

# LANDSCAPE & URBAN DESIGN

55

May/June 2022

Price £4<sup>95</sup>

landud.co.uk



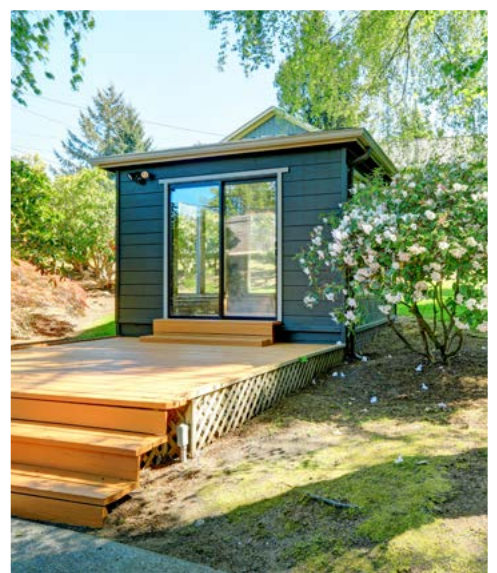
## Making your wish list work in a small garden

Garden Designer Kate Gould reveals some clever ideas for packing your small garden space full of personality and style



## Growing a Living Wall

How to recreate a living wall in a garden or small outdoor space



## Create a haven in your garden...

Creating a separate working area away from the house

# MY EQUILIBRIA

WHEN ART MEETS FITNESS



- Engineered around the bio mechanics of instinctive training
- Scalable and modular design, available in a range of finishes
- Developed for wellness activities that promote focus, relaxation & flexibility

- Inspired by nature
- Full range of fitness equipment
- Hard-wearing and minimal maintenance

**My Equilibria is the worlds first outdoor fitness system based on instinctive body movements.**  
Smooth concrete surfaces seamlessly meet steel components, guaranteeing maximum stability, safety and performance.



**bsfg.co.uk**  
**01625 322 888**

# CONTENTS ISSUE 55

## THIS ISSUES MAIN FEATURES



**Bound Surfacing | 43 - 45**



**Concrete & Stonework | 46 - 63**



**Landscaping Services | 77 - 99**



**Tools, Plant & Equipment | 102 - 107**

### Garden Design

04 - How 13.2million plastic bottles will become a game changing range of furniture in 2022.

14 - Garden Designer Kate Gould reveals some clever ideas for packing your small garden space full of personality and style.

20 - Alternatives to timber decking.

22 - Designing a garden space that works throughout the seasons.

### Green & Blue Infrastructure

36 - Resilience is a current "buzzword", particularly in relation to our urban spaces and infrastructure, but what does it mean?

38 - Advice on how to recreate a living wall in a garden or small outdoor space.

### Bound Surfacing

44 - GeoPave EzFloat resin bound surfacing was the ideal choice for the pathways around the garden of a Victorian Mansion.

### Concrete & Stonework

46 - Larsen Building Products BS 7533 compliant ECO paving mortar system utilises waste material from another manufacturing process.

52 - Brett Landscaping was selected to provide more than 1,300 square metres of block paving at Crystal Palace's new complex in Beckenham.

58 - Discover the best paving options for period and listed properties.

### Street Furniture

66 - In order to truly become a cycling nation, we need to build and redesign our cities to work well for cyclists and pedestrians.

### RHS

74 - Small space gardening makes a comeback at RHS Chelsea Flower Show 2022.

### Landscaping Services

82 - The installation of living trees throughout urban areas can enhance environmental quality in a variety of ways.

84 - Help tackle climate change - use more wood.

85 - During March 2022, Provender Nurseries in conjunction with Ebbsfleet Development Corporation, provided 1500 trees and 900 plants free to residents of Ebbsfleet as part of their 'Greening the City' initiative.

### Tools, Plant & Equipment

106 - A tornado of mowing fabulousness has just blown in from Mountfield.

### Sports & Play

108 - The UK's premier outdoor sports and grounds maintenance tradeshow, SAGE is taking place on 6th & 7th July at The Three Counties Showground in Malvern.

Accredited  
Members  
of BALI



### Publishing Director

Martin Holmes  
martin@mhmagazine.co.uk

### Sales Director

Lee Martin  
lee@landud.co.uk

### Digital Manager

Jamie Bullock  
jamie@mhmagazine.co.uk

### Editor-in-Chief

Antony Holter  
editor@mmhmagazine.co.uk

### Editor

Lorna Davidson  
lorna@landud.co.uk

### Business Manager

Josh Holmes  
josh@mhmagazine.co.uk

### Studio Designer

Sarah Johnson  
sarah.johnson@mhmagazine.co.uk

Marketing Enquiries - 01227 936974  
Editorial Enquiries - 01304 806039  
Other Enquiries - 01304 806039

### Publishers

MH Media Global Ltd.  
Discovery Park, Sandwich, CT13 9FD

Cover images courtesy of: Left: Helen Fickling photography for Kate Gould | Top Right: Eden | Bottom Right: Harlestone Projects

Every effort is made to ensure the accuracy and reliability of material published in Landscape & Urban Design however, the publishers accept no responsibility for the claims or opinions made by advertisers, manufacturers or contributors. No part of this publication may be reproduced or transmitted in any form or by any means, mechanical, electronic (including photocopying) or stored in any information retrieval system without the prior consent of the publisher.



# INTRODUCING THE NEW NASSAU COLLECTION – POWERED BY SOCIAL PLASTIC®

## HOW 13.2MILLION PLASTIC BOTTLES WILL BECOME A GAME CHANGING RANGE OF FURNITURE IN 2022

This Global Recycling Day (March 18th), LifestyleGarden® - one of the UK's most exciting outdoor furniture manufacturers - has its eye firmly set on a more sustainable future with the launch of its new Nassau® offering, powered by Social Plastic®.

This incredible new collection of chairs and tables (from RRP £299) has been created in a uniquely sustainable way by using ethically recycled Social Plastic® from Plastic Bank, part of an exciting long-

term partnership between the two brands. And, what a partnership it shall be, with both parties perfectly aligned in their vision to create a world without waste, further building on similar partnerships such as that with the Eden Project and the ground-breaking DuraOcean® chair.

### 13.2 million bottles rebirthed in 2022

Not only will every Nassau chair be made from the equivalent of 175 recycled plastic bottles, but the range is already committed to utilising the equivalent of 13.2million bottles (or 264,000kgs) in its first year. That's a lot of

plastic! However, the impact of the Nassau collection - launched in collaboration with the Eden Project once again - goes further than vital environmental protection. In a true industry first, this collection will also close the loop by positively impacting the social and economic communities within the Plastic Bank supply chain through the use of Social Plastic®.

### What is Social Plastic®?

Simply put, Social Plastic® is ethically recovered plastic which helps fight ocean pollution, whilst simultaneously improving the lives of those who collect it.



The collected plastic waste is washed, flaked, and goes through a recycling process, where it is then pelletised and integrated into products and packaging as part of a closed-loop supply chain. These pellets are what LifestyleGarden® will use to “power” its Nassau collection, every item of which will be created within its in-house manufacturing facilities, which enables LifestyleGarden® to ensure complete traceability of material and product.

### Introducing Plastic Bank

We are all aware of recycled or recyclable material innovation, but have you ever heard of material that

actually benefits the people and communities that collect it? That’s where the Social Plastic® and Plastic Bank magic comes in.

Collectors in Plastic Bank’s ethical recycling ecosystems in coastal communities receive bonuses for the materials they collect, which helps them provide basic family necessities such as groceries, school tuition, internet access, health insurance, cooking fuel and more.

Plastic Bank’s Alchemy™ blockchain platform secures the entire transaction and provides real-time data visualisation - allowing for transparency, traceability,

and rapid scalability. What this means is that businesses, such as LifestyleGarden®, can truly see how their product is impacting communities and people, as well as being able to determine where material has been collected and by which collector - this kind of closed-loop economy has never before been seen in the UK furniture market.

To date, LifestyleGarden®’s commitment to Social Plastic® has resulted in the equivalent of 11 million plastic bottles being prevented from reaching our oceans, as well as positively impacting two communities and more than 400 people. A further 2.2million bottles will bolster these numbers throughout the 2022/23 season. All of this helps LifestyleGarden® and its parent company, ScanCom, to contribute to the UN Sustainable 17 Development Goals.

LifestyleGarden®’s involvement is part of a much bigger picture, however. To date, Plastic Bank has helped to prevent the equivalent of over 2 billion plastic bottles reaching our oceans and has ecosystems in four countries: the Philippines, Indonesia, Brazil, and Egypt, with plans for further expansion in 2022. LifestyleGarden® is proud to be one of the global partners that are working to bring Social Plastic® to the masses.





**But what does this mean for the consumer?**

Buying the Nassau collection from LifestyleGarden® is an easy decision. Firstly, the range is stunning. Available in peony pink, sage green and honey yellow, and white - with the choice of a 70cm side or 95cm table - the combination of the coloured surfaces and the 100% FSC-Certified hardwood legs creates a colourful and stylish contemporary look for the home and garden. Another huge positive is that the range is fully recyclable at the end of its lifecycle. Simply check [www.lifestylegarden.co.uk](http://www.lifestylegarden.co.uk) to find your local recycling centre.

Having a Nassau powered by Social Plastic® set at home will always be a stunning visual choice but its significant environmental, social and economic impact also means that consumers will be bringing something into their household that makes a real difference in the world.

This is a purchase with heart and meaning; something that creates a talking point with friends and family and, hopefully, inspires others to make better choices and look for products and manufacturers that recognise the importance of a closed-loop economy.



To further support the appeal of the Nassau powered by Social Plastic® offering, LifestyleGarden® has confirmed that a two-seater bistro set will be priced at just RRP £299. This price point has been specifically designed to ensure that access to the innovation of Social Plastic® and its positive impacts is not exclusively for those with deep pockets.



Four- and six-seater sets are also available priced from £499. Shoppers can also buy a set of two chairs to add to their existing dining table set-up or to add colour to a balcony or seating area, priced at just £179 for the two.

### Where to buy

The new Nassau collection, powered by Social Plastic® is available to buy from its exclusive high street retail partner, Robert Dyas, as well as via the world-leading environmental charity, Eden Project, with whom LifestyleGarden® has forged an incredible ongoing partnership with to bring to market even more sustainable innovations.

Additionally, Nassau will also be available from a range of UK garden centres. To find your local stockist please visit <https://lifestylegarden.co.uk/store-locator/>

### Where it all began....DuraOcean®

First launched to the retail market at the trade exhibition, SOLEX, in 2019, DuraOcean® was met with critical acclaim and named winner of the

Best New Product Award at the outdoor living show. It also scooped Bronze in the Gardiente Outdoor Living Awards the same year and was shortlisted for the Recycled Product of the Year at the 2020 MRW National Recycling Awards.

The reason for this flurry of excited attention was DuraOcean's® status as the world's first commercially viable outdoor chair made from recycled ocean plastics, which heralded a new shift towards sustainable outdoor living that is also financially accessible for the mass consumer market. The chair was greeted with immense enthusiasm by retailers and consumers alike and soon became a hero product of the flagship Eden Project in Cornwall, which utilises DuraOcean® furniture in its own catering areas and retails the same chairs through its shop and website, and with whom LifestyleGarden® has an incredibly close working partnership.

DuraOcean® was the culmination of a global ocean plastic recovery project and the first mass-market piece of furniture crafted from recycled marine waste, boasting a sophisticated design and enviable eco-friendly credentials. Design-led and manufactured to the highest possible specifications, these state-of-the-art chairs soon became sought after contemporary classics which are proving they will stand the test of time.

LifestyleGarden® understands that environmentally responsible initiatives are the only way to deliver innovative product development and has made a commitment to 'reduce, reuse, recycle and rethink' on its a mission to bring even more recycled material innovations to UK homes.

Want to know more about the incredible story and investment from LifestyleGarden® that brought DuraOcean® to market? You can read it here.



### Find out more

If you want to find out more about LifestyleGarden® and its premium-quality outdoor furniture, **please visit us at [www.lifestylegarden.com](http://www.lifestylegarden.com)** and follow the team on Facebook and Instagram.

Plastic Bank empowers the regenerative society. They build ethical recycling ecosystems in coastal communities and reprocess the material for reintroduction into the global supply chain as Social Plastic. Collectors receive bonuses for the materials they collect which helps them provide basic family necessities such as groceries, cooking fuel, school tuition, and health insurance. Plastic Bank's Alchemy™ blockchain platform secures the entire transaction and provides real-time data visualisation - allowing for transparency, traceability, and rapid scalability. **Learn more at [www.plasticbank.com](http://www.plasticbank.com)**

[www.lifestylegarden.com](http://www.lifestylegarden.com)  
[www.plasticbank.com](http://www.plasticbank.com)



# LET'S TALK WATER

Adding water to a project has never been easier. This is because OASE has created complete solutions for installers. This means that everything from the pump to the feature itself is made by OASE. You can expect German-engineered, functional, and easy to install products across the board. This harmony ensures ease-of-use and reliability. We pay attention to every aspect of design, from the magnets in the pump impellers, to the copper used in the windings. OASE can provide the technical knowledge and support on all the products you use.

## Let's talk pumps

Pumps are the beating heart of any water feature. When working out which size you need, start by measuring the overall height of the feature. If you know what flow rate is recommended, you can use pump performance curves to find the right pump size for you. If you don't know the flow rate required, we can help. OASE feature pumps come in various sizes from 2500 up-

to 44000 l/h. In addition, pipe size and inlet/outlet size can be changed to suit your feature's requirements. The OASE Control App also allows adjustment of a water feature: flow rate, lighting, on/off and more.

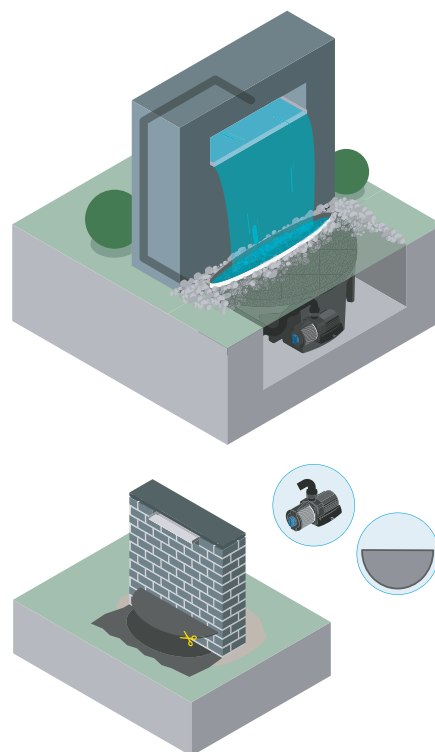
## Water Walls and Water Blades

These create the effect of waterfalls, but within any area of a garden or outside space. They are excellent at transforming an area, and without needing a pond, they are the perfect way to add water with ease.

Water blades can be attached to pre-existing ponds, or as part of a pond-free system. They create a perfect "sheet of water" when installed and are an example of water uniformity, serenity, and beauty. In order to achieve this effect, you will need to calculate how high the drop of the blade is. The higher it is, the more flow is needed for the sheet effect.

At OASE we have a dedicated technical team that will help assist you in deciding pump size or any other requirement for your water

feature. We never want you to feel overwhelmed or confused and so we are here to help.



Contact us at [enquiries@oase.com](mailto:enquiries@oase.com)



# Want to add water to your project?

Complete pond-free water landscaping (without the fuss)

We know what works, and this technical knowledge has allowed us to create a range of products that are easy to install, easy to maintain and look good.

OASE has the right product for any project, and the on trend look and feel of our features guarantee a happy customer. Spillway, Waterfall Walls, Copper Bowls, Corten Cubes and more are now available at your local OASE distributor.

Whatever your next contract calls for,  
OASE has the answer for you.  
Learn more about the complete range:  
<https://social.oase.com/addwater>





# BEAUTIFUL POTS AND PLANTERS

Torc make everything by hand from their studio in the British Isles creating beautiful pots and planters to enhance any outdoor (or indoor) space.

Working alongside a talented team of artisans this family run business really specialize in textures, scale and particularly bespoke design.

The design side of the business is getting busier all the time with landscape architects and garden designers alike realizing just how much expertise this company has to offer with a wealth of experience in design and problem solving to bring to the table. Torc welcome the opportunity to be involved at the design stage and are happy to contribute ideas when requested. Frequently being commissioned to provide planter designs and outdoor furniture as a one-off template for both commercial and residential spaces.

Launching their new contemporary shaped water bowl this month was a good example of how far they can go - the diameter of this bowl can be offered up to 3m wide. Their green credentials are pretty impressive too.



[www.torcpots.com](http://www.torcpots.com)

# TORCPOTS



@torc\_pots



www.torc pots.com

# INNOVATIVE WOOD PANELS USED IN STUNNING GARDEN BUILDING RANGE



Outdoor spaces have become even more important over the past two years. According to the Garden Trends Report 2022<sup>1</sup>, the value of a well-kept outdoor space has also increased significantly. Conservatories topped the list of garden improvements which add the most value to a home, directly followed by a garden home office.

Ensuring it's offering responds in the most useful way to this trend, Garden building suppliers Timberbox LTD have created the 'PassiveBox' - the latest item in their garden building range and it incorporates three MDF products from sustainable wood panel manufacturer MEDITE SMARTPLY.

"The 'PassiveBox' Collection is heavily focused on longevity and performance," said Arthur Moore, Director of Timberbox LTD. "MEDITE TRICOYA EXTREME (MTX) provides us with an unrivalled exterior cladding option, for its excellent machinability, high quality finish



and dimensional stability outside. MEDITE VENT is used as our structural sheathing board in our diffusion open wall system and MEDITE MR provides a fantastic internal decorative finish. It is often used for many other elements within our buildings, for example, bar and kitchen carcasses, cupboard doors and boxing in.

"By using a combination of MEDITE sheet materials in conjunction with other high specification building products, we are able to provide customers with a superb garden room package."

MTX panels boast outstanding durability and dimensional

stability while still maintaining the versatility and excellent machining qualities of standard MDF panels. It is particularly beneficial in environments where humidity and the weather are usually concerns.

MEDITE MR is a moisture resistant MDF panel specially designed for use in interior humid conditions, such as kitchens and bathrooms.

"Since the inception of Timberbox two years ago, our end goal was to offer the ultimate performance garden building in terms of longevity and energy efficiency. After much research, and striving for the best quality products, we settled on MEDITE VENT to be used in conjunction with the MTX and MEDITE MR that we were already using readily."

MEDITE VENT is a breathable, external sheathing panel that is suitable for use in all types of timber frame structures. The panels combine high racking strength in excess of Category 1 requirements with excellent vapour permeability and high weather resistance.

"Used In conjunction with a MVHR System, the Intello Plus Smart AVCL and a Tyvek Breather membrane, MEDITE VENT provides an extra line of defence against interstitial condensation within the timber frame, and we are firm believers of the belt and braces approach.

"All of the MEDITE products used are fantastic in terms of their cutting and machining capabilities," Arthur concluded.

To find out more about MEDITE SMARTPLY products, visit: <https://mdfosb.com/en/>

Join us at  
**The RHS Chelsea  
Flower Show**  
24-28 May  
2022

# MEDITE® makes it real at the RHS Chelsea Flower Show

**EXTREME**

MEDITE® tricoya

**MEDITE SMARTPLY** has set its sights on the RHS Chelsea Flower Show to showcase its innovative product range and commitment to sustainable building. As a responsible manufacturer of wood construction panels, the company is committed to creating products that contribute to healthier buildings.

The innovative construction panel, **MEDITE TRICOYA EXTREME (MTX)**, has revolutionised the construction and landscaping industry. This groundbreaking product is guaranteed outdoors for 50 years and underground for 25 years, contributing towards sustainable construction. Its design capabilities are limited only by your imagination.

**Join the MEDITE MDF community online to receive the latest updates.**



Visit [meditemakesitreal.com](https://www.meditemakesitreal.com) for more information.  
**Dreamers welcome!**

**MEDITE®**

Kate Gould's RHS Chelsea garden 'Out of the Shadows'



# MAKING YOUR WISH LIST WORK IN A SMALL GARDEN

## GARDEN DESIGNER KATE GOULD REVEALS SOME CLEVER IDEAS FOR PACKING YOUR SMALL GARDEN SPACE FULL OF PERSONALITY AND STYLE

At this year's RHS Chelsea Flower Show, award-winning garden designer Kate Gould's 'Out of the Shadows' garden is a lesson in how brilliant garden design can seamlessly incorporate the most demanding of wish lists. With our post-pandemic gardens being asked to work harder than ever, here Kate shares some clever ideas to make even our most ambitious garden ideas make sense in a small garden.

Kate Gould said; "As we (hopefully) come out of the pandemic, people have certainly become more mindful about creating safe spaces they can hunker down in. They are

thinking outside the box in terms of what they want their gardens to deliver when it comes to outdoor living, and they are often not sure how to achieve this within a traditional garden model.

With 'Out of the Shadows' I want to show people that if they want a swim spa for example, or a space to do yoga, they don't need to choose between having that and a beautiful garden. It doesn't need to be an either/ or choice. Have a swim spa but make it chic. It is as much about coming out of the shadow of the pandemic - and all the ways that has elevated the importance of our gardens - as it is about coming out of quite narrow, traditional views of what a garden needs to be. It can work on so many different levels and clever design choices can marry up lifestyle needs."



Helen Fickling Photography

### Deciding on a water feature

A water feature will generally be dictated by the style of your garden as well as your use of the space. If your style is sleek and minimal then a bubbling puddle isn't going to work, something more along the lines of a reflection pool or vertical water wall would suit better. More natural gardens will benefit from a pond, both in terms of aesthetic appeal as well as from a wildlife-enhancing perspective.



Helen Fickling Photography

In the same way that a hot roof terrace looks best with plants that thrive in really sunny conditions, water features tend to look most natural (even very stylised contemporary ones) with lush, leafy planting around them. Big bold leaves and water make for a very pleasing picture.

### Incorporating barbecues and firepits

Some people are drawn like a magnet to cooking outdoors, while others are fair-weather chefs. Working out which type of person

you are will dictate whether you wish to run to the expense of an outdoor kitchen or would be just as happy with a stand-alone barbecue that you can wheel out in good weather.

Add a barbecue or fire-pit for entertaining. Sitting around a fire at the end of the day (be it natural gas, wood, or bioethanol) can be very calming, as well as warming on a chilly but dry evening. All exterior fires have their pros and cons so do your research before purchasing. If you cannot channel natural gas to

the space, bioethanol may be the best solution for you.

### Add impactful personal details

The personal elements you choose for your garden are what make it uniquely yours. It is the little things in life that make the big things sing. A sofa without cushions doesn't look very inviting and a table without candles or pots can look half finished. The personal elements you choose for your garden are what make it uniquely yours. These finishing touches are entirely up to you, and, over time, they will most likely change with fashions and trends. In a small space, every element needs to work hard, often serving a dual purpose.

Where do you start and stop when it comes to accessorising your small garden? Ideally, less is always more, but objects that you have brought home from your travels, as well as candles and lanterns, always lend a really personal touch. Whether they are statement pieces or simply a small reminder of a happy event, much-loved items can be accommodated easily in a small garden and updating those accessories is also an easy way to ring the changes.



Helen Fickling Photography



**Other ideas to consider**

Consider an automated awning - not for shade but for privacy - that can be deployed without diminishing light levels inside the property. Many awnings contain both lighting and heating, which is a bit of a double whammy bonus in a small space.

Although slightly controversial, exterior speakers, if used discreetly, can add a whole new dimension to an exterior space, making it far more interactive and inviting.

[www.kategouldgardens.com](http://www.kategouldgardens.com)  
All images on this page:  
Helen Fickling Photography



## SPECIALISTS IN GROWING INSTANT HEDGING



Readyhedge is a nursery situated in the south of Worcestershire. We specialise in growing instant hedging in metre long lengths and various height from 30cm tall to 200cm tall. As well as individual plants and low and high panels and screens. We grow over 40km of hedges in containers every year in over 35 varieties

Readyhedge is an innovative way of supplying hedges which over comes the problem of how many plants do I need, by supplying pre-spaced metre long units of hedging that can be easily handled by one or two people. This means that to order Readyhedge you just need to select a variety, select a height that you need and measure the distance in metres. It is as easy as that. We can deliver anywhere in the country and normally turn orders around within 48 hours.

Readyhedge comes in two different styles, Readyhedge troughs and Readyhedge bags which cover a range of heights and widths. Specialising purely in hedging means that all our hedges are grown with the love and attention that each variety needs.

[www.readyhedge.com](http://www.readyhedge.com)



# READYHEDGE® Simplicity.

Our instant hedging is delivered ready-spaced and ready to plant, with no need for machinery or special planting skills.

Variety shown: *Prunus Lusitanica Angustifolia* (Portuguese Laurel)



01386 750585

[sales@readyhedge.com](mailto:sales@readyhedge.com)

[matthew@readyhedge.com](mailto:matthew@readyhedge.com)

[www.readyhedge.com](http://www.readyhedge.com)



# FILLING THE LAVENDER LOOPHOLE AT PROVENDER NURSERIES

With importing restrictions becoming tighter on plants commonly used in planting schemes, Provender Nurseries are expanding further into growing some of our own stock to ensure consistency of supply and quality to our customers.

With Lavender being one of the most popular plants used in commercial and domestic landscapes it was decided that Lavender would be an obvious addition to the extensive list of plugs for growing on to supply our cash and carry.

All Lavenders are potted up and grown in our new on-site growing facility into peat free compost in 2L blue kerb-side recyclable pots. A selection of our Lavender choices are grown in 20L air pots which keeps the compost on the dryer side due to the air circulation around the roots. We have found that plants grown in 20L air pots have responded particularly well resulting in fantastic, ready to plant, instant specimen Lavender balls full of bud.

Lavender stock lines to grow were selected for their popularity including regular favourites such as *angustifolia* 'Hidcote' and 'Munstead'.



Lavender x intermedia 'Grosso' is another popular choice with a longer than usual flowering period from July to September of deeply aromatic bluish-purple flowers popular for use in the perfume industry due to the intense scent.

Alongside the more well-known varieties we are also growing Lavender intermedia 'Phenomenal', a reasonably new introduction favoured for its very compact habit and strongly coloured silver-grey foliage that is particularly prominent in the winter months.

As part of our philosophy is to try something new, we are also growing a new introduction which is not yet well known or widely grown, but that we think will prove

popular, Lavender ang. 'Beezee Dark Blue'. The dark blue, highly scented flowers are produced over a long period in large numbers above the silvery-green aromatic foliage reaching an overall height of 40cm. *Lavandula ang.* 'Beezee Dark Blue' is promoted as a hardier, more compact variety than the ever-popular *Hidcote*.

Lavenders will never fall from popularity with designers, property developers and most importantly with bees, butterflies and pollinating insects. Provender Nurseries aim to keep all parties happy with our own production plants.

[www.provendernurseries.co.uk](http://www.provendernurseries.co.uk)

PROVENDER

less is not more ...

more  
is more

ALLIUM...LOVED BY DESIGNERS,  
SPECIFIERS AND POLLINATORS



Plant  
Healthy

Provender Nurseries, The Landscape Centre, Leydenhatch Lane, Swanley, Kent BR8 7PS  
T: 01322 662315 E: sales@provendernurseries.co.uk W: www.provendernurseries.co.uk

# ALTERNATIVES TO TIMBER DECKING



If you're in the trade you are probably accustomed to being asked about timber alternatives for decking. Here Caroline Birdsall, Director of Marketing at wood-look decking manufacturer Millboard, explores some of the frequently asked questions around alternatives to timber.

## What is composite decking?

Composite decking is an innovative outdoor flooring solution which combines man-made materials - and sometimes also wood fibres - with a bonding agent to make a decking board that looks like timber but is more capable of withstanding the elements. It has become increasingly popular with homeowners who

value its durability, ease of maintenance and slip-resistant qualities.

## Is composite decking all the same?

There are many different types of composite decking available. As is generally the case, you pay for quality, so decking that genuinely looks like wood is more expensive than some of the cheaper alternatives. For instance, Millboard's range achieves its amazing resemblance to real wood through being hand-moulded from carefully selected pieces of oak, with each board hand-coloured in realistic tonal shades to give a natural timber appearance.

## What is capped decking?

Most composite decking uses some element of wood fibre in its composition and some manufacturers therefore cap their boards with an additional surface layer to provide protection against water damage and algae growth. Whilst a capped decking board containing wood fibres may have more protection than an uncapped board, this is unnecessary in a board that does not contain wood, such as Millboard. Millboard is rather unique in the world of composite decking in that it is actually wood free.

## Is it maintenance-free?

Composite decking is a great solution for homeowners who would prefer not to undertake regular cleaning, sanding and oiling/staining to maintain the appearance of timber decking and prevent it from rotting. Millboard decking usually just requires an occasional sweep with a stiff broom to prevent debris build-up, and a clean with soapy water twice a year. Composite decking is also less likely to warp or fade in comparison to timber. It's therefore an ideal decking material for homeowners who want to spend time relaxing and enjoying their decking, rather than maintaining it!

[millboard.co.uk](http://millboard.co.uk)



# Nature enhanced, for unreal results.

Every now and then, something comes along to knock an original off its pedestal. Welcome then to Millboard decking. Through continuous research and development, meticulous attention to detail, expertise and innovation we've created a board that's hand-moulded from natural wood – and we think it could be better than the real thing. It won't rot like real wood, warp like real wood or attract mould like real wood. It just takes the best of real wood and enhances it. Beautifully.

Millboard; Live. Life. Outside.

Discover the collection and order your free samples at [millboard.co.uk](http://millboard.co.uk)

millboard®

Live. Life. Outside.



## GARDEN DESIGN TIPS

A well-designed garden should provide you with year-round enjoyment. Think about how you can design a space that works throughout the seasons. While a lawn might be a great space for kids to play in summer, for example, you will probably avoid it in the wet, winter months.

With non-slip decking you can create a space that stays safe and welcoming all year round. Because it never gets slippery, even in wet or icy weather, Gripsure anti-slip timber decking will extend the time you spend in your dream garden. That could mean creating a large deck where you can host family and friends, or a quiet corner of the garden for you to enjoy relaxing with a book.

Considering your needs in autumn and winter means you might decide to add extra features to your garden. A fire pit, shelter or small garden building could entice you into the garden in the colder months, helping you to get outside throughout the seasons.

Redesigning your garden is exciting but it can be daunting. Take your time, do your research and think about what you want to get out of your outdoor space. It's important to get it right and make the choices that work for you and your family. Transforming your garden can transform your life too.

Decking is a great way to create an extension to your own living space, bringing the indoors out. Whether you want to add space for outdoor entertaining, a kids' play area, or a relaxing spot, decking is quick, easy and versatile.

Perfect for sloping parts of the garden, decking works in almost all outdoor spaces, including those tricky shady spots where the grass doesn't grow. Gripsure's non-slip decking allows you to add in some steps or join two areas of the garden with a walkway, safe in the knowledge it won't get slippery, even in the most challenging areas.



**Considerations for decking:**

**Is the ground level or does it have a noticeable slope?**

Level gardens offer the easiest conditions for laying decking, but decking works on even the steepest slope. Using Gripsure adjustable pedestals will ensure a quick and easy installation.

**Do you have any existing features to work around?**

There's no need to remove trees, posts or other features from your space to accommodate your garden decking. Simply work around it. If there is a tree in your decking space, research the species as some trees can be very fast growing so might need much more room than you anticipate.

**How close is the site to your house?**

Garden decking can work well both adjoining your home and positioned further away from it. If you're looking to step out from your home onto the deck, there are few important extra considerations that must be made during installation.

We'll take you through those later during the laying process.

**How much sun does it get?**

The south-facing side of the house will offer the most sunshine. If you're looking to avoid full sun, select a shady spot.

**What's the view from the site?**

Perhaps you have a particularly stunning view that you'd like to enjoy from your decking.

**How much privacy does the space afford?**

Does your chosen spot offer you the privacy that you want from your neighbours and does it maintain their privacy from you?





CARIBBEAN  
BLINDS UK LTD

## ENHANCE YOUR GARDEN DESIGNS

LOUVERED ROOFS | PATIO AWNINGS | EXTERNAL BLINDS

From [outdoor living](#) to [solar shading](#), we've got you covered, whatever the weather. **Proudly UK Manufactured Since 1987**, fully set up for a quick and easy installation and delivered nationwide on our own vehicles in the shortest lead times.





making dreams come true

0344 800 1947 t  
info@cbsolarshading.co.uk e  
cbsolarshading.co.uk/trade w



SHOWSITES IN | [SUFFOLK](#) | [MIDDLESEX](#) | [SURREY](#)



# DESIGNING A MALIBU OASIS

“Combining the highest levels of comfort, quality, and design we conceived innovative projects that break the barrier between the indoor and outdoor world.”

We are always looking for inspiration. Everywhere we go and everything we search. We want to

be inspired by the beautiful things in life and that want can bring a million new ideas to life. Imagine that you are now entering the trip of your life to a breathtaking location where the sun always shines bright. Palm Trees are around you and there’s no need to check your watch. Time just stopped.

Are you ready to enter a Malibu Home where luxury and technology come hand in hand? Come along and find out what where the Myface pieces that completely transformed the Mansion.

This luxurious Malibu Project was inspired by nature and MyFace



aimed to build a real-life oasis with modern shapes and a design that is inspired by the future and technology. The high ceiling and tall glass windows are one of the most used trends in Luxurious Residences Projects, especially for those who aim to build a house with a modern style and with natural light.

Malibu is the perfect place to build a house if those are your requirements.

With a big outdoor area, there's more room to play with the decor and use different elements that will complete the space. With a spacious location, you need to find the perfect pieces that will add style, comfort, and not feel like they are taking too much space.

Pearl and Noa were the long lost Treasure.

### PEARL Sofa

The Pearl Sofa has a distinct shape and oversized scale confer Pearl a significant visual weight in any terrace or patio scenario. A meticulously stitched weather-resistant cushion and upholstery find their rest in powder-coated textured fiberglass, bringing them comfort and joy we seek.



With a very characteristic shape, the Pearl sofa has a very classic style and it will give you a sense of comfort you never experience before. It will be just like resting on top of the clouds.

### NOA Sunbed

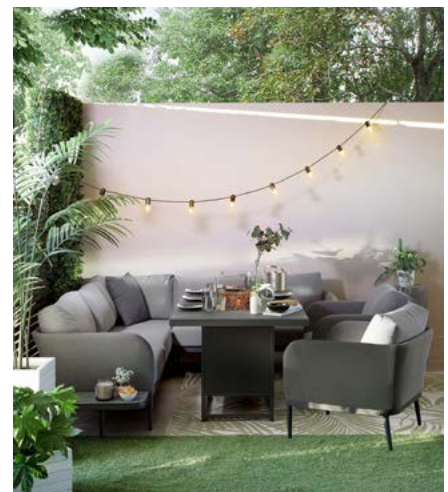
The Noa Sunbed is a modern piece that it's a must-have - either you have a pool or you don't. Noa carries Myface's contemporary style and meticulous attention to detail to the common sunbed.

A very sophisticated yet simple urban allure embodied with elegant copper and lacquered aluminum lines. With a modern style and very simple yet luxurious details, it's the perfect spot for you to be during the hot days. Either is while catching the sun or reading a book you will fall in love and be addicted to comfort.

[www.myface.eu](http://www.myface.eu)

# CREATE YOUR SIGNATURE SUMMER STYLE

## FOR OUTDOOR LIVING AND SOCIALISING WITH DANETTI'S NEW GARDEN COLLECTION



Make the most of your garden this summer with Danetti's new collection of designs that cater to all areas of summer life; from creating the perfect space for outdoor living with daybeds and sun loungers, to configurations and styles that work for entertaining and hosting with modular corner benches, outdoor kitchen set ups and fire pits. Bring the comfort factor and that homely feeling outside by creating a multi-functional space that works for all your summer needs.

Danetti Buyer, Kelly, says: "This summer is all about new materials, lighter colours, and natural textures such as light oak, rattan, and rope. The big trend for this season is high-contrasting finishes such as black frames paired with beige upholstery or mixed materials that will curate a real contemporary and signature look in your garden; it's the kind of style you would associate with a focal point inside your home, and we're bringing that luxury feeling through to your outdoor space."

02035881380 | [www.danetti.com](http://www.danetti.com)

## CREATE A HAVEN IN YOUR GARDEN...

The number of people working from home has grown rapidly over the last two years - as has the need for a separate working environment away from the house. All-weather garden rooms offer the perfect solution for home workers who want to keep the 9-to-5 outside the walls of the main residence.

However, a garden room has much more potential than just a productive office space, it can also be used as a home gym, playroom, studio, or an all-year-round extension of your living space.

Designing your ideal garden getaway to suit your personal requirements is easy with Harlestone Projects. All our garden rooms are bespoke, making them totally flexible to your needs.



### Why choose Harlestone Projects?

- There's a wide range of sizes and structures to choose from
- Each garden room is designed to meet your unique requirements
- You can select from a choice of windows, doors, fixing and finishes

- All materials are hi-spec, and quality is a top priority
- Our team will collaborate with you at every step so that all aspects of the installation are well-coordinated and seamless

### Our work doesn't end when your build is done

We pride ourselves on our exceptional after-care service, and the team will be on hand to make sure your garden room is exceeding all your expectations.

For more details call 01604 586 000 or visit [projects.harlestonegroup.co.uk/garden-rooms](https://projects.harlestonegroup.co.uk/garden-rooms)



# Harlestone

## PROJECTS

### Bespoke Garden Room Design & Installation

Our bespoke, freestanding garden rooms are used as office space, summer rooms, creative studios, playrooms and much more.

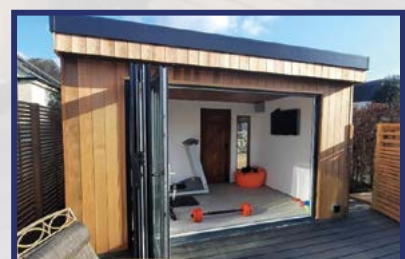
With years of experience in garden room design and on-site construction, we work closely with our clients to create their dream garden getaway in as little as 4 weeks.

Our experts will be on hand every step of the way - from planning and construction to first-class after-care support - speak to the team today and expand your living space for the summer.

📞 01604 586000

✉ [sales@harlestonegroup.co.uk](mailto:sales@harlestonegroup.co.uk)

🌐 [projects.harlestonegroup.co.uk/garden-rooms](https://projects.harlestonegroup.co.uk/garden-rooms)





# LUXURY OUTDOOR LIVING PRODUCTS

Whilst the last two years have sparked a unique enjoyment of the great outdoors, initially through necessity, and now through choice, Samson have been working hard to provide contemporary weather protection systems to transform outside spaces.

Supplying and installing high quality domestic and commercial outdoor living products since 1995, Samson Outdoor Living are a top UK specialist for luxury products, including:

- Awnings
- Retractable canopies
- Glass and polycarbonate verandas
- Garden glassrooms
- Bioclimatic roof systems
- Large umbrellas and parasols

Samson's expertise, dedicated team and bespoke products can be utilised for all types of outdoor settings. From small patios and cosy pub gardens to exquisite outdoor restaurant areas, the goal is to transform outside spaces so that



fresh air can be enjoyed, comfortably, throughout the year.

With modern technologies constantly evolving, Samson work with the latest tools to consistently offer a contemporary and stylish product range. Awnings, blinds and pergolas can be controlled at the press of a button on a remote control, and even via your smart device for integration with smart home automation tools.

## Diverse Showroom

As a family-run business with a particular focus on the highest quality systems, Samson ensure a product range consisting of only industry-leading, award-winning

manufacturers, with a diverse showroom to exhibit these.

Based at a central location, Samson's showroom invites you to view and try out the systems for yourself, with the expert team on-hand to guide and inform you with any product advice and answers to your enquiries.

Product samples, informative brochures and examples of our installations are all available for you to view to allow you to become truly inspired.

**Samson**  
Outdoor Living

01933 448844  
enquiries@samsonawnings.co.uk  
www.samsonawnings.co.uk

**Showroom Address:**  
6-8 Meadow Close, Finedon Road,  
Wellingborough, Northamptonshire,  
NN8 4BH



**SAMSON**

Bespoke weather protection systems for luxury outdoor living  
Retractable Awnings | Glass verandas | Glass Rooms | Retractable Canopies





**FOUR OAKS CASH & CARRY:  
PLANTS AND SUNDRIES TO THE  
TRADE**

Based in Lower Withington, Near Macclesfield only five miles from junction 18 M6, we have great access to all major link roads.

Our huge range of stock includes olives and palms in pots from 1litre up to 1,000 litres available all year round. Four Oaks has an extensive product line of over 1,500 lines of trees and shrubs on display from starter plants to specimen sizes

We have recently added garden furniture to our portfolio and increased our already extensive pot range from 2" to 500 Litre pots including terracotta, glazed and genuine half whiskey barrels.

[www.fouroaks-nurseries.com](http://www.fouroaks-nurseries.com)



**Plants & Sundries  
for the Trade**

**Hedging - Topiary  
Buxus - Laurus Nobilis  
Shrubs & Trees**



**Huge range of shrubs  
from 3 Litre - 15 Litre**

Alpines & Perennials. Seiont Nurseries  
Young Plants. Pack bedding & Vegetables.

**Added Value Lines - April onwards:-**

Superb range of Hanging Baskets,  
Planted Patio Pots, 13cm potted Zonal Geraniums,  
Fuchias, Osteospermums, Marguerites & Standard  
Fuchias in 10 litre pots.

**Sundries - Garden Stoneware  
Yorkshire Flowerpots - Draper Tools**

**We now stock Garden Furniture**

**NEW Italian and Spanish Stock**

**Extensive Pot Range available**



**The largest horticultural "One Stop Shop" in the UK**

**FOUR OAKS CASH & CARRY**

Longshoot Road, Lower Withington, Macclesfield, Cheshire SK11 9DX

**Tel: 01477 571797**

**Fax: 01477 571314**

[marlon@fouroaks-nurseries.co.uk](mailto:marlon@fouroaks-nurseries.co.uk)

[www.fouroaks-nurseries.com](http://www.fouroaks-nurseries.com)



**THE PLANTER SPECIALIST**

IOTA offers a trusted bespoke manufacturing service in all sheet metals

• Highly skilled metalwork aided by the latest technology • Experienced project team • Full service provision

**T. 01934 522617 W. WWW.IOTAGARDEN.COM**



Britain's  
finest

Turf

Topsoil

Bark

Find out why Rolawn is the first choice  
for professional landscapers who demand  
Britain's finest turf, topsoil and bark

[rolawn.co.uk](http://rolawn.co.uk)

**Rolawn**®

Beautiful gardens start here

**Harrod**  
HORTICULTURAL



- Garden Furniture • Arches • Pergolas
- Obelisks • Fruit Cages • Metal Raised Beds and Planters • Plant Supports



Trade brochure & enquiries:

**0333 400 1777**

[trade@harrod.uk.com](mailto:trade@harrod.uk.com)

[harrodhorticultural.com](http://harrodhorticultural.com)



# TRANSFORMING PAVING WITH CONCRETE BLOCK PERMEABLE OVERLAYS

Low-intervention permeable paving overlays can transform worn-out paving and deliver SuDS, green infrastructure and healthy streets. To understand how, it's worth reminding ourselves of the unique characteristics and attributes of modular concrete paving generally - as the trade body Interpave explains.

Concrete Block Paving technology is based on high-strength, interlocking units installed with granular material filled joints and laying course. It enables small displacements between blocks, while retaining interlock, to create a particularly durable wearing course over structural layers below and forming a 'flexible pavement'. Decades of use internationally have demonstrated its suitability for the most taxing paving applications. A wide choice of shapes, styles, colours and finishes - including natural aggregates - add a richness, diversity, visual interest and a human scale to the urban realm.

Concrete Block Paving is slip resistant, durable, strong and sustainable. Modular concrete paving delivers fast, low-cost installation using weather-independent, 'dry' construction methods. There are no curing, hot-work or noxious fume problems and only small plant and equipment is needed, with noise and disturbance minimised. With an extremely long lifespan, blocks can be taken up and re-used without processing for repairs, changing demands and layouts, or new schemes - saving carbon and meeting 'circular economy' criteria.

## Increasingly Popular Permeable Paving

Concrete Block Permeable Paving (CBPP) enhances this technology as a well-established, multi-functional sustainable drainage (SuDS) technique. It simply combines self-drained, safe and attractive surfaces



for a wide range of applications with attenuation, storage, pollution treatment and conveyance of rainwater runoff. The difference with CBPP is angular aggregate (2/6.3mm) - not sand - used to fill enlarged joints and as a laying course. Then, pavement layers of voided material (typically 4/20mm) below accommodate water, whilst still providing the required structural performance. CBPP can also accept additional runoff from adjacent impermeable paving and roofs up to twice its own area.

By its very nature, CBPP requires no additional land-take for water storage or management, and no gulleys with related pipework. Its unique capabilities include source control and delivering a gradual flow of clean water, for example to open SuDS features, for amenity or biodiversity, to drainage systems or into the ground. More than 25-years usage has proven it to be a robust, resilient and adaptable technology, used on projects ranging from footpaths to container terminals, with the reassurance of proven engineering design solutions.

Both construction and whole-of-life costs of CBPP have been shown to be lower than for conventional



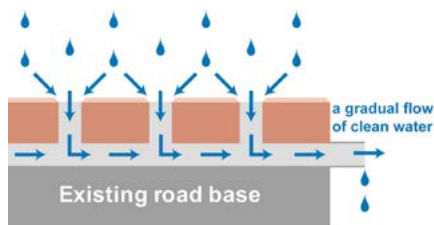
paving and drainage, and it requires only limited, straightforward maintenance without clogging problems. It's important to remember that CBPP is unlike - and not to be confused with - permeable materials, which behave very differently.

## Innovative Paving Overlays

Concrete Block Permeable Paving Overlay is a deceptively simple, innovative approach to retrofitted CBPP, delivering SuDS as part of low-intervention repair, maintenance or regeneration. The

CBPP upper layer is simply applied as an overlay replacing planed-off old asphalt or other road surface, onto the original structural road base. In many cases, this can simply run kerb-to-kerb to form a shared surface level with the footway and flush kerb top. This approach also enables low-cost improvement works - perhaps linked to 'Healthy Streets', new Highway Code measures, or as part of creating traffic calming, Low Traffic Neighbourhoods or Homezones.

The same blocks and 2/6.3mm grit bedding layer and jointing material as for permeable pavements generally are used. Water is attenuated, treated and conveyed within the laying course, which is key to this technology, enabling filtration of silt and retention/treatment of pollutants without clogging. A gradual flow of clean water can then be released near the surface, meeting SuDS requirements.



This approach provides numerous benefits including:

- Interception losses, managing runoff during regular rainfall events
- Attractive, popular surfaces with no puddles or potholes, for user safety
- Maximising re-use of existing road-base and its embodied carbon
- Optimising the original drainage regime, but below the surface
- Low-intervention, low carbon, no-heat retrofit installation
- Long-life with minimal maintenance and low whole-of-life cost
- No open gulleys - wildlife-safe
- Integral water filtration, with debris/litter remaining on the surface
- Straightforward access to below-ground services
- Sustainable re-use of blocks for reinstatement or changed layouts.

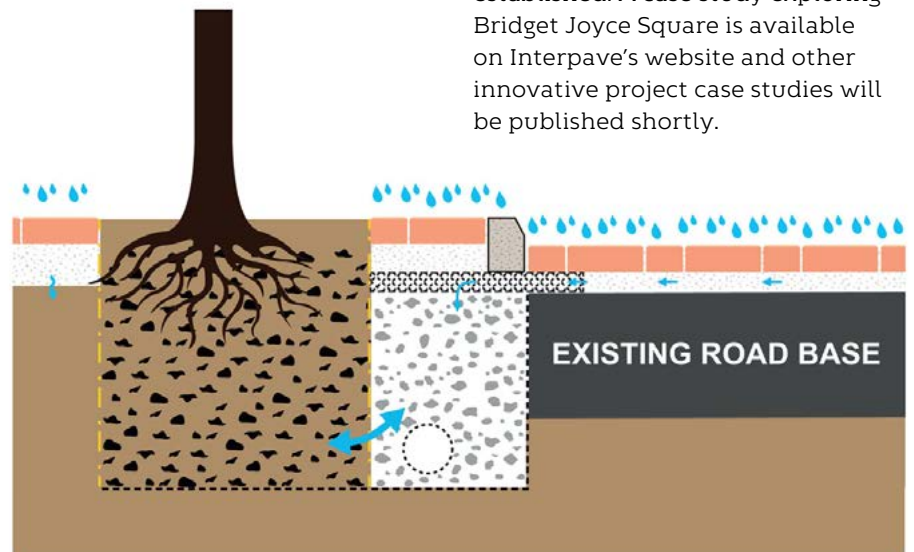
## Permeable Paving and Trees in Harmony

CBPP and trees have been proven to work together in synergy. CBPP - whether full-construction or in overlay form - can collect rainfall away from the canopy and convey it to the tree. It can then simply discharge horizontally into a raingarden, perhaps with overflow into an existing adapted gulley. The raingarden stores water during heavy rain for SuDS, retains soil moisture during dry weather and provides additional water quality 'polishing', as well as irrigation.

Alternatively, CBPP can be used over standard tree pits, proprietary tree planters, Stockholm System or other structural soil installations, enabling irrigation and simple gas (oxygen/carbon dioxide) exchange essential to trees - without

additional reservoirs or pipes. CBPP also avoids tree root disruption common with other paved surfaces. An exemplar of this technology is the award-winning, adopted highway regeneration project Bridget Joyce Square in Australia Road, White City, London. Interpave revisited the project in August 2021, around 5 years after completion, and noted that the permeable paving was performing well and experienced no problems during recent extreme summer storms, despite extensive flooding nearby.

Tests were also carried out demonstrating that all the water infiltration rates of the permeable paving were more than double those recommended by 'The SuDS Manual' (CIRIA, 2015). The trees and other green infrastructure were healthy, substantial and particularly well-established. A case study exploring Bridget Joyce Square is available on Interpave's website and other innovative project case studies will be published shortly.



# WHAT IS RESILIENCE?



Resilience is a current “buzzword”, particularly in relation to our urban spaces and infrastructure, but what does it mean? What defines resilience? Who defines resilience? And more importantly, what can every one of us do to encourage resilience? The Oxford Dictionary defines resilience as:

“The capacity to recover quickly from difficulties; toughness” and “the ability of a substance or object to spring back into shape; elasticity”.

So, what does that mean?

GreenBlue Urban believe that resilience as in urban resilience must be designed at an early stage. Whilst some projects may be resilient “by mistake”, it is more successful if we all try to make sure that any changes that we make in our urban areas are designed with future changes in mind.

None of us has access to a crystal ball, but thankfully there has been huge progress in future forecasting for urban areas. Not only how we are going to use our public realm, but what the challenges are likely to be. Climate change is, of course, top of the list, but there are other potential issues that need consideration. Changing demographics, changing transport modes and even long-term health problems mean that we must try to plan.



By 2050, estimates predict that 70% or more of the population will live in cities. 60% of new urban settlements are yet to be built!

Humans are remarkably resilient - over millennia we have adapted to changing circumstances and climates. Often these changes have been forced upon us, and adaptation is necessary for survival. With modern technology, we can predict some of the changes, but COVID-19 has shown us that we cannot fully guarantee what will happen in the future. The ability to understand the past, and plan is unique to humanity, so we are responsible to harness this ability to provide for future generations.

### What does this have to do with GreenBlue Urban?

GreenBlue Urban has always promoted the dictum of “every tree should have the same opportunity to attain species potential longevity”

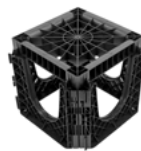
Some of the most resilient cities in the world also have high canopy levels having successfully used the GreenBlue ArboSystem Tree Pit Systems - resilience and canopy cover seem to be closely correlated: Vancouver, Toronto and Boston are all in the top 12 of both. Therefore, it is vital that we understand that if we are to retain our critical canopy cover, we must plant trees in such a way that they can attain maturity. Our ancestors used trees as shelter, fuel, medicine, and many other uses; we don’t need trees for these uses now in the same way, but maybe we don’t realise what other benefits our urban canopy does for us.

There are many deserted cities and ghost towns across the world, abandoned for many reasons: economic downturns, natural or man-made disasters, wars or being by-passes as transport links. However, some towns have become uninhabitable due to climate change - removal of vegetation leading to extreme heat stress. Therefore, if we are creating places where we can “bounce back better” from future urban challenges, we need to plant sustainably to help with urban resilience for future generations.

# Retrofitting Resilience in Harmony with Nature



Our green and blue infrastructure solutions create resilient urban spaces in harmony with nature.



### RootSpace

Suspended pavement support system



### HydroPlanter

Modular 'Plug & Play' Rain Garden



### Street Furniture

Unique street furniture designs

T: +44 (0)1580 830 800  
E: [enquiries@greenblue.com](mailto:enquiries@greenblue.com)  
W: [greenblue.com](http://greenblue.com)



Creating healthier spaces in harmony with nature



Eden's living wall - set to be complete in May 2023

# GROWING A LIVING WALL

## EUROPE'S BIGGEST LIVING WALL BEGINS TO GROW

As the 350,000 plants for Europe's biggest living wall start to grow, its creators give advice on how to recreate a living wall in a garden or small outdoor space.

Europe's biggest living wall will be a key feature of Eden, a 12-storey office building currently being built in Manchester which will set the sustainable building agenda for years to come. It's being developed by The English Cities Fund who are pioneering in delivering buildings which set ambitious sustainable standards in design, construction and operation.

As part of its many sustainable and wellbeing elements, Eden will have a stunning all-year-round living wall covering a surface area of approximately 4,000m<sup>2</sup> which will encompass 32 plant species. Each species of plant has been specially selected for its biodiversity, rich in pollinators or ability to mitigate air pollution.

### Plants including:

*Thymus vulgaris* (English Thyme)  
- good for air quality (hairy leaves, better for air purifying)

*Hypericum Hidcote* (St John's Wort)  
- source of nectar and berries for birds

*Hyacinthoides non-scripta* (Bluebell)  
- early source of nectar

Steve McIntyre, Eden's principal urban environmental consultant added: "Eden's living wall will not only be lush and striking it will be serving a very important purpose of creating an oxygenated environment and capturing carbon dioxide."



Plants being nurtured at a UK nursery for Eden's living wall



Strawberries are excellent grown on living walls

**How can gardeners at home create their own living wall**

Work may have started on Europe's biggest living wall, but that doesn't mean smaller versions can't be recreated at home. Eden's living wall will feature specially selected plants, but there's many aspects that readers can use in their own gardens.

- Select plants that have a woodier stem such as Sarcococca (Sweet Box) and Berberis (Barberry).

- Plants with hairy leaves with large surface areas such as geraniums, woodland strawberry (*Fragaria vesca*) and spearmint will also add colour and attract pollinators.

- No space for a living wall? Most garden centres sell troughs or outdoor shelving which can stand near a house wall or outside space.

- Think about natural rainwater systems and use drain pipe extension links (available from

hardware stores) to direct rain straight onto your plants.

- Don't forget to include bird boxes and bug hotels.

**Follow Eden on  
Twitter: @EdenNewBailey or  
LinkedIn: Eden at New Bailey**

# TRANSFORM GARDEN WALLS & STRUCTURES WITH THE PLATIPUS G-WALL®



The extensive benefits associated with the creation of living walls have been well established and their importance will only grow as we seek to improve our environment.

The Platipus G-WALL® Modular Living Wall System was developed as a viable solution for everyone from the designer, contractor and end user allowing them to enjoy the many benefits it brings and support the advantages of vertical greening.

Every area, no matter how small, has some vertical space, be it a wall or other suitable structure, that is perfect for populating with plants. G-WALL® is an easy to install modular system that will allow everybody to transform bare boundaries or spaces into vibrant colourful living walls.

To encourage more living walls to be used we made G-WALL® simple to assemble and install.



Using individual cells, measuring 25cm x 25cm with an integrated jigsaw design, vertical and horizontal expansion is easy to achieve allowing every area to be maximised. In addition, the system can be secured directly to any surface or structure removing the need for complicated hanging grids and membranes. G-WALL® also takes standard 13 - 16mm irrigation pipe allowing you to tailor every living wall solution to the end user's exact maintenance requirements.



With Garden and Landscape Contractors as an initial focus, we intentionally manufactured G-WALL® using new structural engineering plastic so it is highly UV resistant, provides strength and longevity which is unachievable with recycled plastic. This means your contribution to improve the environment will remain effective and vibrant for decades. And at the end of its life G-WALL® is fully recyclable.

To ensure customer's living walls remain full and vibrant all year round you can use a variety of seasonal plants and specimens through an ongoing support and maintenance program. Regular inspections will also allow for any underperforming varieties to be spotted early and replaced making sure living walls are always healthy and colourful.

G-WALL® is available at the Platipus Direct website or through a growing network of resellers and distributors in the UK. You can also see G-WALL® at this year's RHS Malvern Spring Festival (5 - 8 May) and RHS Hampton Court Garden Festival (4 - 9 July).

**For more information:**  
**Freephone: 0808 169 5060**  
**info@platipusdirect.co.uk**  
**www.platipusdirect.co.uk**



# G-WALL

MODULAR LIVING WALL SYSTEM



**PLATIPUS**  
DIRECT

[www.platipusdirect.co.uk](http://www.platipusdirect.co.uk)

 FREEPHONE 0808 169 5060

# AWARD-WINNING LEEDS SKELTON LAKE MOTORWAY SERVICES WILDFLOWER GREEN ROOF

ABG Geosynthetics and their installation partners Geogreen have been awarded their third major roofing industry award for the Leeds Skelton Lake Motorway Services wildflower green roof. The roof was named as the Liquid Roofing and Waterproofing Association (LRWA) Project of the Year in a Buried Application at the recent awards event held at the Titanic Hotel in Liverpool <https://www.lrwa.org.uk/winners-revealed-at-the-2022-lrwa-awards/>

This completes a hat-trick of roofing awards following on from ABG and Geogreen also picking up the green roof trophy at the recent BALI and NFRC association awards at the end of 2021. The full case study for this award winning green roof project can be read here: <https://www.geogreen.co.uk/case-studies/green-roof-installation-skelton-lake/>



## Sustainable Drainage Systems

ABG specialises in the design & manufacture of innovative geosynthetic solutions that help to manage rainwater at source, improve water quality & enhance biodiversity.

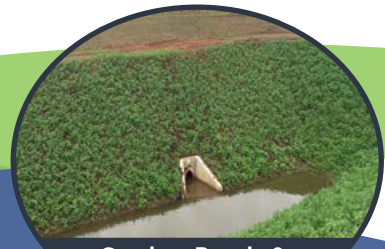
Visit [abg-geosynthetics.com](http://abg-geosynthetics.com) to find out more.



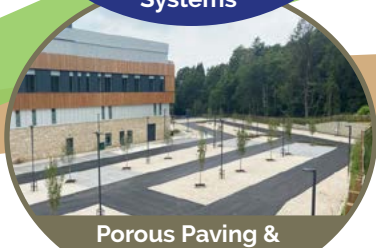
**Blue Roof Systems**



**Green Roof Systems**



**Swales, Ponds & Basins**



**Porous Paving & Drainage**



**Green Retaining Walls**



**Tree Root Protection**

**ABG Geosynthetics Ltd**  
 E7 Meltham Mills Rd, Meltham, West Yorkshire, HD9 4DS  
 t 01484 852250 | e [info@abgltd.com](mailto:info@abgltd.com) | w [abgltd.com](http://abgltd.com)



## **SUDWELL™ ECO RESIN BOUND PAVING SLABS**

SUDwell™ patented Eco Resin Bound Permeable paving slabs are our fantastic SUDs compliant paving slabs that are lighter and more carbon neutral than conventional concrete paving slabs.

Our Eco-Friendly Resin Bound Permeable Paving Slabs make a better alternative to non-porous concrete slabs and offer a greener approach (being manufactured from recycled materials, such as hard plastics, PVC, rubbers, and recycled glass) for hard-landscaping projects (such as patios and pathways).

Due to the permeable nature of our resin bound permeable paving slabs water easily flows through the surface preventing any build-up of surface water.

Customers value design as much as efficacy and a green approach to today's paving as well as helping the environment.

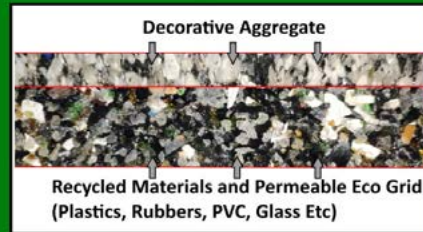
They are ideal for use in patios and pathway paving, decking, Green and Blue roof applications including podiums. Offering a more presentable finish than traditional concrete slabs.

[info@sudwell.co.uk](mailto:info@sudwell.co.uk) | 01424 830 494

[www.theresinbondedslabcompany.co.uk/subjects/paving-slabs/resin-bound-permeable-paving-slabs](http://www.theresinbondedslabcompany.co.uk/subjects/paving-slabs/resin-bound-permeable-paving-slabs)



## **SUDwell™ Resin Bound Paving Slabs**

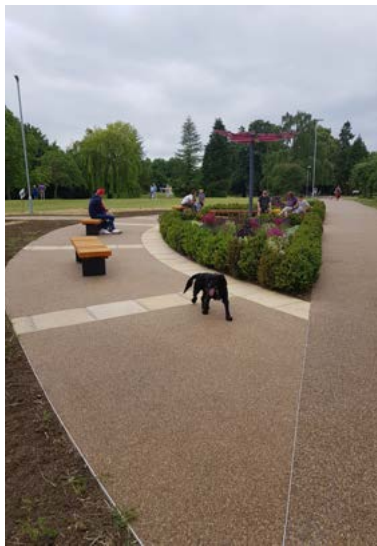


- Stronger and Lighter than concrete slabs.
- Available in a range of colours, natural aggregates and recycled materials.
- Easy and Quick to Install.
- Fully Permeable, Free Draining.



## **RESIN BOUND PAVING**

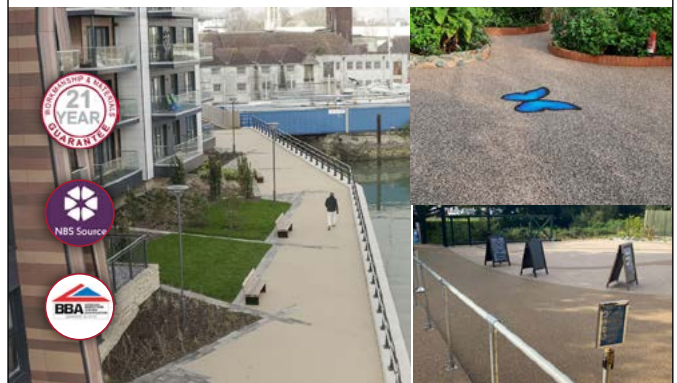
When looking for the right external surface for your project there are a few surfacing options in both conventional and permeable formats, concrete and asphalt make ideal bases for more desirable top layers that are permeable and resilient, Resin bound paving is an accessible and low-maintenance surface option. Its installation method also makes it ideal for reproducing logos and lettering into a surface - comprises of stone and resin thoroughly mixed together and laid onto a stable surface, that can last up to 25 years.



Resin bound is also a convenient way to upgrade any existing surfaces because it can be laid over asphalt or concrete that is in good condition.

**You can request free resin bound samples from SureSet Resin Systems or request more detailed information such as ground build up specifications by calling + (0)1985 841 180 or emailing [sales@sureset.co.uk](mailto:sales@sureset.co.uk) They also have an handy download section on their website [www.sureset.co.uk](http://www.sureset.co.uk)**

## **SureSet Resin Systems**



- Permeable
- UV stable
- Hardwearing
- SuDS compliant
- Low maintenance
- 21 year guarantee

[mail@sureset.co.uk](mailto:mail@sureset.co.uk)  
+44 (0)1985 841180

[www.sureset.co.uk](http://www.sureset.co.uk)



# RESIN BOUND PATHWAYS FOR VICTORIAN MANSION

A Victorian mansion hotel in Hampshire has undergone a full internal restoration now, all the attention is focused on the outdoor space and gardens. Geveko Markings' GeoPave EzFloat was the ideal choice for the pathways around the garden, complimenting the Victorian architecture of the building whilst seamlessly blending with the modern and contemporary feel of the entertainment space.

Coldeast is a beautiful Victorian mansion set in 10 acres of wonderful gardens and parkland, with views towards the River Hamble in Southampton, Hampshire.

Built in 1765, Coldeast Mansion has been owned by several wealthy families who have, over the years, extended and modified the house. In 1924 the Estate was sold to Hampshire County Council, who added a further 170 acres to the estate and converted its use to a psychiatric hospital. In 2009 the mansion was then converted to a hotel which, after renovating, was opened to guests in 2015. Now under new management, the new owners have carefully and sensitively restored the mansion to its former glory and are now in the process of developing the gardens.





Requiring a space to accommodate different events, they have created an outdoor dining and seating area with six dining pods, for guests

to comfortably sit in during all- weathers, plus an outside bar so that the gardens can now be enjoyed all year round.



For the outdoor area the customer chose to have the drive, pathways and seating area surfaced in Geveko Markings' resin bound paving system GeoPave Ezfloat. Installed by Your Build with support from surfacing contractor, LA Kattenhorn, the main pathways and driveway, an area of 1000m2, were completed using the natural aggregate mix design, Maize. Whilst for the seating areas, under the pods, circles were created using the contrasting mix design, Studland.

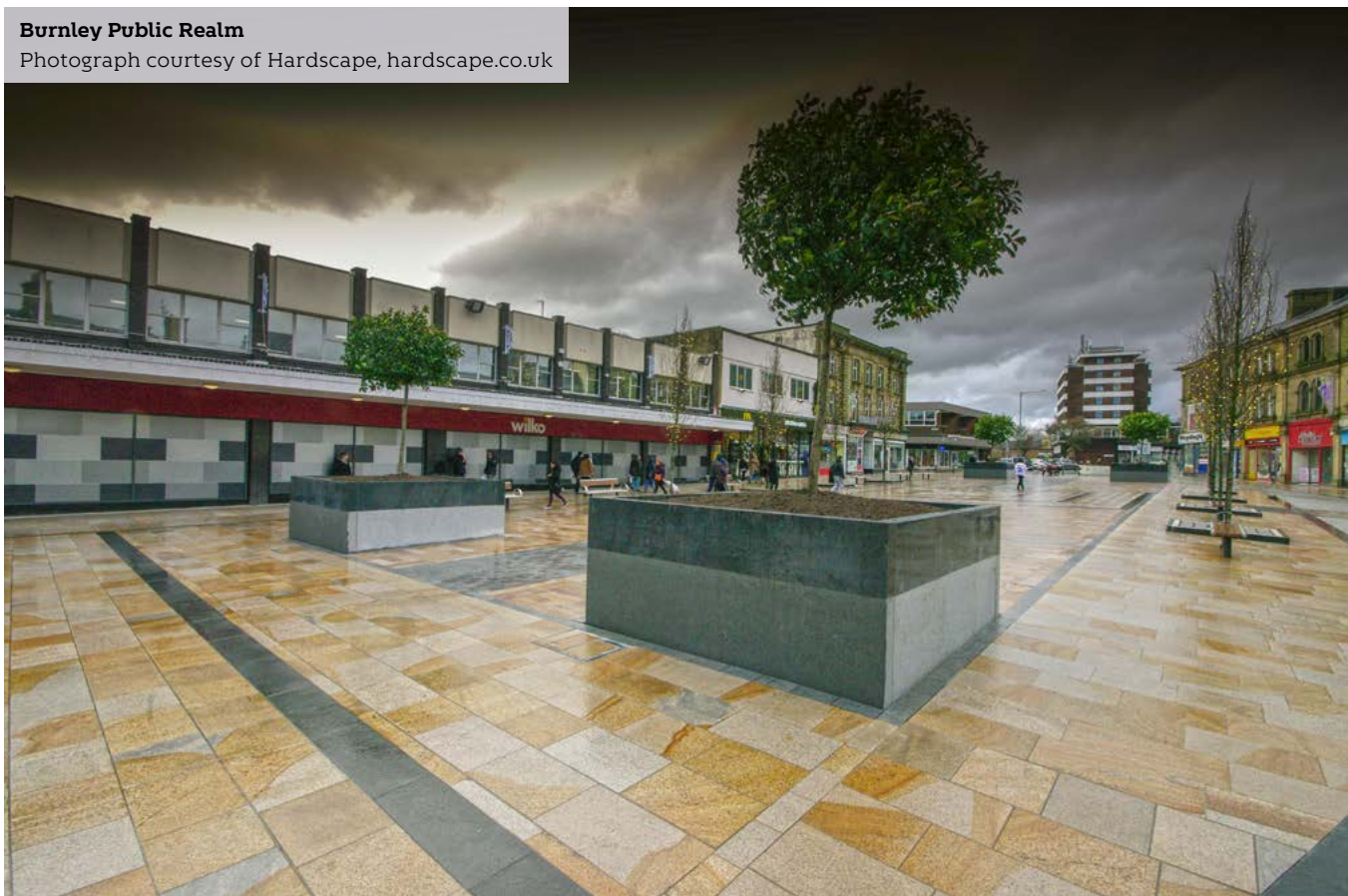
GeoPave EzFloat is a BBA accredited resin paving system that combines durability and performance with visual appeal and offers a stylish and modern alternative to traditional paving.

- Your Build Services is a family run business and was established in 2012 following 10 years of experience in the building trade. Based along the South Coast, Your Build Services offers a complete service for all aspects of building, construction and Resin surfacing.
- They were recommended to Coldeast Manor for the project by a previous customer.
- They didn't face any challenges during the project which they completed in August 2021.
- They have been a customer of Geveko Markings for a long time and really like working with the GeoPave surfacing systems.
- Coldeast Manor were delighted with the end result and get lots of positive comments from their customers.



### Burnley Public Realm

Photograph courtesy of Hardscape, hardscape.co.uk



# LARSEN STREETScape BS 7533 ECO PAVING MORTAR SYSTEM CHANGING TOMORROW TODAY

Larsen Building Products BS 7533 compliant ECO paving mortar system utilises waste material from another manufacturing process. Before we delve into the detail, let's look at some interesting facts around cements contribution to the worlds carbon dioxide emissions (CO<sub>2</sub>), research into partial cementitious replacements & the impact on the environment in terms of CO<sub>2</sub> reduction.

Concrete is the most extensively used manufactured material in the world and is only second to water as the most-consumed resource on the planet. The manufacturing process of cement results in a staggeringly

high emission of greenhouse gases such as CO<sub>2</sub>. Cement is the source of about 8% of the entire world's carbon dioxide (CO<sub>2</sub>) emissions, according to Chatham House and as a result has an immense impact in contributions to global warming. Due to its immense demand, the cost of production of cement is increasing steadily upwards every year as raw materials from natural resources deplete.

Researchers within the cementitious industry have sought to reduce the impact cement has on the environment, whilst maintaining the quality of cementitious products. This research has focused on a

search to find a waste material or by-product from manufacturing processes, which can be used as a partial replacement of cement such as Ordinary Portland Cement, OPC, in concrete, without compromising on its desired strength. The most common materials that are pozzolanic and are suitable for use as a partial replacement for cement are Ground Granulated Blast Furnace Slag (GGBS), Fly ash (FA), Rice Husk Ash (RHA), Silica Fume (SF). Larsen Building Products have opted for GGBS as a partial replacement to Ordinary Portland Cement (OPC) in our range of BS 7533 paving mortar products comprising of, FBC ECO permeable

bedding mortar for the laying course as described in BS 7533 part 101, PS ECO bonding mortar, required for bound system B as per BS 7533 part 101 & FJM ECO, flowable jointing mortar or slurry grout as per BS 7533 part 101.

GGBS is a waste product generated in huge quantities from the steel industries through the manufacture of Iron. Iron ore, coke and limestone are fed into the furnace, the resulting molten slag floats above the molten iron at a temperature of about 1500°C to 1600°C. After the molten iron is tapped off, the remaining molten slag, which consists of mainly siliceous and

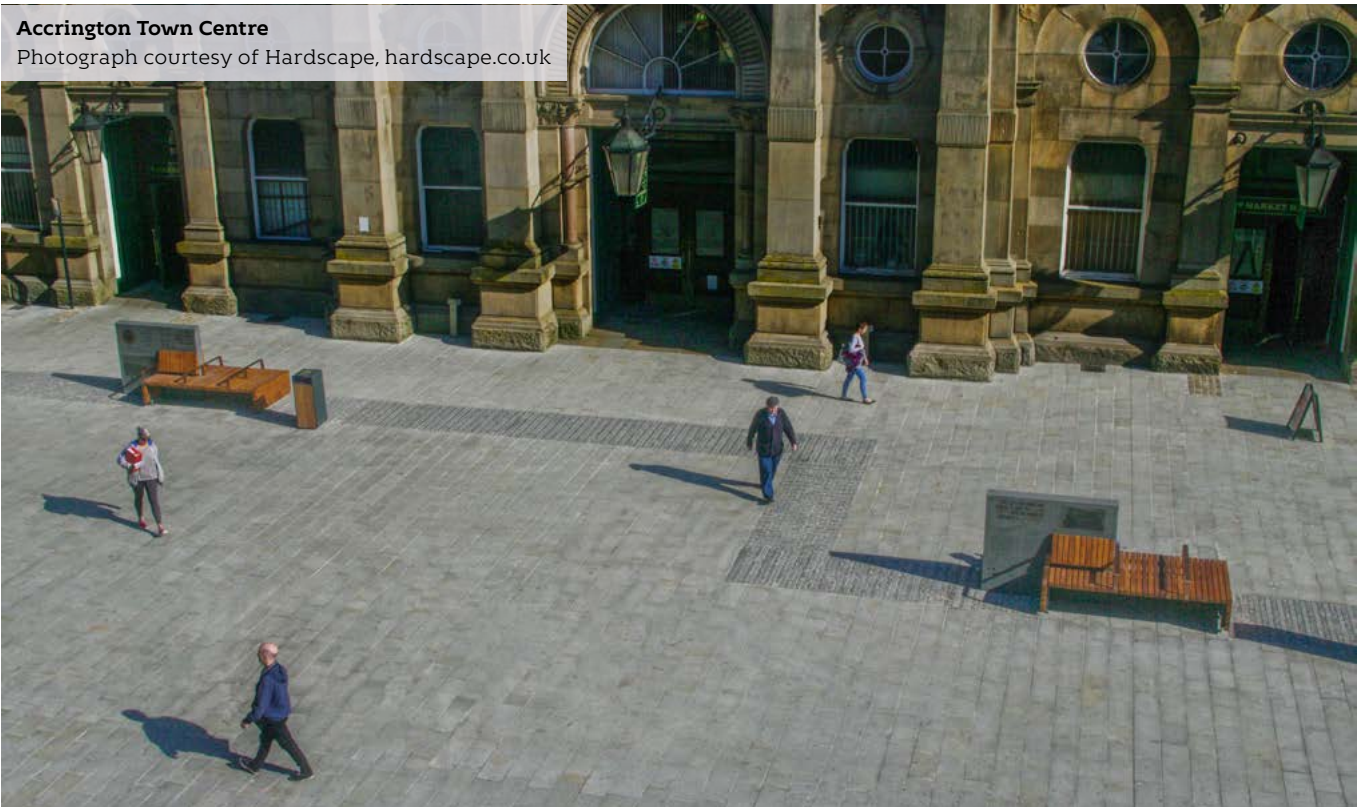
aluminous residue is then water-quenched rapidly, resulting in the formation of a glassy granulate. This glassy granulate is dried and ground to the required size, which is known as GGBS. The partial replacement of OPC in concrete by GGBS, not only provides a saving on CO2 production but also facilitates environmentally friendly disposal of the waste slag.

CO2 savings that can be made through the replacement of OPC with GGBS are impressive. E.g., the carbon footprint of Ordinary Portland Cement (CEM II) is 0.803 tonnes CO2/tonne (based on CEMbureau EPD for CEMIIs and National Cement data for

EPA license), whereas the carbon footprint for slag (GGBS) is 25 x smaller at 0.032 tonnes CO2/tonne (based on Ecocem Third Party verified EPD). If a percentage of OPC is replaced with GGBS, we can use the average CO2 generated per mile emitted by a car (0.00031 tonnes, ICCT EU Pocketbook 2014) or the number of trees growing for ten years absorbing 1 tonne of CO2 (25 trees) to contextualise the CO2 emissions saved e.g., if 1 tonne of product containing 25% OPC was produced and 20% of the OPC is replaced with GGBS this would be the same as 1 tree growing for ten years or 124 miles not driven.

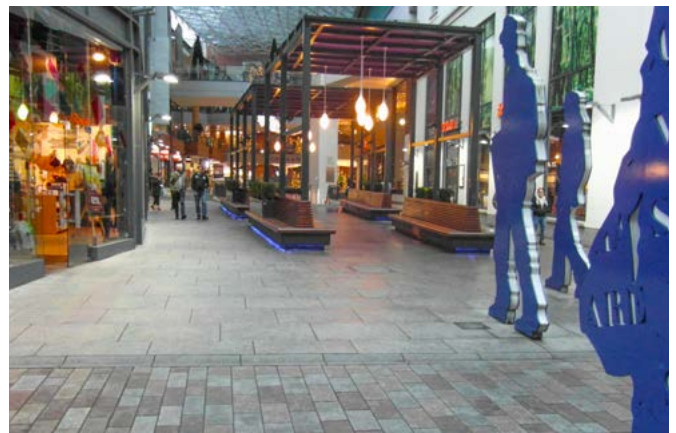
**Accrington Town Centre**

Photograph courtesy of Hardscape, hardscape.co.uk



**Pottingers Entry, Belfast**

Photograph courtesy of Hardscape, hardscape.co.uk



**Victoria Square, Belfast**

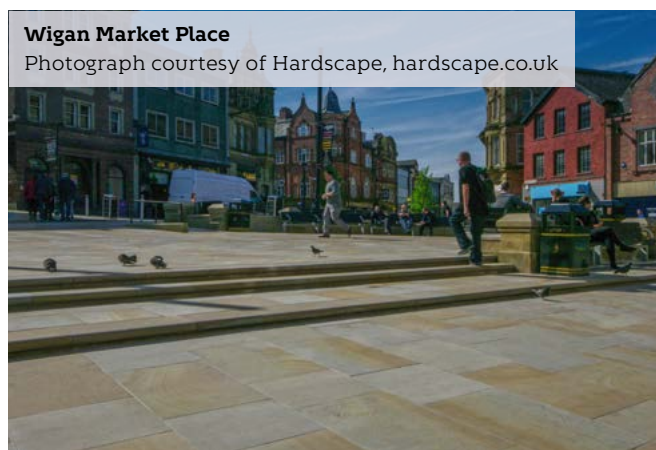
Photograph courtesy of Hardscape, hardscape.co.uk



**Waterhead Promenade, Ambleside Lake District**  
 Photograph courtesy of Hardscape, hardscape.co.uk



**Victoria Street, Liverpool**  
 Photograph courtesy of Hardscape, hardscape.co.uk



**Wigan Market Place**  
 Photograph courtesy of Hardscape, hardscape.co.uk

**How does this translate into a CO2 reduction laying paving with Larsen Streetscape Eco products?**

Larsen Streetscape BS 7533 ECO bedding concrete is the equivalent to carbon absorbed by growing 2 trees for 10 years or not driving a car for 313 miles per one tonne of product used.

Larsen Streetscape BS 7533 ECO priming slurry is the equivalent to carbon absorbed by growing 1 tree for 10 years or not driving a car for 107 miles per one tonne of product used.

Larsen Streetscape BS 7533 ECO flowable jointing mortar is the equivalent to carbon absorbed by growing 1 tree for 10 years or not driving a car for 149 miles per one tonne of product used.

**Per typical 1000m2 of paving laid this equates to:**

76t of bedding = Carbon absorbed by growing 152 trees for 10 years or not driving a car 23,788 miles.

1t of priming = Carbon absorbed by growing 1 tree for 10 years or not driving a car 107 miles.

4t of grout = Carbon absorbed by growing 4 trees for 10 years or not driving a car 596 miles.

**Combined**

Carbon absorbed when growing 157 trees for 10 years.

Miles not driven 24,497.

[www.larsenbuildingproducts.com](http://www.larsenbuildingproducts.com)



# LARSEN

## ECO BS7533 PAVING MORTAR SYSTEM

changing  
tomorrow  
today



[larsenbuildingproducts.com](http://larsenbuildingproducts.com)  
**T: 028 9053 5430**  
[enquiry@larsenbuildingproducts.com](mailto:enquiry@larsenbuildingproducts.com)



# URBAN PAVING REPOINTING - FOR THE LONG-TERM!



## 1. What is Urban Paving?

'Urban Paving' is the term used for paved roads and pavements in our towns and cities, including the trafficked paving around all types of public buildings, retail and commercial developments and facilities, as well as other paved areas with public access, such as in our historic market squares for example. This type of paving is always installed as 'rigid' or 'bound construction' paving, with a substructure and build-up that is designed to accommodate the traffic load, with the paving elements bound into a bedding layer and securely jointed, again to accommodate and distribute the load stress into the substructure, as well as to prevent water wash-out in service.

The selected paving and jointing materials must also be able to withstand continual exposure to weathering and the seasonal extremes of temperature, from direct sunlight to winter frosts and the significant thermal movement this causes at the surface -



In Summer a sudden rainstorm can cause a surface temperature change of more than 20°C in just a few minutes. Urban paving can also receive spillages of many different types of material, from vehicular fuel and hydraulic oils to all manner of foodstuffs, and everything in between on our roads and public spaces. In winter the sometime

heavy use of de-icing salts. All this is followed by frequent and generally aggressive cleaning regimes, including by mechanical brushes, detergents, and high-pressure water-jetting by mechanical street cleaning machines.

There are many different types and sizes of paving elements for urban paving, and these were and are traditionally cut natural hard stone, though precast concrete, and reconstituted stone (crushed stone sands with cement) flags are also used where suitable for the intended traffic and exposure, principally to reduce cost in less severely exposed pavements and pedestrian areas, or parking areas with limited use / loadings. Urban paving elements can also be divided into two main types according to their size.

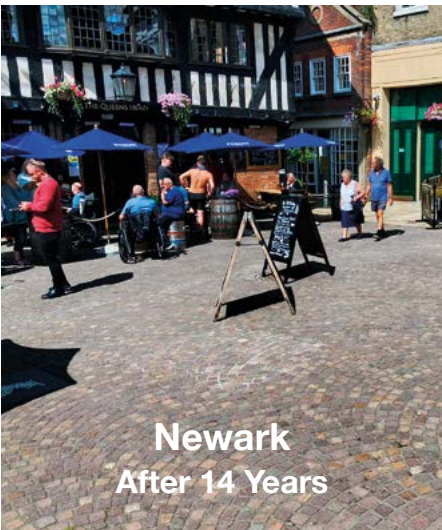


# Repointing Urban Paving is a Tough Job!

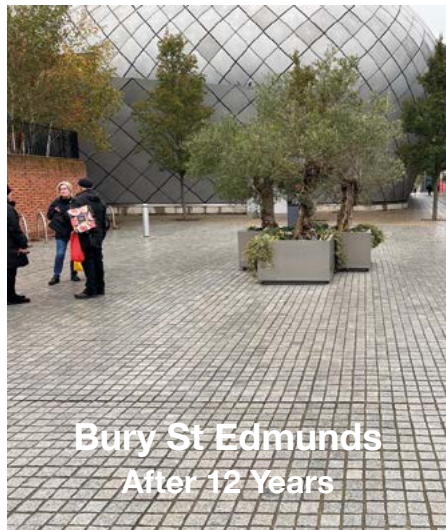
Do it Right Once with **GftK** - Not Every Year



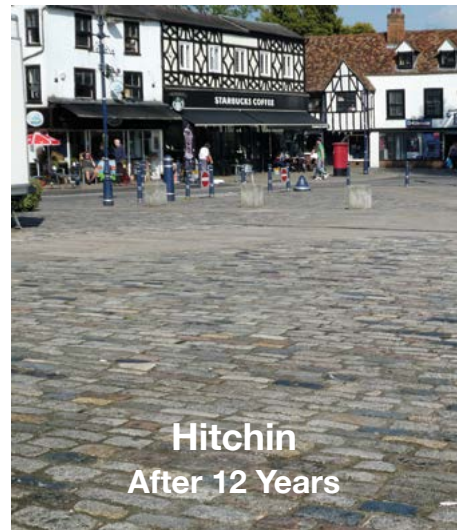
## The Proof is Out There!



Newark  
After 14 Years



Bury St Edmunds  
After 12 Years



Hitchin  
After 12 Years



# Paving Joint Mortars

Exclusively From:

**NCC** Streetscape

Visit: [www.NCCStreetscape.co.uk](http://www.NCCStreetscape.co.uk)  
Email: [sales@nccstreetscape.co.uk](mailto:sales@nccstreetscape.co.uk)  
Call: 01257 266696



# BRETT PAVING USED IN PREMIER LEAGUE CLUB'S £20M ACADEMY



Brett Landscaping played a key role in the completion of Crystal Palace's new £20m academy and training ground when they were able to offer the best product with the shortest lead time.

The leading independent concrete paving manufacturer was selected to provide more than 1,300 square metres of the new high performance Invicta block paving at the Premier League club's new complex in Beckenham.

Architects KSS worked very closely with the Crystal Palace chairman and senior management in selecting premium products for the exterior at the prestigious site -and Brett's Invicta Pearl and Invicta Onyx met the high standards of everyone at the club.

The club and architect required a high-end product, with the flexibility of large plank sizes for larger areas, but that would match up and blend with a more striking pattern in a diamond configuration for the entrance into the academy

building itself. Brett was able to provide all of these elements with readily available, high-end aesthetics with multiple sizes and colours which allowed flexible and varied design.

The Invicta range has a specially formulated surface layer creating a hard-wearing paving block with a durable but vibrant finish which shimmers in different lights. Brett's AggTech manufacturing process allows unique natural aggregates to be used on the surface of each paving block to create a stunning durable finish.

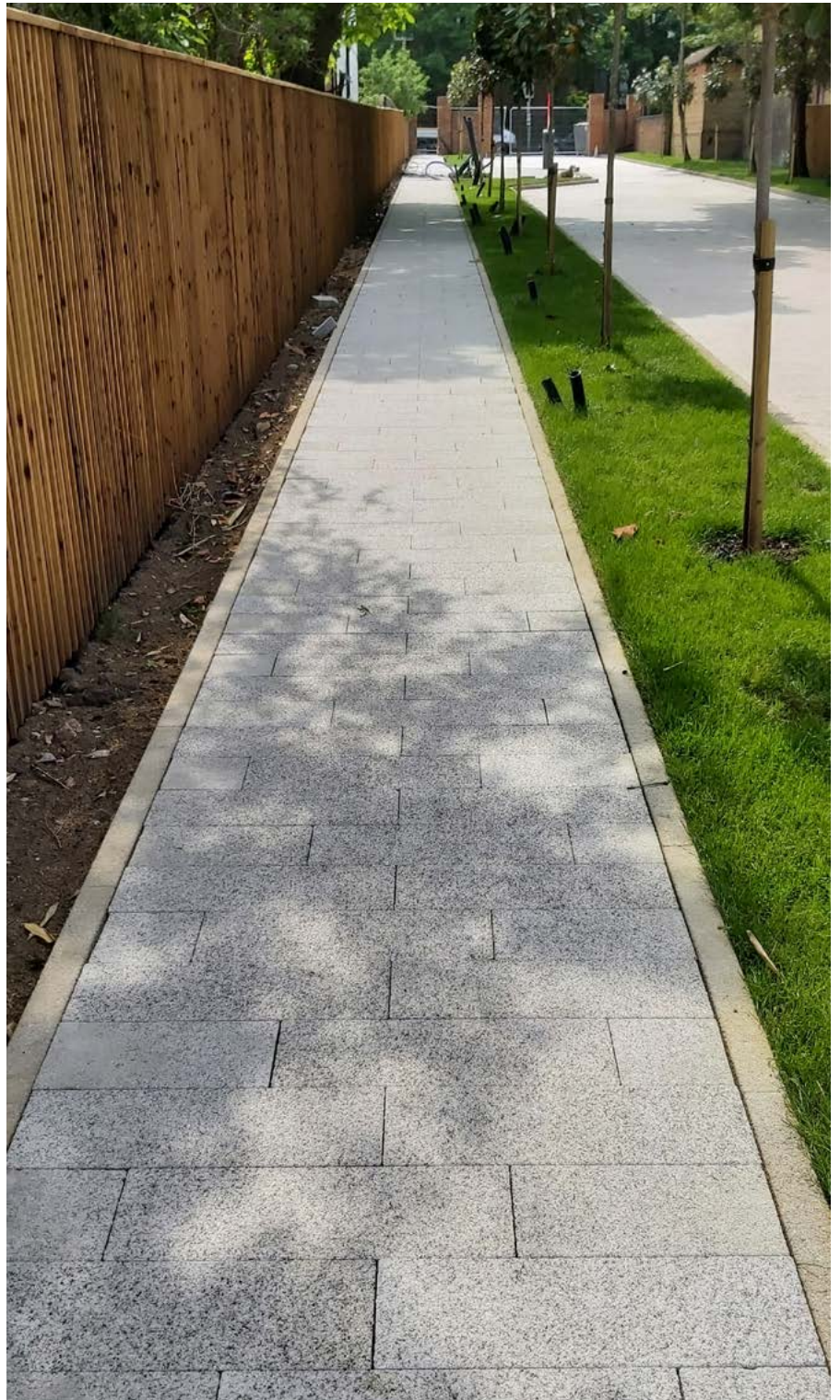
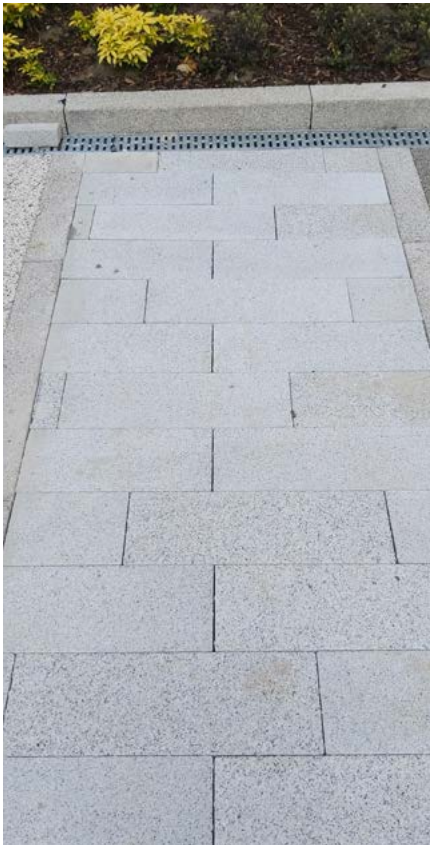
As well as the premium products, Brett was able to provide a full Auto-CAD design service in less than 24 hours, meaning they were able to get the right information, product and quotation back to the architect quickly.

Antony Spencer, Civils Sales Manager for Brett Landscaping, said: "This is one of the most prestigious projects we have been involved with. It demanded effective and

timely communication, design and problem-solving as well as delivering a product which matches with the client's extremely high expectations.

"We had almost daily communication with the club, architect and contractors and everything was delivered as scheduled allowing for the build to remain on schedule."

The Crystal Palace academy has six full-size pitches as well as classrooms, lecture room, analysis and meeting rooms. It has allowed Crystal Palace to bring their facilities up to 'Category One Status' in the Elite Player Performance Plan rankings.



Brett Landscaping worked with KSS architects, Clive Richardson Ltd (main contractors), TriAgg (groundworks contractor) and Wolseley MPS Fareham.

They supplied 1,352 square metres of Invicta 80mm, in Pearl and Onyx 200x100, 200x200, 300x200, 600x200. There were seven size/colour combinations installed.

[www.brettlandscaping.co.uk](http://www.brettlandscaping.co.uk)



# DON'T LET LIMITED ACCESS LIMIT YOUR OPTIONS

Over a quarter of UK houses are terraces, more than any other housing type<sup>1</sup>. Many of these were constructed in the late Victorian era to house factory and mill workers as people flocked to cities for work. This kind of housing is so prevalent in our cities that over half of UK homes are built in terraces or pairs<sup>2</sup>. These homes present challenges to modernisation, as they are situated on small plots with restricted access; often some form of a restrictive covenant or even no access at all.

The current rate of new home construction in the UK cannot keep pace with inner-city population growth<sup>3</sup>; not only are not enough houses being built, but space restrictions in inner cities also prevent new developments. A new home built today would have to last 1000 years at current replacement rates<sup>4</sup>. Without new housing, people in the UK will have to make the most of the existing housing stock.

Modern new-build housing presents similar access issues. Often constructed in short terraces of

four or six houses and sold with basic lawns, these homes struggle to accommodate the larger machinery needed for big hard landscaping projects.

The UK has seen a rise in Outdoor Living trends over the last decade, as homeowners invest in making the most of their plots. This has been heightened by the COVID-19 pandemic, which saw the UK Landscape industry grow by 1.4% year on year between 2017 and 2022. Industry revenue is anticipated to rise by 5.2% in 2021-22 as trends continue<sup>5</sup>.

**How can homeowners in cramped, urban housing get in on the Outdoor Living trend?**

A simple solution offered by Azpects Ltd is EASYClickBase, a synthetic sub-base that significantly reduces the traditional 'dig-out' part of the installation process for patios, paths, and driveways. Early feedback shows that for a 50m<sup>2</sup> patio EASYClickBase requires an excavation of around 2-4 tonnes and just 2-5 tonnes of a fine replacement aggregate depending on site conditions. Traditionally, this would require the excavation of 16 tonnes of waste by-products, and the import of 16-20 tonnes of traditional subbase aggregates, requiring either heavy machinery or a significant amount of labour.

Manufactured from 100% recycled ABS plastic, any offcuts of

EASYClickBase tiles can be recycled again, further reducing waste and improving the sustainability of hard landscaping projects.

Several early adopters of EASYClickBase have reported trimming day's labour off the expected completion time while giving their clients the garden they have always wanted.

Landscaper Paul Chapman of PBC Landscapes recently used EASYClickBase to complete a job in Amersham. "The customer wanted a porcelain patio in her rear garden, but the only access was straight through the house. Multiple landscapers told her she'd have to have a deck instead, but luckily I knew about EASYClickBase. The dig was very minimal so we only needed a 6-yard skip, and we brought replacement materials in through

the house with trug buckets. EASYClickBase is so light that we even managed to get it around the tight corners in the kitchen without any trouble. I'd definitely use it again for a project with similar circumstances."

As the trend for outdoor living grows, the garden is swiftly becoming "the 5th room" where homeowners can relax, connect with nature, and focus on wellbeing. The garden is no longer just a place to grow vegetables; it is now an extension of the home itself, providing space for cooking, dining or even working. Trend analysts Scarlet Opus predict that outdoor living will only become more popular in the wake of the pandemic, with homeowners expecting the same level of comfort and convenience as in any other room in their house.





If lockdown taught us anything, it is how important outdoor spaces are for our physical and mental wellbeing. With a significant percentage of the UK workforce

expecting to continue to work from home at least part-time, it seems likely that investment in hard landscaping will only continue.

---

**Find out more at**  
[www.aspects.co.uk](http://www.aspects.co.uk)



# Restricted Access Giving You A Headache?

Azpects has the solution  
with **EASYClickBase**



**IT SAVES**

**EASYClickBase** reduces time, labour and costs. Less excavation; less waste disposal; less aggregate.



**IT'S STRONG**

**EASYClickBase** provides a solid foundation for the construction of patios, paths and driveways.



**IT'S EASY**

**EASYClickBase** is lightweight, simple and easy to transport, making it perfect for sites with restricted access.



FIND OUT MORE

**Azpects**



# DISCOVER THE BEST PAVING OPTIONS FOR PERIOD AND LISTED PROPERTIES

The landscaping of any period building plays an important role in providing the background to its character, contributing to the overall appearance and complementing the building's architecture.

Listed buildings are required by law to retain, re-use and repair any existing floors that are original to the building, whereas the spec for exterior landscaping is often less prescribed but equally important.

Many period properties have original flags which can prove tricky when restoring as original flagstones such as Yorkstone are notoriously expensive and difficult to source.

Restoration and conservation projects require carefully considered detail and design, something that Westminster Stone has spent nearly 40 years perfecting, with many of their handmade Stonecast products approved for use in Listed buildings.

The maturity and character of Stonecast paving is frequently specified for film sets, BBC dramas, hotels, restaurants and period and Listed properties both here and abroad.

Stonecast paving flagstones and tiles are British made and developed in-house by Westminster Stone's Managing Director John Clifford. Moulds are created using sourced originals that he has handpicked

from around the country and handmade in their Shropshire base with meticulous attention to detail. Each mould has a different patina, shape and size to create paving that is completely authentic in appearance and as close a replica to the original natural stone flags as it's possible to create. The intricate skill and craftsmanship of these unique moulds has been recognised and awarded throughout the industry for decades.

Consistency, price and flexibility of supply are often the key factors when undertaking a sympathetic project. Westminster Stone's wet cast paving products provide a consistent depth for ease of laying and can be bought in specific sizes by the metre or as 10 sqm mixed size project packs. Manufactured in the UK, the ranges are available in any quantity, all of the time, and can

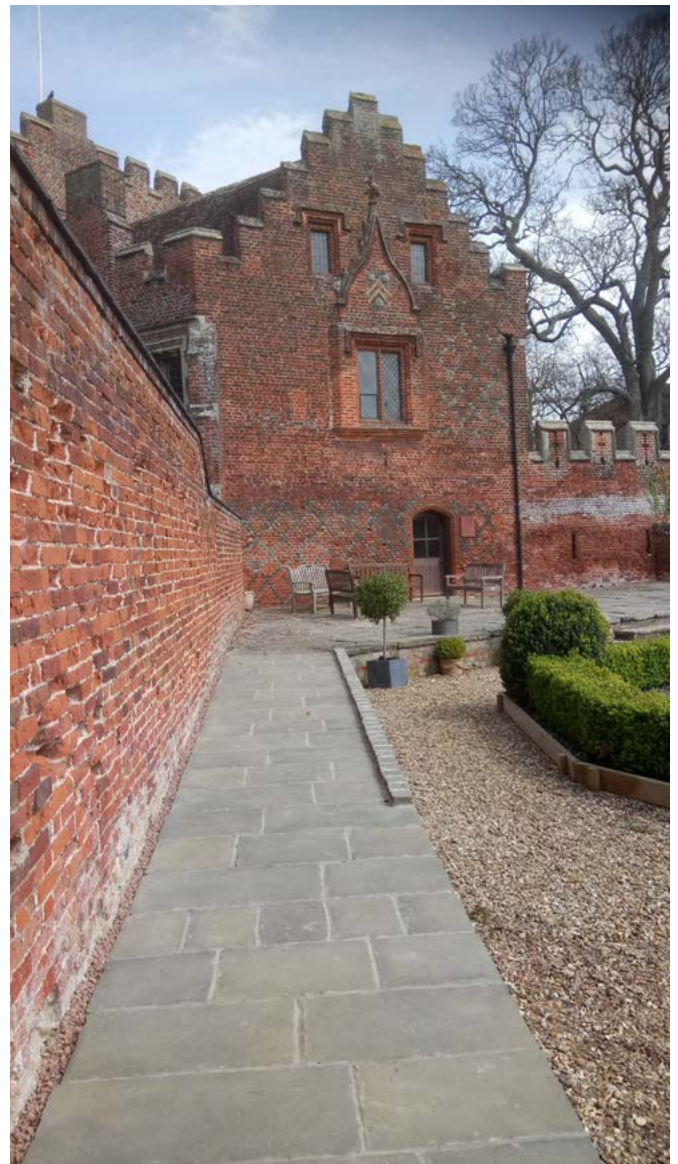
also be bought in a thinner depth to be used as internal flooring.

From a design perspective they provide instant maturity, Stonecast paving uses only natural dyes and the large range of colour options spans light 'cotswold' buff and cream hues through to darker grey and brown tones, which is useful if there is a requirement to match existing paving.

The Stonecast range includes the National Trust Paving Collection which Westminster Stone has manufactured since 2011. The Collection includes bestselling Hidcote Flagstones which has been specified at many listed and period properties through the UK and abroad. Based on the houses and gardens within the Trusts care, these paving, bricks and tiles are extremely authentic and capture

the essence of the great gardens upon which they are inspired. For traditional styles and designs, Stonecast paving really is the answer for creating the characterful backdrop to any period setting.

Of course, for some a more contemporary tone is sought and the mix of a traditional brick or stone period property with modern landscaping can look quite stunning. If Conservation and local Listing allows, Porcelain paving is a great option for combining styles as it is extremely durable, easy to lay and very low maintenance. Available in a huge range of stone and wood effect ranges, Westminster Stone's Italian porcelain collection has a colour, texture or size to suit all landscape designs, and is particularly effective when used both indoors and out, perhaps with bi-fold or sliding doors.





Whether your style is traditional or contemporary, when designing a patio or garden landscape for a period property, be mindful of the character and choose a colour and style which will complement the architecture and enhance the fabric of the building. Ordering a sample is a great way to start, as the colouring and texture can look quite different depending on the environment and natural lighting. View the sample in both wet and dry conditions to see how the character of the paving changes with the weather. A Period building has stood in one place for a long time and you want your choice of paving to do the same!



[www.westminsterstone.com](http://www.westminsterstone.com)

# westminsterstone

*Paving & Flooring*



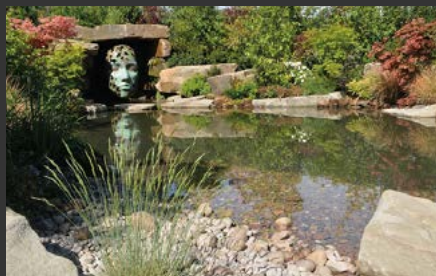
*Featured product: Yorkstone*

Traditional | Classic | Contemporary

Westminster Stone's curated collection of paving and flooring offers the finest British and International ranges.

*View the full range*  
[www.westminsterstone.com](http://www.westminsterstone.com)

Sandstone • Limestone • Building Stone  
Walling • Masonry • Landscaping • Restoration



01594 372023 • 01386 584384  
[www.stonequarries.co.uk](http://www.stonequarries.co.uk)



Transform your  
**HOME & GARDEN**



Importers & Exporters of Natural Indian Stone Paving, Granite, Italian Porcelain and many more Landscaping Accessories.



We have a large internal Italian Porcelain Tile Showroom displaying the most current, stunning pieces which are also available to view on our website.



**OPEN TO THE PUBLIC & TRADE**

RF Landscape Products, A19 Doncaster Road, Whitley, Goole, DN14 0JW

T: 01977 782240 | E: [sales@rflandscapeproducts.co.uk](mailto:sales@rflandscapeproducts.co.uk) | [www.rflandscapeproducts.co.uk](http://www.rflandscapeproducts.co.uk)

# LTP LAUNCHES NEW ECOPROTEC® SEALER FOR HARD LANDSCAPING



LTP has introduced a new water-based impregnating sealer for outdoor paving. ECOPROTEC® External Paving & Stone Sealer is designed to protect all types of natural stone and concrete in outdoor settings. Like all ECOPROTEC® treatments, it's designed for the landscape and contract market, and is manufactured in the UK. Key benefits include high performance and high coverage rates, combined with low odour and low VOC for a safe, eco-friendly treatment.

ECOPROTEC® External Paving & Stone Sealer is suitable for smooth, honed, rough cut and polished paving. It's applied to clean, dry surfaces - using a light pressure sprayer, foam roller or paint brush - and the finish created is natural, breathable and subtly enhances the colour of the paving.

Treatment provides protection against staining and strongly repels water, oil and grease. When applied before grouting, it also protects against fixing residues and promotes easy cleaning.

Other new solutions for outdoor paving include ECOPROTEC® Porcelain Tile Protector - a water-based barrier for unpolished, textured surfaces. This new treatment is designed to protect tiles from staining and it allows easy removal of residues from cement and resin-based jointing compounds, as well as stubborn organic matter. It also improves and increases the working time of grouts and jointing compounds - and a further coat after installation helps promote easy cleaning.

**For specification advice, information can also be accessed at <http://ecoproductselector.com>.**



The diagnostic and specification tool is designed to give instant feedback, identifying the correct eco-treatment according to tile type and symptom. As well as supporting flooring contractors and specifiers, the Product Selector is also a valuable retail sales aid and training tool.

01. IDENTIFY YOUR SURFACE
  02. CHOOSE YOUR FINISH
  03. SELECT YOUR PRODUCT
- [www.ecoproductselector.com](http://www.ecoproductselector.com)



SEARCH FOR  
@ECOPROTECUK



**For more information about LTP ECOPROTEC®, please visit <https://ecoprotec.co.uk> or contact LTP on tel. 01823 666213 and email [technical@ecoprotec.co.uk](mailto:technical@ecoprotec.co.uk)**

## Products that tell a story

Plastic waste saved from landfill since 1995 and turned into award-winning second life products.

Plaswood is the **durable** and **maintenance free** alternative to traditional materials.



Non Staining



Recyclable\*



Long Lasting



UV Stable\*\*



Maintenance Free



Durable



Weather Proof



Versatile



High Strength







Fencing



Decking



Edging



Gates

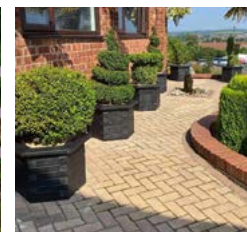


Furniture



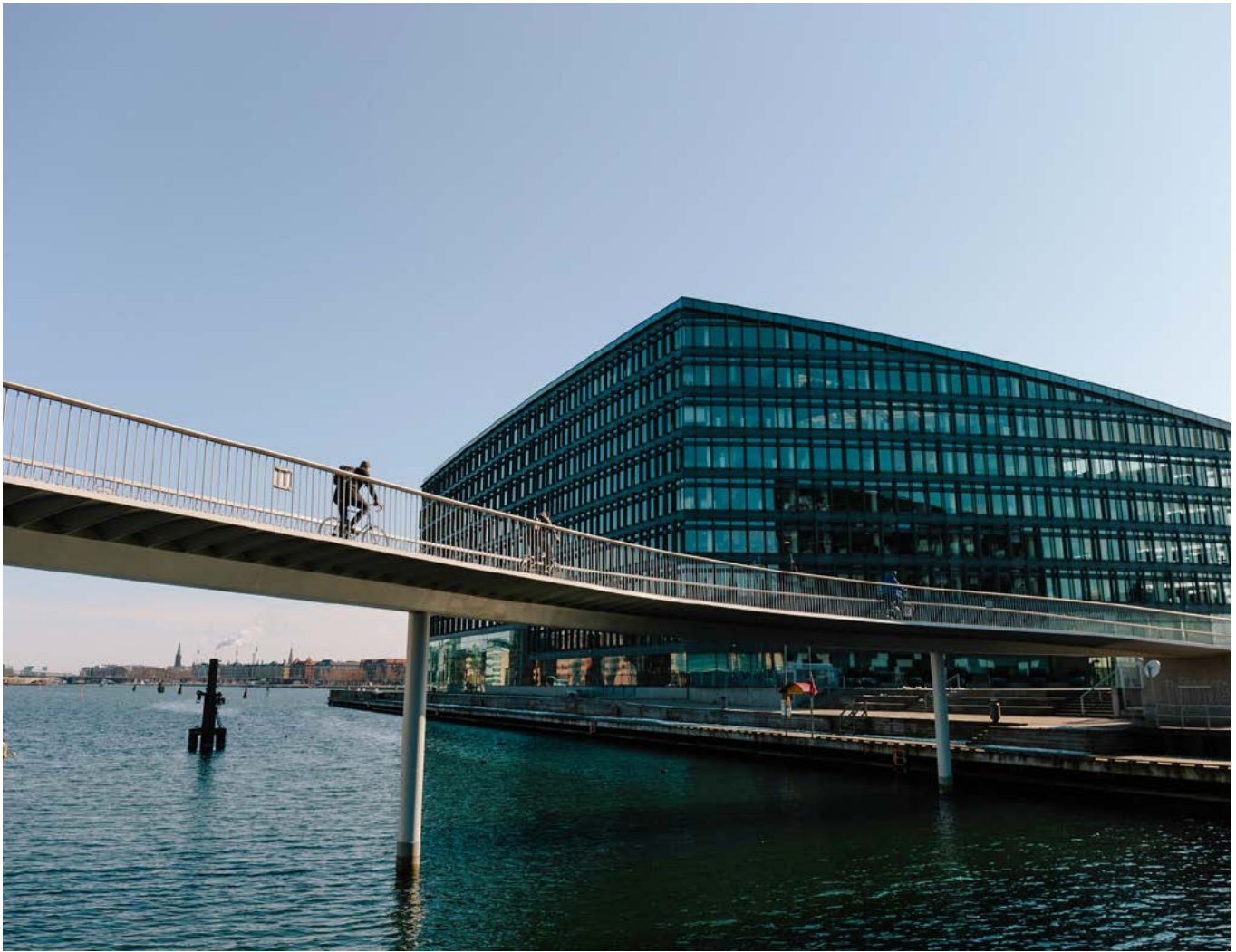
and more

Full range includes: Tables • Benches • Bins/Composters • Planters • Lumber  
Garden furniture • Edging • Decking • Fencing/Gates • Signage • Boardwalks



**Choose a product that stands the test of time.**  
Plaswood provides a range of products and solutions, made from recycled plastic, that are maintenance and splinter free, rot and weather proof.

Begin your journey towards a maintenance free product, visit us at [www.plaswood.eco](http://www.plaswood.eco) or call us on +44 (0) 333 202 6800



# CYCLING AS OUR FUTURE TRANSPORT

With several national lockdowns firmly under our belts and despite offices being shut for most of 2020, the Department of Transport has noted a 38% increase in cycling since before the pandemic. Although this increase has been predominantly recreational the government is hoping that this can be the stimulus to continue this trend into long-term travel habits for us all.

With our drive towards Net Zero, transport is without doubt one of the most challenging sectors to tackle. Our car-dependent lifestyles along with roads, vehicles, and heavy use of fossil fuels are truly embedded in all walks of life. One obvious way to reduce our transport emissions will be to firmly embrace the bike!

Across the country, many of our major cities are getting on their bikes! For example, The Greater Manchester Transport Strategy 2040 outlines all their efforts to make cycling a viable, sustainable and safe transport choice for the future. Greater Manchester intends to have 'World-class connections that support long-term sustainable economic growth and access to opportunity for all' and cycling will be key!

The most bike-friendly city in the world is Copenhagen, London does not currently feature in the top 50. Copenhagen has been top of the rankings since 2015 and a huge 62% of daily work and school journeys are made by bike. The Danish

capital features numerous cycling bridges, 167 km of cycling paths that link seamlessly to the surrounding countryside, and even repair stations.

However here in the UK, it appears we may need further incentive. Cycling has many health benefits. It is a low-impact exercise that doubles up as an environmentally sound way to travel. The UK has the highest levels of obesity in Western Europe and cycling can have a direct positive impact on this alarming statistic. Cycling helps you lose weight. Studies have shown that even sedentary people can reap the benefits of healthy cycling.



Cycling can improve your cholesterol levels which in turn can boost your cardiovascular health and directly lower your chances of having a stroke or heart attack. But not only physical benefits have been observed. Cycling is well known to boost mental health and brainpower. Stress levels, depression, and anxiety can all be mitigated too. It has also been considered that cycling can help prevent and manage type 2 diabetes, a recent study shows that regular cycling can lower mortality rates for people living with diabetes by 24%.

Obviously, we all know that cycling is environmentally friendly but commuting by bike instead of your car once a day can reduce your carbon footprint by 67% over the year. Cycling creates less noise, less air pollution, and can also help promote biodiversity, which of course is crucial for our future planet.

In order to truly become a cycling nation, we need to build and redesign our cities to work well for cyclists and pedestrians. By doing this we will reduce carbon emissions and encourage our most adaptable forms of transport. Protected lanes to allow cyclists to move around safely is important but so will be the narrative of who uses their bike, the government needs to encourage people from all walks of life to embrace their bikes. Pedestrianised streets and wider paths, raised and well-marked cycling lanes, bike hire infrastructure, and secure bike shelters will all help.



CREATING OUTDOOR SPACES TOGETHER



We need to view our bikes not only for recreation but as a means to commute and even for local commercial deliveries. Fed-Ex and DHL are piloting the use of e-cargo bikes for deliveries.

Bailey Street Furniture Group draws on a rich history of street furniture. They cleverly combine innovative design with modern solutions for bike infrastructure and shelters in order to meet all our urban cycling needs. Bailey Street Furniture Group continues to invest in our urban

spaces, they believe that well-designed sustainable street furniture is vital for our surroundings and environment for all our future needs.

**For more information on the Bailey Street Furniture Group please contact their team on 01625 322888 or email [enquiries@bsfg.co.uk](mailto:enquiries@bsfg.co.uk). To view the company's range of high-quality street furniture, visit their website [www.bsfg.co.uk](http://www.bsfg.co.uk)**

## **CIS POROUS RESIN BOUND AND SLOT DRAIN TREE GRILLES**



Trees are an important part of our natural life support system; they have a vital role to play in the sustainability of our towns and cities and we need to take better care of them, both now and in the future, yet we see them starved of natural food and water and damaged at their roots by earthworks, particularly in developed areas of towns and car parks.

As a result of the built environment soil compaction can inhibit or prevent natural root growth. CIS Slot Drain and Resin bound grilles are a great way of enhancing the sustainability of your project for future generations. Clients can use either resin or porous paving in any of these tree surrounds.

For further information please contact our Sales Office on: 01483 203388 or take a look at our website: [www.cis-streetfurniture.co.uk/products/tree-protection/porous-resin-tree-grilles/](http://www.cis-streetfurniture.co.uk/products/tree-protection/porous-resin-tree-grilles/)



## Creating inspiring street scenes

**Bespoke Seats - Safety Railings - Giant Bollards - Security Products**



**CIS Street Furniture have the 'measure' of your next project**

Why not call our sales team to assist?

**T: 01483 203388**

[www.cis-streetfurniture.co.uk](http://www.cis-streetfurniture.co.uk)

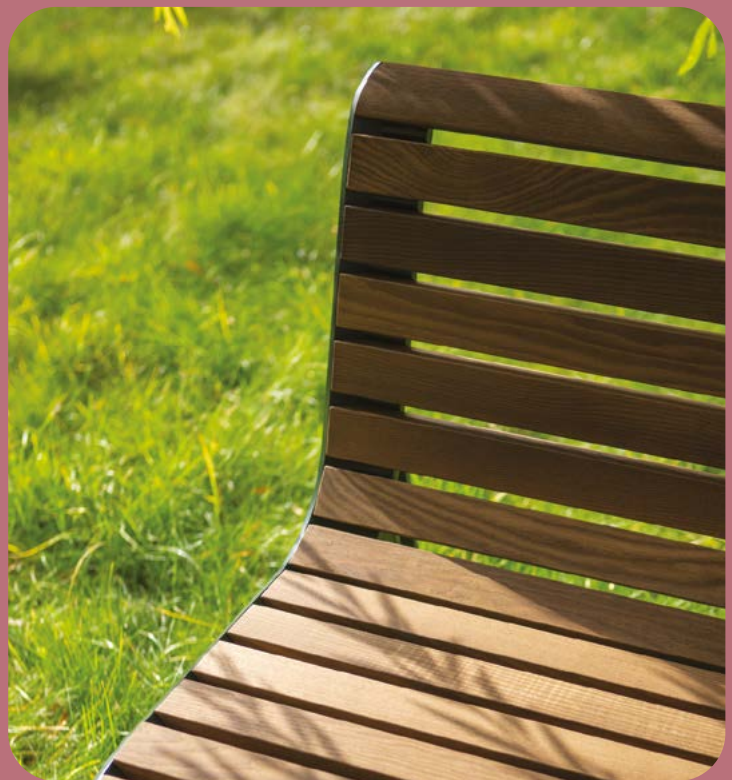
[E: sales@cis-streetfurniture.co.uk](mailto:sales@cis-streetfurniture.co.uk)

# EMAU

A link from the past, a promise to the future.



enquiry@mmcite.co.uk



mmcite.co.uk



# ULTRASCAPE CREATES A TRULY SUSTAINABLE FUTURE

Levels of carbon dioxide in the atmosphere are at an all-time high. Whilst CO<sub>2</sub> is an essential element to the survival of plants and animals, too much CO<sub>2</sub> has a catastrophic impact on the environment. The continuous burning of fossil fuels by humans has resulted in a massive rise in greenhouse gases, creating an imbalance in the atmosphere.

In May 2021, CO<sub>2</sub> levels reached 419 parts per million - the highest

average ever recorded. "As a manufacturer, we know we have a responsibility to be as sustainable as possible. Sustainability and environmental impact has always been a high priority for us and I am delighted to announce that we have introduced further environmental initiatives, all with the aim of reducing our environmental impact." Mark Shorrock, Managing Director at Instarmac.

UltraScape pride themselves on their sustainability practices and all of their high performance subfloor preparation materials are produced at their world-class manufacturing facilities in Tamworth, Staffordshire.

"Having as little impact on the environment as possible is behind every decision I make about the running of our production and warehouse facility. Over the last few years, I am proud to say that we



have introduced further initiatives which include using variable speed drivers across the plant, consuming less electricity at start up, replacing lighting with LED bulbs and using Intelligent Wrapping Technology to select the best wrapping solution for each product, focusing on stability and efficiency.” Paul Evans, Works Director at Instarmac Group plc.

By adapting our manufacturing processes to utilise the most

sustainable procedures possible, UltraScape are delighted to report that in 2020, their carbon footprint was measured at 3303.53 tonnes per CO<sub>2</sub>E - a 16% improvement compared to the previous year.

The environmental improvements to UltraScape’s manufacturing and office facilities do not end there. In February 2021, UltraScape invested over £420,000 to install 3,771sqm of solar panels at their Tamworth

based premises. The power generated by the high specification solar panels will be converted into electricity for use at their site and is also predicted to save at least 36,000kw per month.


What’s more, research is also underway to install more solar panels across the wider Instarmac group infrastructure and properties.

**Our Drivers have collected 15,000 pallets in just one year which have been reused or recycled.**

**This has saved around 1,900 trees**



**INSTARMAC** #GreenManufacturing #ChoosingToMakeAnImpact



**We have already reduced our carbon footprint by 16% and aim to reduce this by a further 5% by the end of 2022**

**INSTARMAC** #GreenManufacturing #ChoosingToMakeAnImpact



UltraScape are helping their customers reduce their own carbon footprint with the introduction of environmentally friendly bedding mortars and jointing solutions. UltraScape eco-bed and flowpoint eco both deliver the performance expected of BS 7533 compliant paving installation materials, but contain 20% recycled material - vastly reducing the use of virgin aggregates.

What's more, UltraScape premjoint brush-in sand, is available in 15kg tubs made from 100% recycled material, which can also be recycled - a huge step forward for UltraScape and the landscaping industry as a whole.

UltraScape eco-bed, flowpoint eco and the other paving installation materials available from UltraScape are delivered to customers on their 35 strong, privately owned fleet which now includes two CNG lorries. The introduction of Compressed Natural Gas (CNG) vehicles will result in a reduction of CO<sub>2</sub> emissions by 115 tonnes per truck, per year. UltraScape are fully committed to using fuel alternatives and aim to have 25% of their fleet running on CNG by the end of 2024, and 60% by the end of 2025.

UltraScape acknowledge that diesel isn't great for the environment and that's why every other vehicle in their fleet features AdBlue.



AdBlue is an additive which is used alongside diesel to reduce mono-nitrogen oxide emissions produced by the exhausts of vehicles. AdBlue transforms the harmful mono-nitrogen toxins in diesel into nitrogen and water vapour reducing the negative impact vehicle emissions have on the environment.

Are pallets taking up space in your yard? UltraScape can take them back! Their experienced Drivers can collect your unwanted pallets and return them to UltraScape to be recycled or reused. During 2020, UltraScape Drivers collected approximately 15,000 pallets. That's 193 tonnes of wood which has saved around 1,900 trees.

Other initiatives successfully implemented at UltraScape include intelligent lighting, a grey water system and climate control. They have also proudly been zero waste to landfill since 2014 - this means that 100% of manufacturing waste is recycled and not sent to landfill.

All of UltraScape's environmental practices have been acknowledged by ISO 14001 - an independent accreditation which UltraScape have been awarded for the last 15 years. The ISO standard allow UltraScape to reflect a good level of professionalism and demonstrates best practice. This accreditation is a great accomplishment for UltraScape as it shows their customers, the supply chain, and the flooring industry as a whole, their intent to continually improve all aspects of their business and how committed they are to providing sustainable solutions.

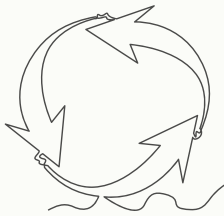
[www.instarmac.co.uk](http://www.instarmac.co.uk)



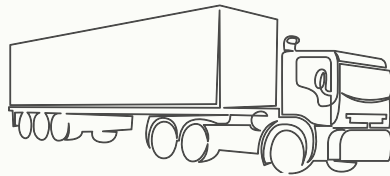
**INSTARMAC<sup>®</sup>**

# GREEN MANUFACTURING

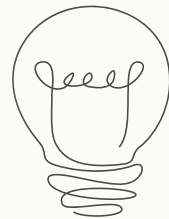
Choosing to make an impact



**ZERO**  
waste  
to landfill



New  
**CNG**  
lorries added  
to fleet



Over  
**3,700sqm**  
of solar panels  
installed



**SUSTAINABLE**  
manufacturing  
processes



**100%**  
recycled  
plastic bottles

Mandala, Meditation & Mindfulness Garden,  
Container Garden, designed by Nikki Hollier



# BIG IDEAS FOR SMALL SPACES AT RHS CHELSEA FLOWER SHOW 2022

Small space gardening makes a comeback at RHS Chelsea Flower Show 2022, sponsored by The Newt in Somerset, as the popular Balcony and Container Gardens return as judged garden categories.

Proving that any space, no matter how small, can be turned into a gardening haven, the Balcony and Container Gardens are joined again by the Houseplant Studios, supported by Close Brothers Asset Management, to offer plenty of inspiration for making the most of limited space and resources.

Living in a high-rise apartment in Manchester, Jason Williams, also known as the Cloud Gardener

UK, decided to transform his own balcony into an urban oasis during lockdown. Using his own self-taught experiments with planting, the 'Cirrus Garden' includes a colourful mix of wildflowers and edibles to create a sanctuary for wildlife in the centre of a city.

Balconies can provide an important habitat for birds and 'JAY DAY', designed by Alison Orellana Malouf and Su-Yeon Choi, integrates typical bird seed plants to encourage birds to visit. Featuring a lush planted floor of green moss for nut caching to attract the Eurasian Jay, the duo hope to bring an ecological connection for urban residents to see nature at their windows.

With planting themes formed of easy to grow edibles, William Murray's 'The Potting Balcony Garden Sponsored by Viking' and Ann Treneman's 'Wild Kitchen Garden' both demonstrate how even with limited outdoor options, homeowners can still grow their own fresh produce outside their door. A sense of travel and escapism comes from Jane Porter and design duo, Tanya K Wilson and Johanna Norlin's container gardens, drawing inspiration from Scottish and Mediterranean landscapes.

As the trend for growing and caring for houseplants continues, the Houseplant Studios showcase the forward thinking style ideas



JAY DAY, Balcony Garden, designed by Alison Orellana Malouf & Su-Yeon Choi



The Potting Balcony, Balcony Garden, designed by William Murray

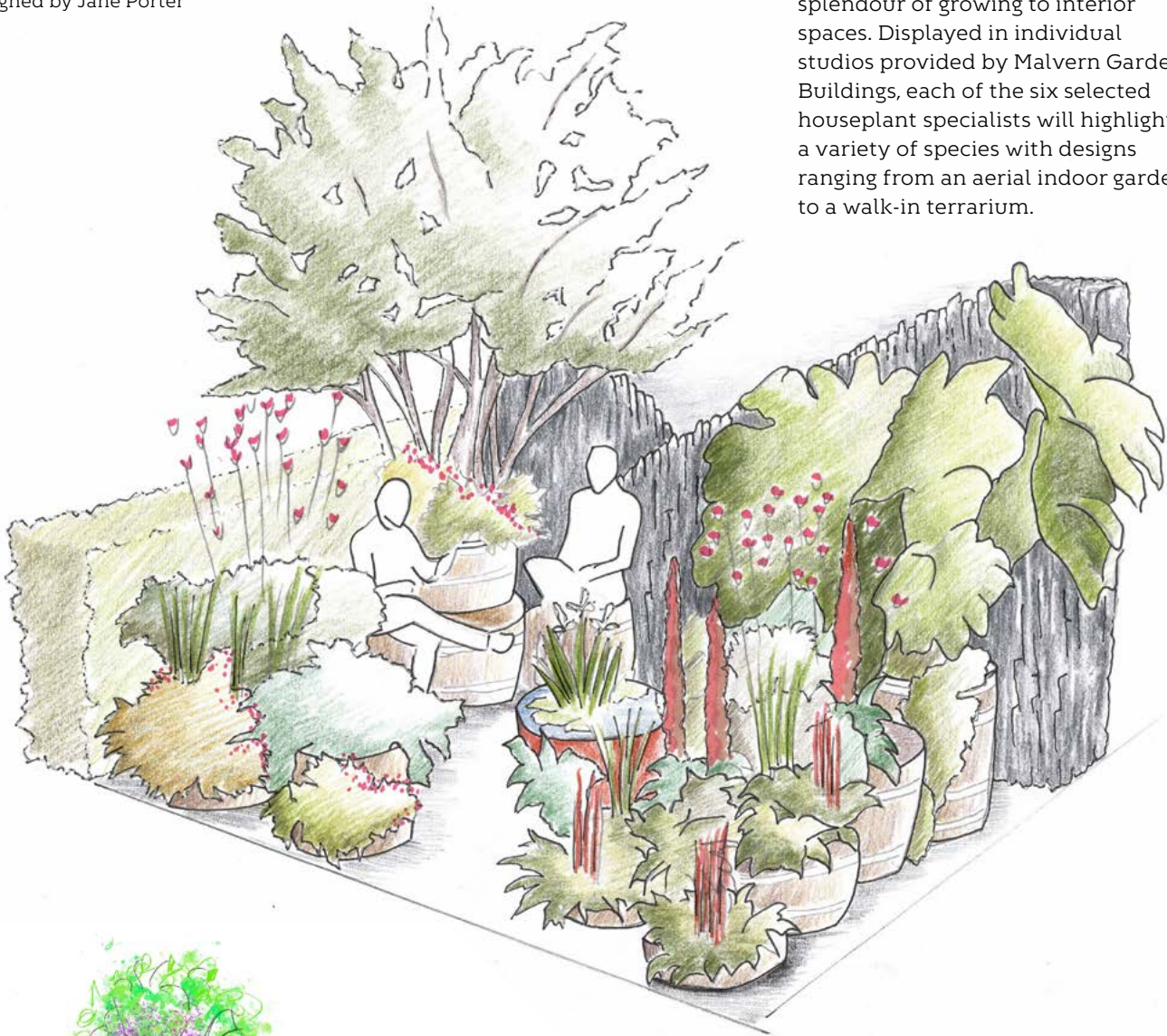


The Blue Balcony, Balcony Garden, designed by Tom Wilkes-Rios



The Enchanted Rain Garden, Container Garden, designed by Bea Tann

The Still Garden, Container Garden, designed by Jane Porter



and practical tips for bringing the splendour of growing to interior spaces. Displayed in individual studios provided by Malvern Garden Buildings, each of the six selected houseplant specialists will highlight a variety of species with designs ranging from an aerial indoor garden to a walk-in terrarium.



# Wild Kitchen Garden

Helena Pettit, RHS Director of Gardens and Shows said: "The Balcony and Container Gardens and Houseplant Studios at RHS Chelsea show that any space, whether inside or out, can be turned into a garden sanctuary for the benefit of our health and the environment. The range of creative ideas is outstanding and they dispel the myth that gardening is only for those with large outdoor areas or big budgets and provide ample inspiration for creating a little piece of greenery in whatever space you have."

The Wild Kitchen Garden, Container Garden, designed by Ann Treneman

**Tickets to RHS Chelsea Flower Show are currently available, including Chelsea Late: [www.rhs.org.uk/chelsea](http://www.rhs.org.uk/chelsea)**



# For essential Irrigation you can rely on Hi-Dro Boost range.

Extensive range for small volume applications up to the largest irrigation schemes.



TALK TO OUR EXPERTS  
[response@ttpumps.com](mailto:response@ttpumps.com)



[ttpumps.com](http://ttpumps.com)

01630 647200



# GREEN-TECH USE SOIL CONDITIONING TECHNOLOGY FOR PRESTIGIOUS MANCHESTER RING ROAD PLANTING SCHEME

## Background:

Great Ancoats Street is one of the main arterial routes around the city centre and is a key part of the Manchester and Salford Inner Relief Route. Averaging 37,000 journeys most weekdays, it is an extremely busy road.

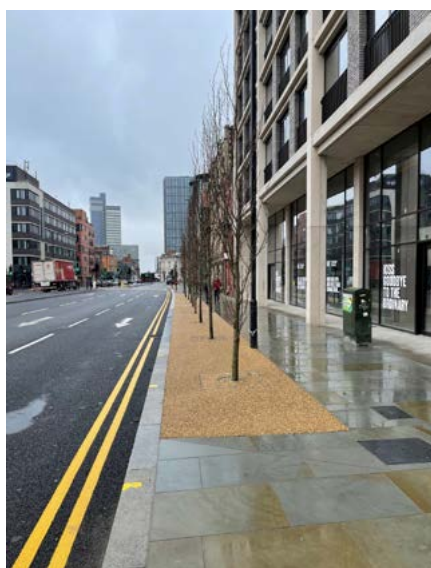
The neighbouring areas of the Northern Quarter and New Islington have undergone major improvement in recent times and the area around Great Ancoats Street is a prime location for both residential and commercial development.

Manchester City Councils plan to landscape the area focused on making the route more attractive and ensuring the area is natural extension of the city centre. It included planting in excess of 70 trees and laying new pavements to line the route.

## Green-tech involvement:

Green-tech was asked to advise the best way to integrate tree pits into the project. There were several challenges to overcome; the main one being the level of lateral loading from traffic, which made the use of geo-cellular units impractical. Another was the extremely narrow width of some of the central reservations, and how to maximise the rooting volume.

After debating various options, a plan of action was agreed that featured a combination of two solutions: For the tree pits within pavement areas ArborRaft units act as an extremely rigid, geo-cellular sub-base replacement,



supporting the paving above, as well as protecting the friable, organic topsoil below from compaction. Working on a raft principle, a key benefit of using the ArborRaft System is that no plastic extends into the actual tree pit rooting area, unlike traditional deep-pit crate systems.

For the narrow central reservations, a more structural soil was required; one that could stand up to the lateral loading from the heavy ring road traffic. Green-tree Amenity Tree Soil was selected for its ability to cope well with compaction; even when consolidated, it retains its open structure, allowing free movement of air, water, and nutrients throughout the soil. It is a blend of native washed sand, the primary function being structural, with a small amount of PAS100 organic green compost added to help with growth. However, this does result in quite a fast-draining soil,

with only a small amount of organic content. To combat this, we used a supplementary soil conditioner, TerraCottem Arbor.

Developed specifically for tree and shrub planting, TerraCottem Arbor comprises a mix of specialist hydro-absorbent polymers, growth precursors and volcanic rock. These dramatically improve water retention and microbiological activity, giving the trees a great nutritional boost during the all-important establishment phase. The white hydro-absorbent polymers expand many times in size when saturated, holding onto the water, and releasing it back into the soil during dry spells. The polymers will carry on doing this for a minimum of eight years, well after the trees have become established.

To save time and labour on site, Green-tech pre-mixed the TerraCottem Arbor with the Amenity Tree Soil ready for use.

Green-tech's Specifier department in conjunction with MJM, designed and produced CAD drawings for the tree pits, which once approved by COLAS and the engineers, went before Manchester City Council for final sign off.

Over a period of eight months, Green-tech delivered 1,300 tonnes of Amenity Tree Soil pre-mixed with TerraCottem Arbor, ArborRaft soil and subsoil, over 800m<sup>2</sup> of ArborRaft units, 1.1kms of gtRootbarrier® 325, along with 70 tree anchors and Mona Link 24 irrigation reservoirs.



# Sustainable soils, growing media and turf

## **British Standard Topsoil**

Light in texture with good water holding capacity. Ideal for environmentally conscious landscaping and construction projects.

## **British Standard Subsoil**

A high quality, clean and consistent soil with full traceability. Ideal for general infill, raising levels and creating landscape contours.

## **Roof Garden Substrate**

Intensive and Extensive options ensuring healthy plant establishment for rooftop or containerised planting projects.

## **Amenity Tree Soil**

Load bearing, fertile planting medium. Enables tree root infrastructure to develop under hard urban landscapes.

## **ArborRaft Soil**

Works as a rootzone with the ArborRaft Tree Planting System.

## **Bespoke Mixes**

Rootzones, low fertility soils, subsoil, sports soils and structural soils.

## **Turfs**

A comprehensive range including Wildflower Turf, which provides an instant wildflower meadow



**T: 01423 332 100**

**E: sales@green-tree.co.uk**

**www.green-tree.co.uk**



Green-tree is a trading style of Green-tech Ltd

Proud to be a  
Supplier Member of:



## PICTORIAL MEADOWS HELPS CELEBRATE THE PLATINUM JUBILEE

Pictorial Meadows, as part of the not-for-profit Green Estate CIC, are thrilled to have been selected to supply wildflower seeds for the Platinum Jubilee 'Superbloom' at the Tower of London.

The project has been conceived by Historic Royal Palaces (HRP) - the charity that cares for the Tower of London - and planned for several years. HRP have worked with University of Sheffield Professor of Planting Design and Urban Horticulture, Nigel Dunnett, to bring the project to life. Their design will bring both the stunning beauty of naturalistic designed meadows to the Tower, as well as providing a significant new resource for pollinators and seed eating birds right in the centre of London.

Pictorial Meadows is renowned for its work on prestigious meadow landscapes and visitor attractions across the UK and beyond. This innovative meadow seed and turf company first shot to prominence after the public fell in love with their meadows surrounding the Olympic Stadium in 2012. Since then, they have continued to develop a range of meadows that offer astounding colour and reliability, well suited to urban environments, and helping to support local biodiversity.

The company will also be providing bespoke meadow seed mixes to schools across the UK as school children are invited to take part in a major school's initiative, growing their own meadow displays to bloom alongside the one at the Tower.



Alongside the Tower of London, you'll be able to find Pictorial Meadows supplied celebratory floral displays at Hampton Court Palace, Kensington Palace, and Hillsborough Castle.

To find out more about Pictorial Meadows, visit them online at [www.PictorialMeadows.co.uk](http://www.PictorialMeadows.co.uk).

# Pictorial Meadows

[www.PictorialMeadows.co.uk](http://www.PictorialMeadows.co.uk)

If you like wildflower meadows, you'll love Pictorial Meadows.

Designed to thrive in gardens and urban areas, choose from a range of 16 different annual meadow seed mixes, each offering great visual impact, support for biodiversity, and stunning successional flowering.

Sow from March to May and expect changing flower-filled displays all across Summer. Truly a wonder to behold.

Visit us online to find our more.

[www.PictorialMeadows.co.uk](http://www.PictorialMeadows.co.uk)



Meadow Seeds

Meadow Turf

Meadow Creation

Meadow Consultation



## EVEREDGE 100% MADE IN BRITAIN

EverEdge has been manufacturing steel landscaping products in Britain for over 25 years. EverEdge have an extensive range of steel lawn, garden and landscape edging products for domestic, commercial and public projects. More recently, EverEdge have introduced a range of steel planters and walls that have been specified into projects such as hospitals, podium landscapes, streetscapes and stately homes. Manufacturing in Britain ensures that all EverEdge products are made to the highest standard. It also means that EverEdge limit their impact on the environment and are sheltered from the worst of the current global supply chain issues.



EverEdge's bestselling edging product to the landscape trade is the Titan range of heavy duty steel edging. EverEdge Titan is available in a range of thicknesses from 2.5mm up to 6.0mm and depths of 100mm up to 300mm. Deeper and thicker edges can be specified. EverEdge Titan is used in both soft and hard landscaping projects on lawns, driveways and pathways and offers a more durable edge which is especially useful in public projects.

EverEdge Planters can be specified to virtually any shape, size and finish. CorTen is often specified in urban design projects due its durability and the fact that it is low maintenance.

Contact EverEdge now to discuss your next project.

Tel: 01630 417120 | Email: [enquiries@everedge.co.uk](mailto:enquiries@everedge.co.uk)  
Web: [www.everedge.co.uk](http://www.everedge.co.uk)



Look what you can do with EverEdge...

Image provided by Kingston Landscape Group

Edging, rings and planters



Call for full details on 01630 417120  
See them all at [www.everedge.co.uk](http://www.everedge.co.uk)



THE ORIGINAL EDGING COMPANY



# KEY CONSIDERATIONS FOR PLANTING TREES IN LANDSCAPED AREAS

The installation of living trees throughout urban areas can enhance environmental quality in a variety of ways. This includes the absorption of noise and pollution, in addition to the production of oxygen and the creation of privacy and land stabilisation. However, the planting of trees in landscaped or paved exterior public spaces can present a number of challenges that must be considered at the very initial design stages.

Chris George, Business Development Manager at Howe Green, discusses the key factors that should be addressed when specifying tree pits and tree grilles for landscaping developments to provide a safe and efficient installation, without compromising on the overall visual effect.

Whilst planting trees in urban areas provide many benefits, any trees or saplings must be initially planted into a safe and secure setting to ensure their long term growth and subsequent environmental advantages. Adequate root management, regular access to water and the maintenance of soil condition are all essential elements that must be considered when incorporating trees into hard landscaped areas.

How can specifiers ensure they're planted in a safe and secure way? External tree pits and tree grilles are particularly popular with landscaping professionals, as they effectively provide easy access to tree root balls, whilst also providing discreet access to electrics, valves, pumps and water features.

## Material matters

When choosing a tree grille or tree pit, ensuring the right materials have been used throughout the product's construction is critical for preserving the tree's life and ensuring a long-lasting and durable installation.



Specifiers should consider solutions manufactured from stainless steel, galvanised steel or aluminium, as they provide long-term rust and corrosion resistance to ensure the highest levels of performance, whilst also accommodating a wide variety of hard floor finishes.

The addition of a top edge seal will also prevent dirt, grout or grinding waste ingress to achieve increased longevity and resilience. This also eliminates the requirement for slither cuts of stone, which often leads to recurrent and costly breakages.

Linear drainage is another important factor to consider when installing tree pits and grilles in a landscaped area. Ensuring that any excess water can be drained from the tree ball root encourages growth and prevents overflow onto the surrounding area, which could pose slip hazards.

To provide a flush fit and eliminate any possibility of a trip hazard, Howe Green offers a wide range of linear drainage finishes, including aluminium, stainless steel, brass, and Coloured PVC.

## Aesthetics vs performance

Howe Green offers a variety of stainless steel, galvanised steel and aluminium tree pit covers and tree grilles that can withstand varying levels of footfall or traffic, making them an easy choice for a wide variety of hard landscaping projects.

Custom made specifications will best meet the specific requirements of each individual project, rather than a standard 'off the shelf' offering. A bespoke specification will also ensure that the type of metal specified within the hard landscaping, are seamlessly integrated into the tree grilles, providing the highest quality finish available.

With over 30 years' experience in the design and manufacture of high performance access solutions, Howe Green's team of in-house design and engineering experts offer a wide range of custom and standard tree pits and tree grilles that can be tailored to meet the exact specification of every project.

**For further information on Howe Green's floor access solutions, visit [www.howegreen.com](http://www.howegreen.com) or call 01920 463230**

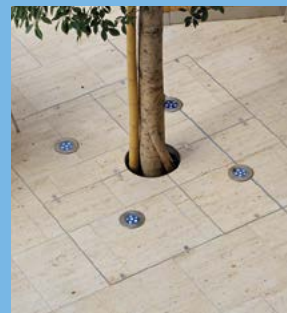


## Innovative tree pit covers. When access, safety and design matter

Our tree pit covers are designed to your exact size and configuration, accurately and cost-effectively providing easy tree root ball access for on-going maintenance.

Manufactured in rust and corrosion resistant stainless steel or aluminium, tree pit covers eliminate tripping hazards, allow the integration of your choice of stone paving for a high quality finish and provide landscapers with hidden access for uplighters and water features to enhance the aesthetics of any urban area.

Given the choice, why would you specify anything less?



Call us on 01920 463 230 [www.howegreen.com](http://www.howegreen.com)

# HELP TACKLE CLIMATE CHANGE – USE MORE WOOD



The climate change conference, COP 26, highlighted construction activity as major contributor to greenhouse gas emissions; it also highlighted that using more sustainable materials like wood could reduce emissions significantly. The environmental performance of construction products is in the spotlight like never before. In this respect, the environmental benefits of wood are compelling. By any measure of sustainability wood scores highly; it's a renewable material that locks up the carbon absorbed by growing trees.

Using more wood however is not as simple as it may seem. That's because the main softwood species used for building and landscaping lack the durability to deliver the performance required for some applications. The good news is that the durability of wood products can be enhanced using a factory controlled preservative treatment

or wood modification process to protect against fungal decay and insects during its service life.

"Realising the full potential of wood as a sustainable, environmentally beneficial material goes hand in glove with realising the benefits of wood protection technology" says Gordon Ewbank, director of the Wood Protection Association (WPA).

### Fit for purpose

Factory pretreated softwoods from managed forests are particularly suited to landscaping and outdoor structural applications. Like any other material though, treated wood must be correctly specified and installed to ensure its performance. Market research by the WPA in collaboration with the Timber Trade Federation (TTF) has highlighted considerable misperceptions about treated wood products. For example, the research highlighted a widespread belief that all

preservative treated wood had the same level of protection and could be used anywhere which is not the case. British Standards require that the treatment process is tailored to the end use. Wood for indoor applications needs lower levels of protection than wood products used out of doors. 'Use a treated internal floor joist out of doors and the risk of premature failure is high' says Gordon Ewbank who confirms that the research was a huge wake-up call for the wood treating industry and has resulted in the TTF, WPA and other timber trade bodies working together improve buyer knowledge about how to specify and use treated wood correctly.

### Follow the ground rules

Nowhere is the fitness for purpose of treated wood more important than for landscaping applications in direct contact with the ground - categorised as Use Class 4 applications in British Standards. "We know from a long-term field trial of timber fenceposts being carried out by BRE that treated wood can be trusted in outdoor applications' says Gordon Ewbank who confirms that the WPA has established a number of ground rules to help ensure that treated wood supplied for ground contact applications is fit for purpose. First and foremost, make sure the supplier knows the timber is for a Use Class 4 application; secondly make sure the wood is treated by a process certificated under an independent quality scheme such as the WPA Benchmark™. And finally, remember that high performance materials do cost more.

**Designers and buyers can find lot more information and help on the WPA website [www.thewpa.org.uk](http://www.thewpa.org.uk)**

# You can rely on treated timber in the garden

Image courtesy of Hoppings Softwood Products



## when you follow the simple Ground Rules

Preservative pressure treatment provides wood with added durability. However, it's a mistake to assume that all pressure treated wood is the same – treatment levels should be tailored to the desired end use (Use Classes).

When **ground contact timber** is treated correctly to Use Class 4, it is fit for purpose – evidence from **WPA field trials** supports this.

Several timber trade bodies are working together to help ensure that quality standards are assured across the timber supply chain – so whether you buy or sell treated timber you can rely on its performance, just follow the simple **Ground Rules**.

Typical Use Class 4 applications include:

Fence posts, retaining walls, landscaping timbers, playground equipment, decking posts, decking joists, boardwalk substructures and any external application where structural integrity is essential for user safety.

### for ground contact treated timbers:



#### **Specify Use Class 4**

levels of **preservative treatment** – anything less and service life, structural safety and customer satisfaction will be compromised.



#### **Use a trusted treater**

who has **third party accreditation** of their operational quality management systems – such as the **WPA Benchmark Scheme**.



#### **Be prepared to pay**

for quality – premium products incur higher costs but their inherent value is priceless when **performance in the field** is paramount.

**Benchmark**

APPROVED **TREATER**



The Make Sure it's 4 campaign is supported by:



Timber Trade Federation  
growing the use of wood



[www.thewpa.org.uk](http://www.thewpa.org.uk)

Find a WPA Benchmark Approved treater:



# PROVENDER NURSERIES COLLABORATION WITH EBBSFLEET DEVELOPMENT CORPORATION IN GREAT TREE GIVEAWAY FOR 'GREENING THE CITY' CONSIDERED A RESOUNDING SUCCESS

During March 2022, Provender Nurseries in conjunction with Ebbsfleet Development Corporation, provided 1500 trees and 900 plants free to every resident of Ebbsfleet as part of their 'Greening the City' initiative.

Provender Nurseries applied for the tender in late 2021 and were selected by Ebbsfleet Development Corporation to source and supply trees, 2L plants and associated sundries due to their biosecurity credential and Plant Healthy

certification in January 2022.

Working closely with Kevin McGeough, Head of Strategy and Placemaking at Ebbsfleet Garden City and Miriam Fagbemi, Ebbsfleet Community Building Manager,



Provender Nurseries selected trees and plants that would increase biodiversity to the city with a mix of native trees, trees with high wildlife value, edible fruit trees and smaller plants grown in Kent in peat-free compost and kerb recyclable pots by Provender Nurseries themselves. A large number of trees sourced were of UK origin and selected.

Promoted to residents via leaflet drops and social media campaigns, the trees and plants provided by Provender Nurseries were distributed to residents over five days and five separate drop off points. Supported by volunteers of local businesses and Ebbsfleet team members, residents were allocated either a tree, tree stake, tree tie

and organic compost if they had a garden or three 2L plants and a bag of peat free compost if they lived in a balconied residence.

Encouraged as part of the Queens jubilee celebrations, 'Plant a Tree for the Jubilee' uptake of the offer has been beyond expectations with many residents making the most of the opportunity to plant a free tree in their garden and valuing expert advice from members of the Provender Nurseries team on site at each tree giveaway to advise on tree choices. Volunteers were available to help load vehicles, load trees and in some cases to plant the trees for residents themselves.

Surplus trees left over from the tree giveaways will be donated to schools and community projects around Ebbsfleet Garden City by Ebbsfleet Development Corporation.

Richard Burt, Sales Director of Provender Nurseries said 'When the opportunity arose to supply trees and small shrubs as part of the 'Greening the City' with Ebbsfleet Development Corporation we jumped at the chance to be involved in such a great initiative. When we provide plants to our clients, we rarely get to see the final finished article. However, in 3 to 5 years' time we will be able to see the trees planted around Ebbsfleet creating a living legacy for the residents of Ebbsfleet for many years to come.'





Kevin McGeough, Head of Strategy and Placemaking at Ebbsfleet Garden City said 'Ebbsfleet is the UK's first new Garden City for 100 years, and our series of 'Free Tree Giveaway' events helped our new residents to understand what is going to be special about living in their new homes. Firstly, the trees and plants will help to create a green and healthy place to live, enhancing biodiversity and improving future air quality. Equally important is the amazing sense of community that was apparent in each of our five

giveaway events, with residents, and volunteers working with Provender Nurseries to choose, transport, and plant the trees and plants which they will watch grown with their families over future generations as Ebbsfleet Garden City itself grows. EDC would also like to applaud the Provender Team for their support and professionalism in helping us to deliver this exciting initiative.'

[www.provendernurseries.co.uk](http://www.provendernurseries.co.uk)





# PICTURE PERFECT

## Fixed Fountains. For when aesthetics are everything.

Provides tranquillity and beauty for your lakes and ponds. Made from corrosion-resistant and durable marine-grade stainless steel, the stand chamber fits flush with the surface to create that picture perfect landscape. And with a power control centre cable with quick disconnect, installation and maintenance is easy, too.

[reesinkturfcare.co.uk](http://reesinkturfcare.co.uk)



Get **MORE** from your turfcare partner this year:  
More products . More advice . More training . More finance



Reesink UK LTD is authorised and regulated by the Financial Conduct Authority. Images shown for illustration only.

# THE UK'S LEADING SUPPLIER OF HEDGING PLANTS



Hedges Direct is the UK's leading supplier of hedging plants, despatching direct from our 16 acre nursery site in Lancashire. We've been selling quality hedging and garden plants since 2005 and in that time, we've sold millions of plants direct to trade and consumer.

As a specialist hedging retailer we offer a vast range of hedging species, in a choice of root type

ALL year round. From seasonal bare root and root balls through to pots and containers. And from individual plants to instant troughs and screens. Additionally, we also have a wide selection of shrubs plus specialist lines of topiary, trees and garden essentials.

And if we don't stock what you need, we can source it from our extensive network of growers across the UK

and Europe, taking all the hassle out of finding the right plants at the best prices.

Our expert team are available 7 days a week to support on any project regardless of size and budget, offering bespoke quotes at competitive prices. You can also expect expert advice and support every step of the way from purchase to delivery and aftercare. With Hedges Direct, you're in safe hands.

## The Hedges Direct Service

- **Our customers come first.** Over 13,000 5\* reviews and a Platinum Five Star Trusted Feefo status speaks for itself.
- **Buy with confidence.** We are dedicated to providing our customers with quality hedging plants, shrubs, garden plants and trees, so much so that we offer, as standard, a full 12 month, no quibble guarantee on all of our plants! If any plants purchased from Hedges Direct fail within the first 12 months after delivery, we will replace them.
- **Product expertise.** We have a dedicated and friendly sales team available 7 days a week. Every member of our team has extensive product knowledge and will take the time to understand your requirements and offer advice.
- **Bespoke sourcing service.** If we don't currently sell what you're looking for, we'll find it. And, we'll always provide the best price possible.

Call our expert team on 01257 788413  
Visit at [hedgesdirect.co.uk](https://www.hedgesdirect.co.uk)

# Hedges Direct



Grown with Care,  
Delivered Direct

Contact our experts today:

[hedgesdirect.co.uk](https://www.hedgesdirect.co.uk)

01257 788413



# EXTEND THE TIME YOU SPEND OUTDOORS

Glass Balustrades are becoming increasingly popular in Gardens and Outdoor Spaces. The main use being Barriers to either protect people from falling or to define an area within your Outdoor Space.

With the introduction of Wind-Dam your Outdoor space can also be protected from the Wind as and when required extending the time you can comfortably spend outside.

Wind-Dam can be used commercially or domestically around Restaurants, Patios, Decking Areas Balconies, Roof Terraces or

Hot Tubs to add protection from the elements.

Its unique retractable Glass solution takes the Balustrade from a standard 1100mm high to 1800mm high by simply applying pressure on the top edge of the glass to allow the Toughened Glass Wind Break to rise into position.

Tested to withstand winds of up to 138kmh (86mph), when used in conjunction with Awnings or Pergolas you can create a fully protected Outdoor Space that can withstand the unpredictable UK

weather and allow Outdoor Spaces to be used for longer.

Available in Standard sizes 1000mm, 1200mm, 1400mm and 1600mm wide panels with optional Aluminium planters. Glass is supplied in Clear, Frosted or Branded to suit commercial requirements.

---

**David Martin**  
Managing Director  
Elite Balustrade Systems Ltd  
[www.elitebalustrade.com](http://www.elitebalustrade.com)



# Wind Protection Systems

## WIND-DAM GLASS BALUSTRADE



## RETRACTABLE GLASS WIND PROTECTION SYSTEM

**W i n d - D a m**  
**Balustrade** is designed as a weather protection solution around external living spaces, such as patio's deck & verandas.

Outdoor living spaces extend the useable space within your home. Entertain

friends and family with comfort, protecting yourselves from the environment while outdoors.

Wind-Dam uses a unique innovation where the moving part of the system is raised or lowered with a single motion according to your wishes and weather

conditions. This allows more people to sit and enjoy your outdoor space in comfort, sheltered from the wind by choosing a glass railings with an adjustable Wind-Dam System®.

[www.elitebalustrade.com](http://www.elitebalustrade.com)  
[sales@elitebalustrade.com](mailto:sales@elitebalustrade.com)  
Tel: 01254 825594

# EARTH DAY SHOULD BE EVERYDAY



Events like Earth Day serve to highlight the impact humankind has on nature and climate change, and sometimes the issues can seem overwhelming. The good news is that the awareness allows us to take informed action and it's encouraging to see organisations implementing Carbon Net Zero and Biodiversity Net Gain plans and policy, turning every day into earth day.

Urban green spaces serve an important role for UK wildlife including small mammals, birds and insects; many of which are facing dramatic declines. Many of these green spaces are under the ownership of agencies who are now looking to improve, maintain and monitor their estate for wildlife in line with new Natural England metrics for assessing and attaining Biodiversity Net Gain, taking account of priority habitats and species.

The connectivity of people to biodiversity also has wider benefits. Spending time in nature is

increasingly understood to lead to improvements in people's physical and mental health. However, often the potential habitat range of these spaces is untapped, and they are not as biodiverse as they could be with many land management practices causing more harm than good.

Field Studies Council is excited to be pioneering work with high-profile organisations such as Sanctuary to support staff with professional development in understanding biodiversity and how they can improve the organisational practice of land management. The Biodiversity Awareness Online Training equips staff with basic knowledge of biodiversity, threats to, and the alterations that can be made to working strategy to protect and enhance biodiversity. On completing the course, staff can apply their understanding within the industry, looking towards a new strategy that will protect, maintain and enhance the natural environment through collaboration with their stakeholders.



Sanctuary staff are applying their awareness, identifying changes in their practice, and devising an organisational strategy for the enhancement of biodiversity across their estates. This includes participation in No Mow May at two of their urban park spaces and evaluating the impact on residents and on nature.

---

**For more information on the Biodiversity Awareness Online training, or a bespoke course designed for your organisation, please contact [ecoskills@field-studies-council.org](mailto:ecoskills@field-studies-council.org)**

# Biodiversity Training

for the Built Environment

**Field Studies Council** design and deliver bespoke courses to raise Biodiversity Awareness within the workforce enabling organisations to work towards

**Biodiversity Net Gain.**

From guiding you through your initial understanding to creating bespoke hands on courses we will train your staff to become confident to apply their learning in simple yet practical ways.





**Cleveland SITESAFE LTD**

Over 30 years experience in Modular buildings from Toilet Pods to Education Spaces and Secure Storage for tools, equipment and vehicles  
 Robust, Secure, Stylish  
 Whatever your requirements  
 We have a solution for you



[www.cleveland-sitesafe.co.uk](http://www.cleveland-sitesafe.co.uk)  
[sales@cleveland-sitesafe.ltd.uk](mailto:sales@cleveland-sitesafe.ltd.uk) 01642 244663

**WHY MODULAR?**

Offsite construction comes with a lot of advantages from sustainability to time savings. You just need to search for modular buildings online and you will find a variety of options, from mass produced units to suppliers of more bespoke designs. This allows for every budget, design and user requirements. Modular builds are constructed offsite, in advance of delivery and installation, in as little as a day, minimising disruption on site.

Cleveland Sitesafe Ltd have been manufacturing modular buildings and storage solutions with a focus on security and longevity. When we say we are highly secure, we mean it, not just windows and doors but the complete structure.

They can be finished in a range of aesthetically pleasing cladding options and can even accommodate a green roof, great for encouraging biodiversity.

Visit [www.cleveland-sitesafe.co.uk](http://www.cleveland-sitesafe.co.uk) or call us to find out how we can help with your project.



**CIVIC TREES**



Founded in 1963, Civic Trees has now become one of the market leaders in the supply, planting and relocation of mature and semi-mature trees.

We have many years experience in the industry, and are dedicated to providing clients with the best possible landscaping solutions.

The company offers a wide variety of services, including the supply and planting of trees, Tree transplanting and site moving.

We also offer soft landscaping schemes that need to be delivered, along with a fully comprehensive maintenance package.

Visit [civictrees.co.uk](http://civictrees.co.uk) today or email [info@civictrees.co.uk](mailto:info@civictrees.co.uk)  
 Or phone us on 0208 950 4491



**The gift that gives back for GENERATIONS**

Special, unexpected and truly memorable... what greater gift is there than a tree?

*"A single act of kindness throws out roots in all directions, and the roots spring up and make new trees"*

Amelia Earhart



Visit [civictrees.co.uk](http://civictrees.co.uk) today or email [info@civictrees.co.uk](mailto:info@civictrees.co.uk)  
 Or phone us on 0208 950 4491







Franklin Electric

# PUMP PERFECTION

Now stocking Franklin Electric  
clean water pumps



## THE QUICK, EASY AND ECONOMICAL OPTION

Introducing the ES, VS and EV series pumps from Franklin, made for pumping clean water through irrigation systems at golf clubs and sports grounds. Plus the EGT and EGF series, for dirty water extraction from reservoirs, streams, lakes and pits. Simple and effective, you get instant improvements to energy efficiencies, variable speed solutions and a boost to your water pressure. Easily the best choice for pump replacements.

[reesinkturfcare.co.uk](http://reesinkturfcare.co.uk)

Get **MORE** from your turfcare partner this year:

More products . More advice . More training . More finance



Reesink UK LTD is authorised and regulated by the Financial Conduct Authority. Images shown for illustration only.



# WHY ALUMINIUM IS TAKING THE DECKING WORLD BY STORM



For decades, aluminium wasn't a material you'd find in the average garden. Widely used in heavy industry, aerospace and automotive, its usage in more residential contexts was relatively rare. But in more recent years, that's changed. It's now much more common to find it in gardens, on balconies, and in other residential settings.

Why? Because aluminium is an outstanding modern material, suitable for a whole host of different sectors and applications. Firstly, it's strong, lightweight, easy to handle, and both watertight and weather resistant. It also offers sleek, fashionable aesthetics, low maintenance and good traction for all areas. In fact, at F.H. Brundle, we think it's a great decking material - which is why we've recently added our new Synergised aluminium decking range to our extensive selection of timber alternatives.

## An alternative to timber

Think decking, and you probably think timber. But timber, as classically attractive and readily available as it is, has problems, as everyone in our sector is well aware.

It will rot, it can twist and warp, and can require a great deal of maintenance to keep looking and performing its best. Which, in recent years, has led to the development of a wide range of alternatives - and one of the most popular is aluminium. Synergised is a robust, fully fire-rated aluminium decking system designed to meet the rigorous demands of twenty-first century usage, and help tradespeople throughout the sector win lucrative new business.

Synergised decking is made from structural-grade 6063 T6 aluminium, and finished with a 100 micron Qualicoat™ premium powder coating, giving it exceptional colour retention, even after years of exposure to the sun. What's more, its highly slip-resistant surface is comfortable underfoot, and stays cool in hot weather, making it perfect for garden applications - while the fact it's A1 and 2fl-s1 fire-rated at heights of 18m for commercial buildings and 11m for residential make it ideal for high-rise settings. It's also tested to EN 13501, EN 12823 and EN ISO 1716, and comes in three colours - anthracite, black and Serengeti sand.

## Up to 50% cost saving

Synergised is extremely quick and easy to install, offers a 50% cost saving when compared to similar systems, and comes with a life expectancy of over 25 years. Its mill finish subframe is available in 3 heights with the 20mm option ideal for ultra-low profile applications. Lightweight and easy to cut, it's extremely quick to assemble and fit. The system's adjustable cradles make for a very simple install, too - with height adjustment ranging from 45mm to 180mm, which, combined with our joist profiles, will deliver decking at the exact angle required.

## Stunning porcelain tiles

The latest addition to the range are highly versatile porcelain tiles. The Italian-made La Fabbrica collection is ideal for all types of decking and raised patio applications, including high rise cantilever and pre-cast balconies, with designs dominated by the warmth and texture of real wood. The La Fabbrica collection is available in two options - Ca'Foscari, which recreates the warmth and natural appearance of textured wood, and Yosemite, which boasts wood-like knots and veining.

It's a fantastic addition that makes one of the leading timber-alternative decking systems even better.

**If you'd like to learn more about Synergised, or request a free sample, call 01708 398048 or visit [www.fhbrundle.co.uk](http://www.fhbrundle.co.uk).**



The beauty and charm of the finest timber in Italian porcelain tiles

## Synergised™ PORCELAIN TILES

- UV resistant
- Non-combustible
- Ideal for elevated patios & balconies
- Stunningly realistic natural wood effect
- Low maintenance & easy to install
- 100% recyclable
- Anti-slip



Balconies



Terraces



Raised Patios



Subframe



Order your free  
samples today



- No trade account required
- Competitive prices
- Order online 24/7
- FREE delivery on orders over £150
- 10,000 products from stock

01708 39 80 22  
sales@brundle.com  
www.fhbrundle.co.uk

# GET READY FOR THE FESTIVAL OF GLEE



Picture the scene - it's late June and the sun is shining. The garden retail sector has come together to showcase the latest innovation and merchandising solutions ahead of the 2023 season, to source new trading partners and to network with peers. The scent of barbecued food drifts through the open doors as suppliers demonstrate their latest grills, pizza ovens and smokers, and post-show drinks take place in the warmth of the late afternoon sun.....this isn't a false reality, this is Glee 2022!

In 2022 Glee will take place in late June (28th - 30th, NEC Birmingham), which means the show will benefit from a summer festival feel unlike never before. Not only will visiting retailers be better armed with their range needs for the year ahead following the peak spring sales period, but the June timing will provide outdoor entertaining brands with a chance to shine thanks to Glee's new outdoor cooking demonstration area.

A first for Glee, this dedicated area - located in the outdoor area at the rear of Hall 20 - will create a central networking hub where suppliers of outdoor cooking solutions will create a mouth-watering backdrop. The wider outdoor entertaining portfolio of products including fire pits, patio heaters, artificial grass will also debut in this area, making for an unrivalled interactive showcase.

Glee Event Director, Matthew Mein said: "Traditionally at Glee, outdoor entertaining brands have been able to display their products on stand but being able to fire them up to really show what they are capable of has always been more of a logistical challenge. Gone are those days however, as our new June timing enables us to make the most of the warmer summer weather and take these demonstrations to the great outdoors, enabling retail buyers to truly understand the functionality of the products on offer, ultimately increasing upsell potential in store. Whether it's barbecues or fire pits, smokers or the latest faux grass, this new area will be one not to miss for anyone wanting to increase their outdoor entertaining offering in 2022 and beyond!"



## Celebrate at the Glee Party

In a move to further optimise Glee's new date, it has been confirmed that a special 'Glee Party' will take place on Tuesday June 28th. This gathering of exhibitors and visitors post-show will be a great way to unwind after the first day of the event, as well as continuing sales conversations that began on stands.

Taking place within Glee's new outdoor cooking hub, the party will (hopefully!) enjoy the great British sunshine and the longer summer evenings.

[gleebirmingham.com](http://gleebirmingham.com)





# glee 2022


---

**28-30 June**  
**NEC BIRMINGHAM**

**Join us this June**  
**for the Festival of Glee**

 @glee\_birmingham

 @Glee\_Birmingham

 @Glee.Birmingham1

 @Glee-Birmingham-Show

[gleebirmingham.com](http://gleebirmingham.com)

# QUICK COMPACTION RELIEF AT PHOENIX GOLF CLUB THANKS TO REDEXIM VERTI-QUAKE®



Tackling compaction on previous untouched ground, a Redexim Verti-Quake® 2516 has dramatically improved the downward movement of moisture at Rotherham's Phoenix Golf Club. The Verti-Quake®, delivered in September 2021, complements the

aeration work conducted with their existing Redexim Verti-Drain®, with Multi-Sport Complex Manager Mark Smith citing outstanding results on some of the sites historically waterlogged areas.

Constructed on clay-based land, the 65 hectares that make up the

complex includes cricket facilities, a bowling green and nine football pitches, alongside the 18-hole parkland golf course. Working with Mark on the maintenance is a team of five, meaning that operations such as aeration have been limited by time and resources. "The Verti-Drain® has traditionally been utilised on the greens but not on larger, open areas because of staffing levels" explains Mark.

"We'd seen a contractor utilising a linear aerator on our football pitch and decided something like that could bring benefit to areas, such as the fairways, on the golf

course." After exploring the options, Mark opted for the Redexim Verti-Quake® 2516 - offering a 1.6m working width and effective compaction relief down to 250mm. "As soon as it was delivered by our local dealer Cheshire Turf, we were out on some of the historically challenging areas and the results spoke for themselves. We went into the winter, and emerged the other side, so much drier than we ever have before."

"Considering a lot of the areas we used it on had never been aerated previously, the Verti-Quake® broke straight through the compaction and helped to move the water down and towards the water courses - providing a much more cost-effective alternative to installing drainage." After making such a strong first impression, Mark is now looking forward to the further improvements the Verti-Quake® can deliver. "If it's open land, and it's likely to get wet, we're going to get the Verti-Quake® on it!" he says.

That mantra extends to work on other areas of the complex, including the football pitch, reducing the reliance on external contractors. "We'll get the Verti-Quake® out during the end of season renovations, giving us important compaction relief and getting the ground repaired and recovered in time for the busy playing season."

Tel: +44 (0)1428 661222  
 Fax: +44 (0)1428 661218  
[www.redexim.com](http://www.redexim.com)

# HOZELOCK-EXEL/LANTRA KNAPSACK TRAINING INITIATIVE EXPANDS



Latest recruit to the Lantra/Hozelock-Exel initiative to raise sprayer maintenance awareness among operators is Newlands Training.

A leading force in the South-West, Newlands Training delivers land-based operator courses to the forestry, arboriculture, conservation, agriculture and local authority sectors.

Lesley Simpson founded Newlands Training nearly 40 years ago to deliver rural skills to serve the local and regional agriculture sector and has seen the scope of demand spread widely since then. "We trained mostly agricultural operators in the early days," she says. "Now, it's mainly landscape and forestry contractors."

Newlands Training provision covers pesticide application using knapsack sprayers, hand-held and quad bike operation using lances and mini boom sprayers.

Lesley's team of 12 trainers deliver courses for clients throughout Gloucestershire, Somerset, Dorset, Wiltshire and, recently, Hampshire.



"We run both Lantra and City & Guilds NPTC pesticide qualifications," Lesley continues, "with assessors covering the range of age groups as required.

Competition is strict," she notes, "with a college and at least two other training providers nearby."

She numbers golf clubs and independent schools in the region among her clients - "we've worked with a major educational establishment for 20 years," Lesley states, "training what is a large team

of grounds professionals, including their greenkeepers, in safe use of pesticides application and hand power tools such as chainsaws, brushers and pole pruners".

"The Cooper Pegler Evolution professional knapsack kindly provided through the Lantra/Hozelock-Exel initiative is already proving a popular and useful addition to our course aids by helping trainees better understand how knapsacks function and how best to maintain them to prolong their lifetime."

## CP3 Evolution Diaphragm Sprayer Testimonial:

"The CP3 Knapsack Sprayer is a good all-round sprayer for overall and spot treatment"

Ed Dorey, Trainer/Assessor, Newlands Training

[www.lantra.co.uk](http://www.lantra.co.uk)  
[www.cooper-pegler.com](http://www.cooper-pegler.com)  
[www.berthoud.fr/en/](http://www.berthoud.fr/en/)



# BERTHOUD VERMOREL RANGE BREAKS THE BACK OF KNAPSACK SPRAYING

Carrying the weight of a 16l or 18l-full knapsack of treatment chemicals can cause challenges for operators who work full days spraying sites.

Joint, ligament and muscle wear and tear across the entire back and in the hips can result if the upper body is inadequately supported during spraying.

Body parts will often compensate for the extra weight but they cannot sustain the strength for too long and begin to degenerate, which can cause stiffness and loss of range of motion, and pain, research reveals.

Further, the gradual degeneration can lead to chronic back pain, compressed discs in the spine (herniated discs) neck pain an altered posture and gait and even pain in the feet, according to Dr Kenneth Hansraj, lead author of a study conducted in 2018, and a

spinal and orthopaedic surgeon at the New York Spine Surgery and Rehabilitation Medicine Center.

Knapsack, hand-held and compression sprayer manufacturer Berthoud's Vermorel professional knapsack range includes critical back support measures to ensure grounds professionals work in optimal comfort, safety and convenience,

Each of the three premium grade knapsacks - Vermorel 1800, Pro Comfort 2000 and top-range 3000 Electric - come with ergonomically contoured, sturdy backframe as standard.

Safety harnesses provide rising levels of support progressing through the line - from padded shoulder straps on the '1800', to padded shoulder, waist and chest strapping on the '2000' and fully specified '3000'.

All Vermorel knapsacks are easy to use and dismantle for servicing and repair. They are also suitable for applying sanitisers and disinfectants and are available with a host of spares and accessories such as spray shields, seal and nozzle kits and multi-nozzle spray booms to give operators even greater flexibility.

Service excellence is a keystone of the Hozelock-Exel sprayer ranges. Both Berthoud and sister professional sprayer brand Cooper Pegler are built to give lasting satisfaction and are backed by a replacement parts and accessories delivery service, usually within 48 hours.

[www.berthoud.fr/en](http://www.berthoud.fr/en)

Find Berthoud on Twitter, Facebook and Instagram



# BERTHOUD

SPRAYING SPECIALISTS SINCE 1895

The most **reliable** and **comfortable** sprayers on the market



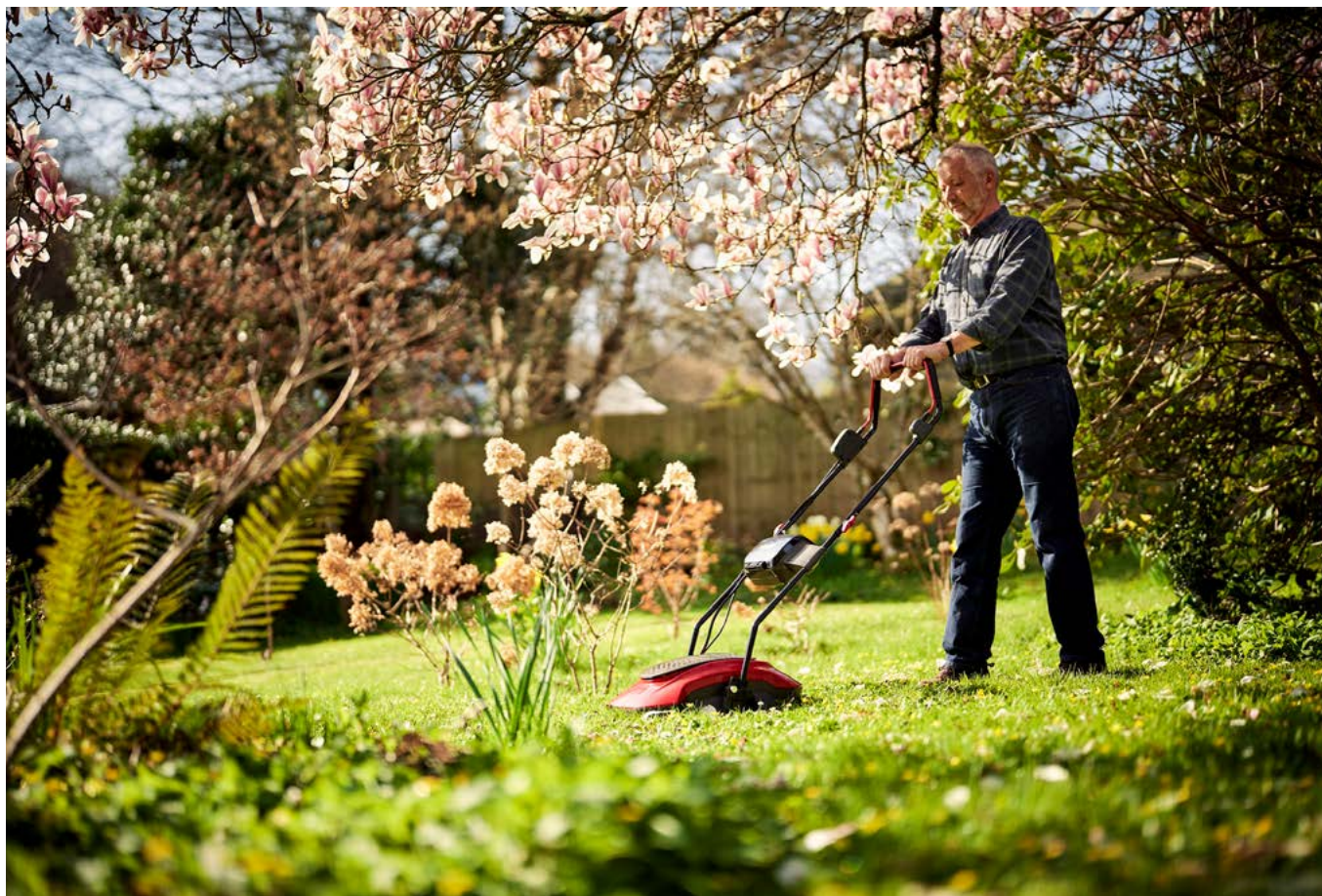
**POWERFUL • ERGONOMIC • PRECISE**



[www.berthoud.fr/en/](http://www.berthoud.fr/en/)

For distributor enquiries for Berthoud products, please contact our UK wholesaler Spindrift Sprayers Ltd. Tel - 01995 600001 Email - sales@spindriftsprayers.co.uk





# THE CORDLESS HOVER MOWER 'TYPHOON'

## ...NOW AVAILABLE FROM B&Q

A tornado of mowing fabulousness has just blown in from Mountfield and it is available to buy now from B&Q!

'Typhoon' is a cordless hover mower which will allow you to mow with the flow! This easy to use and easy to manoeuvre wonder of Mountfield mowing technology glides across grass, forwards, backwards and side to side, with the grace of a ballerina!... And with no cord to get tangled in bushes, hedges, or garden furniture!

The Typhoon is powered by 2 x 4Ah (20V) smart Stiga e-power batteries that provide ample power to cut lawns up to 100sqm from one charge. The unique cutting deck traps the air to create the right amount of energy to produce



the cushioning effect that lifts the mower from the ground similar to a hovercraft. The blade has been specially designed for maximum cutting efficiency without disturbing air flow.

As it is so lightweight, just 7kg, it is very easy to transport to areas

around the garden that require cutting. It is also easy to store in any garden shed or garage, flat against the wall from a single hook.

The mower comes with 2 x 20V 4Ah batteries and a dual charger, the batteries are interchangeable within other products in the Freedom100 cordless range such as a grass trimmer, blower, vacuum shredder, hedge trimmer and multi-tool as well as a selection of 3 collecting mowers.

**Easy mows it ... it's a lot less bother with a Mountfield!**

[www.mountfieldlawnmowers.co.uk](http://www.mountfieldlawnmowers.co.uk)

## SNICKERS WORKWEAR LITEWORK TROUSERS – FOR COOL COMFORT THIS SUMMER

Long-lasting, innovative new fabrics for comfort, sustainability and longevity.

While Fabric, Functionality and Fit are hallmarks of Snickers Workwear, it's the innovation and sustainable fabric technology in the design of the new LITEWork Work Trousers that really set them apart from other brands.

They're great for working hard in the warmer months. Delivering superior flexibility and cooling comfort, these stretchable, lightweight work trousers provide efficient moisture transport, ventilation and sun protection.

They also come with CORDURA® reinforcements for extra durability and they feature a 4-way stretch fabrics, the patented Snickers Workwear KneeGuard® system and detachable holster pockets if you need them.

As well as being street-smart they're packed with functionality and are specially designed for the fast-paced professional who's always on the go and delivering top class work on site.

For more information on Snickers Workwear's LITEWork range and it's sustainability philosophy you can call the Helpline on 01484 854788; check out [www.snickersworkwear.co.uk](http://www.snickersworkwear.co.uk) or email [sales@hultaforsgroup.co.uk](mailto:sales@hultaforsgroup.co.uk)



## SCREWSHOP

With over 35 years' experience specialising in screws, bolts and fixings for the DIY, hardware, building, joinery and furniture manufacturing sectors, Screwshop has evolved from its established sister company, NE Fasteners. Also proving a huge success with its online shop.

Situated in Cradley Heath in the West Midlands, it prides itself with offering expertise, competitive prices, imported bespoke products and off the shelf products with a nationwide next day delivery.

Our versatile approach to providing a wide range of finishes, including zinc, electro brass, black chrome, satin chrome, bronze and nickel and packaging options, ensure that many buyers consider Screwshop to be a key and valued supplier.

We also offer builders metalwork, ironmongery, silicones, sealants and are specialists in kitting and coating. Go to our on line shop at [www.screwshop.co.uk](http://www.screwshop.co.uk) and enter sep5 for a 5% discount, or message for one of our catalogues. If you can't find a certain product, get in touch and we'll try and source it for you. We will give you our best attention and prices at all times.

[www.screwshop.co.uk](http://www.screwshop.co.uk)  
[sales@screwshop.co.uk](mailto:sales@screwshop.co.uk)



**E10 PETROL HAS ARRIVED**

**PROTECT YOUR MACHINERY WITH ASPEN ALKYLATE PETROL**

Being free from ethanol as well as many other harmful substances, Aspen Alkylate petrol offers a clean alternative for both 2 and 4-stroke engines. Improve the performance and reliability of your equipment, the working conditions for the operator and reduce the negative impact your machinery has on the environment.

SP95 E10

ASPEN 2 5L ASPEN 4 5L

**ASPEN**  
FUEL FOR PROFESSIONALS  
Find your Aspen dealer at [www.aspenfuel.co.uk](http://www.aspenfuel.co.uk)

## screwSHOP.co.uk

Screws • Fixings • Fasteners

- ✳ Screws & Fixings
- ✳ Builders Metalwork
- ✳ Ironmongery
- ✳ Silicones
- ✳ Sealants
- ✳ Specialist kitting and coating services

"My Dad says his fixings are the best and probably the UK's cheapest"



**NEXT DAY DELIVERY**  
**0121 559 8866**  
[sales@screwshop.co.uk](mailto:sales@screwshop.co.uk)

NE Fasteners Ltd  
Waterfall Lane  
Trading Estate  
Cradley Heath B64 6PU

# THE SPORTS & GROUNDS EXPO TO DOUBLE IN SIZE THIS JULY

The UK's premier outdoor sports and grounds maintenance tradeshow, SAGE is taking place on 6th & 7th July at The Three Counties Showground in Malvern. Registration has now opened for visitors, so if you would like to book your free place at this much-anticipated event, register on the website now.

There will be companies from a wide range of sectors within the sports and grounds industry exhibiting products, providing live demonstrations and even the opportunity to take free training courses. With a fantastic uptake of stands this year SAGE will double in size this July.

## Focus on sustainability

This year, sustainability has become an even more prominent priority across all industries and SAGE is proud to be hosting the first sustainability summit, which will take place on Wednesday 6th July at SAGE 2022, in partnership with Bio-Circle. The summit will be led by experts across the industry, and will provide guidance and support on how sustainable solutions can be achieved by businesses across the sports and grounds maintenance industry. The panel along with their colleagues will be on hand to deliver tailored options for those looking to adopt processes that are more environmentally friendly.



With the Government's carbon net zero targets to comply with, more businesses have started to explore the different ways that they can reduce carbon emissions. The summit will target this topic head on and help to drive a better understanding of the priorities and solutions for the sports and grounds maintenance industry regarding their responsibilities for reducing carbon emissions.

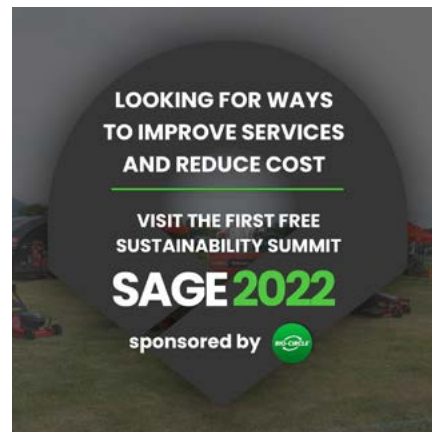
## Now the 'Home Event' for GRASS

SAGE are proud to announce that they have become the home event for GRASS, a newly launched forum built by a Group of Groundcare Industry Specialists. GRASS stands for, Groundcare Resources & Sustainability Suppliers, and is the innovative idea of Mark Tomlinson head of environmental and sustainability stadia projects at Bio-Circle, one of the leading companies paving the way in sustainable solutions for the industry.

The NEW Networking & Support Forum is a FREE to join group that supports all Groundcare and other sporting industry sustainability projects, providing free advice and knowledge of sustainable pitch care.

Top Grounds Personnel, Leading Industry Manufacturers and Senior Experts have come together to form a "Go To Group" that allows grounds staff to begin their own sustainability projects with support and advice.

Through the expert sustainable and environmental forum, GRASS will provide the latest information available all under one roof, whether it's technical pitchcare maintenance, through to recycling washdown, white line marking paint, recycling containers, battery



powered equipment, seed, lighting, our information bank is endless.

"A First for the Groundcare & Sporting Industry, and a much-needed Support Forum Group. By coming together and sharing knowledge GRASS can help and support Groundcare personnel with their sustainability projects. We want to help and protect our environment and make a difference." Mark Tomlinson

Everyone is welcome to attend SAGE 2022. Visitors from last year included educational institutions, local authorities and councils, contractors, construction managers and private estates.

SAGE invites all visitors to join the networking event on the Wednesday evening, sponsored by Fleet Line Markers, where everyone will get the opportunity to meet fellow industry professionals at the stunning showground, with a few added bonus' as well.

To register for SAGE 2022.

Please visit;

[www.sportsandgrounds.events](http://www.sportsandgrounds.events).

If you would like to exhibit at SAGE 2022, there is still time to reserve your stand, contact us today; [team@sportsandgrounds.co.uk](mailto:team@sportsandgrounds.co.uk)

in Partnership with 



# SAGE 2022

## SPORTS & GROUNDS EXPO

JULY 6TH - 7TH • THREE COUNTIES SHOWGROUND, MALVERN

# JULY 6<sup>TH</sup> - 7<sup>TH</sup> 2022

THREE COUNTIES SHOWGROUND, MALVERN



Visitor registration now open  
**BOOK YOUR PLACE TODAY**



and many more

[www.sportsandgrounds.co.uk](http://www.sportsandgrounds.co.uk)

# #SAGE2022

[team@sportsandgrounds.co.uk](mailto:team@sportsandgrounds.co.uk)



[www.sportsandgrounds.co.uk](http://www.sportsandgrounds.co.uk)



# MADE FOR EVERY SLOPE... ZERO-TURNS FROM CUB CADET

Cub Cadet, the proven innovator of zero-turn technology, has created the industry's strongest line up of zero-turn riders - whether you are a landscape professional looking for a machine that can handle any terrain or a small business owner looking for a machine for your customers large lawn maintenance.

You can book a demo of our machines by finding your nearest dealer at [www.cubcadet.co.uk](http://www.cubcadet.co.uk) or contact Cub Cadet on 01869 363677.

Once tried. Never forgotten.

## **Z9 - Top of the range professional zero-turn**

The NEW top of the range Z9 183id zero-turn, proven by landscape professionals, will fulfil all your commercial requirements.

With extremely wide double wheels, the Z9 has been developed to effortlessly tackle even the steepest slopes up to 25° / 46%.

The ability to control all four wheels with a steering wheel and steerable front wheels, an exclusive offering by Cub Cadet in

the commercial sector, minimises the turf being churned up by the wheels. The patented SyncroSteer® technology means that even the less experienced operators can benefit from the ease of use and amazing manoeuvrability of this machine.

The Z9 reduces mowing time by up to 10% compared to lap bar mowers, provides greater hillside stability, enhanced traction on uneven terrain as well as mowing in straighter lines.

### XZ7 - Designed for every challenge

The Award-winning design of the XZ7 L152i from Cub Cadet redefines the zero-turn mowing experience - with enhanced strength, re-imagined comfort and a best-in-class cut.

The latest steering lever lap bar technology combined with the extremely robust construction of heavy-duty components and high-performance engines makes the machine the ideal professional machines for large lawn maintenance.

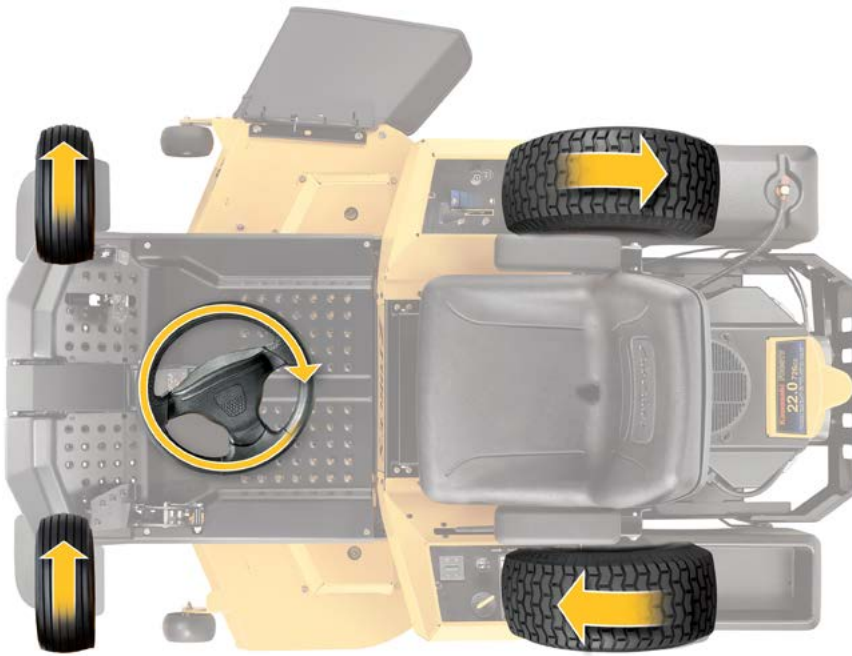
The open continuous tubular lightweight steel frame is designed for strength and durability. The hinged/removable floor pan allows quick and easy access to the welded, all round reinforced AeroForce Max™ mowing deck and engine for ease of maintenance.



A powerful Kohler EFI V-Twin dual cylinder engine gives the machine the power to mow up to 15,000 m<sup>2</sup>h.

With a large cutting width of 60"/152cm, the machine puts owner/operator comfort at the forefront of its design with a premium high-back seat with armrests and adjustable suspension for fatigue-free working.

The XZ7 L152i is ideal for mowing rolling hills, with its outstanding stability on slopes, and around obstacles, with its effortless manoeuvrability. Even on the most difficult lawns the spring-mounted suspension on the front wheels ensure a smooth ride with less vibration.

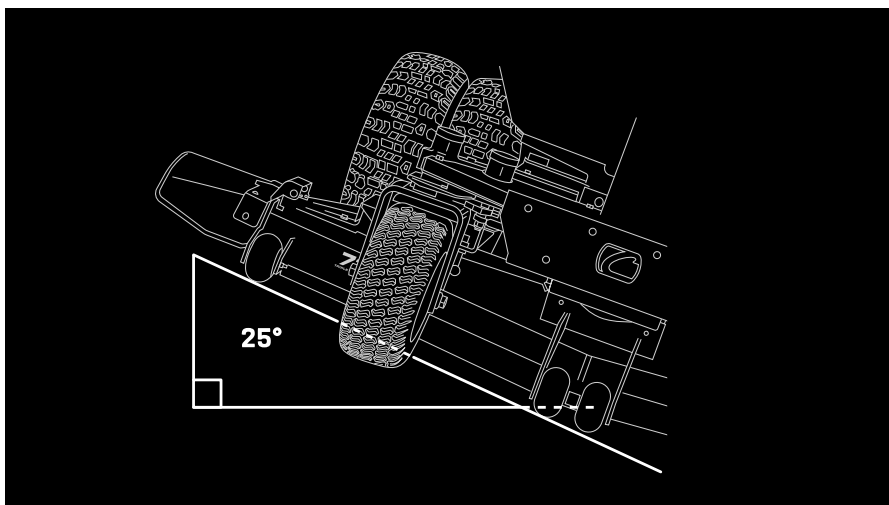


It powers through the thickest grass in one pass at maximum speeds of up to 12mph meaning you can do the job quicker. The high lift Marbain blades with a blade tip speed up to 18,500 fpm and the 3" total blade overlap will ensure that you always get a tight consistent cut. The frame and axle on the Z9 floats as the machine moves, allowing the multi-reinforced steel deck to follow the shape of the terrain and avoid scalping. The cutting deck can be adjusted at the touch of a button.

The Kawasaki EFI engine provides the consistent power you need to get the job done and maximise your work-day - reducing the downtime which could cost you both time and money. The petrol engine benefits from having reduced fuel usage, while the 2 x 34 litre tanks gives you ability to operate all day.

Comfort is at the forefront of the machine's design. Your operators can experience a smooth ride all day long thanks to the exclusive air-ride seat and isolated dampening system on the Z9 - meaning they are working in vibration-controlled comfort, lessening downtime for your business. Angled back adjustments, padded armrest and lumbar support give added protection.

Ideal for commercial users, the Z9 has everything and more that you would expect from a quality professional machine - ultimate performance, comfort and durability that delivers a fast, premium cut time and time again. You'll also benefit from a warranty of 3 year or up to 1000 hours (whichever comes first) for commercial and private use.





At Cub Cadet we trust our new XZ7 L152i to perform with maximum durability and robustness and offer a warranty of 3 years or up to 500 working hours (whichever comes first) - for commercial or private use as well as offering a dealership service that delivers true advantages to you and your business.

The XZ7 L152i from Cub Cadet. Professional grade power for your business and your lawns.

### **XZ6 - NEW steering wheel range**

The new models in the XZ6 range, due to launch in May 2022, will give you unmatched steering capabilities in challenging terrains. The industry-leading SyncroSteer® technology for full control of the front wheels, combined with powerful Cub Cadet

and Kawasaki engines makes the XZ6 series the ideal machines for large lawn maintenance if you prefer the ease of a steering wheel.

With 3 cutting widths available from 107cm / 42" through to 127cm / 50" and a maximum mowing area of 11,500 m<sup>2</sup>/h and speed of 7 mph these machines will provide the ideal solution for your large mowing jobs. You'll be able to mow in comfort for hours due to the high back premium seat and mow slopes up to 20° / 36%.

The award winning continuous lightweight tubular steel frame is designed for strength and durability. A fabricated mowing deck ensures unsurpassed mowing performance. Our unique zero-turn riders with a traditional steering wheel provide

you with amazing manoeuvrability and full control of the front wheels.

The new XZ6 range will be steering you forward during 2022.

Our large range means that both professionals and business owner alike can find their ideal zero-turn machine; whether they are looking for a serious bit of kit to mow steep slopes or to mow their customers large lawns... Cub Cadet have got you covered this year and every year going forward.

---

**For more information and to book a demo go to [www.cubcadet.co.uk](http://www.cubcadet.co.uk) or contact Cub Cadet on 01869 363677.**



**Cub Cadet®**

# ZERO-TURN

## 100% GREAT CUT

**MAX MANOEUVRABILITY**

**MAX POWER**

**MAX COMFORT**



**100%  
INTERESTED?  
BOOK YOUR  
DEMO NOW**

**[WWW.CUBCADET.CO.UK](http://WWW.CUBCADET.CO.UK)**

# TOP FIVE REASONS TO PLAN A TRIP TO FIT

FIT Show is the UK's No.1 trade show for the glass & glazing industry. Whether you install or fit windows, doors and conservatories, hardware, gates or garden rooms, you need to be at FIT Show 2022. When FIT Show returns to the NEC Birmingham from 10-12 May 2022 we will be bringing every link in the fenestration supply chain together. All under one roof. For the first time in three years.

That's a whole lot of opportunities to see the very latest products, speak directly to the people that manufacture them, network and upskill alongside the best in the business. And it's completely FREE to attend!

## 1 - Over 200 Brands, all Under 1 Roof

Get ready to see over 200 brands display the very latest products and materials for use across domestic, commercial, private and public sector building and renovation projects. Expect to see the likes of door manufacturer Doorco, glazing experts Glazpart, window systems giant Kommerling, Roseview Windows, lantern roof and bi-folding door experts Made For Trade, Morley Glass, Ultraframe, VEKA and machinery giants Haffner Murat, Stuga and Emmegi.

You will also be able to see composite decking supplier Ronjack, metal door manufacturer Strongdor and modular steel outbuildings manufacturer Telluria. They'll be joined by FIT Show first-timers ICB Fabrications, Checktrade and Solar Calibre Doors.

## 2 - Save Money & Mileage

Save time travelling around the country looking for the best products and suppliers on the market as we bring them all together, under one roof, across the three days of FIT Show.

As well as saving precious time, you'll be able to access exclusive FIT Show



offers and discounts. Our exhibitors are pulling out all the stops to bring you the best deals and discounts which you will only be able to benefit from if you attend the show.

Looking for a new piece of machinery? Perhaps you want to expand your portfolio to include outdoor living products. You'll be able to do all of this at FIT Show, as well as receiving unrivalled offers directly from these industry leading brands.

## 3 - Fancy a Late Night Lock In?

We understand that time means money and you might not be able to take time away from your day job right now. We're staying open on Wednesday 11th May until 8pm to give you plenty of time to finish up in the office and head over to the NEC for some afterhours shopping and networking.

PIG's will also be hosting its infamous PIGs Bar on the CERTASS stand so the beer will be flowing and there

will be plenty of opportunities to network and celebrate with the whole industry.

## 4 - Try, Test & Demo

Not only will you be able to see the latest products up close, you'll be the very first to see them. Our exhibitors are planning more new product launches at FIT Show than any previous year. Test out the latest products and smart home technology and watch live demos with the people behind these amazing innovations. Whether it's the latest bi-folds, lantern roofs or flat roof alternatives, you'll be able to test and try them out for yourself at FIT Show.

## 5 - It's FREE!

Your FREE ticket to FIT Show gives you access to all of the best brands, products and services in one place, at one time. As well as this, your ticket includes access to our CPD approved learning programme with over 30 hours of seminars, demonstrations and panel discussions all delivered by industry experts.

The full programme can be viewed online at [www.fitshow.co.uk/seminars-2022#/seminars/](http://www.fitshow.co.uk/seminars-2022#/seminars/), there are limited spaces available for each session and visitors are encouraged to register early to avoid disappointment



NEC BIRMINGHAM  
10-12 MAY 2022  
[FITSHOW.CO.UK](http://FITSHOW.CO.UK)

# THE COUNTDOWN TO FIT SHOW IS ON

**UK'S BIGGEST AND BEST TRADE SHOW  
FOR THE WINDOWS, DOORS, GLAZING & COMPONENTS INDUSTRY**



**FIT SHOW  
2022  
WILL BE THE  
FIRST  
EUROPEAN SHOW  
FOR THREE YEARS**

✓  
**OVER 200  
INDUSTRY  
LEADING  
BRANDS.**

FIT IS NOT JUST A SHOWROOM,  
IT'S A SHOWCASE OF PRODUCTS,  
FEATURING EVERY LINK IN THE  
SUPPLY CHAIN.



NOWHERE ELSE CAN YOU  
SEE, TOUCH AND PLAY WITH  
THE LATEST PRODUCTS ON  
THE MARKET, COMPARE  
THEM SIDE-BY-SIDE, UNDER  
ONE ROOF.

**NEC BIRMINGHAM, 10-12 MAY 2022**

Register early and beat the queues at the  
NEC. Scan the QR to book you FREE place  
at **FIT Show 2022**.

#FITShow22



#designthenation

canary wharf, london



01254 685 185

sales@woodscape.co.uk

woodscape.co.uk

woodscapegroup

woodscapectd

woodscape\_street\_furniture

 Woodscape.

Bespoke Street Furniture