

LANDSCAPE & URBAN DESIGN

52

Nov/Dec 2021

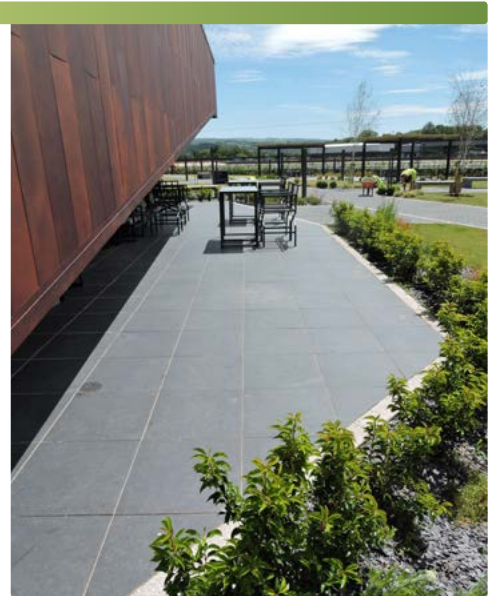
Price £3⁹⁵

landud.co.uk



Chetwoods innovative 'Future City Garden: Nature and City' Design

Designing the centrepiece of the Fifteenth United Nations Biodiversity Conference in China



Patio Perfection for Hilton Hotels

Brett Landscaping supplied the perfect product



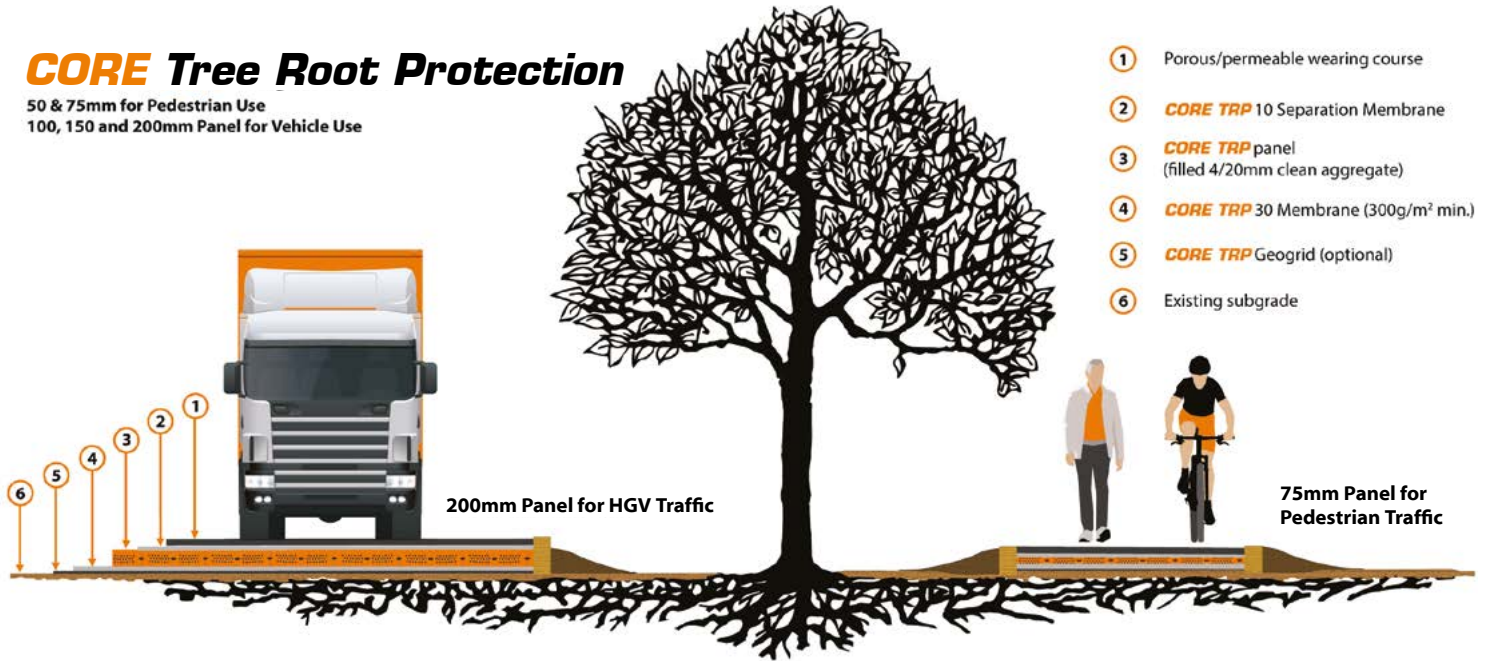
Golf Club Bolsters Toro Fleet

Deeside Gold Club has welcomed an extensive raft of machinery



CORE Tree Root Protection

50 & 75mm for Pedestrian Use
100, 150 and 200mm Panel for Vehicle Use



- 1 Porous/permeable wearing course
- 2 **CORE TRP 10** Separation Membrane
- 3 **CORE TRP** panel (filled 4/20mm clean aggregate)
- 4 **CORE TRP 30** Membrane (300g/m² min.)
- 5 **CORE TRP** Geogrid (optional)
- 6 Existing subgrade

CORE TRP Key Benefits

- ✓ Various depths available for all applications
- ✓ AGN 12 Compliant
- ✓ 'No Dig' Solution to protect mature trees
- ✓ Perfect for temporary site access or permanent use
- ✓ Insurance backed warranty available upon request



Scan the QR code to visit the CORE TRP page of our website where you can download the product specification sheet and installation guide.



CORE Landscape Products



EXPERT ADVICE

Our team have extensive knowledge of Tree Root Protection systems - and even contributed to the latest arboricultural guidance note (AGN 12)



0800 118 2278



sales@corelp.co.uk



www.corelp.co.uk



@CORE_LP_HQ



CONTENTS ISSUE 52

THIS ISSUES MAIN FEATURES



Bound Surfacing | 40 - 51



Concrete & Stonework | 52 - 72



Lighting | 91 - 101



Tools, Plant & Equipment | 102 - 111

Garden Design

08 - Create an outdoor 'room' with a day bed or pergola.

12 - Architectural glazing specialists, AGS Ltd, have launched GlasHaus Design, a luxury glass garden room company.

16 - Tasked with modernising a London Victorian-style terrace home, Zminkowska De Boise Architects set out to deliver a sleek and functional property.

Decking

22 - MKM looks at upcoming trends in landscaping and urban design.

Green & Blue Infrastructure

24 - Plans for one of London's first new public parks for decades have been revealed, as Wembley Park opens the first section of a new open space for the capital - and the first time Wembley Park will have a new major park for 127 years.

28 - Green-tech has made a significant contribution to the UK's first fully solar powered Park & Ride facility on the outskirts of Leeds in West Yorkshire.

30 - 'Future City Garden: Nature and City' - a thought-provoking depiction of biodiversity through architectural and landscape design - welcomes delegates as they arrive at the conference centre building hosting COP 15.

36 - Wildflower green roof at Leeds Skelton Lake Services announced as BALI award winner.

Bound Surfacing

40 - Interpave invites urban designers, landscape architects and contractors to take a fresh look at precast concrete paving.

44 - Resin bound paving to complete the pathways around the Wye Valley Butterfly Zoo.

Concrete & Stonework

58 - ROCCO™ Porcelain Paving - ultimate luxury, effortless practicality.

62 - Westminster Stone's beautiful handmade paving and flooring is the ideal solution for creating seamless interior and exterior spaces.

70 - When Hilton Hotels wanted to create the patio for their £11.1m Hilton Garden Inn at Adventure Parc Snowdonia, they decided that Brett Landscaping's GeoCeramica porcelain was the perfect product.

Landscaping Services

80 - Join us to celebrate this year's National Landscape Award winners!

Lighting

92 - Thorn has supplied lighting for North Ayrshire Council's £2.8 million project to upgrade Irvine High Street, part of an area-wide regeneration initiative named Irvine Vision.

Tools, Plant & Equipment

104 - Deeside Golf Club has signed its third renewal agreement with Toro, boosting its impressive fleet by a further 17 machines.

Publishing Director

Martin Holmes
martin@mhmagazine.co.uk

Sales Director

Lee Martin
lee@landud.co.uk

Digital Manager

Jamie Bullock
jamie@mhmagazine.co.uk

Editor-in-Chief

Antony Holter
editor@mmhmagazine.co.uk

Editor

Lorna Davidson
lorna@landud.co.uk

Business Manager

Josh Holmes
josh@mhmagazine.co.uk

Studio Designer

Sarah Johnson
sarah.johnson@mhmagazine.co.uk

Marketing Enquiries - 01227 936974
Editorial Enquiries - 01304 806039
Other Enquiries - 01304 806039

Publishers

MH Media Global Ltd.
Discovery Park, Sandwich, CT13 9FD

Cover images courtesy of: Left: UN Future Garden City | Top Right: Brett | Bottom Right: Toro

Every effort is made to ensure the accuracy and reliability of material published in Landscape & Urban Design however, the publishers accept no responsibility for the claims or opinions made by advertisers, manufacturers or contributors. No part of this publication may be reproduced or transmitted in any form or by any means, mechanical, electronic (including photocopying) or stored in any information retrieval system without the prior consent of the publisher.



BIOTECTURE'S LIVING WALL FEATURES IN RHS CHELSEA GOLD MEDAL AND 'BEST SHOW GARDEN'

Biotecture, a UK leader in living walls, is celebrating the news that its PlantBox living wall system featured in this year's RHS Chelsea Flower Show Gold Medal and coveted 'Best Show Garden'.

Guangzhou Garden received the awards for its Chinese-inspired garden, which shows how cities of the future must be considered as landscape cities.

Designed by director Peter Chmiel and senior associate Chin-Jung Chen from Grant Associates, 'The Guangzhou Garden' took inspiration from Guangzhou, a port city northwest of Hong Kong on China's Pearl River.

The pair's Chinese-inspired garden paid homage to Guangzhou's philosophy of giving equal consideration to the needs of people and wildlife through sustainable city

planning strategies, reconnecting people and nature in a mutually beneficial relationship.

Biotecture's installed a three metre high by 10 metre long living wall within the woodland dell section, supporting one of the garden's core environmental strategies; improving air quality by using technology and nature working in harmony, a concept of the 'green lung'.



As part of the living wall installation, Biotecture's prototype Active Air technology, developed in collaboration with engineers from 'We Design For', was installed to pipe clean air created from the modular PlantBox living wall into the garden's 'social heart' central structure for people to enjoy.

The Guangzhou Garden living wall Active Airflow system created air pressure that drew in polluted air through the leaf and root zones of the plants where harmful particulate matter and gas pollutants are removed and allowing the system to output clean air.

Along with tackling pollution from cars - traffic on the UK's roads accounts for 32% of nitrogen oxides in the atmosphere - Biotecture's Active Air technology has the potential for improving indoor air

quality in areas of buildings with limited natural airflow.

Biotecture's living wall system also aids biodiversity, providing valuable forage for pollinators such as bees and butterflies. The foliage also provides further benefits in terms of removing airborne pollutants such as particulate matter, reducing urban temperatures and attenuating rainwater. At the same time, living walls contribute to a sense of well-being for those living and working close by.


The Guangzhou Garden was created in collaboration with garden design consultancy The Outdoor Room, with prominent bamboo structures developed in partnership with Xylotek, living walls from Biotecture and water features supplied by Bamber Wallis.

"Congratulations to Grant Associates for their thoroughly well-deserved Gold Medal and 'Best Show Garden' at RHS Chelsea," said Richard Sabin, Managing Director at Biotecture. "The Guangzhou Garden encapsulated the benefits of reconnecting people and nature, while highlighting the benefits of responsible city planning. We are delighted our living wall played an important part in the overall design."

Biotecture's PlantBox living wall product was used in six separate installations at this year's RHS Chelsea Flower Show.

For more information on Biotecture, visit: www.biotecture.uk.com

Photos by Alister Thorpe



Britain's finest

Turf

Topsoil

Bark

Find out why Rolawn is the first choice for professional landscapers who demand Britain's finest turf, topsoil and bark

www.rolawn.co.uk

Rolawn[®]

Beautiful gardens start here

RAISED PLANTER SYSTEMS



VELOX[™]
RAPID EDGE

SWIFTER	SMARTER	SAFER
Less time	Less cost	Less risk
Less labour	Less carbon emissions	Less weight

Suited to both podium and ground floor.
No need for a concrete foundation. No need for fixings.

Logic Manufactured Bespoke[™]
01642 373400
specification@logic-bespoke.com
www.logic-bespoke.com



gabriel ash

The RHS Portico

The only timber greenhouses endorsed by the RHS

From the smallest coldframe to the largest glasshouse, you can expect the same leading quality, value and attention to detail that we are famous for.

All our greenhouses are constructed using precision mortise and tenon joints, the highest quality Western Red Cedar and come with our renowned automatic full length ridge ventilation system, even the fixings are solid stainless steel or brass.

Find us at www.gabrielash.com, call us on 01242 662 926 or visit our Gloucestershire showroom.






©The Royal Horticultural Society 2021. Endorsed by the Royal Horticultural Society. Registered Charity No. 222879/SC038262. rhs.org.uk

BESPOKE GARDEN PLANTERS

Looking for bespoke garden planters for your next project?



With custom options on many of our ranges, you are sure to find the perfect planter of the size and shape you require.


Choose from:

- **Fibreglass planters** - durable, lightweight and weather resistant. Available in a range of shapes, sizes, RAL colours and special finishes
- **Galvanised steel planters** - highly weather resistant and available in a variety of shapes and bespoke sizes
- **Powder-coated planters** - available in any RAL colour and to custom dimensions
- **Terracotta planters** - hand-finished contemporary & traditional, certified as frost-resistant

Our bespoke service allows you to create your ideal planter, calculating the cost instantly.

View online or contact our sales team to discuss your exact requirements.

www.landscaping.co.uk



PROVENDER



the gift
that keeps on giving

Provender Nurseries, The Landscape Centre, Leydenhatch Lane, Swanley, Kent BR8 7PS

Tel: 01322 662315 Email: sales@provendernurseries.co.uk Web: www.provendernurseries.co.uk



CREATE AN OUTDOOR 'ROOM' WITH A DAY BED OR PERGOLA

If you're fortunate enough to be able to step outside your back door and meet a stretch of fresh green lawn, or enjoy the luxury of a sun-catching wooden deck, these last two turbulent years might have made you appreciate—even more—the inherently simple pleasures of the great outdoors.

Lockdown may have restricted us to our homes at various points during the pandemic, but that hasn't

stopped us trying to make the very best of our gardens; ensuring that any time spent in them...is time well spent.

With access to the outdoors more important than ever, it's no surprise that a trend has emerged to invest in room-like structures that borrow all the intimacy and convenience of an indoor space—and drop them in the natural surroundings of a garden.

A room with a view

Sitting Spiritually's range of swinging days beds and pergolas are the ideal solution for those looking to bring a sense of the inside...outside.

A paradigm of luxury and comfort, the hand-crafted oak swinging day bed is the perfect way of creating a room-like sanctuary for your garden. Once you're ensconced on the absurdly comfortable swinging bed, there's really no limit



to the accessories you can add to enhance the feeling of blissful refuge. Drinks and bottle holders, handmade weatherproof cushions, UV protection screens—you can even add a pergola or a cedar roof to further accentuate the idea of introducing a ‘room’ to your outdoor space. Sit, sleep, swing, eat, drink, relax.

All life is here, and with a swinging day bed, you needn’t ever go inside again!

Natural aesthetics

From a design perspective, these grandiose structures lend themselves brilliantly to modern gardenscapes. Not only do pergolas provide a multipurpose hub for your outdoor space—a place to unwind, entertain, or simply somewhere to enjoy the beautiful natural

environment—they also act as a visually-striking centerpiece.

Handcrafted from premium-grade green oak or lark, a Sitting Spiritually pergola sits happily in the midst of its organic surroundings. Wild flower beds can bloom, jasmine vines can creep skyward; and still your pergola will look perfectly at home.

The pergola truly inhabits the essence of a room-like structure: built especially for the outdoors. Its versatile design means that it’s fit for all manner of al fresco occasions. Wrap fairy lights around the beams to add ambience to a late-evening dinner, hang a swing seat to create a relaxing place to retire after a hard day’s work; install a drinks shelf for a summer garden party. If there’s a modern convenience you want to include, it’s more than possible.

So, then, if you’re looking to extract the maximum potential out of your garden—or want to add a sense of luxury and comfort to your outdoor pursuits—a swinging day bed or pergola might just be the answer.

And, if you’re worried about the cold night’s setting in, and the outdoors is looking less and less appetizing—you’ll be interested to hear that one Sitting Spiritually customer recently installed infrared heating and electricity into their cedar-roofed swinging day bed!

Comfort, style and sanctuary...all year round.

Sitting Spiritually of Lyme Regis
The only bespoke swing and bench maker licensed by the RHS

www.sittingspiritually.co.uk

HEDGING IN AN INSTANT WITH READYHEDGE

Enhance and complete your garden surroundings in a flash with the innovative range of hand-finished instant hedging from Readyhedge. Suitable for all garden types, both commercial and domestic.

We specialise in growing instant hedging:

- Metre long lengths
- Various heights - from 30cm tall to 200cm tall
- Available in Readyhedge bags or Readyhedge troughs

We have been producing our instant hedging for over 20 years and have increased to where we are now producing over 50,000 metres of instant hedging per year in over 35 different varieties including individual plants, low and high panels and screens.

Wide variety of hedges

We have a large selection of evergreen, deciduous and mixed native hedging available. Our trough hedges feature mature plants which have already knitted together to provide an immediate and impressive impact and leave you with that show-garden effect simply and easily.



Garden privacy

Readyhedge ready to plant hedges provide an instant transformation to your outdoor space, giving you the perfect privacy to relax in. You can also choose to plant your hedges in separate areas of your garden, perfect for creating a secluded relaxing area in your garden.

With our aim being to fulfil orders in 48 hours, we offer secure and punctual delivery to any location within the country.

For more information contact Readyhedge on 01386 750585 or visit www.readyhedge.com

Follow us on Social Media:
Facebook @ReadyhedgeLtd
Twitter @Readyhedge
Instagram @readyhedge



READYHEDGE® Know-how.

Our instant hedging is grown, irrigated, fed and trimmed by experts at every stage, to give you a perfect hedge every time.

Variety shown: Taxus baccata (English Yew)



01386 750585
sales@readyhedge.com
matthew@readyhedge.com
www.readyhedge.com



Roof Terrace Planters, London

Complex bespoke planter scheme made from aluminium to reduce weight



Bronze-Finish Walkway, London

Intricate design solution for suspended tapered walkway panels, laser-cut in mild steel



Roof Garden, London

Residential roof garden with planters, seating, breakfast bar and a 'freestanding' green wall



M&G Garden by Andy Sturgeon, RHS Chelsea

Concealed structural steelwork for the Best Show Garden Award Winner

At Outdoordesign, we bring our end-to-end design, engineering and manufacturing expertise to commercial and domestic landscaping projects of every type and scale. Working closely with our clients, we apply our unparalleled in-house skills, technology and attention to detail to solve problems and deliver absolute perfection in fit and finish.

View our projects online:
www.outdoordesign.co.uk

Whatever you can imagine, we can make it a reality in metal.
To discuss your ideas, email info@outdoordesign.co.uk or call us now on **01903 716960**.



297% INCREASE IN DEMAND FOR GARDEN ROOMS PROMPTS STRUCTURAL GLAZIERS AGS LTD TO LAUNCH GLASHAUS DESIGN

Architectural glazing specialists, AGS Ltd, have launched GlasHaus Design, a luxury glass garden room company, following a huge rise in demand for outdoor living spaces.

Due to the Coronavirus pandemic, garden rooms and outdoor living spaces have become the latest luxury home addition as homeowners look to enhance their

properties and create additional living space.

UK-based Google searches for 'garden room' rose by 297% in the

12 months following the first UK national lockdown, showing the popularity and rise in demand for outdoor living areas.

As employees were asked to work from home, 'garden office' also experienced a huge increase in online searches, growing by 271% from March 2020 to March 2021. As modern working methods adjust, the trend for garden offices shows no sign of slowing down. Seemingly, workers are searching for a more

balanced lifestyle, spending less time commuting and more time at home with friends and family. In response to this rise in demand, GlasHaus Design has launched. GlasHaus Design tailor-make luxury glass garden rooms, including garden offices, that provide the perfect extension to any home as well as stunning panoramic garden views.

While many garden room suppliers offer turnkey outdoor living spaces, GlasHaus Design work with

customers to design, manufacture and install bespoke glass garden rooms that suit their needs and fit their aesthetic requirements.

The unrivalled functionality of garden rooms means they can be used as luxury entertaining areas, tranquil office spaces, contemporary gym rooms and more. What's more, garden rooms often don't require prior planning permission, so they're a great way to add extra space to a home in a short amount of time.





To ensure quality, garden rooms from GlasHaus Design are built to last using precision German manufacturing methods and double-glazed, energy-efficient glass as standard. SIP insulation panels are also used in each build to ensure the outbuildings can be used all year round - they ensure the rooms stay cool in the summer and warm in the winter.

Director of GlasHaus Design, Ed Dupuy, said: "The Coronavirus pandemic brought to light a gap in the residential market for a luxury structural glazing supplier. Having previously served companies such as Apple and Hugo Boss, we're excited to bring our structural glazing knowledge and skills to the residential market.

By offering tailor-made outdoor living solutions that capture the essence of a property, we hope to inspire houseproud homeowners to spend more time at home in comfort and style."

Find out more here:
glashausdesign.co.uk



Made from Volcanic Pumice sourced from Iceland's Hekla Volcano!

Outdoor Living with the Garden Fireplace

3 sizes available • Easy to build • All materials are included • Fully load bearing • Freestanding, raised or built against a wall • Chimney height can be increased by extra blocks

www.schiedel.com/uk

SCHIEDEL

A **staandard**
INDUSTRIES COMPANY



A CONTEMPORARY APPROACH TO WORKING FROM HOME

Tasked with modernising a London Victorian-style terrace home, Zminkowska De Boise Architects set out to deliver a sleek and functional property with the addition of a new garden studio. However, the architectural team made the decision to sink the new studio several steps into the ground, using in-situ cast concrete. This meant a minimal, yet effective water management system was needed to prevent damage and flooding to the latest addition of the property.

Based in North London, Zminkowska De Boise Architects have worked on a wide range of stylish projects, primarily focusing on private residences. Owned by Hanna Zminkowska and Richard De Boise, the firm aims to create spaces filled

with natural light and materials that come together to result in a dignified and contemporary design.

Working from home

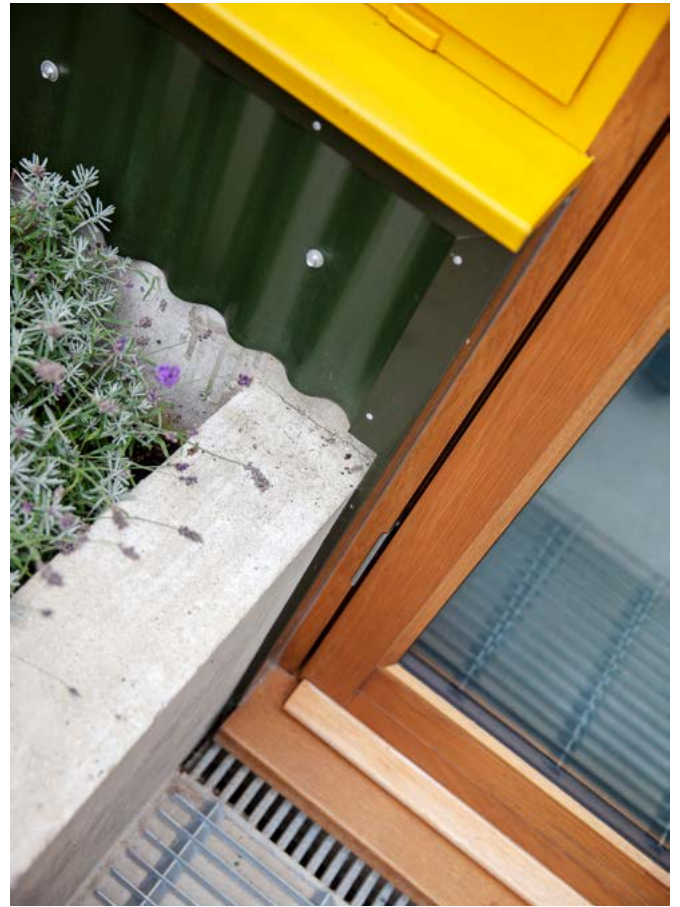
As part of a recent project, Zminkowska De Boise Architects worked with a couple who required a new home office at their property in Walthamstow, London. The Victorian-style terrace home was running out of space for their growing family - something that they were desperate to change. The homeowners wanted to improve the connection between the house and the garden, as well as create a usable office space.

Having met through a New London Architecture (NLA) Don't Move, Improve! design surgery, the

Zminkowska De Boise team were drawn in by the homeowners' plans. Richard De Boise, explains: "The clients wanted to create a space to work from home, settling on the addition of a garden studio because it offered the chance for a better work-life balance, something that has become invaluable during lockdown for many."

Finding a solution

To ensure that the homeowners' rear views weren't hindered by the new studio and that it blended seamlessly with the garden's design, Richard and Hanna decided to sink the structure several steps into the ground. With the steps, patio, and built-in flower bed all being constructed out of in-situ cast concrete, causing a reduction



in surface area that had offered natural water infiltration.

This meant that alongside high-quality damp proofing, a sleek but efficient drainage system was required to ensure that the building didn't suffer from any water-related issues. In addition to practical considerations, the clients wanted a colourful, minimalist aesthetic for their home and garden, which needed to be reflected in the final design.

To handle the rainwater, Zminkowska De Boise Architects selected ACO's RainDrain®, specifically designed for domestic

applications. Richard De Boise continues: "We often use ACO drainage products for quality assurance, and specify RainDrain® for its wide choice of grating materials and styles. In this case, the galvanised steel finish complemented the in-situ concrete base and dark green profiled steel sheet cladding of the outside office."

Made from Vienite® - ACO's polymer concrete material with recycled content - ACO RainDrain® is the ideal system to complete a sleek and modern garden. Each individual channel fits with a simple interlocking system, which allows

for a quick and easy installation. Its enhanced V-shaped profile also ensures a faster flow of water to minimise silt build-up.

The Outcome

The result has been a practical and modern garden structure that blended with the Victorian suburban aesthetics of the surrounding area. Crucially, the incorporation of a simple water management solution allowed the outside office to be sunk without risk, ultimately supporting the overall design.

Richard concludes: "The completed project works well, and we are actually seeing a lot more people wanting to make the most of their homes and gardens. We're very busy with a variety of upcoming projects over the next few months, including more sustainably-driven private house refurbishments and extensions, as well garden studios for a musician and for a cook."

For more information, please visit:
www.aco.co.uk/building-landscape_landing or
www.zdbarchitects.com
 Photo credit: Tom Cronin

PROUD TO SUPPORT RHS CHELSEA FLOWER SHOW



The RHS Chelsea Flower Show offers a chance to delve into the luxuries of complex and cutting edge garden designs and fabulous floral displays. It is the best kind of shopping experience for the fierce green fingers of the nation.

The RHS Chelsea Flower Show has run every spring since 1862, and it is held at the Royal Hospital Grounds where there is an eruption of excitement every year. The show allows England's nurseries and growers to showcase their best species and for designers to work their creative magic into the grounds.

For the first time in its 108 year history, The RHS Chelsea Flower Show was postponed in 2020 and presented virtually due to Covid-19, but finally made a return in its fullest form on the 21st-26th September 2021. Featured this year were new categories including modern-day living featuring balcony gardens, houseplant studios and container gardens where there is no more natural way of growing plants in the constrained space you have.

GreenBlue would like to say a special congratulations to Tom Massey and Sarah Mead as the peoples choice award winner for Best Show Garden!

Separate from the feature gardens, the opportunity to explore the great pavilion, which showcases flowers from all over the world in bloom and is also a place where you can discover more about the recent innovations and development in the world of horticulture.

Located on the RHS 'Mains2Rains' stand was our GreenBlue Urban SuDS permeable paving/rain garden model clearly showing how 'slowing the flow' with water in gardens can be a natural solution.

Our working SuDS model within a garden setting demonstrated how the GreenBlue Urban ArborCell unit (a load-bearing stormwater cell module) is designed for water attenuation and distribution. With benefits such as 92% void ratio, high load-bearing capacity and 100% recycled plastic, this product is a win in storing water below ground.

SuDS interventions - sustainable drainage systems - need to implement in the early design process, taking into account environmental impact assessments. The heart of every successful garden is the soil. Even the tiniest green space can help as any rainwater management in gardens means potable water is used more sustainably. This usually results in

healthier plants with less effort, more carbon capture and reducing our reliance on water utilities - which ultimately reduces our emissions from water treatment plants.

With the fast-approaching COP26 conference in Glasgow, the topic of Climate change has never been so important to our landscaping industry; it is us who need to push for change and have the ability to provide the means for implementation. With climate change weather events being experienced globally ranging from water shortages and extreme heat to devastating flooding events, it is essential to utilise your garden wisely - from design to planting.

GreenBlue Urban along with partner GreenBlue Gardens are keen to work alongside Garden Designers and budding enthusiasts to implement sustainable gardens for all to enjoy.

Without doubt this years show was a huge triumph we congratulate all involved and look forward to seeing you next year!

www.greenblue.com
www.greenbluegardens.com



Exceptional garden & landscaping supplies, available to order online.

Discover our full range of outdoor furniture,
water features, firepits and more.

[greenbluegardens.com](https://www.greenbluegardens.com)



CHOOSING PRODUCTS FOR YOUR DECKING PROJECT?



The variety of decking materials available on the market is extensive: traditional and economical softwoods; luxurious, knot-free hardwoods; durable modified woods and the emerging varieties of 'composite' products - which use a mixture of wood fibre, virgin and/or waste plastic and other additives.

The Timber Decking & Cladding Association (TDCA) applauds innovation and sustainability but advises if you choose composite decking products, there are several points to consider. Individual recipes with varying percentages of key ingredients, result in differing performance - do your research. Be aware that most long service life warranties offered, are valid only if the product is installed and maintained to the manufacturers' exact instructions. Unlike natural timber, recycling at the end of life is currently very limited. All decking surfaces require maintenance and to be kept free of dirt and debris - regardless of the material.

The deck substructure - posts, beams, joists, blocking/noggins and bracing - is just as important as the surface of your

deck as it forms the foundation to the whole project. Pressure treated softwood is the go-to material for deck substructure components, but to ensure it is fit for purpose it must be preservative pressure treated; TDCA recommends a Use Class 4 level of protection irrespective of whether the material is in ground contact or not. Be sure to demand proof of this when buying - if the supplier doesn't know about the Use Class system of treatment, then investigate further.



Contact the TDCA to source DeckMark accredited products, suppliers and installers - for an independent verification of quality.

www.tdca.org.uk | email: info@tdca.org.uk



For independent guidance on your next project



DesignADeck
DeckMark Accredited Installer

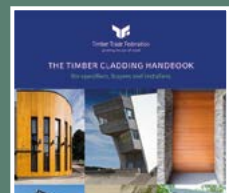
Ensure your timber decking or cladding is fit for purpose through **design, specification, material choice and installation.**

Whatever the size of your project, TDCA can offer:

- an accredited **materials, supplier and installer** database
- impartial and expert help by phone or email
- inspiration through galleries and case studies
- inspection & expert witness services
- free downloadable resources including **The Timber Cladding Handbook** and **A Builder's Guide to Timber Decking**

email: info@tdca.org.uk
visit: www.tdca.org.uk

The Timber Decking and Cladding Association is an independent, not-for-profit technical and advisory body. It was established to promote the materials, design and installation practices required to create good quality decks, associated landscape structures and cladding on buildings.



EXTEND THE LIFE OF YOUR DECK WITH TREX® PROTECT™

Today's high-performance composite deck boards, like those from Trex®, are warranted to last for 25+ years. But what about the substructure underneath? If the posts and bearers that support the deck are made of wood, they may deteriorate long before the decking warranty elapses. Now, there is a simple and cost-effective solution to combat the damaging effects of nature and time. Trex® Protect™ Joist and Bearer Tape, available in two widths - 50 mm x 20 mm for joists and 100 mm x 20 mm for bearers, is a self-adhesive butyl tape designed to protect timber joists and bearers from moisture that can lead to rot, timber decay and the loosening of deck screws and fasteners. Trex® Protect™ allows timber to breathe and won't bleed, dry out as quickly, or curl up and hold water like many asphalt-based tapes.

For more information about Trex Protect visit www.trexprotect.com/uk/.



WHAT IS TREX PROTECT?

Trex Protect is a self-adhesive butyl tape that protects the tops of joists and bearers from moisture that can lead to rot and decay.

HOW IT WORKS

- > Eliminates splitting from freeze and thaw
- > Helps deck screws hold longer and stronger
- > Acts as a barrier between timber and galvanized metal
- > Seals deck fasteners and prevents moisture penetration
- > Provides a non-skid surface for safe installation



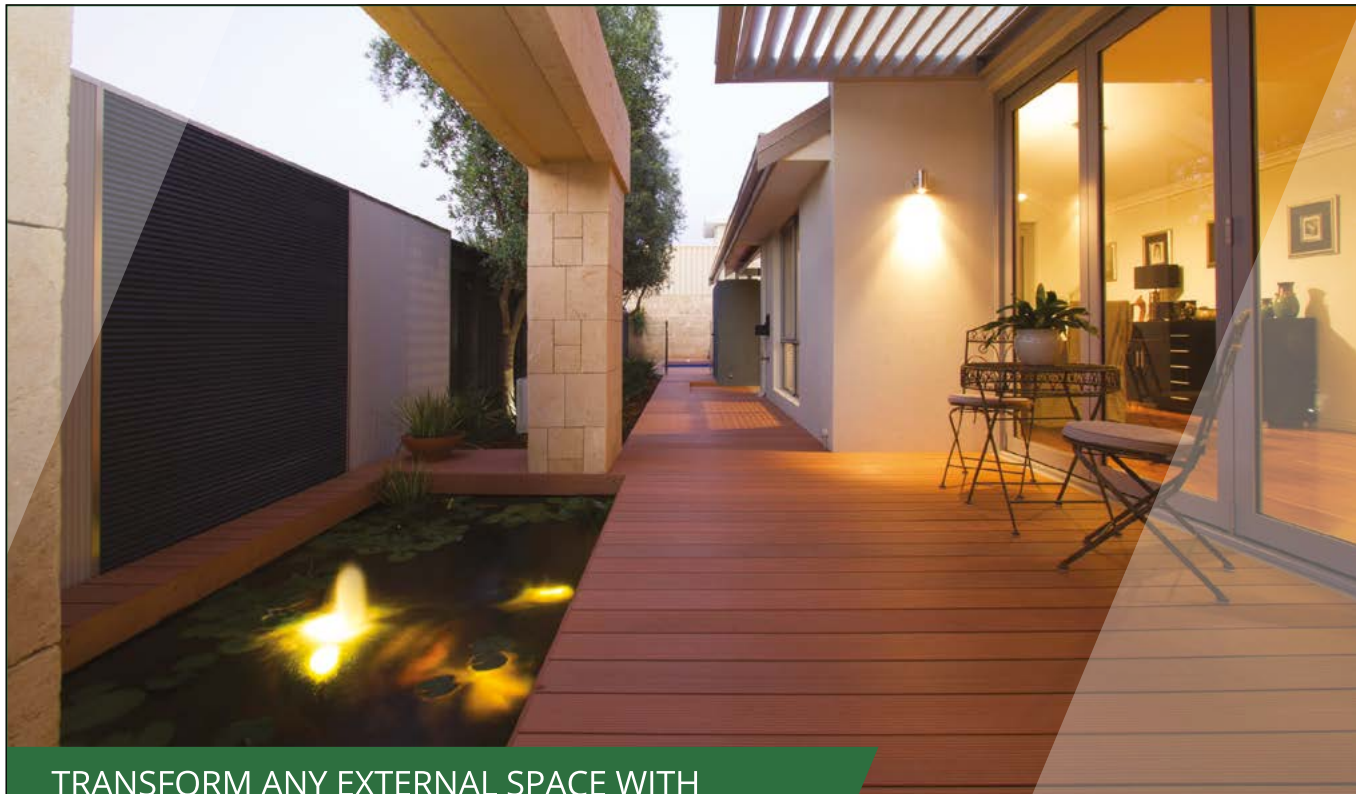
Trex Protect™
JOIST & BEARER TAPE



Trex Protect is the only deck protection tape that comes with a 20-year warranty from Trex - the World's #1 Decking Brand

Visit trexprotect.com/uk

© 2021 Trex Company, Inc. All rights reserved. Trex® "RainEscape" products are manufactured and sold by BBP, LLC under a Trademark License Agreement with Trex Company, Inc. RainEscape® is a federally registered trademark of BBP, LLC. A 20-year Limited Warranty is provided by the manufacturer.



TRANSFORM ANY EXTERNAL SPACE WITH ROCKWOOD COMPOSITE DECKING

Call: 024 7601 7011 www.rockwellsheet.com





MKM LOOKS AT THE UPCOMING TRENDS IN LANDSCAPING AND URBAN DESIGN

The colder and darker weather might be forcing us temporarily indoors, but many homeowners are already dreaming of the upgrades they'll be making to their gardens next year.

Deborah Cobb, Product Manager at MKM Building Supplies, says: "For some, a garden upgrade might involve the laying of new paving. Increasingly, homeowners are opting for the stylishness yet durability of porcelain paving. And while 600 x 600mm slabs will remain the core

size for this product, a growing number of customers are opting for statement slabs in the 1200 x 600mm category.

"Something that is making porcelain even more attractive than usual to homeowners is its growing cost-effectiveness. Porcelain paving is currently enjoying its best value ever in comparison to other variants, so there has never been a better time for homeowners looking to add some real character to their garden to invest.

"What's more, the versatility of the product makes it the ideal solution for a whole range of garden set-ups, with new alternatives such as sandstone-effect slabs helping designers achieve the textured effect of sandstone without compromising on the neatness of porcelain. Whilst sandstone itself will remain a strong performing product, having been influenced by the neatness of porcelain, there has been a recent shift towards single sized layouts; a key consideration for installers as they are typically much easier to lay.



treasured. But what will be some of the prevailing trends across 2022? Deborah believes homeowners will continue to let their imaginations run wild when it comes to gardens. "Looking ahead, we expect to see homeowners continue to view their garden as their very own slice of sanctuary.

"From garden offices to al fresco bars and dining spaces, COVID encouraged countless homeowners to get creative in their green spaces and this is a trend we expect to continue right across the next year."



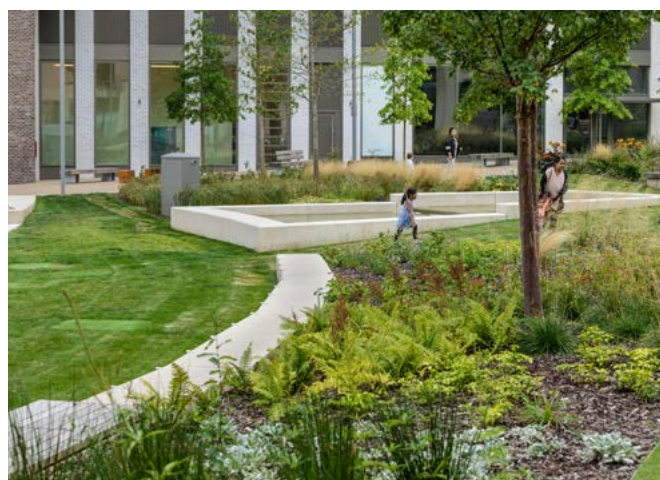
"Porcelain paving can also play a vital role in helping homeowners achieve one of this year's hottest design trends - 'Indoors Outside'. This is particularly pertinent in properties where porcelain is already laid in the kitchen. By utilising it on the patio too, designers can create a seamless flow-through from indoors to garden - all for minimal cost."

Decking is an ever-popular garden feature for many homeowners, and Paul Pennick, Product Manager at MKM, believes upcoming trends will only strengthen that popularity: "As a recyclable, durable and low maintenance alternative to timber, composite decking is a reliable yet eye-catching choice for homeowners. Key trends in this area that landscapers should be aware of include an increasing diversity in colours. Whilst grey will remain very popular with many homeowners, we'll also see an increasing number favouring black or 'burnt timber' effect decking in an attempt to replicate that autumn aesthetic year-round."



Restrictions on socialising might be lifting and holidays abroad no longer off the table, but if the past 18 months has taught us anything, it's that a garden is something to be

For more information on the full range of products and services offered by MKM, please visit www.mkmb.co.uk



PUTTING THE PARK BACK INTO WEMBLEY PARK: PLANS FOR NEIGHBOURHOOD'S FIRST MAJOR PARK IN OVER 100 YEARS REVEALED

Plans for one of London's first new public parks for decades have been revealed, as Wembley Park opens the first section of a new open space for the capital - and the first time Wembley Park will have a new major park for 127 years.

Unveiling the plans for the seven-acre Union Park is the latest milestone in developer Quintain's multi-billion-pound regeneration of Wembley Park, which is now a globally renowned entertainment district, as well as a thriving 365-day

neighbourhood. While the developer has created public spaces, including pocket parks and water features, throughout the neighbourhood, Union Park will be a destination in itself, featuring brand new amenities including a children's paddling pool,



outdoor training equipment and cultural spaces for performances and public art.

The new Union Park has been designed with community at its heart: a place where residents and visitors will be able to experience nature, enjoy unique water features, engage with play areas and performance spaces in a prime location, steps away from the iconic Olympic Way and National Stadium. The Park is being developed on the site of a 1,000+ space car and coach park, which will be moved to a state-of-the-art, multi-storey car

park nearby. Union Park's central location - moments away from Wembley Park tube station - will allow visitors easy access to fresh air and green space.

The southern section of the park, now open, is an attractive space for children and families to play. The north section of the park will feature a more ruggedly natural design and is expected to open in 2024.

Julian Tollast, Head of Masterplanning and Design at Quintain, said: "We have put the park back into Wembley Park - as it

was always meant to be. Union Park, Wembley Park's first significant new green space since the 1870s, is so named because we want it to be a place for the community: a space where people can come together and enjoy nature. The past year and a half has shown, clearer than ever, how important it is that we all have access to natural and wide-open green spaces."

Cllr Shama Tatler, Lead Member for Regeneration, Property and Planning at Brent Council said: "Our vision for Wembley Park has always had the wellbeing of our communities and sustainability at its core. We have worked in partnership with Quintain to make sure a fantastic new neighbourhood is delivered.

"Access to nature and green spaces has never been more important and plays a crucial role in protecting and supporting mental health and wellbeing, which is why we worked hard to ensure the provision of good quality spaces throughout the area.

"Union Park, spanning almost seven-acres, is a key feature of our transformation plan, carefully designed to ensure our residents and visitors have an abundance of space to relax, play, exercise and reconnect with their natural surroundings."

Diverse Waterscapes + Greener Spaces

Union Park features a revolutionary water run-off system, which carries rainwater from around the area, filters it, and then releases it into one of the southern section's lakes. Water features have been an important component of Wembley Park since it was first laid out by Humphrey Repton in the 1770s, with the Wealdstone Brook and Brent River framing the then-manor and now-neighbourhood.

As well as featuring wildflowers, this new community space also features a 'bug hotel' which was designed and built by one of the construction apprentice who helped create the park. Bug hotels are a recognised way of creating habitats for insects, which then goes on to boost biodiversity and thus the natural beauty of the space.

To date, Wembley Park has planted nearly 1,000 trees in the neighbourhood, including 48 new

trees on the transformed Olympic Way, hailing from temperate zones from all over the world. It has also created three acres of green and brown spaces on the roofs of its buildings, and developed pocket parks that are part of London's wildlife corridors. The physical and mental health benefit of Wembley Park's green spaces on completion is expected to be worth £1,635,000 a year.¹

People, Play and Pets

Union Park is well designed for the many young families in the area, including the adjacent residents of Canada Gardens. Canada Gardens,





which itself offers an acre of green space, a kids' playpark, and allotments, is one of the build-to-rent developer Quintain's flagship projects. Union Park and its amenities will serve these residents, others living and working in Wembley Park, as well as those from farther afield.

The first part of the park, which is open now, features amenities including a play park, paddling pools, outdoor gym equipment - which will be an extension of the super-gym right beside it - and a multi-use games area which will enable people to play a number of sports in view of the world-famous Wembley Stadium arch.

Overlooking southern section of the park, Canopy Nursery Wembley Park, a premium nursery that will be a flagship for the brand, is due to open its doors in October. Children in the nursery will make much use of Union Park, with Canopy's childminders actively encouraging them to interact with the nature on their doorstep.

Wembley Park is one of the first new neighbourhoods in London that is actively dog-friendly - and Union Park is an extension of this. As well as designated areas for dogs to run and play with their owners, there will be a new Pet Parlour nearby to serve pets' needs. With many of the area's shops also proactively welcoming dogs, including in London Designer Outlet, Quintain

Living's rental homes are also fully pet friendly.

A New Cultural Space

Union Park will provide an additional backdrop to Wembley Park's extensive cultural programme, which already features a public art trail with over 20 site-specific public art installations across the neighbourhood, and a year-round calendar of free events.

Central to the park will be a new bandstand designed by award-winning architects Flanagan Lawrence Architects, renowned experts in the design of acoustic shells and performance spaces for music. Flanagan Lawrence have delivered projects for notable arts venues including the newly opened Performance Shell for the San Diego Symphony Orchestra; The Summer Theatre in Szczecin, Poland; the Royal Welsh College of Music and Drama in Cardiff; and the Laidlaw Music Centre in St Andrews, Scotland. The Wembley Park bandstand will stage an eclectic programme of music performances, sound installations and concerts, featuring local and international talent.

Additionally, plans for a new Sculpture Park will see new public art commissions on display across the landscape, in dialogue with the surrounding space.

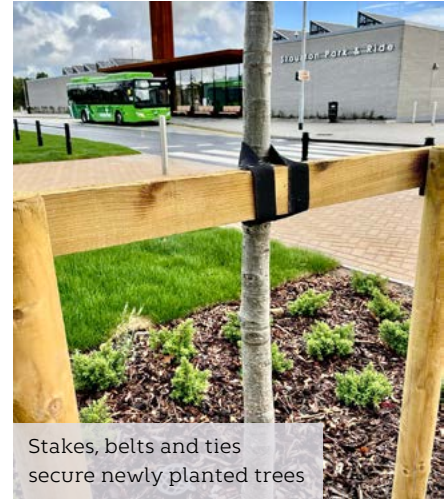
A purpose-built community hub on the doorstep of the park is currently

under construction, the second to open in the neighbourhood following the success of The Yellow, Wembley Park's much-loved Community Centre. The new venue will also home the Royal Philharmonic Orchestra, which announced a move to the neighbourhood in 2019 and - in partnership with Wembley Park - will be delivering year-round programmes of performance, community engagement and education activity.

Josh McNorton, Wembley Park's Cultural Director, said: "Culture and entertainment are central to the community and to the creation of memorable experiences at Wembley Park. Union Park is another fantastic space for residents of Brent, local workers, and visitors to experience spectacular events throughout the year. We are excited to be working with partners, including the Royal Philharmonic Orchestra, to curate these moments to an expansive backdrop of greenery, wildflowers and, of course, the iconic Wembley Stadium arch."

Union Park is a complementary addition to the neighbourhood, not only enhancing Quintain's sustainability credentials, making the area a much more pleasant place to live; but helping residents and visitors exercise and play, and adding to the destination's already well-established cultural offer.

STUNNING SOLAR POWERED PARK & RIDE GOES GREEN IN MORE WAYS THAN ONE



Stakes, belts and ties secure newly planted trees

Background:

Green-tech has made a significant contribution to the UK's first fully solar powered Park & Ride facility on the outskirts of Leeds in West Yorkshire. Designed by Mott Macdonald in partnership with main contractor BAM Nuttall, the brand new Stourton Park & Ride heralds in a new era of clean, green public transport.

Served by a fleet of fully electric buses that run into the city centre every ten minutes and forming part of the Leeds Public Transport Investment Programme, the Park & Ride will help towards a net-zero carbon economy for the city by lowering carbon emissions, improving air quality, and reducing congestion.

A photovoltaic solar canopy covers a third of the site, which powers the terminal building, street lighting and vehicle charging points, and feeds excess electricity back into the local grid. The site provides 1,200 parking spaces along with 26 fast electric vehicle charging ports and 4 rapid chargers.

Care was taken to reduce the visual impact of the site from all directions,

and over 11,000 trees have been planted in and around the park & ride site with an impressive 54:1 replacement ratio. The main central area includes raised Corten steel planters, shrubs, hedges, specimen and evergreen trees to provide year-round coverage, creating a soft, open and welcoming environment.

Green-tech involvement:

Green-tech has a good working relationship with both Mott MacDonald and BAM Nuttall, and supplied all the stakes and crossbars, canes, tree belting and blocks to support the trees in the central area. All Green-tech square-sawn softwood and machine round stakes are FSC Certified and available from stock.

To protect the new perimeter planting from browsing animals and the elements Green-tech supplied 6,000 re-cyclable tree and shrub shelters, 450 square meters of 100% re-cycled jute Ecomatt mulch matting, as well as 275,000 litres of ornamental bark for the planters and beds. The Ecomatt allows air and water to pass through the layers whilst suppressing weed growth and acting as valuable insulation around the root area.

To ensure the best chance of successful establishment, Green-tech supplied 200,000 litres of soil improver to help optimise the structure and fertility of the soil, as well as over 300 sets of irrigation pipes with Aria inlets and Mona reservoir tanks. On the more exposed trees, Green-tech DropMan anchor systems were used, holding the tree stable without the risk of soil contamination from sleepers or kerb stones.

Finally, 1,000 square meters of impermeable gtRootBarrier@ 325 was used where there was a need to deter roots from spreading too far.

Well thought-out planting schemes enhance the main area





Working together to create landscapes to be proud of

We are more than a supplier. Choose Green-tech and you get a trusted business partner.

- Over 25 years servicing the landscaping and forestry industries
- Renowned for our professional advice and technical know-how
- Vast warehousing and stock holding capabilities
- All your landscaping materials available from one company and on one delivery
- Next day delivery
- Competitive pricing
- Excellent customer care

Click or call now to order our catalogue



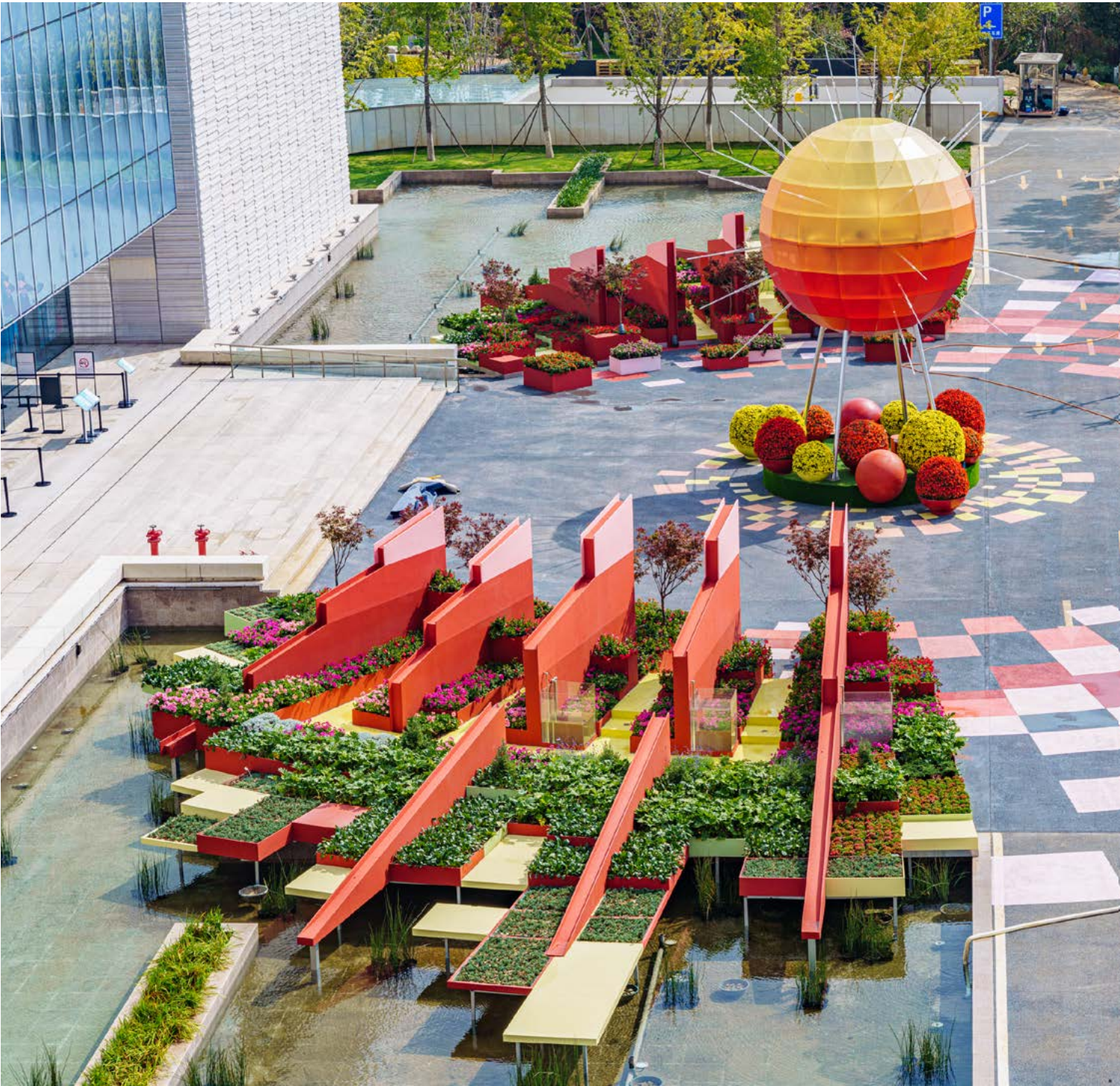
T: 01423 332100

E: sales@green-tech.co.uk

www.green-tech.co.uk

@greentechltd @greentechuk green-tech-ltd





CHETWOODS 'FUTURE CITY GARDEN: NATURE AND CITY' DESIGN FORMS CENTREPIECE OF UNITED NATIONS BIODIVERSITY CONFERENCE (COP 15)



Chetwoods, the award-winning architecture practice, designed the centrepiece of the Fifteenth United Nations Biodiversity Conference, which opens in Kunming, China, on 11 October.

The innovative 'Future City Garden: Nature and City' - a thought-provoking depiction of biodiversity through architectural and landscape design - welcomes delegates as they arrive at the conference centre building hosting COP 15. The entire garden will be equivalent to over 10 of the largest ever displays at



London's world famous Chelsea Flower Show.

The Future City Garden encapsulates COP 15's ideals, using a representation of the Sun at its centre. Chetwoods' has used a hydrogen fuel cell - an innovative form of clean and efficient energy - to create this powerful symbol of life, with a surface made up of photovoltaic panels.

Five gardens radiate from the Future City Garden following a circular pattern, each of which

communicates messages relating the various themes of food, sleep, shelter, air and water. In summary, these are:

- **Food garden** - an area incorporating herb walls and growing shelves to demonstrate the importance of food production and the need for cities to shorten supply chains by growing food on vertical and horizontal surfaces. It is initially structured as a series of urban allotments which progressively move into a more rural setting



featuring orchards and mixed-use hedges which support birds, insects, bees and butterflies.

- **Sleep garden** - a quiet space in which visitors are encouraged to leave the city behind and lose themselves in nature. The garden entrance is characterised by a number of large mirrors configured in a way that produces

multiple reflections and gives a sense of the city's chaos. As visitors pass these mirrors, they move into a series of quiet, private spaces at the focus of which is a secluded woodland area.

- **Shelter garden** - a space providing shelter for all living beings, not only humans but also

insects and microorganisms. The shelter provided is both vertical and horizontal in design, in the form of a translucent canopy and a series of shelves, boxes and ledges.

- **Air garden** - this aims to demonstrate the benefits of flora in reducing air pollution as well as introducing visitors to the sensory benefits of air itself as they become aware of the sounds and movement of the wind through trees and grasses. The plantings include conifers - as pollution 'eaters' - and aromatic shrubs and flowers, heightening the intensity of smell which visitors can experience. This garden combines the restorative and enhancing powers of nature; it also features three helical wind turbines to emphasise the benefits of sustainable energy generation to the planet.
- **Water garden** - an area focusing on rainwater harvesting as a means of addressing water scarcity in some parts of the world. It demonstrates the potential for how existing water features can be used more effectively.



Laurie Chetwood, Chairman of Chetwoods, said, 'It was a great privilege to be asked to contribute the centrepiece for the COP 15 UN Biodiversity Conference. Our Future City Garden reflects the ever-present influence of nature in architecture and design and serves to demonstrate our concern - as architects - for the natural environment.'

'Chetwoods has created a number of other concept gardens in China in recent years. We pride ourselves on being bold and brave and on using design to stimulate both thoughts and actions. Design doesn't just exist to create landscapes or buildings but to convey messages and change mind-sets. Addressing the important issue of biodiversity and the role it has in all our lives - not least in the context of food security - was a challenge we were pleased to take up.'

'While the Future City Garden has a serious point to make, it's also fun. I hope that people will enjoy visiting it, remember its messages and be motivated by them, thereby enriching future decisions on this extremely important global topic.'



Mr Tim Briercliffe, Secretary General to AIPH, says 'I am fascinated to see The Future Garden: Nature and City at the UN Convention on Biological Diversity. As the world's champion for the power of plants, AIPH is impressed by the central role that plants and nature are now taking in conversations about the future of our cities. The creative ideas brought to life in Kunming demonstrate gardens and nature

as the foundation of life. The 5 areas of The Future Garden clearly demonstrate the functional aspects of plants in providing food, fresh air, shelter, and the restorative power of nature that we all need. I trust that its message will be well received by global leaders following COP15.'

www.chetwoods.com/laurie-chetwood

SUDSGRID 40 POROUS PAVING AT ASCOT HEATHERWOOD HOSPITAL CAR PARK

Due to open to patients in Spring 2022 and replacing the current building which has stood in Ascot for over a century, the redeveloped Heatherwood Hospital is designed to treat 168,000 patients a year, double the number of the old facility. Once open the new four storey building offers 48 inpatient beds (half of which are ensuite), six operating theatres and an imaging and endoscopy unit; all centred around a double height space and a courtyard.

In order to meet SuDS planning conditions, consultants BDP specified permeable paving throughout the associated new parking areas in order to limit surface water run-off and minimise the risk of localised flooding. In total 4,200m² of Sudsgrid 40 cellular pavers were supplied to Toureen Contractors and installed and filled with free-draining angular aggregate to provide 450 new parking spaces for the hospital. Yellow markers were also supplied to delineate the car parking bays.

ABG's in-house Design Team proposed a sub-base design which utilises their unique Abgrid geogrid to reduce the



thickness of DoT Type 3 stone required to achieve structural stability. An ABG Terrex NW nonwoven geotextile layer was also proposed to provide an additional stage of treatment for the infiltrating water. Overall, the incorporation of ABG's design and products provided a shallower construction profile which also resulted in reductions in site excavation, off-site tipping, DoT 3 stone deliveries and associated costs.

The car park construction required extensive cut and fill to level the steep site in the protected Berkshire woodland location, and the car park surface water flow is controlled via hydrobrakes to stop downstream flooding as it drains off site through the woodland via a large detention pond, before entering local drainage systems and water courses.

Sustainable Drainage Systems

ABG specialises in the design & manufacture of innovative geosynthetic solutions that help to manage rainwater at source, improve water quality & enhance biodiversity.

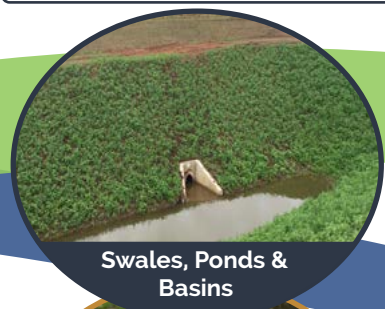
Visit abg-geosynthetics.com to find out more.



Blue Roof Systems



Green Roof Systems



Swales, Ponds & Basins



Porous Paving & Drainage



Green Retaining Walls



Tree Root Protection

ABG Geosynthetics Ltd

E7 Meltham Mills Rd, Meltham, West Yorkshire, HD9 4DS

t 01484 852250 | e info@abgltd.com | w abgltd.com





Hedera screens ltd

Nationwide Urban Greening
Call: 01530 560 550

- Living Ivy Green Screens
- Living Walls
- Sedum Roofing
- Instant 100% coverage Floral Matting
- Steep slope Soil Stabilization Matting
- Commercial Soft Landscaping
- Commercial & Residential Irrigation
- Aftercare Maintenance

Unit 3 Chestnut Farm
Ashby Road
Moir
Derbyshire DE12 6DP

Email: info@hederascreens.co.uk
Follow: @hederascreens
YouTube: Hedera Screens



www.hederascreens.co.uk



WILDFLOWER GREEN ROOF AT LEEDS SKELTON LAKE SERVICES ANNOUNCED AS BALI AWARD WINNER



**AWARD
WINNER
2021**

The new Leeds Skelton Lake Motorway Services at Junction 45 of the M1 sits adjacent to a 40,000m² area of country park. To ensure the development blends in to the surrounding lakeside and to minimise the visual impact of the development, the main 5,277m² amenity building features an over-arching, undulating green roof. The green roof is configured in eleven separate sections in a unique 'ribbon' pattern and the successful realisation of the design has just been recognised with a prestigious British Association of Landscape Industries (BALI) award.

The wildflower roof system was delivered by green roof designers ABG Geosynthetics and their BALI affiliated installation partners Geogreen Solutions. A member of the BALI judging team visited the site at the beginning of July, and then convened with other members of the panel over 3 days in August to assess the entries and determine the winning schemes. Following a record number of entries this year, Geogreen were announced as winners in the Category of Roof Garden project with a value over £500K.



Geogreen’s work encompassed all aspects of the installation for the 11 separate ribbon areas and the judges recognised the contribution the roof design makes to enhancing the biodiversity of the site, providing a significant area of native grassland for local insect and bird species. The green roof also plays an important function as part of the development’s overall sustainable drainage strategy, absorbing rainwater and minimising surface water run-off, with as much as 95% of rainfall naturally absorbed into the vegetated surface. The vegetation, growing media and filtration fabrics within the green roof construction also helps filter dust and pollution from the air and rainfall, thus reducing the amount of chemicals and pollutants that reach the surrounding river networks.

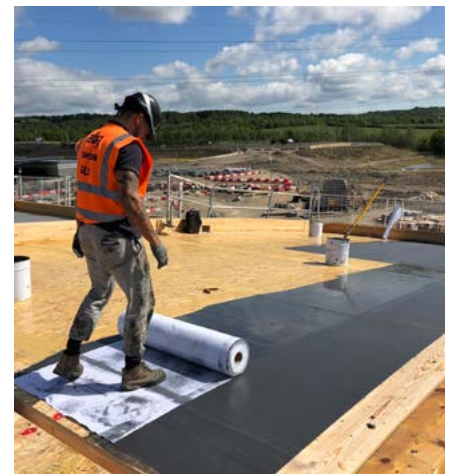
Incorporating a green roof also significantly reduces the carbon emissions from the amenity building by allowing the heat generated to be drawn into the cool roof construction and then dissipated more readily to the environment than with traditional roof constructions. In summer months this reduces the air conditioning requirement whilst providing a level of insulation against heat loss in winter. The green roof is also very good at reducing low frequency sounds from the nearby motorway, with the extensive build up insulating up to 40dB.

The green roof build-up

The underlying structure for the extensive wildflower meadow roof is constructed from a series of interconnected glulam beams, manufactured by fixing timber boards together and forming them into the curved sections. The beams are then spanned using structural deck cassette panels of 20mm thick in 3 layers.



A Kemperol cold applied liquid membrane is applied to the timber panels to give a fully adhered, monolithic waterproofing to encapsulate the surface and preserve the deck from weathering. A 180 mm thick XPS insulation board plus a water control layer, is installed directly onto the waterproofing to complete the inverted warm roof build up.



For the base of the living roof structure, a combination of 20mm and 40mm deep Roofdrain geocomposite reservoir boards were used. The main core of the reservoir board features a grid of storage cups to attenuate rainwater and provide irrigation for planting during dry spells. Small holes in-between the cusps allow excess rainwater to channel to the nearest drainage outlets, preventing the root growing media from becoming waterlogged and stopping water pressure build-up on the water control layer.

GREEN & BLUE INFRASTRUCTURE

During the next phase of the green roof construction, a biodiverse growing media mix was deposited onto the geocomposite layer and levelled to a depth of 100mm. The material is lightweight to minimise loading on the roof structure and

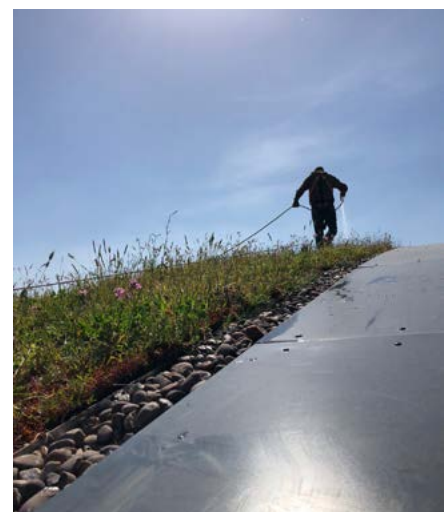
contains organic content to retain moisture and nutrients for growing the wildflower and sedum plants.

To complete the living roof installation a total of 4,622m² of meadow planting was provided

by Wildflower Turf, in a ratio of 20% grass / 80% flowers including a mixture of 34 different flower species. The roof turf was grown at a local nursery especially for the project and designed to thrive in the exposed conditions. The turf was supplemented with 14,200m² of Wildflower seed to boost the density of the meadow and encourage it to spread over the wider landscape.

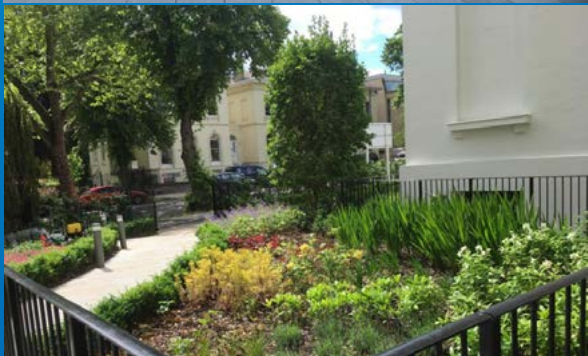
The green roof is subject to an annual maintenance cut in late August/early September, once flowering plants have set seed and arisings are removed from the roof to avoid nutrient build-up. Cutting the plants back to 1 to 2 inches in length ensures that re-growth and species diversity continues year on year.

Insulation, water control membrane, the green roof and irrigation system were project managed by Geogreen Solutions and a five man team worked to complete the install. This was Geogreen's largest install programme to date and in total 5,000m² of green roof sedum and wildflower matting, over 6,000m² of insulation board, geocomposite drainage and waterproof membrane, 28 tonnes of 20mm pea gravel for fire break borders and 12 arctic loads of 1m³ growing media bags were delivered and installed for the new services.



The BALI awards event and winners' presentations are being held at the JW Marriott, Grosvenor House Park Lane Hotel on December 3.

Sky Garden Landscaping Solutions – proudly offering our new expanded range of landscaping products



GROWING MEDIUMS

Sky garden has in house blending facilities to produce a wide range of standard or bespoke growing mediums to meet any of your project requirements, including:

- Intensive substrates
- Blended top soils
- Drainage aggregates
- Structured tree soil (CU-SOIL™)

PRE-GROWN VEGETATION

We can grow standard or contract grown mature blankets or plug plants from our UK based nursery, including:

- Wildflower blanket
- Sedum blanket
- Ground cover blanket
- Wildflower plugs

BAGGED PRODUCTS

Our in-house bagging facility can provide a range of bagged products from 10L sacks to 2m3 bulk bags, white label or customised. We also provide contract bagging from any quantity. Including:

- Lightweight infill (Leca®, Lytag®)
- Decorative aggregates
- Growing mediums
- Soil stabilisation/retention bags (Envirolok®)

Contact us today for national delivery, competitive pricing and excellent customer service

www.sky-garden.co.uk
enquiries@sky-garden.co.uk
 01242 620905





REDISCOVER MODULAR PAVING

The trade association Interpave invites urban designers, landscape architects and contractors to take a fresh look at precast concrete paving to enliven hard landscaping, while meeting the challenges of climate change, sustainability and the changing role of outside space.

Precast concrete paving continues a long tradition of modular elements laid to create a hard surface. But unlike extracted materials such as stone or clay, precast concrete block, flag, kerb and related paving products are fully engineered and manufactured under modern, controlled conditions. This ensures accurate product and joint size, colour and texture, slip/skid resistance and other performance characteristics. So, precast concrete paving offers a unique predictability with consistent, trouble-free performance over the longer term.

Modular concrete paving from Interpave manufacturer members is uniquely placed to satisfy today's changing demands. Distinct units and designed variations in colour, texture and shape break up areas giving visual interest and a human scale not possible with formless materials such as asphalt. Pigment technology today allows a much wider choice of colours, ranging from vibrant to muted tones, as well as varied mixes of colours that can emulate other materials.

Surface treatments can also be applied to paving blocks, flags and kerbs to give different textures, some exposing the inherent aggregates. Surfaces can be honed for a flat finish or polished, or shot blasted to look weathered, or 'tumbled' for a more rugged, naturalistic appearance. Combining these attributes with the range

of shapes and sizes available enables designers to select paving styles, whether traditional or contemporary, enhancing environments from historic areas to vibrant new city spaces.





Sustainable Paving

Precast concrete paving from Interpave manufacturers is demonstrably sustainable in every sense. As well as having low environmental impact, products are locally manufactured, making a vital contribution to the economy and community. Local material sourcing and product supply is also a key element and equivalent paving products shipped into the country bear a substantial CO2 emission load.

The ongoing availability of a complete range of products and accessories in a single, predictable material is also essential over the long-term. As substantial organisations, Interpave manufacturers working within the UK’s framework of standards and regulations easily achieve this aim. Modular concrete paving can be simply taken up and redeployed to meet new requirements (such as social distancing) or reinstated

following excavation works, for example to access services, leaving minimal evidence. It is also worth remembering that all these benefits of precast concrete paving are available at an economic cost - in both initial and whole life terms.

SuDS Requirements

Storm-water flood prevention is also important - particularly with climate change - and concrete block permeable paving is uniquely placed as an essential, multifunctional sustainable drainage (SuDS) technique. In addition to paving, it also provides an inherent drainage system that requires no additional land take for water storage, treatment or conveyance. This technology eliminates pipework, gulleys and manholes, and generally costs less than conventional drainage and paving.

But equally important are the long- and short-term damage caused by pollutants in surface water runoff to the biodiversity and health of our rivers and streams. The Greater London Authority ‘Road Runoff Water Quality Study’ concluded that ‘London’s roads are harming London’s rivers’ and proposed SuDS features to manage runoff pollution from the most damaging roads. On any trafficked surface, concrete block permeable paving offers a real opportunity to address this major problem by trapping vehicle pollution from water runoff. At the same time, permeable paving can provide a completely level, well-drained, firm and slip-resistance surface accessible to all, without the need for cross-falls, channels, gulleys or other interruptions. Potholes and

rainwater ‘ponding’ are eliminated, with less risk of ice forming on the surface and preventing splashing from standing water.

New Planning Policies

Permeable paving also allows water to reach tree and shrub roots, while providing a hard surface above: in fact, the Code of Practice for accessibility, BS 8300-1:2018, calls for permeable paving instead of tree grilles. Tree planting and retention of existing trees in all developments, importantly with provision for long-term maintenance, have now become a priority with new government policies. These measures are needed to nurture and allow trees to mature and deliver their real potential - including net carbon storage, urban cooling through shading and evapotranspiration, biodiversity and public wellbeing.

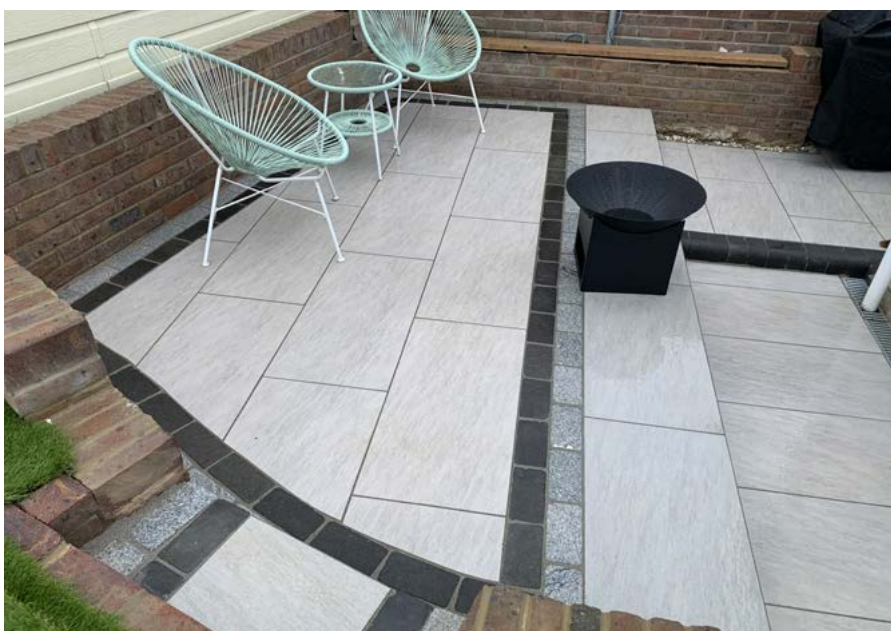
The 2021 ‘National Planning Policy Framework’ states that: ‘Planning policies and decisions should ensure that new streets are tree-lined...and appropriate measures are in place to secure the long-term maintenance of newly-planted trees.’ Concrete block permeable paving offers unique opportunities to collect, store and treat rainwater runoff, removing pollutants before irrigating trees and other green infrastructure. It offers a straightforward spatial solution to the new planning requirements, rather than complex maintenance agreements.

For more information, visit Interpave’s website - an essential resource covering all aspects of design with precast concrete products, including permeable paving and SuDS. It features exemplary project case studies, supported by background information for early design stages, as well as CPD material. A comprehensive series of technical documents covering all types of precast concrete paving products provide the definitive source of guidance for designers, specifiers and contractors - including detailing, construction and maintenance.



PORCELAIN TILES AND EXTERNAL PAVING – MYTHS AND JOINTING EXPLAINED

BY NCC STREETScape LIMITED



Porcelain is made using fine clay, with the addition of very fine-ground and graded sand plus mineral feldspar, which is sieved and combined in a powerful shear mixer, to produce a smooth and homogeneous mix. This is then modified as required and forced through complex pressure moulding and extrusion processes to make many different things, from traditional top quality and almost see-through, Chinese 'porcelain' tea services (the original 'china') to high-tech porcelain electrical insulation components, and porcelain floor and wall tiles, once only used indoors, but now increasingly taking the indoors, outdoors. Porcelain tiles are produced by moulding this special mix over a cheaper ceramic base mix, then the layers are fired together (heated quickly) at higher temperatures (~1,400°C)

than generally used for ceramics (~1,150°C). This results in porcelain ceramic tiles that are denser, less absorbent and more abrasion resistant than normal ceramic tiles. These positive characteristics can also now be combined with recent technical advances that make it possible to print virtually any colours and images into porcelain surfaces, allowing almost unlimited design effects from crazy colours, to imitating natural wood, stone, or pretty much anything else you and your Designer can imagine.

However, porcelain is still a relatively new product for external paving in the UK market, though it has exploded in popularity. With this rapid growth, several 'myths' have appeared around porcelain paving, some of the selection criteria we have heard are:

We are using porcelain tiles for our paving because:

- red wine spills, BBQ fats, oils and grease will not stain or mark it!
- bird droppings, green algae, moss, and other growths will just wipe-off!
- rust stains from furniture and grass stains from mowing will not occur!

And as a result people can consider:

- porcelain paving does not need protective sealing....
- porcelain is slip resistant...
- porcelain does not need frequent water-jet cleaning...
- porcelain needs non-permeable pointing, unless on a permeable bed...

Really.....Well....Good luck with all of that

No seriously, much of this is / can be / has an element of truth, BUT not always and it is really a question of degree, find out more in the next issue of Landscape & Urban Design!

For more advice or assistance with your specific porcelain tile paving project including selecting the right jointing product, the estimated consumption and the installation, visit our website www.nccstreetscape.co.uk/index.html and the specific page regarding porcelain paving here: www.nccstreetscape.co.uk/type-of-paving-unit/porcelain-paving.html or call our paving team on 01257 266696 for FREE Expert Advice.




GftK paving jointing - ideal for both NEW and REFURBISHMENT works because you can:

- Work in wet weather and at low temperatures (from +3°C)
- Use fast wet slurry application
- Work standing up
- Reduce staining and cleaning work
- Open quickly for service (fast curing)



Domestic Paving

GftK Paving Joint Mortars for all Types of Natural Stone, Porcelain & Concrete Paving



Using GftK paving jointing achieves:

- Full frost & de-icing salt resistance
- Full jet-washing & mechanical road sweeper resistance
- Resistance to boring insects
- Optimum strength correlation (compressive, tensile & e-modulus)

Commercial Paving

Call: **NCC Streetscape - 01257 266696**

Visit: **www.NCCStreetscape.co.uk**

FREE
Technical Advice
+
Consumption Calculator
+
Next Day Delivery



Paving Joint Mortars & More from

NCC Streetscape



PATHWAY AT WYE VALLEY BUTTERFLY ZOO

Background

Wye Valley is an area of outstanding natural beauty and is located 6.6 miles outside Ross on Wye town in Herefordshire, where you will find the popular indoor attraction Wye Valley Butterfly Zoo known for breeding and caring for some incredibly tropical butterflies.

The zoo was severely damaged at the beginning of 2020 by Storm Dennis in February, they sadly lost four butterflies and seen tremendous damage to other areas of the zoo such as the miniature golf area, and were forced to close. To further the delay to rebuild the damaged areas the world was hit with COVID-19 and

they had to remain closed. After months of cleaning, rebuilding, and planning to open their doors to the public in early 2021, they decided to postpone reopening until the Summer in the hope of the peak season being a more suitable option with the promise of covid restrictions be lifted to the leisure and tourism industry.

Job brief/planning

SureSet was contacted by Emma Brady from Wye Valley Butterfly Zoo in early Spring 2021 after seeing the amazing installation we completed for the Stratford Butterfly Farm they were so impressed they wanted resin bound

paving to complete their pathways around the butterfly zoo, with a particularly intricate design in mind to include various bespoke colour blended butterflies in red, green and blue.

As manufacturers, SureSet was able to offer technical and design advice as well as produce specific bespoke colours to match the particular project requirements. By offering a full installation service, with a choice of an extensive range of products we can bring life to projects including driveways, patios, pool surrounds roof gardens, play areas, car parks, and public spaces. The complete range includes a wide variety of

colour and texture options, with natural gravel and crushed stone, marble and recycled glass, shells, bricks, and even bottles. The range provides almost limitless options for landscape architects, developers, and homeowners - from natural buffs and shades of terracotta to rich, vibrant primary colours.

To complete the bespoke butterflies the desired shape the zoo had in mind was sent out as a PDF template for us to explore their ideas and provide them with suitable options. Overall a simple butterfly shape was requested but with a two-toned colour effect to give the zoo's pathways the extra wow factor!

To accomplish the best possible finish SureSet had the silhouette of the butterfly shape formed using an MDF CAD cutter, this allowed us to pay special attention to detail to the resin bound colour blending we needed to produce for such an amazing feature.

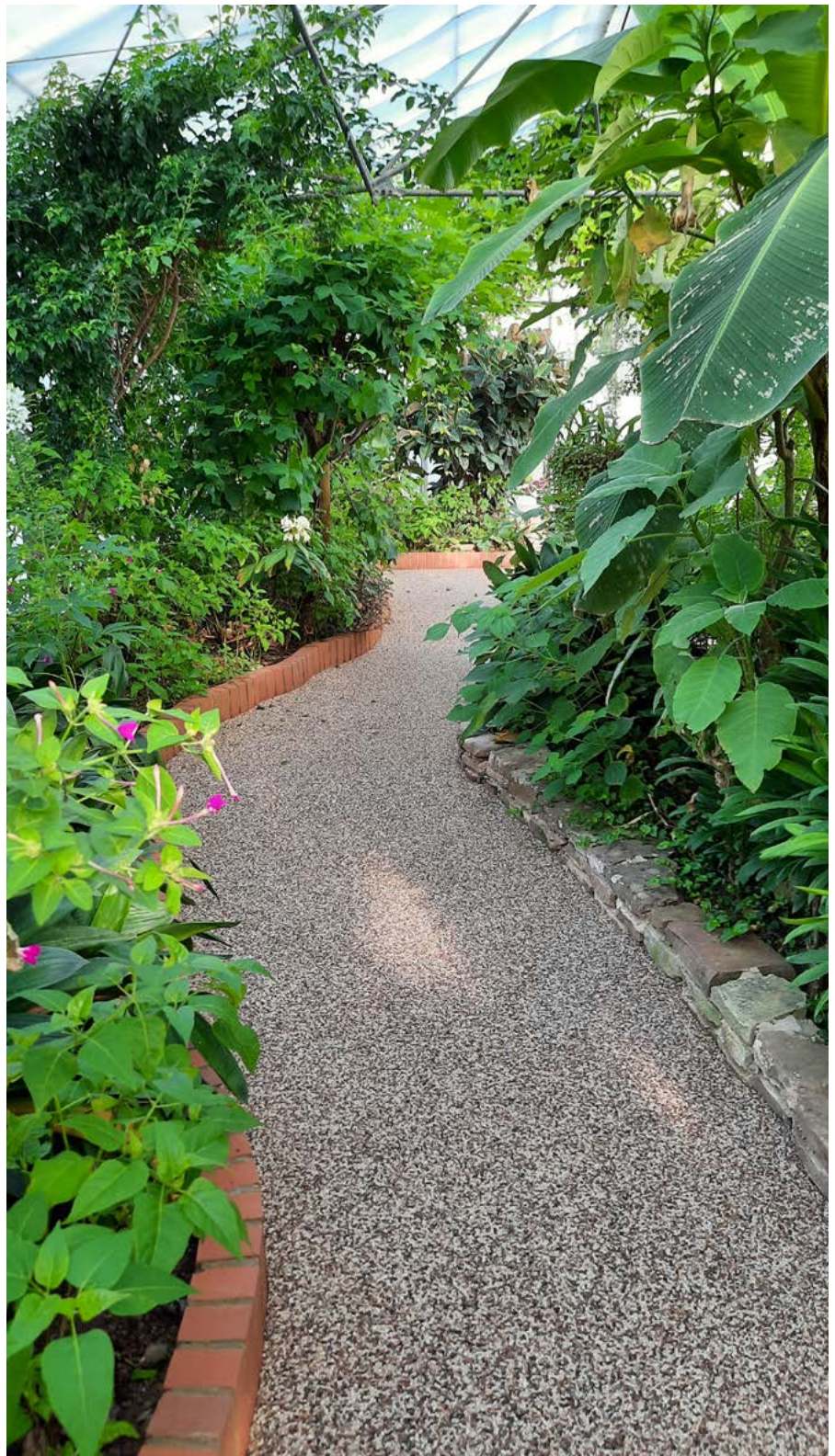
"Using a pre-formed shape and installing colour work like this prior to the main installation is a great way to achieve bespoke work of a high quality, allowing our installation teams more time on the day to concentrate on the remaining areas, in this case, the natural gravel pathways."

Dave Shell | Head of Commercial Sales

Process/Execution

For the butterflies, SureSet used a 3mm clear recycled glass from our Spectrum range. All of the glass SureSet use is tumbled and pigmented to a colour of your choosing, Wye Valley Zoo had a blend of blueberry pastel, vibrant sky blue to pool and mint green, daffodil yellow, traffic red, and for the wings our midnight black used for the main body of the butterflies.

There was one large silhouette of a butterfly in a bespoke "Blue Blend" which was designed to mark social distancing. The two smaller butterflies were in a beautiful blend of "Green" and "Bright Red" were designed to mark the direction that people should follow to guide them around the zoo.



The base used for SureSet resin systems was SureCell, this is an interlocking gravel cellular grid 40mm deep and filled with 10mm loose stone, it provides the ideal base for small areas whilst being durable and eco-friendly. SureCell can be laid directly onto a compacted stone and then in-filled with loose gravel, it provides an incredibly strong and stable surface which is ideal for a heavy footfall.

The 200m² main pathways around the Butterfly Zoo was installed in "Pearl Jam" a 6mm Natural Aggregate stone that compliments the surrounding and really makes the brightly coloured resin bound butterflies to pop! as well as guiding visitors through a butterflies life cycle from a tiny egg to walking around with them up close and personal in real life!



The range of colours and textures used in this project importantly blend in with surroundings whilst the feature paving materials provide a sharp contrast of interest for visitors. Resin bound paving has proved to be the perfect design solution for an extensive range of projects across the world. From schools, medical centres, bridges, and hospitals, to private homes and pedestrianised areas, the product has brought life and colour to landscape schemes of all shapes, sizes, and complexity.

For larger intricate areas, most suppliers have their own professional, skilled installation teams. However, for smaller areas, some also offer DIY kits that contain everything needed to complete a perfect job. Visit our contact page for installations or browse our self-install products via our online shop to check what's available.

Performance is never sacrificed for the sake of design. SureSet resin systems provide a beautiful and hard-wearing surface that will give plentiful years of service that requires minimal maintenance.

Resistant to cracks, oil, UV-light, and frost damage, the integrity of a SureSet resin bound surface remains intact, preventing stones from becoming loose and weeds from growing through.

SureSet were approached to explore the feasibility of a resin floor at the Wye Valley Butterfly Zoo to increase flood resilience due to increased risk as a result of climate change.

The team were professional in their approach from start to finish, excellent in communicating what was attainable, sending samples so we could see exactly what effects we could achieve for our blended butterfly features, inset into the flooring. Of particular note was the diligence with which the pre-installation surveys took place, ensuring that the correct quantities were used saving costs, and eliminating waste. The installation team worked quickly and efficiently and tidied up after themselves. The effect looks really amazing and we, and the public, are very impressed with the result, being both visually impressive and practical to maintain.

The whole process has been a stress-free experience, providing the best solution to our particular needs, and most reassuring is that we know the SureSet team are always available to help us in the future.

Lindsay, Edward and Emma from the Wye Valley Butterfly Zoo.

Key Features

- Application: Pathway
- Base: SureCell
- Area: 200m²
- Colour: 6mm Pearl Jam and various Spectrum
- Depth: 20mm resin bound
- Edges: Stainless steel
- Installed: June 2021 by SureSet
- Client: Wye Valley Butterfly Zoo

The EcoBatcher will save a project of this size 160 single-use plastic buckets.

SureSet is now using Post Consumer Recycled Plastic for our resin tubs!

For more information on our commercial installations, please email us at sales@sureset.co.uk

NAYLOR
ENVIRONMENTAL

Benefits

- Attractive, natural grass surface
- High load bearing strength
- Resists rutting and compaction
- Clean and free draining
- Provides ideal source control for Sustainable Urban Drainage Systems (SUDS)

Suitability

- Events and amenity areas
- Emergency vehicle access roads (inc. HGV)
- Overspill car parks
- Sports surfaces
- Source control for SUDS

TechTurf Systems



The Naylor TechTurf reinforced grass system consists of a specially prepared sand: compost rootzone into which is blended thousands of small interlocking mesh elements. Selected turf and fertiliser are supplied to establish grass cover.

As the grass roots develop they penetrate through the mesh to form a deep anchored root system and a very stable rootzone. The result is a free draining natural grass surface with no visible structures, compaction resistance and high load bearing capabilities. TechTurf is supported by over a decade of high level civil engineering and agronomic research.



NAYLOR
ENVIRONMENTAL

For further information contact

Tel 01226 790591 Fax 01226 791531

E-mail info@naylor.co.uk

Web: www.naylor.co.uk



INNOVATIONS IN RESIN BOUND SURFACING/ INTRODUCING ADDAGRIP ECOHEAT SURFACING

As the popularity of permeable Resin Bound surfacing increases in the UK, so has the choice of products available in the marketplace.

There are now a range of resin bound systems on offer that will provide solutions to meet specific project requirements including SuDS compliant surfacing, no-dig options, recycled content aggregate blends and the offer of product guarantees for extra assurance.

Addagrip Terraco Ltd, part of the Terraco group is a manufacturer, formulator and supplier of quality resin surfacing systems with 41 years' experience in the resin industry and the first resin bound surfacing manufacturer to achieve BBA certification for its resin bound porous surfacing systems Addaset, Addabound and Terrabound. We also offer our patented 'no-dig' Terrabase system that does not need a concrete or asphalt base.

Our resin bound porous paving products provide a seamless, decorative surface that can be installed over existing or new asphalt or concrete to create a hard wearing, low maintenance paving that is aesthetically pleasing and has good slip resistance. The systems are suitable for Commercial and Domestic schemes alike to include footpaths, courtyards, swimming pool surrounds, driveways, car parks and access roads and our

extensive range of natural aggregate blends offers a wide range of design possibilities.

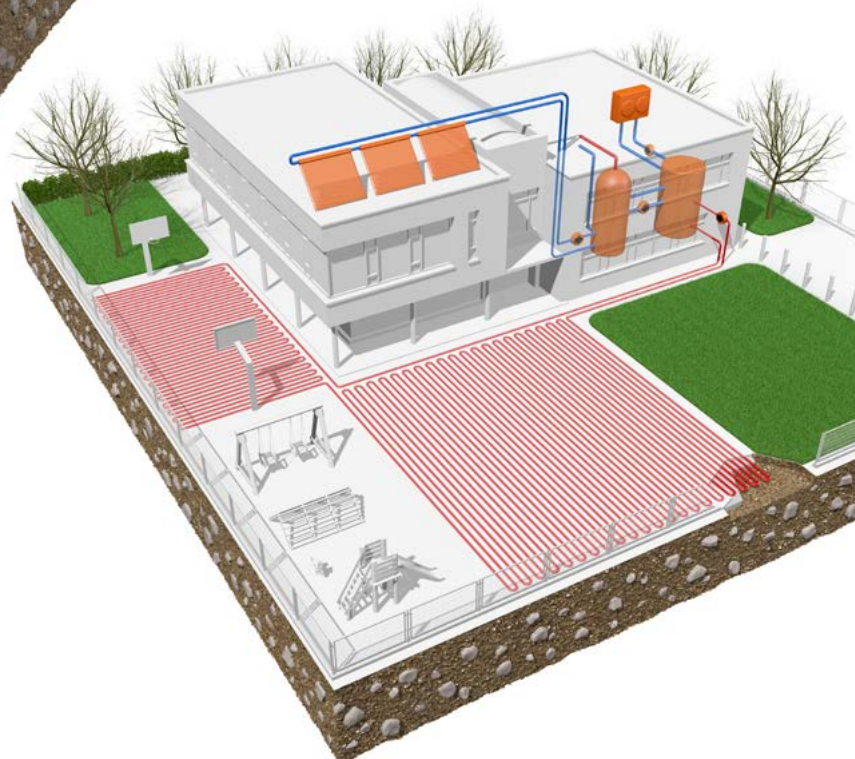
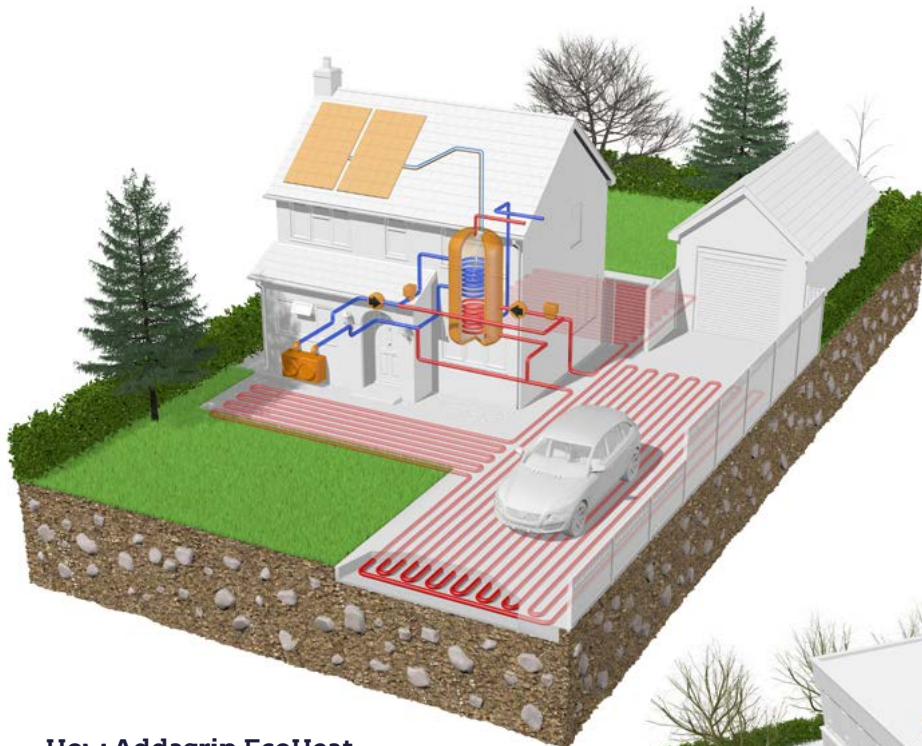
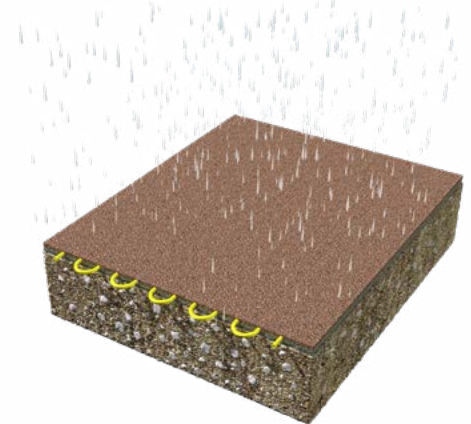
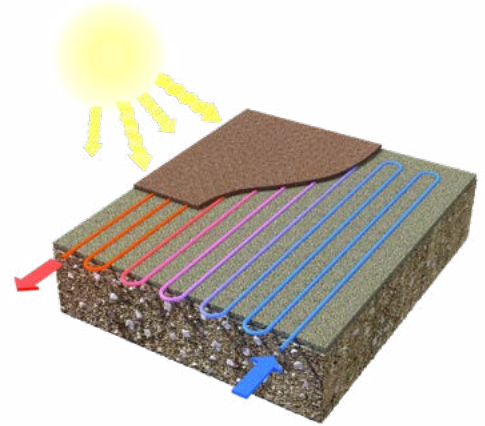
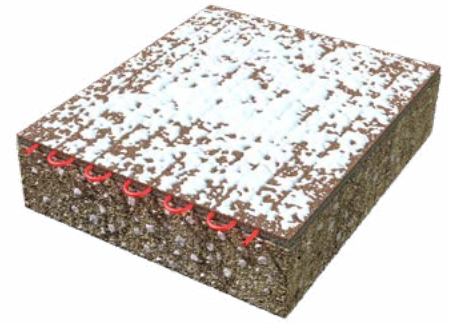
And now Addagrip Terraco are delighted to introduce our latest innovation in resin bound paving - ADDAGRIP ECOHEAT SURFACING

Addagrip Terraco Ltd and EcoHeat Surfaces have joined forces to promote a unique surfacing solution - Addagrip EcoHeat Surfacing - combining Addagrip's quality Resin Bound porous surface finishes with Ecoheat Surfaces patented inlaid pipe system that connects to a renewable energy source, offering a reactive heat storing surface to suit our changing climate conditions.

When the weather warms up, the Addagrip EcoHeat Surfacing will be heated naturally by the sun, and, with a heat pump installed, the heat from the resin bound surface can be harnessed to help supply hot water for the home or other buildings such as hospitals and schools. A source of free energy for hot water.

Addagrip EcoHeat Surfacing can also be linked with solar panels to make it even more energy efficient - no need for gas, thus making it very carbon neutral.

The resin bound surface is permeable so there is no surface water, and it is SuDS compliant when used on a porous base build up.

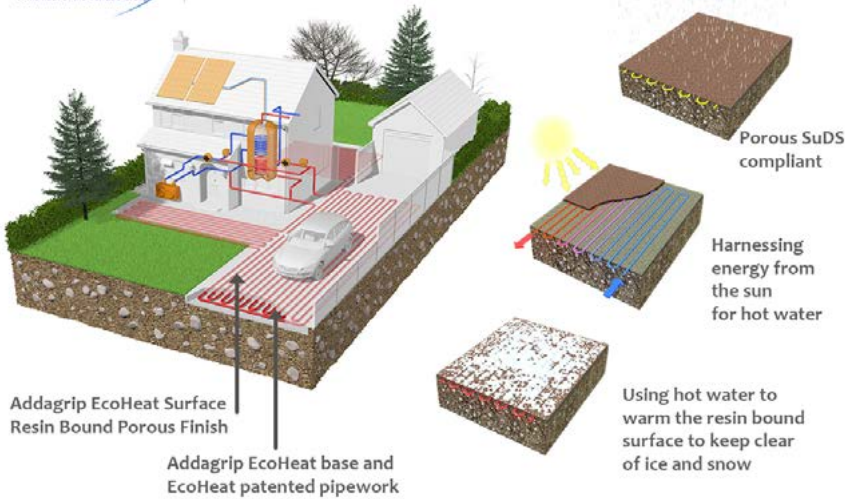


How Addagrip EcoHeat Surfacing Works

Addagrip EcoHeat Surfacing is the 'first of its kind' green energy thermal heating surface system. In colder weather, the surface senses temperature decreases and automatically warms the resin bound surface using a renewable heat source. With the EcoHeat pipework installed under the Resin Bound surface, Addagrip EcoHeat Surfacing takes heat out of buildings via an air source heat pump. Whenever temperatures drop to 0°C this heat will be used to warm the surface area around buildings to ensure no ice or snow build up.



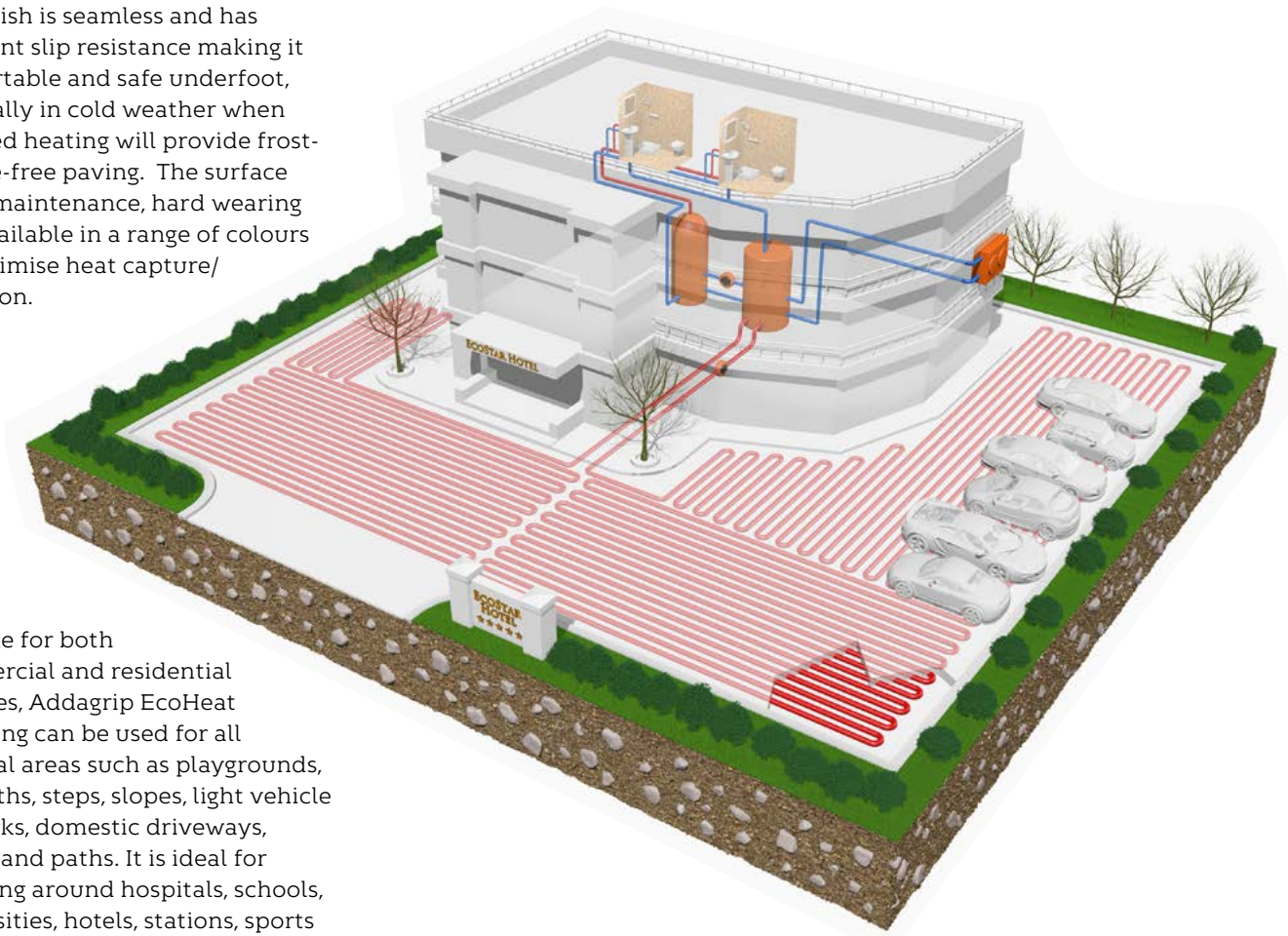
www.addagrip.co.uk



List of Applications

- Hospitals and healthcare facilities
- Airports and railway stations
- Universities and schools
- Hotels and hospitality venues
- Sports venues including football terraces
- Supermarkets and retail units
- Outdoor swimming pool surrounds
- Domestic driveways, patios, paths

The finish is seamless and has excellent slip resistance making it comfortable and safe underfoot, especially in cold weather when recycled heating will provide frost- and ice-free paving. The surface is low maintenance, hard wearing and available in a range of colours to maximise heat capture/retention.



Suitable for both commercial and residential schemes, Addagrip EcoHeat Surfacing can be used for all external areas such as playgrounds, footpaths, steps, slopes, light vehicle car parks, domestic driveways, patios, and paths. It is ideal for surfacing around hospitals, schools, universities, hotels, stations, sports venues and commercial buildings for energy efficiency and safety. For example, hotel car parks could be heated using stored heat from grey wastewater from showers, basins, and baths to create ice and snow free parking areas and perimeter paths.

Features and Benefits

- Decorative hardwearing seamless surface
- SuDS compliant & permeable
- Slip resistant

- Provides free green energy - harvesting energy from the sun
- Prevents ice and snow build up
- Low maintenance
- Reduces carbon emissions
- Produces cost free hot water up to 50°
- Ideal for commercial projects and new domestic self-build developments
- Can be retro fitted to existing properties
- Life expectancy of 25 years
- Bespoke design service

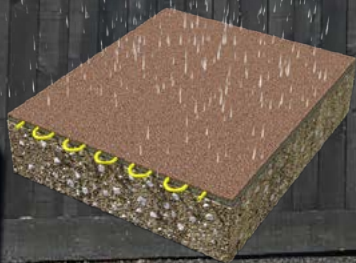
Visit our website for full details
<https://addagrip.co.uk/systems/resin-bound-porous-surfacing/ecoheat/>
Addagrip Terraco Ltd
 Tel 01825 761333
 Email sales@addagrip.co.uk

ADDAGRIP ECOHEAT SURFACING

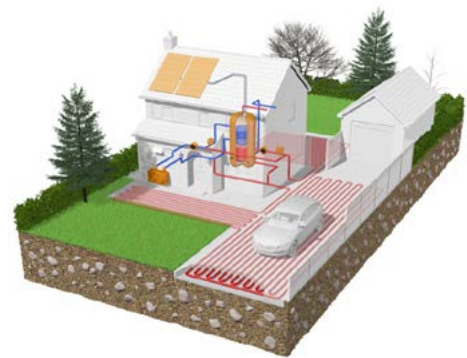


The latest innovation in resin bound paving

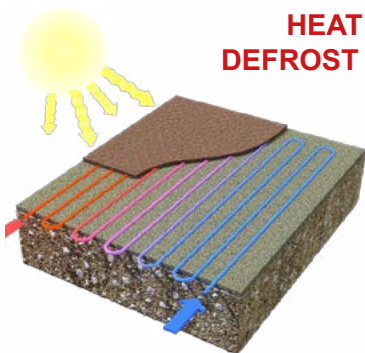
Addagrip Resin Bound Porous Surfacing coupled with EcoHeat technology to offer a 'first of its kind' green energy thermal heating surface system



Generates Free Energy For Your Home



**HEAT YOUR WATER,
DEFROST YOUR SURFACING!**



- Permeable & SUDS compliant
- Free energy
- Heats water to 50 degrees
- Energy saving
- Low maintenance

Call 01825 761333
or visit
www.addagrip.co.uk



SLOWING THE SANDS OF TIME

The global sand industry is running out of time, and the UK landscaping market needs to seek appropriate alternatives or see profits slip through the cracks.

50 billion tonnes of aggregate are used every year¹, and global population growth, urbanisation and development are driving large increases in international demand for sand and other aggregates. This is resulting in not only the disappearance of riverbeds and shorelines worldwide, but an escalating trade in black market sand and increased sand piracy.

Awareness of the global sand crisis is escalating, and scientists worldwide are finding solutions to replace sand in concrete with other materials. The construction and landscaping industry will always require sand and aggregate to build safely; however, we should seek to reduce our use of these primary

resources and think outside the box when it comes to decreasing our dependence on aggregates.

Azpects Ltd has been working on a solution to the aggregate problem when creating patios, paths, and driveways. Their new product, EASYClickBase, is a synthetic sub-base which replaces the traditional 'dig-out' part of the creation process, saving time, money and - importantly - aggregate. Early feedback suggests that for a 60m² domestic vehicular driveway EASYClickBase reduces excavation by 75% and replacement aggregate by 80%².

EASYClickBase replaces the traditional full mortar laying bed, reducing the need for sand and cement in that phase of installation. Thin surface dressings, such as porcelain tiles, can be glued directly to the sub-base, while block paving can be laid on a thin layer

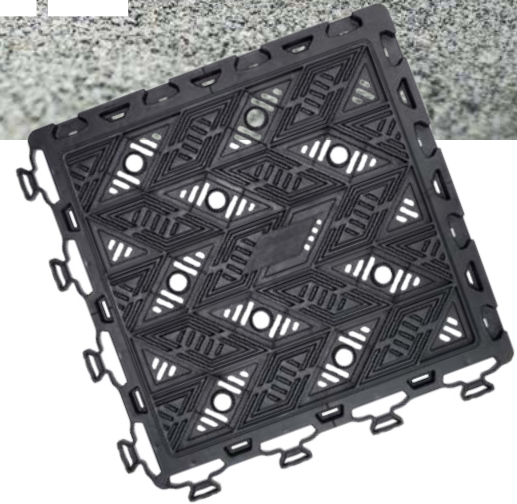
of bedding sand. Made from 100% recycled plastic, EASYClickBase has the potential to significantly reduce the environmental impact of landscaping projects.

The combination of cost savings and eco credentials couldn't come at a better time. In a recent webinar titled 'Consumer Trends in a Post-Pandemic World', trend analysts Scarlet Opus suggested the environmental movement has been brought forward 5+ years in consumers' minds³. Whilst we may never be able to completely halt the hourglass on the use of sand and aggregates, new innovations like EASYClickBase may help us slow the tide to a trickle for the landscaping industry.

www.azpects.co.uk



A SUSTAINABLE ALTERNATIVE



Introducing **EASYClickBase**, a revolutionary new way to create patios, paths and driveways.

SAVE



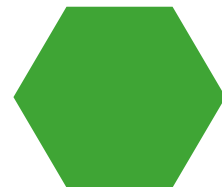
EASYClickBase significantly reduces the time, labour and cost of an installation whilst maintaining the integrity of the project.

REDUCE



EASYClickBase reduced excavation by up to 80% in early test sites, and reduced replacement aggregate by 75%¹

RECYCLE



Manufactured from 100% recycled ABS plastic. **EASYClickBase** is a new way to create a stable sub-base, without the environmental impact.

¹ Data from 60m² domestic driveway test site. Site conditions will impact results.

01473 760777

info@azpects.co.uk

azpects.co.uk

AzpectsLtd

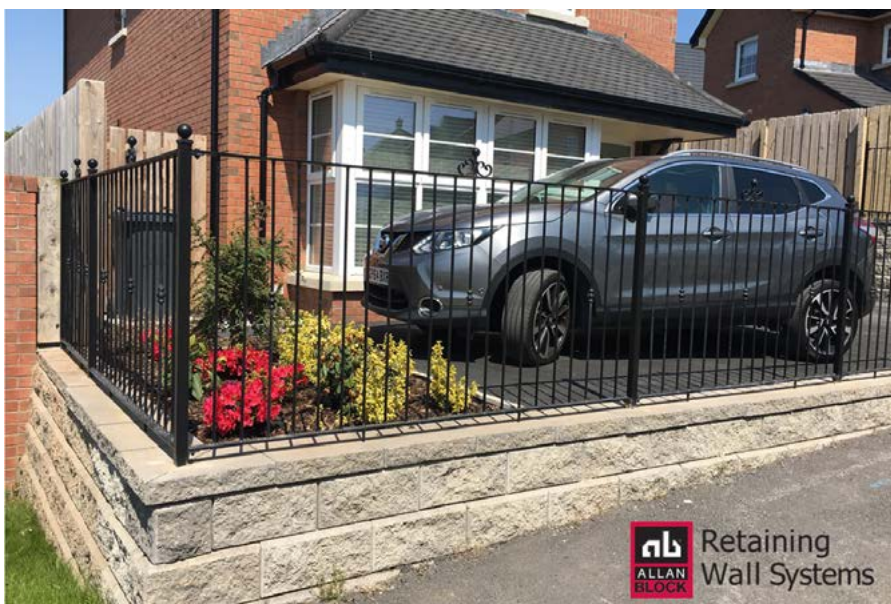
@AzpectsLtd

AzpectsUK

Azpects

Hard Landscaping Made **EASY**

MILLMOUNT VILLAGE



‘Spine’ retaining walls and on small changes in levels between driveways and adjacent house plots.

A key factor in using our Retaining Wall Systems was the speed and ease of design and construction. Our Retaining Wall System boasts a simple installation process as its’ patented interlocking front lip creates a built-in setback and eliminates the need for pins, clips, or mortar. This appealed to Lagan Homes as regardless of weather conditions, this mortar-less dry stacking system means walls can be constructed in a straight- forward easy manner. The system also allows for walls of up to 1.2m in height to be built as Gravity (unreinforced) walls.

Colinwells Martello Stone Walling and Allan Block Retaining Wall System where major products used in the construction of Millmount Village. This brand-new development is a 400 unit plus residential housing project, situated in a semi-rural Co. Down location designed by Alan Patterson Design and developed and constructed by Lagan Homes.

From the outset it was established that a high quality, durable, maintenance free and cost- effective product was required that was also aesthetically pleasing to match the developments surroundings. For those reasons, Lagan Homes chose to use Colinwell’s Martello Stone Walling on facades and Colinwell’s Allan Block Retaining Wall System for house construction, earth retention and landscaping purposes.

Throughout the Millmount development, Colinwell Martello Stone Walling has been used for a variety of applications. Such as conventional construction purposes where it has been used as the outer leaf in traditionally built cavity wall construction and to create screen walls between housing units. Chosen not only for its looks, Martello Stone Walling is an innovative approach to stone walling. It combines 5 different sized units that allow the appearance of natural stone to

be achieved without the need for the expertise of a specialist stonemason.

“We work with Colinwell, not only because they are a well-respected and experienced manufacturer but because their product range helps us solve the problems that the modern housing market generates... For example, using Allan Block as our Retaining Wall solution has allowed us to construct cost-effective, durable, and long-lasting retaining walls, while delivering the kerb appeal that home buyers are looking for”.

Ciaran Magean, Site Supervisor

One of the major challenges that the development of Millmount Village posed to Lagan Homes was the significant changes of levels throughout the site. It was clear that this site, nestled in the Co. Down hills would require the construction of a significant number of Retaining Walls. Colinwell’s Allan Block Retaining Wall System provided the ideal solution to these issues and as such, it was utilised throughout the Millmount development. The versatility of this system allowed it to be used on a variety of applications throughout the site such as to construct large structural



While taller walls can also be easily designed and constructed by combining the blocks with Geogrid and back-fill filling with compacted aggregate or by simply using No-Fines Concrete.

The additional benefit of using both our Martello Stone Walling and Allan Block Retaining Wall System in conjunction with each other, is that they are available in complementary colour palettes that allowed Lagan Homes to achieve a continuity of finish throughout the entire Millmount development.

Colinwell 
Masonry & Retaining Wall Products

Email: info@colinwell.com



St Patricks College, Banbridge
Allan Block Retaining Wall System
Colour: Pewter Blend

Retaining walls... The innovative way



Retaining Wall
Systems

colinwell.com



Colinwell 
Masonry & Retaining Wall Products



PRODUCTS FOR ANY PAVING PROJECT

As paving trends change, Nexus Paving Systems remain constant in their commitment to ensuring the best possible quality products for every application.

We don't believe that one product can or should suit every application - that is why we have a range of products specifically created for use on natural stone, slate or concrete and an alternative for porcelain products.

As porcelain pavers tend to be non-porous, hard wearing and tough, they can withstand the variable weather conditions in the UK without being susceptible to damage - however they do still need to be cared for with routine maintenance. Whilst brush-in compounds won't damage the porcelain pavers, a far superior and long-lasting finish can be achieved by using the specific ProJoint™ Porcelain Grout - this grout has added silicone and helps limit mould growth, repels water from the surface of the grout whilst allowing any vapour to pass through. Once cured this grout will also withstand pressure washing (with a fan nozzle, 200mm from the joints).

Natural stone is very durable and hard-wearing and this paving stands the test of time, but also requires on-going additional maintenance. It is generally advised to seal natural stone/concrete to prevent staining and help prevent the growth of algae, lichen or moss, and to clean as



appropriate using products tailored to your stone. The PaveCare™ range of sealers and cleaners have been developed specifically for the protection and ongoing maintenance of natural stone/concrete.

All our ProJoint™ pointing products offer you:

Speed and efficiency: reduces labour time and therefore costs to you and your customer

Ease of use: brush-in and slurry products require no kneeling or bending

High strength: epoxy resin products are suitable for medium to heavy traffic loads

Frost resistance: very frost resistant and resistant to extreme changes in temperature

Weather during application: fast to use so only a short window of opportunity required - being applied to damp paving means that rain before application is not a problem.



Different resin products suit application temperatures from 3°C to 35°C and will not develop cracks like sand and cement due to drying out too quickly in the sun.

Longevity: epoxy products are designed to outlast traditional mortar and are de-icing salt, pressure washer and sweeper resistant.

Professional: consistent results can be obtained very easily every time with correct colour matching and finish.

Both ProJoint™ and PaveCare™ products are available via our network of stockists either local to you, or online. Stockists can be found on our website.

nexus[®]
PAVING SYSTEMS

www.nexuspavingsystems.co.uk
t: 01937 858000

You can trust Nexus for any paving project...

Whether you're looking to grout a porcelain patio or granite sett driveway, **ProJoint™** products give you the best results.

And then you can use our high quality **PaveCare™** cleaners and sealers to keep your paving looking its best for years to come.

For more information about our products, visit our website:
www.nexuspavingsystems.co.uk
or call our technical team on
01937 858000.



telephone: 01937 858000

www.nexuspavingsystems.co.uk

nexus®
PAVING SYSTEMS





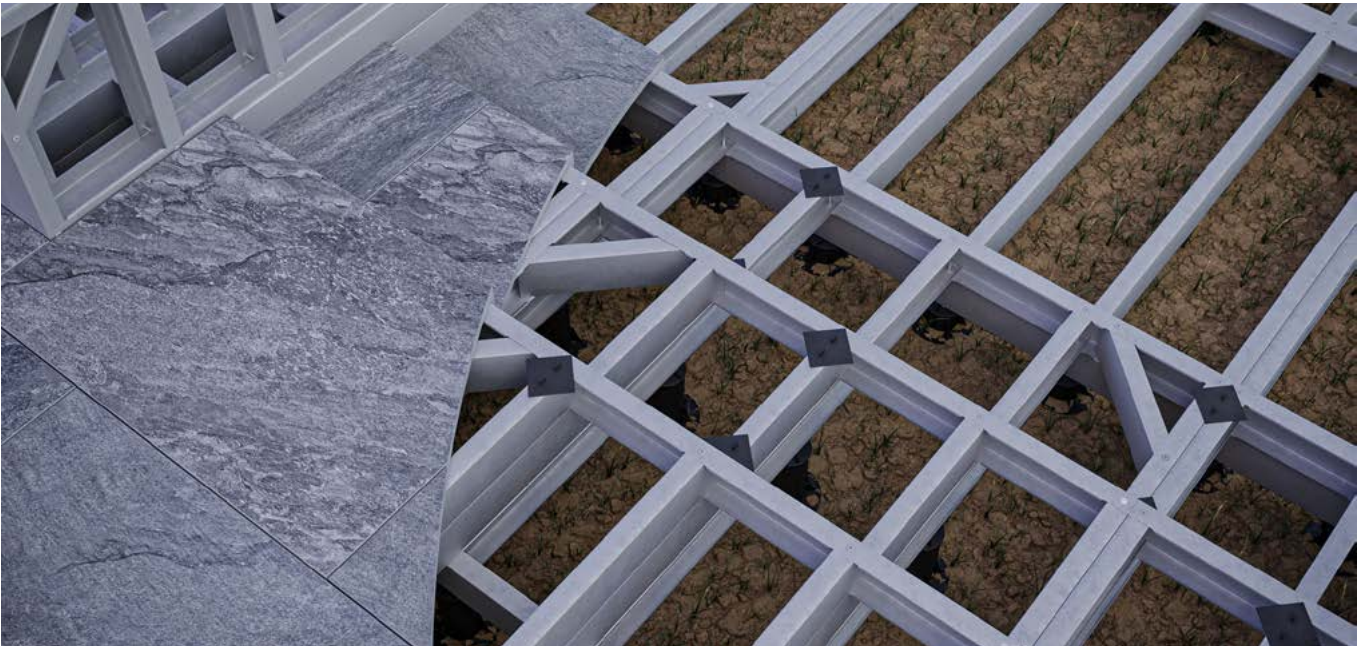
ROCCO™ PORCELAIN PAVING – ULTIMATE LUXURY, EFFORTLESS PRACTICALITY

It is hard to disagree with the attraction that natural stone paving has, but at OVÆDA® we strongly believe that Rocco™ Porcelain Paving will look even more stylish and give a much longer lasting solution. Porcelain Paving can sometime be overlooked for outdoor use as it is often seen in kitchens and bathrooms, so people don't realise that it is also ideal for outdoor use. It has a non-slip surface so can be used just about anywhere. Previous projects by OVÆDA® have used porcelain for patios, balconies, steps and even around swimming pools. The added advantage of it being so tough is that you can even use it on driveways. With the guarantee of low maintenance, OVÆDA® also provides a 25 year warranty on

residential projects and 15 years for commercial, meaning that once it is laid you have peace of mind. It is the ultimate luxury finish to any outdoor area.

Porcelain Paving is formed by baking a mixture of clay, sand and other minerals in a high-temperature kiln. This formulation results in an incredibly durable and hard-wearing surface that will keep its stunning finish over time. In fact, Porcelain Paving is able to handle the everchanging weather - which we have become rather accustomed to in the UK. The tiles are both highly frost and moisture resistant which means they are far less likely to attract moss and mould moving into the colder months.

Traditional stone tiles often require specialist cleaning products and sealants whereas Rocco™ porcelain paving requires no form of treating or sealing. All that is required to keep it looking its best is an occasional wash, which means you have more time to enjoy your new outdoor space. OVÆDA® are always looking for ways in which we can help the environment and improve their carbon footprint, and their products do the same. Rocco™ Porcelain Paving slabs are extremely eco-friendly and made from natural raw materials with minimal waste. The growing list of approved OVÆDA® ProInstallers often comment on how the stone effect Porcelain Paving tiles look amazing.



With an extensive range of finishes such as a minimalist contemporary style, a realistic stone effect or a woodgrain plank, you can transfer your indoor style preferences to create a wonderful space outside. The options available from the Rocco™ range will be sure to make an instant statement to impress your guests. Free samples from the Rocco™ range are available to order from the OVÆDA® website.

Since Porcelain is a very hard material, it can be slightly more difficult to cut into the various shapes needed to fit a specific

project. Porcelain Paving is generally straight forward to self-install. However specialist tools may be required for more complicated jobs and installation costs for porcelain can generally be slightly higher than simply laying concrete slabs. For detailed projects, we would recommend an OVÆDA® ProInstaller from the website.

To be able to install the paving, we would recommend using the Tectonic™ Aluminium Paving Support System which provides a completely rigid platform for paving slabs. The super-strong

aluminium joists overlap to create a lattice framework which gives the maximum possible level of support. This high-quality system can provide many design possibilities, allowing more creative paving finishes - the only limit is your imagination. The system is perfect for terraces, podiums, roof decks, balconies and of course gardens and allows for rapid drainage.

As part of revolutionising the Garden Landscaping industry, OVÆDA® offer another product as part of the Tectonic® range - the modular landscape framing system. Conventional construction methods generate a lot of mess with excavations, hardcore and building walls with mortar and blocks. The Tectonic® system creates no mess.



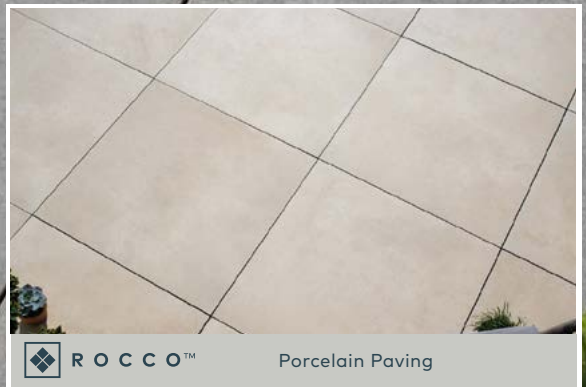
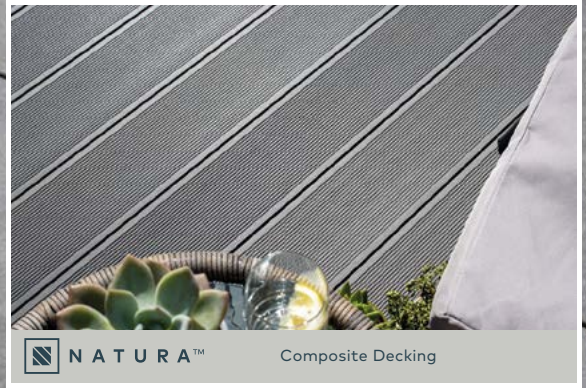


The unique steel frame system is able to provide anyone with the luxury of rapid installation for any type of decking or paving project, so by the time your materials are delivered, most of the hard work has already been completed.

To view the extensive range of contemporary and stone effect Porcelain Paving in the Rocco™ collection then OVÆDA® will be happy to assist you with whatever project you have in mind.

They are able to offer fast delivery nationwide with the supplies being held in their warehouse in Aberdeenshire.

www.ovaeda.com





Space to Breathe™

Explore our wide range of inspirational and high quality products for transforming external spaces into something truly unique. We work together with Landscapers, Garden Designers and Architects to create irresistible environments which promote health and bring value to both domestic gardens and commercial settings.

Get in touch today to find out more.

 sales@ovaeda.com

 0208 159 2999

 ovaeda.com

 [ovaeda_ltd](https://www.instagram.com/ovaeda_ltd)



EASILY CREATE SEAMLESS INDOOR & OUTDOOR SPACES



Westminster Stone's beautiful handmade paving and flooring is the ideal solution for creating seamless interior and exterior spaces.

Offering a 25mm depth for flooring and 40mm for paving presents the ideal design solution. For interiors, the thinner flooring flagstones and tiles work perfectly under furniture and are compatible with underfloor heating. They can be waxed or sealed to provide hardwearing and practical floors which will last a lifetime.

Stepping through bi-fold or sliding doors, the 40mm matching paving creates an extremely durable base, and unlike natural stone the paving is frost and algae resistant, naturally non-slip and consistent in size and depth, which makes cutting and laying them extremely easy.

Stonecast is an award-winning highly refined, and exceptionally high-quality concrete paving product - the best on the market! Moulds are developed in-house, using sourced originals from around the country, each one handmade with a different patina, shape and size to create paving that is completely authentic in appearance and as close a replica to original natural stone as it's possible to create.

The traditional nature of these products is highly sought after for period homes and restoration projects where sourced originals are either unavailable or price prohibitive. The paving and flooring ranges add instant maturity to indoor and outdoor areas with a huge range of colours, textures, sizes and finishes that are available in any quantity, all of the time.



One of the company's key products is their Yorkstone paving, whose popularity is largely due to the flexibility of supply and its competitive price in comparison to original yorkstone. Created from sourced originals, this replica yorkstone is completely authentic and once laid is barely distinguishable from the real thing. Its key advantages being that it is always available in any quantity and the consistent sizes make it far easier to lay.

One of Westminster Stone's unique qualities is the huge selection of complementary paving accessories produced, which increases the design permutations and provides consistent finishing touches to any landscape. Accessories including circles, kerbstones, coping stones and bullnose flags are available to match the full range of traditional flagstones including bestsellers Lancashire Mill and Yorkshire Street.

In 2011 Westminster Stone were offered the coveted licence to produce a range of products on behalf of the National Trust. Chosen for their wholly British manufacturing and meticulous attention to detail, the National Trust Paving Collection includes 4



CONCRETE & STONWORK

ranges of paving and accessories based on the houses and gardens within the Trust's care. Showcasing the versatility of the Stonecast moulds, these award winning products are used throughout the world to add instant character and an aged appearance to period and contemporary properties. The bestselling Hidcote paving was used by Channel 4's 'Escape to the Chateau', specially chosen by Angel Strawbridge to complement the age

and charm of their stunning French home.

As a family business who have been trading for nearly 40 years, making superior products is key. The Stonecast recipe uses the highest quality pigments, additives, fibre reinforcement and raw materials - providing products which are far superior to any other on the world market.

Practical and versatile, these beautiful products are designed to make landscaping and interior design projects simple with a huge range of styles, colours and textures that are always available for your paving and flooring needs. Seamless design has never been so easy.



www.westminsterstone.com

westminsterstone

Paving & Flooring



Featured product: Yorkstone

Traditional | Classic | Contemporary

Westminster Stone's curated collection of paving and flooring offers the finest British and International ranges.

View the full range
www.westminsterstone.com



CHOOSE ULTRASCAPE FOR COMPLETE COMFORT IN COMPATIBILITY

UltraScape has been manufacturing and providing the industry with high quality, specialist paving installation materials for over 25 years. Their expert materials are proven to work alongside all stone manufacturers with guaranteed, excellent results every time.

Over the last 25 years, UltraScape have established themselves as a force to be reckoned with. They have built longstanding relationships with architects, specifiers and contractors, and have listened to the changing needs of the industry to develop and suite of proven and trusted paving installation materials. As a trusted UK manufacturer, UltraScape have always prided themselves on providing the industry with quality paving

materials. With this in mind, each of the products that make up UltraScape's BS 7533 Mortar Paving System has been put through rigorous independent testing by an UKAS accredited laboratory to assess their performance capabilities and to ensure they give the best performance possible in real time situations.

What's more, UltraScape's Mortar Paving System is proven to work perfectly with all stone manufacturers, allowing you to use their premium installation materials with the paving stone of your choice. By choosing UltraScape, you are not restricted to a sole supplier of both stone and installation materials, but are given the freedom to use your first choice of paving

with full confidence that UltraScape will perform no matter which stone manufacturer use you - choose UltraScape for complete comfort in compatibility.

Building the right foundation for your paving is critical to success. UltraScape's bedding mortars will provide the ultimate laying course for all types of paving. UltraScape perma-bed is a permeable bedding mortar specially designed with permeability in mind. Formulated to drain away any water migrating into the pavement via cracks or damaged areas, perma-bed reduces water related pavement failures as rainwater will drain away rather than sit on top of the stone.



Selecting the correct bedding mortar and primer to install your paving is paramount to success but the finishing is also crucial. When making such an integral design decision, it is vital that you don't compromise the aesthetics with poor jointing.

UltraScape have jointing options suitable for all designs and tastes. Their range of flowable grouts and brush in sand will make light work of any installation - the hardest decision you will make is choosing between the beautiful colour options available.

What's more, the free passage of water through the cured product ensures that correctly laid paving will not suffer from reflective staining emanating from the underside of the paving elements.

If you are looking to achieve an 'Excellent' CEEQUAL award, or are due to have a BREEAM assessment, then UltraScape eco-bed is the bedding mortar for you. UltraScape eco-bed is proven to provide the performance you would expect from a BS 7533 bedding mortar but also contains 20% recycled material, significantly reducing the consumption of virgin aggregates.

Priming is an important part of any paving installation but is something that is often overlooked. Neglecting to include a primer such as UltraScape pro-prime slurry primer, can have disastrous consequences for your project and as a result, the reputation of your business.

UltraScape pro-prime is a slurry primer manufactured to meet the demanding requirements of BS 7533. Suitable for use with all paving manufacturers and types, including stone and porcelain pavers, UltraScape pro-prime is simple to use and is proven to increase adhesion, preventing failure and prolonging the life of your project.

Available in three varieties - Original, ECO and Smooth, and two stunning colours - Natural Grey and Charcoal - UltraScape flowpoint rapid set flowable grout, provides a decorative, natural-effect finish every time.

UltraScape flowpoint is easy to mix and apply, and once grouted, can be walked over in just 1 hour, minimising disruption and allowing you to move on to another part of the project quickly.

Completing the UltraScape jointing range is premjoint - the next generation in decorative, brush-in jointing solutions.





Using popular natural paving stones as inspiration, premjoint is available in three attractive colours - Natural Cashmere, Storm Grey and Cosmic Black. Furthermore, premjoint eliminates the need for hand pointing, can be used in all weathers, is frost resistant, and once applied, can be walked over in just 24-48 hours.

UltraScape's premium products are specified by contractors, architects and engineers for an ever-expanding portfolio of major schemes across the UK. Newcastle Cathedral, UCLAN University, Friars Walk in Newport, Piccadilly Place, Grand Central Station, MediaCity, Bullring Shopping Centre, Coal Drops in Kings Cross, Paradise Birmingham and Marble Arch are just some of the most recent projects benefiting from UltraScape's knowledge and expert installation materials.

UltraScape have gone one step further to offer their loyal customers a first class customer support package. This includes maintaining strong relationships with their supply chain to ensure they always meet their customers' needs and quality testing all raw materials and finished products to ensure a superior performance every single time.

All products are delivered on UltraScape's privately owned, FORS silver accredited fleet, which is fully tracked in-house, meaning their customers always receive a first class service which operates to the highest efficiencies and standards. Whether at contractor or early planning stage, UltraScape's Site Support Team are always available for one-to-one dedicated assistance tailored to suit your needs. Their help with problem solving, practical use and product performance

ensures you have the ability to experience their products at your convenience and guarantees confidence of application throughout your project.

As well as offering on-site assistance, UltraScape regularly welcomes visitors to their custom built training facilities where guests can attend a Material Awareness Day or complete a RIBA Approved CPD.

As well as in-person training, UltraScape also have an online training academy where visitors can register for webinars covering topics such as cold weather working and product help and advice, access a huge library of educational resources, watch how-to videos, and complete their virtual RIBA CPD.

Book an upcoming webinar or CPD by visiting instarmactrainingacademy.co.uk.

UltraScape's fully RIBA accredited CPD seminar, 'Paving the Way', has been educating the industry on the benefits of using BS 7533 compliant materials for over 10 years. They have created a package of options so you can complete your CPD using the most convenient methods for your needs. To find out more about UltraScape's CPD options, or to book your CPD and factory tour, please email cpd@instarmac.co.uk.

Choose UltraScape's proven and certified BS 7533 Mortar Paving System for the performance and assurance that comes with a UKAS seal of approval - you can't afford not to!

For more information on UltraScape's range of paving installation materials, support package or upcoming training events, please email ultrascape@instarmac.co.uk, visit ultrascape.co.uk or call their team of experts by ringing +44 (0) 1827 254402.

Keep up-to-date with all the latest news from UltraScape by following them on Facebook, LinkedIn, Instagram and Twitter.

ULTRA SCAPE®



The Mortar Paving System of Choice

Paving with confidence for over 25 years

UltraScape's specialist BS 7533 compliant system has been specified by contractors, architects and engineers for over two decades, and features in many award-winning schemes worldwide.



Environmentally friendly



Permeable option



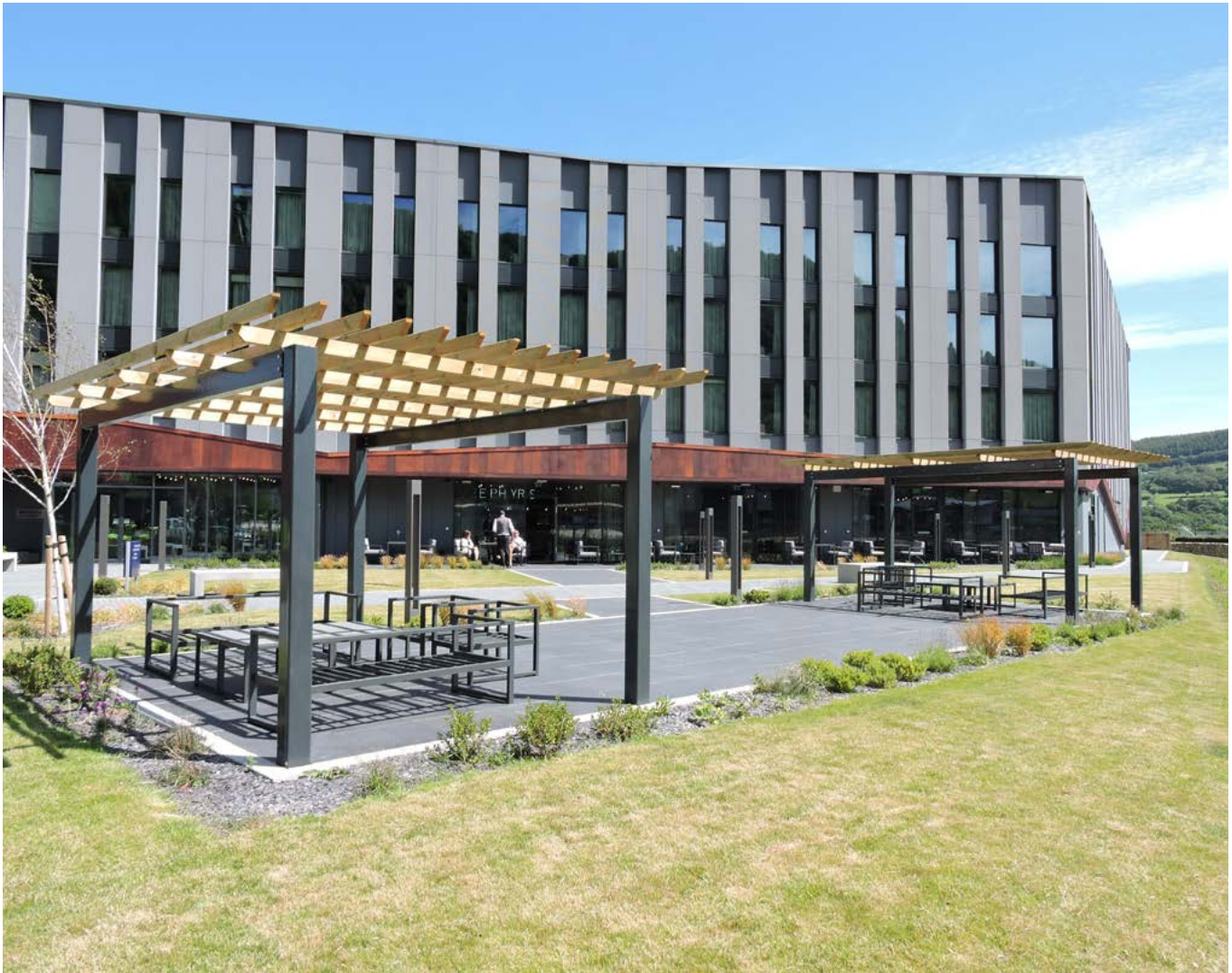
40-year construction life



Fast return to service



High performance



BRETT PROVIDES PATIO PERFECTION FOR HILTON HOTELS

When Hilton Hotels wanted to create the patio for their £11.1m Hilton Garden Inn at Adventure Parc Snowdonia, they decided that Brett Landscaping's GeoCeramica porcelain was the perfect product.

Working with Warrington designers The Environmental Partnership (TEP) and Manchester-based contractors HH Smith's, Brett Landscaping was able to supply their GeoCeramica hybrid porcelain to achieve an efficient install coupled with a stunning finish.

Brett had previously worked with TEP on the prestigious St Fagan's National History Museum in Cardiff and were called in to create the restaurant patio at the Hilton Garden Inn, which is one of the largest hotels in North Wales.

Global hotel chain Hilton Hotels has a strict process for selecting "on brand" products and they approved Brett Landscaping to supply 200m² of GeoCeramica Impasto Noir to the spectacular 106-bed hotel located on the edge of a world-first inland surf lagoon.

GeoCeramica is a composite porcelain and concrete paving flag tile with a pre-bonded, cementitious, water-permeable drainage layer. As the system is supplied as a porcelain tile with a concrete backing it means it can be laid and walked on much more quickly.

It is installed as simply and flexibly as a concrete slab - laid on a sand and Type 1 sub-base - rather than a ridged installation (having to mortar on to a concrete base) usually associated with porcelain paving.



This allowed a faster installation so the patio could be in-use more quickly and also reduced installation costs.

Jamie Gledhill, National Specification Sales Manager at Brett Landscaping, said: "We were happy to be able to add the finishing touches to this spectacular project in a beautiful setting."

"Our GeoCeramica porcelain product is increasingly popular with specifiers and developers due to the beautiful aesthetic combined with the ability to sustain high foot traffic and the ease of installation."

For more details on GeoCeramica and other Brett products see: www.brettlandscaping.co.uk

CHARACTERFUL PENNANT SANDSTONE

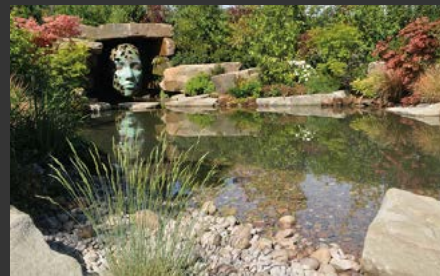
Outdoor space took on a whole new meaning recently, when we were all asked to work from home if we could. Landscapers leapt at the opportunity to provide many of us with a dramatic new look for that previously ignored space that suddenly we had so much time to study. Seating areas, patios, water features, firepits all started popping up, and it would appear even now, that the whole country is still just as keen - to keep up that momentum.

The characterful pennant sandstone, robust in its nature but diverse in its application from drystone walling, to building and paving stone, has been a very popular choice with both the client and the landscaper. Pennant Sandstone, available from Birch Hill Quarry in the Forest of Dean has a multitude of uses. Most recently the quarry has begun producing a coursed building stone, sawn top and bottom, cropped and then tumbled through a huge rolling drum to smooth the edges, making the building stone easy to lay and quick to form a uniform walling. In contrast the 'random cropped' walling produces a more natural, rugged finish, a well-liked product especially when mixed with a sawn coping to create that striking contrast, yet by using the same pennant sandstone complimenting.

www.stonequarries.co.uk



Sandstone • Limestone • Building Stone
Walling • Masonry • Landscaping • Restoration



01594 372023 • 01386 584384
www.stonequarries.co.uk





UK BASED DESIGNERS & MANUFACTURERS OF STREET FURNITURE & LANDSCAPE PRODUCTS

- ☎ 01509 815335
- ✉ sdl@street-design.com
- 🌐 www.street-design.com

PLANTERS & SEATING

- Full range of Planters & Seating manufactured to specific sizes
- Choice of materials & finishes
- Low maintenance products

- UK based manufacturer
- Established in 1986
- ISO Registered
- FSC Registered

- | | |
|-------------|-----------------|
| ROOF | HEALTH CARE |
| GARDENS | HOTEL & LEISURE |
| RETAIL | COMMERCIAL |
| RESIDENTIAL | PUBLIC REALM |



Circular Swithland planters



Creating inspiring street scenes

Bespoke Seats - Safety Railings - Giant Bollards - Security Products



CIS Street Furniture have the 'measure' of your next project

Why not call our sales team to assist?

T: 01483 203388

www.cis-streetfurniture.co.uk

[E: sales@cis-streetfurniture.co.uk](mailto:sales@cis-streetfurniture.co.uk)



CUTTING EDGE

2021 has been great for Woodscape, with sales and manufacturing running at the highest level in our 40 year history, and that success has been reflected in investment, with over £300,000 injected into machinery acquisition and personnel training.

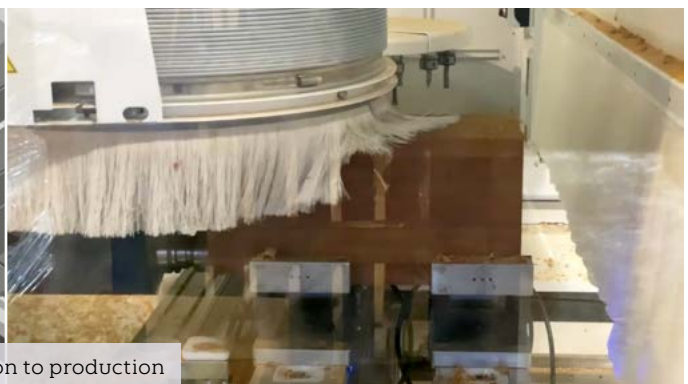
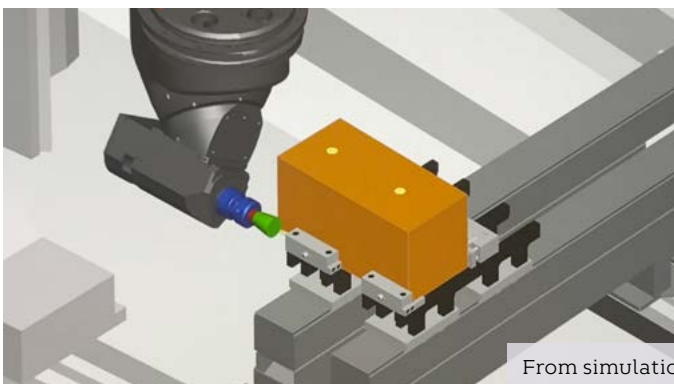
Already an industry leader, being one of only 6 companies in the UK to utilise a 5-axis CNC in our timber manufacturing process, October 2021 sees us take another stride ahead of the competition by introducing a second 5-axis CNC machine.



With its streamlined design, this improved Homag CNC allows us to manipulate 20% larger timbers, while the smaller heads allow for more intricate movement and detailing. Automated tool alignment accurate to 0.01mm ensures accurate replication of our designs every time.

Here you can see both the pre-manufacture simulation alongside an early test piece going through the new CNC, this ability to simulate the cutting and shaping process in real-time allows for fine-tuning without any material wastage.

The component used here is from one of our classic ranges, manufactured by Woodscape for decades and fittingly used here as a benchmark for the quality and precision we require from every element of our furniture.



From simulation to production



Elephant Park, London



Bringing this additional CNC capacity into our factory is not without its challenges, and we are re-working our entire workshop floor to optimise our workflow and ensure everything is working at maximum efficiency and capacity. Undertaking this project would be challenging even without the effects of Covid-19 lingering, so it has been great to see the dedication of our staff enabling us to overcome every obstacle during this difficult time.

The Woodscape name is synonymous with bespoke hardwood street furniture, but our adoption of CNC technology has seen us push the limits beyond other manufacturers abilities to produce products that shine in their locations as pieces of urban art, stunning yet with practical application. From our parade of Strata seats outside Birmingham New Street Station, to our undulating centre-piece seating at Peach Place in Wokingham, where you find street furniture unlike any other you will find the Woodscape name.

We continue to push the boundaries with schemes such as Whitfield Gardens, where the illuminated seating plays a core role in bringing a local mural back to the community, and the amazing work still underway around Battersea, with the waved design seating with internal lighting channels at Elephant Park is making the venue appear like a fantasy novel brought to life.

It's our pride and pleasure here at Woodscape to provide a service that has allowed all these schemes to push to be different, to give architects the freedom to design the nation however they wish, and with this continued investment from Woodscape, 2021 is just the beginning.



Peach Place, Wokingham



Whitfield Gardens, London



Reused and recycled

TWIN: Lava Grey

In addition to recycled hardwood, the Streetlife Drifter and Heavy-Heavy ranges are available in the TWIN material Lava Grey. This anthracite-grey material has a fairly rough texture and consists entirely of 100% recycled household plastic. Lava Grey is maintenance-free and has a very long lifespan.

Streetlife is proud to introduce the **TWIN concept**: an ambitious mission to provide all hardwood options within the Streetlife Collection with an alternative sustainable twin. With the addition of four new materials (Lava Grey, All Black, Cloudy Grey and Bamboo Brown), TWIN offers landscape architects greater freedom of choice and marks Streetlife's next step in its journey towards creating more sustainable public spaces.

Innovations in the field of sustainable materials offer interesting opportunities to make the Streetlife Collection even more sustainable. Lava Grey and All Black are made from recycled plastic and Cloudy Grey comprises plastic and textile. Bamboo Brown is a completely natural CO₂ neutral material and consists of bamboo fibre.

With the TWIN concept, Streetlife combines aesthetics and sustainability in honest products that are ready for the future.



Drifter Picnic Set - Chicago (ILL) - USA

Drifter: Reused hardwood (FSC®)

Of all the product families in the Streetlife Collection, the Drifter range has the largest dimensions and uses the coarsest wood. Drifter beams are old mooring posts (30 x 30 cm – 12 x 12 inches) reclaimed from local ports and waterworks. The 30- to 40-year-old tropical hardwood is certified FSC® 100% Recycled Hardwood. Reusing mooring posts for the production of new products is in line with Streetlife's circularity ambitions.



Free Form Tree Isle in All Black - Verneuil Sur Seine - FR

Rough&Ready: All Black

The Streetlife Rough & Ready range comes as standard in FSC® Hardwood and is now also available in the TWIN material All Black. This is a plastic recyclate (100% recycled industrial and household plastic) that is black throughout with a matt, rough texture. Streetlife products with All Black beams possess an industrial character, are maintenance-free and have a lifespan of 40-50 years.

A Streetlife Drifter Bench contains 650 kg of household plastic waste. This is equivalent to the annual amount produced by 15 households.

Solid Serie: Cloudy Grey

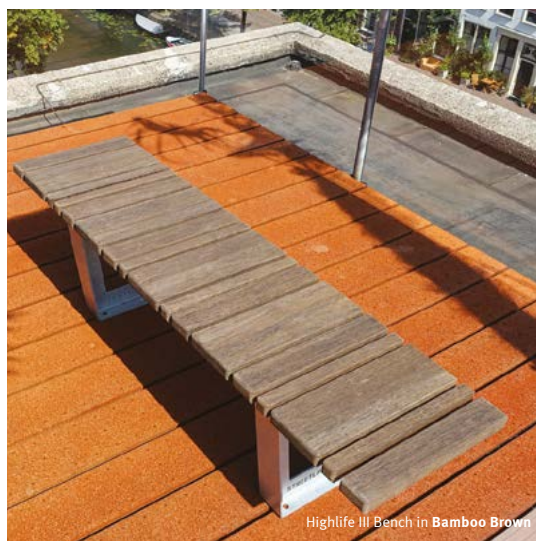
The textile waste mountain, like the plastic waste mountain, is a growing problem. The TWIN material Cloudy Grey reuses both types of material (50% plastic and 50% textile fibres) to form a new 100% recycled product. The material is grey with a blue tone and is distinguished by its vibrant, cloudy appearance. Cloudy Grey is 100% recyclable and can be brought back into the production chain. The Solid Series is the most extensive range in the Streetlife Collection and is now available in Cloudy Grey.



Solid Staple Bench in Cloudy Grey

Fine Benches: Bamboo Brown

Streetlife Fine Benches include the product families with the smallest beam sizes in the Streetlife Collection: Cliffhanger, Olympic Wave, The New Standard, Long & Lean, Wood Tops and the Highlife III range. Bamboo Brown is a natural and sustainable material made of bamboo fibre and has a deep brown colour with a highly luxurious appearance. Like wood, Bamboo Brown ages when exposed to the elements. Bamboo Brown is CO2 neutral and FSC® certified.



Highlife III Bench in Bamboo Brown



Green Circular Bench in Bamboo Brown



Heavy-Heavy Bench in Lava Grey



Solid Serif Chaise Longue in Cloudy Grey



Rough&Ready Picnic Set in All Black



Rough&Ready Big Green Bench in All Black



THE CORE TREE ROOT PROTECTION (TRP) SYSTEM



The CORE Tree Root Protection (TRP) System is a CE certified cellular confinement system that provides guaranteed protection for the roots of mature trees from pedestrian and vehicular traffic. It distributes the weight of the traffic which in turn prevents subsoil compaction around the roots.

With the correct fill material, it is completely porous allowing continued water permeation and gaseous exchange to ensure the protected tree stays healthy.

Why is Tree Root Protection Needed?

Due to the rate of urbanisation within the UK, it's becoming increasingly common to find trees located in areas of development with Tree Preservation Orders (TPO's). TPO's ensure the protection of mature trees, especially when construction work is being carried out nearby.

Our CORE Tree Root Protection (TRP) cellular confinement system offers a compliant solution to creating a driveway, car park, road, or track for temporary site

access. The system creates a three-dimensional erosion barrier and structural bridge that uniformly distributes weight-bearing loads - this prevents unwanted ground compaction in and around the feeder roots of the tree.

Failure to comply with a TPO is treated as a serious offense towards the environment and can result in a £20,000 fine. 90% of tree roots are found within 1m of the surface and extend to a distance equal to approximately 65% of the tree's overall height. Making it impossible to build a sustainable surface using traditional methods that can take vehicular traffic without digging and disturbing the feeder roots of the tree.



First regulate the surface and ensure to cover any exposed roots with a sharp sand or rootzone material. Install our specialist TRP membrane and lay CORE TRP panels over the top, pin the panels open and fill with an angular reduced fines sub base material - such as a clean limestone. The depth of the TRP Panel will depend on CBR value of existing soil and weight of traffic. You are now ready for your permeable wearing course.



Temporary Construction Site Traffic

Our cellular confinement system - CORE Tree Root Protection - is the perfect solution for creating temporary site access through woodland or areas that are obstructed by well-established trees. It can be installed with ease and can take the weight of all types of construction traffic & machinery, even a piling rig!

Our panels come flat packed which makes it easy for on-site handling and transportation. We can supply all the necessary accessories; membranes, pins, connecting studs that you will need to complete the install.

Once the build has been completed, the CORE TRP cellular confinement system can be easily removed from site leaving the ground looking like it was never touched. Better still it can be left in place as subbase for a porous wearing course, just remove the top layer of infill material and you will be ready to install the porous wearing course of your choice.

What Traffic Types Can Use This System?

Cellular confinement systems are employed to enable all traffic types to use that area whilst ensuring that the tree roots of the tree remain protected. Our particular system is available in 5 depths: 50mm, 75mm, 100mm, 150mm and 200mm. For pedestrian use, 50mm is to be used for walkways, public pathways, and woodland paths. The 75mm is used in similar areas to the 50mm but

covers cycle paths too or all traffic under 1 tonne. The 100mm is used for all domestic vehicle use - and the 150 & 200mm panel is for HGV access and construction traffic.

How Is The System Laid?

Unlike traditional methods of road and driveway construction, there is no excavation required to install our cellular confinement system: CORE Tree Root Protection.



JOIN US TO CELEBRATE THIS YEAR'S NATIONAL LANDSCAPE AWARD WINNERS!

Friday 3rd December marks the triumphant return of the National Landscape Awards at JW Marriott Grosvenor House, Park Lane, London. Demand for tickets has been high and with less than 100 tickets remaining, ensure you visit baliawards.co.uk today to confirm your place at the largest landscape Awards in Europe.

This year's ceremony will see Principals, Specials and the coveted Grand Award winner crowned from this year's National Award Winners. To view the full list of winners, visit baliawards.co.uk.

Without the continuing and unstinting support of our headline sponsor, Accredited Supplier member Green-tech, and our other stalwart sponsors, the National Landscape Awards would not be possible. On behalf of BALI, its membership and all of this year's winners, a huge 'thank you to them all.

Ticket prices

Individual Place - £195
Table of 10 - £1,750.00
Table of 12 - £2,100.00



Limited sponsorship opportunities remain available, for further details contact Diane McCulloch via telephone at +44(0)24 7518 5614 or via email at diane.mcculloch@bali.org.uk.

For general enquiries contact Emily Feeney via telephone at +44(0)24 7518 5613 or via email at emily.feeney@bali.org.uk.



BALI National Landscape Awards



Headline Sponsor

CONGRATULATIONS TO THIS YEAR'S AWARD WINNERS TICKETS ON SALE NOW

Don't miss out – visit baliawards.co.uk to book your place

Friday 3rd December 2021
11am – 4.30pm
JW Marriott Grosvenor House,
Park Lane, London

Headline Sponsor	Sponsors											

For general enquiries, contact **Emily Feeney** via telephone at **+44(0)24 7518 5613** or via email at emily.feeney@bali.org.uk

SELECTION OF BOOSTER PUMPS FOR IRRIGATION

Sizing of Pumping Systems for irrigation is not for guess work and to select well, needs many considerations to achieve optimum performance and efficiency.

Head and flow are the main requirement for any system, however there is a lot of information required to get the best efficiency and reliability.

Head is seen as the highest point of discharge from the pumps, but we need to understand the total amount of static head and other head losses in the system to define the Total Head. Pipework costs may push installers towards using less costly small-bore mains to the discharge points, only to undermine the long-term energy cost and system performance. Unfortunately, the friction loss within a small-bore irrigation system will demand more energy, escalating the running costs for energy, therefore the more flow the larger bore pipework is required, especially for the main distribution pipework.

Other losses are found in any pipework system and should be accounted for when calculating the total head, sprinklers, irrigators, fittings, valves will have an identified head loss valve and by careful selection and design some of these losses can be reduced.

Once the total head and flow has been determined the process of selecting the pumping system can begin, most facilities such as golf clubs, sports grounds, parks, large gardens will require a system using 2 or more pumps with a 'jockey' pump to cope with small fluctuations in pressure demands.

The control of these pumps is via an electrical control system which will monitor the pressure with the discharge water main and will start

the pumps as demand increases, so one pump may be required initially, but as demand increases an additional will be deployed to maintain pressure.

The control systems, maybe as simple as using mechanical pressure switches, to activate the motors via crude 'direct online' starting methods, however more commonly, variable speed drives are being used to match performance with demand giving better overall performance and economy.

A reliable and efficient control system will have a myriad of additional built in protection features supplementary to the expected motor overload protection; dry running protection is essential to avoid damaging the pumps due lack of incoming water, equally under pressure protection may be provided which shuts the system down if there is a delivery main burst or unplanned discharge beyond normal planned flows occurs.

Power supply is a very important consideration, ensuring that there is sufficient supply to meet the demand of a new system, while location of system is important trying balance the best location of the pump set to optimise the irrigation obligations but not too far from a main power supply to avoid escalating costs of larger power cabling to avoid voltage drop which will undermine the system.

Recent examples of diverse booster pumps installations for irrigation show how different applications can be applied successfully.

Golf Course

As part of a wider water management scheme on a

Hertfordshire golf course, this required a booster set meeting very high industry standards, to improve the distribution of water around the expansive course where the water was extracted from lake.

A Dual Booster Set was sized and selected, complete with 2 x 5.5kW vertical multistage pumps, motor mounted variable speed drives and bespoke control panel to Irritech specification, including back up fail-safe system via Digital Pressure Controllers. The pump set in a duty / assist configuration, will achieve a performance of 20m³/hr at 8.8 bar pressure.



The booster set is used daily to water the main pitch at the bet365 stadium.

Football Stadium

The home of Stoke City FC, the bet365 stadium, as with all major sporting grounds, requires watering daily to keep their pitch in a premium condition. Searching for an efficient and economic product that could provide reliable irrigation with automatic control. The system, comprised of fixed and variable speed clean water multistage pumps, was designed and manufactured to provide both the flow and water pressure required for the football ground.

Talk to the experts at TT Pumps Ltd
Tel +44(0)1630 647200.
www.ttpumps.com

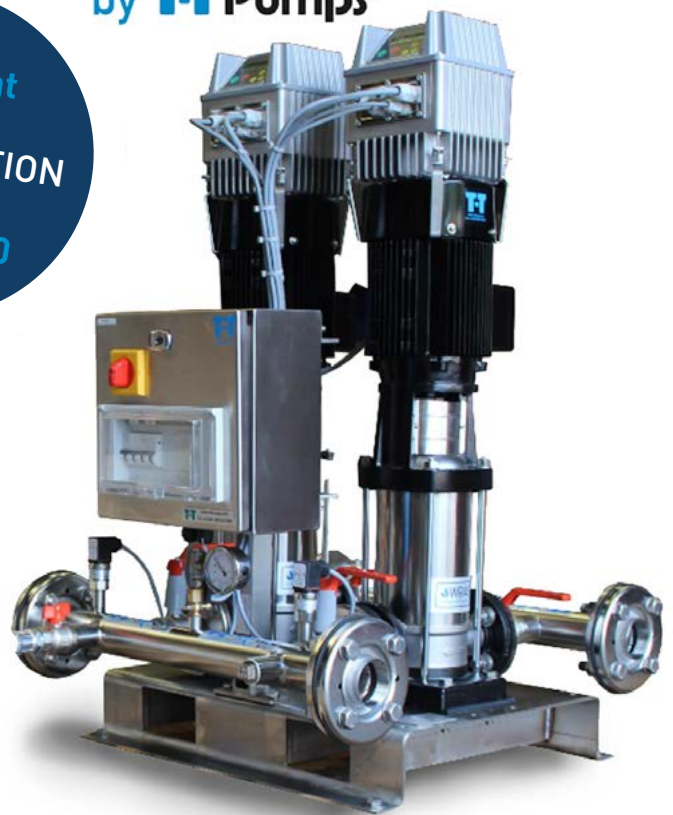


For essential Irrigation you can rely on Hi-Dro Boost range.

Extensive range for small volume applications up to the largest irrigation schemes.



See us at
UK
CONSTRUCTION
WEEK
Stand C130



TALK TO OUR EXPERTS
response@ttpumps.com



ttpumps.com

01630 647200





JM CLARK

Looking for an expert team to clean and clear your outdoor space?

J M Clark's high-performance sweepers collect, compact and remove virtually all forms of debris in dry or wet conditions. Making short work of any clean up task you may have.

Trusted maintenance and cleaning services:

Mechanical Road Sweepers • Compact Road Sweepers
High pressure jet washing • Gully sucking services

Our operated sweepers can be supplied 24 hours a day, 7 days a week for short or long term hire.

T: 0800 014 6241 | E: info@jmclarkltd.co.uk

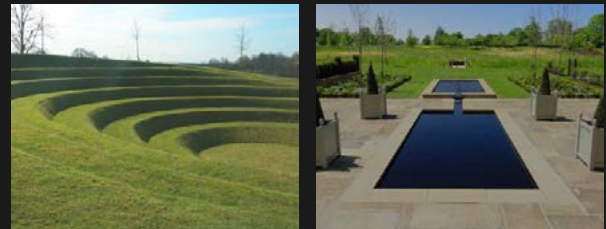
www.jmclarkltd.co.uk



MILES
WATER ENGINEERING



Waterscape specialists offering comprehensive design, renovation and consultation services for a wide range of water related projects in commercial and domestic settings.



miles-water.com 01359 242356 **CHAS**

tce TRAFALGAR
CLEANING EQUIPMENT LTD



Trafalgar Cleaning Equipment launched a new game changing battery powered pedestrian sweeper in 2017 aimed at industry, FM companies, local authorities, and hospitals. The new Eco City Sweeper 2 (ECS2) is a battery powered compact silent pedestrian sweeper and a 'A Game Changer' in sweeping.

More manoeuvrable and quieter than traditional urban machines, it represents a new concept in pedestrian cleaning suitable for cleaning private and public spaces.

The ECS2 is defined as a "mechanical" sweeper because it collects waste by the central brush and is a "suction" sweeper also thanks to its powerful filtering system even in the absence of water, freeing clean air in the environment during use.

For more information call 01403 273 444 or visit www.trafalgarcleaningequipment.co.uk.



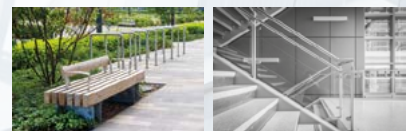
Harlestone
PROJECTS

Trust the experts with your plans

City life is fast-paced and to stand out you need a manufacturing and installation partner who can deliver modern, bold bespoke architectural structures to bring your unique designs to life.

Harlestone Projects works with architects to enhance the construction of residential developments and the surrounding urban area for a brighter, safer, more sustainable environment.

- Street Furniture
- Balconies
- Staircases
- Metal Fabrication



01604 586 000
sales@harlestonegroup.co.uk
harlestonegroup.co.uk

Trees - Managing Your Assets



It is well documented that trees play a significant role, providing numerous aesthetic, social, environmental and health benefits, as well as helping us respond to climate change.

A large tree can produce enough oxygen each year for two people to breathe. They support a huge variety of wildlife and research has shown that when people can see trees and greenery they can recover more quickly from illness.

Trees can also sometimes pose a risk to people or property, and landowners have a Duty of Care to take reasonably practical steps to manage their tree risk



The Quantified Tree Risk Assessment (QTRA) system applies established and accepted risk management principles to tree safety management and provides a numerical basis for the application of a threshold of tolerable and acceptable risks.



TreeWise Solutions have a team of experienced and qualified Tree Inspectors who carry out surveys in order to identify any risks and to recommend works to reduce that risk to an acceptable level.



TreeWise manage the Tree Works on behalf of their clients to ensure that any works resulting from the survey are carried out to the required standard and specification, within time and budget constraints.



TreeWise Solutions work with large landowners across the UK and is an NHS SBS Approved Framework supplier.



*TreeWise
Solutions Ltd*

For more information please email
Jaqs@treewisesolutions.co.uk
Telephone 01228 561000
www.treewisesolutions.co.uk

COOPER PEGLER LANDS AT HEATHROW



Cooper Pegler knapsack sprayers are helping Heathrow Airport control weed and grass growth along its runway margins and perimeter fencing.

These key elements of the airport's airside Habitat Management function are now being handled by CP3 Series 2000 knapsacks, one of Cooper Pegler's most popular models.

Training provider Amenity Training and Consultancy has worked closely with managers Mike McKee and Neil Pritchard, who were instrumental in bringing the Habitat Management function in-house from 1 July in a move to bolster operational autonomy.

The trainer has delivered PA1 and PA6 certifications for knapsack spraying among a ten-strong in-house team, whose responsibilities also embrace maintenance and upkeep of key areas to include taxiways and stands.

Undertaken at night, when aircraft movements are minimal, the spray programme keeps Heathrow's north

runway (3,902m) and south (3,660m) runways and perimeter fencing clear of unwanted vegetation by applying total herbicide to treat perennial broad leaf weeds and grasses during the growing season across the 12.27km² site.

The spray programme is continually monitored and adjusted as necessary, notes Amenity Training and Consultancy owner Paul Bannister. "Controlling perimeter fence-line vegetative growth helps optimise security," he explains, "while keeping the runway burn-line

fully visible at all times enables any staff working on the airfield to avoid breaching it and causing a runway incursion, which is a serious safety risk in aviation."

Sprayer training has proceeded well, Paul adds. "We've delivered PA1 and PA6 programmes to 10 Habitat Management team members and everyone really enjoyed the experience."

CP3 Series 2000 knapsack sprayers are a popular choice across the amenity and sports sectors because of their reliability in delivering constant pressure and sturdy build quality.

"I always use them as demonstration sprayers," Paul states, "as in my view they are among the more reliable units available and carry intrinsic safety features. If any seals fail, for example, liquid is retained in the tank, rather than leaking out."

Heathrow's PA1 and PA6 certifications fall under a wider remit for amenity training provided by Amenity Training and Consultancy that includes machine mounted sprayers, offset and strip sprayers, employed to tackle Heathrow's huge hectare of airside grass.



BERTHOUD

SPRAYING SPECIALISTS SINCE 1895

The most **reliable** and **comfortable** sprayers
on the market

VERMOREL



VERMOREL 2000
PRO CONFORT

VERMOREL 3000
ELECTRIC

VERMOREL 1800



POWERFUL • ERGONOMIC • PRECISE



www.berthoud.fr/en/

For distributor enquiries for Berthoud products, please contact our UK wholesaler Spindrift Sprayers Ltd. Tel - 01995 600001 Email - sales@spindriftsprayers.co.uk



NO WEED OUT OF REACH WITH THE CAMPEY AIR TROLLY PACK



Campey Turf Care Systems latest innovation, the AIR Trolley Pack from Dutch manufacturer WeedControl BV brings the hardest to access weeds into reach.

The Honda GX120 motor with compressor powers the LPG/

propane 3x15kw hot-air burner head with an adjustable operating temperature between 190°C - 290°C. The small footprint of the trolley and burner means it can easily access hard to reach areas such as around poles, along walls and road edges, under street furniture and in

narrow street passages and alleys where weeds consistently grow. The AIR Trolley Pack is also ideal for inner-city areas and the after-treatment of larger weed removal projects.



Flame weeding is a very effective and environmentally friendly way to remove weeds against alternative methods such as potentially harmful herbicides. Most annual and some perennial weeds can be eradicated using a flame that essentially

explodes the weeds' cells, turning them into ash. This ash then mixes with the soil or disperses with no harm to other plants while there is no risk of drift onto other areas, which can be common with chemical applications.

WeedControl has explored all health and safety concerns associated with working with a flame during the development of the product. Special attention was paid to the ease of operation to ensure that any user can safely and easily operate the machine. All Weed-Control products are made to meet legal requirements when working in public and private areas and impact the environment as little as possible with a focus on sustainability.

The AIR Trolley Pack can be optionally supplied with a hot-air bin at the front side. This is equipped with a 3x15kW hot-air burner head. For this, the AIR Trolley Pack is modified at the front side for stability.

For more information or a demonstration of the AIR Trolley Pack, contact Campey Turf Care Systems.



www.campeyturfcare.com

JOHNSONS OF WHIXLEY CELEBRATES 220 MILLION PLANT SUPPLY DURING A CENTURY IN BUSINESS

One of the UK's largest horticultural nurseries, Johnsons of Whixley, celebrated its 100th year in business in June.

The family business was founded by war veteran Eric Johnson in June 1921 and was bought by John Richardson in 1964; it has been owned by the Richardson family since.

The company has sold around 220 million plants during its long history, supplying the commercial sector, garden centres and a long list of affiliated horticultural trades.

Notable projects include the Forth Road Bridge, HSI, Royal Parks, The Athletes Village at the Glasgow Commonwealth Games, a five-star hotel, Grantley Hall, and the UK's largest science campus.

Founder Eric Johnson started the company with minimum assets and a small piece of land bearing a couple of dozen fruit trees. He went on to produce a range of vegetables, fruit and garden plants that he sold directly from the nursery.

By 1964, when Yorkshire horticulturist John Richardson and his Scottish wife Dorothy took over, the company was



producing 150,000 plants annually, many of which were seedlings of hedge plants and rhododendron ponticum. The business employed 11 full-time staff and had a turnover of £30,500.

Today, Johnsons has almost 200 acres of land and 120 employees, rising to 150 seasonally. The business sells between five and six million plants and trees each year. Despite the pandemic and Brexit, turnover for 2020 was £13.2m the second highest in the company's history.

It remains a true family business, with 11 members of the Richardson family performing a variety of roles within the

company. John, now 83, is the company chairman and still works a four-day week. His son Graham is the group managing director and makes the business's overall decisions, with support from his brothers Iain and Andrew, who are directors.



Grower Supplier Distributor



Expertise



Rapid response



Consistency



Quality



Multi-faceted



One-stop-shop



Vast range



National reach

01423 330234

info@nurserymen.co.uk

www.nurserymen.co.uk

A turnkey solution provider for all your landscaping needs...



D Distinctive Lighting

BOLLARDS FOR ANY LANDSCAPE

distinctivelightinguk.com
 enquiries@distinctivelightinguk.com
 Tel: 0330 094 8824

High performance outdoor LED lighting

Ideal for indoor and outdoor applications, such as garden and deck lighting, cabins, studios, garages or stables.

- Available in lengths of 5m, 10m, 15m, 25m
- Easily installed by a non-skilled person
- LIA UK approved
- IP65 rated
- 180 high output LEDs per metre
- 110v and 240v available

SiteLite HIGH PERFORMANCE LIGHTING Developed in the UK, SiteLite is a LED lighting system designed for the leisure and construction industry.

Call: 07974 171681
 or email: geoff@cblimited.co.uk

The Bellhop by Barber & Osgerby

From the extensive range of discreet outdoor lighting created by Italian lighting specialist Flos and its world renowned designers distributed exclusively in the UK by Atrium Limited

ATRIVM

28 Leonard Street London EC2A 4BY
 020 7681 9933

sales@atrium.ltd.uk
 atrium.ltd.uk

Illuminating Landscape Inspirations

Lighting, water features and furnishings for our gardens, parks and landscaped areas

the garden lighting shop



THORN LIGHTS THE WAY TO MORE 'DYNAMIC, APPEALING AND ASPIRATIONAL' HIGH STREET

Thorn has supplied the lighting for North Ayrshire Council's £2.8 million project to upgrade Irvine High Street, part of an area-wide regeneration initiative named Irvine Vision. The team at Thorn Lighting worked with Land Use Consultants (LUC) and mechanical and electrical engineers Hawthorne Boyle Ltd to design a comprehensive upgrade for the main streetscape through Irvine Town Centre. This included the

High Street, Bank Street and several Closes that link them to the rest of the town centre. Key objectives for the project were to create a pedestrian-friendly environment by improving circulation, introducing traffic calming measures, widening footways, reducing street clutter, and upgrading the lighting to facilitate safer access through the town centre while protecting the environment and reducing operating costs.

The scheme celebrates Irvine's heritage and references its connection to the sea and river. The main streets seek to create a cohesive public realm, linking the recent developments at Bridgegate and the Town House. In the Closes, the detailed design relates to each close's history, revitalising them as connections into the town centre.

Thorn faced challenges in balancing the luminaires that would achieve the correct lux levels and uniformity whilst giving the area a unique look and contemporary feel that would integrate with North Ayrshire Council's required CMS system. These challenges were overcome by utilising a mix of column and wall mounted solutions with Thorn's in-house Satys brackets on walls to complement the column units and mounting Dyana LED lanterns on bespoke columns.

Thorn's Dyana LED lanterns meet all of today's demands for eco-friendly road lighting and are virtually maintenance-free, with a 12-year service life. With distinctive product design, outstanding optics, and great versatility, this saucer-shaped luminaire (only 110 mm in thickness), is available in 3,000 and 5,000 lumen packages with a colour temperature of 4200K (neutral white). The high power LEDs are boosted by a patented lens and aluminium reflection system for uniform and glare-free illumination.

Duncan McLean, Director of Landscape Architecture at LUC commented, "The refurbishment of the town centre lighting is a fundamental component to Irvine's regeneration. It contributes to the creation of a vibrant and safer environment at all times of the day, 365 days a year. The Thorn Dyana LED lantern has proved to be a robust and elegant solution for Irvine Town Centre."





Abrar Suleman, Electrical Services Engineer at Hawthorne Boyle Ltd, commented, "Thorn has helped the Hawthorne Boyle and LUC team deliver a hugely impressive, visually stunning lighting scheme that reflects the new Irvine Streetscape - upgraded for today and future aspirations. Irvine Town Centre is now an attraction in its own right, and we frequently see local people stopping to admire the Thorn

columns and light fittings that line and illuminate the central streets".

The new lighting scheme is a complete success and has improved colour rendering, highlighting the new paving and street layout, giving a more modern feel to the area. Councillor Alex Gallagher commented, "Growing our economy, increasing employment, and regenerating towns are priorities

for North Ayrshire Council. The project confirms our commitment to delivering the Irvine Vision initiative based on building a more dynamic, appealing, and aspirational town centre."

For more information on Thorn lighting please visit the website www.thornlighting.co.uk



THORN
LIGHTING

**BETTER
LIGHT
BETTER
LIFE**

URBAN LIFE LIGHTING

Take a look at our applications
and lighting solutions.
thornlighting.co.uk



RE-THINKING THE RENEWABLE – THE SOLAR LIGHTING REVOLUTION HAPPENING IN THE UK

LUMENA LIGHTS FOUNDER MARTIN BENNETT SETS OUT THEIR SOLAR STORY SO FAR...

For several years, Lumena has specialised in unique high-end Brass, Stainless Steel and Aluminium LED garden lighting, often supplied to award-winning projects. Although we still specialise in this area, along with Bollard Lighting and Photocell (dusk to dawn) Lights, I wanted to push forward with a greener, more sustainable approach - Solar Lighting.

A while ago, it became my ambition to stock Solar lighting but until 2018, the U.K. weather and the poor quality of many of the lights available meant it was not an option that suited our high-quality standards.

With the advent of improved technology incorporating more efficient Solar Panels, ever brighter LEDs and high capacity, long life

Lithium-Ion batteries I decided to seriously explore the lights being made. We worked closely with the manufacturers to produce lights suited to the British climate by calibrating the electronic controls. By mid-2019 we stocked a range of unique Solar Lighting that will light for hours every night of the year - the Pro-Solar Range. By way of Solar Bollards, wall lights and floodlights, the Pro-Solar Range has proven very

popular in all areas - in gardens, commercial premises, public areas - even waterfront piers. We continue to expand the range with our most recent additions being the Endura Path Light which will illuminate for up to 10 nights when fully charged! This is our longest lasting solar light which has recently launched with a fantastic response and results.

Sales manager Ben Courtney has witnessed a change in buying habits, even from the electrical trade who are often seeking out a solar alternative.

'Now the trade are aware that the quality of solar lighting has improved, they are confidently specifying solar lighting options, usually alongside 240v mains lights. Most of the time, the solar lights are specified for areas where cabling and power is not a viable option,

either for cost, time, sustainability, or because of general upheaval. It ticks the environmental boxes for all involved too, which is a really positive step'

Since the end of 2020 we have been developing an even brighter Solar Street Light Range - ViaMAX. Just launched, these larger scale designs such as the 'Streetmaster' and 'Olympia Max' are exclusive to Lumena, and suited to commercial premises such as walkways and venue car parks due to their high output and large solar panels. 3m galvanised columns with 76mm or 60mm columns are available. The range also includes impressively bright downlights ideal for signage or general security such as the 'Dominium' which has a fully adjustable solar panel for ultimate charging efficiency.



Many of the lights have multiple lighting functions alongside motion sensors, two more factors important in retaining enough charge to shine bright in the UK, all year!

Solar lights have "green" credentials, are easy to DIY install, many with no light pollution such as the contemporary Endura [pictured] or the Pathmaster solar spreadlight. Some designs have integrated solar panels, whilst others can be placed in shady areas with the panel placed elsewhere.

We are excited to have launched the brand new 'Durasol' Solar Garden Lighting System to power multiple 12v lights at the same time from a single solar panel. This solar powered charging unit has been specially designed with Lumena's 12v plug & play garden lights in mind. Simply plug the lights into the separate solar panel, for an eco, versatile installation, using easy splitters for multiple light fittings - no power source required!



Lights can be placed in shady areas with the Durasol solar panel sited at ground level in a brighter spot nearby. A remote control is also provided which has various time settings. Great for experimentation with highly rewarding results. How's that for green credentials?

Reliability is key with any professional standard lights, but even more important with solar lighting as people are so used to low cost options lasting for one season. That's why a 5 year supplier guarantee is offered with most models, including our ViaMAX street lighting range. This is simply a supplier guarantee with the expected lifetime of the lights in excess of 8 years.



See the full range and trial the solar lights for yourself at www.lumenlights.com

PROFESSIONAL HIGH OUTPUT SOLAR LIGHTING



PATHMASTER

365 DAY ILLUMINATION

- ✓ Long Lasting
- ✓ Environmentally Friendly
- ✓ Easy to Install
- ✓ Free to Run



SOLLUX



ENDURA



OLYMPIA



SOLAR LIGHTS FOR THE UK



COMMERCIAL SOLAR STREET LIGHTS



STREETMASTER



HIWAY MAX



OLYMPIA MAX

- ✓ Warm and Daylight White Options
- ✓ 3m Galvanised Lamp Posts - 60mm & 76mm Collar
- ✓ High Output (up to 4800lms)
- ✓ 365/yr Illumination
- ✓ Heavy Duty Materials



CALL US 9AM-5PM, MON-FRI

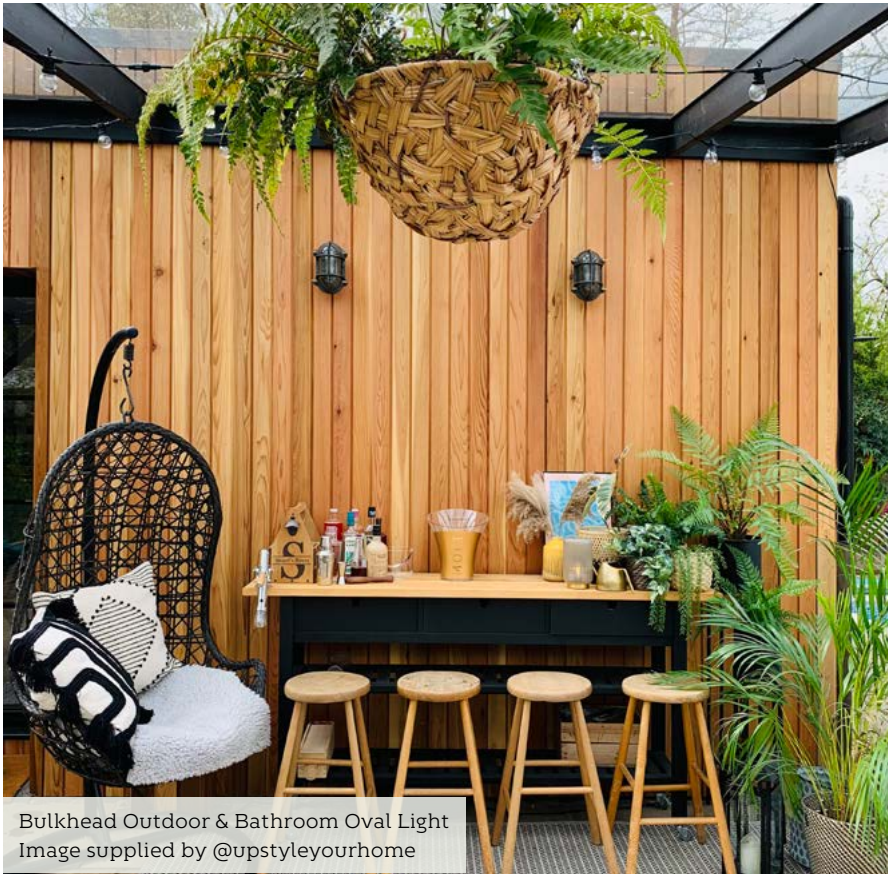
01327 871161



ONLINE SHOP & TRADE ACCOUNT

lumenalights.com

Showroom Open Monday - Friday: Lumena Lights Ltd, Centre 33, Long March, Daventry, NN11 4NR



Bulkhead Outdoor & Bathroom Oval Light
Image supplied by @upstyleyourhome

Brooklyn Outdoor & Bathroom Dome Wall Light. Image supplied by @nicbissekphotography and @veryvictorianmerebrook



EXPERT ADVICE ON EXTERIOR LIGHTING TRENDS AND TIPS



These versatile Bulkhead Wall Lights make a beautiful addition to both interiors and exterior spaces. They are hand-crafted in industrial-styled metal with a patina finish, and can be strategically placed to cascade light to whichever feature you would like to focus on.

Recent events have given homeowners the chance to appreciate every aspect of their homes a little bit more. While we have always cared for our home interiors, we have seen much more attention focused on creating the much sought-after inside/outside look and how we can strengthen the connection from our home to our outside space.

With more time being spent at home, we demand more from our spaces, both inside and out. The expectations for our outdoor living space now hold the same design opportunities as our home interiors and having the correct lighting is vital to making the most of your outdoor space. Not only should your lights be stylish, but they also need to be functional. The lighting plays a key part in ensuring the garden

comes together, taking the design to the next level. For many of us, this means creating stylish thoughtfully designed spaces that create the atmosphere of a chic outdoor kitchen, bar or garden terrace for example.

Thanks to technological advances, IP65 rated outdoor lighting designs are available in a wide range of finishes, fittings, and styles, meaning there is an outdoor lighting option to suit any garden scheme from modern, state-of-the-art exteriors to brick, wood, or traditional gardens.

Metallic finishes on outdoor lighting is definitely a trend that's set to continue and lends itself well to coordinating with other garden accessories and furniture. As well as adding interest with texture and shine, copper and brass lights will



The Brooklyn Outdoor & Bathroom Globe Wall Light provides an elegant yet efficient lighting solution for your exterior and interior in your home or business. The wall light works well with both modern, contemporary themes and traditionally classic, vintage interiors.



Brooklyn Outdoor & Bathroom Dome Wall Light - 8 inch brass shade with brass wall holder.

bulb could be used for creating a softer atmospheric glow for outdoor dining. Another very popular option is to use motion sensor LED bulbs with compatible outdoor lighting fixtures. Not only does this offer multiple safety advantages but will also help to save on electricity bills. After selecting the style or styles of light needed for a space, the next thing to consider carefully is their positioning. Think about the direction of each light to ensure you are not exposing something you'd rather not draw attention to or creating too much glare. Exterior lighting will accentuate the architecture, colours and textures of your property for an outdoor living space to be proud of. Make sure you experiment with different positions before you decide on a final placement. You can use a large torch in varying placements to see where it is likely to provide light. For glow without glare, opt for downward facing wall-mounted lights that create a relaxing atmosphere that can be enjoyed by all.

add a sense of luxury to an outside space. Bold shapes are also set to be big and are great for creating a statement. Modern designs come in all shapes and sizes and can really help to further enhance the overall look of the outdoor area.

Always ensure you opt for good quality outdoor lights that are compatible with LED bulbs. These are energy efficient and also have

incredibly long lives, making them the perfect sustainable choice. The bulbs themselves are also available in a variety of shapes and colours, giving even more choice to achieve the perfect look desired. This could be different depending on the intended use, for example, you may wish to select a bright white bulb for practical reasons such as lighting up a pathway, whilst something more subtle like a vintage style amber

Marketa Rypacek
 Managing Director, Industville Ltd
 020 7971 7871
www.industville.co.uk

OFFERING YOU THE ULTIMATE PACKAGE FOR ARTIFICIAL SPORTS TURF MAINTENANCE

From renovation and maintenance to the assistance of dirt removal, GKB Machines are able to offer you a fleet of trustworthy machines to help you meet your artificial sports turf maintenance goals.

Do you experience problems with a compacted turf pitch?

With the GKB Renovator you are in possession of a robust and reliable synthetic turf maintenance machine. With five rotating brushes forming the foundation of the machine, every inch of your synthetic pitch will be covered. The circular oscillating movement of the spring tines removes unwanted material from around the plastic fibres and in turn improves the effectiveness of your pitch.

Looking for the ultimate solution for your daily brushing work?

Allowing you to carry out of correct synthetic turf maintenance, no matter the requirements, the GKB Quick-Brush provides all your needs for regular brushing work. Included are a spring tine rake bar, two brushes and rubber finishing mat, this machine gives you the ability to adjust the height of the modular brush to suit each specific task.



Remove dirt rapidly from artificial sports fields.

A full mechanic, self-driven machine that removes all kind of dirt from the top of a synthetic pitch, you need the GKB Top-Clean? This machine can easily be connected to almost every tractor by using a standard three-point hitch or electric drawbar. Using a high driving speed (around 10 km/h) the result is a perfect looking artificial pitch that you can be proud of!

Through
thick and
thin with
ease.



A WIDE RANGE OF PEDESTRIAN, RIDE-ON AND REMOTE-CONTROL MACHINES



Well, at least the grass kept growing, and STM Co Ltd sales of the SCAG, RoboFlail and STM product machinery ranges recovered remarkably well for 2021. With such a wide range of pedestrian, ride-on and remote-control machines this would appear to reflect the desires of the market place. Pedestrian machines in SW and SWZ forms go from 32" / 14hp to 61" / 22hp and the complex six-model ride-on range goes from 18hp to 38hp covering 36" up to 61". Within this range are high-end domestic units right up to the equally high-end professional Turf Tiger models.

SCAG have always kept their eye on the market place and have decided to introduce a walk-behind finish mower



for the 2022 range - so, after the other machines in the range have done the bulk of the work, final finishing can now be carried out using a product from the same reliable, rugged and trusted range of products.



The machines are available through the STM dealership network.

To find your nearest dealer ring 01789 488450, email info@st-mach.com or look at our website www.st-mach.com



LX-Series: New standards of compact versatility

A true multi-purpose compact tractor offering an unbeatable power-to-weight ratio; setting new standards by handling tasks.

- Newly designed operator's platform or insulated cab with ergonomically placed controls, making long working days a breeze.
- Kubota's robust HST transmission guarantees reliable and efficient work, ensuring maximum productivity.
- Equipped with a 4-cylinder, Stage V Kubota diesel engine; for high efficiency, low fuel consumption and emissions
- The nimble LX tractor handles tight spaces with ease due to its compact design and small turning radius.
- High-performance hydraulic system offering up to 1,150kg rear lift capacity.
- Optional attachments include: LA545 loader with swift tach function /1.53m mid-mount mower deck with rear or side discharge.



Contact your local dealer or visit our website for more on the LX Series.

www.kubota.co.uk

OPTIONAL
5 YR Kubota care
EXTENDED WARRANTY

BASED ON THE HOURS YOU WORK*

*Conditions apply. See your Kubota dealer for details.

For Earth, For Life
Kubota

DEESIDE GOLF CLUB BOLSTERS TORO FLEET THIRD TORO RENEWAL AGREEMENT FOR SCOTTISH CLUB



Deeside Golf Club, set in traditional Scottish parkland on the bank of the River Dee outside Aberdeen, has signed its third renewal agreement with Toro, boosting its impressive fleet by a further 17 machines.

The club has welcomed an extensive raft of machinery which includes fairway mowers, sidewinders, top dressers and sprayers, along with the industry's first all-electric ride-on greensmower, the Toro Greensmaster eTriFlex 3370.

The machines support course manager, Neil McLoughlin, and his eight full-time staff to maintain the club's 27 holes all-year round.

Neil explains: "We are located in traditional Scottish parkland and due to our position just eight metres above sea level on the banks of

the River Dee we can experience some challenging environmental conditions. We can be subject to flooding, particularly in winter when the water table sits high, and we have lots of mature trees casting shade across parts of the course. Resilient, reliable machinery is a must for us and Toro provides quality every time.

"It's easy to use, adaptable and, having worked with Toro for so long, we understand the machines. Plus, the greenkeeping team absolutely love using them.

"Some of our older mowers are into their thirteenth year with us, which is testament to their quality and durability. They still provide as excellent a finish as the newer models we've recently introduced, although I have to say we're

particularly enjoying the electric eTriFlex 3370 ride-on. It's so quiet and the cut is fantastic! I would definitely buy electric again."

Each machine is set up for its intended purpose, meaning that Neil and his team don't need to keep adjusting the height of the machines as they go between cutting rough or semi-rough. And, despite such a large fleet, technical issues are few and far between.

Neil continues: "We seldom have any problems and if we do, they are resolved quickly. The back-up is vital for us as we don't have a full-time mechanic on site. Whilst we can carry out basic maintenance ourselves, we rely on having the support from the team at Reesink."

Reesink is the sole distributor in the UK for Toro golf and sports fields equipment and Richard Green who is manager at Reesink's Livingstone branch comments: "Deeside Golf Club is a great example of a club which has an excellent understanding of the Toro products. They invest in and look after the fleet, and in return we support them with back-up care and equipment which enable them to deliver on their greenkeeping goals."

Neil concludes: "We strive to provide excellent playing surfaces for our 1,300 members all year round. Having the high-quality Toro machinery makes my job easier, allowing me to focus on improving the courses from season to season."

Call 01480 226800,
email info@reesinkturfcare.co.uk,
or visit reesinkturfcare.co.uk

STIHL



NEW

PRECISE CUTS. POWERFUL PRUNING. BATTERY POWERED.

APIII
SYSTEM



**PROFESSIONAL PERFORMANCE:
THE HTA 135 CORDLESS POLE PRUNER.**

AVAILABLE AT YOUR LOCAL STIHL DEALER. [STIHL.CO.UK](https://www.stihl.co.uk)

The latest additions to the STIHL AP System are our most powerful yet. The HTA 135 telescopic pole pruner is perfect for removing dead wood, pruning branches and for cutting back fruit trees in noise sensitive areas. And thanks to its reinforced telescopic shaft, you'll be able to take on any challenge.

"No matter the height of the job, with the HTA 135 I know I can work safely from the ground and prune with precision in any environment. Plus the quiet motor, low-vibration and light weight of the tool makes it a pleasure to work with."

- Marcel Kickert, horticulturist and landscaper



**TELESCOPIC
SHAFT**



**LONG
SERVICE
LIFE**



**HIGH
POWER
OUTPUT**

WHY AERATE THE SOIL? BY DEEP AERATION SPECIALISTS TERRAIN AERATION

Why should we aerate? To answer this, we need to acknowledge that the roots of all plants need to respire. They do not breathe as we do, but they need to absorb oxygen and emit Carbon Dioxide. Roots can only thrive where this exchange is possible, so where do the roots get their oxygen?. The oxygen is in the air in the air spaces between the soil particles and this is why gardeners always aim to produce a soil with a crumb texture, which has air spaces between the crumbs. It follows that if these air spaces are closed, the roots have little or no oxygen to draw upon and will tend to die back away from such areas.

If we want our plants to thrive, we must ensure that the air can penetrate the soil and we do this by aeration. So, to answer the question directly: we aerate to put air into the soil for the roots to use to respire and to keep the soil sweet. Aeration also allows water to percolate into the ground surface and a soil that allows free percolation is unlikely to remain waterlogged for very long and so will have a firm dryish surface soon after heavy rain.



How to aerate? There are a lot of different techniques available starting with a good old garden fork pushed into a lawn, through spikes the size of smallish nails on a pedestrian pushed roller through large spikes that reach 150mm into the surface to slitting knives some of which simply slice into the turf to others that slice the turf and shake it. We then enter the world of deeper aeration.

Terrain Aeration specialises in deep penetration aeration to a depth of one metre where a blast of compressed air fractures the soil, creating fissures that allow drainage and oxygen to the roots of the grass or trees.

Terrain Aeration | 01449 673783 | www.terrainaeration.co.uk

THE BEFORE AND AFTER OF ONE METRE DEEP AERATION

COMPACTION AND WATERLOGGING STOP PLAY. DOWNTIME COSTS MONEY.

Terrain Aeration's long-term treatment reaches one metre deep where compressed air blasts the compaction.

The soil is opened up for good drainage and a healthy sward with minimum disruption.

We have been successfully aerating sports turf, bowling greens, golf courses, parks, trees and gardens for over twenty-five years.



See us at work:

www.terrainaeration.co.uk

Call us for a quotation 01449 673 783



SNICKERS WORKWEAR – WORK TOGETHER WITH YOU FOR CLIMATE CONTROL

New styles from Snickers Workwear deliver winter warmth and cooling comfort when you need it.



Not only will you stay warm with Snickers Workwear's 37.5° Technology clothing, you'll look and feel cool too. With styles for both professional tradesmen and women, they excel at ventilation to keep you cool and moisture transportation to stop you getting cold. They work together to keep you working comfortably wherever you are on site.

The 37.5° Technology fabric is a very quick-drying material that captures and releases moisture vapour - like your sweat - for superior coolness and dry working comfort. It's integrated into selected Snickers Workwear base- mid- and top-layer garments to keep you working at your best whatever the weather. After all, keeping a balanced work temperature is not just about staying cool and in great shape, it's a matter of your wellbeing and job safety.

So, to make sure you get the right protection, visibility, flexibility, durability and ventilation, check out the Climate Control garments from Snickers Workwear that work together to suit your workday.

For more information on Snickers Workwear's Climate Control garments visit www.snickersworkwear.co.uk alternatively, call the Snickers Workwear Helpline on 01484 854788.

Carpenters Mate
Innovation by carpenters for carpenters

Everyone needs a Carpenters Mate

For the highest quality jobs, delivered in the fastest possible time, you need products designed by carpenters, for carpenters.

Carpenters Mate's self-drilling wood screws are corrosion resistant and known for their durability, longevity and ductility, which means they're guaranteed to work every single time.



Not only that, but fixings can be custom coated in any RAL colour of your choosing. Carried out in-house, it's an efficient, personalised service.

To experience the Carpenters Mate difference, just call 0845 241 9862.

Carpenters Mate, an OSC Sales Brand

f CarpentersMate @Carpenters_Mate



Perfect play requires Perfect maintenance



All the tools of the trade for professional aeration

Verti-Drain | Verti-Quake | OxyShot | Spikers



Redexim



www.redexim.com | 01428 661222

ELECTRIC PERFORMANCE FROM THE ARIENS ZENITH E



Ariens have introduced their first commercial, all-electric zero-turn mower for the UK market. The ZENITH E is powered by a FusionCore lithium-ion battery system, an exclusive technology developed by Ariens. It is designed to provide the operator with a continuous cutting time of up to 5.5 hours on a full charge, and coverage of up to 62,726 sq/m (15.5 acres).

The ZENITH E is built upon the fully commercial Ariens 'ZENITH' platform, well known for its strength, durability and cutting performance. Combined with next-generation battery technology, the ZENITH E is a formidable competitor to conventional commercial petrol and diesel zero-turns.

The ZENITH E has all the power and performance of its petrol counterparts without the noise, vibration and exhaust. Coupled with the increased productivity of a zero-turn, it is perfect for commercial operators looking to capitalise on the growing number



of 'green' contracts. Fully electric, the ZENITH E's FusionCore lithium-ion 56v DC battery system has four interchangeable, easily removable, sealed for life batteries, each with a 4kWh capacity.

Where a mix of charge levels is detected in the four batteries, the patent-pending management system prioritises how the ZENITH E balances power. It will only draw from the full batteries until they reach the same level as those with less charge. Once all four are at the same charge level, the machine will draw power from them equally,

thus ensuring consistent power and cutting performance throughout. Batteries can be charged in 12 hours with a standard charger or in just 5.3 hours using an optional quick charger.

There are two configurations for the 152cm (60") deck: side discharge and rear discharge. Both are fabricated from highly durable, 10-gauge steel. The ZENITH E boasts 15 cutting positions, easily selected with a vertical pin drop and foot-operated deck lift system. The high-back, full suspension seat with padded armrests offers all-day operator comfort.

A range of optional accessories is available. The ZENITH E comes with a 5-year/1500 hour warranty with no hour limit on the first two years and a 3-year warranty for the batteries.

For further information, please e-mail zenithe@ariensco.com, or visit ariens-uk.com

POWERED BY
FUSIONCORE



ARIENS®



**ALL-DAY
operation***



ZENITH E

COMMERCIAL BATTERY POWER

The new Ariens ZENITH E is a fully commercial, all-day use electric zero-turn. Featuring FusionCore lithium-ion battery technology, it gives landscapers a powerful new way to lower long-term operational costs and increase profitability. Low noise and no emissions when in use, mean that the ZENITH E can cut grass in almost all urban environments.

Find out why commercial operators are switching to battery powered zero-turns. Visit zenith-e.ariens.com

*Cut for 5.5 hours continuously on a full charge dependent on conditions



5 YEAR
OR
1500 HOURS
WARRANTY

3 YEAR
BATTERY
WARRANTY

email zenithe@ariensco.com • call 01844 277 035 • ariens-uk.com

NEW TORO MOWER REVEALED AT SALTEX NEW AND IMPROVED CYLINDER MOWER FOR GREATER PRODUCTIVITY

Headlining for Toro at SALTEX will be the new LT2240 cylinder mower which replaces the popular CT2240.

The CT2240, as a commercial triplex mower, had to satisfy a far wider brief than a dedicated golf or sports turf machine, it needed to meet hugely varied end user needs. From local authorities, large institutions and contractors through to estate owners, schools and landscapers, the CT2240 could be relied upon to mow everything from litter strewn roadside verges, amenity and parkland through to managing golf roughs and keeping winter sports turf in check.

The LT2240 is no different in that respect, but for that fact that it is tougher and more powerful than its predecessor, yet still compact and light enough to enable access to the most confined environments.

At 214kg lighter than the CT2240 it's even more suited for transportation between sites, while the 195mm narrower transport width brings increased site accessibility. And thanks to the reduction in weight, fuel consumption is 41 percent lower. These improvements bring big differences when it comes to ease of use, productivity and operational costs.

In addition to that, the redesign includes an engine adjustment to bring it below 19kW meaning it does not need a Diesel Particulate Filter. This simple adjustment keeps the purchase price lower and with the option of up grading from eight to 10 inch cutting units, ensures its performance remains high.

Extremely bright and designed to last the life of the mower, the full LED lighting kit with brake lights on the LT2240 means road use isn't a problem throughout the year. There's also an optimised hydraulic system, independent cutting units, an intuitive infocentre and full-folding ROPS.



Debuting for Toro on stand H075 will be the new LT2240 cylinder mower.

Visit stand H075 at SALTEX to see
Toro's LT2240 cylinder mower,
plus much more.



LIGHT COMPACT AND NIMBLE

**Toro's new lightweight triple mower.
Compact, nimble and versatile too.**

Introducing the Toro LT2240, a lightweight compact triple mower that reaches areas other conventional grounds mowers can't. Compact, nimble and built for serious durability to deliver grounds maintenance productivity second-to-none. That's the LT2240 in a nutshell.

reesinkturfcare.co.uk



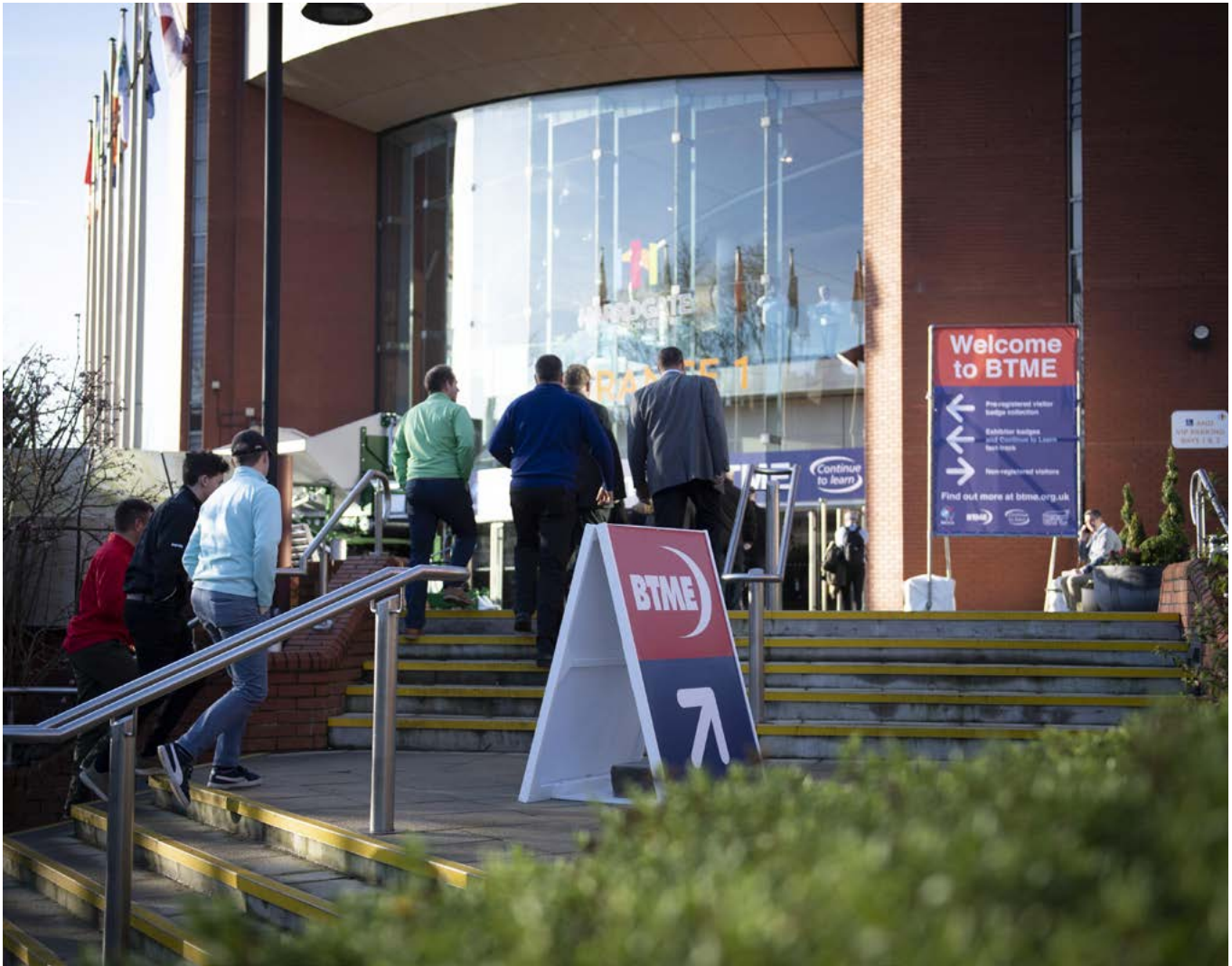
Get MORE from your turfcare partner this year:

More products . More advice . More training . More finance



Reesink UK LTD is authorised and regulated by the Financial Conduct Authority. Images shown for illustration only.





BTME AND CONTINUE TO LEARN ARE BACK IN THEIR NATURAL ENVIRONMENT

The British and International Golf Greenkeepers Association (BIGGA) has launched registration for its annual exhibition, which returns to the Harrogate Convention Centre in January 2022.

The BIGGA Turf Management Exhibition (BTME) is Europe's premier trade exhibition for the golf and sportsturf industry and takes place on Tuesday 25 to Thursday 27 January.

Registration has today (Friday 8 October) opened for the event, which is free to attend and will feature a line-up of more than 150 exhibitors spread across four halls in the Harrogate Convention Centre. An unrivalled networking opportunity, BTME brings together many of the leading names in the sportsturf industry, with a number of exciting events and initiatives yet to be announced.

For more information about BTME 2022, head to the new, dedicated BTME website, www.btme.org.uk.

The launch has coincided with the unveiling of the Continue to Learn 2022 education programme. Taking place from Sunday 23 to Wednesday 26 January 2022, BIGGA's world-leading learning programme features a spectacular range of professional development opportunities, each year providing



On the opening evening of BTME, BIGGA will be hosting the Welcome Celebration, an informal event that celebrates the achievements of BIGGA members throughout the previous year.

Announced at the Welcome Celebration will be the winners of the BIGGA Awards 2022 and nominations are being invited for each of the following categories:

- Outstanding Contribution of the Year sponsored by Bernhard and Company
- Greenkeeping Project of the Year sponsored by Baroness
- Championship Greenkeeping Performance of the Year sponsored by Origin Amenity Solutions

The BIGGA Awards recognise that high performance levels from a dedicated and knowledgeable team are essential to the success of any golf course or championship. The Greenkeeping Project and Championship Greenkeeping Performance awards are an opportunity to showcase a team's successes, both in the redevelopment or renovation of a course or through the hosting of a major event. Meanwhile, the Outstanding Contribution award celebrates a member of the association who has done exceptional work to support fellow BIGGA members, the industry or the wider community.

This year there are some brilliant prizes on offer in each of the three categories. More information and the nomination form can be found on the BIGGA website.

BTME 2022 and Continue to Learn 2022 take place from 23 to 27 January 2022 at the Harrogate Convention Centre in North Yorkshire.



the equivalent of more than two hours' education for every golf club in the country. As such, Continue to Learn and BTME are considered among the most influential events in the golfing calendar.

BIGGA members can find out more about Continue to Learn and begin booking their education experience today by heading to www.btme.org.uk/continue-to-learn.html.

www.btme.org.uk

EXPLORE THE LANDSCAPE OF WATER LEISURE AT SPATEX 2022

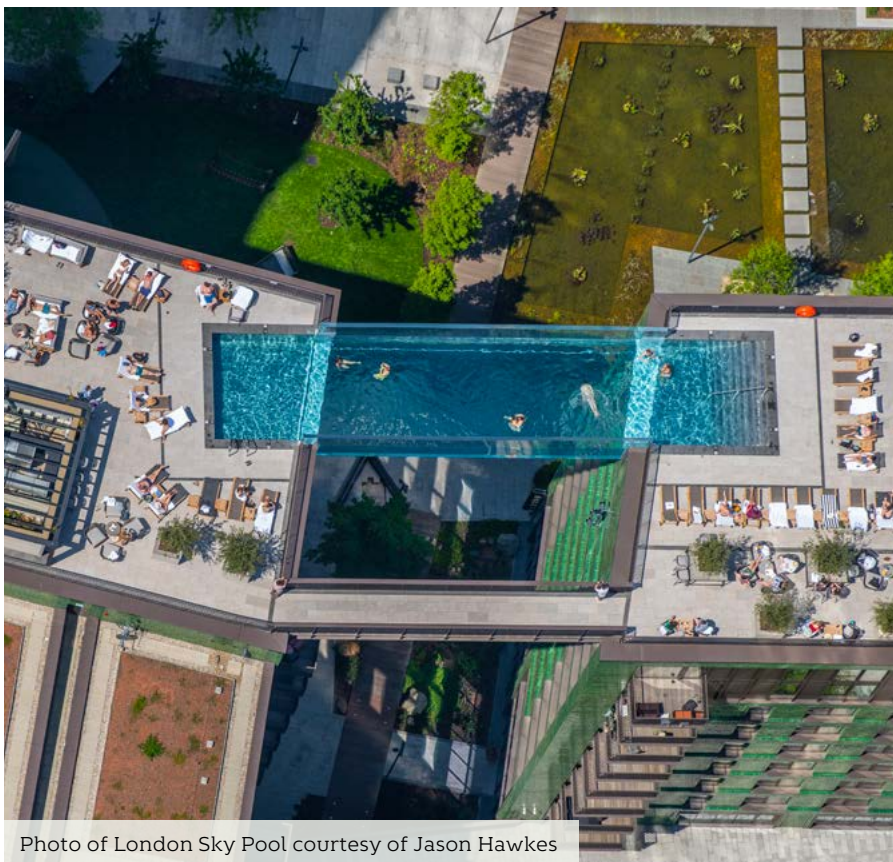


Photo of London Sky Pool courtesy of Jason Hawkes

Like to know more about the design and engineering that went into this the world-famous London Sky Pool, completed in June? Spanning 17m across the rooftops of two high rise apartment buildings 35m in the air, this amazing acrylic, see-through structure is part of the Embassy Gardens development in Nine Elms, London for Ballymore EcoWorld, opposite the new American Embassy building.

The jaw-dropping pool is the topic of a seminar given by Devin Consulting (experts in the design and engineering of water features) at SPATEX 2022 - the UK's ONLY dedicated water leisure exhibition (Tuesday 1st to Thursday February 2nd at Coventry Building Society Arena). Devin will discuss its vital role in the design and construction of this headlining pool.

It's just one of the many seminars to be held at SPATEX 2022 - a show that is bursting with inspiration and information, and showcases the very latest products, trends and innovations in the vibrant world of water leisure. It offers the potential to meet over a thousand people from the water leisure industry in one day.

International showcase

Free to attend, it provides designers, architects, specifiers, builders, developers with ALL you need to know about water features, spas, hot tubs, saunas, steam rooms, swimming pools, enclosures, tiling as well as the more functional elements like chemicals and heating and ventilation.

One hundred plus companies, including all the world's major suppliers and manufacturers, cover

every conceivable aspect of water leisure, for both the domestic and commercial sectors. Saving energy is high on the exhibition's agenda and you can expect to see lots of new products supporting a low energy, low carbon footprint. Following the pandemic, many of the stands will feature two years' worth of launches as well as those making their 2022 debut.

Free seminar programme

SPATEX hosts a double programme of free seminars on all three days. The technical workshops hosted by ISPE (Institute of Swimming Pool Engineers) offer vital information such as new standards and guidance that affect all disciplines involved in the development of water leisure projects. CPD points are available to all attendees of the workshops.

Free expertise for your projects

Tap into a unique pool of free expertise for your projects - SPATEX 2022 is fortunate to count the industry's many esteemed associations amongst its supporting partners. There's no better place to seek advice from an expert, and all for free! Please come to the SPATEX Help Desk at the entrance to the exhibition hall, if you need to be pointed in the right direction.

Registration is FREE at www.spatex.co.uk and view SPATEX's impressive list of exhibitors and details of the free double seminar and workshop programme.

SPATEX 2022 - Tuesday 1st to Thursday 3rd February. The Coventry Building Society Arena, Coventry CV6 6GE is easy to get to - just 500 yards off the M6 and within two hours commuting time of 75 per cent of the population, it offers 2,000 free on-site car parking spaces.



SPATEX 2022

THE POOL, SPA & WELLNESS SHOW

TUESDAY 1 FEBRUARY – THURSDAY 3 FEBRUARY 2022

WE'RE BACK LIVE!



IMAGE COURTESY OF PORTRAIT POOLS

COVENTRY BUILDING SOCIETY ARENA • COVENTRY • UK

SPATEX represents all sectors of the water leisure industry from pools, spas, saunas to hydrotherapy, steam rooms and play equipment, in both the domestic and commercial arena.



THE UK'S ONLY INTERNATIONAL POOL, SPA AND WELLNESS EXHIBITION

FOR MORE INFORMATION AND TO REGISTER FOR FREE VISIT:

WWW.SPATEX.CO.UK OR CALL +44 1264 358558

#designthenation

elephant park, london

Woodscape were proud to be chosen to create custom seating and podium solutions for the Elephant & Castle area of London, south of the River Thames.

The incredible waved seating is designed to seat users in varying positions and heights to make the most of it's location. Several seats were created, culminating with a 9-metre long seat that's sculptural in appearance, with swooping contours.

The yellow powder-coated steel framework houses specially designed lighting trays to allow illumination between the slats and wiring provision to allow for inbuilt charging points in the end panels.

Individual hardwood slats become a sturdy but flowing shape via a joint designed especially for this project, with each piece being manufactured using Woodscape's unmatched CNC capabilities and seamless hand finishing.



01254 685 185

sales@woodscape.co.uk

woodscape.co.uk

woodscapegroup

woodscapeco

woodscape_street_furniture



Woodscape.

Bespoke Street Furniture