



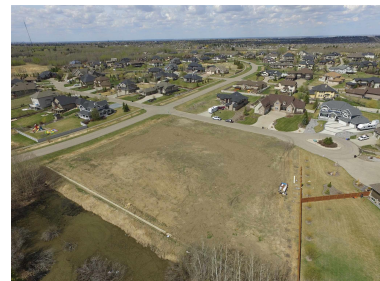
711-a 23033 Wye Road
Rural Strathcona County, AB T8B1H9
MLS® E4252088



Brad Warkentin
SALES REPRESENTATIVE
(780) 913-3537



\$499,900



\$499,900

711-A 23033 WYE ROAD, RURAL STRATHCONA COUNTY, AB T8B1H9

MLS® E4252088



FEATURES

Very RARE Opportunity to find this South Facing 1.1 Acre Lot with Municipal Water & Sewer in the Exclusive and Highly Sought-After Subdivision of Sherwood Hills Estates. Located right on Wye Road West of HWY 21 and minutes to every amenity Sherwood Park has to offer. Custom Build you Dream Home and Enjoy the Peaceful Acreage Life while having City Living at your Door Step. Municipal Service Connection Costs are Included in the Purchase of this Lot! "Visit REALTOR® Website for Additional Information"



View the home: <https://www.c21.ca/listing/AB/Rural-Strathcona-County/711-a-23033-Wye-Road-T8B1H9/135418813>



Brad Warkentin
SALES REPRESENTATIVE
brad.warkentin@century21.ca
<http://brad-warkentin.c21.ca>

(780) 913-3537

CENTURY 21 ALL STARS REALTY LTD.
312 Saddleback Road
Edmonton, AB T6j4r7



Not intended to solicit properties currently listed for sale or buyers under contract. The trademarks REALTOR®, REALTORS® and the REALTOR® logo are controlled by The Canadian Real Estate Association (CREA) and identify real estate professionals who are members of CREA. Used under license. The trademarks MLS®, Multiple Listing Service® and the associated logos identify professional services rendered by REALTOR® members of CREA to effect the purchase, sale and lease of real estate as part of a cooperative selling system. Used under license. Independently Owned and Operated. ®/™ trademarks owned by Century 21 Real Estate LLC used under license or authorized sub-license. © 2020 Century 21 Canada Limited Partnership. ©2021 MoxiWorks.