

# REFURB & RESTORE

**INTERNAL STEEL  
GLAZED SYSTEMS  
INSTALLED TO ELEGANT  
HOME RENOVATION**



**BATTERSEA POWER STATION  
WELCOME FURTHER RESIDENTS  
FOLLOWING COMPLETION OF  
SWITCH HOUSE EAST**

**CREATING A NEW GATEWAY  
FOR CLEMSON UNIVERSITY**



**The Running Bean Cafe:  
Preserving legacy value**





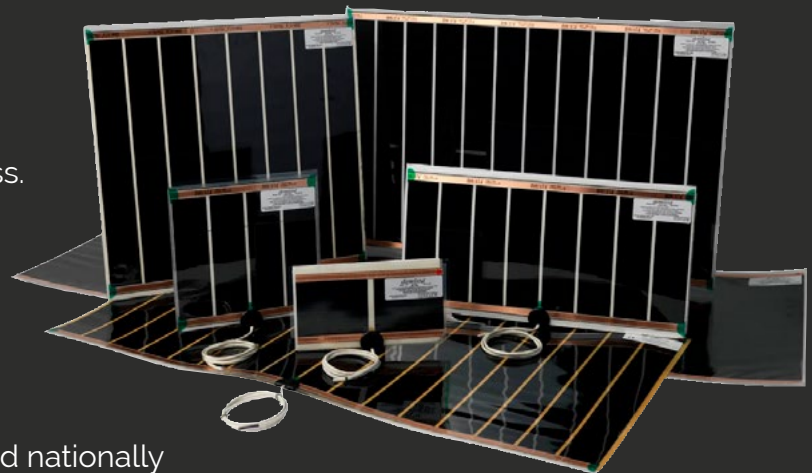
*demista*<sup>®</sup>  
Clearly Perfect

## THE MOST IMPORTANT HIDDEN LUXURY IN YOUR BATHROOM

In 1992 Demista revolutionized the bathroom mirror market by introducing a heated mirror pad which adhered to the back of the mirror to prevent condensation from forming on the glass. The inconvenience and frustration of these foggy mirrors was therefore eliminated forever, giving you a clearly perfect steam free mirror without the need for time consuming wiping or costly cleaning products.

Demista has been proven and accepted nationally and internationally and through its unique reputation and unblemished track record has been the number one choice for specifiers of mirror defoggers for over 26 years. Demista has been fitted in hotel developments globally and has become the industry standard. With over 400 sizes now available, demista can cover virtually any mirror in 230V, 120V, 24V, 12V, demista can also make bespoke sizes if required.

You will find demista installed in the domestic bathroom / en-suite's, along with some of the most prestigious properties and hotels around the world, which include The Burj Al Arab, The Royal Atlantis, Fairmont in Dubai as well as the Hilton Group, Marriott's, Crown Plaza's, Holiday inns, The Intercontinental O2 and the prestigious developments along the River Thames in London.



### Our Team

#### Editor-in-Chief

Antony Holter  
T: 01304 806039  
E: editor@mhmagazine.co.uk

#### Editorial Manager

Claire Morgan  
T: 01304 806039  
E: claire@refurbandrestore.co.uk

#### Editorial Manager

Chris Nicholls  
T: 0203 9079161  
E: chris@refurbandrestore.co.uk

#### Sales Director

Amy Wright  
T: 01227 392575  
E: amy@refurbandrestoremag.co.uk

#### Sales Manager

Hannah Johnson  
E: hannah@refurbandrestoremag.co.uk

#### Business Manager

Josh Holmes  
T: 01304 806039  
E: josh@mhmagazine.co.uk

#### Publishing Director

Martin Holmes  
T: 01304 806039  
E: martin@mhmagazine.co.uk

#### Accounts

Lauren Marchant  
T: 01304 806039  
E: lauren@mhmagazine.co.uk



#### MH Media Global Ltd

Innovation House, Discovery Park,  
Ramsgate Road, Sandwich,  
Kent, CT13 9FD

#### Cover Image Courtesy of

IQ Glass UK

*Every effort is made to ensure the accuracy and reliability of material published in Refurbishment & Restore however, the publishers accept no responsibility for the claims or opinions made by advertisers, manufacturers or contributors. No part of this publication may be reproduced or transmitted in any form or by any means, mechanical, electronic (including photocopying) or stored in any information retrieval system without the prior consent of the publisher.*

# CONTENTS

## Highlights

- 4-6 Switch House East**  
Battersea Power Station welcome further residents following completion of switch house east
- 8-9 A contemporary renovation**  
Internal steel glazed systems installed to elegant home renovation
- 14-15 Mixed use architecture, renovation by max dudler**  
Inspired by legendary Berlin department store architecture, Max Dudler has redesigned the facades for the northern part of the Tegel Quartier
- 18-19 Sustainably retrofitting a North London apartment**  
In 2020, Christian Brailey began a project to refurbish and extend a traditional Edwardian property in North London, which was split into four apartments
- 24-26 LMN Architects**  
Creating a new gateway for Clemson University.



- 32-33 Sage Green Bedroom ARE TRENDING**  
And 2022's hottest colour trend could be helping the nation get a better night's sleep according to experts
- 36-37 The Running Bean Cafe**  
Preserving legacy value
- 40-42 Maximising natural light**  
TR Studio create double height glass library in refurbished West London home filled with natural light

## Featured Categories

Editor's Choice	7-13
Coatings, Sealants & Paints	12
Doors, Windows & Fittings	16
Interiors & Interior Design	20-27
Lighting & Electrical	28-29
Roofing, Cladding & Facades	34-35
Safety & Security	38-39





Switch House East, the second residential element of Battersea Power Station, is now complete and welcoming residents

Photos: Taran Wilkhu

# SWITCH HOUSE EAST

Battersea Power Station welcome further residents following completion of switch house east

Battersea Power Station announced today that it is welcoming residents to the second residential element of the Grade II\* listed building which has completed. The news comes as 2022 marks the start of an exciting phase for London's largest regeneration project, as the destination is transformed into a place for all to live, eat, work and play.

Switch House East utilises the existing historic structure of the Power Station and offers studio, one, two- and three-bedroom apartments. Many of the building's original elements have been

restored during the redevelopment, overseen by WilkinsonEyre as lead architects, with the new homes featuring brick and steelwork from the 1940s, whilst introducing a contemporary feel to the industrial heritage of the building.

In addition to the apartments in the historic structure, Switch House East also offers modern duplex apartments, which are located in three glazed floors added to the top of the building. The new homes feature spacious living and dining areas with fully equipped open plan kitchens and wooden floors. Each home

also comes with windows from the floor to high ceilings, maximising the stunning views across the River Thames and offering an abundance of natural light.

Designed by architect Sir Giles Gilbert Scott, Battersea Power Station was built in two stages with Battersea A (which includes Switch House West) being completed in 1933 and Battersea B (which includes Switch House East) coming into service in 1944. Taking inspiration from both these eras, renowned interior architect, Michaelis Boyd has curated two interior design





palettes which reflect the Power Station's history. The Heritage 33 palette takes inspiration from the classically elegant styling of the 1930s, drawing on details such as the dark herringbone flooring in Control Room A, which once powered a fifth of London's electricity, and glazed tiles from the Power Station's Directors' staircase. The Heritage 47 palette is fresh and contemporary with an "industrial" aesthetic to demonstrate the pared back style of the 1950s when the second part of Battersea Power Station was built.

Residents living in Switch House East also have direct access to two internal private landscaped courtyards and a rooftop garden with fantastic views of the Power Station and its iconic chimneys, allowing residents to really experience the uniqueness of living at the London landmark.

Simon Murphy, Chief Executive Officer at Battersea Power Station Development Company (BPSDC), said:

"When our shareholders took over the site almost 10 years ago, Battersea Power Station - one of London's most iconic and recognisable buildings - had stood derelict for over 20 years. Thanks to their commitment, today it is fast becoming one of London's most sought after and well-connected riverside neighbourhoods with the recent opening of the Battersea Power Station Zone 1 Underground station.



"We can say with confidence that Battersea Power Station will be one of London's destination hotspots in 2022. This follows the development's most transformational year to date in 2021, when we saw a succession of milestone announcements including welcoming our first residents, as the Power Station came to life for the first time in almost 40 years.

"Looking ahead into 2022, the completion of Switch House East marks the first milestone of the year, as we take

another step closer to final completion. Opening the rest of this historic building to the public later this year, will see residents, members of the local community, Londoners and international visitors enjoy a mix of uses for years to come."

Sebastien Ricard, Project Director, WilkinsonEyre, said:

"Switch Houses East and West form the "shoulders" of the massive power station, so it is appropriate that both have been



sensitively but thoroughly repurposed as modern and innovative high-end residential accommodation. Having finished the 1930s Switch House West in 2021, the opening of the late 1940s Switch House East now completes the vision. Unique character has once more been celebrated - converting existing riveted girders found on site into a jaw dropping Concierge desk, exposing most of the industrial features, and reusing some of the electric switch gear as sculptures to stand in the gardens.

“Each flat has a bespoke layout optimising light and views out, and the offer is enhanced by the creation of an amazing rooftop garden above Turbine Hall B for residents’ use; a secluded urban oasis more than 25m above ground. Our design subtly weaves together history and modernity in a way that respects one of the most important industrial landmarks in the world.”

Alex Michaelis, Partner and Co-founder of Michaelis Boyd, said:

“The residences have a refined industrial quality to them – we wanted to create interiors that would reference the Power Station’s rich history but also stand the test of time, for the ultimate experience of modern city living. Our design for the two distinct interior palettes, Heritage 33 and 47, was inspired by the style and textures of the original 20th century building. Grained wooden floors underfoot, exposed brick walls and durable, tactile finishes emphasize materiality throughout and provide a timeless backdrop for evolving interior trends.

“Looking forward into 2022, there continues to be a focus on the importance of outdoor space and a connection with nature. At Switch House East, large Crittall screens and dual aspect glazed windows were designed to make use of natural daylight, encouraging flow between spaces and offering views out onto the riverside and landscaped courtyards and terraces, bringing the outdoors in. The open-plan layouts of these loft-style apartments also remain more relevant than ever, as we continue to design versatile spaces that will lend themselves to news way of living, working, eating and relaxing from home.”

Once completed, Battersea Power Station will be one of the most exciting retail and leisure destinations in London, having recently announced that major international brands such as Ray-Ban, Ralph Lauren, Tommy Hilfiger, The Kooples, A sop and Calvin Klein will be opening inside the iconic building. The Power Station will also be home to



At Switch House East, large Crittall screens and dual aspect glazed windows were designed to make use of natural daylight, encouraging flow between spaces and offering views out onto the riverside and landscaped courtyards and terraces, bringing the outdoors in.



over 100 shops, bars and restaurants, 254 apartments, office space as well as unique events and leisure offering, including the Chimney Lift Experience. There will also be a new six-acre riverfront park that is open to the public.

The retail and leisure experience will continue on a new high street, Electric Boulevard, which runs from the south of the Power Station, between the stunning Frank Gehry designed Prospect Place and Foster + Partners’ Battersea Roof Gardens. Electric Boulevard will offer a mix of office space, shops, bars and restaurants, a park, playground and an exciting new 164 room hotel from art’otel®, the brand’s first hotel to open in London.

Residents currently living at Battersea Power Station can enjoy a great mix of cafés, bars, and restaurants where they can sample cuisines from all over the world. This includes modern Indian at Vivek Singh’s Cinnamon Kitchen, authentic Italian at Francesco Mazzei’s Fiume, bottomless pizza at celebrity chef Gordon Ramsay’s Street Pizza and delicious Japanese patisseries and bubble tea at the recently opened Kova, the first of the Power Station’s retailers to open. A variety of entertainment and fitness venues can also be found beneath

the railway arches on Arches Lane, including Battersea Brewery, which has its own microbrewery on site, spin studio Boom Cycle, DNA VR, London’s biggest virtual reality arcade, Birdies Crazy Golf, The Cinema in the Arches and The Turbine Theatre.

Battersea Power Station also hosts a variety of cultural events throughout the year with highlights including the Light Festival which is currently being hosted until 27th February, Summer Showtime on The Coaling Jetty, London’s first open-air cinema and theatre experience and The Winter Village.

With the Northern Line extended to give this new riverside neighbourhood its very own Zone 1 London Underground station, Battersea Power Station is now within 15 minutes of the West End and the City and is expected to draw visitors from across the capital and the globe, becoming one of London’s most visited destinations, boosting the local economy and creating over 17,000 jobs.

■ Follow @BatterseaPwrStn to keep up with the latest news and events at Battersea Power Station and visit [www.batterseapowerstation.co.uk](http://www.batterseapowerstation.co.uk) to find out more.




# Repair, not replace.



**Repair Care stands for total solutions for sustainable timber restoration and maintenance.**

 The permanent repair of decayed and rotten wood, including windows, doors and fascias.

 Quick and easy to apply with excellent modelling qualities and slump resistance.

 Permanent, elastic repairs that accomodate natural movement in the timber.

For more information visit [www.repair-care.co.uk](http://www.repair-care.co.uk)

Email- [salesuk@repair-care.com](mailto:salesuk@repair-care.com)

Tel- 01827 302 517

**Before**



**During**



**After**



**After**



▲ Repair courtesy of DRM Carpentry  
DRY FLEX® 4 and DRY FLEX® SF used on application







# CONTEMPORARY RENOVATION

Internal steel glazed systems installed to elegant home renovation

---

A [bespoke internal glazing package](#) was engineered and installed by IQ Glass to this contemporary London home renovation, situated within the Redington and Froggnal Conservation Area. The project saw the conversion of the loft and basement spaces to open up additional internal living areas, while the ground floor underwent extensive renovation to create a broken plan industrial-style kitchen and dining area.

Multiple glazed systems were used as part of the ambitious renovation project, including [minimally framed sliding doors](#), an oversized pivot door and multiple configurations of our internal steel framed doors.







To the rear of the home, [three-track minimal sliding glass doors](#) were installed to the ground and first floors to create a large glass façade with a near frameless effect. This allowed for seamless access between the lower level and the outdoor seating area, perfect for entertaining and al fresco dining during the warmer months.

The sliding doors on the upper level meant that the bedrooms benefitted from plentiful and adjustable ventilation when the doors were slid back. [An internal frameless glass balustrade](#) was integrated with the sliding system, creating a [minimal Juliette balcony](#) to ensure the safety of the house owners even while the doors are fully open.

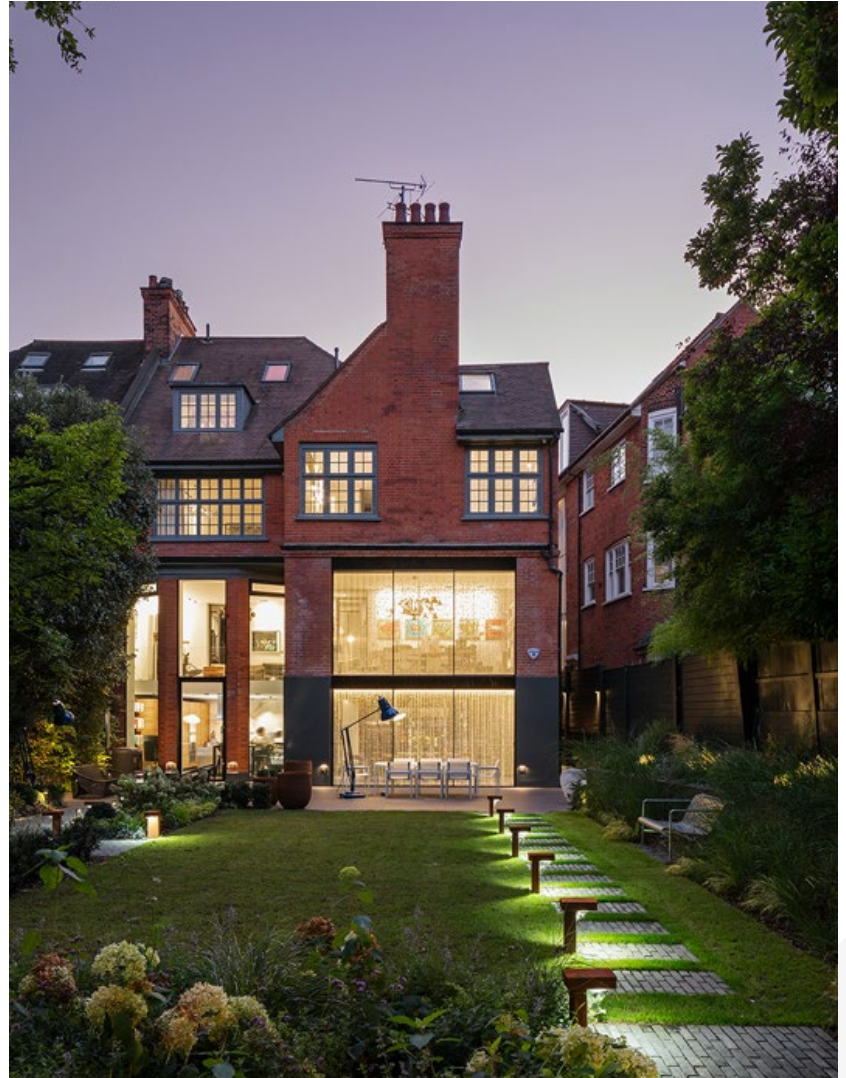
The modern kitchen design follows a subtle, [industrial-style aesthetic](#), with metallic countertops and dark timber flooring. In line with this theme, internal steel doors were installed across the length of the room, opening out onto a dining space. To the rear wall, an impressive double-height pivot door provides easy access to the garden.

The slim steel frames and art deco applied glazing bars of the internal partitions provide an artisan, carefully crafted feel to the flow of the kitchen dining spaces. The dark tones are beautifully lit with natural light, that flows uninterrupted from a structural glass wall facing out onto the garden.

Moving on through the rest of the house, [two frameless fire doors](#) link to contemporary living areas with a crisper white palette, provide elegantly subtle fire protection while maintaining a clean frameless aesthetic and maximising the flow of natural light throughout each room.



Multiple glazed systems were used as part of the ambitious renovation project, including minimally framed sliding doors, an oversized pivot door and multiple configurations of our internal steel framed doors.





# GLOW LIGHTING

Glow Lighting is based in Ripon, North Yorkshire, specialising in creating high quality lighting, using hand blown glass and hand spun metals. Glow's range of pendant, wall and table lighting is all designed, and made in the U.K.

Designed in-house by owner and lighting designer Emily Butterill, who has worked within the lighting industry for over 20 years. Emily established Glow in 2015 after realising there was a gap in the market for unique, quality designed lighting.

Emily explains: "My passion for colour and understated designs are integral in bringing out the intrinsic beauty of the materials used and are brought to life in many different colours of exceptional quality glass, hand blown by our British glass studio blowers. Our lighting can be hung in singles or clusters, add a wall light or matching table lamp or perhaps etched stars or bees to bring your individual style to your lighting.

Each piece is fully customisable, giving you the choice of glass, metal finish, cable colour and length, making each piece truly individual. If you can't see the exact colour of glass you want, we



We are a small team who are dedicated to delivering excellent, personally tailored customer service, underpinned with an ethos to offer British made, beautiful lighting

can colour match using a special glass paint onto our clear glass".

Glow Lighting also offer a range of hand spun metal lighting in various

finishes including copper, aluminium and burnt steel, which is oiled and then burnt to produce a stunning iridescent finish. This range offers a sleek or industrial alternative to a glass or fabric shade. Also available, are extra-large industrial metal pendants which are all made in Yorkshire and can be hand finished in various paint finishes to match your colour scheme.

Emily goes on to say; "We are a small team who are dedicated to delivering excellent, personally tailored customer service, underpinned with an ethos to offer British made, beautiful lighting".

Glow Lighting sell directly to the public for residential projects including kitchens, dining, bedrooms and much more. Glow sell to select independent retailers and work closely with interior designers, commercial project teams and architects.

Emily concludes: Myself and the team at Glow Lighting love bringing lighting dreams to life and no project is too big or too small.

■ For more information visit **Glow Lighting**  
[www.glowlighting.co.uk](http://www.glowlighting.co.uk) or email  
[emily@glowlighting.co.uk](mailto:emily@glowlighting.co.uk)  
Telephone 01765 278288





## High quality customisable lighting

---

**The idea for Glow Lighting came from a simple desire - to help people step away from mass produced lighting and create something unique for their homes or workspace.**

Our lighting is all designed and created in Ripon, North Yorkshire. The components are sourced very carefully using British manufacturers, the majority of which are produced by local craftsmen.

It has always been a passion of mine to support British manufacturing and allow people the opportunity to buy British wherever possible, as well as enabling people to buy bespoke beautiful lighting at reasonable prices.



[www.glowlighting.co.uk](http://www.glowlighting.co.uk)

Email: [emily@glowlighting.co.uk](mailto:emily@glowlighting.co.uk) | Telephone: 01765 278288



## Silicate Masonry Paint for all surfaces

For years, customers have asked if they can use Earthborn's Silicate Masonry Paint on previously painted masonry. Well, now they can.

The newly formulated Bonding Primer can be used alongside Silicate Masonry Paint for exterior masonry surfaces that do not need to breathe. This means that the 48 beautiful shades can be used on all buildings. Bonding Primer provides a mechanical bond between a 'sealed' wall and the paint, allowing Silicate Masonry Paint to 'stick' to the pre painted surface.

And in places where there is a mix of painted and unpainted masonry, you can now spot prime the patches where the previous paint cannot be removed with Bonding Primer and prime the rest of the unpainted area with Silicate Primer.



*Earthborn's silicate masonry paint provides the ultimate protection*

The updated Earthborn product range means that Silicate Primer used on uncoated masonry with Silicate Masonry Paint will create a highly breathable and permanent chemical bond. On existing, sound, previously painted surfaces (that don't need to breathe), Bonding Primer used with Silicate Masonry Paint will create a strong mechanical bond.



*Earthborn's new Bonding Primer*

Earthborn's Silicate Masonry Paint has been used on a wide variety of buildings including windmills, historic halls, new builds, seafront cottages and farmhouses. This new primer means it can be used on an even wider range of buildings, including those with a mix of previously painted and bare masonry, as requested by customers keen to achieve the best protection for exterior masonry.

[www.earthbornpaints.co.uk](http://www.earthbornpaints.co.uk)

## Your door hardware creates the first impression – make sure it's the right one

A study published in the Journal of Personality and Social Psychology confirms what many of us already suspect – that we all need to pay very close attention to our handshake. People are programmed to make fast and decisive assessments about each other and will base their opinion of you on this seemingly innocuous but crucial gesture. The most important being 'can I trust this person?'

As any property agent will tell you, the same principle operates when entering a property for the first time. Often described as the 'handshake' to a building, door hardware is the first real opportunity to create a lasting impression in the mind of the homeowner or visitor.

If the handle feels weak or loose, it will immediately raise doubts including 'what else is wrong with this building?'

The best way to avoid this is to ensure you select a door handle that instils trust and delivers that 'wow factor'.

Coastal's BLU handle range comes as either a solid stainless-steel lever or a thicker stainless-steel wall, both providing high tensile strength and ensures a robust feel and action. They also undergo extra finishing processes to create a luxuriously smooth, super satin finish to convey the impression of the highest quality. But that's not the end of the story. Our BLU range is designed and manufactured to last. Made from the best 316 Marine Grade Stainless Steel, it guarantees the best resistance to wear and corrosion, even in the most challenging of locations.

This only leaves one question - have you considered what your choice of door hardware says about your project?



[sales@coastal-group.com](mailto:sales@coastal-group.com) | 01726 871 025 | [www.coastal-group.com](http://www.coastal-group.com)

## Advanced Perimeter Systems



Perimeter security has never been more important whether at home or at work. Advanced Perimeter Systems range of perimeter security systems provide solutions for every security challenge.

Our solutions are quality assured, proven, reliable, robust and simple to install. Whatever challenges you face securing your property why not give us a call to discuss your needs we may be able to design a bespoke solution just for you.

Advanced Perimeter Systems has a reputation as a manufacturer and designer of high quality, high security, perimeter security solutions. We have a range of



products available for installation to make any premises more secure from industrial, commercial to domestic property.

E: sales@apsltd.net  
T: 01786 479862



[www.advancedperimetersystems.com](http://www.advancedperimetersystems.com)

## Stockwell Ceramics

Ceramic buttons, jewellery and decorations.  
Handmade in Cornwall, UK.



High quality, irresistible ranges of handmade ceramic buttons. Choose from sumptuous designs including Heritage, Floral, Willow Pattern and many more.



[www.stockwellceramics.co.uk](http://www.stockwellceramics.co.uk)

info@stockwellceramics.co.uk +44 (0)1579 351035  
[www.stockwellceramicsuk.etsy.com](http://www.stockwellceramicsuk.etsy.com) Instagram @stockwellceramics

## A taste of Italy, in your own back garden

Pizza Oven Supplies will soon be entering their ninth year of supplying these increasingly popular outdoor ovens to gardens across the UK. Founded by Managing Director, Nick Riley, this success story started back in 2013 when Nick was asked if he could build a pizza oven 'like the one Jamie Oliver was cooking on' in his television programme.

The designs he's developed obviously work, with over 4,000 customers and pizza ovens made so far, (three of which belong to Premiership footballers). Nick comments, "We manufacture our pizza ovens from recycled kiln furniture used in Stoke's pottery industry and as well as keeping our costs and carbon footprint down, it is the perfect material for a pizza oven."

In the last couple of years people have really started making the most of their outdoor space; building entertaining areas, bars, hot tubs and pizza ovens. If you need any further encouragement, take a look at Pizza Oven Supplies website and you'll be inspired by what their customers have created.



[pizzaovensupplies.co.uk](http://pizzaovensupplies.co.uk) | 01782 212777





# MIXED USE ARCHITECTURE, RENOVATION BY MAX DUDLER

Inspired by legendary Berlin department store architecture, Max Dudler has redesigned the facades for the northern part of the Tegel Quartier

With two staggered tower superstructures and the motif of cascading facade pilasters, the architecture becomes a new focus of attraction for this revitalized pedestrian zone. The project, commissioned by HGHI Holding GmbH, is part of an undertaking that redefines Gorkistrasse – set at the heart of Berlin's Reinickendorf district – as an urban shopping street. The entire project will reach completion this year, including the southern part, also designed by Max Dudler. Circa two-thirds of the new shops have already opened. The Rautenbach and Pechtold architecture offices have been commissioned with the planning and execution of the interiors.

Tegel Quartier Nord is a component of comprehensive modernization and expansion of the circa 250-meter long pedestrian zone is known as Gorkistrasse, which includes the former Tegel Shopping Center, the former Hertie Department Store, and the Tegel Market Hall, so steeped in tradition. In collaboration with HGHI, the project's aim was to revitalize this historic pedestrian zone and to reinvest stationary retail in Tegel with new attractiveness. At the same time, such an upgrade of a building from the 1970s represents a prototypical architectural task with regard to 'sustainability.'

The new Galeria-Kaufhaus in the northern section is reminiscent of the





The facade design is animated by the tension between the repetition of identical elements and their continually new and surprising application.

legendary, now defunct facade of the Karstadt Building on Hermannplatz. The northern portion of the Tegel Quartier is configured as an ensemble of separate addresses: this lively, varied architecture, whose details fascinate passersby day and night, is nonetheless traceable to a unified design concept. Here is a genuinely high-quality, durable, and exceedingly memorable architecture.

The facade of the northern section – which has received a completely new design – has for the most part been attached to the preexisting architectural substance, and newly constructed only in part. By filling in the triangular ‘residual areas’ along Buddestrasse, the building’s form – which dates from the 1970s – again approximates the urban street alignments of the 19th century. The deep, lively facade relief, with its vertical structure, draws the attention of passersby, functioning as a decelerating element to slow the gait.

Two tall, newly-defined highpoints atop the Karstadt Building awakens curiosity and function as attractors. The powerful material and color contrasts of the high-quality, natural stone facade (pale limestone, green granite, gray shell limestone) articulate and rhythmic the ensemble optically into smaller sections that allude to historical subdivisions. The facade design is animated by the tension between the repetition of identical elements and their continually new and surprising application. The eaves’ heights rise and fall in harmony with neighboring buildings.

The various utilizations brought together



here – including an office high-rise and a parking garage – remain legible through modulations in the facade motifs which correspond to the respective theme. Along Gorkistrasse, the ground floor zone is opened up by numerous entrances on varied scales. The result is a lively shopping locale with a multitude of attractive offerings. A genuine piece of urban life.

The cascading design of the natural stone facade, with its staggered elements measuring up to 45 cm in depth, was executed using numerous solid elements and is arguably unique by virtue of its form and exceptional quality. Vertically, groups of three stone elements were assembled using compression joints, producing a notably homogenous

look. Another special feature is the execution of the fixed glass display windows. A (dismountable) frame in natural stone conceals the post-and-beam construction lying behind, leaving glass and stone as the only visible materials.

Emerging in the Tegel Quartier on altogether 90,000 m<sup>2</sup> are retail and office spaces. The northern section encompasses circa 45,000 m<sup>2</sup>. Meanwhile, approximately two-thirds of the new businesses in the Tegel Quartier have already opened their doors.

Architects: Max Dudler  
Photographs :Stefan Müller

■ [www.maxdudler.de](http://www.maxdudler.de)



**GARAGLIDE ROLLER DOORS  
CONTINUE WINNING STREAK**



Garador's GaraGlide roller door continues to grow in popularity as it is quick to install, easy to transport to site and precision engineered for durability. An affordable price point has also made it a popular product amongst builders and homeowners alike.

The speed and ease with which the GaraGlide can be installed is a significant advantage, saving them time and effort. The door itself has a pre-assembled box cover and barrel and requires as little as

12 fixings all round, making the installation process much quicker.

The door curtain, comprised of 77mm high rust-resistant aluminium laths, rolls up into a neat box at the top of the opening, giving optimum space both around the door and also in the ceiling area. It is operated by two remote hand transmitters, with a choice of either standard (433 MHz) or bisecur (868 MHz) radio technology, that latter of which provides extra security.

[www.garador.co.uk](http://www.garador.co.uk)



**STEEL WINDOW ASSOCIATION ACHIEVES  
FD30 RATING FOR INTERNAL GLAZED FIRE  
DOORS AND SIDE SCREENS**

A recently completed programme of testing conducted by the Steel Window Association's (SWA) technical committee has resulted in three different internal door configurations successfully attaining a half-hour fire rating with the achievement being hailed as the most important step forward for the industry since the millennium. The SWA tests were carried out in accordance with BS 476 Part 22: 1987 at the world-

renowned Exova Warrington fire research facility. The result being, the SWA can now offer both single and double doors, with and without side screens, tested and assessed from both sides. All were fabricated using the classic W20 steel sections.

The new FD30 rated doorsets are available only through members of the Steel Window Association.

[www.steel-window-association.co.uk](http://www.steel-window-association.co.uk)



An exterior arched steel window and doors create that wow factor. Image courtesy of Squib Photography/Three Spires Glass

**GET IN TO SHAPE - AND COLOUR**

Interior designers and home decor influencers say retro naturalistic greens, bright colours, sky-blues, purple-blue hues, vibrant yellows, sultry black will make up the colour palette for chic homeowners this year.

Steel windows manufacturer Crittall says the trend is for homeowners to be more adventurous in the shapes of windows and door styles too. As the 'eyes' of your home they deserve the attention - adding a deft touch of

flair highlights your individuality and gives your home a unique characteristic style - that's you.

A unique blend of precision machining and hand-crafted finishing for every bespoke product ensures style, elegance and value, whether your project is new-build or renovation of an existing property.

t: 01376 530800;  
e: [hq@crittall-windows.co.uk](mailto:hq@crittall-windows.co.uk)

[www.crittall-windows.co.uk](http://www.crittall-windows.co.uk)

**STRAND REWARDS TOP TALENT**



Strand Hardware has rewarded the skills and expertise of two team members by promoting them to senior roles. Jo Wallis, previously General Manager, becomes Operations Director, while Andy Michel moves from Warehouse Supervisor to Warehouse and Production Manager.

Jo joined Strand Hardware in July 2019 and has worked in the industry for more than 20 years. She began her career as a Supply Chain Co-ordinator for Allgood plc before joining GEZE UK as a Purchasing Assistant and later became its Purchasing and Distribution Sales Manager. She is MCIPS qualified and remains a

member of the Chartered Institute of Procurement and Supply.

Andy joined Strand Hardware in 2012 and his new role will also see him take on more managerial responsibility including production planning, co-ordination, administration, efficiency reviews and quality assurance.

Strand Hardware's Managing Director, Steve Marshall, said: "I am delighted to promote Jo and Andy within the company. They are both integral to Strand's key operations, ensuring their smooth running and maximising opportunities for efficient and effective work practices."

[www.strandhardware.co.uk](http://www.strandhardware.co.uk)

# 7 REASONS DESIGNERS AND ARCHITECTS CHOOSE FORMICA® LAMINATE FOR DOORS

When it comes to choosing materials for door applications, there is no shortage of options. But only Formica® Laminate offers a powerful mix of performance, endurance, hygiene and long-term value. That combination of benefits is why Formica® High Pressure Laminates (HPL) are so well regarded across the design and construction industries.

Nina Bailey, European Design Lead at Formica Group, says: "Doors are not only functional fixtures to close off spaces – they are a key part of the overall interior design and can often be the finishing touch to creating a crisp and refined look."

**When you choose Formica laminates for your door applications, you enjoy:**

1. Impressive toughness. All Formica laminates are highly resistant to stains, impact and scratches – making them ideal for busy areas or high-touch surfaces such as doors or work areas.
2. Long-lasting performance and beauty. Formica laminates can be installed with the confidence that they will maintain their quality and aesthetic appeal for many years to come offering better life-cycle value than lower-cost alternatives.

“ Doors are not only functional fixtures to close off spaces – they are a key part of the overall interior design and can often be the finishing touch to creating a crisp and refined look.



3. Inherent hygiene. All Formica laminates are inert, so they don't promote bacterial growth. You don't have to worry about specialist cleaning materials, either. Warm, soapy water is all you need to keep your laminates in perfect condition.

4. Moisture resistance. The surfaces of our laminates are non porous. A well fabricated door with sealed edges can be used in washroom and changing room settings, without fear of imminent damage or degradation.

5. Cost-effective production and easy fabrication. Formica laminates are lightweight and easy to cut to size. To ensure optimised door design and to provide maximum efficiencies in conversion, saving time and reducing material wastage, four different sheet sizes are available: 2150x950mm, 2350x950mm, 2350x1300mm and a large general 3050x1300mm sheet size.

6. Natural product textures. State-of-the-art textures can be incorporated into the laminate manufacturing process, instantly changing the look and feel of the final product. Linewood, Puregrain and Naturelle are favoured surfaces for wood decors while Matte58 is a timeless classic for colours.

7. Extensive aesthetic choices. The Formica Doors Collection includes 20 new wood decors. Additionally, a large selection of 120 plain colours are available, including 15 new colours offering the ultimate flexibility in creating an eye-catching feature door. Sheet-to-sheet consistency minimises the risk of non-matching doors across an installation.



■ **View the full Formica Doors Collection today at [www.formica.com](http://www.formica.com).**





# SUSTAINABLY RETROFITTING A NORTH LONDON APARTMENT

In 2020, Christian Brailey began a project to refurbish and extend a traditional Edwardian property in North London, which was split into four apartments

“We eliminated persistent damp and extreme mould using sustainable solutions – that was the key to the success of our retrofit project,” says Christian Brailey, an experienced architect and owner of a newly-retrofitted North London apartment.

For Christian and his partner, Faye, a landscape designer, using sustainable and healthy materials, which would remedy and prevent the existing damp problem within the property, was key.

## RESOLVING AND PREVENTING EXTREME DAMP

“The condition of the existing building was very poor,” explains Christian.

“After years of water damage, the ceiling of the existing infill bathroom was black with mould. The property had very little ventilation, the windows were all single glazed, and the whole interior was generally damp. Overcoming these issues was the biggest challenge for us.

“The property is also terraced, which

meant we needed to improve the thermal performance of the building from the inside.”

## INSULATING FROM THE INSIDE

“After looking for sustainable products that would bond well with the existing building materials and address the range of issues within the apartment, we came across Lime Green,” continues Christian.

“Lime Green offered healthy and natural products, which could be used

in a variety of applications and solve multiple issues at once. To insulate the internal boundary walls and ceilings, we selected Lime Green's Warmshell solution – an internal insulation system, comprising board adhesive, woodfibre boards and a coat of breathable plaster.

"To finish the walls and ceilings, we chose Solo, a one-coat lime plaster. Finally, to protect the bathroom from water damage, we used Silic8 Silguard, a breathable water repellent.

"Instead of rendering directly onto the woodfibre boards, we used plasterboard between to enhance the building's thermal, fire and noise performance further. The Solo plaster then created an airtight layer on top.

"One particular brick wall was bowed, so it needed additional support. The Warmshell system, along with some wooden batons, offered that support.

"The Warmshell system helped us to resolve a variety of issues. It's an internal system, so we could use it to insulate the property from the inside as the external insulation route was not possible due to being located within a Conservation Area. It improved the breathability too and is great at reducing outdoor noise.

"As the materials in the system are natural, they ring true to how the building was originally designed and constructed."

## THE RESULTS

"We're delighted with the results. Visually, the lime plaster looks great. It has a traditional off-white colour, which can be difficult to find nowadays. The whole system has created a natural and calm space," says Christian.

"The natural materials in combination with the mechanical ventilation system has created a really clean indoor air quality, which is so important in London especially.

"The acoustic separation is a benefit too – we can barely hear any outside noise.

"The thermal performance of the Warmshell system is brilliant. It's great for managing temperature shift, as it holds heat and releases it when temperatures drop overnight, which is exactly how a building should operate.

"I already have two or three other projects where we're using the Warmshell system and Solo plaster.

"The Lime Green team is helpful and



Lime Green offered healthy and natural products, which could be used in a variety of applications and solve multiple issues at once.



extremely knowledgeable and very easy to get hold of.

"I would absolutely recommend Lime Green and its products."

"It's been great to work with Christian to develop a sustainable solution for the property's challenges," says Simon Ayres, co-founder and managing director, Lime Green Products.

"We're so pleased the solution has improved the internal environment so drastically, and we're sure it will continue to for years to come."

■ For more information about the project and the products used, visit [Lime Green](https://www.limegreen.co.uk) or call 01952 728 611.





# CARPET RECYCLING UK CONFERENCE

Repurposing textile flooring in the circular economy

Moves by the textile flooring sector to redefine itself along more environmentally conscious principles will be among key topics for discussion at Carpet Recycling UK's (CRUK) much-anticipated Annual Conference, Dinner and Awards Event at the voco® St. John's Solihull on June 29th and 30th 2022.

Through its 115-strong membership (a record high), 11 core funders and extensive UK-wide and international outreach, the not-for-profit association is helping the sector to create new circular initiatives, having recognised a clear change in attitudes among key decision-makers towards sustainable solutions in all markets.

Delegates at the first in-person conference for three years will be updated on achievements, developments, policy and legislative changes, and technology advances within the sector in relation to sustainability, design for recycling and waste reduction for textile flooring.

The event will also provide sponsorship opportunities for organisations to promote and demonstrate their green credentials, plus an exhibitor area for showcasing products or ranges.

The annual awards ceremony will celebrate important contributions by CRUK's growing membership – both individuals and organisations – who continue to advance sustainability in the textile flooring sector. The Awards will reward members' proactivity in relation to environmental sustainability, innovation and success in recovering carpet for new uses.

This year, a new 'Circular Design' award category has been added to recognise advances in design for the circular economy. Along with the categories Recycler of the Year; Reuse Member of the Year; Take Back Partner of the Year and Recycling Champion of the Year, it is open to applications from Carpet Recycling UK members.

CRUK's conference will offer its members and wider network



dissemination and networking opportunities for UK, EU and international decision makers from across the supply chain. Returning as keynote speaker and CRUK Awards presenter will be Bob Peoples, Executive Director of the US-based Carpet America Recovery Effort (CARE) and Edmund Vankann, Managing Director of the European Carpet and Rug Association, who will deliver updates on policy developments, technological advances, challenges and progress at a US and European level.

Results will be shared from a 2020 comprehensive landfill diversion survey being done in conjunction with analysts Oakdene Hollins demonstrating the various outlets compared against the volume of textile flooring placed on the market that year. Oakdene Hollins will also present the two new research projects commissioned by CRUK on Circular Design and existing and future Recycling Technologies for textile flooring waste.

Returning member Aquafil will outline their international and UK plans to capture and recycle carpet polymers for new textile flooring, and Tarkett will talk about their established UK ReStart programme for the take back of commercial flooring in the circular economy. The benefits of CRUK membership in winning new work will be covered by David Heafey of Saint Flooring.

Adnan Zeb-Khan, CRUK Scheme Manager comments: "Our packed two-day conference programme highlights

the sector's clear change in attitudes and commitment towards sustainable solutions and progress towards creating more circular opportunities within the sector. This is reflected in a growth of enquiries from companies concerned about the impact of their business activities, waste being produced and the desire to reduce this for environmental and reduced disposal costs reasons.

"It's been a while, but we are looking forward to welcoming lots of familiar and new faces at our 2022 Conference where we can share numerous exciting, sustainable and important developments for our sector."

CRUK's core funders are Balsan, Betap, Brintons, Cormar, ege Carpets, Headlam Group, Milliken, Shaw and Tarkett, along with new members in 2022 – Gradus and Furlong Flooring. The core funders are showing leadership within the sector on developing for the circular economy, helping their customers with increased sustainable ranges and through CRUK to reduce their waste.

Latest CRUK figures revealed that pre-Covid, the industry was diverting approximately 65% of textile flooring waste from landfill. Around 430,000 tonnes of carpet and textile flooring waste arises annually in the UK.

■ **For more information, including details about the 2022 Conference and Awards event, email: [info@carpetrecyclinguk.com](mailto:info@carpetrecyclinguk.com) or visit [www.carpetrecyclinguk.com](http://www.carpetrecyclinguk.com).**

## Join Carpet Recycling UK to help make the UK carpet sector more sustainable!

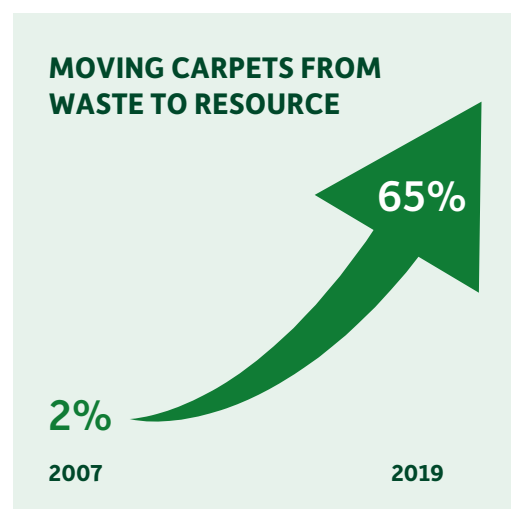
With the help of Carpet Recycling UK, our members and wider network diverted 277,490 tonnes of waste carpet and textile flooring from landfill in 2019, approximately 65% of the total carpet waste arising in the UK. How can you help to increase this?

- C** Carpet Recycling UK is a not-for-profit membership association set up in 2008.
- A** We are an **association** of 115 member companies from across the carpet supply chain.
- R** We **respond** and advise on best practice for reuse and recycling of commercial carpet waste.
- P** We **provide** support and advice to flooring manufacturers, contractors and retailers.
- E** Members are **encouraged** to demonstrate their progress by **entering** our awards.
- T** **Tonnages** diverted from landfill are independently verified and reported regularly.
- W** **Waste** carpet and carpet tiles can be used again, ask us how our members can help.
- A** We **assess** companies' waste to find the most feasible and best recycling options.
- S** We demonstrate and promote **sustainability in design for recycling**.
- T** **Tell** us your story so that we can help you!
- E** Talk to us at our **events**—join our network!

### Contact Carpet Recycling UK

Carpet Recycling UK is a not for profit organisation funded by companies across the supply chain to develop more sustainable and environmentally friendly solutions for carpet waste. Our ability to network with our members and non-members helps to provide you with the most feasible solutions to send your waste up the waste hierarchy and prevent waste being sent to landfill. Please visit our website for more information.

[www.carpetrecyclinguk.com](http://www.carpetrecyclinguk.com)







# FROM MEGA YACHTS TO START UP SALONS

Distinctive design combined with value and function

Our range of furniture is the best available throughout Europe if not the world... Including German engineering excellence, Italian design flare and flamboyance. With a whole lot of Spanish simplicity and practicality thrown in.

We have concept designs used in large national chains throughout the UK and Ireland.

We offer a complete design service within our available options. This



Our range of furniture is the best available throughout Europe if not the world...

includes photo realistic visuals. AutoCAD is a specialty when creating the environment. But it also allows us to have full integration with the main architects' drawings too.

Still with relatively short lead-times we can turnaround completed salons in

record times. Working with contractors or main agents we can ensure easy relations. Technical expertise abounds with both us and our manufacturers and suppliers.

■ [www.albertewandesign.com](http://www.albertewandesign.com)



**PAHI.**  
Barcelona



LAPIS-LED £880+VAT



BRISTOL £325+VAT



MATIC KUBE £880+VAT

Call now for all the latest 2022 ranges promotional prices

t.016 70 73 89 79 w.albertewandesign.com





# LMN ARCHITECTS

Creating a new gateway for Clemson University.

---

Located in the foothills of the Blue Ridge Mountains and sited prominently at the highest point in the area, the five-story Wilbur O. and Ann Powers College of Business creates a new gateway for Clemson University. Inspired by the hills and natural landscape around the site, the building is carved out of the hillside and maximizes accessibility with five entry points that converge at the central atrium.

Wendy York, Dean of the Wilbur O. and Ann Powers College of Business at Clemson University, comments: "As one of the major capital projects funded under our Clemson Forward 10-year strategic plan, the new Wilbur O. and Ann Powers College of Business has created a new gateway to the University. The design team envisioned a student-centric think tank environment that provides a dynamic environment for student/faculty engagement, active

learning, and student body socialization. The new facility has been transformational for our students and faculty, helping the University make a bold statement about the importance of the College at Clemson. Our new building is a huge game-changer."

A grand public stair flows between the complex's north and south wings to draw movement westward and down from nearby residence halls into the campus'





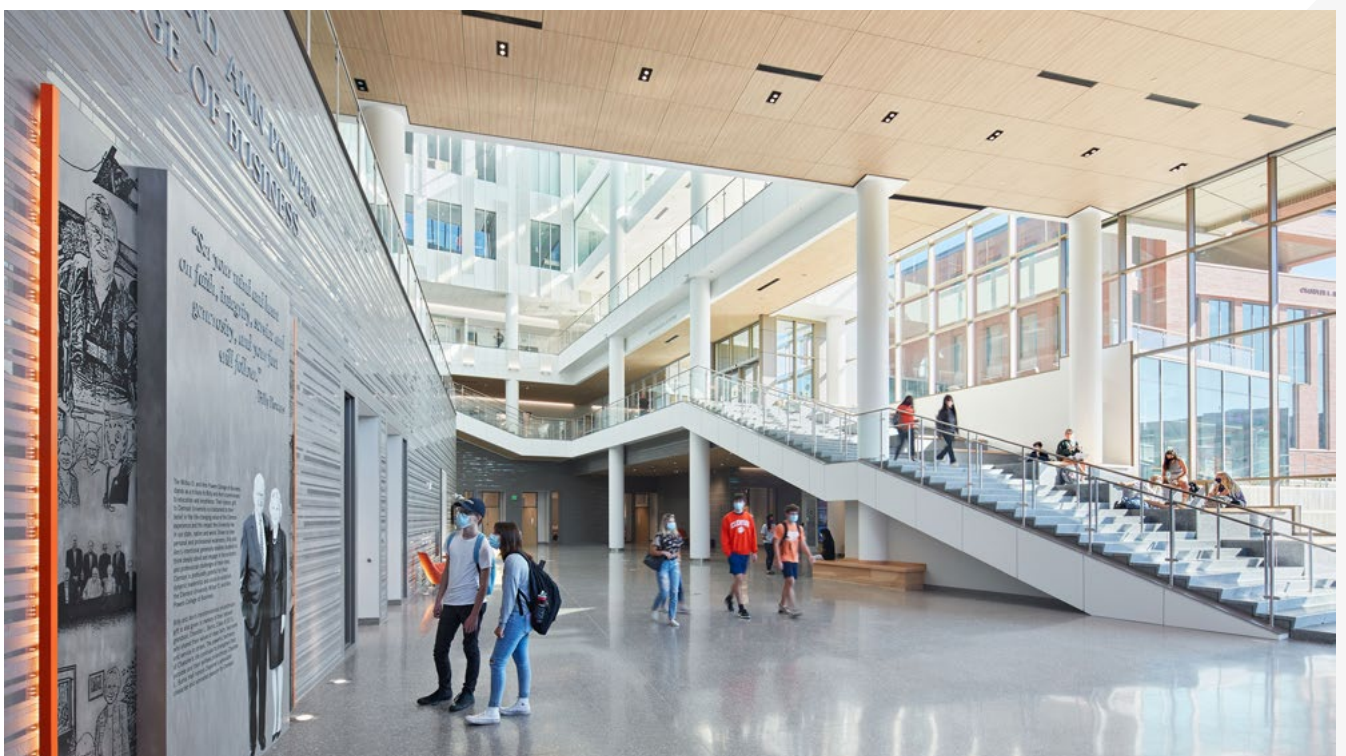
historic core, featuring the venerable Bowman Field and Tillman Hall. The project welcomes students on three levels and opens to Bowman Field at its base, where classrooms link to daily campus life. Above grade, the project reaches skyward to a dramatic effect as spacious, daylight-filled common areas inspire students, faculty, and community partners to explore possibilities together.

Rafael Viñoly-Menendez, Partner, LMN Architects, comments: "Our collaboration on the project with LS3P and Clemson University began with the charge from former Dean McCormick to create an "unleavable" home for students from across campus. As the first new academic building adjacent to Bowman Field in over a century, the architecture needed to be respectful of its neighbors, while projecting an aspirational vision of Clemson's standing in the world for the next 100 years. The project site, at the nexus of academic, residential, and social zones of campus, afforded a unique

opportunity to consolidate these energies in a singular hub of activity, extroverting the activity of the business school and activating the surrounding campus."

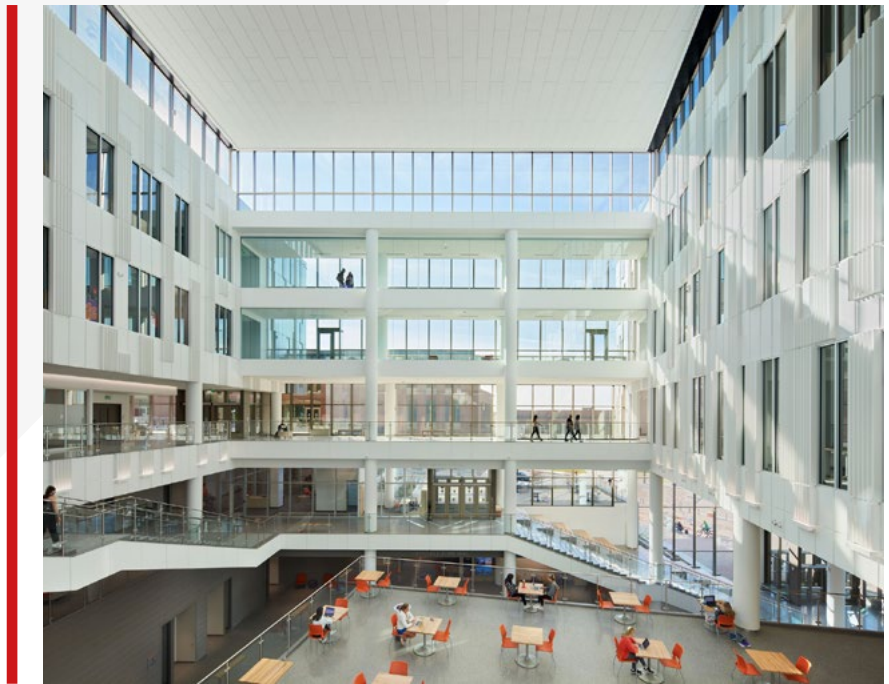
This technology-rich, immersive, educational experience stands out as the newest element on campus with an expansive glass façade, high ceilings, and a grand, connecting stairway illuminating an entrepreneurial focus. Elevating recognition, recruitment, and rankings, the complex prepares students to enter today's competitive marketplace as leaders. Like a modern workplace, a mix of formal and informal spaces encourages hands-on participation through chance encounters, focused study, team collaboration, research laboratories, and group presentations.

Additionally, various amenities are available for students to come and stay all day, including food service and lounge areas. A combination of tiered, flat, flexible, and high-tech classrooms is





based on a common module to allow for pedagogical change over time. Outdoors, interaction spaces, and landscaped areas invite ongoing discussion beyond the classrooms. Environments simulating real-world experiences in sales and financial trading, as well as a designated business incubator, strengthen the chance to join forces with the professional community and launch students' careers. Scott May, Higher Education Sector Leader, LS3P, comments: "It was clear from the inception of the project that this building would be a community anchor for this new campus district. The focus on connection and transparency is evident in the welcoming, vibrant gathering spaces that mirror the topography of the site. The flexibility of the building will allow it to adapt to as-yet-unforeseen needs as pedagogies and technologies evolve over time. This is a durable, collaborative, resilient building designed to serve its occupants well into the future."



The interior palette is also inspired by the site and is defined by natural materials that echo the solidity of the mountains and celebrate the horizontal strata of the hillside. On the upper levels, vertical and crisp textures contrast and symbolize how the building stands on a solid and rich historic campus but is open to innovation with contemporary and lighter materials. Honoring the past and looking to the future, the building's brick façade respects its larger historic and natural context, while modern construction technology allows for maximizing both transparency and energy efficiency. The transparent electrochromic glass façade in the atrium is transformed by natural light, and the opacity is stimulated and activated by the changing seasons. Connecting the building with the hill, and the hill with the building, this open and transparent composition anticipates the future while redefining Clemson's historic campus and establishing a new destination for business education.

“ The focus on connection and transparency is evident in the welcoming, vibrant gathering spaces that mirror the topography of the site.



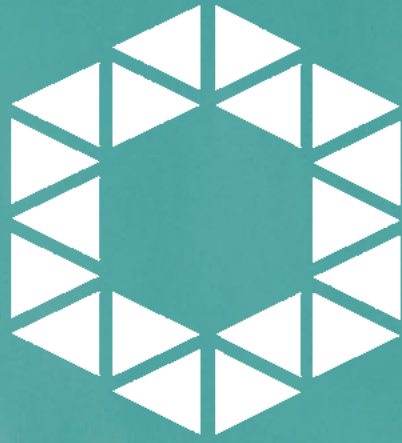
LMN Architects is a leader in the design of higher education facilities in North America. Other completed projects include the Bill & Melinda Gates Center for Computer Science & Engineering at the University of Washington; the Voxman Music Building at the University of Iowa in Iowa City; the Edward J. Minskoff Pavilion at Michigan State University; and the Interdisciplinary Science Center at Eastern Washington University.

Architects: LMN Architects  
Area : 176000 ft<sup>2</sup>  
Year : 2022  
Photographs :Mark Herboth Photography, LLC.



■ [www.lmnarchitects.com](http://www.lmnarchitects.com)





GRAPHENSTONE®  
PURIFYING PAINTS



VOC & PLASTIC FREE - CO2 ABSORBING - CRADLE TO CRADLE CERTIFIED  
info@graphenstone.co.uk - 01379 772940 - graphenstone-ecopaints.store



# SEGA TOYS HOMESTAR FLUX

## SATIN BLACK

Flux is the powerful star projector designed to be your first choice home planetarium

Imagine enjoying the sky full of stars while sitting on your sofa. This dream can become reality with the Sega Toys series of home planetariums. Flux is the most powerful and most advanced model available to date. Flux takes an incredibly popular planetarium design and refines it even further. Crafted in a satin-like finish, this powerful star projector is designed to be your first choice home planetarium. Brilliant glass lenses and our brightest LED to date make everything look vibrant and sharp. The indicated edges of a lunar crater surrounding the lens finish the look.

The name Flux is derived from the technical term Luminous flux which is the measure of the perceived power of light.\*

#### New and improved:

- The custom 5 Watt warm white LEDs mean more brightness for enhanced visibility
- Advanced multilevel glass lenses for brilliant projection
- Silent disc rotation means more relaxation while observing
- USB cable for wall plug or wall plug free power bank operation where you like
- Perfectly smooth focus dial
- Semi random advanced shooting star function
- Beautiful packaging for gifting and storage
- Now more than 30 optional star discs and all new scenic disc motives available More:
- Up to 60 000 twinkling stars on your wall or ceiling
- Project onto high and low ceilings or walls (140 cm to 270 cm)
- Projecting diameter of up to 270 cm
- Includes: Flux Planetarium, two changeable star discs, USB cable und wall plug, manual and skymap of northern and southern hemisphere, stylish gift box
- Homestar series is produced by Takayuki Ohira



Since the product launch of the Sega Toys Homestar Original in 2006 it has established itself as the leading manufacturer of home planetariums.

#### Dimensions:

Projector:  
16 cm x 16 cm x 15 cm, 620 g

Complete including gift box:  
19cm x 19cm x 23cm 1680 g

#### Technology to Dream

Since the product launch of the Sega Toys Homestar Original in 2006 it has established itself as the leading manufacturer of home planetariums. The Homestar Series is developed by the Japanese inventor & entrepreneur Takayuki Ohira. As a recognized specialist for professional planetariums he has received numerous innovation prizes.

#### Sega Toys Homestar

His company Megastar supplies large planetariums internationally. Large planetariums project up to 22 million stars. Ohira has been driving the development of the Sega Homestar series in the joint development efforts of both companies. The result is home planetariums which project thousands of stars also at home at a very fair price. Flux is the newest and most advanced planetarium in the Sega Toys Homestar series.

■ [www.segatoys.space](http://www.segatoys.space)

# Sega Toys Homestar Flux

Satin Black



Imagine enjoying the sky full of stars while sitting on your sofa. This dream can become reality with the Sega Toys series of home planetariums.

Flux is the most powerful and most advanced model available to date. Crafted in a satin-like finish, this powerful star projector is designed to be your first choice home planetarium.

Brilliant glass lenses and our brightest LED to date make everything look vibrant and sharp. The indicated edges of a lunar crater surrounding the lens finish the look.

SEGA  
TOYS

flux

[www.segatoys.space](http://www.segatoys.space) 149GBP



## EFFECTIVELY UPDATE DOWNLIGHTS DURING YOUR REFURBISHMENT

Enjoy an attractive designer look and save time and money.

Sustainability-choose a perfect replaceable GU10 bulb colour, brightness and dimming to match your install.

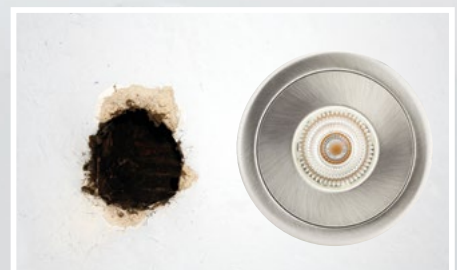
### Ideal for refurbs and replacing old downlights

Cut-out range 70-100mm



### Round Evofire Range ; installation guard and recessed options

Cut-out range 70mm and 70-100mm wth add-on bezel

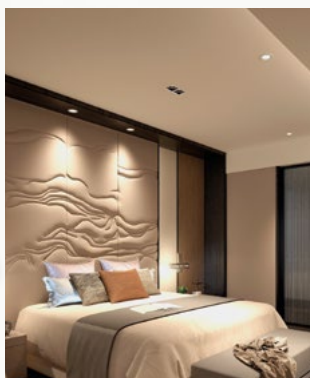


# TAKE ADVANTAGE OF THE BENEFITS OF EVOFIRE DOWNLIGHTS

Ultra-thin 1mm "blend-in" bezel with a premium finish for an attractive look in any room



1mm bezel



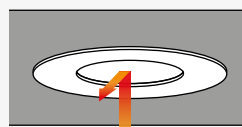
## Low profile, lightweight and durable

with an open design that is easy to install and remove and delivers an extended lamp life due to decent heat dissipation

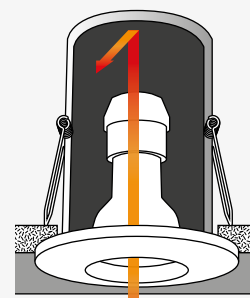


## A fire-resistant glass and steel body

provides a barrier below the ceiling with a compliant fire-rated design



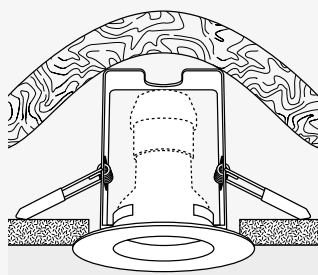
Patented design



Traditional can design

## Easily add insulation rolls

with optional insulation guard



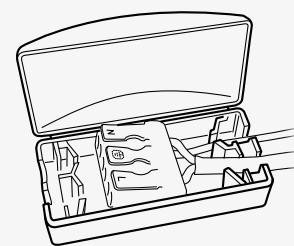
## IP65 Rated

Ideal for bathrooms



## Fast and efficient installation

Via a push fit loop in/out connector



Tool-free

Check out the full range on [Integral-LED.com](http://Integral-LED.com)

Available in a range of finishes, sizes and shapes including recessed versions for low glare  
Engineered and patented in the UK by Integral LED with a 3 year warranty

Complies to BS476 Part 21:1987

Complies to building regulations: Parts B, C, E and L



Fire rated compliance by UKAS Warringtonfire



SCAN ME

Available from all good Electrical Wholesalers and Retailers

Search **EvoFire** to buy



# SAGE GREEN BEDROOM ARE TRENDING

And 2022's hottest colour trend could be helping the nation get a better night's sleep according to experts

Sage green bedrooms are set to be the biggest design trend of Spring/Summer 2022, according to data from Google and Pinterest Trends with searches for 'green bedroom ideas' on the rise in the first quarter of this year. And the year's hottest design trend not only looks good – it could also be key to helping the nation get a better night's sleep, say colour experts.

"Sage green in both fashion and interiors has been a growing trend over previous months, but it is now in 2022 when it is really dominating our wardrobe and home interior choices – especially in the bedroom", says interior designer Megan Baker from My Fitted Bedroom.

"This is because people are starting to really understand and appreciate the wellbeing benefits of this colour and how it can support people's wider mental health and enhance sleep.

"Sage is a calming colour that is helping designers and homeowners take the biophilic trend one-step further by 'cocooning' with nature in a room. Because it is a versatile shade – it can be used at scale and this colour blocking effect can have transformative results by fully immersing people in what could be one of the natural world's most soothing shades. This feeling of being in nature is said to be great for our mental health and as such the colour has growing associations with self-care, making it a popular choice for the bedroom.

"But that's not the only reason why it is becoming so popular as the lead colour in bedroom design – if used correctly this non-stimulating shade could even help to promote enhanced sleep. Sage, whether it's a light sage or darker hue, is a relaxing and soothing colour that can help people unwind after a long day, supporting a sleep and self-care routine."



*My Fitted Bedroom's Luna design in Clover*



## MEGAN'S TOP TIPS FOR DECORATING WITH SAGE IN THE BEDROOM:

### Don't be afraid to go big and bold

Whether it's light or dark, sage in all its strengths is a calming colour that can be used at scale to create a versatile room that will stand the test of time.

Sage green painted walls or a block of sage green furniture, such as a fitted wardrobe, can update a bedroom in a modern way and it provides the perfect

starting point to build your design scheme around.

Using a bold block of green will help to create that soothing sleep space that people are craving - so hold back on pattern on the walls and be brave and go big with block colour.

Yuna Bedding in Sage and Water Based Acrylic Eggshell Paint by Morris & Co in Leafy Arbour – both from The Rug Seller



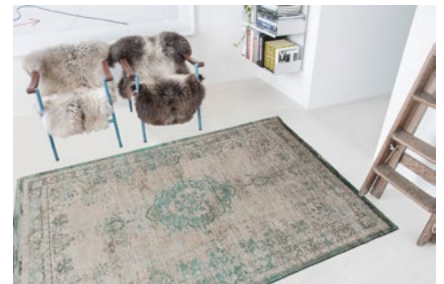
My Fitted Bedroom's Luna design in Verde



[Harrison Soft Boho Shaggy Rugs](#) in Sage Green £209



Above and top right, [Urban Forager Botanical Bedding by Ted Baker](#) – from £85.00 and [Wave Geo Knitted Throw by Ted Baker](#) - £165.00 – both from [The Rug Seller](#).



[Louis De Poortere Traditional Fading World Medallion Designer Rugs](#) in Jade Oyster – from £155.00 from [The Rug Seller](#)



[Small green bird statue](#) - £17.10 from [Arighi Bianchi](#).

### Use green to enhance period features

If you have a period property sage is a great shade to enhance period features such as a fireplace, wooden floors and a more traditional design scheme.

### Add pattern and enhance the biophilic elements of your design with accessories

Sage complements so many different

colour palettes and works particularly well with other shades of green so bringing in leafy prints and patterns into your bedding and accessories can help to add an extra layer of nature into your scheme.

Have fun with accessories, teaming sage with yellow and pinks.

Rugs are a fantastic and versatile way to add a splash of colour and extra

comfort to the floor – again, think about how they can enhance the overall look and feel of your design with pattern and texture.

Smaller decorative accessories will add interest, a bit of fun and a final design flair – don't forget plants and foliage for that added biophilic element too.

■ [www.myfittedbedroom.com](http://www.myfittedbedroom.com)



# Parker and Son have a History Spanning Back to the 1930s as a Specialist Building Contractor.



The company was first established in 1929 by Fred Oaten a general builder in the Bexhill On Sea area. Later (Curley) Roy Parker after serving his apprenticeship as a bricklayer with Parker in the 1950s, there is an archive photo of him with the Bexhill mayoress Mrs Alexander, building the Bexhill Hospital chapel of rest. Chris Parker went on to do his apprenticeship as a roofer with George & Albert Macklin a local roofing contractor who covered most if not all the Larkin Bros properties in Bexhill, later to join up with the family in the 1970s, and then went on to qualify as a quantity surveying estimator. During this time the company became an approved installer for Marley roof tile products covering the south east of England. In 2005 James joined the family firm after serving his apprenticeship with local Carpenter/ Builder Kevin Doswell as a Carpenter to NVQ Level 3. From then on growing the business with his father Chris to what it is today with the hope that a fifth generation of children and grandchildren will take the company to new heights in the future.



prize winning artist Steve Mac Queen at the Institute of Contemporary Arts (ICA), Appearing on Sky show doing it up with Paul Ross and Sarah Green, More recently the company carried out the restoration of Tickarage Mill, home to the late actress Vivian Leigh & Laurence Olivier. Last year the company was nominated for the rebuilding of the retaining wall to the mill pond at Batemans the home of the late Rudyard Kipling.



The team at Parker and son are second to none with experience in all aspects of the building industry from carpenters, Bricklayers, roofers, decorators and groundworkers they are able to offer a full service in house with most of them being with the company for many years offering a high quality of work and training opportunities to make sure they are the best in there sector.

Parker and son have been well established in the south of England over the past 90 years, working with long term clients which include Structural engineers, Architects public services such as local authority, NHS/ Trust, National Trust, English Heritage, to name but a few.





# PARKER & SON

BUILDING, ROOFING & SURVEYING  
Est. 1929

BUILDING THE FUTURE - RESTORING THE PAST



New Builds | Alterations & Conversions | Restorations | Extensions  
Garages | Groundworks | Roofing Services | Bathrooms & Kitchens  
Surveying | Listed Properties | Commercial Properties

[www.parkerandsonconstruction.co.uk](http://www.parkerandsonconstruction.co.uk) | 01424 892933 | [info@parkerandsonconstruction.co.uk](mailto:info@parkerandsonconstruction.co.uk)

PARKERS YARD, LITTLE ACRE, THE GREEN, NINFIELD, BATTLE, EAST SUSSEX TN33 9JG





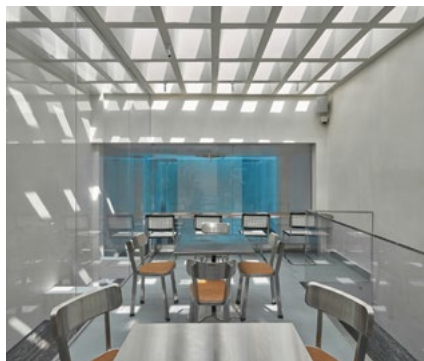
# THE RUNNING BEAN CAFE

## Preserving legacy value

---

To add the contemporary to a building that has conservation value right in the heart of Hanoi is the equation that we need to solve this time for The Running Bean - while we head North. Current condition overview - This is an ancient house located right at the center of Hanoi, after several forms of business passed through it - naturally this place no longer conserved the original design. The building is quite narrow in width a lack of natural light and an almost corrupt original structure. However, the old inherent with a few Gothic lines and the ideal height is the spotlight of the remained.

There are many ways to preserve a legacy value but the Red5 team chose to freeze it. Why do we call it FROZEN? Imagine the symbol of the iceberg, spreading cold air, freezing corners, and spaces inside the ancient house. We used the method of integrating square cubes, slanted arrays, or diagonal cuts combined with glass materials, glass bricks with a blue light tone to create a sense of movement and spread of the freezing.



The facade of the building was stripped of the old mortar layer to reveal the old bricks wall. The Gothic pattern is wrapped in stainless steel to make it more contemporary. Instead of directly entering the building from the main gate, we pushed it back a little deeper, the entrance gate is now made of a glass wall - paneled by 2 different types of transparent and translucent glass to create the image of the transparent block of ice with cuts inside. Leading the way in, there is a glass-brick floor that reveals the raw cement floor laying beneath.

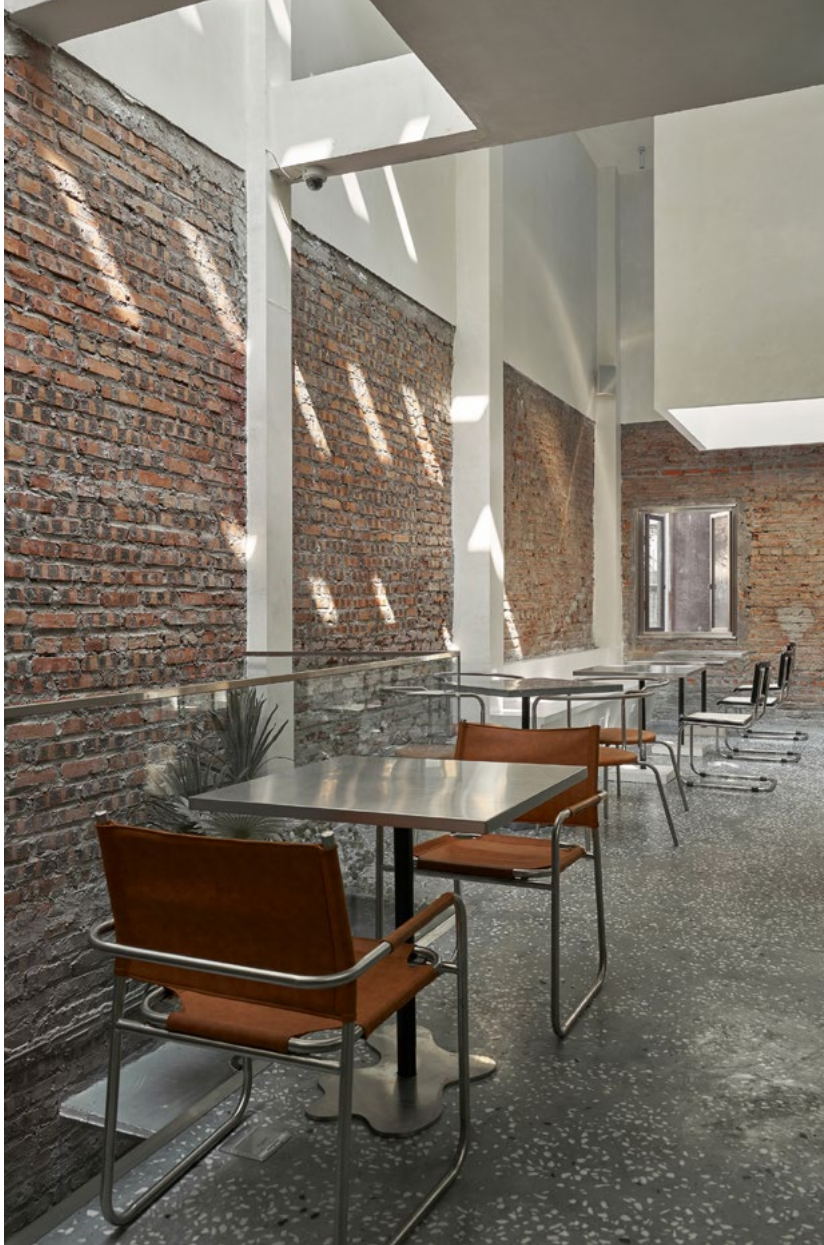


At the heart of the ground floor is the open coffee counter, which was made of transparent glass bricks and stainless steel. Above the counter, there is a diagonal rectangular block made of blue glass and stainless steel to strongly resonate with the freezing movement. We removed the finishing mortar layer on both of the sidewalls as well and put an extra layer of beveled glass to match the slanted counter ceiling. Because of the disadvantage of the width, we wanted to increase the original height of the building, which we did by placing an additional layer of mirrors to make





We used the method of integrating square cubes, slanted arrays, or diagonal cuts combined with glass materials, glass bricks with a blue light tone to create a sense of movement and spread of the freezing.



it feel higher and airier. To finish it off, the yellow light layer was chosen to be the main light, but we added a layer of blue light inside the counter ceiling to create the color effect and the feel of the iceberg.

Next, there is a sitting area for 2-3 guests that just want to take a quick sip of coffee. This area uses concrete walls and layers of glass walls to hide the kitchen area and technical area and to make it seem larger. Highlighted with the open ceiling, the atrium is

responsible for providing light during the day. The main aisle and the stairs system were made of glass and blue LED light, creating a feeling of walking inside the iceberg. On the first floor, we carefully used arrays of box shapes made from glass, mirror, painted plaster - to integrate multi-material box shape layers on top of each other, making it feel like you are inside the icebox.

As for the old brick walls, some of them are kept, while the other is combined with the off-white effect wall.

In the evening, the entire space is covered with a hue of blue LED light reflecting the feel of the iceberg - the same as the ground floor. Because of the need to enlarge the area and the number of seats required, we changed the structure from two to three floors plus the interwoven mezzanines. The ceiling is pushed up to create spaces for natural light, to overcome the lack of light problem at first.

The entire furniture of this project is made of materials that resonate with the space: stainless steel, industrial leather, terrazzo, old wood, and old brick remains of the house.

Architects: Red5studio

Area : 240 m<sup>2</sup>

Year : 2022

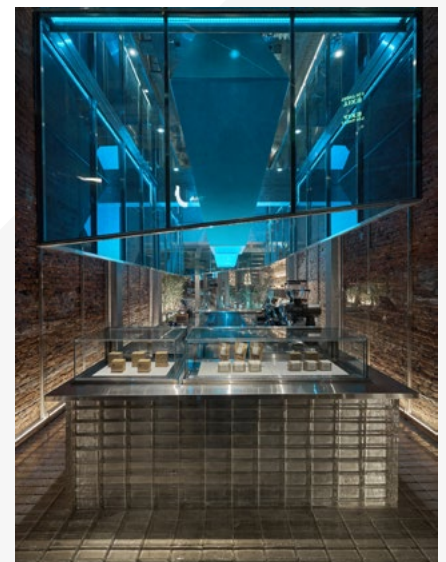
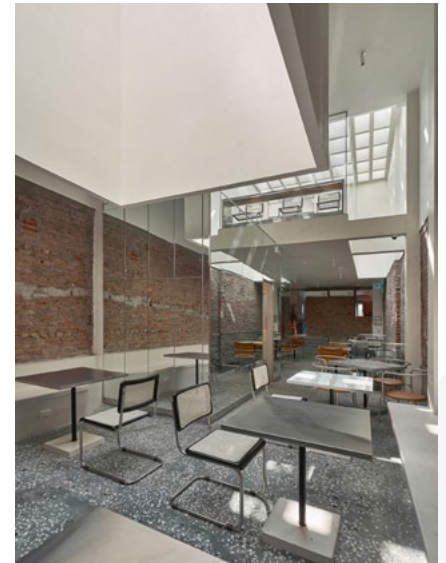
Photographs :Wuyhoang Studio

Manufacturers : Lam.

weavingspaces, Light Art, Van A Chau

Construction : Rex Interior

[www.red5studio.vn](http://www.red5studio.vn)







# STRIKING 3-BED BEACHFRONT HOME

Magply doubles up on shoreline property to withstand the 'sands of time'

A striking new three bedroom beachfront home on the East Sussex coast has been designed to not only respect its location within an area of Special Scientific Interest, but also withstand the challenging weather conditions as well as shifting sands, with Magply boards specified as part of both the roof and wall construction.

Sea Breeze at Camber Sands is being built by Coast View Property Ltd., with RX Architects being the locally based design practice leading the project. The unique residence's amenities will include a wellness spa with a steam pod, sauna and plunge pool, while the open plan living accommodation offers large expanses of glazing looking out across the beach.

The building is making use of non-traditional construction methods, which features twin 12mm layers of the rugged and versatile Magply boards as a carrier for a render like finish, applied by the Micro Cement Company across the entire envelope. Some 190 of the 12mm boards have been supplied to the

site through the Rye branch of Parker Building Supplies.

In the case of the habitable roof-space, the contractors are applying a single ply Renolit rubber membrane over a sarking board and then bonding aluminium rails along the line of the rafters, to which the two overlapping layers of Magply are fixed with stainless steel screws. The pink coloured finish is then applied as a primer, base and pigmented topcoat.

The Associate at RX Architects leading the project, Rob Pollard, commented: "We have specified Magply for a number of projects, generally where there were fire protection issues due to the closeness of other buildings. We know once it has been used to sheath the structure that we have the fire rating to safely timber clad over the top or use any other material. In the case of Sea Breeze it also makes an ideal substrate for the Micro Cement finish, being so stable. The designs are focused on creating a really robust covering for the rubber membrane that still allows us to obtain the warranty for it."

Nick Browne from Coastal View Property, added: "Weighing 38 kg each, the Magply boards are fairly easy to handle and cut, while we are having to predrill them here because of fixing into the aluminium channels bonded across the Renolit single-ply membrane. We expect to be finished by the end of October, ready for the Micro Cement system to be applied."

Magply offers a fire-safe and environmentally friendly alternative to conventional plywood or OSB products. Additionally, the unique production process keeps the chloride content to just 0.01%, enhancing both stability and long-term durability. The different thickness of panels are also widely used as a substrate board for the direct application of proprietary render systems, as well as for flooring and flat or pitched roof build-ups.

■ T: 01621 776252 | F: 01621776688  
E: [gmp@intpetro.com](mailto:gmp@intpetro.com) or [john@magply.co.uk](mailto:john@magply.co.uk)  
[www.magply.co.uk](http://www.magply.co.uk)

# Magply

## A1 RATED PATTRESS BOARD

EUROCLASS A1



Magply board (18mm & 20mm) offers a tried and tested alternative to plywood & OSB in PATTRESS applications within dry lining in both ceilings and walls. With changes in the construction industry and fire regulations you can be assured that Magply ticks all the boxes offering a lightweight robust building board with superb screw pull out results and the highest fire performance guaranteed to take the weight of everyday items in today's construction industry.



REACTION TO FIRE A1



EASY TO CUT / SCORE AND SNAP



HIGH SCREW PULL OUT STRENGTH



SAFE LOAD FIXINGS UP TO 1.5kN PER m<sup>2</sup>



CONFORMS TO BS 5237-2 1982



RACK TESTING TO BS EN 594:2011



FIRE TESTED TO BS 476: PART 6&7 + A1



SUITABLE ABOVE 18 METRES

FOR MORE INFORMATION VISIT

# magply.co.uk

 +44 (0) 1621 776 252

 sales@magply.co.uk





# MAXIMISING NATURAL LIGHT

TR Studio create double height glass library in refurbished West London home filled with natural light

Founded by Tom Rutt, London-based architecture and interior practice, TR Studio have transformed the lower and upper ground floor of a West London family townhouse, enhancing family life by creatively maximising natural light.

Located in South Kensington, London, the four-storey private residential property known as PNC House was typical of its 1830s style with a small, compartmentalised footprint. Briefed by the client to fully renovate the lower

ground floor and redesign the upper ground floor to create a more usable interconnected space with a modern aesthetic; the approach set by the practice was to borrow natural light and use materials to create an expansive, open plan layout full of personality in which to cook, dine, rest, play and read.

Fully supporting the main house whilst major structural work was carried out, TR Studio opened up the internal

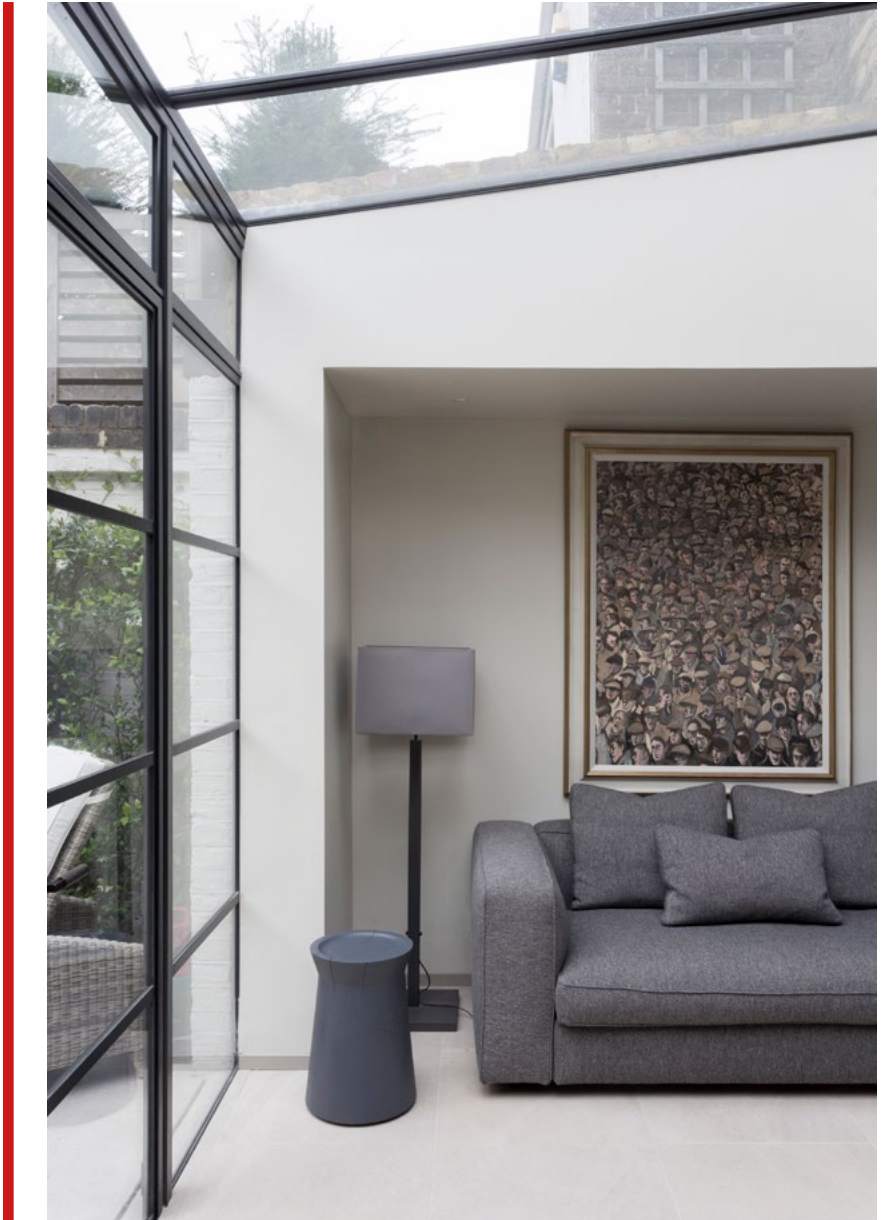
lower ground floor layout, transforming several small, dark rooms into a fresh, open plan space. The practice incorporated a set of contemporary Crittall style doors and glazed roof, bringing much needed natural light into the property. When open and closed, the Crittall style doors and use of complementary floor tiles inside and out, cleverly connects the compact rear garden courtyard to become part of the internal lower ground floor area.



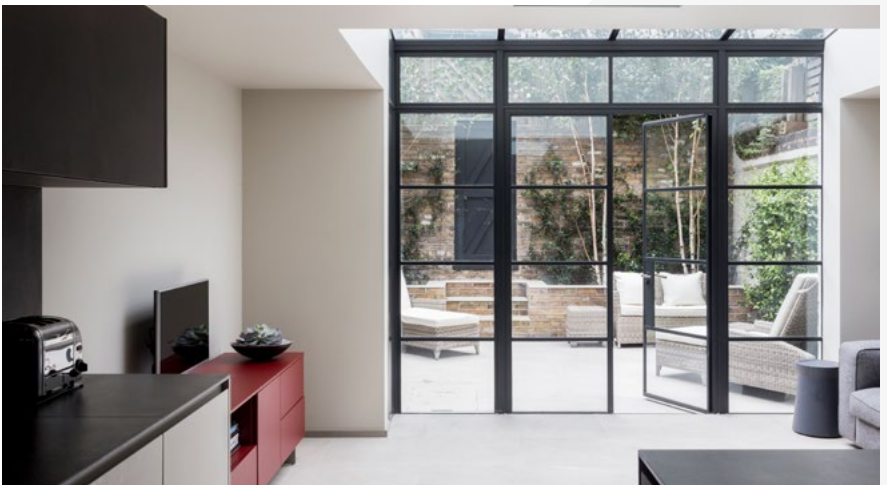
Flowing in from the garden courtyard, a small casual living area comprising of a soft grey wool sofa and a red entertainment centre, connects to a large kitchen diner. Here, bespoke under stair joinery optimises kitchen storage alongside housing a wine fridge and concealing white goods whilst creating a streamlined, contemporary aesthetic. Sleek, pale grey and black kitchen cabinetry are paired with a Kelite work surface. A large central kitchen island also in a mid-grey tone with matching slate-coloured work surface showcases a large spider burner stove with a small rustic wooden breakfast bar and grey woollen bar stools.

Introducing a further flash of colour, red velvet dining chairs surround a slate grey table offering a more formal place to dine. Just off from this more formal eating space, TR Studio created a bespoke double height library designed by the practice for the client's extensive book collection. Connecting both lower and upper ground floors through the use of a glass ceiling / walk-on glass floor, the library is a visual statement and clever device to maximise light flow, linking the spaces and providing a sense of spaciousness. Mirroring the rear Crittal style glazing, sliding glass doors separate the open plan space from a secondary living space and den located at the front of the property.

The use of natural light was crucial to the project to ensure that the lower ground floor was bright and airy. By creating one continuous level and utilising zoning for the kitchen diner and casual living area, the studio created a generous and useable space for the whole family.



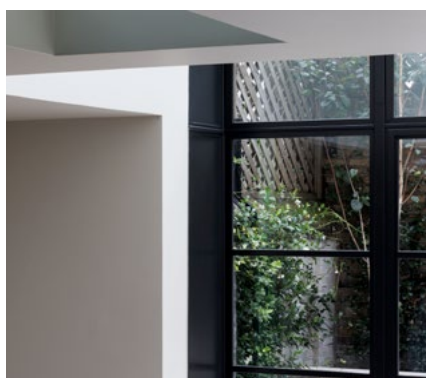
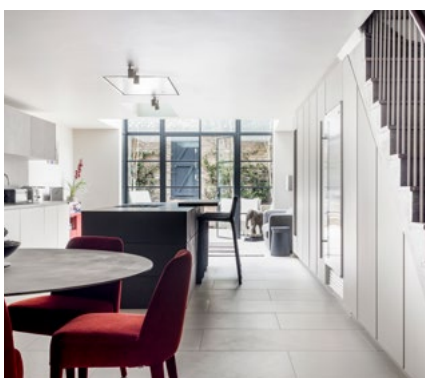
“ Mirroring the rear Crittal style glazing, sliding glass doors separate the open plan space from a secondary living space and den located at the front of the property.





Leading upstairs, TR Studio's attention to detail can be seen in the sophisticated wooden staircase with hardwood floor and contrasted by a sleek white and mahogany banister. Discreet stairwell lighting was set into cool, taupe toned walls.

Featuring period detailing, the front of the property on the upper ground floor level encompasses an entrance hall leading to a main reception room which provides a tranquil retreat away from the more practical lower living floor. In the main reception space, the double height library continues providing a reading nook for the client whilst showcasing a classic Arne Jacobsen leather egg chair and Warhol canvas. Here the walk on glass floor adds a sense of modernity in contrast to the traditional architectural detailing of the 1830s period property. As with the lower layout, the studio chose to install sliding glazed doors to allow for a separate or open living room. The studio incorporated soft curves to cleverly maximise space and provide for a TV and a bespoke built-in storage unit designed by the studio in a bold teal hue.



At the rear, on a half landing leading on to a guest WC, TR Studio once again installed Crittal style glazing and sliding doors, maximising the use of unused space at the rear of the property to create a multi-purpose cloakroom and storage space.

■ TR Studio  
[www.trstudio.co.uk](http://www.trstudio.co.uk)  
+44 (0)203 567 0569  
@tomruttstudio



NEW Gazco eStudio 135R with log-effect



*Fire Your Imagination*



STOVAX  GAZCO

WOODBURNING | GAS | MULTI-FUEL | ELECTRIC

[stovax.com](http://stovax.com)



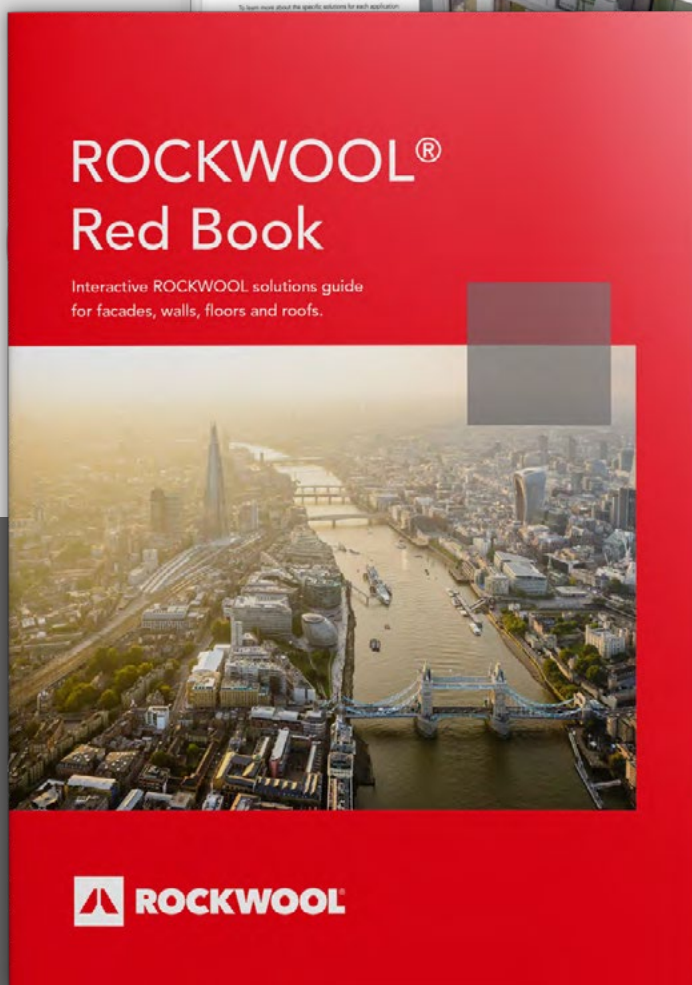


# The new ROCKWOOL® Red Book now available

The ROCKWOOL Red book is a powerful digital tool that supports the specification of insulation solutions from a single source.

Use the ROCKWOOL Red Book to:

- Enhance your understanding of the current building regulations in relation to thermal, acoustic and fire performance.
- Access free online software and technical tools to assist with modelling building performance and regulation compliance.
- Easily navigate to the relevant construction sections to determine the most suitable ROCKWOOL insulation solutions.
- Access the latest information on solutions such as the BBA Certified HARDROCK® range and the External Wall Insulation Dual Density Slab.



Download a  
copy of the new  
ROCKWOOL  
Red Book at  
[rockwool.com/  
redbook](https://rockwool.com/redbook)



[rockwool.com/uk/redbook](https://rockwool.com/uk/redbook)