



RWinvest

PARLIAMENT SQUARE CONSTRUCTION UPDATE

September 2019



PARLIAMENT SQUARE

CONSTRUCTION UPDATE

September 2019

WORKS PROGRESSED

In the latest construction update for Parliament Square, site investigations are now 90% complete. The marking out and digging of trial pit areas is underway as part of the ground investigations.

Some reinforced concrete and concrete manholes were discovered which have been destroyed and disposed off site.

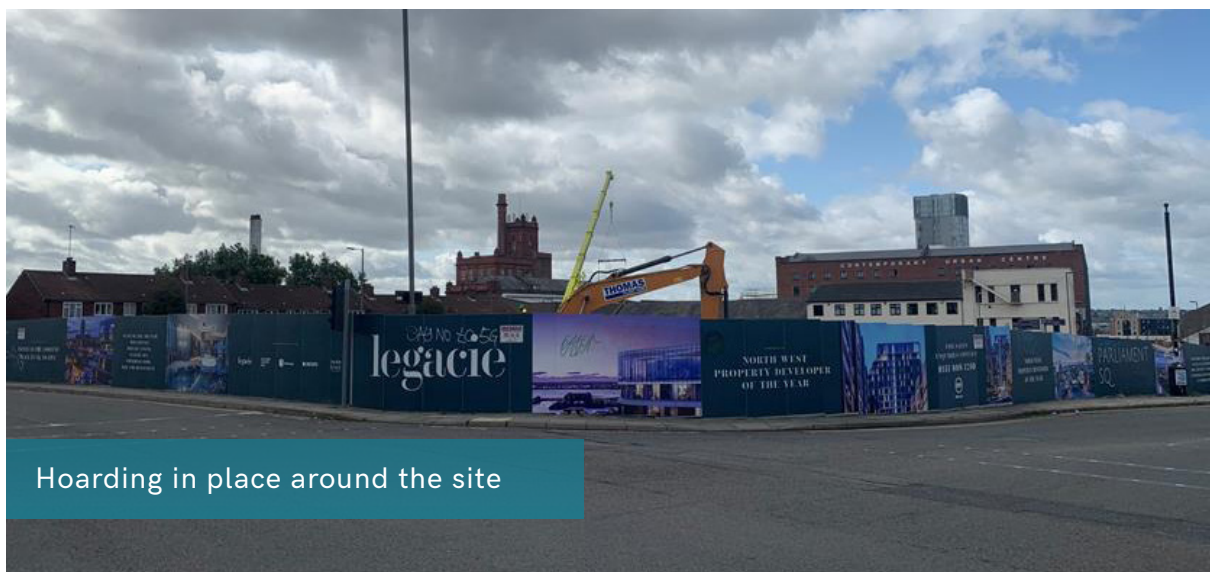
The site compound and temporary supplies have commenced and progressed by 5%. Site accommodation is now installed.

Demolition and site clearance are 100% complete with the ground infill and site levelling both 70% complete.

The hoarding can also be seen erected up and around the site.

WORKS ANTICIPATED

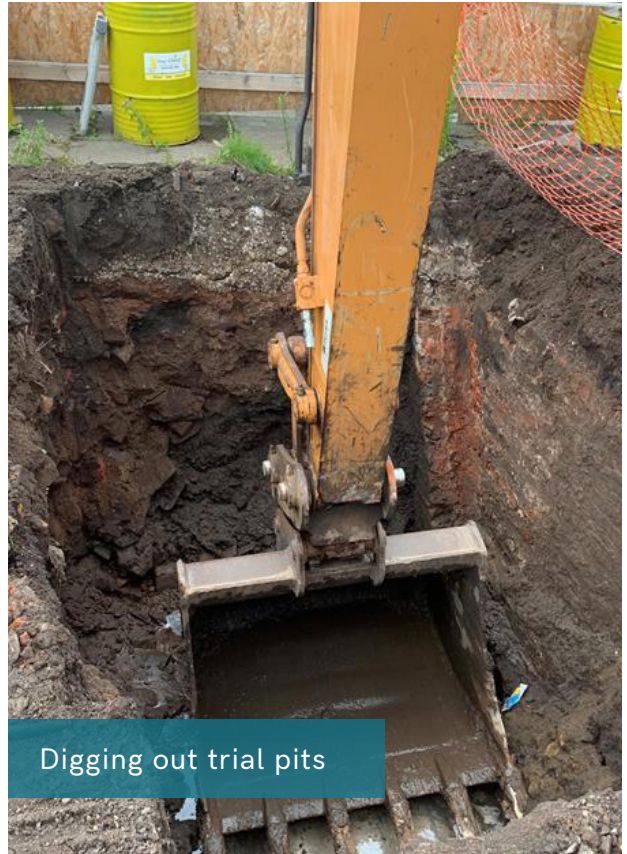
In the next construction period, piling is scheduled to commence which is a type of deep foundation pushed into the ground to provide steady support for structures built over it. The contiguous walls will also be going in.



Hoarding in place around the site



Marking out trial pit areas



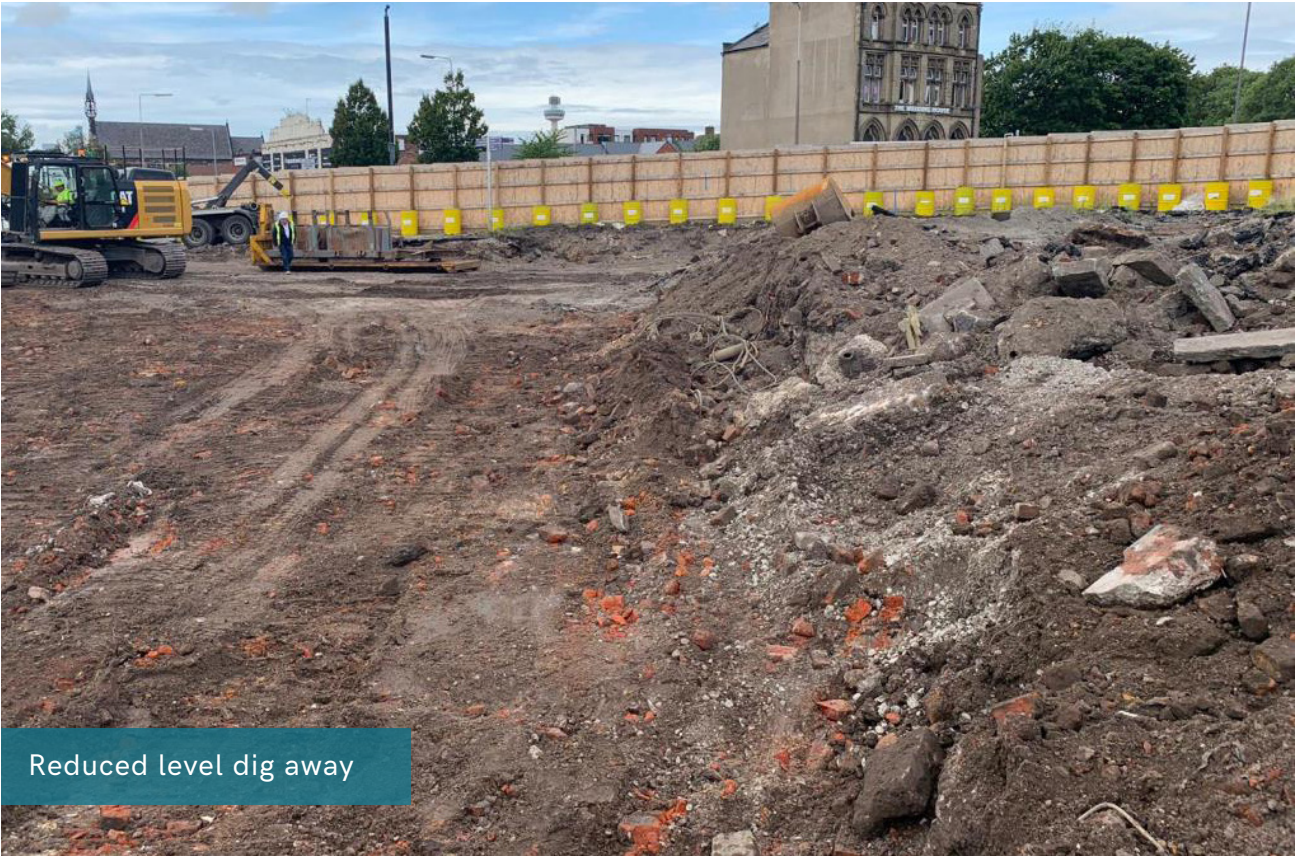
Digging out trial pits



Site investigations



Breaking up of concrete manhole



Reduced level dig away



Site clearance



Site accommodation being installed



RWinvest

Liverpool +44 (0)151 808 1250

London +44 (0)207 100 4141