

# REFURB & RESTORE

**THE CHURCH RESIDENCE:  
MODERN LIVING WITH  
HISTORIC CHARM**

**NEW COLLECTION FROM  
WOODPECKER FLOORING  
ENCAPSULATES SLOW LIVING**

**WHAT'S TRENDING FOR 2024?  
PINTEREST PREDICTS**





INTRODUCING  
**THREE ONE SIX**



Matt Black  
Gunmetal  
Lever Handles  
Pull Handles  
Matching Accessories

**FRELAN**  
HARDWARE



Scan Me!



### Our Team

#### Editor-in-Chief

Antony Holter  
T: 01304 806039  
E: editor@mhmagazine.co.uk

#### Editorial Manager

Claire Morgan  
T: 01304 806039  
E: claire@refurbandrestore.co.uk

#### Sales Director

Amy Wright  
T: 01227 392575  
E: amy@refurbandrestoremag.co.uk

#### Sales Manager

Lee Martin  
E: leel@mhmagazine.co.uk  
T: 01227 936974

#### Business Manager

Josh Holmes  
T: 01304 806039  
E: josh@mhmagazine.co.uk

#### Publishing Director

Martin Holmes  
T: 01304 806039  
E: martin@mhmagazine.co.uk

#### Accounts

Lauren Marchant  
T: 01304 806039  
E: lauren@mhmagazine.co.uk



MH Media Global Ltd  
18/20 Newington Road  
Ramsgate, Kent  
CT12 6EE

Cover Image Courtesy of  
Katherine Lu

*Every effort is made to ensure the accuracy and reliability of material published in Refurbishment & Restore however, the publishers accept no responsibility for the claims or opinions made by advertisers, manufacturers or contributors. No part of this publication may be reproduced or transmitted in any form or by any means, mechanical, electronic (including photocopying) or stored in any information retrieval system without the prior consent of the publisher.*

# CONTENTS

## Highlights

- 12-13 Digital Construction Week**  
Digital Construction Week has opened visitor registration for 2024
- 16-18 The Church Residence**  
Modern living with historic charm
- 20-22 Mastering the Art of Culinary Organisation**  
Molly Chandler, Designer at Willis & Stone unveils her expert insights on perfecting kitchen storage
- 24-25 What's trending for 2024?**  
Pinterest predicts
- 28-29 Using glass to create luxury spaces**  
North Leeds project
- 41 Life in the slow lane**  
New collection from Woodpecker Flooring encapsulates slow living
- 44-45 Keeping kitchens toasty**  
UK Radiators unveil Alpha Collection
- 50-52 Bookstore in the Blast Furnace**  
hyperSity architects
- 60-61 Sleeping Beauty**  
New research from Beautiful Walls shows dark interiors with a feminine edge will dominate bedroom schemes in 2024
- 66-67 The Ursuline Convent**  
The final part of the 'Ursulinhof' urban renewal project



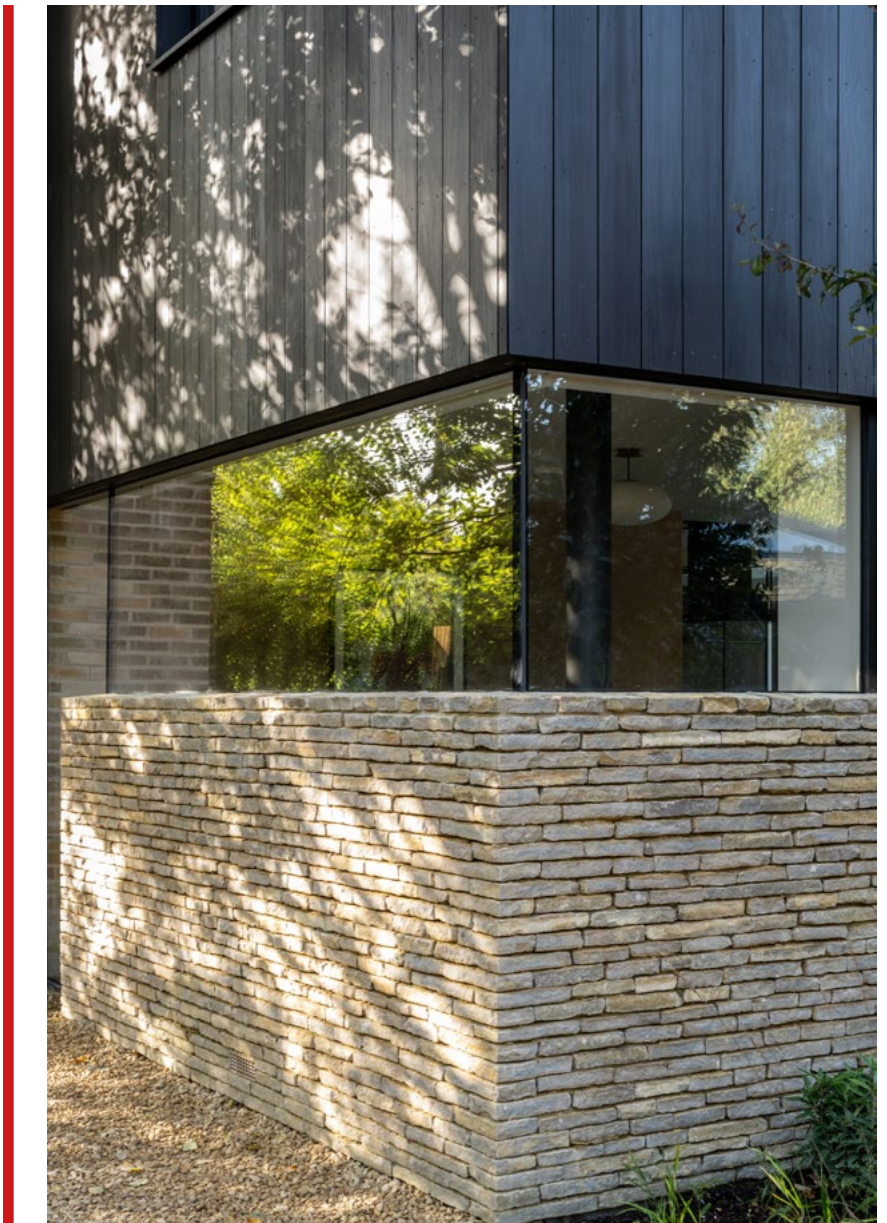


**SUSTAINABLE TIMBER  
AND LOCALLY SOURCED  
DORSET STONE COMPLETE  
CONTEMPORARY EXTENSION  
ON THE ISLE OF PURBECK**

Kebony Cladding by Shou Sugi Ban transforms stunning  
mid-Victorian countryside home

---





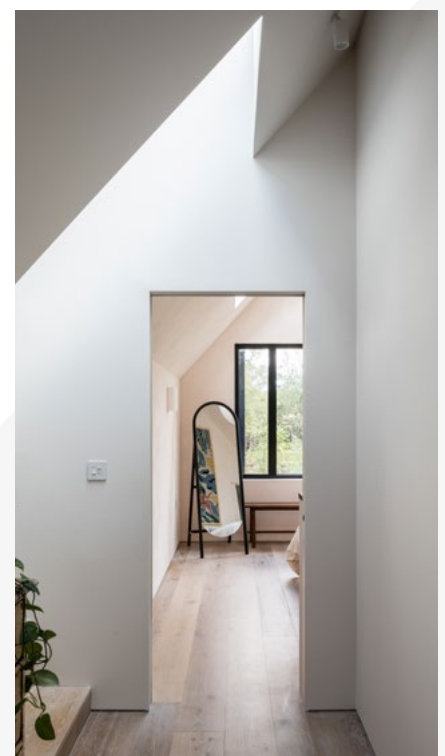
Located in the English countryside, close to Dorset's Jurassic Coast and Corfe Castle, a beautiful modern extension has recently transformed a mid-Victorian semi-detached home, while at the same time retaining the property's quaint style and heritage. Featuring local Purbeck stone and sustainably sourced Kebony timber, owner and developer, Lewis Donoghue of Lewel Construction, has more than delivered in marrying old with new.

Designed in collaboration with Gruff Architects, the vision behind the new project in Furzebrook was to create a modern extension that would enlarge the house for the owners and their growing family, at the same time connecting the building more intimately with its natural surroundings. The new extension to the side and rear

has expansive glazing to take advantage of the spectacular views overlooking the glorious Dorset landscape of green hills and leafy hedgerows, opening the house to light and sunshine, and allowing the owners to interact with the plethora of local flora and fauna that form the backdrop of the property.

Internally, the ground floor living spaces have been enlarged with two additional bedrooms created upstairs, capturing the views of the treetops and hills beyond.

The original Victorian house is constructed from clay bricks quarried directly from the land to the rear of the house. However, the double storey side extension has been designed as a younger, contemporary version of the





footprint of the original house, with its ridgeline sitting at a lower level, enveloped in 1500m of wire brushed Kebony Cladding by Shou Sugi Ban.

Developed in Norway, the patent protected Kebony technology sees sustainable softwoods, such as pine, transformed into dually modified™ products with comparable aesthetic and mechanical characteristics to tropical hardwoods. In addition to the increased dimensional stability, durability, and hardness of the wood, the use of Kebony Shou Sugi Ban diverts the need for deforestation of the planet's vital rainforest sinks, helping to reduce CO<sup>2</sup> emissions and the carbon footprint of the Furzebrook home.

Kebony wood also has a significantly increased resistance to the elements, allowing it to maintain its structural integrity and distinctive appearance for many years to come, making it the ideal material for the exterior of the new extension.

The remaining materials have been sourced from the surrounding area, with varying different colours and textures of Purbeck stone from local quarries creating a traditional and yet visually engaging façade. The combination of this local stone with the black coated Kebony timber, used to clad the entirety of the first-floor exterior, as well as the roof of the main extension, and the walls and roof of the garage, gives the building an enhanced grain finish that sits comfortably in the local landscape, while complementing and enhancing the



Developed in Norway, the patent protected Kebony technology sees sustainable softwoods, such as pine, transformed into dually modified™ products with comparable aesthetic and mechanical characteristics to tropical hardwoods



original Victorian cottage at the heart of the property.

Owner of the property, Lewis Donoghue, and Director at Lewel Construction commented on the decision to use Kebony: "We wanted to build something that was unique while still using traditional materials that didn't look out of place, and we loved the way that Kebony looked and felt. As we clad the roof of the house it was really important the timber could last and remain stable also to maintain the

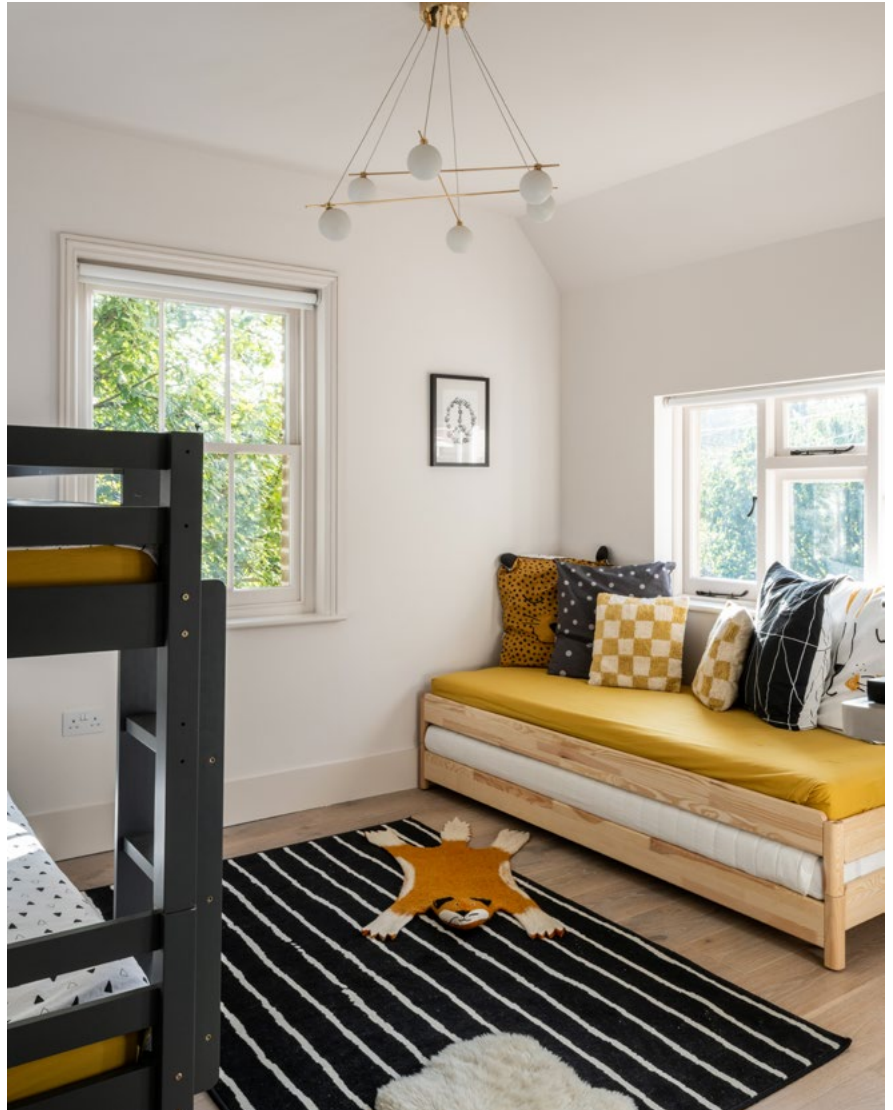




sharp detailing - I'm truly delighted with the outcome".

Nina Landbø, International Sales Manager for Kebony, comments: "It is amazing to see the extensive application of Kebony Shou Sugi Ban for this remarkable extension. The project is an outstanding demonstration of the integration of modern and traditional architecture, with the versatile appearance of Kebony harmonising the new extension with the existing building, and its enhanced durability guaranteeing high performance cladding for years to come."

■ [@the\\_purbeck\\_project](#)  
[@kebonywood](#)  
[www.kebony.com](http://www.kebony.com)





# THE KEY TO EFFICIENCY

## Keytracker

Adopting advanced management processes has become imperative for many businesses, with the integration of key and asset management solutions emerging as a crucial aspect. These electronic or mechanical solutions play a pivotal role in facilitating operations, improving security, and enhancing overall efficiency for different companies.

### Efficient Access Control:

One of the many challenges for businesses is managing access to different sites, offices, and properties. Keytracker's intelligent lockers offer secure storage for keys, tools, and equipment, featuring advanced authentication methods like pin codes or fingerprint access, ensuring that only authorised personnel can access the stored items.

The mechanical peg-in, peg-out board is an effective alternative, implementing security measures that require access pegs for key removal, thereby preventing prohibited access.

### Real-Time Traceability & Accountability:

Keytracker's solutions go beyond essential key and asset management by introducing real-time traceability features. Companies can monitor movements by keeping track of details such as who accessed them and when. This not only enforces accountability but also streamlines resource allocation.

The mechanical solution enforces traceability and accountability through personalised access pegs, providing immediate visual insights into which user has which key.

### Saving Time & Money:

Implementing key management solutions leads to tangible cost



Whether managing a large construction site or overseeing multiple properties, these systems can be customised to suit the scale and specific requirements of the operation.

savings by reducing the potential loss or theft of keys and assets, eliminating the need for expensive replacements. Time saved in accessing keys and managing security protocols contributes to heightened productivity and enhanced profitability.

### Adaptability to Diverse Environments:

Keytracker's key and asset management solutions are designed with versatility in mind, catering to the diverse needs of each sector. Whether managing a large construction site or overseeing multiple properties, these systems can be customised to suit the scale and specific requirements of the operation. This adaptability ensures that building companies of all sizes benefit from efficient key management.

### Conclusion:

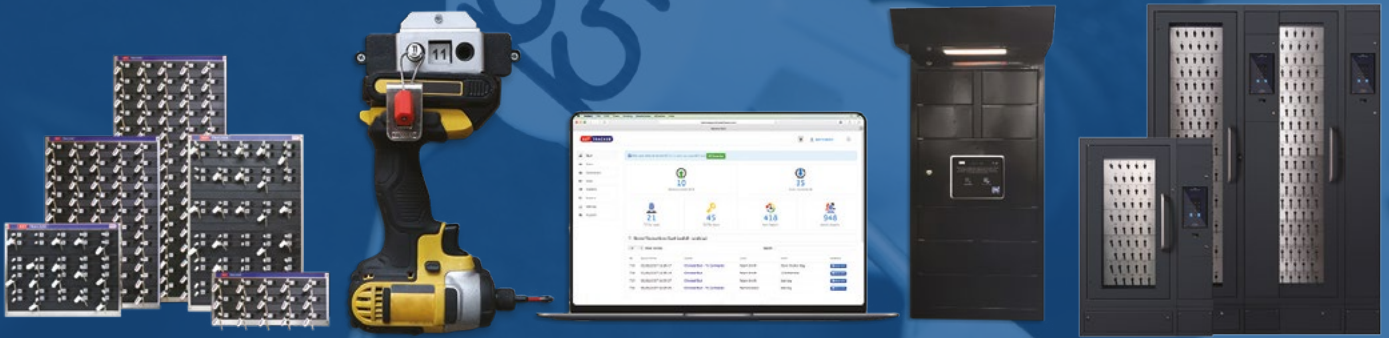
In conclusion, implementing key management systems, such as intelligent lockers or peg-in, peg-out boards, offers a transformative approach to the challenges faced by building companies. Enhancing access control, improving accountability, and fortifying security measures pave the way for a more streamlined, cost-effective, and secure future for all businesses. Unlocking efficiency through advanced key management solutions is undeniably the key to success.

To find out more about Keytracker's key management solutions, visit our website [www.keytracker.com](http://www.keytracker.com), email [sales@keytracker.co.uk](mailto:sales@keytracker.co.uk) or phone 01215599000.





# Secure Key & Asset Management Solutions



Keytracker designs, manufactures and services the world's most advanced range of cabinets & software to keep track of keys, tools, and regularly used equipment.

For a range of customers in both the public and private sectors, customising solutions to meet customers requirements.

From simple Mechanical Peg-in Peg-out systems and Secure Cabinets all the way to intelligent Key & Asset Management Systems, Keytracker provides solutions to all key and asset management challenges faced by businesses.



The Power of Traceability



Keytracker Ltd  
Station Road  
Rowley Regis  
West Midlands  
B65 0JY

01215599000

[www.Keytracker.com](http://www.Keytracker.com)

[Sales@Keytracker.com](mailto:Sales@Keytracker.com)



# DELIVERING MULTI-FACETED RETROFITTING SOLUTIONS

aspex

---

There are official targets in place to reduce the energy consumption from selected buildings and industries, furthermore the UK government has set a target committing to become a net-zero carbon emissions economy by 2050. Upgrading existing interior fitouts, as necessary, is a requirement not an option.

Aspex UK are the ultimate source for timber doorsets, risers, architectural ironmongery and access control. Find all your retrofitting solutions for interior fitouts with Aspex. Specifiers, architects and project consultants benefit from finding







As industry-leaders in interior fitouts, Aspex understand attention-to-detail is very important when retrofitting to make sure replacements fit-in well in terms of installation, compliance, functionality and aesthetics.

their complete doorset package from one supplier, Aspex, greatly reducing the risk of specification conflict and non-conformance.

As industry-leaders in interior fitouts, Aspex understand attention-to-detail is very important when retrofitting to make sure replacements fit-in well in terms of installation, compliance, functionality and aesthetics. The aesthetics element is exceptionally important where characteristics are unique, e.g. graded buildings, and Aspex's team can help achieve the finest, bespoke doorsets, risers and ironmongery. Retrofit seamlessly without compromising on design.

Aspex are supporting various retrofitting projects in align with the urgency to upgrade residential, healthcare and academic buildings to cut carbon emissions and make sure of fire and security compliance. Retrofitting is a high-demand service. Aspex's dedicated team can support phased upgrades by retrofitting across different storeys or selected buildings within a campus, ensuring of a smooth upgrade in a timely manner with minimal interruption to your everyday services and operations.

Retrofitting solutions work well when damaged doorsets need replacing too, Aspex can closely match your existing doorset and ironmongery designs allowing for consistent interior look.

Aspex offer an excellent choice of doorset solutions including entrance, internal and communal doorsets, access controlled doorsets, acoustic doorsets, lead-lined and post-formed doorsets



for healthcare, all combined with various design features - vision panels, styling options (grooved, panelled) and finishes (veneered, laminated, painted etc.). Ironmongery choices include heavy duty to aesthetical and bespoke designs.

Aspex's experienced project consultants can help you make

well-informed designs about your project, by proposing suitable doorset choices from door cores, configurations and finishes making sure the options adhere with the required fire performance, regulatory compliance, budget, delivery timeframes and interior design visions.

■ [www.aspex.co.uk](http://www.aspex.co.uk)

# DIGITAL CONSTRUCTION WEEK RETURNS FOR 2024

Digital Construction Week, the UK's leading event for innovation and technology in the built environment, has opened visitor registration for 2024

Taking place on 5-6 June 2024 at ExCeL London, Digital Construction Week (DCW) features two days packed full of inspiring content. Including 300+ speakers across 10 stages, 120 hours of CPD accredited education, 150+ exhibitors, live demos, workshops, networking drinks, and much more.

Attendees will get the chance to network with other industry innovators, explore the future of the built environment and get inspired at this free to attend expo.

Event Director and Co-Founder of DCW, Ollie Hughes, says "We're excited to be planning a stand-out event for 2024, that offers even more opportunities for the industry to connect, collaborate and innovate.

"DCW is THE place to learn about the transformative technologies driving change and improving outcomes across the built environment. With free registration now open, we can't wait to welcome our visitors on 5-6 June."

## Discover the innovations transforming the built environment

The latest solutions from 150+ leading built environment brands will be showcased at the event. DCW acts as a one-stop shop for visitors to learn how to use new technology to improve projects, assets, teams and business directly from the companies driving AECO forward.

The disruptive technologies and solutions set to be on display include digital twins, augmented reality, information management, automation and AI, drones, robotics and much more.



Visitors will discover how these solutions can help them be more efficient, collaborative, connected, sustainable and profitable.

An array of inspiring brands have been confirmed to exhibit at the ninth edition of DCW. These include Autodesk, Bentley Systems, Bluebeam, Causeway Technologies, Glider, IFS UK, Mission Room, MSite, Paperless Construction, Procure, Sir Robert McAlpine, Symetri, Strata, Trimble, Twinit, Xinaps, YardLink, and many more.

## Learn and get inspired in the education programme

It's not just in the central exhibition where the latest industry innovation will be in the spotlight. The event also boasts 10 theatres of free-to-attend talks, informative panels discussion, interactive workshops and more.

Hear from 300+ industry experts and get up to speed on the latest ideas shaping architecture and design, construction, engineering, and operation.

Speakers from Bryden Wood, Skanska, Laing O'Rourke, Restoration & Renewal (HoP), AECOM, John Lewis & Partners and Heathrow are just a few examples of big names who were part of the 2023 line-up.

The theatres are focused on some of the key areas shaping the built environment. These include information management, geospatial, digital transformation, people and change, asset management, net zero and more.

Visitors can expect to be inspired and informed by high profile presenters and curated panel discussions covering the industry's most pressing issues, exploring new ideas and actionable insights. The full programme will be announced in the spring.

## Register now for DCW 2024

Digital Construction Week takes place at ExCeL London from 5-6 June 2024.

■ To register for a free trade ticket, please visit: [www.digitalconstructionweek.com](http://www.digitalconstructionweek.com).





# DIGITAL CONSTRUCTION WEEK

EXCEL LONDON  
5-6 JUNE 2024

INNOVATION  
IN THE BUILT  
ENVIRONMENT

## Register to attend DCW

Join innovators from across AECO to debate, discuss and share ideas to help build a more digitally enabled industry.

### Discover

the latest technology to help you on the journey towards digitalisation

### Network

with your peers to share ideas and experiences

### Learn

from expert speakers and improve the way you work



 @DigiConWeek  
 Digital Construction Week  
 @DigiConWeek

Organised by **diversified**  
COMMUNICATIONS

**REGISTER FOR FREE**

[www.digitalconstructionweek.com](http://www.digitalconstructionweek.com)

#### HEADLINE PARTNERS



#### GOLD SPONSORS



# VICAIMA 24/7

## Vicaima revolutionizes customer support and service automation with its transformational Ai Chatbot

In an era where flexible working is increasingly the norm and technological advancement moves at an ever-increasing pace, Vicaima is proud to announce the launch of their new AI-driven knowledge base, Vicaima24/7. This innovative tool is not just a testament to Vicaima's commitment to customer-centric innovation but a leap forward in providing round-the-clock support and answers to customer queries.

### Enhanced Customer Service:

Vicaima24/7 stands out as a cutting-edge solution for providing continuous support and rapid responses to customer inquiries, considerably improving the user experience. This AI-driven tool is designed to seamlessly answer questions, guiding users to a wealth of information spread across installation instructions, maintenance advice, technical datasheets, and many other resources, thus ensuring customer queries are handled efficiently and effectively.

**Service Automation:** Unlike static websites, Vicaima24/7 is a dynamic, evolving platform. It automates repetitive tasks and customer service processes, saving valuable time and resources. This evolution in service means that Vicaima can adapt to changing market needs and advancements in its own product and service offerings, ensuring that the information and support provided are always up-to-date and relevant.

**24/7 Availability:** One of the standout features of Vicaima24/7 is its round-the-clock availability. Customers can access this service anytime, anywhere, which is crucial in a global market with varying time zones. This constant availability ensures that support is always at hand, even outside



conventional office hours, thus enhancing the accessibility and convenience of customer support.

### Efficient Customer Relationship

**Management:** Vicaima24/7 is more than just a chatbot; it's a tool for more efficient and personalized customer relationship management. By providing immediate and relevant responses, it helps build a stronger connection between Vicaima and its customers, fostering loyalty.

### Adapting and Enhancing Through

**Systematic Updates:** A crucial aspect of this new solution is its capacity for adaptation and enhancement, aligning with the evolving needs of our customers. While the core functionality of Vicaima24/7 depends on our meticulously curated knowledge base, our commitment goes beyond static information. We at Vicaima are dedicated to systematically updating this base, ensuring that the information remains relevant, comprehensive, and in step with the latest developments in performance timber door systems and customer needs.

Parallel to these updates, the chatbot tool itself undergoes

continuous improvements. These enhancements are not just in response to technological advancements in AI and chatbot functionalities, but also a reflection of our deep understanding of customer interactions and feedback. This dual approach of updating the knowledge base and refining the tool ensures that Vicaima24/7 remains a dynamic, responsive, and cutting-edge solution in customer support.

To experience the benefits of Vicaima24/7, simply visit [www.vicaima.com](http://www.vicaima.com) (select United Kingdom version) and look for the bubble icon. Start a conversation by typing your query and receive immediate answers. For those who prefer spoken communication, a voice option is also available. General advice is always accessible via Vicaima24/7, or alternatively, contact [info@vicaima.com](mailto:info@vicaima.com) or Tel: +44 (0) 1793 532333.

Vicaima24/7 is more than a chatbot; it's a symbol of Vicaima's unwavering dedication to customer satisfaction and technological excellence.

■ [www.vicaima.com](http://www.vicaima.com)

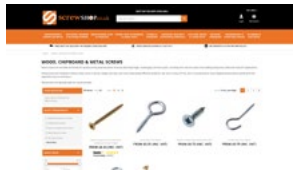


## Over 35 years of specialist experience

With over 35 years' experience specialising in screws, bolts and fixings for the DIY, hardware, building, joinery and furniture manufacturing sectors, Screwshop has evolved from its established sister company, NE Fasteners. Also proving a huge success with its online shop.

Situated in Cradley Heath in the West Midlands, it prides itself with offering expertise, competitive prices, imported bespoke products and off the shelf products with a nationwide next day delivery.

Our versatile approach to providing a wide range of finishes, including zinc, electro brass, black chrome, satin chrome, bronze and



nickel and packaging options, ensure that many buyers consider Screwshop to be a key and valued supplier.

We also offer builders metalwork, ironmongery, silicones, sealants and are specialists in kitting and coating. Go to our on line shop at [www.screwshop.co.uk](http://www.screwshop.co.uk) and enter sep5 for a 5% discount, or message for one of our catalogues. If you can't find a certain product, get in touch and we'll try and source it for you. We will give you our best attention and prices at all times.

We recently improved our website to make it easier for our customers. Go to our on line shop at [www.screwshop.co.uk](http://www.screwshop.co.uk) and enter Nov5 for a 5% discount, or message for one of our catalogues. If you can't find a certain product, get in touch and we'll try and source it for you. We will give you our best attention and prices at all times.

[www.screwshop.co.uk](http://www.screwshop.co.uk) | [sales@screwshop.co.uk](mailto:sales@screwshop.co.uk)

# screwSHOP.co.uk

DIY • Trade • Business

"Let us surprise you - Lowest Online Prices"

• Ironmongery & Builders Metalwork

• Silicones/ Sealants

• PPE

• Lowest Prices

• Next Day Delivery throughout the UK



Home of **TURBOQWIK** and **RHINO**  
THE PRECISION MULTIPURPOSE WOODSCREW SCREWS

0121 559 8866 • [sales@screwshop.co.uk](mailto:sales@screwshop.co.uk)

## PREMIER LOFT LADDERS

Counter-balanced  
for **ease-of-use**

Highly insulated hatch  
to **keep in the warmth**  
(U value of 0.60 W/m<sup>2</sup>K)

**High strength** wooden ladder  
(load rating of 180 kg/tread)

6-point latching system  
for an **airtight seal** (class 4)

Learn more about the Designo loft ladder...

[www.premierloftladders.co.uk/designo](http://www.premierloftladders.co.uk/designo)

0345 9000 195 | [sales@premierloftladders.co.uk](mailto:sales@premierloftladders.co.uk)

Certified  
Passive House  
Component



# THE CHURCH RESIDENCE

Modern living with historic charm

---

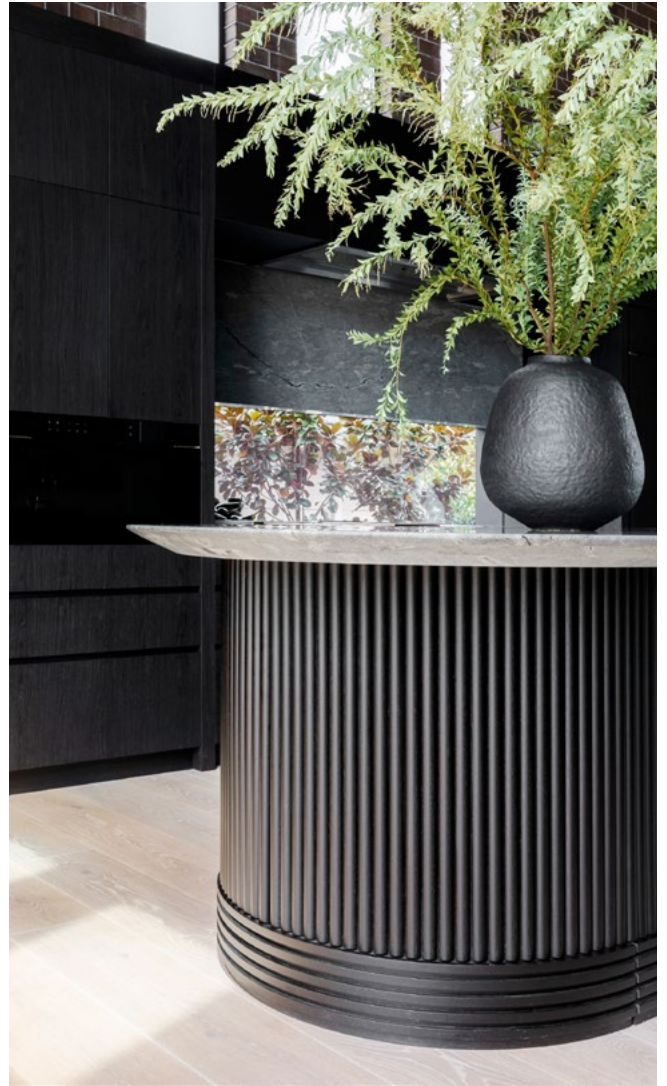
Transformed from its beginnings as a community church and theatre, The Church has undergone a remarkable rejuvenation, emerging as a three-level contemporary dwelling that seamlessly blends modern living with the historic charm of its heritage-listed brick and sandstone façade. Preserving the integrity of the original building, The Church successfully

maintains its historic exterior while introducing a modern aesthetic within. The architectural intervention delicately navigates the balance between tradition and contemporary design, employing thoughtful reinterpretation through geometries, material selection, and lighting.

By adhering to the existing footprint, The Church provides

a spacious interior with an impressive volume. The architectural response artfully contrasts traditional and contemporary elements, breathing new life into the structure while honoring its historical roots. Minimal partitions, floating mezzanine levels, and modified glazing contribute to a bright and airy atmosphere within the once-dormant building. The





introduction of expansive glazed arches in the new glazing mirrors the format and scale of existing fenestration, framing picturesque views of the garden, harbor, and sky. This design choice preserves the original rhythm of the exposed roof structure, complemented by the enduring presence of brickwork buttresses and the rich patina of timber trusses.

In a thoughtful nod to the essence of a church, the heart of The Church's new dwelling is the kitchen, strategically positioned to command attention, much like an altar in a religious setting. The centrally aligned kitchen island becomes a focal point, accentuating the volume of space with its soaring height and consistent materials. The island's curved corners pay homage to the arched windows, creating a visual connection to the brick bonds behind. The adaptive transformation



from a community theatre to a private residence necessitated a reimagining of the interior program and a corresponding shift in architectural response. Strategic insertions into the once cavernous plan and the anchoring of key social and private spaces have reshaped the once civic volume into a home where domestic life unfolds seamlessly.

A deliberate balance between built-in joinery and carefully selected furniture establishes a clear hierarchy of programs within the space. This design approach not only reflects the progressive lifestyle of the occupants but also supports their domestic ambitions, creating a residence that is both functional and aesthetically pleasing. In conclusion, The Church stands as a testament to the successful marriage of historic preservation and contemporary design, offering a unique and vibrant living space that honors its past while embracing the future.

- **Architects: Michiru Higginbotham**
- **Area: 700 m<sup>2</sup>**
- **Photographs: Katherine Lu**
- **Manufacturers: Brodware, Elton Group, Gineico Lighting, Living Tiles, Ownworld, STS Stone, Woodos**
- **Builders: Straight Up Built**
- **Landscape Architects: Andrew Pearce Landscape Design**



In a thoughtful nod to the essence of a church, the heart of The Church's new dwelling is the kitchen, strategically positioned to command attention, much like an altar in a religious setting.






# Repair, not replace.



**Repair Care stands for total solutions for sustainable timber restoration and maintenance.**

 **The permanent repair of decayed and rotten wood, including windows, doors and fascias.**

 **Quick and easy to apply with excellent modelling qualities and slump resistance.**

 **Permanent, elastic repairs that accomodate natural movement in the timber.**

**For more information visit [www.repair-care.co.uk](http://www.repair-care.co.uk)  
Email- [salesuk@repair-care.com](mailto:salesuk@repair-care.com)  
Tel- 01827 302 517**

**Before**



**During**



**After**



**After**



▲ Repair courtesy of DRM Carpentry  
DRY FLEX® 4 and DRY FLEX® SF used on application





# MASTERING THE ART OF CULINARY ORGANISATION

Molly Chandler, Designer at Willis & Stone unveils her expert insights on perfecting kitchen storage

## **Key Considerations: Everything in its place**

The kitchen is probably the most hardworking room in the home, and we ask a lot from it, including the storage of a multitude of items and gadgets, from crockery and cutlery to bread makers and coffee machines. Therefore, it's worth taking some time to consider the storage needs of your own family and lifestyle at the beginning of a kitchen project.

As a starting point, it makes sense to think about your current or last kitchen and what did or didn't work storage-wise. Did you have enough space for storing awkward items such as tall pasta jars? Was it a pain to get those weighing scales out from the corner cupboard every time you needed them? Think about items you use regularly so that easy access can be factored into the design. Consider any particularly large items such as appliances, which

may require tall housing units to be built into the plan.

Everyone uses their kitchens differently and storage needs for a keen cook or baker may be different from those of a busy family with young children. Therefore, lifestyle also needs to be factored into the decision-making process. A keen cook may decide on open shelving or dressers to store cookbooks, whereas a large family may need larger appliances





*Basalt Georgian Shaker from £15,000.*

such as fridges and freezers for groceries. Customised cabinets, pull-out shelves, and built-in organisers optimise space and cater to individual preferences. Multi-generational living is also on the rise, and homes with multiple generations will require versatile storage solutions to accommodate various cooking styles, preferences, and dietary needs.

### **Precision Placement: What to put where**

Consider the convenience of accessing kitchen items by placing them close to their corresponding usage areas. For example, plan storage around the placement of appliances to streamline the cooking process by positioning pots, pans and utensils near the hob or cooker. Store baking sheets and mixing bowls close to the food prep area and place plate cupboards or drawers in proximity to the dishwasher or serving area. This thoughtful arrangement will help to enhance the flow in the room so that in shared family spaces, there is less chance of entanglement with other family members. Storing items in the areas where they are regularly used, will mean everyone in the family can easily find what they need and use the space efficiently and without irritation.

While perhaps less glamorous, an essential aspect to consider is the



*French Grey Georgian Shaker from £15,000.*

inclusion of bins in your kitchen design. Incorporating pull-out waste and recycling bins not only contributes to maintaining a neat and organised kitchen but also enhances practicality. A strategic placement, such as under the worksurface or within the island unit where food prep occurs, ensures easy disposal of vegetable peelings and other waste directly into the appropriate bins, streamlining the cleanup process. Pictured above: Basalt Georgian Shaker from £15,000.

### **Drawers or Cupboards: Which is best?**

In terms of storage, drawers are most efficient and not opting for enough drawer sets is a common mistake. Drawers allow you to use

every layer of the available space, rather than stacking multiple items. Items can often be accessed much easier than a cupboard and using drawer organisers will keep utensils, cutlery, and small kitchen tools neatly separated making items easy to find.

### **Maximise Kitchen Storage**

This is often crucial in smaller kitchens and there are several ways to still ensure plenty of storage, however modest the space. Try exploring multi-functional furniture; for example, if you have seating in the room, consider banquettes with under-seat storage. If you like the look, hanging pot racks are also a good option and not only save cupboard space but can also add



*Juniper Ash Georgian Shaker from £15,000.*

a decorative element to your kitchen. Consider adding quality storage racks to the back of cabinet doors to make the most of every inch of cupboard space.

In any size of kitchen, tall cabinets or shelving can also be used to make the most of vertical space. High-level cupboards are great for items that you don't use daily, like small appliances, cook or serve ware. Customised breakfast cabinets are also very popular now and can include storage for coffee machines and toasters as well as cereals, bread and crockery. Simply shutting the doors makes for a clutter-free space when breakfast is finished, and they can be located close to the seating area for easy access.

Large pantries and back kitchens are also regaining popularity and if you have the room, both offer brilliant extra storage space. Accessible shelving and pull-out baskets are great for making pantry items visible and easily accessible, whereas back kitchens provide a convenient extra space for storage of larger kitchen essentials such as food mixers, jam pans and larger serving dishes, which are perhaps only used on special occasions.

### Tips for Staying Organised and Clutter-free

Declutter your kitchen regularly



In any size of kitchen, tall cabinets or shelving can also be used to make the most of vertical space.



*Obsidian Green Georgian Shaker from £15,000*

by assessing kitchen items and donating or discarding items that are broken or no longer used. It's also a good idea to anticipate future storage needs by designing flexible solutions that can adapt to changing lifestyles. Think about storage for small appliances, technology integration, and potential changes in the household. Tech-savvy individuals may need storage solutions for kitchen gadgets, charging stations, and the integration of smart

appliances. Consider incorporating hidden outlets and dedicated spaces for electronic devices. By carefully considering these aspects during the planning phase, you can create a kitchen that is not only functional and stylish but also provides efficient storage solutions tailored to your lifestyle.

■ 01353 361843  
[www.willisandstone.co.uk](http://www.willisandstone.co.uk)



*Obsidian Green Georgian Shaker from £15,000.*



*Obsidian Green Georgian Shaker from £15,000.*





## NIKOLATESLA UNPLUGGED **NEVER SO EASY.**

Control your cooking with the simplest gesture with the new NikolaTesla Unplugged extractor hob. Thanks to its beautifully weighted knobs, you can set the most suitable cooking mode and power with a single “click” to make even the most complex preparations simple. An incredible technological solution, with the unmistakable Elica design. Register your product on our website to include a 5 years warranty that lets you relax and enjoy a unique cooking experience.

Discover the full range at [elica.co.uk](http://elica.co.uk)

 elica



# WHAT'S TRENDING FOR 2024?

## Pinterest predicts

Pinterest's annual 'Pinterest Predicts' report paves the way for yearly trends that influence a number of industries from fashion to interiors. Following the launch of this year's report Ruth Lavender, design expert at Benchmark Kitchens, explores how to bring a number of the trending styles into your kitchen space:

### Tropic like it's hot

"A trend that has dominated interiors over the past few years is biophilic design - the concept of bringing the outside in to create a tranquil, peaceful setting that takes inspiration from the natural world. It's no surprise to see that Pinterest searches for 'tropical chic

décor' increased by 110 per cent in 2023, as this trend offers a natural progression from the nature-inspired interiors we've been seeing. "For those who prefer a minimal approach, a simple way to welcome a touch of the tropics is through house plants, such as palms. Pairing greenery with neutral cabinet doors and wood flooring can create a space that feels like a breath of fresh air.

"Bold design decisions and tropical décor go hand in hand - leafy prints on soft furnishings, juicy pops of colour through cabinets, standout wallpaper and wood furniture are all perfect ways of integrating this look. Have fun and create your own little tropical paradise!

### Kitchens

"Kitsch kitchens are all about expressing your personality and creating a space that is bold and unique. This individualistic approach has seen Pinterest searches for eclectic kitchen décor rise by 50 per cent, and eccentric kitchen searches rise by 160 per cent.

"The trend welcomes a vibrant and eclectic approach, with a bold colour palette and retro prints taking centre stage. It's important, however, to ensure the scheme is balanced to avoid overwhelming the space. If you're planning to go bold with your cabinet doors or wall colours, balance this with



neutral worksurfaces that will keep the room feeling light and airy.

“The goal is to create a considered, treasure trove through mix and match furniture and crockery, while creating areas of interest through art, colour pops and statement lighting. Pattern can also be introduced through soft furnishings or splashbacks.

### Cafécore

“For many of us, coffee is part of our daily ritual, so it’s unsurprising that more people are looking for ways to create designated areas to house our coffee paraphernalia. So much so that 2023 saw a whopping 1,125 per cent increase in Pinterest searches for ‘coffee bar styling’, and a 145 per cent increase in searches for ‘coffee station décor’.

“When creating a coffee station or coffee bar in your kitchen, consider whether you want it on display or would prefer to hide it away. If you’d prefer it to be out of sight, then build this into your design early in the planning stages to ensure enough storage space is set aside. An integrated coffee machine is another option - locating alongside other appliances will create a consistent look.

“If space is limited, tucking your coffee machine away in a corner of the kitchen is a viable option. When picking the perfect spot, I’d recommend ensuring your station is as close to the sink as possible, making it easy to fill the machine or



Bold design decisions and tropical décor go hand in hand - leafy prints on soft furnishings, juicy pops of colour through cabinets, standout wallpaper and wood furniture are all perfect ways of integrating this look.



kettle with water. Including cabinet storage above will ensure mugs and glasses are within reach.

### Western gothic

“Western gothic is predicted to take the interior world by storm this year, with Pinterest reporting

a 145 per cent increase in searches for the term. The aesthetic takes inspiration from American ranch life, but is remixed with dark, industrial elements.

“Edgy and moody yet plush and cosy, this trend welcomes a deep colour palette and is complemented by faux leather, cowhide and industrial-style furniture and décor. When choosing colours, dark hues should be your go-to. Black kitchen cabinets are the perfect base, using softer shades like grey, beiges and blues through your walls and accessories to build the scheme. Texture and materials are also important - wood finishes, leather accessories and fringed upholstery all work to add a western feel.”



■ To order a brochure, book a free design consultation, or use Benchmark’s handy kitchen visualiser tool, visit [www.benchmarkkitchens.co.uk](http://www.benchmarkkitchens.co.uk).

# YOUR KITCHEN CONTRACT PARTNER

The UK's leading kitchen contracts business

Nolte Kitchens UK is your perfect partner for any contract kitchen installation, offering all you need to make your install seamless, each and every time.

Critically important for any project is having complete confidence in your suppliers. Nolte has a dedicated Contracts team, serving both boutique housing projects and large-scale developments.

Their German-engineered kitchens are made to order and shipped from Germany pre-assembled, saving on installation time, and their breadth of portfolio allows for complete flexibility, aligning with your project budget or finish, from contemporary handle-less to more traditional, classic shaker style.

Choose from three class-leading, high-quality collections: Express, Nolte, or their luxury range, Nolteneo. For projects requiring a co-ordinated aesthetic, Nolte offers a range of living and utility furniture. And once you know what style of beautiful kitchen you want, the Nolte highly experienced kitchen makers will build them for you efficiently and effectively.

They use decades of experience and their latest software provides full CAD designs, quotations, comprehensive project managed installations with SMSTS, SSSTS and CSCS-certified managers and a full insured install team and dedicated after sales department.

From first designs to final fit, you can trust Nolte Kitchens Contracts to deliver an exceptional service, and an even better result with their thorough quality assurance process which gives you full control, no surprises and a final result exactly as you imagined it (if not better).



Creating stunning kitchens is a team effort, and Nolte works with select and highly regarded suppliers that they can trust to make sure every project goes to plan.



Creating stunning kitchens is a team effort, and Nolte works with select and highly regarded suppliers that they can trust to make sure every project goes to plan. These include leading brands such as Miele, Caesar Stone, Quooker and Electrolux, and many more. So, from worktops to appliances, sinks to final fittings, whatever your kitchen budget or desired design, they have every kitchen ingredient covered.

For your added protection, health and safety is a Nolte priority. They

retain the services of a highly successful independent health and safety consultancy, who provide effective, user-friendly policies and procedures along with practical assistance with implementing safety strategies. Working with them means Nolte can cover site-specific RAMS, regular on-site health and safety inspections, company health & safety policies and employee training.

Nolte Kitchens Contracts has exciting plans for 2024, so if you're looking for a new kitchen contract supplier, get in touch.

■ [www.nolte-kitchens.co.uk/trade](http://www.nolte-kitchens.co.uk/trade)

**nolte**<sup>®</sup>  
KITCHENS CONTRACTS



**nolte**<sup>®</sup>  
KITCHENS CONTRACTS

YOUR KITCHEN  
CONTRACT *partner*

MORE THAN 99% OF THE WOOD WE  
USE COMES FROM CERTIFIED SOURCES

Our German heritage and 70-year history means we stand for all the things you'd want from a kitchen contract team: quality, precision, reliability.

And our modern approach means we'll give you a quicker, more straightforward and more sustainable kitchen project at every step.

We're proud to be a climate-neutral company — an achievement we think is one of our greatest to date. After all, we make 900 kitchens a day and export to over 60 countries, so neutralising our effect on the planet hasn't been easy.

PARTNER WITH US AT [NOLTE-KITCHENS.CO.UK/TRADE](https://www.nolte-kitchens.co.uk/trade)



# USING GLASS TO CREATE LUXURY SPACES

## North Leeds project

---

Founded in 2009 and based in Yorkshire, Verus Construction, the luxury new build construction specialist, creates unique homes and distinctive housing developments across Yorkshire.

Damian Barker, Founder and CEO discusses one of his recent multi-million pound housing projects in the sought-after Alwoodley in North Leeds. The construction specialist already represented a strong portfolio of successful, large-scale projects which were all secured through recommendations.

### The project

The design team included Studio Map and Verus Construction, whose skills, expertise and meticulous attention to detail

are showcased throughout the remarkable property.

The project aimed to create an elegant, spacious and functional family home surrounded by large grounds. The result is an exquisite, contemporary two storey detached house that combines minimalism and quiet luxury.

The multi-million pound project is complete with five bedrooms, each with walk-in dressing rooms and private bathrooms, a bar and recreation room, home gym, triple garage and an open-plan kitchen and dining area. The large ground floor boasts floor-to-ceiling glass doors that seamlessly connect the open-plan interiors to the tranquil and impressive garden. Architecturally, the project makes

use of geometric forms which are pivoted either side of the double height core of the home which is complemented by a modern flat roof to give the building a modern and sleek finish.

### Using glass to fill homes with light

Upon entering the house, the expansive foyer and glass staircase greet you with an abundance of natural light. Courtesy of the floor-to-ceiling glass sliding doors and windows, the spacious open-plan entertaining and living area effortlessly connects with the outdoors.

The property also features sky-frame structure glazing, creating a fully open-plan layout from all sides and levels of the property. Throughout the home, strategically



placed feature windows also work to add architectural interest while maintaining an open and luxurious ambience.

The striking staircase and distinctive lighting highlight the geometric structure of the home which serves as a focal point within the open-plan living area. Incorporating glass steps and bannisters effortlessly fills the home with light, creating a bright and open-plan feel to the whole property.

Embracing glass in the decoration and design creates a sleek, minimalist finish whilst still creating a connected and cosy family home.

### **Open-plan living spaces**

Creating open-plan living spaces has grown hugely in popularity over the last few years. Homeowners are regularly seeking versatile and functional spaces that serve as both luxurious entertaining areas and open family environments.

Incorporating glass in the kitchen and dining areas is a key interior style for a connected and harmonious open-plan layout for the project. Open-plan living maximises the use of the property's square footage by creating multifunctional spaces for the entire family to enjoy.

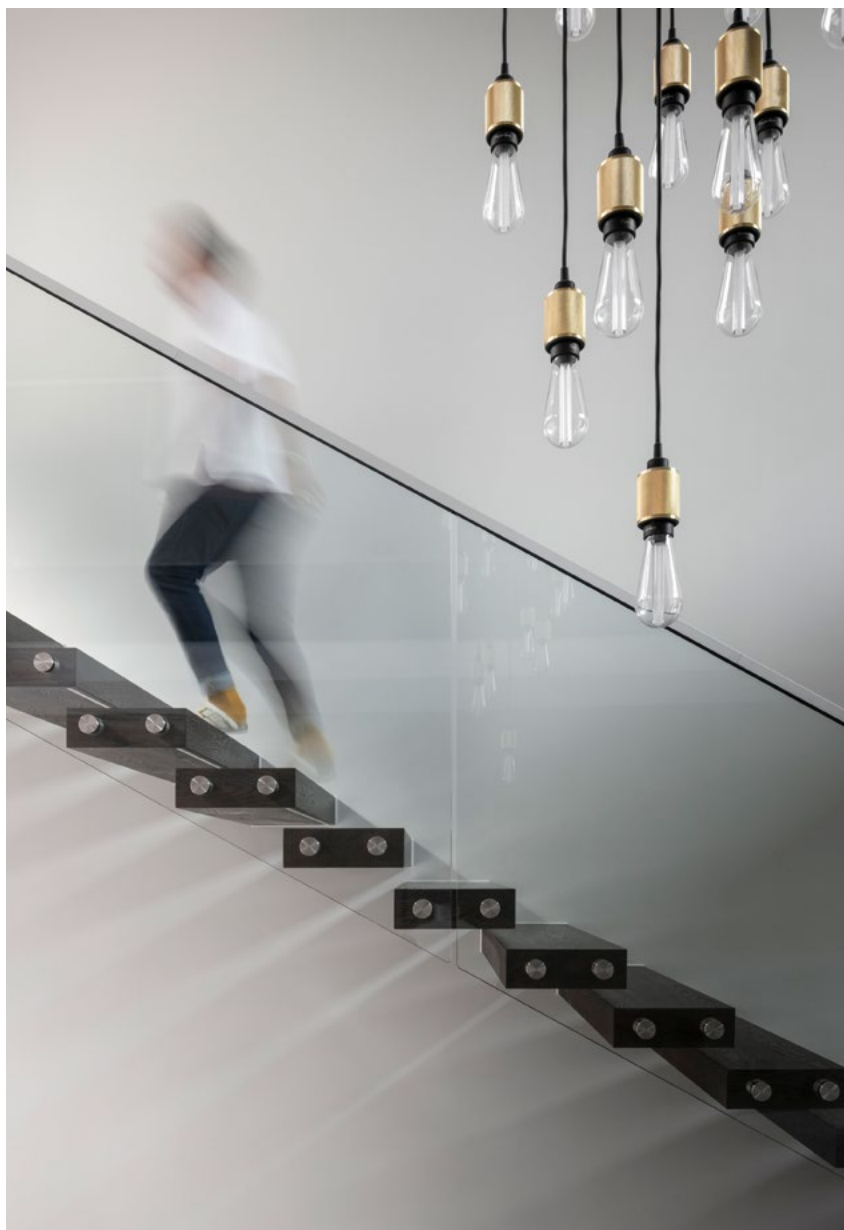
Substituting conventional doors and walls with glass frames enhances the flow of space into the surrounding rooms and gardens.

The house celebrates both cohesion and simplicity through neutral colour palettes, glass staircases, and expansive glass bi-fold doors. These elements and touches of gold used throughout the home creates a sense of balance, calm and luxury.

■ **For more information and to see further projects from Verus Construction, please visit:**  
[www.verusconstruction.co.uk](http://www.verusconstruction.co.uk)  
[www.instagram.com/verusconstructionltd](https://www.instagram.com/verusconstructionltd)  
[www.linkedin.com/company/verus-construction-ltd](https://www.linkedin.com/company/verus-construction-ltd)



The project aimed to create an elegant, spacious and functional family home surrounded by large grounds. The result is an exquisite, contemporary two storey detached house that combines minimalism and quiet luxury.



# THOMAS DUDLEY LAUNCHES THE WORLD'S FIRST PUSH BUTTON SYPHON

Thomas Dudley signals the end of the leaky toilet valve

Thomas Dudley the UK's leading innovator in plumbing solutions, proudly announces the launch of Quantum, its groundbreaking all new Pushbutton Operated Leak-Free Syphonic Toilet Flush Valve. This state-of-the-art product represents a significant leap forward in toilet flushing technology, offering unparalleled efficiency, reliability, and water conservation.

## **Quantum's key Features:**

### **Innovative Pushbutton Operation:**

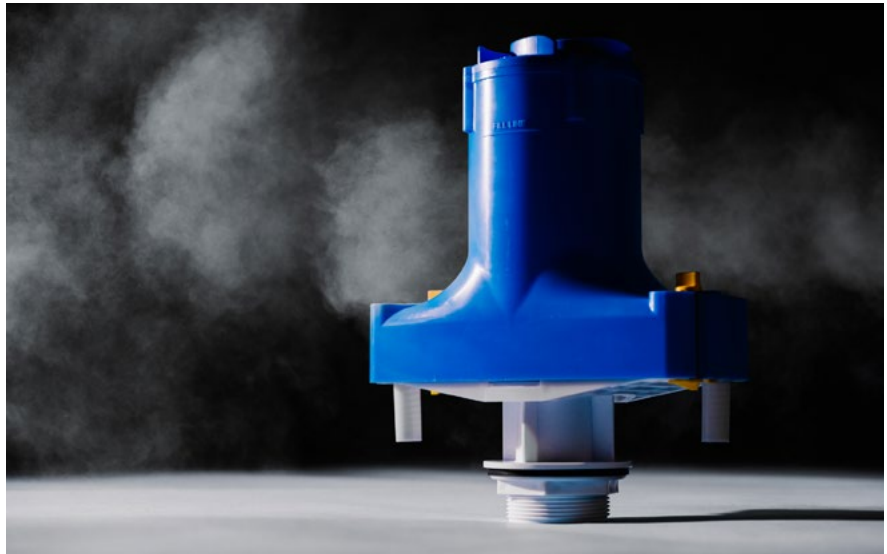
Quantum is the first button operated mechanically activated syphon and comes equipped with a user-friendly pushbutton mechanism [available in various styles], providing a convenient and intuitive flushing experience. The modern design of the pushbuttons enhances user interaction while ensuring a reliable and consistent flush with every use.

### **Leak-Free Syphonic Technology:**

Designed and engineered in the UK with precision, Quantum incorporates advanced syphonic technology that lifts water with no power assistance in order to eliminate leaks and minimise water wastage. The leak-free design enhances the durability of the valve and contributes to water conservation efforts.

### **Water Conservation:**

Thomas Dudley is committed to sustainability, and the new Quantum Leak-Free Syphonic Toilet Flush Valve reflects that commitment. In the UK enough water is leaking from toilets in the UK to fill over 4 MILLION baths EVERY SINGLE DAY. By utilising



the leak-free benefits of a syphon, coupled with the ease of the pushbutton mechanism of a flush valve, Quantum optimises water usage by eliminating leaks without compromising performance, Quantum helps users reduce their environmental footprint and lower water bills.

### **Easy Installation and Maintenance:**

Designed with installers and maintenance teams in mind, Quantum boasts a hassle-free installation process and requires a vastly reduced amount of maintenance compared to a standard flush valve. This ensures that both professionals and end-users can enjoy the benefits of this cutting-edge technology with ease.

### **Durable Construction:**

Crafted from high-quality materials, Quantum is built to withstand the rigors of daily use. Its robust construction ensures longevity, making it a reliable and cost-effective choice for residential and commercial applications.

Chris Slezakowski Thomas Dudley Plumbing Products Business Unit Director said:

"We are thrilled to introduce Quantum, the first in a new line of Pushbutton Operated Leak-Free Syphonic Toilet Flush Valves, a testament to our commitment to innovation and sustainability. This product not only redefines the flushing experience but also addresses key concerns related to water conservation and reliability. At Thomas Dudley, we believe in providing solutions that make a positive impact, and Quantum is a prime example of our dedication to excellence."

■ If you would like to find out more about Quantum then please email: [info@tyde.co.uk](mailto:info@tyde.co.uk)

You can visit the Thomas Dudley website at [www.thomasdudley.co.uk/tyde](http://www.thomasdudley.co.uk/tyde)

T H O M A S   
D U D L E Y 

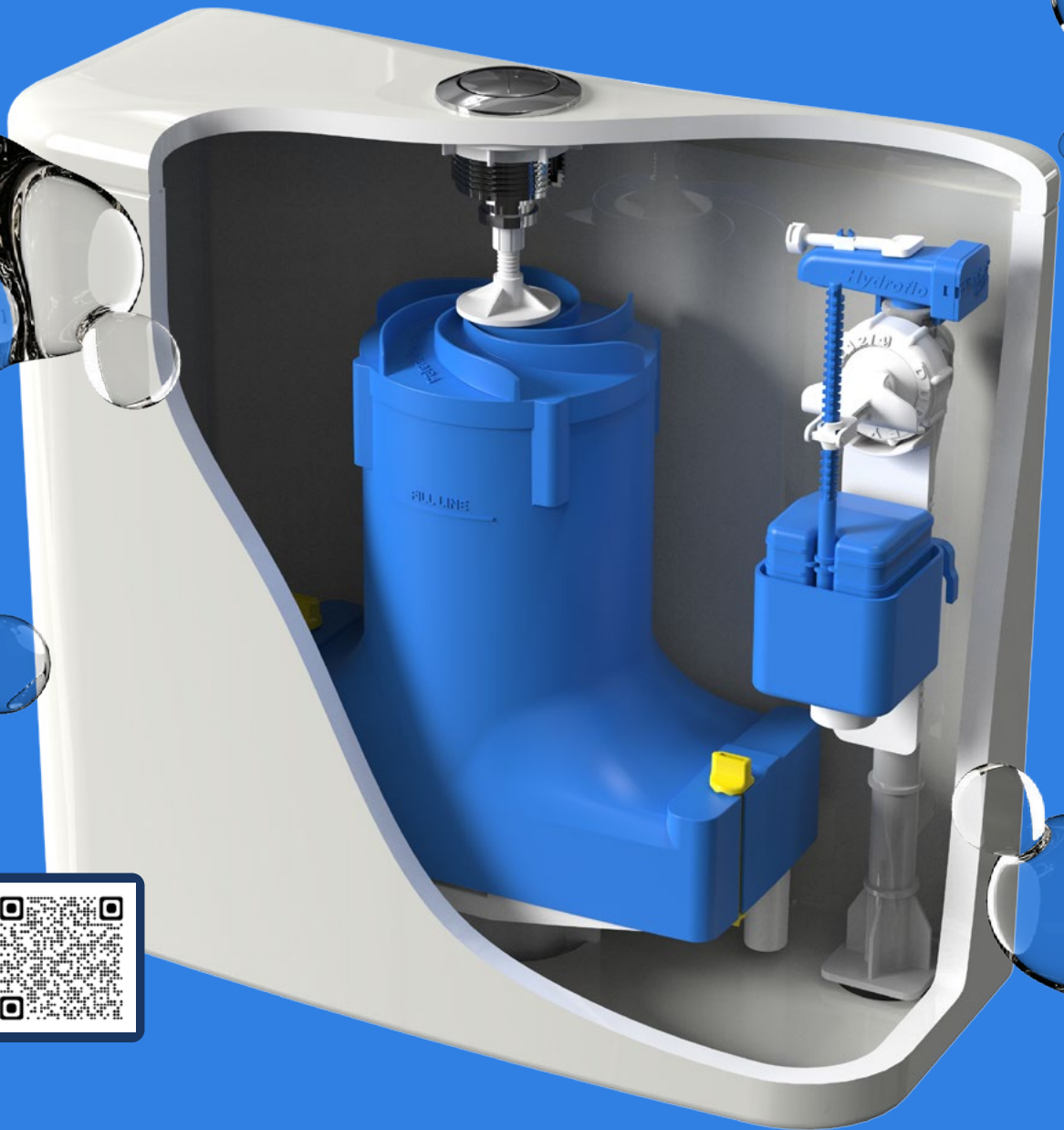


# Dudley



## NEW QUANTUM

### THE WORLD'S FIRST PUSH BUTTON SYPHON



Leak-Free  
Syphonic  
Technology



Optimises  
Water Usage



Easy  
Installation &  
Maintenance

**TD** THOMAS | DUDLEY   
British design, British build, Family business

# EAZYMIX

PLASTER ACCELERATORS & RETARDERS

## CHANGE PLASTER SETTING TIMES TO SUIT THE JOB



# WWW.EAZYMIX.CO.UK

## Windmill restoration turns to Bradite

A 300-year-old windmill that now provides luxury accommodation for short-break holidays has been refreshed with Bradite paints.

The structure sits atop Blackthorn Hill at Bicester in Oxfordshire. The Grade II-listed building is a stone-built tower mill that was first converted into a house in 1999. In recent years it has been transformed into a luxurious holiday let by its new owner, Alan Chapman.

Looking for help and advice for the protection of the exterior, he turned to Bradite.

“The Bradite team recommended using Bradite One Can for external walls, due to its quick-drying abilities and longevity”, Alan explains.

Both were important considerations, especially as Alan painted the external window frames at the top of the tower himself, which he described as “not an easy job and not for the faint-hearted.” A durable coating was required so that the finished result would stand the test of time

Bradite One Can was the ideal choice for the project, as it provided an easy-to-apply yet tough and professional finish.



Alan explains, “Bradite has been used on masonry, iron, wood and is a joy to work with, due to quick-drying times and being water-based”.

[www.bradite.com](http://www.bradite.com)



*Rose*  
collection

# THIS IS NOT TIMBER

(BUT YOU CAN'T TELL FROM LOOKING)

## *Meet Ultimate Rose*

Ultimate Rose is a timber-alternative sash window that has all the elegance and charm of period sash windows, complemented by modern performance and energy efficiency.

Say goodbye to constant maintenance and repainting of your windows, instead say hello to a conservation-grade sash window that's hand crafted to achieve the finest detail, even up close.

Boasting 40 years of manufacturing experience built into every sash, Ultimate Rose is designed to keep your home warm in the winter, cool in the summer and secure and quiet all year round.

The most authentic uPVC sash window meticulously crafted by the UK's leading manufacturer.

**Classic style. Modern Performance.  
Tradition redefined.**

*Scan to find out more*

[sashwindowsuk.com/tellmemore](https://sashwindowsuk.com/tellmemore)



---

# TOUCH

## IRONMONGERY LTD



[www.atouchofbrass.co.uk](http://www.atouchofbrass.co.uk)

210 Fulham Road, Chelsea London SW10 9PJ

# CELEBRATING 40 YEARS

---

## One of London's leading Architectural Ironmongers

Originally called "A Touch of Brass", TOUCH changed their name in 2003 in reaction to advancing market changes in architectural Ironmongery to reflect the broader range of products and finishes that they sell.

In fact today Touch supply 20 different finishes including Brass, Satin Brass, Polished Chrome, Polished Nickel, Satin Nickel, Copper, BMA, Antique Brass, Black, Pewter, Ceramic, leather, Stainless Steel, Satin Stainless Steel, Gun Metal & 4 different shades of Bronze and the list keeps growing. Whatever finish you require, Touch can help you get the right look.

Touch occupy their recently refurbished showroom at 210 Fulham Road, Chelsea, where they stock and display a vast range of their 5,000 products. With a customer base including Architects, Interior Designers, Builders and private Individuals who are interested in the quality end of the Ironmongery market, the company also have a healthy export market to all corners of the world, namely the Middle East, Europe and the Americas.

Touch Ironmongery's owner and founder, Bill Benham, has 42 years' experience in the Ironmongery trade, as does his colleague Jim Haselup. Saleem Qureshi is the newest member of our team and has 21 years' experience, meaning their knowledge is unrivalled in this industry.

The range of products supplied by Touch date from circa 1640 French (Louise XIV) and cover all subsequent periods (Georgian, Edwardian & Victorian), Art Deco and contemporary pieces also make up the product ranges.

Touch showcases the very best of British manufacturing; the best ranges are still produced in the Midlands by craftsmen in factories dating back 200 years or more.

Touch Ironmongery have recently become suppliers for **Designer Doorware (Australia)** Who have beautiful products with a cutting edge design Metal, Wood and concrete. We also have the exclusive rights to sell the **Olaria (Barcelona)** range in the UK.

Olaria make all our bespoke products, they have incredible levels of workmanship.

Touch also sell European manufactured goods which are considered to be of a very good quality.

With trends continuously evolving new and innovative products are constantly under development.

Touch understand that keeping up with the fashion-shifts is imperative in order to provide every customer with the best solution for their requirements.

Ironmongery can be a difficult and complicated aspect of a building project, as a result Touch aim to take this awkward aspect and make it user friendly and clear to understand by offering an on-site service where they carry out a detailed door by door, window by window, room by room Ironmongery schedule, highlighting all requirements and identifying all requirements.

Restoration is a large part of the business Touch will undertake complete Ironmongery refurbishment projects, and can restore old paint covered door furniture to their former glory, looking as good as new again at a fraction of the cost to replace.

**For more information about Touch Ironmongery or to arrange a showroom visit please call 0207 351 2255 or alternatively visit [www.atouchofbrass.co.uk](http://www.atouchofbrass.co.uk)**





## BRITISH & EUROPEAN MANUFACTURERS SUPPLYING THE FINEST QUALITY IRONMONGERY

Touch combine traditional skills with modern manufacturing techniques to produce the most beautiful, quality fittings, built to stand the test of time.

As well as specialist bespoke items, Touch supply over 1000 products, available in 23 different finishes to furnish high end residential and commercial properties, royal palaces, government houses, historic castles and stately homes.

Olaria, available from Touch Ironmongery  
[www.atochofbrass.co.uk](http://www.atochofbrass.co.uk)  
& [www.olariabarcelona.com](http://www.olariabarcelona.com)



# SPRING FORWARD TO SAFEGUARD STUDENTS

Why finger protection on school doors needs to be planned now

---

The summer holidays may seem like a lifetime away but its never too early to start planning requirements for school refurbishment projects, including essential finger protection, according to Strand Hardware.

The first signs of spring may just be emerging but when it comes to planning major development and refurbishment projects, it's essential to look ahead. For schools and other educational establishments, project planning for the summer - avoiding busy term times and scheduling work to minimise disruption - is key.

Safety measures are essential for all public buildings but particularly those used by young people and vulnerable adults. From nurseries, primary and secondary schools, through to colleges and universities - buildings used for learning have specific needs. They are inevitably bustling environs with constant movement, as students go from class to class. It's important therefore, to minimise the chances of accidents occurring including accidental injuries from fingers trapped in doors.

"Schools, colleges and universities are busy environments and often their estate can include a number of buildings on one site. These can be of different ages and include entrances, corridors, classrooms and lecture theatres, with doors of many types," said Craig Fox, Sales Director for Strand Hardware.

"Local authorities, academies, college and university estate managers endeavour to create safe and inviting learning environments. These are constantly reviewed and refurbished to maintain and upgrade facilities.



This is a significant undertaking and it's essential that all elements are fully considered, including the finishing touches to ensure safety."

Finger protection can often be left off the list, he explains:

"Unfortunately, this essential requirement can often be overlooked until the majority of work is completed and final risk assessments are undertaken. We recommend thinking 'safety first' and budgeting for finger protection at the start of the project to allow the purchase of

good quality products that offer durability."

Strand Hardware's extensive range of finger protection is suitable for all types of doors; manual and automatics, external and internal, single and double action, made from different materials; timber, aluminium, Pvc-u or glass.

All Strand Hardware finger guards are housed in easy-clean aluminium housing and tested to 1,000,000 operations and comply with industry standards.



It's not just the hustle and bustle of school 'traffic' that can present danger. Younger children are naturally curious and may not always be aware of the potential dangers posed by closing doors. Crushed fingers and hands caught in rapidly closing doors can lead to painful injuries and, in severe cases, fractures or dislocations. Finger protection provides a barrier, reducing the risk of such accidents occurring and are therefore ideal for pre-school and primary environs.

Installing finger protection on doors aligns with safety standards and regulations designed to protect students in educational settings. Adhering to these standards not only helps avoid legal implications, but also demonstrates a commitment to providing a secure learning environment for all.

"Obviously with children, there's always an inherent danger," says Craig. "It makes sense to apply a preventative approach and can also help avoid expensive litigation."

The costs associated with treating finger injuries can be substantial. Installing finger protection on doors is a cost-effective measure that prevents these incidents, ultimately saving schools and parents from the financial burden of treating avoidable injuries.



Safety measures are essential for all public buildings but particularly those used by young people and vulnerable adults.



Strand Hardware offers other product ranges that are ideal for incorporating into schools, including emergency exit and panic hardware for doors, and window controls for the safe opening of difficult to reach or high level windows which can be operated by a cranked pole.

This enables windows to be opened without staff having to stand on furniture to reach the openers.

Duoflex also provides the tools for a cost-effective, natural ventilation solution. Natural ventilation has numerous benefits in schools - positively impacting students and the wider learning environment.

It improves indoor air quality by providing a continuous flow of fresh air, reducing the concentration of pollutants and ensuring a healthier atmosphere. Natural ventilation also promotes better concentration and cognitive function among students, helping regulate temperature and prevent stuffiness.

It can also contribute to energy efficiency and improve security, lowering operational costs for schools. By harnessing the power of natural airflow, schools can create comfortable, conducive learning spaces that support the overall wellbeing and academic performance of students.

By planning ahead for summer refurbishments, those responsible for educational estate management can not only safeguard students from potential injury but also demonstrate a commitment to maintaining high safety standards - efforts worthy of an A+ achievement.

■ For more information contact: [info@strandhardware.co.uk](mailto:info@strandhardware.co.uk) or call: 01922 639111 [www.strandhardware.co.uk](http://www.strandhardware.co.uk)

# IMPROVEMENT & INNOVATION

Exceptional finishes for domestic, commercial or industrial applications

With over 100 years' experience in the design, development and manufacture of sliding and folding door hardware systems, P C Henderson has demonstrable experience in the refurbishment, maintenance and renovation industry.

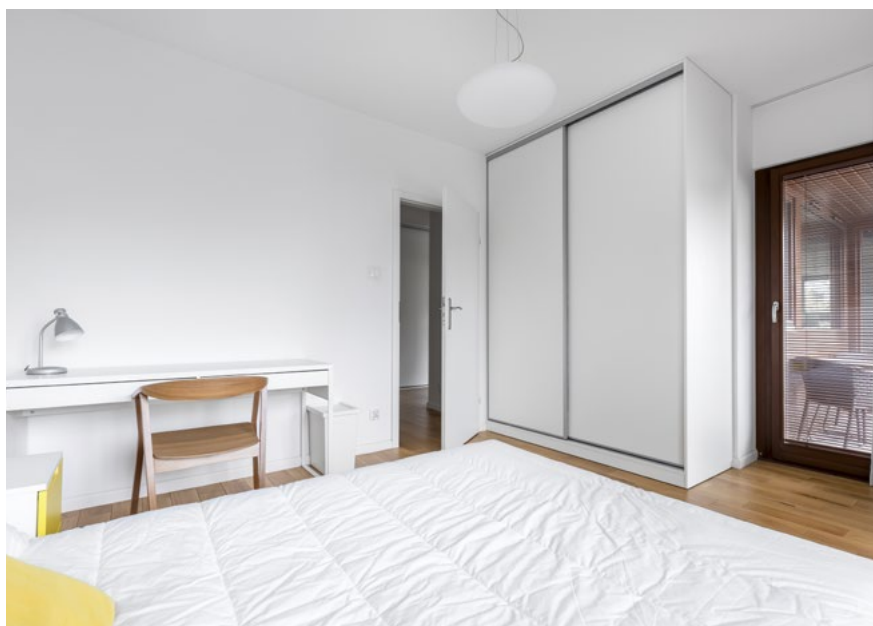
Based in Co. Durham, the company has a continual improvement ethos that runs through everything they do. With a strong focus on innovation, the market leading company strives to exceed customer expectations in both product and service.

Working creatively from a foundation of robust market research, the business operates on an agile model able to adapt and enhance its products to deliver exceptional finishes for domestic, commercial or industrial applications.

The company has recently launched SlideLite 50, the ideal wardrobe and cupboard hardware solution for home improvement specialists as the system is easy to install and comes in two kit variants as well as an additional door kit.

The smooth-running system is available in either an 1800mm track or a 2400mm track and is supplied with dual soft close as standard. Trevor Cossins, Managing Director, P C Henderson explains the reasons for introducing the new product:

"Assessing the changing global landscape, we decided that strategically the continual investment P C Henderson makes in the design and development of new products is key. Creating improved solutions keeps the business at the forefront of the industry and provides greater choice for our customers."



All products are rigorously tested, in excess of industry standards, to maintain their market leading position. Each component undergoes Finite Element Analysis, a process that applies virtual forces to the product, to guarantee the very best solution. Trevor Cossins continued,

"With our flexibility and responsive business practices and a focus on research and development we have been able to adapt and thrive in recent years. We see the launch of SlideLite 50 as a continuation of our agile and proactive approach to operations."

Certified to ISO 9001, the manufacturing centre of excellence in the UK ensures all aspects of each door hardware system delivered is of the very highest quality. With an enviable reputation in the market, quality processes and procedures underpin production, customer support, marketing, design and technical specification.

P C Henderson also has offices in Ireland, the Netherlands along with an extensive network of distributors and representatives

across the globe - exporting to over 70 countries worldwide.

Customer service and technical support teams are always on hand to offer advice for door hardware projects and have exceptional product knowledge and capability. Further support is offered by comprehensive fitting instructions and installation videos, all available on their website, and training provided when required.

The company has delivered projects across a range of sectors to customers globally and as such can provide advice for the most complex and ambitious of projects. The team can support at any point, from the initial planning stages to the implementation of the system.

Their versatile systems, many specifically designed for the renovation sector, cater for wooden doors in internal and external applications.

■ **To find out more about P C Henderson, visit their website [www.pchenderson.com](http://www.pchenderson.com) or learn more about their products at your local builders' merchants and distributors.**





# HENDERSON

## SlideLite 50

New! SlideLite 50 is a quiet and smooth running sliding door system for wardrobe and cupboard doors up to 50kg. To ensure optimum performance the product is available in two kit variants, as well as a fittings kit for use with an additional door.

- **Easy to install**
- **Fitting instructions supplied**
- **2 door kit with a track up to 1800mm**
- **3 door kit with a track up to 2400mm**
- **Dual soft close as standard**
- **No routing or specialist tools required**
- **Perfect for DIY solutions**

# Arridge Garage Doors Since 1989



★ REVIEWS  
4.82 Rating

- Top Brands
- Discounted Supply to trade and retail
- Quality installation service available

[sales@arridgegaragedoors.co.uk](mailto:sales@arridgegaragedoors.co.uk)  
[arridgegaragedoors.co.uk](http://arridgegaragedoors.co.uk)  
01691 670 394

## Garador's solar energy system outperforms expectations

Garador, one of the UK's first garage door manufacturers to start using a renewable power source for its factory, has announced that its solar based energy system is outperforming all expectations.

Last summer, Garador installed a vast array of 1600 solar panels on the roof of its Somerset factory as part of the company's long-term strategy to reduce the company's carbon footprint.

The latest reports coming in now show that even during the winter months, Garador's new renewable energy system has been steadily outperforming predictions and expectations.

Garador's Managing Director, Jon Watson says:



"With the latest figures in, we are delighted to see that our solar energy system is continuing to make a strong contribution to our power requirements.

"With the strong benefits of helping to reduce our carbon footprint and also keeping our overall manufacturing costs down; without doubt our plan last year to invest in solar energy was the right decision," said Jon.

[www.garador.co.uk](http://www.garador.co.uk)

## Old meets new in the Cotswolds

A mix of traditional master craftsmanship combined with the latest building design techniques have been effectively combined in this stunning property in the heart of the Cotswolds. Set in its own valley, it comprises a period cottage with a contemporary extension built into the hillside.

An impressive wall of glazing to one side of the build maximises the views across the countryside, giving a light, open feeling to the design. However, at night, or when the property is empty, such a remote location can cause concerns about security, prompting the client to specify shutters on all the windows and entrances.

Naturally, when so much thought had gone into matching the old to the new buildings, the aesthetic design was of paramount importance. By choosing Equilux security shutters from Charter Global Ltd they could be intelligently concealed within the honey-coloured Cotswold stone and when lowered, the anodised shutters' have a subtle matt silver finish which complements the natural choice of building materials. Installed in the traditional manner at the time of build, the Equilux system incorporates a shutter within a



structural lintel, providing an unobtrusive structurally integrated solution that still addresses the usual features of lintel design such as structural loadbearing, cold bridging and damp proofing, but has the added benefit of acting as a high security shutter.

**CHARTER  
GLOBAL**  
PROTECTING PEOPLE | SECURING PROPERTY

The security shutters have been fully integrated into the property's Building Management System and can be remotely controlled at the touch of a button.

Charter Global Ltd | T: 0845 050 8705 | W: [www.charter-global.com](http://www.charter-global.com) | Email: [enquiries@charter-global.com](mailto:enquiries@charter-global.com)



# LIFE IN THE SLOW LANE

New collection from Woodpecker Flooring encapsulates slow living

It's a trend that has more than 6.1m posts on Instagram but wood flooring experts Woodpecker Flooring believe 'slow living' is far more than a passing craze.

Which is why all their solid and engineered wood floors now come with a 100-year warranty.

Slow living, or slow design, emphasises thoughtful, intentional lifestyle choices that also considers sustainability too.

When it comes to interiors, it's about making deliberate decisions that will bring a sense of calm to the home.

Darwyn Ker, Managing Director of Woodpecker Flooring, said: "All of our solid and engineered wood floors start life from a tree that is over 100 years old, and we have worked hard to ensure these boards will stand the test of time in family homes. Our Woodpecker floors will bring life and warmth to homes for another 100 years." Slow living is captured in the newest additions to the Chepstow range. Chepstow, which is renowned for its majestic, thick



Chepstow is a real beauty of a collection that puts the natural beauty of wood in the spotlight

and traditionally oiled engineered boards, is a strong, hardwearing and timeless board.

Its latest additions Flaxon, Silverglade and Shale, all put the wood's natural grain in the spotlight. Like the rest of the Chepstow collection, they offer a hand-worked, distressed feel.

Darwyn added: "Chepstow is a real beauty of a collection that puts the natural beauty of wood in the spotlight. It's the ideal collection for those homeowners who are looking to create a classic blank canvas around which to build the rest of their interior scheme."

■ **The Chepstow Collection is available now from [www.woodpeckerflooring.co.uk](http://www.woodpeckerflooring.co.uk) - with prices starting at £121 per m2.**



# ADD COLOUR TO YOUR PROJECTS WITH OSMO

Give your wood the treatment it deserves with Osmo Interior Wood Wax Finish Intensive, or the Exterior Country Shades

At Osmo we are wood product specialists and with over 140 years of expertise and knowledge we have developed our own natural wood finishes. We know what it comes down to in terms of wood products and finishes.

The Intensive Colours in the Wood Wax Finish range keep interior wooden surfaces nourished and in optimal condition. The product is ideal for finishing wall panelling, mouldings, furniture, and a coloured base coat for wooden flooring. It's also popular for use on children's toys!

Country Shades is an especially durable opaque exterior wood finish that's water repellent and UV stable. The product is well suited to timber cladding, windows, fences, garden furniture and sheds.

Like most Osmo finishes, both products are based on natural ingredients, and once dry remain breathable and microporous. Finished Wood is able regulate its own moisture content naturally and swelling and shrinkage is reduced.



Like most Osmo finishes, both products are based on natural ingredients, and once dry remain breathable and microporous.

Osmo Oil finishes penetrate and nourish the wood keeping it healthy and flexible, while the dried coating resists cracking, peeling, and flaking. If maintained at the correct time, no sanding is necessary when spot repairing or topping -up.

Both finishes are extremely safe and once dry will have a finish that is safe for humans, animals and plants.

When it comes to the choice of colours you really are spoiled for choice. Both the Wood Wax Finish Intensive and Country Shades can be effortlessly mixed to any RAL, NCS, BS4800 colours using the Osmo Tinting System. Simply find your nearest Osmo MIX IN STORE stockist and get the product mixed in seconds!

Both ranges have an impressive coverage of up to 60m<sup>2</sup> per 2.5L. It's also possible to mix smaller 125ml sample tins to help you trial the colour to make sure you get the colour that is correct for you.

Whether you're looking to start a new project or need a top up of your blended product, Osmo has you covered with the perfect wood care product no matter the project.

■ Find out more at [www.osmouk.com](http://www.osmouk.com).

**Osmo, Good for Wood.**





# OSMO WOOD FINISHES.

## ENDLESS POSSIBILITIES OF COLOUR



Opaque interior and exterior wood finishes can be mixed on demand and available the same day using the Osmo Tinting System in-store.



**FOR INTERIOR:**



**WOOD WAX FINISH**

**FOR EXTERIOR:**



**COUNTRY SHADES**



**Highly Repellent**



**High Coverage**



**Natural Ingredients**



**Breathable**

[www.osmouk.com](http://www.osmouk.com)

FIND  
YOUR  
LOCAL  
STORE:





# KEEPING KITCHENS TOASTY

## UK Radiators unveil Alpha Collection

---

UK Radiators have unveiled their collection of Alpha radiators, designed especially with kitchens in mind.

Vertical and slimline, the Alpha collection balances form and function - exuding style while delivering on the heating front.

Rob Nezard, Managing Director of

UK Radiators, said: "The kitchen has become the epicentre of our homes and families, so creating the right atmosphere is more important than ever. And temperature plays a huge role in that."

The Alpha collection is crafted from steel, which is incredibly efficient when it comes to heat output.

What's more, it is available in white, black, anthracite and raw metal to ensure it will enhance kitchen décor.

Significantly, when it comes to size, the Alpha collection is available in a wealth of options.

Rob said: "Kitchens are notoriously busy rooms. With counters, sinks,





cookers and ovens to fit in, it can be easy to forget to pick a spot for your radiator. But you can't just fling it on any old wall. Where you choose to place your radiator can affect its performance just as much as choosing the wrong heat output."

For those who want to inject a real sense of style, the Alpha collection

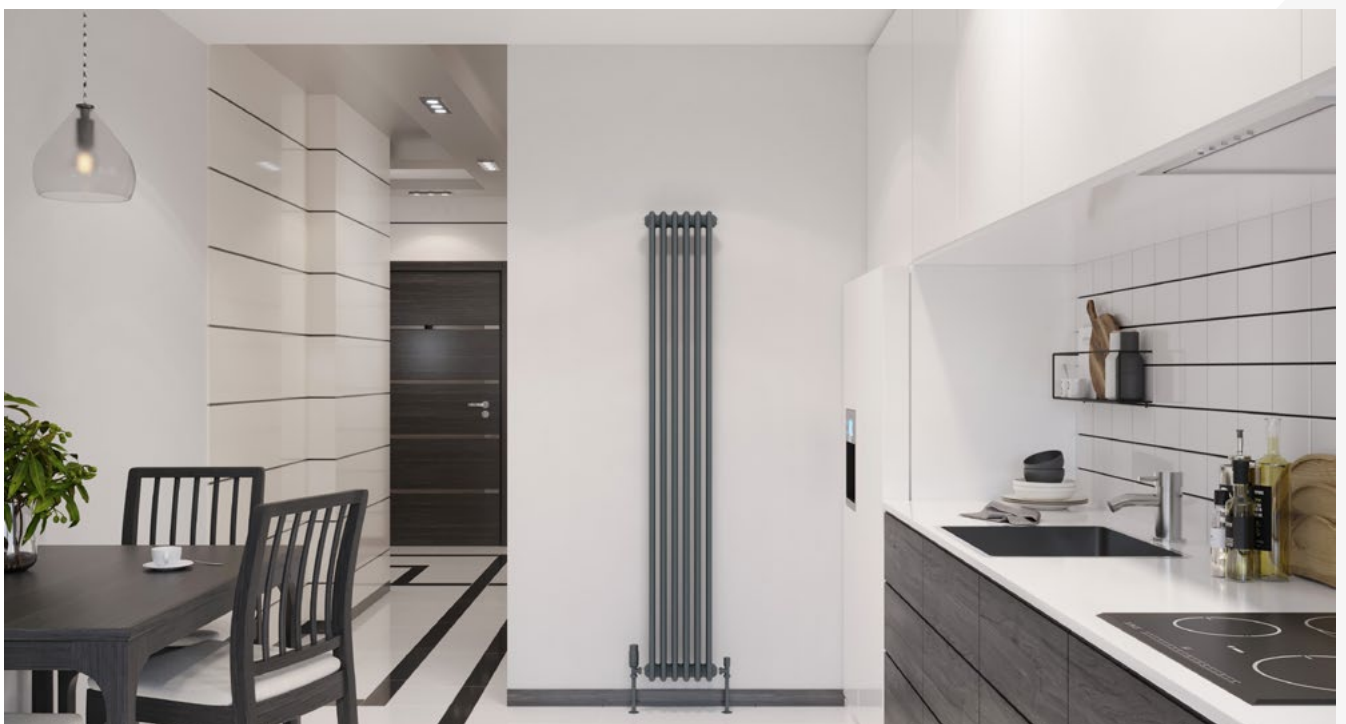
offers vertical radiators that command attention.

Rob added: "Choosing a radiator for the kitchen is a daunting task, but this Alpha collection has been created to offer a practical yet beautiful solution."

■ **The Alpha Collection is available now from [ukradiators.com](http://ukradiators.com)**



The kitchen has become the epicentre of our homes and families, so creating the right atmosphere is more important than ever. And temperature plays a huge role in that.



# The importance of thermally isolating building envelopes

In the UK, a staggering 45% of all carbon emissions stem from the building environment, with domestic buildings contributing 27% alone. In the pursuit of a more sustainable future, integrating energy efficient solutions into building structures is paramount.

There are a number of important areas within a building envelope where thermal bridges can occur, which are often overlooked in the initial design phase. These are significant culprits of energy loss, and often compromise the overall efficiency of a building. To combat this, innovative solutions like Armatherm's thermal breaks play a crucial role.

## So, how do thermal breaks work?

These cutting-edge materials can be seamlessly integrated into various structural connections within a



building, from foundations to roofs. Incorporating thermal breaks, particularly in balcony and column base applications, yields significant reductions in energy transfer, resulting in a cost-effective and reliable solution.

## What are the benefits?

By identifying and addressing potential thermal bridging points during the initial design phase, architects, specifiers and developers can make informed

decisions that optimise energy efficiency. The reality is, however, they're often overlooked and not specified, which can render other costly energy-saving solutions redundant.

Failure to prioritise thermal breaks can hinder achieving desirable R values necessary for sustainable construction. Such oversight not only jeopardises compliance with regulations like the 2008 Climate Change Act, but also undermines broader sustainability goals.

Thermal breaks emerge as one of the most significant investments which can be made during a major construction project, contributing substantially to the creation of sustainable, energy efficient structures that align with regulatory standards, and of future environmental targets.

For guidance on selecting the most suitable thermal break materials for your project, visit [www.armatherm.co.uk](http://www.armatherm.co.uk).

## Thermal Bridging Solutions



Armatherm™ is one of the leading suppliers of thermal break materials for the construction industry. Our goal is to provide architects, engineers, and contractors with the knowledge and materials to effectively address thermal bridging issues. Armatherm™ thermal break materials have low thermal conductivity, high strength, and have been designed and tested to carry the loads, and prevent thermal bridging.



[www.armatherm.co.uk](http://www.armatherm.co.uk)



Credit:  
Higgins Partnerships

# Introducing: The Recladding with ROCKWOOL® Guide

As the recladding sector faces increasing challenges, specifiers are in growing need of support to ensure high-quality delivery of recladding projects.

The Recladding with ROCKWOOL guide will help specifiers to:

- Meet modern building regulations with up-to-date technical information and fire standards information
- Select new ROCKWOOL solutions to meet these regulations, such as NyRock® Frame Slab 032 and NyRock RainScreen 032
- Get access to various technical tools to support ongoing or future projects
- And much more...



**Download now:**

[rockwool.com/uk/reclad-guide](https://rockwool.com/uk/reclad-guide)

# WHY CHOOSE RADIATOR OUTLET?

Well, we are the home of affordable radiators!

Here, at Radiator Outlet we have built a healthy reputation over the last 5 years of providing fantastic quality radiators at affordable prices. Throughout this duration, we have supplied our radiators to thousands of customers throughout the country and acquired over 16,000 5-star reviews stating how attractive and efficient our radiators are once fitted in your home!

All our radiators are manufactured to the highest standards, with no corners cut when it comes to materials used or the manufacturing process. We only supply the highest quality radiators to our customers; our reputation means too much to us to offer anything less.

Our company 'mission statement' is to provide high quality radiators at affordable prices. And that is just what we do.

When buying radiators from Radiator Outlet, you can be assured of warm, reliable and super stylish radiators arriving quickly at your door!

It is no secret that costs have drastically increased due to the covid 19 pandemic with many companies in all industries



When buying radiators from Radiator Outlet, you can be assured of warm, reliable and super stylish radiators arriving quickly at your door!

looking for alternative materials to keep costs down. Despite these global issues, our radiators are identical in specification to pre covid 19 with the same thickness of steel, high quality packaging, super impressive heat outputs; and showroom standard coated finishes, ensuring the same level of satisfaction every time!

Another core fundamental to Radiator Outlet, is the fact we manufacture our own radiators and have warehouses storing our catalogue of radiators, meaning that stocking issues are rare. We are in complete control of the supply chain, meaning any delays from third parties are not a factor when buying from our website.

Finally, and most importantly as a customer, should you have any issues down the line, your hassle-free 10-year warranty is with us directly, so you are covered. No long-winded process of chasing



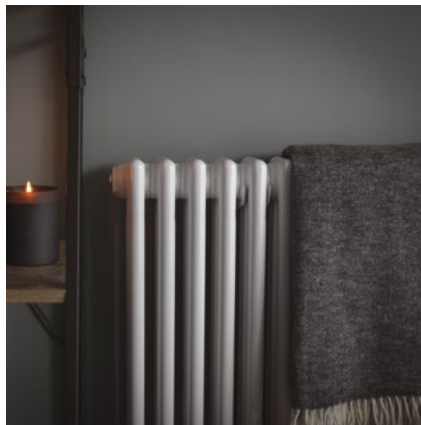
your radiator manufacturer, you have bought from us, we supplied your radiator, it is down to us to resolve any issues.

■ [www.radiatoroutlet.co.uk](http://www.radiatoroutlet.co.uk)



# radiators outlet

THE HOME OF AFFORDABLE RADIATORS



For more information, please contact us.



Phone: 0845 860 5908

Website: [www.radiatoroutlet.co.uk](http://www.radiatoroutlet.co.uk)

Email: [hello@radiatoroutlet.co.uk](mailto:hello@radiatoroutlet.co.uk)



# BOOKSTORE IN THE BLAST FURNACE

hyperSity architects

---

The center of the circle of the three blast furnaces is the core and spiritual fortress of the whole blast furnace. The symbolic and commemorative nature of the core is enhanced by the lighting designer, through the three-dimensional sense created by the red wall washing lamp, the light that is projected on the furnace body like a flame, and the details of some metal rods on

the blast furnace, creating a warm atmosphere like the fireplace and giving the shuttle crowd a sense of worship. The relationship between the service and the served space is diffused outward from the center, and the second ring is the front end of the core as a service space, and also a visual and functional hub to strengthen the ritual sense and centripetal force of the core.

The third ring of the floating device and the outermost ring near the facade of the fourth ring reading activity area are served Spaces. The reading activity area is a flexible area inside the blast furnace. It can be used as a corner for reading and communication. It can also be used as a space for activities, lectures and conferences, equipped with the functions of coffee and simple meals.





It is a multi-scene space, covering 7 operating sections of books, art, exhibition, market, intelligence, life and bookstore business school.

After the opening and operation of the three blast furnace bookstore, many Shougang employees came to visit, and a pair of old workers in their thirties returned to this blast furnace to review the scene of their previous work to see the new scene, filled with a happy smile.

In order to create a different overall atmosphere to shape and cater to different use scenes, lighting designers have carried out lighting matching and scene-switching effects, such as the use of functions from coffee night wine, lecture mode, leisure reading and so on.



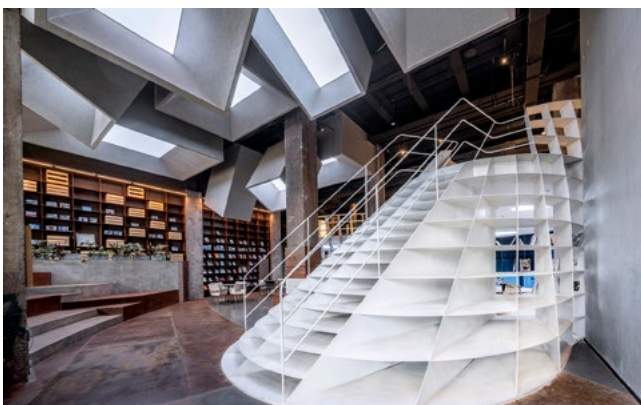


The light box design of the suspended ceiling here reinforces the concept of a chaotic universe.

In terms of details, the handrails of the second-floor walk are interspersed with light stained glass Spaces, forming a dramatic contrast effect, which walks through history and future like time and space. The design of the time and space ribbon also implies that the whole world composed of books and artworks is colorful and colorful, and it is the carrier of the organic integration of the cultural consumption space with multiple formats, multi-functions and multi-scenes.

■ [www.hyperscity.cn](http://www.hyperscity.cn)

“ The third ring of the floating device and the outermost ring near the facade of the fourth ring reading activity area are served Spaces.





## Wall beds - maximising and multi-purposing our precious living space ex stock in UK and around the globe

Wallbed Systems Ltd. offer an exclusive and versatile range of high-quality wall bed hardware designs. Designed for hotel rooms, micro-apartments, small bedrooms, a home office and student accommodation, our wall beds provide hybrid living, working, studying, sleeping and storage areas, fully maximising the space available.

Wall beds have never been easier to order, build and install and have a tiny footprint. All models include our robust bed counterbalance mechanism (SBLM) and are complete with contract level finishes and strength, all using our safe and reliable spring system, needing only finger-tip effort.

The **NeXT Bed™**, **Alpha Bed™**, **Beta DIY Kit**, and **Studio Desk™** by Wallbed Systems Ltd. provide huge scope for rethinking the way we live, work and sleep.



The **Alpha Bed™** utilises rolled section steel for strengthening the wallbed front panel and includes supports to ensure maximum support whilst never compromising on balance nor comfort.

Our **Studio Desk™**, compatible with the **Alpha Bed™**, functions as either a work surface and integrates directly into the wallbed. Desktop items remain undisturbed while the bed is up, or in use. The **Beta DIY kit** has been developed specially for cabinet makers, and other trade professionals who require an affordable, compact, safe, reliable, and easy to operate system to produce any size of professional wallbed.

A wide range of UK / EU / US sizes are in stock and available in any sized project volumes worldwide. Talk to us today about our range of wall bed mechanisms and associated products.

Full drawings of cabinet requirements are included and give you the ability to customise your own design. Many designs of finished product are also available.

T +44 208 704 5796 | M +44 7780 661958 | [jeremy.waller@wallbedsystems.co.uk](mailto:jeremy.waller@wallbedsystems.co.uk) | [www.wallbedsystems.co.uk](http://www.wallbedsystems.co.uk)

## Wallbeds were never this easy to order, build and install, so we created

### next bed™

Instant solutions with or without cabinet, installed on day of arrival, and in stock now.

Tiny footprint, fingertip control. Safe spring support system. Available in most countries around the world – just add the creativity to make the space you need.

Free advice and ideas/designs



Wallbed Systems Ltd

T +44 208 704 5796 | M +44 7780 661958

[jeremy.waller@wallbedsystems.co.uk](mailto:jeremy.waller@wallbedsystems.co.uk) | [www.wallbedsystems.co.uk](http://www.wallbedsystems.co.uk)

**WBS**  **WALLBED SYSTEMS**  
Let's build a Wallbed together

# FROM STRENGTH TO STRENGTH

Julian Bowen drives significant growth in the contract sector

The Julian Bowen business continues to go from strength to strength and they are now seen as one of the key suppliers to the contract sector, partnering with key providers to offer a flexible product fulfilment service. They are clearly well established, highly regarded and have developed a reputation as a reliable source for delivering a complete package to meet the customer requirements. They pride themselves on offering bespoke furniture and installation solutions collaborating with clients to meet their specific demands. This has come about through ensuring that every project is tailored to suit the client's requirements with the upmost attention to detail, from receiving the client brief, critical path planning and fulfilment, setting the benchmark for the finest quality and service in the contract industry. They have a huge choice of products from their standard range but they can also work with bespoke briefs across all categories of home managing more complex solutions to ensure customer satisfaction.

Emmett Lenaghan comments; Every project and client no matter how big or small, including Build to Rent, HMO, Student Housing, Private Rentals is handled by an expert team and managed to ensure complete satisfaction. Working closely with clients ensures that each project receives the individualised attention it deserves.

This is supported by a heavily invested supply chain incorporating an experienced in-house buying and design team, with domestic and international Quality Control teams who work in close partnership with a select group of leading manufacturers. Julian Bowen has a profound passion for all things design with a continually growing product pipeline based on the most recent technological developments and cutting-edge furniture design giving you the best available on the market. They are an FSC-certified company committed to only working with suppliers using sustainable raw materials.

They have forged an impressive new product development capability which



Working closely with clients ensures that each project receives the individualised attention it deserves.

has created a platform for significant growth and an enhanced customer proposition with a huge focus on FSC, reclaimed materials and a robust sustainability policy. The recently launched FSC Mallory Oak bedroom and dining collections has been a great success offering both exceptional value for money and classic timeless styling. Also, the stunning reclaimed and FSC Chatsworth extending dining table, Bench set with the Woburn fixed table, bench and occasional pieces, the country rustic style of these ranges reflects the growing trend in the marketplace for products sympathetic to the environment with unique characteristics.

Emmett continues "Our sustainability ambitions and commitments are in line with the UN Sustainable Development Goals while our membership with FIRA and SEDEX reflects our commitment to remain at the forefront of industry developments and we firmly adhere to ethical and environmental standards across our operations and supply chain".

Product development is backed up by a continuous ongoing investment programme across the business in their marketing support, customer service, supply chain management and IT infrastructure to maximise business efficiency through automation from

stock feed management to ordering and distribution. This is further enhanced with tailored individual solutions with the new self-service customer portal, which enables customers to log on and have access to all their details including; live-stock, outstanding invoices, product details and ability to order products at any time. A huge flexible benefit to customers.

Huge attention has been paid to supply chain & stock management to mitigate overstocks and warehouse space constraints which gives them the enviable position of having the optimum stock with sufficient capacity to meet their aggressive new product launch plans for 2023. Julian Bowen's emphasis upon bespoke solutions and customer support has been a key factor in the development of its successful Direct Container business, which offers a well-managed one-stop solution from product development through quality control, shipping and in-bound distribution and ongoing stock management support, while leveraging the firm's significant buying power to its customers' advantage. As across the whole business, the emphasis is upon making the buying process as easy, efficient and pain-free for its customers as possible.

■ [www.julian-bowen.co.uk](http://www.julian-bowen.co.uk)



# JULIAN BOWEN

OVER 30 YEARS OF INSPIRATION AND INNOVATION



The UK's leading provider of integrated furniture solutions,  
offering exceptional quality and value supported by  
award winning customer service

Julian Bowen Limited  
Bentinck House, Park Lane Business Park, Kirkby-in-Ashfield, Nottinghamshire, NG17 9LE

W: [www.julian-bowen.co.uk](http://www.julian-bowen.co.uk) | T: 01623 727374 | e: [contract@julian-bowen.co.uk](mailto:contract@julian-bowen.co.uk)

# BRITISH DESIGNED LUXURY FURNITURE AT AFFORDABLE PRICES

## My Furniture

My Furniture have perfected the neutral trend this season. Their organic, curved silhouettes inspired by nature will add flow, movement and balance to any interior. Create a calm, cosy and relaxing atmosphere by embracing a neutral palette of ivories, chinks and taupes.

With an extensive knowledge of interiors and a forward-thinking approach, My Furniture are constantly creating fresh and original designs. An increasing number of design professionals are favouring this dependable and affordable furniture provider; including architects, interior designers and property developers.

Early 2020 saw My Furniture substantially extend their warehouse and showroom, resulting in increased stock availability and further streamlining the ordering process for the customer. With over 12,000 Trust Pilot reviews and consistent 5-star ratings, customers can buy in confidence.

Designing in-house in the UK enables this luxury interiors brand to do what they do best - offer unique luxury pieces at affordable prices. Equipped with an in-house upholstery team, it allows them the flexibility to provide bespoke fabric options to suit their customers' specific needs.

My Furniture regularly add new collections to their portfolio.



Early 2020 saw My Furniture substantially extend their warehouse and showroom, resulting in increased stock availability and further streamlining the ordering process for the customer.

Whether your preference is hotel luxe or simple elegance, you will undoubtedly find the perfect piece that can be in your home in as little as a couple of days.

New to their collection this season, is the Pax lounge chair. A beautiful opulent accent chair inspired by luxurious hotel interiors.

Also joining the Pax is a selection of new seating, artworks, rugs and unique accessories.

Also available from their showroom in Nottingham and online are a wide range of products, from bedroom and dining furniture to

elegant lighting and accessories. Alternatively, all products can be viewed via a video call facility with a member of the sales team.

My Furniture are passionate about providing excellent customer service and offering luxury items at affordable prices. Authentic, reliable and honest with FAST AND FREE DELIVERY TO UK MAINLAND. Delivery available throughout Europe.

■ **Discover luxury furniture and a wealth of home décor inspiration, visit: [my-furniture.com](https://www.my-furniture.com) or call freephone 0800 092 1636.**

**my furniture**





*your home*  
**my** furniture

living · dining · bedroom · lighting · accessories

---

[my-furniture.com](http://my-furniture.com)





# ELEVATING OUTDOOR CONSTRUCTION

## A Dive into Fabrics for Projects from Kayospruce

From creating shade structures to building enclosures, the choice of fabric plays a crucial role in the success of any outdoor project. Kayospruce, a leading provider of high-quality fabrics, offers a diverse range of materials and fittings tailored to meet the demands of outdoor construction. In this article, we explore the versatile fabrics available from Kayospruce and how they can enhance your outdoor construction endeavours.

### 1. PVC, Solution Dyed and Coated Fabrics:

For outdoor construction projects requiring exceptional strength and weather resistance, PVC, Solution Dyed and Coated Fabrics are an ideal choice. These fabrics are constructed to make

them highly durable and water resistant or waterproof dependant on your requirement. From temporary structures like tents and event pavilions to permanent installations such as awnings and canopies, PVC, Solution Dyed and Coated Fabrics provide reliable protection against rain, wind, and UV exposure. Kayospruce offers a variety of PVC, Solution Dyed and Coated Fabrics in different weights and colours, allowing for customization to suit specific project requirements.

### 2. Mesh Fabrics:

In applications where airflow and visibility are key considerations, mesh fabrics from Kayospruce offer an excellent solution. Constructed with open-weave designs, these fabrics allow air to

circulate freely while providing partial shade and UV protection. Mesh fabrics are commonly used in enclosures and privacy screens or as ventilation panels. Their lightweight and flexible nature make them easy to install and manoeuvre, while their durability ensures long-term performance in outdoor environments. Kayospruce offers mesh fabrics in various densities and colours to accommodate different construction needs and aesthetic preferences.

### 3. Shade Sail Fabrics:

Shade sails have become increasingly popular in outdoor construction for their ability to provide shade and architectural interest to residential and commercial spaces. Kayospruce





offers a range of shade sail fabrics designed to withstand the elements and create visually striking shade structures. These fabrics are engineered for durability and UV resistance, ensuring prolonged exposure to sunlight without fading or degradation. With a variety of colours available, Kayospruce enables architects, designers, and builders to create customized shade solutions that enhance outdoor environments while offering protection from the sun's harmful rays.

**4. Tent Fabrics:**

From temporary shelters to semi-permanent structures, tents play a vital role in outdoor construction projects such as

“ From creating shade structures to building enclosures, the choice of fabric plays a crucial role in the success of any outdoor project.

events, festivals, and worksite enclosures. Kayospruce supplies a diverse selection of tent fabrics engineered for durability, weather resistance, and ease of installation. Whether you need lightweight fabrics or heavy-duty materials for large event marquees, Kayospruce has you covered. Their tent fabrics are available in various strengths, coatings, and colours, allowing for customization to meet specific project requirements while ensuring reliable performance in challenging outdoor conditions.

**5. CNC cutting:**

Kayospruce not only has the ability to supply Fabrics and Hardware for your outdoor project they can also cut your bespoke design with their cutting edge team and unique large cutting table. Just send us your design files and we will have your design back to you quickly and with all the necessary accessories in one delivery (threads, zips, fasteners etc etc).

**Conclusion:**

Choosing the right fabric is essential for the success of outdoor construction projects, where durability, weather resistance, and performance are paramount. With Kayospruce's extensive range of high-quality fabrics, builders, Interior Designers, architects, and contractors can find the perfect materials to enhance their projects and withstand the rigors of the outdoors. Whether you're constructing shade structures, tents, or temporary enclosures, Kayospruce's fabrics provide the durability, versatility, and reliability needed to elevate your outdoor construction endeavours. Explore their selection today and build with confidence in any outdoor environment.



■ [www.kayospruce.com](http://www.kayospruce.com)  
01489 581696





# SLEEPING BEAUTY

New research from Beautiful Walls shows dark interiors with a feminine edge will dominate bedroom schemes in 2024

Brooding wallpapers with a feminine edge are going to be big news in 2024, according to new research from family-run wallpaper retailer Beautiful Walls.

Using data from Pinterest trends, Beautiful Walls have found that searches for 'dark feminine

bedroom' are up 50% over the last month, and 400% over the last year.

Tim Dixon, Managing Director of Beautiful Walls, said: "We are seeing a switch on the idea of traditional femininity. Instead of light shades and airy pastels, we

are seeing rich jewel tones and moody darks like charcoal and navy being embraced.

"The beauty lies in the contrast. Deep colours create a sense of drama and intimacy, a perfect backdrop for layering on the feminine touches. Think



floral damasks in unexpected colourways, or textured velvets with a subtle sheen. It's all about creating a space that feels luxurious, mysterious and utterly unique."

Beautiful Walls has a range of wallpapers which are ideal for creating a dark, sumptuous bedroom.



Beautiful Walls has a range of wallpapers which are ideal for creating a dark, sumptuous bedroom.



From dark florals to brooding prints, Beautiful Walls has a range of wallpapers ideal for bringing drama to the bedroom, ideal for channelling this trend.

■ Prices start at £30 per roll and all are available from [www.beautifulwalls.co.uk](http://www.beautifulwalls.co.uk)





# STEP INTO PERFECTION

Aquacut's unparalleled process for crafting extraordinary steps



Welcome to the world of Aquacut, where artistry meets precision, and innovation reigns supreme. As a leading manufacturer of steps for retail, commercial and domestic properties, we take pride in creating thousands of bespoke steps every year. Our commitment to excellence drives us to deliver the highest quality products that meet the unique demands of our esteemed clientele. Let's take a fascinating journey through our step-by-step process, where every detail matters.

## Precise Templating

At Aquacut, we embrace the challenge of fabricating intricate step designs, including the enigmatic spiral staircases. Our secret weapon? High-end computerised laser templating systems, accurate to the millimetre. From the first moment of templating, we ensure that every curve, angle and dimension is flawlessly plotted, setting the stage for a perfect masterpiece.

## Cutting-edge CNC Technology

Waterjet cutting is at the heart of what we do here at Aquacut. The state-of-the-art CNC-systems harness water and abrasive to cut through any material, such as porcelain, with pin-point precision and no breakage. Our waterjet cutting machines are technological marvels that produce stunningly accurate continuous cuts ensuring a consistent finish is presented throughout all our steps and risers.

## Profiling and Polishing

The beauty and safety of a project go hand in hand at Aquacut. With our expert profiling machinery, our artisans can create edge profiles to the needs of the client. Our most popular profile finish is the bullnose, where we gently round the edges of each step, enhancing the aesthetics of the tile whilst eliminating sharp edges. Not only does this remove the dangers of the step, but it also adds a new sleek aesthetic finish to the design.

## Mitring and Bonding

Every step and riser at Aquacut undergoes an artful mitring process, meticulously crafted to ensure a flawless union. With expert bonding using special colour-matched resin and adhesives, we forge an unbreakable connection between the porcelain, resulting in a staircase that stands the test of time.

## Reduced Slip Features

Reduced slip features play a paramount role in the creation of our steps and risers at Aquacut. Due to our high-end machinery and skilled artisans, we offer a wide range of reduced slip features

to our clients, ensuring the safety and beauty of the project are equally as important.

To safeguard against slips or falls, we offer anti-slip solutions that bring peace of mind to high-traffic areas. We offer a wide range of anti-slip features, such as etched grooves, metal bar inserts, tactile studs, resin and more. Not only do our anti-slip features allow for step treads to be safer, but they also assist those with impaired vision, allowing for easier navigation with each step.

At Aquacut, our process is more than just manufacturing; it's a work of passion and dedication. Whether you're seeking steps for a retail environment that demands aesthetic appeal, a commercial space that demands durability, or a domestic setting that demands comfort, Aquacut is your answer. So, step into perfection with Aquacut, where every detail matters. Choose Aquacut, where innovation meets artistry, and elevate your world, one step at a time.



■ [www.aquacut.co.uk](http://www.aquacut.co.uk)







## Elevate with Aquacut Steps

Give your project the WOW factor.

## Bespoke fabricated steps and risers.



Simple step.



Step with a riser.



Simple step with a return.



Simple riser, return and box bond.



A riser with two strengtheners.

WATERJET CUTTING | BULLNOSING, EDGE PROFILES & POLISHING | STEPS & RISERS | REDUCED SLIP FEATURES | SWIMMING POOL FEATURES | ETCHING & PAINTING | TEMPLATING & SURVEYING

Unit 4A Stretton Distribution Centre,  
Off Grappenhall Lane,  
Appleton WA4 4QT

01565 750666  
sales@aquacut.co.uk  
www.aquacut.co.uk

Aquacut Limited





# WATLING RECLAMATION

## Reclaim, Reuse, Restore

Specialists in reclaimed materials for the restoration of listed buildings or the construction of new homes where sustainability is a focus.

- Bricks
- Wall Copings
- Architectural Stone
- Roof Tiles and Ridges
- Brick Pavers
- Cobbles and Setts

Watling Reclamation is a 6 acre site, located south of Towcester on the A5, with easy access from the M1 and M40 via the A43.

01327 811 888

Insta- @watling\_reclamation Facebook: @WatlingReclamation  
[www.watlingreclamation.co.uk](http://www.watlingreclamation.co.uk)

# Chikara®

Weed Control

The number one season long broad spectrum weed control product for professionals

- ✓ Up to 5 months control
- ✓ Less Sprays = Less Labour
- ✓ Pre and early post emergence control
- ✓ Low application rate = Cost effective

Chikara is a water dispersible granule formulation containing 25% w/w flazasulfuron for use as a non-selective herbicide on natural surfaces not intended to bear vegetation, permeable surfaces overlying soil, hard surfaces (railway ballast only and amenity vegetation).

Discover more: [www.certisbelchim.co.uk](http://www.certisbelchim.co.uk)



CHIKARA®

USE PLANT PROTECTION PRODUCTS SAFELY. ALWAYS READ THE LABEL AND PRODUCT INFORMATION BEFORE USE. For further information with regard to the warning phrases and symbols for these products please refer to the product labels. Chikara® is a registered trademark of Ichihara Kasei Co. Ltd. Japan and contains flazasulfuron. MAPP No. 20185. Contact Certis Belchim on 0945 373 0306, e-mail [info.KI@certisbelchim.com](mailto:info.KI@certisbelchim.com) or visit [www.certisbelchim.co.uk](http://www.certisbelchim.co.uk). © Certis Belchim 2024

## Trex Decking

Adding a deck to one's garden is unquestionably one of the best investments a homeowner can make. However, choosing the right decking is also hugely important. Trex Company, the world's No 1 decking brand, offers a simple and easy way to enhance your garden, whilst also building with green materials. With high-definition wood grain patterns and rich, saturated colours inspired by the outdoors, Trex composite decking looks natural and boasts a vibrancy that remains unchanged for years.

A great deck can add valuable space to a home, and materials matter. Designed to deliver incredible durability, easy maintenance and lasting beauty, Trex composite decking offers the aesthetic appeal of timber with superior performance and sustainability benefits. In fact, all Trex decking is



sustainably made from 95% recycled materials, so it's an eco-friendly choice that feels as good as it looks.

Nearly a third of Brits say that low maintenance is key when it comes to designing their garden. Trex makes the perfect choice since, unlike wood, it won't rot, warp, crack or splinter. No sanding, staining, or painting is required; just an occasional sweep and cleaning



with soap and water will ensure the beauty of the Trex deck for up to 25 years.

Designed with high-definition, nature-inspired wood grain patterns, Trex decking is available in a wide range of colours - from walnut brown to weathered grey - allowing homeowners to tailor their garden exactly to their style and needs.

Trex decking is available through Arbordeck stores [www.arbordeck.co.uk](http://www.arbordeck.co.uk)



Unique and handcrafted pots and planters  
made to last a lifetime.



**TORC:POTS**

[www.torc-pots.com](http://www.torc-pots.com) | [@torc\\_pots](https://www.instagram.com/torc_pots)





# THE URSULINE CONVENT

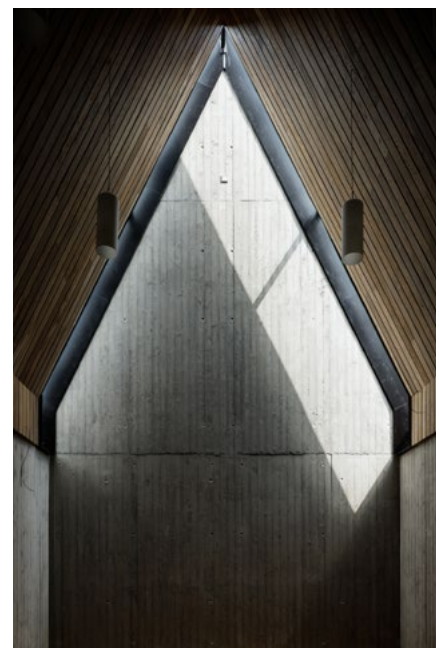
The final part of the 'Ursulinhof' urban renewal project

The renovation of the 18th-century mansion the generalate and the Ursuline convent in the city center of Hasselt is the final part of the 'Ursulinhof' urban renewal project. The historic site next to the 'Groenplein' was managed and expanded by the Ursuline Sisters from 1879 onwards. There, they taught thousands of pupils in a large school building and lived and worked from their own convent en generalate. After the school moved to a new location in 2019, a master plan was drawn up to give the site a new life. The school was demolished, the listed buildings retained, but the later additions were removed.

The block was opened via a large public thoroughfare and the new functions are organized around green courtyards. The convent en generalate were incorporated into the new whole, the remaining convent for the order. The Ursuline

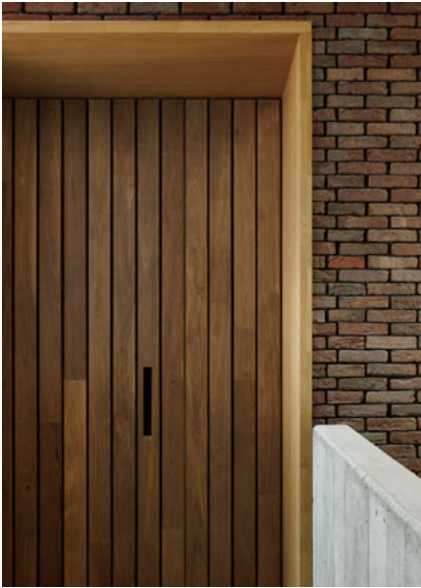


Sisters thus remain part of the city center and the urban community. The facades of the generalate have been restored and the interiors restored and adapted to today's



standards. A balance was sought between the restoration and recovery of authentic values on the one hand and appropriate additions on the other.





The furniture fabrics, window decorations, and paintwork are light in color so that the rooms are bathed in light but still feel warm.

The generalate itself serves as the Ursuline Sisters' administrative building. The authentic elements in the interior, such as staircases, doors, ornaments, and fireplaces were retained. The oak doors were stripped of their soiled varnish; the sandblasted wood remains visible and gives a robust and authentic look. The floors have been waxed, but the years of use are still visible.

The work and meeting rooms were fitted with new office furniture, conference tables, and a library, but the historical furniture was also given a new place in the whole after renovation. The connection between old and new lies in the use of oak. The new furniture is lighter in color and soberer in design, but the detailing refers to the historical objects. The furniture fabrics, window decorations, and paintwork are light in color so that the rooms are bathed in light but still feel warm.

The convent was extended with a new chapel, a sanctuary in the busy city center. The slender volume is crowned with a pointed gable roof that matches the city's historic buildings in scale and shape. The structure of the building consists of exposed concrete and wood, while the facades and roof are clad in brick. The daylight in the chapel enters the space from above through a cut in the roof. There is no direct view to the outside, giving the interior space a sacred atmosphere.

■ [www.a2o-architecten.be/](http://www.a2o-architecten.be/)



# PATENTED JULIET BALCONY PROFILE ARIA

Cost-effective and effortless installation

Our ARIA Juliet System is not only aesthetically pleasing, but also meets all safety requirements. The Pure Vista Juliet system offers cost-effective and effortless installation. With ARIA, we aim to provide a balcony that makes you feel connected to the outside world. You can enjoy fresh air and maximize your views with no handrails or obstructions. In addition, the ARIA system allows for ample natural sunlight to stream into your home.

The system is suitable for glass lengths of up to 3000mm and a height of 1100mm. You can use this channel for fascia or side (reveal) fixing, and it is tested up to 0.74kN per meter fixing into concrete and steel. The Aluminium profiles are anodised to 25 microns, ensuring that it is protected against the elements. The glass is held securely in place with a solid aluminium block. The system is designed from high-quality materials to ensure durability and the high quality you would expect from Pure Vista.

## Here are the top 5 reasons YOU WILL love ARIA!

**1. Light** If you're looking to increase the amount of natural light in your room a Juliet balcony is the perfect solution! Using a full-length glass door, this balcony system maximises the amount of sunlight that enters your space without obstructing the view.



With a Juliet Balcony installed, you'll enjoy increased ventilation and fresh air flow into your home.

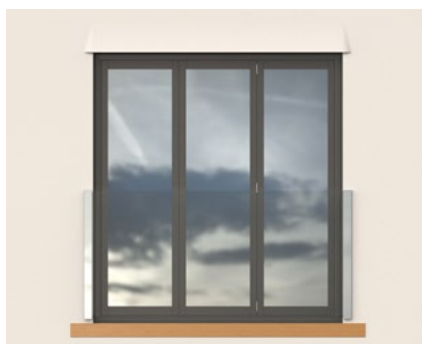
**2. Safety** Safety is our top priority. That's why the solid glass panel is installed close to the wall, reducing the chance of small items falling through gaps. Not only that, but the system is also strong and secure, tested for safe domestic installations. Unlike others designs, the glass is held on a strong solid aluminium block.

**3. Increased Ventilation** With a Juliet Balcony installed, you'll enjoy increased ventilation and fresh air flow into your home. Plus, the channel profiles used for this

balcony system are thin and subtle, making it a perfect match for any property.

**4. Subtle in appearance** The channel profiles used for a Juliet balcony are thin in comparison to traditional glass balustrade. They will not be seen from inside the room and are subtle enough to suit any property from the outside.

**5. Cost** Best of all, the ARIA is much more cost-effective than traditional balconies. Supplied in one compact box and delivered to your door, this balcony system is also popular for its simple storage. In most cases, you won't even need planning permission for a Juliet Balcony but please check with your local authority before work begins.



■ Phone us 01208 261040, email us [sales@pure-vista.com](mailto:sales@pure-vista.com) or visit the website [www.pure-vista.com](http://www.pure-vista.com)





### NEW PATENTED JULIET BALCONY

A stunning new Juliet System from Pure Vista that meets all the required safety measures in a gentle and beautiful way.

Unlike other brands, **the glass is secured with a strong aluminium block.**

- ✓ Up to 3000mm wide glass
- ✓ 13.5mm - 21.5mm glass thickness
- ✓ Strong and designed to last
- ✓ Domestic installation

Order online, via email or over the phone

[www.pure-vista.com](http://www.pure-vista.com)

+44(0)1208 261040 [sales@pure-vista.com](mailto:sales@pure-vista.com)



**An Introduction to Martyn's Law and the Relevance of Anti-Terror Glass Balustrade CPD session is available to book now.**

During this CPD certified 1-hour long session you will learn all about anti-terror glass balustrade, force loading, safe substrates for installation and key information on Martyn's Law.

The session will end with a Q&A where we can discuss your upcoming projects and make sure you leave this CPD with an increased knowledge on Martyn's law and anti-terror glass balustrades.

**REGISTER HERE FOR SESSIONS BEGINNING IN MARCH 2024**

**[WWW.PURE-VISTA.COM](http://WWW.PURE-VISTA.COM)**





*Transforming everyday spaces into engaging and memorable experiences through five new contemporary design themes.*

# UNLEASH YOUR CREATIVE VISION

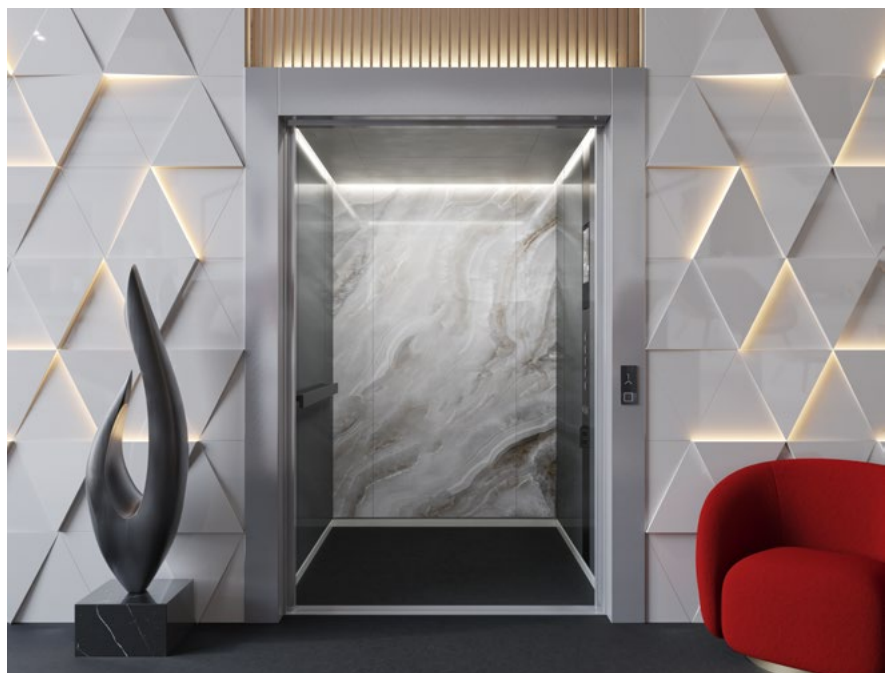
Schindler Designs

---

Our lift interiors boast an array of contemporary aesthetics intertwined with cutting-edge technology. Showcasing unique concepts that ensure a harmonious flow from lobbies to lift interiors, and are ideal for hotels, luxury residential, or commercial projects. Schindler Designs offer both functionality and customization, while elevating the overall user experience.

## **Architectural elegance**

Celebrating the artistry and craftsmanship of architectural design through intricate details, structural forms, and decorative features that define a building's character. From ornate columns and arches to sleek modern lines and dramatic facades.





### Accent colour

Choose from a palette of vibrant and contrasting hues to add visual interest and depth to a space. With a predominantly neutral or monochromatic color palette, one bold and dynamic color pops as the focal point. The contrast between the neutral tones and the vibrant accent color creates a sense of drama and excitement, while also allowing for easy customization and versatility.

### Tone on tone

Discover the understated elegance and refined simplicity of monochromatic color schemes. Use varying shades and tones of a single color to create a harmonious and sophisticated aesthetic. The absence of contrasting colors allows the focus to shift towards texture, pattern, and materials, emphasizing their unique qualities.

### Natural nuances

Drawing inspiration from earthy tones, that reflect hues found in forests, mountains, and meadows. Create a sense of grounding and authenticity with these refined laminates. The natural colors bring calm and tranquility, allowing for a peaceful environment. Subtle variations in tone and texture add depth and interest, while the overall effect is harmony and balance.

### Digital spaces

Incorporate interactive elements such as customizable screens and smart devices to enhance the user experience. The design also emphasizes connectivity

and adaptability to accommodate the ever-evolving nature of digital technology and demands for user personalization.



■ Contact us for more information and to find the best lift design for you. Scan the QR code





# KEP LIFTS LTD

Excellent service, maintenance and breakdown care

With over 30 years of experience in the Lift Industry KEP Lifts offer expertise in creating residential, commercial and event solutions for all budgets. As well as supplying and installing a vast range of lifts and platforms we also explore economical and effective refurbishment solutions. We are proud to have contracts with multiple London Boroughs, working in famous iconic landmarks and buildings across the country as well as many private residences and some of the biggest sporting venues.

Our team have worked with and continue to work with designers, architects, builders, event companies and directly with the end-user building an impressive portfolio of solutions. Through our wide-ranging and varied projects we have built a reputation to bring our ever-increasing product knowledge along with our creativity to every project. For our customer this means there are no limitations to what we can achieve

together. We have worked with all building types including modern city offices; hotels, restaurants and cafes, temporary structures for sporting events, residential, castles, churches, cathedrals and historic homes amongst many others. Our solutions can cater for lifts with any requirements whether they be standard, design or bespoke. We also provide lifts with heavy load capacity up to 2000Kg meaning they can support special floor finishes as well as all barrier and balustrades types.

Working with the most renowned names in the Industry our team of experts will guide you through the whole of your lift project from concept and design, through installation to a continuing relationship providing aftercare. Our team of experts will ensure that the end result meets all requirements and exceeds expectations for any budget, providing options for our customers to ultimately choose their perfect solution.

Like most Industries there are constantly new styles evolving. We keep ourselves abreast of all the latest advances so that we can knowledgeably guide you on any new features that a lift solution could benefit from. We aim to combine any new trends and styles with a client's key requirements to guarantee a platform lift design that is personal to them.

If you are already a lift owner we offer excellent service, maintenance and breakdown care. Our Customer Service team are here to support you in whatever way you need. From regular service and maintenance packages to breakdown assistance we aim to keep your lift travelling smoothly.

Whatever your lift requirement our team can assist you in achieving the best possible solution.

**■ Contact us today for a consultation and no obligation quote; either email: [info@keplifts.co.uk](mailto:info@keplifts.co.uk); or telephone 01843 610060.**





# KEP Lifts

RAISING THE LEVEL



**KEP Lifts Ltd is a well-established company supplying, installing and servicing a vast range of lifts and platforms**



With over 30 years of experience in the Lift Industry we come with extensive knowledge of many brands of lifts. For new projects we offer expertise in creating residential and commercial solutions for all budgets with superior project management.

Our passion for creating bespoke lift solutions that are personal and sympathetic to their surroundings means that we deliver a lift that fits beautifully within its environment, marrying practicality and style.

**Whatever your lift requirement contact us for a consultation or a no obligation quote:**

**01843 610060 or [info@keplifts.co.uk](mailto:info@keplifts.co.uk)  
[www.keplifts.co.uk](http://www.keplifts.co.uk)**



## Cardiff Apartments Meet BS 8629 Code of Practice with Installation of EvacGo

Two seven-storey residential apartment buildings in the cultural and social hot-spot of Cardiff Bay are now protected by evacuation alert systems from UK manufacturer, Advanced.

The EvacGo panels have been installed to meet the criteria set out in the BS 8629 Code of Practice for the design, installation, commissioning, and maintenance of evacuation alert systems for use by fire and rescue services in England and Wales.

Situated in Cardiff Bay's Tiger Quay development, Roath House and Queen Alexandra House are a mix of 73 social and market-rented one and two-bedroom apartments managed by Trivallis, one of Wales' largest housing associations. Trivallis



appointed Cardiff-based, Tremorfa Ltd, to complete the installation, requesting that Advanced's EvacGo solutions be installed to ensure both residential buildings met the BS 8629 recommendations.

With all Advanced evacuation alert systems custom-manufactured to reflect each individual building's

evacuation zones, Advanced supplied two EvacGo systems to Tremorfa complete with 1-loop card, expandable from four to eight evacuation zones. The two systems were installed alongside a combined total of 63 sounders to provide audible warning to building occupants in the event of an emergency.

[www.advancedco.com](http://www.advancedco.com)

## FIREFLY™ system upgrades roofspaces at Ashfield Wellbeing Centre

A programme of works carried out at a Nottinghamshire hospital, just prior to Christmas, has seen a number of products from the FIREFLY™ range employed to upgrade the passive fire protection throughout the roof spaces, with the manufacturer providing site specific design details to assist the highly experienced contractor complete the project on time.

DC Fire Protection Ltd., based at Wellingborough in Northamptonshire, works right across the country covering multiple sectors of the construction industry, installing active as well as passive fire protection systems. For its 10 week contract at the Ashfield Health and Wellbeing Centre at Kirby in Ashfield, the specialist installed dozens of rolls of the TITAN Lite™ fire barrier as well as the APOLLO Horizontal barrier, Collaroll and two of the 1200 x 600mm FR120 Access Panels to link some of the safety zones being created.



[www.tbafirefly.com](http://www.tbafirefly.com)



# Magply

## ULTIMATE FIRE PROTECTION EUROCLASS A1



### **A1 Non Combustible Magply Recovery / Protection Roofing Board**

Magply recovery and protection boards have been developed to meet the roofing industry need for a cost-effective, lightweight and fireproof board that will provide an inert and stable separating layer for all types of waterproofing overlay applications. It can also be used as a tough, durable and reusable protection layer over completed installations.

Available in 6mm, 9mm and 12mm thicknesses, to suit both light and heavy traffic applications, the board can be easily cut to fit around penetrations and at abutments and can either be mechanically fixed or bonded into position when used in overlay applications.

6mm Magply will achieve B-roof T4

18mm and 20mm also available for roofing.



**Safe Sure Secure**

FOR MORE INFORMATION VISIT

**magply.co.uk**

 +44 (0) 1621 776 252

 ollie@magply.co.uk

# A SAFE AND PRODUCTIVE WORKING ENVIRONMENT

## Why is fire safety important in your outdoor home office?

We live in a time when remote working is on the rise and having a dedicated working space at home is more important than ever. The working space available may be the corner of the spare room or the kitchen table, but extended periods can lead to discomfort and the risk of future health issues. It may also be difficult to concentrate on work with family life happening in the background.

According to data from the Office for National Statistics (ONS), the prevalence of hybrid working has seen a notable rise, with a significant proportion of individuals opting to work both from home and their usual place of work.

Therefore, more and more of us are utilising the space we have available in the garden, or our existing outbuildings to create a dedicated home office - a place where we can leave the home to go to our place of work, limiting domestic distractions.

Ensuring adequate fire protection in the home office is a top priority, devices like Aico's Ei660iRF—a battery-powered, RadioLINK+ Multi-Sensor Fire Alarm equipped with both Optical and Heat sensors may provide an easy solution.



The use of electrical appliances within home offices underscores the importance of fire safety measures.

The Ei660iRF's wireless design eliminates the need for mains electricity, simplifying installation and enabling wireless connection to existing Aico smoke and heat devices in the household through radio frequency (RF). By adhering to British Standard BS 5839-6:2019+A1:2020 recommendations for

interconnected alarm systems, home office spaces can be fortified against potential fire hazards, ensuring prompt alerting in the event of an emergency.

The use of electrical appliances within home offices underscores the importance of fire safety measures. Faulty appliances and leads accounted for a significant percentage of accidental house fires in recent years, highlighting the need for vigilance and preventive measures.

Creating a safe and productive home office is important, especially if you're going to be spending a lot of time there.

■ To find the right alarm for you, please visit - [www.aico.co.uk/homeowner/product-selector/](http://www.aico.co.uk/homeowner/product-selector/)







The European Market Leader in  
Home Life Safety

#AlarmsSaveLives

# 3000 SERIES

## FULL CIRCLE PROTECTION

Simple and intelligent, the 3000 Series provides whole property coverage.



The technologically advanced 3000 Series includes both **Multi-Sensor** and **Single-Sensor** alarms, detecting **Fire** and **Carbon Monoxide** from just one range, while maintaining the simplicity that installers love.



Add the Ei3000MRF for wireless interconnection and data extraction via the Ei1000G Gateway

**Smart, connected and future-proof.**



# LOVE IT LOCK IT

Domestic door and window security and sold secure  
SS 312 & SS 301



## DOMESTIC DOOR AND WINDOW SECURITY

**SOLD SECURE SS 312 & SS 301**

PAS 24 has long been the go-to security certification standard for domestic doors and windows. Approved Document Q made it mandatory for builders to provide security in new build homes, and PAS 24 is the easiest way to meet this requirement.

In 2009/10, cylinder snapping became a serious issue in some parts of the country, leading to the development of the SS 312 Diamond Specification for Cylinders for Locks. This allowed locksmiths to offer a serious security upgrade to any door and was the first-ever UK upgrade for high-security cylinders for doors.

Sold Secure (SS) 312 has now been referenced in the latest version of PAS 24 along with SS 301 Specification for Mechanical Security Systems for Domestic Buildings. The reference can be found in Section 4. Enhanced



Security Requirements; 4.1.2 Doorsets.

### You can choose either:

- a Sold Secure SS 312: 2019 cylinder with a Diamond rating; or
- a Sold Secure SS 312: 2019

cylinder with a gold rating, plus a Sold Secure SS 301; 2015 handle or escutcheon with a minimum Bronze rating.

The latest update to the PAS 24 standard means that products certified by Sold Secure (SS) 312 and SS 301 can now be used to meet legal requirements. This is in addition to TS 007 products, giving you even more options to ensure your products meet approved document Q.

This is the first ever time that Sold Secure specifications have been referenced in a standard used to meet legal requirements and is a testament to the important work carried out by this independent test lab in helping to reduce crime.

Love it Lock it. Be sure its Sold Secure.

■ [www.soldsecure.com](http://www.soldsecure.com)





# vicaima

UNEXPECTED HARMONY

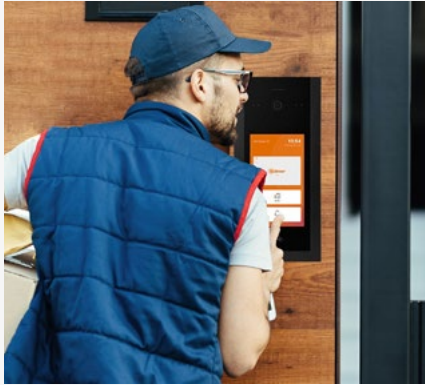


Security Door Solutions

Seeking innovative  
design and performance?

# PIONEERING EXCELLENCE IN DOOR INTERCOM SYSTEMS

Golmar Systems UK



Established 70 years ago, Golmar has been a stalwart in the global market, leaving an indelible mark on the landscape of door intercom systems. With a dedicated hub in the UK for the past two decades, Golmar Systems UK continues to uphold the brand's legacy of excellence.

## A Legacy of Service and Innovation

As an integral part of the Golmar family, Golmar Systems UK takes pride in maintaining uncompromising standards of service. Their commitment extends beyond mere transactions as they focus on fostering lasting relationships with clients. From door intercom systems to access control and CCTV, Golmar Systems UK ensures seamless integration and reliable performance.

## Empowering Installers: Building a Network of Distributors

Golmar Systems UK recognizes that time is of the essence for installers. To expedite system installations, they are actively building a robust network of distributors. Whether it's a standard configuration or a customized solution, Golmar Systems UK ensures swift access to quality products. Their expert team assists in specifying the right

components, tailored to meet specific project requirements.

## Collaboration for Continuous Improvement

In the spirit of innovation, Golmar Systems UK collaborates closely with Golmar in Spain. This dynamic partnership ensures a constant evolution of their product range. Feedback from installers and end-users is invaluable, driving enhancements with each new product release. Golmar's commitment to improvement is unwavering.

## The Golmar Advantage

Style Meets Functionality: Golmar offers a compelling blend of aesthetics and practicality. Their Sixty5 range of panels exemplifies this ethos. Whether it's the modern classic digital keypad or the sleek touch screen panel, Golmar bridges style and functionality seamlessly.

## Key Features:

- **Audio/Video Communication:** Crystal-clear communication for enhanced security.
- **Call Progress Confirmation:** Audible and visual cues keep users informed.
- **Door Open Confirmation:** Instant feedback for peace of

mind.

- **Coded Access:** Secure entry with personalized codes.
- **Built-in Proximity Reader:** Streamlined access control.
- **Aluminium or Steel Finish:** Versatility to match any aesthetic.
- **Visitor Display:** Deters unwanted intruders.
- **2-Wire Technology or IP:** Flexibility for diverse installations.

## Conclusion

Golmar Systems UK remains at the forefront of innovation, offering competitive solutions that cater to both form and function. From cozy homes to sprawling apartment complexes, Golmar's integrated systems redefine safety and convenience.

For more information, visit Golmar Systems UK and experience the future of door intercom technology.

■ [www.golmarsystems.com](http://www.golmarsystems.com)







# Sixt/5 TOUCH

Golmar was first established in Barcelona, Spain 70 years ago, and has enjoyed a world-wide presence for many of those years, including a dedicated hub in the UK for the last 20 years

# BETTER MAINTENANCE WITH YEOMAN SHIELD WALL & DOOR PROTECTION

Care environments can benefit physically, financially & aesthetically from yeoman shield wall & door protection services

In a healthcare environment hygiene is one of the most important considerations.

Protecting a building's interior with Yeoman Shield's range of wall & door protection systems ensures they don't suffer from dents and scratches which can harbour harmful bacteria.

Durable and easy to clean, all Yeoman Shield products are inherently hygienic if they are properly cleaned and maintained. The PVCu materials they are manufactured from are "rigid" and therefore do not support the growth of bacteria or mould.

## PROMOTING ACCESSIBILITY

Offering accessibility is a must for the safety of residents in care homes. Our durable handrails provide support for people who need it, whilst also adding a layer of additional protection by creating a barrier between walls and people. Handrails



Durable and easy to clean, all Yeoman Shield products are inherently hygienic if they are properly cleaned and maintained.



benefit both employees and patients and our Guardian Handrail offers dependable, durable performance in all situations.

## FIRE PRECAUTION

Safety of patients, customers and staff is also paramount and keeping fire doors (an important component in fire compartmentation) up to RRO standards can be achieved

by maintaining the doors with the assistance of Yeoman Shield Fire Door Inspections and maintenance using protection products such as door edge protectors, door protection panels and glazing bead protectors. All these products carry fire certification.

## SAVING MONEY

This not only ensures the safety of the building's occupants but can also avoid the costly exercise of replacing damaged doors and redecorating interiors.

Installing Yeoman Shield wall protection products such as corner protection angles and wall protection panels, to protect vulnerable plaster work, is a great money saving exercise by reducing the amount of redecoration and repair work that needs to be undertaken.

## A WARM WELCOME

Yeoman Shield wall & door protection products not only protect but can add to the décor of an establishment. With an array of colours, a choice of surface finishes and the ability to add imagery, signage and corporate Logos to our wall and door protection panels and hand/protection rails, Yeoman Shield can help to maintain a professional and inviting appearance for any building.



[www.yeomanshield.com](http://www.yeomanshield.com)



# Attractive - **Cost Saving** - Protection



**YEOMAN  
SHIELD**  
WALL & DOOR PROTECTION  
making business a pleasure *for over 55 years*

Prevent everyday wear and tear in busy environments, with Yeoman Shield's extensive range of maintenance free, wall and door protection.

Our hygienic, easy-clean products, provide an attractive and economical solution to protecting all types of surroundings.

Protect the life cycle of your building with Yeoman Shield and you'll find costly repainting and repair becomes a thing of the past!

A comprehensive Fire Door repair & maintenance service available with Yeoman Shield Fire Door Services.



For more information call **0113 279 5854**  
or email **info@yeomanshield.com**  
**www.yeomanshield.com**





Beautiful decking for outdoor living.

Ask us about our range of luxury composite decking and cladding products in stunning colours and finishes to complement any garden project. All products are made from recycled hardwood fibres and virgin polymer.

The result is a beautiful, luxury material designed for life

**TREKKER**  
LUXURY DECKING & CLADDING

[trekkglobal.com](http://trekkglobal.com)  
[info@trekkglobal.com](mailto:info@trekkglobal.com)  
01483 310800