



RWinvest

ONE BALTIC SQUARE CONSTRUCTION UPDATE

October 2019



ONE BALTIC SQUARE CONSTRUCTION UPDATE

October 2019

Work Progressed

Works at One Baltic Square in Liverpool have been progressing well with the groundworks now complete to Blocks A and D, and well underway throughout the rest of the site.

A road was dug to enable positioning of the crane to erect the steel frame.

Blocks were installed in the ground ready for the steel frame construction.

The steel has now started to be installed on Block A.

Excavations have continued to Block E.

Work Scheduled

Steel is on site and ready for construction on Block D.



Road dug to enable crane in preparation to erect steel

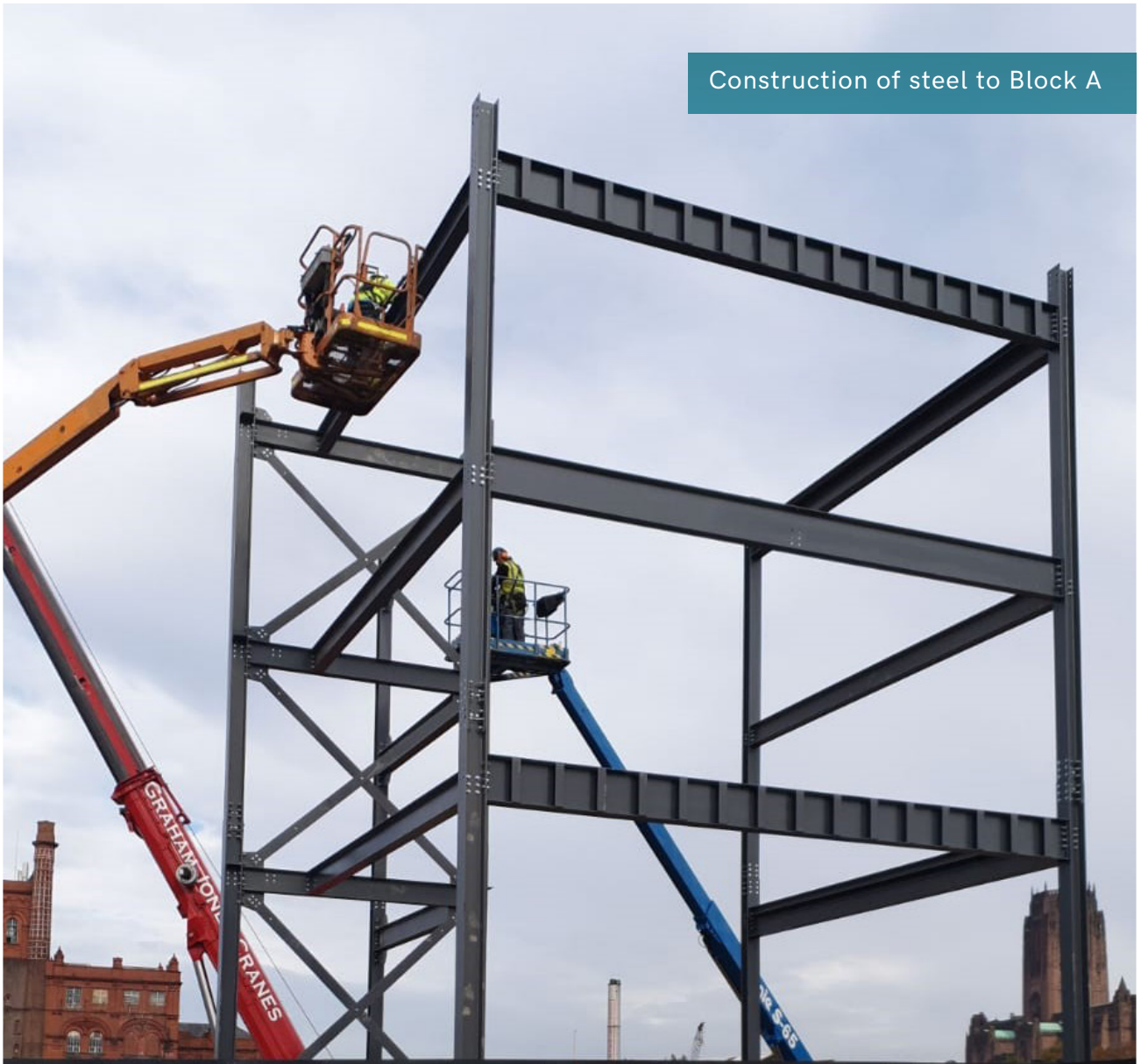


Hoarding at front of site



Blocks installed in preparation for steel frame

Construction of steel to Block A





RWinvest

Liverpool +44 (0)151 808 1250

London +44 (0)207 100 4141