

LANDSCAPE & URBAN DESIGN

46

Nov/Dec 2020

Price £3⁹⁵

landud.co.uk



Innovative products to create beautiful and unique outside spaces

Outdoor spaces have become our new social hubs and activity spaces, with the garden a key extension of our homes



Paving the way for decades

UltraScape: a trusted and proven
force to be reckoned with



Engineering excellence

Zero-turns built for strength
and quality

INSPIRA

modular planting system



A canvas for natural bursts of colour, bringing a range of environmental & social benefits to the built environment.



Increases Biodiversity



Acoustic Cushioning



Improves Rainwater Management



Offers Pedestrian Protection



Reduces Pollution



Improves Mental Health



Promotes Social Distancing



Climate Cooling

CONTENTS ISSUE 46

THIS ISSUES MAIN FEATURES



Decking | 4 - 17



Bound Surfacing | 32 - 35, 47 - 49



Concrete & Stonework | 36 - 46



Tools, Plant & Equipment | 75 - 81

Decking

04 - Outdoor spaces have become our new social hubs and activity spaces, with the garden a key extension of our homes.

06 - Keep maintenance (and stress) to a minimum with NeoTimber's latest range of all-weather decking solutions.

08 - Ecodek recommends its low maintenance solid decking boards as a solution to safely increase premises' customer capacity.

12 - Homeowners looking to maximise their living space and make their gardens more enticing this winter.

Garden Design

18 - New social distancing guidelines have meant that many hospitality businesses have had to rethink or completely redesign their space.

20 - A wide range of distinctive, durable and bespoke statement pieces for outdoor and indoor areas.

22 - Transforming an L-shaped plot into a practical and chic urban garden.

30 - Luxury external shading manufacturer, Caribbean Blinds, recently completed its most 'creative' installation of one of its most popular products, the Outdoor Living Pod™.

Bound Surfacing

32 - The secret behind why more landscapers than ever are choosing Resin Bound.

48 - Recycled FlexiSet installed for Town Centre Car Park Islands in Fordingbridge, Hampshire.

Concrete & Stonework

36 - Paving the way - UltraScape have established themselves as a force to be reckoned with.

38 - Considering the current difficulty sourcing and supplying natural stone, perhaps it is time to think about concrete alternatives.

42 - Brett has the answers to your driveway questions.

Green & Blue Infrastructure

52 - Green-tech announces their Green-tree roof garden substrate was used in the award-winning scheme installed by Palmer Landscapes.

Landscaping Services

66 - Before you invite guests over, there's some quick and easy maintenance you can do to make sure your garden looks its absolute best for hosting.

70 - Bespoke glass balustrades for residential balconies, false balconies, swimming pools and corporate headquarters.

74 - Independent lab tests show Weedingtech's chemical-free foam kills coronavirus in under 10 seconds.

Tools, Plant & Equipment

79 - Husqvarna® presents winter tips for chainsaw users.

Publishing Director

Martin Holmes
martin@mhmagazine.co.uk

Sales Director

Lee Martin
lee@landud.co.uk

Digital Manager

Jamie Bullock
jamie@mhmagazine.co.uk

Editor-in-Chief

Antony Holter
editor@mmhmagazine.co.uk

Editor

Lorna Davidson
lorna@landud.co.uk

Business Manager

Josh Holmes
josh@mhmagazine.co.uk

Studio Designer

Sarah Johnson
sarah.johnson@mhmagazine.co.uk

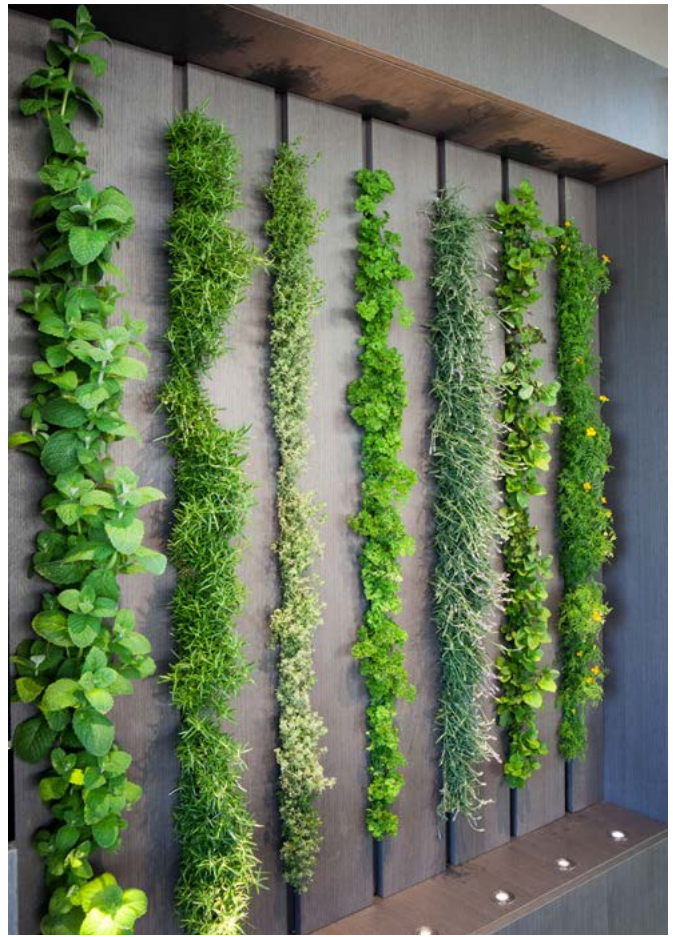
Marketing Enquiries - 01227 936974
Editorial Enquiries - 01304 806039
Other Enquiries - 01304 806039

Publishers

MH Media Global Ltd.
Discovery Park, Sandwich, CT13 9FD

Cover images courtesy of: Left: Lathams | Top Right: Instarmac | Bottom Right: Ariens

Every effort is made to ensure the accuracy and reliability of material published in Landscape & Urban Design however, the publishers accept no responsibility for the claims or opinions made by advertisers, manufacturers or contributors. No part of this publication may be reproduced or transmitted in any form or by any means, mechanical, electronic (including photocopying) or stored in any information retrieval system without the prior consent of the publisher.



LANDSCAPING ENHANCEMENTS

The Covid-19 outbreak has influenced a much greater appreciation for our outdoor spaces. By necessity, they have become our new social hubs and activity spaces, with the garden a key extension of our homes.

It is such an important attribute that almost a quarter of adults have used savings to improve these spaces, using money that had previously been earmarked for a holiday. The average spend on these upgrades is just over £4,000 per household (2020 Renovation Nation Report).

But, while homeowners are happy to invest, they want to get it right first time. They want something that offers long-lasting quality and will not take up their time with regular maintenance.

This is where advanced and engineered materials come into play.



Hands on deck

Decking makes an immediate impact on an outdoor space and provides a very practical, usable area within a relatively short timeframe. And, by choosing the right product, it is possible to drastically cut down your maintenance requirements.

Millboard decking combines a high-performance Lastane surface and polymer resin core, resulting in a strong, low maintenance product that will not warp, rot or deteriorate like normal wood.

Its top layer is scratch and stain resistant and, because it is non-porous, prevents algae growth and offers excellent anti-slip properties, perfect for the variable British weather.

This exceptionally durable product is moulded from real oak and available in a variety of tones and grains providing an effective natural look. With "lost-head fixings" too, you can create a smooth, safe surface, that is perfect for any setting.

Stone with a twist

Once you have the deck in place it is time to consider the furniture and decorative features. For the most imaginative of garden designers, there are a range of innovative solid surfaces available that mimic other materials.

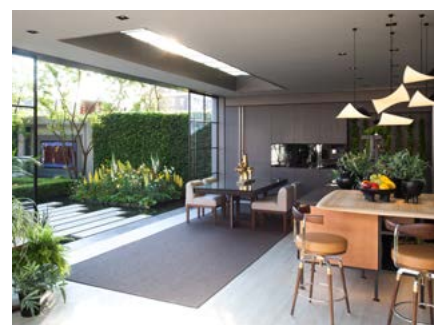
Stone effects are one of the more popular options. Stone dust is combined with technical additives resulting in a product that offers a masonry feel with plenty of flexibility.

Examples include LG's HI-MACS and the Aristech Avonite and Studio Collections. Purchased in standard sheets, they are thermoformable. This means that they can be molded to fit any shape, offering plenty of opportunity for experimentation.

Providing a non-porous and completely smooth surface, they are available in a wide range of finishes, such as concrete, marble and stone - perfect if you want to add some variety to your outdoor spaces.

Solid surfaces are often used for furniture, such as chairs and tables, as well as functional areas like exterior cladding and panelling. Because it is so versatile, it can even be used for decorative features such as sculptures and lighting installations.

These are just two of the innovative types of product available to create beautiful and unique outside spaces, as well as other categories such as modified timbers.



To find out more about the range of stylish, low maintenance and flexible materials that are available to help you with your project visit www.lathamtimber.co.uk



KEEP MAINTENANCE (AND STRESS) TO A MINIMUM WITH NEOTIMBER'S LATEST RANGE OF ALL-WEATHER DECKING SOLUTIONS

NeoTimber® widens their product range with a host of new weather-resistant decking and subframe offerings.

In their aim to provide both homeowners and installers with the complete outdoor flooring solution, NeoTimber® launch their new capped composite decking range, alongside a host of subframe solutions designed to be their most eco-friendly and hardwearing to date. With weather-resistance and durability at the heart of their design, the new products are typically NeoTimber® and are in-keeping with the brand's mantra of offering innovative solutions that are designed with both performance and aesthetics in mind.

The NeoTimber® Advanced Range

Broadening their offering of long-life decking solutions, NeoTimber® launch their latest composite decking range, the Advanced board.

A hollow composite product smarter than most, the board is capped in a protective polymer shell and is built to tackle the stresses and strains of everyday garden life. Unlike most hollow boards on the market, the capped board is designed to offer superior stain and fade resistance and in-turn, provide added peace of mind, year-after-year. Designed with the brand's trademark hollow tubes, the board offers a lightweight, yet hardy construction, and comes with an impressive 25-year residential warranty.

The range is priced at £25 inc. VAT per 3.6m length and is available in a choice of 3 on-trend shades: Teak; a light oak; Chocolate; a timeless classic; and Grey; modern and minimalistic.

NeoTimber's Eco-Friendly Subframe Solutions

NeoTimber's range of eco-friendly plastic lumber is comprised of 100% recycled plastic and offers a robust,

long-life alternative to timber. Designed to work hand-in-hand with the decking boards, NeoTimber's plastic subframe solutions are versatile and can be used in a number of different installation settings.

Low maintenance and rot-free, the subframe solutions offer long-term strength and structural support. The range includes two different types of plastic joist, a 100mmx100mm plastic post and a series of fully adjustable pedestals. The selection of products are designed to be installed individually, or together, in order to create long-life subframes on roof terraces, uneven soft ground or directly onto concrete bases.

Pricing information and product specifications can be found on the NeoTimber® website

Become an Approved NeoTimber® Installer

An installer programme
built with landscapers
in mind.

The benefits you'll receive:



COST
SAVINGS



EXPERT
ADVISE



TRAINING



REFERRALS

Contact our expert sales team to apply:

☎ 01509 323 170

➡ www.neotimber.com

✉ enquiries@neotimber.com





ECODEK® COMPOSITE DECKING PRESENTS A SAFE, SUSTAINABLE SOLUTION FOR OUTDOOR HOSPITALITY SPACES

As restaurants and bars create new ways for customers to safely enjoy dining and drinking experiences out of doors, sustainable composite decking manufacturer, Ecodek recommends its low maintenance solid decking boards as a solution to safely increase premises' customer capacity.

Presented with an unexpected duty to keep patrons safely socially distanced in 2020, businesses within the UK hospitality sector have increasingly utilised available external space to create areas for customer use.

With the importance of maintaining safety guidelines likely to continue for the foreseeable future, a requirement to make outdoor surroundings as relaxing and attractive as indoor areas has become a priority within the sector; and with colder months ahead, the need for those spaces to remain safe and comfortable becomes ever more relevant.



An installation for now, and for the future

One solution, capable of making a substantial difference to the feasibility of outdoor hospitality areas is ecodek® - an attractive composite alternative to hollow boards that's simple to install, safer and more hardwearing than a wooden outdoor floor surface.

Manufactured in the UK and supported with a 25-year guarantee, ecodek® has been designed with indoor and outdoor leisure and dining in mind. With slip-resistant boards that won't splinter, rot or split, the solution is ideal for commercial purposes in both wet and dry conditions, making it a logical choice for bars and restaurants that want to develop outdoor areas.

With its solid composition - intended to prevent water and moisture from rotting the decking from within - ecodek® is a long-lasting, ecologically sustainable decking with an increased resistance to impact damage. Its solid structure gives it greater noise absorption properties, so it's quieter underfoot; helping to reduce noise levels in dining environments.

Designed to impress

"Keeping customers safe during the COVID pandemic has become the first concern for the hospitality sector, with business continuity currently dependent on effective in-house social distancing," explains Felicity Hodgkinson, Marketing Manager at Ecodek.

"Alongside premises' safety priorities sits the importance of diners and bar patrons feeling relaxed whilst eating and drinking out of doors; enjoying everything an alfresco experience affords, from the food and drink, to the atmosphere and surroundings. Similarly, at a more corporate level, company canteens restricted by diner capacity numbers, are progressively seeking out effective solutions to better utilise outdoor areas for safer staff dining.

"To increase patron numbers, premises need to make as much safe space available as possible. As expectations for additional outdoor hospitality areas continue, creating that welcoming environment for customers to enjoy eating and



drinking outside could well become key to the hospitality sector's onward success."

Felicity goes on to explain how when designing and developing outdoor hospitality space, the use of practical, as well as attractive building materials is crucial:

"Whilst UK weather elements play their part in demanding a tolerant and robust outdoor floor surface for commercial outdoor areas, a business's bottom line needs a cost effective and low maintenance material."

A perfect solution

With its synergistic blend of plastic and wood and proven colour fast properties, ecodek® is a solution that ticks all the boxes. A market leading Wood Polymer Composite Decking, renowned for its "fit and forget" characteristics, ecodek® needn't be stained, painted or treated to prevent warping, swelling or distortion, as the product's polymer content limits moisture absorption to less than 1 percent,



compared with more than 25 percent for untreated timber. Initially manufactured using 95 percent recycled materials and sustainably sourced materials, the decking can be recycled repeatedly; proving ecodek® to be as green as it is long lasting. Decking lengths are cut to order at the fabrication stage in the UK - not only limiting waste, but also helping to reduce installation time, customer costs and environmental impact.

Sustainable and long-lasting

"It's everyone's hope that the hospitality and commercial sectors will be operating as normal sooner rather than later," Felicity continues, "however with current circumstances as they are, maximising premises'



potential to increase customer capacity within an outdoor space makes a lot of sense.

"Ensuring that area is attractive, inviting and safe, using materials designed to last for the long-term as opposed to the moment, presents proprietors with a business-building spatial solution that customers can enjoy and return to, months and years from now."

For further information about the ecodek® composite decking solution, including design ideas, environmental credentials, and recommended installation partners, visit ecodek.co.uk or speak to a product specialist on 01978 667840.

Image Credit:
Mansj King (Image © Mansj Spiselpanda)

Sustainable Outdoor Living.

The durable and sustainable
alternative to hardwood
and hollow decking

- Low maintenance, high slip resistance
- Made from 95% recycled and sustainably sourced materials and 100% recyclable
- Carbon negative manufacturing
- 25 year warranty



British made ecodek® solid wood polymer composite profiles are available in a range of profiles and colours, and are suitable for a huge variety of commercial and residential applications.

Versatile enough to adapt to urban or traditional design schemes, ecodek® decking allows the designer to transform outdoor spaces and gardens into feature areas.



www.ecodek.co.uk

ecodek®
Part of the Epwin Group of companies



CLEAR THE DECKS

As we move into a second wave of lockdowns, those in tier 2 areas are facing an alfresco winter, should they wish to socialise. To enable COVID-compliant socialising with friends and family, many will be looking into ways of transforming their outdoor space as the cooler weather settles in. Outdoor heaters, fire pits and pizza ovens have seen a staggering surge in demand, and interest in decking options has followed suit, as homeowners look to maximise their living space and make their gardens more enticing.

Decking is a versatile product, allowing garden landscapers to add a welcome pop of personality to an outdoor area. From creating an impressive walkway from living room to lawn, or raising ground level to the height of the doors to rectify surface disparity, decking is a feature with endless scope for opportunity.



Practicality beyond the aesthetics

Stylish decking can drastically improve the overall look of a garden. Even the smallest section has the power to transform an outdoor space, adding a strong focal point around which other visual elements can congregate.

Practically, decking can also be specified to level out any uneven or sloping ground, and fill awkward

or unused areas on steep inclines. It increases the size of the garden and finds a purpose for any space which was previously unusable.

In more extensive gardens, incorporating steps and terraces can further maximise space. If the structure is positioned high enough, the area underneath can be used as additional, lockable storage, a space-saving alternative to the traditional shed.



Raising ground

If the garden is situated in an area of outstanding beauty or by the coast, decking can create an excellent area for relaxing and enjoying the scenery. However, be sure to check planning permissions first!

Attractive decking which makes the most of a view, will not only deliver a great deal of pleasure to the homeowner, but is also likely to increase the property's value.

Classic combinations

For garden pathways, investing in non-slip decking is recommended, as it reduces the risk of accidents during wet and icy winter months.

Mixing decking and paving stone designs on pathways and raised platforms, is a great option. It produces a beautiful contrast via the materials used, creating points of visual interest throughout the garden.

Ultimately, decking provides an ideal solution for customers looking to extend the footprint of their home's living space.

Aside from its timeless look and enhanced safety features, decking has the added benefit of reducing garden maintenance, such as mowing and pruning time, ensuring your client has more time to sit back and enjoy their garden fully.

www.jacksons-fencing.co.uk

Step, Footpath & Walkway GRP Safety Solutions

for LANDSCAPERS

Are
your steps
wet-weather
ready?

GRP Fencing
GRP Walkways
GRP Hand Railing
GRP Access Stairs
GRP Anti-Slip Flooring
GRP Anti-Slip Decking Strips
GRP Anti-Slip Stair Tread Covers
GRP Water Feature Mesh Grating
WPC Decking Boards & Cladding



Step on Safety

www.steponsafety.co.uk
01206 396 446





TREX DECKING

Trex Company, the world's No. 1 decking brand, offers a solution to build with green materials whilst not compromising on aesthetics. In fact, no trees have ever been cut down to make Trex. The entire high-performance decking portfolio is manufactured from more than 95% recycled content. With high-definition wood grain patterns and rich, saturated colours inspired by the outdoors, Trex composite decking looks natural and boasts a vibrancy that remains unchanged for years. Colour options range from deep earth tones to warm umbers, spicy reds and pristine greys.

Featuring a protective shell for superior defense against severe weather and heavy foot traffic, Trex deck boards will retain their good looks even after years of wet British winters. Just an occasional sweep and soap-and-water cleaning is all that is needed to maintain a Trex deck for decades.

Trex decking is available locally through Arbordeck stores at www.arbordeck.co.uk. Visit uk.trex.com for more information on low-maintenance, high-performance Trex products.



CREATE A DRY SPACE BELOW YOUR DECK



Trex RainEscape®
DECK DRAINAGE SYSTEM



WATERPROOF YOUR
TIMBER DECK



Trex Protect®
JOIST & BEAM TAPE

trexrainscape.com | trexprotect.com

*See the product website for the terms of the warranty.
© 2020 Trex Company, Inc. All rights reserved. Trex®, RainEscape® and Trex® Protect® products are manufactured and sold by DSI-Deck Enterprises, LLC under a Trademark License Agreement with Trex Company, Inc. RainEscape® is a federally registered trademark of DSI-Deck Enterprises, LLC.

THE PERFECT SOLUTION FOR YOUR NEXT DECKING OR PAVING PROJECT



Karoapp fixed and adjustable pedestals for use on decking and paving are the latest brand to reach the UK market and are available from Euro Accessories Ltd.

Fixed pedestals are available in 4 different heights ranging from 13mm to 30mm. Adjustable pedestals are available in 6 different adjustable heights ranging from 18mm to 225mm.

By incorporating the extension piece a further 7 adjustable heights are available, offering a complete range from 18mm up to a staggering 1083mm.

Karoapp pedestals are fully tested and offer a minimum load resistance of 900kg each. Using recycled plastics, they help prevent moisture to the deck / patio helping to increase its life.

Euro Accessories professional pedestal team can also offer assistance with any development or project you have.

For more information on Karoapp

Tel. 01189 81 95 22

www.karoapp-pedestals.co.uk | sales@euroacc.co.uk



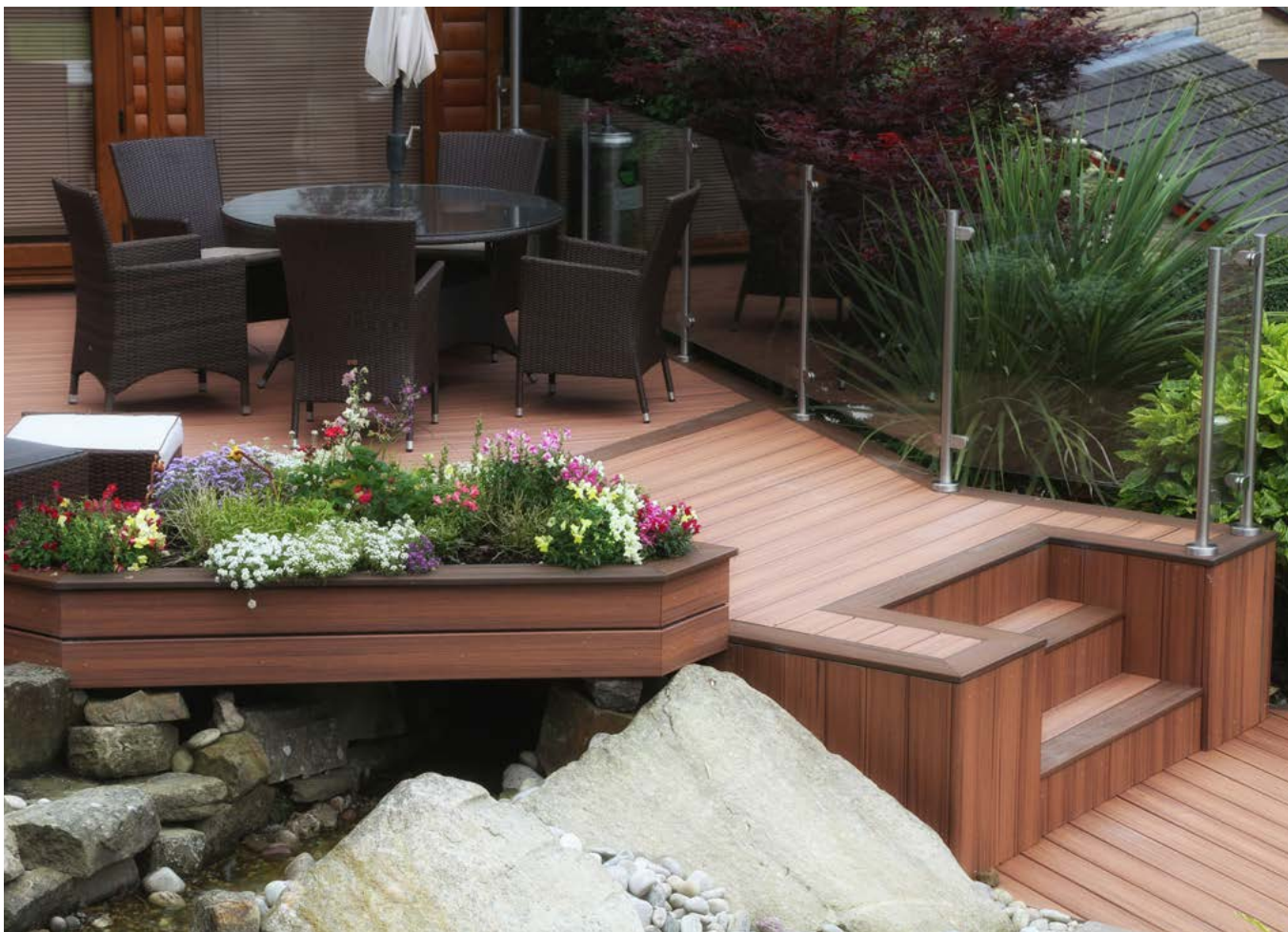
- Fast and easy to use in all weathers.
- Adjustable for all sites and slopes.
- Allows easy access to utilities concealed below the deck.
- Continuous drainage through joint spacers means no accumulation of water on decks or paving.
- It provides a point-to-point intervention in insulation problems.
- It has a high load resistance (Min 900kg/pc)
- Provides the final level without any screed concrete on installation.



For more information on Karoapp

Tel. 01189 81 95 22

www.karoapp-pedestals.co.uk | sales@euroacc.co.uk



GIVING A GARDEN A FACELIFT THAT WILL LAST FOR UP TO 25 YEARS

**By Duncan Kingston,
Southern Sheeting**

As the coronavirus pandemic continues and restrictions on daily life fluctuate, having a great space to entertain in the back garden is in hot demand.

Many builders will be tasked with installing new decking as people look to give their gardens some love, but should you advise them to opt for traditional timber or modern composite?

This debate heats up every year all over the country as homeowners begin their quest for the perfect garden decking.

Previously timber was the most popular choice, and the big decision was whether to keep the cost down with a soft wood timber or to think about the long-term by using more expensive hard wood.

But now there's a new contender vying for market share - long lasting and designer friendly composite decking. Thanks to technological advances it now looks incredibly realistic.

We all know that high end composite decks look stunning and will stay that way with very little maintenance, but here are some of the key questions your clients will ask and the answers to give them.

What's the difference in terms of price?

Composite decking is now the more cost-effective option over time. While timber decking is typically less expensive to lay initially, especially if soft wood is used, it will need far more maintenance. You can explain to clients that it will require annual treatments of sealant or varnish to keep it watertight, plus treatments to prevent mould and rot.

A timber deck, depending on the type of wood used, has an average lifespan of around 10-15 years, compared that to a composite deck which can often last twice as long. Some composite decking is so weather resistant it is guaranteed for 25 years in residential use.

Which is better? Composite or timber decking?

Traditionalists of course will revel in the look and feel of real timber, which can be revarnished, or repainted if the mood strikes and it is well suited to older style properties.

However, it's important to point out to your clients that composite decking will maintain its good looks for longer and with less effort. For clients who are elderly or have children, you should let them know that the surface is less slippery, leading to a reduced risk of trips and falls in wet weather all year round.

Composite decking is also more weather resistant and comes in a greater range of colours. In many cases it's so realistic it's hard to spot the difference. So, it's a case of weighing up the benefits of both and looking at the client's needs.

Which option is more environmentally friendly?

Consumers are increasingly eco-conscious these days so it's good to have the answer to this up your sleeve. Timber decking sourced from sustainable forests obviously boasts very strong eco credentials. However, some composite decking can be just as green.

For example, Trex composite decking is made of plastic and wood, but uses 95 per cent recycled materials - including thousands of recycled plastic bags plus reclaimed wood from timber mills. It's also worth pointing out that in the long term they won't need to clean it with chemicals or detergents to prevent it from rotting.

Does all composite decking look the same?

We're often asked this question at Southern Sheeting by our enthusiastic DIY fans eager to have a go themselves and you can bet your client will ask this question too. One of the great benefits of composite decking is that it is customisable. It can be laid in different patterns and configurations - and different colours can be used in the design to create a look that is unique, eye catching and modern.



For some inspiration why not suggest using a perimeter board in a different colour to 'picture frame' the deck? With a timber deck, it would be necessary to buy two lots of paint to achieve the same effect.

BESPOKE CRAFTED JOINERY FROM THE GARDEN TRELLIS CO NOT JUST FOR BEAUTIFUL GARDENS...



The Garden Trellis Co have firmly established themselves as the 'go-to' company for beautiful bespoke trellis, slatted panels and other stunning garden features such as rose arches and bespoke gates.

Choosing timber finishing for outdoor landscaping projects is not only good for its beauty and attractiveness, but also for its durability; for this reason, their services are high in demand to create stunning hand-crafted joinery for commercial landscaping projects.

Recently in response to the COVID-19 pandemic their commercial expertise has been more needed than ever, the team have been busy in the design studio developing innovative projects and concepts to help businesses get back on their feet.

Using garden joinery to mark out safe social distancing zones

New social distancing guidelines have meant that many hospitality businesses have had to rethink or completely redesign their space.

An easy solution is sectioning off an outdoor seating area with trellis or creating a walkway with contemporary slatted panels. Planters are also a good way to mark



out areas with the added benefit of adding greenery to your outdoor space.

Cover up unsightly areas in outdoor spaces

When moving an operation partially or fully outside, bin stores, air conditioning covers, and decorative trellis help to make outdoor dining areas look as slick outside and they do inside.

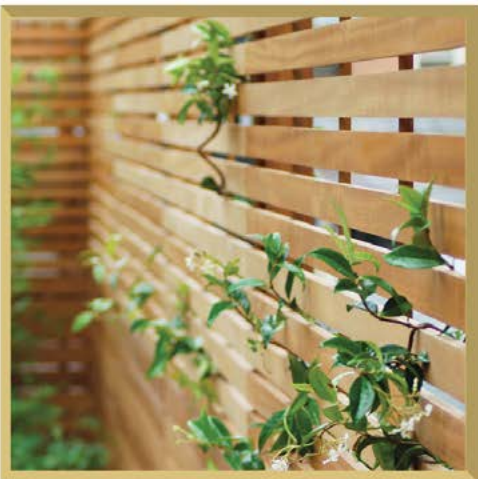


Street furniture

The Garden Trellis Co have also been working on street furniture projects with their bespoke benches for public spaces being popular in outdoor shopping hubs hopefully encouraging a longer visit to support the high street.

Director Julian Furness has said: "We are greatly enjoying the challenge of coming up with solutions to the changes that the 'new normal' is bringing to businesses and we hope that our work can go some way to supporting the economy in helping businesses adapt."

Contact Howard on 01255 688361 or howard@gardentrellis.co.uk to discuss your next project today, if it involves timber, and goes outside, they can help with custom made solutions and high-quality paint finishes to add an elegant, attractive look to your outdoor designs.



We design, craft, build and install high quality bespoke outdoor joinery

From classic trellis or contemporary slatted panels, to individually designed screening & street furniture, or bespoke planters & benches.

From our workshop and design studio in Essex, UK we can help you to create the dream outdoor space.

gardentrellis.co.uk

Contact Howard on 01255 688361 or howard@gardentrellis.co.uk



DISTINCTIVE, DURABLE AND BESPOKE

Torc Pots offers a wide range of distinctive, durable and bespoke statement pieces for outdoor/ indoor areas both residential and commercial. Working as a family run business they operate from their studio in the British Isles making pots and furniture which can be custom designed to suit your requirements. A group of skilled artisanal pot makers work together shaping the pots by hand until they take on their own unique form - no two pots are ever quite

the same. Torc do not simply pour materials into moulds - they create each piece by hand with attention to detail on large potter's wheels. This gives them great flexibility when it comes to bespoke design, scale and textures. They can even personalise your pots by imprinting your own logo onto your pot of choice which is popular with both commercial customers as well as private.

In a world where we have increasingly become surrounded

by so much that is mass produced we think there is a real appreciation for hand-crafted objects and Torc offer exactly that! With lots of new launches planned for 2021 including contemporary water bowls of up to 3m wide, a new organic range of pots (misshapen and slightly off key) plus a range of outdoor furniture to compliment the pots there is a lot to look forward to. One to watch!

www.torc pots.com

TORC:POTS



@torc_pots



www.torc-pots.com



AN L-SHAPED PLOT IS TRANSFORMED INTO A PRACTICAL AND CHIC URBAN GARDEN

With tricky dimensions and a list of requirements from the space, the owners of this London garden headed to Houzz.co.uk to research ideas that could work and the right professional to help with their project. After seeing a similar urban project and multiple 5-star reviews on her Houzz profile, the owners

reached out to garden designer, Georgia Lindsay. "I actually get quite a few jobs from Houzz, it's such a great website," explains Georgia. "Potential clients are normally very well researched on you and your work when they get in touch as it lays it out for the consumer in a really clear way."

At only 40 sq m, the l-shaped space needed to include a bike-shed, parking space and provide extra security, whilst acknowledging the owners' appreciation of stylish design. It was also important to the owners' that the garden include bee and butterfly-attracting plants.



Photo credit: Nathalie Priem

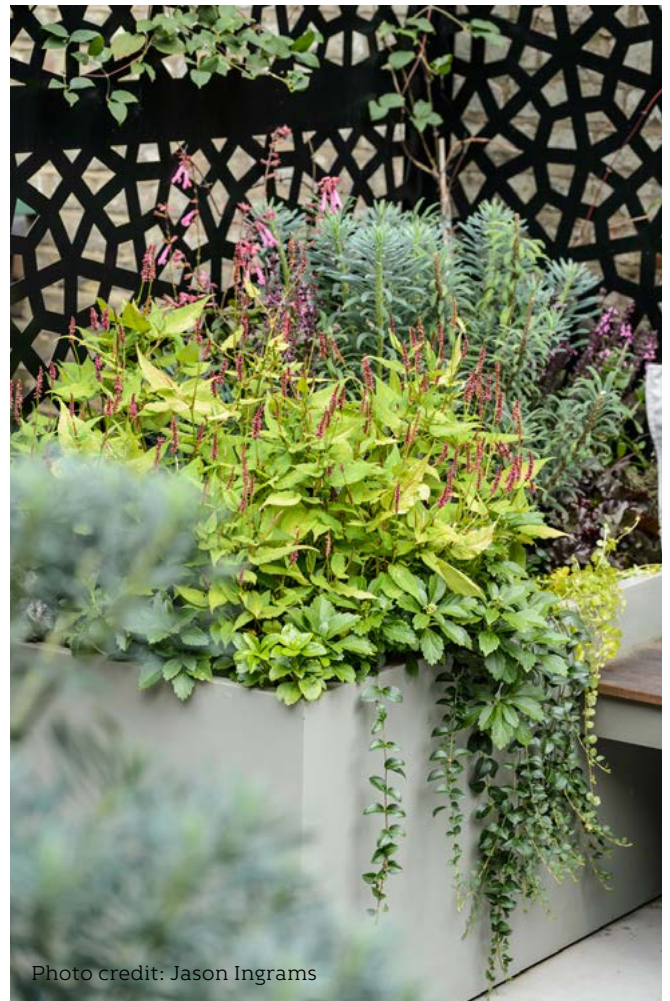


Photo credit: Jason Ingrams



To help communicate their ideas, Georgia tasked the owners' with creating an Ideabook on Houzz, explaining "I think Ideabooks are great. I always encourage my clients to create one and to leave notes to let me know what they like and why."

Georgia trained as a theatre designer and says she likes creating spaces that are multi-purpose, as is often the case with a stage set. "You have to be much more inventive in a smaller space. Things have to double up - a coffee table that's also a firepit, or a cupboard door dropping to become a bar area. Every surface is within eye-level, so attention to detail has to be very precise because

of that." Small spaces aren't Georgia's speciality, but she explains "I've done quite a lot of them and I really enjoy the challenge."

"It's quite an unusual plot," Georgia says. The original garden was divided into two when the house was converted. The result is an L-shaped plot that includes a metal staircase up to their floor. Before Georgia came on board, the garden had low fencing that wasn't doing a good job of providing screening for either side. "Because of the layout, the owners and the downstairs neighbour felt very much in each other's pockets," she explains. The other garden forms a rectangle

inside the L. The aim was to create a sense of intimacy without it becoming claustrophobic.

As the owners access the garden from their first floor flat, via a staircase from their balcony they wanted the garden to become a secondary space where they can enjoy nature for short periods. It also needed to look attractive from the balcony and work as a transitional space, as they regularly walk through to access the car.

One of the most noticeable new features is the black fretwork screening which Georgia added to two sides of the garden.

GARDEN DESIGN

The garden had previously had an open, wrought iron fence between the old bike shed and the street, which was very visible and a cause of concern. The chic new screen provides more privacy, as well as conceals the car and bins from the rest of the garden.

For seating, Georgia had a metal-framed hardwood bench built in, with planters at either end. "It's a floating design to create the illusion of as much space as possible, rather than one down to the ground that could have closed off the space," she says.

The planters are filled with a mix of *Euphorbia characias* subsp. *Wulfenii* 'Black Pearl', two heucheras ('Blondie in Lime' and 'Obsidian') and *Lysimachia*. Each planter features a similar mix. "I wanted to get some real acid green colour in there to lift the monochrome," Georgia explains. Many of the plants will look good all year round. "In a very small space, it's good to have a lot of evergreen foliage. You can't get away with bare patches in a small garden," Georgia adds.

To zone the seating area, Georgia designed a tiled 'rug' which was inlaid into a plain porcelain tile surround. The patterned tiles are also porcelain, designed to resemble traditional encaustic ones. "They're printed to look encaustic, but they're much more hardwearing and don't need sealing every year," explains Georgia.

The stairs to the flat are just visible from the seating area. To add some greenery to the wrought-iron staircase, Georgia clad the risers with artificial maidenhair fern panels. The faux fern comes on grids and was fitted behind the metal mesh of the risers and pulled through the gaps. "I don't usually like to use artificial, but in the right setting it can be very effective," she says. "And a real fern would have taken a battering here. It gives the illusion it's real because there's lots of real planting in the garden as well. Also, it remains dense, it doesn't deteriorate, and you don't have to worry about stepping carefully. It was a good, robust solution."



Photo credit: Jason Ingrams

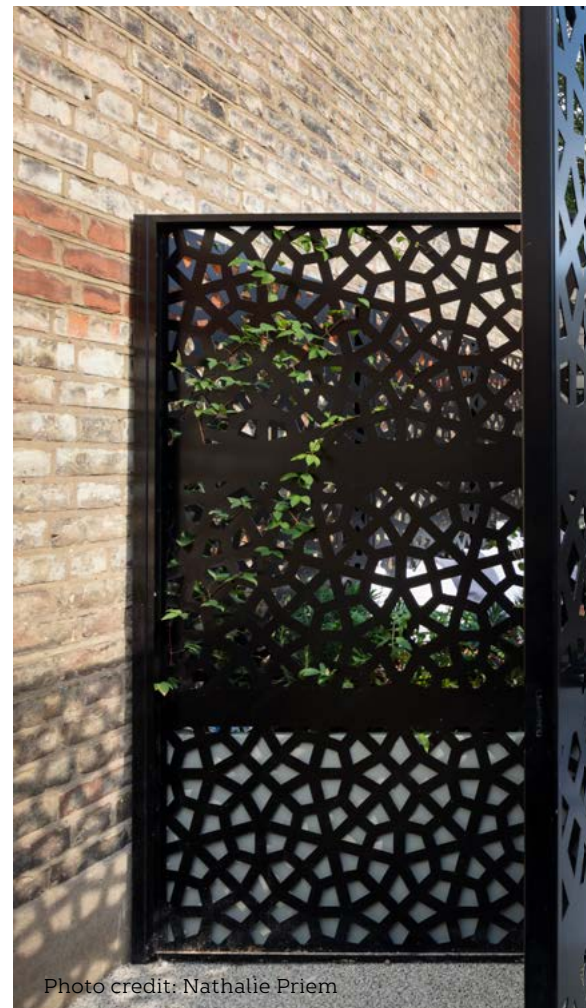


Photo credit: Nathalie Priem



Photo credit: Nathalie Priem

The garden also had to accommodate a bike shed large enough to store the whole families bikes. The shed was custom-made and is the full height of the fence for maximum storage. To boost the view from the owners' kitchen window, which overlooks the garden, the bike shed has a green roof. This helps boost biodiversity in the garden and is planted with bee and butterfly-attracting plants.

Photo credit: Jason Ingrams



As the garden starts to mature and knit together it has created a Zen escape from city life. In this busy world, it's incredibly valuable to step off the treadmill for a moment and just contemplate nature. This garden is so accessible you can instantly take those stolen moments from the urban world and yet the space works so hard for each square metre providing parking, bike storage, privacy but most importantly respite from daily life.

The owners' are bowled over by the finished result. "A garden in London is not something I took for granted but we now have a lovely outdoor room and more reason to nip outside," they say. "It now feels like home once you come through the gate, and style-wise it ties in with our house. We like the modern art feeling and the screens cast beautiful shadows as well as being practical - they are a fence, a gate and support for climbers. The inlaid tiling adds personality and quirkiness. Just looking at the garden makes us happy. What was once an eyesore and a burden feels like a new piece of home."

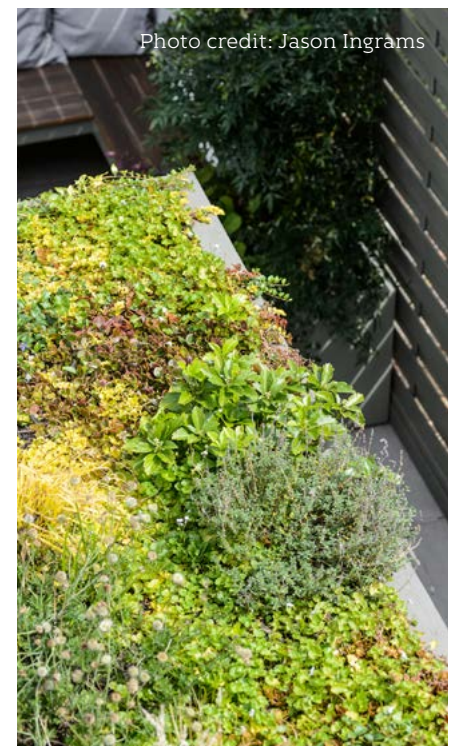
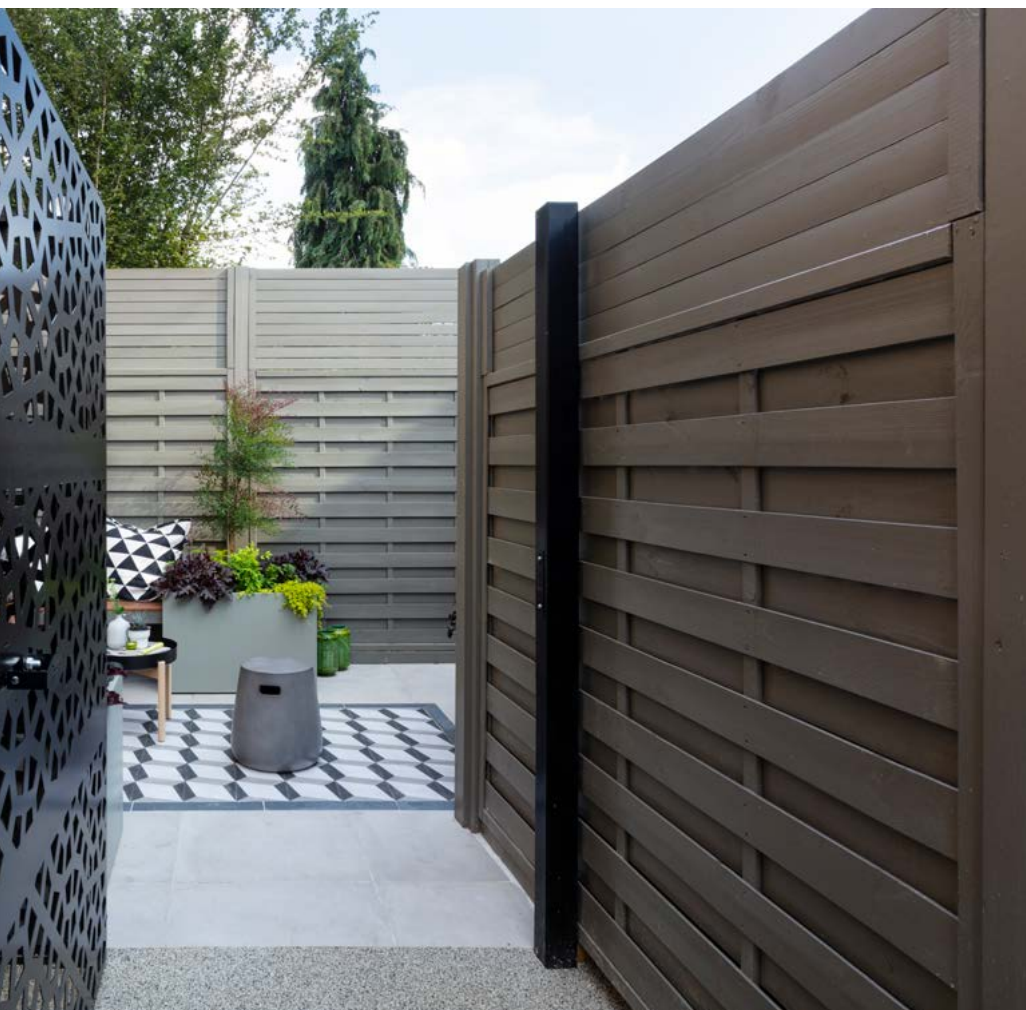


Photo credit: Jason Ingrams

For more information
 visit **Georgia's Houzz Profile**
www.houzz.co.uk/pro/glgardendesign
 Or call 07958 918034



OUTDOOR LIVING IN THE UK HITS RECORD DEMAND

Outdoor Kitchens have been popular in countries like America and Australia for decades. But in the last 5-10 years, we have seen a steady increase in demand for people wanting to embrace Outdoor Living in the UK.

And there is no doubt that extending the living space of a house into the garden is a good move. Looking at trends such as bifold doors and open plan living spaces shows how people are shifting into a true 'bring the indoors out' approach to housing design.

And it is more than just kerb appeal. **This year, fuelled by the national lockdown experienced, demand for outdoor living and outdoor cooking has reached new heights.**

The extra time people have spent at home has resulted in a boom for home and garden improvements, with designers and landscapers across the UK struggling to keep up with demand.



Coupled with the ability to socialise outdoors, **summer 2020 has put Outdoor Living firmly on the map.**

So, what is an outdoor kitchen? Dougal Donald, Grillo's co-founder, says that a Grillo outdoor kitchen is so much more than a place to cook up beef burgers and sausages. "Our vision is to bring people together around food and flames. So, instead of having the barbecue tucked away in the corner, **we wanted to bring guests and host together, and to enable socialising and cooking to happen in one place.**"

What about the weather, we hear you say? Well, if you've ever travelled to Australia or parts of America which experience 30-40°C summers, you'll know that staying outside in those temperatures is pretty unbearable. One of the great things about the UK is our moderate pleasant summers, ideal for enjoying the sunshine and a good barbecue. Roll out the great British outdoors!

Images provided by Grillo Outdoor Kitchens: www.grillo.uk.com



VANTAGE

An addition to the Grillo family.
Launching Nov.



grillo.uk.com/the-vantage



THE PLANTER SPECIALIST

IOTA offers a trusted bespoke manufacturing service in all sheet metals

- Highly skilled metalwork aided by the latest technology
- Experienced project team
- Full service provision

T. 01934 522617 W. WWW.IOTAGARDEN.COM

THE TREE & HEDGE COMPANY



UK grown instant hedges, mature trees & expert planting service



For more details on the original, UK grown, instant hedges please contact us for expert advice and the best prices guaranteed.

www.treeandhedge.com

01895 438 811





CARIBBEAN
BLINDS UK LTD

Sun. Shade. Shelter.



OUTDOOR LIVING POD™ - LOUVERED ROOF |

ALL WEATHER | TERRACE COVERINGS

- ☉ Waterproof fabric or aluminium louvered roofs
- ☉ Effortless motorised remote control operation
- ☉ Wind resistant upto Beaufort 12 (hurricane force)*
- ☉ Optional LED lighting & infra-red heating
- ☉ 5 year guarantee for peace of mind

Enhance your garden designs with our **innovative retractable awnings and aluminium pergolas** that provide flexible shade and shelter, allowing your clients to enjoy the alfresco experience all year round come sun, wind, rain or even snow*



t 0344 800 1947
e info@cbsolarshading.co.uk
w cbsolarshading.co.uk/trade

*Wind resistance and snow load based on our louvered roof Outdoor Living Pods™



CUBA - PATIO AWNING |



CARIBBEAN BLINDS PARTNERS WITH LOCAL LANDSCAPER FOR LATEST OUTDOOR LIVING POD™ INSTALLATION

Luxury external shading manufacturer, Caribbean Blinds, recently completed its most 'creative' installation of one of its most popular products, the Outdoor Living Pod™, in collaboration with an exceptional landscaping firm.

During the early design stages of a complete garden renovation project in Hemel Hempstead in November 2019, Limebok Landscaping contacted the outdoor shading experts for their assistance.

The garden transformation began in February this year, with Caribbean Blinds undertaking a detailed survey in mid-March. The Outdoor Living Pod™ was installed in late May, taking just two days to complete.

Stuart Dantzic, Managing Director of Caribbean Blinds, explained:

"In May this year, we installed the Deluxe model of our award-winning Outdoor Living Pod™ for a client who required a low-maintenance pergola to seamlessly link their newly built outdoor bar and kitchen area and provide an all-weather socialising spot for the adults, whilst allowing a full and unobstructed view of the children's play area.

As a Caribbean Blinds 'first', we incorporated a water feature into a unique 'living' wall on the boundary side of the pergola. Screening was also added to the adjacent side of the outdoor kitchen and play area to provide protection from the weather but with a view through so as not to enclose the space. Finally, lighting and heating options were integrated into the structure for year-round use."



The end result was a dedicated 'zone' that the client can use to simply relax in or entertain friends and family with no disruption from the elements due to the all-weather pergola that cleverly adapts to the changing ambient conditions.

Stuart added: "Our committed team were on hand throughout the entire process to discuss every detail with both the landscaper and client, with a shared vision of the end result. When confirming details such as screen materials, hardware colours and finishes, and lighting and heating options, every 'zone' on site was taken into consideration to ensure that all elements of the garden would flow."

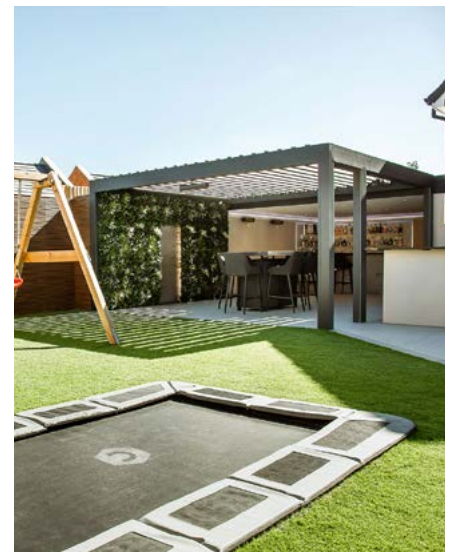
The client explained: "It's no secret that the UK weather is extremely unreliable, so this was at the forefront of our minds when designing our garden. We wanted a space for the whole family to enjoy during the summer months, but still be able to utilise throughout the colder, wetter and windier months too. After a lot of research, we decided to purchase the Caribbean Blinds Outdoor Living Pod™.

When the team came to carry out their survey, we decided to add a central leg to split the blind up and create a doorway. They were so accommodating and made us feel at ease throughout the entire process. The Pod is, without a doubt, the feature of our garden, and we couldn't be happier with the results.



Whether someone is cooking on the outdoor BBQ or mixing up cocktails behind the bar, the spaces link together effortlessly, providing a feeling of inclusion for everyone to enjoy. Furthermore, the adults can enjoy their time together in their grown-up space without worrying about the children in the play area."

Limebok Landscaping commented: "We introduced our client to Caribbean Blinds whilst working on a large-scale garden landscaping project. Our client was very impressed with the no-nonsense, professional service they received and the quality of the Outdoor Living Pod™. On site, we found the installation team to be fantastic - they were courteous, hardworking,



knowledgeable and extremely efficient. The pergola was a brilliant addition to the garden we designed and featured heavily in our finished photos, which were incredibly popular across our social media channels. We look forward to the next install of Caribbean Blinds on one of our projects."

Ingeniously designed for those who want to live life outdoors, the Caribbean Blinds Outdoor Living Pod™ provides the ultimate luxury, all-weather, outdoor living space that gives the customer complete control of the elements, 365 days a year.



For more information, visit:
[www.cbsolarshading.co.uk/
 outdoor-living-pod/](http://www.cbsolarshading.co.uk/outdoor-living-pod/)



THE SECRET BEHIND WHY MORE LANDSCAPERS THAN EVER ARE CHOOSING RESIN BOUND

As well as its inherent beauty, there are many factors why Resin Bound is becoming an increasingly integral feature of landscaping and being added to the services of designers and landscapers across the UK.

But the secret of its rising popularity comes down to three things - its beauty inspires the designer; its practicality satisfies the installer, and the finished result delights the customer.

Compared to traditional surfacing solutions, like block paving, concrete and tarmac, Resin Bound offers an unmatched range of benefits.

Permeability is important. With urbanisation, flood risk and unpredictable weather becoming serious everyday issues, the government has acted with legislation. As a permeable surface, Resin Bound is SUDS (Sustainable Urban Drainage Systems) compliant

meaning planning permission is not required (as long as a suitable base or soakaway is used). This makes it ideal for new builds and renovations alike.

But customers today want much more and Resin Bound delivers. This attractive yet easy to maintain surface can be used for driveways, patios and paths in both residential and commercial settings.



It covers areas of all shapes and sizes and can be installed on slopes and steps. Weed, frost and slip resistant, it provides customers with the low maintenance solution they crave, and a regular jet wash is all that is needed to keep the surface looking pristine. And finally, of course, Resin Bound's undeniable beauty cannot be ignored.

This even, uniform surface is available in a spectrum of colours and the versatility of Resin Bound allows different colours to be combined to create geometric patterns, contrasting colour blocks, house numbers or even bespoke logos to add that extra truly bespoke 'wow' factor.

resinbondedaggregates.com from
derbyshire specialist aggregates 

DALTEX - The No.1 Brand in Resin Bound

When specifying or installing a Resin Bound project, the importance of high-quality materials sourced from a reputable manufacturer cannot be overemphasised.

Derbyshire Specialist Aggregates is the manufacturer and home of DALTEX - the UK's No.1 brand for Resin Bound. DALTEX dried aggregates are sourced worldwide and are meticulously dried and screened to produce a high-quality product which, when combined with DALTEX UVR Resin, consistently delivers excellent results.

The DALTEX UVR Resin Bound System has been rigorously and independently tested and awarded certification by the BBA (the British Board of Agrément) - the highest industry standard available for Resin Bound.

DALTEX Bespoke - The Largest Range of Colours in the UK

The DALTEX Bespoke range consists of 46 beautiful Resin Bound colour blends. From gentle yellows to warm golds, stylish silvers to contemporary greys, burnished reds to deep greens, there's a colour and shade to complement every age and style of property.

Sam Buckley, Managing Director of Derbyshire Specialist Aggregates explains: "Years of experience has taught us that no two customers or projects are the same. We may offer the widest range of colours in the UK, but we always look to innovate and continually monitor and respond to trends. The demand for greys and silvers currently shows no sign of waiving so we are delighted to announce the launch of two new blends - Ocean Grey and Gunmetal Grey, to add to the already impressive DALTEX Bespoke range."



As the manufacturer of DALTEX, Derbyshire Specialist Aggregates guarantees 100% stock availability and operates large production runs of over 300 tonnes per product. Nationwide next day delivery is also available and trade customers can open an online trade and enjoy a 5% discount instantly.

With over 35 years of experience, help is close at hand. Customers can contact the experienced sales and technical teams for advice at any stage or about any aspect of a project.

The company supports customers with samples and DALTEX Bespoke brochures and a DALTEX Bespoke presentation case is also available to add that extra touch of professionalism.

New to Resin Bound? Training is essential.

An understanding of the product and what is involved in a successful installation is critical. In response to COVID-19, Derbyshire Specialist Aggregates has developed a comprehensive online training course that covers the theory behind Resin Bound installation and provides step by step instructions on how to install Resin Bound to BBA accredited standards.

Derbyshire Specialist Aggregates is committed to promoting the highest standards of Resin Bound installation - especially in these challenging times - and all fees have been waived and the course is free.

With over 50 modules, the course has been designed to be easy to follow with 'how to' videos and detailed information covering everything from Resin Bound bases to mix specifications, to common mistakes to avoid. In addition, the course covers everything from Resin Bound bases to mix specifications and common mistakes to avoid. To register for free, go to resinboundtraining.com.



For further information about DALTEX and Resin Bound, contact:
Tel: 01629 636500
Email: sales@derbyaggs.com
Web: resinbondedaggregates.com

RESIN BOUND THE DRIVEWAY SURFACE EVERYONE IS ASKING FOR!

- Permeable paving system. SUDS compliant
- Perfect for driveways, patios and paths
- The largest range of colours available
- Come direct to the manufacturer of DALTEX dried aggregates
- BBA accredited DALTEX dried aggregates and UVR resin - the highest standard available



Introducing...

Daltex

Bespoke

46 Stunning new resin bound blends
Colours customers are bound to love!



The No.1 Choice
for All Resin Bound
Installations



derbyshire specialist
aggregates 

01629 636500
resinbondedaggregates.com

Arbor Low Works, Youlgrave, Bakewell, Derbyshire, DE45 1JS

PAVING THE WAY FOR DECADES



Over the last 20 years, UltraScape have established themselves as a force to be reckoned with. They have built longstanding relationships with architects, specifiers and contractors, and have listened to the needs of the industry to develop a suite of trusted and proven paving installation materials.

UltraScape have always prided themselves on providing the industry with quality paving materials. With this in mind, each of the products that make up UltraScape's BS 7533 Mortar Paving System has been put through rigorous independent testing by an UKAS accredited laboratory to assess their performance capabilities and to ensure they give the best performance possible in real time situations.

What's more, UltraScape's Mortar Paving System is proven to work perfectly with all stone manufacturers, allowing you to use their premium installation materials with the paving stone of your choice. By choosing UltraScape, you are not restricted to using a sole supplier of both stone and installation materials, but are given the freedom to use your first choice of paving with full confidence that UltraScape will perform no matter which stone manufacturer you use.

UltraScape's BS 7533 Mortar Paving System comprises of specialist bedding, priming and jointing materials, all of which have been manufactured in their state-of-the-art UK production facility using the latest technology and innovations available.

The superior performance of UltraScape's BS 7533 Mortar Paving System is just one reason why these materials have been used time and time again all around the world. UltraScape bedding mortars are available in 3 sizes - 25kg, 1 tonne bulk bags and 30 tonne silos - allowing you to choose the perfect quantity of material for your project.

In addition, their world-renowned jointing materials are available in a variety of beautiful colours to perfectly complement all varieties, textures and colours of stone. UltraScape have even gone one step further to offer their loyal customers a first class customer support package. This includes maintaining strong relationships with their supply chain to ensure they always meet their customers' needs and quality testing all raw and finished materials to ensure a superior performance every time.

All products are delivered on UltraScape's privately owned, FORS Silver accredited fleet, which is fully tracked in-house, meaning their customers always receive a first class service which operates to the highest efficiencies and standards. Whether at contractor or early planning stage, UltraScape's Site Support Team is always available for one-to-one dedicated assistance tailored to suit your needs. Their help with problem solving, practical use and product performance ensures you have the ability to experience their products at your convenience and guarantees confidence of application throughout your project.

As well as offering on-site assistance, UltraScape regularly welcome visitors to their custom built training facilities where guests can attend a Material Awareness Session or complete a RIBA Approved CPD.

UltraScape's fully RIBA accredited CPD Seminar, 'Paving the Way', has been educating the industry on the benefits of using BS 7533 compliant materials for over 10 years. They have created a package of options so that you can complete your CPD using the most convenient method for your needs. Visit ultrascape.co.uk to see their full CPD offering.

Choose UltraScape's proven and certified BS 7533 Mortar Paving System for the performance and assurance that comes with a UKAS seal of approval - you can't afford not to!

For further information on UltraScape and how you can benefit from their expertise, please contact their team of specialists by calling +44 (0) 1827 254402, emailing ultrascape@instarmac.co.uk or connecting with them on LinkedIn.



Lodge Natural & Westbury Grey



20MM OUTDOOR PORCELAIN



Tatton Grey & Sand



Fade Resistant



Frostproof



Easy to Clean



Good Slip Resistance



Simple to Install



Uniform Thickness



Algae & Moss Resistant



Robust & Durable



Hampton Beige & Kenwood Ash

Our premium porcelain AI Fresco range features 20mm tiles for outdoor use with coordinating 10mm tiles for indoor use to create seamless open plan living spaces. With a wide range of designs ranging from classic stone effects, to modern concrete styles and even rustic wood grains - there's an AI Fresco tile for every project. We offer a range of display solutions alongside a comprehensive consumer brochure.



Get in touch to find out more!

www.alfrescotiles.co.uk | www.veronagroup.co.uk
 info@alfrescotiles.co.uk | sales@veronagroup.co.uk
 0113 244 4984



EXPERIENCING ISSUES WITH THE AVAILABILITY OF NATURAL STONE? TOBERMORE CAN HELP!

When selecting the hard landscaping for a project, old habits often die hard. Some specifiers tend to rely on the 'old faithful' natural stone when specifying paving materials. But considering the current difficulty sourcing and supplying natural stone, perhaps it is time to think about concrete alternatives, which will deliver both the aesthetic and quality you require, without the supply issues and expensive cost.

Braemar: The Premium Concrete Alternative to Natural Granite

If it is the natural granite look that you are seeking, look no further than Tobermore's Braemar block paving and flag range. Braemar is widely recognised as the premium concrete alternative to granite. It is manufactured with natural aggregates that emulate the distinct aesthetics of natural stone. Available in two different textures, thirteen size options and eight vivid colours,

the possibilities for landscape designers are truly endless. Not only will you fulfil your aesthetic and design aspirations, Braemar also exceeds technical and quality requirements.

The Tobermore Difference

Tobermore's products are superior to typical concrete pavers as they are manufactured with 'PrimeTop', a hard-wearing surface layer.



Every block and slab undergoes a meticulous manufacturing process that improves strength, durability and colour retention. Tobermore's PrimeTop surface layer contains a high concentration of pigment creating vibrant colour and exceptional UV performance leading to enhanced weathering properties.

Efflorescence is a common unsightly problem with natural stone products. To combat this, all Tobermore products undergo an 'Ef-stop' process which involves extensive vapour curing, which dramatically reduces the appearance of efflorescence.

At Tobermore, customers and people are at the heart of everything they do. ServiceSure is Tobermore's unique package of customer service benefits developed to ensure an efficient, consistent and streamlined experience. This unbeatable, seamless service follows your project from initial enquiry to delivery and beyond, keeping you fully informed at every stage.

Fusion: Modular Granite Aggregate Paving

Tobermore's Fusion block paving range also features natural granite aggregates and offers exceptional choice with a wide variety of formats, sizing and colour options. Fusion is also available in Tobermore's environmentally friendly permeable solution, Hydropave.

The combination of sparkling natural granite aggregates and



bright contemporary colours ensures there is a Fusion option for every project. Professionals across the UK and Ireland consistently rely on Fusion as their paving of choice due to its consistent performance and Tobermore's seamless support at every stage of the project, from specification to completion.

Artro: The Concrete Alternative to Clay Pavers

Artro is Tobermore's latest linear paving range inspired by the beauty and intimate scale of traditional European clay pavers. Available in seven colours ranging from cool

contemporary greys to warmer traditional tones, including a striking clay-red alternative, 'Autumn'. The long thin pavers have the dimensions of 220mm by 55mm and a depth of 80mm which provides the perfect option for vehicular access.

Tobermore's Artro range marries the aesthetics, colour retention and hard-wearing nature of clay pavers with the cost savings, availability and versatility of concrete pavers making it the perfect choice for architects and landscape architects alike.



Why Specify Artro for Care Homes?

Arto brings a classic style to residential projects in private, social or shared accommodation schemes. Ideally suited to care home applications, Arto is non-reflective and anti-glare which is an important consideration when end users may have visual impairments.

Perfect for paving a grand entrance, an intimate courtyard or a meandering pathway. Arto is designed to perform flawlessly with the demands of frequent vehicular traffic. People with limited mobility can often be deterred from hard landscaping which appears to be slippery. Arto boasts a very low slip/skid risk rating which is essential for care home end users.



Design Services

Free Design & Technical Support

Did you know that Tobermore offers Free Design Services? They package together all essential elements to make the specification of Tobermore products a quick and easy process. Tobermore's team of qualified landscape designers will work in partnership with you to select the right products, colours, sizes and textures to compliment your Care Home project within your indicated budget.

Genuine Concrete Alternatives to Natural Stone

If you are currently experiencing issues with the availability and supply of natural stone, why not consider a genuine concrete alternative

from leading UK manufacturer and supplier, Tobermore.

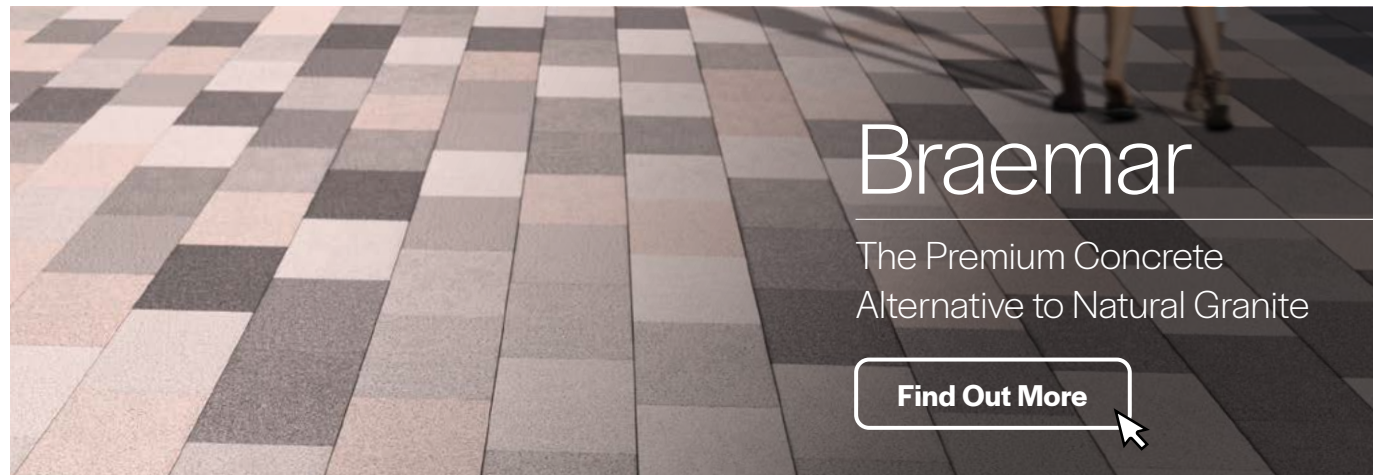
Tobermore does not operate with a complex international supply chain, 99% of product raw materials come from their own quarry and all products are manufactured and despatched from one site which provides customers with a streamlined service.

Tobermore's natural stone alternatives Braemar, Fusion and Arto are cost-effective and readily available. To find out more email NaturalStoneAlternative@tobermore.co.uk or call 0844 800 5736.

Experiencing Issues with The Availability Of Natural Stone?

UK manufacturer & supplier Tobermore can help!

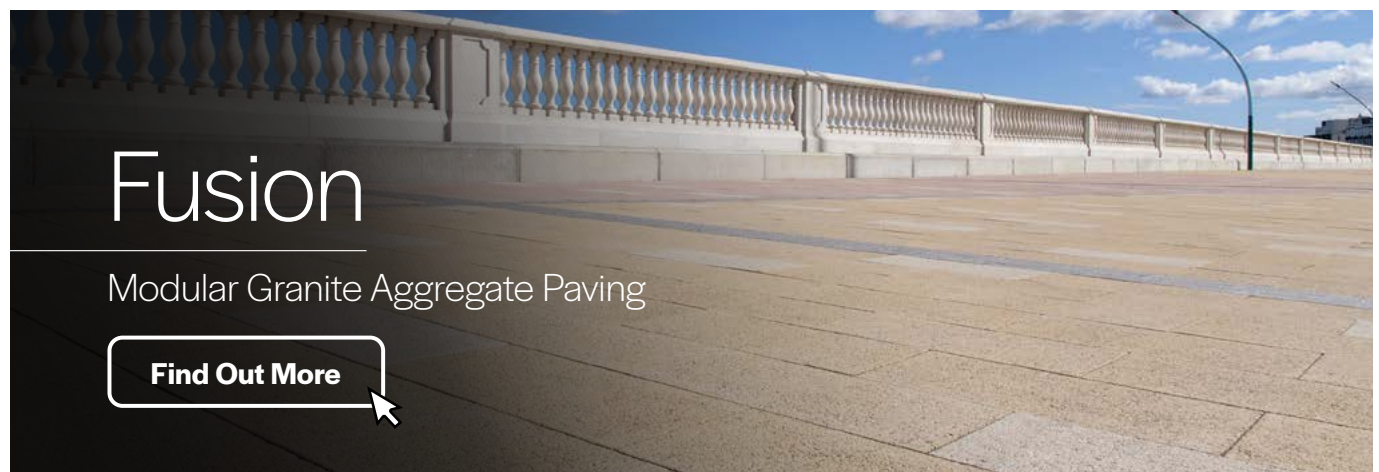
[Find Out More](#)



Braemar

The Premium Concrete
Alternative to Natural Granite

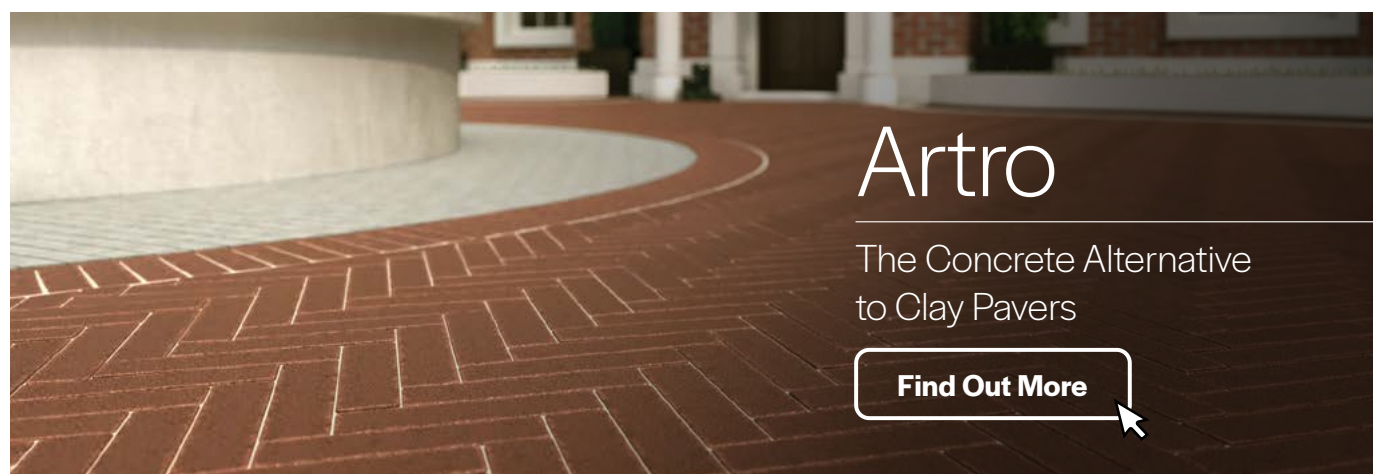
[Find Out More](#)



Fusion

Modular Granite Aggregate Paving

[Find Out More](#)



Artro

The Concrete Alternative
to Clay Pavers

[Find Out More](#)

Tobermore's natural stone alternatives **Braemar, Fusion & Artro** are cost-effective & readily available. To find out more
Email: NaturalStoneAlternative@tobermore.co.uk or call 0844 800 5736

 **Tobermore**



Brett Landscaping's GeoCeramica® 60mm Bluestone or Fiordi flags can be installed using unbound installation methods

BRETT HAS THE ANSWERS TO YOUR DRIVEWAY QUESTIONS

For a successful driveway installation to be achieved needs careful design, a clear installation process - that ensures a solid sub-base is installed - and that the chosen driveway product and finish is suited to the demands of the homeowner.

Helping your customers to choose the most suitable product is a key part of the process and the options for permeable or porcelain paving each have key benefits.

Permeable block paving

Permeable block paving is ideal for the weather conditions experienced in the UK. The systems have been designed to help prevent localised flooding and water pooling on a driveway. Water is effectively drained away from the surface through the open-graded sub-base and ideally soak into the ground.

It should be emphasised that there are a number of advantages for builders opting for permeable paving beyond the primary purpose

of the management of water. There is a greater range of products and finishes available across the market all designed with SuDS legislation and system longevity in mind. For example, Brett Landscaping's residential permeable paving systems Omega Flow and Alpha Flow offer between 15 and 20 years of minimal maintenance service.

Brett's products provide frost resistance, which address any concerns for long-term block performance.

Porcelain paving

Porcelain paving is an increasingly popular system among UK homeowners, and with good reason. It is an extremely strong bound system that offers a solid finish, scratch and stain resistant and will last a very long time. However a standard porcelain installation is not recommended for driveways. Due to the bound installation a larger heavier car will introduce a cantilever effect on porcelain used over a wide area that will need high performance adhesives to manage and, depending on the product's dimensions, may exceed the product's flexural strength resulting in cracking.

For driveway installations it is recommended that a specialist porcelain system that can manage the demands of a trafficked area is selected. For example using Brett Landscaping's GeoCeramica® 60mm Bluestone or Fiordi flags removes some of the difficulty as it can be installed using unbound installation methods, reducing the costs and often needed for porcelain installations.

This system is supplied as a porcelain tile with a concrete backing, this allows GeoCeramica® to be installed using a similar method to normal block paving. This also allows for the creation of different layouts and features.



Alpha Flow offers between 15 and 20 years of minimal maintenance service



By using a system that can offer more flexibility and give when vehicles move over it, this will ensure the longevity of the installation.

Brett Landscaping offers a range of guidance and advice for landscaping professionals including handling guidance, Approved Installer scheme and the Permcac software which gives you a bespoke reliable estimate of product and installation costs for your projects.

Careful installation is absolutely vital. Unbound GeoCeramica® systems come in large, easy-to-install flags, but they are heavy and do need to be positioned very closely

together - often between 2mm and 5mm - which means that manual handling is difficult and using specialist lifting equipment such as a donkey picker may be required.

To view the full Brett Landscaping range, or find out about becoming a Brett Approved Installer, see www.brettlandscaping.co.uk/professional/



PAVING FOR CHANGE

With Covid-19, outdoor space has taken on a new importance. But, apart from temporary measures for social distancing, the pandemic has also triggered a fundamental rethink about other improvements to our paved environment. The future is uncertain and a fresh approach is now needed, with the flexibility to adapt to changing requirements, as the trade association Interpave explains.

Modular concrete paving - including blocks, flags and kerbs - is ideally placed to meet today's challenges, whether for new or retrofitted schemes, as demonstrated in various case studies (some shown here) available via www.paving.org.uk. It can be lifted and re-used for layout changes and new requirements, while also addressing other key issues such as flooding, vehicular pollution, urban heat island effects,

climate change, introduction of trees and the reinvention of our high streets to create places for people.

Limited Intervention

Adopting the principles of 'modern methods of construction', factory-produced modular concrete paving delivers fast, low cost installation, with limited intervention for retrofits. Layouts can easily be altered and units taken up and re-used, if needed to meet changing needs. These principles generally apply to all precast concrete block, flag and kerb products. They are fully engineered and manufactured under sustainable, controlled conditions - consistently providing accurate sizes, colours and textures, as well as slip/skid resistance and other performance characteristics.

The distinct, modular units and designed variations in colour, texture

and shape can break up areas giving visual interest and a human scale not possible with monotonous, formless materials. So, precast concrete paving offers a unique combination of predictability, safety and accessibility for all, with scope for endless variety in shape, scale, colour and texture to enrich the urban environment.

Paving by Design

One exemplar of inspired design enhancing the urban realm is the regeneration of the Brownfield Estate in east London, incorporating interventions with concrete block and flag paving. It clearly defines footways and defensible space, as well as highlighting public spaces announcing block entrances with strong-coloured concrete flag linear paving, shared surfaces right across the adopted street itself.

Good paving design helps create attractive spaces that will help encourage walking and cycling, meeting current government requirements. It is also central to the rejuvenation of our high streets, as part of their reinvention with the demise of town centre shopping.

Improving Streets

Community-led neighbourhood improvements near Turnpike Lane, London, highlight regeneration to limit traffic and encourage social interaction. A joint initiative between Haringey Council and Sustrans, the project delivers long-lasting improvements to an established residential area. Here, concrete block paving with a restrained palette of colours and styles establishes local character and influences the way that drivers behave. Low-intervention techniques employed include widening footways, coupled with traffic calming measures such as road narrowings and raised junctions.

Capturing Pollution

But equally important to flooding is the long- and short-term damage caused by pollutants in surface water runoff to the biodiversity and health of our rivers and streams. The Greater London Authority 'Road Runoff Water Quality Study' concludes that 'London's roads are harming London's rivers' and proposes SuDS features to manage runoff pollution from the most damaging roads. On any trafficked surface, concrete block permeable paving offers a real opportunity to address this major problem by trapping vehicle pollution.

Permeable paving can provide a completely level, well-drained, firm and slip-resistance surface accessible to all, without the need for cross-falls, channels, gulleys or other interruptions. Rainwater 'ponding' is eliminated, reducing the risk of ice forming on the surface and preventing splashing from standing water.

Retrofit Permeable Paving Overlay

Bringing these issues together, an award-winning, exemplary SuDS scheme near Australia Road, London, demonstrates the multifunctional benefits of retrofitting permeable paving in place of conventional surfaces. Its design, by Robert Bray Associates, introduces the innovative concept of concrete block permeable paving as a thin overlay for existing streets, removing rainwater straight from the surface without gulleys and providing some water attenuation and treatment before discharging to adjacent, well-planted SuDS basins.



The innovative concept of concrete block permeable paving overlays has also been used for temporary overlays to existing streets to provide a well-drained surface level with the footway for short-term pedestrian trafficking. But it opens up wider possibilities for all hard-surfaces.

Modular concrete paving offers designers the potential to create safe, attractive and comfortable urban spaces for the post-pandemic environment, with maximum flexibility to meet future challenges and minimal interventions with retrofit, whilst reducing flooding, pollution and urban heating.

An additional, key consideration is storm-water flood prevention - particularly with climate change - and concrete block permeable paving is uniquely placed as an essential, multifunctional sustainable drainage (SuDS) technique. In addition to paving, it also provides an inherent drainage system that requires no additional land take for water storage, treatment or conveyance. This technology eliminates pipework, gulleys and manholes, and generally costs less than conventional drainage and paving.

It also allows water to reach tree and shrub roots, despite providing a hard surface above: in fact, the Code of Practice for accessibility in the external environment, BS 8300-1:2018, calls for permeable paving instead of tree grilles. It can also help reduce the urban heat island effect, with evaporation of rainwater within the paving. This is in addition to the high albedo - or heat reflectance - offered by modular concrete paving.



For more information, visit the Interpave website www.paving.org.uk



PERIOD PROPERTY NEEDED BRETT SOLUTIONS

Architects designing an exclusive housing development in the Warwickshire countryside called on Brett Landscaping when they needed to create stylish paving that was in-keeping with the surroundings.

Milverton Hall, near Royal Leamington Spa, is being developed into ten modern apartments while retaining the period aesthetic.

All the building materials had to be carefully selected and this included the areas of landscaping work within the grounds of the hall and areas for parking, turning circle and patios.

Leo Architects, of Market Harborough, contacted Brett Landscaping for advice on products and technical expertise.

Specialists from Brett provided help and support to select the areas

which would require permeable paving, to drain the surface water, to best meet the site conditions.

Initially the clients wanted to use permeable paving on a large radial circle at the front of the property. Brett advised that the size of the radius meant that this wouldn't be the optimum product for the area. The size of the joint required between permeable blocks would have impacted on the structural integrity of a comparatively high traffic area of paving.

Brett advised where the permeable paving should be installed and that their stylish Alpha Antique paving should be used for the radial frontage area to allow the surface water to run off into the adjacent paving - which was built from Brett's Alpha Flow permeable pavers.

The combination of Alpha Antique and Alpha Flow ensured that the requirements for SuDS on the scheme were amply met while providing the look required by the client and architect. It also provided the long-term structural integrity of the paved areas.

Kevin Jones, Specification Sales Manager for Brett Landscaping, said: "We were very pleased to be involved in this project and to be able to offer our expertise to improve the outcomes for the developer and the architect.

"Brett Landscaping's experience in assessing the product needs and requirements for SuDs, style and sustainability make us the ideal partner for this type of development."

www.brettlandscaping.co.uk

THE ADAPTABILITY OF RESIN BOUND SURFACING



There has been a significant increase in demand for resin bound surfacing over the past couple of years. It is a product which was initially popular within commercial projects, particularly public spaces. This is because commercial paving projects often experience high levels of foot traffic so require a surface that is high quality, long lasting and hard wearing. The smooth surface also makes it easily accessible for wheelchair users. However, over the past couple of years resin bound surfacing has quickly found its way into the residential sector too. Most commonly used for the driveway area, it is also ideal for use on pathways, roof terraces, accessibility ramps and swimming pool surrounds to name a few.

Long Rake Spar provides high quality, dried and screened aggregate granules and sands into resin bound surfacing. Our Grantex range of decorative aggregates, offers our customers a wide choice of colours and sizes, to complete any resin bound project, big or small. Our products were recently used for two very different resin bound applications. Firstly a commercial project, in which our customer Addgrip provided a new multi-purpose path for pocket park improvements near Wandsworth. This featured their Resin bound Terrabound. Part of the plan to upgrade Bramford Gardens (a pocket park near Wandsworth), included reconstruction of the existing separate cycle path and foot path. The idea was to provide a new shared pedestrian cycle path. Additional improvements also included repainting of existing railings, planting trees, laying turf, renewing signs and installing new benches.

Addgrip approved contractor O'Hara Bros Ltd dug up the existing cycle route and pedestrian path to create a wider shared route. They then installed 200m² of BBA approved Terrabound Resin Bound surfacing in an attractive 10mm Trent blend. The aggregates used within this stunning blend were from our Grantex range of specialist dried and screened decorative aggregates. The challenge was working in a busy public place, maintaining the safety of the public and keeping work areas to a minimum. The area being resurfaced had to be as accessible to the public as possible during the installation. Park gate access and parking required the use of smaller machinery and storage points outside of the working area. The new surface is porous, seamless and has revitalised the park with a decorative yet low maintenance paving.

The second resin bound paving project that featured our Grantex range, was residential. Our customer SureSet were situated in a small town close to Longleat Forest in Wiltshire, where they were faced with a tired, south facing residential patio that was in desperate need of a revamp. The owners of the worn-out patio area wanted to transform the back garden of their detached property with resin bound aggregate. The installation was done by the homeowner themselves and they chose to use SureSet's 6mm Cappuccino material, which was chosen from the Natural Aggregate DIYPack Range. Well over a year after its completion, the owners are still extremely happy with not only how the resin bound surface looks, but also how it performs in the rain!

www.longrakespar.co.uk



THE UK'S LARGEST RANGE OF DECORATIVE AGGREGATES FOR RESIN SURFACING



☎ 01629 636 210

🌐 www.longrakespar.co.uk

✉ sales@longrakespar.co.uk



RECYCLED FLEXISET INSTALLED FOR TOWN CENTRE CAR PARK ISLANDS IN FORDINGBRIDGE, HAMPSHIRE

Background

On the edge of the beautiful New Forest district of Hampshire lies the town Fordingbridge. A former market town, bustling Fordingbridge sits on the banks of the River Avon and boasts a 40-meter-long late medieval seven-arched bridge. Fordingbridge is famous for its smuggling and the infamous Captain Diamond, the 'Smuggler King' who spent much of his time in a local hostelry!

Problem

New Forest District Council were looking at the options available to resurface the town centre car park including the 'islands' that incorporate tree pits. The Council held a Public Consultation which resulted in the decision to address the following:

- The introduction of speed ramps.
- Installing electric car charging bays.
- Relocating parent and child parking spaces.

- Providing a taxi pick up/drop off area.
- Improving drainage and surface water issues.

The central and very busy car park is home to many delightful trees with irregular roots that sit proud of the surface level.

So, the material chosen for the tree pits and the 'islands' in which they sit, had to be able to address the root issue both sympathetically and aesthetically.



The benefits of a SureSet resin bound tree pit:

- Aesthetically pleasing - compared to metal grilles.
- Safer - no protruding roots creating trip hazards.
- Permeable - air and water can pass through to allow continued growth.
- Easy to maintain - no loose stones to migrate or opportunity for weeds to grow or rubbish to gather.
- Guaranteed for 21-years .

We also offer a self-install option with a Tree Pit TradePack® - providing a sufficient quantity of SureSet aggregate and resin to install a 10m² area at a depth of 40mm.

Key Features

Application: Car park islands and tree pits

Base: Tarmac and crushed stone

Aggregate: 6mm Cappuccino and 6mm FlexiSet Bronze

Depth: 18mm and 30mm

Area: 372m²

Solution

We were contracted by Rocon Contractors LTD, based in Bramley, to resurface the car park 'islands' and tree pits.

SureSet resin bound paving was chosen as the best surface to help improve the issues of drainage and surface water and to address the irregularities of the trees root levels. Excess soil from around the root clusters was removed and many of the small protruding roots were, as safely as possible, trimmed back before our permeable resin bound paving was skilfully laid up around the trunks.

The SureSet resin bound solution consisted of:

224m² at a depth of 18mm using 6mm Cappuccino (with a permeable asphalt base) and 148m² at a depth of 30mm using 6mm FlexiSet Bronze (with a Type 3 base).

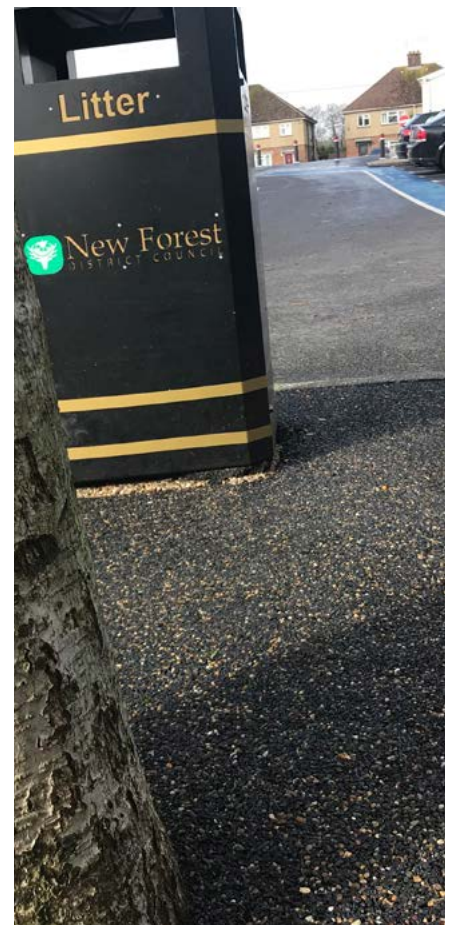
The project was completed by SureSet using our Approved Installer MJS on a sub-contract agreement on 29 May 2019.

Result

The new speed ramps help smooth traffic flow for the safety for both pedestrians and drivers. The electric car charging spaces fully support the sustainability part of the brief.

Relocating the parent and child parking allocation nearer to amenities provides families with safer access to the town centre and park.

SureSet resin bound paving improves the drainage and surface water issues in the car park by allowing rainwater to flow through the paving instead of running off onto the car park surface.



DRIVING TOWARD A GREENER FUTURE WITH ARBORCHARGE

One question that is on many minds is “what will our towns and cities look like in the future”? Well, nobody knows, but one thing is sure - it’s going to be different from what we have been used to. There seems to be little doubt that pedestrians and cyclists will have higher priority than they have for the past one hundred years or so, and that issues such as air quality and the heat island effect of our concrete jungles will remain high on the agenda.

As a general rule, authorities are looking to implement sustainable drainage systems, pollution-free travel, reduction of temperatures in urban areas, improved air quality and other environmental interventions which will improve the quality of life for residents.

The GreenBlue Urban ArborSystem with Arborflow and ArborCharge. The new package ticks all the boxes, and what is so unique is that the tree that is central, guaranteed to grow to species potential size and age, year after year to bring the huge benefits that only a healthy tree can provide. The Arborflow module attenuates and cleanses stormwater, reducing pressure on the limited drainage networks, and irrigating and feeding the tree.

The new ArborCharge option adds the ability to include electric car charging! Whilst excavating the tree pit you can now identify and join into an electrical supply to supply the charging units.

Trees bring so many advantages to humanity; as we begin to adapt to the changes in our global climates we need to make the small steps fast, to bring the big changes soon.

www.greenblue.com



Enhancing Public Realms for Improved Quality of Life

World’s leading provider of tree pit solutions.
Building a greener environment for future generations.
SuDS solutions for flood risk management.
Advisors in urban design offering on-site support.

Toffee Factory, Newcastle



w: greenblue.com
t: 0800 018 7797
e: hello@greenblue.com

GreenBlue 
URBAN
Establishing the future urban landscape

BOOK AN
ONLINE CPD
TODAY



Working together to create landscapes to be proud of

We are more than a supplier. Choose Green-tech and you get a trusted business partner.

- Over 25 years servicing the landscaping and forestry industries
- Renowned for our professional advice and technical know-how
- Vast warehousing and stock holding capabilities
- All your landscaping materials available from one company and on one delivery
- Next day delivery
- Competitive pricing
- Excellent customer care



Call now to pre-order our new 2021 catalogue

T: 01423 332100
E: sales@green-tech.co.uk
www.green-tech.co.uk

@greentechltd @greentechuk green-tech-ltd





GREEN-TREE ROOF GARDEN SUBSTRATE SPECIFIED FOR BALI AWARD WINNING ROOF GARDEN PROJECT

Green-tech has announced that their Green-tree roof garden substrate was used in the award-winning scheme installed by Palmer Landscapes.

Leodis Square, Sweet Street, Leeds is a city centre development project, comprising four apartment blocks of up to 12 storeys high. The development is also home to two podium gardens; situated on the roofs of the on-site car parking, which form the courtyards for the apartments.

Palmer Landscapes is a commercial landscape contractor with 50 years' experience behind them. The Leodis Square project took two years to complete and won them a 2020 BALI Award in the category Roof Gardens/ Living Wall Installations - Residential Roof Garden or Podium Landscaping - under 250k

Palmer Landscapes constructed and landscaped the central podium courtyard gardens to offer an outdoor area that fits with the aspirational design of the overall

development. The landscape design for the shared courtyard space contains varied seating opportunities, planting and lawn areas where residents can sit back, relax and enjoy city life.

Palmer's have a long-standing relationship with Green-tech and turned to them for their landscaping materials. This complex project involved importing 550 m3 of Green-tree lightweight roof garden substrate, through narrow walkways up to the podium courtyard gardens.

The Palmers team has a wealth of experience of transporting substrates onto elevated areas and they decided to blow the substrate utilising a specialist topsoil pumping wagon.

Adam Palmer of Palmer Landscapes comments,

“It was an innovative solution which required extensive planning and many trial runs. There were concerns over the quality of the planting material once it had been blown and we had disaster plans, should any machines breakdown. However, testing off-site and a great team behind us, helped us achieve the import of soil in 7 days.”

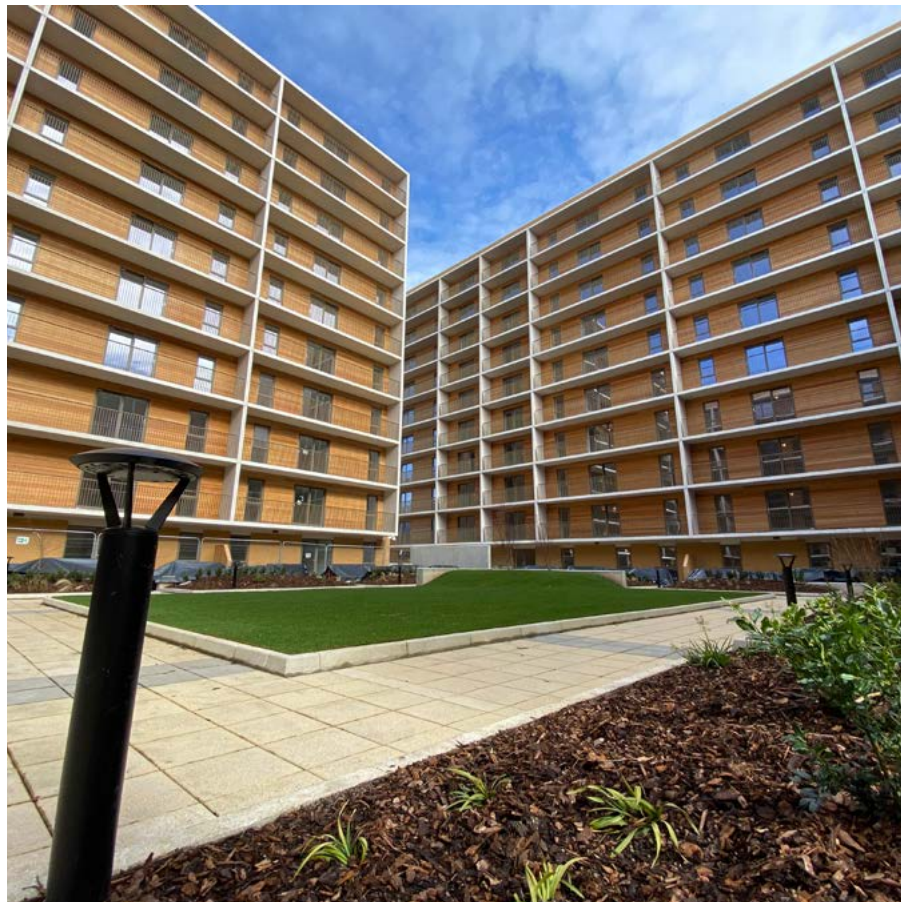
Green-tree roof garden substrate is lightweight and free-draining and was purpose mixed for this site. It is manufactured from an environmentally sustainable compost of recycled materials and lightweight aggregate.

The team worked closely with Palmers to coordinate timed, scheduled deliveries that adhered to tight city centre restrictions as well as requirements to keep a steady flow of substrate for the topsoil pumping wagon. The teams worked weekends and evenings to adhere to movement restrictions.

Adam continues,

“The Green-tree substrate was specifically selected for its green credentials, which appealed to both the client and main contractor. We have used this substrate on other roof gardens and knew that it would offer quick establishment which was exactly what this site needed.”

Green-tree substrate was delivered to the site on a grab wagon. The substrate was then transferred to a pumping wagon and over 100m of pipeline was used for the substrate transfer. Overall, it took seven days to complete the import of the substrate. Smaller planted areas, employed a conveyor method where the substrate was placed on the conveyor belt tipped over the walls and barrowed to site.



The imported substrate created mounded plant beds and large turfed areas to the central courtyards to create the social spaces between the four buildings.

Mark Browne, Key Account Manager at Green-tech added,

“I have worked with Palmers for a long time and I was delighted to be involved in this project.

We needed to work closely together to make sure the flow of substrate was constant and delivered exactly when they needed it. I am delighted that this project has won them a BALI award. It's a fabulous urban landscaping project that the Palmers team worked incredibly hard to deliver.”

www.green-tech.co.uk



RAISING THE ROOF AT MAGGIE'S CENTRE LEEDS

Green-tech is incredibly proud to have supplied the landscaping materials for the new rooftop garden of the Maggie's Centre Cancer Charity which is situated in the grounds of St. James's University Hospital in Leeds.

The charity's 26th UK centre was designed by award-winning landscape designers Balston Aguis. It was inspired by Yorkshire woodlands and features native English species of plants, alongside areas of evergreen to provide warmth in the winter months.

BALI registered contractor Swinburne Horticultural Services Ltd undertook the roof garden build and all the landscaping works.

A well-established family run business with over 30 years' experience installing and maintaining landscapes throughout the North-East, Scotland and Yorkshire; Green-tech has worked with Swinburne for many years supplying their projects across England and Scotland.

The outside space at Maggie's Leeds is as important as the inside. Inspired by founder Maggie Keswick Jencks' love of gardening, Maggie's Centres work closely with the architect and interior and landscape designers from the very beginning of each project to make sure there is a strong connection between the outside and inside space. They ask their landscape architects to use plants that will add colour, scent

and interest throughout the year. Leeds Maggie's Centre is roofed by three overlapping gardens which step down and overhang to shelter communal areas. The challenge was to span and enclose the level changes and reinstate the site's greenery. In this way, the hospital does not lose its last green space - it is lifted up, filled with woodland plants and made more accessible and inviting.

Swinburne Horticultural Services installed the roof garden and created the landscape vision over several months. During this time Green-tech supplied 270m³ of Green-tree Roof garden intensive substrate which equates to 150 dumpy bags and gt Roof Drain




which provides a lightweight continuous drainage layer across the roof structure. It collects and stores water to irrigate the plants during low rainfall periods

300 tonnes Green-tree 12mm premium top soil was supplied for the general landscaping areas, along with 44 tree anchoring kits, Mona irrigation pipes, compost and bark mulch.

In total 23,000 bulbs and 17,000 plants were planted which all help to provide a tranquil environment; a calming space for all to take time out and enjoy the nature around them. Visitors are encouraged to participate in the ongoing care of these.

Brian Watson, Landscape Architect from Swinburne Horticultural Services Ltd comments, "We worked closely with Green-tech as we had to work around challenging delivery restrictions. Being in a city centre and the hospital's own restrictions meant it was imperative that Green-tech made each delivery to a very specific and tight timescale; which they did successfully. They used Moffett equipped artic trailers for easier unloading. The roof top garden looks amazing and has been well received. I would happily recommend Green-tech."

www.green-tech.co.uk





ABGRoofdrain


ABG's UK manufactured **Roofdrain** geocomposite range provides factory controlled flow capacity for green roof constructions and structural landscaping applications.

Roofdrain allows storage of water within the nodes of the HDPE core, whilst facilitating the drainage of any excess water away from the roof. This helps prevent the root growing media from drying out during warm periods and from becoming waterlogged during wet periods.

The geotextile layer filters a wide range of materials whilst allowing water to percolate into the core of the geocomposite.



Green roof drainage & attenuation layer



01484 852096
 sales@abgltd.com
 www.abg-geosynthetics.com



LEEDS SKELTON LAKE SERVICES LIVING ROOF

A brand new £64M service station development has opened at J45 on the M1 in Leeds, located adjacent to Skelton Lake country park, 2 miles south east of the city centre.



The main 5,277m² food court building features an undulating wildflower living roof to help minimise the visual impact of the development, configured in a unique 'ribbon' pattern in eleven separate sections. The green roof absorbs rainwater into the roof build up to minimise surface water run-off; and the vegetation, growing media and filtration fabrics used within the green roof construction also filter dust and pollution from the air and rainfall, reducing the amount of chemicals and pollutants that reach the surrounding water courses.

At the base of the living roof structure ABG Roofdrain reservoir and drainage geocomposite is installed. The main core structure of the HDPE reservoir board features a matrix of storage cups to attenuate storm water and provide irrigation of the wildflower and sedum planting during dry periods.

The green roof system was designed by ABG Geosynthetics and installed by Geogreen Solutions.

www.abg-geosynthetics.com



Are you looking for a reliable living wall partner?

PlantBox is designed with professional landscapers, garden designers & self-builders in mind – simply attach and plant on site for instant **vertical greening** solutions!

- Instant vertical greening
- Numerous plant options
- Simple irrigation system
- Easy-to-grow & adaptable
- Proven supplier
- Trade terms available

It's a Growing Revolution!™

For your recognised, reliable living wall partner contact PlantBox NOW.
020 8543 4530 contact@plantbox.shop
www.plantbox.shop



HAHN PLASTICS



hanit® - Quality 100% Recycled Plastic Products

Amazing Products For All Your Landscaping Projects
Why not give hanit® a try?

Benefits of using hanit® products in your projects are countless, but a few are summarized as below:

- Durability & Strength - Long service lifespan compared to timber, concrete and some composites
- 100% recycled product & 100% recyclable
- Easy installation & no maintenance
- Weather, vandal & rot resistant
- Moisture repellent

Hahn Group pioneers and now leader in the development and manufacturing of recycled plastic products in Europe processing over 66,000 tonnes plastic annually.

Hahn Group has been creating quality 100% recycled plastic products for over 25 years, with 220,000m² business premises and production plants located in the UK, Germany and Canada. We market and manufacture over 2000 products under the hanit® trademark.

Using state-of-the-art technology and moulding tools, along with our technical expertise, we develop high quality, innovative products from 100% recycled plastic.

Our product range not only comprises of items for garden, street and landscaping designs, but also includes complex industrial products, exclusively manufactured in accordance with customer specifications.



Barriers • Bench Boards • Benches and Tables • Board Profiles • Bollards
Children's Furniture • Decking • Fencing • Ground Reinforcement • Privacy Screens
Palisades • Picnic Benches • Planters • Sandboxes • Sleepers • Waste Bins

0161 850 1965

www.hahnplastics.com

info@hahnplastics.com



Street Design

Grenadier timber planters help with social distancing in Leicester

Leicester City Council needed to put social distancing measures in place during the coronavirus crisis.

Timber planters were seen as a useful device to create safe areas for cyclists and pedestrians whilst at the same time restricting vehicular access.

Street Design was approached to manufacture and supply their Grenadier timber planters.

The FSC Certified treated softwood planters were manufactured and delivered quickly to allow these changes to be implemented as soon as possible, increasing the spaces for cyclists and pedestrians.

The planters have been used to close off streets, narrow traffic carriageways and create outdoor eating areas.

The closed streets have allowed cafes and bars to extend onto the road, providing safe areas for customers to eat and drink.

Planters have been located to reduce the number of carriageways, allowing more space for cyclists and pedestrians.

A large pop-up picnic area has been created in one of the city centre squares, providing seating and tables for people to consume their takeaway food and drink, bought from a range of local businesses.

In addition to helping with social distancing, the planters have increased the number of trees and planting in the city centre.


Contact Street Design for more information on **01509 815335**





Street Design

UK BASED DESIGNERS &
MANUFACTURERS OF
STREET FURNITURE &
LANDSCAPE PRODUCTS

 001509 815335

 0sdl@street-design.com

 www.street-design.com

PLANTERS & SEATING

- Established in 1986
- UK based manufacturer
- Full range of Planters & Seating manufactured to specific sizes
- Choice of materials and finishes
- Low maintenance products
- ISO Registered
- FSC Registered

ROOF GARDENS

RETAIL

RESIDENTIAL

EDUCATION

HEALTH CARE

HOTEL & LEISURE

COMMERCIAL

PUBLIC REALM





INSPIRA RANGE BY BSFG

As we tentatively move forward into a new normal and post covid landscape, we at Bailey Street Furniture Group celebrate all that is new and innovative in the world of street furniture. We are constantly asking how we can make YOUR personal bubble better?

In response, our designers at Bailey Street Furniture Group have created a new and exciting range which cleverly answers many of these questions.

Inspira is a flexible, modular retaining wall system, perfect for creating raised planting schemes in any location.

The ease of installation makes Inspira a quick and cost-effective addition to street, courtyard and roof terrace developments. Perfect for urban areas, retail parks, residential complexes and educational facilities.

Inspira is available in a wide variety of materials, finishes and sizes to meet the requirements of any site.

Inspira Linear is a collection of straight walls and angled corners, designed for geometrically-shaped installations. (squares, rectangles, parallelograms, triangles)

Inspira Form includes all the rectilinear components of Linear with the addition of curved wall and corner sections, allowing more organically shaped installations (circles, lozenges, waves etc.)

Inspira Seating provides social space and increases the accessibility of any public area. By interspersing seating modules throughout your Inspira installation, you have the opportunity to sit amongst a little bit of nature within the city.

Inspira is a blank canvas which introduces natural bursts of colour, provides public protection and offers a diverse range of environmental and social benefits to the urban area.



The ability to plant encourages biodiversity and introduces pollinator friendly areas to an otherwise concrete space. Clever planting filters harmful airborne pollutants and reduces runoff by absorbing rainwater. Green planting within our environment, as we know improves both our mental and physical health, reduces respiratory conditions and brings a greater sense of wellbeing.

The robust design of Inspira cleverly acts as a necessary protective barrier in pedestrian built up areas and in addition integrates seating that can be dispersed cleverly at a necessary social distance.

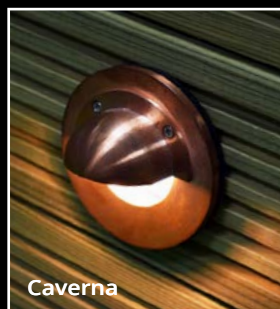
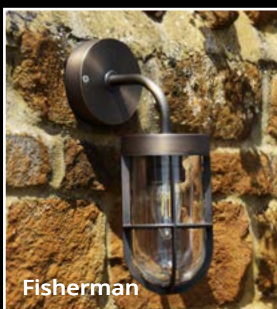
For more information on the BSGF please contact their team on 01625 322 888 or email enquiries@bsfg.co.uk.

To view the company's wide range of high-quality street furniture, visit their website www.bsfg.co.uk

NEED SUSTAINABLE OUTDOOR LIGHTING?

Your Easy Guide to the Ultimate Solutions & Benefits

SOURCE 240v or 12v LIGHTS MADE FROM LONG LASTING MATERIALS



Solid Brass,
Copper, Anodised,
Stainless Steel,
Timber

BENEFITS:

- ✓ Naturally weatherproof & durable
- ✓ LED compatible for ultra efficiency
- ✓ Impressive, stylish, versatile & beautiful
- ✓ Easy DIY installation with 12v option

CHOOSE SOLAR LIGHTS DESIGNED FOR PROFESSIONAL USE



30 DAY
Satisfaction
Guarantee

UP TO 3
Year Guarantee

BENEFITS:

- ✓ As bright as mains powered lighting
- ✓ Easy DIY installation & no running cost
- ✓ Ultra efficient solar panels & LEDs
- ✓ Illuminate 365 days a year in the U.K



01327 871161

www.lumenalights.com

Daventry showroom 9am-4.30pm Mon-Fri - NN11 4NR

TECHNICAL ADVICE

TRADE SUPPLY

HIGH STOCK LEVELS

NEXT WORKING DAY DELIVERY





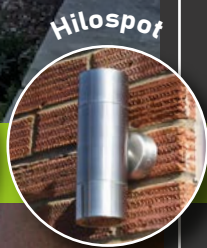
PASSIONATE ABOUT QUALITY LIGHTING

Contact us
today with
your lighting
requirements



GARDEN DESIGNS BY DAVID ANDERSEN

FEATURED LUMENA LIGHTS PRODUCTS:



A PROFESSIONAL LANDSCAPE FOCUS - OUR FEATURED GARDEN DESIGNER

David Andersen Contemporary Gardens has used Lumena Lights in various high profile projects, including a garden featured on ITV's 'Love Your Garden'. Focusing on simplicity and style, David embraces our 12v range, particularly marine grade stainless steel.

www.davidandersen.co.uk

"We are a long-established, design-led landscape firm, covering the whole of the UK, with offices in Manchester and London. We cover all aspects of garden work from detailed initial design right through to construction, planting and of course the all important garden lighting which needs to be reliable"

T:01327 871161

www.lumenalights.com

E: sales@lumenalights.com



THE BALI NATIONAL LANDSCAPE AWARDS IS GOING VIRTUAL FOR THE FIRST TIME IN ITS 44-YEAR HISTORY

Working with its production company H2 Business Communication, BALI is pulling out all the stops to create a spectacular digital showcase packed full of showstopping moments that will retain the magic of what makes the BALI National Landscape Awards the leading industry awards ceremony in Europe.

BALI, with support from Headline Sponsor Green-tech, believe this is the right decision, for the health and wellbeing of its staff, members and their guests. Members are invited to join BALI for a worldwide broadcast of the prestigious event on the 4th December 2020 at 1pm and is looking forward to celebrating with industry colleagues and cheering on all of this year's National Landscape Award winners from the comfort of our own homes and businesses.

BALI's Chief Executive Wayne Grills commented on the event going virtual:

"This decision was not taken lightly. For months the team has been exploring all avenues for a safe and enjoyable event. Now the decision has been made progress on the online experience can continue unabated with the full support of our board of directors. The health and wellbeing of our staff, members and their clients is of paramount importance to us as an association and we have a duty of care to everyone, as well as to set an example for the rest of the industry to follow.



Our Awards event may have lost its physicality, but I can assure you it won't lose its quality, integrity, professionalism and grandeur. I look forward to celebrating with you online on the 4th December 2020."

A full list of this year's Award winners and sponsors can be found at baliawards.co.uk, where you can also register for the virtual ceremony to be one of the first to find out who will go on to win the prestigious Principals, Specials and coveted Grand Award.



National Landscape Awards 2020

headline sponsor



CONGRATULATIONS TO THIS YEAR'S AWARD WINNERS

REGISTER NOW FOR THIS YEAR'S VIRTUAL CEREMONY AT BALIAWARDS.CO.UK FRIDAY 4TH DECEMBER 2020, 1PM (GMT)

Headline Sponsor



Sponsors



For general enquiries please contact:
Emily Feeney +44 (0)24 7518 5613/
+ 44 (0)7936 944258
or email emily.feeney@bali.org.uk

Limited sponsorship opportunities still available.
Please contact:
Diane McCulloch +44 (0)7455 110975
or email diane.mcculloch@bali.org.uk



CREATING THE PERFECT WINTER GARDEN

PLEASURE IN PREPARATION

Before you invite guests over, there's some quick and easy maintenance you can do to make sure your garden looks its absolute best for hosting.

Protecting your lawn and clearing away the autumn leaves are also vital to ensure that when the weather warms again in spring, your garden is in tip-top condition.

Protect your lawn

No matter how diligent you've been with your lawn over the summer months, come autumn it will need some TLC. This is because it has used up most of the nutrients in the soil, as well as suffering wear and tear from socialising outside. Here's a step-by-step guide:

1. In October or November, you should give your lawn its last cut, keeping the blades high.
2. Spike the grass with a garden fork to increase drainage and get air to the roots, brush some sand or horticultural grit into the holes to prevent them from closing up again.
3. Use an autumn lawn feed such as Miracle-Gro Autumn Lawn Care, which will strengthen the roots and kill moss to leave you with a perfectly green lawn in spring.
4. Treat bare patches caused by summer weather and activities or the removal of moss from your lawn food, such as Miracle-Gro Patch Magic. Simply follow the instructions on pack and ensure you don't over-apply the seed as this can cause weak growth.
5. Keep pets away from your newly seeded patches until the grass has been established for best results. Keep an eye out to ensure that the seed is watered enough.

Clear the leaves and clean your paths

Cleaning up leaves, weeds and mildew keeps your garden looking its absolute best for when you invite guests over and makes sure nobody slips over! This can be done in three simple steps:

1. Rake up any leaves that have fallen to prevent a sludgy substance from forming under foot.
2. Remove any weeds that have grown near your paths over the summer. To effectively remove weeds naturally, try Roundup NL Weed Control for a ready-to-use solution, with results seen in just 3 hours!
3. Finally, for any patio areas or paths you'll also want to remove any mildew or algae. Try using Patio Magic! which can be used on outdoor paved areas and even greenhouses and garden furniture. All you need to do is spray and leave!

TIME TO HOST!

Over the last few months, BBQs and visiting each other's gardens have been our favourite way to socialise, but why should the fun stop now? Follow these five simple steps to set up your garden as the perfect place to enjoy what's important in life:

1. **Stay Hygge:** Hygge is a Danish concept that celebrates coziness, wellbeing and happiness, and you can transform your garden into a Hygge paradise with some simple additions. When the days and evenings are getting cooler, add cushions and cosy throws to your outdoor furniture to keep your loved ones warm. To brighten up your seating area, string up fairy lights, and voila. Hello hygge!
2. **Keep warm:** While some might choose to invest in outdoor heaters, a more traditional way of keeping your guests warm is to set up a fire pit or even a bonfire from your leftover garden cuttings. Around a warming fire, you can roast marshmallows to make s'mores and serve festive drinks such as hot chocolates, or mulled wine.
3. **Harvest your foods:** September and October are key harvest months for many crops, including tomatoes, potatoes and courgettes. After harvesting all of your delicious fruits and vegetables, clean your garden of plant debris and decaying vegetable matter. It's really important to keep your vegetable beds or pots clean and free of disease so that you can have another successful year of growing. Before winter you should put a layer of mulch over your soil to prevent a loss of soil nutrients and the impact of rain.
4. **Autumn BBQs:** No need to lock the BBQ away for the autumn, you can still dine outdoors - especially with blankets and cushions. You can even set up the BBQ as a cosy conversational place, sit chairs around it so that you aren't left to cook solo! For a more warming meal, swap out your salad for roast potatoes and roasted vegetables (perhaps from your own harvest!), and your cold beer for a mulled wine or cider.
5. **Home pride:** Now that summer is over, there are still plenty of



opportunities to host outdoor gatherings. Enjoy the fruits of your work, and proudly present your home in all of its autumn beauty. When hosting your friends and family celebrate the occasion with autumn festivities and themed decor, including Harvest season, Halloween and Bonfire Night.

MAINTAINING A BEAUTIFUL AUTUMN GARDEN IN 10 STEPS

- Use a high performance, 100% organic lawn food, such as Miracle-Gro Performance Organics (RRP £12.99) that will deliver a greener lawn in just 7 days. Apply after doing your final lawn mow in October/November
- The heatwaves this summer may have left your lawn patchy, simply apply Patch Magic (RRP £11.99) to grow thicker grass, with first shoots appearing after just 4 days!
- With Autumn BBQs and evenings by the firepit on the horizon, make sure your patio looks its best with Patio Magic! (RRP: £11.49). It's easy to use to remove and prevent green mould and algae within two to four days!
- Now is the time to feed your plants with a slow release plant food to help them through winter. Miracle-Gro Chicken Manure (RRP £7.99) is a completely natural plant food that will enrich your soil encouraging strong and healthy growth.
- If you have moss within your lawn, then make sure you act now! Use Miracle-Gro Autumn Lawncare (RRP £24.99) to kill moss and toughen grass to help it withstand winter weather by strengthening the roots.
- Just like moss, it's important to control the weeds in your garden ahead of winter frost. Roundup

NL Weed Control (RRP £6.99) is ready to use and will break down naturally in the soil, while controlling a broad range of annual garden weeds in flower beds, vegetable patches as well as gravel paths and patios.

- Just like animals, your lawn needs food through winter - so apply a slow release formula, like Miracle-Gro Premium+ Autumn & Spring (RRP £12.99) to feed your lawn for three months. Apply between September to November and again between March to May to ensure the correct balance of nutrients so it can withstand the extremes of cold, heat and drought throughout the year.
- If you find slugs and snails are feeding on your home grown veg more than you, try applying SlugClear Ultra 3 Pellets (RRP £6.49). These pellets kill a wide range of surface feeding slugs and snails, is suitable to use on home grown crops and one application lasts up to two weeks.
- If you've got some areas of your perfect garden overgrown with weeds then give as good as you get with Weedol Gun! Ultra Tough Weedkiller (RRP £5.99). It kills weeds to the roots, including brambles, nettles, thistles, docks, and other deep-rooted weeds.

You may look out at your lawn and think it's beyond repair but try Miracle-Gro Evergreen Fast Grass (RRP £7.99). This revolutionary grass seed ensures rapid four-day germination for all lawn types so give it a go now for a healthy, green lawn by Spring!



For more information on looking after your garden in autumn and for any other garden-care queries please visit: www.lovethegarden.com.

SPRINGBRIDGE DIRECT LTD - ONE OF THE UK'S LARGEST TURF AND TOPSOIL SUPPLIERS

Running a Fleet 20 Vehicles we are able to supply soft landscaping materials in bulk bags, pallets or loose tipper loads in any quantity from one ton to one thousand tons.

Based in a prime location on the outskirts of West London, we can deliver with our own fleet of vehicles through the South East, as well as delivering nationwide using our network of pallet couriers.

All Springbridge's products are tested to the highest standards to ensure quality throughout our range. Whether you're looking for BS3882:2015 standard topsoil, TGA approved Turf or 6.1 rated multi trip bulk bags we will have, or be able to source products to any specification.

Alternatively you may just want some bog standard turf and topsoil for a small back garden. We can do this as well.

With over 30 years' experience in the industry, a fast efficient delivery service, high quality products and good value pricing we urge you to give us a try on your next order and let us show you what we can do.

www.springbridge.co.uk



Remote Workflow Management from office to site

NEW PACKAGE ZERO SET-UP FEES

Schedule

Capture

Track

Invoice

Report

Digital, mobile workflow management, field data access, safety and planning software for landscaping

- **Create jobs and tasks**, add all information and sync to users' mobiles in the field.
- **Schedule users** in the calendar and assign pinpoint map locations to jobs.
- **Add landscaping specific digital forms and workflows**, accessed on or offline.
- **Assign materials and equipment to jobs and users** with codes for tracking, maintenance and SHEQ.
- **Mark-up images, sign off forms and tag all submissions** with time/date/location tags.
- **Produce quotes and invoices** within the app using a Bill of Quantities and inbuilt calculators.
- **Receive information and produce reports** to make data-driven decisions and improve costs, safety and efficiency.

Re-flow
LANDSCAPING

www.re-flow.co.uk/landscaping | 01392 574002 | info@re-flow.co.uk

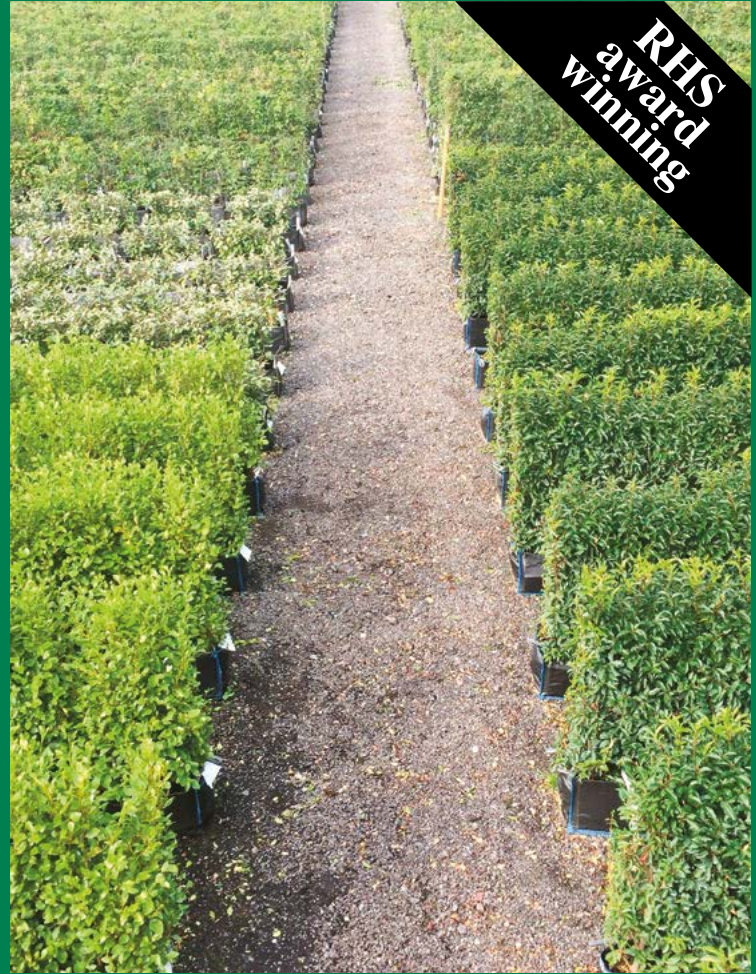
BOOK A DEMO



INSTANT HEDGES & LARGE TREES



Practical Instant Hedge - ready to plant



Practical Instant Hedge - growing in the Iver nursery

We have been supplying high quality semi mature trees and instant hedges since 1989.

Our own Practical Instant Hedge™ range is grown at our nursery in Iver in 1m troughs, making planting easy. We also source Instant Hedges and hedging from other growers; we can supply all your hedging requirements.

Our instant hedges are often used in award-winning RHS Flower Show gardens.

Our tree nursery showcases stunning specimen trees, both evergreen and deciduous stock; we have top quality containerised trees and elegant topiary to complement any garden design.

Find more information at:

www.pracbrown.co.uk

PRACTICALITY BROWN LTD

THE INSTANT LANDSCAPE SPECIALISTS





STAINLESS STEEL AND GLASS BALUSTRADE SOLUTIONS

SHS Products are the leader in designing, manufacturing, supplying and installing stainless steel and glass balustrade solutions for homes and businesses across the UK.

Backed by over 25 years' experience, we provide our customers with the highest quality systems at the most cost-effective prices, and our customer service is second to none.

Our design and technical teams have worked closely with many leading brands, companies and organisations, supplying glass balustrades and stainless steel handrails to the likes of Marks & Spencer, Bentley, The National History Museum, Audi, Selfridges, Bet 365, West Bromwich Albion Football Club and many more.

As trusted balustrade and handrail suppliers across the UK, we always strive to deliver exceptional quality and service to both national companies and private individuals. We can provide bespoke glass balustrades for residential balconies, false balconies, swimming pools or corporate headquarters. No job is too big or too small to warrant our undivided attention and quality.



Companies and individuals have benefited from our in house surveyors, bespoke design and technical expertise. We are featured on Home and Garden Listings, belong to the Guild of Master Craftsmen and British Stainless Steel Association, and carry the Made in Britain badge proudly.

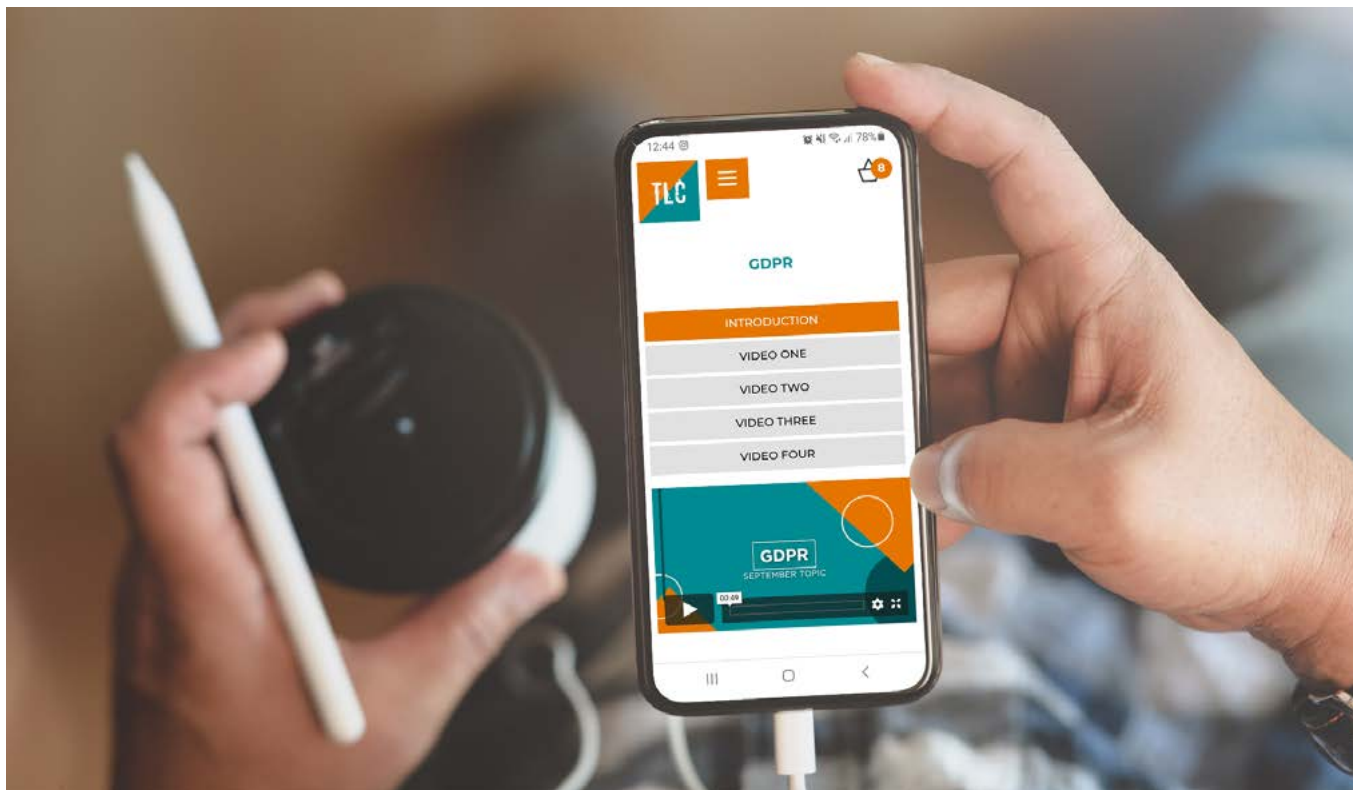
From our glass balustrades to our wire rope infill solutions, we have a range of handrail and balustrade designs to suit every budget. When only the very best will do, we can deliver outstanding designs with exceptional style and award worthy aesthetics. We also cater to tighter budgets by offering more economical balustrade solutions that still deliver high quality and inspiring design.

Over the years we have invested heavily in staff training to ensure that the quality of our designs, manufacturing and delivery are second to none. We have also invested massively in making sure that our customer service, communications and level of support are also the very best they can be. We have invested in high quality automated equipment and made a number of improvements to our shop floor and warehouse facilities for efficient production.

Essentially, at SHS Products we put the customer first.



www.stainless-handrailsystems.co.uk
Contact number - 01922 743842



YOUR CHANCE TO GET AHEAD FOR A SUCCESSFUL 2021

An industry event like no other, Virtually Limitless is set to take the horticultural industry by storm. As a business owner, you can watch this online event on Thursday 3rd December to make big plans and positive changes in your business for a successful 2021.

There will be 12 speakers including The Association of Professional Landscapers, Talasey, London Stone, and others inside and outside the industry. This world-class line up will be bringing you the very latest tips and insights into the industry, your business and more.

Your hosts for the day are Paula Warman and Charlotte Russell, co-founders of The Landscaper's Circle. The Landscaper's Circle (TLC) is an award-winning online platform for horticultural business owners to achieve success, through video tutorials, templates, and support.

How will the event work?

- Access the event anywhere, and on any device! Whether you'll be tuning in on your laptop, tablet or phone you can watch and improve your business. Plus, they have created the event to fit around the school run, so if you have got little ones you won't be missing a thing!
- Paula and Charlotte will be introducing each speaker, answering your questions during Q&A and in the comments; your right-hand women are there for you every step of the way.
- After the event, you will get exclusive access to a replay of the day, so you can watch back at your leisure.

Is Virtually Limitless for you?

If you are in the horticultural industry, then this event is for you! Whether you're just starting out or are an established business, you will gain actionable tips that you can implement straight away.

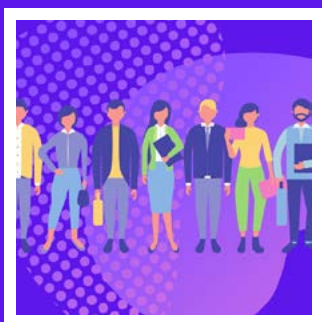
However, this is not right for you if you're looking for a get rich quick scheme. The Landscaper's Circle focuses on consistent, valuable marketing to attract the right clients to your business and help you streamline the day to day. That takes work, but TLC helps make that process easier.

Once you purchase your ticket (for only £25!) you will get sent a welcome pack, which includes your printed workbook. Visit the link below to RSVP today:
www.thelandscaperscircle.co.uk/virtually-limitless/

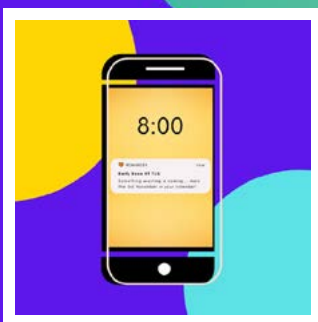
VIRTUALLY LIMITLESS

On Thursday 3rd December, The Landscaper's Circle is bringing you an event that's unlike anything the industry has seen before...

Virtually Limitless is an online planning bootcamp for horticultural business owners like yourself to review 2020 and get ahead for a successful 2021.



There are 12 speakers who are sharing the very best and latest tips on reviewing your business and planning for 2021. From manufacturers such as **Talasey and London Stone**, through to the **Association of Professional Landscapers**, **Sam Hassall** and more!



Access the event anywhere! You can tune in from your office computer or phone on site.

Plus, we've created the event to fit around the school run, so if you've got little ones you won't be missing a thing!



You'll have two live hosts, Paula and Charlotte! Introducing each speaker, answering your questions during Q&A and in the comments - your right hand women there for you every step of the way.

Click the link below for more information, including the day's schedule, and get your ticket:

<https://www.thelandscaperscircle.co.uk/virtually-limitless/>



info@thelandscaperscircle.co.uk
02381 800108



INDEPENDENT LAB TESTS SHOW WEEDINGTECH'S CHEMICAL-FREE FOAM KILLS CORONAVIRUS IN UNDER 10 SECONDS



Award-winning British technology used by local authorities around the world to kill weeds and algae without chemicals could prove a vital tool in the fight against coronavirus, research has shown.

The Foamstream technology, designed by Weedingtech, was originally invented as a herbicide-free way to control weeds, moss and algae in public spaces, including parks and city streets; but independent lab tests confirm it can quickly kill Covid-19 particles in under 10 seconds.

The Foamstream 'wand' emits near-boiling hot water, blended with natural plant oils and sugars including wheat, maize, potatoes, rapeseed and coconut oil on surfaces.

Independent laboratory research by BluTest, one of the United Kingdom's leading laboratories and an internationally recognised expert in virus testing, showed that Foamstream killed 99.99% of all coronavirus particles within seconds and without recourse to chemicals that might harm the environment or the public. This makes it one of the fastest-acting treatments for killing Covid-19 particles.

Leo de Montaignac, CEO at Weedingtech, said: "We began exploring other uses for the technology beyond weed control last year, including the elimination of viruses - something which is now more crucial than ever. As lockdown restrictions relax and children return to school and people enjoy public outdoor places again, it is vital they are safe. Foamstream can help by destroying coronavirus particles, preventing their transmission, and giving peace of mind to millions across the UK and many more around the world."

He added: "The applications of this are enormous. It can be used in sports stadiums, bus shelters, school playgrounds and parks. It can help make children's play areas safe, as well as park seating, outdoor gyms, theme parks, beach front seating, station platforms and bus and tram stations."

Until now, no other outdoor sanitisation technology has met all necessary criteria to be considered a viable solution in eliminating coronavirus. Foamstream is significantly faster and easier to use than most current manual sanitisation practices, like disinfectants. Furthermore, it's approved for organic use and non-toxic, meaning it can be used in the majority of outdoor settings.

Given these breakthrough lab results, Foamstream will work with local municipalities and other landowners to help decontaminate public places so they are safer for people to use and enjoy.

Dr. Sandy Primrose MBE, UK renowned microbiologist, said: "To date, deep-cleaning processes have typically involved various chemicals and presented several logistical challenges, particularly with larger spaces such as train stations, but

Foamstream scales up the process and offers an infinitely more effective and safe solution."

How does it work? Coronavirus particles begin to break down when subjected to heat upwards of 56°C / 133°F and the higher the temperature the faster the kill rate. Foamstream flows from the lance at 98°C / 208°F. The heat in the hot water is trapped on the virus by a biodegradable foam blanket, stopping the heat from escaping to the atmosphere. The wet heat destroys the lipid envelope that surrounds the virus making it non-infectious.

Given that Foamstream is chemical-free, there's no need to cordon off treatment areas prior to, during, or after treatment, as the product is safe for people, animals and delicate ecosystems. In addition, it can be used on flat and vertical surfaces too, making it highly effective, versatile, and user-friendly.

Foamstream systems are already in use for controlling vegetation across the world in cities including New York, Los Angeles, Seattle, Miami, Munich, Barcelona, Budapest, Manchester, Dublin, London, Auckland, Hong Kong and Montevideo. Global distribution is already established (typically through Toro and John Deere distributors) on five continents, making Foamstream technology easily accessible to all.

For further detail on Weedingtech and Foamstream, Please visit:
www.weedingtech.com/why-foamstream/

You can also see more about how Foamstream works, here: www.youtube.com/watch?v=4o1ROoBfGxY&feature=youtu.be



TACKLING NOISE - EMISSIONS VIBRATION - SAFETY - SLOPES ALL IN ONE MOWER



At RAYMO we have decided to create the tool to do the job on a commercial level - fully electric or plug-in hybrid radio controlled mowers that are safe, agile, efficient, silent, clean and inexpensive to operate. The mower itself is extremely low in height allowing you to access low clearance areas and has an outstanding climbing ability for sloping and undulating terrain. The ZTR steering system in combination with 4WD delivers exceptional driving and maneuvering features.

Visit www.raymoelectric.co.uk for more information & to book a demo today!

“I HAVE NEVER COME ACROSS ANYTHING QUITE LIKE AN ARIEN’S ZERO-TURN.”

When people talk about Ariens zero-turn mowers it is generally with a realisation of how much more productive they are over other grass cutting machines. This is usually followed by how solid they are and why they make such a worthwhile investment. This is users speaking, not just Ariens. The proof is in the fact their zero-turns are built for strength and quality with the ability to mow fast and for longer periods with total manoeuvrability, greater productivity and increased profitability. Here’s what commercial users are saying:

“The Ariens always gets the looks when it’s out and the performance and quality the machine gives is second to none. I cut a lot of grass every day and using the Apex 52, it feels like I’m sitting in an armchair cutting the grass. It’s clearly been designed for people like me who use their machine day in, day out. I like the design of the machine and feel it protects me as a user. The land we maintain varies in terrain and with the Apex, there’s so much bounce taken out by the way the machine is designed, I hardly feel the bumps. This has been a worthwhile investment to my business.” James Ruddick, Ruddick Landscape Service, Carlisle

“The simple and easy-to-use features such as the foot-operated deck lift gives efficiency and smoother operation. It’s got great manoeuvrability and is very reasonably priced for such a robust, well designed piece of machinery. I have never come across anything quite like the Ariens and would highly recommend it to other companies looking to purchase



a top-quality mower”. Andrew Longley, AJL Garden Services, Kent.

High praise indeed but then Ariens pride themselves on building with engineering excellence and this family company has been doing so for 80 years, distributing products in the US and Europe. It’s no wonder Ariens has become one of the fastest-growing zero-turn brands in the UK for both commercial and domestic machines. It’s now widely recognised zero-turn mowing is faster, more productive and cost-effective than any other method. The ability to turn on its axis and negotiate around obstacles with ease reduces mowing time by up to 50% while the comfort of the machine means the operator is able to work for longer periods. Ariens zero-turns boast powerful engines and premium cut quality while maintenance is straightforward. It all adds up to greater productivity and related increased profitability for the commercial operator.

“To-date, the Zenith has given us a very professional cut and the thick grass hasn’t put any strain on the Kawasaki motor. One thing I’ve

noticed is the time savings I’ve made from using the Zenith against my previous machine, a tractor type mulcher with a front deck.” Adam Matthews, Estates Manager, St Michael’s School, Wales.

“I have had the Ariens Ikon X 52 zero-turn for nearly a week now and it is a complete game-changer for our grounds maintenance business. I really do not know how we did things before. It has completed our lawn cutting capability.” Paul Roseman, PJR Services, Essex.

Ariens has been steadily growing in the UK with its network of dealers and recently began manufacturing zero-turns at their Oxfordshire factory. This shows the strong commitment they have to the UK and European markets.

To find out more about how an Ariens zero-turn can increase your productivity and profitability, like the many commercial operators who have made the switch to zero-turn, go online at ariens-uk.com or for more information contact Ariens on 01844 278800.



THE RAYMO REMOTE CONTROLLED MOWER

More than ever before contractors are being asked to meet higher standards when it comes noise and emissions. One of the problems with electric mowers is that the weight of dragging an operator (and all the associated hardware) around really negatively impacts on the run time that you can get from the batteries, by taking the operator off the machine and making it remote control the Raymo mower with wide 104cm (41") deck can give unrivalled run times from its Lithium battery pack. The raymo mower powered by this battery pack operates at very quiet ~68db, ideal for when working in noise sensitive areas.

Thanks to the low centre of gravity the Raymo remote controlled mower can tackle slopes up to 35 degrees, with the operator working safely at a distance. By removing the operator from working on the machine it also eliminates any damaging vibration caused from spending long periods of time each day mowing.



The 4WD offers superior traction no matter what grass is being cut with a neat finish thanks to its easy manoeuvrability and zero turning circles, allowing the operator to be as productive as possible. The low height of the mower at only 51cm (20") also means it can tidily cut under benches or around low bushes and trees.

Should you find you need a longer run time the battery pack can be simply replaced with another whilst out on site, alternatively where noise levels are not so restricted you can switch to a hybrid power pack.

The Raymo electric, zero-emission, remote controlled mower is a unique product that, with the ability to swap power packs, offers you a versatile multi-use mower. Whether you need to cut grass in noise sensitive areas, gain access under low objects such as solar panels or trees, or need to meet the needs of the customer with growing concerns of carbon emissions this mower will exceed your expectations whilst tackling lush dense grass growth with ease.

Visit www.raymoelectric.co.uk for more information.

MUD, MUD GLORIOUS MUD...

A spotless, yet stylish Boot Room or Hallway where you can change shoes and store outdoor gear, including muddy wellies is an enviable idyll, and Harrod Horticultural have a range of products that can help to declutter, tidy and add a touch of elegance to your home or entrance-way.

Boot Scrapers and Jacks greatly assist with keeping the inescapable outdoor mud from shoes and wellies confined to one, easy-to-clean space. They also help with the sometimes challenging operation of welly removal whilst trying to remain vertical!

Once boots have managed to be removed, then storing them on a sturdy Welly Boot Station offers a tidy and good-looking solution. Whilst robust, yet fashionable, Coat and Shoe Racks help to complement and complete the look.



Scrapers & Jacks

Boot Scrapers and Jacks are the perfect addition to the porch or boot room or for simply right outside your front door! Carefully designed to remove excess mud from your wellies, and with useful boot jacks to assist in the often tricky welly boot removal.



Welly Boot Stations

Three options are available with the two larger 4 and 6 pair racks including a boot scraper and jack - practical additions to these multi-functional stations. A Circular Welly Rack is also available and is a great way of storing 4 pairs of wellies in the corner of a porch or hallway.



Coat & Shoe Racks

A 3-tier shoe rack is available, and although designed for shoes and boots, it is also ideal for storing hats, gloves and scarves too. Our Coat Hook Rack features 7 traditional style hooks for coats, hats, scarves, umbrellas and even binoculars!



Suitable for both indoor and out, the Boot Room Range by Harrod Horticultural has been carefully designed and manufactured by them in the UK to offer high quality home and lifestyle products.

Made from powder coated 8-10mm solid steel rod, they stand proud in any Boot Room, Hallway or Porch, come with a 10 YEAR GUARANTEE and are available in a matt black or anthracite finish.



For more information, view the range on our website here: www.harrodhorticultural.com/bootroom



HUSQVARNA® PRESENTS WINTER TIPS FOR CHAINSAW USERS

During winter, working with chainsaws (both electric and petrol) can be challenging. As a result, world leading experts in forestry equipment, Husqvarna®, has pulled together a handy guide on its top tips for staying safe and productive when using chainsaws during the winter months.

FELLING WINTER TREES

Take extra precaution when felling trees when the temperature drops below zero, even softer tree types such as pine, spruce and leafy tree species turn hard and brittle.

In addition to this, chainsaw operators users should be extra careful when felling a tree if it is covered with snow. A snow-heavy crown can affect the centre of gravity of a tree so ensure a large hinge is left, plus, always try to fell in the direction of a tree's natural lean.

FILING DURING WINTER

During the cold season, operators may need to file a chainsaw's chain more often due to the hard and frozen wood on trees. By using a filing gauge from Husqvarna®, tree workers will not have to think about the angle of the cutting teeth to ensure excellent results. The gauge comes with two different settings - S for soft wood and H for frozen and hard wood - so it's easy to get the depth gauges filed optimally for winter sawing.

USEFUL CHAINSAW PARTS

Two parts that come in handy for chainsaw users during the colder season is a cover for the starter housing and a winter air filter. As a result of using a winter cover, operators can reduce the risk of getting snow in the chainsaw's engine, plus, a winter air filter will prevent a chainsaw's filter from getting clogged up with ice.

KEEPING WARM

Husqvarna® personal protective equipment ensures arborists and forestry workers stay protected during winter, the garments are warm and assist with body temperatures being regulated. During cold weather, Husqvarna offers underwear, fleece jackets and vests to ensure tree care workers are kept warm.

In addition to this, Husqvarna offers chainsaw features and accessories that are extremely useful in the cold. For example, Husqvarna's XP@G chainsaw range has heated handles that keep hands warm and dry whilst maintaining good blood circulation. The heating on the XP@G chainsaws is controlled by a thermostat which switches heat on and off at a certain temperature.

www.husqvarna.com



INFINICUT® AND ULTRAGROOMER™ DOUBLE DELIVERS QUALITY COURTS AT THE LENSBURY CLUB

Having seen them in action on the world-famous Wimbledon courts, The Lensbury Club in Middlesex are one of a growing list of clubs taking delivery of an INFINICUT® mower for use on their grass tennis courts. Along with a set of UltraGroomer™ cassettes from the TMSYSTEM™, Grounds and Gardens Manager Peter Craig says the improvements in the quality and appearance of the six courts hasn't gone unnoticed by the club's members.

Following an 18-year term at the Hurlingham Club - during which, he started looking into the INFINICUT® - Peter re-joined The Lensbury in 2018. "We started to see some famous venues using the INFINICUT® mowers and I was lucky enough to see them in action first-hand on the courts at Wimbledon which only further sparked my interest" he explains. "When I returned to The Lensbury, I organised for the team to have a demonstration and they loved it straight from the off". They became the proud owners of a 22" Fixed Head INFINICUT® shortly after its launch at the end of 2018.

"It gives such a fantastic quality of cut and finish - the definition of stripe is excellent and the HOC and bedknife adjustment systems could not be simpler. The fact that it's battery powered and therefore more environmentally friendly has always been a major plus-point for me; but even more so now, with the courts at The Lensbury located very close to a residential road. In the past, this meant we were unable to use machinery before 8am but, because the INFINICUT® is so quiet in operation, we can get out and mow at 7am. This means we effectively gain five additional working hours a week, where necessary."

Recently, the club also purchased a set of UltraGroomer™ cassettes from the TMSYSTEM™ range for early and in-season verti-cutting.

"We're running those in our Jacobsen GP400 triple to remove any lateral growth and clean the surface up. We'll use these as soon as we start getting some consistent growth in April/May, then will aim to cover all of the courts once a month after that".

The UltraGroomer's are also in use on the site's ornamental lawns. "Improving these areas was one of my key goals when I returned, and these cassettes have contributed towards bringing the lawns up to the standards we're achieving elsewhere."

The grass courts are a major attraction at the Lensbury Club, with a strong membership regularly playing on them. "They're over the moon with the condition of the courts. We've previously had some of the world's leading players using the courts for tournament preparations and, while this isn't currently the case, the quality of the courts are certainly good enough once again to host that level of play should they return."

**Advanced Turf Technology,
3 Redwood Court, Campbell Way,
Dinnington, Sheffield, S25 3NQ
Tel: +44 (0) 114 212 2200
Web: www.infinicut.com**

STAY SAFE WITH SNICKERS WORKWEAR PROTECTIVE WEAR SOLUTIONS FOR MEN AND WOMEN



Snickers Workwear -Your Health, Your Safety, Your Wellbeing On Site.

Long working days and cheap uncomfortable clothing makes Snickers Workwear's protective wear range the better-informed choice for men and women working in hazardous environments and inclement weather.

There's a comprehensive selection of ergonomically designed

Base-, Mid- and Top-layer clothes, certified as appropriate for different risks at work to ensure comfort, health and workforce-wellbeing all day, every day.

The new range also includes waterproof and windproof AllroundWork Hi-Vis Jackets that provide protection in low-light, high-risk environments.

So, whatever the hazard on site, the Snickers Workwear Hi-Vis collection and ProtecWork range can provide a protective wear solution to provide maximum, certified protection whatever the risks on site.

Getting information on the NEW Snickers Workwear new Protective Wear is easy. You can call the Snickers Helpline on 01484 854788, checkout the website and download a digital catalogue at www.snickersworkwear.co.uk or email sales@hultaforsgroup.co.uk

DRESS FOR WINDY WEATHER WITH SNICKERS WORKWEAR'S GORE® WINDSTOPPER® JACKETS

Delivering great wind protection and efficient ventilation.

Snickers Workwear jackets are well known for delivering performance and comfort at work - integral features of this new range of Windproof Jackets. Sharp, stylish looks and market-leading GORE® WINDSTOPPER® and stretch CORDURA® fabric technology to make this jacket a must for winter on site or outdoor leisurewear.



This great-looking jacket has a fleece-lined interior for warmth and climate control fabric to keep your body warm or comfortably cool when you most need it. With a water-repellent fabric, it can be worn on its own or combined with Snickers' Mid and Base Layer garments. Fashionable and functional, this jacket has long arm cuffs with thumb grips for warm comfort and a high collar that delivers extra wind protection. It's also got stretchable side panels in for comfort and flexibility with stretch CORDURA®-reinforced elbows for durability. With street-smart, contemporary designs, all Snickers Workwear Jackets are packed with must-have features that focus on fit, comfort and freedom of movement as well as using innovative fabrics that deliver long lasting protection.

For more information on Snickers Workwear Jackets, call the Hultafors Group UK Helpline on 01484 854788, email sales@hultaforsgroup.co.uk, or checkout the website and download a digital catalogue at www.snickersworkwear.co.uk



PLUGR LAWN AERATORS

The Billy Goat range of Plugr Aerators enables grounds professionals, landscapers and contractors to be able to tackle large areas of lawn quickly and easily.

Plugr aerators offer the perfect solution to promoting spring growth. They can improve drainage and encourage new growth by making holes throughout the turf that breaks up compacted soil and allows air, water and nutrients to circulate through the roots. This results in healthier, stronger roots, grass and turf.



HONDA

To find your local Billy Goat dealer visit www.billygoat.co.uk today

For information on all Billy Goat products call: 0115 986 6646 visit: www.billygoat.co.uk or email: info@hcuk.co.uk



**20 YEARS' WORKING
IN HORTICULTURE.
5 ACRES OF
FORMAL GARDENS.
30 WEDDINGS AND
EVENTS EACH YEAR.
1 BRAND OF CHOICE.
STIHL LIFE.**

For a demanding job where every task requires a different approach, the STIHL AP System is the professional range of tools Andy chooses to maintain the high horticultural standards required.

Whether it's for precision topiary or the final touches before wedding guests arrive, STIHL tools meet his daily demands as a professional gardener.

Andy Wain, Head Gardener at Euridge Manor, with the **STIHL HLA 65** hedge trimmer

AVAILABLE AT YOUR LOCAL STIHL DEALER.
STIHL.CO.UK

STIHL

Quartix

Vehicle tracking that works for you

Find out just how much you can save with Quartix



No auto-renewal | Free mobile app | 1st class customer service

Visit [quartix.com](https://www.quartix.com) or call **01686 807 607** to schedule a free demo



ID:A00438



#designthenation

wapping quay, liverpool



01254 685 185

sales@woodscape.co.uk

woodscape.co.uk

woodscapegroup

woodscapectd

woodscape_street_furniture



Woodscape.

Hardwood Street Furniture