



ELEMENT - The Quarter Construction Update

July 2023

July 2023

Estimated Completion Date - September 2023

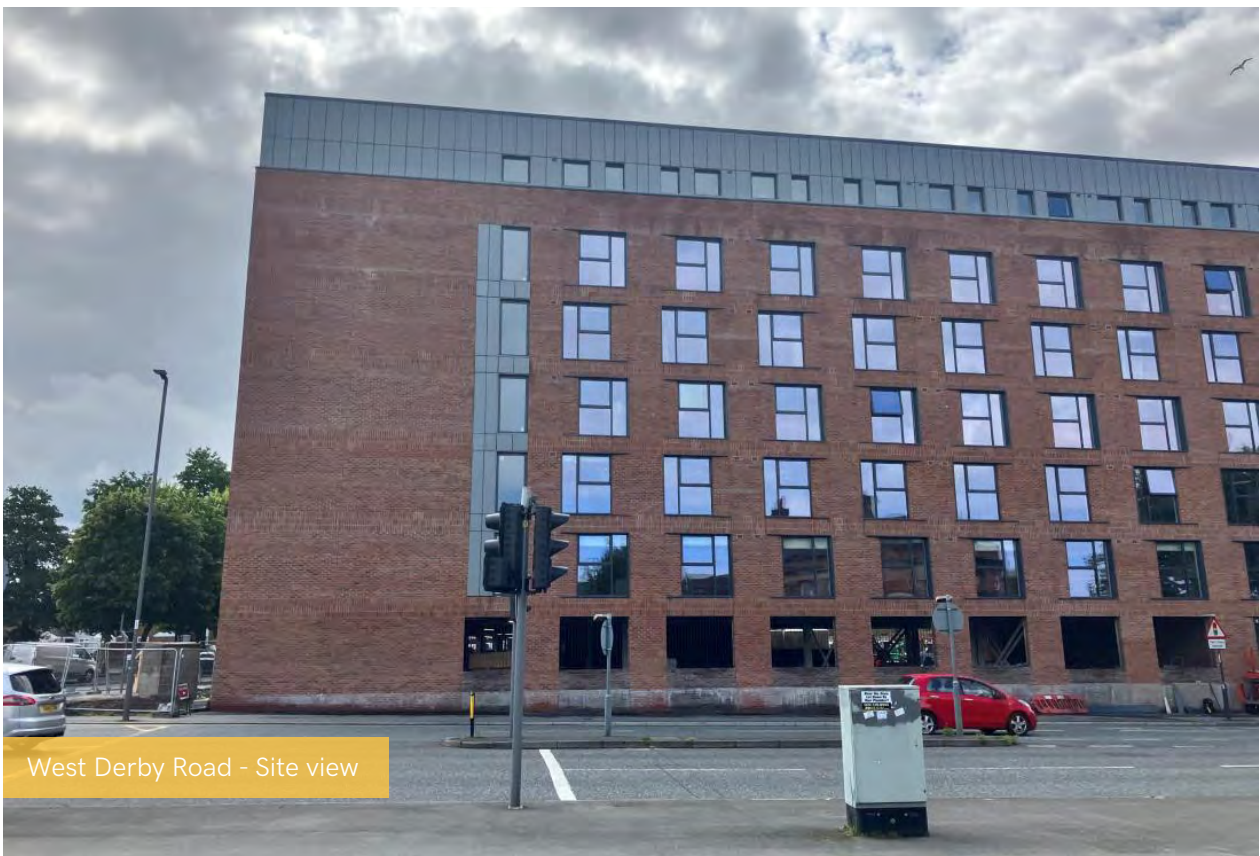
(Our Post-Payment Team will be in contact shortly to confirm the final steps towards completion).

At Element - The Quarter external works are currently receiving their finishing touches, while major progress continues to be made to the internal fit-out as the on-site team moves ever closer to completion.

Electrical, plumbing and heating first fixes are now complete and second fixes are well underway. Apartment ceiling installation, plaster finishes, doorframes and bathroom sanitary fittings are among the internal works fast approaching completion. Wall and floor tiling has also been completed and signed off in the last reporting period.

Summary of Works Progressed

- The retaining walls and concrete beam foundations are 95% complete.
- Flat roof coverings including balconies are 100% complete.
- External windows, doors and curtain walling are 99% complete.
- External wall insulation and render is 99% complete.
- The apartment ceiling installation is 99% complete.
- Plaster finishes to walls and ceilings are 98% complete.
- 1st fix electrical, plumbing and heating works are 100% complete.
- Kitchen units and appliances are 92% complete.
- Doorframes are 98% complete.
- Skirting and architraves are 88% complete.
- Bathroom sanitary fittings are 93% complete.
- The wall and floor tiling is 100% complete.
- Carpet and floor finishes are 95% complete.
- Doors and ironmongery are 90% complete.
- Decorations are 87% complete.
- 2nd fix electrical, plumbing and heating works are 82% complete.
- General fixtures and fittings are 30% complete.





Brunswick Road - Building signage complete



Brunswick Road - Siteview



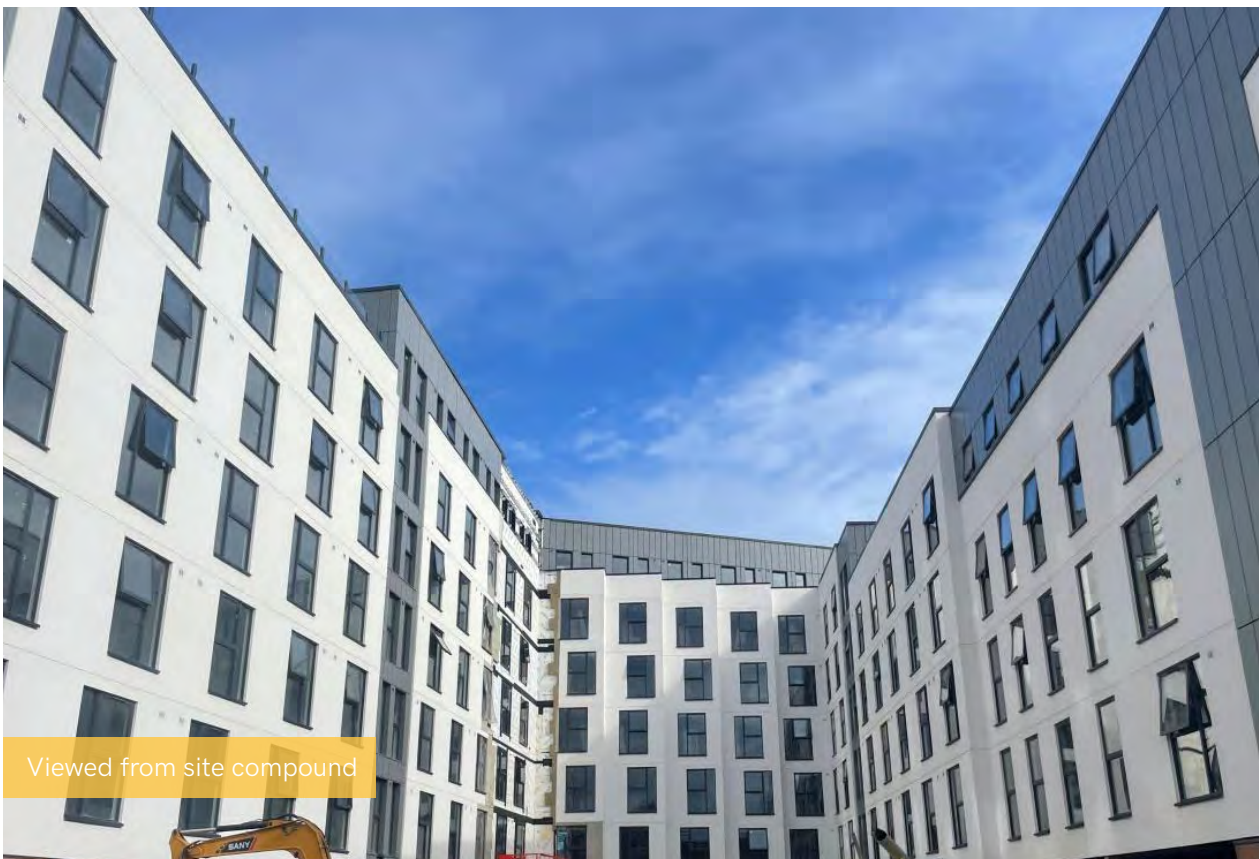
Commercial Block - Curtain walling



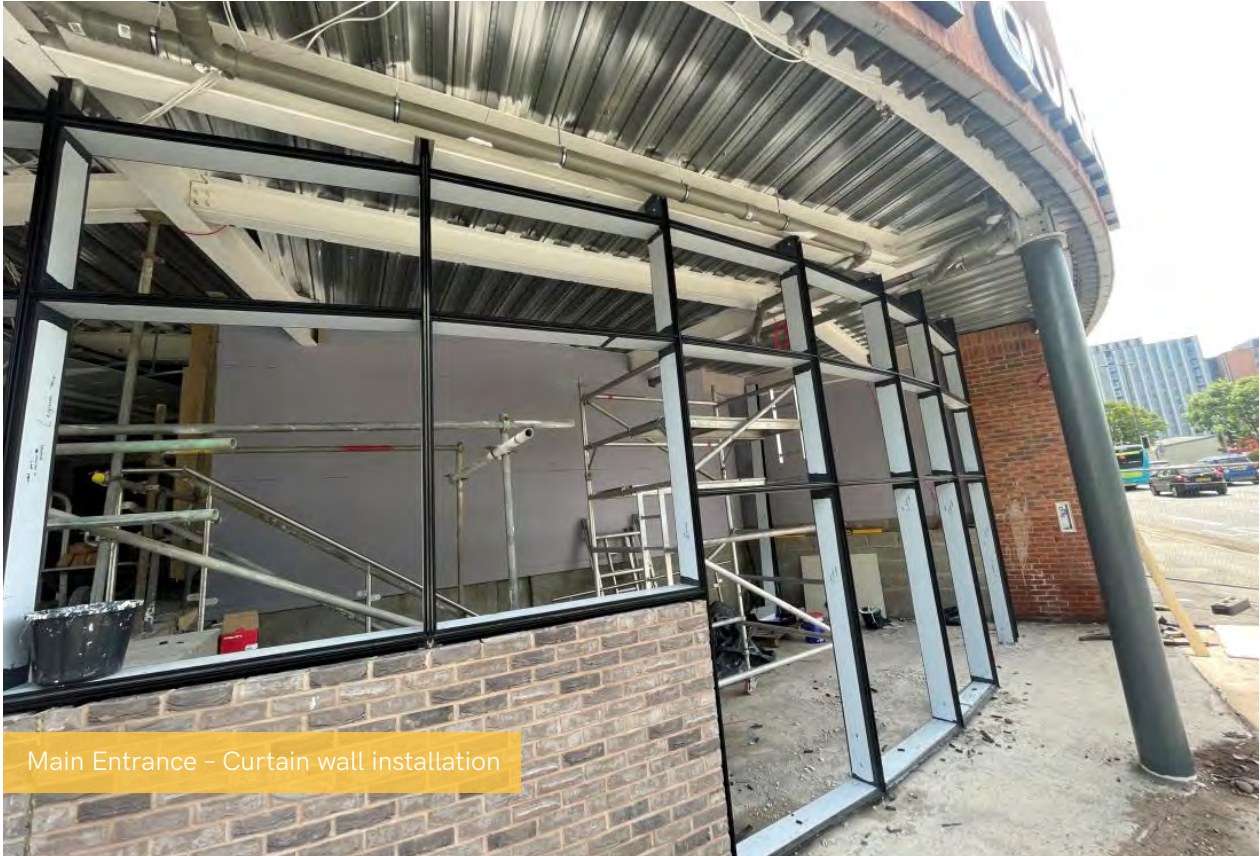
Residential Block - Infill of hoist apartment on-going



Student Block - Cladding complete



Viewed from site compound



Main Entrance - Curtain wall installation



Main Entrance - Curtain wall installation



Residential Wing - Glazed balustrade installation nearing completion



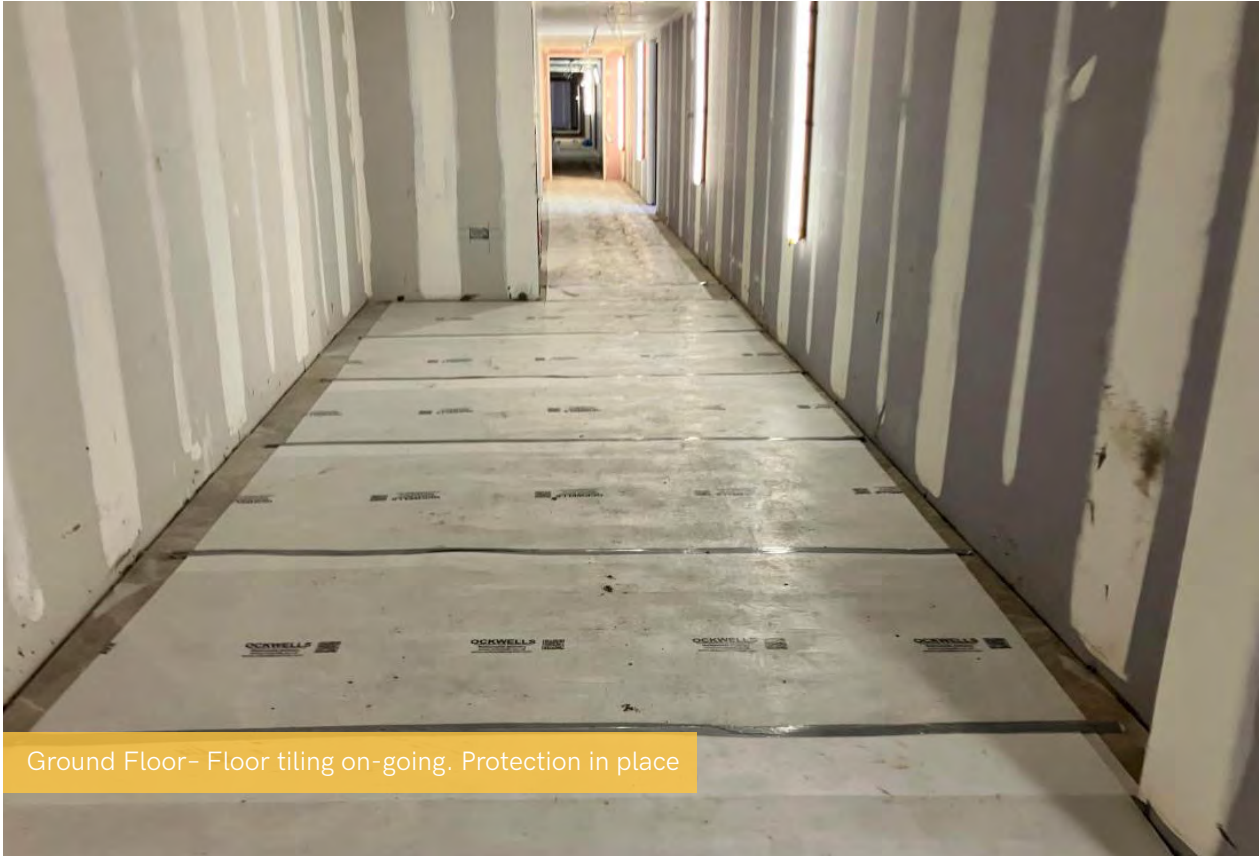
Residential Block - Paving



Residential Block - Rainscreen cladding



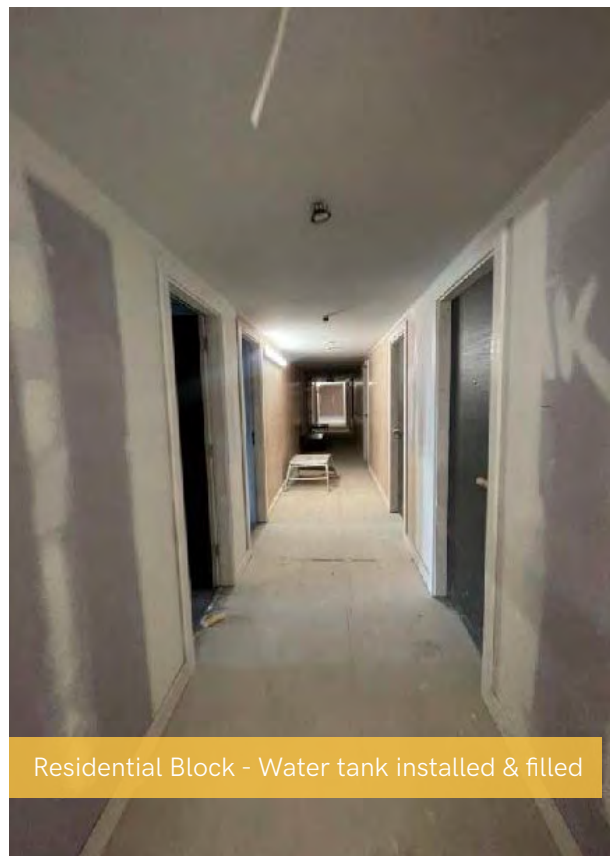
Ground Floor -Tape & jointing to Lobby walls & ceilings



Ground Floor- Floor tiling on-going. Protection in place



Ground Floor - Doors installed



Residential Block - Water tank installed & filled



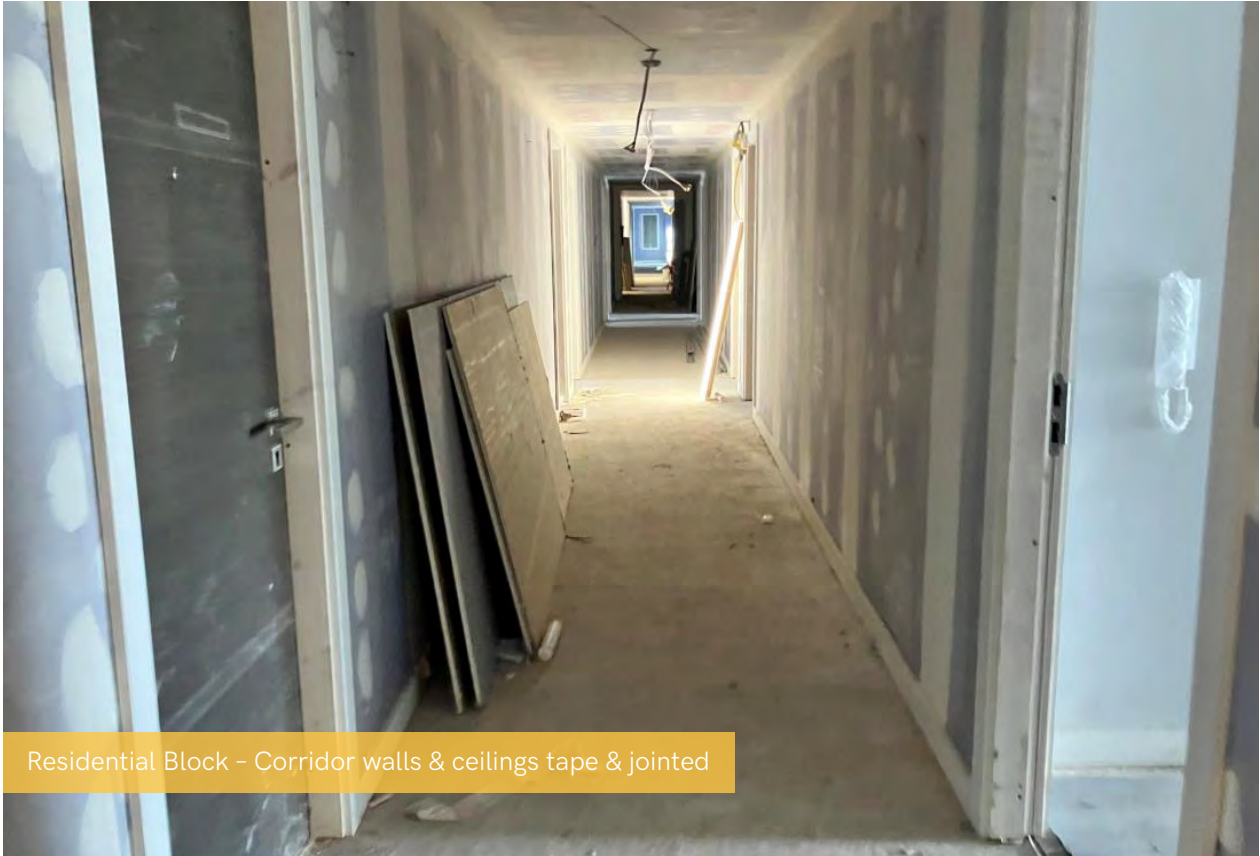
Ground Floor - Decoration works



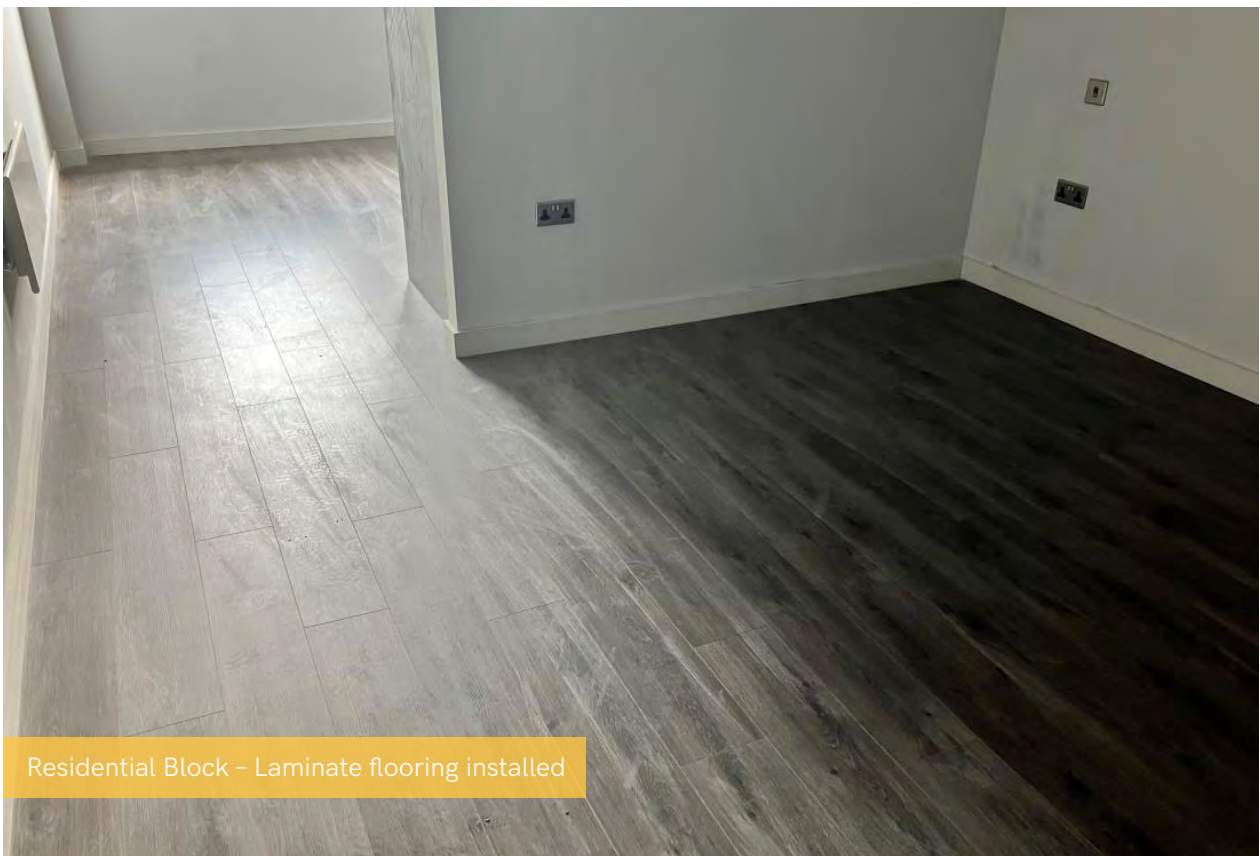
Residential Block - Decoration of stairwells on-going



Student Block - Corridor feature wallpaper



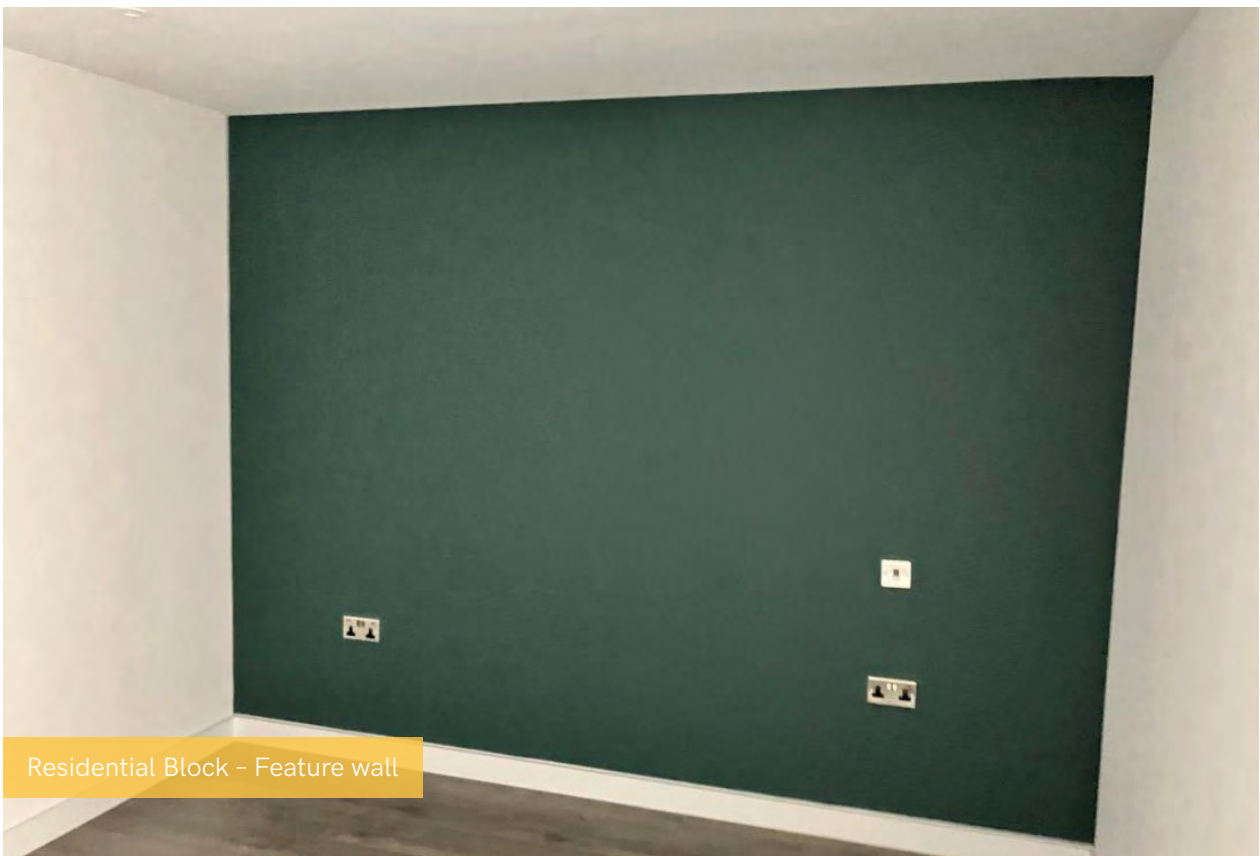
Residential Block - Corridor walls & ceilings tape & jointed



Residential Block - Laminate flooring installed



Residential Block – Skirting installation on-going



Residential Block – Feature wall





Residential Block - Sink



Residential Block - Microwave



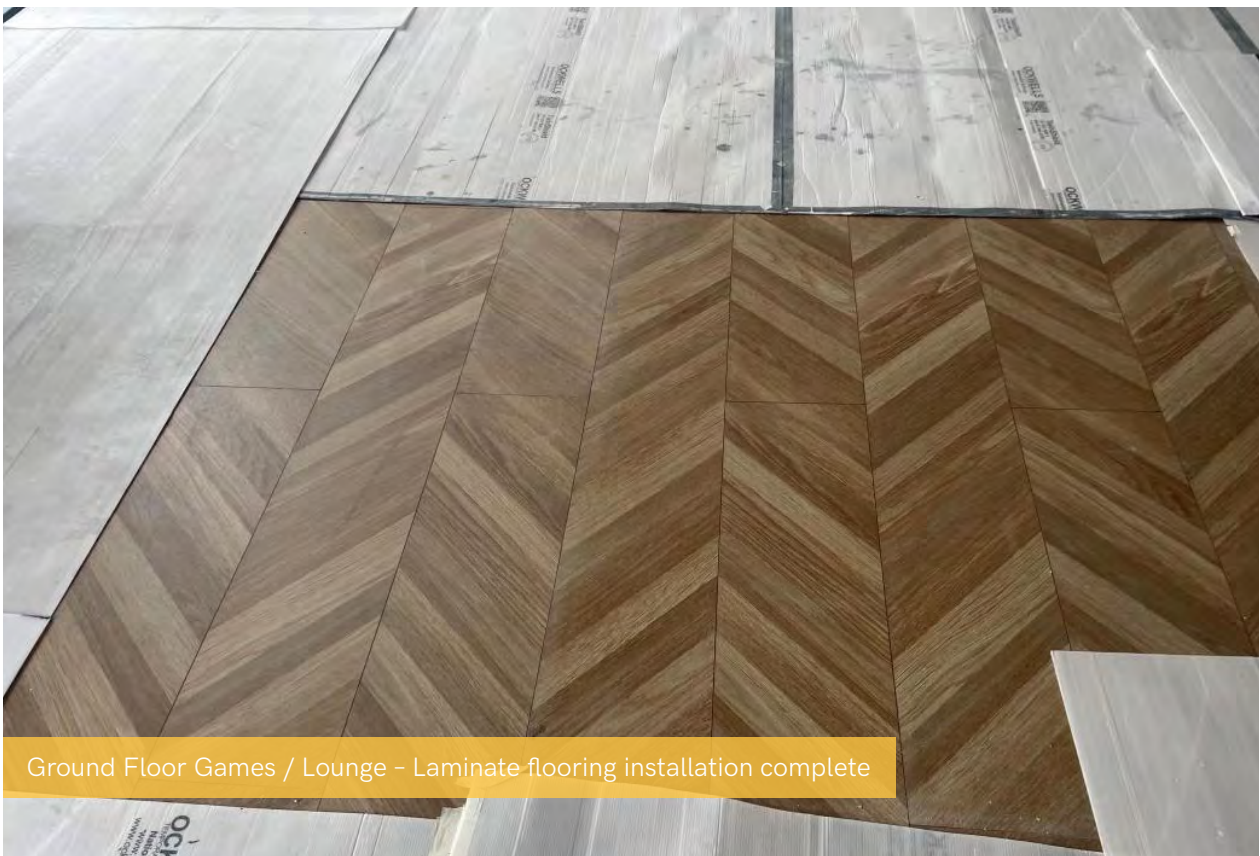
Residential Block - Sanitary Items



Ground Floor Games / Lounge - Feature wall



Ground Floor Games / Lounge - Laminate flooring installation complete



Ground Floor Games / Lounge - Laminate flooring installation complete



Ground Floor Games / Lounge - Kitchen area installation on-going



Ground Floor - Slatted Timber detail



Ground Floor - Slatted Timber detail



Student Wing - Show flat



Student Wing - Show room



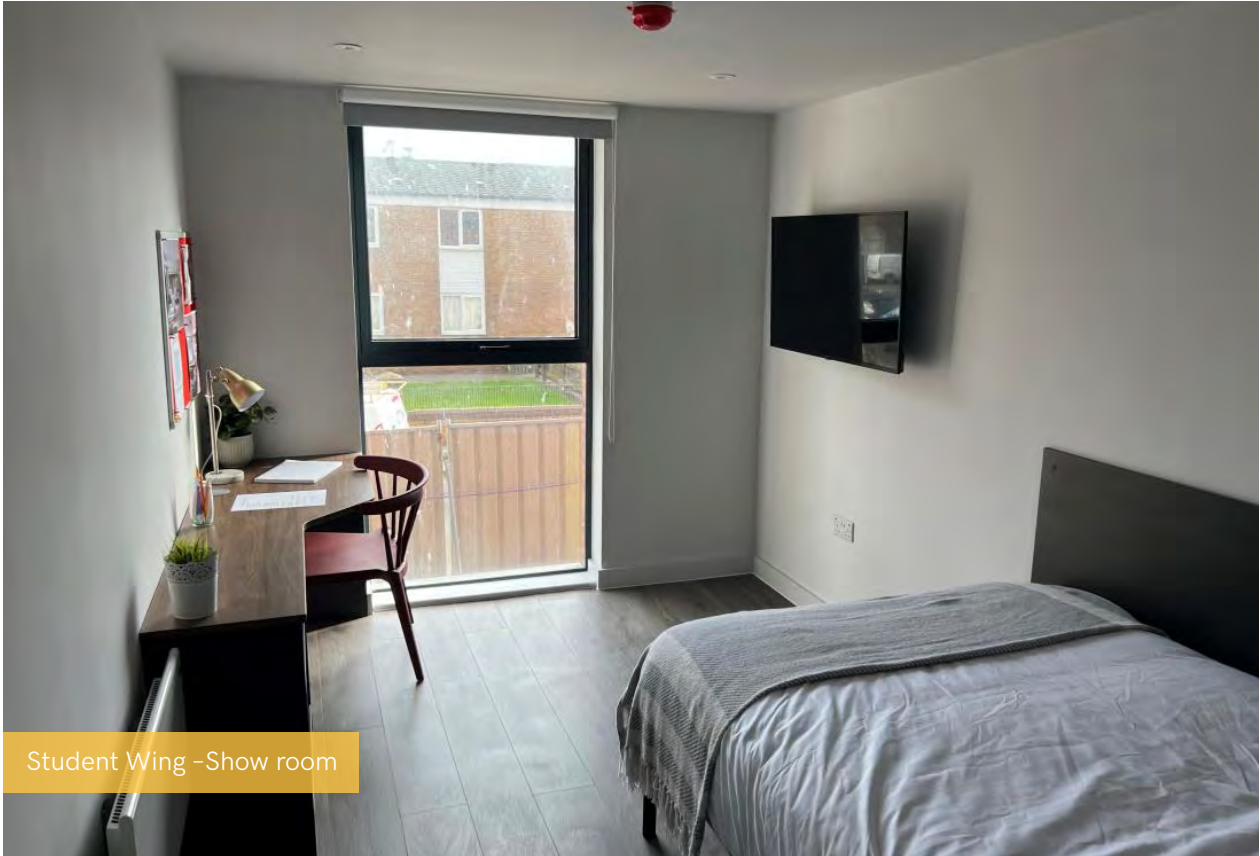
Student Wing - Show room



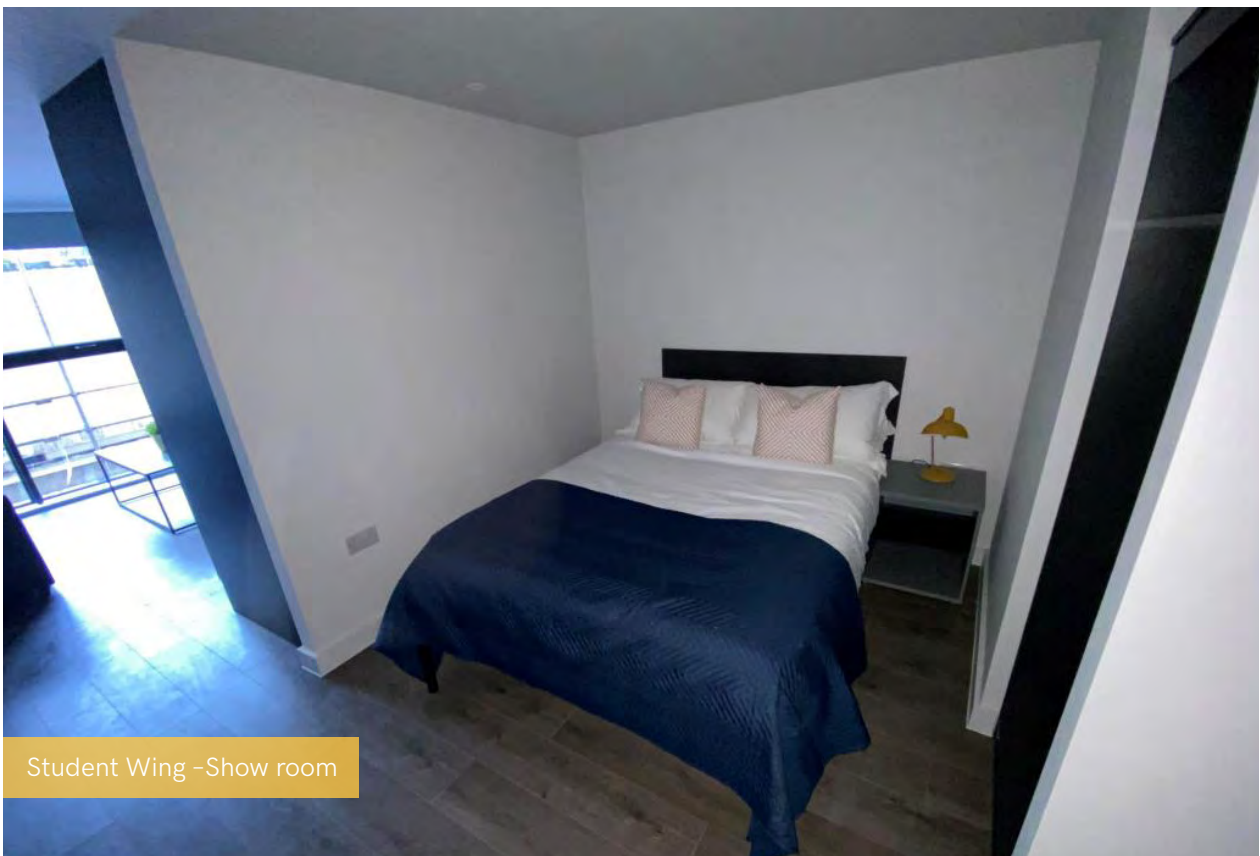
Student Wing - Show room



Student Wing - Show room



Student Wing - Show room



Student Wing - Show room

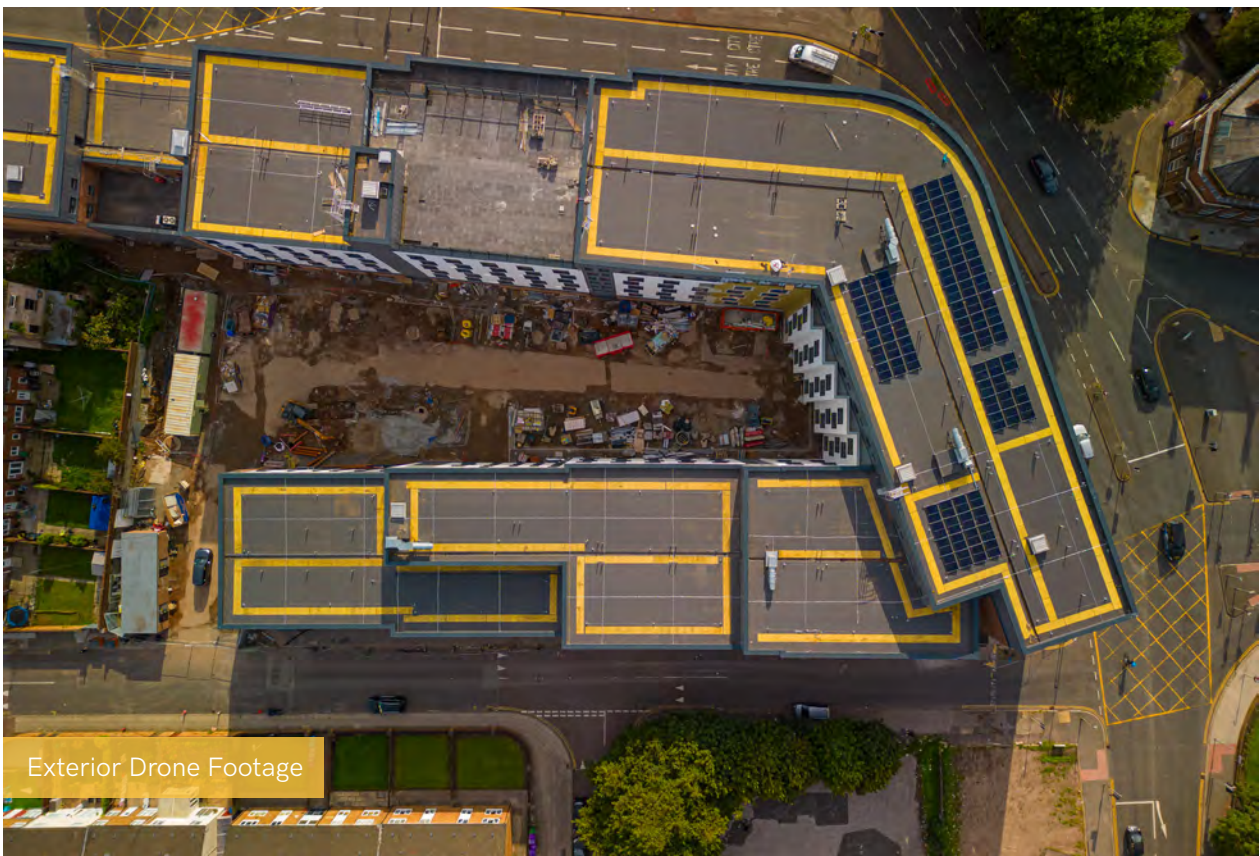




Exterior Drone Footage

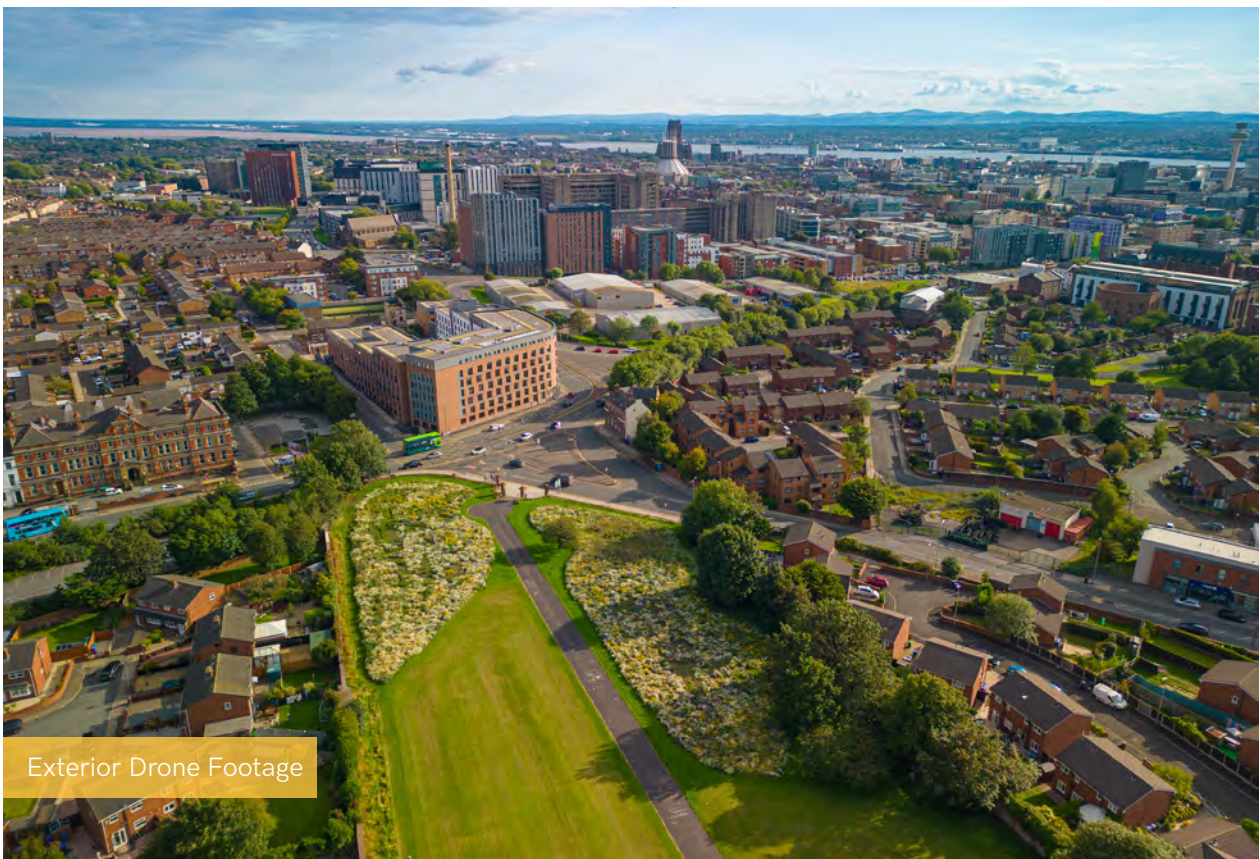


Exterior Drone Footage





Exterior Drone Footage



Exterior Drone Footage