



RWinvest

CITY RESIDENCE - THE APARTMENTS

CONSTRUCTION UPDATE

June 2022



CITY RESIDENCE - THE APARTMENTS

CONSTRUCTION UPDATE

June 2022

This month at City Residence – The Apartments, completion of the superstructure brickwork has taken place, as well as finalisations being made to the roof and single ply membrane.

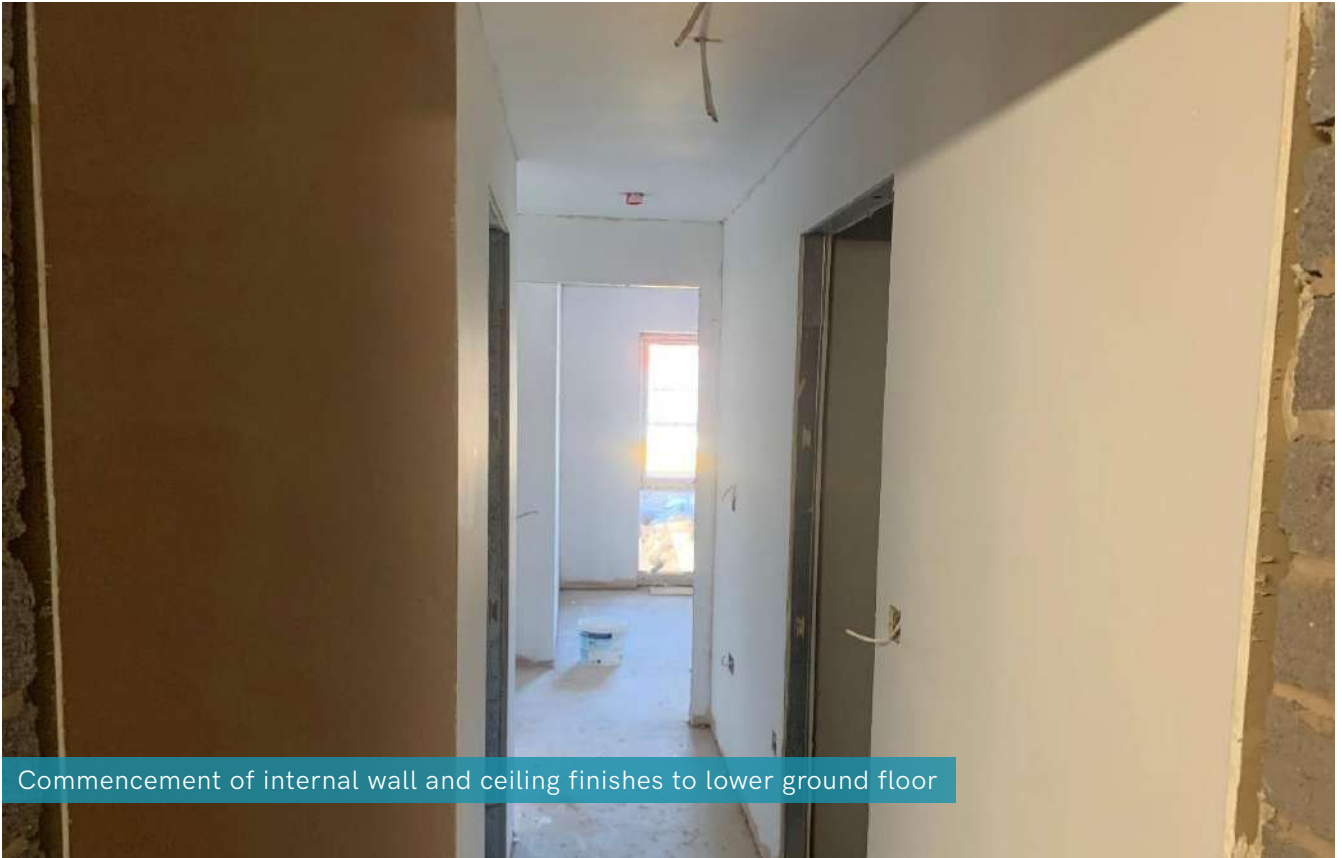
Another task now nearing completion is the sprinkler system installation, plus clear development is being made to the soil vent and internal drainage. Work has also commenced on the tiling of the bathrooms.

Summary of Works Progressed

Completion of superstructure brickwork
Roof and single ply membrane is nearing completion
Clear development of sprinkler system installation
Progression of soil vent and internal drainage
Continuation of screed
Window installations are rapidly developing
Development of partitions and boarding
Continuation of ceiling grids
Development of roof and single ply membrane
Continuation of plastering
Clear development of ceiling boarding
Progression of framing for combination units within the bathrooms
Commencement of kitchen installations
Initiation of tiling to bathrooms
Wall finishes have begun
Commencement of laminate floor finishes

Works Anticipated

Completion of roof and single ply membrane
Near completion of window installations
1st fix mechanical and electrical installations continues
Progression of internal drainage
Continuation of partitions and boarding development
Development of ceiling grids
Plastering to advance further
Ceiling boarding will continue to progress
Development of framing for combination units within the bathrooms
Progression of kitchen installation
Continuation of tiling to bathrooms
Wall finishes to continue developing
Continuation of laminate floor finishes



Commencement of internal wall and ceiling finishes to lower ground floor



Continuation of internal wall and ceiling finishes to lower ground floor



Installation of laminate flooring to lower ground floor

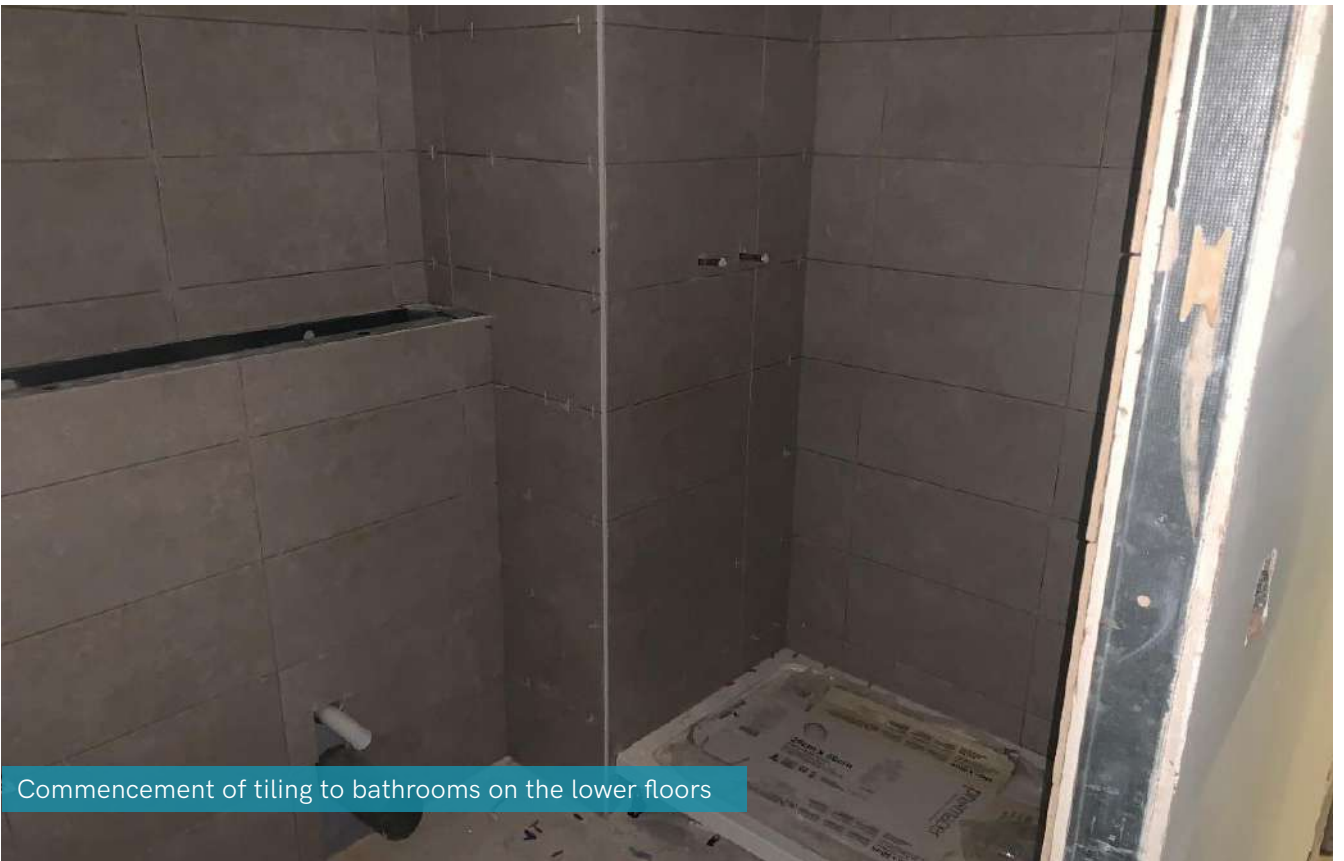


Commencement of kitchen installation to lower ground floors





Continuation of the installation of combination units and shower trays to bathrooms



Commencement of tiling to bathrooms on the lower floors



Continuation of internal boarding to upper floors



Completion of masonry and roof on Block A



External view and progression of Block C



External view of superstructure progression on Blocks D and B



External view of superstructure progression on Block A



RWinvest

Liverpool +44 (0)151 808 1250

London +44 (0)207 100 4141

Manchester +44 (0) 161 884 1305