

# City Residence - the Apartments

## Construction Update

September 2022

## September 2022

During the latest construction period, window installation has almost reached completion. A number of tasks are making progress including internal doors, floor finishes, kitchens, electrical works and plastering.

In the next few weeks, window installation will complete and progress will continue to be made across several key areas of construction. Utility connection works will also soon be achieved.

## Summary of Works Progressed

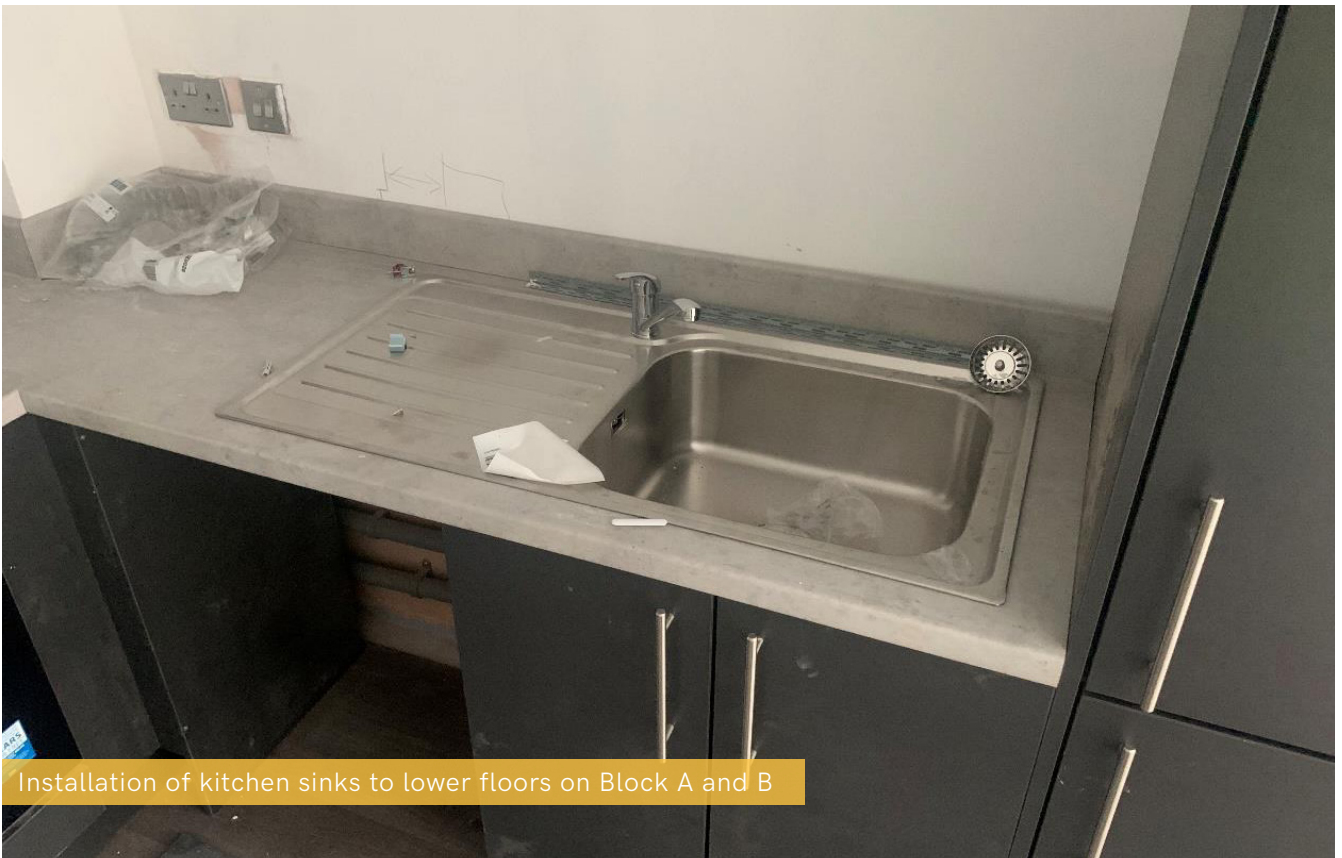
- Near completion of window installations
- Continuation of partitions and boarding
- Continuation of internal doors
- Continuation of tiling to bathrooms
- Continuation of floor and wall finishes
- Continuation of framing for combination units within the bathrooms
- Continuation of kitchen installations
- Continuation of sprinkler system installation
- Continuation of soil vent and internal drainage
- Continuation of electrical works
- Continuation of screed
- Continuation of plastering
- Continuation of ceiling boarding

## Works Anticipated

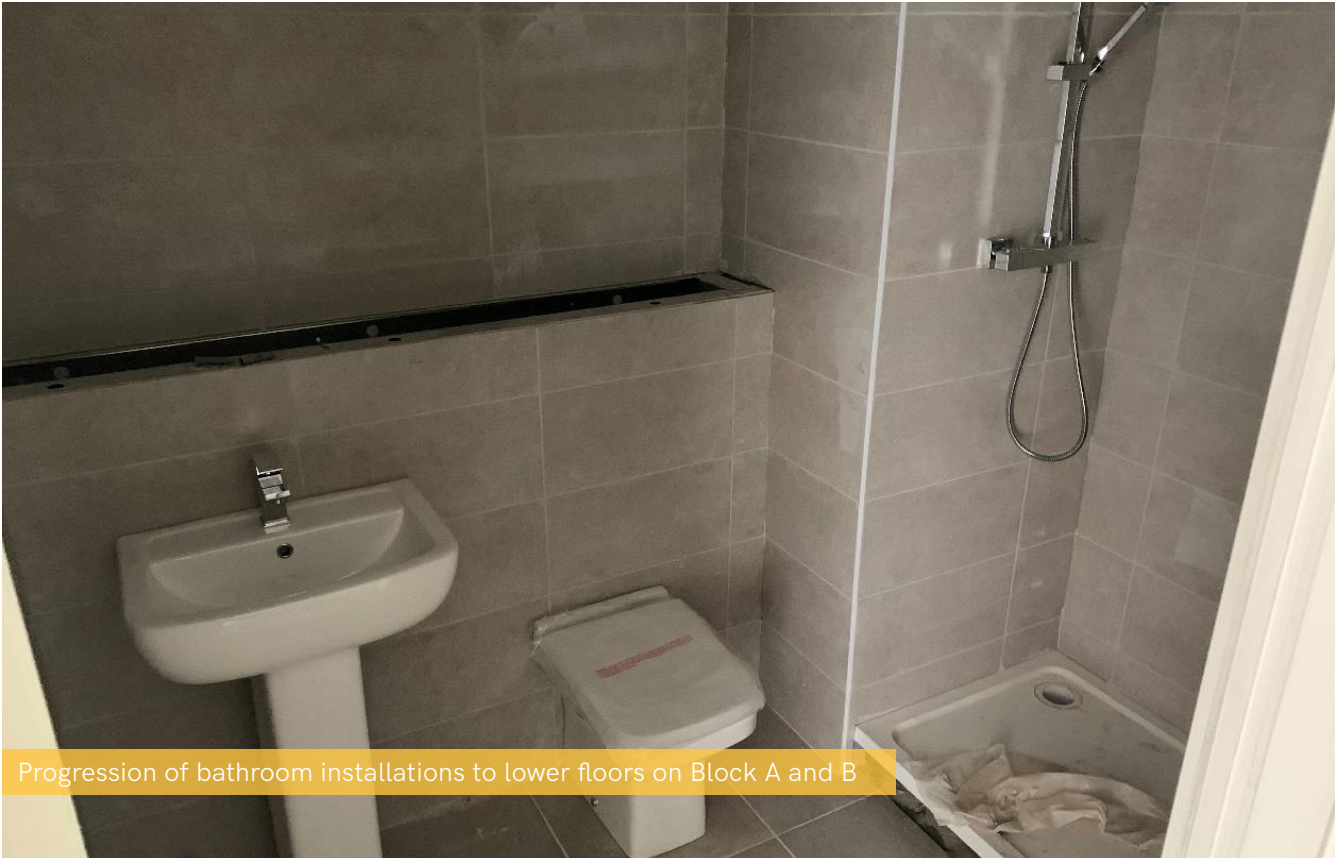
- Completion of window installations
- Near completion of utility connection works
- Continuation of first and second fix mechanical and electrical installations
- Continuation of internal drainage
- Continuation of partitions and boarding
- Continuation of plastering
- Continuation of ceiling boarding
- Continuation of framing for combination units within the bathrooms
- Continuation of kitchen installation
- Continuation of tiling to bathrooms
- Continuation of wall, ceiling and floor finishes



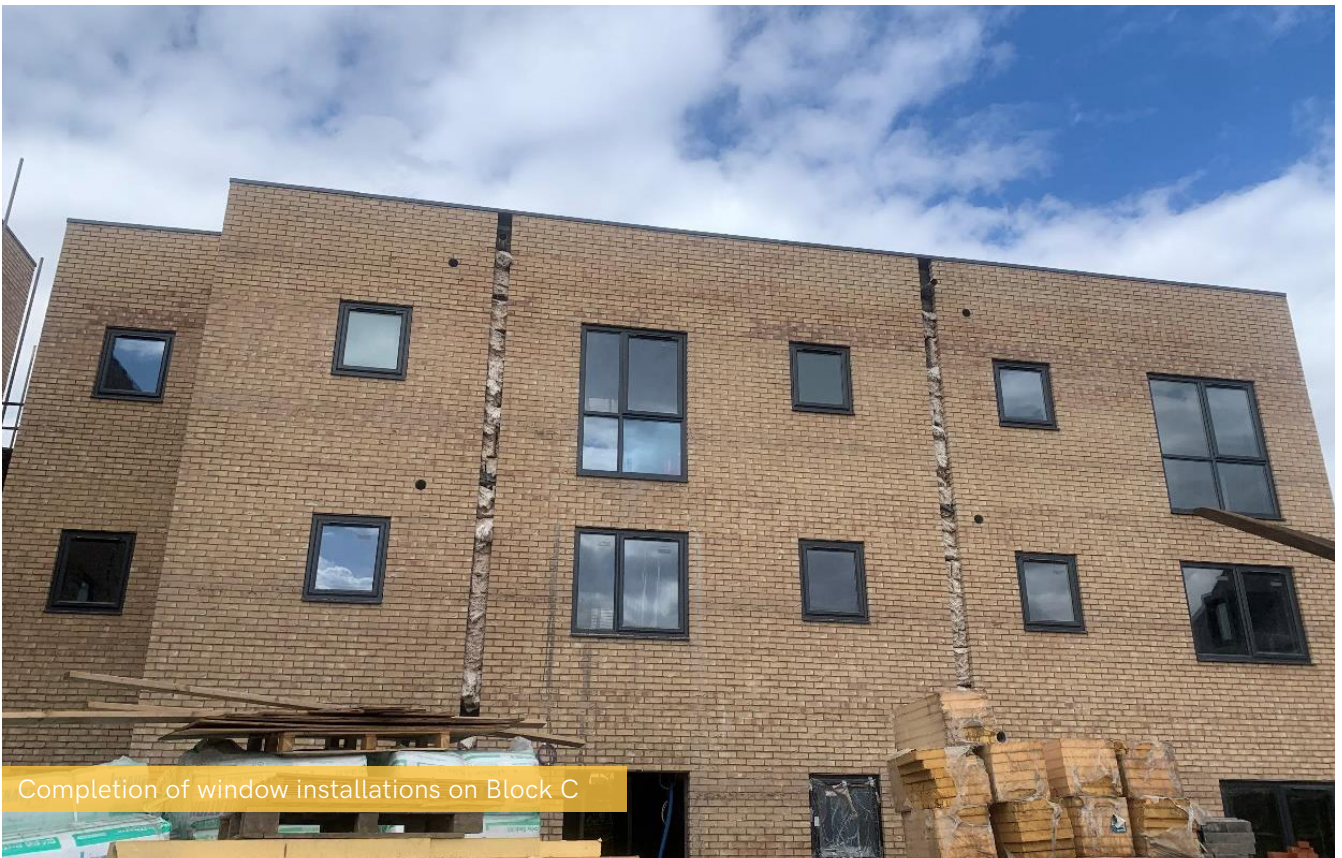
Installation of extractor fans and ovens to lower floors on Block A and B



Installation of kitchen sinks to lower floors on Block A and B



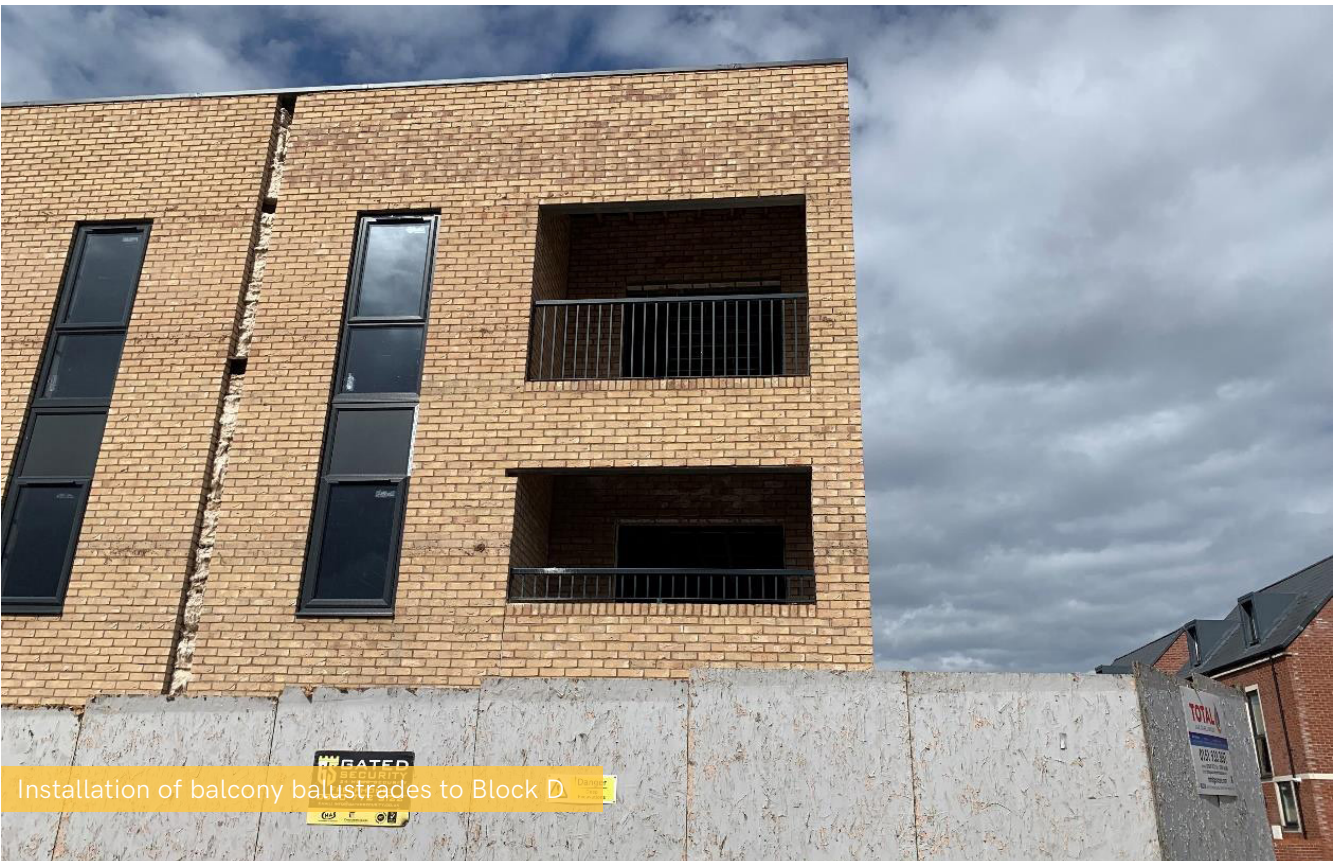
Progression of bathroom installations to lower floors on Block A and B



Completion of window installations on Block C



Completion of window installations on Block D



Installation of balcony balustrades to Block D



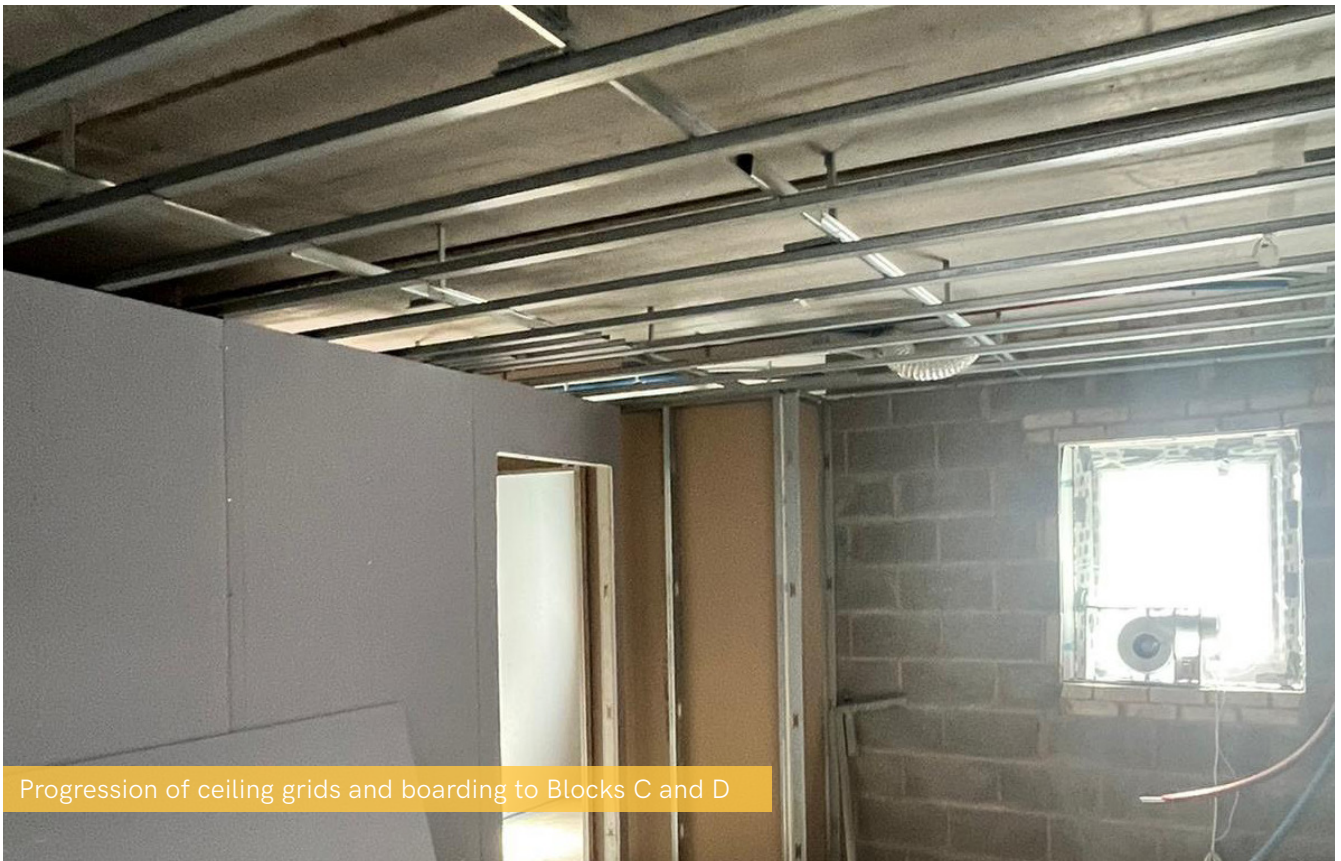
External view of superstructure progression



Continuation of electric radiator installation to lower floors on Block A and B



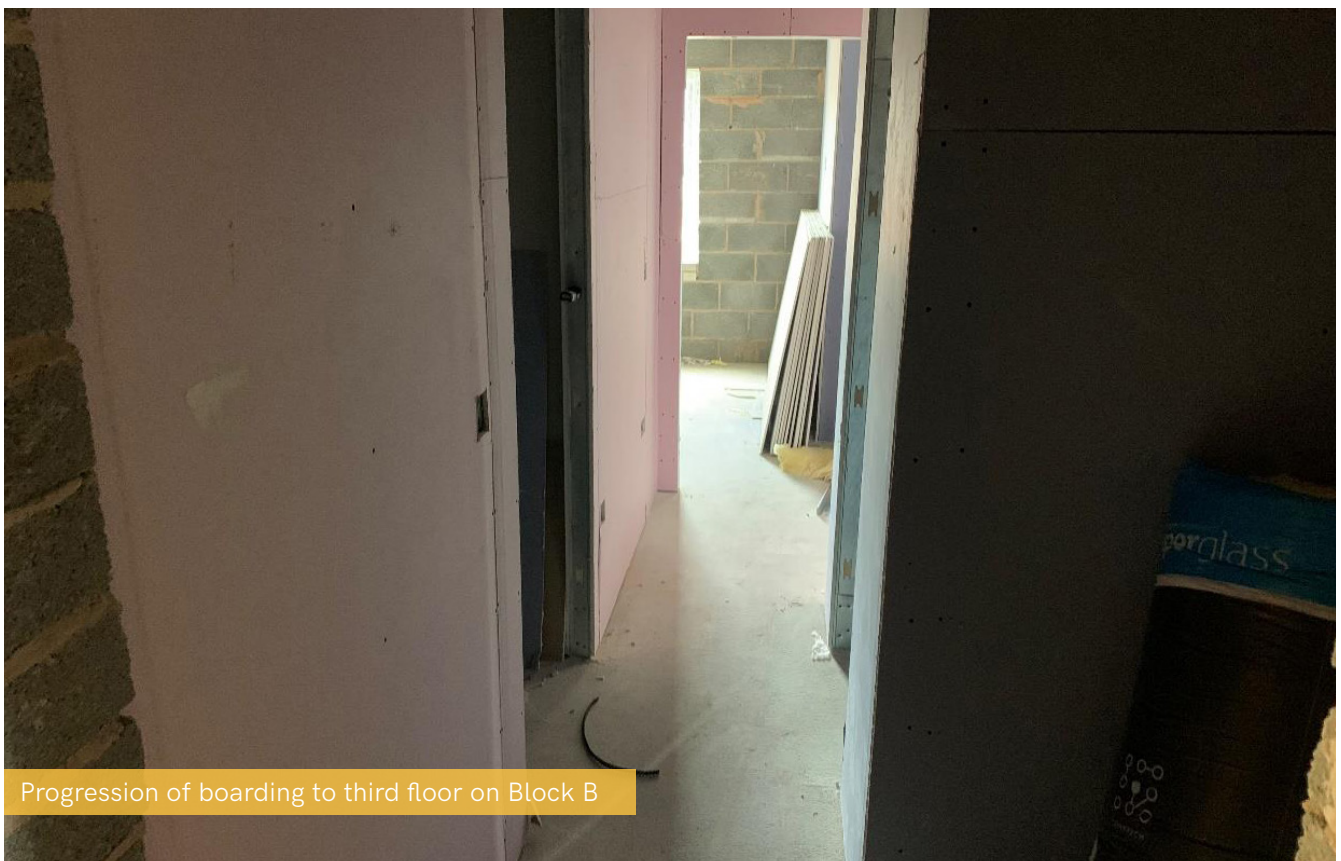
Installation of apartment doors on Block A ground floor



Progression of ceiling grids and boarding to Blocks C and D



Continuation of ceiling grids and boarding to Blocks C and D



Progression of boarding to third floor on Block B