

THE ART OF
DESIGN

LUXURY HOME INTERIORS

£4.95 • ISSUE 80



CLERKENWELL DESIGN WEEK 2026 /
INTERIOR TRANSFORMATIONS /
SHAPING THE LANGUAGE OF LUXURY LIGHTING



Niche Bespoke Interiors



WOODBENDER

All you need is Lhov.



The first All-in-One cooking solution.
Oven, hob and integrated extraction system:
finally together, to revolutionise your kitchen and your cooking experience.

design Fabrizio Crisà

Extraordinary Cooking

elica[®]



CONTENTS

6

CLERKENWELL DESIGN WEEK 2026

Marking the 15th anniversary of this global design festival, a new curated series of large-scale installations will be launched called Design Interventions.

44

RECALIBRATING A NORTH LONDON HOME

This period house had all the architectural charm of a beautiful home, but years of piecemeal changes had left it feeling visually and emotionally fragmented.

20

A COUNTRY ESTATE TRANSFORMATION

London-based luxury interior design studio Laura Hammett is proud to announce the completion of their latest full-scale project in the heart of rural Yorkshire.

70

FROM LIVING ROOM TO GARDEN

When Louis De Poortere first introduced its Ecorugs collection, the ambition was clear: to move towards a more circular approach to rug design.

Editor in Chief

Antony Holter
T: 01304 806039
E: editor@mhmagazine.co.uk

Editor

Rebecca Keating
T: 01304 806039
E: rebecca@theartofdesignmagazine.com

Editorial Assistant

Katie Essex
T: 01304 806039
E: editor@mhmagazine.co.uk

Publishing Director

Martin Holmes
T: 01304 806039
E: martin@mhmagazine.co.uk

Sales Director

Georgia Martin
T: 0203 907 9166
E: georgia@theartofdesignmagazine.com

Digital Manager

Jamie Bullock
T: 01227 936971
E: jamie@mhmagazine.co.uk

Business Manager

Josh Holmes
T: 01304 806039
E: josh@mhmagazine.co.uk

Studio Designer

Sarah Johnson
E: sarah@mhmagazine.co.uk

Accounts Department

Alison Holmes
T: 01304 806039
E: accounts@mhmediaglobal.com



Cover Image Courtesy of:
Woodbender | woodbender.com



The Art of Design
is proud partners with

MH Media Global Ltd, 18/20 Newington Road, Ramsgate, Kent CT12 6EE



CLERKENWELL DESIGN WEEK LAUNCHES NEW INSTALLATION SERIES: **'DESIGN INTERVENTIONS' AND EXPANDED CDW AWARDS** 19 – 21 MAY 2026

Clerkenwell Design Week (CDW) is pleased to announce it will be returning to London's EC1 on the 19 - 21 May 2026.

Marking the 15th anniversary of this global design festival, a new curated series of large-scale installations will be launched called Design Interventions. Following a call-out from CDW to emerging and established designers and architects for ideas for innovative structures, the strongest

submissions will be installed across Clerkenwell. These will encourage interaction and spark conversations about materials and the built environment, while activating EC1 with striking, immersive moments throughout the festival.

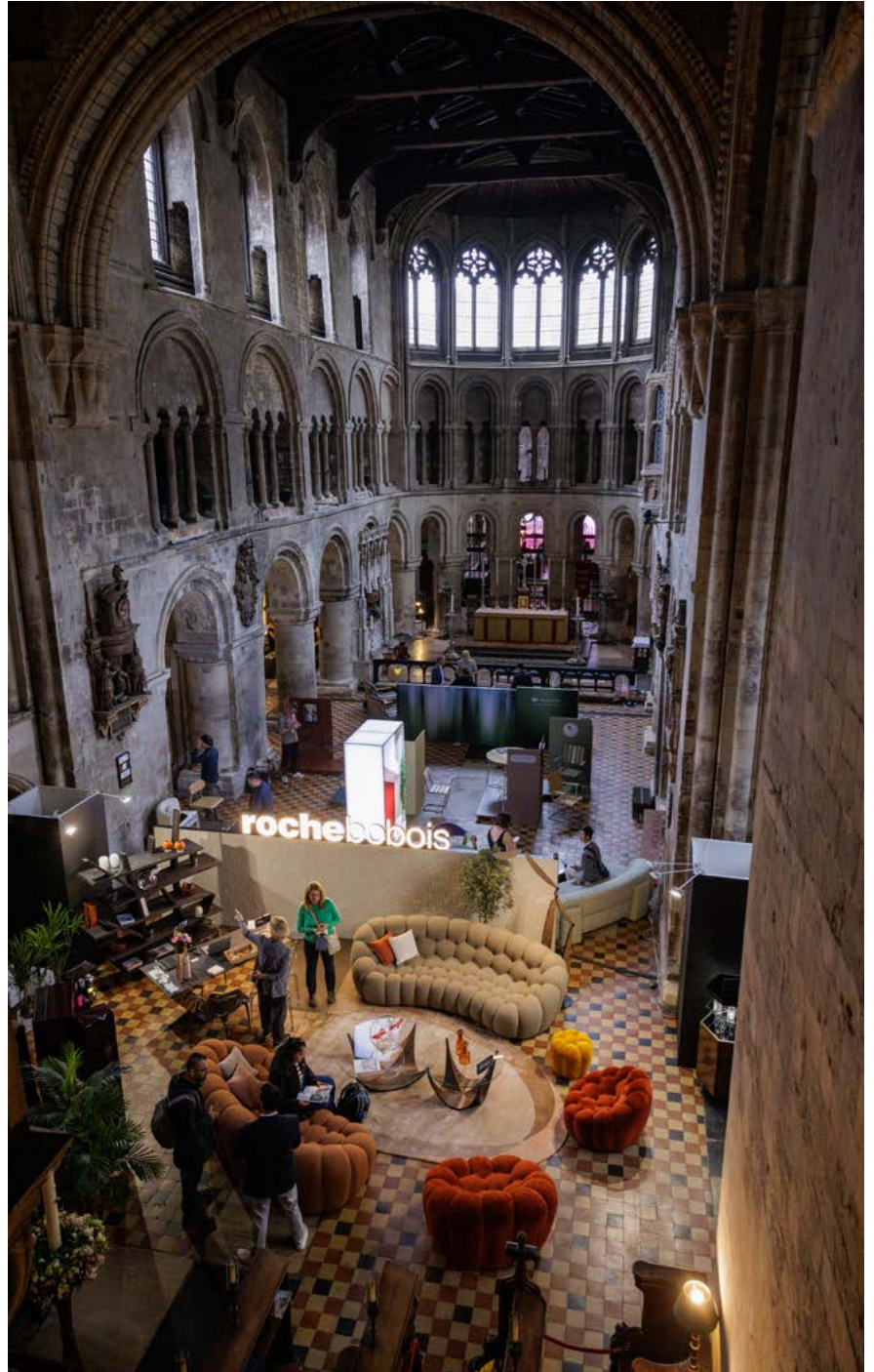
In addition, a major highlight this year will be the expanded CDW Awards, presented with the digital design magazine Design Milk. The CDW Awards will not only celebrate the best new products and innovations but also the disruptors, dreamers and 'doers of design'.



DESIGN INTERVENTIONS: AN OPPORTUNITY TO REFLECT AND CONNECT

These site-specific, interactive installations, created by the design and architecture community, will appear in the parks, streets and green spaces of Clerkenwell, as well as in the festival's venues. Many of these pop-up structures will provide a place to sit, reflect and connect with others while exploring structural and material concepts.

One of the many Design Interventions selected for this year will be on Clerkenwell Green. The Fountain of Technicolour Beads, has been created by Hong Kong-based multi-disciplinary studio One Bite Design. This immersive terrazzo installation integrates spatial design with social awareness by focusing on Colour Vision Deficiency (CVD). And next to St James' Church, The Crinkle-Crankle Bench will take pride of place. This series of half crescent benches crafted from natural stone bricks is designed by architectural practice StudioFolk.



EXPANDED CDW AWARDS AND NEW VENUES

Haberdashers' Hall, will be a new addition to CDW's list of spectacular venues. Known as The Luxury Edit during the show, this new venue will be hosting the CDW Awards ceremony on Tuesday 19th May, presented in partnership with Design Milk. Following a strong debut last year, the awards will

once again celebrate furniture, lighting, materials and interior solutions that are shaping the future of design. New categories will focus on the individuals, teams and ideas challenging conventions and celebrating the creatives driving design forward today. In addition, as well as being home to a cluster of high-end Italian design brands, The Luxury Edit will host the talks series Design Meets featuring industry bodies, leading brands and industry experts.



A 'living' outdoor installation, The Pulse of Becoming, will animate the space outside The Luxury Edit. This Design Intervention, created by recent graduates Musab Umair, Amruta Ramesh Pullawar and Sharath Binu John who are based in Portsmouth, explores the cyclical nature of death, rebirth and life. Chia seeds embedded in two opposing crescent shells will sprout during the festival, turning bare surfaces green.



The Museum of the Order of St John above St John's Gate (originally built in 1504) is one of the great hidden historical treasures of London and is another new venue for the festival. The atmospheric space, steeped in history, will be the temporary home to INTERIORS FROM SPAIN, a striking platform for contemporary Spanish design produced by London-based design journal Disegno.



Material Source Studio, which showcases products and materials for architects, interior designers and property professionals, and Workplace on the Square outside The Zetter hotel, a platform for design brands catering to offices, are two new additions to CDW's wide range of venues for 2026. Office design brands will also be exhibiting at Workplace at Goldsmiths' at The Goldsmiths' Centre which returns as a festival venue this year.

RETURNING VENUES, NEW INSTALLATIONS

St Bartholomew the Great once again becomes the Church of Design, this year's venue for the coveted Conversations at Clerkenwell programme curated by PR and Brand Consultant Katie Richardson, which will include discussions with leading and emerging designers on topical subjects. Dulux, this year's sponsor for Conversations at Clerkenwell, is launching a student-focused competition to design the backdrop of the talks stage using a palette of on-trend colours.

Roche Bobois, DEDON and MAGIS Spa are among the many leading international brands exhibiting at the Church of Design, and CONFLUENCE, a monumental origami-inspired installation by Fung+Bedford, will be suspended from the ceiling of the 900-year-old Grade I listed medieval church.

The House of Detention returns as the host of Light, showcasing a selection of exciting local and global lighting brands. Visitors will be greeted at the entrance with Loom Light, a 3D-printed light sculpture drawing on the optical language of Op Art, designed by MIMStudios, AI Build and SEAM Design. [d]arc thoughts, an enlightening series of talks curated by [d]arc media, also returns.

"We're thrilled to be back in Clerkenwell this May with our new Design Interventions initiative which acts as a creative platform for the incredible talent and imagination of the participating architects and designers," says Marlon Cera-Marle, Design Division Director at Media 10, the organiser of the annual design festival. "These thought-provoking installations are set to bring a new interactive dimension to the show. We're looking forward to another successful year welcoming tens of thousands of people from the UK and abroad to EC1 to discover the latest that global design has to offer."





A mix of historic and contemporary buildings will once again become venues during CDW26.

- **Old Sessions House** - Home to brand activations, presentations and the festival hub.
- **The Charterhouse** - Contemporary furniture, decorative lighting and luxury finishes.
- **Detail & Finishes** - Featuring refined luxury products and finishes in St John Priory Church.
- **British Collection** - Taking over the whole of St James's Church once again and highlighting the best British design talent and brands.
- **Ceramics of Italy** - Hosting Italian ceramic and porcelain tile brands at a pavilion on St John's Square. This exhibition is organised by the Italian Trade Agency in collaboration with the Ceramics Association of Italy.
- **Commercial Design in the Park** (formerly Project) - Focused on contract furniture and surface design, the venue will also host a series of talks from Commercial Interiors UK.

- **Commercial Interiors on the Green** (formerly Clerkenwell Green Pavilions) - contract furniture, solutions and surfaces brands from around the globe.
- **Interior Hardware** (formerly Elements) - Dedicated to architectural hardware and finishes.
- **Future Talent** (formerly Platform) - Spotlighting emerging design talent and companies.

International design names

Across all venues, CDW will feature hundreds of design brands, showcasing furniture, lighting, textiles, surfaces, home accessories and product design. Confirmed exhibitors include String Furniture, Moroso, Swedese, Dornbracht and Vincent Sheppard. Collections from Austria, Denmark and Italy will also return.

Hundreds of showroom partners

are an essential part of Clerkenwell Design Week as they host product launches, talks and workshops. A small taste of participating showrooms include: Actiu, Andreu World, Boss Design, Camira, Domus, HAY, Hansgrohe, Herman

Miller, Humanscale, J.Adams & Co, Knoll, Muuto, Milliken, Modus, Iris Ceramica, Knoll, Tarkett and Cosentino.

Interactive app

A new state-of-the-art app replaces the printed, paper guide and tickets in 2026. The CDW app will be an essential digital companion for visitors, helping them tailor their visit and navigate the venues, exhibitors, participating showrooms and much more according to their specific interests.

FOOD & DRINK

Festival-goers can also enjoy exclusive discounts and offerings from local food and drink partners. Architects and interior designers will have the opportunity to join guided specialist tours covering topics ranging from sustainability to emerging design talent and more.

Clerkenwell Design Week 2026 takes place across EC1, London, from 19 - 21 May. More details about the festival will be announced in due course.

For more information, please visit clerkenwelldesignweek.com - registration is now open.

**CLERKENWELL
DESIGN
WEEK**

19 – 21 MAY 2026

CDW

**THE UK'S LEADING
DESIGN FESTIVAL.
WHERE DESIGN
BELONGS.**

**SECURE YOUR
FREE TICKET
TODAY**

clerkenwelldesignweek.com

 [@clerkenwelldesignweek](https://www.instagram.com/clerkenwelldesignweek)

 [@clerkenwell-design-week](https://www.linkedin.com/company/clerkenwell-design-week)

REWRITING THE SURFACE: KARTA INTRODUCES OVERSIZED HERRINGBONE AT CLERKENWELL DESIGN WEEK 2026

“Resilient flooring” remains widely defined by materials that rely on plastics and petrochemicals. For a category specified at scale across commercial environments, this presents a growing challenge, both in material impact and long-term recovery.

Karta was developed to offer a different approach. Created within the Ted Todd Group and informed by over three decades of timber expertise, it applies a deeper understanding of natural materials to the demands of contemporary interiors. Karta delivers a flooring system engineered from circular components, designed to perform in high-use environments without relying on plastic.

At Clerkenwell Design Week 2026, Karta returns with a clear next step in that evolution. Building on the success of its Recycled Leather Series, the brand introduces a new oversized herringbone format, reimagining a familiar pattern at a more architectural scale. These greater proportions to the traditional format allow for stronger visual presence across open-plan



spaces, while supporting more considered zoning, transitions, and layout design.

This development extends the same construction that underpins the existing collection. Each 200mm by 900mm click-system plank is formed from five layers of natural and reclaimed materials, including cork for acoustic comfort and integrated underlay, a PEFC-certified wood fibre core for strength and stability, and a recycled leather layer that diverts post-industrial waste from landfill. The surface is created using high-definition scans of real timber, drawn from the Ted Todd and Woodworks archives, delivering authentic variation with no repeats

across more than 40 boards. A plastic-free Karta Plated® topcoat achieves AC5 durability, supporting use across demanding commercial settings.

With the introduction of this new development, designers can now work with a more expressive format while retaining the same material integrity and environmental credentials as they have achieved in existing Karta projects.

Visitors to Clerkenwell Design Week will be able to experience the full Recycled Leather Series, including the new herringbone format, at stand CG21 in Commercial Interiors on the Green. Karta’s commercial flooring team will be on hand to guide attendees through both surface detail and structure, from the histories of the original timber through to the layers beneath.

Karta’s return marks a continued industry shift toward responsible material choices, offering a considered path forward for sustainable flooring specification.

Discover the next chapter in circular flooring at Clerkenwell Design Week, May 19-21 2026.



Karta

REMAPPING THE FUTURE OF FLOORING

Find us at
stand CG21

CDW

CLERKENWELL
DESIGN WEEK
19-21 MAY 2026

DISCOVER A BOLD NEW CHAPTER IN SUSTAINABLE FLOORING

Classic herringbone, reinterpreted at scale for commercial impact.

The next chapter of our revolutionary Recycled Leather Series.
Engineered from recycled and reclaimed wood fibre, cork, and
leather diverted from landfill, with zero plastics or petrochemicals.

Be among the first to specify Karta's new oversized herringbone.



Learn more at
karta floors.com

HELLO KARTA, GOODBYE PLASTIC
info@karta floors.com | 0808 501 7321

PLANK HARDWARE MAKES ITS CLERKENWELL DESIGN WEEK DEBUT WITH THREE NEW LAUNCHES ROOTED IN MATERIAL CONTRAST



Plank Hardware, the UK-born interiors brand known for its design-led decorative hardware, arrives at Clerkenwell Design Week for the first time this May, presenting two new hardware collections - **ESBEN** and **PEYTON** - alongside its best-selling lighting collaboration with Good Bones.

Across all three launches, there's one shared idea - that the most interesting interiors are built from finishes that complement each other rather than match.

Mixed metals are having a moment in interiors, moving beyond a styling device into something more considered. The tension between finishes - warm alongside cool, polished with brushed - is increasingly being used to bring depth, character and versatility to

a space. Plank Hardware has long worked within this territory, and the new collections build on that thinking.

Neither trend-driven nor nostalgic, they're designed for layered interiors where materials are given room to speak. Tom Revall, co-founder, Plank Hardware: *"More and more we're seeing customers naturally mixing finishes across handles and backplates. With ESBEN, we've taken that idea a step further - introducing mixed finishes within a single piece, so the contrast is built in from the outset."*

Leanne Kilroy, Good Bones: *"The real rule with mixing metals is there is no rule. Do what you love. And the more metals you have the more freedom you have to play".*



Making its first appearance at Clerkenwell marks an important moment for the brand - a chance for its products to be experienced in person as intended.

Visitors to Stand E7 are invited to handle the collections directly, mixing back plates and handles and observing how different finishes interact. It's a tactile and playful way of engaging with the new range - designed to encourage exploration and unexpected combinations.

Tom Revall, co-founder, Plank Hardware: *"Clerkenwell feels like the perfect place for us to introduce these collections. It's an environment where people are looking closely at materials and details, and where the thinking behind the design really matters."* Rooted in precision, materiality and a deep understanding of how products are used in real spaces, Plank Hardware's Clerkenwell debut brings together three distinct launches under one cohesive idea - that thoughtful combinations of finish and form can quietly transform a space.



ESBEN and PEYTON will be available to purchase exclusively online at www.plankhardware.com from 19 May 2025



Tom Raffield

Wooden Lighting Handcrafted in England

TRADE PROFESSIONALS

*Trade Pricing | Project Support | Free Samples | CAD & Assets Library
Showrooms in Falmouth and Chelsea Harbour*

Find us at :

Clerkenwell Design Week 19-21 May 2026
Stand: L16 - House of Detention

www.tomraffield.com - trade@tomraffield.com

SPACEMANN DEBUTS NEW SHOWROOM AT CLERKENWELL DESIGN WEEK AT THE FORUM. 19-21 MAY 2026

Spacemann, a specialist in innovative pods, booths and office screen systems for modern, flexible working environments officially enters the UK workplace design and manufacturing landscape with a new showroom at The Forum, 69 Turnmill Street, London EC1M 5RR.

Spacemann delivers high performance, future ready solutions that support evolving business needs around privacy, focus, collaboration and acoustic comfort. The new showroom at The Forum showcases many options available in full, offering workplace designers and specifiers a hands on opportunity to experience the materials, acoustic capabilities and modular configurations.

As hybrid working continues to reshape commercial interiors, Spacemann is committed to creating spaces where people and ideas thrive. The company provides organisations with scalable, high quality solutions that bridge the gap between privacy, acoustic control and contemporary design.

Jonathan Burrage, MD for Spacemann, comments *"Opening our first showroom space in London marks a significant milestone in our journey. Launching during Clerkenwell Design Week, alongside the introduction of our new range of Class A pods, makes this moment even more special. As a business proudly manufacturing in the UK, this new chapter represents both our continued commitment to British craftsmanship and our ambition for growth. We're incredibly excited to welcome our customers to The Forum and to share a space that truly reflects who we are and where we're headed."*



Pictured is one of Spacemann's personal pods from the Silence range of Class B acoustic-certified designs for both modular and accessible solutions



Spacemann's Silence is available in three forms - the Phone/Studio/Personal Pod, the Duo Pod and the Team Pod. Each is fully glazed or features a media-prepared wall, and every model is designed to be a collaboration retreat for communication and concentration

For more information on the Spacemann range, visit www.spacemann.co.uk

SPACEMANN

LAUNCHING IN THE FORUM SHOWROOM CLERKENWELL DESIGN WEEK 2026

Premium, innovative and sustainable solutions
for Commercial interiors.



The Forum, 69 Turnmill St, Farringdon, EC1M 5RR

[SPACEMANN.CO.UK](https://www.spacemann.co.uk)



MATTHEW BURT AT CLERKENWELL DESIGN WEEK: **BRINGING A CORNER OF WILTSHIRE TO CENTRAL LONDON**

Matthew Burt Furniture will again be exhibiting at Clerkenwell as part of the British Collection. The show runs from Tuesday 19th - Thursday 21st May 2026 at numerous venues and their stand will be at St James' Church EC1R 0EA, right at the heart of the event.

They are presenting pieces in the 'Waterfall' design, displaying an imaginative and affectionate use of ash trees, currently ravaged by disease; and spalted beech, trees in the early stages of decay but which remain strong as well as strikingly handsome.

"We relish memorialising this wonderful wood in ways that give it a future with both beauty and purpose."

Matthew explains: *"Waterfall' was born out of a commission to bring some warmth and softness to a*

double-height atrium at the home of a client. Using thin sections of Hampshire and Sussex sweet chestnut, we created undulating cuts which we then randomly juxtaposed with others of various thicknesses. It is difficult to be intentionally random, but we try. Putting sufficient of these alongside each other, we created what could be described as 'waterfall' panelling.

"Exploring this concept further, we are using a lot of ash, rescued after being cut down due to the ubiquitous dieback. We're taking it into other designs, including sculptures, furniture and columns & panels for interiors, and relish memorialising this wonderful wood in ways that give it a future with both beauty and purpose."

The centrepiece of the stand will be a spectacular 2.3m dining table (pictured below), made of small sections of spalted beech from a tree felled in the client's own garden.

Complete with gnarls and knots, this eye-catching timber, incorporated into Matthew's 'Lozenge' design, is another example of using supposedly aberrant wood to both stunning and functional effect.



Social media: www.instagram.com/matthewburtstudio

Website: www.matthewburt.com

Contact: Celia Burt | **01747 820800** | showroom@matthewburt.com

Visit us in the
Church of Design

CDW CLERKENWELL
DESIGN WEEK
19-21 MAY 2026

Designed in Hamburg
Manufactured in Germany

more-moebel.de



[more]



A Contemporary Reimagining
of Heritage English Elegance
Across 10,250 Sq Ft.

LAURA HAMMETT UNVEILS A LANDMARK YORKSHIRE COUNTRY ESTATE TRANSFORMATION

London-based luxury interior design studio Laura Hammett is proud to announce the completion of their latest full-scale project: the interior architectural design and furnishing of a 10,250 sq ft former Victorian country lodge, set within more than 1,000 acres of private parkland in the heart of rural Yorkshire. Reimagined as a warm, contemporary family home, the estate overlooks rolling grounds, ancient woodland, and a private lake with a boathouse- elements that deeply informed the interior story.

From the outset, Laura Hammett's design ethos centred on creating a seamless dialogue between interior and landscape. The result is a home where natural light, organic textures, and timeless detailing blend effortlessly with refined

modernity. The project features new furniture and lighting pieces from the Laura Hammett Living 'Modern Heritage' collection, designed by Laura herself.

THE CLIENTS & DESIGN BRIEF

Quote from Laura Hammett: *"The homeowners on this project are a couple with adult children and young grandchildren who visit often. They wanted the majority of the home to feel quite classic, with hints of contemporary. They loved the idea of taking influence from traditional design, done in a more 'modern' way, which is our signature as a design studio, so we had a deep understanding of this client brief. As they loved these design*

principals, the clients really allowed us creative free-reign. As part of this, we were able to develop new Laura Hammett Living furniture and lighting pieces, inspired by this project. Particular favorites include the Audelia chandelier, inspired by nature with its antique brass decorative leaves and branches. We also tailored our LHL designs for the different types of living areas required. For example, we developed more elevated versions of our Modern Heritage sofa designs (Lupton and Lawton) with more formal detailing like fringing and trims, but also took the designs in a more relaxed, paired-back direction for the casual TV room by adding skirting to the base.

They wanted the home to feel very light and bright throughout, even in the formal areas. The clients



wanted multiple different places to entertain, so the formal living and dining rooms are very elegant, and the TV snug and the large family kitchen/ dining/ TV spaces are more cosy. Our clients are very passionate cooks, so the extensive pantry was a big part of the brief and we integrated their rotisserie and meat ager into the joinery design. Being situated in beautiful, rural grounds, the clients are very outdoorsy and lovers of their 2 large dogs and country pursuits, so the boot room needed to be very functional and durable in its design and material choices.

In the private suites, they wanted the principal bedroom to be a serene retreat, with direction and focus on the large windows and their view to the woodlands outside. We also designed a vaulted ceiling to maximise the feeling of light, spaciousness and airiness. With the 'his' and 'hers' bathrooms and dressing rooms, we were really able to lean into the 'feminine' and 'masculine' with the different suites. Her bathroom features an architectural gem- a turret- so we wanted to maximise this unique feature with a bespoke window seat to frame the views.

This project was such a joy to work on and now sits proudly as a pinnacle in our design portfolio, but more importantly, is now the dream forever home for our very happy clients."

ENTRYWAY:

A Grand Arrival

The journey begins in the impressive double-height entryway, designed to deliver a grand sense of arrival. Vast ceiling heights, intricate heritage architectural detailing, and generous proportions offer a nod to the property's Victorian roots. A sweeping Portland Stone staircase with ornate bronze balustrades and twin bespoke oak-leaf pendants introduce a sculptural, nature-inspired aesthetic that sets the tone for the spaces beyond. The secondary entryway features the original stone fireplace and archway, restored back to their former glory and at the centre of the new design.

THE KITCHEN:

The Contemporary Country Heart

At the centre of the home lies its open-plan kitchen, dining and living space. A dramatic, light-drenched space defined by high ceilings with expansive skylights and glazing on all sides. This is the social heart of the estate, a multifunctional space conceived for cooking, gathering, relaxing, and entertaining.

The design maximises space, flow and connection between its three 'zones'. The kitchen area



features soft neutral tones, with polished Calacatta Borghini marble countertops, and bespoke cabinetry delivering a sense of contemporary calm. A trio of hanging glass pendants shine a soft glow over the space. Arches are a strong motif throughout, softening the geometry, while a porcelain tile floor mimicking the warmth of timber offers durability for a hard-working family home. A large casual dining table sits in the centre of the room, with an open-grained wood top and a sculptural stone base, adding an element of the natural and raw materiality to the design.

A conversational living room area is at the end of the space, facing the views out over the rolling hills and woodland. A TV is concealed behind elegant, antique-brass framed and fabric-clad sliding doors, allowing the joinery and styling to take centre stage when the screen is not in use. The furniture palette, in linen textures and light-reflecting finishes, continues the room's bright but cocooning atmosphere.

THE PANTRY:

A Modern Take on the Classic Country Larder

Hidden beyond the kitchen lies a beautifully appointed pantry- a luxurious reinterpretation of the traditional farmhouse larder. With its Carrara marble countertops,





chequered diamond flooring in Nero Marquina and Carrara marbles, pale oak cabinetry and bespoke cream and natural oak joinery, the space feels both grounded and elevated.

Open shelving styled with woven baskets and glass jars brings rustic authenticity, while state-of-the-art culinary equipment, including a professional rotisserie and meat ager, remains discreetly stored. This ensures the main kitchen remains serene and uncluttered, balancing innovation with countryside charm.

THE BOOT ROOM: Heritage Utility, Elevated

The estate's boot room balances functionality with understated luxury. Bespoke slate-blue joinery and polished Catania Quartz worktops bring depth, while soft neutrals, Portland Stone flooring and natural textures echo the surrounding landscape.

Hidden storage, bench seating, wicker baskets, and open display shelving allow the room to work gracefully behind the scenes. A generous central island provides a practical workspace, enhancing this space as both a utility hub and a beautiful expression of English country living.

THE FORMAL RECEPTION:

A Modern Interpretation of Heritage Elegance

The formal drawing room celebrates the spirit of traditional English heritage design, interpreted through a contemporary lens. This space also features an architectural gem- a turret- so we maximised this unique space by placing an easel with the clients wedding photobook always on display, a deeply personal touch. Anchored by two antique crystal chandeliers, the room is divided into zones for conversation, reading, games and intimate gatherings.

Bespoke swag-and-tail curtains and silk wallpaper introduce gentle classical drama, while the furniture marries heritage-inspired silhouettes with contemporary touches, such as performance fabrics. A Laura Hammett Living games table with four heritage armchairs acts as a conversational space for chess, reading or games. The soft, tonal palette allows the layering of intricate architectural mouldings, marble fireplace, and tactile textures to shine. The result is luxurious yet serene, a room of refined formality without sacrificing comfort.

THE FORMAL DINING ROOM:

A Botanical Immersion

A standout moment of the project is the formal dining room, enveloped in fully bespoke de Gournay chinoiserie wallpaper featuring a hand-painted branch and leaf motif. This exquisite mural harmonises with Laura Hammett Living's own Audelia antique brass pendant, a sculptural masterpiece inspired by beech leaves. Each element of the pendant is individually hand-crafted- over 40,000 hours of artisan skill- evoking the poetry of a living form suspended in air. The resulting dining experience feels like stepping into an English cottage garden- immersive, artistic, and deeply evocative.





HIS EN-SUITE

Defined by deep, refined materiality, the counterpart bathroom pairs Noir St-Laurent marble with lighter Porcini Emperador marble vanity, shower and accents for a sophisticated, high-contrast interplay of tone. An enclosed, partially glazed shower maintains openness while framing views of the grounds through the windows beyond. Bronze hardware, Art Deco wall lights and subtle hand-applied, polished plaster walls complete this masculine, luxurious setting.

THE MEDIA SNUG:

A Cocoon of Quiet Luxury

The media/TV snug offers an earthy, cocooning retreat. Layered neutrals, subtle green accents, burl walnut finishes, warm European oak joinery and tailored upholstery from Laura Hammett Living create a timeless, enveloping space perfect for relaxed evenings. Generous windows allow soft natural light to enhance the room's natural warmth. This space is highly layered and enveloping, pairing both a Linen wallpaper and suede joinery backing.

A fringed upholstered bench adds depth and comfort, while ambient lighting from the voluminous Laura Hammett Living heritage chandelier, wall lights and tactile hand-blown glass bedside lamps creates a warm, enveloping glow. This bedroom embodies Laura Hammett's signature approach: timeless, contemporary and beautifully crafted, a peaceful sanctuary within the Yorkshire Country Estate.

DUEL DRESSING ROOMS:

A Study in British Craftsmanship

The gentleman's dressing room features bespoke beechwood joinery, khaki leather-lined interiors, luxury linen wallcoverings and solid bronze hardware. The space embodies quiet British heritage sophistication with modern refinement. Defined by luxurious touches, ample storage and a beautiful vanity desk, 'her' counterpart dressing room is a feminine, soft and detailed space designed for glamour and retreat.

THE PRINCIPAL BEDROOM SUITE:

Bespoke Sanctuaries of Calm

The principal bedroom is designed as a serene retreat, wrapped in warm neutrals and soft textures to create an atmosphere of calm, understated luxury. Its focal point is the architectural headboard panel, framed with a refined antique brass trim and upholstered in a textured, tonal fabric. Layered over it, a plush upholstered headboard introduces a gentle, romantic silhouette, softening the room's clean lines and bringing an elegant contrast to the structured panelling.

HER EN-SUITE

A spa-like sanctuary entirely wrapped in striking Calacatta Oro marble, the principal en-suite features a monolithic aesthetic softened by pearlised lacquer joinery and integrated mirror lighting. Hand-applied Perlata polished plaster adds a luminous, moisture-resistant finish to the walls. A marble-clad bath sits beside a bespoke curved bench set within the turret of the property, which overlooks private woodland, creating a retreat of pure tranquillity and architectural uniqueness.

A Landmark Project of Contemporary British Luxury

The Yorkshire Country Estate is a defining example of Laura Hammett's signature approach: a seamless blend of heritage craftsmanship, refined contemporary living and deeply personal storytelling. Within this remarkable setting, the studio has created a home that feels expansive yet intimate; luxurious yet welcoming; contemporary yet rooted in English tradition.



POLTRONA FRAU AND LEICA THE MOST BEAUTIFUL FORM OF HOME CINEMA. PERFECTED.

The rapid evolution of audio-visual technology and the growing desire to enhance the home cinema experience have transformed modern living spaces. Today, the fusion of aesthetic design and technological innovation defines the art of contemporary home entertainment.

With the new Fidelio Multimedia Cabinet, Leica and Poltrona Frau unite their shared passion for excellence. The result is an extraordinary home cinema experience where Italian craftsmanship meets German engineering precision – an elegant synthesis of form, function, and

emotion. Designed specifically for the Leica Cine 1 Laser TV, the cabinet offers an effortless interaction between furniture and technology. When extended, the system automatically adjusts to the optimal viewing distance. The motorised 100-inch screen, seamlessly integrated into the cabinet's upper section, rises when the Cine 1 is switched on and retracts silently when turned off. When not in use, the piece retains its pure, sculptural elegance.

The cabinet's structure, made from birch plywood, solid ash, and MDF panels, is finished in a mocha-stained ash veneer. Drawer fronts and side panels are upholstered in Poltrona Frau's signature Cuoio Saddle Leather, available

with contrasting or tone-on-tone stitching. A discreet cable channel ensures seamless connectivity, while slender ash legs give the design a sense of balance and lightness.

At the heart of the system, the Leica Cine 1 sets new standards for cinematic excellence. With brilliant 4K image quality, Triple RGB laser technology, and Dolby Atmos® surround sound, it delivers an immersive viewing experience. Its ultra-short-throw lens allows for space-saving integration, while the refined aluminium housing reflects Leica's timeless design ethos.

Since 1912, Poltrona Frau has stood for Italian artistry and craftsmanship. Designed by Roberto Lazzeroni, the Fidelio collection brings sophisticated functionality to the living environment. Together, Poltrona Frau and Leica redefine the home cinema experience – a celebration of precision, beauty, and innovation that transforms every moment into a work of art.



Learn more at
leica-home-cinema.com



Leica Cine 1

THE ART OF HOME CINEMA

Timeless design, innovative technology and Leica precision optics all come together in the Leica Cine 1, an ultra-short throw laser-tv that turns any space into an authentic home cinema. Experience Leica quality scene after scene, right in your very own living room.



Find out more at leica-home-cinema.com

AUTHENTIC BY DESIGN: THE STORYTELLING CRAFT OF WOODBENDER



Niche Bespoke Interiors

At Woodbender, every piece begins with a story, shaped not only by design intent, but by the people, process, and material that bring it to life. Authenticity is not applied at the end, it is embedded from the start. It lives in the way timber is handled, in the decisions made by skilled hands, and in the relationship between making and meaning.

A Manufacturer, By Design

At its core, Woodbender is a manufacturer where process sits at the heart of everything we do, guiding an authentic approach to design. Steam bending shapes each piece from concept to completion, with design and production evolving together to create furniture that feels considered and grounded. Precision matters, as does the human touch behind every piece. Shaped by skilled hands, each reflects consistent process and natural variation in timber, resulting in unique character and a distinct presence within each piece.

The Hands Behind the Craft

Central to this way of working are the people behind the craft. Each craftsman brings experience, sensitivity, and judgement that shape the final outcome. Their role is not simply to follow a process, but to interpret it, responding to the material in real time. This human element ensures that every piece holds a quiet narrative of its making, one that cannot be replicated or rushed.

Introducing Scoop 33

This philosophy is brought into focus through the Scoop 33 Chair, a new design by Jordan Bailiff and realised in collaboration with Grant Longmore, Woodbender's Head of Technical. The chair emerges directly from the possibilities of steam bending, its form shaped through a process of continuous refinement. Thirty three individual bends were required to achieve its final expression, each one contributing to a structure that balances strength, comfort, and lightness.

Redefined Design Philosophy

Scoop 33 embodies a redefined design philosophy shaped through the close relationship between design and making. Conceived by Jordan and realised with the technical expertise of Grant, the piece reflects a shared commitment to clarity, restraint, and precision. Developed through ongoing refinement, the design balances form, comfort, and structure, resulting in a chair that feels both intuitive and enduring. Each curve is carefully resolved to support the body while expressing the inherent qualities and natural character of the timber.

Authenticity in Every Detail

Despite the control required in its making, no two Scoop 33 chairs are identical. The natural variation of the timber, combined with the role of the hand, gives each piece a distinct presence. Grain, tone, and subtle shifts in form ensure that every chair carries its own character. These differences may be quiet, but they connect the object to its origin, reinforcing the authenticity and integrity that define Woodbender's work.

Experience It at Clerkenwell

The Scoop 33 Chair will be presented at Clerkenwell Design Week 2026, offering an opportunity to experience this approach firsthand. Visitors are invited to engage not only with the piece, but with the story behind it, to understand how material, process, and people come together in every curve. It is an open invitation to connect with Woodbender as a brand, to explore the craft that underpins it, and to discover how authenticity is shaped through making.

Visit us at Details, Stand D4. 19-22 May 2026 | woodbender.com



SCOOP 33 CHAIR

*“Innovation is born where
tradition dares to bend”*

SPOTLIGHT ON LAHART CARPENTRY

THE RISE OF HOME STUDY FURNITURE

The home study, library and music room have been around for centuries and, of course the very wealthy, in times past, were the main owners of such rooms.

These days we can all add in a study space - larger or smaller - often inserted into the living room cupboards or a child's bedroom or - for those who have the room to do it - a room of requirement!

Such a room of requirement can be seen on the opposite page and it is all three of the above: with it's beautiful, inviting and classically styled library/music room - and home office space at the window.

These home studies are, these days, used by the student, the writer and the remote worker - and, let's face it - we have many of those!

So, beyond the practicality of a desk and shelving space, why not also make it beautiful and inviting? It is so much nicer to get things done in a space you want to be in!

Another fine example of this is this lovely and light living room nook created replete with the inclusion of a very pretty desk, chair and lighting, designed in to cater to future possible needs.

And then, on a more immediately practical level, here are two home



study spaces for the teen students whose, bedrooms they were placed in, while they got through their primaries and levels.

Every piece you see here was designed as a team activity between Lahart Carpentry and the customer, who, of course had the largest style-influence in each of these.

Lahart Carpentry is a medium sized fitted furniture outfit in West London, that has been operating since 1999. They specialize in built-in furniture, installing mainly in the West, South-West, North and North-West areas of London and some surrounding areas to these.

Aside from the home study furniture shown in this article, they install wardrobes, loft furniture, living room units, Built-in beds, children's bespoke bedrooms, under stairs areas etc.

You can find photos of many of these in their website portfolios:
<https://www.lahartcarpentry.co.uk/portfolio/>

They love working with you to bring your vision and style to life. They will be very happy get a call or email from you regarding the project you want professional help with, to get it done!

www.lahartcarpentry.co.uk





Handmade Bespoke Furniture in London



www.lahartcarpentry.co.uk

0208 588 0770 | 0208 566 3288 | 07847 081 072

72 Church Rd, London, W7 1LB

LUXURY FURNITURE, EXCLUSIVE BRITISH DESIGN

My Furniture have perfected the neutral trend this season. Their organic, curved silhouettes inspired by nature will add flow, movement and balance to any interior. Create a calm, cosy and relaxing atmosphere by embracing a neutral palette of ivories, chinks and taupes.



With an extensive knowledge of interiors and a forward-thinking approach, My Furniture are constantly creating fresh and original designs. An increasing number of design professionals are favouring this dependable and affordable furniture provider - including architects, interior designers and property developers.

The company was established in 2009, but early 2020 saw My Furniture substantially extend their warehouse and showroom, resulting in increased stock availability and further streamlining the ordering process for the customer. With nearly 13,000 Trustpilot reviews and a consistent 5-star rating, customers can shop with complete confidence.

Designing in-house in the UK enables this luxury interiors brand to do what they do best - offer unique luxury pieces at affordable prices. Equipped with an in-house upholstery team, it allows them the flexibility to provide bespoke fabric options to suit their customers' specific needs.

My Furniture regularly add new collections to their portfolio.

Whether your preference is hotel luxe or simple elegance, you will undoubtedly find the perfect piece that can be in your home in as little as a couple of days.

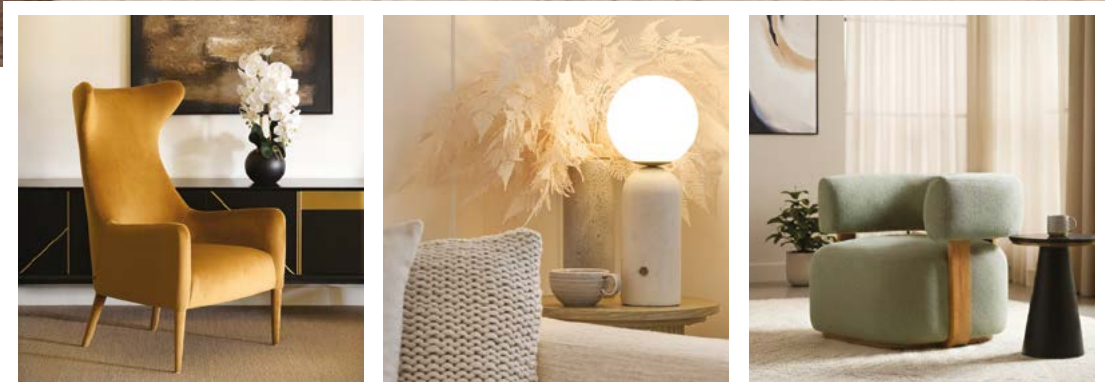
Also available from their showroom in Nottingham and online are a wide range of products, from bedroom and dining furniture to elegant lighting and accessories. Alternatively, all products can be

viewed via a video call facility with a member of the sales team.

My Furniture are passionate about providing excellent customer service and offering luxury items at affordable prices. Authentic, reliable and honest with FAST AND FREE DELIVERY TO UK MAINLAND. Delivery available throughout Europe.



Discover luxury furniture and a wealth of home décor inspiration, visit: [my-furniture.com](https://www.my-furniture.com) or call freephone **0800 092 1636** to discuss your next project.



my furniture

living · dining · bedroom · lighting · accessories

a trusted name for the public and trade since 2009

my-furniture.com

WALLSAUCE.COM IS PROUD TO UNVEIL A NEW COLLECTION OF MURALS FROM LORIS DRAGO!

Wallsauce.com is thrilled to introduce a captivating new mural collection by Italian artist Loris Drago, where abstract expression meets the beauty of the natural world.

Since 2013, Wallsauce has been transforming interiors across the globe with bespoke wall murals. This latest launch continues that journey, celebrating artistic collaboration while offering designs that bring personality, style and creativity into every space.

Born in Padua in 1987, Drago refined his artistic voice at the Brera Academy of Fine Arts in Milan, where he earned a Master's degree in Painting. Through collaborations with skilled artisans and prestigious commissions, he has developed a refined technical expertise, allowing him to realise ambitious large-scale and bespoke works with precision and depth.

Drago's work moves beyond decoration, transforming walls into immersive artworks. His collection explores abstract interpretations of nature, from expressive large-scale florals to layered jungle scenes, each piece rich in movement, colour and atmosphere. The result is a series of murals that feel both contemporary and timeless, bringing a sense of sophistication and artistic presence to interiors.

Blending painterly techniques with a deep appreciation for nature and culture, Drago creates compositions that are both striking and considered. His designs invite you to experience nature in a more expressive, elevated way, where bold forms and organic inspiration come together in harmony.



Now available as made-to-measure murals, each design can also be ordered as a sample, allowing customers to experience the richness of colour and quality of material before committing to a full installation.

Loris Drago's collection offers an effortless way to introduce statement artistry into the home, transforming everyday spaces into something truly exceptional. **Browse the full collection from Loris Drago now.**



www.wallsauce.com



SOFAS & STUFF

Choice, not compromise

Join The Upholstery, our trade membership,
serving the finest in interior design

www.sofasandstuff.com/trade

Visit one of our 26 showrooms | 0808 178 3211

V&A



A FAMILY HOME IN ZURICH BY K'ARTE DESIGN

Timeless design meets family living overlooking Lake Zurich.

BRIEF

For this striking duplex apartment in Kilchberg, overlooking Lake Zurich, the client's vision was clear: create a timeless, family-friendly home that feels warm and inviting while allowing standout design pieces to shine. With Zurich's colder climate, the design needed to balance sophistication with cosiness, using warm tones that echo the beauty of the surrounding landscape. With two children, the space also had to be highly practical, easy to maintain, and full of personality.

CHALLENGES

The project came with a strict deadline for completion in

February, meaning logistics had to be tightly managed. With Switzerland's complex customs and import processes, the team needed to ensure every item specified and approved could be delivered and installed seamlessly. To meet the timings, some existing interior elements were retained and reimaged within the new design.

OUTCOME

The result is a calm, contemporary family home that balances elegance with function. Defined by threads of retro revival, bold design statements, and subtle warmth, the apartment feels both luxurious and deeply personal - a place where style and family life coexist harmoniously.

K'Arte Design Director Katerina Tchevytchalova comments, "Designing this home was about

balancing beauty with real family life. Every space needed to feel elegant but also approachable, timeless yet playful, and able to adapt as the children grow. By weaving in bold design statements alongside personal touches - from heirloom pieces to artworks with meaning - we were able to create a home that truly reflects the family's story, while remaining warm, functional, and enduring."

ROOM-BY-ROOM BREAKDOWN

Entrance Hall

The duplex layout meant the staircase was the first impression - so it became a centrepiece. A cascading cluster of alabaster and bronze pendants by Tigermoth creates soft, inviting light,



complemented by a ceramic wall sculpture by Elizabeth Prince that echoes falling flowers. A vintage oversized Bally poster, sourced in New York, adds a nod to Swiss heritage and the clients' passions.

Living Room

The living area pairs practicality with bold design. A bespoke Ferreira de Sá rug anchors the space, while Cassina's Patricia Urquiola sofa in leather ensures durability with young children. A vibrant Utrecht armchair adds playful colour, balanced by tactile green marble and bronze Minotti coffee tables. Sculptural lighting from Arteriors and Bover enhances the sense of height and atmosphere, with curtain tracks ceiling-mounted to accentuate the space.





Dining Area

The dining table, handmade by the client's brother as a wedding gift, provided the emotional anchor for this space. Paired with wipe-clean faux leather chairs by Calligaris and a playful Giopato & Coombes bubble chandelier, the dining zone

mixes sentiment with fun. An oversized vintage Taittinger poster and a walnut-accented Wimmer drinks cabinet bring in personality, while a piano nook is adorned with an oyster artwork - an inside joke that reflects the client's character.

Kitchen

Rather than a full remodel, the kitchen was elevated with new Dekton worktops and splashbacks - a durable and visually striking upgrade that blends seamlessly with the wider scheme.



Master Bedroom

The master suite combines the clients' own bed and Lee Broom pendants with Cattelan Italia furniture and Arte wallpaper. The result is restful yet refined, bringing together cherished pieces with elegant new additions.

Guest Bedroom

A small double bed with a custom UK-made headboard and a stylish desk doubles as a workspace - designed to look elegant enough to serve as a backdrop for video calls.



Children's Spaces

A shared bedroom for the clients' son and daughter strikes a playful balance with mint green and yellow tones, Dutch house-shaped wardrobes, and a bed with a slide. The adjoining playroom is designed for creativity and activity, featuring a climbing wall, modular sofa, and craft table.

Website: kartedesign.com | Instagram: [@k_artedesign](https://www.instagram.com/k_artedesign)

Photography: Nick Smith | nsphotography.co.uk

DESIGNING FOR A NEW ERA OF STAY

Two pioneering brands reveal how design and specification are responding to a new generation of long-stay guest.

Something has quietly shifted in the way people stay. The traditional hotel room is no longer the default – serviced apartments, aparthotels, branded residences, and members’ clubs are drawing guests who want longer, slower, more autonomous experiences: spaces that feel closer to home. This shift sits at the heart of ‘Designing for a New Era of Stay’, a panel discussion to be held in Clerkenwell this May.

With 11 properties and over 45 years of delivering tailored luxury, Cheval Collection understands this landscape well. Senior Project & Design Manager Sophie Borel puts the design challenge clearly.

“At Cheval, our focus is on creating environments that feel intuitive, comfortable, and genuinely connected to the way our guests live. Our apartments offer a sense of ease and belonging, while delivering an experience guests will remember. This is particularly important for families and corporate guests who value privacy and flexibility - in spaces ranging from generously proportioned studios through to expansive four-bedroom penthouses.”

A similar approach can be seen at Mason & Fifth. Co-founder Ben Prevezer’s newest property of 332 design-led studios in Westbourne Park with wellness facilities, cultural programming, and a music studio, is built around the solo traveller seeking both comfort and connection.



“We pride ourselves on the flexible nature of our offering, with studios equally suited to short business trips as longer-term corporate relocation. There’s access to on-site amenities, a carefully curated weekly cultural programme and in-house wellness facilities - particularly valuable for solo guests seeking a sense of community from their stay.”

However different their customers, both brands share one clear priority; sleep underpins the entire guest experience. Both have placed their trust in Hypnos, a British handcrafted bed maker and Royal Warrant holder, to deliver on that promise.

“Ensuring our guests enjoy a truly restful night’s sleep is a top priority. We place significant emphasis on our bedrooms - from acoustic performance, which is particularly important for corporate travellers, to the quality of our Hypnos mattresses. This commitment to comfort is why we have chosen Hypnos across our UK properties,” continues Sophie.

“A good night’s sleep is a critical part of our guests’ wellbeing, so they wake ready to do their best work”, adds Ben. *“We assure this through Hypnos mattresses. Aligned with our values, each is handcrafted in the UK using responsibly sourced materials and designed for exceptional comfort - something not lost on us or our guests and residents.”*

Handcrafted in Buckinghamshire and EcoVadis Silver certified, Hypnos brings together craft, conscience, and quiet luxury to a sector increasingly demanding all three.

Join Hypnos for the British Collective Panel Talk on ‘Designing a New Era of Stay’, at 4.00 pm, 19th May at Ulster Carpets Studio, Unit 1 Compton Courtyard, 40 Compton St, London EC1V 0BD.

Alys Bryan from Commercial interiors UK will host the panel, with Cheval’s Sophie Borel joined by Kalindi Juneja, CEO of PoB Hotels, Joanna Knight, Managing Director of Joanna Knight Interiors, and Arun Rana, Design Director at Accor Group.

To reserve your seat at the panel talk visit
www.tickettailor.com/events/britishinteriorscollective



BY APPOINTMENT TO
HIS MAJESTY THE KING
MANUFACTURERS OF BEDS,
MATTRESSES AND UPHOLSTERY
HYPNOS LIMITED ENGLAND

HYPNOS®

THE MOST COMFORTABLE BEDS IN THE WORLD



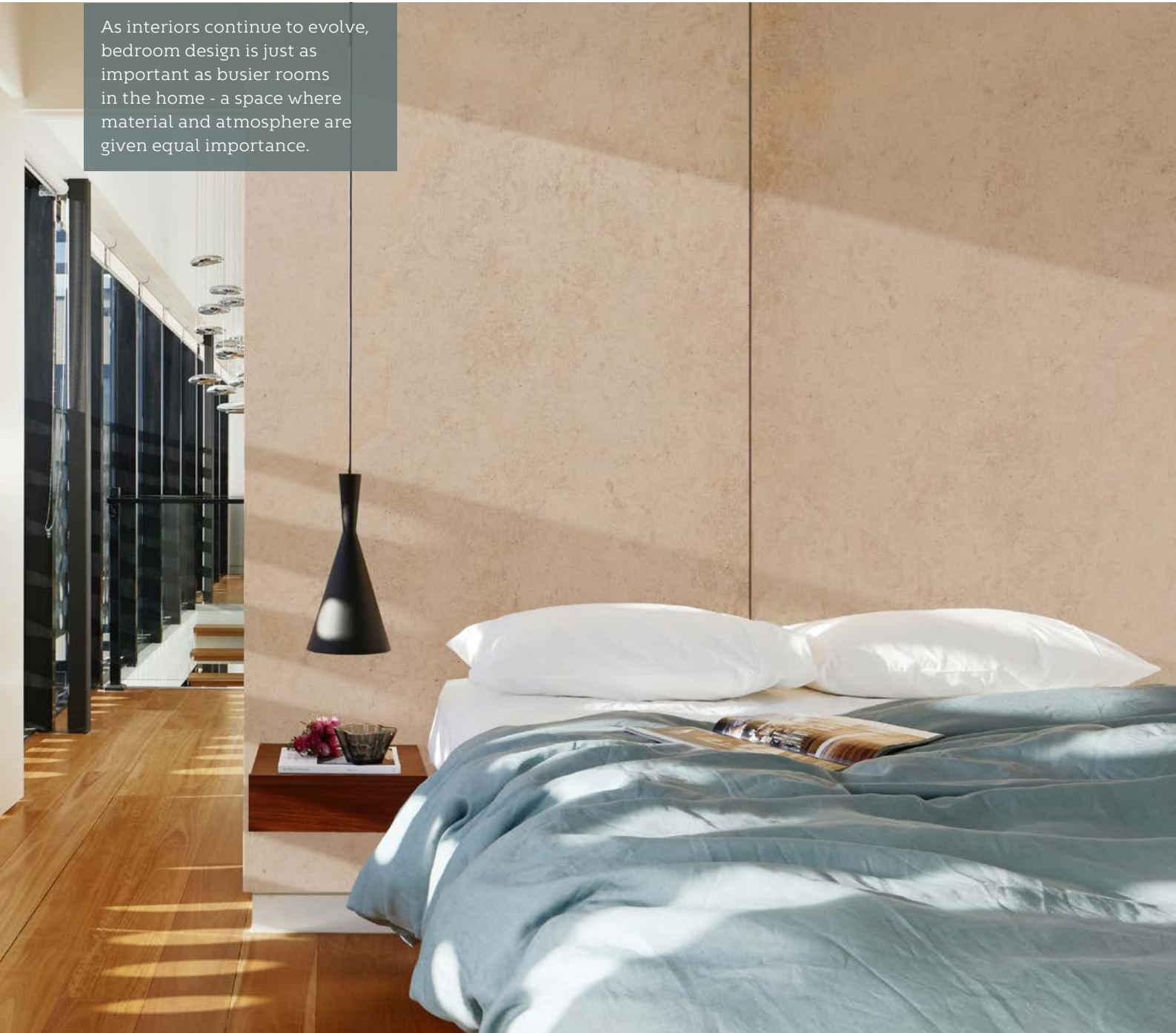
HOSPITALITY
SLEEP
SOLUTIONS

Handmade. Sustainable. Recyclable.

+44 (0) 1332 497111 | info@hypnoscontractbeds.com | hypnoscontractbeds.com |  @hotelhypnos

THE ROLE OF STONE **IN BEDROOMS**

As interiors continue to evolve, bedroom design is just as important as busier rooms in the home - a space where material and atmosphere are given equal importance.



Natural stone that is often reserved for kitchens and bathrooms, is now finding its place within more intimate settings, bringing with it a sense of permanence, texture and character. Whether used for a sculptural bedside table, a statement headboard or a fireplace surround, stone introduces a tactile quality that shifts throughout the day, responding gently to changing light.

THE TIMELESS APPEAL OF MARBLE

Marble introduces a different energy; one that is more defined yet still at home within a bedroom setting. Stones such as Rose Aurora Machhia Vechhia with rich veining, or softer options like Verdi Antigua, introduce movement and contrast, creating moments of interest without disrupting the overall calmness of a space.

Used as a headboard, a fireplace or a side table, marble acts as a natural focal point, grounding the room with a sense of structure and a touch of grandeur. Finer, more delicate marbles offer a softer expression,



while bolder varieties introduce a stronger visual rhythm. In both cases, marble adds a sense of quiet sophistication that feels enduring rather than decorative.

SUBTLE TEXTURE IN TRAVERTINE

With its softly pitted surface and warm, earthy tones, Travertine offers a more organic approach. Materials such as Travertine Silver or Classic Travertine bring a gentle variation in tone, with texture that catches the light in a way that feels diffused and soft.

Often used across larger surfaces, travertine works particularly well in bedrooms that favour a more pared-back aesthetic. It sits comfortably alongside other natural materials, allowing the space to feel cohesive and calm, with texture doing the work rather than colour or contrast.

WARMTH THROUGH LIMESTONE

Soft, chalky and inherently understated, limestone lends itself naturally to the bedroom. Varieties such as Portuguese Moleanos, with its gentle tonal variation and muted



palette, create a sense of ease, offering warmth without drawing too much attention to themselves.

Underfoot, or used across walls and built-in elements, a honed limestone finish feels smooth and quietly tactile. Paired with natural materials, such as timber, linen and wool, it helps shape spaces that feel relaxed and liveable, with an effortless sense of comfort.

NATURAL STRENGTH IN QUARTZITE

Quartzite offers a balance of durability and visual interest, making it a practical yet refined choice for bedroom interiors. Often characterised by soft veining and subtle movement, stones such as Bali Satin or Platinum Macaubus bring a lighter, more tonal quality that works well in calm, neutral schemes.

Its density and resilience make it particularly suited to surfaces that see regular use, such as bedside tables, dressers or window surrounds, where a harder-wearing material is beneficial. At the same time, its natural

patterning introduces just enough variation to add interest without overwhelming the space, allowing it to sit comfortably alongside softer materials and finishes.

BEYOND THE BED

Larger applications such as wall paneling, flooring or architectural details, including window surrounds and dressers, allow for a more immersive approach, where material becomes an integral part of the overall scheme rather than a decorative addition.

Stone is finding its way into the bedroom in a more relaxed and intuitive way. From the warmth of limestone to the character of marble and the softness of travertine, each material adds something different, helping to shape spaces that feel calm, balanced, and easy to live with.

“Stone works particularly well in bedrooms because it introduces contrast in a very controlled way. You can use it to define a headboard or frame a space without needing additional decoration. It brings focus to a room whilst still maintaining a calm and understated feel.” Oli Webb, Director of Cullifords





THE BEAUTY OF PARK LANE FIREPLACES

Crafted from genuine Bath Stone, each Park Lane Fireplace from Stoneworld stands as a timeless centrepiece, where warmth, craftsmanship, and design come together in perfect balance.

A fireplace has long been the heart of a home. It draws people in, anchors the room, and brings an undeniable sense of permanence. When executed in natural stone, that feeling is amplified, something about the texture, tone, and depth of the material speaks of heritage and craftsmanship. The Park Lane Fireplaces collection from Stoneworld captures exactly that: elegance carved from the earth, refined for modern living.

Each surround is precision-sculpted from genuine Bath Stone, quarried exclusively from Stoneworld's own Park Lane Mine in Wiltshire. This fine-grained British limestone is prized for its smooth consistency, warm hues, and remarkable durability. It's a material with

history, used in the country's most distinguished architecture, and yet its soft, neutral tones make it equally at home in contemporary settings. The result is a fireplace that feels considered, never imposed; a natural fit within both period properties and clean-lined modern spaces.

Every design within the Park Lane Collection has been created to express character through form. From the confident geometry of the Lacock and Combe models to the softer curves of the Methuen and Corsham, each piece brings its own personality to the space.

But a statement fireplace isn't just about how it looks, it's about how it feels. The natural thermal properties of Bath Stone make it ideal for this purpose: durable, heat-resistant, and built to withstand both the intensity of the fire and the rhythm of everyday

use. Each hearth and surround is crafted not only to be admired but to last, ageing gracefully as part of the home's story.

Stoneworld's approach is collaborative and bespoke. The team works closely with you to ensure that each fireplace is perfectly proportioned and fits your home. From initial design sketches and stone selection to final fitting, every stage is handled with care and precision. Whether you're restoring a Georgian townhouse or shaping a modern interior, a made-to-measure Park Lane fireplace offers a focal point that feels integrated, not added.

The collection's versatility allows you to create something deeply personal, a fireplace that reflects both the architecture of the building and the atmosphere of the home. It's this ability to balance craft with context that defines the Park Lane Fireplaces range: timeless, functional, and distinctly British.

Prices for standard models start from £1,200 + VAT, with bespoke sizing and matching hearths available to order. Every piece is a statement in stone, beautiful, enduring, and unmistakably crafted by hand.

When it comes to making a house feel like home, there are few things more symbolic than a well-made fireplace. With Park Lane Bath Stone, that statement becomes permanent.

And if you'd like to explore more of what we do, Stoneworld offers a full range of premium natural stone products for both indoor and outdoor spaces, including PAVING | WALLING | POOL COPINGS | FIREPLACES | STAIRCASES | FLOORING | TILES. We look forward to speaking to you.

www.stoneworld.co.uk

PAVING | WALLING | POOL COPINGS | FIREPLACES | STAIRCASES | FLOORING | TILES

STONeworld

EXPERTS IN NATURAL STONE

WHERE STONE MEETS DESIGN

The Finest Natural Stone

From elegant patios to bespoke pool surrounds, Stoneworld brings expert craftsmanship and premium materials together to elevate every outdoor space. Explore what's possible with stone, reimagined.

Tel: 01844 279274

sales@stoneworld.co.uk

stoneworld.co.uk

Views Farm, Windmill HI, Great Milton OX44 7NW

INSIDE A NORTH LONDON PERIOD HOME, **QUIETLY RECALIBRATED BY TXTURED**



At the heart of the living room is a stunning newly designed fireplace, drawing the eye with the colour and texture of the abstract artwork above.

Tucked into a leafy North London street, this period house had all the architectural charm of a beautiful home, but years of piecemeal changes had left it feeling visually and emotionally fragmented.

When the owners approached TXTURED founder Simon Mayhew, they were not seeking a dramatic overhaul. Instead, the brief was to bring calm and a sense of cohesion, to quietly recalibrate the home so its original features and contemporary layers could finally speak the same language.

REFINEMENT OVER REINVENTION

The project involved a full interior reworking of the existing property, focusing not on structural changes, but on spatial flow, material continuity and bespoke detailing.

A colour palette of layered neutrals, soft blush tones and warm browns emerged organically as the project progressed.



A SEAMLESS TRANSITION

To welcome visitors and immediately set the tone, Simon chose a soft chequerboard floor for the hallway. This then transitions seamlessly into the timber flooring, textured walls and refined detailing of the main living room beyond. Designed as a moment of arrival, this space features a stunning focal point in its newly created fireplace, which is anchored by the colour and texture of a large abstract artwork above.

Sculptural seating and furniture with gentle curves soften the symmetry of the period architecture, while materials including timber, stone and plaster were chosen equally for their tactility and looks. In addition, a discreetly integrated bar is woven into the joinery, adding a layer of function and pleasure without interrupting the visual calm, a recurring theme throughout the home.

Therefore, rather than imposing a new identity, Simon’s approach was one of restraint. *“This project was about refinement rather than reinvention,”* he explains. *“We wanted the house to feel considered and enduring, somewhere that supports daily life while still feeling special.”*

The design began not with individual rooms, but with atmosphere. TEXTURED focused on how the home feels as you move through it, the rhythm of spaces and the way light shifts throughout the day. Flooring became the unifying thread, uniting rooms that had once felt disconnected and restoring a sense of flow.

The colour palette emerged organically. An alpine-inspired rug, a nod to the client’s love of skiing, became an unexpected reference point, informing Simon’s scheme of layered neutrals, warm browns, muted ochres and soft blush tones. Walls are finished in chalky hues that quietly respond to changing light, creating warmth and depth without heaviness.



A HOME THAT FINALLY FEELS COMPLETE

Upstairs, the bedrooms continue the story, with layered linens, muted palettes and bespoke upholstered headboards creating spaces that feel restorative and



deeply personal. Bathrooms are treated with the same level of thoughtfulness, combining natural stone, clean-lined cabinetry and gentle lighting to create spa like-rooms that are timeless rather than led by trends.

Bespoke elements run throughout the project, from custom bathroom stonework to a marble and glass pendant that drops softly through

the stairwell, bringing elegance to a space often overlooked. And when the client returned after time away, the response was immediate - that the house finally felt complete.

"This home is a clear expression of our approach at TXTURED," says Simon. "It is confident enough to be understated, thoughtful enough to endure. There are no unnecessary gestures, just careful decisions, made consistently and in service of how the space feels to live in."

Contact: **0161 399 0037** or **txtured.studio**



NEW RAVENNA.

THE WORLD'S MOST EXQUISITE COLLECTION OF
CUSTOM STONE AND GLASS MOSAICS

DESIGNED AND MADE TO ORDER IN AMERICA

@NEWRAVENNA | NEWRAVENNA.COM

REFINED LIVING: A LUXURY BESPOKE JOINERY JOURNEY

Chelsea Townhouse project by Lanserring in collaboration with interior designer Portia Fox.

Lanserring, the design and production-led studio renowned for its uncompromising approach to bespoke kitchens and architectural

joinery, introduces The Chelsea Project, an immersive articulation of its end-to-end process, where craftsmanship, precision, and personalisation converge.

Rooted in a century-old Austrian heritage of master craftsmanship, Lanserring operates at the intersection of tradition and innovation, delivering highly tailored interiors for some of the world's most discerning private clients. With studios in London, New York, and Vienna, the company brings together design, engineering, and manufacture under one unified vision – what it defines as its philosophy of Unity of Craft.

This latest project narrative offers a rare insight into the meticulous journey behind each Lanserring commission from initial concept through to final installation revealing a process that is as considered as the finished spaces themselves.

Every project begins with a dialogue. Clients are invited into an immersive design experience where their lifestyles, routines, and aspirations inform every decision. From early sketches and moodboards to advanced technical drawings and full-scale visualisations, Lanserring's in-house teams work in close collaboration to refine a vision that is both deeply personal and architecturally coherent.

At the heart of this journey lies Lanserring's Austrian atelier, where all joinery is handcrafted by master artisans. Here, traditional techniques meet precision engineering, ensuring each component is produced with exacting standards of quality, consistency, and longevity. Each piece is meticulously crafted,





dry-fitted, and refined before leaving the workshop guaranteeing seamless installation and flawless execution on site.

Beyond craftsmanship, the project underscores Lanserring's commitment to a fully integrated service. Design, production, and project management operate as one cohesive system, enabling clarity, efficiency, and control at every stage. This holistic approach allows the studio to deliver complex, large-scale residential projects with the same attention to detail as a singular bespoke piece.

Function remains intrinsic to every design. Intelligent spatial planning, concealed innovation, and purposeful material selection ensure that each environment not only embodies aesthetic excellence but enhances the way it is lived in balancing beauty with performance.

The journey culminates in installation, where every detail is resolved with precision and care. Yet for Lanserring, completion is not the end point. Ongoing aftercare reflects the brand's enduring relationship with its clients, ensuring each space continues to evolve and mature over time.

The Chelsea Project ultimately captures more than a process it reflects a philosophy. One where craftsmanship is human, design is collaborative, and luxury is defined not by excess, but by intention, integrity, and permanence.

As Lanserring continues to shape some of the most refined residential interiors globally, this project stands as a testament to its belief that the most meaningful spaces are those crafted around the lives they serve.



B Sir William



Bespoke & antique billiards. Chosen by design.



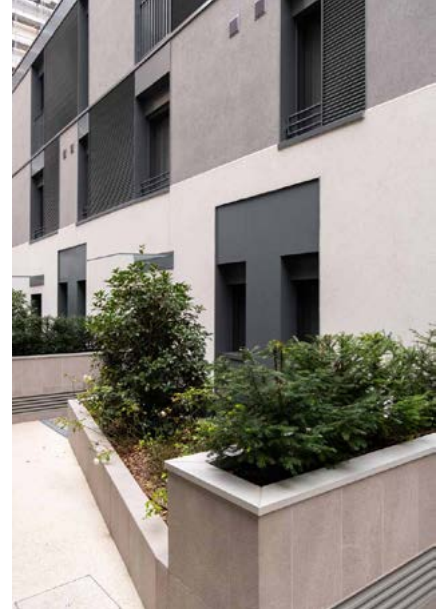
Bentley Billiards



www.billiards.co.uk | +44 (0) 1264 731 210



PRIVATE APARTMENT URBAN VILLA LOCATED WITHIN A NEWLY BUILT HIGH-END RESIDENTIAL COMPLEX



Located in a newly built residential building in the Washington district of Milan, the apartment unfolds over three levels and is designed for a family of five.

The project naturally interprets the typically Milanese dialogue between history and innovation. A neighborhood characterized by historic buildings and a strong presence of green spaces becomes the ideal context for a contemporary urban villa project that embraces modern design while maintaining a deep sense of warmth and balance.

The living area opens into a spacious double-height living room that enhances both natural light and the perception of space. The interiors are designed to accommodate everyday family life as well as moments of social gathering. A large sofa becomes the focal point of the room—an invitation to conviviality, relaxation, and lingering.

The dining area is organized around a large table with clean lines, framed by dark volumes and suspended lighting that emphasize its graphic character. The decorated wall adds depth and identity, defining an elegant and convivial space designed for everyday sharing.

Behind a sliding door lies a compact and efficient operational kitchen, organized in an L-shaped layout to concentrate all functions within a practical workspace. Matte black volumes interact with a light marble-effect countertop, while a wooden snack counter introduces a warm and informal touch. The result is a technical yet refined environment, perfectly balanced between functionality and discretion.

The living area extends naturally outdoors, creating continuity between interior and exterior spaces. Large openings connect the living room with a sheltered urban patio, furnished as a true outdoor room. The pergola filters the light and defines the convivial area,

while perimeter greenery ensures privacy and tranquility, isolating the space from the surrounding urban context. It becomes a measured and refined extension of the living area, designed to enjoy outdoor living throughout the seasons as an integral part of the home.

The staircase on the ground floor becomes a central architectural element within the living space—a light and contemporary gesture that crosses the room without weighing it down. Cantilevered steps and a transparent glass balustrade emphasize the double height and amplify natural light, creating a continuous dialogue between the different levels of the house. More than a simple vertical connection, the staircase becomes a design statement that merges functionality and aesthetics, contributing to the airy and sophisticated atmosphere of the home.

The color palette is delicate and refined. Neutral tones—ivory, sand, and warm greys—interact with the warmth of natural wood parquet



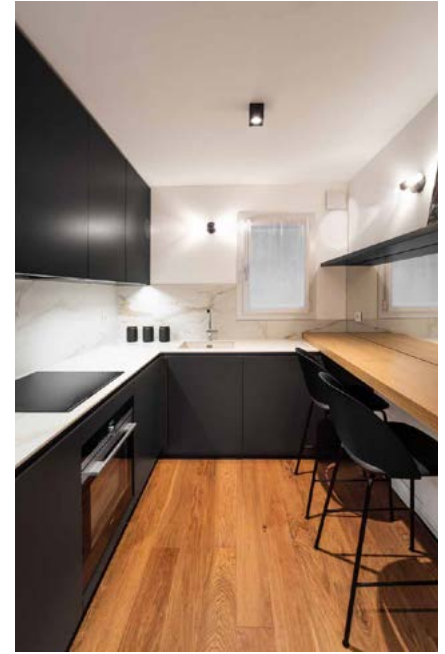
flooring. Dark volumes introduce depth and character, while subtle accents of color, carefully applied in decorative elements and textiles, animate the space without overwhelming it.

Material choices express a luminous and essential elegance: light surfaces and graphic details are paired with fluted-effect wallpapers in the bedrooms and marble-effect finishes in the bathrooms. Suspended furnishings and clean lines complete functional yet refined environments, conceived as spaces for everyday well-being—timeless, understated, and elegant.

The children's bedrooms share the same design language, interpreted differently according to the needs and personalities of their occupants. One room is conceived as a more essential and functional space, characterized by a sober and orderly atmosphere with neutral tones and practical materials. The other bedrooms maintain the same formal clarity while introducing a softer and more intimate dimension: enveloping fabrics, light palettes, and discreet decorative details accompany both study and rest areas. Bright, balanced, and versatile environments designed to evolve over time alongside their inhabitants.



Lighting is conceived as an integral part of the project—discreet yet highly functional. Targeted fixtures and integrated systems highlight architectural volumes and support the various functions of the home, while the large suspended light in the living room becomes a scenic feature that emphasizes the verticality of the space and acts as an iconic element of the project. The lighting is carefully calibrated, never intrusive, and designed to



create welcoming atmospheres that can shift throughout the day.

The project deeply reflects the identity of the homeowners, translating their tastes, habits, and aspirations into measured and coherent design choices. Each space emerges from a thoughtful dialogue between everyday needs and aesthetic sensitivity, giving shape to a home that feels authentic and personal.





The result is an apartment that expresses a contemporary Milanese spirit: elegant yet never ostentatious, respectful of the urban context, rational in its solutions, and attentive to atmosphere. A space designed to be truly lived in, where architecture supports everyday life with discretion, comfort, and refined lightness.

PROJECT CREDITS

ARCHITECTURE: Studio LMA - Luigi Marchetti Architettura

CONSTRUCTION & SYSTEMS: Impresa Costruzioni Grassi & Crespi S.r.l.

IMAGES: Maurizio Morra for Studio Marco Piva

SHOWROOMS: 2B Arredamenti, Abbattista, Montrasio Home Solutions, Stylmec, Vertemati

SUPPLIERS: Art Nova, Bentel, Besana, Bontempi, BTicino, Caccaro, Cerasa, Dierre, Dunavox, Elli, Fornasetti, Franke, Geberit, Geda, Ideal Standard, LIP, Luceplan, Lucitalia, Marazzi, Neff, Pedrali, Pimar, Pratic, Rimadesio, Siemens, Sovet, Turati T4, Valdesign Cucine, Vescom, Woodco, Zehnder, Zichichi

www.studiomarcopiva.com



JENSEN

BESPOKE



Bespoke Cabinetry, Crafted for Your Vision

We collaborate with London's leading designers to create refined, fully bespoke fitted furniture—precisely tailored to elevate every space.

Working in premium materials and finishes, we combine precise craftsmanship with a collaborative approach—ensuring every detail, proportion, and finish aligns with your design intent.

www.jensenbespoke.com

Designed with you. Built without compromise.

ELEVATE A KITCHEN WITH THE RAW BEAUTY OF ELICA



NikolaTesla One HP Raw

Today, discerning homeowners do not want just utility, they want a blend of aesthetics and performance, a space that reflects their individual style while delivering unparalleled efficiency.



NikolaTesla Switch Glow Raw

Gloss black finishes have been a mainstay of kitchen designers for 20 years but they are beginning to date and have drawbacks in everyday use as they show every mark and scratch easily. So, enter Elica's groundbreaking matt black RAW finish for its NikolaTesla venting hobs PRIMIS, and RATIO CONNEX induction hobs and RIFT and ASCENT hoods. These are appliances that have been designed to integrate flawlessly into contemporary kitchens with their soothing aesthetic and to be easy to maintain.

The RAW collection is all about understated elegance, embracing designs that champion tactile surfaces. They help create kitchens that are authentic and distinctive. Quite simply, the matt black finish enhances the Elica design in every cooking experience, even when you are not cooking.

RAW finish is available on a wide range of Elica's NikolaTesla venting hobs including the highly competitive ALPHA, FIT which comes in 3 sizes, SWITCH GLOW with clear white controls, SWITCH LUX with 4 high power Auto-cook zones and UNPLUGGED with its easy-to-use analogue knobs.

Most kitchens are now designed with induction hobs and Elica offers both its high-end wireless connected RATIO CONNEX hobs and its simple to use PRIMIS hobs in 60cm and 80cm sizes with RAW finish.

Of course, if you have a matt black hob you need a matching hood and Elica have many black built-in hoods available in all sizes. Check them all out on Elica's website, especially LANE, BOXIN and FOLD that offer the best design and performance on the market.



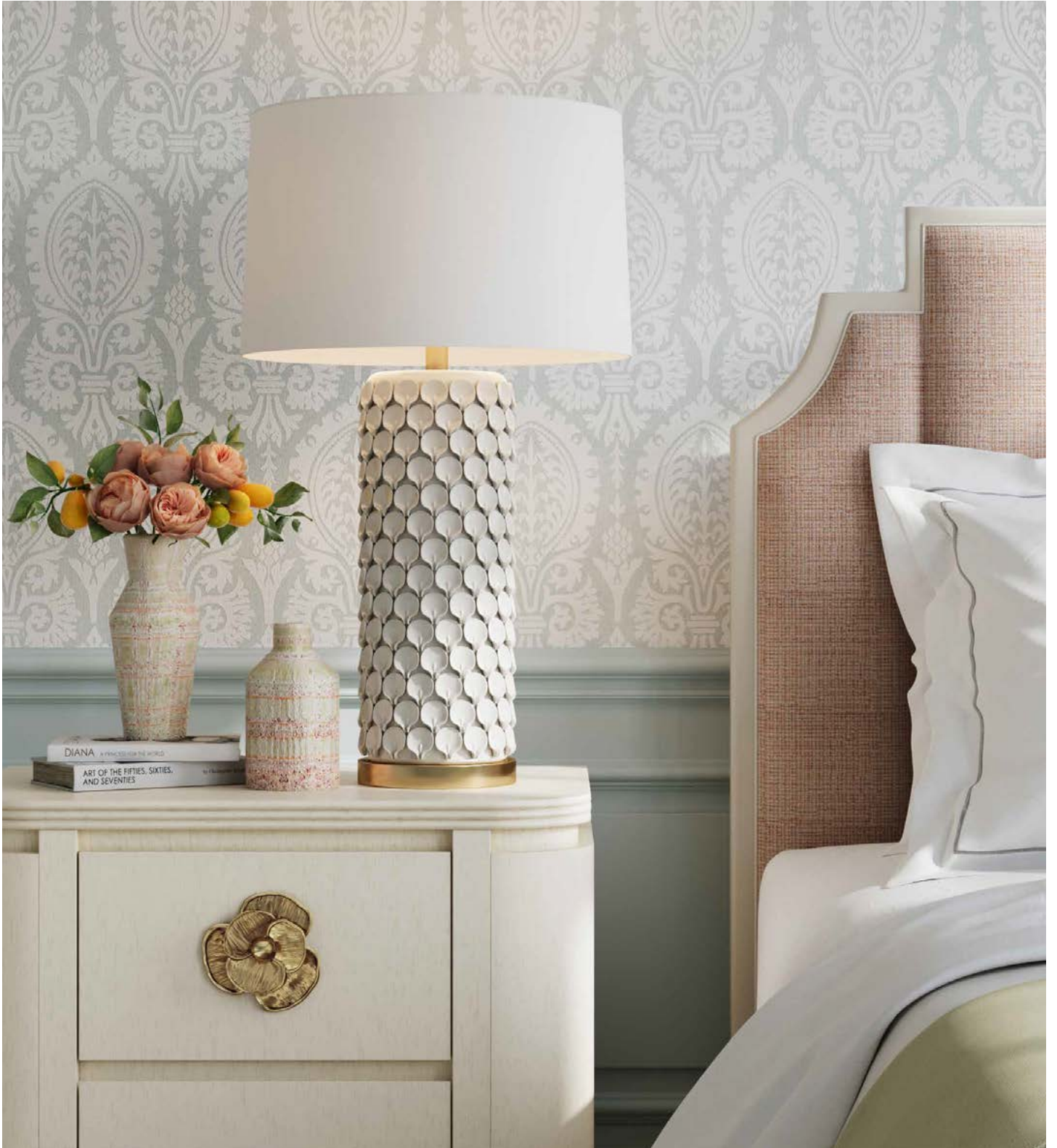
Boxin

Angled, wall-mounted hoods are still a big choice so Elica have recently launched the ASCENT and RIFT in matt black glass finish to perfectly complement their RAW finish hobs.

The Elica RAW collection - NikolaTesla, Primis, and Ratio Connex - is not just about equipping a kitchen; it's about enriching a home. They blend cutting-edge technology with a design aesthetic that is both timeless and deeply contemporary. Installing Elica's RAW collection is more than an upgrade; it's an investment in a kitchen that not only performs brilliantly but also inspires and delights every single day.

CREATIVE LUXURY LIGHTING FROM

CURREY
& COMPANY



CDW CLERKENWELL DESIGN WEEK
19-21 MAY 2026

Visit
Quintiesse/Elstead
STAND L22

QN
QUINTIESSE®

DOWNLOAD THE QUINTIESSE CATALOGUES
enquiries@quintiesse.com | quintiesse.com

Quintiesse is part of the Elstead Lighting Group



Scan for PDF Catalogue

CHRISTOPHER HYDE DEFINING THE LANGUAGE OF LUXURY LIGHTING

London-based luxury brand, Christopher Hyde Lighting, has spent over three decades shaping the language of refined lighting.

Celebrated for its timeless designs, the classic collection spans from grand, opulent chandeliers to exquisitely detailed table lamps, each piece distinguished by intricate craftsmanship and rich, hand-applied patinas.

Over the years, the brand has evolved to introduce a contemporary collection of distinctive designs, where intriguing textures, sculptural forms, and carefully considered materials come together in a series of striking statement pieces.

One of the brand's most cherished heritage designs, the Carlton stands as a celebration of timeless grandeur. This expansive chandelier collection is adorned with cascading crystal droplets and defined by exquisite detailing across its finely crafted brass frame. Available in sizes ranging from an elegant five-light to a spectacular twenty-four-light centrepiece, the Carlton offers a statement of refined opulence for every setting.

The Empire table lamp is part of a distinguished selection of designs featuring exquisitely hand-painted metal shades, elevating each piece to a functional work of art. Beyond its rich finish, the lamp is defined by intricate lost-wax detailing across the base and arms, complemented



by twin candle lights that lend a soft, atmospheric glow.

Among the brand's latest contemporary additions, the Twist pendant stands out as a striking study in form and craftsmanship. Hand-forged steel ribbons coil elegantly around a horizontal LED bar, finished in a warm, modern brass. As light plays across the sculptural twists, it creates a captivating glow that draws the eye and celebrates the intricacy of its making.

Modest in scale yet striking in its presence, the Phoenix wall light reveals its full character once illuminated. Finished in a rich antique bronze, the frame is encased in faceted rectangular copper crystals, which catch and diffuse the light with a warm, radiant glow. An elegant way to introduce a touch of modern glamour to any interior.



For further information or to discuss bespoke lighting requirements, contact sales@christopherhyde.com or call **020 7351 0863**.

Private appointments can also be arranged at The Vault in Clerkenwell, offering an opportunity to experience the collections first-hand.

CHRISTOPHER HYDE

LIGHTING



JOIN US IN OUR
SHOWROOM AT
THE VAULT,
CLERKENWELL, EC1M 4BF

CDW

CLERKENWELL
DESIGN WEEK
19-21 MAY 2026



INDUSTRY
PARTNER

LONDON | DUBAI

+44 (0)20 7351 0863 | sales@christopherhyde.com | [@](#) [in](#) [▶](#)

Discover the complete collections at christopherhyde.com





TERRE, BY WOW DESIGN: CERAMICS SHAPED FROM MATTER

A collection that brings the logic of geological processes into architecture, where texture, color, and material combine to create surfaces with depth.

WOW Design's ceramics are shaped from matter. Terre is born from this premise, offering a material-driven interpretation of ceramic cladding. Inspired by the formation of geological strata, the collection develops through a layering process

in which each piece introduces subtle variation, creating surfaces defined by accumulation, blending, and transformation—almost like sedimentation over time.

In Terre, ceramics connect to the earth and to a sense of rootedness tied to place. Its surfaces evoke the ground as origin and material as something close and familiar, reconnecting with the material roots of architecture and a sense of permanence. The surface is no longer understood as a finish,

but as a constructed landscape, where matter, color, and texture are arranged according to a natural logic.

The character of the collection is defined by an essential duality. On one hand, clay-based surfaces with a matte finish and slightly irregular tactility evoke ceramic tradition. On the other, glazed finishes introduce shine and reflection, inspired by the mineral dimension, generating points of light that activate the surface.



This tension between matter and light allows ceramics to be approached from an architectural perspective, where contrast becomes a design tool. The collection also introduces mixing as a design strategy: the combination of finishes, tones, and proportions creates visual rhythms that evolve with light, enabling the construction of dynamic, non-uniform surfaces that are deliberately open to variation.

In Terre, each composition is unique.

The collection is available in two formats—a rectangular 7 x 28 cm tile and a square 11.6 x 11.6 cm tile—allowing for different compositional approaches. The rectangular format

introduces directionality and rhythm, while the square format provides balance and compactness. Their combination expands possibilities for both floor and wall applications.

The color palette is built around earthy tones—wheat, sienna, and umber—combined with mineral accents such as turquoise, pale blue, and smoke. Terre proposes a design approach based on mixing: open, non-uniform surfaces that evolve like a living system, where each composition is unique.

WOW Design, signature ceramics in small format

WOW is a signature ceramic editor, specialized in the design and

development of unique pieces customized to suit the needs of architects and interior designers, which makes it unique at an international level.

Present in more than 90 countries and with 25 years of experience in prescriptive ceramics, WOW currently records a turnover of around €65 million and provides stable employment to 300 people in its local environment.

Its main markets are the United States and European Union countries, with the aim of continuing to grow in these regions through the prescriber channel, offering small-scale ceramic products with high added value.



DESIGN WITHOUT BOUNDARIES: ELEVATING OUTDOOR LIVING WITH RENSON AMANI



In today's design landscape, the most compelling work does not shout. It reveals itself gradually, with precision and restraint.

Across furniture, architecture, textiles and design, there is a growing shift towards environments that feel intuitive rather than imposed. Spaces that invite rather than instruct. It is within this quiet evolution that Renson Amani finds its place, not as a product alone, but as an expression of a deeper design philosophy.

Amani is evolving. Subtly, yet with intent. This new chapter reflects a refined vision rooted in tranquillity, nature and architectural clarity, where outdoor living is no longer defined by function alone, but by atmosphere and experience.

At its essence, Amani dissolves the boundary between architecture and landscape. It does not impose itself on its surroundings, but instead frames them. Light filters softly through its structure, materials

respond to their environment, and every line is considered. The result is an exterior that feels composed rather than constructed, where design becomes almost imperceptible, yet deeply felt.

For designers, this restraint offers something powerful: freedom. Amani is not a fixed object, but a platform for expression. Its modularity and adaptability allow architects and designers to shape space with precision, responding to context, scale and use. Whether defining an intimate terrace or extending a larger architectural concept, it enables a level of control that aligns with contemporary design practice.

Materiality is approached with the same clarity. High performance aluminium provides the structural backbone, engineered for longevity yet refined in its finish. Textiles and integrated elements are treated not as additions, but as essential layers within the composition. Together, they create a dialogue between structure and softness, echoing the language of interior design while remaining grounded in the outdoors.

This interplay is where Amani distinguishes itself within the wider design conversation. It allows furniture, textiles and objects to exist in harmony, supported by a framework that enhances rather than competes. The space becomes curated, not filled. Each element has room to breathe.

The new Amani identity reinforces this thinking. A more timeless

visual language, a calmer and more intuitive digital experience, and a communication style that reflects its core values all point towards a singular ambition: to create clarity. In a world often defined by excess, Amani chooses reduction. Where others add, it refines.

Yet while the expression evolves, the foundation remains unchanged. Its architectural strength, its commitment to quality, and its promise of enduring design continue to anchor the brand.

Ultimately, Amani is not about creating outdoor structures. It is about shaping environments that feel instinctive and enduring. For designers operating at the intersection of disciplines, it offers more than a solution. It offers a framework through which ideas can unfold naturally, where design is experienced not as an object, but as a state of being.



Step into the world of Amani and craft your own iconic exterior: www.amani-exteriors.com/en



Envision an outdoor space where architecture frames nature with quiet precision. Designed as a seamless extension of the built environment, Amani can be configured entirely to suit your spatial vision, aesthetic and way of living. More refined, multifunctional and sophisticated than ever before, it redefines contemporary outdoor architecture.

Discover everything about Amani.
[Renson.net/amani](https://renson.net/amani)



Find an Amani
showroom

AMANI
CRAFTING ICONIC EXTERIORS



AVICENNA



The key feature of the project is its personal story. The entire interior concept was built by designer Aliya Ibrayeva around items that are dear to the heart of the customers, creating a harmonious eclecticism where each item took its natural place.

Most of the furniture was moved from the previous apartment: a sea-green sofa, Italian furniture for the TV area, an antique round table, a leather kitchen sofa, display cases for porcelain, and other items.

The interior of this spacious apartment was created for a family

of four: parents, their 16-year-old twins, and a dog.

From the very beginning, the client had a clear vision: a rich color palette, European classics, brass accents, and a cozy, upscale atmosphere.

The designer's main goal was to maintain the family's emotional connection with familiar objects and infuse the interior with genuine warmth. At the same time, the customers did not want to radically change the layout of the apartment, so they only added a study, moved the doorways in some places, and



Project name - Avicenna
Project area - 216 sq.m.
Project location - Astana city, Kazakhstan
Project completion year - 2025

Project authors who participated in the project:

Designer and decorator:
 Aliya Ibrayeva
 @aliya_ibrayeva_interior

Photo: Damir Otegen
 @damir_otegen_

Production: Storm @by.strm

made the main room clearer by using architectural techniques. The result was a very comfortable and well-organized space with a circular movement pattern, easy transitions between areas, a separate study for the owner who works from home, a large wardrobe for seasonal items, a laundry room with a dog wash, and spacious children's rooms.

The result is an interior with character – a European eclecticism, where classical proportions coexist with modern forms, and rich colors and noble materials create an atmosphere of intelligent luxury and home comfort.

The entire apartment is divided into two zones:

Private: where there are three bedrooms, a women's and a men's bathroom for the owners, and a large wardrobe for seasonal items.

Shared: where there is a living room, a kitchen, an office, a laundry room, and a guest bathroom.

These two zones are connected by a circular movement, with the help of halls and passageways of the living room and kitchen. It turned out very convenient.

The dominant and decoration of the apartment are the black portals in the living room. Their shape was taken from the architecture of the windows of one 19th century apartment building by the Designer.

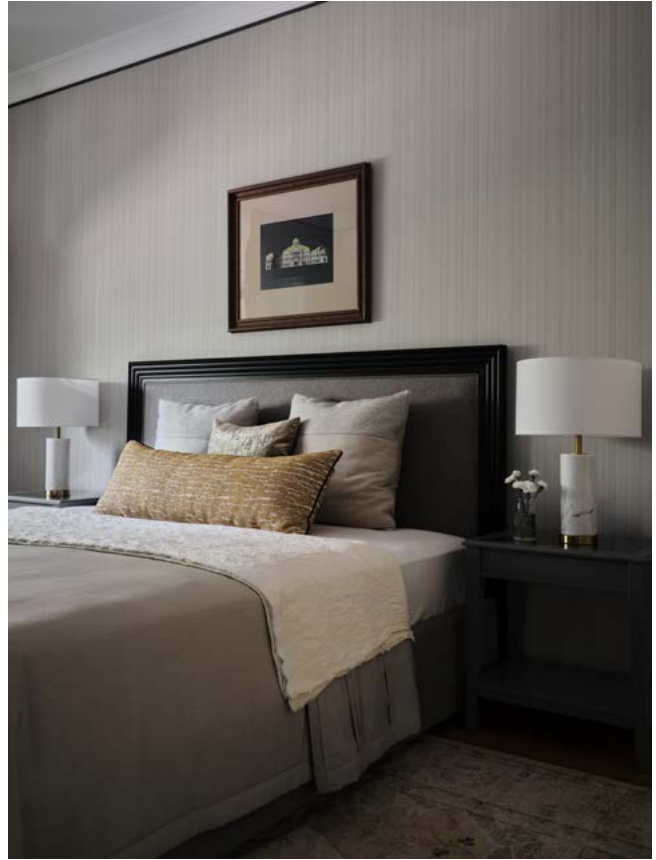
Furniture and decor items were selected to the already existing furniture from the customers. This was not easy, because all the furniture was completely different in style, this is modern Italian furniture and Ikea showcases - everything had to be skillfully connected, which the designer did with the help of color. For example, the color of the sofa in the living room was supported in

the Missoni wallpaper in the TV area, and continued this color in the hall and study, making it a little more saturated. Simple white Ikea showcases were integrated into an emerald kitchen set, adding luxury with marble and brass. The project is unique due to the art - paintings, lithographs and a little vintage - pink suspensions above the island, chairs in the kitchen.





Still life "Pomegranates" (oil), artist A. Beck (in the kitchen), copies of lithographs K. Bogaevsky, reprint from the album 1923 limited edition (study), a picture from the series Kaftany (oil), artist N. Karagoz (hall), the rest of the paintings in the bathrooms, in the room of the daughter - this is a family collection.



According to the designer Aliya Ibrayeva, this project was very significant for her from a professional standpoint. She used some techniques for the first time and worked with deep, rich colors, although the apartment feels very light and airy. She also did a lot of work as a decorator and in selecting art for the family collection.

This project brought together seemingly different items. The items vary in style, age, and mood, but they are united by the story of this family. Because of this, the project turned out to be very personalized, warm, and heartfelt.



THE ART OF LISTENING



Notice the detail. *Hear* the difference.

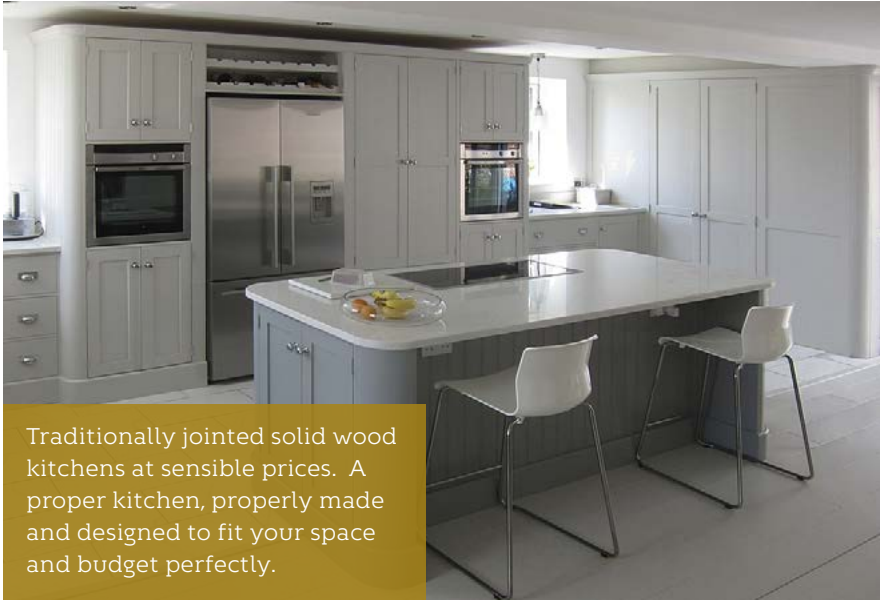
Transforming how you listen to
the music you love.

Rediscover music at
ruarkaudio.com



Scan Me

BESPOKE KITCHENS HANDMADE TO YOUR EXACT SPECIFICATION



Traditionally jointed solid wood kitchens at sensible prices. A proper kitchen, properly made and designed to fit your space and budget perfectly.

Free Design Service

We have a unique approach to our design service, in the same way that our furniture is hand made so are our designs.

Construction & Materials

Extensive use of Quebec yellow pine and the highest standard of selected kiln dried panels ensures product stability.

Finishes

You can order our hand made wooden kitchen, bedroom and other furniture in one of 5 finishes.

THE PRICE

As a rough guide, an average Fine Sanded Pineland kitchen costs £10,000 (delivered incl. VAT). Allow around £2,000 for worktops/taps/sink and tiles and this means you can effectively install a solid wood traditional farmhouse kitchen for less than £12,000. All our units are supplied fully assembled, checked for quality and identified, vastly reducing fitting time and costs.



Pineland Furniture is a family owned business and was established in 1987 by Edward Taylor and his son Richard.

We have two branches which are located fairly centrally in the UK. You'll find our main outlet in the picturesque market town of Cleobury Mortimer in Shropshire and our second branch in the old salt town of Northwich in Cheshire. Both of these premises are manufacturing centres with comprehensive showrooms.

WHAT WE DO

We mainly design and manufacture bespoke high quality kitchens however we also make freestanding and built in furniture for bedrooms, living rooms etc.

Kitchens

All our kitchens are bespoke and built to the exact size and shape to fit the shape of your room perfectly.



NOVA™

Small. Smart. In control.

RCL by Luminii's smallest motorised downlight, Nova delivers precision control within a discreet 100 mm cut-out. Advanced optics, wireless connectivity, and a next-generation electronics platform provide exceptional accuracy and long-term reliability. With beam angles down to 6° and up to 3× the mechanical life of previous generations, Nova puts confident, refined control in the hands of lighting designers.



Available in Static White • Tunable White • LensVector™ Digital Zoom





When Louis De Poortere first introduced its Ecorugs collection, the ambition was clear: to move towards a more circular approach to rug design.

FROM LIVING ROOM TO GARDEN

By shifting to a 100% polyester construction, the company created rugs that could be fully recycled through its take-back programme. But the material innovation also unlocked a range of unexpected practical benefits, including impressive durability, weather resistance and the ability to be machine-washed at home.

Following extensive testing across the different textures and qualities within the range, Louis De Poortere can now confirm that the entire Ecorugs Collection 2026 is suitable for outdoor use.



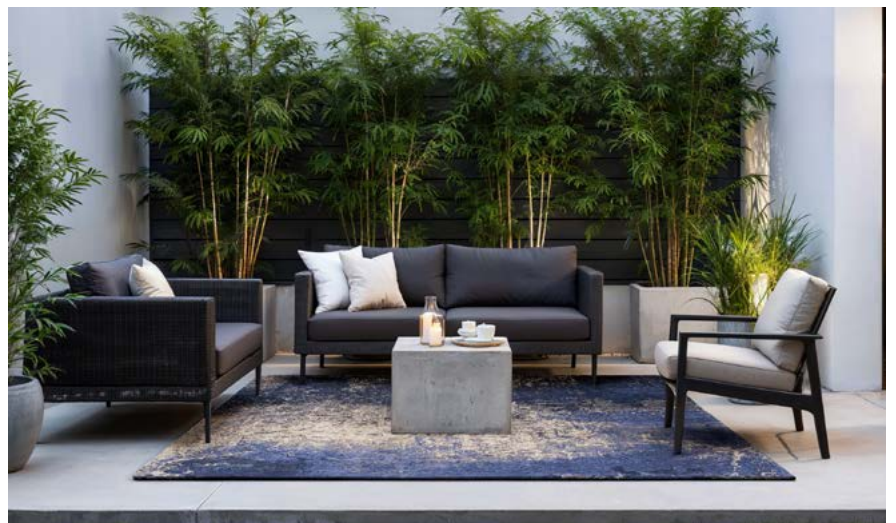


This means the brand's distinctive designs, from timeless classics to bold contemporary patterns, can now move seamlessly between interiors and exterior living spaces. Whether placed on a terrace, balcony or garden seating area, Ecorugs introduce warmth and softness to surfaces such as stone, porcelain tiles or wooden decking, helping outdoor areas feel like a natural extension of the home.

Crucially, practicality remains central to the collection's appeal. Because Ecorugs are fully machine washable, they are easy to maintain even when exposed to the elements. Dirt, dust and everyday marks can simply be washed away, allowing the rugs to retain their appearance season after season.

Alan Russell, sales director at Louis De Poortere, explains: *"Outdoor living has grown significantly, and homeowners are paying increasing attention to how their gardens support their lifestyles beyond traditional expectations of what a garden should be. They're no longer just spaces for gardening or appreciating nature, but places to relax, entertain and even work."*

The practicality of Ecorugs also makes them well-suited to busy indoor spaces. Their machine-washable design provides a convenient solution for households



with pets, children or high foot traffic, where occasional spills and everyday accidents are part of daily life. With the ability to refresh the rug in a standard household washing machine, homeowners can keep their interiors looking fresh without the need for professional cleaning.

DISTINCTIVE AND DURABLE

Torc sculpt everything by hand from their studio in the British Isles creating beautiful pots, water features, fire tables and outdoor furniture. Their one-off designs are beautifully crafted and made by hand to last a lifetime. They make very unique and distinctive statements for both residential and commercial settings.

Working alongside a talented team of artisans this family run business really specialises in textures, scale and bespoke design. In fact the design side of the business is well worth considering with landscape architects and garden designers appreciating the wealth of expertise this company has to offer. Torc are often commissioned to provide planter designs and outdoor furniture and they appear to thrive on creativity and innovation, always pushing boundaries to bring new ideas to life!

In addition to their standard range, they offer a bespoke service tailored to your needs. Whether it's turning your unique design into reality or customising the height and width of their standard pots they really go the extra mile.

"When we are surrounded by so much that is mass produced there is a real appreciation for hand-crafted objects created out of organic materials which appeal to our senses. We shape them by hand, layer by layer, enhanced by texture and finish until they take on their own unique form and because of this no two pots are ever quite the same."



Torc's green credentials are robust as they use a variety of materials to reduce their carbon footprint such as local recycled glass alongside bi-products from the steel and power industries - reusing waste! The addition of these materials increases the overall strength of their products. They also cure using hydration as opposed to high energy kilns.

TORCPOTS

01534 717104 | www.torcpots.com

Unique and handcrafted pots and planters, made to last a lifetime.

Distinctive and durable statement pieces for outdoor areas, gardens, architectural projects or commercial spaces.

Every product is a one-off and can be custom designed to fit your requirements.



CHIC TEAK



www.chic-teak.co.uk

sales@chicteak.co.uk | 01256 398008

TIMELESS TEAK FURNITURE. TREASURED FOR GENERATIONS.



Crafted from the finest Indonesian heartwood teak, our collection is effortlessly stylish whilst being brilliantly practical and durable, to suit every outdoor space.

GRADE A HEARTWOOD TEAK

To ensure perfection, each teak component is hand selected. All of our teak is sourced from sustainable plantations owned and certified by the Indonesian Government.

DELIVERY

Most products can be delivered from stock within 2 weeks. All furniture is delivered fully assembled by our own team.

BESPOKE SERVICE

We can adapt most of our collection to your specifications. We can also work with you to create a truly bespoke piece of teak furniture.

25 YEARS EXPERIENCE IN TEAK

We are truly passionate about teak and the quality of our products. It's not just the wood, but the joints, the fixings and the finish too.

TRADE DISCOUNTS

Available over a rolling 12 month period.

FIRST CLASS CUSTOMER SERVICE

5* Feefo rating because we go the extra mile.

BOOK AN APPOINTMENT

Visit our Hampshire showroom and one of our expert team will show you around.





TOUCH

IRONMONGERY LTD

The perfect touch

Touch Ironmongery Ltd
210 Fulham Road,
Chelsea SW10 9PJ

We display and stock over 3,000 products in 28 different finishes.

With a customer base including Architects, Interior Designers, Builders and private Individuals who are interested in the quality end of the Ironmongery market Touch Ironmongery's owner and founder, Bill Benham, has 44 years' experience in the Ironmongery trade, as does his colleague Jim Haselup. Saleem Qureshi is the newest member of our team and has 23 years' experience, meaning their knowledge is unrivalled in this industry.



Touch Ironmongery showcases the very best of British manufacturing; The best ranges are still produced in the Midlands by craftsmen in factories dating back 200 years or more. Touch also sell European manufactured quality Ironmongery.



Ironmongery can be a difficult and complicated aspect of a building project, as a result Touch aim to take this awkward aspect and make it user friendly and clear to understand by offering an on-site service where they carry out a detailed door by door, window by window, room by room Ironmongery schedule, highlighting all requirements.

Restoration is a large part of the business Touch will undertake complete Ironmongery refurbishment projects, and can restore old paint covered door

furniture to their former glory, looking as good as new again at a fraction of the cost to replace.



For more information about Touch Ironmongery or to arrange a showroom visit please call 0207 351 2255 or alternatively visit www.atouchofbrass.co.uk



FIRE RATED FD30 & FD60 **Letter plates in 7 different finishes** **SLIMLINE SECURITY AT ITS BEST**

Technical details

- Tested and passed the latest TS008:2022 and meets document Q requirements
- FD30 and FD60 approved (on fire rated version)
- Easy to install (just 2 screws to connect TS008 flap on our product)
- Simple door cut out for improved accuracy
- 480 hours of neutral salt spray test on external flap
- 20,000 cycle flap test
- Stepped internal adjustable sleeves, to suit both 44 & 54 mm door thicknesses
- Available in 7 colours with matching suited products

Style blends with security with this letterplate, designed to help protect homeowners from 'letterbox fishing' while offering a sleek design and ultimate functionality.

The letterplate features an anti-theft steel guard solution with an attractive non-intrusive slimline cover. The anti-theft features of the letterplate offer vital defence against opportunist burglars, the letterplate is also tested in accordance with TS 008:2022 and meets Approved Document Q requirements.



Suitable for use on both 44mm and 54mm door thicknesses, it is available in seven finishes including anthracite, black, chrome, graphite, satin chrome, white, and brass.

TOUCH
IRONMONGERY LTD

Visit us online: www.atouchofbrass.co.uk

Or visit our showroom:
210 Fulham Road, Chelsea London SW10 9PJ

OSMO WOOD WAX FINISH: THE ULTIMATE SOLUTION FOR INTERIOR WOOD PROTECTION



When striving to create a home that is both attractive and functional, selecting the right wood finish goes beyond mere looks. It's a choice that encompasses protection, durability, and the overall health of our living spaces.

For those in search of a comprehensive solution that excels in every aspect, Osmo Wood Wax Finish emerges as an outstanding product, offering unmatched versatility and performance, making it the top choice for complete interior wood protection.



The finish's dual-purpose nature offering both transparent and intensive versions, which unleash a realm of creative opportunities. For those who wish to highlight the natural beauty of the wood, the transparent tones allow the unique grain and texture to shine through, adding a subtle hint of colour while enhancing the wood's inherent warmth. Alternatively, the intensive provides a rich, opaque hue that can dramatically alter a piece, conceal the grain while preserving the tactile and natural feel of the wood beneath. This flexibility enables homeowners and designers to customize the finish to realise their precise vision, whether it's a classic, rustic style or a striking, modern look. When it comes to the choice of colours you really are spoilt for choice. Both the transparent and intensive finish can be effortlessly mixed to any RAL, NCS, BS4800 colours using the Osmo Tinting System. Simply find your nearest Osmo MIX IN STORE stockist and get the product mixed in seconds!

For families, the reassurance offered by Osmo is a significant advantage. The finish is saliva-resistant and sweatproof, making it perfectly suitable for children's toys. This dedication to safety and non-toxic ingredients reflects Osmo's commitment to fostering healthier living environments.

Importantly, the finish is microporous and breathable, a characteristic that distinguishes it from traditional varnishes. This unique quality allows the wood to naturally expand and contract with changes in humidity, preventing cracking, peeling, or flaking over time. This not only guarantees a longer-lasting finish but also simplifies maintenance. For minor scuffs or worn areas, no sanding is required for spot repairs or future applications; a simple re-application of the finish is sufficient to refresh the surface, saving time, effort, and the hassle of extensive refinishing projects.

Osmo Wood Wax Finish is more than just a coating; it represents a complete wood care system. It combines a beautiful, customisable aesthetic with a level of durability and ease of maintenance that is hard to surpass. For anyone seeking a single, dependable product that delivers all-around, hardwearing, and safe protection for every wooden surface in their home, Osmo Wood Wax Finish is the ultimate and wise choice.

Osmo Good for Wood

www.osmouk.com

WOOD WAX FINISH

Perfect for interior wooden surfaces; floors, furniture, walls, ceilings and more.

Features:

- Resistant to common liquid spillages such as water, juice, tea, cola and wine.
- Saliva-resistant and sweat-proof, suitable for children's toys (EN 71.3).
- Available in RAL, NCS, & British Standard Colours*



Highly Repellent



High Coverage



Natural Ingredients



Breathable Finish

- Available in transparent and opaque finishes.



3103 Oak



3137 Cherry



3161 Cognac



3161 Ebony



3132 Pebble



3132 Grey Beige



3105 Yellow



3104 Red

osmo[®]



*Available to mix in-store via the Osmo Tinting System.

Tinting System



Beautiful Designer Ceiling Fans



Stylish - Reliable - Silent



THE HENLEY FAN COMPANY LTD



01256 636 509
www.henleyfan.com

PARADOR UNVEILS HARMONIA – NEW ENGINEERED WOOD FLOORING CELEBRATING ORGANIC TEXTURE

Global flooring brand Parador has recently launched its new collection, Harmonia, which redefines flooring for contemporary interiors. This curated engineered wood range combines artisanal texture with technical precision, reflecting Parador's belief that good design shapes atmosphere and imparts meaning to a room.



Designed by in-house designer Franziska Wagner, an alumna of the Royal College of Art, Harmonia views flooring as an architectural element - something to be experienced as well as observed. Drawing inspiration from nature and modernist architecture, each of the seven products in the collection evokes calm, spatial rhythm and intentional character.

At the core of the collection is SurfaceONE™ - Parador's unique blend of handcrafted tactility and advanced technology. This innovation renders natural grains and sculpted surfaces with depth and authenticity. With a colour palette ranging from warm champagne to rich espresso, and crafted using low-emission manufacturing techniques in Austria, Harmonia is suitable for both residential and commercial spaces.



HOTTER

FOR LONGER

Our special material, Iso-Enamel, keeps your bath water hotter for longer, and is only a third of the weight of a cast iron bath.

With over 50 models to choose from and finished in your preferred colour, we'll have you spoilt for choice.

Request your brochure of our bath tubs, taps and bathroom furniture.

01255 831605 | albionbathco.com

ALBION

BATH COMPANY
HAND MADE IN ENGLAND

MAKING INTERIORS SMELL AS GOOD AS THEY LOOK

Have you ever entered a space and instantly felt at home, or quite the opposite, uncomfortable or anxious?

The reason why is not always an evidence, be it the colours, the lighting, the furniture or perish the thought... the SMELL! A badly aligned interior may have you longing for more or running for the door.

Aromatise Fragrance Diffusion Technology believe in the art of aligning those senses, with the help of the often-forgotten sense of smell. With premium perfumes and state of the art fragrance diffusion technology, we will assist

you in designing the olfactive completion of any living space.

Do call us and speak to us personally for an easy first consultation or visit us on our website.



AROMATISE

www.aromatise.co.uk
info@aromatise.co.uk | 01223 894207

HAWWOODS' ELEGANTE VENEER

Havwoods' Elegante Veneer offers a refined approach to introducing natural texture and character across interior surfaces. Designed for use on walls, ceilings, furniture and joinery, the collection lends itself to applications ranging from tactile kitchen cabinetry to sculptural feature walls, bringing depth and warmth to contemporary schemes.

Manufactured from reconstituted Italian ALPI veneer made from fast-growing Ayous - a sustainably sourced timber native to West and Central Africa - Elegante Veneers combine environmental consideration with technical performance. Engineered for stability, the lightweight sheets deliver the aesthetic of solid timber with enhanced consistency and flexibility.



Available in 21 profiles, three shapes and eight colours, from deep Ebony to cool White Oak, the veneers are created by bleaching, staining and layering thin Ayous sheets to replicate a wide range of timber grains without using endangered species.

The collection also includes Elegante Flatsheet, with matching species options and four additional finishes, plus fire and moisture-resistant specifications available on request.

www.havwoods.com/uk

PWS INTRODUCES AALBORG: THE NEW MICRO SHAKER



With the increasing market growth and demand for modern kitchen designs, PWS has introduced a brand new door range to its portfolio - Aalborg. A 5-piece, primed ash, micro shaker available in both lay-on and handleless sizes, Aalborg offers a slender 20mm frame width providing a high-end contemporary take on a classic Shaker door design.

Its superior, solid door construction is designed to be compatible with integrated appliances, internal storage and drawer systems thanks to its 22mm door thickness

and flush reverse, delivering a product that is fit for purpose, easy to install and minimises complications for fitters. To ensure every demand is met, Aalborg is also available in bespoke door sizes with drilling available. Customers have a choice of primed from stock, 10 popular colours through PWS's Paint Plus service, which benefits from a reduced price and a new lower lead-time of 12 days, as well as the brand's full paint-to-order palette.

Continuing to provide innovative and up-to-date design solutions, the new Aalborg door family provides an array of planning and design features to meet the needs of today's customer. With an increased demand for full height installations and concealed designs, an enhanced matrix of larder doors is available supporting 1000mm and 1200mm wide units for pantry, drink and coffee stations. Customers can choose a new full door matrix to maximise planning, select an array of handleless doors sizes and incorporate feature glazed doors including clear black and fluted glass detailing.



www.pws.co.uk

COMFORT, COLOUR AND CONSCIOUS DESIGN: A SPRING/SUMMER PERSPECTIVE - BY KAREN MCCULLY, UK DESIGN MANAGER AT TRIDENT GROUP

As we move into spring/summer, I find the conversation around bathroom design becoming more nuanced. It's no longer just about how a space looks, but how it feels and, increasingly, what it represents. Comfort, colour, and conscious design are not isolated ideas; they are interconnected responses to the way we live now.

For me, comfort in the bathroom goes beyond softness or warmth. It's about creating a space that supports daily rituals in a meaningful way. That might mean a layout that flows effortlessly, materials that feel good to the touch, or lighting that adapts throughout the day.

There's a noticeable shift away from purely functional spaces toward environments that encourage pause. Freestanding baths, generous walk-in showers, and more open, breathable layouts all contribute to this sense of ease. It's about designing a room you want to spend time in, not just pass through.

This season, I'm seeing colour used with more confidence. Instead of sharp contrasts, we're embracing tones that create atmosphere. Earthy neutrals, soft greens, and muted blues are particularly resonant; they bring a sense of calm without feeling predictable. Even warmer tones, like terracotta or blush, are being used in a more understated way, often layered across surfaces rather than applied as accents. Materiality is where design becomes tangible. I'm drawn to finishes that feel honest, natural stone, wood, and ceramics that carry texture and variation.

At the same time, there's growing interest in materials that balance aesthetics with practicality.



Advances in manufacturing mean we can achieve the look of more luxurious surfaces with greater durability and less maintenance, which is an important consideration for everyday living.

Textiles also play a key role here. Towels are often overlooked as design elements, yet they contribute significantly to both comfort and visual softness within a space.

What's shaping my thinking more and more is the idea of conscious design. As designers, we're not working in isolation; we're part of a much larger system of production and consumption.

Looking at textile manufacturing, for example, countries like India continue to play a pivotal role in supplying bathroom linens globally. It's an industry that supports millions of livelihoods, but also raises important questions around sustainability, water use, and long-term impact.

For me, conscious design is about being aware of these layers. It's

about specifying products made responsibly, choosing materials that will last, and designing spaces that won't need constant rework.

Another shift I'm embracing is a move toward softer forms. Curves, fluted textures, and rounded edges bring a gentleness to the bathroom that feels very appropriate right now.

After years of sharp minimalism, something is reassuring about spaces that feel more fluid and less rigid. It's a subtle change, but it has a big impact on how a room is experienced.

Ultimately, spring/summer bathroom design is about balance: comfort and functionality, colour and restraint, beauty and responsibility, they all need to work together. From my perspective, the most successful spaces are those that feel considered at every level. They don't just follow trends; they respond to how we want to live, both individually and collectively, and that's where design becomes truly meaningful.

GRAUNDED IN NATURE COLOURED FOR LIFE



Your home takes its cue from nature itself. Crafted from pure, natural wool, our carpet brings warmth, depth and texture, in a spectrum of colours inspired by the landscape. Soft underfoot and effortlessly elegant, it grounds your furniture and elevates your space. Nature gives it colour. Your home gives it life.



penthousecarpets.co.uk



C.P. HART

BATHROOMS | TILES | WELLNESS | DESIGN & INSTALLATION

Create a bathroom that's anything but ordinary. It begins with booking an appointment.



SPEAK WITH
OUR EXPERTS