



RWinvest

A photograph of a multi-story brick building, Caxton Hall, featuring a prominent corner bay window and arched windows. The building is set against a blue sky with light clouds. A diagonal gold line runs across the image from the top left to the bottom right. In the foreground, several people are walking on the sidewalk, and a car is visible on the street to the right.

# CAXTON HALL

Construction Update  
July 2018

# Caxton Hall

## 88-92 Chapel Street, Manchester, M3 5DW

### Key Works Progressed

Consultation with conservation officer regarding window refurbishments were passed.

Part-stripping to ground floor.

First draft fire strategy has been issued.

Fire sealed all first-floor ceilings.

Fire sealed all first floor-floor junctions.

Structural steel has been fitted to units where stair case has been removed.

2nd-3rd floor stairs have been measured.

Heavy strip is complete.

Steel order has been placed.

Priced structural timber and have extra oversized lengths on order.

Final internal masonry works are completed.

### Key Works Scheduled

Erect full scaffold.

Commence roof re-lay.

Fit Velux windows as required.

Fire line all existing 2nd floor joists.

Construct 2nd floor party walls

Construct 3rd floor

Issue SAP calculations to Building Control

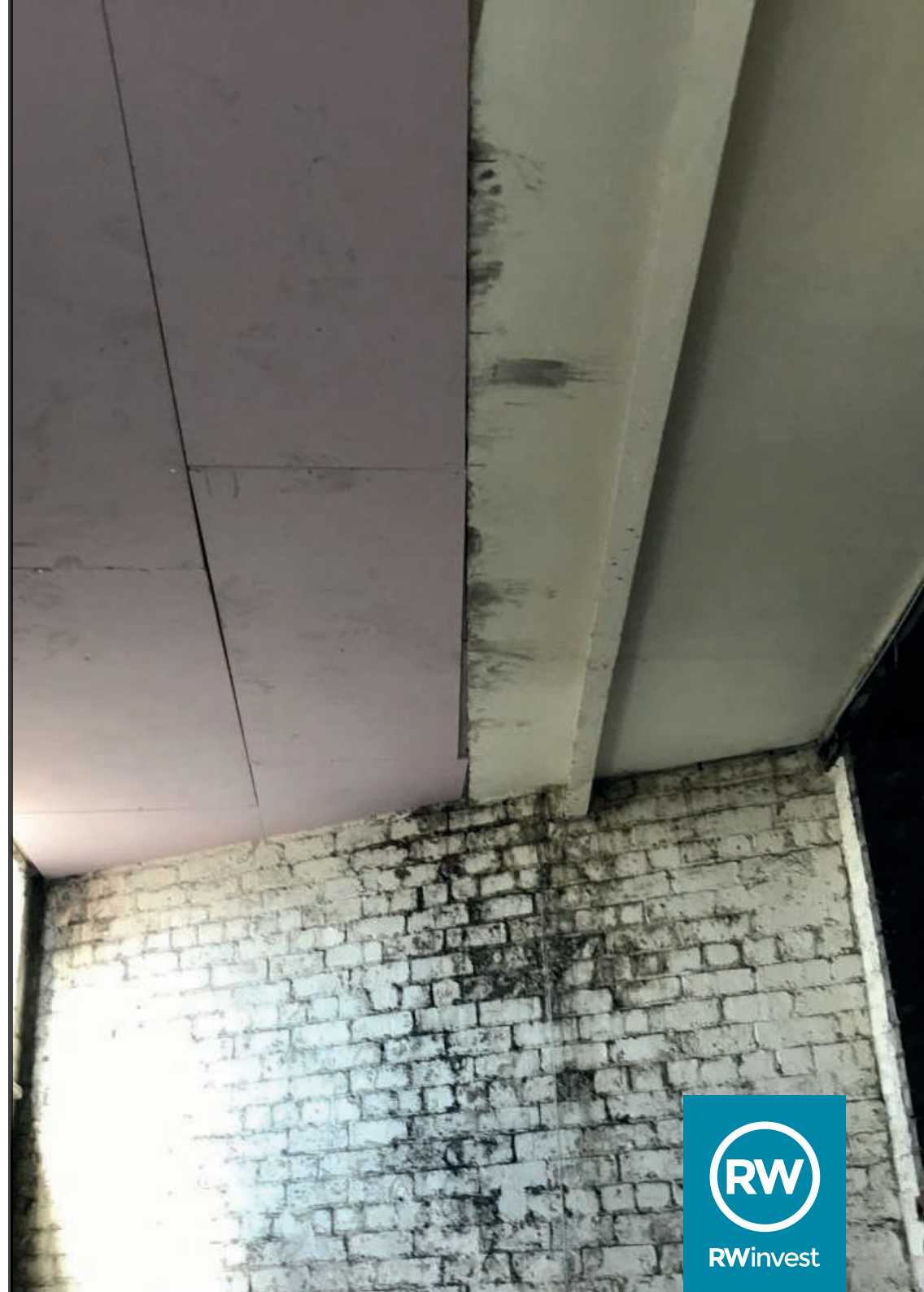
Start MF on 1st floor apartments and begin to board.

Start first fix works.

If you need any further information in the meantime, please call us at the following offices:

Liverpool +44 (0)151 808 1250

London +44 (0)207 100 4141



RWinvest

