



RWinvest

ONE BALTIC SQUARE CONSTRUCTION UPDATE

June 2022



ONE BALTIC SQUARE

Construction Update

June 2022

This month at One Baltic Square, the intumescent paint across the site and the steel framing system in Block C are now both complete. Block E's stairs have also been installed.

Another task almost nearing completion is the internal partitioning and boarding to Blocks A and D, as well as clear advancement being made to the framing for combination units within the bathrooms of the same blocks.

Summary of Works Progressed

Completion of steel framing system on Block C

Intumescent paint is 100% complete

Finalisations to the show flat on Block D

Substation is nearing completion

1st fix mechanical, engineering, and containment for electrical works to Blocks A and D all nearing completion and 2nd fixes now progressing

Steel frame on Block E rapidly developing

Block E stairs now installed

Finalisations to internal partitioning and boarding to Blocks A and D

Framing for combination units within the bathrooms on Blocks A and D nearing completion

Progression of concrete pour on Block E

1st fix joinery to Blocks A and D are rapidly developing

Development of wall and ceiling finishes

Plastering is clearly progressing

Advancement of hot water cylinder installations

Tiling and sanitaryware developing

Development of brick superstructure masonry

Continuation of kitchens

Commencement of ground floor curtain walling on Block D

Drainage installation works continue

Works Anticipated

Completion of the show flat

Substation to be finished

Conclusion of steelwork superstructure on Block E

Completion of concrete pour on Block E

Finalisations to internal stud work partitions and boarding on Block A and D

Bathroom unit framing and sanitaryware in Block D to be completed

Near completion of first fix mechanical and electrical and joinery

Boarding and plastering on Blocks D and A nearing finalisation

Progression of lift installation

Continuation of 2nd fixes on Blocks D and A

Development of finishes

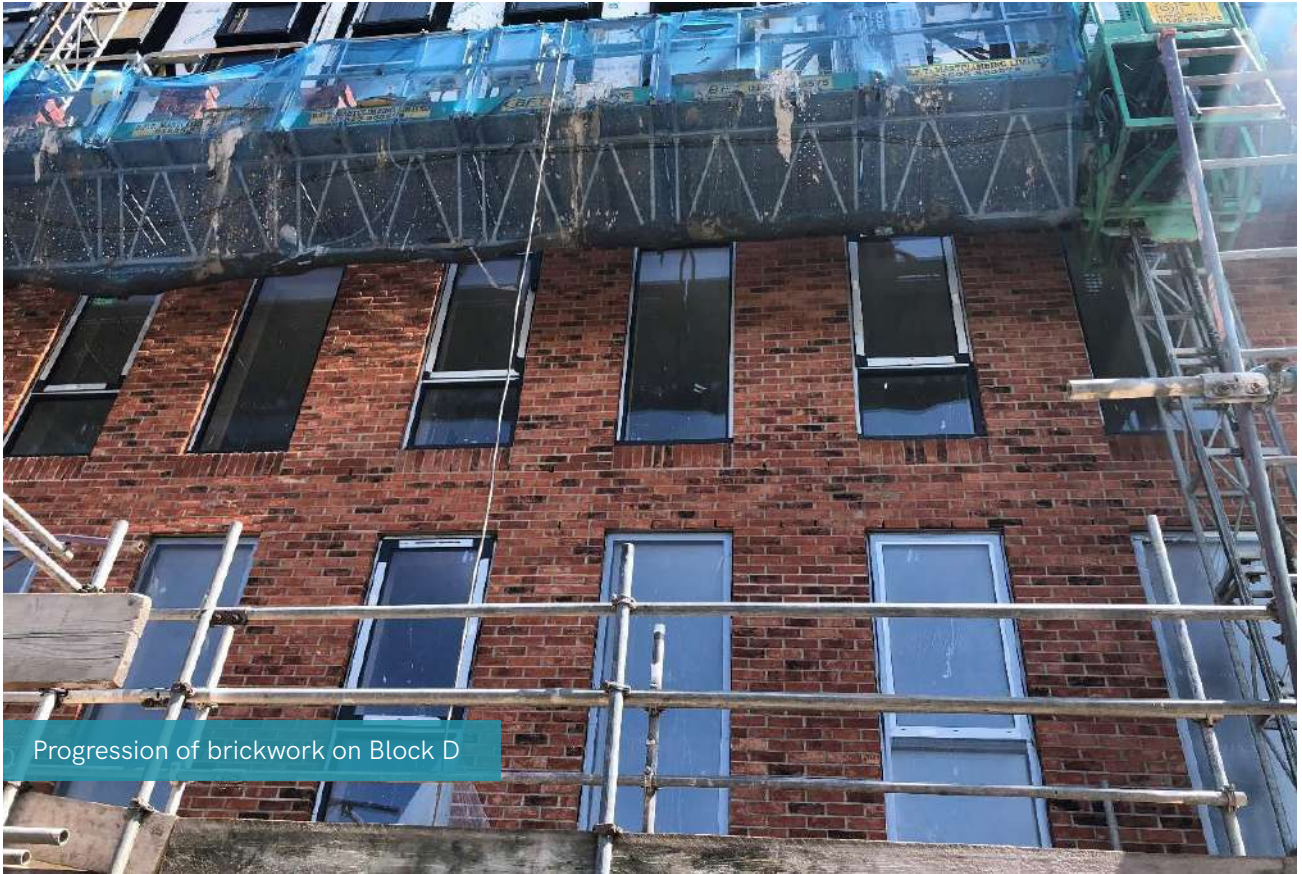
Advancement of hot water cylinder installations

Progression of brickwork

Continuation of kitchens

Development of drainage

Progression of curtain walling





Progression of party wall masonry and containment fixings



External view of Block B SFS



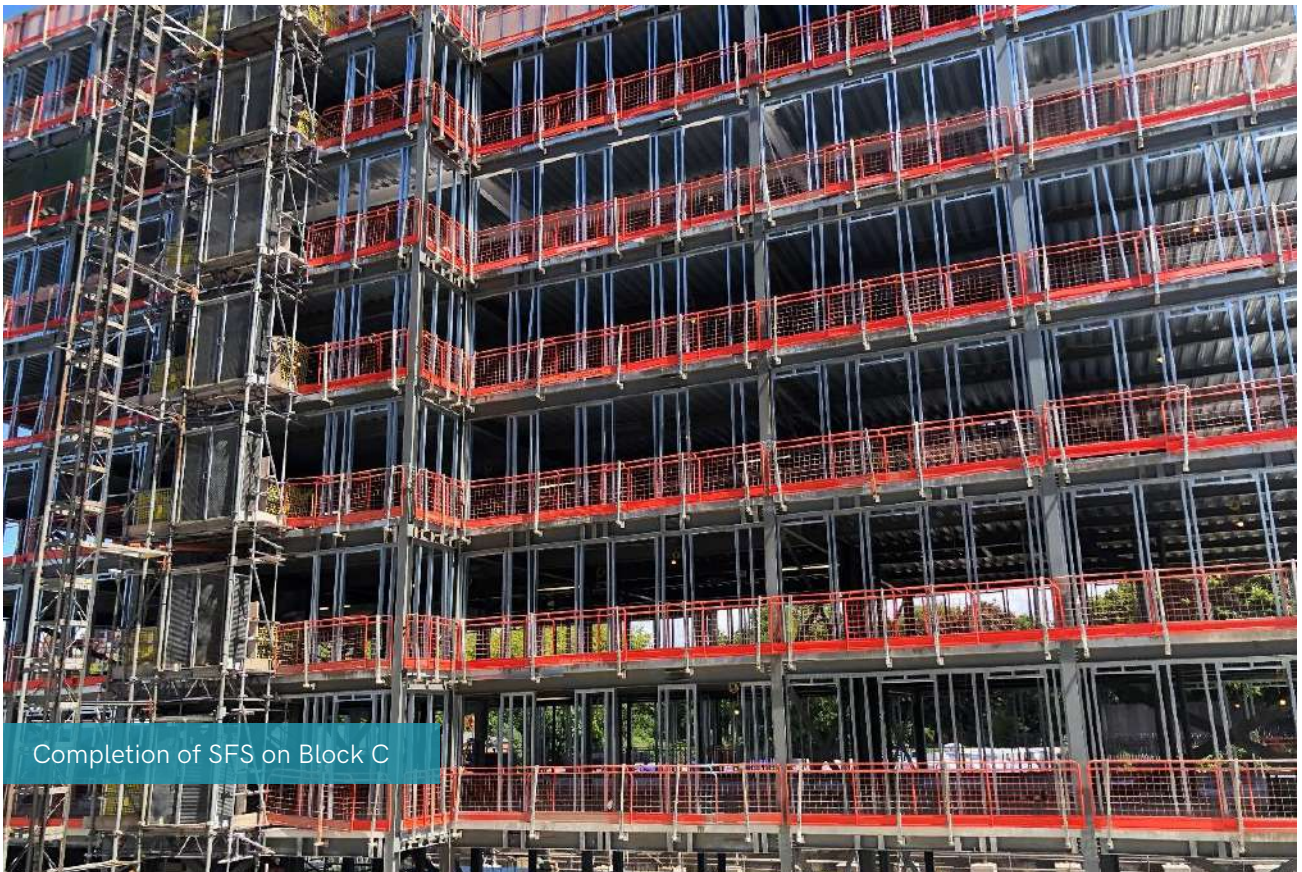
Progression of kitchens and finishes on Block A



Progression of drainage installation and manholes



Progression of lift masonry on Block B



Completion of SFS on Block C

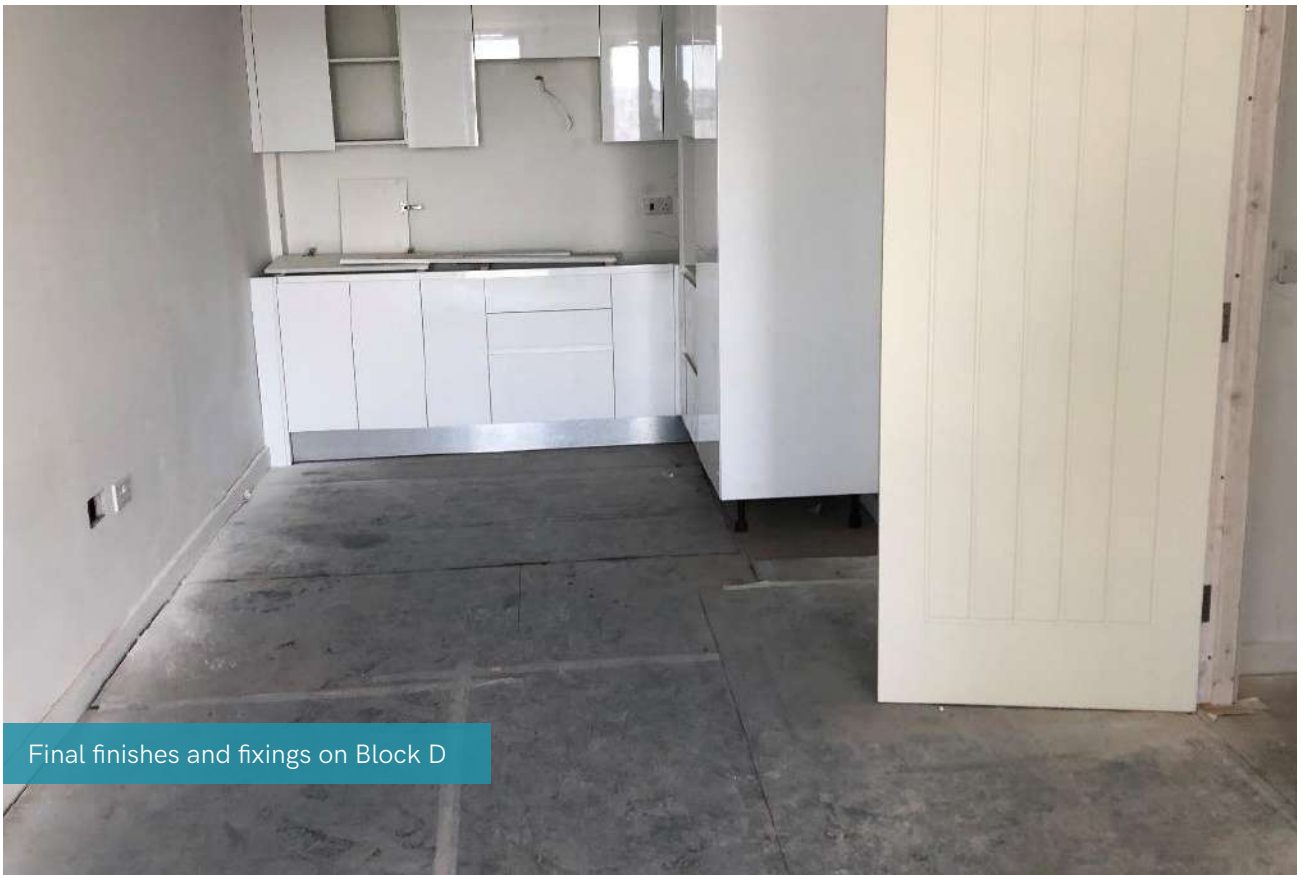


Progression of decking and concrete on Block E



Progression of enabling works for retaining wall







Near completion of steel frame on Block E



External view of Blocks A, B and C



RWinvest

Liverpool +44 (0)151 808 1250

London +44 (0)207 100 4141

Manchester +44 (0) 161 884 1305