

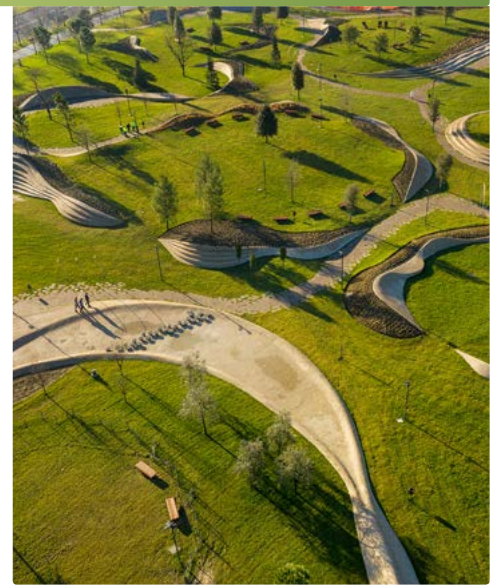
# LANDSCAPE & URBAN DESIGN

37

May/June 2019

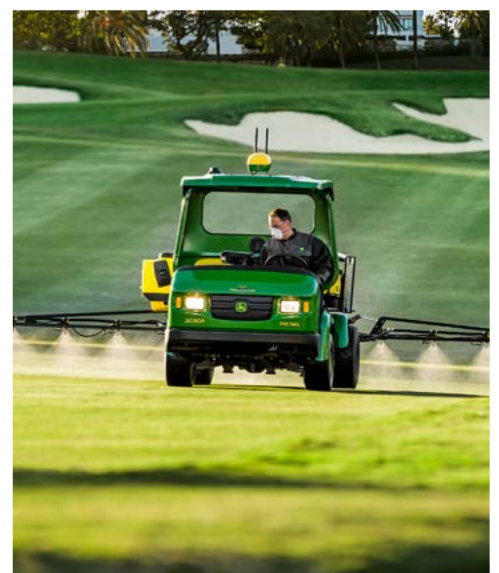
Price £3<sup>95</sup>

landud.co.uk



## Koper Central Park

Fusing elements of a city beach  
and a contemporary city park.



## Take your business to the next level with a BALI National Landscape Award

BALI members report increases in sales and interest in their brand  
with a BALI National Landscape Award.

## The John Deere Revolution

Revolutionising spraying  
applications on amenity turf.



# ELEGANT & BESPOKE BOLLARDS

Design your own beautiful bollard light to suit your unique taste and individual installation needs. Only the best materials are selected for our premium, made-to-order range of bollards, which are hand-crafted in the UK, delivering unrivalled quality and a unique lit effect for your exterior space.



For our full product range visit [www.collingwoodlighting.com](http://www.collingwoodlighting.com) or call 01604 495 151

Mastering light together  
[collingwoodlighting.com](http://collingwoodlighting.com)



@collingwoodLED



/collingwoodlighting



collingwoodled



COLLINGWOOD  
LIGHTING

# CONTENTS



## SECTIONS

- 06-19 Decking
- 22-26 Outdoor Lighting
- 28-35 Tools, Plant & Equipment
- 36-55 Garden Design
- 56-67 Landscaping Services
- 76-79 Bound Surfacing
- 80 Concrete & Stonework
- 81-86 Street Furniture
- 87-94 Groundskeeping
- 96-98 Sports & Play

## FEATURES

06

As homeowners across the country seek to make their gardens an extension of their homes, building a deck is one of the best investments a homeowner can make.

24

With the popular trend of creating a seamless flow from your home to your garden, outdoor lighting is now an important consideration in creating this look.

36

The Game Fair returns to Hatfield House in Hertfordshire on 26-28th July 2019, with unparalleled access to a vast catchment area and literally minutes from central London.

92

John Deere is revolutionising spraying applications on amenity turf with its new GPS PrecisionSprayer, available exclusively for use with the ProGator heavy-duty utility vehicle.

## THE TEAM

**Publishing Director**  
Martin Holmes  
martin@mhmagazine.co.uk

**Sales Director**  
Lee Martin  
Tel: 01227 392597  
lee@mhmagazine.co.uk

**Digital Manager**  
Jamie Bullock  
jamie@mhmagazine.co.uk

**Editor in Chief**  
Antony Holter  
Tel: 01304 806039  
antony@mhmagazine.co.uk

**Editor**  
Lorna Davidson  
Tel: 01304 806039  
lorna@landud.co.uk

**Business Manager**  
Josh Holmes  
josh@mhmagazine.co.uk

**Studio Designer**  
James Sayer  
james@mhmagazine.co.uk

**Designer**  
Sarah Johnson  
sarah.johnson@mhmagazine.co.uk

Cover images courtesy of:  
Left: BALI Landscape Award Top Right: Miran Kambič Bottom Right: John Deere

Every effort is made to ensure the accuracy and reliability of material published in Landscape & Urban Design however, the publishers accept no responsibility for the claims or opinions made by advertisers, manufacturers or contributors.

No part of this publication may be reproduced or transmitted in any form or by any means, mechanical, electronic (including photocopying) or stored in any information retrieval system without the prior consent of the publisher.

www.landud.co.uk T: 01304 806 039 E: info@landud.co.uk



# LANDSCAPE & URBAN DESIGN



Free Trade  
**Subscription**







# Landscape & Urban Design **Magazine**

Landscape & Urban Design provides the UK's major landscaping and urban design specifiers with a comprehensive look at the latest in the landscape design and management, design innovations, garden design, the built and natural environment, public space, green space, open space and environmental sustainability.

[info@landud.co.uk](mailto:info@landud.co.uk)    01304 806039

[www.landud.co.uk/subscribe](http://www.landud.co.uk/subscribe)

Image courtesy of Smith & Wallwork Engineers Cambridge Uni





# SIMPLE DECKING UPGRADES THAT DELIVER BIG RETURNS

As homeowners across the country seek to make their gardens an extension of their homes, building a deck is one of the best investments a homeowner can make. When it comes to picking the right decking though, it is important to choose a material that is built to last and will meet the homeowners desired look and feel.

Manufactured from 95% recycled materials, Trex, the world's number one composite decking brand, is made from reclaimed wood and sawdust, as well as recycled plastic from commercial packaging and a variety of common household items. Guaranteed to retain a 'like-new' appearance for at least 25 years, Trex offers the natural beauty of wooden decking but won't rot, warp, crack or splinter over time or after a long, wet winter.

To help homeowners and contractors make the most of their outdoor spaces, the experts at Trex offer the following tips for building a deck that delivers maximum enjoyment and ROI.

## **Protect your investment**

Homeowners today have access to high-performance deck boards warrantied to last for decades. But, unless the proper steps are taken from the start, the deck's foundation could begin decaying within the first 10 years. This is because the vast majority of substructures are built using wood, which is susceptible to damage from the outdoor elements.

Easily one of wood's worst enemies, moisture contributes to mould growth and can accelerate structural

deterioration. When joists and beams are exposed, water seeps into screw holes and sits on the wood causing it to rot and the screws to rust. Additionally, the natural expansion and contraction of wood due to seasonal freezing and thawing can cause beams to split and weaken over time, posing serious safety concerns.

## **1. Trex® Protect™ Joist and Beam**

**Tape** is a self-adhesive butyl tape designed to protect wooden joists and beams from moisture that can lead to rot and the loosening of deck screws and fasteners. Effectively shielding the top of joists, rim joists, ledger boards and beams from moisture it also acts as a barrier between the wood and galvanized metal commonly used in construction hardware such as joist



hangers. Additionally, Trex Protect seals deck fasteners and helps deck screws hold longer and stronger by preventing moisture penetration and defending against splitting that can result from seasonal freezing and thawing. Trex Protect works as a cap (vs wrapping), which allows the wood to breathe. The butyl-based self-adhesive also won't bleed, dry out as quickly, or curl up and hold water like many asphalt-based tapes.

## 2. Trex® RainEscape®

To protect an elevated deck from moisture, consider installing an under-deck drainage system. Using a network of troughs and downspouts, these systems capture and divert water away from a deck. They also allow homeowners to double their outdoor space and create a truly unique outdoor living space, by protecting the area below the deck from rain, sun and other elements, making it useable for storage or as an additional living area. Once protected, dry space beneath an elevated deck can be outfitted with everything from furniture to lighting fixtures and even outdoor cooking facilities. The Trex® RainEscape® will protect the entire substructure from water damage and deterioration and can be installed to both new and existing decks.

## Choosing the right materials

Before beginning any project, it is important to choose a decking that will stand the test of time. New for 2019, the new Trex Enhance range provides trade professionals and homeowners with a high-performance, lower-cost deck board designed to compete more directly with timber.

Delivering the beauty of wood with the confidence of composite by combining premium aesthetics with superior durability and ultra-low maintenance – all at an attainable price point. The Enhance decking collection is part of Trex's tiered decking line-up that allows contractors and homeowners to choose the perfect product for any project.







All of these upgrades and decking materials add considerable function and value to a deck project without adding a lot of time or cost.

For homeowners, this translates into greater satisfaction and increased ROI. For builders, they are great ways to earn more profit and over

time, these minor add-ons can have a major impact on a company's overall revenue.





# PROTECT YOUR DECK FROM MOISTURE

**DOUBLE**  
*your outdoor*  
**LIVING SPACE**



A UNIQUE UNDER-DECK DRAINAGE SYSTEM THAT  
CREATES A DRY SPACE BENEATH YOUR ELEVATED DECK

**EXTEND**  
*the life*  
**OF YOUR DECK**



PROTECTS THE JOISTS & BEAMS FROM MOISTURE  
PREVENTING WOOD ROT AND DECAY

[uk.trex.com](http://uk.trex.com)





# DECKWRIGHT

With its natural appeal and relatively low-maintenance requirements, decking is the perfect solution for outdoors spaces of all shapes and sizes. But there is one major drawback – it can become very slippery when wet, making it hazardous in the unpredictable Great British weather and when drinks or food are spilled.

There is, however, a solution and it's one that can be retrofitted to almost any grooved decking quickly and easily using standard tools.

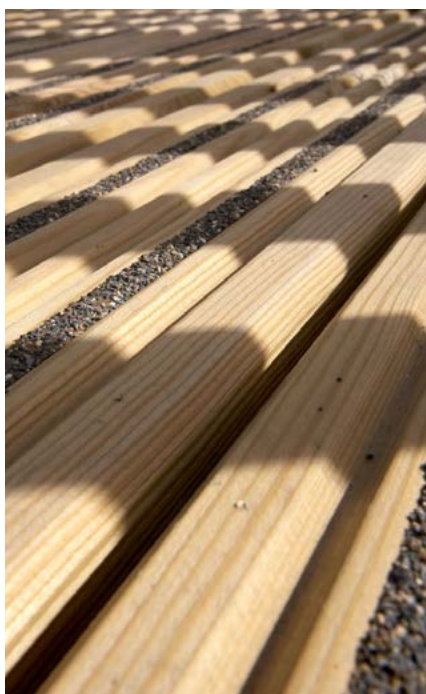


It comes with a five-year warranty and there's even an online calculator to help customers work out how many DeckWright inserts they need.

Planning on laying new decking? DeckWright can also be added to timber boards before they are fitted.

This is available through DeckWright's anti-slip service and there's no minimum order required. This service is also suitable for grooved composite decking.

There is even a range of colours available ranging from eye-catching shades to muted tones which complement the wood.



The DeckWright innovation was developed by timber and metal components firm WJ Group to complement its existing timber treatment services for decking and fencing.

The inserts work by using a universally shaped plastic T-bar that holds a resin and aggregate formulation.

When fixed into a deck board groove using the specially formulated adhesive, the insert sits a little proud of the timber deck and provides a reassuring grip.



To find out more about DeckWright, call us on 01482 338 950 or email [info@deckwright.co.uk](mailto:info@deckwright.co.uk)





TRANSFORM ANY EXTERNAL SPACE WITH  
**ROCKWOOD COMPOSITE DECKING**



Call: 024 7601 7011  
[www.rockwellsheet.com](http://www.rockwellsheet.com)

**RockWOOD**  
WOOD PLASTIC COMPOSITE







# TRANSFORM ANY EXTERNAL SPACE WITH ROCKWOOD COMPOSITE DECKING

Wood Plastic Composite (WPC) - a relatively new environmentally friendly material that utilises wood waste and recycled plastics to produce a range of attractive finished, and semi-finished products which combine the look and feel of real hardwood with outstanding durability.

With only minimal maintenance, Rockwood WPC decking provides the Architect and end user with a robust solution to the age-old problems associated with timber decking - providing years of trouble-free use.

Available in a choice of attractive colours and finishes, Rockwood WPC decking has the ability to transform any garden, patio, pool surround, walkway, roof garden or balcony - its outstanding longevity also make it an ideal choice for commercial landscaping, aquatic and riverside installations.

Rockwood has a low water absorption rate, will not rot, splinter, or require the expense of ongoing painting or staining to retain its appearance. It is resistant to attack by insects, does not promote algae growth, mould or fungus - and importantly, will not become slippery when wet.

Easy to handle, the Rockwood WPC deck boards are quick to fit, can be worked just like timber and do not require any specialist tools for installation. To ensure nothing detracts from its attractive appearance, and to keep the surface free from unsightly fixing screws,





the WPC Boards are secured to the sub structure with hidden fastening clips made from nylon or stainless steel. Finishing touches to the install are then applied with a range of matching WPC profiles, angles and perimeter balustrades.

One of the first companies in the UK to supply WPC decking, Rockwell have developed an unrivaled knowledge of the product and are happy to supply technical and installation advice via their decking department, led by Steve Blacow.

*“The Rockwood composite deck boards are an absolutely fantastic product. Very easy to handle and install, rot & insect proof, they don’t splinter or require staining or painting. It really is the ideal alternative to traditional timber deck boards - providing the customer with a sound floor underfoot for all their outdoor relaxation and socialising. WPC is everything that timber isn’t.”* says Steve.

WPC Decking Boards are available from Rockwell in a choice of 3 standard lengths. These are 3.6m, 2.9m & 2.2m giving the flexibility to produce an installation with the minimum amount of wastage. Our standard range of boards have a multi grooved finish on one side and a wider spaced grooved pattern on the opposite.

The boards can be installed either way up but the multi grooved side gives the most slip resistant surface. Available colours are Charcoal Black, Light/Stone Grey, Dark Brown and Brownish Red.

For an alternative finish, our range of Wood Grain Boards give a very stylish look to any installation. They come in 2.9m lengths and 4 attractive colours, Graphite Grey, Stone Grey, Autumn Brown and Olive Green.



For further information see  
[www.rockwellsheet.com](http://www.rockwellsheet.com)  
or Contact Steve Blacow on  
Tel: 02476 017011





# FIVE THINGS YOU MIGHT NOT KNOW ABOUT TIMBER DECKING

By Laura Qualters, National Technical Manager at Marley

As we head towards the summer months, the continuing trend towards taking living space into the outdoors offers significant opportunity for those in the professional garden and landscape sector. Decking continues to be a popular way of adding an extra dimension to outdoor areas, whether that be creating additional living spaces in the garden, or creating boardwalk-style exteriors at hospitality and leisure developments.

Yet, whilst timber decking is often the material of choice for its aesthetic qualities, you may have some questions over its durability and longevity. In fact, some timber decking products mean any concerns about maintenance, rot and slipping, are a thing of the past and some timber boards even have a 30 year service life!

**Five things you might not know about timber decking**

## 1 - A low maintenance option

Many people are surprised to hear that timber decking is a low maintenance option. Modern timber decking boards, with the right preservative treatment from the outset, require very little work. For example, our smooth profile decking boards, with non-slip inserts, are low maintenance, without the need to clean in between grooves. Aside from a brush with a broom and an annual clean with a deck cleaning product, they can be left to weather naturally with no need to re-treat.

## 2 - Slip resistance

A common concern is that timber decking could be slippery in wet weather. This is a possibility if



traditional decking isn't properly maintained. However, there are some great anti-slip products on the market and these are ideal for sloping surfaces, ramps, or areas that are likely to get very wet. Our AntiSlip Plus and CitiDeck timber decking boards have been specifically designed to provide a durable and effective anti-slip surface to minimise any risk of slipping, even in adverse weather conditions.



If you are installing hot tubs, due to the combination of timber and water, we recommend that anti-slip decking is used, at the very least on the walkway from hot tub to house. Our Antislip Decking products are ideal for use in the garden if you are looking to install a hot tub.

### 3 - Up to 30 year service life

There is a misconception that timber decking isn't durable. However, this comes down to choosing the right product, with the right use class treatment. The Timber Decking and Cladding Association (TDCA) recommends only using decking boards that offer a minimum service life of 15 years. However, there are now products on the market, such as our CitiDeck and AntiSlip Plus timber decking boards, that have been preservative treated to Use Class 3 to achieve a 30 year service life. Many people are surprised to hear that timber decking can last for three decades.

One of the main reasons for timber decking failure is actually incorrect fixings. Corrosion is the biggest threat to fixings used outdoors. Therefore stainless steel, hotdipped galvanised or high quality coated carbon steel fixings are best. Our decking has a range of complementary stainless steel fixings, so you can purchase a complete decking package from one manufacturer.

### 4 - Sustainability

The consumer demand to get closer to nature and use sustainable materials has seen a resurgence in the use of timber. When it is sourced responsibly, timber is the most sustainable building material and is an ideal choice as people become increasingly concerned about waste and recycling. All timber decking boards should hold either PEFC or FSC Accreditation, which verifies the supplier is sourcing timber sustainably, from well managed forests with excellent replanting programmes.



### 5 - Smooth profiles

When thinking about decking, many people picture the traditional grooved appearance but actually smooth profiles are becoming increasingly popular.

A smooth board offers a different feel and appearance to the deck when compared to the traditional look of a grooved board but also has many benefits.

The smooth, flatter profile provides an inclusive surface for all users of the decking and provides an easier surface to maintain.

We're seeing increasing demand for our CitiDeck smooth profile decking boards, which have two non-slip inserts, rather than the usual grooved surface.

These have tended to be seen more in the specification market but are becoming more popular and affordable for domestic use.

Marley's range of high quality, Anti Slip timber decking boards are manufactured from selected joinery grade European Redwood and supplied in a variety of lengths.

Boards are graded to BS 4978:2007+A1:2011 Strength Class C16 or C24 and CE marked.

For further information,  
visit  
[www.marley.co.uk/  
decking](http://www.marley.co.uk/decking)





# LET'S GO OUTSIDE

## THE COMPOSITE DECKING COLLECTION FROM HAVWOODS

Extend entertaining spaces to the outdoors with the resilient surface of composite wood decking from international flooring brand, Havwoods.

A practical yet beautifully aesthetic surface, the high-performance boards are designed to bring the beauty of natural timber to exterior spaces whilst avoiding the issues associated with wood's naturally hygroscopic qualities. Due to its innovative composite structure, Havwoods' composite decking planks will not warp, splinter or rot, providing a durable outdoor surface that will withstand the elements, all year round. Choose from two distinctive collections: Xscape and Trekker, both of which are ideal for residential settings and high-footfall commercial installations.

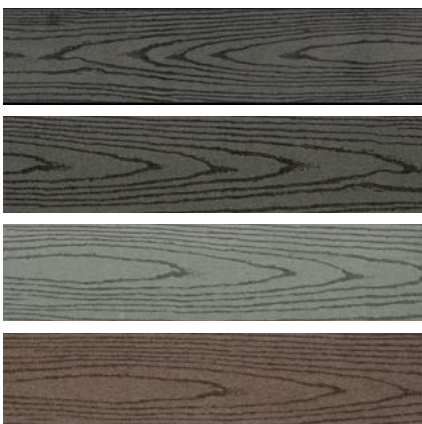




## Trekker

### 15-Year Structural Warranty

Manufactured in Europe in a state-of-the-art, environmentally-aware facility, Trekker is formed entirely from recycled wood and plastics. The collection is offered in fluted and wood-grain surface profiles, both of which are treated with a UV finish for fade resistance, making it ideal for sunny terraces. The planks are also effortlessly easy to clean and maintain; all you need is plain water.



**Wood Grain**



**Fluted**



**Grooved**





## XSCAPE

### 25-Year Structural Warranty

Formed from a combination of wood fibre and high-density polyethylene, Xscape decking planks offer a strong and substantial board that will prove resilient against the impact of moisture, mould and extreme weather conditions. The design's distinctive wood-grain pattern lends a natural finish to the decking surface, whilst the bonded material ensures maximum resistance to external wear and tear.

Havwoods' advanced composite decking collection provides customers with a diverse selection of colour grades and textured plank designs to suit all exterior schemes. To complete the look, team Havwoods' decking with

matching fascia panels and decorative trims. All trims and cladding are manufactured in the same manner as the boards and are equally as resistant to year-round weather conditions.

[www.havwoods.co.uk](http://www.havwoods.co.uk)  
[info@havwoods.co.uk](mailto:info@havwoods.co.uk)  
+44 (0) 1524 737000



# ecodek<sup>®</sup>

## SUSTAINABLE OUTDOOR LIVING.

The durable and sustainable  
*alternative* to hardwood  
and hollow decking

High quality, British made Wood Plastic Composite  
ecodek<sup>®</sup> contains 50% recycled hardwood and 45% HDPE  
recycled polymer and is 100% recyclable

Bespoke lengths minimise waste

Solid boards that will not splinter or rot

Carbon negative production

Low potential for slip wet or dry

Low maintenance

25 year warranty



01978 667 840

[enquiries@ecodek.co.uk](mailto:enquiries@ecodek.co.uk)

[www.ecodek.co.uk](http://www.ecodek.co.uk)



MADE IN  
BRITAIN 



**High Output Professional Solar Lighting to Illuminate 365 Days a Year**

## Secursol

**3 Function PIR Light with Remote Control**

**Operates from Dusk to Dawn (Photocell)**

**Long Life Lithium Ion Battery & LEDs**

- 1) Constant Light PIR Mode – 50% constant on for 5 hours / 30% battery, then PIR mode
- 2) Wall Wash PIR Mode – Wall wash constant on & main light when PIR is triggered
- 3) Standard PIR Mode – Light at 100% only when PIR is triggered



**2 Options**  
**15w = 1500Lm**  
**7w = 700Lm**



**Versatile  
 Mounting  
 onto Walls  
 or Posts**

## Freeway 5

**3 Function PIR Light with 2 Mounting Arms**

**Operates from Dusk to Dawn (Photocell)**

**Long Life Lithium Ion Battery (up to 8 Yrs)**

**High Output Long Life LEDs – 1000 Lumens**

- 1) Full Brightness (Constant on) then off after approx 5-6 hrs
- 2) 30% constant light & full brightness when PIR triggered (approx. 30 secs)
- 3) Standard PIR Mode – Light only when PIR triggered (approx. 30 secs)



# More Designs Coming Soon...



Panama



Halopost



Litecharge



Olympia



HiWay

**Forget the Low Power, Short Lasting Solar Lights of Yesteryear, the Pro Solar Range will Charge & Illuminate even on Cloudy & Dull Days**

- ✓ Impressively Bright, Long Life LEDs
- ✓ High Capacity Lithium Ion Batteries for up to 8 Yr Life
- ✓ Highly Efficient Solar Panels inc. Monocrystalline
- ✓ Low Installation Cost - No Electrician Required
- ✓ Simple & Safe to Install - No Restraints on Positioning

*We're Confident  
You'll Love This Range!*

**30** DAY

**Satisfaction  
Guarantee**

*See Website for More Info.*

Next Working Day Delivery - High Stock Levels - Trade Discounts Available - Tel. 01327 871161

Free Delivery for Orders Over £60 net. Showroom: 9-5 Mon-Fri - Centre 33, Long March, Daventry, NN11 4NR

**[www.lumenalights.com](http://www.lumenalights.com)**







# SOLAR LIGHTING WITH STRENGTH

Awareness and knowledge of Solar lighting is increasing, as well as improvement in the technology used in Solar products including related technologies like 'LED'. Unfortunately, lower cost solar lights tarnished the industry. They were often extremely cheap, didn't last much more than a season, and illuminated dimly. Nowadays, thanks to a few forward-thinking companies, long-lasting solar path lights that charge sufficiently on dull days with high outputs are easier to find.

When considering outdoor lighting for any premises, the benefits of 'going Solar' is obvious.

## **1. Environmentally friendly**

There is currently a positive and proactive drive to try and save our planet in any way possible and rightly so. Solar energy is one of the World's most innovative renewable power sources. It uses no power from the grid, just solar power to charge rechargeable batteries during the day, stored and ready to be used at night.

## **2. No Energy Cost**

Even after a higher initial cost, the overall and ongoing savings with Solar are considerable, especially with newer designs which last longer. There can also be financial incentives to use solar when dealing with commercial projects.

## **3. Very Low Installation Costs**

Unlike 240v mains lighting where an electrician is required usually for long periods of time to bury armoured cable (for example), it can be as simple as fixing solar lights in place once - job done!

## **4. Maintenance Free**

Once in place, very little maintenance is required, especially with the latest designs. The fact high quality LEDs are used gives them a long lifespan anyway, but be sure to source fittings that use Lithium Ion batteries for up to 8 years life.

## **5. No restraints on positioning**

It can be costly and difficult to feed 240v power to a desired location. Solar lights are naturally versatile and can solve this issue effectively.





**2019 sees the exciting launch of the Pro Solar 365 Range by Lumena Lights.**

Lumena M.D Martin Bennett tells us why he's ready to take the next step with Solar.....

*"The time is now right to launch a new range of high quality reliable and high light outputs solar lights that will work 365 days a year.*

*In the last year or so Solar lights have advanced significantly. LEDs have become more efficient with many emitting over 100 lumens per watt whereas previously 60 lumens per*

*watt was considered good. Battery technology has also improved tremendously with the use of high capacity Lithium Ion batteries as used in Electric cars. Using the latest mono crystalline highly efficient solar panels Lumena solar lights will not be just decorative but will have light outputs equivalent to mains powered lighting. They will also work all year even on very cloudy or rainy days."*

Often, the perception is that U.K is fairly dull for half the year, so the effectiveness of Solar Lighting suffers. The Pro Solar Range is here to smash that theory. The high capacity long life Lithium Ion batteries last several years

and retain a full charge unlike Nickel Cadmium batteries that rapidly lose their storage ability. Many products in the range have PIR motion sensor technology, and all have impressively bright lumen outputs.

So confident are Lumena in the performance of this new range, they are offering a 30 day trial period, where if the client isn't completely satisfied with the effectiveness of the light after 30 days, then it can be returned for a refund.

Find the Pro Solar range at [www.lumenalights.com](http://www.lumenalights.com)





# OUTDOOR & GARDEN DESIGN LIGHTING TRENDS

With the popular trend of creating a seamless flow from your home to your garden, outdoor lighting is now an important consideration in creating this look. Gone are the days when the choices for garden lighting were limited to plain, uninteresting white security type lighting, today's modern designs are just as stylish and varied as those you would find inside the home.

Customers are also much more environmentally conscious than ever before and many of the newer weatherproof fittings are compatible with modern LED bulbs. They work by housing the bulbs and protecting them from the elements. LED bulbs certainly tick the eco-friendly box, being not only energy efficient but also having incredibly long lives. The bulbs are also now available in a variety of shapes and colours, to help you achieve the exact look you desire.

This could be different depending on the intended use, for example, you may wish to select a bright white bulb for practical reasons such as lighting up a pathway, whilst something more subtle like a vintage style amber bulb could be used for creating a softer atmosphere for outdoor dining.

Metallic finishes on outdoor lighting is definitely a trend that's set to continue and lends itself well to coordinating with other garden accessories and furniture. As well as adding interest with texture and shine, copper and brass lights will add a sense of luxury to an outside space. Bold shapes are also set to be big and are great for creating a statement. Modern designs come in all shapes and sizes and can really help to further enhance the overall look of the outdoor area.





At Industville, they have recently developed a superb range of weatherproof lighting, which perfectly complements their indoor range; ideal for creating that seamless indoor/outdoor look. The collection is made from the highest quality raw materials and features a stylish assortment of unique industrial-style lights that will transform the outside of a home, wherever they are placed. As the perfect blend of classic and contemporary, they can be used with many styles from modern, state-of-the-art exteriors to brick, wood or vintage finishes. Each hand-crafted waterproof light carries IP20, IP44 and IP65 ratings, making them suitable for whatever the British weather can throw at them!

The company also have their own in-house design team, architects and lighting designers who can offer free design consultation and advice making it easy to get your garden lighting summer-ready.



**Industville**  
020 7971 7871  
[www.industville.co.uk](http://www.industville.co.uk)



## INTEGRAL LED: NEW RANGE TACKLES OBTRUSIVE LIGHTING UNDER DARK SKIES

UK manufacturer Integral LED innovates with new precision outdoor luminaires, enabling installers and specifiers to minimise light spill and comply with current planning requirements.



Integral's new generation of LED floodlights are designed specifically with targeted outdoor lighting in mind to provide precise targeting of illumination and minimise the impact of light spill on the environment.



The range offers an extensive choice of beam angles, with certain models able to project asymmetrical beams to illuminate specific areas of a building's facade. In this way, certain architectural features can be 'picked-out' within a structure. The luminaire range has recently been broadened to include models with RGB colour changing facility to truly enable design choice.

To find out more, visit:  
[www.integral-led.com/precision-pro](http://www.integral-led.com/precision-pro)

## Illuminating Landscape Inspirations



Lighting, water features  
and furnishings for our  
gardens, parks and  
landscaped areas

the garden lighting shop

01773 856937  
[sales@thegardenlightingshop.co.uk](mailto:sales@thegardenlightingshop.co.uk)  
[www.thegardenlightingshop.co.uk](http://www.thegardenlightingshop.co.uk)

## Starscape Fibre Optic Lighting



*A river of light*

01289 332900  
[info@starscape.co.uk](mailto:info@starscape.co.uk)

[www.starscape.co.uk](http://www.starscape.co.uk)



**Unrivalled  
versatility with  
performance  
you can  
count on.**



**Kubota**



**2 YEAR  
WARRANTY  
AS STANDARD+**  
+ Conditions apply to 2nd year see dealer for details

## **B2 Series: The efficient and powerful choice**

Get more for less with Kubota's premium-specified B2 compact tractor series

- High performance and fuel-efficient Kubota 3 or 4-cylinder diesel engines
- Extremely versatile with choice of HST with multi stage control or manual transmission plus mid and features mid + rear PTO as standard
- Advanced manoeuvrability with Kubota's unique Bi-Speed feature for tighter turning ability and reduced turf damage
- Designed for maximum comfort with the option of integrated air-conditioned cab and ergonomically positioned controls

Contact your local dealer or visit our website for more details.

[www.kubota.co.uk](http://www.kubota.co.uk) T: 01844 873190



**For Earth, For Life**  
**Kubota**





# KUBOTA Q&A WITH DAVID HART

**1. The Kubota Dealer Apprenticeship Programme is fantastic and is a great opportunity for apprentices looking to work in the agriculture, construction or groundcare machinery sectors. Could you give us a little bit of an insight into why Kubota have invested in this programme?**

The Kubota Dealer Apprenticeship Programme is an excellent way to get a feel for the groundcare industry, which is growing rapidly. We have seen some exciting developments in the industry over the past few years, due to the increasing use and integration of technology being used and deployed across our full range of machinery. This is not only increasing product performance and efficiencies, but is also playing its part in reducing the operating costs for our customers and businesses.

The Apprenticeship Programme enables the individual to earn whilst learning and more importantly, become a key member of a dealership. Those who enter the programme must remember that although it represents a starting point of their career, it has the potential to open up many

opportunities, whilst the on-the-job experience allows for the apprentices to climb the ladder and find their niche.

Due to the flexibility of the programme, apprentices are able to change focus during their placement. They may choose to start within the service department before moving into sales, parts or management, giving them exposure to the many different functions of the business.

You can find out more about our Apprenticeship Programme on our website.

**2. Over the past few years technology has really come to the forefront in any company manufacturing or supplying goods to the trade or end user. Have you found that the use of technology has helped you to create a better end product or has it been hard to adapt with things rapidly changing?**

In order to stay ahead of the competition, new technology is continuously reviewed by Kubota to ensure the business is keeping up to speed with the rapidly changing technology and demands of today.

One example of where Kubota has needed to adapt to this rapid change is with emissions regulations. Last year we introduced the L2602, an innovative model which offers a premium specification designed to provide users with unrivalled levels of power, safety and comfort. This was the first of our groundcare, 60hp tractors to be fitted with a diesel particulate filter (DPF) in order to meet the new emission regulations.

The technology needed to do this transformed our tractors from being mechanically governed into electronically governed machines, which enabled us to meet the emissions regulations but does come with the need for new investment. New service tooling is then required and more importantly, so is a new set of skills for our dealer engineers. The level of service training is a huge focus for Kubota in order for us to aim for 'first time fix' and dealer excellence, to make sure that our machinery keeps the outstanding reputation it has always had.

**3. In a lot of successful companies there tends to be one specific product that people always remember and**



**one that a company can be built around. Is there one specific product from Kubota that is seen as the benchmark for all future products that get released?**

The UK business was born out of our 'B series' tractors. Over the years, these tractors have developed a great deal and are still seen today as being the benchmark for quality, reliability and engineering excellence.

These machines are the core of Kubota's business just as much as they were 40 years ago – we even hear from customers who still have some of the very first Kubota tractors to enter the UK!

**4. Kubota just seems to go from strength to strength and continues to be an industry leader but what is the key to the huge success of the brand? Obviously there is a lot of factors to take into consideration to build such a fantastic reputation but what you would you say is the main USP for the brand?**

The business continues to grow which is ultimately down to us listening to and learning from our customers and dealers to develop products which meet their needs in the ever changing groundcare landscape.

We can turn to our G21 product here, which first hit the market in 2000. Direct collect on this type of machine was a relatively new concept at the time of launch, but we, as a business, learnt about the important requirements of

our customers and dealers which meant that we were able to develop a machine that met their needs perfectly. This set the precedence and today, Kubota has the broadest range of diesel powered direct collect mowers, making us market leaders in the field.

At Kubota, we find that the key to maintaining such a fantastic reputation is to spot the next industry requirement that hasn't yet been established. From this, we are able to develop a machine or adapt a much needed feature for it, helping us to stay ahead of the game which is key to our success.

**5. We know the brand is always looking at new ventures, new products and opportunities but what can we look to expect to see from Kubota in the coming months?**

The challenge of complying with emission regulations is an ongoing concern and one that we will continue to face. Every manufacturer will have to comply with the regulations put in place, however, as we make our own engines and are recognised as the world leaders in the field, we are perfectly placed to adapt to the changing needs.

Understandably, new machinery development can take a long time to complete to get to production stage, but excitingly, we are experimenting with LPG, Gasoline, Diesel, Battery, GPS, Remote control technology. Although it is doubtful that we will see many new products imminently,

we are concentrating on focusing our attention on the aforementioned technologies.

This was recognised this year by Kubota winning the annual 'Diesel of the year' award, awarded by Diesel International, presented to the most innovative engine of the year, with Kubota being the first Japanese winner of the prestigious European engine award.

**6. We know from personal experience that Kubota attends a lot of industry events all over the world, are trade events still a priority for Kubota and do you feel that you have as much success with trade event as you did in the past with a lot of business now being done online?**

Trade shows are an important part of our yearly schedule and offer a great opportunity to meet face to face with dealers, suppliers, media and customers alike. The spike in the use of the internet has naturally impacted trade show attendee numbers over the years, with a lot of modern businesses relying on online transactions.

Even with online being so prevalent, the 'touch and feel' aspect of trade shows adds real value and allows visitors to see our products in person which can really help in getting them over the purchasing line.

The shows also give our customers the chance to see the product without the need to visit our HQ or dealerships and allows us to touch base with key industry contacts, all under one roof.

In addition to attending the many industry events throughout the year, we also attend local shows to support our wider dealer network. This allows our dealers to get in front of their potential end user customers and build upon both new and existing relationships.



For more information, visit: [www.husqvarna.com/uk/products/robotic-lawn-mowers/automower-awd/](http://www.husqvarna.com/uk/products/robotic-lawn-mowers/automower-awd/)



# REESINK CUSTOMER SERVICE KEY SAYS BROOKFIELD GROUNDCARE OWNER



Cambridge based grounds care company Brookfield Groundcare has recently invested in a Toro LT3340 triple cylinder mower because of the “excellent back up service provided by Reesink Turfcare” says company owner, Danny Wright.

With 15 years in the business maintaining everything from small gardens to huge country estates for private and commercial clients across Cambridgeshire, Newmarket and Suffolk, having a reliable backup service is vital.

“Reesink is known for providing really good customer support particularly when it comes to its backup service,” says Danny. “I know that if there was ever a problem with our machine, they would get a replacement out to me immediately. When you’re a relatively small business with a wide client base,

that’s vital. I’d actually say that the backup is just as important, if not more than, the quality of the machine itself.”

In fact, it was this reputation that led to Danny going straight to Reesink when the need for more equipment arose. After recently securing more school and council clients, the company needed a new machine to help cope with the increase in work.

“When I was looking for a new machine, I went directly to Reesink to organise a demonstration,” says Danny. “Toro really is leading the market at the moment, so it made sense to go to them first. The LT3340 impressed me so much I didn’t see the need to test out any other brands. I decided pretty much there and then to get it.”

The LT3340 heavy-duty triple cylinder mower, with its sheer durability and

strength makes for a perfect addition to a grounds care fleet. With such a powerful and versatile machine, it’s no wonder Danny is already seeing an improvement.

“It’s a lot quicker in operation,” he says. “And the controls are better situated compared to other brands so it’s more user-friendly and comfortable. Based on the performance of the machine, and the service that Reesink provides, it’s likely that as the company continues to grow there’ll be more investment in Toro.”

Reesink Turfcare is the exclusive distributor in the UK and Ireland for Toro grounds care machinery. It is based at 1 Station Road, St Neots PE19 1QH. Call 01480 226800, email [info@reesinkturfcare.co.uk](mailto:info@reesinkturfcare.co.uk), or visit [reesinkturfcare.co.uk](http://reesinkturfcare.co.uk).



## SNICKERS FLEXIWORK STRETCH SHORTS – FOR COOL COMFORT THIS SUMMER.

### Snickers FLEXIWork Stretch Shorts – For Cool Comfort This Summer.

While Fabric, Functionality and Fit are hallmarks of Snickers Workwear, it's the innovation and fabric technology in the design of the new FlexiWork Stretch Shorts for men and women that really set these new garments apart.



These shorts are great for working in the warmer months. Delivering superior flexibility and comfort, these lightweight work shorts come in a hi-tech body-mapping design and are made from a self-ventilating stretch fabric with Cordura reinforcements for all-round mobility and durability when you need it most.

As well as being street-smart with men's and women's designs, they're packed with comfort and functionality and specially designed for the fast-paced professional who's always on the go and always delivering top class work on site.

For professionals who rely on their gear in demanding environments, they're a must for everyone who wants the ultimate in cool comfort this summer.

To get more information on what's right for you in the Snickers Workwear range, visit the website at [www.snickersworkwear.co.uk](http://www.snickersworkwear.co.uk) alternatively, call the Snickers Helpline on 01484 854788.

## ITS TIME TO STAY COOL AT WORK – WITH SNICKERS WORKWEAR

Lightweight fabrics in the new Topwear range will compliment Snickers Workwear Stretch Garments perfectly this Summer.



The warmer weather will bring a need for professional craftsmen and women to be cool and dry - to maintain wellbeing and working efficiency on site.

That's why Snickers' new Topwear for the summer uses 37.5° fabric technology, which is really good at 'wicking' moisture away from the body and keeping you dry.

They've all got superb, body-mapping designs for an amazing fit, outstanding functionality and long-lasting comfort – all day, every day.

Getting information on the Snickers' Summer Workwear range is easy. You can call the Snickers Helpline on 01484 854788. You can check out the website and download a digital catalogue at [www.snickersworkwear.co.uk](http://www.snickersworkwear.co.uk) or email [info@snickersworkwear.co.uk](mailto:info@snickersworkwear.co.uk)

# THE BEFORE AND AFTER OF ONE METRE DEEP AERATION

**COMPACTION AND WATERLOGGING STOP PLAY. DOWNTIME COSTS MONEY.**

Terrain Aeration's long-term treatment reaches one metre deep where compressed air blasts the compaction. The soil is opened up for good drainage and a healthy sward with minimum disruption. We have been successfully aerating sports turf, bowling greens, golf courses, parks, trees and gardens for over twenty-five years.



**See us at work:**

**[www.terrainaeration.co.uk](http://www.terrainaeration.co.uk)**

**Call us for a quotation 01449 673 783**







## GREENMECH TO LAUNCH THE NEXT EVOLUTION OF WOODCHIPPER AT THE ARB SHOW

The ARB Show will see a new product launch from GreenMech that is set to be the next evolution of woodchippers. Visitors to stands C8/9 and D8/9 will be the first to see the brand-new machine, which promises to extend GreenMech's portfolio in the arb sector. Alongside this, other highlights will include the recently introduced SURE-Trak 19-28, now available as a stand-alone model, and their petrol-powered Arb 150p chipper.

For occasions where operators encounter either challenging ground undulations, or where levels differ significantly between the two tracks, GreenMech's new SURE-Trak 19-28 model safely overcomes both challenges. The independent pivoting track assemblies allow each track to

maintain contact with the ground while following the contours, to provide a surer footprint and improved stability. The patent-pending pivoting track system allows safe traversing and climbing of slopes in excess of 35 degrees. Its assistance in keeping the body of the machine level also protects the engine by keeping it within its approved manufacturer tilt levels.

GreenMech's Arborist 150p, fitted with a 37hp Briggs & Stratton Petrol engine, can offer comparable performance to the higher horse-powered diesel engine of the existing Arborist 150, but at a much-reduced cost. It features a generous 970 x 790mm in-feed chute to accommodate a 150mm chipping capacity, while the 150mm x 230mm letterbox-style in-feed

throat opening makes light work of brush and heavily forked branches. The Arb 150p also comfortably meets the sub-750kg towing restrictions.

All of GreenMech's hydraulic machines are fitted with their patented disc-blade system, providing up to 150 hours of chipping before re-sharpening is required. They also come with a 3 Year, no-quibble warranty, the support of GreenMech's well-established UK dealer network and a variety of flexible GreenMech Finance options.

Tel: +44 (0)1789 400044  
[www.greenmech.co.uk](http://www.greenmech.co.uk)



## THE SOLID GEAR OCEAN SAFETY SHOE – PRECISION SAFETY AND COMFORT

Solid Gear continues to modernise PPE footwear with a safety shoe that looks and feels more like a trainer.



Combining a lightweight athletic look and superb safety features, the new OCEAN safety shoe is ideal for workers who are constantly on the move.

The shoe's midsole is made of a poured PU rather than a traditional injected PU to give a more cushioned feel underfoot, while the thick rubber outsole provides a high level of anti-slip protection and durability.

With an eye-catching style, the shoe's BOA comfort fastening delivers a better overall fit making it easy to take the shoe on and off,

Added to which, the shoe's fibreglass toecap and ballistic midsole combine with the other protection features and anti-static properties to deliver S3 protection

So get to know more about the quality and innovation plus the top class safety functionality in every Solid Gear product – your feet will notice the difference.

To get more information on Solid Gear - the Next Generation of Safety Footwear - visit the website at [www.solidgearfootwear.com](http://www.solidgearfootwear.com) alternatively, call the Helpline on 01484 854788.



FLAT SOCKET CONNECTORS



SOCKET CAP NUTS



CROSS DOWELS



THE HOME OF



0121 559 8866

[sales@nefasteners.co.uk](mailto:sales@nefasteners.co.uk)

Units 2-3, Waterfall Lane Trading Estate, Waterfall Lane, Cradley Heath, B64 6PU  
[www.nefasteners.co.uk](http://www.nefasteners.co.uk) | 0121 559 8866 | [sales@nefasteners.co.uk](mailto:sales@nefasteners.co.uk)

## REESINK SECURES DISTRIBUTION FOR UK MARKET

Reesink Turfcare is delighted to announce it has secured the exclusive UK distribution rights for a specialist range of tractor mounted aeration equipment from the American-based company 1st Products.

Better ways to aerate and remove thatch to more efficient seeding, the versatile capsule range of 1st Products tractor attachments, which are available now, complement Reesink Turfcare's growing range of tractor mounted attachments.

Steven Haynes, sales manager for TYM, which Reesink also distributes and which are a good fit with the 1st Products range, says: "We're introducing three

core product lines back into the UK from 1st Products, having been previously imported by Mumby Machinery."

First in the range is the AERA-Vator, a subsurface aerator whose unique oscillating vibrating tine system loosens, rather than punches, the soil around and underneath each tine. It has the benefit of being designed with a universal frame system so extra shafts can be added to expand its capabilities, such as the Multi-Tine, Multi-Slicer, Multi-Spike and the non-PTO Coring shaft.

The big brother of the AERA-Vator, is the AGRI-Vator. A larger machine ideal for relieving soil compaction on bigger areas



such as race courses and polo fields, the AGRI-Vator brings the same oscillating hubs as found on the smaller AERA-Vator, but with larger tines to provide more depth and subsoil fracturing.

The biggest advantage of the last item in the range – the VC Verti-Cutter – is the speed and depth which the machine can work to. Depth adjustments can be made in the field with no tools using a simple detent pin allowing the height to be adjusted in 5mm increments.

For further information on the three product lines and range of shafts contact Reesink Turfcare [www.reesinkturfcare.co.uk](http://www.reesinkturfcare.co.uk)





# HUSQVARNA LAUNCHES AI ENABLED ROBOTIC MOWER WITH AWD

Today, Husqvarna announced the release of Husqvarna Automower® 435X AWD, an AI-enabled, robotic mower with all-wheel drive and smart home connectivity.

This iconic, fully autonomous robotic lawn mower is designed to manage rough terrain and slopes with an incline of up to 70%, and works with Amazon Alexa, Google Home, IFTTT, and provides an open API for smart home integration.

Husqvarna, the world leader in robotic mowers, launches a game changing robotic mower for homeowners with challenging lawns and connected homes - Husqvarna Automower® 435X AWD. With an all-wheel drive system and a new unique body design with two connected bodies, Husqvarna Automower® 435X

AWD robotic mower can climb steep slopes with an incline of up to 70%. To put the number in perspective, a black downhill slope has an incline of approximately 40-60 %, and the incline of a ski jump hill measures about 70 %. The new robotic mower from Husqvarna can manage areas of up to 3500 m<sup>2</sup> and operates at 62 db.

“Husqvarna Automower® 435X AWD sets a new standard for robotic mowers, combining a perfect cut in “impossible gardens” with multiple product interactions, including conversational AI for Amazon Alexa and Google Home integration,” says Olle Markusson, Director Product Management at Husqvarna.

## Multiple voice interaction for Husqvarna’s connected robotic mowers

Starting this spring, Husqvarna Automower® 435X AWD, and all other Husqvarna robotic mowers with Husqvarna Automower® Connect, will be able to use voice commands via Amazon Alexa and Google Home. Via these voice-controlled speakers, the user can manage the mower. Advanced users can design their own program for the robotic mower via IFTTT or the open API. In addition, Husqvarna Automower® Connect also works with GARDENA SmartSystem, adding irrigation to the smart garden.

Voice interaction will first be available in English, followed by German and French. Additional languages will follow.



### New safety features

In addition to the built-in safety feature that automatically stops the mower if it is lifted up or turned over, Husqvarna Automower® 435X AWD is also equipped with several new features to increase safety. With Ultrasonic, a remote object detection feature, Husqvarna Automower® 435X AWD reduces its speed as soon as it senses a nearby object. Together with a front rubber bumper, Ultrasonic ensures a soft impact when the robotic mower comes in contact with an object. Husqvarna Automower® 435X AWD also has automatic passage handling and LED-headlights.

There are several optional accessories for Husqvarna Automower® 435X AWD, including replaceable top covers

in white and orange as well as a brush kit that keeps the wheels clean to improve traction even more.

### About Husqvarna Automower®

Husqvarna Automower® is the world leading robotic lawnmower since 1995, mowing public and residential lawns around the world, and known for its quiet and reliable handling of complex lawns. Husqvarna Automower® can easily handle steep slopes, automatically return to its charging station, as well as be controlled from anywhere in the world with connectivity.

Due to the machine's self-fertilising cutting technique and light weight pivoting blades, grass does not require as much fertilisation when compared

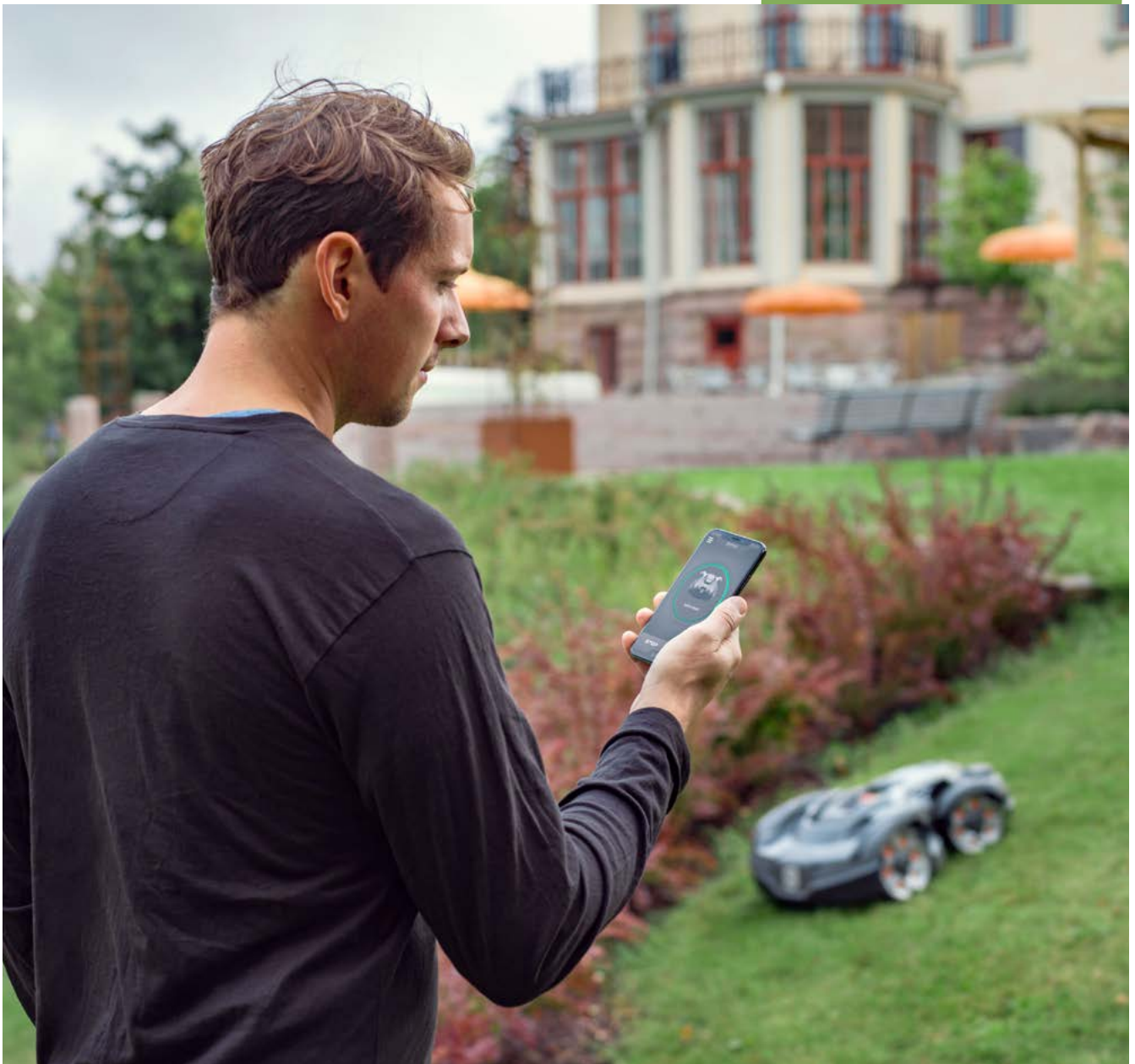
with other cutting techniques.

Husqvarna Automower® cuts a small bit at a time but often which - coupled with the self-fertilising technique - means a denser, greener lawn, and also prevents moss.

Husqvarna Automower® 435X AWD is available from April 2019 and has an RRP of £4,400.00.

Amazon Alexa and IFTTT will be available in Germany from March 1, 2019. Amazon Alexa and the open API will be available in French in the second quarter of 2019.

For more information, visit: [www.husqvarna.com/uk/products/robotic-lawn-mowers/automower-awd/](http://www.husqvarna.com/uk/products/robotic-lawn-mowers/automower-awd/)







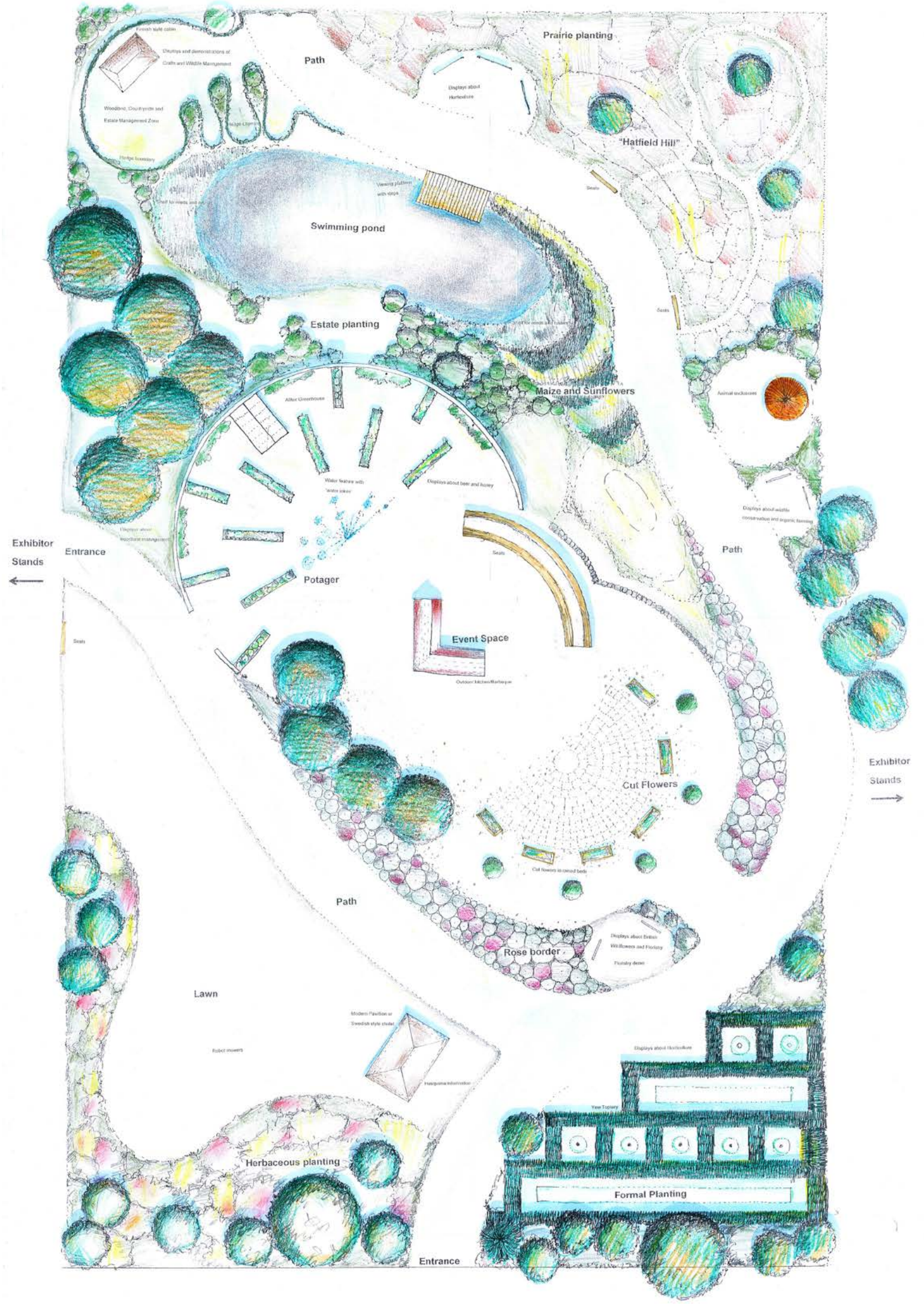
# WORLD'S LARGEST SHOW GARDEN EVER ATTEMPTED AT THE GAME FAIR 2019, HATFIELD HOUSE

The Game Fair returns to Hatfield House in Hertfordshire on 26-28th July 2019, with unparalleled access to a vast catchment area and literally minutes from central London.

Lord and Lady Salisbury's estate at Hatfield House will host the event again, attracting over 120,000 visitors to the 3-day event. The Game Fair are delighted to announce an ambitious plan of new attractions that will delight the crowds - including the installation of the largest show garden ever attempted - brought to life by leading educational institution Capel Manor College, of which Lady Salisbury is a Patron.







Woodwork, Claymolds and Estate Management Zone  
Herbaceous display  
Displays and demonstrations of Crafts and Wildlife Management

Path

Prairie planting

"Hatfield Hill"

Swimming pond

Estate planting

Maize and Sunflowers

Exhibitor Stands

Entrance

Potager

Event Space

Path

Exhibitor Stands

Cut Flowers

Path

Rose border

Lawn

Robot insects

Modern Pavilion or Swedish style stables  
Horticulture display

Herbaceous planting

Entrance

Formal Planting

Displays about Horticulture

View Tower





Capel Manor College is a leading education provider for those interested in plants, animals, flowers, trees and the environment, offering apprenticeships in London for those looking to work and contribute to the rural economy and urban regeneration. The college is uniquely placed to help Sadiq Khan's latest plans for London to have more than 50% green space. The college can facilitate how people can take care of and maintain these green spaces in London.

The Game Fair Gardens, designed by Capel Manor's Royal Horticultural Society gold medallists, will create an immersive and interactive experience, telling the story of the countryside, estates, country gardens, traditional practices and innovations through a number of themed gardens. Visitors can expect kitchen gardens, traditional crafts, art, sculpture and superb design at Hatfield House, which already has an international reputation among gardening enthusiasts. A stage at the centre of The Game Fair Gardens will also host Q&As, demos and debates.

James Gower, Managing Director of The Game Fair, explained:

*"A show garden on this scale has never been attempted before, but given its outstanding reputation for garden design, innovation and young talent, Capel Manor College is perfectly placed to deliver it at Hatfield House this summer. This ambitious display offers something different and will be a huge draw for the 120,000 visitors coming to The Game Fair this year."*



Lady Salisbury, who is Patron of Capel Manor College, said:

*"It is wonderful that this year The Game Fair is encouraging our apprentices and students to use their skills and knowledge to create a spectacular garden at Hatfield. As patron of the college, specialising in land-based subjects across London, I know this RHS award-winning team will provide inspiration to gardeners and will show with a good design, what can be grown. Seeing what people can do is always a pleasure as well as providing a vital contribution to our green open spaces."*

Malcolm Goodwin, Principal at Capel Manor College, added:

*"We are very excited to be bringing a substantial display of horticulture and environmental skills to The Game Fair at Hatfield House to showcase the many talents of our students and*

*staff. The college provides fantastic opportunities for young people and career changers alike. This exhibit will show how people can have wonderful careers by learning how to create beautiful gardens, produce food from the land and look after the countryside, trees and wildlife to create a healthier, more attractive, productive and accessible environment for everyone."*



**For more information  
and to book tickets visit:  
[www.thegamefair.org](http://www.thegamefair.org)**





**Palmstead**  
our plants  
your design

Garden by Acres Wild

**Palmstead Mini Workshops 2019  
BOOK NOW**  
[www.palmstead.co.uk/events](http://www.palmstead.co.uk/events)

From the smallest garden to the largest park,  
leading producers of quality nursery stock

**Discover more online:**  
Live stock availability  
10% web discount  
Articles, events, offers

**Visit:**  
[www.palmstead.co.uk](http://www.palmstead.co.uk)

## JULIANA URBAN SERIES PERFECT FOR CITY GARDENERS

Growing your own vegetables, salads and herbs is always popular, but for city dwellers with only a small outdoor space, it may seem a challenge too far. But thanks to Juliana Greenhouses new Urban Series of apartment and courtyard growing spaces, home ripened produce and your very own oasis of green can be achievable after all.

The Juliana Urban Series comprises the Balcony, the Vertical and the City Greenhouse, all three combining elegant aesthetics, high end functionality and small space adaptability. All come equipped with removable plants shelves to allow you to take your herbs straight to the kitchen or dining table.



For more information visit [en.juliana.com](http://en.juliana.com),  
call 01242 676625  
or email [mail@eden-greenhouses.com](mailto:mail@eden-greenhouses.com).

I O T A 




## THE PLANTER SPECIALIST

IOTA offers a trusted bespoke manufacturing service in all sheet metals

• Highly skilled metalwork aided by the latest technology • Experienced project team • Full service provision

**T. 01934 522617 W. [WWW.IOTAGARDEN.COM](http://WWW.IOTAGARDEN.COM)**





Mode Profiled in Graphite.  
Priced from £67m<sup>2</sup>

# FIVE TIPS FOR PLANNING & DESIGNING YOUR GARDEN

Whether it's a new patio or a decorative feature wall on the agenda, with summer fast approaching, there

is no better time to make a start on creating your dream garden. Lee Dunderdale, product manager

for Bradstone, shares his design considerations for homeowners looking to re-design their garden this summer.





*Madera Antigua in Oak.*  
Priced from £68m<sup>2</sup>

### 1. Always keep your objectives in mind

When you stay focused on exactly why you've given yourself the green light on your project, you'll be able to stay on track and keep a tighter rein on your budget. It sometimes helps to put together a basic drawing of what you're hoping to create so you can share your vision with your installer or paving supplier.

### 2. Patio positioning and privacy

Think about where the sun is at different times of the day in your garden and whether there's any view you want to be able to enjoy. It's also important to check whether the furniture you want fits in the area with plenty of room to walk around.

### 3. Choosing materials

When planning your patio, are you opting for porcelain, natural stone or concrete? Each material will help create a completely different look, so research the advantages they each have and decide which suits your home and lifestyle best. If you were thinking of timber decking, why not opt for Bradstone's Madera Antigua paving which looks sleeker and doesn't come with the required maintenance of wood.

### 4. Don't forget the technical bits

It's easy to get carried away with the aesthetics of the garden, however if you are installing a patio yourself, take some time to consider access to your property, trees and drainage. The advantages of using a Bradstone Assured installer is

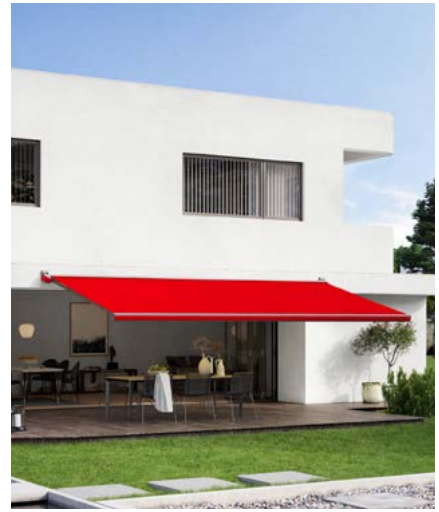
they will ensure all groundwork and building regulations are covered.

### 5. Set a budget

Set a limit of what you're prepared to spend and stick to it. But don't forget to factor in the cost of a professional installer if you're going to be using one. It's worth remembering that only 20% of the total project cost is spent on product, as this avoids any surprises further down the line.

For more information  
on Bradstone's paving  
collection, please visit  
[www.bradstone.com](http://www.bradstone.com)





*A new awning revs up summer: the MX-3 from markilux. With its soft curves and the coloured front profile, the awning catches the eye and brings modern chic to your patio and balcony.*

# AWNING DESIGN IN TOP FORM

## NEW CASSETTE AWNING REVS UP SUMMER WITH ITS CASUAL ROUND SHAPE

Nature shows the way: Ever since it has been picking the best ideas from its vast pool of shapes and creates something new. True to this principle, awning specialist markilux developed its new cassette awning MX-3. According to the manufacturer it unites the best from technology and looks and many years of development in a gracefully curved, colourful design.

The new slim cassette awning shows how components can merge in a playful way. The side profiles of the model flow with soft curves into the elongated profile that closes the awning housing at the front.

### **Design for shape enthusiasts**

The MX-3 received a colourful front profile to turn the sweeping ensemble of round and square an even greater eye-catcher. As continuous ribbon it picks up the arched shape of the side

caps with great skill. You can choose from eight accent colours and match them to the pattern of the awning cover. Thus, the awning presents itself as an exciting mix of shape and colour lending the facade casual chic. It provides shade not only for patios but also for balconies.

### **High-tech at its finest**

In addition to the curved design, the MX-3 also offers a new light option. Below the awning you can attach an LED-Line or LED-Spots. They illuminate the cassette and the façade in the evening with an accentuated band of light or with accentuating light beams. In general, the awning is equipped with the latest technology. The high-tech mechanism extends and retracts the awning cover smoothly. The brackets for wall and ceiling are hardly noticeable since they are covered by sealing caps. To operate the



awning, you can choose from manual or radio-controlled motor operation. The integration in a home automation system is also possible. Further options are dimmable infrared heaters and weather sensors. The small awning with a maximum width of six metres and three metres of depth provides a wide area with shade. According to the manufacturer, the MX-3 unites highest standards from the in-house development centre and shows itself at its best for summer.

**For further information, please visit: [www.markilux.co.uk](http://www.markilux.co.uk)**



markilux 6000



ESCAPE  
THE INDOORS  
IN STYLE

## Designer awnings – Made in Germany

**Put only the best between you and the sun.** Create the most seductive shade in the world. markilux designer awnings are a symbiosis of innovative technology and the pinnacle of quality and have received both acclaim and multiple awards.

For additional information visit your markilux specialist dealer or [markilux.co.uk](http://markilux.co.uk)



| Brand



| Website



| e.g. markilux 6000



reddot design award  
winner 2006

**markilux**

safe timeless beautiful





# BUILDING A CHELSEA GARDEN



**By Dan Riddleston,  
Managing Director, Bowles & Wyer**

It's over 25 years since I built my first RHS Chelsea garden and in that time I've been involved with about 15 gardens from large Main Avenue Show Gardens to the smaller artisan plots. It doesn't matter how big or small they are, building an RHS Chelsea garden is a unique experience and completely different to building a domestic garden. Show gardens have to embody a sense of theatre and often involve incredibly complex structures and techniques that no-one ever sees and that would never be built in a domestic setting.

Getting these right is ultimately what brings the designer's vision to life, so as well as carrying with it an enormous amount of responsibility, it can take ridiculous amounts of time working out the best ways to construct them.

Building an RHS Chelsea Garden begins months before we arrive on site. The task of building a garden from scratch, on site, in just 20 days is very challenging so like most Chelsea contractors, we build a lot of the more complicated elements off-site where we can trial them with specialists to ensure quality and accuracy. Our aim is always to shorten the time we spend on the hard landscape elements on site, so that the planting can be completed ahead of time and can have a chance to settle and establish before the garden is judged. Building in advance not only ensures the best quality of build, but it saves valuable time later.

As many as 45 people might be involved in creating a show garden behind the scenes in the months leading up to the show but you will only see about 12 people on site for the 20-day build.

This year I'm working with designer Helen Elks-Smith on the Warner's Distillery Garden. It features a central pavilion created out of drystone walling but, with two large cantilevered roofs and a series of complex water features, one that brings with it its fair share of challenges when it comes to construction.

As the contractor responsible for making sure the garden is ready on time, we treat it as a military exercise. We have a strict programme of works that sets out the sequence and timing of all operations, from those that take several days to those that can be done in a couple of hours.





I have worked with a number of different designers on gardens that have all been very different, but in every case, it is the relationship between contractor, suppliers and designer that is important. The schedules are tight, you are down to the wire and good relationships in this environment are vital.

For the Warner's Distillery garden we've assembled a team of experts to master the challenge and ensure that the finished garden fits with Helen's vision.







Experts from KAM Engineering have created the steel framework of the pavilion that will hold the complicated roofs, PAD architects has helped to turn the structure into a viable building and structural engineers from Constructure have helped bring it to life. There are other suppliers involved too. Water expert Andrew Ewing has consulted on the multiple water features to make sure they appear and disappear throughout the garden exactly as Helen envisaged and Aztec Modelmakers has created real scale mock-ups, giving us the opportunity to test the most complicated elements and hone their design.

Since I started working at RHS Chelsea I've seen a huge improvement in the standard of construction and levels of professionalism. No one wants to create a garden that isn't the very best it can be, so while the RHS show manager will keep a very close eye on the progress of the build they also work hard to make things as easy as possible for the contractors while they're on site. Once there, the feeling of camaraderie between everyone involved in creating the show is amazing. 25 years on it's this, and the thrill of seeing a designers vision come to life - however complicated - that keeps me coming back.





# EVEREDGE

In 2018 EverEdge were tasked to supply plastic powder coated steel planters for the redevelopment of two Grade II listed Regency Villas. The Villas are being developed for Pegasus Life to provide 50 apartments. Glen Howells Architects have designed the project to fit in seamlessly into the distinguished streets of Montpellier, Cheltenham.

Sky Garden, the contractor on this project, came to EverEdge to provide the steel planters. The planters are 900mm tall and have been designed to fit between existing structures on the roof of the building. The planters are filled with a mixture of void former, grit, bark and 300mm of topsoil. Because of the size of the planters, they are braced for strength and to prevent the steel from bowing.

The planters are made from durable steel for longevity and finished in a light grey powder coat which matches beautifully the building. All the planters have an internal jointing system which was a requirement on this project to give them a near seamless appearance.

EverEdge Planters are available in virtually any design, shape and size and in a range of finishes making them the perfect addition to any project.



Tel: 01630 417120 Direct: 01630 417125  
[www.everedge.co.uk](http://www.everedge.co.uk)

Look what  
you can  
do with  
EverEdge...



Edging, rings and planters



Call for full details on 01630 417120  
 See them all at [www.everedge.co.uk](http://www.everedge.co.uk)

**EVEREDGE**  
 THE EDGING COMPANY

Made in  
 Britain  
 INVENTED  
 AND  
 DESIGNED

Follow us on Twitter @EverEdge





# SUSTAINABLE GARDEN DESIGN

With the latest report from the IPCC estimating that we have just 12 years to try and halt the drastic consequences of climate change there has never been a more important time to take action and protect our environment.

Whether you have a small outdoor space or more garden to work with, we can all do our bit to help preserve the future of our planet. Here are our tips for designing a sustainable garden.

## **Water conservation**

With UK government bodies having already issued a drought warning for 2019 and the prolonged heatwaves from last summer far from a distant memory, it is essential to be more conscious of water usage in the garden.



Now is a great time to install a rainwater collection barrel at the base of your gutters to collect spring rainfall. It will become an invaluable resource for your lawn and flowers later on in the year, especially in the case of a hose pipe ban, while also reducing your water usage and bill. Make use of second-hand barrels to collect and store the water.

Mulching is also an effective way to minimise water consumption in your garden. By spreading biodegradable material such as compost and wood chippings around a plant or over soil it provides an organic barrier which prevents drying out from the sun, resulting in less water usage. The organic mulch also adds nutrients to the soil and suppresses weeds by blocking sunlight. To get the best out of mulching, apply them mid- to late spring and autumn, when the soil is moist and warm.

### Natural pest control

The overuse of pesticides has been linked to the current catastrophic decline of insect populations that we are witnessing around the world, so eradicating pesticide use in your own garden is vital if we are to safeguard the essential role that insects play in our ecosystem.

Companion planting is an entirely natural and safe way to reduce pests while eliminating the presence of artificial pesticides in your garden. For example, coriander or garlic plants will ward off aphids with their strong scent, making them an ideal companion for roses. Sage or plants in the cabbage family are also effective insect controllers; they emit pest-repelling scents.

Companion planting is not only for warding off pests, it can also be used for adding nutrients to the soil. Plants in the pea family, such as lupins, peas, beans and sweet peas, take in nitrogen from the air and store it in their roots, naturally benefitting the soil. Plant these around fruit trees for the greatest benefit.



### Reusing household items

In nature the concept of waste doesn't exist; a by-product from one organism becomes the food for another and vice versa. Try to take this approach to waste in your own home and garden.

A compost heap is an excellent way to recycle food and other organic waste into a rich fertiliser for soil. From food waste such as vegetable peelings to garden waste and grass cuttings, you will not only be reducing household waste but also helping to improve soil quality in your garden. To go a step further, repurpose second-hand

bricks or old planks of wood into a compost bin.

Old toilet and kitchen roll cardboard tubes also make great biodegradable, waste-free seedling plant pots. Cut them to size as necessary, folding over at the bottom and then plant straight into soil. Non-recyclable black plastic containers also perform this function well, with the added bonus that you are reusing something that would not otherwise be recyclable. The black colour also helpfully blocks light from getting to the roots of the plants, preventing growth problems.





## Environmentally friendly finishing touches

More and more consumers are becoming conscious of the environmental provenance of their products, creating a space for sustainable garden furniture.

As this market grows, the appearance and quality of environmentally friendly garden products is able to compete with their more traditional counterparts, but with the added benefits of diverting waste from landfill and repurposing non-recyclable materials into durable products.

Look into more sustainable alternatives to traditional garden furniture. For a luxury and environmentally friendly addition to any patio we recommend Galleon all-weather rattan garden furniture. Created using a handmade rattan weave made from 100% recycled polyethylene you can relax in the knowledge your furniture not only looks good, but has helped repurpose materials in the fight against plastic waste.

Whether turning food waste into a healthy mulch for plants, repurposing black plastic containers into seedlings pots, or simply mowing your lawn less often, there are many ways you can make your garden more sustainable. Small but sustainable choices will not only will it improve the overall health of your garden, but also help to secure the future of our planet.

Aidan Bell is the co-founder of sustainable building materials company Envirobuild. Bell's mission is to use recycled plastic materials to design sustainable cladding, decking and furniture to help mitigate the built environment's contribution to climate change.

**For more information on Envirobuild and its sustainable design solutions, please call the team on 020 8031 2638 or send an email to [info@envirobuild.com](mailto:info@envirobuild.com)**

## Low-maintenance gardening

Consider mowing your lawn less frequently than every two weeks. Not only will you cut down on energy consumption from the lawnmower, but it will also allow flowers to bloom and be pollinated while cultivating a healthy habitat for insects. If you have the space, set aside a small area of unmown lawn or a patch of nettles to provide ongoing plant food and a breeding area for butterflies.

Native flowers and plants which are often considered to be weeds, such as brambles, dandelions, buttercups and ox-eye daisies, are actually the best

suitable to your garden because they are extremely well adapted to the local area and climate. Not only will they need less water to thrive, they will also attract the greatest numbers of bees and other pollinating insects, key components of a thriving garden.

Although it could be tempting to replace your lawn with artificial grass, installing artificial grass will result in a substantial loss of habitat for insects such as bees and butterflies as well as other wildlife, not to mention the creation of plastic, non-biodegradable waste.



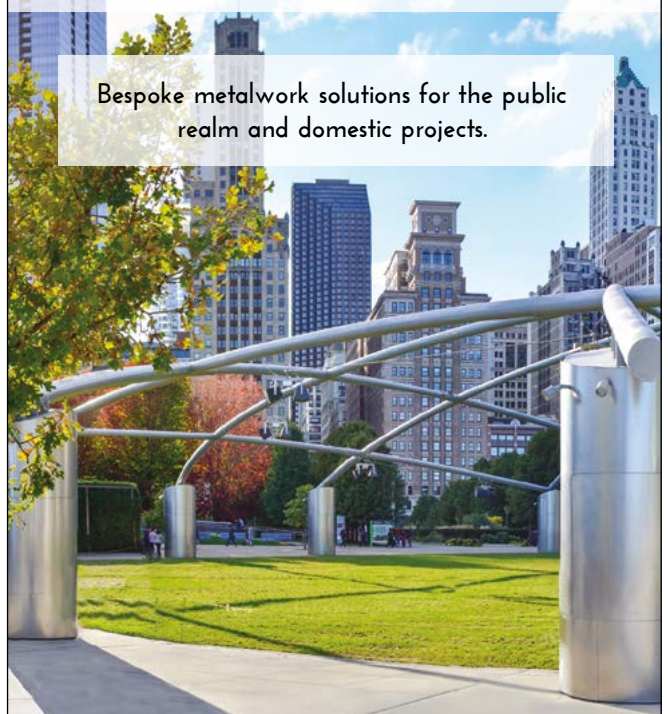


Cabinco Structures  
Room 41 Flexspace Offices, Vincent Carey Road,  
Rotherwas Industrial Estate, Hereford, HR2 6FE

Tel: 01600 719218  
Email; [simon@cabincostructures.co.uk](mailto:simon@cabincostructures.co.uk)  
Web; [cabincostructures.co.uk](http://cabincostructures.co.uk)



Bespoke metalwork solutions for the public realm and domestic projects.



[www.exteria.co.uk](http://www.exteria.co.uk)

**MADE IN BRITAIN**

01623 857161

[info@exteria.co.uk](mailto:info@exteria.co.uk)

## BESPOKE GARDEN STRUCTURES FROM OECO GARDEN ROOMS

Oeco Garden Rooms have been manufacturing and installing timber framed structures for over 10 years. They specialise in building bespoke garden rooms,



offices and studios for those who want to extend their living space for a multitude of uses.

Made from a traditional timber frame construction, concrete pile and steel foundations, these garden rooms are built to last and can be used year round. Western red cedar external timber cladding finishes off the look, providing rich and varied browns, reds and pinks making each garden room unique.

Our bespoke garden room service allows you to decide on site where you want the windows and doors, switches, lights and sockets placed and allows our installers to run any additional wiring such as internet, telephone or alarm cables inside the walls.

Visit [www.oecogardenrooms.co.uk](http://www.oecogardenrooms.co.uk) or contact one of our sales team on 0800 170 1270 for more information or to request a brochure

**oeco**  
garden rooms



Oeco Garden Rooms have been manufacturing and installing bespoke garden rooms, offices and studios for over 10 years. We deliver and install nationwide. Contact our team for more information.

T: 0800 170 1270  
E: [sales@oecogardenrooms.co.uk](mailto:sales@oecogardenrooms.co.uk)  
[www.oecogardenrooms.co.uk](http://www.oecogardenrooms.co.uk)





# ACHIEVING A MODERN AND CONTEMPORARY LOOK IN YOUR GARDEN FOR 2019

With memories of the glorious weather in last year's summer still fresh in our minds, Britain's leading producer of outdoor timber garden products has a host of new ideas that will help you enjoy this coming sunshine bonanza.

Whether it is developing a point of interest in a lost corner of the garden or creating a real wow factor statement, Forest Garden has a host of exciting products that will get the summer off to a sizzle, regardless of the weather.

From decking and fencing to large features, these can all help create a

contemporary and modern feel to a garden, which will, in turn, establish form and structure. When designing a garden, these vital elements can make a huge difference to the overall look, as they act as the first stepping block needed to create a stunning focal point around which the planting and other features can be built.

Starting with your boundaries, simply changing your fencing can create a dramatic effect to your garden and can change a space for the better. There's nothing worse than broken or mismatched panels. The 6ft Double Slatted Panel from Forest

is a substantial and stylish panel which offers both a contemporary look and modern feel. Due to features on the panel, more privacy for you is possible, yet light and air flow is not compromised. It is also a perfect product to achieve those desired soft lines around your garden.







If you have a larger space then think of partitioning areas of your garden - to begin your makeover, choosing a few of the Forest Heavy Duty Trellis's, which stand 6ft tall and come in a variety of widths, is a good starting point. These trellis' provide a solid structure in which you can divide the space in your garden and section off areas in which you want to do more with. They also provide the perfect support needed for climbing plants, which can make a soft focal point.

If you want to achieve a level surface in the garden, then decking is a good option for this. It is a great way to create a designated area that is separate from the rest of the garden. To create a more modern feel to this area, you can use the Patio Deck Tile, which creates an illusion that the space is bigger than it is or install a ready-made area with plenty of space to relax and added height with a patio decking kit with pergola.



To ensure the attention is not solely on the decking, you can soften the edges with planters such as the Linear Planter or the softer Windsor Planter. Both come in square, long or tall styles meaning the possibilities are endless on how to style your decking. The Windsor Planter Square Planters dotted in each of the corners would bring a different feel to the area. Whilst the Tall Windsor and Linear Planters can be used to create a partition, closing off the area.







To create a real statement, large structures such as pavilions or pergolas provide height and create a focal point in the garden. Forest's Venetian Pavilion can create a very distinguished look but is also practical too. The Venetian Roof will shelter you from any passing showers, yet it can allow light to shine below. Whether you use it as a social area or a dining area, it gives you the advantage of spending time outdoors and looks great when paired with rustic sleeper furniture.

Or if you want something more stylish and contemporary, the Dining Pergola makes the perfect focal point structure. The laddered side and roof panels add an extra dimension to the structure and are fantastic for training climbing plants and creating your own shade. Also, the modern design and strong lines create an eye-catching display which can be admired by friends and family.

With these elements in place, the garden of your dreams can be created and, as it changes through the seasons, you can rest well knowing its structure will remain solid.

**Forest Garden has a wide range of decking, fencing and large structures to choose from. To view the entire range, visit [www.forestgarden.co.uk](http://www.forestgarden.co.uk)**

**Products can be ordered nationwide through online retailers, high street multiples and garden centres.**



## H<sub>2</sub>O SWIMMING POOLS – TOP TIPS FOR DESIGNING THE PERFECT POOL

Swimming pools are a source of family fun and exercise, and can enhance a garden. However, designing and installing a pool is a big undertaking so here are some tips to help you:-

**Budget** – This is the foundation of the project. Talk to your pool designer to get the best value for money and cost saving ideas.

**Planning permission and building regulations** – Generally, outdoor pools don't need planning permission unless the garden is in a conservation area or area of outstanding natural beauty, or if the pool is to be enclosed. However, relevant building regulations must be adhered to. Consult the local authority in advance before making a costly mistake.

**Position** – Is the pool to be near the house (a good idea if you have children, or further away? The pool pump, filter and possibly heater need to be housed in a shed or building and you may want a changing area too. Consider whether noise from the equipment or pool might annoy neighbours. Try to choose the sunniest spot away from overhanging trees which may shed leaves into the pool or cause root damage. You will need to run the pool pipes underground and will need a power supply.

**Pool size and shape** – UK weather means pools need covers when not in use. Standard rectangular pools with square or semi-circular step access are the easiest to cover, although other shapes are possible.

**Pool surround** – Allow space around the pool for lounging, pool cleaning and maintenance. Paving or decking look good, but ensure the chosen material is non-slip and suitable for use with treated pool water.

**Pool finish** – There are several options eg pre-formed fibreglass shells, pvc 'liner' membranes, 'marbelite' type finishes, glass or ceramic tiles and natural stone. Choose a style and colour/s that suit the house and garden.

H<sub>2</sub>O Swimming Pools Ltd recommend contacting SPATA UK to find your local member pool contractor.



[www.h2oswimmingpools.co.uk](http://www.h2oswimmingpools.co.uk)  
Contact 01342 844555 or [info@h2opools.co.uk](mailto:info@h2opools.co.uk)

# LEADING SWIMMING POOL CONTRACTORS

**H<sub>2</sub>O Swimming Pools Ltd** is a leading swimming pool contractor in the south east. The company builds, refurbishes and maintains swimming pools across Surrey, Sussex, Kent and west London.

As a Which? Trusted Trader and member of SPATA you can be assured of a good standard of workmanship. We are also GasSafe and OFTEC registered.

Whether you have an existing pool and equipment that needs repair and renovation or are looking to have a new pool built, we offer a choice of designs, heating, lighting, covers and paving or tiled surrounds so you can have a pool to suit your home, lifestyle and budget.

Or you might like us to provide an affordable spa to relax in?



[www.h2oswimmingpools.co.uk](http://www.h2oswimmingpools.co.uk)  
Contact 01342 844555 or [info@h2opools.co.uk](mailto:info@h2opools.co.uk)



**H<sub>2</sub>O** SWIMMING POOLS





## SEAMLESS SURFACING FOR PATHWAYS AT BATTERSEA PARK

Over 800m<sup>2</sup> of Addagrips Terrabase Classic Resin Bound porous surfacing was installed to rejuvenate the pathways in Battersea Park on the banks of the River Thames, London.

Addagrip was contacted by the client Barhale Ltd regarding the resurfacing of existing pathways in the Grade II listed, 200-acre urban green space in the London Borough of Wandsworth. The requirement was for overlay of existing pedestrian walkways with a smooth, low maintenance, seamless finish in a colour similar to adjacent paths.

A special blend of aggregates was required which Addagrip named 'Battersea'. The natural stone that helped create this bespoke resin bound colour was supplied by Long Rake Spar and was installed with their Terrabase system as a Terrabase Classic paving.

Long Rake have a large offering of specialist dried aggregate granules that are perfect for use in resin bound paving.

The initial phase of the pathway resurfacing was carried out in June 2018 by Addagrip approved contractor Total Protection Ltd who installed a total of 450m<sup>2</sup> of the Terrabase Classic.

A further 430m<sup>2</sup> of the resin bound surfacing was installed in a different area of the park by Addagrip approved contractor O'Hara Bros Surfacing Ltd in September 2018.

The finished surface offers a practical, porous paving option suitable for all weather access to this busy park and the bespoke colour blend provides a great match to the adjacent surfacing.

[longrakespar.co.uk](http://longrakespar.co.uk)



## THE UK'S LARGEST RANGE OF DECORATIVE AGGREGATES

We supply a range of products...



Decorative Chippings



Pebbles & Cobbles



Rockery, Boulders & Feature Stones

| [sales@longrakespar.co.uk](mailto:sales@longrakespar.co.uk)  
| [longrakespar.co.uk](http://longrakespar.co.uk) | 01629 636 210



# GLOBAL STONE

NATURAL STONE & PORCELAIN



**Global Stone is an industry leading, innovative supplier of premium porcelain and natural stone paving, setts, accessories and features**

For more information or to see our full range:  
[www.globalstonepaving.co.uk](http://www.globalstonepaving.co.uk)





## BEE PART OF THE SOLUTION WITH HONEY FROM BEE CONSERVATION'S CORPORATE HIVES

Businesswoman and beekeeper, Thalia White, is offering businesses a unique way to showcase their sustainability and corporate responsibility efforts with their own bee colonies producing sustainable, local honey.

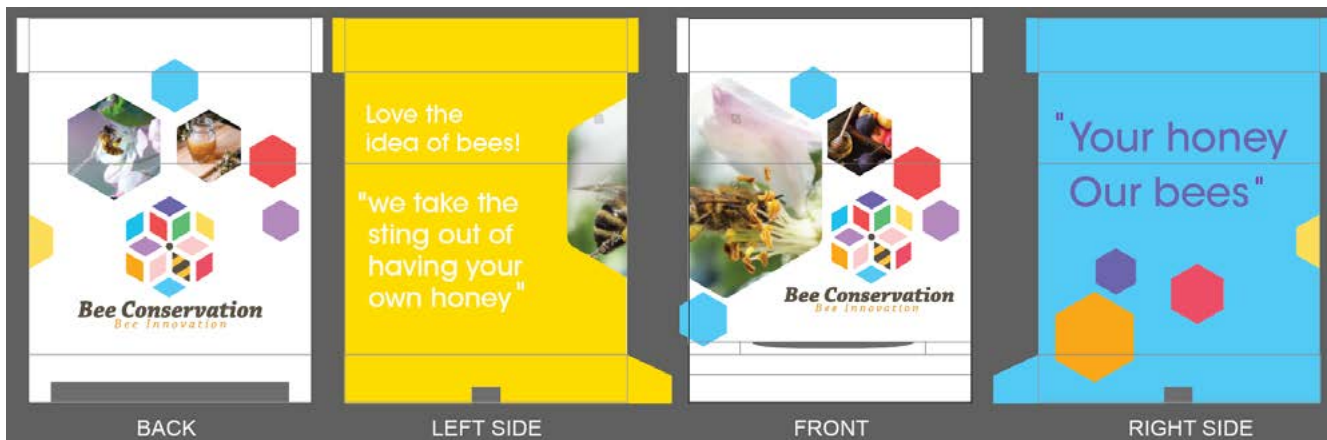
Thalia, is combing her experience from a long, successful career in sales and business publishing with her life-long passion for the British countryside, and bees in particular to Bee Conservation.

Founded in 2017, Bee Conservation supports bee populations and pollination by taking bee colonies out to home and business owners.

In return, as well as supporting vital pollination, the hives' sponsors gets priceless publicity from branded hives in highly visible locations.







At the end of each season a guaranteed, personalised supply of honey is a very special gift from your company.

There is no better way to make a tangible difference to British eco-systems, and to let people know what that you're serious about sustainability.

*"People love bees," says Thalia. "They associate them with honey and with the summer. And we're also becoming more aware of their importance to the countryside and to food supply, and the threat that they are under."*

Bee and pollinator populations around the world have declined.

In November 2017, Parliament gathered together the best contemporary research on bee populations for a debate at Westminster Hall.

They reported a long-term decline in UK pollinators, for which the more than 250 species of UK bees are used as an indicator. A National Pollinator Strategy sets out what the



Government intends to do, efforts it has pledged to maintain after Brexit.

The exact cause of this fall in bee numbers is not yet fully understood. Climate change probably plays a role; the decline in native wild flowers certainly does. Pesticides, disease, parasites, and invasive species could also be contributing.

It's an important issue. The House of Commons Library's research put the value of pollinators like bees to the UK economy at about £600 million a year.

But according to Thalia, it is relatively easy to make an impact on a personal and corporate level.

*"This is an opportunity to make your own contribution. Individual bees from your hive will fly up to 3 miles each a day, pollinating as they forage for food. A hive can contain up to 50,000 bees, and they can pollinate billions of flowers and help produce thousands of tons of apples, and hundreds of tons of pears and cherries."*

*"Your company can really make a difference."*

Thalia - who became fascinated by bees after hearing the buzzing of a neighbour's hives as a child - will manage hives wrapped with high-quality branding in a safe site, visiting around once a week during the summer. Bee Conservation is fully insured, and Thalia is happy to explain her work and the lives of the colonies to staff who want to know more.

Honey yields are guaranteed, branded with your logo and personalised labels, and make a wonderful promotional gift or staff reward.



**Contact Bee Conservation  
now to find out more:  
[beeconservation.org.uk](http://beeconservation.org.uk)**



10-12 September 2019  
NEC Birmingham

---

Tuesday & Wednesday 9:00 – 18:00  
Thursday 9:00 – 16:00

# glee

The UK's leading garden and  
outdoor living tradeshow.

Secure your space in Glee's dedicated Landscaping and Garden  
Decorations show sector, and place your brand in front  
of over 7,000 quality buyers.

---

Discover more at [gleebirmingham.com](http://gleebirmingham.com)

 Glee\_Birmingham

 Glee\_Birmingham

 Glee.Birmingham1

 GleeBirmingham1





*ABOVE: Principal Award Winner 2018, Soft Landscaping Construction (non-domestic) - Between £300-£1.5M, Frosts Landscape Construction - 'Holland Park Villas'*

*LEFT: Special Award, Best Newcomer to BALI 2018 & Principal Award Winner 2018, Domestic Garden Construction - Under £30K, Langlea Garden Design & Construction - 'Victorian Flavour'*

## TAKE YOUR BUSINESS TO THE NEXT LEVEL WITH A BALI NATIONAL LANDSCAPE AWARD

The British Association of Landscape Industries (BALI) is the leading trade association in the UK for landscaping professionals who offer design, build and maintenance services. Every year BALI celebrates its member's achievements at Europe's largest and most prestigious landscape awards ceremony, with over 1,000 guests and VIPs in attendance. 2019 marks the 43rd Awards, supported by Headline Sponsor Green-tech, the UK's leading supplier of quality landscaping materials.

To enter a scheme into the BALI National Landscape Awards, you must be a BALI Registered member. This means only those organisations that have achieved BALI's accredited status can submit an entry. Many BALI members that have won a prestigious BALI National Landscape Award report increased sales and interest in their brand, with some organisations reporting an exponential shift in momentum in how their business is not only managed and run, but how it delivers projects for clients and is perceived in the industry.

To win a BALI National Landscape Award you will also need to impress BALI's expert adjudication panel led by the Chair of the Adjudication Panel and former Managing Director of six-time Grand Award winner Willerby Landscapes, John Melmoe.

Commenting on this year's Awards, John said "A key way to showcase your company's capabilities is to submit an entry into this year's Awards. Entrants should be fully focused on submitting flawless projects, highlighting the significant contributions of staff and the underlying desire for your company to excel."

BALI Chief Executive Wayne Grills added "Since the Awards were first launched over 40 years ago the standard of entry has improved tenfold. This is testament to the quality of work delivered by our BALI Registered members."

Multi-award-winning company director of Northumbrian Landscapes, Peter Cunliffe, commented "Having won our first award in 2009, every

aspect of our business has improved. We have gained elevated respect and status from suppliers, industry and press, which has resulted in us tripling our turnover without any noticeable increase in effort. This has allowed us to employ staff to help with administration, which facilitates staff training and running a more professional outfit. As a result of our award success we now operate with a 12-month waiting list enabling us to pick and choose the projects with which we work. We are also frequently asked to contribute to industry and local publications, which has been both humbling and a testimony to how far we have come since our first entry back in 2009."

**To find out more visit [baliawards.co.uk](http://baliawards.co.uk) or contact Leah Brookes, [leah.brookes@bali.org.uk](mailto:leah.brookes@bali.org.uk), +44 (0) 2475 185613**

**To find out more about becoming a BALI Registered member visit [bali.org.uk](http://bali.org.uk) or contact Sales Officer Roger Roberts, [roger.roberts@bali.org.uk](mailto:roger.roberts@bali.org.uk), +44 (0) 2476 698650**





# APPLYING MARIE KONDO'S MAGIC TO YOUR GARDEN

Marie Kondo has taken the world by storm. From best-selling book to Netflix Queen of Clean, the tidying expert's unique method to decluttering has transformed people's living spaces from a messy place that doesn't "spark joy" into areas of serenity and calmness.

As summer creeps up and BBQs and garden parties are impending, we want our outdoor areas to be a true extension of our homes and our family life, to truly make the most of the weather the next time the sun decides to shine.

Yet we have all been there in May: a sudden heat wave, but a garden that has been disregarded for a few months. Our shed crammed with all sorts of items and last years inflatable paddling pool hiding behind the outhouse - sound familiar?

Marie Kondo is a cultural phenomenon - her work has helped people across the globe transform their homes. This blog offers Housing Units' take on how to use her life-changing magic in your garden, with five simple steps. No matter how big or small, Kondo's approach is simple and effective. First, let's understand her method:

## **KonMari**

KonMari, a play on her name, is Kondo's unique method which includes gathering together all of your belongings, one category at a time, and only keeping the things that 'spark joy' to your life which suit any of your needs. The first point of action is...

## **Make the Commitment**

Once you are committed and have dedicated yourself to decluttering and organising your garden, half of the

battle is already won. If your garden is a field of mess, your commitment will help you to stop wasting unnecessary products as well as save time by reducing the risk of being constantly distracted.

## **Get the Idea First**

Take a moment to imagine the life that you want to lead, and how you visualise this in your garden and house. Be as specific as possible. Once you envisage it, you will have a much clearer image in your head which will help you to stay motivated and acquire your dream garden. Does the garden in your head include a BBQ and table and chairs, but you don't feel like you have the space? No problem. Once you have decluttered, you will be surprised by how much space you can create and utilise, while still allowing the area to look clean and organised.



## Out of Sight, Out of Mind?

Before you start buying new furniture for your decluttered garden, we have to focus on the clutter itself. This does not mean store it away out of sight, out of mind, as it will get on top of you.

The most common storage culprit in the garden? The shed. People can often cram as much as possible into the shed because that hides the mess. But then you aren't discarding, you are only adding more and more and more.

That's not to say that storage solutions aren't always a good idea. They can be a blessing for cushions and other smaller items that you want to use each summer, but not have out for the bad weather. Often though, storage is used as a hideaway for mess and hoarding. How do you declutter?

### Choose Category by Category

Many people opt to organise by location, but Kondo recommends doing it by category as it helps you acknowledge how much of each item you have, what you need or brings happiness to you. Kondo typically heads for the clothes first, then moves onto books, papers, misc and leaves sentimental items until last. It's not difficult to adapt this to your garden; don't organise by shed and greenhouse, organise by item.

Take your garden accessories one by one. Lots of random garden chairs



that look out of place? 50 tennis balls? An abundance of different tool kits that you never use? Sort through them category by category, and it will ultimately help you to choose the best of the best of your garden tools to keep, and to throw away.

### Categories for Garden

- Clothes and gloves
- Dining Sets
- Seating, Sofas, Stools and Benches
- Parasols
- Barbeques
- Outdoor Accessories
- Plant Pots
- Gardening tools
- Toys and Sports
- Building Materials
- Komono (miscellaneous items)
- Last, anything with sentimental value

### Does it 'Spark Joy'?

Perhaps her most famous catchphrase, Marie Kondo urges people to only keep the things that 'bring joy' to them in their homes. Do you have a garden gnome that you don't love? Plant pots with no plants in? Throw them away. Think about how useful it is. Have you used it recently? Is it sentimental? Does it bring joy? The last part is the most important.

Imagine putting on your favourite pair of jeans or reading your favourite book. If throwing away a tool gives you the same feeling of throwing away your favourite book, don't bin it. But if not, pass it on, donate it, or recycle it. This will help you to stop buying things you don't need and even once you have decluttered, save money in the long run.

Other benefits to the Marie Kondo method include benefits to your mental health and relieving stress. We've all heard the idea that a cluttered home is a cluttered mind, and this is just as relevant to the garden.

Choose a place for everything. Remove anything that doesn't bring you happiness. Keep anything that does bring joy. Most importantly - don't get a bigger shed.







Superior quality designer meadows from seed and PMturf based on 20 years of research and development

**Pictorial Meadows**

Request your catalogue now:

01142 677 635

PictorialMeadows.co.uk

Meadow seed and turf supply  
Design and consultation  
Meadow installation



**Wildcare**

Nationwide Ecology Supplies

# Genesis Swift Nest Boxes now in stock!

EXCLUSIVE to Wildcare in the UK.  
Visit our website to view our range of Genesis Swift Boxes.



Genesis Swift Boxes have been widely used throughout Ireland, & are now available in the UK.

### Genesis Swift Box

- 30 year manufacturer's warranty
- Made from high quality Magnesium Oxide
- Waterproof
- Mould proof and vermin proof
- Fittings included
- Undercoat of insulating paint
- Roughened floor for the birds to grip on
- Available single, double or triple nest boxes.



Visit our website: [www.wildcare.co.uk/genesswift](http://www.wildcare.co.uk/genesswift)

THOUSANDS OF PRODUCTS IN STOCK

HELPFUL & KNOWLEDGEABLE TEAM

FREE NEXT DAY DELIVERY SERVICE

Moreton Road, Longborough, Glos. GL56 0QJ | [sales@wildcare.co.uk](mailto:sales@wildcare.co.uk) | 01451 833 181





# National Landscape Awards 2019

headline sponsor



# THE COUNTDOWN IS ON

## For the first entry deadline

Visit **[baliawards.co.uk](http://baliawards.co.uk)** to view the categories, entry criteria and submit online today

### Registered Contractor/ Registered Designer/Group

Early Bird Discount Deadline: 24 April 2019

Final Deadline: 5 June 2019

### International/Affiliate/Employer Excellence

Early Bird Discount Deadline: 5 June 2019

Final Deadline: 10 July 2019

### BALI Awards Ceremony: Friday 6 December 2019

JW Marriott Grosvenor House, Park Lane, London

For general enquiries please contact

#### Leah Brookes

+44 (0)2475 185613 / +44 (0)7931 810210

or email [leah.brookes@bali.org.uk](mailto:leah.brookes@bali.org.uk)

For sponsorship opportunities please contact

#### Diane McCulloch

+44 (0)2475 185614 / +44 (0)7455 110975

or email [diane.mcculloch@bali.org.uk](mailto:diane.mcculloch@bali.org.uk)

[baliawards.co.uk](http://baliawards.co.uk)

BALI\_Awards

baliawards

### Headline Sponsor



### Sponsors





# GT SPECIFIER ADVISE ON IRRIGATION WITHIN THE QUEENS WALK DEVELOPMENT

Green-tech's specification team gt Specifier has worked with Barton Willmore Landscape Architects to advise on the Mona Plant irrigation System. It has been incorporated within planter designs of a new courtyard area at the Queens Walk development in Reading.

Described as a subterranean watering system, the Mona plant system tanks were incorporated within the planting medium and deliver water direct to the plant's roots through the process of capillary action. The system removes the need for surface watering so ensures the correct amount of water is delivered as and when required by the planting. The system is 100% efficient, eliminating the risk of over or under-watering and responds to the seasonal requirements of each individual plant.

With over 30 years' heritage, the Mona Plant System has been specified on many projects across the UK and Europe.

The old Yell office block was originally built as part of a large hotel development then later housed the office team for the famous Yellow Pages for many years. The building has now received a full makeover incorporating 284 new flats for the University of Reading students and an external landscaped courtyard by landscape contractor Hillier Landscapes. The courtyard incorporates both hard and soft landscaped areas and raised planters housing both trees and shrubs that provide shade, screening and seasonal interest.

The team behind the Mona Plant System assisted with the specification of the system at an early stage of the design process, ensuring the correct quota of tanks were utilised to suit the individual planting.



The team also arranged the supply of 150m<sup>3</sup> of Green-tree intensive substrate; an established growing media with an excellent reputation in the marketplace. It is a blend of lightweight aggregate and award-winning Green-tree top soil; which is ideal for containerised planting or green roof projects. It is lightweight in texture and has good water holding capacity which encourages healthy plants and trees in containerised planting projects like this.

Paul Corfield, Senior Landscape Architect for Barton Willmore commented:

*'Barton Willmore was commissioned to produce the design proposals for the existing courtyard space as part of the refurbishment works at Queens Walk. Incorporating the Mona Plant System into the planting scheme offered a simple and effective watering solution for the raised planters.'*

Richard Wexham, Product Specification Manager, gt Specifier added:

*'The Mona Plant System offers a solution to water wastage. By incorporating the system into a scheme at specification stage you are providing the best possible start for your trees and plants. The yellow subterranean tanks are designed to release water on request by the planting and the process of capillary action transfers the water through the growing medium to the plant's roots to ensure the correct amount is always available.'*

*Images kindly supplied by Omos, street furniture designers and manufacturers.*

[www.gtspecifier.co.uk](http://www.gtspecifier.co.uk)







Visit our website  
to book a free  
CPD presentation

# Providing tailored landscape solutions for Architects and Garden Designers

gtSpecifier, our in-house specification team, offer technical advice, design and on-site support at the specification and installation stages of your landscaping project.



## Soils and Growing Media

We can advise and supply a range of soils for all projects from Certified British Standard topsoil and subsoil to amenity tree soils and ArborRaft soil to prevent soil compaction; to substrates for green roofs and containerised planting.

## Green Roof Installations

We have a wealth of experience in urban greening projects and offer seminars, technical drawings and project-specific onsite assistance when planning a green roof.

### Advice and product supply covers:

- Intensive Roof Garden Substrate
- Extensive Roof Garden Substrate
- Wildflower and sedum installations
- gt Roofdrain
- gt Deckdrain
- Sedum Matting
- gt Sedum Cassettes



Request one of our brochures today

T: 01423 332100 E: sales@green-tech.co.uk [www.green-tech.co.uk](http://www.green-tech.co.uk)

[@GreentechLtd](https://twitter.com/GreentechLtd) [facebook.com/greentechuk](https://facebook.com/greentechuk) [linkedin.com/company/green-tech-ltd](https://linkedin.com/company/green-tech-ltd)





# MACMILLAN'S GARDEN OF A HUNDRED CURIOSITIES CELEBRATES LEGACY OF ARTIST COUPLE



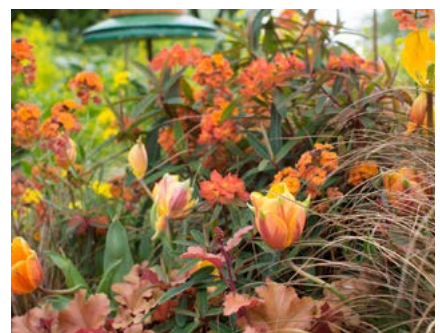
Mementos, including marbles, buttons and over a hundred other curiosities line the walls and inhabit the flower borders of designer Gary Bristow's Macmillan Legacy Garden.

The garden tells the story of a fictional couple and the legacy they left behind through objects they loved. It will be on display at the RHS Malvern Spring Festival from 9th - 12th May.

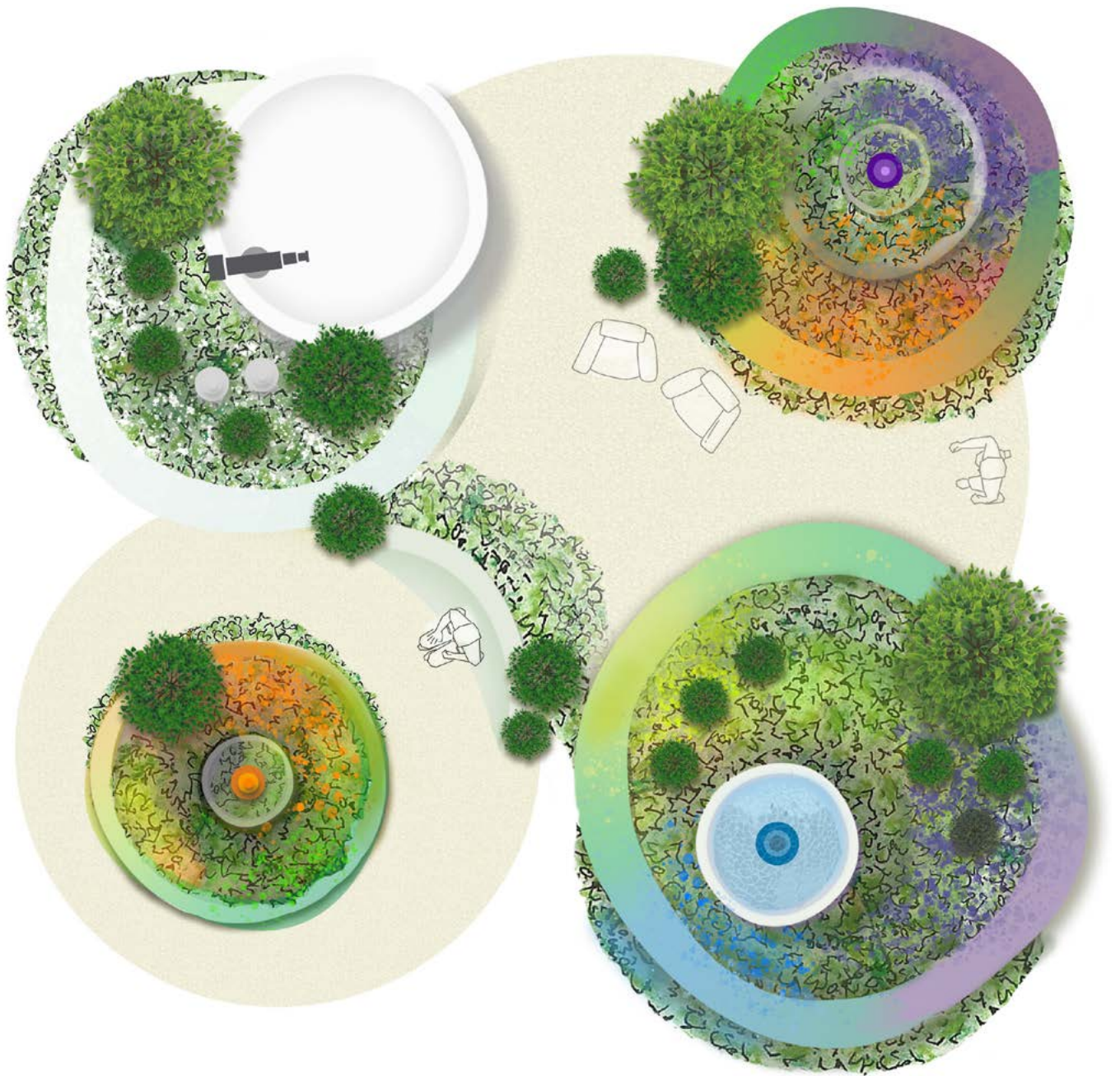
Featuring a planting scheme of perennials, bulbs and self-seeding plants, the garden is inspired by the significance of legacy donations to Macmillan Cancer Support - which receives over a third of its income through gifts left in wills.

Garden designer, Gary Bristow, said: *"The memorabilia built into the garden tells the story of a fictional couple - one an artist and one a photographer - using objects from their lifetime's collection."*

*"I wanted this garden to be an immersive celebration of life and to draw attention to the importance of legacies as a concept."*







Gary was moved to create the garden for Macmillan after his family were supported by the charity during his grandmother's cancer diagnosis.

*"Macmillan is a charity that's close to my heart because my grandmother received support from a Macmillan nurse in her last few weeks of life," said Gary. "Her nurse was warm, loving, caring and helped the whole family during the experience."*

*"The garden includes an area of white planting to represent the challenges of a cancer diagnosis, when life can seem to lose its colour. The garden develops into more colourful and tactile planting, expressing the warmth and energy Macmillan's support provides."*







The Macmillan Legacy Garden also contains totem pole sculptures of different materials and sizes. These highlight that, regardless of shape or size, gifts in wills are all of vital importance to Macmillan Cancer Support.

Ruthie Coverdale, Macmillan Cancer Support Senior Legacy Promotions Manager said:

*“Gary’s garden is a touching reminder that legacies can be beautiful and make a real impact for other people. Many of us think about what the world will be like when we’re no longer around to enjoy it. We hope our garden will serve as a safe space in which visitors can consider their own death and how they want to be remembered.”*



*“Gifts in wills raised over £80 million pounds last year for Macmillan and these crucial funds ensure we can be right there with people living with cancer.”*

Head of Shows, Diana Walton, said the team felt privileged to provide a platform for such a poignant, inspirational and beautiful garden:

*“We really value our role in supporting show garden designs like this which highlight such important issues and raise awareness of charities which truly do make a real difference.*

*“In designing this garden Gary has created something that is both spectacular and sensitively encourages more openness about a difficult topic to help people in a positive way. It is a wonderful garden and we are delighted it will be on show at RHS Malvern Spring Festival this year.”*



Macmillan is almost entirely funded by public donations and gifts left in wills are vital in helping the charity to support everyone - regardless of age, location or their cancer type.

For more information on how you can leave a legacy for Macmillan Cancer Support visit [www.macmillan.org.uk/donate/gifts-in-wills](http://www.macmillan.org.uk/donate/gifts-in-wills)



# Borek. For the great outdoors



CADIZ lounge, LAGOS coffee table & side tables, SILVES wing chair & ottoman, CADIZ lounger.



Sevilla lounge chairs



Ferragudo lounge chairs, Tarifa teak table



Ardenza Ferragudo chairs, Tarifa teak table



Borek outdoor furniture pushes the boundaries of design and innovation in order to create high-quality, craftsman-built products which provide the ultimate in seating comfort. Nowadays the garden is more than just a place to relax, it has become a fully-fledged outdoor room that fits seamlessly with the atmosphere within the house. There's lots more we could say about this stunning Dutch furniture but we suggest you turn the picture into reality and see it for yourself. Borek furniture is exclusively available through Robeys.

Visit our showrooms in Belper, Derbyshire or contact us for further details.

# Robeys

A PASSION FOR QUALITY

Robeys Ltd, Riverside, Goods Road, Belper, Derbyshire, DE56 1UU.

Tel: 01773 820940. [info@robeys.co.uk](mailto:info@robeys.co.uk) [www.robeys.co.uk](http://www.robeys.co.uk)





# LOVE YOUR LAWN

Is your lawn lackluster? Is the grass less than green, or has it got bald patches? Part of the problem could be the weather. Summer 2018 was the joint hottest on record, and the heat, combined with a lack of rainfall, has meant that our lawns aren't as lush as they once were.

So how to solve the problem? Well you can either start from scratch and get a new lawn, or love the lawn you've got.

## **Create a new lawn – but beware of turf shortage**

The cheapest way to get a new lawn is to sow lawn seed, but the quickest and easiest way is to lay turf. However, be aware that turf may be in short supply this year.

Sarah Squire, Chairman of Squire's Garden Centres commented, "The cumulative effect of several extreme weather events over the last year has started to impact stock levels of turf

nationwide. However I am pleased to report that turf is currently available at Squire's Garden Centres. We are expecting high demand for turf this year so customers should call us first to check availability."

## **Love the lawn you've got**

It's amazing what you can do to repair and rejuvenate your lawn. Follow these simple care tips from Squire's Garden Centres and you'll have a lush lawn in no time.

### **Cutting**

- When temperatures rise above 5 degrees Celsius give the lawn a trim.
- Keep the blades on their highest setting.
- In hot weather, longer grass copes better.

### **Moss Control**

- Use a lawn moss killer such as Miracle-Gro Evergreen Complete 4 in 1.

- Once moss has blackened, rake vigorously or use a scarifier to remove moss and debris.
- Aerate with a garden fork to a depth of 10-15cm, to help drainage.
- Top dress with Westland Lawn Dressing or Top Soil.
- Alternatively try Miracle-Gro Premium+ No Rake Moss Remover & Lawn Food.

### **Repair**

- Use Miracle-Gro Patch Magic on bare or worn patches.
- Rake the area well before sowing the seed.
- Cover with bird-proof netting, and water regularly until well established.

### **Nourishment**

- Use Miracle-Gro Evergreen Complete 4 in 1, which controls weeds and moss, whilst feeding and greening your lawn.





- After two weeks remove any dead weeds with a spring-tined rake.
- Once weeds and moss are gone use a lawn food such as Westland Safe Lawn.
- Water every 7-10 days in the early morning or evening when moisture evaporates more slowly.

So the grass isn't always greener on the other side. You can have a lush lawn and make your neighbours green with envy by giving your lawn a little tender loving care.

If you need advice simply pop along to Squire's Garden Centres and their horticultural experts will help you to love the lawn you've got.



[www.squiresgardencentres.co.uk](http://www.squiresgardencentres.co.uk)

[www.facebook.com/SquiresGC](https://www.facebook.com/SquiresGC)

[www.twitter.com/SquiresGC](https://www.twitter.com/SquiresGC)

[www.pinterest.com/SquiresGC](https://www.pinterest.com/SquiresGC)





# BLUE ROOF DESIGN CONSIDERATIONS AFTER BS6229:2018 UPDATE

Landscape & Urban Design spoke with Bauder's technical director, Nigel Blacklock and Chris Roddick, green and blue roof product manager for Bauder on the changes in the BS6229:2018 update that impact rooftop water management solutions.

The BS6229:2018 – Flat Roofs with Continuously Supported Flexible Waterproof Coverings update was published in November, overriding the 2003 edition.

**Nigel can you outline the updates to BS6229 that relate to blue roofs and why they came about?**

**Nigel:** The main considerations in the update relate to structure, drainage and thermal performance. A blue roof is a good example of a new technology that has come along in the last 15 years and needs consideration.



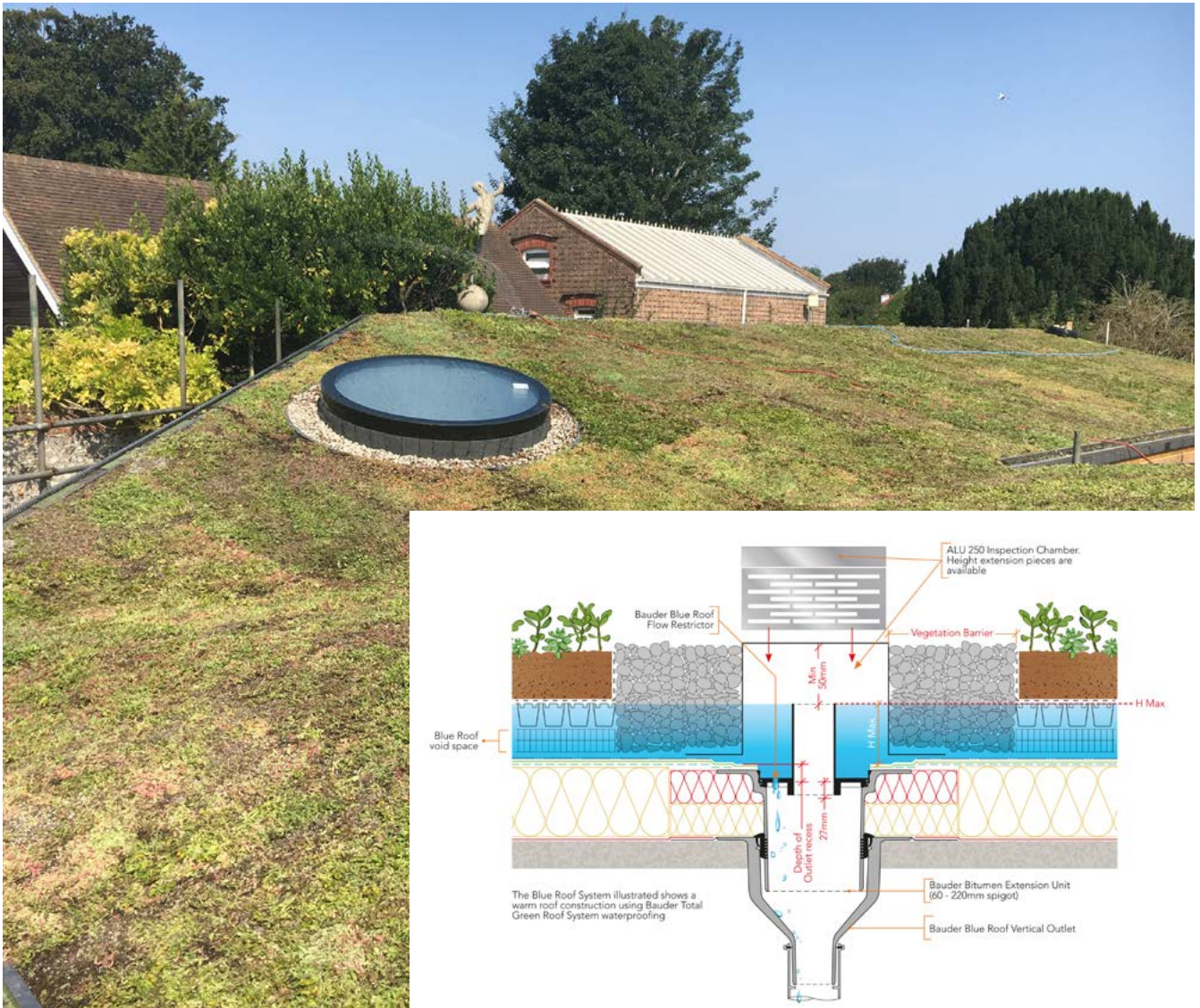
**Chris, tell us about Bauder's rooftop SuDS system, BauderBLUE**

**Chris:** BauderBLUE is a blue roof system which attenuates heavy rainfall and controls its discharge over a 24-hour period. Calculations are made to factor in the site location, catchment areas and discharge rates from other elements of the site to ensure that the water run off during storm conditions meets drainage requirements of local planning authorities.

**So, how will the revisions in BS6229 update impact the design considerations for a BauderBLUE roof?**

**Chris:** The 2018 update clarifies and reinforces the meaning of a zero falls roof used in most blue roof systems. A zero falls roof is defined as having no more than a 1:80 fall, but more importantly the roof must not have any back falls away from outlets. This will mean all back falls must be corrected with localised latex screed or additional outlets.





**Nigel, you mentioned structural considerations. How does this tie in with zero falls?**

**Nigel:** A blue roof designer needs to account for the dead and imposed loads of the system build-up and the maximum potential retained rainwater, this tends to lead to a concrete slab being used.

A detailed structural analysis of the deck should account for construction tolerances, settlement and deflection under load with a concrete slab level survey carried out to identify any back-falls prior to the waterproofing being installed. Hence the advice “design a fall of 1 in 80 to achieve not less than zero”, starting at zero inevitably will lead to back-falls.

**How does the thermal performance update apply to a blue roof?**

**Chris:** Unlike a traditional warm roof, the U-value achieved in an inverted roof greatly depends upon the amount of water that passes through the joints of the insulation and sits on the waterproofing, as this will cause rainwater cooling. This has a negative effect upon the roof insulation value.

**Nigel:** So, there is now a note that suggests that not less than 10% is added to the thickness of the insulation to take account of rainwater cooling. However, water on an inverted blue roof might sit on the waterproofing for longer and with a greater depth, BS6229:2018 states no correction factor should be used which will lead to much thicker insulation than is currently used. This could effectively censure installing blue roofs over inverted insulation.

BauderBLUE is supplied as part of a full Bauder roofing system and therefore has a single point warranty.

Bauder’s technical director, Nigel Blacklock, has been an active member of the Technical Work Group for the duration of the amendment along with representatives from NHBC, BBA, BRE, RIBA, NFRC, SPRA and manufacturers. Nigel and Chris Roddick, green and blue roof product manager for Bauder.



Chris Roddick



Nigel Blacklock

**For more information call Bauder on 0845 271 8800  
www.bauder.co.uk**



# PLANNING WITH PAVING

The trade association Interpave invites landscape designers to take a fresh look at precast concrete paving to enliven the external spaces between buildings, while meeting durability and sustainability requirements – demonstrated by exemplary projects taken from its resource website [www.paving.org.uk](http://www.paving.org.uk).

Precast concrete paving continues a long tradition of modular elements laid to create a hard surface. But unlike extracted materials such as stone or clay, precast concrete block, flag, kerb and related paving products are fully engineered and manufactured under modern, controlled conditions. This ensures accurate product and joint size, colour and texture, slip/skid resistance and other performance characteristics. So, precast concrete paving offers a unique predictability with consistent, trouble-free performance over the longer term.

## Design Freedom

Precast concrete paving from Interpave manufacturer members is uniquely placed to satisfy today's technical demands while offering real design freedom. Here, distinct, modular units and designed variations in colour, texture and shape can break up areas giving visual interest and a human scale not possible with formless materials such as asphalt. Pigment technology today allows a much wider choice of colours, ranging from vibrant to muted tones, as well as varied mixes of colours that can emulate other materials.

Surface treatments can also be applied to paving blocks, flags and kerbs to give different textures, some exposing the inherent aggregates. Surfaces can be honed for a flat finish or polished, or shot blasted to look weathered, or tumbled for a more rugged, naturalistic appearance. Combining these attributes with the range of



shapes and sizes available enables designers to select paving styles, whether traditional or contemporary, enhancing environments from historic areas to vibrant new city spaces.

## Sustainable Paving

Precast concrete paving from Interpave manufacturers is demonstrably sustainable in every sense. As well as low environmental impact, products are locally manufactured, making a vital contribution to the economy and community. Local material sourcing and product supply is also a key element and equivalent paving products shipped into the country bear a substantial CO<sub>2</sub> emission load.

The ongoing availability of a complete range of products and accessories in a single, predictable material is also essential over the long-term. As substantial organisations, Interpave manufacturers working within the UK's framework of established standards and regulation easily achieve this aim. Precast concrete paving can be simply reinstated following excavation works, for example to access services, leaving minimal evidence with any replacement product readily available. It is also worth remembering that all these benefits of precast concrete

paving are available at an economic cost – in both initial and whole life terms.

## Meeting SuDS Requirements

And concrete block permeable paving is uniquely placed as an essential, multifunctional SuDS technique. Of course, paving is always needed on developments – whether for roads, parking, shared spaces or play. But permeable paving also provides an inherent drainage system that requires no additional land take for water storage, treatment or conveyance. This technology eliminates pipework, gulleys and manholes, and generally costs less than conventional drainage and paving.

For more information, visit Interpave's new website - [www.paving.org.uk](http://www.paving.org.uk) - an essential resource covering all aspects of design with precast concrete products, including permeable paving for SuDS. It features an inspirational project gallery and case studies, supported by background information for early design stages, as well as for CPD. A comprehensive series of technical documents covering all types of precast concrete paving products provide the definitive source of guidance for specifiers and contractors – including detailing, construction and maintenance.



## The Brownfield Estate, London

Dating from the 1950s, London's Brownfield Estate now has a settled resident base and strong local identity. This regeneration project aims to transform the public realm within the general layout of refurbished and new infill buildings and adopted streets. It unifies disparate elements of the site using a simple palette of hard landscape materials, developing a language that unites the neighbourhood. Multi-use streets and spaces are developed – bold and contemporary in character, using robust and high-quality landscape elements.



Designs are characterised by a uniform application of concrete block paving on un-adopted areas, with feature paving announcing estate entrances and around key buildings.

Here, concrete flags in strong colours are arranged in bands to create a bold linear feel. Then, throughout the scheme, silver-grey concrete setts, with enhanced granite surface adding

sparkle, highlight footways, while charcoal setts identify private amenity space. Edges and transformations are defined by enhanced-finish concrete kerbs, some laid flush, others raised.



## Trafalgar Place, London

Shortlisted for the 2016 Stirling Prize, Trafalgar Place near London's Elephant and Castle provides an exemplar for high density development and the exceptional public realm that helps define the project. The entrance square, central pedestrian street and access ways to dwellings are characterised by high quality concrete block paving set out

in patterns using five different sizes for visual richness. With a combination of three shades of grey, the paving blocks have been shot-blasted for a sparkling, textured surface.

For the more homely northern route and play area, less formal, 'rumbled' concrete block paving style was used in warmer rustic colour tones. At first floor level, over enclosed car parking, a communal courtyard garden provides

a flexible, usable space for residents. Concrete flag paving provides level access around the courtyard linking the various spaces generated by raised planters of varying heights. The concrete flag paving incorporates up to 60% recycled and reclaimed materials, with granite aggregates providing exceptional performance and durability.



## RESIN BOUND – THE SURFACING SOLUTION EVERYONE IS ASKING FOR!

Derbyshire Specialist Aggregates is the manufacturer of DALTEX dried aggregates – the contractor’s no 1 choice for resin bound installations.



High quality DALTEX dried aggregates, combined with DALTEX UVR resin, help deliver beautiful, consistent results for residential and commercial areas such as resin bound driveways, paths and patios. This DALTEX UVR System is BBA Accredited – the highest industry-wide recognised certification available.

Look out too for the NEW DALTEX Bespoke range of resin bound aggregates. There are 40 stunning colour blends to choose from - and we can provide samples prior to installation.

Plus we offer one FREE place on our Resin Bound training course to contractors/companies. Run from our purpose build training facility in Derbyshire, this hands on course is run by experienced independent contractors who promote the very highest standards of resin bound installation.

For more information on DALTEX products and training: Tel: 01629 636500  
[resinbondedaggregates.com](http://resinbondedaggregates.com)

## RESIN BOUND THE DRIVEWAY SURFACE EVERYONE IS ASKING FOR!



Permeable paving system. SUDS compliant  
 Perfect for driveways, patios and paths  
 The largest range of colours available  
 BBA accredited DALTEX dried aggregates  
 and UVR resin - the highest standard available

derbyshire specialist  
**aggregates**

[resinbondedaggregates.com](http://resinbondedaggregates.com) | 01629 636500

Arbor Low Works, Youlgrave, Bakewell, Derbyshire, DE45 1JS



## BOOST YOUR SUSTAINABILITY CREDENTIALS

### ENVIRONMENTALLY FRIENDLY BEDDING MORTAR AND FLOWABLE GROUT

- Contains 20% recycled materials
- Reduce your consumption of virgin aggregates
- Ideal for schemes looking to achieve a CEEQUAL award
- Improve your BREEAM rating



[ultrascape@instarmac.co.uk](mailto:ultrascape@instarmac.co.uk)  
 01827 254402  
 @Ultrascape\_UK

[www.ultrascape.co.uk](http://www.ultrascape.co.uk)





**The next generation of  
Resin Bound Surfacing  
has arrived!**

**‘Minimum/No-dig’  
Resin Bound Porous Surfacing  
for Driveways, Paths and Patios**

**No need for a concrete  
or asphalt base**

**Seamless • Hard Wearing • Low Maintenance**

**Call 01825 761333  
or visit  
[www.addagrip.co.uk](http://www.addagrip.co.uk)**







**At Green Garden Paving we are passionate about porcelain.**

As UK market leaders in the supply of porcelain paving, we stock a variety of vitrified products suitable for a range of landscaping and architectural projects.

We sell products for all your paving requirements:

-  Porcelain
-  Fixing
-  Cleaning
-  Profiling



GreenGardenPaving.com 0333 320 70 36 *Connect with us!* 

**TWO NEW TREATMENTS JOIN LTP'S ECOPROTEC® RANGE**

LTP's ECOPROTEC® range provides trusted protection and maintenance solutions for the contract and hard landscaping sector. All treatments benefit from



the most advanced research in water-based technology and combine high performance with low odour and low VOC formulations. They are designed to care for and treat natural and engineered stone surfaces - inside and outdoors - and are developed and manufactured by LTP in the UK.

New product innovations include ECOPROTEC® Cement, Grout & Salt Residue Remover - a treatment which replaces conventional acids normally used to remove cement and grout residues. Other new treatments include ECOPROTEC® Blackstone - an outdoor sealer and restorer for dark natural stone and artificial stone surfaces.

**For more information about LTP ECOPROTEC® visit [www.ecoprotec.co.uk](http://www.ecoprotec.co.uk) or contact LTP on tel: 01823 666213 email: [technical@ecoprotec.co.uk](mailto:technical@ecoprotec.co.uk)**



LIMESTONE • SANDSTONE  
BUILDING STONE • FLOORING • WALLING  
MASONRY • LANDSCAPING • RESTORATION



01386 584384  
[www.stonequarries.co.uk](http://www.stonequarries.co.uk)





# HAHN PLASTICS



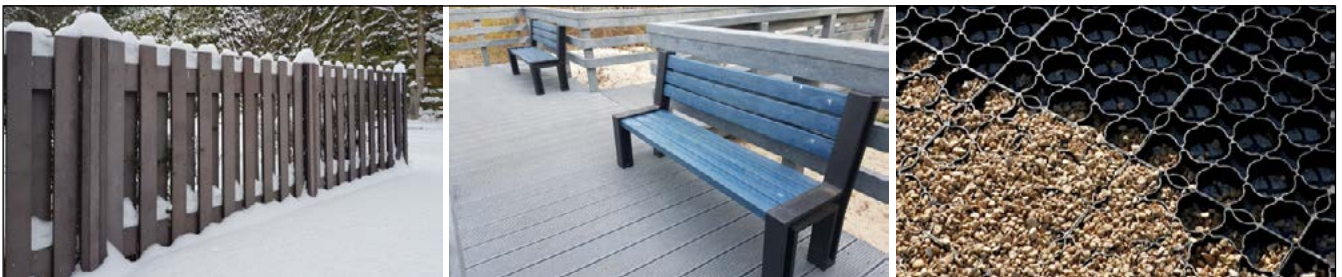
## MADE FROM 100% RECYCLED PLASTIC



With 210,000m<sup>2</sup> business premises and production plants located in the UK, Germany and Canada, we are the biggest 100% recycled plastic products manufacturer in Europe, processing over 54,000 tonnes recycled plastic annually.

More and more Landscapers and Architects are choosing our hanit<sup>®</sup> systems because of the many product benefits. hanit<sup>®</sup> materials are 100% recyclable, durable, eco-friendly and can be very simply processed, using all the same tools, fixings and fittings that you would if processing timber. With an attractive grained timber appearance, it is also weather-resistant, chemical-resistant and splinter-free. Vitally it required no maintenance whatsoever which is unbeatable when comparing price with performance.

During 25 years in operation, the HAHN group has been consistently increasing its' product range and now have over 2000 products – all made with 100% recycled plastic. This gives our customers complete confidence that a project can always meet completion on time.



- Decay Resistant
- Long Life
- Maintenance Free
- Environmentally Friendly
- Splinter Free
- Weather Proof
- Sustainable



Old Pilkingtons Tile Site  
Rake Lane, Swinton  
Manchester M27 8LJ

# HAHN PLASTICS

+44 (0)161 850 1965  
info@hahnplastics.com  
www.hahnplastics.com





# KOPER CENTRAL PARK

In line with the prognosis that the sea by the promenade is to grow increasingly cleaner, it is feasible that a new city beach may appear along the promenade. Successful similar examples show that a city beach is not only an area where people take a dip in the sea but that city beaches can become the most important free-time socialising space. Since the densely developed old town core does not allow for a sufficient number of large open spaces and constrains their size, and since we need to understand that convivial bustle, concerts, and late-night events disturb the residents in the immediate vicinity, the placement of such programme in the area under consideration is all the more suitable.







The heterogeneous forms of development which characterise present-day Koper - the old town core, the residential suburbs, the commercial and service development belt in the former salt-pond area, and the inescapable presence of all the infrastructure required by a modern seaport call for a space with an inwardly oriented form enabling a visual escape, but whose scale and outward expressiveness would rise above the heterogeneity of development around it and tie it all together.

The area of the new city park covers a sizeable portion of the wider site and its design can thus serve as a prototype for further interventions. The new intervention offers a uniform and attractive appearance, and with its intensive hinterland greenery, it drowns the heterogeneity of the surrounding built structures. The fusing of the elements of a city beach and a contemporary city park encourages the area's residents and visitors to use the space in different ways.

The basic building blocks of the new city park are monolithic, undulating urban elements. Their controlled placement in the space in combination with a pronounced topography of the green surfaces softly divides the whole of the park's surface into individual introverted programme isles.

The design of the individual urban elements consistently follows the different programmes. In places, they are taller and act as a shelter from views and the noisy surroundings; elsewhere, they are lower and allow for an unimpeded contact between programme zones. The organically designed urban elements form stands for viewers, an obstacle course for children, climbing walls, a backdrop to a seaside bar, a concert venue, a children's playground, a reading area, and more. Due to the proximity of the sea, the programme zones are appointed with numerous water elements. A pond, ground sprinklers, a geyser, parabolic water jets, cascades and a water platform in combination with the variegated urban elements encourage active use of the space and an expansion of the future beach towards the interior of the park.

The planted portion of the landscape design is laid out only with indigenous Mediterranean vegetation. The strategically arranged tall growth complements the existing tree lanes on both edges of the park, gives shade to the individual programme zones, and offers the park area additional protection from the impacts of the surroundings. In order to encourage as much diversity in the use of its space, the new city park doesn't feature traditionally designed footpaths.

Interlocking paving with a free arrangement of grass-coloured tiles is limited to the access points and the sections of the park where a more intensive use of the ground is expected. In this way, the visitors define their own path and their own manner of using the space. In case new content is added to the park, or if obvious desire lines are formed, which is very difficult to predict initially, this manner of paving enables an easy rearrangement of the compacted surfaces at a later time.

The innovative layout of the city park is a great new asset for the citizens of Koper as it enables the development of programmes which the city presently cannot offer. The new park is an attraction and with its unique form and the manner of spatial organisation, it transcends a merely functional park regulation. It represents a prototype for further designing of the wider area, as well as motivation for development-oriented attitudes in regard to other sections of the Slovene seacoast currently in a state of decay.







# Solid Solutions

*The Korman Quad has been transformed from a functional traffic hub into an accessible and attractive green public space. It is now an outdoor area where thousands of people can meet, eat, study and connect. The three Solid Podium Discs serve perfectly as playful seating elements. The New Standard Benches at the edges offer a lot of seating area.*

Besides our well-known Rough&Ready Range (based on 7x15cm wooden beams) we offer the **Solid Series** as the slender collection with beams sized 7x7cm. This Series is the most extensive one and offers its own range of products, with its own touch, feel and 'minimal' look. A strong coherence is created by using one Solid timber size for different product types.

As an alternative to FSC® hardwood, Streetlife introduces the exceptionally hard-wearing **Cloudy Grey** beams. This material is 50% recycled LDPE plastic combined with 50% recycled textile fibres and remnants. The waste of plastics and textiles is a big environmental issue, using Cloudy Grey beams means that these materials are recycled and given a new use. The grey marbled appearance has its own unique character. Its technical properties make Cloudy Grey an attractive and fully-fledged alternative to wood.





On the square in front of the Maunula library in Helsinki (Finland) a theatre setup is created with the **Solid Terrace Curve System**. Thanks to the layered structure a lot of seating capacity is realized. The seat and the upright backrest components consist of FSC®-100% hardwood Solid slats. The base structure is build up with modular CorTen steel components.



The **Mobile Green Isles** with big plant boxes bring the courtyard of the university of Leipzig (Germany) to life. Here they are combined with **Mobile Surf Isle Modules**. With the different modules various setups can be created. Because they are placed on top of the hardscape, the modules remain movable, this way any square can be outfitted with green areas. The Streetrail® system guarantees an easy and quick placement.



The **Solid Meet&Work system** comprises various design elements allow playful setups to be realised in public spaces, rooftop terraces and meeting points. The combination of benches, tables and tree planters are an innovative alternative for traditional picnic sets. It is an ideal and high-end system for outdoor areas of big office buildings. Flexible workplaces, meeting spots and gathering points are combined with sustainable green.

The **X-Table Picnic Set** is a sturdy picnic table with diagonal supports. The metal supports extend elegantly to support the 2 long benches. The resulting design is quite striking. The supports are available in galvanized steel or RAL coated. This extended version in Villiers le Bel (France) has a length of 468 cm and offers seating for 16 people.



The **Solid Staple Benches** are slender with a powerful architectural look. As an alternative to FSC® hardwood, Streetlife introduces the exceptionally hard-wearing **Cloudy Grey** beams. This material is 50% recycled LDPE plastic combined with 50% recycled textile fibres and remnants. The Solid Staple benches are very suitable for big public areas, both indoors as outdoors, such as waiting areas on airports, stations and platforms.



Solid Tree Planter



Solid Serif Chaise Longue in Cloudy Grey **NEW**



Solitude Bench



Solid Bicycle Racks



Solo Bridge in wood





# SEEDS OF CHANGE

When Hyland Edgar Driver (HED) was tasked on behalf of Crown Estates with creating four bespoke planter seats for St James's Market in London, Woodscape were the ideal manufacturer to work in this prestigious location.

The public spaces surrounding St James's, in the heart of what used to be a Victorian Haymarket, is now a popular meeting place for food lovers and home to various festivals and gatherings during the year. This required a planter & seating solution that aligned with the surrounding aesthetic, could handle the existing paving that sloped in many directions and be easily relocated when the space needs to be emptied for gatherings.

Working with HED over several months, based on the initial designs and inspirations, a set of sectional planter seats were created that can easily be taken into several parts and relocated. With the shapes based on the colours and shapes of barley to give them a warm, natural feel, the utilising of naturally very durable hardwood over a metal structure adds

to the pleasing appearance, as well as being long-lasting and practical.

*"It has been a real pleasure working very closely with Woodscape on this project. We have worked with Woodscape many times in the past and were extremely pleased when they were awarded the contract to complete the design for our concepts. I think the results are delightful! Warm, contemporary and sophisticated."* - Carly Kershaw, HED Director

Design considerations were included in the planters to ensure that Tuffin

Ferraby Taylor LLP, Axis Europe and Standerwick Land Design, working in conjunction with the Woodscape team, would have a trouble-free installation on site.

**If you would like to contact Woodscape about your bespoke planter or seating requirements, from a simple concept through to assisting with design, manufacture and install, contact us on 01254 685 185, or email [sales@woodscape.co.uk](mailto:sales@woodscape.co.uk), and our experienced team will help you find the perfect solution.**





# BIOSTIMULANT SUPPORTS SUCCESSFUL TURF ESTABLISHMENT

## TONIVIT®

Creating healthy, resilient turf in areas of high aesthetic value will now be improved, thanks to a biostimulant aimed specifically at the establishment of new turf.

Launched this spring, Tonivit® activates root growth & activity, nutrient uptake and tillering, to quickly establish a stronger sward for newly seeded and re-seeded areas, or newly laid turf.

Business Development Manager UK & Ireland for Speciality and Amenity Crops at UPL UK, Stephen Olive, said:

*“The effect of Tonivit on emergence speed is demonstrated through trials, which have shown that newly-sown leys treated with the product reach 70% sward density three weeks earlier than those untreated. The product is also effective on newly laid turf.”*

*“That’s great news for if you’re wanting to create lush green spaces quickly, in areas of high aesthetic value. And because the turf has an improved health status, it will be resilient to potential traffic during its early stages, which will be more prevalent in built-up or urban environments.”*

Tonivit contains oligosaccharides - naturally produced complex sugars extracted from seaweed, with the addition of phosphorus and potassium. These sugars are beneficial for turf establishment because they stimulate plant reductases, which increase nutrient and water translocation and therefore boost health and ultimately yield.



Mr Olive added: *“Tonivit is manufactured to the same standard as our traditional crop protection products, and is highly concentrated thanks to the development of a refined cold-press extraction process at our manufacturing plant in St. Malo, France.”*

*“This means the application rate is just 1L/ha, which is an added bonus, as it’s speedier to apply and less product to handle.”*

*“Interest has rapidly grown in seaweed-based biostimulant products*

*such as Tonivit, particularly in the amenity turf sector. And it’s no wonder – they’re a natural and sustainable alternative that offer simple cost effective benefits.*

Tonivit was launched by Arysta LifeScience in February. Arysta LifeScience is now part of UPL, creating a new leader in global agriculture.

**For more information on Tonivit and other turf products, visit [www.arystalifescience.co.uk](http://www.arystalifescience.co.uk) or e-mail [ukenquiries@arysta.com](mailto:ukenquiries@arysta.com)**





# NEW GKB COMBISEEDER FOR BANCROFT AMENITIES

COMBISEEDER JOINS THE COMPANY'S FLEET OF GKB MACHINES



Bancroft Amenities Ltd a well-established specialist sportsground contracting company based in Greater Manchester have recently added a GKB Combiseeder to their large fleet of modern and innovative contracting machinery.

*"We like the fact it is a dimple seeder, it gives a lot of holes per square metre and the use of the machine for the operator is very simple. We like the small compact size and its ability*





to seed at very low rates. The GKB build quality is very good and strong” explains Stuart Thompson, Director of Bancroft Amenities Ltd.

Bancroft Amenities maintain both natural and artificial sports surfaces with a large range of equipment. The GKB Combiseeder will be a new and valued addition to a fleet, they also run a comprehensive range of GKB synthetic turf maintenance machinery, which includes two GKB Quick-Brushes, a GKB Quick-Clean and GKB Rotobrush. Stuart adds,

“The quality of service we get through Tom [GKB Machines Operations Manager for UK & Ireland] is very good but just in general, GKB’s business model, their costs and what they offer makes them easy to work with.”







The GKB Combiseeder is a fast and efficient way to seed or overseed your golf course or sports pitch, offering both solutions, as well as the possibility to seed multiple types of grass. It's

two spiked rollers open up the soil and accurately spread seed across the full width of the machine, in and around the holes whilst two drag brushes incorporate the seed into the holes.

For more on GKB Machines and their reliable and robust range of machinery for natural, hybrid and synthetic turf, please visit [www.gkbmachines.com](http://www.gkbmachines.com) or contact Tom Shinkins on 07495 883617.



GKB MACHINES, TAKING OUR KNOWLEDGE OF CONTRACTING TO SUPPLY THE BEST POSSIBLE MACHINE SOLUTION. BE IT A NATURAL, SYNTHETIC OR HYBRID PITCH. WE HAVE A MACHINE TO SUIT YOUR NEEDS.

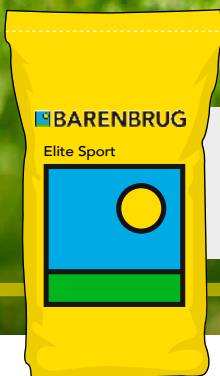
[WWW.GKBMACHINES.COM](http://WWW.GKBMACHINES.COM) / [TOM@GKBMACHINES.COM](mailto:TOM@GKBMACHINES.COM) / 07495 88 36 17





# ELITE SPORT

The new #1-rated Winter Sports blend



40% *Europitch* perennial ryegrass  
25% *Eurocordus* perennial ryegrass  
25% *Barcristalla* perennial ryegrass  
10% *Eurosport* perennial ryegrass

MEAN BSPB/STRI score of  
**7.92 – #1-rated!**

40% #1-rated *Europitch*  
Superior colour and disease  
tolerance of *Barcristalla*



Scottish Premier League football club Heart of Midlothian undertook an ambitious full pitch reconstruction during summer 2018.

In conjunction with STRI, Carrick Sports and SIS UK, a state-of-the-art SISGrass hybrid pitch was installed, complete with new undersoil heating, irrigation and drainage systems.





# THE PRECISION SPRAYING REVOLUTION HAS STARTED

John Deere is revolutionising spraying applications on amenity turf with its new GPS PrecisionSprayer, available exclusively for use with the ProGator heavy-duty utility vehicle.

Launched at BTME 2019 in January alongside the 2750 greens mower – the first time new golf products have been launched by Deere in Europe ahead of the Golf Industry Show in the US – this advanced technology system offers golf course managers and other amenity turf professionals a proven, off-the-shelf, integrated John Deere solution for precision spraying.

With features such as AutoTrac satellite guided automatic steering, a full-colour in-cab touchscreen display and individual nozzle control, the easy-to-use GPS PrecisionSprayer increases application accuracy and consistency, lowers input costs through reduced overlaps and misses,

helps protect the environment and increases productivity by reducing operator fatigue.

*“The GPS PrecisionSprayer offers an innovative solution that allows our customers to be more productive and accurate when maintaining turf,”* says John Deere’s European turf sales & marketing manager Carlos Aragonés.

*“John Deere boasts over 20 years of GPS experience, which was vital when creating this new sprayer. We were able to take advantage of our industry leading knowledge of satellite guidance technology to develop a solution that supports our customers by increasing productivity and accuracy while reducing labour and material costs.”*

One of the most notable features on the GPS PrecisionSprayer is AutoTrac, which helps to spray predetermined areas in less time with greater pass-

to-pass accuracy. Another important benefit is individual nozzle control, which minimises application errors and reduces fatigue, as the operator does not need to focus on manually turning boom sections on and off. Individual nozzles can be paired with AutoTrac guidance to limit wasted product applications caused by pass to pass overlaps and misses.

The GPS PrecisionSprayer utilises advanced satellite technology and mobile RTK (real-time kinematic) navigation down to accuracy levels of 2.5cm to ensure the reliability of boundary maps and allow users to create spray coverage maps, which also eliminates overlaps and increases productivity.

Another major benefit is the ability to electronically capture all spray data and analyse the results, which streamlines the documentation



process and provides robust analytics for recording and legislation purposes. Automated documentation also removes the need for manual records and increases accuracy when recording details of all spraying applications.

**Visit [www.deere.com](http://www.deere.com) for further details and videos - search for 'GPS PrecisionSprayer'.**

Advanced technology is also featured on John Deere's range of professional fine turf mowers, based on extensive feedback from greenkeepers and other golf and turf industry professionals.



Common features across the A Model range include a brand new TechControl display, LoadMatch from the company's compact tractor range, internal wet disc brakes and improved operator stations - all engineered to provide users with greater control of the machines, easier operator training and first class cut quality.

All A Models also feature OnCourse Technology, which intelligently integrates electronic controls with the mowers' mechanical features to deliver improved performance, better diagnostics, more uptime and increased reliability, productivity and operator comfort.





The simple to use, password protected TechControl display enables turf managers to quickly set or change mowing, turning and transport speeds, for example, to limit variations in performance by different operators and provide a more consistent, quality finish. On-board visual diagnostics and the ability to set regular service times also help to maximise productive time.

John Deere has also recently announced an exclusive agreement to develop autonomous mowing solutions for the golf and sports turf industry

with Precision Makers, a Netherlands based company that specialises in autonomous technology for various types of equipment.

*“The turf industry is looking for more sustainable operating models to maintain precision turf, and expanding the use of technology will be critical to the future success of turf managers,”* says John Deere’s global golf director Manny Gan.

*“With labour costs and availability becoming an increasing concern in*

*many parts of the world, customers are eager to introduce autonomous equipment into their operation to ensure tasks can be completed with consistently excellent results and precision.”*

Precision Makers is an affiliate of Dutch Power Company (DPC), which already has an ongoing supplier relationship with John Deere.

Visit [www.deere.co.uk](http://www.deere.co.uk) to see a short video - search for ‘Precision Makers’.





# MAINTENANCE OF A GREEN

The secret to the maintenance of a fescue green is all about timing and basic principles; my theory is to limit the amount of Nitrogen I apply. This can vary between years, but typically for me in the years I have been responsible for Royal St George's, it's between 30 – 50 kg. We will also try to keep our moisture levels constant in the growing season at between 16 – 20 %. On top of this we will usually try to apply 100 to 200 tonnes of sand.

For me the weather is crucial to how I manage my maintenance plan. I generally have a strategy as to how we will go for the year, but it will depend on weather conditions as to the procedure we follow. The following plan will demonstrate how we expect to proceed each month, however it may fluctuate due to weather conditions and this is only a general guide.

## January

Despite this being the start of the year, the greens are generally just resting. For us we will just make sure we get the dew of the greens early morning to avoid any type of disease. Keeping them dry, we have the best chance to halt the encroachment of microdochium nivale. If we go into winter with a dry green without to much excessive nitrogen, then we have really lowered the chances of contracting any disease. If the weather is dry & conducive to some top dressing, we will add about 10 tonnes of sand to the surface & hand brush it in. In this time, we hand weed greens to avoid use any herbicide. I am a great believer in cultural methods rather than chemical controls.

## February

February tends to be more of the same as January. We will try to get another dressing on the greens & if fortunate we may be able to get another 20 tonnes of sand on. Hand weeding will continue, however, if the weather is mild it is feasible we could roll the greens to keep them smooth, but I try to keep this minimal as I want to reduce the amount of compaction this could lead to. It is possible we may spray a little sulphate of iron onto the greens. This will help add a little colour to the greens, but can also help us by aiding us in control of some cushion moss we may get during the winter months. This can also help in the reduction of any fusarium patch disease.



In addition to the iron, I have started to spray a wetting agent. This has allowed us to keep the moisture levels more even. The dry springs & summers we are experiencing has certainly aided us. I have found that this can help alleviate any hydrophobic areas as this can help the water to negotiate its way through the soil.

### March

This month tends to be quite complex for me. Spring is trending to be later these days hence we are finding growth a little sluggish. This can be a frustrating time as golfer expectations are beginning to rise by now. Thankfully the fescue greens still produces a smooth fast surface so with some constant sand dressing we can produce a fast firm surface. We still have a cutting height of 5mm which I have tended to stick to throughout the year. This is the beauty of fescue as we can get speeds from 9 to 10.5 on the stimpmeter without having to cut much lower. This enables us to keep the fescue sward happy & stress free.

### April

Typically, this can be another challenging month as golfers expectations are certainly high. With the changing weather patterns, this can perhaps be the hardest month to deal with. The hardest hurdle tends to be the sudden changes in weather temperatures. We can go from 7c up to 23c within a few days, but luckily we have such a good sward coverage that I am not fighting for growth so can get very good smooth greens. We will ramp up our cutting by now & will roll a couple of times a week at this stage. We also improve by spraying seaweed on a monthly basis in addition to the wetting agent.



### May

This is the real growing month! The fescue will be in full force by now. The seaweed & wetting application in full flow so it will be all about keeping moisture levels pretty constant. I will look to keep them at between 16% - 20%. By now the poa is looking really stressed and for me this then tends to be a great opportunity for me to verticut the greens at around -1 mm below. This tends to help me in my fight against the bent grasses & the poa and I also use a granular fertilizer & apply an 8-0-0 feed. This will be followed up by a very light overseed of fescue at a rate of around 12g/m<sup>2</sup>. By now we are in full flow of top dressing every two or three weeks. This will be very light at around 11 tonnes an application and we tend to roll it in then irrigate to wash in as by doing this we feel we don't have to brush in. This is so we can be gentle on the fescue & minimize any abrasive actions.



### June

June tends to be just making sure we keep our moisture levels constant which is important. We will be cutting every day & will sporadically use the greens iron to keep things smooth. On top of this we will hand weed if the need arises. By now we are just on the routine monthly applications of seaweed wetting agent & the top dressing are applied fortnightly. This continues until October.

### July

July is more of the same, but by now we are really concerned with moisture levels, but to help with this we will hand water. It is important we don't over water as we want to help the fescue thrive & keep the poa at bay. A few years back this would have been the month I applied a summer feed of 8-0-0, but with climate change I have since put back our fertilizer feed until later in the year.







### November

If we are likely to verti drain this is the month we would do this. The majority will try to go earlier, but due to playing demands, we tend to stick to this month.

We didn't verti drain last November and slit the greens instead. We did this four times last November at two weekly cycles. Another procedure I carried out last November for the first time was give the greens an 8-0-0 granular feed. The weather pattern was changing and I feel this was a necessary change to our plans. This meant we went into winter very healthy & with a much better plant adapt to disease. It meant I wasn't chasing for growth in the early spring. In fact I will not have applied any fertilizer until May thus helping the greens perform better than ever.

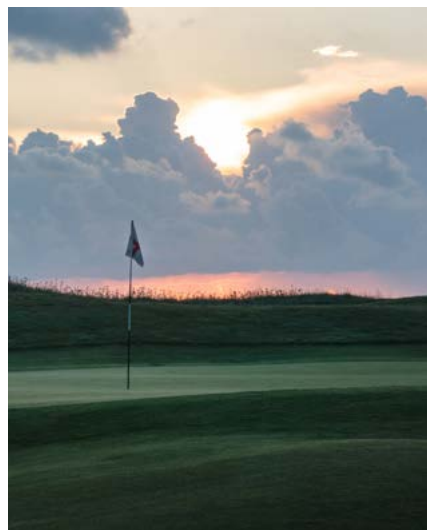


### August

This sees us continue with our monthly action plans, but by now we will probably be reviewing some pencil tining to alleviate some compaction & aid the penetration of water through the soil. We will carry this out throughout the summer on a ad hoc basis dependent on the correct timing. In conjunction with this I will have also sarel roll throughout the year but will be crucial we go into the Autumn in good shape.

### September

Early September will see us tine the greens again & continue with the sand dressings. At this point, I will overseed a pure fescue mix into them at around 18g/m<sup>2</sup> to take advantage of the soil temperatures. The height of cut will still be retained at 5mm, however I may attempt to roll a few times instead of cutting to help the new seedlings along. If required, we will not roll or cut to help protect the seed.



### October

With the nights drawing in & disease pressure at a high risk, we will do everything possible to dispense of any moisture & keep the greens dry. Cutting will now be slowing down so we will roll occasionally or alternatively, dewy the greens. Remnant weeds still lingering will be hand picked so as to avoid any chemical applications.

### December

December allows us to ease back on everything, but we still seem to get some growth so find ourselves still cutting once a week. With the slit tining continuing, we still try to apply very light sand dressings if the weather is conducive to this. Of course, as usual we will dry to keep the greens dry by dewy brushing the greens.

This is my guideline but is always changing. This plan works for me but every course is different so it really depends on your site ,weather patterns etc as to how you manage your greens. I hope this proves a helpful insight as to how we manage ours here at Royal St George's.

**The Royal St. George's Golf Club,  
Sandwich, Kent, CT13 9PB**

**Tel:  
01304 613090**

**Email:  
office@royalstgeorges.com**



## ACOUSTIC ARTS OUTDOOR MUSICAL INSTRUMENTS

Since 1990 Acoustic Arts have designed and built outdoor musical instruments for schools, museums, family attractions, play parks and sensory gardens throughout the UK and around the world.



The award-winning installations are sustainably built using naturally durable timbers and industrial materials to provide high quality, precisely tuned percussion instruments that are accessible to all ages and abilities. The large-scale drums, chimes and xylophones produce bright, resonant tones and offer all-round access to encourage individual exploration and group interaction. The hand-crafted, sculptural designs can be purchased singly or in sets and are ideal for creating woodland musical trails or dedicated play and performance areas.

[www.acousticarts.org.uk](http://www.acousticarts.org.uk)  
0117 935 2034



## Cheeky Monkey TREE HOUSES

Bespoke design & build treehouses, playhouses and elevated platforms.

Commercial & International commissions welcomed



TEL: 01403 262219

[www.cheekymonkeytreehouses.co.uk](http://www.cheekymonkeytreehouses.co.uk)

OUTDOORFITLANDJUD2019



Get fit with our app!  
[wicksteed.fit](http://wicksteed.fit)  
see website for more details



# OUTDOOR GYM EXPERTS

The Wicksteed calisthenics multi-station gym allows the experienced user to perform rhythmic body weight exercises consisting of a variety of movements. The exercises can benefit both muscular and cardiovascular fitness, in addition to improving psychomotor skills such as balance, agility and coordination.

**"IT HAS BEEN THE TOOL WE NEEDED TO HELP OUR COMMUNITY!"**

"It (The Wicksteed Calisthenics Zone) has been amazing. It has allowed us to be able to promote these free sessions on Saturday. In an area where there was not much to do for young people, alternatives being unhealthy or getting in trouble with local enforcement. To summarise, it has been the tool we needed to help our community. Breaking stereotypes, promoting health and wellness, and giving our community relatable positive influences"

Edris Kizito, Kinetick Kontrol Calisthenics



01536 517028

[wicksteed.co.uk](http://wicksteed.co.uk)

[sales@wicksteed.co.uk](mailto:sales@wicksteed.co.uk)





**WANT TO BE A VERDE ACCREDITED INSTALLER?  
JOIN OUR EXISTING TEAM PROMOTING  
100%  
UK MADE PRODUCTS**

**Benefits of Being Verde Accredited**

- Promotion on our website
- Recommendation to potential clients
- Promotional literature & merchandising
- Product training & workshops
- Access to top quality British products
- Part of a nationwide established team



**Requirements for Accreditation**

- Only promote Verde products
- Provide site installations for approval
- Produce references on request
- Professionalism at all times
- Active on social media
- Interested... Call 01254 831666



**PROVEN...**



**BRITISH...**



**QUALITY...**



Verde Sports Ltd, Gabbotts Farm Barn, Bury Lane, Withnell, Chorley Lancashire, PR6 8SW.

**Web:** [www.verdesports.com](http://www.verdesports.com) **Email:** [sales@verdesports.com](mailto:sales@verdesports.com) **Tel:** 01254 831666



#designthenation

st. james's market, london



☎ 01254 685 185

✉ sales@woodscape.co.uk

🌐 woodscape.co.uk

📘 facebook.com/woodscapegroup

🐦 @woodscapeco

🌐 linkedin.com/woodscape



Woodscape.