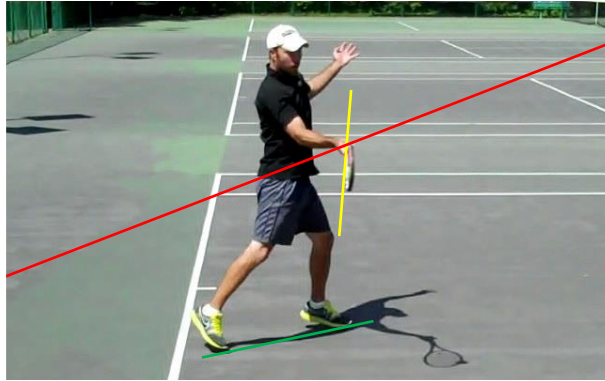
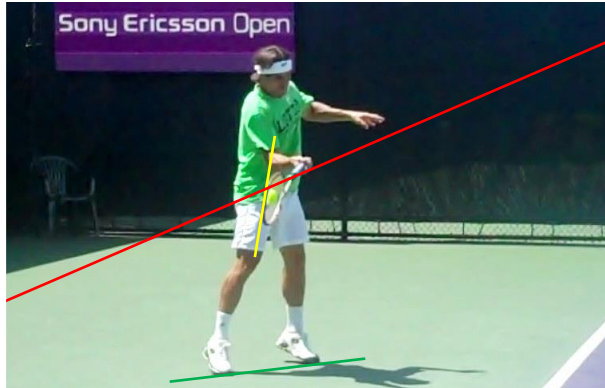


Fig. A



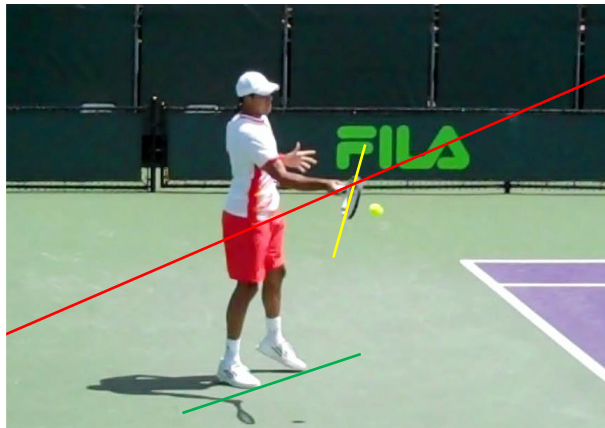
Daniel Dodson, Copyright HammerItTennis 2012

Fig. B



David Ferrer, Copyright HammerItTennis 2012

Fig. C



Jo-Wilfried Tsonga, Copyright HammerItTennis 2012

Fig. D



Milos Raonic, Copyright HammerItTennis 2012

CONTACT POINT

In Figures A,B,C,& D the racquet face is roughly at a 45 degree angle at contact IN RELATION TO THE RACQUET PLANE. It is critical to understand that the bottom of the ball is not contacted and tried to be rolled for topspin. The racquet face appears to be in a "neutral" face position in relation to the ground, however the ground is irrelevant to the ball's flight path to the target. A ball struck with top spin must always stay under the racquet swing plane. The upward angle of the racquet plane gives the ball an upward launch angle. However, the ball has a downward angle in relation to the racquet plane. This is only possible if the face of the racquet is closed at contact. In ALL photos the racquet face is closed at almost a 45 degree angle at contact IN RELATION TO THE SWING PLANE.