

# LANDSCAPE & URBAN DESIGN

43

May/June 2020

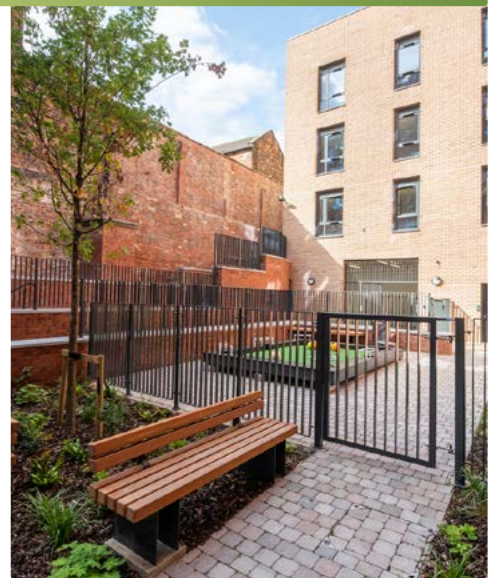
Price £3<sup>95</sup>

landud.co.uk



## Neocube-o: Developed to establish a new dimension in design

Sintered Stone brand teams up with CB Stone-tec for an exclusive range of outdoor fireplaces



## The design of space and place

Creating healthy environments with a positive impact



## Good quality artificial grass

A fantastic hassle-free investment





# MORE STYLE GIANT RESULTS



**Lasting impressions with Otterbine's giant fountains.  
Stunning and dramatic water features for your lakes.**

Take your landscapes to new heights with a Giant Fountain from Otterbine. Specify a water feature that boasts both quality and elegance round the clock. Shallow operating depth combined with other engineered features means these fountains are easy to handle while still striking to see. If you're looking for a water feature that makes a statement without any of the drama, look to Otterbine.

[reesinkturfcare.co.uk](http://reesinkturfcare.co.uk)

Get **MORE** from your turfcare partner this year:  
More products . More advice . More training . More finance

Member of Royal Reesink   
Reesink UK LTD is authorised and regulated by the Financial Conduct Authority. Images shown for illustration only.

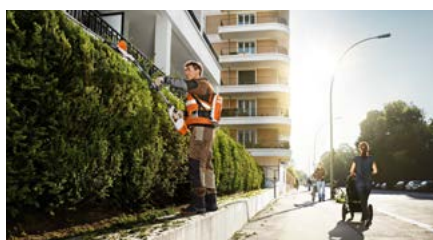


# CONTENTS ISSUE 43

## THIS ISSUES MAIN FEATURES



**Garden Design | 04 - 31**



**Tools, Plant & Equipment | 42 - 49**



**Green & Blue Infrastructure | 50 - 57**



**Decking | 66 - 75**

### Garden Design

04 - Charlotte Rowe Garden Design creates an accessible and attractive garden.

08 - What happens when you hire a garden designer.

12 - An exclusive collaboration with premium fireplace manufacturer CB stone-tec: neocube-o.

16 - Using instant living screens to create a biophilic environment to enhance health, happiness and wellbeing.

24 - Brett Landscaping - The stylish and practical choice.

26 - Keter announces a new ambitious sustainability strategy.

28 - Wood-effect tiles for outside living areas.

29 - The best trees for small gardens.

30 - Top tips on how to involve your children in gardening this Summer.

### Landscape Services

22 - The Garden Masterclass programme.

32 - Designing privacy.

34 - Sustainable and environmentally friendly packaging and transport products for horticulture.

### Artificial Grass

36 - A useful buyer's guide.

40 - Choosing a lawn that looks realistic and stands the test of time.

### Tools, Plant & Equipment

42 - Kubota's ST range of diesel tractors is designed with ground care operators in mind.

44 - Quickly transform any garden with ease, no matter the height of the hedges.

46 - Right place, right time for delivery of the new Charterhouse Verti-Drain® 7416.

48 - EVO 165D delivers powerful performance for rooted tree & landscapes.

### Green & Blue Infrastructure

52 - Creating healthy environments that have a positive impact on people's lives.

56 - Living wall at Nottingham Trent University Music Centre.

### Tree Pits

58 - The benefits of tree pits.

### Bound Surfacing

63 - Top trends in landscaping stone.

64 - The Techturf Rootzone Reinforcement system.

### Decking

66 - Two simple ways to take a garden project to the next level.

### Sport & Play

80 - How sustainability and technology is shaping the urban environment.

### Publishing Director

Martin Holmes  
martin@mhmagazine.co.uk

### Sales Director

Lee Martin  
lee@landud.co.uk

### Digital Manager

Jamie Bullock  
jamie@mhmagazine.co.uk

### Editor-in-Chief

Antony Holter  
editor@mmhmagazine.co.uk

### Editor

Lorna Davidson  
lorna@landud.co.uk

### Business Manager

Josh Holmes  
josh@mhmagazine.co.uk

### Studio Designer

Sarah Johnson  
sarah.johnson@mhmagazine.co.uk

Marketing Enquiries - 01227 936974  
Editorial Enquiries - 01304 806039  
Other Enquiries - 01304 806039

### Publishers

MH Media Global Ltd.  
Discovery Park, Sandwich, CT13 9FD

Cover images courtesy of: Left: Neolith® | Top Right: HLM Architects | Bottom Right: PermaLawn

Every effort is made to ensure the accuracy and reliability of material published in Landscape & Urban Design however, the publishers accept no responsibility for the claims or opinions made by advertisers, manufacturers or contributors. No part of this publication may be reproduced or transmitted in any form or by any means, mechanical, electronic (including photocopying) or stored in any information retrieval system without the prior consent of the publisher.



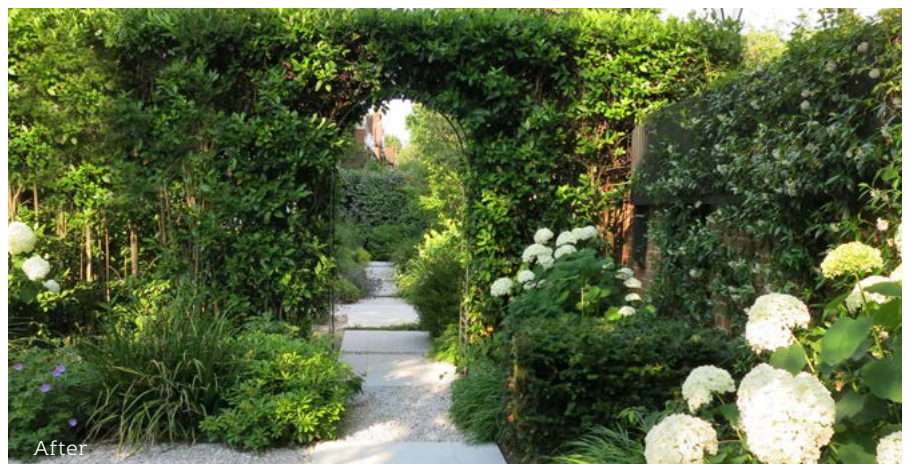


# CHISWICK GARDEN

Our clients, for whom Charlotte Rowe had already created a garden previously, had bought a listed detached house in the Bedford Park Conservation Area in Chiswick, West London. Major works were to be undertaken to both the interior and footprint of the property.

The house is situated in the centre of a tricky triangular site of 312 square metres in total. When our clients bought the property, the garden was composed of a number of unconnected zones: a narrow front path, a main lawn which struggled in the semi-shady triangular space, and another narrow shady passage leading to a very dark, poky 'back terrace' area.

Our client's brief was to create a more cohesive external area comprising a 'secret garden' in the main triangular space, a secondary 'destination' off the kitchen for dining and visually attractive paths to unite these spaces as all areas are clearly visible from windows on the ground floor.





For the principal garden in the triangular area on the West side of the house, we decided to design a core rectangular central space including a paved seating area with gravel insets and strips of limestone. Low tables of *Taxus* hedging and new trees including a multi-stem *Parrotia persica* and a *Prunus x subhirtella* 'Autumnalis' were planted to provide structure.

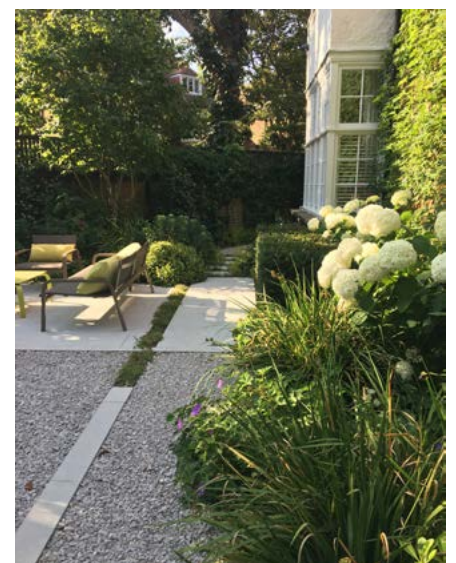
Access to the main garden is via a mature bay hedge arch on the front side of the house, with the main gravel path leading the eye down to an existing *Mimosa* tree and new urn in the apex of the triangle.

This 30m long path running along the whole length of the site was re-aligned to run parallel with the house and is punctuated by a series of limestone strips and planted rills, and three multi-stem *Amelanchier lamarckii* were planted along the front boundary to provide additional screening.

The path continues at right angles to the house to a new 'destination' dining area created in an under-used space between the kitchen and garage, a once gloomy corner toward the back of the house transformed into an inviting space for family suppers and entertaining.

On the other side of the 'secret garden', we designed a winding gravel path leading to a new bin store and utility area. Acers and shrubs under-planted with low grasses and ground cover including *Carex elata*, *Tellima* and *Pachysandra* were planted to provide interest in an otherwise dull and very shady part of the garden.

To offset the hardscaping and create more of a natural look, we created large areas of generous planting throughout the garden. In the main triangular garden, we planted shrubs including *Rhododendron* 'Madame Masson', *Hydrangea quercifolia* 'Snow Queen' and *Pittosporum tobira* 'Nanum' combined with perennials such as *Libertia grandiflora* and *Persicaria amplexicaulis* 'Taurus' and ferns such as *Dryopteris filix-mas*. Interspersed between the gravel and stone strips we planted rills with *Soleirolia soleirolii*, *Erigeron karvinskianus* and *Thymus serpyllum albiflorum*. On the trellis fixed to the boundary walls we used evergreen climbers such as *Trachelospermum jasminoides* and *Akebia quinata*. Along the front of the house, we included shrubs such as *Euphorbia characias* 'Humpty Dumpty' and *Euphorbia mellifera*, combined with perennials *Gillenia trifoliata*, *Geranium* 'Rozanne' and *Aster x frikartii* 'Monch'. Bulbs such as crocus, *Fritillaria meleagris*, narcissi, irises, alliums and tulips add bursts of added colour throughout the garden from early spring to midsummer.







Before



After

In addition to the garden, Charlotte Rowe Garden Design was asked to transform our client's 25 sq m roof terrace that leads off the main bedroom on the first floor. We designed Western Red Cedar decking and bespoke powder-coated metal planters containing two stunning multi-stem Cornus mas trees and shrubs including Pittosporum tobira 'Nanum' and lavender.

The main challenge of this project was the unusual shape of the space - a tricky triangular wedge, most of it very dark. By introducing more symmetry in the form of a rectangular paved and gravel terrace within the triangle and further breaking up the space with strips of stone and planting, Charlotte Rowe Garden Design created a more accessible and attractive garden.

Copyright Charlotte Rowe  
Garden Design, April 2020  
T: +44(0)20 7602 0660  
E: [design@charlotterowe.com](mailto:design@charlotterowe.com)  
[www.charlotterowe.com](http://www.charlotterowe.com)



HARTLEY  BOTANIC

HANDMADE WITH PRIDE SINCE 1938

HANDMADE IN ENGLAND



Bespoke Victorian Glasshouse, Lingholm Estate, Keswick, Cumbria

For our Sale offers please call 0800 783 8083  
or visit [www.hartley-botanic.co.uk](http://www.hartley-botanic.co.uk)

**NOTHING ELSE IS A HARTLEY**

The only aluminium glasshouses and greenhouses  
endorsed by the RHS

© The Royal Horticultural Society 2018 Endorsed by the Royal Horticultural Society  
Registered Charity No 222879/SC038262 rhs.org.uk





# WHAT HAPPENS WHEN YOU HIRE A GARDEN DESIGNER



Camilla Ropers © Houzz 2016



Maike Wagner © 2016 Houzz

It can often be difficult to envisage the touches that will bring a garden to life, which is where a garden designer can help. They will look at your boxy patch with expert eyes and, instead of lines, see winding paths, an unexpected pond or a curved lawn. Houzz.co.uk, the leading platform for home renovation and design, shares tips from its community of garden designers, to help you know what to expect from the process.

## Start with planning

Houzz research indicates that for most homeowners, the time between planning a renovation and actually executing it is usually six months or more (76%). Use some of this time at home to start saving your inspiring photos to ideabooks, planning what you want from your garden and researching local home professionals, then you will be ready to reach out when you are in a position to invite someone into your home.

## When should I contact a professional?

“The ideal time to ask a designer to look at your garden is when you’ve decided it’s time to have a fresh pair of eyes to help you understand your vision,” Claudia de Yong, a garden designer on Houzz says. “Or if you have no idea where to start, to help create a wonderful space for you to enjoy.”

Fiona of Green Tree Garden Design, a professional on Houzz says, “If you’re having a substantial renovation or even building a new house from scratch, then getting the garden designer involved at the outset is a good idea. It may make sense to get the groundworks done by the builder and then leave the garden until the house/extension has been completed before getting the garden built.”

## What happens in the first meeting?

The first meeting is an important opportunity for you and the professional to discuss ideas and learn more about each other. It’s also a chance for a designer “to get a good idea of your likes and dislikes and what you’re looking for with a new design,” Claudia explains, “it’s important for the designer to see the garden’s existing layout, any constraints, such as neighbouring buildings blocking light or views, and the lay of the land.”

Fiona adds, “Most designers will visit your garden to meet you and find out more about what you want from your ‘new’ garden. They’ll also use the opportunity to explain how they work and perhaps talk you through their portfolio.”



"The initial meeting is usually a top-line discussion and a talk through the process," explains a garden professional on Houzz, Simon of Simon Orchard Garden Design. The reason for this is that "until a client has signed up, a designer is likely to keep design ideas close to their chest!"

Remember many professionals will also offer virtual consultations, where they will be able to answer your style and function questions, share inspiring photos and explain how to take accurate measurements in your own garden, all remotely.

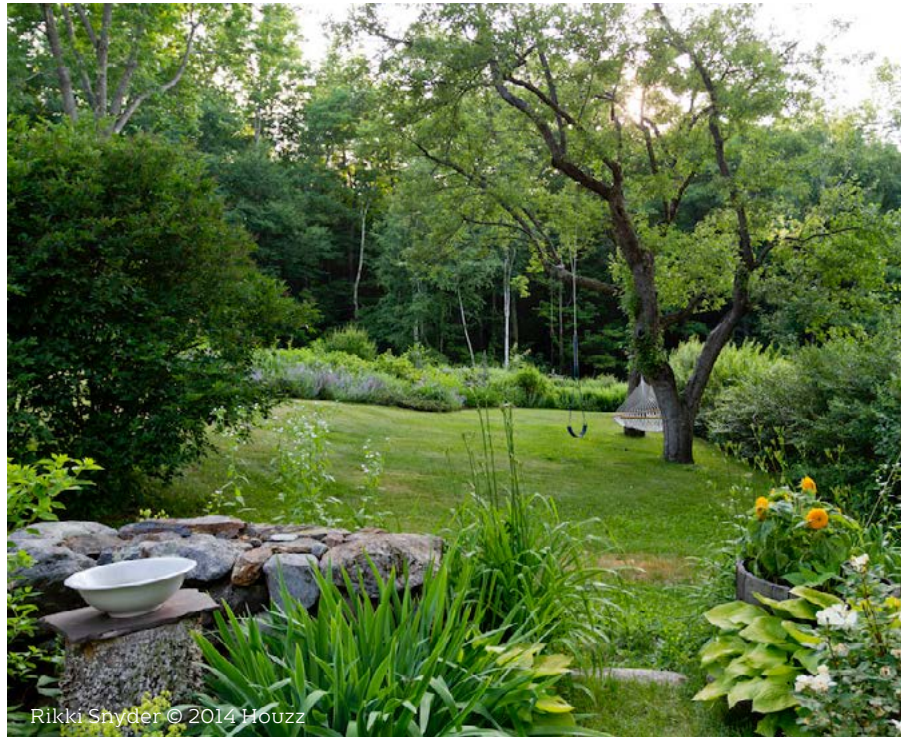
### How long will this meeting be?

"I find these meetings can take up to a couple of hours," Fiona says. "Some designers charge for them, some don't. There isn't really a hard and fast rule. I think it's important to establish a really good rapport at this meeting," she adds, "as the success of the project will be very much based on how well you communicate with your designer."

### Can I see previous work or references?

It's important when hiring a professional to have done your research. Always check their Houzz profile, looking through their projects and reading their previous reviews. "I always point clients to my portfolio and send them example sketch designs," says Simon. "I also have plenty of past clients who are happy to speak to potential clients and even show them their gardens."

While Claudia understands the importance of people checking references, she says, "A great deal of the time it's about the right fit in terms of personality when choosing a designer. Ultimately, it's a partnership between you and the designer." She adds, "You want to feel comfortable and secure in the knowledge you've chosen the right professional fit and that the designer fully understands your wishes. A good designer will guide you through the process step by step."



Rikki Snyder © 2014 Houzz



Hoi Ning Wong © 2014 Houzz

### Will you judge my existing garden if it's a mess?

"I would never judge an existing garden, whether it was a mess or it wasn't to my taste," Claudia says. "I'd never dictate a style and I like to get a feel for the landscape and architecture and how you wish to live with it and use it."

"I've had several clients who've been very concerned about this," Fiona says, "and it really doesn't matter."

Personally, I love the process of transforming a mess into a beautiful space and also watching my clients enjoy the garden once it's been completed. So in some ways, the messier, the better!"

**Inspired to start your own garden project? Take a look at [Houzz.co.uk](http://Houzz.co.uk) today to get design ideas, find professionals near you and hire with confidence.**



**New for 2020**

Introducing...  
**Magic Meadows™**  
 by Pictorial Meadows

-  An expertly balanced mix of annuals, biennials, and perennials
-  Dramatic changes in colours and variety from year to year
-  Choose from 3 stunning new meadow designs

Superior quality designer meadows from seed and PMTurf based on 20 years of research and development

**Pictorial Meadows**

Request your catalogue or arrange your CPD now:

01142 677 635  
 PictorialMeadows.co.uk

Meadow seed and PMTurf™ supply  
 Training and CPD seminars  
 Design and consultation  
 Meadow installation

THE  
**TREE & HEDGE**  
 COMPANY

**UK grown instant hedges, mature trees & expert planting service**

**Supply**

**Plant**

**Maintain**

For more details on the original, UK grown, instant hedges please contact us for expert advice and the best prices guaranteed.

---

[www.treeandhedge.com](http://www.treeandhedge.com)
**01895 438 811**
  

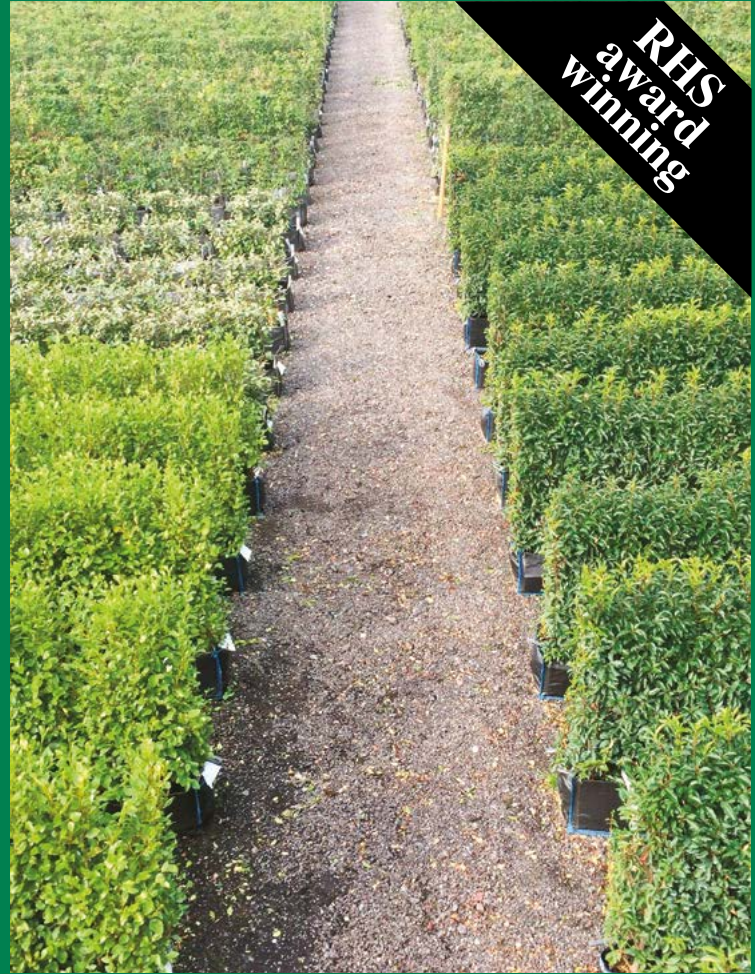




# INSTANT HEDGES & LARGE TREES



Practical Instant Hedge - ready to plant



Practical Instant Hedge - growing in the Iver nursery

**We have been supplying high quality semi mature trees and instant hedges since 1989.**

**Our own Practical Instant Hedge™ range is grown at our nursery in Iver in 1m troughs, making planting easy. We also source Instant Hedges and hedging from other growers; we can supply all your hedging requirements.**

**Our instant hedges are often used in award-winning RHS Flower Show gardens.**

**Our tree nursery showcases stunning specimen trees, both evergreen and deciduous stock; we have top quality containerised trees and elegant topiary to complement any garden design.**

Find more information at:

**[www.pracbrown.co.uk](http://www.pracbrown.co.uk)**

**PRACTICALITY BROWN LTD**

THE INSTANT LANDSCAPE SPECIALISTS







# NEOLITH® SQUARES UP WITH NEOCUBE-O

## SINTERED STONE BRAND TEAMS UP WITH CB STONE-TEC FOR EXCLUSIVE RANGE OF OUTDOOR FIREPLACES

Neolith®, a market-leading brand of Sintered Stone, has announced an exclusive collaboration with premium fireplace manufacturer CB stone-tec: neocube-o.

Born from a mutual appreciation of each company's innovative, forward-thinking and dynamic approaches, neocube-o is an outdoor gas fireplace developed to establish new dimensions in design, workmanship and material diversity.

The chic fireplace combines high quality gas firing technology in

stainless steel and Schott glass with an elegant, Neolith-clad base. With a striking visual appearance, neocube-o is a sophisticated style statement, guaranteed to catch the eye.

Manufactured in Germany to rigorously high standards, premium quality is at the essence of the system.

neocube-o is solely for outdoor use and is suitable for all gas types. The fireplace has the further advantage of being easy to move, set on four

discreet rollers with a brake for fixing in position. This offers a welcome degree of flexibility as it can be quickly repositioned in an outdoor area according to specific requirements.

neocube-o is currently offered in 13 of Neolith's most popular colors, including the award-winning La Bohème and Zaha Stone, as well as the brand's latest patterns, New York - New York, Mont Blanc and Sofia Cuprum.





Commenting on the collaboration Lorenz Geger, CB stone-tec sales director, said: "Our clients are always looking for solutions which seamlessly balance form and function. A robust, reliable product is as important, if not more so, as one which looks great. This is especially the case for anything which needs to withstand the elements such as outdoor furniture and sculptural installations."

He continued, "We tested many different surface materials when designing neocube-o and found Neolith to be the one which perfectly matched the high-end fireplace system we manufacture. A simple design with clean lines, it has a quiet, understated beauty and can act as much as a standalone item as an important background player in any outdoor space. We look forward to a long and fruitful partnership with the Neolith team, and the success of our neocube-o collaboration."

Website: [www.neolith.com](http://www.neolith.com)

Email: [info@neolith.com](mailto:info@neolith.com)

Phone: +34 964 652 233





# BRITAIN'S PRIVATE MID-MARKET GROWTH COMPANIES ACHIEVE BIGGEST SALES

The 15th annual Sunday Times Grant Thornton Top Track 250 league table ranks Britain's private mid-market growth companies with the biggest sales.

The 250 companies achieved combined sales of £63.3bn, a 16% increase year-on-year, profits of £5.9bn, up 20%, and they employ a total of 373,000 people, up 11%. Almost half the table, 122 companies, were not on the league table in 2018, including Gymshark, Five Guys and TransferWise, and fifty-seven firms feature for the first time.

These companies appear alongside other established brands including Dr Martens, Travelodge and Virgin Active, and fast-growing brands such as Princess Yachts, Busy Bees and Medivet.

Contributing to the top Track 250 is Ground Control, which ranks

at Number 238. Along with 40 other companies headquartered in the southeast (compared to 38 in 2018) they have made a strong contribution to the regional economy. These companies increased combined sales 15% to £9.1bn and operating profits 39% to £769m, and employ more than 58,000 people.

The Top Track 250 is sponsored by Grant Thornton and Lloyds Banking Group, and compiled by Fast Track, the Oxford-based research and networking events firm.

"It is an honour for Ground Control to receive such a prestigious award from The Sunday Times and be recognised amongst 250 of the most distinguished and fastest growing companies in the UK. Caring for our Environment is why we are in business. We put people at the centre of everything we do and we embrace innovation and technology

to be sustainable leaders in our chosen fields. I would like to thank all the people at Ground Control who made this possible: you're awesome!" says Marcus Watson, Managing Director of Ground Control.

Jim Rogers, Partner at Grant Thornton UK LLP, the title sponsor of the league table, praised the companies for their performance:

"Whilst the headwinds of political and economic uncertainty have been a consistent feature of the UK economy over the past year, mid-market firms have continued to prove their resilience. They've demonstrated their adaptability to uncertain times and found opportunities for growth, both at home and abroad."



# Award Winning Commercial Landscapers since 1973

*The Water Garden Viewing Platform & Stepping stones*

Could you be the next Award Winning  
Commercial Landscaper?

Recruiting now for careers in our  
Landscape Design, Grounds Maintenance,  
Arboriculture & Ecology Divisions.

How to Apply:

T: 0800 334 5606

E: [talent@ground-control.co.uk](mailto:talent@ground-control.co.uk)

W: [www.ground-control.co.uk/careers](http://www.ground-control.co.uk/careers)



Grounds Maintenance | Arboriculture | Vegetation Management | Gritting & Snow Clearance | Landscape Construction | Landscape Design | Ecology | Fencing | Pest Control | Roofing | Specialist External Cleaning | Pothole Repairs | ChargePoint Installations

# BALI

2019

**GRAND**  
AWARD WINNER

National  
Landscape  
Awards







# USING INSTANT LIVING SCREENS TO CREATE A BIOPHILIC ENVIRONMENT TO ENHANCE HEALTH, HAPPINESS AND WELLBEING OR ZEN AND THE ART OF INSTANT GREEN SCREENING BIOPHILIA

East of Eden's first involvement with the supply and installation of instant living screens was with 'The Rain Chain' garden by Wendy Allen, which won the Best Sustainable Garden and a Gold medal at the RHS Hampton Court Flower Show 2009.

As soon as the garden was completed, it became apparent that, in contrast to the use of a fence or wall, the instant green screen boundary created a sense of tranquillity and connection with the natural world that permeated into the whole garden. Since then

East of Eden have often pondered why a simple green boundary could have created such a powerful effect on me. Could our interaction with nature be operating at a deeper subconscious level, reflecting our evolutionary origins and cultural development.



Human's innate attraction to nature and natural processes, forms the basis of Biophilia, which means 'love of nature'. It implies that through thousands of years living as agrarian societies we all have developed an innate connection to the natural world. The American biologist Edward O Wilson in the 1980's observed how through the migration to urban environments it has led to a disconnection with the natural world. Hence Biophilia is increasingly regarded with importance to our health and well-being in the built environment.

It is now accepted by the scientific and medical community that spending time immersed in nature is good for our mental wellbeing. The fact that we spend about 85% of our time indoors means that most of us are deprived of exposure to nature. In Japan the benefits of immersing yourself in nature is known as shinrin-yoku, or 'forest bathing'. In the 1980's it was developed by the Japanese as a form 'plant therapy practice' and has become an important component of preventative health care and healing in Japanese medicine. They found

that being immersed in nature creates calming neuro-psychological effects through changes in the nervous system, reducing the stress hormone cortisol and boosting the immune system, and has led to reductions in stress, anger, anxiety, depression and sleeplessness amongst the participants and improved mental clarity.

At East of Eden Plants and Designs, we believe that the principles revealed by shinrin-yoku can be incorporated into thoughtful Biophilic Design, which aims to create a human centred approach to improve the many spaces that we live and work in today. By incorporating direct or indirect elements of nature into the built environment, there are enormous benefits to our health and well-being reducing stress, blood pressure levels and heart rates, whilst increasing productivity, creativity and well-being.

It is not a practical reality for most urban dwellers to find the nearest forest. We believe that, there are some simple, yet very effective ways of incorporating elements of nature

into the built environment. One of the simplest, which is both instant and cost effective, is the use of living green screens. For many of our projects we now encourage the use of instant living screens to produce a natural green landscape, which can transform even the bleakest concrete urban setting.

Biophilic design is often seen as a rather esoteric indulgence for interior settings of the few, but we believe that we can bring the benefits to far wider groups of people in urban environments, who are devoid of nature's benefits. Once an area is brought back to life with green screening, it immediately improves one's state of mind, lifts the spirit and induces a sense of wellbeing, bringing about a positive outlook on life. Just having a view through the window of vegetation outside has proven to boost happiness, and combat depression).

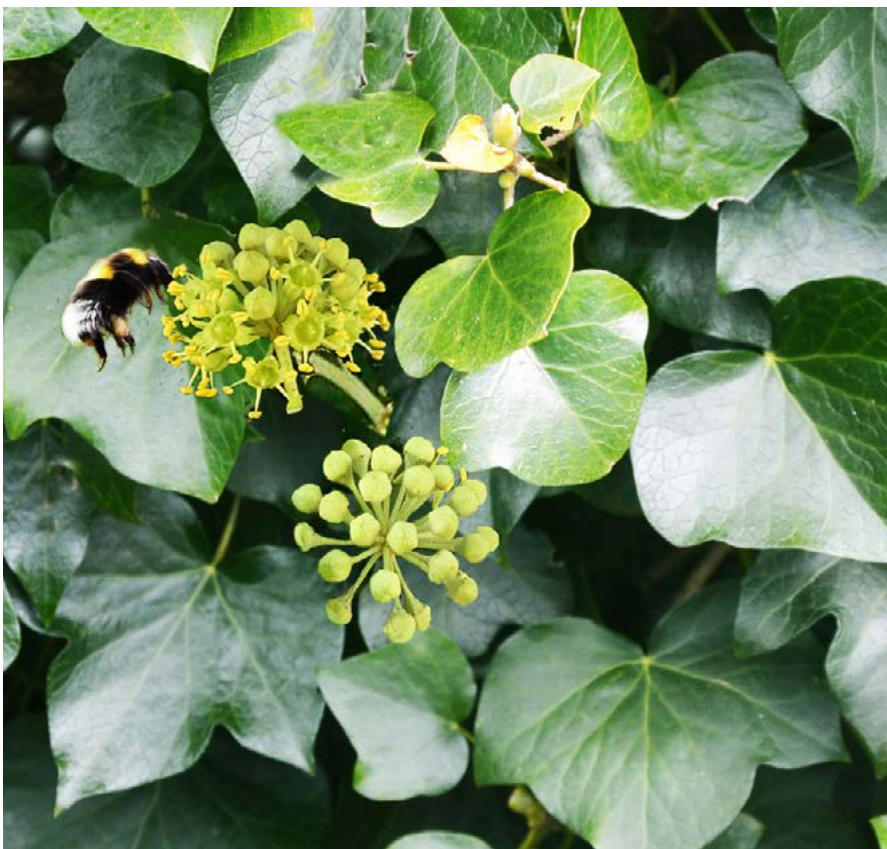
Where funds permit, we combine instant green screening with living walls to create an enhanced effect, but they are often beyond the budget of many clients, particularly community groups, that are often in the greatest need of greening their environment. Instant natural screens provide an affordable option, as well as being virtually maintenance free. By using the highly reliable green screens, it provides a sustainable scheme. Once established the 'green screened' area can then be developed gradually with other planting, encouraging the community to get involving in the green spaces they have created.

Although I am convinced that connecting with nature, through the principles of Biophilia, brings about the benefits associated with wellbeing. There are further significant benefits of using living walls that are likely to improve the mental state.

These include:

**Instantly Conceal and Prevent Graffiti / Eyesores**

**Increased Biodiversity**



Bumble bee Photographed last summer on Ivy Screen





For a number of years, with acknowledged success, we have been using Mobilane's Ivy, and other species of instant living screens, to enhance our garden and landscape designs. In many cases the specific client requirements are for privacy screening, natural security boundaries and air purification of sensitive areas, such as:

- Schools
- health spas
- gymnasiums
- public gathering spaces (e.g. al fresco dining)

Although the requirements for privacy, and air purification were clearly being met with the instant impact of green screening, the positive feedback from our clients

has gone way beyond their practical benefit. We are thrilled to hear that instant living screens created a sense of peace and wellbeing for clients, children, residents, customers and personal spaces. The biophilic connection with nature was clearly at work.

More recently we have been helping inner city community groups to obtain grant funding to enhance their sense of wellbeing by connecting with nature, through the creation of green spaces in their concrete environments. Working in collaboration with the enlightened eco-landscaping company, Stone Green Landscapes Ltd, we aim to create panoramic views of nature for inner city resident groups using instant living screens, which will

make an important contribution to the mental, emotional and physical well-being of the whole community.

\*<https://www.growwilduk.com/blog/5-simple-steps-practising-shinrin-yoku-forest-bathing>

**For more information about our Instant Green Screens and projects visit**

**[www.eastofedenplants.co.uk](http://www.eastofedenplants.co.uk)**

**or call 01752 822782**

**[www.sg-landscapes.co.uk](http://www.sg-landscapes.co.uk)**

**or call 07789 718 101**

**email [admin@eastofedenplants.co.uk](mailto:admin@eastofedenplants.co.uk)**

**email [hello@sg-landscapes.co.uk](mailto:hello@sg-landscapes.co.uk)**

**PHOTOS - All copyright of Peter Belton East of Eden Plants and Designs**





# Euroflor

## Spring sowing for summer showing



### Your Spring Collection

Select from over 30 mixtures including, Banquet, Boulevard, Cornflowers, Classic, Colour Bouquets, Endurance, Flora Britannica, Fragrant Lawn, Ground Cover, Honey, Sarah Bouquet, Summer Lace, Super Blue Bee, Tudor Scent

- ❁ Combination of mixtures provides extended period of flowering from early/mid summer through to first frosts of autumn.
- ❁ First flowers appear approximately 50-55 days after sowing
- ❁ An extensive range of colours, heights and growth habits
- ❁ Provides season long supply of nectar and pollen
- ❁ Choose a combination of 50g packs in the Discovery box selection or 1 kg packs of a single mixture

For more information on ALL the mixtures, flower species, site selection, sowing rates and testimonials, log onto:

[www.euroflor.co.uk](http://www.euroflor.co.uk)



### PROJECT POLLIN-8

#### An Ecological Initiative

Project Pollin-8 is a Rigby Taylor initiative to help arrest the decline on the UK bee population.

Crucially, springtime flowers provide an earlier seasonal supply of energy-rich nectar and pollen, sustaining pollinators when resources are most scarce.



rigby taylor

Rigby Taylor Limited  
Freephone 0800 424919 Website: [www.rigbytaylor.com](http://www.rigbytaylor.com)  
e-mail: [sales@rigbytaylor.com](mailto:sales@rigbytaylor.com)



Lossiemouth, Moray Firth, Scotland



# EUROFLOR URBAN MEADOWS

From the north of Scotland to the south east of England, Euroflor has been colouring the British countryside and providing food for pollinating insects.

**Moray Council  
Lossiemouth, Scotland**

At the height of the holiday season, Euroflor urban flower seeds were sown on the esplanade overlooking the seafront at Lossiemouth and transformed the area with a riot of colour for all to enjoy.

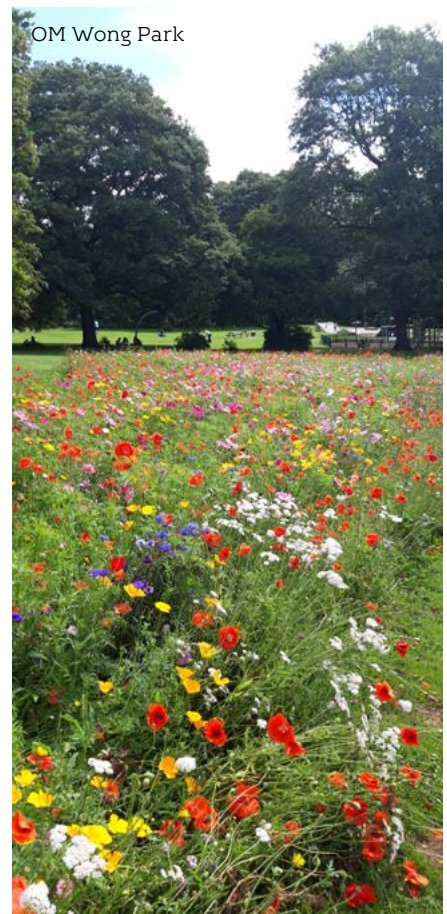
Grant Speed, Lands & Parks Department said, "We were keen to see how the wildflower mixes would grow in the Scottish climate as the esplanade has the distinction of being the most northerly in the country. This type of display has advantages over the flower beds that we used to have in that, it is low cost, takes only a few minutes to sow the seed and once the seed germinates the flowers take care of themselves."

Lossiemouth councillor John Cowe commented, "the displays were a welcome innovation, all the more so since they were low cost and required little maintenance. That is obviously a major consideration given the council's financial position," he said. "Sowing wildflowers to brighten up their own areas is maybe something that local community groups could think about for next season."

**Hall Om Wong Open Space  
Broxtowe Borough Council,  
Nottinghamshire**

"As a Council we needed to find ways of saving money and reducing our carbon footprint", commented Hugh Turrell, Technical Horticultural Assistant. "From this starting point, we looked at more effective ways of managing our seasonal bedding to save money and, more importantly, to improve the local environment."

OM Wong Park





“To achieve these objectives, many of our seasonal bedding schemes were changed to Euroflor Urban flower meadow seed mixtures, which resulted in fantastic displays that lasted all summer.”

Hall Om Wong Park received a very positive public feedback and Broxtowe Council hope to extend this scheme to other areas around the Borough next summer; this will include areas of highway verges as well as parks, open spaces and other areas that have been neglected to bring them back to life.

Hugh continues, “By incorporating Wildflowers areas around our Borough, it has helped boost pollen and nectar availability for our declining pollinator population and, as we are all aware, these wildflowers are meant for our environment after all!”

**North West Electricity - Transforming our spaces' Whitehaven, West Cumbria**

Rigby Taylor’s Euroflor urban meadow flower seed mixes have played a key role in the success of Electricity North West’s ‘Transforming our Spaces’ project by revamping substations throughout the region with spectacular displays of colour from flower mixes that also attract a host of pollinators.

The colourful displays produced by the Euroflor seed mixes also drew laudatory comments from the local communities as well as council officials and MPs.

For example, commenting on one site, Copeland MP Trudy Harrison said: “Electricity North West has planted what was previously grassland, requiring regular and costly maintenance, into a beautiful and environmentally beneficial wildflower oasis...This is an economic, environmental and social win, win, win project which should be replicated all over the UK.”

Angie Thornton, Electricity North West’s Groundworks Delivery Manager, who is heading up the scheme, said: “We are all absolutely delighted with the results; the sites truly have been transformed from what used to be eyesores into beautifully vibrant areas for the local communities to take pride in and spaces for revitalising insects and wildlife.



Electricity North West's CEO, Peter Emery at one of the revamped substations in Bolton

Eight substations were initially targeted last year and working closely with Rigby Taylor, various Euroflor urban meadow flower mixes were selected.

These included Rainbow Perennials and Flora Britannica from Euroflor’s Project Pollin-8 range specifically designed to attract pollinators while



Rainbow Perennials

also delivering high visual impact. The displays lasted through the summer and into October and November.

Electricity North West’s ‘Transforming our Spaces’ project will return this year with the continued support from Rigby Taylor.

**Hever Castle grounds and golf course, Edenbridge, Kent**

As a result of the “fantastic success” of its displays of Rigby Taylor’s Euroflor urban meadow flower seed mixes, Kent-based stately home Hever Castle has expanded the total area planted this year to more than 5,000 square metres.

The meadow flower project on the 400-acre estate, which includes an adjoining golf course, was initiated by Hever Castle Golf Club’s head greenkeeper Rob Peers to “encourage visitors to both the golf course and the estate to fully enjoy and be immersed by and engaged with the complete site”.



Hever Castle lake side, Euroflor mixtures

The Euroflor seed mixes selected were Meadow Breeze, Rainbow Annuals, Bleuet de France (renamed Cornflowers) and Classic and were chosen in terms of being ‘best fit’ options in terms of colour and height, as well as in texture and form. The flower displays will last through the summer and into October/November.

Rob continues, “The project has been an overwhelming success throughout the castle grounds and on areas of the golf course. In addition, I’ve never seen so many pollinating insects on the estate - a wonderful sight”.

[www.rigbytaylor.com](http://www.rigbytaylor.com)  
[www.euroflor.co.uk](http://www.euroflor.co.uk)





# HIGH QUALITY EDUCATIONAL EVENTS AND WORKSHOPS

Garden Masterclass is an educational programme created over four years ago by garden designer Annie Guilfoyle and horticulturalist and writer Noel Kingsbury. Both Annie and Noel realised that there was simply not enough high quality educational events and workshops on offer for professional garden designers, landscape architects and horticulturalists. The Garden Masterclass programme is deliberately held in locations all over the United Kingdom, Ireland and continental Europe, as in the past there has been very little on offer outside the south-east.

The tutor list includes many of the most highly respected names in the landscape design and horticultural industry such as Dan Pearson, Tom Stuart-Smith, Olivier Filippi, Nigel Dunnett and James Hitchmough. Group numbers are purposely limited to a maximum of between 20 to 30 people,

ensuring that attendees receive high-quality learning with the tutor, smaller numbers also enable extremely thought-provoking group discussions. Events may be lecture based or offer a more hands-on, practical workshop approach to learning.

This year there are several events specifically aimed at landscape architects, such as a seminar-based study day at Hestercombe in Somerset, with landscape and heritage consultant Deborah Evans, who will focus on design issues in the historic environment. For horticulturalists there is plenty on offer, including a day at the magnificent Exbury Gardens in Hampshire, focusing on trees and shrubs led by Jim Gardiner, the former Director of Horticulture at Wisley. James Hitchmough, Professor of Horticultural Ecology at Sheffield comes to The Horniman Museum in London to study the

deep gravel herbaceous planting system that he has designed there. Tom Stuart-Smith will be explaining his approach to the large-scale planting schemes that he has designed at Chatsworth. Landscape architects Giacomo Guzzon, Tom Muller and Zac Tudor will be discussing sustainable planting for the public realm.

Important new subjects this year include natural swimming pool design and specification with designer and swimming pool specialist Sarah Murch, and the transformation of a brown-field site into a 'post-wild' family garden with Jo Mckerr and Marina Christopher. Study days run from 10am until 4.30 and include lunch and refreshments.

---

To find out more about this extensive programme go to: [www.gardenmasterclass.org](http://www.gardenmasterclass.org) or email [gardenmasterclass@gmail.com](mailto:gardenmasterclass@gmail.com)



# GARDEN MASTERCLASS

SUPPORTED BY

  
**ALITEX™**  
GREENHOUSES AND CONSERVATORIES

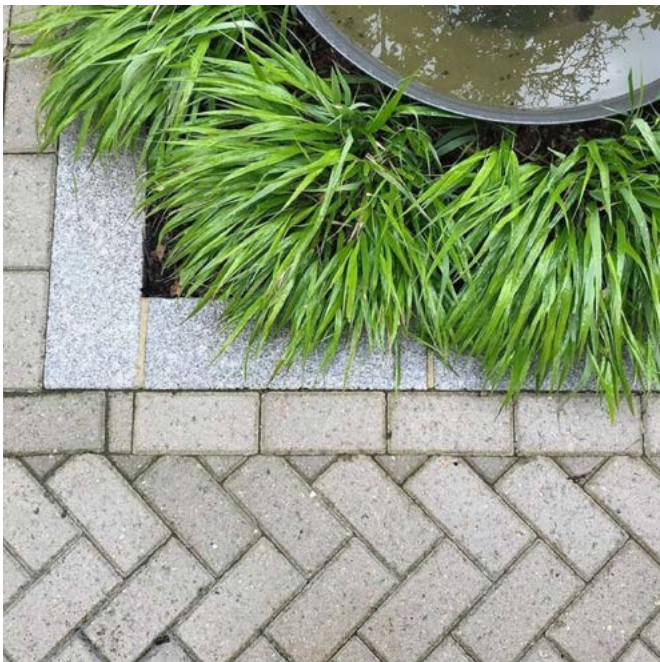


Curated by garden designer Annie Guilfoyle and horticulturalist Noel Kingsbury, Garden Masterclass is a place where gardeners, designers and landscape architects come together to learn and share their experience and knowledge. The list of tutors includes some of the most innovative people in the gardening world and these exceptional workshops are held all over the British Isles and continental Europe.

We are thrilled to launch our 2020 programme, please go to the Garden Masterclass website for event details and tickets.

Learn, share and experience knowledge, skills and ideas in gardening and garden design  
[gardenmasterclass.org](http://gardenmasterclass.org) [gardenmasterclass@gmail.com](mailto:gardenmasterclass@gmail.com)





# BRETT LANDSCAPING PROVES TO BE THE STYLISH AND PRACTICAL CHOICE

The homeowner of a period building was determined to carry out extensive reshaping of his outdoor space but knew there needed to be provision for one element that he wouldn't be using himself - a driveway.

It was an interesting challenge for garden designer Lucy Willcox who

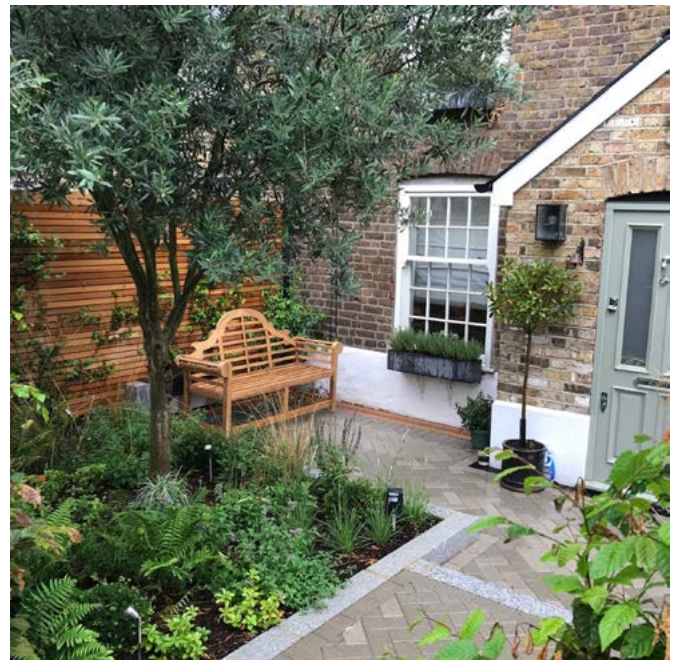
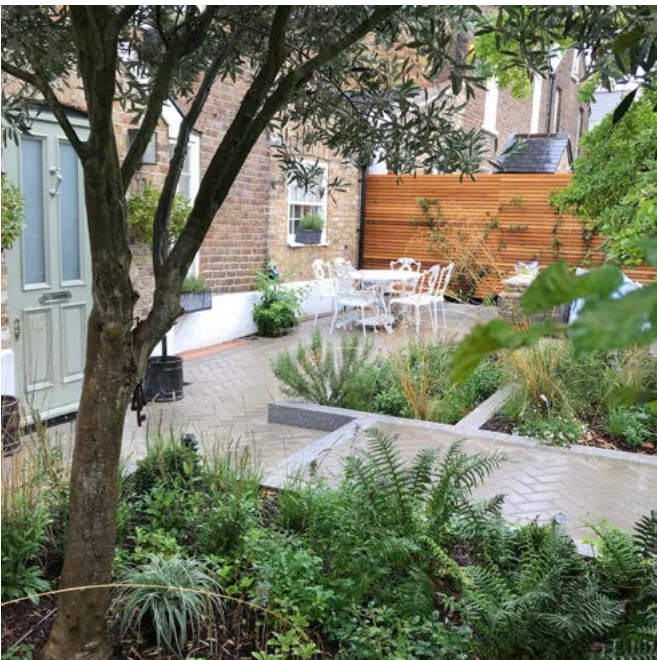
understood that the owner of the charming Victorian station cottage in Ealing, West London, was taking the long view in terms of the resale potential of the property.

Parking in London is at such a premium that having a driveway is a great selling point for a property and, although it wasn't required

immediately, this needed to be incorporated into the design.

The award-winning garden designer chose Brett Landscaping paving products to guarantee that her client could enjoy a stylish outdoor dining area which could ultimately convert into a practical and hard-wearing driveway.





The house has no back garden - so part of the brief was to provide privacy for entertaining in the front garden but not to enclose the space completely.

In order to achieve the beautiful patio AND hard-wearing drive, the designer opted for Omega natural paving. Omega, paired with granite kerbstones, allowed the customer to have a welcoming outdoor space but enabled the owner to sell the house complete with a fully operational driveway.

With its extensive range of colours and accessories, Omega provides nearly endless design opportunities. Its modern lines blend with almost any environment, maturing over time, for a subtle, natural effect.

Omega is the most popular product in Brett's block paving range and is available in a range of three thicknesses, making it suitable for most projects.

Lucy Willcox said: "The client wanted to avoid being overlooked but didn't want his views spoiled and he wanted a driveway that didn't look like a driveway."

This made for a very interesting project that required a bit of smoke and mirrors.

"I have seen the Brett products used in commercial settings, but these small pavers were perfect for the colours of the building and suitable for use on a driveway.

I'll certainly be using Brett products in the future."

[www.brettlandscaping.co.uk](http://www.brettlandscaping.co.uk)  
[www.lucywillcoxgardendesign.com](http://www.lucywillcoxgardendesign.com)





# A BETTER WORLD WITH KETER

## KETER'S AMBITIOUS PROGRAMME OF CHANGE

Keter - a leader in the design and manufacture of outdoor resin-based storage solutions for the past 70 years - has announced a new ambitious sustainability strategy entitled, 'We Care'.

It sees the business commit to doubling the use of recycled materials across its operations by 2028.

Meeting this target will mean 80% of all materials used to create Keter's product range will derive from a recycled source.

Through the 'We Care' commitment, the business intends to be a force for change by having a lasting and positive impact and helping to encourage sustainable living and the creation of long-lasting products.

It is a significant contribution to the ongoing debate about plastics, waste, alternative materials and consumer education to tackle the impact of plastics on the environment. Alternatives to plastic are, on average, 3.5 times heavier and require 82% more energy to produce, creating nearly 2.7 times more CO2 over the course of their life cycle.

Keter is currently the largest user of recycled plastic in its industry. It intends to drive its targeted sustainability policy through innovation and significant investment into its manufacturing processes over the coming decade.

The new strategy will focus on three important areas: material innovation, design innovation and business responsibility, to achieve the overarching global ambition by 2028.

Keter has already been addressing the sustainability challenge in a number of ways. In recent years this has included:

- Building a design ethos that promotes products for a lifetime, not single use.
- The creation of zero-waste 100% recyclable products and the soon-to-launch Kratky Hydroponic planter.
- Becoming the largest user of recycled plastics in the industry - reusing 120,000 tonnes of plastics in the past year.

Edward Johnson, Marketing Director UK and Ireland, comments: "To address the environmental

challenges we face as a society, we must collaboratively work to live more sustainably. Keter understands the role we should play as a partner to help our customers and consumers in this regard.

"The launch of our 'We Care' sustainability programme is a significant milestone for the company. We have set ourselves an ambitious target to use 80% recycled materials across our operations within the next ten years, but it is a target I am confident we can achieve.

"We are already the largest user of recycled plastic in the industry and lead the way in creating technology solutions to produce zero-waste 100% recycled plastic products designed to last a lifetime.

"As a business we are making good headway in tackling the sustainability challenge and minimising our operational footprint, but we also know we have to further improve our approach and invest in our future. 'We Care' will help drive our strategic vision and deliver practical solutions."

[www.keter.com](http://www.keter.com)



I O T A 

## THE PLANTER SPECIALIST

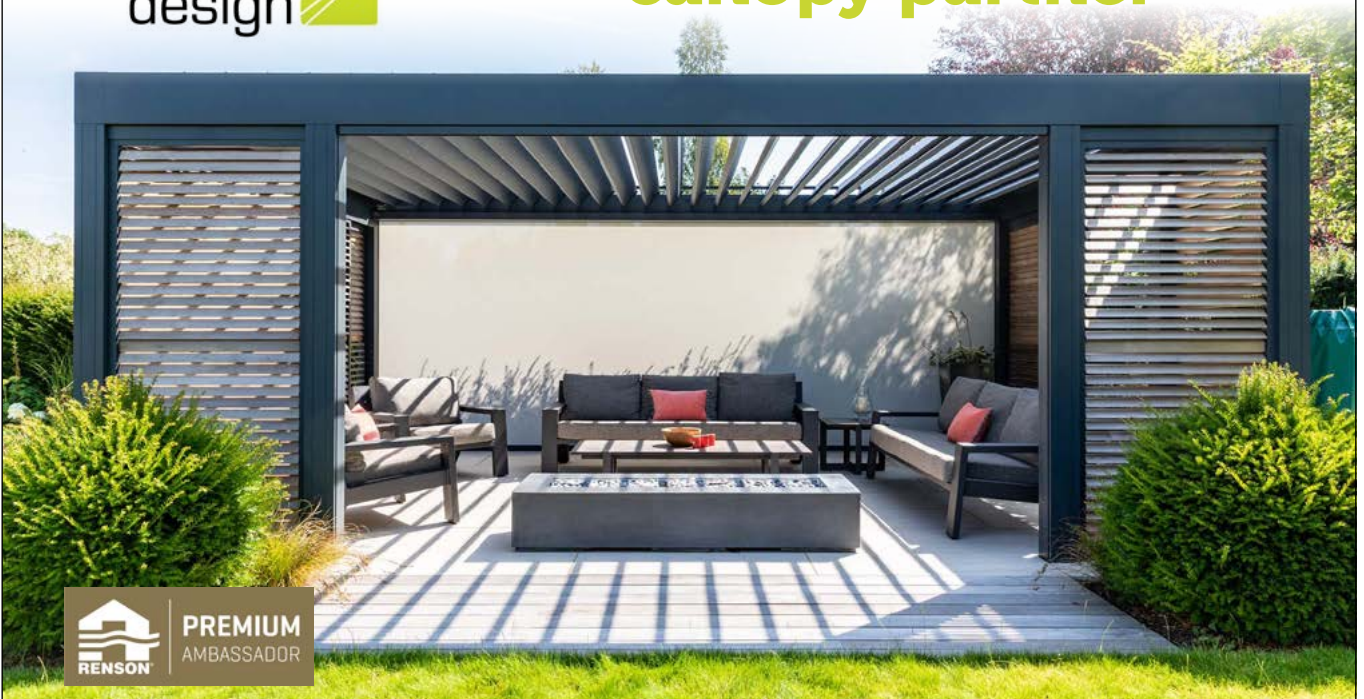
IOTA offers a trusted bespoke manufacturing service in all sheet metals

• Highly skilled metalwork aided by the latest technology • Experienced project team • Full service provision

T. 01934 522617 W. [WWW.IOTAGARDEN.COM](http://WWW.IOTAGARDEN.COM)



## The perfect louvered canopy partner



[www.gardenhousedesign.co.uk](http://www.gardenhousedesign.co.uk) | 01903 774 774 | Trade discounts





Flaviker's Gold Rett 30x120 20mm  
Prices starting at £39.00, available at Real Stone & Tile



Flaviker's Dakota Naturale 30x120 20mm  
Prices starting at £39.00, available at Real Stone & Tile

# WOOD-EFFECT TILES FOR OUTSIDE LIVING AREAS

## LEIGH PRICE, MANAGING DIRECTOR OF REAL STONE AND TILE PROVIDES HIS EXPERT OPINION

As we finally wave goodbye to the winter months and our head turns to the thought of warm summer nights, (hopefully!) we look at how you can transform your outdoor area with the use of wood-effect tiles.

Whilst real wood has become a desirable aesthetic to incorporate into your outdoor living area, it also demands regular maintenance and care to prevent it becoming tarnished from bad weather.

Wood-effect tiles give you the ability to create the same stunning design, without the high price and the pressure of annual upkeep.

These stunning, non-slip porcelain tiles imitate the natural

characteristics of real wood, so much so that they will dupe you into thinking they are!

Unlike wooden floor boards, porcelain tiles won't warp or dry out in the heat, which makes them the perfect for outdoor entertaining areas. And furthermore, because they're water-resistant if you spill a drink, the tiles will not stain, and it will be easy to clean-up - ideal for any summer parties you may be planning!

Here at Real Stone & Tile we supply a stunning range a wood-effect tiles from luxury Italian tile brand, Flaviker. The wood-effect range features a variety of shapes and colours so you can find the

perfect design for you. Take a look a just a few of the tiles from our vast Flaviker range, including our favorites!

Real Stone & Tile is open to both the trade and the public, specialising in a wide range of tiles. The tile and bathroom suite retailer also boasts a vast portfolio of contemporary and designer tiles, large format tiles, natural stone tiles, wood effect tiles, feature tiles and mosaics, sanitary ware, wet rooms and brassware.

**For more information on Real Stone & Tile, visit: [www.realstoneandtile.co.uk](http://www.realstoneandtile.co.uk) or call the team on 0161 485 1373**



# BEST TREES FOR SMALL GARDENS



An Acer will give stunning colour to your garden

Planting a tree can benefit even the smallest garden, by attracting wildlife, cleaning the air, and adding colour and interest throughout the seasons.

Every garden deserves a tree and spring is the perfect time to plant one. Trees can bring you flowers in spring and summer, radiant leaf colour in autumn, plus interesting bark and stems in winter.

Trees can be multifunctional too - screening an unattractive view

or helping to filter noise and air pollution if you live near a busy road. They also benefit nature significantly: providing pollen for insects and shelter for birds, and converting air-borne carbon dioxide into oxygen.

Finally, if you're concerned about your tree growing too tall, don't worry: many are suitable for the smallest of gardens, and most can be pruned regularly to keep them compact. Or simply plant your tree in a large container.

Sarah Squire, Chairman of Squire's Garden Centres commented; "If there is one thing I think we could all do for our world fairly easily it is plant a tree. Trees are fantastic as a habitat and food source for wildlife and as a source of carbon capture. They also give structure and architecture to a garden.

There are trees for every size and shape of garden, from a small acer in a pot on a balcony or a gorgeous flowering cherry in a back garden, to birch, whitebeam and hornbeam (my personal favourite) for larger spaces."

## Best trees for small gardens or patio pots:

- Bay Tree (*Laurus nobilis*)
- Euonymus
- Japanese Maple (*Acer Palmatum*)
- Magnolia
- Christmas Berry (*Photinia 'Little Red Robin'*)
- Privet (*Ligustrum*) Topiary Lollipop
- Witch Hazel (*Hamamelis*)

## How to plant a tree in a pot:

1. Choose a container with plenty of room to house the rootball, with space to grow.
2. Most trees thrive in loam-based compost, such as John Innes No 3.
3. Water regularly - keep the compost moist.
4. Use a slow release fertiliser every Spring to keep the plant healthy.

Plant a tree and watch it grow over the coming years. It will benefit the environment and wildlife for years to come.

It's a lifelong investment.

[www.squiresgardencentres.co.uk](http://www.squiresgardencentres.co.uk)  
[www.facebook.com/SquiresGC](https://www.facebook.com/SquiresGC)  
[www.twitter.com/SquiresGC](https://www.twitter.com/SquiresGC)  
[www.pinterest.com/SquiresGC](https://www.pinterest.com/SquiresGC)



Easy Stack Walling. Priced from £6 - £9 per unit.



# THREE TOP TIPS ON INVOLVING YOUR CHILDREN IN GARDENING THIS SUMMER

With the nation spending more time at home than ever before, it's the perfect opportunity to get children involved in sprucing up the garden in time for summer. From games to planting, we've got three top tips that will help keep children entertained whilst ticking some jobs off your list.

## 1. Make it a game

A job that often needs doing this time of year is weeding and sweeping the patio. But to make things fun, why not turn it into a game? A quick contest of who can pull up the most weeds in five minutes will not only have the kids running around burning energy,

but will help you - and your back! - by getting the job done quickly. When it comes to cleaning the patio, why not see who can pick up the most leaves or sweep any debris into the biggest pile? The reward? An afternoon of fun games in the recently tidied garden.





**Top tip:** Ensure all little helpers are wearing gardening gloves to protect their hands.

### 2. Give them room to grow

If space allows, give them their own area of the garden to grow vegetables or fruits. Bradstone's Easy Stack Walling is ideal for creating an easy raised garden bed that can be filled with soil. Once complete, the children can choose what to plant and take responsibility of weeding and watering the area each day. They could even start a diary and document the plants progress over the months as they grow and flourish.

**Top tip:** Sensory plants can be beneficial for children with special needs as it encourages them to explore and enjoy the garden.



Stonewood Sleeper Edging. Priced from £9.50 - £15 each

### 3. Plant in colour

Children are extremely visual and you'll no doubt get them excited if you plant lots of bold, bright colours. Why not section off different parts of your garden with Bradstone's Stonewood sleeper edging and arrange different colour bedding plants in each area?

The children can then get their fingers dirty by helping to plant and maintain the flowers - some of which can be in their favourite colour.

**For more information on Bradstone's collection, please visit [www.bradstone.com](http://www.bradstone.com)**





## DESIGNS ON PRIVACY

For garden designers the desire to create stylish but also private spaces is often top of their clients' requirements. This together with the growing awareness of the environmental and health benefits of living with more trees and plants has encouraged us all to want more green in our lives.

Many outdoor spaces are overlooked by neighbours or may have immense walls which block out light and require softening with natural foliage. If full privacy is difficult to achieve, it's usually possible to create at least one screened area.

Instant Hedges, a family run nursery in rural Buckinghamshire, grows a vast range of quality semi-mature and mature trees and hedging. They offer a complete service from design and consultancy, through to supply and planting. Working closely with designers and private clients they are experts in providing the best advice and most suitable planting options.

It is important to consider all options. Rather than simply planting a tall hedge, using pleached trees can create more of an airy space while still providing screening.



Further planting at the base of the trees could include smaller evergreens, flowering shrubs, ferns and grasses.

Box Head trees make a strong design statement. Often used at the front of properties they can transform the entire entrance. As with pleached trees, the trunks are visible and there's scope for underplanting. And then there are the wonderful Table Top trees, 'roof trained' parasol shapes, among them Malus Evereste (crab apple) or Platanus (plane). These beautiful style features provide instant privacy, shelter from overlooking windows and create an area of dappled shade for rest and entertaining.



Please call Instant Hedges on 01296 399585, email [sales@instanthedges.co.uk](mailto:sales@instanthedges.co.uk) or visit [www.instanthedges.co.uk](http://www.instanthedges.co.uk) for helpful advice or further information on any of the above.





SUPPLIERS AND GROWERS OF SEMI-MATURE & MATURE, ROOTBALL & CONTAINERISED TREES, SHRUBS AND INSTANT HEDGING



From our Buckinghamshire nursery we are conveniently located to service the whole of the UK, which we do with our own fleet of fully equipped vehicles. With over 15 miles of Instant Hedging Troughs and more than 3,000 Pleached and shaped trees from Box Heads to Multi Stem umbrellas, we have the finest stock for Garden Designers, Landscapers, Architects and Developers you can find.

We look forward to receiving your enquiries.



Contact Us:  
01296 399585

[sales@instantheedges.co.uk](mailto:sales@instantheedges.co.uk)

[www.instantheedges.co.uk](http://www.instantheedges.co.uk)





# MODIFORM INTRODUCES ECO-EXPERT TO THE LANDSCAPE SECTOR

## WHAT IS ECO-EXPERT

Modiform constantly strives to produce packaging and transport products for horticulture that are sustainable and environmentally friendly. We realise that sometimes our plastic products won't come back to us or go for recycling somewhere else. For instance, the used pots of landscapers are often landfilled or put into kerbside bins where they don't get recycled. Therefore Modiform have looked into other materials and other markets to see what can be used in these types of situations. After the 'research' years Modiform have created a new product range called 'EcoExpert'. This product range is made from paper fibre instead of plastic. The paper used is 100% recycled (waste from production of cardboard boxes) and comes from FSC sources. Even the used natural wax is completely biodegradable.

The EcoExpert's products can easily be recycled through the standard household or commercial cardboard recycling system. Even better for the landscape industry, not only can it be recycled but it can be planted straight into the ground. And if it finds its way into the natural environment it will degrade within a year.

## BENEFITS OF ECO-EXPERT

EcoExpert transport trays have a great benefit for retailers and the environment. Plants delivered in plastic trays have to be separated from the usual cardboard secondary packaging that retailers have to deal with. With the EcoExpert trays retailers can treat them as they would any cardboard box and throw it in the standard cardboard recycling system. This saves retailers time and money.

EcoExpert pots have a great benefit for retailers, consumers, landscapers and the environment. Currently landscapers have to squeeze the plant carefully out of the plastic pot, and after planting the plants they are left with many plastic plant pots to do something with. Growers don't want to take them back and councils won't recycled them. Landscapers end up paying to dispose of the pots commercially. EcoExpert pots are different: they can be planted with the plant into the ground, where they will degrade and the roots will break through. This saves landscapers time and money on site and contributes to reducing the plastic waste from our sector.

Why not ask your grower or plant supplier to provide your plants in EcoExpert pots?

[www.modiform.com](http://www.modiform.com)



# Modiform®



**SAVES  
TIME, MONEY  
AND ENVIRONMENT**

## EcoExpert

- 100% recycled and recyclable
- Strong
- Waterproof
- Retail and consumer-friendly
- No need to take the pot off, just plant it straight into the ground (degrades naturally)







# ARTIFICIAL GRASS BUYER'S GUIDE

BY THE EXPERTS AT [ULTIMATEGRASS.CO.UK](http://ULTIMATEGRASS.CO.UK)  
AND [THERUGSELLER.CO.UK](http://THERUGSELLER.CO.UK)

**Daniel Prendergast from specialist online shop [www.ultimategrass.co.uk](http://www.ultimategrass.co.uk) (part of The Rug Seller) has compiled a new useful guide for choosing artificial grass and answers some frequently asked questions.**

A continuing 'home interiors' and DIY trend is to make outdoor living spaces more usable - with outdoor rugs, gorgeous lighting and even sofas - and adding artificial grass is part of this movement.

Not only does artificial grass look fantastic, it's extremely practical too. For families with young children, the non-toxic, hard-wearing surface means the lawn stays looking great no matter how much it's played on - with no more muddy footprints entering the home.

It's pet friendly. The product is fine when soiled on and the pile is easy to clean with mild detergent. And for those with limited mobility such as the elderly or living with a physical impairment, it's a safe and easy to maintain solution.

It's a great DIY, quick fix for homeowners, allowing them to enjoy the garden much sooner than seeding a lawn or laying turf. Comprehensive online DIY guides offer help and support, from how to measure to fitting products in both gardens and on balconies. <https://www.ultimategrass.co.uk/guides>

While artificial grass is most popular for lawns and gardens, it's versatile enough to be laid on just about any surface. It can be laid on soil,

concrete, tarmac, paving and areas which have previously had natural grass (with suitable base preparation where required). It copes beautifully with sloping areas. It can even be laid on roof terraces and balconies (or by swimming pools for the lucky few!).

It's a great investment - no expensive lawn treatments and products come with a 9-year UV Guarantee.

### Choosing Artificial Grass

Artificial grass comes in different qualities, colours, sizes, blade lengths and densities - so knowing what to look for most suitable for your application is key. There are several things to consider when choosing artificial grass:





**Pile Height**

When choosing artificial grass, the pile length depends on your application. Longer pile lengths typically (but not always) provide a denser, softer and more luxurious finish. If you want a lush looking, premium finish you should also review the weight per m2 ratings.

While longer pile will usually give a more premium finish it is more susceptible to flattening with wear and it holds more water (so not ideal for around a pool). In general longer pile products popular for garden and landscaping applications.

Short pile grass is suitable for most applications. Budget it the most common reason to choose a short pile product, however, shorter pile can be the preferred choice for high traffic areas, as well as balconies and around water features.

**Weight**

Usually expressed as a weight per square meter, this is the weight of the grass with the backing (total weight) or without (pile weight) per m2. This measurement, coupled with the total/pile height, can be used to compare density of products. Heavier, denser products generally provide a softer and more luxurious finish, however, in some applications a lighter weight product can have advantages. Budget would be the main reason for choosing a lighter weight grass, however, it can be a more practical choice for poolside installations as it will hold less water.

**Colour and Thatch**

Products come in Olive or Meadow Green. Olive is the slightly darker of the two colours that can blend better with natural turf, as well as other vegetation. Olive is popular for garden and landscaping installs, but it's entirely down to personal preference. Meadow green is ideal for brightening up a space all year round. It's the most popular for gardens with limited natural vegetation, or for patio and balcony installations. It's about deciding whether you want to imitate a natural looking garden (with its slight imperfections) or lush green 'perfect' turf - the choice is yours.







Ultimate Grass products all have a 'thatch' effect - a beige/brown curled pile that sits below the green strands and creating the impression of cut grass within the product - it's more realistic and increases the density.

### **Polypropylene (PP) or Polyethylene (PE)**

All our artificial grass (together with most competitor products) are made from a mixture of Polypropylene (PP) and Polyethylene (PE). Both are synthetic materials (plastics) and, while similar, they do possess slightly different properties. Polypropylene is generally a harder wearing product but doesn't feel quite as soft to touch as Polyethylene. The mix of the plastics in each product is some indication of how soft they feel and how hardwearing they may be. For example, a product with more Polyethylene in it is likely to feel slightly softer to touch but may be slightly more prone to wear.

### **Cost**

Like with many types of products, there are various options at different price points, with prices starting at £9.95 per m<sup>2</sup>. Ultimate Grass sells five ranges within its three artificial grass collections to suit everyone's needs and budgets. Each range has width options - 2m or 4m - and a choice of grass length.

### **Pre-cut or bespoke**

Artificial grass can be bought easily online by square meter and in a choice of two widths ([www.ultimategrass.co.uk](http://www.ultimategrass.co.uk)) or in pre-cut sizes, like buying a rug! ([www.therugseller.co.uk](http://www.therugseller.co.uk))

### **Creating a striped lawn**

Homeowners looking for a stripe can easily achieve this by how they lay the grass.

### **Caring for Artificial Grass**

There are online care guides for top tips on maintaining artificial grass, but to show how easy it is follow these simple steps:

- Brush the grass regularly in the opposite direction of the artificial fibre
- Regularly remove leaves and debris using a leaf blower, stiff brush or plastic rake
- Trim hedges and trees often to limit the amount of leaves falling onto the lawn
- Apply weed killer twice a year to the whole area to prevent weeds growing and to kill any stray ones
- Use an artificial turf spray to clean away any urine from your pets

**For more information (and a 10% discount on current prices) visit [www.ultimategrass.co.uk](http://www.ultimategrass.co.uk) or [www.therugseller.co.uk/artificialgrass/r-64](http://www.therugseller.co.uk/artificialgrass/r-64)**





# hi-techturf

suppliers & installers of artificial grass



Full rolls, cut lengths and all ancillary items available for immediate despatch

Over 200 rolls in stock at our UK warehouse

18mm and 25mm shock pad in stock at our UK warehouse

Dedicated trade account managers and technical expertise available from our installation managers

Competitive prices on all our trade turfs with incentives for volume orders

Contact us for more information on our range and to request your free trade sample pack:

[www.hitechurf.co.uk](http://www.hitechurf.co.uk)

[info@hitechurf.co.uk](mailto:info@hitechurf.co.uk)

01244 289 182



# WHY GOOD QUALITY ARTIFICIAL GRASS PROVES THE GRASS IS GREENER ON THE OTHER SIDE



Artificial grass is a fantastic hassle-free investment, but not all grass is created equal and for the untrained eye, picking a good quality product can be difficult task. Adrian Buttress, managing director at PermaLawn, discusses the difference between cheap and high-quality artificial grass options and explains why it's worth investing upfront for long-term benefits.

It's inaccurate to only compare price when choosing products - and artificial grass is no exception to the rule. Cost comparison in any industry is always on a like-for-like basis. However, in the grass market, that difference is far more than simply pile height and price.

When something is cheaper, it's usually because you are getting less product. There is only so far you can go when cutting production costs before you start hitting problems. For example, while it all looks the same when it is brand new on the roll, that will change once the artificial grass has been exposed to the elements.

Cheap products may have that unbelievably tempting price, but if it starts failing sooner than you think, it actually becomes a very costly investment for the homeowner and a reputation-damaging project for the contractor or landscaper.

## **Choosing a lawn that looks realistic and stands the test of time**

Like most things, manufacturers can take shortcuts in the production process to save themselves time and money, which allows them to offer their artificial grass at a lower price than their competitors.





However, it's important to remember that these cheap prices only come by sacrificing quality.

To help you avoid purchasing an artificial grass you may regret installing in the future, there are a few key signs you can look out for to help you spot poor quality products - and ensure you can enjoy the many benefits that having an ever green and ever mowed lawn brings for years to come.

A certain level of yarn loss is to be expected, but it shouldn't be excessive. The easiest way to test this is to pull the tufts from the middle of your sample - if you get good resistance and no shedding, your product is solid.

When enquiring about artificial grass, you should also ask about the stitch rate, which is the number of stitches per 10cm. As a general rule of thumb, better quality grass as a higher stitch rate.

### There's more to artificial grass than just the plastic fibres

The secondary backing material, which tends to be made up of either latex or polyurethane, holds the tufts in place and allows the fake grass to lie flat. One of the keys to a long-lasting fake lawn is artificial grass that has been manufactured with sufficiently high quantities of latex.

Generally, artificial grass made in Europe tends to be of much higher quality because of the European Union's stringent standards and regulations that manufacturers have to comply with. PermaLawn works with a renowned European manufacturer with decades of proven background and experience - ensuring the artificial grass we supply is well worth the money.

It's also important to check the warranty that comes with your artificial grass - some cheaper options will only guarantee the product for five years, whereas PermaLawn products are guaranteed for seven.

### Getting the stock you want, when you want it

Many stockists will have to wait up to 12-weeks for a delivery to be imported from the manufacturer, meaning homeowners will need to plan their garden renovations months in advance. However, PermaLawn purposefully sits on 100,000m<sup>2</sup> of stock all year round at our headquarters in Derbyshire and deliver just the amount you need for your garden.

Artificial grass is a smart, convenient and aesthetically pleasing solution. And for a lawn that lasts and makes others green with envy, it is worth investing upfront in a quality product.

**For further information on PermaLawn and to find your local installer, please visit [www.perma-lawn.co.uk](http://www.perma-lawn.co.uk) or call 01773 441 952.**



# RELIABLE AND EFFICIENT

## – THE KUBOTA ST SERIES



Easy to operate and exceptionally reliable, Kubota's ST range of diesel tractors is designed with ground care operators in mind.

The machine is lightweight and compact yet powerful, helping it to deliver in terms of speed, maneuverability and efficiency.

It can be used for a wider range of jobs. For mowing, its mid PTO-drive mid-mounted mowers and exclusive shaft drive feature ensure maximum durability with low maintenance.

It can also be utilised for front-loader or implement work, with grass catchers, trailers, rotary tillers, grapple buckets and pallet fork all being listed as potential attachments.

**Unbeatable  
versatility  
for work.**





The high torque, low noise Kubota diesel engine ensures powerful performance and offers a high and stable output over a wide rpm range. Operators are able to handle every high-duty task with power to spare. Standard features include power steering and cruise control, as well as the exclusive Kubota bi-speed turning. This feature improves four-wheel tractor steering by speeding up the front wheel to ensure that there is no drag.

This reduction in front wheel resistance ensures smoother, faster, tighter turns than ever before and minimises turf damage. Precision mowing has never been easier!

Available with a factory installed panoramic, spacious and air-conditioned cab, Kubota's ST series is designed with user safety and comfort front of mind.

The cab features a 4-pillar design, with a large, curved windscreen and glass at the sides and rear.



This provides an unobstructed view of an operator's surroundings.

The machine also incorporates a cruise control setting which helps to reduce operator fatigue by ensuring a constant speed for mowing and other tasks, without the user constantly having to adjust the accelerator pedal.

Similarly, its engine outputs low levels of noise and vibration helps minimise operator fatigue, improving safety.

[www.kubota.co.uk](http://www.kubota.co.uk)



OPTIONAL  
**5 YR**   
 EXTENDED WARRANTY  
 BASED ON THE HOURS YOU WORK\*  
\*Conditions apply. See your Kubota dealer for details.



## RTV-X1110: Highly capable and remarkably versatile

The powerful and economic workhorse that's ready for virtually any terrain or task

- Incredibly powerful and reliable 24.2 HP Kubota 3-cylinder, liquid-cooled Kubota OHV diesel engine for hill climbing power, low emissions and excellent fuel economy.
- All terrain control with VHT-X 2-range variable hydrostatic transmission plus dynamic engine braking for optimum traction and unrivalled hill control.
- Advanced, adjustable front and rear suspension system, power steering and class leading ground clearance
- Highly versatile - tow up to 590kg or carry 540kg in the hydraulic-lift cargo bed.
- Extremely comfortable with deluxe split-bench seats, digital easy-read instrument panel and ROPs protection as standard
- Heated cab & road legal options also available.

Contact your local dealer or visit our website for more details.

 [www.kubota.co.uk](http://www.kubota.co.uk)

**Kubota**  
 130th Anniversary



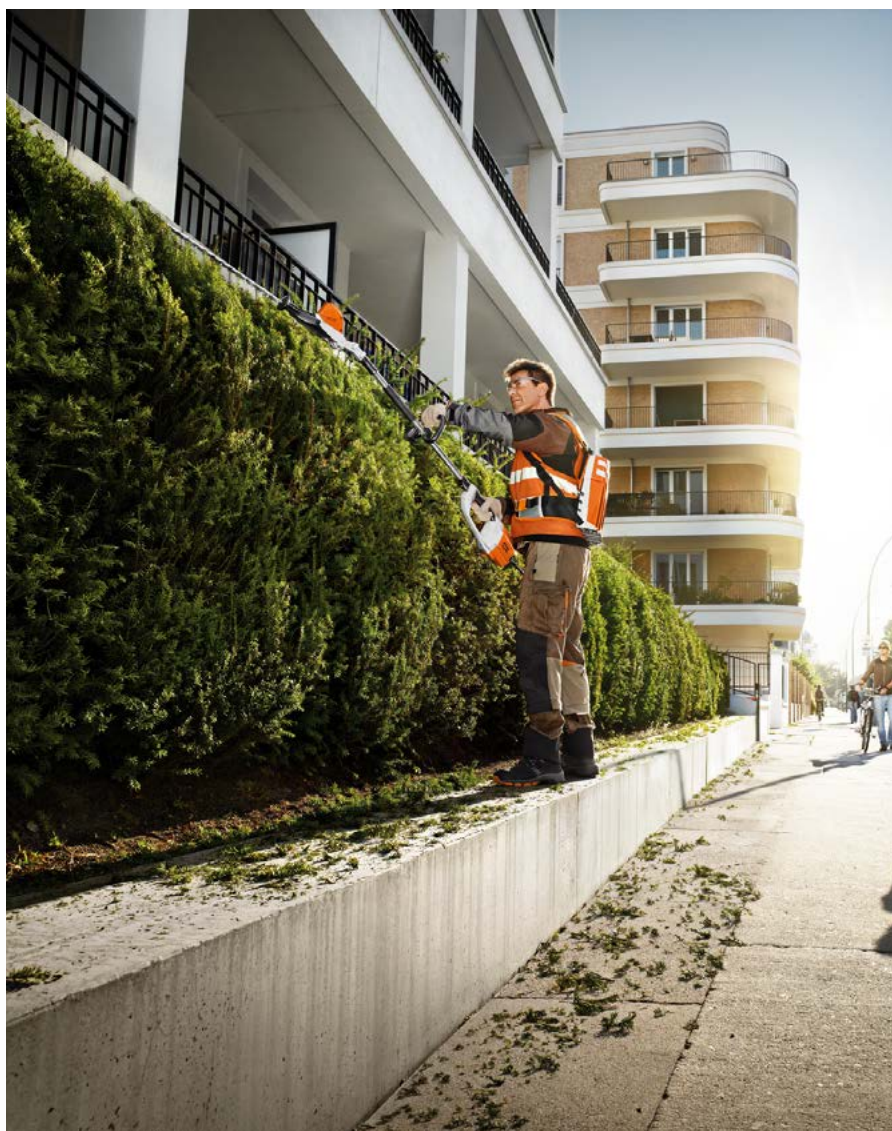
# REACH NEW HEIGHTS WITH STIHL'S LONG REACH HEDGE TRIMMERS

Overgrown hedges can make a garden look untidy, but with STIHL's range of long-reach hedge trimmers, landscapers can quickly transform any garden with ease, no matter the height of the hedges.

## STIHL HLA 85

Weighing only 4.4kg (without the battery), the HLA 85 is a versatile long-reach hedge trimmer that features an adjustable cutter, making it ideal for vertical, overhead and ground-level cutting on tall and deep hedges. Powered by a 36V battery, the tool offers a run-time of 144 minutes when used in conjunction with the recommended STIHL AP 200 battery.

To give landscapers a safer approach to taller hedges, the HLA 85 can be extended from 2.6m to a total length of 3.3m via a quick release mechanism, making shaft length



adjustments quick and simple. The cutter bar can be adjusted by 115 degrees to suit the needs of any application and can be folded down to 1.8m to easily fit into a vehicle.

## STIHL HLA 65

Weighing only 3.5kg (without the battery), the HLA 65 is a cordless long-reach hedge trimmer that is perfect for tackling tall and wide hedges. Powered by a 36V battery and when used with the recommended STIHL AP 100 battery, the trimmer has a run time of 72 minutes, giving professionals plenty of time to tidy up hedges around the garden.

To help landscapers reach any difficult areas, the HLA 65 has a total length of 2.05m, allowing users to cut up to a height of over four metres from the ground without the need for ladders. The double-sided cutting blade allows for easy and safe vertical and horizontal trimming and the cutter bar is adjustable by 115 degrees, giving the ability to cut both overhead and vertically with ease. In addition, the tool can be folded down to a length of just 125cm, making transportation and storage simple.

**For more information on STIHL's range of long-reach hedge trimmers, please visit [www.stihl.co.uk](http://www.stihl.co.uk)**





**20 YEARS' WORKING  
IN HORTICULTURE.  
5 ACRES OF  
FORMAL GARDENS.  
30 WEDDINGS AND  
EVENTS EACH YEAR.  
1 BRAND OF CHOICE.  
STIHL LIFE.**

---

For a demanding job where every task requires a different approach, the STIHL AP System is the professional range of tools Andy chooses to maintain the high horticultural standards required.

Whether it's for precision topiary or the final touches before wedding guests arrive, STIHL tools meet his daily demands as a professional gardener.

Andy Wain, Head Gardener at Euridge Manor, with the **STIHL HLA 65** hedge trimmer

AVAILABLE AT YOUR LOCAL STIHL DEALER.  
[STIHL.CO.UK](http://STIHL.CO.UK)

**STIHL**



# RIGHT PLACE, RIGHT TIME DELIVERY OF VERTI-DRAIN® 7416 FOR SELBY GOLF CLUB



The Verti-Drain 7416 in action at Selby Golf Club

Course Manager at Selby Golf Club, Chris Goodall, says the arrival of their new Charterhouse Verti-Drain® 7416 in November 2019 couldn't have come at a better time! The heathland course is very sandy meaning it is playable all year round and, in turn, makes it one of the busiest clubs in Yorkshire. This level of traffic has seen the Verti-Drain® in high demand over the winter

period, tackling compaction on some of the high footfall areas.

"We previously had two separate aerators - one of which was proving too heavy for our ageing tractors, and the other was smaller so only really suitable for work on the greens" explains Chris, who has been at the club for five years.

"When the time came to replace them, we wanted a good all-rounder - capable of site wide aeration." Having been impressed with the Verti-Drain® at a previous club, Chris was keen to go down the Charterhouse road this time and spoke with local dealer F G Adamson and Sons.

"The size of the 7416 model was a perfect fit for our requirements and fleet of tractors. It's super easy to set up, quiet in operation and covers the ground at good speed. The timing of its delivery meant it was out straight away and every couple of weeks after that, relieving compaction on pathways, walkways and fairways which kept us free of any waterlogging over the very wet winter months."

Chris purchased his Verti-Drain® with solid tines, and additional hollow tines for year-round flexibility. "In a regular year, we would equip the Verti-Drain® with pencil tines to aerate the greens through the summer then as we head towards the back end of the year we'd then look at hollow coring and using bigger tines on the fairways and other areas."

The Verti-Drain® 7416 has a 1.6m working width and offers a 14" maximum working depth. The range of solid and hollow tine options, together with its weight, makes it a popular choice for golf courses; but it's robust nature also makes it ideal for penetration of hard and compacted soils on a range of sports surfaces.

---

Tel: +44 (0)1428 661222  
Fax: +44 (0)1428 661218  
[www.charterhouse-tm.co.uk](http://www.charterhouse-tm.co.uk)



## SNICKERS NEW STRETCH WORK SHORTS – COMFORTABLE AND LIGHTWEIGHT

**Work Shorts for the flexible working environment - designed to deliver superior comfort and freedom of movement.**

Fabric, Functionality and Fit are hallmarks of Snickers Workwear, it's the innovation and fabric technology in the design of the new Stretch Shorts for men and women that really set these new garments apart.

These new AllroundWork and FLEXIWork shorts are great for working in the warmer months. Delivering superior flexibility and comfort, these lightweight work shorts come in a body-mapping design and a range of new colours including Hi-vis options.

Made from a self-ventilating stretch fabric with Cordura reinforcements for all-round mobility and durability, they're packed with comfort and functionality and specially designed for the fast-paced professional who's always on the go for delivering top class work on site. For professional tradesmen and women who rely on their gear in demanding environments, Snickers Workwear Work Shorts are a must for everyone who wants the ultimate in cool comfort this summer.

To get more information on what's right for you in the Snickers Workwear range, visit the website at [www.snickersworkwear.co.uk](http://www.snickersworkwear.co.uk) alternatively, email [sales@hultaforsgroup.co.uk](mailto:sales@hultaforsgroup.co.uk) or call the Hultafors Group Helpline on 01484 854788.



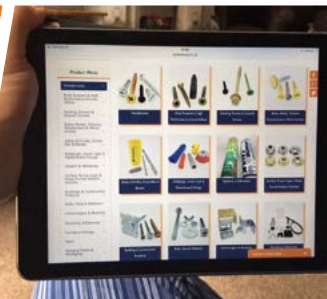
**SCREWSHOP.co.uk**

YOUR FRIEND IN THE TRADE FOR OVER 30 YEARS...

**BUY YOUR SCREWS AND FIXINGS ONLINE**



at competitive trade prices for quick delivery or collection from us



**OR CALL/EMAIL US WITH YOUR ENQUIRIES**

0121 559 8866  
[sales@screwshop.co.uk](mailto:sales@screwshop.co.uk)

NE Fasteners Ltd trading as Screwshop  
Units 2+3, Waterfall Lane Trading Estate, Waterfall Lane, Cradley Heath, B64 6PU

## THE BEFORE AND AFTER OF ONE METRE DEEP AERATION

**COMPACTION AND WATERLOGGING STOP PLAY. DOWNTIME COSTS MONEY.**

Terrain Aeration's long-term treatment reaches one metre deep where compressed air blasts the compaction.

The soil is opened up for good drainage and a healthy sward with minimum disruption. We have been successfully aerating sports turf, bowling greens, golf courses, parks, trees and gardens for over twenty-five years.



**See us at work:**

**[www.terrainaeration.co.uk](http://www.terrainaeration.co.uk)**

**Call us for a quotation 01449 673 783**





# EVO 165D

## DELIVERS POWERFUL PERFORMANCE FOR ROOTED TREE & LANDSCAPES

An EVO 165D from GreenMech has become the dominant machine on the arb fleet of Swansea-based Rooted Tree & Landscapes. Owner Craig Mylan has been a loyal user of GreenMech woodchippers since he started the company in 2008 with the EVO becoming his fourth machine, and it's the most powerful yet - transforming the way they carry out both commercial and domestic tree works.

"I first saw the EVO 165 at its launch at the 2019 Arb Show and the first thing that really hit me, or didn't hit me more to the point, was the noise! We have a duty to our customers and our operators to look at things like reducing noise and this machine demonstrates real progress" explains Craig who heads up a team of six. "There are so many new developments on this machine - simple things like the foldable chute which makes storage of the unit that much easier."

From a performance perspective, the re-designed flywheel and large infeed chute have resulted in labour and time savings when it comes to processing large volumes of woody waste. "The more powerful pull-through means we can feed in material without having to sned it down first. It then chips whatever we feed in quickly and efficiently before throwing it out again cleanly. It is without doubt the most powerful machine we've used in terms of torque and bite." With its 165mm chipping capacity, the EVO isn't the largest machine in Craig's fleet, however it has been used on a range of projects both large and small.

Another factor that has kept Craig loyal is the superior back up support he's received from those in the GreenMech dealer network. "I've worked closely alongside Julian Cullis of GreenMech since



way back when, who has always kept me abreast of new and future developments. We're also fortunate to have Chipper Hire South West not too far away who have a fantastic fleet of GreenMech machines to hire if we need them. With the EVO, the support we received from our local dealer Powercut in Carmarthen has again been first-class."

"For us independent companies" Craig concludes, "our success

depends on reliable and robust equipment that's capable and working to its full capacity. The fact that the new EVO is a great machine is one thing, but the whole GreenMech ethos to support their users every step of the way is another to really be applauded."

Tel: +44 (0)1789 400044  
[www.greenmech.co.uk](http://www.greenmech.co.uk)



# TERRA-VAC

SUCTION CLEANERS  
& SWEEPERS

Clean up  
the easy way

Innovating and developing quality Sweepers and Suction machines since 1982

Second to none Customer Service and Aftersales care  
Terra-Vac machines are easy to use and designed to last



## CS Suction Range

- Multi-Purpose Suction Cleaner for all Year Round use
- Strong Suction System for effective collection
- Powerful Fan Blades mulch and compact material for easy re-cycling or disposal
- Ground Scoop options for hands free collection
- Non-contact collection of hazardous waste
- Wander hose to reach awkward areas
- Capacities to suit your requirements saving emptying time
- Choice of Engine or PTO powered models
- 2 Year Warranty & Reliable Spares/Repair Service

## Twin Fan Suction Machines

- 2.4 mtr Scoop Width
- 2 Wander Hoses attachments
- High capacity
- Powerful Performance
- Hi-Tip versions available



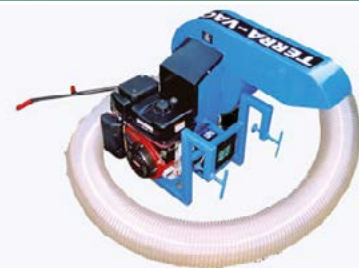
## All Purpose Sweeper Range

- 1.2 & 1.8 Brush width for fast coverage
- Powerful PTO mechanism for effective collection & scarifying
- 7.0 & 2.0 cu.m capacity versions with top up baffle reducing emptying time
- Floating Brush design for effective & consistent collection
- 2 Year Warranty & reliable spares/repair service
- Brushes fully adjustable to required height for collection or scarifying
- Designed to give years of good service with minimal maintenance
- Lifting gear on Sweeper head for easy transportation



## CS13/Ferret

- Clamping system designed to fit most vehicles
- Simple to install & remove
- Multi-Purpose Applications



For more details on our unique product  
call us on 01440 712171 or email [info@terra-vac.com](mailto:info@terra-vac.com)

[www.terra-vac.com](http://www.terra-vac.com)





# IMPROVING URBAN LANDSCAPES WITH LIVING WALLS

Increasingly, living walls are playing a major role in transforming urban landscapes where improving sustainability and reducing carbon footprints are key drivers. As well as their visual appeal, living walls reduce air pollution, improve air quality and increase biodiversity - all while lifting people's spirits.

## **MOST WATER EFFICIENT SYSTEM**

Biotechure has been designing, supplying and maintaining living walls since 2007. Lightweight and flexible, our modular hydroponic system is the most water efficient living wall system as it directs water straight to the root zone and uses three to four times less water than an equivalent area of horizontal landscape.

## **FIRE SAFETY SPECIFICATION**

Biotechure is the only living wall company with a compliant rainscreen cladding system that has been independently tested to CWCT standards. Our B-s3,d2 compliance certification, together with our Engineering Assessment for reaction to fire, confirm excellent levels of fire safety and have proved crucial in recent project specifications in achieving Planning approval criteria.

## **WORKING TOGETHER**

At Biotechure, we offer our partner contractors a choice: we can provide a complete managed service, covering design, installation and maintenance of our living wall systems, or we can supply our product in kit form, along with comprehensive training, so that partners can maximise their returns on our very competitively priced and easy to install modular system, PlantBox.







You can find all of our specification documents on our website as well as on RIBA's NBS Product Selector: [www.ribaproductselector.com/biotecture-limited/231181/overview.aspx](http://www.ribaproductselector.com/biotecture-limited/231181/overview.aspx)

walls scheme with Balfour Beatty and Southampton City Council; a new arrival experience at ExCeL London; intu's car park in Milton Keynes; and one of the world's largest living walls at McArthurGlen's Ashford Designer Outlet.

**MAJOR PROJECTS IN 2019**

This year, we've worked with landscaping contractors, architects and designers on dozens of living wall installations, including the No.1 Court at The Championships, Wimbledon with The All England Lawn Tennis Club; the first UK highways living

Our striking green walls either side of the Big Screen on the Hill at The Championships, Wimbledon saw us win the 2019 Living Walls Installations Award from the British Association of Landscape Industries (BALI).

**YOUR NEXT PROJECT**  
**If you'd like to discuss how your next project could benefit from our living wall system, internally or externally, please contact Biotecture on 01243 572118 or [enquiries@biotecture.uk.com](mailto:enquiries@biotecture.uk.com) or visit [www.biotecture.uk.com](http://www.biotecture.uk.com)**





# PlantBox

A Biotecture Company

- Instant vertical greening
- Numerous plant options
- Simple irrigation system
- Easy-to-grow & adaptable
- Proven supplier
- Trade terms available



**Are you looking for a reliable living wall partner?**

PlantBox is designed with professional landscapers, garden designers & self-builders in mind – simply attach and plant on site for instant **vertical greening** solutions!

Ideal for planting Herbs & Edibles, Ferns & Grasses, Bedding Plants and more.

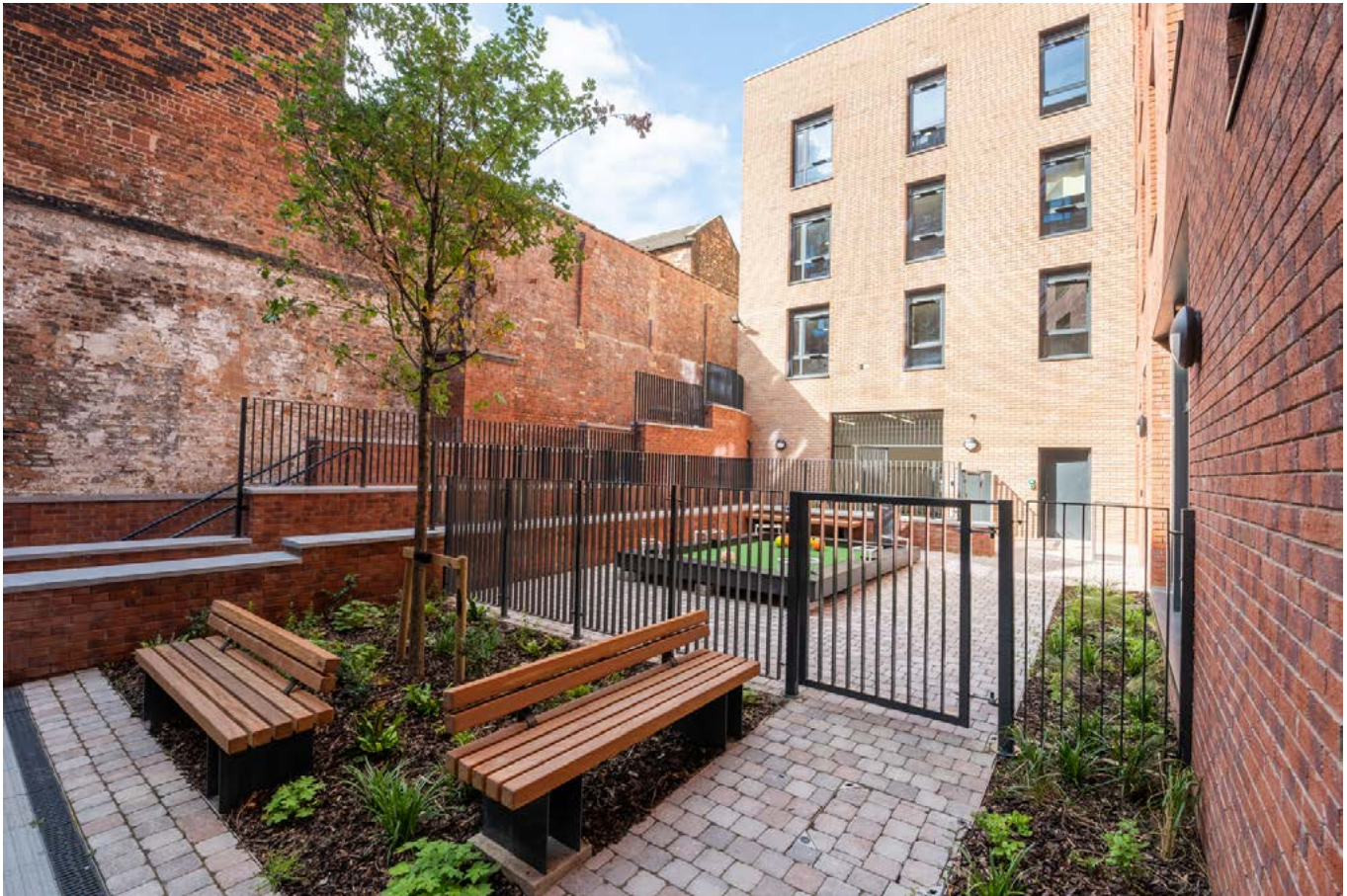
**It's a Growing Revolution!™**

For your recognised, reliable living wall partner contact PlantBox NOW.  
**020 8543 4530** [contact@plantbox.shop](mailto:contact@plantbox.shop)  
[www.plantbox.shop](http://www.plantbox.shop)









# THE DESIGN OF SPACE AND PLACE

**ALETHEA OTTEWELL, ASSOCIATE DIRECTOR, LANDSCAPE, HLM ARCHITECTS**

The wellbeing and experience of a user in the design of space and place plays an integral role in creating healthy environments that have a positive impact on people's lives and promote connection with nature.

Sensitive landscape design can improve mental health. The introduction of a multilevel landscaped approach, that connects and engages with the emerging build forms and uses, shapes our urban environment.

Hollis Croft is an exciting new residential development for students to live and study in the heart of Sheffield. It has been designed to engender a new community. Connections to

the city have been introduced with the creation of new streets increasing the sites permeability and legibility between the nearby University of Sheffield, local businesses, commerce and the wider community. The project bridges the gap, creating a green network across the city.

An essential requirement of the design was to include active frontages, improved links and outdoor spaces for a range of uses from public, semi-public and private while taking into consideration the importance of creating a sense of place and connection with nature. This improves student wellbeing and also connectivity between public and private use.

Set on a steeply sloping site, whilst providing challenges this also created opportunities. Three separate buildings steep down the site, allowing the design team to maximise on the visual and physical connections of internal and external natural spaces. This is essential for the users' wellbeing and experience.

Taking into consideration the specific impact that access to nature has on the health and wellbeing of students, the scheme capitalises on this steep topography by designing a multilevel landscape environment. This approach enables access to green views from ground floor right up to podium roof terraces that are overlooked from social amenity spaces and apartments at all levels.





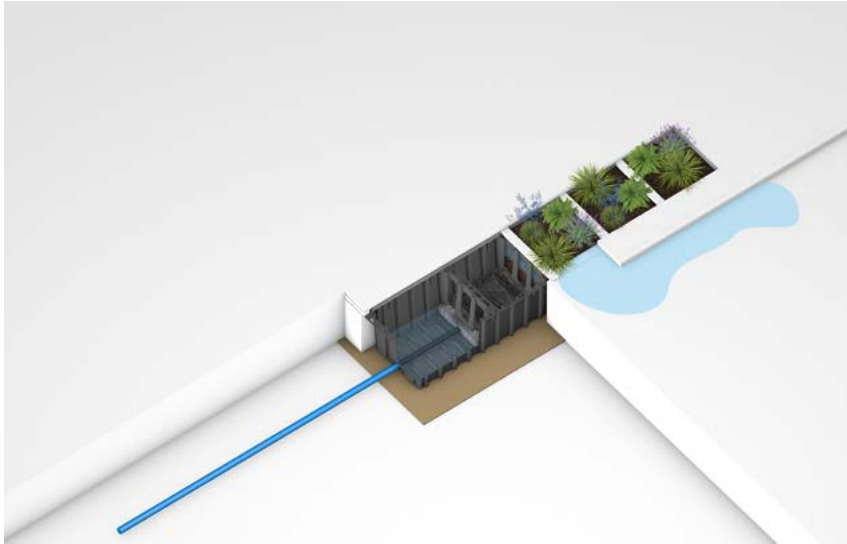
The massing allowed for roof terraces to be cut out and extensive green roofs incorporated. Brown roofs have been implemented to the highest blocks, adding to the site's biodiversity.

Tree planting throughout the scheme works with the drainage strategy, provides structure, improves air quality and greening of the pedestrian links along with diverse planting areas at ground levels and raised beds adding additional space to relax.

HLM Architect's multi-disciplinary approach to the project demonstrates how we can shape our urban environment to take advantage of challenges and maximise the connections with nature, through a multilevel landscape.



## LAUNCHING HYDROPLANTER™



GreenBlue Urban are excited to announce the launch of a new modular bioretention raingarden system, the HydroPlanter™. The latest product can be retrofitted into highways schemes and on new developments of any size.

The “Plug and Play” sustainable urban drainage solution can attenuate and cleanse stormwater and provide amenity and biodiversity to new and

existing spaces particularly suitable for highway build outs, central reservations and verges. A single modular unit would also be suitable for new housing developments tackling SuDS solutions when space is at a premium. The HydroPlanter is an easy to design solution with drag and drop CAD drawings available via the GreenBlue Urban website.

The modules are manufactured in the UK from 100% recycled material that can be filled with a soil specification and planted with wildflowers and biodiverse grasses.

The concept is flexible, scalable and each unit stacks together to be a convenient solution that any subcontractor can work with and install. Installation is fast, simple and offers significant cost savings to alternative methods.

The complete package is available to include soil, drainage, stone and planting schemes. The HydroPlanter fully meets all requirements of the 4 pillars of SuDS outlined in the CIRIA manual.

For detailed specification of the new HydroPlanter including internal build ups, suggested planting schemes and UK Hydraulic Performance design tables visit the GreenBlue website at <https://www.greenblue.com/gb/products/hydroplanter/>

**GreenBlue also offer dedicated SuDS CPD's with lunch included, should you wish to discover more do express further interest by emailing [Hello@greenblue.com](mailto:Hello@greenblue.com) or by calling 01580 830800.**

## HydroPlanter™

'Plug & Play' Raingarden



Installation is fast, simple and offers significant savings



Manufactured in the UK from 100% recycled material



Highly effective filtration & flow control



Provides amenity and biodiversity

**NEW SuDS INNOVATION**



**ENQUIRE TODAY**



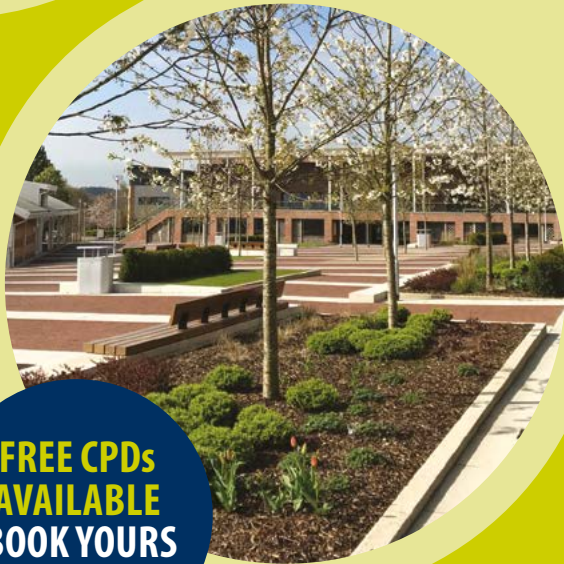
[greenblue.com](http://greenblue.com)  
0800 018 7797

**GreenBlue** URBAN  
Establishing the future urban landscape





**green-tech**  
Plant • Protect • Enhance • Improve



**FREE CPDs  
AVAILABLE  
BOOK YOURS  
TODAY!**

**VISIT OUR  
WEBSITE TODAY  
GREEN-TECH.  
CO.UK**

# Helping to create amazing green spaces

Expert advice, technical know-how and a trusted  
supplier for your urban landscaping project

## Rural Tree Planting

- Tree Shelters and Guards
- Bamboo Canes
- Wooden Stakes
- Tree Belting and Blocks
- Tree Anchoring

## Urban Tree Planting

- Tree Irrigation
- Root Protection
- ArborRaft Tree Planting System
- Tree Anchoring
- Tree Grilles and Guards

## Maintenance Products

- Grass Seed
- Wildflower Seed
- Lawn Edging
- Fertilisers and Weedkillers
- Soils and Growing Media

**T: 01423 332100 E: [sales@green-tech.co.uk](mailto:sales@green-tech.co.uk) [www.green-tech.co.uk](http://www.green-tech.co.uk)**

**[@greentechltd](https://www.instagram.com/greentechltd) [@greentechuk](https://www.facebook.com/greentechuk) [green-tech-ltd](https://www.linkedin.com/company/green-tech-ltd)**





# LIVING WALL SYMPHONY OF FOLIAGE AT NOTTINGHAM TRENT UNIVERSITY MUSIC CENTRE



This 38 square metre bespoke living wall takes majestic prominence on The Music Centre frontage at Nottingham Trent University. Installed in Autumn 2019 and pictured here in its February 2020 flushes, the new Music Centre's living wall not only adds a splash of natural beauty but will encourage biodiversity in its proximity.

The LivePanel living wall cassette system was supplied by Mobilane and expertly affixed by plant design specialist installers Oasis Plants alongside the traditional buildings at Shakespeare Villas on the City Campus.

## **A summer symphony of natural colour**

The University facilities team wanted to make a bold and vibrant statement on the exterior of this refurbishment project. The living wall was the finishing touch on a two-phase project on the site that saw the University Hall extended and the addition of the Music Centre. The new building sits alongside the buildings originally constructed in 1854 and accommodates dance and music studio, dining facilities and is linked by a glass vestibule.

## **A concerto of Campanula**

The arrangement of plant varieties will create a concerto of colour in the warmer spring and summer months. Conducted by the Oasis team, the plant choice encompasses a blend of foliage and flower in over 1700 individual plants including ivy (*Hedera Helix*) and *Euonymus*, grasses (*Carex*) and *Pachysandra*. The green wall will reach a crescendo with the full visual impact of striking blue *Campanula* flowers in the summer.





Tom Shipman, director at Gleeds, the property and construction consultancy who managed the project said:

“It is fantastic to finally see the accumulation of three and half years of dedication by the project team working seamlessly together along with the Conservation Officer to deliver an impressive and architecturally sympathetic building. The green wall is already proving to have a positive impact at the University, further enhancing this historical part of Shakespeare Street.”

**Orchestrate your own LivePanel living wall**

Adding a LivePanel outdoor system transforms what would otherwise be a bare and grey exterior expanse into a natural flourishing living wall. The LivePanel modular system features exchangeable cassettes with slots into which any variety can be planted - choose for foliage, contrast, theme or floral colour.

Each row of plant cassettes is placed in a gutter profile that serves as a water reservoir, allowing the plants to absorb water through capillary action. The system elements are all fully recyclable.



The resulting living wall not only has a vertical green visual impact, the plants work hard improving air quality, encouraging biodiversity and helping to regulate the building temperature - with extra insulating and sound-dampening effects thrown in!

**To find out more about LivePanel and Mobilane's complete range of ready-made green systems for interior and exterior landscapes, visit [www.mobilane.co.uk](http://www.mobilane.co.uk), call +44 (0) 203 741 8049 or email [sales@mobilane.co.uk](mailto:sales@mobilane.co.uk) to discuss your living wall options.**





# SHOUTING FROM THE TREE TOPS: THE BENEFITS OF TREE PITS

The specification of trees within an urban area can provide many benefits, including improving inhabitants' mental and physical wellbeing, to filtering urban pollutants and aiding the offset of carbon emissions.

However, the planting of trees within landscaped or paved exterior public spaces can also present a range of potential complications that must be considered at the very initial design stages. Here Chris George, Business Development Manager at Howe Green, explores the wide ranging benefits tree pits and tree grilles offer and the key elements specifiers should consider.

Whilst the planting of trees in urban location can contribute to the reduction of the city or town's carbon footprint, it is essential any

trees or saplings are planted within the provision of a healthy and secure environment.

This will ensure the successful nurture and facilitation of the trees' long term growth, with adequate root management, access to water and the condition of the soil all essential elements that must be considered.

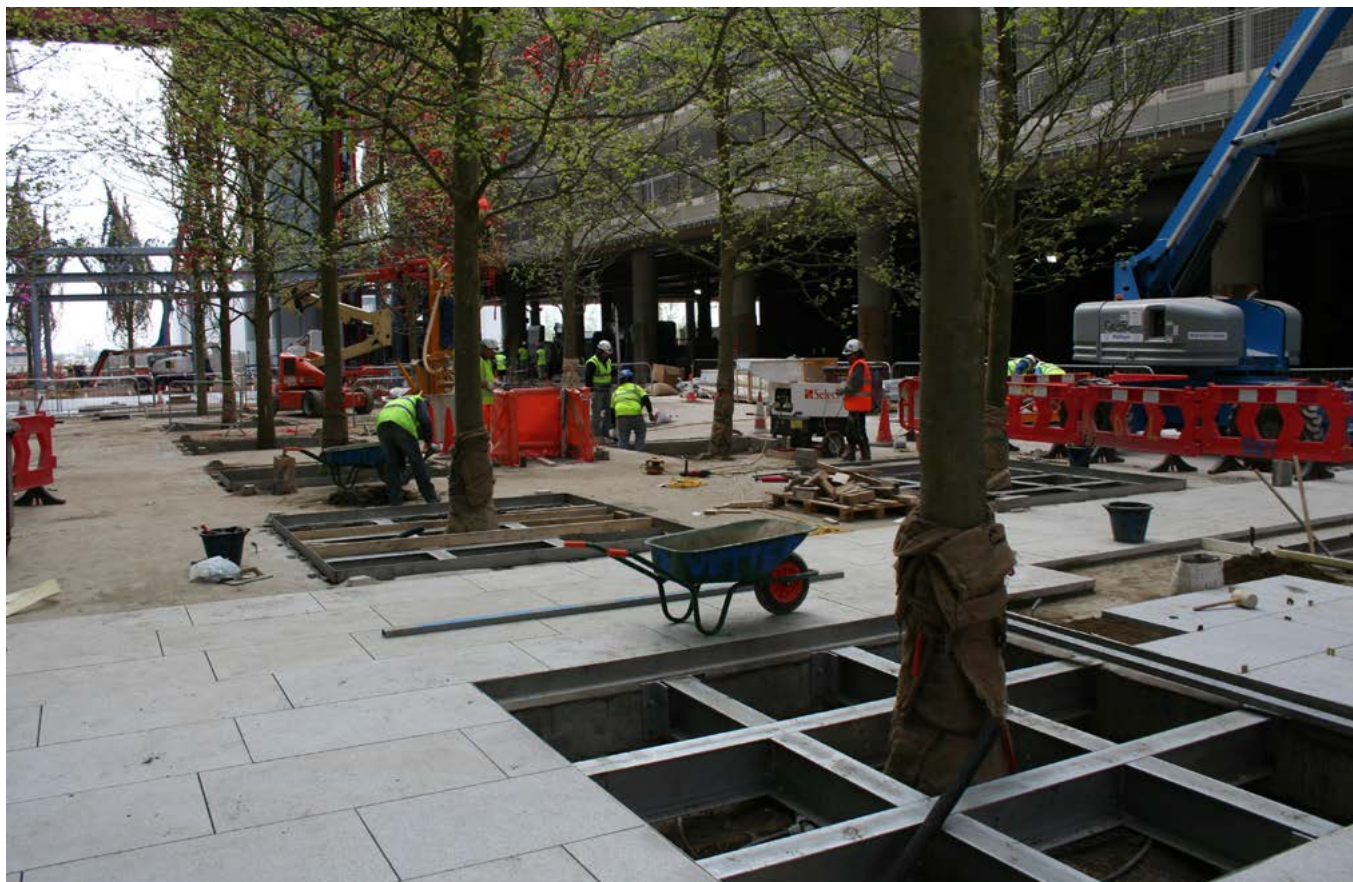
External tree pits and tree grilles present a popular choice as they can successfully alleviate the potentially negative effects an urban environment can have on a living organism, whilst simultaneously providing inconspicuous access to electrics, valves, pumps and water features.

Tree pits and tree grilles also prevent any potential damage to the urban

environment as the tree roots are securely managed within the tree root ball. This eliminates the opportunity for the roots to spread up and across the landscape, where they could cause damage to the flooring and present a dangerous trip hazard.

When specifying tree pit covers for upcoming landscaping projects, professionals should consider solutions manufactured of stainless steel as they provide long term resistance to rust and corrosion. The addition of a top edge seal also prevents dirt, grout or grinding waste ingress for increased longevity and resilience. This style of tree pit also aims to eliminate the requirement for slither cuts of stone, which often leads to recurrent and often costly breakages.





However, the structural integrity and design of a stainless steel tree pit shouldn't hinder safe access to the tree root ball. Here, specifiers should consider solutions that utilise lifting keys, facilitating easy ongoing maintenance of the tree root ball without any additional budget, time or resources.

As each urban landscaping project is different from the next, so too must be the approach to the tree pits or tree grilles installed. Custom made specifications will best meet the specific requirements of each individual project, rather than a standard 'off the shelf' offering. A bespoke offering will also ensure the type of stone used and the modules or pattern formations featured within the hard landscaping are seamlessly integrated into the covers, providing the highest quality finish available.

The orientation of the tree pits, whether single, multiple or in a duct formation, should be adapted to meet the bespoke requirements of the project, providing a desired visual style without impacting on the long term growth and success of the trees.



Tree grilles also offer the opportunity for the installation of electrical elements such as up lighters, creating an enhanced visual effect. If using tree grilles, stone thickness must also be considered, whilst load bearing for both grilles and pits must be addressed at the specification stage. For example, will the solutions be installed in a high footfall pedestrian area, or will there be vehicles regularly travelling through? This is essential to ensuring the solution is fit for purpose throughout the duration of its lifetime.

By working closely with a manufacturer from the very initial specification stages, landscaping professionals can not only achieve the successful implementation of trees into hard landscaped areas, but ensure their long term growth and maintenance whilst achieving the desired visual aesthetic.

**For further information on Howe Green's complete range of tree pit covers and tree grilles, visit [www.howegreen.com](http://www.howegreen.com) or call 01920 463230.**



## **CIS POROUS RESIN BOUND AND SLOT DRAIN TREE GRILLES**

Trees are an important part of our natural life support system; they have a vital role to play in the sustainability of our towns and cities and we need to take better care of them, both now and in the future, yet we see them starved of natural food and water and damaged at their roots by earthworks, particularly in developed areas of towns and car parks.

As a result of the built environment soil compaction can inhibit or prevent natural root growth. CIS Slot Drain and Resin bound grilles are a great way of enhancing the sustainability of your project for future generations. Clients can use either resin or porous paving in any of these tree surrounds.



For further information please contact our Sales Office on:

01483 203388 or take a look at our website:  
[www.cis-streetfurniture.co.uk/products/tree-protection/porous-resin-tree-grilles/](http://www.cis-streetfurniture.co.uk/products/tree-protection/porous-resin-tree-grilles/)



# Creating inspiring street scenes

**Bespoke Seats - Safety Railings - Giant Bollards - Security Products**



**CIS Street Furniture have the 'measure' of your next project**

Why not call our sales team to assist?

**T: 01483 203388**

[www.cis-streetfurniture.co.uk](http://www.cis-streetfurniture.co.uk)

[E: sales@cis-streetfurniture.co.uk](mailto:sales@cis-streetfurniture.co.uk)



# HAHN PLASTICS



**hanit® - Quality 100% Recycled Plastic Products**

Amazing Products For All Your Landscaping Projects

Why not give hanit® a try?

Attributes of using hanit® Products in your projects are countless but few are summarized as below:

- Durability & Strength - Long service lifespan compared to traditional products
- 100% recycled product & 100% recyclable
- Easy installation & no maintenance
- Weather, vandal & rot resistant
- Moisture repellent

Hahn Group pioneers and now leader in the development and manufacturing of recycled plastic products in Europe processing over 66,000 tonnes plastic annually.

Hahn Group has been creating quality 100% recycled plastic products for over 25 years, with 220,000m<sup>2</sup> business premises and production plants located in the UK, Germany and Canada. We market and manufacture over 2000 products under the hanit® trademark.

Using state-of-the-art technology and moulding tools, along with our technical expertise, we develop high quality, innovative products from 100% recycled plastic.

Our product range not only comprises of items for garden, street and landscaping designs, but also includes complex industrial products, exclusively manufactured in accordance with customer specifications.



Barriers • Bench Boards • Benches and Tables • Board Profiles • Bollards  
 Children's Furniture • Decking • Fencing • Ground Reinforcement • Privacy Screens  
 Palisades • Picnic Benches • Planters • Sandboxes • Sleepers • Waste Bins

**0161 850 1965**

**www.hahnplastics.com**

**info@hahnplastics.com**



# Landscape

## Paving Our Way



Where high performance  
meets sustainability.

Our clay pavers are colourfast, primed for high footfall areas and designed to last over a hundred years. Plus, our Dutch pavers are made with 100% green energy.

So for sustainability, durability and design consider Wienerberger clay paving for your next landscaping project.

[www.wienerberger.co.uk/paving-our-way](http://www.wienerberger.co.uk/paving-our-way)

 [www.wienerberger.co.uk](http://www.wienerberger.co.uk)

 0845 303 2524

 [marketing.uk@wienerberger.com](mailto:marketing.uk@wienerberger.com)

 @WienerbergerUK

  
**Wienerberger**



**TOP TRENDS  
IN LANDSCAPING STONE**



Slate, Cotswold and Pea Gravel have been used by landscapers and DIYers for decades but these established favourites are being challenged by new products which give landscapers the chance to offer clients a wider variety of colour and materials to meet consumer trends.

With this in mind Long Rake Spar are committed to being at the forefront of product development by continually introducing new products to the market. This has led the company to create a range of unique and exclusive decorative aggregates that reflect current trends in hard landscaping.

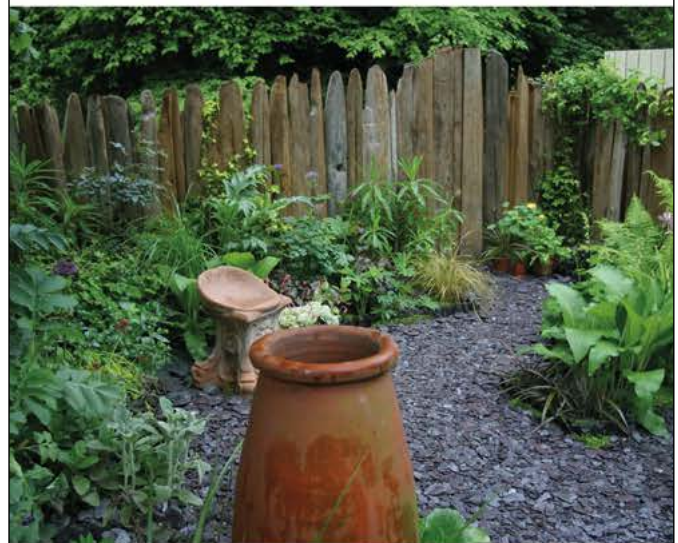
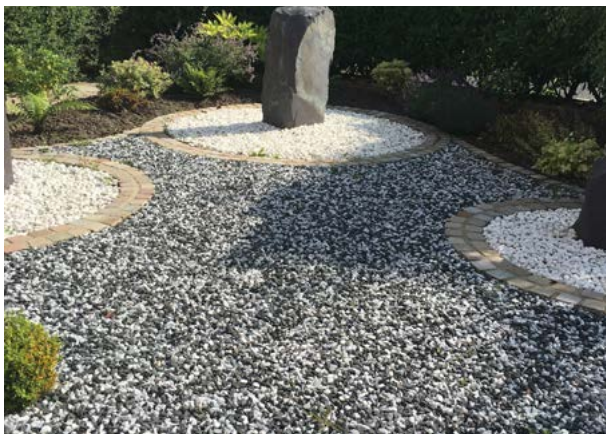
Sales of Long Rakes Platinum Range of exclusive products have repeatedly grown year on year making them a popular choice within landscape design.

To ensure the continuing success of their Platinum range, Long Rake closely monitor current patterns in landscaping. Over the last few years we have seen a rise in the popularity of grey colour tones, with sales of products that complement this colour palette increasing.

Currently Long Rake's top selling decorative aggregate is Black Ice which is a mixture of blacks, blue, grey and white chippings. Also in the top 10 are Polar Ice, Flamingo and Polar White gravels, all of which feature the contemporary colour tones of white, blue or grey. All of these products look fantastic by themselves or combined with grey paving.

Millie Ferns, Long Rake Spar's Marketing Director commented "Over the last three years we have seen the colour grey become a central requirement for landscape design, outselling the staple favourites of buff and golden colour products. Our product development reflects this and has returned some surprising results".

[longrakespar.co.uk](http://longrakespar.co.uk)



**THE UK'S LARGEST  
RANGE OF  
DECORATIVE  
AGGREGATES**

**e:** [sales@longrakespar.co.uk](mailto:sales@longrakespar.co.uk)

**w:** [longrakespar.co.uk](http://longrakespar.co.uk)

**t:** 01629 636 210





# THE TECHTURF ROOTZONE REINFORCEMENT SYSTEM

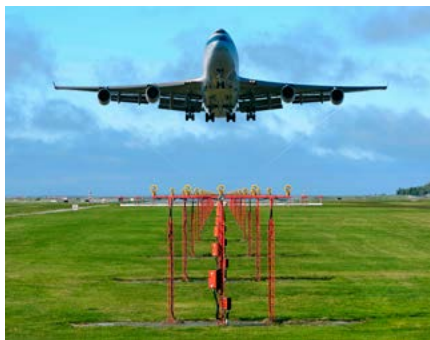
The TechTurf rootzone reinforcement system was originally developed in the UK following extensive research carried in the UK and USA.

Subsequent research showed that the use of mesh elements provided up to a 35% improvement in reinforcing effect when compared to all fibre alternatives. The TechTurf system provides a solution to load bearing; trafficked or high wear grassed areas and is SuDs compliant.

### The system consists of 3 elements:

- a) The reinforced rootzone material
- b) Specialised fertiliser
- c) Specially grown turf to complement the rootzone

The TechTurf rootzone is reinforced with an exact percentage of randomly oriented polypropylene mesh elements. The grass roots penetrate and entwine with the mesh elements, stabilising the system and providing positive anchorage for the grass plants.



The result is an engineered natural grass surface with high load bearing characteristics, improved damage resistance and a unique cultivation property which overcomes the problem of soil compaction. It is an ideal solution for a natural, environmentally attractive area where excessive traffic loadings are anticipated but a natural grass finish is desired.

### The system is therefore ideal for:

Walkways, Emergency access routes, Sport Surfaces, Aviation Areas, Equestrian, Landscaping, Housing Projects & Public Areas

### Benefits of Naylor TechTurf:

- a) SUDS compliant - Excellent drainage properties.
- b) Invisible once installed but still performs.
- c) Improved root growth - reinforcement maintains hydration and prevents compaction.
- d) Natural Alternative - maintains the natural environment.
- e) No grid reinforcement visible.
- f) Versatile - Excellent in 'high traffic' areas giving a natural appearance but supplying a hard wearing surface.
- g) Ease of Maintenance - No special measures required.
- h) Cost Effective - a viable alternative to grid reinforcement.



[www.naylor.co.uk](http://www.naylor.co.uk)



**Benefits**

- Attractive, natural grass surface
- High load bearing strength
- Resists rutting and compaction
- Clean and free draining
- Provides ideal source control for Sustainable Urban Drainage Systems (SUDS)

**Suitability**

- Events and amenity areas
- Emergency vehicle access roads (inc. HGV)
- Overspill car parks
- Sports surfaces
- Source control for SUDS

# TechTurf Systems



The Naylor TechTurf reinforced grass system consists of a specially prepared sand: compost rootzone into which is blended thousands of small interlocking mesh elements. Selected turf and fertiliser are supplied to establish grass cover.

As the grass roots develop they penetrate through the mesh to form a deep anchored root system and a very stable rootzone. The result is a free draining natural grass surface with no visible structures, compaction resistance and high load bearing capabilities. TechTurf is supported by over a decade of high level civil engineering and agronomic research.







## TWO SIMPLE WAYS TO TAKE A GARDEN PROJECT TO THE NEXT LEVEL

Adding a deck to one's garden is unquestionably one of the best investments a homeowner can make. To help your customers make the most of their outdoor spaces and maximize their return on investment, consider recommending the following upgrades - both of which are easy to sell, simple to install and add meaningful value to a deck.

### Extend Deck Life with Protective Flashing Tape

Homeowners today have access to high-performance deck boards warrantied to last for decades. But,

unless the proper steps are taken from the start, the deck's foundation could begin decaying within the first 10 years. This is because the vast majority of substructures are built using timber, which is susceptible to damage from the outdoor elements. Easily one of wood's worst enemies, moisture contributes to mould growth and can accelerate structural deterioration. When joists and beams are exposed, water seeps into screw holes and sits on the surface causing it to rot and the screws to rust. Additionally, the natural expansion and contraction of timber due to seasonal freezing

and thawing can cause beams to split and weaken over time, posing serious safety concerns.

Deck flashing tape is a simple and cost-effective way to protect timber from the damaging effects of weather and time. Designed to shield wood joists and beams from moisture that can lead to deterioration, it also acts as a barrier between the wood and galvanized metal and helps screws and fasteners hold longer for enhanced structural integrity.





There are two primary options when it comes to deck flashing tapes - asphalt-based and butyl tape. Although asphalt-based tape is generally less expensive, it tends to dry out more quickly, curl up and hold water. Butyl tape offers several advantages over asphalt-based tape. It is stickier, performs better in a wider range of temperatures and is more pliable, which allows it to create a tighter seal around screws to prevent water from infiltrating screw holes.

Trex® Protect™ is a popular self-adhesive butyl tape that works on horizontal and vertical surfaces and is applied as a “cap” (vs. wrapping), which allows the wood to breathe. The tape lies directly on the boards and features a non-skid surface, making it safer for contractors to walk across during construction. The peel-and-stick application is simple and requires almost no trimming. For added confidence and peace of mind, Trex Protect is the only

tape on the market that comes with a 20-year warranty, ensuring the substructure will last as long as the decking it supports.

### Optimize Space Beneath an Elevated Deck

Outdoor space and ample storage are among the most sought-after amenities by today’s homeowners and prospective homebuyers. In both cases, the area beneath an elevated deck can offer an ideal solution. With the addition of an under-deck drainage system, this space can become usable for a multitude of purposes.

Using a network of troughs and downspouts, a deck drainage system captures and diverts water away from a deck to protect the substructure from moisture and create dry space underneath. But it’s important to keep in mind that all drainage systems are not created equal.







For maximum protection, opt for an 'above-the-joist' system with poly or rubberized membranes that drape over the joists to ensure that the joists and beams of the substructure are shielded from moisture penetration. This type of system also helps to hold screws in place longer and acts as a shield between galvanized metal and timber. Furthermore, the membrane material (vs. metal, vinyl or PVC) accommodates a broader range of ceiling options for homeowners seeking a finished aesthetic.

Systems that install below the joists leave timber and metal exposed to the elements and more susceptible to water damage and corrosion. This type of system can trap

moisture in the core supports of the substructure. In warmer months, rising temperatures 'cook' the trapped, wet wood and accelerate rotting. Over time, this combination of moisture, heat and lack of ventilation can create a potentially dangerous formula for deterioration.

Once protected, the dry space beneath a deck can be used for storage or as additional living space. Homeowners can add electricity, water and gas lines, as well as furniture, lighting, ceiling fans and entertainment components, depending on how they plan to use their new-found space.

The possibilities are limitless, and the process is simple. Trex®

RainEscape®, for instance, is a high quality, affordable, above-the-joist deck drainage system that can be installed using just a stapler, utility knife and caulk. Each trough is clearly labeled with staple markers to expedite the process, which takes no more than a few hours to complete. And, the system is backed by a 20-year warranty from the world's #1 decking brand.

Both of these upgrades add considerable function and value to a deck project without adding a lot of time or cost.

---

**For more information or to locate your nearest stockist, visit [www.trexrainescape.com/find-your-nearest-dealer/](http://www.trexrainescape.com/find-your-nearest-dealer/)**



# CREATE A DRY SPACE BELOW YOUR DECK



**Trex** RainEscape®  
DECK DRAINAGE SYSTEM



# WATERPROOF YOUR TIMBER DECK



**Trex** Protect™  
JOIST & BEAM TAPE

[trexrainscape.com](http://trexrainscape.com) | [trexprotect.com](http://trexprotect.com)

\*See the product website for the terms of the warranty.

© 2020 Trex Company, Inc. All rights reserved. Trex® RainEscape® and Trex® Protect™ products are manufactured and sold by Dri-Deck Enterprises, LLC under a Trademark License Agreement with Trex Company, Inc. RainEscape® is a federally registered trademark of Dri-Deck Enterprises, LLC.





# BOOST YOUR MENTAL WELLBEING WITH IRO TIMBER

As the lighter nights and warmer weather arrive, we start to see the garden overtake the kitchen as the heart of the home during the summer months. BBQs and alfresco dining see friends and families gravitate to outdoor spaces, socialising and enjoying time outside.

Did you know that that spending as little as 30 minutes a week in the garden can have a positive effect on your mental and physical wellbeing? But with an enticing outdoor space featuring IRO Timber, why stop at just half an hour?

IRO Timber is an exclusive range of natural cladding and decking products that has been developed by BSW, the UK's largest integrated forestry and sawmilling group.

Each and every piece of IRO architectural timber is crafted using an intricate step process that combines an eye for detail with the latest timber technology. The result is a beautiful, unique product that adds character to a range of spaces

and promotes a sense of wellness to be enjoyed by individuals soaking up some outdoor space.

Inspired by the traditional Japanese method of Yakisugi, IRO is available in a range of 15 colours, from driftwood to dragon fruit, that are each designed to add charm to both indoor and outdoor environments. We're combining one of the most traditional, environmentally-friendly materials with progressive design techniques to redefine how natural timber can be used in modern spaces.

From cool urban outdoor living spaces and roof terraces to classic garden and patio inspiration, IRO Timber is versatile enough to transform any area.

Featuring at the 2019 RHS Chelsea Flower Show as part of a collaborative installation called LAND, IRO timber played a key role in promoting wellness in nature. The installation consisted of a covered structure, using IRO decking in 'charcoal', which housed

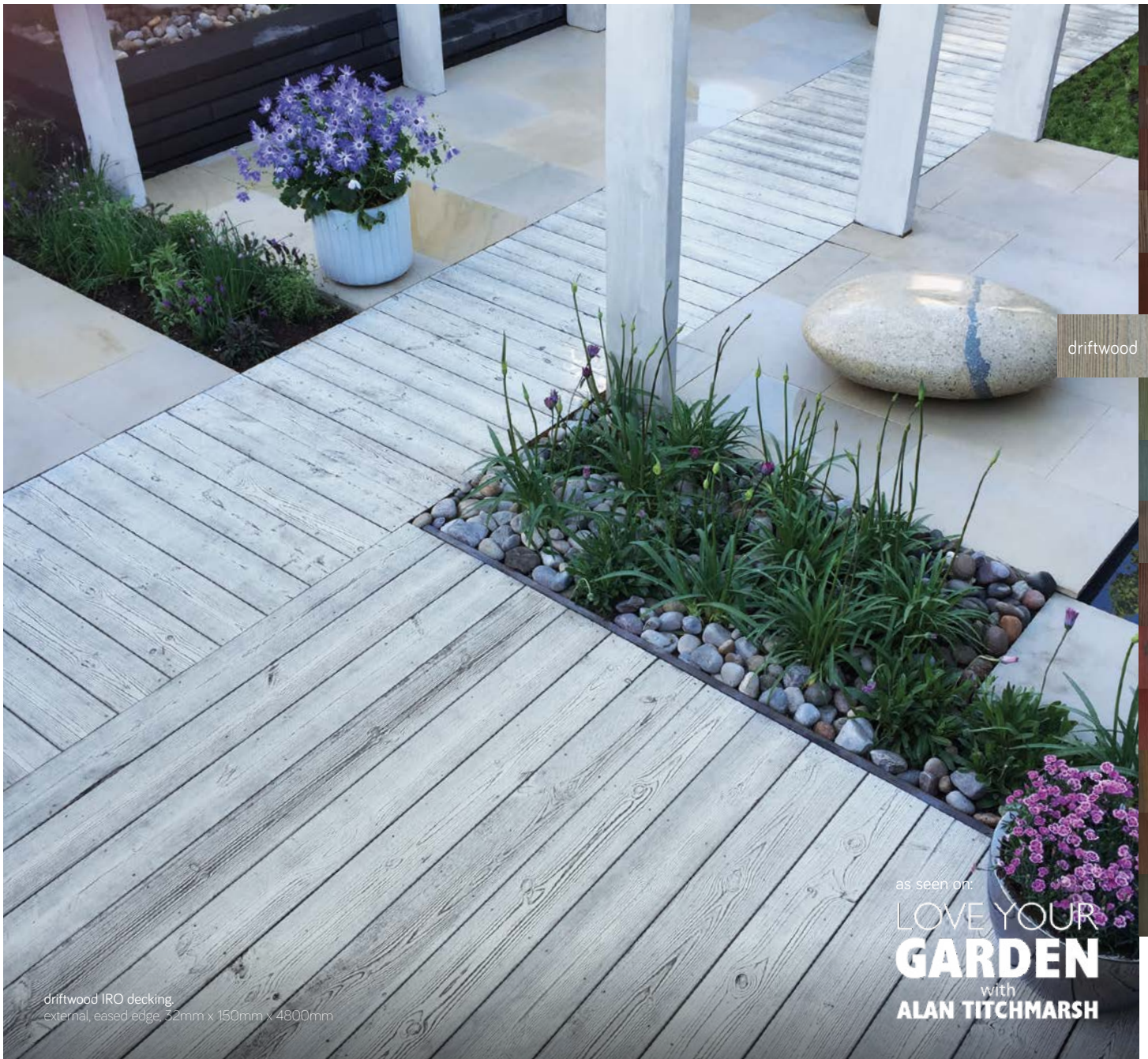
textile and botanical collections, taking inspiration from Japanese architectural simplicity and modernist buildings found in Palm Springs, California.

LAND was driven by Laura Slater, a Leeds-based textile designer, and Zosia Berkiet-Lewis, founder of The Plant Room. Zosia said: "With the help of IRO Timber we were able to create a tranquil haven at the heart of RHS Chelsea Flower Show for visitors to escape to. We were delighted with the result."

In addition to being a low-maintenance but long-lasting alternative to traditional decking, IRO is UV stable and HVOC-free, meaning the product is both child-friendly and pet-friendly. With endless design possibilities, IRO can also be used inside as cladding as an alternative, unique design feature.

**Find out more about transforming your outdoor or indoor space with IRO Timber, visit [www.irotimber.co.uk](http://www.irotimber.co.uk)**





driftwood

driftwood IRO decking.  
external, eased edge, 32mm x 150mm x 4800mm

as seen on:  
**LOVE YOUR GARDEN**  
with  
**ALAN TITCHMARSH**



heat  
enhanced  
architectural  
timber

## crafted by nature and perfected by experts

IRO - which is Japanese for 'colour' - is inspired by yakisugi, the Japanese method of charring timber. We're combining one of the oldest, most versatile building materials with progressive design techniques to redefine how natural timber can be used in modern spaces, putting you in control.

As people turn to colour to elicit different moods and to energise their buildings, IRO's collection of colours evokes emotion and excitement, embracing creativity over dull tones and faded palettes.

contact us for more information | [hello@irotimber.co.uk](mailto:hello@irotimber.co.uk) | [www.irotimber.co.uk](http://www.irotimber.co.uk)



charred



brushed



high pressure  
treated



coated in  
wood cream



exclusive  
colour range



water-repellent



low-maintenance



100% natural  
timber





# DECKING FOR THE NEXT DECADE

Offering resistance to the 'four S's: Slip, Stain, Scratch and Sun, UPM ProFi - which is distributed exclusively in the UK by James Latham - boasts a long list of outstanding performance properties including: minimum maintenance; superior stain resistance; extra-high impact strength and a high friction surface.

Designed and manufactured in Finland, Germany and the United States and carrying a 10-year guarantee, UPM ProFi has become a popular choice with landscaping professionals as it is perfectly suited to high traffic areas, where it will continue to perform to optimum levels while looking fresh, smart and clean for years to come.

And with two stunning new design styles in the range for 2020, James Latham is predicting that this rise in popularity will continue to grow.

### UPM ProFi Vision

A uniquely elegant decking, UPM ProFi Vision offers numerous features and benefits including; an exceptional 'luxury' surface texture; class leading fade stain and scratch resistance, plus an ultra-durable

core of heat treated Oak fibres, fully encapsulated with polyethylene. This allows not only 'on the ground' and 'in the ground', but even under water installation.

Made from 95% recycled materials, it is available in three stunning colours, Sandstone, Smokey Grey and Spanish Leather.

### UPM ProFi Piazza

An affordable, high-performance decking, UPM ProFi Piazza prides itself on a modern hardwood look that is remarkably resistant to stains. Again, produced from 95% recycled materials, it boasts ultra-low maintenance properties as well as excellent colour durability and fade resistance and is available in three rich colour shades, Brazilian Walnut, Streaked Ebony and Silver Ash.

Richard Mosson, James Latham's Group Cladding and Decking Manager commented, "This is a true premium quality product and one that ticks all the boxes for us. As well as its impressive environmental credentials, it offers choice in style, consistency in performance and clean, cutting-edge design.

"With 10 years of continued investment and R&D, the quality of the UPM ProFi deck range is exceptional. Long-life and ultra-low maintenance have been engineered into it and due to the innovative use of recycled materials it has won several international awards, with the product making a major contribution to reducing traditional landfill and incineration, something that is really important to James Latham and to many of our customers."

With 12 branches throughout the UK and Ireland, and specification showrooms in London and Manchester where the product can be seen, James Latham's inspiring range of UPM ProFi decking is available directly from stock.

**To order free samples or discuss your decking projects with one of Latham's highly experienced and knowledgeable decking champions, contact details of your local depot and the showrooms can be found at: [www.lathamtimber.co.uk](http://www.lathamtimber.co.uk)**



# MILLBOARD DECKING CREATES OCEAN MAGIC!



As part of Hampshire's ongoing Ocean Village project, the new Southampton Harbour Hotel has been built to cement the city's reputation as the UK's shipping capital and to reference the port's maritime history.

HGP Architects were engaged to create a five-star hotel for the marina and they came up with a spectacular design: Southampton Harbour Hotel looks like a luxury ocean liner moored on the waterfront with terraces on multiple levels. The landscaping of the outside areas (the 'decks') reveal an intense eye for detail and perfectly conjure the look and feel of an extravagant cruise ship at sea.

High-end decking was required for all the terraces, and as well as looking the part, materials

had to be able to withstand the waterside location - non-slip and non-rot properties were vital. The architects used 1500m<sup>2</sup> of Millboard's Enhanced Grain Smoked Oak with contrasting edging to achieve a nautical but slip-resistant surface. Most composite decking combine plastic with wood fibres but Millboard decking is made from wood-free polyurethane combined with mineral stone. This exclusive combination creates a unique resin mineral board that's tough enough for use in outdoor environments all year round. As polyurethane is one of the most stable resin materials, it won't warp or rot and needs very little maintenance - it can simply be wiped clean with a damp cloth or mop. The product has no wood content at all so no treatments will ever be needed to keep the decking clear of insects or damp.

As the decks form the best-part of the cruise-ship illusion, HCP Architects needed a practical and beautiful canvas for the rest of the landscaping and Millboard's decking met and exceeded the strict criteria. The decking looks intensely natural and is the perfect backdrop for the day beds and riviera seating of the glamorous hotel exterior.

Millboard's decking range includes three distinctive finishes and ten different colours to fit any installation's theme or specification.

Visit [www.millboard.co.uk](http://www.millboard.co.uk)  
for more information and style  
inspiration!





**A STRONG, EASY, AND FAST ALTERNATIVE TO CONCRETE**

OSMOUK Post Fix is a strong, easy-to-use, and fast-setting solution that allows landscape architects and garden designers to fix garden posts or sports poles in a matter of minutes, making it a cost effective, lightweight alternative to concrete.

With no complicated installation process and no need for any tools or fixings, everyone can use OSMOUK Post Fix. Applications include fences, garden lights, post boxes, signs, washing lines, and bird baths, as well as sports posts, such as basketball hoops and football, tennis, and volleyball nets. OSMOUK Post Fix has a shelf life of 12 months, if stored in its original package and away from direct sunlight and moisture.

To watch the OSMOUK Post Fix installation video, visit [www.vimeo.com](http://www.vimeo.com) and search for OSMOUK Post Fix.

For more information on OSMOUK Post Fix, visit [www.easypostfix.co.uk](http://www.easypostfix.co.uk), email [sales@osmouk.com](mailto:sales@osmouk.com) or call +44 (0) 1296 481 220.

**ENSURE THE LIFE OF YOUR DECK WITH TREX®**

Today's high-performance composite deck boards, like those from Trex, are warranted to last. But what about the substructure material underneath? If the posts and beams that support the deck are made of wood, they are likely to deteriorate long before the decking warranty elapses. Now, there is a simple and cost-effective solution to combatting the damaging effects of nature and time.



Trex® Protect™ Joist and Beam Tape is a self-adhesive butyl tape that works by shielding the tops of joists, rim joists, ledger boards and beams from moisture that can lead to rot, wood decay and the loosening of deck screws. It also acts as a barrier between wood and galvanized metal commonly used in construction hardware such as joist hangers. Additionally, Trex Protect seals deck fasteners and helps deck screws hold longer and stronger by preventing moisture penetration and defending against splitting that can result from seasonal freezing and thawing.

For more information about Trex Protect visit [www.trexprotect.com](http://www.trexprotect.com)



**CEDRAL**

The ideal low maintenance, rot-resistant alternative to traditional cladding material that will give your home a timelessly beautiful facade.

✓ low maintenance

✓ factory applied colour

✓ easy to install



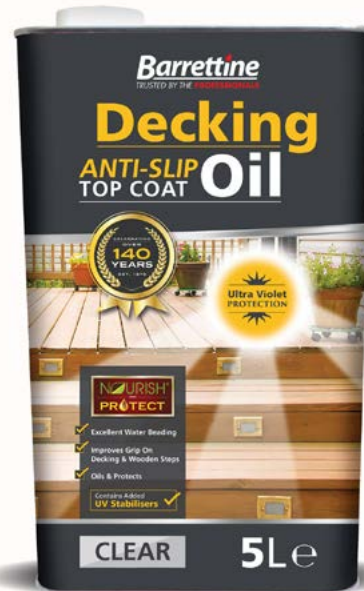
more at [cedral.world](http://cedral.world)



# DECKING CARE COVERED WITH BARRETTINE WOOD CARE RANGE

Barrettine's Wood Care range includes oils, preservers and protectors for all types of wood surfaces and structures, including decking boards and tiles. British-made - and trusted by professionals and the trade - best-selling treatments include its 'Nourish & Protect' All-in-One Decking Oil and the new, award-winning Anti-Slip Decking Oil.

Specifically formulated for treated timber, Barrettine All-in-One Decking Oil creates a non-flaking finish that protects against water and UV-rays, helping to prevent splitting, cracking and fading. A surface biocide preserver also protects against mould and algae growth. The oil is offered in six natural shades - Clear, Light, Natural and Dark Oak, Cedar Red and Rosewood - and can be used on all types of pressure and preservative-treated boards and tiles, as well as sheds, summerhouses and fences. Follow-on treatment - Barrettine Anti-Slip Decking Oil - is a low-sheen top coat that enhances grip underfoot. It also provides further protection against the elements and helps slow discolouration.



Other Barrettine decking treatments include 'Knock Out' Driveway, Decking & Patio Cleaner, ideal for use before the oil.

To find out more about the decking treatments - and Barrettine's wider Wood Care range - please visit [www.barrettinepro.co.uk](http://www.barrettinepro.co.uk) or contact Barrettine on 0117 960 0060 or email [sales@barrettine.co.uk](mailto:sales@barrettine.co.uk)

## THE PERFECT SOLUTION FOR YOUR NEXT DECKING OR PAVING PROJECT



Karoapp fixed and adjustable pedestals for use on decking and paving are the latest brand to reach the UK market and are available from Euro Accessories Ltd.

Fixed pedestals are available in 4 different heights ranging from 13mm to 30mm. Adjustable pedestals are available in 6 different adjustable heights ranging from 18mm to 225mm.

By incorporating the extension piece a further 7 adjustable heights are available, offering a complete range from 18mm up to a staggering 1083mm.

Karoapp pedestals are fully tested and offer a minimum load resistance of 900kg each. Using recycled plastics, they help prevent moisture to the deck / patio helping to increase its life.

Euro Accessories professional pedestal team can also offer assistance with any development or project you have.

For more information on Karoapp  
Tel. 01189 81 95 22

[www.karoapp-pedestals.co.uk](http://www.karoapp-pedestals.co.uk) | [sales@euroacc.co.uk](mailto:sales@euroacc.co.uk)



- Fast and easy to use in all weathers.
- Adjustable for all sites and slopes.
- Allows easy access to utilities concealed below the deck.
- Continuous drainage through joint spacers means no accumulation of water on decks or paving.
- It provides a point-to-point intervention in insulation problems.
- It has a high load resistance (Min 900kg/pc)
- Provides the final level without any screed concrete on installation.



For more information on Karoapp  
Tel. 01189 81 95 22

[www.karoapp-pedestals.co.uk](http://www.karoapp-pedestals.co.uk) | [sales@euroacc.co.uk](mailto:sales@euroacc.co.uk)





SOL-ICON

Double Sided 20w Path Light

- PIR Options on Both Sides •

**Need Solar Lights with High Output?  
The Wait is Over.**



View Full Specifications & Full Product Range on Website

**[www.lumenalights.com](http://www.lumenalights.com)**

T: 01327 871161

E: [sales@lumenalights.com](mailto:sales@lumenalights.com)

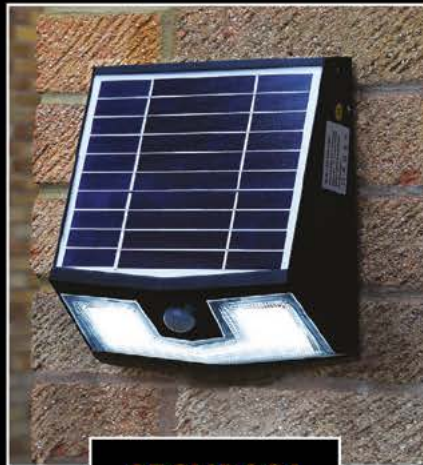


# EASY Installation, FREE Illumination

In the current climate of isolation and distancing, our Pro Solar range provide a simple, D.I.Y-friendly alternative to mains powered lights, and in most cases, are equally as bright.



**HALOPOST**



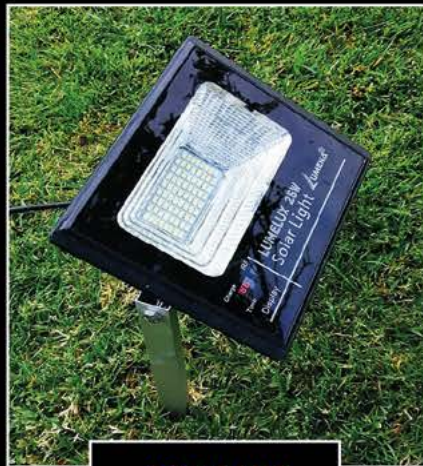
**SECURSOL**



**OLYMPIA**



**GUARDA**



**SOLLUX**



**FREEWAY**



More  
Designs  
Online

Next Working Day Delivery - High Stock Levels

Technical Advice - Trade Supply

[www.lumenalights.com](http://www.lumenalights.com)

All Catalogues Available to Download





**ACOUSTIC ARTS OUTDOOR MUSIC**

Acoustic Arts make outdoor musical instruments and sound sculptures suitable for permanent installation in gardens, parks and playgrounds. After working with the National Trust, RHS and other environmental organisations, we have developed a range of instruments that combine gentle, harmonious sounds with elegant, organic forms that fit perfectly in natural landscapes. The instruments are hand built using sustainably sourced English Larch, stainless steel and other durable materials.



See our website for a full range of products as well as examples of recent bespoke projects.

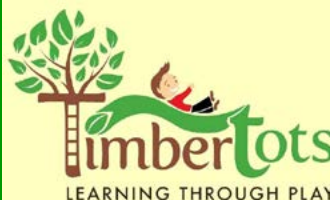
Contact: [www.acousticarts.org.uk](http://www.acousticarts.org.uk)  
[info@acousticarts.org.uk](mailto:info@acousticarts.org.uk) | 0117 935 2034

**UK Made for UK Weather**



The roofs of our Shelters are 100% Waterproof & available in any colour.

Flat pack for quick, easy assembly on site.



(028) 7772 2201  
[info@timbertots.co.uk](mailto:info@timbertots.co.uk)  
[www.timbertots.co.uk](http://www.timbertots.co.uk)



**PASSPORT365**  
 PLAY ASSET SOFTWARE



**Real-time Reporting**



**Manage your staff**



**Remote Working**

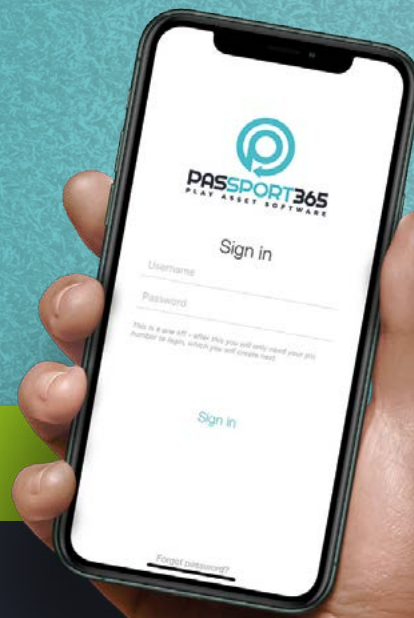


**Schedule Jobs**

**Sports facility and grounds care management software**

Start a 14 day free trial!

[www.passport365.com](http://www.passport365.com)







**DYLAN GROUP**

Hardwood Robinia Timber Stockist & Supplier

**FSC® CERTIFIED:**

**POLES**

**PREPARED BOARDS**

**WANEY EDGE**

**DECKING**

**SHINGLES**



**NATIONWIDE DELIVERY**



**T: 01730 779709**

**E: [enquiry@dylangroup.co.uk](mailto:enquiry@dylangroup.co.uk)**

**W: [www.dylangroup.co.uk](http://www.dylangroup.co.uk)**



**DYLAN PLAY**

UK Designed & Manufactured  
Play Solutions

**SITE ASSESSMENTS & SURVEYS**

**3D MODELLING & RENDERING**

**PLAY EQUIPMENT DESIGN**

**BSEN1176 CERTIFIED**

**UK MANUFACTURED**







inspiring urban furniture  
for the future



Bailey Street Furniture Group is one of the UK's leading providers  
of street furniture, structural canopies & playground solutions

[www.bsfg.co.uk](http://www.bsfg.co.uk)  
01625 322 888



# inclusive play. making sense...

At Sutcliffe Play making sense of inclusive play is our speciality...

We believe that every child irrespective of age, gender or ability should have equal access to the best play opportunities which are fundamental to their childhood.

Our understanding of the benefits to all children from engaging in play, along with 30 years of experience of delivering truly inclusive play features, enables us to create playful features suitable for all within our play space designs.



design  
make  
play  
**SutcliffePlay**

We can help make sense of all your projects, for our new inclusive brochure, call us +44 (0)1977 653 200 or email [info@sutcliffeplay.co.uk](mailto:info@sutcliffeplay.co.uk)

inclusive  
play.  
making  
sense...

design  
make  
play  
**SutcliffePlay**



# THE SAFEST COURT IN THE WORLD™

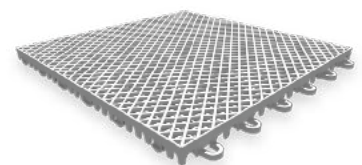
## DESIGN CONSTRUCTION AND INSTALLATION

PowerGame™ courts are enjoyed by thousands of professional athletes and homeowners around the world.

Sport Court UK design, build and install residential and commercial sport courts throughout the UK. From small backyard basketball courts, to international futsal facilities, we can help you achieve your vision.

For a full range of products visit [sportcourt.uk](http://sportcourt.uk) or call 01962 809 206

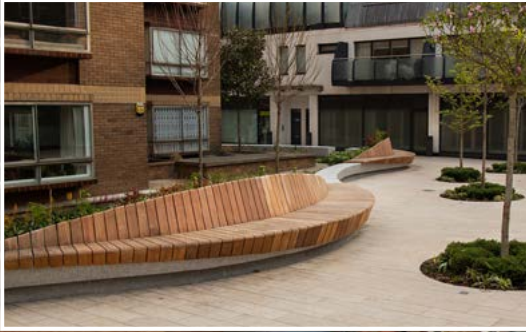
 **SPORTCOURT.UK**





#designthenation

halkin arcade, london



01254 685 185

sales@woodscape.co.uk

woodscape.co.uk

woodscapegroup

woodscapectd

woodscape\_street\_furniture

 Woodscape.