



ELEMENT - The Quarter Construction Update

April 2023



April 2023

Estimated Completion Date - Q3 2023

Huge progress has been made at Element - The Quarter recently with the majority of external works now complete. Weatherboarding and the internal staircase structure are now finished, while completion of the flat roof coverings is just one of the milestones soon to be achieved.

The internal fit-out is going similarly well with lift and partition wall installations both approaching completion. 1st fix plumbing, heating and electrical works are also in their final stages, with 2nd fixes already passed the halfway point.

Summary of Works Progressed - Sub-Structure and Super Structure

- Weatherboarding is now complete.
- The internal staircase structure is complete.
- External wall insulation and render are 98% complete.
- Flat roof coverings including balconies are 98% complete.
- External windows, doors and curtain walling are 98% complete.

Summary of Works Progressed - Internal Fit Out

- Lift installation is 95% complete.
- Installation of partition walls is 97% complete.
- Apartment ceiling installation is 82% complete.
- Plaster finishes to walls and ceilings are 78% progressed.
- 1st fix electrical works are 87% complete.
- 1st fix plumbing and heating works are 92% complete.
- 2nd fix electrical, plumbing and heating works are 57% progressed.
- Kitchen units and appliances are over halfway to completion.
- Doorframes are 76% complete.
- Skirting and architraves are 74% complete.
- Wall and floor tiling is 65% progressed.
- Carpet and floor finishes are 75% complete.
- Doors and ironmongery are 74% complete.
- Decorations are 56% progressed.



Walker Street - Site view



West Derby Road - Site view



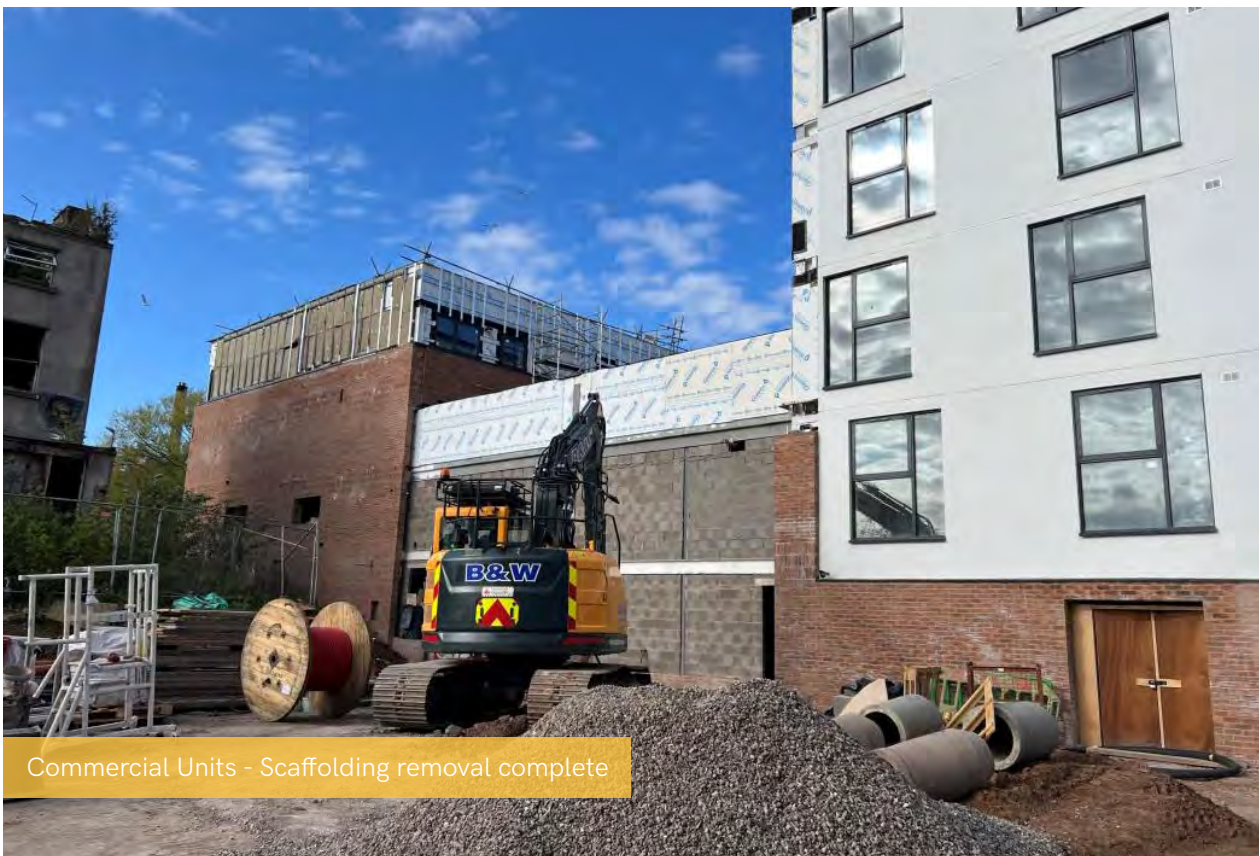
Curtain walling



Student Wing - Cladding installation on going



Residential Block - Render decoration complete



Commercial Units - Scaffolding removal complete



Louvre ventilation grills



Kerb Line



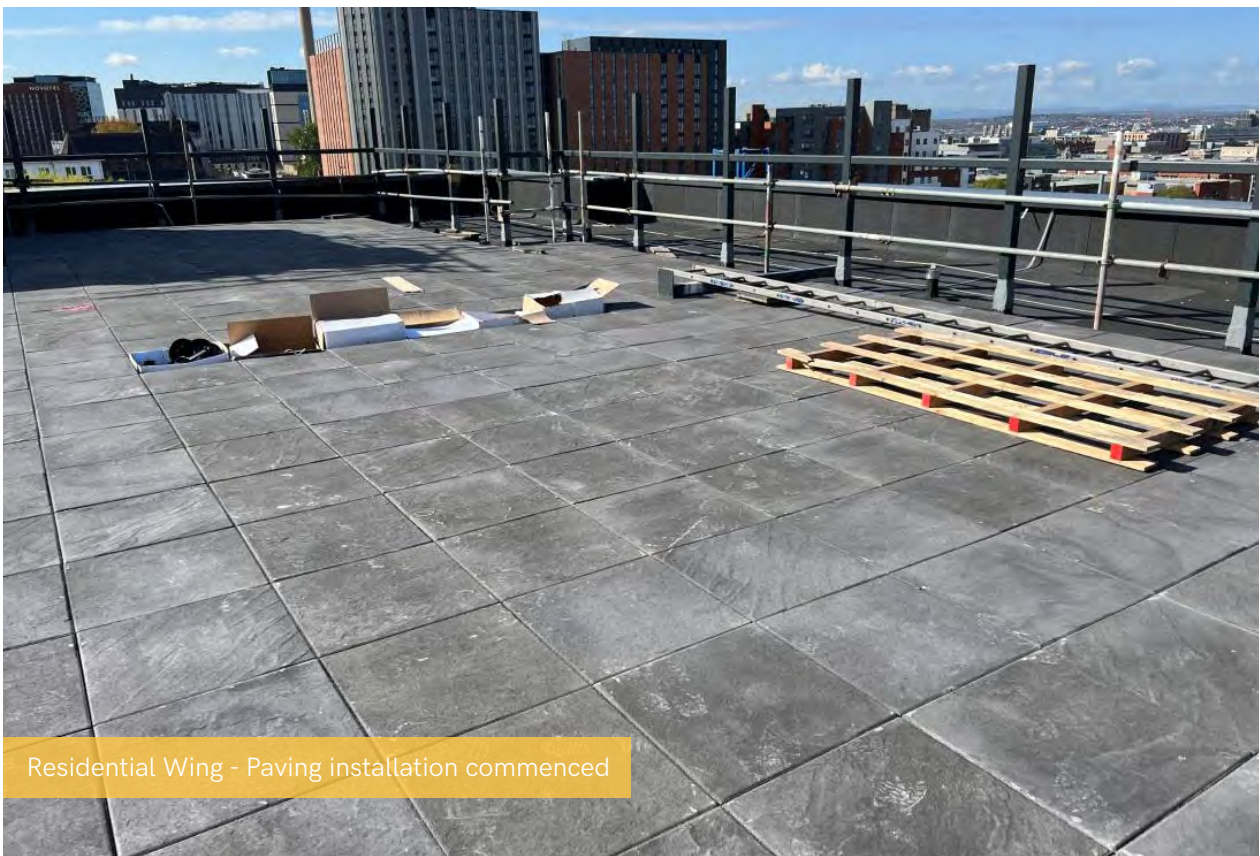
Excavation commenced for water connection



Commercial Block - Weatherboarding installation complete



Residential Block - Weatherboarding installation complete

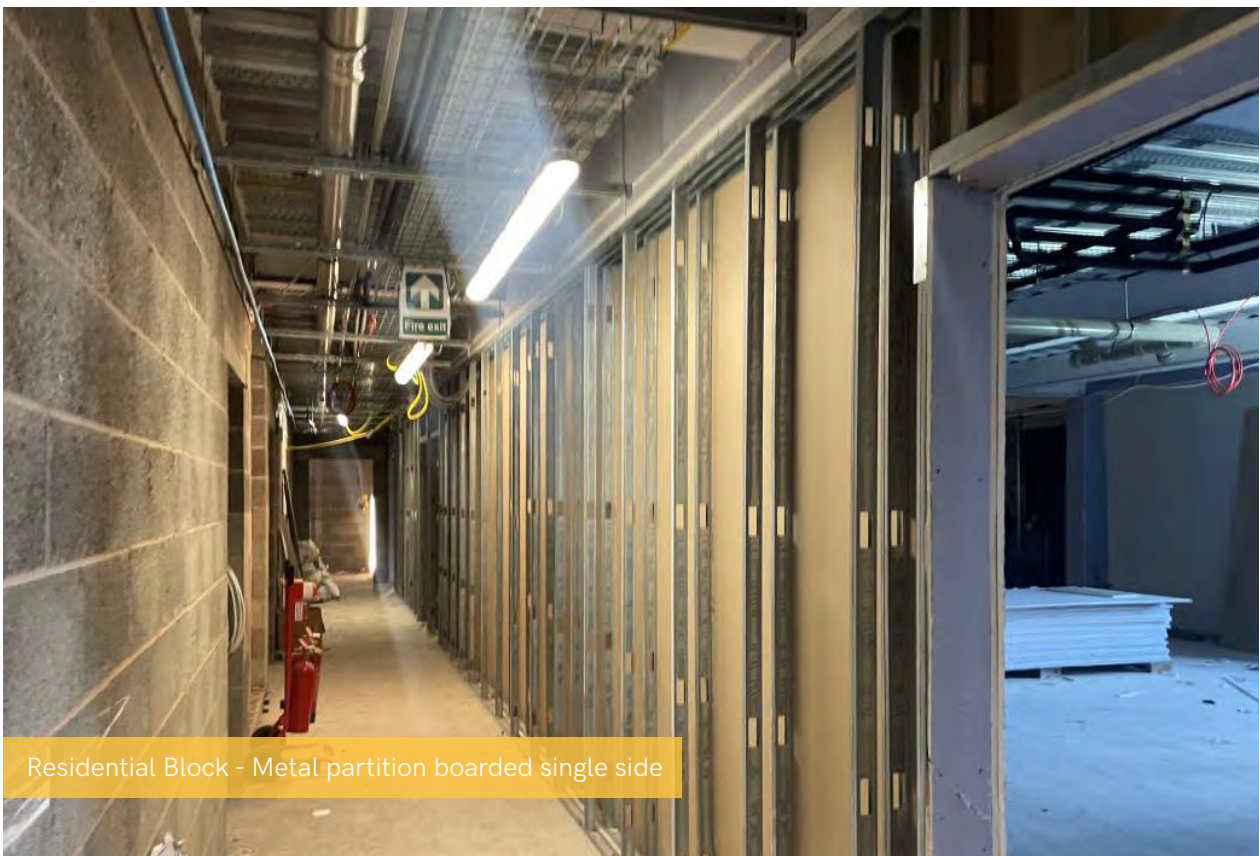


Residential Wing - Paving installation commenced

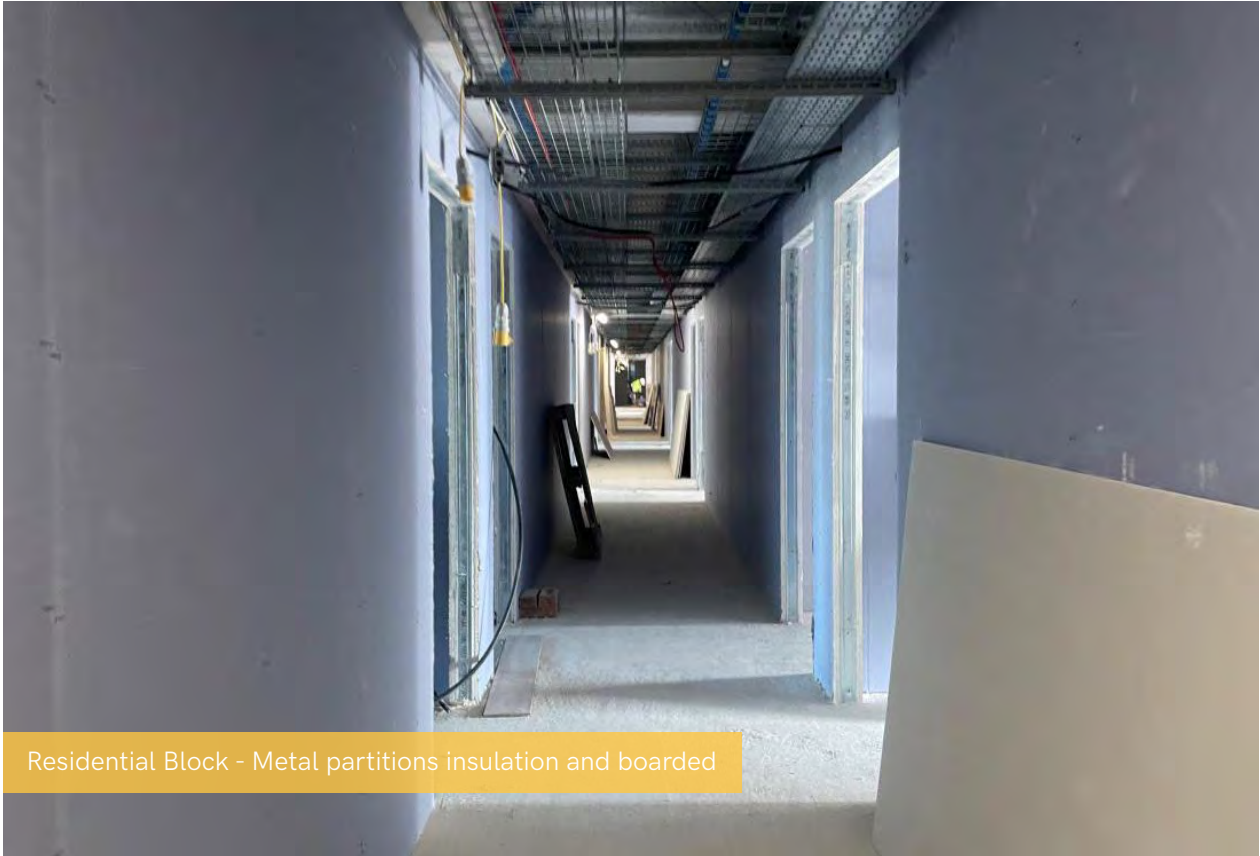




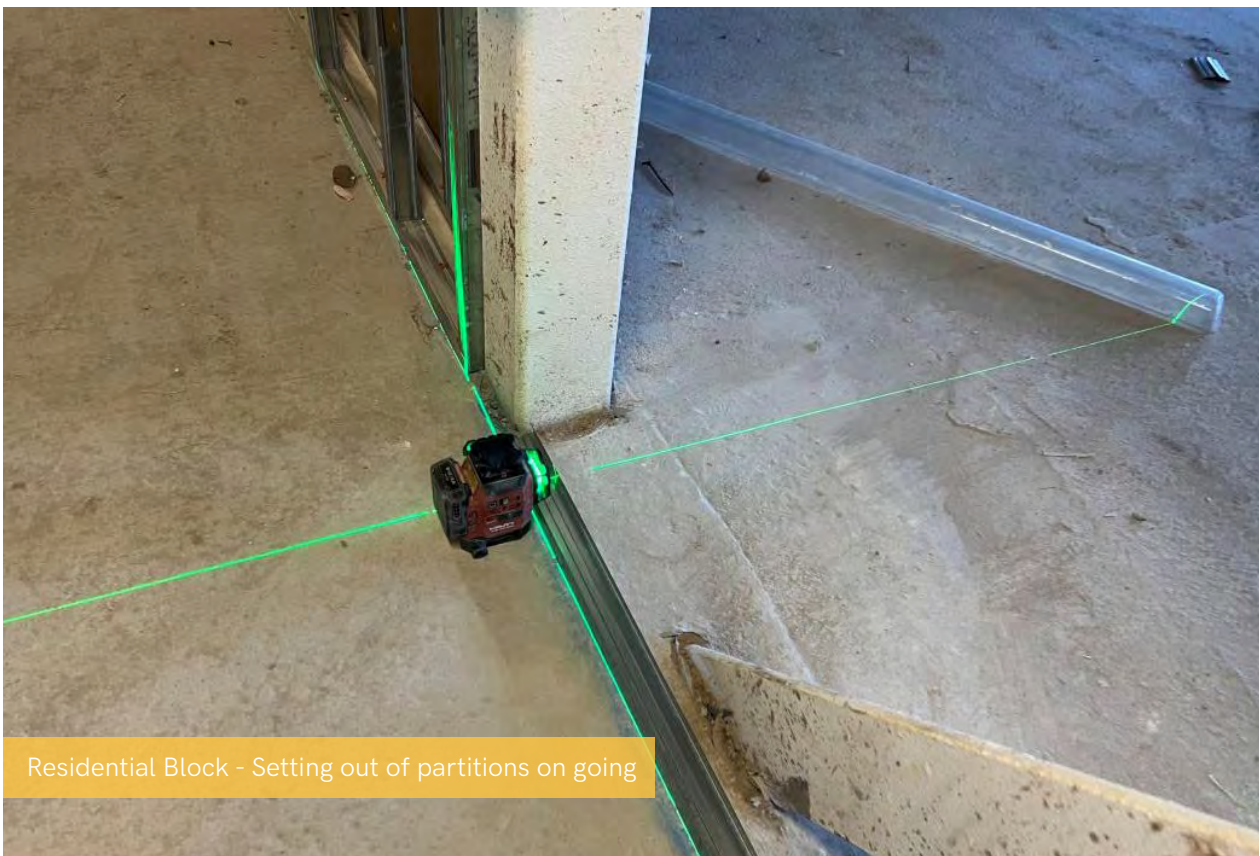
Residential Wing - Apartment drainage



Residential Block - Metal partition boarded single side



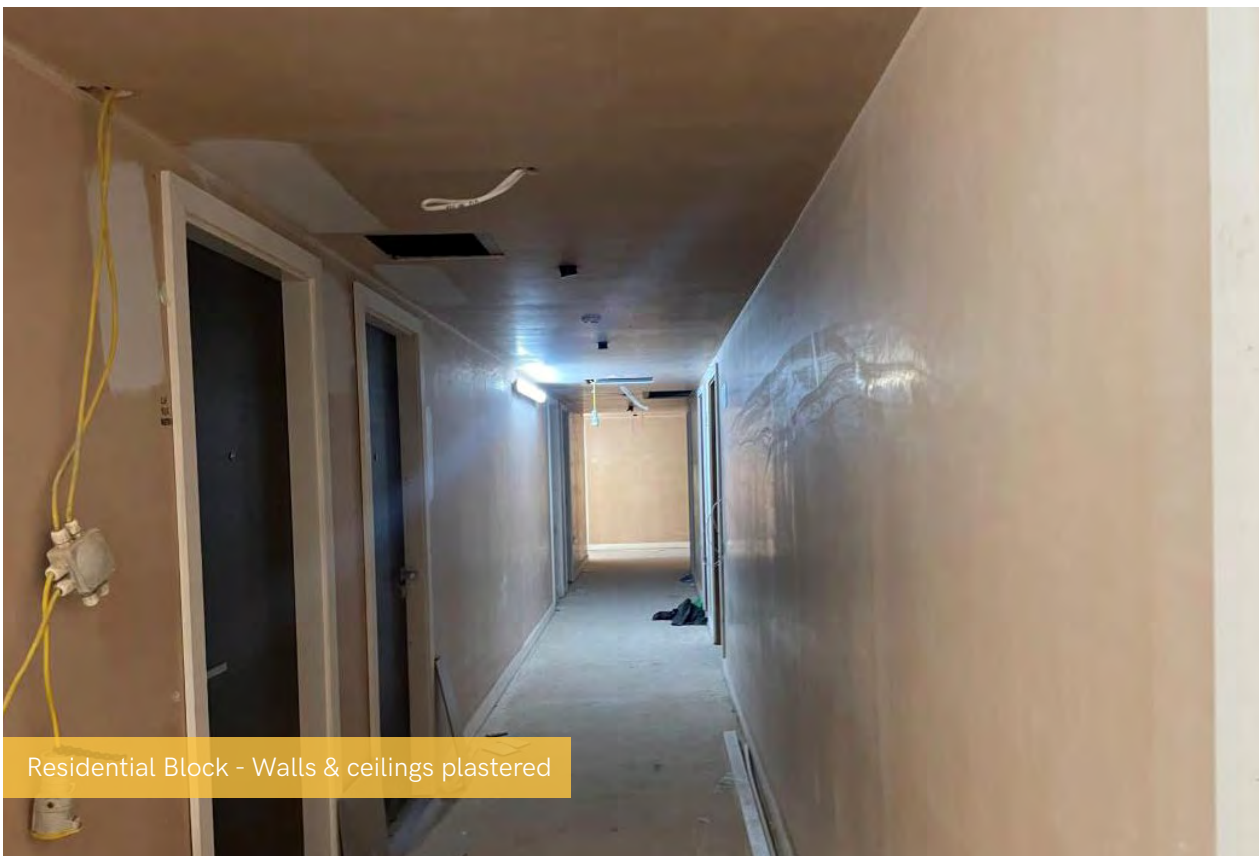
Residential Block - Metal partitions insulation and boarded



Residential Block - Setting out of partitions on going



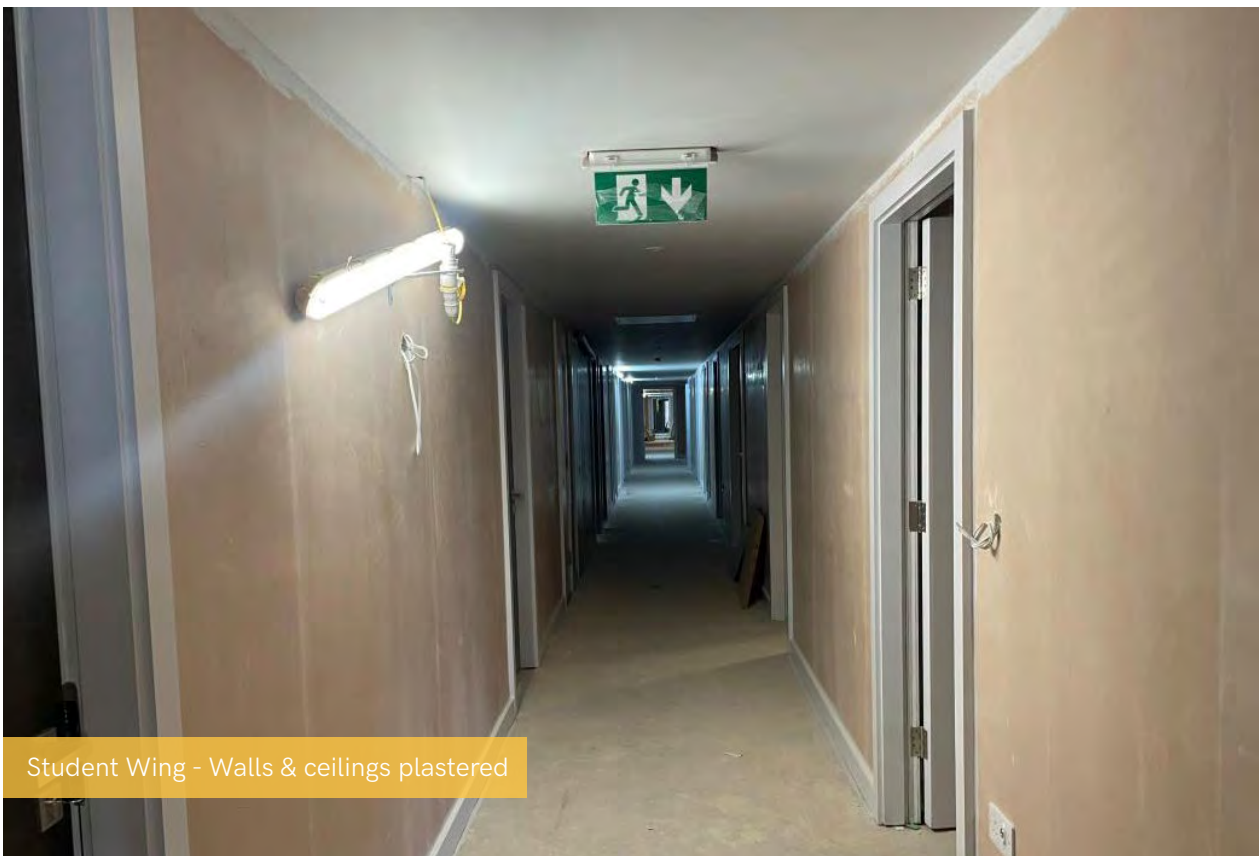
Student Block - Lift lobby walls & ceiling plastered



Residential Block - Walls & ceilings plastered



Student Wing - Installation of doors on going



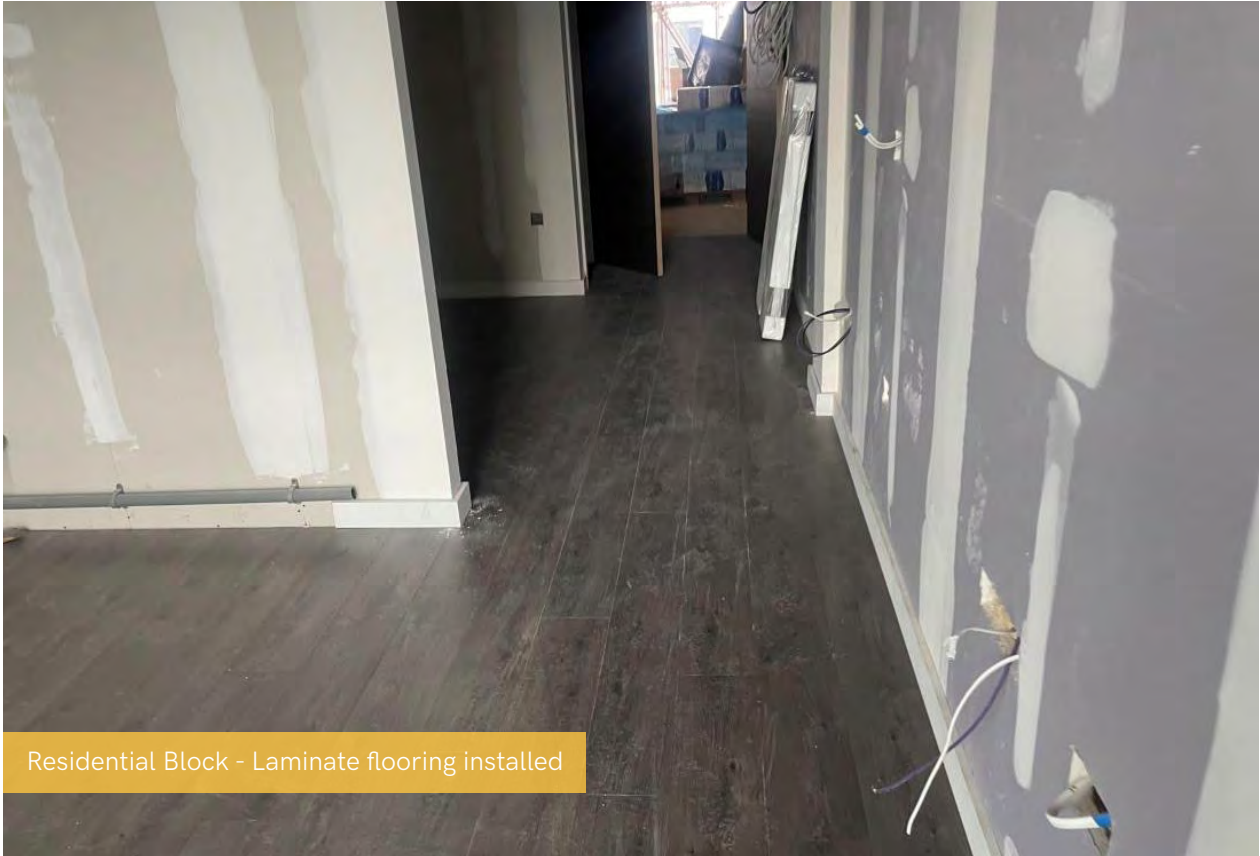
Student Wing - Walls & ceilings plastered



Residential Block - Internal walls boarded, taped and jointed



Residential Block - Kitchen units



Residential Block - Laminate flooring installed



Student Wing - Kitchen installation



Residential Block - Kitchen complete



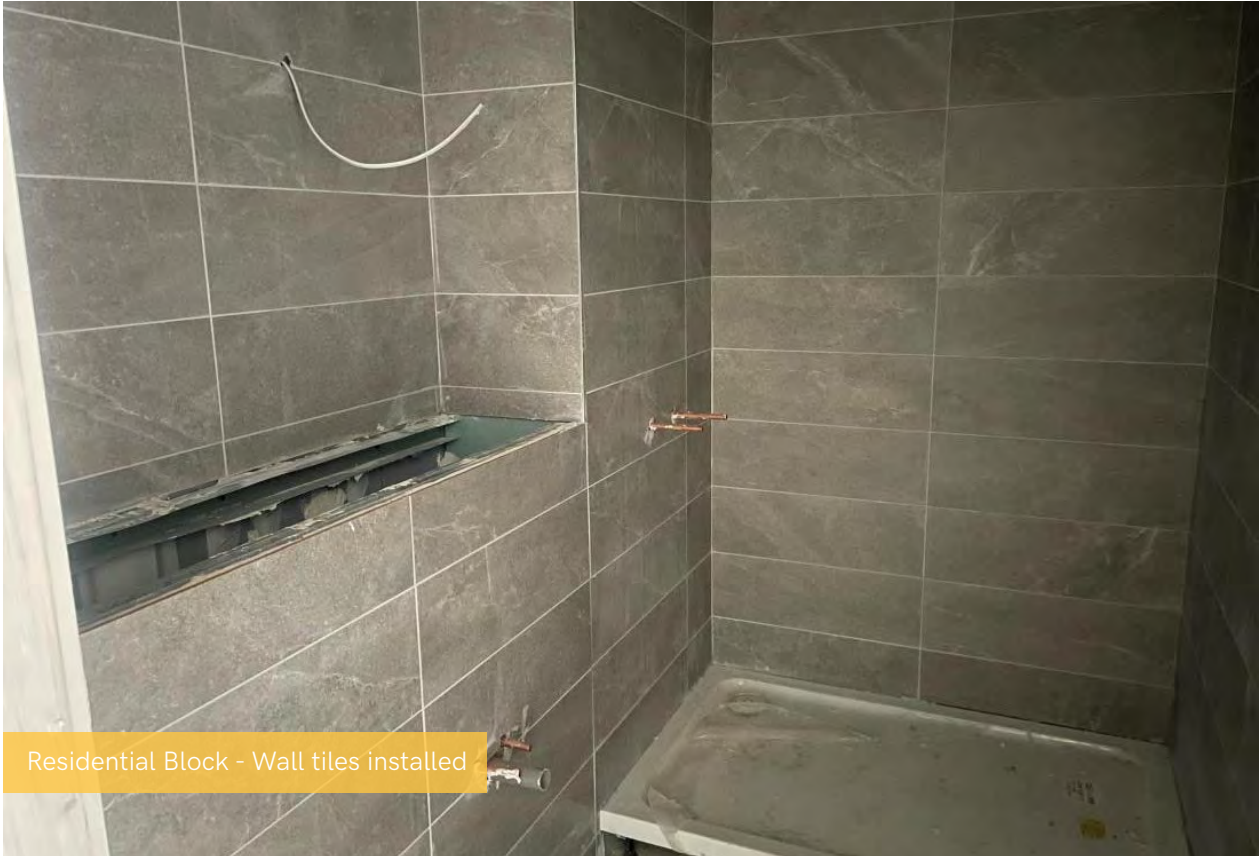
Residential Block - Splash back



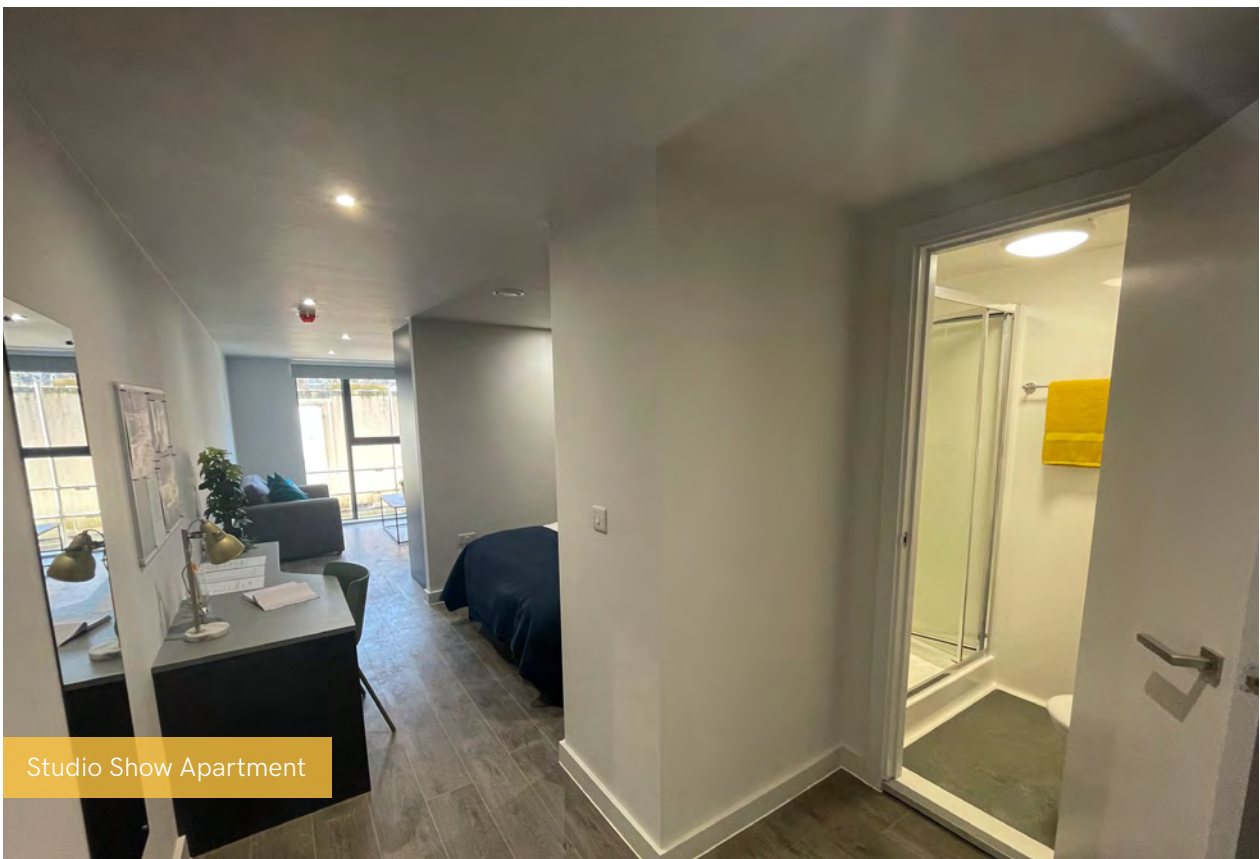
Residential - Block Microwave



Residential Block - IPS Installed



Residential Block - Wall tiles installed



Studio Show Apartment



Studio Show Apartment



Studio Show Apartment



Studio Show Apartment



Studio Show Apartment





Exterior Drone Footage



Exterior Drone Footage



Exterior Drone Footage



Exterior Drone Footage

