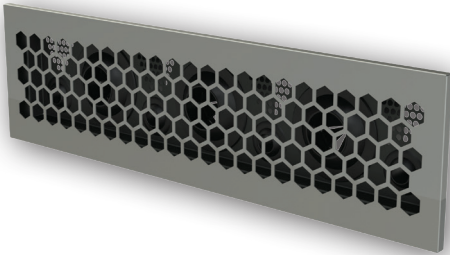


Pure competence in air.



Linear wall-mounted swirl air diffuser

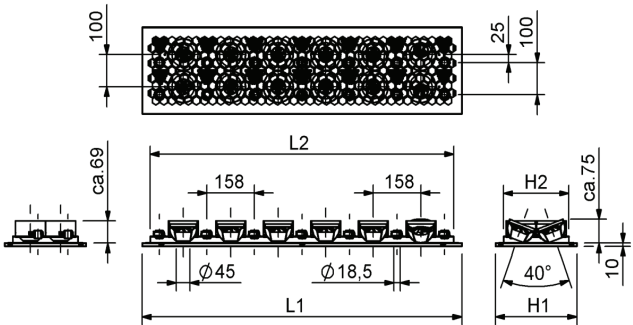
The SCHAKO LWD linear wall-mounted swirl air diffuser for the air conditioning of comfort areas is comprised of adjustable nozzles for the optimal provision of supply air into the room and a perforated sheet grille as the visible grille.

Technical features

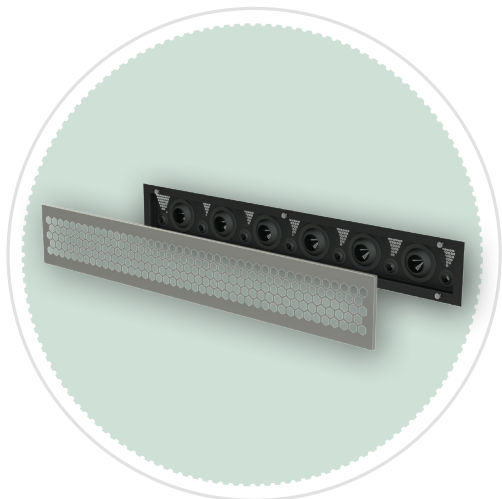
- Used in supply air systems
- Very high air volumes are supplied to the room at a low sound power level and a minimal air jet speed.
- Connection to the duct network occurs through direct duct installation or a plenum box integrated into the duct network.
- High induction is achieved when cooling, which effectively reduces the temperature and air speed.
- Thanks to the easy adjustment option of the installed nozzle bodies, the air jet can be individually adjusted to the room conditions.

Available sizes

	LWD-...- 00625-125-...	LWD-...- 01025-125-...	LWD-...- 00625-225-...	LWD-...- 01025-225-...
L	625	1025	625	1025
L1	589	1063	589	1063
L2	535	1009	535	1009
H	125	125	225	225
H1	163	163	271	271
H2	109	109	218	218



Technical changes reserved.



Areas of application

The air diffuser for high comfort

The LWD is mainly used for the air conditioning of rooms with high comfort requirements.

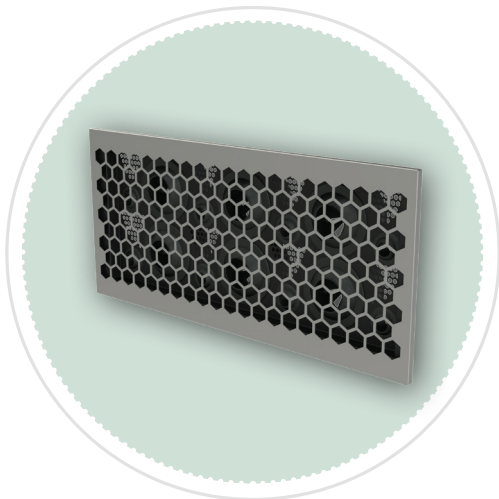
It is suitable for VAV systems with variable volumetric air flows of 40 to 100% and is used for supply air.

It is connected to the duct network either directly or with a plenum box.

When cooling, air volumes of 500 m³/h per metre with a ΔT of 8 K are possible. When ventilating or cooling, the most stringent comfort criteria are met thanks to very good reduction of the air jet speed and temperature differential.

Accessories

- Damper for air volume adjustment
- Rubber lip seal



Function

Cooling/Heating

The stable air jet and high induction mean that the LWD linear wall-mounted swirl air diffuser can be used for cooling up to a $\Delta T \leq 8$ K. The air jet generated by the nozzles with integrated swirl discs ensures that the speed and temperature are reduced evenly across its entire surface. Comfort criteria are optimally met.

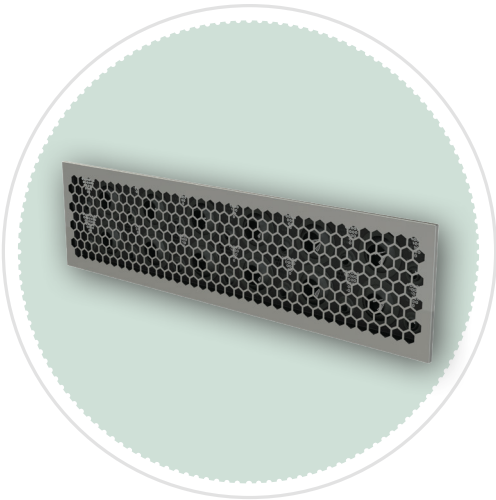
Thanks to its high induction, the LWD linear wall-mounted swirl air diffuser enables very good room flushing when heating and cooling. Efficient room flushing can be achieved even in the case of excessive temperature in the air jet.

Benefits

By using the LWD linear wall-mounted swirl air diffuser, the number of required air diffusers is reduced thanks to the possibility of conveying high volumes of air. Substantial cost savings are possible as a result.

Performance values

- Volumetric air flows of up to 500 m³/h per metre in the supply air at a sound power level of 35 dB(A).



SCHAKO stands for competence in ventilation and air conditioning technology. The quality standard and reliability of our products are well known throughout Europe. At our own test laboratories, we develop solutions which sustainably optimise the indoor climate in work environments and public spaces. With sites in Germany, Spain and Hungary, we deliver quickly and flexibly throughout Europe.

We carry a wide standard range and are ideally positioned to meet special air demands with individual and smart solutions as well.

Pure competence in air.

As specialists, the companies of **SCHAKO Group – ADMECO, NOVENCO Building & Industry, REVEN, SCHAKO, SCHNEIDER Elektronik, SIROCCO and SMITSAIR –** offer a unique portfolio of ventilation, air conditioning, smoke extraction & fire protection products and system solutions for operating theatres, commercial construction, public buildings, canteen kitchens, laboratories, the process industry, stairwells, underground car parks, tunnel systems and data centres.

SCHAKO KG

Steigstrasse 25-27
D-78600 Kolbingen
Germany
schako.com

Version: 2023-03-02

