

The Art of DESIGN

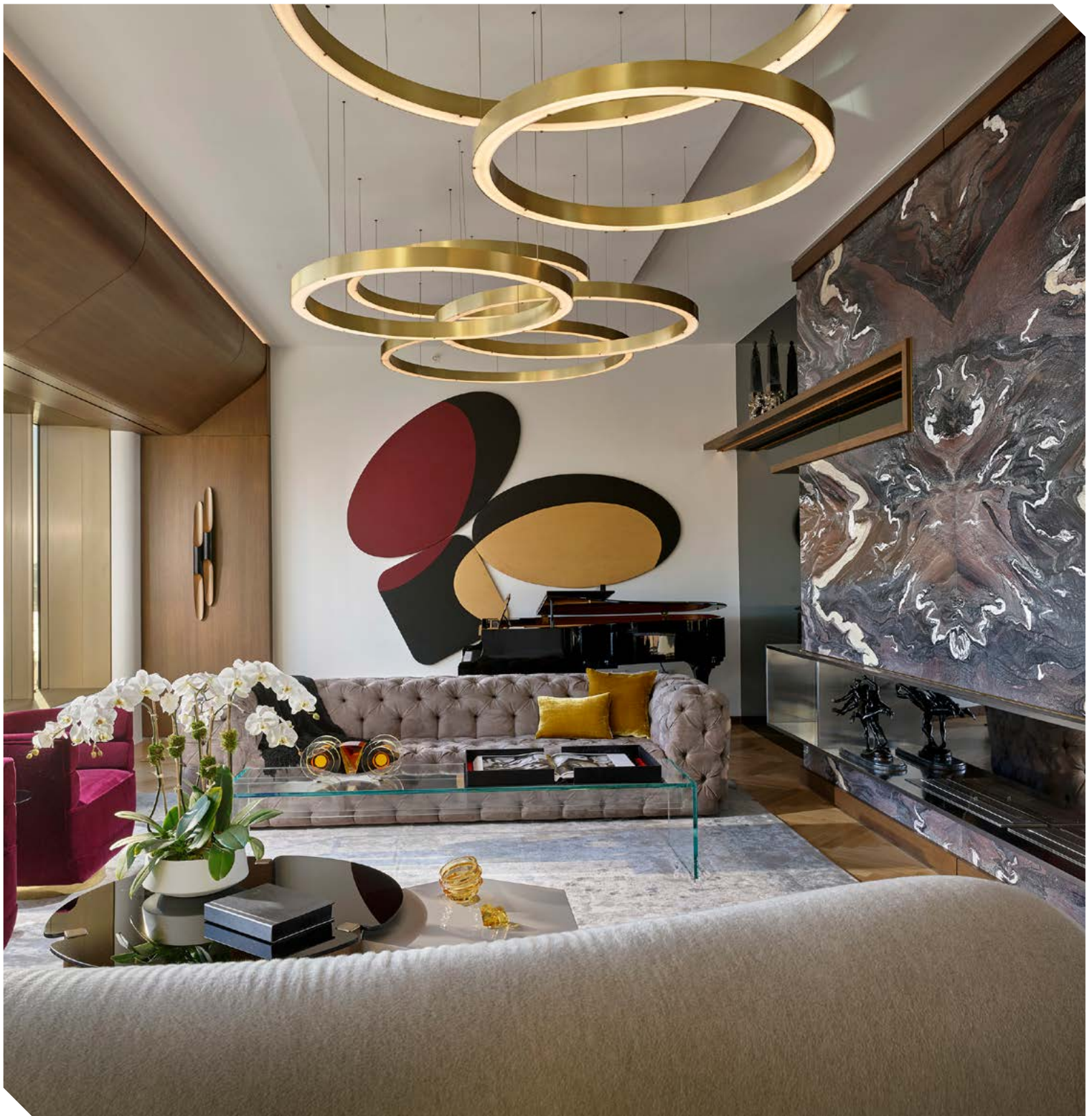
Issue 41 £4.95

Interiors

| Décor

| Bespoke

| Luxury Homes



STARPOOL

NEW DIMENSION IN LUXURY SPA & POOL DESIGN

Starpool is an international luxury spa and wellness brand with 40-years of experience and more than 3.000 project implementations in Europe and all over the world.



SAUNA
ELECTRICAL
INSTRUCTIONS

0333 939 8009

www.poolsaunaspa.com

sales@poolsaunaspa.com

STARPOOL

wellness concept

Your destination for design

Purveyors of iconic furniture,
lighting & accessories
from the most exciting,
international brands.



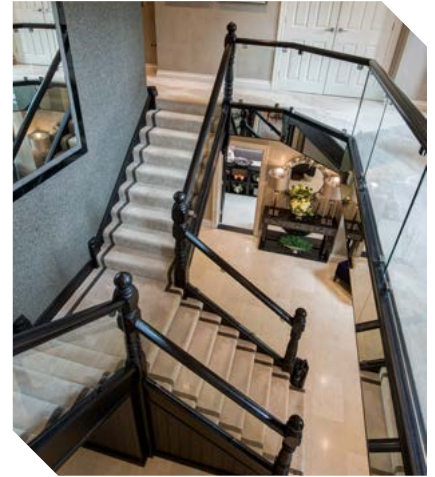
HOSPITALITY | COMMERCIAL | RESIDENTIAL

**Nest Contracts deliver premium
designer furniture to any project,
with quality guaranteed.**

With over 15 years of industry experience,
our expert team are on-hand to keep
your project on track.

**Speak to our specialists.
Call 0114 243 3000**

nest.
CONTRACTS



CONTENTS

06

Private residence of Kelly Hoppen MBE

Kelly Hoppen MBE's 9,000 square feet home in London is an homage to her talent as one of the most celebrated interior designers of our time.

24

Oxshott Oasis - Al Fresco Entertaining in Sociable Surrey

When undertaking a complete renovation, Hill House considered how the building and its gardens may be changed to serve a family who were now all grown up, whilst retaining its character.

18

Harmonious Exclusive Residence In London, UK

Created by Laith Abdel Hadi, an interior designer based between Dubai, London, and Saudi Arabia and known for his unpredictable design projects.

32

Drummonds

Malta's 'Balluta Buildings' are an Art Deco gem. Built in 1928, they were the largest and most luxurious apartments in Europe at that time.

Editor in Chief

Antony Holter

T: 01304 806039

E: editor@mhmagazine.co.uk

Sales Director

Judy Yuken

T: 01227 936977

E: judy@theartofdesignmagazine.com

Studio Designer

James Sayer

T: 01304 806039

E: james@mhmagazine.co.uk

Editor

Rebecca Keating

T: 01304 806039

E: rebecca@theartofdesignmagazine.com

Digital Manager

Jamie Bullock

T: 01227 936971

E: jamie@mhmagazine.co.uk

Accounts Department

Alison Holmes

T: 01304 806039

E: accounts@mhmediaglobal.com

Publishing Director

Martin Holmes

T: 01304 806039

E: martin@mhmagazine.co.uk

Business Manager

Josh Holmes

T: 01304 806039

E: josh@mhmagazine.co.uk

MH Media Global Ltd

Office 15, Second Floor, Innovation House,
Discovery Park, Ramsgate Rd,
Sandwich, Kent, CT13 9FD



Cover Image Courtesy of:
Upper East Side Residence / Barry Grossman



The Art of Design
is proud partners with



PRIVATE RESIDENCE OF KELLY HOPPEN MBE

Kelly Hoppen MBE's 9,000 square feet home in London is an homage to her talent as one of the most celebrated interior designers of our time. Having taken one year and 3 months to complete, this ancient auction house boasts six bedrooms and bathrooms, walk-in wardrobes, a study, a gym, underground parking, a laundry and flower room and a large open-plan high ceiling living/dining/kitchen space, along with a breakfast area. Kelly Hoppen designed her new home in her signature style, using her neutral colour palette of taupe, whites,

beiges and greys, complimented by beautiful pops of green, bronze, nickel and rose gold. The designer's love for texture is obvious, enriching and adding a new dimension to the space.

As you enter into each room of the stunning property, you are captivated by its elegance, softness, extraordinary art collection and fantastic views. Each area is as inviting and intriguing as the next, imbued with luxury whilst remaining true to Kelly's laid back lifestyle.

Iconic and vintage furniture can be seen throughout as well as bespoke pieces designed by Kelly Hoppen herself. In fact, the ambitious project is a true picture of the British designer's famously sought after style. Kelly's design philosophy has always been to create timeless and understated elegance whilst fusing the eastern principles of simplicity and the western taste for sumptuous textures and luxurious finishes.

Situated in a residential area in London, the property was a dream of Kelly's, which finally became a reality.

The ancient auction house was a blank canvas for the designer whose starting points were the impressive columns that are the core of the structure, linking the vast panels and staircase in the main space. Kelly Hoppen elegantly plays with texture and material, mixing different shades of wood and metals, something which is very characteristic of her world renowned style and the basis of the entire project.

The bespoke light in my entrance hall is the result of a discussion with Herve Langlais and Galerie Negropontes at PAD London. It is a great addition to the entrance and draws

beautiful vertical lines that emphasize the height of the ceiling.

The soft curves of the metal around the delicate round paper shades are to me, the perfect balance.

The area is tastefully accessorised and decorated with flowers and black and white photographs. Kelly found the round mirror at Les Puces flea market in Paris. It was originally found in a train station in Eastern Europe, on the side of the railway. A striking image of Marilyn Monroe from the Michael Hoppen Gallery hangs in the entrance hall as well as an imposing photo of Mohamed Ali.



These are part of Kelly's art collection that she has been gathering over the years. It is very special to her. I used up-lighting for the sleek stairs that lead you to the main open-plan living area, adding to the elegance of the space.

The long marble ledge that starts from the entrance steps, runs against the wall all the way to the study located on the other side of the living area.

This creates a continuity within the space and is a stunning architectural feature. Kelly also use this to display pieces she has collected during my travels, Kelly's home jewellery and her artwork, which is easily interchangeable depending on my mood and the season.

Kelly has seductively designed the living room with stunning wooden floors. These shade of the floorboards took 6 months to perfect, finally obtaining the perfect tone. The main idea behind the design of this space was the designer's love of hosting.

Wooden arches were added to the impressive pre-existing columns, lighting up and adding monumentality to the space. The pendant lights above the seating area and dining table were lowered to balance out the space.

Indeed, balance was extremely important to bear in mind when designing this area of The Auction House due to its vastness and open-plan nature. The bespoke lighting has the capability to dramatically and softly light up the room, suiting all moods and ambiances.

The stunning bubble lights above the seating area are designed by Kelly and stand in stark contrast to the straight lines of the lights above the dining table, yet they do not clash. The glass bubbles are almost floating and add to the balance of the main space.

The golden disk floor lamp is a sculpture called the Ribot lamp by DeCastelli. Kelly designed the sofas and armchairs of the living room and some of the pieces are from her own range. The Le Corbusier armchair upholstered in linen is just the right mix of natural materials and modernist design. Naturally lit during the day, the dining room overlooks the living room and kitchen. Often used for special occasions and evening meals, the dining area is full of character.

A large bespoke Kelly Hoppen pendant light elegantly hangs over the beautiful 6 metres stone dining table. This was specifically designed for this space and one can truly see that it is where it is meant to be.



It is certainly the right piece for the right space. This lovely private TV room can either be open onto the dining room or closed off, thanks to its beautifully innovative lacquer shutters. These sleek rotating doors allow you to enjoy a film peacefully secluded from the rest of the house whilst also making a great visual impact, adding a new dimension to the space.

www.kellyhoppen.com





Make
your space
the place

ROOMS
BROUGHT TO
LIFE

Benif™ interior film

Commercial use for walls, decorative panels, doors, architrave and furniture. Benif™ is a range of self-adhesive interior films which will bring any room to life.

Call: +44 (0)1376 518037

Announcing the
Tollgard Pop-up.
Please pop in!

TOLLGÅRD
POP UP

Great design holds a story.
Come and tell us yours.

This Autumn we are delighted to host a Tollgard Pop-Up in the Design Centre, Chelsea Harbour. Showcasing even more of our favourite things, hand-selected from around the globe, we are really looking forward to welcoming you. Pop in!



Design Centre, Chelsea Harbour
First Floor, Lots Road, SW10 0XE
info@tollgard.com



MATT LIVSEY HAMMOND LTD

Founded over 24 years ago, Matt Livsey Hammond Ltd have firmly established an impressive portfolio of work and an enviable international reputation as crafters of fine metalwork. With a dazzling and eclectic catalogue of projects ranging from sweeping balustrades in palaces, hotels and private homes to bespoke furniture and lighting pieces which are sculptural in their detail and beauty, the company specialise in filigree work, curving balustrades, furniture, lighting, mirrors, interior gates and ornamentation.

All pieces are handmade to the highest standards combining traditional blacksmith arts, carving and casting methods with modern hi-tech production techniques where appropriate. A wide range of metals can be worked including wrought and cast iron, steel, bronze, aluminium, copper and brass, incorporating other natural materials such as glass, wood, stone and precious stones where appropriate to the design. A wide range of finishes is available including

chemical patination, clear and coloured waxing, specialist paint finishing, gilding and electroplating.

Commissions have included elaborate curving balustrades for a French chateau, luxury Verbier chalet and magnificent Mayfair townhouse, along with finely sculptured super-sofas, interior gates and enormous steel, wood and glass cabinets for a London mansion. Recent commercial work has included a grand, sweeping stair balustrade, bespoke intricate chandeliers, mirrors, wall-lights and table lamps for a private club in Mayfair, and ornate balustrading and bespoke chandeliers for a Piccadilly restaurant. Recent private projects have included a sweeping balustrade and gates for the grandest of villas in Kazakhstan, a solid bronze curving balustrade for a house on the Wentworth Estate, an 80 metre balustrade for a mansion on the Bishop's Avenue and several balustrades for an historic Chelsea home.



Matt Livsey Hammond Ltd provides a complete service from design and construction to fitting and finishing. However an advisory and design-only service is also available. Examples of work can be viewed on their website at www.mattlivseyhammond.co.uk or email them direct at matt@mattlivseyhammond.co.uk



Matt Livsey Hammond Ltd produces fine bespoke balustrading, gates, furniture and architectural metalwork.



With 24 years of experience, Matt Livsey Hammond Ltd has an extensive portfolio of work and wide experience in working with architects, interior designers and individual clients to produce unique pieces. The company specialises in filigree metalwork, curving balustrades, furniture, lighting, mirrors, interior gates and ornamentation.



THE ESTABLISHED
CARPET BRAND
INVICTUS® NOW
BRINGS YOU LUXURY
VINYL FLOORING

www.invictus.co.uk



INVICTUS[®]

INVINCIBLE CARPET & FLOORING



Associated Weavers, the maker of Invictus[®] carpet, presents Invictus[®] luxury vinyl flooring.

With the same attention to quality, the same eye for exclusive designs, and a unique performance level, Invictus[®] luxury vinyl flooring is the perfect match to Invictus[®] carpet.

Always a trailblazer when it comes to branding, Associated Weavers reinvents the in-store display and brings an experience unseen in the flooring business. With traditional samples and an intuitive digital module, Invictus[®] luxury vinyl flooring invites the customer on a fun-to-do purchasing journey.



**A UK brand
since 1964**

CABINET GETS COOL AT JANUARY FURNITURE SHOW 2020

At the forefront of modern furniture design, visitors to the January Furniture Show in 2020 will see major cabinet brands set trends, be eco-friendly and capture the attention of buyers looking for a new take on 21st Century form.

The 4-day trade show takes place at Birmingham's NEC and runs from 19th-22nd January 2020. A core element of the show since its inception, visitors in 2020 can expect to see new, well executed cabinet designs for living, dining, bedroom and home office - that will deliver longevity, ingenuity and huge desirability for both residential and commercial spaces.

Cabinet has seen a big step change in recent years with the introduction of mixed materials – marble, stone, metal and glass, and the use of reclaimed and repurposed woods. This multitude of materials combined with a vast array of finishes has seen cabinet embrace variety and means it can be more individual than ever.

Companies at January Furniture Show who are striding forward with design and the use of new materials include Rowico who will introduce 9 different Scandinavian influenced collections. Using metal, bleached woods, dark woods, sustainable materials and contemporary lines, buyers will be spoilt for choice.

Another company with a big story to tell and on an upward trajectory is Birlea, who recently acquired Willis & Gambier - its core ethos is to produce beautifully designed furniture and it has over 50 individual collections to its name. Baker Furniture and Bentley Designs are two

British companies on the march, both have individual signature styles and produce contemporary and practical furniture for modern living.

Kesterport with their sound ethos of being design led, value orientated and service driven, will again show their forward looking designs. Designing furniture for 21st Century living leads them to use sustainable materials, new materials and new and faster methods of production. As well as a strong retail presence their furniture has wide commercial use – gracing some of the world's most prestigious buildings including the Burj Al Arab and the Houses of Parliament.

High-end European cabinet furniture is a must-see at January Furniture Show.

Companies from Italy, Denmark, The Netherlands, Poland, The Republic of Ireland and Germany are among those bringing their beautifully designed and perfectly executed cabinet ranges.

ALF, Alfrank, B4 Living, Camel Group, Hartman, Rauch, Skovby and Weimann are among those showing their latest living, dining and bedroom collections. High gloss, modern engineering and streamlined shapes will merge with modular design to produce desirable furniture of distinction.

Bursting with cool, inventive and expertly made cabinet furniture, January Furniture Show is the place to kick off the search for new furniture for a new decade.

For information on all of the exhibitors at JFS 2020 please go to: www.januaryfurnitureshow.com



January
FURNITURE
SHOW

NEC
19-22 JAN
2020

THE
HOME
OF
FURNITURE



Register now at januaryfurnitureshow.com



HARMONIOUS EXCLUSIVE RESIDENCE IN LONDON, UK.

INTERIOR DESIGN PROJECT BY LAITH ABDEL HADI

"My client's request was to create a curated space with a feel that pieces were collected over time."

Laith Abdel Hadi

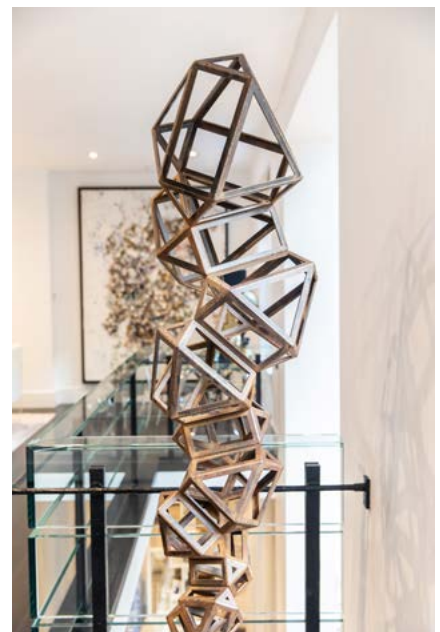
Created by Laith Abdel Hadi, an interior designer based between Dubai, London, and Saudi Arabia and known for his unpredictable design projects, this Contemporary Residence enhances perfectly the balance between bright colors, strong contrasts and the elegance of some the most wanted pieces by Boca do Lobo.

A harmonious space full of exclusivity that Laith sketched from the very beginning.

The key to make this unique project is to have as the center stage the client's art collection. Therefore, the walls are painted in crisp white to have the art speak and stand out. The Designer thoughts worked around the colors of a peacock feather: blue, green, caramel for the formal area. The ambiance is filled with shaped and sharpened forms to create more dimension and life growing through the ground.

"The Boca Do Lobo Versailles sofa was the focal point for me in the formal lounge which was custom upholstered in a rich deep blue velvet...the sofa was a perfect fit to such an eclectic space"

Laith Abdel Hadi



Right in front of the firework stands out opulence and wide-open eclectic living room. Art is detailed in every piece of furniture in the house. Contemporary and maximalism styles are the main combination of the room and together create the perfect juxtaposition.

By the dining area, white and neutrals are the king and queen. However, this outstanding design corner only works with the white and blue-tiled sideboard. The kitchen countertop was a challenge for its size as it's entirely made of blue agate crystal, which we had made and flown from India to London. Heritage Sideboard, from Limited Edition, dictates an overall look and feel about this unique space.

"I added the Heritage sideboard in the dining area that worked perfectly with the kitchen blue agate countertop to pull in all the different shades of blue."

Laith Abdel Hadi



Minotti, Jonathan Adler, Eichholtz, Tom Dixon, The Rug Company, Hudson Furniture NY by Barlas Baylar just to name a few, are other luxury and exquisite brands that the designer chose for this inspiring interior design project.

“One of the brands, I worked with on this project is the obvious choice of Boca Do Lobo. I genuinely love the ex-aggerated fantasy-like art pieces they created, which I believe will be sought after collectibles 20 years from now.”

Laith Abdel Hadi



But, no matter what, the interior designer always works closely with his clients to create an interior design project that reflects the clients' style and personality, always pushing the boundaries of style and design a bit further.

VERSAILLES SOFA

The creativity and rich decoration of the Versailles Palace contributed to the inspiration of the creation of this exu-berant sofa. Boca do Lobo opens the way to freedom and the need of bringing extravagant creations to life.



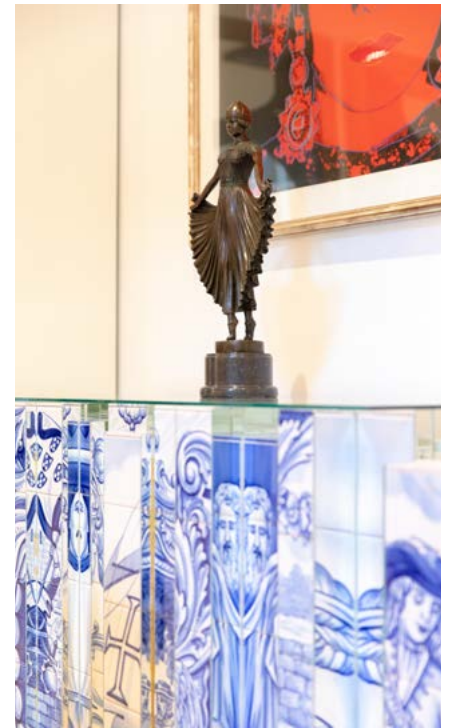
HERITAGE SIDEBOARD

Hand-painted-tiles have gained a privileged place in architecture throughout the centuries.

Portugal has adopted them like no other country has and in order to honor the Portuguese hand painted tiles, Boca do Lobo created Her-itage Sideboard.

This piece presents a different number of layers, where each one tells a different story.

www.bocadolobo.com/en





CUSTOM ELECTRONIC DESIGN

Introducing 'M.Cab', a range of wall-mounted cabinets to house your TV, sound bar and media devices. No more clutter or visible cables.

Available in 3 standard sizes, M.Cab is designed to work with 65, 55 & 43" TVs, with cupboard space beneath to conceal the latest slim-line audio visual & gaming equipment.

Ultra-slim. With a depth of only 22cm M.Cab doesn't take-up much space; in fact, it is designed to wall-mount - which even keeps the floor clear.

M.Cab comes in 5 standard colours or can be custom spray painted to match the decor of your room.

Along with your M.Cab we can also supply and install a range of TVs, surround sound speakers and Audio Visual (AV) & gaming equipment.

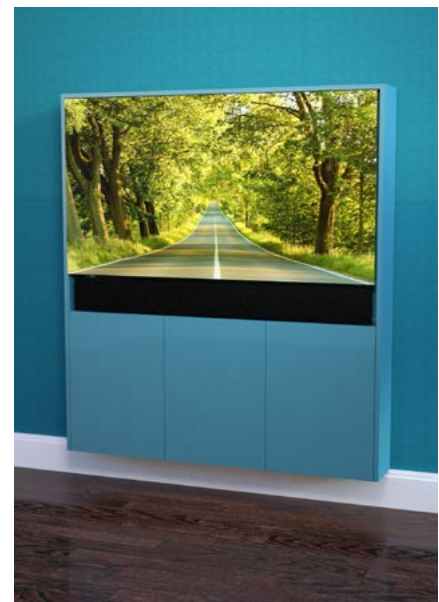
Ideal for gamers, box-set enthusiasts and movie fans; there's an M.Cab to suit all needs!

M.Cab options can be delivered & fitted in a day* so you can be catching-up on broadcast TV, streaming the latest 4K movies, watching

sport or playing your favourite games in no time! Designed by CEDIA member audio-visual installers & built by joinery specialists we believe that M.Cab looks as good as it sounds!

Key features

- Wall-mounted
- Shallow and compact design (only 22cm deep)
- For new-build and retrofit installations
- Available in 3 sizes- perfect for Living Rooms, Bedrooms, TV/Media Rooms and Home Offices.
- Boardrooms & break-out spaces, hotel rooms & commercial/hospitality applications
- Choice of 5 standard paint finishes
- Custom finishes available on request
- Choice of TV & sound system packages
- Accommodates (subject to version) SkyQ, AppleTV, PlayStation, Xbox, Sonos, compact MACs, PCs and other slim-line devices.
- Supply, install & commissioned, normally, within one day*



- Modular- can be expanded to provide left & Right Front speakers as part of a full surround sound system
- Copyright CED Ltd

*Subject to survey

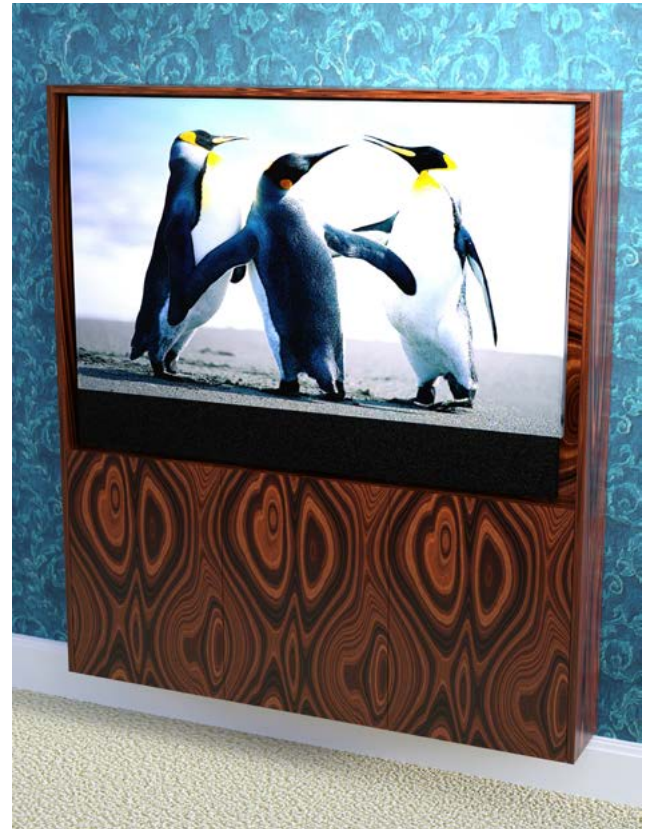
Tel: 01784 470881

info@customelectronicdesign.co.uk

www.customelectronicdesign.co.uk

Custom *electronic design*

• Smart Home Solutions • Home Cinema • Hi - Fi • Lighting





OXSHOTT OASIS

AL FRESCO ENTERTAINING IN SOCIABLE SURREY

When undertaking a complete renovation of this much-loved detached family residence, Hill House considered the degree to which the building and its gardens may be changed to serve a family who were now all grown up, whilst retaining its character.

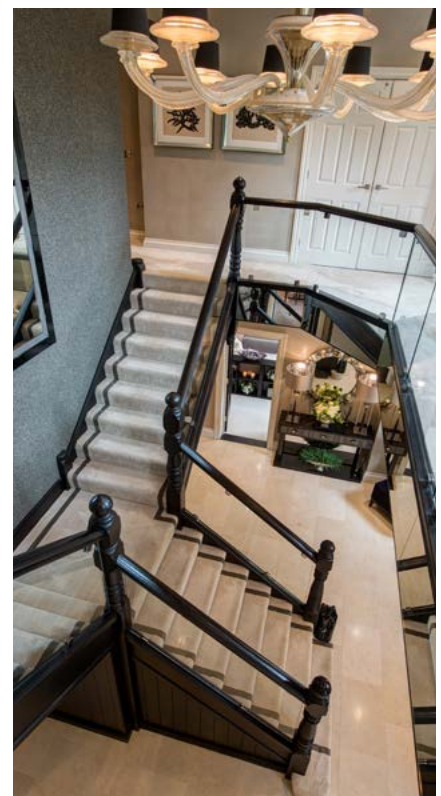
Finding oneself in the outdoor space, the eye now lingers on their beautiful, hand carved contemporary wooden pergola with three suspended bespoke pendant lamps. This original take on garden lighting for evenings around the twelve-seater Gloucester wooden table and rattan chairs creates the most stunning of settings, accompanied by a backdrop of expertly landscaped topiary for laid back sophistication.

“There’s nothing quite like outdoor entertaining,” comments Helen Bygraves, Hill House’s co-founder. “But it can be difficult to create the right arrangement that caters

for anything from casual weekend BBQ’s to more formal dinner parties. We think with this amazing space we have managed to do both.”

“The pergola offers something a little more special than the usual open-air patio style. We purposefully selected the Andrew Martin cushions to complement the bespoke linen table runners, and the addition of the chic accessories and classic florals really elevates the dining area to another level of sophistication.”

“Outdoor entertaining should be an extension of the home, and when guests retire to the more relaxed seating surrounding the fire pit after dinner, they can lounge on the soft cashmere throws from the formal drawing room, which work just as well outside as they do indoors.”



Bringing the outdoors in, we encounter an outstanding example of spatial design and exquisite eye for detail. The outside flows into the airy new orangery, complete with a full height sunburst window, with ease. The beautiful arched window is dressed with bespoke plantation shutters to allow for uninterrupted views over the extraordinary garden and pool area.

This peaceful room was created for relaxation and reflection, the soothing tones enlivened with a timbale of textures and finishes on walls, soft furnishings and the custom-made cabinetry. Gentle injections of teal – from the hand-blown glass lamps to the lining of the curtains – link perfectly to the mixed accents of colour outside, resulting in a serene space for the whole family to enjoy.



“The orangery is our client’s favourite room, and it’s such a beautiful bridge between the exquisite gardens and the rest of the house,” explains Jenny Weiss, co-founder of Hill House Interiors. “The room is used predominantly for reading and listening to music, and its calming influence is felt almost immediately.”

Glass doors from the orangery lead into the open plan kitchen/diner/living space – another must-have for the family, who have two teenage children living at home. A grand central island and breakfast bar create the scene stealer, enhanced with bespoke cabinets and kitchen units designed by Hill House in collaboration with master craftsmen Pedini. The adjoining unused drawing room was developed into an interesting multi-functional entertainment space that suited the family’s lifestyle. A home bar was incorporated as an extension of the main seating and entertainment areas, introducing accents of aubergine carried over onto floristry, linking the two areas through colour.

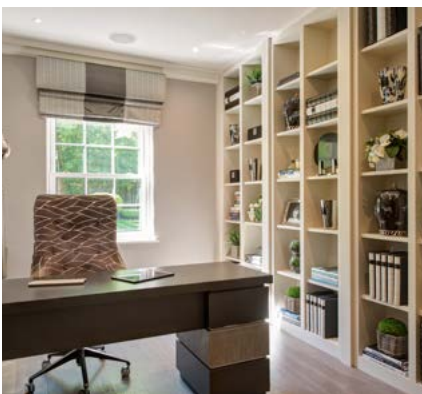
Perhaps the biggest transformation of the project is the dramatic entrance hall,

opened up to the floor above with a split glass-panelled staircase. Soft Silka carpets running down the stairs pair seamlessly with Jerusalem crema grey marble flooring, and a designer chandelier over the first-floor galleried landing supported by custom accent lighting creates a welcoming ambience that permeates all levels.

Helen explains, “The hallway is the first thing guests see when they enter a home, so it’s always a key feature and starting point of any scheme. All the principal rooms lead from the hallway and need to continue to delight and impress, hence the formal drawing room comes with a bespoke lacquered oak bar, and on the first floor, the super-size master bedroom with luscious en-suite and walk in dressing room equals those enjoyed in the most exclusive world-class boutique hotels.”

“The client loved our transformation so much, she has already briefed us on another property which we will be starting imminently!”

Telephone: 01932 858 900
Hillhouseinteriors.com



WHERE INTERIOR DESIGN COMES ALIVE

FESPA GLOBAL PRINT EXPO 2020 | 24 - 27 MARCH 2020 | MADRID

Inspired by nature, **Printeriors 2020** brings the print community together in a celebration of interior decoration. Featuring Textiles, Wallcoverings, Furniture and Surface effects, Printeriors aims to showcase the growing application of digital print technologies in the interior marketplace.

FESPA
GLOBAL
PRINT EXPO

Madrid
24-27 March 2020

www.printeriors.net

REGISTER FOR FREE
USING CODE **PRNA204**

2020

PRINTERIORS

24-27 MARCH 2020
MADRID, SPAIN

Bergmann Three Seat Sofa – Navy Blue*Frankfurt Three Seat Sofa – Bottle Green**Selini Three Seat Sofa – Peacock**Monty Two Seat Sofa – Mustard*

DESIGNER PIECES, AFFORDABLE PRICES

MY Furniture pride themselves on offering original products of exceptional quality, at remarkable prices.

With generous, deep foam and fibre fillings, and sprung seat and backrests, the construction of their latest pieces is just as impressive as the designs themselves.

Alice

Inspired by the golden age of Hollywood, the head-turning Alice collection is sure to make a style statement.

It features an armchair, a two-seater and a three-seater sofa; all of which are available in a choice of plush velvet fabrics.

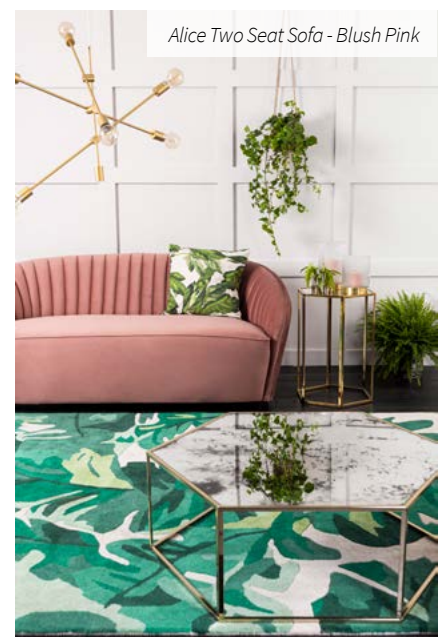
Priced from just £479.99, the new Alice collection is sure to bring 1920's glamour to any interior, at an affordable price.

Selini

With its streamlined silhouette, clean lines and gentle curves it is clear to see that the new Selini sofa takes inspiration from Mid-Century American furniture. The combination of the steel plinths and luxurious velvet fabric gives this sculptural sofa real wow-factor. There are six colours to choose from, with either mirror polished or brass finish steel plinths. Priced at just £899.00.

Monty

Also new is the Monty, available as a two or three seater and in a choice of six beautiful shades. With a sprung seat and backrest, it offers supreme comfort not to mention style. The sinkable deep cushions and softly padded high scroll arms complete the look, making this a perfect homely sofa in which to relax and wind down. Priced from £689.99.

*Alice Two Seat Sofa - Blush Pink*

**For further information visit
www.my-furniture.com or call
0800 092 1636**

my furniture



enquiries: 0800 092 1636

to open a trade account visit: [my-furniture.com](https://www.my-furniture.com)



SKYESKYNS, THE SCOTTISH SHEEPSKIN SPECIALIST

ISLE OF SKYE

Established in 1983, Skyeskyns, based in Waternish on the beautiful Isle of Skye, is the sole remaining commercial and exhibition woollens tannery in Scotland.

Skyeskyns is now run by the second generation of the Hartwell family who are helping to steer the business through the 21st Century, producing and stocking the highest quality, hand-crafted sheepskins, leather and woollen goods, and adapting the business to fit with the highest possible environmental and sustainability goals.

The two generations of the Hartwell family share a passion for working in and with the landscape, conserving and cherishing both artisan skills and the environment. Lambskins have always been a by-product of farming in Britain, where we have the highest standards of animal welfare. Skyeskyns works closely with their mostly Scottish and British suppliers to ensure that all their lambskins are ethically sourced and carefully selected

to produce the most beautiful and durable fleeces.

These products include single sheepskins in a variety of natural colours, larger natural shaped rugs made up of several fleeces sheepskin bean bags, pouffes and cushions, as well as cow and reindeer hides. Sumptuous mosaic sheepskin rugs, exclusive to Skyeskyns, are available in a range of sizes and colour variations, adding luxury, texture and comfort to any setting.

After hugely successful trials, Skyeskyns has recently moved to mimosa (or veg) tanning all of their sheepskins, a biodegradable and natural process. An ancient, traditional hand crafted and natural process, mimosa tanning travels into the past to take the business forward into a sustainable future, allowing for the production of the very best quality sheepskins the business has ever produced and cementing the Skyeskyns reputation for quality.



The Skyeskyns team have experience working with interior designers and architects and, together with their in-house tanners and seamstresses, are happy to discuss any bespoke requirements for tailor-made products.

Skyeskyns Ltd
Office@skyeskyns.co.uk
17 Lochbay
Waternish
Isle of Skye
IV55 8GD
www.skyeskyns.co.uk



**LUXURY RUGS AND THROWS,
BEAUTIFULLY HANDCRAFTED,
AND LOTS OF GORGEOUS
INTERIOR ACCESSORIES, ALL
LOVINGLY DISPATCHED FROM
THE ISLE OF SKYE**



SKYESKYNS
ISLE OF SKYE

WWW.SKYESKYNS.CO.UK



MONOCHROME

Malta's 'Balluta Buildings' are an Art Deco gem. Built in 1928, they were the largest and most luxurious apartments in Europe at that time. Apartment 3 is one of the first to undergo major renovation and the client's brief to local architectural practice, Cuschieri Architects was to restore the space to its former Art Deco glory, with the addition of modern comforts.

Down to the smallest detail, the choice of materials, fixtures and fittings was crucial throughout, maintaining authenticity and reflecting the exceptional quality of the original apartment. The master bathroom, designed to be amongst the major wow factors of the apartment, places Drummonds classic bathroomware centre stage amongst the spectacular finishes including marble and geometric tiles and pays homage to the sheer glamour of the Art Deco period.

Shown here is the Master Bathroom where Drummonds' wide range of specialist metal finishes allowed the architects to choose Brushed Brass for taps and accessories, introducing a warm note to the coolly monochrome palette. The freestanding Humber bath has a bespoke raw finish.

Coll Lever bath & shower mixer with China Lever handles on H-Stand: from £2376

Coll Lever basin taps with China Lever handles: £1170.

Eden low level WC suite with China handle & standard loo seat: from £2406

Five bar wall mounted heated towel radiator: from £2502



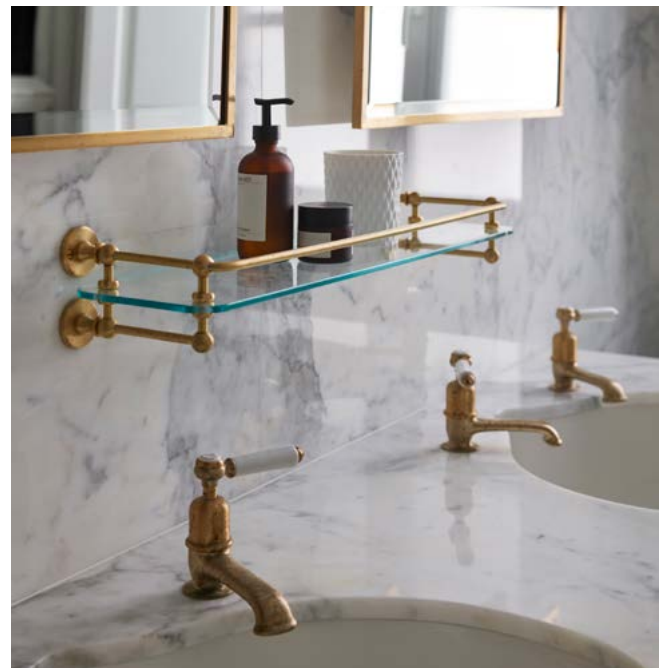
ACCESSORIES

- Single Chessleton wall lights with conical shades: from £474 Robe hook: from £54
- Rectangular tilt mirror: from £828
- Single Arm Loo roll holder: from £174
- Freestanding Toilet Brush Holder: from £354
- Large bath rack: from £582
- Single glass shelf: from £342

All finished in Brushed Brass

Architecture & interior design by Cuschieri Architects

www.carchitacts.eu





BACK IN 1994, ALBION'S FOUNDERS HAD A MISSION

- to create the ultimate bathtubs. After looking at the market it was clear that only two materials were available at the time. Acrylic, which is a soft plastic, became popular in the 1970's due to ease of manufacture and low cost. However, acrylic's properties fell short of what the customer wanted. It's flexibility was always an issue. People reported a dread of taking a bath, as they felt the tub might break under their weight. People also said that acrylic was easy to scratch and always had a 'cheap look about it'. These shortcomings still remain today.

Cast Iron has been used for approximately 120 years. It gained a reputation for being the 'real-thing'. However, cast iron has many drawbacks, such as excessive weight, incredible heat loss from the bathing water and proneness to surface chipping. Homeowners also found that liquid cleaners would ruin the white interior surface.

After two years of development, Albion had it sorted. A new material was created from an amalgam of high technology resin and a special reinforced mineral.

Manufactured in their own factory, this material was named Iso-Enamel due to its high strength and hard surface. This formulation is cast into moulds and allowed to harden. The result is a strong, durable and luxurious construction that gives years of bathing enjoyment. Also, Albion baths will keep your water hotter as our material insulates rather than conducts heat.

To this day, their unique process offers benefits that other materials cannot provide. Their range of baths are split into two families: Roll Tops, which have a soft rolled edge, and Bull Nose which are characterised by a continuous form from inside to outside. The exterior of our Roll Top baths can be customised; choose from our selected paint range, one of our three exclusive burnished metallic finishes

The exact way the baths are made is a bit of a secret! The materials and processes are unique to Albion - so they're keen not to give the game away. What they can say is that an Albion bath is a multi-layered construction of special resins and stone powders. The surface is high-gloss, bright white enamel.



This is harder than acrylic - and compared to cast iron, our coating is less prone to chipping.

An Albion bath is approximately 1/3 the weight of a cast iron bath. This core also insulates your bathing water.

Albion now manufactures hand made bathroom furniture in a variety of sizes and styles.

To suit your bathroom ideas, Albion's furniture can be painted to a colour of your choice - giving you the ultimate solution for your new, classical bathroom.

www.albionbathco.com

What's unique about an Albion Bath?



We first began making fine free-standing baths over 20 years ago using our own special material: Iso-Enamel, keeping your bath hotter for longer, and at only a third of the weight of cast iron.

Request our 276 page brochure for our range of 50 beautiful traditional bath tubs.

+44 (0)1255 831605 | albionbathco.com

ALBION

BATH COMPANY



TWENTY GROSVENOR SQUARE

At Twenty Grosvenor Square, Mayfair, Finchatton has partnered with Four Seasons Hotels and Resorts, the world's leading luxury hospitality company, to offer the first standalone Four Seasons Private Residences in the world.

The 250,000 sq. ft. building has incredible amenities including private wine cellars, a spa with a 25m swimming pool, a treatment suite with steam room and sauna, a state-of-the-art gym, games room, a cinema, business suite, crèche, a garden library and a private landscaped courtyard.

Developed and masterfully designed by Finchatton, in collaboration with award winning architects Squire & Partners, this brand-new building has been lovingly created behind the historical façade of Grosvenor Square.

Benefitting from Finchatton's nearly 20 years of experience of designing and building

some of the world's most exceptional homes, the vision for Twenty Grosvenor Square is best described as sophisticated, timeless elegance with an emphasis on traditional craftsmanship and exquisite finishes.

This unique opportunity, to re-create a historic icon in such a significant location, has

allowed Finchatton to carefully choreograph a perfect sequence of spaces, from the grand entrance lobby and extensive amenity areas through to each square foot of every individual apartment.

www.riviererugs.com





UKBATHROOMS

The online store for the most exciting, designer brands at affordable prices.

AXOR

BETTE

hansgrohe

KEUCO

matki

Roca

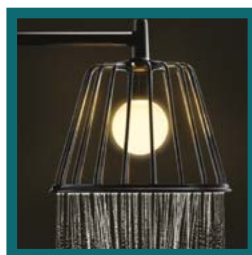
Villeroy & Boch
1748

VitroA



Order online quoting **AOD19** to receive a **FREE** Villeroy & Boch 12 piece glassware set*

*Subject to availability, only one set per order over £500 inc VAT. Glasses cannot be exchanged for other goods, nor returned for refund. Valid until 31.12.19.



www.ukbathrooms.com // 01765 694720



Individually created,
expertly engineered
& wonderfully tactile.

Custom made, mixed-material surfaces. BLANCO Durinox® by STEELART®

Premium kitchen sinks, taps & bespoke work surfaces by BLANCO.

Quality has been the key ingredient for BLANCO, ever since the company was established over 90 years ago with the founding principle to offer our customers the best in design, function and innovation. While our products and materials have evolved over the years, our commitment to quality and excellence remains steadfast.

Designed and engineered in Germany, our STEELART® products are renowned across the world for exceptional quality, first-class aesthetics and functional superiority across a wonderfully versatile range - something to suit all tastes. Our bespoke stainless steel surfaces are the absolute pinnacle of our product portfolio, offering levels of precision and mastery only available from STEELART® by BLANCO.

Contact the dedicated UK team in St Albans on 01923 635 200

www.blanco.co.uk/surface

BLANCO

STEELART

Made to order

STEELART® work surfaces are created to your exact specifications, by our team of stainless steel experts in Germany. Choose from a variety of finishes, edges and sink options, all integrated into your bespoke size and shaped design.

SILGRANIT® PuraDur® is our market leading stone composite material, from which we create beautiful kitchen sink ranges. These images show our SUBLINE undermount sink in anthracite, contrasting perfectly with the stainless steel work surface.

To achieve our super-durable Durinox® finish we blast the precision engineered stainless steel with billions of steel balls - creating an extremely hard, highly scratch and mark resistant surface. The result looks soft, clean and feels velvety smooth to the touch, matching the texture of the SILGRANIT® sink perfectly. Simply stunning.



BLANCO
GERMANY



ROCK-N-ROLL WITH A VIEW BY ESSENTIAL HOME AND PEPE CALDERIN

Living in the glamorous Upper-East side of New York. Warrants a gorgeous residence to boot, and that is exactly what we have here. Endless light, with a city and ocean view. That's a view, not every client gets the have, and also, not a view every designer gets to play with.

This 3800 sq. Ft. Residence was designed by Pepe Calderin, a New York and Miami based agency. Now in the sea of interior designers in New York and Miami, why were we so intrigued?

Pepe Calderin is an interior design agency that has garnered recognition for its fresh, energetic, visionary approach to the modern design process, where the philosophy is

“Space has no boundaries and has limitless possibilities.” Having design projects that stretch over four continents and specializes in high-end residences and commercial projects. Pepe Calderin is showing us what made them well known in the first place.

Sounds cliché, however a typical characteristic to the way Pepe Calderin works. by fostering an intimate connection with the client each project becomes a distinctive reflection of their unique personality, lifestyle, and spirit. For this design project, the client was a big art lover and had some painting with a rock-Roll Vibe which signing. now, take a look at this residence, and you'll understand why we fell in love with it.





Wanting the design to complement the paintings with the Rock-n-Roll vibe, Pepe chooses to travel back to the midcentury's where Rock-n-Roll was born, and who better to do it than, Essential Home to add the pops of color, and the signature brass and velvet touch typical to the '50s & '60s.

Something noteworthy about this apartment's design, and typical to the Pepe Calderin Style, is the way he plays with light, the openness, and the flow. the movement from room to room is so organic, it almost feels like water.

However, the living room deserves special appreciation. Pepe Calderin thought of everything in this room.

Placing a statue in a living room could be risky, but having it look out over the Hudson River and passing boats considering the client's a big boat lover as well.

This is every boat lover's dream and you can't imagine the room without it.

As the stage is perfectly set, what completes this mid-century essence of rock-n-roll is Loren's Armchair of Essential Home.

The vibrant Armchair echoes through the room and captures the captivating design of this apartment.

**Interior designer – Pepe Calderin -
www.pepecalderindesign.com**

Photographer - Barry Grossman



MEET HOSPITALITY INDUSTRY'S LEADERS AND SEE AWARD-WINNING DESIGN PRODUCTS AT SLEEP & EAT 2019

Sleep & Eat returns to London Olympia on 19th – 20th November. With an increase of 24% in international visitors last year, the ambitious 2019 programme already scales new heights and is set fair to live up to the show's reputation as Europe's leading hospitality design and innovation event.

With the theme for 2019 of "Social FlexAbility", the show will be exploring what design can contribute to human interaction in our age of digital isolation. Six Sleep & Eat Sets will brave this question, presenting built concepts for hospitality spaces that offer flexible environments where users can activate the social experience of their choice. In addition, the Sleep & Eat Conference will include

sessions that debate the issue and discuss the latest innovations in co-experience spaces. As in previous years, the event will also feature an international Exhibition.

The Conference will feature hospitality game-changers from around the globe, such as Amar Lalvani, CEO of Standard International and Josh Wyatt, CEO of NeueHouse, as well as its perennially popular Development Roundtables that give visitors the chance to talk face-to-face with developers, operators and industry consultants. This year, table hosts will include Charles Cresser, Development Director at SACO, Maria Adamo, Global Development Manager at Mandarin Oriental Hotel Group, and Irene Hoek, Vice

President of Global Residential Development at Rosewood Hotels.

Conference panels will include much respected hotel operators tackling this year's theme of "Social FlexAbility", while foremost influencers will share their insights on creating eco hotels, sustainability and the importance of community.

The design of co-living and co-working environments will be under the spotlight when Harry Harris of SUSD, the developer behind the Devonshire Club, chairs a conversation between hospitality design leaders looking at some of the latest creative solutions.

'Social FlexAbility' will also be tackled from a management viewpoint in a debate between Grant Powell of Central Working, Eylem Ozgun of citizenM, and Dale MacPhee of Waldorf Astoria Edinburgh, moderated by Robin Sheppard, Chairman of Bespoke Hotels. In addition, the Conference is promising to take delegates to the outer reaches of hospitality. 'Above and Below' will consider what it takes to design great guest experiences in space and underwater in discussions with several of the world's most outstanding hospitality pioneers.

One of the event's favourites are the concept room Sets, designed afresh each year. Six international design and architecture

firms are now fine-tuning their vision for concept room installations, aiming to deliver thought-provoking, inspiring and experiential Sets in response to the theme. They are: twenty2degrees, HAT Design, Maria Tibblin & Co and Miaja Design Group, who are each designing a guestroom, and SpacelInvader and NAME Architecture who are designing a bar and a restaurant respectively. Other pop-up spaces – all specially designed for Sleep & Eat – will include The Hub, created by the London arm of Wilson Associates, the VIP Lounge, designed by Moscow-based MEGRE INTERIORS, and the much-loved Sleeper Bar, which will host the late evening networking on day one and is being designed by Michaelis Boyd.



Reflecting the growing convergence between hotel, restaurant and bar design, the exhibitor line-up includes many companies which supply all three sectors, as well as cruise ships and spas. This November's show will see the Sleep & Eat debut of Tarkett, the worldwide supplier of innovative and sustainable floor coverings; YPRT, the Turkish manufacturer and fit-out contractor behind a number of major hotel projects in Europe; Catalano, the Italian manufacturer of ceramic collections combining cutting edge technology with traditional craftsmanship; and Marie Martin, an international line of exclusive lighting by Dutch company, Lumière. As always, newcomers such as these, will be joined by an array of Sleep & Eat veterans, including Style Library Contract, Dornbracht, Bang & Olufsen, Laufen, Roca, Faro Barcelona and Hansgrohe, to name but a few.

For more information, visit
www.sleepandatevent.com



Eylem Ozgun



Amar Lalvani



Josh Wyatt



SPECTACULAR VALCHROMAT BAR STARS AT NEW CULTURAL VENUE



Valchromat, the innovative and award-winning engineered fibreboard - which is available in the UK through James Latham - has been extensively used in the interior fit-out of a spectacular new cultural venue in South London.

Created by the innovative cultural infrastructure developer, Really Local Group, Catford Mews in Lewisham, centers on providing a flexible community space for local residents and includes three cinema screens, a cafe and food market, a bar and a live performance area.

A focal point of the venue's stunning interior is a high-impact, 12.5m long bar, featuring 80 individually machined, 1200mm vertical strips in bright Red Valchromat, which run across the front of its entire length.

The bar, which also used Black Valchromat for the carcassing, was designed, manufactured and installed by Birmingham based, bespoke joinery company, Cre8ive Joinery (www.cre8ivjoinery.com)

Cre8ive Joinery also used Valchromat to make the Integrated Panel Systems (IPS) for the toilet cubicles which saw the cubicle dividers and doors colour-coded; Red for male, Blue for female and Yellow for disabled.

The panels were also treated with a clear Morrells lacquer to provide additional protection from moisture.

In total, more than 70 sheets of Valchromat were supplied to Cre8ive Joinery by James Latham's Dudley branch and as a relatively new customer, Cre8ive Joinery Director, Phil Lewis was really impressed. "The team at James Latham are fantastic and they really know their stuff. They are extremely knowledgeable about their products and are always on hand to offer advice when needed. We have only been dealing with Latham's for a few months and I never realised the sheer breadth and range of both panel and timber products they offer."

Ed Latham, Valchromat Product Manager, James Latham commented, "It's always fascinating to see the many and varied applications for the products we supply and the innovative ways in which they are used. Catford Mews is a fantastic project and one which allowed the team at Cre8ive to demonstrate perfectly the versatility and workability of this unique material. "

Available in 10 striking and vibrant colours, Valchromat is completely unique, in that the colour runs throughout the entire board, enabling almost limitless decorative applications.



Valchromat also boasts a number of time and cost saving features and benefits; It's easy and quick to finish - no edging is required, and being moisture and UV resistant, non-toxic and load resistant, the applications are endless. Plus, its extremely durable, scratches and marks on the finished product go largely unnoticed because the colour runs evenly throughout the board.

Plus, all the wood used is FSC® certified and is sourced from forest waste, residue from timber mills, pine and recycled pine. Valchromat is available in the following board sizes; 2500mm x 1850mm/1250mm and in 8mm, 12mm, 16mm, 19mm, 25mm and 30mm thicknesses.

For Valchromat samples and to find out more about this and James Latham stunning collection of surface solutions, or to find details of your local James Latham depot or showroom go to; www.lathamtimber.co.uk



CATALANO

Catalano, an Italian company based near Rome, was founded in 1967 in Civita Castellana by a team of expert ceramic technicians. Celebrating 50 years in production, Catalano, a company rich in heritage, is a market leader in manufacturing and exporting ceramics, selling its ranges in over 100 countries. The company produces cutting edge ceramic collections in a its technically advanced, 170,000 square metre factory and then collections are hand finished by skilled craftsmen, giving ceramics an authentic finishing touch in true Italian tradition.

Catalano is globally renowned for producing the finest contemporary designs, made to the highest standards. A standard of excellence in terms of quality and respect for the environment, is built into every stage of the manufacturing process. Catalano's commitment to quality is highlighted in numerous worldwide projects and awards received in recognition of its achievements. Recent awards include the 2019 Plus X Award for Newflush® WCs with Vortex flushing

technology, IF Design Award 2019 for Ceramic Top, IF Design Award 2018, Good Design Award 2018 and Reddot Award 2018 for the new Zero collection.

The signature Cataglaze+ treatment has a lifetime guarantee and is standard on all Catalano products. Cataglaze+ is blended at a high temperature with the ceramic itself so that it is an integral part of the product, giving Cataglaze the edge over many traditional glazes. Cataglaze+ contains silver and titanium ions which, once activated, kill germs and bacteria. The silver ions are activated by light and the titanium ions are activated in darkness. Combining the two ensures antibacterial protection 24 hours a day. Surfaces are smoother, easier to clean and more resistant to limescale, general dirt and aggressive chemicals. In addition to increased hygiene, Cataglaze+ sets Catalano ceramics apart aesthetically. Cataglaze+ gives ceramics a smooth finish and ensures surfaces stay brighter for longer for a stunning appearance.

Dedicated furniture solutions in on trend finishes are available for stylish bathroom storage. Units are available for small and larger basins with 1 or 2 drawer options and can be combined with matching wall storage for a total look.

Catalano ceramics have gained notoriety due to a wide range of designs and sizes plus flexible installation options, all without compromising on looks and high quality. Catalano also offers colour matching for ceramics to harmonise with specific colour schemes. From simple solutions for public washrooms to personalised boutique settings, Catalano can meet the requirements to create beautiful bathrooms and washrooms.

CATALANO
THE ESSENCE OF CERAMICS

Discover a ceramic like no other... visit us at Sleep & Eat 2019 on 19th and 20th November at Olympia on Stand J20!
0208 685 6815 / www.catalano.co.uk

CATALANO

THE ESSENCE OF CERAMICS

VISIT US AT SLEEP & EAT 2019
ON STAND J20

020 8685 6815
www.catalano.it



JURA

Taking your home or office coffee game to the next level is pioneering Swiss coffee machine manufacturer JURA – the only brand in the world to focus solely on premium bean-to-cup machines.

The brand prides itself on stunning design, smart technology and delicious coffee, every time.

Developed by a dedicated team of 70 Swiss engineers, JURA has revolutionised the way coffee should be enjoyed and believes that no one should compromise on the quality of coffee they enjoy.

Designed to equip any home or work place environment, the JURA J6 and S8 models produce freshly ground coffee at just the touch of a button, creating the perfect wake-up call.

The J6 has been described as “the coffee equivalent of swinging into a car park in a Ferrari”, by the tech buffs Stuff Magazine.

This fully automated machine is perfect for gadget-minded guys and girls as it features smart technology that will allow you to save your favourite settings for a one-touch route to your perfect serve. Plus, it can even be controlled by your phone and it's self-cleaning too!

And the luxurious coffee doesn't stop there; the award-winning S8 coffee machine does it all, offering revolutionary technology that extracts the perfect coffee flavour from the beans, a one touch function, and a super stylish finish.

This celebrated model is capable of making up to 15 specialities, from fiery ristretto, to rich espresso and frothy cappuccino, to silky flat



white, it can even make two cups simultaneously.

If all this talk of coffee has got you craving a coffee, please visit uk.jura.com or visit the Flagship Store at 148 Marylebone Road, London.

www.uk.jura.co.uk

jura®

Coffee pleasure –
freshly ground,
not capsuled.

R.F.

Roger Federer
Greatest tennis
champion of
all time



The new Z6 impresses even the most discerning coffee lovers and connoisseurs – like Roger Federer. The front and top sections in Diamond Black emphasise the sculptural design. With cutting-edge technologies like the Professional Aroma Grinder, P.E.P.® and fine foam technology, the Z6 offers 22 speciality coffees from ristretto to tempting long barista specialities, all prepared to perfection. The artificial intelligence automatically customises the TFT display according to the user's individual preferences. With the Smart Connect you can even operate the machine from your smartphone, while the I.W.S.® automatically detects the water filter.

Available from: JURA Store London, 148 Marylebone Road, Harrods, John Lewis, selected retailers and uk.jura.com

JURA – If you love coffee



CAPCO UNVEILS STUDIO ASHBY DRESSED PENTHOUSE AT THE FLORAL COURT COLLECTION, COVENT GARDEN

An exceptional three-bedroom penthouse with interior décor by Studio Ashby, at Capco's Floral Court Collection, has launched.

Spread across nearly 5,000 square feet, the penthouse has a strong sense of understated luxury, craftsmanship and features bespoke furniture by British artisans, commissions from British artists as well as four private terraces offering striking views of famous London landmarks including The Houses of Parliament and The London Eye.

The owner of the penthouse will also benefit from exclusive access and services from luxury brands on the Covent Garden estate.

On the market for £20 million, the striking lateral penthouse, one of the largest to come to market in Covent Garden, completes The Floral Court Collection which comprises 31

apartments in total. Architects Kohn Pedersen Fox Associates (KPF), blended new-build and heritage architecture to create this rare collection of homes incorporating the former Westminster Fire Office which dates back to 1717. Many of the building's original features remain including the heraldic crests in the grand concierge lobby. At the heart of the development is a green enclave in the form of a new central courtyard which is now home to Petersham Nurseries' two al fresco restaurants, deli, shop and florist, amongst others.

Art as the canvas for interiors

Sophie Ashby's eponymous studio curated each room around art, with paintings dictating the colour palette, materials and sumptuous furnishings used throughout. Upon entry, you are immediately greeted by a

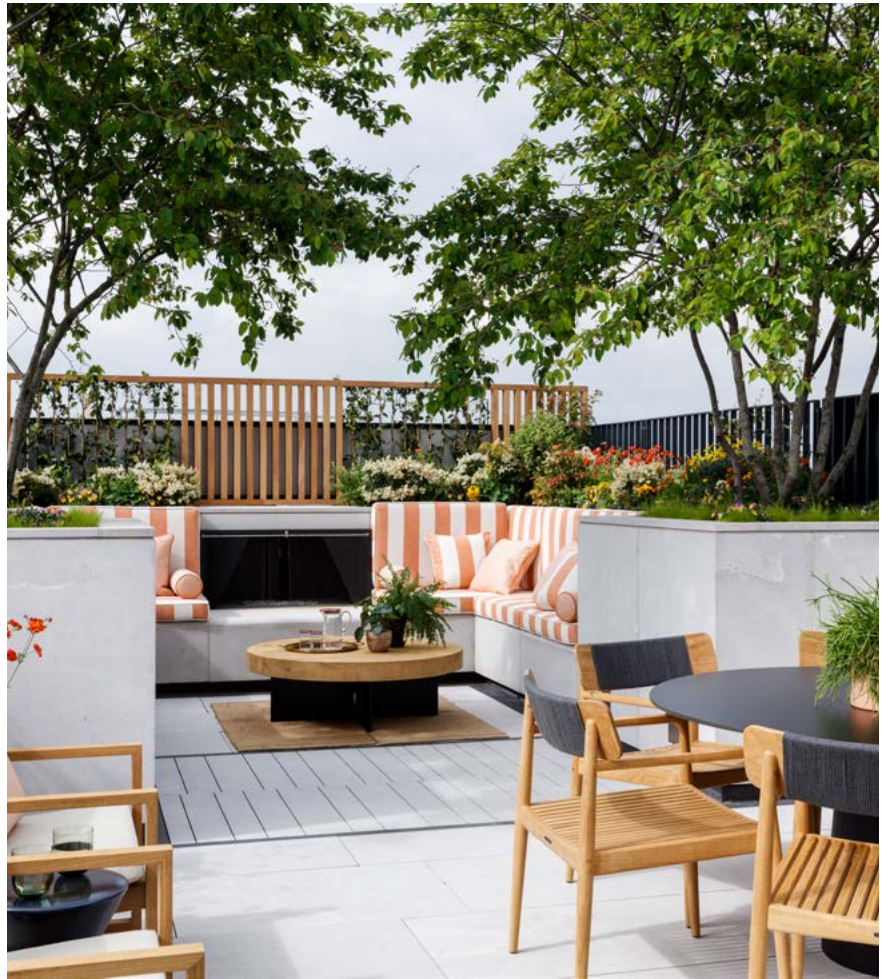
large reception area where a bespoke central sofa is positioned around a live edge organic elm coffee table and atop a handmade rug inspired by Abstract Impressionist art. Majestically overlooking the reception room is a canvas by London-based artist, Christabel Forbes. This striking piece of artwork takes inspiration from Covent Garden's landscape.

Once through the reception area, residents can take a classic novel from the bespoke book shelves and relax in the spacious family room, a tranquil space for more informal socialising. A study also offers a quiet retreat.

A home to entertain in

The penthouse has been designed for the creative entertainer. This is exemplified by a dedicated dining room and cocktail lounge with views of Floral Street which presents

a charming space for any soiree. The focal point of the dining room is a spectacular table created in collaboration with florist, Mary Lennox, which in itself is a work of art. Paying homage to Covent Garden's history as a flower market it incorporates intricately selected dried flowers meticulously arranged beneath a glass surface. This ties in with the overall green, rust, red and golden palette of the room. Above the dining table sits an organic light canopy with twisted metal florals and foliage, designed in collaboration with British makers Cox London.



After an evening of entertaining, three decadent bedrooms are the perfect spaces to rest. The enviable master bedroom has its own dressing room, terrace and a bathroom with a bathtub and shower. The palette of blue and yellow with hints of dusty rouge take from British artist, Anne Rothenstein's, "Figures on a Beach."

Roof terraces with landmark views

The penthouse boasts four private terraces spread across 1,132 square feet. Studio Ashby has collaborated with celebrated landscape and garden design practice, Hay Designs, to create seasonal planting of undulating florals, meadow planting and foliage. Stylish fixed seating and low-level planting create a tranquil atmosphere, for elegant alfresco entertaining.

Sophie Ashby, Director of Studio Ashby: "When curating the penthouse for a development as unique as the Floral Court Collection we were conscious to draw influence from the surrounding location and architecture. Taking a human approach to the design, we have created a space that is not only luxurious but full of character and personality. This penthouse has been designed to appeal to someone interested in the arts and travel, an individual who will truly make the most of Covent Garden's rich culture and everything it has to offer."

Michelle McGrath, Director of Capco Covent Garden: "Restoring Covent Garden's residential heritage was central to the vision for The Floral Court Collection and the penthouse offers a rare opportunity to live in a beautiful, world class destination





which marries global and independent brands with history, culture and the arts in London. It presents a new level of luxury with art, fine craftsmanship and the essence of individuality at its heart.”

Brian Girard, Principal, Kohn Pedersen Fox Associates: “The rooftops of Covent Garden inspired the interior architecture of the penthouse. Tall, elegant windows frame views both of the distinctive texture and character of the neighbourhood and the familiar landmarks beyond. The penthouse was conceived as a continuous space that blurs the boundaries between inside and outside, allowing the resident to feel both immersed in this theatrical neighbourhood and at peace within a well-proportioned, calm interior.”

Exclusive services from Covent Garden brands

Spearheaded by Capco, Covent Garden now offers an impressive range of global, British and independent brands across retail, dining and culture.

Each store brings something fresh to the historic estate, whether a new flagship for London or an innovative, first to market concept like Tiffany’s Style Studio or Tom Ford first ever beauty store. New offerings also include The Shop at Bluebird’s flagship store in Carriage Hall and the ultimate home and lifestyle emporium, The Shop at Petersham Nurseries.





The new penthouse resident will also enjoy access to a host of exclusive partnerships, offers, early previews from Covent Garden. This includes personal shopping with Mulberry and The Shop at Bluebird and bespoke make-up classes and men's grooming services at Tom Ford. All this alongside an on-site 24-hour concierge for added security as well as a residents' cinema room which can be used for entertaining.

Furniture and dressing of the penthouse is not included in the sale price but available via separate negotiation.

Apartments at The Floral Court Collection from £1.3 million.

www.floralcourtcollection.com

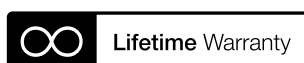




Ultra-discreet loudspeakers for any location



British loudspeaker designer, Monitor Audio, has a range of speakers for every situation. Their ultra-discreet in-wall and in-ceiling speakers deliver a stunning audio performance whilst protecting the room's décor. For more extreme environments, such as outdoor terraces or pool rooms, they offer a choice of speaker ranges, all of which deliver Monitor Audio's award-winning sound.



monitoraudio.com/install



90 YEARS OF SIEMATIC, 90 YEARS OF KITCHEN HISTORY. THE PREMIUM KITCHEN BRAND CONTINUES TO SET NEW STANDARDS IN ITS ANNIVERSARY YEAR.

For decades, SieMatic has stood for kitchen interior design of timeless elegance. For design and quality that are not subject to a short-term trend, but which last for many years and thus provide planning security.

The company was founded in 1929, then still under the name August-Siekmann-Möbelwerke, in Löhne, Westphalia, where SieMatic's headquarters are still located today. In September, the anniversary celebrations also take place there - under the motto "Timeless by Tradition".

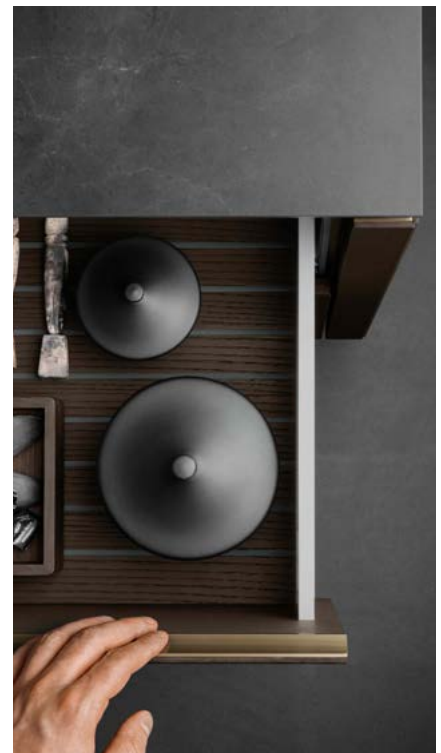
Writing history, shaping the future.

The history of SieMatic always reflects the history of the kitchen: from the original kitchen buffet through the first handle-free SieMatic to holistic furnishing concepts. The entire industry was influenced by SieMatic

developments; for example, the company is regarded as the inventor of the handle-free kitchen.

The small family business has developed into an internationally active medium-sized kitchen manufacturer. SieMatic - the brand name was created in 1960 - is today a globally established premium brand and continues to set standards in terms of aesthetics, individuality and functionality. "Kitchens have long since moved to the centre of the living space and will establish themselves even more strongly as the central place for family and friends in everyday life.

We will continue to actively shape this place in the future," says Ulrich W. Siekmann, CEO of SieMatic and grandson of founder August Siekmann.



More living space than kitchen.

The new SieMatic SLX PURE is the best example of the fusion of kitchen and living room. The new interpretation of the handle-free kitchen is as aesthetic as it is functional.

The entire SieMatic kitchen expertise lies behind elegant surfaces, delicate proportions and transparent surfaces: from the only 6.5 millimetre thin elements to the intelligent interior and the completely newly designed recessed grip with discreetly integrated and individually controllable batten luminaire. This new kitchen concept is part of the SieMatic style collection PURE, which is characterised by its minimalistic and clear

design. In total, SieMatic offers three style worlds that can be individually integrated into the customer's living environment.

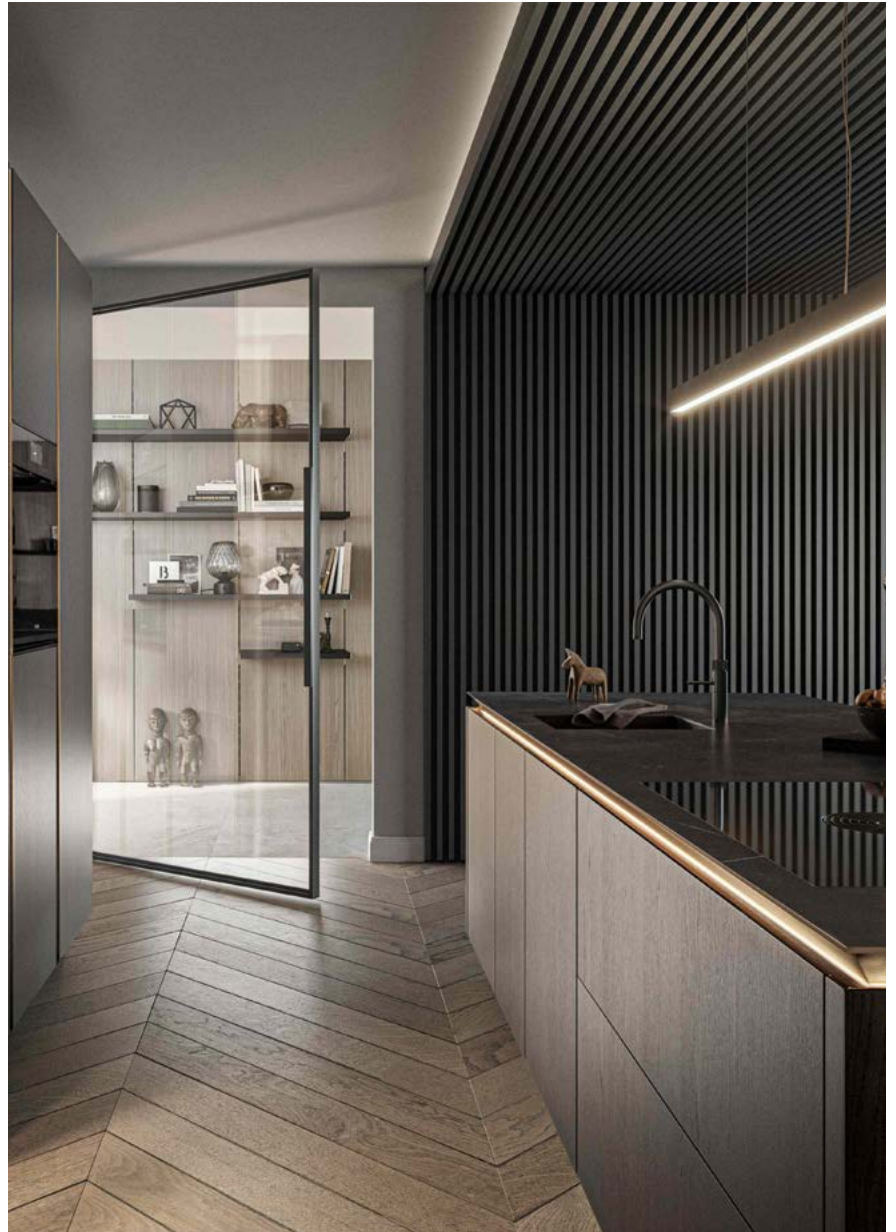
The style collection URBAN enables particularly flexible, intuitive planning with solitary furniture - such as the award-winning SieMatic 29, the reinterpretation of the classic kitchen buffet.

Characteristic of the style collection CLASSIC is the sophisticated combination of tradition and modernity, above all visible in the creative mix of materials with elements of metal and glass.



From the SieMatic Forum to the SieMatic Interior Design Days.

SieMatic also uses the anniversary year for some changes. For example, the SieMatic Forum, which has been held as part of the MOW since 1995, has a new name: SieMatic Interior Design Days.





The name illustrates both the reality in the premium kitchen market and SieMatic's claim to create living environments rather than kitchens.

Numerous international trade visitors are expected at the fair in mid-September in Löhne to discover current innovations in the exhibition rooms of the "August-Wilhelm Siekmann-Forum". Of course, the SieMatic Interior Design Days will also be used to celebrate the anniversary extensively.

Contest for excellent Kitchen Interior Design.

Another highlight of the anniversary year was and is the SieMatic ID Contest. It demanded outstanding room and kitchen planning with exceptional design quality and creativity. For this, the very first SieMatic ID Contest, a total of well over 300 projects from 25 countries were submitted by planners, architects and end customers and it is planned to hold this competition every two years in future.

The eight-member, international and high-level jury honoured one winner each in the categories "Best of the Best", "Best of PURE", "Best of URBAN" and "Best of CLASSIC" and awarded the "Honorable Mention" to a further 23 contestants.

The winners will be presented and honoured at the SieMatic Interior Design Days.

www.siematic.com

demista®

Clearly Perfect



Demista® The hidden Luxury

The Luxury items that first catch your eye in the bathroom could be the gold taps, the amazing rain shower, the marble tiles or the creative lighting. But the hidden luxury that every bathroom or En-suite cannot do without is the heated mirror pad.

The unobtrusive product from demista, ensures your bathroom mirror remains steam free at all times.

Often the first choice for designers, architects, interior designers and specifiers, demista has become the must have part of any bathroom or En-suite, as the system is probably the simplest and most adaptable item available around the world via demista's distributors.

Since the idea of the demista mirror heat pad was conceived steamed up mirrors have become a thing of the past in luxury hotels, prestigious housing and apartment developments around the world, and now being used in domestic new builds and renovation projects as a must have item because once the pad has been installed it saves time and money, as you do not need to keep cleaning your mirror with cleaning products.

With over 400 sizes available in various voltages means the heat pad can be installed anywhere in the bathroom or

En-suite, even on cabinet doors and vanity units. Demista has become the generic name for heated mirror pads, but to avoid imitations, look for the demista trademark on the product, all of demista's heat pads are completely manufactured in the UK and carry a 10-year warranty.



Safety, ease of installation, minimal energy consumption, quality, reliability, full technical advice and service are the key ingredients for our customers, with our pads fully approved for bathroom use to European and international standards, which meets all the requirements both in the UK and around the world.

Prestige projects such as The Ritz in Paris, The Royal Atlantis in Dubai, The Crosby Street Hotel in New York, The Sky View hotel and residences in Dubai, W Hotel Ibiza, The Crown Plaza in St Petersburg, Burj Al Arab and other luxury hotels and homes in India, Australia, Egypt, Barbados and Malaysia can be found in Demista's portfolio.



WOKA

WOKA LAMPS VIENNA® is a Vienna-based Manufacturer of Iconic 20th Century Lighting Design. Lovers of iconic lamps from the early 20th century were for decades deprived of the possibility of owning some of the most striking pieces by the Wiener Werkstaette and the Bauhaus, which had long fallen out of production.

The designers whose work WOKA is licensed to produce read like a who's who of the Vienna design pantheon. In addition to Hoffmann and Koloman (Kolo) Moser, the manufacturer has reissued striking table, ceiling, wall and floor lamps, as well as chandelier pieces, by the likes of Adolf Loos, Otto Wagner and Carl Witzmann.

A collection of very rare antiques of the early 20th century as well as a large collection of chandeliers from the 18th century until the 1960s is completing the business of the WOKA GALLERY. On request all antiques and pieces of arts are delivered with an expertise made out by a certified appraiser for art and antiques on the commercial court in Vienna.

WOKA LAMPS VIENNA® presents in its Showroom in the centre of the city of Vienna and on our website the complete collection of the lamps designed by Josef Hoffmann, Adolf Loos and other leading architects of the first part of the 20th century Lamp-designs of the second part of the 20th century up to today's creativity.

Outstanding pioneers of this movement were, as mentioned above, the designers Otto Wagner, Josef Hoffmann and Kolo Moser in conjunction with members of the "Wiener Werkstaette", an organization where the best craftsmen and most distinguished designers of the period worked in collaboration.

www.woka.com

WOKA
LAMPS VIENNA

WOKA

LAMPS VIENNA



handcrafted in Vienna since 1900

www.woka.com

Foto Tobias Izso

TOUCH

IRONMONGERY LTD

www.atouhofbrass.co.uk

210 Fulham Road, Chelsea London SW10 9PJ

THE PERFECT TOUCH

Touch Ironmongery is one of London's leading Architectural Ironmongers Established in October 1982

Originally called "A Touch of Brass", the firm changed their name in 2003 in reaction to slowly advancing market changes in architectural ironmongery which is no longer supplied solely in brass, and to also reflect the broader range of product and finishes that they sell.

In fact today, Touch can supply a wide range of finishes including Brass, Satin Brass, Polished Chrome, Polished Nickel, Satin Nickel, Copper, Bronze – solid and plated, BMA, Antique Brass, Black, Pewter, Ceramic, Leather, Stainless Steel, Satin Stainless Steel, Gun Metal, and the list keeps growing. Whatever finish you require, Touch can help you get the right look.

Touch occupy their recently refurbished showroom at 210 Fulham Road, Chelsea, where they display a vast range of their 5,000 products. With a customer base including Interior Designers, Builders and Individuals who are interested in the quality end of the Ironmongery market, Touch mainly supply to residential premises but hotel and office properties also contribute to their vast clientele.

The company also have a healthy export market to all corners of the world, namely the Middle East, Europe and the Americas. Touch's owner and founder, Bill Benham, has 38 years' experience in the ironmongery trade, as do his colleagues Jim Haselup and Alan Blanchard. Saleem Qureshi is the newest member of our team and has 10 years' experience, meaning their knowledge is unrivalled in this industry.

The range of products supplied by Touch date from circa 1640 French (Louise XIV) and cover all subsequent periods (Georgian, Edwardian & Victorian), art deco and contemporary pieces also make up the product ranges. In addition, Touch showcases the very best of British manufacturing; the best ranges are still produced in the Midlands by craftsmen in factories dating back 200 years or more.

Touch Ironmongery have recently become suppliers for **Designer Doorware (Australia)** who have beautiful products with a cutting edge design Metal, Wood and concrete. We also have the exclusive rights to sell the **Olaria (Barcelona)** range in the UK.

Olaria make all our bespoke products, they have incredible levels of workmanship. Touch also sell European manufactured goods which is considered to be of a very good quality and in recent years they have introduced some of the far eastern made products, albeit in a limited range but cost effective. With trends continuously evolving new innovative products are constantly under development. Touch understand that keeping up with the fashion-shifts is imperative in order to provide every customer with the best solution for their requirements.

Ironmongery can be a difficult and complicated aspect of a building project, as a result Touch aim to take this awkward aspect and make it user friendly and clear to understand by offering an on-site service where they carry out a detailed door by door, window by window, room by room Ironmongery schedule, highlighting all requirements and identifying any items that can be refurbished. Refurbishment is a large part of the business; Touch will undertake complete ironmongery refurbishment projects, and can restore old paint covered door furniture to their former glory, looking as new, at a fraction of the cost to replace.

**For more information about Touch Ironmongery or to arrange a
showroom visit please call 0207 351 2255 or alternatively
visit www.atouhofbrass.co.uk**



BRITISH & EUROPEAN MANUFACTURERS SUPPLYING THE FINEST QUALITY IRONMONGERY

Touch combine traditional skills with modern manufacturing techniques to produce the most beautiful, quality fittings, built to stand the test of time.

As well as specialist bespoke items, Touch supply over 1000 products, available in 23 different finishes to furnish high end residential and commercial properties, royal palaces, government houses, historic castles and stately homes.

Olaria, available from Touch Ironmongery

www.atouchofbrass.co.uk & www.olariabarcelona.com



RUGS DIRECT



Rugsdirect.co.uk is a leading supplier of rugs in the UK and showcases some of the best designers.

The Vintage collection by Louis De Poortere is one of the best-selling ranges and each one features a stunning patchwork design in a spectrum of vibrant colours to appeal to fans of both modern and traditional rugs.

The short flat weave pile (6mm) in premium-quality wool and cotton chenille makes them

highly durable and easy to maintain, while also being ideal for high-traffic areas but are thinner than most normal tufted wool rugs, making them perfect for putting under tables and chairs. Starting at just £85 the range comes in 8 standard sizes and has many different colour variations.

www.rugsdirect.co.uk offers customers a Price Promise, FREE UK Delivery, Easy Returns and over 10,000 rugs to choose from



STAIR-ROSDIRECT

www.Stair-rodsdirect.co.uk is a supplier of luxury carpet accessories. The Stair Rods are manufactured in the UK and come in a variety of finishes and finials to match any decor that you have created. They are cut to the specific length you require and are very simple to install and make the finishing touch to an elegant stair case. Suitable for domestic homes, commercial venues, stately homes or even castles.

We also supply UK manufactured Door thresholds, which come in

similar finishes, and can be fitted to any combination of surfaces. Stair rods and door thresholds can make the perfect finish to your new look.

**Please visit
www.stair-rodsdirect.co.uk or
call 0330 113 4909 to discuss
your requirements.**



SELECTAGLAZE

This Grade II Listed Blue Anchor Pub, built in the 17th century, was one of the last remaining public houses in the historic Fishpool Street, St Albans. In 2017, Osprey Development's planning application was approved to convert The Blue Anchor into a two-storey four bedroomed home with remodelling and alterations to the single storey rear extensions including changes to the roof.

The conversion of the building was a success; however, it still required a solution for the thermally cold and inefficient single glazed primary windows throughout. Additionally, the other requirement was noise insulation from the busy thoroughfare. Osprey Developments consulted Selectaglaze, the leading specialist of secondary glazing for a solution.

16 units on the first floor, ground floor and study have been treated thus far using a selection of three window styles. All the units installed are versatile and slimline framing systems, suitable for heritage properties.



The owners are extremely happy with the look and energy saving properties of the windows, as Selectaglaze's secondary glazing reduces heat loss and the high performance seals almost eliminate draughts leading to lower heating bills.

"With the sensitive work done by Selectaglaze, Blue Anchor House is now a pleasure to live in – warm and a good deal more protected from the noise of Fishpool Street traffic." Kevin Keenan.

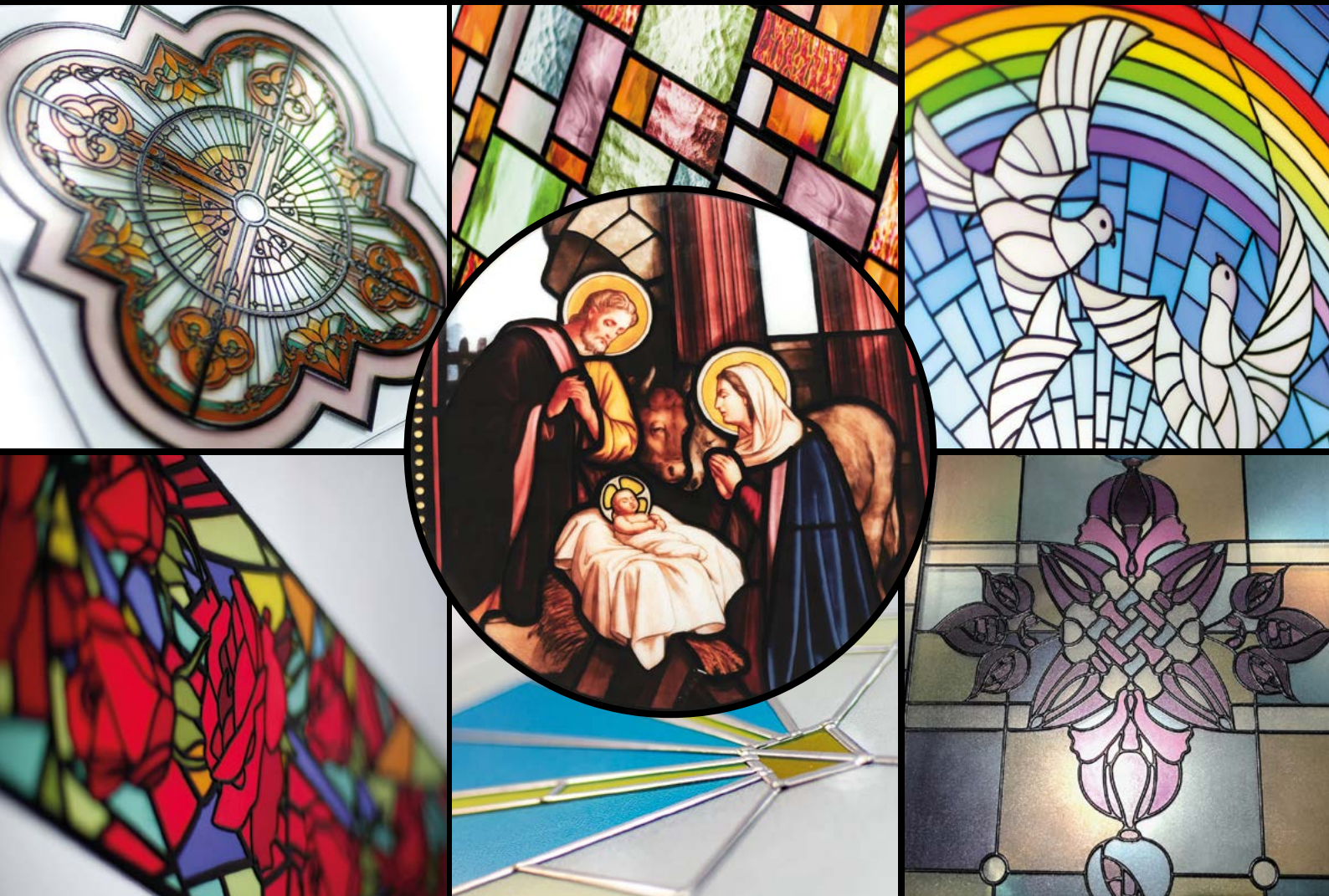
Founded in 1966, Royal Warrant Holder Selectaglaze is the leading secondary glazing specialist.

Selectaglaze will be exhibiting at the BIIID Inside Knowledge Conference in London on the 7th November 2019.

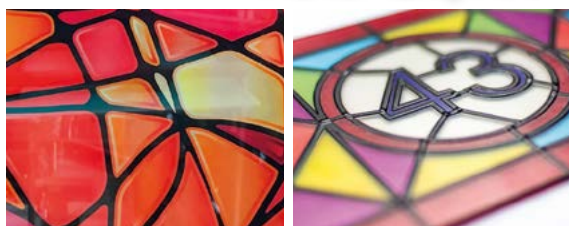
**Contact Selectaglaze on 01727 837271/
e mail: enquiries@selectaglaze.co.uk or
visit: www.selectaglaze.co.uk**

PRINTED DECORATIVE GLASS

STAINED GLASS GOES DIGITAL



Marries traditional styles with new 3D printing techniques.
Period influenced contemporary design styles including Georgian,
Victorian, Art Nouveau, Art Deco to Modern



Digitally printed glass is more cost-effective
than using traditional stained glass methods.
We can print on toughened, laminated and
security-rated glass

Call us for more information **01708 374534** email
sales@firmanglass.com or visit www.firmanglass.com

Firman Glass, 19 Bates Road, Harold Wood, Romford, Essex RM3 0JH



COLORFIRM 3D
Print on virtually anything!

Firman

www.firmanglass.com



INDOOR COLLECTION

Always keen to stay on top of, and often even anticipating changes in lifestyles, Flexform is a company that interprets the contemporary home as the natural space where everyone can finally be themselves, engaging in their favorite activities: relaxing, reading, watching TV, spending time with family, kicking back in comfort, surrounded by objects that exude understated elegance.

While staying true to its aesthetic design signature, Flexform expands its collection through a series of new products that reaffirm the company's commitment to making products that transcend the bounds of time and fashion, authentic distillations of form and function.

The Romeo sofa's delicate lines, proportions and details – like the tapered cast aluminum feet and subtle grosgrain piping that outlines the stitching and emphasizes the aesthetically balanced shapes – attest to the company's artisan expertise.

Thanks to the perfect inclination of the seat and the generously goose-down-filled cushions, the Romeo sofa is tangible proof of the company's ability to wed understated elegance with the utmost in comfort.

The Romeo seating system is also amazingly versatile, in that it can confidently wear any of the fabrics and leathers in the Flexform collection, each one expressing a different personality. This means the Romeo sofa can easily furnish any setting, from sleekly minimalist to the most classic decor.

A family of seating elements with classic-traditional allure reinterpreted with contemporary flair, available in luxurious materials embellished with sophisticated details.

Made entirely of solid Canaletto walnut or ash, artisan crafted with techniques that call to mind the tradition of fine cabinetmaking, the visually light structure of the Ortigia armchairs puts them in a class of their own.



The seat can be upholstered in fabric or leather while the backrest is made of entirely hand-woven cowhide.

The Ortigia family includes an armchair with armrests, an armchair without armrests that can be paired with a footstool and also with dining chairs.

Designed as statement pieces, the Ortigia armchairs can play a leading role in settings like the bedroom or easily be matched with

all of the sofas in the Flexform collection to lend a note of understated elegance to any living space.

The sophisticated silhouette and generously inviting shapes that distinguish the Sveva armchair can now be found in its namesake sofa. The shapely shell in rigid structural polyurethane is upholstered in cowhide while the soft seat and backrest cushions are filled with goose down.

The sofa rests on elegant cast aluminum bases available in satin, chrome, burnished, black chrome or champagne finish.

Just like the armchair, the Sveva sofa also allows for countless unique combinations between the cowhide shell, available in many colors, and the cushion upholstery, which can be in fabric or leather.

Thanks to its compact proportions, the Sveva sofa imparts an air of style and elegance to residential as well as hospitality settings.

The sinuous, enveloping lines of the Sveva armchair with cowhide shell can also be found in the fully-upholstered Sveva Soft version.





The soft upholstered shell is made of a special polymer that offers considerable structural support and, along with the goose-down-filled seat cushion, ensures outstanding softness and comfort.

The cast aluminum swivel base comes in versions with four or five spokes, with satin, chrome, burnished, black chrome or champagne finish.

The Sveva Soft armchair upholstery is completely removable; the chair also comes in a wing back/bergère version.

The Jeremy family includes compositions with drawers and drop-front doors, with various fittings, each of which is designed to be placed in different parts of the home, from the entry to the living room. All of the elements are finished on the back, making them suitable as room dividers.

Designed and crafted to promote a superior sleep experience, the Newbridge Soft bed has carefully-engineered proportions, generous padding and refined tailoring details. The silhouette of the headboard is highlighted by elegant piping, while the back

features a refined metal bar that supports the upholstery.

The Newbridge Soft bed comes in several sizes and is available in versions with base composed of a single perimeter frame, rigid base, platform base with height-adjustable slats and base with storage compartment, handy for storing pillows, blankets and bed linens.

Upholstery of the Newbridge Soft bed is completely removable.

www.flexform.it

TURN THE IPAD INTO THE FOCUS OF ANY ROOM

Viveroo's stunning range of wall and furniture mounts for the iPad enhance and complement this icon of design. The distinctive sculptured range is hand-crafted from premium materials and has been created to blend perfectly with the iPad's form. Each mount in the range offers different features that have been designed to provide improved visibility and functionality of the iPad in both domestic and commercial environments.

LOOP

The world's first rotating iPad mount for flush installation. The innovative rotating mechanism makes it possible to alternate between vertical and horizontal positions. Available in Super Silver, Deep Black and Clear White.

LOOP 360

A table-mounted version of the Loop allowing 360-degree rotation of the iPad. Perfect for

retail and domestic environments.

Available in Super Silver, Deep Black and Clear White.

SQUARE

The design of the Square complements the form of the iPad and offers spectacular presence from any angle. Available in Super Silver, Deep Black and Clear White.

FREE

This distinctive design appears to float in front of the wall. The contemporary asymmetrical lines are beautifully machined from billeted aluminium and create a sharp look in a modern room. Available in Super Silver and Dark Steel.

FREE FLEX

Integrates the iPad into every environment. Features USB cable charging, a rotating joint head to allow landscape or portrait orientation



and custom tube length for the perfect lifestyle fit.

FREE FLEX PEDESTAL

The pedestal base allows the Free to be moved from room to room.

Features USB cable charging and a rotating joint head to allow landscape or portrait orientation.

CUSTOMISATION

The entire range can be finished in any colour, and corporate branding can be added.

PRICES START AT £375

FOR MORE INFORMATION:

www.red-line.co.uk/viveroo



All Round Entertainment

MASS Surround Sound



monitoraudio.com

Movies, Music, and Gaming

Five satellite speakers and a subwoofer bring an entirely new level of performance and aesthetic with 360° sound.



UNIQUE PIETRA™ WILL AWAKEN YOUR SENSES

Unique Pietra™ is an exciting addition to COMPAC's Unique Collection – a distinctive, elegant range of quartz worksurfaces whose designs have been inspired by the textures, beauty and durability of nature's rivers, forests, lakes, mountains and landscapes.

Unique Pietra™ is mysterious as it is inspirational; its dark almost volcanic background will awaken your senses, a unique worksurface featuring a combination of defined and wispy strands of cloud running across its surface.

Unique Pietra™ is available in a polished finish that intensifies its surface colour, or a new unique crêpe finish which combines a fine roughness with a delicateness to provide a flawless, non-glare finish. Whether used for a kitchen or bathroom worksurface, cladding a wall or a floor, Unique Pietra™ will transform spaces in your home into something quite extraordinary. Unique Pietra™ is easy to clean and maintain and will retain its elegance and beauty for a lifetime of use.

www.en.compac.es



KOOKAY CONTEMPORARY ART CRAFTS

Kóokay is a 100% Mexican enterprise that showcases its magical art crafts.

We work with local people, mostly women, empowering and helping them to become an independent workforce to build up their communities.

Kóokay is committed with the environment, so we recycle, reuse, remake and redesign old/vintage/modern/contemporary furniture for the making of beautiful, handmade pieces, so you will not find a machine made perfection in us.

Mexico is tradition, is culture, is diversity, is well known for its beautiful handcrafts and explosive use of colors. Our chic and eclectic designs combines all of the above, resulting in a stylish appeal.

All of our pieces are handmade, unique and one of a kind, and surely a piece of talk in your home.

Mexico Europe USA

www.KookayArtCrafts.com



SALICE POCKET DOORS POWER AHEAD

In keeping with its policy of continuous product improvement, Salice has introduced an updated version of its industry-standard pocket door system.

Designated Exedra, the new version incorporates a linear magnetic damper that gently controls the movement of the door as it moves smoothly and silently into and out of its recess. In addition, a Smove piston cushions the door as it closes onto the cabinet.

Walter Gosling, Branch Director for Salice UK Ltd commented, "All our pocket door systems are now supplied in the Exedra version and like the previous systems, are made to measure and fully assembled ready for installation. Their customer friendly features have seen a healthy month-by-month increase in sales in 2019".

For further information on the Salice product range please telephone 01480 413831, email info.salice@saliceuk.co.uk or visit www.saliceuk.co.uk



FREE SAMPLE! QUOTE: POLYX2019
01296 481220

osmo

osmo
Polyx®-Oil
High Solid
The original Harwood-Oil

For wooden floors and furniture
Clear – satin – for restorer use
Natural oil / wax based – microporous
Water repellent and very durable
Encourages healthy living

3032 Satin
Clear

OSMO POLYX®-OIL ORIGINAL
HIGHEST QUALITY AND PROTECTION FOR WOOD

MICROPOROUS | NATURAL | OIL-WAX BASED | DURABLE | HIGH COVERAGE

LEARN MORE: OSMOUK.COM CALL US: 01296 481220

BarlowTyrie
Est 1920

Barlow Tyrie – Crafting exceptional, award-winning outdoor furnishings since 1920.

Barlow Tyrie Limited, Braintree, UK
T: +44 (0)1376 557 600
Email: UKsales@teak.com
www.teak.com

[f](#) [t](#) [p](#) [in](#)

Layout collection

*Switching up
the Elegance*

THE SOHO
LIGHTING COMPANY

soholighting.com
enquiries@soholighting.com | 0203 314 1433

VILLA, MARBELLA



UK-based Bernard Interiors was commissioned to design and project manage the redevelopment of a luxury second home in Marbella, Spain for a private client.

“The focus of the brief was to create a light and comfortable family residence with a contemporary European feel, that also encouraged relaxation and had space for hosting informal family and social gatherings,” commented Jen Bernard, founder and managing director of Bernard Interiors.

“Having worked closely with the client for many years we understood their vision for a luxurious, colourful and inviting place where the design for outdoor living is as important as the interior.”

Making the most of the villa’s coastal location was paramount for the client, so the three main ground floor spaces - living, dining and kitchen - were combined and now connect to the outside terrace with views across the gardens to the sea.

The terrace is multi-functional and works exceptionally well as an open plan social space for lounging or dining. A combination of comfortable seating surrounds a bespoke coffee table where family and friends can socialise with drinks or watch tv. The screen is concealed in a bespoke kitchen unit with a motorised lift. The outdoor kitchen houses everything needed including a fridge, freezer and storage for crockery and glassware.





Bernard Interiors designed furniture for the interior was made by a locally-based furniture maker using materials including highly glossed timbers, inlaid antique brass and leather.

The garden umbrellas were made for Bernard Interiors by Santa Barbara Designs in the US and bespoke outdoor furniture was also shipped from the US.

For the whole project around 80% of the furniture, doors and cabinetry is bespoke.

On the terrace outdoor fabrics by Hermes, Dedar, and Abbott + Boyd were used for the cushions and the sofas are bespoke made by George Smith. A bespoke outdoor rug creates a real outdoor living feel.

In the formal dining area a cabinet in highly glossed timber with inlaid antique brass and leather, and dining chairs upholstered

in fabric by Creations Metaphores, Zimmer + Rohde, and Abbott + Boyd, are some of the many pieces made to Bernard Interiors' designs for this project. The cabinet was made by a locally-based furniture maker. The chandelier is by Villaverde, and the wall covering is by Elitis.

For the kitchen there is custom cabinetry by Gunni & Trentino, with polished marble work tops and bespoke handles by Armac Martin. The bespoke stools by Justin van Breda are upholstered in Dedar fabric.

The open ground floor is coordinated throughout to enhance the sense of space and flow. In the lounge area the pale grey scheme is highlighted with pops of colour, bringing the outside in. The cabinetry is custom-made and the rug is a bespoke commission from Riviere. The seascape artwork was commissioned from a local artist.



Bernard Interiors, The Church, Greystoke Avenue, Newcastle upon Tyne NE2 1PN

www.bernardinteriors.co.uk

Tel +44 (0)1661 821 427

enquiries@bernardinteriors.co.uk

© Kristen McCluskie

www.kristenmcluskie.com



HUTIG FURNITURE AND FLOORING

The inspiration for Hutig Furniture and Hutig Flooring has come from our long walks through the beautiful Scottish Highlands. The widespread landscape and the raw beauty of the hills have resulted in the creation of a new range of sustainable furniture and flooring of exceptional high quality. For the production we use mainly fallen trees from local estates, full of Scottish history.

Ben Hutig, a small hill in the far north of the Scottish Highlands, is located just north of 'The Flow Country'.

The Flow Country is the largest single expanse of blanket bog in the world and the inspiration for our 'Flows' range. The continuing wood grains simulate the water flowing over the bog.

The 'Bothy' range is inspired by the widely spread little basic shelters, usually available for anyone to use.

For more information, please visit our website www.hutig.com or contact us on info@hutig.com.

Hutig: 'Inspired by the raw beauty of Sutherland'

Hutig
Furniture

<https://hutig.com>

[@hutigfurniture](https://www.facebook.com/hutigfurniture)

E: info@hutig.com

T: 07818 205077

**THE MASTERS OF MODERN FURNITURE
INSPIRED BY THE RAW BEAUTY OF SUTHERLAND**



HIGH QUALITY SUSTAINABLE FURNITURE



EASY BATHROOMS HAS INTRODUCED FOUR BRAND-NEW COLLECTIONS

CALLERTON: ITALIAN-INSPIRED

Callerton range offers a luxurious selection of contemporary designer bathroom vanities. They incorporate the appearance of high-end materials, including curved gloss wood and a slim porcelain tile worktop, while offering an affordable option.



GRIFFIN: PETROL BLUE FURNITURE

Its clean and contemporary design modernises any bathroom, with subtle round corners for a gentle touch. The worktop is available in white marble or solid sintered stone, while a slim ceramic countertop basin is included as standard.

FERRIS: TRADITIONAL MARBLE- TOP FURNITURE

Ferris is an affordable traditional range of furniture.

Available in matt white, light grey or midnight grey, the pieces each come with a luxury, opulent marble worktop and inset ceramic basin.

ODION: CLOAKROOM VANITY UNITS IN A RANGE OF FINISHES

The units have been designed to a depth of just 325mm – ideal for a small space. They each have a ceramic basin included, as well as a slim cupboard, allowing for storage capacity.

www.easybathrooms.com

BATHROOM DISCOUNT CENTRE



Expert advice and a large selection of products is essential when renovating or designing a new bathroom.

Bathroom Discount Centre has worked with interior designers, architects, private individuals, and trades for over 40 years – ensuring great solutions for both luxury design and modest budgets.

Based in the heart of Fulham with over 10 different showroom areas displaying products to

inspire - we have something for everyone. From traditional roll

top baths to Bluetooth enabled bathrooms - come visit us for all your bathroom needs. We deliver nationwide.

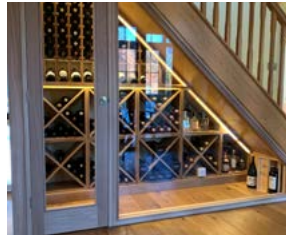
Special Art of Design offer: an extra 5% off your first trade order. Quote code ART5

**Website: www.bathdisc.co.uk
Telephone: 020 7381 422**



A & W MOORE WINERACKS

A & W Moore Wine Racks have been manufacturing wine racks in the UK since 1977. We are a family-run business, providing a comprehensive range of high quality wine racks and wine cabinet storage solutions.



We have built our reputation on building bespoke wine racks using only the finest materials, to not only provide you with bespoke storage solutions that are tailor-made to your requirements, but also to ensure that no matter the wood or metal you choose, your wine storage solution will preserve your wine or champagne for generations.

Our reputation for quality products at affordable prices, combined with great personal service, means that we now have loyal clients from every

corner of the globe, as well as across the United Kingdom. Choose from our large collection of solid oak wine racks, solid pine wine racks, traditional wood & steel wine racks or all metal wine racks to find your perfect fit.



For more information
0115 9441434,
information@wineracks.co.uk
www.wineracks.co.uk
www.instagram.com/
awmwineracks and
www.pinterest.co.uk/
AWMWineRacksUK/pins/

WR WINE RACKS UK
 By A & W MOORE
 EST. 1977

A & W MOORE Wine Racks manufacture the largest range of wine storage solutions in the UK. We produce tailor-made storage units for any space.

Call Now for a Quote Tel: 01159441434
 information@wineracks.co.uk or visit wineracks.co.uk

Wine Racks & Storage by Wineracks.co.uk

HAVWOODS INTRODUCES NEW VENEER FINISHES TO ITS VERTICAL COLLECTION

International wood flooring brand, Havwoods, has introduced nine stunning new designs to its popular Vertical collection of solid and engineered wood.



Adding a seamless finish to the rest of the home, the new designs provide the perfect feature for walls, doors, furniture and almost any other surface in the home. With a wide choice of highly textured designs available, consumers can choose from the cool grey tones of Spring to warm browns of Oshima for a distinct take on weathered wood designs. Within the new Veneer products, Havwoods has also introduced one particularly standout finish that sets itself apart from any other wood surface - the YakiSugi.



This vibrant design is inspired by the traditional method of wood charring dating from the 18th century, incorporating a range of vibrant different colours.

The process of the board manufacturing involves slightly charring the surface to accentuate the grain - creating a distinct and rustic finish that will last for years to come.

www.havwoods.co.uk

VITRA TILES BRINGS DESIGN INSPIRATION TO SLEEP & EAT, STAND L22

VitrA Tiles will be supporting its growth into the leisure and hospitality market, by showing one of its exciting new ranges at the Show.



Retromix is a comprehensive range of porcelain wall tiles which finds inspiration in the geometric shapes of traditional global patterns. It conveys a sense of being handmade, while the designs are brought up to date with modern reinterpretation, making them highly aspirational for use in modern spaces.

The tiles are available in 15 x 15 and 10 x 10 square format, offering ease of application

and a wide range of options to maximise design creativity. In addition to geometrics in B&W, Warm Grey and Cold Grey, the range features signature colours of Lava Red, Emerald Green, Sapphire Blue and Amber Yellow all in deep luscious gloss.

The CPD can be booked from the website of the RIBA CIPD Providers' Network at www.ribacpd.com or by contacting Vitra Tiles direct on tiles@vitra.co.uk



BRINGING LUXURY TO OFFICES THIS FALL

Fall brings many possibilities, even though Spring is traditionally the optimal time for reinvention, Fall season always brings new ideas to the table, it almost feels as a new beginning with the start of another school year and getting back to routines after the Summer Holidays.

It's a time to reinvent and the ideal period to renovate interiors. For two reasons - one for turning the interior into cozy retreats ready for the cold months ahead and two for refreshing our interiors and starting a new chapter. A great way to bring this concept into real life is to update workspaces,



CHARLA OFFICE CHAIR

The elegant Charla comes in two sizes, the original and the smaller version. Designed with a special attention to the backrest's ergonomic shape, these chairs were made to be comfortable for sitting for several hours, making it an ideal work chair. Made with the best materials and finishes, these chairs tie luxury and comfort together and bring endless elegance.



WALTZ DESK

Waltz Desk is the ideal work surface for a stylish office! Functional, contemporary unmistakable stylish, it's a sleek desk for modern spaces that joins design and luxury materials. With its contrasting textures and five conveniently located drawers it's the perfect choice for offices, whether private or corporate. It matches beautifully with the Charla Office Chair and is embellished with PullCast's jewellery hardware!

WALTZ BOOKCASE

The Waltz bookcase is an anthem to sophistication and exclusive design. It also provides lots of storage - with shelf space, drawers and cubicles to keep clutter out of sight. A beautiful way to display collector items, books, office supplies or décor pieces, no office is complete without a bookcase like the Waltz. An ideal choice to bring into contemporary and luxury offices, that fits into all styles of interior design, thanks to its simple design lines.



AND WHAT ABOUT LIGHTING?

Lighting can go a long way and make all the difference in an interior design project. It sets the mood and provides lighting, which is a must in any work space, after all bright ideas need bright lights. With that in mind these are the two suggestions LUXXU has, two table lamps that are the ultimate expression of luxury!

WWW.LUXXUHOME.NET **INFO@LUXXUHOME.NET**



**PHARO
TABLE LAMP**

Representing the architectural lines of light-houses, Pharo table lamp is the ideal lighting solution for those who love accent pieces. Reminiscent of Summer and beach days, this table lamp features a marble base and crystal details to turn every office into a luxury space.



**WATERFALL
TABLE LAMP**

The Waterfall Table Lamp is perhaps a more glamorous choice. A unique table lamp that fits beautifully into any office space (and matches wonderfully with the Waltz Desk). It combines a smooth marble base with tubular shapes of brass and crystal – making the Waterfall Table and unique office lighting solution.

Offices never looked so luxurious!



Beautiful spaces made beautifully accessible

The stunning Autograph and Heritage Collections by Lyfthaus. Bespoke disabled access platform lifts, designed and crafted in Cambridge, England. Architecturally inspired, beautifully engineered.

Lyfthaus premium open aspect platform lifts can be found in Britain's finest buildings, architectural icons and A-list properties.

Lyfthaus Limited
We rise by lifting others



Lyfthaus Limited, Steeple Bumpstead, Cambridge, CB9 7BN
Tel: 01440 731111 Email: lifts@lyfthaus.com

www.lyfthaus.com

LLOYD LOOM
FINEST QUALITY HANDMADE FURNITURE

01452 88 38 74
www.lloydlooms.co.uk

Lloyd Loom



1

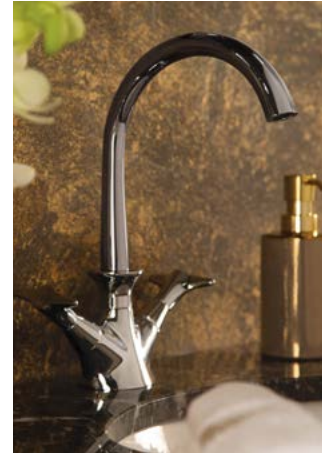
Thomas Crapper Adds Contemporary Touch with New Range

Luxury bathroom specialist Thomas Crapper has launched a stunning new range of products, designed with today's discerning and style-focussed customers in mind.

Perfect for the most sophisticated and stylish bars, hotels and restaurants, the new collection includes back to wall and wall hung WC pan options, unique urinal and urinal cisterns and sleek Thomas Crapper branded flush plates.

With items including matt dark bronze and champagne brassware, real platinum and 24ct gold foiled logo tiles and black powder coated cisterns, the latest additions to the Thomas Crapper range offer designers and specifiers even more design choices.

Website: www.thomas-crapper.com | **Email:** wc@thomas-crapper.com



2

Unique Feature Walls

Love Maps On is the UK's leading supplier of map wallpapers and wall-art to consumers and businesses.

Our Ordnance Survey Mapping and Vintage Ordnance Survey Mapping can be centred on any GB postcode and can be produced on made-to-measure wallpapers, canvases, ceramic tiles, glass splash-backs and framed prints.

Our dedicated mapping experts are on-hand to offer guidance and advice ensuring that every map is created exactly to customer specifications.

Website: www.lovemaps.com | **Telephone:** 01344 427647

love
maps
on...



3

Matthew Day Jackson, Formica Group and Made by Choice present Kolho, a collection of tables and chairs inspired by the moon launched at Milan Design Week, 2019

The collection, titled Kolho, after the Finnish town that first inspired Jackson, comprises a series of dining tables and chairs, exhibited alongside the artist's well-known, exquisite flower paintings at the event. For the table and chairs, Jackson has designed his own Formica® surface that replicates, to scale, the surface of the moon. He has created the flower paintings using lead, scorched wood and Formica® laminate, evoking Jan Breughel the Elder and Younger's genre-defining floral works from the 16th and 17th centuries, made during a time of Dutch prosperity, colonial expansion and exploitation.

Website: www.Formica.com | **Telephone:** +441916220096



4

Dallmer

The DallFlex system family of drainage specialist Dallmer has grown. The German based manufacturer has launched two new shower channels for the modern DallFlex drainage system.

As a result, the drain body can now be combined with nine different Dallmer shower channels.

By further developing the DallFlex drain body, Dallmer has successfully separated the drain body from the shower channel, a market innovation that offers many advantages for level-access showers – including maximum flexibility and ease of cleaning.

Website: www.dallmer.com | **Telephone:** 01787 248244



5

CTD Architectural Tiles Introduces The New Skyline Collection

New for autumn 2019, CTD Architectural Tiles introduces the Skyline collection. A reinterpretation of the traditional appearance of glazed brick, Skyline offers a contemporary twist on the brick slip tile trend in a range of modern solid colours to create standout wall features within any manner of architectural or design space. Featuring a gloss surface with a characteristic structured finish, the new glazed porcelain wall tiles are available in twelve solid colourways. A versatile specification choice, the innovative thickness of only 6mm allows faster installation even overlaying a previous façade. From a neutral Taupe and on-trend green Musk to metallic-effect Copper and Bronze, Skyline offers designers and specifiers a broad choice of finishes to create a true statement, whether in a commercial or residential setting.

Website: www.ctdarchitecturaltiles.co.uk | **Telephone:** 0800 021 4835



AROMATISE
Fragrance and Technology



Downton Abbey, Highclere Castle

6

Making Interiors smell as good as they look

Have you ever entered a space and instantly felt at home, or quite the opposite, uncomfortable or anxious?

The reason why is not always an evidence, be it the colours, the lighting, the furniture or perish the thought... the SMELL! A badly aligned interior may have you longing for more or running for the door.

Aromatise Fragrance Diffusion Technology believe in the art of aligning those senses, with the help of the often-forgotten sense of smell. With premium perfumes and state of the art fragrance diffusion technology, we will assist you in designing the olfactive completion of any living space.

Do call us and speak to us personally for an easy first consultation or visit us on our website.

Website: www.aromatise.co.uk | **Telephone:** 01223 894207 | **Email:** info@aromatise.co.uk

7

THE LATEST TILE TRENDS FROM CTD ARCHITECTURAL TILES

From cultural influences to environmental considerations, the surface industry has become an exciting creative arena for trend developments.

The desire for creating spaces that stand out, delivering on both aesthetic and practical qualities, has driven the demand for tiles that make unique and memorable design statements.

From botanical-inspired patterns to modern terrazzo finishes, CTD Architectural's extensive product portfolio provides architects and designers with more choice than ever when it comes to specifying ceramic and porcelain tiles for residential, commercial and hospitality projects.

Website: www.ctdarchitecturaltiles.co.uk | **Telephone:** 0800 021 4835

8

Beautiful Handmade Oriental Rugs

At a warehouse one minute from Brent Cross and the M1, you will find every sort of handmade Oriental rug in every colour and size up to 800cms x 500cms. Whatever your client's requirement, you'll almost certainly find here and at the right price. Custom-made too. Open seven days 9.30-5.30. Parking right outside. Home trial with pleasure.

For more information or to make an appointment call Leon on 020 8731 7708.

LEON NORELL

8 Atlas Business Centre, Oxgate Lane, London NW2 7HJ (halfway up, on the right)

Website: www.leonnorell.com | **Email:** leon@leonnorell.com | **Tel:** 020 8731 7708

9

Lalique

Lalique has worked with the French interior decorator and designer Pierre-Yves Rochon since 2017 on 'Signature' – a capsule collection of furniture and lighting.

"I have always admired René Lalique's creativity and talent. Crystal is a noble material that lends itself to many art forms – it is a material I find extraordinary for its purity and wonderful response to light." Pierre-Yves Rochon.

Pierre-Yves Rochon has now added the Perles chandelier to the "Signature" collection. Inspired by original Art Deco lighting designs created by René Lalique in the 1930s and by the graphic and symbolic power of the candle. The Perles chandelier with neoclassical accents is highlighted by LED technology.

Website: www.lalique.com | **Telephone:** +44 (0)20 7292 0444



10

Get a head start with Rapid Level CT 3220 from Mapei

Rapid Level CT 3220 is the latest addition to Mapei's extensive product range, offering a levelling compound that promises a quick drying time of just 45 minutes prior to the installation of ceramic and porcelain type tiles. Suitable for internal use, Rapid Level CT 3220 is used for levelling, smoothing and infilling differences between 3 and 20mm in a single application.

It is suitable for levelling a variety of substrates including new and existing concrete, anhydrite and cementitious screeds, stone and ceramic tiles, and can also be used over boarded timber floors. It can also be used in areas subjected to castor wheels and onto screeds with incorporated underfloor heating systems.

Website: www.mapei.com | **Telephone:** +44-121-5086970



11

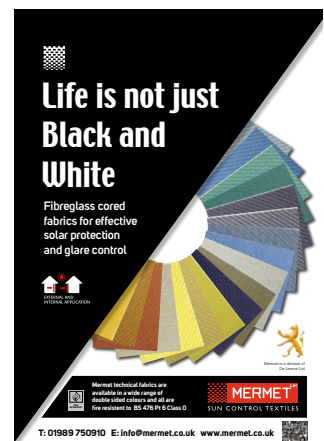
Mermet

Screen fabrics with the finest visual transparency, afforded by the thin yarns possible with the use of glass fibre cored yarns, and the flattest faced shadow free blackout fabrics, because of the dimensional stability the same yarn provides, form the basis of the Mermet range of solar shading fabrics.

Nearly 300 different fabrics and colours provides a multitude of choice.

Roll widths up to 3.20 m wide permitting the manufacture of large panels without a disfiguring seam joint breaking the view – imagine a bi-fold door 5.0+ m wide, floor to ceiling, covered with one un-broken see-through screen – with Mermet you can – request your samples now.

Website: www.mermet.co.uk | **Telephone:** 01989 750 910



12

Netherby Hall

Netherby Hall in Cumbria is an outstanding grade II* mansion house, steeped in history from the Roman times to the modern day. Set in the beautiful borderlands between England and Scotland Netherby Hall is an historic property that has stood for 2000 years.

The house stands in 36 acres of parklands with extensive lawns, a Victorian pleasure garden and Victorian Walled Garden that produces much of the fruit, vegetables and herbs used at our fantastic award winning Pentonbridge Inn. Netherby Hall is home to several events including classic car shows, concerts and exhibitions, and hosts an exquisite afternoon tea once a month.

There are also plans to open the Victorian Stables and Meeting Room in the summer of 2020.

Website: www.netherbyhall.co.uk | **Telephone:** +44 (0) 1228 586 636



ST. EVAL

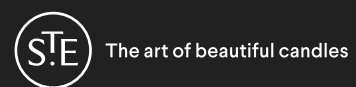


The magic of Christmas begins with a St. Eval candle

For warmth and spice, try Inspiritus or Orange & Cinnamon. Within the beauty of our handmade candles is a unique scent, inspired by nature and designed to transform room ambience. Try our festive fragrances, uplifting herbals and fresh citrus blends.

Enjoy 10% off with code ART10

Offer expires 16th December 2019



Nestled on a farm in North Cornwall, St. Eval use traditional methods and sustainable production to craft high quality candles by hand.

www.st-eval.com

dwell

A modern living room interior. In the foreground, a grey fabric sofa is adorned with a bright yellow textured pillow and a matching yellow blanket. A glass coffee table with a chrome base sits in front of it. Behind the sofa, a dark console table holds a silver mirror, a gold lamp, and a stack of firewood. To the right, a dining table with a white pedestal base and grey chairs is set with gold and blue decor. The background is a light-colored concrete wall with several large green plants.

live like this

dwell.co.uk | Stores nationwide