



RWinvest

SKY GARDENS CONSTRUCTION UPDATE

July 2019



SKY GARDENS

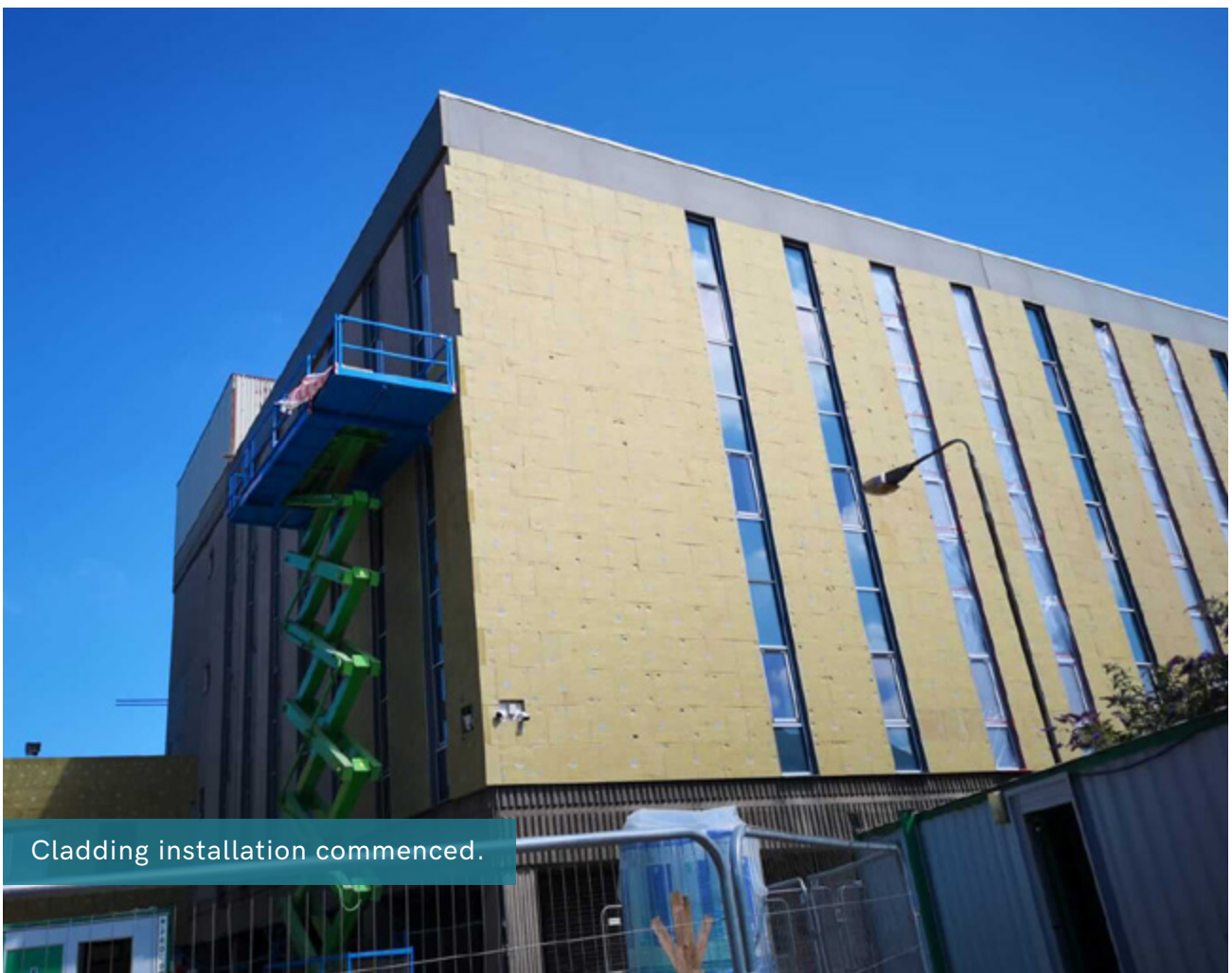
CONSTRUCTION UPDATE

July 2019

Construction at Sky Gardens is progressing well. Windows are now 100% installed throughout the development and internal partitioning is underway on the upper floors.

The installation of brick slip cladding has commenced and the insulation which precedes this is 100% complete. The internal boarding has also started to be installed.

In the next construction period, the main works will include continuation of first fix and the external cladding system installation. This will include the rendering of the insulation, followed by the brick slips themselves being installed.





Windows installed 100%.



Internal partitioning progression to upper floors.





Internal boarding commenced installation.





RWinvest

Liverpool +44 (0)151 808 1250

London +44 (0)207 100 4141