



RWinvest

CITY RESIDENCE - THE APARTMENTS

CONSTRUCTION UPDATE

August 2019



CITY RESIDENCE – THE APARTMENTS

CONSTRUCTION UPDATE

August 2019

At City Residence Phase 2, the hoarding is now 100% erected around the site. The developer has produced the construction health and safety document for the scheme to allow this to be issued to the planners and the CDM coordinator.

They have also liaised with the supply chain to obtain feedback on the design via fortnightly meetings and have established procurement lead-in durations.

In addition to this, contact has been made with the statutory service providers to make them aware of our requirements and begin the process with relevant orders. All necessary arrangements are being made to achieve the start date for construction.

ARCHITECT

The architects have produced the proposed level drawings to allow setting out of the works on site. They have also developed the general arrangements to coordinate the mechanical and electrical design and structural requirements into the build. Envelope design has progressed to align with the planner's requirements and the external works scheme has been developed.

Architects have liaised with building control, produced detailed wall plans and commenced the detailing of the bathrooms and kitchens, whilst also coordinating the service risers and main service routes throughout the scheme.

STRUCTURAL

With regards to structural planning, the foundation of general arrangement and detailed working drawings have been created. The foul water and service water drainage design has been developed and particulars for the drainage installation have been produced.

Teams have liaised with the stone vibro specialist, warranty provider and building control to discuss the proposed foundation designs. They have also developed the floor construction details and secondary steel requirements.

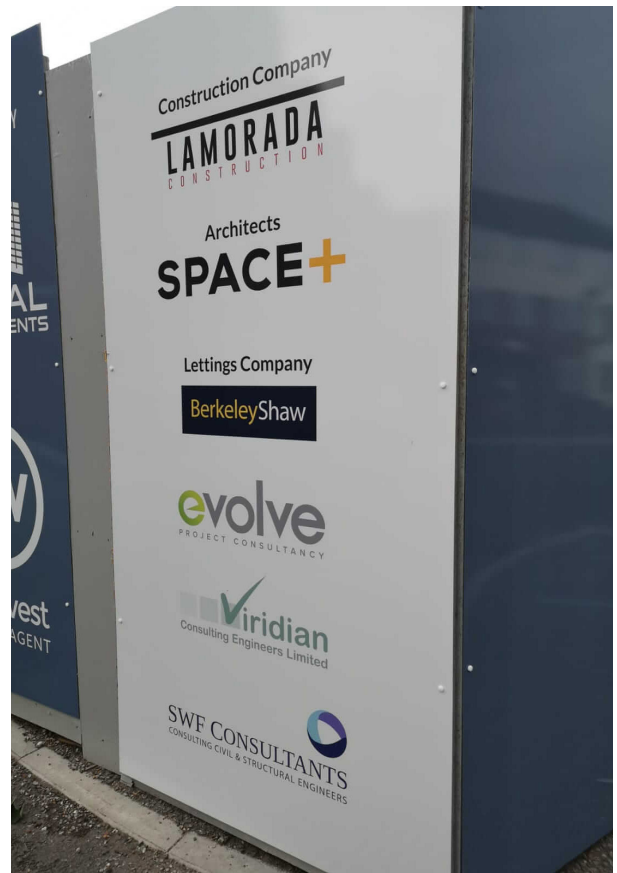
MECHANICAL AND ELECTRICAL

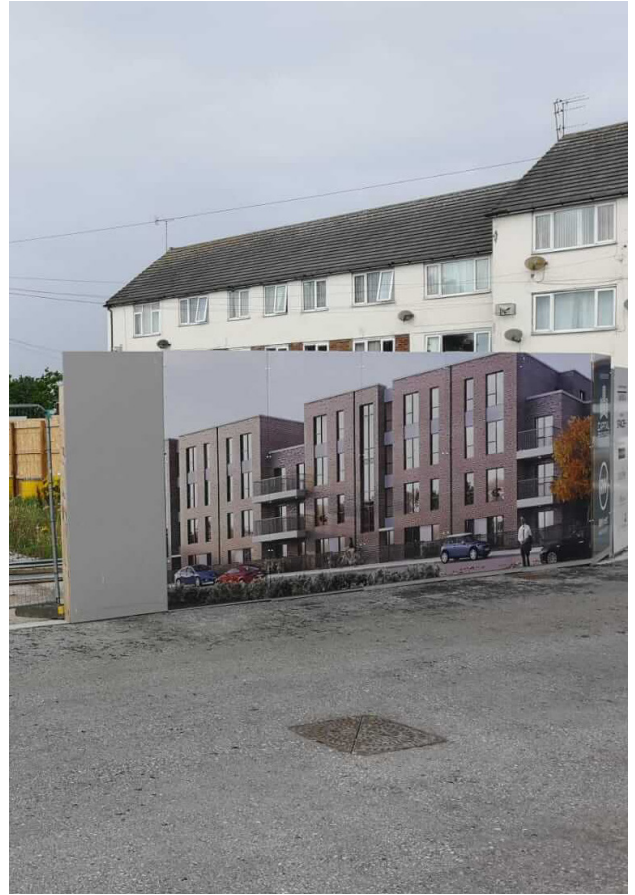
Mechanical and electrical teams have delivered general arrangement drawings for all key systems. Scheme requirements have been confirmed with Scottish Power and the main service riser and plant room runs have been detailed.

Above ground drainage designs for the scheme have been generated and the key utility requirements for the project have been reviewed.



Hoarding erected around the site.







RWinvest

Liverpool +44 (0)151 808 1250

London +44 (0)207 100 4141