



**Welcome  
to class**

T.

**WE CAN!**

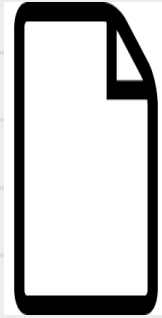
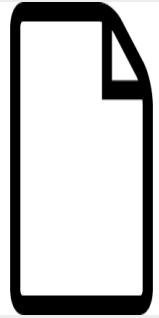


---

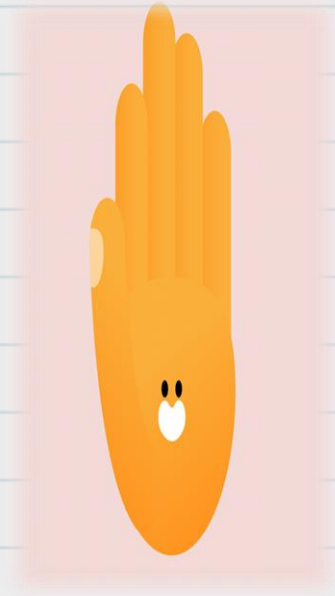
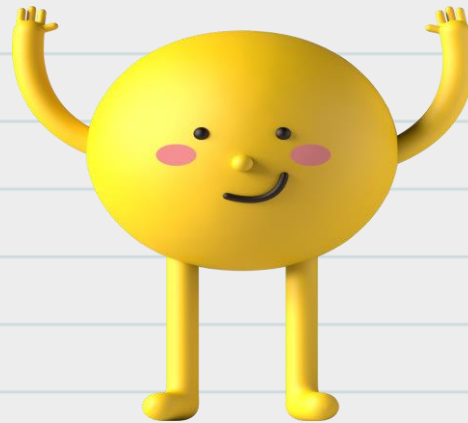
**Unit 11**

**workbook**

**Pages 219 , 220**



**READY?**





**1 Listen and fill in the missing words.**

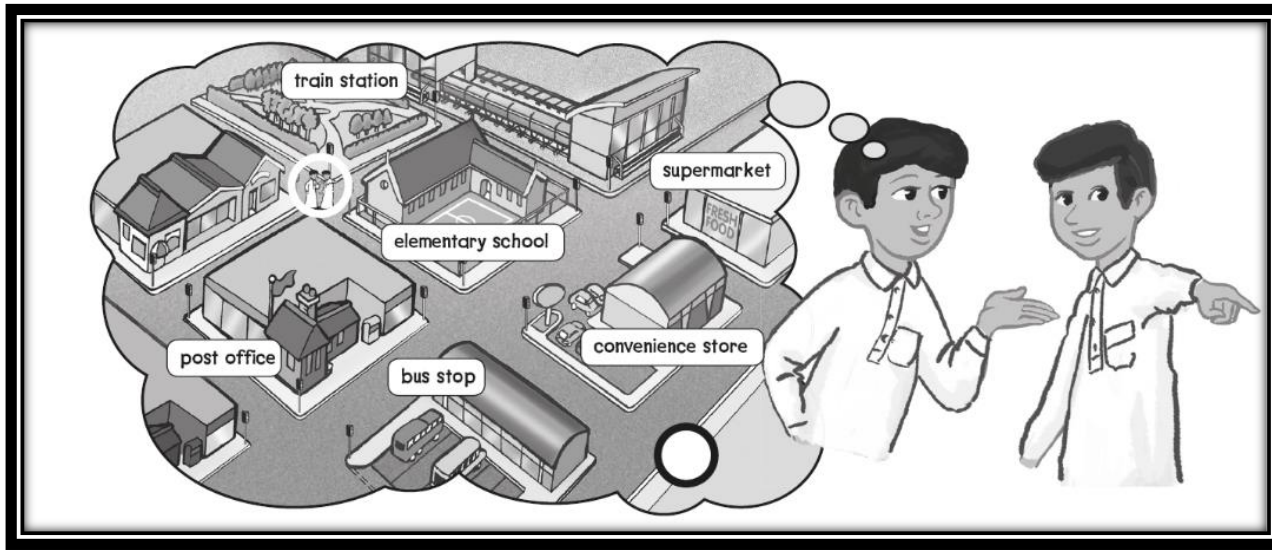
A: Excuse me. Where's the post office?

B: Go straight, turn left, and you'll find it on your right.

A: Is it far from here? B: It's only a few minutes.

A: Thank you. B: You're welcome.

2 Say how to get there using the map. Start at the circle.



1. Where's the train station? *Turn left and go straight*
2. Where's the bus stop? *Go straight then turn right*
3. Where's the elementary school? *It's right over there*

### 3 Three Hints Quiz



Hint 1: It's a store.

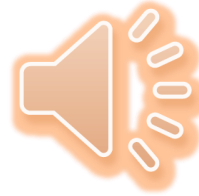
Hint 2: It's usually very big.

Hint 3: There are many kinds of food in the store.

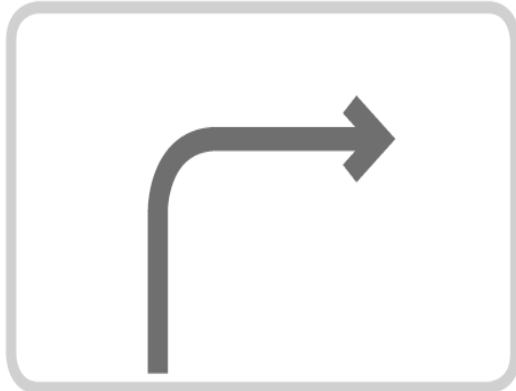
A: It's a supermarket

1

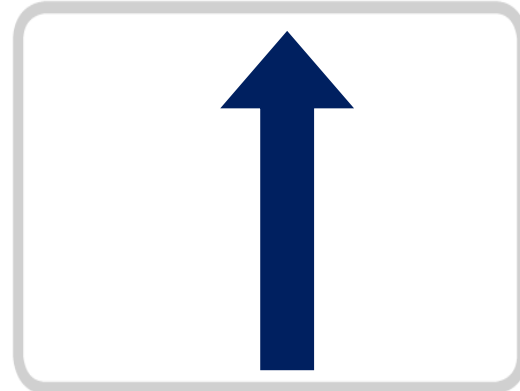
Listen and draw.



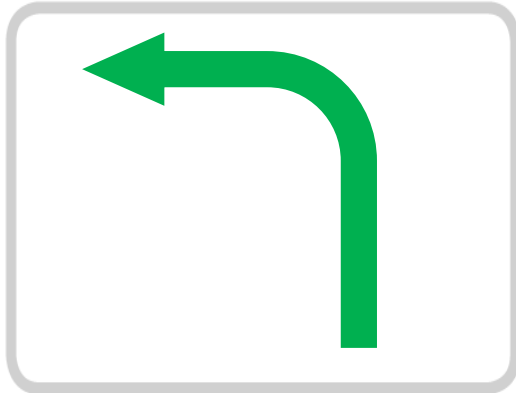
A



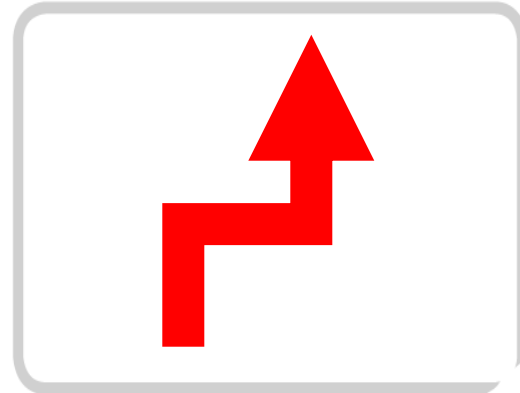
C



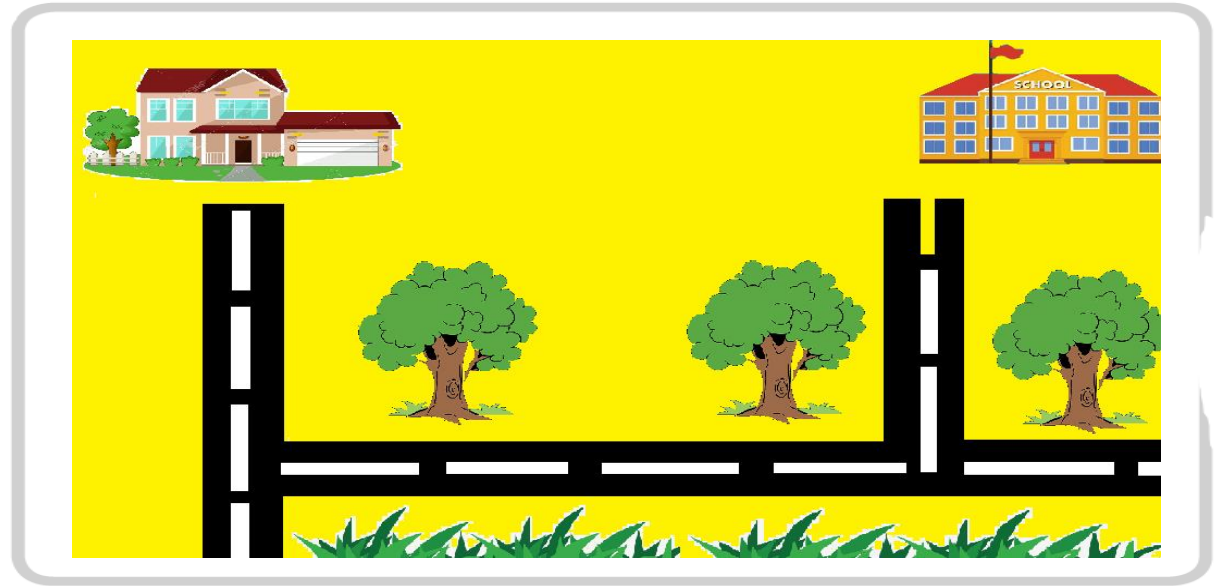
B



D



**2** Draw a map from your house to your school, or to the nearest bus stop, train station, or convenience store.





## 3 Three Hints Quiz



Hint 1: There are usually a lot of children there.

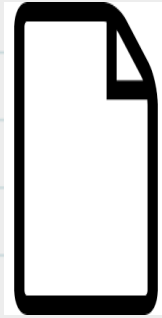
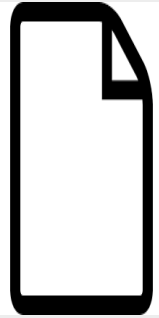
Hint 2: The children are usually 1st to 6th graders.

Hint 3: There are teachers there, too.

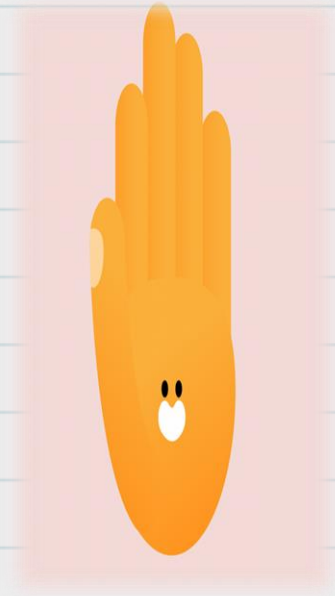
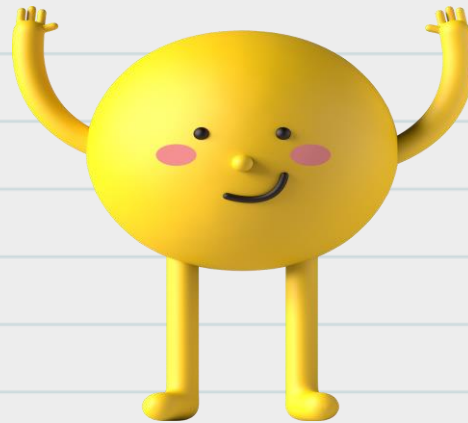
A:                     A school

**workbook**

**Pages 221 , 222**



**READY?**



**1 Listen and match.**



1. I'm going to the b
2. You're going to the d
3. He's going to the a
4. She's going to the f
5. We're going to the e
6. They're going to the c

**Hints:**



**2** Read and write the answers.

1. A stationery store sells staplers and staples.
2. A candy store sells candy.
3. A DVD store sells DVDs.
4. A bakery sells bread and cakes.
5. A bookstore sells books.
6. A flower store sells flowers.

### 3 Three Hints Quiz



Hint 1: It's a store.

Hint 2: It usually smells very good.

Hint 3: You can get fresh bread there.

A: the bakery

1 Listen and fill in the missing words.



1. I want \_\_\_\_\_ **pens** \_\_\_\_\_ and **pencils** \_\_\_\_\_.  
I'm going to the \_\_\_\_\_ **stationary store** \_\_\_\_\_.
2. I want some \_\_\_\_\_ **chocolate** \_\_\_\_\_.  
I'm going to the \_\_\_\_\_ **candy store** \_\_\_\_\_.
3. I want some \_\_\_\_\_ **DVD's** \_\_\_\_\_.  
I'm going to the \_\_\_\_\_ **DVD store** \_\_\_\_\_.
4. I want some \_\_\_\_\_ **bread** \_\_\_\_\_.  
I'm going to the \_\_\_\_\_ **bakery** \_\_\_\_\_.
5. I want some \_\_\_\_\_ **magazines** \_\_\_\_\_.  
I'm going to the \_\_\_\_\_ **bookstore** \_\_\_\_\_.
6. I want some \_\_\_\_\_ **plants** \_\_\_\_\_.  
I'm going to the \_\_\_\_\_ **flower store** \_\_\_\_\_.

Hints:



pens and pencils

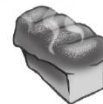


magazines

chocolate



DVDs



bread

plants



## 2 Listen again and practice the sentences.

1. I want \_\_\_\_\_ **pens** \_\_\_\_\_ and **pencils** \_\_\_\_\_.  
I'm going to the \_\_\_\_\_ **stationary store** \_\_\_\_\_.
2. I want some \_\_\_\_\_ **chocolate** \_\_\_\_\_.  
I'm going to the \_\_\_\_\_ **candy store** \_\_\_\_\_.
3. I want some \_\_\_\_\_ **DVD's** \_\_\_\_\_.  
I'm going to the \_\_\_\_\_ **DVD store** \_\_\_\_\_.
4. I want some \_\_\_\_\_ **bread** \_\_\_\_\_.  
I'm going to the \_\_\_\_\_ **bakery** \_\_\_\_\_.
5. I want some \_\_\_\_\_ **magazines** \_\_\_\_\_.  
I'm going to the \_\_\_\_\_ **bookstore** \_\_\_\_\_.
6. I want some \_\_\_\_\_ **plants** \_\_\_\_\_.  
I'm going to the \_\_\_\_\_ **flower store** \_\_\_\_\_.

## 3 Three Hints Quiz



Hint 1: It's a restaurant.

Hint 2: It has drinks and some food.

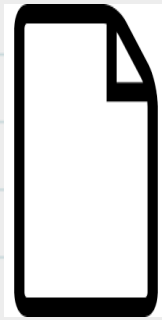
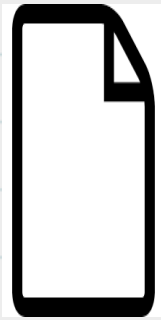
Hint 3: It always has fries and burgers.

A: It's a fast food restaurant

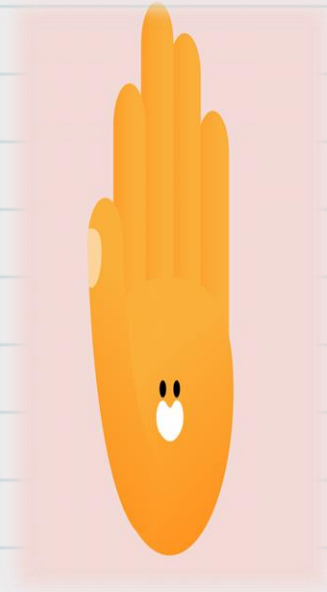
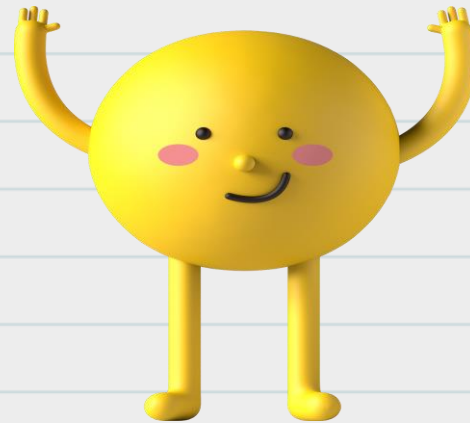


**workbook**

**Pages 223 , 224**



**READY?**



1 Listen and practice.



## There Was a Little Green House

There was a little green house,  
And in the little green house,  
There was a little brown house,  
And in the little brown house,  
There was a little yellow house,  
And in the little yellow house,  
There was a little white house,  
And in the little white house,  
There was a little red heart.



**2** Change colors and say the chant.

silver, gold, black, beige, dark green,  
light orange, gray, bright pink

## There Was a Little Green House

There was a little green house,  
And in the little green house,  
There was a little brown house,  
And in the little brown house,  
There was a little yellow house,  
And in the little yellow house,  
There was a little white house,  
And in the little white house,  
There was a little red heart.



## 3 Three Hints Quiz



Hint 1: Everyone has one.

Hint 2: We can't live without it.

Hint 3: It moves blood around your body.

A: \_\_\_\_\_ **The heart** \_\_\_\_\_

**1** Change *house* to one of these words and chant.

There was a little green ... ,  
And in the little green ... ,  
There were three little brown ... ,  
And in the little brown ... ,  
There were little yellow ... ,  
And in the little yellow ... ,  
There were little white ... ,  
And in the little white ... ,  
There were little red ....

Hints:



box



bottle



fish



book



doll



letter

2 Listen and fill in the missing words.



1. There's a post office near my house.
2. There are many convenience stores in my town.
3. There was a candy store near our school when I was little.
4. There were many people in the street last night.

### 3 Three Hints Quiz



Hint 1: It's an animal with big jaws and sharp teeth.

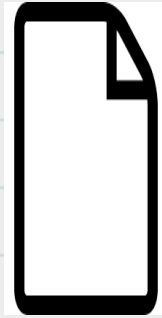
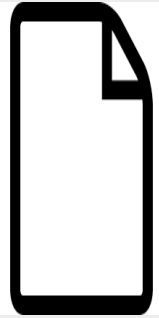
Hint 2: It's usually very big.

Hint 3: It lives in water.

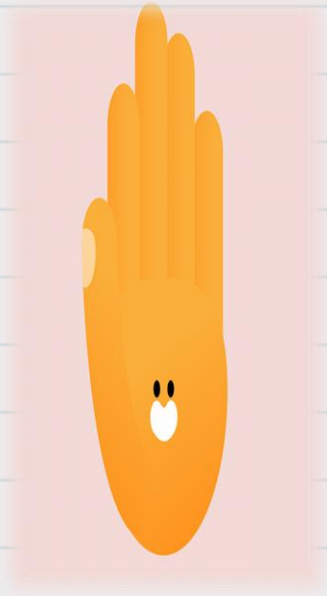
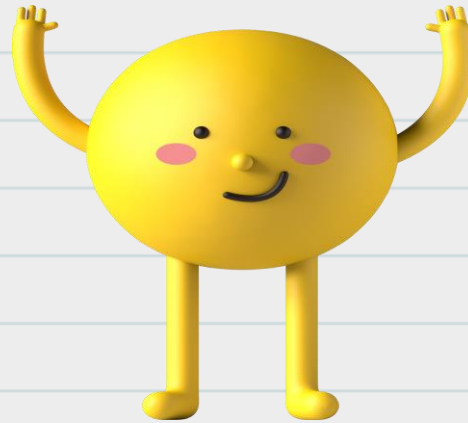
A:                     **A crocodile**

**workbook**

**Pages 225 , 226**



**READY?**





**1** Listen and fill in the missing letters.



1. tiss u e

2. bl u e

3. c u t e

4. J u n e

5. gl u e

6. barbec u e

**2** Read and match with the pictures.

1. barbecue h

2. huge d

3. cube g

4. tissue b

5. cute f

6. glue a

a.



b.



c.



d.



e.



f.



g.



h.



## 3 Three Hints Quiz



Hint 1: It comes in a small bottle or tube.

Hint 2: It has a strong smell.

Hint 3: You use it to fix or stick things.

A:           A glue

1 Listen and match. Then practice.



1. No parking. a
2. Keep off the grass. c
3. No skateboards. e
4. No bicycles. b
5. No shouting. d
6. Library. i
7. Warning! Please switch off all cell phones. g
8. Please do not litter. h
9. No eating. No drinking. f
10. No balls. j



**2** Write the names of the signs. Use the hints.

1. Entrance

2. Police station

3. Exit

4. Bus stop

5. Library

6. Train station

Hints:



## 3 Three Hints Quiz



Hint 1: It's a sign.

Hint 2: It's usually red and white.

Hint 3: It means *don't go!*

A:           **stop**

