



RWinvest

An architectural rendering of a modern multi-story office building. The building features a light-colored facade with vertical gold-colored accents and a section with a dark, patterned glass facade. The scene includes trees, a street with cars, and a few pedestrians. A large orange diagonal line cuts across the image from the top left to the bottom right.

**ONE ISLINGTON PLAZA**  
Construction Update  
December 2017

# One Islington Plaza

## Devon Street, Liverpool, L3 8HA

### What's new?

Works are progressing well on site this month. Following the site meeting on Tuesday 19th December, the programme was discussed between all parties. After the meeting, EPCL received a target programme which details the phasing plan, identifying release dates for all units. This is currently under review.

Moreover, concurrent works and an extra gang are necessary for the steelwork installation programme. EPCL have been advised that two steel erection gangs are on site.

As it stands, Building Consents continue to carry out regular inspections. No adverse comments have been raised.

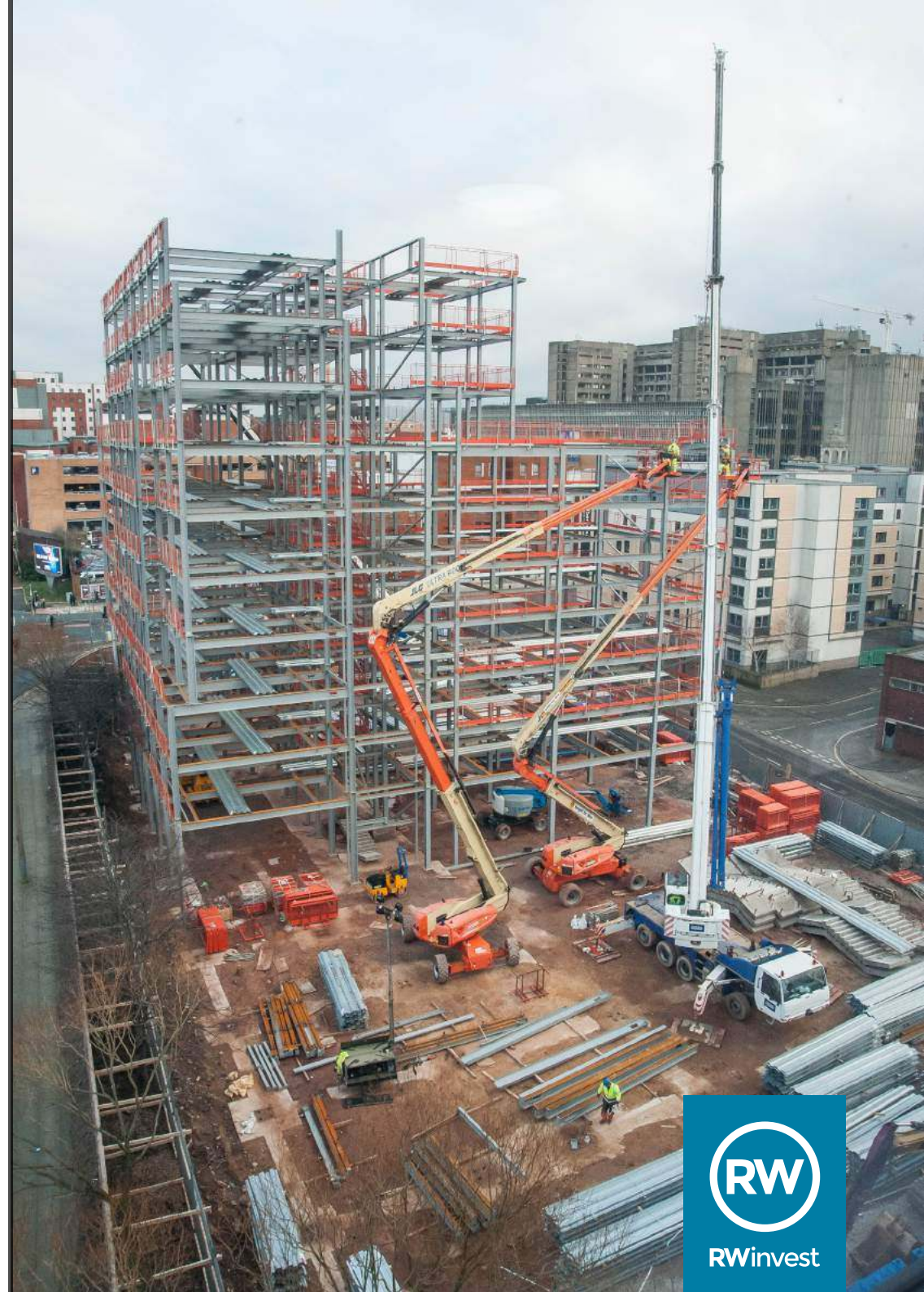
### The Schedule

EPCL have been advised that the precast stairs will be installed by 15th January 2018 and that the steel frame will be complete by 9th February 2018. Regarding the installation of audio visual requirements on the ground floor, along with group study cluster cubicle power requirements within the amenity space, EPCL are now to liaise with USL.

The anticipated date of completion is 28th September 2018.

If you need any further information in the meantime, please call us at the following offices:

Liverpool +44 (0)151 958 1254  
London +44 (0)207 100 4141





ONE ISLINGTON PLAZA  
Luxury Student Residence  
Opening September 2018

**Sales & Lettings**  
0151 958 1254

**8% NET RENTAL RETURN**  
Invest from £66,995  
[www.rw-invest.com](http://www.rw-invest.com)

Classics  
Pig Pops  
Gymnasium

Coffee Shop  
Lush  
The Storage  
Resistor

ONE ISLINGTON PLAZA  
Luxury Student Residence



