



One Baltic Square Construction Update

May 2021



May 2021

In this month's construction update for One Baltic Square, there are several tasks which have completed. Weatherboard installation, retaining wall concrete, blockwork and internal drainage are just some of the works completed during the period. Foundations and pads have started being laid and internal stud work partitions have also commenced in this time.

Summary of Works Progressed

- SFS installation to Block D now complete and nearing completion in Block A.
- Weatherboard installation complete to Block D.
- The retaining wall concrete is now complete up to Block C, reinforcement and formwork is also finished, which are essential works for formation of the underground car park walls and in facilitating the steel frame to be erected to Blocks B and C.
- The blockwork to the lift shaft and core has continued in Blocks A and D and is now complete. Brickwork to the stairwell and cores is continuing.
- Containment for electrical works is progressing nicely.
- Internal drainage installation is near completion.
- The window installation is progressing throughout the development. It is nearing completion on Block D and will commence imminently on Block A.
- Lightning protection works are complete.
- The roof construction has commenced.
- First fix mechanical and electrical has commenced and starting to progress, with contractors continuing with first fix plumbing also.
- Foundations and footing pads have been laid to Blocks B and C. Structural steel has been ordered.
- Internal stud work partitions have been delivered to site, ready for installation once the roof is completed.

Works Scheduled

- Ground workers to complete footings by inserting concrete pads in the ground which connect to the steel frame via structural steel bolts which they have prepared. Blocks B and C will then be ready to receive the steel frame and begin erecting it when it is delivered to site. More information about the steel frame delivery will be provided shortly.
- Continuation of retaining wall for the car park around Block E.
- Commence Block A window installation.
- Awaiting parapet steelwork to Blocks A and E to allow the roof to be completed, and then internal partitions will be installed.





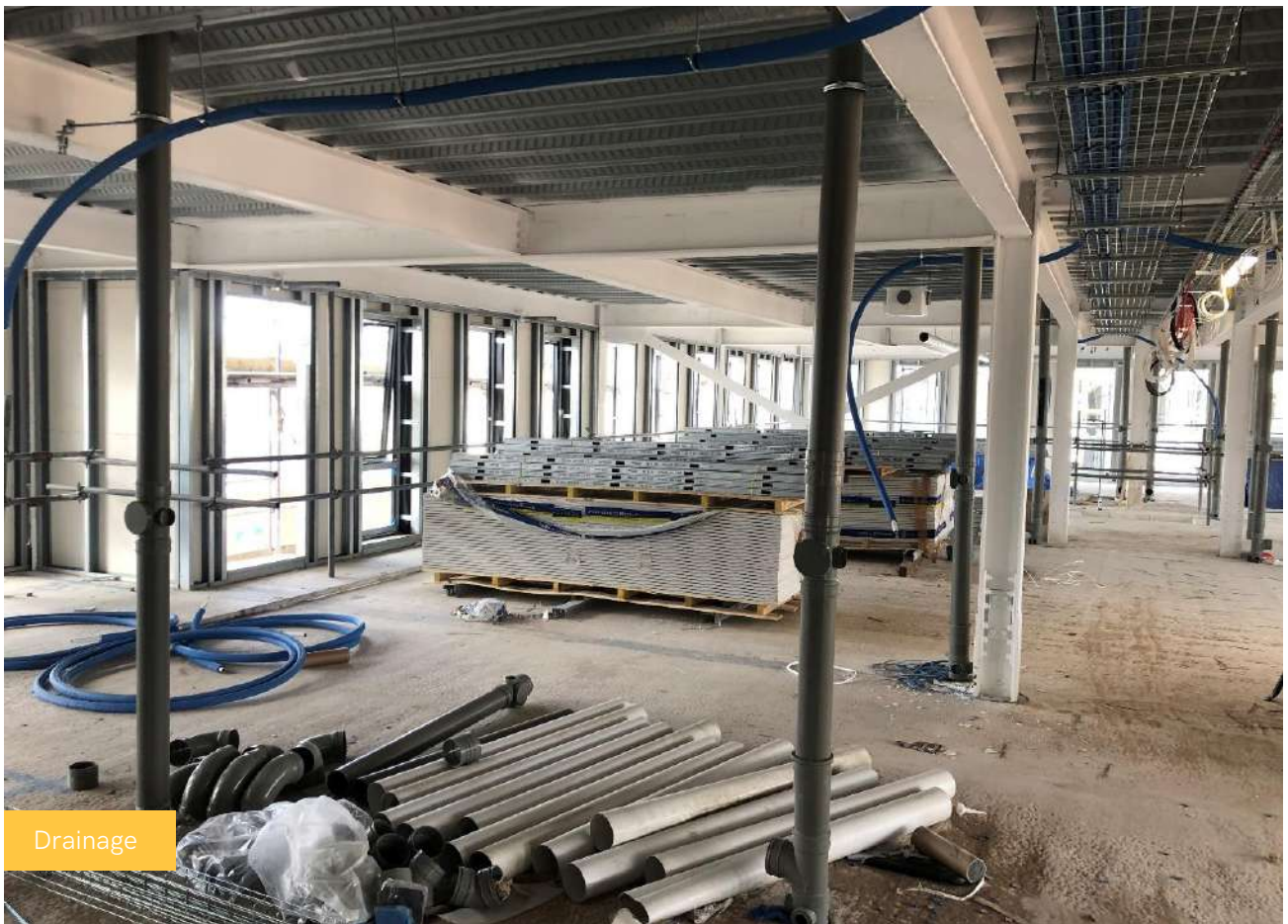
Retaining wall concrete



Progress to Block A and Block D



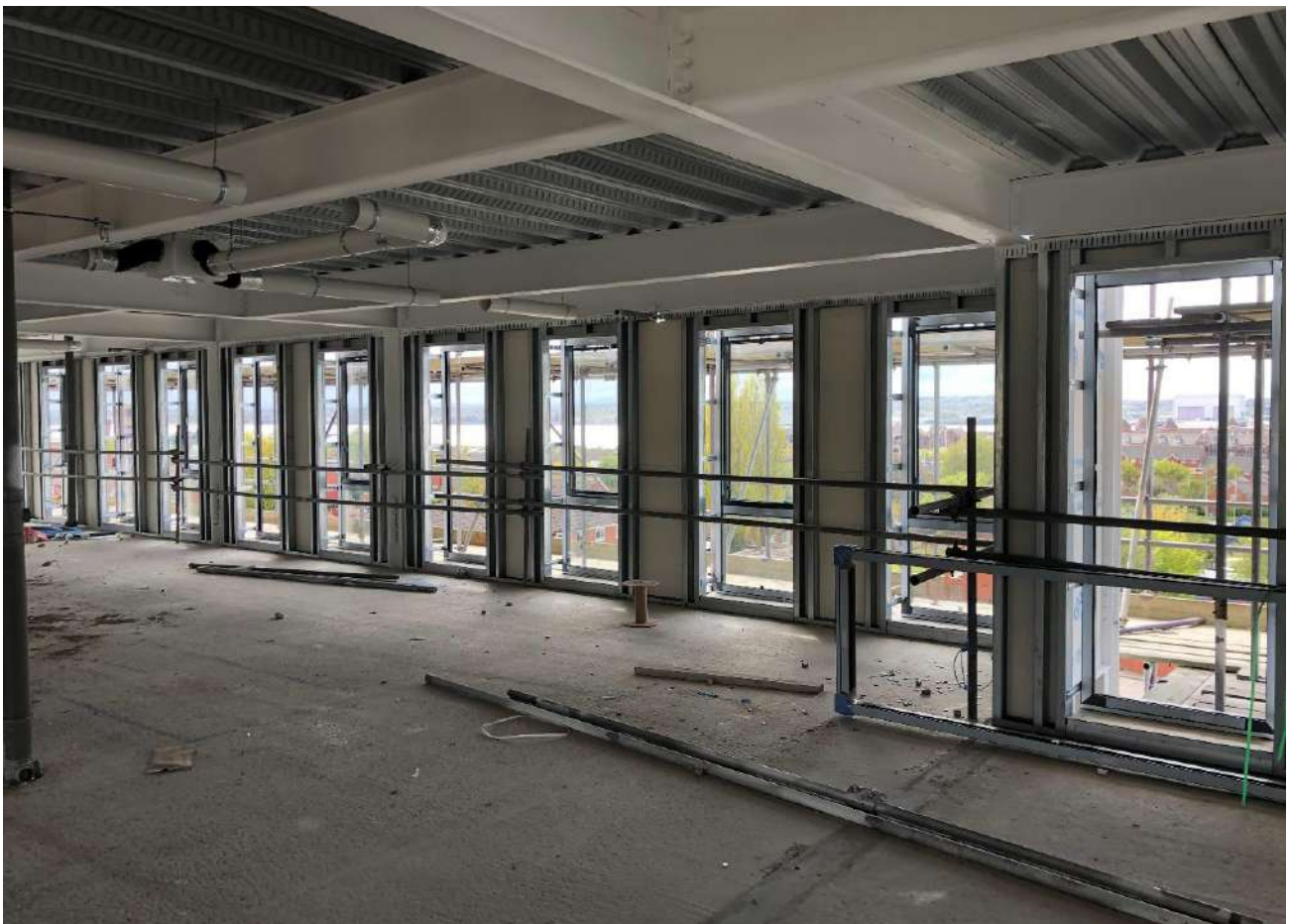
Window installation progress



Drainage



Internal ventilation





Steel delivery



Groundworks dug down to basement level



Mortar on site



First fix plumbing



Retaining wall



Concrete pads for steel frame

