



RWinvest

ONE ISLINGTON PLAZA

Construction Update
April 2019

One Islington Plaza

Devon Street, Liverpool, L3 8HA

This One Islington Plaza construction update has showed progress to the window installation, internal doors, ground floor walls and more. Internal partitions have now been fully completed. There has also been significant work to the furniture, fixtures and equipment and snagging is ongoing across all floors in the development.

A statement from the developer regarding the completion date of One Islington Plaza will follow shortly.

External Works

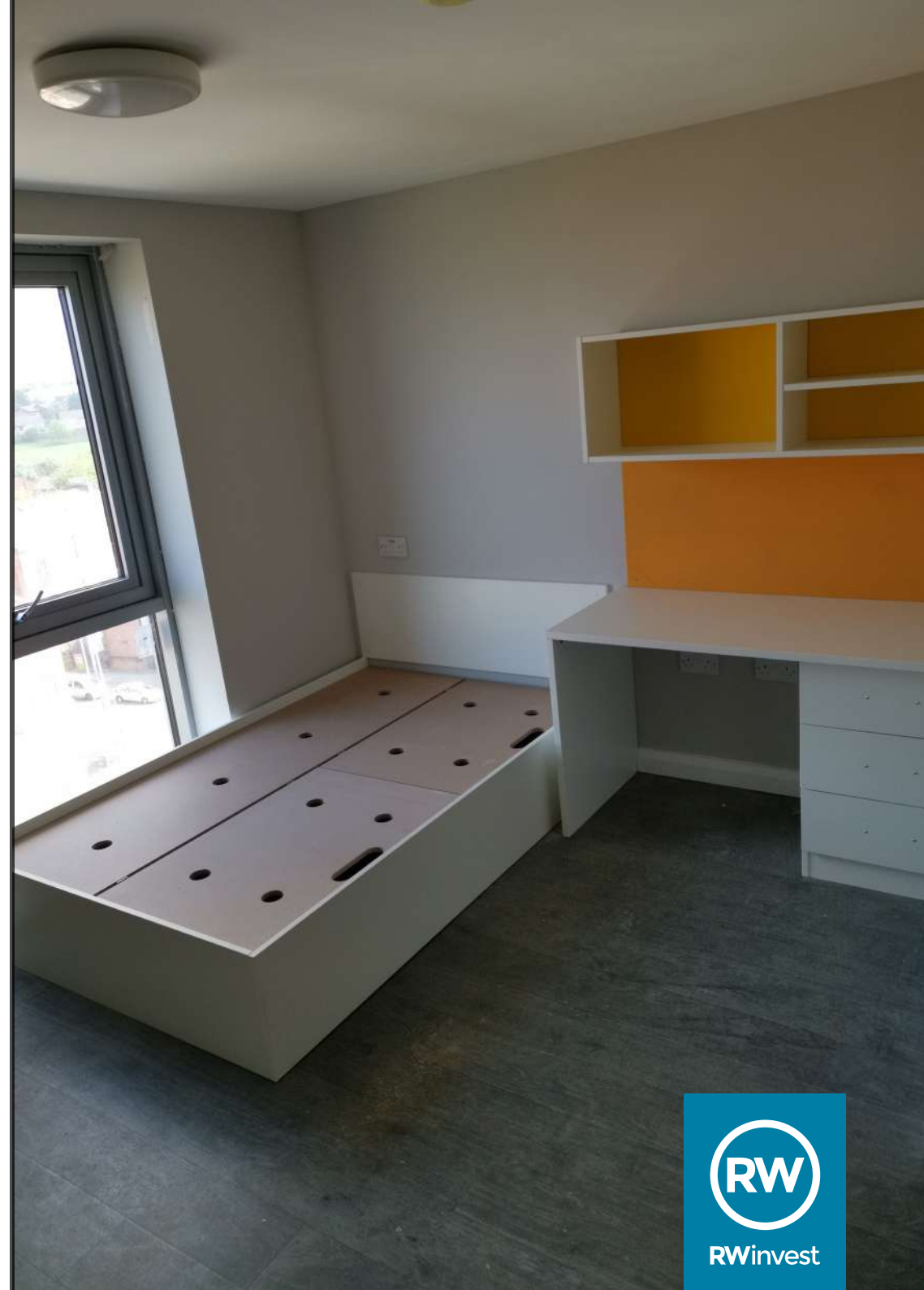
- Windows are 99% installed with remaining 1% materials on site to construct.
- Ground floor walls 97% complete with rest of materials ready.
- Internal partitions 100% installed.
- Internal doors 97% installed with 3% materials on site.
- Mechanical, electrical and plumbing works 96% installed. Remaining 4% of materials are on site.
- Furniture, fixtures and equipment is 50% complete. 30% materials have arrived on site thus far.
- Kitchen and bedroom furniture installation has progressed on floors 2-9. Kitchens and appliances are being prioritised for commissioning purposes.
- Snagging to all floors is ongoing.

Works Anticipated

- Completion of final special cuts of cladding.

If you need any further information in the meantime, please call us at the following offices:

Liverpool +44 (0)151 808 1250
London +44 (0)207 100 4141









RWinvest