



# ELEMENT - The Quarter Construction Update

February 2023

## February 2023

**A number of key milestones have been achieved in this month's update, including the completion of retaining walls and concrete beam foundations, ground floor slab, and structural framework forming the external walls.**

Internally, both 1st and 2nd fix works are making excellent progress. Apartment ceilings are now 82% installed, and kitchen units are 46% progressed. Carpet and floor finishes are progressing nicely across the site.

### Summary of Works Progressed - Sub-Structure and Super Structure

- Retaining walls and concrete beam foundations are now complete
- Ground floor slab construction is 100% complete
- Scaffolding and mast climber access has also completed
- Structural framework forming the external walls is now complete
- Weatherboarding has progressed to 98% and is approaching completion
- External windows, doors and curtain walling are also 98% complete

### Summary of Works Progressed - Internal Fit Out

- The lift has been installed to 63%
- Partition wall installation is now 82% complete
- Apartment ceiling installation is 82% complete
- Plaster finishes to walls and ceilings is 68% progressed
- 1st fix plumbing and heating is 87% complete and 1st fix electrical is 46% progressed
- 2nd fix electrical is 54% complete, with plumbing and heating 28% progressed
- Kitchen units and appliances have been 46% installed so far
- Doorframes have progressed to over halfway
- Skirting and architrave are now 58% complete
- Wall and floor tiling are 47% progressed
- Carpet and floor finishes have progressed to 59% completion
- Doors and ironmongery are 59% progressed thus far
- Decorations are ongoing and are 50% progressed
- General fixtures and fittings are 3% progressed





Walker Street - Site view



Low Hill - Site View





Student Block - lower ground brick work progression



Residential Block - lower ground brick work progression



'Zig-zag' Elevation – Render decoration on-going

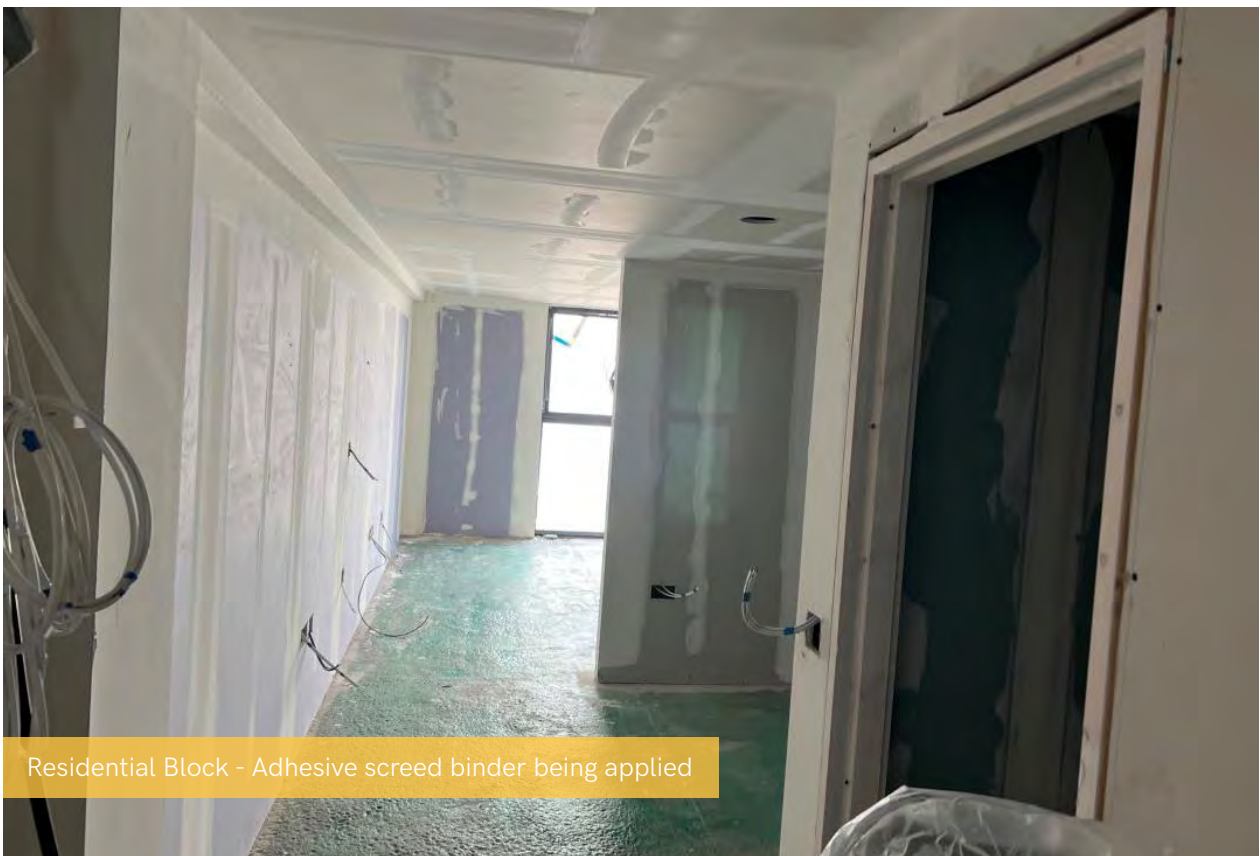


'Zig-zag' Elevation – Render decoration on-going





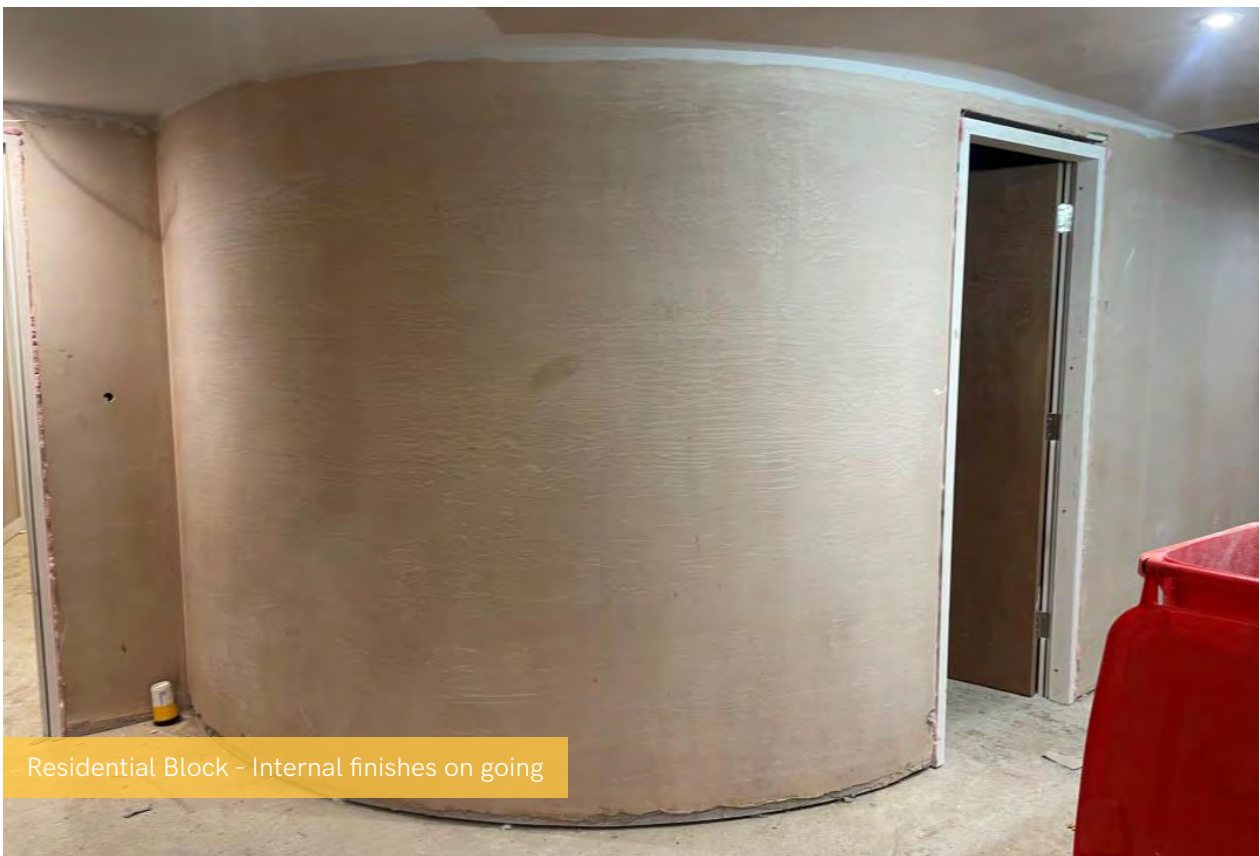
Formation of commercial units on-going



Residential Block - Adhesive screed binder being applied



Residential Block - Internal finishes on going

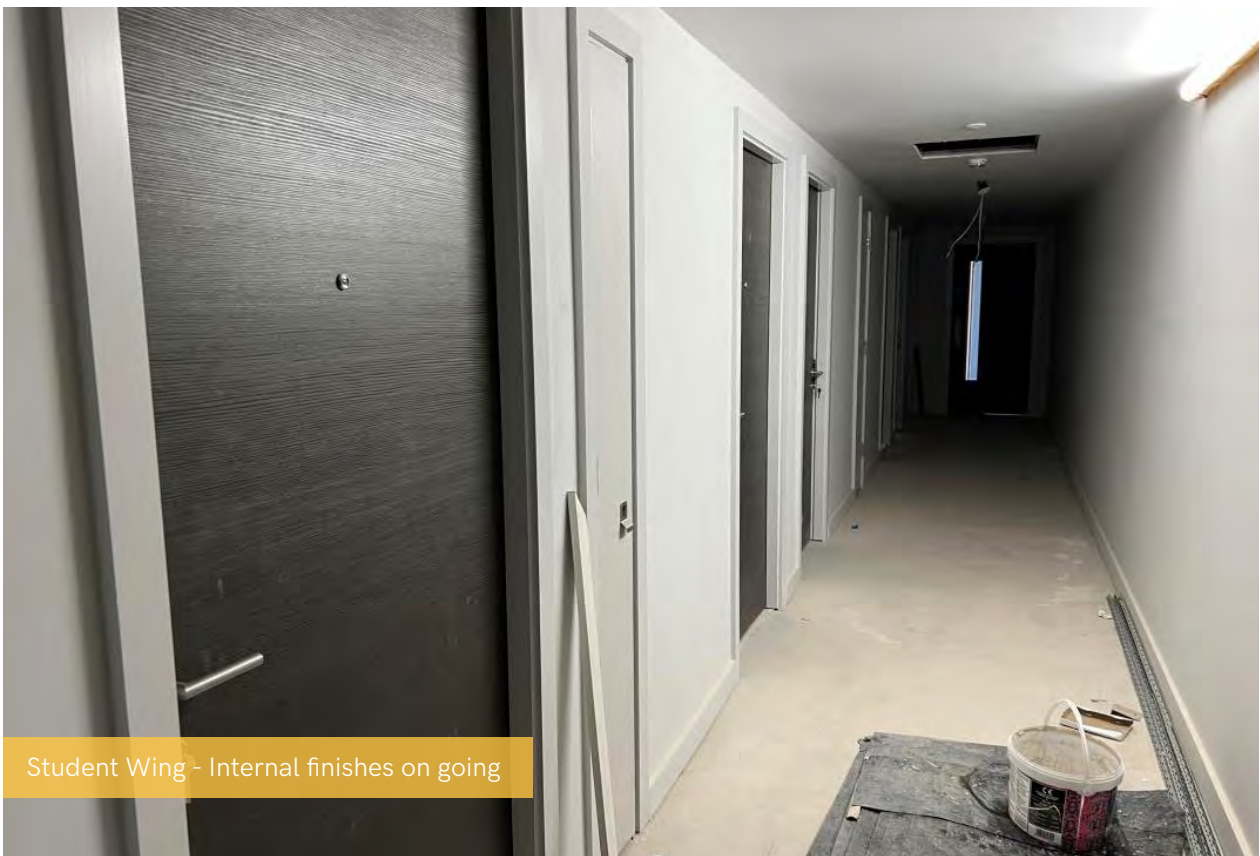


Residential Block - Internal finishes on going



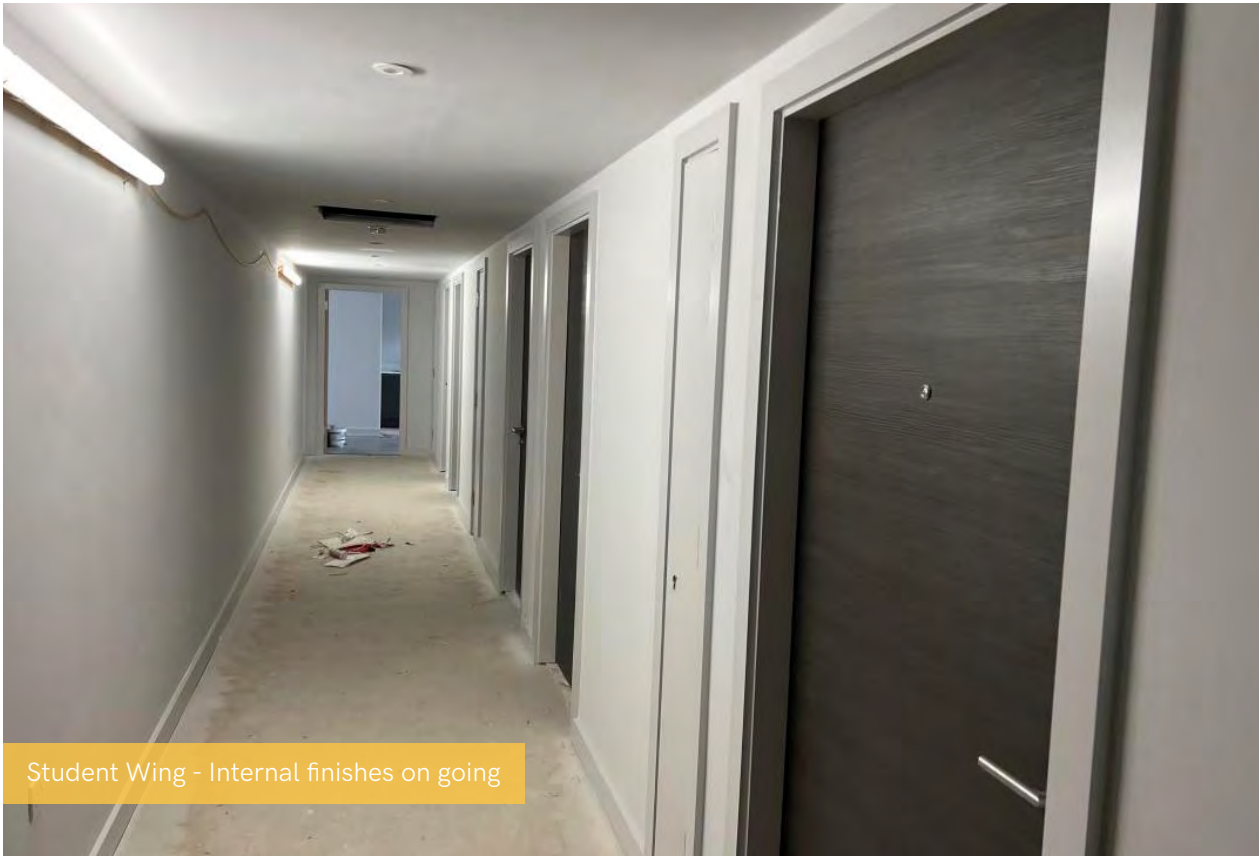


Student Wing - Internal finishes on going

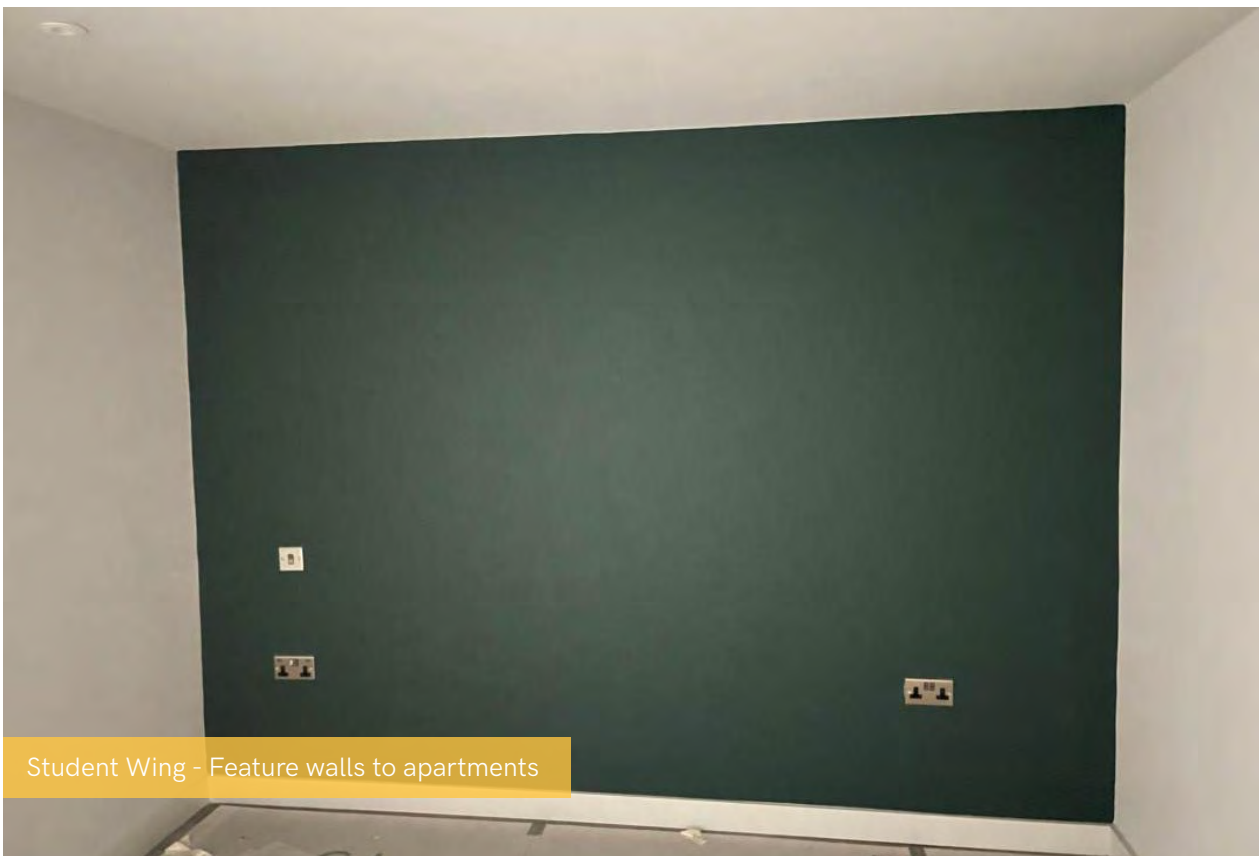


Student Wing - Internal finishes on going





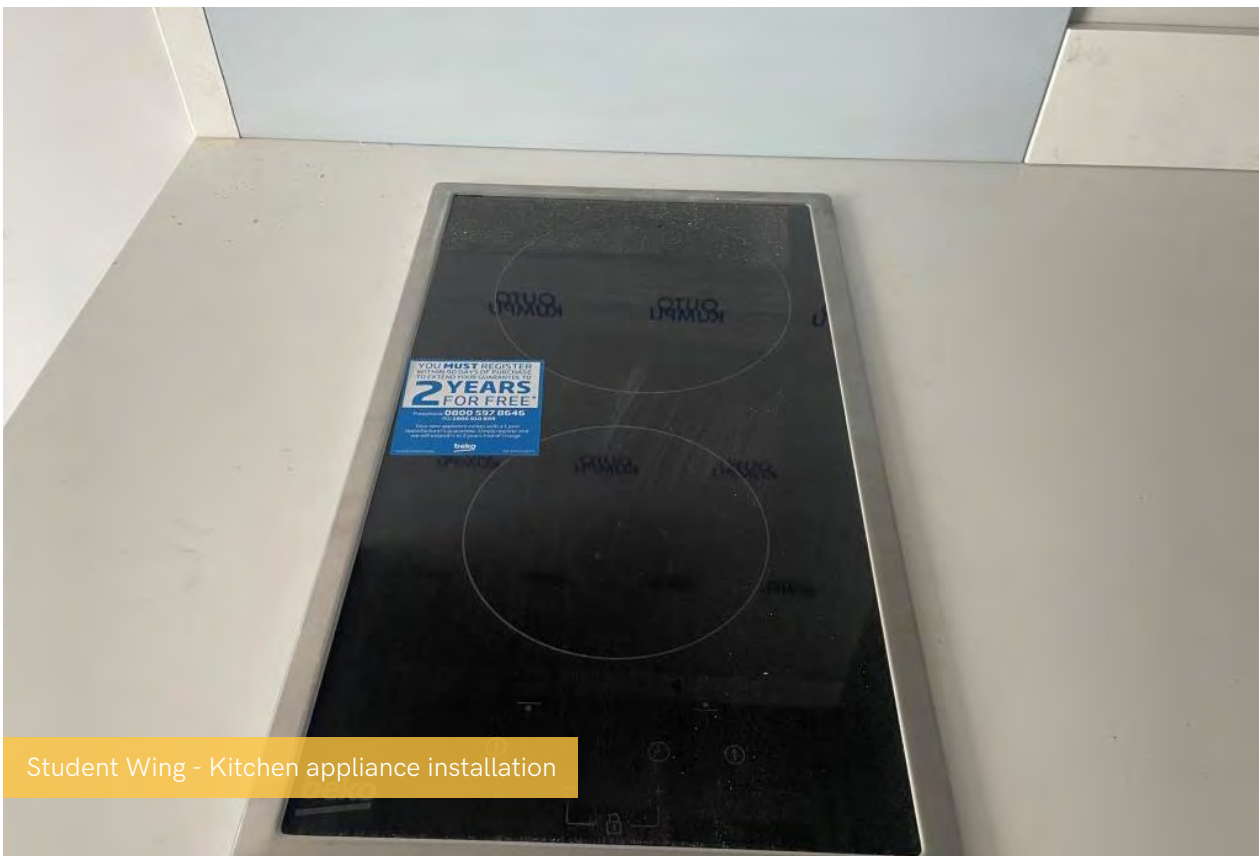
Student Wing - Internal finishes on going



Student Wing - Feature walls to apartments



Student Wing - Internal finishes complete

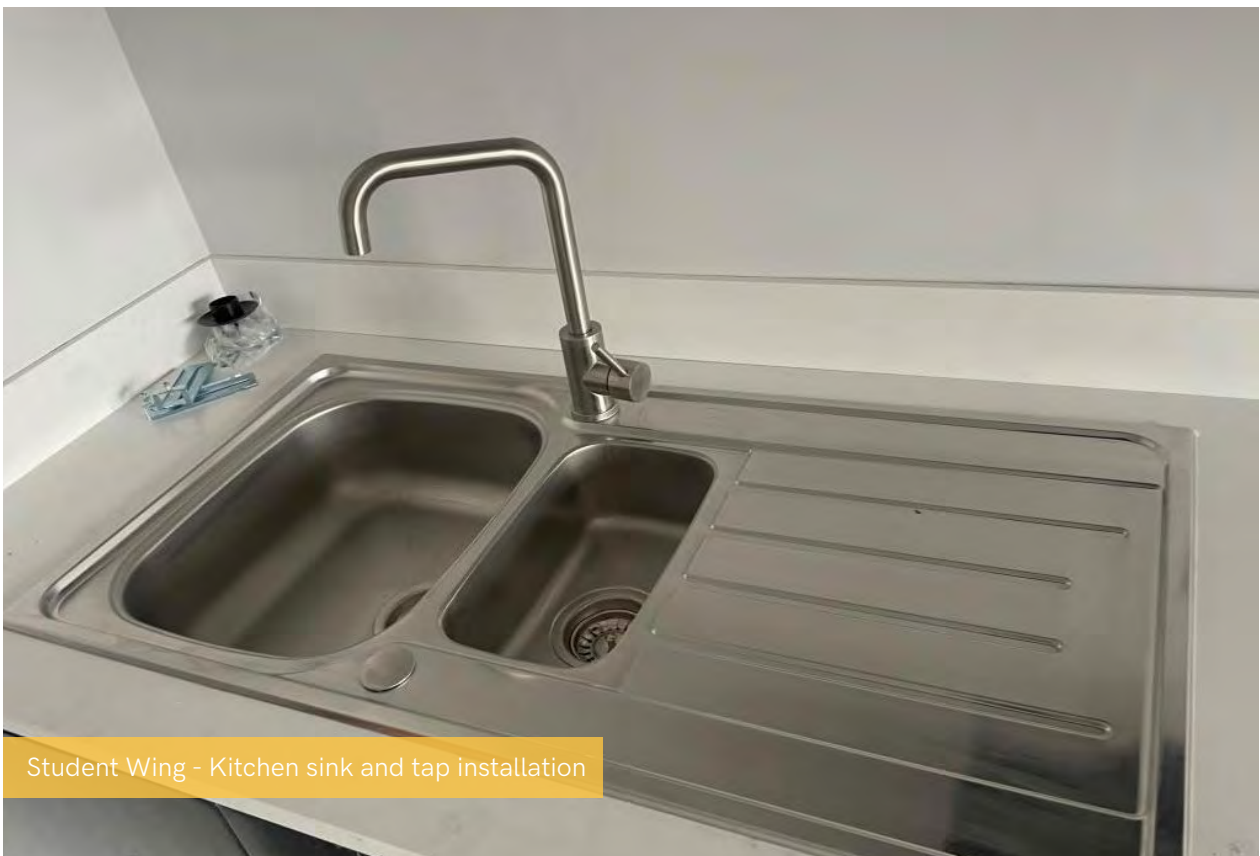


Student Wing - Kitchen appliance installation





Student Wing - Kitchen appliance installation



Student Wing - Kitchen sink and tap installation



Student Wing - Splashback installation



Student Wing - Kitchen installation



Student Wing - Sanitaryware installation