



ELEMENT - The Quarter

Construction Update

June 2022



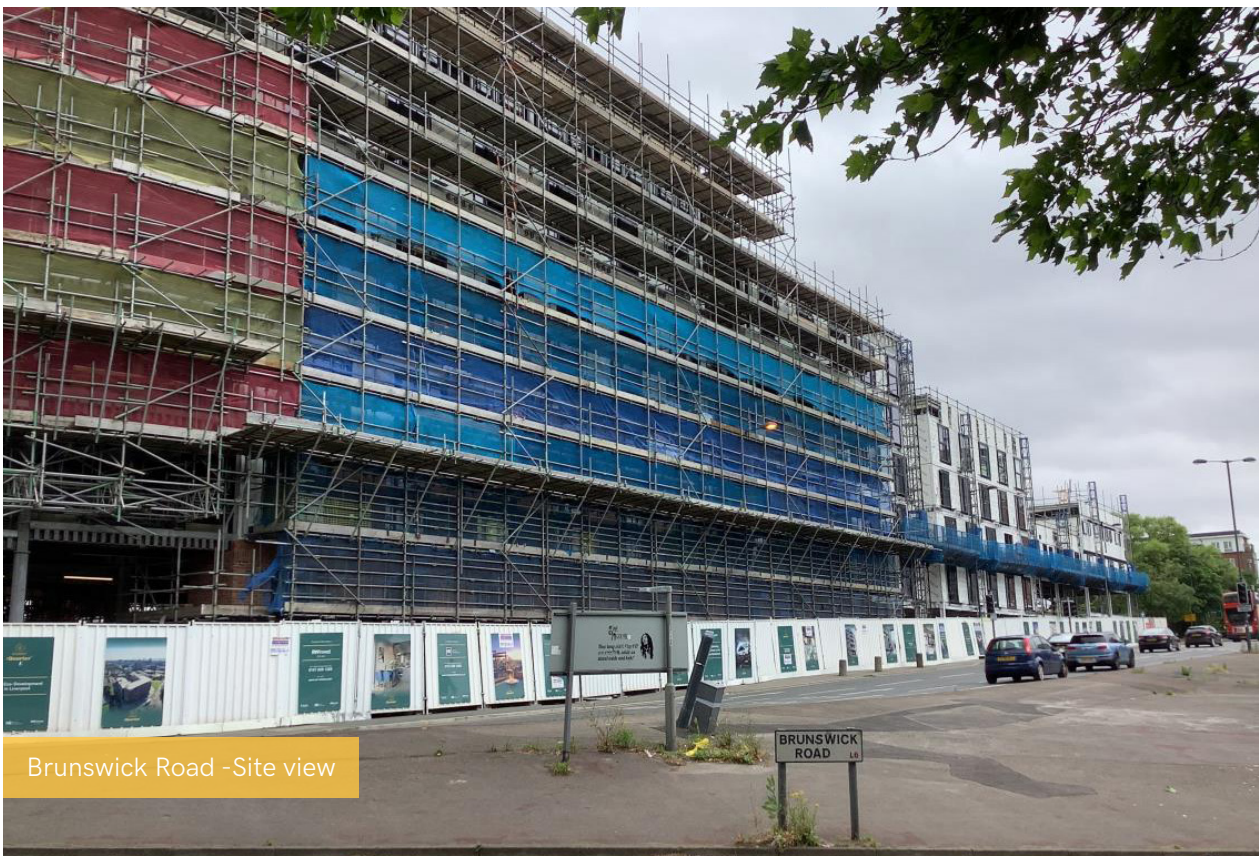
June 2022

During June at ELEMENT - The Quarter, we saw progression in a number of areas including the retaining walls, upper suspended steel floor structure and weatherboarding, to name just a few.

Other activity on site includes the installation of external windows and doors, scaffolding access, fire coating to the steel framework and work on the Mansafe system.

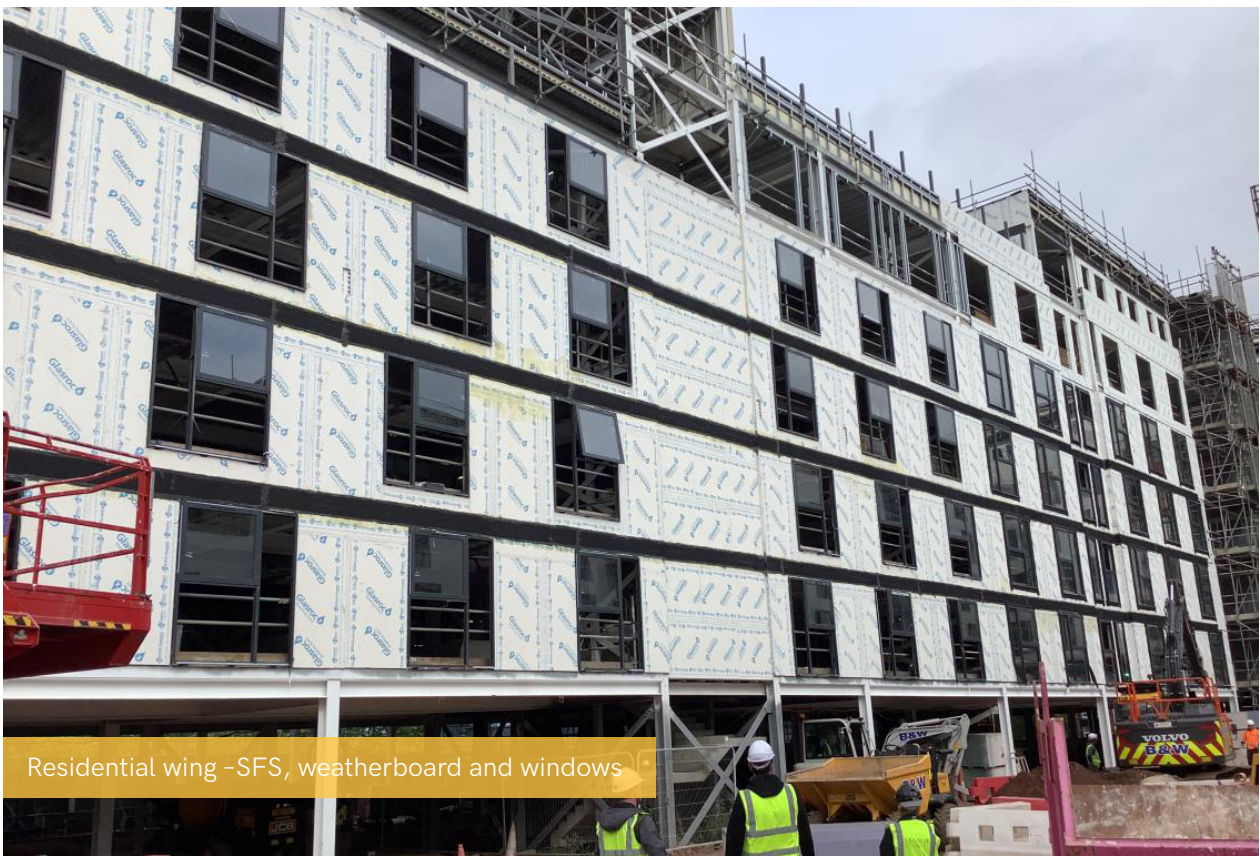
Summary of Works Progressed

- Retaining walls and concrete beam foundations are progressing
- Underground drainage is 95% progressed and approaching completion
- Construction of the ground floor slab has made significant progress and is halfway to completion
- Upper suspended steel floor structure is approaching completion
- Fire coating to the steel framework is underway
- Work continues to the structural framework forming the external walls
- Scaffolding and mast climber access has achieved 95% progression so far
- Development to the flat roof covering including balconies
- Weatherboarding is 85% complete
- External windows, doors and curtain walling are 78% progressed
- External wall insulation and render is 65% progressed
- The Mansafe system is 48% complete

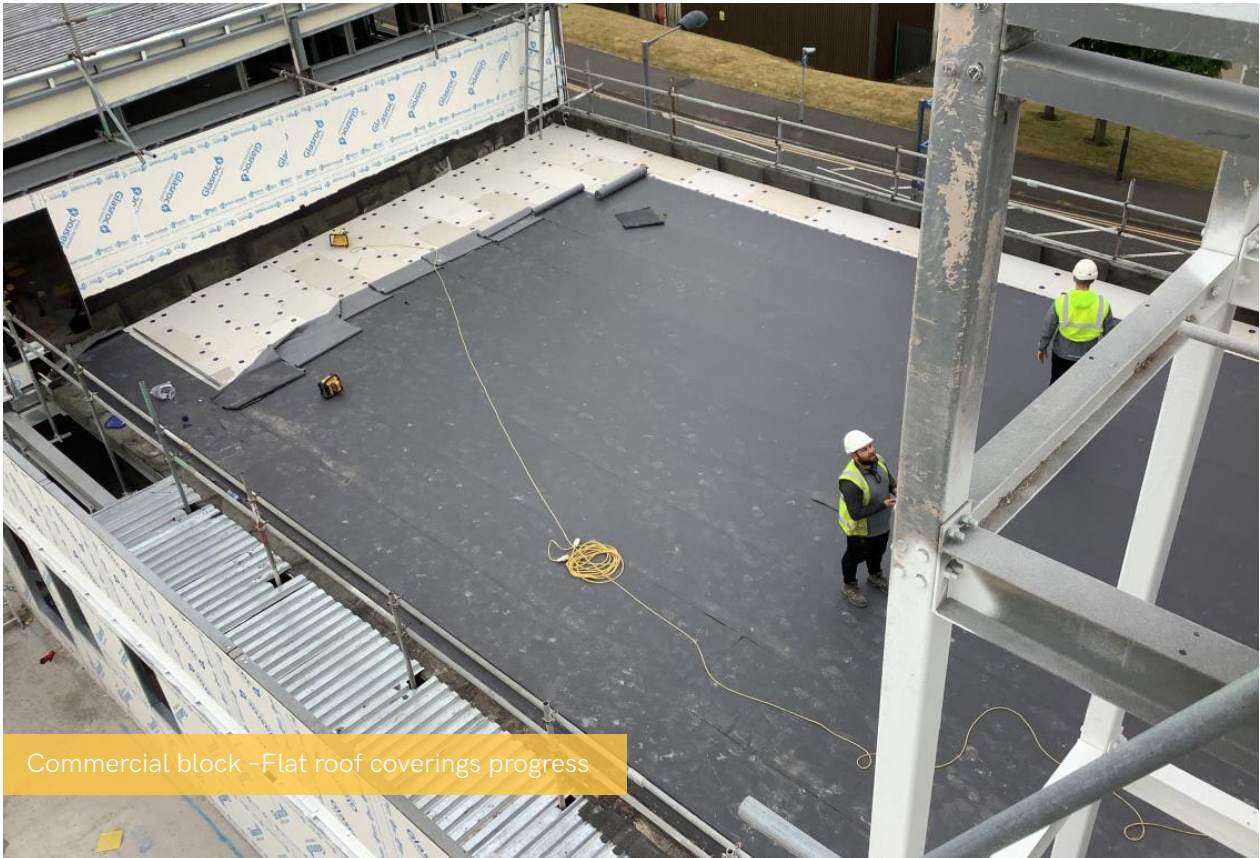




Student Wing -Render application & cladding progress



Residential wing -SFS, weatherboard and windows



Commercial block - Flat roof coverings progress



Residential wing - External brickwork on-going



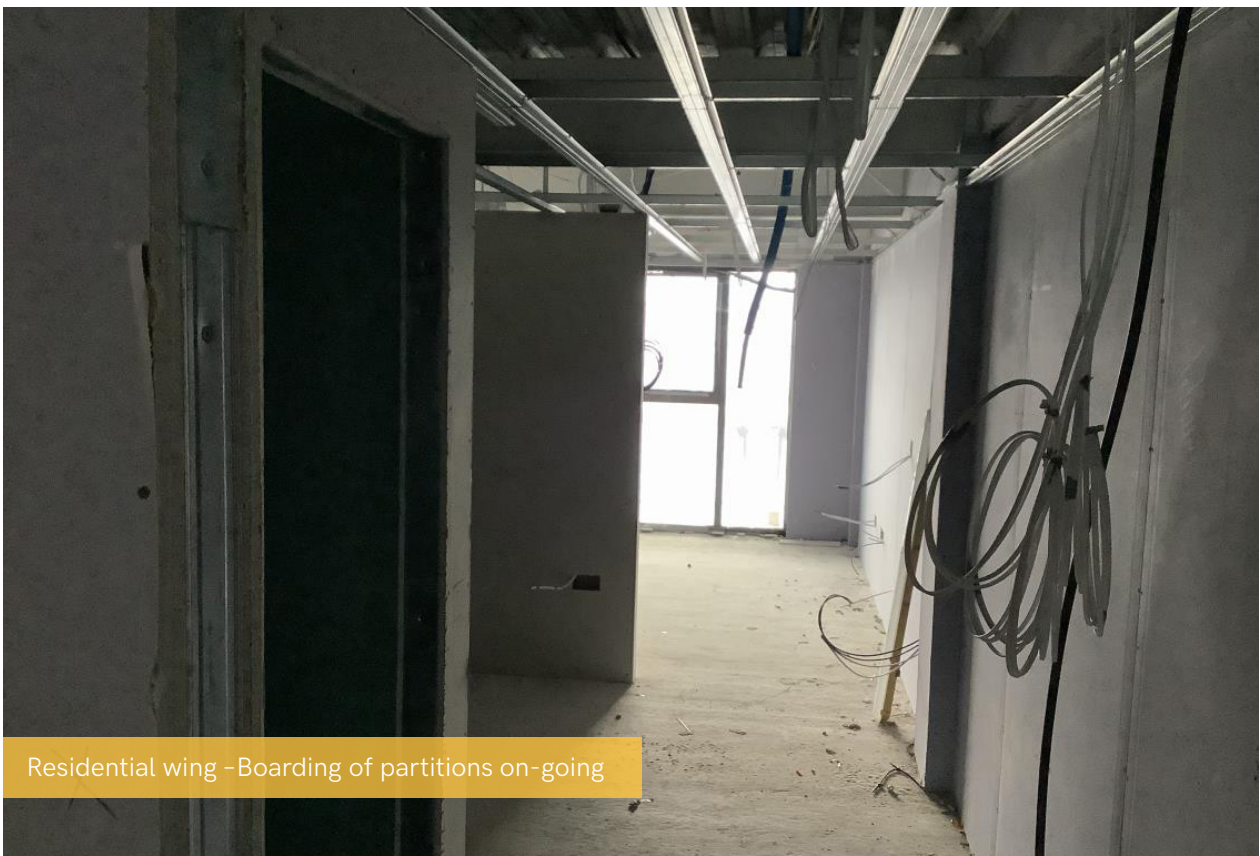
Student wing - Joinery, floor finishes and internal decorations



Student wing - Kitchen units on-going



Student wing - Kitchen units on-going



Residential wing - Boarding of partitions on-going



Residential wing –Boarding of partitions on-going



Student wing – 1st Fix electrical installations