

# LANDSCAPE & URBAN DESIGN

41

Jan/Feb 2020

Price £3<sup>95</sup>

landud.co.uk



## RHS Chelsea Flower Show 2020 designed with climate crisis in mind

Designers across all categories have taken steps to be more sustainable in their garden designs



## Karen Blixens Plads

One of the largest public squares  
in Copenhagen



## BLEC set to impress

Two new machines being  
launched at BTME





# Hedera screens ltd

Urban Green Solutions  
Call: 01530 560 550

- Living Green Screen Fences
- Living Walls
- Sedum Roofing
- Instant 100% coverage Floral Matting
- Steep slope Soil Stabilization Matting
- Commercial Soft Landscaping
- Aftercare Maintenance
- Irrigation

Unit 3 Chestnut Farm  
Ashby Road  
Moira Derbyshire DE12 6DP

Email: [info@hederascreens.co.uk](mailto:info@hederascreens.co.uk)  
Follow: [@hederascreens](https://www.instagram.com/hederascreens)



[www.hederascreens.co.uk](http://www.hederascreens.co.uk)



# CONTENTS ISSUE 41

## THIS ISSUES MAIN FEATURES



**Green & Blue Infrastructure | 32 - 38**



**Lighting | 64 - 69**



**Street Furniture | 45 - 55**



**Turf Management | 72 - 79**

### RHS

04 - RHS Chelsea Flower Show 2020.

### Tools, Plant & Equipment

10 - Making turfcare extremely reliable.

12 - John Deere expands Fairway Mower line-up.

### Industry News

14 - Award-winning children's garden at Kew.

### Landscaping Services

16 - Thermal stratification.

18 - Sunday Times Grant Thornton Top Track 250 league table.

22 - Semi-mature and mature trees and hedging.

24 - A product range made from paper fibre instead of plastic.

### BBC Gardeners' World Live

20 - Contestants and show gardens announced.

### Bound Surfacing

28 - Specialist aggregates.

### Green & Blue Infrastructure

32 - Enhance your surroundings with Award Winning Hedera Screens Ltd.

34 - A whole new area of Cambridge, designed for twenty-first century sustainable living.

36 - Quarry Hill Campus - part of an exciting £300m redevelopment.

38 - Natural, green foliage in outdoor and indoor environments.

### Architects Projects

40 - One of the largest public squares in Copenhagen.

42 - Bringing biodiversity back to the urban environment.

### Street Furniture

46 - Quality 100% recycled plastic products.

### Decking

56 - DeckPlus composite boards.

### Garden Design

58 - Considering your carbon footprint when undertaking a renovation.

60 - Educational events & workshops.

62 - A garden to mark the bicentenary of the birth of Florence Nightingale.

### Lighting

64 - Natural, refined design.

68 - Simplified sign lighting.

### Sports & Play

70 - Socketed goalposts, nets and net support posts at Wolves.

### Turf Management

72 - The zero-emission AllTrec Tool Carrier.

74 - Two machines set to impress at BTME.

76 - Specialists in all aspects of Sportsturf, construction, drainage, renovation and maintenance.

78 - Optimising plant health.

### Publishing Director

Martin Holmes  
martin@mhmagazine.co.uk

### Sales Director

Lee Martin  
lee@landud.co.uk

### Digital Manager

Jamie Bullock  
jamie@mhmagazine.co.uk

### Editor-in-Chief

Antony Holter  
editor@mmhmagazine.co.uk

### Editor

Lorna Davidson  
lorna@landud.co.uk

### Business Manager

Josh Holmes  
josh@mhmagazine.co.uk

### Studio Designer

Sarah Johnson  
sarah.johnson@mhmagazine.co.uk

Marketing Enquiries - 01227 936974  
Editorial Enquiries - 01304 806039  
Other Enquiries - 01304 806039

### Publishers

MH Media Global Ltd.  
Discovery Park, Sandwich, CT13 9FD

Cover images courtesy of: Left: RHS Chelsea | Top Right: Karen Blixens Plads | Bottom Right: Blec

Every effort is made to ensure the accuracy and reliability of material published in Landscape & Urban Design however, the publishers accept no responsibility for the claims or opinions made by advertisers, manufacturers or contributors. No part of this publication may be reproduced or transmitted in any form or by any means, mechanical, electronic (including photocopying) or stored in any information retrieval system without the prior consent of the publisher.





# **GARDENS AT THE RHS CHELSEA FLOWER SHOW 2020 DESIGNED TO MEET THE CHALLENGES OF OUR CHANGING CLIMATE**





With this in mind award-winning design duo Hugo Bugg and Charlotte Harris have designed a communal residential garden for show sponsor M&G as they return to Main Avenue with a design that promotes the essential need to incorporate and maintain beautiful, sustainable green spaces within our growing cities for the benefit of the planet and people. The garden highlights how communities and designers are working together to address this challenge by creating gardens in neglected city spaces. Sustainability is woven through the design of 'The M&G Garden' through the use of repurposed materials, water management techniques, permeable surfaces and a planting palette defined by resilient plants suitable for the climatic challenges of urban spaces.

The 'Guangzhou China: Guangzhou Garden' by first time Show Garden designers Peter Chmiel and Chin-Jung Chen of Grant Associates provides a similar narrative, a city garden of the future that balances the needs of both people and wildlife whilst sustaining the planet's health, promoting a move towards a new 'ecological civilization'. The garden features a woodland dell to clean the air, a

pool to clean water and bamboo structures which represent homes for humans and wildlife.

With deforestation central to the climate crisis 'The Facebook Garden: Growing the Future' looks at the benefits of increasing the UK's tree cover whilst highlighting the need for better woodland management in a changing climate. Using timber in various forms, RHS Chelsea gold medal winning designer Joe Perkins hopes to showcase timber's renewable and sustainable properties as it celebrates how social media platforms help share knowledge and empower others to plant more trees and support sustainable woodlands and timber use.

Britain's largest organic dairy company, Yeo Valley hopes to encourage the UK's 27 million gardeners to consider going organic and put nature first. 'The Yeo Valley Organic Garden' designed by award-winning designer Tom Massey has been created with sustainability front and centre. Where possible the plants for the garden will be grown organically, while the carbon used to create the wildlife-friendly Show Garden will also be offset at Yeo Valley's farm in Somerset.

As the climate crisis continues to escalate a number of global brands and garden designers will use the world's most famous flower show as a platform to encourage a future where we live in harmony with nature through urban design and sustainable practices.

In just thirty years it is predicted that a third of the world's population will live in cities.







Designers across all categories this year have taken steps to be more sustainable in their garden designs. An increased number of designers are sourcing their plants and materials from within the UK, incorporating planting schemes which benefit wildlife and the environment.

Timber is championed as the building material of choice for a number of garden structures due to its green, carbon- locking credentials. Contractors are working with designers to adopt alternative construction methods and opting for sustainable hard landscaping materials in a bid to avoid single use materials such as cement and concrete.

Award winning designer Robert Myers and his contractor Bowles and Wyer are experimenting with a new, more sustainable 'wood' concrete among other sustainable materials in The Florence Nightingale Garden - A Celebration of Modern Day Nursing whilst every element from the reclaimed brick walls to the artwork in The Bicester Village Artisan Garden designed by





renowned florist Nikki Tibbles has been sustainably sourced.

Growers at the heart of the show in the Great Pavilion are being directly impacted by climate change as environmental changes such as extreme weather conditions are affecting their plants and growing methods. To lessen their impact on the environment a number of

growers and nurseries exhibiting this year have made positive changes by for example going peat free, growing in bio-degradable pots, switching from chemical to biological pest controls and harvesting rainwater for irrigation.

Rose Gore Browne, RHS Chelsea Show Manager said: 'This time of year is always exciting as the themes

and trends for 2020 begin to emerge, as gardens and horticulture are key to helping combat climate change, it is very encouraging to see a number of gardens addressing these issues and more designers and growers adopting suitable practices.'

[www.rhs.org.uk/shows](http://www.rhs.org.uk/shows)





# TORO REVEALS TWO NEW TRENCHERS IN TRX RANGE

Toro, a leading provider of landscaping equipment, have revealed two new additions to their TRX range of trenchers.

In addition to the existing TRX-16, the TRX-250 (22983) and the TRX-300 (22984) are bringing new features to the range.

The difference between the two new models is their engine, with the TRX-250 using a 24.5hp (18.3kW) at 3,600rpm Toro V-twin engine and

The evolution of mowing performance.

**2** YEAR WARRANTY AS STANDARD+  
+ Conditions apply to 2nd year see dealer for details





the TRX-300 using a 26.5hp (19.8kW) at 3,600rpm Kohler ECV749 EFI.

The new TRX walk-behind trenchers bring some new features that will save operators time. Now more efficient and powerful than ever, the two new models demonstrate outstanding manoeuvrability. The track drive design provides a low centre of gravity and large footprint, offering a more stable and manoeuvrable driving experience, while minimising any damage to the turf. The boom lift and lower function has also been enhanced hydraulically, allowing a smoother boom motion.

Another notable feature of the new TRX models is the Intelli-Trench™ system, which automatically adjusts and diverts the hydraulic flow from the traction motors to the trencher motor when needed, helping to maximise productivity by delivering more torque and reducing trenching times. Track speed was also improved, eliminating the need for

manual adjustment of the traction controls.

The TRX's streamlined controls are much easier to learn and operate and the new design includes the familiar TRX trencher valve handle and boom lift lever, as well as an independent traction control for the left and right tracks. Also, with fewer parts than previous models, the new TRX trenchers are much simpler in terms of maintenance.



For more information, please visit [www.toro.com/en](http://www.toro.com/en)



## ZD1211 Zero-Turn Mower: Exceptional manoeuvrability, high productivity

Engineered from the ground up to deliver outstanding cutting capability you can rely on.

- Impressively powerful, reliable and economic 24.8HP Kubota diesel engine with high capacity, smooth HST transmission.
- Extremely manoeuvrable with a 360 turning radius
- Highly productive mowing featuring a shaft-driven, deep cutting deck with hydraulic lift mower deck
- An ultra-comfortable operating area with responsive controls.

Contact your local dealer or visit our website for more details.  
[www.kubota.co.uk](http://www.kubota.co.uk) T: 01844 873190



For Earth, For Life  
**Kubota**



# HUSQVARNA AUTOMOWER 435X AWD



Husqvarna's top of the range Automower® 435X AWD comes with a host of features that makes turfcare extremely reliable, with excellent cutting results and extreme slope performance, to ensure a lush and even finish is delivered on lawns.

Husqvarna®, during its 20 years of development has refined its mower concept to achieve the highest level of reliability, quality and cutting result, with minimum assistance. This makes the Automower® 435X AWD an intelligent choice to keep lawns green, healthy and perfectly mowed. The all-wheel-drive Automower® 435X from Husqvarna makes light work of lawns up to 3,500 m<sup>2</sup> and sets the benchmark for robotic mowers in the industry. The mower confidently manoeuvres inclines of up to an impressive 70%, navigates obstacles, narrow spaces and handles tough terrain to deliver great results in the most challenging and complex gardens.

The Automower® 435X AWD offers the highest cutting capacities, and due to its free movement, pattern lawns are perfectly cut, achieving a carpet-like look. The razor-sharp blades cut the grass gently from all directions, helping it to grow strong with no track marks and moss growth is effectively prevented.

The robotic mower features an ultra-silent motor which means no disturbance in any neighbourhood. Its premium X-line and articulated body design enables superior steering and traction. The mower is weatherproof and gives great results in any type of weather, as its vital parts are safely protected from rain, as well as dust and grass clippings. It features rubber bumpers for added protection and to reduce scratch marks, LED headlights for improved visibility in low light and X-line orange wheel caps help the machine to stand out.



The Automower® Connect App keeps you in full control over your Husqvarna Automower® from your iOS or Android smartphone no matter where you are in the world, thanks to its GPS tracking and connection via the mobile phone networks. Plus, you can keep your robotic mower safe with the GPS theft tracking. The mower also listens to demands via voice control through Google Home or Amazon Alexa, executing commands such as start, stop, park, and you can also get status updates from your mower.

Rec. retail price inc. VAT: £4,400.00

[www.husqvarna.com](http://www.husqvarna.com)

## SNICKERS WORKWEAR NEW ALLROUNDWORK JACKETS AND GILETS

**NEW Winter Jackets and Gilets - insulated and water-resistant.**

These new ALLroundWork Jackets and Gilets are just what the name suggests - delivering a great all-round performance on site with a Ripstop water-resistant outer fabric and a coated inner fabric for extra durability.

They're wind-resistant too and all have the features and functionality that you'd expect in Snickers Workwear clothing. Designed for optimum comfort and flexibility when you're on the move, they're great-looking working clothes that will keep you feeling comfortable wherever you are and whatever you're doing at work in cold and windy weather.

With smart designs and an ergonomic fit, Snickers Workwear ALLroundWork garments are packed with must-have features that focus on functionality and freedom of movement as well as using innovative fabrics that deliver long lasting protection. There's also a range of Base- and Mid-layer garments plus accessories like gloves, hats, face warmers and beanies to ensure that every part of you stays dry and warm.

**For more information on Snickers Workwear's NEW AllroundWork Jackets and Gilets, call the Hultafors Group UK Helpline on 01484 854788, checkout the website and download a digital catalogue at [www.snickersworkwear.co.uk](http://www.snickersworkwear.co.uk) or email [info@snickersworkwear.co.uk](mailto:info@snickersworkwear.co.uk)**





**20 YEARS' WORKING  
IN HORTICULTURE.  
5 ACRES OF  
FORMAL GARDENS.  
30 WEDDINGS AND  
EVENTS EACH YEAR.  
1 BRAND OF CHOICE.  
STIHL LIFE.**



**BGA 100**  
LEAF BLOWER

The perfect solution for Andy Wain, Head Gardener at Euridge Manor.

For a demanding job where every task requires a different approach, the STIHL AP cordless system is the professional range of tools he chooses to maintain the high horticultural standards required.

Whether it's for precision topiary or the final touches before wedding guests arrive, STIHL tools meet his daily demands as a professional gardener.

AVAILABLE AT YOUR LOCAL STIHL DEALER.  
[STIHL.CO.UK](http://STIHL.CO.UK)

**STIHL**





# JOHN DEERE EXPANDS FAIRWAY MOWER LINE-UP

## BTME 2020, HARROGATE: STAND NO. 274, RED ZONE

John Deere has announced two new additions to the economical 6000A Series fairway mower line-up, which will be previewed at BTME 2020 in Harrogate from January 21-23.

Sharing technologies with the award-winning A Model mower range, the 6080A and 6500A E-Cut hybrid electric fairway mowers feature high-performance electric reel drive, which greatly reduces

the number of potential hydraulic leak points to ensure maximum productivity and performance. In addition to their economical price, these new mowers can be operated at lower engine speeds, which further reduces operating costs by decreasing fuel consumption.

"We're excited to bring the E-Cut hybrid mowing system to the 6000A Series fairway mowers," says

John Deere's European turf sales & marketing manager Carlos Aragonés. "Powerful and full of premium features at an economical price, the 6080A and 6500A combine our proven E-Cut hybrid electric technology with the popular 6000A Series model design."

John Deere was first to market with its electric reel drive system in 2005 on the 2500E triplex greens mower,



and this was added to the fairway mower range in 2009 with the 7500 and 8000 E-Cut hybrid models. By removing all hydraulics from the reel circuit, the risk of hydraulic leaks has been reduced by over 90 per cent. In addition, the hybrid system is powered exclusively by an alternator, which offers consistent performance without additional batteries to maintain.

Equipped with a powerful 24.7hp (18.4kW) diesel engine, the 6080A and 6500A E-Cut hybrid mowers feature a three-wheel smooth tyre configuration on a durable chassis, with premium performance and comfort features for all-day mowing. Width of cut is 80in (2m) on the 6080A and 100in (2.5m) on the 6500A, with 18 and 22in (46 and 56cm) QA5 cutting units respectively.

These new models include the proven eHydro transmission and LoadMatch as standard, which maintains a high quality cut even when working on slopes. A mowing speed of 8mph (13kph) on both models allows operators to be more productive by covering larger areas in less time.

Another advanced technology feature adopted from the existing A Model range is the innovative, password-protected TechControl display. This gives turf managers and technicians complete control over cut quality and performance by enabling them to input commands such as mowing speed, transport speed and service times, while also capturing on-board service diagnostics.

Cut quality on the new John Deere 6080A and 6500A E-Cut hybrid electric fairway mowers is further enhanced with rear-attaching yokes on the cutting units and standard hydraulic down pressure, which can tackle even the toughest mowing conditions. Additionally, the hybrid reel drive system allows more power to be available for the standard GRIP all-wheel drive traction system, to further improve performance on slopes.

Other operator friendly features include internal hydraulic wet disk brakes, which eliminate linkage adjustments and grease points in the brake system, and a comfortable operator station with CommandArm-mounted controls that move with the seat.







# GROUND CONTROL AWARDED BALI'S HIGHEST ACCOLADE FOR THE CHILDREN'S GARDEN AT KEW

BALI Registered Contractor Ground Control has been awarded the British Association of Landscape Industries' (BALI) prestigious Grand Award at the 43rd BALI National Landscape Awards 2019, sponsored by BALI Registered Affiliate and Headline Sponsor of the Awards Green-tech. Ground Control's project, The Children's Garden, Royal Botanic Gardens, Kew was entered into the Community and Schools Development category.

The annual BALI National Landscape Awards, held at the iconic JW

Marriott Grosvenor House, Park Lane, London celebrates the skills, hard work, quality, commitment and successes of BALI Registered members and are the largest landscape Awards in Europe. They recognise excellence in landscape design, construction and maintenance both in the UK and overseas, as well as awarding Affiliate customer service and employer excellence.

Ground Control, a UK-based multi award-winning grounds maintenance provider specialising in

winter maintenance, took home the top Award for The Children's Garden at the Royal Botanic Gardens, the first significant development within the Kew Gardens estate for over a decade. Ground Control developed the initial design concept, engaged with Kew's visitors, local community groups and larger public organisations before transforming a large under-used area into a unique play and learning space. Children of all ages can now enjoy a beautiful adventure space unaware they are learning about nature, plants and the environment.





scheme softens and enhances the hard elements and, despite the garden's popularity and consequent heavy use, seems to thrive in spite of the attention of many small hands and feet. This is landscaping at its very best and a worthy winner of this year's BALI Grand Award."

145 entries were judged by BALI adjudicators over the summer with 91 National Landscape Awards bestowed on 63 members of the Association in September, with 23 Principal, 8 Special and the coveted Grand Award announced live on stage at the glittering ceremony.

Other notable wins came from BALI Registered Designer Rosemary Coldstream MBALI who won three Principal Awards, two for her Modern Garden Hampstead and one for Copper Courtyard whilst BALI Registered Contractor Blakedown Landscapes (SE) won a Principal Award for the Venetian Waterways, Great Yarmouth and was also the recipient of two Special Awards; Best Community Involvement for the aforementioned project and Outstanding Memorial for Cannon Hill Park, Birmingham - Sousse and Bardo Memorial. BALI Registered Contractor Bridgman & Bridgman also received a Special Award for Best First Time Entrant and BALI Registered Contractor NAO Landscapes took home a Special Award for Best Newcomer to BALI.

This year also saw several records broken, including the most entries received in the last 10 years, the highest number of first-time entries at 51 and 34 International entries ever received.

This was the second year the Awards were successfully delivered in-house by the team at BALI's Landscape House. Events Project Manager Leah Brookes, who attended the 2018 Awards and project managed the 2019 event said, "It has been an immense pleasure managing the BALI Awards 2019. From attending the event last year, to meeting and working alongside the expert adjudicators, to managing the whole entry process and advising members on their submissions. To see the fruition of a year's work

come together on this special day and celebrate together with each and every member is fabulous. I send my heartfelt congratulations to all our winners and thanks to all our sponsors, adjudicators and stakeholders for their continued support of the prestigious National Landscape Awards."

Sport and lifestyle presenter Mark Durden-Smith played host for the afternoon's proceedings in front of over 1,000 BALI VIPs, members and guests, including Adam White MBALI, President and Fellow of the 'Royal Chartered' Landscape Institute and BALI Registered Designer; Chair of the Society of Garden Designers, Sarah Morgan; Rod Winrow, Chairman of the Association of Professional Landscapers; Sue Biggs CBE, Director General of the Royal Horticultural Society and Gerald Bonner, President of the Chartered Institute of Horticulture (CIOH).

BALI's Chief Executive Wayne Grills said, "Once again I am delighted that the level of quality and professionalism demonstrated at our 43rd Awards is set at the highest possible level. Our well-deserved Grand Award winner for 2019, Ground Control, seriously impressed adjudicators who recognised their outstanding contribution to landscaping with a flawlessly executed standard of workmanship and professionalism in The Children's Garden scheme. This delivered in excess of the expected levels of quality as a BALI Registered member and also achieved the highest level of client satisfaction. Congratulations to them and all of our winners this year, and thank you to our sponsors, who without them, the event would not be possible."



This year's BALI National Landscape Awards' Adjudicators, led by Chair of the Adjudication Panel John Melmoe, jointly commented, "The quality of the finish on this hard and soft landscaping scheme is absolutely superb. The contractor has embraced the design and created an amazing play and learning space for children, complete with a beautifully constructed oak tree circle walkway, meticulously installed play equipment, carefully sited rockery boulders, and a skillfully laid plethora of different surfacing including artificial grass, composite boarding, gravel pathways and safety surfacing. Every aspect, without exception, has been tackled with skill, precision and exemplary attention to detail. The planting

**A full list of award-winners and a description of the winning schemes is available on the BALI Awards website: [www.baliawards.co.uk/results-2019](http://www.baliawards.co.uk/results-2019)**

**Benefitting from a collection at the event, this year's chosen charities were Perennial and the BALI Chalk Fund who will both split £4,905 between them.**





# THERMAL STRATIFICATION

Pond and lake water management is no easy feat, with plenty of hazards to water health and quality.

Thermal stratification is one such example, where water separates into distinct thermal layers, with cold water sinking to the bottom and warmer water rising to the top. Without strong winds or running water to help move the water, the thermal layers don't mix. As such, the lower level of your lake will suffer with massively reduced dissolved oxygen levels.

If left alone the water quality of larger bodies of water can decrease hugely if affected by thermal stratification. The most extreme cases take place in the summer, however it's an issue that can occur throughout the year depending on the geographical location and depth of your lake.

When the natural process of anaerobic digestion occurs, whereby bacteria break down organic and biological waste into carbon dioxide, ammonia and methane, this further

reduces the amount of dissolved oxygen in the water. This can be incredibly damaging to any aquatic or plant life and result in stagnant water.

However, with Otterbine aerators you can prevent thermal stratification from happening or solve the issue if it already has, by ensuring you maintain healthy levels of dissolved oxygen.

It's important to remember that you can't over-aerate water. In fact, water's capacity to hold dissolved oxygen reduces as the temperature rises; at the same time, the metabolic rate of nature's clean-up organisms (aerobic bacteria) speeds up significantly, resulting in increased consumption of dissolved oxygen at a time when less is available. Ensuring you always have enough oxygen isn't the easiest task when dealing with the change in seasons. A rise from 14 degrees to 27 can see oxygen capacity reduce by 40 percent, so making sure your aerator is always meeting the saturation point is highly important.



It's recommended to aim for around 80 percent over the saturation point, to allow for changes in temperature and other external factors.

With the proven high oxygen transfer rates of Otterbine's comprehensive range of aerating fountains, you can easily increase the dissolved oxygen levels in your lake or pond, preventing or curing stagnant water, algae build up and bad smells for clean, clear, healthy water. And with Otterbine's decorative range you can make your lake or pond an appealing beauty spot at the same time.

[www.otterbine.com](http://www.otterbine.com)





# MORE



**Want healthy, more attractive lakes and ponds?  
Use Otterbine water management systems.**

Otterbine professional aerators and aerating fountains create beautifully clean and sustainable water features that attract wildlife and create pleasant landscapes for visitors. Make more of your parks and landscapes with Otterbine.

[reesinkturfcare.co.uk](https://reesinkturfcare.co.uk)

**Get MORE from your turfcare partner this year:**

More products . More advice . More training . More finance

Member of Royal Reesink 

Reesink Turfcare UK Limited is authorised and regulated by the Financial Conduct Authority. Images shown for illustration only.







# BRITAIN'S PRIVATE MID-MARKET GROWTH COMPANIES ACHIEVE BIGGEST SALES

The 15th annual Sunday Times Grant Thornton Top Track 250 league table ranks Britain's private mid-market growth companies with the biggest sales.

The 250 companies achieved combined sales of £63.3bn, a 16% increase year-on-year, profits of £5.9bn, up 20%, and they employ a total of 373,000 people, up 11%. Almost half the table, 122 companies, were not on the league table in 2018, including Gymshark, Five Guys and TransferWise, and fifty-seven firms feature for the first time.

These companies appear alongside other established brands including Dr Martens, Travelodge and Virgin Active, and fast-growing brands such as Princess Yachts, Busy Bees and Medivet.

Contributing to the top Track 250 is Ground Control, which ranks

at Number 238. Along with 40 other companies headquartered in the southeast (compared to 38 in 2018) they have made a strong contribution to the regional economy. These companies increased combined sales 15% to £9.1bn and operating profits 39% to £769m, and employ more than 58,000 people.

The Top Track 250 is sponsored by Grant Thornton and Lloyds Banking Group, and compiled by Fast Track, the Oxford-based research and networking events firm.

"It is an honour for Ground Control to receive such a prestigious award from The Sunday Times and be recognised amongst 250 of the most distinguished and fastest growing companies in the UK. Caring for our Environment is why we are in business. We put people at the centre of everything we do and we embrace innovation and technology

to be sustainable leaders in our chosen fields. I would like to thank all the people at Ground Control who made this possible: you're awesome!" says Marcus Watson, Managing Director of Ground Control.

Jim Rogers, Partner at Grant Thornton UK LLP, the title sponsor of the league table, praised the companies for their performance:

"Whilst the headwinds of political and economic uncertainty have been a consistent feature of the UK economy over the past year, mid-market firms have continued to prove their resilience. They've demonstrated their adaptability to uncertain times and found opportunities for growth, both at home and abroad."



# Award Winning Commercial Landscapers since 1973

*The Water Garden Viewing Platform & Stepping stones*

Could you be the next Award Winning  
Commercial Landscaper?

Recruiting now for careers in our  
Landscape Design, Grounds Maintenance,  
Arboriculture & Ecology Divisions.

How to Apply:

T: 0800 334 5606

E: [talent@ground-control.co.uk](mailto:talent@ground-control.co.uk)

W: [www.ground-control.co.uk/careers](http://www.ground-control.co.uk/careers)



Grounds Maintenance | Arboriculture | Vegetation Management | Gritting & Snow Clearance | Landscape Construction | Landscape Design | Ecology | Fencing | Pest Control | Roofing | Specialist External Cleaning | Pothole Repairs | ChargePoint Installations

# BALI

2019

**GRAND**  
AWARD WINNER

National  
Landscape  
Awards







# **BBC GARDENERS' WORLD LIVE YOUNG LANDSCAPERS AWARD 2020 CONTESTANTS AND SHOW GARDENS ANNOUNCED**

At WorldSkills UK on 24th November, Mark Gregory, of award-winning landscaping company Landform, presented the two Show Garden designs to the landscapers going forward to compete in the BBC Gardeners' World Live Young Landscapers Award supported by The APL (Association of Professional Landscapers).

The four competing landscapers, who took the top spots at the WorldSkills UK finals, are Nick Bundy from Gadd Brothers in Suffolk (Gold), Jamie Franklin from Wiltshire College (Silver), Mark Brown from CAFRE in Northern Ireland (Bronze) and Patrick Neild

from Pershore College (Highly Commended). As two teams of two, they will build their allotted gardens at BBC Gardeners' World Live which will be assessed on 17 June and enjoyed by upward of 100,000 visitors between 18 to 21 June at The NEC in Birmingham.





# BBC Gardeners' World Live

Sponsored by:  LEXUS

**18 - 21 June | Birmingham NEC**

Landform Consultants' Mark Gregory has come up with two designs to test the young landscapers' skills and ingenuity. Mark said "We, at Landform, have been delighted to get involved with the Young Landscapers Award at BBC Gardeners' World Live 2020 and have come up with two exciting, yet challenging, front garden designs. Both gardens are very different and use a variety of materials, to show how it's possible to create a beautiful and practical space, despite being small."

Mark added "The teams will be thoroughly challenged to deliver the quality and tolerances the industry requires, especially given the time they have to create them."

For the second year running, the competition will highlight front gardens. Mark says "Front gardens all-too-often overlooked, disappointing and bland - yet they can be transformed, with even a relatively simple design. Let's not forget, first impressions count!"

The competition launched in 2018 with two Diarmuid Gavin Show Gardens with the Bespoke Outdoor Spaces duo, Jacob Botting and Laurence Senior, taking home the winning trophy. In 2019, its second year, Prof David Stevens designed the two Show Gardens with Matthew Woods and Sam Gordon winning the coveted title.



Phil Tremayne, General manager of The Association of Professional Landscapers (The APL), said "It is fantastic that BBC Gardeners' World Live has decided to support this competition again for 2020. To give these young, up and coming talents the opportunity to build at this level, with mentorship from one of the best landscapers in the country, is truly amazing." Phil continues, "The APL have organised the landscaping competition at WorldSkills UK, alongside its own apprenticeship, for the last 5 years. Supporting

the industry, as well as the youth and career-changers entering it, combined with our high industry standards, is at the heart of what we do. I can't wait to see the results of the competition."

**Come to see the BBC Gardeners' World Live Young Landscapers Award Show Gardens at BBC Gardeners' World Live, from 18 to 21 June at The NEC Birmingham.**  
For info and tickets visit [bbcgardenersworldlive.com](http://bbcgardenersworldlive.com)





# CITY OF GREEN

Tucked away in the Vale of Aylesbury, Instant Hedges are established suppliers and growers of quality semi-mature and mature trees as well as hedging. Having grown from a small family business, we're passionate about what we do and are proud of the reputation we have built over the 15 years since we began trading.

Whether you require long runs of hedging or just a few metres we aim to meet your requirements. Throughout the year we supply container grown evergreen and deciduous trees and hedging. During rootball season, from November to March, the choices are even greater and we offer an extensive range of hedging, trees and topiary.

At Instant Hedges we understand that no two projects are the same and that clients have very different requirements and tastes. As well as our nursery stock of 'formed' trees to choose from, we will train trees to your specification which helps to overcome specific design challenges

and offers even wider choice. These formed trees include pleaches, box heads, table-tops and espaliers.

### Popular natural shaped and 'Formed' trees include:

Carpinus betulus, Fagus sylvatica, Fagus sylvatica Purpurea, Ligustrum japonicum, Liquidambar styraciflua, Malus Evereste, Malus Red Sentinel, Parrotia persica, Photinia Red Robin, Prunus laurocerasus, Prunus lusitanica, Pyrus Chanticleer, Quercus ilex, Taxus baccata and Tilia.

### Popular hedging varieties include:

Carpinus betulus, Eleagnus ebbingei, Euonymus japonicus, Fagus sylvatica, Fagus sylvatica Purpurea, Griselinia littoralis, Ilex aquifolium, Ilex crenata, Ilex maximowicziana kanehirae, Ilex meserveae Blue Maid/Blue Prince, Ligustrum ovalifolium, Mixed Natives, Osmanthus burkwoodii, Photinia Red Robin, Prunus laurocerasus, Prunus lusitanica, Taxus baccata and Thuja.

We offer a fully bespoke service, from design and consultancy, through sourcing, supply and distribution to planting. Our range is available on a quick turnaround in large quantities and one of our key selling points is our flexibility to adapt stock to meet your specification if necessary. Our ethos is to serve our clients with an end to end service supplying the best products available.

Based in Buckinghamshire we're perfectly placed to deliver nationwide using our own fully equipped vehicles.

Helpful and friendly staff welcome any enquiry and will offer expert horticultural advice and assistance. A visit to the nursery near Aylesbury is also highly recommended.

---

**To book an appointment or request information call 01296 399585 or email [sales@instanthedges.co.uk](mailto:sales@instanthedges.co.uk) [www.instanthedges.co.uk](http://www.instanthedges.co.uk)**





SUPPLIERS AND GROWERS OF SEMI-MATURE & MATURE, ROOTBALL & CONTAINERISED TREES, SHRUBS AND INSTANT HEDGING



From our Buckinghamshire nursery we are conveniently located to service the whole of the UK, which we do with our own fleet of fully equipped vehicles. With over 15 miles of Instant Hedging Troughs and more than 3,000 Pleached and shaped trees from Box Heads to Multi Stem umbrellas, we have the finest stock for Garden Designers, Landscapers, Architects and Developers you can find.

We look forward to receiving your enquiries.



Contact Us:  
01296 399585

[sales@instantheedges.co.uk](mailto:sales@instantheedges.co.uk)

[www.instantheedges.co.uk](http://www.instantheedges.co.uk)





# MODIFORM INTRODUCES ECO-EXPERT TO THE LANDSCAPE SECTOR

## WHAT IS ECO-EXPERT

Modiform constantly strives to produce packaging and transport products for horticulture that are sustainable and environmentally friendly. We realise that sometimes our plastic products won't come back to us or go for recycling somewhere else. For instance, the used pots of landscapers are often landfilled or put into kerbside bins where they don't get recycled. Therefore Modiform have looked into other materials and other markets to see what can be used in these types of situations. After the 'research' years Modiform have created a new product range called 'EcoExpert'. This product range is made from paper fibre instead of plastic. The paper used is 100% recycled (waste from production of cardboard boxes) and comes from FSC sources. Even the used natural wax is completely biodegradable.

The EcoExpert's products can easily be recycled through the standard household or commercial cardboard recycling system. Even better for the landscape industry, not only can it be recycled but it can be planted straight into the ground. And if it finds its way into the natural environment it will degrade within a year.

## BENEFITS OF ECO-EXPERT

EcoExpert transport trays have a great benefit for retailers and the environment. Plants delivered in plastic trays have to be separated from the usual cardboard secondary packaging that retailers have to deal with. With the EcoExpert trays retailers can treat them as they would any cardboard box and throw it in the standard cardboard recycling system. This saves retailers time and money.

EcoExpert pots have a great benefit for retailers, consumers, landscapers and the environment. Currently landscapers have to squeeze the plant carefully out of the plastic pot, and after planting the plants they are left with many plastic plant pots to do something with. Growers don't want to take them back and councils won't recycle them. Landscapers end up paying to dispose of the pots commercially. EcoExpert pots are different: they can be planted with the plant into the ground, where they will degrade and the roots will break through. This saves landscapers time and money on site and contributes to reducing the plastic waste from our sector.

Why not ask your grower or plant supplier to provide your plants in EcoExpert pots?

---

[www.modiform.com](http://www.modiform.com)



# Modiform®

**SAVES  
TIME, MONEY  
AND ENVIRONMENT**

## EcoExpert

- 100% recycled and recyclable
- Strong
- Waterproof
- Retail and consumer-friendly
- No need to take the pot off, just plant it straight into the ground (degrades naturally)







# PERMITTED PAVING

**2019 - another year of flooding around the UK - provided a timely reminder of the importance of sustainable drainage or SuDS. Although a requirement for most new developments, other often forgotten planning measures encouraging SuDS also apply to new or replacement paving around existing properties, as the trade association Interpave explains.**

Many planning authorities have already embraced SuDS and incorporated requirements for them in local policies being implemented now, impacting on planning applications. This stance is supported by the 2019 National Planning Policy Framework (NPPF). But, in addition to new developments, earlier changes to planning 'Permitted Development' rules aim to apply SuDS techniques to new or replacement paving around existing homes and also various non-domestic buildings.



Before these changes, paving anywhere in a garden related to a 'dwellinghouse' or within various non-residential properties, using any materials, was considered to be 'permitted development' - effectively, an automatic planning permission without needing a planning application.

### Planning Changes

For dwellings, the changes take away permitted development rights from new or replacement drives or other paving between a house and the street, unless it is permeable paving or drains water onto a permeable area within the property. Otherwise planning permission is now needed before installing new, or replacing



existing, paving if it is not SuDS compliant. With national and increasing local planning policies encouraging or requiring SuDS, such applications may well be rejected.

The measures have applied in England since 2008 and in Wales since September 2013. They apply to paving that is: over 5m<sup>2</sup> (replacement paving only in Wales) and in the front garden only. In Scotland, similar measures apply to work initiated after February 2012 and to paving of any size and between the house and any street, therefore not just front gardens. All three sets of measures refer to a government guide on permeable paving and this, in turn, refers to important guidance documents on the Interpave website [www.paving.org.uk](http://www.paving.org.uk)

**Commercial and Domestic Properties**

For industrial, warehouse, office and shop premises, similar changes take away permitted development rights from new or replacement paving on a property, unless it is permeable paving or drains water onto a permeable area within the curtilage of the property. Otherwise planning permission will be needed. In England, these measures took effect in April 2010. In Scotland, similar measures were applied in 2014.

But the growing awareness of the importance of SuDS and permeable paving in the fight against flooding means increasingly robust enforcement by local authorities, which landscape designers and contractors need to consider.

**On-site Water Attenuation**

The aim of the Permitted Development requirements is to hold back (i.e. attenuate) water on the property during heavy storms to avoid downstream flooding and treat it to remove or trap pollution. What happens after that depends on the ability of the ground to absorb water (i.e. permeability) and whether it is intended to make use of it through rainwater harvesting.

With good ground permeability, such as sandy soil, the water can simply soak away into the ground.

This is the cheapest option and helps replenish the water table, as well as sustain plants and trees. With poor ground permeability, such as heavy clay, some of the stored water is collected and gradually soaks away, or eventually discharges into sewers or streams after storms have passed - but with far less impact than piped drains.

Alternative techniques can be taken to satisfy the requirements. It is for the local planning authority to decide whether a particular proposal will meet the aims of the Permitted Development Order.

**Concrete Block Permeable Paving**

There is a growing choice of concrete blocks and paving slabs available from Interpave manufacturers, designed specifically for permeable paving. Essentially, they have the same impressive performance as conventional precast concrete paving products, being slip resistant, durable, strong and sustainable. And today there are more shapes, styles, finishes and colours than ever to give real freedom of choice.

The difference with permeable paving is the enlarged joints, filled with a permeable aggregate specifically chosen for each product - but never sand (which is used with conventional block paving). This ensures that water will continue to pass through the joints over many years. The materials used below the blocks are also specifically selected to accommodate water, unlike conventional drive and road construction.

Permeable paving is specifically designed for a dual role, acting as the drainage system as well as supporting people and vehicles. At the same time, many pollutants are substantially removed and treated within the paving layers before the water leaves it. Concrete block permeable paving can be laid level and still avoids puddles without the need for drainage gulleys and pipes. It also provides a safe, firm surface for everyone, including wheelchair users and people pushing prams, unlike gravel and other loose materials that may also satisfy the



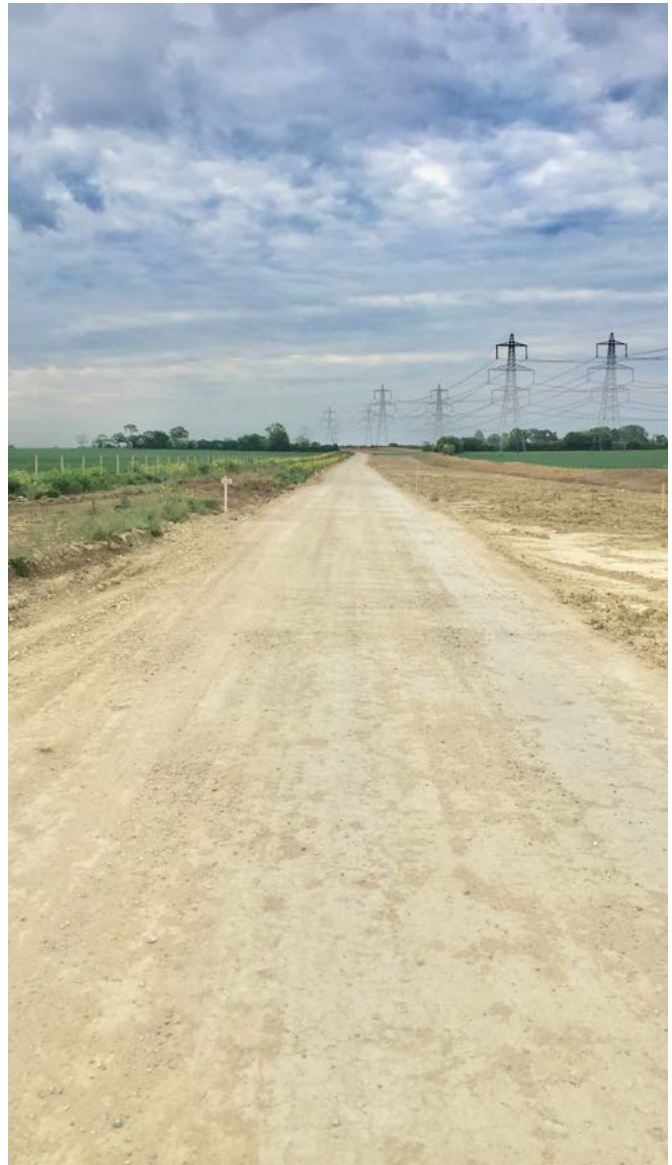
permeability rules. But the accessibility Building Regulations don't allow these loose materials for access paths and drives.

**Spotting the Difference**

Conventional block paving is not designed to be permeable. Its sand filled joints soon clog up to provide a sealed-up surface and the material below is not intended to handle water. Although looking similar to conventional block paving, permeable paving should have permeable aggregate (looking like coarse, sharp or crushed stone) filling the joints and under the blocks, not sand. In addition, a recent planning appeal decision highlighted that a permeable sub-base must also be used below to comply, not standard 'Type 1' aggregate which has sand and silt filling voids.

**For more information, download the brand new edition of Interpave's 'Permitted Paving' and other guidelines from the Permeable Paving & SuDS section of [www.paving.org.uk](http://www.paving.org.uk)**





# LEADING PRODUCERS OF SPECIALIST AGGREGATES

Geo is a leading producer of specialist aggregates across the UK including our own specialist Geo Selfbinding Gravel, Geo Buff Chippings and also Geo 6G Gabion Stone; all of which come from our independent quarry in Grantham, Lincolnshire and are supplied nationwide.

- Our Geopave is a fully sustainable natural material which can be laid and compacted to its optimum moisture content, allowing it to stand up for long periods of time without incurring rutting. Ideal for use in temporary haul roads and compounds mitigating

the requirement for asphalt. Upon completion Geopave can be taken up and reused on the same or different project giving it a sustainable circular economy performance

- Our Geo Selfbinding Gravel has been used in various prestigious schemes across the UK from pathways in public open spaces on residential developments, the construction of a bridleway in the new Peak Resort Development in Chesterfield to industrial applications for pathways and MEWP accesses around units, playgrounds, pathways in country

parks etc and I believe this product could be of particular benefit and very cost effective for the type of projects you undertake.

- Our Geo 6G Gabion Stone is widely used nationally due to its specification and properties giving an overall enhanced landscape.
- Our Geo Buff Chippings is also used nationally and in Ireland for decorative applications on driveways, gravel margins around residential, commercial & industrial properties.





We are also pleased to announce that we have recently achieved the International Living Future Institute's (ILFI) Declare Label Red List Free status for our Geopave range of materials and they are now approved for specification on LEED v4 and Living Building Challenge projects.

Declare is a transparent ingredients initiative for building products that is designed to shape a greener, healthier environment within the built environment.



ILFI runs the Living Building Challenge, which is the world's most rigorous green building standard, going above and beyond LEED certification. Living buildings strive for net-zero or net-positive energy, water & waste footprint.

All LBC projects must include at least one Declare-labelled product.

We will endeavour to fulfil all enquiries within a short space of time, providing written quotation on request and with an excellent

network of both artic and rigid haulage, we are confident that we can meet all delivery requirements for any products you need.

To view our brochure please visit [www.geoquarries.co.uk/e-brochure](http://www.geoquarries.co.uk/e-brochure) we like to think all of our products are aesthetically pleasing and sure to enhance your projects, please also let us know if you would like any samples.

[www.geoquarries.co.uk](http://www.geoquarries.co.uk)



# PORCELAIN ENGINEERING

**Pool Roman End fabricated from 20mm thick porcelain**

Specialist manufacturers of creative, functional finishes in porcelain and stone; high quality steps, house signs, logos, bullnosing, pool edges and engraved designs.

Go on, you know it makes sense.



Phone: 01565 750 666

Web: [www.aquacut.co.uk](http://www.aquacut.co.uk)

Email: [sales@aquacut.co.uk](mailto:sales@aquacut.co.uk)

MADE IN ENGLAND



VALVERDI®  
INDOOR-OUT

strength | beauty | resilience



The Valverdi Indoor-Out range of co-ordinating indoor and 20mm outdoor porcelain tiles allow you to create a synchronised flow from your indoor living space to your garden or terrace.

[www.valverdi.co.uk](http://www.valverdi.co.uk)

0333 222 40 24



LIMESTONE - SANDSTONE  
BUILDING STONE - FLOORING - WALLING  
MASONRY - LANDSCAPING - RESTORATION



01386 584384

[www.stonequarries.co.uk](http://www.stonequarries.co.uk)





# CREATE BREATHTAKINGLY BEAUTIFUL EXTERNAL PAVING IN GRANITE



Contact Granite Setts UK today for all your granite needs

*Quote L&UD for your exclusive 5% discount!*

## WHY CHOOSE OUR GRANITE?

- Creates a stunning finish with a huge amount of character
- Unrivalled durability, even in areas of high traffic
- Extremely versatile
- Incredibly low maintenance and will last a lifetime
- Vast range of colours and finishes

SETTS / COBBLES



FREE  
SAMPLES

TILES



KERBS



DECKING







# **HEDERA SCREENS LTD TURNING THE UK GREY TO GREEN**

Enhance your surroundings with Award Winning Hedera Screens Ltd (HSL) exceptional range of living green screens, outdoor living walls, acoustic walling, sedum roofs, soil stabilisation and floral matting. Nationwide approved supplier and installer of urban green solutions, providing a 360° service of design support and installation, delivering stunning creations, with optional soft landscaping, irrigation and aftercare maintenance. Proud to be the senior installation partner of all Mobilane products.

A family business since 2007, we work closely with our diversity of clients in order to meet their exact requirements. We pride ourselves on a friendly working environment, low staff turnover and careful management of projects. A strong team ethic, methodical approach to our work and a sense of satisfaction are core to the company's exceptional track record of consistent delivery on time and to a budget. Hedera Screens has become renowned for their unique products range and outstanding services.

With a fully qualified team, appropriate resources infrastructure and industry recognised accreditations, and recently acquiring the Construction and Engineering award for Best Urban Green products supply and installation for the UK. HSL can undertake both large commercial projects and small residential projects, providing supply and delivery only, if required.





**The Living Green Screen**

Our most popular product is the Living Green Screen. These are available in Ivy, Beech, Hornbeam, Pyracantha Darts Red & Evonymus Dart's Blankets. We also offer Variegated Goldchild and Green Ripple.

The screens are planted and pre-grown on a 5mm galvanised steel frame and come fully established, creating a secure and attractive evergreen or deciduous hedging.

We now have several different methods of installation with a solution available for most projects. The screens can be installed on timber or powder coated steel posts, planted into GRP, timber, aluminium or powder coated steel planter boxes or fixed to an existing structure using our stainless-steel cabling system.

An increasingly popular design is the green screen installation in planter boxes. They offer a flexible and instantly stylish way to maximise space by creating a partition, protection from the effects of pollution, draughts, and instant privacy screening. Available in a choice of finishes including GRP, timber, aluminium or powder coated steel, planter boxes are the perfect choice for roof terraces, patios, outdoor dining areas, swimming/spa pool areas and the perimeter of schools playgrounds.

Included in the installation costs are all materials, labour, compost to improve planting ground conditions and slow release granular fertilizer. The result is an instant, sustainable and beautifully well-established secure hedge that reduces air pollution and promotes biodiversity.

**Recent projects - Green My School**

Thousands of children up and down the country are being exposed to poor air quality that risk causing lifelong health problems both inside and outside the classroom.

A study, commissioned by the mayor of London, showed in London alone there are over 800 schools, nurseries, and colleges being exposed to illegal levels of air pollution. The EU legal limit for nitrogen dioxide pollution levels is 40µg/m<sup>3</sup> (40 micrograms per cubic metre of air) and some schools have NO<sub>2</sub> readings as high as 73.

There is no more important outdoor environment to protect from the dangerous toxins of traffic pollution than in and beyond the school perimeter.

This isn't limited to inner London schools; the damaging effects of pollution are countrywide.

Ongoing research shows that the Living Green Screens, superior in plant density and construction than other greening options, help remove PM10 particle pollution - in some sample locations up to 60% of the particles were "cleansed" from the air behind the screens. The research continues to further validate these initial findings, but increasingly, the installation of Living Green Screens offers not only a secure and natural screening barrier for schools' perimeters, but a valuable screening option to reduce the hard effects of urban pollution from our schools and communities.

For several years we have been helping some of the most polluted schools across London and the UK by working tirelessly to supply and install 100s of metres of Living Green Screens as the first line of defence in the battle to improve air quality across the UK. The demand has been significant in 2019 and constantly increase as more organisations become aware of the benefits of installing living green screens.

The screens can be planted directly into the ground, using timber or powder coated steel posts, planted into planter boxes or raised sleeper beds.

With greater emphasis on the reduction of carbon emissions and the carbon footprint, Hedera Screens is an experienced, accredited and trusted greening partner.



**For more information contact Hedera Screens on 0845 504 8211, email: [info@hederascreens.co.uk](mailto:info@hederascreens.co.uk) or visit the website at [www.hederascreens.co.uk](http://www.hederascreens.co.uk)**





# GREEN-TECH SUPPLY LANDSCAPING MATERIALS FOR NEW SUSTAINABLE-LIVING NEIGHBOURHOOD IN CAMBRIDGE

Eddington is Cambridge's newest neighbourhood with something for everyone. It is promoted as 'a whole new area of Cambridge, designed for twenty-first century sustainable living'.

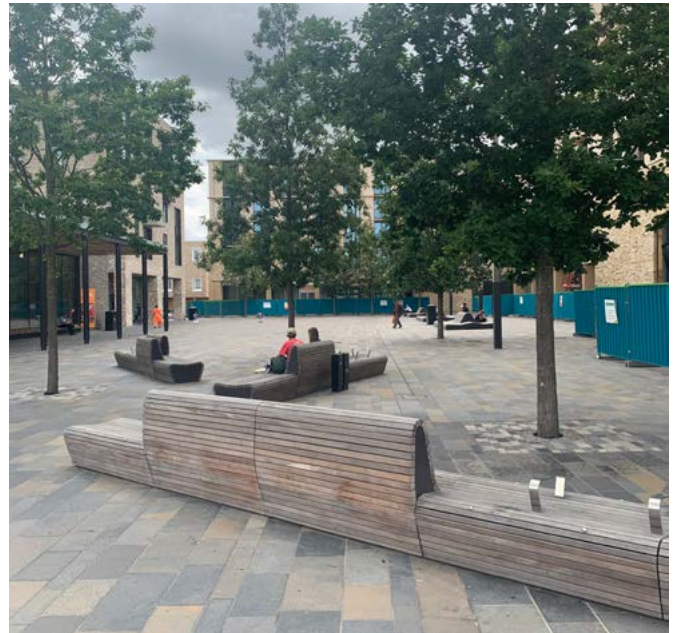
This long-term project commenced in 2015 and is known as the NW Cambridge Development Project. A University of Cambridge

development planning for the future growth of the University by building over 1,500 homes for University and College staff, accommodation for 2,000 postgraduates, 100,000 sqm of academic and research and development space, community facilities such as a primary school, community centre, health centre, supermarket, local shops, and a hotel. The site is being built in eight

phases stretching over 10 years with open public spaces featuring high in the University's plans.

Six times BALI Grand Award Winner Willerby Landscapes, a leading commercial landscaping company is involved with the development and selected Green-tech as one of their soft landscaping suppliers for this high-profile prestigious project.





The site is so large that Willerby Landscapes dealt with it as five landscapes Central, North, East, South and West. Phase one included informal open land in the western edge of the development, representing a major piece of the new parkland. Over 2,400 trees were planted by the time the first phase of the development was completed in 2017. There are over 24 hectares of open space in Phase 1, and over 65 hectares in the entire development.

Based in Kent, Willerby Landscapes specialise in all disciplines associated with the installation and on-going maintenance of hard and soft landscape schemes, water features and specialist planters. Green-tech provided key materials

as part of Willerby's established, valued and trusted supply chain. As well as tree planting materials we have supplied more than 500 tonnes of Green-tree amenity tree soil; a load-bearing, fertile soil which is designed especially for use in urban environments. 100 tonnes of Loksand Rootzone was supplied to reduce compaction and improve stability of sports pitches and grassed areas that will be subject to heavy trafficking.

In excess of 500 Mona irrigation systems with accompanying Aria inlets, Mona Relief Vente and Piazza inlets were supplied to deliver water directly to tree and shrub roots at a consistent level.

Unique measures are integrated in every aspect of Eddington to encourage residents and visitors to lead more sustainable lives. Biodiversity across the development was high on the list of design priorities. Open spaces help creatures flourish and include enhancements for birds, bats, amphibians as well as wildflower meadows and wetlands. In the region of 800kg of bespoke John Chambers grass seed and John Chambers Wildflower Seed was supplied for the green spaces and to create the stunning displays which will also provide a habitat for wildlife and encourage biodiversity.

[www.green-tech.co.uk](http://www.green-tech.co.uk)



# GREEN-TECH SUPPLY MATERIALS

## AS PART OF £300M LEEDS REDEVELOPMENT PROJECT



### Overview

Designed to be an important and integral part of Leeds' vibrant Cultural Quarter, sitting side by side with the West Yorkshire Playhouse, the Quarry Hill Campus is one of the first developments to be completed as part of an exciting £300m redevelopment of the area.

Welcoming students for the first time in September 2019, the new £60m Leeds City College development will provide a stimulating, state of the art new home for the college's School of Creative Arts and School of Social Science, as well as providing expansion for Leeds College of Music.

As part of the larger development, including Gateway Court and Playhouse Square, approximately 0.4ha of existing green space will be enhanced, and a further 0.2ha created, including 33 new trees, shrub planting and grassed terraces.

### Green-tech involvement:

Situated next to the west Yorkshire Playhouse, planners were keen to develop a continuous public realm throughout the site. Leading Leeds landscape architects Re-form, used landscaping and planting to soften what was previously a hard urban space. The use of trees along the front of the building, as well as around the entrance and raised parking area, add welcome greenery, while three large planters break up what would be an exposed area at the lower level front corner.

The team worked with Howard Civil Engineering, providing the unique, patented ArborRaft tree pit system. ArborRaft's shallow profile not only protects the soil from compaction, but also reduces intrusion into the rooting area. Combined with Green-tree's specially formulated ArborRaft soil and subsoil, this will give the trees the very best chance of successful establishment. Terram Root Guard was used where necessary and the tree pits were finished off with the Fortress grille, allowing paving to be laid seamlessly, practically up to the trees themselves. Irrigation is provided by the tried and tested Mona Relief Grande. The perforated pipe sits around the root ball and, via a capped filler pipe provides a cost effective, easy to use irrigation solution.

Callum Dawson - Green-tech Technical Sales commented; "It is always great to be involved in high visibility projects in prime city centre locations, and this was no exception. We have worked with Howard Civil Engineering on many projects to date, and seeing the completed site gives a tremendous sense of satisfaction. It is amazing the difference that well thought out planting makes to a city centre location."

Howard Civil Engineering added; "This was a key project, and as part of a larger development, it was critical that all the parts of the puzzle came together on schedule. The ArborRaft tree pit system is so easy and quick to install, and the Green-tree soils so easy to work with, it makes dealing with them a pleasure."

**For further information visit**  
[www.green-tech.co.uk](http://www.green-tech.co.uk)



**green-tech**  
Plant • Protect • Enhance • Improve



**NEW  
PRODUCT  
CATALOGUE  
AVAILABLE  
NOW**

# Creating Green Spaces

Expert advice, technical know-how and a trusted supplier for your urban landscaping project

## Rural Tree Planting

- Tree Shelters and Guards
- Bamboo Canes
- Wooden Stakes
- Tree Belting and Blocks
- Tree Anchoring

## Urban Tree Planting

- Tree Irrigation
- Root Protection
- ArborRaft Tree Planting System
- Tree Anchoring
- Tree Grilles and Guards

## Maintenance Products

- Grass Seed
- Wildflower Seed
- Lawn Edging
- Fertilisers and Weedkillers
- Soils and Growing Media

**T: 01423 332100 E: [sales@green-tech.co.uk](mailto:sales@green-tech.co.uk) [www.green-tech.co.uk](http://www.green-tech.co.uk)**

**[@greentechltd](https://twitter.com/greentechltd) [@greentechuk](https://facebook.com/greentechuk) [green-tech-ltd](https://linkedin.com/company/green-tech-ltd)**







# BRINGING GREEN TO GREY IN SPACE-LIMITED URBAN AREAS

Mobilane lead the way in exterior and interior instant green systems. That's natural, green foliage in outdoor and indoor environments, giving an extra planting option to a forgotten wall, roof, building or boundary. Adding greenery where space is at a premium, Mobilane's products offer all the benefits of planting with added visual impact, creating a protective privacy, pollution and security barrier.

The original Mobilane Green Screen, grown and supplied directly from the UK, can be seen installed in domestic, commercial, retail and public open spaces across the UK. These internationally tested ready-made green systems include: MobiRoof green roof cassette system, WallPlanter and LivePanel living walls and the NoiStop sound barrier. The LivePicture and LivePicture Go products offer homeowners or facilities managers a burst of planted artistry for aesthetic beauty at home or in the workspace, as does the equally impressive green backdrop, LiveDivider.

Supporting a network of installers, contractors and distributors across the UK, Mobilane are recognised for

their support, technical expertise and training given to clients in the commercial and domestic landscaping.

## **Naturally foliage-rich**

Mobilane Green Screen installations demonstrate their versatility in commercial and public open spaces. At a London demolition site, a 37 linear metre expanse of 1.8 and 2-metre-high panels has been used to mask site hoardings. Shielding and protecting, the Mobilane Green Screens provide environmentally responsible construction companies a naturally foliage-rich fence that can absorb noise, dust, fumes and look much more attractive for the passing community.

## **Living green, working hard**

These living green hoardings help instantly with the aesthetics of what would otherwise be an unsightly blank wall - a prime target for graffiti. The new green screen allows natural planting on a site where the planting of trees and shrubs is not possible as space does not allow.

## **Protecting and improving air quality**

This installation mirrors other Mobilane Green Screen installations

in urban environments, particularly in high traffic areas around schools. The Green My School campaign has gained momentum and many UK schools now benefit from ivy green screens, their dense foliage working hard to absorb and filter pollutants from busy roads, bringing greenery to an otherwise harsh concrete environment.

## **Nurture and nature**

Installed on the roof garden of a London nursery, this LivePanel extends the natural theme, planted with Pachysandra, Carex Morrowii, Carex Ice Dance, Hedera Helix White Wonder and Euonymus Fortunei. This infusion of grasses, climbers, colour, foliage and form draws interest from its young patrons. The children are encouraged at play to take notice of the plants, to spot when they need a little care and to learn about plant science, growth and nature.

**Find out more about Mobilane Green Screens, Live Panel living walls and all of Mobilane's innovative instant green systems by visiting [www.mobilane.co.uk](http://www.mobilane.co.uk), email [office@mobilane.co.uk](mailto:office@mobilane.co.uk) or calling 0203 741 8049.**



# INNOVATIVE INSTANT GREEN SYSTEMS



## CHOOSE LIVEPANEL

A sustainable plant wall

- ✓ Simple and quick installation
- ✓ Low maintenance
- ✓ Space-saving and slim system
- ✓ Improves biodiversity
- ✓ Manual or centrally-operated irrigation



## CHOOSE GREEN SCREEN

Natural and fully grown fence

- ✓ Instant green privacy
- ✓ Easy and quick to install
- ✓ Low maintenance
- ✓ Improves biodiversity
- ✓ Available in various heights and plant varieties







# KAREN BLIXENS PLADS PUBLIC SQUARE

At more than 20,000 m<sup>2</sup> Karen Blixens Plads is one of the largest public squares in Copenhagen. Situated between the University of Copenhagen and the Danish Royal Library's buildings at the university's South Campus, the open and welcoming urban space is an innovative, spectacular and multi-functional architectural design that accommodates and promotes green transportation, climate change adaptation, and biodiversity. The project was supported by a generous donation from the private foundation A.P Møller Fonden.



## Innovative bicycle parking

The combined public square and university plaza are designed as a carpet that covers an undulating terrain of small hills and breaks the large space up into smaller zones with room for activities both on and inside the hills (domes). The three bicycle hills were created as cast concrete shells clad with hand-laid tiles in colors echoing the exteriors

of the surrounding university buildings. In addition to serving as an active meeting place for students, employees, and locals, the square also contains a high-capacity bicycle parking space for the many users of the university, including 16,000 students and 2,000 employees.

The innovative and unique design has room for 2,000 bicycles.







**Green profile**

In a soft transition, Karen Blixens Plads brings together the university's need for urban spaces with the open landscape of the neighboring Amager Fælled (Amager Commons). The north side of the square, where the three main entrances to the university are located, is an open and multi-purpose space. To the south, hilly, undulating meadowland connects the campus with the commons. In addition to bringing nature into the campus the landscape also contributes to climate change adaptation by adding a capacity to handle stormwater. Delaying rainwater in depressions in the landscape utilizes the recreational values of the water and creates small wet biotopes that support biodiversity, enable rainwater evaporation and supplements the canal in case of extreme precipitation, thus contributing to climate change adaptation. The design uses simple, sturdy and durable materials, just as lighting and furnishings are kept to a few, simple elements to ensure a sustainable urban space. All the selected elements are low-maintenance and contribute to the square's green profile.



**Interdisciplinary collaboration**

In collaboration with CN3, COBE and EKJ's construction engineers calculated and created 3D projections of the iconic concrete dome constructions. The solution is based on a shell construction as the load-bearing structure.

Aesthetically, the design provides a large airy space underneath the domes. However, while a shell construction does not normally have holes in it, these domes have large openings, which constituted a significant challenge and required additional statistical analyses.

**Outdoor auditorium.**

A central feature is an outdoor auditorium with seating for up to 1,000 people on the manmade hills. The hilltops offer additional standing room for concerts or other large public events.





# URBAN AND PERI-URBAN AREAS ARE BECOMING MORE CONGESTED

As our urban and peri-urban areas become more congested, our biodiversity becomes increasingly degraded; in fact, apart from our ancient woodlands, there would be few zones where biodiversity is at a level that it was before the Industrial Revolution.

**But does this matter? And if it does, what can we do about it?**

## **Fletton Quays, Peterborough**

The major factors in the loss of biodiversity (meaning the complete range of living organisms from the smallest to the largest, including plant and animal - biological-diversity) are agriculture and urbanisation. The use of chemicals and the removal of hedges are recognised as responsible for much of the loss of habitat, but

the increase in building density is probably equally responsible for some of our biological deserts. As humans we are part of the ecosystem that we inhabit, and our health, well being and enjoyment depends greatly on our experience of a biologically rich and rewarding landscape.





**Kings Crescent Development, Hackney London.**

The planning system has tried to change this over recent years, and many government initiatives have been successful in stopping the erosion of animal and insect life in our towns and cities. The removal of permitted rights to pave front gardens with impermeable paving is a step in the right direction, but more needs to be done. However the recent Biodiversity Metric 2.0 launched in July 2019 by Natural England provides a way of measuring and accounting for biodiversity losses and gains resulting from development or land management change.

**Floral Court, Covent Garden London**

The scale of many new residential



schemes and redeveloped schemes - including the one above, Kings Crescent in Hackney with density of buildings works against a biodiverse area. Many of our biodiverse habitats have evolved over hundreds or even thousands of years, and we cannot expect to replicate this overnight. One area that needs attention is ensuring that our landscape designs include species of plants that encourage greater biodiversity, and that we link our green areas together to allow movement through our schemes of animals and insects. Often the issue comes down to the cost factor, both of installation and of maintenance, and thus we find areas which could have native tree planting and wild seed planting are turned to grassed strips, which provide very little habitat or food for the nature we want to encourage.

**Kenmont Rain Garden**

Another critical factor that is often neglected is the long-term health of a scheme. New developments are often adopted by local authorities, who are permanently strapped for

funding, and who do not have the resource to maintain a biologically rich environment. At times local authorities charge a commuted sum to allow for maintenance that is prohibitive to the developer that the important parts get value engineered - cut out.

In our experience, one of the best ways to increase bio-diversity is to plant less trees but plant them better.

Incorporating trees into Sustainable Urban Drainage Schemes (SuDS) brings additional benefits for both habitat and human enjoyment. Trees can be planted in such a way that they do not take up large amounts of developable land, and when used as storm water managers, these magnificent living plants can pay for themselves many times over. Please contact one of the GreenBlue Urban design team for details of how to add biodiversity to your project, adding value to the schemes.



# GREENBLUE URBAN PUBLISH URBAN TREES, HIGHWAYS & UTILITIES GUIDE



To request your FREE hard copy of this already sought after publication please email [hello@greenblue.com](mailto:hello@greenblue.com) with mailing address details.

Alternatively, you can download the full version online! By clicking on the link

<https://www.greenblue.com/gb/resource-centre/urban-trees-highways-utilities/>

Greenblue Urban is the global leading solutions provider in assisting trees in their battle to establish in urban spaces.

Established over 27 years ago with more than 40 years' experience in the landscaping industry GreenBlue provide exceptional expertise in planning, design and the installation of trees in the hard landscape.

Continued innovation and best practice methods allows UK onsite manufacturing using 100% recycled materials - contributing to over 410,000 trees to flourish world-wide providing long term tree canopy for many years to come.

**Discover more on our ground-breaking products visit [www.greenblue.com](http://www.greenblue.com)**  
**[Enquiries@greenblueurban.com](mailto:Enquiries@greenblueurban.com)**  
**+44 1580 830 800**

GreenBlue Urban are delighted to announce the anticipated publication of Urban Trees, Highways & Utilities.

**The inclusive publication contains: -**

- Insightful collaboration articles from industry experts
- A detailed section on structural applications
- Highlighting below ground constraints
- Policies & Case Studies
- Inclusion of Stormwater Management



Sauchiehall Street, Glasgow

## Enabling award winning projects

Our engineered tree pit and SuDS systems enable the establishment of **green** and **blue** infrastructure for future generations.



[greenblue.com](http://greenblue.com)  
 01580 830 800





# HAHN PLASTICS



**hanit® - Quality 100% Recycled Plastic Products**

Amazing Products For All Your Landscaping Projects

Why not give hanit® a try?

Attributes of using hanit® Products in your projects are countless but few are summarized as below:

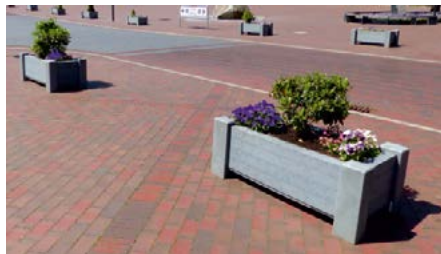
- Durability & Strength - Long service lifespan compared to traditional products
- 100% recycled product & 100% recyclable
- Easy installation & no maintenance
- Weather, vandal & rot resistant
- Moisture repellent

HAHN Group pioneers and now leader in the development and manufacturing of recycled plastic products in Europe processing over 60,000 tonnes plastic annually.

HAHN Group has been creating quality 100% recycled plastic products for over 25 years, with 220,000m<sup>2</sup> business premises and production plants located in the UK, Germany and Canada. We market and manufacture over 2000 products under the hanit® trademark.

Using state-of-the-art technology and moulding tools, along with our technical expertise, we develop high quality, innovative products from 100% recycled plastic.

Our product range not only comprises of items for garden, street and landscaping designs, but also includes complex industrial products, exclusively manufactured in accordance with customer specifications.



Barriers • Bench Boards • Benches and Tables • Board Profiles • Bollards  
Children's Furniture • Decking • Fencing • Ground Reinforcement • Privacy Screens  
Palisades • Picnic Benches • Planters • Sandboxes • Sleepers • Waste Bins

**0161 850 1965**

**www.hahnplastics.com**

**info@hahnplastics.com**





# **HANIT® - QUALITY 100% RECYCLED PLASTIC PRODUCTS**

**AMAZING PRODUCTS FOR ALL YOUR OUTDOOR  
PROJECTS - WHY NOT GIVE HANIT® A TRY?**

**Attributes of using hanit® Products  
in your projects are countless but  
few are summarized as below;**

- Durability & Strength - Long service lifespan compared to traditional products
- 100% recycled product & 100% recyclable
- Weather, vandal & rot resistant
- Moisture repellent
- No maintenance

HAHN Group pioneers and now leader in the development and manufacturing of recycled plastic products in Europe processing over 66,000 tonnes plastic annually.

HAHN Group has been creating quality 100% recycled plastic products for over 25 years, with 220,000m<sup>2</sup> business premises and production plants located in the

UK, Germany and Canada. We market and manufacture over 2000 products under the hanit® trademark.

Using state-of-the art technology and moulding tools, along with our technical expertise, we develop high quality, innovative products from 100% recycled plastic.



Our product range not only comprises of items for garden, street and landscaping designs, but also includes complex industrial products, exclusively manufactured in accordance with customer specifications.

A good chef knows that a successful dish is more than the sum of its ingredients. The dish should bring out the best in each ingredient, strike a balance between flavours and create something special. The same applies to recycled plastic. You can't just mix any

old rubbish together. Getting the ingredients right is crucial. The right ingredients, tested formulations and strict quality control: we've been following these principles since we started in 1993. They are the backbone of the company and enable us to innovate, develop and bring products of the highest quality to market, all put together with used plastic packaging.

More and more designers and architects are choosing our hanit® products because of the many product benefits. hanit® materials

are 100% recyclable, durable, eco-friendly and can be very simply processed, using all the same tools, fixings and fittings that you would if processing timber. With an attractive grained timber appearance, it is also weather-resistant, chemical-resistant and splinter-free. Vitality, it requires no maintenance whatsoever which makes it unbeatable when comparing price with performance. With a 20-year guarantee, our products are expected to last far longer, as demonstrated by the BBA certified 120 year assessed design service life of the Ecocrib retaining wall manufactured by PC Construction using hanit material.

During 25 years in operation, the HAHN group have been consistently introducing new and exciting products and the next 12 months are set to be no different. Significantly different to anything currently offered, a new range of 100% recycled plastic woven fencing has recently been launched, adding to the vast line up of over 2,000 products already available for garden, park and street design. We've seen a huge increase in the specification and application of recycled materials in recent times, so it's hugely satisfying for us that the message to reduce the amount of recyclable waste going to landfill and collecting in our oceans, as well the reduction in carbon emissions associated with the creation of virgin materials, is getting through. This collective effort will hopefully pay dividends for future generations.

Using locally sourced material enables HAHN to maintain high volumes of stock to meet increasingly tight deadlines. This gives our customers complete confidence that a project can always meet completion on time. Whether this be through one of our national distributors, or direct from our factory and warehouse facility in Manchester, it is well within our compass to supply whatever scale of project comes our way.







# STREET DESIGN LIMITED

## OUTDOOR STREET AND LANDSCAPE FURNITURE SINCE 1986

Since 1986 Street Design Limited have been designing and manufacturing outdoor street and landscape furniture including planters and seating, for the public and private sector.

Working with architects, landscape designers, major developers and contractors to supply a wide variety of standard designs and bespoke to suit specific schemes.

Street Design can assist with design and technical details for individual projects, working with you to create the right product for your scheme.

### Manufacture

We manufacture our products from a diverse spectrum of materials including FSC Certified Iroko, FSC Certified treated Redwood, stainless steel, aluminium and Corten® weathering steel.

Our experienced and fully trained manufacturing team work to rigorous quality standards to comply with our accredited Quality Management System (ISO 9001:2015).

### Street Furniture

Street Design manufacture and supply a range of standalone street furniture products including planters, benches, seats and planters with integral benches.

All street furniture products are available with a choice of materials, finishes and colours.

### Landscape Furniture

A wide range of products can be supplied that are suitable for creating landscape areas.





Large planters with seating can create outdoor recreational and working areas for roof terraces, courtyards and other public spaces.

Products can be supplied with integral seating, pergolas, trellis and can be manufactured to accommodate lighting.

### Roof Garden Furniture

Products can be manufactured and supplied for the creation of roof gardens. Planters and seating can be supplied as standalone units or manufactured in sections for bolting together on site to create large or long products.

Roof garden planters can be manufactured with extended legs to transfer the load down onto the roof structure or they can be supplied to spread the load over a larger area including the posts walling and base bearers. Planter walling can be supplied without bases reducing cost and helping spread the weight on the roof structure.

A range of roof garden accessories can be manufactured and supplied including pergolas, trellis panels, seating, lighting, storage boxes and lawn or deck areas.

### Planters

Street Design offers an extensive range, from budget to bespoke planters in a variety of materials and finishes. Planters can be manufactured using combinations of timber, mild or stainless steel, aluminium and Corten® weathering steel. A wide range of sizes, shapes and styles is available. All planters are available with optional features, including: - integral seating, adjustable feet, tree anchors, self-watering systems and colour stain options. They can be personalised with logos, inscriptions and decorative plaques.

### Versatile Planters

Within our planter range, we offer 5 versatile products that are able to be specified for a wide variety of applications.



Long, circular and curved planters can be specified to suit your particular area.

Versatile planters can be used in conjunction with benches, trellis, pergolas to create landscape areas in courtyards and roof spaces.

### Seating

Our ranges of external seating products comprises of seats with backs, benches without backs, and are available from budget seating to bespoke designs to suit most applications. The designs incorporate a range of materials that can be specified, including timber, with a choice of FSC Certified hardwood or FSC Certified treated Redwood, or metal, with a choice of mild or stainless steel. All seating is available for above or below ground installation. They can be supplied straight or curved, free standing or wall mounted and come with a choice of finish. Seating can be supplied with armrests.

### Versatile Seating

As part of our seating range, we offer 3 versatile seating products that are able to be specified for a wide variety of applications.



Long, circular and curved seating can be supplied to suit the lengths and radius you require for a specific area and function.

Versatile seats and benches can be used in conjunction with tables to create outdoor working and social areas.








# Street Design

UK BASED DESIGNERS &  
MANUFACTURERS OF  
STREET FURNITURE &  
LANDSCAPE PRODUCTS

 001509 815335

 [0sdl@street-design.com](mailto:0sdl@street-design.com)

 [0www.street-design.com](http://0www.street-design.com)

## PLANTERS & SEATING

- Established in 1986
- UK based manufacturer
- Full range of Planters & Seating manufactured to specific sizes
- Choice of materials and finishes
- Low maintenance products
- ISO Registered
- FSC Registered

**ROOF GARDENS**

**RETAIL**

**RESIDENTIAL**

**EDUCATION**

**HEALTH CARE**

**HOTEL & LEISURE**

**COMMERCIAL**

**PUBLIC REALM**







# Street Design

## ROOF GARDEN

Street Design manufactured and supplied planters for the roof garden of the IM Group Ltd's new headquarters. **Diplomat** planters were specified for the staff roof terrace and included integral **Spalding** planter benches. **Bowden COR-TEN™** steel planters were also specified to create linear planting areas.







# FOR QUALITY OUTDOOR LITTER AND RECYCLING BINS, GLASDON IS ALWAYS A SMART CHOICE

Glasdon have been designing and manufacturing bins to the highest standards since 1959, with the aim to supply products that will improve spaces and waste management around urban landscapes.

Glasdon bins are ideal for preventing littering on streets and in public and private business premises. Our range of street litter bins are perfect for collecting waste in areas of high footfall, including public pathways and residential areas.

We manufacture external waste bins using high quality materials, which combine excellent durability and strength with a low maintenance finish. 'Bin-it' and other graphics can be added to promote correct usage within all areas, especially where waste is streamed for recycling.

New Electra™ Curve litter bin has recently been added to our extensive range. This stylish unit is perfectly designed for modern styled developments, and combines strength and functionality.

The curved hood provides cover from the elements, and also prevents unsightly litter from being left on top of the bin, allowing the unit to successfully collect waste, keeping your urban landscape an attractive and tidy space.

An Armortec® coated steel framework and Vandalex® material, 100% recyclable body panels ensure the Electra Curve is vandal and fire resistant, and has a long service life, as well as contributing to its environmentally friendly design.



Neil Gilkes, Sales Manager for Glasdon UK Limited said: "The Electra Curve is a great addition to the Electra litter bin range. Its curved hood is perfect for both outdoor areas (as it provides a cover for the container) and places where litter is more likely to be discarded on top of bins, as its stylish design prevents this possibility."

The Electra Curve is also available as an on street recycling bin with dedicated, built in apertures for specific waste streams to avoid cross contamination. An extensive variety of optional graphics are available for the Electra Curve, as well as complete personalisation, allowing you to tailor the look of the bin to suit your exact requirements.

Glasdon design external litter bins to co-ordinate with a variety of environments. Where space is limited we offer wall, rail and post mount fixings to securely attach your chosen litter bin to its location. A variety of ground fixings are also available for permanent or temporary siting.



You can select from a range of outdoor waste bins with varying capacities to best suit your waste management needs. If you require a larger capacity outdoor litter solution, we can supply an alternative solution with Glasdon wheelie bin housings, which provide secure cover for 120 up to 360



litre wheelie bins. For areas where security is paramount, select from our range of sack holder bins with transparent exteriors for increased visibility of the contents inside the sack. A range of hygienic dog waste bins are also available which are ideal for parks and popular dog walking spots.

For locations where cigarette waste may be a concern, you can add smoking control features such as a stubber plate to the aperture or mount an ashtray to the hood of your selected litter bin. Alternatively, one of our litter and cigarette bin combos may be preferable.



**If you would like more information about the Glasdon range of litter or recycling bins or would like to talk to one of our experts online please visit [www.glasdon.com](http://www.glasdon.com)**



**UK MANUFACTURERS OF STREET FURNITURE**



**POSTS - HINGED & TELESCOPIC**  
**BOLLARDS - STEEL & STAINLESS**  
**HOOPED BARRIERS**  
**CYCLE STANDS & RACKS**  
**CYCLE SHELTERS**  
**HEIGHT RESTRICTORS**  
**SWING GATES**  
**ARM BARRIERS**  
**SMOKING SHELTERS**  
**SEATING**

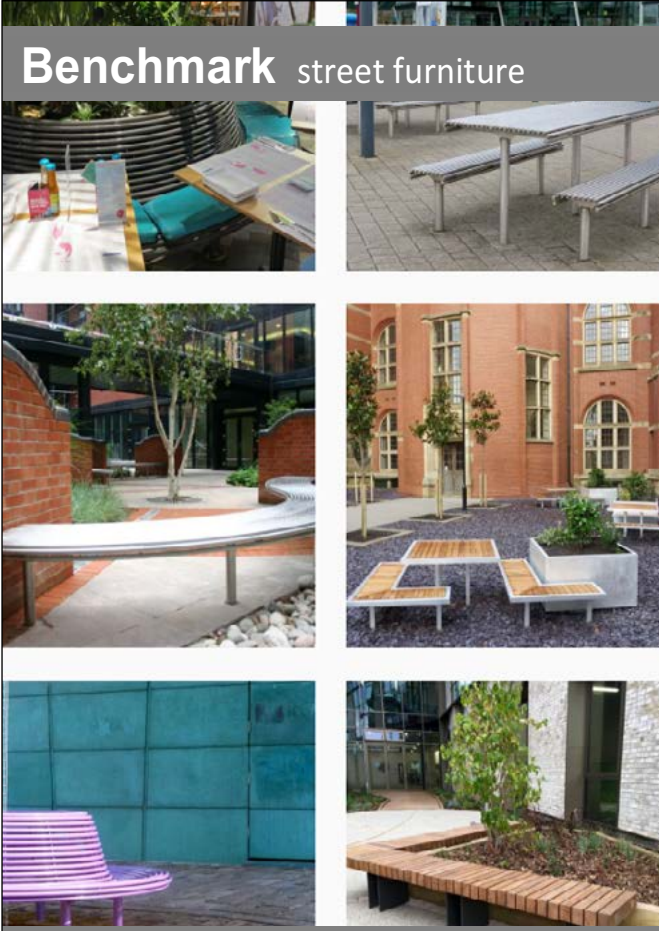
**AUTOPA**

01788 550556  
 info@autopa.co.uk  
 www.autopa.co.uk



AUTOPA Limited, Cottage Leap, Rugby, Warwickshire, CV21 3XP

**Benchmark street furniture**



www.benchmark-ltd.co.uk    01243 545926    info@benchmark-ltd.co.uk

**Cis**  
 Street Furniture

**Creating inspiring street scenes**

**Bespoke Seats - Safety Railings - Giant Bollards - Security Products**



**CIS Street Furniture have the 'measure' of your next project**  
 Why not call our sales team to assist?

**T: 01483 203388**

**www.cis-streetfurniture.co.uk**

**E: sales@cis-streetfurniture.co.uk**





To view the full range of high quality, durable and sustainable products, visit:  
[www.glasdon.com](http://www.glasdon.com)





# GREENSQUARES DeckPlus LAUNCHES DECKPLUS COMPOSITE DECKING

Greensquares, the UK's leading supplier of outdoor living products, has launched a new brand in composite decking - DeckPlus. With over 15 years experience in marketing and selling composite decking via the TimberTech brand, the business has seen a substantial growth in trade enquiries over the past 12 months and has decided to capitalize on this growth by developing its own range of budget-friendly composite decking.

Perfect for the landscaping market, DeckPlus offers a multitude of

options. From the entry level EvoDek composite boards, which are designed to appeal to the more price sensitive of customers; to the rustic charm provided by the WeatherDek range of boards; through to the strikingly modern FutureDek capped composite boards.

The range is expanding further for 2020 with the addition of ReversaDek - a double sided board featuring two different greys, perfect for picture framing and creating accents - all from one board!

All DeckPlus composite boards are colour fast, splinter free, slip resistant and won't split, warp, bend, crack or fade. They also carry the reassurance of a residential warranty of between 5 and 20 years.

Order your free samples at  
[www.deckplus.co.uk](http://www.deckplus.co.uk)

DeckPlus  
0800 028 8756  
[info@deckplus.co.uk](mailto:info@deckplus.co.uk)  
[www.deckplus.co.uk](http://www.deckplus.co.uk)



## THE PERFECT SOLUTION FOR YOUR NEXT DECKING OR PAVING PROJECT



Karoapp fixed and adjustable pedestals for use on decking and paving are the latest brand to reach the UK market and are available from Euro Accessories Ltd.

Fixed pedestals are available in 4 different heights ranging from 13mm to 30mm. Adjustable pedestals are available in 6 different adjustable heights ranging from 18mm to 225mm.

By incorporating the extension piece a further 7 adjustable heights are available, offering a complete range from 18mm up to a staggering 1083mm.

Karoapp pedestals are fully tested and offer a minimum load resistance of 900kg each. Using recycled plastics, they help prevent moisture to the deck / patio helping to increase its life.

Euro Accessories professional pedestal team can also offer assistance with any development or project you have.

For more information on Karoapp

Tel. 01189 81 95 22

[www.karoapp-pedestals.co.uk](http://www.karoapp-pedestals.co.uk) | [sales@euroacc.co.uk](mailto:sales@euroacc.co.uk)



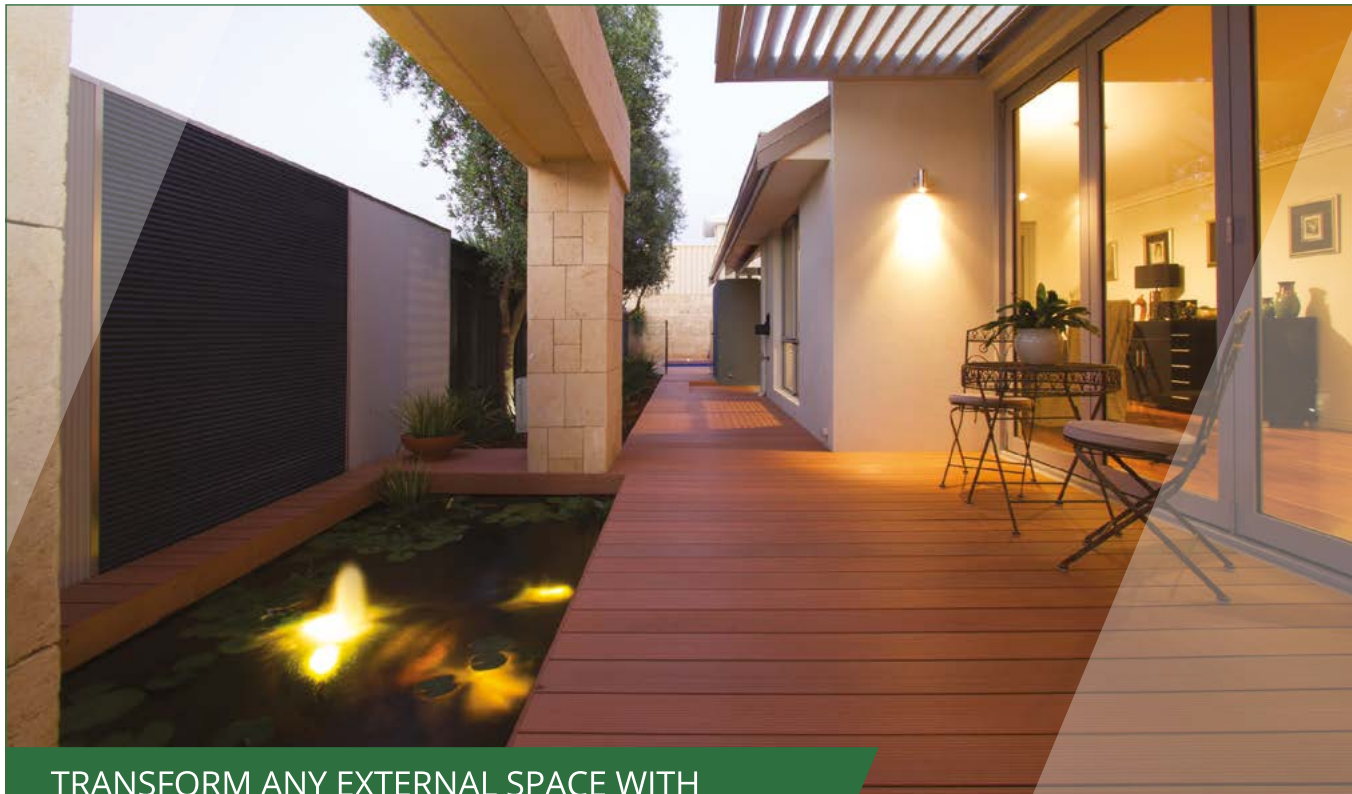
- Fast and easy to use in all weathers.
- Adjustable for all sites and slopes.
- Allows easy access to utilities concealed below the deck.
- Continuous drainage through joint spacers means no accumulation of water on decks or paving.
- It provides a point-to-point intervention in insulation problems.
- It has a high load resistance (Min 900kg/pc)
- Provides the final level without any screed concrete on installation.



For more information on Karoapp

Tel. 01189 81 95 22

[www.karoapp-pedestals.co.uk](http://www.karoapp-pedestals.co.uk) | [sales@euroacc.co.uk](mailto:sales@euroacc.co.uk)



## TRANSFORM ANY EXTERNAL SPACE WITH ROCKWOOD COMPOSITE DECKING

Call: 024 7601 7011 [www.rockwellsheet.com](http://www.rockwellsheet.com)







# GREEN IS ON TREND

## IN MORE WAYS THAN ONE, SAYS WESTBURY GARDEN ROOMS

It's not just hazy green wall colours that are garnering the interest of homeowners in 2020: Westbury Garden Rooms has identified another green trend. There is a noticeable increase in the number of people who are taking a significant interest in the carbon footprint of their renovation and glazed extension projects - both during the manufacturing process and after the build is complete.

Founder of Westbury Garden Rooms, Jonathan Hey commented:

"The mounting environmental crisis has come to a head this year on a scale not previously seen, and people are now questioning the choices they are making in their everyday lives - be that rejecting the throwaway culture of cheaply-made clothes, to reducing the number of unnecessary flights they are taking. Therefore, it stands to reason that this also extends to their homes too, with people wanting to understand how their new orangery or garden room might impact the environment."

This increased desire to invest in a 'green' glazed extension has manifested itself in several ways:

- an increase in the number of homeowners questioning the sustainability of timber, the levels of transport emissions, and manufacture locations etc. of an extension project
- a desire by many homeowners to go above and beyond the minimum environmental building regulations





"Historically, uPVC conservatories have always been bad for the environment, with an unsustainable manufacturing process. They also required huge amounts of energy throughout their lifetime, as it has always been notoriously difficult to control the internal temperatures.

"Modern manufacturing processes mean that today's timber orangeries, garden rooms and even conservatories have sound environmental credentials that minimise the homeowner's carbon footprint throughout their whole lifecycle, as they can easily be recycled."

#### About Accoya®

Westbury uses Accoya® (a modified wood) to the furthest extent possible. Not only does the latter outperform traditional solid hardwood but it is created from fast-growing, abundantly available, FSC® or PEFC™ certified tree species such as Radiata pine, which eliminates the need to use hardwoods sourced from the rainforests of South America or Africa.

Before it is used in the construction of Westbury's orangeries and garden rooms, it undergoes a non-toxic, environmentally-friendly chemical process which makes it a super-strength version of its original form, which coincidentally also improves its paint retention. The wood is guaranteed to last for 50 years and is extremely stable, even when used in coastal properties or at altitude, where there is more moisture. This paired with its thermal insulation properties means it is a win-win for any homeowner with noble green intentions.



Westbury applies three coats of Teknos paint to all of its Accoya® windows and doors. Teknos paint results in long-lasting, low-maintenance joinery that will not require repainting for at least 12 years. Additionally, unlike other products on the market, Teknos paints have extremely low levels of Volatile Organic Compounds (toxins that are released into the atmosphere), making them kinder on the environment.

#### Understanding 'green'

They concluded: "Every glazed extension manufacturer will have an environmental story to tell but homeowners who are really serious about environmental issues need to fully understand the manufacturing process from start to finish. It's one thing for a manufacturer to say they want to use sustainable wood but if the factory doesn't recycle or reuse offcuts, or if it's halfway around the world, then the benefits in one area will be outweighed by pitfalls in another."

"In more ways than one, going green is very much on trend for 2020."

- the desire to specify controllable heating and ventilation technologies, including the use of ground source heat pumps and biomass boilers

And specifically, Westbury has seen:

- an increase in visits to its Essex-based factory with a view to understanding the impact of the in-house manufacturing process
- an increase in visits to the company's environmental policy website page

They continued: "A homeowner chooses a glazed extension because they want to invite the great outdoors into their home - a garden room or orangery is a transitional space that can be used in all seasons. Therefore it makes sense that due care and attention is paid to the environment when their new extension is being planned.

For more information please visit [www.westburygardenrooms.com](http://www.westburygardenrooms.com) or call 01245 326500





# HIGH QUALITY EDUCATIONAL EVENTS AND WORKSHOPS

Garden Masterclass is an educational programme created over four years ago by garden designer Annie Guilfoyle and horticulturalist and writer Noel Kingsbury. Both Annie and Noel realised that there was simply not enough high quality educational events and workshops on offer for professional garden designers, landscape architects and horticulturalists. The Garden Masterclass programme is deliberately held in locations all over the United Kingdom, Ireland and continental Europe, as in the past there has been very little on offer outside the south-east.

The tutor list includes many of the most highly respected names in the landscape design and horticultural industry such as Dan Pearson, Tom Stuart-Smith, Olivier Filippi, Nigel Dunnett and James Hitchmough. Group numbers are purposely limited to a maximum of between 20 to 30 people,

ensuring that attendees receive high-quality learning with the tutor, smaller numbers also enable extremely thought-provoking group discussions. Events may be lecture based or offer a more hands-on, practical workshop approach to learning.

This year there are several events specifically aimed at landscape architects, such as a seminar-based study day at Hestercombe in Somerset, with landscape and heritage consultant Deborah Evans, who will focus on design issues in the historic environment. For horticulturalists there is plenty on offer, including a day at the magnificent Exbury Gardens in Hampshire, focusing on trees and shrubs led by Jim Gardiner, the former Director of Horticulture at Wisley. James Hitchmough, Professor of Horticultural Ecology at Sheffield comes to The Horniman Museum in London to study the

deep gravel herbaceous planting system that he has designed there. Tom Stuart-Smith will be explaining his approach to the large-scale planting schemes that he has designed at Chatsworth. Landscape architects Giacomo Guzzon, Tom Muller and Zac Tudor will be discussing sustainable planting for the public realm.

Important new subjects this year include natural swimming pool design and specification with designer and swimming pool specialist Sarah Murch, and the transformation of a brown-field site into a 'post-wild' family garden with Jo Mckerr and Marina Christopher. Study days run from 10am until 4.30 and include lunch and refreshments.

---

**To find out more about this extensive programme go to:**  
[www.gardenmasterclass.org](http://www.gardenmasterclass.org)  
 or email [gardenmasterclass@gmail.com](mailto:gardenmasterclass@gmail.com)



# GARDEN MASTERCLASS

SUPPORTED BY

  
**ALITEX™**  
GREENHOUSES AND CONSERVATORIES



Curated by garden designer Annie Guilfoyle and horticulturalist Noel Kingsbury, Garden Masterclass is a place where gardeners, designers and landscape architects come together to learn and share their experience and knowledge. The list of tutors includes some of the most innovative people in the gardening world and these exceptional workshops are held all over the British Isles and continental Europe.

We are thrilled to launch our 2020 programme, please go to the Garden Masterclass website for event details and tickets.

Learn, share and experience knowledge, skills and ideas in gardening and garden design  
[gardenmasterclass.org](http://gardenmasterclass.org) [gardenmasterclass@gmail.com](mailto:gardenmasterclass@gmail.com)





# ROBERT MYERS RETURNS TO RHS CHELSEA 2020 TO CELEBRATE MODERN-DAY NURSING ON THE BICENTENARY OF FLORENCE NIGHTINGALE'S BIRTH

A garden to mark the bicentenary of the birth of Florence Nightingale and celebrate the importance of the nursing profession in the 21st century, will be created for RHS Chelsea's Main Avenue in 2020.

Designed by Robert Myers, The Florence Nightingale Garden - A Celebration of Modern Nursing, will

depict a courtyard garden for a new hospital, enclosed on three sides by a sculptural timber pergola and surrounded by imagined perimeter rooms that evoke the 'pavilion' hospital layouts proposed by Florence Nightingale.

The restorative garden has been designed for viewing from inside the

building, as well as for sitting in and strolling through with shaded places to rest among naturalistic planting and a reflecting pool to engage the senses. The centre of the garden will feature mounded ornamental beds, to create privacy, and a stylised woodland glade offering sun and dappled shade.





Returning to RHS Chelsea after a seven-year absence, Robert Myers said:

"The theme of the garden is 'nurture through nature', inspired by the idea that the shortest road to recovery leads through a garden. The garden will celebrate Florence Nightingale's contribution to modern-day nursing using architectural design and modern, sustainable materials to represent her enduring reforms in hospital construction and vibrant planting to highlight the importance of green spaces for health and recovery.

It has been a wonderful challenge and reflects my own passion for creating contemporary landscapes in historically and culturally significant contexts."

The garden will evoke key elements of Florence Nightingale's life: pale concrete and timber will represent the materials that she endorsed for hospital construction; a reflecting pool will reference her insights into drainage and cleanliness; and the plants in the garden will include some found in her own pressed flower collection as well as plants with strong medicinal properties which were used in the 19th century.

In addition, images of Florence will be etched on glass windows and echoes of her handwriting will appear to be inscribed onto the concrete walls to embody her extensive writing in support of healthcare reform.

In recognition of modern-day nursing, a striking installation at the front of the garden will display the recently redesigned Nightingale Nurse badge, denoting both her enduring legacy and her ability to inspire the next generation of leaders in the nursing profession.

The garden is sponsored by the Burdett Trust for Nursing - a charity that supports nurse-led initiatives to enable nurses in their professional development and empowers them to improve patient care. Chief Executive, Shirley Baines, said:

"Florence Nightingale was at the forefront of modern-day nursing and an active lobbyist for reforms in healthcare. As the architect of the modern hospital, she recognised that the hospital environment had a strong influence on patient outcomes. While she understood the importance of fresh air, sunlight and green spaces to wellbeing and recovery, she also recognised the significance of the architectural design and materials used in hospital construction. We are delighted that Robert has so successfully encapsulated all of these important elements into our Chelsea garden through its contemporary design, considered planting and modern sustainable materials.

Today, as a result of Florence Nightingale's pioneering work, nursing is a highly skilled profession that makes a significant contribution to global healthcare. Modern-day nurses are at the forefront of progressive healthcare provision and we support these nurses in their professional development to create new leaders for the future."





## IC OUTDOOR

The successful collection designed in 2014 by Michael Anastassiades to give light to indoor environments is now taken outside, in two floor models. IC Outdoor has been adjusted in the materials, finishes and technological waterproof engineering to meet the expected requirements for outdoor lighting fixtures.

*I remember watching a short film about a juggler, Tony Duncan, rolling a set of spheres in the palm of his hands and up on his arms. There were moments when the spheres would seem perfectly still, on the edge of his fingers. Only if you looked very closely could you see them spinning around to achieve the balance. Then I came across the old photographs of Paul Cinquevalli, capturing a moment in the art of contact juggling.*

Michael Anastassiades

Four finishes for the stem, combined with refined materials for the base, in lava stones or travertino imperiale: precious natural stones quarried in Italy. The lava stone - black, grey and occhio di pernice, is extracted in Sicily, from the quarries on the slopes of the Etna volcano. The variety of surfaces and colours depends on the underground source and treatment.





The travertino imperiale stone, from Tuscany, is composed of vegetal fragments and carbonate, and it is characterized by small cavities enhancing the materic aesthetic of the stone. The uniqueness and preciousness of the bases donate to IC Outdoor a natural, refined design, in harmonious dialogue with the colours and materiality of the outdoor spaces.

On top of the thin stem, as if in a balancing act, a blown glass sphere. The IC lamp by Michael Anastassiades has the poetic grace and visionary design quality that have always characterised the work of this Cypriot designer.







Lumena Lights present

# Outdoor Lights for 2020

**REFRESH**

**RENEW**

**RE-THINK**

## REFRESH

*Refresh & Revive with smart, contemporary Silver light fittings including, high grade stainless steel and durable weatherproof anodised aluminium path and spot lights.*



Pictured: Airlite Anodised Path Light / Trimina 12v Recessed Light / Smartspot Adjustable Spotlight / Stelled Marine Grade S.Steel Bollard



## RENEW

*Is it finally time to deal with those wonky old path lights and bring your outdoor lighting up to standard in both daylight and darkness ? Dusk to Dawn options available for automatic function.*

Lumena's Lighthouse (Left) and LEDifice Bollard (Bottom Right) are built to last & Guaranteed for 5 Years - Replace those Wonky Bollards!

Next Working Day Delivery - High Stock Levels - Free Delivery for Orders Over £100 net.

**QUOTE: LAUD** when you contact us

[www.lumenalights.com](http://www.lumenalights.com)



# RETHINK

*Make a positive move towards sustainability and a better environment by using products that incorporate LED & Solar Technology. Lumena's must-see Pro Solar lights are impressively bright.*



Pictured: Halopost Solar Path Light / Freeway Solar Triple Function PIR Light/ Olympia Solar Pedestal Light - All Use High Output LEDs

## USE OUTDOOR LIGHTS THAT WILL LAST

*It's important to choose outdoor light fittings that won't need to be replaced within a year or so. Choose lights made from materials built to withstand all weathers & environments and that house LED lamps.*



Pictured L-R: Solid Pine Radiata Sleeper Bollard / Copper Astros Spotlight / Natural Brass Decimax Deck Light / Brass Fisherman Wall Light

## LUMENA HAVE A NEW-LOOK SHOWROOM FOR 2020



Showroom Open: 9-5 Mon-Fri - Centre 33, Long March, Daventry, Northamptonshire, NN11 4NR



01327 871161

[www.lumenalights.com](http://www.lumenalights.com)





# I SAW THE SIGN

## INTRODUCING THE BRIGHT LED SOLAR LIGHTS THAT ARE SIMPLIFYING SIGN-LIGHTING

As a lighting supplier to landscapers, developers and designers, one stumbling block that often arises is the logistics and cost of running mains cable to an area where there is no existing power. The required illumination point can often be a fair distance from a main building which can mean a large cost over a long time, with noticeable upheaval to the landscape. This is relevant to many business premises large

or small, Hotels of all sizes, farms, campsites or residential buildings.

Before now, a solar light wouldn't necessarily be a reliable option for this function, but Lumena have a solution. Part of Lumena's Professional Solar Range, The Signalite is a durable, IP65, high output solar sign light, available in 3 sizes: 5w, 10w and 20w.

Each size Signalite incorporates high power, long life LEDs in daylight white which emit a high lumens output; the largest with an output of 2000 lumens. To quantify that, a 2000 lumens solar light is equivalent to a high output 20w LED corn bulb, used in large, commercial style bollards! Alongside the Epistar LEDs, designed to last for up to 50,000 hours, is the reliable polycrystalline solar panel and replaceable Lithium





Ion Batteries. These are also expected to last many years.

These solar sign lights, also known as LED trough lights, are perfect for illuminating signs / billboards, as well as above doorways, due to their sleek design and downwards projection. Alternatively, these solar downlights can create dramatic, decorative lighting effects on walls, rather than solely for illuminating signs or doorways. Each wattage is a different length: 30cm, 60cm and 120cm, ensuring there is an option suited to fulfil all requirements. Importantly, the well-made,

contemporary, sleek design of the Signalite looks attractive in the daytime too.

Installation really is simple - it will simply surface mount onto most signs using the mounting holes provided. Then simply turn the Signalite on and it'll automatically come on when darkness arrives.

The Signalite LED Solar Sign Light will be fully charged with 6-8 hours of full sunshine, consequently, lasting for up to 3 days. Therefore, even on cloudy days the light will have retained, and continue to increase charge. It illuminates at dusk automatically for 5 hours at full brightness, and then reduce to 25% for the remainder of darkness. As a result, the battery charge will last longer than if it was at full brightness all night. Even in the dullest of weather, our solar lights will still illuminate, although they may not last the entire night cycle, which in many cases is not a

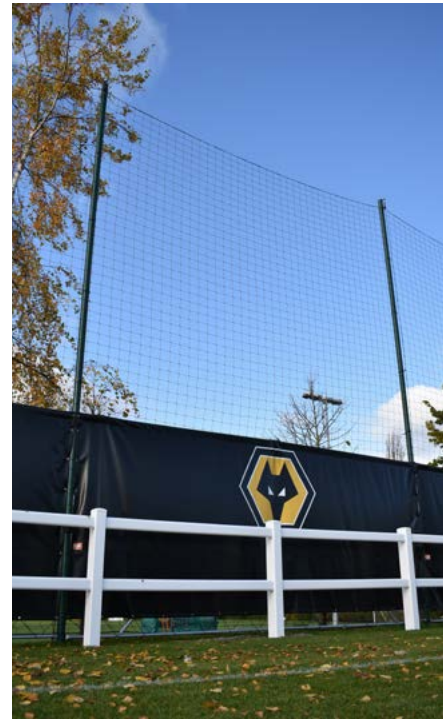
necessity. Installation is simple with keyhole surface mounting.

The current proactive drive to save our planet is positive and important. Solar energy is one of the World's most innovative renewable power sources. It uses no power from the grid, just the sun to charge rechargeable batteries during the day, stored to be used at night. Subsequently, other benefits are clear, with no running and installation costs or ongoing maintenance.

Solar is the perfect solution to illuminating areas where hard wiring is not possible. Most importantly, solar is better for the environment and use a natural, clean, renewable energy source - the sun.

**So, get your Sign Seen - Use the SIGNALITE. See the full range at [www.lumenlights.com](http://www.lumenlights.com)**





# WOLVES ROLL OUT ‘WHEELIE GOOD’ TRAINING GOALS UNDER TWIN-SITE EQUIPMENT PACKAGE

Wolverhampton Wanderers FC’s head groundsman Wayne Lumbar is in charge of the club’s turf facilities at an exciting time in Wolves’ history.

Coming into post in 2005, Wayne has seen the club rise to footballing prominence again as it seeks to secure a permanent place in the game’s top drawer.

After promotion to the Premiership, Wolves had to step up its grounds provision, both at its Molineux Stadium and the Sir Jack Hayward academy base and training centre, where major investment in synthetic pitches is now complete.

“We gained budget to improve the training ground two years ago,” recalls Wayne, “and have installed three new Desso Grassmaster pitches, including a show pitch

intended for U23s training and staging U18s Premier League games. Wayne splits his eight-strong team between the training base (five) and Molineux (three) to ensure the fresh facilities at the Sir Jack Hayward base are tended to the standards required.

“Once in the Premiership, we also began upgrading various elements at Molineux to meet higher-level requirements ready for the new season,” he continues.

“Every Premiership club has to conform to set criteria for stadium provision,” Wayne explains. “Goal nets have to be uniform white and grounds teams can only mow match pitches from goal to goal or across their width, for example.”

The match goals had passed their sell-by date and needed

replacing, he says, and turned to goals manufacturer Mark Harrod Ltd for advice. “We’ve enjoyed a longstanding relationship with the company and knew they could deliver a solution tailored to our requirements,” Wayne says. After talking over things with managing director Sean Wallett, the company delivered and installed socketed goalposts, nets and net support posts ready for Wolves’ first home game of the 2018-2019 season, against Everton FC.

The white aluminium powder-coated 24ft x 8ft match goalposts conform fully to home and European league requirements and form part of a package of provision for the Midlands club that includes goals and ancillary equipment at the training centre, which has just trumped Molineux with a football first.



“Sean and his colleague Matt Page had developed the concept of a goal designed to use on synthetic pitches and wanted to trial it. He approached us and we were delighted to put the product through its paces, as I believe that latest generation synthetic pitches deserve latest technology goals.”

A DevoShift training goal was delivered earlier in 2019 and Wayne trialled it for eight months on the training centre’s Desso pitches. His verdict is decisive. “For groundsmen, this goal is a no-brainer,” Wayne concludes. “The concept is beautifully simple and highly effective. Traditional wheeled goals are tricky to turn on grass and artificial surfaces and require large gateways to remove them from the pitch.

“Two people can quickly and easily swivel and push the DevoShift goals in any direction, not just forwards and backwards, as with current equipment.”

Full-sized DevoShift aluminium goals, designed to conform to the latest British and European standards, turn sideways and can be pushed/pulled through an access gate only 2 or 3m wide,” he adds.

The goals break new ground in another way. Stylishly fashioned, with no wheels visible, thanks to the unique moulded enclosures, the DevoShift posts appear to float across the ground. “They certainly look, as well as feel, a world away from traditional designs,” Wayne states.

After deciding the goals would form a permanent fixture at the training centre, Wolves have become the Premier League’s first club to take custody of goalposts tailored specifically to the demands of synthetic turf and high-quality turf.

Universal-style jointed wheels allow two people to manoeuvre them 360 degrees and push them on to and around a pitch quickly and easily, which will save time and money for grounds managers, operators and clubs alike.

Known for innovation, Mark Harrod Ltd developed the first wheeled goals, now widely adopted across sport. Fourteen years ago it launched the Easylift, which allowed frames to be pushed and pulled around sites after raising them above the playing surface.

The latest advance in training goal design marks a further quantum leap to create a goal featuring multi-directional mobility. Two years in development, the DevoShift is intended to roll out on to synthetic and high-quality pitches, allowing site personnel to steer a full-sized goal through access gates with minimal fuss and resources.

Wolves’ new acquisition is important for another reason, Wayne says: “The installation coincides with launch of British and European Standard BSEN16579, which aims to tighten up goal safety by eradicating pinch points that can trap the fingers, head or neck, as well as issues relating to crushing and shearing points.”

Designed to be fully compliant with the new standard, the DevoShift heralds a new era of football provision spanning grassroots to Premier League facilities, says R & D developer Matt Page. “It allows anyone to move the goal easily on and off pitches in a way simply not possible with existing products.”

Surface pressure of the goal is even less than that of the Easylift, he adds. “Schools will also welcome the third generation advance, while pitch facility managers can expect far less downtime when positioning goals.”

A castor system safely encased in a tough ABS plastic cowl, with built-in lift and lower mechanism, raises operational ease and safety. “The 80mm surface clearance is more than ample for synthetic and high-quality pitches,” adds Wayne, “while the smoother differential reduces any risk of snag and drag when moving the goal.”

With its family of pitches, including the three Desso Grassmaster full-size surfaces, the training and

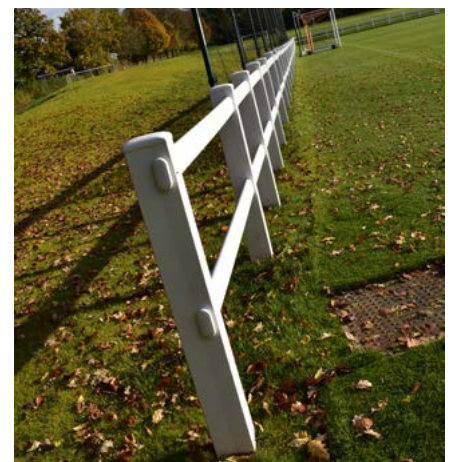
academy base hosts a season-full of competitive matches across the U7 to U18 age groups.

“Under our plan to ‘dress’ the show pitch, Mark Harrod Ltd supplied and fitted a pair of full-sized DevoShift goals, Duralock white post and rail perimeter fencing with gates, bespoke dugouts, Ball Stop netting system, freehanging 420S Box Nets, aluminium 1m x 1.2m Target goals and warm-up goals, “which will help limit wear and tear in the goalmouths”, Wayne confirms.

“Previous suppliers have proved reluctant to provide products not listed in their catalogue but Sean and the team are prepared to develop ones to suit our requirements. His response is always: ‘I’m sure we can help you’.”

Mark Harrod Ltd works closely with football governing bodies and sports clubs from elite to grassroots level. It supports the England Amputee Football Association and the English Schools’ Football Association, supplying and delivering goalposts for tournaments under a continuing commitment.

Every Mark Harrod Ltd product, where relevant, conforms to current British Standards and health and safety guidelines. As a leading sports equipment designer and manufacturer, the company plays a major role in shaping the future of goalpost quality, from grassroots to international level.







# CAMPEY™ PROVIDES ZERO EMISSIONS MOWING WITH THE ALLTREC TOOL CARRIER

Campey™ Turf Care Systems has launched the 100% electric AllTrec Tool Carrier to the UK market, with zero CO2-emissions during operation and low noise output.

Being environmentally responsible is an important cause of many companies and councils. Using the AllTrec allows essential maintenance to be completed with zero emissions, helping to improve green spaces without damaging the wider environment.

The machine has been designed by Dutch manufacturer, WeedControl B.V., to be the perfect solution

for zero-emissions mowing. With its sharp turning capabilities, it is agile enough to work in small enclosed spaces while also having been designed to work on large areas with a long-lasting battery to match its versatility. The running time is entirely dependent on the circumstances, but when cutting with the four-blade 180cm deck, the battery will typically last for 6-8 hours and 7-9 hours using the three-blade 130cm deck. Both decks feature rear ejection and allow height of cut adjustments from 30mm-110mm.

It can also be used with a number of other attachments including the weed controller, weed brush, and hedge cutter.

The electrically driven hedge cutter can be fully operated using a joystick, making it easy to operate for a day of work, while the LPG tanks used for the E-Variator Weed Burner can be mounted to the back of the AllTrec, with a connection for the automatic tank heater to prevent them from freezing. Weeds can also be tackled using the Weedbrush, which can be hydraulically adjusted to any angle, and used for a full day without any worry of batteries running out.





A large-action radius and highly efficient attachments combined with low operation and maintenance costs makes the AllTrec perfect for use in urban environments, sports complexes, holiday resorts and parks by contractors, local authorities and landscapers.

All batteries come with a three-year warranty and have a lifetime of + - 2500 charge discharge cycles. The 48VDC battery uses LifePO4 technology with a capacity of 20kwh or an optional 30kwh, with onboard charging taking 4-8 hours.

**For more information on making your mowing and other maintenance operations 100% electric and emissions free, contact Campey™ at [info@campeyturfcare.com](mailto:info@campeyturfcare.com).**





## TWO NEW MACHINES SET TO IMPRESS FROM BLEC LAUNCHING AT BTME – STAND PURPLE 414

BLEC will be returning to BTME in Harrogate with details of two new machines being launched into the landscaping and turfcare range, in early 2020. With a Redexim touch, the Multivator returns to the renovation stable by popular demand, while a new pedestrian version of the Rotorake will also be introduced. Visitors can find out all the details from the BLEC team on stand 414 in the Purple Zone.

The Multivator returns good quality material from depths of up to 30cm back into the upper layers of the soil profile. Once the soil has been successfully exchanged, the rear-mounted brush then ensures material is distributed evenly to leave a clean finish in its wake. A popular machine from the BLEC portfolio in days gone by, the

Multivator returns with a working width of 180cm and a 75hp tractor requirement. With a number of new features under the guidance of Redexim design and engineering, the Multivator will become a popular tool for contractors, local authorities and large-scale landscapers once again.

Also built in direct response to customer demand is the new Rotorake 1000. This new compact, pedestrian variant of the larger, tractor-mounted model is designed specifically for use in smaller areas and those with restricted access. Powered by a BCS two-wheel tractor or similar, the Rotorake 1000 features a 100cm working width and uses a multi-tine rotor to rake down to a maximum depth of 30mm. PTO driven, its principle is the same as

that of the heavy-duty Rotorake - to move and wind-row unwanted stones and debris using a contra rotating rotor to leave a clean, level finish.

Along with finding out about the latest additions to the line-up, stopping by the BLEC stand will also give visitors the chance to see some of the most popular products from their pedestrian range - the Cultipack Seeder and Power Box Rake.

---

**Charterhouse Turf Machinery Ltd.,  
Weydown Industrial Estate,  
Weydown Road, Haslemere,  
Surrey GU27 1DW UK  
Tel: +44 (0)1428 661222  
Fax: +44 (0)1428 661218  
[www.blecmachinery.com](http://www.blecmachinery.com)**



# Alltrec 100% Electric Tool Carrier

producing no CO2 emissions during operation



Hedge cutter



Weed controller



Weed brush



Cutting deck

A versatile machine that can be used with several different attachments, making it perfect for cutting grass, controlling weeds, brushing or cleaning. It has no CO2-emission and is suitable for use in multi-use sports complexes, urban areas, campsites, holiday resorts and theme parks.

For more information visit [www.campeyturfcare.com](http://www.campeyturfcare.com)

 CampeyTurfCare  Campeys  CampeyMachinery  CampeyTurfCare

**Campey**  
TURF CARE SYSTEMS  
QUALITY GROUND CARE EQUIPMENT





# NEW GKB DRAINMASTER FOR DUNCAN ROSS LTD DUNCAN ROSS LTD ADDS THE REFINED GKB DRAINMASTER MACHINE TO THEIR RANGE

Specialists in all aspects of Sportsturf, construction, drainage, renovation and maintenance. The Company originated in the 1960s from a background in agricultural land drainage. Duncan Ross Ltd, have invested in a GKB Drainmaster for full drainage schemes for a variety of clients.

Joe Ross, Manager at Duncan Ross Ltd, explains how impressed they were with their new GKB Drainmaster.

Duncan Ross - Managing Director had initially seen the machine exhibited at BTME and was so impressed by the design and quality of the workmanship." He adds, "ultimately, this was a key factor which encouraged us to purchase the reliable and refined machine."

"We have been delighted with the service and attention we've received from GKB since purchasing the GKB Drainmaster, Joe Ross explained. The machine is very well engineered and makes the job easy!"

Having been in continuous development since 1985, the concept of the GKB Drainmaster has been completely refined. The system has been developed not only to improve the drainage of surface water but also the acceleration. Duncan Ross Ltd have used their machine to "complete a full drainage scheme and intensified the system using the GKB Drainmaster. The results were excellent." With the GKB Drainmaster, the stability and quality of your grass will improve.



For more on GKB Machines and their reliable and robust range of machinery for natural, hybrid and synthetic turf, please visit [www.gkbmachines.com](http://www.gkbmachines.com) or contact Tom Shinkins on 07495 883617.





# JOHN DEERE DEALER SHERRIFF ACQUIRES GREENLAY

John Deere agricultural and turf dealer Thomas Sherriff & Co Ltd, whose headquarters are based at Haddington in East Lothian, has bought the professional turf business of Greenlay Ltd in Cramlington, south Northumberland.

This development extends the dealership's trading area and takes to seven the total number of Sherriff outlets serving customers from the River Forth in Scotland, down through the Borders to Durham in north-east England and reaching out west to the Cumbrian border.

Sherriff's head office site at Backburn in Haddington, which replaced the previous facility in Dunbar at the beginning of 2017, brought both the dealership's agricultural and turf divisions under the same roof for the first time. The other Sherriff outlets are based

at Alnwick, Coldstream, Hexham, Jedburgh and Stow.

All 17 Greenlay employees have transferred to the renamed Sherriff Cramlington business, with outlet manager Eric Pattinson continuing to lead the dealership's experienced sales, service and parts team.

"Originally founded by David Lowes and his wife Judith in 1972 before becoming John Deere Limited's first professional grounds care dealer in 1986, Greenlay is a well-established, successful family business," said John Deere Limited division sales manager Chris Meacock. "We would like to thank the Lowes family and especially Geoff Lowes for their commitment to John Deere over the past 33 years - it's great to see this positive outcome for his team."

Sherriff managing director Colin Weatherhead added: "This is a key

addition to our business and a great fit for our organisation. Following the development of our head office at Haddington as part of our overall expansion and restructuring plans, this latest acquisition represents another considerable investment in our business, allowing us to expand our geographical presence in the north-east of England and the Durham area.

"Most importantly, this means that we will now be serving our total John Deere area of responsibility with both agricultural and turf equipment, from the Forth to Teesside and out to the Cumbrian border. It ensures that we can maintain the highest level of support to our customers in both the important business sectors of agricultural and professional turf equipment sales and service."

[www.deere.co.uk](http://www.deere.co.uk)





# USING THE TMSYSTEM™ AND INFINICUT® TO OPTIMISE PLANT HEALTH – THE FOCUS OF STAND RED 253 AT BTME

With changes in pesticide legislation having an ever-deepening effect on sports turf quality, Turf Managers are having to carefully consider the role of mechanical maintenance in delivering a proactive plant health strategy. The UltraGroomer™ cassette from the renowned TMSYSTEM™ collection is specifically designed to provide a healthier turf environment by preventing the accumulation of thatch. Visitors can find out more about this, alongside the award-winning INFINICUT® range, on stand Red 253 at BTME 2020.

A thatchy surface that is moisture retentive not only reduces the movement of oxygen and nutrients, it also provides an ideal environment to harbour pathogens. The UltraGroomer™ cassette features over 80 tungsten carbide

tipped blades, spaced at 5mm apart, to reduce Poa ingress, minimise puffiness and prevent the build-up of organic matter. By improving the plants immediate environment, it becomes more difficult for disease pathogens to take hold.

The UltraGroomer™ can also be effectively used in conjunction with other cassettes from the TMSYSTEM™ range, particularly the SMARTVibe™ to increase greens speed. During the winter months, when the plant is at its most vulnerable, the SMARTVibe™ can be employed as an alternative to mowing to reduce plant stress. Vibratory rolling can smooth the greens surface and quicken play without cutting, eliminating passes of heavy pieces of equipment which in turn, lowers the risk of compaction.

The TMSYSTEM™ is available to fit OEM triplex and light fairway machines, as well as being an integral part of the Cub Cadet INFINICUT® mower. Also playing its part in the fight against disease, the INFINICUT® range features a number of parameters that can be adjusted to deliver an unparalleled quality of cut, no matter the time of year or conditions encountered at the given time. The INFINICUT® cylinder mower range spans 22"/26"/30" and 34" working widths, and floating or fixed head variants, together with the recently launched SM34 Rotary Mower.

---

**MTD Specialty Turf Products, Unit  
3, Redwood Court, Campbell Way,  
Dinnington, Sheffield S25 3NQ UK  
Tel: +44 (0) 114 2122 200  
Web: [www.cubcadetturf.com](http://www.cubcadetturf.com)**





# CHARTERHOUSE LAUNCH NEW SOLUTIONS FOR AERATION & BRUSHING AT BTME 2020 – STAND PURPLE 432

A brand-new addition to the renowned Redexim Verti-Drain range will be a particular highlight on the Charterhouse Turf Machinery stand at BTME 2020. Expanding the existing offering with a new 1.9m working width, it is ideal for use on a variety of turf surfaces. Visitors to stand 432 in the Purple Zone will also be able to find out about the new 6m wide Top-Brush for course presentation, removal of organic matter and dispersal of worm casts.

The Verti-Drain 2519 is considered the next generation of high-speed, high-productivity aerator. It combines its 1.9m working width with a variable working depth of up to 250mm (10") and can accept a range of tine options including 12mm and 19mm solid tines, as well as hollow tines for coring. This versatility makes it a popular choice

with greenkeepers, groundsmen and contractors alike looking for a machine suitable for year-round operation. As standard, the 2519 features user-friendly controls, an easy to adjust heave lever and a new draw rod system. Together with new features, it also comes with new styling and livery.

As well as updates to the aeration portfolio, Charterhouse will also be launching a new tool into their brush range. As an ever-increasing number of chemicals continue to be withdrawn from the market, Course Managers are turning to mechanical forms of maintenance to keep surfaces balanced and reduce contributing factors to disease. Brushing stands the grass plant upright, helping to achieve a cleaner quality of cut and can rid the surface of excess moisture and dew

to maintain good airflow through the turf canopy.

The Redexim Top-Brush's 6m working width makes it ideal for large areas such as golf fairways and sports pitches. It is comprised of 3 poly brushes, that can be accurately set to the desired depth to achieve a light surface brush-in or more aggressively loosen surface material. The 'wings' can then be hydraulically lifted and folded for convenient transportation and storage.

---

**Charterhouse Turf Machinery Ltd.,**  
Weydown Industrial Estate,  
Weydown Road, Haslemere,  
Surrey GU27 1DW UK  
Tel: +44 (0)1428 661222  
Fax: +44 (0)1428 661218  
[www.charterhouse-tm.co.uk](http://www.charterhouse-tm.co.uk)



# LANDSCAPE & URBAN DESIGN



Free Trade  
**Subscription**







# Landscape & Urban Design **Magazine**

Landscape & Urban Design provides the UK's major landscaping and urban design specifiers with a comprehensive look at the latest in the landscape design and management, design innovations, garden design, the built and natural environment, public space, green space, open space and environmental sustainability.

[info@landud.co.uk](mailto:info@landud.co.uk)    01304 806039

[www.landud.co.uk/subscribe](http://www.landud.co.uk/subscribe)

Image courtesy of Smith & Wallwork Engineers Cambridge Uni







# Quartix

Vehicle tracking that works for you

Find out just how much you can save with Quartix



No auto-renewal | Free mobile app | 1st class customer service

Visit [quartix.net](https://quartix.net) or call **01686 807 607** to schedule a free demo



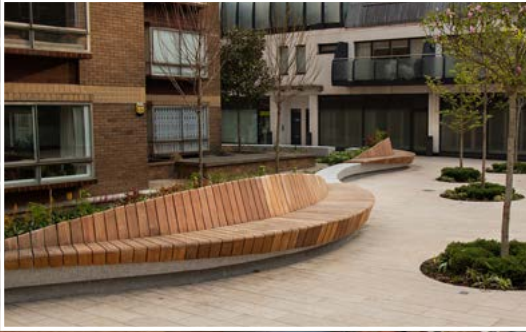
ID:A00438





#designthenation

halkin arcade, london



01254 685 185

sales@woodscape.co.uk

woodscape.co.uk

woodscapegroup

woodscapeco

woodscape\_street\_furniture

Woodscape.