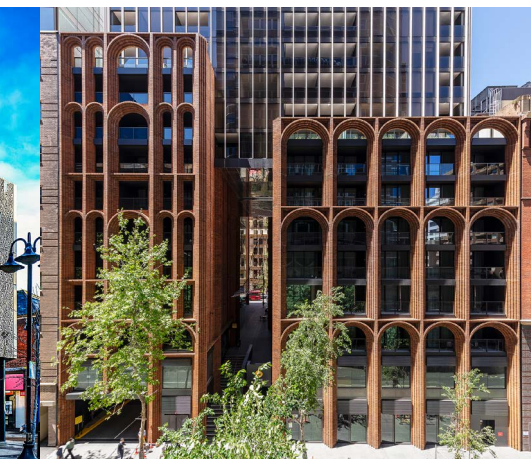
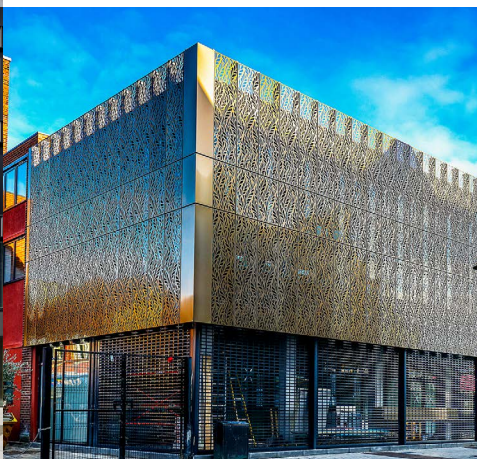




ARCHETECH

Turning Dreams into Reality

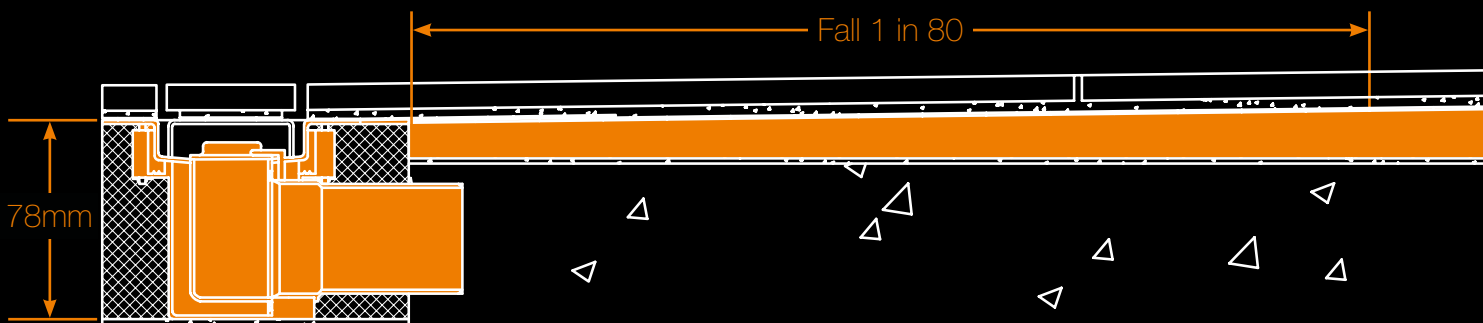
Issue 53 £4.99



Think wetrooms.

Think systems.

Think Schlüter.



Low height system solutions for level access showers

- ✓ Compliant with BS EN 1253, BS EN 274 & BS 5385
- ✓ Technical and specification support on & off site
- ✓ Comprehensive product, system & installation warranties
- ✓ Accredited educational & practical training



www.lowheightdrain.co.uk

ARCHETECH

Turning Dreams into Reality

Main Features

- Editor's Choice 9-11
- Bathrooms & Kitchens 15-16
- Coatings, Sealants & Paints 17
- Doors, Windows & Fittings 18-27
- Floors & Flooring 31-33
- Heating, Ventilation & Insulation 37
- Interiors & Interior Design 41-47
- Landscaping & External Works 48-59
- Roofing, Cladding & Façades 60-69
- Safety, Security & Fire Protection 70-77
- Editorial Highlights 78-81

Case Studies

ARCHITIZER - 6-8

Architizer Announces Winners of 1st Annual A+Firm Awards

JGMA - 12-14

Daley College Manufacturing, Technology & Engineering Center

ASSA ABLOY - 18-19

ASSA ABLOY Project Specification Group keeps up track record at Silverstone Primary School

VERDUN CULTURAL CENTRE - 28-30

Opening up an opaque building on the waterfront promenade and adjacent linear park to foster interaction with citizens while enhancing the sense of security around it

MCGILL UNIVERSITY - POWER PLANT - 34-36

McGill University needed a new building to house three 1.5 MW emergency facilities, generators that will protect research activities in the event of a power outage

PARK NOW - 38-40

Creating a people focused space for a leading tech company

GARDEN HOUSE - 44-47

The Modern-Day Hillside Village Featuring the Country's Largest Living Wall Unveils Four Decor Offerings by Visionaire

TREX - 50-53

Three deck upgrades that optimize project potential, performance and profits

BRETT- 56-57

When global tech company Vega Controls built a new HQ in East Sussex they created an interesting challenge for the architect designing their 33,000 sq ft offices

STOREY - 60-61

Storey launches new, flexible workspace at 100 Liverpool Street, Broadgate

CEDRAL - 64-65

Cedral Sidings were the perfect choice when applying the finishing touches to a spectacular former gatehouse in Scotland

PROTEUS FACADES - 68-69

The former Ottakar's bookstore in High Wycombe has been given a new lease of life and brought back to its former glory

CLOU ARCHITECTS - 74-75

220-metre of Vertical Interlocks



YOUNG 2.0 2GS TOTAL BLACK



MINIMALISM AND CLEAN LINES

With a whole host of exciting product features, such as showering height of 2000mm, through to the minimal matt black, matt white or polished chrome profiling giving the enclosure a sleek and luxurious look. Coupled with the rise and fall door mechanism and the versatility to be installed on a shower tray or tiled floor, the **Young** collection gives you a multitude of showering options and fantastic value for money. Combine this with our **Novosolid** stone shower tray or Novellini **Wetroom** for the total solution.



*Discover the
Black & White
video collection*

info-uk@novellini.com

www.novellini.com



Designed and
manufactured
in MANTOVA

FOLLOW US



Editor in Chief

Antony Holter - 0203 911 4067
antony@archetech-media.co.uk

Editor

Isabelle Hart - 0203 911 4067
isabelle@archetechmag.co.uk

Sales Director

Steve Hawkins - 0203 907 9165
steve@archetech-media.co.uk

Digital Manager

Jamie Bullock - 01227 936971
jamie@archetech-media.co.uk

Editorial Assistant

Chris Nicholls - 0203 907 9161
chris@archetech-media.co.uk

Business Manager

Josh Holmes - 0203 911 4067
josh@archetech-media.co.uk

Publishing Director

Martin Holmes - 0203 911 4067
martin@archetechmag.co.uk

Accounts

Lauren Davis - 0203 911 4067
lauren@archetechmag.co.uk

Studio Designer

Richard Bland
richard@archetech-media.co.uk

ARCHETECH

Turning Dreams into Reality

The Archetech magazine is an insightful information source for Architects, Architectural Technologists and Interior Designers. We feature lead stories on current projects, industry news and case studies so that our readers have the opportunity to keep up to date in the ever changing world of architecture and design.

Archetech offers architectural and design services to all those who are initiating, planning and implementing projects. Whether you're an interior designer, architect, technologist, developer or builder who is searching for inspiration for the next project, Archetech hosts the latest products, case studies and services to meet those needs.

With sharp editorial content, a cutting-edge design approach and informative written style, our advertisers and readers alike can take confidence in our experience and ability in matching your product to the needs of the marketplace.

Archetech Media Ltd

Tel: 020 3911 4067
www.archetech.org.uk
info@archetechmag.co.uk

Every effort is made to ensure the accuracy and reliability of material published in Archetech Magazine, however, the publishers accept no responsibility for the claims or opinions made by contributors, manufacturers or advertisers. No part of the publication may be reproduced or transmitted in any form or by any means, mechanical, electronic (including printing), recording or stored in any information retrieval system without the express prior written consent of the publisher.

SUBSCRIBE NOW

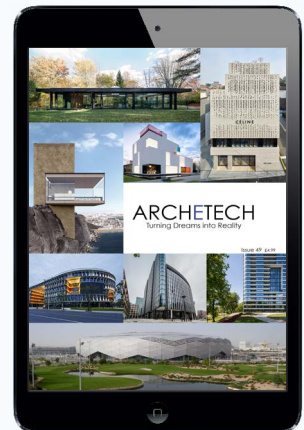
Digital Edition

SUBSCRIBE TO OUR ONLINE ISSUES FREE OF CHARGE

- Accessible anytime and anywhere on most electronic devices
- Receive the magazine by email as soon as each issue is released
- All issues are stored in an archive, so you can look back across every edition
- Now available on 3 major digital platforms: ISSUU, Joomag and Readly

Printed Edition

- Free of charge for qualifying trade professionals
- Paid subscriptions are available, for non qualifying trade professionals



HAVE YOU GOT A PROJECT YOU ARE PROUD OF?

If you've recently finished a project, conversion or renovation, why not submit it to our Editor in Chief for a chance to be featured in our next issue! Email antony@archetech-media.co.uk with details of your latest project.

Visit: www.archetech.org.uk/subscribe



ARCHITIZER ANNOUNCES WINNERS OF 1ST ANNUAL A+FIRM AWARDS

WINNERS SPOTLIGHT ARCHITECTURE FOR A CHANGING WORLD

Architizer, the world's largest online platform for architecture, announced the winners of the 1st Annual A+ Firm Awards, a new architectural awards program created to spotlight the architects behind the world's best buildings and spaces.

Building on the success of its A+ Awards program, the world's largest architectural awards program, this new program is the first of its kind dedicated to celebrating AEC companies of all sizes, geographies, and specializations.

"It is a great honor for our studio to be recognized in an important global arena like Architizer A+ as Best in Asia. It marks a meaningful step for us on the international stage." - Chaiyapat Mirasena, Department of ARCHITECTURE Ltd.



Neri&Hu - New Shanghai Theatre

“

An influential jury of creative thought leaders has awarded 31 firms with the top honor of World's Best.

An incredible range of architecture and consulting firms participated in the inaugural season, with some 400 firms — hailing from 50 countries across 6 continents — submitting portfolios for consideration. An influential jury of creative thought leaders has awarded 31 firms with the top honor of World's Best. From far-flung, relatively unknown studios, to some of the industry's most illustrious names, Winning firms illustrate the diverse talent designing and delivering incredible architecture today.

Best Overall Winners include:

- Foster + Partners (Best XL Firm)
- Neri&Hu Design and Research Office (Best Large Firm)
- Koichi Takada Architects (Best Medium Firm)
- Shulin Architectural Design (Best Small Firm)
- OFFICE OFF COURSE (Best Young Firm)

For the complete list of winners, please visit: www.winners.architizer.com/2021/Firms/

“We are honored and delighted to have won an inaugural A+Firm award. This is testament to our amazing global and diverse integrated design team who help create thoughtful, pioneering and sustainable buildings and projects all over the world.” - Matthew Streets, Foster + Partners

The prestigious A+Firm Awards Jury, which includes luminaries such as Virgil Abloh (Founder, Off-White), Kelly Wearstler (Founder, Kelly Wearstler Design), Toshiko Mori (Principal, Toshiko Mori Architect), and David Rockwell (Chairman, Rockwell Group), expressed their admiration for the evolving efforts of firms working at the forefront of contemporary design.



Shulin Architectural Design - Public Toilet at Sanchakou



“The A+Firm Awards reveals that design need not exclude sustainability, access, and equity. It was heartening to see these principles seamlessly embedded in the firms’ work without sacrificing thrilling formal solutions.” - Charles Renfro, Diller Scofidio + Renfro

In keeping with the A+Awards’ mission to democratize architecture and honor innovation, dedicated awards were also given for firms responding in dynamic ways to evolving global challenges. Honors for project specializations and geographies that represent millions of global stakeholders include:

- MASS Design Group (Best Humanitarian Architecture)
- Mecanoo (Best Cultural Architecture)
- Department of ARCHITECTURE Co. (Best in Asia)
- Koffi & Diabaté Group (Best in Africa)

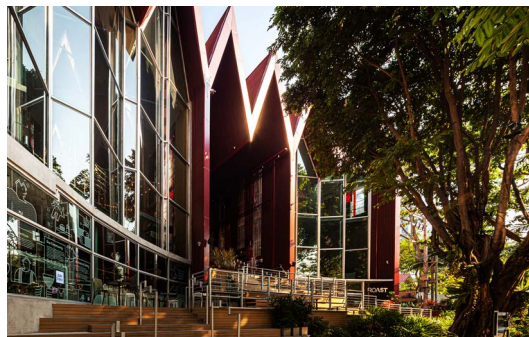
“Our passion and commitment as a firm have always been in developing meaningful solutions that engage the local community and tackle climate change. To be recognized for that work is an incredible feeling...” - MGA | Michael Green Architecture

In collaboration with its official partners Phaidon, Aesthetica Magazine, ICON, AIA New York, Royal Architectural Institute of Canada, and v2com Newswire, Architizer will honor A+Firm Awards winners online. Select Winners will also be featured in Aesthetica’s Future Now Symposium and in “Architizer: The World’s Best Architects,” a stunning, hardcover book set for publication in Fall 2021.

winners.architizer.com/2021/
www.firmawards.architizer.com/



Mecanoo - Longgang Cultural Centre



Department of ARCHITECTURE - The Commons Saladaeng



OFFICE OFF COURSE- National Archaeological Park Celadon Exhibition Centre

NEW 19MM COLLATED FLOORING SCREW BANISHES SQUEAKY FLOORBOARDS FOR GOOD!



Floor fitters and homeowners alike will be all too familiar with the curse of squeaky floorboards. Time after time the culprit is the fasteners; nails working loose over time, leading to expensive callbacks and customer dissatisfaction.

While it's well known that screws provide a tighter grip power by pulling the boards together, fitting 6mm plywood to underlay has long presented a dilemma. The conventional 25mm timber screws used to fasten flooring carry a risk of damaging underfloor electrical cables or puncturing water pipes, with potentially dangerous and costly consequences. The alternative use of 19mm nails, however, can cause the plywood subfloor to lift from the floorboards.

Construction products manufacturer Simpson Strong-Tie has developed an affordable solution: the groundbreaking new 19mm MTHZ19E collated underlayment screw. Designed for Quik Drive auto-feed screw system, the MTHZ19E allows fast and secure underlayment to subfloor installations, with a sharp point for fast start and a trim head for a neat finish.



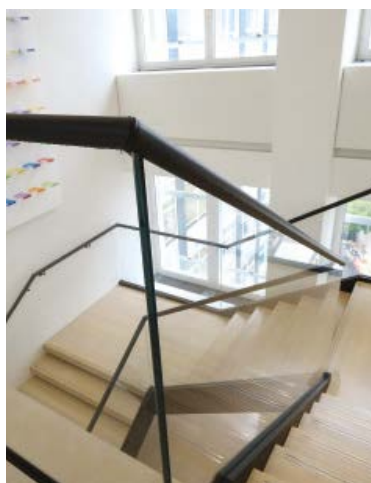
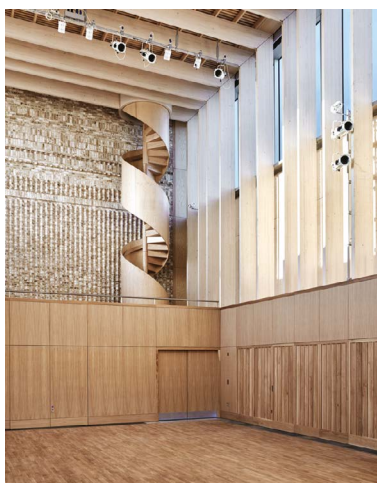
Fasteners Sales Manager Natalie Dixon explains "This new shorter length alternative to traditional flooring screws prevents the tip from protruding through the floorboards when fixing 6mm plywood, making it a safer way to fix to subfloors.

"The MTHZ19E can be used with timber joists, or to fix to steel up to 0.9mm thick – for example in the installation of computer flooring and can be easily removed and reapplied if access required to pipework at a later date. Nailed floorboards are notoriously difficult to remove intact.

While nail guns provide speed of fastening, they can produce inaccurate results and an inconsistent finish. Quik Drive provides a neat finish and flush consistent counter sink. And the upright installation option will protect your knees and back, with no need to bend or crouch."

Less torque. Less time. More fastening.

Contact details: Natalie Dixon ndixon@strongtie.com
07971147961



Design, form, deliver

Spiral UK's in-house expertise in the design, manufacture and installation of bespoke staircases ensures we deliver complex projects on time and to budget for you and your client.

Call **0330 123 2447**

Visit spiral.uk.com

Email info@spiral.uk.com to find out more or book free online CPD



LAUNCH OF THE TIMBER CLADDING HANDBOOK

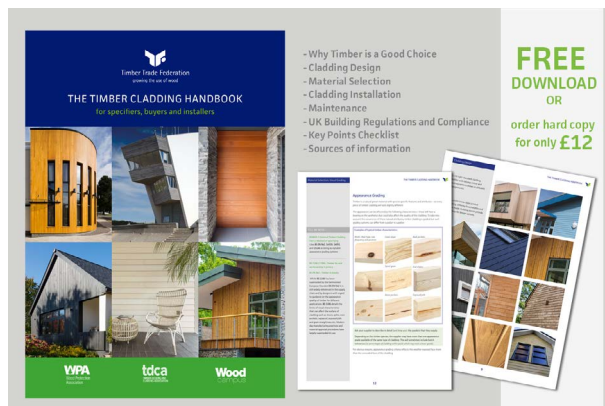
The Timber Decking and Cladding Association (TDCA) in collaboration with The Timber Trade Federation (TTF) have jointly published a new resource – The Timber Cladding Handbook.

Produced with support from the Wood Protection Association (WPA), Wood Campus and with technical input from Dr Ivor Davies, the Handbook is aimed at specifiers, buyers and installers of timber cladding.

A GO-TO REFERENCE

The 48 page book provides clear, relevant and up to date information covering cladding design, installation, material choice and UK building regulation compliance. The Handbook references a new version of the TRADA External Timber Cladding Manual which is due for release in late spring/early summer. The two documents will complement each other – the Handbook acting as a forerunner with summarised and illustrative guidance with TRADA's being more detailed and of particular interest to the specification and professional installer market.

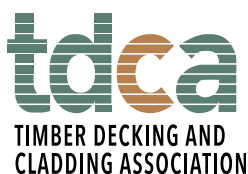
Janet Sycamore – TDCA Director of Operations, commented: "This clear and well-illustrated document has been produced to help prevent the common and easily avoidable problems that we see over and over again. The complexities of designing, creating and installing timber cladding can be quite daunting but this



Handbook brings everything together in one accessible source. We hope it will prove to be a valuable reference for anyone involved with timber cladding".

For those looking for added assurances of quality, the TDCA operates the CladMark quality accreditation schemes covering materials and installers. They provide evidence of compliance with the good manufacturing practices and the sound installation techniques required by the TDCA.

The Timber Cladding Handbook is available as a free pdf download at: www.tdca.org.uk/publications with printed versions costing £12 each including P&P.



For independent guidance on your next project



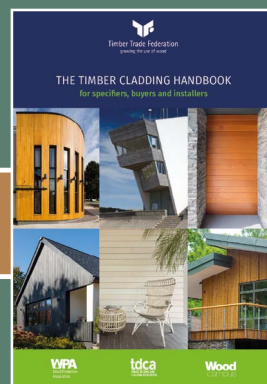
Anti-slip Plus smooth deckboards from Marley, installed by Deckbuilders UK.

Ensure your timber decking or cladding is fit for purpose through **design, specification, material choice and installation**. Whatever the size of your project, TDCA can offer:

- an accredited materials and supplier database
- impartial and expert help by phone or email
- inspiration, through galleries and case studies
- inspection & expert witness services
- free downloadable resources including our NEW **Timber Cladding Handbook**

email: info@tdca.org.uk
visit: www.tdca.org.uk

The Timber Decking and Cladding Association is an independent, not-for-profit technical and advisory body. It was established to promote the materials, design and installation practices required to create good quality decks, associated landscape structures and cladding on buildings.



A NEW BRAND IDENTITY AND LOGO FOR SCHÖCK

Schöck will have a new look from January 2021. Innovation has always been a key part of the company's philosophy and the new branding is intended to represent a more authoritative and contemporary look going into the new decade. The 'Schöck seal', represented by two interlocking brackets, combined with the use of upper-case type, symbolises even more strongly the promise of delivering reliable, consistent quality; at the same time maintaining strong relationships between the company, its customers and its employees. The strapline will continue to be: 'Dependable by design'.



Schöck's primary focus is on the development of structural components that make a substantial contribution to building physics – minimising thermal bridges, preventing impact noise in buildings and reinforcement technology solutions. Mike Bucher, CEO of Schöck AG comments: "Schöck has developed very successfully over the last 30 years. Our company is now more innovative and international than ever – and we want to present this to the outside world."

The most striking feature of the new design is the logo. The blue used in the logo is darker and becomes the leading brand colour and the Schöck name is now presented in upper-case type.



Mike Bucher

"The new Schöck seal stands for a clear promise. It is a symbol of quality and value, of reliability and security" explains Mike Bucher. "These are values that are at the core of our actions, even in times of digital transformation."

For a free copy of the Schöck Thermal Bridging Guide; the Schöck Specifiers Guide or to view the range of downloadable software, contact Schöck on 01865 290 890 or visit the website at www.schoeck.com



Target Timber Systems

Traditional Values using Modern Methods of Construction



If you are a Property Developer or Builder looking at Timber Frame structures for Houses and Apartments, or a family looking for their dream Self-build Home Target Timber Systems are here to help.

We offer a professional service which includes fully certified design & engineering, supply and erect of factory insulated panels, engineered floor beams and floor deck, roof trusses and bracing along with full chain of custody certification.



Target Timber Systems Ltd | +44 (0) 1483 782 600 | info@targettimber.com | www.targettimber.com

TWINFIX®

Utilise your outdoor space with a Twinfix Canopy

High quality, safe canopies for social distancing



Our canopies feature the following benefits:

- ✓ Non-fragile roof glazing
- ✓ Long lasting and durable
- ✓ Non-rusting aluminium frame
- ✓ CE marked
- ✓ Variety of colours
- ✓ Choice of glazing material

For more information contact us on:

01925 811311

enquiries@twinfix.co.uk

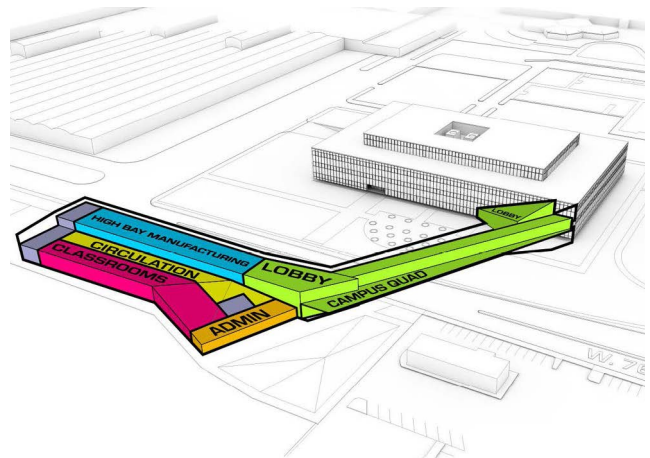
www.twinfix.co.uk



DALEY COLLEGE MANUFACTURING, TECHNOLOGY & ENGINEERING CENTER

The new Manufacturing, Technology and Engineering Center (MTEC) at Daley College is an addition to the Richard J. Daley campus. The MTEC sets the framework for a wider master plan. The project unifies the existing complex by creating a campus environment with engaging pathways and collaborative spaces throughout.

Rising from the transformed parking lot, the MTEC project speaks to issues larger than architecture; it seeks to revitalize a Chicago southwest neighborhood by creating a connective message that all are significant and welcome. Daley College tasked JGMA with removing the negative stereotypes that exist in the workforce when pertaining to manufacturing careers. Often suggesting these careers as devoid of dignity and reserved typically for minority populations.



“

The new building celebrates the manufacturing industry through the expression of materials such as metal panels, glass, and exposed steel.

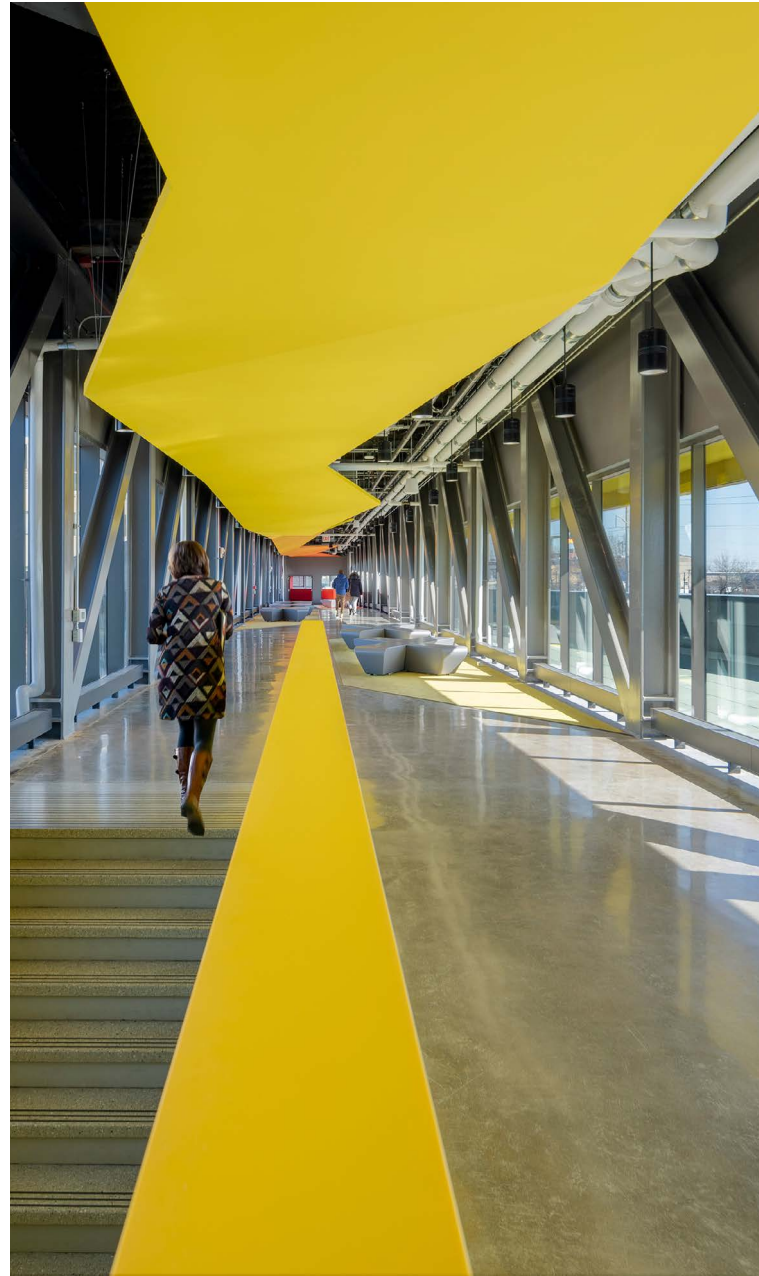
The project reverses the misconception through a design focused on celebrating state-of-the-art manufacturing spaces and proves careers in this industry require tech and skills as advanced as any other.

The design strategy utilizes building transparency to showcase machines, equipment, and products integral to the learning objectives of the colleges as well as provide a visual connection to the surrounding West Lawn community. The seamless fluidity to the building's form was inspired by the constant and linear flow of the manufacturing process. The building spans the main thoroughfare with a strong industrial bridge that links the south and north campus of Daley College.

The new building celebrates the manufacturing industry through the expression of materials such as metal panels, glass, and exposed steel. In addition, the underside of the elevated bridge is intentionally painted caution yellow, bringing the manufacturing expression to the exterior.

The transparency of the building provides a similar experience for even the casual passerby, by providing a look into the advanced technical nature of manufacturing today.

The project challenges the latent stereotypes of a community college and alters the psychology of simply crossing the street to go to class. Through dynamic spatial organizations and site responsive architecture, the MTEC provides students and staff a unique experience from the moment they walk into the building. The circulation spaces inside the building intentionally collide with seating areas, platforms, and alcoves to encourage students to congregate and participate in incidental learning between peers.





There is a combination of exterior and interior terraces for users to enjoy in the warm weather months. These green areas facilitate the students' and faculty's interaction providing connections with nature and lead to increased cognitive function and wellness, as well as creating a more unified campus.

As the MTEC is now the front door to the campus, thorough analysis was conducted to the user experience with regards to security, wayfinding, and new learning opportunities. It was imperative that the new addition set-up a framework for further transformation of the existing building while still celebrating its current legacy. The unique exterior façade of the MTEC building is phase one in a masterplan to completely rebrand and re-clad the existing facilities to create one new energized campus.

The new building will not only be a catalyst for growth and change within City Colleges of Chicago, but also inspire the pursuit of manufacturing careers as a sophisticated and high-tech learning path.

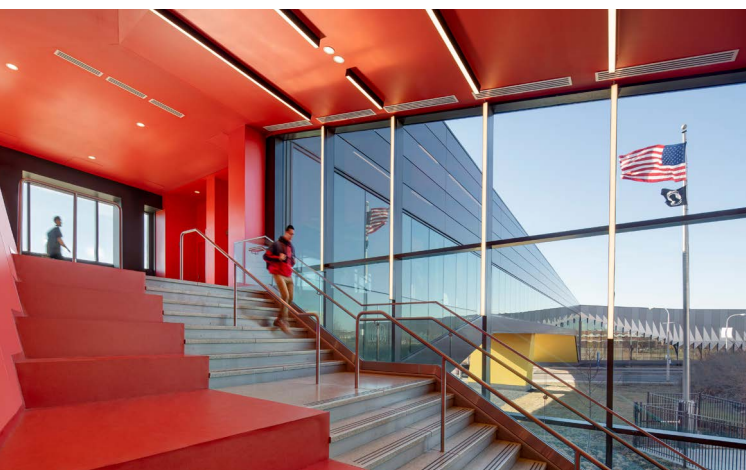
Technical sheet

Project address: 4101 W 76th st Chicago, IL, 60652 USA.
 Project square footage: 65,000 SF / 6040 m2 SF: 52,000sf building
 Completed on October 2019

Awards & Recognitions: Architecture Masterprize (2020), ENR Midwest Award of Merit (2020), Innovation by Design – Fast Company Awards (2020), Chicago Building Congress (2019).
 LEED Gold Certification

Design Architect: JGMA
 Architect of Record: Cannon Design
 Structural Engineers of Record: Cannon Design
 Civil Engineers of Record: David Mason and Associates MEPFP
 Engineers of Record: Cannon Design
 Landscape Architect: Terry Guen Design Associates Acoustic/
 AV/ IT/Security Consultant: Shen Milsom & Wilke Lighting
 Consultant: Aurora Lighting Wayfinding/ Environmental Graphics:
 A Perfect Sign
 Client's company name: City Colleges of Chicago
 Photography: Tom Rossiter

www.jgma.com/



LOW HEIGHT SHOWER SOLUTION FROM SCHLÜTER-SYSTEMS

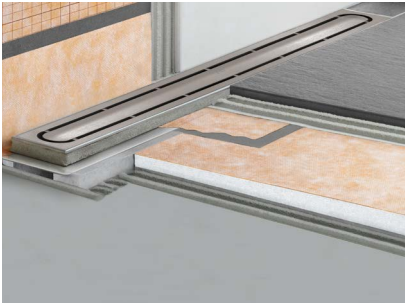
Schlüter-KERDI-SHOWER-LTS is a new range of shower trays created by tile and stone accessory experts Schlüter-Systems. One of the trays within this range is low in height, making it ideal for a wetroom or bathroom project in a high-rise building. It has been specifically designed to integrate with Schlüter-KERDI-LINE-G3 drain which was launched in 2020. The drain stands at just 78mm in height, and the low height version of the Schlüter-KERDI-SHOWER-LTS tray works within these perimeters to create a single source solution.

As per BS EN 5385, falls should be between 1:35 and 1:80. Any shallower than 1:80 means water will not drain effectively, whereas any steeper than 1:35 would be considered a slip hazard. Most shower trays sit comfortably in between this point at 1:50, but Schlüter's low height shower tray is unique

in that it has a fall of 1:80. This means that rather than rising 20mm for every meter gradient (as per a standard 1:50 fall), it will be 12.5mm, saving the difference between 20mm and 12.5mm. This is a massive 7.5mm every meter, which will be extremely valuable in keeping build-ups low.

When the Schlüter-KERDI-LINE-G3 drainage system was launched, it was just one part of the low height puzzle – the next step was to introduce a compatible shower tray to allow for level access. This also makes a single source solution from one manufacturer far easier to achieve and offers the knowledge that the two products will work seamlessly together.

To find out more about the products and services offered by Schlüter-Systems, visit www.schluter.co.uk



BRISTAN OPAC TMV3 COMMERCIAL SHOWERS

Easy fitting, maintenance, efficiency and infection control.

At Bristan we continually invest in new product development to ensure that our products excel in quality, safety and performance. That's why we've recently improved our range of OPAC TMV3 Commercial Showers, designed with a host of new innovations to meet the needs of commercial sector environments.

With a new patented built-in thermal flush mechanism, the OPAC range is designed for easy infection control and anti-legionella regimes. What's more, a new front mounted one-piece cartridge makes for simple servicing and commissioning.

And with TMV3 technology, you can rest assured that the highest level of safety and protection is guaranteed.

There's a variety of options to choose from to suit your specification requirements — all of which quality tested in our UKAS accredited in-house testing centre.



Discover the full range at www.bristan.com/specifiers-home/opac-commercial-showers

Find your local IPG stockist at: <https://www.the-ipg.co.uk/stores/>



FAST 2000 SHOWER ENCLOSURE – NOW WITH BI-FOLD DOORS

Installing a shower enclosure has never been so quick and simple. Thanks to a clever interlocking system, it is now possible for one person to assemble a new Fast 2000 shower enclosure in just a few steps.



A stylish, modern shower enclosure designed to suit any bathroom space, Fast 2000 features aluminium profiles lock that together easily to create a frame, whilst easy release rollers can be fixed to slider door profiles without any tools. Handles are attached using pre-supplied screws and fixings for the glass panels slot neatly and securely in place. For a neat finish all fixings are concealed and there is 20-40mm of adjustment for ease of fitting.

Following requests from customers the option of bi-fold doors has now been introduced to the popular range. Bi-fold doors in the Fast 2000 range are available for enclosures from 700 – 1200mm and are ideal in space limited bathrooms. This addition increases the flexibility of this already versatile range even further.

For further information visit www.saniflo.co.uk

acquabella



Raised Access Flooring

Specification Manufacture
Installation Certification

Call: 01432 347700

www.bathgateflooring.co.uk



BATHGATE

FLOORING

SPECIFYING PAINTS THAT PROTECT

What are the real world considerations when choosing a paint that does more than decorate?



Breathability: The high breathability of our paints, in particular the moisture absorbing quality of Claypaint, helps even out the humidity in a room and allows walls to breathe. This helps avoid the build up of moisture and damp plaster, protecting the building and the health of those who use it.

Accreditation: At Earthborn we were the first UK paint company to hold the EU Ecolabel. This money-can't-buy accreditation means our paints have to meet strict environmental criteria.

Free from: No oils, no acrylics and a negligible VOC content – less than 62 parts per million! Legislative recommendations mean manufacturers should not claim paints to be 100% VOC free so we honestly describe our products as virtually VOC free.

Choice: There's plenty to choose from - our classic range offers 72 colours, emulsion comes in every 100 BS colour (100) and we've doubled the silicate masonry colour range to 48. And - you can buy from our website or from a nationwide network of expert stockists.

www.earthbornpaints.co.uk



THE FINISH YOU DESERVE

- Airless, airless air assisted & HVLP paint sprayers (plus more!)
- Wide range of spray guns
- Repairs and services
- Multitude of spray accessories, including PPE, tips, guards, filters, extension poles, seals, air caps, needles, rings & many more...
- Supply and installation of spray booths
- Team of professionals providing valuable and extensive advice only a phone call away
- Hire services and leasing options available
- The Apollo A.S.I master distributors of the UK!



01509 237415
info@totalcoatingsystems.com

www.totalcoatingsystems.com

Working with nature

SiOO Wood Protection AB are leaders in wood protection using silicate technology.

Specified by architects across Europe, our patented SiOO:X product gives long life and a beautiful natural surface with even colouration. It is friendly to people and the environment. An example of a SiOO:X project is this house in Devon where the Siberian Larch cladding was factory treated by Russwood Timber with SiOO:X Mid Grey pigment.

SiOO Wood Protection AB
www.sioox.org.uk

SWEDISH PATENTED SILICON TECHNOLOGY

Photography by Alex Campbell.



ASSA ABLOY PROJECT SPECIFICATION GROUP KEEPS UP TRACK RECORD AT SILVERSTONE PRIMARY SCHOOL

ASSA ABLOY Project Specification Group, a unit of ASSA ABLOY Opening Solutions UK & Ireland, the global leader in door opening solutions, has assisted with the design and specification of doorsets and relevant hardware for Silverstone CE Primary School.

Working alongside Northamptonshire County Council, local firm pHp Architects and contractor Lakehouse Construction, the UK Specification team helped deliver the full-scale build of the two-form entry primary school.

Products specified included 92 ASSA ABLOY laminate faced timber doorsets, complete with redwood frames and dark grey PVC edges, making them easy to clean and to help conceal scuffs from daily use.



“

Working with the Project Specification Group team was straightforward from start to finish. The doors and ironmongery specified really enhance what is an exceptional building

The colour contrast between the edge of the door and the door surface also helped to achieve an inclusive environment, in line with the latest legislation and guidelines such as Approved Document M of The Building Regulations 2000 and BS8300:2009+A1:2010.

The doorsets were complemented by a full ironmongery specification of ASSA 3228 ZP hinges, ASSA ABLOY DC200 Rack & Pinion Door Closers, Union Optimus 3 Locks, UNION J1000 door furniture and ASSA finger guards, which prevent pupils' fingers from being trapped in closing doors.

The specification also included ASSA's P600 cylinders for internal and external doors as well as external gates, providing the school with one masterkey system and permitting access to authorised personnel only.

Chris Wayman, Associate at pHp Architects commented: "ASSA ABLOY Project Specification Group not only supplied high quality and fit-for-purpose products, but they also provided a full consultancy service, which took into account factors such as pupil comfort, flow of traffic around the school, as well as the need for staff to access certain areas of the building efficiently and securely. We are delighted with the finished result."

James Bloomfield, Headteacher at Silverstone CE Primary School said: "Working with the Project Specification Group team was straightforward from start to finish. The doors and ironmongery specified really enhance what is an exceptional building."



David Shields, National Specification Manager at Project Specification Group, added: "We have worked on a number of education projects and pride ourselves on tailoring the solutions we provide from our extensive experience in the sector."

"The challenge in all schools is to prioritise safety and minimise the risk of injury, while providing a comfortable learning and teaching environment for both pupils and staff. We believe we have not only achieved this, but also exceeded expectations with the solutions we helped design and specify via our BIM capabilities and personable one-to-one service."

To find out more, please call 0845 071 0882 to speak with an experienced Project Design Consultant, email ukspecification@assaabloy.com or visit www.assaabloyopeningsolutions.co.uk/specification.



TOUCH

IRONMONGERY LTD

www.atouchofbrass.co.uk

210 Fulham Road, Chelsea London SW10 9PJ

THE PERFECT TOUCH

**Touch Ironmongery is one of London's leading Architectural Ironmongers
Established in October 1982**

Originally called "A Touch of Brass", the firm changed their name in 2003 in reaction to slowly advancing market changes in architectural ironmongery which is no longer supplied solely in brass, and to also reflect the broader range of product and finishes that they sell.

In fact today, Touch can supply a wide range of finishes including Brass, Satin Brass, Polished Chrome, Polished Nickel, Satin Nickel, Copper, Bronze – solid and plated, BMA, Antique Brass, Black, Pewter, Ceramic, Leather, Stainless Steel, Satin Stainless Steel, Gun Metal, and the list keeps growing. Whatever finish you require, Touch can help you get the right look.

Touch occupy their recently refurbished showroom at 210 Fulham Road, Chelsea, where they display a vast range of their 5,000 products. With a customer base including Interior Designers, Builders and Individuals who are interested in the quality end of the Ironmongery market, Touch mainly supply to residential premises but hotel and office properties also contribute to their vast clientele.

The company also have a healthy export market to all corners of the world, namely the Middle East, Europe and the Americas. Touch's owner and founder, Bill Benham, has 38 years' experience in the ironmongery trade, as do his colleagues Jim Haselup and Alan Blanchard. Saleem Qureshi is the newest member of our team and has 10 years' experience, meaning their knowledge is unrivalled in this industry.

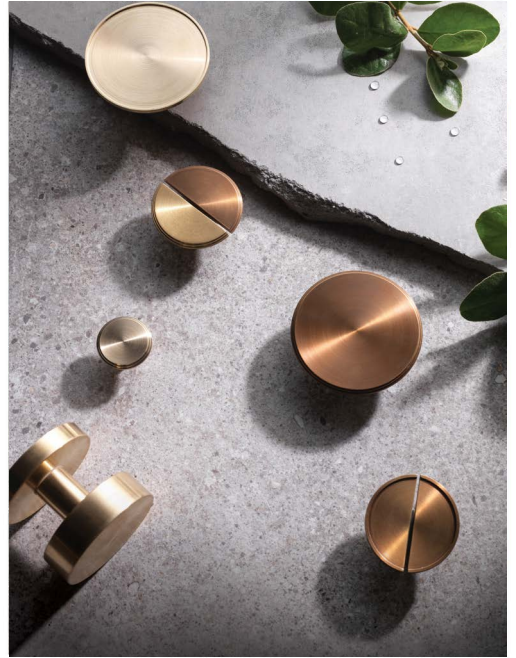
The range of products supplied by Touch date from circa 1640 French (Louise XIV) and cover all subsequent periods (Georgian, Edwardian & Victorian), art deco and contemporary pieces also make up the product ranges. In addition, Touch showcases the very best of British manufacturing; the best ranges are still produced in the Midlands by craftsmen in factories dating back 200 years or more.

Touch Ironmongery have recently become suppliers for **Designer Doorware (Australia)** who have beautiful products with a cutting edge design Metal, Wood and concrete. We also have the exclusive rights to sell the **Olaria (Barcelona)** range in the UK.

Olaria make all our bespoke products, they have incredible levels of workmanship. Touch also sell European manufactured goods which is considered to be of a very good quality and in recent years they have introduced some of the far eastern made products, albeit in a limited range but cost effective. With trends continuously evolving new innovative products are constantly under development. Touch understand that keeping up with the fashion-shifts is imperative in order to provide every customer with the best solution for their requirements.

Ironmongery can be a difficult and complicated aspect of a building project, as a result Touch aim to take this awkward aspect and make it user friendly and clear to understand by offering an on-site service where they carry out a detailed door by door, window by window, room by room Ironmongery schedule, highlighting all requirements and identifying any items that can be refurbished. Refurbishment is a large part of the business; Touch will undertake complete ironmongery refurbishment projects, and can restore old paint covered door furniture to their former glory, looking as new, at a fraction of the cost to replace.

**For more information about Touch Ironmongery or to arrange a
showroom visit please call 0207 351 2255 or alternatively
visit www.atouchofbrass.co.uk**



**BRITISH & EUROPEAN MANUFACTURERS
SUPPLYING THE FINEST QUALITY IRONMONGERY**

Touch combine traditional skills with modern manufacturing techniques to produce the most beautiful, quality fittings, built to stand the test of time.

As well as specialist bespoke items, Touch supply over 1000 products, available in 23 different finishes to furnish high end residential and commercial properties, royal palaces, government houses, historic castles and stately homes.

Olaria, available from Touch Ironmongery

www.atouchofbrass.co.uk & www.olariabarcelona.com





DELIVERING A STRIKING FAÇADE FOR CABI'S STUNNING NEW LOW ENERGY HEADQUARTERS

CABI is an international, inter-governmental, not-for-profit organisation that applies scientific expertise to solve problems in agriculture and the environment.

Designed by Scott Brownrigg Architects, CABI's new state-of-the-art corporate office in Wallingford builds upon its commitment towards a more sustainable world, as its innovative design leaves less of a carbon footprint amidst a landscape rich in biodiversity.

Working alongside project managers Ridge and Partners LLP (Ridge), Scott Brownrigg's design provides a two-storey, low carbon office that integrates an experimental bio-diverse landscape with a new collaborative flexible working environment. The accommodation also provides a range of amenities including a café restaurant, meeting rooms and a lecture theatre which will also be used by the local community.

Metal Technology's high performance curtain walling and Brise soleil solar shading systems were specified by Aluminium Sashes for contractor Barnwood Construction. System 17 curtain walling was utilized alongside the perforated façade panels to allow for natural ventilation. This is complemented by the building's extensive lightweight sedum green roof and photo-voltaic solar array system, which harvests the sun's energy.



CABI and property developers CALA Homes have been mindful of landscaping which is sensitive to the location – an Area of Outstanding Natural Beauty (AONB) – with the planting of cypress trees, native hedgerows, low shrubs, ornamental plantings, perennial flowers and even a meadow to attract a broad range of insects, birds and other wildlife.

We're delighted to see CABI make the move into their striking, eco-friendly new home, and are very proud to have played a part in this highly innovative development. A fantastic building and a credit to all involved.

www.metaltechnology.com

NEW SMART TECH ROOF WINDOW UPGRADE FROM VELUX® IS DESIGNED TO HELP INSTALLERS REAP THE BENEFITS

Leading roof window manufacturer VELUX® has introduced a new promotion which is set to make it easier for installers to promote the benefits of VELUX INTEGRA® to their customers.

Starting in August and running until the end of the year, homeowners purchasing VELUX INTEGRA® electric and solar powered roof windows* can receive a free VELUX ACTIVE with NETATMO kit worth £220. This complimentary upgrade will make it easier for installers to showcase the impact INTEGRA windows will have on their clients' projects.

VELUX INTEGRA® is an innovative system of roof windows, blinds and shutters that can be controlled with one touch of a pre-paired wall switch, with rain sensors automatically closing roof windows at the first sign of a downpour.

VELUX ACTIVE with NETATMO takes the INTEGRA® range to the next level, offering total indoor climate control. Smart sensors continuously monitor temperature, humidity and CO2 levels in customers' homes and adjust their roof windows to create a healthier indoor climate.

Windows can even be controlled when customers are on the go, thanks to the VELUX ACTIVE app, which is compatible with

voice-controlled virtual assistants such as Apple's Siri and Google Assistant.

The ACTIVE kit can be delivered to the property where the windows were installed and comes ready to fit and with full instructions included. This means that once it arrives, homeowners can install the kit themselves, saving installers time ahead of their next client project.

Installers can help customers take advantage of this offer until the end of December 2020, simply by creating a VELUX Rewards account and uploading their invoice. Approved purchases of VELUX INTEGRA roof windows will automatically generate an email with instructions to claim a free ACTIVE kit.

Up to £30 in VELUX Rewards per roof window will also be available, which can be spent with top-brand partners including M&S, Argos, TK Maxx, H&M and many more.

For more information, visit velux.co.uk/activeupgrade

**- One free VELUX ACTIVE kit will be offered per invoice where a purchase of VELUX INTEGRA® electric and solar roof windows has been made. Terms and conditions apply, see velux.co.uk/activeupgrade for more details.*



STANZA
ARCHITECTURAL HARDWARE

Our STANZA range is designed to be both elegant and modern with the affordability to suit both consumer and contractor.

UTILITY BY DESIGN


A range of designer zinc levers available in rose and backplate, chrome plated to achieve long performance and great aesthetic appeal.

T : +44 (0) 1228 672 900
E : sales@zoo-hardware.co.uk
W : www.zoohardware.co.uk

For further information on this range visit our website or call one of our friendly sales team.

STANZA is part of Zoo Hardware Ltd. 

PRECIOUS. PROTECT FINGERS AT DOORS




ZEROplus

THIS NEEDN'T HAPPEN!

A wide range of colours:



FINPROTECT PLUS - FINGER PROTECTION STRIPS

The professional solution to preventing painful finger injuries.

- Prevents finger trapping on both sides of the door
- Suitable for use on internal or external doors
- Easily fitted and can be temporarily removed if required
- Suitable for all door constructions
- Strong design with 5-year guarantee, tested to 1 million cycles
- TÜV certified
- Available in 1980mm & 2500mm lengths
- New colour - Anthracite Grey (RAL7016)

NOW SUCCESSFULLY TESTED TO BS 8613:2017 TYPE A - CLASS 2

ZERO SEAL SYSTEMS LTD: 01785 282910
FIND OUT MORE AT: WWW.ZEROPLUS.CO.UK/FINPROTECT

CD9810

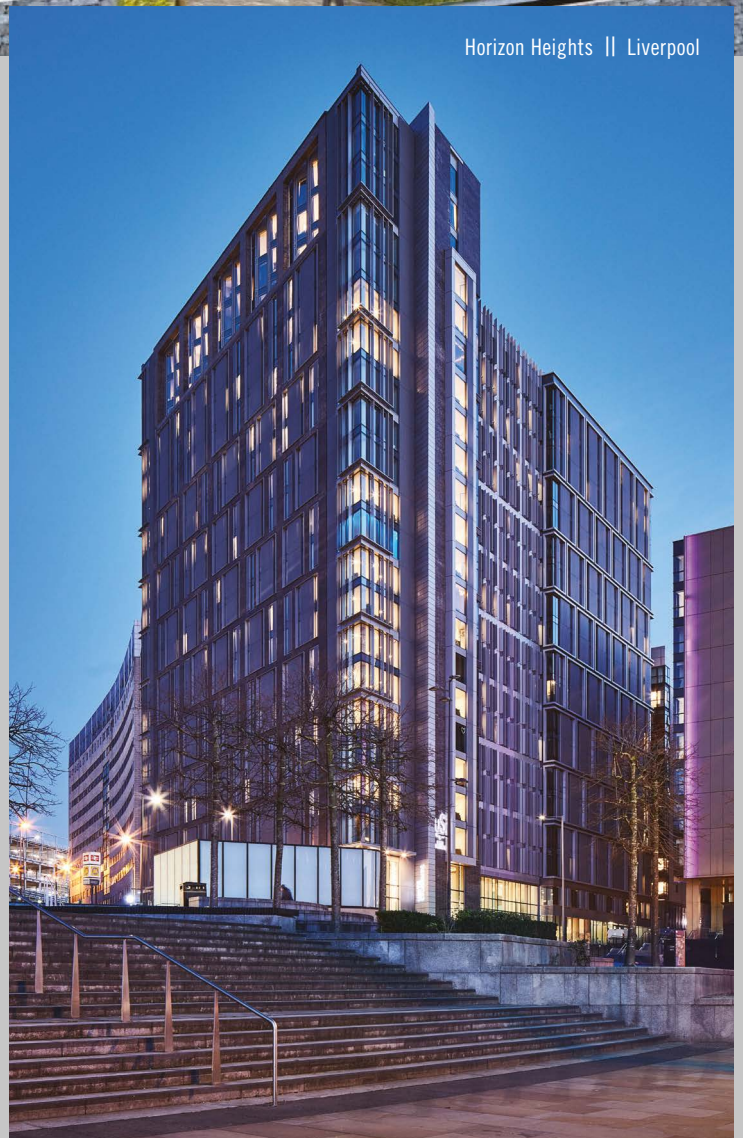
Defining spaces in architectural aluminium

High Performance **THERMAL** Range
Windows || Doors || Curtain Walling
Brise Soleil || Louvres





Horizon Heights || Liverpool



Support

Technical design input

Thermal modelling

Free air calculations

Security analysis

Online BIM models

Secured By Design

Environmental

Window Energy Rating software (WER)

BREEAM guidance

BRE Green Guide A+ rated products

Life cycle analysis

Sustainable products

Responsible sourcing



HIGH PERFORMANCE SEALED UNIT SECONDARY GLAZING INSTALLED IN A 250 YEAR OLD GRANARY

Hindmarsh Hall, Grade II Listed, was originally one of three granaries at the south-end of the village of Alnmouth, Northumberland. The 4th Duke of Northumberland had the building converted into an Anglican Chapel in 1859.

In 1876 the chapel was made redundant, so the building was used and referred to as the 'Town Hall' for the ensuing 60 years. Leonard King Hindmarsh bought the dilapidated property in the 1930s, then some years later had it refurbished and gave it to the community of Alnmouth.

During 2003 – 4, the Trustees completed a programme of restoration and updating of the building; however, 14 years later, the building needed further renovations, following a comprehensive condition survey.

Giles Arthur Architects were employed to conceptualise the trustee's vision; addressing structural issues, space planning and making the building more energy efficient to reduce on-going running costs. Selectaglaze 4-12-4mm, low-E, sealed unit secondary glazing was specified to provide enhanced thermal insulation.



All the openings have deep splayed reveals, so the secondary was fixed with a maximum cavity close to the wall face where it was wider, framing the primary window, allowing unrestricted opening of the units and proving full access for cleaning and maintenance.

Fenestral, partner of Selectaglaze, managed the surveying and installation of the project. Using laser measuring equipment, 3D information was produced for the manufacturing of the timber grounds and casements. The tall lancet windows posed a challenge due to their height; 3350mm.

Each of these openings were built up with a Series 41 side hung casement set between two Series 40 fixed light units.

Selectaglaze is the specialist in secondary glazing, established in 1966 and Royal Warrant Holder since 2004. Selectaglaze has a range of RIBA approved CPD seminars, which provide a better understanding of the applications and implications of specifying secondary glazing.

For further information, please contact Selectaglaze on 01727 837271. Email: enquiries@selectaglaze.co.uk or visit: www.selectaglaze.co.uk

100 YEARS OF SLIDING SUCCESS FOR P C HENDERSON

Sliding door gear manufacturer, P C Henderson, is proud to celebrate its 100th year in business - signifying an entire century of high quality manufacturing, product innovation and a dedication to worldwide exporting.

Founded by Percy Cecil Henderson on the 24th February 1921, the company has come a long way since its humble beginnings where the business started in an unused loft space of a paint and varnish factory. Fast forward 100 years and the company has offices in the UK, Ireland, Holland and China, exports to over 70 countries worldwide and is firmly positioned as the go to provider for sliding door gear.

Speaking about the companies continued success, Trevor Cossins, Managing Director at P C Henderson, commented, "Celebrating a centenary in business is a huge achievement, it puts us amongst a rare group of companies which have truly withstood the test of time and it certainly isn't something that happens by chance.

The company operates out of its 2.9 acre Bowburn based manufacturing plant where it has resided for the last 52 years. Showing no signs of slowing down, the company has achieved



record sales, multiple award wins and some of the most successful product launches in its history in the last 3 years alone.

"In the late 1920s' Percy Cecil Henderson established the export side of the business – developing strong relationships in South Africa, New Zealand and China – regions which we still have a strong presence in today. I believe this courageous move has

been a huge factor in the company's longevity and success over the years.

P C Henderson has won multiple awards for its exporting achievements, most notably 'UK Export Business of the Year' at the British Chamber Awards – a highly prestigious and respected award. Exporting currently accounts for 70% of the company's annual sales with products reaching all four corners of the globe.

"Our expertise and dedicated team ethos has also been a huge contributing factor over the years. We have a great team of highly skilled and passionate individuals - almost 60% of our team members have been with the company for over 10 years and 30% for over 20 years.

www.pchenderson.com

ENERGY EFFICIENT, WOODEN WINDOWS AND DOORS

Are you looking for double glazed, wooden windows or doors for your project? The Sash Window Workshop specialise in high quality, energy efficient timber windows and doors.

The company manufacture all their new windows and doors in their workshop in Berkshire, offering a supply and installation service in London and Southern England and a supply only service across Britain. They use a timber called Accoya as standard, which comes with a 50 year anti-rot guarantee.

New windows and doors are manufactured with the modern benefits of double glazing, while preserving the character of the property. If the property is listed, the company can also manufacture single glazed windows and doors to comply with planning requirements.

Where windows and doors are installed by The Sash Window Workshop, they will be draught proofed as standard to further improve the thermal efficiency.

Established in 1994, The Sash Window Workshop pride themselves on providing bespoke solutions to meet their clients' requirements. The materials used enable them to produce windows and doors to the highest specifications, giving the best possible performance and combining minimum maintenance with maximum lifespan.



The Sash Window Workshop are FSC® Certified and FENSA registered. They understand the importance of providing a high quality product and service, reflected by the fact that roughly half of their orders come from previous customers and recommendations.

To obtain a quotation, contact The Sash Window Workshop on: 01344 868 668 or email info@sashwindow.com. You can also visit their website: www.sashwindow.com.

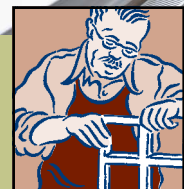


High Quality, Timber Window and Door Specialists



Providing Tailor Made Solutions For Your Project. Period Property Experts. Supply Only, Supply and Install, Draught Proofing.

01344 868 668 www.sashwindow.com



**THE SASH
WINDOW
WORKSHOP**



QUAI 5160

VERDUN CULTURAL CENTER

A winner of an architectural competition held for the conversion of the Guy-Gagnon Arena into a Cultural Center for the borough of Verdun, Quai 5160 includes a 360-seat performance room, an art gallery, a mediation room, a circus school for the children of the neighborhood as well as the additional offices and spaces necessary to implement this mission.

The primary objective we pursued was to open this opaque building on the waterfront promenade and adjacent linear park to foster interaction with citizens while enhancing the sense of security around it. The project is part of a broader vision of valorization and development of the river banks that were once places for swimming and recreation before being contaminated by waste spills and the construction of buildings with an industrial character surrounded by vast asphalt areas.



“

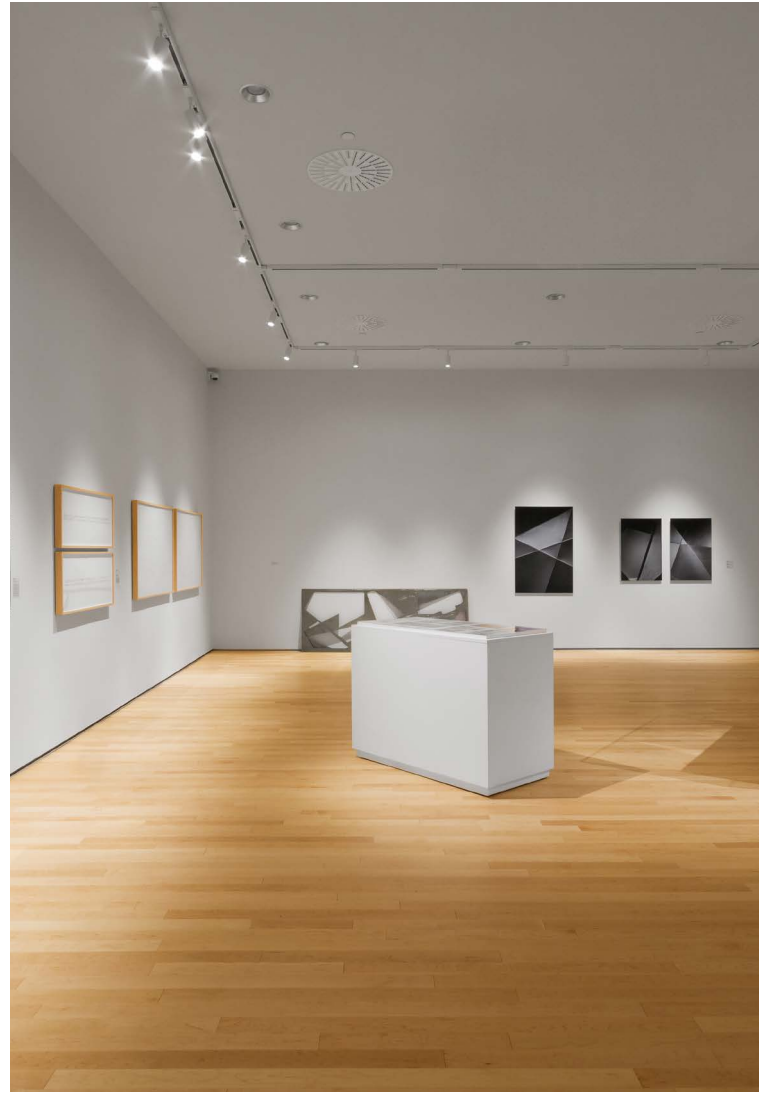
This conversion project reflects the significant change that has occurred in recent years in public space, cultural practices, and the environment.

A new public beach has just been laid out, the renovation of the Verdun Auditorium is underway and a new public indoor pool is planned.

The arena was a concrete structure covered with brown concrete bricks and, later, colored acrylic plaster surfaces. The outer shell was partially demolished but the structure was retained. An expansion allowed the addition of a large entrance hall generously open to the park and which includes a step staircase for performances and cultural mediation activities in an informal setting. A forecourt in the extension of the hall encourages complementary activities outside.

All the mechanics have been hidden in the sanitary vacuum under the building and the biogas from the soil contaminated by the decaying waste in the basement are channeled and discharged through the drums on the outskirts of the forecourt.

The new building envelope, designed on the principle of rain screen with a ventilated cavity is coated with aluminum panels with small perforations producing a slight visual vibration of the painted surface (fluoropolymer) with a high luster. Golden accents and oiled oak plank siding warm public spaces in contrast to the cold whiteness of the envelope. Some brick surfaces of the original building have been preserved and dyed black. They serve as a support for a wall of brass cut plates, designed as part of the arts integration program.





This conversion project reflects the significant change that has occurred in recent years in public space, cultural practices, and the environment. It reflects the expectations of the public, elected officials, and architects who converge through more participatory design processes including the architecture competition, presentations to citizens, and the move to the Urban Planning Advisory Committee.

Awards and recognitions

Prix d'excellence de l'OAQ - 2018

Technical Sheet

Project Name: Quai 5160-Maison de la Culture Verdun

Location: Verdun, Montreal

Commissioning Date: August 31, 2018

Client: Arrondissement of Verdun representative - Jean-Pierre Gauthier

Architecture Firm: Les Architectes FABG - Éric Gauthier, Marc Paradis, Dominique Potvin

Structure: SNC Lavalin

Mechanical, Electrical: SM Group

General Contractor: Construction TEQ Inc.

Scenography: Go Multimedia

Acoustician: Octave acoustics

Photographer: Steve Montpetit

www.montreal.ca



Hardwood Flooring

*bespoke finished
to complement
your designs*



☎ 01462 486586

✉ info@roversflooring.co.uk

🌐 www.roversflooring.co.uk

33 Jubilee Trade Centre,
Jubilee Road, Letchworth,
Hertfordshire SG6 1SP

 **ROVER'S**
FLOORING
PRODUCERS, IMPORTERS & DISTRIBUTORS

Specify CFA members and

MINIMIZE COSTLY FLOORING FAILURES



QUALITY BY ASSOCIATION

**MARKS &
SPENCER**
Only Specify
CFA FLOORING
Contractor Members

Specifying a CFA member for your next flooring project could mean the difference between success – or a flooring failure. Most of the UK's largest and best known Manufacturers, Distributors, Contractors and Consultants are CFA members – and for good reason.

- CFA members promote high standards, knowledge and expertise
- Specifying CFA members will maximize your investment and minimize costly flooring failures
- All members have to pass a vetting process



Image kindly supplied by Gerflor Ltd



Image kindly supplied by Junkers Ltd



Image kindly supplied by Interface

Tel: 0115 941 1126
www.cfa.org.uk | Email: info@cfa.org.uk



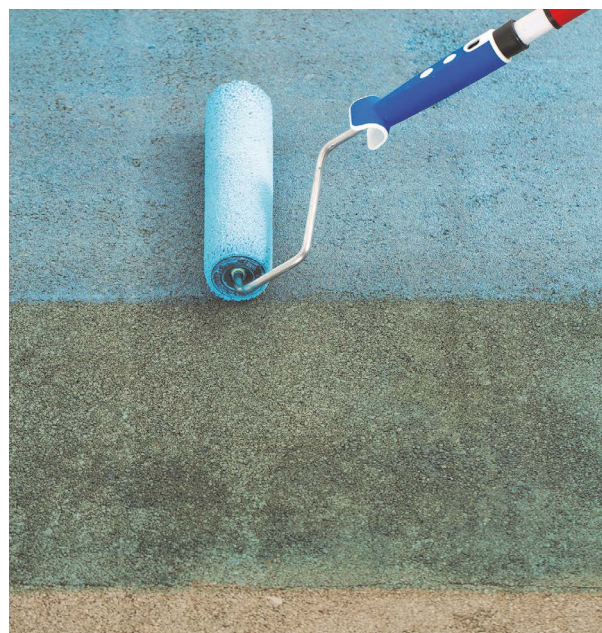
MAPEI ADDS TO ITS SURFACE MEMBRANES RANGE WITH RAPID DRYING MAPEPROOF PRIMER

Mapeproof Primer is the latest addition to Mapei's range of surface membranes, with the added bonuses of being single component, water-based and moisture suppressing, with very low emission of VOC.



Ready for use with no mixing required, Mapeproof Primer is quick and easy to roller apply; the primer is green in colour to assist with application, certifying full coverage of cement-based substrates. Suitable for both large projects and domestic installations internally, this Mapei offering also benefits from no waste, and can be resealed and stored with no qualms for future use.

For particularly porous substrates, Mapeproof Primer should be diluted 1:1 with water prior to a further two undiluted coats, to ensure that the primer penetrates the surface of the screed. It must be applied in a minimum of two coats over the whole floor at a temperature of above 10°C.



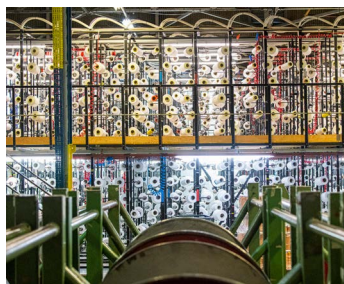
Upon full application and once dried, the primer provides a waterproof surface membrane, blocking the passing of residual construction moisture from affecting subsequent floorcovering installations, thus allowing early installation of floorcoverings.

Mapeproof Primer is available in 10kg bottles.

www.mapei.com

MILLIKEN CELEBRATES A CENTURY OF MAKING IN THE UK

Leading flooring designer and manufacturer Milliken is proud to be celebrating its 100th year of production in Britain. The company was first registered in 1920 at the Waterside Mill in Bury, Greater Manchester when it became one of the earliest textile manufacturers in the



UK. It manufactured cotton shirtings and in later years industrial fabrics before switching to air bag manufacture in 2004. Following the purchase of the Beech Hill Plant in Wigan, the first Millitron® carpet tile (using Milliken's patented digital dye technology) was printed in the UK in 1986, which makes 2021 the 35th year Milliken has made carpet tiles in the UK. The last UK site Milliken purchased was the Middleton Plant in 1997 where protective flooring and entryway products are now produced.

Milliken creates a full range of beautiful and considered floor coverings providing a one-stop-shop for the latest in design-led flooring. From its UK bases nearly 600 people are employed and not just in the manufacturing process itself; Milliken employs and develops designers, technicians, admin staff, finance teams and much more.

www.millikenfloors.com



CUSTOM COLOUR MIXING

For interior & exterior wood surfaces

- Interior •
Wood Wax Finish
- Exterior •
Natural Oil Woodstain
Country Colour

MORE THAN
2000
COLOURS




www.osmouk.com



MCGILL UNIVERSITY - POWER PLANT

MCGILL UNIVERSITY NEEDED A NEW BUILDING TO HOUSE THREE 1.5 MW EMERGENCY FACILITIES, GENERATORS THAT WILL PROTECT RESEARCH ACTIVITIES IN THE EVENT OF A POWER OUTAGE

The McGill University thermal power plant and the Wong, Rutherford, Administration, and Leacock pavilions are powered by a single emergency generator located in the Ferrier building in the immediate vicinity of the boiler room. This presents risks that should be limited by Housing New generators in separate spaces in the immediate vicinity.

The feasibility studies compared several location hypotheses, which led to the location of the structure between the Ferrier building (1963) and the Wong Pavilion (1990) being the best location. These preliminary studies also described the functional parameters associated with the two required 1.5 MW generators and the possible addition of a third in the future.





The project focuses on the underlying presence of the mountain by dramatizing the topography of the site.

INNOVATION

The project was developed as part of a multidisciplinary integrated design exercise combining historical research, architecture, engineering, landscape, and urban acoustics to formulate a sensitive response to a problem that cannot be limited to utilitarian considerations.

The steeply pitched lot was an unused parking lot on Dr. Penfield avenue, which supported a greenhouse that had been demolished. It faces the castle-style pumping station of the McTavish underground reservoir and is part of the Mount Royal historic and natural District protected area.

CONCEPT

The proposed concept is based on the following objectives:

- Preserve transparency and permeability at Dr. Penfield level
- Establish an additional link between the top and bottom of the campus
- Structure the slope left in the wasteland
- Ensure a significant plant presence on the site
- Strengthen the specific character of McGill by using Trenton limestones
- Promote integration by respecting existing alignments and templates

The solution chosen is a glass pavilion on a limestone podium in alignment with the facades adjacent to the location of the disappeared greenhouses. A gazebo, under the extension of the roof, separates it from the Ferrier building and an external staircase leads to the lower level of the campus. Under this



pavilion, a ventilation plenum allows the entry through the floor of the large amount of new air required while concealing the steam pipes connecting the Wong pavilion to the Ferrier Pavilion. The cantilevered overhang at the rear has vent grilles at the underside of the floor.

The roofs are vegetated due to the low height of the building which exposes these surfaces to the view all over the south flank of Mount Royal and from surrounding buildings. For the roof surfaces and walls covered with metal panels, environmental problems related to lead discouraged us from using the tinned copper present on the Wong building and led us to propose a fluoropolymer paint baked on an aluminum panel to harmonize with the shade of the neighbor.





The acrylic coating on the adjacent portion of the Ironworks has been replaced with limestone siding in this project.

The project focuses on the underlying presence of the mountain by dramatizing the topography of the site. Although it is a technical infrastructure, we insisted on treating the building as a pavilion that could help enhance the quality and specificity of the McGill University campus.

PROGRAM

Storage and maintenance spaces for campus furniture and outdoor amenities are laid out at the foot of the slope and the limestone-clad main wall becomes parallel to the rest of the campus. A mature Elm is preserved at the foot of the staircase, which extends the existing sidewalks to University Street to enrich the network of pedestrian traffic that is being consolidated throughout McGill.



The generators are installed in a glass pavilion sitting on a granite baseboard at Dr. Penfield Street level while there is storage space for campus street furniture on the lower level. The interstitial space between these two volumes serves as a plenum for air, steam, and electricity connected to the Ferrier power station. An open staircase opens a new passage along the east-west axis to connect the top and bottom of the campus.

Awards and recognitions

Prix d'excellence de l'OAQ - 2020

Technical Sheet

Project Name : McGill University-Central Électrique

Location: 840 Avenue du Docteur-Penfield, Montreal, QC

Commissioning date: April 2019

Client: McGill University (royal Institution for the advancement of science)

Architecture Firm: Eric Gauthier, Marc Paradis, Les architectes FABG

Project manager: Johanne Guertain, GPH

Assistant Project Manager: Nadia Nachtigall, McGill University

Structural engineer: Ayad Bensbaa, CIMA+

Civil engineer: Guillaume Harpin, CIMA+

Mechanical engineer-electricity: Guillaume Bouccara, Alain Bilodeau, BPA

Landscape Architecture: Ziad Haddad, WAA

General contractor: Benoit Fiset, David Morissette,

Mathieu Mainville, QMD

Photos: Steve Montpetit

www.mcgill.ca

UNDERFLOOR HEATING TICKS ALL THE BOXES!

By Steven Rooney, Sales Director at Gaia Underfloor Heating

When it comes to heating, there is no single off-the-peg solution that suits every situation and it is no longer a case of considering the individual components in isolation. Now the emphasis is on looking at the whole project design and mixing and matching various systems to achieve the most appropriate overall solution.

This is being driven by the building regulations which, in turn, are taking account of the sustainability agenda, energy use and reduction of CO2 emissions in buildings. As a consequence, suppliers that provide total designed solutions rather than individual products are in a winning position.

Underfloor heating (UFH) - whether wet or electric – is well placed to be part of a holistic design solution. It scores well in terms of environmental performance and is regarded as economical, ultra-efficient and comfortable.

Simple to install and control, UFH wastes no heat at ceiling level and frees up valuable wall space, providing complete design freedom. Wet systems circulate water at low temperatures through a series of continuous pipe loops laid within a screed, or between timber joists, beneath the floor surface. Electric systems consist either of cables laid within the screed or cable mats laid on top of existing subfloors.

Importantly, UFH has the ability to tick the boxes when it comes to working with renewable energy and sustainable solutions yet it cannot do this in isolation. It must be considered in terms of the other components that make up the floor such as insulation, screed and floor coverings as well as in relation to the energy source, the overall specification of the building and level of sustainability being sought.



In this market, it is increasingly important for companies to deliver a one-stop-shop, solution-driven service that 'bolts' together multiple products to deliver true value to the client. And value, in these terms, represents more than price and product; it is about customer service and certainty with one point of contact, bespoke design, shortening of the build programme, ease of installation, compliance with regulations and end-user appeal, plus a warranty based on the knowledge that the company is well established and is still likely to be in existence in ten years time.

For further information contact Gaia, call 01359 242 400 email info@gaia.co.uk or visit www.gaia.co.uk.

JACKON'S BUILDING SYSTEMS FOR THE UK MARKET

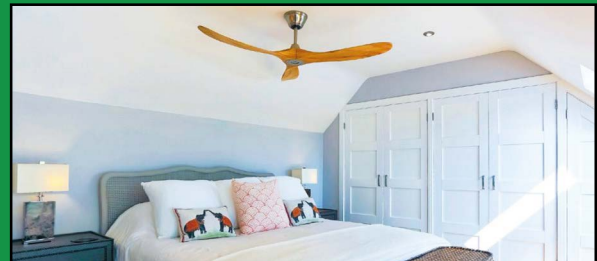
JACKON Building Systems are revolutionising the UK construction market. The company has over 60 years' experience in EPS and XPS manufacturing. There are two separate products – JACKODUR ATLAS Extruded Polystyrene (XPS) insulation and formwork system for constructing foundation slabs for energy-efficient houses. THERMOMUR insulating concrete formwork system (ICF) comprises a robust pre-formed block manufactured from Expanded Polystyrene (EPS) with a hollow core, which is filled with poured concrete during construction.



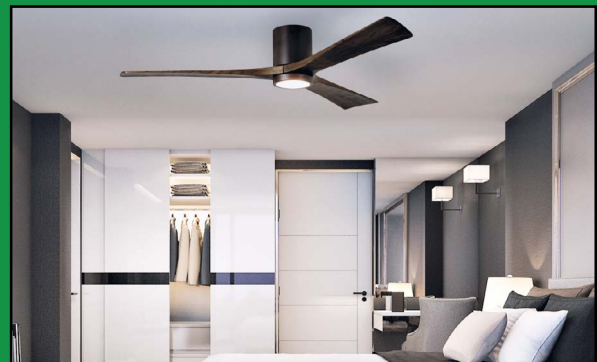
The systems enable fast and easy installation on site, bringing the advantages of very high insulation levels, elimination of thermal bridging, air tightness, moisture and mould resistance and acoustic insulation. When used together the JACKON systems can achieve u-values of 0.15 or even lower on insulated slabs and external walls - JACKON is 100% ready for the Future Homes Standard! The products have BBA approval and Passivhaus certification, as well as mortgage, insurance and planning acceptance. For the benefit of architects, JACKON also have CPD presentations available covering both systems.

For further information visit www.jackon-insulation.co.uk

Beautiful Designer Ceiling Fans



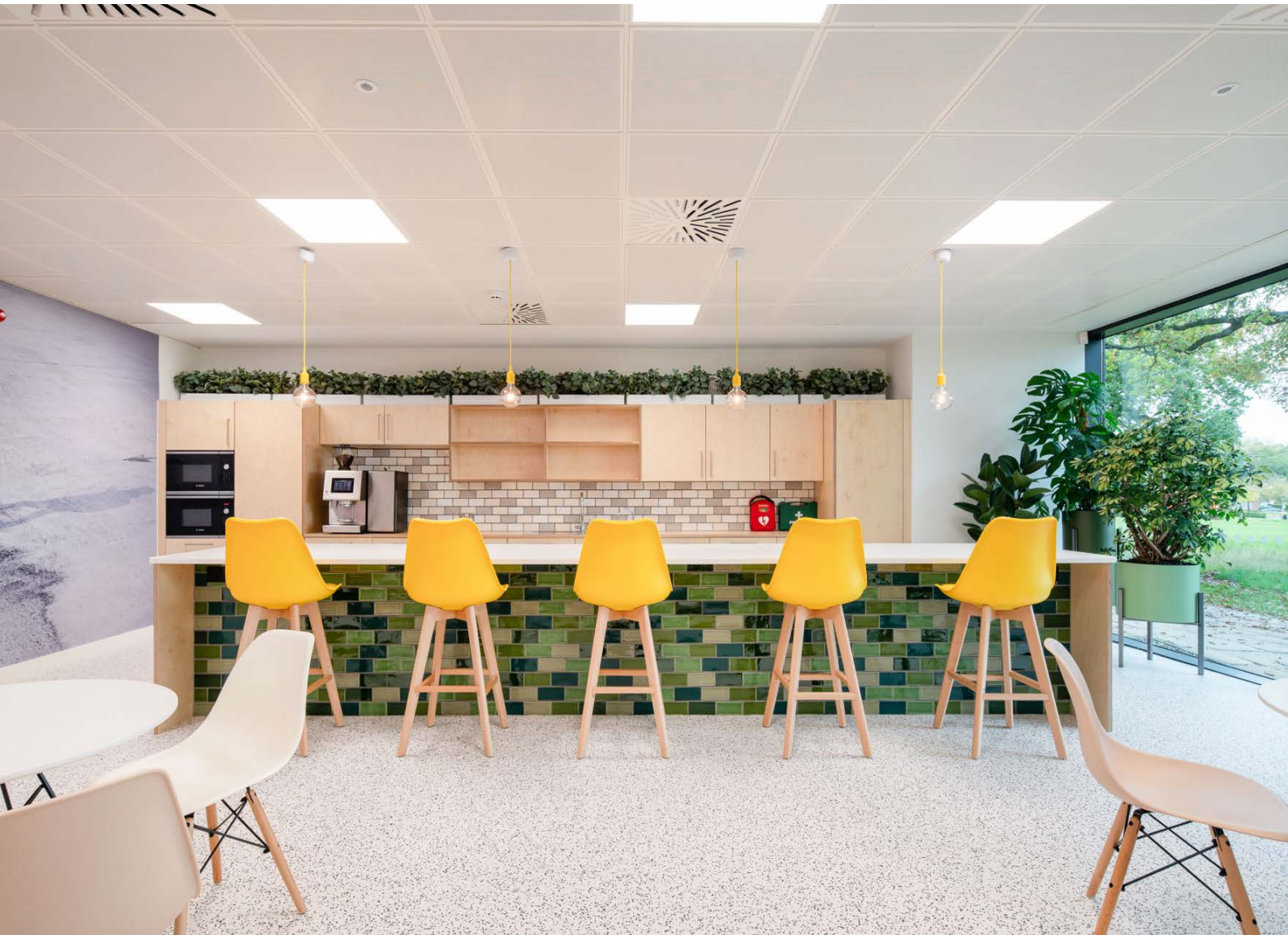
Powerful - Stylish - Reliable - Silent



THE HENLEY FAN COMPANY LTD



01256 636 509
www.henleyfan.com



CREATING A PEOPLE FOCUSED SPACE FOR A LEADING TECH COMPANY

PARK NOW MAPLEWOOD, CHINEHAM BUSINESS PARK, BASINGSTOKE

When it came to creating a new office for award-winning parking app, PARK NOW, known as RingGo in the UK, the company needed an uplifting and creative space to support their growing team. Operating in 1,000 cities and servicing 22 million users every year, PARK NOW wanted an office to attract and retain the best talent and provide a new home for its employees. Creating a collaborative hub in the new 15,000 ft head office space in Basingstoke was the challenge tasked to leading office design experts, Peldon Rose, and project management specialists, Gerald Eve.





Moving from a one to one static working format to a more agile way of working helped to embed the brand identity into the office.



UNITING A GLOBAL TEAM

PARK NOW was previously split across multiple industrial units, a set up that was not conducive to collaboration across the rapidly growing team. The new office needed to bring everyone together in one space, in the same way PARK NOW's European office already did.

PARK NOW conducted a workplace study to understand how an office space can support a more agile way of working. Together, with the expertise of the Peldon Rose team, these insights

shaped the design brief. Peldon Rose also worked closely with Gerald Eve Project Management, who were appointed to advise and guide PARK NOW through compiling the tender and employers' requirements, as well as fulfilling a project management, cost analysis, and contract administration role.

Moving from a one to one static working format to a more agile way of working helped to embed the brand identity into the office. The team created a selection of flexible spaces and meeting rooms to support all styles of working and suit the business's collaborative approach. The Basingstoke site is also home to PARK NOW's UK call centre, which meant the team had to factor private and quieter spaces into the design, while also ensuring the team didn't feel separated from the wider organisation.

A FUN AND DIVERSE DESIGN

Russell Glover, Head of Design, Peldon Rose, commented: "The new space is fun and diverse, in line with PARK NOW's brand identity and it brings people together while giving each team the space, privacy, and technology they require to operate efficiently, with the help of a beautiful building to work in. The use of natural timbers and muted greys against a backdrop of vibrant blues and pinks sets the tone for a fun and sophisticated office – the use of fun lighting and planting also came into play to help liven the environment up."

THE BENEFITS OF END TO END SERVICE

PARK NOW took advantage of Peldon Rose's full end-to-end service, which included in-house design, M&E and furniture installation. The step-by-step service provides a fully connected experience for the customer.





Martin Dean, project director at Peldon Rose, explained: "Guiding the client through such a radical change to their working practices was a highlight of the project. We transformed PARK NOW from a static, old fashioned, working environment to a modern and agile workspace with a great contemporary design in a new steel and glass building."

"We managed to keep the design on budget, and practical to the objectives of the business and needs of the employees. Our M&E expertise and installation helped to double performance and saved investment long term. Our change management workshops helped develop the project and design to what it's become today, the client embraced our vision and fully integrated into the sessions – resulting in a fantastic finished product."

Peter O'Driscoll UK Managing Director concluded: "As a company that is at the forefront of technical innovation in the mobility space, it is important to bring this vision to every part of our business, including where and how we work. As a company with collaboration and communication in its DNA, I believe this new, modern, flexible office space in the UK will encourage closer integration and foster continued innovation."

"Working with partners who understand this vision is key. Peldon Rose took our brand and transformed it into a physical space with deep understanding of what our employees needed, turning it into a reality. I look forward to a time when our whole team can come together in this amazing space they have created."

www.parknowgroup.com



the
decorative
panels
group

YOUR PERFECT PARTNER



any surface,
any substrate
and any volume
**the only limit is
your imagination.**

dp-limitless provides a limitless offer of surface finishes bonded with a high strength PUR glue line to the substrate of choice. Surfacing materials including Laminates, the full range of Senoplast Acrylics, Rehau Acrylics, Real Stone Veneer, Faux Leather, Natural Wood Veneer Laminate, Technical Surfaces and of course Unique, one off surface finishes.

There is no commitment to purchasing in bulk, the offer is deliverable from single sheets up to full load quantities – from stock.

Unique / Silver Mirror

Textured Surfaces / Diamantino

Faux Leather / Aliena Limette

Rehau Acrylics / Marmo Nero

Laminates / Brilliant Yellow

Senoplast / Denim

Technical / Tortona Natural Oak

Real Stone Veneer / Vienna

Natural Wood Veneer / Titanium Oak Groove Effect

Contact us for more information.

Century House, Premier Way, Lowfields Business Park,
Elland, West Yorkshire, HX5 9HF

T: +44 (0) 1484 658341 E: info@decorativepanels.co.uk
www.decorativepanels.co.uk

STUNNING NEW PROJECTS WITH ELEGANT ACOUSTIC DESIGN

Danish manufactured Troldekt panels are commonly specified throughout the UK and Europe to improve the interior acoustic environment. Two recent Danish projects are the transformation of an old building into a car dealer's offices for Karvil Biler, while the other is an extension of Randers Architects' own headquarters into a mix of offices and exclusive residential units.



create a coherent look. The milled grooves have a visually calming effect and contrast well with the new raw concrete floor," the project manager explained.

Troldekt® line forms nine acoustic solutions that make up the "design solutions" range which combines the best ideals of form and function.

Both projects use Troldekt® line with its perfectly symmetrical vertical lines to balance walls and ceilings with great aesthetics, conveying warmth and providing a modern look coupled with high performance sound absorption.

Founded on the Cradle to Cradle design concept, 100% Troldekt's natural wood wool panels are manufactured in a new state-of-the-art production facility. With a variety of different surfaces and colours, they can be supplied in the FSC® 100% category (FSC®C115450) contributing to a building's BREEAM, DGNB and LEED rating.

For the Architects' washrooms, Troldekt® line was chosen to add visual vibrancy to the rooms. It also exhibits different appearances depending on the angle from which the wall surfaces are viewed. The edges have been milled where the panels meet the ceiling, around electrical sockets and switches and also at floor level where bamboo skirting has been integrated. All have been elegantly cut to ensure a neat finish and fine detailing.

In addition to their high sound absorption and tactile surface, the panels offer high durability and low cost life cycle performance, as well as inherent sustainability. They are also a natural, breathable material which can absorb and release moisture, which is why they have been awarded an Allergy Friendly Product Award by Allergy UK.

In the car dealers, Troldekt® line was selected in order to enhance and benefit the whole indoor climate. "We wanted to

Samples, case studies and technical information are easily sourced from tel 01978 664255 or visit www.troldekt.co.uk

WR EST. 1977
WINE RACKS UK
 Manufactured By A & W Moore

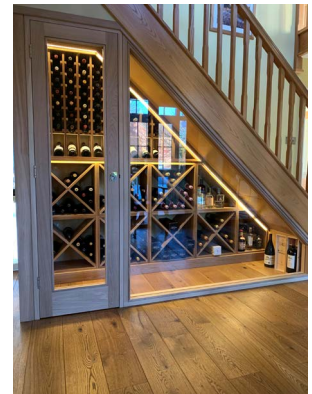
A & W MOORE Wine Racks manufacture the largest range of wine storage solutions in the UK. We produce tailor-made storage units for any space.

Call Now for a Quote Tel: 01159441434
information@wineracks.co.uk or visit wineracks.co.uk

Wine Racks & Storage by Wineracks.co.uk

A & W MOORE

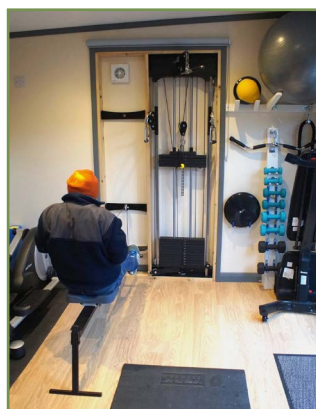
A & W Moore Wine Racks have been manufacturing wine racks in the UK since 1977. We are a family-run business, providing a comprehensive range of high quality wine racks and wine cabinet storage solutions. We have built our reputation on building bespoke wine racks using only the finest materials, to not only provide you with bespoke storage solutions that are tailor-made to your requirements, but also to ensure that no matter the wood or metal you choose, your wine storage solution will preserve your wine or champagne for generations.



Our reputation for quality products at affordable prices, combined with great personal service, means that we now have loyal clients from every corner of the globe, as well as across the United Kingdom. Choose from our large collection of solid oak wine racks, solid pine wine racks, traditional wood & steel wine racks or all metal wine racks to find your perfect fit.

For more information Tel: 0115 9441434, email: information@wineracks.co.uk, visit our website www.wineracks.co.uk. Follow us at www.instagram.com/awmwineracks and www.pinterest.co.uk/AWMWineRacksUK/pins/

SLIM GYM™



Introducing the Slim Gym™

Slim gyms function just like much larger more expensive room filling multi-gyms, but without filling the room.

Cleverly designed to offer a huge number of different exercises using all the main muscle groups for both cardio and strength training.

ALL THE CAPABILITY none of the travelling time and none of the gym fees.

- Weight stack operated for reliability and load consistency, no bands or springs, just reliable gravity.
- From £2.600 plus vat, depending on the model but the same functionality in all models.
- Optional weight stack rower for longer term cardio fitness.

AND YOU KEEP THE SPACE

www.slimgyms.direct

Tel: 01559 899 555 | Email: info@slimgyms.direct



GARDENHOUSE

THE MODERN-DAY HILLSIDE VILLAGE FEATURING THE COUNTRY'S LARGEST LIVING WALL UNVEILS FOUR DECOR OFFERINGS BY VISIONNAIRE

Gardenhouse, the much-anticipated architectural debut in America by world-renowned Ma Yansong of MAD Architects, today announced a partnership with Italian lifestyle design brand Visionnaire to provide a turnkey solution for buyers who want to effortlessly move into one of Gardenhouse's fully-furnished Sky Villas, Row Houses or Garden Flats. Also today, Gardenhouse, a new community that reinvents the essence of Beverly Hills in a modern, contemporary form, unveiled the first look at Visionnaire's curated decor and furnishings available to buyers.

"Visionnaire's approach to sustainable design along with the furniture designer's sophisticated sensibility with refined modern, sculptural, and versatile furnishings meets the specific needs of

our discerning buyers at Gardenhouse," said Ken Simpson, Vice President of Palisades, the developer of Gardenhouse. "We are delighted to partner with such a respected lifestyle brand and to be able to offer a total turnkey solution and their efforts in creating an effortless personalized living experience."

The curated and cosmopolitan furnishings offered through the Gardenhouse and Visionnaire partnership include four different designs: Garden Flat Collection One & Two, Row House Collection and Sky Villa Collection — each giving priority to the juxtaposition between indoor and outdoor living and with the furniture being specifically chosen to enhance the shape and design of each room, improving and exalting the space.

“

Residents of Gardenhouse enjoy expansive, open-concept floor plans with towering window walls and private outdoor living spaces.



Garden Flat

Gardenhouse and Visionnaire Interior Decor Collection Highlights include:

Garden Flat Collection One features a casual-chic aesthetic, punctuated with poppy flower-inspired Camden armchairs that sit alongside a Kings Cross cabinet, coffee table, side table and bar unit. The dining room's Talos mirror amplifies the room's depth and creates balance with the considerable width of the room, bringing in natural light from the window to light the kitchen.

Garden Flat Collection Two is designed to create a beautiful path enhanced by natural references, from the ocean-inspired Conway Rug to the Marty coffee table to the art piece of a beautiful fluttering swan to a metal fishbone hung on the fireplace in front of the kitchen, as well as the Rebel chandelier in steel and pink onyx on top of the round Opera table. This combination is a stage that complements the natural vegetation outside of the window.

In the **Row House Collection**, the Beloved Art bed in the main bedroom features a background of the central niche on the headboard. Michele Astolfi's artwork, which contains leaves designed by green mosaic glass and Swarovski crystals is a focal point in this residence.

In the **Sky Villa Collection**, the living room holds the Davis capsule, which balances the verticality of the ceiling with thick vertical quilted sections on the back of the sofa and armchairs, linked with bands in marble.

Just completed, Gardenhouse, which has transformed the Wilshire Boulevard streetscape with its "village on a hill" design, features a limited collection of architectural homes encompassed by the largest living wall in the US and encircling a lush central garden atrium. Offering the space and privacy of a signature custom home, each distinct penthouse, residence and townhome draw nature into the living experience with airy, contemporary spaces and barrier-less transitions between indoors and out. The one-of-a-kind design embraces the notion that architecture can connect with landscape and nature to inspire us to live more fully and harmoniously.

With seamless transitions between indoors and out, residents of Gardenhouse enjoy expansive, open-concept floor plans with towering window walls and private outdoor living spaces. Chef-caliber kitchens are equipped with Miele appliances and Italian cabinetry and master bathrooms feature Japanese onsen-style wet rooms with free-standing tubs and radiant heated floors. Each home features direct lift access to a private foyer from the lobby and subterranean parking garage. The private driveway and covered motor court create a discreet sense of arrival to the building. The lobby, which opens to the sky, surrounds a reflecting pool and leads to the private residences above. The interiors envisioned by Visionnaire pays attention to the importance of creating a respite for homebuyers' hectic lives through absolute quality products married to a rigorous and responsible commitment to the natural environment.



Garden Flat



For the Anniversary collection (2019), Visionnaire has set its sights on FSC® Forest Stewardship Council® C147146 and PEFC™ Programme for Endorsement of Forest Certification, the commitment extends the possibility to choose wood from controlled, legal origin, orienting the market towards responsible forestry management. Visionnaire has ISO 9001 certification since 2011, a guarantee of respect for qualitative management standards, in a wider program of development and valorization of Italian know-how, based on the choice – for six decades – of production entirely carried out in Italy. Wellness and sustainability also translate into the choice of innovative performing fabrics and leathers through recycling logics and a low impact production process, they represent a new technological and sustainable milestone.

Gardenhouse offers three distinct residential collections featuring unique three-bedroom layouts ranging from 2,100 to 3,100 square feet, all of which provide the space and privacy of a custom home while offering the benefits of an intimate residential community. With understated details within the spacious layouts, from custom Italian millwork, soapstone powder room sinks and white oak and limestone floors, each residence delivers style and sophistication. Gruen Associates, who served as both the executive architect and landscape architect for Gardenhouse, worked closely with the designers to bring this architectural vision to life.

SKY VILLA COLLECTION

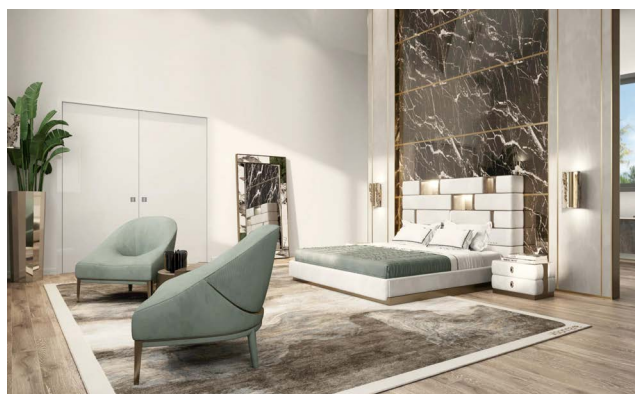
Perched on the upper levels of Gardenhouse, the Sky Villas boast abundant natural light, beautiful gathering spaces, and expansive views across the city. Each of these two-story, three-bedroom residences feature soaring ceiling heights, floor-to-ceiling windows, and custom-designed sculptural staircases connecting lower and upper floors penthouses. The Sky Villas are appointed with spacious interior living spaces of up to 2,900 square feet that open to generous outdoor living areas and private terraces. The exteriors, clad in a stunning architectural façade of aluminum composite panels, reinterpret the classical proportions of each residence in a contemporary aesthetic.



Above, Garden Flat. Below, Sky Villa

ROW HOUSE COLLECTION

An exclusive trio of residences on Charleville Boulevard, the Row House Collection features three-story floor plans of up to 3,100 square feet and private three-car garages directly accessed from each residence's private lift. Adding to the level of luxury are spacious private full-floor master suites, fireplaces, powder rooms, formal and informal living spaces and upper-level great rooms with chef's kitchens and walk-in pantries. Showcasing a seamless indoor-outdoor design, the Row Houses provide a variety of outdoor living spaces, including terraces and balconies and landscaped front entries on Charleville Boulevard.



GARDEN FLAT COLLECTION

The Garden Flats are centered around the outdoor living experience, with a thoughtful balance between vast windows and gallery walls suitable for an extensive art collection. With up to 2,600 square feet of living space, these three-bedroom residences are configured generously on a single level with ample space for dining and entertaining. The interiors transition effortlessly onto private balconies and terraces, which connect to the interior courtyard.

Gardenhouse is centrally located in Beverly Hills, within minutes of the city's most acclaimed cultural destinations. Available residences at Gardenhouse are priced from approximately \$3.288 million.

Compass is the exclusive sales and marketing agent for Gardenhouse. For more information, please visit www.gardenhousebh.com or contact sales@gardenhousebh.com or 424.265.4941 to schedule a private viewing.



Row House

THE REVOLUTIONARY NEW OUTDOOR DECKING RANGE

Trekker Global is delighted to introduce Forte; a revolutionary new decking range for spring 2021. With its high resistance to stains, Forte is the ideal choice for outdoor entertaining.



As the spring and summer months begin to approach, now is the perfect time to start thinking about alfresco dining. Suitable for both residential and commercial application, Forte has an extremely high tolerance to spillages and stains, particularly fats – allowing for a stunning and practical deck surface all year round.

In addition to stains, the new composite decking is also UV and scratch resistant – making the product range extremely beneficial for hospitality outdoor eating areas with heavy use and footfall.

Forte offers the look and feel of real wood, but with high longevity and durability. Available in a range of colours, in both grooved and wood grain profile, Forte is extremely versatile and will complement any exterior.

Trekker Global is part of the Havwoods International Group

www.trekkerglobal.com | info@trekkerglobal.com
 +44(0)1524 737000

UK MANUFACTURERS OF STREET FURNITURE



- POSTS - HINGED & TELESCOPIC
- BOLLARDS - STEEL & STAINLESS
- HOOPED BARRIERS
- CYCLE STANDS & RACKS
- CYCLE SHELTERS
- HEIGHT RESTRICTORS
- SWING GATES
- ARM BARRIERS
- SMOKING SHELTERS
- SEATING



AUTOPA





MADE IN BRITAIN

01788 550556
info@autopa.co.uk
www.autopa.co.uk

AUTOPA Limited, Cottage Leap, Rugby, Warwickshire, CV21 3XP

AUTOPA



Look what you can do with EverEdge...

Image provided by Kingston Landscape Group

Edging, rings and planters 

Call for full details on 01630 417120
 See them all at www.everedge.co.uk



Follow us on Twitter @EverEdge



- Verandas Pergolas • Bioclimatic Pergolas • Retractable Garden Rooms • Swimming Pool Enclosures
- Domestic and Commercial • UK wide • Standard, Made to Measure & Bespoke Products

— Extending Outdoors —

Create an outdoor living space
to enjoy all year round

At Extending Outdoors, you will find the right sun protection for different areas of use, whether a garden patio, veranda, balcony, pergola or conservatory. Extending Outdoors stands for professional customised solutions that not only improve your quality of life, but also create a completely new feeling of well-being under your outdoor living space.



Tel: 01722 444590, +44 (0) 7718180511 or Freephone 08081689226
Email: info@extendingoutdoors.co.uk | sales@extendingoutdoors.co.uk
www.extendingoutdoors.co.uk | www.extendingoutdoorsleisure.co.uk



OUTDOOR INSPIRATION

THREE DECK UPGRADES THAT OPTIMIZE PROJECT POTENTIAL, PERFORMANCE AND PROFITS

By: Simon Thomas, TrexPro and Owner of Simon Thomas Deck & Design

2021 should be declared “the year of the garden!” As Brits continue to spend more time at home, space is at a premium, inspiring homeowners to look outside for an escape and some extra elbow room. If your business is anything like mine, your project calendar is likely filling up for the season, if not already booked out. Since quantity of jobs should not be an issue this year, if not already booked out. Since quantity of jobs should not be an issue this year, why not focus on quality and making the most of the projects you have lined up? With homeowners more willing than ever to invest in their outdoor spaces, be sure to optimize opportunities to sell them simple upgrades that will add function and value to their decks without adding a lot of time or cost. Here are three easy and cost-effective add-ons that I suggest to all of my clients:



“

Deck flashing tape is a simple and inexpensive way to protect wood from the damaging effects of weather and time.



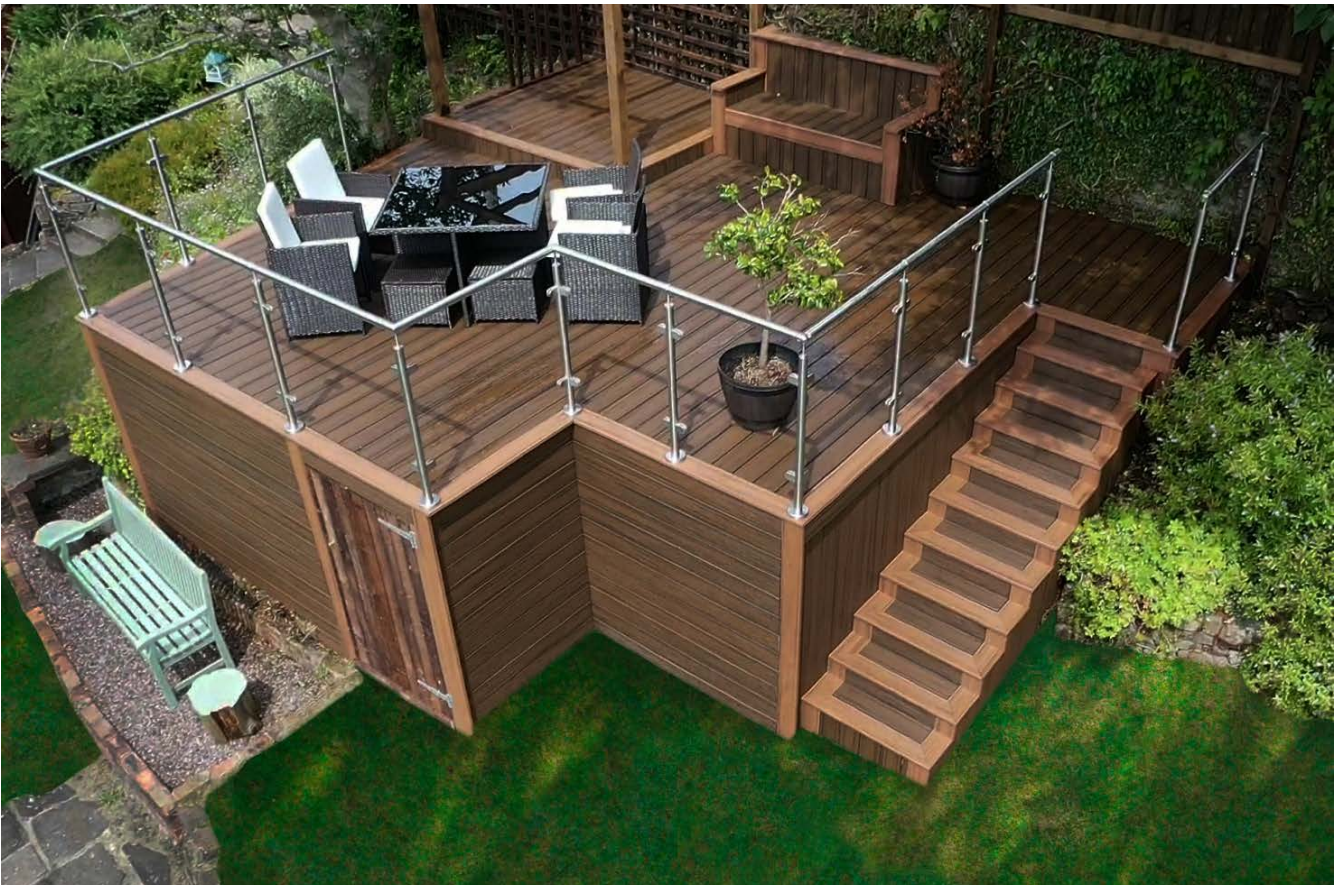
1. DECK FLASHING TAPE

Today's homeowners have access to high-performance garden decking warranted to last for decades. But research* has shown that most decking substructures begin to show signs of decay within the first 8-10 years. This is because the majority of substructures are built using timber, which is susceptible to damage from moisture and exposure to outdoor elements.

Easily one of wood's worst enemies, moisture contributes to mould growth and can accelerate structural deterioration. This is particularly common in the U.K. given our perennially damp and rainy climate. When joists and bearers are exposed, water can seep into screw holes and sit on the wood causing it to rot and the screws to rust. Additionally, the natural expansion and contraction of wood due to seasonal freezing and thawing can cause beams to split and weaken over time, posing serious safety concerns.

Deck flashing tape is a simple and inexpensive way to protect wood from the damaging effects of weather and time. Designed to shield the tops of timber joists, bearers and ledger boards from water damage, it also acts as a moisture barrier between wood and galvanized metal to help deck screws and fasteners hold longer and stronger for enhanced structural integrity.

My go-to product is Trex® Protect™ Joist and Bearer Tape. I use it on every deck I build – no matter the size, design or decking material I use – because I want my work to last. It's a self-adhesive butyl tape engineered specifically for use on decks. It works on both horizontal and vertical surfaces and is applied as a "cap" (vs. wrapping) to allow the timber to breathe. The peel-and-stick tape lies directly on the boards and requires minimal cuts and little overlap making application a breeze.





Furthermore, the butyl adhesive is super sticky, yet pliable, which allows it to create a tight seal around fasteners to prevent water from infiltrating screw holes. It doesn't dry out or curl up like other construction tapes and performs extremely well in a wide range of temperatures. Trex Protect tape also features a non-skid surface, making it easy and safe to walk across during construction.

2. AN UNDER-DECK DRAINAGE SYSTEM

As our homes have become offices, classrooms, fitness facilities – you name it – space has become a precious commodity. One easy way to fully optimize a deck project is by installing an under-deck drainage system. When protected from the elements, the often overlooked area beneath an elevated deck can become a perfect spot for an al fresco conference call, mid-day playtime for at-home students or an open-air yoga session.

Using a network of troughs and downspouts, an under-deck drainage system captures and diverts water away from a deck, not only preserving the studwork but also making the area under the deck useable for storage or as additional living space. Once protected, that space can be used for stowing lawn and garden equipment, pool supplies, bicycles and boats, or outfitted with furnishings, lighting fixtures, ceiling fans and entertainment components to serve as an outdoor room.

There are two main types of drainage systems – those that install above or below the joists of the substructure. For optimal protection and aesthetics, I prefer an “above-the-joist” system, such as Trex® RainEscape®. The main advantage to this type of system is that it protects the entire foundation and the area beneath the deck. It also allows homeowners to put any kind of decorative ceiling or soffit on the underside of the joists, making it a good option for customers who want a completely finished look.

Trex RainEscape is easy and efficient to install – whether during a new deck build or when replacing existing deck boards. The entire system includes just five SKUs – a 40cm and 30cm drainage trough sheet, a downspout, butyl waterproof caulk and butyl waterproof tape. Additionally, only three tools – scissors or a utility knife, a staple gun hammer and a caulk gun – are needed for installation. Each trough is clearly labeled with staple markers to expedite the process, which takes no more than a few hours to complete. And, the system is backed by a 20-year warranty from Trex® – the world’s #1 decking brand.

3. DECK LIGHTING

Another “bright” idea for adding value to a deck project is with lighting. Dimmable LED lights incorporated into railing post caps and stair risers can increase safety while also enhancing ambiance and extending the time that homeowners can spend enjoying their outdoor space. And don’t forget to illuminate the space beneath the deck with soffit lights. The makers of Trex RainEscape offer plug-and-play lighting components that integrate seamlessly with the drainage system and with other Trex Outdoor Lighting components.

While these add-ons may seem minor, they can have a major impact on customer satisfaction and your bottom line – especially during a season as busy as this one promises to be.



**Based on a survey of 100+ builders conducted by Dri-Deck Enterprises (now IBC, LLC)*

For more information about the products mentioned in this article, visit TrexProtect.com/uk and TrexRainEscape.com.





Products that tell a story

Plastic waste saved from landfill since 1995 and turned into award-winning second life products.

Plaswood is the **durable** and **maintenance free** alternative to traditional materials.



Non Staining



Recyclable*



Long Lasting



UV Stable**



Maintenance Free



Durable



Weather Proof

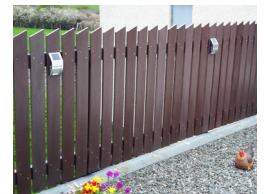


Versatile



High Strength



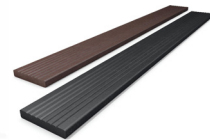


Choose a product that stands the test of time. Plaswood provides a range of products and solutions, made from recycled plastic, that are maintenance and splinter free, rot and weather proof.

Begin your journey towards a maintenance free product, visit us at www.plaswood.eco or call us on +44 (0) 333 202 6800



 Fencing



 Decking



 Boardwalks



 Furniture



 and more

Full range includes: Tables • Benches • Bins/Composters • Planters • Lumber
Garden furniture • Edging • Decking • Fencing/Gates • Signage • Boardwalks

Patio Decking Replacement

...The existing structure was difficult to clean and was not safe in wet seasons with returning patches of algae. The new structure was built using Plaswood, recycled plastic decking and support frame – designed to create a sleek and stylish contemporary look with no maintenance required....

Read the full story, visit the [recent project](#) page on our website.



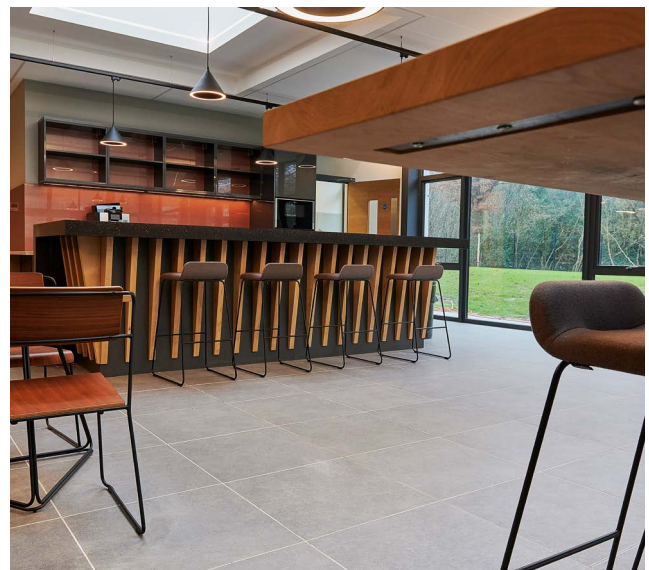
THE PERFECT SOLUTION FOR INSIDE-OUT DESIGN

When global tech company Vega Controls built a new HQ in East Sussex they created an interesting challenge for the architect designing their 33,000 sq ft offices.

Vega wanted to create a consistent outdoor-to-indoor feel using slabs which were stylish enough to be used in the office building but hard-wearing enough to be used as paving and for a balcony.

MJB Architecture carried out extensive research, inspected a large selection of samples and then concluded that the porcelain pavers supplied by Brett Landscaping would perfectly satisfy the requirements.

Brett Landscaping's GeoCeramica® porcelain surface slabs are a hybrid porcelain and concrete paving flag tile with a pre-bonded cementitious water permeable drainage layer. They are permanently and inseparably bonded to a drainage mortar base which offers excellent stability, strength, drainage and adhesion.



“

Brett Landscaping's GeoCeramica® porcelain surface slabs are a hybrid porcelain and concrete paving flag tile with a pre-bonded cementitious water permeable drainage layer.

This system is supplied as a porcelain tile with a concrete backing which can flexibly laid rather than a ridged installation usually associated with porcelain paving.

The Vega building has a café area with a continuous inside/outside area, stepped areas and ramps internally and also a large walkway that starts outside the entrance and right through the building all finished in GeoCeramica® Impasto Grigio. An exterior walkway, interior walkway and the director's personal office balcony have been complete in GeoCeramica® Impasto Grigio and Noir

Architect Sam Clisby, from MJB Architects, said: "Brett Landscaping was chosen as the products met the requirements in terms of providing a product where the same porcelain tile could be used both internally and externally.

"We have worked with porcelain tiles before but not those exact products, and not tiles with the aggregate backing and it was possible to source from Brett the 10mm porcelain tile alone for the internals and the porcelain tile with the aggregate backing for the externals."

The car parking bays at the Ashdown Business Park site were also completed using Brett products. This time it was Alpha Flow paving which offers a hard-wearing permeable solution satisfying the surface water drainage requirements, without sacrificing any aesthetic qualities.



Vega Controls is a global manufacturer of process instrumentation which is used in a wide variety of processes including the chemical and pharmaceutical industry, the food industry, power generation and water supply systems. They operate in 80 countries around the world.

The project was completed in December 2020.

www.brettlandscaping.co.uk



Remote Workflow Management from office to site

NEW PACKAGE ZERO SET-UP FEES

Schedule 

Capture 

Track 

Invoice 

Report 



Digital, mobile workflow management, field data access, safety and planning software for landscaping

- **Create jobs and tasks**, add all information and sync to users' mobiles in the field.
- **Schedule users** in the calendar and assign pinpoint map locations to jobs.
- **Add landscaping specific digital forms and workflows**, accessed on or offline.
- **Assign materials and equipment to jobs and users** with codes for tracking, maintenance and SHEQ.
- **Mark-up images, sign off forms and tag all submissions** with time/date/location tags.
- **Produce quotes and invoices** within the app using a Bill of Quantities and inbuilt calculators.
- **Receive information and produce reports** to make data-driven decisions and improve costs, safety and efficiency.

Re-flow LANDSCAPING

www.re-flow.co.uk/landscaping | 01392 574002 | info@re-flow.co.uk

BOOK A DEMO



Kitchen in the Garden, based at Cedar Nursery in Cobham, Surrey, supply a full range of outdoor cooking equipment, from the world's leading outdoor cooking brands.

We provide expert advice and technical support for the design and build of premium outdoor kitchens. From contemporary grills, high-end pizza ovens, sinks and fridges, to a vast range of specialist cooking equipment. We cater for all outdoor cooking requirements, along with a variety of storage options tailored to your client's needs.

Why not suggest to your client to add an outdoor kitchen to make the most of their outdoor space and add value to their property?

Authorised Dealers For:



Kitchen in the Garden, Cedar Nursery, Horsley Road, Cobham, KT11 3JX

t: 01932 862473

e: kitcheninthegarden@landscaping.co.uk

kitcheninthegarden.co.uk



REPLICA
TREES
CUSTOM MADE
TO ANY SIZE

HAND BUILT
IN THE UK 



ARTIFICIAL GREEN WALL



ARTIFICIAL TREES



EXTERIOR
GRADE

ARTIFICIAL HEDGING

WWW.TREELOCATE.COM

GET IN TOUCH TO DISCUSS YOUR PROJECT:  info@treelocate.com  +44 1668 219219

FireSilx
FLAME RETARDANT FOLIAGE

INHERENTLY FIRE RETARDANT ARTIFICIAL FOLIAGE

 TESTED TO MEET WORLDWIDE FR STANDARDS

BS 5867 EN 1021 DIN 4102 NFPA 701

FIND OUT MORE - WWW.FIRESILX.COM



STOREY LAUNCHES NEW, FLEXIBLE WORKSPACE AT 100 LIVERPOOL STREET, BROADGATE

Comprising 48,000 sq ft set across the first and second floors of the building, Storey at 100 Liverpool Street offers customers' private, branded office space, meeting rooms and breakout areas, which can be fully customised and managed on their behalf. Following its success at British Land's Paddington Central campus, 100 Liverpool Street will also house Storey Club, offering a mix of workspaces away from the office, including lounge areas, a café, meeting rooms and events space.

Designed with Gensler, Storey's unique modular design enables each private workspace to be reconfigured to meet customers' needs, including office layout, size and aesthetic. Storey customers can also modify their space requirements within the Broadgate campus, providing an additional layer of flexibility as their businesses evolve.



© Charles Hosea

“

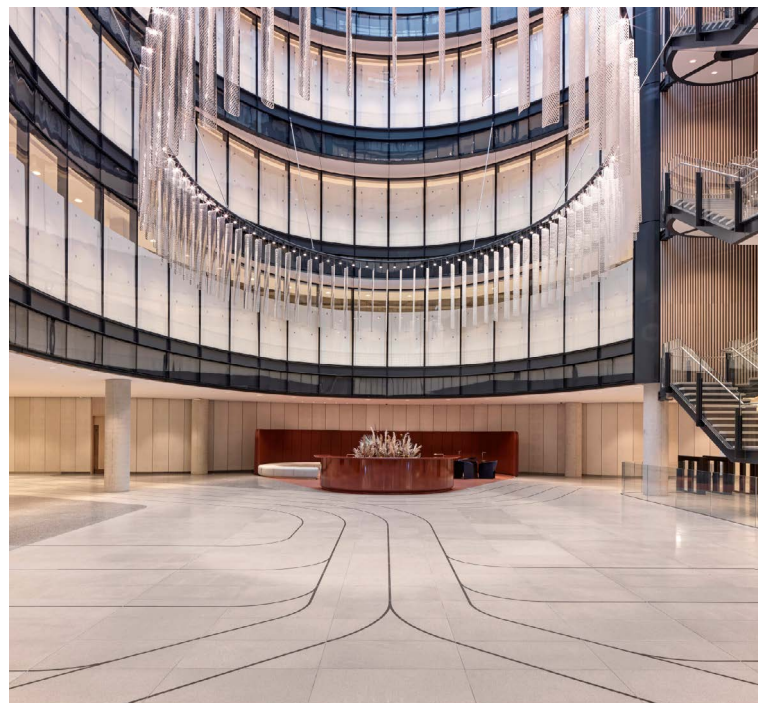
British Land is investing £1.5 billion over 10 years to transform Broadgate into a world-class, mixed-use destination for London.

100 Liverpool Street has been designed to the highest sustainability and connectivity standards. The building recently received a BREEAM Outstanding rating and is on target to achieve WELL Gold certification. It is fully tech enabled to optimise the user experience, from sensors to help understand their environments including lobby traffic, occupancy and air quality, to facilitating touch free journeys through the building.

Customers' will also benefit from access to Broadgate's new digital customer engagement app, which has been designed to help people get the most from their time on the campus and will also play a key role in supporting businesses to reoccupy their spaces.

James Lowery, Head of Storey at British Land, said: "We are thrilled to be launching our 12th Storey location at 100 Liverpool Street, Broadgate. Covid-19 has accelerated a range of workplace trends, not least the demand for greater flexibility, an increased focus on collaboration spaces and the importance of a trusted partner to manage the workplace experience. Storey is well placed to respond to this, providing flexibility in the broadest sense, including lease lengths, size, design, configuration and service."

Stuart Templeton, Design Director at Gensler said: "We are delighted to have partnered once again with Storey on the design of their new workspace location at 100 Liverpool Street. Throughout the project, we have made use of the building's strong architectural elements to define the contrasting Storey areas, with productivity, wellness and aesthetics remaining front of mind. As with each design process, sustainability has been a key consideration and we have sought to maximise the use of recycled



and sustainable solutions throughout, whilst ensuring the product remains of the highest Storey standard."

British Land is investing £1.5 billion over 10 years to transform Broadgate into a world-class, mixed-use destination for London. The campus hosts many of the world's leading financial, legal, technology and media companies, alongside some of London's best shops, restaurants and bars, including 90,000 sq ft of premium brands at 100 Liverpool Street and the UK's first Eatly. It is also home to four public squares, including Exchange Park, a 1.5-acre park, which is currently under construction and will quadruple the amount of green space at Broadgate.

Further details can be found on the Storey website at www.storey.co.uk



UK CONFORMITY ASSESSMENT AND WHAT YOU NEED TO KNOW

By Wojciech Brozyna - MD of Aluprof UK

Since the beginning of 2021 the UK now sits outside of the European Economic Area (EEA) complete with a late brokered 'deal' which helps businesses trade without tariffs between the EEA and the UK. Despite the increased levels of paperwork required for such imports and exports, it is 'almost business as usual'. Over the last few years conformity with legislation and standards present in Europe has been a prerequisite for producing and selling any goods within the EEA, either produced in the EEA or from overseas. Known as 'CE' marking, it is applicable equally to the manufacture and sale of a paper clip to a curtain wall facade.

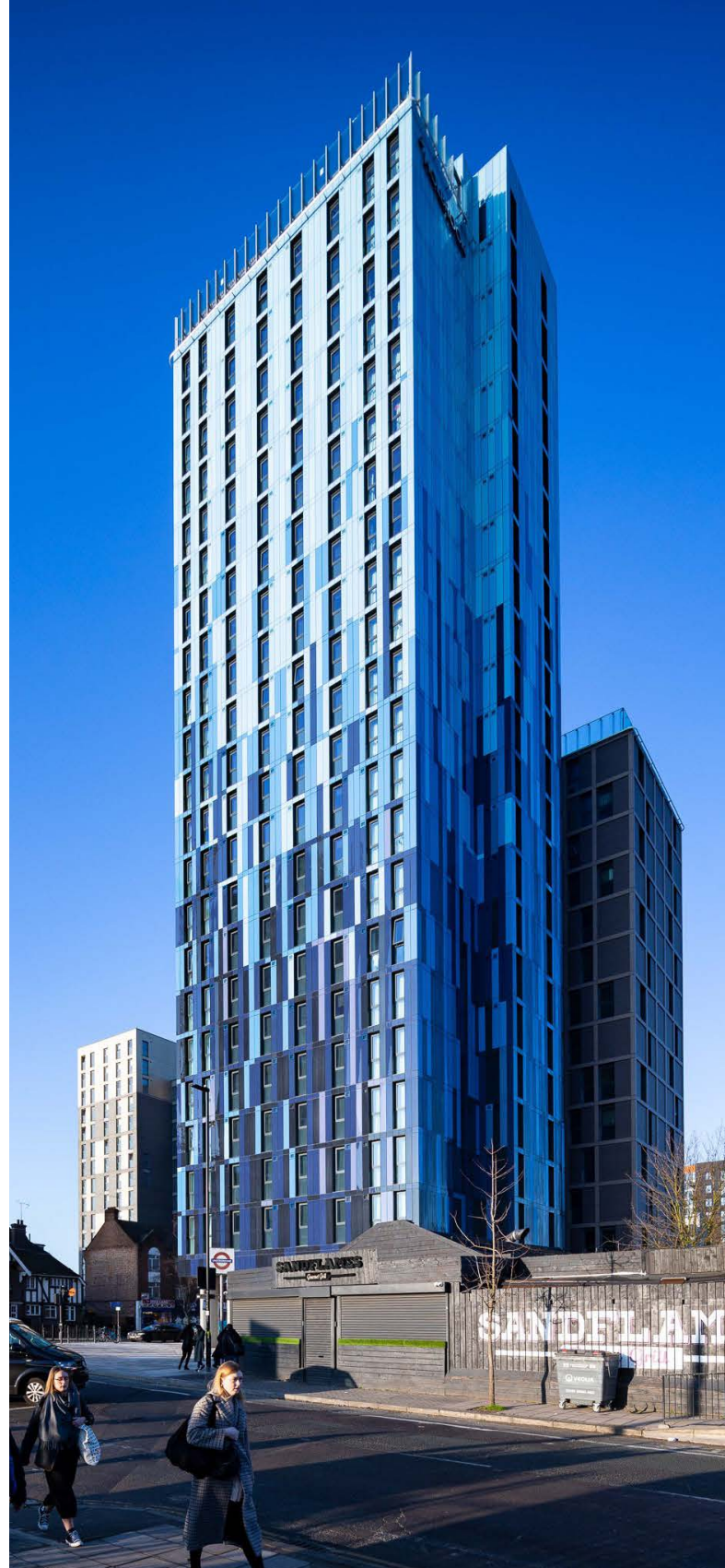
So what is a 'CE' mark? A CE mark indicates conformity with a harmonised product standard, and assures the user that the product is classified to the relevant essential characteristics, within Annex ZA, for the member state whose market it is placed on. Construction products are different to say medical devices for CE marking as regulations differ.

So now that we have left the EEA, what now?

The UK has set up its own conformity marking known as the 'UKCA' mark. Broadly the same as the current CE marking the new UKCA mark will allow the UK to begin to adjust its conformity standards to suit UK businesses and the UK's legislative requirements in the longer term. As far as timing is concerned, CE marking is still fully accepted in the UK this year, but all companies manufacturing and selling in the UK must have UKCA marking on their products by the end of 2021. Importantly for Aluprof UK, we will comply with the new UKCA marking and are already scheduling our products for conformity with UK 'approved bodies' this year.

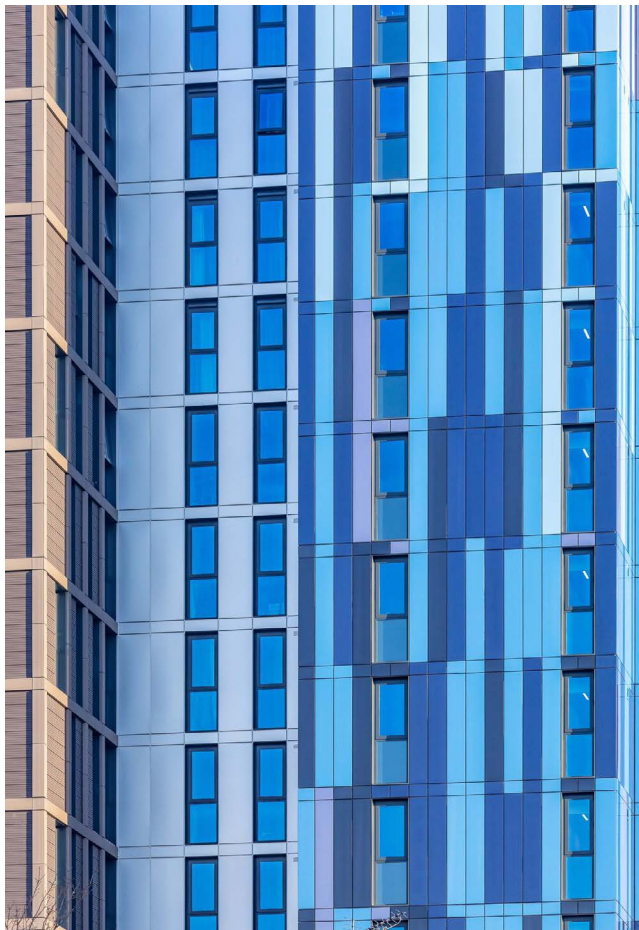
Now a note of caution, we often use Great Britain, the United Kingdom and the British Isles interchangeably, but this is not correct. 'Great Britain' consists of England, Scotland and Wales, the 'United Kingdom' consists of 'Great Britain' and 'Northern Ireland'. The 'British Isles', consists of the 'United Kingdom' and 'Ireland', plus numerous smaller island groups, which include the Hebrides, the Shetland Islands, the Orkney Islands, the Isles of Scilly, and the Isle of Man.

In Northern Ireland, matters get a little more complicated as manufacturers there have their own UK(NI) mark to comply with which must be used alongside the CE marking. Whilst Great Britain will accept the UK(NI)+CE marked products known as 'unfettered access', products manufactured in Northern Ireland only need to carry the CE mark if they are to be sold solely in the EEA. Part of the reason for the difference in Northern Ireland is that whilst Northern Ireland sits within the EEA, from the 1st January 2021, it is now outside the EU Customs Union. It must be reiterated that for products manufactured and sold in Northern Ireland, they must always carry both the CE mark and the UK(NI).



“

As ever with our loyal customers in the British Isles, we are on-hand at Aluprof to give any of our customers guidance on the compliance and marking convention.

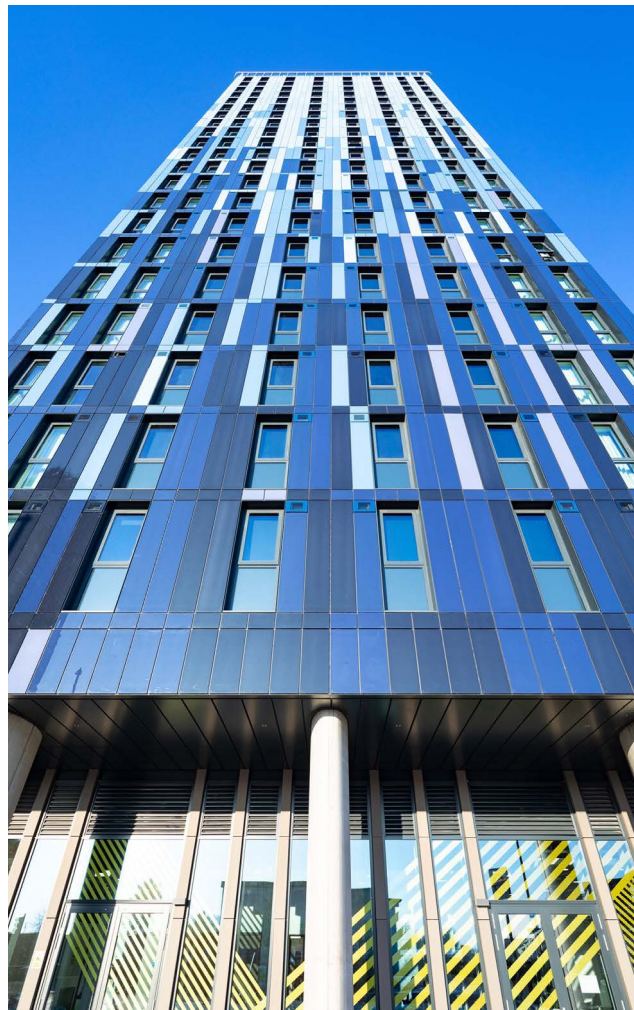


It is also important to remember that a separate Declaration of Performance/Conformity (DoP) must be provided for each UKCA, UK(NI) and CE mark. Whilst at the moment these will broadly be the same, it is likely that with changes to legislation here and in the EEA over time, these will begin to differ. It has also been confirmed that both CE and UKCA marks can be used together on products as long as they are separate and are clearly visible. As the UK 'approved bodies' move to offer UKCA marking, CE marking 'approved bodies' for products to be sold in the EEA, can only be provided by an EU based 'approved body'.

Whilst new conformity marks are being introduced, UKCA and UK(NI), nothing else changes at this time regarding the products that require labelling. The marking convention and conformity continues for construction products as it has done for CE marking for the last few years.

So what does this mean for supply of goods from the EEA to our customers in the British Isles and in particular, products imported by Aluprof?

As a European manufacturer, we will continue with CE marking which will confirm with the requirements for Ireland and Northern



Ireland, for Great Britain (England, Scotland and Wales) all our products can continue to be used with CE marking in 2021 are being lodged with a UK 'approved body' to ensure they can carry UKCA compliance markings.

There is also one caveat to the conformity marking, that is the marking is only applied at the time of manufacture, so there could be products manufactured in 2021 in compliance with CE marking that may enter the Great Britain market in early 2022. At this point we begin to get into some of the grey areas of compliance and the government is still working out some of the detail. What is known is that for our customers who manufacture our systems into products that go on site, you will need to demonstrate compliance with the new UKCA marking from the 1st January 2022.

As ever with our loyal customers in the British Isles, we are on-hand at Aluprof to give any of our customers guidance on the compliance and marking convention.

With the company Project Office at the Business Design Centre in London, Aluprof has rapidly grown their specification influence in the UK with their high performance architectural aluminium systems. With overseas growth across Europe spreading into the Middle East and firm roots already in the East of the USA, the company is becoming a global player in facade supply. Further information is available on the company's website at aluprof.co.uk or direct from their UK office in Altrincham on 0161 941 4005.



BEAUTIFUL FINISH TO SPECTACULAR HOME

CEDRAL SIDINGS WERE THE PERFECT CHOICE WHEN APPLYING THE FINISHING TOUCHES TO A SPECTACULAR FORMER GATEHOUSE IN SCOTLAND

Architect Graeme Andrew, of ataSTUDIO in Glasgow, was commissioned to design the family home in the village of Kilmocollm. Split over three levels, at the top of a rocky hill, it was a complex project built over a steel frame structure.

The two-year build was challenging but, the final piece of the jigsaw was a simple choice. Graeme and the homeowners opted for Cedral Click Woodgrain in the Mineral range.

The Cedral sidings gave a finish that was both in-keeping with the surroundings and with the modern design of the home.

Graeme said: "We like the colour choice with Cedral and the fixing method is well resolved for our style of building."





“
 This was a really memorable project to be involved in and it looks amazing.”

“We chose Cedral rather than stained cedar due to the low maintenance of the sidings and its reliability for not shrinking and expanding over the lifetime of the building.

“We have built a few houses clad in cedar and there has been more movement than expected as well as ongoing staining to

maintain a good visual appearance - this seems to be issues that we won't have with Cedral.”

Paul Gallacher, from Cedral Sidings, said: “This was a really memorable project to be involved in and it looks amazing.”

Cedral's fibre cement sidings offer both contemporary and flexible design options, and is used by many architects and homeowners to create stunning facades. The simple combination of wood cellulose, sand, synthetic fibres, water and cement make fibre cement one of the most environmentally friendly and comprehensive building products available.

To see the full range available visit www.cedral.world



THE BEAUTY & EXCEPTIONAL PERFORMANCE OF LUNDHS REAL STONE

Combining unrivalled workmanship, centuries of knowledge and the world's strongest and unique natural materials, Lundhs has cemented its reputation over centuries as a leading provider of 100% real stone, supplying exceptional Larvikite and Anorthosite natural stone to the commercial, hospitality and specification market across the globe.



Specified by architects and interior designers the world over, natural stone from Lundhs Real Stone graces the surfaces of a vast range of commercial and residential projects. From retail spaces and shopping malls to hotel spas and residential kitchens and bathrooms, the impressive materials deliver on both practical and aesthetic qualities, no matter the application, thanks to its natural properties.

Durable, distinctive and 100% natural, Lundhs Real Stone boasts high heat, water, scratch, UV and stain resistance as well as minimum maintenance, making it one of the most versatile surface choices in the world. Thanks to its low porosity and natural resistance to the elements (both heat and frost) the surfaces are often specified for building façades and outdoor paving in addition to its most popular and frequent use – as kitchen or bathroom countertops.

For further information visit www.lundhsrealstone.com/uk

SPV COMPLETE CLADDING WORKS AT THE NEC

SPV Group- the Walsall based refurbishment specialists, have recently completed Phase 2 of the cladding works at The NEC, Birmingham. The cladding works undertaken by SPV form part of a £4.5 million transformation which will completely change the look and feel of the iconic Birmingham based venue. The new design has recently seen 37 pyramid translucent structures installed – created by architects Acivico – that can be backlit to create a stunning visual effect sandwiched between the pyramids are a series of vibrant colour panels designed by global agency McCann.



The finished result using this innovative technology is visually stunning. The project has not only transformed and modernised the dated building which was originally built in 1976, but has also made the area a far more dynamic and engaging environment for all customers and set the NEC apart as one of the best leisure destinations in the country. SPV's remit was the installation of designed metal rainscreen cassette panel cladding complete with bespoke flashings.

<https://www.spv-uk.co.uk/>

seal it

ONE COAT ROOF SEAL

100% WATERPROOF BARRIER

the flexible cool roof

Solvent-free and non-flammable, Seal It Liquid Membrane is designed for professional roofing applications as the ultimate alternative to bitumen based and GRP roofing membranes: ideal for all existing roof substrates. With outstanding water resistance and weather proofing it is self-levelling, gap-bridging, non-shrinking and non-cracking.

You can even apply it when it's wet!

Full available system comprises: Primer, Reinforcing Mat, Sealer and Accelerator. Available in either white or grey and in stock now.

Unit G16, River Bank Way, Lowfields Business Park, Elland, West Yorkshire HX5 9DN
 Tel: +44(0)1422 315300, Fax: +44(0)1422 315310
 Email: sales@bond-it.co.uk Website: www.bond-it.co.uk



CUPA PIZARRAS

The world leader in natural slate



For more information, contact us at +44 (0) 20 3318 4455 or uk@cupapizarras.com



PROTEUS FACADES HELPS BRING FORMER BOOKSHOP BACK TO LIFE

THE FORMER OTTAKAR'S BOOKSTORE IN HIGH WYCOMBE HAS BEEN GIVEN A NEW LEASE OF LIFE AND BROUGHT BACK TO ITS FORMER GLORY AS A PILLAR OF THE TOWN CENTRE, THROUGH A STATE-OF-THE-ART REGENERATION PROJECT FEATURING BESPOKE CLADDING PANELS FROM PROTEUS FACADES

The Proteus SC cladding panels are arranged in a striking half-hexagon design that appears to float outward from the main structure. The 6 metre high façade, where the panels themselves are embellished by intricately designed, leaf-shaped perforations, has the ability to stop people in their tracks while they gaze at the intriguing, shimmering aesthetic.

Prior to the refurbishment, the original building, which once stood proud on the corner of Queens Square fell into disrepair after

being left unattended by its previous owner for quite some time.

In 2019 however, as part of an ongoing initiative to acquire, regenerate and re-let vacant shops to independent businesses, Wycombe District Council purchased the building and invested in a state-of-the-art refurbishment project. This included a complete redesign of the interior and an external upgrade to improve aesthetics and add more versatility to the town centre.



Proteus SC is an engineered panel system that is offered in either solid, perforated or mesh panel formats.

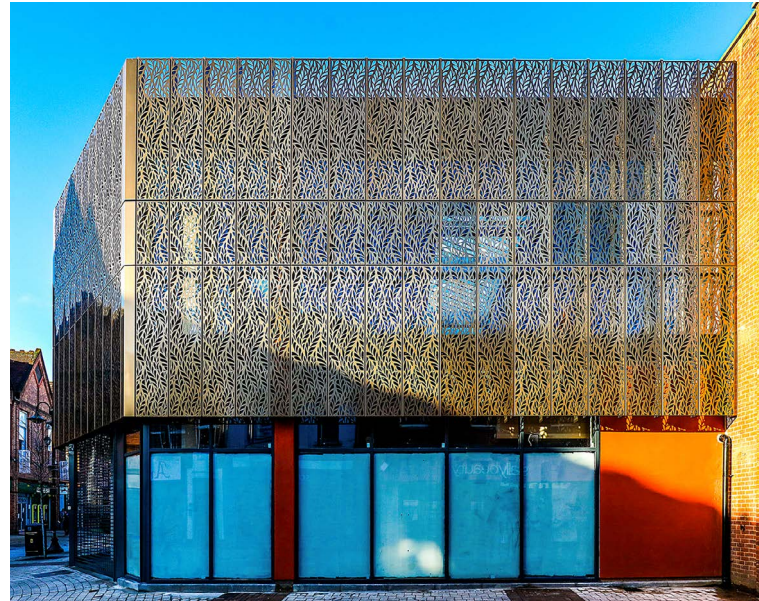
During the initial stages of the redevelopment, main contractors, Abbeymead Building Ltd. found that the glazing to the upper levels would need replacing, along with limited structural support positions where the perforated cladding could connect. This resulted in a complete redesign of this section, with full replacement of the windows and the spanning solution of the Proteus SC, lightweight perforated anodised aluminium panels, manufactured by Proteus Facades.

Proteus SC is an engineered panel system that is offered in either solid, perforated or mesh panel formats. By utilising an extensive range of metals, colours, textures and forms it can add another dimension to any façade cladding project. The system can be manufactured between 1mm and 5mm in thickness and an acoustic insulation layer encapsulated within the panel.

Installed by J & PW Developments Ltd, the Proteus SC panels at White Hart Street, were fabricated from a 3mm J57Up aluminium alloy with a brush polished, mirror effect finish, anodised to Anolok 543.

The bespoke laser-cut leaf pattern on the panels, visible both inside and out, also provides further visual appeal to the façade, offering a delicately designed brise soleil within and a striking external aesthetic for passers-by.

Each Proteus SC panel is secured in place using a bespoke aluminium support system, also manufactured by Proteus Facades, with a matching anodised coating. The brackets are fixed back to the original structure with a 200mm x 50mm aluminium extrusion at panel joints, spanning approximately 3700mm



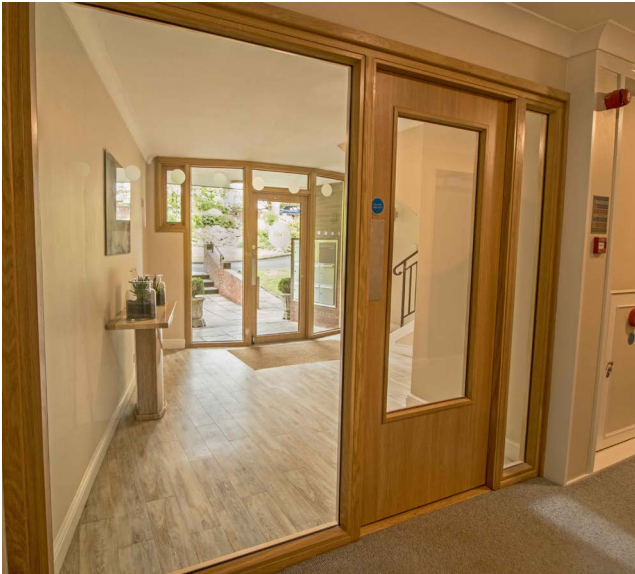
between the floor and slabs, and with 1100mm cantilevered upper and lower sections.

Further external works carried out during the redevelopment, completed in December 2020, include replacement of the flat roof and installation of a new shopfront set back from the pavement to create a covered seating area.

Internally, the building has been completely restructured to offer a ground floor space ideal for use as a restaurant and shops, along with first floor studio-style offices. All of which have great potential to attract some of High Wycombe's up and coming businesses, which in turn is expected to boost footfall and improve the overall experience for visitors to the town.

For further information about Proteus SC or to view more inspirational rainscreen facades from Proteus Facades, visit: www.proteusfacades.com or call: 0151 545 5075.





THE SPECIALISTS IN ACCREDITED TIMBER FIRE DOORS

Sunray Timber Door Division are leading and accredited Specialist Surveyors for Fire Doors and Passive Fire Door Protection. As one of only a few organisations to hold the full FDIS (Fire Door Inspection Scheme) they are expertly placed to provide Fire Door Surveys to determine compliance to Fire and Building Regulations and as a consequence corrective remedial or replacement advice.

The Sunray Fire Door Survey provides a thorough and detailed report on each door within the remit to define compliance or noncompliance to passive fire protection. Each door is meticulously inspected to understand its potential Fire Integrity and rating.

Following the Fire Survey and outside and independently to the Surveyors role, we are able to assess the information from the report on the corrective action required and provide a quote aligned with what is needed in order to obtain conformance. The main objective and focus will be compliance, safety and expert advice on which to act.

Sunray Timber Fire Division manufactures a diverse range of Fire Doors, Screens, Partitions and Fire Breaks as part of the Building fabric.

With ratings from 30 minutes to 2 Hours of Fire Protection, the Sunray Timber Door Division product range is used in a variety of applications including Hotels, Healthcare, Schools and Government and Commercial buildings.

More recently Sunray has introduced a revolutionary new product to its range. FIRE-SECURE® is a pioneering product combining Fire and Security Integrity giving two accreditations in one product, FD30 and LPCB SR2.

This is setting new standards for passive Fire Door protection as well as providing the assurance of security against physical attack.

Within the Commercial and Residential sectors, the increased demand on passive Fire protection and Building security has intensified, with a focus on product manufacturers investing into R&D to provide specifiers with accredited, tested and proven products to meet and exceed measured performance criterias.

The FIRE-SECURE® range features are unique in their own right, however combined into one product they provide the specifier with paramount assurance to withstand the most vulnerable of applications and Passive Fire or Security Door solutions.

Without compromise to cost, the testing of the Fire-Secure® range has been the most challenging in order to achieve and exceed the standards outlined using punishing and rigorous testing through renowned UK test facilities.

The result is a Timber Door which provides aesthetics using a wide range of colour or veneer finishes, vision panels, locking options and critically with the underlying assurance of Fire and Security protection.

For more details call our specialised team to discuss your particular project on 01252 645534 or visit our website at www.sunraytimberdoors.co.uk/



Design, manufacture and installation of timber fire and security door systems

Sunray Timber Door Division
28 Waterfront Business Park
Station Approach
Fleet, Hampshire GU51 3QT

Tel: 01252 645534
E-mail: sales@sunraytimberdoordivision.co.uk



INTRODUCING...

FIRE-SECURE®

A REVOLUTIONARY NEW TIMBER DOOR WHICH PROVIDES FIRE & SECURITY INTEGRITY WITH ACCREDITED RATINGS OF FD30 AND SR2. PIONEERING THE STANDARDS OF DOOR SAFETY.

FIRE-SECURE® is a Timber Door which offers two unique benefits, timed protection from fire and timed protection from physical attack.

Sunray have achieved the ability to provide a 30 minute fire rating on either face of the door (interior or exterior) as well as it having the accredited LPCB SR (Security Levels 1 & 2) certification.

The result is a Timber Door which provides aesthetics with a range of colour and veneer finishes, vision panels, locking options and critically with the underlying assurance of Fire and Security protection.

THE SPECIFIER'S CHOICE FOR:



COMMERCIAL



HOTEL / LEISURE



SOCIAL HOUSING



HEALTHCARE

For more details, call our specialised team to discuss your particular project on

01252 645534

sales@sunraytimberdoordivision.co.uk

www.sunraytimberdoors.co.uk



CROSSRAIL SYSTEMWIDE CONTRACTOR ATC REACHES FOR NEW HEIGHTS WITH THE HELP OF BILCO UK

With the new Elizabeth line set to deliver a 10% increase in rail capacity across central London, the project will provide a high frequency service that reduces journey times and creates new travel opportunities by linking 41 stations across 100 kilometres.

As part of the landmark construction project, over 42 kilometres of new tunnels, 50 kilometres of new track and 10 new stations are being developed in conjunction with major upgrades to the existing infrastructure.

Throughout the construction stages of the central section, which spans from Westbourne Park to Plumstead and Pudding Mill Lane, over 350 of Bilco UK's innovative aluminium Ladder Up® Safety Posts have been specified by Crossrail's systemwide contractor Alstom TSO Costain Joint Venture (ATC Systemwide) to provide safe and secure access.

Weighing just seven kilograms due to the milled aluminium construction, the resilient Ladder Up® Safety Posts will provide engineers with unobstructed access to the walkways when conducting essential maintenance throughout the tunnels, once the line is operational.

Once fully open, the Elizabeth line will provide an additional 1.5 million people with access to central London within 45 minutes, covering Reading and Heathrow in the West, right through to Shenfield and Abbey Wood in the East.

The specification process, managed by Construction & Rail Contractors McNealy Brown, focused on the requirement for durable yet functional access solutions that would consistently provide a safe and direct step through onto the walkway, without impacting on the surrounding electrical services.



The unique and high quality construction of the Ladder Up® Safety Post fulfilled each requirement of the brief. This includes features such as the innovative telescopic post, which mounts permanently to the top two rungs of any fixed ladder to provide a secure handhold that enables the user to enter or exit the opening in an upright and balanced position.

Clive Burfoot, Contract Manager at McNealy Brown, said: "When we first began researching potential access solutions for the Crossrail project's central section, it became clear quite quickly that the Bilco UK Ladder Up® Safety Post was the only product available on the UK market that would fulfil our extensive list of requirements.

"The telescopic extension was one of the main benefits that secured its specification for this project, as it enables the Ladder Up® safety post to be both retracted and extended, a key function that wasn't available with any other access solution."

Each ladder has been installed with two Ladder Up® Safety Posts, which are located on either side of the ladder to provide the direct step through onto the walkway for increased safety and efficiency.

The installation process, which has been managed by ATC Systemwide, will provide secure access throughout all essential areas of the central section, including at either end of every station and at additional strategic locations.

For further information on Bilco UK's complete range of roof access solutions, visit www.bilcouk.co.uk or call 01284 701696.





A smoke vent and an access hatch? Your two solutions in one



That hatch with the ladder running up to it? Yes, it's a Bilco smoke vent. You may know it as one of the best smoke vents on the market; CE-marked, self-actuating in less than a minute, excellent thermal properties, and so on. But simply add a fixed ladder with the optional LadderUp® Safety Post, and you also have a safe exit out onto the roof. So the next time you specify a smoke vent, make sure it's a Bilco.



220-METRE OF VERTICAL INTERLOCKS

Shenzhen Shuiwan 1979 Life Plaza is nestled within the leafy streets of a coastal zone of Shenzhen, neighboring Shekou's Nanshan Mountains and facing the Shenzhen Bay. At the heart of this new development, a "secret garden" floating over three floors of retail podium, with green terraces and lifestyle platform in between office and residential towers altogether offer pleasant public spaces between the hustle and bustle of the commercial developments and the natural scenery.

TOWERS ABOVE THE HORIZON OF HONG KONG

The 220-metre mixed-used complex is nestled between networks of tree-lined streets and directly connects to the Shuiwan subway station. The project attained its name from its site where in 1979, Deng Xiaoping announced the reform and opening up of China.



“

The floating “secret garden” on the top offers visitors a fantastic view of the city and an enjoyable respite from the urban hustle.

Nowadays, factories converted into lifestyle areas stand side by side with the real factories, old residential neighborhoods, banking headquarters, and touristic theme park. Due to its close proximity to river and mountain, Shuiwan 1979 becomes a building that interacts with the city.

The clear and concise façade texture of the office floor portrays the overall image of the project, delivering a landmark identity in the area. The podium contains ample commercial retail space, and the commercial space of the plaza has a large atrium which runs through three levels of retail space. The floating “secret garden” on the top offers visitors a fantastic view of the city and an enjoyable respite from the urban hustle.

GREEN TERRACES BETWEEN TOWERS

The tower is designed as an interlocked stack of smaller boxes relating to the scale and diversity of today’s Shekou. Gaps rising up between the boxes are filled with green terraces and public space from the raised retail podium’s roof landscape. Halfway up the tower between offices below and residences above cantilevering terraces invite the neighbourhood to its restaurants and bars, swimming pool, and art gallery. Meanwhile, public spaces also split up the building allowing a dialogue with its surrounding buildings of different scales.

www.clouarchitects.com



Images: Shining Laboratory, Shuhe

melaphone

visual audio

When you need to talk...**Safely**

100% blocking of viruses and pathogens

0% transmission of air-flow



Melaphone[®] Speech Unit

Fully certified to ISO 14644 -1 Class 5

In use for
over 50 years

01359 233191
info@melaphone.co.uk
melaphone.co.uk





HR PROF THE **ECO-FRIENDLY** FIRE RETARDANT

- Water based - does not leach
- Allows wood to breathe naturally
- Internal/External application
- Colourless - Odourless
- EN 13501 - 1
- Non Toxic - No Solvents
- BS 476 part 6 & BS 476 part 7
- Euro-class B-sl-d0 and C-sl-d0
- BM TRADA ISO 9001 Certificate
- Meets the **highest** EU standards



Classification Reports and Certificates for HR Prof: Pine, Spruce, Scotch/Siberian Larch, Western Red Cedar, Oak, Plywood & More

ALSO FOR WOOD PROTECTION: Fire Retardant UK One Coat Interior
A clear, colourless treatment for Euroclass B s2 d0 and Class O in a one coat application on porous wood, porous-faced plywood and porous wood based boards.

Fire Retardant UK Top Coat Sealer Interior Option
For protection against dirt, UV, and splinter resistant surface - a wipe-able sealer for application over Interior One Coat. In Clear or Wood-Stain - Matt or Satin finish

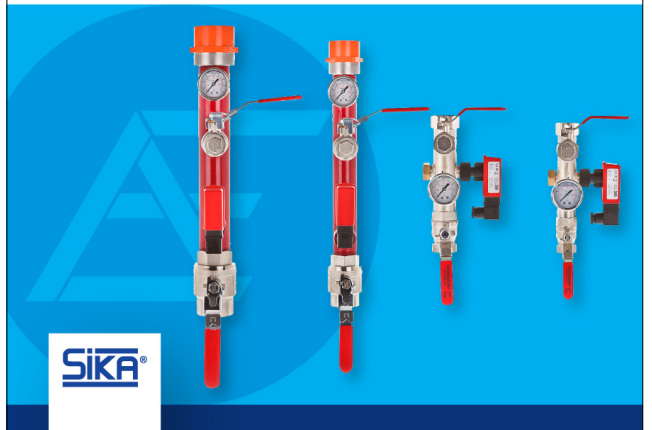


t 0800 7833 228
e sales@fireretardantuk.com
w www.fireretardantuk.com



T: +44 (0)1825 764737
F: +44 (0)1825 768330
E: info@appeng.co.uk
www.appeng.co.uk

FIRE SPRINKLER VALVE SET
1" to 2"



BANISH BUDGET BLUES

MAINTENANCE FREE WALL AND DOOR PROTECTION

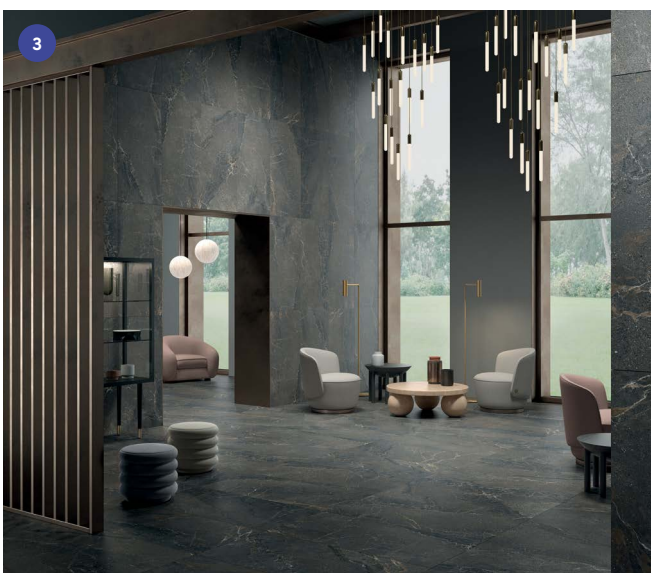
www.yeomanshield.com



making business a pleasure for over 50 years

Improve the performance of your interiors by ending costly re-painting and repair.

for more information call 0113 279 5854 or email sallyann@yeomanshield.com



1

STEEL WINDOW ASSOCIATION MEMBERS ARE FULLY OPERATIONAL AND WE ARE HERE TO HELP AS ALWAYS

The New Year has got off to a start no one expected – so it does not seem right to holler Happy New Year as we always like to do. Yet, we do need to look forward with positivity and hope; and things will get better!

The architectural and building world is still moving fast and efficiently despite the challenges; and we are pleased to see all Steel Window Association manufacturing members and associate organisations continuing to be fully up and running. Sites are open and homeowners’ plans are coming to fruition. Throughout the past few months, SWA has been the source of independent, comprehensive advice when members were busy trying to optimise and amend operations. We are still here to help so please do get in touch.

www.steel-window-association.co.uk

2

AIR PURIFICATION SYSTEMS FROM DDC DOLPHIN

UVMATIC® air purification units are the latest in DDC Dolphin’s range of infection control products. The UVMATIC® and UVMATIC® Plus are the perfect solution, removing harmful bacteria on hard surfaces and in the air, and eliminating odour. Completely automated and chemical free, the UVMATIC® and UVMATIC® Plus draw in polluted air and treats it using UV light and photocatalytic oxidation. This powerful but eco-friendly technology doesn’t merely filter out micro-organisms – it destroys them! Proven to destroy viruses such as influenza and coronavirus as well as E.coli, salmonella and similar bacteria, the UVMATIC® and UVMATIC® Plus are highly effective in removing unpleasant smells, killing bacteria that cause malodours, and improving hygiene, leaving rooms smelling fresh and clean.

Tel: 01202 731555
 Email: info@ddcdolphin.com
 Web: www.ddcdolphin.com

3

CTD ARCHITECTURAL TILES INTRODUCES ANTIBACTERIAL COLLECTIONS ANTHOLOGY & DELIGHT

New for 2021, CTD Architectural Tiles introduces two new collections to its portfolio: Anthology and Delight. Manufactured by LEA Ceramiche, the new ranges boast exceptional aesthetic and practical qualities, namely the PROTECT antibacterial solution. Using Microban® Technology, a world-renowned 3rd party accredited antibacterial system, the tile surfaces have been finished with this ground-breaking coating, which eliminates up to 99.9% of bacteria. Exclusively available through LEA Ceramiche, the innovative antibacterial Microban® coating provides continuous protection, 24 hours a day, giving designers, specifiers and architects the added and increasingly essential benefit of hygiene when it comes to product selection.

www.ctdarchitecturaltiles.co.uk

4

REDEFINE YOUR HOME

The Stratus Thermal Lantern Roof is bringing a touch of colour to a grey world with the announcement that its popular aluminium lantern roof system will be available in any RAL colour from 1st March – with the option to choose the same colour on both faces, or mix and match different colours.

2020 was a grey year and so this new colour offer is sure to be welcomed by those wanting to add a splash of colour to their homes.

The Stratus Aluminium Lantern Roof System is up to 65% more thermally efficient than conventional aluminium roof systems and boasts a slim ridge for modern aesthetics. The aluminium exterior gives a premium, architectural look to the lantern, which is available in a range of styles including four-way pyramid.

www.stratuslanternroofs.co.uk



5

STARON INTRODUCES FOUR NEW COLOURS

Staron is delighted to introduce four new contemporary colourways to its solid surface collection for 2021. Designed with modern living in mind, the premium surface brand's new hues provide a refined finish that's guaranteed to enhance any space.

Choose from the strikingly bold shades of Forest and eye-popping Ultramarine for an interior that makes a statement, or opt for the delicate softer shades of the aptly named Artic White and Rotor Cloud finishes for a soft, bright and elegant marble-effect finish that's perfect for on-trend abodes.

Perfect for use in kitchens and bathrooms, due to superior anti-scratch, anti-bacterial and heat resistant qualities, solid surfaces from Staron provide seamless and exquisitely smooth surfaces through indistinguishable joints.

www.staron.com

6

T-WM WASTE MANAGEMENT

T-WM Waste Management, reliable 24/7 construction waste removal and site services in London, offering a complete waste management & recycling service with the piece of mind that all waste collected comes back to our own waste facility in the heart of East London.

We have a selection of collection vehicles to suit the job in hand, 2 man teams available, we run ad-hoc & scheduled collections offering wait & load service, 16 & 20 yard collection vehicles, skip hire & Roll On – Roll Off Hire, whatever the project, no job is to big or too small.

Call: 020 3589 0312
Email: info@t-wm.co.uk
www.t-wm.co.uk

7

CELEBRATE YOUR PROJECT WITH BESPOKE STERLING SILVER CHAMPAGNE COUPES

Based in the heart of the historic cathedral city of Canterbury, Justin Richardson and his team of master craftsmen create some of the country's most exclusive and inspiring jewellery and silverware. They have won numerous awards for their world-class design and craftsmanship. These include awards from the prestigious Worshipful Company of Goldsmiths Craft & Design Council. At the heart of every custom-made piece is the design. Justin combines his passion and craftsmanship to create dramatic, beautiful fine jewellery and silverware. After meeting to discuss and bounce ideas, a firm brief is established. From there meticulously hand painted drawings are created from which to choose. Once chosen and created the design remains exclusive. So why compromise, when you can create something unique.

www.justinrichardson.co.uk

8

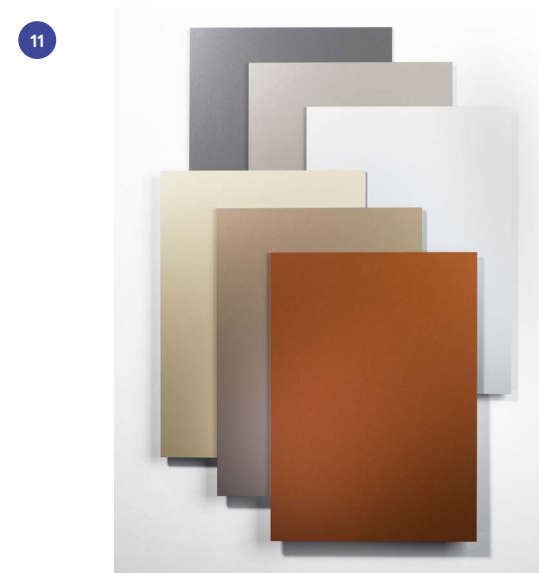
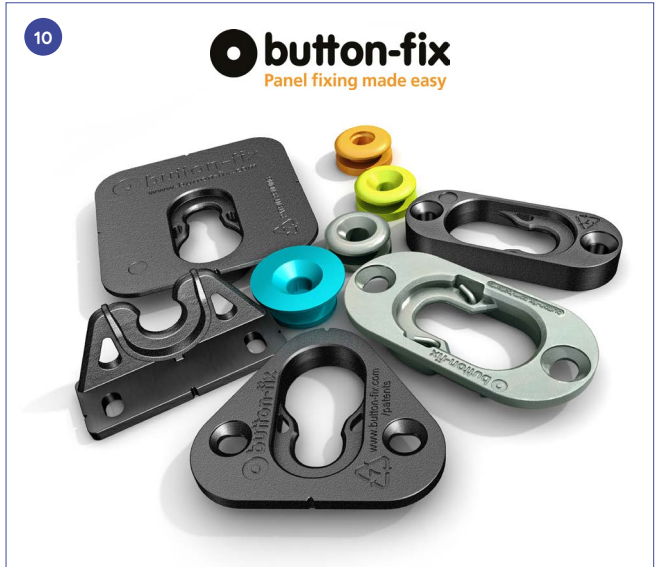
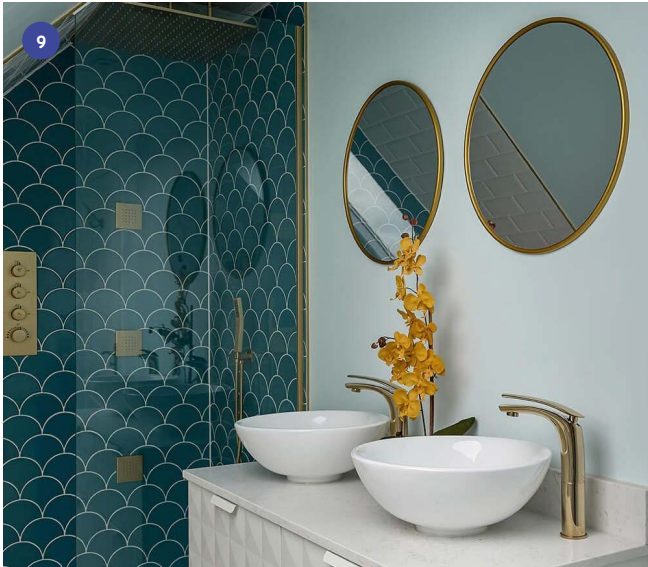
THE LATEST IN SEALING TECHNOLOGY

"How do I seal around a pipe where it passes through a wall or ceiling panel?" What may seem a simple problem has for many years been the source of aggravation and repeated maintenance costs.

Pipetite's self-sealing design and versatility eliminates the headache that comes with escutcheon and metal wall plates. Pipetite does not require any sealants, making it quick and easy to install. The air-tight seal keeps water, bugs, dirt, mould, and dust out, while providing a more permanent solution than 'quick-fix' putties, sealants and caulks.

Pipetite's applications are endless, but it is an effective option to seal a pipe, tube, or other structural equipment through concrete walls, outside piping, ceiling holes, and various openings.

www.industrialtradingsolutions.com



9

THE LOFT ROOM

With over 30 years' experience, Rich Conlin and Paul Gibbs started The Loft Room to fulfil the need for luxury design and service in the loft conversion industry and now proudly work on homes across South West London, Surrey, Berkshire and Hampshire.

Unlike most traditional loft conversion companies, The Loft Room was founded and now managed by two expert carpenters who set out to create bespoke spaces and offer an exceptional experience for their clients.

Now, after building hundreds of lofts, Paul, Rich and their team of architects and structural engineers have an extraordinary ability to turn any loft into the heart of their client's home. They ensure this family-run business provides a unique luxury service like no other.

the-loftroom.com

10

PANEL FIXING MADE EASY!

Button-fix is an easy, accurate and secure method of invisibly attaching panels, signage and objects to walls, ceilings, and other surfaces.

Whatever your project, for smooth, streamlined interiors with no unsightly screws then Button-fix is the answer!

Independent test reports show that all our products are immensely strong, whilst our new Type 1 Metal fixing has been specifically designed for fire-retardant applications and other extreme environments.

All our panel fixings enable panel replacement and provide easy access to concealed services.

For more information visit www.button-fix.com, email us on info@button-fix.com or follow us online @button_fix

11

ALUCOLUX® A1 FROM 3A COMPOSITES GMBH LAUNCHED IN THE UK!

3A Composites GmbH, has launched ALUCOLUX® A1 – coil-coated and real anodised solid aluminium sheets, into the UK market. ALUCOLUX® aluminium sheets provide an A1-rated non-combustible solution featuring, high quality PVDF/FEVE coatings produced on a continuous coating line to ensure consistency and longevity across the surface. Conforming to AAMA 2605 and ECCA guidelines ALUCOLUX® A1 aluminium sheets offer the highest quality coated surfaces and real anodised surfaces in accordance with DIN 17611 as well as boasting A1, non-combustible fire classification in accordance with EN 13501-1.

For more information about ALUCOLUX® its many finishes and applications visit the company's website at www.alucobond.com or to request an ALUCOLUX® A1 brochure call + 44 (0) 75 84 68 02 63.

12

THE ULTIMATE SPLASH: AWARD-WINNING SWIMMING AND SPA FACILITIES

Buckingham Pools is a leading specialist in the wet leisure industry and trusted to deliver exceptional expertise in design and construction.

Our award-winning swimming, leisure and spa facilities enhance commercial, educational and residential developments nationwide.

We focus on first class customer service from drawing-board to completion.

www.buckinghampools.com
info@buckinghampools.com
 01926 852351
 @buckingham_pools



13

Photo credit: Developer: Vita Group; Contractor: Sir Robert McAlpine; Architects: Denton Corker Marshall; Façade Sub Contractor: Rollecate Façade.



14



15

Photo: Reto Guntli



16

13

MANCHESTER'S TRINITY RIVERSIDE BUILDING STRIKES A STUNNING POSE WITH ALUCOBOND® A2

ALUCOBOND® A2 from 3A Composites GmbH, was chosen to clad the stunning Trinity Riverside Building, a 16-storey residential development, which includes 188 apartments and associated amenity areas on its ground and first floors. Designed by architects Denton Corker Marshall, on behalf of Select Property Group, the striking building with its façade of ALUCOBOND® A2 Silver Metallic panels, maintains the architectural language of the Riverview building, visually connecting the two buildings and establishing a distinct identity for the overall scheme. Specifically, the use of ALUCOBOND® A2 Silver Metallic panels "continues the architectural expression of a solid billet of steel and incorporates natural anodised aluminium fins for vertical emphasis."

Visit the company's website at www.alucobond.com or call + 44 (0) 75 84 68 02 62.

14

THINK DESIGN THINK HOMOPAL VIA DERALAM LAMINATES LTD

Keen to stay ahead of the market, Deralam have sole UK distribution rights for Homopal®, that specialise in laminates of various finishes including real metal surfaces, this leaves an almost unlimited scope for creativity and customisation; meaning that this product has a multitude of applications and finds its way into cruise ships, bars, restaurants, nightclubs and high street retail stores, in fact, any vertical surface that needs to be enhanced. Over the years, hardly any other material has proven its worth in interior design to the extent in which the laminate has done. Looks, feel and function are combined to get the interplay of elements into all-embracing spatial concepts in a way that could not be more natural. Deralam is the ideal choice for Architects, manufacturers and retailers alike.

www.deralam.co.uk

15

LALIQUE INTERIORS

Lalique, the jewel in the crown of the French crystal industry has been widely used to much acclaim in commercial and residential projects worldwide. When considering the use of crystal in the home both as an architectural feature and decorative item, there is no better example of its use than at Maison Lalique's five star hospitality establishments. Villa Rene Lalique, the former family home of Rene Lalique, now a 5 star hotel and 2 Michelin star restaurant recently celebrated its centenary. A celebration and showcase of Lalique from the wine glasses to the door handles and Damien Hirst artworks lining the cellar it is a perfect example and showcase of what can be bought or made bespoke to suit your schemes from our London boutiques. For further information or to book a one to one appointment for our team to guide you through the collection, please contact:

LALIQUE, 47 Conduit Street, London, W1S2YP
Tel: +44 207 292 04444
email: shop.london.cs@lalique.fr

16

COMBAT COVID-19 WITH PUREAIR

Create a safe workspace with the PureAir R150 professional air cleaner. It is now widely accepted that COVID-19 is transmitted in enclosed indoor spaces where a staggering 90% of our time is spent and even more in winter. Businesses must start considering more effective ways to improve IAQ, provide a clean, safe working environment and peace of mind for staff and customers.

Safe air should be an integral part of our coronavirus precautions as viruses attach themselves to airborne pollutants which leads to them remaining suspended in breathable air for up to 3 hours and able to travel further distances.

For more on the PureAir with H14 filters and UVC sterilization, contact: Loretta King, Alert Technology Ltd, loretta@asbestos-alert.com

www.alerttechnologyltd.com

INNOVATION IS KEY FOR ENGINEERING AND CONSTRUCTION CONTRACTOR

For over 50 years, Fordingbridge plc, an independent firm in West Sussex, has been providing solutions to enhance outside space. From humble beginnings manufacturing polytunnels for commercial horticulture, the company has evolved to design and build an industry leading portfolio of bespoke canopies, covered walkways and pre-fabricated statement buildings.

Working in multiple sectors including education, commercial, healthcare and leisure, Fordingbridge have a team of industry experts in each field, providing information and design notations from an early phase throughout to programme delivery. "The ethos we work to is very much a collaborative approach with our installation process," explains Fraser Dixon, Business Development Manager at the firm. "We ensure the clients requirements are fully understood, from both a design purpose and also to the works schedule. Our team achieve this through clear communication, engaging with the programme team as a whole and working with both the architects and end client. With a large volume of our work coming from education and healthcare, we understand the importance of a tight works programme, so always pre-fabricate our structures offsite to allow for a smoother installation with minimal disruption to the site. Our work in healthcare especially, which has included a number of ambulance bay canopies, requires careful planning. Working closely with other contractors, the paramedic unit and of course the NHS Trust themselves, means that we can stage a build to ensure the department can continue to function and crews and patients can access emergency departments."

The team also take the longevity of the end product into account, meaning that the claims of 'industry leading guarantees' are valid. "Our complete process is in-house, from design through to manufacture and installation," Fraser continues. "This means that we can take ownership of the brief, and monitor quality of our output closely. We understand that the value of a product isn't just about price, it's about how well it delivers over time. Our clients understand that while something may cost a little more, they will see the return on that investment through the overall lifespan of the product. If we take a school canopy as an example, where ours may cost a few per cent more initially, our steel structure would be guaranteed for an additional 15 years when compared to a competitor; 25 years in total. Add to that the point that we always ensure our education canopies are subject to full site-specific structural calculations, the overall value of our offering is very attractive."

Fordingbridges' experience in the leisure industry also adds to the diversity of the firm. With projects including roof-top skybars, Zoo Visitor Centres and animal enclosures, the businesses design team have chance to flex their drawing metal when working with architects and planners. Building with steel and glulam



timber as primary construction materials, Fordingbridge specialise in the creation of statement buildings which are as efficient as they are aesthetic. "We understand the buildability aspects of design, so it is always beneficial when we are engaged early," Fraser explains. "As we have the design capabilities in-house to complement the construction and engineering aspect, we can help alleviate some of the pressure architects face on more complex installations. Similarly, we can assist in initial planning. A good example of this is some forthcoming work we have at a popular zoo. We have worked closely with the businesses architect and owners to come up with a design which will be functional, environmentally conscious, deliverable and stunning! Sometimes the buildability aspect may be overlooked which can lead to extra costs for the client, but working with us from the outset means these aspects can be incorporated into the design. We want to bring architects works to fruition, and we want to do it as safely and cost effectively as possible."

www.fordingbridge.co.uk



Canopies, walkways & statement buildings designed to work with you

Fordingbridge consistently deliver successful solutions collaborating with Architects and specifiers. With over 50 years of experience, Fordingbridge have the knowledge, in-house expertise and understanding to enable inspired and durable designs. Make us your canopy contractor of choice.

01243 55 44 55
www.fordingbridge.co.uk
info@fordingbridge.co.uk

Our specialist in-house design & build team is here to bring your next project to fruition.

Contact us today to discuss how we can work together

FORDINGBRIDGE
inspiring design + build



no architraves?

Yes, exactly that, a perfectly "**flush to wall**" that extends your contemporary design to include the door too.

Flush Door Frames from **Rocket Door Frames**

 **Rocket Door Frames**

TEL 0330 998 0617

EMAIL info@rocketdoorframes.co.uk

WEB www.rocketdoorframes.co.uk