



# One Baltic Square Construction Update

JANUARY 2022



## JANUARY 2022

This month at One Baltic Square, Block D has seen the completion of the blockwork to the lift shafts and the screed and insulation on upper ground floor.

Another task completed is the concrete pour to floors in Block B, as well as Block C's being near completion. The drainage installation works continue to make progress across the entire site.

## SUMMARY OF WORKS PROGRESSED

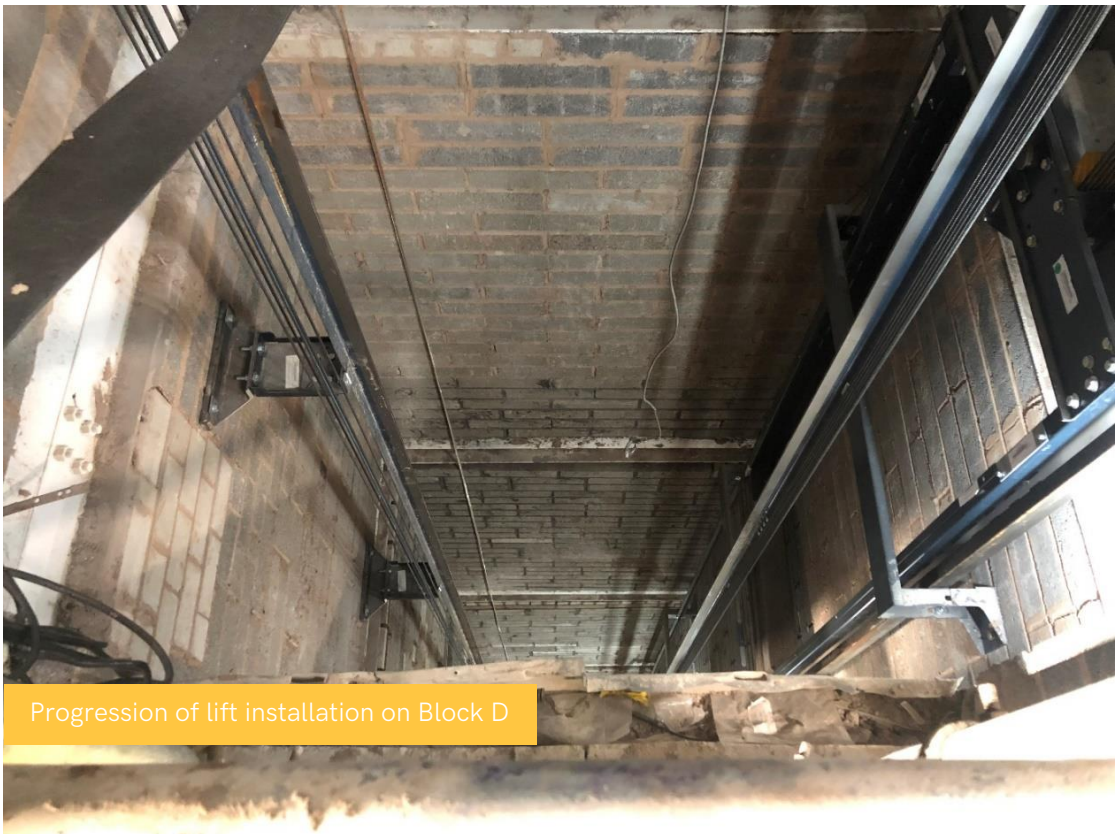
- Completion of the blockwork to the lift shafts on Block D, with Block A nearing completion
- Screed and insulation on upper ground floor of Block D at 100%
- Concrete pour to floors in Block B is complete with Block C nearing completion
- First fix mechanical and electrical and containment for electrical works to Blocks A and D continues
- Progress to internal partitioning and boarding to Blocks A and D
- Development of the lift on Block D
- Party wall masonry works progressing
- Finishes in the storerooms progressing nicely
- Progression of framing for combination units within the bathrooms
- Drainage installation works seeing fast progress throughout the site

## WORKS SCHEDULED

- Completion of blockwork to lift shafts across the site
- Concrete pour on Block C to be completed
- Progression of bathroom unit framing
- Continuation of first fix mechanical and electrical works
- Development to internal stud work partitions and boarding
- Progress to lift insulation on Block D
- Continuation of party wall masonry works
- Commencement of fire stopping
- Initiation of intumescent painting on Block C



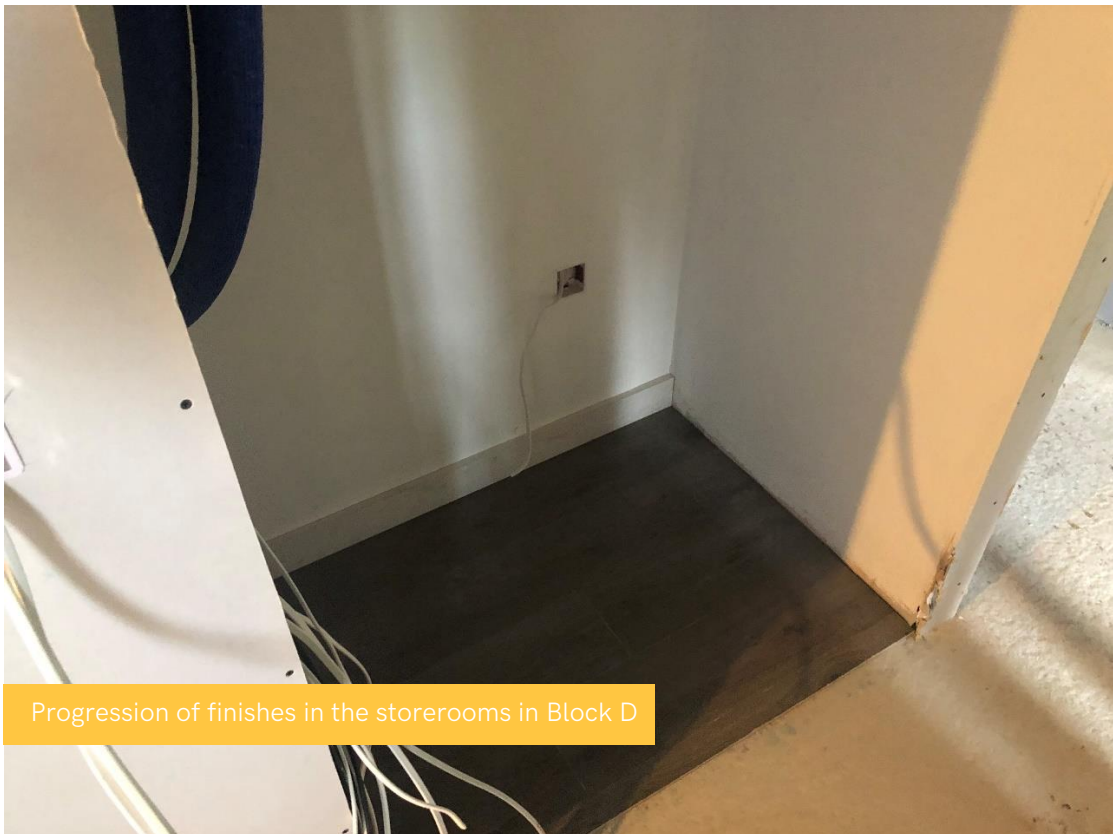
Progression of Blocks B and C, concrete ongoing on Block C



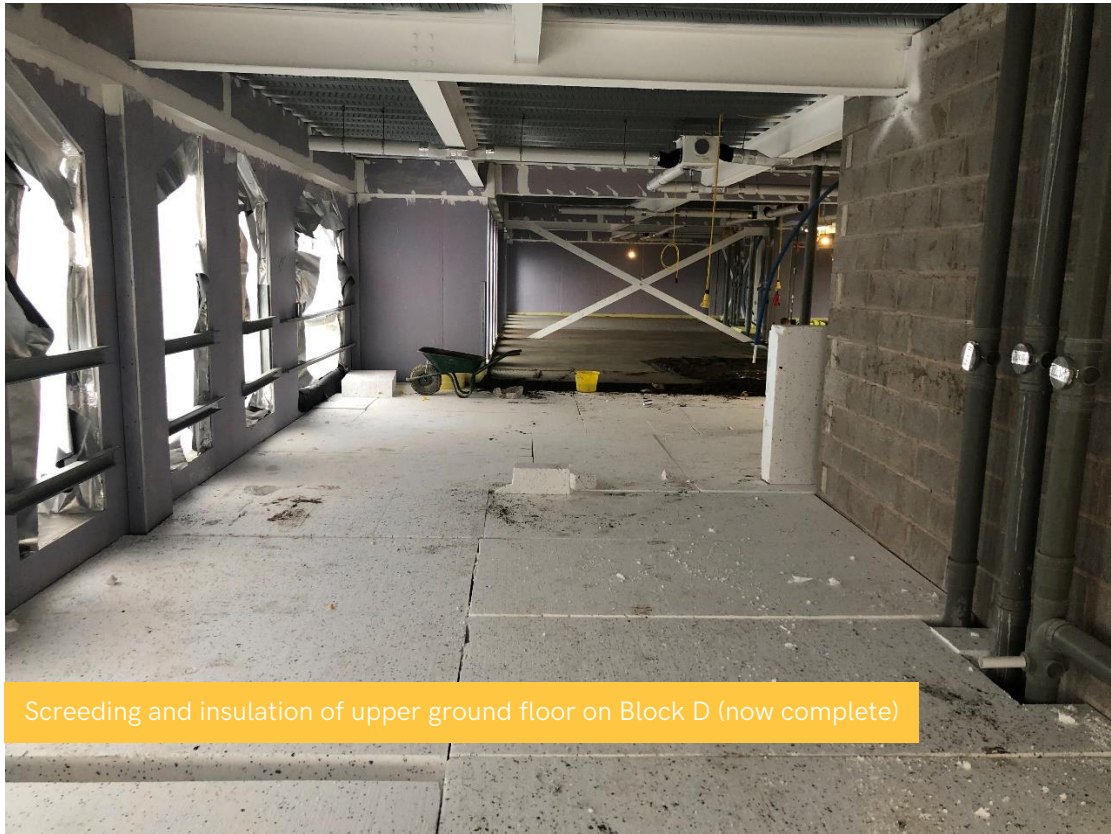
Progression of lift installation on Block D



Progression of framing for combination units within the bathrooms in Block D



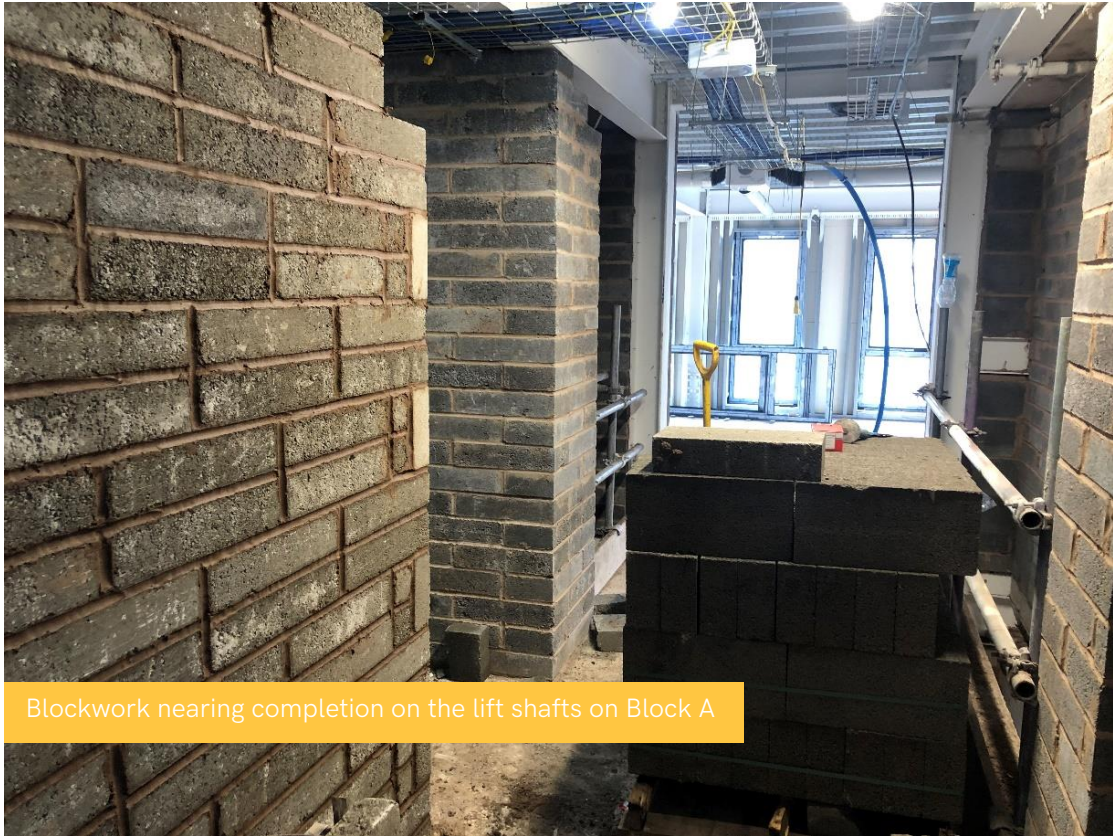
Progression of finishes in the storerooms in Block D



Screeding and insulation of upper ground floor on Block D (now complete)



First fix installation ongoing



Blockwork nearing completion on the lift shafts on Block A



Progression of internal partitions and boarding on Block A



External view of Blocks A and C