



# ELEMENT - The Quarter Construction Update

January 2022



## January 2022

**This month at ELEMENT - The Quarter, the steel structure and upper suspended steel floor structure are both nearing finalisation. Also, great progression is underway with the fire coating steel framework.**

Another task nearing completion is the flat roof structure, and finishing touches are being made to the scaffolding and master climbing access. Weatherboarding work continues to make progress across the entire site.

## Summary of Works Progressed

- Finalisations of steel structure to be completed
- Upper suspended steel floor structure near completion
- Large progression seen with fire coating steel framework
- Over halfway progressed on the structured framework forming the external walls
- Finishing touches to scaffolding and master climbing access
- Flat roof structure 88% complete
- Commencement of flat roof coverings including balconies
- Weatherboarding is seeing fast progress throughout the site
- Clear development of external windows, doors and curtain walling
- Progression of external wall insulation and cladding



Brunswick Road site view



Inner Courtyard - General site view



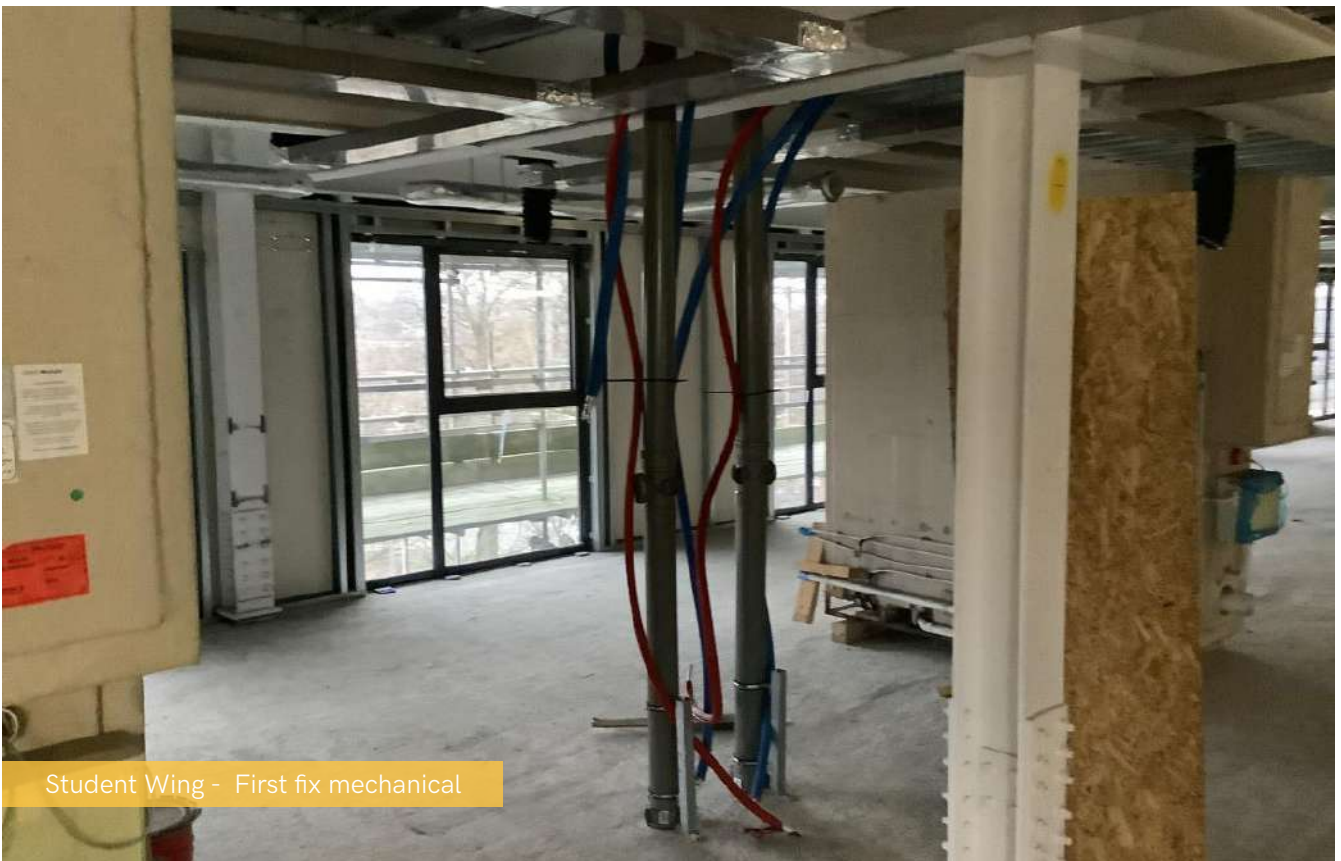
Brickwork progress to sub station



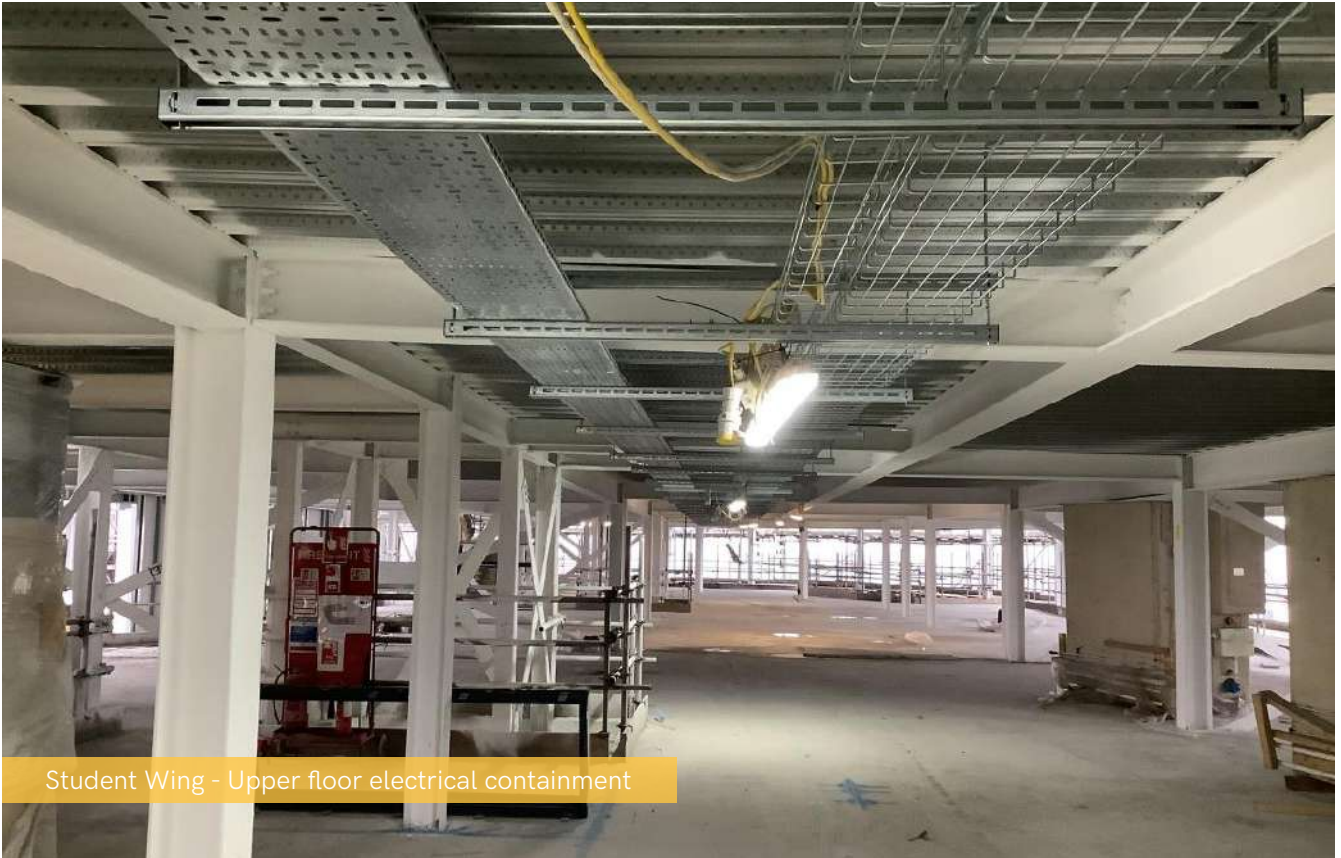
Under Croft parking area fire coating



Residential Wing - First fix mechanical works



Student Wing - First fix mechanical



Student Wing - Upper floor electrical containment



Commercial Block - Upper suspended steel floor structure



Student Wing - Insulation and waterproofing flat roof system



Student Wing - Perimeter waterproof detail to flat roof



Student Wing - Flat roof membrane installed



Student Wing - External wall insulation





Student Wing - Cavity wall brickwork



Commercial Block - Under ground drainage and ground floor beams



Inner Courtyard View - Steel frame structure and SFS & weatherboard



[www.nexusresidential.co.uk](http://www.nexusresidential.co.uk)