

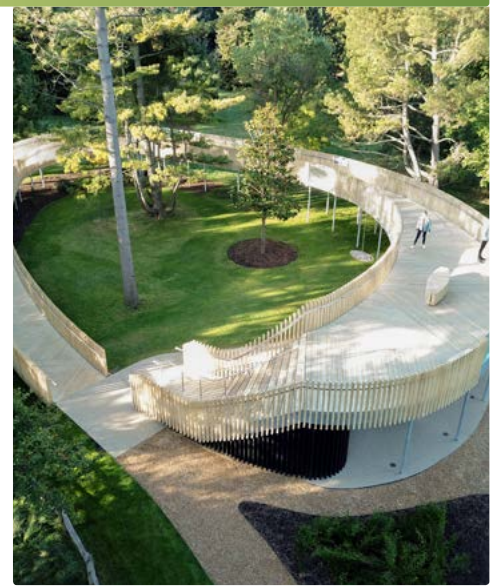
LANDSCAPE & URBAN DESIGN

35

Jan/Feb 2019

Price £3⁹⁵

landud.co.uk



Landscaping at Quebec Quarter

Outdoor space was integral to the design of L&Q's Quebec Quarter



Greenhouse & Glasshouse Trends For 2019

Greenhouses are no longer the exclusive preserve of elderly men with pipes and wellies pottering with trowels.

Expert Top Tips: Protecting a Patio

Take steps to ensure your paving is fully prepared for winter.

Unrivalled
versatility with
performance
you can
count on.



Kubota



B2 Series: The efficient and powerful choice

Get more for less with Kubota's premium-specified B2 compact tractor series

- High performance and fuel-efficient Kubota 3 or 4-cylinder diesel engines
- Extremely versatile with choice of HST with multi stage control or manual transmission plus mid and features mid + rear PTO as standard
- Advanced manoeuvrability with Kubota's unique Bi-Speed feature for tighter turning ability and reduced turf damage
- Designed for maximum comfort with the option of integrated air-conditioned cab and ergonomically positioned controls

Contact your local dealer or visit our website for more details.

www.kubota.co.uk

T: 01844 873190



For Earth, For Life
Kubota

CONTENTS



04



16



22



26



42

04

Hartley Botanic Reveals Their Predicted Greenhouse Ownership Trends For 2019

16

2019 Design Trends to Take Your Garden to the Next Level

22

Finding a way to add stylish outdoor storage solutions can often pose a problem for architects and housebuilders.

26

JPS Landscape Design are delighted to unveil the newly created Petal Garden at The Royal Bournemouth Hospital (RBH).

42

Recent BALI award winner Matt Nichol is a garden designer based in Adlington, Cheshire.

THE TEAM

Publishing Director
Martin Holmes
martin@mhmagazine.co.uk

Digital Manager
Jamie Bullock
jamie@mhmagazine.co.uk

Business Manager
Josh Holmes
josh@mhmagazine.co.uk

Sales Director
Lee Martin
Tel: 01227 392597
lee@mhmagazine.co.uk

Editor in Chief
Antony Holter
Tel: 01304 806 039
antony@mhmagazine.co.uk

Studio Designer
James Sayer
james@mhmagazine.co.uk

Every effort is made to ensure the accuracy and reliability of material published in Landscape & Urban Design however, the publishers accept no responsibility for the claims or opinions made by advertisers, manufacturers or contributors.

No part of this publication may be reproduced or transmitted in any form or by any means, mechanical, electronic (including photocopying) or stored in any information retrieval system without the prior consent of the publisher.

www.landud.co.uk T: 01304 806 039 E: info@landud.co.uk



GREENHOUSE & GLASSHOUSE TRENDS FOR 2019

- British greenhouse manufacturer Hartley Botanic reveals their predicted greenhouse ownership trends for 2019
- Less good life, more good living – the new, multifunctional ‘glass rooms’ for environmentally conscious young families entertaining al fresco and enjoying veg-based diets

Greenhouses are no longer the exclusive preserve of elderly men with pipes and wellies pottering with trowels. In 2019 they're just as likely to be used for parties and entertaining as younger families admit they see them, not just as a route to healthier and eco-friendly living, but as luxury lifestyle accessories - according to Hartley Botanic who have shared their predictions for how their greenhouses and glasshouses will be enjoyed

in 2019 based on recent customer behaviour.

The trends, which have been released at the end of Hartley Botanic's 80th anniversary year, reveal how modern gardeners are using greenhouses within their gardens, their most important motivations for ownership and the most in demand styles and designs.





Trend 1: Greenhouses Being Used To Serve Organic, Veg-Based Diets

At the heart of greenhouse ownership in 2019 lies the fact that many people want to live more healthily with a focus on enjoying good quality fruit and vegetables which they are confident producing themselves. The manufacturer found that while 95 percent of customers expected to use their greenhouses to grow food and decorative plants, most of them did so because they wanted to eat better.

Some of Hartley Botanic’s customers exclusively use their greenhouses for food ‘production’ with even very large structures being given over

to the exclusive growth of fruit and vegetables for customers and their families.

Many Hartley Botanic customers cite that their greenhouses give them surety of the quality of the produce they eat. They can guarantee the food they produce is organic and they believe the fruit and veg they grow tastes superior to supermarket equivalents.

Trend 2: Greenhouses As Multipurpose Spaces

The second most significant predicted trend cited around greenhouse usage was their purpose as multifunctional

spaces. While recent customers may have initially purchased a Hartley Botanic greenhouse with horticultural production in mind, once installed, they soon become a peaceful place to enjoy the garden or the fruits of their gardening labour, away from the intrusions of modern life.

30 percent of recent Hartley Botanic customers also expected to specifically use their greenhouses as an al fresco entertaining space at the point of purchase. A greenhouse allowed them to extend the length of time it was possible to entertain outdoors and many customers use them as additional, al fresco areas for socialising 8 or 9 months of the year.



Trend 3: Greenhouses As A Status Symbol

In recent years there has been a definite change in the way customers view their greenhouses – instead of being just a functional building, in 2019 gardeners will increasingly view them as almost lifestyle accessories and to an extent, status symbols.

Imposing and grand Victorian structures are increasingly popular, with customers using them to frame and display ambitious plant collections in a similar way to the hothouses of the Victorian era. The Victorians filling their large glasshouses with exotic ferns and giant palms is still a very covetable look which customers recreate today. One Hartley Botanic customer recently shared that she liked to “show off” her greenhouse to other members of the gardening club she had joined.

experience and a health point of view) and by the fact that market conditions mean families are moving less and investing more in their existing properties.

Families moving less frequently has also influenced interest from urban customers and in the last year there has been a renewed greenhouse demand from city dwellers: Christopher White, Sales Manager for Hartley Botanic commented; “In general there is a growing demand amongst city dwellers for greenhouses – both in the UK and abroad (we have seen considerable growth from the US’ major cities over the last two years.)

“London, for example, is hugely diverse in terms of its ‘under glass’ growing tastes and the preferences of its homeowners. Commonly however, we are experiencing increased demand for larger and lean-to structures

which we believe reflects a customer desire to invest long-term in their homes. We do still see a demand for small, practical greenhouse solutions for city dwellers but increasingly homeowners want something which makes a beautiful statement in their

Trend 4: City Dwelling Families With Young Families, Not Just The Retired In The Country

In terms of customer demographic, Hartley Botanic’s customers are changing. From a group primarily composed of the over 50s and the retired to a more mixed customer base which includes younger consumers usually with children and the manufacturer expects this change to increase in 2019.

This seems to be driven by both a desire for children to benefit from home-produced food (both from an





garden and will last over time, as well as serving a practical or hobbyist function.”

Trend 5: Victorian-Style Greenhouses And Glasshouses

During 2019, as with the last 22 years, Hartley Botanic foresees that its traditional Victorian range will still be the most popular greenhouse design and look chosen by customers. It is felt that this has been influenced by a trend for exotic plants and ferns which are perfectly set-off by a Victorian aesthetic. The largest Victorian glasshouse Hartley Botanic has produced for a customer in the past year was more than 150 square metres in size.

Of their Victorian range, Tom Barry, Managing Director of Hartley Botanic said; “It’s an iconic look which was somewhat set in an era when plant-

hunters filled their greenhouses with exotic plants, ferns and giant palms. That’s still very covetable even today. It has classic beauty and style as well as a historic appeal.”

Trend 6: Using A Greenhouse For Environmental Reasons

As well as the ‘grow your own’ benefits of improved quality and taste, 2019 gardeners will be using a greenhouse for environmental reasons. Current Hartley Botanic customers cited a key motivation in using a greenhouse for food production was around reducing air miles and concerns for the environment.

Modern greenhouse owners have concerns for the use of chemicals in the production of fruit and vegetables but also about the environmental effects of transporting produce over long distances.

Many customers also felt that using a greenhouse to produce their own fruit and vegetables had significantly reduced their day to day consumption of plastic packaging – an issue they were increasingly concerned about.

All Hartley Botanic’s greenhouses and glasshouses are handmade, bespoke and made to order. They are the only aluminium greenhouse manufacturer endorsed by the RHS.

Customers interested in purchasing a Hartley Botanic greenhouse or glasshouse should visit: www.hartley-botanic.co.uk or call 01457 819 155 for more information.



LUMENA LIGHTS

PRO SOLAR FOR ALL SEASONS

'English weather'... words that hold such Gravitas with everyone in the U.K. and words that confuse the idea of using 'Solar' products in this country! The perception is that U.K is fairly dull for half the year, so the effectiveness of Solar technology suffers. The good news, is that the forecast looks good for 2019, and indeed long into the future. Here's why...

Awareness and knowledge of Solar lighting is increasing, as well as improvement in technology used in Solar products including related technologies like 'LED'. Unfortunately, lower cost solar lights tarnished the industry. They were often extremely cheap, didn't last much more than a season, and illuminated dimly. Nowadays, thanks to a few forward-thinking companies, long-lasting solar path lights that charge sufficiently on dull days with high outputs are easier to find.

When considering outdoor lighting for any premises, the benefits of solar are obvious.

- 1) **No Energy Cost** – Even after a higher initial cost, the overall and ongoing savings with Solar are considerable, especially with newer designs which last longer. There can also be financial incentives to use solar when dealing with commercial projects.
- 2) **Very Low Installation Costs** – Unlike 240v mains lighting where an electrician is required usually for long periods of time to bury armoured cable (for example), It can be as simple as fixing solar lights in place once – job done!
- 3) **Maintenance Free** – Once in place, very little maintenance is required, especially with the latest designs. The fact high quality LEDs are used gives them a long lifespan anyway, but be sure to source fittings that use Lithium Ion batteries for up to 8 years life.
- 4) **Environmentally friendly** – Solar energy is one of the World's most innovative renewable power sources.

It uses no power from the grid, just solar power to charge rechargeable batteries during the day, stored and ready to be used at night.

Professional Solar lights such as those offered by Lumena Lights, address previous problems including dull U.K light. They have high capacity long life Lithium Ion batteries as used in electric cars and the latest mobile phones. These last several years and retain a full charge unlike Nickel Cadmium batteries that rapidly lose their storage ability. The SolarEye80, Freeway PIR light and Solamon range all use Lithium Ion and have suitably bright lumens output. The high quality SolarEye in-ground lights will last for 2 weeks without sunshine when fully charged, with a battery life of up to 8 years! With over 20,000 installed since 2012, the virtually indestructible Solar Eye is proof that Solar technology will be lighting the way for years to come!

Find the SolarEye at
www.lumenalights.com



**New
for 2019
Available
Now**



Innovate • Educate • Illuminate

Exclusive Pro-Solar Lighting Range

solareye[®]80 >>

- >> Solar Powered In-Ground Lighting
- >> When fully charged will last for more than 2 weeks without sunshine
- >> No Electrical Supply Required
- >> As used by Councils in the U.K. Over 20,000 installed since 2012
- >> Virtually Indestructible - IK10 & IP68
- >> Up to 8 years Battery Life



White or Coloured Options



FREEWAY 5 - PRO-SOLAR PIR LIGHT



COMING SOON!

TRADE DISCOUNTS AVAILABLE // NEXT WORKING DAY DELIVERY



www.lumenalights.com

Showroom: 9-5 Mon-Fri - Centre 33, Long March - Daventry, NN11 4NR • 01327 871161





The Bellhop by Barber & Osgerby

From the extensive range of discreet outdoor lighting created by Italian lighting specialist Flos and its world renowned designers distributed exclusively in the UK by Atrium Limited

ATRIUM

28 Leonard Street London EC2A 4BY
020 7681 9933

sales@atrium.ltd.uk
atrium.ltd.uk



Wise Controls the wireless control solution for your **Outdoor Lighting...**



- Controlled by wireless switches, remotes or PIRs
- IP Rated, suitable for outdoor use
- Range of up to 200 metres
- Control with your smartphone, tablet or PC

Email for a catalogue and pricelist

t : 020 8874 2234 e : info@wisecontrols.com
www.wisecontrols.com

To purchase products see www.mr-resistor.co.uk

Starscape Fibre Optic Lighting

Interesting ideas for outdoor lighting



01289 332900
info@starscape.co.uk

www.starscape.co.uk

MDF? Outside? In the Rain? For 50 years? Are you MAD?



MEDITE TRICOYA EXTREME is a revolutionary product that will take the construction, landscaping and exterior design worlds by storm.

Guaranteed for up to 50 years in the face of the elements, this naturally modified MDF is incredibly versatile and can be used for **planters, garden rooms, sculptures, playgrounds, building façades, furniture**; you name it,

MEDITE TRICOYA EXTREME can do it!

For more information on MEDITE TRICOYA EXTREME, contact us on [01322 424900](tel:01322424900), email info@mdfosb.com or visit www.mdfosb.com

EXTREME
MEDITE® tricoya

ROCKWOOD COMPOSITE DECKING



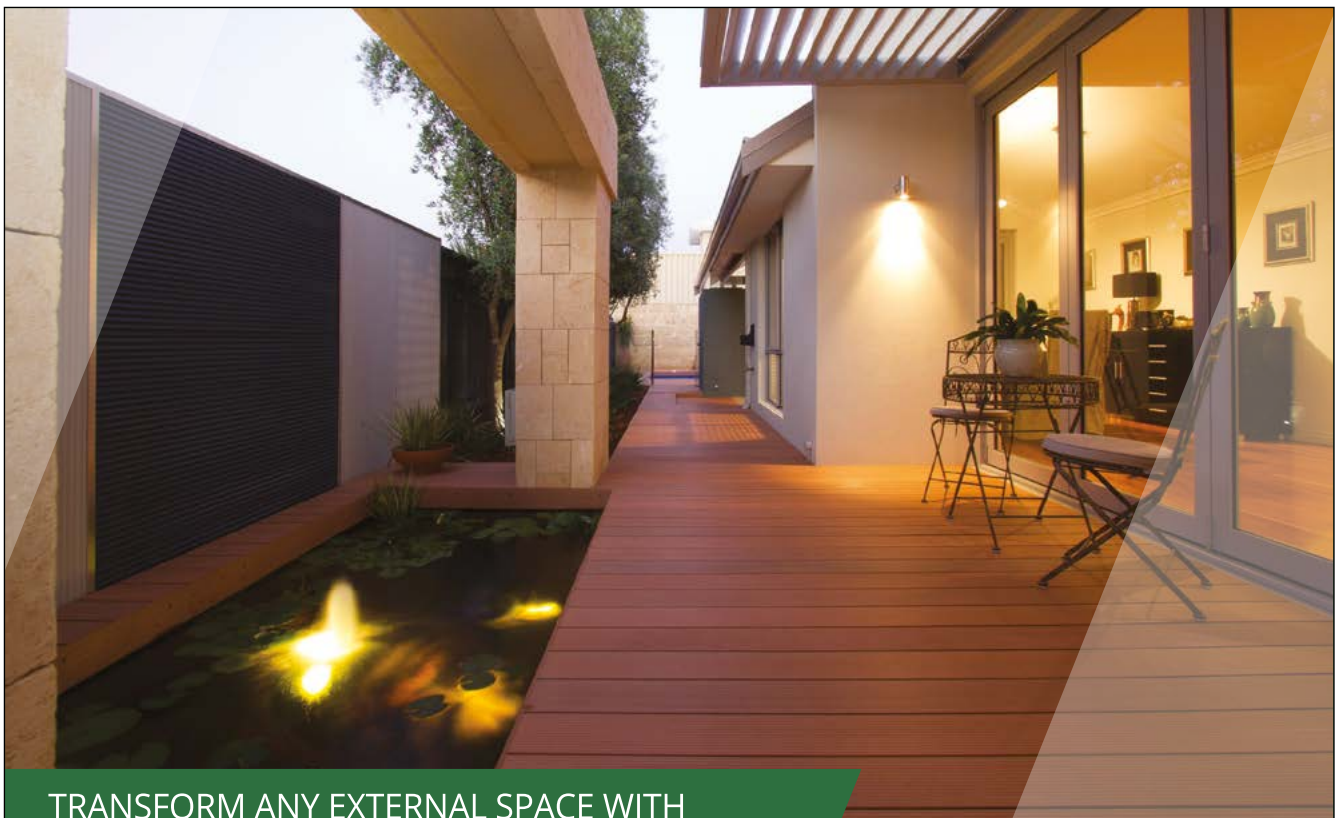
With only minimal maintenance, Rockwood WPC decking provides the Architect and end user with a robust solution to the age-old problems associated with timber decking - providing years of trouble free use.

Rockwood has a low water absorption rate, will not rot, splinter, or require the expense of ongoing painting or staining to retain its appearance.

It is resistant to attack by insects, does not promote algae growth, mould or fungus - and importantly, will not become slippery when wet.

Available in a choice of attractive colours and finishes, Rockwood WPC decking has the ability to transform any garden, patio, pool surround, walkway, roof garden or balcony - its outstanding longevity also make it an ideal choice for commercial landscaping, aquatic and riverside installations.

Contact details:
024 7601 7011
www.rockwellsheet.com



TRANSFORM ANY EXTERNAL SPACE WITH
ROCKWOOD COMPOSITE DECKING

Call: 024 7601 7011 www.rockwellsheet.com



Professional nest boxes for bats, birds & insects

Suppliers of professional nest
boxes for bats, birds & insects

Our range of nest boxes are
perfect for biodiversity mitigation
and enhancement



House Martin Nest, Double

Product Code: 10678

£16.57 ex VAT



Conservation Bat Box

Product Code: 10650

£41.09 ex VAT



Urban Nest Box

Product Code: 10326

£20.54 ex VAT



Insect Hotel

Product Code: 10304

£412.50 ex VAT

NEXT DAY DELIVERY SERVICE

We make sure your
equipment turns up on time,
in full, wherever you are.

HELPFUL & KNOWLEDGEABLE TEAM

We respond quickly and fully
to quotes, queries and
technical enquiries.

THOUSANDS OF PRODUCTS IN STOCK

We hold large stocks of nest
boxes and accessories from all
the major manufacturers.

Visit our website to view our extensive range of specialist bird, bat and insect nesting boxes

wildcare.co.uk | sales@wildcare.co.uk | 01451 493 885

LANDSCAPE & URBAN DESIGN



Free Trade
Subscription





Landscape & Urban Design Magazine

Landscape & Urban Design provides the UK's major landscaping and urban design specifiers with a comprehensive look at the latest in the landscape design and management, design innovations, garden design, the built and natural environment, public space, green space, open space and environmental sustainability.

info@landud.co.uk 01304 806039

www.landud.co.uk/subscribe

Image courtesy of Smith & Wallwork Engineers Cambridge Uni



2019 DESIGN TRENDS TO TAKE YOUR GARDEN TO THE NEXT LEVEL

Whether you are looking to completely re-design your garden or simply want to update the functionality and look of your garden, www.oecogardenrooms.co.uk has put together some of the top design trends for 2019.

From creating a space which is low maintenance to creating interesting focal points, this article will provide

you with the inspiration you can use for your garden.

Creating a low maintenance garden

Due to the hustle and bustle of modern life, gardeners are always looking to simplify their gardens, and 2019 will be no different. Creating a low maintenance garden that still has visual appeal, areas to entertain and

relax, while also being practical can be a daunting task, but following these simple tip can make a big difference.

Perennial Plants

Using perennial plants is an easy and low maintenance way of adding colour and focal points into the garden. Some of the most popular perennial plants include:

Lavender - Lavender produces a fragrant summer scent and is perfect to use for edging and borders, it also has the benefit of attracting bees and butterflies to the garden.

Geranium - These hardy and low-maintenance perennials provide pops of colour throughout the summer and are available in a range of colours including white, pink, purple and blue.

Helium - With colours ranging from red to orange and bright yellow, Helemiums work well in borders and typically flower from midsummer to early autumn providing visual appeal to the garden.

Remove high maintenance bushes and shrubs

Consider removing any messy bushes and shrubs from the garden, especially those who shed their leaves regularly.

Box Hedge, Leylandii and Conifers

are all great choices for edging and garden borders, while Rhododendrons and Camellia provide pops of colour at different times of the year.

Choose Hardscaping Materials

If you're looking for low maintenance gardening options, hardscaping materials such as stones, rocks, patios and gravel are ideal. These materials come in many shapes, colours and sizes and don't need constant looking after as lawns do.

Creating a staycation spot

With holiday prices continuing to rise, many people choose to stay in the comfort of their home instead, so why not turn your garden into the ultimate staycation space. Creating a tranquil area to entertain, relax and unwind in is easy with these inspirational tips:

- Install a weatherproof sound system

so that you can play music while you're outside.

- Build a fire pit to draw people outside and relax into the night in comfort.

- Invest in comfortable garden furniture.

- Install garden lighting so that you can use the space when it gets dark.

Have a dedicated area for cooking and entertaining such as a raised patio area or pergola.

If you have a larger garden, one trend that's sure to be big in 2019 is creating secluded areas to relax and unwind in away from the main garden. Whether you plan to read, meditate or just relax in the space, adding things like a simple water feature, lush plants and a calm, neutral colour palette will provide a retreat from the rest of the garden.



Turn your garden structures into interesting focal points

Some garden structures such as sheds, walls and greenhouses are a necessity for many, and since these structures will be seen every day, why not turn them into interesting focal points.

Painting garden sheds and fences with a bold, vibrant colour can make them stand out and provide interest in the garden, while the use of garden lighting can make things come alive when it gets dark.

Looking after wildlife

Making sure that your garden is wildlife friendly is a great way of giving back to nature and welcoming them into your space; this is especially important during the winter months when food and water are in short supply.

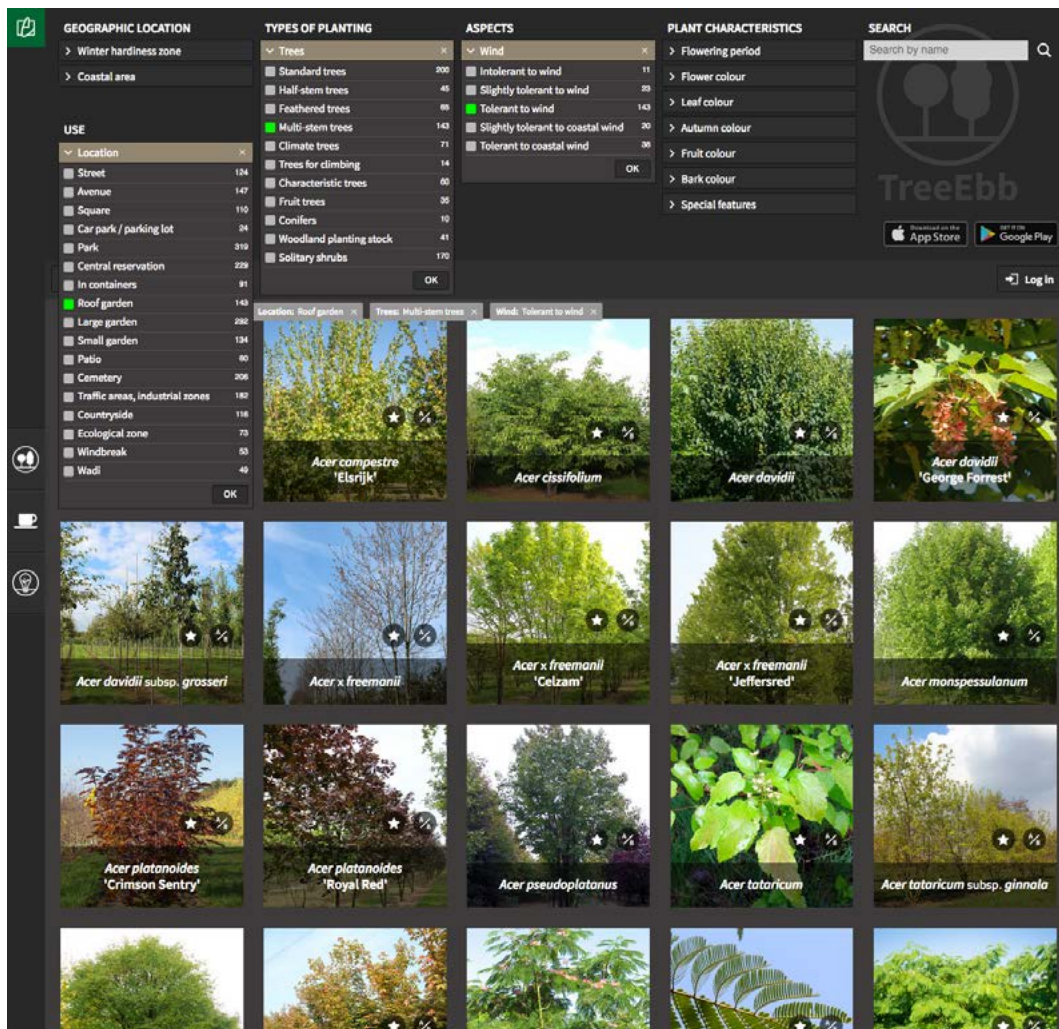
Creating a range of different habitats will allow wildlife to breed and shelter in safety while providing them with food and water will allow them to forage and feed.

There are a variety of plants which attract wildlife that flower and seed at different times of the year. Berry bushes and fruit trees also provide valuable seasonal food, while a source of clean water is also important.

www.oecogardenrooms.co.uk







- Thousands of species of trees and plants
- Search simply by application, size, colour, shape, location and other plant characteristics
- Extensive species descriptions and inspiring photos
- Compare trees and look for alternatives
- Make your own project mood boards

Or as an app in the Apple App Store and Google Play Store.

TreeEBB

THE ONLINE TREE TOOL FOR GREEN PROFESSIONALS

Want to put together an inspiring mood board of the trees and shrubs in a design in no time? Want to select and present the range for a new park to be created? Or produce a clear image of a planting recommendation?

The Ebben TreeEbb includes a practical tool for creating planting mood boards. So you can put together inspiring project mood boards for green projects and green ideas in the tree encyclopaedia.

Would you like to make multiple mood boards, save mood boards or share mood boards with others? When you log in with your email address and password, you will have endless possibilities to create, review and share mood boards.

Tree library with thousands of species of trees and plants

The TreeEbb is an extensive tree tool for green professionals. Landscape architects, urban planners, green contractors, arborists, students and other green specialists can find a huge collection of characteristic plant species with species descriptions and photos in the TreeEbb. These allow you to put together the perfect range for any green project in a few clicks.

Because every project and every user is different, you can not only search for specific species within the tree tool, you can also use countless practical filters. From position to geographical location. From shape characteristics to seasonal colours.

And from application to height or width.

On the extensive tree pages, the user will then find detailed information and inspiring photos of the species.

And would you like to compare the properties and characteristics of a number of plant species in order to make the right choice?

Via the TreeEbb Comparison Tool, you can see the similarities and differences between selected species in one glance.

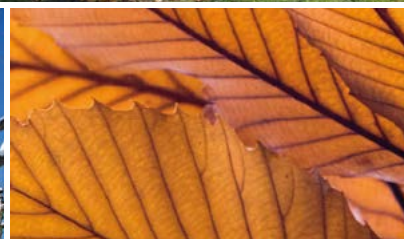
www.treeebb.com



Step into our green world

Ebben Nurseries has been active as a producer of trees and other plants for use in green projects since 1862. Ebben specialises in multi-stem trees, climbing trees, trees for avenues and parks, characteristic trees, topiary and solitary shrubs. At our nursery we cultivate all species, shapes and sizes, from small shrubs to park trees with trunk circumferences of no less than a metre and a half. You are sure to find the right selection in the right size and quantity to meet all your green requirements at Ebben Nurseries.

Need trees? Contact us for more information.





THE POSH SHED COMPANY

ADD AN EXTRA SPECIAL FINISHING TOUCH TO YOUR DESIGN



As the name implies, The Posh Shed Company are makers of bespoke, hand-crafted premium sheds. However, the range expands significantly beyond sheds and now includes a range of outdoor storage solutions under the Back-Door Store heading. This also includes, Log Stores, Wheelie Bin Stores, as well as the new Double and Single Outdoor Stores which are specifically designed to fit neatly near backdoors to provide accessible storage. They provide the perfect solution for muddy boots, wet umbrellas and dog leads and offer a much sought-after solution for family homes where clearing up mud and footprints seems a never-ending cycle!

Richard Frost, managing director of The Posh Shed Company, commented: "As well as the standard range, we offer a bespoke design service where products can be tailored to meet the design and dimension specifications for the customer. We work with architects and housebuilders to ensure that our products meet with their client's requirements whilst fitting in with the wider design."

All products from The Posh Shed Company are built to last and are made from the highest quality treated timber. They are strong, durable and attractive, built with the customer in mind and designed to meet any specification. To reiterate confidence in the product, Posh Sheds come with extensive guarantees and the tanolised timber is guaranteed against rot and insect attack for 10 years.

For further information about The Posh Shed Company and its range of wooden sheds and garden accessories please visit www.theposhshedcompany.co.uk or call 01544 387101.

BESPOKE GARDEN STRUCTURES FROM OEKO GARDEN ROOMS

Oeco Garden Rooms is a family run business and have been manufacturing and installing timber framed structures for over 10 years.



They specialise in building bespoke garden rooms, offices and studios for those who want to extend their living space for a multitude of uses.

Made from a traditional timber frame construction, concrete pile and steel foundations and PVC-U windows and doors, these garden rooms are built to last and can be used all year round.

Western red cedar external timber cladding finishes off the look, providing rich and varied browns, reds and pinks making each garden room unique.

Visit www.oecogardenrooms.co.uk or contact one of our sales team on 0800 170 1270 for more information or to request a brochure.

oeco
garden rooms



Oeco Garden Rooms have been manufacturing and installing bespoke garden rooms, offices and studios for over 10 years. We deliver and install nationwide. Contact our team for more information.

**T: 0800 170 1270
E: sales@oecogardenrooms.co.uk
www.oecogardenrooms.co.uk**

SWALLOW GB LTD



Swallow GB Ltd manufacture a wide range of high quality buildings which are delivered and installed Nationally across the UK.

Please request a brochure via rebecca@swallowgb ltd.co.uk or on 01709 701 999 www.swallowgb ltd.co.uk

STAN FAIRBROTHER GARDEN STRUCTURES



Stan Fairbrother Garden Structures create beautifully hand crafted, bespoke designs in their Lancashire workshop.

Each building is made to order with the highest level of care and attention to detail.

Visit their website to view a stunning collection of their work.

www.stanfairbrother.co.uk
01772 814274

To celebrate the family business marking their 20th anniversary earlier this year they have launched a small collection of summerhouses & gazebos. Designed by Stan Fairbrother this beautiful range encompasses the companies twenty years of knowledge and expertise, with a passion for designing structures that their customers will be able to enjoy for years to come.



UNIQUE IRO CLADDING AND DECKING RANGE INTRODUCED TO UK

A colourful and exclusive range of timber cladding and decking products, branded IRO, has been introduced to the market by BSW Timber.

The IRO architectural timber range boasts a suite of 15 thrilling colours which were specifically created to blend seamlessly with current trends. From driftwood white and chestnut brown, to dragon fruit red and lagoon blue, there's something to suit every environment.

Crafted using the traditional Japanese method of Shou Sugi Ban, the seven-step process produces an array of exquisite products which add charm and character to indoor and outdoor settings.

First developed in the 18th century, Shou Sugi Ban involves using heat to enhance the surface of timber.

The charcoal-black result reveals clean, distinct lines and textures unlike those seen in traditional cladding and decking.

Dave Chapman, sales director at BSW Timber, said: "We're thrilled to be introducing this unique new product range. IRO was only launched to the public earlier this month and it has already received some fantastic feedback.

"We've worked hard to identify a suite of colours which will appeal to everyone and we will update the collection on a regular basis to ensure that we stay up-to-date with changing trends."

Current colours available in full are charcoal, chestnut, claret, dolphin, dragon fruit, driftwood, forest, lagoon, mountain, natural, piglet, poppy, sunflower, sunset and woodland.

Dave continued: "Having seen the product in situ in both homes and gardens, I'm confident that IRO will be extremely well received. It will soon become a must-have alternative to traditional timber cladding and decking."

A unique, high-end product, it is also extremely durable. While real wood cladding alternatives will fade over time, IRO is coated with Rubio Monocoat cream to ensure a long-lasting, UV stable finish.

All products in the IRO range are self-cleaning, water-repellent, HVOC free and 100% eco-friendly – making them completely safe for families and pets.

IRO architectural timber is the latest innovation from BSW; the largest integrated forestry business in the UK.

To find out more, visit www.irotimber.co.uk or contact us at hello@irotimber.co.uk

charcoal



charcoal IRO cladding, external, shiplap and square edge, 25mm x 150mm x 3300mm or 3600mm



heat
enhanced
architectural
timber

crafted by nature and perfected by experts

IRO heat-enhanced architectural timber is a revolutionary and exciting new range of cladding and decking products developed by BSW Timber. Created using the traditional Japanese method of Shou Sugi Ban, IRO is available in a range of 15 colours which complement every environment.

contact us for more information hello@irotimber.co.uk | www.irotimber.co.uk

 **BSW Timber**



WHAT A TRANSFORMATION!

JPS Landscape Design are delighted to unveil the newly created Petal Garden at The Royal Bournemouth Hospital (RBH).

Patients, families and staff were entertained by a Punch & Judy show and treated to a musical

accompaniment by members of the Bournemouth Symphony Orchestra for the opening of the new garden.

This exciting new garden, designed especially for the dementia wards at the Royal Bournemouth Hospital, is now an optimistic and joyous

celebration of both memory and the beauty of the petal, born out of a previously neglected and overgrown courtyard. The garden comprises five raised beds in the shape of petals, each representative of the wards using the space.





Denise Wright, MD of JPS said: “Every memory we have is unique and precious, yet they are as delicate and fragile as a petal. Memories can be easily damaged or blown away in the wind, but they remain forever a part of the flower that created them”.

The Royal Bournemouth Hospital Petal Garden is now being used by the five wards of dementia patients.

Dementia affects 850,000 families in the UK and is expected to soar to two million by 2051. Green therapy can bring comfort, friendship and a sense of independence to those affected, while offering respite for their carers and families.





Denise added, “It’s been a thoroughly rewarding and, at times, deeply moving journey for us all at JPS. We are grateful to LV= who also contributed significantly, and we are honoured to have helped our local NHS hospital deliver this worthy project. As a result, we’ve since been appointed to create three other gardens for the NHS in Southampton.

“With the growth in construction and development throughout the UK, JPS are passionate about designing sensitive and beautiful green spaces for people to enjoy. Immersing ourselves in nature is good for both our physical and mental wellbeing, and I believe our lack of connectivity as a society to our natural environment is closely linked to the rise in disorders such as depression and anxiety,” said Denise.

JPS designed and created the garden as part of their support in the community and provided all design, plants and labour for free to this worthy cause. LV= contributed to the costs involved to complete the project.

JPS have been established for over 16 years and are a multi award-

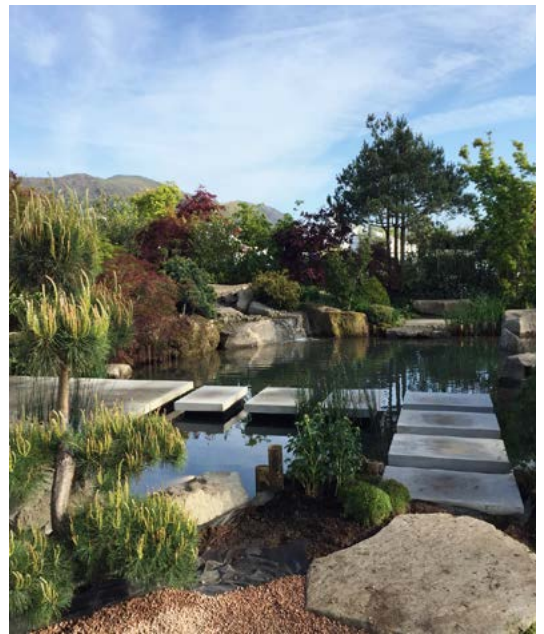


winning practice of landscape designers, landscape architects, horticulturalists and artists, renowned for combining creative flair with technical expertise to deliver outstanding landscape design solutions. Coupled with their strong team development and outstanding designs, many JPS projects have gone on to win numerous industry awards.

JPS work with home owners, architects, developers, planning consultants, national home builders,

local authorities, care home providers, charities, healthcare, education, and community groups.

To find out more about the services they offer, speak to one of JPS’s friendly team at 01202 426143 or visit them at their new website address www.jpslandscapedesign.co.uk



LIMESTONE • SANDSTONE
 BUILDING STONE • FLOORING • WALLING
 MASONRY • LANDSCAPING • RESTORATION



01386 584384

www.stonequarries.co.uk



YOUR ONE STOP SHOP FOR ALL RESIN BOUND MATERIALS

One of the largest suppliers of resin products in the UK with everything you need for resin bound installations including:

- ✓ A huge range of dried aggregate colours & styles
- ✓ Hands on training from experienced installers
- ✓ Drive in collection points
- ✓ Next day on site delivery
- ✓ Free technical advice
- ✓ Rubber crumb for playgrounds
- ✓ Resin grid system



Order **online anytime**, day or night!
www.resindrivetrade.co.uk

OR DRIVE IN TO ONE OF OUR COLLECTION POINTS TODAY:

Huddersfield
01274 699233

Unit 4D Armytage Road
 Brighouse HD6 1QF
 Mon-Fri: 6.30am-6.30pm. Sat: 7am-12pm

South Wales
01656 667866

Unit 17A Kingsway Buildings
 Bridgend Ind Est, Bridgend CF31 3RY
 Mon-Fri: 7am-5pm. Sat: 7am-12pm



resindrives.co.uk is a trading name of resindrives.co.uk Ltd.





PAVING FOR REGENERATION

The trade association Interpave revisits a phased, £80 million regeneration in east London, some 6-years after publishing its initial case study on the project's hard landscape.

Previously known as the Mardyke Estate - a typical 1960s social housing estate which had experienced major deprivation - Orchard Village is located in the London Borough of Havering.

The regeneration master-plan consisted of:

- Phased demolition of the original Mardyke Estate buildings
- Provision of up to 555 new dwellings
- Open space improvements
- A new Local Square with new local shopping facilities and office accommodation.

Comprehensive and effective consultation with residents proved critical in the master-planning process.

Master-planned Regeneration

The development concept has four key elements:

- The Mixed-Use Street establishes key connections between the development and the surrounding neighbourhoods, and enables a choice of transport modes.
- A new Local Square anchors community services, public transport and open space. It creates a vibrant, mixed-use zone that acts as a focus within the neighbourhood.
- Distinctive Neighbourhoods are defined by higher density development around the Local Square and in the north of the site, decreasing towards the south along the links to the dual carriageway.
- A Green Network of streets and spaces throughout the new development provides visual focus and amenity between the existing parks and open spaces within the surrounding area.

The phasing framework linked together demolition and new-build proposals in a step-by-step approach, ensuring that traditional streets remained connected with properties secure, and minimum disruption to existing residents throughout the regeneration process.

Creation of a clear and legible hierarchy of roads, streets, paths and cycle-ways permeating throughout the site was key. This includes a main vehicular and bus route through the site, secondary roads and shared surfaces.

Importance of Paving Materials

Paving materials, street furniture and planting vary with each different road type.

The provision of tactile surfacing, dropped kerbs and smooth, even paving throughout the estate - to encourage inclusivity for all and ease of movement by disabled people and pushchair users - was particularly important.

A simple palette of hard landscape materials defines the road hierarchy and creates a language that unifies the whole site. Simple and 'clean' materials predominate, so that an open feel to the site is maintained. The precast concrete block paving was carefully selected to complement the buildings, with a silver-grey granite finish. Concrete kerb units are also used extensively – both raised and flush with the paving – as well as concrete flag paving, granite setts and buff bound gravel.

The site is adjacent to the Beam River and a multi-award-winning wetland park, home to a variety of wildlife including Great crested newts. Therefore, as part of a general approach towards improving ecology and biodiversity, water management using SuDS was considered important and extensive areas of concrete block permeable paving are included throughout.

The northern half of Phase 1 is characterised by a higher density urban courtyard building, surrounded by hard landscaped areas and incorporating a landscaped courtyard utilising precast concrete paving. Phase 2 in the north west of the site includes another large courtyard block with inner landscaped area, linked to two other blocks by the more formal streetscape, including the Mixed-Use Street bus route. The now-completed Phase 3 comprises three distinct, separated areas running north-south. Phase 4 remains under construction.

Precast Paving Long-term

As a result, a substantial amount of the precast concrete paving was installed with the first phases of the project, although also serving more recent phases, and has now been in use for over 6 years. Interpave has regularly visited and photographed the project – most recently in June 2018 – and observed the longer-term robust performance of the paving.

Phased projects such as Orchard Village present particular challenges for hard-landscape design, particularly with paving serving various phases.



Here, master-planning needs to consider traffic usage during the construction phases, not just after final completion.

For example, structural design of the paving may need to cater for construction vehicles or temporarily high volumes of diverted traffic.

Similarly, concrete block permeable paving must be protected against silt run-off from construction works and vehicles.

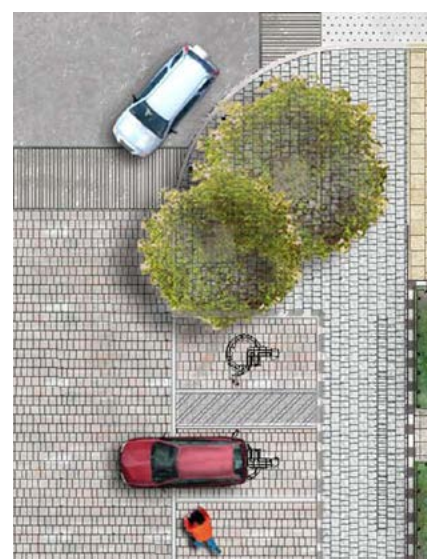
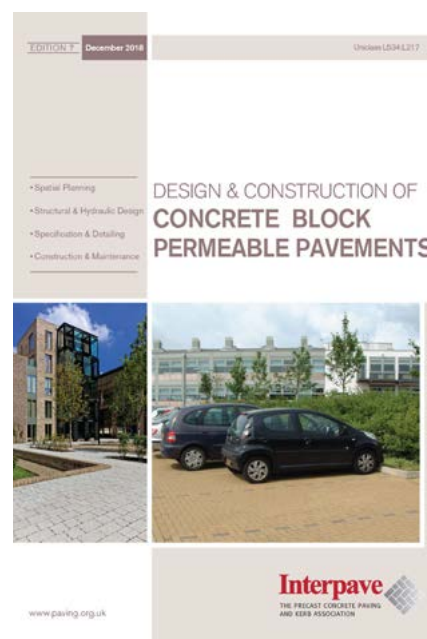
Essential Resource

Interpave has just published the new Edition 7 of its definitive guidance document 'Design and Construction of Concrete Block Permeable Pavements'.

The guide is intended for planners, urban designers, landscape architects, engineers, local authorities and other decision makers to assist them in the design, construction, approval and maintenance of concrete block permeable paving.

This latest edition includes an extensive new Glossary and covers the most recent permeable paving techniques, such as overlays to existing road constructions and enhanced, predictable water storage using flow controls.

The structural and hydraulic engineering design procedures have been comprehensively updated and new, straightforward maintenance and reinstatement guidance added.



The new guide and case study are freely available to download via Interpave's new website www.paving.org.uk



EXPERT TOP TIPS:

PROTECTING A PATIO

The weather can be harsh on your patio so it's essential that you take a few steps to ensure it's fully prepared ahead of the winter months. Lee Dunderdale, Product Manager at Bradstone, gives his top tips for helping to protect your paving.

Tip #1: Clean your patio

The first step to protecting your patio is ensuring that it remains clean.

Be sure to regularly remove any fungus, dirt, mildew, algae and leaves that accumulate on your pavers and give it a regular wash-down with a stiff brush or broom.

Tip #2: Remove pots and furniture

Removing plant pots and garden furniture from your patio is a good way of avoiding any stains appearing or the build-up of mildew over the autumn and winter months.

Bringing potted plants indoors and storing away furniture will also help to protect them from the bad weather too.

Tip #3: Sealer

A good quality sealer can be used to combat stains and weeds and, if applied early enough, can help to ensure protection during the colder months. Sealer should only be applied on a thoroughly clean and dry patio surface.

Image caption: Bradstone's Old Town in Grey Green

www.bradstone.com



FRANK KEY AND BRADSTONE RULE THE 'PATIOWORLD'

Bradstone is already seeing a positive impact thanks to the success of the Frank Key Group's highly anticipated 'Patioworld' at Brookfields Garden Centre, Nottingham which launched earlier this autumn. The impressive new landscaping display, which features a full suite of Bradstone's paving range, alongside extensive stock and building products, was unveiled at a VIP trade launch on the evening of Thursday 13 September 2018.

Those landscapers who attended the exclusive event were able to explore the full breadth of Bradstone's portfolio of domestic hard landscaping products, including porcelain, ethically-sourced natural stone, complementary garden products such as edging and walling, and driveway block paving.

Guests were able to enjoy a host of special offers and landscaping giveaways on the night, as well as a delicious hog roast which proved incredibly popular. Live demonstrations by product experts resonated particularly well, with challenging issues such as cutting curves and awkward cuts being tackled.

Katharine Topham, Group Marketing Manager at the Frank Key Group comments: "The evening was deemed a real success and a great showcase of the partnership between Frank Key Group and Bradstone.

"At Frank Key's, we recognise how important it is to help guide both landscapers and homeowners alike on their journey to making the right paving choice for their project or outdoor space. We believe that, by investing in an immersive and visually striking display space, we will make this journey even easier for our customers."

Jen Monaghan, marketing manager at Bradstone, comments: "Consumers can find it difficult to make a purchasing decision based on one paving sample or an image from a brochure, so to have this space to bring our products to life is a valuable asset.

"Given the early success of Patioworld, we are keen to explore what other creative visual merchandising can be developed to help our landscaping partners explore the Bradstone range."

Patioworld will be open seven days a week, all year round, offering both landscapers and their customers quick and easy access to purchase product.

Frank Key Group Limited, is a large privately owned, independent builders merchant and tool hire specialist across Nottinghamshire, Derbyshire, Yorkshire and Lancashire.

Since 1907 Frank Key have been renowned for supplying market-leading building, plumbing and timber materials. Built on family values, Frank Key has grown to now stock interiors, landscaping, civils and drainage products, as well as providing high quality plant and tool hire equipment.

Bradstone is a market leader in manufacturing and importing concrete and natural stone paving for the domestic market. The all-encompassing product range includes natural or reconstituted stone paving, walling, edging or coping, as well as driveway block paving.

For further information, visit www.bradstone.com or call 01335 372 222.

“FINE PORCELAIN POINTING – EASY WITH VDW EPOXY PAVING GROUT”

Another great job by the real professionals at Arbour Design and Build, led by Richard Bickler and using GftK’s vdw 815 Paving Joint Mortar that is ideal for grouting these top quality Emperor Limerick Porcelain slabs of larger format paving (larger format generally means the paving units are larger than 400 x 400mm).

In addition to its ease of application and high performance and durability in service, this advanced material is specifically designed for narrower joints (down to 3mm) and bonds tenaciously to dense substrates like this vitrified porcelain.

As with all of the range using GftK’s Epoxy Bound technology,

the product’s ease of slurry application onto the pre-wetted paving, also allows grouting and finishing to

continue in bad weather, even in the pouring rain for that urgent opening ahead!

You actually can’t use too much water in the grouting operation, so the fickle British Weather does not stop you finishing the job (and getting paid of course!), plus it is the most durable and jet washing resistant paving grout there is. Finally on this project the colour was very important as the owners wanted to see the paving rather than the resin and it blended in really well.



“Fine Porcelain Pointing – Easy with vdw Epoxy Paving Grout”

www.nccstreetscape.co.uk

STUNNING BURLINGTON SLATE SETTS JOINED WITH VDW 850

This driveway and terraces surrounding this stunning private residence in the Lake District were all designed and laid using Burlington Stone’s ‘Cumbrian Black’, tumbled natural stone setts. The paving was all jointed and pointed in a single operation using GftK’s vdw 850 paving joint mortar from NCC Streetscape.

The GftK vdw 850 was selected because it is extremely durable and easily able to accommodate frequent traffic over the driveway, including a high percentage of 4X4’s and visiting delivery vehicles of up to 20 Tonnes, plus it is fully resistant to de-icing salts and freeze-thaw cycling in winter time.

Also important for the contractor, in this exposed location the jointing work had to be completed quickly and on schedule, without

delays due to the cold, wet weather of the British Springtime (allegedly!).

The unique vdw 850 is easily ‘wet-slurry’ applied over pre-dampened paving, where it self-compacts into the joints and then the surfaces are simply rinsed with additional water and any residue brushed-off - It is not necessary to wait for a good weather forecast, or to allow areas to dry out before and after the pointing works, even in the rain. No additional compacting is

necessary and the job is done - Clearly the best pointing system for one of the best natural stone paving systems for heavier duty applications on the market today, with proven long term performance and durability.



Exposed Burlington Slate Setts Jointed with vdw 850

www.nccstreetscape.co.uk



GftK Paving Joint Mortars for Natural Stone, Porcelain and Concrete Paving

Ideal for both NEW and REFURBISHMENT works because you can:

- Work in wet weather and at low temperatures (from +3°C)
- Use fast wet slurry and self-compacting application
- Get off your knees and work standing up
- Have greatly reduced staining issues and eliminate surface cleaning work
- Fast curing and opening for service

Whilst also achieving:

- Frost, de-icing salt, boring insect and weed growth resistance
- Pressure jet washing and even mechanical road sweeper resistance
- Optimum strength correlation (compressive to tensile) for small format paving
- Permeable joints for SUDS

Paving Joint Mortars for ALL Types of Paved and Trafficked areas, from Domestic Patios and Driveways to Town Centres, Market Squares and Highways

Save Time and Money on Every Project

**For more information: Website: www.nccstreetscape.co.uk
Telephone: 01257 266696 Email: sales@nccstreetscape.co.uk**

GftK Paving Joint Mortars from

NCC Streetscape





FUTUREBUILD 2019: THE CHALLENGES FOR URBAN DESIGN PROFESSIONALS

Futurebuild is the leading built environment event for landscaping and urban design professionals to learn, be inspired and do business. Taking place from 05-07 March 2019, the event will focus on exploring and tackling the biggest challenges impacting the industry, and will be a unique destination for visitors to gain unrivalled insight and hands-on experience around the latest innovations, products and materials.

Developed in conjunction with renowned, industry leading partners, Futurebuild will provide over 500 hours of structured learning across an inspiring conference programme and 11 seminar streams – all completely free of charge and CPD accredited.

Time For Action - Meeting challenges and making commitments

Central to Futurebuild is the ecobuild conference, which will inspire visitors to take action on the most pressing challenges through insights and

knowledge-sharing from leading experts. With an overarching theme of 'Time For Action', the conference sessions will be collaborative forums where visitors will develop plans for implementing change and proposing action for a more sustainable future.

Futurebuild will be the platform where 13 challenges are tackled. These include how to ensure cities can contribute to a liveable future, how environmental protections can be strengthened in a post-Brexit Britain, and how to apply innovative technology to deliver infrastructure under the Construction Sector Deal.

Future trends, products and materials

In addition, over 500 market-leading brands and organisations from across the globe – including Wavin, ACO, Polypipe, Green-Tech and Ronacrete – will be showcasing their latest innovations and contributing to the extensive knowledge programme. To ensure visitors gain a truly immersive

and in-depth experience across all areas of the industry, these exhibitors will be hosted across six curated Hubs: Urban Infrastructure, Buildings, Interiors, Materials, Offsite and Energy.

Each Hub will include unique feature attractions and a concentrated education programme hosted by a relevant sector-specific authority.

They will also host a variety of new and expanded pavilions and attractions including: the City Walk, Made In Britain, Vision @ Futurebuild, the Association of Decentralised Energy (ADE) pavilion, the Home of the Future by Tufeco, the RIBA Stand designed by Gundry + Ducker, and many more.

New and exclusive features

Outside the conference arena, Futurebuild will be bolstered by a range of new and exclusive partnerships and features.



As an official UK Government Innovation Partner, Futurebuild will be hosting the Innovation Zone with the Department for Business, Energy & Industrial Strategy (BEIS) and Innovate UK. At the Zone, BEIS will be showcasing the work of the Energy Innovation Programme and demonstrating how it is delivering the Clean Growth Strategy. Focusing on true innovation, it will provide a platform for investment and knowledge exchange across three areas: a dedicated three-day seminar series; an exhibition featuring innovative companies BEIS and Innovative UK has provided funding to; and a 'Business Bar' in collaboration with the Knowledge Transfer Network - providing 1-to-1 advice and support on accessing funding.

New for 2019 is the Knowledge Forum - a dedicated area where industry-leading partners, academia and professional bodies will offer a comprehensive look at the biggest issues facing the built environment. Hosting CPD workshops, the Knowledge Forum will provide useful solutions and guidance for visitors to take back to the office.

futurebuild

05-07 March 2019 / ExCeL, London

The Waste Zone will return with new and expanded features, including the new Circular Economy Hub.

Curated by architect, academic and author Duncan Baker-Brown, the area will take a unique beach hut format and showcase how waste can be a valuable industry resource.

In an exclusive sector first, Futurebuild is also partnering with GIGA - a leading organisation driving greater accessibility of international building product certifications via cloud software.

This will come to life through a new Futurebuild product directory and a dedicated new area of the event - The mindful MATERIALS Certification Pavilion.

To register, visit:
www.futurebuild.co.uk/register





The future of
Urban
Infrastructure

**Introducing
Futurebuild 2019**

The Urban Infrastructure Hub at Futurebuild 2019 will cover all aspects of urban infrastructure defined as "including everything that is not a building". It will look at green, blue, grey and social and economic infrastructure.

In addition to the exhibitor product launches taking place in this Hub, you will also find innovative features, such as the Refill Station and City Walk, where you will be able to view a showcase of natural products. A dedicated seminar programme, sponsored by ACO, will cover everything around infrastructure, water,

urban greening, the public realm and wellbeing, giving industry professionals the opportunity to explore some of the challenges facing the built environment.

www.futurebuild.co.uk/urban-infrastructure-hub

**Register for
free today**

www.futurebuild.co.uk/register



@FuturebuildNow



/FuturebuildNow



/FuturebuildNow



/FuturebuildNow

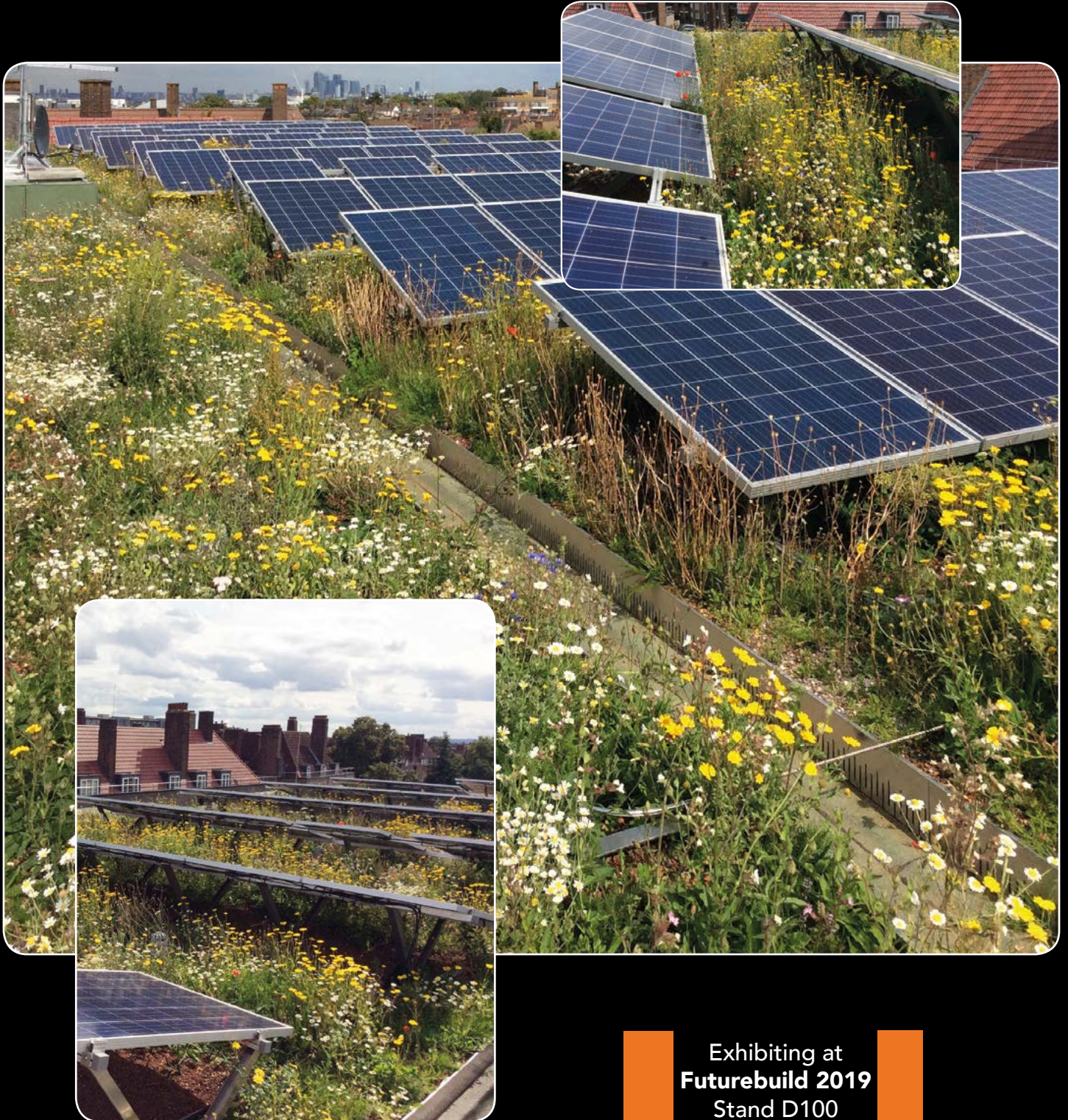


FuturebuildNow

In partnership with



When sustainability matters



Exhibiting at
Futurebuild 2019
Stand D100

SAFETY | DURABILITY | SECURITY

0845 271 8800 • **GET IN TOUCH** • bauder.co.uk



GREEN-TECH

PROTECT 29,500 NEWLY PLANTED TREES TO RESTORE LAND AND ENHANCE BIODIVERSITY AT EAST MIDLANDS QUARRY

Overview:

Bantymock Quarry, a gypsum quarry operated by Saint-Gobain Formula has recently undergone a tremendous revival to preserve the environment and create an ideal habitat for a diverse range of wildlife.

Glendale, a professional green service company who manage and maintain green environments were awarded the contract to regenerate 25 acres of the worked-out quarry area into native countryside.

The Project:

Proposals were developed by landscape architects DRaW (UK) Ltd and agreed with the local authority to encourage biodiversity and enhance the landscape at Saint-Gobain Formula's Bantymock Gypsum Quarry. Located in Balderton near Newark, this is a key industrial site in the East Midlands. The brief was to restore and revitalise the land by turning it into woodland and grassland, creating habitats for wildlife through the planting of 29,500 trees and seeding a newly created wildflower grassland area.

Glendale turned to Green-tech for the necessary landscaping supplies which included tree shelters, stakes, compost and fertiliser. In total, 30,000 tree shelters and stakes and 1,200 bags of compost and fertiliser were supplied for this project.

The Solution:

Green-tech is the leading UK supplier of landscaping essentials. Our tree and shrub shelters and stakes aim to aid trees towards better initial establishment, survival rate and protect the trees from being damaged by wildlife.

The trees, which were planted during the 2017-2018 planting season, have been specially selected to attract a mix of wet woodland and native woodland species and will provide important habitats for birds and wildlife, while contributing to the region's biodiversity targets across the 25-acre part of the site.

The Outcome:

It is planned that the woodland area will be extended further as other parts of the wider site are restored.

Saint-Gobain Formula published their latest ecological monitoring work which recorded 160 grassland and herbaceous plant species and highlighted that three new species on the site had been identified. As the trees and grassland establish they hope to see more butterflies beginning to colonise the site, including the Grizzled Skipper, which is becoming increasingly rare in the UK.

Commenting on the completed project Jeremy Elvins, Minerals and Estates Manager from Saint-Gobain said, "Glendale completed the planting work very efficiently and will be continuing to maintain the area for 5-years, this will ensure that we get the new woodland area."

Andy Ansell, Operations Director from Glendale continues, "We were delighted to secure this contract. It has been a rewarding project to work on and we're confident of securing the next phase when this happens. We have worked with Green-tech for many years and they always provide us with excellent advice, prices and service. They are very flexible and always work hard to accommodate our requirements."



Choose a winning supplier for your landscaping products

Over 6500 products to help protect, enhance and improve plants, trees and their environment



**2019
CATALOGUE
AVAILABLE
NOW**



Rural Tree Planting

- Tree Shelters and Guards
- Bamboo Canes
- Wooden Stakes
- Tree Belting and Blocks
- Tree Anchoring

Urban Tree Planting

- Tree Irrigation
- Root Protection
- ArborRaft Tree Planting System
- Tree Anchoring
- Tree Grilles and Guards

Maintenance Products

- Grass Seed
- Wildflower Seed
- Lawn Edging
- Fertilisers and Weedkillers
- Soils and Growing Media



Call today for a copy of any of our literature

T: 01423 332100 **E:** sales@green-tech.co.uk **www:** www.green-tech.co.uk

@ [@GreentechLtd](https://twitter.com/GreentechLtd) **f** facebook.com/greentechuk **in** linkedin.com/company/green-tech-ltd



MATT NICHOL GARDEN DESIGN

Recent BALI award winner Matt Nichol is a garden designer based in Adlington, Cheshire.

Matt studied Garden Design at Pershore Horticultural College and after cutting his teeth and gaining invaluable experience in the design and build world at Notcutt's Landscapes, went on to set up his own joint design and build company in 2006, employing a large team of landscapers. Matt now focuses purely on designing gardens, but still relies on his extensive experience of the construction process when working on his schemes.

Matt was the Northern Design Awards' 'Garden Designer of the Year' in 2012 and has recently won the prestigious

BALI National Landscape Award for Design Excellence 2018 for his 'Tranquil Cheshire Garden'. Matt and his colleague Sarah Heyes are hoping to create a show garden at next year's RHS Tatton Park Flower Show.

The Brief

The owners of this newly renovated farmhouse in the village of Rushton Spencer in the Cheshire/Staffordshire borders were a couple with young children who wanted to create a practical yet beautiful family garden with a focus on relaxing and entertaining.

The garden also needed to make the most of its idyllic rural setting and stunning views of the surrounding countryside.

In particular the clients wanted two distinct family entertaining areas; one for relaxing and one for dining, and a separate barbecue area. They envisaged a feature courtyard space, which would be viewed internally from the large picture window of the new extension. They also needed a new driveway and gates.

Agreeing the Design

Matt and Sarah had a number of interactive meetings with the clients in the early stages of the project. In order to completely understand the needs and vision for the garden, they always start the design process with dynamic, loose pencil sketches. This always opens up valuable discussion about the practicalities of the design



and helps create a full brief for the garden and a clear direction for the subsequent design work. Images are also used at this early stage to explore the aesthetic elements of the design. These sketches are then translated into Vectorworks-based CAD drawings which are also hand rendered using Copic markers for a more bespoke feel. Eventually these drawings become detailed working drawings for the contractors to use for the garden build.

Once the design was agreed, the contractor's pack was put out to tender and Matt assisted the client in selecting the right contractor for the work. It was vital to get the right contractors in place to ensure the design was translated correctly from plans to finished garden.



The Garden

Matt has created a truly beautiful haven for his clients, with an emphasis on soft planting and natural materials.

Existing yorkstone paving was utilised in different formats and practical gravel was selected for the paths and driveway.

The feature courtyard, which was to house both the dining and seating areas had to be dug out to get it to the same level as the house.

Feature walling and steps were then used to accommodate the changes in level and create interest.

The lawn levels were altered and regraded to create smoother lines.

The lower entertaining level was surrounded by fragrant borders of Nepeta, Lavender and Salvia to create a more intimate enclosed space and the soft seating area also included a fire table for evening/winter entertaining.

The lawned areas were framed by more low level planting to enhance the views of the surrounding countryside.

The colour pallet of blues, lilacs and whites were carried on to the barbecue area, which was framed by an elegant pergola.





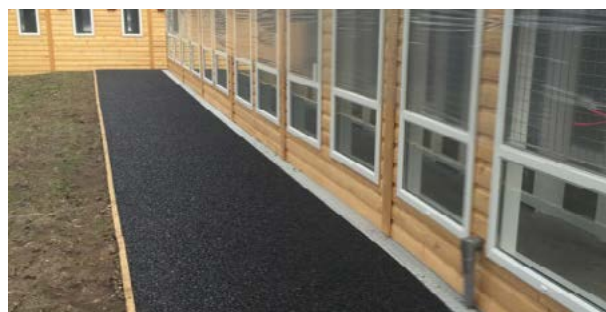
THE SPECIALISTS

Star Rubber Environmental Ltd are surfacing specialists based in the UK.

We pride ourselves on the quality and resilience of our products.

We offer a wide range of surfacing products and surface solutions to schools, nurseries, councils, local authorities and many more as well as the other companies within the industry.

All our surfaces carry a 5 year warranty and have been tested to the highest of standards.



Our skilled team of installers can completely change your play space with amazing coloured designs and graphics. Working with our design team we can put together a scheme that caters for all your needs and allows children to get the most out of a play space. Using high quality EPDM granules our work really will transform your play space.

For the perfect track and path product look no further than Agri-Flex, made from recycled Bus and HGV tyres this product carries great test results as well as a great recycle value. Tested to BS7188 which includes slip resistance testing, This fully permeable surface eco friendly surface is ideal for pathways, golf buggy tracks, seating areas and the daily mile courses.

The Finished surface of your choice



The Market leading mulch surface, made from recycled HGV and Bus tyres, this product is highly tested to both British and European standards. Available in a range of natural, single colours and blends this product is ideal for large open play space projects or smaller eco garden environments. We have licensed installers across the UK and Europe so there really is no need to accept any imitations!

IN PLAYGROUND SURFACING

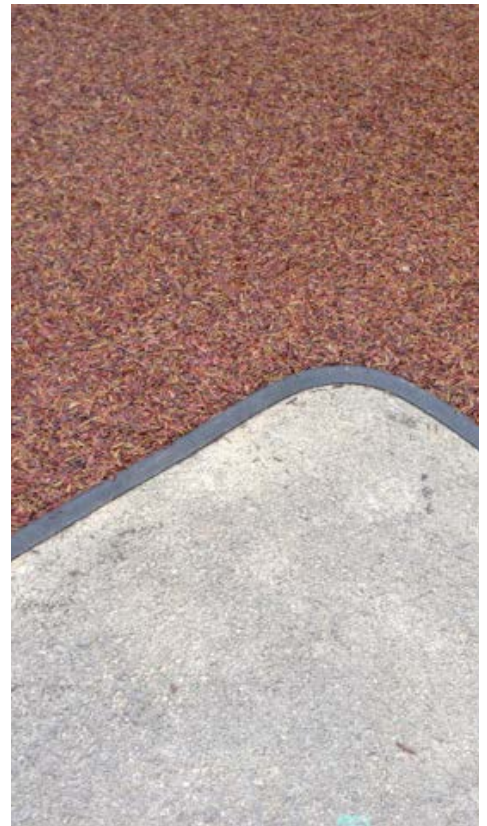
Star Kerb / Cap Kerb

Star and Cap Kerb have been created using all the knowledge of 30 years of confronting edging issues within the synthetic surface sector.

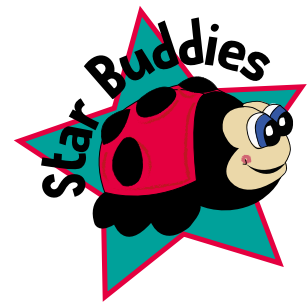
Both edges are made from high performance EPDM rubber and drastically reduce the chances of thermal shrinkage which plagues the play industry.

Works with

- Wet pour
- TigerMulch
- Agri-Flex
- Resin Stone
- Artificial Grass



Face to Face play with the all new



- 80% Recycled
- Bespoke made
- outstanding detail
- 7 creatures

3D graphic animals, including fish, frogs, turtles, ladybirds, snails, dragons and penguins. Aimed at 2-10 year olds, these Star Buddies are ideal for schools, nurseries, public parks and open spaces. These detailed 3D graphic life-like creatures look great and are easy for children to climb on and use for imaginative play. All Buddies are also available with built in water jets!

ACOUSTIC ARTS OUTDOOR MUSICAL INSTRUMENTS

Acoustic Arts was set up in 1990 to promote outdoor learning and creative play through music. The company designs and builds outdoor musical instruments for schools, museums, family attractions, play parks and sensory gardens throughout the UK and around the world.



The award-winning installations are sustainably built using naturally durable timbers and industrial materials to provide high quality, precisely tuned percussion instruments that are accessible to all ages and abilities.

The large-scale drums, chimes and xylophones produce bright, resonant tones and offer all-round access to encourage individual play and exploration as well as group interaction.

For further details visit
www.acousticarts.org.uk, email
info@acousticarts.org.uk or call
0117 935 2034

WICKSTEED PLAYGROUNDS BUILDS BESPOKE CASTLE IN SCOTLAND!

Wicksteed Playgrounds brought the designs of local school children to life by creating an impressive, imaginative and, crucially, inclusive £300k playpark at Wilton Lodge Park in Hawick, Scotland.



Reflecting the history of the area, a large bespoke timber castle-inspired multi-play feature takes pride of place in the scheme which incorporates a wide range of diverse play and sensory elements across different zones.

Notably, the primary school pupils' brief allowed Wicksteed to really demonstrate their bespoke design creativities and capabilities.

For further information on how Wicksteed can transform your play area, visit www.wicksteed.co.uk or contact the sales team T: 01536 517028

www.wicksteed.co.uk

ECORUBBER CHIPPINGS

AVAILABLE IN 8 VIBRANT, LONG LASTING, WEATHER RESISTANT COLOURS



AVAILABLE IN 20KG, 100KG, 250KG 500KG, 750KG & 1000KG BAGS

We provide collection service and curb side delivery throughout the UK.

KEY BENEFITS

- Unique 2 stage colouring formulation and process consisting of high performance pigment which is then locked in with a polyurethane coating,
- Tested in accordance with BS EN 1177: 2008 Impact Absorbing Playground Surfacing (Test number LSUK.12-0374),
- Reduces moisture loss,
- None slip,
- Long lasting, trouble free ground cover and easy to maintain,
- Unrivalled fade, stain and weather resistant qualities,
- Brightens up any garden and play area with a choice of 8 rustic and vibrant colours,
- Collection or National curb side delivery,
- All weights, colours and delivery requirements catered for.



IDEAL FOR PLAY AREAS & LANDSCAPING

CONTACT US

T 01977 529570 E info@ecochippings.co.uk W www.ecochippings.co.uk

PDS
 phil day sports

Hard & Soft
 Landscaping Services

- Artificial Surfaces
- Tennis Courts
- Sports Pitches
- Attenuation Systems
- Horse Manege
- Soak Aways
- SuDS Systems
- Drainage
- Kerbing
- Fencing

We are a specialist sports turf and landscaping contractor in the sports amenity and construction sector.

Shop online at www.phildaysports.co.uk

Call us today on **01386 462425**

or email: sales@phildaysports.co.uk

Like 'Phil Day Sports Ltd' Follow @phildaysports

Phil Day Sports Ltd, Glebe Farm, Church Lane, Bishampton, Pershore, Worcs, WR10 2FA



A YEAR OF GROWING CHALLENGES

With this year's unusual weather extremes having many repercussions for plants and growing as a whole, Hedges Direct has taken the step to discuss and make customers aware of how the adverse growing season has impacted both plant availability and growth levels, in order to effectively manage customer expectations and available stock through the autumn hedging season.

Hedges Direct work with a number of growers throughout the UK and Europe, all of whom are reporting a similar picture with regard to this season's plants and growth.

The harsh and extended winter resulted in annual sowing taking place a couple of weeks later than the norm, which in itself was only slightly problematic, however this coupled with a long, wet spring extending almost until June caused issues with plants establishing. The lack of any transition period from spring into one of the hottest and driest summers on record has ultimately led to further

complications for healthy plant growth resulting in both an increase on the average failure rate and plants struggling to achieve expected growth.

Subsequently, some newly grown plants experienced poorly developed root systems which failed to thrive on transplanting, resulting in many small plants being deemed unsuitable for sale and removed from available seasonal stock.

With the overall market for plants increasing and an ever-growing demand from commercial landscaping jobs, property and housing developments, area regenerations and government planting schemes plus the demand from the retail sector, supply is already stretched to capacity.

However, the last few months of disrupted growth and increased plant failure due to drought will only add to the plant availability issues with fewer plants available and smaller plants than expected.

Hedges Direct, are as ever, committed to offering quality plants at competitive prices and although some species may not have achieved expected height due to the adverse growing season, our growers have worked tirelessly to negate the challenges faced and ensure that the quality and health of our new season hedging plants are to an excellent and consistent standard. In order to support our growers through this challenging season and to accommodate the expected demand, we are working closely with them to promote all batches of stock that are available and to maintain competitive pricing on all plants and specifications.

We will continue to monitor both quality and stock levels throughout the season and to keep our customers informed with regular newsletter updates for transparency and openness.

For more information regarding the above go to our recent blog post at: <http://bit.ly/2zdcuUI>



THE ROYAL HORTICULTURAL SOCIETY ANNOUNCES RHS CHELSEA FLOWER SHOW 2019 HIGHLIGHTS

- Star studded line-up as UK's top designers set to impress on Main Avenue
- Natural habitats inspire garden design promoting the increasing need to reconnect with nature
- The benefits of gardening on our health and the environment celebrated across all categories
- First judged 'walk through' Show Garden in the Great Pavilion by IKEA and internationally renowned British Designer Tom Dixon

Today, the Royal Horticultural Society (RHS) announces highlights at the RHS Chelsea Flower Show 2019 (21 – 25 May), which for the 10th year is sponsored by M&G Investments.

Show Garden Highlights

Encouraging people to reconnect with nature is a key theme at this year's RHS Chelsea Flower Show with gardens celebrating the beauty of the natural world.

Seven-time gold medal winning designer Andy Sturgeon is back for show sponsor M&G Investments, drawing inspiration for his garden from nature's power to regenerate.

The woodland landscape will be colonised by young trees, ferns and jewel-like flowers, interspersed with stone platforms and huge burnt timber sculptures representing natural rock formations.



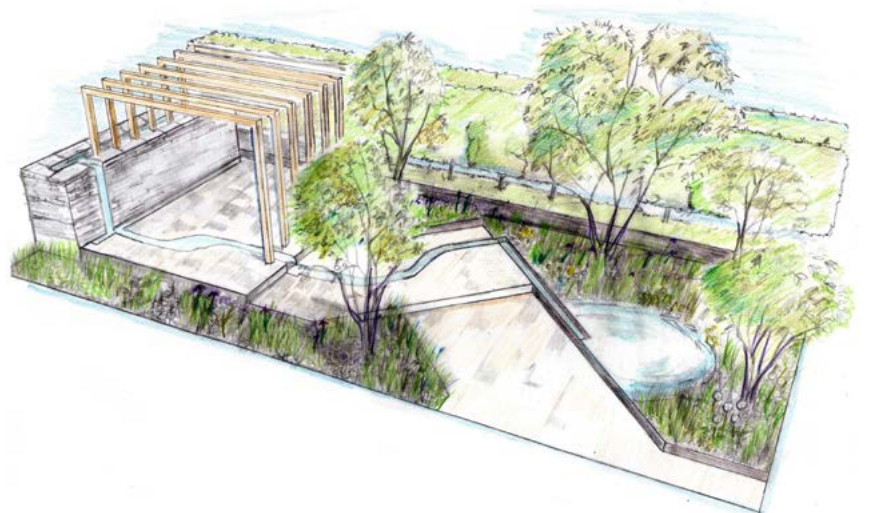


Multi RHS gold medal winning designer, Sarah Eberle returns to Main Avenue with a garden celebrating 100 years of forestry with The Forestry Commission.

The Resilience Garden looks ahead to the biggest challenges facing our forests in the future, exploring how they can be made resilient to a changing climate and the increasing threats of pests and diseases.

A celebration of the environmental benefits of trees, this time within an urban space has influenced the design of The Savills and David Harber Garden by Andrew Duff.

The garden seeks to create a beautiful, sustainable woodland clearing within a city, featuring bio diverse trees and greenery known to remove harmful pollutants from the atmosphere.





Three gardens on Main Avenue this year represent striking natural landscapes. Last year's People's Choice winner Mark Gregory is designing once again for Welcome to Yorkshire, inspired by the canals and waterways found in the West of the county. Jon Snow for Trailfinders is sourcing inspiration from further afield bringing the temperate rainforests of South America to Central London complete with lush planting and dramatic waterfalls.

In contrast the The Dubai Majlis Garden designed by Thomas Hoblyn evokes a Middle Eastern feel inspired by the sculptural beauty found in arid landscapes.

The importance of having access to nature and green spaces for all ages and abilities has inspired the brief for The Greenfingers Charity Garden designed by Kate Gould. Intended for a hospice to provide a fun, interactive and uplifting space where seriously ill children, their families and friends can come together and embrace the benefits of being in the fresh air and engaging with the natural environment.

Chris Beardshaw, winner of Best in Show 2018 and multi gold medal winning designer Jo Thompson complete the talented line up designing Show Gardens in 2019.

The Great Pavilion

British horticulture remains at the heart of RHS Chelsea as the UK's top nurseries fill the Great Pavilion with thousands of immaculate plant varieties on display.

For the first time the Great Pavilion will also house a judged walk-through Show Garden by internationally renowned British Designer Tom Dixon and home furnishings retailer IKEA. The immersive garden hopes to raise awareness that it is both possible, affordable and rewarding to grow your own food in the city using sustainable urban growing techniques. Upon first impression, the garden looks like a

natural hillside landscape, on closer inspection, the viewer can see a subterranean, and futuristic high-tech garden with edibles and plants growing in an immersive horticultural laboratory.

Eight nurseries making their Chelsea debut and adding to the horticultural excellence on display this year include Andy's Air Plants, Exotic Blooms, Lime Cross Nurseries, New Forest Hostas and Hemerocallis, William's Cactus, Summerdale Garden Nursery, Newlands Herbs and for the first time

a National Allium Collection will be on display demonstrating the diverse size, colour and shape of these popular plants.

Iconic multi RHS Gold medal winning rose breeder, David Austin Roses will be celebrating their 50th Anniversary at the show with a sensual display of award winning roses along with some exciting new introductions. Perennial is celebrating its 180th year of supporting those in the horticultural industry with a walk through feature 'The Perennial

Lifeline Garden' designed by London College of Garden Design Graduates taking inspiration The Laskett Gardens in Herefordshire bequeathed to the charity by Sir Roy Strong.

More announcements including details of the RHS Feature Garden to follow in January. For more information on the RHS Chelsea Flower Show 2019 including the

Tickets are now available to buy now at www.rhs.org.uk/shows





ACCOYA®

SELECTED BY THE PRESTIGIOUS CAMBRIDGE UNIVERSITY FOR
UNIQUE BOTANIC GARDENS PROJECT

Accoya® wood has been specified for an integral part of the 'Understanding Plant Diversity' project in Cambridge University's Botanic Gardens, one of the largest university-owned botanic gardens in the world. Following an invited competition in the summer of 2016, Chadwick Dryer Clarke was appointed as the project lead to create a path structure to inspire and intrigue visitors. 'The Rising Path', a galvanised steel structure clad with Accoya® wood balustrades and decking, was created to meet the brief.

The 65 metre long dynamic spiral, which has a three-metre high elevated viewpoint, features an interpretation hub designed to inspire visitors to explore the garden's Systematic Beds and offer new ways to explore the science of plant taxonomy.

Robin Dryer, Director of Chadwick Dryer Clarke, commented: "During the development of the design we considered various types of wood, and it was Sustainable Building Advisor, Alexander Reeve, from the Cambridge University Estates Department who first suggested Accoya® wood due to its outstanding environmental qualities."





He adds, "Following further investigations into the product and meetings with Justin Peckham, Head of UK Sales at Accsys Group, it was decided that Accoya® wood not only provided the necessary durability and sustainability qualities - with its C2C accreditation and 50 year above ground guarantee - but it could be machined to a smooth finish and had a complementary light colour and knot free surface that would enhance the design."

The balusters were 38x100mm sections, end sealed with Osmo and grain sealing wax. Over 1,300 linear metres of non-slip Accoya® wood decking supplied

by Gripsure was installed in four meter lengths and cut down to 22x142mm sections with two non-slip strips and stair treads with special contract edges, as well as a series of bespoke non-slip resin supergraphics where letters and numbers, each corresponding to a different aspect in the evolution of plants, are routed into the deck, for both aesthetic and educational appeal. An installation by Designmap which has also been made from Accoya® wood is designed to educate visitors as they enter the Botanic Gardens. The structure was crafted to add an extra dimension to the newly opened site.





Accoya® wood is produced using Accsys Group's proprietary acetylation process, which chemically alters the cell structure of the wood to resist distortion.

Certified Cradle to Cradle™ (C2C) Gold in recognition of its sustainability credentials, Accoya® wood has the added benefit of offering peace of mind for the environmentally conscious.

**Accoya® wood is available to buy
throughout the UK and Ireland.**

www.accoya.com

MAKING WAVES AT ROSSALL COASTAL DEFENCE ECOLOGY PARK

Three bridges with unique 'wave' style parapets were installed by CTS Bridges Ltd in the Mythic Coast inspired Ecology Park as part of the Rossall Coastal Protection Scheme.

Artist Stephen Broadbent of Broadbent Studios was responsible for the design of the ecology park and his concept for the bridges required the parapets to have a wave effect made from hardwood spindles.

CTS worked with Balfour Beatty and Broadbent Studios to develop the design into a buildable solution for



the three bridges.

Twelve spindles formed one wave effect and each of the Ekki hardwood spindles were cut to shape from a larger timber section to achieve the exact shape required. Once cut they were numbered prior to being methodically fitted by CTS's joiners.

The Ekki hardwood deck has Hi-Grip Excel non-slip inserts to provide a slip resistant surface on the multi use bridges.

The three bridges were manufactured by CTS at their factory in Huddersfield prior to being delivered and installed on site in time for the opening of the Coastal Flood Defence scheme carried out by Balfour Beatty for Wyre Council in partnership with the Environment Agency.

CTS Bridges Ltd specialise in the design, manufacture and installation of footbridges in timber, steel or FRP.



For more information contact
enquiries@ctsbridges.co.uk
www.ctsbridges.co.uk

DESIGN BUILD INSTALL
 Delivering quality structures
 across the UK

- BRIDGES
- BOARDWALKS
- STRUCTURES
- LOCK GATES
- DECKING

01484 606416 enquiries@ctsbridges.co.uk www.ctsbridges.co.uk

HAHN PLASTICS

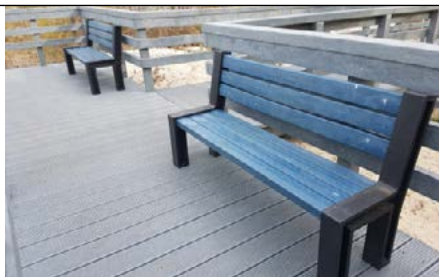


MADE FROM 100% RECYCLED PLASTIC

With 210,000m² business premises and production plants located in the UK, Germany and Canada, we are the biggest 100% recycled plastic products manufacturer in Europe, processing over 54,000 tonnes recycled plastic annually.

More and more Landscapers and Architects are choosing our hanit[®] systems because of the many product benefits. hanit[®] materials are 100% recyclable, durable, eco-friendly and can be very simply processed, using all the same tools, fixings and fittings that you would if processing timber. With an attractive grained timber appearance, it is also weather-resistant, chemical-resistant and splinter-free. Vitally it required no maintenance whatsoever which is unbeatable when comparing price with performance.

During 25 years in operation, the HAHN group has been consistently increasing its' product range and now have over 2000 products – all made with 100% recycled plastic. This gives our customers complete confidence that a project can always meet completion on time.



Old Pilkingtons Tile Site
Rake Lane, Swinton
Manchester M27 8LJ

HAHN PLASTICS

+44 (0)161 850 1965
info@hahnplastics.com
www.hahnplastics.com

Benchmark street furniture



www.benchmark-ltd.co.uk

01243 545926

info@benchmark-ltd.co.uk



LANGLEY DESIGN

Langley Design are experienced providers of a wide range of street furniture products including Benches, Canopies, Cycle Shelters, Litter Bins, Pergolas, Picnic Tables and Seats, with Green Roof Cycle Shelters a speciality.

Our products are manufactured to order so we can adapt our standard range to accommodate your specific design needs.

We have a varied selection of materials to ensure we can match your budget constraints and our young team work with the Landscape Designer, providing drawings and technical advice to ensure the product fits in with the schemes requirement. Please give our team a call to discuss your project.

LANGLEY DESIGN
EXTERNAL FURNITURE SOLUTIONS

Number: 01793 759 461

Email: info@langleydesign.co.uk

Website: www.langleydesign.co.uk



Harlestone

DESIGN • CONSTRUCT • DELIVER

ENHANCING LANDSCAPES WITH STREET FURNITURE

With more than 25 years' experience, Harlestone designs, constructs and delivers high-quality architectural metalwork, general fabrication, fencing, gates and street furniture.

From concept through to completion, we are devoted to carrying out every project on time and within budget, always treating safety as an utmost priority.

Street furniture not only complements a landscape, it enhances it. And, it's part of our business we take exceptional pride in.

From benches, bins, planters and bollards through to ornate pergolas and bespoke monumental designs; we have designed, constructed and delivered street furniture for a whole host of organisations and applications, including most recently the American Embassy in London.

For further information, visit www.harlestonegroup.co.uk

POTSTREAM™ BY ANTELCO THE NEW WATERING STANDARD FOR POTTED PLANTS

Potstream™ is the new fully adjustable watering device for potted plants

Adjustable watering pattern, no overthrow to stain paving or cause slip hazard!

Light gentle targeted streams to apply water at a low application rate.

Potstream™ is now available through your nearest Antelco Distributor.



For further information please contact Antelco UK Ltd. buzz@antelco.co.uk or view online at www.antelco.com



NATURALLY BEAUTIFUL

BESPOKE HARDWOOD WALKWAY COMPLEMENTS COASTAL DEFENCES

Over the last 5 years, considerable work has taken place on the Rossall Sea Defences designed and built to protect thousands of homes from the risk of coastal flooding, as well as providing a fantastic new promenade to aid visitors and residents in appreciating the full beauty and rare flora and fauna of the area.

Woodscape are proud to have supplied a large quantity of Type 4 cantilevered wall seats to this 64 million pound scheme.

Woodscape were also tasked with providing a walkway over a location of biological importance and interest, that would both enhance the area and allow access to the promenade.

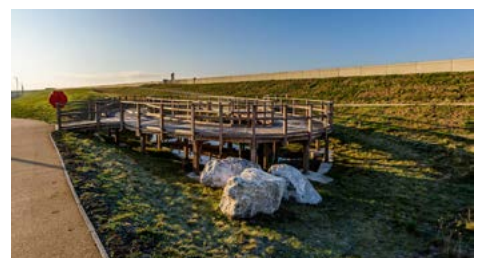
In collaboration with Balfour Beatty and Blackpool & Wyre Councils, a design was developed that incorporated a stunning elliptical viewing platform, with easy access and DDA compliant ramps.

As specialists in the use of Naturally Very Durable Hardwood, a timber essential for durability in marine based installations, Woodscape were perfectly placed to craft a feature product that would both thrive in, and complement this demanding environment.

Use of 316 grade stainless steel tensioning further adds to the builds strength and durability, while acting as subtle and stylish safeguard.

Anti-slip decking ensures safe and easy passage for the many visitors looking to admire the grasslands or travel through to the promenade.

By finishing many of the required elements at our Blackburn based workshop utilising our 5-axis CNC, we were able to deliver and install a complex, bespoke product, with minimal time spent on-site, working closely with the principal contractor for an issue free build.



If you would like to contact Woodscape about your decking, boardwalk or bridge requirements, from a simple concept through to design, manufacture and install, call us on 01254 685 185, or email sales@woodscape.co.uk, and our experienced team will help you find the perfect, bespoke solution.

WOOD BlocX

LANDSCAPING



A unique, patented system of interlocking timber blocks that can be used to design and create almost any external structure



Street Furniture



Raised Beds



Retaining Walls

www.WoodBlocX-Landscaping.com

0800 389 1420



HOW OUR CITIES CAN MAKE SIGNIFICANT GAINS FROM HARNESSING THE RAINS



Sean Robinson, business development director, Water Management Solutions, Polypipe

According to the MET office, the UK's climate is changing, bringing more warm spells and tropical nights. It also states rainfall has increased during winter.

This could mean a complete rethink in the materials we use and the functionality of buildings. Solutions must reduce rising temperatures in cities – the urban heat island effect – and effectively manage water.

Blue-Green roof systems, which harness rainwater to sustain plant life, can lower temperatures during summer.

In Amsterdam, research has found Blue-Green roofs provide a viable, scalable solution for UK cities.

The Project Smartroof 2.0 research analysed the hydrological, thermal and biodiverse functioning of Blue-Green roofs in the urban environment.

The hypothesis from the Permavoid experts was that plants in Blue-Green roof systems have a higher urban cooling capacity, can enable a wider plant species selection due to improved water availability, as well as reduce the precipitation lost to sewer discharge.

Setting up Project SmartRoof 2.0

Three 4.2x4.2m plots were constructed within a 440m² Blue-Green roof garden. One plot was constructed like a conventional extensive green roof, equipped with a 25mm drainage mat and a 4cm substrate layer.

Two other plots were equipped with a Permavoid 85mm drainage, storage and capillary irrigation system, with water storage maximised - by overflow - to 30mm out of the available 80mm capacity due to the roof's weight restrictions. One was covered with a 4cm substrate and the other with 8cm substrate.

Sensors measured heat fluxes such as incoming sunlight, reflected light, surface temperatures, and soil and air temperatures. Weather data was also gathered on-site.

After placement of sedum mix blankets, 40 European plant species were sown on the sedum carpet/substrate to observe the plants over time.

All plots received the same initial vegetation and seed-mix as well as the same maintenance and fertilisation during the research.

What the results show

After the first month, the plots were only supplied with rain. The vegetation

started as a primarily sedum mix, but rapidly developed. Grass and herbs dominated vegetation on the capillary irrigated plots.

The research plots showed distinct differences in actual plant evaporation rates. The capillary-irrigated plots showed evaporation fluxes of ca. 3mm per day (3 l./m² per day) on average during summer, with more than 4mm per day, especially in spring 2018 - typical of vegetation in the Netherlands.

Actual evaporation of the conventional plot showed prolonged periods with significant evaporation reduction during dry spells, especially during spring and early summer.





Observations on the roof indicated that the Sedum vegetation on the conventional green roof ran out of water after 6-7 days of no rain, where the Blue-Green systems with grasses and herbs ran out of water after a dry spell of 15 days.

The results found that a conventional green roof with sedum vegetation, total-growing- season water shortages can be reduced from 28% to 4% by increasing the amount of water stored in the drainage layer from 0 to 80mm.

For a grass and herb-dominated vegetation, water shortage is reduced from 29% to 12%. This lesser reduction is caused by the fact that the modelled potential evaporation of a grass/herbs vegetation is higher

than that of the sedum-dominated vegetation.

To achieve maximum evaporation to maintain the growth of roof vegetation and to generate the urban cooling effect, based on 80mm of water storage, 70mm of extra irrigation water would be needed for a grass/herbs vegetation and 15mm for the sedum-dominated vegetation.

During the research period, the hydrological performance in the sense of evaporating precipitation water instead of discharging this water to the sewer was also greatly improved by the Blue-Green roof system: Total average precipitation water evaporation for sedum increased from 290 to 386mm and for the grass/herbs vegetation from 414 to 515 mm.

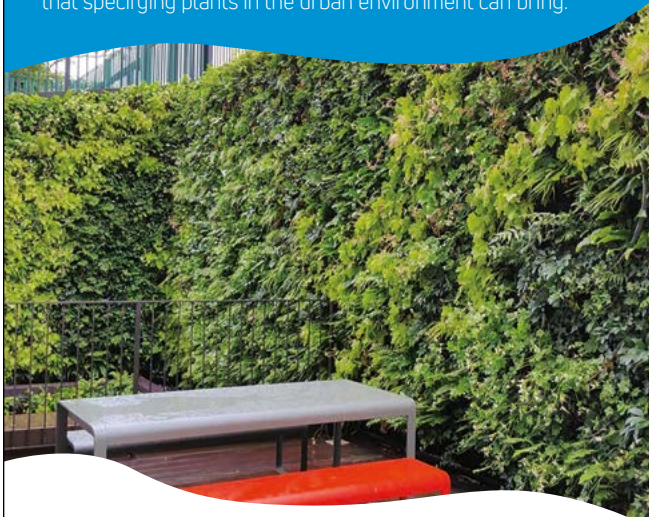
The research from Project SmartRoof 2.0 demonstrates that in order to have the urban environment benefit of green roofs, we have to add water to these systems so plants can flourish. A Blue-Green roof system also enhances how urban space can be better used in a multifunctional way.

These Blue-Green roof systems could bring significant benefits to UK cities. Not only is a Blue-Green roof intuitive to install and maintain on a large enough flat roof area, the spaces created can offer more benefits for the end users of the site by increasing usable green spaces for amenities, which, in turn, increases biodiversity and can assist with climate cooling.



Learn about Living Walls from Smartscape
the Living Wall Experts

Book our CPD to understand the design process, installation and maintenance of living walls, plus the enormous benefits that specifying plants in the urban environment can bring.



Contact cpd.training@scotscape.co.uk to book your Living Walls CPD today. Available face to face or via our excellent webinar service.

+44 (0)208 254 5000 scotscape.co.uk

Part of the
Scotscape group:



See us on Stand G39 at
The Landscape Show



wonderwall

Vertical gardening made easy!

Make your garden or living space the best room in your home is what USP Creations are shouting about with their Wonderwall vertical wall planters.

Vertical gardening has never been so easy and is a great way of creating some amazing environments from balcony displays, full walls, fences in your garden to an internal display, the uses are endless.

Landscapers and designers have found the planters the simplest and most reliable to use.

Traditionally vertical planters have been designed to be a complete modular install with plants already planted.

With Wonderwall planters you can either bed in soil or place up to 13cm nursery pots directly into the inserts.

The system has been designed to use throughout all seasons. The self irrigating planters will adapt to all conditions and displays.

Most vertical wall systems have been designed for commercial uses. Wonderwall has been designed for both commercial and domestic use.

Winner of best sundries product at the HTA plant show 2017 and winner of best product at grow south 2016.

For any enquiries contact sales@uspcreations.com or call 0161 643 5742



ROOFTOP AMENITY SPACES

enquiries@sky-garden.co.uk

01242 620905

sky-garden.co.uk

Wild Flower Lawns & Meadows



- ❖ Unique wild flower seed mixes with wild orchids
- ❖ Wild flower turf with wild orchid seed – nationwide delivery
- ❖ Wild flower plants and plant plug collections
- ❖ Yellow Rattle seed and plugs
- ❖ Advisory service for creating and managing wild flower areas

and much more... SEE THE WEBSITE below:

www.wildflowerlawnsandmeadows.com

Tel: Colin 01435 810446 email: contact@colinreader.com



KEMPER SYSTEM TOPS LONDON'S BEST NEW EXTENSION



Kemper System has helped to create an award-winning home extension, featuring a unique swooping roof structure.

Designed by architects Tonkin Liu, the 'Sun Rain Room' forms part of the restoration of a Grade II Listed Georgian townhouse in London and features the work of local craftspeople. The building is also home to architects Anna Liu and Mike Tonkin and provides a studio for their practice.

A 'Good Place on a Bad Day'

The two-storey extension reframes the rear of the building and features a new garden room offering living space and a meeting area for the studio. A mirrored wall in the covered outdoor area beyond conceals a workshop, cooking area, tool shed, store, and deep planter for the small trees in the green roof above. Below the patio, the existing basement has been extended to create a bedroom, two bathrooms and an enlarged plant-filled lightwell.

One of the most striking features of the new extension is a curved, 10m-long roof, which dominates the space and frames a bean-shaped courtyard. A pipe runs down the building's rear wall to meet the new roof. When rainwater gathers at the top of the townhouse it falls through the pipe and follows the roof's curving leading edge to a spout over a long rainwater harvesting tank. The tank floods the patio at the push of a button, transforming it into a reflecting pool.

Robust and Flexible Waterproofing

Structurally, the roof is unique as it has been built using layers of 6mm plywood, which sandwich an insulating core and allow for 25 circular skylights. A thin steel support post hidden within the glazing framing allows the roof to apparently span free over the space.

Given the unusual shape and style of the roof structure, Kemper System's

Kemperol 2K-PUR was specified for the waterproofing.

Odourless and solvent free, the liquid waterproofing system was installed by north-London based roofing contractors Liquid Waterproofing Ltd. It was applied directly onto the 110m-thick plywood structure, in a single wet-on-wet process using a reinforcement fleece. Once cured, the system formed a seamless, elastomeric waterproof membrane which bonded directly to the substrate.

Tony Mctigue director of Liquid Waterproofing Ltd said: "The steep slope and curves on this unusual roof demanded a very easy to apply and durable waterproofing solution, so Kemperol was ideal. As it is laid using a roller and wet-on-wet, we were able to install it quickly and effectively including around the detailing, specifically the circular lighting units.



"As the structural concept hadn't been tried before, the roof was carefully load tested using bags of water. As Kemperol has excellent elasticity this also provided the assurance that the waterproofing would not be affected if there was any movement."

A Complete Solution

After the Kemperol 2K-PUR had been applied, it was topped with richly planted sedum. However, as parts of the roof's perimeter remained visible, Kemperol Reflect was also applied. This is a white waterproofing system comprising special liquid synthetic properties which reflect UV and infrared radiation away from the roof, ensuring the surface temperature remains cooler than when using traditional darker roofing materials.

Stuart Hicks from Kemper System commented: "Kemperol provided a perfect membrane for the green roof and will provide long-term protection, ensuring this stunning structure retains its impressive appearance for many more years to come.

"As the property is in close proximity to a number of neighbours and is also used as workspace for the architectural practice, which remained operational throughout the project, the fact Kemperol 2K-PUR is odourless and solvent free was another major benefit."

The Sun Rain room has won multiple awards including being named the overall winner of New London Architecture's prestigious Don't Move, Improve! awards in 2018, which showcase the Capital's best and most innovative new home extensions.





LUXURY LANDSCAPING AT QUEBEC QUARTER

An abundance of outdoor space was integral to the design of L&Q's Quebec Quarter, a collection of 70 private rental apartments in Canada Water, with both architects and landscapers taking their inspiration from the Russia Dock Woodlands that runs alongside the site.

Carefully planning the communal gardens that will sit between the stepped blocks of homes to bridge the gap between the woods and Quebec Way, landscape design consultants Outerspace will create unique spaces that will graduate from wild forest to urban garden.

Primarily using native trees and ground covers, including mature maples and oaks which are important for attracting wildlife*, and the wild garlic found in abundance in the woods, Outerspace will also add splashes of colour with plants that will flower year round.

Richard Broome, Creative Director at Outerspace, comments; "The gardens have been carefully designed for tenants to enjoy as much outdoor space as possible, and we felt it was important for the landscaping to reflect the development's variety of surroundings.

From the modern, urban layout near Quebec Way to the much wilder-feeling border of the Russia Dock Woodlands, the communal gardens offer something for everyone."

The gardens are designed to use sustainable drainage techniques in a creative way, forming spaces with a sophisticated layout, and the geometry gently breaking down in formality as it drifts into the woodland belt. A pathway will also lead from the development directly into the woodlands, providing easy access for residents.



Covering five acres in total, 65% of the development is dedicated to recreational areas. Homes offer views of the peaceful landscaped grounds and scenery from private balconies or extensive terraces, with some top floor apartments also benefitting from fantastic views of Canary Wharf.

Prices start from £1,575 pcm for a one-bedroom apartment, £2,050 for a two-bedroom apartment and £2,595 for a three-bedroom apartment.

To register interest, visit LQgroup.org.uk/Quebec or call 0208 853 6937



JAPANESE KNOTWEED™ TO BE IGNORED

SURVEY

TREATMENT

REMOVAL

GUARANTEE

Japanese Knotweed Ltd has a proven track record for eradicating Japanese knotweed for major building developers, local authorities and private landowners. We pride ourselves on becoming one of the leading Japanese knotweed removal experts in the UK.

Our highly knowledgeable and skilled staff provide a comprehensive service and are committed to providing the highest level of customer care. With a range of guaranteed, cost-effective and efficient eradication solutions, we work closely with our clients to meet all requirements.



DO YOU have Japanese knotweed on your site or property?

ARE YOU looking for tailor-made, efficient knotweed remediation options?

CONTACT US **0333 241 4413**
contact@knotweed.co.uk

“ Very professional and they dealt with our Japanese knotweed in a timely, practical and affordable manner.
- Christopher Hill, Taylor Wimpey West London Ltd ”



★ Trustpilot



www.japaneseknotweed.co.uk

Protect against damage from tree roots, Japanese Knotweed and other invasive plant species

DENDRO-SCOTT™ Root Barrier, recognised by the Environment Agency, is known for its quality and reliability. It is flexible and adaptable, specified for all types of projects, from the very large, including new builds, to small residential projects. It can be easily jointed on site, using double-sided butyl tape. It is an excellent and proven way to protect structures and services from **tree roots** and **Japanese Knotweed**.

DENDRO-SCOTT™ Root Barrier comes in 26 stock sizes, from a small 1m x 10m roll, up to a 30m x 30m sheet.

DENDRO-SCOTT™ Root Barrier is used in various ways:

- **Vertically**, to prevent lateral intrusion of roots and rhizomes, to protect underground services and to prevent ingress from neighbouring sites
- **Horizontally**, to protect buildings and surfaces from vertical intrusion of roots and rhizomes, this includes installation below foundations
- **Services**, wrapped with root barrier membrane, to protect pipes, etc.
- **'Cell'**, to avoid the very expensive process of transportation of contaminated soil to a waste facility, licensed for Japanese Knotweed. To comply with Environment Agency guidelines on root spread of Japanese Knotweed, the quantities of spoil can be extremely significant. With a 'Cell', soil is retained within the site, reburied and completely sealed within a 'Cell' of DENDRO-SCOTT™ Root Barrier. The potential cost saving is enormous!





TERRAIN GETS TO THE CORE

A common problem facing building companies, contractors and landscapers on completion of a development is compaction. The movement of traffic and materials across the ground to buildings under construction leaves areas prone to waterlogging. Newly laid gardens, grassed and play areas in particular become susceptible, with compaction occurring far deeper than normal aerating will alleviate. Deep penetration aeration is the solution but how do you know what lies beneath the grass and to what depth the aeration is needed? Terrain Aeration have been treating such problems for over twenty-five years and work regularly with construction companies such as Taylor Wimpey, Barrett Homes, Laings and smaller developers to provide a long-term solution.

The Terrain Aeration Terralift machines penetrate the ground to a depth of one metre, releasing a blast of compressed air which fractures and relieves the compacted soil, creating permanent aeration and drainage. However, before carrying out the aeration it is often necessary on old site layouts to determine what lies beneath and Terrain Aeration take a core sample using their specialist machinery.



The plastic sleeve which slides out of the metal casing reveals what the soil is like, from the top soil down (in this example) to the clay structure beneath. The soil cores are taken to one metre depth and are also very good indicator to show where oil and diesel spillages have penetrated and how deep. The Terralift can then deal with the oil-bioremediation using specialist products in the area down to one metre depth.

Further down, flint is encountered and the Terralift probe is designed to break through the solid layers, employing a JCB hammer incorporated as part of the machine. Once the hard materials have been penetrated, the compressed air blast released creates fractures and fissures.

These are injected with dried seaweed as part of the process, keeping, in this case, the clay seen in the core sample open and allowing surface water to quickly drain down one metre, before naturally percolating away into the flint area.

What is an ex-car park area has been transformed into a healthy soil structure with good root zone and ready for children to play on. Of course, not all compacted ground will have the same strata but the Terrain Aeration process is used to treat all types of waterlogging, from small gardens to parks, public spaces and sports pitches to bowling greens.

Terrain Aeration

www.terrainaeration.co.uk

01449 673783

DUPONT

DUPONT™ PLANTEX® PLATINIUM: YOUR MOST RELIABLE ALLY AGAINST INVASIVE WEEDS

DuPont™ Plantex® Platinum: your most reliable ally against invasive weeds

Japanese knotweed, couch grass, giant reed, giant hogweed, mareetail, horsetail, Himalayan balsam... the list of aggressive neophytes and all the expensive and ecological damage they can cause can seem like a nightmare. But landscaping professionals can rest easy: newly optimised Plantex® Platinum delivers the long-lasting resistance required, without the need for toxic herbicides or mowing.

A high-performance landscaping fabric that has been thoroughly and extensively tested, DuPont™ Plantex® Platinum now has further enhanced manufacturing technology for even greater protection. Plantex® Platinum forms a highly-effective, chemical-free barrier against weed penetration, while also being permeable to air and water and so enhancing soil health and stability. Easy to install, Plantex® Platinum offers very high tensile strength and comes in two convenient widths for a variety of site areas and needs.

Proven performance against invasive weeds

Invented and manufactured by DuPont, Plantex® Platinum has undergone numerous and rigorous tests by the company's Research & Development team. Over several years and in natural environments, it has demonstrated powerful resistance to weed penetration, while observations in the field have led to further improvements in its manufacture and application.

"DuPont originally developed Plantex® Platinum with a special focus on Japanese Knotweed, to address the increasing problem of invasive weeds spreading across Europe," explains Carl Festré, EMEA Marketing Manager, Typar® and Plantex®, "the next phase has been to optimise and diversify the product, tailoring it carefully to more specific requirements or applications."



A complete solution from DuPont

Experts appreciate the complex challenges of eradicating Japanese knotweed. Thus, DuPont has combined a premium offering of advanced products and expertise into a complete solution to the nuisance of invasive plants. This consists of: Plantex® Platinum to control the plants above ground, plus Plantex® RootProtector and Plantex® RootBarrier to confine the root and rhizomic systems, together with a clear-cut installation guide to ensure that adjacent runs will be impenetrable to unwanted roots. Only by working with such comprehensive products and guidelines can invasive plants be beaten.



The Future is bright for Solar Farms

Alongside this typical-use offering, DuPont now also offers a specialised version of the fabric called Plantex® Platinum Solar. This product is dedicated to uncovered applications such as solar farms, or other such sensitive technical installations, where weed control presents particular challenges or can cause safety issues. Plantex® Platinum Solar can be left uncovered under UV radiation for 8 years according to the limited product warranty, thus reducing both installation costs and maintenance in the long run.

For further product information:

www.plantexpro.dupont.com

ETESIA UNVEIL TWO NEW ATTILA BRUSHCUTTER MODELS



Etesia UK has unveiled two new Attila pedestrian brushcutters ahead of the 2019 season.

With built-in rugged reliability as standard, the new Etesia AK60 and AH75 pedestrian brushcutters have been designed to work in the toughest of conditions.

These powerful workhorses effectively deal with clearing vegetation from a wide variety of sites - long grass, weeds, bracken and brambles on woodland paths, orchards, holiday parks and road verges.

Ease of operation and manoeuvrability ensure total efficiency and high output.

Efficiency

Heavy-duty brush cutting (up to Ø30 with AH75 and Ø20 with AK60)

Mowing on the most difficult slopes (up to 20°) thanks to the hydraulic transmission with a differential lock

Two idlers that can be locked without a tool for improved stability on slopes in the AH75

Possibility to fit two wider rear wheels as an option

Cutting height adjustment with three positions from the handle

Handle offset control from the operating position with three working positions and one transport position

Comfort

High manoeuvrability thanks to the hydraulic transmission and three forward speeds and one reverse speed

Differential lock can be engaged without interrupting movement

All operating controls are available from the operating position for convenience and safety

Protection for controls and hands

with the guards incorporated into the handle with a three-position adjustment facility

Central handle that allows easier access to low controls (parking brake, forward transmission bypass, engine starter), with full protection for cables

Parking brake for safe immobilisation

Anti-vibration rubber handles

Ruggedness

Machine can be moved into vertical position to gain access to the cutter blade for maintenance and cleaning

Maintenance-free hydrostatic transmission with forced-air cooling, integrated expansion vessel

Flail blades: reversible, protect the blade transmission system, low maintenance costs

Rugged and reliable engines: Engine crank shaft mounted on bearings.

The AK60 model is fitted with a Kawasaki FJ180 OHV engine with a 60cm cutting width, while the

AH75 is fitted with a Honda GXV 390 engine with a 75cm cutting width.

A full two-year commercial warranty comes as standard.

For further information, please contact Etesia UK on 01295 680120 or visit www.etesia.co.uk.

For more news, reviews and insightful views, you can follow Etesia UK on Twitter @EtesiaUK and like the company's Facebook page – www.facebook.com/EtesiaUK. You can also view the latest Etesia videos by visiting www.youtube.com/EtesiaUK.





ONE BATTERY, MULTIPLE TOOLS

THE NEW ECHO 58V RANGE

Battery power for garden and groundcare tools has been around for some time now. However, it's only since the advent of powerful lithium-ion batteries that electric power could really become a serious contender against petrol two-stroke.

Now, a new generation of lithium-ion products has arrived and ECHO outdoor power tools are at the forefront with their new range of 58 Volt battery products. This includes a battery hedgetrimmer, trimmer, lawn mower, power blower and chainsaw for semi-professional and domestic use.

When you consider the benefits of electric power, it's easy to see why it has grown so quickly since lithium-ion batteries became commercial. The obvious features are batteries that produce the same power as petrol engined tools, with no exhaust emissions and without the need to

store petrol and mix two-stroke. No effort is required to get started. You just charge and go, cutting, trimming, blowing leaves and mowing with virtually no noise or vibration.

Today's 58V batteries are designed to give you more than enough power in constant use to carry out most tasks. The ECHO interchangeable battery system is available with two options, 2Ah and 4Ah. The hedgetrimmer, trimmer and power blower come with a standard 2Ah battery but if you're looking for a longer run time you have the option of a 4Ah battery, and remember, you only need the one.

Recharging is fast with the Quick Charger, ensuring 30 minutes charging time for the 2Ah and 60 minutes for the 4Ah, and you can always buy a spare battery as a back-up if required. Buy the chainsaw or mower and they come

with a 4Ah battery as standard, so you would have the benefit of the extra run time for other products you might need.

ECHO battery products are built to the same professional standards as all their products, so they are solid, durable and ergonomic. As there are no moving parts no engine servicing is required, which means there is another cost saving in addition to no longer needing to buy petrol. ECHO 58V lithium-ion battery products come with a two-year domestic or one-year professional warranty and there is a two-year warranty on the batteries.

You can find out more from your local authorised ECHO dealer by visiting www.echo-tools.co.uk or calling 0800 597 7777 for more information

SNICKERS WORKWEAR NEW HIGH-PERFORMANCE ALLROUNDWORK JACKETS

Top athletes have long enjoyed the benefits of performance wear - now professional craftsmen and women can too with Snickers Workwear's new range of high-performance winter jackets.



These new ALLroundWork Jackets are just what the name suggests. There's a selection of super-lightweight 37.5® Jackets, Windproof Shell Jackets, Hi-Vis and Waterproof Jackets plus Parkas that all have the features and functionality that you'd expect in Snickers working clothes.

To get more information on the Snickers range of Next Generation Work Jackets is easy - call the Helpline on 01484 854788; check out www.snickersworkwear.co.uk and download a digital catalogue; or email info@snickersworkwear.co.uk

IT'S BEST TO 'BE SAFE' WITH MAKITA UK

Several hundred students attending Merrist Wood College, a multi-award winning, 400 acre estate and 'outdoor classroom' in Guildford, Surrey, are benefiting from



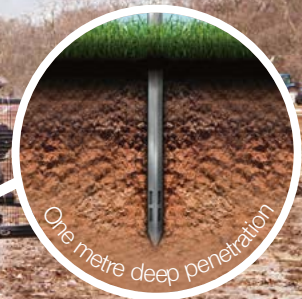
Makita UK's invaluable Be Safe training modules. The College specialises in a variety of subjects from animal welfare and arboriculture, to landscaping, garden design, equine management, sport, Public Services and horticulture. For students on the land-based courses Makita UK, Britain's number one professional power tool manufacturer, has started to deliver a series of Be Safe modules in grounds maintenance, landscaping and horticulture.

For more news and product information about Makita UK please visit www.makitauk.com. Follow us on Twitter @MakitaUK, Facebook.com/makitauk and [google.com/+makitauk](https://www.google.com/+makitauk)

THE POWER OF DEEP AERATION

TERRALIFT DEEP PENETRATION RELIEVES COMPACTION, WATERLOGGING AND PANNING

TERRAIN AERATION'S TREATMENT IS LONG-TERM FOR PARKS, TREES, SPORTS PITCHES, GOLF COURSES, BOWLING GREENS AND GARDENS. ASK THE EXPERTS. WE HAVE 25 YEARS OF EXPERIENCE OF MAKING THE EARTH MOVE.



**SEE THE EARTH MOVE ON VIDEO
W: WWW.TERRAINAERATION.CO.UK
T: 01449 673783**





GKB ON PAR AT BTME

Following the success of previous years, GKB Machines have taken a larger stand in one of the new halls at this year's BTME to display more of their machinery range. The new Topair 120 being introduced at the show is based on the popular Topair 160 model, offering a smaller machine for use on the golf course with compact tractors. A robust and reliable combined aerator/roller its GKB developed Evolvente® blades minimise upper layer disturbance to

leave a smooth, levelled finish when used in conjunction with the water-filled roller. The two operations can also be done separately. The machine features optional cutting discs to leave a continuous slit to aid surface water drainage and the slicing of grubs.

In areas on the golf course where surface water and moss formation are a problem, the GKB Sandfiller goes to work offering a fast solution for drainage and intensive aeration. Top

layer treatment is environmentally friendly and cost-effective with its all-in-one combination of aeration and sand filling. Intensive aeration of the grass leads to quicker recovery, greater green longevity and faster drainage of surface water, without the need for complete renovation.

Meeting top dressing requirements for golf courses and all types of sports pitch the GKB SP100 Spreader has been developed on the back of the



hydraulic controls and runs directly off the hydraulics of the chosen turf truck.

The GKB Combiseeder offers a fast, efficient way of seeding and surface aerating with virtually no surface disturbance. Creating over 1500 holes per m² the Combiseeder provides accurate seed application at various rates to suit different seed mixes, with drag brushes to incorporate seed and topdressing. The Combiseeder can be used for overseeding and initial

seeding and features two spiked rollers that open up the soil for the seed to then be spread accurately across the full width, in and around the holes. Two drag brushes incorporate the seed into the holes and this method results in minimal surface disruption.

The latest GKB Vstrong improves on already proven technology to offer the professional a robust and reliable scarifying machine that swiftly deals with the problem with the minimum waste flow.



success of GKB's trailed versions and to meet customer needs with easy mounting onto turf trucks, such as the John Deere Gator and Toro Workman. Mounting is straightforward with a simple bolt-on system and stand legs allow the SP100 to be quickly set up or removed. With its 1m³ hopper capacity the machine suits a variety of purposes, evenly distributing materials, such as sand and mulch, with variable spread widths and depths. It's easily fitted with electro-



Operating speeds up to 7.4mph/12km/h mean you can quickly cover a lot of ground for maximum productivity. At the heart of the Vstrong is the CombiRotor with generically developed 3mm carbide scarifying blades. The blades, in turn, are attached to the rotor by means of the QuickLock system which allows you to attain a depth of 5cm.

In combination with the reversed rotation direction you're guaranteed you don't miss an inch.

There is also the option of 2mm or 4mm blades and you can alter the centre-to-centre distance of the scarifying blades. For added benefit a collection system can be used to catch the dispatched material.

**GKB Machines at BTME
Hall:Purple; Stand: 406.**

www.gkbmachines.com
07495 883617





screwSHOP.co.uk

OUR FRIEND IN THE TRADE FOR OVER 30 YEARS...

Screws • Fixings • Fasteners

A division of NE Fasteners Ltd. Cradley Heath, West Midlands.

"MY DADDY ALWAYS SAYS HIS SCREWS ARE THE BEST.."

"..AND ALWAYS AT SUPER GOOD PRICES."

BUY YOUR SCREWS AND FIXINGS ONLINE

OR CALL US..

0121 559 8866



THE HOME OF



SCREWS

Units 2+3, Waterfall Lane Trading Estate, Waterfall Lane, Cradley Heath, B64 6PU

www.screwshop.co.uk | 0121 559 8866 | sales@screwshop.co.uk



A CLEAN SWEEP FOR GREENTECH AND GKB

St Andrew's' University Park is renowned for its grass pitches being among the finest in Scotland, winning high praise from visiting professionals. With such a reputation to live up to it's important the synthetic pitches are maintained to equally high standards.

University Park called on the specialist services of Throsk based Greentech Sportsturf and their GKB equipment for that purpose.

The 3G rubbercrumb pitch, constructed in 2012, is a full size, floodlit, FIFA 2 Star World Rugby approved Third Generation synthetic pitch, used for rugby, football, ultimate Frisbee and lacrosse as well as a venue for regular club fixtures.

The Park's sand dressed pitch is used as a training and match venue for a number of sports clubs, including hockey and football, and is home to a number of community sports programmes and weekly sports leagues.

A programme of consistent high quality pre-season maintenance is essential and Greentech undertook decompaction and deep cleaning of the surfaces using a GKB Quick Clean for powerful in-depth cleaning and removal of coarse dirt, small stone particles and loose fibres. The synthetic turf brush casts contaminated infill material onto a vibrating screen for removal to a collection container, while dust and fibres are absorbed by a suction unit to a dust bag.

"We use, in conjunction with the Quick Clean, a GKB Rotobrush with its extra rigid bristles for deep compaction and that loosens up the infill for us." Says Ewan Peddie, Greentech Synthetic Turf Manager. "Then we run our Quick Clean over the surface, taking out any contamination from the playing surface, as well as extracting any loose fibres." Moss and algae settlements are often most persistent around the edges of synthetic sports pitches.



These pose the danger of a slippery surface for players and the Rotobrush also tackles the problem extremely effectively.

"We were pleased to be called in by St Andrews for their maintenance programme," add Ewan, "and equally so for Dundee United FC, where we carried out similar treatment for their 3G rubber crumb training pitch in October, to get it to a standard ready for FIFA approval."

**www.gkbmachines.com
07495 883617**

**MADE IN
BRITAIN**

LAWN COUTURE

Is now the time to own one of the finest mowers in the world?

Hayter rear roller lawnmowers are designed to cut and create beautiful stripes on any size lawn. Find your nearest dealer at Hayter.co.uk, or email sales@hayter.co.uk.

 **HAYTER**
MAKERS OF THE FINEST MOWERS



TORO



Turbo Boost Power with Speed Lock - moves up to 815 m³/h
Brushless DC Motor
Accessory Attachment Collar and Speed Nozzle
Variable-Speed Trigger

UP TO
60
MINUTE
RUN TIME**

POWER PLEX™ 40V MAX[^]
EASY-TO-USE, POWERFUL YEAR ROUND

T90 LITHIUM +10N
40V MAX BATTERY
2.5 AMP HOURS 90 WATT 60 MINUTE CHARGE

ONE battery - FIVE tools
ZERO hassle

Find out more visit toronew.com/powerplex and locate your nearest stockist at Toro.com or call 0800 781 7155 to request a brochure

[^]Battery manufacturer rating = 40V maximum & 36V typical usage. Actual voltage varies with load. ^{**}3-year full warranty on tools; 2-year full warranty on batteries.

©2018 The Toro Company. All rights reserved.



GREEN BUILDINGS

Green Building, green construction, or sustainable building is not new; it's the practice of designing, constructing, and operating buildings to minimize resource use, reduce waste and avoid negative environmental impacts.

For 25 years - and more - we've been designing, manufacturing and constructing 'Green Buildings' and components in a 'Green way'. Creating buildings that deliver a positive impact on our climate and natural environment. It's in our DNA!

Low Energy Buildings are what we are about. By helping reduce your energy consumption we help you reduce your energy bills, increase your property value and, if you're a business, increases your profits and marketing potential. If you're a homeowner it gives you more free cash to spend on the other things you'd like in life.

Lifestyle Living is, therefore, one more box our buildings can tick for you. It's also one of our aims when working with you and your professional advisors. Understanding the way you live and operate, sharing your aspirations for 'something better' is part of what drives us.

Going Green is not a fad or a fashion. It is a way of life and an important reason for adopting an eco-friendly lifestyle,

making conscious decisions about sustainability, reducing harm to our world and creating positive conditions for the environment to flourish and thrive. Green buildings conserve precious natural resources and improve our quality of life.

Top Tips for Building Green

Decide on your energy systems and on-site generation

- Solar | Wind | Geothermal

Specify your Thermal Insulation in relation to your:

- Site location, building orientation and surroundings
- Heating / cooling / climate systems
- Preference for natural, recycled or other sustainable materials

Assess the health and comfort factors

Choose materials, like wood, that:

- Are good natural insulators
- Are easily and economically recycled
- Have good 'end of life' value

Consider prefabrication of components and building elements:

- That minimise waste both off-site and on-site
- For managing the site to improve the environment
- With 'lean manufacture' to reduce energy use

REFURB, REMODEL, RENEW

Car Barns



Bungalow into 3 Storey House



Balconies



Oak Porches and Entrances



Some of our other services. Visit our website to find out more

Grand Garages

Grand Garages provide extra height for larger vehicles and can be combined with workshops, studios, games rooms, home offices etc.. Unlike most other Garage type buildings, Grand Garages have been developed using virtually the same building technology used in the construction of residential buildings. They can deliver everything from simple single car garages right up to hobby, sports, leisure and home based office "Lifestyle Pavillions".

Grand Garages are designed to be extendable. The precision manufactured frames enable you to start with the smallest models and then, as and when the need arises, add to the structure, either at the end, the side, or by replacing the roof.

Parkland Homes

Re-Locateable Sectional Buildings

- Unique solutions for low cost, affordable housing delivered quickly
- Emergency, temporary & permanent accomodation problems solved
- Comfortable Homes for retirees, keyworkers, young and homeless people
- Mobile & Relocatable for transitional and longer term residential needs
- Spacious Luxury Park Homes and small, basic, budget bungalows

Your project will be in safe hands

With over 80 years experience providing High Quality buildings & property developments you can rest in the knowledge that you and your project will be taken well care of.

Get Started On Your Project **01291 437050**



#designthenation

rossall walkway, fleetwood



📞 01254 685 185

✉ sales@woodscape.co.uk

🌐 woodscape.co.uk

📘 facebook.com/woodscapegroup

🐦 @woodscapeltd

🌐 linkedin.com/woodscape



Woodscape.