



ELEMENT - The Quarter Construction Update

March 2022



March 2022

This month at ELEMENT - The Quarter, the internal stair structure and sub-structure masonry walls have been completed. Also, finalisations are being made to the underground drainage.

Another task nearing completion is the steel frame structure, and finishing touches are being made to the upper suspended steel floor structure. Rapid progress is being made on the flat roof coverings including balconies across the entire site.

Summary of Works Progressed

- Retaining walls and concrete beam foundations are 45% complete
- Commencement of ground floor slab construction
- Steel frame structure nearing completion
- Finalisations to underground drainage
- 96% completion on upper suspended steel floor structure
- Completion of internal stair structure
- Sub-structure masonry walls are 100% complete
- Finishing touches to fire coat steel framework
- Structural framework forming external walls is 72% developed
- Scaffolding and mast climber access nearing finalisation
- Rapid progress on flat roof coverings including balconies
- Flat roof structure is 88% progressed
- 75% completion of weatherboarding
- Over halfway completion of external windows/doors and curtain walling
- External wall insulation and render now 55% complete
- Clear development of Mansafe system





Student wing view - Steel frame structure, SFS & weatherboard and windows



Commercial block - Intumescent coating progress



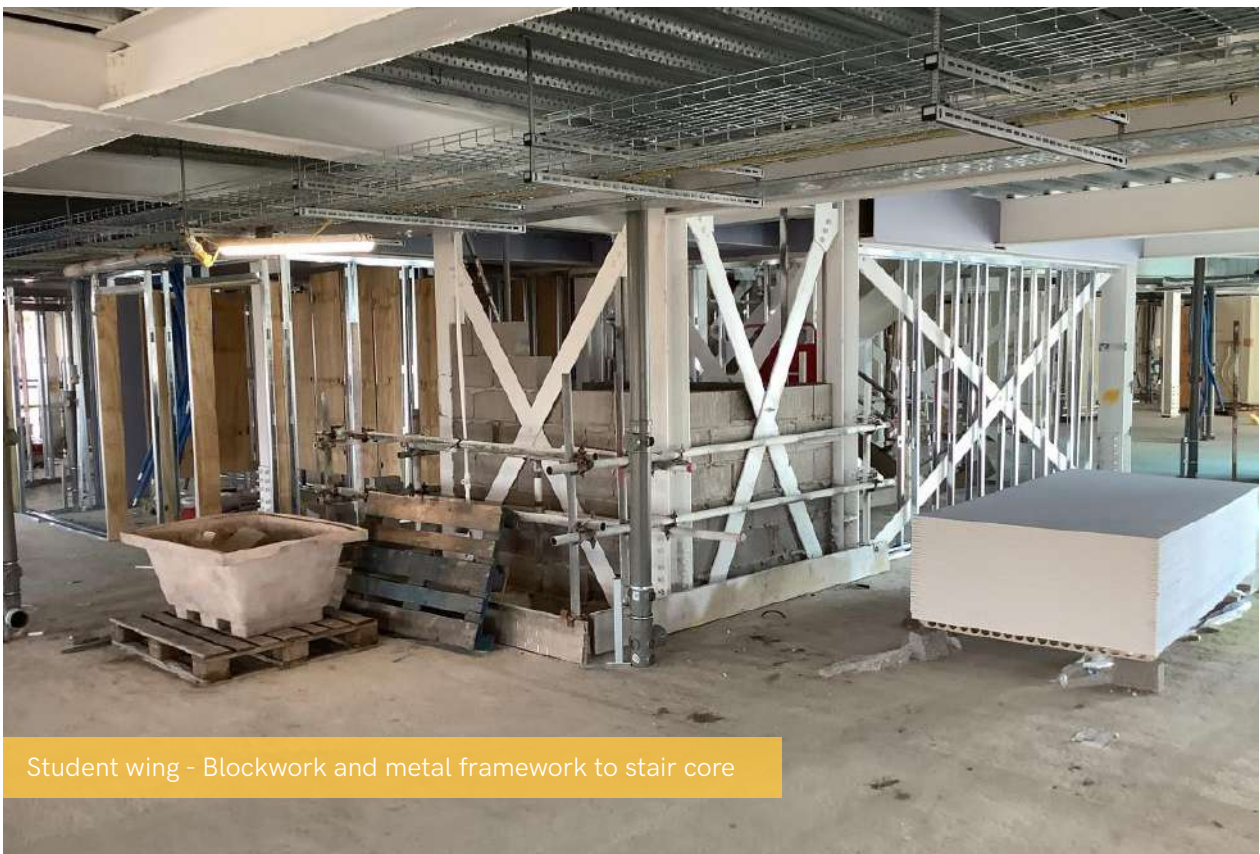
Student wing - Mast climbers, external insulation & render progress



Student wing - General progress to upper floor



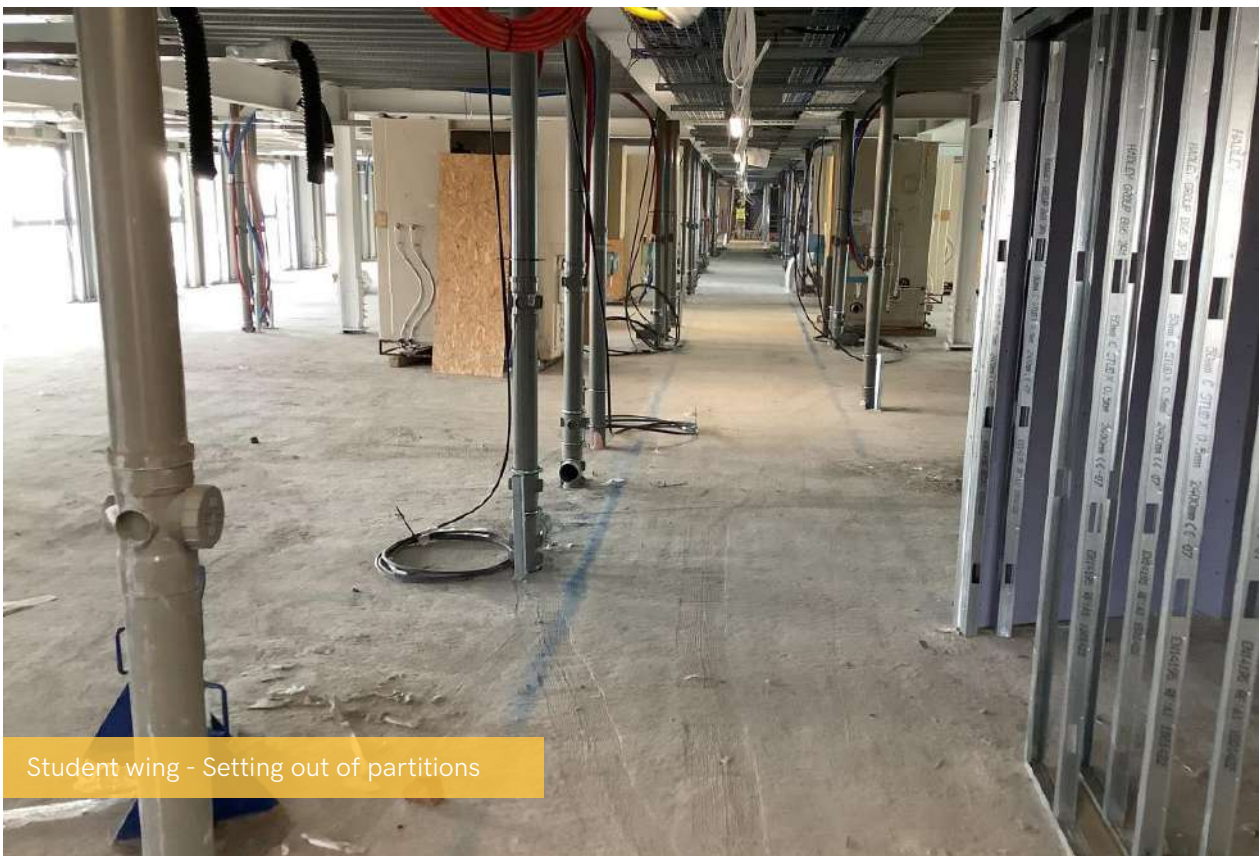
Residential wing - First fix Mechanical works



Student wing - Blockwork and metal framework to stair core



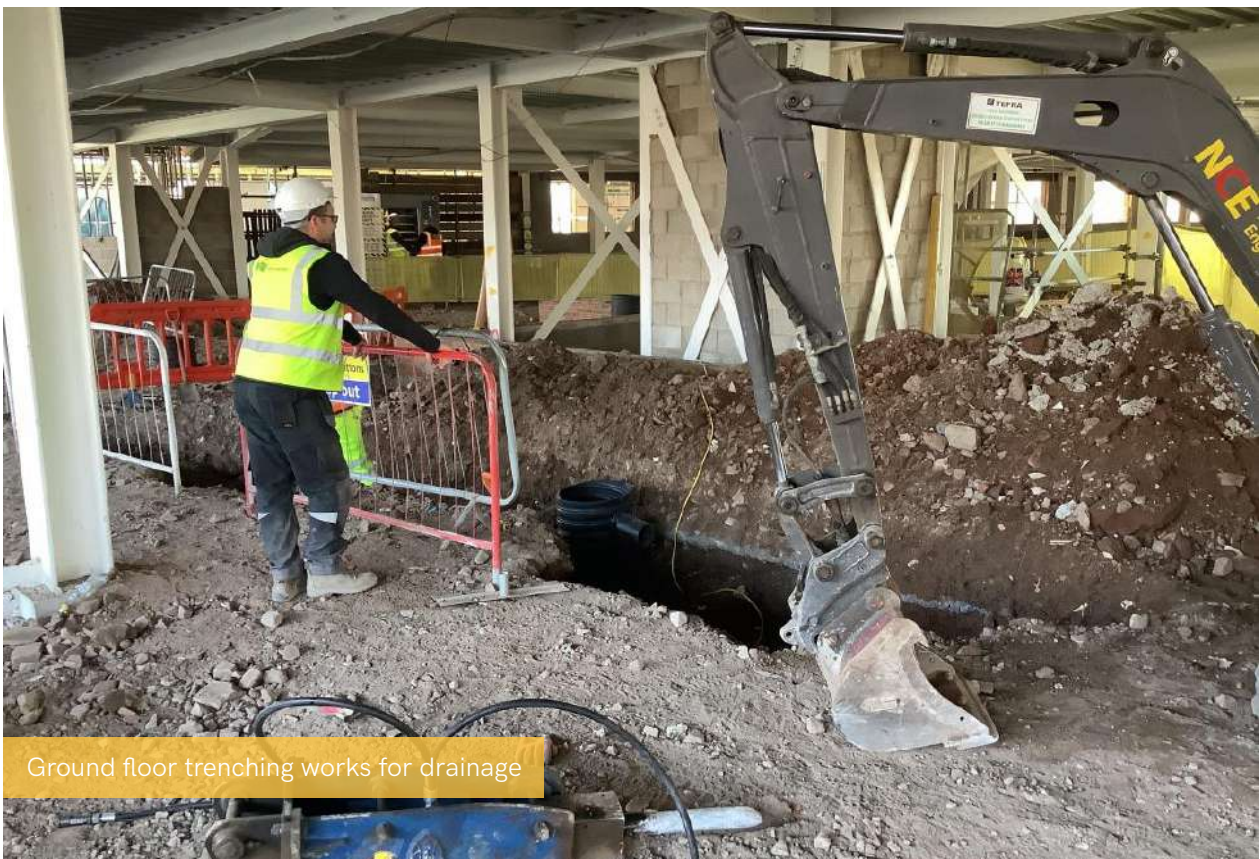
Residential wing - Windows



Student wing - Setting out of partitions



Ground floor - Facing blockwork



Ground floor trenching works for drainage





www.nexusresidential.co.uk