



# ARCHETECH

Turning Dreams into Reality

Issue 50 £4.99







the  
decorative  
panels  
group

YOUR PERFECT PARTNER

# matt. gloss. laminated.



dp-specialist

**A variety of over a 100  
highgloss, supermatt,  
woodgrain and fantasy designs.**

Available in acrylic, PP, PVC and paper  
gloss finishes from the likes of Senoplast,  
Hornschuch and Renolit, among many  
others.

**Contact us for more information.**

Century House, Premier Way, Lowfields Business Park,  
Elland, West Yorkshire, HX5 9HF

T: +44 (0) 1484 658341 E: [info@decorativepanels.co.uk](mailto:info@decorativepanels.co.uk)  
[www.decorativepanels.co.uk](http://www.decorativepanels.co.uk)



# ARCHETECH

Turning Dreams into Reality

## Main Features

Editor's Choice 10-17

Bathrooms 18-21

Bathrooms & Kitchens 22-31

Doors, Windows & Fittings 35-53

Glass & Balustrades 54-55

Floors & Flooring 56-59

Interior Design 62-65

Landscaping 66-73

Roofing, Cladding & Facades 77-79

Safety, Security & Fire Protection 80-81

Timber & Timberframe 84



## Case Studies/Trade Shows

### ESCAPADE LIVING - 6-8

Escapade Living, the lifestyle-led property developer, in collaboration with Silverstone, will offer luxury accommodation meters from the track

### FUTUREBUILD - 16

Futurebuild is calling for manufacturers to join contractors, architects, engineers and more across the built environment supply chain in taking a critical role to achieve net zero carbon emissions.

### WEMBLEY PARK - 18-20

In 1923, Wembley Stadium was built to serve as the centerpiece for the British Empire Exhibition. Since then, it has continued to host some of the world's most memorable moments in sports and entertainment history throughout the twentieth century. It also prompted development efforts in the surrounding Wembley Park district that transformed the area from a recreation destination to a budding suburban metropolis.

### VPLAZA - 32-35

This hybrid of skatepark, playground and urbane living room has now opened – the perfect venue for a young, dynamic society. Cool Lithuania!

### SHOUKAI VANKE CENTRE BEIJING - 40-42

Located in the heart of Daxing district, the project operates as a key piece and the largest building complex within the regional development so far. The tips of the floor plates become sky-garden balconies whose terraces provide a comfortable outdoor seating area. CLOU sees outdoor workspace as a logical next step in the evolution of office culture.

### ASSA ABLOY - 50-51

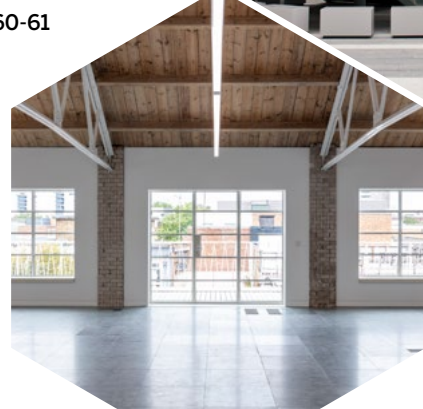
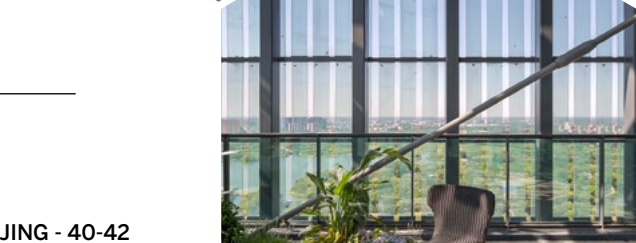
Door Group, a unit of ASSA ABLOY Opening Solutions UK & Ireland, has secured a series of high-profile contracts with Transport for London and Crossrail Limited

### CRL - 54-55

TAPER-LOC gives lessons in safe and efficient glass balustrade installation for new Academy building

### BW: WORKPLACE EXPERTS - 60-61

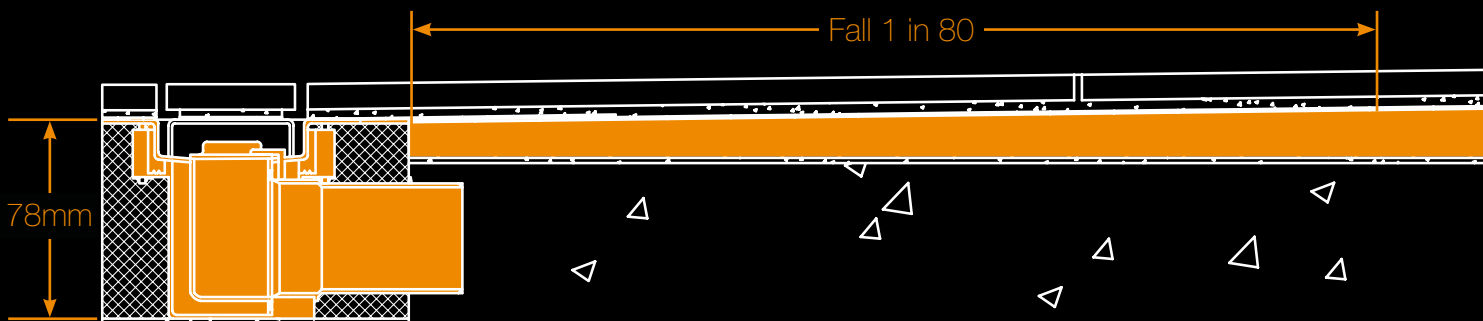
BW transforms historic Harella House in London's Clerkenwell into highly desirable Cat A office space



# Think wetrooms.

# Think systems.

# Think Schlüter.



Low height system solutions for level access showers

- ✓ Compliant with BS EN 1253, BS EN 274 & BS EN 5385
- ✓ Technical and Specification support on & off site
- ✓ Product, system & installation warranties
- ✓ Comprehensive & accredited training



[www.lowheightdrain.co.uk](http://www.lowheightdrain.co.uk)



**Editor in Chief**  
Antony Holter - 0203 911 4067  
antony@archetech-media.co.uk

**Editor**  
Isabelle Hart - 0203 911 4067  
isabelle@archetechmag.co.uk

**Sales Director**  
Steve Hawkins - 0203 907 9165  
steve@archetech-media.co.uk

**Sales Manager**  
Lauren Pettman - 0203 907 9166  
lauren@archetech-media.co.uk

**Digital Manager**  
Jamie Bullock - 01227 936971  
jamie@archetech-media.co.uk

**Editorial Assistant**  
Chris Nicholls - 0203 911 4067  
chris@archetech-media.co.uk

**Business Manager**  
Josh Holmes - 0203 911 4067  
josh@archetech-media.co.uk

**Publishing Director**  
Martin Holmes - 0203 911 4067  
martin@archetechmag.co.uk

**Accounts**  
Lauren Davis - 0203 911 4067  
lauren@archetechmag.co.uk

**Studio Designer**  
Richard Bland  
richard@archetech-media.co.uk

# ARCHETECH

Turning Dreams into Reality

The Archetech magazine is an insightful information source for Architects, Architectural Technologists and Interior Designers. We feature lead stories on current projects, industry news and case studies so that our readers have the opportunity to keep up to date in the ever changing world of architecture and design.

Archetech offers architectural and design services to all those who are initiating, planning and implementing projects. Whether you're an interior designer, architect, technologist, developer or builder who is searching for inspiration for the next project, Archetech hosts the latest products, case studies and services to meet those needs.

With sharp editorial content, a cutting-edge design approach and informative written style, our advertisers and readers alike can take confidence in our experience and ability in matching your product to the needs of the marketplace.

**Archetech Media Ltd**  
Tel: 020 3911 4067  
www.archetech.org.uk  
info@archetechmag.co.uk

Every effort is made to ensure the accuracy and reliability of material published in Archetech Magazine, however, the publishers accept no responsibility for the claims or opinions made by contributors, manufacturers or advertisers. No part of the publication may be reproduced or transmitted in any form or by any means, mechanical, electronic (including printing), recording or stored in any information retrieval system without the express prior written consent of the publisher.

## SUBSCRIBE NOW

### Digital Edition

SUBSCRIBE TO OUR ONLINE ISSUES FREE OF CHARGE

- Accessible anytime and anywhere on most electronic devices
- Receive the magazine by email as soon as each issue is released
- All issues are stored in an archive, so you can look back across every edition
- Now available on 3 major digital platforms: ISSUU, Joomag and Readly

### Printed Edition

- Free of charge for qualifying trade professionals
- Paid subscriptions are available, for non qualifying trade professionals



### HAVE YOU GOT A PROJECT YOU ARE PROUD OF?

If you've recently finished a project, conversion or renovation, why not submit it to our Editor in Chief for a chance to be featured in our next issue! Email [antony@archetech-media.co.uk](mailto:antony@archetech-media.co.uk) with details of your latest project.

Visit: [www.archetech.org.uk/subscribe](http://www.archetech.org.uk/subscribe)





# ESCAPADE LIVING UNVEILS FLAGSHIP DEVELOPMENT AT SILVERSTONE

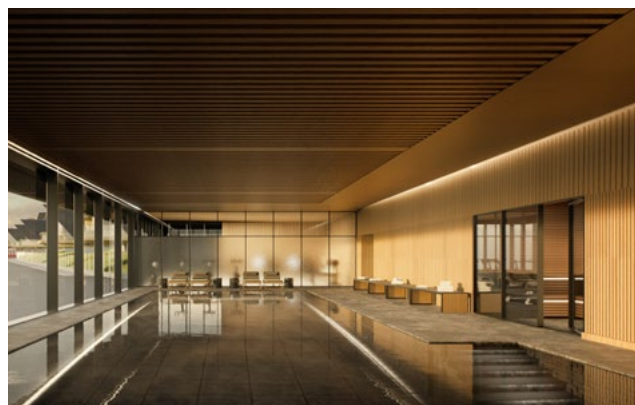
---

ESCAPADE LIVING, THE LIFESTYLE-LED PROPERTY DEVELOPER, IN COLLABORATION WITH SILVERSTONE, WILL OFFER LUXURY ACCOMMODATION METERS FROM THE TRACK

Escapade Silverstone, comprising 60 residences and a clubhouse, will give guests the chance to live out their racing ambitions and offer unparalleled sightlines of the circuit. It will seek to redefine access to motorsport.

## TRACKSIDE LUXURY

To-date, for those seeking higher-end accommodation when track events are held, London has often been the only option. Escapade Silverstone changes that. Designed for high performance living, the clubhouse and facilities include state-of-the-art simulator rooms, briefing rooms, a driver-focussed gym, oxygen swimming pool and sauna, restaurant, bar and private dining room.







***Escapade Silverstone enables owners to capitalise on the 1.2 million visitors that the circuit welcomes every year.***

The residences themselves have cantilevered terraces, allowing spectators to get even closer to the racetrack. Light-filled and with high acoustic specifications, they have underfloor heating, comfort cooling and ensuite bathrooms. When an owner is not staying in their residence, it will form part of the wider accommodation available to guests at Silverstone and offer a healthy net yield.

Escapade Silverstone enables owners to capitalise on the 1.2 million visitors that the circuit welcomes every year. It is a reimagining of leisure, lifestyle and investing: putting capital into something that provides entertainment, enrichment, enjoyment and learning, while also making a return.

This is an end-to-end investment; residences are fully managed, from all upkeep and maintenance to the organising of stays and revenue distribution. Owners will also be granted founding membership, giving free access for all major race events, use of the clubhouse – even when they’re not staying – priority track access and exclusive invites to owner-only events, track days and trips.

Residences are provided on a 125-year lease and owners will be able to use them as they wish up to a certain number of nights a year. Usage nights are calculated to enable maximum utilisation of a property – for owners as guests and investors. Income made on residences are not pooled; rather, owners are forecast to receive 5-6.5 percent net yield from their individual property, taking into account how much they themselves use it. They are also free to sell their property at any time.

Escapade Silverstone will also separately provide climate-controlled car storage, allowing owners to securely store vehicles when not in use. This facility, less than 500 meters from the



edge of the Silverstone circuit, will offer full pre- and post-use preparation and inspection – allowing guests to turn up and make the most of their time on the track.

Escapade Living CEO Will Tindall, said:

“We’re delighted to be working with such a world-renowned venue as Silverstone for our first development. Escapade Living creates destinations that are entirely of their surroundings, while also providing owners with the opportunity to make a return on unique world-class property. The residences overlook arguably the most exciting complex of corners on all of the F1 calendar.







“In our opinion, real luxury doesn’t feel expensive; it feels comfortable and natural. That’s what Escapade Silverstone provides. And more than that, it is completely integrated with the circuit – an authentic experience borne out of the world’s foremost racetrack and, as a finished product, baked into it.

“The millions watching Silverstone’s Grand Prix double bill will do so virtually. But as the world unlocks, thousands will return to Silverstone to share the joy and spectacle of speed. When they do, we hope Escapade will be the ultimate place to stay as a guest, or as an owner.”

Stuart Pringle, Managing Director Silverstone Circuits, added:

“Silverstone has always been a centre of excellence from a racing, technology and engineering perspective. But we aim to be a global, all-weather destination, welcoming guests from around the world on a daily basis to enjoy motorsport together, and to do it in surroundings which enrich that experience. We are delighted to be working with Escapade Living in creating a peerless hospitality experience. Escapade Silverstone will enable motorsport lovers to buy residences right on the edge of the circuit. For us, its immersive, bespoke, guest-led offering hails the dawn of something special.”

The Escapade Living team combines the talents of Twelve Architects, interior design firm Michaelis Boyd and project management consultancy Tower Eight.

[www.michaelisboyd.com](http://www.michaelisboyd.com)  
[www.towereight.com](http://www.towereight.com)  
[www.twelvearchitects.com](http://www.twelvearchitects.com)



# A great rate and instant access to your business savings. Now that's smart.

Earn one of the best rates on the high street and access your money for whatever you need, whenever you need it, with our Business Instant Access savings account.

**Search TSB Business Instant Access Savings.**



Source: Comparison of Business Instant Access savings accounts available in the UK, see [tsb.co.uk/BIA](https://tsb.co.uk/BIA).

TSB Bank plc. Registered Office: Henry Duncan House, 120 George Street, Edinburgh EH2 4LH. Registered in Scotland No. SC95237. Authorised by the Prudential Regulation Authority and regulated by the Financial Conduct Authority and the Prudential Regulation Authority. Registration No. 191240. TSB Bank plc is covered by the Financial Services Compensation Scheme and the Financial Ombudsman Service. (Please note that due to the schemes' eligibility criteria not all TSB business customers will be covered by these schemes.)



## TURN THE IPAD INTO THE FOCUS OF ANY ROOM

Viveroo's stunning range of wall and furniture mounts for the iPad enhance and complement this icon of design. The distinctive sculptured range is hand-crafted from premium materials and has been created to blend perfectly with the iPad's form.

Each mount in the range offers different features that have been designed to provide improved visibility and functionality of the iPad in both domestic and commercial environments.

### LOOP

The world's first rotating iPad mount for flush installation. The innovative rotating mechanism makes it possible to alternate between vertical and horizontal positions. Available in Super Silver, Deep Black and Clear White.

### LOOP 360

A table-mounted version of the Loop allowing 360-degree rotation of the iPad. Perfect for retail and domestic environments. Available in Super Silver, Deep Black and Clear White.

### SQUARE

The design of the Square complements the form of the iPad and offers spectacular presence from any angle. Available in Super Silver, Deep Black and Clear White.

### FREE

This distinctive design appears to float in front of the wall. The contemporary asymmetrical lines are beautifully machined from billeted aluminium and create a sharp look in a modern room. Available in Super Silver and Dark Steel.



### FREE FLEX

Integrates the iPad into every environment. Features USB cable charging, a rotating joint head to allow landscape or portrait orientation and custom tube length for the perfect lifestyle fit.

### FREE FLEX PEDESTAL

The pedestal base allows the Free to be moved from room to room. Features USB cable charging and a rotating joint head to allow landscape or portrait orientation.

### CUSTOMISATION

The entire range can be finished in any colour, and corporate branding can be added.

### PRICES START AT £375

[www.red-line.co.uk/viveroo](http://www.red-line.co.uk/viveroo)



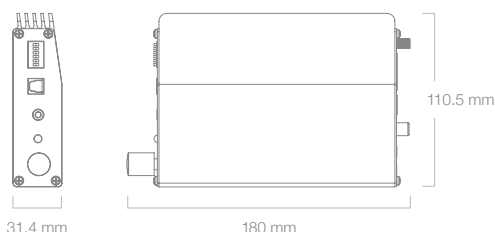
## Compact, stylish and versatile IA40-3 Amplifier



The IA40-3 Installation Amplifier is a highly versatile unit and features digital, analogue and Bluetooth® inputs with Dolby Audio (Dolby Digital) for maximum flexibility. Designed for modern living, the IA40-3 is a Monitor Audio's small solution when superior sound is required in custom install projects.

Ideal for tight environments, it also works beautifully when paired with Monitor Audio in-ceiling speakers and passive soundbars.

Switchable between 3 or 2 channels with/without an active subwoofer, for a wide range of applications.



[monitoraudio.com/amplifiers](http://monitoraudio.com/amplifiers)

## SIMPSON STRONG-TIE LAUNCHES CROSS-LAMINATED TIMBER CONNECTORS AND FASTENERS RANGE

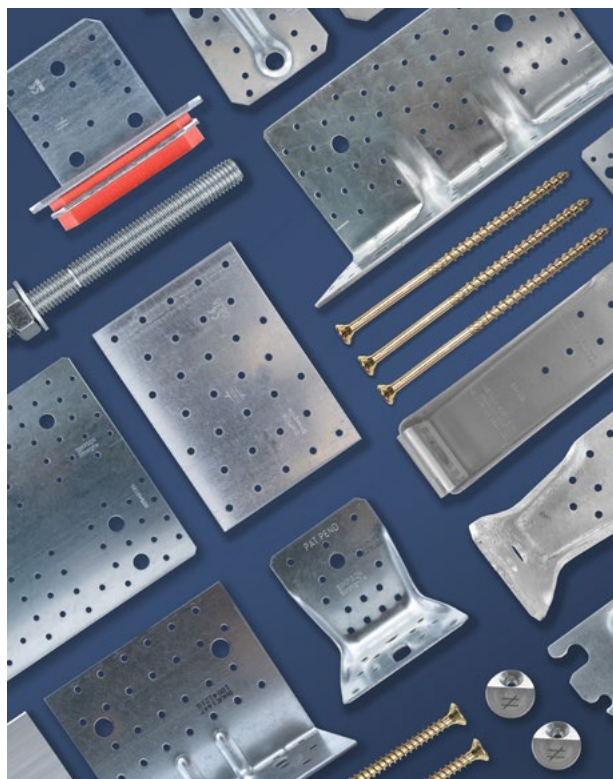
Simpson Strong-Tie, leader in engineered structural building solutions, has launched a comprehensive range of connectors and fasteners to serve the growing demand for CLT construction, along with a brand new 'Connectors & Fasteners for CLT Construction' catalogue.

The CLT product range is backed by a robust distribution system, along with first-rate service, technical support, and training, enabling design flexibility and ensuring projects can be built stronger, faster and more easily than ever.

"With over 25 years of designing and manufacturing here in the UK, Simpson Strong-Tie is proud to now offer smart solutions for CLT," says Jon Head, Sales Director. "We're looking forward to bringing our product range to this fast-growing sector; particularly our brand new structural angle brackets, hold downs and beam hangers, along with a heavy-duty connector screw and a Quik Drive collated screw system for timber frames."

To learn more about how Simpson Strong-Tie can improve your Cross-Laminated Timber project call 01827 255 600.

The new catalogue is now available to download at [www.strongtie.co.uk](http://www.strongtie.co.uk)





**APPLICATIONS  
ENGINEERING LTD**

T: +44 (0)1825 764737  
F: +44 (0)1825 768330  
E: [info@appeng.co.uk](mailto:info@appeng.co.uk)  
[www.appeng.co.uk](http://www.appeng.co.uk)



### FIRE SPRINKLER VALVE SET 1" to 2"



**SIKA**

## FIRE-RATING FIRST FOR MORLEY GLASS & GLAZING

Morley Glass & Glazing has become the first company in the UK to achieve a fire-rating accreditation for its insulated glass units with integral blinds inside.



Image: Tomer Kohn

The fire-rated Uni-Blinds sealed units with ScreenLine integral blinds inside now comply with the performance criteria set out in the EU 305/2011 Construction Products Regulation, and have been independently verified by TUV UK, a UKAS accredited third party testing house.

Ian Short, managing director of Morley Glass & Glazing said: "There are more than 300 fire-related deaths and more than 200,000 fire alarms raised in the UK every year. With recent high-profile incidents such as Grenfell Tower, it's more important than ever that the correct building materials are specified. Our sealed units with integral blinds inside are manufactured in the UK using fire safety glass from Pyroguard and can deliver 30 to 120 minutes integrity and insulation fire-resistance."

For more information visit [www.morleyglass.co.uk](http://www.morleyglass.co.uk).



# All your heating needs **100% FREE\***



Free thermal energy is stored within the PCM cell and then released when the temperature drops



\*Use with solar vacuum tubes or photovoltaic powered ground and air source pump systems

Fit PCM cells and benefit from:



Reduced energy consumption



No maintenance  
Fit and forget



Suitable for other heat saving applications



Available in different sizes



[www.pcmproducts.net](http://www.pcmproducts.net)  
[info@pcmproducts.net](mailto:info@pcmproducts.net)

Want to make your air conditioning more efficient?

**SEE OUR COOLING PCM CELL RANGE**



# save energy

Heat energy is absorbed by the PCM cell during the day and then released when the ambient temperature drops at night

Retro fit  
PCM cells  
and benefit  
from:



Reduced energy  
consumption



No maintenance  
Fit and forget



Available in  
different sizes



Suitable for  
other cooling  
applications

[www.pcmproducts.net](http://www.pcmproducts.net) | [info@pcmproducts.net](mailto:info@pcmproducts.net)



Phase Change Materials

Want to save  
energy with your  
underfloor heating?

**SEE OUR WARMING  
PCM CELL RANGE**



# FLEX-R LAUNCHES NEW RIBA APPROVED ROOF REFURBISHMENT CPD

FLEX-R HAS LAUNCHED A NEW RIBA APPROVED CPD SEMINAR ENTITLED 'ROOF REFURBISHMENT: A GUIDE TO BEST PRACTICE'.



There are many different factors to consider when working on roof refurbishment projects. How the roof survey will influence the design? Do you understand the different roof types available? What is the condition of the roof deck and should you strip or overlay?

This seminar will guide you step by step through the refurbishment process covering the options available for upgrading the insulation, selecting the correct waterproofing system and what to expect from suppliers. Best practice examples will also be shown through Flex-R projects, demonstrating how the results of the survey and requirements of the client impacted decisions.

The CPD also addresses how to avoid common problems with detailing, compatibility and interfaces. There's a checklist of what manufacturer support to expect, plus advice on compliance with British Standards and Codes of Practice."

Danny Cole, National Sales Manager at Flex-R, explained why they had created this new CPD: "Flex-R are a leading supplier of professional cold applied flat roof systems in the UK. As a company we work with our clients throughout the entire process from design all the way through to the installation.

We have a lot of experience in roofing projects and realised that specifiers are increasingly looking for the latest information on refurbishment. We wanted to inform them on the correct steps needed to reach a successful outcome.

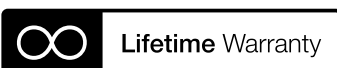
From 1st September Flex-R will be running this CPD through a continuous programme of free online seminars. Held every Tuesday starting at 1:30pm the CPD will run for an hour and include a Q&A session. The CPD qualifies for double points.

**For more information and how to book contact Fran Makinson on 01494 448792 or email [webinars@flex-r.co.uk](mailto:webinars@flex-r.co.uk)**



## Ultra-discreet loudspeakers for any location

British loudspeaker designer, Monitor Audio, has a range of Custom Install speakers for every situation. Their ultra-discreet In-ceiling and In-wall speakers deliver a stunning audio performance whilst protecting the room's décor. For more extreme environments, such as outdoor terraces or pool rooms, they offer a choice of speaker ranges, all of which deliver Monitor Audio's award-winning sound.



[monitoraudio.com/install](https://monitoraudio.com/install)







# MANUFACTURERS ARE CRUCIAL FOR ACHIEVING NET ZERO

## FUTUREBUILD CALLS ON THE BUILT ENVIRONMENT SUPPLY CHAIN TO TRANSFORM THE INDUSTRY

Futurebuild is calling for manufacturers to join contractors, architects, engineers and more across the built environment supply chain in taking a critical role to achieve net zero carbon emissions. At the event, from March 2 to 4, 2021 at ExCeL London, exhibitors and visitors can debate issues, share ideas and showcase products to tackle the generation's greatest challenge — the climate and ecological crisis.

In 2020, the pandemic meant that many events for the built environment industry to meet and collaborate were either postponed or cancelled. We know that we cannot pause our progress in transforming the sustainability of the industry, so Futurebuild 2021 will be going ahead.

Our industry currently faces two main challenges — recovery after the current pandemic and achieving net zero carbon. The Chancellor's recent announcement of £3bn in funding to reduce emissions generated by current infrastructure brings us closer to the UK's target of net zero by 2050, but is it enough to transform the industry?

According to research, 85 per cent of the infrastructure we'll have in 2050 will have been built by 2030. Some even say that construction will need to transform itself by 2025. So, we have five to ten years to make the fundamental changes required to radically reduce carbon emissions. We must act now.

"Futurebuild is the platform to debate current issues, exchange

best practice and showcase the solutions and technologies that can really drive change," explained Martin Hurn, event director of Futurebuild. "The Government's plan for green recovery is a good first step, but so much more is needed. We know that the entire supply chain must work together to make a real difference. Specifiers have the power to transform the industry — it is their products that drive our green infrastructure capabilities."

Futurebuild, previously Ecobuild, has led the way in tackling climate change in the construction industry for over ten years. The event brings together over 20,500 industry influencers to debate ideas, showcase products and drive real change across the built environment. For example, 73 per cent of visitors in 2020 reported that they attend the show with the intent to see and invest in the latest innovations and product launches.

In 2021, the event's stages will put a spotlight on six key areas to support industry transformation — whole house retrofit, digital impact, future installer, district energy, circular materials and intelligent buildings.

Are you a manufacturer that has ideas or technologies, new or existing, that can improve sustainability and help us meet net zero carbon? Net zero needs you to showcase it. Register your interest to exhibit at Futurebuild 2021 at [www.futurebuild.co.uk/visit/register-your-interest/?utm\\_source=PR&utm\\_medium=news&utm\\_campaign=FBDO01](http://www.futurebuild.co.uk/visit/register-your-interest/?utm_source=PR&utm_medium=news&utm_campaign=FBDO01)

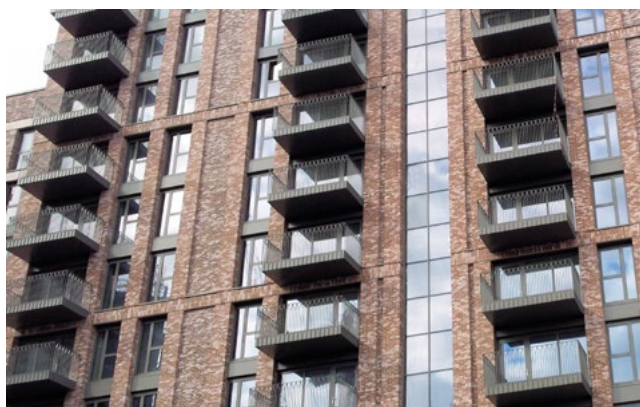
# SCHÖCK THERMAL BREAKS FOR WEMBLEY'S LARGEST SINGLE DEVELOPMENT

Canada Gardens is the largest single development site that Quintain, the developer behind the regeneration of Wembley Park, is undertaking in the area. Set around a landscaped courtyard and podium-level communal gardens, Canada Gardens comprises seven stepped height buildings, ranging from 12 to 26 storeys, which provide 743 residential apartments. The tallest unit being a landmark building to the northern end of Wembley Park. It conceals an energy centre, which feeds other developments within the vicinity and at rooftop level features a residents lounge and a rooftop garden with exceptional views across London. A number of the buildings at Canada Gardens have in fact been angled at 45 degrees to optimise general views throughout the whole of the site.

The concrete frame buildings have façades predominantly of brick and glass – and a notable feature throughout the development is the number of generous steel balconies. The structural and long-term thermal insulation performance of these balconies is critical and as with many of the other major projects at Wembley Park, Schöck Isokorb load-bearing thermal insulation elements are the preferred solution.

## HUNDREDS OF CANTILEVERED STEEL BALCONIES

Local heat loss is the immediate effect of poor insulation at cantilever connection points and this results in more energy being required to maintain the internal temperature of the building. In addition, low internal surface temperatures in the area of the thermal bridge can cause condensation, leading not only to structural integrity problems with absorbent materials such as insulation products or plasterboard, but also mould growth. This has serious health implications for residents in the form of asthma and allergies. So for any project involving balcony detailing, the prevention of thermal bridging is a critical issue. There are hundreds of balconies installed at Canada Gardens and the Schöck Isokorb type used throughout is a load-bearing thermal insulation element with 80mm insulation thickness, for connecting cantilevered steel balconies to a reinforced concrete slab.



The units are ideal in resolving any technical, thermal and structural issues involved in the design of modern steel balconies and guarantee there is no risk of condensation, mould or corrosion. Other applications for the product include steel canopy roofs, façade substructures and brise soleil systems.

## ENORMOUS FREEDOM OF DESIGN

As the leading international supplier of structural thermal breaks, Schöck is able to offer planners complete construction dependability and total freedom of design, with the almost limitless variants available in its main Isokorb range. The comprehensive Schöck Isokorb range offers solutions for concrete-to-concrete, concrete-to-steel, steel-to-steel, a thermally insulating connection for reinforced concrete walls – and even a maintenance free alternative to wrapped parapets. The temperature factor used to indicate condensation risk (fRSI) which must be greater than, or equal to, 0.75 for residential buildings, is easily met by incorporating the Isokorb. All products meet full compliance with the relevant UK building regulations and the NHBC. They also offer LABC Registration and have independent BBA Certification.

For a free copy of the Schöck Thermal Bridging Guide; the Schöck Specifiers Guide or to view the range of downloadable software, contact Schöck on 01865 290 890 or visit the website at [www.schoeck.co.uk](http://www.schoeck.co.uk)





# THE POWER OF PARTNERSHIP

## KOHLER AND QUINTAIN COLLABORATE ON THE UK'S MOST AMBITIOUS BUILD-TO-RENT PROJECT

In 1923, Wembley Stadium was built to serve as the centerpiece for the British Empire Exhibition. Since then, it has continued to host some of the world's most memorable moments in sports and entertainment history throughout the twentieth century. It also prompted development efforts in the surrounding Wembley Park district that transformed the area from a recreation destination to a budding suburban metropolis.

The original stadium was demolished in 2003 and replaced by the newer, larger Wembley Stadium we know today. Like its predecessor, the new stadium is helping to drive a new wave of mixed-use development that's reshaping Wembley Park into a vibrant neighborhood where people can live, work, shop, eat and play, all within walking distances.

Quintain, developer of the UK's largest single site of build-to-rent development, is the main force behind this transformation. The company is investing £3 billion into remaking 85 acres of Wembley Park with 8.8 million square-feet (over 800,000 square-meters) of mixed-use development. That includes 750,000 square feet (about 70,000 square-meters) of office space, a theater, a

7-acre park, outlet shopping featuring 70 retailers, a community center and more. At the heart of it all is a commitment to building community.

It's no surprise, then, that much of Quintain's development at Wembley Park focuses on housing, the majority of which is build-to-rent apartments designed for a range of demographics including young families and Londoners who want to be in the heart of a buzzing neighborhood. To date, over 2,500 have been built, 2,900 are under construction and there will be 8,500 once complete in 2027.

### GLOBAL BRAND, FOCUSED SERVICE

One of the most important endeavors in building a neighborhood from the ground up is identifying trusted partners who can rise to the prodigious challenges that engineering, architecture and urban development on this scale present. With the residential building at Wembley Park specifically, there are added challenges of flexibility, variability, customization and designing with an eye to the future to make sure the various end user experiences are commensurate with the Wembley Park brand.





*Kohler introduced us to products that are at the forefront of design and technology.*



To help realize Wembley Park’s residences with those goals in mind, Quintain selected a key strategic partner: Kohler Co., a global pioneer in the design and innovation of kitchen and bath products and one of the largest manufacturers of power systems in the world.

“We sought a company which has the range and quality of product that enables us to deliver a different impression across each of our individual projects as each has its own unique designs within the overall development,” says Mary Kelly-Mannion, head of cost management and procurement at Quintain. “Partnerships start with people. We want to work with people who are experts in their field, who work collaboratively and who can provide us with the best solutions for our needs.”

Kohler is particularly positioned for this level and scale of collaboration. The reach of its products across the globe and the partnerships Kohler fosters continue to bolster the company’s longstanding reputation for quality among developers, designers and consumers alike.

Though Kohler is a global brand with close to a 150 year history, it maintains the focused, client-driven customer service of a family-owned company. Experience, expertise and service have helped Kohler form large-scale partnerships to create best-in-class developments across the world.

Once complete, 55,000 KOHLER® products will be in bathrooms and kitchens across Wembley Park. Among those products, Quintain relied on the Kohler team’s insight for which would best suit the design intent, functionality and specific budget for each residential project.

“Kohler introduced us to products that are at the forefront of design and technology,” says Mary Kelly-Mannion. “They worked hard to ensure that we have the best products for our development at the most competitive prices. We could also see that Kohler continues to develop and innovate.”

**MAKING CONNECTIONS**

Beyond scale was the challenge of the project’s speed. A residential build on this scale would typically require about seven years to complete. Many of Wembley Park’s residences will be completed in a much shorter timeframe. Accomplishing accelerated timeframes like these depends on a carefully planned and executed production process.

A thousand miles (1600 km) southeast of Wembley Park, electricians, plumbers and Italian artisan tilers work in a warehouse with dozens of rows of room-sized steel-framed cubes.

This is the production line at Bathsystem, a bathroom pod manufacturing facility in Verona, Italy, and one of two pod manufacturers for Wembley Park. Walker Modular, located in Hull on the east coast of England, is the other.

Prefabricated bathroom pods are a critical piece in project speed because they allow various phases of building to happen concurrently and minimize on-site operatives, with complete rooms shipped in and installed, like a puzzle, into the rest of the residence.







With so many moving parts in the process—and so many moving rooms in the buildings, Quintain and its pod manufacturing partners relied on the resilience and quality of KOHLER products. They are durable and dependable enough to withstand the trials of global transportation, installation at pod facilities and construction at Wembley Park.

“Because of their past experience and a willingness to work with our pod manufacturers, Kohler streamlined build time and helped create efficiencies in the process,” explains Matt Voyce, Quintain executive director of construction.

“The quality of the people at Kohler and their supportive attitude with our pod manufacturers and designers made them a true partner.”

“Kohler’s logistics and distribution team have truly engaged with our pod manufacturers whether they are located in the UK or northern Italy,” adds Kelly-Mannion. “The Kohler team maintains direct and continual dialogue with the suppliers and us and facilitates on-time delivery, thus ensuring the overall construction program isn’t impacted adversely.”

**BUILDING FOR THE FUTURE**

When complete, Wembley Park will be the largest single site of build to rent in the UK. In every sense, the initiatives behind it are both grand and revolutionary. This project is truly a first for residential housing in the UK, and it is supported with innovations and features like low-carbon energy centers and district heating, site-wide waste disposal, site-wide IT infrastructure, car parking for 3,000 vehicles, 42 acres of public realm and resident gardens.

Quintain’s goals are to create a sense of place for the 20,000 residents who will live in Wembley Park, nurture a hub of innovation for businesses that will grow there and provide an exciting destination for more than 16 million annual entertainment-seekers who will visit. And the path to achieving that goal is supported by partners like Kohler.

“As a team, we have born and raised this vision, going on a journey of development and improvement at every design stage,” says Voyce. “The level of support we receive from the Kohler team, the product development to keep us ahead of our competition and the strong support for Wembley Park give us a real sense Kohler has collaboration in its DNA and is part of our own team.”

[www.kohler.co.uk](http://www.kohler.co.uk)





# A UNIQUE SERVICE

## INTCERAM: ONE OF THE UK'S LEADING TILE DISTRIBUTORS

Founded in 1998 as a tile agency, IntCeram has evolved with the changing times and demands of the tile industry. With a head office and showroom along with a 38,000sq. ft warehouse in Leeds and a showroom in West London, IntCeram is one of the UK's leading tile distributors and offers a unique service.

IntCeram exclusively represents four factories offering different portfolios and price bands to give an extensive offer. Super Ceramica in Spain offers extremely competitively priced wall & floor tiles while Yurtbay Seramik, the family owned Turkish factory who are celebrating their 25th anniversary this year, has a broad and UK orientated product catalogue offering formats from 100 x 100mm through to 600 x 1200mm porcelain.

The most recent addition is the well know Roca brand which has a vast portfolio which includes 130 x 130mm through to 1200 x 2400mm x 7mm. Incepa, the Brazilian arm of Roca is also included in IntCeram's extensive product portfolio.

The Leeds and London showrooms offer a relaxed environment for customers to visit and make product selections, in addition, IntCeram have an experienced national sales team covering the UK and Ireland which is backed up by a knowledgeable support team based in both showrooms.

“

*The Leeds and London showrooms offer a relaxed environment for customers to visit and make product selections*

IntCeram's customer base includes owner managed retail stores, national retail chains, property developers and architects. IntCeram pride themselves with a can do attitude where no project is too small or large for them to fulfil.

Offering a range of distribution services to suit individual customer needs, which include direct container shipments from the factories through to pallet and individual box pick from the Leeds warehouse which sets IntCeram apart from its competitors.

With the current challenging times for the retail and construction industry, IntCeram believe it has a service and portfolio to meet its client's needs to fulfil all requirements.



Maiolica Blue Steel 11x25cm from Roca



Legend Anthracite for Roca



# CELEBRATING 30 YEARS IN 2020

## 'METALLIC ELEMENTS' WITH SPECIAL FINISHES BY VOGUE (UK)

Vogue (UK), the UK's largest manufacturer of award-winning radiator and towel warmer designs is defined by exclusivity and its library of Special Finishes is the perfect partner for expressive heating, which meets the need for luxurious and hardwearing bathroom schemes.

Be it warm or cool, smooth or textured, metallic elements have become a key part of the contemporary bathroom and have returned season after season as the go-to finishing touch. Richer by design and in tone, warm metallic finishes are synonymous with more period-style bathroom interiors that require a heightened level of authentic luxury. At the other end of the colour spectrum, cool metallic finishes have become a prerequisite of the modern bathroom, where grey-blue heating designs help to create a clean, contemporary aesthetic.

With an extensive range of Special Finishes, standard and bespoke, Vogue (UK) offer the following metallic options, which are available in a range of high-fashion finishes:

**WARM:** Gold > Matt, Antique or Dark | Brass > Matt, Polished or Antique | Copper > Polished, Brushed, Antique or Crackle | Rose Gold > Polished or Brushed | Brass > Antique | Bronze > Antique or Crackle

**COOL:** Chrome > Polished or Brushed | Nickel > Bright or Brushed | Stainless > Polished or Brushed | Pewter | Silver Crackle

Steve Birch, Sales Director at Vogue (UK) explains "If you consider each room in the home then most, typically feature a range of



essential metallic elements like sinks and taps through to the hardware and fixtures and fittings. Now an essential interior design resource which over time, have been grouped into so-called warm and cool designs, premium radiator and towel rail designs are helping to unify an entire bathroom scheme all thanks to their finish. We understand how important it is to personalize your home and define your own style through material, colour and finish, which is why the majority of our heating designs can be created in a metal of your choice, as standard. You can even colour-match our heating solutions to existing brassware and accessories in your bathroom with our three-tier bespoke design service spanning 'Tubing, Joints and Colours & Finishes' for a truly extra-special heating design."

With a choice of 21 metallic finishes in the exclusive Finish Library by Vogue (UK), custom heating design has never been easier. Be inspired by its special collection of warm and cool metallic finishes and if you can't decide, Vogue (UK) is able to offer you the best of both worlds with its pioneering Melange finish: a combination of two metallic finishes in one design, like the pictured Polished Chrome & Brass finishes.

Another trend to gain prominence this year is 'high-texture' in the bathroom and Vogue (UK) is pleased to include the Crackle Collection across its range of metallic finish options in Silver, Copper and Bronze. Taking a new approach to the metallic finish, these new mottled paint effect finishes exclusive to Vogue (UK), encapsulate what is big in interiors right now: rich tones and metallic texture!

[www.vogueuk.co.uk](http://www.vogueuk.co.uk)





*The country's leading manufacturer and supplier of  
heated towel warmers and designer radiators.*



**VOGUE UK**  
TOWEL WARMERS & RADIATORS

Vogue (UK) Ltd

Strawberry Lane, Willenhall, West Midlands, WV13 3RS. United Kingdom

T: +44(0) 1902 387000 F: +44(0) 1902 387001 E: sales@vogueuk.co.uk W: www.vogueuk.co.uk







# NOVELLINI LAUNCH BESAFE WALLS TO HELP THE UK RETURN TO WORK SAFELY

Workplaces around the nation are preparing for when the UK can return to a kind of normality. The Novellini Group presents a solution that will help to create safe working environments that are hygienic and adaptable. The BeSafe wall is a protective device that companies with any office or desk space can incorporate going forward.

The primary benefit? Hygiene. Employees will feel protected with the BeSafe wall as it provides a barrier.

Constructed from 6mm tempered glass, it's easy to clean with any alcoholic disinfectant. In smaller spaces where it's difficult to sit two metres away, the wall is a particularly helpful solution.



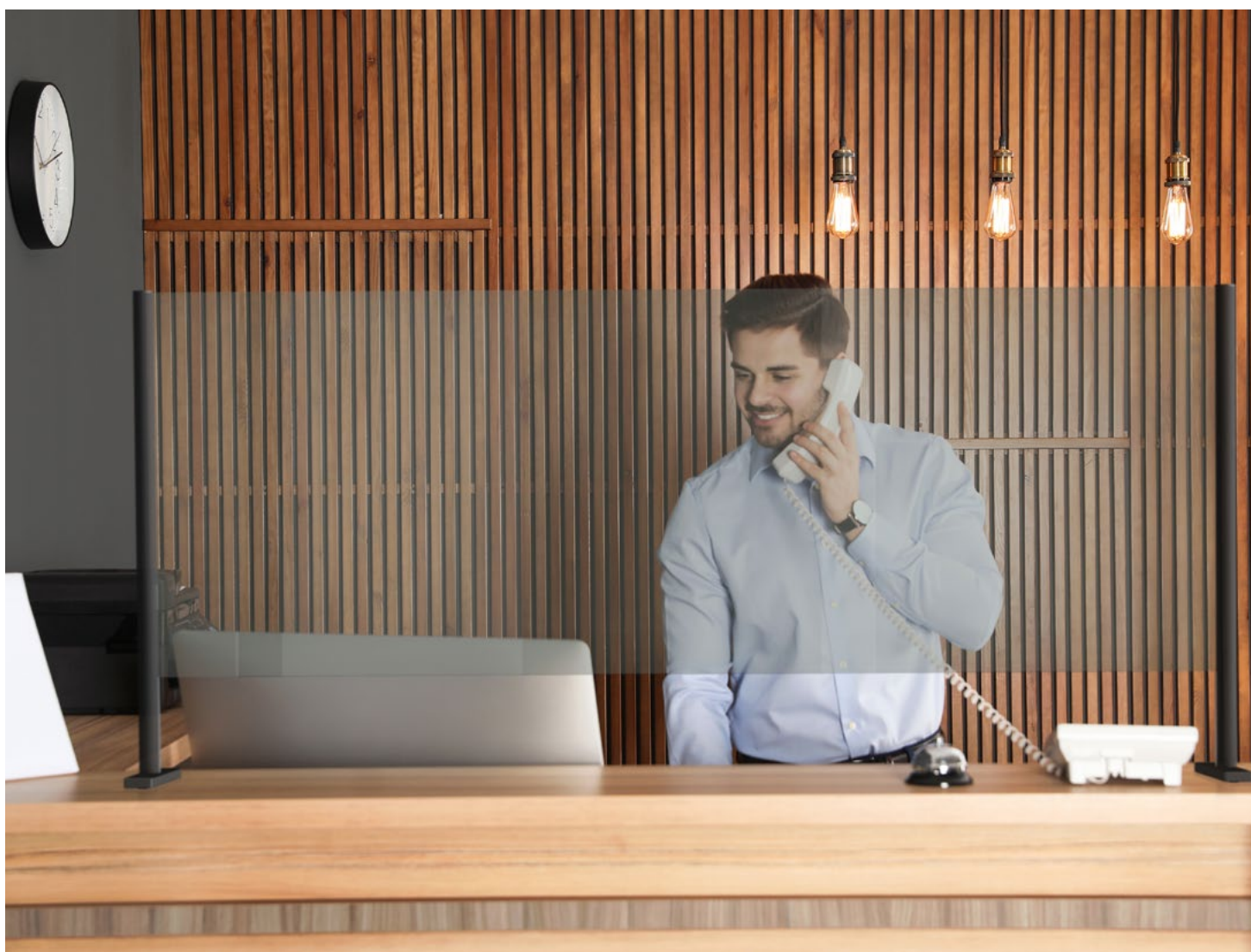
“

*The primary benefit? Hygiene. Employees will feel protected with the BeSafe wall as it provides a barrier.*

Office teams aren't the only ones who will be happy to see these walls put in place. BeSafe is a smart answer for all industries where contact with the public is required, such as pharmacies, retail counters, restaurants and public offices. Novellini can customise each barrier to suit the space with three versions (floor mounted, trade counter, and desks) and five different sizes.

UK Sales Director at Novellini, Stuart West says 'We are looking to help the UK workforce where we can and these are a positive answer to those concerns about health and hygiene.' As specialists in showers and design, Novellini are putting their skills to good use and many businesses across the UK will be pleased to find a safe and stylish solution. They are even available in several colour profiles to suit the surroundings, including white, silver, chrome PVD\* and black.

**For more information contact Novellini UK on 01727 229922 or visit the website at [www.novellini.co.uk](http://www.novellini.co.uk). For brochure and advice please email [info-uk@novellini.com](mailto:info-uk@novellini.com)**





# FUNCTION & DESIGN COMBINE TO CREATE A STUNNING KITCHEN ENVIRONMENT

MAKE A STATEMENT IN THE HOMES YOU ARE DESIGNING WITH THE ELICA RANGE OF COOKER HOODS AND EXTRACTOR HOBS THAT BRING TECHNOLOGY AND MINIMALIST STYLE INTO THE HEART OF THE KITCHEN.

The NikolaTesla range of extractor hobs is exceptionally powerful with maximum extraction rates of over 620 m<sup>3</sup>/h. The central fan, perfectly integrated into the cooktop, guarantees high performance in terms of fume capture, silence and energy efficiency. NikolaTesla is easy to install, all filters are accessible from the counter top and all models come in duct-out and re-circulating versions.

NikolaTesla Prime features a black glass hob with four independent induction zones. At the centre is a cast iron grill that conceals a powerful extraction unit which provides high performance and near silent operation.

NikolaTesla Switch's exceptionally elegant and iconic design is available in black with cast iron accents and white glass with polished chrome trim. It will look stunning in any kitchen.

NikolaTesla Libra is the first extractor hob with integrated weighing scales. You can weigh ingredients right at the place you are cooking and, being heat resistant, directly into a hot pan. The NikolaTesla Libra is extremely intuitive to use thanks to touch controls for weighing cooking and extraction.

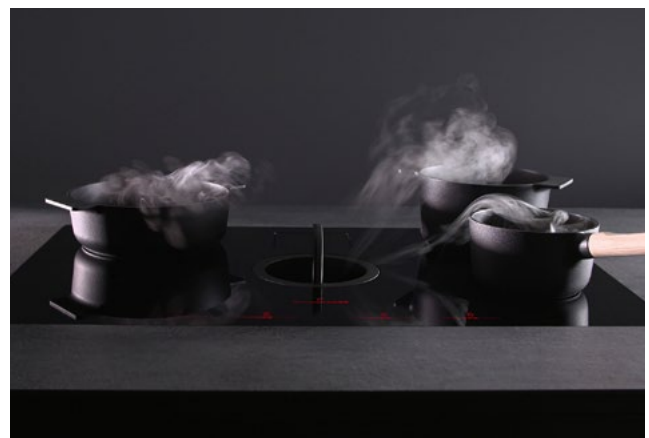
And NikolaTesla Flame is the first hob to combine integrated extraction with gas cooking. Incorporating four burners with a range of outputs for all pan sizes, cast iron pan supports and electronic ignition and extraction control, Flame enables you to enjoy the best that gas cooking can offer with powerful integrated extraction.

## INNOVATIVE FINISHES

The striking copper finish of the Dolce wall-mounted hood takes the iconic representation of the traditional cooker hood but with a twist that makes it the perfect accessory in any contemporary kitchen. Its organic shape and gentle curves soften the profile of the Dolce cooker hood creating a product that will stand the test of time, as well as house the very latest extraction technology. It is also available in a range of other finishes

## EVERY TYPE OF HOOD

For those that prefer hoods that disappear into the ceiling, yet also provide outstanding illumination, Skydome is an attractive option.



It is a powerful cooker hood that fits flush with the ceiling and has a 28W LED lighting panel to provide the cooking area with ambient lighting.

- Dimmer allows you to adjust the intensity of light
- Tune-White system enables users to change the "heat" of the light from 2700K to 6000K so that it coordinates with other lighting in your kitchen.
- Powerful with a maximum airflow of up to 770m<sup>3</sup>/h.

To see the full Elica range, visit [elica.com/GB-en](http://elica.com/GB-en) or call DR Kitchen Appliances on 01252 351111.

GOODBYE SCALES.  
HELLO NIKOLATESLA LIBRA.



## NIKOLATESLA LIBRA.

THE HOB WITH INTEGRATED EXTRACTION AND WEIGHING SCALES.

NikolaTesla Libra is the innovative hob with integrated extraction able to weigh your ingredients directly in the pot, at any temperature level. A visionary product that combines elegance, power, silence and precision for a three times revolutionary cooking experience.

[elica.com](http://elica.com)

NikolaTesla Libra | Design Fabrizio Crisà

 **elica**  
aria nuova



## THE URBAN SERIES COLLECTION

### Premium quartz surfaces from Radianz

Inspired by the sights, sounds and energy of vibrant, metropolitan cities, the Urban Series Collection from renowned, premium quartz surface brand, Radianz offers a refined, modern and sleek surface for a sophisticated appearance in the home. The elegant, marble-effect worktops have been cleverly designed to provide the ideal surface for use in both the kitchen and bathroom.

Suitable for both commercial and residential settings, the elegant, industrial Urban Series range is made up of twelve varying styles. Offering a selection of sumptuously soft beiges and soothing greys, the collection has been designed to complement any interior.

Choose from the dark and dramatic night sky of Aster, the beautiful flowing appearance of neutral Napoli Beige and the earthen hue of Shasta Brown, or opt for fine dark veining on the matt grey of Ashford Fog for a powerful, industrial and on trend finish to a space.

The high-density, non-porous composite surfaces from Radianz provide the refined feel and appearance of natural stone with added practical benefits ideal for cooking preparation. Boasting scratch and heat resistant qualities,



The exceptional quality material is extremely durable and easy to clean, providing the ideal kitchen work surface.

### PRICE DETAILS

Radianz collection priced from £280.00 per m2

[www.radianzquartzurope.com](http://www.radianzquartzurope.com)

## acquabella



## HUX LONDON

HUX is a market-leading joinery specialist that creates bespoke kitchens, cabinetry, and furniture for a wide range of design professionals and discerning private individuals. We offer a seamless concept to completion service, dedicated to designing and manufacturing individually tailored joinery pieces and kitchens of the highest quality. All delivered at a competitive price.



HUX helps to shape and deliver your vision for exceptional living spaces. We specialise in bespoke kitchens and whole house joinery packages, designing and producing everything from dressing rooms, wardrobes and panelling to bespoke media units, libraries and bathroom vanities, designed around your lifestyle, tastes and the character of your home.

High street kitchen and joinery companies offer a degree of flexibility, but fundamentally they are working to a pre-determined palette of styles, materials and finishes. Whereas every HUX commission is truly bespoke. We are constantly researching and experimenting with new technology, techniques and finishes. Bespoke cabinetry not only enhances the enjoyment and aesthetics of your home, it also provides invaluable storage and can increase the value and desirability of your property.

For further information visit [hux-london.co.uk](http://hux-london.co.uk)

## ACQUABELLA CELEBRATES THE IF DESIGN AWARD AND PRESENTS ITS NEW BATHROOM COLLECTIONS

Acquabella has become the leading brand in the manufacture of shower trays and bathroom equipment. The company, recently named Business of the Year at the European Business Awards, completes an excellent year which comes along with the 25th anniversary of the company. We interview Acquabella's CEO, Juan José Benavent, in order to know its consolidation as a reference in the bathroom industry.

### Which are the drivers behind Acquabella's success?

There are no miracles, just hard work and the ability to understand the changing market. We decided to differentiate Acquabella from the competitors in aspects such as the high-definition textures, the material and the design of a complete collection of 100% custom bathroom equipment for all our customers. Additionally, the high aesthetic value of Acquabella's products together with extraordinary technical characteristics make this an excellent option for contract and hotel projects.

### If there's one indisputable leading figure in Acquabella's new collection, surely that's Smart Quiz, which has recently won the iF DESIGN AWARD...

Definitely. The Smart Quiz shower tray has become the highlight of our novelties. Smart Quiz represents the story of

Acquabella. 25 years of innovative creations that blend into a unique shower tray that is formed by different textures set beneath geometric patterns with a grid that is fully integrated

into the shapes. This Award is a well-deserved recognition to Acquabella's product design and development team who has been completely dedicated to working on the creation of such impressive and innovative collections. We are pleased to exhibit the prestigious red label that accredits this product as the winner of the iF DESIGN AWARD.



### After such a renowned collection, what new products is Acquabella preparing for next season?

It's still too soon to give details. The only thing I can say is there will be very attractive and surprising releases, considering our style and the way of understanding the product. These launches will have a strong innovative component thanks to the work carried out over the last few months in our brand new R+D Centre.

[www.acquabella.com](http://www.acquabella.com)

## Raised Access Flooring

Specification      Manufacture

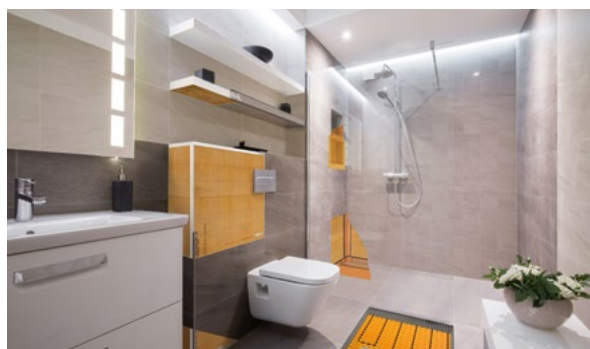
Installation      Certification

Call: 01432 347700

[www.bathgateflooring.co.uk](http://www.bathgateflooring.co.uk)







# CREATING THE PERFECT WETROOM WITH SCHLUTER-SYSTEMS

When it comes to designing a wetroom, a significant amount of time and consideration is required to get the waterproofing basics right whilst also ensuring that the finished look and feel hits the spot.

This is where barrier-free bathrooms or wetrooms with floor-level showers, easy-access sanitary ware and the provision of seating areas can offer a practical, future-proof solution. The huge range of ceramic and natural stone tiles available today means that creating luxurious, beautiful, yet safe and slip-resistant surfaces is easily achievable.

Schlüter-Systems creates products which work best when used together. Creating a fully waterproof bathroom or wetroom that will stand the test of time relies on each component working both on its own and as part of a system.

The uncoupling membrane Schlüter®-DITRA 25, serves as a waterproofing membrane and a vapour pressure equalisation layer, protecting tile or natural stone coverings from cracking or debonding. The same features can also be found in the underfloor heating system Schlüter®-DITRA-HEAT-E, making it ideal for heated floors and walls in wetrooms with tile and stone coverings.

The tile and stone covering in the shower area must be sufficiently sloped to allow for appropriate drainage. This is easily achieved with

Schlüter's prefabricated levelling and shower tray components, which are available with a point drainage system or a linear drainage system.

The linear drainage system Schlüter-KERDI-LINE complies with BS EN 1253, providing a constant 50 mm water seal and anti-blockage based on an 8mm ball bearing test. A welcome addition to the KERDI-range is the KERDI-LINE-G3 drain. At just 78mm high it offers a low-height solution whilst also meeting the requirements of BS EN 1253 and 274.

With the waterproofing system accounted for and ticked off the list, finishing the wetroom off with the perfect aesthetic is the last piece to the puzzle, and it's the small details that can make a big impact. With plenty of colours and styles to choose from, Schlüter-TRENDLINE finishing profiles can really make the tile pop and tie the whole bathroom or wetroom together.

Specifying a fully warranted waterproofing system, along with accessories for your wetroom is a task Schlüter prides itself on doing well. The systems offer you peace of mind and the knowledge that they have been installed correctly and will stand the test of time.

[www.schluter.co.uk](http://www.schluter.co.uk)



# Invisible Marble Book Match

Polished & Rectified  
60x120cm

**IN STOCK**



# Etna Rust

45x90cm  
featuring Devonstone Silver  
33x33cm on the floor

**IN STOCK**



# Marble Nouveau

Glazed Porcelain  
120cm x 120cm x 6mm

**IN STOCK**



**FOR FURTHER INFORMATION PLEASE CONTACT:**

Showroom/Office:

Rebecca  
Tel: 01132 350 340  
rebecca@intceram.com

For an appointment:

Simon Woodbridge  
Mob: 07857 699166  
simon@intceram.com

Paul Wright  
Mob: 07956 572170  
paul@intceram.com

Wayne Tittle  
Mob: 07710 030409  
wayne@intceram.com

Manuela Profetto  
Tel: 0208 747 3585  
manuela@intceram.com



VISIT OUR WEBSITE [INTCERAM.COM](http://INTCERAM.COM)





# NEW MOBILITY & MORE COMMUNITY!

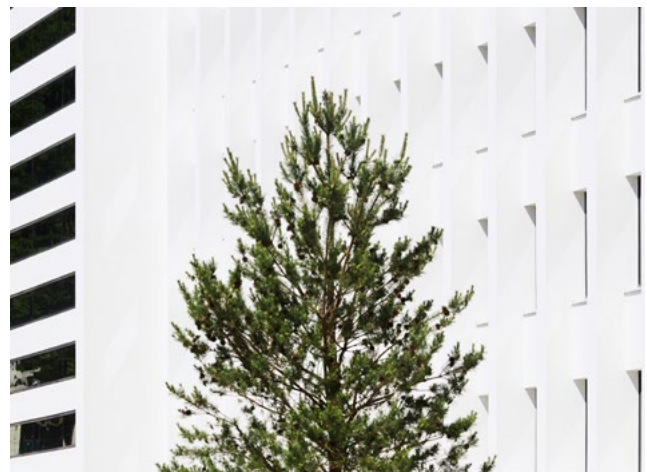
PIONEERING CITY PLAZA PROJECT DESIGNED BY 3DELUXE

In the midst of a newly designed building ensemble boasting bright facades and ultramodern workspaces the German architecture practice has created a visionary plaza that is a celebration of contemporary mobility. Cyclists and scooters cruise along organically curved levels, between them oases of tranquility, water features, cafes and restaurants.

This hybrid of skatepark, playground and urbane living room has now opened – the perfect venue for a young, dynamic society. Cool Lithuania!

## V-PLAZA – URBAN DEVELOPMENT

What was previously a largely unused space adjoined by historical buildings is now becoming a new, inviting public amenity where





“

*This hybrid of skatepark, playground and urbane living room has now opened – the perfect venue for a young, dynamic society.*

you can casually enjoy a coffee in your lunch break or get some work done outdoors while children play in the water, young people skate and students relax in the sun...

### 3DELUXE INTERIOR ARCHITECTURE

This is certainly the new now in Kaunas, a city in Lithuania which, with the help of 3deluxe, has brought to life a future-oriented architectural concept that sets new impulses and is geared towards the communicative needs of a young and dynamic generation. The history-steeped “Unity Square” with its impressive buildings from different eras has been redesigned to reflect the innovative spirit of a country considered to be a pioneer of digitization.

The extraordinary design sets off the extensive façades to bright and cheerful effect, creates modern workspaces, and uses organically shaped green spaces, curved pathways, seating levels and the latest technology to transform the space into inspiring terrain with an urban ambiance.

The real challenge was to preserve cultural heritage while creating space for social transformation. And the solution was innovative architecture that caters to the needs of today’s society: bright, friendly, open and connecting.

Back in 2016 3deluxe was commissioned with the complete transformation of the central square, together with the buildings that adjoin it on its eastern side – three new builds and two renovations, along with an underground garage that extends beneath the entire square.







### THE BUILDINGS AND FAÇADES: 3DELUXE MEET THE INTERNATIONAL STYLE OF THE EARLY 1960S

Here, 3deluxe is creating an exciting ensemble featuring various architectural interpretations of the different eras that define the city. Hence, for example, the new corner building is an homage to Lithuania's Art Deco heritage. With its rounded and organically shaped glass fronts and the elongated façade, the corner building is quite captivating thanks to its elegant simplicity and flowing forms. Here, the coming together of old and new building cultures is celebrated rather than concealed. Extensive glazing and unfussy design meet detailed window frontage featuring applied decoration inspired by the façades of the neighboring historical buildings.

The central new-build block reflects the city's Bauhaus tradition and forges a clear link to the now modernized dual ensemble that so epitomizes the International Style of the early 1960s. The redesign of the façade picks up on the aesthetic simplicity to be found in this Baltic testimony to mid-century Modern, with a pronounced Cubist design vocabulary and clear lines.

An elongated roof pavilion covers both the newly built and the renovated structures and thus melds different styles to create a new whole.

The roof pavilion incorporates a roof terrace that stretches the entire length of the complex – a green oasis offering a magnificent view of the whole city.





The stylistic connection between all five buildings is their uniform, white-rendered façade, which enables all the buildings to merge into one radiant unit.

The redesign of the interiors likewise emphasizes the idea of connection, since all the buildings are linked internally. Extensive lobbies, atriums and open workspaces permit straightforward communication as well as concentrated and creative work. Meanwhile, shops, cafés and restaurants inject further life into this modern, agile world of work and the lively, urban leisure society.

### THE SQUARE: NEW QUALITY OF LIFE ACROSS 22,000 SQUARE METERS

A historical square is transformed: 3deluxe initially developed two design levels that structure the entire surface as a grid made up of visible lines on the ground.

One is linear and forms the historical context, in which the existing axes of vision and movement are taken into account. The other level is designed to be organic and fluid, reflecting the natural flows of movement of passers-by.

This structuring gives rise not only to pathways, but also to natural islands, which are enlivened in different ways: a green lawn for sunbathing, a skate park, a programmed fountain complex or a modern event venue.

The natural result is an organic, landscape-like arrangement comprising dynamic thoroughfares, staggered seating and steps, and gently sloping green spaces and water features that connect the different height levels of the square in a seemingly obvious way. The materials used form a welcoming interplay

of light granite, wood, and elaborately modelled elements made of white molded concrete. The choice of plants for the green spaces is based on the local flora. Native pine and birch along with insect-friendly grasses and shrubs form the basis of the greening concept.

An artificial stream meanders through the organic concrete landscape with wooden islands, inviting visitors to linger and play, while an interactive fountain installation enlivens the large, flat open space in the square, which can also be used for events, festivals and markets.

The man who is funding the transformation of the square is a passionate skateboarder and wanted to offer skate enthusiasts a new home in the city, hence large parts of the square are laid out to be skater-friendly too. Specialists in skate park construction were therefore brought on board to help realize the challenging free forms developed by 3deluxe.

Another addition, lying opposite the new corner building, is a modern amphitheater, and the frontage facing it can be outfitted with a giant LED screen for public viewings when required.

On this basis, additional mobile elements will be used to bring further life to the square: a pavilion that can be planted in various ways as an urban gardening project, changing installations such as kiosks, food trucks and mobile seating, and a temporary event stage.

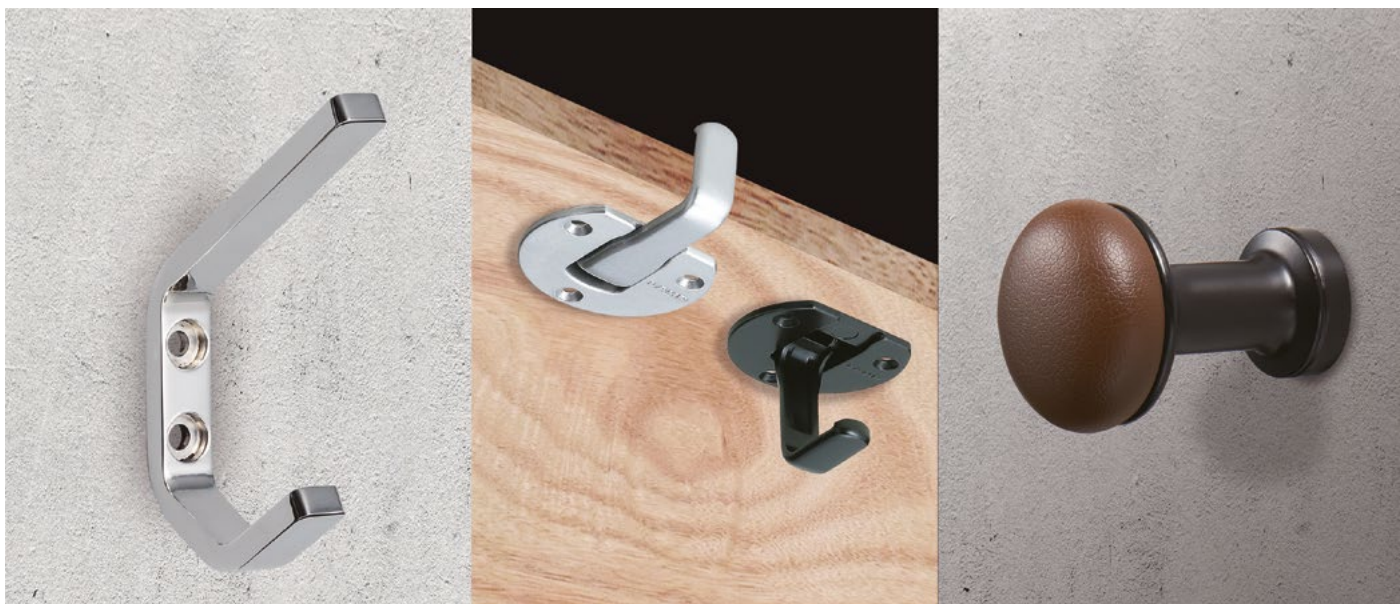
All in all, it's a square to bring people together, to create new opportunities, and to improve the quality of life for people in Kaunas.

[WWW.3DELUXE.DE](http://WWW.3DELUXE.DE)





# Premium Designs. Off the Hook.



Every architectural designer knows the feeling, you get towards the end of a project and then you run into a problem. No matter how hard you try, you just can't source what on the face of it seems a pretty basic component in a style that suits your overall design.

But at Sugatsune, we know that details matter. You should never be forced to make a compromise on your design. That's why we are constantly innovating new products in all of our ranges even products seemingly as simple as hooks. All too often, component manufacturers focus on items like handles and pulls in their design collections, offering an extensive range. But then for anyone who wants hooks as well, there is nothing to match.

Over the last 40 years we have been developing our range of hooks to cater to emerging needs. This has taken us on quite a development journey and allows Sugatsune to offer one of the biggest range of hooks for domestic and commercial use available on the market. Our aim is to make sure our customers can find the right hook for every design, for every purpose, on every occasion, with an uncompromising commitment to build quality, durability and style.

How it all began; We used our expertise to manufacture a comprehensive range

of hard-wearing utility hooks designed for industrial and outdoor environments. This range extends to also offer corrosion-resistant SUS316 for marine environments.

Our world class design team is never afraid to push the boundaries of a basic component concept, this led us to develop a number of products that go way beyond the basic hook prototype. For example, counter and recessed hooks add value by tucking neatly out of the way when the hook itself is not in use, providing a clean, seamless appearance but also helping to avoid snags in tight spaces like the seats or toilets on planes and trains.

As hooks came indoors, we placed an emphasis on providing choice of design without compromising on quality. Our PXB range is available in different materials - wood, brass, leather, rubber - they are carefully chosen to create dozens of different styles to suit different aesthetics. The key with the hooks available within our PXB range is that they are part of something bigger - handles, bars, pulls, racks and more, all delivering a unified design. Whatever your concept, our PXB brand ensures you won't be let down looking for the right style of hook.

All of this focus on appearance does not mean we have taken our eye off the ball

when it comes to the functionality of our hooks. Just the opposite, in fact. Alongside our extensive selection of hooks for interiors we have continued to develop our ranges with additional functionality.

Our under-counter hooks, for example, can lie flat under the bars where customers sit, safely out of the way so legs and clothing aren't caught against them. But when required, a hook can simply be pulled down to provide a convenient and secure place to hang a jacket or handbag safely out of the way and off the floor. With our built in patented soft close damper technology when the load is removed, instead of snapping back flat, the hook smoothly and gently returns to its closed position.

If you are still looking for that extra special touch; Within our Zwei L range, every hook is crafted from premium quality stainless steel before undergoing a meticulous polishing process to achieve the signature 'dual light' contrasting satin and mirror finish. Robe hooks and hangers are elevated above the mundane, making each an exquisite addition to the most luxurious bathrooms.

To us, even hooks are worthy of these premium touches.





Japanese manufacturer of  
**LAMP**® and **Zwei L**®  
branded products

**FURNITURE, ARCHITECTURAL, MARINE AND INDUSTRIAL HARDWARE**

Unit 635, Wharfedale Road, Winnersh Triangle, Wokingham, RG41 5TP

Tel: 01189 272 955 Email: sales@sugatsune.co.uk

[www.sugatsune.co.uk](http://www.sugatsune.co.uk)



## COMAR LAUNCH THE ECO LT WINDOW & DOOR SYSTEMS

Comar profiles have thicker walls providing extra strength and durability for the British market, ensuring that Comar performs. Designed specifically for the British Market and offering a truly British engineered solution.

Comar ECO LT sightlines have been minimised whilst not sacrificing product performance. Large sizes come as standard from the same range of profiles.



### 5P.i ECO LT - ALUMINIUM WINDOW SYSTEM

Comar 5P.i ECO LT Aluminium Casement Window System has both internally and externally glazed options. With the resurgence of slim aluminium high security externally beaded with sloped beads minimises the sight lines and maximises daylight. The square chamfered profiles are a distinctive feature of this system, keeping the square look of a truly aluminium solution.

For Ovolo feature the ECO range seamlessly suites in: No matter the situation Comar 5P.i ECO LT delivers.

### 7P.i ECO LT - ALUMINIUM DOOR SYSTEM

Comar 7P.i ECO LT Aluminium Door System has both inward and outward opening options in single or double door combinations. There are two thresholds available high weather performance and low-rise for seamless balcony terrace integration. Comar 7P.i ECO LT door has been designed to provide high performance solutions for today's specification demands. Utilising Comar's trademark P.i. (Polyamide Insulation) thermal break technology, it delivers superior thermal performance with an aesthetic edge.

Aesthetics come from its slim 55mm profiles, seamlessly integrating with the Comar 5P.i ECO LT casement window system. Comar 7P.i ECO LT has been tested to BS 6375 which ensures the door performs well against the rigours of the British weather, reducing draughts and providing excellent weather proofing.

Security concerns are alleviated with the Comar 7P.i ECO LT door exceeding the requirements of PAS 24:2016.

**For further information about Comar Architectural Aluminium Systems, please visit [www.comar-alu.co.uk](http://www.comar-alu.co.uk), call 020 8685 9685 or email [projects@parksidegroup.co.uk](mailto:projects@parksidegroup.co.uk)**

## HIGH QUALITY TIMBER WINDOWS AND DOORS

The Sash Window Workshop specialise in traditional timber windows and doors, offering a replacement and repair service across London and Southern England, with a supply only service nationwide.

The Sash Window Workshop have worked on a range of projects, from flats in Central London to large country mansions and prestigious properties, such as Buckingham Palace and the Royal Academy of Music. The company also has extensive experience working in Conservation Areas and on listed buildings.

They believe that windows and doors are an important feature in any home and that they must be as energy efficient as possible, while also being in keeping with the architectural style of the building.

As every window and door in a period property is individual, The Sash Window Workshop pay extraordinary attention to detail when manufacturing new timber windows and doors in their Berkshire workshops. The company pride themselves on providing high quality, bespoke solutions to meet their clients' requirements.

For installation and repair work, the company's installation team are all expert craftsmen, with extensive experience



working on timber windows and doors in period properties. The installers understand that your client's home should be treated with the utmost care and respect. They will therefore seek to minimise disruption and keep the work area clean, tidy and safe.

The Sash Window Workshop are also FSC® Certified, FENSA registered, members of the Safecontractor scheme and Which? Trusted Traders, with most of their work coming from previous customers and recommendations

**To obtain a quotation, or arrange a tour of the workshop, contact The Sash Window Workshop on: 01344 868 668 or [info@sashwindow.com](mailto:info@sashwindow.com). You can also visit their website: [www.sashwindow.com](http://www.sashwindow.com).**

# VICAIMA LAUNCHES NEW WEBSITE STRENGTHENING THE USER'S EXPERIENCE

Always aiming to build the perfect online experience for its customers and partners, Vicaima, one of the largest European players in the production of sophisticated solutions for interior doors, wardrobes and panels, has just launched a new website, which aims to improve the ease of navigation for its users, providing spontaneous and differentiating interaction with all features and tools. Yet another innovation, from a company which is continuously investing in a close, modern and intuitive digital footprint.

Among the new features, Vicaima highlights the speed of the platform and the contemporary, functional and responsive redesign, strategically created to facilitate the search process for users, in line with their intentions, needs and desires.

Thus, the new website is characterized by dynamism, accompanied by carefully selected content, as well as a wide range of products, performance and solutions, with a view to boosting the digital presence of the brand in the national and international arena.

This redesign includes aesthetic improvements allowing for more immersive experimentation and improved navigation, which allows visitors to easily find the information they need.

"After many months of work and dedication by our entire team, we are very pleased with the launch of the new Vicaima website. This latest step reflects the company's ability to anticipate trends, innovate, propose complete and exciting proposals to the market. With the new website, the user can easily and intuitively access the commercialized products, news, catalogues, technical information, projects and news, as well as request the download of BIM solutions from Vicaima, quickly and effectively. We believe that we will strengthen our position as one of the dominant players in the market. With the new design, we expect an increase in the number of visitors and consumption of content on our page. We look forward to feedback and the new and exciting developments to come", stresses Antonio Moutinho, Director at Vicaima Group.

**NEW WEBSITE**  
Unique Design & Experience  
**vicaima.com**



The new Vicaima page thus highlights the company's willingness to invest in a digital sphere that provides the best user experience for its customer. The renewal follows, precisely, the thought provoking attitude of the brand towards the different markets in which it operates. This is also related to an integrated multichannel strategy, which reconciles the company's multiple digital tools, placing it, once again, at the forefront of the sector.

Vicaima is currently one of the biggest European players in the design and production of sophisticated solutions for interior doors, technical doors, frames, wardrobes, panels and furniture parts. Its positioning is based on the ability to develop integrated and customized solutions, oriented to different sectors, namely housing, hotel, health, education and commercial. Innovative and trendsetter, Vicaima has a constant concern for sustainability, being the first Portuguese company in the sector to obtain FSC® (Forest Stewardship Council®) certification. Founded in Portugal, it has a direct presence in countries such as the United Kingdom and Spain and exports 95% of its production to markets ranging from Europe to the African continent, passing through the United Arab Emirates and the American continent.

**For further information, visit the Vicaima website**  
[www.vicaima.com](http://www.vicaima.com)







# SHOUKAI VANKE CENTRE BEIJING

---

BEIJING'S DAXING AREA HAS BEEN ENVISIONED AS A NEW GATEWAY TO THE CITY

Located in the heart of Daxing district, the project operates as a key piece and the largest building complex within the regional development so far. The tips of the floor plates become sky-garden balconies whose terraces provide a comfortable outdoor seating area. CLOU sees outdoor workspace as a logical next step in the evolution of office culture.

Shoukai Vanke Centre Beijing has been awarded Excellent Architecture 2020 by German Design Award, Innovative Architecture 2019 by ICONIC Awards, and 2018 Red Dot Design Award.





“

*The sky gardens balconies in the office towers across two floors providing a comfortable outdoor seating area with spectacular views over the adjacent park.*



### TRIANGULAR FLOORS DESIGN STRATEGIES

Shoukai Vanke Centre is a 132,000 sqm mixed-use development which is composed of a 26,000 sqm shopping mall, a 124-metre-tall office tower as well as a hotel.

The office tower has a triangular shape which creates a strong presence at the main intersection yet appears elegant and slim from other points. The triangular shape is the result of a series of pragmatic decisions which include maximising views towards the newly built park and integrating double height sky-garden balconies into the tips of the floorplates. Their terraces provide comfortable outdoor seating areas with spectacular views over the adjacent park.







### SKY GARDENS

The sky gardens balconies in the office towers across two floors providing a comfortable outdoor seating area with spectacular views over the adjacent park. While the design of the rooftop garden employs bright colours, lively forms and landscape by BAM to engage visitors and promotes opportunities for physical activities and playfulness.

### INTERIOR DESIGN OF SHOPPING MALL

The commercial complex will offer primarily F&B retail which provides the opportunity to create unconventional dining experiences. Utilising this program, we created a network of large terraces that are strategically placed and act as an extension of the shopfront. Elevated escalators and walkways connect to the adjacent terraces and weave the development into the 3D urban pedestrian network. This creates a central space that offers a view of overlapping planes and interlacing of lines. The terraces have flexibility for varying functions ranging from temporary booths, open bars, seating for dining, or even casual relaxation zones.

[www.clouarchitects.com](http://www.clouarchitects.com)





# The Perfect Pocket

Nowadays an essential part of your modern day living area.  
More space to move around in and more options with furnishings.  
Rocket Door Frames fit UK standard door sizes so you can supply  
your own for more style and more space at the same time.

## The Inexpensive Alternative

Visit: [rocketdoorframes.co.uk](http://rocketdoorframes.co.uk)  
0330 998 0617

From  
**£119.50**  
Plus VAT

WARRANTY  
**12**  
YEARS  
WARRANTY

NEXT DAY  
DELIVERY

EXCELLENT  
CUSTOMER  
SERVICE

 **ROCKET**  
DOOR FRAMES



## P C HENDERSON'S TANGENT ROUND THE CORNER SPECIFIED FOR UK'S LONGEST HERITAGE RAILWAY

P C Henderson has recently been specified for a new build project at the UK's longest heritage railway - Ffestiniog and Welsh Highland Railway. As the oldest independent railway in the world, Ffestiniog and Welsh Highland Railway is a major tourist attraction - taking passengers on a scenic 40 mile journey through the hills between Blaenau Ffestiniog, Porthmadog harbour and Caernarfon.



Boston Lodge Works is the railway's main workshop and base for the daily train service. With over 55 carriages in service, the station required a storage facility which could house up to 30 carriages whilst also providing shelter for train cleaning and preparation which could be done away from the public eye. The project brief included the need for a robust entrance solution which could provide easy accessibility to the shed.

Ian Hartill, Project Engineer at Ffestiniog Railway, commented "The original brief detailed the use of traditional outward opening hinge doors which we have used in previous projects. However, due to the coastal location of the building and the possibility of strong winds, this option was not possible. As a more suitable alternative, we found P C Henderson's Tangent Round the Corner which could comfortably hold the large custom made doors".

[www.pchenderson.com](http://www.pchenderson.com)

**STANZA**  
ARCHITECTURAL HARDWARE

**UTILITY BY DESIGN**

Our STANZA range is designed to be both elegant and modern with the affordability to suit both consumer and contractor.

A range of designer zinc levers available on rose and backplate, chrome plated to achieve long performance and great aesthetic appeal.

T : +44 (0) 1228 672 900  
E : [sales@zoo-hardware.co.uk](mailto:sales@zoo-hardware.co.uk)  
W : [www.zoohardware.co.uk](http://www.zoohardware.co.uk)

For further information on this range visit our website or call one of our friendly sales team.

STANZA is part of Zoo Hardware Ltd.

**Mirror Door Systems Limited**  
reflecting your lifestyle

**Mirror Door Systems Ltd**

Made to measure and Bulk quantities of Sliding Door Systems to the trade and public nationwide.

All systems incorporate anti-jump safety features and have been designed to accept the choice of safety backed mirror, opaque glass (BS6206 Class B) and/or panels.

The full range of now extends to 5 superb systems with nearly 40 different colours including woodgrains to choose from:

<b>Solitaire &amp; Topaz</b>	Steel systems with painted & vinyl finishes
<b>Diamond</b>	Aluminium (dual) systems anodised and a powder coated finish mid-rails to match
<b>Pearl</b>	Aluminium system with woodgrain finishes plus mid-rails to match and option soft door closers
<b>Cerroni</b>	A unique small aluminium profile with track system and door closers
<b>Tuscany</b>	An aluminium system, with classical and elegantly designed profiles and selected modern colours and features with door closers

Tel: +44 (0) 1268 573357  
Web: [www.mirrordoor.co.uk](http://www.mirrordoor.co.uk)  
Email: [salesmds@mirrordoor.co.uk](mailto:salesmds@mirrordoor.co.uk)

ESSEX Wildlife Trust  
Corporate Members  
Pleased to be associated with the Essex Wildlife Trust

## ASSA ABLOY PROJECT SPECIFICATION GROUP PROVIDES GUIDANCE ON THE STANDARD FOR DOOR CLOSER COMPLIANCE

ASSA ABLOY Project Specification Group addresses the issues around door closers, ensuring durability and compliancy are not compromised in the specification process.



Specification of the correct door and hardware combination is essential to ensure that the right architectural appeal, functionality and longevity is achieved, but most importantly that safety regulations are not compromised.

Since fire doors are critical life-saving elements in many buildings, it is essential that they operate effectively – and the role of door closers is one not to be taken lightly. Designed to restrict the spread and initial development of a fire, as well as protect escape routes, doorsets should provide lasting protection before and even after a fire evacuation, but this can only occur when the door closer is installed and working correctly – in other words, ensuring fire doorsets are properly closed.

To find out more about ASSA ABLOY's door closers, visit: <https://bit.ly/3bGdr2i> or for more information on the unrivalled capabilities of Openings Studio™ visit [www.assaabloyopeningsolutions.co.uk/en/local/uk/project-specification/specification-bim/assa-abloy-openings-studio/](http://www.assaabloyopeningsolutions.co.uk/en/local/uk/project-specification/specification-bim/assa-abloy-openings-studio/).

**vicaima**  
UNEXPECTED HARMONY



# Silent Night.

Vicaima Acoustic Door Solutions.  
Keep the noise down and the performance up.

Follow us:



[vicaima.com](http://vicaima.com)



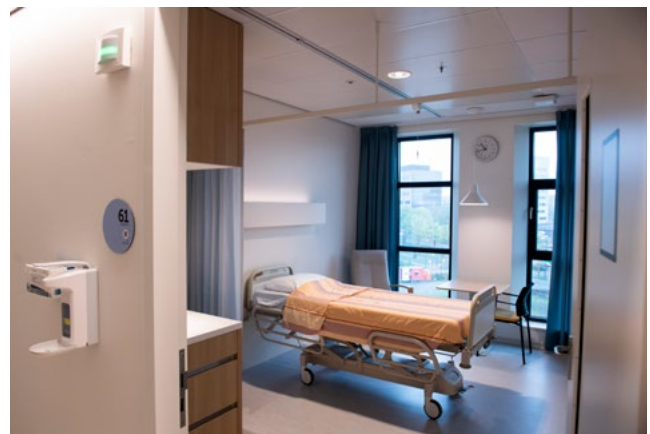


# STATE OF THE ART HOSPITAL BENEFITS FROM P C HENDERSON'S SIROCCO SYSTEM

SLIDING AND FOLDING DOOR HARDWARE MANUFACTURER HAS BEEN SPECIFIED FOR A STATE OF THE ART HOSPITAL BUILD IN BRED A, HOLLAND

Covering 128,000 square metres, the new ultra-modern Amphia Hospital was officially opened in November 2019. The design brief focused on creating a new world of medical care – aiming for increased one to one patient contact, shorter waiting times, the highest level of health care and a peaceful and comfortable environment.

A key component in achieving this was the design layout of 514 private luxury rooms with adjoining bathrooms. The contractor wanted to ensure ease of movement around the room - as well as enhanced privacy and comfort. A key solution in achieving this was through the specification of a sliding door system to separate the main room from the bathroom. P C Henderson's Sirocco system was identified as the best solution for the project.





“

*The hospital is one of the largest clinical hospitals in the Netherlands and utilises some of the most innovative medical technology.*

Rene van den Biggelaar, Business Unit Manager at P C Henderson Holland, commented “Our Sirocco sliding door system is extremely popular in healthcare applications due to its integrated hydraulic self-closing feature which ensures the door always comes to a safe and gentle close”.

In order to ensure a system that worked well for both patients and staff – a test room was set up during the build which was used for a number of months. This provided valuable feedback which led to some further customization of the product to ensure the best user experience.

“The contractor required a system which could work with a 1.35m wide door - ensuring that even a hospital bed could be maneuvered through into the bathroom if required. We achieved this by manufacturing a custom made 2850mm length of track to replace the systems usual 2200mm track. We also designed a custom made stop which would allow the door to be held open half way across the opening - when only a small walk way was required”, continued Rene.

Home to over 4000 employees, the hospital is one of the largest clinical hospitals in the Netherlands and utilises some of the most innovative medical technology. With a key focus on patient comfort - patients are provided with their own iPad, which they can use for entertainment purposes, as well as to order from a menu of over 25 nutritional hot meals.

Sustainability is also high on the hospitals agenda – with systems in place to generate approximately 85% of its own energy needs. The use of P C Henderson’s Sirocco system assisted towards this through its hydraulic self-closing feature which requires zero electric input.



Sirocco sliding door gear caters for doors weighing up to 80kg and is available with a number of optional extras to further add to the sophistication of the product – including a delayed closing timer and fascia.

[www.pchenderson.com](http://www.pchenderson.com)





# Defining spaces in architectural aluminium

**THERMAL™**

Windows || Doors || Curtain Walling || Brise Soleil || Louvres

Residential Apartments, Springside || Edinburgh (Visual by CDA Group)





CDE Global Head Office || Cookstown

Horizon Heights, Student Accommodation || Liverpool

## Support

Technical design input

Thermal modelling

Free air calculations

Security analysis

Online BIM models

Secured By Design

## Environmental

Window Energy Rating software (WER)

BREEAM guidance

BRE Green Guide A+ rated products

Life cycle analysis

Sustainable products

Responsible sourcing



metaltechnology.com







# AN IMPRESSIVE TRACK RECORD

---

DOOR GROUP, A UNIT OF ASSA ABLOY OPENING SOLUTIONS UK & IRELAND, HAS SECURED A SERIES OF HIGH-PROFILE CONTRACTS WITH TRANSPORT FOR LONDON AND CROSSRAIL LIMITED

These contracts have included supplying and installing security doors for major London Underground redevelopments including London Bridge, Bond Street and King's Cross, as well as station upgrades such as Victoria.

Full doorset solutions have been delivered and installed to Crossrail's Elizabeth line stations at Canary Wharf, Paddington, Bond Street, Tottenham Court Road, Farringdon, Woolwich and Custom House. They have also been installed at other sites along

the route including Pudding Mill, Eleanor Street and Mile End, as well as at the Elizabeth line depot at Old Oak Common.

Each project presented its own demands and challenges in relation to product performance requirements. Doorsets had to be fully compliant to achieve the latest standards and meet the specialist needs of each environment. Factors to consider included fire, acoustics, air tightness, high-security and pressure resistance.





*Each contract brought its own individual challenges, but from the very beginning we worked closely with the architects and contractors involved to understand their requirements*

Decorative finishes such as vitreous enamel, stainless-steel and bronze cladding helped complement the aesthetics of the surroundings on doors that required a finishing touch, and many of the doorsets required installation in challenging conditions, being underground, with tight access and with restricted working hours.

Brian Sofley, Managing Director at ASSA ABLOY Door Group said: "Our experience working with London Underground provided us with the ideal foundation for supporting our working partners on the Crossrail project for the Elizabeth line stations.

"Each contract brought its own individual challenges, but from the very beginning we worked closely with the architects and contractors involved to understand their requirements. This meant we could provide specialist and tailored solutions that met their exact needs. Solutions were carefully chosen from both our Powershield and Prima steel door ranges including cross corridor doors for high traffic fire escape routes, and pivoted fire rated platform doors to conceal station equipment rooms.

"We take great pride in our wide portfolio of well-respected transport contracts. It says a great deal that customers choose to work with us time and time again, and we put this down to our full-service offering, financial stability, and expert advice at every stage of the project, from specification to installation and inspection."

For more information on ASSA ABLOY Door Group, please visit <https://bit.ly/2YnuyTt>.





# LITTLE FOR GLAZING IN GREEN GRANT SCHEME

THE GOVERNMENT HAS RELEASED MORE DETAILS OF THE GREEN HOMES GRANT SCHEME ALMOST ONE MONTH AFTER IT WAS ANNOUNCED BY THE CHANCELLOR



The announcement adversely affected many home improvement companies as consumers cancelled or postponed orders until the launch of the scheme, which is set for September and will be available in England only, with an estimated 600k homes benefiting.

In the detail, the glazing element is relatively low priority with only those upgrading from single glazing to double or triple glazing or if installing secondary glazing, being able to claim funding under the scheme.

The scheme also covers upgrading to energy efficient doors but at present there is no detail as to what this means and which products will be eligible. The amount of Government assistance for glazing cannot be more than the value of the initial measures which will need to be completed first and which are different types of insulation and / or low carbon heating.

On receiving the details of the scheme, John Agnew, GGF Managing Director commented, "The Green Homes Grant Scheme announcement and delayed publication of operating detail has caused significant damage to many companies in our membership. Following the initial announcement last month, many homeowners cancelled or simply didn't order their replacement glazing, in anticipation of the scheme's September launch. Now that the details have been confirmed it is clear there is very little in this scheme for the glazing industry".

The biggest glazing challenge for homes is to have modern energy efficient windows - those that are C rated or above. There are currently tens of millions of double glazed windows in the UK

that have been installed pre-2002 that need replacing because they are inefficient. The Green Homes Grant Scheme does not tackle this issue. Instead it leans towards, loft insulation, cavity wall insulation and cheaper, easier options.

The other reality in the scheme's details is that it is very limited in terms of suppliers. Only installers who are accredited to PAS2030 will be allowed to carry out work under the scheme. It is estimated that of the 15,000 window and door installers in the UK, less than 5% (under 500) are PAS2030 registered. FENSA can accredit installers to PAS2030, and the GGF recommends all glazing home improvement companies who wish to qualify for work under the Green Homes Grant Scheme, register with FENSA who will support GGF members with any additional assessment requirements.

Later this month, homeowners across England will be able to access advice and support on improving the energy efficiency of their homes from the Simple Energy Advice (SEA) service. SEA will suggest appropriate home improvements that homeowners may be able to apply for support in funding.

Once the works are agreed, vouchers will start to be issued from the end of September so work can commence.

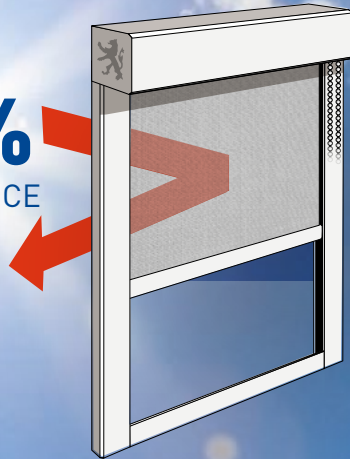
The GGF is continuing to engage in the Government's work streams regarding the road to recovery from lockdown impact and will keep members up to speed with all developments.

[jlee@ggf.org.uk](mailto:jlee@ggf.org.uk)

# Reflex-Rol

BESPOKE ROLLER BLIND SYSTEMS

OVER  
**80%**  
REFLECTANCE



If you know of a blind  
that gives more than  
80% solar reflectance,  
use it.

If not, visit  
[www.reflex-rol.co.uk](http://www.reflex-rol.co.uk)



Reflex-Rol is a division of  
De Leeuw Ltd

De Leeuw Ltd., incorporating  
Reflex-Rol U.K. and Mernet U.K.  
are associate members of ES-SO



**Reflex-Rol (UK)**  
Insulating Solar & Glare Control Systems

Reflex-Rol (UK), Ryeford Hall, Ryeford, Ross-on-Wye, Herefordshire HR9 7PU  
Tel: 01989 750704 Email: [info@reflex-rol.co.uk](mailto:info@reflex-rol.co.uk) Online: [www.reflex-rol.co.uk](http://www.reflex-rol.co.uk)







# TAPER-LOC GIVES LESSONS IN SAFE AND EFFICIENT GLASS BALUSTRADE INSTALLATION FOR NEW ACADEMY BUILDING

---

When architects working on the new ESSA Academy in Bolton wanted to create a striking staircase within the new building, glass was the natural material of choice, installed safely and efficiently using the innovative TAPER-LOC™ System from CR Laurence.

Creating a stunning 'inside outside' space, the staircase is built within the hall of the Academy, exhibiting a modern blend of stylish interior design, combined with a spacious and open-air feeling.

Located in one of the busiest areas of the building, the structure not only needed to look the part, but put safety first too. The CRL TAPER-LOC™ system is a simple way to install such glass railings and balustrades. It is significantly faster to install than traditional alternatives and as it is a totally dry glaze system there is no need for wet cement.

“

*The CRL TAPER-LOC™ system is a simple way to install such glass railings and balustrades.*

Conforming to BS6180:2011 the product uses a horizontal TAPER-LOC design, which allows the system to be adjusted, dismantled and re-set easily and efficiently. This also makes the TAPER-LOC™ System ideal for replacing scratched and broken panels in existing applications. CRL's Aluminium Base Shoe were specified to be

used with 13.52mm laminated toughened glass.

To finish the project CRL's Cap Rails were used throughout the staircase and balcony area, in a 51mm diameter. These premium cap rails are manufactured by bump-forming to ensure reduced spring back. The Cap Rails have a standard wall thickness of 3.2mm and are available in diameters ranging from 38.1mm to 101.6mm, as well as oval and square profiles in a wide range of architectural finishes.

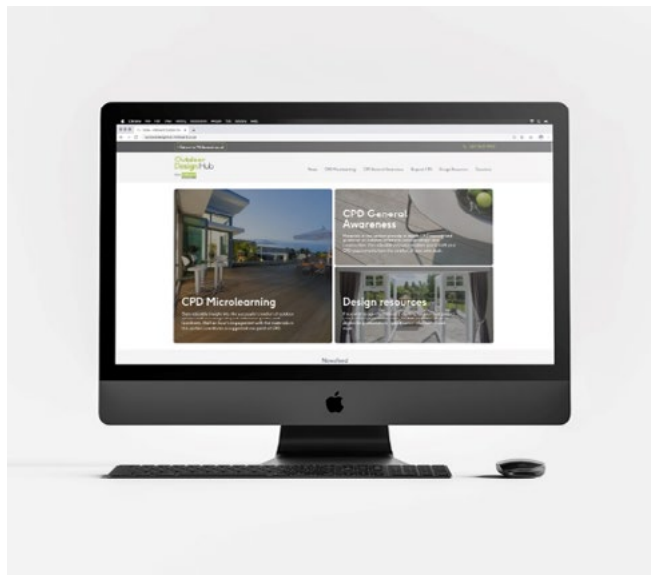
**For more information call CRL on 01706 863600, email [crl@crlaurence.co.uk](mailto:crl@crlaurence.co.uk), or visit [www.crlaurence.co.uk](http://www.crlaurence.co.uk)**





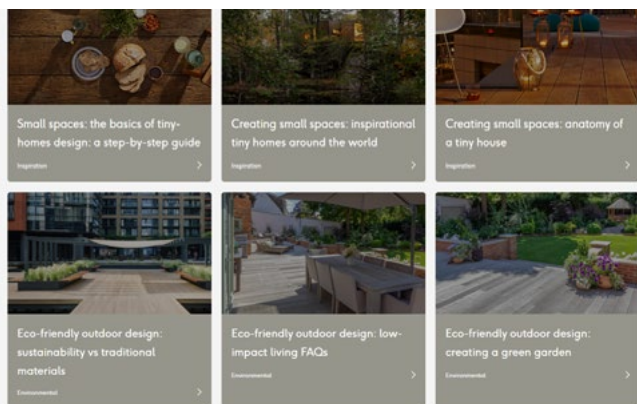
# A SINGLE SOURCE FOR DESKTOP LEARNING, FROM MILLBOARD

Millboard has recently launched a brand-new informative resource for professional landscapers, architects, interior designers and master builders. This Hub of educational materials is entirely free and provides a single source for desktop learning, covering a broad range of useful and up-to-date information related to the world of outdoor design.



*The Millboard Outdoor Design Hub*

Visitors can browse for inspiration, catch up on the latest regulatory news and even pick up CPD points from the comfort of their own desks! Millboard, manufacturers of design-led mineral board decking, states that after six months of intensive work, the Hub is now 'bursting with informative and engaging materials and news'. Marketing Manager Caroline Birdsall comments 'we're thrilled to have created such a valuable facility for the industry – we hope that it's of use to a wide range of people, whether they are looking for design-theme inspiration or wanting to learn about the most eco-friendly and innovative design materials available. It covers lots and we'll continue to add content to it on a regular basis.'



*The Hub hosts bite-sized learning and news*



*Millboard are well known for their premium outdoor flooring collections.*

The Hub currently contains over forty pieces of learning-focused content, including videos, PDFs, handy guides, mood-boards and FAQs, in addition to a news feed that curates the best of the latest from across the leading journals and magazines. The Hub is intended to support the design of outside spaces from a creative and technical perspective, and will be updated to keep abreast of design trends, legal framework updates and items of topical interest.



*Millboard recently opened the Clerkenwell London Design Hub and offers CPD seminars.*

Millboard already offers RIBA accredited CPD seminars and has recently opened the Millboard London Design Hub in Clerkenwell – a facility to host training sessions, architect-focused events and design presentations, as well as showcase their unique decking range.

[www.millboard.co.uk](http://www.millboard.co.uk)





# Learn something new, every day.

Inspirational spaces come from inspired minds. Which is why Millboard has launched the Outdoor Design Hub; an online resource for Professional Landscapers, Architects, Interior Designers and Master Builders. Providing up-to-date creative design inspiration, regulatory news and technical know-how, the Outdoor Design Hub has been developed with you in mind.

The Outdoor Design Hub. Your go-to space for knowledge and inspiration.

Learn more at [outdoordesignhub.millboard.co.uk](http://outdoordesignhub.millboard.co.uk)

**Outdoor  
Design Hub**

from **millboard**  
Live Life Outside.



## ALTRO NOW A RECOMMENDED SUPPLIER OF FLOORS AND WALLS FOR PROCURE22

Altro has been appointed as a recommended supplier of vinyl and resin floors and floor accessories on the Department of Health's ProCure22 Framework for NHS and social care construction schemes in England. Altro floor systems, including Altro Orchestra, Altro Aquarius and Altro Wood Safety, are recommended for use throughout healthcare environments. This follows Altro's appointment in 2018 as a recommended supplier of wall and door systems, including the Altro Whiterock and Altro Fortis systems.

The ProCure22 (P22) process is designed to achieve improved value for money and reduce exposure to risk through a simplified capital procurement procedure.

With up to 20-year product guarantees, Altro can ensure healthcare environments provide an impervious, hygienic and durable environment, meeting the stringent requirements in critical hygiene areas. With a vast array of colours, including wood-look designs, a warm and welcoming environment can be created to reduce stress and improve patient and staff wellbeing, without compromising on hygiene standards.

Altro provides a wide selection of floor solutions that can be used in all areas of health and care environments, including

specialist safety solutions for areas with a high slip risk, including bathrooms and kitchens.



Altro has also been awarded DSDC accreditation, and is the only manufacturer to have HACCP approval for both floor and wall products.

Mark Johnstone, Head of Commercial, UK, Middle East and Ireland says: "Altro pioneered hygienic wall sheets and safety flooring, and we have over 60 years of experience providing solutions in health and care environments, including many projects within the NHS and social care. We are proud to have our floor and wall solutions included on the Procure22 Framework. Our floor, wall and door systems are recognised as cost-effective and durable solutions for health and care, and work together to create a hygienic environment that is designed to support the wellbeing of patients, staff and visitors."

[www.altro.co.uk](http://www.altro.co.uk)

## GET A HEAD START WITH RAPID LEVEL CT 3220 FROM MAPEI

Rapid Level CT 3220 is the latest addition to Mapei's extensive product range, offering a levelling compound that promises a quick drying time of just 45 minutes prior to the installation of ceramic and porcelain type tiles. Suitable for internal use, Rapid Level CT 3220 is used for levelling, smoothing and infilling differences between 3 and 20mm in a single application.

Rapid Level CT3220 must be primed, and is designed for the installation beneath ceramic tiles. It is suitable for levelling a variety of substrates including new and existing concrete, anhydrite and cementitious screeds, stone and ceramic tiles, and can also be used over boarded timber floors. In addition, it can also be used in areas subjected to castor wheels and onto screeds with incorporated underfloor heating systems.

Its impressive application allows up to 20mm per coat without any shrinkage, cracking or crazing, and develops very high compressive and flexural strength, in addition to resistance to indentation and abrasion.

In its pre-mixed form, Rapid Level CT 3220 is a grey powder consisting of special cements with rapid setting and hydration, together with graded silica sands, resins and special additives. A fluid and easily workable mortar when mixed with water,



the smoothing and levelling compound provides a high bond strength to the substrate, as well as offering ultra-fast drying.

[www.mapei.com](http://www.mapei.com)

## NEW FROM HAVWOODS: CORK WALL TILES

NEW FOR 2019 - International wood flooring brand, Havwoods has introduced a new collection of solid cork wall tiles to its Vertical collection.



A unique concept in wall coverings, the 3D Cork collection is available in three signature designs:

Giza, Modo and Reyes. The surface of each feature tile offers a highly textured, raised-pattern finish that is designed to add interest to vertical surfaces, whether used as an accent panel or across a full wall scheme. All three styles are offered in two sizes of 150 x 150mm and 300 x 300mm and three colours to allow for imaginative formats and patterns to be created with ease.

Cork is the outer bark of the cork oak tree, which grows mainly in the Mediterranean region. It can be harvested from the same tree for around 200 years making it an environmentally friendly,

renewable and sustainable surface choice for interior installations. Alongside its eco credentials, cork is also a natural sound and heat insulator, whilst also being dust, bacteria and



fungus repellent. Cork is an amazingly versatile design material; by altering the tonal variations and layering of Havwoods' Cork 3D tiles, it is possible to create a whole range of stunning textures and visual effects.

[www.havwoods.co.uk](http://www.havwoods.co.uk)

**osmo**

# ORIGINALLY OSMO POLYX®-OIL

Innovative for over 30 years.

OSMO POLYX®-OIL – FEEL THE DIFFERENCE.

[www.osmouk.com](http://www.osmouk.com)

**The Preparation Group**  
— Preparing & Finishing Surfaces —

## Polished Concrete

- Full Contracting Service
- Machines & accessories to buy or hire
- Grouts, densifiers & seals to complete the job

+44 (0)1522 561460  
e: [sales@ppcgroup.co.uk](mailto:sales@ppcgroup.co.uk)

[in](#) [t](#) [f](#) [v](#)





# BW TRANSFORMS HISTORIC HARELLA HOUSE IN LONDON'S CLERKENWELL INTO HIGHLY DESIRABLE CAT A OFFICE SPACE

---

BW: WORKPLACE EXPERTS HAS SENSITIVELY REFURBISHED HARELLA HOUSE ON GOSWELL ROAD IN CLERKENWELL.

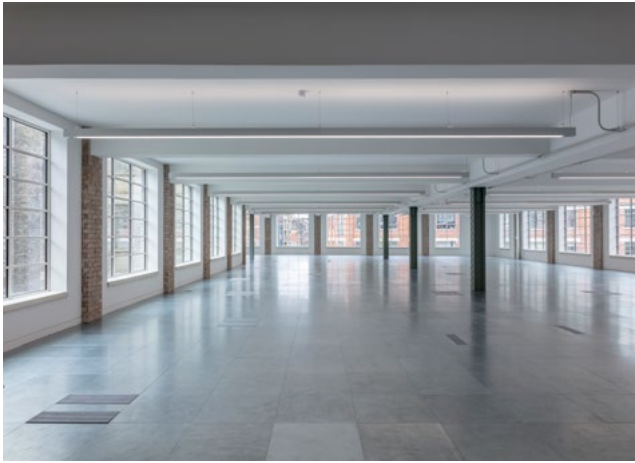
In total, six floors of lettable Cat A office space have been created for Chait Investment Corporation, within a characterful building, which now has three new terraced areas.

Harella House dates back to the 1930s, starting out as a garment factory for Harella Clothing Manufacturers. This enterprising firm was famous in its day for producing garments in a wider range of women's sizes. The 55,000 sq ft building has large Crittall windows, which were intended to create natural light filled spaces that could accommodate large items of machinery. BW managed the erection of scaffolding to the full perimeter of the building and a full temporary roof, enabling the original facade to be cleaned and all existing windows to be replaced with new Crittall.



“

*I think we can all agree that following the recent refurbishment works, Harella House is now one of the best (if not the best) commercial office spaces on offer in Clerkenwell.*



An electrical substation to the rear has been decommissioned and relocated into the basement and ground floor, with the access point on Gee Street.

A new reception entrance has been created on Goswell Road, providing the main access to the building. Original features have been restored, with exposed steel columns and brick piers on the upper floors and sanded timber sarking boards on level 4. Also, on this level, the roof has been completely replaced and altered to create a mezzanine floor, with new roof slates throughout.

To the rear, adjacent to the neighbouring offices, a single-storey extension has been demolished and completely rebuilt to enable a larger ground floor area. A rooftop garden, a highly desirable element for contemporary workplaces, has also been created.

Anthony Brown, Sales & Marketing Director of BW: Workplace Experts said:

“I’m delighted that the BW team were able to bring this period building back to life, refurbishing the existing structure, adding contemporary features and managing the building works in a timely manner.”

Daniel Salako, Associate Director at CBRE said:

“I’d like to take this opportunity to thank both BW and the wider consultant team for their combined and continued efforts on the project and I think we can all agree that following the recent refurbishment works, Harella House is now one of the best (if not the best) commercial office spaces on offer in Clerkenwell.”

A 94-week programme of rebuilding and structural alternations, Harella House has been completely reinvented as a twenty-first century workplace.

The consultant team:

- Client: Chait Investment Corporation
- Architect: Piercy & Company
- Quantity Surveyor: Exigere
- Project Manager: CBRE
- M&E: Elementa Consulting
- Structural: Davies Maguire

[www.wearebw.com](http://www.wearebw.com)





# TRAJAN NATURAL STONE



## From Traditional to Contemporary... The Versatility of Stone

**Natural stone, with its diverse properties is boundlessly versatile. Whether you are looking for classic traditional elegance or a chic and sophisticated contemporary look, there is a stone solution that will enhance your design.**

At Trajan Stone, our motto is "from inspiration to installation", and we think this exemplifies our service. Firstly, after understanding your design vision, we can help you choose the right material using our expertise to advise on colour, texture and suitability.



We will then source the stone direct from the best quarries around the world, drawing on our 27 years' experience.





Our team of highly skilled master stone masons will cut the stone to your precise specifications, using our state-of-the-art CNC machinery. Finally, our discreet and trusted craftsmen will fit it on site.

We are proud to have collaborated with many leading architects, interior designers, building contractors, surveyors, landscape designers and private clients. Attention to detail, quality of performance and integrity are the core of our company values, as is achieving fabulous results for our customers. The bespoke Arabescato marble vanity pictured above was designed by one of our clients and expertly crafted and installed by our master masons, and is just one example of how we can take your inspirations to the next level.



Be it a beautiful book-matched marble bathroom, a sweeping stone staircase, an elegant stone floor or even a private (or commercial) wellness spa, we are here to make your life easier.

We have even made a bespoke five-seater stone jacuzzi for a client before, so feel free to give us a challenge!

At Trajan Stone we pride ourselves at keeping up with all the latest products and design trends, so even if you need a Dekton kitchen work surface or a Neolith feature wall, we're always on hand to help.

[www.trajanstone.com](http://www.trajanstone.com)





Imagery: Hoo Residence | Max Hawley, Nest.co.uk

# YOUR DESIGN DESTINATION

## HOSPITALITY | COMMERCIAL | RESIDENTIAL

From initial concept to final installation – Nest Contracts deliver premium, designer furniture and lighting to any project, with quality guaranteed. With over 15 years of industry experience, an expert team are on hand to ensure your project is completed on time, within budget and true to the original design.

## CONTRACTS FROM NEST.CO.UK

Established in 2003 from a desire to bring high quality, forever design to the UK market – Nest were one of the earliest adopters of online retail within their field. With a website that is highly regarded within the industry, Nest have grown and developed a strong presence within the international market, now working with hundreds of sought-after brands such as Vitra, Hay, Flos and Muuto.

## WHY WORK WITH US?

Offering trade discounts to interior professionals, Nest Contracts gives you direct access to the world's top design brands. Receive an initial quote within 24 hours of enquiry, enjoy industry leading dispatch speed and shipping to over 100 countries worldwide.

Working with influential companies across a wide range of sectors, including residential, hospitality and workplace projects – Nest Contracts have supplied furniture and lighting for brands including HSBC, Lexus and Bose. Key projects include commercial interiors

by Hoo Residence and Yorkshire Sculpture Park's Stirling Prize shortlisted Weston building.

## A PERSONALISED JOURNEY

With no order too big or small, Nest Contracts' online portal for professional customers is a fantastic tool for quick or small orders. For larger orders, your dedicated account manager will look after you from start to finish, with a care that is second to none. Liaising with the brands on your behalf, your account manager will provide you with one consolidated invoice, making it easy to keep track of your suppliers, finances and paperwork.

## THOUSANDS OF MODERN DESIGNER PRODUCTS, ALL CLASSICS

With a choice of over 20,000 products from 100 brands in their online catalogue, Nest Contracts supply the very best in premium design at competitive prices. If you don't have time to search, the team are more than happy to specify products and brands that they know can facilitate a quick turnaround. After a custom finish? With many brands offering complete customisation for contracts, it's always worth asking.

Are you looking to furnish your next project? Discover what Nest Contracts can do for you.

**Contact our team over email at [projects@nest.co.uk](mailto:projects@nest.co.uk) or give us a call on 0114 243 3000.**

# Your destination for design

Purveyors of iconic furniture, lighting & accessories from the most exciting, international brands.



HOSPITALITY | COMMERCIAL | RESIDENTIAL



**Nest Contracts deliver premium designer lighting & furniture to any project, with quality guaranteed.**

With over 15 years of industry experience, our expert team are on-hand to keep your project on track.

**Speak to our specialists.  
Call 0114 243 3000  
[nest.co.uk/contracts](http://nest.co.uk/contracts)**

**nest.**  
CONTRACTS





# SPEEDY, BESPOKE DELIVERY

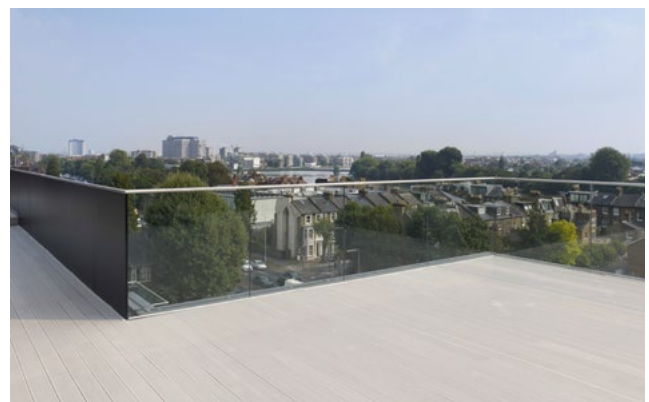
## CLOCKWORK BUILDING CASE STUDY BY ENVIROBUILD

### THE PROJECT

Clockwork building was looking for a low maintenance, sustainable alternative to timber decking for their new 480m<sup>2</sup> of commercial London office space. As this was a busy worksite, they required speedy, bespoke delivery. EnviroBuild's stock and delivery vehicles delivered Hyperion wood-polymer decking within 24 hours.

### WHAT PRODUCTS DID WE SUPPLY?

Hyperion Decking in Pioneer Silver Birch and Pioneer Stone, made of 90% recycled material.







*They've even continued to use the decking products across a number of other large refurb and new build properties.*



Hyperion® is an innovative composite decking made from reclaimed materials which would otherwise have gone to landfill. What results is a lifelong product with low maintenance requirements, making it an excellent choice for decking and ideal for consumers who are trying to live more sustainably. It comes with up to 25 years' guarantee of protection against typical deck issues such as rot and weakening.

**MANTICORE RECYCLED PLASTIC LUMBER**

Manticore Lumber is EnviroBuild's alternative to wood, made entirely from plastic which would otherwise not be recycled through conventional means. By creating a sustainable product, fewer materials are sent to landfill. EnviroBuild's Manticore plastic lumber achieves this without excessive cost to the client.

The robust and sustainable Manticore Lumber comes with a 10-year warranty against typical damages and breakages over extended periods of time. This makes Manticore the ideal solution for sustainable homes and offices.

**THE SOLUTION**

Our expert team delivered full commercial support and completed the job on schedule. The client had expert help at every stage of the process.

By using the maintenance-free Manticore (recycled plastic) lumber on their flat roof surface, the client's decking was installed quickly and with confidence. They chose a combination of Silver Birch and Stone coloured boards to break up the different parts of the building.

They've even continued to use the decking products across a number of other large refurb and new build properties.

**CUSTOMER FEEDBACK**

Successful installation meant praise for the EnviroBuild team, and the client has continued to use our products across many of their refurbished and new build properties.

[www.envirobuild.com](http://www.envirobuild.com)





DANDELION STONE TROUGHS



Herewith a picture of a very unique Dragon Stone Arch which would make either a truly stunning fireplace, garden water feature or could be incorporated within a 'Grand Design', such as a 'Folly'.

DANDELION specialise in supplying Antique Architectural Stone Curiosities, such as : • Old York Stone Gargoyles • Old Standing Stones • Old York Millstones

Cowling in Craven, North Yorkshire BD22 0NW.  
01535 637153 - 07971 906105

[www.dandelionstonetroughs.co.uk](http://www.dandelionstonetroughs.co.uk)

**UK MANUFACTURERS OF STREET FURNITURE**

- POSTS - HINGED & TELESCOPIC
- BOLLARDS - STEEL & STAINLESS
- HOOPED BARRIERS
- CYCLE STANDS & RACKS
- CYCLE SHELTERS
- HEIGHT RESTRICTORS
- SWING GATES
- ARM BARRIERS
- SMOKING SHELTERS
- SEATING

**AUTOPA**

AUTOPA Limited, Cottage Leap, Rugby, Warwickshire, CV21 3XP

01788 550556  
info@autopa.co.uk  
www.autopa.co.uk

AUTOPA

Kitchen in the Garden, based at Cedar Nursery in Cobham, Surrey, supply a full range of outdoor cooking equipment, from the world's leading outdoor cooking brands.

We provide expert advice and technical support for the design and build of premium outdoor kitchens. From contemporary grills, high-end pizza ovens, sinks and fridges, to a vast range of specialist cooking equipment. We cater for all outdoor cooking requirements, along with a variety of storage options tailored to your client's needs.

Why not suggest to your client to add an outdoor kitchen to make the most of their outdoor space and add value to their property?

Authorised Dealers For:

**Kitchen in the Garden**, Cedar Nursery, Horsley Road, Cobham, KT11 3JX  
 t: 01932 862473 e: kitcheninthegarden@landscaping.co.uk  
[kitcheninthegarden.co.uk](http://kitcheninthegarden.co.uk)



flowbright

revolutionary water-powered LED pool light

# THE FUTURE OF SWIMMING POOL LIGHTING

DISCOVER  
MORE

T: 01924 472 665  
E: SALES@HYDRO-FLUX.COM  
A: UNIT 18 WILTON  
INDUSTRIAL COURT, 851  
BRADFORD ROAD, BATLEY  
WF17 8NN  
W: HYDRO-FLUX.COM



THE MOST  
ECO-FRIENDLY  
LIGHT IN THE  
WORLD.  
PERIOD.







*Trex RainEscape creates dry space beneath a deck ideal for added storage*

# INNOVATIVE SOLUTIONS FOR MAXIMIZING AND PRESERVING AN OUTDOOR LIVING SPACE

## TWO EASY UPGRADES THAT ADD FUNCTION, PROTECTION AND CLIENT SATISFACTION

By: Simon Thomas, TrexPro and Owner of Simon Thomas Deck and Design

It's no surprise that we Brits love our gardens! And with many people spending more time at home these days, outdoor spaces have become more important than ever. From small extensions to major renovations, consumer interest in deck and patio remodeling projects is at an all-time high, and homeowners are more willing to invest in elements that expand and extend the use of their garden spaces.

One of the easiest – and often overlooked – ways to add value and function to any outdoor area is to create usable, dry storage space beneath a deck. As long as the space is accessible and properly protected from the elements, it can be used to store virtually anything. And who couldn't use a little more storage space?





“

*One of the easiest ways to add value and function to any outdoor area is to create usable, dry storage space beneath a deck.*

#### GO BELOW: UTILIZING UNDER-DECK AREAS

For years, homeowners – not to mention architects, builders and contractors – have neglected to take advantage of under-deck spaces. And, for those that have used the space under a deck for storage, odds are it hasn't been pretty – especially in light of our often wet and rainy U.K. climate. I've certainly seen my share of outdoor storage spaces filled with deteriorating items covered in mud, mould and mildew due to being exposed to too much moisture.

Still, creating useable space beneath a deck is one of my favourite add-ons to any garden project. The secret to success and customer satisfaction is adding a deck drainage system. Using a network of troughs and downspouts, these systems capture and divert water away from a deck, not only preserving the studwork but also making the area under the deck useable for storage or as additional living area.

There are two main categories of drainage systems available, depending on whether they're installed above or below the joists. For optimal protection and aesthetics, I prefer an above-the-joist system, such as Trex® RainEscape®. This system uses an ultra-durable, rubberized membrane that drapes down into each



*Above, Trex RainEscape installed.*

joist bay. The membrane pieces are shaped so that they can be stapled to the top of the joists yet hang lower at one end of the bay to facilitate drainage. When the joists cantilever past a bearer, separate pieces are installed on each side and sloped to direct water to a gutter on the inner face of the beam.







Maximize the space beneath an elevated deck with Trex RainEscape



Above, Trex RainEscape with Soffit Lights.  
Below, Trex RainEscape funnels are easy to install



The main advantage to this type of system is that it protects the entire substructure and the area beneath the deck from water damage and deterioration. Trex RainEscape also includes a heavy-duty waterproof tape that protects joists and bearers from moisture penetration, helps to hold screws in place longer and serves as a shield between galvanized metal and timber. Furthermore, the membrane material – compared with metal, vinyl or PVC – accommodates a broader range of ceiling options for homeowners seeking a finished look.

Among the biggest advantages of Trex RainEscape is that it is very easy and efficient to install – whether during a new deck build and when replacing existing deck boards. Any contractor or DIYer can do it. The entire system includes just five SKUs – a 40cm and 30cm drainage trough sheet, a downspout, butyl waterproof caulk and butyl waterproof tape. Additionally, only three tools – scissors or a utility knife, a staple gun hammer and a caulk gun – are needed for installation. Each trough is clearly labeled with staple markers to expedite the process, which takes no more than a few hours to complete. And, the system is backed by a 20-year warranty from Trex® – the world’s #1 decking brand.

#### LIMITLESS POSSIBILITIES

Once protected from the elements, the dry space beneath a deck can be used for any number of purposes from storing lawn equipment, gardening tools and patio essentials to serving as additional living space outfitted with everything from upholstered furnishings and decorative accessories to ceiling fans, entertainment components and Trex® RainEscape® soffit lights. Thanks to the innovative above-the-joist application of the Trex RainEscape system, gas lines and electrical wiring can be run safely and discreetly between the deck surface and a soffit ceiling.



From a storage standpoint, there are endless possibilities for making the most of the area beneath a deck no matter the size of the area. Following are just a few of the ways that my clients use the bonus storage space that I've integrated into their decks using the Trex RainEscape system:

- Storing seasonal items such as pool equipment, patio furniture, cushions, hammocks, camping essentials and yard games
- Tucking away outdoor toys like bicycles, scooters, water tables and yard games
- Sheltering grills and smokers from moisture and corrosion
- Housing (and hiding) lawnmowers, garden tools and hoses, along with leftover seed and fertilizer
- Keeping sports equipment handy, protected and ready for action
- Parking and protecting a boat, snowmobile or ATV from the outdoor elements
- As a workshop for crafting and DIY projects
- As a playhouse for the kids (my favourite!)

### PROLONG THE LIFE OF STUDWORK

The U.K. receives more than its fair share of precipitation, and these wet, rainy days can wreak havoc on the substructure of a deck. Easily one of timber's worst enemies, moisture contributes to mould growth and can accelerate structural deterioration. When joists and beams are exposed, water seeps into screw holes and sits on the wood causing it to rot and the screws to rust. Additionally, the natural expansion and contraction of wood due to seasonal freezing and thawing can cause beams to split and weaken over time, posing serious safety concerns.

This is especially important if a homeowner is investing in premium, composite decking, such as Trex, which is engineered and warranted to last for several decades. It's only logical that a customer will expect the substructure to last just as long. Unfortunately, that's not always the case when working with timber. In fact, a recent survey of builders revealed that nearly all timber substructures show signs of splitting, rotting or decaying after just eight years.

If a complete drainage system is not viable for a deck project, it is still important to protect the studwork from moisture penetration that can lead to rot and deterioration over time. Deck flashing tape



is designed to shield the tops of timber joists, rim joists, bearers and ledger boards from water damage. It also acts as a moisture barrier between wood and galvanized metal and helps deck screws and fasteners hold longer and stronger for enhanced structural integrity.

My go-to product is Trex® Protect™ Joist and Bearer Tape. I use it on every deck I build – no matter the size or design – because I want my decks to last.

Trex Protect is a self-adhesive butyl tape available in two widths – 40mm x 20m for joists and 100mm x 20m for bearers. Designed specifically for use on decks, it works on horizontal and vertical surfaces and is applied as a “cap” (vs. wrapping), which allows the timber to breathe. The peel-and-stick application is simple and requires almost no trimming. The tape lies directly on the boards and requires minimal cuts and little overlap making installation a breeze.

Furthermore, the butyl adhesive is super sticky, yet pliable, which allows it to create a tight seal around fasteners to prevent water from infiltrating screw holes. It doesn't dry out or curl up like other construction tapes and performs extremely well in a wide range of temperatures. Trex Protect tape also features a non-skid surface, making it easier and safer to walk across during construction. This non-slip coating helps to prevent falls which are one of the most common potential hazards of deck construction.

### DRIVE CUSTOMER SATISFACTION AND REFERRALS

Sometimes it's what clients don't see that makes all the difference. Trex RainEscape and Trex Protect are products that sell themselves by adding considerable function, protection and value to a deck without adding a lot of time or cost. For homeowners, this translates into increased satisfaction and return on investment. For builders, they are great ways to boost revenue and referrals. I recommend one or the other to all of my customers and can tell you from my own experience, these minor add-ons can have a major impact on your bottom line.

For more information, visit [www.trexrainescape.com](http://www.trexrainescape.com) and [www.trexprotect.com/uk](http://www.trexprotect.com/uk)



*Trex RainEscape creates dry space for storage beneath a deck*





## EXCELLENSEAA 126

In response to a very specific brief, this housing project has 126 apartments in six buildings of 11 storeys each. Planned in three different sizes these apartments of 750, 850 & 950 sqm are configured with large living spaces, 5 bedrooms, a study & a gym in them.

Located on a plot of 29,600 sqm in Surat city, India, with a height limitation of 40 metres, the buildings are laid out along the site perimeter creating a large focal garden of 13,000 sqm.

All the vehicular movement is restricted to the perimeter along with a basement car park generating 80% of the plot as vehicle-free space.





“

*Each of the buildings is 11 metres high entrance lobbies with 2 apartments on each floor & penthouses on the 11th floor.*

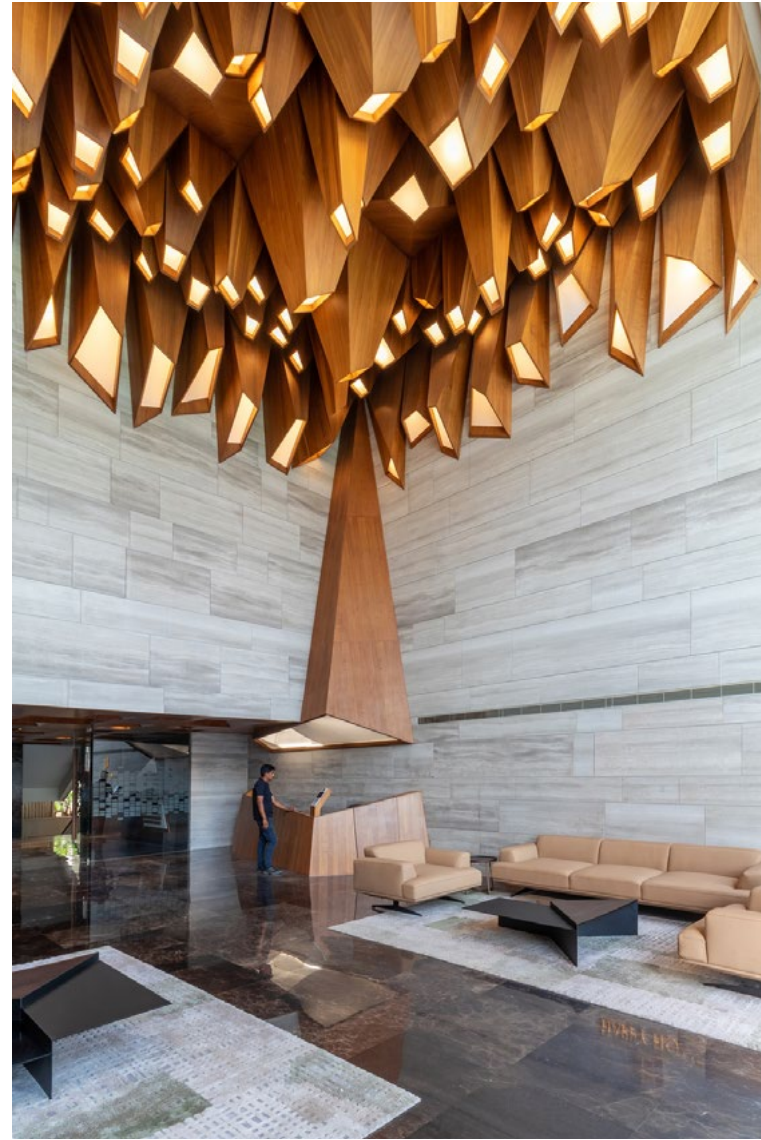


The large landscaped area rises in angular planes revealing a partially sub-terranean recreational club with entertainment & sports facilities that are sheltered from heat gain & simultaneously open to natural ventilation & light.

The apartments are planned to facilitate cross ventilation & are sheltered by large cantilevered decks that mitigate heat gain in response to the climate of the location. Temperatures are in excess of 35°C for 8 months annually in Surat city.

Each of the buildings is 11 metres high entrance lobbies with 2 apartments on each floor & penthouses on the 11th floor.

The extensive landscaped space generated by the layout is planned with numerous sports facilities & different areas for different age groups.







Designed in response to the client's brief, the location of the site & the city's climate, Excellenseaa 126 creates a micro-environment that is sustainable.

The extensive landscaping with trees, plants, and water bodies helps in passive cooling. The large overhangs & outdoor decks to each apartment reduce heat gain whilst adding individual outdoor spaces.

Water recycling, rain-water harvesting, sewage treatment & solar panels contribute towards reducing the carbon footprint & making the project self-sufficient.

The numerous sporting & entertainment activities are supplemented by conferencing facilities, a grocery store, a medical room, a laundromat & housekeeping staff facilities.

#### **Technical sheet**

Location: Surat, India

Client's Name: Happy Homes

Architecture Firm: Sanjay Puri Architects

Total Built-up Area: 130,000 sqm

Project completion year: April 2020

Lead architect: Sanjay Puri

Design Team: Kapil Merchant, Madhavi Belsare & Pooja Sampat

[www.sanjaypuriarchitects.com](http://www.sanjaypuriarchitects.com)



# KEMPEROL® Liquid Waterproofing

Long term protection for flat roofs,  
buildings and critical structures

Warm roofs, inverted roofs, green roofs,  
podium decks, walkways, balconies,  
terraces, car parks...

- No hot works
- Sustainable
- Solvent-free
- Odourless

Whatever your  
requirements, we have  
a certified and proven  
solution to meet your  
needs.

Contact us to discuss  
your next project.

FREE  
Site Survey &  
Specification Service  
[enquiries@kempersystem.co.uk](mailto:enquiries@kempersystem.co.uk)



KEMPER SYSTEM  
Tel: 01925 445532  
[enquiries@kempersystem.co.uk](mailto:enquiries@kempersystem.co.uk)  
[www.kempersystem.co.uk](http://www.kempersystem.co.uk)



**KEMPER**  
**SYSTEM**  
Kemperol Liquid Waterproofing



# STO BRICK SLIPS USED TO COMPLETE THE FAÇADE OF THE BIRMINGHAM TOY BOX BUILDING

A COMBINATION OF EXTERNAL WALL INSULATION AND BRICK SLIPS FROM STO WERE SPECIFIED FOR A MAJOR NEW LANDMARK BUILDING IN BIRMINGHAM

The StoTherm Mineral K insulation system and StoBrick were chosen for the city's new Toybox student accommodation building for their ability to combine outstanding thermal performance with a traditional brick appearance, and blend with other construction materials.

The 15-storey Toybox building is built on a prominent site near Birmingham city centre. "We wanted to create a visually striking appearance that would give this new building a unique identity within the area," explains Tony Mead of project architects Corstorphine + Wright. "In order to achieve that, and also provide a high level of thermal insulation, we worked with Sto to specify a combination of Sto thermal insulation, and different types and colours of Sto brick slips. Combined with the glazing and the external zinc panels this gave us lots of flexibility to translate our designs into reality."

The StoTherm Mineral K insulation system uses mineral fibre boards which were adhesively fixed to the substrate. This allowed for fast and easy installation, and the accommodation of the curved surfaces found on the building's façade. The system provides a high level of thermal performance, outstanding fire protection and effective sound insulation. Its single-leaf external construction also does not reduce the interior space of the building.

To create the impressive 'shark fin' appearance for the completed building and extend the range of surface textures used, Corstorphine + Wright specified glazed ceramic StoBrick slips, in a contrasting green colour to the grey Sto resin brick slips used on other areas of the façade.

StoBrick has been developed as a brick cladding solution for use with mineral-fibre based insulation systems, to provide architects with the opportunity to incorporate genuine clay brick finishes into their façade designs, whilst also achieving the required A2-s1, d0 fire rating.

The BBA certified Sto resin brick slips also used on this project are manufactured from synthetic acrylic render and are compatible with all Sto façade systems, offering outstanding resistance to the effects of weathering, impact damage and mechanical stress. "The slips themselves are extremely lightweight and are bonded directly onto the substrate, opening up the range of design options for recreating the appearance of traditional brickwork in architectural designs," comments Graham Chadwick of Craft Interior who installed the Sto materials.



*A combination of StoTherm Mineral K external wall insulation system and StoBrick brick slips were specified for the new Toybox student accommodation building in Birmingham.*

Sto brick slips are available in a wide range of colours, sizes and textures, covering all requirements from surface structures which provide maximum visual impact through to those where a more uniform and consistent brick appearance is required. Sto also offers bespoke options for the resin brick slips, which enable architects to match existing brickwork in relation to colour, size and texture, thus providing a virtually unlimited range of design possibilities.

The Toybox building is operated by Prestige Student Living. It houses 290 student flats plus other amenities including ground floor retail spaces, a shared garden and a roof-top social area.

[www.sto.co.uk](http://www.sto.co.uk)



NEW  
QUARTZ WHITE



## New **EQUITONE [natura]** Quartz White [N164]

The subtle white hue has been inspired by the soft colour palette of nature, while perfectly matching EQUITONE's authentic fibre cement shades.

- European Fire Classification A2-s1, d0
- 50+ years life expectancy
- Range of fixing options
- Suitable for new buildings and refurbishments

 **EQUITONE**  
Fibre cement facade materials

Request samples at [equitone.com/en-gb/n164uk](https://equitone.com/en-gb/n164uk)





# SUNRAY TIMBER DOOR DIVISION LAUNCH FIRE-SECURE®

FIRE-SECURE® is a brand new ground-breaking combined timber fire and security rated door revolutionising door safety and standards.

Within the commercial and residential sectors the increased demand on passive Fire protection and Building security has intensified following disasters such as Grenfell, which must lead to responsible product manufacturers investing into R&D to provide specifiers with accredited, tested products to meet and exceed measured performance criteria.

FIRE-SECURE® is a Timber Door which offers two unique benefits, timed protection from Fire and timed protection from physical attack.

Having invested a six-figure sum in the development of this range, Sunray have achieved the ability to provide a 30 minute fire rating on either face of the door (interior or exterior) as well as it having

the accredited LPCB SR (Security levels 1 & 2) certification.

These features are unique in their own right, however combined into one product they provide any specifier with paramount assurance to withstand the most vulnerable of applications and Passive Fire or Security Door solutions.

Without compromise the testing to the Fire-Secure® range has been our most challenging in order to pass the punishing and rigorous testing by the renowned test houses.

The result is a Timber Door which provides aesthetics with a range of colour or veneer finishes, vision panels, locking options and critically with the underlying assurance of Fire and Security protection.

**For more details call our specialised team to discuss your particular project on 01252 645534**





INTRODUCING...

# FIRE-SECURE®

A BRAND NEW GROUND-BREAKING COMBINED TIMBER FIRE & SECURITY RATED DOOR, WHICH REVOLUTIONISES DOOR SAFETY AND STANDARDS.

FIRE-SECURE® is a Timber Door which offers two unique benefits, timed protection from fire and timed protection from physical attack.

Sunray have achieved the ability to provide a 30 minute fire rating on either face of the door (interior or exterior) as well as it having the accredited LPCB SR (Security Levels 1 & 2) certification.

The result is a Timber Door which provides aesthetics with a range of colour and veneer finishes, vision panels, locking options and critically with the underlying assurance of Fire and Security protection.

## FIRE-SECURE® DOORS ARE THE IDEAL SOLUTION FOR



COMMERCIAL



HOTEL / LEISURE



SOCIAL HOUSING



HEALTHCARE

For more details, call our specialised team to discuss your particular project on

# 01252 645534

[sales@sunraytimberdoordivision.co.uk](mailto:sales@sunraytimberdoordivision.co.uk)

[www.sunraytimberdoors.co.uk](http://www.sunraytimberdoors.co.uk)







# FACING THE WAVES

---

STEVENS LAWSON ARCHITECTS COLLABORATE WITH DESIGNER AND SURFER DEAN POOLE ON A SPECTACULAR BEACH-FRONT CABIN IN NEW ZEALAND COMPLETE WITH FISHER & PAYKEL APPLIANCES

Designed in collaboration with artist, creative director and surfer Dean Poole for his own family, this efficient and deceptively simple weekend house is hidden up a zig-zag stairway in the dense, native forest of the Waitakere Ranges, which roll down to the black-sand surf beaches below.

Karekare Bach was born out of a desire to connect with the natural landscape and provide Dean Poole and his family with an "authentic New Zealand experience", a goal that has been successfully executed in every corner of the project. The entire lower level is devoted to an open kitchen, living and dining space in which the family can enjoy spending time together while looking out of the floor-to-ceiling windows to the expansive native bush just outside.





“

*Karekare Bach was born out of a desire to connect with the natural landscape and provide Dean Poole and his family with an “authentic New Zealand experience.*

To perfectly complement the architecture’s intentional simplicity, Dean took on the role of designing the kitchen himself. Having worked with Fisher & Paykel over many years in his role as creative director with the Auckland-based design studio Alt Group, the New Zealand native brand’s offering of sleek and contemporary appliances were the obvious choice for this pared-back project.

The plywood-lined living space is accented only with black, from the kitchen island’s worktop to the Fisher & Paykel built-in oven, providing dimension while allowing the natural woodgrain seen throughout to take centre stage.

“With this space, Dean wanted the kitchen to act as a workshop, with products that facilitated the needs of everyday life and no more, exemplifying an ‘enough is enough’ design ethos,” comments Helen Haider, Head of Marketing, Fisher & Paykel UK & Ireland. “We therefore provided our most intuitive and ergonomic products. For example, our integrated DishDrawer™ is situated in one of the three freestanding timber cabinets and removes the discomfort of loading and unloading a conventional dishwasher, with the pyrolytic, self-cleaning oven found just above. The result is absolutely no fuss in the kitchen, allowing the family to enjoy their time together and let the appliances do the hard work for them.”

Fisher & Paykel products:

600mm Single Pyrolytic Built-in Oven OB60SD7PX1

300mm Gas on Glass Cooktop CG302DLPGB1

900mm Fridge French Door Slide-in Panel Ready RS90A1

600mm Integrated Single DishDrawer™ Dishwasher Tall DD60SHT19

Front Loader Washer Dryer Combo, 7kg + 4kg WD8060P1

[www.stevenslawson.co.nz](http://www.stevenslawson.co.nz)





## NEW HIGHER SPECIFICATION FOR DECK SUBSTRUCTURES

The specification requirements for pressure treated softwood deck substructures are set to change in BS8417, the British Standard for wood preservation, when it is next revised with leading trade bodies incorporating the changes now.



This means that all softwood beams, joists, wall plates, blocking and bracing will have to be pressure treated to the same level as posts that are in permanent contact with the ground, a category referred to as Use Class 4.

This brings the UK into line with standards in Sweden, Finland, France and north America where the whole deck substructure system (posts, beams and joists) is recognised as safety critical.

TDCA members are working to adopt this change in policy in readiness for the publication of the revised BS8417, probably in 2021. Leading the way, Use Class 4 joists are already available from TCDA members Hoppings Softwoods, Silva Timber and Champion Timber.



The question is how many decking installers will pick up on this new requirement and ensure that the work they undertake meets the latest standards? Certainly, TDCA DeckMark accredited installers whose work is inspected to ensure compliance, will be fully conversant.

**To find a DeckMark accredited installer or enquire about achieving accreditation, email [info@tdca.org.uk](mailto:info@tdca.org.uk) or visit the TDCA website [www.tdca.org.uk](http://www.tdca.org.uk) where you'll find a UK supplier search facility.**

## For independent guidance on your next project



Anti-slip Plus smooth deckboards from Marley, installed by Deckbuilders UK

Ensure your **timber decking** or **cladding** is fit for purpose - through **design, specification, material choice** and **installation**.

Whatever the size of your project, the TDCA can offer:

- an accredited **materials** and **supplier database**
- impartial and expert **help** by phone or email
- **free** downloadable resources
- **inspiration**, through galleries and case studies
- expert **inspection & witness services**

Take a tour around our website: [www.tdca.org.uk](http://www.tdca.org.uk)

Contact us: ✉ [info@tdca.org.uk](mailto:info@tdca.org.uk) | ☎ 01977 558 147

The Timber Decking and Cladding Association is an independent, not-for-profit technical and advisory body. It was established to promote the materials, design and installation practices required to create good quality decks, associated landscape structures and cladding on buildings.





Delivering

# GREEN BUILDINGS

NATIONWIDE

**Benfield**<sup>ATT</sup>  
Timber Engineers

Houses, Flats & more up to 7 floors

Traditional & Modern | Car Barns & Penthouses | Remodel & New Build | Trusses & Components

Helping Build Your **GRAND DESIGNS** Sustainably & Profitably

CALL US TO DISCUSS YOUR NEXT PROJECT NOW



**Benfield ATT, Caldicot, NP26 5PR** [info@benfieldatt.uk](mailto:info@benfieldatt.uk) [www.benfieldatt.uk](http://www.benfieldatt.uk) 01291 437 050



# TWINSON DECKING FROM DEEPLAS

ELEGANT, LONG-LASTING DECKING, WITH RESPECT FOR NATURE



HIGH SLIP RESISTANCE



LOW MAINTENANCE



SPLINTER RESISTANT

For more information  
call Hazel Verschuere:  
**07718340731**

Quality you  
can feel

