

LANDSCAPE & URBAN DESIGN

51

Sept/Oct 2021
Price £3⁹⁵
landud.co.uk



The Sentinel by Award-winning British Sculptor David Harber

British sculptor David Harber has added the Sentinel to his ever-expanding portfolio of sculptures and water features



Sustain and Maintain

Considering the ecological
impact of each and every project



Dealing John Deere in Scotland

Completing a unique treble
this summer

Loop Recycle

by **outsider**



A range of 100% recycled outdoor seating, dining & planting elements

Offering a sustainable alternative for street furniture in urban environments

Exclusively available in the UK from the **Bailey Street Furniture Group**



bsfg.co.uk
01625 322 888

CONTENTS ISSUE 51

THIS ISSUES MAIN FEATURES



Garden Design | 4 - 41



Green & Blue Infrastructure | 66 - 81



Landscaping Services | 92 - 111



Groundskeeping | 122 - 131

Garden Design

04 - Award-winning British sculptor David Harber has added the Sentinel to his ever-expanding portfolio of sculptures and water features.

14 - Summer tiling tips from Quorn Stone.

18 - To tie-in with its RHS Chelsea Flower Show 'Heritage & History' stand, Hartley Botanic has worked with gardening expert Matthew Biggs to uncover some historic greenhouse gardening ideas & tips.

RHS Chelsea Flower Show

28 - Following the decision to postpone the Show until September for the first time in its 108-year history, designers have been tweaking their plans.

Decking

54 - Upselling Outdoor Living: tips to create a unique outdoor space your clients will love.

Concrete & Stonework

62 - Ultrascape's specialist materials are proven to work alongside all stone manufacturers with excellent results every single time.

Green & Blue Infrastructure

66 - The lie of the land: Key access considerations for landscaping projects.

74 - Kirstin Monk at Growing Revolution Ltd looks at the benefits of integrating living walls into commercial and residential landscaping schemes.

78 - Howe Green has expanded its portfolio of access solutions with the launch of its new Galvanised Steel Floor Access Covers.

Street Furniture

82 - If you are not a sustainable business going forward, will you have a business to sustain in the future?

88 - A survey by Natural England has demonstrated that 89% of adults agree that green and natural spaces are good for mental health and general wellbeing.

Landscaping Services

96 - New Forest inspired haven at New Cancer Support Centre Maggie's in Southampton.

108 - How the COVID-19 pandemic has encouraged the landscaping and groundscape industry to adapt to new ways of working.

Chelsea's SAATCHI Gallery

112 - The Royal Horticultural Society (RHS) and Saatchi Gallery have partnered to present the return of the RHS Botanical Art and Photography Show in 2021.

Groundskeeping

126 - Wellbeing and Wilderness: The Royal St George's approach to hosting the 149th British Open.

Show Previews

42 - *Glee*

47 - *Landscape Show*

90 - *UK Construction Week (UKCW)*

120 - *SALTEX*

Publishing Director

Martin Holmes
martin@mhmagazine.co.uk

Sales Director

Lee Martin
lee@landud.co.uk

Digital Manager

Jamie Bullock
jamie@mhmagazine.co.uk

Editor-in-Chief

Antony Holter
editor@mmhmagazine.co.uk

Editor

Lorna Davidson
lorna@landud.co.uk

Business Manager

Josh Holmes
josh@mhmagazine.co.uk

Studio Designer

Sarah Johnson
sarah.johnson@mhmagazine.co.uk

Marketing Enquiries - 01227 936974

Editorial Enquiries - 01304 806039

Other Enquiries - 01304 806039

Publishers

MH Media Global Ltd.
Discovery Park, Sandwich, CT13 9FD

Cover images courtesy of: Left: David Harber | Top Right: Bailey Street Furniture Group | Bottom Right: John Deere

Every effort is made to ensure the accuracy and reliability of material published in Landscape & Urban Design however, the publishers accept no responsibility for the claims or opinions made by advertisers, manufacturers or contributors. No part of this publication may be reproduced or transmitted in any form or by any means, mechanical, electronic (including photocopying) or stored in any information retrieval system without the prior consent of the publisher.



THE SENTINEL

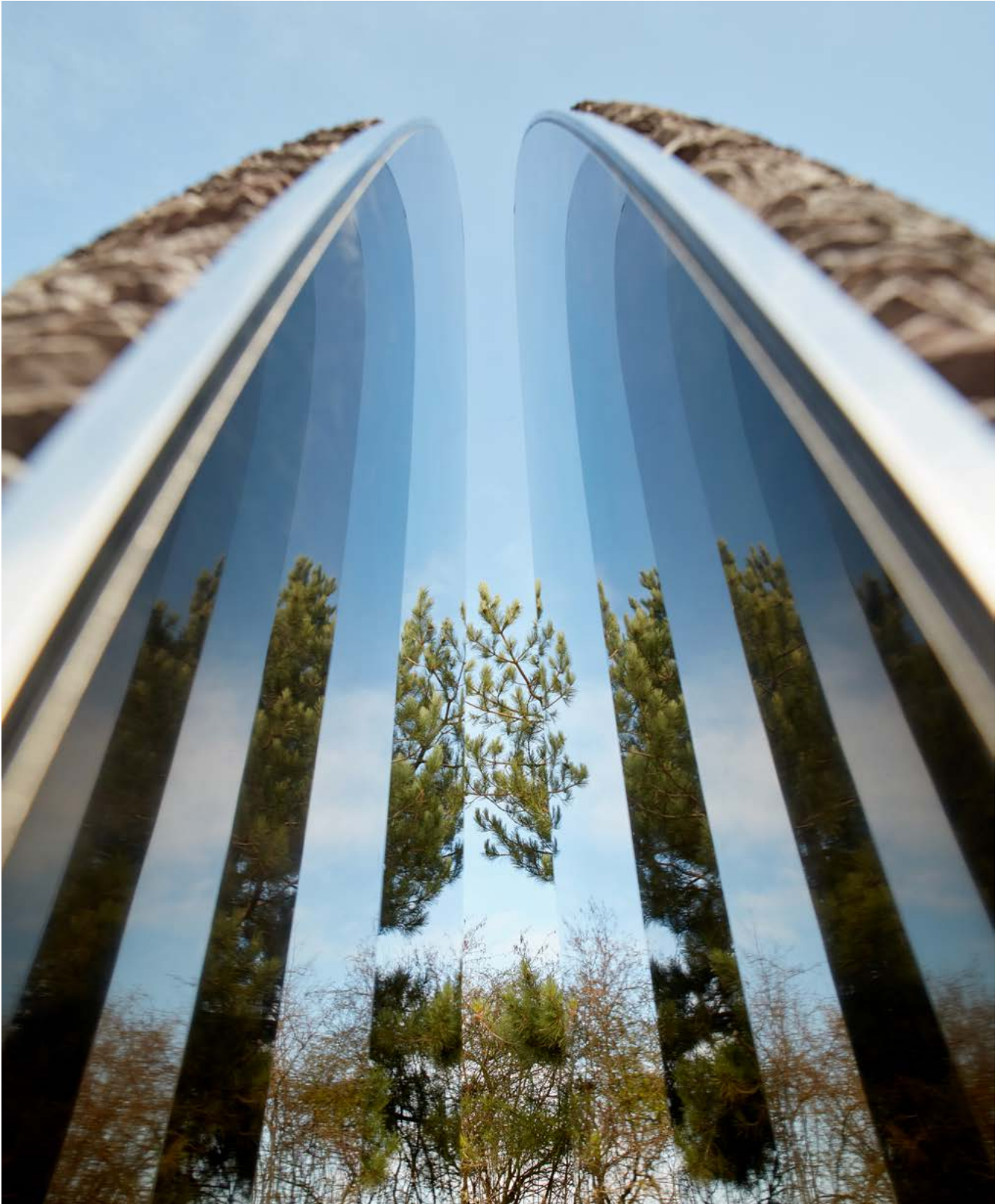
BY AWARD-WINNING BRITISH SCULPTOR DAVID HARBER

Award-winning British sculptor David Harber has added the Sentinel to his ever-expanding portfolio of sculptures and water features.

Featuring two elegantly poised halves in a state of implausible balance, Sentinel's arrival comes following a period of time that has placed a huge significance on maintaining a safe distance from one another. Having explored how two bodies can co-exist in close proximity without touching, Sentinel's two halves are split vertically by an internal face of marine grade polished steel, creating an almost kaleidoscopic effect of infinite reflections in the mirrored surface.

Sentinel's outer shell is fashioned from an elongated ovoid crafted from hundreds of shards of tactile Welsh slate. This juxtaposition of natural, rugged exterior with the crisp, clean mirror-polished steel interior creates a truly striking effect. The two halves, poised on a small base, stand vertical and resolute in a state of symbiotic interdependence, ushering the user to connect with the sculpture's balanced yet dynamic energy and drawing the viewer's eyes directly to its central focal point. At night, Sentinel comes alive thanks to uplighters found at its feet.





Sentinel is the latest addition to David's collection of stonework sculptures, each expertly crafted by his team on site at his rural Oxfordshire workshop. A cousin of the popular Dark Planet family, each and every shard of slate is meticulously sorted and selected by hand, with only the finest and most uniform making the final cut.

Each is individually applied to the sculpture, a painstakingly precise process that gives each Sentinel its own unique personality. All pieces in David's repertoire reflect his love for and fascination of nature, incorporating light, reflection, shadows or water to spectacular effect.

The Sentinel costs £30,535 (ex. VAT) plus VAT including delivery and installation.

www.davidharber.co.uk



DESIGN-LED PLANTERS FROM TORC

Torc make everything by hand from their studio in the British Isles creating beautiful pots and planters to enhance any outdoor (or indoor) space.

Working alongside a talented team of artisans this family run business really specializes in textures, scale and especially bespoke design. The design side of the business is getting busier all the time with landscape architects and garden designers alike realizing just how much expertise this company has to offer with a wealth of experience in design and problem solving to bring to the table. Torc welcome the opportunity to be involved at the design stage and are happy to contribute ideas when requested. Frequently being commissioned to provide planter designs and outdoor furniture as a one-off template for both commercial and residential spaces.



Launching their new contemporary shaped water bowl this month was a good example of how far they can go - the diameter of this little beauty can be offered up to 3m wide. Their green credentials are pretty impressive too.

01534 717104 | nicole@torcpots.com
www.torcpots.com

TORC:POTS



@torc_pots



www.torc-pots.com



OUTDOOR LIVING IN THE UK HITS RECORD DEMAND

Outdoor Kitchens have been popular in countries like America and Australia for decades. But in the last 5-10 years, we have seen a steady increase in demand for people wanting to embrace Outdoor Living in the UK.

And there is no doubt that extending the living space of a house into the garden is a good move. Looking at trends such as bifold doors and open plan living spaces shows how people are shifting into a true 'bring the indoors out' approach to housing design.

And it is more than just kerb appeal. **This year, fuelled by the national lockdown experienced, demand for outdoor living and outdoor cooking has reached new heights.**

The extra time people have spent at home has resulted in a boom for home and garden improvements, with designers and landscapers across the UK struggling to keep up with demand.



Coupled with the ability to socialise outdoors, **2021 has put Outdoor Living firmly on the map.**

So, what is an outdoor kitchen? Dougal Donald, Grillo's co-founder, says that a Grillo outdoor kitchen is so much more than a place to cook up beef burgers and sausages. "Our vision is to bring people together around food and flames. So, instead of having the barbecue tucked away in the corner, **we wanted to bring guests and host together, and to enable socialising and cooking to happen in one place.**"

What about the weather, we hear you say? Well, if you've ever travelled to Australia or parts of America which experience 30-40°C summers, you'll know that staying outside in those temperatures is pretty unbearable. One of the great things about the UK is our moderate pleasant summers, ideal for enjoying the sunshine and a good barbecue. Roll out the great British outdoors!

Images provided by Grillo Outdoor Kitchens: www.grillo.uk.com

grillo.

VANTAGE

An addition to the Grillo family.
Launching Nov.



grillo.uk.com/the-vantage

URBAN EARTH'S FIRST COLLABORATION WITH CLEAR WATER REVIVAL (CWR)



The swimming pool site area is within a Grade II listed house and garden within the village of Lymington, Devon, with lovely views towards the Exe Estuary.

This was Urban Earth's first collaboration with Clear Water Revival (CWR) who were responsible for the swimming pool installation. With any project it is always essential that from the outset clear lines of communication are achieved with the client and Project Team.

The project had planning and many technical challenges, including:-

- Excavation for the pool, building up/retaining the existing sloping ground to the new pool level and landscaping, with a raised oak sleeper planting bed along the whole length of the pool and grass steps, to reduce the visual impact of the pool within the historic landscape setting.

- Ensuring that the pool cover track, cover pit decking and bonded overlap porcelain coping details were installed correctly.

Given the scale and complexity of the project, planning and reviewing progress and establishing next stages with the client and project team happened regularly, with any minor design and construction changes being agreed with the client and the Project Team.

Due to supply chain and associated COVID-related issues, some delays arose which necessitated flexibility and creativity to work to the very tight deadline, consequently we adapted our normal installation process to ensure that the project would be completed in time for the clients to host their Grand Summer Party (after the COVID restrictions were lifted).

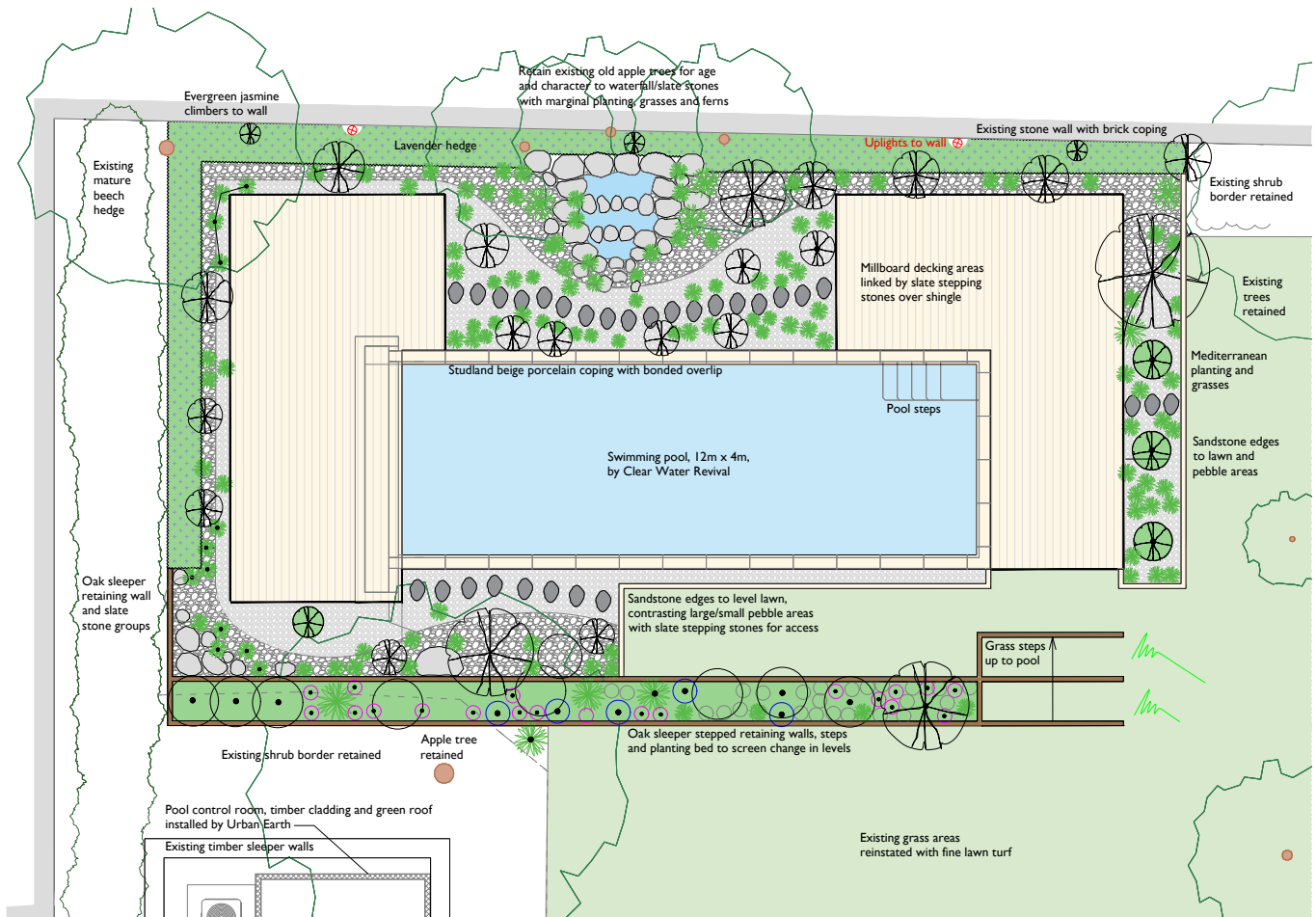
The initial stage of the project consisted of erecting Tree Protection Fencing, as per the planning approved Tree Protection Plan, to ensure that the existing trees were not damaged by the excavation or landscaping works.

The initial excavation consisted of digging in layers, which was closely supervised by an archaeologist who closely analysed each layer of excavated soil to ensure nothing of archaeological value was unearthed; however, the biggest find was an old flower bed built of stonework.

Approximately 300 tonnes of soil was excavated and removed. We were limited by access consequently the soil had to be carefully grabbed over the 15-foot historic rubble stone boundary wall, surrounded by protected trees.

The backfilling and concreting of the pool base went smoothly with many hands making light work. Once the pool was formed, we backfilled the pool walls with over one hundred tonnes of clean stone. CWR then began their build, covering the pool with a water-tight marquee.

After the completion of work by CWR, we returned to undertake the landscaping works, including a stepped oak sleeper planting bed; grass steps; composite Millboard areas and natural slate steppingstones over shingle to link the decking areas; Mediterranean themed planting with lavender hedging to wrap around the north and east sides of the pool, specimen Amelanchier lamarkii shrubs, a dwarf mountain pine tree, contrasting areas of pebbles and slate rock groups. A waterfall feature was also constructed with varied slate stone, pebbles, marginal planting, ferns, grasses, and herbaceous perennials.



We built a bespoke pool plant room from Siberian larch which included a green roof; laid new stepping stone slabs (for access from the house to the lawn and up to the pool); installed the pool drainage, and all new water and electrical services for the pool. On completion of the project, and due to all the site works traffic, the drive was fully reinstated with new stone to match the existing gravel.



The highlight for the Project Team was handing the completed swimming pool over to our clients, who commented "we are delighted with our new pool. The landscape design and planting scheme create the soft and natural setting that we were hoping to achieve. George and the Urban Earth team worked hard to deliver our project on time with skill and positivity. They were a pleasure to have on site." Delighted as always knowing that we have not only met, but have exceeded their high expectations; and that everything went swimmingly!



Team Leader: George Croton (30Under30 Winner 2018; Bradstone Installer of the Year 2018)

Landscape Designer: Martin Skuse, BA (Hons), PG Dip. Landscape Architecture



OUTDOOR SHADING ACCESSORIES TO HELP YOU TRANSITION INTO AUTUMN

The UK's unpredictable weather has meant that we have to be prepared for all weathers while we 'holiday at home', with many of us choosing to invest in some form of external shading as a result.

Awnings

Patio awnings are fast becoming the external shading product of choice for many residential properties as they provide a quick, easy and affordable solution to transform any outdoor space.

Practical and stylish, awnings offer instant shade, shelter and privacy and can be designed and built to a bespoke brief to suit all applications, requirements and budgets. Installing any additional features such as LED lighting and infra-red heating will enhance year-round enjoyment and functionality.

If your awning is motorised, not only will you be able to extend and

retract at just the touch of a button, but lighting and heating can be operated from the same hand-held remote. The latest bi-directional motors enabling you to view the exact position of the awning via an app on your smartphone and adjust it to suit your needs.

Pergolas

These premium structures are highly durable due to their solid construction and are able to withstand heavy rain, gale force winds (and even snow), and can be installed with multiple features which will allow for year-round use. Sliding glass, zip screens and separate entrance doors combined with accessories such as weather sensors, LED lighting and infra-red heaters will provide extra shielding from the elements and create a cosy and pleasant environment during the colder months, as well as provide privacy from nosey neighbours.

Caribbean Blinds has designed an exclusive pergola canopy branded the Outdoor Living Pod™. Created for those who want to 'live life outdoors', the innovative rotating louvered roof permits the user to play with light and shade, offering an open-air alfresco feel when left fully open, and ensuring a completely water, wind and even snow-tight roof when closed.

Optional windproof screens, ambient LED perimeter lighting and instant infra-red heaters provide the ultimate luxury, all-weather, outdoor living space that gives the customer complete control of the elements, 365 days a year.

Stuart Dantzic
Managing Director, Caribbean Blinds
www.cbsolarshading.co.uk



CARIBBEAN
BLINDS UK LTD

Sun. Shade. Shelter.



**REAL
HOMES**
★★★★★
**AWARDS 2020
WINNER**
BEST GARDEN BUY

OUTDOOR LIVING POD™ - LOUVERED ROOF |

ALL WEATHER | TERRACE COVERINGS

- Waterproof fabric or aluminium louvered roofs
- Effortless motorised remote control operation
- Wind resistant upto Beaufort 12 (hurricane force)*
- Optional LED lighting & infra-red heating
- 5 year guarantee for peace of mind

Enhance your garden designs with our **innovative retractable awnings and aluminium pergolas** that provide flexible shade and shelter, allowing your clients to enjoy the alfresco experience all year round come sun, wind, rain or even snow*. Proudly UK manufactured since 1987.



t 0344 800 1947

e info@cbsolarshading.co.uk

w cbsolarshading.co.uk/trade

*Wind resistance and snow load based on our louvered roof Outdoor Living Pods™





SUMMER TILING TIPS FROM QUORN STONE

In the midst of the summer season, it's the time of BBQs, garden parties and alfresco dining - albeit weather permitting! But enjoying our outdoor spaces shouldn't just be the preserve of the warmer months. We should consider our garden patios as extensions of our homes for use all year round. Leading natural stone flooring company Quorn Stone shares its top tips to consider when choosing a floor tile that'll merge both your interior and exterior spaces, creating a garden that'll allow you to soak up the sun and cocoon in the chillier evenings.

Low maintenance paving

A porcelain paver is a great option for garden spaces as it doesn't require sealing and therefore offers a stain resistant surface which requires minimal maintenance. Porcelain pavers have low porosity and UV

stable properties which means that they will not stain or change colour over the years with sunlight exposure. Limestone is also a very forgiving choice with its natural markings and hardwearing characteristics, providing a practical paving tile that will season with time and give an authentic feel to your garden.

Consider the style of your home

In recent years the infinity flooring trend has boomed and now internal flooring choices often need to encompass the external requirements. A great place to start is with the style of property you have - a traditional or country





style property bodes well with more rustic finishes, such as a tumbled limestone paver whereas a contemporary home will likely suit a straight cut porcelain paver with low tonal variation.

Choose a tile that'll create the illusion of space

To give the illusion of more space, we recommend going with a large format paver such as a 'Free Length' limestone tile or a 900 x 600 porcelain. The larger the paver, the

less grout and therefore it helps to create a seamless space that isn't broken up by numerous grout lines. We also recommend choosing a grout colour that is a close colour match to the paver itself - again, this helps the grout to blend in with the pavers and gives the illusion of a larger area.

Tiles that provide grip

A final point to consider is the pavers slip resistance - a porcelain paver is often produced in a 'grip'

finish, this finish is designed for external use and helps to provide more grip in wet conditions. A natural stone paver can come in a wide variety of finishes, some offer more texture than others - we usually recommend a 'tumbled' or 'seasoned' finish as this strikes the balance of providing grip whilst still being comfortable underfoot.

Quorn Stone, 01509 416557
sales@mystonefloor.com
www.mystonefloor.com



CREATING LUXURIOUS OUTDOOR ENVIRONMENTS

OVÆDA Ltd. is pleased to announce its launch to the UK market, providing a range of premium landscaping products for creating luxurious outdoor environments. Continuing with the success of Ryno Ltd, the market leading provider of paving and decking systems for the high-rise and commercial market, OVÆDA will be focussed on the domestic markets through approved installers and direct-to-consumer via its ecommerce website.

With Outdoor Living becoming an increasingly popular trend in the UK, especially boosted by the requirement to stay at home during the circumstance of the last year, enjoyable & relaxing outdoor space has quickly become as important as our indoor environments. With the spotlight increasingly on mental and physical health during the current climate, more emphasis is being placed on creating spaces where

we can unwind. The extensive range of inspirational and high-quality products OVÆDA offers can turn any underused space into something truly unique.

Based in Ellon, Aberdeenshire and Cranleigh, Surrey, OVÆDA will work together with Landscapers, Garden Designers, and Architects to create irresistible environments which promote health and bring value to both domestic gardens and commercial settings. The new website offers our Natura™ Composite Decking, Rocco™ Porcelain Paving, all-season Canopies and Pergolas from our Airspace™ range, and the revolutionary Tectonic™ landscape framing system. As part of the Tectonic™ offering, OVÆDA also designs and manufactures modular parklet systems to quickly and easily reconfigure external space to help both the hospitality industry



with serving customers outside and city centres to recover from the challenging circumstances of the past year.

Company Director Anton White said: "We're excited to take the attributes which have cemented our group company Ryno Ltd as the market leader in its field, into the domestic market. With our innovative energy and market leading products, we look forward to collaborating with our clients to imagine and create irresistible outdoors spaces for people to enjoy. Whether we're transforming a domestic garden, creating an outdoor seating area for a restaurant, or providing an environment for people to relax in the city centre, our aim is to provide people with Space to Breathe™."



AIRSPACE™

Canopies & Pergolas



NATURA™

Composite Decking



TECTONIC™

Landscape Framing System




ROCCO™


Porcelain Paving


Space to Breathe™


Explore our wide range of inspirational and high quality products for transforming external spaces into something truly unique. We work together with Landscapers, Garden Designers and Architects to create irresistible environments which promote health and bring value to both domestic gardens and commercial settings.

Get in touch today to find out more.

 sales@ovaeda.com

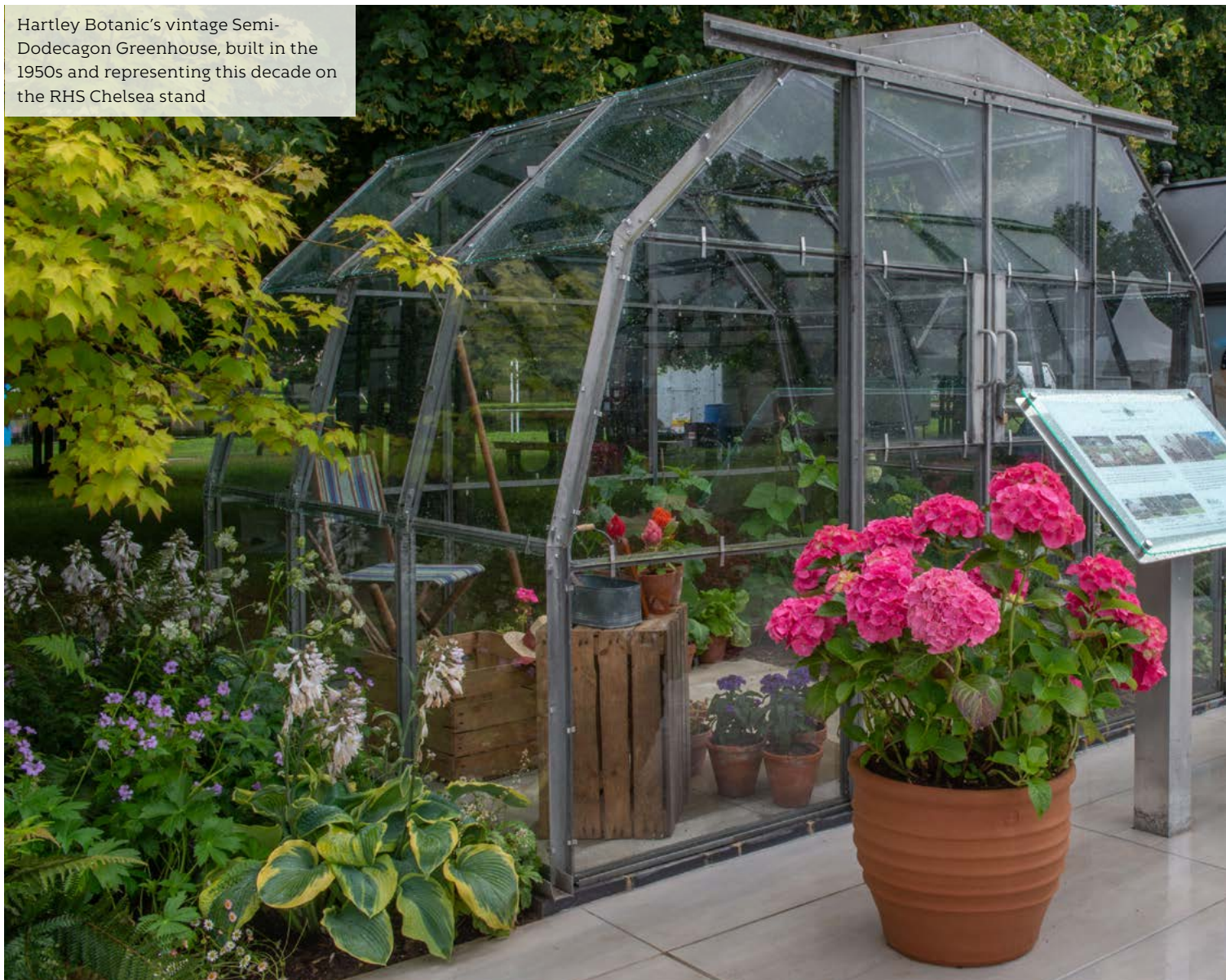
 0208 159 2999

 ovaeda.com

 [ovaeda_ltd](https://www.instagram.com/ovaeda_ltd)



Hartley Botanic's vintage Semi-Dodecagon Greenhouse, built in the 1950s and representing this decade on the RHS Chelsea stand



HISTORIC GREENHOUSE GARDENING TIPS & TRICKS WE NEED TO REMEMBER

TO TIE-IN WITH ITS RHS CHELSEA FLOWER SHOW 'HERITAGE & HISTORY' STAND, HARTLEY BOTANIC HAS WORKED WITH GARDENING EXPERT MATTHEW BIGGS TO UNCOVER SOME HISTORIC GREENHOUSE GARDENING IDEAS & TIPS

At RHS Chelsea Flower Show this year, historic English Glasshouse and Greenhouse manufacturer Hartley Botanic is celebrating and showcasing its business through the decades. The Lancashire-based business has built an unrivalled heritage and reputation over 83 years and will be showing

four handmade Hartley Botanic structures, each representing different eras in its trading history. The structures have been dressed to represent the 1950s, 60s & 70s, 90s and the modern day using planting schemes, garden tools and accessories typical of each decade - a vintage Semi-Dodecagon



Greenhouse (built in the 1950s,) a Hartley 6 Grow and Store (the 60s & 70s), Victorian Terrace (90s) and a Modern Horticulture Opus Grand Botanic (present day). The show stand offers a journey through Hartley Botanic's legacy and the history of Greenhouse gardening as a whole.

To tie-in with the theme of its stand, Hartley Botanic has worked with gardening writer Matthew Biggs to uncover some historic Greenhouse growing tips and tricks which may have been forgotten about and which need to be remembered.

Tom Barry, CEO of Hartley Botanic said; "Over its 83 year history, Hartley Botanic has certainly moved with the times and trends. New Greenhouse designs and styles have been launched with

the decades to reflect gardeners' needs and ambitions - whether a neat Greenhouse and storage shed solution in the 60s and 70s (the Grow and Store) or our elegant and ornate Victorian-style Glasshouses in the 90s (the launch of the Victorian range.) But as we look back, we can see the timelessness of some of these historic designs. Honed over 83 years, the structure, shape and detail of these Glasshouses have become iconic, originally designed decades ago but very much in demand by the modern gardener. In the same way, some of the Greenhouse growing techniques of the decades gone by are gardening gems which stand the test of time and shouldn't be forgotten."

1950s

The post-war gardeners' Greenhouse

Britain entered the 50s with wartime rationing still in place, and many gardeners remained in 'Dig for Victory' mode, when parks and playing fields had been turned over to food production. But now, at last you could take down your Anderson shelter, and replace it with a state-of-the-art Hartley Botanic Greenhouse. Planting was fairly basic by today's standards, and often consisted of growing flowering plants to add a splash of colour to the garden and vegetable seedlings for planting out. Anything more exotic would have been hard to come by, and in any case, the 50s British palate was not quite ready for fiery chillies or Cherimoya.

1950s Greenhouse edible growing tips

Inspiration book: "The New Illustrated Gardening Encyclopaedia" ed. Richard Sudell c.1950

50s growing inspiration: plant

tomatoes in an 'L' shape

"Tomatoes - Bad gardeners sometimes allow their tomatoes to grow 'leggy' a state which can be remedied somewhat by laying the stem horizontally into the soil at planting time."

Matthew Biggs said, "Leggy looking tomato crops are often the result of tomato seeds being sown too early in

the year, when there is an incorrect balance between light and heat. Too much heat, and plants become tall and spindly, or 'leggy' as they try and grow towards the light. The idea from this c1950s encyclopaedia of laying the roots almost horizontally so the plant formed an 'L' shape, is intriguing. Tomatoes produce roots on the stems, so planting them deeper increases the size of the root system, but you don't need to lay the roots horizontally, just modify this tip from the 1950's and plant them vertically, with the stems buried 5-10cm below the level of the compost. This means that if your plants are not excessively 'leggy' you can still get decent crops, you don't have to put them on the compost heap and start again."

50s growing inspiration: tailor your soil

"The final potting compost should consist of two parts fibrous loam and one part each of leaf mould and well decayed manure with a good sprinkling of sharp sand."

Matthew Biggs said, "The complexity of creating the right compost in the 50s has been completely removed today thanks to the good range of peat-free multipurpose composts which are available from your local garden centre. However, this does remind us of the importance of choosing the correct compost for different crops. Most Glasshouse crops need multipurpose compost or multipurpose with added John Innes. It is a good idea to warm the compost in the Greenhouse for 24 hours before sowing or transplanting, as tender crops don't like the shock of cold compost."

50s growing inspiration: your vegetables can also be ornamental

"Sown under glass, these half hardy annuals are usually grown for bedding. Their handsome graceful foliage is an admirable foil to beds of such subjects as begonias."

Matthew Biggs said, "In the 1950s no-one thought of sweetcorn as an edible crop, instead, they thought of them as ornamentals for use in bedding displays. This sparks a nice idea - to consider aesthetics when growing your vegetables.

The French create ornamental gardens or potager's with panache and you can, too. Choose varieties for your Greenhouse to create a display that is both ornamental and edible. Tomatoes of different colours, from yellow to black, white or orange aubergines and bright skinned peppers and chillies are among the best plants for creating a glamorous Greenhouse display."

1970s

Gardens grow trendy

Foreign holidays and ever-more diverse cuisines in 70s and 80s Britain saw us broadening our horizons in our Greenhouses and gardens. We had many more varieties of vegetables, flowers, and shrubs to experiment with, but we still liked to plant out in neat, regimented rows in very segmented layouts. The marigolds were still precisely 12 inches apart, but you might also find figs in the Greenhouse, or a grape vine, and certainly Gardeners' Delight tomatoes. At Hartley Botanic in the 1970s, they felt combining the Greenhouse with the garden shed would be helpful for the new breed of the busier gardener, hence this Grow & Store dual-purpose structure (Greenhouse/Store) was developed. We were all using very much more plastic too, in pots, seed trays, watering cans and those new-fangled growbags.

1970s Greenhouse growing fundamentals

Inspiration book: 'The Readers Digest Gardening Year' ed. Roy Hay 1974

70s growing inspiration: consider your watering

"It is important not to splash the foliage of pot plants like Begonias. Apply water gently, from a can with a long spout, close to the rim of the pot. If necessary, wedge a sliver of wood in the spout to reduce the flow."

Matthew Biggs said, "There is much debate as to whether or not you should water plants' leaves as they can scorch in the sunshine. You certainly should avoid wetting the foliage of Greenhouse plants with hairy leaves. This 50s tip suggesting you should apply water to the roots

where it is needed, is correct and the idea of wedging a sliver of wood into the spout of your watering can if you have mislaid the 'rose' is a great one. This will help to reduce the strength of the flow of water, so compost is not washed out of the pots."

70s growing inspiration: make sure you clean your pots!

"Sow seeds in pots or trays, cleaning the containers thoroughly before use. Sow the seeds thinly on the surface of the compost covering all but the smallest with finely sieved compost, coarse silver sand or horticultural vermiculite."

Matthew Biggs said, "I wrote an article a while back in the RHS' magazine about whether you need to wash your pots or not. I think it is good practice to keep everything clean as is suggested in this extract from the 1970s, it makes your Greenhouse look more professional and avoids the spread of pests and diseases. It is important you take extra care when cleaning non-plastic, such as terracotta, as these alternative materials tend to have rougher surfaces where nasties can lurk. Scrubbing your pots in warm water with environmentally friendly disinfectant is a job for late in the season, when they can dry out in the sunshine on the patio or lawn. Carefully washed terracotta pots look immaculate when they are all lined out on the Greenhouse bench together. What is the point of having a beautiful Hartley Botanic Greenhouse or Glasshouse if your floor is unswept or your pots are dirty?"

70s growing inspiration: try your hand at bedding plants

"Sow seeds of Coleus, tuberous and fibrous rooted Begonias, celosias, abutilons and streptocarpus in February. Place in pans or seed boxes in a propagating frame heated to 16-18C (61-64F.)"

Matthew Biggs said, "All of these plants were really popular in the 1970s, before the age of 'plug plants' when it was common for gardeners to grow their own bedding plants from seed. It is still a lot cheaper to do this, but seedlings of bedding plants do need lots of care.

Hartley Botanic's Hartley 6 Grow and Store representing the 1960s and 70s on the RHS Chelsea stand



I think the main benefit we can take from this today is the pleasure around watching these plants grow from start to finish. I have been gardening for many years and there is still a wonderful sense of excitement and anticipation as your seedlings start to emerge. There is a clear psychological benefit to caring for plants, it an absorbing and satisfying experience which brings a little mindfulness into our lives."



1990s

Gardens as an extension to the home

By the 90s, timeless style was returning to the garden. The Greenhouse was still a functional building, but many people wanted theirs to enhance the overall aesthetic of their garden space. The idea of the garden as an additional room was taking hold, and we began to think of gardens more as leisure spaces, with less formal planting and

more places to entertain or relax in. At Hartley Botanic we looked to the classic Glasshouse designs of the Victorian period and reinvented them for the late 90s, complete with elegant finials, subtle colours, and handsome brick bases. Planting-wise, we were more adventurous than ever, with exotic herbs, aubergine, chilli, and sweet peppers joining the growing mix.

1992 - The New Royal Horticultural Society Dictionary of Gardening

1990s Work with nature in your Greenhouse

90s growing inspiration: try natural predators

*"Biological Control is another technique increasing in use and scope. Predators and parasites can be brought into the Greenhouse and placed among the crop to control such difficult pests as whitefly (*Encarsia formosa*) and red spider mite (*Phytoseiulus persimilis*)."*

Hartley Botanic's Victorian Terrace representing the 1990s on the RHS Chelsea stand



Matthew Biggs said, "The 90's marked the arrival of biological control in home gardening, and it is still something that not everyone knows about - especially if they are just starting out. Instead of dumping lots of chemicals on your plants, use natural predators to manage any pest problems. This technique uses nature's own controls. It isn't particularly complex or involved - now you can buy predators online or from the garden centre and they are simple to manage within the Glasshouse. There are predators for aphids, whitefly, scale insect and a host of other pests. Use environmentally friendly solutions - let's think natural!"

90s growing inspiration: tailor your approach

"Edible peppers have requirements in cultivation similar to tomatoes, although they need slightly higher temperatures and humidity."

Matthew Biggs said, "Although most gardeners grow tomatoes and peppers happily together, with a few degrees making little difference,

this does demonstrate the need to understand that different crops have different tolerances. You don't have to be that specific, but different plants do have different needs. Peppers, basil, and tomatoes, are happier near the Greenhouse door where it is hot and dry and I grow my cucumbers at the back of the Greenhouse, where the air is still and humid."

90s growing inspiration: think about temperature

"Sow French beans under glass for early crops. Germination will not take place below 10C(50F) and is slow at 15C(60F) The optimum temperature for germination is 30C(85F.)"

Matthew Biggs said, "You don't need to be following guidelines on sowing temperatures down to the last degree, but it is important to understand that temperature has an important role in producing successful crops. It is vital not to sow some crops too early. If it says on the packet you must sow in February but your Greenhouse feels

very cold, it is best to wait until the weather warms, especially at night. When sowing outdoors, make your decisions according to the weather conditions and the needs of the crop, not by the instructions on the packet. You can, however, to beat the weather, sow hardy vegetables like lettuce and broad beans, earlier in the protection of your Hartley Botanic Greenhouse."

Hartley Botanic was founded in 1938 by brothers Vincent (RHS fellow) and Norman Hartley following their ground-breaking aluminium Greenhouse design, the first time (to our knowledge) aluminium had been used in Greenhouse construction and marking a huge improvement on its wood and wrought iron Victorian forerunners. The English manufacturer is an authority on Greenhouse design and use over the decades, having been making its beautiful and elegant handmade, made-to-order horticultural buildings for over 83 years from its original factory at the base of the dramatic Pennines' Chew Valley in Greenfield, Lancashire.



It has become synonymous for crafting the finest Greenhouses money can buy through the very highest standards of hard-won experience, craftsmanship and service. A hugely respected brand within the horticultural world, it is the manufacturer of choice for leading organisations, institutions and designers with Hartley Botanic structures commissioned by the RHS, the National Trust, Kew Gardens, Glasgow Botanic Gardens, Massachusetts Horticultural Society, Oxford Botanical Gardens, Le Manoir aux Quat'Saisons, Blenheim Palace, The Lingholm Estate and Hampton Court Palace...to name a few. Its entire product range is endorsed by the Royal Horticultural Society.

In April of this year, the manufacturer was awarded a prestigious Queen's Award for Enterprise in the international trade category, thanks to the significant growth of its international business - driven largely by demand for its beautiful, handmade English Glasshouses and Greenhouses from customers in the United States.

'Why Hartley?' - What makes a Hartley Botanic the finest Glasshouse money can buy

Unrivalled. Unparalleled. Unique. There are Glasshouses and there are Hartley Botanic Glasshouses. Combining inspired design with enduring quality, nothing quite enhances your garden and home like a Hartley Botanic; each one beautifully handmade to last a lifetime.

Why Hartley?

At Hartley Botanic we have had a continuous conversation with our customers over many years. We have collected their comments so as to let you know what our customers say about us, and just why they have chosen a Hartley Botanic Glasshouse.

1. Beauty and Elegance

The incomparable range of simply beautiful and elegant structures means Hartley Botanic can create designs that are distinctive and unique. The Victorian, Heritage and Modern Glasshouse ranges, are so comprehensive you don't have to go anywhere else to find your beautifully crafted, high-quality Glasshouses from the widest of choices.

2. Structurally Superior

Every Hartley Botanic Glasshouse is handmade in the North of England to your exact requirements. It is made of the finest materials with unparalleled durability, safety, and beauty. All of the aluminium sections have a structural purpose. Short cuts, such as 'sticking' aluminium to glass for aesthetic reasons, are never taken. Hartley Botanic are so confident of the structural integrity of their Greenhouses; a 30-year Lifetime Guarantee is offered.

3. A reputation Beyond Compare

Hartley Botanic's brand heritage and reputation have been built on trust for over 80 years. They have earned an unrivalled reputation for crafting the finest Glasshouses and Greenhouses money can buy through the very highest standards of hard-won experience, craftsmanship and service.

4. Unrivalled Knowledge and Expertise

There is a wealth of knowledge and expertise built into every Hartley Botanic Glasshouse. Generations of customers have put their trust in the hands of expert, time served, highly skilled craftsmen. Glasshouses of distinction are created from decades of knowledge and care.

5. Exceptional Delivery of Service

Once your order has been handmade to your personal requirements, and Hartley Botanic's exacting standards, your delivery and installation will be exceptional. The proud team at Hartley Botanic are there to ensure the process runs smoothly, providing you with the information you need and keeping you up to date throughout.





CREATE A STUNNING WATER DISPLAY TO SUIT ANY SIZE GARDEN SPACE

It's never been easier to transform a space into a water oasis and add the beautiful sound of flowing water. OASE has a huge collection of pond-free options for smaller gardens and outstanding display fountains for large ponds. There's a solution to suit any garden size and help create a breath-taking dream water display.

Waterfall

The range of OASE Waterfalls, accessories, and complete sets, are beautiful formal waterfalls that can be easily customised. Built to an extremely high standard with quality workmanship, the entire range is extremely sturdy. They make it easy to build an elegant and uniform water display, up to one metre in height, in an open garden space or as part of a back garden wall.

These graceful waterfalls are made of robust, non-rusting stainless steel and the collections include a wall fitting kit, a freestanding kit, and a complete set that features all the accessories you could need, including a pump.

PondJet

If there's more space for a larger water display, consider the OASE PondJet. This floating water fountain can be easily installed in a large pond and it's the perfect option for an impressive water display that can be up to three metres in height and width.

The PondJet features a dynamic function that can be activated by a switch, to create attractive water patterns with different fountain heights. Plus, the fountain can be

customised, thanks to its multi-functional nozzle, which allows additional fountain attachments to be installed.

An optional underwater transformer makes it easy to install lighting sets to the fountain. These can dance along with a variety of fountain displays and illuminate it in white or an array of colours, depending on what would complete the look of the garden. It's the best way to brighten up this new water feature in glorious light.

Discover the complete OASE range here: social.oase.com/gardenspace

Create a stunning water display to suit any size garden space



Waterfall Complete Set Wall 90



PondJet



Waterfall Kit 30



PondJet

Whether you have a large or small garden space, OASE manufacture complete solutions to suit any project. Discover more: social.oase.com/gardenspace



AUTUMN SOWING FOR SUMMER SHOWING!



Flowers are a valuable resource for enriching the urban environment, supporting bio-diversity, producing stunning vistas and generally brightening up parkland, housing estates, verges, entrances to towns and cities, roundabouts, in cemeteries and in areas where they sown in place of grass to reduce mowing frequency.

Euroflor 100% flower seed, unlike "wildflower" seed, is germination tested just like grass seed. Low maintenance comes from just one cut per year in autumn after seeds have ripened and fallen and a sowing rate of just 3g per square metre means 1kg of Euroflor covers approximately 333 square metres, making it an extremely cost-effective and rewarding choice for enhancing the landscape.

Autumn Sowing

Euroflor mixes recommended for autumn sowing for flowering the following year.

Alliance: Combination of red Field (or Common) Poppies and Cornflowers. Adds a splash of colour to out of play sparse roughs

Boulevard: Low growing, 100%

native & naturalised perennials. Perfect for driveway entrance and mixed borders

Cornfield Annuals: Classic cornfield mix - excellent in out of play sparse roughs

Cornflowers: 100% Cornflowers. Mainly blue but also shades of pink and white

Endurance: For shallow, free draining, impoverished soils. Perfect for heat traps - eliminates the need for annual sowings

Flora Britannica: 100% native and naturalised species recommend for ecological conservation schemes, riversides/out of play areas.

Native Pollinator: 100% UK native and naturalised flora - abundant nectar and pollen. A more discreet flowering display for environmentally sensitive sites.

Poppies: 100% Field (or Common) Poppies of exceptional purity and germination

Rainbow Perennials: Predominantly perennial species for extended flowering and more permanent displays from spring to late autumn

Spring Flower: Earlier spring source of nectar and pollen - may flower a second period in autumn if cut back after flowering.

Autumn Sowing - The advantages

1. Earlier flowering displays the following year
2. Advantageous for perennial mixes which first flower the year after sowing
3. Perfect time for sowing 100% native & naturalised species
4. Reduces the impact of spring climatic variability such as drought or late frosts

Summer Preparation

1. Cut existing vegetation down to 5cm or lower in July/August to prevent self-seeding
2. If using a glyphosate such as Hi-Aktiv, to control existing vegetation, apply 7 to 10 days after cutting to allow for re-growth.
3. Cultivate and prepare an early seed bed in August/September (depending on season)
4. Let the weed seed bank germinate and either treat again, hoe or harrow the area to reduce weed species
5. FloraFleece is a biodegradable weed suppressant matting as an excellent alternative to herbicide control and eliminates the need for cultivation prior to sowing

Time to sow

Sow Euroflor mixes at 3-4g per square metre in late August - September (north & east), late August - mid October (south & west). Apply a pre-seed organic based fertiliser such as Apex 4-6-4, particularly if soil fertility is impoverished. Ensure seeds are in good contact with the soil and keep seed and seedlings moist until well established.

www.rigbytailor.com/flower-seed/euroflor/
 Freephone 0800 424919



Kitchen in the Garden, based at Cedar Nursery in Cobham, Surrey, supply a full range of outdoor cooking equipment, from the world's leading outdoor cooking brands.

We provide expert advice and technical support for the design and build of premium outdoor kitchens. From contemporary grills, high-end pizza ovens, sinks and fridges, to a vast range of specialist cooking equipment. We cater for all outdoor cooking requirements, along with a variety of storage options tailored to your client's needs.

Why not suggest to your client to add an outdoor kitchen to make the most of their outdoor space and add value to their property?

Authorised Dealers For:



Kitchen in the Garden, Cedar Nursery, Horsley Road, Cobham, KT11 3JX

tel: 01932 556266 email: sales@kitcheninthegarden.co.uk

kitcheninthegarden.co.uk



RHS REVEALS LATEST GARDEN LINE UP FOR HISTORIC AUTUMN RHS CHELSEA FLOWER SHOW

The Royal Horticultural Society (RHS), the charity behind the world's greatest flower show reveals the garden line-up* for this year's RHS Chelsea Flower Show (21-26 September), sponsored by M&G.

Following the decision to postpone the RHS Chelsea Flower Show until

September for the first time in its 108-year history, designers have been tweaking their plans for the later show and visitors to the RHS Virtual Chelsea Flower Show next week will hear from some of those who have taken on the challenge to exhibit at this year's historic autumn show.

For many designers their gardens have become even more relevant following the events of the last 14 months. The Florence Nightingale Garden - A Celebration of Modern Day Nursing designed by Robert Myers shines a light on the critical role nurses play in modern-day healthcare whilst celebrating the



remarkable legacy of Florence Nightingale and the importance of gardens for wellbeing and recovery. For the September show, Robert has adjusted the planting pallet so rather than creating a shady garden with woodland plants, the garden will be a bright and vibrant space with colourful late summer perennials.

The incredible efforts of the thousands of NHS workers who care for millions of people across the UK and have kept the health service running throughout the Coronavirus pandemic will be celebrated in the 'Finding Our Way - An NHS Tribute Garden' by Naomi Ferrett-Cohen. The healing power of gardens and nature also inspired the design of 'The Bible Society: Psalm 23 Garden' by multi award winning designer Sarah Eberle and 'The M&G Garden' by design duo Harris Bugg designed to raise awareness of the increased need to introduce beautiful and restorative green spaces within our towns and cities.

In a year where international travel is limited, gardens taking inspiration from foreign landscapes will transport visitors to far away destinations. Despite being based in Thailand, first time RHS Chelsea designers Tawatchai Sakdikul

and Ploytabtim Suksang are determined not to let potential travel restrictions prevent The Calm of Bangkok Garden being part of this year's historic show and are confident their team in London will be able to deliver the garden should they be unable to travel.

Designers also taking inspiration from foreign landscapes include first time designers Ekaterina Zasukhina with Carly Kershaw who will explore the beauty of the Ural Mountain region in Russia, as well as retuning award winning designers Taina Suonio whose design celebrates the Nordic tradition of seaside life and Jonathan Snow with a Himalayan inspired garden for Trailfinders. As the national flower of Nepal, the garden features rhododendrons but as they will not be in flower now the show is in September, Jonathan plans to add colour by incorporating some late flowering Hydrangeas.

Back on home soil, The Yeo Valley Organic Garden by Tom Massey supported by Sarah Mead will bring a slice of the Yeo Valley Farm in Somerset to SW3, inspiring visitors to adopt organic gardening practices and put nature first. The later show date has given them more scope and a greater range of plants they can grow for the garden particularly the flowering plants for late summer colour, which will include dahlias, Echinacea, and rudbeckia, some of which are being grown by Sarah at the farm in Somerset.

Helena Pettit, RHS Director of Shows & Gardens: 'This year's RHS Chelsea Flower Show is going to be a moment in history and we are incredibly grateful to all the designers, growers and sponsors who have embraced the new date and have worked hard to adjust their plans and take on the challenge to be a part of this one-off autumn show. For many designers the change in season has provided a rare opportunity to work with exciting new plants, which you wouldn't usually see at RHS Chelsea and I am so looking forward to seeing the array of later summer and autumn flowers and plants that will be on display - it is going to be an incredible and unique sight.'





With millions more people gardening and growing plants the RHS has introduced two new garden categories alongside the new Houseplant Studios providing a wealth of inspiration for anyone interested in growing plants in small spaces. In cities and dense urban spaces, balconies provide access to a private outdoor space and the new Balcony Gardens at this year's show will demonstrate the different ways these small outdoor spaces can be transformed into functional and interesting gardens.

With visits to RHS Web pages for advice about planting up containers up by 256%, this year Container Gardens** are also making their debut providing achievable, clever design ideas for this growing gardening trend.

Helena Pettit adds: "Millions more people turned to gardening this year so we have introduced these two new categories to ensure there is something for everyone at this year's show. We have lots more exciting content for the September

show being announced over the next few months and throughout the RHS Virtual Chelsea Flower next week so stay tuned!"

Venue: Royal Hospital, Chelsea, London SW3 4SL

To book tickets 0344 338 7501 or www.rhs.org.uk/chelsea



BLUE FOREST
THE TREEHOUSE PEOPLE



NOTHING IS BEYOND THE REALM
OF POSSIBILITY WITH A BLUE
FOREST TREEHOUSE

T 01892 750090 E INFO@BLUEFOREST.COM
WWW.BLUEFOREST.COM

BESPOKE GARDEN PLANTERS

Looking for bespoke garden planters for your next project?

With custom options on many of our ranges, you are sure to find the perfect planter of the size and shape you require.



Choose from:

- **Fibreglass planters** - durable, lightweight and weather resistant. Available in a range of shapes, sizes, RAL colours and special finishes
- **Galvanised steel planters** - highly weather resistant and available in a variety of shapes and bespoke sizes
- **Powder-coated planters** - available in any RAL colour and to custom dimensions
- **Terracotta planters** - hand-finished contemporary & traditional, certified as frost-resistant

Our bespoke service allows you to create your ideal planter, calculating the cost instantly.

View online or contact our sales team to discuss your exact requirements.

www.landscaping.co.uk



**FOUR OAKS CASH & CARRY:
PLANTS AND SUNDRIES TO THE
TRADE**

Based in Lower Withington, Near Macclesfield only five miles from junction 18 M6, we have great access to all major link roads.

Our huge range of stock includes olives and palms in pots from 1litre up to 1,000 litres available all year round. Four Oaks has an extensive product line of over 1,500 lines of trees and shrubs on display from starter plants to specimen sizes.

We have recently added garden furniture to our portfolio and increased our already extensive pot range from 2" to 500 Litre pots including terracotta, glazed and genuine half whiskey barrels.

www.fouroaks-nurseries.com



**Plants & Sundries
for the Trade**

**Hedging - Topiary
Buxus - Laurus Nobilis
Shrubs & Trees**



**Huge range of shrubs
from 3 Litre - 15 Litre**

Alpines & Perennials. Seiont Nurseries
Young Plants. Pack bedding & Vegetables.

Added Value Lines - April onwards:-
Superb range of Hanging Baskets,
Planted Patio Pots, 13cm potted Zonal Geraniums,
Fuchias, Osteospermums, Marguerites & Standard
Fuchias in 10 litre pots.

**Sundries - Garden Stoneware
Yorkshire Flowerpots - Draper Tools**

We now stock Garden Furniture



The largest horticultural "One Stop Shop" in the UK

FOUR OAKS CASH & CARRY

Longshoot Road, Lower Withington, Macclesfield, Cheshire SK11 9DX
Tel: 01477 571797 Fax: 01477 571314
marlon@fouroaks-nurseries.co.uk www.fouroaks-nurseries.com



BECOMING PLANT HEALTHY

Plant Healthy is a new quality assurance scheme created to protect horticultural supply business against destructive pest and diseases launched in 2020. Plant Healthy has been developed by the industry, with input from Government and sets out key requirements for plant health management.

Plant Healthy Certification is to wholesale plant nurseries what trade membership accreditation is to its trade body members. In other words, every plant nursery supplying across the industry should aim to be Plant Healthy certificated regardless of size, allowing customers to purchase secure in the knowledge that a Plant Healthy supplier is doing all they can to supply plants that are biosecurity compliant.

Applying for and achieving Plant Healthy Certification is voluntary, however, realising the importance of being audited, registered and recognised across the industry, Provender Nurseries decided to undertake the rigorous process to qualify for Plant Healthy status to assure its customers just how important plant health, biosecurity and plant husbandry is to a plant supplier.

Having worked closely with Plant Healthy auditors to ensure that the highest standards are met and upheld from the very start of the plant procurement procedure to the moment plants are delivered to the nursery and purchased by our valued clients. Provender Nurseries attained its Plant Healthy certificate early in 2021 and were amongst the first few trade nurseries to do so.

In order to pass the certification Provender Nurseries had to demonstrate traceability of all stock coming to and leaving its nursery in Kent. Many procedures required were already in place and being followed including biosecurity, plant husbandry and staff training.

Becoming and staying Plant Healthy requires input from all areas of the business due to the wide range of content covered and guidelines to follow. Plant passports, phytosanitary certificates and ensuring the correct import documents are provided by their suppliers for the internal processing of plant orders done by a wide range of people with a myriad of skills on site.

As a business Provender Nurseries care passionately about plant procurement so they can offer their customers plants that are clean. Attaining the Plant Healthy certification ensures that customers have clarity and peace of mind are being met and upheld. Each year Provender Nurseries will continue to be audited to ensure those standards are upheld.

With an excellent reputation within the industry Provender Nurseries work hard to uphold a strong working relationship with APHA and Plant Healthy scheme. Looking ahead clients can rest assured that Provender Nurseries are doing all they can to keep the industry healthy and stay Plant Healthy.

planthealthy.org.uk

www.provendernurseries.co.uk/plant-healthy

www.provendernurseries.co.uk/about-us/bio-security

PROVENDER

plan ahead
and rise to
the challenges ...



WE HAVE.

Provender Nurseries are expanding and building an infrastructure to make your onsite experience even more valuable. You should visit.



Provender Nurseries, The Landscape Centre, Leydenhatch Lane, Swanley, Kent BR8 7PS

Tel: 01322 662315 Email: sales@provendernurseries.co.uk Web: www.provendernurseries.co.uk

HEDGING IN AN INSTANT

Readyhedge is a nursery situated in the south of Worcestershire. We specialise in growing instant hedging in metre long lengths and various height from 30cm tall to 200cm tall. As well as individual plants and low and high panels and screens. We grow over 40km of hedges in containers every year in over 35 varieties

Readyhedge is an innovative way of supplying hedges which over comes the problem of how many plants do I need, by supplying pre-spaced metre long units of hedging that can be easily handled by one or two people. This means that to order Readyhedge you just need to select a variety, select a height that you need and measure the distance in metres. It is as easy as that. We can deliver anywhere in the country and normally turn orders around within 48 hours.

Readyhedge comes in two different styles, Readyhedge troughs and Readyhedge bags which cover a range of heights and widths. Specialising purely in hedging means that all our hedges are grown with the love and attention that each variety needs.

www.readyhedge.com



READYHEDGE® Simplicity.

Our instant hedging is delivered ready-spaced and ready to plant, with no need for machinery or special planting skills.

Variety shown: Prunus Lusitanica Angustifolia (Portuguese Laurel)



01386 750585
sales@readyhedge.com
matthew@readyhedge.com
www.readyhedge.com



Autumn sowing for spring showing



The Perennial Choice

There are now *eleven* perennial Euroflor mixtures recommended for autumn sowing that not only provide wonderful colour displays during the following spring and summer.

Autumn sowing can take place from August through to October for flowering the following spring and summer.

Euroflor seeds are available in 1kg packs. Also available are **Autumn Discovery** boxes of 10 x 50g foil sachets (either single or a combination of mixtures) to provide the opportunity to try out different colour combinations and growth habits.

At a typical mid-range sowing rate, a 50g sachet will cover approximately 12.5 sq.m. All mixtures are available to view and purchase from the website below.

For more information log on to:
www.rigbytaylor.com



PROJECT POLLIN-8

An Ecological Initiative

Project Pollin-8 is a Rigby Taylor initiative to help arrest the decline on the UK bee population. Crucially, springtime flowers provide an earlier seasonal supply of energy-rich nectar and pollen, sustaining pollinators when resources are most scarce.



Member of Origin Amenity Solutions

0800 424919
www.rigbytaylor.com
sales@rigbytaylor.com

Origin
amenity solutions



EXPERT GARDEN ADVICE

When my wife Celia and I moved into Bramble Hayes on 1st May 1998, we had no idea how significant the paddock behind the house would become.

This paddock was about a third of an acre and sloped steeply down, facing south westerly. Upon moving into our new home, Celia and I made

an agreement: Celia is in charge of the interior design, and I was in charge of the garden!

So, I asked the builder of the house to just leave the paddock area as it was. Why? I'd always wanted to landscape my own garden and create it from nothing.

Dave and Ed Brooks

Ed Brooks, the eldest son of our family friend, Dave, had just graduated as a landscape architect. So, he prepared a design that factored in the slope of the garden and made the most of the borrowed view.



Shortly after, Dave arrived with a fairly ancient land rover towing a digger, as well as various bits and tools. Gradually, terraces, wide borders, and even water features began to take shape. The garden then slowly began to be filled with plants and foliage that we selected.

The National Garden Scheme

We organised for someone from the National Garden Scheme to come and take a look at the Sitting



Spiritually Garden, the feedback was:

“It’s a lovely garden but we need to keep our visitors interested for 45 minutes. Have you ever thought of getting some seating to slow people down”.

I’d always admired the concept of garden swing seats, but I was unable to find any that would do my garden justice.

So, I returned to my roots as an Indentured Carpenter and Joiner, and applied some Feng Shui principles to a US blueprint of a swing seat design. From this, came the first ever Sitting Spiritually Swing Seat, which still sits proudly in our garden today.

Naturally, this is where our garden gets its name, and our seats are now showcased in it’s grounds. We’re open to visitors all year round, so get in touch if you’d like to arrange a visit.

What Makes The Sitting Spiritually Garden Design So Special?

Sensory Stimulation

It was never about making a superficially attractive space. Celia and I wanted a landscape that stimulated all of our senses. The sweeping lawn is a combination of quality turf and careful maintenance, with layers of planting in deep borders that create a dynamic garden just bursting with interest, colour, and scent.





One particularly effective sensory concept that we have incorporated into our garden design is underplanting. For example, underneath one of our swing seats there is a bed of Sweet Woodruff; when you swing on this seat, it brushes against the Sweet Woodruff and its heavenly scent is released.

Balance

Over time, the garden evolved with a strong emphasis on herbaceous perennials which we allowed to overwinter, set seed, and fill a lot of gaps. We only cut back in early spring. The results were huge swathes of naturalistic planting, which holds a rustic beauty.

I then introduced neat, clipped hedges and topiary to contrast and balance out the wild foliage. I planted a lot of *Lonicera Nitida* which strikes easily from hardwood cuttings. It's easy to cut back and doesn't suffer blight, but has to be clipped quite frequently.

This balance between the uncultivated wildness of the natural world and clean lines, make for a dynamic garden that is authentically charming without being cluttered or too busy.

Family- Orientated

The Sitting Spiritually garden is not just a public garden, but is also a garden that has been used by my

family for over 20 years. As a result, despite numerous re-designs, the pathways through have always stayed the same. Just because this is an outside space, does not mean that it cannot be personal and hold a great deal of sentimentality.

Allowing Nature to Take Over

By having faith in the plants to self set and group themselves, nature has taken over and I love the way the garden has evolved. New plants crop up often, and this idea of regeneration is such a key one in the design of the Sitting Spiritually garden.

www.sittingspiritually.co.uk

BOURNE BUILDINGS



Set in a magical landscape of water and wildlife, Bourne Buildings is not your typical garden buildings showsite. Locals know Bourne Buildings for its great location on the Shephard and Flock round-a-bout in Farnham, with its humorous banners, and annual visit from Santa, but only those who have visited will know of its hidden beauty spread over nearly 3 acres of picturesque land.

Celebrating its 26th year this year, this family run business is continuing to go from strength to strength, supplying quality garden buildings from sheds, greenhouses, and playhouses to garden offices, summerhouses, animal housing, workshops, garages, and garden bars.

Bourne Buildings offers made-to-order designs of varying qualities and styles fit for all budgets, a base laying & felt roofing service, stone ornaments, and over 100 small garden furniture sets.



www.bournebuildings.co.uk | sales@bournebuildings.co.uk
01252 718481 | THURSDAY - MONDAY 10AM - 4PM

Distinctive Lighting



BOLLARDS FOR LANDSCAPES

The Distinctive Lighting Pro Exterior Series is the professional choice for architects, lighting designers and contractors. These high-quality products have robust construction, partnering the best materials with durable finishes. All are European made and comply to all essential European Standards. Featured is the (52789) bollard in graphite powder coated aluminium. It has a 5yr warranty with no coast exclusions, it is IP65 with UV stable and vandal resistant clear polycarbonate lens and has indirect LED light output. For a great selection of bollards, lanterns and lamp posts contact the Distinctive Lighting sales office for a catalogue.

www.distinctivelightinguk.com
T:0330 094 8824 | enquiries@distinctivelightinguk.com

Harrod

HORTICULTURAL



- Wide range of standard sizes
 - Bespoke sizes also available
 - Professional CAD/technical drawings
 - Trade Discount Available
- Arches • Pergolas • Obelisks
 - Fruit Cages • Metal Raised Beds and Planters • Plant Supports • Garden Furniture

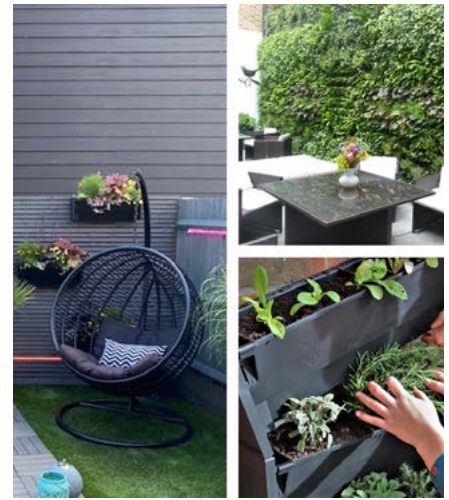


Trade brochure:
0333 400 1777

Trade enquiries:
trade@harrod.uk.com

harrodhorticultural.com





HEDERA SCREENS LTD SUPPORTING THE NATIONWIDE #GREENRECOVERY

Nationwide approved supplier and installer of urban green solutions, with optional soft landscaping, irrigation, aftercare maintenance with an online shop to cater for smaller projects.

Enhance your surroundings with Award Winning Hedera Screens Ltd exceptional range of:

- living green screens
- outdoor living walls
- indoor moss walls
- acoustic walling
- sedum roofs
- soil stabilisation matting
- floral matting

A family business since 2007, working closely with leading suppliers and our diversity of clients, coupled with careful management, methodical approach to our work, is core to our exceptional track record of consistent delivery on time and to a budget.

With a fully qualified team, infrastructure, and industry recognised accreditations, we can undertake both large commercial

supply and installation projects to modest residential projects, providing supply and delivery only, if required.

Scientifically proven to filter harmful pollutants

Horticulture and plants are at the heart of most initiatives for clean air, privacy, and social distancing measures, but thankfully now becoming widely recognised in the main for their contribution. Living Green Screens are supplied in a variety of species and heights. The screens are planted in a coco pocket and pre-grown on a 5mm galvanised steel frame and come fully established, creating a secure and attractive evergreen or deciduous hedging. With various installation options for virtually every project.

Ongoing research shows that the Living Green Screens, superior in plant density and construction, help reduce PM10 particle pollution, in some sample locations up to 60% of the particles were "cleansed" from the air behind the screens. Research

continues to further validate these findings, but increasingly, the installation of Living Green Screens offers not only a secure and natural privacy screen and social distancing barrier, but a valuable solution to reduce the effects of urban pollution.

Our products contribute to cleaner air and biodiversity, thus providing an abundance of health and wellbeing benefits for everyone, moreover a nurturing, pollution filtering green space for children, as our installations of green screens in schools demonstrate the importance.

With greater emphasis on the reduction of carbon emissions and the carbon footprint, there is no better time to turn grey to green with our range of products.

For more information contact Hedera Screens on 01530 560550, email: info@hederascreens.co.uk visit www.hederascreens.co.uk Follow: [@hederascreens](https://www.instagram.com/hederascreens) YouTube: Hedera Screens Ltd



Hedera screens ltd

Nationwide Urban Greening
Call: 01530 560 550

- Living Ivy Green Screens
- Living Walls
- Sedum Roofing
- Instant 100% coverage Floral Matting
- Steep slope Soil Stabilization Matting
- Commercial Soft Landscaping
- Commercial & Residential Irrigation
- Aftercare Maintenance

Unit 3 Chestnut Farm
Ashby Road
Moir
Derbyshire DE12 6DP

Email: info@hederascreens.co.uk
Follow: @hederascreens
YouTube: Hedera Screens



www.hederascreens.co.uk



A SAFE RETURN TO GLEE AS 100 NEW BRANDS MAKE THEIR DEBUT

Events are back, with Glee leading the charge as the first dedicated garden retail exhibition to make its in-person return post-lockdown (14th - 16th September NEC Birmingham). This year's show will bring together hundreds of brands

and thousands of exciting products under one roof, providing garden buyers with the first opportunity in 18 months to 'shop' new ranges to boost their retail offering and build on the incredible momentum created throughout lockdown.

One key part of Glee's offering is the access to both grassroot and established brands. This year's event is set to welcome over 100 new brands, made up of UK and international exhibitors, these companies represent a thriving



Playback Frames Ltd, S&S Garden Designs Ltd, Apollo Gardening, Bedmax Ltd, Dansons Europe, Evercreatures, Allingham Games, The Stone & Garden Company, Teal International, Biohort GmbH, Kingsley Designs Ltd, Lave-Lite, Carbon Gold Ltd, Collarways Ltd, Hornsey Hammocks, and GRS Footwear.

Also look out for Poétic Garden, a 75-year-old family run company, based in the Lyon area of France that produces planters and accessories for indoor and outdoor use, with significant advantages such as minimum 90% recycled material, strong designs, cost-efficient production, and an effective logistical operation.

Kin Ltd, a member of the Wilkinson Hardware Stores Ltd. family of businesses, is also debuting at Glee 2021, bringing with it a range of sustainable products for the home and garden. Sustainability will also be on display from PlantGrow - who playfully refer to themselves as "an eco-conscious bunch who have found a solution to many problems in today's gardening world and horticultural trade". PlantGrow is the first in the UK to produce natural plant foods and growing mediums through a patented renewable energy process.

Another new-to-Glee exhibitor will be BOOTPAC. Born during the first

lockdown in 2020, the BOOTPAC was designed to make recycling easier by enabling the transport of wet or dirty items to the recycling centre to be a simpler and cleaner process. The bag itself fits almost all cars - unlike most boot liners which are car specific - and is designed to last for years and not be part of our disposable culture.

Elsewhere, the So & Mo brand wants to bring performance lawn care products to the domestic market via its debut presence at Glee 2021. The team has developed three formulations focussed on complete plant health which we use over the 12 months for year-round performance.

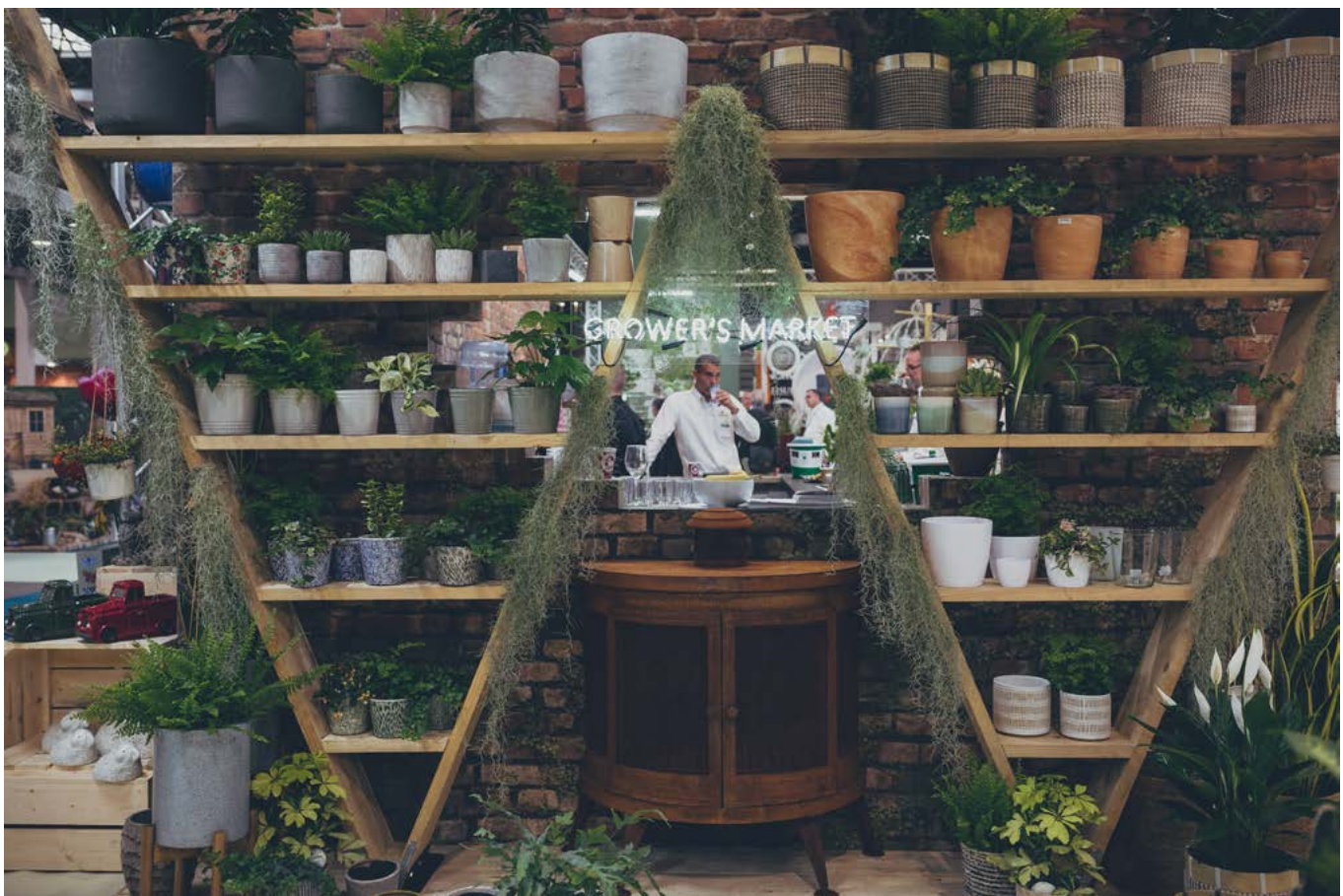
Update to Glee's Safe & Secure Guidelines

Glee's Safe and Secure Guidelines will take into account all elements of the show including pre-, during and post show, and will ensure that all those onsite can rest assured that all possible measures have been put in place to reduce the chance of transmission. Examples of this include access to hand sanitiser and increased cleaning regimes particularly in high traffic touchpoints, plus 3m wide aisles to allow for more comfortable movement around the event, and contactless registration of visitors at entry points. Glee 2021 will also be a mask friendly event.

newness that is helping to shape the future of garden retail. Featuring grass root product development and established brands that are looking to diversify and capture more customers, buying teams will want to make a beeline for these exhibitors as they may be able to source something new and unique to bolster their retail offering in 2022.

New names confirmed for Glee 2021 will be Veritable, Urban Farm It, Tri-Star Packaging, Tripod Home, Hansa Design, Jadecliff Ltd, Loud & Clear Safety, GoodToBee, Anglo-Peruvian Trading, NIAB, Ergrownomics,





Additionally, visitors and exhibitors at Glee 2021 will also be asked to verify their Covid-19 Status before entering the event. This can be done by providing evidence of one of the following: a full course of vaccination two-weeks prior to arrival; or proof of negative lateral flow test taken within 48 hours of arrival*; or proof of natural immunity shown by a positive PCR test result for COVID-19, lasting for 180 days from the date of the positive test and following completion of the self-isolation period.

Added peace of mind also comes from the fact that the experience gained when constructing and operating the NHS Nightingale Birmingham facility, means the NEC has upgraded all the filter media within the ventilation systems to high efficiency F7 media, which was the standard specified by University Hospitals Birmingham (UHB) NHS Trust.

Exhibitors have also been given a wealth of advice regarding how to ensure exhibition stands remain compliant, including guidance on

stand layout, data capture, staffing and displaying product effectively.

For more details and FAQs regarding Glee's Safe & Secure measures please visit www.gleebirmingham.com/the-community/safe-secure.

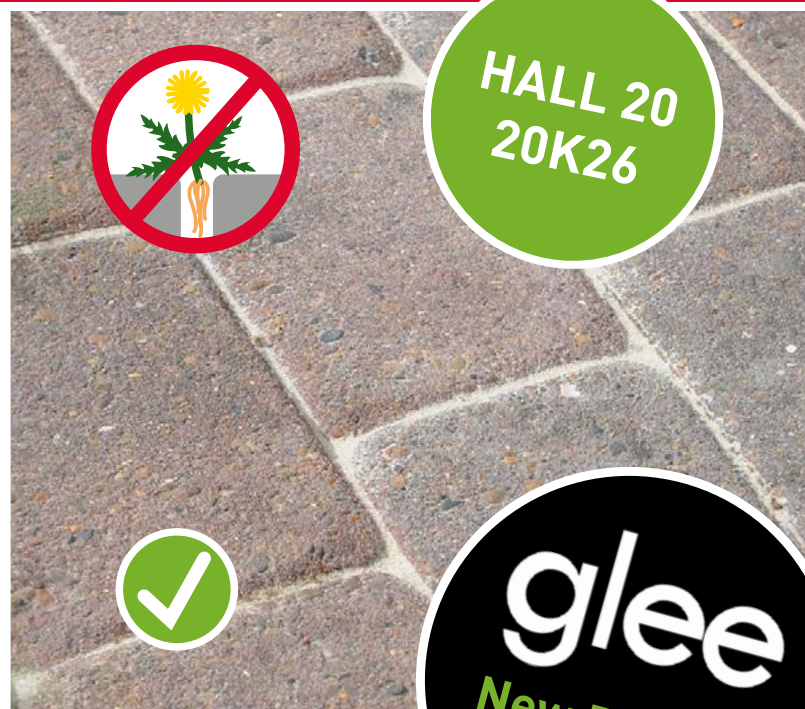
Find out more

To keep up to date on the latest Glee news visit www.gleebirmingham.com.

To enquire about exhibiting at Glee 2020 call +44 (0)203 3545 9752.

DANSAND® NO GROW™

Joint Filling Sand with Natural Weed Inhibitor



Your customers love weed-free patios, driveways and paths, so they'll love **DANSAND NO GROW**

NO GROW is a joint filling sand infused with minerals to create desert like conditions by raising the pH value to naturally inhibit weeds. The range includes a choice of colour and sands for different width of joint and firmness of finish.

Resists Weeds | Resists Erosion | Resists Insects | Hard Wearing



20kg bags
49 bags per pallet
Prompt delivery
FREE point of sale
Staff product training



Active Products Ltd, Exclusive UK Distributor

Barnston Warehouse, Chelmsford Road, Great Dunmow, Essex, CM6 1LP

Direct sales: 01371 872 842 Lines open 9am - 5pm
sales@active-products.co.uk dansand.co.uk

active
products

MEREBROOK WATER PLANTS



Our family-run niche water plant nursery has over 40 years' experience in growing water lilies and a comprehensive range of aquatic and moisture-loving plants. Through our website www.pondplants.co.uk we are always happy to offer help and advice on plants and planting schemes for watery areas in gardens large and small. We want our plants to be a success in your ponds and lakes and for you to get as much joy from them as we do.

Planting up a pond is as beneficial for our planet as planting a tree. We are passionate about increasing the availability of beautifully planted, healthy, watery habitats for wildlife that actively support the ecosystem by reducing our carbon footprint.

All our plants are grown outside, meaning that they are fully hardy, and many are available all year round. We also deliver all plants bare-root, cheaper for you and less costly for the environment than sending plants out in small plastic pots.

pondplants.co.uk



fargro[®]

SUPPORTING HORTICULTURE FOR MORE THAN 75 YEARS

Fargro are specialist suppliers of garden sundries, pots, tools, gifts and horticultural supplies for garden centres, landscapers, growers and other horticultural businesses throughout the UK.

Visit our website to browse our wide range of quality horticulture supplies, or speak to a member of our team at ask@fargro.co.uk or call 01903 726 100

www.fargro.co.uk

Make your space work in any weather, with a Fordingbridge canopy



FORDINGBRIDGE
inspiring design + build

Industry leaders in the design & build of bespoke **steel, timber & tensile** canopies.

www.fordingbridge.co.uk
01243 55 44 55
info@fordingbridge.co.uk

Hedges Direct

Grown with Care, Delivered Direct



Hedges Direct is a leading supplier of hedging, garden plants, topiary, trees and more. Our aim is to work in partnership with you to make your life easier - you do the planting, we'll grow, source, and deliver your plants.

Hedges Direct's brand new Account Management Team can work with you on your future projects. Just one simple phone call to your Account Manager and you can rely on us to do the rest. We'll source any plants that you need, securing the best prices from our growers, ensuring you get the best quality plants and making sure your plants are delivered on time, to any address. And if you want to see the plants before you commit, we can video call you from our nursery. The possibilities are endless!

To work in partnership with us and to find out more information, call the team today on 01257 806101.

BioScapes®

Connecting Nature

NEW

New thinking when it comes to biodiversity

Introducing the BioCube, a unique patented product that has been developed to create species-rich ecosystems and promote gains in biodiversity wherever it is used.



Visit: bioscapes.co.uk

A1 OR A2? IS IT JUST A NUMBERS GAME?

Ecodek's Technical Manager, Michael Roberts, explores if there's a need to chase the A1 fire classification for Polyester Powder.

The A1 obsession

"The need to improve on fire classifications has led some companies to uncompromisingly chase the A1 classification of non-combustible paint finishes on metal work. There is no doubt that the development of material technology to prevent any further incidents of fire spread on buildings is a must, but have we reached the limits of what is possible with a powder coating paint finish?"

Setting standards

"For specifiers and powder coaters of architectural aluminium, the recognised European Standard is BS EN 12206. This standard goes hand-in-hand with Qualicoat, the internationally recognised specification for the production of high-quality coatings on aluminium products for architectural applications. These specifications also determine whether your product can be classified as A1."

Talking thickness

"According to AkzoNobel, a leading coating supplier, if you are applying a polyester powder coating to a non-combustible metal to Qualicoat certified standards, then it cannot be above 25µm(microns) thick if you are claiming it achieves A1. Qualicoat states that to meet its Class 1 - 2 coating specification the minimum coating thickness should be 60µm and to meet Class 3 is a minimum of 50µm - so reaching A1 is unachievable using their certified coating system."



Educating the industry

"Manufacturers are currently obsessed with achieving A1 status, whilst contractors believe only products achieving such standards are fit for purpose. And this is the problem - a lack of understanding about the difference between the A1 and A2 classifications.

"A2 products are not sub-standard and by better understanding the differences between the A1 and A2 ratings, those involved in the construction industries will find they have a greater choice of products, without having to compromise on safety or quality."

RENEWABLE & REWARDING OUTDOOR LIGHTING THAT WORKS FOR YOU & THE ENVIRONMENT



Garden lighting can completely transform a space, adding ornamental beauty to trees, paths, outdoor structures; enhancing decking, pergolas, steps, walls and planters. It also provides light for access and functions.

Lighting innovation is at an all-time high, with improvements in quality, technology, and efficiency. The focus currently is on being as 'green' as possible, leaving a

low carbon footprint by using renewable solar energy (where possible) for zero emissions and minimum light pollution. The aim is to use durable lights constructed of weatherproof materials that last longer, while using less energy. The concept of solar lighting has been revolutionised in the UK with professional designs now available that take these environmental and functional factors on board.



Northamptonshire lighting specialists Lumena, supply 12v garden lighting systems to award-winning gardens and landscapes, and have recently turned their attention to providing solar lights worthy of such acclaim.

The Pro Solar range have guarantees of up to 5 years with expected life of up to 8 years, and work well in the UK's climate. All have impressive outputs, illumination times and charging capacity, with built in charge-saving illumination controls. Bright LEDs, inbuilt solar panels and high-capacity lithium-ion batteries are used for 365 day illumination.

Excitement is building for a new product launching in 2021: the Durasol 12v Solar System. This solar powered charging unit has been specially designed with Lumena's 12v plug & play garden lights in mind. Simply plug the lights into the separate solar panel, for an eco, versatile installation, using easy splitters for multiple light fittings - no power source required! Lights can be placed in shady areas with the Durasol solar panel sited at ground level in a brighter spot nearby. A remote control is also provided which has various time settings. Great for experimentation with highly rewarding results. How's that for green credentials?



See the full range at
www.lumenalights.com



PATHMASTER



OLYMPIA



HI-WAY



ENDURA



ECCENTRICA

01327 871161



Solar Lighting



The green way forward

High-end, high output solar lights with up to a 5 year guarantee, designed to illuminate 365 days a year using the latest technology. Powered by the world's most renewable energy source for zero emissions & high efficiency, the pro solar range is truly revolutionary.



- ✓ Long Lasting
- ✓ Impressively Bright
- ✓ Easy to Install
- ✓ Durable & Strong
- ✓ Environmentally Friendly
- ✓ Work in U.K Weather
- ✓ Free to Run



TECHNICAL ADVICE / FAST DELIVERY / UK SHOWROOM

www.lumenalights.com

sales@lumenalights.com





LANDSCAPE - THE INDUSTRY TRADE SHOW

LANDSCAPE - the UK's premier landscaping exhibition, is pleased to announce the 10th anniversary show will take place on 3rd & 4th November 2021, at the National Exhibition Centre in Birmingham.

Welcoming over 200 exhibitors with a vast collection of industry-leading products and services and innovation for the design, build and management of exterior and interior landscape projects, LANDSCAPE 2021 is the trade event you will not want to miss - and the best part is, it's all FREE!

As the first in-person industry show back, The LANDSCAPE Show is perfect opportunity to reconnect with others in the industry and keep up to date with the latest news and innovations!

LANDSCAPE is proud to say that 86% of visitors are very likely to recommend and use an exhibitor for a future project, and the exhibitor list continues to go from strength-to-strength year-on-year. The extensive exhibitor list ensures that when they

say that there is "something for everyone", they really do mean it! LANDSCAPE continues to offer the most up-to-date and current seminar programme in the industry with Stone, Lighting, Arboriculture, Rooftop Gardens and Climate Change being just some of the many topics covered. Across both days there are 44 CPD accredited seminars taking place. Both the exhibition and all seminar sessions are free to attend. Expect the biggest names in landscaping to feature in the 2021 line up and be sure to keep an eye on LANDSCAPE's social media channels.

LANDSCAPE is thrilled to bring this year's show to the NEC for the first time. The move to a larger venue in Birmingham gives the ability to grow and create a bigger show. This exciting new chapter for LANDSCAPE has put the health and best interests of both exhibitors and visitors front and centre with many still uneasy about venturing into London.



The LANDSCAPE Show will be open from 10am-6pm on Wednesday 3rd November, and 10am-5pm on Thursday 4th November.



LANDSCAPE
THE INDUSTRY TRADE SHOW

To register for your free tickets to attend the show, simply visit the registration page at www.landscapeshow.co.uk/register

See you there!

Further information can be found online:

Website: landscapeshow.co.uk

Email: info@landscapeshow.co.uk

Phone: +44 (0)20 7821 8221

Twitter: [@LandscapeEvent](https://twitter.com/LandscapeEvent)

#LANDSCAPE2021

Instagram: [@Landscape.show](https://www.instagram.com/Landscape.show)

#LANDSCAPE2021



LANDSCAPE

THE INDUSTRY TRADE SHOW

THE NEC, BIRMINGHAM | Wednesday 3rd & Thursday 4th November 2021



+44 (0)20 7821 8221



landscapeshow.co.uk



@LandscapeEvent
#Landscape2021



landscape.show



In an age of Covid-19 and lockdowns where we are spending more time at home than ever before, artificial grass has never been so popular. It's easy to see why. It's low maintenance, long-lasting, and durable. Who wouldn't want to wave goodbye to the lawnmower? And weeds!

And yet, although artificial grass is hassle-free, installing it can be quite the opposite...

Fixing the perimeter of an artificial lawn is one of the most important parts of an artificial lawn installation. Traditional methods are dated, flawed, and improvised. When the lawn perimeter is nailed, screwed, or stapled every 10cm, just 10% of the lawn is fixed, leaving 90% unfixed. Not to mention leaving visible fixing marks on the lawn surface. When the lawn perimeter is glued on to a cement haunch, ghosting lines are visible through the lawn almost immediately or certainly once the compacted aggregate has settled.



"VertEdge, a revolutionary new artificial grass edging system."

VertEdge is a new revolutionary artificial grass edging system. VertEdge addresses these problems providing a neat 100% adhered perimeter, which is safer, neater, and stronger than any other product or method on the market today. VertEdge offers paying customers a system that is purpose designed, easy to understand and value for money.



For many people, the trickiest piece of the jigsaw when laying artificial grass is the edging. In particular, finding a reliable – and long-term – method of securing the grass to the perimeter.

The good news is there's a simple way to put these artificial lawn-laying headaches out to pasture.

VertEdge, the new industry standard.





“Are You Fixing your Artificial Grass Down Safely?”

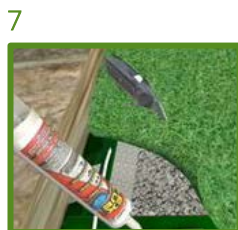
VertEdge is a new revolutionary artificial grass edging system.

Fixing the perimeter of an artificial lawn is one of the most important parts of an artificial lawn installation. Traditional methods are dated, flawed, and improvised. When the lawn perimeter is nailed, screwed or stapled, just 10% of the lawn edge is fixed. This has the potential to lift and become dangerous, leaving 6 inch nails in the ground to secure the lawn is clearly dangerous and should be avoided.

When the lawn perimeter is glued on to VertEdge, using the VertEdge adhesive, a 100% adhered perimeter is achieved. With no need for nails or screws, VertEdge creates a safe, child and pet friendly environment for your garden.

VertEdge offers customers a system that is effective, easy to install and value for money. VertEdge is neater, stronger and safer than any other artificial lawn edging product or method on the market today.

- Fully integrated natural profiled finish
- Can form to any curve or radius
- Perimeter cannot be pulled up by children, pets or wild animals
- VertEdge will help artificial grass to last longer (no perimeter failures)
- Cost effective
- Recyclable
- Safe & secure
- Simple to install and user friendly
- Light weight, easy to store and handle
- Ideal for DIY or professional use
- Works with all artificial grass surfaces
- Supplied in 750mm lengths
- Safe for Children and pets: No nails or pegs hammered through the artificial lawn which can come loose and cause injury.
- Will last the lifespan of the artificial lawn: No Timber battens, which rot under the artificial lawn.
- No receding or pushed up perimeters: The lawn edging finish will always look the same as the day it was installed.



VertEdge can be installed in 7 easy steps. Visit our website for a comprehensive fitting guide.





UPSELLING OUTDOOR LIVING: TIPS TO CREATE A UNIQUE OUTDOOR SPACE YOUR CLIENTS WILL LOVE

Karl Harrison, Trex Pro decking expert and founder of Karl Harrison Design

While homeowners have increasingly invested time and money into their outdoor spaces in recent years, there's now an even stronger interest in outdoor living, as homeowners everywhere adjust to a new normal by reimagining how to use and enjoy their exterior spaces. And, there are no signs that demand for multi-functional outdoor living spaces and garden upgrades will be slowing any time soon. To help your customers make the most of their outdoor spaces and maximise their return on investment, consider recommending a unique deck design that offers a real wow factor and can be enjoyed for years to come.





railing decisions should be made simultaneously - as a purposeful pairing early in the design process. Additionally, as the first thing neighbors and guests are likely to notice about an outdoor space, railings have the power to translate into lucrative referrals.

Define deck spaces

Just like the inside of your home, you can establish separate areas for relaxing, cooking, dining and socialising. Pergolas are perfect for designating an “outdoor room,” helping to maximize the function and flow of your space. Pergolas also create an opportunity to grow climbing plants which will soften the hardscape of the decking and offer some much needed shade in the summer months which your customers will thank you for.

Build a curved deck

Gone are the days of simple squared-off decks. Remodelers and landscapers report increased interest from customers in decks with multiple levels, curves, railings and seating options build into the design. Creating a multi-dimensional interest and defining different functional areas. Consider going for deck railings that double as seats to make the most of the space and entertain more people in comfort at once. Using decking rather than more traditional railings can open up the view beyond the garden and help the deck blend into the surroundings.

Levels

Adding levels to your outside space can really help maximize a small area. Using two different shades helps emphasise the levels for both safety and beauty, while also adding depth and dimension.



The variety of outdoor product offerings available today - along with an ever-increasing pool of competitors - requires that builders be skilled at the art of the sale, as well as the art of design and construction. Simply put, if you’re not upselling your customers, you’re missing out on a critical opportunity to maximize profit, grow your business and better serve the full needs of your clients.

Composite Vs Wood

For the beautiful look of timber without the upkeep and with a longer lifespan, consider Trex composite decking, made from 95% reclaimed materials. Unlike timber, composites resist fading, staining, scratching and mould, and require no sanding, staining (change to

treatment) or painting. Just a quick soap and water cleaning is all that’s needed to keep it looking brand new. Plus, the lack of harmful chemicals needed to produce and maintain Trex decking makes it a safer choice for humans, animals and the environment.

Easy add-ons

Lighting and railing are other easy add-ons for enhancing safety and ambiance to any outdoor setting. Given the myriad of options available, this is an area where clients can truly customize their space and let their personality shine. Share images from previous projects as inspiration and to reinforce the important role these components play in creating an ultimate outdoor living space. Ideally, decking and





DECKSAFE COMPOSITE BOARDS

DeckSafe's top quality WPC (Wood Plastic Composite) decking boards are made from a blend of recycled hardwood and plastic, giving the illusion and warmth of real wood with the longevity and consistency of a man-made product.

Easy to cut, shape and install, artificial wood decking offers a non-slip finish that won't fade, stain, warp or splinter, resists insect and animal damage and won't attract algae, moss, mildew or mould. And, unlike cheap composite decking alternatives, DeckSafe's composite boards won't chip or crack under the weight of furniture or feet. With a warranty that lasts decades - even in commercial environments - composite decking is the perfect choice for any outdoor area.

It's waterproof so is perfect for use around ponds, hot tubs and swimming pools; for dining areas it won't be stained by spills of food or drink. It remains slip-resistant even when wet and is splinter-free. Ready to use and enjoy the moment it's installed, composite decking never needs sanding, painting or staining. Aside from the occasional wash, WPC decking requires no maintenance whatsoever.

DeckSafe has installed decking in restaurants, marinas, private swimming pools and rooftop gardens and has supplied it to venues around the world.

Bespoke colours and specifications can be arranged, and a pre-cutting service is also available. Other

solutions include GRP anti-slip grating and profiles which can provide a solid base for hot tubs and water features. Their recently revamped website allows you to buy materials quickly and easily online but, should you need advice on how best to install them or ask about their installation options, the helpful team are on hand Monday to Friday.

DeckSafe, based in Suffolk, offers a range of WPC decking boards in a choice of colours and finishes to suit any environment. They offer fast delivery nationwide and the boards, trim and fixings are held in stock.

For further information visit
www.decksafe.co.uk
 or call 01206 322 899

RecoDeck™ Woodgrain Composite Decking

for LANDSCAPERS



The long-lasting alternative to timber

- ✓ Long-Lasting
- ✓ Slip-Resistant
- ✓ Zero Maintenance
- ✓ Choice of colours & finishes

DeckSafe
SOLUTIONS

RECODECK™
a Step on Safety brand

www.decksafe.co.uk
01206 322 899



Newark Market Square Installation
August 2007: Porphyry setts
Thoroughly Prewetted



Newark Market Square Installation
August 2007: Fast, Ergonomic, Wet
Slurry Application



Newark Market Square Installation
August 2007: Final Rinse-off & Open to
the Public

BUDGET SAVING WITH PROVEN PAVING JOINT DURABILITY FROM GFTK

Durable performance and cost effectiveness is now clear and evidenced by recent inspections of two major Local Authority projects over 14 years and nearly 12 years old and still going strong! - GftK's vdw 850 Paving Joint Mortar is the ideal solution for paving setts replacement and refurbishment works in public spaces.

One of the first Local Authority adoptions of what was new paving technology for the UK at that time, was to replace a large area of broken-down porphyry sett paving, and to repoint other areas where traditional cement pointing had failed repeatedly in Newark Market Square. This project was carried out 14 years ago now, back in the warm and dry Summer of 2007, which was

the same year it was introduced to the UK by NCC Streetscape.

A couple of years later Hitchen Town Council carried out a test programme of 'just about everything' on the market over winter, and then also selected GftK's vdw 850 as the ideal solution for the repointing of granite setts in the historic Hitchen Market Square, which this time had to be completed in the cold and wet weather leading up to reopening in time for their famous Christmas market in December 2009.

In both busy public spaces, all previous pointing failed within just a year or two in the demanding environments, with multiple heavy duty traffic loadings, spillages of

'allsorts', plus frequent mechanical street cleaning etc. However, with unique advanced technology of GftK's vdw 850, the projects were completed on time and on budget, because work could continue and be completed on time in warm Summer and cold, wet Winter weather, without delay.

Today after 14 years and almost 12 years respectively, these historic market squares are still looking good and will continue to do so for many more years - Put that in your budget saving proposals!



Newark Market Square - Paving Inspection August 2021



Hitchen Market Square Installation October 2009



Hitchen Market Square Paving Inspection




GftK paving jointing - ideal for both NEW and REFURBISHMENT works because you can:

- Work in wet weather and at low temperatures (from +3°C)
- Use fast wet slurry application
- Work standing up
- Reduce staining and cleaning work
- Open quickly for service (fast curing)



Domestic Paving

GftK Paving Joint Mortars for all Types of Natural Stone, Porcelain & Concrete Paving



Using GftK paving jointing achieves:

- Full frost & de-icing salt resistance
- Full jet-washing & mechanical road sweeper resistance
- Resistance to boring insects
- Optimum strength correlation (compressive, tensile & e-modulus)

Commercial Paving

Call: **NCC Streetscape - 01257 266696**

Visit: **www.NCCStreetscape.co.uk**

FREE
Technical Advice
+
Consumption Calculator
+
Next Day Delivery



Paving Joint Mortars & More from

NCC Streetscape

RF PAVING – REFINING FUNCTIONALITY

RF Landscape Products are one of the UK's leading independent suppliers to the landscaping industry. Importing and distributing a range of high-quality hard landscaping products via our trusted supply chain. Under the branding of **RF Paving** our products are distributed nationwide, either by our extensive network of stockists, or directly to the contractor/end user or via our RF Approved Trade Account Scheme.

Our Natural Stone and External Porcelain paving is used in all applications, from the largest commercial sites to the smallest of private projects. **RF Paving** assure the customers' needs are always fulfilled, and the quality of our products and customer service is always at the forefront of our company ethos.

As well as holding a vast stock of Sandstones, Limestones, Granites, Slate and External & Internal Porcelain within the UK, we have a full range of accessories to accompany the paving ranges including: Circles, Stone & Porcelain Cobbles/Setts, Stone & Porcelain Steps, Kerbstones, Steppingstones, Wall Copings and Sleepers and Ancillary Products.



To view our ranges, we have an extensive product display at our Northern Sales Centre in Yorkshire. Our network of stockists often showcase our products too. Contractors and retail customers get free brochures and sample boxes to either take home or show their clients and we supply full sized samples for any customers who may not be able to view the products in person.

Also, **RF Paving** showcase our products/contractors work via our various social media channels giving our Approved Contractors maximum exposure.

www.rflandscapeproducts.co.uk



Transform your HOME & GARDEN



Importers & Exporters of Natural Indian Stone Paving, Granite, Italian Porcelain and many more Landscaping Accessories.



We have a large internal Italian Porcelain Tile Showroom displaying the most current, stunning pieces which are also available to view on our website.



OPEN TO THE PUBLIC & TRADE

RF Landscape Products, A19 Doncaster Road, Whitley, Goole, DN14 0JW

T: 01977 782240 | E: sales@rflandscapeproducts.co.uk | www.rflandscapeproducts.co.uk



St Patricks College, Banbridge
 Allan Block Retaining Wall System
 Colour: Pewter Blend

Retaining walls... The innovative way



Retaining
 Wall Systems

colinwell.com

37 Colinglen Road Tel 028 9061 8145
 Dunmurry Rol 048 9061 8145
 Belfast Email info@colinwell.com
 BT17 0LP



Colinwell 
 Masonry & Retaining Wall Products



ULTRASCAPE – TRIED, TESTED AND WILL NOT LET YOU DOWN

UltraScape have been successfully providing the industry with high quality paving installation materials for over 20 years. Their specialist materials are proven to work alongside all stone manufacturers with excellent results every single time.

Building the right foundation for your paving is critical to success. UltraScape's bedding mortars will provide the ultimate laying course for all types of paving. UltraScape perma-bed is a permeable bedding mortar specifically designed with permeability in mind. Formulated to drain away any water migrating into the pavement via cracks or damaged areas, perma-bed reduces water related pavement failures as rainwater will drain away rather than sit on top of the stone.

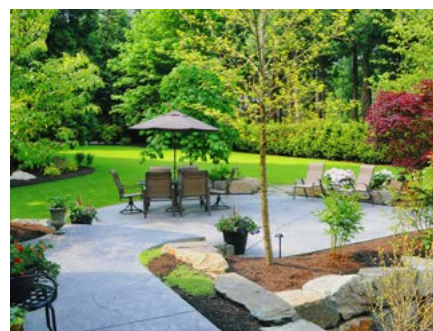
Priming is an important part of any paving installation but is something that is often overlooked. Neglecting to include a primer such as UltraScape pro-prime slurry primer, can have disastrous consequences for your project and as a result, the reputation of your business.

Suitable for use with all paving types including stone and porcelain pavers, UltraScape pro-prime is simple to use and is proven to increase adhesion, preventing failure and prolonging the life of your project.

Selecting the correct bedding mortar and primer to install your chosen paving is paramount for success but the finishing is also crucial. When making such an integral design decision, it is vital that you don't compromise the aesthetics with poor jointing.

Available in four varieties - Original, ECO, Smooth and Fine, and two colours - Natural Grey and Charcoal - UltraScape flowpoint rapid set flowable grout, provides a decorative, natural-effect finish every single time.

UltraScape flowpoint is easy to mix and apply, and once grouted, can be walked over in just 1 hour, minimising disruption and allowing you to move on to another part of the project quickly.



UltraScape have always prided themselves on providing the industry with quality paving materials. Each of the products that make up UltraScape's BS 7533 Mortar Paving System has been put through rigorous independent testing by an UKAS accredited laboratory to assess their performance capabilities and to ensure they give the best performance possible in real time situations.

To find out more, or for assistance in selecting the perfect products for your next installation, please contact UltraScape by emailing ultrascape@instarmac.co.uk or calling +44 (0) 1827 254402.

ULTRA SCAPE®



The Mortar Paving System of Choice

Paving with confidence for over 25 years

UltraScape's specialist BS 7533 compliant system has been specified by contractors, architects and engineers for over two decades, and features in many award-winning schemes worldwide.



Environmentally friendly



Permeable option



40-year construction life



Fast return to service



High performance



After

OUT DAMN SPOT!

Warmer and longer Spring and Summers periods have seen the British public embrace the great outdoors , generating the Alfresco Dining revolution of the past 12- 15 years, .

Households have invested small fortunes on natural stone Patios and terraces, as the centre piece of their garden; four - course , candle - lite dinners, complimented by fine wines and stilletoes , have replaced the invitation for a "beer, a burger and a bun," on a dirty patio , of the last century!

For the first two years, the area maintains it pristine appearance. At the beginning of the third year, tiny, vivid, black spots begin to appear, on certain slabs, almost by stealth.

After five years, the entire area has become infested, and the Patio has become something of an eyesore!

Pressure washing removes the dirt, but merely accentuates their appearance!



Before

Excess pressure washing vibrates the surface, causing delamination, and breaks down the surface of the stone, Your valuable investment has lost its beauty and value!

THE CAUSE

Patio Black Spots® are spores of black lichen, the size of pollen, that emanate from the trees. Carried on the breeze, when it rains, they are watered into the pores in your garden stonework; feeding off the various minerals in the stone, by the beginning of the 3rd Year, the spores have germinated, anchoring themselves into the surface , which is why pressure washing alone, has little effect.

Most "patio cleaners" contain pesticides, or, worse, acid, which will dissolve limestone and stain sandstone orange, not to mention, having a devastating effect on surrounding plants.

THE SOLUTION - THE PATIO BLACK SPOT REMOVAL SYSTEM®

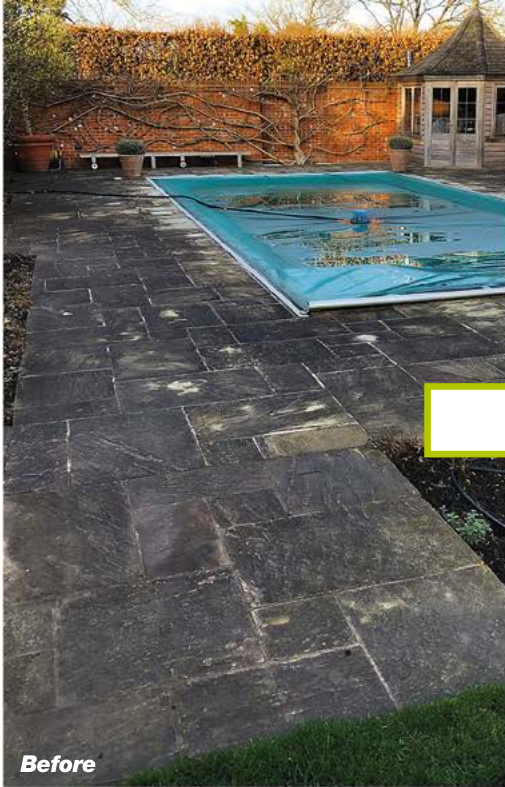
THE PATIO BLACK SPOT REMOVAL SYSTEM, consists of three different Removers' for use on for Natural Stone, Artificial Stone or Brick and Block pavers. Applying Patio Black Spot Preventer® , at a quarter of the cost, ensures, you never have to repeat the Removal process again!

Acid free and biodegradable, it's unique, Award Winning formulation will gently penetrate and breakdown the organic growth, completely restoring the original colour to any type and age of garden stonework, in a matter of hours, at a fraction of the cost of relaying! Simply wash away the effluent, and admire!

www.patioblackspotremoval.com



Completely Restores Natural Colour to Patios, Paths and Ornamental Stone.



The UK's Best Selling Stone Restorer

It takes ten years for your Patio to look like picture 1. but less than a day to transform it to picture 2. And at a fraction of the cost of renewing! **Patio Black Spot Remover** instantly gets to work, gently lifting the many layers of organic growth, completely restoring the original colour and value to **all** your garden stone.

RHS CHELSEA
GARDEN PRODUCT
OF THE YEAR 2020
FINALIST

More Restoration, Less Perspiration!

glee
Awards 2019
WINNER
BEST NEW PRODUCT
Garden Landscaping



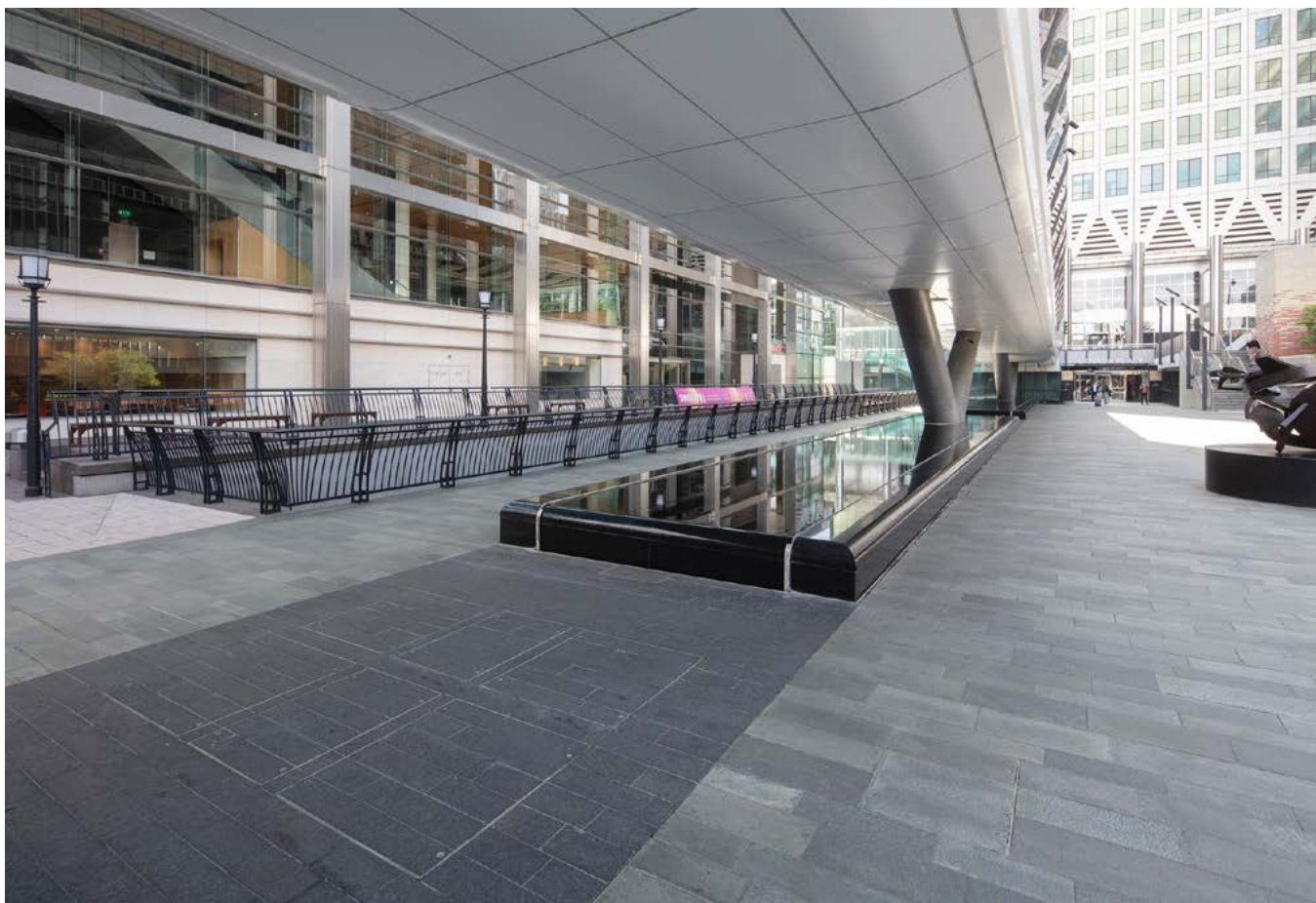
Please note: StoneKing® is only available from Garden Centres.

Excellent
★★★★★ Trustpilot



f @ www.patioblackspotremoval.com Order today online or call: **01252 751639**





THE LIE OF THE LAND: KEY ACCESS CONSIDERATIONS FOR LANDSCAPING PROJECTS

One of the most essential parts of an urban experience is the visual appeal the environment creates for its visitors. Whilst aesthetics will be one of the main considerations, urban designers and specifiers must also address the functionality and durability of the public space to ensure its long-term usability.

Chris George, Business Development Manager at Howe Green, discusses the key considerations that should be made when specifying floor access solutions for landscaping developments to provide a safe and efficient installation, without compromising on the overall visual effect.

Urban designers and specifiers have a responsibility to prioritise public safety when designing external public areas, particularly high

trafficked spaces such as parks, walkways and outdoor shopping centres.

A factor that must be carefully considered for these types of commercial spaces is the floor, as it must offer the highest standards of longevity and durability, whilst also providing instant access to essential underfloor services for necessary maintenance and emergency repairs.

However, whilst the functionality of these dedicated access areas is critical, it is also just as important to ensure the access solutions do not impact the overall design scheme or usability of the landscaped area.

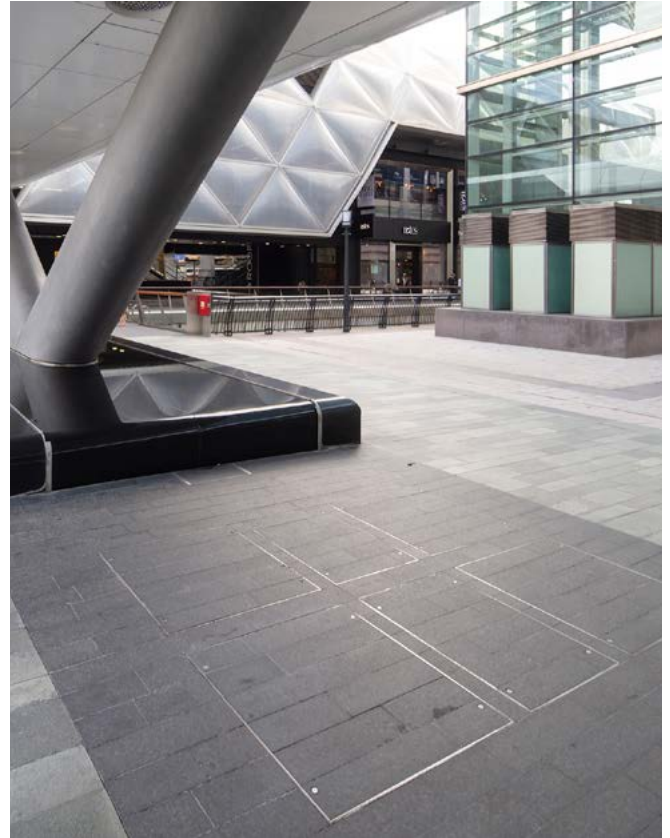
Design stage considerations

By working closely with a manufacturer from the initial design

stages, urban design professionals can successfully implement floor access solutions into hard landscaped areas to provide ease of access for regular maintenance, whilst keeping any potential disruption to a minimum.

The hard flooring should seamlessly integrate with the floor access covers to provide the highest quality finish, without impacting the location or functionality of the services beneath.

Here specifiers should look for discreet floor access covers that allow safe and simple access to concealed underfloor services, whilst simultaneously providing a flush and unobtrusive design that achieves a smooth finish and flat walkway to eliminate any potential trip hazards. The sleek aesthetic is



also enhanced by the access cover frame being manufactured to suit the tile module, and the edge profiles reflecting the dimension of the joint between the tiles to create a unified and cohesive finish.

The configuration of the access covers will be dependent on the size and requirements for access, with professionals able to choose from a range of configurations, including single covers, duct runs and multi-part options.

Many urban areas are also now adopting the introduction of trees in order to reap the many benefits they bring, such as improved mental and physical wellbeing for residents and a positive impact on the environment.

But how can specifiers ensure they're planted in a safe and secure way? External tree pits and tree grilles are particularly popular, as they effectively provide easy access to tree root balls, whilst also providing discreet access to electrics, valves, pumps, and water features.

Performance and functionality

Not only do the visual aspects of urban landscaping projects play

a major role in the specification process, but the choice of materials used can seriously affect the performance and longevity of the space.

When specifying floor access covers, specifiers should consider solutions manufactured of stainless or galvanised steel, as they provide long term resistance to rust and corrosion for the highest standards of performance and can accommodate a wide variety of hard floor finishes in greater depths.

When embarking on a new design project, safety and compliance is also at the forefront of every specifier's mind. Achieving quick and straightforward access to key areas is extremely important to consider at the specification stage, as once the project is complete, the main tasks that are undertaken within these areas are usually for routine maintenance checks and emergency access.

Access covers that are constructed with lifting points in the corners as standard, in addition to offering inset or barrel lifting point options, provide contractors with safe and secure methods of lifting the access

cover, ensuring minimal disruption to visitors, without impacting the overall security of the access cover.

Choosing products that not only look the part, but perform to the highest standard, is key to a successful and durable installation. Howe Green's team of in-house design and engineering experts offer a broad range of custom and standard tree pits and floor access covers to meet the most demanding project requirements.

This includes its 1050 Series, which is available in single, duct or multipart configurations for use in exterior areas up to 6.5 tonne pneumatic tyre wheel load. Manufactured in the UK and third party CERTIFIRE fire rated to BS 476 Part 22, these floor access covers are suitable for use with thicker and hard-wearing floor finishes to enable permanent, safe access to services concealed underneath.

For further information on Howe Green's floor access solutions, visit www.howegreen.com or call 01920 463230.



TACKLING CLIMATE CHANGE WITH THE PLATIPUS G-WALL®

With the UK hosting the 26th UN Climate Change Conference (COP26) in Glasgow on 31st October - 12th November there has never been a more important time to help tackle climate change by creating your own amazing urban green spaces.

Every indoor or outdoor garden, no matter how small, has some vertical space, be it a wall or other suitable structure, that is perfect for populating with plants. The Platipus G-WALL® Modular Living Wall is an easy to install system that will allow you to transform bare boundaries or spaces into colourful living walls and enjoy the many health, environmental and economic benefits it can bring.

Improved air quality

Urban green spaces are known to increase the oxygen levels in both interior and exterior environments. Studies have shown that they can also reduce nitrogen dioxide and particulate matter by between 40-60%. During the process of

photosynthesis, plants will absorb carbon dioxide, the primary greenhouse gas causing global warming and store it as carbon in the biomass of the plant.

Reduction of energy costs

Urban green spaces absorb energy through evapotranspiration, keeping areas cool. This will reduce air conditioning by up to 30% and heating by up to 12%. Buildings with living walls can be up to 20% cooler than their counterparts. A reduction in energy costs, will mean less production of the greenhouse gases generally associated with traditional energy creation.

Nature based solution

To truly make a difference, any nature based solution tackling climate change needs to be quick and simple to install. G-WALL® is made from lightweight recyclable materials, is stackable and extremely compact to transport. The system requires no batons, hanging grids or membranes for installation



and its unique integrated jigsaw design allows for easy vertical or horizontal expansion to suit any available space. G-WALL® also has a 25-year design life which means your contribution to reduce climate change can remain effective and vibrant for decades.

G-WALL® is available at the Platipus Direct website or through a growing network of resellers, including their newest distributor, Landscapeplus. You can also see G-WALL® at this year's Chelsea Flower Show on stand 512.

For more information:
Freephone: 0808 169 5060
info@platipusdirect.co.uk
www.platipusdirect.co.uk

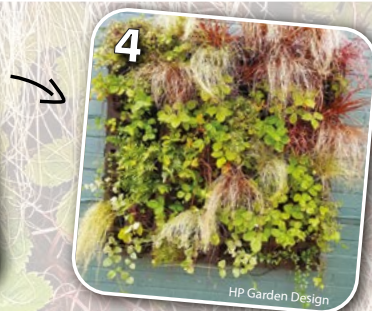
G-WALL

MODULAR LIVING WALL SYSTEM



TRANSFORM YOUR INDOOR & OUTDOOR WALLS OR STRUCTURES

- Quick to assemble & install using basic tools
- Pocket 'drip through' slots supply water to all plants & prevent overwatering
- Irrigation ready with clips for standard 13-16mm pipe
- Design of sealed cells protects walls / structures from damp & improves airflow
- Available in 0.25m², 0.5m² & 1m² sizes starting from £55 excl. VAT



HP Garden Design

Visit us at
RHS
CHELSEA
FLOWER SHOW
Stand
512

"CALL NOW TO BECOME A G-WALL DISTRIBUTOR / RESELLER"

PLATIPUS
DIRECT

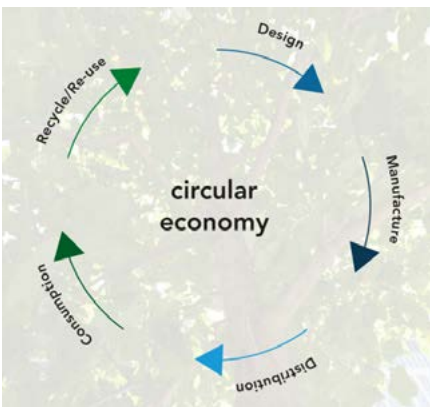
www.platipusdirect.co.uk

FREEPHONE 0808 169 5060





THE GREENBLUE CIRCULAR ECONOMY



The concept of a circular economy is not new - in fact, the linear economy characterised by taking, make and dispose of has only existed since the industrial revolution in any particularly meaningful way. In previous eras, very little was thrown away, as nearly everything had an

alternative use at the end of its life, even if only for compost. Building materials are a case in point; many old buildings are constructed from stone from demolished buildings, and some old timbered properties are held up by old ships timbers.

So why don't we still do this everywhere? The real truth is that it's far more convenient and sometimes cheaper to manufacture products from virgin material, and nearly always the quality is more consistent. Many older people, who remember rationing during and after the Second World War, are appalled by the amount of waste created by the current generation, being brought up to mend, remake and make do. So is it possible to reverse this trend?

GreenBlue Urban has always been committed to the circular economy principle - and it is far wider than just product manufacture. A circular economy is actually a wide economic system that works to challenge global issues such as waste and pollution, but also climate change, biodiversity loss and pollution - both air and water. In setting such massive goals, the circular economy needs a huge shift in thinking, by all of us.

In addition to the issues that the circular economy seeks to tackle, as above, it is designed to actually benefit not only the environment but to bring prosperity to business and to society. It is regenerative by design, meaning that natural resources do not become so quickly



depleted, and therefore new industries came to arise, bringing healthy economic growth.

Planting trees is a perfect example of a circular economy, as the tree provides multiple benefits during its life, and can be used to manufacture products when it is cut down. Removal of a plantation tree results in space left for new tree planting, bringing employment to often rural areas. But what about urban trees?

Urban trees also form part of a circular economy - but to maximise the benefits, these need to be properly planted, and grow to maturity. This is the raison d'être of GreenBlue Urban - assisting trees in their struggle to survive in a hostile environment. Whether it is providing soil support by using RootSpace soil cells, guiding tree roots with products from the ReRoot root management range, bringing air and water to the rooting zone with RootRain irrigation and aeration solutions or physically protecting the tree from above ground damage with tree grilles and guards.

The GreenBlue Urban innovative solutions enable trees to grow to their species potential longevity. All the below-ground products are manufactured from 100% recycled materials and are recyclable up to 5 times once they have finished their life. This is central to the GreenBlue Urban philosophy, as our vision is to bring environmental benefits to communities around the world, and the least possible carbon footprint.

In 2018, a number of organisations including the Ellen MacArthur Foundation launched the Platform for Accelerating the Circular Economy (PACE). This program seeks to scale up current initiatives to build a global circular economy by developing financial models allowing better public/private partnerships to get more involved and to encourage better policy frameworks to tackle barriers and challenges to the closed-loop cycle - minimising waste and pollution. Many companies globally have joined the coalition, and the results are encouraging.

The UK has been supportive of these initiatives, and a British Standard (BS 8001:2017 -Framework for implementing the principles of the circular economy in organisations) has been launched to align the vision of the Circular Economy with established business routines at the organisational level. Setting out the principles, and outlining management frameworks for implementation. It is considered to help write strategies that make way for a more sustainable global economy, although details of monitoring and governance are still being worked out.

The New London Plan, which came into law in March 2021, is insisting that on all developments of more than 150 residential units, buildings over 30m in height or commercial premises over 2500m², a Circular Economy Statement must be submitted, along with a Whole Life Carbon Assessment as part of the planning process. This aims to reduce waste and pollution, and in time, will help achieve the net-zero carbon commitments.





It is suggested that circular economy strategies could deliver emissions reductions that could limit the expected temperature rise by half - an incredible benefit.

The circular economy has been described as not just a change in the way we operate, but a new way of thinking. GreenBlue Urban are proud of our story, and how we have achieved so much in canopy cover improvement in our urban areas around the world. With hundreds of thousands of trees supported by GreenBlue Urban solutions, we look forward to hearing of your projects where your trees will continue to thrive to bring us the needed benefits to our climate, air and water, biodiversity and quality of life for all.



REQUEST AN
ONLINE CPD



Enabling award winning projects.

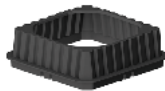
GreenBlue Urban is the world's leading tree pit specialist. Creating greener, healthier cities for all those that live, work and play in the urban environment.



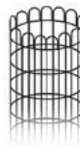
Tree Irrigation



Underground
Guying



Root
Management



Tree
Protection



Stormwater
Management



Soil Cells

Visit greenblue.com today to discover more on our **green** and **blue** infrastructure solutions.



w: greenblue.com
t: 0800 018 7797
e: hello@greenblue.com

GreenBlue
URBAN 
Establishing the future urban landscape



THE RISE OF VERTICAL GREENING

HOW LIVING WALLS CAN TRANSFORM OUR URBAN SPACES

Kirstin Monk at Growing Revolution Ltd looks at the benefits of integrating living walls into commercial and residential landscaping schemes.

The opportunity

My most profound memory of lockdown last year isn't of the restrictions and worries during that unsettling time. It is of the temporary redress of power we witnessed from man to nature, when we cleared the roads, stopped pumping such large quantities of CO2 emissions into the air and simply stayed indoors.

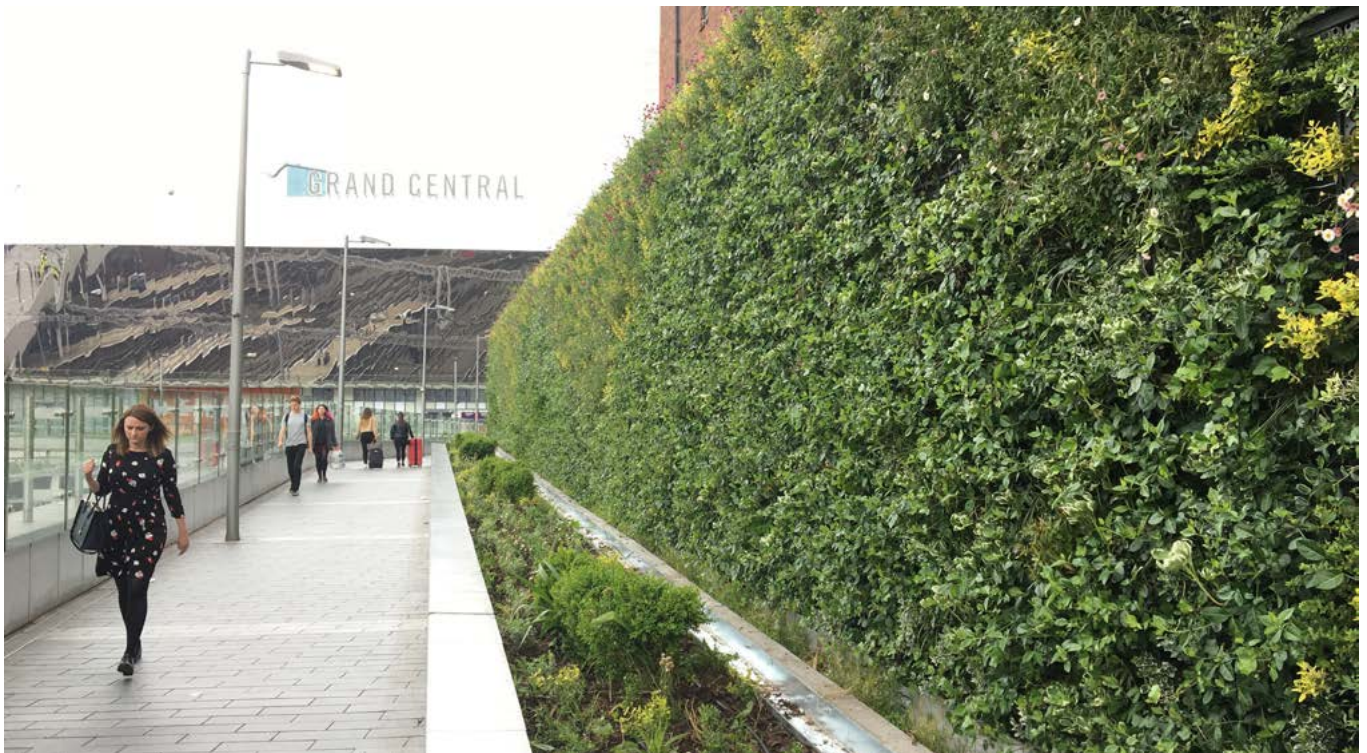
Almost overnight, nature's presence intensified. As we decreased our footprint, nature's drumbeat got louder, and it slowly reclaimed its place. We heard bird song. We saw jellyfish in Venice and goats in the deserted streets of Llandudno! We observed our rivers and coastline change colour and we smelled the freshness in the air. For the first time ever, as a global collective, we witnessed the direct correlation between our own lifestyle and our impact on the planet.

The reality of the climate change emergency was also amplified as our

relationship with the natural world was laid bare before us. We gained a greater awareness and appreciation of our symbiotic relationship with nature and its impact on our own wellbeing. And of course, we saw a huge surge of interest in gardening as a result.

It's clear that nature should not be reserved for weekends and holidays. Its integration into our daily lives is fundamental. The landscaping industry and green infrastructure sector have an opportunity to harness this momentum and add real value in response to these questions:

- How can we encourage staff back to the office or improve their home office experience?
- How can we create engaging, restorative spaces where we actually want to be?
- How can we green our towns and cities and enhance the public realm, even in the smallest of spaces?
- How can we help increase biodiversity and encourage pollinators into our urban areas?
- And how can we regenerate our towns and stimulate the local economy in a sustainable way?



Benefits of vertical greening

With space at a premium, we need to think both laterally and vertically! From planting trees, to adding green roofs and designing living walls, there is no limit to where nature can be integrated.

Put simply, if there is a wall, you can add plants. Vertical greening can be fitted to existing buildings as well as incorporated as rainscreen cladding on new builds. It's highly versatile and can help create an instant transformation without losing any floor space.

Living walls don't just enhance a space aesthetically, they offer myriad benefits for people, the economy and the planet.

Interior living walls help clean the air by removing toxins and reducing CO2 levels. They absorb, diffract and reflect sound leading to better acoustics, especially in spaces with hard surfaces. Living walls provide concentrated planting at eye level which has a proven calming effect, helping to reduce blood pressure and heart rate. They are also restorative and enable us to replenish our mental resources

through effortless attention, with a proven impact on productivity. The result? In offices, this could be a happier, healthier and more creative workforce. In retail premises, this could be increased footfall and staff retention.

Exterior living walls can remove air pollutants, reduce urban temperatures, improve biodiversity, attenuate rainwater and improve the aesthetics of a public space or building, as well as help satisfy planning requirements in some cases. This can result in the meeting of CSR targets, longer dwell time in

retail areas and increasing property value among many others. When installed at residential properties, living walls can completely transform patios, courtyards, railings, decking areas and large expanses of bare wall or fencing.

The solution

At Growing Revolution, we wanted to make living walls more accessible to both landscapers and the general public. We designed a modular, freestanding living wall system called PlantBox that is ideal for smaller commercial and residential landscaping projects. It has all the benefits of a larger commercial living wall but is available at a fraction of the cost, it's easy to install and simple to maintain.

PlantBox can be fixed to traditional hoardings or Portakabins at construction sites, it can enhance bare walls and hide unsightly features, it can transform balconies, create relaxing seating areas and so much more. It only requires restraint fixings and can be configured to fit any space as the troughs are modular and can be clipped and stacked both vertically and horizontally.

Unlike other living wall solutions, each PlantBox trough has a 1.8 litre water reservoir and plants take up water as they need it via wicking felt. By watering from the top, the cascading watering system also ensures you don't overwater, and the water level indicator tells you when to fill up - it's cleverly simple!

Maintenance is very straightforward too. You can either water by hand or for larger walls we've created a one-point fix irrigation system that just requires a hose connection.



Made in the UK from 100% recycled materials, PlantBox was shortlisted for the RHS Chelsea Sustainable Garden Product of the Year 2021 award. It is quick to deliver (usually 3-5 working days) and we offer full product training either virtually or from our nursery in West Sussex.

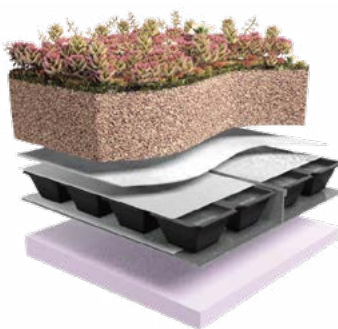
For information on how to integrate PlantBox into your landscaping project visit www.growingrevolution.com/trade or call our friendly team on 01243 957 109.

CREATIVE GEOSYNTHETIC ENGINEERING FOR IMPROVED SUDS DESIGN

Warmer temperatures lead to more regular and intense storm periods and more frequent localised flooding as a result. In order to reduce the flood risk, new and retrofit developments need to better mimic natural catchment responses and reduce peak surface water flows. Sustainable Drainage Systems (SuDS) such as blue and green roofs, attenuation ponds, permeable paving, as well as incorporating trees and planters as part of the design, all help landscape planners and drainage engineers to achieve this aim.

Integral to the implementation of good SuDS design are a range of geosynthetics, for example the ABG Roofdrain drainage geocomposite installed as part of a green roof system to filter rainwater at source, whilst also functioning as an attenuation reservoir for plants during spells of dry weather.

Similarly, blue roof designs incorporate geotextile filtration and geocomposite drainage layers within the system build-up (along with attenuation void formers and restrictor chambers) to slow down the discharge rate of rainwater, typically calculated to attenuate a 1 in 100 year storm events plus an allowance for climatic change.



ABG Roofdrain geocomposite drainage and reservoir layer within extensive green roof build-up



ABG Truckcell porous paving installed at the Reculver Country Park visitor centre

Permeable paving products such as ABG Truckcell and ABG Sudspave provide a system of interlocking cellular plastic porous pavers that deliver a stable, free-draining surface for gravel or grass car park, access road or driveway areas. Geocellular containment panels such as ABG Abweb TRP are also available to protect newly planted trees and existing root structures against damage during the construction of paths, roads and parking areas.

Geocellular green retaining wall systems, such as ABG Webwall, offer a much lower carbon footprint when compared to constructing a concrete or stone wall, and the vegetated finish further helps to reduce surface water run-off. Webwall can also be utilised in combination with erosion control panels such as ABG Erosaweb to contain soil and enable grass to establish on the slopes of attenuation basins and swales.

For specific product information and design advice please visit www.abg-geosynthetics.com.

Sustainable Drainage Systems

ABG specialises in the design & manufacture of innovative geosynthetic solutions that help to manage rainwater at source, improve water quality & enhance biodiversity.

Visit abg-geosynthetics.com to find out more.



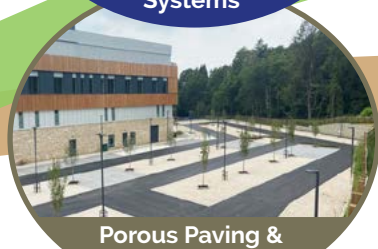
Blue Roof Systems



Green Roof Systems



Swales, Ponds & Basins



Porous Paving & Drainage



Green Retaining Walls



Tree Root Protection

ABG Geosynthetics Ltd

E7 Meltham Mills Rd, Meltham, West Yorkshire, HD9 4DS

t 01484 852250 | e info@abgltd.com | w abgltd.com





HOWE GREEN LAUNCHES NEW GALVANISED OFFERING

One of the UK's leading manufacturers of floor access solutions, Howe Green, has expanded its portfolio of access solutions with the launch of its new Galvanised Steel Floor Access Covers, which deliver first class performance and attractive affordability.

Galvanised to BS EN ISO 1461, the range includes three configurations of floor access covers, which support fast and safe installation manufactured in single, Duct Run or Multipart configurations with bespoke shapes available on request to meet each project's unique requirements.

Each model within the new range is FACTA A - D rated, withstanding forces of up to 108kN or 11 tonnes, such as those found at heavy duty plant areas and service roads making the range suitable for internal and external applications. Higher FACTA ratings can be also be manufactured on request through

additional reinforcement in the support structure.

Each product range has a maximum clear opening of 900 x 900 mm, a minimum clear opening of 300 x 300 mm and an outer frame maximum of 1100 x 1000 mm. The 7500 galvanised Series offers a maximum stone depth of 55mm, whilst the 1050 galvanised Series features a stone depth of up to 85mm.

Howe Green's team of engineering experts can also design and manufacture deeper recesses and bespoke shapes upon request, to meet the most demanding site requirements. As an official Made In Britain manufacturer, every Howe Green product is designed and manufactured at its UK site in Hertfordshire.

The Galvanised 1050 Series and 7500 Series' crown vapour seal protects against dirt ingress and the EDPM construction acts as a barrier

to reduce the flow of water within the unit.

Lifting points are available either at the corners or inset and are available with UKPN lifting keyholes, certification pending.

Chris George, Business Development Manager for Howe Green, said: "At Howe Green, we continually invest in our products and manufacturing capabilities to ensure we offer every client the most suitable access solution for every installation. This new range represents our continuous investment in product development to further our commitment to ensure we provide specifiers and contractors with the widest choice of safe, secure and resilient access solutions."

**For further information on
Howe Green's complete range of
floor access solutions,
visit www.howegreen.com
or call 01920 463230.**



Galvanised steel floor access covers for exterior hard landscaping projects

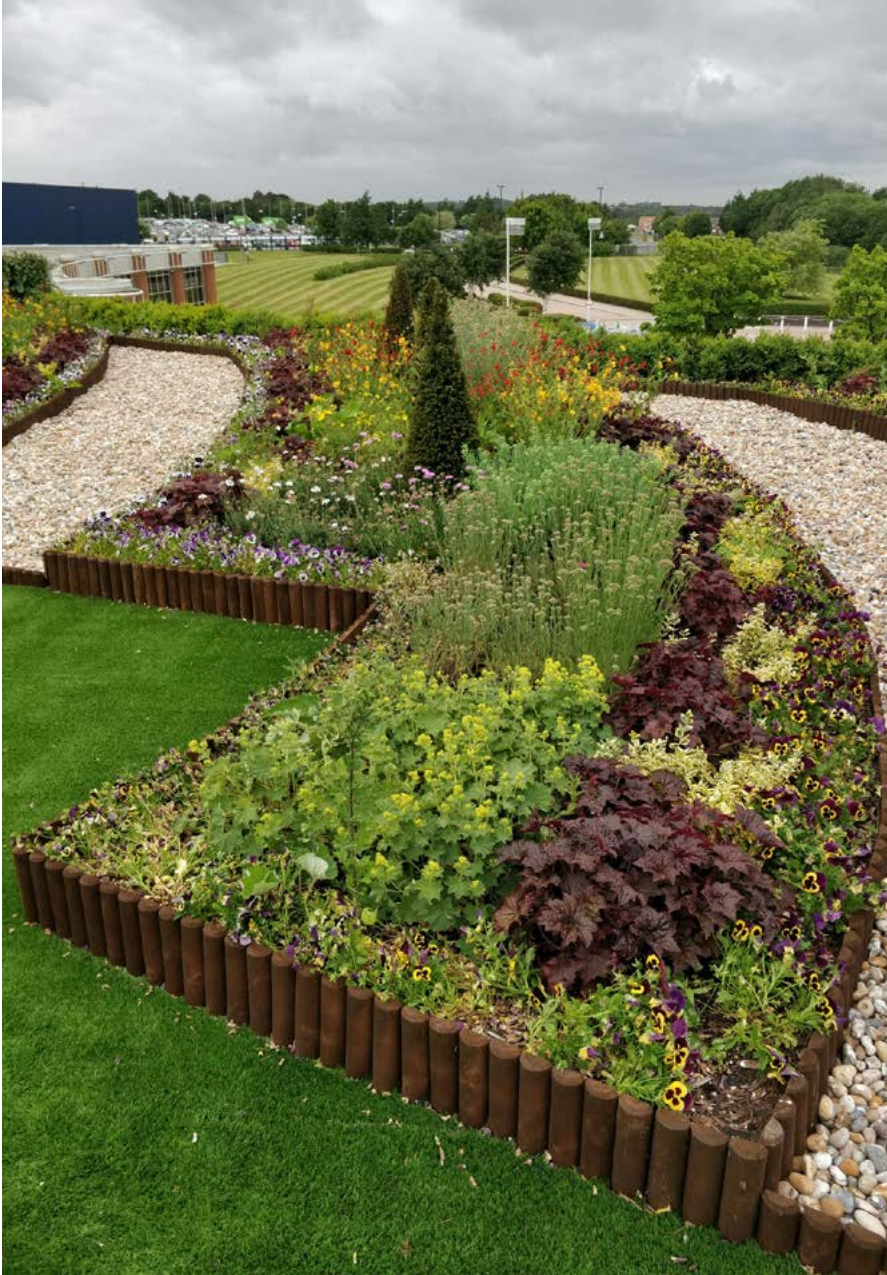


Our solid floor access covers are suitable for all types of exterior hard landscaping projects where permanent, safe access to under floor services is required.

FACTA rated and manufactured in the UK to bespoke shapes and sizes, these floor access covers deliver first class performance with attractive affordability.

Given the choice, why would you specify anything less?

SKY GARDEN - BRINGING LANDSCAPING PRODUCTS BACK DOWN TO EARTH



SUSTAINABILITY

At Sky Garden we are proud of the sustainable journey our products take. The majority of our growing mediums are made from 100% recycled materials from assured sources. All of the irrigation for our farm is sustainably drawn from the local river to minimise the use of mains supplied water and providing the plants that we grow with a chemical free source of irrigation. Our UK farm sits in a conservation area for which we actively engage in stewardship to maintain and improve biodiversity, which is one of our core values. Our UK production and growing presence allows us to minimise delivery miles and therefore support our goal of net-zero carbon footprint.

CAPABILITY

Sky Garden understands the challenges of Urban Greening. Since incorporation we have worked as a Landscaping Contractor in some of the most difficult urban locations. To meet these challenges we took the decision to in-house our production to give us the flexibility to produce our own materials. We work with and produce industry accredited products including PAS 100, BS:3882 and BS:8616. We bring our contracting knowledge to our product only clients and ensure we can service their project requirements to the highest level.

Sky Garden have been part of the Urban Greening Revolution since 2007, with roots in the industry going back to 1986. With over 3 decades of landscaping experience Sky Garden are proud to be a leading independent in all things Urban Greening.

Sky Garden are a BALI and RIBA award winning partner for your projects with a drive to deliver

sustainable and cutting edge solutions whilst providing an unrivalled selection of products that can be manufactured to your needs.

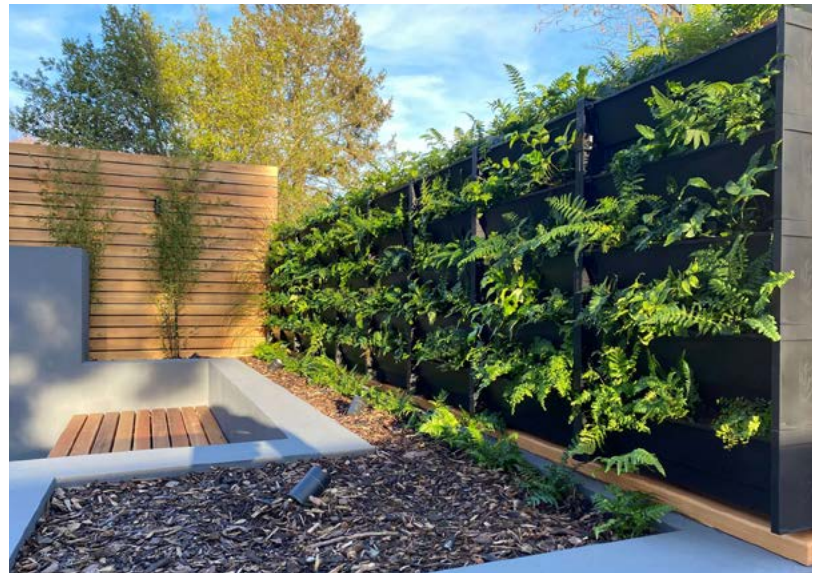
With over 10 years experience in the construction industry offering full project solutions—we have supplied over 30,000 cubic meters of growing mediums to landscapers in the past 5 years and supply hundreds of projects a year.

Visit www.sky-garden.co.uk for case studies and more information, call us on 01242 620905 or email enquiries@sky-garden.co.uk for all your urban landscaping needs.

PlantBox

The cleverly simple vertical garden

Made in the UK from 100% recycled materials, PlantBox is a modular living wall system featuring a 1.8 litre water reservoir. Quick to assemble and easy to maintain with straightforward irrigation options.



Integrated
water
reservoir



Overflow
watering
system



Tells you
when to
top up

Our partner benefits include:

- Competitive trade rates
- 24/7 online ordering
- Product training
- Fast delivery
- Drop shipping
- Dedicated customer support
- Marketing collateral

Request a free trade sample

Tel: 01243 957109 Email: plantbox@growingrevolution.com

www.growingrevolution.com/trade



SUSTAIN AND MAINTAIN

We would all agree that our awareness of sustainability for the future is advancing and as the demand for a greener future arises and awareness grows within industry; design companies and architects are beginning to consider their products from an impactful stance.

If you are not a sustainable business going forward, will you have a business to sustain in the future? It is important to continue forward with the momentum that is driving many new processes in street furniture design. Both sustainable products, green material principles and circular recycling economy are key to a successful future on planet earth.

Both landscape architects and street furniture designers must now consider the overall ecological impact of each and every project. Including materials and products used.



Green innovations and creativity are the driving force for future projects. Both aesthetics and materials are key, reused materials, recycled and upcycled materials, plastics, and bio-based composites, FSC certified wood and metal materials are all to be considered.

The circular economy aims to design out waste in order to increase the well being of both humanity and the environment. Many designers across all fields are moving from the traditional TAKE-MAKE-DISPOSE model to one that has a closed loop, where materials, nutrients and data are continuously repurposed.



New tools such as artificial intelligence, the internet, and biomimicry mean our design ambitions and constructions are now only limited by our imagination. Creativity has never been more important and a new mindset for business is emerging.

The traditional line of thinking in product design is no longer relevant or defensible. The new circular economy concept goes further, expecting more of a company, where everything now will be engineered to be constantly reused or recycled.

It requires a total rethinking of architecture, design, manufacturing, selling, reusing, recycling and consumerism to keep all resources in use and out of the ground for as long as possible. Extracting maximum value from each material and end product.

As the EU has now set challenging waste targets our industry has to take note. The proposals ban sending plastics, wood, textiles and food to landfill and therefore the circular economy may be the answer to both our resource and employment challenges.

With global changes now in demand and over ninety percent of the World's resources only having a single use, the waste produced represents an enormous pool of resources that are there to be exploited. It is vital now more than ever that these resources remain in a perpetual loop to be used and cleverly reused.

The UK alone uses 5 million tonnes of plastics but only 7% of that waste is recycled. Plastics have many useful attributes and it is possible that disused plastics could be turned into reliable and sustainable materials. Plastics are strong, lightweight, waterproof and durable and in conjunction with these essential properties are also easy to mould and recycle.

Bailey Street Furniture Group in conjunction with their Danish partners Out-sider have been working to find a solution for a sustainable and environmentally friendly range of street furniture. A new fully recycled and mouldable material has been created after extensive research and development;



This material can be adopted for a whole range of street furniture from seating to planters and picnic sets. Previously only available from virgin plastic The Loop Recycle Range is manufactured from 85% internal waste and production surplus, and 15% polyethylene carrier bags - the combination of materials produces a unique and natural speckled anthracite finish and can also be recycled again at the end of its life.

This innovative material option finish is also Nordic Swan Ecolabelled, which promotes circular economy and fulfils the UN's sustainable development goal no. 12 - Responsible consumption and production.

Changes to the urban environment and the planet as a whole present continuous challenges within the modern world. Bailey Street Furniture Group repeatedly strives to be as sustainable as possible, demonstrating a high level of consideration for the world around us.

Bailey Street Furniture Group offers the combination of innovative design, clever solutions and smart technologies for our urban regeneration and reallocation needs. BSFG believes that investing in well designed unrestricted urban spaces is vitally important, our immediate surroundings and environment benefit our quality of life and promote a healthier future that we all so depend upon.



Using world class design teams and utilising environmentally sustainable materials in conjunction with leading edge technology, Bailey Street Furniture Group creates inspiring integrated urban furniture with our future needs in mind.

For more information on BSFG please contact their team on 01625 322 888 or email enquiries@bsfg.co.uk.

To view the company's wide range of high quality street furniture visit their website www.bsfg.co.uk

UK MANUFACTURERS OF STREET FURNITURE



- POSTS - HINGED & TELESCOPIC
- BOLLARDS - STEEL & STAINLESS
- HOOPED BARRIERS
- CYCLE STANDS & RACKS
- CYCLE SHELTERS
- HEIGHT RESTRICTORS
- SWING GATES
- ARM BARRIERS
- SMOKING SHELTERS
- SEATING



01788 550556
 info@autopa.co.uk
 www.autopa.co.uk

AUTOPA Limited, Cottage Leap, Rugby, Warwickshire, CV21 3XP

AUTOPA

THE CITY OF THE FUTURE IS A GREEN CITY!



Cities are sensitive to the consequences of climate change. Extreme weather leads to floods, heat problems and poor air quality. A green roof is not only appealing to look at, it also offers many other advantages, such as temperature regulation, air purification and it also encourages biodiversity. Today's green roofs even go one step further by completely storing rainwater and drain in a controlled manner.

Thanks to our wide range of green roof products, we can offer the right advice for every project. Our pre-grown solutions give an immediate green result, are low-maintenance and remain green all year round.

With our local stock location near Manchester we are able to keep our product's carbon footprint to a minimum by distributing our green roof materials efficiently throughout the UK.

For more information on the Sempergreen green roofs products, please contact our local sales representative Nicola Leyland at nicola.leyland@sempergreen.com. www.sempergreen.com/uk



Street Design

UK BASED DESIGNERS & MANUFACTURERS OF STREET FURNITURE & LANDSCAPE PRODUCTS

- 01509 815335
- sdl@street-design.com
- www.street-design.com

PLANTERS & SEATING

- Full range of Planters & Seating manufactured to specific sizes
- Choice of materials & finishes
- Low maintenance products

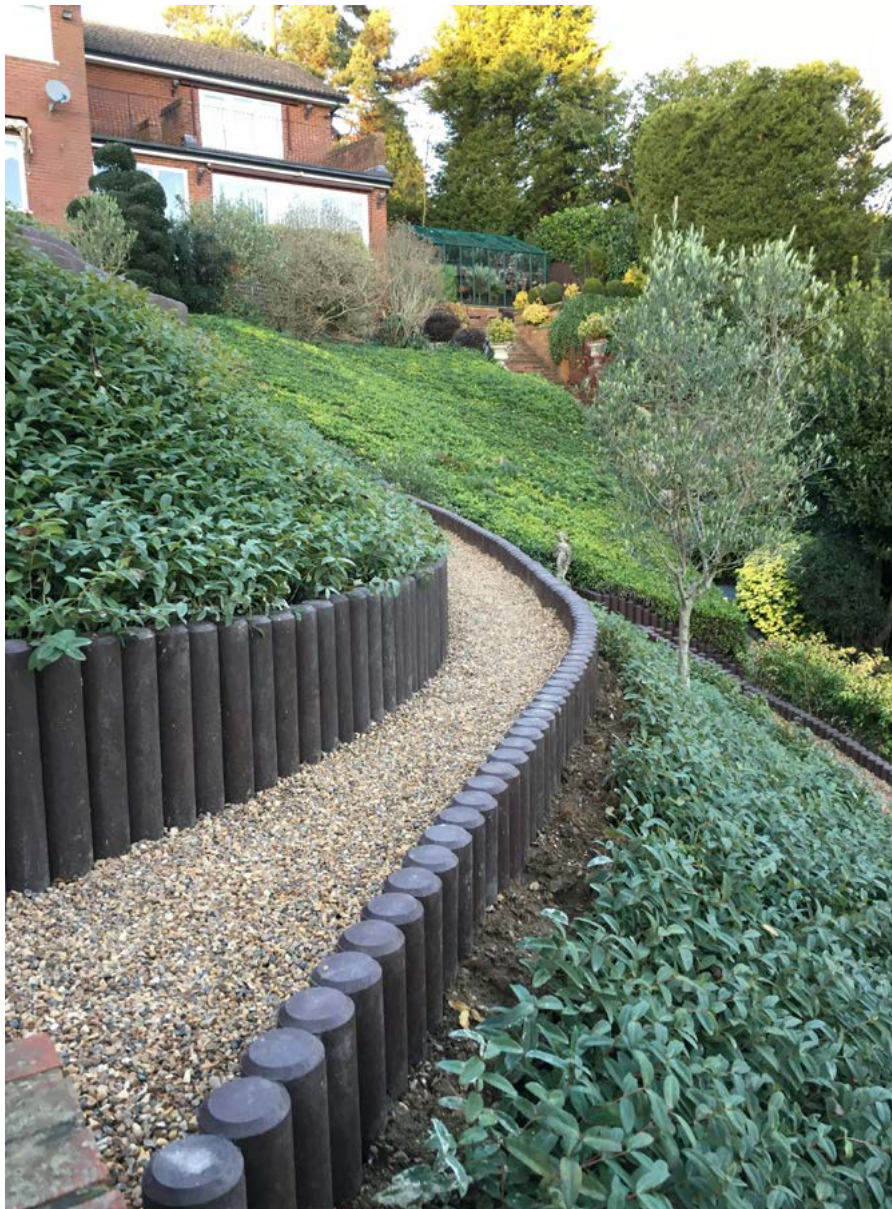
- UK based manufacturer
- Established in 1986
- ISO Registered
- FSC Registered

- | | |
|-------------|-----------------|
| ROOF | HEALTH CARE |
| GARDENS | HOTEL & LEISURE |
| RETAIL | COMMERCIAL |
| RESIDENTIAL | PUBLIC REALM |



Circular Swithland planters

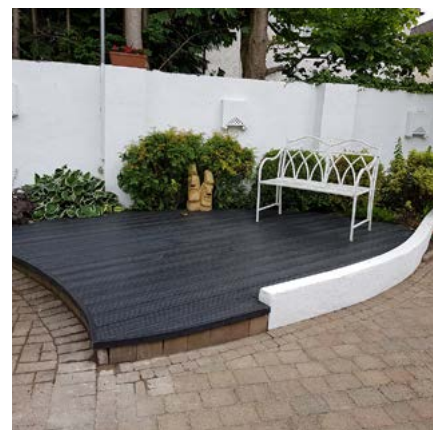
THE BEST KEPT SECRET IN LANDSCAPING



Unlike traditional timber, hanit® can survive all kinds of weather and do not rot or splinter. Made without any hazardous chemicals, non-toxic, non-polluting, maintenance-free, easy to handle and don't require any heavy equipment to install. HAHN Plastics produce 55,000 tonnes of recycled plastic products yearly. In environmental terms, this is the equivalent of:

- 330 million bottle tops being diverted from landfill
- 330 thousand tonnes of CO2 saved from the atmosphere (compared to producing the equivalent in virgin plastic)

When you consider all the benefits together, it's a no brainer! Together, we can make a big difference.



Having spent the last 18 months thinking of ways to keep yourself busy, the seemingly larger proportion of people decided that improving their homes was the most productive way to channel their efforts. Reinforced by the start of a much-needed summer, the time has come for us to share the best kept secret in landscaping.

It appears, though, that everybody has had the same idea at the same time, with shortages apparent across home improvement goods

stretching to all corners of your homes. With that, there is surely no better time to consider alternatives to the traditional stream of products that are now exchanging at a premium, yet still come with the common problem of ageing.

To solve this problem, HAHN Plastics have been developing high-quality outdoor products made from 100% recycled plastic - or hanit®. We've found the clever alternative to wood, concrete and steel!



See our range of recycled plastic outdoor products at www.hahnplastics.co.uk

DESIGN QUALITY OUTDOOR SPACES

**MADE FROM
100% RECYCLED PLASTIC**
DURABLE | MAINTENANCE-FREE | NON-TOXIC | NO ROT

TRANSFORM ANY OUTDOOR SPACE FOREVER
WITH OUR INCREDIBLY
**VERSATILE & ECO-FRIENDLY
GARDEN PRODUCTS.**

EASY TO INSTALL
AND PERFECT FOR **SHAPING KEY AREAS**
SUCH AS BEDS AND EDGES.

**TAKE THE FIRST STEP IN
CREATING THE ULTIMATE
MODERN HANGOUT**



EDGING



SLEEPERS



PALISADES



ECLIPSE BENCH

ULTRA DECKING



Check out our range of eco-friendly products at
hahnplastics.com or call 0161 850 1965

HAHN
PLASTICS



Southgate

MAKING SPACES

For more than a year, COVID-19 has been disruptive to all our lives, with the repeated lockdowns and periods of isolation affecting people in varied ways, and this has resulted in an increased appreciation of the outdoors and in the expansion and redevelopment of urban spaces to better suit the changing world.

A survey by Natural England demonstrated that 89% of adults agree that green and natural spaces are good for mental health and general wellbeing, with demands for public spaces particularly prominent among the lower earners, who are less likely to have a home garden or to live close to parks and other outdoor recreation, a problem only enhanced by travel restrictions and lockdowns.

Utilising our urban and retail spaces, repurposing them to make quality social and green spaces everywhere we can, is among the most important tasks our government faces today.

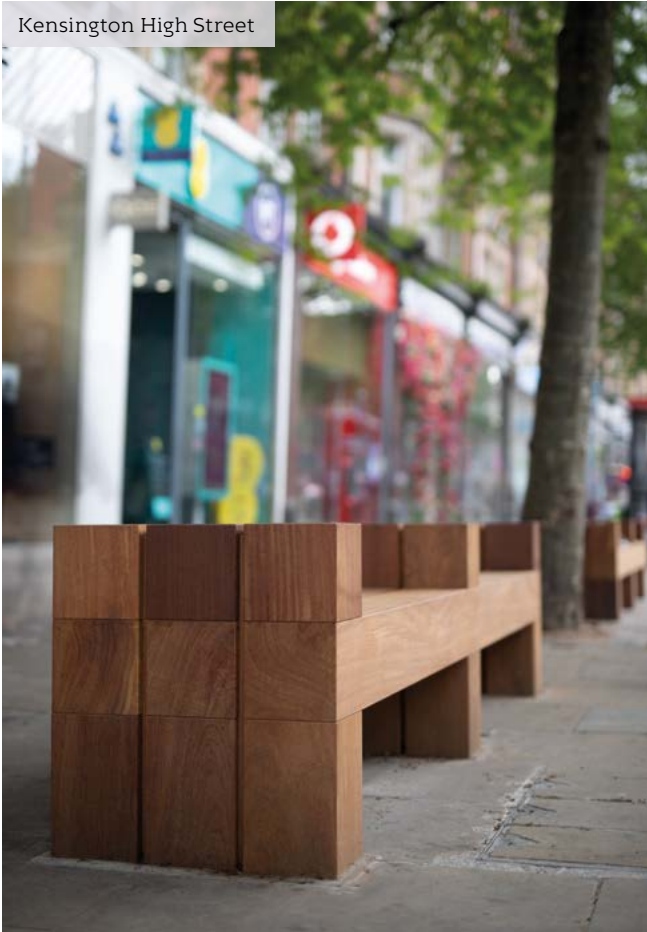


Whitfield Gardens

“The environment, after all, is where we all meet, where we all have a mutual interest. It is the one thing that all of us share.” - Lady Bird Johnson

It’s a testament to the the councils, planners, landscape architects and associated industries, that many areas of the UK have been ahead of this problem.

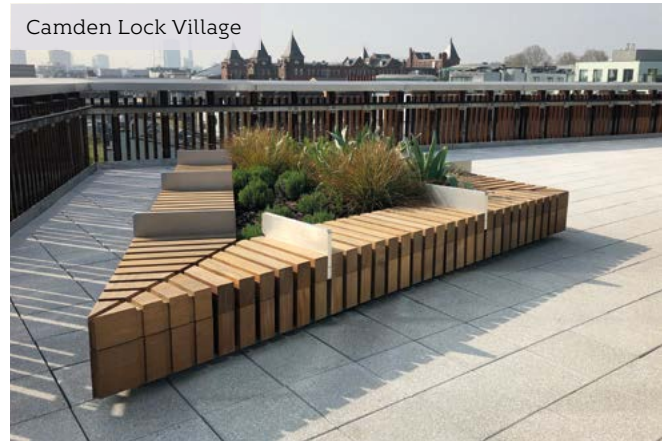
Kensington High Street



Wembley, London



Camden Lock Village



While it may seem to the public that many projects are in reaction to the pandemic, a huge number of schemes across the UK in fact reflect years of investment, work and dedication.

The West End Project in London has had a massive impact on several areas already with many more to come. Pocket parks will be appearing along Tottenham Court Road, and Alfred Place will be the first new green space for its borough in 25 years. Whitfield Gardens (pictured) has undergone a complete refurbishment, including a restoration of the famous Fitzrovia mural, utilising fixed and movable street furniture to allow the space to be flexible for a wide range of events.

Public realm enhancement undertaken in Southgate, Bath in 2019 was specifically targeted at providing spacious locations to dwell and socialise, with Brunel Square outside the main train station featuring expansive tree seats ideally situated for the nearby outdoor dining.

The seating installed in Peach Place, Wokingham, brings artistic flair that invites you to linger in a delightful commercial space without infringing upon social distancing, and you'll find our spacious Grid benches peppered along Kensington High Street. Ensuring customers have spaces to wait and rest is essential in revitalising the retail economy.

Ongoing on a massive scale, the redevelopment of Wembley has taken every opportunity to include wall & step seating or expansive vent seating platforms at ground level, with countless roof garden and balcony spaces being included on the surrounding commercial and residential properties. Developers are seizing the chance to design bespoke solutions for roof gardens and balconies, to fully utilise their available space in creative ways, such as the planter seating shown below at Camden Lock Village.

Schemes reacting to the changing demands of urban spaces are happening around the world in increasing numbers.

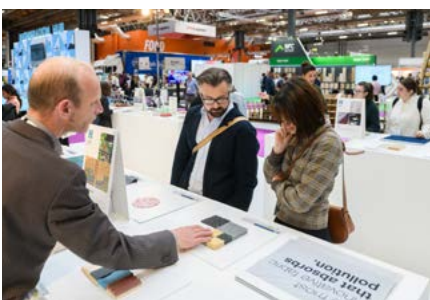
The Lithuanian capital city of Vilnius provided space for outdoor catering to 400 businesses and closed many roads, some changes now being permanent, effectively converting the centre into a single massive open-air café. San Francisco's Shared Spaces programme fast tracks the use of outdoor venues benefitting businesses and customers alike, and the Bristol Street Space programme looks to restrict traffic flow through retail zones to improve the space for visitors. Such schemes have quickly and dramatically impacted areas, and changed their perception for good.

The users of these new spaces are making them their own, and will not readily allow a return to pre-COVID conditions. Woodscape are grateful to be a part in these spaces all over the UK, and is working closely with the industry on hundreds more, by making street furniture that truly makes spaces.

UK CONSTRUCTION WEEK (UKCW)

As the UK's largest construction event, the award-winning UK Construction Week (UKCW) puts sustainability theme at the heart of this year's show.

UKCW, taking place at NEC Birmingham on 5-7 October 2021, will bring together top level speakers and experts for you to explore unique insights, solutions and thought-leadership on this critical subject.



Highlights from the Sustainability programme:

Tuesday 5th October 2021

10:30am Regeneration Hub sponsored by EasyTrim

How to design sustainably without compromising architectural vision?
How do we integrate a net-zero policy into good design?

Mark Farmer, CEO, Cast Consultancy

Kunle Barker, COO, Melt Property

11:00am UKCW stage sponsored by COINS

The construction sector's response to the government's 10-point plan for a Green Industrial Revolution, and the path to Net Zero by 2050

Megan Adlen, Group Sustainability Director, Travis Perkins

Stuart Young ACIPR, Head of Stakeholder Engagement & Management/
EU Exit & COVID19 Construction Sector Relationship Manager, BEIS

11:05am Regeneration Hub sponsored by EasyTrim

DESIGN vs MMC - What are the impacts of the different forms of MMC and how can they help us in the drive to Net Zero?

Jaimie Johnston OBE, Director and Head of Global Systems, Bryden Wood

James Walsh, Founder, Studio Anyo

12:00pm UKCW stage sponsored by COINS

From sustainability to regeneration and restoration for architects, contractors & clients (COINS FUTURE SERIES)

Ehab Sayed, Director of Innovation, Biohm

THE FIRST MAJOR EVENT FOR THE
CONSTRUCTION INDUSTRY IN TWO YEARS

THE UK'S LARGEST CONSTRUCTION EVENT

UK Construction Week



5-7 OCT 2021 | Birmingham

REGISTER
FREE
NOW

2021 THEMES



DAY 1

Sustainability



DAY 2

Wellbeing, diversity,
equality & inclusion



DAY 3

Quality, social value
& building safety

www.ukconstructionweek.com

@UK_CW #UKCW2021

Sponsors

easy-trim
Roofing & Construction Products

aico

coins

NORTHGATE
Vehicle Hire

CEMEX

PROCORE

Build

Sponsored by
easy-trim

Building
tech

Civils

Energy &
HVAC

Surface &
Materials

Modern
Methods of
Construction

Timber Expo

Concrete
Expo

The Offsite
Show

ECCO PRODUCTS

Your project. Our products.

Product developer and manufacturer of aesthetically pleasing ecological landscaping solutions, with a constant focus on quality, innovation, usability and high service standards towards our clients. We pride ourselves on offering sustainable landscaping solutions that manage water drainage and associated environmental issues.

ECCOGravel



Superior gravel stabilisation

ECCOGravel is suitable for:

- Driveways
- Terraces
- Pathways

Drainbase




Drainage tile for artificial grass

Drainbase is suitable for:

- Lawns
- Roof terraces
- Balconies

Find out more about us by giving us a call, visiting our website or following us on social media!

 01628 781607

 www.eccoproducts.eu

 eccoproductsuk@eccoproducts.eu

WE ALSO OFFER

ECCODAL GRASS GRIDS



ECCOBORDERS GARDEN BORDERS



ECCOFENCE GABION FENCING



ECCOSEDUM GREEN ROOF TRAYS




MADE IN BELGIUM

ECCO Products set out to find solutions to reduce the impact of human construction on our environment. With a focus on increasing water permeability in designed landscapes.

Rain water run-off has become an increasing issue in our modern world, with towns and cities built in such a way that create barriers and 'rushpoints' in the natural water cycle. Where water once reached the ground's surface and permeated slowly (and naturally) through the ground making its way to rivers and streams, it now hits impermeable man-made surfaces such as tarmac, paving, roofs, gutters and more. Here, the water picks up a swathe of debris and pollutants on its journey to the water system via either natural or our man-made centres



The effect of water run-off

Human impact - we are impacted by flashpoints and flooding caused as waterways can no longer handle the speed at which the water reaches them, often bursting river banks or flooding streets.

Environmental impact - floods have a large impact on the surrounding environment and vegetation particularly due to the pollutants that are now in the water that would usually have been cleansed by natural permeation and filtration.

ECCO Products have created a range of landscaping solutions that increase water permeability and reduce run-off in designed landscapes using fully recycled materials. Our products support those who wish to create an eco-friendly garden with a modern contemporary finish using materials such as decorative aggregate and artificial grass.



WINNERS OF THE 2021 NATIONAL LANDSCAPE AWARDS ANNOUNCED!

No other Awards for designers and contractors demand the level of professional excellence expected by the National Landscape Awards judging panel. Every construction and design project entered was visited personally by a judge throughout July and August and scrutinised individually. If that's not enough, the judges jointly deliberated each decision at a three-day long meeting to ensure consensus that the winners really do represent the very best in landscape construction and design.

The team at Landscape House, the board of directors and the Judging Panel wish to congratulate every BALI member who has won a 2021 National Landscape Award and extends its thanks to every member that entered this year.

Principals, Specials and the coveted Grand Award winner will be announced at this year's ceremony which will be returning to JW



Marriott Grosvenor House, Park Lane, London on Friday 3rd December. This marks the return of the National Landscape Awards' live ceremony so demand for tickets will be high, ensure you visit baliawards.co.uk today to confirm your place at the largest landscape Awards in Europe.



Ticket prices

Individual Place - £175.00 (early bird*), £195 (full price)
 Table of 10 - £1,550.00 (early bird), £1,750.00 (full price)
 Table of 12 - £1,860.00 (early bird), £2,100.00 (full price)

The early bird* deadline for ticket purchase is 29th September 2021.

Limited sponsorship opportunities remain available, for further details contact Diane McCulloch via telephone at +44(0)24 7518 5614 or via email at diane.mcculloch@bali.org.uk.

For general enquiries contact Emily Feeney via telephone at +44(0)24 7518 5613 or via email at emily.feeney@bali.org.uk.



BALI National Landscape Awards



Headline Sponsor

CONGRATULATIONS TO THIS YEAR'S AWARD WINNERS TICKETS ON SALE NOW

Don't miss out – visit baliawards.co.uk
to book your place

Friday 3rd December 2021

11am – 4.30pm

JW Marriott Grosvenor House,
Park Lane, London

Headline Sponsor



Sponsors



For general enquiries, contact **Emily Feeney** via telephone at **+44(0)24 7518 5613**
or via email at emily.feeney@bali.org.uk



Image credit: ALA architects

HILLIER TREES PART OF NEW FOREST INSPIRED HAVEN AT NEW CANCER SUPPORT CENTRE MAGGIE'S IN SOUTHAMPTON

Visitors to the new Maggie's cancer centre in Southampton will be able to benefit from the charity's much-needed free support and expertise in a beautiful setting inspired by the

nearby New Forest. Hillier Trees is proud to have supplied more than 100 British-grown trees, helping achieve the design vision of a tranquil oasis for visitors.

The brand-new Maggie's in Southampton, which opened in 2021, is the first Maggie's in the South of England. With around 10,000 people sadly diagnosed with

cancer in the central south coast area of England each year, there was a clear need in the region for Maggie's invaluable free support for those living with cancer as well as their family and friends.

The centre is in the grounds of the University Hospital Southampton, which is one of only 12 regional cancer centres and amongst the largest of the university hospitals in the UK. Maggie's work will complement the treatments received by people at the hospital and the centre is expected to receive more than 20,000 visits each year.

Maggie's are created with the intention to feel more like a home than a hospital. Great architecture and beautifully landscaped surroundings are a vital part of this and fundamental to all Maggie's. Having viewed design plans for the new Maggie's in Southampton, Hillier saw how they could use their horticultural expertise to offer support through the supply of trees. Hillier has provided more than 100 British-grown trees from the company's nurseries in Hampshire at no profit to the company, which are all now in place for visitors to enjoy.

The centre has been created in partnership with award-winning architects AL_A, University Hospital Southampton NHS Foundation Trust and Sarah Price, one of the country's most sought-after landscape designers. Almost three-quarters of the 1,470m² site has been given over to four distinct gardens, inspired by the ecology of the nearby New Forest. These form a tranquil oasis that looks as if it has always been there, providing seclusion from the outside world.

Image credit: ALA architects





Image credit: ALA architects

Naturalistic Tree Forms

In keeping with Sarah Price's design ethos, trees at the new centre include species that create a natural, woodland look and feel, blend visually with the striking architectural design and provide year-round interest.

"Sarah is a very visual, creative designer," comments Caroline Swann, Account Manager at Hillier Trees.

"Due to Coronavirus restrictions, we conducted a number of video tours to select trees. This allowed us to give a 360° walk around each one to make sure it was perfect!"

Tree species to spot throughout the garden at the centre include *Betula pendula* (silver birch), *Pinus sylvestris* (Scots pine), *Sorbus aucuparia* (Mountain ash), *Prunus serrula* (Tibetan cherry) and *Prunus avium* (wild cherry). Many of these are multi-stem or more naturalistic forms, as opposed to a more traditional neat clipped form.

A Team Effort

As well as supplying trees, Hillier contacted MJT Landscapes and Yoreland Design for support with

hard and soft landscaping elements at the Centre.

MJT Landscapes, who have contributed to a number of gold-medal winning Hillier exhibits at RHS Chelsea Flower Show, were responsible for hard landscaping elements including creation of the planting bunds requiring nearly 1,500 tons of sub and topsoil.

"MJT Landscapes were thrilled to work with the Hillier Team on the project for Maggie's at Southampton," says Mark Tomlinson, Director of MJT Landscapes. "There were a number of challenges during the build due to Covid restrictions and delays with weather conditions, so it is great to see the garden now completed and in full bloom. I look forward to seeing it mature over time."

"On behalf of the Yoreland Design team, I can say that it was a pleasure to support such a worthwhile cause," says Leigh Richards, Founder and Director of Yoreland Design Ltd.

Supplier partners of Hillier Garden Centres also offered their support for this project, including Westland,

who donated 12 pallets of mulch.

Generous support was also given by Platipus Anchors, who provided all the tree anchors used to support and stabilise the trees at a reduced cost, as well as making a company donation towards Maggie's centres.

"Maggie's was delighted to work with Hillier to realise Sarah Price's landscape at University Hospital Southampton," says Siobhan Wyatt, Property Projects Lead at Maggie's. "Our New Forest oasis is now able to offer a calm haven for anyone living with cancer, and their loved ones, while they receive support from our staff."

"We are delighted that all trees are now in position and thriving," comments George Hillier, Director of Property at Hillier Nurseries. "This centre is already bringing a huge benefit to the community and we are proud to have been able to lend our support."

Visit hillier.co.uk to find out more about Hillier Garden Centres
Images ©Hufton+Crow



Franklin Electric

PUMP PERFECTION

Now stocking Franklin Electric
clean water pumps



QUICK PUMP
REPLACEMENT

THE QUICK, EASY AND ECONOMICAL OPTION

Introducing the ES, VS and EV series pumps from Franklin, made for pumping clean water through irrigation systems at golf clubs and sports grounds. And the EGT and EGF series, for dirty water extraction from reservoirs, streams, lakes and pits. Simple and effective, you get instant improvements to energy efficiencies, variable speed solutions and a boost to your water pressure. Easily the best choice for pump replacements.

reesinkturfcare.co.uk

Get **MORE** from your turfcare partner this year:

More products . More advice . More training . More finance



Reesink UK LTD is authorised and regulated by the Financial Conduct Authority. Images shown for illustration only.



SELECTION OF BOOSTER PUMPS FOR IRRIGATION

Sizing of Pumping Systems for irrigation is not for guess work and to select well, needs many considerations to achieve optimum performance and efficiency.

Head and flow are the main requirement for any system, however there is a lot of information required to get the best efficiency and reliability.

Head is seen as the highest point of discharge from the pumps, but we need to understand the total amount of static head and other head losses in the system to define the Total Head. Pipework costs may push installers towards using less costly small-bore mains to the discharge points, only to undermine the long-term energy cost and system performance. Unfortunately, the friction loss within a small-bore irrigation system will demand more energy, escalating the running costs for energy, therefore the more flow the larger bore pipework is required, especially for the main distribution pipework.

Other losses are found in any pipework system and should be accounted for when calculating the total head, sprinklers, irrigators, fittings, valves will have an identified head loss valve and by careful selection and design some of these losses can be reduced.

Once the total head and flow has been determined the process of selecting the pumping system can begin, most facilities such as golf clubs, sports grounds, parks, large gardens will require a system using 2 or more pumps with a 'jockey' pump to cope with small fluctuations in pressure demands.

The control of these pumps is via an electrical control system which will monitor the pressure with the discharge water main and will start

the pumps as demand increases, so one pump may be required initially, but as demand increases an additional will be deployed to maintain pressure.

The control systems, maybe as simple as using mechanical pressure switches, to activate the motors via crude 'direct online' starting methods, however more commonly, variable speed drives are being used to match performance with demand giving better overall performance and economy.

A reliable and efficient control system will have a myriad of additional built in protection features supplementary to the expected motor overload protection; dry running protection is essential to avoid damaging the pumps due lack of incoming water, equally under pressure protection may be provided which shuts the system down if there is a delivery main burst or unplanned discharge beyond normal planned flows occurs.

Power supply is a very important consideration, ensuring that there is sufficient supply to meet the demand of a new system, while location of system is important trying balance the best location of the pump set to optimise the irrigation obligations but not too far from a main power supply to avoid escalating costs of larger power cabling to avoid voltage drop which will undermine the system.

Recent examples of diverse booster pumps installations for irrigation show how different applications can be applied successfully.

Golf Course

As part of a wider water management scheme on a

Hertfordshire golf course, this required a booster set meeting very high industry standards, to improve the distribution of water around the expansive course where the water was extracted from lake.

A Dual Booster Set was sized and selected, complete with 2 x 5.5kW vertical multistage pumps, motor mounted variable speed drives and bespoke control panel to Irritech specification, including back up fail-safe system via Digital Pressure Controllers. The pump set in a duty / assist configuration, will achieve a performance of 20m³/hr at 8.8 bar pressure.



The booster set is used daily to water the main pitch at the bet365 stadium.

Football Stadium

The home of Stoke City FC, the bet365 stadium, as with all major sporting grounds, requires watering daily to keep their pitch in a premium condition. Searching for an efficient and economic product that could provide reliable irrigation with automatic control. The system, comprised of fixed and variable speed clean water multistage pumps, was designed and manufactured to provide both the flow and water pressure required for the football ground.



For essential Irrigation you can rely on Hi-Dro Boost range.

Extensive range for small volume applications up to the largest irrigation schemes.



See us at
UK Construction
Week
Stand C130



TALK TO OUR EXPERTS
response@ttpumps.com



ttpumps.com

01630 647200



THE COST-EFFECTIVE SURFACING OPTION FOR GRAVEL DRIVEWAYS



CORE DRIVE gravel stabiliser grid is the core of hassle-free gravel paving for all types of vehicle or pedestrian traffic with no compromise in strength and durability. Part of a natural porous paving system, just add gravel to the panels of hexagon cells and you have an eco-friendly surface that costs less than asphalt, concrete, or block pavers. CORE DRIVE solves the problems of aggregates without gravel stabilisation sinking, migrating, and forming ruts.

A CORE DRIVE gravel stabiliser panel is a sheet of connected hexagon cells with a geotextile backing underneath. Made from recyclable milky-white virgin HDPE material, our proprietary manufacturing process provides a rigid honeycomb design that holds its uniform hexagon shape which provides maximum load bearing. The underside incorporates a durable geotextile which allows water to drain easily and prevents weed growth.

High Load Bearing

The CORE DRIVE honeycomb grid construction provides tightly packed pockets of loose gravel which create a completely porous hard standing, allowing extreme pressure from vehicular traffic to be applied without the aggregate displacing, this makes CORE DRIVE gravel grid more practical and versatile than other more costly paving options.

Attached High-Quality Membrane

Our unique manufacturing technique enables us to heat weld a high-quality geotextile membrane to the underside of every panel. This heat weld attaches the membrane firmly to the honeycomb structure and creates a tray for the gravel to sit in and prevents the gravel from migrating under the cell wall which causes the honeycomb structure to rise and become exposed making it susceptible to irreparable damage. As well as stopping gravel migration, the membrane also eliminates weed growth breaking through the surface and interrupting the aesthetic of your gravel area.



Gravel Stabilising Grid

CORE DRIVE

Gravel Driveway Stabiliser



Keep Your Gravel In Its Place...

Cost Effective

One of the most cost effective surfacing solutions - also reduces the cost of gravel as less is required



No Weeds

The grids have a high quality weed membrane heat welded to the underside, eliminating weeds and reducing the risk of gravel migrating under the cell wall



Easy to Install

The grids can be laid extremely quickly and can save time on installation



Strong

The grids are able to withstand a wide variety of vehicle types across the range, from domestic cars up to HGV



DDA Compliant

The grids are suitable for both wheelchair users and those with walking aids



SuDS Compliant

The grids are completely porous, making them SuDS compliant - no need for planning permission



Stabilises Gravel

The grids are designed to be virtually invisible once filled, thanks to their unique honeycomb design

CORELandscape
Products



0800 118 2278



sales@corelp.co.uk



www.corelp.co.uk



@CORE_LP_HQ

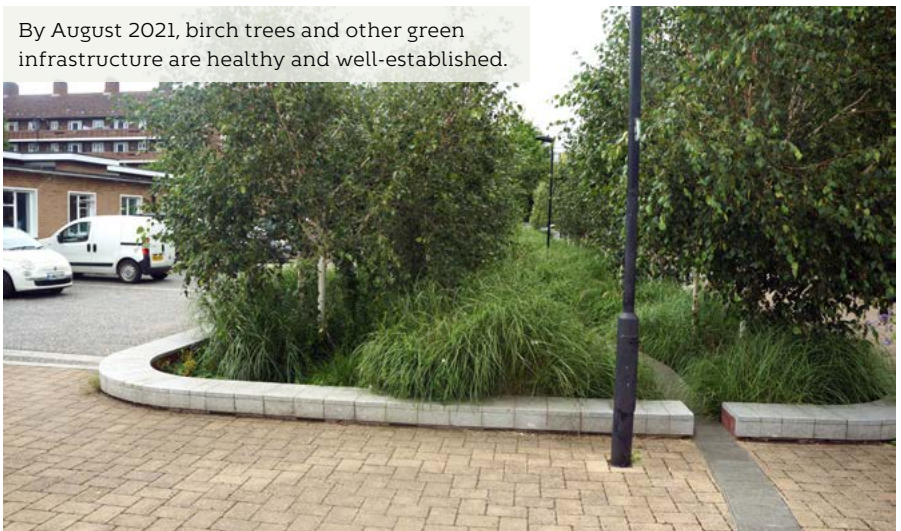


Bridget Joyce Square 2016, with permeable paving irrigating newly-planted trees in a rain garden. Photo courtesy of RBA

PERMEABLE PAVING HELPS MEET NEW PLANNING REQUIREMENTS FOR TREES

Extensive urban tree planting and retention of existing trees, with provision for long-term maintenance, has just become a priority with new government policies taking effect. Concrete block permeable paving offers an important opportunity to help satisfy these requirements with irrigation, integrated with SuDS, hard surfaces and urban design - as the trade association Interpave explains.

The latest requirements for street trees have been established in the July 2021 'National Planning Policy Framework' (NPPF) for England. The NPPF sets out what local planning authorities (LPAs) will require for all developments, when setting local policies and also considering planning applications for all developments. The NPPF states that:



By August 2021, birch trees and other green infrastructure are healthy and well-established.

'Planning policies and decisions should ensure that new streets are tree-lined and that opportunities are taken to incorporate trees elsewhere in developments'. This is backed up by other recent government and

local guidance such as the 'National Model Design Code' which says: 'All schemes will be expected to follow national policy by achieving a 10% net gain in biodiversity. All new streets should include street trees'.

Water is treated and gradually discharged through slots, then retained in rain gardens



Tree Maintenance Requirement

However, measures need to be put in place to nurture and allow trees to mature, generally for decades, enabling them to actually deliver their real potential - including net carbon storage, urban cooling through shading and evapotranspiration, biodiversity and public wellbeing. So, the NPPF also requires that: ‘appropriate measures are in place to secure the long-term maintenance of newly-planted trees, and that existing trees are retained wherever possible’.

Urban trees and paving have traditionally been considered as conflicting. But this is not the case with concrete block permeable paving (CBPP), a key sustainable drainage (SuDS) technique to reduce flood risk and make cities more liveable. CBPP offers unique opportunities to collect, attenuate and treat rainwater runoff, removing pollutants, before irrigating green infrastructure. Unlike conventional impermeable hard landscape materials, CBPP allows the same pattern of run-off transfer to the ground as natural vegetation, allowing water to reach tree and shrub roots, despite providing a hard surface above. Local planning authorities will need to incorporate long-term tree maintenance measures in their planning consents and a straightforward spatial solution, such as permeable paving providing irrigation, should prove particularly appealing.

Beneficial Relationship

In a previous article, Interpave explored the 20-year beneficial relationship between CBPP and trees at the Martlesham Park and Ride scheme. This benefit for trees while retaining accessibility is recognised by the current Code

of Practice for accessibility in the external environment, BS 8300-1:2018, which states that: ‘Tree grilles should be avoided. Smooth or paved permeable surfaces should be used wherever practicable’. CBPP can be laid level and still avoids puddles without the need for drainage gulleys. It provides a safe, firm, pot-hole free surface for everyone - including wheelchair users and people pushing prams. Two decades of experience in the UK has demonstrated the long-term performance of CBPP with minimal, if any, maintenance.

CBPP generally comprises an upper layer of concrete blocks with permeable jointing and laying course, over a sub-base and other structural layers of permeable material for water storage. Interpave is currently exploring new ways of applying CBPP to provide gradual supplies of water for tree irrigation at both levels, as well as optimal interaction with tree planters and proprietary tree pit systems. Paving layouts are also being considered to maximise the permeable paving catchment area for tree irrigation, particularly outside the protective tree-canopy zone. Interpave would be pleased to hear from anyone interested in these developments for projects.

Low Intervention Retrofit

Another important innovation, particularly for urban regeneration, is the retrofitting of CBPP as an overlay to existing, conventional road bases or other hard surfaces. These low-intervention, thin overlays create attractive, safe and sustainable shared-surfaces. They can be particularly effective when used to supply a gradual flow of clean water horizontally into raingardens or bioretention

areas, via simple slot inlet/outlets, to store water for irrigation and biodiversity, as well as SuDS. Such low-intervention techniques enable transformation of the public realm in response to the raft of recent active travel and open space initiatives.

This approach is exemplified in Bridget Joyce Square, London, an important regeneration project designed by Robert Bray Associates (RBA) in conjunction with McCloy Consulting for the London Borough of Hammersmith and Fulham, which won the top prize at the 2017 Landscape Institute Awards. Here, a typical, adopted asphalt street and adjacent parking areas were transformed for community use with CBPP overlay shared surfaces and tree-planted raingarden basins - an exemplar for future urban landscapes. The basins provide water storage for SuDS (in the absence of the CBPP sub-base) as well as for irrigation.

Well-established Green Infrastructure

Interpave revisited the project in August 2021, around 5 years after completion, and noted that trees and other green infrastructure were healthy, substantial and particularly well-established. The permeable paving is also performing well and, it is understood from local sources, experienced no problems during recent extreme summer storms, despite extensive flooding nearby.

RBA founder, SuDS expert and landscape architect Bob Bray commented: ‘All the plants have grown really well. Birches are particularly sensitive to drought and urban heat island effect but they have thrived here and the vegetation has remained green all summer. The critical thing seems to be that even small rainfall events are captured by the permeable paving in summer and with larger events concentrated in the basins’.

For project case studies and guidance on all aspects of permeable paving and SuDS visit: www.paving.org.uk



After

DRAINAGE CURE FOR BUCKINGHAM WEST END BOWLS CLUB



Before

Buckingham West End Bowls Club was founded in 1910 and enjoys a strong and loyal membership. Situated in Buckingham itself, the club aims to promote the game of Flat Green Bowls and provide facilities for the social needs and well-being of its members. As a mixed club, they play men's, ladies and mixed matches with other clubs in Buckinghamshire, Bedfordshire and Northamptonshire. Greenkeeper Ian Jones joined the club in 2013 at which time, he says, the green drained well but in 2018 they started getting problems with drainage. On Christmas Eve 2020, the nearby river flooded the green to a depth of about 2ft. Although most of the water drained away within 24 hours, because of the drainage problem, part of the green

remained underwater so long the roots of the grass began to rot.

"We use contractors Avonmore Associates to do spraying, aeration in autumn and top dressing and we worked with Avonmore's Brian Buttler to take some core samples. While the topsoil was good, we found there was no drainage layer," says Ian. Brian's view was the constant walking on the green over the many years had caused severe compaction. They coupled this with another reason. The green sits on yellow clay, being near Bedford, which is famous for brick making using the clay over the past hundred years. Ian had seen an article on a South Wales bowling club that had a similar drainage problem and they had called in Terrain Aeration, whom Brian also knew of. Whereas normal aeration is an accepted part of a good greenkeeping regime, it only reaches a depth of inches.

Terrain Aeration's system treats the ground down to a depth of one metre. At this depth, the ground is usually so compacted it requires fracturing to open up fissures and

allow drainage. Their Terralift machine hammers a hollow probe through the soil using a JCB road breaker gun, and compressed air is released up to 20Bar (280psi). At the end of the air blast, they inject dried seaweed, which sticks to the fissure walls. This expands and contracts with the moisture in the soil to keep the area breathing. Ian and club member volunteers who help maintain the green backfilled the 1.5-inch probe holes with Lytag aggregate and covered with topsoil. The green was playable almost immediately.

"Had we put in field drains it would have been very disruptive and using Terrain Aeration's system meant we could do the work in the season," says Ian. "Then we had no rain for some weeks so we had no idea if it had worked until the heaven's opened in June. After severe downpours, we found the green drained far better than in years and the club is overjoyed with the result."

Terrain Aeration 01449 673783
www.terrainaeration.co.uk

EVEREDGE - THE EDGING COMPANY

In 2018 EverEdge were tasked to supply plastic powder coated steel planters for the redevelopment of two Grade II listed Regency Villas. The Villas are being developed for Pegasus Life to provide 50 apartments. Glen Howells Architects have designed the project to fit in seamlessly into the distinguished streets of Montpellier, Cheltenham.

Sky Garden, the contractor on this project, came to EverEdge to provide the steel planters. The planters are 900mm tall and have been designed to fit between existing structures on the roof of the building. The planters are filled with a mixture of void former, grit, bark and 300mm of topsoil. Because of the size of the planters, they are braced for strength and to prevent the steel from bowing.

The planters are made from durable steel for longevity and finished in a light grey powder coat which matches beautifully the building. All the planters have an internal jointing system which was a requirement on this project to give them a near seamless appearance.



EverEdge Planters are available in virtually any design, shape and size and in a range of finishes making them the perfect addition to any project.

93 The Lloyd | Hales | Market Drayton | TF9 2PS
tel: 01630 417120 | direct: 01630 417125 | www.everedge.co.uk

Look what
you can
do with
EverEdge...



Edging, rings and planters

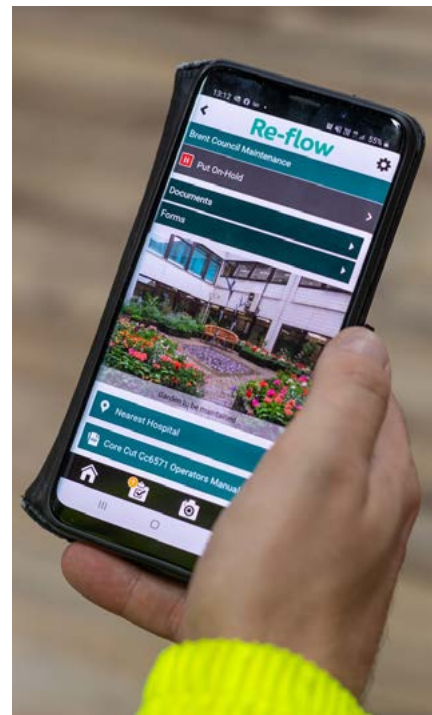


Call for full details on 01630 417120
See them all at www.everedge.co.uk

EVEREDGE
THE EDGING COMPANY

Made in
Britain
INVENTED
AND
DESIGNED

Follow us on Twitter @EverEdge



THE TIME IS NOW TO GO DIGITAL...

If there is one positive to take from the COVID-pandemic it has been the landscaping and grounds care industry's ability to adapt to new ways of working and embrace technological innovations to not only allow the sector to continue to work through various lockdowns but embrace longer-term objectives to become more efficient.

You can't work from home if you're a landscape operative!

For the landscaping and grounds care sector, digital transformation has been central to work continuing as normal. One of the biggest challenges in this industry was that, because work had to be carried out on a site, essential information had to be shared amongst many members of a team who were working more separately on the ground, with social distancing restricting how many people could work together or travel to a site together.

Alongside the pandemic related push to go digital, the need for more paperless operations has never been

greater, as is the ability to store and recall data to help support better, more-efficient decision making. The amount of work that goes into client reporting and audits, plus the tendering for work requires more and more paperwork as well as constant monitoring when it comes to delivery. That is why there has never been better time to go digital than now.

Digital trailblazers

For our existing landscaping clients using Re-flow's workflow management system, for example, it has been business as usual through the pandemic. Having a system such as Re-flow enabled companies to keep track of paperwork, monitor the progress of work and complete vital quality and safety checks more efficiently as well as invoicing on time and as keep every member of a team involved with the progress of a job. As well as access for project managers and operatives to all job information, any HSE, HR or other work forms are available on one app as well as the ability to manage SHEQ compliance.

Also, through Re-flow software, you can send important forms to other members of the team, straight to their smartphones and they can complete the necessary information, draw their signature and send them right back.

Using this process not only keeps everything safe and secure, but it means there's no need to print anything and store it in a filing cabinet. With the importance of audit trails, using a Re-flow form means you can preserve the authenticity of your documents, and have a full time, date and location stamped record of when and where that signature was submitted.

For other forward thinking landscaping companies, Re-flow's Landscaping Workflow Software package only takes a couple of days to set up and go live, so it's never been easier to make a success your digital transformation and start feeling the benefits.

www.re-flow.co.uk/landscaping

Remote Workflow Management for landscapers and grounds care

Schedule 

Capture 

Track 

Invoice 

Report 



Get ready to Re-flow – the software that connects and optimises your back office to field operations

“It’s a real game-changer. Freed from the burden of huge amounts of admin, we have more time to focus on actual landscaping and company development. I fail to see how it wouldn’t benefit almost any business which has staff working remotely. The unforeseen benefits just keep appearing; recently we found it made us a contender for a large contract which demanded live reporting. It’s a fantastic product as it is – but when backed up by Re-flow’s tirelessly supportive and flexible approach – well, I just wish we’d got on-board years ago. We’d certainly never go back.”

**Oliver Hemson, Commercial Department Manager,
Tony Bengier Landscaping**

Mobile Workforce Management solution for landscaping

- **Create jobs and tasks**, add all information and sync to users’ mobiles in the field.
- **Schedule users** in the calendar and assign pinpoint map locations to jobs.
- **Add landscaping specific digital forms and workflows**, accessed on or offline.
- **Assign materials and equipment to jobs and users** with codes for tracking, maintenance and SHEQ.
- **Mark-up images, sign off forms and tag all submissions** with time/date/location tags.
- **Produce quotes and invoices** within the app using a Bill of Quantities and inbuilt calculators.
- **Receive information and produce reports** to make data-driven decisions and improve costs, safety and efficiency.

Re-flow
LANDSCAPING

Find out more: www.re-flow.co.uk/landscaping
01392 574002 | info@re-flow.co.uk

**BOOK
A DEMO**

UK Construction
Week 

Stand BT130

LANDSCAPE
THE INDUSTRY TRADE SHOW

Stand M27

WELCOME TO ARBOUR LANDSCAPE SOLUTIONS LTD.



As one of the leading trade landscape materials supply companies in the UK, Arbour Landscape Solutions are here to help you choose the very best products for your landscape projects.

We provide award winning customer service and the best quality products available. Catering to a wide range of customers from garden designers and landscapers to local authorities, builders and developers.

This is the 'One Stop Shop' for the landscape trade. with a comprehensive supply chain supporting the whole industry.

We offer over 5000 landscape materials, accessories, tools and plant hire, and have access to high levels of stock at all times. In addition, we hold extensive stock of paving and the associated installation accessories to keep the industry working seamlessly, uninhibited by global supply chain challenges.

Award Winning Customer Service

The service at Arbour Landscape Solutions Ltd forms the foundation of our business. Customers will testify that our team are knowledgeable and dedicated to ensuring that you receive the goods and services you need, when you need them and where you need them.

With 134 5-star reviews on google and named as winners of the Association of Professional Landscapers Supplier of the Year award 2021, we are confident that you will experience a service level from us which is unrivalled.

The team have a collective 90 years of landscape experience between us, we offer more than products.

Ordering tools to support your business

Once registered as a trade customer you will discover online tools to save time and streamline your quotations processes.

Try 'My Bill of Quantities' simply upload your specification list and we will do the hard work for you! Try 'Multi-user Account' and train and enlist your team to cost projects. All costs remain live for 1 month with a price guarantee.

All newly registered accounts receive 5% off their first order.

Give us a try, you won't look back.

Testimonials

'Great attention to detail, very clear and organised when it comes to logistics and deliveries. We really like his products too, they are carefully chosen to be on trend and excellent value.'
Matt Woods - Woods Landscaping

I love the guys at Arbour Landscape Services. Their customer service is second to none!
Faith Ramsay - My Country Garden Design Solutions



ARBOUR
LANDSCAPE SOLUTIONS



Paving
Plants
Equipment Hire
Decking
Wildflower Turf
Bespoke Procurement

Award winning landscape materials
supplier to the trade. Register for your free
account today.

www.arbourlandscapesolutions.co.uk

Tel: 0208 953 6177





Beckley Bog #4 'Late Summer', 2017-2019 by Betsy Rogers-Knox / RHS Lindley Collections © Betsy Rogers-Knox. Awarded RHS Silver-gilt medal and Judges' Special Award 2019

RHS BOTANICAL ART & PHOTOGRAPHY SHOW 2021 RETURNS TO CHELSEA'S SAATCHI GALLERY

The Royal Horticultural Society (RHS) and Saatchi Gallery have partnered to present the return of the RHS Botanical Art and Photography Show in 2021. Running parallel to the RHS Chelsea Flower Show in September, it will feature more than 200 of the best botanical artwork and garden photography by 34 global artists in celebration of these technical art forms.

2021's show will include an array of intricate and scientifically accurate botanical illustrations by 15 artists and portfolio collections from 19 photographers that will all compete for an RHS Medal - Gold, Silver Gilt, Silver or Bronze.

The RHS Botanical Art & Photography Show 2021 will be the first presented at the Saatchi Gallery, London and will run for two weeks, enabling artists and

photographers to showcase their work to an even wider audience. Accompanying the show will be a series of outreach projects for school and community groups including painting, drawing and print workshops intended to inspire a passion for botanical art and research.

Admission to this ticketed show is free for Saatchi Gallery Members and RHS Members.



Passiflora x violacea 2018, by Caroline Jackson-Houlston / RHS Lindley Collections © Caroline Jackson-Houlston. Awarded RHS Gold medal 2018

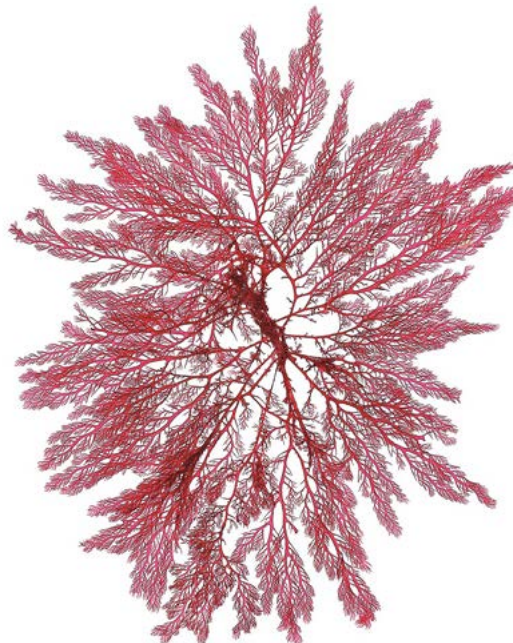


Chrysanthemum x morifolium 'Edo', 2016-2017 by Hideo Horikoshi / RHS Lindley Collections © Hideo Horikoshi. Awarded RHS Gold medal 2018

Laura C. Uccello, Director of Partnerships at Saatchi Gallery, "Saatchi Gallery is thrilled to partner with the RHS to present this internationally recognised exhibition that celebrates contemporary art with an incredibly interesting scientific scope. We are impressed with the high standard of works presented for the 2021 edition and we are delighted to share this unique presentation with our visitors and members this Autumn."

Charlotte Brooks, Art Curator at the RHS, said: "We are excited to showcase some of the world's best botanical art and photography at the Saatchi Gallery and for thousands of art lovers and avid gardeners to be given the opportunity to see their favourite plants in a new light."

The show compliments the RHS Lindley Collections of more than 30,000 botanical paintings stretching back to the 1630s and heritage photographic images of gardens and gardening people



Plocamium cartilagineum 2019 by Josh Westrich/RHS Lindley Collections ©Josh Westrich. Awarded RHS Gold Medal and Best Portfolio Photography Exhibit 2019

starting in the 1860s. The botanical art collection continues to grow with the regular addition of Gold medal standard pieces. Botanical art and photography help evidence trends and discoveries of plants popular in UK gardens today with piece available to view throughout the year by appointment with the RHS.

A panel of recognised experts, including leading botanical artists, photographers, teachers, and botanists, judge the exhibits on display, assessing their accuracy, skill, and aesthetic appeal.

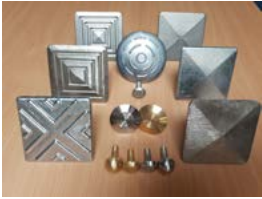
For more information about the RHS Botanical Art & Photography Show visit: www.rhs.org.uk/showsevents/rhs-london-shows/rhs-botanical-art-and-photography-show

SPORTSMARK

Call Julie on 0800 0197733 or email sales@sportsmark.net for more information



Site safety studs and bars



All your sports equipment and line marking needs, along with general green keeping tools, Groundsman's equipment and road studs in one shop.

Sports installation, sports maintenance works and car park markings available in some areas.

www.sportsmark.net

OUTDOORFITLANDUD2019



Get fit with our app!
wicksteed.fit
see website for more details



OUTDOOR GYM EXPERTS

The Wicksteed calisthenics multi-station gym allows the experienced user to perform rhythmic body weight exercises consisting of a variety of movements. The exercises can benefit both muscular and cardiovascular fitness, in addition to improving psychomotor skills such as balance, agility and coordination.

"IT HAS BEEN THE TOOL WE NEEDED TO HELP OUR COMMUNITY!"

"It (The Wicksteed Calisthenics Zone) has been amazing. It has allowed us to be able to promote these free sessions on Saturday. In an area where there was not much to do for young people, alternatives being unhealthy or getting in trouble with local enforcement. To summarise, it has been the tool we needed to help our community. Breaking stereotypes, promoting health and wellness, and giving our community relatable positive influences"

Edris Kizito, Kinetick Kontrol Calisthenics



01536 517028

wicksteed.co.uk

sales@wicksteed.co.uk



STIHL

NEW

REAL PROFESSIONAL PERFORMANCE. BATTERY POWERED.

APIII
SYSTEM



**PROFESSIONAL PERFORMANCE:
THE FSA 135 CORDLESS BRUSHCUTTER.**

AVAILABLE AT YOUR LOCAL STIHL DEALER. [STIHL.CO.UK](https://www.stihl.co.uk)

The latest additions to the STIHL AP System are our most powerful yet. The FSA 135 and FSA 135 R brushcutters are perfect for mowing tough grass and scrub in noise sensitive areas. And thanks to a wide range of cutting tools that can be fitted to them, you'll be able to take on any challenge.

"The FSA 135 makes cutting through thick grass and growth effortless. But it wasn't just the performance that won me over; the craftsmanship, low-noise output and long working times is what makes this the perfect tool for my needs."

- **Christoph Jötten, horticulturist and landscaper**



**HIGH
POWER
OUTPUT**



**LONG
SERVICE
LIFE**



**RANGE OF
CUTTING
TOOLS**



STIHL HSA 26 SHRUB SHEARS: A SMALL BUT MIGHTY GARDENING GADGET

The versatile STIHL HSA 26 cordless shrub shear will help tame any unruly shrubs and grass edges into perfect shape.

The HSA 26 is the perfect product for those who want a small, lightweight tool, which can quickly transform a garden. It is extremely manoeuvrable thanks to the cordless design and with two diamond ground, double-stroke 17cm blades, it will efficiently pull and trap branches up to 8mm in diameter for smooth, clean and efficient cutting.

The inclusion of an 11.5cm grass cutting blade means the shrub shears can also be used to maintain borders and lawn edges, and the optional telescopic handle makes this even easier, extending the shears by 95-110cm so you can work while standing up.

The HSA 26 is easy to use, thanks to the comfortable rubber handle and large trigger. Plus, the quick-change button means switching blades is easily done, with no need for extra tools.

New for 2021 is the Telescopic Shaft for the HSA 26, which allows you to work comfortably in an upright position - perfect for trimming grass edges without bending down. The telescopic shaft is quick and simple to connect with the HSA 26, meaning there is little down-time as you switch between tasks and the AS 2 battery in the handle can be easily changed. The angle of the head can be adjusted from 125-180 degrees and the shaft is extendable from 95-110cm, allowing you to work comfortably for the required task. Recommended retail price for the Telescopic Shaft is £40.



The HSA 26 is part of the STIHL AS cordless system for garden maintenance. In addition to the garden pruner, this system also includes the GTA 26 cordless pruner, meaning one battery pack is interchangeable between the two tools.

Recommended retail price for the HSA 26 starts from £109 including battery, charger and VAT.

www.stihl.co.uk



Kubota

MAX UP
WITH A
MICRO.



**NEW MICRO SERIES:
K008-5 /U10-5**

Maximised output for minimised spaces

They may be small, but these machines pack a big punch. The high power-to-weight ratio and an adjustable width track mean that tough jobs and tight workspaces are no problem. With class-leading safety features, easy side-lever joystick control*, and superb all-round vision, your day just got a whole lot easier.

Demand the Best.

Talk to your dealer or visit www.kubota.co.uk



*U10-5 only

VISIT US AT
SALTEX
SPORTS AMENITIES LANDSCAPING TRADE EXHIBITION
3-4 Nov 2021 | Stand C070



Discover more.
Scan QR code.

For Earth, For Life
Kubota

THE FUTURE OF COMMERCIAL TURF CARE



At Husqvarna, we're set to change the world of commercial turf care. We've developed something new that allows for a huge scale up of operations, to meet increasing demands on time, turf quality and sustainability.

Covering more ground for less

With a huge area capacity of up to 75,000m², CEORA™ delivers superb results and easier turf management on larger surfaces than ever.

Flexible use and increased control

CEORA™ is a state-of-the-art autonomous solution guided by Husqvarna EPOS technology. Precise satellite navigation with virtual boundaries eliminates the hassle of physical wires. Quick definitions of work areas and stay-out zones accommodate optimal use of the turf and flexible management.

Low noise, emission-free mowing

CEORA™ is lightweight and battery driven, minimizing noise and reducing carbon footprints with zero direct emissions while in use.

info@husqvarna.co.uk | 0344 8444567

CLIMATE CONTROL BASELAYERS – FOR THE SUMMER AND AUTUMN MONTHS

Snickers Workwear will give your workday working clothes a good foundation.

Upgraded, Innovative and Sustainable - Snickers Workwear 'Climate Control' clothing delivers exceptional comfort and performance. There's a range of garments that use socially and environmentally responsible fibre technology such as 100% recycled polyester, as well as others available in high-tech breathable fabrics.



For consistent comfort, the seamless designs are also available in 37.5@ ventilating technology for efficient body moisture transport as well as odour-reducing merino wool to suit different types of work, whatever the weather conditions. These cutting-edge AllroundWork, FLEXIWork and LITEwork designs and fabrics will keep you cool, warm and dry when you need to be. All the garments are made from quick drying, lightweight fabrics that come with special ventilation features to control and regulate the heat from your body.

All in all, Snickers Workwear Baselayer clothing will give you the kind of fresh working comfort you wouldn't have thought possible.

Getting more information on the Snickers Workwear clothing range is easy. You can call the Helpline on 01484 854788; check out www.snickersworkwear.co.uk and download a digital catalogue or email sales@hultaforsgroup.co.uk



01263 734311 Aylsham
 01328 701347 Beeston
 01733 840777 Coates
 01480 890990 Ellington
 01638 577877 Newmarket
 01603 628251 Norwich
 01572 492492 Oakham



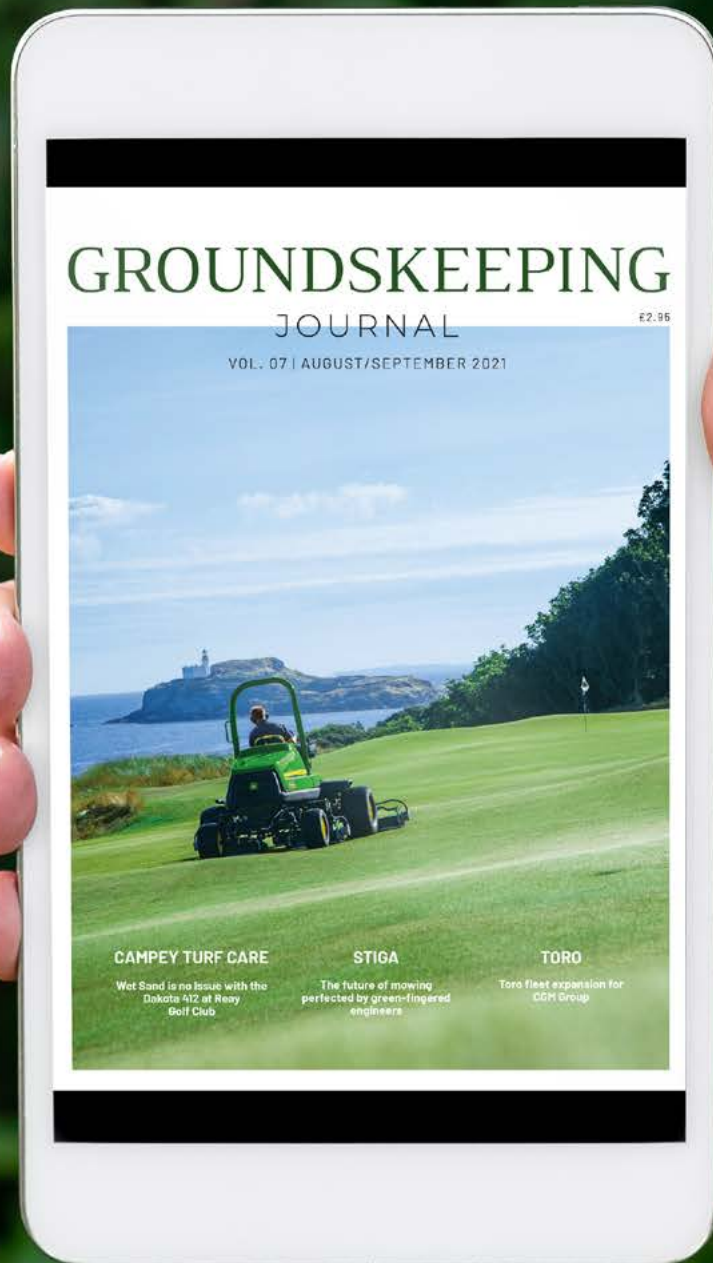
We have a great range of parts, garden equipment, hand tools, country clothing and footwear, ride on toys, branded merchandise plus much more available in our showroom and online shop.



Visit our online shop:
BenBurgess.co.uk

Follow us:

GROUNDSKEEPING JOURNAL

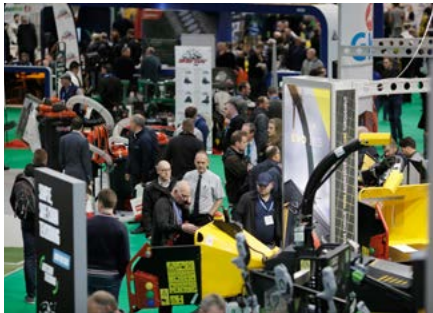


Download your **FREE** copy today



www.groundskeepingjournal.co.uk

TIME TO CELEBRATE 75 YEARS OF SALTEX THE COUNTDOWN IS ON!



Those associated with landscape design and management will have the opportunity to see a wide range of innovative new products and services from prominent suppliers when SALTEX opens its doors at the NEC, Birmingham on November 3 and 4.

If you are a landscape architect/designer, contractor, gardener, forester or horticulturalist, then this is your show.

SALTEX will be taking place for the 75th time this year and the show is set to be the most vibrant and celebrated event in its long history.

The show floor will be bursting with everything a visitor needs to increase their efficiency and improve operations and will contain a plethora of exhibitors representing the likes of turf maintenance machinery, fertilizers, wetting agents, seeds, turf, aggregates and treatments, weed control, facilities management services, fencing and landscaping.

As well as a wide range of innovative products on display within the three large halls, visitors to SALTEX will have the chance to see an 'electrifying' showcase of products in a dedicated area on the show floor called the Eco Village. Featuring a programme of daily demonstrations in cutting-edge sustainable technology - the Eco

Village allows visitors a unique opportunity to witness a multitude of products in action.

Expect to see a powerful line-up of new innovations from the likes of Avant UK (headline sponsor), Dennis Mowers, Overton UK, GroundWOW and Allet Mowers - with more to be announced soon.

SALTEX plays host to the most technologically advanced equipment, product and service showcase in grounds management. Many are rightly celebrated at the show and none more so than through the SALTEX Innovation Awards.

Since its launch at SALTEX 2017, the Innovation Awards have helped to highlight some of the most groundbreaking, innovative products and services within the groundscape industry. Visitors will get the chance to see every entry on the show floor and there will be a winner in each of a wide range of product categories - so keep an eye out for news on when and where the final ceremony will take place on the show floor.

There will also be a number of education opportunities through Learning LIVE - SALTEX's all-encompassing, free-to-attend education programme. Learning LIVE will take place in large seminar theatres situated on the show floor and will feature a wide range of

topics which could be particularly beneficial for those working in the landscaping sector.

Landscapers may well be interested in Lawn Care Legends LIVE, which will take place on the first day of the show and offer a fantastic networking opportunity. Lawn Care Legends, a Facebook group which was created in July 2016, is a thriving online community with over 4,000 worldwide active members. It is primarily a group for all landscapers and gardeners to showcase their work and knowledge and ultimately support one another. Now the Legends are coming to SALTEX and all are welcome.

In addition to the limitless opportunities available on the show floor, one lucky visitor will be presented with an incredible battery-powered compact loader from Avant UK worth approximately £30,000. Every person who registers will be in with a chance of winning this fantastic prize - on loan for six months and the live draw will take place on the first day of the show.

John Ryan, founder of the Lawn Care Legends online networking community revealed why SALTEX is a must-attend event: "SALTEX is a way to get a feel of what is coming to the marketplace, and it helps you to adapt or evolve with the industry. We all use SALTEX as an opportunity to source new products and everyone is keen and eager to see what manufacturers have to offer."

Register to SALTEX 2021 for free here <https://gmasaltext.co.uk/visitor-registration/>
For more information visit www.gmasaltext.co.uk
Follow SALTEX on Twitter @GMA_SALTEX and Facebook - www.facebook.com/GMASALTEX

SALTEX

SPORTS AMENITIES LANDSCAPING TRADE EXHIBITION



POWERED
BY
INNOVATION



3 - 4 NOVEMBER
2021

THE NEC
BIRMINGHAM

FREE
ENTRY



EUROPE'S LARGEST ANNUAL EVENT FOR GROUNDCARE PROFESSIONALS

- **Discover** the latest product innovations
- **Connect** with industry suppliers
- **Network** with grounds care professionals
- **Receive** 1-2-1 advice on specific turf challenges
- **Update** your knowledge on the latest trends
- **Progress** your career with expert guidance
- **The Eco Village** featuring the latest environmentally-friendly products in grounds care

REGISTER AT [GMASALTEX.CO.UK](https://gmasaltex.co.uk)

Register for your chance
to WIN an Avant UK
e6 multi-functional
electric loader!



GROUNDS
MANAGEMENT
ASSOCIATION

AEO ASSOCIATION
OF EVENT
ORGANISERS



Venue
Protect

@gma_saltex

@gmasaltex

@GMA_SALTEX

CHAMPIONSHIP TREBLE FOR DEALER SUPPORT



A John Deere 7500AE hybrid electric fairway mower working on the 10th hole (Championship 13th) at The Renaissance Club.

Scottish John Deere dealers Thomas Sherriff & Co and Double A will complete a unique treble this summer as they provide vital tournament support for the abrdn Scottish Open at The Renaissance Club in July, the Trust Golf Women's Scottish Open at Dumbarnie Links and the AIG Women's Open at Carnoustie Golf Links, both in August.

This is The Renaissance Club's third consecutive Scottish Open, with the course running an extensive John Deere equipment fleet including the new satellite guided GPS PrecisionSprayer and 2550E PrecisionCut hybrid electric greens mowers.

Sherriff Haddington turf sales manager Dougie Archibald arranged for the supply of additional 8000AE PrecisionCut hybrid electric fairway

mowers, Gator utility vehicles and other support equipment to deputy head superintendent Jamie Aitken, who headed up the course maintenance team for the abrdn Scottish Open.

The dealership's senior technician John Blair also spent two days before the tournament setting up the mower fleet to ensure all the machines achieved a consistently high quality finish.

Head superintendent Paul Seago says: "We are indebted to John Deere, local dealer Thomas Sherriff & Co and their respective staff for once again providing the tournament support fleet for the 2021 abrdn Scottish Open, without which we could not produce our course to the exacting standards required for hosting such a prestigious event.

"As an end user, particularly during these globally challenging times, it is reassuring to know that customer support remains a high priority at John Deere. As The Renaissance Club motto says, 'Rare Indeed'."

Dumbarnie Links is a new venue for the Women's Scottish Open, and this will be the first major golf tournament hosted by Scotland's newest golf course, which only opened for play officially at the end of May last year. The course also operates a number of E-Cut hybrid electric mowers as part of its equally extensive John Deere fleet, supplied by Double A from its main Cupar outlet in Fife.

The dealership was involved with the Dumbarnie Links project from the very beginning, and since the initial supply of John Deere equipment on loan Double A group

John Deere and dealer support for golf tournaments includes helping the greenkeeping team to keep the machinery fleet serviced and ready for work each day.



sales manager Ross Kelly and golf key accounts manager John Bateson have been phasing in a full range of course maintenance equipment over the past three years.

“It’s simply not possible to achieve what we want to achieve without the extra machines and technical support we get from Double A and John Deere,” says Dumbarnie Links course manager Grahame Taylor. This will include additional hybrid greens, fairways and surrounds mowers plus HPX Gator utility vehicles, with John Bateson also cutting aprons throughout the tournament using a new 2750E PrecisionCut machine.

“Our team of 20 greenkeepers expands to 30 for the Open, and we need to carry out all the necessary tasks as quickly and efficiently as possible. The expanded fleet enables us to increase the mowing frequency, particularly during the tournament when there’s only a short time-frame to get the work done before the start of play.

We’ll therefore have lights fitted to all the mowers, as we’ll be starting in the dark at 4.15am each day.”

Carnoustie Golf Links, known as ‘Golf’s Greatest Test’ and a flagship for innovation and sustainable golf course management, entered into a new partnership agreement with John Deere and Rain Bird in 2020. It is also taking advantage of the latest developments in precision technology, with a comprehensive equipment fleet that includes three of the first new GPS PrecisionSprayers to be sold in Europe.

The AIG Women’s Open returns after 10 years to Carnoustie for the 45th playing of the championship in 2021, with the famous Angus course becoming the fifth links venue in history to host the event multiple times.

Carnoustie Golf Links courses manager Kevin Stott says: “Reliable manufacturer and dealer support such as that provided by John Deere

and Double A is very important. Hosting a major tournament such as the AIG Women’s Open requires the extra kit and manpower to help our team put that extra polish on the fairways and greens, and make maximum use of the available daylight hours.

“It comes down to the frequency and quality of cut that we need to apply across all three courses. Our primary focus is on giving golfers the very best conditions possible for them to play their best golf.

“This year, as we welcome some of the very best golfers in the world for the AIG Women’s Open, we are ensuring that Carnoustie will provide the great test that is expected from this iconic golf course and that we produce world class surfaces that will challenge every part of their game, resulting in the best all round golfer winning.”



MADE FOR EVERY SLOPE... THE NEW Z9 FROM CUB CADET

Cub Cadet has launched its new top of the range Z9 183id zero-turn. Proven by landscape professionals the Z9 will fulfil all your commercial requirements.

With extremely wide double wheels, the Z9 has been developed to effortlessly tackle even the steepest slopes up to 25° / 46%.

The ability to control all four wheels with a steering wheel and steerable front wheels, an exclusive offering by Cub Cadet in the commercial sector, minimises the turf being churned up by the wheels as it would on a lap bar zero-turn. The patented SyncroSteer technology means that even the less experienced operators can benefit from the ease of use and amazing manoeuvrability of this machine.

The Z9 reduces mowing time by up to 10% compared to lap bar mowers, provides greater hillside stability, enhanced traction on uneven terrain as well as mowing in straighter lines.

It powers through the thickest grass in one pass at maximum speeds of

up to 12mph meaning you can do the job quicker. The high lift Marbain blades with a blade tip speed up to 18,500 fpm and the 3" total blade overlap will ensure that you always get a tight consistent cut. The frame and axle on the Z9 floats as the machine moves, allowing the multi-reinforced steel deck to follow the shape of the terrain and avoid scalping. The cutting deck can be adjusted at the touch of a button.

The Kawasaki EFI engine provides the consistent power you need to get the job done and maximise your work-day - reducing the downtime which could cost you both time and money. The petrol engine benefits from having lower emissions and reduced fuel usage.

Comfort is at the forefront of the machine's design. Your operators can experience a smooth ride all day long thanks to the exclusive air-cushioned seat and isolated dampening system on the Z9 - meaning they are working in



vibration-controlled comfort, lessening downtime for your business. Angled back adjustments, padded armrest and lumbar support give added protection.

Ideal for commercial users and owners of large properties with challenging slopes, the Z9 has everything and more that you would expect from a quality professional machine - ultimate performance, comfort and durability that delivers a fast, premium cut time and time again.

For more information go to www.cubcadet.co.uk

Cub Cadet[®]

NEW

Z9 183id

**MADE FOR
EVERY SLOPE**

**3 YEARS
1000 HOURS***
WARRANTY
PRIVATE &
BUSINESS



THE ULTIMATE PROFESSIONAL ZERO-TURN MACHINE FOR YOUR BUSINESS

- Proven by landscape professionals
- Tackles steep slopes up to 25° / 46%
- Extremely wide double wheels for stability
- Powerful Kawasaki EFI engine
- Delivers true zero-turn handling with less overlap
- Reduces mowing time by up to 10% compared to lap bar mowers
- The thickest strongest steel deck in the industry
- Exclusive air ride comfortable seat for hours of mowing

FIND YOUR NEAREST DEALER AT WWW.CUBCADET.CO.UK

* Whichever comes first

The greenkeeping team hard at work, preparing the course for The Open with the help of Toro.



WELLBEING AND WILDERNESS

THE ROYAL ST GEORGE'S APPROACH TO HOSTING THE 149TH BRITISH OPEN



It may have been the 15th British Open hosted at prestigious Royal St George's in Sandwich, Kent, but for the greenkeeping team headed up by course manager Paul Larsen, the 149th Open was an extraordinary and unique event.

Set in the dunes of the Kentish coastline and bisected with swathes of naturalistic grasses and wildflowers, you'd be forgiven for thinking you were in a nature reserve, not one of the most famous and prestigious golf courses in the world. Yet for Paul, showcasing the natural beauty of the area was a top priority.

Paul comments: "We have amazing views and a unique position as a golf course within a dune land. We made a conscious decision some years ago to move away from the typical golf course with its striped lines and focus on enhancing what makes us special. We brought it back to what it used to be - more wild and natural - and having The Open here has

been an opportunity to show people what we've been doing.

"When you're preparing for an event of this magnitude, for us it's not about modifying the course, adding new holes or making changes to greens and bunkers. It's about doing what we always do but more regularly and without room for mistakes. We take such pride in our work and were excited to showcase our product."

Supporting Paul was his resident 16-strong greenkeeping team boosted by the help of two support teams totalling a further 34 greenkeeping specialists from other golf courses both locally and around the UK. Work started at 4am each day and the teams were responsible for hand-cutting the greens, cutting the fairways, tees and aprons and raking the bunkers, all on a daily basis.

In order to sustain such a large greenkeeping resource, Reesink Turfcare, the sole Toro distributor in the UK for golf and sports fields equipment and irrigation products, produced a loan fleet from Toro, global leaders in turfcare machinery to bolster the Toro Reelmaster fairway mowers, Groundsmaster rough mowers, Greensmaster TriFlex Hybrid riding greensmowers and Greensmaster Flex walk-behind greensmowers machines already on site.

As a Toro Total Solutions customer, the machines complement the Toro Lynx Central Control System and over a thousand sprinklers across the greens, tees and fairways.

For Paul, having the support from Reesink and Toro is something he is "so grateful for". Paul elaborates: "There's no blueprint for hosting The Open in a pandemic. It's a unique experience so having the support of the extra fleet from Toro made our job easier, enabling us to double our capacity and help everyone to perform at the top of their ability."

When asked about dealing with the pressures of hosting a major sporting event in the midst of a pandemic Paul is characteristically pragmatic

about it: "There's no doubt that the pandemic gave us some logistical challenges such as getting staff tested and managing teams to avoid social contact.

"The adrenaline does flow but there's no secret to getting it right. We just focused on our work. We'd put all the right preparations in place so at the end of the day my view was 'you've got what you've got'.

"The nature of our work is always reactive, and we adapted constantly whether it was to the weather or changes in regulations. We were resilient and worked incredibly hard. The players and spectators loved the course and we've had feedback from members of the sporting press saying it was one of the best Opens they'd seen."

Having welcomed up to 32,000 visitors per day, the course is currently awaiting a full assessment from Paul and his team. Paul elaborates: "At the end of August when The Open is fully off site we will be able to assess the course and the extent of the damage from footfall. I expect there'll be some areas that require reseeding or new turf. We may have to burn some areas of the rough to regenerate it but essentially it'll be routine maintenance."

In Paul's ten years working at Royal St George's, the 2021 British Open was one of the highlights of his career, particularly making such a major success of the event in a pandemic.

Paul concludes: "The biggest achievement? It was definitely keeping everyone safe. It was a pleasure to welcome spectators back to the sport safely and hear the excitement from the crowd. You could feel the energy and it was a fitting end to all our hard work."

To talk to someone about how the Toro range would suit your course, call Reesink Turfcare on 01480 226800.



SIDE VS REAR DISCHARGE DECK - WHICH IS RIGHT FOR YOU?

Up and down the lawns and green spaces of the UK, there is one topic of conversation that splits opinion: what's better, a side or rear discharge deck? Traditionalists will argue that a side discharge deck offers greater flexibility and quality, and now that it can be fitted or retrofitted to accommodate mulching, you needn't look elsewhere. However, rear discharge deck disciples would argue that not only can a rear discharge deck make light work of a lawn, it'll distribute trimmings more evenly and, as trimmings exit behind the mower, allay safety concerns. Whichever side of the fence you sit on, it's time we settle this once and for all.

Always on your side

A side discharge deck offers a variety of benefits for the landscaping professional. Due to its design, it creates a vacuum that stands the grass up before cutting, producing a more even, quality cut across the lawn. But, that's not all. It's also less prone to clogging and super flexible, allowing specialists like Tom Duchesne, Owner of Top Garden Services to "mulch, pick up or collect grass with a collection kit," making it perfect for the differing landscapes encountered on any one day.

However, with such flexibility can come additional upkeep. As it's so

adjustable, there are more parts that could require maintenance further into its use cycle, so make sure the mower is expertly constructed. Also, a side discharge deck can sometimes produce an uneven spread of clippings across the lawn as well as cause trimmings or debris to eject from the side unwantedly. This, though, is where the rear discharge deck comes in.

Always got your back

One of the rear discharge deck's biggest strengths is that trimmings are contained behind the wheels and then deflected back onto the ground and dropped under the path of the mower.

This not only means that trimmings fall uniformly onto the lawn, but they also won't hit fences, walls or flowerbeds. This is also important from a health and safety perspective as stones or other objects won't accidentally damage property or injure passers-by, making a rear discharge deck a safer consideration for council, local authority and amenity work, especially near roadsides or pathways. Specialists like John Ryan of John's Lawn Mowing prefer a rear discharge deck for this type of work for that exact reason.

It isn't all about safety with a rear discharge deck, though. A rear discharge deck can conquer tough-to-cut terrains better than its counterpart and give professionals like James Chillingworth, Owner of Wooden Fence Post Company "quicker discharge of trimmings for a faster, more efficient mow."





Which is a cut above?

When looking at the strengths and weaknesses of both side and rear discharge decks, it's clear both warrant their place in the garden, each being a master of its own terrain. How then can we settle this long-standing debate? Actually, it's quite simple. Instead of arguing over which is better, decide upon the right deck for the job and focus more on mower build.

With so many varying and difficult landscaping scenarios, landscaping professionals need a mower that can get the job done on the first try, that doesn't compromise on quality. One that has the power, durability and craftsmanship of the Ariens

APEX 48 RD. Ariens, renowned for its industry leading side discharge mowers, is now manufacturing rear discharge mowers with its APEX 48 RD rear discharge petrol zero-turn mower leading the way.

The APEX 48 RD is designed to overcome the unique lawn challenges faced by UK and European landscapers, including the need for rear discharge where necessary. Ariens works with thousands of landscape specialists across the continent and even set up a manufacturing base in Oxford to not only produce the APEX 48 RD zero-turn mower but be closer to the men and women powering them.

When it comes to which deck is best, it all depends on the type of work that must be completed. If flexibility and cut quality is needed, a side discharge deck will operate better, whereas, if speed, uniform trimming discharge and safety are priorities, a rear discharge deck is a step ahead. But, no matter what deck you decide to go with, don't skimp on quality. Put your trust in a manufacturer that, as well as having decades of experience you can rely on, expertly builds mowers that produce the results you need first time, every time.



ARIENS®



All-day performance, all-day comfort

The APEX 48 RD features a fully fabricated, 10-gauge, 122cm (48") deck offering superior airflow with exceptional cutting performance. The industry-leading solid and fully welded frame supports the overall design and an optional ROPS can be fitted to order. Large tyres provide solid traction and a comfortable ride while all-day comfort is further emphasised by the high-back plush seat and padded armrests. Power comes from a Kawasaki FR691 V-Twin engine and a self-adjusting belt drive minimises wear and tear with little to no maintenance required.

NEW

Available with
**48" REAR
DISCHARGE
cutter deck**

Powered by

Kawasaki

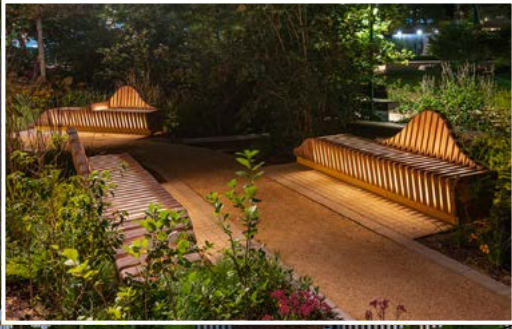
**Find out why commercial operators
are switching to zero-turn.**

Visit www.ariens-uk.com

4 YEAR
OR
500 HOURS
WARRANTY

#designthenation

elephant park, london



01254 685 185

sales@woodscape.co.uk

woodscape.co.uk

woodscapegroup

woodscapectd

woodscape_street_furniture

 Woodscape.

Bespoke Street Furniture