



RWinvest

# KING'S DOCK MILL CONSTRUCTION UPDATE

July 2019



---

# KING'S DOCK MILL

## CONSTRUCTION UPDATE

July 2019

Some of the main works progressed at King's Dock Mill in the latest construction period were fit out, snagging and envelope works. These are now 95% complete across Zones 1 and 2 of the development. The same tasks are 90% completed in Zone 3 and 85% completed in Zone 4.

Overall works to Zone 5 are 50% progressed. The steel structure and flooring is now 95% and nearing completion in Zone 6.

The water connection and electricity power on are due to be established in the coming weeks.

Section 278 works including flagging and landscaping to Hurst Street are 90% completed.



Zone 1 fit out and snagging.

---

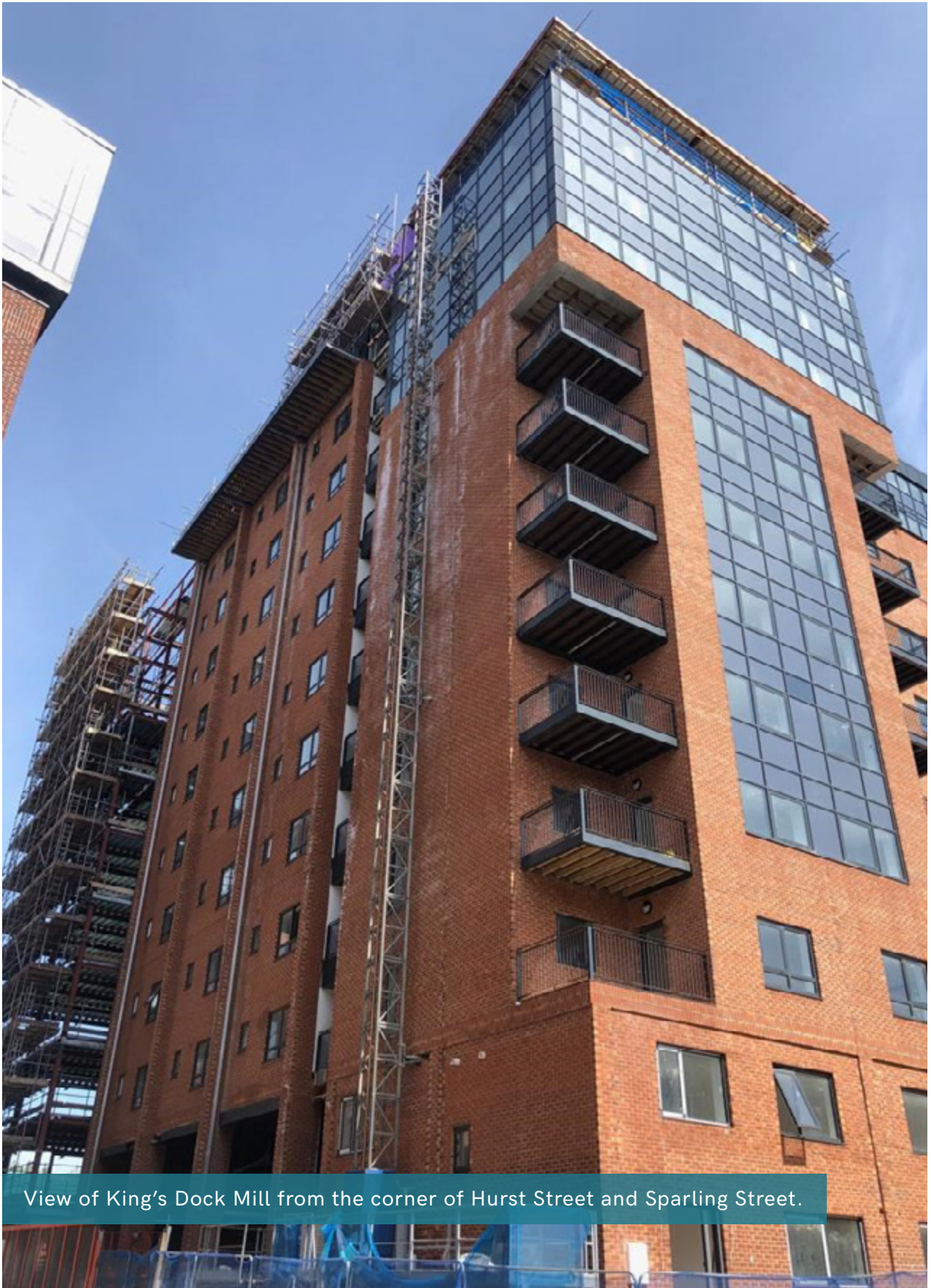


Zone 2 fit out and snagging.





View of King's Dock Mill from the corner of Hurst Street and Tabley Street.



View of King's Dock Mill from the corner of Hurst Street and Sparling Street.

Construction of penthouses.





**RWinvest**

Liverpool +44 (0)151 808 1250

London +44 (0)207 100 4141