

Design Buy Build

M A G A Z I N E

Issue 36 2019

www.designbuybuild.co.uk

Self Builders



Property Developers



Architects



Interior Designers



IQ Glass

Keller minimal windows sliding doors are exclusively available from IQ Glass in the UK.



The Hill House

The Hill House sits in an area of Winchester that has a hidden and secluded feel and has some of the greatest views in the city.



CTN House

To meet the need for expansion, the agency recommended that the house is renovated by occupying the night area.



Firing imaginations for over 37 years



WOODBURNING | GAS  MULTI-FUEL | ELECTRIC

STOVAX | **GAZCO**
Fire Your Imagination

www.stovax.com

Features

06-10 Villa on the Lake

The principle was to create a house that combines transparency with sustainability, forging a strong relationship between the villa and the landscape.

16-18 Hill House

The Hill House sits in an area of Winchester that has a hidden and secluded feel yet somewhat paradoxically, has some of the greatest views in the city.

24 Kitchen Trends from Rotpunkt UK

Rotpunkt, award winning designer and manufacturer of quality German Kitchen furniture, look at the latest interior trends set to 'wow' the kitchen market in 2019.

26-28 CTN House

The compact and opaque typology of the buildings of the original house did not take advantage of the landscaping quality offered by the immediate proximity of a public park.

38-39 Five 2019 Kitchen Trends

The kitchen has always been the place to socialise and with the ever growing movement of open plan spaces and shared living and dining areas, this welcoming layout allows homeowners to be creative with their kitchen designs and be more connected than ever before.

42-45 IQ Glass - Minimal windows sliding doors

Keller minimal windows sliding doors are exclusively available from IQ Glass in the UK.

48 Evolution Windows

Windows made of uPVC versus wood are a great social divider, much like hot tubs, solar panels and fake grass!

50-51 Plantation Shutters

Shutters can look simply stunning in a contemporary home, with timeless elegance and sophistication. Shutters are generally recognised in traditional properties but are now being seen more widely across modern houses.

Products & Services

11-29 Editors Choice

36-37 Bathrooms & Kitchens

40 Coatings, Sealants & Paints

41-54 Doors, Windows & Fittings

55 Drainage & Plumbing

63 Floors & Flooring

64 Glass & Glazing

65-66 Heating, Ventilation & Insulation

72-73 Interiors & Interior Design

80-85 Landscaping & External Works

88-91 Lighting & Electrical

95 Safety & Security

95 Timber & Timber Frame

96-97 Tools, Plant & Equipment

Cover Story



06

Villa on the Lake

Design Buy Build - www.designbuybuild.co.uk

Editor in Chief
Antony Holter
antony@designbuybuild.co.uk
01304 806 039

Editor
Fiona Medows
fiona@designbuybuild.co.uk
01304 806 039

Sales Director
Ryan Nolan
ryan@designbuybuild.co.uk
01227 392 517

Sales Manager
Rebecca Charlesworth
rebecca@designbuybuild.co.uk
01227 392 568

Business Manager
Josh Holmes
josh@mhmagazine.co.uk

Studio Designer
James Sayer
james@mhmagazine.co.uk

Publishing Director
Martin Holmes
martin@mhmagazine.co.uk
01304 806 039

Sales Support Executive
Nicky Wilson
nicky@designbuybuild.co.uk
020 3287 2045

Digital Manager
Jamie Bullock
jamie@mhmagazine.co.uk
01227 392 571



MH MEDIA
GLOBAL

Published by:
MH Media Global Ltd
Office 15, Second Floor,
Innovation House, Discovery Park,
Ramsgate Road, Sandwich,
Kent, Ct13 9FD

Tel: 01304 806 039
Fax: 08721 152240
© MH Media Global

Professor Murray Fraser to receive 2018 RIBA Annie Spink Award

The Royal Institute of British Architects (RIBA) has today (30 November 2018) announced Professor Murray Fraser as the recipient of the 2018 RIBA Annie Spink Award for excellence in architectural education.

Professor Murray Fraser © Dr Eva Branscome

Fraser, who is Professor of Architecture and Global Culture and Vice-Dean for Research at the Bartlett School of Architecture (UCL), will be presented with the award at the President's Medals ceremony in London on Tuesday 4 December.

The prestigious biennial prize is awarded to an individual who has made a significant contribution to the advancement of architectural education in a school of architecture anywhere in the world that offers courses validated by the RIBA.

RIBA President, Ben Derbyshire, said:

“Congratulations to Professor Murray Fraser on winning the 2018 RIBA Annie Spink Award. Murray's extensive career has influenced the development of thousands of students at Oxford Brookes University, at the University of Westminster, and at the Bartlett School of Architecture, as well as over many other aspects of architectural education. The academic rigour of his teaching of design, and history and theory, and his passionate commitment to sharing architectural knowledge in the most diverse publishing formats, make him a most deserving winner of this award.”

Research project which reconnects homeless people with local support services wins RIBA Research Medal

The Royal Institute of British Architects (RIBA) has awarded the 2018 RIBA President's Medal for Research to Chris Hildrey of Hildrey Studio for 'ProxyAddress: Using Location Data to Reconnect Those Facing Homelessness with Support Services'.

One of many interviews carried out in homeless shelters across the UK © Hildrey Studio

Chris Hildrey's project addresses one of the main causes of homelessness in the UK: the end of an 'assured shorthold tenancy', where a landlord is legally entitled to issue a possession order.

ProxyAddress tackles this issue through collaborative research and real-world application. It creates a database of long-term empty properties, which serve as 'proxy' addresses to be used throughout periods of instability. By giving homeless people a consistent address, they are able to retain access to vital support services, which may otherwise be lost.

ProxyAddress was selected as the Medal winner from other recipients of the 2018 RIBA President's Awards for Research, which were also announced yesterday evening (Tuesday 4 December).

The RIBA President's Awards for Research were given in four categories: Cities and Community; Design and Technical; History and Theory; and this year's theme: Ethics and Sustainable Development.

Cities and Community:

- Chris Hildrey, Hildrey Studio

'ProxyAddress: Using Location Data to Reconnect Those Facing Homelessness with Support Services'

Design and Technical:

- Dr Kostas Grigoriadis, Architectural Association School of Architecture

'Computational Blends: The Epistemology of Designing with Functionally Graded Materials'

History and Theory:

- Prof Jane Rendell, Bartlett School of Architecture, UCL

'May Mo(u)rn: transitional spaces in architecture and psychoanalysis – a site-writing.'

Ethics and Sustainable Development:

- Roland Karthaus, Anthony Hu & Lucy Block, Matter Architecture

'Redesigning Prison - the Architecture and Ethics of Rehabilitation'

Britain must retain and build a skilled workforce

The Migration Advisory Committee (MAC) has released its Government-commissioned study, "EEA migration in the UK: Final Report".

The report set out to establish the current and likely future patterns of EEA migration.

Key recommendations include:

- No preference for EU citizens, assuming that immigration will not be part of the UK-EU withdrawal agreement;
- Reviewing how the sponsor licensing system works for SMEs;
- Maintaining existing salary thresholds and extending Tier 2 (General) visas to all jobs at RFQ (Regulated Framework of Qualifications) Level 3 and above;
- Reviewing the shortage occupation list;
- Retaining and revaluating the Immigration Skills Charge;
- Abolishing the cap on the number of migrants under Tier 2 (General) visas.

RIBA responds to the government's building safety update

The Royal Institute of British Architects (RIBA) has responded to the government's building safety update and implementation plan, released today following two reports undertaken after the Grenfell Tower tragedy, now over 18 months ago.

Immediate Past President of RIBA and Chair of the RIBA's Expert Advisory Group on Fire Safety, Jane Duncan says:

"The update released today contains some welcome proposals. We are pleased to see that the government will require proper testing of fire safety products rather than relying on desktop studies and that they are planning substantial and

comprehensive reform to the regulatory and accountability framework.

But the news is long-overdue and with the exception of combustible cladding, the building regulations remain the same as they did when the Grenfell Tower tragedy took place, over 18 months ago. England is now lagging behind Wales and Scotland, who have in place or are introducing regulations to require sprinklers, and in Scotland provide a second means of escape – two recommendations the RIBA has consistently called for to provide clarity for the industry and protection for the public.

Furthermore, until we see real reform of how construction projects are procured, the pressure to cut costs will continue to incentivise the use of cheaper and ultimately riskier materials and approaches. The government must urgently reform the inspection process, but in the long-term we need to see a holistic focus on safety, not just cost cutting.

The next large scale fire may not happen in a tower block – it's vital that the government do not neglect other high risk buildings like care homes, hospitals and schools."

Build UK members contribute to latest updates to Construction H&S and Environmental Manuals

Build UK is continuing its work with Construction Industry Publications (CIP) to ensure the Construction Health & Safety (H&S) manual includes industry recognised health and safety policies and standards.

This integrated approach aims to improve the knowledge and practices of those on site without duplicating information or publishing conflicting advice.

Build UK partner Construction Industry Publications (CIP) is offering all Build UK members an exclusive 30% discount (excludes the six-monthly updates) on its online combined Construction Health & Safety and Environmental Manual CIP Knowledge and also on hardcopies and CDROMs.

Industry unites for largest ever survey on skills shortages

Build UK, along with other leading industry trade bodies, have joined forces to build a picture of those occupations that are in greatest demand.

A survey, which will go to more than 20,000 companies nationwide, asks respondents to indicate which roles they are finding difficult to recruit for now, and which ones they expect to be challenging post-Brexit.

In order to ensure that the survey has as wide reach as possible, companies that are not members are also invited to take part in the survey.

The evidence uncovered from this survey will be used to identify where industry should be focussing its efforts to recruit new workers.

It will also be used to engage with the Government and Migration Advisory Committee to support decision-making on appropriate migration for workers from the EU and rest of the world.

Suzannah Nichol MBE, Chief Executive at Build UK said: "We recognise that more needs to be done in recruiting, training and retaining the next generation of home-grown talent to meet our industry's skills needs. However, to deliver the homes, hospitals, roads and rail projects underway and those in the pipeline, the industry also must have the ability to continue to recruit skills at all levels from outside of the UK. This is our opportunity to collectively demonstrate to Government the extent of those skills needs and create a system that works for everyone."

BSA comments on CMA decision on CAB super-complaint

A BSA spokesperson commented:

"The BSA welcomes the decision by the CMA for regulators to take forward the recommendations within their current work without the need for a separate market study at present.

"We are engaging with the FCA on multiple consultations and will continue to contribute as the regulators and industry consider the full CMA response. We also look forward to working with the CMA and our sector's regulators on the generic cross-cutting recommendations."



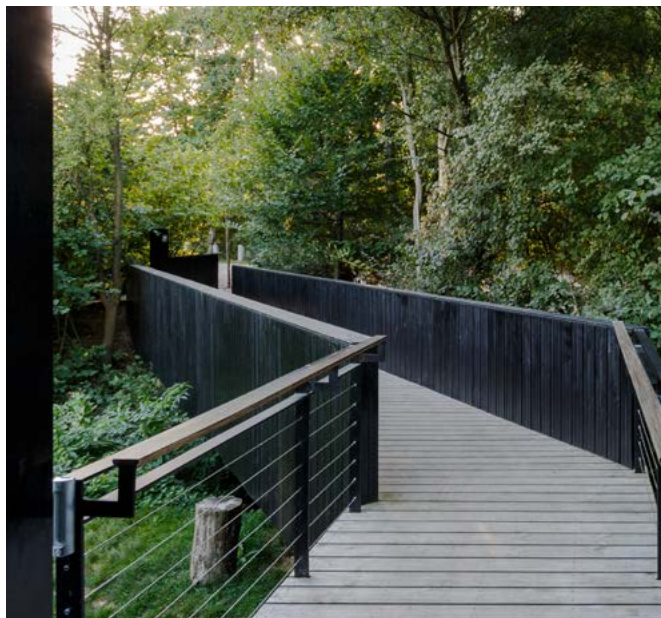
Villa on the lake

The guiding design principle was to create a house that combines transparency with sustainability, forging a strong relationship between the villa and the landscape.

The harmony between landscape and interior, architecture and nature, was a key design determinant, particularly regarding sight lines, materials, colours, and lighting.

The house is designed from inside out, creating uninterrupted views to the surrounding nature while providing shelter and intimacy. All these aspects work together to ensure the house's sense of timelessness.





Oasis

The villa is situated in a green oasis of trees and plants that hide the house from view. Water plants along the water line alternate with stepping stones that lead to other parts of the garden.

On the water side, the villa has an optimal view over the lake. Terraces on two different levels connect the villa to both the land and the water, anchoring the house in nature and giving it a welcoming presence.

Glass corner windows in the living room, kitchen and other rooms, make the residents feel like they live on the water. Between the house and the adjacent plot, a hilly finger of land with tall trees ensures privacy.

By curving the bridge that connects the villa to the main road, the row of trees remains intact. This further increases the sense of privacy and blocks disturbing lights from the traffic.





Panoramic view

Interior elements such as the fireplace and storage cupboards, divide the house into different places, creating more intimate and private areas within the large transparent volume. In the heart of the house, a full-height void connects all levels and creates another series of diagonal and vertical sight lines.

The staircase sews all the rooms together into one interior space. The central atrium brings abundant daylight into the sunken basement and connects the interior to the roof terrace.

From the roof terrace, one can enjoy panoramic views as if floating quietly over the expanse of the lake.



Programme: 600 m² three-storey house with one level below water with cinema, games/bar area, wellness/spa area, 80 m² roof terrace and 176 m² ground floor terrace

Design: 2015-2016

Realisation: 2016-2018

Client: private

Development: Boheme Development S.L.

Concept design: Mecanoo architecten

Developed architectural design: Arquitectura y Ordenación Urbana S.L. AOU SL

Structural engineer: Fernando Sarria
Engineering: INARQ S.L.



www.mecanoo.nl



Working with nature

Sioo:x are leaders in wood protection using silicate technology.

We provide a highly effective proven system to protect wood of all types. It gives long life and a beautiful natural surface with even colouration and is friendly to people and the environment. An example is the summerhouse by architect Leo Quarsebo, Sweden.


Sioo:x
WOOD PROTECTION



Sioo Wood Protection AB | www.sioox.org.uk




OFFSITE CONSTRUCTION OF CUSTOM TIMBER FRAMES



**EAST COAST
PROPERTY (UK) LTD**

www.eastcoastproperty.uk.com
07521 404382 • info@eastcoastproperty.uk.com

Suffolk • IP12 3BD

STRUCTURAL
TIMBER ASSOCIATION
Member



Wembley Park

Wembley Park is one of the UK's largest urban regeneration schemes. Situated in London's borough of Brent, the development offers a vibrant hub for people to live, companies to grow, and neighbourhoods to come alive.

Hello Wembley

The £3bn renewal project is led by development firm Quintain, which purchased the plot in 2002. The development will provide a total of 7,500 homes and a variety of amenities. Reynaers has been named as a preferred supplier for window systems across the Wembley Park site. Reynaers will assist on the development of further projects following the success of Emerald Gardens in 2016 and Alto in 2017.

Mary Kelly-Mannion, Head of Procurement with Quintain comments: "We look to engage with first class suppliers who can offer high quality products which complement the development at Wembley Park. In our selection of Reynaers as a Key Supplier we recognise their strong history in the field of research and development.

This history, together with the range and quality of their products, means that they are an ideal contributor from the early design stages right through to provision of the window and door systems on our projects."

Crowd pleasers

Since construction began in 2006, Quintain's approach was to create a desirable district filled with amenities before populating the area, creating a welcoming sense of community first and foremost. Visitors to Wembley Park can enjoy a nine-screen cinema, over 70 shops, restaurants, coffee spots, a children's all-weather play park and the London Designer Outlet.

Simon Cray, Consultant Project Manager at Reynaers, comments: "Seeing the project progress from pen to paper to the vibrant community that is there today is incredibly rewarding. We have seen this fantastic development grow before our eyes, almost in unison with the fabrication of the buildings, and I think that is what makes this project so special."

The aesthetic of the Wembley Park project has been designed to enhance the skyline and allow residents to view the sweeping boulevards that lend an openness to the development.

Reynaers has utilised systems that create a maximum presence of space and natural light, resulting in seamless integration between the indoor and outdoor environments. Throughout the project, making a feature of the iconic Wembley Stadium, as well as facilitating unrivalled views of across the site has been a priority when considering the glazing systems.

Cray continues: "We wanted to create buildings which look just as striking from the outside as they do inside. Working closely with architects has ensured that each building is unique, diverse and innovative in appearance and in functionality.

The systems used create a sense of rhythm across the façade of the buildings, in keeping with the community feel, as well as building identity across individual plots."



Tipi

Quintain has utilised the world class development at Wembley Park as an opportunity to revolutionise its business structure, focusing on BtR (Build to Rent) by creating Tipi, a wholly owned residential rental management business. Of the 7,500 homes built, the majority are will be exclusively Build to Rent, managed by Tipi. In London's economic climate, many find the prospects of purchasing a property in the cosmopolitan capital unobtainable, whilst renting can often result in many additional complications such as absent landlords and hefty upfront payments.

Tipi offers no fees, no deposits, all-inclusive utilities and fully furnished state-of-the-art apartments. Residents can expect stunning social spaces, superfast ultra-fibre broadband, John Lewis furniture, Samsung kitchen appliances and a 24-hour concierge.

Alto

Reynaers has successfully completed the supply of aluminium windows and doors for the Alto development, which offers 120 apartments available to rent through Tipi. Completed to the highest spec, external features include private garden terraces fitted with privacy screens and communal spaces including an elevated private landscaped garden.

Cray explains: "Tipi is showcasing the future of living in large cities. It is not only offering brand-new living space close to the bustle of the Capital, it has created a hub where occupants don't just rent an apartment, but rather they can benefit from an entire lifestyle. Reynaers is proud to be a part of this world-class development by supplying residents with our rigorously tested systems and we can offer them the upmost comfort and security in their luxurious new homes for years to come."

Emerald Gardens

The Emerald Gardens development is inspired by London's flourishing garden squares. The plot surrounds almost an acre of private grounds, accommodating 475 apartments spread across a number of buildings.

Cray continues: "We have been working closely with our HQs in Duffel and Birmingham to ensure seamless logistics throughout this project. A key area of focus from the technical team has been developing acoustic solutions to ensure minimal disruption from the stadium during large events."

To discover more about the project visit:
www.quintain.co.uk

For more information about Tipi apartments visit:
www.tipi.london

For more information about Reynaers' innovative aluminium systems,
 email reynaersltd@reynaers.com or
 call +44 (0)121 421 1999 and see the website at
www.reynaers.co.uk





NEW CHAIRMAN FOR THE LADDER ASSOCIATION

The Ladder Association is welcoming Paul Bruton of WernerCo as he takes on the role of chairman for the not-for-profit membership organisation.

With nearly 45 years of experience within the ladder industry, Paul has taken over from Martin Brookes of Bratts Ladders following a successful three years in the position.

In his new role as chairman, Paul aims to move the association forward in its plans to promote the safe use of ladders on site and focus on ensuring safety is a priority for manufacturers.

Paul commented: "My entire career has been spent in the ladder industry as I started out within the family business so I'm pleased to be taking on the reigns of the Ladder Association. I am honoured to be taking over the role from Martin who has worked incredibly hard and with such passion to support members in shaping the industry.

www.wernerco.com/eu



Valverdi Indoor-Out

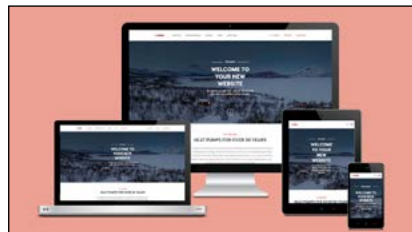
Launched in 2013, Valverdi Indoor-Out is a premium range of co-ordinating indoor and outdoor porcelain. Now one of the market leaders in indoor-outdoor tiles, Valverdi provides wide range of high-quality porcelain tiles for residential and commercial use.

Creating a seamless transition from inside your home to your outdoor space, Valverdi Indoor-Out will extend your living area into your garden. This slip-resistant range of tiles features a 20mm frost proof outdoor porcelain, and matching 10mm indoor tile.

Choose from natural-inspired finishes like wood and stone effect, or opt for something contemporary like a large format cement effect slab.

Valverdi Indoor-Out products are in stock in Hampshire and available for delivery throughout the UK.

www.valverdi.co.uk



NIBE LAUNCHES NEW WEBSITE TO SUPPORT INSTALLER NETWORK AND CONSUMER CHOICE

In recognition of how technology can support consumer demands and education needs a leading supplier of heat pumps in the UK is launching its new website.

Some of the most noteworthy additions are the Interactive Product Selector which will enable those making an initial enquiry to decipher the right heat pump for their needs; video case studies which bring the products and the processes to life instilling confidence and educating buyers as described by previous NIBE purchasers; whilst each element continues to reflect the NIBE ethos 'It's in our nature', which champions the power of nature and how it can be harnessed to provide heating and hot water for our homes and businesses.

Further information can be found by visiting www.nibe.co.uk



Veritais Ltd

With over 20 years experience and over 300 installations Veritais consults, designs and installs automation systems, AV equipment, lighting, heating, security control and lighting design.

We work with architects, interior designers, owner's reps and directly with the home owner to design systems small and large specifically to suite budgets and the required functionality.

Our team can talk you through the installation process, from selecting top brand name components to how we work alongside building contractors.

We provide full technical support including schematic drawings, commissioning and hand over. Most importantly, advice how to future proof the property.

Tel: 01827 64688
www.veritais.com



NET Coverage Solutions

NET Coverage Solutions Ltd has been delivering mobile coverage since 2004 to combat the problem of poor and non-existent mobile coverage no matter the environment.

NET CS offers more expertise and more choice than anyone else to give its customers the right option to suit their needs.

Its "Can Do attitude" has won NET CS the reputation for excellence in both trouble shooting, solution tailoring and customer service.

From working directly for all four UK Mobile Network Operators through to direct customers in hospitality and leisure, residential and commercial space; NET CS has delivered premium mobile coverage solutions through its independent position and offers the full choice of solutions from small cell, DAS and hybrid solutions.

www.netcs.eu
enquiries@netcs.eu
Tel: 01276 854 440



Sterling data solution for football club's state-of-the-art media room

A vast amount of data cabling is required to keep Swansea City Football Club's media centre running smoothly and Marshall-Tufflex's Sterling Curve and Sterling XL PVC-U trunking have provided the perfect cable management solutions.

The club plays in the English Football League Championship and its media centre is regularly used by news and media agencies, such as Sky Sports, for outside broadcasts, interviews and press conferences.

The large amount of cabling required to service the centre is now managed via Marshall-Tufflex's trunking fitted across four media rooms, which form part of the club's new Fairwood training base.

The state-of-the-art facility was built in collaboration with Swansea University at a cost of £10.5million.

www.marshall-tufflex.com

Drive to success

When exterior specialist Resin Drives found the next customer on its order book was property developer and Channel 4 TV celebrity, Sarah Beeny, the staff were thrilled. Not only had Sarah identified that "Resin is definitely the perfect drive finish", but she had chosen Resin Drives with their ten-years of experience as the best company for the job at her own home.

The original surface was a mix and match tired drive and pathway in a combination of gravel, tarmac and block paving. It looked tired and keeping it tidy and combating weeds breaking through was a constant challenge. Sarah wanted a new driveway which would be easy to maintain and smart to look at; providing that instant first impression 'kerb appeal' which is so important.

The successful pioneers in developing this functional, attractive, safer and surprisingly environmentally friendly surface for drives, patios and pathways, Resin Drives was the natural choice and the team were not fazed by what might otherwise have been a challenging project.

No planning permission is required for resurfacing with Resin Drives, so the hardest part, with a choice of 40 colours, was choosing the optimum look.

Natural aggregate stone is mixed with resin, a synthetic organic polymer liquid that solidifies when it dries. Sarah observed "It has the massive advantage of being a bit like a little black dress. You can dress it up glitzy glam if you want a real Hollywood look or it can blend perfectly with a rural setting." She opted for a rich golden brown shade.

Sarah's home in south west London, in had a sizeable 600 metre drive which meant that four fitters were put onto the job, each able to surface around 200 metres a day.

Application is a relentless operation for the fitters on site, as realistically there is only a 15 minute window before it becomes too viscous to spread with a trowel.

It's definitely a job for an experienced crew, particularly when there is a large area to cover.



Sarah was delighted with the result and is happy to recommend Resin Drives to others, saying "They arrived when they said they would, gave us a clear time schedule for the work and were finished early," she says. "All the fitters were polite and charming and properly cleaned up after themselves. They did a beautiful job and were complete perfectionists."

www.resindrivetrade.co.uk

YOUR ONE STOP SHOP FOR ALL RESIN BOUND MATERIALS

One of the largest suppliers of resin products in the UK with everything you need for resin bound installations including:

- ✓ A huge range of dried aggregate colours & styles
- ✓ Hands on training from experienced installers
- ✓ Drive in collection points
- ✓ Next day on site delivery
- ✓ Free technical advice
- ✓ Rubber crumb for playgrounds
- ✓ Resin grid system

Order online anytime, day or night!

www.resindrivetrade.co.uk

OR DRIVE IN TO ONE OF OUR COLLECTION POINTS TODAY:

HUDDERSFIELD

01274 699233

Unit 4D Armytage Road
Brighouse HD6 1QF

Mon-Fri: 6.30am-6.30pm. Sat: 7am-12pm

SOUTH WALES

01656 667866

Unit 17A Kingsway Buildings
Bridgend Ind Est, Bridgend CF31 3RY

Mon-Fri: 7am-5pm. Sat: 7am-12pm



Rated EXCELLENT by our customers



Resindrives.co.uk is a trading name of resindrives.co.uk Ltd.

RESINDRIVES
TRADE .CO.UK



RESIN TRADE SUPPLIES



The Hill House

The Hill House sits in an area of Winchester that has a hidden and secluded feel yet somewhat paradoxically, has some of the greatest views in the city. Built in the late 70s, the five bed house was recently bought by the current owners from an elderly lady who had not changed the property since its construction. The existing layout was dark, outdated and denied the occupants an appreciation of the stunning views of which the house commands.

The client's approached AR Design Studio with a simple brief; increase the area of the living spaces, allow as much natural light in to the house as possible and maximise the views out.

Externally, the now linear nature of the house is highly apparent. At the rear, an elongated insertion frames the new aspect of the house. At the front, one now enters the home via a new double height box which has created a visibly welcoming and clear entrance.

Both of these new features are clad in fibre cement, defining the property with a bold and contemporary character.

The house, split across three levels, has the bedrooms and bathrooms located on both the lower and upper floors.

One arrives on a split level landing and is met with snippets of the stunning views that make the location so special.



Descending a few steps down, one arrives at the central floor which plays host to the kitchen, dining and living spaces where the insertion of the contemporary box has allowed for the exterior wall to be completely removed and replaced with a single expanse of sliding glazing; one cannot fail to appreciate the uninterrupted panorama yet feel complete privacy due to the clever orientation of the house.

To make the most of the wide plot and provide a new outlook, AR Design Studio proposed the idea of increasing the width of the central floor.

In this new space the kitchen, a clean and seemingly simple space, encompasses clever touches which hide the pantry and utility rooms with 'secret' kitchen unit doors.





As keen hosts, the client's wanted somewhere for entertaining. The dining space, now large enough to contain a dining table of grand proportions, allows the client's to enjoy parties.

The entire property has been finished with a visibly neutral palette; primarily designed to allow the walls and floors to be decorated by the ever changing play of shadows and dappled light that filters through the trees and dances around the spaces throughout the day.

AR Design Studio is a RIBA chartered architects practice, based in Winchester, Hampshire, specialising in elegant and imaginative contemporary new homes, extensions, renovations and multi-plot developments.

AR Design Studio's architectural expertise and flair has been recognised by winning a number of prestigious industry awards including the Royal Institute of British Architects (RIBA) 2012 Regional Award, Civic Trust Award, Daily Telegraph Small House of the Year Award 2014 and were shortlisted for BD House Architect of the Year 2014. With a comprehensive knowledge of planning, AR Design Studio has built a stunning portfolio of completed residential projects. It is a specialist designer of waterfront homes.



For further information contact
info@ardesignstudio.co.uk
 Martin Gardner
www.martingardner.com



Lord-Lieutenant presents Ancon with third Queen's Award for Enterprise



ANCON has officially received the 2018 Queen's Award for Enterprise from the Lord-Lieutenant of South Yorkshire, Mr Andrew Coombe, on behalf of Her Majesty the Queen.

This is the third time the company has been honoured in this prestigious award scheme that acknowledges outstanding achievements by UK businesses. Ancon's 2018 Innovation award follows its Queen's Awards for International Trade in 2015 and Innovation in 2012.

After a tour of the recently-extended Sheffield head office and main UK manufacturing

operations, Mr Coombe said, "It gives me great pleasure to present this award to Ancon. I have been so impressed with what I have seen here today. It is a real team effort."

The award was received on behalf of Ancon by company director Peter McDermott at a special ceremony attended by 36 long-serving employees representing all areas of the business from sales and marketing to production and accounts.

For more information, call 0114 275 5224 or visit www.ancon.co.uk

Quad-lock



The ideal solution for the self builder.

WE can supply complete kits including insulated slabs, ICF walls and warm roof solutions.

Highly popular is our fully constructed shell ready for finishing, using a nationwide network of installers under our supervision.

QUAD-LOCK®

- STRONG/AIR TIGHT
- FLEXIBLE DESIGN
- RAPID BUILD
- HIGH INSULATION VALUES
- VARIOUS THICKNESSES
- QUIET (TYPICALLY 50dB)

Call Stephen Campbell:
07771311311

Email:
stephen.c@quadlock.com

Contractors required jobs waiting.

JULIET BALCONIES

Stylish, durable & cost effective!



Visit www.fhbrundle.co.uk to view or download a copy of the new Master Catalogue today!

For a competitive quote or for more information;

F.H. BRUNDLE
SERVING THE TRADE SINCE 1868

Email: sales@brundle.com
Web: www.fhbrundle.co.uk

Tel: 01708 25 35 45
Fax: 01708 25 35 50

Smart mobile coverage

Are you a landlord or developer looking to enhance mobile coverage in your buildings? We can help with that.



NETCS

Mobile Coverage Solutions
www.netcs.eu
01276 854440



FFX Tool Show

FFX is one of the UK's leading internet retailers of power tools, hand tools, fixings and accessories.

The Show

Where can you find the biggest selection of the best tool brands demonstrating their products all under one roof at the same time? Answer: The FFX Tool Show at the Kent County Showground!

DeWalt, Makita, Milwaukee, Stanley, Bosch, Festool and Metabo are just a few of the over 60 brands exhibiting at the show.

Not only can you see the latest tools demonstrated, but visitors to the show can purchase great deals on site. With 50,000 square feet of first-rate indoor exhibition space, there is plenty to see with excellent facilities throughout.

So, if you work in the construction, trades or

refurbishment industry, this is a show not to be missed!

In addition to being able to take home the best tools on the market, the FFX technical team will also be on hand to talk through any challenges you may be facing on your project.

So, when it comes to specifying fixings and their application, the FFX team may just have the perfect solution to meet your design needs.

Location

The Kent County Showground is located at Detling on the A249 just a few minutes from both the M20 and the M2, making it highly accessible to visitors.

The showground has FREE parking for over 30,000 cars.

How to Get Your FREE Tickets

Tool show tickets can be pre-booked at FFX.co.uk

Back by Popular Demand

Now in its 7th year, the FFX Tool Show is a real hit with tradesmen and DIY enthusiasts alike. Last year, circa 15,000 visitors attended the show. Here is what some FFX customers said about the show from its November 2018 customer survey:

"Enjoy your shows!"

"Great tool show!"

"Keep up the tool show!"

"Great show at Detling!"

"Do more trade shows!"

"Great show, I find it useful to pick things up and hold tools"

"I Really enjoyed your show!"

"I find the tool show really useful!"

"Should do the Tool Show twice per year!"

"Top day!"

"Keep it up please I always learn a lot."

"When is next year's show?"

"Keep the trade shows going I made most of my purchases there."

"Have the tool show again!"

"The shows at the Detling show ground are brilliant!"

"The tool show is really good as you get to see all tools and advice from the actual manufacturers"

FFX TOOL SHOW 2019

1ST | 2ND | 3RD MARCH

THE UK'S FAVOURITE TOOL SHOW!

50,000 SQ FT OF THE BEST
BRANDS UNDER ONE ROOF

The show you don't want to miss! Hundreds of show only bargains! Thousands of free parking spaces! Live product demonstrations *and more!*

1st, 2nd & 3rd March 2019

Kent Event Centre, Maidstone, Kent, ME14 3JF

For more information and to book your free ticket visit:

FFX.CO.UK/TOOLSHOW

 **BOSCH**  **Makita**  **FESTOOL**  **DEWALT**  **trend**  **schepach**  **Fein** + **MORE!**



Humanistiska Teatern, Uppsala University

University campus auditorium, Sweden





An artist's vision is brought to life

The auditorium for the Humanities Division of Uppsala University (Humanistiska Teatern) is an innovative and unique building designed in the shape of a horseshoe. Unlike traditional lecture halls, the horseshoe-shaped design of this unique building allows all in the auditorium to see and hear each other, encouraging both speakers and attendees to participate in lectures and debates. This unusual building is encapsulated in a spectacular facade created from over 300 perforated aluminium sheets. The vision of artist Ann Lislegaard has been brought to life by using RMIG ImagePerf technology to transfer her intricate design to the metal sheets.

Technical characteristics

Raw material: Aluminium EN AW-5754

Pattern: RMIG ImagePerf

Thickness: 3.0 mm

Finishing operations: Bending

Surface treatment: Powder coating

White Arkitekter has been awarded the prestigious Swedish architectural prize PLÅT18, in recognition of the innovative use of perforated metal.

www.rmig.com

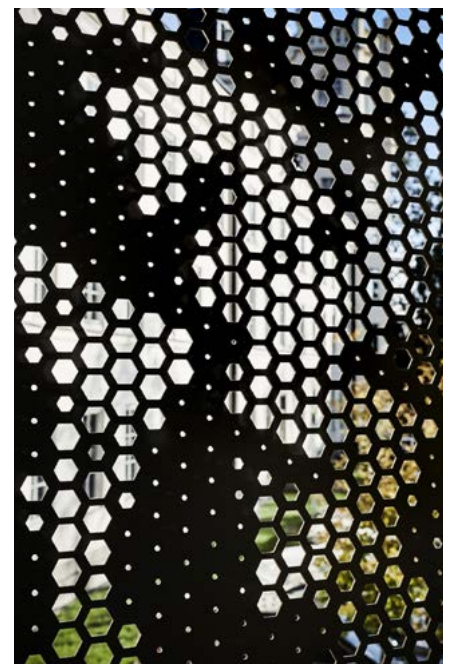
www.city-emotion.com

email: info.uk@rmig.com

Tel: 01925 839610

Architects: White Arkitekter

Artist: Ann Lislegaard



Power of Possibilities' with 2019 Kitchen Trends from Rotpunkt UK

Rotpunkt, award winning designer and manufacturer of quality German Kitchen furniture, look at the latest interior trends set to 'wow' the kitchen market in 2019.

Matt Phillips, Head of UK Operations, Rotpunkt, says "I strongly believe as we move into 2019 that furniture will be 'defined by difference' and by this I mean, a brave mix of stand-out finishes and materials being used to identify different pieces of furniture and create zonal kitchen schemes that are not restricted by four walls or customary layouts."

Asymmetrical Design

Broken-plan furniture schemes are dictating the kitchen market and these influences are a welcome preference to the outdated uniform kitchen design in terms of construction, material, finish and space planning. This has opened up the kitchen market to new and exciting design concepts which are driving trends towards hardworking furniture like room dividers, multipurpose workstations and display cabinetry through to asymmetrical layouts and wall-hung solutions. By playing with different eye-lines, visual weights and modular arrangements, modern kitchen furniture will focus on free-thinking in 2019: creating a feeling of eclectic balance that is dynamically unrestricted.

Utilitarian Style

In terms of style, next year will pay focus to the 'jewellery' of a kitchen, making a feature of exclusive handles and knobs that offer new surface textures for better grip, convenient push-to-open fittings for the height of utility and user-friendly shaped handles for extra comfort or overall design impact. Storage systems will also be top priority, with new drawer boxes, pull-outs and integrated larder systems being introduced for



a heightened level of uniformity and aesthetic appeal.

Dark Colours

2019 interior colour trends will embrace the darker colour palette, showing fewer primary colours and a greater emphasis on black which is contrasted by rich coffee browns, shades of grey, taupe and biscuit beige. I believe this change in colour story stems from developments in other areas of the kitchen which are also embracing black. For example, you can now purchase a black PVD coated kitchen tap to match your furniture, with striking work surfaces and built-in appliances and no longer available in just white. In fact, black remains the most loved colour in fashion, with any new colour trend coined as 'the new black'! Known for its expensive façade, online searches for black and dark colours are up 93% in the last 6 months and I am confident that black kitchen furniture will continue to rise in popularity throughout 2019.

High Texture

Atypical door finishes will be massive in the kitchen next year, with unique glass, metal and marble effect doors, laminate solutions with innovative surface treatments, pioneering colour-matched worktops, fine black

edging techniques and a refreshing approach to modular space planning for the creation of ergonomic kitchen environments that are modern and long-lasting. Rich wood veneers and laminate solutions can now capture masonry-style effects like marble and stone, to exude a Scandi-Noir aesthetic with industrial undertones.

A great example of dark asymmetrical design with high texture, is the Zerox kitchen in new dark Umbra Marble, Arabica and City Nature Oak by Rotpunkt, as pictured. This pioneering and brand new kitchen concept captures a variety of different colours, finishes and materials in a juxtaposing layout for greater impact and a central point of focus.

Eco-materials

The need for quality furniture that is environmentally friendly remains a priority for many of us and as a result, it is reshaping how the market is approaching kitchen design in the modern home to recognise 'resiliency' as the new 'sustainability'. This is filtering down in to the kitchen furniture market, where durable materials and designs continue to grow in popularity.

www.rotpunktuk.com &
www.rotpunktkuechen.de



Safe Heating Transforms Nursery School

The North Bristol NHS Trust are delighted with the LST radiator covers and vented pipe boxing that Contour Heating have supplied and installed to ensure safe heating in Somerset House nursery school.

New to the educational scene, Somerset House offers nursery care for the children of NHS staff onsite at Southmead hospital. The North Bristol NHS Trust were keen to implement a retrofit solution to protect radiators without preventing thorough cleaning and maintenance.

Contour, specialist safe heating providers, transformed a healthy space for the new nursery school with DeepClean, low surface temperature radiator covers. Designed with drop-down front access doors, these casings allow fast and easy access to heat emitters.

www.contourheating.co.uk



FLOOR SAFETY TESTS – DON'T SLIP UP

A new floor-safety, risk assessment service which identifies potential slip and fall hazards and provides full reports, expert advice and practical help if required for their prevention, has been introduced by Arkad Health & Safety Limited, producers of 'TREADSURE'™ the flooring traction enhancement solution.

An independent, professional slip-testing inspection checks if businesses or owners of any area where there is footfall meet legally required standards, helping them to avoid injury to users and possible resultant law suits.

For more information visit:
www.tread-sure.com
email: info@tread-sure.com or call
Ian Baker or Michael Burgess on
0330 333 7426



Ara Construction

Ara Construction is London leading company offering an unique service which combines design and construction.

Our philosophy is to work in close collaboration with our clients so that every project provides a distinctive and fresh design with considered originality, incorporating an understanding of the clients preferences in home decor and studying their lifestyle.

When choosing construction company our clients are making a decision on who will they be spending several weeks, or even months with. And we are proud not to misplace this trust.

Our site managers work closely with our customers at all stages of every project in order to minimise disruption and alleviate concerns with the final aim of achieving clients's goals and desires to the highest possible standard.

www.araconstruction.com

Cistermiser and Keraflo's new corporate website celebrates "Our World Is Water"

Cistermiser Ltd and sister company Keraflo Ltd are jointly presented in a brand new corporate website www.ourworldiswater.co.uk which reinforces a shared commitment to producing smart, efficient water management solutions that optimise control, deliver savings and help to ensure the safety and preservation of the earth's most precious resource.

With their headquarters and manufacturing centre in Woodley, Reading, the two companies boast proud histories spanning over 35 years of service to the UK construction industry, with design and development of proven and innovative products.



The Keraflo brand is renowned for top quality Aylesbury delayed-action mechanical float valves and Tanktronic systems for management of cold water storage tanks.

The Cistermiser name is synonymous with proven and reliable products that control all water outlets in commercial washroom environments, as well as Combimate limescale prevention devices for domestic applications.

Ourworldiswater.co.uk

Improve your family home, Crocodile style.



Homecomings and goings are so much easier with a Crocodile Automatic Garage Door. Smart in appearance and ingeniously space-saving in operation, it's the perfect combination of design and function. Call Crocodile today and find out how quick and easy they are to install.

*Subject to terms and conditions.

FREE FITTING*

Designed and

 Made in Britain

CROCODILE
 Garage doors

Call Freephone 08000 1122 34

Or visit crocodile.co.uk



CTN House

The compact and opaque typology of the buildings of the original house did not take advantage of the landscaping quality offered by the immediate proximity of a public park. To meet the need for expansion, the agency recommended that the house is renovated by occupying the night area, giving it more intimate spaces, and designing a contrasting extension, by means of a very open volume for the day spaces.

The installation of a narrow extension has been designed to occupy all the exterior. This layout generates a clearer reading and identifies spaces, such as the new entrance to the north, or the pool to the south. With reference to the Farnsworth House by Mies Van Der Rohe, the typology of the construction translates into a rational and assertive black metal frame, allowing total transparency, and alternating volumes of glass and lounge terraces.







The level of the extension is a midpoint between the level of the existing house, too elevated compared to the garden. The staircase, the only physical contact with the original house, allows the different levels to be connected. A trick of light makes the transition between the two epochs. The horizontality of the structure emphasizes the randomness of the vegetation and the trees of the park.



www.brengues-lepavec.com

Images:- Marie-Caroline LUCAT



A & W Moore Wine Racks

A & W Moore Wine Racks have been manufacturing wine racks in the UK since 1977. We are a family-run business, providing a comprehensive range of high quality wine racks and wine cabinet storage solutions.

We have built our reputation on building bespoke wine racks using only the finest materials, to not only provide you with bespoke storage solutions that are tailor-made to your requirements, but also to ensure that no matter the wood or metal you choose, your wine storage solution will preserve your wine or champagne for generations.



Our reputation for quality products at affordable prices, combined with great personal service, means that we now have loyal clients from every corner of the globe, as well as across the United Kingdom. Choose from our large collection of solid oak wine racks, solid pine wine racks, traditional wood & steel wine racks or all metal wine racks to find your perfect fit.

For more information Tel: 0115 9441434, email: information@wineracks.co.uk or visit our website www.wineracks.co.uk



Freephone - 0800 328 5492

Email: sales@allertonuk.com

Website: www.allertonuk.com

The Dependable Choice in Drainage

In rural areas without a mains drainage system, and where septic tanks will no longer reach environmental standards, Allerton can provide the ideal solution. Trading since 1974, Allerton are leading specialists in efficient treatment systems. They pride themselves on their individual, problem solving approach to dealing with alternative means of treating and disposing of raw sewage.

The Allerton ConSept converts your existing Septic Tank or Cesspit into a fully functioning Sewage Treatment Plant

Servicing & Maintenance on a wide range of Sewage Treatment Plant and Pump Stations by BRITISH WATER ACCREDITED ENGINEERS

The Diamond Sewage Treatment Range is suitable for either Individual Homes or small population applications

When Gravity Drainage is not possible choose Allerton Pumping Stations for Sewage or Dirty Water



LIMESTONE • SANDSTONE
BUILDING STONE • FLOORING • WALLING
MASONRY • LANDSCAPING • RESTORATION



01386 584384

www.stonequarries.co.uk





Sustainability and eco-building for the future

Sustainability is increasingly at the heart of the UK economy. The Government has adopted a clean growth strategy, which means growing national income while cutting greenhouse gasses. Progress is being made across a number of sectors, including transport, energy, waste and water to limit environmental impact.

But sustainable building is also a key area as the built environment accounts for a significant amount of carbon emissions, which does need to be addressed and at astudio we have developed methodologies and tools that help us minimize the environmental impact of our projects and contribute to the building of a cleaner, greener society.

Having a more sustainable approach will help boost UK productivity, career opportunities, enhance people's

earning potential and help protect the environment and climate upon which we and future generations depend. The impact of this focus is already evident across the economy.

Take waste and energy. The UK increased the share of municipal waste recycling from 12% to 40% between 2001 and 2010 and the ratio has continued to improve, while the carbon factor of grid electricity was 495 grams of CO₂ for each kWh of electricity generated in 2014, by 2016 it was 412 and it is projected to fall to just 66 grams in 2035. Critical to further progress are heat networks, as they use low carbon heat sources and the Government has announced a £320-million fund initiative to accelerate the growth of heat networks across the UK.

Another key area is the built environment, as it accounts for 39%

of global energy-related carbon emissions. But sustainable eco-buildings are already gathering momentum, such as The Co-op's HQ in One Angel Square Manchester or the Eden Centre building in Cornwall. There are a number of assessment tools and standards available, such as, BREEAM, Passivhaus, SAP and LEED, which all seek to help developers and architects to deliver more sustainable projects.

At astudio we follow three general principles that many local councils endorse; 'Be lean': Make sure that you design out as much energy as possible, 'Be Clean': Using an optimum system and 'Be Green': take the best product on the market you can get at the time, for example choose the best system possible to get the most out of the power that you are using. In addition, we use tech and tools to



test how our designs will perform and the CO2 cost of that design.

For example, we can estimate how much energy it takes to construct a concrete wall, so when we design our buildings in 3D we can tell exactly how much volume of concrete we have within it and therefore what is the embedded CO2 cost.

We can also compare that structural system to a timber structural system, which helps us extrapolate and work out the carbon benefit.

We work with our in-house engineer, Kate Millen, to help limit carbon and energy use from the first design. She helps us to

understand this better and educates us in early concepts for low energy design. This has assisted us in achieving zero carbon emissions in our projects, such as East Wick and Sweetwater, as well as zero carbon housing in Barking using our offsite amodular approach.

We all have a duty to make a positive impact on the environment around us for the sake of future generations. Eco-buildings can play a strong role in this, and it is up to architects to help ensure that their adoption is accelerated for the benefit of us all.

Richard Hyams, Founder and Director of astudio

Power straight from the sun, with the solar bench from mmcité1



Mmcité, a design studio based in Czech Republic introduced a new prototype dubbed Woody solar bench. Woody solar, which harnesses solar energy to power wireless internet and charging ports for portable electronic devices, in keeping with supporting renewable energy sources.

The solar bench is sturdy and looks beautiful in the outdoors, and it's more than just a place to sit on. Made from steel and tropical wood,

solar bench is capable of charging four devices at the same time. It has built-in Wi-Fi router that transmit strong signals to the users nearby. The solar-powered bench not only keeps you connected and charge your devices, but it also has Co2 meter, humidity meter and noise level meter to check noise level in the environment.

In 2016 mmcité opened a new successful branch in England mmcité8.



LED Belisha & Refuge Beacons

Solar Power

- Post Top Mount or Purpose Made Column
- Push Button LED Spotlight
- 3 Year Warranty
- 2 No. 20w PV Panels as standard
- Battery protection and monitoring

Mains Power

- 8w LED Beacon
- Anti-Vandal, IP54 Globe & Gallery
- Illuminated Column option
- 4w LED Spotlight c/w PEC option



Somerton - Somerset

Tel 0333 666 2122

info@fisherandcompany.co.uk
www.fisherandcompany.co.uk





futurebuild

05-07 March 2019 / ExCeL, London

FUTUREBUILD 2019: THE CHALLENGES FOR DESIGN AND ARCHITECTURE PROFESSIONALS



Futurebuild is the leading built environment event for design and architecture professionals to meet and learn, be inspired and do business. Taking place from 05-07 March 2019, the event will focus on tackling the biggest challenges impacting the industry, and will be a unique destination for visitors to gain unrivalled insight and hands-on experience around the latest innovations, products and materials in order to address these issues. Developed in conjunction with renowned, industry leading partners, Futurebuild will provide over 500 hours of structured learning across an inspiring conference programme and 11 seminar streams – all completely free of charge and CPD accredited.

Time For Action – Meeting challenges and making commitments

Central to Futurebuild is the ecobuild conference, which will inspire visitors to take action on the most pressing challenges through insights and knowledge-sharing from leading experts. With an overarching theme of 'Time For Action', the conference sessions will be collaborative

forums where visitors will develop plans for implementing change and proposing action for a more sustainable future.

Futurebuild will be the platform where 13 challenges are tackled, including how to put health and wellbeing at the heart of building design, how to achieve a truly circular economy and how the industry can overcome the housing crisis.

New and exclusive features

Beyond the conference arena, Futurebuild will be bolstered by a range of new and exclusive partnerships and features.

As an official UK Government Innovation Partner, Futurebuild will be hosting the Innovation Zone with the Department for Business, Energy & Industrial Strategy (BEIS) and Innovate UK. At the Zone, BEIS will be showcasing the work of the Energy Innovation Programme and demonstrating how it is delivering the Clean Growth Strategy. Focusing on true innovation, it will provide a platform for investment and knowledge exchange across three areas: a dedicated three-day seminar series; an



exhibition featuring innovative companies BEIS and Innovative UK has provided funding to; and a 'Business Bar' in collaboration with the Knowledge Transfer Network – providing 1-to-1 advice and support on accessing funding.

New for 2019 is the Knowledge Forum – a dedicated area where industry-leading partners, academia and professional bodies will offer a comprehensive look at the biggest issues facing the built environment. Hosting CPD workshops, the Knowledge Forum will provide useful solutions and guidance for visitors to take back to the office.

The Waste Zone will return with new and expanded features, including the new Circular Economy Hub. Curated by architect, academic and author Duncan Baker-Brown, the area will

take a unique beach hut format and showcase how waste can be a valuable industry resource.

In an exclusive sector first, Futurebuild is also partnering with GIGA – a leading organisation driving greater accessibility of international building product certifications via cloud software. This will come to life through a new Futurebuild product directory and a dedicated new area of the event – The mindful MATERIALS Certification Pavilion.

Future trends, products and materials In addition, over 500 market-leading brands and organisations from across the globe – including RIBA, Zip, Glavloc, and Internorm – will be showcasing their latest innovations and contributing to the extensive knowledge programme. To ensure visitors gain a truly immersive and

in-depth experience across all areas of the industry, these exhibitors will be hosted across six curated Hubs: Urban Infrastructure, Buildings, Interiors, Materials, Offsite and Energy.

Each Hub will include unique feature attractions and a concentrated education programme hosted by a relevant sector-specific authority. The Hubs will also host a variety of new and expanded pavilions and attractions including: the City Walk, Made In Britain, Vision @ Futurebuild, the Association of Decentralised Energy (ADE) pavilion, the Home of the Future by Tufeco, the RIBA Stand designed by Gundry + Ducker, and many more.

To register, visit:
www.futurebuild.co.uk/register

The future of Interiors



Introducing Futurebuild 2019

Futurebuild brings together opinion-shapers, decision-makers and product innovators under a common purpose to explore the latest technologies and approaches, and debate the biggest issues facing the built environment – now and in the future.

The new dedicated Interiors Hub, is the leading destination for

manufacturers across all areas of commercial and domestic interiors – including healthy buildings, kitchens, bathrooms, washrooms, surfaces, flooring, lighting, appliances and technology – to meet the UK's largest audience of contract specifiers.

www.futurebuild.co.uk/interiors

**Register for
free today**

www.futurebuild.co.uk/register



@FuturebuildNow



/FuturebuildNow



/FuturebuildNow



/FuturebuildNow



FuturebuildNow

2019 exhibitors include



SIAMP



NOVY

FISHER & PAYKEL

DELABIE

In partnership with



bre

Cinderella Incineration Toilets

the Burning Questions Answered by LeeSan

What are they:

Cinderella incineration toilets burn biological waste at high temperatures, leaving only an insignificant quantity of fine, harmless ash, amounting to the equivalent of about one teacup for four people during one week of use. The toilet may be used around 70 times before emptying is required.

Cinderella incineration toilets are currently installed by over 60,000 users worldwide.

How Do they work:

Waste is burned in an integral combustion chamber. The harmless gases from this combustion are dispersed through a vent pipe.

In contrast with other toilet systems, incineration toilets eliminate all waste on site without the need for connection to the main sewer or a septic tank.

Correctly used, Cinderella incineration toilets are odourless, hygienic and safe, providing a user experience similar to a normal domestic system.

The user simply inserts a bowl liner, uses the toilet then presses a button to evacuate and incinerate the waste. Cinderella toilets are suitable for all ages and are child safe.

Where can they be used:

Available around the world for decades, incineration toilets are a commonly used alternative in residential and commercial applications without easy access to public utilities.

These include mountain cabins, remote areas, tiny homes, off-grid structures, mobile homes, boats and many more.

They do not require a water supply or septic system.



Power Requirement:

Cinderella incineration toilets use either 240v electricity or LPG as the combustion energy source.

LeeSan are the sole UK distributors for Cinderella Eco Solution incinerating toilets.

LeeSan is part of the Pump Technology Group.



+44 (0)1295 770000
www.leesan.com



Only LeeSan truly specialise in toilets



Incineration toilet adapted for when nature calls

T: 01295 770000





LONG LASTING AND ENDURING: INTRODUCING METHVEN'S NEW TŪROA COLLECTION

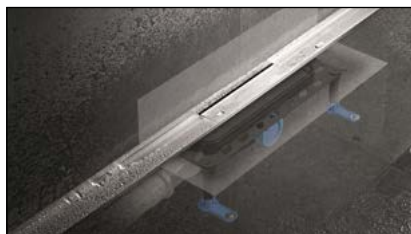
Tūroa is the Māori meaning for long lasting and enduring, and Methven's design team has managed to encapsulate this in its new bathroom collection.

Crafted from high-grade stainless steel, Tūroa features Methven's latest patented spray technology, VJet™ – a variable spray pattern that can be personalised to each user.

Tūroa's cleverly hidden channels create spirals of water that flow through the nozzles across the entire shower head, whilst the smooth handset slider activates a seamless spray transition ranging from a firm, invigorating blast to a gentle, enveloping spray and everything in between.



www.methven.com/uk/home



Dallmer Ltd

The DallFlex shower drainage system from Dallmer offers a great amount of choice and flexibility for both refurbishments and new developments.

The DallFlex drain body can accommodate a wide range of shower channels including CeraFloor and CeraWall, as well as Zentrix and CeraNiveau. Depending on the channel, DallFlex can be installed at floor-level or directly in the wall, so that options can be tailored to individual taste and budget.

The stainless steel shower channels are available in traditional matte or polished surfaces, as well as with additional PVD coatings.

DallFlex has a simple cleaning process – the channel is simply wiped clean and any dirt in the fully removable trap insert can be quickly rinsed off.

Tel. 01787 248244
www.dallmer.com



Twyford: The perfect partner for your next bathroom project

From planning and logistics to stock availability and aftersales, Twyford exceeds expectations to offer a wide range of bathroom solutions for any development.

Much as you'd expect from a name built on outstanding service and exceptional bathroom solutions, Twyford's dedicated project planning team ensures smooth and efficient running of your project from start to finish.

From classic to contemporary styles, Twyford offers a broad range of products to suit your budget and provide something different for your project. From ultra-hygienic Rimfree® technology to water-saving Flushwise®, Twyford continually seeks to improve its products aesthetically, technically and environmentally.

www.twyfordbathrooms.com



A leading trade wet room supplier

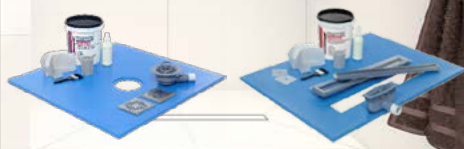
High quality products

Next day delivery

Fantastic customer service

Huge range including -

MAXXUS
WET ROOM FLOOR FORMERS



Contact us for your free
brochure/price list



Tel 01629-815500

wetroominnovations@hotmail.com



Maxtop announces new factory and products

Kitchen and bathroom surface specialist, Maxtop Quartz Ltd, is strengthening its manufacturing capabilities and product offering with a brand new, state-of-the-art factory in China.

Situated at Chouzhou, near Shanghai, the 28,000 sq ft facility boasts ultra-modern machinery and the space to increase manufacturing capacity by 900 per cent.

Maxtop Quartz launched to the UK market in 2014, offering a unique alternative to natural stone – a patented polypropylene honeycomb interior topped with an 8mm layer of solid quartz. Lightweight, but with the aesthetics of a solid stone surface, the product will soon be manufactured using more modern, automated processes, making it even stronger and quicker to produce.

For more information about Maxtop Quartz, visit www.maxtopquartz.co.uk or the company's Facebook and Twitter pages. To book onto your nearest training course, visit www.maxtopquartz.co.uk/installation-training-days.



Five 2019 Kitchen Trends You Need to Know

The kitchen has always been the place to socialise and with the ever growing movement of open plan spaces and shared living and dining areas, this welcoming layout allows homeowners to be creative with their kitchen designs and be more connected than ever before.

Here Andy Briggs, Optiplan Kitchens Interior Designer, shares his five top tips on what to look out for in 2019:

1. Moveable spaces – We're able to move our living, bedroom and dining furniture around, but were limited when it comes to the kitchen. All these spaces are key areas to the home and all of them can adapt to how we live, so why should the kitchen be any different? Moveable work-surfaces, breakfast bars, and pull down units for unreachable spaces are on top of everyone's kitchen wish-list. Whilst hidden wall panels to
2. Dead space to better space – A kitchen doesn't always have to be large for space to work at its best. Every kitchen, no matter the size, needs clever design ideas to make it practical, yet stylish. A big trend for next year will see ceiling height cupboards and tall units with overhead cabinets to create seamless layouts that offer reams of additional storage.
3. Smart kitchens – The one room which you spend most of your life in should be the room that keeps you most up to date. Kitchen tech is endless and will keep on evolving, but smart appliances, built-in Bluetooth speakers and automatic lighting will soon become everyday necessities.





4. Complementing surfaces - Combining different styles of countertops in contrasting colours and textures helps to create visual drama and creativity within the room. It's also a great option for those on a budget as a stunning piece of marble can be used in a small area as a focal point, whilst a cost-effective surface can be utilised for the remaining space.
5. Beyond the kitchen – Each room in the home should always look to link to the next, creating a fluid motion and connection through the entire home. Furniture that creates a link, such as sliding doors and open plan shelving units can be used to create living-dining areas that bring two zones together.



To discuss your latest kitchen trends and speak to an experienced designer, visit your local Optiplan Kitchens showroom by searching online at optiplankitchens.co.uk

ColourFutures™ - A Space to Dream

In the fast pace of life in 2019, is there still the time to dream? To slow down, step off the conveyor belt and allow our minds to drift away?

These are often when the best ideas are born, whether at work or at home. However, the opportunities to dream must be created by design professionals in the first place.

'Dream' is one of the four forecasted trends for 2019, a palette for the professional specifier, developed by AkzoNobel and Dulux Trade as part of ColourFutures™ 2019.

The AkzoNobel Global Aesthetic Center has more than 25 years of experience in colour research, bringing together independent colour and design experts from around the world with their own in-house designers.

During the annual trend forecasting process, this group distils its knowledge of design innovations and social changes in architecture, materials, interiors and the visual arts to create colour combinations which capture the mood of the moment.

Colour is an intrinsic part of any design project with a powerful impact on how individuals use spaces and feel within them.

ColourFutures™ combines expert colour research with industry knowledge so professionals have forward looking and useable colour palettes at their fingertips.

When deciding on the ColourFutures™ 2019 palettes, the experts chose themes of think, dream, love and act.

The ColourFutures™ palettes have been created by interpreting extensive knowledge of colour trends specifically for the paint market. Each shade can be used successfully as a broad wall colour to capture the essence of one of the four trend stories.

Another key consideration when selecting the colours for 2019's trend forecasts is that they all work with the colour of the year, so you can feel



confident that whichever combination you select it will work beautifully with Spiced Honey™. These palettes are about balance and usability so professionals have access to effortless, directional colour combinations.

The Dream palette is perfectly suited to the cold, wintry tones of the weather outside, allowing users of any space room to let their minds wander, without distractions from bold or jarring colour combinations.

The Dream palette is about seeking stillness and silence, falling into a state of dreamlike wakefulness where people get lost in the moment and allow their minds to wander. This is a colour story of soft muted pastels that retain the playfulness of the classic brighter tints we remember from childhood, but with a touch of grey to add a little elegance.

The role of Spiced Honey™ here is as a stronger accent, adding depth along with deep grey – Vintage Smoke. Degraded pastels are currently an important colour area in design and these specific shades have been selected to capture the whimsical nature of the story.

This colour palette will create spaces where adults can step back from more serious matters and relax, which could be a very helpful tool in creating spaces for healthcare as well as the leisure market.

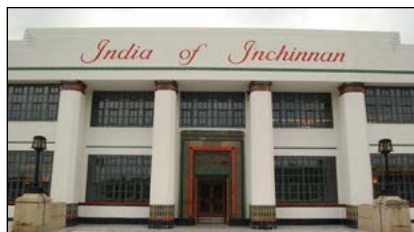
Relaxation and play may have once been a stranger to the workplace, but we now understand that being productive is all about invigorating the brain, feeling well in yourself (not stressed or overwhelmed) and working as a team; all things that play can provide.

Google was one of the forerunners in this area, but there is now even a School of Play in the UK, where its founder Portia Tung has created 'a pop-up school dedicated to promoting happier adulthood through lifelong play' and 'unleashing the play-brain'.

From big brands, to workplaces, public spaces and homes, one thing is clear - we must now nurture each other and our communities in 2019.

To download the Dream palette or for more information, please visit www.duluxtradepaintexpert.co.uk/colours





SWA membership service all sizes of project

Anyone visiting the Steel Window Association website (www.steel-window-association.co.uk) for the first time will be struck not just by the diversity of products and services that the member companies offer, but also the widely varying scale of the projects they tackle.

Although some members specialise in like-for-like refurbishment or smaller residential work, the SWA's combined, countrywide capability sees satisfied customers stretching from the owners of a cottage changing a couple of corroded old casements, to whole elevations of corporate office buildings being fitted with high performance, W40 fenestration.

For further information on the Steel Window Association, please visit www.steel-window-association.co.uk or call 020 8543 2841.



Why every home should have PVC-u windows...

PVC-u is the most common material used and, here, you can find out the reasons why every home should have PVC-u windows...

1. Minimal maintenance – Easy to care for and virtually maintenance free, PVC-u runs no risk of warping or rusting.
2. Energy efficient - Performing well against their counterparts, PVC-u windows have better insulation profiles and reduce heating costs over time. Quickslide PVC-u windows are available with an A+ energy rating and to further boost efficiency, there's the option to include argon gas.
3. Adaptable – retailers such as Quickslide offer PVC-u windows in multiple styles; sash and casement. It's also possible to select colour and finishing effect to fit with the style of the house!
4. Durable – Their use life of 40-50 years reduces waste and saves cost in the long term.

www.quickslide.co.uk



EXTRA SECURITY WITH GARADOR'S SBD GARAGE DOORS

With additional security features, Garador's Secured by Design (SBD) up & over garage doors give peace of mind to homeowners with valuables stored inside their garage.

Constructed from high grade galvanised steel, these Secured by Design accredited garage doors have extra security features such as 8 back braces along the back of the door, instead of 2.

They also have a reinforced steel plate added to the lock body, to prevent attacks against the locking mechanism. Additional steel plates have been added to each corner to protect the bottom locking points.

Available in three designs: Carlton, Horizon and Salisbury, as well as 18 standard colour options, these doors are ideal for those seeking extra security for their garage door.

For more information, call 01935 443799 or visit www.garador.co.uk.



OPEN AND SHUT CASE...

Creating a seamless transition between rooms, by opening or closing space is now possible with new sliding doors from Crittall's range of InnerVision internal screens.

These bright, beautifully crafted walls of glazing will complement timeless styles of period property or contemporary homes.

On-trend, open plan living takes on a different dimension by partitioning open interior areas to create contemporary zones with steel-framed single or double sliding doors, without compromising light or space.

Available in a variety of options, InnerVision screens and doors are designed with modern living in mind, giving a sense of space, light and understated beauty, with clean lines and subtle detailing.

The sliding doors feature concealed running gear to provide a sleek finish.

**www.crittall-windows.co.uk;
t: 01376 530800;
e: hq@crittall-windows.co.uk**



SunSeeker UltraSlim. Fully Opening Glass Doors for Stylish Contemporary Homes

With ultra-slim 19mm aluminium side frames in a wide colour choice, natural light can flow through the glass doors, bringing sunlight into your home and maximising your view. SunSeeker UltraSlim double-glazed slide-and-pivot doors also have slim profiles for maximum access to the garden or balcony. The edge-to-edge doors slide to the ends of the guide rails where each one opens 90 degrees to create a wide, spacious opening. Made to measure and installed directly by innovative door designer and manufacturer, SunSeeker Doors, these affordable contemporary style glass doors cost a little more than clunky bi folding doors and will enhance your home for years. SunSeeker UltraSlim is a unique external door set, manufactured exclusively within the UK. SunSeeker Frameless Glass Doors are also available to order.

Visit www.sunseekerdoors.co.uk or call direct on 01582 492 730



SLIDE ASIDE, ORDINARY

The Luminia SC156 Lift and Slide door is a brand new aluminium sliding door from leading aluminium systems company AluK that is anything but ordinary. Designed primarily for high end apartment blocks and luxury hotels, it has already been specified ahead of launch in Berkeley Homes' prestigious West End Gate residential development in Marylebone, central London.

This is the second product to be introduced into AluK's new Luminia premium product tier, which is characterised by contemporary aesthetics and exceptional performance; and it sits alongside the already popular Luminia F82 bi-folding door.

In terms of aesthetics, the SC156 Lift and Slide door boasts slim sightlines of 95mm around the frame and just 50mm on the central interlock. It can accommodate large expanses of glazing up to 3100mm high with panel weights of up to 400kg, so truly maximises space, views and natural light.

More details at: www.aluk.co.uk



Minimal Windows Sliding Doors

- Keller minimal windows sliding doors can hold up to 8.5m² of insulated sliding glass per pane, with a 21mm aluminium vertical sight-line between each sliding door.
- Frameless glass balustrades can be installed adjoining the sliding doors to provide a protective barrier if there is a level change when the sliding doors are open.
- Using glass as a building material not only allows light to flood into the building but it also connects owners with their outdoor space to provide that sought after indoor-outdoor living environment.
- Using vast amounts of glass within property developments and renovations has been scientifically proven to promote the health and well-being of the occupants, due to the increase of natural light that brightens internal space.
- A full portfolio of images from a wide range of projects are available upon request.

Keller minimal windows sliding doors are exclusively available from IQ Glass in the UK. The beauty of this system is the frameless aesthetic that can be achieved through the completely flush base and the ability to hide the outer frames within the wall finishes - resulting in only the slim vertical sightlines being visible.

As well as offering outstanding performance and beauty, we have recently launched a series of product updates. All specially designed to offer flexibility in your designs and to allow the sliding doors to work to your product requirements, while ensuring high quality, fully tested design specifications.

The minimal windows sliding doors, including the triple glazed minimal windows 4+ system, can be designed in various configurations including corner opening, pocket doors and Juliet balconies.



Multi corner sliding doors?

It is also now possible to create 'multi corner sliders' using the minimal windows system. This allows us to create a 90-degree corner connection from the glass between inside and outside. But when the doors are slid open, one elevation slides away from the building fabric ensuring points of travel are possible across all tracks.

Corner opening is not limited to one corner of a building's parameter, for buildings that are not simply square the sliding doors can follow the contours of the building; therefore 2,3,4 (and even more) corner-opening sliders can be installed one after the other to create a continuous stream of sliding glass doors. Sliding doors are often designed and installed to slide internally or towards walls or pocket door systems.

However, IQ Glass are aware that there can be structural limitations such as a load bearing wall that prevents the installation of an inward sliding corner opening minimal window system. Therefore, it is now possible to design these sliding doors to slide outwards and stack externally to reveal an unobstructed open corner aesthetic.



Automation

As part of our product update we have updated the motor information including two different levels of motor depending on the total weight of the sliding panes.

In addition, the MOT 2000 is available with an IP65 rating to allow it to be mounted externally.

The automation can be managed through various controls; smart home automation through an app or a wall switch.

New External Key Lock

We have now developed a new external locking system that utilises a euro cylinder key housed within an elongated vertical stile on the leading sliding door pane.

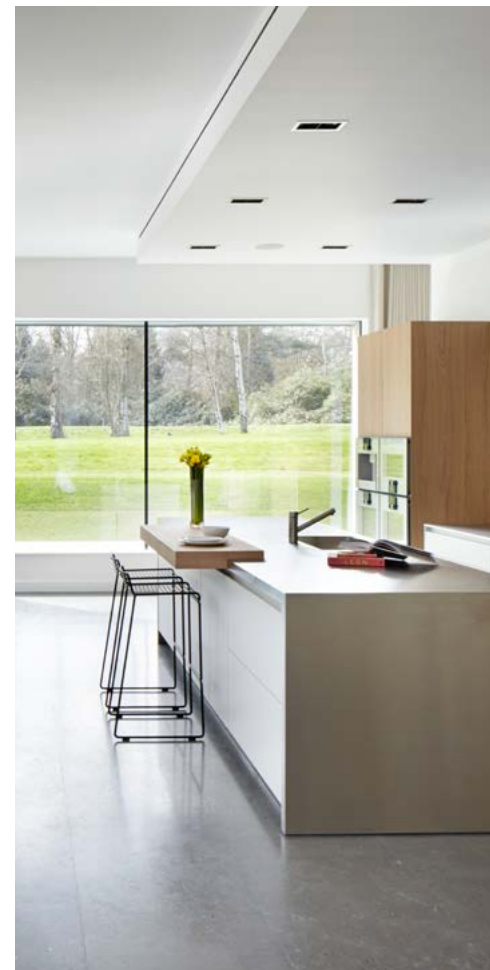
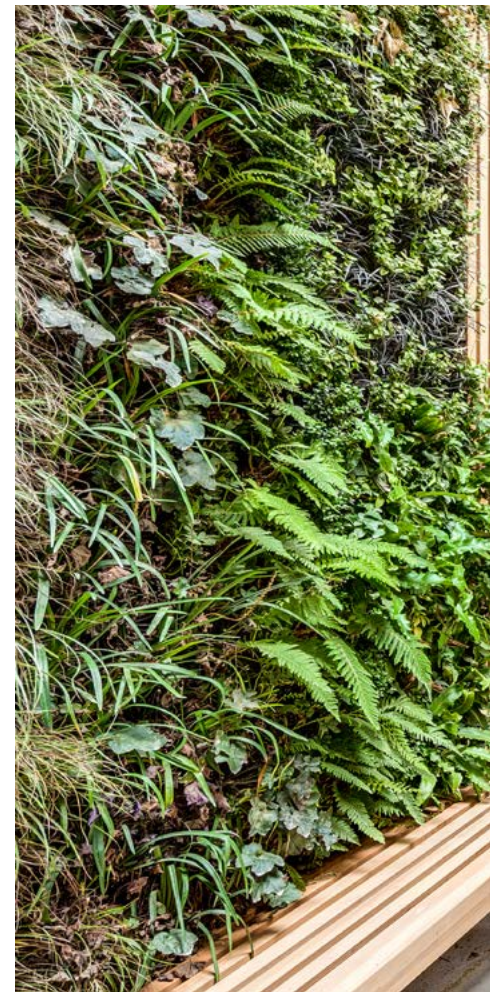
The removable key can be used both internally and externally for access on both sides of the door.

Updated Base Details

IQ use our own unique base detail for the minimal windows and 4+ systems to ensure adequate water drainage for our wet weather climate in the UK.

There are several technical and design updates now available to use on your projects:

- Up to 4 colour options for the IQ integrated drainage channel including Champagne, Titanium, Black and the standard GT silver.
- The new Freeway base which allows a completely flat finish across the base tracks to the external floor finish.
- Updated recommended base details for minimal windows 4+ which can be seen in the minimal windows 4+ product information sheet.





Integrations

There are a wide array of optional integrations and additions available for the sliding doors including insect screens. The screens can be installed on their own 60mm deep track, designed to slide along the track in the same way that the glass doors do. Insect screens are available for all configurations including bi-parting and corner opening. Insect screens allow both light and ventilation into the property, whilst keeping the inside spaces free of insects.

View the minimal windows sliding doors in person at the IQ Glass Showroom in Amersham, Buckinghamshire. Our large Keller minimal windows box showcases three sets of sliding doors forming two complete walls of sliding glass and a pocket door.

Welbeck Street - Morrow + Lorraine Architects & Photographer
Simon Maxwell. Gauden Road - Kaap Studio Architects. Photo credit: 82mm - Malcolm Menzies



www.iqglassuk.com

TOUCH

IRONMONGERY LTD

www.atouchofbrass.co.uk

210 Fulham Road, Chelsea London SW10 9PJ

THE PERFECT TOUCH

Established 33 years ago in October 1982, Touch Ironmongery is one of London's leading ironmongers. Originally called "A Touch of Brass", the firm changed their name in 2003 in reaction to slowly advancing market changes in architectural ironmongery which is no longer supplied solely in brass, and to also reflect the broader range of products and finishes that they sell.

In fact today, Touch can supply a wide range of finishes including Brass, Satin Brass, Polished Chrome, Satin Chrome, Polished Nickel, Satin Nickel, Copper, Bronze -solid and plated, BMA, Antique Brass, Black, Pewter, Ceramic, Leather, Stainless Steel, Satin Stainless Steel, Gun Metal, and the list keeps growing. Whatever finish you require, Touch can help you get the right look.

Touch occupy their recently refurbished showroom at 210 Fulham Road, Chelsea, where they display a vast range of their 5,000 products. With a customer base including Interior Designers, Builders and individuals who are

interested in the top end of the Ironmongery market, Touch mainly supply to residential premises but hotel and office properties also contribute to their vast clientele.

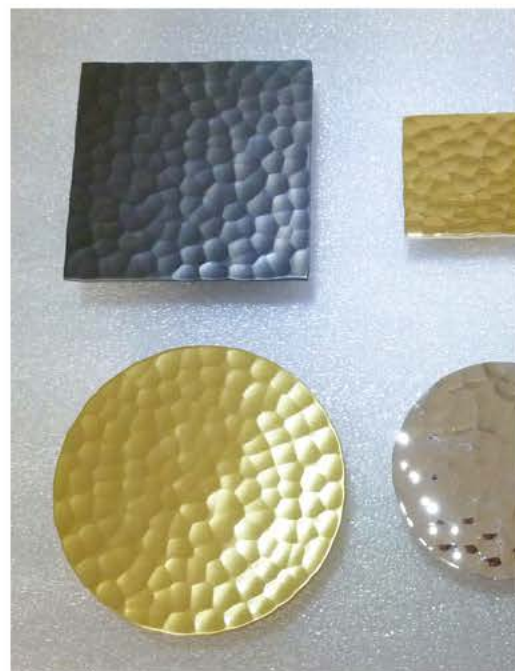
The company also have a healthy export market to all corners of the world, namely the Middle East, Europe and the Americas. Touch's owner and founder, Bill Benham, has 33 years' experience in the ironmongery trade, as do his colleagues Jim Haselup and Alan Blanchard. Saleem Qureshi is the newest member of our team and has 10 years' experience, meaning their knowledge is unrivalled in this industry.

The range of products supplied by Touch date from circa 1640 French (Louise XIV) and cover all subsequent periods (Georgian, Edwardian & Victorian), art deco and contemporary pieces also make up the product ranges. In addition, Touch showcases the very best of British manufacturing; the best ranges are still produced in the Midlands by craftsmen in factories dating back 200 years or more. Touch also sell European manufactured goods

which is considered to be of a very good quality and in recent years they have introduced some of the far eastern made products, albeit in a limited range but cost effective. With trends continuously evolving, new innovative products are constantly under development. Touch understand that keeping up with the fashion-shifts is imperative in order to provide every customer with the best solution for their requirements.

Ironmongery can be a difficult and complicated aspect of a building project, as a result Touch aim to take this awkward aspect and make it user friendly and clear to understand by offering an on-site service where they carry out a detailed door by door, window by window, room by room Ironmongery schedule, highlighting all requirements and identifying any items that can be refurbished. Refurbishment is a large part of the business; Touch will undertake complete ironmongery refurbishment projects, and can restore old paint covered door furniture to their former glory, looking as new, at a fraction of the cost to replace.

For more information about Touch Ironmongery or to arrange a showroom visit please call 0207 351 2255 or alternatively visit www.atouchofbrass.co.uk



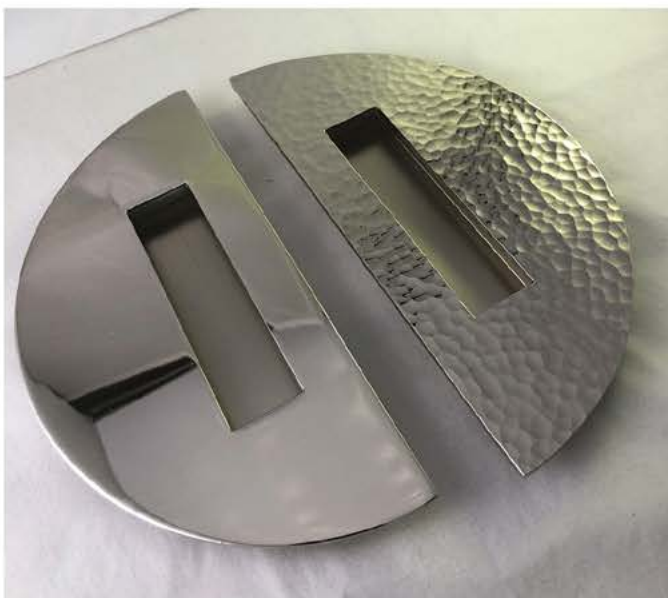
BRITISH & EUROPEAN MANUFACTURERS SUPPLYING THE FINEST QUALITY IRONMONGERY

Touch combine traditional skills with modern manufacturing techniques to produce the most beautiful, quality fittings, built to stand the test of time.

As well as specialist bespoke items, Touch supply over 1000 products, available in 23 different finishes to furnish high end residential and commercial properties, royal palaces, government houses, historic castles and stately homes.

Olaria, available from Touch Ironmongery

www.atouchofbrass.co.uk & www.olariabarcelona.com





Wood vs Timber Alternative Windows – Can You Tell the Difference?

Windows made of uPVC versus wood are a great social divider, much like hot tubs, solar panels and fake grass!

Not so long ago most windows were made of wood. But during the 1960s improved uPVC manufacturing quality created a low cost, easy-to-make alternative that now accounts for 90% of all new windows installed in the UK.

The use of uPVC has been under attack for a number of years, primarily because of its association with chlorine chemistry. However modern uPVC is durable, low-maintenance, recyclable and performs well in life cycle assessment tests.

Evolution Windows have addressed the issue of offering the benefits of both wood and uPVC with their Timber Alternative Storm and Flush ranges. Every aspect has been meticulously designed and hand crafted to authentically emulate traditional timber windows.

Taking inspiration from classical windows blending intricate period detailing and authentic colour options with advanced material technology and innovative design to create a unique window, which offers unrivalled aesthetics and a virtually maintenance free solution.

The latest Timber Alternative range from Evolution truly has the look and feel of real wood as well as the following benefits:

- Lower Cost Evolution Windows timber alternative windows are around 20% cheaper than solid wood windows.
- Low Maintenance Once installed an Evolution timber alternative windows require little or no maintenance unlike solid wood, which requires regular sanding and repainting to ensure its longevity.
- Superior Insulation Another reason people have, in the past,



embraced uPVC is its superior insulation. Wooden windows not so long ago had just a single pane while uPVC windows were launched as a double-glazed product. Evolution also now offer a triple glazed option for even greater energy saving benefits.

Prices for Evolution timber alternative double and triple glazed windows, supplied and fitted, start from £1000 for a window measuring 100cm W x 100cm H including installation.

For further information visit
www.evolutionwindows.com
 tel 0800 773 4045

SLIMPORT ROUND METAL VISION FRAMES

ZERO*plus*

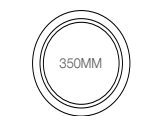
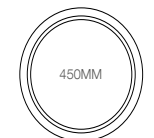
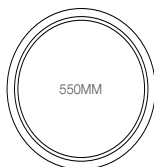

- AVAILABLE IN 4 SIZES - 250, 350, 450, 550MM
- AVAILABLE IN 4 DOOR THICKNESSES - 40, 44, 50, 54MM
- MANUFACTURED FROM MILD STEEL AND STAINLESS STEEL
- FULLY FIRE TESTED TO SUIT TIMBER DOORS AND STEEL DOORS
- CONCEALED FIXING ONE SIDE
- AVAILABLE AS A FULL KIT WITH GLASS AND GLAZING TAPE

SLIMPORT CIRCULAR VISION FRAMES WITH THEIR CLEAN LINES ENHANCE THE APPEARANCE OF ANY DOOR.

THIS FLUSH FITTING DESIGN IS AVAILABLE IN STAINLESS STEEL, OR ZINC PLATED MILD STEEL READY FOR COLOUR COATING.

NOW PRACTICAL VISION REQUIREMENTS NEED NOT COMPROMISE AESTHETICS. SLIMPORT VISION FRAMES WITH THEIR UNIQUE CONCEALED FIXING DESIGN ARE THE ANSWER. IDEAL FOR LUXURY OFFICE SUITES, CORRIDOR DOORS, CLASSROOMS, RESTAURANTS ETC.

RECTANGULAR AND CUSTOM SHAPE VISION FRAMES, ALSO AVAILABLE.



Zero Seal Systems Ltd
Units 43 - 45 Ladford Covert, Seighford, Stafford, ST18 9QG, United Kingdom
Tel : +44 (0)1785 282910 E-mail : sales@zeroplus.co.uk

WWW.ZEROPPLUS.CO.UK

ROSSO MANIGLIE
ELEGANZA CON STILE

FINE ITALIAN DESIGN

Rosso Maniglie is our exclusive range of Italian inspired designer levers. Produced using a zinc base material and manufactured to the highest standards, this range takes designer levers to the next level.

Created with a sleek and incomparable aesthetic appeal, our contemporary style Rosso Maniglie range has quickly become the first choice for home owners, architects and house builders throughout the UK.

T : +44 (0) 1228 672 900
E : sales@zoo-hardware.co.uk
W : www.zoohardware.co.uk

For further information on this range visit our website or call one of our friendly sales team.

Rosso Maniglie is part of Zoo Hardware Ltd.

A world of possibilities with Vicaima doors

The eagerly anticipated 2019 edition of the Vicaima Interior Door Selector (IDS) has now arrived, with an array of products designed to inspire creative interiors for modern living. Whether for homes, commercial environments, health or educational establishments, Vicaima offers original style coupled with outstanding performance.

The 2019 IDS provides specifiers and distributors with an easy to navigate, priced guide through a myriad of styles and finishes that demonstrate the sheer breadth of possibilities available with Vicaima interior doors and doorsets. All doors are available in a variety of constructional cores, extensive choice of dimensions and of course a colour palette that allows real creative flair for new build and refurbishment projects. Whether the vision calls for wood veneers displaying their natural specie or stained in a contemporary tone, originally designed laminates and innovative foils or even a spectrum of paint lacquers; Vicaima has one of the most comprehensive selections available.



As if 80 pages of door models were not enough, the Vicaima 2019 Interior Door Selector goes one step further, offering a wide assortment of additional modifications. Vicaima customisation provides the opportunity to select a door of choice from any of their Essential ex-stock solid core designs and to transform them with grooves, inlays and glazing plus many other factory servicing options.

Effectively this creates thousands of additional doors patterns, all available with shorter lead times than conventional bespoke doors.

Download a copy of the 2019 Interior Door Selector today by visiting the Vicaima website www.vicaima.com. Alternatively call 01793 532333 for further possibilities.



Why shutters are the perfect addition to a contemporary home....

Shutters can look simply stunning in a contemporary home, with timeless elegance and sophistication. Shutters are generally recognised in traditional properties but are now being seen more widely across modern houses. There are plenty benefits for the home that shutters can create.

Here's 6 brilliant benefits we've recognised for Plantation Shutters within the contemporary home.

Light Control and Privacy

Shutters allow you to have control over how much light you want let into the room, whilst at the same time give you as much privacy as you want and need. Shutters are perfect for the bedroom to develop privacy, and control the light at times during the day. Tilt the louvres to your desired angle and control the light within the room.

Added Insulation

Shutters are eco-friendly, they help to keep your energy bills down. Shutters have great insulation features, perfect assist in keeping those extra costs down. Made to measure meaning they will cover the natural divide of the window, keeping you warm in the Winter.

Contemporary Style

Shutters have a modern style to them. Some curtains and blinds can appear outdated and a little out of place. Shutters, with their clean and crisp appearance are a breath of fresh air. Shutters are available in a range of colours and shades, choose a colour to suit you.



Stay Calm and Cool

If your room traps the heat and gets extra warm, Plantation Shutters are perfect to control the amount of sunlight and heat in those hot Summer months.

Just tilt the louvres to let in some fresh air and the right amount of sunlight.

Regulate the sunlight to your desire.

Easy to Maintain and Clean

Shutters are extremely easy to maintain and clean.

Simply wipe the shutters clean, they require little upkeep.

Shutters are wood products, so do not attract dust mites, perfect for families with any allergy sufferers!



Ageless

Shutters are a timeless and elegant addition to the home. Shutters bring an overall attractive aesthetic to the room. They are perfect when you need to update your interior décor as they adapt to style and design. Plantation Shutters also look perfect from both the outside and in!

Being a leader in the UK shutter industry, Plantation Shutters highly trained and expert in house team are able to provide the necessary instance from the beginning to any after care enquiries. Give our friendly team a call on 020 8871 922 or email: hello@plantation-shutters.co.uk us today.



Hello@plantation-shutters.co.uk

020 8871 9222

www.plantation-shutters.co.uk





Sun-X Blinds

Blinds are a common solution to dealing with glare from the sun, but what is increasingly becoming popular is the desire to maintain a view of the outside world, and avoid a room feeling 'closed off'. Perforated 'sunscreens' blinds are manufactured and fitted by Sun-X in a wide range of commercial and high-end residential properties. The fashion for large glass curtain walling resulted in Sun-X fitting several Sainsbury's stores with motorised sunscreen roller blinds, up to seven metres in height, to diffuse glare in their checkout and café areas.

Although these were mains-powered, there are now available motors with a high-capacity rechargeable lithium battery, which can be connected to a small internal solar panel to provide a constant trickle-charge.

The discrete solar panel connects to a rechargeable, wireless, low-voltage DC motor within the roller blind tubing. No other external componentry is required. It stores, boosts, and efficiently releases power to the motor when required, even in low light.

Without the solar panel, on one single charge, the blind can open and close once a day, for six months, or can be charged from a mains socket like a mobile phone if required. Even large windows can benefit from this system, up to 3.5m x 3.5m. The motor also runs very quietly, at less than 40dB.

The user is able to control the blinds with the use of a remote handset, wireless wall switch, home automation system, and now even voice control.

This environmentally friendly solution will enhance the solar shading sustainability of any building; mains-powered motorised blinds use up electricity even in standby mode. This system offers incredible savings on the installation by eliminating the need for hard-wiring, and the resultant impact to operation, lost revenue, and damage to building fabric caused by the in-wiring process.



Sun-X Window Film



John Bell & Croyden, a prestigious pharmaceutical company with a central London outlet, called upon fellow Royal Warranty holder Sun-X (UK) Ltd, to help problems caused by sunlight on their large picture windows. Their display stock was being faded by the sun, and the customers and staff were suffering from solar heat gain. Sun-X installed their Vista61 'clearview' solar window film, eliminating 99.9% of UV radiation, 49% of solar energy, in a clear colour with minimal reflection so the view in from the street was not impeded. The installation was carried out quickly and efficiently, by Sun-X's own highly skilled and experienced personnel, during opening hours without disrupting running of the store.

Low-E clear window film

Heating, cooling and ventilation systems are responsible for over 50% of carbon emissions in non-domestic buildings and are largely impacted by the performance of the building's glazing.

Traditionally, window films are used to reduce summer cooling requirements.

In addition to the benefits of the aforementioned film, the Sun-X MT70E Low-E film also reduces heat loss in winter, providing a true "all-season" solution that can significantly reduce total building energy consumption, often by more than 10%.

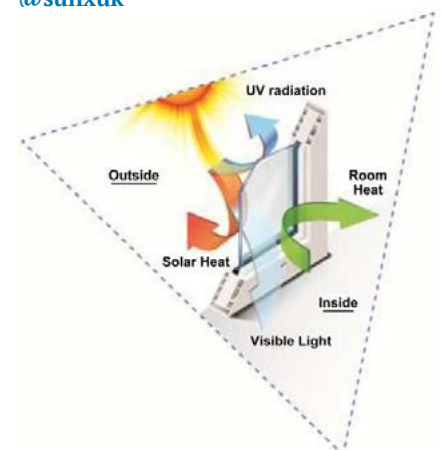
The Low-E coating reflects over 90% of radiant energy back to its source, reducing the glazing's U-Value from 5.8 to as low as 3.3, an improvement of up to 44%.

This effectively upgrades the insulating performance of a single pane window to close to double pane, and double pane to close to triple pane.

Whilst the film reflects solar energy, it absorbs very little, which has the added benefit of minimising thermal stress to the glass, and reflecting air-conditioned air back into the room, rather than being lost through the glass.

Return on investment can be obtained in as little as three years, with the film then effectively earning money by lowering fuel bills throughout its expected lifespan of at least 15 years. It will also help companies meet their carbon reduction commitments, and landlords meet minimum energy efficiency standards (MEES) for commercial or residential lets.

01243 826441
www.sun-x.co.uk
[@sunxuk](https://twitter.com/sunxuk)





Tapping 'Intu' the Latest Window Trends

Made to measure window blinds brand Style Studio is seeing a huge rise in demand for its INTU window blinds. Growth in sales of these blinds, that fit straight into the window frame eliminating the need to drill, reflects trends in the window and glass door market; notably the consumer shift to UPVC and metal frames, clean lines and larger glass expanses.

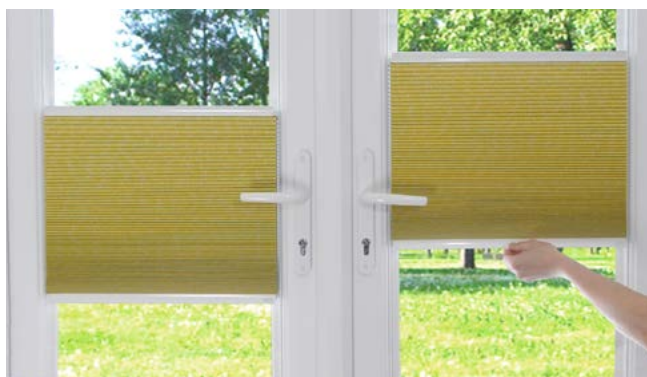
“Glazing trends have a huge impact on the types of blinds that become popular and INTU blinds are ticking all the boxes when it comes to dressing modern windows”, says Style Studio’s interiors expert Lorna McAleer.

“Sleek, contemporary glazing styles as well as black and grey frames are hugely popular (even in period properties), which is prompting a desire for window dressings that complement window frames rather than covering them up.

“Style Studio’s innovative INTU blinds fit differently to other types of window blinds. Rather than being mounted around a window, they clip directly into the window frame so that they sit flush against the pane.

“They are available for Roller, Pleated, Hive (thermal) blind fabrics as well as Venetian blind slats, all made to measure so they fit perfectly with no gaps.

“And because they integrate with the window itself, the blind stays within the frame as the window opens and closes. This is great for tilt and turn windows and a ‘micro’ version with a smaller pleat size fits specifically in bi-fold and tri-fold doors.”



Visit www.intublinds.co.uk to see how different styles of INTU blinds look around the home. You can also try out the new DesignSpace interactive design tool for visualising INTU blinds in different room sets.

PEGLER INTRODUCES THICK WALL STEEL PIPE PRESS FITTING RANGE



As the momentum for using an integrated piping system for HVAC applications gathers pace, leading manufacturer Pegler is thrilled to launch a press thick wall solution to its ever increasing portfolio. VSH PowerPress is a range of fittings and valves for use on thick wall steel pipes particularly in the HVAC market. "We are delighted to be adding another range to our portfolio. This really does mean that

Pegler has become the only manufacturer to offer a truly integrated piping system. With our breadth of experience and knowledge we can offer solutions and products from plant room to bathroom and beyond," said Phill Jackson Business Development and Marketing Director.

Tel: 01302 560 560

Fax: 01302 367 661

web: www.pegler-yorkshire.co.uk

BESPOKE PUMPING STATIONS RIGHT FIRST TIME, ON TIME & ON BUDGET



Below Ground Pumping Stations



Floor Mounted Lifting Stations

0118 9821 555

- Experienced Support Team - Answers to all your questions
- Right First Time - Station sizing, installation and operation
- In House Manufacture - Quality and on time delivery
- In-house consulting engineer
- All Major Brands supplied
- Nationwide Maintenance



PUMPTM
TECHNOLOGY LTD

POWERED BY **JUNG PUMPEN**
Pentair Water

www.pumptechnology.co.uk

[@PumpTechLtd](https://twitter.com/PumpTechLtd)

56 Youngs Industrial Estate
Aldermaston, Berks, RG7 4PW



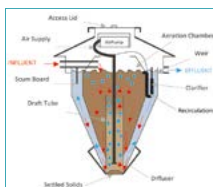
We Build It Ltd
simple solution sewage systems

Our BioPure Range of Sewage Treatment Plant

The Bio-Pure

Simple solution sewage systems

- ✓ Suitable for homes without access to mains drainage
- ✓ Discreet solution to on-site sewage treatment
- ✓ 10 models in the range with a capacity up to 50pe
- ✓ CE Marked and EN 12566-3 Certified
- ✓ Uses the extended aeration method to treat sewage
- ✓ 96% efficiency allows a typical 3-5 year emptying interval
- ✓ Visually unobtrusive and odourless
- ✓ 25 year warranty on GRP & 2 year warranty on the air pump
- ✓ Deal direct with the UK Manufacturer
- ✓ Flowpath Range for Commercial & Leisure Sites 55+



Please call 01746 781782 or visit
www.webuildit-ltd.co.uk or
www.bio-pure.com



Surface Design Show 2019

Celebrating the best in new and innovative surfaces

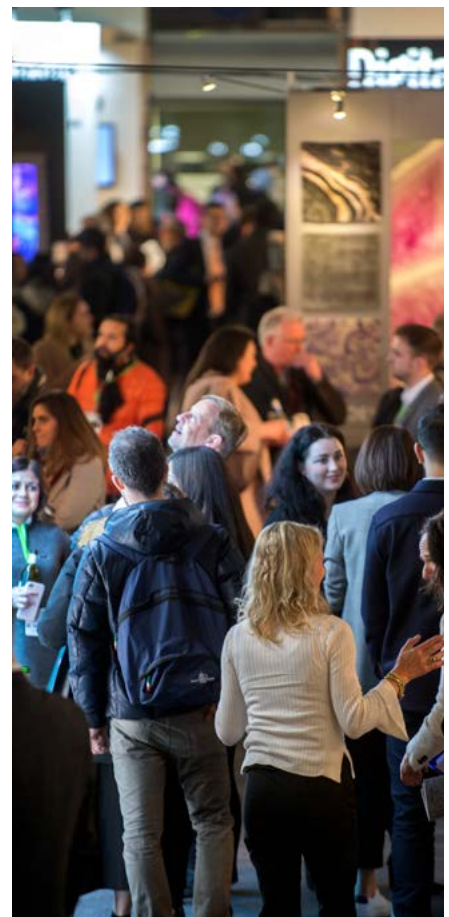
From 5-7 February Surface Design Show 2019 will take place at London's Business Design Centre to provide a platform for architects, designers and specifiers to explore the best in interior and exterior surface materials, lighting design, development and innovation.

Surface Design Show is the only event in the UK that focuses solely on interior and exterior surfaces.

For more than ten years Surface Design Show has been the place where industry professionals immerse themselves in the latest materials for the built environment, gain new insights and network with like-minded designers, architects and suppliers.

Surface Design Show 2019 also features some 40 talks from over 50 industry professionals, all designed to engage and inspire.

The Opening Night Debate returns from 6.30pm on the first day of the Show, Tuesday 5 February. Organised in association with the Royal Institute of British Architects (RIBA) and New London Architecture (NLA) it will discuss whether factory-made housing can provide Londoners with better places to live. The panel will be chaired by Peter Murray of NLA, with Ben Derbyshire of HTA Design and RIBA President, Carl Vann of Pollard Thomas Edwards and Hazel Rounding of shedkm debating the topic 'Factory-made Housing: is this the solution to building better homes long term?'.





Returning for 2019 is the ever popular PechaKucha Evening, hosted by Chris Dyson of Chris Dyson Architects on 6 February from 6.30pm. Speakers include Nigel Ostone of Hawkins Brown; Soraya Khan of Theis and Khan Architects; Alex Scott-Whitby of ScottWhitbyStudio; Stuart Piercy of Piercy and Co; Simon Fraser of Hopkins Architects; Alison Brooks of Alison Brooks Architects; Lucia Berasaluce of Haptic Architects and Ben Cousins of Cousins & Cousins Architects. Presenters will discuss 'Identities and Boundaries: site specific responses to modern architecture' in an exciting and inspiring format using 20 images, each discussed for 20 seconds.

Stone Gallery, which is officially supported by Stone Federation GB whose Stone Knowledge Hub forms a focal point for the event, will also be returning to Surface Design Show 2019. Stone Gallery, which is also supported by media partner Tomorrow's Tile & Stone, is an industry-leading event for architects and designers to meet and specify natural stone. The Stone Hub stage will host a series of presentations curated by Arup.

Now in its fifth year Light School, the home of architectural lighting, allows architects and designers to touch, compare and learn about innovative lighting and technology products. The Light School arena, Light Talks, will return once again supported by the Institution of Lighting Professionals and LED Linear.





Since 2013 the Show has hosted the Surface Design Awards, now recognised as one of the most respected events in the design calendar. The 2019 Awards received 197 entries from 22 countries, including America, Italy, China and India.

There are 13 awards that recognise exterior and interior surfaces for different sectors of design, including commercial, housing, light and surface, public building, retail, sustainable, and temporary structure.

The shortlist for this year's Surface Design Awards consists of an impressive 43 categories across seven categories, including entries from Zaha Hadid Architects, Studio Egret West and Chris Dyson Architects from the UK, Rockwell Group from the USA, and Kengo Kuma & Associates from Japan.



Each entry is an exemplary example of creative and innovative use of materials and lighting in both interior and exterior schemes.

Some projects received nominations across several categories, resulting in 48 finalists. The Awards Presentation will take place on the morning of Thursday 7 February, at Surface Design Show.

Tickets to the Presentation are available via the Surface Design Show website. Award partners include; James Latham, Finsa, Business Design Centre, Soluis and Roof Maker.



[www.surfacedesignshow.com](http://www surfacedesignshow.com)

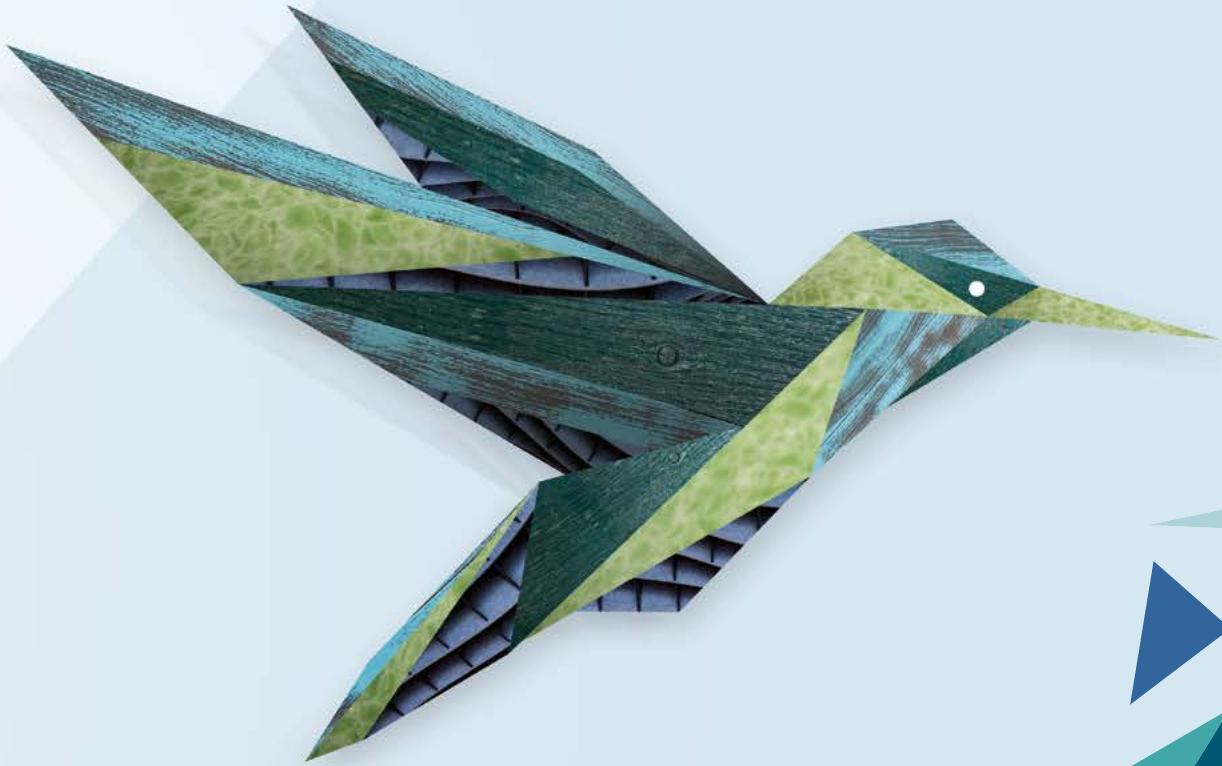


SURFACE DESIGN SHOW

**BUSINESS DESIGN CENTRE
LONDON – 5 - 7 FEB 2019**

[www.surfacedesignshow.com](http://www surfacedesignshow.com)





REGISTER
NOW

BRINGING SURFACES TO LIFE

THE UK'S MOST DYNAMIC DESIGN EVENT

REGISTER NOW AT:

WWW.SURFACEDESIGNSHOW.COM

#SDS19 @SurfaceThinking

STONE
GALLERY



**SURFACE
DESIGN
AWARDS**



Surfaces Inspired By Design



James Latham returns to London's Surface Design Show in February, where it will be showcasing one of the biggest and most varied collections of surface solutions for both inside and outside the building.

Created to inspire architects and designers when looking to specify materials, the stunning collection of decorative panels and timber reinforces Latham's status as a single-source supplier and has been carefully selected to provide innovative ideas for design and product specification.

During the show, Lathams will be featuring a number of exciting new products and range additions for 2019, both on its usual, eye-catching stand on the ground level (stand:208) as well as in its permanent Product Specification Showroom which is located on the Gallery level of the Business Design Centre at Suite 301.

Chris Sutton, Managing Director, James Latham explained, "Working in conjunction with our supply partners, who are among the biggest and most recognised surfacing brands in the World and experts at forecasting trends, we are presenting our take on both interior and exterior surface solutions for the future.

"Showcasing a wide range of designed exclusive and semi-exclusive products, our stand, and indeed our showroom, will act as a hub for providing ideas and inspiration to visiting architects and designers."

Latham's highly experienced and knowledgeable team of products specialists will be on hand both on the stand and in the showroom, to offer practical support, technical advice and specialist knowledge on selecting products, and to explain how they can offer support throughout the entire specification process. This year, James Latham will be showing the latest

range additions for 2019 from supply partners including; Decospan, Abet Laminati, Garnica, Egger, Kronospan, AE Core, XyloCleat, Accsys, LG and Sekisui SPI as well as a range of timber cladding, flooring and engineered timber sections, plus, an exciting, exclusive new product launch will be announced.

The Surface Design Show takes place at the Business Design Centre, 52, Upper Street, Islington, London, N1 0QH between 5th-7th February 2019 – www surfacedesignshow.com



For more information on Latham's full range of surface materials: phone 0116 257 3415, e-mail marketing@lathams.co.uk or visit www.lathamtimber.co.uk

Top Left: HI-MACS® solid surface (credit: Pam Kat photography)
bottom left: Decospan's Querkus range of veneers;
right: AE Core laminate



OSMO UK SPRAYS THE WAY TO HARDWEARING AND DURABLE PROTECTION

Osmo UK, the eco-friendly wood and finishes expert, has expanded its Spray-Wax range with the introduction of a new 3010 Natural option.

Developed with professional users in mind, Spray-Wax provides a durable, low maintenance and hardwearing surface for all interior wood, including those in wet rooms.

Osmo UK Spray-Wax is based on the original Polyx-Oil finish.

Producing a resistance to water and dirt, the product is hardwearing and smoothens the chosen surface.

For stockist details and more information on Osmo and its range of environmentally friendly wooden products and specialist finishes, call Osmo UK direct on 01296 481220 or alternatively visit www.osmouk.com.

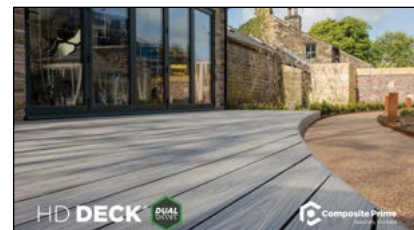


OSMO REVIVES WEATHERED TIMBER CLADDING

The owner of a two-storey property in Brighton was looking for a wood finish to revive the exterior timber cladding on his family home. After hearing about Osmo UK's reputation for good quality sustainable finishes, she knew that its products would not only provide a long-lasting finish, but that it would enhance the natural character of the wood.

Rachel Forrest felt that the timber shiplap on the front and rear of her home was beginning to look dull and tired, and wanted to find a wood finish that would rejuvenate the existing cladding and keep it in good condition for years to come.

For more information and to view the complete product range, visit www.osmouk.com.



Time to try Composite Prime?

Tasteful, practical and offering a truly sustainable solution, the stylish decking range developed by Composite Prime provides the perfect solution for those seeking an elegant outdoor finish for that special project.

The company's HD Deck® ranges utilise the latest composite technology to produce a long life, low maintenance, slip-resistant and child-friendly material which outperforms traditional treated timber.

Highly attractive, it's also environmentally friendly, combining Forest Stewardship Council FSC® 100% certified hardwood timber from well managed, sustainable sources and recycled plastics, seen as a crucial consideration in the global campaign to combat plastic waste.

Now available through a network of stockists and resellers nationwide, the full range of Composite Prime products can be found at: www.composite-prime.com

Dr. Schutz®

QUICK FIX ANTISLIP

One quick and easy application!

Floor becomes safe to walk on after just 2 hours!

www.drschutz.co.uk

Tel: 01296 437827

TRETFORD COMMERCIAL CARPET IS TRULY EXCEPTIONAL BECAUSE IT IS MADE WITH NATURAL CASHMERE GOAT FIBRES.

It performs as an air filter, reducing airborne dust and allergens, providing better indoor air quality. Whether you choose TRETTFORD carpet roll, carpet tiles, or a combination of both our unique ribbing creates fabulously clean, elegant lines, which establish a sense of order and structure in any room. Our naturally rich colour

pallets offers stunning options to create remarkable designs and colour schemes which are only limited by your imagination.

Relay Park, Relay Drive, Tamworth, Staffordshire. B77 5PR.
Tel: 01827 831400

Aztec Glass

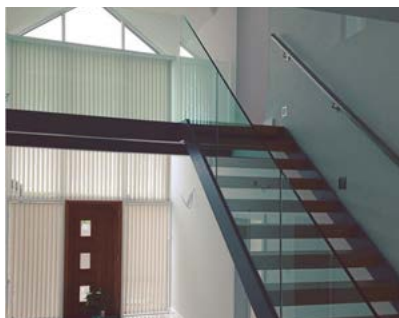
Formed in 2011, Aztec Glass is an innovative and fresh company offering Glazing and Balustrading services across South Wales and the UK.

Aztec Glass provides bespoke glass solutions for a wide range of new build, refurbishment, renovation and one-off glass projects across the UK.

We work closely with residential and commercial clients to provide high specification glass products that are tailor made for a functional, elegant and modern fit.

Working with Architects, Designers and Builders we find solutions for the most complex design briefs.

Aztec Glass take great care in providing clients with the products they require, working within building regulations and with products that fully meet British Standards.



Our products include many glass types include standard clear float, low iron (crystal clear), sandblasted glass, body tints, laminated glass with bespoke interlayers, back painted glass and heavily textured kiln formed glass. We can also apply decorative manifestations to the glass to incorporate company branding, personal artwork and patterns for a truly bespoke installation.

With all projects being bespoke the glass will be cut to the exact size, integrating cutouts for sloped ceilings, alcoves and furniture, for example.

Our product range and services include glass splashbacks, one-off pieces and major renovation projects.

**01656 857131 info@aztecglass.co.uk
www.aztecglass.co.uk**

- GLAZING SYSTEMS & CANOPIES
- SPECIALIST METALWORK & FABRICATION
- BALUSTRADE & STAIRCASES
- STRUCTURAL GLAZING
- AUTOMATED ENTRANCES



Unique Metal & Glass

Full Design, Manufacturing and Installation Service



UMG Co. Ltd,
First Stage House,
Brimington Road North,
Chesterfield,
Derbyshire S41 9BE

T: 01246 208789
F: 01246 208791
E: umg@metal-glass.com
W: www.metal-glass.com

UMG
unique metal & glass co ltd

The
comfortable
solution for
warmth where
you want it,
when you want
it...
guaranteed

- ◆ efficient
- ◆ controllable
- ◆ professionally installed
- ◆ nationwide suppliers
- ◆ ideal for conversions & retrofits



electrical underfloor heating by
SPEEDHEAT
comfort from the ground up

Speedheat UK
Iona House, Stratford Road,
Wicken, Milton Keynes, MK19 6DF
tel: 01908 562211 email: info@speedheat.co.uk

www.speedheat.co.uk



Beautiful Designer Ceiling Fans



Powerful - Stylish - Reliable - Silent

THE HENLEY FAN COMPANY LTD



01256 636 509

www.henleyfan.com



b e t t e r s o l u t i o n s
J K N R E N E W A B L E S

Local Ground & Air Source heat pump Consultants, Designers & Installers



RHI Example - Detached house using 26,400kWh/y for heating and hot water.
Estimated income over 7 years from £24,500.00 and save up to 70% on running costs vs LPG.

Install a Heat Pump to benefit from Comfort, Economy and Sustainability

Website www.jknrenewables.co.uk
Email enquiries@jknrenewables.co.uk
Tel 01427 874308



**PROFIT from heating your home or business,
talk to JKN about the Renewable Heating Incentive now!**





Vectaire

Vectaire's Microbox 125/2DC was chosen to ventilate St Peter's House and Admiral's House in Kents Road, Torquay. This prestigious development converting two listed buildings into apartments needed discreet, but effective ventilation. The Microbox, provided this. The unit is slim (less than 184 mm deep) so is particularly suited for in-line installation where space is at a premium. Additionally, it can be installed at any angle and only requires one discharge grille. It is an efficient, low energy solution to controlling condensation and pollution in residential properties up to 185m². It has a variable choice of low (trickle), boost and purge speeds at installation with low noise levels and low running costs. It is easy to install, using the minimum amount of ductwork (therefore fewer fire dampers and less coring), saving approximately £250 per system. It will operate in up to 60°C, is IPX4 rated and SAP PCDB Listed.

www.vectaire.co.uk



The Mini Eurocowl

Are you incorporating a chimney within your build?

Building within an area: in reach of a coast line? susceptible to high winds? Surrounded by trees?

The Mini Eurocowl is the complete chimney cowl solution solving anti downdraught issues whilst also protecting against birds, wind and rain.

Suitable for all fuel types, with a robust design and a dome top making for hassle free sweeping and easy maintenance.

Eurocowl has been in the chimney and flue industry for over 21 years, creating solutions to chimney problems with our variety of products, all of which are Certified by Bria Ltd, compliant with BS EN 16475-7:2016 and CE approved

Please visit our website www.eurocowl.co.uk to view our extensive product range



RIBA accredited CPD presentations available through Grant UK

Grant UK has registered with RIBA and joined their CPD Providers Network, offering RIBA approved seminars to architects and specifiers on air source heat pumps.

Grant UK has produced a free of charge seminar which focuses on air source heat pumps, providing general awareness information for the attendees.

The seminar has been rigorously assessed by RIBA and is consequently worth double CPD points to RIBA Chartered Architects.

The seminar, which is available at venues throughout England, Scotland and Wales, provides an introduction to how an air source heat pumps works before delving into greater detail about specification and installation.

For further details about Grant UK's CPD seminar or to book a place, please visit www.grantuk.com.



AET Flexible Space Underfloor air conditioning:

Less waste, a better space



With over 300 projects worldwide and a portfolio of notable world class developments, AET are the undisputed authority on underfloor air conditioning technology. We have the widest equipment range on the market and can help design bespoke systems to meet client requirements.

www.flexiblespace.com

ICID PLUS

Now with a Lifetime Guarantee*



Have you made the connection?

- Designed for the stove market
- Available in two stunning finishes
- Highly insulated
- Simple to fit



Take a look at some fantastic installation videos online at
Schiedel.co.uk

Made from high quality stainless steel, ICID Plus makes a beautiful addition to any home. It's as beautifully simple to fit and install as it is to behold. ICID Plus is available in two stunning finishes: black and stainless steel.

Comes with a Lifetime Guarantee.

Please see online for Terms & Conditions

To find out more, visit us at **Schiedel.co.uk**



Join us on Facebook
SchiedelUK



fiftpointeight Architecture + Interiors

Conford Brae is a two storey detached house in the 'green belt' outside Liphook in Hampshire. The owners had lived at the property for a number of years before embarking on a significant refurbishment and extension project. They were clear that the existing house required additional ground floor living space and at least one additional bathroom at first floor.

fiftpointeight Architecture + Interiors were appointed in late 2014 with an open brief in terms of the scope, initially to provide options for the potential alterations.

A number of options were considered, in most cases the themes were similar. Maximising the connection to and views of the west facing garden, and open fields beyond. Provision of an appropriately sized kitchen dining

space which would become the focal point of the house. Provision of an enlarged living room. Rationalised bedrooms and additional bathrooms at first floor.

After extensive discussion and consideration of options, a Planning Application was submitted in early 2015 with Planning Approval granted in July 2015. The Planning Department were happy with the contemporary flat roofed rear extension, but required the side extensions (which housed the bathrooms) to be in keeping with the original house. The side extensions are finished in white render and white framed windows to match. The entire property was re-roofed during construction - as a result the side extensions seamlessly blend with the original building.







The ground floor extension is clad in vertical and horizontal western red cedar cladding which will be allowed to weather to a silver grey. A single ply membrane flat roof with four flat roof glazed roof lights and grey framed minimal sliding doors allowing light to flood into the interior.

The proposals for the ground floor extended the house to include a larger kitchen with dining space overlooking the garden, utility room with separate 'back door', large living room, snug and study.

The proposals for the first floor extended the house from three double bedrooms, one single bedroom and one family bathroom to four double bedrooms two with ensuite

shower rooms and one larger family bathroom with bath and shower.

The entire property has been refurbished throughout.

A new full width patio to the rear allows a seamless connection between the internal spaces and the garden.

Construction commenced in mid 2016 with completion in early 2017.

The project was an extremely successful collaboration between Architect, Kitchen Designer, Bathroom Designer and Contractor.



fiftypointeight.co.uk



my furniture



VANTAGIO LOUNGE CHAIR £449.99

SALES ENQUIRIES 0800 092 1636 • FREE MAINLAND UK DELIVERY • OVER 90% OF ORDERS DELIVERED NEXT DAY

WWW.MY-FURNITURE.COM

Serica, the new standard in luxury super-matt



SILKY TOUCH



HIGH SCRATCH
RESISTANCE



ANTI-
FINGERPRINT



EXTREMELY
FLEXIBLE



EASY
REPAIR

Serica is the ultimate premium finish and the latest addition to the dp-specialist range.

This robust PVC is silky smooth to touch and adds a luxurious supermatt statement when laminated double sided to MDF or dp-lite Hollowcore board. With anti-scratch and anti-fingerprint technology, Serica is designed to cover all types of furnishings in homes, offices and stores.

In case micro-scratches occur, the surface can be easily repaired using a simple iron. The PVC's resilient nature means it does not require a protective film, easing the manufacturing process. Available 1220mm wide and stocked in 11 unicolour designs as well as a further 19 colours deliverable on short lead times.

“The best performing super matt finish, setting a new standard on the market”

According to a leading European manufacturer of furniture frontals.

dp-lamination

SERICA

dp-specialist

Contact us for more information:

Century House,
Premier Way,
Lowfields Business Park,
Elland,
West Yorkshire HX5 9HF

t: +44 (0) 1422 658341
e: info@decorativepanels.co.uk
decorativepanels.co.uk

Going Underground: Stunning Family Home in Highgate

With London property developers digging deep to maximize potential some commentators believe we are seeing a new golden age of basements in the capital. However, creating such projects present interesting challenges for developers.

Citadel Design and Construction have recently completed this beautiful family home, designed in the style of the art and craft movement and backing onto Highgate Golf Club.

They have created a stunning home with six bedrooms on the first and second floors and two large reception rooms with a large kitchen and breakfast area on the ground floor and a lift to all floors. And with prime residential space at such a premium in London, Citadel excavated below ground to house the swimming pool, entertainment room and gym in the basement, together with an ancillary plant room and utility room.

The entire garden area was also lowered by 1.7m to provide a better view from the ground floor areas with the basement level eventually accounting for 35% of the floor space.





But going underground to create a dream basement meant the developers had to guard against the possible presence of underground streams in this area of north London with a thorough course of secant piling.

Citadel were initially called in to demolish an existing house on the site and build the new home to an architect's design.

But after reviewing the brief they were able to suggest significant improvements to the original architect's design, significantly increasing the living space and

improving the lighting quality of the basement area by providing larger glazed areas to the swimming pool and entertainment room.

They also provided larger access stairs to the basement from the garden area with staggered planter boxes for added excitement and interest and designed a glazed terrace area on the ground floor over the area just outside of the swimming pool.

The development was led by Citadel Design and Construction Director Masoud Irani, who said the project was not without challenges.



He said: “This was an interesting project and it has been wonderful to deliver such a beautiful family home for our client.

“Creating such an extensive basement level in this part of north London meant we had to go to great lengths to guard against the possible presence of small underground streams, drilling more than 120 secant piles to a depth of 13m.

“As well as the reinforcement cages used in the piles an additional 97 tonnes of reinforcement were used to build the base slab and retaining walls around the site.

“When we took over the project we also had to address a number elements, essentially the internal

layout and the roof which was designed as a butterfly roof.

“We managed to simplify the roof structure and made it into a crown roof that by itself provided 700sqft of additional usable space but at a lower cost.

“We also extended the basement to house a larger swimming pool. These alterations allowed for the lift shaft to extend to the second floor as desired by the client.

“The changes we made increased the size of the house from 8500sqft to 10500sqft internally without significantly affecting the overall budget.”

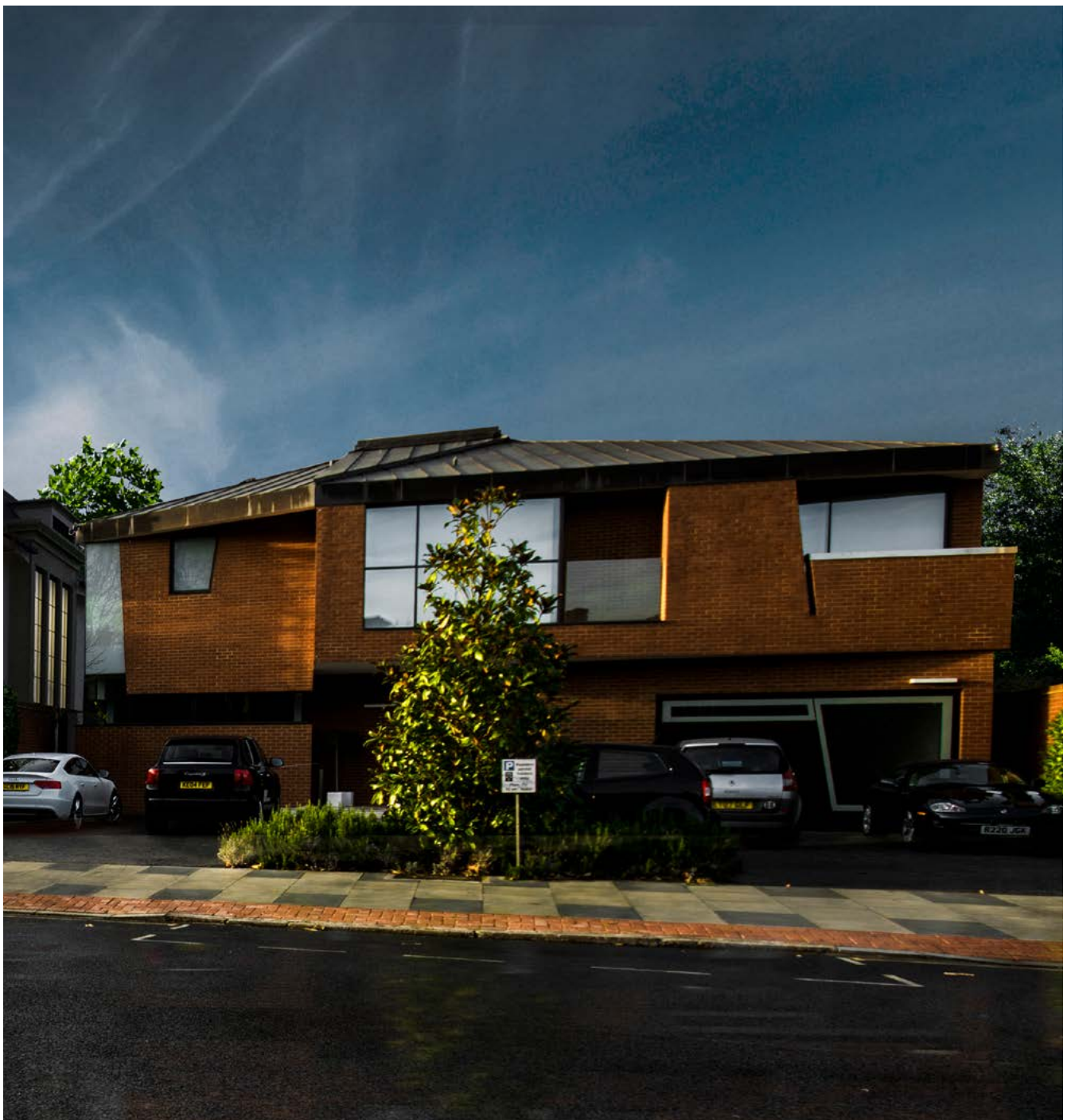


The basement walls were made up of 600mm piles with 250mm reinforced retaining wall covered with delta membrane tanking 100mm of insulation and 140mm block work.

The base is made up of 220 cellcore, 400mm reinforced slab, delta tanking membrane, 100mm insulation and 70mm structural screed.

The construction of the floors above ground was made up of steel columns and heavy masonry blockwork.

External walls are rendered with self-coloured render with bespoke natural stone window surrounds. The house is fully equipped with the latest Lutron lighting and AV systems. Internal and external doors are made by a bespoke joinery company.





Four Steps to Creating the Dream Dressing Room

A bedroom with an accompanying dressing room is often high up on a homeowner's wish list. Yet it's often considered a far-fetched luxury that is only achievable if a home has space to spare. This is a common misconception as with the right layout and clever storage solutions, the dream walk-in wardrobe can become a reality. Here are our four simple steps to follow...

1. Pick the perfect spot

If your home does not have the option of a separate room, consider utilising the empty space along a wall in the bedroom or section off an alcove.

Sliding doors are an effective option for partitioning off the space and can make the walk-in wardrobe available to almost any bedroom.

In particular, mirrored sliding doors can double up as a full-length mirror which reflect light around the room, making it appear larger than it actually is. Sliding doors also help maximise the available space and give you a sleek, contemporary look.

2. Consider the practicalities

A dressing is rendered useless if it isn't able to store belongings in a practical and tidy manner. Start by making an inventory of all your possessions, including clothes, shoes and accessories, as well as any other items you plan on storing away such as coats or extra bedding.

This will provide a much clearer picture of the type of storage options that are required. Modular storage systems are so flexible that they fit to any space for any purpose, allowing you to choose from shelf or drawer combinations to match your specific needs.

3. Let there be light

Having appropriate lighting in a dressing room is essential. Bright overhead lights can often cast an unflattering shadow across the face and body, so instead, opt for bulbs that evoke a soft, luminous glow. Consider incorporating the glamour of a hanging pendant in the centre of the space or installing task lighting around a vanity mirror which is ideal for make up application.

4. Add some personal touches

Panelled sliding wardrobe doors are ideal for adding a splash of colour to the bedroom. Not only will you create an individual style by using varying textures in the door panels, but this technique injects colours and depth to a once plain bedroom. If you have the luxury of a large space, then add in an ottoman or statement chair to make this space not only practical, but comforting. Adding enhancing features such as these makes the space a room on its own, more than just another wardrobe.



For more information on Spaceslide products or installation services, call 0800 980 3499 or visit www.spaceslide.co.uk





ecodek

British manufacturer Ecodek have been producing their unique Wood Polymer Composite boards system for over 14 years. In 2017 alone, the production of ecodek® material consumed more than 3600 tonnes of recycled plastic milk bottles and sustainably sourced hardwood fibres.

ecodek® boards are available in three profiles, two finishes and five colours, so suitable for a huge range of applications both commercial and residential. ecodek® can be found across the UK and beyond, in public realm areas such as walkways, bridges, schools, care homes, stadia, restaurants – the list goes on.

With the versatility to adapt to urban or traditional design schemes, ecodek® decking systems will allow the designer to transform outdoor spaces and gardens into feature areas. For podium decks and balconies, we have produced a range of specific screws, substructure bearers and beams that take into consideration the change in outdoor temperature and weather.

In addition, ecodek® is prevalent in the major housing developments across London in balconies and roof terraces.

With a high material stability that has negligible expansion or contraction, ecodek® offers the perfect choice for balcony applications.

Offering bespoke lengths to suit individual projects in both our AT and HD ranges means a welcome relief on site to the usual problem of waste materials. As ecodek® material is 100% recyclable, should any waste be generated on site, this can be bought back by the company and put back into the production of new boards.

The boards will not warp, splinter or rot, and as ecodek® does not promote mould or algae growth, only require minimal maintenance, and do not require sanding or sealing.

ecodek® material comes with a 25 year warranty as standard, giving piece of mind to both specifier and end user.

A recent life-cycle assessment considered the manufacture of ecodek® (from cradle to factory-gate) showed that its production had a net effect of removing carbon dioxide from the atmosphere rather than adding to it – hence carbon negative - a huge achievement in modern manufacturing



and one that clearly illustrates the company's environmental credentials.

Ecodek are members of Made in Britain, an organisation established to promote and support British manufacturers, and proudly bear the Made in Britain Marque.

ecodek® AT and HD Reversible Grooved Ribbed boards are available in bespoke lengths and five colours (Pebble Grey, Slate Grey, Black, Dark Brown and Light Brown)

ecodek® Heritage Woodgrain Effect boards are available in standard 3.6m lengths and five colours (Pebble, Welsh Slate, Highland Basalt, Pennine Millstone and Brecon Shale).

www.ecodek.co.uk
01978 667 840
enquiries@ecodek.co.uk



SUSTAINABLE OUTDOOR LIVING.

The durable and sustainable *alternative*
to hardwood and hollow decking

High quality, British made Wood Plastic Composite
ecodek® contains 55% sustainably sourced hardwood and
40% HDPE recycled polymer and is 100% recyclable

Bespoke lengths minimise waste

Solid boards that will not splinter or rot

Carbon negative production

Low potential for slip wet or dry

Low maintenance

25 year warranty



Image © Neil Kenyon @ Arki Mag



01978 667 840
enquiries@ecodek.co.uk
www.ecodek.co.uk



Life on another level

Amid the Government's promise to deliver 300,000 new homes per year in England by the mid 2020s and the ever increasing demand for affordable housing, property remains well and truly at the top of the political agenda.

Most recently, Professor Sir Roger Scruton has been appointed to chair a new Government commission that will consider the aesthetics of buildings, including the material they are built with, their appeal and their size in order to harmonise with the urban environment ensuring they are built to last and that new homes are places for communities to live in. But, with the requirement to preserve the Green Belt in the most in demand areas and,

by association, limited land availability, developers and planners are going to have to think outside the box to create exquisite homes in areas which are already high in density.

One way of achieving this, and preserving the all important feeling of community, is to consider the construction of town houses. Built on smaller plots, if designed well, the town house can offer practical, secure and convenient living accommodation.

This is something which design led developer, Bewley Homes is championing at two of its current development sites – Reading Gateway in the highly competitive area of Reading,

Berkshire and Jubilee Meadows on the edge of the in demand area of Walton on Thames in Surrey. Both Reading and Walton on Thames offer superb commuter links into central London in well under half an hour, giving them great appeal for those who need to travel into the Capital for work.

Brett Reeves, Sales Manager at Bewley Homes, says: "There are so many advantages to living in a town house. First and foremost, they tend to be incredibly private dwellings in terms of layout.

This is particularly the case with bedroom and bathroom configuration which is often over a couple of floors.



In the growing trend of multi-generational living, where perhaps parents in-law are sharing accommodation with children or grand children, it enables everyone to have their own space and not feel like they live 'on top of each other'.

This is also a benefit if you are a family with children approaching their teenage years.

"In addition to this, those who live in town houses talk about the great sense of community – with everyone looking out for one another and which, by association, also helps to make town house living more secure.

"Many of those who have moved into our developments also speak about reduced outgoings finding that, because of its multi-layer layout, the cost of heating is significantly lower than in an equivalent sized detached or semi-detached house."

"At Jubilee Meadows, we have created homes which come with a garage providing secure parking or, for those who choose not to use the space for their car, a useful additional storage space. The houses here have also been laid out with the principal reception areas on the ground floor, meaning there isn't the strain of walking up and down the stairs to access the kitchen and reception areas which can make some slightly apprehensive about town house living.

"Upstairs, the layout comprises 3 bedrooms, en suite shower room and family bathroom on the first floor and, on the second floor, a master bedroom suite with dressing room and a full suite bathroom from premium Italian bathroom brand, ROCA."

Bewley Homes is launched its new 4 bedroom town house show home on Saturday 24 November at Jubilee Meadows, Hersham. It is an opportunity for prospective purchasers to come and view the quality of the properties Bewley Homes is creating here.

There will also be financial representatives from award winner whole market mortgage broker, Key Solutions, on hand to help with any financial queries and to advise on Part Exchange.



Prices from £699,000. Contact Bewley Homes for more information on 01932 828500.



Smart and sophisticated decking solutions with Trex composite

Trex is the world's number one brand of premium decking and railing. Made from 95% recycled materials, it is eco-friendly and guaranteed to look like new for decades.

Offering designers and homeowners alike the opportunity to create a truly unique and customised outdoor space, Trex Transcend composite decking combines a finish that resists stains, scratches and mould with a distinctive and natural-looking, wood-grain pattern in deep, saturated colours inspired by the great outdoors.

With its CustomCurve decking solution, Trex boards can be bent to create dramatic shapes, sweeping curves and a harmonious flow to suit every space no matter the size or shape of the garden.

Gone are the days of simple square decks and basic slab patios, as Trex CustomCurve raises any outdoor living project into a work of art.

The newly launched Trex RainEscape drainage system offers homeowners the chance to maximise their outdoor living environments and create a useable space beneath an elevated deck. Installed above the joists of the substructure, this innovative system drains water away from a deck and protects the area below from rain, sun, snowmelt and other elements.

As a result, homeowners gain bonus space for storage or an added living area. With Trex RainEscape, homeowners can safely outfit the area under a deck. Unlike wood, composite decking resists fading and won't rot, warp, crack or splinter, regardless of daily wear and tear. The boards will even retain their good looks after years of wet British winters and summers. Available in a variety of shades, there is one to suit every outdoor space.

Visit www.trex.com/uk for more information on Trex products



Give your garden the edge on sustainability



become is taking the sustainability message to the great outdoors by launching a garden edging that is made from 100% recycled household plastic.

Eco Edge is the latest addition to the become portfolio to meet soaring demand for all-things sustainable from consumers, businesses and public-sector organisations.

Driven in part by the phenomenal impact of publicity from the likes of Blue Planet, Eco Edge is on trend, lending itself to promotional messages that

will strike an immediate chord with ever-more eco-aware customers.

Eco Edge is stylish, strong and as easy to work with as wood, making it an ideal edging for virtually all types of gardens and landscaped public space. Unlike wood, however, it is rot-proof, and environment friendly, making it supremely cost-effective, flexible and long lasting. It suits the widest possible range of users and uses.

www.become.eco
0333 202 6800
become@rpc-bpi.com

Organowood® 02: A Natural Wood Protection Against Dirt, Water And Damp



Organowood®, the natural wood preservation specialist, offers Organowood® Repellent 02, the ultimate environmentally friendly and organic solution to protect wood from water, dirt and damp.

Organowood® 02 has been designed for use on a variety of wood types, including traditional

pressure impregnated wood, larch or core pine. When used in conjunction with Organowood® Protection 01, the product creates a complete system for non-treated pine or fir.

For stockists and more information on Organowood®, please call 01296 323770 or visit www.organowood.co.uk

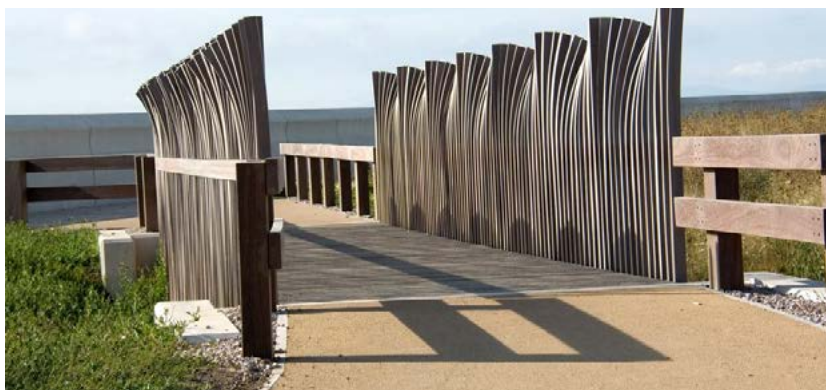
Making Waves at Rossall Coastal Defence Ecology Park

Three bridges with unique 'wave' style parapets were installed by CTS Bridges Ltd in the Mythic Coast inspired Ecology Park as part of the Rossall Coastal Protection Scheme.

Artist Stephen Broadbent was responsible for the design of the 'Mythic Coast' inspired park and the wave effect bridge parapets were part of his concept for the scheme.

CTS Bridges' Structural Engineers and in-house timber specialists worked closely with main contractor Balfour Beatty and Broadbent Studios to develop the concept into a buildable solution.

The final bridge designs use 120 unique spindles to create each 'wave' bay. The spindles themselves are FSC Ekki – a sustainably sourced hardwood timber species that is both strong enough to permit the slender spindle sizes whilst maintaining structural adequacy and naturally very durable to suit the marine coastal environment.



The deck itself uses CTS Bridges Hi-Grip Excel FSC ekki deck boards spanning on to a galvanised steel frame.

All three bridges were fully assembled in CTS' Yorkshire factory before being craned into position on site under the supervision of CTS' own installation team in a 2-day visit. CTS' joiners followed building complementary ekki parapet approaches to the bridges.

The three bridges were manufactured by CTS at their factory in Huddersfield prior to being delivered and installed on site in time for the opening of the Coastal Flood Defence scheme carried out by Balfour Beatty for Wyre Council in partnership with the Environment Agency.



CTS Bridges Ltd specialise in the design, manufacture and installation of footbridges in timber, steel or FRP. For more information, quotations or advice contact enquiries@ctsbridges.co.uk www.ctsbridges.co.uk

CTS
BRIDGES

DESIGN BUILD INSTALL
Delivering quality structures
across the UK

- BRIDGES
- BOARDWALKS
- STRUCTURES
- LOCK GATES
- DECKING

01484 606416 enquiries@ctsbridges.co.uk www.ctsbridges.co.uk



KE presents SPACE, the new awning for 2018, perfect for verandas and penthouses

Based on Arch. Cantarutti design, SPACE awning can be applied to pre-existing structures: this makes it the perfect solution for verandas and penthouses.

Easy to install, it is available also in the wall-mounting version: SPACE WALL can be installed both on the wall and on the ceiling – on the front part, it stands on pillars.

SPACE stands out for its front cap that, together with its cassette cap, recalls a record player and the arm on which its stylus is fixed.

Easy to install and equipped with an inspectionable cassette, one of its main features are its guides: in fact, they can be adjusted in their width, so as to better fit in every context.

A gas piston allows the tension of the fabric with no imperfections.

Moreover, a mechanical fixing system is available on request: it allows a perfect tension of the fabric, avoiding anaesthetic wrinkles.





The LED strips, that can be integrated on the guides, put SPACE in line with the latest outdoor trends.

Technical features:

SPACE: cassette awning that can be applied to pre-existing structures, the fabric is tensioned through gas pistons

SPACE WALL: cassette awning, the fabric is tensioned through gas pistons in the wall-mounting version

- inspectionable cassette
- guides adjustable in their width up to 500 mm on each side

- it is possible to reach a maximum dimension of 7x7 metres (7x5,5 metres in the WALL version) with three guides and 6 metres in width with two guides, up to a maximum projection of 4 metres
- LED strip that can be integrated in the guides
- possibility to hook and unhook the trolley automatically
- possibility of movement not only with 120 NM motors but also with 80 NM motors.



www.keoutdoordesign.com





BBC'S DIY SOS: THE BIG BUILD SPECIAL

As part of the BBC's DIY SOS: Big Build project, Mackwell provided its emergency lighting systems and technical expertise to an ambitious project to create the North Kensington Community Centre and rebuild the Dale Youth Boxing Club which was destroyed in the Grenfell Tower fire.

The team at DIY SOS: Big Build, led by presenter Nick Knowles, was determined to do something to help those involved to recover from the trauma and devastation of the fire. After consulting with the Grenfell community, a plan was put in place to build a bespoke facility to provide both the community space and a new home for the Dale Youth Boxing Club, which was previously located on the second floor of the tower.

Further information is available from Mackwell on 01922 742145 by email info@mackwell.com or by visiting the company's website at www.mackwell.com



Authentage

The Authentage collection guarantees timeless, atmospheric lighting in a classy style.

Our lighting is made according to traditional methods, but fitted with the most modern technology.

In turn, the design reflects clean lines or components from the past.

Thanks to various materials, such as aged brass, brushed nickel or chrome, our collection perfectly matches homes in classic, country, modern or minimalist style.

Our experience with lighting over many years helps us to create fixtures that produce amazing lighting results in a very broad scope of applications.

Instagram: [Authentage_official](https://www.instagram.com/authentage_official)
www.authentage.be



Let There Be Light

Here at LED Wholesale Exchange we consider ourselves privileged to be able to make a valuable contribution to making this available and affordable to increasing numbers of people everywhere – available, because by using less electricity there is more light to go around for everyone; and affordable because although the initial cost of the bulbs themselves is higher than that of the old technologies, the cost savings to the user are dramatic (usually 80% -85% of the equivalent incandescent measured by the Wattage consumed). We are the exclusive distributors of the superb ALTY brand with its cutting edge technology.

LED Wholesale Exchange are fully committed to promoting the adoption of LED lighting. The benefits for consumers, industry and the environment are clear to us. We can see the light - it's bright, clean and energy-efficient.

Tel: 020 3432 7117
Fax: 0845 8673637
info@ledexchange.co.uk
www.ledexchange.co.uk



Asteria series MR16 Spotlight (GX5.3 Base)

Suitable for Enclosed Fixtures






LED
EXCHANGE
Energy-Saving Lighting Systems
For a Brighter, Cleaner, Greener Future

Requests / inquiries

sales@ledexchange.co.uk

Tel 020 3432 7117 Fax 0845 867 3637

Visit our website ledexchange.co.uk

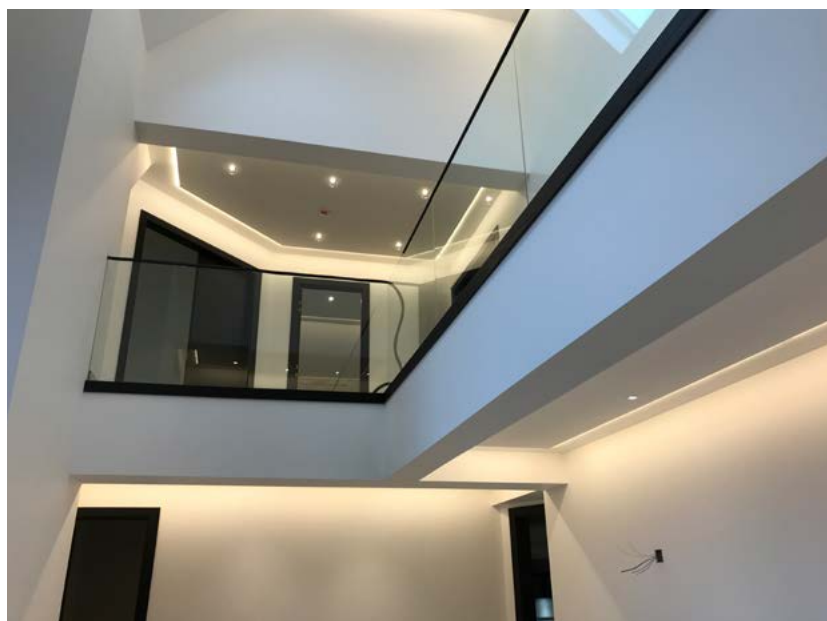
Edge Lighting Made Easy

Enhancing an interior can be an expensive task but not utilising our unique LED edge lighting profiles. Designed to be cost effective yet create stunning results. These profiles become the key component to a lighting concept.

Options being for a flat ceiling or a corner detail the aluminium trims form a sharp edge perfect for plastering to. The aluminium also acts as the perfect heat sink for LED keeping the running temperature low.

For the LED strip, simply select the colour temperature and output, whether it is single colour, dim to warm or colour changing the options are many. After selecting the LED, select the driver, either switched, triac, DALI, 1-10v, DMX, 12v or 24v, the choice is yours.

Typical applications are washing light round cornices, coffering, roof light wells,



light panelling, beam edges, skirtings and wall recesses. When switched off the edge trim blends into the interior almost unnoticeable.

When on, the room is washed with soft reflected light, the perfect way to illuminate a room and to avoid the error of too many down lights.

Available in 3m lengths for ease of transportation and installation, these trims will transform the way you see light being used to enhance a room giving it added value and exclusivity.

david@ald-edge.com
07725 560653
www.ald-edge.com

ALD
Architectural Lighting Details

The English House


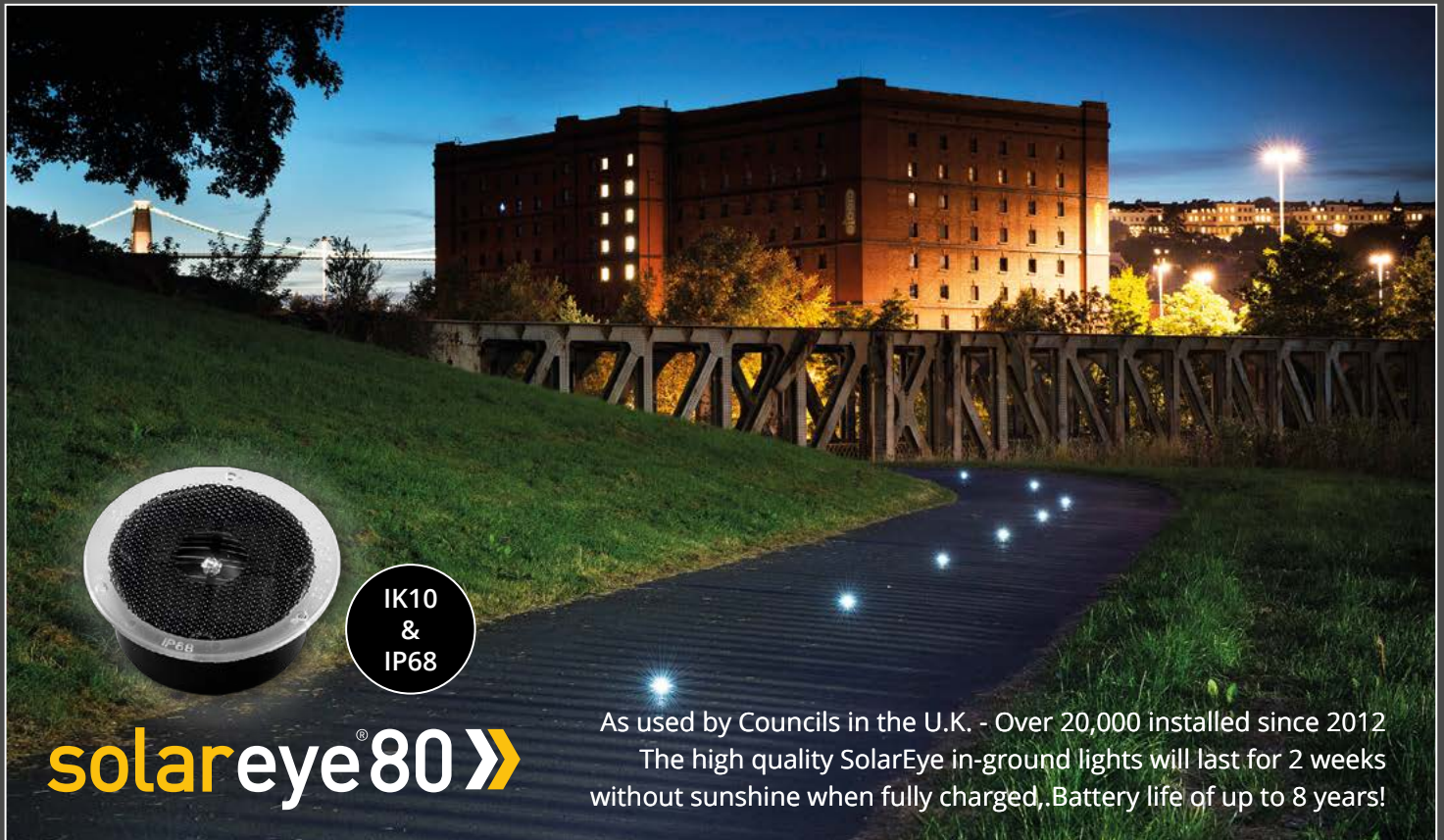
Handmade light fittings



www.theenglishhouse.co.uk
tel: CHARLES MORRIS on 01502 478493

Professional Solar Lighting

The Lumena Pro-Solar 365 Range Illuminates 365 Days a Year - Rain or Shine



IK10
&
IP68

solareye®80»

As used by Councils in the U.K. - Over 20,000 installed since 2012
The high quality SolarEye in-ground lights will last for 2 weeks without sunshine when fully charged. Battery life of up to 8 years!

CHOOSE SOLAR

No running cost or electrical supply

Ongoing savings

Minimal installation costs

Maintenance free – long life LEDs & lithium ion batteries for up to 8 years life

Rechargeable batteries

Environmentally friendly – Charges from natural energy

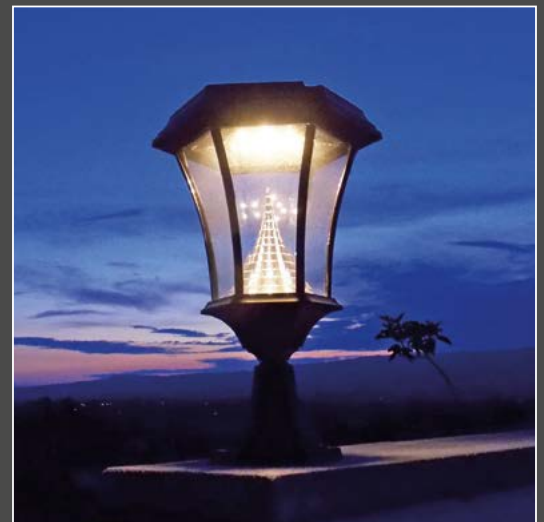
Perfect for areas where cable installation is difficult



FREEWAY 5

Triple Function PIR Light

Versatile bracket mounts onto walls or posts for instant path lighting



SOLAMON PEDESTAL

Frosted Lens & PIR Options

Ideal for mounting on walls and gate posts and as a safety feature for general access



Lumena Lights

Innovate ● Educate ● Illuminate

TRADE DISCOUNTS & ONLINE ACCOUNTS
NEXT WORKING DAY DELIVERY SERVICE
FREE DELIVERY - ORDERS £60+ EX. VAT
TECHNICAL TEAM ON HAND TO HELP

Outdoor Lights for Any Project

Professional Lighting Crafted from Durable Materials for 240v & 12v Installation



EXTENSIVE RANGE STOCKED

Durable Materials: Marine Grade S.Steel
Aluminium, Solid Wood, Natural Brass

Various Heights, Styles & Finishes

Bespoke & Dusk to Dawn Options

In Ground or Surface Mount Bollard Lights

Replaceable High Output LED Bulbs

www.lumenalights.com



Showroom: 9-5 Mon-Fri - Centre 33, Long March, Daventry, NN11 4NR • 01327 871161





Quality and Design come together

Whilst many people living in London are struggling for space, these four new homes have a light and spacious feel throughout the properties. Quality and design have come together with the construction of these four 4-bedrooms homes in a quiet cul-de-sac on a tree-lined avenue.

As a building contractor working in and around London, Kisiel Group provided quality construction to complement the innovative design from the architect to the delight of the developer. As it was not considered that planning permission for a 3-storey property would be an option, the architect made excellent use of space by designing a basement where the master bedroom with en-suite and a study both look out on

to a small private courtyard. This has resulted in plenty of natural light creating bright rooms not normally associated with basement areas.

Good communication skills are always imperative between the client, the architect and the building contractor. In a busy world with tight deadlines it is so easy to assume that everyone involved has understood and got the correct message. However, this is a dangerous assumption and can lead to ineffective communication. At Kisiel Group we believe that clear communication is an essential element in the construction process and so we train our team in ways to communicate effectively.



Sometimes, there can be difficult situations on a project that require more sensitive communication skills.

From the commencement of this project, it was evident that the neighbours were against the development and had banded together to bombard the Developer and the Council with complaints in the hope the development would be halted.

We very much feel, on every project, that the Kisiel team become in essence 'temporary' neighbours in the street and a part of the local community for the duration of the works. As part of our support to our client and for the smooth running of the project, four Kisiel team senior managers held an evening meeting with the residents and listened carefully to all their concerns.



Everyone was given an opportunity to ask questions and we explained, as a Chartered Building Company, how we would work with them to make the construction period as least disruptive as possible.

This was the first step in communicating with the neighbours which continued both on an individual basis and through regular newsletters at each stage of the works.

Having demonstrated through clear communication and our actions that we were 'good' neighbours, the remainder of the project passed without any problems.

Concerned about the possibility of crime in this affluent part of London, the architect's design had incorporated key requirements for the doors, windows and locks to meet the stringent requirements of the Secured by Design scheme bronze or silver award.



However, keen to aim for the Gold Award, members of the Kisiel team worked closely with the Metropolitan Police to enhance the security in the external environment to significantly reduce the opportunity for crime and anti-social behaviour.

Following an assessment and having met the vigorous standards set, a Gold Award was achieved. The Met Police Designing Out Crime Officer commented 'Gold Awards are rare, and compliance is strict in order to achieve the high standards of crime prevention'. (<https://www.kisiel.co.uk/news/article/gold-awards-are-rare/>)

Having added this value to the development, the Kisiel team also provided a quality finish. Our trades people do not just 'make do' but they are proud to deliver work to an excellent standard. The manager of the local estate agents appointed

to sell the houses told us that they were of a much higher standard than he would normally expect, and it made his job much easier to market the properties.

How a developer or an architect choose a building contractor is key to the success of any project. If you mis-match the contractor to the specific needs of a project, issues can be encountered but choosing the right contractor who understands the requirements of the client is the best approach. The Kisiel Group team once again proved that they can effectively collaborate with an architect and went that extra step to meet the needs of the developer.



www.kisiel.co.uk



Chartered
Building
Company



DoubleTree by Hilton Integrates High-Specification Fire Audio Solution from Advanced at Boston Hotel

One of the World's most famous hotel-chains, DoubleTree by Hilton part of Hilton Worldwide, has selected a high-performance fire system from industry leader Advanced at their eight-storey, 366 room hotel in Boston, Massachusetts.

The challenge was to replace an existing system, integrate speakers to all guest rooms and ensure that all audio messages and strobes were fully synchronized across the hotel, in the event of a fire situation, without the need for costly re-wiring.

Christopher Whitmarsh, President at Hayden Systems, Inc., commented: "I was confident that the Advanced equipment could meet the



application requirements based on my knowledge and experience with the equipment. In this case the Axis AX system was the preferred choice of the client too thanks to its voice communication system, coupled with PerfectSync, ensuring the hotel adhered to strict guidelines. The system integrated seamlessly into the fabric of the building and provided the client with a solution that met their needs as well as satisfying the rigorous demands of the local fire authority."

Bespoke Garden Structures from Oeco Garden Rooms



Oeco Garden Rooms have been manufacturing and installing timber framed structures for over 10 years. They specialise in building bespoke garden rooms, offices and studios for those who want to extend their living space for a multitude of uses.

Made from a traditional timber frame construction, concrete pile and steel foundations, these garden rooms are built to last and can be year round.

Western red cedar external timber cladding finishes off the look, providing rich and

varied browns, reds and pinks making each garden room unique.

Our bespoke garden room service allows you to decide on site where you want the windows and doors, switches, lights and sockets and allows our installers to run any additional wiring such as internet, telephone or alarm cables inside the walls.

Visit www.oecogardenrooms.co.uk or contact one of our sales team on 0800 170 1270 for more information or to request a brochure.

Safetytread - pioneers of anti-slip stairnosings

Safetytread products are a range of bespoke, premium, high quality anti-slip stair nosings manufactured in the UK.

Safetytread is environmentally friendly and provides a more economical solution than cheaper plastic materials. The treads will add excellent slip resistance to any staircase (internal or external); can be tailor-made to fit the exact dimensions of a stair tread and are available in a wide range of colours.

We will meet your stair nosing requirements with a tailor-made, bespoke solution, filled in your desired colour.

For more information please visit www.safety-tread.co.uk or call us on 01202 625596.



WOODU CHOOSE LTD IS A PIONEERING ONLINE SERVICE WITH A SIMPLE CONCEPT

Instant access to buy timber products in the wood of choice from multiple sources. The UK's only wood price comparison website.



Tailored timber products such as

- Skirting
- Architrave
- Decking
- Cladding
- Tongue and groove boarding
- Coving
- Beading
- and many more

PLUS

High quality bespoke joinery such as Windows, Doors, Staircases etc.

GREAT TOOL FOR ARCHITECTS AND DESIGNERS

Hundreds of downloadable CAD (DWG) timber profiles, saving drawing time. **Wooduchoose** has something to offer for all timber users and specifiers.



www.wooduchoose.com
t: 0800 772 3269
e: info@wooduchoose.com



The Perfect Jacket and Trouser Combination For Winter - From Snickers Workwear

Snickers Workwear is continually improving its working clothes with superb new stretch Work Trousers and Hi-Tech Jackets.

With great fit and superb value for money, the brand new comfort fabrics woven into Snickers' newest street-smart Work Trousers deliver enhanced freedom of movement as well as improved comfort and close quarter mobility.

They're perfectly complimented by the new, Hi-tech range of AllroundWork and FlexiWork jackets.

Getting information on the newest winter workclothes from Snickers Workwear is easy.

You can call the Helpline on 01484 854788, checkout the website and download a digital catalogue at

www.snickersworkwear.co.uk or email info@snickersworkwear.co.uk



FEIN UK – Launches value pack range offering premium quality Starlock, at affordable prices

FEIN Starlock accessories are proven to last many times over that of comparable competitor blades, offering enormous value when comparing price to the life-time of the blade. That said, the team listened to requests for assortments of accessories, releasing last year a 'Best of E-Cut' set containing six of the best cutters in the range, for a promotional price. The Best of E-Cut pack is FEIN UK's first 'official' value pack for its UK customers, offering an assortment of the best cutters that can be used commonly on typical applications faced by tradespeople 'on the job'.

This year, FEIN UK is proud also to have announced the launch of four more additional value packs, each of which support with a particular area of work such as flooring, window work or Bathroom installations.

www.fein.com/en_uk/news/promotions/the-great-british-value-pack-range-0792/



Leicester Based WorkStuff UK Launch Brand New Website

WorkStuff UK, a leading supplier of high quality workwear and personal protection equipment for over 20 years, have just launched their brand new website, www.workstuffuk.com, to meet the growing needs of their customers.

The brand new ecommerce store is stocked with a wide variety of products from work boots and high visibility jackets to chef's whites, first aid equipment, stylish polo shirts and plenty more, with additional printing and embroidering also an option.

WorkStuff UK has developed fantastic relationships with the leading brands on the market, so are able to offer customers the very best range of products. The new online store is therefore stocked with products from recognisable names including Caterpillar, Dr. Martens, Portwest, Castle and Uneek.

**205-207 Saffron Lane,
Leicester, LE2 7NB
0116 283 1840 sales@workstuffuk.com
www.workstuffuk.com**

Leica DISTO™ S910

Measure point data
and create plans

The Ultimate Measuring Tool

Measure Anything from Anywhere

Point to Point measurement

Measure the distance between two points from one remote location.

Smart Area

Measure the area between up to 30 points from one remote location.

DFX Data Capture

Create CAD drawings on the move from one point.

- **NO MORE** accessing dangerous areas on building sites to obtain measurements
- **NO MORE** ordering too much material
- **NO MORE** wasting material due to inaccurate measurements

**SAVE TIME
INCREASE ACCURACY
REDUCE WASTAGE
INCREASE PROFITABILITY**

please contact using the details below and quote the following code for a 10% discount: ABCDEC

offer valid until 31st March 2016



Contact - Stuart Loach
Mobile - 07741312062
Office - 01908 513439
stuart.loach@leica-geosystems.com

- when it has to be **right**

Leica
Geosystems



screwSHOP.co.uk

OUR FRIEND IN THE TRADE FOR OVER 30 YEARS...

Screws • Fixings • Fasteners

A division of NE Fasteners Ltd. Cradley Heath, West Midlands.

**"MY DADDY ALWAYS SAYS HIS
SCREWS ARE THE BEST.."**

**"..AND ALWAYS AT
SUPER GOOD
PRICES."**

BUY YOUR SCREWS AND FIXINGS ONLINE

OR CALL US..

0121 559 8866



THE HOME OF



SCREWS

Units 2+3, Waterfall Lane Trading Estate, Waterfall Lane, Cradley Heath, B64 6PU

www.screwshop.co.uk | 0121 559 8866 | sales@screwshop.co.uk



GREEN BUILDINGS

Green Building, green construction, or sustainable building is not new; it's the practice of designing, constructing, and operating buildings to minimize resource use, reduce waste and avoid negative environmental impacts.

For 25 years - and more - we've been designing, manufacturing and constructing 'Green Buildings' and components in a 'Green way'. Creating buildings that deliver a positive impact on our climate and natural environment. It's in our DNA!

Low Energy Buildings are what we are about. By helping reduce your energy consumption we help you reduce your energy bills, increase your property value and, if you're a business, increases your profits and marketing potential. If you're a homeowner it gives you more free cash to spend on the other things you'd like in life.

Lifestyle Living is, therefore, one more box our buildings can tick for you. It's also one of our aims when working with you and your professional advisors. Understanding the way you live and operate, sharing your aspirations for 'something better' is part of what drives us.

Going Green is not a fad or a fashion. It is a way of life and an important reason for adopting an eco-friendly lifestyle,

making conscious decisions about sustainability, reducing harm to our world and creating positive conditions for the environment to flourish and thrive. Green buildings conserve precious natural resources and improve our quality of life.

Top Tips for Building Green

Decide on your energy systems and on-site generation

- Solar | Wind | Geothermal

Specify your Thermal Insulation in relation to your:

- Site location, building orientation and surroundings
- Heating / cooling / climate systems
- Preference for natural, recycled or other sustainable materials

Assess the health and comfort factors

Choose materials, like wood, that:

- Are good natural insulators
- Are easily and economically recycled
- Have good 'end of life' value

Consider prefabrication of components and building elements:

- That minimise waste both off-site and on-site
- For managing the site to improve the environment
- With 'lean manufacture' to reduce energy use

REFURB, REMODEL, RENEW

Car Barns



Bungalow into 3 Storey House



Balconies



Oak Porches and Entrances



Some of our other services. Visit our website to find out more

**Grand Garages**

Grand Garages provide extra height for larger vehicles and can be combined with workshops, studios, games rooms, home offices etc.. Unlike most other Garage type buildings, Grand Garages have been developed using virtually the same building technology used in the construction of residential buildings. They can deliver everything from simple single car garages right up to hobby, sports, leisure and home based office "Lifestyle Pavillions".

Grand Garages are designed to be extendable. The precision manufactured frames enable you to start with the smallest models and then, as and when the need arises, add to the structure, either at the end, the side, or by replacing the roof.

**Parkland Homes**

Re-Locateable Sectional Buildings

- Unique solutions for low cost, affordable housing delivered quickly
- Emergency, temporary & permanent accomodation problems solved
- Comfortable Homes for retirees, keyworkers, young and homeless people
- Mobile & Relocatable for transitional and longer term residential needs
- Spacious Luxury Park Homes and small, basic, budget bungalows

Your project will be in safe hands

With over 80 years experience providing High Quality buildings & property developments you can rest in the knowledge that you and your project will be taken well care of.

Get Started On Your Project **01291 437050**



Discover new textured wood décors in the 2019 Arpa Athlon UK Collection

Visit Performance Panels Limited at
Surface Design Show, London
Stand 564/566
to find out more



performance panels

www.performance-panels.co.uk

T: 01422 310319

E: info@performance-panels.co.uk