

D *The Art Of* DESIGN

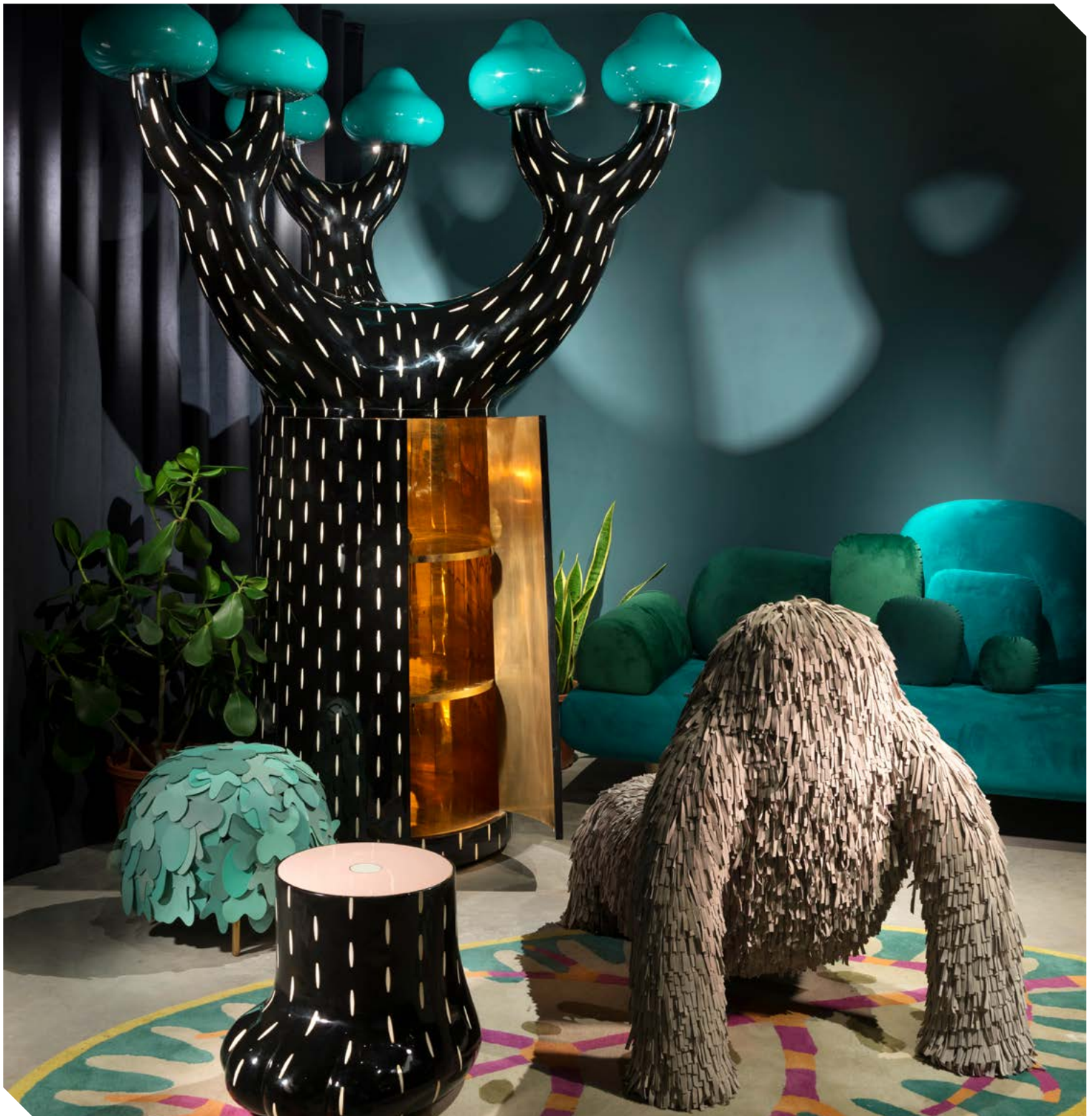
Issue 49 £4.95

Interiors

| Décor

| Bespoke

| Luxury Homes





Chambord dining table

Keplero chandelier

Ines chair

smania.it



 **SMANIA**
FURNISH YOUR STYLE



VENTURA

DESIGN | INTERIORS | BESPOKE FURNITURE

Please visit our newly extended showroom which showcases our bespoke furnishings and luxurious home accessories

London Showroom
216 Design Centre East
2nd Floor, Chelsea Harbour
Lots Road, London SW10 0XE

+44(0)203 976 9448

www.venturalondon.co.uk

info@venturalondon.co.uk



CONTENTS

24

BRASILIDADE 2021

One group of furniture designers are facing up to the growing role of furniture in our lives, breathing their own identities, and a distinct spirit of Brasilidade through their work.

50

2021 KITCHEN TRENDS

A leading British designer and manufacturer of luxury fitted furniture discuss the latest lifestyle trends it predicts, will influence and inspire the shape of kitchen design in 2021.

44

THE COBERMASTER CONCEPT

Illuminating and Ultimate Gray were the trend colors selected for 2021, according to Pantone. Give a Modern Industrial Touch to Your Home in the Colors of the Year!

72

'ENVOLEE'

Nulty Bespoke have completed a very special commission for the main entrance of a new private residential development in London.

Editor in Chief

Antony Holter
T: 01304 806039
E: editor@mhmagazine.co.uk

Editor

Rebecca Keating
T: 01304 806039
E: rebecca@theartofdesignmagazine.com

Publishing Director

Martin Holmes
T: 01304 806039
E: martin@mhmagazine.co.uk

Sales Director

Rupert Churchman
T: 01227 936977
E: rupert@theartofdesignmagazine.com

Digital Manager

Jamie Bullock
T: 01227 936977
E: jamie@mhmagazine.co.uk

Business Manager

Josh Holmes
T: 01304 806039
E: josh@mhmagazine.co.uk

Studio Designer

Sarah Johnson
E: sarah.johnson@mhmagazine.co.uk

Accounts Department

Alison Holmes
T: 01304 806039
E: accounts@mhmediaglobal.com

MH Media Global Ltd

Office 15, Second Floor, Innovation House,
Discovery Park, Ramsgate Rd,
Sandwich, Kent. CT13 9FD



Cover Image Courtesy of:
Scarlet Splendour



The Art of Design
is proud partners with



The Albert Embankment is situated between the cultural South Bank and the new Embassy District of Nine Elms between Lambeth and Vauxhall Bridge. The Dumont is the centrepiece of the a trio of buildings designed on the Albert Embankment.

THE DUMONT - ALBERT EMBANKMENT (SE1)

Architect and designer Thomas Griem of TG-Studio, appointed by St James's, has designed a fully furnished and dressed cosmopolitan penthouse displaying British craftsmanship whilst drawing inspiration from its historic riverside setting.

"We have added bespoke joinery pieces to this penthouse that make it as special as

its location, from a bespoke dining table, feature wine display case to stylish shelving in the living room."

The buildings' elegant linear form and black framed full height windows allows the apartment to be flood lit by the rising rays of the sun in the east and savour the waning rays as it sets to the west in the

evening. The constant light change has inspired the rich colours of the interiors from plush purples to tan, to natural colours that richly reflect the light and allows for warmth during sun cast days. The sculptural nature of the city beyond has also informed some of the bespoke pieces that abound in the apartment.



DESIGN ELEMENTS IN DETAIL

HALL

The penthouse occupies the whole plate of the building and is one storey. The main entry gives access into a lobby off which to one side are the living, dining and kitchen rooms and to the other a corridor leading to the sleeping quarters of the apartment.

The furnishings in the hall reflect the linearity of the building and architecture in the choice of artwork and a softer feel is given by introducing a semi-circular sculptural console table.

LIVING ROOM

The living room has a breath-taking view of the Palace of Westminster, the river and the City beyond. The rich and calming colours of the living room reflect the many colours of the sunlit city and the golden beiges of the Palace of Westminster. The furniture in this room is grounded by a sumptuous cream linen L-shaped sofa sitting on a TG studio designed bespoke blue hued pure wool rug. The riverside view is framed by floor to ceiling black framed windows, a classic Italian winged back tan leather sculptural revolving armchair inspired by the tail of a plane and sits in this prominent location with a circular side table displaying binoculars and a glass sculpture. Velvet burgundy twin swivel armchairs complement the sofa seating while allowing you to sit towards the riverside view or the main sofa. The walls are lined in a beige Belgium linen wall covering creating a calm luxurious backdrop.





To the other side stands a bespoke full height shelving unit that frames the view towards Battersea Power Station and is finished in a natural steam beech veneer wood above a contrasting reeded dark red lacquer cabinet with storage. A bespoke sideboard with reeded doors and open shelving sits below the TV, with display shelving above providing a focal point

in the room. Thomas explains “The colour inspiration of these bespoke pieces is combining the golden beiges of the palace of Westminster with a rich pulsating colour that is the modern city”.

Bespoke Sheer linen curtains accompany and soften the strong architectural lines of the building.

DINING ROOM

The backdrop of the room is a feature wall created by introducing a bespoke wine display in a light oak veneer that becomes the perfect frame for the central art piece. The symmetry in the room is enhanced by replicating the window on one side with a printed mirror artwork of the city in plan-view. Thomas points out that the view enjoyed from the 28th floor is cleverly mapped on the mirror making it a floor to ceiling art work.

This symmetric view is framed on the top and side by a textured black wallpaper stripe feature framed with a brass trim that brings the space together and connects it to the rectangular shapes of the building. This shape is balanced by the soft edges of the rectangular dining table, which has been particularly designed and manufactured for this space only. The table features a gun powder lacquer top on an array of trapezoidal legs finished in architectural bronze. It adds a modern architectural feel to this exciting dining room. The chairs are Italian designed with a grained navy leather back and a textured linen seat with black stained legs.



The flute chandelier is a Thomas Griem design too, that draws inspiration from bamboo cane flutes and finished in antique bronze. Its shape references the verticality of the neo-gothic architecture of the Palace of Westminster.



The kitchen space, with the introduction of a further bespoke table at the end of the island, accentuates the length of the space and allows the kitchen to extend as an entertainment space.



KITCHEN

The oak table has been hand made by a joiner in the Midlands, the design explores practicalities of centre table storage with an organic look and features a display slot for herbs and or flowers. The kitchen island has received an upgrade in the shape of a feature glass cabinet made out of oak offering additional storage space. The table chairs are an Italian design with a curved stitched leather back and linen seats. The artwork are abstract drawings of numerous types of oysters.

CORRIDOR

The corridor features a leather and brass feature wall with a curated selection of original and prints artworks to the other walls. A console table with storage covered in faux leather helps to break and centre the long corridor.

MASTER BEDROOM

The master bedroom features a calm and neutral colour scheme with accents of deep blues and reds. The walls have been covered in a printed linen wallpaper featuring a jigsaw brush pattern. The master bed itself has a tall double headboard with a combination of two fabrics and leather straps. Satin lacquer bedside tables support table lights with real alabaster bases and glazed linen shades.

The rear balcony creates the perfect place for a comfortable seating corner for morning coffee or evening drinks.

Opposite the bed, gold leaf artworks with Japanese inspired brushstrokes sit over a bespoke desk with leather inlaid top and brass details. A sculptural swivel chair sits in front of the window creating a tranquil reading place towards the view.

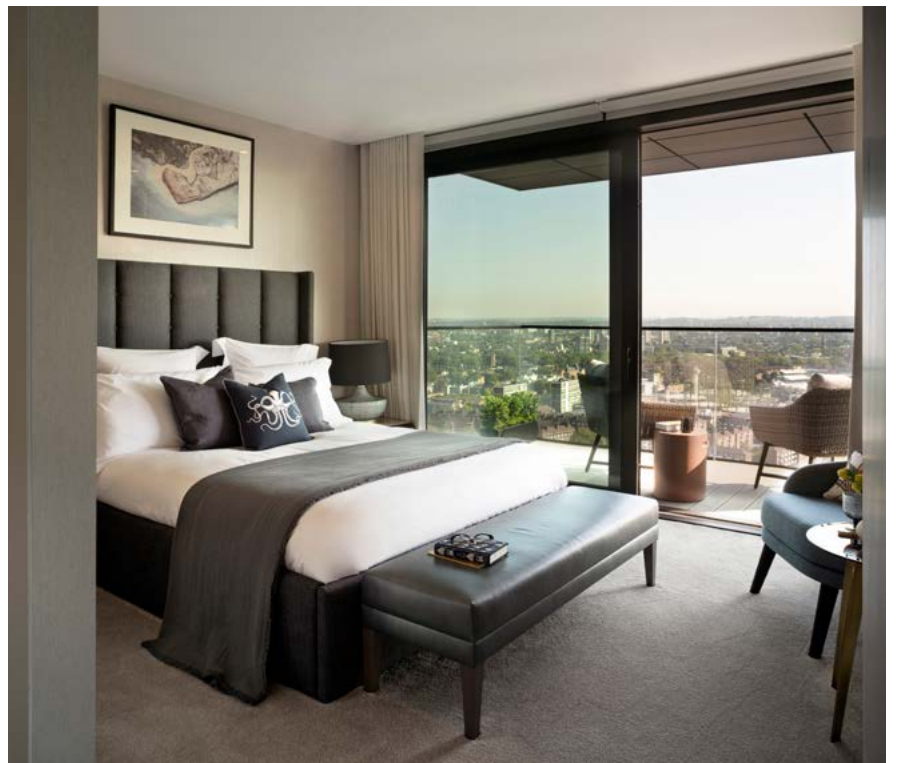


BEDROOM 2

Features a river inspired scheme with hues of blue greys and brick red, with a tall buttoned headboard and Portuguese designed bedside tables with lacquer and marble details. The art selection is a mix of nature photography and reproductions of Barbara Hepworth's work that connect to the British heritage of the property. The colour schemes carries through to the dressing room with a large dressing table and an accent handblown glass table lamp.

BEDROOM 3

Features a calm earthy tone palate, with a coppery linen wallpaper, brass and oak bedside tables and split face marble bedside lights. A light console table in lacquer and brass sits below an abstract acrylic canvas.



www.tg-studio.co.uk
Photographer credit: Philip Vile

SIMPLY LUXE



Defining luxury is not easy, for some it's a feeling of aspiration or distinction. To others, it's an indicator of elegance or individuality. Luxury in interiors has been taken to new heights in recent years with more interior designers favouring this indulgent, yet elegant style.

Ella bed

Established luxury UK interiors brand, My Furniture, have successfully created the perfect mix of high end, quality furniture at affordable prices. Elegant dining, sumptuous sofas - all products in the My Furniture range are designed in-house in the UK by a team of dedicated designers creating fresh, original designs with the end user in mind. All items can be viewed at their showroom in Sandiacre, Nottingham, or via their website my-furniture.com.

My Furniture are constantly adding new items to their collections. Whether your preference is hotel luxe or simple elegance, you will undoubtedly find the perfect piece that can be in your home in as little as a couple of days.

A proud new arrival to the collection is the Ella Bed – the latest addition to the Ella Range. Impress your guests with this

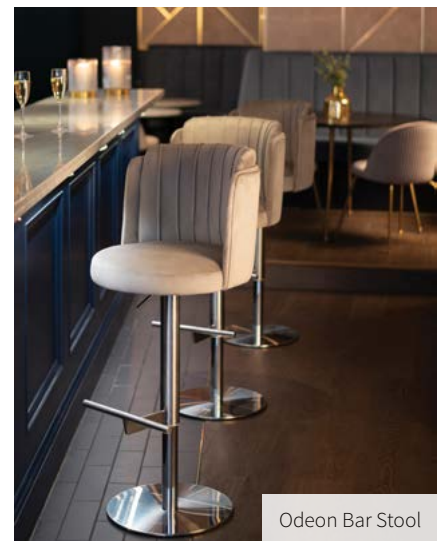
statement bed inspired by American Art Deco interiors. Featuring a sculptural wraparound headboard with fluted detailing, upholstered in plush velvet fabric.

Understated elegance at its best - the Etienne Range is a gracefully styled collection that comprises a side table, coffee table and stunning sideboard. Designs are already underway to expand the range later in 2021. This collection is inspired by high-end American interiors and features decorative fretwork panels in subtle pale grey with mirror and glass finishes.

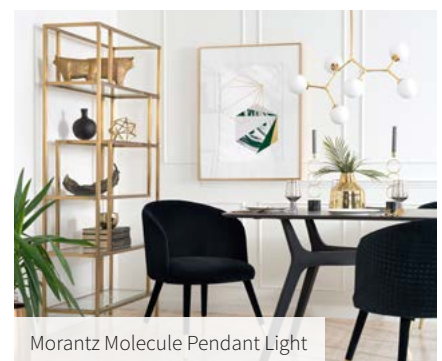
With the ongoing trend for open plan kitchens and large family rooms not going away any time soon, My Furniture have expanded their range of bar stools. The Odeon is Inspired by glamorous 1930's Hollywood interiors and exceeds the highest standards in design and durability.

Accessories can transform a room and create the wow factor in a matter of moments. My Furniture offer everything from stunning lighting to inspiring storage solutions. Timeless, beautiful pieces that will stay with you forever. Or, if you are looking for a quick inexpensive update – check out their hand-finished artworks and beautifully crafted rug collection.

Customer service is of the utmost importance to My Furniture. With over 9000 Trust Pilot reviews and consistent 5-star ratings, customers can purchase with complete confidence.



Odeon Bar Stool



Morantz Molecule Pendant Light

Discover luxury furniture and a wealth of home décor inspiration, visit: my-furniture.com or call freephone **0800 092 1636**.

FAST AND FREE DELIVERY TO UK MAINLAND.
Delivery available throughout Europe.



my furniture

my-furniture.com

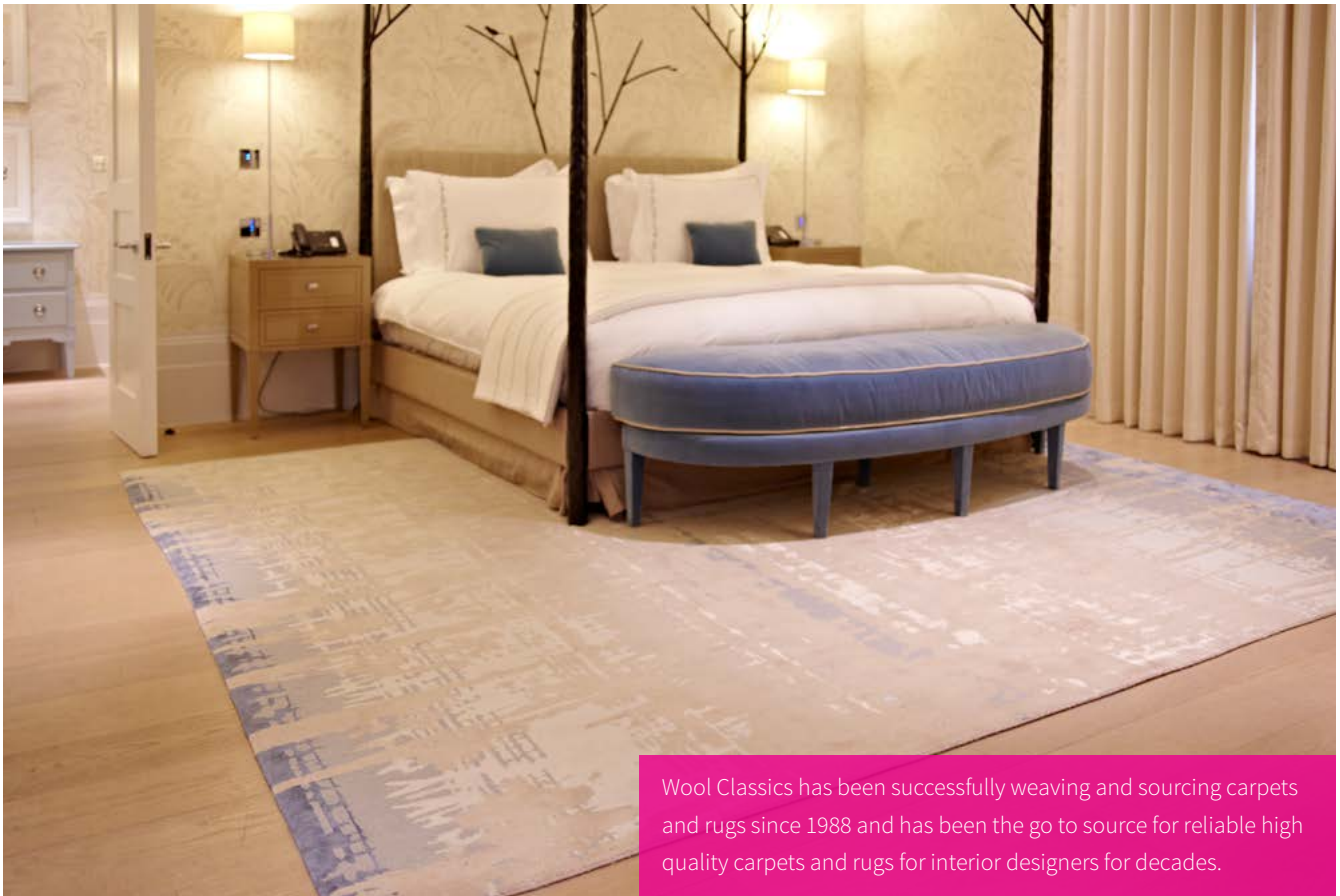
enquiries: 0800 092 1636

STUNNING CONTEMPORARY STYLE



WOOL CLASSICS

LONDON



Wool Classics has been successfully weaving and sourcing carpets and rugs since 1988 and has been the go to source for reliable high quality carpets and rugs for interior designers for decades.



With wool not only in name but also flowing through the veins of the company, this is a business built on the most environmentally friendly fibre available in the interiors industry.

Renewable, organic, biodegradable, thermally efficient, sound insulating, non-flammable, soft and protective, wool works like no other product in the home to protect your family and the planet we all live in. Better still Wool Classics uses its base in the Design Centre at Chelsea Harbour to ensure that its colour palette is spot on trend and complimenting the other popular brands in interiors.



Quality is assured throughout the business, but starts at the top with Julian Brinton, whose family has been famous for weaving carpet non-stop for 237 years, although Julian has only worked in the carpet industry for a mere 34 of those years. The rest of the team are trained from the same mould, providing second to none service with a smile and lots of creative flair.

Offering over 600 standard range products from stock in the UK plus a full bespoke design service for both rugs and carpets, if you can imagine it we can weave it, there is nothing that Wool Classics cannot provide, so long as it is soft.

As experts in the one field of soft floor-coverings we have not let our focus be distracted by branching out into other product lines. Wool Classics doesn't have the same ring!

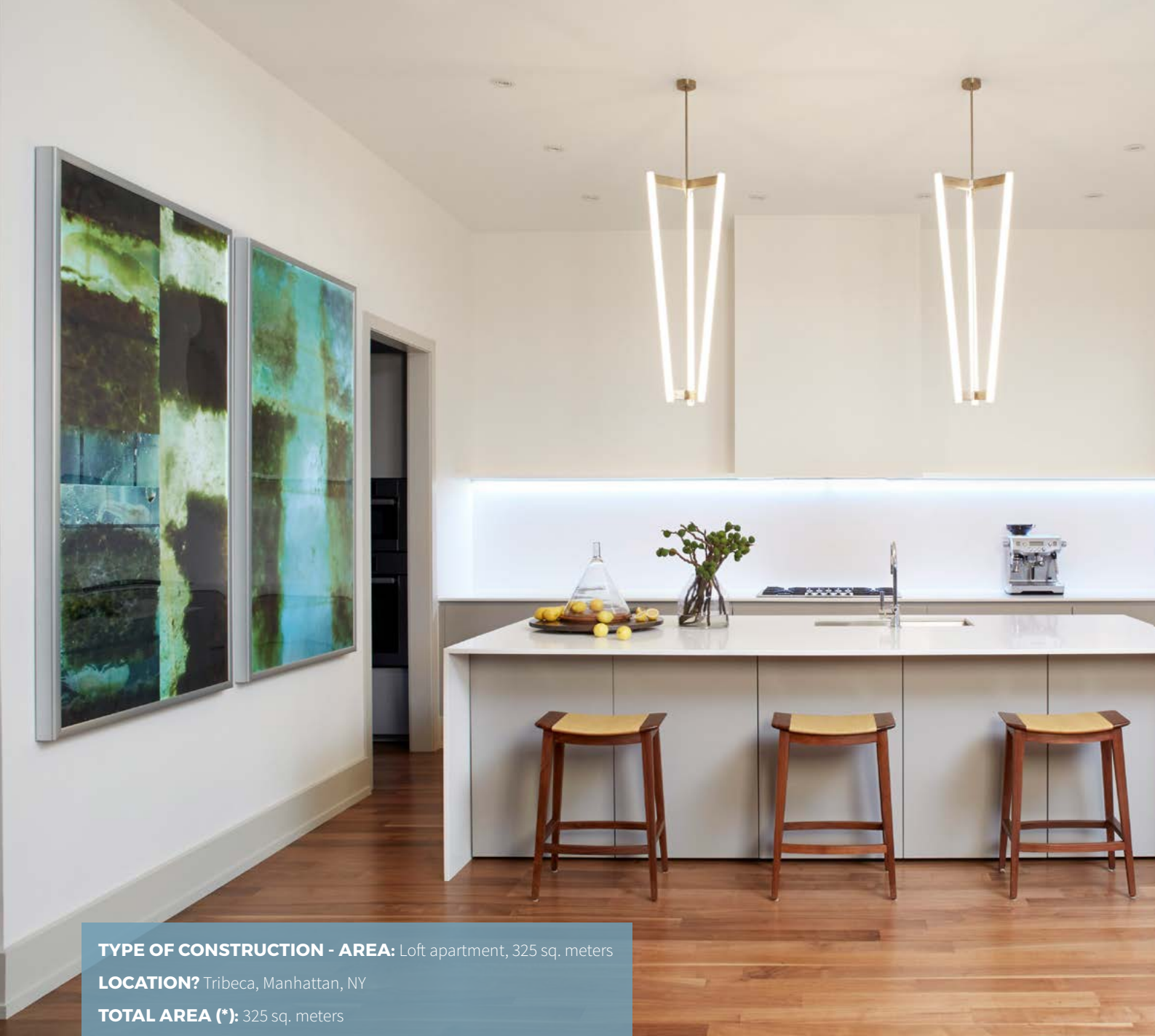
Wool Classics operates a fleece to floor mentality, managing every step of the process from wool selection through to installation and everything in between. Alternatively if you are purely looking for supply only we respect every customer's needs equally. We can supply throughout the world and have carpeted some of the world's most famous buildings, no job too big or small or complex, we have done it all before and are ready for the next challenge.



In 2020 we have adapted to the new world and continued to supply carpets across the planet despite the pandemic. We take pride in protecting our customers as much as the environment.



For further details please call **020 7349 1560** | Email **sales@woolclassics.com**
Visit our showroom at 205 Design Centre East, Chelsea Harbour,
London SW10 0XF.



TYPE OF CONSTRUCTION - AREA: Loft apartment, 325 sq. meters

LOCATION? Tribeca, Manhattan, NY

TOTAL AREA (*): 325 sq. meters

RODNEY LAWRENCE

What is the main concept of the Design?

How would you define it?

The design evolved around the client's art collection but was kept simple, preserving the original loft feeling

Client profile, based on personal tastes and lifestyle

Young professional in Finance, art collector





Is it a new apartment or Renovation?

New (Gut Renovation done by developer)

How is the space arranged?

The kitchen is integrated to the living room, creating one space taking advantage of the large windows on the street facing side of the apartment. Bedrooms and family spaces are separate from the living area, creating a more intimate and private space.

The Building was converted from industrial to residential and kept this characteristic in the living area – Can you tell a little more?

The most notable characteristics are the original cast iron columns throughout the space.



What were the client's requests?

The starting point was defining one area in the space that had an exotic feel. We came up with the concept of an “opium den” which guided the color pallet and finish selections throughout the apartment. It was also the clients request to add definition to various areas in the space as the apartment was delivered as a “white box” by the developers.

How did this Project fulfil client's ideal of living?

In designing the space, we were able to create a warm and welcoming space without losing the openness that characterizes loft spaces.



IN THIS PROJECT, WHAT ARE YOUR CONSIDERATIONS ABOUT:

Finish selections based on different types, textures and colors:

The shell of the space was kept with light finishes acting as a background for art. The furnishings counter balance this with richer color tones and the play of textures. All finishes, colors and fabrics were selected in order to create a warm ambience that at the same time would enhance the art collection

Which modifications were needed to achieve your design?

Not much was necessary – the major change was to make all the doors taller so they would fit better within the high ceilings.

Any specific challenge in this Project?

The living room is relatively deep, with all the windows on only one side so we had to be very mindful when selecting the window treatments in order to maximize the amount of natural light without compromising the general ambience.





The detail in the Child's room, is it a painting? Can you tell a little more about it?

That's actually an art installation we developed and installed based on modular pieces by Vitra and origami paper butterflies.

What do you consider the highlight of this project?

We really like the custom hanging light fixture in the living room (by studio Drift, one of our favorite designers) that is more art than functional lighting.



www.rodneylawrenceinc.com
[@rodneylawrenceinc](https://www.instagram.com/rodneylawrenceinc)

Image Credits: Marili Forastieri

HIGH QUALITY INTERIOR DECORATIVE LIGHTING



CASADISAGNE is a French manufacturer of high quality interior decorative lightings : table lamps, floor lamps, wall lights, ceiling lights, which was founded in 1997.

Since more than 20 years, we design and manufacture our products in France, in our workshop located in Provence, near Avignon. Our lightings are made in brass, a noble material, and a guaranty of elegance and quality.

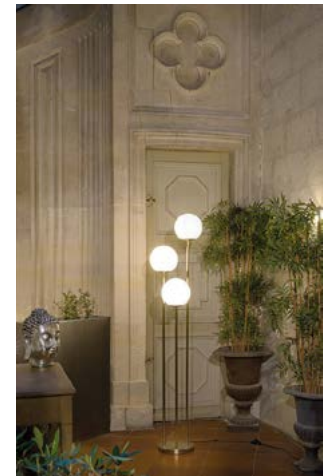
Casadisagne combines noble materials and traditional technics to make quality its top priority. Specialized in brass work, the expertise of Casadisagne optimizes the brass qualities, and then allows any creativeness.

The Casadisagne's speciality is handmade patina, slowly revealing all the nuances of brass and in particular the depth of the material. Black or matt gold, patina are obtained through the traditional techniques of oxidation, dyeing and waxing.

Casadisagne style is definitely elegant, refined, contemporary and timeless. The creations are mainly made in-house, in order to give a strong consistency with style and image. Occasionally, some creations are made by external designers.

They have been designed to decorate and lighten with elegance and discretion all kinds of interiors, whether classical, contemporary or modern.

Our broad collections allows us to meet all expectations : lighting an office, a bedroom, an entrance, or screening a living room.



www.casadisagne.com

CASADISAGNE

Made in France



www.casadisagne.com

NEW DOORS FOR A NEW AGE

With the world in turmoil, changing attitudes, social and economic upheaval everywhere, you could be forgiven for thinking that innovation within the interior doors market was likely to be on hold for a while. However at Vicaima the desire to move forward and push boundaries in design and performance has never lost momentum, even in the face of such challenges. And so, with the introduction of the 2021 Interior Door Selector; Vicaima bring new doors for a new age.

Their latest brochure contains over 100 pages of inspiration for professionals looking to transform homes, hotels and other private and public spaces, fit for tomorrow. With its easy to navigate layout, ideas and solutions go hand in hand. Whether the criteria is for cost effective simplicity or high end performance and trend-setting designs, the 2021 Interior Door Selector (IDS) has something for everyone.



Vicaima Dekordor 3D Glacier Oak

WHAT'S NEW IN THE 2021 IDS?

While some existing ranges have been developed, Vicaima have also taken the opportunity to introduce some striking new interior door products for 2021. Using their expertise and understanding of design trends and modern build requirements, this fresh approach allows specifiers the opportunity to expand their senses, with ideas that engage in both sight and touch; either capturing nature or taking it to another level. These new ranges include:

- **Naturdor Stained Extra** – Vertical and horizontal semi-translucent stained veneers
- **Heritage Oak** – Real Oak veneer with random grain and knots
- **Dekordor 3D Vertical** – Embossed face in 2 new Oak designs
- **Dekordor SD Touch** – Subtle textured foil in rich tones
- **Visual Sensations** - Cross Directional Woodgrain in Forest and Alpine designs

Naturally all the new designs in the Vicaima range for 2021 are available to meet the latest performance specifications. With certified solutions in Fire, Security and Acoustics, it really is the complete package.



Vicaima Stained Extra Dark Taupe Horizontal



Download your copy of the 2021 Interior Door Selector today or for further inspiration and new age ideas, Visit the Vicaima website www.vicaima.com contact info@vicaima.com or Tel: **+44 (0) 1793 532333**

vicaima 
UNEXPECTED HARMONY

Respect.

Caring about our future today.



Follow us:



vicaima.com

BRASILIDADE 2021

BRAZILIAN FURNITURE TRENDS TO LOOK OUT FOR THIS YEAR

Sérgio Matos



2020 has been, for many, a year to forget. But it has taught us all something about our homes; about the way we use them, what we value in them, and how the spaces we create, curate and cultivate reflect our own aspirations, and desires for comfort, safety, and sustainability.

The pandemic has forced us to reimagine our lived spaces. They have become more than a place to relax and sleep after a long day, or a place to entertain friends and family after a long week. In 2020 we have transformed our homes into offices, gyms and even classrooms, as we shelter from uncertainty outside.

As we look ahead to 2021, and ask what the future will hold, one group of furniture designers from Brazil are facing up to the growing role of furniture in our lives, breathing their own identities, and a distinct spirit of Brasilidade through their work. A 'Brazilian-ness' that celebrates Brasil's shape, colours and styles, including, but not limited to: wood, warm people, vibrant colours and cotton.

Estudiobola





Sérgio Matos

"We are going through a pandemic and facing another crisis in the furniture and decoration industry. Due to the lack of raw materials in the local industry, I believe it will take about six months in order to normalize this situation. Given this scenario, the trend for 2021 is auspicious for those who work with other types of materials, such as natural fibres, valuing artisanal and social work.

"If we talk about 'Brasilidade,' certainly there won't be only one point of view, just one concept. From north to south, we will find different types of 'Brazilianities' that are also placed in the concepts of Brazilian furniture. It can be found in a more refined furniture or with a more evident concept, like our furniture, or more minimalist as seen with designers in the south of Brazil or in other states.

SÉRGIO MATOS

Sérgio Matos is a designer who tells stories through his research and materialized ideas, establishing affective connections based on Brazilian identity and ancestry.

Culture is an essential raw material for his work, which reveals a genuine search for originality. His intention is to design away from trends and exalt identity, provoking reflections and sensations from textile fabrics. His career - since the opening of his studio in 2010, has gained recognition and collaborates to strengthen the image of Brazilian design across borders, a path that also opens the way for the dissemination of knowledge while establishing, by combining design with craft consulting aimed at the artisan communities, experiences that translate into an immersion into the ancestry, the material and immaterial richness of the place, the optimization of the surrounding raw material and references to belonging.

The designer understands that people are interested in products that connect them with their memories and experiences, ones that are linked to their own references and attitudes towards their surroundings. For him, more than just function, design is able to encompass history, memory and emotional ties. It is through this perception - ingrained with the essence of Brazil - that Sérgio Matos gets inspired and nourishes the development of furniture and decoration items. All endorsed in the cultural cauldron with mixed spices. The solid foundation of creation lays its feet on regionality, an identity that resists time and preserves the ancestral knowledge that rests in artisan communities.



Sérgio Matos



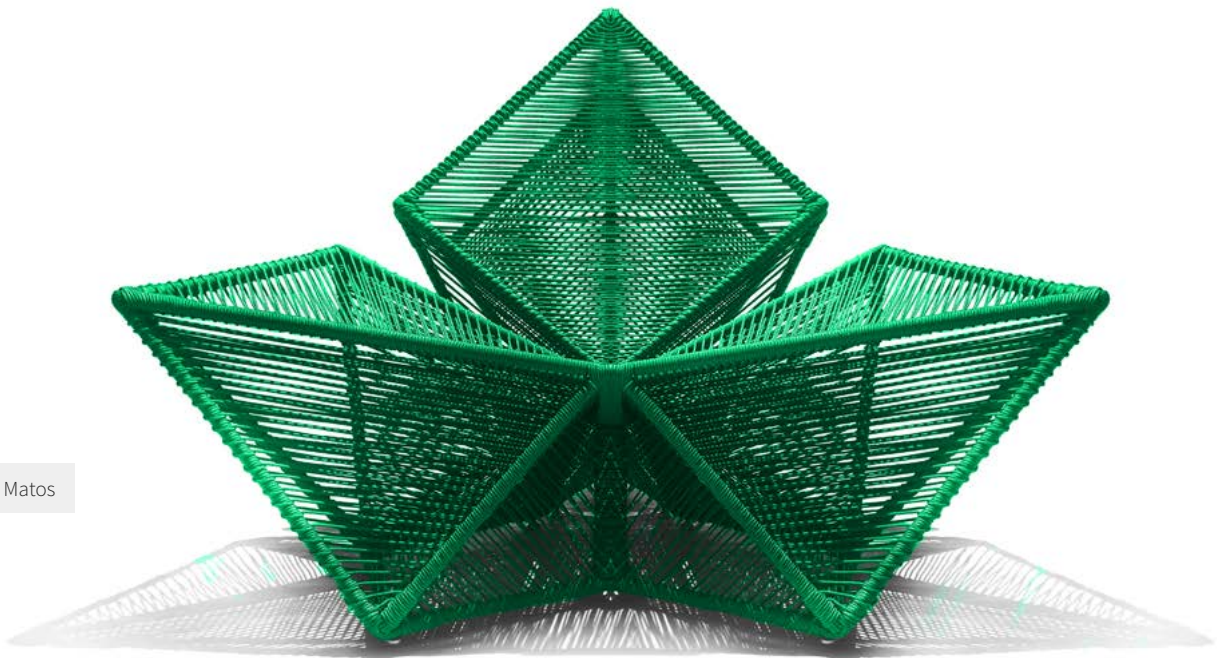
Sérgio Matos



Handmade objects, with human warmth, bear a stamp of originality, inside and outside of Brazil, thus arousing admiration.

The studio has the atmosphere of a loom due to the unique way a significant portion of the products are involved by weaving material. Nautical rope, a material used to cover most products, has become his major identity.

Sérgio Matos's creations are quite conceptual, but they work as a piece of art or in the daily life of a family. At the same time, in the many projects that Sérgio Matos develops in artisan communities, each experience generates entrepreneurial opportunities; rescues individual and collective dreams; strengthens belief in ancestral skills and projects self-esteem as fuel to enhance riches that are at the fingertips, in the palm of our hand.



Sérgio Matos

ESTUDIOBOLA

Branded design, formal simplicity and elegance at all costs. This is the backbone of the work developed by architects Flavio Borsato and Mauricio Lamosa at estudiobola. What they seek is to build a structured bridge toward the balance of three pillars: design, industry and market. For 17 years they have worked around this concept, creating products with personality and simplicity studied to exhaustion.



Estudiobola

“We have always believed in the alliance between aesthetics, formal simplicity, and comfort. Even more so now with the current challenges that Covid-19 has presented.

“The pandemic accelerated what was already growing: a tendency to value the home. With more time spent at home people are understanding its importance, its spaces, and their essential connection with nature.

“We have had more time to think about new collections, in another hand the development and prototype took more time and energy because of the scarcity of materials available on the market. That impelled us to test and use new materials.

“Brasilidade to us is mainly working with wood, but with a lighter, contemporary concept, without giving up the visual and physical comfort that this material carries. Wood in Brazil is part of everything in our lives. Wooden furniture always has a greater affection and respect here.”

Their work is free from fads and trends, requiring rigorous research on proportions and finishes to give the creations timeless results that extend the life of the pieces, making them pleasing to the eye for years to come. This concept is applied to all estudiobola productions, from the creation of a chair to lighting projects. Their intention is always to come up with unusual objects and ideas that include design, raw material, product category, market or industry.

They have won some design awards along the way, such as the Museu da Casa Brasileira Award, which helped to highlight the work of the duo who are recognized in the furniture industry for the excellence of their designs and for always linking their work to the pursuit of striking commercial results, building relationships with the companies that produce and resell their creations.

Estudiobola



Their internal structure has grown over the years, without losing the competitive edge that helped them get here: objective, sincere and professional service. The figure of the creative duo has given way to a competent team of professionals who help put the company and its products in the best and most reputable furniture and decoration stores in the country, as well as constantly participating in renowned national and international publications of the segment.

Nowadays, estudiobola looks towards other horizons and challenges and shares all its design expertise with consumers in their own workplace. A shed of an old factory houses the store with indoor and outdoor furniture, lamps, photographs and coatings with unique and different design: a space in the city of São Paulo that is worth visiting for its industrial concept of exhibition, but mainly, to talk to the designers and to encounter all this history that has been applied to their products.



Estudiobola



Estudiobola





Roberta Rampazzo

"In 2021 we are going to see a lot more comfortable materials, functional objects and furniture for a multi-use house."

"Get ready for a countryside and relaxed style to become more popular than an urban one."

Brasilidade is a mix of our characteristics; warm weather and people, summer, colours, handmade products, natural fibres, cotton. We frequently see these elements in different kind of products and fields, including fashion, design, art."

ROBERTA RAMPAZZO

Roberta Rampazzo believes in the power of beauty and well-being and how they are capable of transforming an environment, and consequently people's mood and quality of life. For her, an expressive object in the house also brings an important emotional side. Her work style reflects much of the designer's own personality - including her feminine and inconstant side. Although she has created several minimalist and light pieces, the emotional, playful and human factor occupies an important part of her work. Pure and graphic pieces are complemented by more fun pieces in the designer's repertoire, who admits a passion for wood as a sustainable, unique and eternal material.

Roberta Rampazzo's versatility in trait provides her designs with characteristics that are often clean and expressive. Raised in the creative environment of her father's advertisement agency, Roberta grew up with the enchantment of art direction,

creation and design processes. Later on, her childhood stories merged with her passion for interior design and objects, turning it all into design. Roberta believes in removing the apparent superficiality of design to give people an understanding of how important objects are in life. This is one of the purposes of Roberta's work, as well as quality and sustainability issues at various levels.

Roberta gives her projects personality from the moment they are studied, to escape from the obvious and ordinary.



Sérgio Matos: www.sergiojmatos.com.br
 estudiobola: www.estudiobola.com/estudiobola/index.php
 Roberta Rampazzo: www.robortarampazzodesign.com

Roberta Rampazzo

SWITCH TO TRENDI



With a strong emphasis on the current trends in home interior, Trendi's new colour range is led by a variety of modern glossy colours such as distinctive shades of grey, tones of pink, highlights of orange and varieties of blue. One could argue Trendi certainly has colours to match any décor.

The complete Trendi range includes everything you need to complete a stylish refurbishment or contemporary project with light switches, plug sockets, dimmer switches in all the aforementioned colours.

Due to the unique look Trendi beholds, the range has been successfully specified in a number of projects.

These include the nationally recognised shared living development "The Collective" in London, The VIP Hotel located in Doha, Qatar as well as numerous boutique hotels in Malta and Cyprus where Trendi is becoming the No.1 designer wiring accessory of choice. Trendi has also been featured on the BBC's 'Your Home Made Perfect' and makes a stunning appearance in ITV's Coronation Street every week. So, keep your eye out to see if you can spot them!

Our objective for the wiring accessories market is to bring a design led functional product to the worldwide marketplace similar in price to the historically dated wiring accessory. We believe for the foreseeable future the light switch & plug socket will continue to be the majority

purchase in wiring accessories. We have just added a touch of style, class, and dare we say excitement to a conventionally dull product.



DEFINED BY DESIGN



Trendiswitch is a complete range of light switches and sockets, available in Gloss White, Gloss Silver, Piano Black, Champagne Gold as well as our 16 new colour finishes. Design led for an elegant, seamless, retro re-fit, you can trust Trendiswitch throughout your project.

0203 5899 520 | sales@trendiswitch.com | [@trendiswitch](https://www.trendiswitch.com)

www.trendiswitch.com



Salice opens a new world of elegance and refinement, enriching its existing wide products range with the launch of Excessories, its first collection of accessories with the highest aesthetic-functional qualities.

EXCESSORIES - **NIGHT COLLECTION**

STORE, HANG,
PROTECT, CONTAIN,
PULL OUT.

An infinite variety of solutions designed to optimise space and to facilitate the perfect arrangement of wardrobe interior fittings, offering infinite possibilities of exquisite style and convenience.





Excessories - Night Collection allows wardrobes and walk-in wardrobes of all styles to accommodate elegant hangers, scarves and tie hangers, bag hangers, cotton garment holder bags, trouser hangers and shoe racks, all elements of singular refinement and efficiency.

In particular, the collection includes watch-holder trays, spectacle holders, ring holders, earring holders, made of imitation or genuine leather, available in various colours and dimensions, according to individual aesthetic and functional requirements.

Boxes and trays for clothing or other items, covered with elegant fabric, enable the internal space to be organised and enriched with tones and colours.

The drawers, with soft shapes and high design, and the illuminated shelves transform the walk-in wardrobe into an inspirational space and make it the most appreciated and coveted place in the home.

Thanks to an easy and quick assembly and a clean and refined aesthetics, the drawers are perfectly compatible with wardrobes of any design and material. No technical element is visible.

The illuminated shelves of the collection bring clothes and accessories to life; the lighting system is perfectly hidden and the shelf bottoms, made of glass, amplify even more the brightness and the luminance. A classic synthesis of technological development and design, they stand out for

the elegance of the profiles, oozing perfect aesthetics and smooth and sinuous shapes.

The Excessories collection is the answer to any possible applications, always offering the best solution.

The materials of the collection, from fabrics to leather and imitation leather, breathe life to endless combinations. A tasteful palette of colours and a range of surface textures ensures both the freedom to personalise the selection of accessories and their perfect compatibility with wardrobes of any design and material.

Excessories is also the winner of the Interzum Award: Intelligent Material & Design 2019, a competition organized by Koelnmesse in cooperation with Red Dot. This prestigious award is given to products that best represent technological innovation combined with functionality and design. The judging panel has conferred on Excessories the highest recognition as "Best of the Best" in the category "Fittings, glass and lighting."



excessories

NIGHT COLLECTION

SALICE

www.salice.com



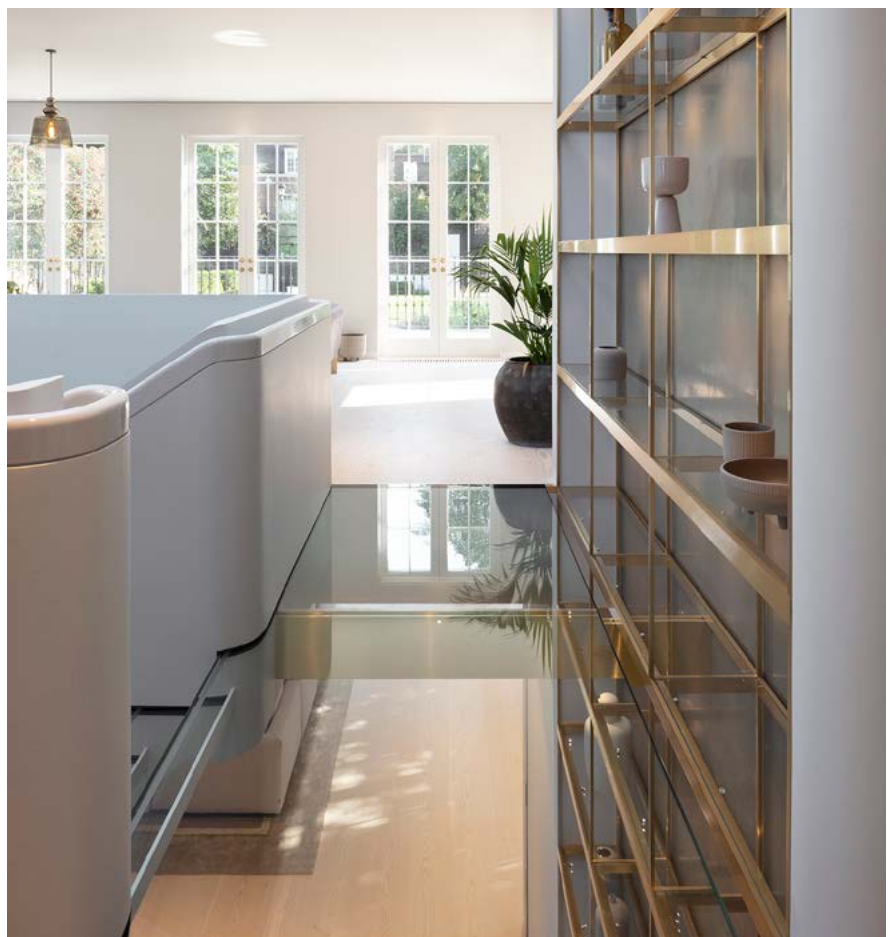
This four storey Grade II listed Victorian home was revived by 23+GS/318 with the insertion of a double storey atrium and the reconfiguration of a series of poorly arranged late 20th Century extensions.

LISTED VILLA HOLLAND PARK

PROJECT
DESIGNED BY
23+GS/318
318.STUDIO

On the principal floor, an impressive dining room with vaulted ceiling, a bright living room fringed with French doors and the airy two-storey atrium are arranged around the kitchen - the literal and figurative centre of the home.

From here, a sculptural staircase with glass treads, descends towards a large family room, gym and a guest suite which feel an integral part of the home. These formerly dark and unloved rooms were transformed by light from above and a renewed connection to the rear garden by way of a gently sloping planted terrace.





Following Scandinavian design cues, soulful minimalism ties together the features of this space. From the brushed brass drawers to hand-painted furniture, a contemporary palette of materials and subtle detailing was used in the design.

With a pantry area adjacent to the kitchen, there was opportunity to play with space and separation. Each space was demarcated with a sliding door constructed from brushed brass mesh. this unique semi-translucent material has the effect of separating the spaces whilst preserving a subtle interaction.

Light-touch decorative works and some delicate structural alterations were carried out to the historic portion of the house that contains five bedroom suites and one further reception room.

The kitchen was a joint design collaboration between 23+GS/318 and Lanserring (lanserring.com).





One of the main features of this property, previously obscured by poor planning, is the breadth of the raised ground floor. By placing the kitchen and atrium at the very centre of the house and forming large openings on each side of it, one can now appreciate and enjoy this lateral space.

Immediately upon stepping into the original entrance hall, views begin to open up to the spaces beyond on the left and right-hand side. As you turn towards the kitchen, these views expand, both laterally and vertically, and continue to open up, creating a wonderful sense of space and light.



A palette of wide, pale Douglas fir floorboards and muted walls provide a canvas for pops of colour such as hand-made Danish floor tiles and fitted joinery. These quality finishes respect the heritage of the building whilst providing a playful Scandi backdrop for modern family life.



318.studio



 **Posterlounge**[®]
ART FOR EVERY WALL

- ✓ High-quality wall prints & frames
- ✓ Wide range of products
- ✓ Fast & affordable delivery

www.posterlounge.co.uk

LUTECA FURNITURE

A MODERN MEXICO



Encompassing a bespoke collection of contemporary and modernist pieces, Luteca honors Mexico's most influential 20th century design masters, while celebrating the diverse craftsman and artisans that make up the country's rich cultural landscape.

Musing on the tenants of simplicity, accessibility, texture and meaning in one's space, pieces are designed to bring joy and spark memory, while indigenous materials redefine the invaluable connection to earth.

Luteca has established itself as the first company to offer luxury Mexican design with a distinctly authentic collection and

international perspective, now developing its collaborative work into the European market. Comprising of three handcrafted collections; classic, contemporary and woven, Luteca furniture pieces endure time and tradition, honoring heritage, design, legacy and vision - exquisite collectibles to be cherished both now and generations to come.

THE CLASSIC COLLECTION

Combining tenants of local craftsmanship and the use of raw materials, The Classic Collection illuminates the legacy of 20th century "Modern Mexico", while musing on the original and innovative designs from Michael Van Beuren, Clara Porset, and Pedro Ramirez Vázquez. Pieces are handcrafted in tradition, artistry, and a rich architectural heritage.

THE MODERN MASTERS

Pioneers of a New Mexican landscape

Michael Van Beuren

Embodying the heart of Luteca's design philosophy, the Mexican Modernist architect Michael Van Beuren bridged the gap between innovative design and the use of local Mexican craftsmen.

Clara Porset

Steadfast in the belief that contemporary Mexican design should be rooted in the country's rich artisanal history, Clara Porset devoted her life to championing a mutually enriching vision of modernity and tradition.

Pedro Ramírez Vázquez

Latin American architect Pedro Ramirez Vázquez was responsible for many of Mexico's Modernist projects, including the National Museum of Anthropology and the Basilica de Guadalupe.





THE CONTEMPORARY COLLECTION

Showcasing Latin America's brightest talents, the Contemporary Collection brings the modernist into the cosmopolitan, where functionality and aesthetics are celebrated through the use of natural materials, classic techniques and innovative tools.

Ever evolving and redefining the bridge between past and present, the contemporary collection boasts bold shapes, textures, forms and movement, honoring its origins and redefining the future.

THE WOVEN COLLECTION

Honoring the ancient and revered techniques of Mayan weaving, The Woven 'Icpalli' Seating Tule Collection is an homage to Mexican Folk tradition. To protect and preserve the endangered art form, Luteca encourages the continued support of woven artistry by training and cultivating more skilled craftsman, furthering the exceptional weaving tradition of Mexican heritage around the world.

INDOOR + OUTDOOR

Unique to the Luteca collection is its celebration of indoor, outdoor living, inherent to Mexican lifestyle and culture. Encompassing natural and raw materials such as volcanic stone, walnut, maple, teak, bronze, wrapped leather and polished brass, each piece is designed and developed for life indoors and out, befitting a myriad of environments and climates and catering to international clientele around the world.



SMANIA, THE MOST MODERN AMONG THE CLASSICS, **THE MOST CLASSIC AMONG THE MODERN**

This is a summary of the concept that emerges from the contemporary nature of the furniture designed and built by the historic Venetian company, leader in the luxury furniture sector.



Smania is manufacturing passion, creative spirit and haute couture of furniture, capable of transforming each piece into a work of art and an icon of craftsmanship.

Since 1967, the distinctive character of each designed furniture, the unquestionable

know-how in the realization, the use of high quality materials, have led to the progressive affirmation of the company on an international level, giving life to a bold and absolute beauty, found in all his creations.

Smania's strong design identity is based on customer's personal satisfaction, which is displayed in an eclectic design capable of emphasising the most diverse and distinctive personality traits.

The wide range of options offered by the INDOOR collection, through the choice of each material - wood essences, fabrics, leathers, marbles and metals - in fact allows the customization of Smania furniture and can satisfy each Customer taste.

In this sartorial flexibility lies the ability to access dexterously and skillfully also to the Contract sector, as well as to the nautical sector, of which Smania knows how to satisfy the specific requests, from the planning to the realization phase. The OUTDOOR collection, on the other hand, constitutes the other major pillar of the brand, with a product that is recognizable for its lines, contemporary and easily combined with both classic and modern contexts, and for the high quality and resistance of the materials used.

Precisely this obsessive attention to furniture in all its aspects has led Smania to encourage collaboration over the years with several important designers who have always known how to give a significant creative contribution to the collections. Just think of Giuseppe Viganò, who designed the NEST line, more a philosophy than a collection: based on an extremely dynamic vision of living, it explores the relationship between man and nature, in a dreamy interpretation of contemporary living as an unpublished osmotic balance between interior and exterior, which is expressed through an eclectic and fascinating design, perfectly in line with the classic and modern taste of the brand.

Finally SMANIA NEW COLLECTION - also the result of the collaboration with designers such as Giuseppe Viganò and Massimo Iosa Ghini - finds its focus in the desire to bring together stylistically different forms in a unicum, in a subtle but solid overall balance, giving emphasis on aesthetic rigor, details and materiality. In this way two styles coexist, creating an exclusive and unconventional luxurious décor, paying particular attention to all those details that define Smania total look.

The essence of the brand is the daring beauty, capable of overcoming its own borders. The company is driven by creative passion. The know-how gained over the years mixes with a peculiar design, characteristic of Made in Italy. Its DNA is creative, its taste sculpted and the energy that identifies it intense. It represents handmade culture. Characterized by a strong material flair, SMANIA draws, cuts, sews and produces furniture and accessories that contain the energy of its passion. It does not fill spaces with its furniture: thanks to exclusive details, it is its stylish pieces of furniture that decorate and characterize the most exclusive houses, the most elegant offices, the most sophisticated dehors, the most prestigious yachts and hotels all over the world.



SMANIA shapes Client desires. Its goal is achieving perfection. The study of every detail, the attention paid to selected materials and the search for balanced proportions characterize the items, which embody a high-quality and well established standard.

SMANIA INDUSTRIA ITALIANA MOBILI
VIA DEL LAVORO 8/10 - 30030 CAZZAGO DI PIANIGA (VE) - ITALY

Tel: **+39 041 5137700** | Web: **eng.smania.it** | e-mail: **info@smania.it**

PHAEDRA GLASS

A CELEBRATION OF COLOUR AND LIGHT

Over the last 20 years of creating glass for the home, the enduring essence of the Phaedra Glass brand has been in the coexistence of the ephemeral qualities of light, colour, depth and transparency with a contradictory robustness and strength in the materiality of double fired kiln-worked glass.



www.phaedraglassgifts.co.uk



Here visitors will be able to see and touch the glass, they can hold pieces up to the light and generally feast their eyes on a wide display of the Phaedra Glass range.

THALASSA – GLASS WASH BASINS

Phaedra's latest edition to her treasury of works is the THALASSA glass washbasin range. A considered use of lavish colour combinations washes through the glass basins giving them a mesmerising opulence. In this latest collection you can see the masterful blend of artistic creativity with a dedication to high performance functionality. Every nuance of the design has been thoroughly thought through to ensure that they are not only spectacular for the eyes but have great user satisfaction.

These visually arresting glass works are the creations of glass artist and designer/maker Phaedra Politis. With her little nod to the Arts and Crafts movement, Phaedra's work focusses on the "beautifully functional and the functionally beautiful". Always led by the overall aesthetic outcome but driven by their fundamental purpose, her works both adorn and serve simultaneously.

Representing the culture of handmade quality artifacts, Phaedra, who is mostly self-taught, has developed her own distinctive style from years of trial and error. She admits that some of her experiments were "utterly disastrous" but with a determination and perseverance Phaedra has perfected her own specialist techniques pioneering the use of enamels and innovative designs which are now coveted and sought after by private collectors, galleries and corporations both here in the UK, Europe and the USA.

Phaedra's quintessential designs are driven by creativity and a passion for overcoming the restrictions that glass is generally feared for. Working from her studio on the Wiltshire/Somerset border both she and her small team attend to every creation with the same close attention to detail. Every piece of glass that is designed, cut, coloured, fired and born out of this studio has been thoughtfully considered resulting in luscious glassware that is guaranteed to enhance any setting.

Though the ethos of bespoke, customer-led and commission-based work is the basis of the Phaedra Glass operations, a number of collections have also been developed over the years that are now available to buy online and from esteemed galleries.

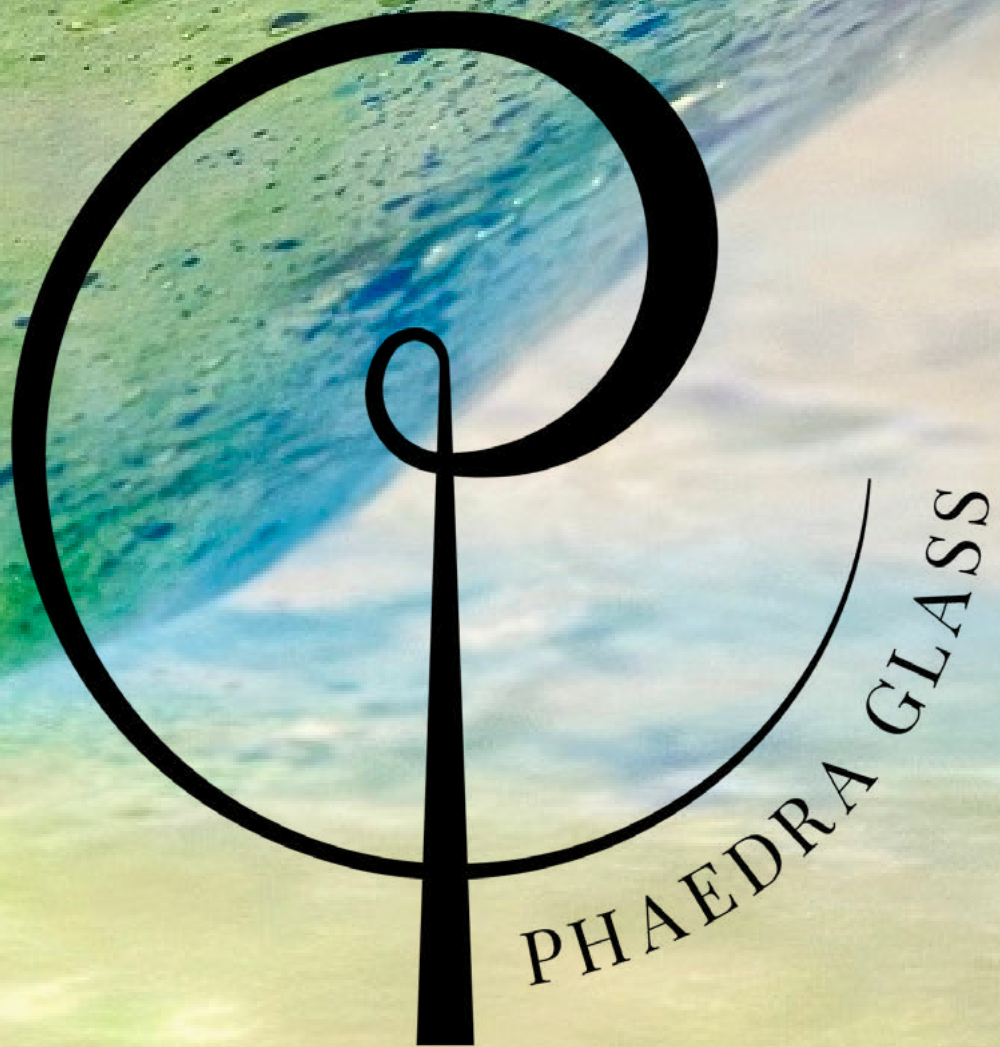
EXCITING NEWS – the studio is about to undergo a huge makeover which will result in a lovely new showroom.

A collaboration with a renowned bathroom designer is now underway and together they aim to have new designs ready later in the year.

You can keep up to date with all developments mentioned above in the Phaedra Glass newsletter by subscribing to info.phaedraglass@gmail.com



Thalassa Wash Basins



2021 LATEST TRENDS GIVE A MODERN INDUSTRIAL TOUCH TO YOUR HOME IN THE COLORS OF THE YEAR!



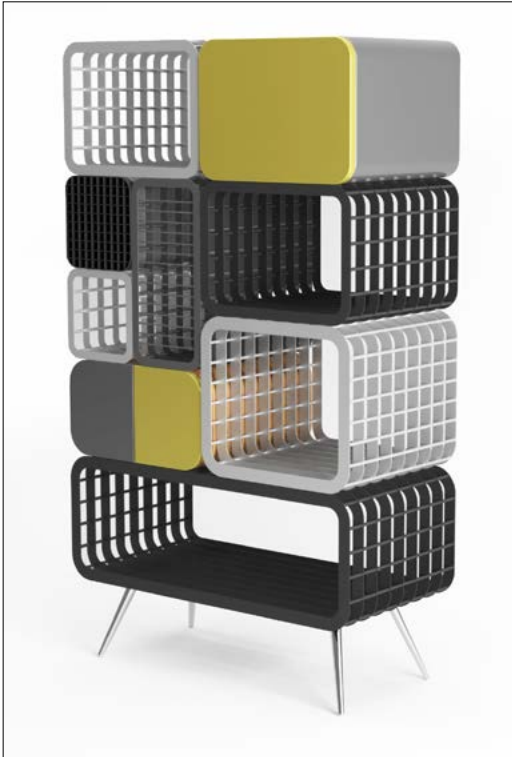
Illuminating and Ultimate Gray were the trend colors selected for 2021, according to Pantone. These two independent colors convey, on one hand, optimism and positivity with Illuminating, contrasting, and on the other hand, with the solidity and practicality of Ultimate Gray and lead to a message of unity, strength and renewed hope.

The Cobermaster Concept, being a vintage and industrial inspired brand, fits the gray tones perfectly, having created for this purpose a selection of pieces inspired by the colors of the year.

Gray tones are always in fashion, so they are an option when it comes to changing the look of your home. In fact, it has been a popular color for several years and for that very reason is often used in interior design. Yellow complements these tones in a lively and vibrant way.

In addition to color, the Cobermaster Concept also combines, in the most harmonious and creative way, the three-dimensional grating, produced and patented by the brand itself, with other materials such as wood, glass or ceramics, allowing to create exclusive design pieces never before seen and experienced.

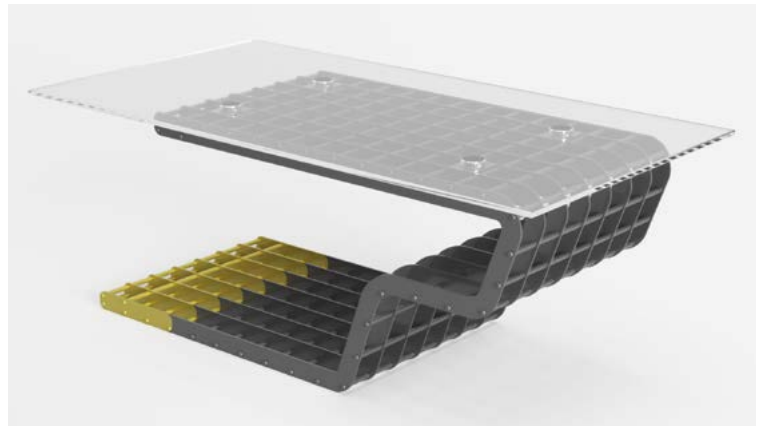
This modern and industrial style embraces bolder textures and materials and darker tones, seeking a more masculine approach to spaces.



STACK CABINET

The STACK Cabinet is characterized by its geometrically minimalist modules supported by the Stainless Steel Legs. The combination between the Three-Dimensional Grating modules and the Natural and Lacquered Wood ones differentiate this piece and give it an original and elegant personality.

Price: 4,132.80€.



BLACK CENTER TABLE

Inspired by the angular contemporary design, we created the BLACK centre Table. Ideal for the decoration of home and office spaces, this is a piece with unique elegance, able to give the final touch to every environment. The top can be supplied with several materials like all the other tables of this collection.

Price: 1,506.75€



FUSION SIDEBOARD

The FUSION Sideboard is without a doubt, one of our most elegant sideboards that translate in a very clear way the enormous work that our craftsmen had in the perfect combination between metal and wood. We also have the possibility to combine different types of finishes with glossy, matte, lacquered and veneers, according to each client projects.

Price: 7,092.18€



DIVERGENT FLOOR LAMP

Designed to create ambient, the slope present in the DIVERGENT lamp allows a nice light combination. It's an ideal piece for the decoration and illumination of relaxing spaces such as living and waiting rooms. It has the same structure and finishes present in the TWINS lamp.

Price: 1,697.40€.

From classic industrial mixes like concrete walls, leather accents and exposed lamps to new "fresh and clean" elements like marble, plants and lighter carpets, this style brings elegance and shine and is part of the big trends for this year, associated, of course, with the colors Ultimate Gray and Illuminating.

Make a difference with the Cobermaster Concept.

MAZE CONSOLE

The MAZE Sideboard was designed for the most exquisite environments. Manufactured in wood, with gold and bronze leaf drawers and a stainless steel base that can assume different types of finishes. In addition to the 3 main drawers, it has 5 small safes applied on the metallic base for storage of small, valuable objects.

Price: 5,623.56€.



www.cobermasterconcept.com

◆ BRYAN TURNER ◆

KITCHEN FURNITURE



*Cambridge
design studio*

NOW OPEN

*Contemporary, traditional
& truly bespoke living spaces*

Contact us to discuss how we can design your perfect room.

Design studio open Monday to Saturday 9:30–5pm
De Freville House, High Green, Great Shelford, Cambridge CB22 5EG

Cambridge 01223 641050 | **Norfolk** 01953 601567

enquiries@bryanturnerkitchens.com | bryanturnerkitchens.com



Brookmans, Smallbone's younger sibling, combines traditional furniture-making skills with informal elegance, resulting in a capsule collection of kitchens and freestanding furniture that is synonymous with craftsmanship and a sense of easy modernity.

Founded in 2019, the brand's ethos is rooted in creativity, sustainability, precision making and exceptional value. Brookmans kitchens are tailor-made to suit both contemporary and traditional schemes, generous spaces or streamlined interiors, with bespoke solutions allowing for a multitude of personalised configurations.



PLAYFUL DESIGN. DISTINCTIVE STYLE. **EXCEPTIONAL CRAFTSMANSHIP.**

“Brookmans harnesses the craftsmanship established by our elder sibling and marries it with a next-generation edge,” says the brand’s Ideation Director, Iain O’Mahony. “Our kitchens riff on classical Georgian-inspired designs as well as more contemporary styles, characterised by simple lines, metal accents and a mid-century feel. In addition, a considered palette of more than twenty colour finishes results in a comprehensive selection of styles and customisable elements.”

The brand’s two existing collections, K1 and K2, along with a keenly anticipated third, are priced to sit in the £25,000 to £40,000 marketplace, offering a sense of accessible luxury. Each collection is made and hand-assembled at the company’s workshop in Wiltshire and shares the same core ethos, heritage and quality as its sister brands.

K1 offers a contemporary take on classic Georgian kitchens, combining both fitted and freestanding elements, painted cabinetry and natural wood accents for fresh, modern-rustic appeal. Every key component, from glazing and worktops to ironmongery and colour finish, can be handpicked for a truly bespoke result.

Cool and confident, K2 is defined by a subtle vintage feel, thanks to its nod to the pared-back designs of the 1960s and 1970s. The cabinetry combines streamlined silhouettes with bold accents, such as matt black hardware, for an up-to-the-minute twist. This urban approach to kitchen design makes it ideal for contemporary interiors.

Sustainability is central to Brookmans’ offering. Repurposed timber is used to make some of its cabinetry, while state-of-the-art woodworking machinery enables minimal

waste, all the while championing quality. In addition, the brand offers to recycle or re-sell clients’ existing kitchens via the Kitchen Exchange programme, with all the ensuing profits circling back to the homeowner.

Kitchen collections are complemented by a selection of bespoke solutions for the rest of the home too, including hand-finished sideboards, vanity units, tables and benches. The collections are sold exclusively by celebrated British design store Heal’s, and are available to view at its Tottenham Court Road flagship.



To book a virtual design consultation call **+44 (0)203 960 8760**



BROOKMANS

BY

SMALLBONE



brookmans.uk

Award winning kitchens
+44 (0)203 960 8744

Part of Lux Group Holdings Ltd.

'2021 KITCHEN TRENDS' WITH BRITISH MANUFACTURER, DAVAL FURNITURE

New 100% Recycled, FSC Certified Renzo furniture in Charred Japanese Wood



Get inspired by the latest kitchen furniture trends with Simon Bodsworth, Managing Director at Daval: Grassington | Renzo

Daval, leading British designer and manufacturer of luxury fitted furniture discuss the latest lifestyle trends it predicts, will influence and inspire the shape of kitchen design in 2021.

Simon Bodsworth, Managing Director at Daval Furniture reveals, "Self-expression is forecast to be at the heart of lifestyle interiors next year, as homeowners and property developers seek to personalise the home and lean towards keystone kitchens where hero details, quality raw materials and custom elements are used to anchor a design and overall style identity. Our research indicates that meaningful kitchen design, which is luxurious and sustainable is evolving the modern home – new build or period property – and this has led to a rise in storage requirements and need for space to cook, eat, socialise, relax and work remotely."

The UK has the second-largest design sector in the world and the largest design industry in Europe, with Germany, France and United Kingdom currently representing 50% of the continent's DIY market. With a renewed focus on design innovation and quality in furniture, Daval share its thoughts on tomorrow's kitchen...

NEW TRADITIONAL:

Modernising the classic Shaker-style kitchen has emerged as a consumer-favourite in 2020, as both furniture and the latest fashions continue to focus on authentic product design and quality craftsmanship. Master joinery techniques, eco-friendly materials and special surface treatments will therefore be key in 2021, helping to create a tailor-made aesthetic that is sensitive to the kitchen, homes architecture and personal style. This type of 'layered design' will continue to increase the level of customisation in kitchens next year, with bespoke paint finishes, custom larder options, utility solutions and butler-style pantries being used to give a new sense of style and purpose to the classic kitchen and embrace our return to more traditional values.

GREEN CONTEMPORARY:

We have moved into a post-industrial era in which 'reduce, reuse, recycle' has become universally significant in the future of our planet and increased wellbeing at home. Using environmentally-friendly materials in interior design has seen huge growth of late and we are finding that the pure nature of 100% recycled furniture continues to lend itself to urban-inspired kitchens, which are sustainable and originally designed.

To echo the renewable trend, earthy shades of green are predicted to be front runners in 2021, providing a solid foundation in the kitchen with rich tonal value and design authenticity. Taking on a variety of forms next year, softer moss greens and shades of grey will define the contemporary kitchen whereas stronger, more traditional tones like forest green will enrich more classical British schemes.

Dark colours in 2021 will look to the different types of wood species available, with browns and blacks being introduced through rustic wood veneers, charred timber effects and matt black accessories. I believe raw, natural materials will continue to define the modern kitchen and increase the subtle interplay of mixed materials that we've all grown to love.

OAK:

Infinitely stylish, real wood kitchens continue to hit the mainstream with great affection and we are finding that solid oak has become a go-to option for creating a sense of calm and serenity in the kitchen, akin to Mother Nature. Durable and lightweight with defined wood grain, this choice of hardwood is a natural beauty - able to be easily moulded, hand painted and specially treated with oil or wax.

To further amplify the markets love of wood products and their positive effects in the home, oak will create areas of light and dark dependent on your choice of surface treatment. If you're looking for Nordic inspired interiors, which have a strong focus on textures and light colours then you need opt for a white-washed to brighten the space. Classic oak is also available in warmer mid-tones, which is great if you want to create balance between light and dark through natural raw materials.

FAMILY FOCUS:

We all want to make the most of time spent with family and friends right now and so the desire to create a welcoming kitchen and living area in-one is only going to intensify next year. Placing huge importance on 'community at home', tomorrow's kitchen needs to be able to cater to different needs like entertaining at home.

New 100% Recycled, FSC Certified Renzo furniture in Character Oak Tobacco & Savoy Matt Lichen





New Grassington furniture in Matt Painted Porcelain with industrial-style Matt Black Handles

Now more than ever, the home is your one-true safe place and I believe the desire to host and entertain friends and family will only increase as we continue to adapt to new social distancing measures: in and outside of the home.

Another lifestyle trend has taken a four-legged approach to furniture design and storage. With approximately 45% of UK households now owning a pet, it makes sense to accommodate this furry friend

from the outset, however now we're spending more time at home, there is huge potential for custom designed furniture to not only house pet food and accessories, but your beloved dog or cat too!

With this in mind, consider new design options like banquette seating, integral breakfast bars and extra power points at the early stages of design as this will ensure you have the 'fundamentals' planned-in so for instance, you can conveniently

charge your laptop, smart phone or other electronic device in a dedicated area of the kitchen: great when working from home or seeking some down time with friends and family.

Looking to the future, Daval kitchens are built from sustainable materials and precision engineered in the UK. Watch this space for the new 2021 Collection by Daval Furniture coming out next year...

Daval Furniture | t **01484 848500** | **www.daval-furniture.co.uk**

Daval House, Spa Fields Industrial Estate, New Street, Slaithwaite, Huddersfield, HD7 5BB

matt antrobus design

beautiful bespoke birch ply

kitchens & furniture
handmade in bristol
www.mattantrobus.co.uk
07850 664431





We live in a rich textural world, full of interesting, tactile surfaces. We naturally run our hands along walls, through grasses and dip into cool streams. And yet our kitchens are often composed of straight lines and flat colours. It is no surprise that these surfaces don't quite satisfy our subconscious desires, for it's in our nature to seek out patterns and explore objects through touch.

TEXTURES OF JOY

STIMULATE YOUR SENSES WITH THE LATEST KITCHEN DESIGNS FROM SCHÜLLER

"The right use of texture can create the most spectacular kitchens and living spaces. And with the latest innovations in marble and wood effects, textured surfaces can be achieved at a far more affordable cost," says Wayne Dance at InHouse Inspired Room Design. "Layering textures and tones creates dynamic spaces. Marry together the right combinations and you'll find yourself enjoying a huge dose of satisfaction every day."

Don't underestimate the importance of selecting the right textures for your kitchen. If we have learnt one thing about our homes this year, it is almost certainly that they should create a sense of comfort and calm whatever is happening in the world outside.

Deep blue, louvre cabinet fronts with a combination of dark knotty oak and cool, white marble creates a stunning blend of

complementary textures. The pairing of bold colour with earthy neutrals creates a rich and inviting kitchen.

The elegant combination of bold deep blue cabinet fronts and knotty brown grain are balanced with luxurious and earthy white marble effect surfaces and feature wall. Here textures inspired by nature create a bright and striking contrast to rich and contemporary colours.



The ROCCA range, part of the schüller.C collection. The image as shown with a Marble bianco effect worktops and wall, with Deep blue matt velvet SCALA fronts.

Wood effect cabinets create a rustic feel with a contemporary touch. Schüller's synchronised pore effect replicates the feel of natural wood, creating a sensory and immersive experience within your home. Maroon knotty oak (as pictured) is right on trend for 2021. The rich brown creates a comforting yet sophisticated atmosphere whether you're winding down at the end of the day or entertaining friends and family.



Inspired by classic French shutters, the louvre front brings a cosy and nostalgic feel to every kitchen. Available in 17 colours from Schüller's 2021 colour concept, the louvred front presents an opportunity to bring in your individual style and add a further touch of personality to your kitchen.

The ROCCA range, part of the schüller.C collection. The image as shown in Deep blue matt velvet louvre fronts.



The ROCCA sideboard, part of the schüller.C collection. The image as shown in Maroon knotty oak has an RRP that starts from £ 2419.74 exc.VAT.

The schüller.C collection is available from Schüller's UK and Ireland network of retailers. For details, please contact InHouse Inspired Room Design at www.inhousetd.co.uk or call **01661 842304**.

CARIBBEAN BLINDS PARTNERS WITH LOCAL LANDSCAPER FOR 'MOST CREATIVE' OUTDOOR LIVING POD™ INSTALLATION

Last summer, luxury external shading manufacturer Caribbean Blinds completed a unique installation of its award-winning Outdoor Living Pod™ in collaboration with a landscaping firm as part of a complete garden renovation project in Hemel Hempstead.

Stuart Dantzig, Managing Director of Caribbean Blinds, explained: "In just two days, we installed the Deluxe model of our Outdoor Living Pod™ for a client who required a low-maintenance pergola to seamlessly link their newly built outdoor bar and kitchen area and provide an all-weather socialising spot for the adults, whilst allowing a full and unobstructed view of the children's play area.

"As a Caribbean Blinds first, we incorporated a water feature into a unique 'living' wall on the boundary side of the pergola. Screening was also added to the adjacent side of the outdoor kitchen and play area to provide protection from the weather, but with a view through so as not to enclose the space. Finally, lighting and heating options were integrated into the structure for year-round use.

"When confirming the finer details such as hardware colours and finishes and lighting and heating options, each aspect of the space was taken into consideration to ensure that the entire garden would flow. The end result was a dedicated 'zone' that the client can use to simply relax in or entertain friends and family with no disruption from the elements due to the all-weather pergola that cleverly adapts to the changing ambient conditions."



The client explained: "The UK's unpredictable weather was at the forefront of our minds when designing our garden. We wanted a space for the whole family to enjoy during the summer months, but still be able to utilise throughout the colder, wetter and windier months too.

"After a lot of research, we chose the Outdoor Living Pod™ and decided to add a central leg to split the structure in two, creating a doorway. Whether someone is cooking on the outdoor BBQ or mixing up cocktails behind the bar, the spaces link

together effortlessly, providing a feeling of inclusion for everyone to enjoy. The adults can socialise in their dedicated 'grown-up' space without worrying about the children in the play area. The Pod is without a doubt the feature of our garden and we couldn't be happier with the results."

Ingeniously designed for those who want to live life outdoors, the Caribbean Blinds Outdoor Living Pod™ provides the ultimate luxury, all-weather, outdoor living space that gives the customer complete control of the elements, 365 days a year.



For more information, visit: www.cbsolarshading.co.uk/outdoor-living-pod/



CARIBBEAN
BLINDS UK LTD

Sun. Shade. Shelter.



**REAL
HOMES**
★★★★★
**AWARDS 2020
WINNER**
BEST GARDEN BUY

OUTDOOR LIVING POD™ - LOUVERED ROOF |

ALL WEATHER | TERRACE COVERINGS

- Waterproof fabric or aluminium louvered roofs
- Effortless motorised remote control operation
- Wind resistant upto Beaufort 12 (hurricane force)*
- Optional LED lighting & infra-red heating
- 5 year guarantee for peace of mind

Our **innovative retractable awnings and aluminium pergolas** provide flexible shade and shelter, allowing outdoor spaces to be enjoyed come sun, wind, rain or even snow*. Proudly UK manufactured since 1987.



t 0344 800 1947
e info@cbsolarshading.co.uk
w cbsolarshading.co.uk/residential

SHOWSITES IN | SUFFOLK | MIDDLESEX | SURREY

*Wind resistance and snow load based on our louvered roof Outdoor Living Pods™



CUBA - PATIO AWNING |

TEATRO SCARLET BY SCARLET SPLENDOUR



SETTING THE STAGE FOR DRAMA AND SPLENDOUR

It's been a dramatic five years of design, craftsmanship and technology. Scarlet Splendour has matched global design trends with a fascination for bygone eras and dramatic colour palettes, materials and forms. Over the years, Scarlet Splendour has brought together world-renowned designers with Indian aesthetics, culture and craftsmanship. Pioneering an eccentric style that has wowed international markets.

Today, as the greatest of all dramas unfold in real life, Scarlet Splendour joins the world's resolve to stand strong and create strong.

Since its inception in 2015, the design curation company has premiered its collections at The Milan Design Week. Unfortunately, 2020 was cancelled and with it went the joy of discovery, the exchange of ideas and the excitement of sharing stories from the world platform of Salone Del Mobile. But Scarlet Splendour looked at this as an opportunity to look inwards, and invites the world over to its home.





TEATRO SCARLET, KOLKATA, INDIA

This 1,500 sq. ft. studio features stand out performances from the world's finest talent. Extravagant, plush and even a little mysterious, each setting is highlighted with carefully chosen backdrops, props and lighting.

The influence of Giorgio de Chirico's metaphysical art is strong with flattened surfaces and arches, the play of shadows and lights around which the drama of the iconic pieces unfold. The colour palette is chic with layered textures. Pops of green like those of exotic tropical plants complement the sculptural products to great effect. Whilst accessories are meticulously handpicked from around the world.

Teatro Scarlet gives you the opportunity to see, touch and feel every single detail.

The juxtaposition of furniture combinations and colour schemes are designed to inspire visitors and to add drama to their homes. Discover the elegant Strings Collection, the opulent Mandala Cabinets and the poetic 88 Secrets range of bars, credenzas, sofas and rugs. Indulge in the Italian inspired Vanilla Noir and Vanilla Noir Oro, the sculptural Animagic, I Danzatori Cabinets and the ethereal Wolk. Or simply hunt down the fun Forest collection. All under one roof, for you to experience, explore and take home.

Teatro Scarlet promises the world a glorious performance. Starring - handcrafted furniture, eccentric talent and great drama!



BUY ARTWORKS EASILY!

WITH LONDON & ONLINE GALLERY GALERIE PRINTS



“A lot of people are intimidated by galleries or overwhelmed by the prospect of choosing a suitable artwork for their home or as a present or as an investment piece...” explains GALERIE PRINTS founder Stuart, “but actually there should be nothing intimidating about it at all!”

Whether you are buying an exclusive hand signed Terry O'Neill print or an Estate Stamped Slim Aarons print from our collection of over 1,000 of his works - or an image by an unknown photographer for the sheer beauty of it, GALERIE PRINTS pride themselves on exceptional customer care and are always open to answering any type of questions on any of their offerings and always open to lending useful advice.

“We like to work with interior designers on large hotel projects to individuals just wanting to choose a gift for someone special”

“...Paramount in importance to us is that our customers are happy – and we never tire of getting yet another nice review or comment from our clients...at the end of the day that's what really matters...” says Fleur, Production Manager at GALERIE PRINTS.

Prints and frames are made to order and can be done to any specification and securely delivered worldwide.

“That's one of the core reasons why we created GALERIE PRINTS, to make really beautiful photography and art prints genuinely accessible.”

“We offer a wide range of prints from Photography to Art and Vintage Posters and for a wide range of price levels from £ 100 for a beautiful open edition print to £ 90 K for a one-off edition print of Duffy's infamous Aladdin Sane image signed by David Bowie himself.”

Covering a wide range of subjects, themes include Sports, Architecture, Pop Art, Travel and Social Documentary and in large range of formats including Supersize prints at 2m x 1.5m and larger – there is genuinely something for every art and image lover.

Beautifully produced prints with London handmade framing and finishing, the quality speaks for itself.



GALERIE PRINTS have a gallery in southwest London at **152 Arthur Road, Wimbledon Park SW19 8AQ** and are online with a highly established international client base at **www.GALERIEPRINTS.com**

GALERIE PRINTS



'Oscar Ennui' 1977 by Terry O'Neill 183 x 183 cm Super Giant Limited Estate C print

[galerieprints.com](https://www.galerieprints.com)

152 Arthur Road | Wimbledon Park | SW19 8AQ | t 020 8947 6898

INSIDE THE SAN FRANCISCO HOME OF SKINCARE INNOVATOR: **APRIL GARGIULO**

THE FOUNDER OF VINTNER'S DAUGHTER SHARES HER VINTAGE-LUXE HOUSE



Founder of sell-out brand Vintner's Daughter, April Gargiulo's design ethos is not only reflected in her business practices but also in her home. Built in 1938 by renowned Californian architect William Wurster, Gargiulo's home effortlessly showcases how to make vintage feel thoroughly modern and relevant. Her home manages to project her fun and alive character while simultaneously being grounded and modern. The tasteful mix of fresh upholstery and contemporary art gives a perfect balance. Expect a smattering of rare pieces found by Gargiulo who has a love for scouring auctions in the US and around the world. Her home is old-world luxe but not ostentatious.



Without the assistance of an interior designer, Gargiulo drew on her background in furniture design to create a serene space that does not compromise on functionality. Not only does everything have a space but everything serves a purpose.

"I deliberate for eons before I make a purchase, but then I have it forever" says Gargiulo.

The rewarding results of this deliberation process are no more apparent than in her impressive pantry which is stocked with beautiful pottery and dishware- all of which get used. April comes from a line of collectors which has given her the innate ability to skilfully choose quality pieces that fit her and her family's lifestyle.

“Living well to me means living in balance and with gratitude. That balance is super personal, ever evolving and really hard to attain. You have to show, do that work and have gratitude for the opportunity and process” – April Gargiulo, Founder of Vintner's Daughter



Chic nudes and neutrals flow throughout the home with rare pops of colour achieved through her love of modern art. The calming colour palette is offset by textures which play an important role by adding extra dimension while not overwhelming the peaceful feel of the space. April's love for buoyant Italian design is showcased throughout the property in her meticulously selected elevated furniture, displaying her admiration for all things well thought through and detail orientated.

April's house reflects her inherent style and lifestyle ethos. Every item, piece of décor and soft furnishing is a well thought through purchase with nothing bought for the 'sake of buying'. Gargiulo's San Francisco home reflects all things that quality design should be; detailed, collected, evolving and very well loved.



Pansy Ball
Basket

At Just Artificial, we work with interior designers, decorators, set dressers, architects and more to set your premises apart from the rest. Our artificial plants, flowers and trees are highly realistic to look and touch, as well as being durable and attractive.



ARTIFICIAL PLANTS & TREES FOR BUSINESSES

Our master craftsmen construct each bespoke order with painstaking care and attention, to create an exceptionally 'real' artificial showpiece, and we offer bespoke solutions to suit the needs of your space, business and tastes.

Whether you need simple plants and trees that don't need tending to or you're going for a full artificial landscape with turf, hedges and more, we have existing products and the capacity to create custom designs for any need and budget. We'll offer a no obligation quote to help you plan your projects and we can tailor our service to 'fir' your needs.

FULL SUPPORT

Whatever your choices, we have the design experience and know-how needed to make you stand out. We can work with your design to make your premises look incredible, whatever the space and whatever the industry. We can even help you develop the design, drawing on years of experience.

WHO HAVE WE SUPPLIED?

Major companies in many industries including ITV, BBC, Channels 4 and 5, Mulberry, Innocent Drinks, Monsoon, Bella Italia, Tesco, Big Brother, The Only Way is Essex, Coronation Street, Dancing on Ice, Park Resorts, Volkswagen, and more. We've also sold to house builders, zoos, hotels, restaurants, shopping centres, theme parks, colleges and schools, cruise ships, theatres... the list goes on! We have tens of thousands of satisfied customers in the UK, in Europe, and across the World.

We can provide offers for procurement managers and corporate buyers on bulk orders and or trade, to help you finalise your design. **Our quotes are no obligation - so call us today. We look forward to working with you!**

Call us today on **01524 858888** or email:
sales@justartificial.co.uk

Browse our Web Store online for our full stock range and more info on our bespoke solutions on offer **www.justartificial.co.uk**



JUST ARTIFICIAL
PLANTS · TREES · FLOWERS

The finishing touch



Fern Tree

Calathea

**HUGE FIRE
RETARDANT
RANGE
IN STOCK**

**UV
RESISTANT
RANGE FOR
EXTERIOR
PROJECTS
IN STOCK**

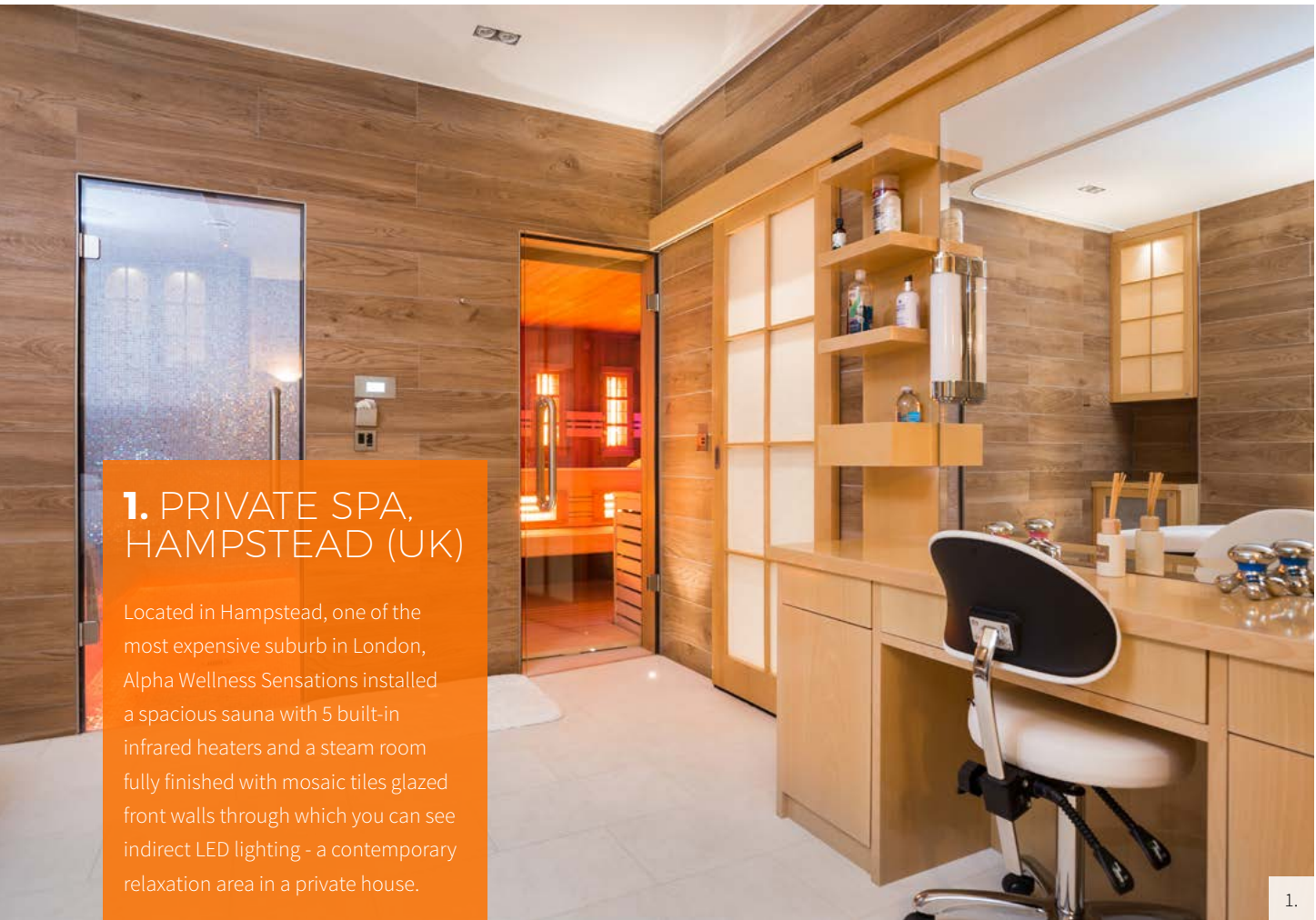
At Just Artificial, we work with interior designers, decorators, set dressers, architects and more to set your premises apart from the rest. Our artificial plants, flowers and trees are highly realistic to look and touch, as well as being durable and attractive.

www.justartificial.co.uk/aod | 01524 858888 | sales@justartificial.co.uk

GET 10% OFF PRODUCTS

Quote coupon code AOD10 at checkout

Online orders only, single use, 1 per customer. Expires 60 days from publication date. Terms apply* See Website.



1. PRIVATE SPA, HAMPSTEAD (UK)

Located in Hampstead, one of the most expensive suburb in London, Alpha Wellness Sensations installed a spacious sauna with 5 built-in infrared heaters and a steam room fully finished with mosaic tiles glazed front walls through which you can see indirect LED lighting - a contemporary relaxation area in a private house.

1.

WELLNESS WITH INNOVATION



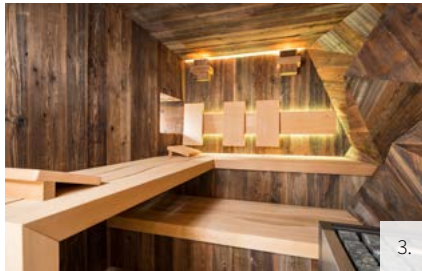
2. OUTDOOR CHALEUR COMBI SAUNA, GENK (BE)

A beautiful minimalistic bespoke solution for an outdoor sauna! Project crowned with a golden medal by the competition of the Belgian swimming pool, pond and wellness builders in 2017. Sauna with an outdoor shower were ingeniously added to the pool house. The glass front and side walls are fit into a frame that matches the frame of the windows of the house. This ensures a beautiful unit, even if the pool house is more modern than the house.

2.

3. RESIDENTIAL WELLNESS, EHNER (LU)

You cannot find easily a more elaborate residential wellness than the one in Ehner, Luxembourg. The project is nicely integrated in the rustic style of the house and includes a swimming pool, a shower, a sauna, a steam room, an infrared sauna and a fitness basement. Alpha Wellness Sensations has been awarded for this project in the category wellness@home at the competition of the Belgian swimming pool, pond and wellness builders!



5. VODNY SVET, VELKE KARLOVICE (CZ)

Six extra large models of the 'award-winning' Eclipse by Alpha Wellness Sensations have stolen the show at the beautiful Kyčerka Resort in the Czech Republic! The holiday park with hotel and cottages is fully committed to rest and relaxation with its focus on wellness. The traditional elements go hand in hand with the modern technologies. In July 2020, a new asset was added to the resort. A gigantic water park that combines various wet leisure and wellness facilities, a dream place for young and old.



4. RESIDENTIAL WELLNESS, BELSELE (BE)

This design by the architect Koen Thomas (Ante Architecten) has been perfectly completed by Alpha Wellness Sensations. The result is an architectural gem that fits perfectly in the property and invites you to many hours of wellness indulgence. This project was crowned with a golden medal in the category 'wellness@home' at the competition of the Belgian swimming pool, pond and wellness builders 2019/2020.



Warmup

The world's best-selling floor heating brand™

Radiant Warmth for Your Home by Warmup



Underfloor Heating Solutions for New-Build and Renovation Projects

Underfloor heating provides a cleaner, more energy-efficient way of heating your home and is suitable for both home renovations and off-plan construction projects.

Warmup's research-led approach to design has resulted in unrivalled heating systems and heating controllers that offer affordable luxury and, as the world's best-selling floor heating brand, Warmup's range of energy-efficient floor heaters and thermostats have been installed in over 2.5 million homes.

Get a Free Online Quote Today

Scan the QR code below to get a quote today using our Pro Hydro tool. The Warmup Pro Hydro tool is uniquely designed to meet the specific needs of your project. The system has been optimised to use up to 10% less materials required – by choosing Pro Hydro, you will be helping the environment too. Not to mention, the quoting process takes just 18 seconds.



Benefits of Underfloor Heating:

- Solutions for Every Room Type and Floor Finish
- Energy-Efficient Technology - Low Running Costs
- Discreet Warmth – No Compromise on Style
- Rapid Installation Times

Luxurious Heating Solutions from Warmup

As an award-winning research-driven company with a focus on innovation, Warmup aims to create a cleaner and more sustainable future using its Electric, Water, and Smart Underfloor Heating solutions, while providing luxurious comfort for your home.

Underfloor Heating Saves Energy

14% of all CO2 emissions within the UK are a result of energy use within homes. Implementing sustainable energy solutions has become more vital than ever before. Warmup's radiant underfloor systems are designed to meet the unique heating requirements for your home, using significantly less energy than conventional radiators. The increased energy efficiency allows you to dramatically reduce your heating bills too.

Hydronic Underfloor Heating Systems for Low Running-Costs

Hydronic Underfloor Heating, also known as Wet or Water Underfloor Heating, is a contemporary heating system that pumps heated water from a heat source through pipes within the floor construction. This heated water produces radiant warmth which heats up a room to a consistent, comfortable temperature from the floor up.

Low running costs / Energy-efficiency

Water underfloor heating systems require less energy to reach optimal comfort temperatures than traditional heating systems and with this increased energy-efficiency, you can expect lower long-term running costs.

Total-16 System

One of our most popular hydronic heaters, the Total-16 Low-Profile System has an ultra-thin depth of just 16mm - making it a great choice for both renovations and construction projects.

Scan the QR code below to get a quote. Simply enter the details of your project and in a few clicks, we'll provide you with a comprehensive quote and a full commissioning log.

Get a Quote - Quick and Easy





Nulty Bespoke have completed a very special commission for the main entrance of a new private residential development in London. Specialists in custom luminaire design, the Nulty Bespoke team worked in collaboration with Goddard Littlefair and in conjunction with Canary Wharf Contractors to create the custom-made suspended installation.

NULTY BESPOKE COMPLETES 'ENVOLÉE'

**- A NEW INSTALLATION CRAFTED FOR A PRIVATE
RESIDENTIAL DEVELOPMENT IN THE HEART OF LONDON**

The inspiration behind the feature came from the strength, beauty and power of birds, with the design focusing on the aerodynamic formation of a bird's wing and the movement of birds in flight. The intricate design comprises of 170 individual 'bird' components, each one made from hand-blown clear glass. Whilst still molten, each component was manipulated to form a shape resembling wings and then dipped into water to create a cracking effect. The glass birds were then placed into a furnace to ensure that they solidified and remained stable pieces. This process also creates a glistening texture giving the impression of a bird gliding through clear skies. The cracked effect on the surface of each component allows them to catch the light and sparkle in suspended glory.



“We are so proud of our latest installation, ‘Envolée’, meaning ‘to fly’ in French”, says Alison Smith, Creative Manager at Nulty Bespoke. “We wanted to symbolically represent strength in numbers and the complexities of bird flight. Each component is intricate in its own way, but when they appear together, their shape mimics bird murmuration and the movement of soaring.”

The installation hangs above the stairwell, which connects the reception to the mezzanine floor. The large double height space of the reception area encouraged the team to design something that would use as much of the space as possible in order to create a breath-taking focal point for those entering the building. The composition travels alongside those moving from one floor to the other via the stairs and mimics the curvature of the stairwell design.

Each component is suspended from the ceiling using gold finished cables. Nulty Bespoke strategically added adjustable downlights in the ceiling to increase light levels for the composition and enhance the play between light and shadow. This has helped to make the feature more prominent in the space and to animate the birds and elevate their presence. The downlights are orientated in a way to ensure holistic coverage of the space beneath them. Light pours down onto each component, catching their sparkle and enhancing their lustrous aesthetic.



Nulty Bespoke, 246 Westminster Bridge Road London, SE1 7PD
+44 (0)20 7803 9300 | office@nultybespoke.co.uk

Beautiful Designer Ceiling Fans



Powerful - Stylish - Reliable - Silent



THE HENLEY FAN COMPANY LTD



01256 636 509
www.henleyfan.com

STARON INTRODUCES FOUR NEW COLOURS TO ITS SURFACE COLLECTION FOR 2021



Staron is delighted to introduce four new contemporary colourways to its solid surface collection for 2021. Designed with modern living in mind, the premium surface brand's new hues provide a refined finish that's guaranteed to enhance any space. Choose from the strikingly bold shades of Forest and eye-popping Ultramarine for an interior that makes a statement, or opt for the delicate softer shades of the aptly named Artic White and Rotor Cloud finishes for a soft,

bright and elegant marble-effect finish that's perfect for on-trend abodes. Perfect for use in kitchens and bathrooms, due to superior anti-scratch, anti-bacterial and heat resistant qualities, solid surfaces from Staron provide seamless and exquisitely smooth surfaces through indistinguishable joins. Combining a sophisticated blend of natural minerals and thermosetting acrylic polymers, Staron offers total flexibility when it comes to design, making it ideal for commercial use too. From reception desks to shop display tables, its pliable structure allows any shape to be created, providing specifiers with unlimited design capabilities.

www.staron.com

EARTHBORN PAINTS PASS THE LATEST TOY SAFETY STANDARD

Earthborn is known for its distinctive paints that are better for the environment and healthier to live with. And its environmentally friendly formulations are now certified as child safe paints too!

Independently tested to meet the latest Toy Safety Standard (EN71-3:2019), this means they are safe to use in babies' and children's rooms as well as on toys and furniture. Many people choose Earthborn paints because they're free from harmful emissions and nasty paint smells. Two things that are hugely important when looking for child safe paints. More than that, Earthborn's paints are Eco

Label accredited and virtually VOC free. Earthborn's Claypaint, Eco Chic, Lifestyle and Eggshell no 17 have all passed the most recent Toy Safety Standard test, making them ideal for children's bedrooms, nurseries, wooden toys, cots and other furniture. In addition, Earthborn's wall glaze, furniture glaze and wax have all been approved. So whether you're preparing a nursery or revamping children's furniture following years of wear and tear, you can be assured that Earthborn's paint finishes are child safe and healthy.



earthbornpaints.co.uk

THE TRUE ESSENCE OF DESIGN

SMANIA new collection is the expression of desire to breathe sometimes true elegance in simplicity and to rediscover the true essence of design in linearity. The colors, as well as the chosen materials, in addition to being an expression of the taste, emphasize the room elegance and design as a whole. SMANIA always allow this personalized choice, which enhances taste and result.

TWEED 250 sideboard. Its aesthetic rigor finds expression in the study of the lines, in the accurate choice of materials, in the refined details of



the product, in its perfect realization. And balance becomes style.

MARCEL table lamp. Absolute elegance. References to geometries of the past. Reflexes. Warmth. Shape and content for this stylish lighting. It is designed also as floor lamp and chandelier.

SMANIA INDUSTRIA ITALIANA MOBILI
VIA DEL LAVORO 8/10 - 30030 CAZZAGO DI PIANIGA (VE) - ITALY
TEL. +39 041 5137700 | Web: eng.smania.it
e-mail: info@smania.it

CUSTOM COLOUR MIXING

For interior &
exterior wood surfaces

- Interior •

Wood Wax Finish

- Exterior •

Natural Oil Woodstain
Country Colour

MORE THAN
2000
COLOURS





<https://hutig.com>
 @hutigfurniture

E: info@hutig.com
 T: 07818 205077

A PIECE OF SCOTTISH LANDSCAPE HERITAGE
 YOU CAN SEE AND FEEL

DESIGNED AND CREATED BY

THE MASTERS OF MODERN FURNITURE
 'INSPIRED BY THE RAW BEAUTY OF SUTHERLAND'



SUPREME QUALITY SUSTAINABLE FURNITURE MADE IN THE HIGHLANDS OF SCOTLAND

FLOORING SOLUTIONS TO MATCH A STUNNING EXTERIOR



The latest addition to Havwoods' impressive project portfolio is Storrs Hall. Set against the beautiful backdrop of Lake Windemere, the lakeside retreat epitomises luxury and appeals to guests longing for a country escape. In order to create a classic interior scheme, Storrs Hall enlisted the help of Havwoods to specify a flooring solution that would make the interior just as stunning as the exterior.

Set on 17 acres of private land, Storrs Hall is one of the Lake District's most luxurious hotels.

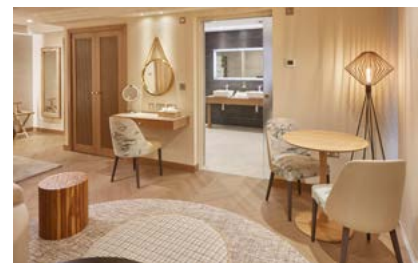
With a design brief to create a natural scheme that would complement the lakeside views, Havwoods were chosen to supply wood flooring for six premium suites; that opened in July 2020.

The self-catering lakeside suites benefit from a private terrace, cedar wood hot tub, floor-to-ceiling glazed wall and underfloor heating, to deliver a truly memorable stay. At the top end of Storrs' offering, the hotel required a high-quality wood flooring solution that would tie the scheme together whilst remaining practical, premium and visually pleasing.

Havwoods provided Ferro Block boards from the Italian collection to furnish the lakeside suites. Selected for its timeless finish and on-trend herringbone design, the engineered European Oak blocks can easily cope with heavy footfall, therefore a suitable choice for a hotel setting with regular guest rotation.

As well as offering functionality, the boards are finished with UV Oil, resulting in an aesthetic wood surface that flows seamlessly as you pass through the suite.

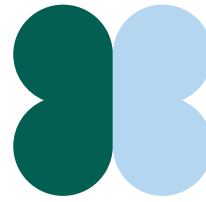
As a premium hotel in a picturesque location, design was always going to be an important consideration. Storrs Hall with the help of Havwoods, have designed six indulgent suites with a timeless wood floor solution that will continue to appeal to guests for many years to come.



www.havwoods.com | info@havwoods.com | +44(0)1524 737000

Biojet[®]

NEW
FOR
2021



BELL PACKAGING

Biojet[®] packaging has been created to deliver biodegradable plastic tubes, boxes and clampacks.



DESIGNED & MANUFACTURED
IN GREAT BRITAIN



At last biodegradable packaging made in Great Britain for home interior and DIY products. At a sensible cost. Call us today for a FREE sample

Biojet[®]
Designed to keep our oceans cleaner



www.bellpackaging.com



www.faceguards.co.uk



+44 (0) 1582 459292

WELCOME TO OAKMOUNT AND PARTNERS LTD,

YOUR AWARD-WINNING PREMIER INVESTMENT CONSULTANTS

Oakmount was incorporated in 2009, with the goal and ambition to become a globally recognised financial institution which aims to deliver more to its customers.

They provide premium-quality investment opportunities to their clients, consisting of Ultra-High-Net-Worth, High-Net-Worth, Professional and Sophisticated investors, along with corporate platforms, entrepreneurs and intermediaries.

They are a Trustpilot Certified business with an Excellent 5 Star Rating.

If you are looking to get started, and you are an experienced investor, their investment consulting and management team are here to assist you.

Oakmount can give you access to bespoke investment opportunities, help with investment management and put together investment strategies using their advanced analytics software, expertise, and global contacts.

Oakmount and Partners provide expert consultancy on investments in land acquisition and development, commercial and residential properties, commodities, energy and IPO's. With numerous years of success, they seek to optimise performance over the medium and long-term whilst



reducing volatility and unnecessary risks, preserving capital, improving returns and generating regular income and capital growth.

Understanding the critical importance of communication, every investment begins with Oakmount and Partners analysing and understanding your needs, (whether you are a business or individual) before offering a service based on how actively involved you want to be in the management of your investments. Throughout your on-going relationship, they will continually assess and plan on your behalf to ensure your investment achieves the optimum results, freeing you up to continue with your busy life.

For the last decade and more, their business has been privileged to create and build upon relationships with clients whom they treat as strategic partners within their firm. The quality of the investment opportunities they introduce to their clients are of the highest calibre, meaning that they can enjoy life at their leisure as Oakmount continue to seek out fixed-income investment opportunities with attractive annual yields.

All their long-term strategies and short-term actions are moulded by a set of core values.

Knowledge. Commitment. Nurture. Growth.

**Oakmount. Exclusive. Exceptional & Empowering.
Reflecting the People, We Serve.**

OAKMOUNT AND PARTNERS LTD. EST 2009.
SCULPTED FROM EXPERIENCE, BUILT FOR SUCCESS.

Web: www.oakmountpartners.com | Tel: **01279 874 392**



OAKMOUNT AND PARTNERS LTD

At Oakmount and Partners, we're renowned for our premier investment acumen and unrivalled customer focus. So, for first-class service and superior investment returns call our team today!

Voted as the Best Corporate Investment Consultancy & Best Fixed income & Investment Specialists 2020, by the SME UK Enterprise Awards & SME UK Finance Awards.

Oakmount. Changing lives, one customer at a time.



www.oakmountpartners.com | Tel: 01279 874 392

1

THINK DESIGN **THINK HOMAPAL** VIA DERALAM LAMINATES LTD

Deralam Laminates Ltd started as a family business in the Northwest of England and now operate from multiple UK sites meaning that the customer can benefit from a flexible and unrivalled nationwide distribution service. Keen to stay ahead of the market, Deralam have sole UK distribution rights for Homapal®, that specialise in laminates of various finishes including real metal surfaces, this leaves an almost unlimited scope for creativity and customisation; meaning that this product has a multitude of applications. Over the years, hardly any other material has proven its worth in interior design to the extent in which the laminate has done. Looks, feel and function are combined to get the interplay of elements into all-embracing spatial concepts in a way that could not be more natural.

Deralam is the ideal choice for Architects, manufacturers and retailers alike.

Email: sales@deralam.co.uk | Tel: **01257 478540**



2

A NEW TEXTILE DESIGN BRAND FUSING ART AND NATURE **TO BRING SOPHISTICATED IMAGINATION INTO YOUR HOME**

Jardell Hill Design creates luxury wallpaper and home accessories/gifts. Encouraging people to celebrate their home through pattern and colour; we believe in creating unique and personal spaces full of imagination whilst also considering the environment. 'Points of Nature' is the first collection of hand-drawn, digitally printed wallpapers by Jardell Hill Design. Drawing inspiration from nature, post-impressionist art and a love of hand drawing. Painter Henri Rousseau's detailed jungle scenes and Signac's distinct pointillist technique inspired the subject matter and style of drawing. Combining these attributes with a personal approach; busy, flowing repeat patterns were created for a structured designed look. The final outcome is a contemporary and elegant collection. A soft colour palette with subtle stripes and textures keeps the focus on the drawings but bring the designs to life.

Web: www.jardellhilldesign.com | Email: jardellhilldesign@gmail.com



3

WELCOME TO OAKMOUNT AND PARTNERS LTD, **THE MULTI-AWARD-WINNING PREMIER INVESTMENT CONSULTANTS**

Oakmount was incorporated in 2009, with the goal and ambition to become a dominant financial institution which aims to deliver more to its customers by way of service and investment returns. We introduce premium-quality investment opportunities to our clients, consisting of Ultra-High-Net-Worth, High-Net-Worth, Professional and Sophisticated investors, along with corporate platforms, entrepreneurs and intermediaries. We are proud to be a Trustpilot Certified business with an Excellent 5 Star Rating. If you are looking to get started, and you are an experienced investor, our investment consulting and management team are here to assist you. For first-class service & superior investment returns, call us today!

Oakmount and Partners Ltd – Est 2009 | Sculpted from experience, built for success.

Web: www.oakmountpartners.com | Tel: **01279 874 392**



4

GOOD DESIGN AWARD WINNING – **MOVEMENT SERIES**

Design inspired by luxurious natural stone, this industry breakthrough marble collection is elevated above other colours because of the diverse aesthetic appeal, highlighted by distinct veining running through each slab, that offers a sophisticated look and artistry that makes them a classic choice for centuries. Luxury marble design without the hassle of real-marble. Cleaning and maintaining the sleek look is made easier with the hassle-free non-porous surface which limits bacteria and mold growth. The flowing veins can be seamlessly joined and thermoformed to create shapes which reduce fabrication difficulties. Suitable for healthcare, food service, education and more, the seamless duplication of these patterns offers unlimited design potential, and enables any space on any budget to access the appeal of high-end natural stone.

Web: www.meganite.com | Email: info@meganite.com

MEGANITE®
Acrylic Solid Surface



5

ASTOUNDING INTERIORS

Astounding Interiors have over 16 years' experience delivering interior design and build projects, guiding clients through the entire design process. We have worked in the hospitality, leisure and residential sectors and are now the UK's leading home bar specialists. We design and build a range of high-end home entertainment spaces including bars, cinema rooms, 'man caves', swimming pools, spas and gyms as well as home bars, bedrooms, lounges, kitchens etc. Especially in light of the current global pandemic, the trend for high-end home entertainment spaces is here to stay. We think that people are now looking to entertain at home more than ever before. At Astounding Interiors, we believe your home interiors should be as entertaining and exceptional as your outer world. Therefore, our design concepts are individually created to meet the power of your imagination, we also believe they should reflect clients' taste and personality.

Email: info@astoundinginteriors.co.uk | Tel: **020 3937 6886**
 Web: www.astoundinginteriors.co.uk

**ASTOUNDING
INTERIORS**



6

ASTOUNDING BATTERSEA

Astounding Battersea located in Embassy Gardens, Nine Elms, London takes pride in its ability to transform any living space via classic, contemporary, modern and avant-garde product designs. Astounding Battersea maintains a 5000 square foot showroom displaying beautifully crafted, all Italian, kitchens, furniture, tiles, lighting, walk in wardrobes, and many other decorative accessories. With years of industry experience and knowledgeable staff, we pride ourselves in helping customers enhance the look and feel of their environment with our unique products, first-rate solutions and pioneering home décor ideas with the most in superior comfort and style. Astounding Battersea will be the London's most luxurious and forward-thinking designer furniture showroom, taking inspiration from around the world. We will have an onsite interior design team on hand to offer our customers a new and exciting, stress free experience in order to help them achieve a space that will wow and impress their friends and associates alike.

Email: info@astoundingbattersea.co.uk | Tel: **020 3937 6884**
 Web: www.astoundingbattersea.co.uk

AB
 Astounding Battersea
 LUXURY INTERIORS



7

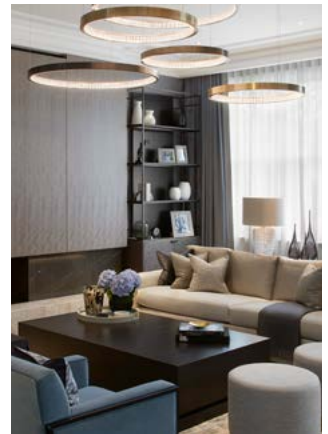
SPECIALISTS IN CURATED LUXURY INTERIORS

Mokka Design, specialists in curated luxury interiors, strives to deliver bespoke, elegant and inspiring spaces, which bring to life each client's unique design vision. Founded in 2004 by Shazma Maladwala, who has over 20 years industry experience, Mokka Design consists of a dedicated, passionate team who always go the extra mile to deliver exceptional projects worldwide, enabling a loyal client base to recommend us without reservation. Recently completed designs include a chic two-bedroom apartment with a private bar for entertaining and relaxation in Belgravia and a fun-filled seven-bedroom family home personalised down to the very last detail in Putney. Upcoming projects in Latvia and New York will further expand Mokka Design's international portfolio, which already comprises residences in Miami, Cape Town, Cap Antibes and Moscow.

Email: enquiries@mokkadesign.com | Tel: **0208 947 6401**

MD

MOKKA DESIGN



8

THE WATER-BASED PRINTER REVOLUTIONISING MODERN DAY DÉCOR

Master the beautiful, profitable world of customised interior décor with the Roland EJ-640 DECO wide format printer; an eco-friendly, easy-to-use system designed for creativity. It is the perfect partner for anyone looking to create stunning, digitally printed wallpaper, wall coverings, blinds, lampshades and much more! When paired with Roland's webshop platform PersBiz, the EJ-640 DECO printer offers the perfect solution for those looking to explore the online sales opportunity for personalised décor items. Running on Roland's innovative water-based inks, it delivers bold, fast-drying and washable prints, allowing for the same-day production and supply of custom one-offs.

Available throughout EMEA, the EJ-640 DECO is the only choice for customers serious about entering the buoyant world of customised décor.

Web: www.rolanddg.eu | Email: sales@rolanddg.co.uk

EJ-640 DECO



IT'S TIME TO SWOON OVER THESE HOME BAR INTERIOR TIPS

Say goodbye to the drinks trolley and hello home bar! It comes as no surprise nearly 39,000 people per month are searching online for stylish home bar inspiration, with it being top of the wish list in 2021.



Since you're going to need a killer set-up that goes beyond a well-stocked cabinet of your finest wines, Swoon, the UK's leading innovative online furniture brand, is highlighting some chic home bar ideas to inspire you.

STYLISH STORAGE SOLUTIONS:

Creating a stylish storage solution is key to any home bar.

If you're short of space and need to use an area in your lounge or dining room, simply add some built-in shelving or floating shelves as the centrepiece of your display. Sleek and chic shelving such as the functional Jackman or the industrial

Lubeck are perfect backdrops to show off your gin collection and cocktail glasses.

If you have a larger area you can utilise, a storage unit will do just the trick, adding further dimension to the room. If you're considering a more elegant look, why not blend a rich timber design to compliment the room with the Etna unit. Or for a more contemporary showstopper, the Norrebro is a natural oak-stained mango wood grain with all the right 'shelfie' angles.

And let's not forget the sideboard option. Not only will it make for a serious statement piece for your home bar, it's the perfect solution for clutter-clearing. For those with a mid-century room vibe, the Terning is the perfect fit thanks to its textured façade leaving you completely mesmerised. If 'modern-day' chic is more your thing, the Banner sideboard is richly coloured and complete with a flash of brass to add those bold doses of depth to your room.

Oh, the endless possibilities...



CREATIVE IMPACT.

So, once you've established your home bar area, it's time to embrace your inner creativity. After all, it needs to appear seamless to the rest of the room.

If you've designed a home bar that has its own area, seating should form part of the design plan. Adding two or three bar stools will not only add authenticity to your home bar design but give it that much-needed finish it needs. For a more modern look, industrial styling is well and truly back. The Thibaut is an obvious choice to add functionality and sentiment. For a more vintage look, the honeycomb-inspired Coombes bar stool oozes uniqueness and beauty.

Now to the little touches. Mirrors are the easiest way to brighten an area. Simply hang a mirror as your backsplash above your bar set-up and it will instantly feel more polished and 'together'. A couple of our favourites include the hexagonal brass Nemo or the opulent Verso to give your room the illusion of space and an all-important Deco-esque charm. And don't forget to spruce up the shelves with plants (in varying heights), artwork and of course, cocktail recipe books.

GET IT LIT.

Finishing your home bar with the right lighting is a must. A pendant light will create stand-out and complete the look, adding a modern feel. If you're looking for simplicity, the Midi geometric copper-plated steel pendant is hard to refuse. Alternatively, opt for a spherical shade - the Capella is a must-have spotlight which will fit effortlessly into any room. Top tip: If you really want to recreate that pub or bar vibe atmosphere, remember to opt for low wattage bulbs.

THINK DESIGN **THINK HOMAPAL**

Over the years, hardly any other material has proven its worth in interior design to the extent in which the laminate has done. Looks, feel and function are combined to get the interplay of elements into all-embracing spatial concepts in a way that couldn't be more natural.

Above all, it has always been the genuine- metal coated laminates and magnetic boards that are associated with the HOMAPAL name. Yet behind the scenes in Herzberg, many more variations of this modern material are created and produced.

It provides architects, carpenters and joiners in furniture-making and interior design with the basis for producing the last word in creative design – in doctors' surgeries, bars, hotels, clubs and restaurants, on cruise ships and in shop fitting.



Distribution in the UK:

DERAlam

Deralam Laminates Limited Head Office:

West Coast Park, Bradley Lane,
Standish, Wigan WN6 0YR

T 01257 478540 | **F** 01257 478550 | **E** sales@deralam.co.uk

www.deralam.co.uk

Southern depot:

Units 10 + 10a, Foster Avenue,
Woodside Park, Dunstable,
Beds LU5 5TA

TOLLGÅRD

Extraordinary Pieces
from around the World



tollgard.com

+44 (0)20 7952 6070

Tollgard Showroom, Grosvenor Waterside,
Gatliff Road, London SW1W 8QN

info@tollgard.com

+44(0)20 8067 2123

First Floor, Centre Dome, Design Centre,
Chelsea Harbour, London SW10 0XE