



ELEMENT - The Quarter Construction Update

October 2022

ELE
TH

October 2022

A number of internal and external works are making progress at ELEMENT – The Quarter. Internally, carpet floor finishes and kitchens are going in quickly. There has also been significant progress to both 1st and 2nd fix electrical works.

Externally, flat roof coverings, weatherboarding, windows, and ground floor slab construction are all progressing well along with several other works.

Summary of Works Progressed

- Retaining walls and concrete beam foundations are now 85% complete
- Underground drainage is 99% progressed
- Construction of the ground floor slab is now 60% complete
- Structural framework forming the external walls is 95% progressed
- Scaffolding and mast climber access has achieved 99% progression so far
- Development to the flat roof covering including balconies is 89% complete
- Weatherboarding is 87% complete
- External windows, doors and curtain walling are 80% progressed
- External wall insulation and render is 75% progressed
- The Mansafe system is 60% complete
- Partition walls installation is 55% complete
- Apartment ceiling installation is 50% complete
- Plaster finishes to walls and ceilings are 35% progressed
- 1st fix electrical is 86% progressed with plumbing and heating not far behind
- 2nd fix works are in progress
- Kitchen units and appliances have been 27% installed so far
- Doorframes, skirting and architrave are all progressing
- Bathroom sanitary fittings are 45% complete
- Wall and floor tiling are 24% progressed
- Carpet and floor finishes are 36% complete
- Doors and ironmongery are 32% progressed thus far
- Decorations have been making progress and are 30% complete



Walker Street - Site view



West Derby Road - Site view



Brunswick Road - Site view



Student Wing - Cladding progress





General site activity



Residential Wing - Lift core tanking complete



Commercial Block - Ground floor concrete slab preparations



Commercial Block - Ground floor concrete slab preparations



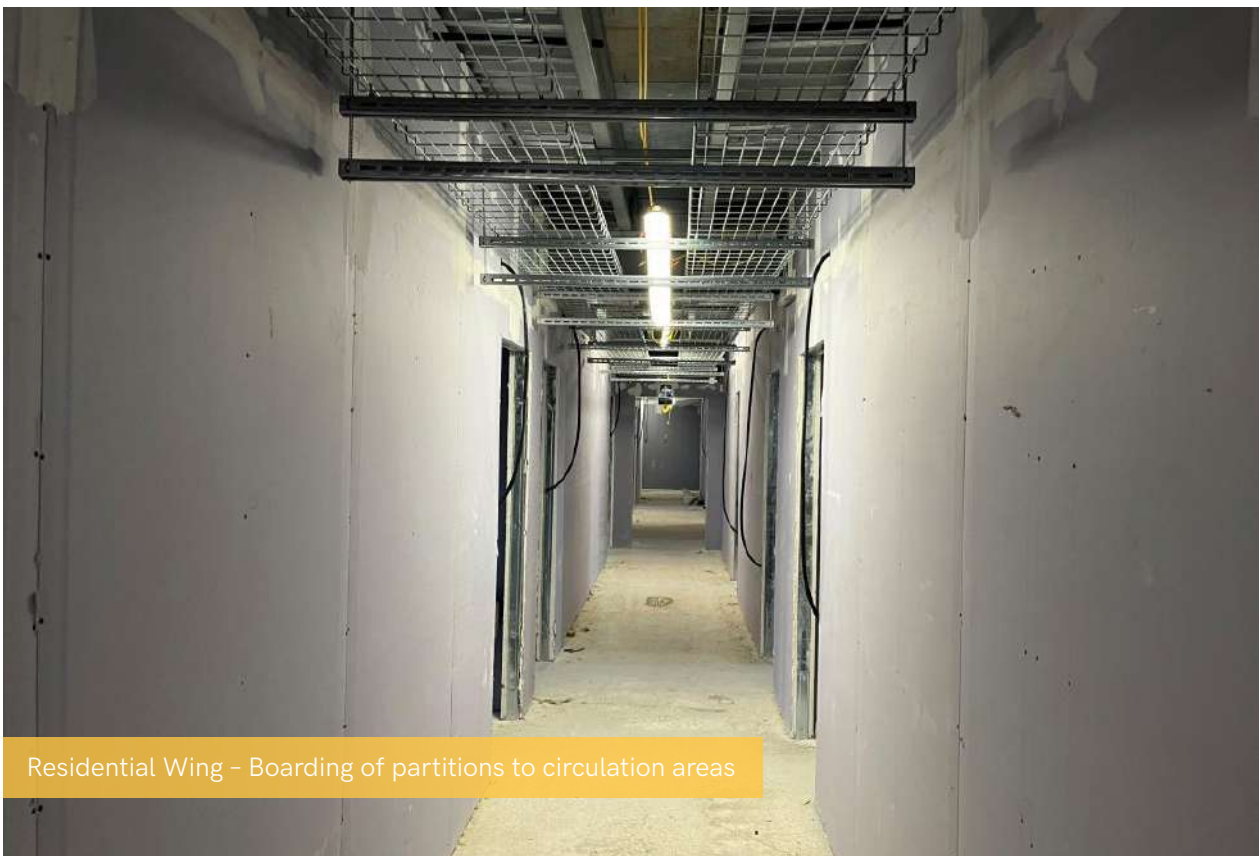
Student Wing - Internal doors, doorframes and architraves



Student Wing - Kitchen units on-going



Residential Wing - Cable trays on-going



Residential Wing - Boarding of partitions to circulation areas



Residential Wing - Wall and floor tiling



Show flat

