

Design Buy Build

M A G A Z I N E

Issue 54 2022 £3.95

www.designbuybuild.co.uk

Self Builders



Property Developers



Architects



Interior Designers



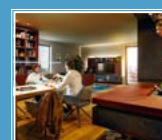
Very Peri in the home

Pantone Colour of the Year 2022: a carefree, confident colour that encourages creativity and expression



New wood effects from Pelipal

Creating a warm, cosy and welcoming atmosphere



The contemporary kitchen

A place to retreat, unwind and seek pleasurable experiences



LUXURY MEDIA WALL ELECTRIC FIRES



BUILT IN FIRES ● STOVE ● TUNNEL ● INSET ● SUITES

INFO@SOLUTIONFIRES.CO.UK

01462 813138

f @SOLUTIONFIRES @

solution
fires

EXCELLENCE IN ELECTRIC

WWW.SOLUTIONFIRES.CO.UK

ISSUE HIGHLIGHTS

- 04-06 First look: Lydden Hills contemporary living set within the unspoiled rolling countryside of the North Downs**
Lydden Hills, an exclusive new development in the North Downs has been revealed by leading Kent developer Pentland Homes.
- 20-21 New wood effects from Pelipal**
Beautiful bathroom furniture that creates the wonderful look of wood without compromising quality or functionality.
- 22 The rise of the conscious consumer: Why sustainability matters**
Estimates suggest that the demand for water may exceed its supply in the next 20 years. This highlights the importance of water sustainability, particularly in residential buildings.
- 30-31 The contemporary kitchen, designed for connection and collaboration**
After learning to live with new social restrictions and regional lockdowns, the home has become a place to retreat, unwind and seek pleasurable experiences amongst the everyday.
- 42-43 Sustainable new-build home built with Kebony façade adorns rugged Welsh coastline**
Built into a rugged hillside overlooking the extensive natural coastline in South Wales, a new-build family home with a sustainable vision is now complete.
- 48-49 Net zero pioneer Futurebuild returns for 2022**
Futurebuild, the event that's championed a sustainable built environment for the past 16 years will take place from March 1 to 3, 2022, at the ExCeL London.

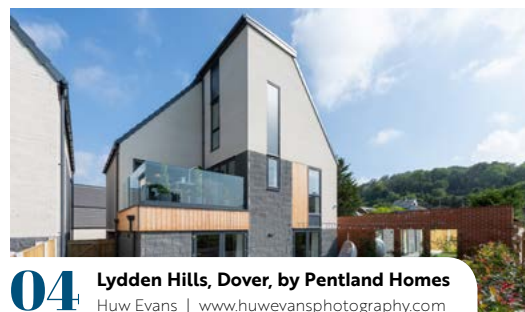
PRODUCTS & SERVICES

- 04-06** Contemporary Living
07-19 Editor's choice
20-25 Bathrooms & Wetrooms
29-37 Kitchens
38-41 Doors, Windows & Fittings
42-43 Sustainable Living
44-45 Drainage & Plumbing
46-47 Floors & Flooring
52-60 Heating, Ventilation & Insulation
61 Home Automation
62-68 Interiors & Interior Design
72-73 Lighting
74-79 Landscaping & External Works
80-81 Safety & Security
82-83 Tools, Plant & Equipment

SHOW PREVIEWS

- 26-28** KBB Show
48-51 Futurebuild Show
69-71 Surface Design Show

COVER PHOTO



04 Lydden Hills, Dover, by Pentland Homes
Huw Evans | www.huwevansphotography.com

Design Buy Build - www.designbuybuild.co.uk

Editor in Chief
Antony Holter
antony@designbuybuild.co.uk
01304 806 039

Editor
Fiona Medows
fiona@designbuybuild.co.uk
01304 806 039

Sales Director
Rebecca Charlesworth
rebecca@designbuybuild.co.uk
01227 936 977

Studio Designer
Sarah Johnson
sarah.johnson@mhmagazine.co.uk

Business Manager
Josh Holmes
josh@mhmagazine.co.uk

Publishing Director
Martin Holmes
martin@mhmagazine.co.uk
01304 806 039

Editorial Assistant
Tom Moore
tom@designbuybuild.co.uk

Digital Manager
Jamie Bullock
jamie@mhmagazine.co.uk
01227 936971



Published by:
MH Media Global Ltd
Office 15, Second Floor,
Innovation House, Discovery Park,
Ramsgate Road, Sandwich,
Kent, CT13 9FD

Tel: 01304 806 039

© MH Media Global



FIRST LOOK: LYDDEN HILLS CONTEMPORARY LIVING SET WITHIN THE UNSPOILED ROLLING COUNTRYSIDE OF THE NORTH DOWNS

Lydden Hills, an exclusive new development in the North Downs has been revealed by leading Kent developer Pentland Homes.

Set within an Area of Outstanding Natural Beauty, Lydden Hills' distinctive modern architecture offers thirty-one three and four-bedroom houses each benefiting from gardens, terraces, and uninterrupted views of the rolling hills, located just a few miles north of Dover with UK and international rail connections.

The eagerly anticipated first phase to be released at Lydden Hills incorporates eight homes perched on the top of the site: The Cobalt, The Dolomite, The Graphite, The Limestone, The Marlin with prices starting from £600,000. Contemporary, architecturally designed exteriors suit both the location as well as the topography of the site, while the attention to detail on the luxury interiors is second-to-none.

The bold lines of Lydden Hills within the picturesque village of Lydden are the work of Procters & Matthews Architects. The architectural practice has established a reputation for distinctive contemporary homes in London and across Southern England.





The design brief was to create a fresh, contemporary style informed by the agricultural structures of the Kent countryside. The result is a striking new aesthetic based around a palette of cool muted greys where detail and proportion combine to deliver a sense of place.

With its close proximity to the French borders, the development oozes cosmopolitan glamour. Honky, the award-winning, multi-disciplinary architectural and interior design practice completed the interior design, drawing on Lydden Hills surroundings of both nature and sea.

"The bold lines of Lydden Hills within the picturesque village of Lydden are the work of Procters & Matthews Architects."



Paul Dawson, Design Director, Honky says:

"The stunning landscape of the North Downs and its tapestry of colours was the main inspiration for the design of the overall scheme, with the area's natural tones of neutrals, golds, rusts and blues featured heavily throughout the homes. We wanted to evoke the reflection of the scenery into the design to create a warm, inviting and elegant home."

The colour scheme of gold, blues and dark woods create a luxurious feeling inspired by those of exclusive private beach clubs and the marble of the tables emulates the grey and silky nature of the pebbles on the beaches, and the artwork a reflection of the rugged white cliffs."



Each home has ample living space, and seven of the eight have two reception rooms. Spacious ground floor rooms are designed for informal family living with open plan living and kitchen areas equipped with Siemens and Zanussi appliances and a mixture of stone and laminate worktops. The homes have landscaped gardens at the front and large double bifold doors to the rear gardens which allow easy access to gardens with uninterrupted views. Homes benefit from either carports or garages, outside taps and burglar alarms are included as standard.

A mix of traditional two-story and three-story homes offers spacious living areas, those with additional floors have been designed with a more formal reception room with a quiet area for study and working from home. All have double glazing, underfloor heating to the ground floor and Stelrad compact style radiators to upper floors. Principal bedrooms have large bi-fold doors that fill the room with natural light and lead to a decked upper terrace, taking in the view of the surrounding countryside, perfect to watch the sunset.

All houses include spacious bathrooms with full-size baths and feature contemporary white sanitaryware with black Vado mixer taps and heated towel rails while large de-mist mirrors are fitted over vanity units complete with LED lighting. Master bedrooms include connected bathroom suites and all bedrooms including second floor guest rooms feature full height wardrobe units.

The rolling countryside of South-East Kent offers the perfect home for nature lovers, surrounded by woods and



fields ideal for walking, running, and cycling. Dover Castle, Canterbury Cathedral, Kearsney Abbey and Russell Gardens, The Turner Contemporary and Howletts Wild Animal Park are perfectly located under a short drive away.

The historic town of Dover is on the high-speed rail link to London St Pancras with travel taking just over an hour, while travel to Europe is just a ferry away at the port of Dover nestled just beneath the White Cliffs. Canterbury is just 19 minutes away by car.

Karrina Oki, Sales and Marketing Director, Pentland Properties says:

“This is a rare opportunity to obtain a three or four bedroom home featuring the very best of contemporary design, set in unspoiled surroundings with unparalleled views of Lydden Hills - a rich and varied landscape in the North Downs. With two reception rooms, landscaped gardens and master bedroom terraces across each home, the development is the ultimate in countryside luxury location with superb transport connections.”

Viewings are by appointment only. For further information and to book an appointment, email lyddenhills@pentlandhomes.co.uk or call 01304 680 062.

**Lydden Hills, Dover, by Pentland Homes.
Huw Evans | www.huwevansphotography.com**



Arridge Garage Doors

Since 1989



- Top Brands
- Discounted Supply only to trade and retail
- Quality installation service available

★ REVIEWS
4.82 Rating

sales@arridgegaragedoors.co.uk
arridgegaragedoors.co.uk • 01691 670 394



- Quality factory reject Celotex insulation boards
- Thickness from 12mm to 250mm
- Standard size 1.2m x 2.4m
- Other sizes are also available
- Discount available for large orders
- Nationwide delivery subject to agreeing on delivery cost



Collection from

Unit W, Stafford Park, Listion
Sudbury, Suffolk, CO10 7HX

Culford Sawmill, Brandon Road
Culford, Suffolk, IP28 6UE

Office: 01787 370 295 | Mobile: 07963 695 226 | sales@economicinsulation.com

www.economicinsulation.com

ZOO

ARCHITECTURAL HARDWARE

Request a copy of our brand new 472 page catalogue today!



Zoo Hardware are designers and suppliers of architectural door hardware, including door handles, knobs, locks, hinges and much more. Dedicated to ensuring its products meet the highest standards, Zoo Hardware uses only high-quality aluminium, brass, steel and zinc. This eye for detail and strive for quality is of the utmost importance for Zoo Hardware and as such, the company is confident that it can provide the highest quality products at the most competitive prices.



Through a determination to consistently innovate, develop and deliver state-of-the-art products, Zoo Hardware has designed Rosso Tecnica a new and exclusive collection of European inspired designer levers.

Manufactured from Grade 304 stainless steel, which has been specifically selected for its high-corrosion resistance, durability and hardness properties, the Rosso Tecnica range has been purposely designed to provide an exceptional performance for use in both domestic and commercial applications.

Always committed to staying ahead of the crowd, Zoo Hardware takes inspiration from contemporary trends with a focus towards minimalism and simplicity, this led to the company identifying a gap in the market. Zoo Hardware recognised the need for a new range of high-performance, design-led furniture, with hard-wearing decorative finishes; powder coated matt black, PVD satin brass and PVD satin bronze, to stand up to today's requirements for hardware. With this in mind, the Rosso Tecnica range was created and delivers high-quality door furniture with a stunning aesthetic appeal to suit any modern interior.

Offering a broad range of lever styles to suit even the most discerning tastes, from the industrially styled 'Orta' lever to the subtle curves of the 'Como', each design has been meticulously created to be both ergonomically and aesthetically pleasing, while meeting the technical requirements of the applicable BS EN standards.

Rosso Tecnica has been designed and produced using a combination of both solid cast components and tubular components, where quality is the main consideration with an efficiency of material use to maintain cost

effectiveness. This gives the range affordability while maintaining an exceptional, quality look and feel, and if your specification requires consideration around The Equality Act, the Maggiore Lever is a 19mm diameter, return to door lever that meets the dimensional requirements of BS8300 and Approved Document M of the building regulations.

The introduction of a newly engineered 'Squircle' rose, a rounded square known in mathematical terms as a 'superellipse', allows the complete customisation of both the levers and accessories to have a completely different look and feel from the standard round rose option. As well as being aesthetically pleasing, the Squircle rose has been designed for easy installation on the existing sub-rose, making it a simple and cost-effective solution for creating a modern and fashionable environment.

The product is supplied with both wood screw and bolt through fixings, and a far more user friendly allen key for installation of the grub screws that are situated on the underside of the lever for improved aesthetics. All levers are supplied on a sprung rose configuration for improved operation and longevity.

It's not just about the levers either, Rosso Tecnica is a fully suited range, with complementary products including, hinges, door closers, flush bolts and more, being offered in each of the three hard-wearing finishes to create the perfect aesthetic for your project, whether it's a residential dwelling or commercial office space.

For more information about Zoo Hardware or our Rosso Tecnica range, please contact one of our friendly sales team using the details below.

T: +44 (0) 1228 672 900

E: sales@zoo-hardware.co.uk



ZOO
ARCHITECTURAL HARDWARE

T: +44 (0) 1228 672 900
E: sales@zoo-hardware.co.uk
W: www.zoohardware.co.uk



T-T Pumps supplies pumping system to Lowestoft's flood risk management project

The consultants and contractors for the new pumping station at Velda Close looked no further than T-T Pumps to design, supply and install the equipment needed to meet the demands of the Lowestoft flood risk management project. Drawing on decades of technical and site expertise, T-T Pumps were an essential partner to ensure the scheme's success.

T-T Pumps was the only choice made by the construction contractors. With an existing relationship built on trust and long-term supply reliability, the Velda Close pumping station component of Lowestoft's new flood defence project was in good hands.

As the pumping station would have unique characteristics to meet the project's strict requirements, T-T Pumps' involvement from the inception of the pumping station's design was critical to the entire project's success.

For Drainage and Effluent pumping systems, call our experts today:
+44 (0) 1630 647200 | www.ttpumps.com



FOUR OAKS CASH & CARRY

Plants and Sundries to the Trade.

Based in Lower Withington, Near Macclesfield only five miles from junction 18 M6, we have great access to all major link roads.

Our huge range of stock includes olives and palms in pots from 1litre up to 1,000 litres available all year round. Four Oaks has an extensive product line of over 1,500 lines of trees and shrubs on display from starter plants to specimen sizes

We have recently added garden furniture to our portfolio and increased our already extensive pot range from 2" to 500 Litre pots including terracotta, glazed and genuine half whiskey barrels.

www.fouroaks-nurseries.com



OSF – Optimal, Simple, Flexible

The new OSF balustrade profile manufactured by Sadev in France, is a smaller, more cost-effective alternative to similar systems on the market at the moment.

One of the main advantages of the OSF is the ability to offer single side clamping of the glass, reducing fixing time and the need to have access from both sides.

At just 55mm wide and suitable for glass thicknesses between 12mm & 22mm, it has been tested and achieved a rating of .74kN. It is available in base fix, side fix and recess fix variants.

OSF is a welcome addition to the Sabco range stocked by Barrier Components Ltd and will be available from the new year

OSF – Optimal, Simple, Flexible

Barrier Components Ltd
01708 891 515
www.barrier-components.co.uk

HELPING THE UK CARPET AND TEXTILE FLOORING SECTOR BE MORE SUSTAINABLE

Carpet Recycling UK is an independent non-profit membership association working with companies across the sector. We help foster strategic collaborations and networks to develop viable solutions for carpet and other textile flooring waste. With core funding from flooring manufacturers Balsan, Betap, Brintons, Cormar, DESSO, ege, Headlam Lifestyle Floors, Milliken and Shaw, our network spans the carpet supply chain and waste recovery sector. This allows our members to take advantage of emerging opportunities in reuse and recycling including sustainable raw materials for manufacture and identifying

suitable outlets nationwide and innovations in material processing. CRUK is seeing an emerging trend where more developers are requesting that projects incorporate sustainable flooring which can include repurposed commercial carpet tiles, as well as specifying products made with recycled content. Through CRUK, manufacturers are helping their clients to segregate their fitting and uplifted wastes, saving on costs and resources.

carpetrecyclinguk.com



SMART, LOW CARBON STRUCTURAL SOLUTIONS FOR A SUSTAINABLE BUILT ENVIRONMENT

C-Probe Systems produce smart, low carbon materials for the repair, protection, and monitoring of structural corrosion in the built environment. LoCem®, their alkali activated cementitious material innovation, is used as a concrete repair material and an anode material to provide cathodic protection to structures.

Embedded sensing and online management of data is partnered with C-Probe's product range to create whole life protection and corrosion management systems to be retrofitted into structures. These are managed and controlled through the Achilles Interactive Management System (AiMS), which provides service life tracking and resilience



data around a structure's performance.

C-Probe has recently focused their efforts into new construction, launching a new product: LoCem® Modular Anode Unit (MAU). This is designed specifically for protection of structures from their birth to give indefinite life. This is an ICCP component which is installed as a "plug-and-play" system with current densities providing long-term resilience and control.

C-Probe Systems Ltd | W: www.c-probe.com
Tel: 01744 611 555 | Email: cwalker@c-probe.com

CAN YOU REMEMBER WHEN WATER MADE YOU SMILE?

Aqua good Water treatment engines are the new way of effectively creating the best water for the environment you live in. Our unique all encompassing systems produce the perfect water for your needs. Water engines are designed to treat large volumes of water and are fitted onto the incoming water supply to the building. Most often the water engine provides a water quality that is suitable for the equipment and activities of the individuals however we provide a number of add on filtration units which cope with the most demanding water problems if required.



Our systems have been supplied to many customers which include homes, hotels, restaurants, breweries and factories.

Visit www.aquagood.co.uk

FIRE SAFETY CONSULTANCY FIRM OF THE YEAR IN THE UNITED KINGDOM, ENGLAND



DB FIRE SAFETY LIMITED

YOUR PARTNER FOR FIRE SAFETY

We are an independent fire safety consultancy with more than 30 years' experience.

From our office in Peterborough we are proud to service clients' premises throughout the UK. Working with a number of building contractors and architects, we provide Fire Strategy documents for buildings under construction or renovation. We will also carry out necessary Fire Risk Assessments prior to hand-over to the building owners. Our specialities are residential care premises, schools, and blocks of flats



Fire Risk Assessments

Fire Strategy Documents



DAVID BLACK
DB FIRE SAFETY LIMITED
Tel: +44 (0)800 772 0559
Email: enquiries@dbfiresafety.co.uk
Web: www.dbfiresafety.co.uk



Unit 1, Wittering Service Station
Townsend Road
Wittering
Peterborough. PE8 6AB



TORC MAKE EVERYTHING BY HAND FROM THEIR STUDIO IN THE BRITISH ISLES



Working alongside a talented team of artisans this family run business really specializes in textures, scale and especially bespoke design. The design side of the business proving to be very popular with landscape architects and garden designers alike realizing just how much expertise this company has to offer with a wealth of experience in design and problem solving to bring to the table. Torc welcome the opportunity to be involved at the design stage and are happy to contribute ideas when requested. Frequently being commissioned to provide planter designs, outdoor furniture and paving as a one-off template for both commercial and residential spaces.

Launching their new contemporary shaped water bowl this month was a good example of how far they can go – the diameter of this little beauty can be offered up to 3m wide. Their green credentials are pretty impressive too.

www.torc-pots.com



TORC:POTS



@torc_pots



www.torc-pots.com

Lime in construction today

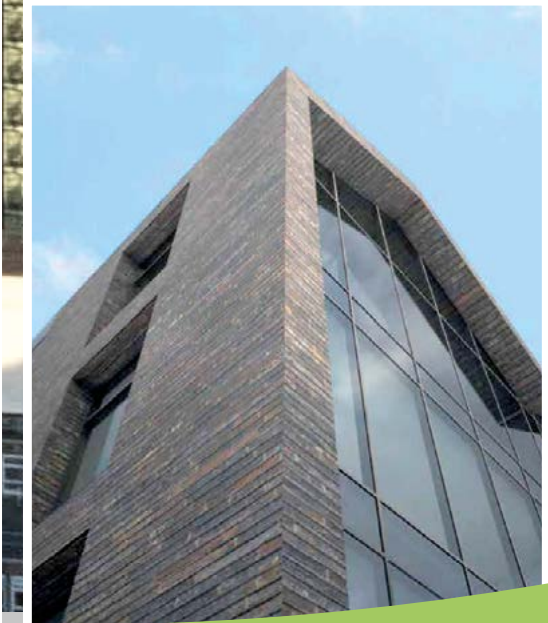
Lime Based Building Products

Lime is a truly sustainable building product that has withstood the test of time. Highly workable with excellent aesthetic and performance qualities that meet the needs of modern construction and building conservation.

Precise colour-matched mortar, mixed on-site to reduce carbon emissions and the perfect partner for low-energy sustainable materials.

08458 733 888 | ecoright.co.uk





PANTONE COLOUR OF THE YEAR 2022: VERY PERI IN THE HOME



Harlow Light Grey Fabric 2 Seater Sofa - £599.99

A red violet infused periwinkle, Very Peri is a carefree, confident colour that encourages creativity and expression.

Rebecca Snowden, Interior Style Advisor at Furniture And Choice (FurnitureChoice.co.uk), shares how to introduce this dynamic colour into your home for a stylish update.

1. ADD POPS OF VERY PERI TO A LIVING ROOM

"Just as Pantone created Very Peri from scratch specially for the year ahead, channel that same curiosity and spirit of discovery in your home for a lively start to 2022," says Rebecca.

In the living room, use a light grey sofa as a chic yet grounding base for layering colours. Then introduce pops of carefree Very Peri through soft furnishings like cushions, artwork or pendant lights. "Match Very Peri with bright pastels like coral and turquoise and plenty of white to get a bright and creative space," she adds.



Harlow Slate Grey Plush Fabric Armchair - £349.99

2. CREATE A COSY, COCOONING EFFECT WITH VERY PERI WALLS

"Very Peri possesses the calming qualities of blues with a hint of excitement from its red violet undertone - resulting in a colour that's soothing yet not flat or boring which makes it great for a wall update," says Rebecca.

Identify a quiet space in the home like a reading nook or relaxation corner and paint Very Peri on the walls. "Choose a comfy grey armchair to complement this imaginative purple hue, and accent with metallic finishes to brighten the space."

ABOUT FURNITURE AND CHOICE:

We're a furniture company that brings together achievable room ideas, and feel-good prices. And we back it up with free delivery, and free returns. And 0% finance, and UK customer service. And thousands of independent 5-star reviews.

We're Furniture And Choice, and since 2005 we've made it easy to transform your home.

▶ To find out more, visit
www.furniturechoice.co.uk/about-us/

Reused



Ocean
Plastic

REUSED OCEAN PLASTIC

Using waste plastic collected by local people from beaches and riverbanks that is then cleaned, broken down and reused to make new transparent packaging



For more information and samples contact us:



www.bellpackaging.com

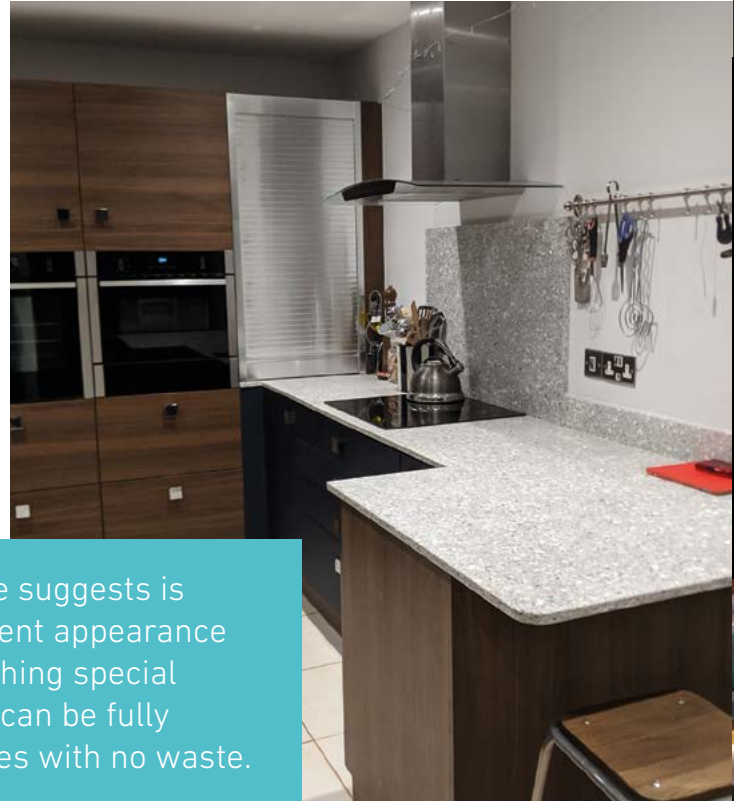


+44 (0) 1582 459292

Diamik Glass the alternative and sustainable luxury surface

Diamik Glass have created two environmentally friendly products Ecorok® and Decorok®, both products are made from recycling waste glass. Both are durable, strong, beautiful and have commendable environmental credentials. Years of development and trials have resulted in two products that offer a creditable alternative to imported, mined products.

Ecorok® is perfect as worktops for kitchens, bathrooms and utility rooms. Made from a minimum of 85% recycled glass and the remainder a mixture of resin and pigment which makes them non-porous, scratch resistant, smooth to the touch and beautiful to the eye. As Ecorok® is non-porous it makes it highly resilient to stains and marks. Cleaning for the eco-warriors amongst us can be as simple as mild soapy water, but if you need to give it a deep clean you can use scouring pads and bleach sprays without damaging the surface.



Decorok is made using 100% glass and as the name suggests is targeted as a more decorative material. Its translucent appearance featuring crushed glass design provides that something special in key environments. Just like Ecorok™ Decorok™ can be fully recycled at the end of its life to produce new surfaces with no waste.



Diamik harvests only local glass destined for landfill, then processes this waste, using craftsmanship into perfect sheet sizes for every customer. This is supported using modern technology to create these two innovative and versatile products. Their latest digital templating technology also allows for millimetre perfect measuring and cutting to create shapes – they even offer to video the procedure as a keep sake for the customer or to use as a promotional tool.

Diamik's products can now be found in all parts of the UK and Europe which is testament to how quickly people are moving towards a more sustainable future. Customers have been looking for something new, something fresh a new design with ecological street credibility. Ecorok comes in over fifty standard designs with new ones being created every month. The Diamik Bespoke option will create your very own unique special surface. The only limit is the customers imagination!



DIAMIK
GLASS

If you would like to find out more about these unique products contact Diamik Glass on 0113 249 7001

E: info@diamik.co.uk or visit their website www.diamikglass.co.uk





DIAMIK
ECOROK™

Eco friendly, luxury surfaces

Our glass surfaces are manufactured using waste glass destined for landfill. A combination of craftsmanship and high-tech processes produce beautiful, hard wearing surfaces. Ecorok is scratch resistant, non porous and smooth to the touch making them easy to clean with just warm soapy water. We offer our customers a full service package including digital measuring, delivery and installation.

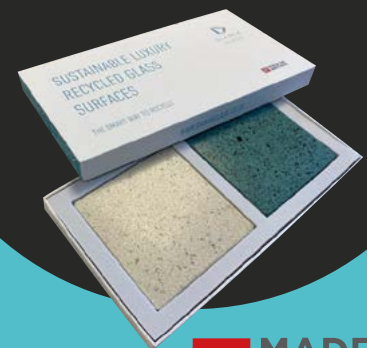


- ▶ Kitchen worktops
- ▶ Splashbacks
- ▶ Bathroom vanity units
- ▶ Wall panels
- ▶ Tiles - various sizes
- ▶ Bar tops
- ▶ Reception areas
- ▶ Serving stations
- ▶ Tea points
- ▶ Retails counters

We work with architects, designers and developers in addition to our rapidly expanding personal customer network. Our work can be found in homes and commercial buildings around the whole of the UK.

Our sustainable clients include, HMRC, Diageo, Kellogg's, Breeam, Dorrington PLC, Fortnum and Mason, Leeds Building Society, and MasterCard.

**ORDER SAMPLES
ONLINE**



**MADE IN
BRITAIN**

Get in touch if you would like to discuss how Ecorok™ recycled glass surfaces can help you to become more sustainable in the future.

Diamik Glass on 0113 249 7001 email info@diamik.co.uk www.diamikglass.co.uk



SPRUCE UP THE BATHROOM WITH THE NEW WOOD EFFECTS FROM PELIPAL

Wooden textures have a natural ability to create a warm, cosy and welcoming atmosphere in any room of the house.

It's no wonder that wood has featured in our homes for thousands of years. The only downside with the natural material is its need for low humidity levels and stable temperatures. That's why we have developed a number of bathroom furniture ranges featuring composite wood effect surfaces instead of raw timber. The result? Beautiful bathroom furniture that creates the wonderful look of wood without compromising quality or functionality.

Steven Jaques, Pelipal National Development Manager for InHouse Inspired Room Design, says,

"Longevity and resistance to changing levels of humidity and moisture are fundamental for bathroom furniture design and selection. Modern wood effects, such as laminate, are an increasingly popular alternative to solid timber as they create the look of the natural material without compromising cost, durability or hygiene."



Reminiscent of contemporary Japanese spa design, Series 6025 range from Pelipal brings the spa to you. Bathroom furniture as featured above in Riviera Oak has an RRP that starts from £1,726.00 exc. VAT. Available from Pelipal's UK and Ireland network of retailers. For details, please contact InHouse Inspired Room Design at www.inhouseltd.co.uk or call 01434 400 070.

COMBINE NATURAL WITH MODERN

Once upon a time, using wood in the bathroom meant accepting that the natural material would soon start to degrade and lose functionality. Thanks to modern materials it is now possible to have the best of both worlds, and have a beautiful bathroom with the latest technology as well as the timeless and rustic look of wood.

The new 6025 range from Pelipal features minimalist furniture modules, all of which are available in four different wood effects ranging from natural shades of oak to whites and greys. Pair natural timber finishes with clean lines, glossy surfaces and bright LED lighting to create an effortlessly chic and functional bathroom.

MAKE A STATEMENT BY PAIRING WITH DARK WOODS WITH A WHITE BACKDROP

While pale beech and warm oak have been the most common wood effects for some years, darker wood finishes are making a comeback. Contrast deep brown furniture with a bright white wall or light grey tiles to create a statement look.

Steven Jaques, Pelipal National Development Manager for InHouse Inspired Room Design, says,

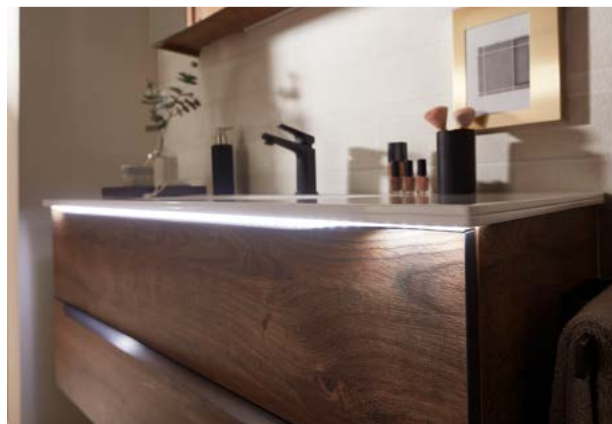
"Organic shapes and materials have the ability to create a really welcoming and grounding feel in the bathroom. Modern wood effects have developed over the past few years and are incredibly realistic nowadays. The Ribbeck oak effect as featured below includes occasional knots and subtle markings that mimic the unique patterns of natural wood. Be bold and go for deep brown wood effects paired with glossy tiles and LED lighting for an earthy, yet sophisticated, touch."

MODULAR FLEXIBILITY

The bathroom is no longer purely functional, and our wide range of elegant and innovative storage solutions available reflects this. This combination of practicality and style means we can now have the best of both worlds, and the bathroom, like the rest of the home, can become an extension of individual personality and style.



Enjoy a healthy dose of luxury with Series 6025 range from Pelipal. Bathroom furniture as pictured above has an RRP that starts from £1,664.00 exc. VAT. Available from Pelipal's UK and Ireland network of retailers. For details, please contact InHouse Inspired Room Design at www.inhouseltd.co.uk or call 01434 400 070.



"While pale beech and warm oak have been the most common wood effects for some years, darker wood finishes are making a comeback."

Modular bathroom furniture ranges, like Series 6010, allow you to tailor your bathroom to your individual needs. Whether that means adding multiple storage units to make sure everyone in the house has space for cosmetics, soaps and everything else, or selecting certain cabinets to make sure grandma can have wheelchair access.

Bring the outdoors in by combining wood effect furniture with natural textures and plants. Series 6010 bathroom furniture as shown above has an RRP that starts from £3,424.00 exc. VAT. Available from Pelipal's UK and Ireland network of retailers. For details, please contact InHouse Inspired Room Design at www.inhouseltd.co.uk or call 01434 400 070.

► The Pelipal collection is available from InHouse's UK and Ireland network of retailers. For details, please contact InHouse Inspired Room Design at <https://inhouseltd.co.uk/> or call 01434 400 070.

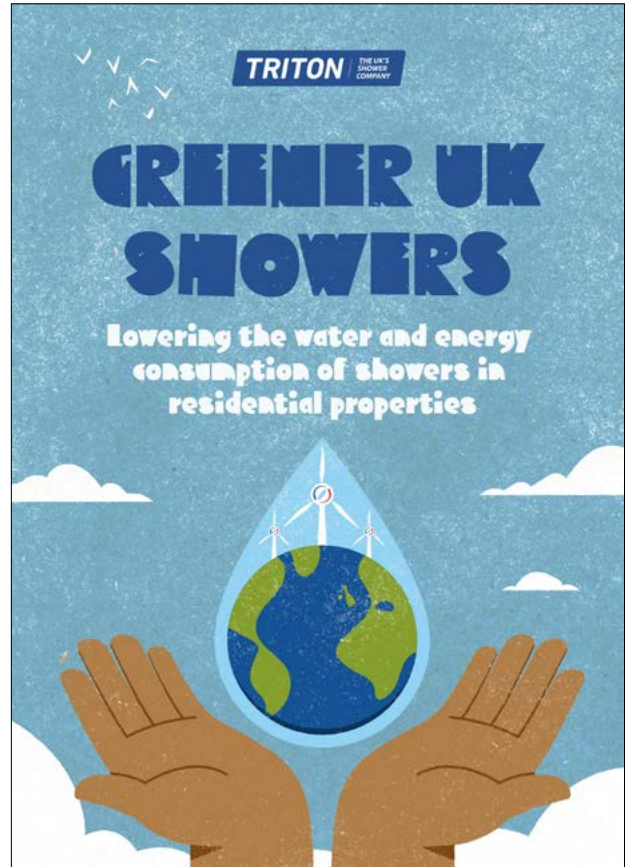
THE RISE OF THE CONSCIOUS CONSUMER: WHY SUSTAINABILITY MATTERS

Estimates suggest that the demand for water may exceed its supply in the next 20 years. This highlights the importance of water sustainability, particularly in residential buildings. Martyn Brown, Contracts and Technical Manager at Triton Showers, explores how this issue can be addressed by incorporating more environmentally friendly measures into housing design.

Within the housebuilding sector, legislation such as the Future Homes Act has already positioned environmental issues front and centre. This is compounded by a survey of homeowners carried out by Triton, which revealed 80 per cent of respondents expect housebuilders to create environmentally friendly builds. A further 86 per cent declared that water wastage is an important issue to them, demonstrating the growing market for properties that prioritise green factors.

GOING ELECTRIC

This has placed emphasis on ensuring bathroom appliances are as efficient and eco-friendly as possible. As electric showers only heat what is needed, opting for this type of product over a mixer shower could save an average family of four more than 48,000 litres of water per year, according to Triton's findings in its Sustainability Report: Greener UK Showers.

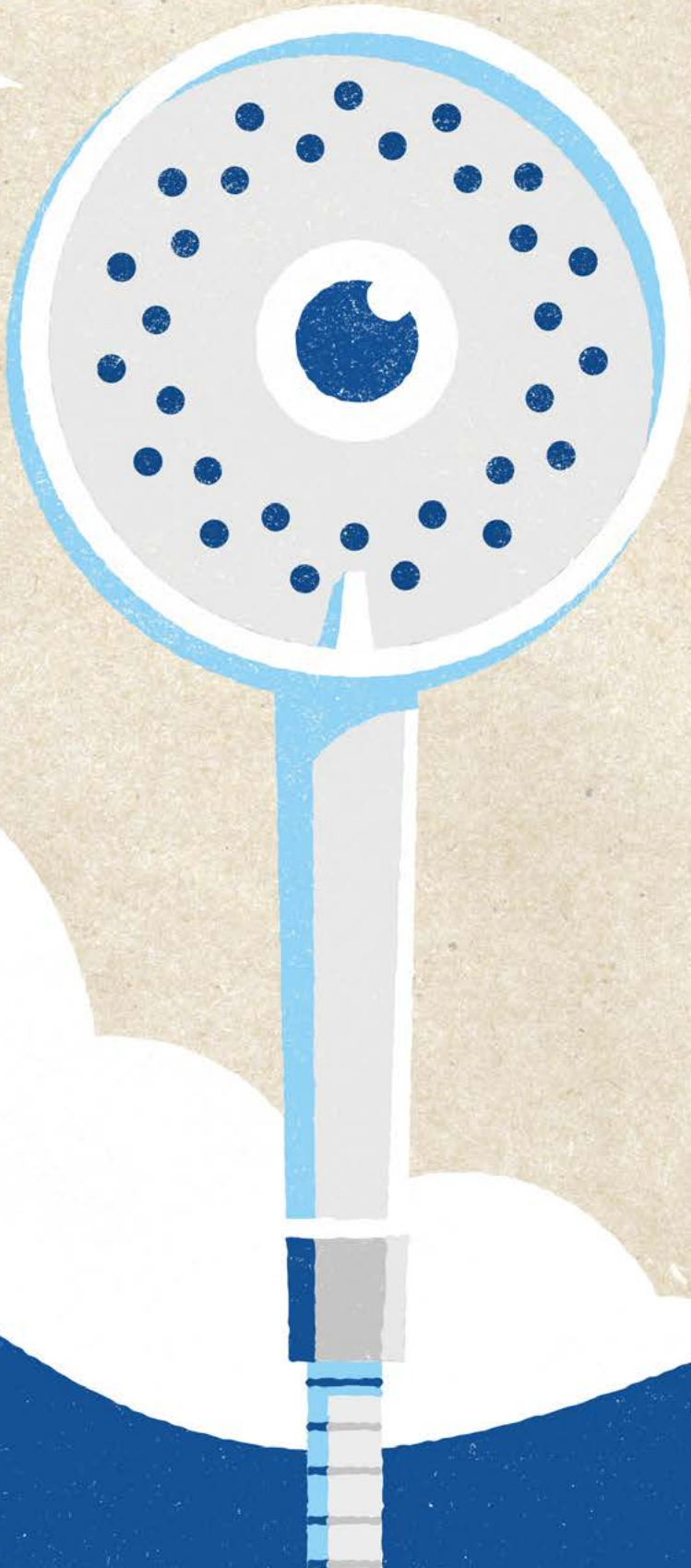


With electric showers set to play a key role in reducing domestic water and energy consumption, housebuilders can take advantage of the latest technology. The recent and widely documented increase in UK gas prices also highlights the importance in going electric for financial reasons. Triton's range is designed to provide an energy efficient option for all tastes and budgets, ranging from the sleek Amore to the household favourite T80 Pro-Fit. Crucially, these options not only offer increased efficiency, but a great user experience too – without compromising on style.

It is everyone's responsibility to do their part in protecting natural resources, from manufacturers and developers through to customers themselves, which is why it's essential that each aspect of the supply chain works together to achieve this.

▶ For more information, please visit: www.tritonshowers.co.uk/sustainability

Making a difference in the world takes a certain vision.



Made in Britain since 1975.

Triton electric showers are the best fit for your customers' wallets and our world.

Why? Because they're inexpensive to run and reduce the cost to the environment.

After all, electricity is the most efficient way to heat only the water you need.

Durable, repairable and reliable means less waste. In fact, within our manufacturing process, we've sent zero to landfill since 2015.

When you fit a Triton electric shower, you'll be fitting in with how more and more of your customers are thinking.

And don't forget our Fit & Forget pledge ensuring you and your customers have a better all-round experience.

Don't be on catch up, net more customers now.

Find out more at tritonshowers.co.uk

TRITON | THE UK'S
SHOWER
COMPANY

For a cleaner conscience

WHITEVILLE CERAMICS ENHANCE DIGITAL OFFERING FOR UK CUSTOMERS



Whiteville Ceramics, innovative Italian-designed sanitaryware brand specialising in contemporary design led bathroom interiors enhance its digital offering by investing in a range of online services including its new Innovation webpage and latest catalogue now available to download via the Virtual Worlds User Centre.

Creating unlimited product accessibility for its growing dealer network, this exciting development between Whiteville Ceramics and Virtual Worlds, means new and existing customers can utilize an innovative 4D software platform to revolutionise the design of a contemporary bathroom project. End users can locate a local 4D retailer, as well as design and view virtually during client consultation and prior to purchase = design, present, quote and invoice.

This area also provides access to many other valuable resources including software updates, other manufacturer catalogues, help documentation, FAQs and 'How To' videos all made available to help add value to your customers journey.

Graham Bucktrout, Managing Director at IBC Group says, "We are thrilled to announce that Whiteville Ceramics new UK Catalogue is now available through Virtual Worlds User Centre. To be able to give our customers a true-to-life experience in 4D, will naturally aid our UK retailers in the design and conversion of, any new bathroom projects and enquiries. Taking an almost 'try before you buy' approach is a fantastic way for us to infiltrate the UK market quickly, all the while demonstrating our commitment to high quality innovative sanitaryware featuring the latest technologies that maximise user comfort, function and convenience. "

Whiteville Ceramics new and ever-evolving Innovation webpage is also now live and is designed to showcase the latest design and technologies unique to the brand. Easy-to-navigate, the page highlights the company's range of ergonomic sanitaryware designs and eco-efficient technology like its exclusive VORTIX® rimless system, extra wide comfort seats and patented SAVER® water saving technology in one place.

Informative, beautifully illustrated and all-inclusive, the Innovation webpage also offers direct access to the featured product collections by Whiteville Ceramics, along with a brochure download area and video promo's to engage and inspire.

A great example of the leading-edge sanitaryware designs by Whiteville Ceramics is with the featured image, which shows:

- WING SMOOTH Washbasin 650mm: H156 x W650 x D475mm - White – at £198 including vat
- WING EDGY Close-coupled WC with wing detail, tank and soft close seat: H800 x W375 x D680mm - White – WC from £394 including vat + £120 including vat for WING EDGY Seat

► Brand new to the UK and available now, please contact Whiteville Ceramics:

**t 01922 743 074 | e info@whitevilleceramics.co.uk
www.whitevilleceramics.co.uk | For the latest social updates on Whiteville > Instagram, Twitter, Pinterest & LinkedIn**

OF COURSE YOU SHOULD CHOOSE NATURAL STONE!



Bathroom by stoneCIRCLE

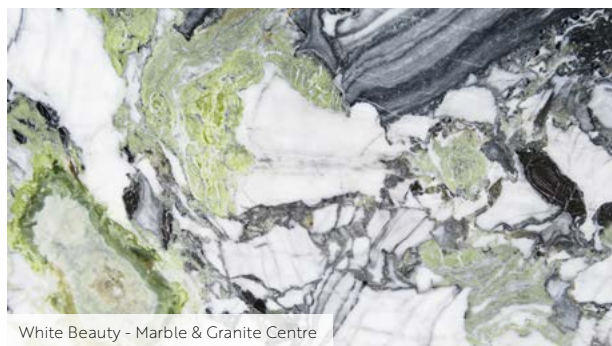
Quarried from the earth, cut and polished to reveal its inner beauty. A material with impeccable environmental credentials. Entirely natural stone. It can be cleaned with neutral detergents and will last for 100s of years. And when you've finished with it, recycle it repurpose it or return it to the earth, from where it came.

So which to choose? Granite, Marble, Limestone, Slate, Quartzite, Sandstone, Onyx? The colour? The finish? Polished or honed, flamed or sand blasted, antiqued or tumbled – the texture needs to suit the application. The where, the how, the what for? Shower floor, bathroom wall, an entrance floor, garden paving, a vanity top, a kitchen work surface, the dining room table, a cantilevered staircase. The choices.

Selecting the right stone for the right application with the most suitable finish will ensure lasting beauty and easier maintenance. Shower and bathroom floors should be non-slip and the material should have a low water absorption. Entrance floors must be hard wearing with appropriate abrasion resistance to avoid tracking. Kitchen surfaces need to be resistant to liquid absorption, heat and acidic content of food and drink. Granite, slate and quartzite work best. And the design, - how to cut economically while maintaining the affect, creating that feeling of luxury without compromising safety or methods of installation.

And how to install to the correct sub-base, thin bed or thick bed adhesive, solid bedded, mechanically fixed, epoxy or cementitious grout, sand and cement bed.

And finally, to maintain it, keep its looks. Now we could all do with a bit of that.



White Beauty - Marble & Granite Centre



Raw Onyx

► If you need assistance with any of the above or would simply like to talk to a stone expert about your project, your choices and how to use this gorgeous material to achieve fantastic results please call Robert Merry on 07771997621 or visit the Stone Consultants at www.stoneconsultants.co.uk.

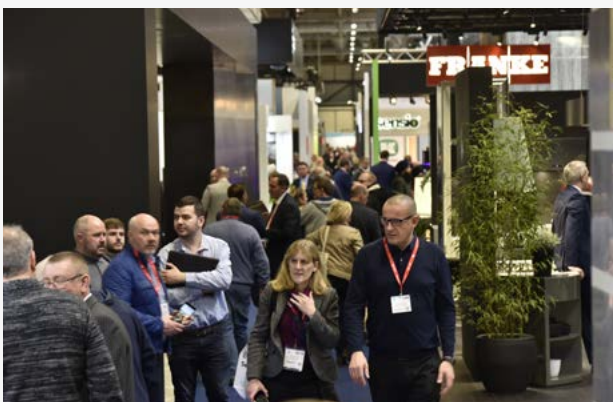
John Ruskin said ... "Quality is never an accident: it is always the result of intelligent effort." Look forward to hearing from you.



VISIT KBB BIRMINGHAM 2022 FOR THE VERY LATEST DESIGN TRENDS

Europe's largest dedicated kitchens, bedrooms and bathrooms exhibition kbb Birmingham, will be returning from 6-9th March 2022.

Taking place at the NEC, kbb Birmingham will feature over 300 exhibitors across 26 different product categories, featuring the very latest innovations and cutting-edge design trends in the KBB sector for 2022.



kbb Birmingham will feature an unrivalled selection of Europe's most established and prestigious brands, well known to the interior design community and all conveniently housed under one roof. Confirmed exhibitors include Quooker, Capel, Electrolux, Davroc and Caesarstone, as well as a number of up-and-coming brands within the sector. Many exhibitors will be offering visitors a first look at their new product launches and sharing the very best in KBB industry trends and award-winning designs. To view the latest list of exhibitors, visit the kbb Birmingham website.

kbb Birmingham Sales Director Jon Johnston comments;

"We are looking forward to reuniting the industry for 4 days of unrivalled networking and specifying. For many of our exhibitors this will be the first opportunity they've had to showcase their latest products and services, following an unprecedented 2 years. kbb Birmingham offers an

"Many exhibitors will be offering visitors a first look at their new product launches and sharing the very best in KBB industry trends and award-winning designs."



unbeatable opportunity for the interior design community to meet in-person with valued partners, colleagues and suppliers - we can't wait to welcome everyone back."

COMMITMENT TO SAFETY

Informa Markets, the organisers of kbb Birmingham, have introduced Informa AllSecure, a series of best practice guidelines and industry standards for all event teams to adopt post Covid-19. As a result, there are 2 key differences that exhibitors and visitors will notice when attending kbb Birmingham:

- All aisles have been widened to 4m across the show floor to allow for easier density management and physical distancing, should this be recommended by local government at the time of the show.
- Physical visitor and exhibitor badges will be replaced by digital badges that can be accessed on any smart phone. All visitors will be encouraged to register online rather than registering when they arrive at the event.

Kbb Birmingham Sales Director Jon Johnston continues;

"Our Informa AllSecure guidelines ensure enhanced health and safety standards. Whether they are exhibitors, visitors, speakers or sponsors, we want all our customers to come to kbb Birmingham to connect, learn and do business, safely and with confidence."

The AllSecure best practice standards raise the bar on delivering safe, hygienic, productive and high-quality organised event experiences. This new standard is now being adopted by key stakeholders in the events industry worldwide and will continue to be updated as new ideas emerge. More information on the 10 key principles that make up the AllSecure policy can be found on the kbb website here.



PRODUCT INNOVATIONS

During the four-day event, the kbb Innovation Awards 2022, in partnership with Blum, will also be taking place. The awards honour the best and most innovative ideas in the KBB industry, recognising the most creative and ground-breaking solutions. Entries for the Innovation Awards will be accepted until 14th January 2022, when their panel of judges will create a shortlist of forward-thinking designs to put forward. Visitors will be able to see the shortlisted products at the show to get an essential preview of some of the most cutting-edge product design from the KBB sector. Details around submissions and entry requirements can be found on the kbb Birmingham website.

► For more information on kbb Birmingham 2022, please visit www.kbb.co.uk

THE SURFACE COLLECTION BY THOMAS GROUP RETURNS TO KBB FOR THE SECOND YEAR EXHIBITING WITH ATLAS PLAN PORCELAIN SLABS

Atlas Plan has derived from Atlas Concorde, world leaders in ceramic production. The technical performance of porcelain stoneware plus refined style comes together across 5 collections; marble, stone, concrete, metal and solid. The Surface Collection is the exclusive supplier of Atlas Plan porcelain in the UK. The innovative, Italian brand has produced Natura Vein and Natura Body technology which is a major discovery for the world of porcelain stoneware. This makes it possible to recreate aesthetic continuity throughout the full thickness of the slab (1.62m x 3.24m).



► If you want to see this for yourself, you can visit www.thesurfacecollection.co.uk or @TheSurfaceCollection on Instagram to watch reels on how to order a complimentary sample.

The rich, aesthetic quality in Atlas Plan designs captivates the beauty of natural material without the maintenance. Although the material looks to have pits and pores, the 0.01% porous nature makes the material hard-wearing and resistant to staining. This makes the material perfect for outdoor spaces due to its weather resistance and natural composition.

"The result is a continuous dialogue between material and inspiration, nature and technology, design and emotion."

If you want to see this for yourself, have the opportunity to meet the team and ask some questions, Atlas Plan by The Surface Collection is exhibiting at KBB 6-9 March 2022, stand number P70.

Atlas Plan is a leading brand that focuses on sustainability. Atlas uses a zero-waste manufacturing process, and the material consists of up to 40% pre-consumer recycled materials and 100% responsibly sourced materials. The eco-sustainable surfaces also have health benefits as reduce the amount of chemically treated items in the home.



KBB 2022 will preview exclusive new colours to the large format slab range along with the introduction of Habitat; new, luxury porcelain sinks.

"Habitat was created to expand the potential of porcelain surfaces, breathing life into a rich range of design elements and sinks that combine creativity and functionality."

► If you want to learn more about the Habitat range, visit the website www.atlasconcorde.com/en/worlds/habitat



ROCK SOLID - THE ULTIMATE SOLID SURFACES FROM STARON

Offering superior solid surfaces for residential and commercial kitchens and bathrooms, as well as for a variety of interior applications including offices, healthcare environments and even wall cladding, Staron's unique, non-porous structure ensures an extremely hygienic surface option.

Made with seamless, join-free technology, no joins or cracks are present in the solid surface, meaning no germs or bacteria can become trapped, which ensures zero bacteria growth, making Staron a leading surface brand.

For those seeking a solid, rock-effect look, choose the gritty grey appeal of Cloudbank, Supreme Dawn or Magnolia for a subtle nod to natural materials. Staron's Ocean View surface comes with a unique fossil-like appearance with watermarked details epitomising the natural weathering that rocks take on when close to the sea. For a smoother look, opt for Supreme Ash Concrete with its flint structure, or select Loam for dark and dramatic earthy rock-effect.

Working in harmony with on-trend pink and green kitchens, the subtle appearance of these muted grey surfaces deliver a practical, yet extremely stylish choice suitable for a multitude of applications.

www.staron.com
staron.eu@lottechem.com



Commodore Design - Bespoke As Standard



Stylish Kitchens, Sell Homes

Heart of the home. Social space. The place where we feed the ones we love. Regardless of how you'd describe yours, the fact is great kitchens sell homes. And 'Commodore Design' kitchens sell homes even faster.

We design kitchens that homebuyers fall in love with. Our 50 years of contract kitchens experience and industry leading future trends analysis can help you predict fashion forward styles and must have features ahead of time. Thanks to us, the kitchens you specify now, will be bang on trend when your customers are ready to sign on the dotted line.

Whatever style, dimensions, materials and finish you're looking for, we can design to your brief and add the clever extra touches that will set your development apart.

Work with us and our wealth of consumer insights today, and you can be confident of kitchens that excite and delight your customers tomorrow.

www.commodoredesign.com
hello@commodoredesign.com



A central island in a spacious kitchen is the perfect place to prepare meals together, finish homework or pull up a barstool for a glass of wine. The Elba range, part of the schüller.C collection as shown in Alvaro slate effect and Indian red matt velvet has an RRP that starts from £16,076.82 exc. VAT (furniture only).

THE CONTEMPORARY KITCHEN, DESIGNED FOR CONNECTION AND COLLABORATION

After learning to live with new social restrictions and regional lockdowns, the home has become a place to retreat, unwind and seek pleasurable experiences amongst the everyday.

All this time spent in our own homes has created a desire to make simple changes to the way we live in order to elevate daily life to a higher level - from seeking out high quality ingredients to chic tableware that can make even a takeaway look like something from an Ottolenghi cookbook.

So what does all of this mean for the kitchen? The contemporary kitchen needs to include plenty of multifunctional social space (whether for entertaining or hosting a team Zoom call), high quality fixtures and fittings (goodbye creaky, stiff drawers) and most importantly, must be built around an intelligent workflow tailored to the individual household.

"The contemporary kitchen must adapt to new ways of living, and become a space that celebrates high quality cooking, dining, hosting and working," says Wayne Dance, Managing Director of InHouse Inspired Room Design. "Values have changed a lot over the past couple of years. Gone are the days of grabbing a quick coffee before a long commute.

We are spending a lot more time at home, and we have a lot more time to enjoy being there. People are shifting towards much more experimental, creative and healthy cooking styles, as well as rediscovering the pleasure of cooking and hosting."

Contemporary kitchen design should shift and adapt in line with emerging consumer trends and behaviours. A rise in home cooking paired with a greater desire for real-life connection, presents an opportunity to evaluate traditional kitchen workflows and ensure that kitchen/dining layouts are tailored to individual needs. As collaborative cooking and entertaining gain greater importance, the InHouse experts predict a number of changes set to take over kitchen design.

Our first prediction starts with the kitchen island. While islands are already a fairly common feature in current kitchen designs, kitchen islands with stove tops could be the next big thing as we move into 2022. Not only do island cooking stations create a sophisticated transition between



"...kitchen islands with stove tops could be the next big thing as we move into 2022."



The Elba range in Alvaro slate effect and Indian red matt velvet creates a luxurious yet highly functional kitchen with plenty of storage and counter space. Part of the schüller.C collection, the Elba kitchen as shown has an RRP that starts from £16,076.82 exc. VAT (furniture only).



Here, Alvaro slate effect and Indian red is applied to living room storage units as well as the kitchen to create a seamless transition between open plan living areas. The schüller.C sideboard as shown above has an RRP of £2,476.83 exc. VAT.

open plan kitchen/dining areas, but they also become a hub of activity and connection, used for much more than preparing meals.

A pleasureable cooking experience requires space, organisation and flow. Here, handleless fronts create a stylish backdrop to daily life and make the most of every centimetre of space available with floor-to-ceiling storage and custom inserts. Strong and sturdy pull-outs keep heavy kitchen gadgets easy to access, and selective open shelving keeps clutter away from surfaces while keeping your favourite items on display.

Embrace open plan living by creating continuity between your kitchen, dining and living areas. The new collection from Schüller includes an extensive range of home furniture, giving you the ability to perfectly match kitchen fronts and unite living spaces as a whole. The result is a highly elegant living area that encourages connection while adding harmony and warmth to the home.

► **The schüller.C collection is available from InHouse Inspired Room Design's network of UK and Ireland independent retailers. For details, please contact InHouse Inspired Room Design at inhousetd.co.uk or call 01434 400 070.**

CONVENIENCE AND WELLBEING AT HOME

Image shows: Pronteau 4-in-1 Propure Monobloc Quad Chrome [PT1160] - Offers 75-98° instant filtered steaming hot water, fresh filtered cold, as well as your regular hot and cold functions. The hot water temperature is set via the PROBOL 2X under sink boiler: intelligent hot water boiler, offering fast and trouble-free delivery of steaming hot filtered water at the touch of a handle. Fast and simple to install, this model offers a 2-litre stainless steel tank, tool-less installation and is an insulated model with low running costs but with quick re-boil times and simple intuitive digital controls.

Five finishes available: Chrome, Brushed Nickel, Matt Black, Brushed Brass and Urban Copper.



Paul Illingworth, Design Manager, Abode

Consumers have come to terms with living in ever changing circumstances for nearly two years now and the market has responded by moving quickly to accommodate an 'at home' lifestyle, which is leaning towards a more adaptable work/life environment. As a result, premium manufacturers are refining their specialisms to attract more discerning end users at all levels of the market and as customer expectations rise, so is the level of product innovation and services being offered in the mainstream: inspiring new form and function in the marketplace that is sensitive to the customer, home and planet.

I think the need for added convenience and increased wellbeing at home in light of the pandemic has led to a reappraisal of the kitchen. These two factors are now converging with a desire to be more sensitive to the environment with factors like conserving energy, save water and even reduce waste at home by encouraging consumers to reduce, reuse and recycle. I think these market trends will only intensify as leading manufacturers set a new standard when providing convenient solutions that benefit both home and lifestyle, especially when they are designed-in to foundational kitchen components like sinks and taps.

Hybrid design that captures a range of different functions, styles and features is providing homeowners with a remarkable level of customisation – be it design or utility.

Stand out trends are therefore looking at expedient interior design solutions that offer both style and substance and a great example of this, is the 4-in-1 hot water tap facilitating hot, cold, boiling and filtered water from one source. I believe the popularity for this type of product has stemmed from the kitchen becoming the 'workhorse of the home' over the last 18 months and so any design element that can help with everyday tasks like preparing food through to cooking and cleaning, is gaining the upper hand and most notoriety within the UK tap market.

High lustre finishes with discernible patinas like copper, contemporary matt black, brushed stainless steel, along with antique brass and conventional chrome continue to stand firm in the modern kitchen, with 2022 trends looking towards distinct polishing and surface treatments that differentiate tap designs from other models on the market, as well as complementary accessories like a hand spray, soap dispenser and even the kitchen sink.

► **For further information, please contact Abode:**
t 01226 283 434 | e info@abodedesigns.co.uk
www.abodedesigns.co.uk

For the latest news & company updates, please follow Abode on Pinterest, Facebook, Twitter and LinkedIn
#WaterTheWayYouWantIt

Bringing the KBB Community Together

kbb Birmingham

6-9 March 2022, NEC Birmingham

Credit: Verona Tiles



kbb

FOR MORE INFORMATION AND TO REGISTER, PLEASE VISIT WWW.KBB.CO.UK

Organised by:



Following:



Lead Media Partner:

kbbreview



Cambridge midnight blue kitchen from Benchmark Kitchens. Prices start from £1,800 for an eight-unit kitchen.

A KITCHEN FOR EVERY SEASON

When Karl Andrews and his wife bought their home in 2018, they knew the property's original, narrow kitchen would not suit the family's needs – especially with the couple's shared passion for cooking and interior design.

With the large garden at the rear of the property providing the perfect opportunity for an extension, the couple quickly envisaged the kitchen of their dreams. They knew that an open-plan design, leading into the garden through bi-fold doors, would create a seamless transition between the living space and outdoor area. Following nine months of building work, the couple finished their project in June and have since been enjoying their new, functional space.

With ample room for a new design thanks to the newly extended 55m² of floor space to the rear of the property and 35m² of additional space to the side, the couple began their renovation project with the most important decision first – the kitchen style. Sharing a love for the traditional shaker design but keen for the kitchen to incorporate a contemporary edge, the couple instantly fell in love with the Cambridge range from Benchmark Kitchens.

The range showcases the perfect marriage of traditional and modern design, with its narrow frames that reinforce the shaker's timeless versatility, while combining an attractive modern twist.

Commenting on his kitchen choice, Karl said: "When it came to choosing our kitchen, we wanted a design that adopted clean lines but wasn't too minimalist in its appearance. We have always admired industrial style interiors and wanted to include references to this aesthetic in our renovation project. We therefore decided to reclaim the exposed brick wall and pillar posts, which contrast perfectly with the sleek, understated cabinetry of the Cambridge range in the gorgeous midnight blue colour option.

"We knew that the key to making an industrial look a success is very much in the mix of textures you choose, so we opted to include knurled brass handles and brass taps

"With so much additional space available and a perfect square shape created, the couple were keen to add an island to their renovation."



Karl adds: "We knew we wanted to maximise our new space but were keen to maintain an inviting ambience that didn't feel too exposed or vacant – so adding an island offered the perfect solution. I love to cook and this renovation offered the perfect opportunity to be indulgent. Therefore, the cooking appliances from NEFF and additional work surface provided by the island have created a feeling of luxury – which is perfect when we have people over as we can show off the new space!"

► For further information about Benchmarx and to download a brochure, visit www.benchmarxkitchens.co.uk

which provide a nod to our industrial inspiration, while also offering an opportunity to introduce warmer pops of colour that contrast perfectly with the deep blue colour of the cupboards. We wanted to build on the pop of colour these created, so opted for brass-finish bar stools that feature around our kitchen island. We also were mindful to create a versatile colour scheme that is both warm and inviting in the evening but remains a cool and refreshing environment during the day".

With so much additional space available and a perfect square shape created, the couple were keen to add an island to their renovation. Growing in demand with homeowners, the couple decided on a floating island in the centre of the room which would not only provide a focal point, but also additional worktop space for when family and friends visit.





DID YOU KNOW YOU CAN SELL YOUR KITCHEN?

How, where and why you should make this your top renovation priority.

As any renovator will tell you, adding a new kitchen is one of the biggest costs associated with a renovation aside from building an extension to put it in. As the hub of the home, it's no wonder they are so expensive and with expense also comes multiple options, finishes and decisions.

However, as building regs change, the carbon reduction deadline approaches and thankfully we all start to realise how important sustainable building practice is. The good news is there is another way you can get a stunning kitchen at an absolute fraction of the cost.



The first step is to assess the kitchen already in place. What condition is it in? Could it be refinished, are the worktops still in good condition but the appliances and units in desperate need of replacing? The second step is to work out if you can make use of the existing kitchen with a few updates like a new splashback or a re paint of the units, for example. Renovating an existing kitchen can save thousands and still create a fresh and usable kitchen.

The third step needs to be where you make your decision. Do you upcycle what you have, do you save what you can and rip out what's there as it's past repair, or instead do you sell it? Selling your kitchen can make you thousands towards your next project. The Used Kitchen Company can sell your existing kitchen and arrange to have it dismantled and collected, giving you a tidy pot of money to use towards purchasing a new one.

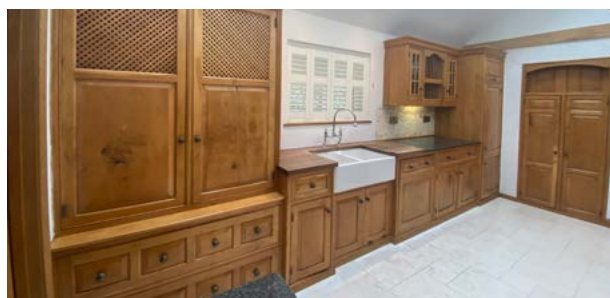


But why stop there? If you're selling your old kitchen, why not also consider buying a 'new to you' kitchen or ex showroom display at up to 70% off rrp.

This can be particularly effective if you're renovating a property to a higher spec. Adding a designer kitchen can add thousands to a property's value yet how many of us have that initial £60k to achieve that designer bespoke look? By purchasing an ex-display kitchen, you can achieve a real wow factor statement and include the fact that the property features a Poggenpohl or Bulthaup kitchen in the listing details without the £60K price tag.

If a designer showroom display is still out of your reach, there's hundreds of amazing quality 'new to you' kitchens available from people who have just decided it's time for a new kitchen or the current kitchen in the property they've moved into doesn't quite tick the boxes for their family.

"The Used Kitchen Company can sell your existing kitchen and arrange to have it dismantled and collected, giving you a tidy pot of money to use towards purchasing a new one."



These huge cost savings can be put towards a new bathroom or even add towards the cost of an extension, meaning you're opening up the floorplan and getting the kitchen of your dreams, all while saving a huge amount of kitchen going to land fill. You can be positive your choice to get a kitchen of your dreams that's perfect for your renovation will also be saving the planet, and who can ask for more than that?

► **Looeeze Grossman is the founder of The Used Kitchen Company which buys and sells 'new to you' kitchens and appliances from showrooms and homes in the UK and internationally.**

www.theusedkitchencompany.com



TOUCH

IRONMONGERY LTD



www.atochofbrass.co.uk

210 Fulham Road, Chelsea London SW10 9PJ

CELEBRATING 40 YEARS

One of London's leading Architectural Ironmongers

Originally called "A Touch of Brass", TOUCH changed their name in 2003 in reaction to advancing market changes in architectural Ironmongery to reflect the broader range of products and finishes that they sell.

In fact today Touch supply 20 different finishes including Brass, Satin Brass, Polished Chrome, Polished Nickel, Satin Nickel, Copper, BMA, Antique Brass, Black, Pewter, Ceramic, leather, Stainless Steel, Satin Stainless Steel, Gun Metal & 4 different shades of Bronze and the list keeps growing. Whatever finish you require, Touch can help you get the right look.

Touch occupy their recently refurbished showroom at 210 Fulham Road, Chelsea, where they stock and display a vast range of their 5,000 products. With a customer base including Architects, Interior Designers, Builders and private Individuals who are interested in the quality end of the Ironmongery market, the company also have a healthy export market to all corners of the world, namely the Middle East, Europe and the Americas.

Touch Ironmongery's owner and founder, Bill Benham, has 42 years' experience in the Ironmongery trade, as does his colleague Jim Haselup. Saleem Qureshi is the newest member of our team and has 21 years' experience, meaning their knowledge is unrivalled in this industry.

The range of products supplied by Touch date from circa 1640 French (Louise XIV) and cover all subsequent periods (Georgian, Edwardian & Victorian), Art Deco and contemporary pieces also make up the product ranges.

Touch showcases the very best of British manufacturing; the best ranges are still produced in the Midlands by craftsmen in factories dating back 200 years or more.

Touch Ironmongery have recently become suppliers for **Designer Doorware (Australia)** Who have beautiful products with a cutting edge design Metal, Wood and concrete. We also have the exclusive rights to sell the **Olaria (Barcelona)** range in the UK.

Olaria make all our bespoke products, they have incredible levels of workmanship.

Touch also sell European manufactured goods which are considered to be of a very good quality.

With trends continuously evolving new and innovative products are constantly under development.

Touch understand that keeping up with the fashion-shifts is imperative in order to provide every customer with the best solution for their requirements.

Ironmongery can be a difficult and complicated aspect of a building project, as a result Touch aim to take this awkward aspect and make it user friendly and clear to understand by offering an on-site service where they carry out a detailed door by door, window by window, room by room Ironmongery schedule, highlighting all requirements and identifying all requirements.

Restoration is a large part of the business Touch will undertake complete Ironmongery refurbishment projects, and can restore old paint covered door furniture to their former glory, looking as good as new again at a fraction of the cost to replace.

For more information about Touch Ironmongery or to arrange a showroom visit please call 0207 351 2255 or alternatively visit www.atochofbrass.co.uk



BRITISH & EUROPEAN MANUFACTURERS SUPPLYING THE FINEST QUALITY IRONMONGERY

Touch combine traditional skills with modern manufacturing techniques to produce the most beautiful, quality fittings, built to stand the test of time.

As well as specialist bespoke items, Touch supply over 1000 products, available in 23 different finishes to furnish high end residential and commercial properties, royal palaces, government houses, historic castles and stately homes.

Olaria, available from Touch Ironmongery

www.atochofbrass.co.uk
& www.olariabarcelona.com





Architectural Bronze Windows, Doors, Screens and Secondary Glazing

Architectural Bronze create stylish, bespoke, hand crafted bronze windows, doors, screens, glass walls and secondary glazing for historic, contemporary and unique buildings.

Bronze is a prized and beautiful metal, which provides an exciting alternative to aluminium or steel. Our products complement any architectural style and can be finished in mid or dark patina.

Our bronze windows and doors are used in refurbishment projects and new builds as our sections fit into flush and stepped reveals; in ancient castles through to contemporary grand designs.

Our unique double glazed secondary glazing improves thermal efficiency, soundproofing and security for townhouses and buildings whilst preserving historic integrity.

Visit us at The Building Centre, London or call for a brochure or samples.

www.bronzecasements.com
or call +44(0)1476 249494



Steel steals the show at Hackney Church Brew Co's uber cool stunning home in the arches

A vibrant brewery in London, Hackney Church Brew Co www.hackneychurchbrew.co, has been given the steel star treatment by Steel Window Services & Supplies www.steelwindows.co.uk, a member of the Steel Window Association www.steel-window-association.co.uk.

Steel Window Service & Supplies' project entailed providing W20 arched, headed external screens, along with interior doors and screens. Over 80 man days, the company supplied and fitted the large entrance screens, two large external screens at the rear of the building, four internal WC doors and one internal double door set. The W20 suite features an industrial patina finish which offers a stunning urban aesthetic echoing the building's heritage whilst also reflecting the nature of this vibrant, fashionable district of London. Another innovative touch was the silicone fronted glazing which replicates perfectly the authentic look and feel of traditional steel windows.

www.steel-window-association.co.uk
020 3475 8049



Grade II listed barn renovation

The Grade II listed barns and farmhouse at Elms Farm, Derbyshire, are packed full of history. Originally built in 1775, the barns are the former home of the Little Eaton Brewery Company, owned by Officers, and were used as a malthouse and granary before later becoming a working farm.

Owners Fiona and John worked with local architect, Paul Gaughan Building Consultants to draw up the plans for the granary, which was being used as a barn at the time. Light and heat were two large factors that had to be taken into consideration during the planning stages. Many of the upstairs' original beams, which the owners had hoped to keep, had to be covered for insulation, and fifteen roof windows were drawn into the plan to bring natural daylight into the top floor rooms. Fiona says "The three bedrooms all boast two Keylite roof windows, and each en-suite has an added one. The light that the windows bring in is wonderful and really helps to enhance the beauty of the property."

For more information about Keylite Roof Windows, please visit www.keyliterateofwindows.com, call 01283 200 158 or email info@keyliteuk.com.

HIGHLY RATED



Crittall's Innervision range of steel-framed glazed internal fixed screens and doors for fire rated applications.

Alarming, annually in the UK there are around 200 fire-related deaths and some 37,000 house fires. It's a no brainer ensuring you do all you can to reduce the risk of fire-related incidents in your home.

Crittall's InnerVision range of glazed internal fixed

screens and doors can now be specified for fire rated applications. The steel-framed system is compliant with BS476 Part 22 providing 30 minutes (FD30) integrity fire resistance.

Available in any RAL or BS colour, InnervisionFR can be supplied as fixed screens, single or double leaf hinged doors, and is hot dip galvanized making it virtually maintenance free.

www.crittall-windows.co.uk | t: 01376 530800
e: hq@crittall-windows.co.uk

THERMALLY SEPARATED SOLUTION

As the focus on climate change continues to grow so does the need for net zero buildings and improving our carbon footprint. GEZE's ECdrive T2 automatic sliding doors with a thermally broken profile system – the GCprofile Therm – offer a solution. The GCprofile Therm accommodates up to 32 mm glass thickness in either two-pane insulation glass with 2x ESG 6mm, UG value 1.0, or three-pane insulation glass with 3x ESG 4 mm, UG value 0.8.

The profile system uses slim aluminium frames which reduce visible sightlines by approx. 30 mm – giving designers greater ability to produce a clean design aesthetic while providing greater efficiency.



With increased performance for leaf weight of up to 140 kg, the GCprofile Therm also boasts improved air tightness (compared to other ISO profile systems), better sound insulation and improved wet weather durability aided by its fit and an optional floor guide with drainage.

It can be combined with manual and motorised GEZE hook bolt locks, without losing thermal separation and the appearance of the system remains discreet, even with locking.

For more information about GEZE UK's comprehensive range of automatic and manual door closers call 01543 443000 or visit www.geze.co.uk

FINBOLT TRIPLE DOOR LOCK SET WINS SBID INTERNATIONAL DESIGN AWARD 2021



DISCOVER WHY FINBOLT, AN ELEGANT, HIGH-SECURITY DOOR LOCKING SOLUTION WITH AUTOMATIC DEADBOLTS HAS WON THE PRESTIGIOUS SBID INTERNATIONAL DESIGN AWARD 2021.

The SBID International Design Awards winners for 2021 were revealed at the Nobu Hotel Portman Square in London on Friday 22 October. Finfort is pleased to announce that it is among the impressive global design talent to have become a SBID product design award winner for its entry, FinBolt Triple Door Lock Set in the Interior Fittings category.

The FinBolt Triple Door Set is the ultimate combination of ultra-security, convenience and beautiful craftsmanship. It is an innovative set of three compact, sleek, recessed door locks equally suited to period or modern wooden doors.

The set includes two FinBolts, one at the top of the door and one at the bottom, simultaneously automatically deadbolting with a sophisticated soft closing action and a third insurance-compliant manual deadbolt which you choose when to use.

The FinBolt lock is a major innovation in door security. FinBolt makes it possible to secure a door at multiple points with individual locks operating independently, that automatically deadbolt every time the door is closed so doors are always secure, without turning a key.

It combines elegant design with award-winning engineering to secure doors automatically. The thumbturn mechanism ensures you can always get out fast when you need to so you can enjoy safer, automated door security that never compromises on style.

To compliment the elegant design, Finfort has partnered with Avocet ABS who supply its high-security 3 star kitemarked cylinders with registered keys which can be copied by ABS authorised key cutting centres.

‘We are delighted to partner with ABS Avocet whose high-security cylinders complement our vision to deliver elegant, convenient, high-security door locking solutions. The thumbturn design was so unique and fitted with our ethos of bringing security and style together.’

Hilary Duggan, Finfort Co-founder.

Steve Ross, Commercial Director for Avocet ABS commented, “when we were approached by Finfort to work

with them on their innovative FinBolt product, we were particularly excited by their vision of a security product that lends itself to the design conscious person. We are already looking at new bespoke finishes for our cylinder to work alongside Finfort’s future plans for an architecturally designed high security product offering.”

Considered one of the most prestigious accolades in the interior design industry, success in the GOLD-standard Awards programme which amassed over 3,000 entries from 85 countries demonstrates the highest level of design excellence across the commercial and residential sectors.

To win, FinBolt went through a two stage technical judging process that considered the innovativeness, functionality, user-benefits and sustainability of the FinBolt Triple Door Lock which accounted for 70% of the decision. The public vote accounted for the remaining 30%.

‘Winning a prestigious SBID award validates the long design journey from a concept of a recessed automatic deadbolt through to creating the FinBolt Triple Door Lock set – a unique, convenient, safer door locking solution that honours the British front door aesthetic.’

Timothy Finn, Finfort Co-Founder.

The full range of FinBolt products are available for purchase from <https://finfort.co.uk/> or from leading architectural ironmongers and locksmiths.

➡ Visit <https://finfort.co.uk/> to find out more about the FinBolt product range.

Visit <https://www.avocet-hardware.co.uk> for more details on the ABS range of cylinders



SUSTAINABLE NEW-BUILD HOME BUILT WITH KEBONY FAÇADE ADORNS RUGGED WELSH COASTLINE

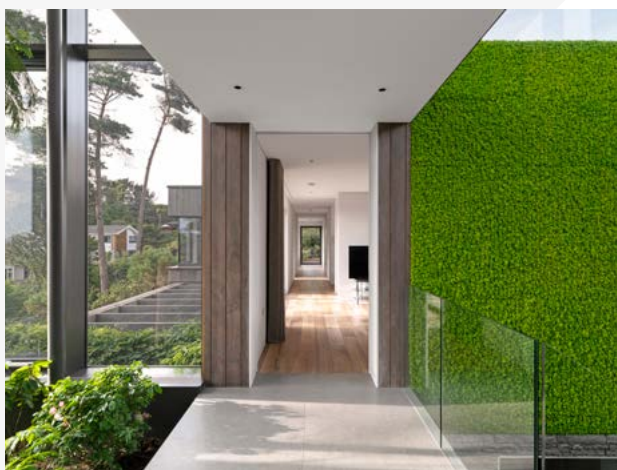
Built into a rugged hillside overlooking the extensive natural coastline in South Wales, a new-build family home with a sustainable vision is now complete.

Designed by award-winning architects, Loyn + Co, the home which blends naturally into the verdant landscape and sits beneath towering pine trees, makes extensive use of Kebony, a global leader in the production of sustainable wood, for the home's façade.



The design brief for the new home was to make the most of the beautiful views, capturing the potential of the sensitive location, in addition to prioritising the contextual importance of the site, topography and existing trees. As keen gardeners, the clients also wanted a house that would be suitable for the warm months and harsher winters. The dwelling is partially cut into the site and organised to not only have wonderful sea views, but arranged so that a central atrium planted with specimen trees provides a winter garden as well as an inspiring circulation space serving each of the three levels and putting nature at the centre of the home.

The family home, which has been cut into the valley side amongst established trees, makes extensive use of Kebony wood, which diverts the need for deforestation by transforming sustainable wood species such as pine into Kebony wood with features that are comparable, and in some cases superior, to those of precious tropical hardwoods.



"The new home has been thoughtfully knitted into this complex site to work with the varying levels and existing beautiful trees."

Following the COP26 climate summit which saw 100 world leaders promise to end and reverse deforestation by 2030, Loyn + Co's decision to make extensive use of sustainably-sourced Kebony wood for the stunning new-build home reflects the global shift to favour sustainable materials in construction, which will soon become an imperative for architects, homebuilders and real estate developers to rapidly curb the impacts of climate change, including the destruction of trees which depletes forests that absorb vast amounts of CO2.

James Stroud, Director at Loyn + Co Architects, commented: "The new home has been thoughtfully knitted into this complex site to work with the varying levels and existing beautiful trees. The design truly brings the outside in, not only through 'inside outside spaces' and visual links through the house to the sea beyond, but through the indoor garden within the central atrium where nature is the focus. Simple measures such as bringing the Kebony cladding in and through the atrium reinforces this concept."

Nina Landbø, International Sales Manager at Kebony, added – "It's fantastic to see more and more homes embrace the use of sustainably sourced wood like Kebony, which decreases the logging of precious tropical hardwoods and provides a long-lasting and sustainably-sourced wood



alternative to concrete, plastic and steel. The architects, Loyn + Co have created a truly special home in Wales, and one that should set an example for how remarkable homes can be created and benefitted by innovative, environmentally-friendly materials."

Kebony is a Norwegian company which aims to be the leading wood brand and technology company. The company's revolutionary technology is an environmentally friendly process which modifies sustainably sourced softwoods by heating the wood with furfuryl alcohol - an agricultural by-product. By polymerising the wood's cell wall, the softwoods permanently take on the attributes of tropical hardwood including high durability, hardness, and dimensional stability.

www.kebony.com | loyn.co.uk | [@loynco](https://www.instagram.com/loynco)

Images: Charles Hosea

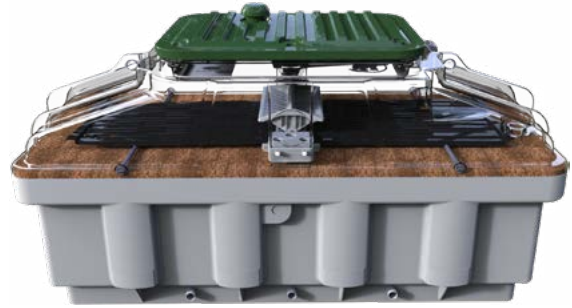
PREMIER TECH WATER AND ENVIRONMENT ENSURE A SUSTAINABLE AND ECO-FRIENDLY ENVIRONMENT, WITH COCONUT-HUSK BASED WASTEWATER TREATMENT

For over 25 years, global company Premier Tech Water and Environment has been protecting our properties and our environment with sustainable local solutions. With over 100,000 installations already across the globe, the Ecoflo Coco Filter is a proven system for enhancing wastewater effluent quality for a variety of applications. Now, Premier Tech Water and Environment has brought the Ecoflo Coco Filter to the UK market, to further improve the effluent quality for both residential and commercial projects that require off-mains wastewater treatment.

100% natural, organic and renewable, the Ecoflo uses coconut-husk fragments that are produced by cutting up the husk that surrounds the fruit of the coconut. This mechanical process ensures complete control over the size of each fragment and overall porosity, guaranteeing a uniform filtering medium that delivers a consistently high wastewater treatment performance over time.

Ecoflo works with a non-mechanical tipping bucket that scatters wastewater across perforated distribution plates. Wastewater drips through these plates and falls across a filter made of coconut husk fragments, creating a physical barrier that cleans wastewater effluent to an even higher standard. After percolating through the all-natural filter, water is then safely discharged into the environment.

With areas of the UK already beginning to stipulate stricter effluent standards for wastewater outflows, the Ecoflo Coco Filter offers an ecologically friendly alternative to replacing an existing septic tank or sewage treatment plant. The Ecoflo Coco Filter can also be specified as part of a new treatment system to fully protect and preserve UK watercourses, streams and nearby rivers.



▶ To find out more about how Premier Tech's eco-responsible wastewater treatment solution can protect our communities, our environment and our planet for generations to come visit: PT-WaterEnvironment.co.uk



Freephone: 0800 328 5492
Email: sales@allertonuk.com
Website: www.allertonuk.com



The Dependable Choice in Drainage

In rural areas without a mains drainage system, and where septic tanks will no longer reach environmental standards, Allerton can provide the ideal solution. Trading since 1974, Allerton are leading specialists in efficient treatment systems. They pride themselves on their individual, problem solving approach to dealing with alternative means of treating and disposing of raw sewage.

The Allerton ConSept converts your existing Septic Tank or Cesspit into a fully functioning Sewage Treatment Plant.

Servicing & Maintenance on a wide range of Sewage Treatment Plant and Pump Stations by **BRITISH WATER ACCREDITED ENGINEERS.**

The Diamond Sewage Treatment range is suitable for either individual homes or small population applications

When Gravity Drainage is not possible choose Allerton Pumping Stations for Sewage or Dirty Water



Dudley



Discover More

WAVE S3™ FLUSHPLATE

**CUTTING EDGE
CONTEMPORARY FINISH**

STATE-OF-THE-ART FLUSH PLATE TECHNOLOGY



- ~ Combines state-of-the-art technology with cutting-edge contemporary styling for the perfect designer finish
- ~ Sleek, scratch-resistant black fascia
- ~ Sits neatly against tiling or panelling
- ~ Interactive icons
- ~ Full & water-saving reduced flushing
- ~ Hygienic, COVID safe, touch-free operation

www.thomasdudley.co.uk/tyde



British design,
British build,
Family business

Dudley



Discover More

OSMO™ T1 CISTERN

**CATEGORY 5 CISTERN
WITH AXIS TECHNOLOGY™**

MULTIPLE INLET AND OUTLET OPTIONS

- ~ Fluid category 5 certified; the only way to achieve a water regulations compliant cistern
- ~ Unique reversible cistern body due to AXIS Technology®
- ~ Flush Pipe Stability System (FPSS™) with SureLock™ Bracket
- ~ Multiple flushing volumes

www.thomasdudley.co.uk/tyde



FULLY REVERSIBLE
CISTERN



EASY TOP
ACCESS WITH
SNAPLOCK LID™



British design,
British build,
Family business

IS ENGINEERED WOOD FLOORING ENVIRONMENTALLY FRIENDLY?



Becoming an eco-conscious consumer has never been more important. That's why many homeowners are making efforts to buy from more sustainable sources. If you're on the market for engineered wood flooring, you may be wondering if it's an environmentally respectful choice. Whilst many worry that wood flooring may contribute to deforestation and loss of habitat, we're here to tell you that, contrary to popular belief, engineered boards are ecologically friendly.

HERE'S WHY:

Low Waste

Engineered wood flooring utilises technically progressive manufacturing techniques in the creation of each board. Below a surface lamella of real wood, the plank's core is composed of highly compressed ply or HDF providing structural support and dimensional stability.

Unlike traditional hardwood boards – which have to be milled from a single piece of timber – engineered flooring can repurpose waste wood and pulp usually discarded during production.

This effectively helps to cut down on deforestation, making the product an environmentally friendly choice.

FSC Regulated

Sustainability has become a primary concern amongst most wood flooring manufacturers. As a result, many companies work in accordance with strict guidelines, designed to encourage eco-friendly production.



One of the most prominent organisations in the wood flooring industry is the Forest Stewardship Council. The FSC has been set up specifically to promote responsible management of the world's forests, and provides certification to all companies who are dedicated to remaining eco-friendly.

If you're buying engineered flooring from legitimate retailers, you can rest assured that your product will be FSC certified. But remember, always make sure to check for the FSC logo before you make your purchase. This will guarantee that your new wood flooring is sustainable, and good for the planet.

Circulates Heat

One of the best ways to create positive ecological change is by cutting down on the energy we use in our homes.

This includes using less light, electricity, and most importantly, heat.

Whilst you may be worried that your home could go cold without switching the heating on, changing your flooring to engineered wood will help retain heat, and promote proper air circulation throughout the entirety of your home.

The dense core of compressed timber makes engineered boards an excellent conductor of heat.

This reduces the rate at which warmth escapes from your home, helping you spend less time with the heating on, and more time going green.

► www.luxuryflooringandfurnishings.co.uk


Luxury
FLOORING



QUALITY BY ASSOCIATION

— ESTD 1974 —

SPECIFY CFA MEMBERS FOR YOUR NEXT PROJECT AND MINIMIZE COSTLY FLOORING FAILURES



Why choose a CFA member to install your flooring?

Specifying a CFA member for your next flooring project could mean the difference between success — or a flooring failure. Most of the UK's largest and best known Manufacturers, Distributors, Contractors and Consultants are CFA members — and for good reason.

- CFA members promote high standards, knowledge and expertise
- CFA members will maximize your investment and minimize costly flooring failures — which is good for your client, good for your reputation and also helps promote future business
- All members have to pass a vetting process



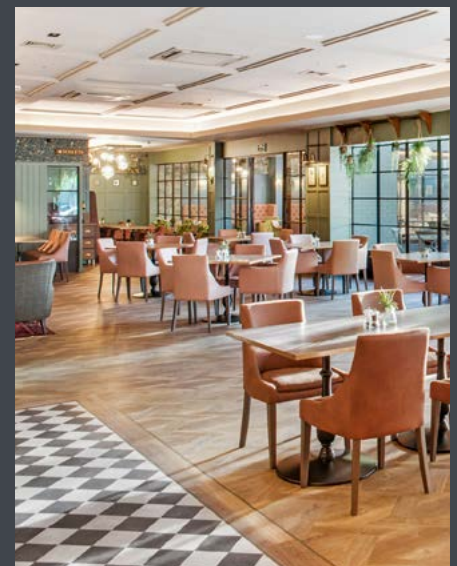
See the "Downloads" section at www.cfa.org.uk and download our leaflet TODAY



Courtesy of Forbo Flooring UK Ltd



Courtesy of Loughton Contracts plc



Courtesy of Amtico International





NET ZERO PIONEER FUTUREBUILD RETURNS FOR 2022



Futurebuild, the event that's championed a sustainable built environment for the past 16 years will take place from March 1 to 3, 2022, at the ExCeL London.

This event will connect specifiers, decision makers and disruptors with major brands and start-ups from across the built environment.

Following the announcement of the UK Government 'Net Zero Strategy; Build Back Greener', and COP26 conference in 2021, Futurebuild, previously Ecobuild, will be perfectly timed to focus on these key issues and the actions needed. The focus is no longer about ambition – it is about delivery. As the only event to attract 20,000+ senior professionals from right across the built environment, Futurebuild is the perfect opportunity for the industry to meet and collaborate together, to achieve the transformational change needed if the built environment is going to reach net zero.

As the home of innovation, Futurebuild 2022 will be organised into six sections – Buildings, Offsite, Interiors, Resourceful Materials, Energy and Critical Infrastructure.

The curated event will showcase over 250 leading brands, the companies who are developing the most innovative technologies, products and solutions. Visitors can participate in the innovation trail, which highlights the event's innovation partners. The winners of the Big Innovation Pitch, a competition that celebrates new approaches to the biggest challenges facing the industry, will also be announced during the event.

"Now it is more important than ever to meet in person and do business face to face because our exhibitors and attendees are all working towards a common goal – achieving net zero" explains Martin Hurn, event director at Futurebuild. "To ensure we can deliver a sustainable future we've curated an event that cultivates cross-sector collaboration, addresses key industry issues and inspires transformational change."

The event will also feature six spotlights, Digital Impact in partnership with Glider, Whole House Retrofit in partnership with the Retrofit Academy, Circular Materials in partnership with 540 World, District Energy in partnership with UKDEA, Future Installer in partnership with MCS and Intelligent Buildings in partnership with KNX. These spotlights will include a mixture of presentations, discussions and practical demonstrations that will cover the fundamental issues facing the built environment.

The Whole House Retrofit spotlight, for example, will showcase products and services that can underpin whole house retrofit at scale. The providers will offer suggestions about best practice during retrofitting, including alternative heat solutions, sustainable timber suggestions and rainwater harvesting. The Intelligent Building spotlight will inform the industry on the smart products and technologies that will make buildings more intelligent, help minimise environmental impact and reduce costs for the end user. Attendees will be able to learn about new smart products, such as innovative heat pump technology, lightweight windowsills and ventilation solutions.



"The first conference day will focus on the built environment's actions beyond COP26."



Visitors can also attend Futurebuild's renowned knowledge programme, which includes a conference programme sponsored by Construction Innovation Hub that will explore ambition towards net zero on a macro-level, as well as two keynote stages. Each keynote stage session will be delivered by industry-leading partners and associations such as the RIBA, Passivhaus Trust, MCS, BEIS, MPBA, ASBP, Good Homes Alliance, The Concrete Centre and many more.

The first conference day will focus on the built environment's actions beyond COP26. The current physical impacts of

climate change highlight the need for developing long-term resilience at the same time as reducing emissions, restoring natural resources and biodiversity, ensuring a sustainable food supply and recognising the impacts of climate change on human health and wellbeing. The session will focus on the actions that the UK construction industry should take – starting now.

▶ If you're interested in visiting Futurebuild 2022 and exploring the most innovative products and solutions in the built environment, register for your place here.



Energy House Laboratories

Energy House Laboratories (EHL) at the University of Salford is a leading research and innovation centre supporting the transition of the UK housing stock to net zero.

Working in both retrofit and new build, EHL has a track record of delivering commercial and grant-funded research and consultancy to clients such as Saint-Gobain, Persimmon, BEIS, and Schneider Electric.

Our expertise includes material and building performance in our UKAS accredited Thermal Measurement Lab and smart homes and energy systems in our Smart Meters>Smart Homes Lab.

We are home to the award-winning Salford Energy House, a Victorian end terrace in an environmental chamber, and in early 2022, we will be launching Energy House 2.0, a £16M building performance research facility part-funded by the European Regional Development Fund.

E: energyhouse2@salford.ac.uk
T: +44 (0) 161 295 0073
energyhouse2.com



Full bespoke Mechanical Ventilation & Heat Recovery systems

Working in partnership with the trusted manufacturer of renewable energy equipment Stiebel Eltron, Go Geothermal can offer full bespoke Mechanical Ventilation & Heat Recovery systems. Full designs are done in conjunction with our partners in Germany and with a range of units available virtually all applications can be catered for. To ensure an energy efficient and hygienic minimum air change, ventilation via windows would have to occur four to six times a day for approx. 5 minutes each time. Heating would have to be turned off and windows fully open, making this virtually impossible. Mechanical ventilation systems reliably safeguard the necessary supply of fresh air, as well as energy efficient central heating and DHW.

www.gogeothermal.co.uk | 01388 720 228



Innovative floor coverings

With the wineo brand, international company Windmüller stands for innovative and high-quality floor coverings in over 70 countries around the world, supplied across residential and commercial sectors. The highlight is PURLINE organic flooring, the new generation of sustainable flooring, produced with renewable and natural materials in our carbon neutral production plant in Germany. With high-performance, sustainability and design diversity, this flooring proves that sophisticated design and a healthy lifestyle are not mutually exclusive. PURLINE organic flooring meets the most stringent international criteria (Cradle-to-Cradle, Blue Angel...). Without the addition of chlorine, without plasticisers and without solvents, it is also extremely hard-wearing without being harmful to people or the environment – odour-neutral and low on emission.

To see more, please visit us: www.wineo.co.uk
<https://showroom.wineo.de/>



Windmüller GmbH | Mark Hipwell
Nord West Ring 21, Augustdorf, DE-32832, Germany
Tel: 0121 281 0099 | Mob: 07375 049723
info@windmoeller.de

DO YOU WANT TO SELL A PROPERTY BEFORE IT IS BUILT?

ENVISAGE HOW YOUR DREAM HOME WILL LOOK BEFORE YOU MAKE ANY COSTLY ERRORS?

AVOID MISTAKES IN DESIGN, OR ANY POTENTIAL EXPENSIVE MISUNDERSTANDINGS WITH A CLIENT!

We gallantly introduce Nunya Digital.

Nunya Digital use the latest software to create digital 3D life-like images, giving a true vibe of the property before labour-intensive work begins.

Nunya's team of 3D rendering experts use accurate lighting, hyper realistic textures, flawlessly detailed furniture and work with your taste and budget to refine and create your personal vision.

Whether you prefer high ceilings, winding staircases, futuristic kitchens, or warm wood textures, brick, cladding, stone, or render as well as colours and shades, their team make sure you are happy, confident, and satisfied with your choice and decision.

Using exterior 3D renders, you can adjust and modify designs as the project evolves. Nunya Digital can also add depth and movement, allowing you or your client to view the building from any angle or level, whether from the ground or a bird's eye view.

Still images

Super high quality 4K stills that can be set to any time of day or season.

Virtual walkthrough

A captivating, audio-visual, presenting a life-like experience. Visualising diverse times of the day and seasons of the year.

360 tour

An interactive tour is the perfect way to take stock of each and every corner of your building, visualising floorplans most suitable for your lifestyle or business.

Nunya Digital are fanatical about the 3D world. Their passion and expertise are the reason they grow!

Nunya Digital will be attending Futurebuild Expo at ExCeL, London 01 – 03 March 2022



Number: 07305376103
Email: Scott@nunyagroup.com
Website: <https://nunyadigital.com>



THE FUTURE OF THE BUILT ENVIRONMENT

Join us at Futurebuild 2022

Futurebuild is the home of innovation and the essential platform connecting specifiers, decision makers and disruptors in architectural technology with major brands and start-ups from across the built environment.

The curated exhibition alongside the world class knowledge programme will inspire the change needed to propel the construction industry to net-zero. Now is the time for you to act, join your industry by registering today.

Register now

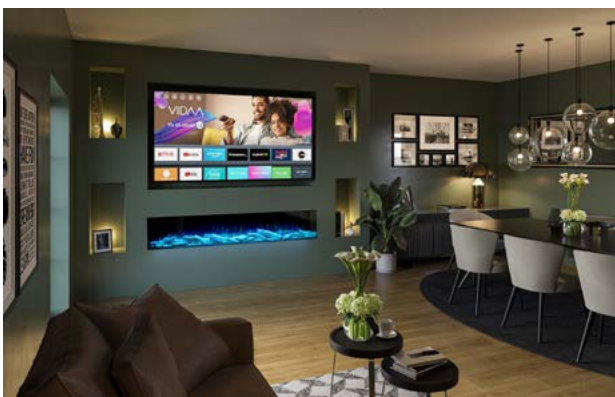


SOLUTION FIRES - EXCELLENCE IN ELECTRIC



Solution Fires is a new generation of highly efficient, authentic and stylish electric fires and luxury media walls. The focus of your living space, these fires have been designed and manufactured with optimal controllability of heat, light and sound as the critical elements.

No electric fire, currently on the market, has the level of product features or attention to detail that Solution Fires have as standard, supported by a high level of genuine customer service.



SETTING THE AMBIENT MOOD

Our visually stunning LED itronic technology not only provides one of the most realistic flame effects on the market but also gives you, the owner, incredible versatility.

You can utilise any of our six preset options, or further enhance your fire to suit your individual taste by altering the colour of the downlights, and the brightness and colour of the fuel bed, flames and scene lighting.

OPTIMAL CONTROL

All Solution Fires are controllable via a remote handset, which is supplied as standard and allows you to control all of the fire's features.

You can also customise your fire through the Solution App, which is available on Android and iOS smart phones and tablets, as well as through the use of smart watches and Alexa voice control.

► For more information about our products, please visit: www.solutionfires.co.uk

TorFloor RdB

Underfloor heating,
reduction in sound
transmission & floor
panel in one.

FoilBoard RdB

Designed with
insulation built in
and reduce sound
transmission.

LowBoard RdB

Designed for retrofit
applications to
minimise build up
and reduce sound
transmission.

Ssshhhh.

Our acoustic range of underfloor heating is quickly becoming a trade secret. By combining heating and acoustic panelling in one system, we've made it much quicker and easier to install.

OMNIE



COMPLETE SYSTEM DESIGN. UNDERFLOOR HEATING & COOLING.
HEAT PUMPS. VENTILATION. HOT & COLD SUPPLY.

TRIED. TESTED. TRUSTED.

Got a project in mind?

Call 01392 36 36 05
or visit [omnie.co.uk](https://www.omnie.co.uk)

FREEDOM HEAT PUMPS

THE HEAT PUMP DELICATESSEN

So, you want a heat pump?

Where do you start?

You could Google heat pump suppliers, pick one off the shelf and have it delivered.

That could work. Would it give you the result you wanted though?



At Freedom Heat Pumps, we don't do 'off the shelf'.

We know that every install is different. We know that one size doesn't fit all. We are a heat pump delicatessen, with heat pump aficionados behind everything we do. We understand every product on the market and advise you, accordingly, providing a solution that fits your needs whilst also being the most economical possible.

How do we do that? For over ten years, we have established our reputation as one of the UK's most knowledgeable and leading suppliers of heat pumps. It's all we do. We don't just supply your heat pump. We design the system to fit your property. We take your plans and size the air source or ground source equipment. We calculate the running costs, carbon savings and payback period.

With climate change being an increasing issue to everyone, we know how to create the most efficient system to lower your carbon footprint and running costs. We then select the best system from our range of heat pumps.

Being an independent retailer, we aren't tied to any manufacturer, so we have the freedom to select the best system for your property. Our service doesn't end with the delivery of your heat pump though. We work directly with installers, training them and providing all the technical data and diagrams they need to make sure your install is successful. We continue to provide this high level of support right through to the end of your heat pump's useful life.

To find out more about how Freedom Heat Pumps can provide you with a reliable, efficient, design and installation service, contact sales@freedomhp.co.uk and find out why we've been nominated as wholesaler/distributor of the year for the past three years at the annual heat pump awards.

► **Contact us for more information:**
www.freedomhp.co.uk | sales@freedomhp.co.uk
 023 8027 4833



QUALITY UNDERFLOOR HEATING KITS FOR ALL TYPES OF FLOORS

UFHI's in-house product range - TOPLO offers the same premium quality as that of named brands at a competitive price. Get the



same high-quality build and warranty at a lower cost. We also offer super slim RETROFIT underfloor heating systems, allowing you to have underfloor heating on all types of subfloors.

Our new 'Premium Plus' range comes with a lifetime warranty on the manifold and pipe and we now also include SMART Wi Fi thermostats without the need to upgrade.

Toplo Smart Wi-Fi Thermostats

Control your heating away from home with your Smart Phone. Toplo Touch Wi-Fi stats are now included with all our Premium Plus Kits, and are exactly like named branded Wi-Fi stats but are more cost effective with no hub required.



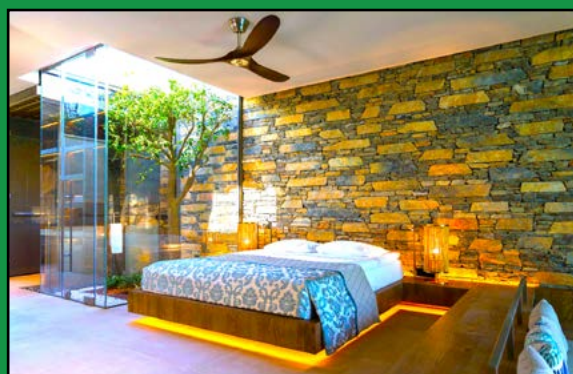
Discover more: underfloorheating1.co.uk
email: sales@underfloorheating1.co.uk



Beautiful Designer Ceiling Fans



Powerful - Stylish - Reliable - Silent



THE HENLEY FAN COMPANY LTD



01256 636 509
www.henleyfan.com



WINTER IS COMING FORGET GAS!



REDUCE ENERGY BILLS



STORAGE HEATER REPLACEMENT

To cost to supply 2 bedroom terrace house From approx. £2,400

FREE UK DELIVERY

- Advanced technology
- Simply plug in and go system
- No pipework or plumbing
- Programmable controlled heating
- Compatible with Google Home, Alexa and iPhone
- No annual maintenance (Landlords)
- New build compliant
- Energy saving feature
- Energy efficient heating solution

Zero Co2 Emissions



Telephone: 01789 459455 | 07778 672090

enquiries@heat-genie.co.uk (for same day call back) www.heat-genie.co.uk



A LOCAL COMPANY FOR LOCAL PEOPLE



VOGUE (UK) 2022 HEATING TRENDS

The UK's largest British designer and manufacturer of premium radiators and towel warmers, Vogue (UK), share its expert heating and bathroom trends predictions for 2022 and beyond

Steve Birch, Sales Director at Vogue (UK) begins with saying, "We are finding new appetite for heating solutions that provide homeowners with all the advantages of warmth and style without the environmental impact and so this needs to be factored in to the overall 'design picture' from the outset. I believe this new desire has stemmed from the abundance of sustainable materials now available, for instance, aluminium heating designs which are now being considered as an eco-luxe choice for the modern bathroom. Given its water efficiency, flexible installation and lightweight material, aluminium is a great example of a sustainable material which can be endlessly recycled as an end product = designer radiators and towel warmers!"

SO WHAT ELSE IS PREDICTED TO SHAKE-UP THE HEATING MARKET IN 2022?

Steve explains:

Lifestyle heating: When looking ahead to 2022, it will be a case of 'anything goes' as many of us now have more

confidence to take charge when updating our homes and so selecting the right heating design will be critical when designing in line with specific lifestyle preferences. We are now in an era where you really can 'be your own home stylist' and meet your every need. With this in mind, robust materials and finishes on the darker spectrum like anthracite and black, will be just as desirable as vintage metallics and timeless white finishes as we move into next year.

In addition, hidden heating solutions which are designed as singular floating bars that can also come together in a range of styles and formations, are on the rise in the modern bathroom. With property experts indicating that house prices will continue to rise in 2022, personalisation in interiors is going to be fundamental moving forwards. Creative products like single bar heating will therefore answer demand from homeowners who appreciate traditional craftsmanship, coupled with the latest technology.

"Given its water efficiency, flexible installation and lightweight material, aluminium is a great example of a sustainable material which can be endlessly recycled as an end product..."

Added value: The 2022 home is about adding value where there is none, offering easy living and high comfort that is both beautiful and practical. In light of this, en-suite bathrooms and cloakrooms continue to be a popular way to enhance convenience and add value to your home and research proves that over three quarters of home buyers are likely to offer more money for a house if these are on offer. It therefore makes sense to consider the virtues of wall-hung heating solutions next year, whether looking to upgrade an existing model or working on a new bathroom project, it is the extra features that will elevate the space. Foldaway heated shelves, integrated robe hooks, optional towel bars and even a built-in aroma oil dish so you can bring your favourite scents to the bathroom, are just some of the added-value features your radiator or towel warmer can benefit from so make sure to ask what extras are available: as standard and made to order.

Eco-design compliant: As energy prices rise, so too does market demand for heating solutions that can give homeowners all the advantages of warmth and style, whilst being kind to the pocket and environment. As a result, 'doing the right thing' has now become an essential part of the design and manufacturing process and to answer demand, you can now choose from a range of green heating solutions that will become a market mainstay moving forwards. Be it material or a specific eco design element, products which are environmentally compliant are set to make a name for themselves next year with no signs of abating.



Vogue (UK) is the UK's leading designer and manufacturer of quality towel warmers, designer radiators and heating accessories, with market leading eco-credentials since 1990.

► For further information on Vogue (UK) and the company's latest radiator and towel warmer designs, please contact: Tel 01902 387 000 | Email info@vogueuk.co.uk | Website www.vogueuk.co.uk



WARMUP UNDERFLOOR HEATING: PROVIDING SOLUTIONS FOR A SUSTAINABLE FUTURE



Underfloor heating is a cleaner, more efficient way to heat a home and is suitable for both new-build and renovation projects. Floor heaters require less energy to reach optimal comfort temperatures than traditional heating systems and with this increased energy-efficiency, you can expect lower long-term running costs. The 'invisible' nature of underfloor heating also facilitates complete freedom when designing your home, with no style interruptions caused by bulky radiators and exposed piping.

Warmup Underfloor Heating provides a bespoke floor-heating solution specifically designed and built to suit your requirements. With over 20 years of experience in heating homes, Warmup offer optimised electric and water underfloor heating systems to bring cost-savings, energy-efficiency and design freedom to your project.

HYDRONIC UNDERFLOOR HEATING SYSTEMS

Hydronic Underfloor Heating, also known as Wet or Water Underfloor Heating, is a contemporary heating system that pumps heated water from a heat source through pipes within the floor construction. This heated water produces radiant warmth which heats up a room to a consistent, comfortable temperature from the floor up.

KEY BENEFITS:

- Suitable for almost all floor finishes and room types
- Compatible with a variety of heat sources
- Perfect for new build and large-scale renovation projects
- Lower running costs

REDUCING CO2 EMISSIONS: WARMUP PRO HYDRO

Warmup Pro Hydro is the world's first tool to instantly and automatically design bespoke underfloor heating systems, meaning real savings for installers and their customers by making correctly specified underfloor heating as quick and easy to buy as pre-packaged room kits.

In comparison to pre-packaged room kits, Warmup Pro Hydro uses up to 20% less pipe, because spacings are automatically optimised for the heat loss of the room. That is equivalent to saving an entire room's worth of pipe on a 100m² install. By automatically optimising the design of the system for the heat loss of the rooms, Warmup Pro Hydro can ensure enough heat output for the coldest days at lower flow temperatures. This allows the heat source to run at more efficient temperatures, saving up to 10% in energy use. In fact, for every 100 homes built with Warmup Pro Hydro systems instead of pre-packaged room kits, over 15 tons of CO₂ is saved each year.

Scan the QR code below to get a quote. Simply enter the details of your project and in a few clicks, we'll provide you with a comprehensive quote with full costings.

► Warmup Plc, 702 & 704 Tudor Estate, Abbey Road, London, NW10 7UW, United Kingdom

Website: www.warmup.co.uk

Email: uk@warmup.com

Warmup



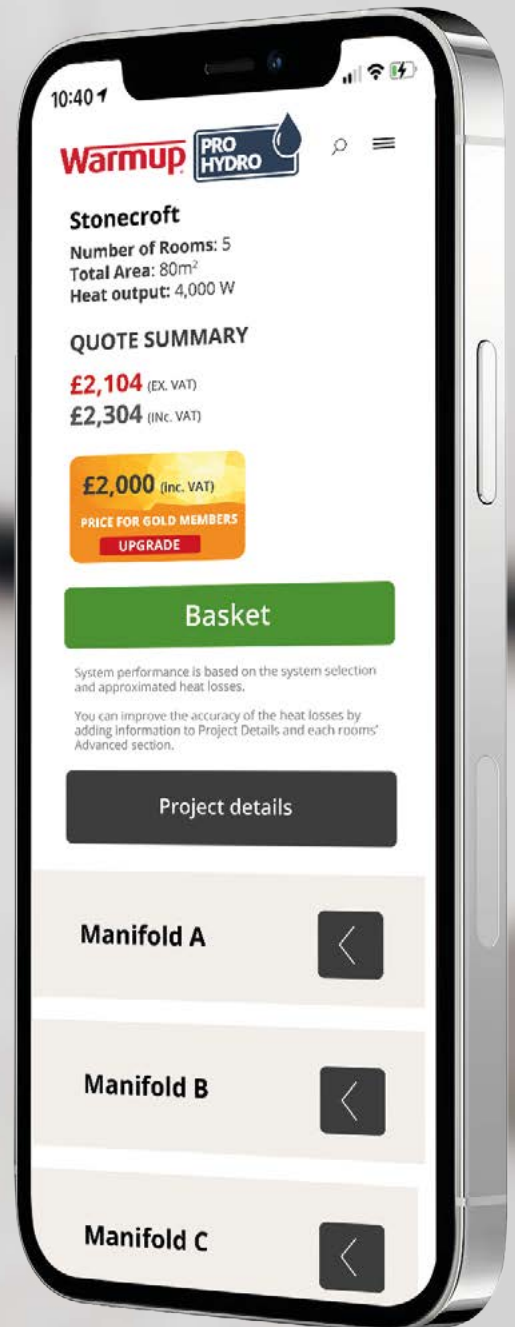
Get water underfloor heating quotes

in seconds that give the perfect temperature

required to heat your home.

Only from Warmup Pro Hydro

- ✓ Full Quote in 18 seconds
- ✓ Instant Heat Loss Estimates
- ✓ Full Commissioning Log Included
- ✓ Up to 10% Reduction in Running Costs
- ✓ Up to 10% Reduction in Material Wastage



Scan to Get a Quote



NEW DIK GEURTS WOOD STOVES IN CLASSIC AND CONTEMPORARY DESIGNS



Dik Geurts Soren 5 wood stove

DIK GEURTS SOREN 5

Dik Geurts is the brand under which DRU designs and manufactures its wood fires and stoves. The latest freestanding model is Soren 5, part of a series that includes the popular Ivar and Aste. It has a classic square shape with a distinctive new door design in a dark anthracite finish. The standard heat output is 4.9 kW so it can be used without additional ventilation and it has an A+ energy rating with 82% energy efficiency.

These stoves can be installed into existing UK fireplaces by hollowing out the chimneybreast and creating an inglenook fireplace. There are also freestanding models with various log storage options.

DIK GEURTS ODIN BASE

The Odin is a stunning circular wood stove that can be wall-mounted or suspended from the ceiling. The latest model includes a sturdy base that takes up very little space in the living room but creates an impressive focal point. It is available in both single-sided Front or Tunnel models.



Dik Geurts Odin Base wood stove

The Tunnel version can be viewed from both sides, allowing the stove to be located in a central position for dramatic effect. It has a maximum 8 kW heat output with an energy efficiency rating of 75%.

DIK GEURTS INSTYLE CORNER SLIM 660/570

The Instyle Corner Slim 660/570 is the latest in a series of built-in wood burning fires in single-sided, 2-sided, 3-sided and tunnel options. The 660/570 model has a compact size that is suitable for the conversion of a standard UK chimney or for installation in a false chimneybreast or room dividing wall. The 2-sided fire view provides a stunning addition to any living space, with a clear, unhindered view of the flames. It has a substantial maximum heat output of 10 kW and an impressive 80% energy efficiency rating.

All the new models have the option of an external air system that recirculates air from outside the building for combustion. They will be available to UK fireplace dealers and installers in 2022.

▶ For further information, visit www.drufire.com



Dik Geurts Instyle Corner Slim 660/570 wood stove

SMART HOME UNRAVELLED

Bespoke integration of: lighting; heating; curtain & blinds

Technology changes so quickly, housing stock by contrast changes so slowly!

So its not surprising that when the two are put together they take time to stabilise and come together.

The smart home incorporates such a wide array of devices (from audio visual through to heating and security and everything in between) all of which traditionally come from their own individual market sector and have their own methods of operating, most have the potential of not just being controlled from their own buttons or switches or remotes but from any device anywhere. With out a knowledge of the market place and understanding of technology things can very quickly get very complicated and end up being of less value rather than more.

What ever the future brings the home of the foreseeable future will still incorporate cables and wires, but we can now plan

those cable runs with some certainty and be assured that the devices that fix to them will still be useable many years into the future and hopefully for the life expectancy of the property.

Household Automation has many years of expertise in designing smart home infrastructure we use well proven topologies and manufacturers of equipment with a history of reliability and backward compatibility.



So if you are looking for a simple reliable well proven automated solution or a fully functional all singing an dancing automated home then contact Household Automation.

[E-mail: info@household-automation.co.uk](mailto:info@household-automation.co.uk)

NEXT EDITION: Smart home - When a switch is not just a switch - Explore the possibilities of what can be done with the press of a button

householdautomation

Est: 1999

Control of your home from your smartphone

Consultation and design

Comprehensive automated control:

Lighting, heating and blinds control using KNX equipment (www.knxuk.org)

Forward thinking service and maintenance



e-mail: info@household-automation.co.uk | tel: 0330 2232101

www.household-automation.co.uk



Keen to stay ahead of the market

Deralam have sole UK distribution rights for Homapal®, that specialise in laminates of various finishes including real metal surfaces, this leaves an almost unlimited scope for creativity and customisation; meaning that this product has a multitude of applications and finds its way into cruise ships, bars, restaurants, nightclubs and high street retail stores, in fact, any vertical surface that needs to be enhanced.

Over the years, hardly any other material has proven its worth in interior design to the extent in which the laminate has done. Looks, feel and function are combined to get the interplay of elements into all-embracing spatial concepts in a way that could not be more natural. Deralam is the ideal choice for Architects, manufacturers and retailers alike.

Head Office, West Coast Park, Bradley Lane, Standish, Wigan, Lancashire WN6 0Y

Southern Office, Units 10-10a, Foster Avenue, Woodside Park, Dunstable, Bedfordshire LU5 5TA

01257 478540 | sales@deralam.co.uk



Transform your home for less

Furniture in Fashion is consumers leading online furniture store in the UK. Modern & contemporary home and garden furniture at affordable prices.

Shop stylish furniture for your Living Room, Hallway, Dining Room, Bedroom and office at FiF. Discover our range of TV stands, units and cabinets to organise your home entertainment and enhance the viewing experience. Select a stunning coffee table that combines bespoke style and practicality.

Shop from our large range of Bar Stools & Tables at FiF, all with free next day delivery.

Transform your home for less with our fantastic range of furniture sale offers in each category.

Buy more, save more today!!!

www.furnitureinfashion.net

**Furniture in Fashion
Causeway Mill
Express Trading Estate
14 Stone Hill Road
Bolton
BL4 9TP**



Swan Systems Sliding Wardrobes – Maximising Storage in Smaller Spaces

We manufacture and supply (or install) our own brand of Swan Sliding Wardrobes to house builders, hotels, interior designers and create unique designs to help them sell their properties.

With a choice of 17 frame colours and panel, coloured glass or mirror door options our British Patented product really deserves looking at.

We hold SafeMark certification and all fitters hold CSCS cards.

If you'd have a property you'd like us to quote for or want an info pack, please email info@swansystems.co.uk



MARIO ROMANO

WALLS

Create walls without limits

www.parametricwalls.co.uk

Non-repeating, three-dimensional, seamless surfaces



YOUR PERFECT PARTNER

The Decorative Panels Group and Biomaster® working in partnership to offer a 24/7 lifetime protection that contains inbuilt antimicrobial protection that does not wear off or leach out over time.

*Tested in accordance with ISO22196:2011

Biomaster is proven to inhibit the growth of microbes by up to 99.99%.

As a trade laminator of sheet materials for the furniture and allied industries, dp-lamination can offer an extensive range of surface designs incorporating this technology laminated to many different substrates. These substrates can then be converted into finished product either in house at sister companies dp-furniture and dp-components or externally by fellow manufacturers.

Contact us for more information.

Century House, Premier Way, Lowfields Business Park, Elland, West Yorkshire, HX5 9HF

T: +44 (0) 1484 658341 E: info@decorativepanels.co.uk
www.decorativepanels.co.uk



SHAPES AND GAMES IN HUNGARY



For this project in Hungary, the end user spends a significant part of his time in a villa with direct water connection on the shores of Lake Balaton, 45 minutes drive from Budapest.

The covered terrace, which can be opened from 3 sides and can be shaded on all surfaces, serves as an exclusive dining and lounge area, where the family spends most of the day to relax and chill.

The protagonist of this special interior is the dual-function Fusiontables dining table, which invites up to 10 family members or invited guests to an exciting game of billiards after a cozy dinner - while admiring the stunning view of Lake Balaton.

Fusion Tables Design Hungary, the exclusive importer of Fusiontables in the country, has installed the unique configuration: the height-adjustable "MetalLine / WhiteMat / Vintage / REVERSO Rock" table with an EasyLift system built into the legs, the fusion storage cabinet for the clever storage of cues and table tops, the design FUSION chairs and the FUSION bench.

By these lockdown times such a place can become soon a Must to enjoy nice moments with family and friends without leaving the country.

The motto of the Hungarian Fusiontables partner translated into English: "shapes and games", referring to the contemporary and unique design of the Fusiontables dining tables, as well as their versatility.



LET'S PLAY WITH STYLE JAMES



Check the other colors and timbers available
www.fusiontables.com



[fusiontables]
by Aramith

THE SENSUS COLLECTION OFFERING YOU ENDLESS POSSIBILITIES



Based in the Design Centre within the beautiful Chelsea Harbour, Wool Classics is a niche company who are passionate in all things carpet and rugs. Wool is not only part of their name, it's in their DNA. They are a company built on using the most environmentally friendly materials.

Wool Classics have always been synonymous with products made from the highest quality materials combined with elegant and on trend designs. With this, Wool Classics introduces a brand new range of rugs called the Sensus Collection. This elegant range consists of stunning wool, viscose and bamboo designs, all ensuring that longevity goes hand in hand with elegance in design. With over 70 designs to choose from, the Sensus Collection has been created to offer you endless possibilities.

Like all Wool Classics products, the Sensus Collection combines distinctive design and craftsmanship to ensure that the perfect harmony of style and quality lines every choice of interior style. From simple classical designs, to trend-setting colourful patterns, the Sensus Collection is the perfect solution for adding those final stylistic touches to the home.

As a company, Wool Classics always strives to use materials which are biodegradable, renewable and organic. Wool, cotton, bamboo, jute and silk are all materials which are found in Wool Classics carpets and rugs.



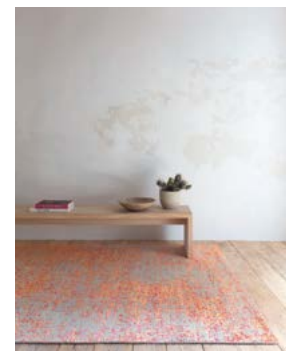
With this, the company is able to supply products which are both friendly to the environment and to your home. Although Wool Classics prides itself on being green, thankfully all products are available in any colour of your imagination!

In addition to this new collection, they offer over 600 standard range products from stock in the UK plus a full bespoke design service for both carpets and rugs, if you can imagine it, they can weave it. There is nothing that Wool Classics cannot provide, so long as it is soft.

So why not go and give their showroom a visit today, located at the glorious Design Centre at Chelsea Harbour where their colour palettes are spot on trend and complementing other popular brands in interiors.

As with all Wool Classics products, the new Sensus Collection is available from stock in a wide selection of sizes. For further information please do not hesitate to contact them anytime.

➡ For further details please call 020 7349 1560
Email press@woolclassics.com
Visit our showroom at 205 Design Centre East,
Chelsea Harbour, London SW10 0XF





WOOL CLASSICS

LONDON

Elegant Contemporary Style

The All New Sensus Collection

WALLSAUCE LAUNCHES ITS OWN COLLECTION OF WALLPAPER MURALS



Creators of made-to-measure wallpaper murals, Wallsauce has launched its very own collection of designs.

Inspired by the current trends of oversized abstracts combined with Bauhaus influences, the 12-piece collection offers statement designs for sophisticated feature walls.

Available in a variety of colourways including pastel blues with baby pinks to ultra-dark tones with textures, the wallpaper murals have been strategically created by the in-house studio team at Wallsauce.

The studio manager, Rachel Kenny says, "Wallsauce is very fortunate to host thousands of designs by

artists from around the world, but we wanted to add to our exclusive collections and offer our customers more designs that can't be found elsewhere.

The team has worked very hard to develop this collection. The colours in particular took some development as we aimed to offer on-trend sophistication.

With an in-house team of talented graphic and digital artists who liaise with customers on a one-to-one basis, it made sense to further expose their talents."

▶ The Wallsauce Collection sits within the designer category at Wallsauce.com with prices starting from £35/m².

SURFACE DESIGN SHOW

**BUSINESS DESIGN CENTRE
LONDON – 8-10 FEB 2022**
surfacedesignshow.com



Featuring

**LIGHT
SCHOOL**

**STONE
GALLERY**

**SURFACE
DESIGN
AWARDS**



**SEE AND
TOUCH THE
WIDEST RANGE
OF PRODUCTS
AND DESIGNS
FROM THE UK
AND BEYOND**

REGISTRATION IS NOW LIVE!

JOIN thousands of architects and designers

REGISTER TODAY FOR FREE



THE SURFACE DESIGN SHOW



The design industry will once again be able to meet in person and be updated on the latest surface materials and designs when the Surface Design Show returns to the Business Design Centre from 8-10 February 2022.

Over 120 exhibitors will be exhibiting, including 35 new talents at the UK's leading event for architects and designers. Many of the exhibitors will bring to the show a range of new product launches, inspired by the show's theme 'Sense of Place' with the goal of putting humanity and the planet's wellbeing at the heart of all decision making.



Surface Matter will be displaying its sweet material pop up shop stand. The stand is inspired by Surface matter's material studio in London Fields which is described by architects and designers as a 'sweet shop for materials'.

Hosting debates, panels, trend forecasts and insights into the latest surface design innovations, the Main Stage is at the heart of the Show. There will be 16 presentations on the Main Stage during the 2 ½ days of the Show. The Opening Night debate highlights a younger generation of architects and designers and is entitled Climate Change and Future Proofing. New to Surface Design Show is a series of Legends Live interviews where an industry personality meets and chats with their 'legend'.

One of the highly anticipated and unique parts of the show is the New Talent section. Supporting new talent is a key focus for Surface Design Show. This year over 30 participants, will display a range of sophisticated and innovative designs, from textile designs featuring augmented reality to 3d tiles of eco resin and waste materials. Many of the participants this year also show a recurring focus of using natural materials and dyes.

"Each year visitors also look forward to Surface Spotlight Live, a focal point of inspiration for designers to touch and compare the very latest material prototypes."

New Talent is curated by Trendease International and held in Partnership with Canon UK.

Each year visitors also look forward to Surface Spotlight Live, a focal point of inspiration for designers to touch and compare the very latest material prototypes. Surface Spotlight Live will highlight the Show's 'Sense of Place' theme and will be curated again by trend and colour expert Sally Angharad and held in Partnership with CD (UK).



2022 will be the 10th anniversary of the Surface Design Awards which is therefore fitting that it received a record number of entries.

All the finalists, including the new Architectural Photography Award, will be featured on a display stand with Surface Design Show.

▶ Registration to attend the show is now open
<https://sds-2022.reg.buzz/website-button>



SURFACE DESIGN SHOW

**BUSINESS DESIGN CENTRE
LONDON – 8-10 FEB 2022**
surfacedesignshow.com

LULLABY LIGHTING - LAURA ASHLEY LIGHTING AND MIRRORS



Carson Small Table Lamp Base in Antique Brass and Crystal £85

As we transition into the new year, wellbeing goals for the next 12 months ahead are sure to take centre stage. Rest is as important for the mind as for the body, so creating zen spaces around the home will go a long way in aiding relaxation and reinvigoration. The right lighting can not only create a calming ambience that reflects around the whole home, but can have positive effects on the mind that are long lasting.

"Whilst ceiling lights are ideal for practicality, they are intended to flood a room with light and could provide a stark contrast when switched from on to off in the evenings. Bedside lamps and floor lamps can provide a lower level light and better set the mood for lulling you into a restful state" Mary Buchanan, Creative Director and Board Member for Laura Ashley Lighting and Mirrors explains.

The Marlowe Polished Nickel Swing-Arm Floor Lamp with Shade illuminates corners beautifully for reading



Amber Table Lamp Base in Polished Chrome £160



Marlowe Polished Nickel Swing-Arm Floor Lamp with Shade £189

and recuperating, with its adjustable double-jointed arm and soft grey hue. The Carson Small Table Lamp Base in Antique Brass and Crystal offers a grand statement with its hand-polished cut crystal body and a comforting, homely aesthetic when teamed with a pleated shade. The warm glow of the Laura Ashley Amber Table Lamp Base is undeniably tranquil with its pear-shaped design topped and tailed with an elegant chrome finish.

Mary adds: "Using a warm, white light is more soothing for the eyes, and opting for an LED Amber light has been known to preserve your body's natural levels of melatonin which aid the sleep-wake cycle."

www.darlighting.co.uk/laura-ashley

GIESSE LIGHT SRL

Producers and distributors of indoor
and outdoor lamps in treated brass
and stainless steel



TARTARUGA OVALE



TARTARUGA TONDA

CLIPPER



GIESSE LIGHT SRL UNIPERSONALE
PIAZZA VECCHIA FILANDA N.9, 24060 – PREDORE (BG) ITALY

Tel: +39.035 938573 | Fax: +39.035 923721 | Email: info@giesselight.com

www.giesselight.de | www.giesselight.com
www.giesselightshop.com



CARIBBEAN
BLINDS UK LTD



SUMMER READY SALE

SAVE UPTO £1,500 ON EXTERNAL SHADING

LOUVERED ROOFS | PATIO AWNINGS | EXTERNAL BLINDS

From [outdoor living](#) to [solar shading](#), we've got you covered, whatever the weather.

Proudly UK Manufactured Since 1987.



making dreams come true

0344 800 1947 t
info@cbsolarshading.co.uk e
cbsolarshading.co.uk w



SHOWSITES IN | **SUFFOLK** | MIDDLESEX | SURREY

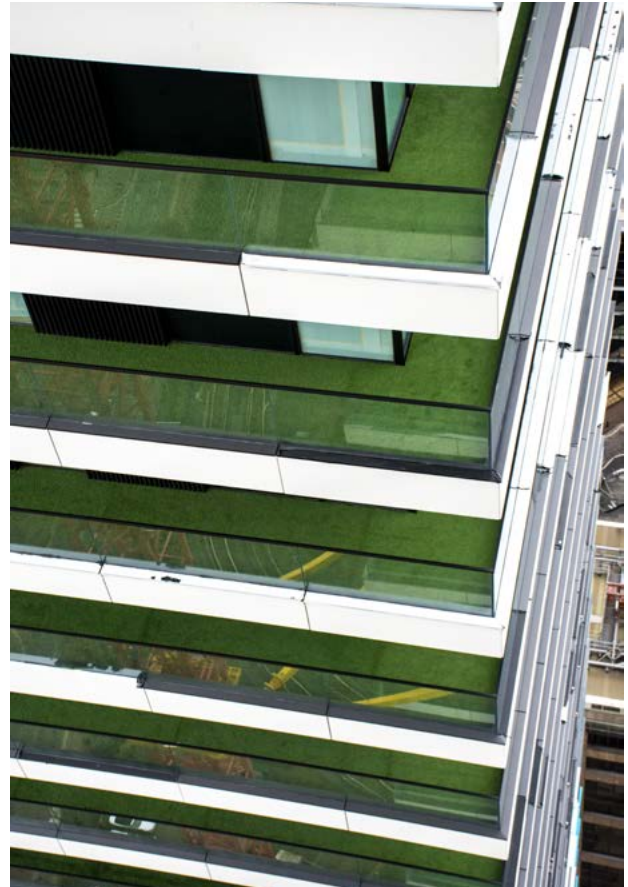
NAMGRASS ANNOUNCES ECO-FRIENDLY ARTIFICIAL GRASS - A SUSTAINABLE SOLUTION FOR THE ARTIFICIAL GRASS SECTOR



Namgrass, the uk's leading artificial grass company, is today announcing the launch of its new eco-friendly artificial grass products enriched with Pureti. Known for its air quality improvement and sustainable elements, Pureti coated namgrass is now available across all grasses within the company's product line.

One of just three licensed distributors in the uk, the product's arrival comes at a time when the uk's air pollution is being monitored daily during the covid-19 pandemic. A Pureti treated metre squared of namgrass is comparable to the air purifying effects of one mature tree planted. Taking this into account plus the fact that the uk's average garden size is 50m², Pureti offers the same co₂ equivalent that planting 50 trees in a family back garden would achieve.

Namgrass products have long been designed and manufactured to make them hard-wearing easy to clean and able to withstand heavy garden use. The addition of a Pureti treated surface means consumers will benefit from a reduction in dust, grime, mould, or algae build up, leading to an elimination of odours and a significant improvement in outdoor air quality.



Jared Gardner, sales director at namgrass, commented:

"cutting edge technology has always been at the heart of the namgrass brand and we are delighted to be able to now offer a sustainable solution to artificial grass across our range. One long lasting application of Pureti will save time, money, water, chemicals, and energy which in turn helps to cultivate a sustainable cleaner environment and reverse the pollution levels on our planet."

▶ **To find out more about Pureti coating, visit namgrass.co.uk.**





MADE FOR LIVING

LIKE REAL GRASS, ONLY BETTER.

A TROUBLE-FREE 10-YEAR WARRANTY

There's a whopping 10-year warranty with your Namgrass and its the strongest warranty on the market. Still, you probably won't need it as it's so well made.

01425 627832

EUROPEAN MANUFACTURED

We follow a strict research and development and manufacturing and distribution process to ensure the grass you receive is in top condition and made to last.

info@namgrass.co.uk

ULTRA REALISTIC ARTIFICIAL GRASS

We've constantly driven improvements using clever innovation and cool new technology and we've always ensured that Namgrass offers the most natural look and feel.

namgrass.co.uk

#MADEFORLIVING

Product: Eclipse

SMALL BUT MIGHTY - T-SHAPED STEEL POSTS FROM JACKSONS FENCING



Garden and security fencing manufacturer Jacksons Fencing has responded to industry demand and expanded its range of premium quality products by creating a metal fence post, Mi-T®. These posts reflect emerging market trends and offer a sustainable alternative to tackle the destructive nature of concrete posts.

At 2.7m long, Mi-T® posts can be used with Jacksons' framed timber fence panels. They're constructed from hot-dip galvanised steel to protect them from rust and corrosion, and can also be powder coated in anthracite grey.

From the front, the post can hardly be seen between panels, creating a seamless fencing run with no posts to interrupt the continuity.

Like their timber posts, Mi-T® posts also hold a 25-year guarantee.

Nick Bishenden, Senior Marketing Manager, Jacksons Fencing says: "There is a traditional audience in the UK who remain wary of using timber posts, as they have been bitten by inferior products to ours that rot after only a few years. This audience generally opts for concrete posts.

"As one of the largest UK garden fencing manufacturers, we feel it is our responsibility to help the fencing industry become more sustainable by moving away from concrete posts. Mi-T® provides an alternative to the audiences that currently opt for these."

Chris Hone, Approved Installer Manager, Jacksons Fencing says: "Sustainable business practices are given due consideration at each stage of all of our manufacturing processes, and these are regularly reviewed to ensure continual improvement.



"We are proud that Mi-T® posts are 100% recyclable, meaning they have an extremely low carbon footprint and environmental impact.

"Beyond the manufacturing process, we ensure that the installation of all of our products is as eco-friendly as possible. The new Mi-T® post is lightweight and easy to handle, so our vehicles can transport more at once, and installation is easier.

The Mi-T® posts work with several of Jacksons Fencing's framed fence panels, including:

Tongue and Groove, Venetian, Hit and Miss, and Woven.

Peter Jackson, MD Jacksons Fencing says: "For years we have flown the flag for reliable timber posts. We're very proud to say, they have more than proven themselves, often lasting many more years than our 25-year guarantee.

"The launch of the Mi-T® posts will broaden our range, respond to customer demand, and offer a new alternative for those looking for a more sustainable option than concrete.

"In situ, these posts are subtle, ensuring the overall aesthetic is not deterred away from the attractive natural timber panels they're fixed to."

www.jacksons-fencing.co.uk



D E S I G N | M A N U F A C T U R E | I N S T A L L



SMALL BUT MIGHTY

Mi-T[®] metal fence posts.
A safe, secure, sustainable
alternative to concrete posts.
For a seamless finish with a
25 year guarantee.

Call 0800 408 1341 or visit
www.jacksons-security.co.uk



Jacksons Fencing

CARDIFF APARTMENTS MEET BS 8629 CODE OF PRACTICE WITH INSTALLATION OF EVACGO

Two seven-storey residential apartment buildings in the cultural and social hot-spot of Cardiff Bay are now protected by evacuation alert systems from UK manufacturer, Advanced.

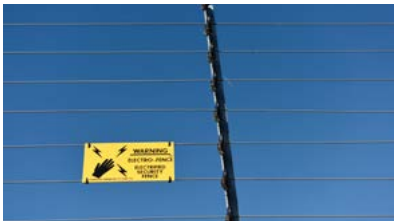
The EvacGo panels have been installed to meet the criteria set out in the BS 8629 Code of Practice for the design, installation, commissioning, and maintenance of evacuation alert systems for use by fire and rescue services in England and Wales.

Situated in Cardiff Bay's Tiger Quay development, Roath House and Queen Alexandra House are a mix of 73 social and market-rented one and two-bedroom apartments managed by Trivallis, one of Wales' largest housing associations. Trivallis appointed Cardiff-based, Tremorfa Ltd, to complete the installation, requesting that Advanced's EvacGo solutions be installed to ensure both residential buildings met the BS 8629 recommendations.



With all Advanced evacuation alert systems custom-manufactured to reflect each individual building's evacuation zones, Advanced supplied two EvacGo systems to Tremorfa complete with 1-loop card, expandable from four to eight evacuation zones. The two systems were installed alongside a combined total of 63 sounders to provide audible warning to building occupants in the event of an emergency.

www.advancedco.com



Perimeter security systems for every security challenge

Perimeter security has never been more important whether at home or at work. When it comes to perimeter security Advanced Perimeter Systems has a range of products from the discrete to the intimidating.

Have you made changes to your business as a result of the pandemic? Reduced your footprint as more staff work from home? Have you conducted a new risk assessment since making those changes? When you do consider security make sure you start from the outside in. Perimeter security is the first line of defence to ensure your property is protected against intruders and vandalism. All of our products offer serious protection, are built to British Standards, and have low power consumption making them an environmentally responsible choice too.

Our solutions are quality assured, proven, reliable, robust and simple to install. Whatever challenges you face securing your property why not give us a call to discuss our solution to your needs.

E: sales@apsltd.net | T: 01786 479862
W: www.advancedperimetersystems.com



Bull Products protects riverside landmark 80 Strand

Bull Products, a manufacturer of life-saving fire protection equipment, has installed its Cygnus 1 Wireless Alarm System at 80 Strand in London.

The Cygnus Alarm units have been installed to protect the building during the refurbishment project. Due to the nature of the project including the careful restoration of original art deco features, round the clock protection was required to ensure comprehensive safety of the site and its workers.

Working in partnership with Trident Electrical, Bull Products provided Cygnus fire alarms, extinguishers and trolleys across different levels of the 12-storey building. The Cygnus Alarm System was also required to interface with the permanent alarm system on site, ensuring that site workers were alerted to any risk of fire, 24 hours a day.

For more information, contact Bull on 01432 371170, visit www.bullproducts.co.uk or email enquiries@bullproducts.co.uk



Home Security Systems from Securefast

It can be a full-time job ensuring the safety of your home, that's why the latest range of advanced home security products from Securefast are designed to offer surveillance for both the inside and outside of your home 24 hours a day 7 days a week. Utilising the free app software and the intelligent Wi-Fi configuration allows long distance signal transition, allowing the devices to be viewed from a mobile phone or tablet from anywhere in the world. A combination of the doorbell, internal and external cameras, can all be accessed by using the same app.

For more information on the Securefast home security range and other products in the Securefast range of safety, security and access control products please contact the sales team on 01704 502801.

www.securefast.co.uk



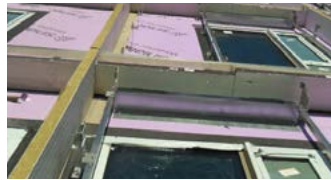
Envirograf manufacture the largest range of **passive fire products**

PRODUCT 55 - CAVITY BARRIERS AND TRAYS BS476 Part 20 and EN1363-1 (2012)

Fire protection for all types of cladding systems. Providing up to 240 minutes of fire protection.



SEALED CAVITY TRAY (SCT)



FAST FIX CAVITY BARRIER (FFCB)



RSM - CAVITY BARRIER FOR RAINSCREEN FACADE SYSTEMS



CV - CAVITY STRIP BARRIER FOR TIMBER FRAME BUILDINGS

PRODUCT 110 - FIROBLOK EN13501-1 (2007) and EN1634-1 (2014)

Fire protection for services passing through plasterboard walls, ceilings and hollow brick walls. Designed to fit over existing services and can be made in any size.



2 HR PROTECTION AROUND PIPES



2 HR PROTECTION VENTILATION DUCTING



2 HR PROTECTION ELECTRICAL TRUNKING



2 HR PROTECTION CABLE BASKETS AND TRAYS



67 MINS PROTECTION FLUE PIPE PROTECTION



67 MINS PROTECTION FIRE AND THERMAL PROTECTION FOR PIPES

PRODUCT 13, 16 & 18 - COLLARS, SADDLES AND MULTI PURPOSE BOXES

Building regulations state that all services that penetrate fire-rated elements must be fire-stopped to the same fire rating as the wall, ceiling or floor.



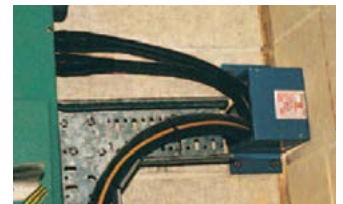
SERVICES THROUGH COLLARS & MULTI PURPOSE BOXES



COLLARS CAN BE USED FOR PIPES AND ALSO CABLES



MULTI PURPOSE BOX BEING USED FOR DIFFERENT SERVICES



SADDLE FOR DIFFERENT TYPES OF SERVICES

FIREPROOF COATINGS

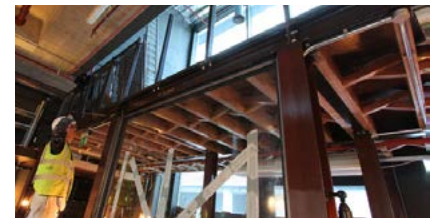
Fire-resistant paint suitable for a variety of applications. Manufactured with intumescent for effective fire protection.



PRODUCT 42 - INTUMESCENT COATING FOR 30 TO 60 MINUTES FIRE PROTECTION. AVAILABLE IN CLEAR OR WHITE.



PRODUCT 92 - FIRE COATING FOR DIFFERENT TYPES OF TIMBER FOR BOTH INTERNAL AND EXTERNAL. CLASS 0 & 1, SBI: B/S1/D0 AND 20 MINS PROTECTION.



PRODUCT 83 - INTUMESCENT COATING FOR STRUCTURAL STEEL FOR UP TO 90 MINUTES. IDEAL FOR INTERNAL AND EXTERNAL USE.

THEY SAID IT COULDN'T BE DONE!

The dealer (elastic sided, pull on) boot style was the signature product when the Buckbootz safety footwear range was launched in 1998. Since that time we have introduced many additional features to the dealer boot concept but up until now and for obvious reasons, the one dealer boot design feature which eluded safety footwear designers had been the provision of ankle support and protection.

After two years of constant design development and wear testing Buckbootz announces a major breakthrough in dealer boot design with the pre spring launch of a sensational new dealer boot : **bANg guardz®**.

Like many good ideas the solution to providing ankle protection on a dealer style is a simple one: build the stretch area into the top part of the front of the boot to enable the ankle protection to be built into the sides. However, that is only the beginning of the story. The real test is in perfecting the boot upper design and components combination so that all the wearer convenience of a normal dealer boot design is not compromised. Getting that right has brought an impressive bonus: you would not believe how comfortable the **bANg guardz®** dealer boot style is, nor its lace style stable mate. The EN/UKCA standard ankle protection (standard code: AN) built into these styles provides the extra benefit of unsurpassed snug fit, comfort and support.

Both styles also come with Buckbootz Achilles Clasp heel support and S3 HRO AN SRC certification and both are WATERPROOF - even the elastic on the dealer style is waterproof!

bANg guardz® joins a long list of Buckbootz protected designs which have broken with convention and brought completely new dimensions to safety footwear performance, function and comfort.

Your Buckbootz Regional Sales Manager has **bANg guardz®** samples for you to preview and forward order. Don't miss the opportunity to be amongst the first merchants to offer this safety boot revolution to your customers.

SAFETY SPEC

- S3 HRO AN SRC
- Supertough anti-scutt toe
- Composite toecap
- Non-metallic anti-penetration midsole
- Antistatic
- Slip resistant - max test
- Ankle impact protection
- Heat (300°C/60 secs) and Oil Resistant Non-marking Rubber Outsole



BSH014 BR

RSP £79.90



BSH014 BK

RSP £79.90



BSH012 HY

RSP £85.90



BSH012 BR

RSP £85.90



BSH012 BK

RSP £85.90

ORDER NOW FOR HI FEBRUARY 2022 DELIVERY!

For more product and stocking information call
01382 82 82 00 or email info@buckbootz.com

BUCKBOOTZ®

ADVANCING SAFETY FOOTWEAR SINCE 1998

WE ARE THE WORK WE DO

TRADEZ BLITZ



**WE DON'T DO POWER
TOOLS OR EXCAVATORS.
WE ONLY DO BOOTS.**

Go to www.buckbootz.com.

For more product and
stocking information call
01382 82 82 00 or email
info@buckbootz.com

BUCKBOOTZ[®]
ADVANCING SAFETY FOOTWEAR SINCE 1998

WE ARE THE WORK WE DO

All your heating needs **100% FREE***



Free thermal energy is stored within the PCM cell and then released when the temperature drops



Use with solar vacuum tubes or photovoltaic powered ground and air source pump systems

Fit PCM cells and benefit from:



Reduced energy consumption



No maintenance
Fit and forget



Suitable for other heat saving applications



Available in different sizes



www.pcmproducts.net
info@pcmproducts.net

Want to make your air conditioning more efficient?

SEE OUR COOLING PCM CELL RANGE