

THE ART OF
DESIGN

LUXURY HOME INTERIORS

£4.95 • ISSUE 60



2023 INTERIOR DESIGN TRENDS /
ARTFUL PENTHOUSE IN BOSTON /
JANUARY FURNITURE SHOW



Bed: Vindö | Fabric: Designer's Guild Glenville Oyster | Carpet: Light Beige | Bed Linen: Havsbris White | Bedside table: Holme

STAY IN BED

The ultimate luxury is taking time to unwind in a bed
so comfortable that you never want to leave



CARPE DIEM BEDS
SWEDISH LUXURY

15 WIGMORE STREET | LONDON W1U 1P | MARYLEBONE@CARPEDIEMBEDS.CO.UK | +44 (0) 20 3982 3252 | CARPEDIEMBEDS.CO.UK
COPENHAGEN GOTHENBURG LONDON SEOUL STOCKHOLM ZURICH AND OTHER FINE LOCATIONS

NEW IN  FURNITURE THIRD FLOOR

**CUSTOM STAINLESS STEEL
& COPPER
AQUATIC PRODUCTS**

- ◆ RESIDENTIAL
- ◆ COMMERCIAL
- ◆ HOSPITALITY

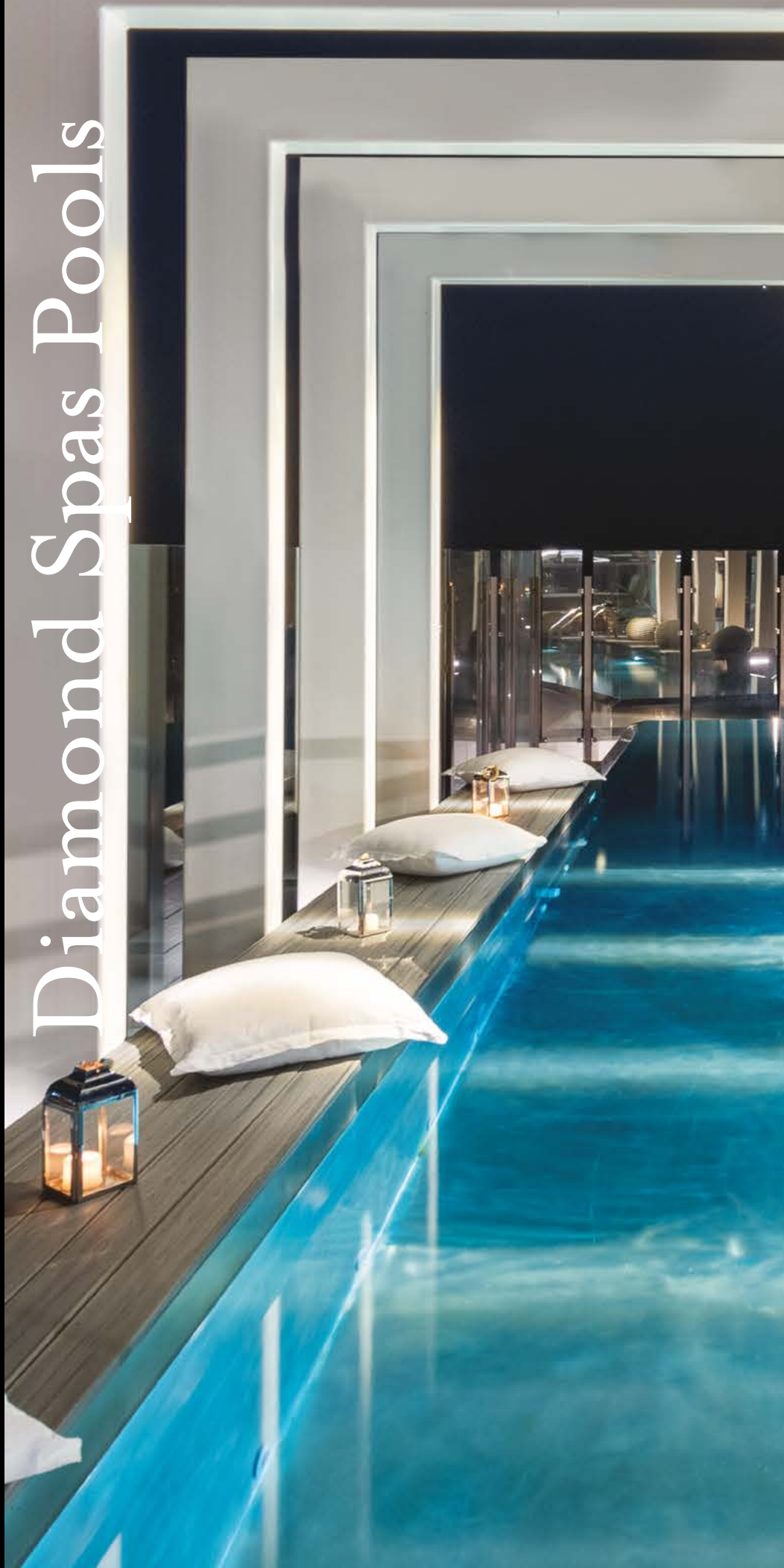
- ◆ Spas
- ◆ Swimming Pools
- ◆ Glass-Walled Pools & Spas
 - ◆ Swim Spas
- ◆ Energy-Efficient Portable Spas
 - ◆ Cold Therapy Pools
 - ◆ Water Features
- ◆ Luxury Custom Indoor & Outdoor Bath Fixtures

- ◆ SPECIALIZING IN ROOFTOP POOL & SPA INSTALLATIONS
- ◆ SUPER YACHT POOL & SPA DESIGN & CONSTRUCTION
- ◆ LIGHTWEIGHT & DURABLE

- ◆ SOPHISTICATED
 - ◆ ARTISTIC
 - ◆ SUSTAINABLE

- ◆ SHIPPING WORLDWIDE SINCE 1996

Diamond Spas Pools



1.800.951.SPAS (7727)
720.864.9115
FAX 866.605.2358
diamondspas.com
info@diamondspas.com



PHOTOGRAPHER: JIMI SMITH PHOTOGRAPHY
BUILDER: CORNERSTONE CONSTRUCTION SERVICES, LLC



ROOFTOP STAINLESS STEEL POOL WITH LED LIGHTING, THREE-SIDED INFINITY EDGE
AT FAR END OF POOL CASCADING INTO IRREGULAR-SHAPED SHALLOW POOL WATER FEATURE



GRAPHENSTONE®
PURIFYING PAINTS



VOC & PLASTIC FREE - CO2 ABSORBING* - CRADLE TO CRADLE CERTIFIED
info@graphenstone.co.uk - 01379 772940 - graphenstone-ecopaints.store

*the majority in the first 30 days of curing



CONTENTS

8

HILLSIDE BY CHIODELLI

Located in the green Hong Kong lung, this Chiodelli project was designed as an interpenetration between man and nature.

42

FIVE STAR HAT-TRICK FOR VESTA

Vesta has been awarded 'Five Star' status for its entries in the 2022-2023 International Property Awards.

20

SEAFRONT DUPLEX

A two floor apartment overlooking the Mediterranean sea, where well-being aligns with design providing unique sensations in an elegant space.

56

FENG SHUI AGENCY

Featuring the UK's longest-established and leading holistic design & energy wellness practice.

Editor in Chief

Antony Holter
T: 01304 806039
E: editor@mhmagazine.co.uk

Editor

Rebecca Keating
T: 01304 806039
E: rebecca@theartofdesignmagazine.com

Publishing Director

Martin Holmes
T: 01304 806039
E: martin@mhmagazine.co.uk

Sales Director

Courtney Yorke
T: 01227 936976
E: courtney@theartofdesignmagazine.com

Digital Manager

Jamie Bullock
T: 01227 936971
E: jamie@mhmagazine.co.uk

Business Manager

Josh Holmes
T: 01304 806039
E: josh@mhmagazine.co.uk

Studio Designer

Sarah Johnson
E: sarah.johnson@mhmagazine.co.uk

Accounts Department

Alison Holmes
T: 01304 806039
E: accounts@mhmediaglobal.com

MH Media Global Ltd

18/20 Newington Road
Ramsgate
Kent CT12 6EE



Cover Image Courtesy of:
HILLSIDE by Chiodelli



The Art of Design
is proud partners with

HONG KONG – HILLSIDE BY CHIODELLI **DESIGNED WITHIN NATURE**



Inspired by Oriental philosophy and approach, the materials and environments are integrated with the surrounding vegetation becoming a whole thing. Large sliding glass windows envelop the spaces enriching them with all shades of natural light and opening up striking perspective views of the Clear Water Bay waterfront and wooded hillsides.

Extremely spacious, the living area has been divided into comfortable eclectic corners.

From the living to the dining room, passing through the wine zone, the combination of materials, shapes and colours strengthens the design concept for an impressive result that scents of nature.



The antique wood of the furniture chases the polished wood of the parquet floors and ceilings, meeting technology in the large wine cellar and between the grooves in the walls.

In the living room the panels above the fireplace feature triangular geometries in natural colours that recall the origami technique. Like leaves moved by the wind, these decorations create movement and lead the eye towards the rest of the living area.

The gold and bronze metallic inserts give a contemporary edge by enhancing the wood shades while the dark tones increase the intensity of the space.

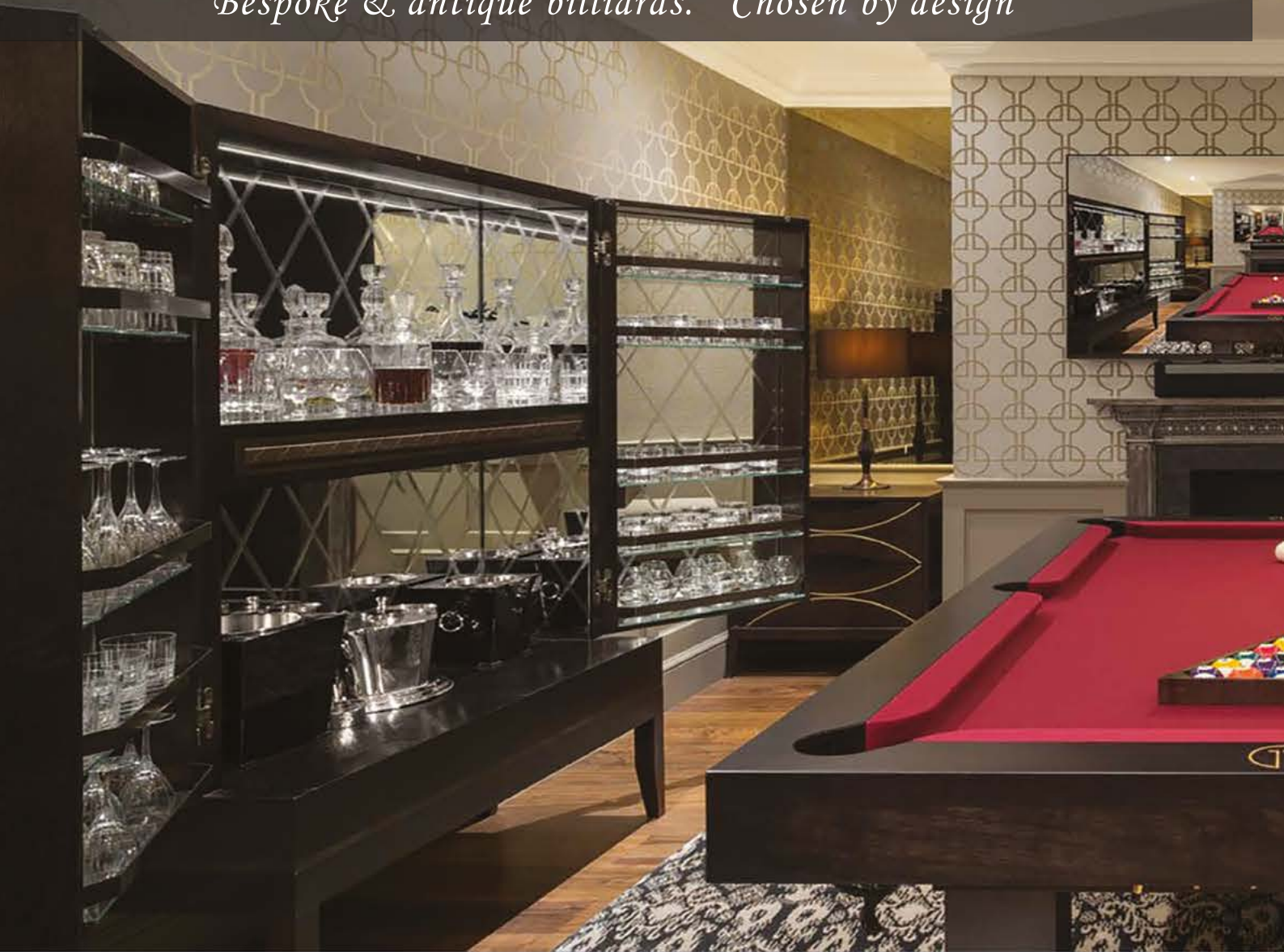
Eye-catching green is all around, from the soft fabric of the sofas to the innovative backlit fireplace in translucent onyx. A chromatic chiasm approach that reveals all the company's attention to detail.

Between art and craftsmanship, this Chiodelli creation is a tribute to beauty and high quality. An example of how design can blend classic elegance with the charm of the contemporary, improving environments in a natural and unique way.



B Sir William

Bespoke & antique billiards. Chosen by design



Crafted by hand in the UK

Bentley Billiards



www.billiards.co.uk

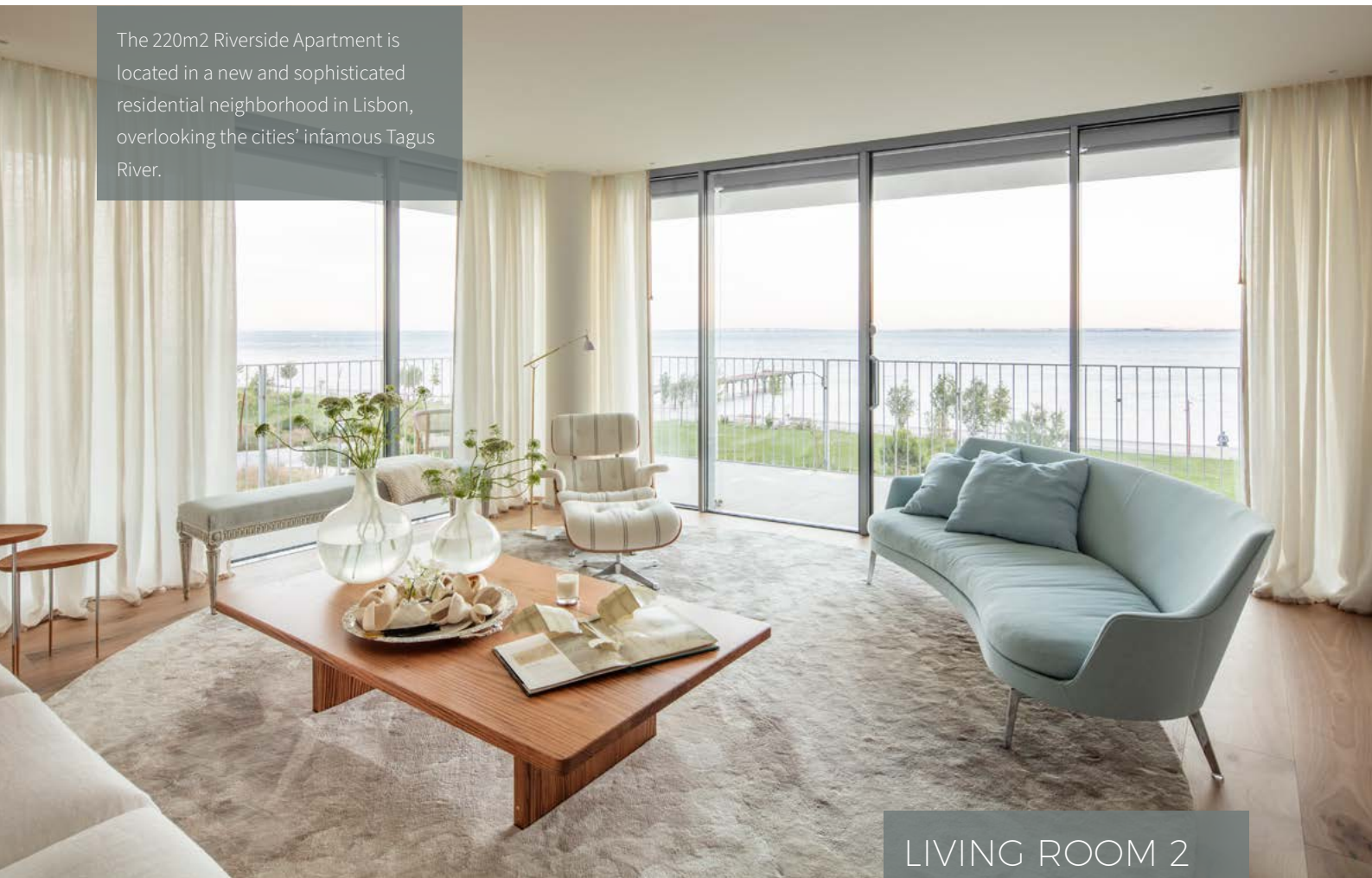
| +44 (0) 1264 731 210



Enjoyed all around the world

RIVERSIDE APARTMENT

The 220m2 Riverside Apartment is located in a new and sophisticated residential neighborhood in Lisbon, overlooking the cities' infamous Tagus River.



LIVING ROOM 2

Sofa: Cassina (fabric: V&N)

Floor Lamp: Tato

Coffee Table: Joana Aranha Signature
(In solid oak wood with matt varnish)

Round Sofa: Flexform (fabric: Romo)

Armchair and Pouf: Vitra (fabric: C&C)

Side Tables: Joana Aranha Signature
(Natural cherry wood top and polished steel legs) Stool: French Antique Piece

Curtains: White linen

The sense of serenity from the surrounding water streams throughout the space, with brass accents that glimmer as they meet river-inspired hues. An open plan living space with three distinct areas (an elegant dining area, a contemporary living room, and a TV room with plush sofas) adjoins the apartment's extensive balcony, enabling the owners to take full advantage of its magnificent views. Additional unique details hint to the natural beauty of the water surrounding the home such as Calcatta Oro marble surfaces and Cole & Son's nautical wallpaper in earthy tones in the kitchen.

Organic materials such as woods, linens, velvets, and cashmeres preserve the soothing ambience. The master bedroom



connects to a custom-designed wardrobe space and en-suite bathroom, adorned from floor-to-ceiling with polished Arabescato marble that contrasts with black geometric lines to grant a modern Art Deco touch.



PLAYROOM

Sofa-Bed: Innovation Living

Monkey Wall Lamp: Seletti

Toy Cabinet: Joana Aranha Signature
(Lacquered wood structure with
handwritten pull-out drawers) Little

Table: Smallable

Little Chairs: Vitra

Ceiling Lamp: Catellani&Smith

Wallpaper: Cole & Son

Curtains: White and Beige Linen

Additional rooms include a guest bedroom as well as an elegantly whimsical children's bedroom and playroom.

Inspired by the owners, a contemporary Swedish style is combined with traditional Portuguese features to harmonise with the home's original architecture, blending the classical and the modern in signature Studio Joana Aranha style. The Riverside Apartment provides the perfect space for the owners to unwind: an ideal space for the family as well as entertaining guests.

"Being in this house is almost like being on a boat in the middle of the river."

Q&A

Could you name and describe the area where the house is located?

The house is located in a new sophisticated residential neighborhood in Lisbon, Portugal. It is a new area with freshly planted gardens, modern cafes and cycle tracks, right in front of the Tagus river.

Could you describe the layout? (size in square meters, open plan, number of bedrooms, bathroom etc.)

This is an apartment with about 220 square meters plus an extensive balcony. The house has a long living room with three distinct areas: a living space, a dining area and a TV room. This house also has a master suite with a closet and a bathroom, two bedrooms with a shared bathroom, a toilet, a guest bedroom with bathroom, a kitchen with an area for quick meals and a laundry room.

Were there any special requests from the homeowners, and if so, how did you answer to the requests in the final design?

In this house, the kitchen is precisely

aligned with the entrance door. The clients requested that the kitchen would not be seen as one enters the door, but rather an entrance hall. Therefore, we created a panel that visually continues the wall as an integrated part of the architecture of the house, without having a physical door element. This allowed the creation of a more elegant entrance hall. In addition, this disguised door has a clip that makes it stay closed at all times, preventing the feeling of entering the house and seeing the kitchen right away.

The same is true in the living room. All communication from the living room to the bedrooms is very direct, almost without corridors. For this reason, and to avoid the repetition of a physical door element in such an important wall of the house, we applied to the doors the same language as the rest of the wall (the Venetian stucco) with subtle handles. This way, we managed to keep all the communication coherent, elegant and discreet.

In addition to this, the house was highly customized and adapted to this family, their needs and their lifestyle. The house had an outdated layout that did not fit the needs of this family and we completely changed it to make more sense.



KITCHEN

Cabinets: Ernestomeda

Countertop: Calacatta Oro Marble

Table: Saarinen Tulip Dining Table

Ceiling Lamps: Tom Dixon

Chairs: Iconic CH24 Carl Hansen & Søn Chair

Wallpaper: Cole & Son

Curtains: White linen

What was the inspiration behind the project?

The inspiration for this house came from all its beautiful surroundings. This is a house on the edge of the Tagus River, with a breathtaking view all around. It was precisely the blue and the serenity of the river that inspired us. Being in this house is almost like being on a boat in the middle of the river.

Besides, the clients are always a huge source of inspiration. In this case, they are a young couple of a Portuguese and a Swedish. So, we mixed a Scandinavian and contemporary style with some details of Portuguese roots.



What type of materials did you decide to use in this project, and why?

We started by intervening in terms of architecture, where we chose a magnificent solid wood to embrace the floor of the entire house, among other natural elements such as the stones of the bathrooms and kitchen, the wooden striped panel of the kitchen and the Venetian stucco that covers the entire living room. Metal was also used a lot in these bathrooms, to create the shower compartments.



In terms of interior design, we have chosen, as always, the linens, the velvets, the cashmere... everything that is natural and pleasant to the touch.

How would you define the style of this home?

This is a contemporary house, although there are small classic details that make their presence felt here and there. This will always be our signature, the blend between classic and modern.

The curved sofa in the living room, or even the Eames armchair, emphasize this more contemporary side of the house. In contrast, the sideboards of the dining room, while designed with very straight lines, play with some highly classic brass handles that were painted in the same tone as the furniture to provide modernity. These are the type of detail that are felt in this house.

What type of colors did you decide to use in this house, and why?

The view and specially the river were the biggest inspirations for the color scheme of this house. The river gave color to several pieces scattered throughout the house, but we also felt the need to take things out of the serious and the obvious by bringing in some strong contrasting colors such as the bright orange that is present in some elements of the living room, and the mustard yellow more present in the guest bedroom. In the toilet it was the mixture of the blue of the river and the green of the gardens overlooking the house that created the atmosphere. The contemporary wallpaper with leaves connects these two tones and creates a remarkable environment.

joanaaranha.com

What was the biggest challenge you faced?

We would say that the biggest challenge we faced in this project was the long wall in the living room that leads to the bedrooms. It is a very important wall, but it is extremely long and with several doors. In the beginning we wanted to give a little dynamism to it, to create interest, so we were thinking of including various paintings throughout the wall and the doors. In the end we felt that we should chose a less static solution, and that is why we decided to apply the Venetian stucco throughout the wall, including the doors.

What do you like the most about this project?

We are unconditional fans of this kitchen, it worked very well. It's almost like an extension of the living room, a space to receive. The Calacatta marble countertop that goes up the wall embraces the ripped wood and gives such a special comfort to this space. We love it!

Besides, the living room is also a space that fills our hearts. It was not very easy to accomplish, since it is such a long and narrow area, but we feel that we managed to define a layout that ended up working amazingly.



IS LUXURY ON YOUR MIND?

Defining luxury is not easy, for some it's a feeling of aspiration or distinction. To others, it's an indicator of elegance or individuality. Luxury in interiors has been taken to new heights in recent years with more interior designers favouring this indulgent, yet elegant style.



Established luxury UK interiors brand, My Furniture, have successfully created the perfect mix of high-end, quality furniture at affordable prices. Elegant dining, sumptuous sofas - all products in the My Furniture range are designed in-house in the UK by a team of dedicated designers creating fresh, original designs with the end user in mind. All items can be viewed at their showroom in Sandiacre, Nottingham, or via their website my-furniture.com.



My Furniture regularly add new collections to their portfolio. Whether your preference is hotel luxe or simple elegance, you will undoubtedly find the perfect piece that can be in your home in as little as a couple of days.

An exciting new arrival is the Emmeline. Striking, luxurious and completely extravagant. Featuring multi-faceted toughened smoked mirror, the range comprises an impressive dining table, as well as coffee, side and bar tables.

Understated elegance at its best, the Lexington is a gracefully styled collection. The in-house designers at My Furniture review products regularly to establish any gaps within the collections and felt the elegance of the Lexington would appeal to a wider audience - simple styling, but with an opulent twist.

With the ongoing trend for open plan kitchens and large family rooms not going away any time soon, My Furniture have an expansive range of bar stools.

The Frankfurt is a skilfully handcrafted, deep buttoned stool with elegant curvaceous lines, available in both chalk and dove grey fabrics to suit most interiors.

Accessories can transform a room and create the wow factor in a matter of moments. My Furniture offer everything from stunning lighting to inspiring storage solutions. Timeless, beautiful pieces that will stay with you forever. Alternatively, if you are looking for a quick inexpensive update - check out their hand-finished artworks and beautifully crafted rug collection.



Customer service is of the utmost importance to My Furniture. With over 11,000 Trust Pilot reviews and consistent 5-star ratings, customers can purchase with complete confidence.

FAST AND FREE DELIVERY TO UK MAINLAND. Delivery available throughout Europe.

my furniture

Discover luxury furniture and a wealth of home décor inspiration, visit: my-furniture.com or call freephone **0800 092 1636**.



my furniture

my-furniture.com

enquiries: 0800 092 1636





ORIGIN

**BUILDING AWARD WINNING
POOLS FOR OVER
40 YEARS**

ORIGIN POOLS

**AT ORIGIN WE DO IT ALL
FROM CONCEPT TO COMPLETION**

**INDOOR POOLS FROM
£195,000 - £500,000***

Download your free brochure from
www.originpools.co.uk or call the
experts at Origin on 01895 453996



**SPATA AWARDS
WINNER 2022**

* Inc VAT and subject to T&C's and technical site visit survey

f [originleisure](https://www.facebook.com/originleisure)



@ [originpoolsuk](https://www.instagram.com/originpoolsuk)

SEAFRONT DUPLEX

OTOMI STUDIO



A bespoke design where comfort and nature meet. A two floor apartment overlooking the Mediterranean sea, where well-being aligns with design providing unique sensations in an elegant space.

Kitchen, living and dining united by materiality, lighting design and furniture selection

Referring to essential materials such as timber and stone, and having a panoramic levitated seaview, we were able to convey the sense of privacy and solitude in nature. Contemporary space was created by engaging pure forms and volumes which bring elegance enhanced by technology.

The choice of wall coverings was guided by earthy and timber tones to give the occupant the feeling of warmth, especially through the decorative timber panels, which in addition to making the environment cosy produce a particular aesthetic and acoustic perception. The choice of wallpapers refers to the natural elements of laguna, foliage and animal kingdom. The floor is made of wide

parquet planks running perpendicular to the main facade through the entire apartment. Marble themed ceramic tiles dialogue harmoniously with each other and the rest of interior elements. Brushed bronze & brass accentuate the decor throughout the project. Rimadesio doors covered in fluted walnut timber or amaranto leather blend with decorative timber panels. All of the doors and openings are frameless, cut into the continuous surface of the wall coverings.

Materials and various lighting combinations play an important role in creating an interior atmosphere that turned out to be warm and inviting. In the search for a cosy environment, lighting was used to highlight

the areas and enhance the mise en scene of design pieces and decorative elements. The entire technical lighting solution was provided by Delta light, resulting in a sophisticated and harmonious environment. Following the concept of space, we have used decorative lights that are inspired by organic and natural shapes from Tom Dixon, Axolight, and Sylcom.

The project works with home automation, dimmable controls, motorised curtains and blinds, and integrated ceiling speakers. The technologies are intentionally concealed, and therefore, practically invisible, and remain a hidden force in the apartment's backbone.

Spiral staircase hammered bronze railing



Illuminated spiral staircase steps and entrance corridor

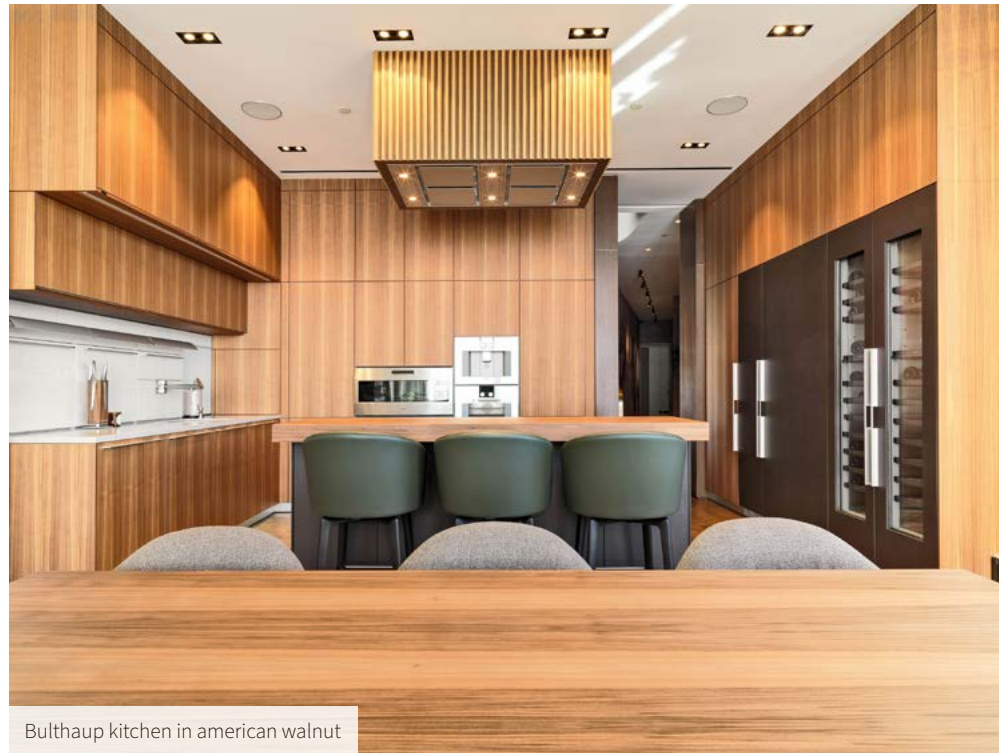


Blown glass fish elements



Upon entering the duplex you are greeted by a custom made spiral staircase made of hammered bronze railing on the outer side and Pirarucu fish skin inspired timber veneer on the inner side. The floating oak steps are illuminated at night. The bottom of the staircase is dressed in the same oak as the steps to bring in the feeling of the single solid timber volume entrapped between the railings. This installation is enhanced by a Sans Souci chandelier consisting of 84 piece blown glass fish like elements floating through the centre of the stairs. The side wall of the entrance area is made of teak timber cut out in a form of sea waves and in the background we can see the wallpaper with shimmering shoals of fish.

Arriving at the kitchen, which is integrated into the dining and living open space, we have a Bulthaup designed solution, with a mix of natural walnut for the storage cabinet doors and dark structure oak for the kitchen appliance doors as well as the island bar. London Grey Ceasastone countertop matches flawlessly with the rest of the material selection. The client adores high quality cooking and was looking for something with monolithic aesthetics and practicality in operation. One of the challenges was to distribute all the kitchenware and dishware, for that reason we have raised the kitchen height from standard to ceiling height.



Bulthaup kitchen in american walnut

This kitchen is providing maximised functionality of internal storage and function integration of Gaggenau kitchen appliances. The bar island hosts electrical induction as well as gas cooktops with custom made hood that matches the American walnut solid wood bar counter.

The Rimadesio dining table, coupled with the Atomic Chandelier by Delightfull, shows the transforming power of open space. The living and dining room is united by custom made linear low wall storage drawers with Rosso Portogallo marble top. The linearity

is only interrupted to insert the Bang & Olufsen television and speakers. Several patterns and textures have been introduced into the living space via the Minotti sofa armchair, bench and coffee table with marble, wood and fabrics of varying shades and pillows with accent colours.

The dining and living room is connected to the veranda through a sliding glass door, generating a feeling of spaciousness and clarity. When you pass this boundary, an intimate space is created that provides a refuge and contact with nature.

Solid teak furniture, iroko ceiling with starry sky lighting layout and wall finish from clay tiles.

The elevated bed podium in the master bedroom represents the refuge and tranquillity. It offers an even better view of the Mediterranean horizon. The background of the bed is backlit faux onyx with emerald tones and on each side of the bed there is a pendant Axo Light Mountain View chandelier. This mise en scene is symbolic; blue sea view in front and green forest of Troodos mountains behind. Adjacent to the master bedroom is a semi outdoor terrace for intimate relaxation time surrounded by

lush green plants and floral pattern tiles.

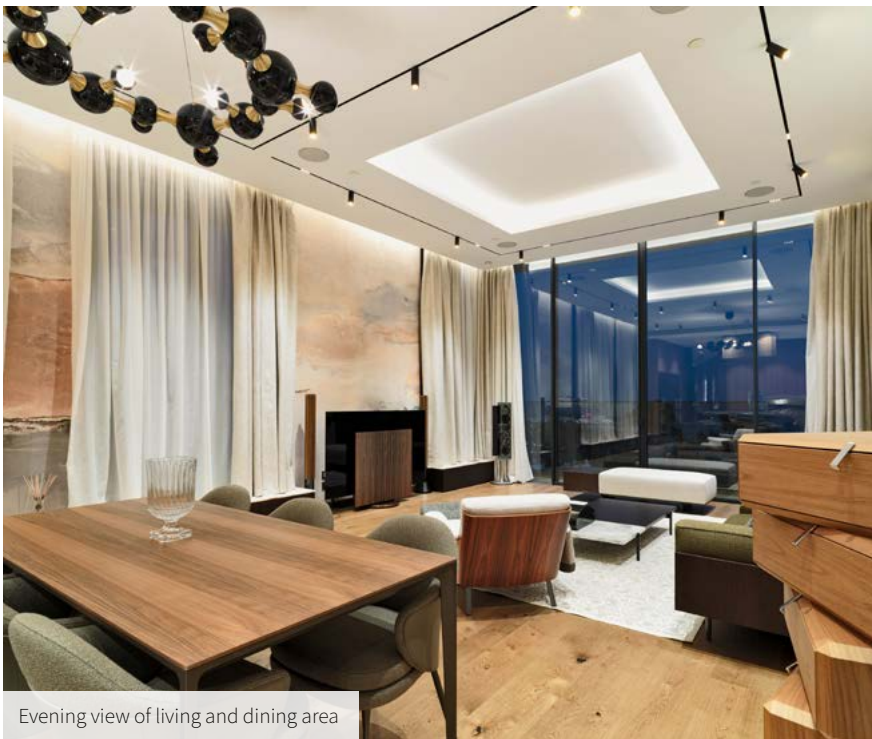
The Rimadesio walk-in wardrobe acts like a transition space between the bedroom and bathroom. It is seamlessly integrated together with custom made decorative wallpanels and frameless doors. It has been intricately designed, down to the smallest detail based on the client's habits and lifestyle nuances. The dominant material here is grey reflective glass that creates a game between openness, semi-transparence and preservation. The space generating, cutting-edge wardrobe system completely redefines the spatial layout and provides minimalism, elegance as



Bedroom sitting area

well as plenty of beautiful storage floor to ceiling. The integrated lighting provides an optimum view of the items stored in the wardrobe through a beautiful prism of decorative glass and creates an exciting warm light lantern effect. Centre piece of this room is the levitating island that looks sophisticated and mysterious under the colourful pendants of the chandelier.

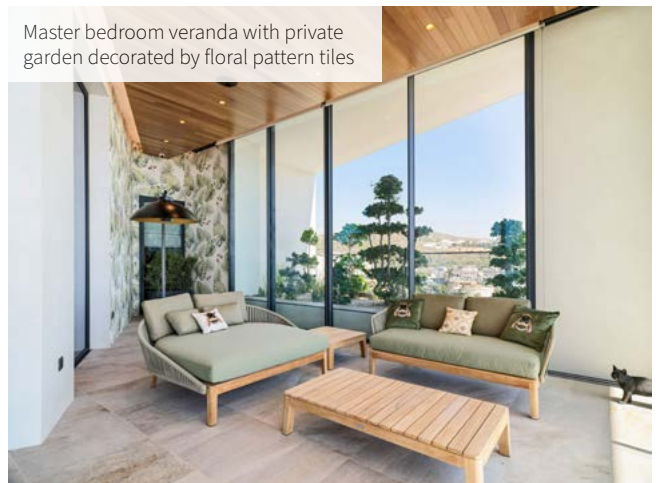
The room has two major marble tones: Verde Alpi on the floors and backdrop wall, Calacata Elite on the rest of the walls. We conceived a custom-made vanity made of teak and fluted oak that is completely symmetrical, with giant full height mirrors that multiply an already grandiose space.



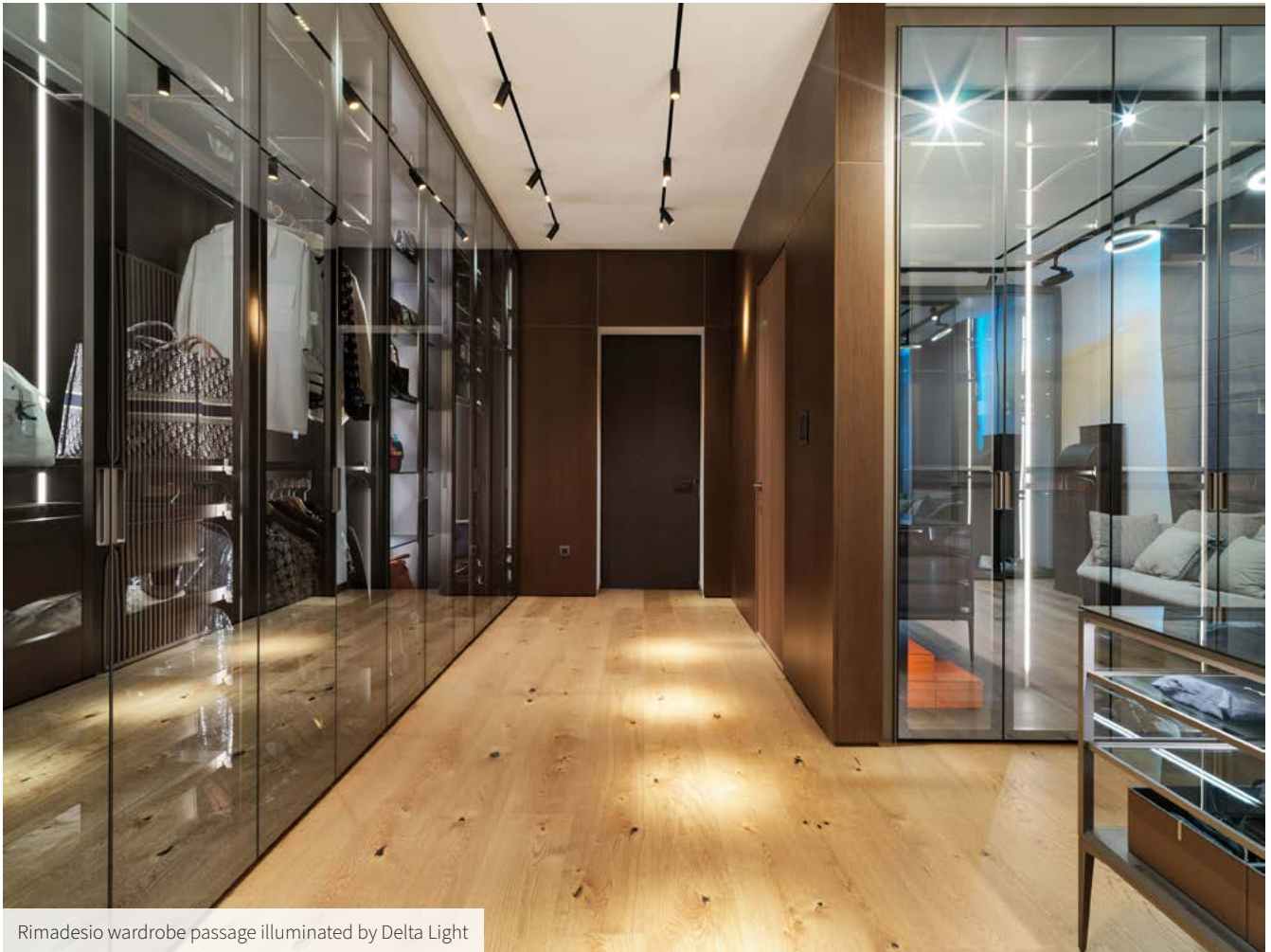
Evening view of living and dining area



Semi outdoor veranda with timber ceiling and clay tiled walls



Master bedroom veranda with private garden decorated by floral pattern tiles



Rimadesio wardrobe passage illuminated by Delta Light

The integrated led backlight of mirror frames creates a mystical portal that reflects the free form chandelier between the vanities and above the freestanding bathtub. All the sanitary fittings and accessories are in brushed bronze finish; inline with the design accents of the projects. The toilet and bidet area as well as the walk in shower are in separate spaces behind a frosted glass.

Guest Toilet is the smallest space of the apartment but nevertheless an integral part of the design flow. Organic shapes of sanitary ware and fittings take over the small rectangular space surrounded by arabescato orobi-co walls and enlightened by pendant lights.



Timber ceiling above decorative illuminated Technografica panels

SPACE TO RELAX & ENTERTAIN

THIS PROJECT IS BASED IN WORCESTERSHIRE, ARCHITECTURALLY DESIGN BY AVON HOMES.

AN ARTS & CRAFT PROPERTY WITH STYLE AND PRESENCE, YET ALSO BENEFITTING FROM THE LATEST SMART HOME TECHNOLOGY.

THIS HOUSE CONSISTS OF 4 BEDROOMS AND 3 BATHROOMS SET OVER 2 FLOORS.



Patsy Blunt Interiors was responsible for project management, interior design, and dressing of this spacious property. We were appointed by a private client to work with the property developers.

During the initial consultation phase, Patsy and the team learnt a lot about the clients desires and needs. Being a young, single gentlemen he wanted a space he could both relax and entertain. Whilst accommodating bedrooms specifically for his family.



We were brought on in the early stages of the build which allowed us to adapt the property to the client's needs, such as a cinema room and a snooker room that features a bespoke bar unit. The designers worked closely with the client to create an interior which is suitable for modern living, every finish was chosen with detail and quality in mind.

PATSY BLUNT INTERIORS

Founded in 2010, we are a multi award-winning Interior Design Studio based in Surrey, Virginia Water with our Showroom run by Patsy and her team.

The company provides full interior design service from Concept Designs, Floor Plans, FF&E Design, Procurement, Project Management, Installation and Styling.



We create bespoke homes tailored to each of our clients' requirements, lifestyle and budget

Patsy Blunt Interiors, 7 Station Approach, Virginia Water, Surrey, GU25 4DL

Email: showroom@patsybluntinteriors.com | Tel: 01344845594

www.patsybluntinteriors.com

 @patsybluntinteriors

COZE

ONLINE MERCHANTS OF THE FINEST LINEN AND HOUSEHOLD TEXTILES

At the heart of the family-run luxury linen brand Coze lies a passion for textiles, stretching back four generations to when the great-grandfather of directors Ben and Dan Roston opened a textiles business in London's East End.

The business supplies pillows, duvets, towels and bed linen to many of Britain's most prestigious five-star establishments including The Dorchester, The Ritz & The Gleneagles in Scotland. Ben and Dan soon spotted a gap in the market for customers to purchase hotel quality linens for their homes & Coze was born as a result.

'The five-star hotels we supply always put comfort and feel at the top of their requirements,' says Ben. 'We often receive enquiries from guests who were introduced to our bedding by some of the UK's finest Hotels, seeking to bring the same comfort and luxury to their own homes.'

Coze has a focus on ethical sustainability and work closely with the finest cotton harvesters who grow the seed and monitor the journey right through to final product in the quest to produce the most premium, quality cotton available.

The company has been working with cotton farmers in the Bay of Bengal for four generations. The cotton is handpicked so only the best flowering buds are harvested. The purest fibres are spun on site, on

state-of-the-art machines that produce the highest quality yarn, woven in various thread counts on looms and finished using 12 stitches per inch, far higher than the industry standard of eight to ten inches.

Duvets and pillows are filled with Pyrenean duck down, Coze pride themselves on producing the very best quality pillows and duvets globally. They don't inundate with over-production, but fewer, better quality pieces that are designed for the ultimate in luxury and comfort. They have extensive experience working alongside partners in the French Pyrenees and have together built a solid foundation of craftsmanship and knowledge.

Towelling is made in the Aegean region of Turkey, where they traditionally use a longer fibre, meaning fewer joins and a much softer yet stronger product overall.



Wool blankets are made in a Yorkshire mill dating back to 1783, skilfully woven to capture pockets of insulation, making them light but comfortingly indulgent.

To add that extra special finishing touch, Coze are proud to work in partnership with top 100 Country & Townhouse & Luxdeco top 50 designers, Sophie Paterson to create the exclusive #spforcoze monogrammed Collection. Sophie has become a renowned name across the interior design industry and has worked closely with Coze to introduce this exclusive range of monogram options across all towels, robes, blankets and bed linen. Its distinctive personalised products can be customised in a range of fonts and colours, making them an ideal finishing touch to any Design Project.

Coze has collaborations with several top hotels, spas and interior designers with a constant determination to always offer the very best quality products.

"I've always loved monogrammed products - it adds a layer of luxury to your home and they make the most thoughtful gifts. The quality of the Coze linens is beautiful and with the wide selection of monogramming styles and colours there is something for everyone and every style of interior." – Sophie Paterson.

Interior Designers can apply for a Trade Application on www.cozeline.com

COZE



*Gracing the chambers of the world's very best hotels,
Coze Linen delivers the ultimate in luxury textiles.*

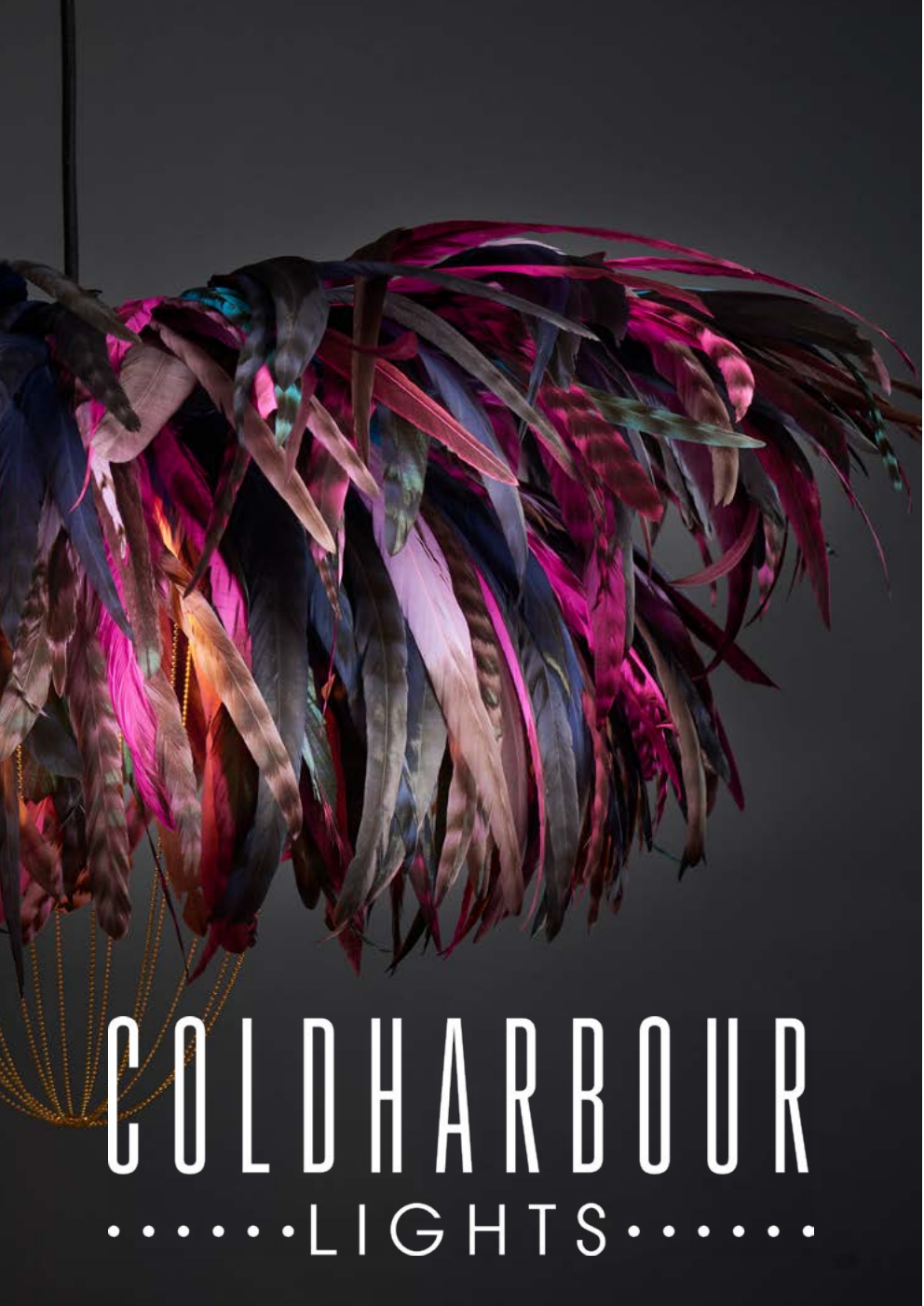
LINEN | BEDDING | TOWELS | BLANKETS | BATHROBES
TEA TOWELS | TABLE LINEN | CUSHIONS

*Exclusive Sophie Paterson for Coze monogramming service available.
Shop the five star collection at*

www.cozelenen.com

APPLY FOR AN INTERIOR DESIGN TRADE ACCOUNT ONLINE

 Follow us on Instagram @coze_linen and tag us using #cozelenen and #spforcoze for a chance to feature on our page.



So too is the soft weightlessness of the feathers, thrown into relief by the utilitarian ball chain.

I can envisage how actors or dancers could embody these elements on stage. That's why these creations are more than light shades to me, they can be another presence in a room; a playful and responsive element that can be interacted with through touch, light and movement."

The human touch is all over these designs, starting with the feathers that are all hand dyed in the UK. Each piece is hand crafted to order in the London studio.

The original Classic Collection features three designs, the Juliette Ø47cm, the Gloria Ø68 and the two tiered Bertie Ø68. These are all designed as easy-fit light shades so the process of installing could not be simpler. We love the fact that the process is so fuss free, delivery to installation takes just a few minutes.

The same is true for most of the new Rio Collection which was developed in response to growing requests for increasingly large and impactful designs. The largest diameters in the Rio Collection are The Filomena and the three tiered Coco, both of which have a flamboyant 115cm diameter. The range of colour combinations available for the new Rio Collection is extensive; a sample service is available.

Sustainability is at the heart of how CHL is run and is a key consideration in its design processes and operations.

As a small design studio, Lottie and her team are able to offer a bespoke consultation process and enjoy developing new ideas. Get in touch with Lottie for bespoke solutions.

Coldharbour Lights launched its latest addition to an extraordinary collection, The Coco (opposite), at Decorex 2022.

Specialising exclusively in feather lighting, it is the brand to turn to for textural, colourful and whimsical pendants to bring warmth and softness to a space. From easy-fit feather lights shades that are installed in seconds, to the world's first three-tiered adjustable feather chandelier, these are statement pieces to make your heart sing.

It is not surprising to find that Coldharbour Lights has its roots in theatre. Lottie Davies, the creative force behind the company, transferred her sensibilities as a theatre performer to her design work, launching the brand in 2017. Movement and playfulness continue to inform her designs which are very much at home being centre stage.

"Whether it's the rhythmic swing of the chains, the madness of the movement of light through the crystals or the soft ruffle of a breeze through the feathers, these are all ludic and essential aspects of the design.

lottie@coldharbourlights.com | www.coldharbourlights.com



INNOVATIVE AND TRENDY LIGHTING DESIGN



Ruzo - 4 light matt warm white and white porcelain ceiling pendant £239 & Orcia - linen tripod diffuser floor lamp £239

Entering their third year since launch, design duo Niki Wright and Scarlett Hampton have continued to impress with their constant release of innovative and trend leading lighting designs.

Building on their successes, the pair look towards a more natural and grounding design ethos for this Autumn Winter season.

“Hand woven rattan remains an integral part of our range this year” explains Hampton, “the natural finish, warm light and diffused shadows are just things we can’t resist”.

Following their ‘Lagom’: just enough approach, lights&lamps offer a diverse range of elegantly simple products using striking forms in an array of different materials.

“There is already so much natural intricacy in the materials we choose” describes Wright “that we believe the shapes and overall compositions should be kept minimal to let each substrate speak for itself”.

This sentiment can be found in the Orcia linen dome floor lamp and the Ruzo 4 light porcelain chandelier.

Alongside hand woven rattan and raffia, lights&lamps have created a collection of beautiful pieces using crackle ceramics, polished marbles, ribbed concrete and soft slubbed linens.

Wright and Hampton know their audience and pride themselves on listening to customer feedback and requests. Their ability to create new products and answer demand is market leading and has meant they have already built a loyal following within the UK.

“Our aim is and has always been to offer more for less” continues Wright, “the design details, the product scale and the materials we use all ensure our customer’s expectations are exceeded every time”.

“We often hear back from our customers to say they thought it might have been too good to be true!” adds Hampton “but we can assure you, our lights and lamps look every bit as good in your home as they do on our website”.



Sanvi - rattan globe table lamp £99

For the full range of designs please visit www.lightsandlamps.com

lightsandlamps.com



PORRO

PORRO BEDROOM 2022



FORMAL PURITY & CRAFTSMANSHIP

Bed Byron, Design Piero Lissoni

Porro, with Piero Lissoni's unmistakable touch, brings its own distinctive design into the bedroom, expanding its range of beds with Byron.



A textile bed with an intimate and compact shape, Byron is made up of 3 elements: the high upholstered bed frame slightly raised from the floor, the soft headboard and the paravent at the bottom that seems to embrace the space and protect your sleep.

Soft lines and rounded edges characterize the textile part of the bed, while the paravent features a rigorous geometry.

The bed comes for mattress 1600 x 2000 mm, 1800 x 2000 mm and King Size 1930 x 2030 mm.

The paravent is a sophisticated detail of Byron: it is a frame in solid black stained ash wood that encloses a straw weave, and is available in different graphic patterns and colours, or wood panels in black stained ash.

Dimensions

Bed: L. 178/198 x H. 89 x D. 230 cm.

L. 211 x H. 89 x D. 241 cm.

Paravent: L. 327/347 x H. 80,5 x D. 5 cm.

Bedside table Byron, Design Piero Lissoni

Savoir-faire and a passion for wood characterize the Byron bedside table featuring a compact shape and rounded corners, with ash frame and Black Sugi melamine interior. A functional volume, divided into a capacious container and a storage drawer, combining rigour and softness, in a palette to be modulated by choosing between open-pore varnishes that allow the natural wood grain to shine through and the expressive intensity of carmine red.

Dimensions

L. 37 x H. 40 x D. 37 cm.



SINUOUS AND WRAPPING SILHOUETTE

Bed Makura, Design Piero Lissoni

The textile bed Makura interprets a new conception of domestic warmth, among rationality and sensuality.



Suspended from the floor, Makura has a cozy and inviting shape thanks to the sinuous and wrapping headboard and to the presence of comfortable removable pillows.

The attention to details that characterizes Porro products is found in the smooth curve that connects the headboard with the structure.

The bed is available in 3 dimensions, for mattresses *W.1600 x D.2000*, *W.1800 x D.2000* and King Size *W.1930 x D.2030 mm*.

Dimensions

L. 174/194 x H. 92 x D. 222 cm.

L. 207 x H. 92 x D. 222 cm.

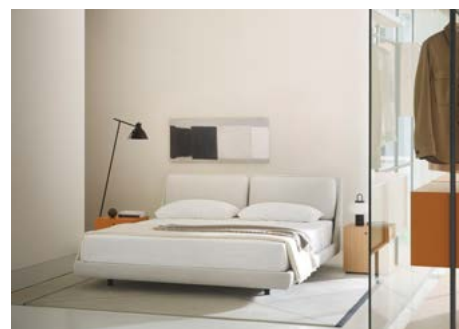
Bedside table Offshore, Design Piero Lissoni

The Offshore bedside table is a versatile accessory to be matched to any beds present in the Porro collection but also an independent unit to furnish any ambience. Compact cubic volume which opens thanks to a central hole, is provided with an internal drawer/tray, completely removable.

Offshore is available in solid natural hemlock or black stained hemlock wood or matt lacquered in all the colours of Porro collection with an MDF structure. Internal drawers are in solid natural hemlock.

Dimensions

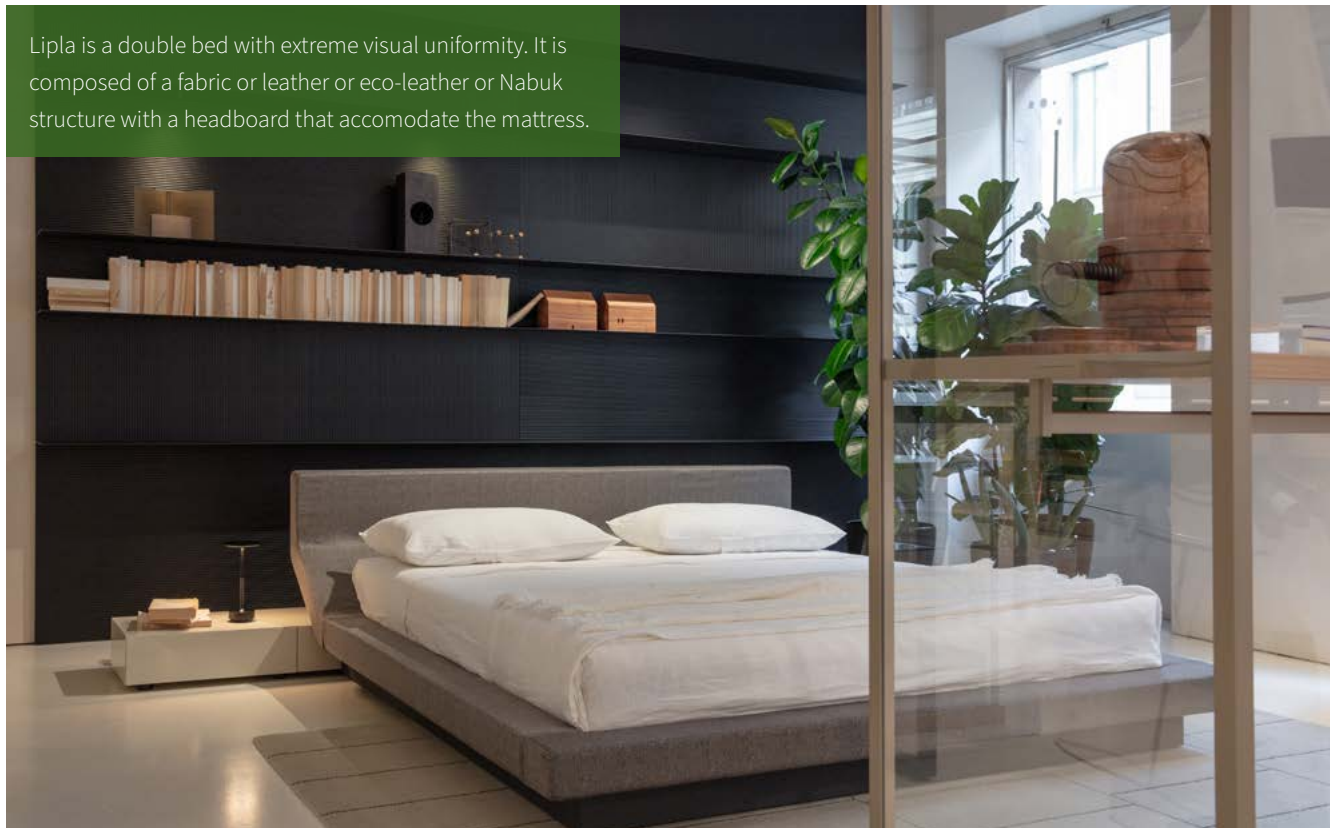
L. 43 x H. 44,5 x P. 43 cm.



DYNAMIC LINES AND VIBRANT CONTEMPORANEITY

Bed Lipla, Design Jean Marie Massaud

Lipla is a double bed with extreme visual uniformity. It is composed of a fabric or leather or eco-leather or Nabuk structure with a headboard that accomodate the mattress.



The bed is available in 3 dimensions, for mattresses $W.1600 \times D.2000$, $W.1800 \times D.2000$ and King Size $W.1930 \times D.2030$ mm.

Dimensions

Double bed L. 192/212 x H. 70,3 x D. 243 cm.

L. 225 x H. 70,3 x D. 246 cm.

Double bed with back unit L. 310/330 x H.

70,3 x D. 253 cm. L. 343 x H. 70,3 x D. 256 cm.

Back unit Lipla, Design Jean Marie Massaud

The Lipla back unit is an optional and can be used as a support surface and bedside table with drawers; it can be made of all the glossy lacquers of the sample collection.

Pedana L. 192/212/225 x H. 24 x D. 40 cm.



info@porro.com
www.porro.com

SPACE-CREATING SOLUTIONS



The NeXT bed enables designers to create the perfect enclosure for a room, maximising flexibility of use, and as minimal as needed. Cabinet structure is non-load bearing so alternative materials are an option too, along with lower costs and faster installation.

This cabinet can feature sliding, rolling or folding doors. We also have prepared ideas for new types of cabinets that dramatically reduce the time needed to install.

The NeXT bed is independent of the cabinet, and can, as shown in the second image, be installed without a cabinet, or the cabinet installed later.

This results in the whole process being simplified, the costs reduced, and reduced time for completion. The NeXT bed is stocked and immediately available in many markets for instant delivery. Just a mattress is needed to have a solution.

Springs are used which were developed by us to be easily adjustable so that any size mattress can be used, so there is no compromise on comfort, in a home or a hotel. This also means that the NeXT bed

can easily be perfectly balanced so that finger-tip operation is possible, unlike gas lifts which can seize, wear or even fail. Perfect balance means safety and springs last and last as our systems use up to 9 each side. Even super-king mattresses can be perfectly balanced.

Cabinet, no cabinet or cabinet added later – the choice is yours

Cabinet designs available free of charge to designers and contractors, many with new features and suggestions to reduce cost, weight, and facilitate assembly.

Recycled materials options for enclosures being developed.



NeXT bed is available throughout Europe and UK, Middle East, USA & Canada, and Asia/Australasia.

www.wallbedsystems.co.uk

Wallbeds were never this easy to order, build and install, so we created NeXT bed

Instant solutions with or without cabinet, installed on day of arrival, and in stock now. Tiny footprint, fingertip control. Safe spring support system. Available in most countries around the world – just add the creativity to make the space you need.



Free advice and ideas/designs

Wallbed Systems Ltd

www.wallbedsystems.co.uk

jeremy.waller@wallbedsystems.co.uk

0208 704 5796 | 07780 1661958

WBS  **WALLBED
SYSTEMS**
Let's build a Wallbed together

THE LAMP THAT TELLS THE STORY OF A CREATIVE YOUNG MAN

All the pieces of the Cobermaster Concept brand tell a story, because all of them were thought, designed and produced based on a concept.

But let it be known: this piece has a special history behind, which the brand is proud to share now.

During the long period of confinement, which was felt due to the Covid-19 pandemic, many children were left without access to face-to-face classes, and many others who, out of necessity, had to accompany their parents to work, so that they could reconcile their personal and professional lives.

This was the case of Tiago Alexandre, to whom this story belongs, and who for some time attended classes from the company where his father works. The contact with the innovation and design department, where the Cobermaster Concept furniture pieces are designed, aroused in Tiago a great desire to design his own pieces. Moved by his son's enthusiasm, his father, Frederico Albergaria, the brand's CEO, challenged him to design a new model of floor lamp, asking him to dedicate himself body and soul to the project, thinking about the concept and respect for the environment. environment. On the other hand, if the model were interesting and feasible, the lamp would be manufactured and presented at the various international fairs where Cobermaster Concept is an assiduous presence.

The motto was launched! Tiago was now in charge of a project like a true professional. For a few days, the young man shut himself in a room, far from everyone, working in complete secrecy. A few days later, he presented his father with a sketch of his vision for the new lamp. After observing the design, Frederico immediately thought that the small sketch could become one of the best floor lamps developed by the brand.

When asked about the inspiration, Tiago promptly explained that he had been inspired by the vintage tall speakers, widely used in the 80's and 90's, which he was very fond of.





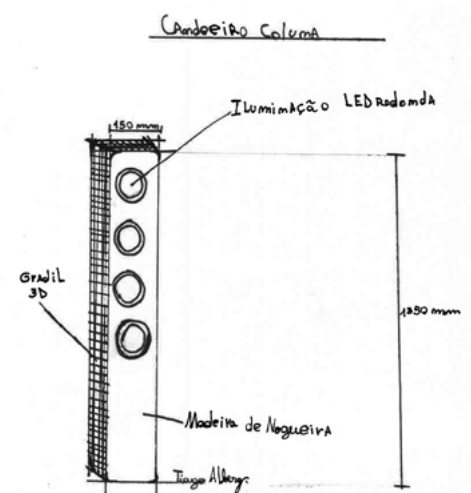
Tiago's first big project was created and he couldn't be happier! A name for his creation was now lacking. The father suggested it be JAMES ALEXANDER, the English version of the creator's name (Tiago Alexandre), in honor of himself.

The James lamp has already been produced and is currently being presented to the market, having been one of the most coveted pieces in Paris, in the latest edition of Maison et Objet, and praised by many designers and professionals in the sector during the fair.

The truth is that until now, no one has ever known that this piece was designed by a pre-teen at the height of his 12 years!

Tiago's capacity for initiative ended up positively marking the difficult period of the pandemic, awakening in him the desire to design, create and undertake.

JAMES ALEXANDER is the new lamp by Cobermaster Concept, a lighting piece that transports us to the glamor of other times, with a vintage and industrial touch. A piece designed in detail where even the lamps have the shape of the speakers used at that time. More than a new lamp model, it is a piece of art and lighting capable of giving the final signature to any premium decoration project, being available for shipping to any part of the world.



www.cobermasterconcept.com

The best technology works effortlessly, elegantly, even emotionally, to improve the space around you without complication or aesthetic compromise. The essence of true luxury is the experience.

At Dubai Audio, we believe deeply in the exhilarating and irresistible experience of luxury home entertainment. High-fidelity sound, stunning visual clarity, sophisticated design, and not least, effortless ease of use are the hallmarks of all we have to offer.

Our range of products and services meet the needs of discerning home and commercial buyers, as well as consultants, architects, contractors and interior designers. As distributors we exercise rigorous oversight over the dealers we work with, ensuring they provide a level of service and expertise that meets our own demanding standards.

As pioneers in bringing cutting-edge home entertainment solutions to the UAE and across the Middle East, we have established a global reputation for innovation and integrity that makes us the go-to resource for world-class brands looking to enter the region.



Mondaine Alarm Clock

Tivoli Audio M3BT

Geneva Time

MONDAINE®

Swiss  Watch

Iconic Swiss Alarm Clocks



A modern home décor statement for your wall and your desk. The timeless design from Mondaine Swiss Railways Clock is captured in the 125mm mini clock with hands visible in the dark. Its 2-in-1 functionality makes it possible to use this timepiece as desk clock or wall clock. The gold and aluminum tone cases with tone-on-tone hands and markers, combined with the elegant, matching colour dial gives a special touch to every room. Inspired by the greatness of our Swiss Alps, this new Mondaine clock is the perfect item for any hotel room that wants their guests to wake up on time and with style.



 dubai audio

Dubai Audio Center LLC. T. +97143431441 | E. info@dubaiaudio.com | www.business.dubaiaudio.com

FIVE STAR HAT-TRICK FOR VESTA AT THE 2022-2023 **INTERNATIONAL PROPERTY AWARDS**



Vesta has been awarded 'Five Star' status for its entries in the 2022-2023 International Property Awards for 'Best Residential Interior Show Home for Hertfordshire' and 'Best Residential Interior Apartment for London'.

The London-based interior design firm also picked up 'Best Residential Interior Apartment for the UK' after winning the London category.

The International Property Awards is an annual event to celebrate the highest levels of achievement amongst residential and commercial property professionals around the world, open to companies operating in all sectors of the real estate industry.

Continuing its successes over the last three years, Vesta – under its sister brand, INVESTA - has been awarded 'Five Star' in the show home category with its city-meets-country inspired one-bed apartment at the 'Waterside at Riverwell' development by Bellway Homes in Watford.





To capture city workers and the first-time buyer market, Vesta designed an apartment inspired by the local area's picturesque countryside location and used fresh, earthy, and organic influences.

The interior design firm was also crowned with the 'Five Star' status in the Best Residential Interior Apartment for London' category, with its penthouse project, Belvedere Row.

Working with its private client, Vesta transformed a one-of-a-kind, two-story penthouse apartment located at the prestigious St James development, White City Living. The interiors are chic, tonal, and reminiscent of the style and comfort of a luxury hotel.

The Belvedere Row project was also awarded 'Five Star' for the 'Best Residential Interior Apartment UK', beating all its



fellow contenders across the country and automatically entering them into the European competition in which results are revealed in early 2023.

Vesta's Group Managing Director, Chris Dale, said: "I'm absolutely delighted with our successes in this year's entries. We'd hoped for two, but to win three is such a wonderful surprise and further showcases our success and growth in the interiors and property marketplace."

The UK International Property Award winners were announced at a glamorous ceremony on Friday, 28th October 2022 at The Royal Lancaster Hotel, London.

For more information on Vesta's interior design services please go to www.vesta-london.co.uk

ELICA – MAKING LIFE IN THE KITCHEN **SIMPLER AND MORE CONNECTED**



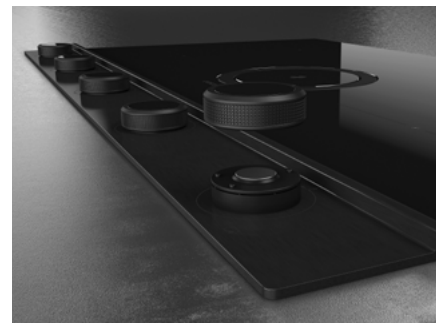
Induction hobs are loved for their minimalist lines and ultra-easy to clean surfaces but the touch controls can be hard to use with wet or greasy fingers and they lack the intuitive feel of traditional controls.

Elica has solved this with the launch of its latest extractor hob NIKOLATESLA UNPLUGGED, which is controlled through beautifully engineered rotary knobs. These provide instantaneous and intuitive access to all its features without compromising Elica's bold, clean design.

The textured knobs give NIKOLATESLA UNPLUGGED a professional look and provide perfect grip, even when hands are wet or greasy. Extraction of fumes is through the centrally located zone concealed by a circular glass flap. Just touch to open and activate extraction – close to turn off extraction.

As well as standard heating, NIKOLATESLA UNPLUGGED has three automatic cooking features: Melting - to gently melt without needing to stir, Warming - to heat food through without burning and Simmering - which keeps a pot boiling but prevents it boiling over. It helps the user cook faster by bringing water to a boil 30% quicker than a traditional hob and even large and full, frying pans can be kept at the high temperature required for crisp, flavourful results.

The Autocapture feature lets users focus on their cooking and not on the cooking smells, as NIKOLATESLA UNPLUGGED automatically sets the most suitable air extraction power, by gradually adjusting it to remove odours during and after cooking.



www.elica.com



NIKOLATESLA UNPLUGGED

Never so easy

Precision control for your cooking - elegance for your kitchen.

NikolaTesla Unplugged is the new extractor hob with easy, responsive control. Its beautifully balanced, easy clean knobs give you intuitive, precise control of the power and advanced cooking functions of your induction hob. Powerful whisper quiet built-in extraction with environmentally friendly 5 years regeneratable filters keeps your living area odour free.

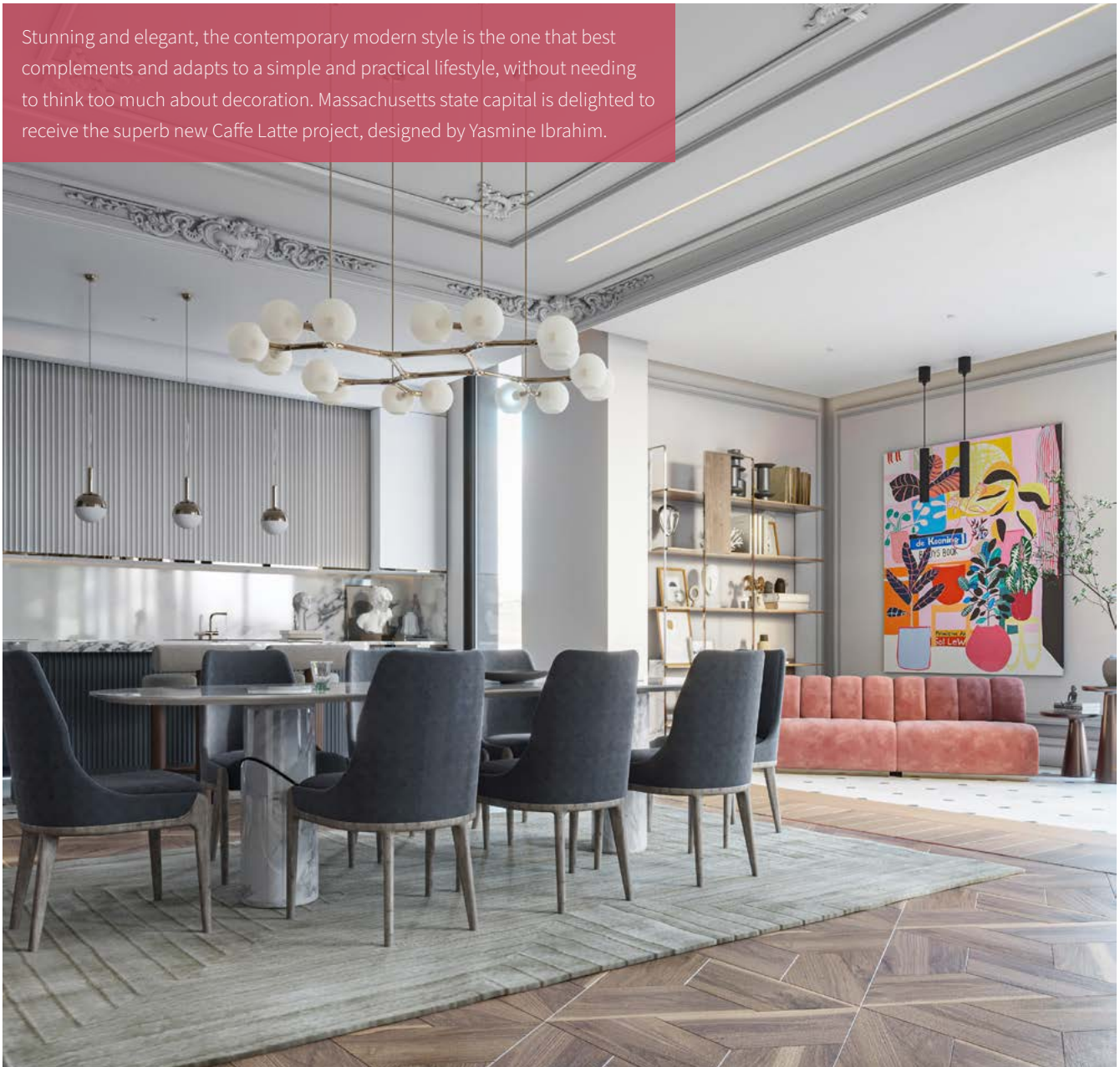
elica.com f @ p y

design Fabrizio Crisà

 **elica**
aria nuova

ARTFUL PENTHOUSE IN BOSTON PUTTING COMFORT AND WELL- BEING IN THE FIRST PLACE

Stunning and elegant, the contemporary modern style is the one that best complements and adapts to a simple and practical lifestyle, without needing to think too much about decoration. Massachusetts state capital is delighted to receive the superb new Caffe Latte project, designed by Yasmine Ibrahim.



Created in open space format, filled with wood panelling and marble finishes, it contemplates different spaces, with nature-inspired shades, putting comfort and well-being in the first place.

“Interior design is making the best possible use of the available space”

As a crossing point between rooms, like a mere foyer, the modern classic style stands out, underlined by the eloquent presence of Colosseum II Console and Aurum Wall Lamp, two iconic pieces.

As the largest area of an apartment, the living room is often considered the pinnacle of coziness and relax, just like happens in this project, thanks to the subtle, but significant role of Sherman Sofa, a neutral seating statement piece, flanked by Caffe Latte’s Robusta Center Table and Altura Mirror, two portraits of the power of marble.



As faithful companions, there are also Cutty Side Table and Macchiato Stool, from Caffè Latte, in a simpler and more functional aesthetic, without forgetting Oslo Rug, which brings with it the famous terrazzo inspiration. On the lighting issue, it can be found the iconic Horus II Suspension Lamp, and also the brand new Marmor

Floor Lamp, in champagne tones, produced exclusively by Covet Collection.

For cozier evenings by the fireplace, there are two Ellen Armchairs, inspired by the classic mid-century style, as well as Brutte Side Table, from Caffè Latte, great support for books or other decorative objects.

Another unconditional attraction of the penthouse is the dining room, where all the pieces and details harmoniously combine within the modern style, in which Caffè Latte is queen and mistress, through the marbled Breve Oval Dining Table, but also the lavish Moka Dining Chair. Meanwhile, White Garden Rug is spread across the floor,



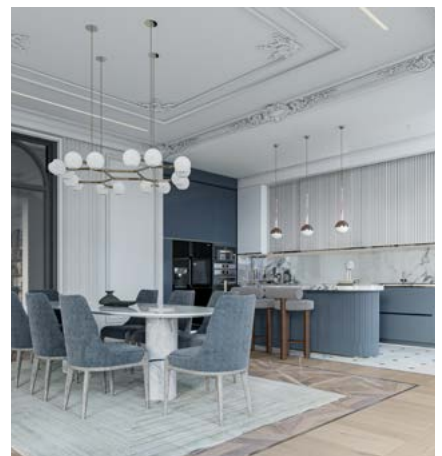
as a manifesto of neutrality, in addition to the unequivocal and reinforced presence of Horus II Suspension Lamp.

Bathed in white and klein blue tones, the kitchen appears as an oasis of minimalism

and functionality, where it can be found Niku Pendant Lamp, but also Freddo Bar Chair, a newest piece of Caffè Latte.

At last, with immediate access to the balcony, a colorful office, in fresh and lively

tones, catches the eye. Cassia Modular Sofa, by Caffè Latte, reveals all its adaptability and versatility, in a trendy pink version. A very flexible piece, either for a living or reading corner design.





Caffe Latte, in partnership with Yasmine Ibrahim, inaugurate a new residential concept: calm sophistication, where escape from day-to-day stress is duly rewarded by a clean and invigorating aesthetic, imbued with a familiar and intimate concept.

CAFFE LATTE modern Design's paramount is to provide ergonomic and functionality to any room, with a modern minimalist approach. Complementing other designs aesthetics with the use of a neutral colour palette, presenting sobriety to any interior decoration project, ultimately creating a consensual and transversal design, suitable for any taste.

www.caffelattehome.com



HOLD OFF ON YOUR HARDWOODS BECAUSE CARPETING IS MAKING A COMEBACK

There's something about carpet trends, with their cosy chic, plush underfoot feeling, that wood just can't impart. And, while wooden flooring isn't going anywhere, carpet is making a comeback in a big way. As we move towards the autumn/winter season, the Design Manager at heritage carpet company Brintons, Jodie Hatton, discusses why carpet is making a serious comeback.

WHY WOOL CARPET?

Carpet is making a serious comeback as we all look towards bringing comfort into our homes, and there's nothing like carpet to make a room feel cosier and more sumptuous than ever. With Salone del Mobile 2022 reporting that wall-to-wall carpet is having a design moment, expect to see exuberant carpets in super-saturated colours, decadent patterns, and royal hues. Hatton explains: 'Carpets also absorb sound to give a sense of calm and tranquillity. wool rich carpets are known for their quality because wool is naturally tough, giving you luxury that lasts for longer. Not only providing comfort underfoot, but wool can also insulate your home and help to reduce energy costs. It's also naturally fire resistant too. The protective natural waxy coating on wool fibres makes wool products resistant to staining.'

COLOURED CARPETS

Carpet trends for 2022 aren't all about just dipping your toe in with a nice neutral shade. Bold design has been on the rise these past two years, and the need to embrace the maximalist aesthetic is reflected in the wonderful and colourful carpets prints we've been seeing recently.

Elizabeth Sage, Velvet Collection, prices start from £74.99, Brintons, www.brintons.co.uk



Noir Ruskin Butterfly, from £97.99 per sq m, Brintons, www.brintons.co.uk



timeless aesthetic, they make the perfect recommendation for any room.'

'Colour is a powerful tool, it has the strength to evoke mood and alter a sense of space,' says Hatton. 'For a dramatic look, pair grey with layers of dark, moody and mysterious shades like aubergine or midnight blue. For a fresh look, infuse the palette, with a lighter, softer shade that glows, like golden yellow or bright green.'

PATTERNED FLOORING

Nature-inspired designs continue to thrive in the spotlight, according to Hatton. 'With many people adapting their home design to reflect wellbeing, comfort and biophilia, residential interiors are now fostering calmness, peace and warmth, bringing nature in. While wooden floors have been centre stage in many homes in the recent past, we have seen a dramatic rise in sales in the last few years, and in particular sales of patterned carpets. Fitted carpets are back, and back with gusto. We've seen an increase in a desire for nature inspired shapes. Town or country, period or modern, natural inspired patterns look striking in any room and can be used to bring a colour scheme or theme together. Exceptionally hard-wearing and versatile with a

DECADENT SWIRLS AND FLORAL PATTERNS

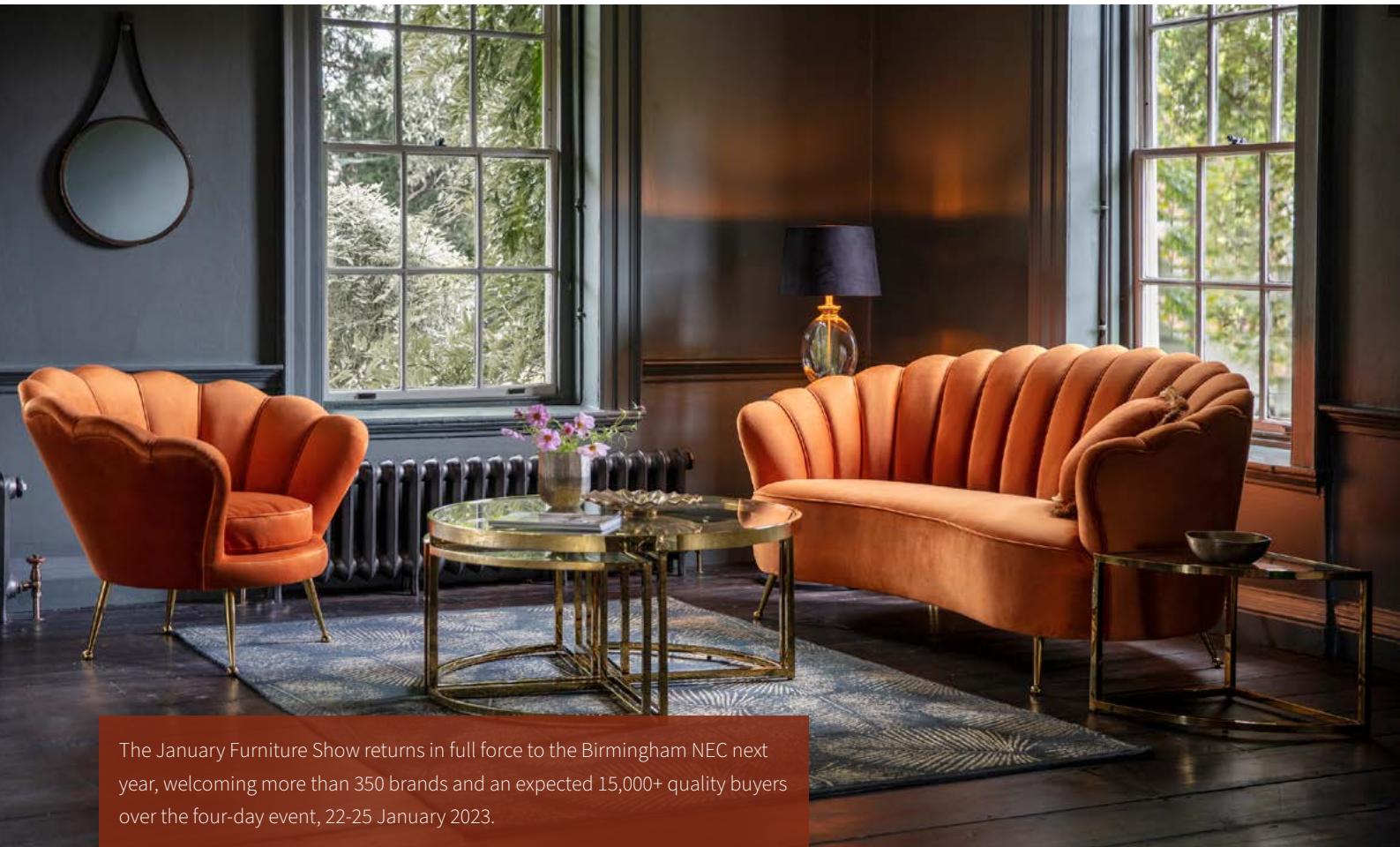
'A continuing popularity of florals, in particular large scale dark florals in muted tones. Statement carpets such as the Timorous Beasts collection have become the key feature for floors challenging traditional conventions through the use of heavily illustrative insects, plants, butterflies and leaves,' says Hatton. 'Using larger scale and the avoidance of symmetry, the gentle meandering sprawl of carpets like the Ruskin Butterfly, with its delicate organic background texture, favours balance through composition to create a completely individual interior. The décor can simply pick out a few key highlights so as not to detract from the stunning floor. A high percentage of wool is key to carpeting in any room, but especially the bedroom. The lifespan of a carpet can vary greatly depending on the quality of the materials used, the manufacturing method, where it is installed in the home and how well it is maintained.'

www.brintons.co.uk



Brintons

www.brintons.co.uk
0800 505055



The January Furniture Show returns in full force to the Birmingham NEC next year, welcoming more than 350 brands and an expected 15,000+ quality buyers over the four-day event, 22-25 January 2023.

JANUARY FURNITURE SHOW RETURNS FOR 2023 WITH FOCUS ON SUSTAINABILITY AND NEW INTERNATIONAL APPEAL

As the only dedicated European furniture show taking place in the first quarter of the year – the key time for buyers to select new stock and suppliers – the January Furniture Show is the must-attend event for the industry.

Across four halls, visitors can explore contemporary furniture, innovative design concepts, and homewares to suit all retailer and customer styles. There will be over 50,000 products, 10,000 of which are new, and exclusive launches from the best brands in the industry.

New for 2023 is a partnership with trend experts, The Better Trends Company, to provide the buying community and attending brands with expert, tangible and adaptable trends advice. There will also be onsite installations showcasing trends for 2023 and 2024, including ‘Permacrisis’ - a defiant design response embracing joyful, nostalgic and creative outlets through bright colour and bold pattern; and ‘Psychedelia’ - surreal expression and dreamlike movements, with layers of colour and morphing shapes which create a hypnotic and surreal aesthetic.



Becoming increasingly diverse, furniture and interior brands from more than 18 countries are exhibiting, including from Australia, the USA, Italy, and Germany. There will be several International Pavilions, representing Vietnam, Portugal, and Poland, and more than 350 brands signed up so far to attend.

The Furniture Talks Stage will see a number of engaging topics across the four days, with a focus on sustainability, innovation, trends and insights. The schedule features masterclasses, panel discussions and interviews with renowned makers and designers, industry trailblazers and recognised thought-leaders. The line-up so far includes:

- John Hubbard, Technical Consultant for FIRA International, on leveraging the Furniture Industry Sustainability Programme (FISP)
- Franky Rousell, Founder & Creative Director of Jolie Studio, on working with sensory design
- Panel discussion hosted by Made in Britain CEO, John Pearce, featuring founders of British brands including The Soho Lighting Company and Wrought Iron and Brass Bed Co.



The VIP programme has also been remodelled for 2023, following consultation with key buyers, and will focus on those with spending budgets of £500k and above, in particular international buyers. The programme offers unrivalled networking opportunities with bespoke content and insight, fastrack registration, free parking near the NEC, as well as access to 'The Suite', a new VIP lounge where complimentary lunch, beverages, refreshments as well as invitation-only round tables will take place.

Following the success of last year's showcase, the Young Furniture Makers will be back, bringing even more emerging designers and new talent in the industry. There will also be a focus on sustainability with live furniture making and demonstrations from renowned designers, with further details to be announced imminently.

James Howard, Show Manager, said: "The 2023 show promises to be one of our biggest and best yet, with exciting new launches, fresh brands, industry insights and emerging trends.



Our talks programme will be tackling some of the most pressing issues in the furniture and interiors market, from sustainability to the impact of Brexit on import, export and storage, and the importance of skills sharing for future generations.

"We are committed to offering our audience the most valuable takeaways possible, and it's a unique opportunity to be able to provide small businesses with trend content and forecast information that would usually be unobtainable. The Better Trends Company provides digestible and aspirational reports, inspirational new installations, and expert sessions to deliver 'shop-able' trends on the show floor as well as informative digital content that is easily adapted to suit each business's needs.

“The UK furniture industry is now worth £15.8bn, with 3.8% growth year on year (Statista Furniture Report, 2022.) More international brands than ever before are being attracted to the UK and our show is a key place for brands to showcase their products, learn more about how to make their businesses more successful, and make valuable industry connections.”

The January Furniture Show has been running for 32 years. More than £500m is spent at the show, which is attended by professional retail buyers from independent retailers, department stores and multiples, online retailers, architects, interior designers, garden centres, contract buyers, procurement managers, hoteliers and property developers.



The brands exhibiting will be displayed across four halls: Premium Design; Interior Accessories & Furniture; Living, Dining & Bedroom; and Upholstery & Beds. Many brands are returning following previous successful years, such as Abbeylands Furniture Ltd, Buoyant Upholstery, La-Z-Boy UK, Highgrove Beds, Tetrad, Breasley UK, Forte Furniture, Alpha Designs, Bluebone, Mindy Brownnes, Pacific Lifestyle, Kettle Interiors, Wiemann, Rauch, Lebus, Mlily, Bresley and Westbridge.

A wide range of exciting new names will also be in attendance, including 3C Candy, Aquinos Sofas, Pole Position, Merlino International, Arredoclassic, PF Furniture, Duxiana, Gruppo Mastrotto, Composad, Harrison Spinks and idzczak Merle.



January Furniture Show

www.januaryfurnitureshow.com



vicaima

UNEXPECTED HARMONY



Interior Door Design
towards the future

ENERGY WELLNESS IN INTERIOR DESIGN AND ARCHITECTURAL PRACTICE



FENG SHUI
AGENCY

Listening to the 'energy' of a home or the spirits of the land might sound strange, but it is par for the course with the work of Sarah A McAllister, the UK's leading feng shui expert and metaphysical advisor to visionary leaders and changemakers.

For Sarah, interior design is more than the visual impact and practical purpose. Rather it is a type of energy choreography in which she guides the power of natural forces to increase the health and happiness of those who dwell or work in the final built environment. Sarah is a curator of exquisite atmospheres – where people can deeply relax, feel grounded and 'at home', and some of her clients even report feeling empowered and full of strength when inhabiting the spaces she designed for them.

From wellness homes and private woodland Kung Fu Kwoons to urban spas, wellness centres and large acreage villages and retreats, Sarah has infused the ancient wisdom of classical healing feng shui into all her collaborations with design professionals as well as running complete renovations of London properties through her company Feng Shui Agency. Since 2003, Sarah has created unique and eco-friendly wellness

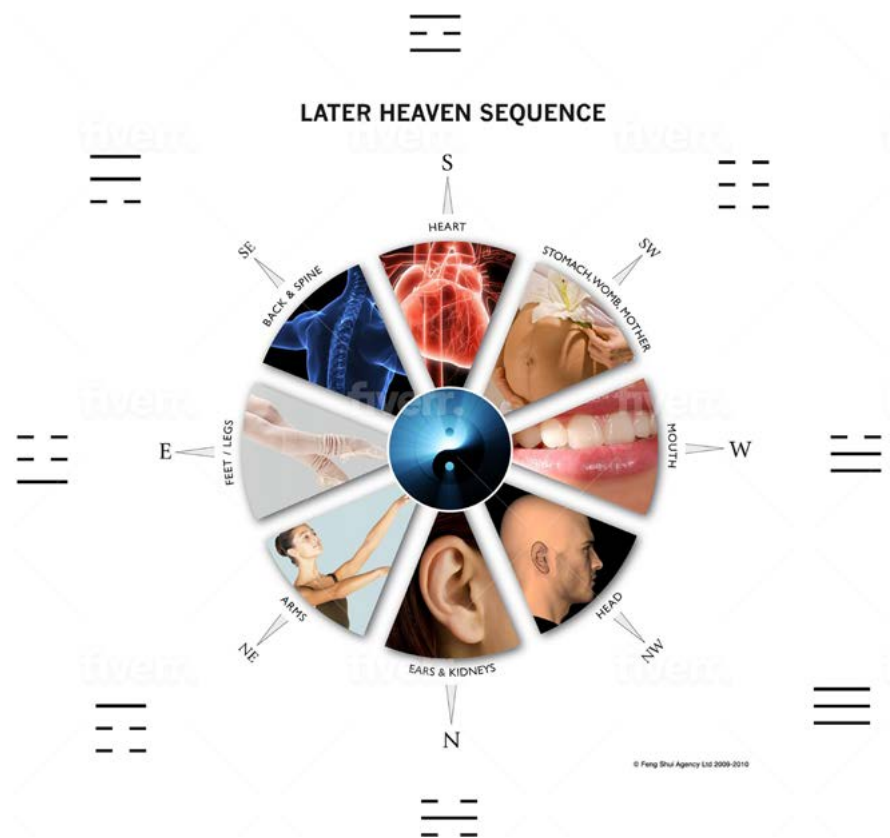
spaces using upcycled materials, recycled rubber flooring, hemp-covered sofas, air ionisers & water filtration, and low-energy lighting solutions well before 'wellness or sustainable architecture' were trendy.

Having served on leading international design committees and spoken, taught & consulted on five continents, Sarah is encouraged to see her niche becoming better understood & valued as architects are finally calling for spaces to be designed with the physical, emotional and spiritual well-being of occupants in mind - something that Sarah has pioneered for two decades.

An architectural or interior design collaboration is ideally formed at the outset of a project before too many significant decisions have been made, and, if possible, before planning application is granted, so that the feng shui can help master plan the project.

The first step on a new build project or an existing home or office renovation is to 'sense the chi' – whether this is an empty plot of land, an existing site to be demolished or a tired space in need of a refresh. Then specific compass readings are taken with the Chinese LoPan compass, which gives accurate information on the best orientation for the new building or how to make the most of the existing site.

Within the 8 general directions are a further 8 types, making 64 in total and even one degree can be the difference between a Cool or a Pure pulse... much like an acupuncturist reads the body pulses at the wrist, the feng shui consultant reads the pulse of the building or the natural environment. The goal is to tap into the healthful and life-giving energy and to avoid declining, empty or sick energy.



Sick Building Syndrome is very real and refers to more physical aspects of a building's health like ventilation, mould, EMF smog etc. whereas the insights that classical Feng Shui provides help to create energetic wellness. One of the most common phrases she hears from her business and residential clients is how much they love being in their new space. They work better, feel better, sleep better... it is such very rewarding work.

Feng Shui is one of the 8 Brocades of Traditional Chinese Medicine.

Traditional Chinese Medicine is a framework for understanding health, and Feng Shui is part of the Eight Brocades of Chinese Medicine. Sarah also weaves insightful Chinese Astrology considerations

into the design of the space so that a person's most vital elemental directions are well supported in the layout and not drained. Then the entire build process is timed to align with natural energy cycles, thus creating a type of 'biodynamic architecture'.

No Feng Shui? Then there is no true wellness...

Based on decades of experience, Sarah asserts that no space can genuinely call itself a wellness home or wellness spa without the expert application of classical Feng Shui. Spaces feel tense or ungrounded, even if they LOOK stunning. Architects have confessed over the years that they can't quite put their finger

on why some spaces don't feel right, and yet Sarah can diagnose why a space feels 'off' and has ways to restore the elemental balance and energy 'line dragons' – think of her work as 'acupuncture for space'.

Good Feng Shui Should Be Felt and Not Seen

While Asian style design is hugely popular in the West, space does not need to look Chinese or Zen to have excellent feng shui. Similarly, it can be very successfully applied to period homes. To find out more contact Sarah on her website.

www.fengshuiagency.com

THE UK'S LONGEST-ESTABLISHED AND LEADING HOLISTIC DESIGN & ENERGY WELLNESS PRACTICE

Designing healing homes and wellness spaces

RESIDENTIAL COMMERCIAL HOSPITALITY

+44 (0) 779 618 5136 | www.fengshuiagency.com



FEBRUARY 2023 SEES THE RETURN OF THE **SURFACE DESIGN SHOW**



Surface Design Show which is held from 7-9 February 2023, will once again be showcasing the best in material innovation.

A well-established part of the design calendar for nearly twenty years, the show returns to London's Business Design Centre. It provides the perfect opportunity for material experts, and the architectural and design community to come together under one roof.

Visitors to Surface Design Show 2023 will be inspired by new product launches running the gamut of colour, materiality and sustainability, plus diverse displays of surface-based installations and a

comprehensive speaker programme featuring accomplished industry professionals, passionate about the future of surface design.

Surface Design Show has already welcomed over 150 exhibitors to participate. Returning to the event once again is Armourcoat, renowned for its polished plaster, sculptural effects and innovative surface finishes. Innovations include Armourcoat Clime, which produces a stunning matt stone surface finish and Armourcoat Sculptural

panel systems which offer a seamless three-dimensional finish. Other long-term supporters of the show include Textura, specialists in contract wall coverings which can transform a space and Surface Matter which connect architectural materials with creatives for interior and exterior design projects. For Tile of Spain's 2023 stand, expect an eclectic collection of products from 12 manufacturers from small formats and mosaics to 3D surfaces and technical slabs.

Supporting emerging material designers has always been important to Surface Design Show. That is why the New Talent section will, for the fourth year in a row, be held in partnership with Trendease International. Its Chief Creative Director, Jennifer Castoldi, will be curating over 30 'New Talents' this year. The section will inspire and excite visitors with the 'class of 23' showcasing a fascinating mix of biomaterials, natural materials, digital print, textiles, furniture, wallcovering, weaving and biopolymers. This forthcoming edition will be the most international yet with New Talents coming from as far afield as Sweden, the Netherlands, Lebanon, Malaysia, Korea and China and will give them the opportunity to learn from each other and to connect for a better future.

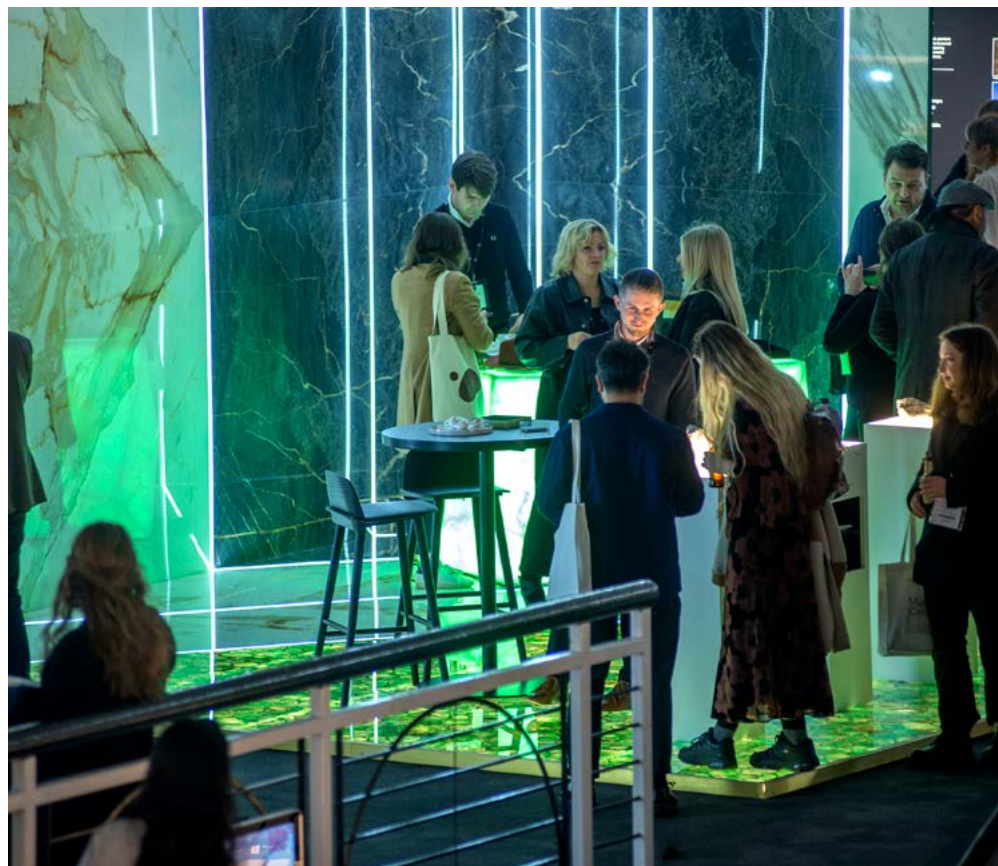
Located right in the heart of the exhibition, Surface Design Show welcomes back Surface Spotlight Live (SSL), an area which gives visitors a chance to touch and compare the latest material prototypes. Centred around this year's theme, 'Shaping Communities', SSL will highlight the importance of new exchanges between surfaces, people and environments. From material transformation to inclusive design, co-creation to sensory wellbeing, SSL will present designs creating thoughtful solutions for interiors and architecture. This section of the show will again be curated by leading trend and colour expert, Sally Angharad.



Stone Gallery showcases the possibilities with one of the most sought-after materials with this section of the show attracting companies from the UK, Europe and further afield. It is officially supported by Stone Federation Great Britain whose Knowledge Hub forms a focal point for its member companies. Stone Tapestry, meanwhile, is an installation curated by leading London-based architectural practice Squire & Partners. It explores innovative textures,

light, colour and pattern to create a tapestry of inspiring materials from around the world.

The talks programme is always a particular highlight of Surface Design Show. The Main Stage, designed by Emily Skinner of recycling pioneers Smile Plastics, will host 18 different presentations and feature more than 40 speakers, inspiring a professional audience of architects and designers.



Setting the tone for the live events programme will be the Opening Night Debate, hosted this year by Jonathan Smales, executive chairman with Human Nature, a leading proponent of sustainable development. The debate, which has CDUK as the official partner, will question how architecture and interior design professions are dealing with the Show's theme of Shaping Communities.

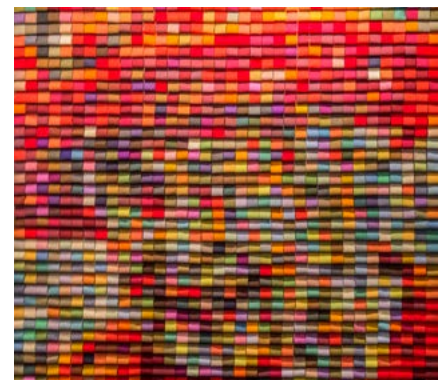
Over the 2½ days, the Main Stage will host a range of debates, panels, trend forecasts and insights into the latest surface design innovations. It will also be the venue for the Legends Live series of 'in conversations' in partnership with Mix Interiors, where industry leaders interview someone they admire.

The PechaKucha evening also returns for 2023 having previously been an entertaining talking point of Surface Design Show. This fast and furious speaking format sees eight speakers battling to get their message across, presenting 20 slides for just 20-seconds each. The evening will be hosted by Nicola Osborn, creative director of design studio Basha-Franklin.

Another popular element of the show is the Surface Design Awards. Now in their 11th year, they continue to set a benchmark for architectural and design achievements across the world. More than 110 projects were entered into the 2023 Surface Design Awards, coming from an impressive 24 different countries. The BAFTA Headquarters in London by Benedetti Architects, which scooped the Supreme Winner award in 2022 set the standard for excellence in surface design. Following the success of its debut last year, the Architectural Photography category returns once more for 2023.

This year the Awards' judging panel is co-chaired by Jonathan Hagos, Director of architects studio Freehaus and Nasim Koerting Head of Design at The Office Group, and features a diverse mix of industry professionals who have made a name for themselves amongst their peers.

Surface Design Show 2023 builds on the success of the event, which has been running for over fifteen years, as a place to encourage a meaningful exchange of ideas between manufacturers and the marketplace to further material innovation.



Surface Design Show, Business Design Centre,
N1 0QH | 7-9 February 2023

SURFACE DESIGN SHOW

BUSINESS DESIGN CENTRE
LONDON - 7-9 FEB 2023
surfacedesignshow.com

➤ THE BEST IN SURFACE
MATERIAL INNOVATION



➤ JOIN US FOR 2½
DAYS OF
EDUCATION,
ENTERTAINMENT
AND ENGAGEMENT

REGISTER FOR FREE ENTRY
www.surfacedesignshow.com



 @surfacethinking | #SDS23

STONE KITCHEN WORKTOP SPECIALIST

At Cawdor Stone Gallery we pride ourselves on delivering the highest level of client satisfaction and quality of product and service.

We have many satisfied clients whom have written testimonials on the web and in some cases filmed a video testimonial, this is something that drives us forward, to keep delivering the very best.

The materials we specialise in are Quartz, Granite, Dekton, Quartzite, Marble & Onyx. All of which are suitable for a range of uses including the kitchen, bathroom, bar areas and even outdoor kitchens which are becoming more and more popular in recent years. We will help you select a stone that is perfectly suitable for the use-case and your requirements for style and performance.

We have the skill to fabricate the stone with intricate detail and flawless quality, using a combination of time-honoured stone masons and the latest in CNC machinery. The double Ogee edge detail on the kitchen island, opposite, is one example of the finest details possible.

WHY CAWDOR?

Cawdor Stone Gallery is part of the Cawdor Group of companies which has a unique history of more than 40 years in the stone industry, operating internationally on large-scale projects such as the Hong Kong International Airport, Mandarin Oriental Hotel & Mayors Offices South Bank, just to name a few. This history and wealth of experience allows us to put our client's minds at ease, knowing they are dealing with a company with a solid foundation in the stone industry.



Kitchen worktops, then, are an area we are able excel in, across the Southeast of England including Herts, Essex, Beds, Bucks and Greater London.

Our showroom in Knebworth, is equipped with one of the largest selections of materials and samples to take away with you.

We welcome clients of all types including private residential, kitchen companies, builders, interior designers and many more.



www.cawdorstonegallery.co.uk



Cawdor House, London Road, Woolmer Green, Hertfordshire
SG3 6JE | Tel: 0800 998 1059

www.cawdorstonegallery.co.uk

 @cawdorstone

CARPET RECYCLING UK REPORTS 50% SUPPORT FROM THE CARPET SECTOR

Carpet Recycling UK (CRUK) now has support from around half of the carpet manufacturing and distribution sectors supplying the UK market through its 16 core funder members. This reflects a clear increase in engagement from the sector to act to reduce textile flooring waste and resource usage, according to the not-for-profit association.

Support from CRUK's core funders comes from Balsan, Betap, Brintons Carpets, Condor Group, Cormar Carpets, ege Carpets, Furlong Flooring, Gradus, Headlam Group, IVC Commercial, Likewise Floors, Milliken, Modulys, Rawson Carpet Solutions, Shaw and Tarkett. They are acting voluntarily ahead of any legislation, including Cormar Carpets and Headlam who, with assistance from CRUK, have helped key customers to reduce waste and to create cost savings.

At the 2022 Harrogate Flooring Show, Adnan Zeb-Khan, CRUK Scheme Manager reported interest from raw material suppliers, including fibre and backing manufacturers, seeking advice on how to include more recycled content, and discussing the challenges of separating the component part of carpets.

"We want to have more conversations with raw materials suppliers about the supply of recycled and more sustainable materials as well as, the challenges of decommissioning carpets at the end of life, what is being done and how can we help. We also want to examine more deeply the range and volume



of fibres in the UK marketplace. The raw material sector wants to do more to help their manufacturing customers," he said.

Flooring suppliers of varying sizes showed interest in design for the circular economy and products made with recycled content. Smarter information is often needed to understand their waste streams. CRUK suggests companies do a baseline study with their waste collector to find out what is happening to their textile flooring waste.

"Gaining a detailed understanding of the process means we can provide bespoke advice on how to make improvements and potentially to make savings on cost and resources," continued Adnan. "We

met several flooring contractors with a monthly spend of £4k to £5k on waste,

and we look forward to making a start on helping these companies with next steps and including them in our membership."

Adnan also highlighted discussions with two flooring fitting training organisations on developing educational programmes regarding the wastes they create and how they can directly influence how the waste is collected, sorted and then processed.

"Overall, it was a positive show, and it was great to meet new faces in the sector from raw material suppliers, manufacturers and flooring suppliers. We look forward to following up all of the conversations and assisting companies in revisiting their textile flooring waste streams as well as using resources in a better way through our 119-strong membership and wider network," he added.

For more information, email: info@carpetrecyclinguk.com
or visit www.carpetrecyclinguk.com.

Join Carpet Recycling UK to help make the UK carpet sector more sustainable!

With the help of Carpet Recycling UK, our members and wider network diverted 330,000 tonnes of waste carpet and textile flooring from landfill in 2020, approximately 70% of the total textile flooring waste arising in the UK. How can you help to increase this?

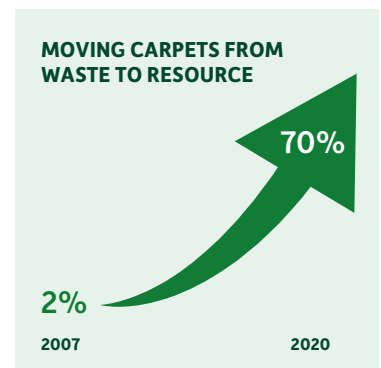
- C** Carpet Recycling UK is a not-for-profit membership association set up in 2008.
- A** We are an **association** of 120 member companies from across the carpet supply chain.
- R** We **respond** and advise on best practice for reuse and recycling of commercial textile flooring waste.
- P** We **provide** support and advice throughout the supply chain to include flooring manufacturers, contractors, retailers etc.
- E** Members are **encouraged** to demonstrate their progress by **entering** our awards.
- T** **Textile flooring** includes broadloom carpet, carpet tiles and planks, rugs and underlay.
- W** **We** engage with the supply chain to identify and introduce and promote Circular Economy initiatives
- A** We **assess** companies' waste to find the most feasible and best recycling options.
- S** We demonstrate and promote **sustainability in design for recycling**.
- T** Surplus, offcut and used **textile flooring** can be reused or recycled, contact us!
- E** Talk to us at our **events** – join our network!

Contact Carpet Recycling UK

Carpet Recycling UK is a not for profit organisation funded by companies across the supply chain to develop more sustainable and environmentally friendly solutions for carpet waste. Our ability to network with our members and non-members helps to provide you with the most feasible solutions to send your waste up the waste hierarchy and prevent waste being sent to landfill. Please visit our website for more information.

www.carpetrecyclinguk.com

Thank you to our Core Funders



FINE ART PRINTS ADD VIVA MAGENTA TO WALLS - PANTONE COLOUR OF THE YEAR 2023



In keeping with Pantone's Viva Magenta colour ethos of joyous and optimistic celebration, this selection of art will easily add a boost of the buoyant colour to homes and offices. All without having to go to the trouble and expense of redecorating.

Each open-edition print is available unframed in 3 sizes and prices start at £30.

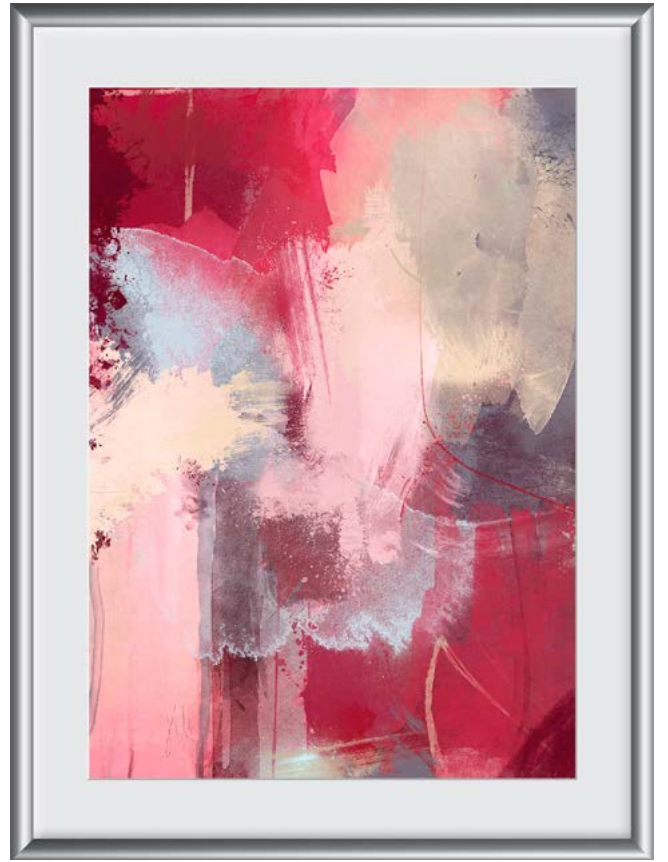
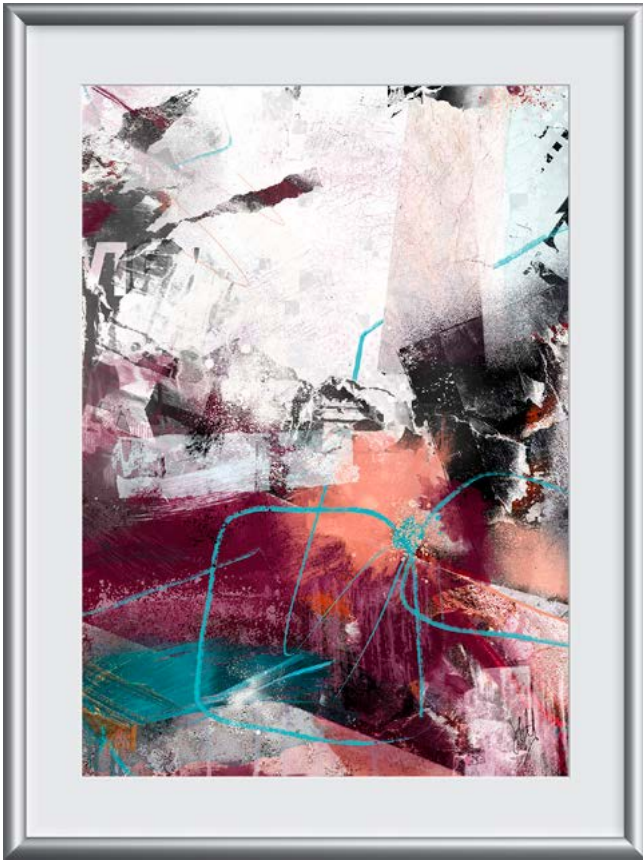
The art is printed using high quality, fade-resistant pigment inks on acid-free, archival, heavyweight 100% cotton rag paper, to ensure it will last a lifetime.

Claude & Leighton fine art prints are custom-produced to the highest quality in the UK, from its own Berkshire art and print studio. They are carefully packed in gift-ready, British-made, eco-friendly, reusable packaging.

Claude & Leighton® has curated a beautiful selection of its fine art prints, all of which perfectly complement the newly announced Pantone Colour of the Year 2023: Viva Magenta.

The art prints are all produced from original paintings by artist and co-founder of Claude & Leighton, Jayne Leighton Herd. The art is rich with vibrant reds, burgundy, magenta and crimson hues that interior designers, stylists and homeowners alike will be crushing on during the year ahead.





www.claudeandleighton.com

21ST CENTURY CRAFTSMANSHIP

11,000 square feet of craftsmanship, ancient and modern, with more than 50 years manufacturing museum quality frames for 15th to 21st century paintings.

John Davies Framing was established in 1968 after he spent 5 years at Chelsea School of Art and several dismal years teaching. Davies inherited his grandfather's workshop. It was a workshop like no other, with the likes of ebony, tortoiseshell, ivory, antimony and the toolmaker's tools for processing such exotic materials. The tools and materials were a perfect introduction for making Netherlandish and mid-European frames in the traditional manner for which the company quickly gained international recognition.

The Company is renowned for its attention to detail and authentic construction. These cabinet-making skills are labour intensive and even in the 21st Century craftsmen can hardly build frames any faster than their predecessors could more than three hundred years ago.



Frames continue to be built from traditional materials such as Ebony, Cocoa-bola, Pear, Lime, Walnut, Oak, Panga-Panga, Palisander/Rosewood Ziracote and African Blackwood.

POLISHED FRAMES

The process is a tedious one of filling the wood grain with polish, to bring out its natural beauty. It involves "putting on" and "taking off" until one achieves a high "coach gloss" finish. This in turn requires ageing/distressing to give the surface an antique appearance.

CARVED FRAMES

For the most discerning clients there is still no alternative other than to manufacture in the traditional manner. However, removing surplus wood is the most tedious part of traditional carving so, to meet the challenges of today and remain competitive, the Company invested in possibly the most technically advanced



Robot carving machine to further extend capabilities whilst preserving the highest quality of work with a greater ability to deliver on demand. The skill of the carver is shown in the accuracy and quality of the final carving. The Company's policy is neither to invent nor embellish, but to accurately reproduce original designs.

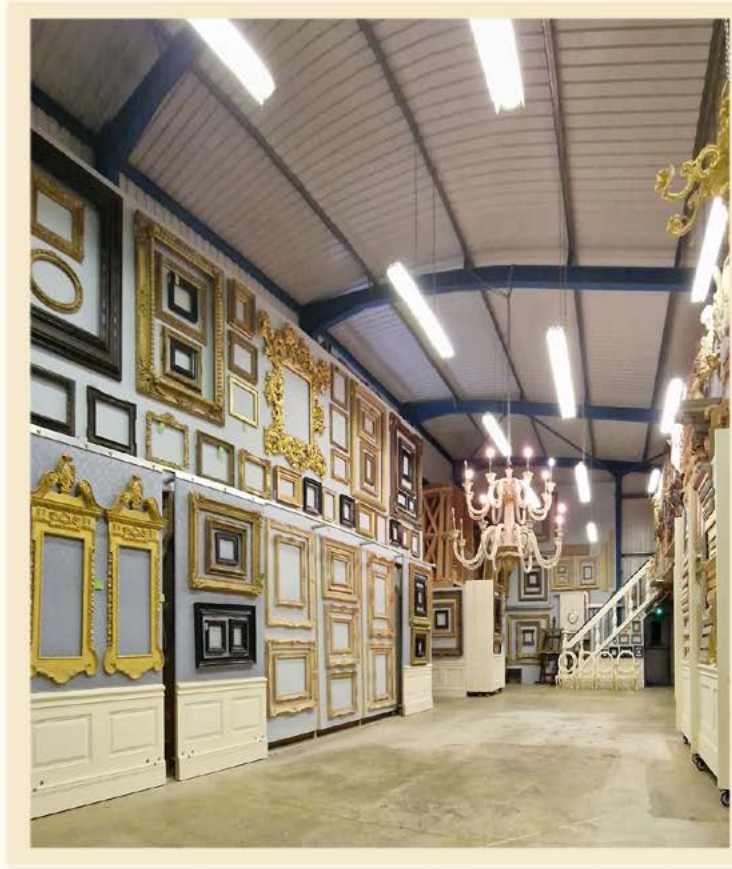
JIG-MAKING AND IN-HOUSE TOOLING

Jig-making and in-house tooling extended the range of frames as well as promoting the company's versatility. Barely a year goes by when the Company is asked to make truly large frames, not only in overall size, but also width of profile. To date the largest was a neoclassic frame 15 feet by 32 feet for an overseas client who required the frame to be made in 10 parts with virtually invisible joints.



John Davies Framing Ltd

Fakenham - Norfolk - England



**Visitors by appointment - Unit 5, Millers Close
Fakenham, Norfolk, NR21 8NW - +(0)44 1328 851857**

For more information email john@johndaviesframing.com
or view www.johndaviesframing.com

SHOWROOM AND WORKSHOPS

The showroom and workshops are situated on Fakenham Industrial Estate about a mile from the town centre and can be visited (by appointment only). In the showroom one can see a wide range of antique and company made frames for comparison of build and finish. In the workshops one can see various methods of manufacture as all the frames are bespoke, and literally made from the log. Separately can be seen, carving, gilding, finishing and polishing, all to museum standard.



Your
Vintage
Design
Marketplace





ImParlour

A place where You can shop all your vintage interior needs, you can also accessorise you home and yourself with exquisite designs from around the globe.

Whether your looking for Antique or the finest vintage modern design Make Imparlour your 1st choice.

Imparlour was born from a passion for the finest designs from around the globe, produced by decades by passionate designers that have strived to bring you the very best.

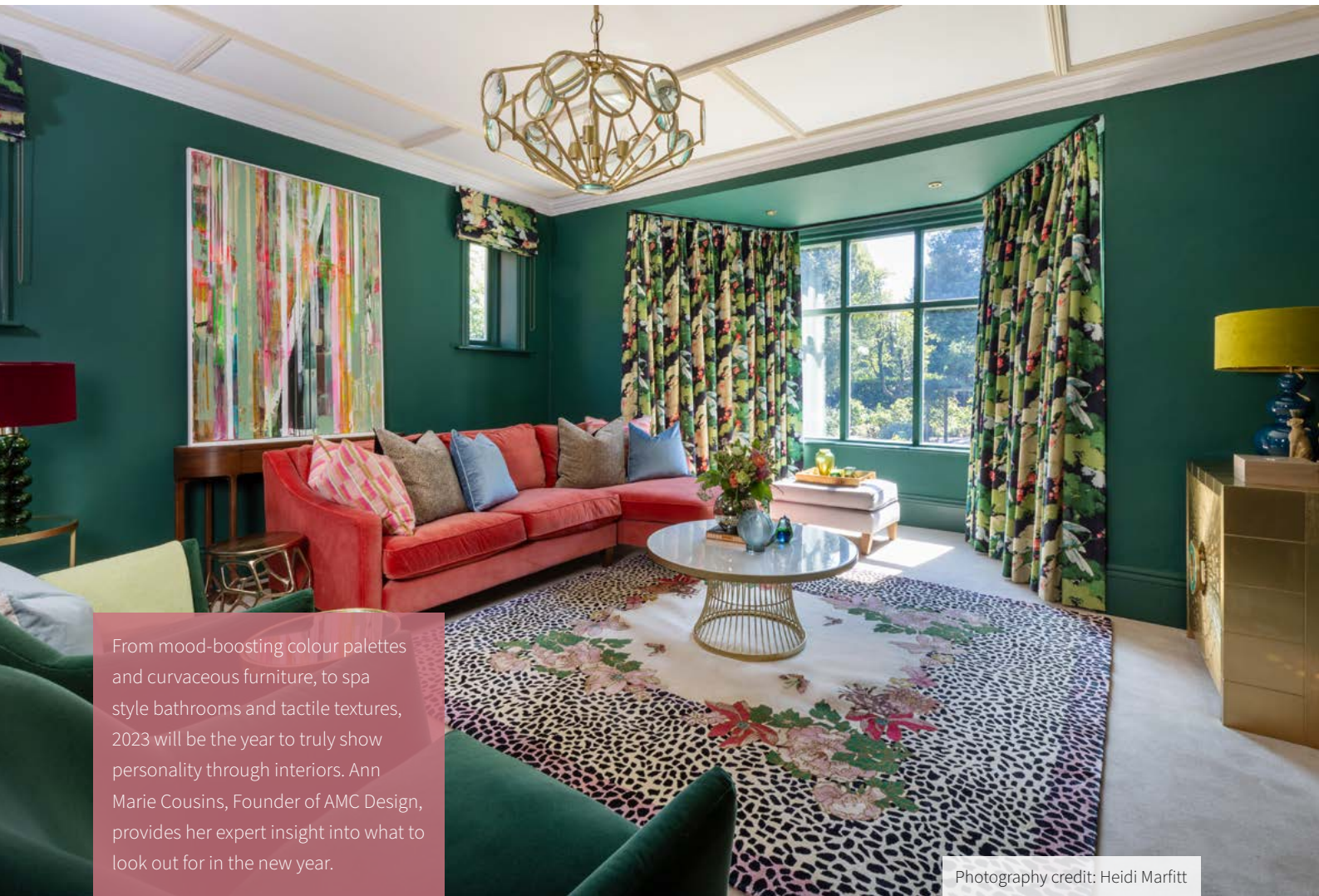
Our name was derived from the Elegant Impala that roams the African Plains our desire is to make your interior as special as the Earth we live on, Sustainable and the most beautiful Parlour.

www.imparlour.com



2023 INTERIOR DESIGN TRENDS

WITH INSIGHT FROM AMC DESIGN



From mood-boosting colour palettes and curvaceous furniture, to spa style bathrooms and tactile textures, 2023 will be the year to truly show personality through interiors. Ann Marie Cousins, Founder of AMC Design, provides her expert insight into what to look out for in the new year.

Photography credit: Heidi Marfitt

DOPAMINE DÉCOR

“We’ve already started to see bold and colourful interiors this year, but they will be even more prevalent in 2023. There has been more of a focus on creating surroundings that heavily influence our moods and wellness, so introducing a vibrant colour palette is a great place to start. Explore your more playful and nostalgic side and experiment with patterns and textures to create the ultimate uplifting atmosphere in your home.”

HOME SPAS

“A bathroom isn’t only a necessity in a home, but a wellness space to wake up in the morning or relax and rejuvenate in the evenings. In 2023, we will see an increase in bathrooms as wellness spaces in themselves, where homeowners can enjoy some true R&R. The new year will welcome the luxuries and amenities of hotel suites and spas into the comfort of our own homes, ranging from double-vanity units and luxurious wallpapers, to striking light fittings and swoon-worthy tiles.”

Photography credit: Chris Snook



Photography credit: Heidi Marfitt



Photography credit: Heidi Marfitt

SWERVES & CURVES

“Stay ahead of the curve and move away from slim profiles by incorporating rounded and shapely furniture and décor into your home, as we expect a continued resurgence in 70s and 80s design. From tiles and sofas, to mirrors and rugs, gone are the days of straight lines and instead, replace them with aesthetically pleasing soft, curvaceous pieces. I’ve especially seen a continued request for scallop designs which can be introduced in a number of different ways, instantly adding intrigue and charm.”

EMBRACE TEXTURE

“Texture is one of the easiest and most dynamic ways to add character to your home, regardless of the interior style. We’ll see a shift from minimalistic and pared-back style, and a move towards maximalist interiors. One of the best ways to do this is by layering natural materials such as wood and stone, with tactile fabrics like velvet, suede and leather in a variety of tones and patterns. Don’t be afraid to be bold, and try experimenting throughout the seasons to see what works best.”



Photography credit: Chris Snook



Photography credit: Chris Snook



Photography credit: Heidi Marfitt

Recognised for interiors that deliver energy and vibrancy, Yorkshire-based interior studio AMC Design creates bold interiors for stylish everyday living. Using a mixture of colours, patterns and textures, each project introduces interior flair that is personalised to each homeowners' preferences and personality.

SEE US AT
THE FLOORING SHOW
 17-19 SEPTEMBER
 2023



Need to protect your floor when moving heavy furniture?

DON'T STRUGGLE WITH IT

Move it!
 moving made *easy*

Heavy furniture slides like ice on Move-it Pads.

Everyone should have a set of Move-it Pads to move furniture, so you can clean behind units, redecorate a room or rearrange key pieces at any time with no effort and no worry.

Move-It pads protect your floor:

Save your carpet from stress damage. Save your wood, tiles and laminates from scars & scratches.

Move-It pads protect your furniture

Save your furniture joints from fatally lurching to one side – like the leaning tower of Pisa.

Move-It pads protect your back

Save your muscles from pain, which can save your business, as you can't earn if you can't work. See them in action in our online video.



Great on Carpet



Superb on Wood



STEP ONE
 Place a Move-it Pad under each furniture leg.

STEP TWO
 Slide your furniture to wherever you want.

STEP THREE
 Remove the Move-it Pad. That's it!



“
 Moving warbrobes has never been easier!
 Great product, so simple and easy to use.”



FLOORING & FURNITURE PROTECTION SOLUTIONS

View Products, POS, Videos & Become A Stockist

JOIN THE REVOLUTION



Oltco is the UK and Channel Islands' leading sustainable resin bound driveway specialist, renowned for creating stunning outdoor transformations for both domestic and commercial spaces.

Founded in 2004 as a small Cornish family business, over the past 18 years Oltco has grown to become a nationally recognised brand which has championed innovation and sustainability within the industry.

This passion for innovation culminated in 2019 when Directors Tom Stringer and Johnny Pearce developed the world's first sustainable resin bound solution – Recycle Bound. By combining a mixture of stone, resin and waste plastic already in circulation, Tom and Johnny were able to create a unique, sustainable solution which hadn't yet been seen within the industry.

Each square metre of Recycle Bound consists of the equivalent of 3,000 plastic straws. Oltco has recycled the equivalent of over 385 million plastic straws in outdoor transformations, highlighting the popularity of this sustainable flooring alternative.

The versatility of Oltco's Recycle Bound ensures that each project is bespoke and tailored to the client's requirements.



With a wide range of both traditional and contemporary colour blends, a new Recycle Bound patio or driveway can match any aesthetic. Add bespoke borders, patterns or designs to your outdoor space to really make it your own.

Practically, Recycle Bound stands head and shoulders above other solutions. It is the strongest system Oltco has ever tested and as a result the solution is incredibly durable.

It is SUDS (Sustainable Urban Drainage System) compliant and features anti-slip properties for heightened safety. These benefits are packaged up to create a low maintenance, hard-wearing yet stunning outdoor surface.

Oltco won the Sustainability Warrior Award at the 2021 bfa HSBC British Franchising Awards and Recycle Bound has gone on to pick up accolades such as Runner Up at the National Recycling Awards in 2019.

Oltco is proud to have worked on a wide range of domestic outdoor spaces including driveways, patios, pathways, pool surrounds and balconies. It also boasts an impressive commercial portfolio, having worked with visitor attractions such as the Eden Project, RHS Garden Harlow Carr as well as golf clubs, restaurants, hotels, councils and schools across the UK and Channel Islands.



More information can be found on Oltco's website, oltco.co.uk, or by calling our Head Office team on **0800 040 7795**.

leading sustainable resin driveways

*made with recycled plastic**

RECYCLE BOUND®

Call or email today for your
FREE sample or instant quote.
0800 0407795 info@oltco.co.uk

 oltco

www.oltco.co.uk leading sustainable resin driveways #JoinTheRevolution

* Innovated by, and exclusive to Oltco, Recycle Bound is a resin bound solution that is made using a mix of stone and recycled waste plastic

QUINTIESSE COLLECTION

Elstead Lighting has recently launched their new Quintiesse Collection in the autumn of 2022. The new catalogue has over 200 new unique and memorable designs, including the LINARA range.

The Natural Brass finish contrasts with the Matte Black metal slatted shade. When illuminated, this range adds an intangible texture to the surrounding canvas. A refreshing twist on contemporary and mid-century modern décor. The Linara range consists of the featured 6lt round pendant chandelier, a 5lt linear chandelier, a tall single pendant and large wall light.



QN
QUINTIESSE

To see more of this stunning Quintiesse collection download the catalogue from the Elstead Lighting website.

elsteadlighting.com



QN
QUINTIESSE

DESIGN BROUGHT TO LIGHT

Elstead
LIGHTING

+44 (0)1420 82377 | enquiries@elsteadlighting.com | www.elsteadlighting.com

BESPOKE TERRAZZO



Established in 1886, **A. Andrews & Sons Ltd** are the UK's leading manufacturer of pre-cast Terrazzo, offering our services in design, template, supply and installation anywhere in the UK.

Using traditional methods involving hand casting and often hand polishing, our specialist

team can create bespoke Terrazzo made to almost any specification.

Made typically from natural marble chipping set into a cement or resin base, Terrazzo is now transforming to incorporate recycled aggregate and low carbon cement substitutes.

A. ANDREWS & SONS (MARBLES & TILES) LTD.
LEEDS (HEAD OFFICE) – GLASGOW – STOCKPORT
324-330 MEANWOOD ROAD, LEEDS, LS7 2JE

“Being able to include some treasured materials in our worktops was a great idea”.

We offer a unique experience giving you the opportunity to create your own Terrazzo blend, choosing from our extensive stock of raw materials or adding something of your own into the mix.



CONTACT US

TEL: 0113 262 4751

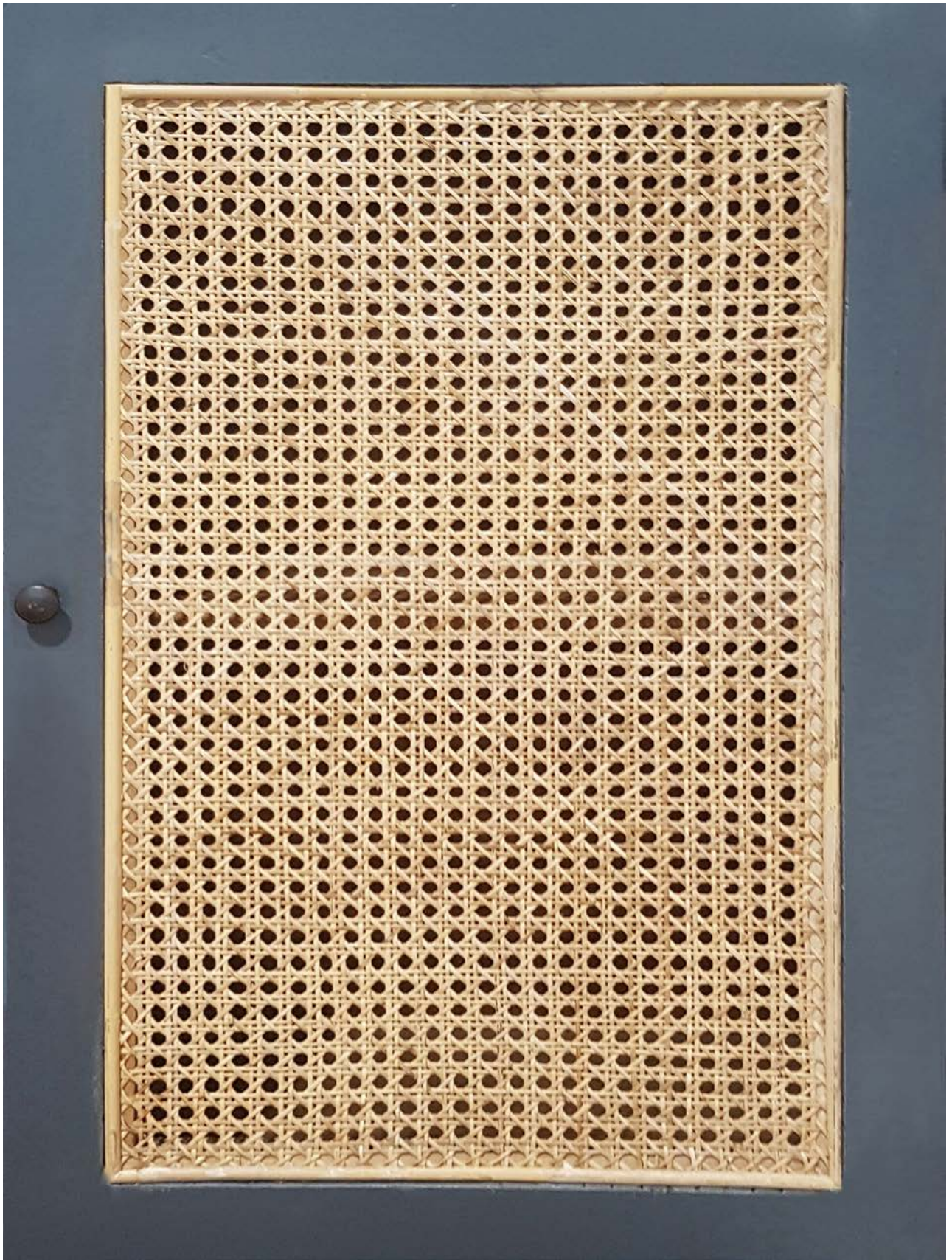
EMAIL: sales@andrews-tiles.co.uk

www.andrews-tiles.co.uk

EST. 1886



ANDREWS
MARBLES & TILES



Somerset Willow Growers

www.willowgrowers.co.uk

01278 691540

dispatch@willowgrowers.co.uk

COBERMASTER CONCEPT



Cobermaster Concept is a Portuguese brand dedicated to the development and manufacture of premium furniture with vintage and industrial inspiration with international projection.

Innovation, sustainability, design and character are the basis of inspiration for the creation of each of the pieces, most of which are produced using the 3D grating, a mesh with unique

characteristics, manufactured using a technology developed and patented by the company itself.

Cobermaster Concept manufactures in Portugal and ships worldwide, with no minimum order quantity.



COMPLETE
FITTED FURNITURE
Richard Phillips



GET INSPIRED

BECAUSE ALL HOMES ARE BUILT ON LOVE

DISCOVER THE COMPLETE COLLECTION
COMPLETEFITTEDFURNITURE.COM

BERKHAMSTEAD
01442 777 111

WATFORD
01923 224 000

AMERSHAM
01494 434 363



A HOME DESIGNED FOR ENTERTAINING THE WARRINGTON HOUSE PROJECT BY HAVWOODS



A modern family abode in the Midlands, this stunning home has undergone a large refurbishment, completely transforming the ground floor of the property with a new open plan design. Flowing seamlessly from one side of the house to the other, the space includes an open-plan kitchen and separate bar area, formal living room and utility space.

As a family that likes to entertain, Interior Designer Laura Jackson has welcomed new energy into the home by combining the best of contemporary design with everyday comfort. Using natural materials like wood and marble, and pairing them with colour palette

of dark blue and sage green, the house exudes contemporary elegance with a personable touch.

Havwoods' Pallido Select 70mm Block from The Italian Collection has been introduced throughout the space, creating a cohesive look that perfectly complements the abundance of natural light. Adding depth and charm, the herringbone design creates a free-flowing feel and has been paired with a Scandi-inspired aesthetic including soft wood furnishings and brass accents.

In the kitchen, the warm undertones of the flooring works beautifully with the sage green cabinetry, reflecting the greenery from the garden outside. As the floor continues into the bar area, the rooms are divided by an on-trend Crittall door and differing colour scheme. Unlike the kitchen, the bar has been decorated in rich, dark blue floor to ceiling storage, complemented with a velvet armchair. Whilst the glass separates the two rooms, the herringbone floor subtly brings the spaces together.



With its sleek silhouettes and natural elements, this home boasts a clean and inviting aesthetic, perfect for modern family life. Havwoods wood flooring perfectly accentuates the scheme, injecting texture into the space, as well as implementing quality to both the look and feel.

www.havwoods.com/uk

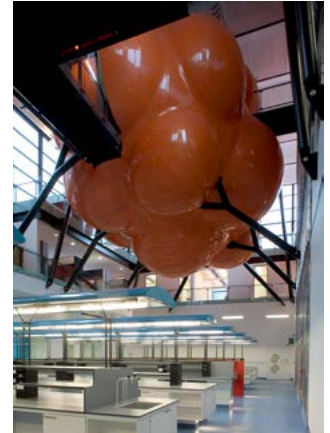
1

BESPOKE FEATURES IN GRP (FIBREGLASS) – INDULGE YOUR CREATIVITY

Long established Design & Display Structures have been satisfying client demands for curvy features that make a real impact through clever use of their 3D design facilities, industry experience and fibreglass manufacturing team. The range of profiles, organic shapes, surface textures and colours D&D can achieve is huge. The fully finished modular panels are lightweight yet robust making the shipping and site installation process easier and quicker, a major contribution to reducing everyone's carbon footprint. If a project calls for it you can even apply specialist finishes or supplementary artistic decoration.

Design • Manufacture • Installation UK wide

Web: www.design-and-display.co.uk | Email: sales@design-and-display.co.uk
Contact: Allan Curtis - Mobile/WhatsApp: **07718 320184**



2

MAKING INTERIORS **SMELL AS GOOD AS THEY LOOK**

Have you ever entered a space and instantly felt at home, or quite the opposite, uncomfortable or anxious?

The reason why is not always an evidence, be it the colours, the lighting, the furniture or perish the thought... the SMELL! A badly aligned interior may have you longing for more or running for the door. Aromatise Fragrance Diffusion Technology believe in the art of aligning those senses, with the help of the often-forgotten sense of smell. With premium perfumes and state of the art fragrance diffusion technology, we will assist you in designing the olfactive completion of any living space.

Do call us and speak to us personally for an easy first consultation or visit us on our website.

Web: www.aromatise.co.uk | Email: info@aromatise.co.uk | Tel: **01223 894207**

AROMATISE



3

LOVE WILL TEAR US APART? **OR WILL THE COMING TOGETHER WILL TEAR US APART?**

The fact is that flooring and furniture are foes, not friends. While opposites attract, if you love your flooring, it's best to keep a little distance between them.

At Stroomount our Protect & Care range of specialist protection features a heart sign. This symbolises the care needed so that when flooring and furniture cosy up together, they don't rub each other up the wrong way: only scrapes, scratches and scars can come of that.

From the best Felt pads to Repair Kits and Radiator Pipe Rosettes, Stroomount has it all to keep your floor flawless.

Love your floor?
Web: www.stroomount.co.uk



4

1ST FOLDING SLIDING DOORS

We offer the installation of specialist bespoke sliding doors, bi-folding doors, glass roof structures, innovative frameless glazing systems, windows and frameless glass balustrades. We also work closely with established manufacturers, offering both UK and Offshore designed systems, with lead times as quick as one week on specific items. We have many years' of experience in overcoming the technical difficulties involved in designing, manufacturing, and installing, a bespoke product. Our full on-site survey ensures that we can work with the timescale required, and will assist with any technical issues your builders, architects or project manager may have. Together with this technical support we have in place, our fully trained 'In-House' Installers, and also the support we give our trade customers, this gives us the confidence to promote the best overall package available in the market today. Whether your project is big or small, we can help you achieve your glazing vision; you dream it, we'll deliver it!

Email: marcus@1stfoldingslidingdoors.co.uk | Tel: **0208 997 2448**



Pansy Ball
Basket

At Just Artificial, we work with interior designers, decorators, set dressers, architects and more to set your premises apart from the rest. Our artificial plants, flowers and trees are highly realistic to look and touch, as well as being durable and attractive.



ARTIFICIAL PLANTS & TREES FOR BUSINESSES

Our master craftsmen construct each bespoke order with painstaking care and attention, to create an exceptionally 'real' artificial showpiece, and we offer bespoke solutions to suit the needs of your space, business and tastes.

Whether you need simple plants and trees that don't need tending to or you're going for a full artificial landscape with turf, hedges and more, we have existing products and the capacity to create custom designs for any need and budget. We'll offer a no obligation quote to help you plan your projects and we can tailor our service to 'fir' your needs.

FULL SUPPORT

Whatever your choices, we have the design experience and know-how needed to make you stand out. We can work with your design to make your premises look incredible, whatever the space and whatever the industry. We can even help you develop the design, drawing on years of experience.

WHO HAVE WE SUPPLIED?

Major companies in many industries including ITV, BBC, Channels 4 and 5, Mulberry, Innocent Drinks, Monsoon, Bella Italia, Tesco, Big Brother, The Only Way is Essex, Coronation Street, Dancing on Ice, Park Resorts, Volkswagen, and more. We've also sold to house builders, zoos, hotels, restaurants, shopping centres, theme parks, colleges and schools, cruise ships, theatres... the list goes on! We have tens of thousands of satisfied customers in the UK, in Europe, and across the World.

We can provide offers for procurement managers and corporate buyers on bulk orders and or trade, to help you finalise your design. **Our quotes are no obligation - so call us today. We look forward to working with you!**

Call us today on **01524 858888** or email:
sales@justartificial.co.uk

Browse our Web Store online for our full stock range and more info on our bespoke solutions on offer **www.justartificial.co.uk**



JUST ARTIFICIAL
PLANTS • TREES • FLOWERS

The finishing touch



Fern Tree

Calathea

HUGE FIRE
RETARDANT
RANGE
IN STOCK

UV
RESISTANT
RANGE FOR
EXTERIOR
PROJECTS
IN STOCK

At Just Artificial, we work with interior designers, decorators, set dressers, architects and more to set your premises apart from the rest. Our artificial plants, flowers and trees are highly realistic to look and touch, as well as being durable and attractive.

www.justartificial.co.uk/aod

01524 858888 | sales@justartificial.co.uk



COACH HOUSE

www.coachhouse.com / [@coachhouseuk](https://www.instagram.com/coachhouseuk)