



ELEMENT - The Quarter Construction Update

February 2022

February 2022

At ELEMENT - The Quarter, a number of tasks are nearing completion such as the retaining walls, flat roof structure, scaffolding and mast climber access and upper suspended steel floor structure.

First fix mechanical and electrical works are underway in residential and commercial wings, and excellent progress can be seen to weatherboarding and the structural framework forming external walls.

Summary of Works Progressed

- Retaining walls and concrete beam foundations are 85% complete
- Underground drainage is 92% complete
- Ground floor slab construction has commenced and is 2% progressed
- Steel frame structure is 98% complete
- The upper suspended steel floor structure is almost completed
- Flat roof structure is 88% complete
- Flat roof coverings including balconies are ongoing
- Scaffolding and mast climber access is 94% progressed
- Works on external windows, doors and curtain walling are 35% progressed
- Weatherboarding has made excellent headway and is 65% complete
- Structural framework forming the external walls is 72% complete
- Fire coating to the steel framework is 75% complete
- External wall insulation and cladding are 15% constructed
- Mansafe system is 35% complete
- First fix mechanical and electrical works commenced



Brunswick Road - Site view



Student wing - External wall insulation ongoing



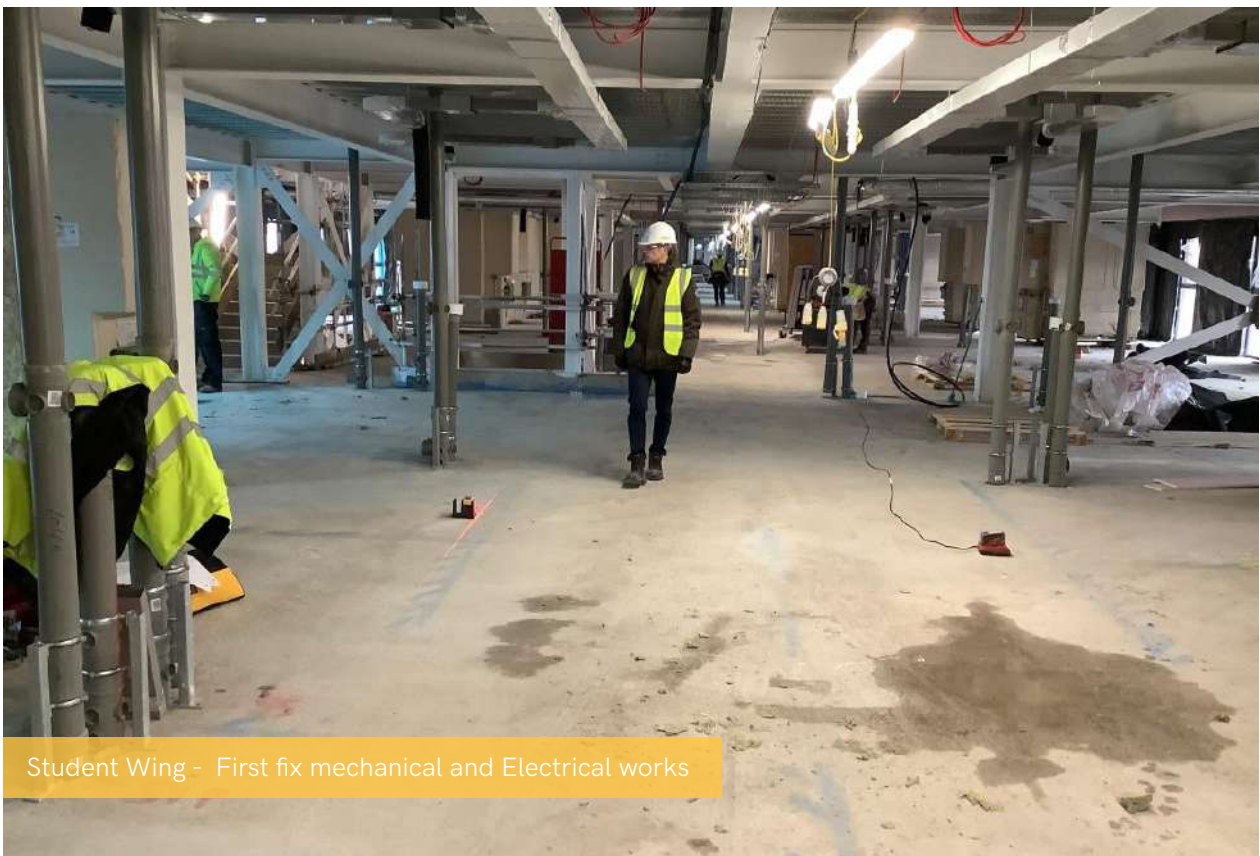
Student wing - External facing brick ongoing



Student wing - Gable end facing brick ongoing



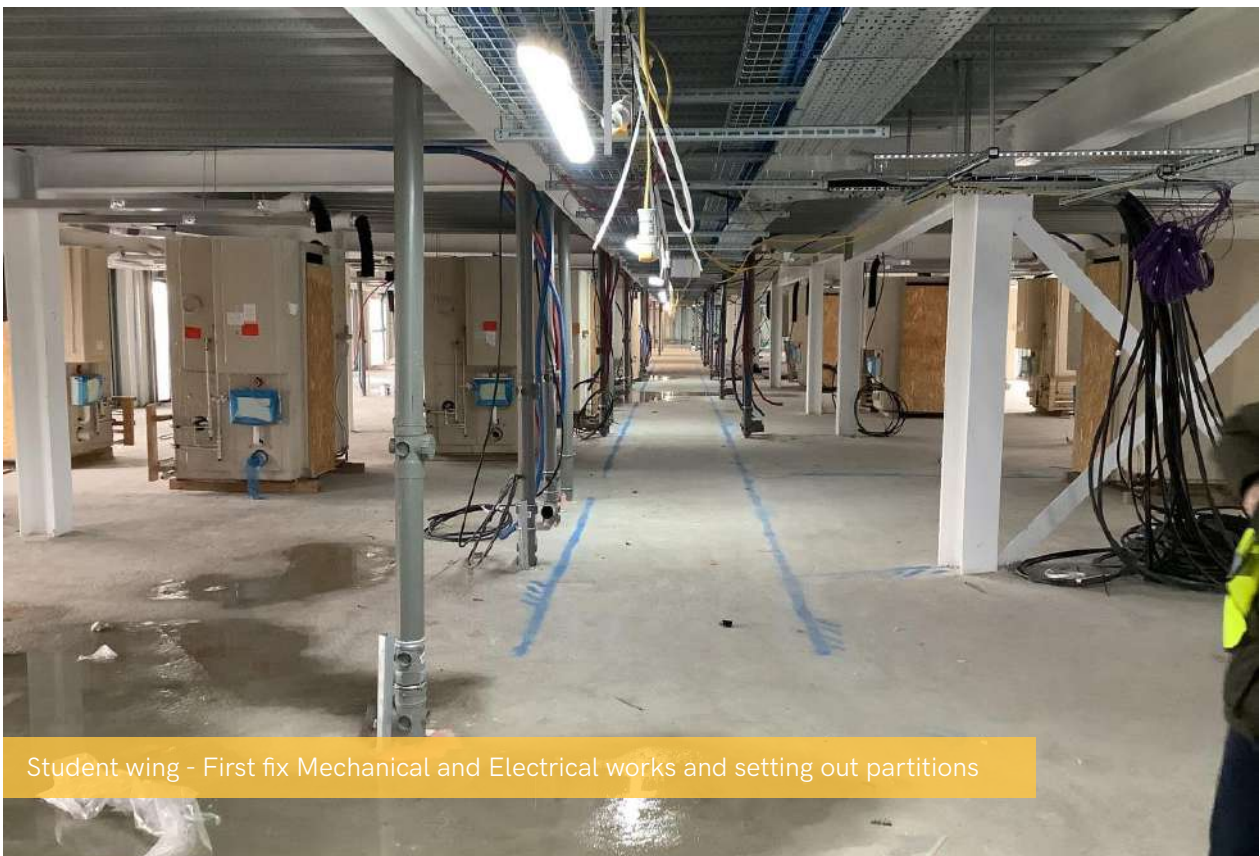
Brickwork progress to sub-station



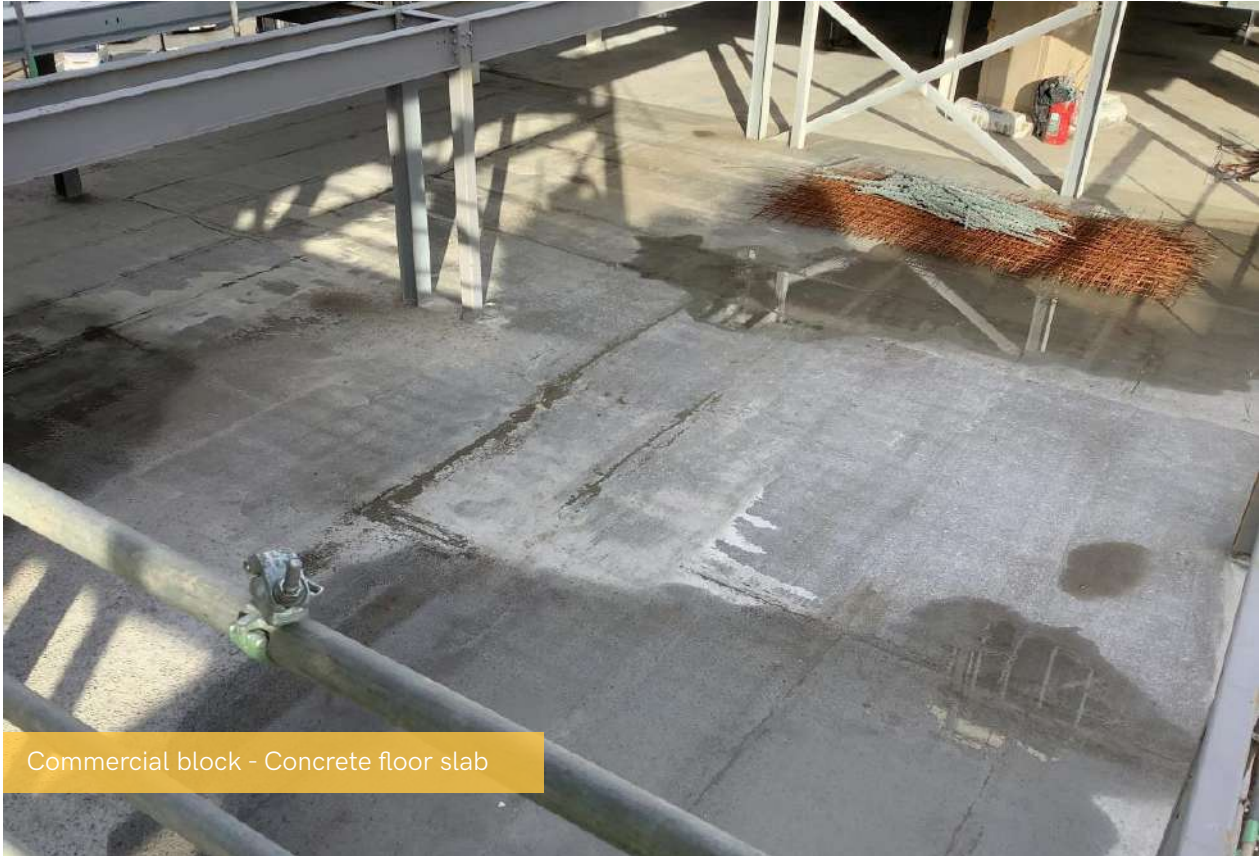
Student Wing - First fix mechanical and Electrical works



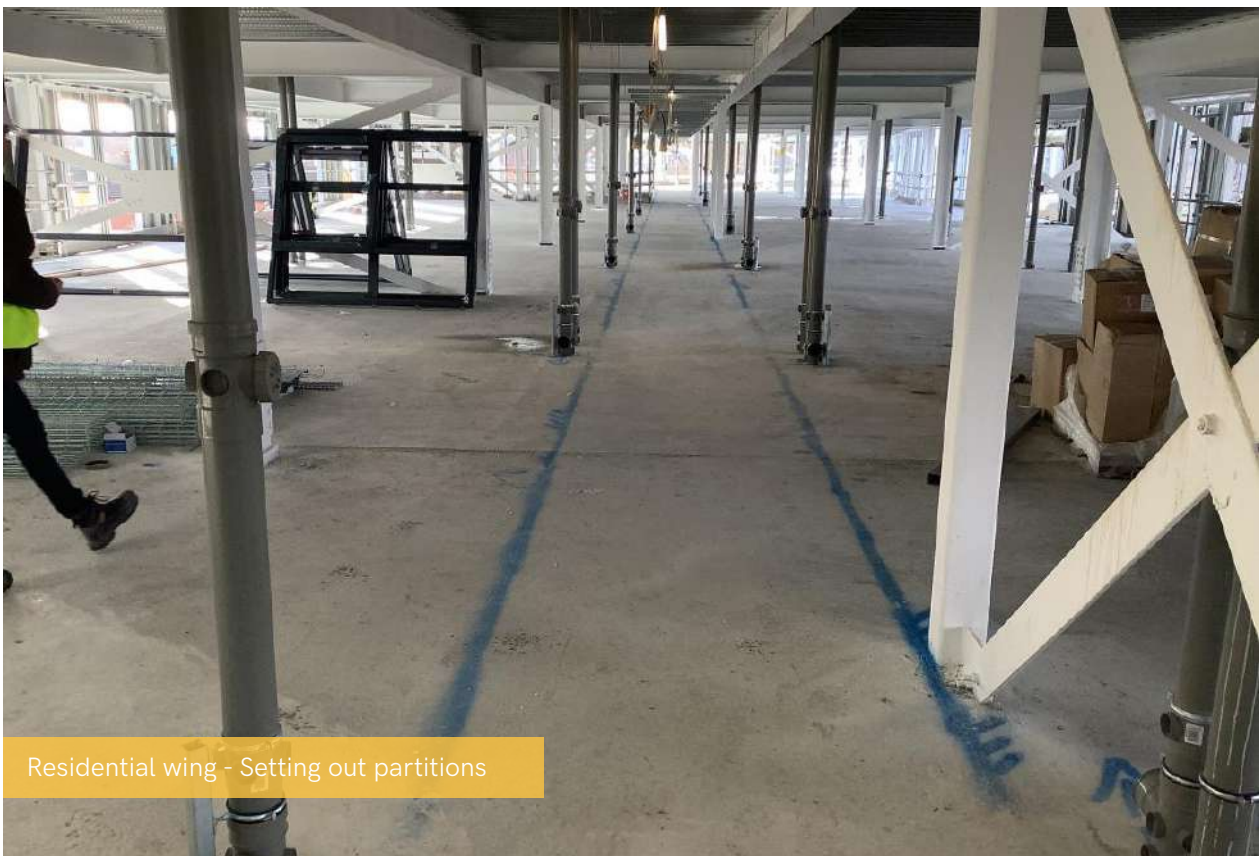
Student Wing - Internal dry lining



Student wing - First fix Mechanical and Electrical works and setting out partitions



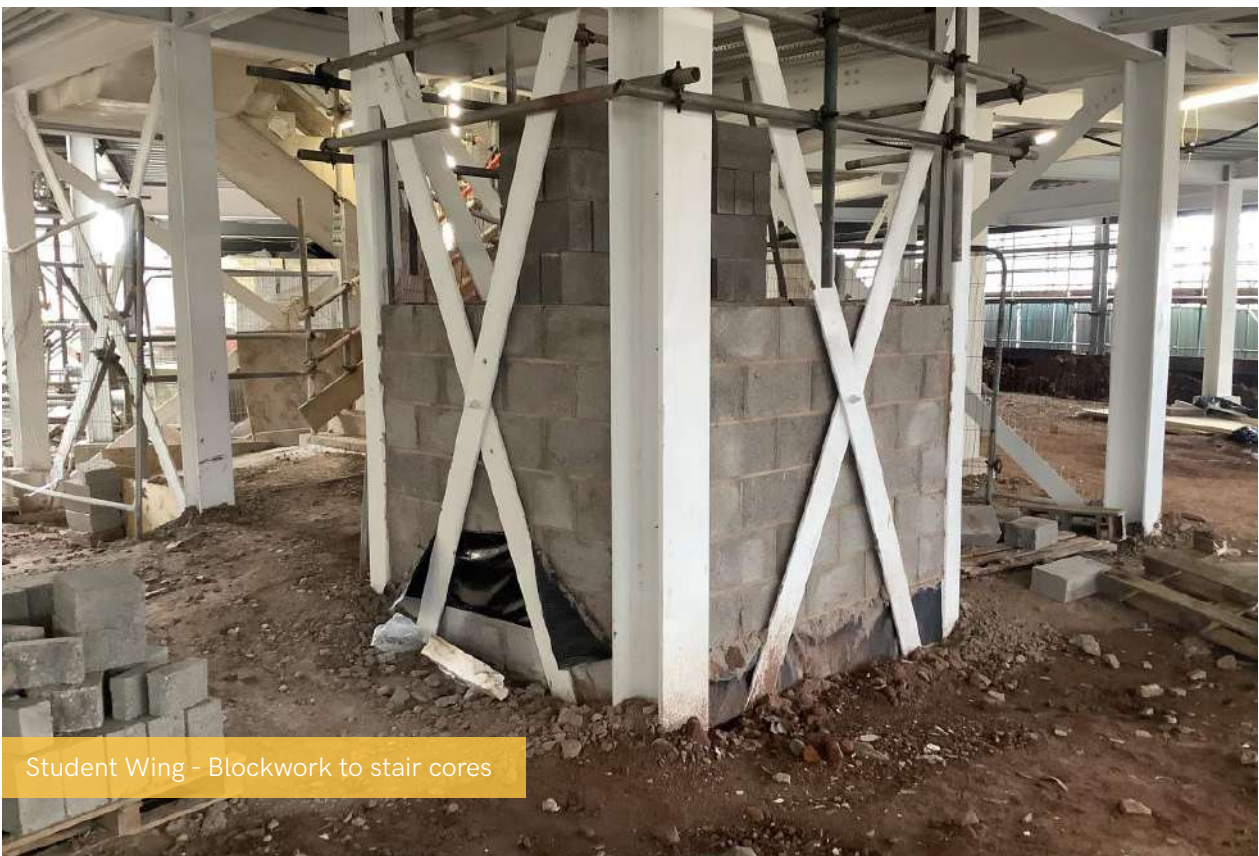
Commercial block - Concrete floor slab



Residential wing - Setting out partitions



Commercial block - Concrete floor slab



Student Wing - Blockwork to stair cores



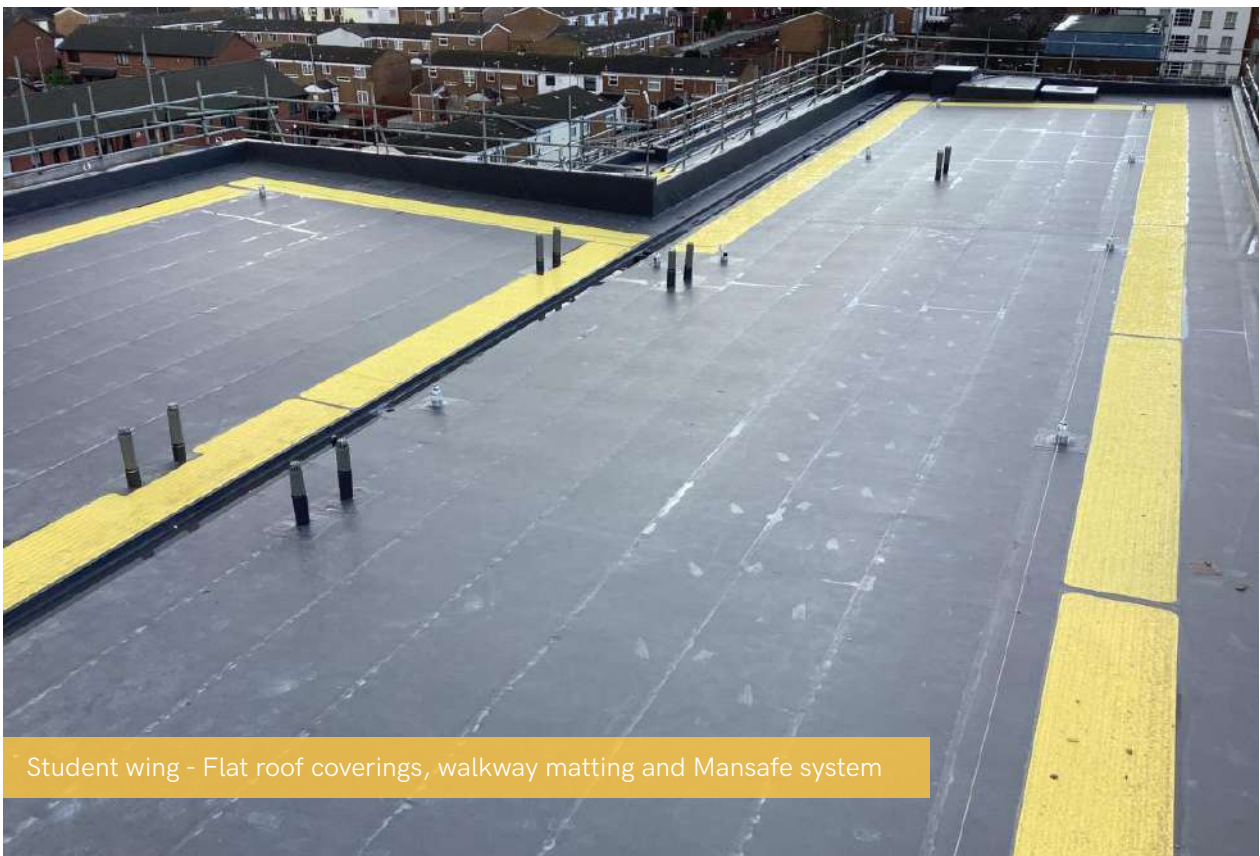
Student Wing - Low level blockwork progress



Residential wing - Steel frame structure and SFS and weatherboard



Residential wing - Steel frame structure, SFS & weatherboard and windows



Student wing - Flat roof coverings, walkway matting and Mansafe system



Student Wing - Mast climbers, external insulation and render progress



Student wing - External insulation & render progress



www.nexusresidential.co.uk