

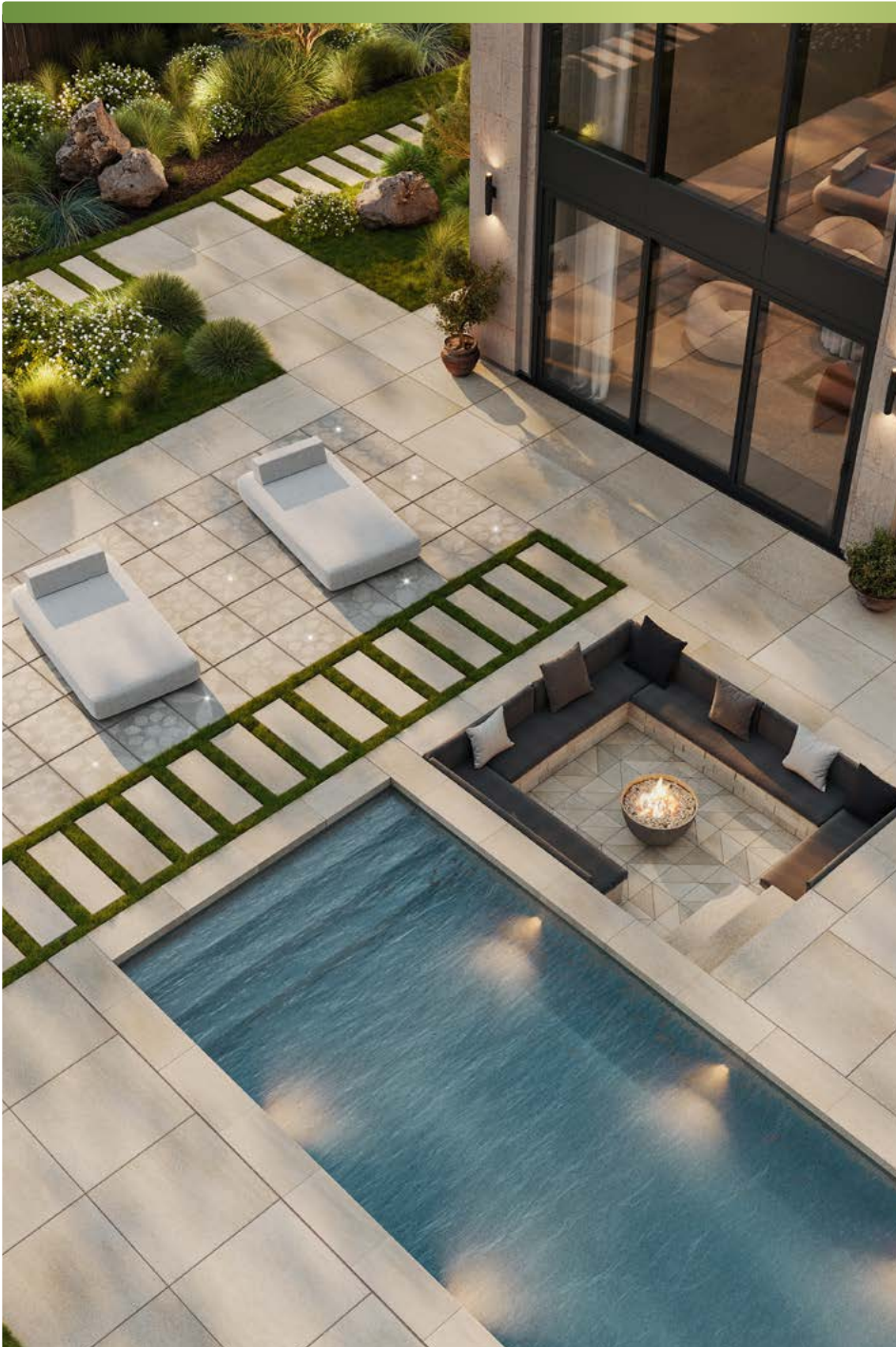
LANDSCAPE & URBAN DESIGN

66

Mar/Apr 2024

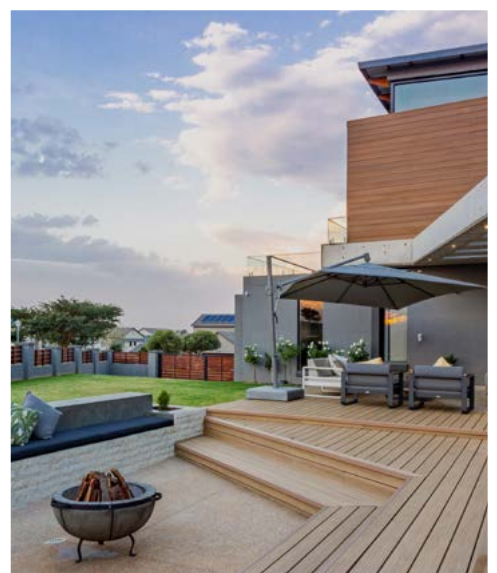
Price £4⁹⁵

landud.co.uk



Irrigation systems need TLC

Ensure reliable and consistent
performance through the seasons



Techo-Bloc introduces this year's theme of 'Quiet Luxury'

Stepping away from ostentation, the focus is on timeless,
investment pieces that lay the foundation for outdoor spaces

Make life easier and better

The beauty and benefits of
building with composites



HARDSCAPE

Supplying commercial stone & paving
to inspirational urban spaces for 30 years.

Contract the experts on enq@hardscape.co.uk and **01204 565 500**



CONTENTS ISSUE 66

THIS ISSUES MAIN FEATURES



Garden Design | 16 - 43



Green & Blue Infrastructure | 54 - 59



Street Furniture | 60 - 63

Royal Horticultural Society

8 - The Royal Horticultural Society is inviting millions of garden lovers across the country - and beyond - to vote for their favourite RHS Partner Garden for 2024.

Decking

10 - The increasing popularity of bamboo decking and cladding as a viable alternative to tropical hardwoods.

14 - More and more smart people are discovering the beauty and benefits of building with composites.

Garden Design

16 - Eco-paving manufacturer, Bradstone, highlights five ways in which you can become eco-friendlier and more self-sufficient in your own gardens.

22 - CMO Group PLC, the UK's largest online only retailer of building materials and products, has expanded its offering with the launch of Landscaping Superstore.

36 - Hartley Botanic previews plans for its 2024 RHS Chelsea Flower Show tradestand.

40 - Techo-Bloc unveils this year's Leading Trends through new product and color launches.

Concrete & Stonework

48 - Johanna Elvidge, Head of Domestic Design at Marshalls shares the garden, patio and colour trends that are likely to make an appearance in 2024.

50 - Introducing Elite Verti-Crete - the good-looking solution to fast and effective fencing.

Green & Blue Infrastructure

54 - In the dynamic realm of urban development, Sustainable Urban Drainage Systems (SuDS) have emerged as a critical component of responsible planning.

58 - Green-tech helps Bradford Council create a network of rain gardens to reduce flooding.

Street Furniture

60 - An ambitious initiative aiming to revitalize a sprawling 79-hectare derelict post-industrial site into a vibrant urban community accommodating 35,000 residents.

Landscaping Services

72 - A helpful guide from the experts at Johnsons Lawn Seed.

74 - Toro is entering a new market with its first ever range of passenger vehicles.

84 - Nature-based Solutions that Enhance Biodiversity.

90 - The British Association of Landscape Industries (BALI) is delighted to confirm that entries into this year's National Landscape Awards are now open.

Accredited
Members
of BALI



Publishing Director

Martin Holmes
martin@mhmagazine.co.uk

Sales Director

Lee Martin
lee@landud.co.uk

Digital Manager

Jamie Bullock
jamie@mhmagazine.co.uk

Editor-in-Chief

Antony Holter
editor@mmhmagazine.co.uk

Editor

Lorna Davidson
lorna@landud.co.uk

Business Manager

Josh Holmes
josh@mhmagazine.co.uk

Studio Designer

Sarah Johnson
sarah.johnson@mhmagazine.co.uk

Marketing Enquiries - 01227 936974
Editorial Enquiries - 01304 806039
Other Enquiries - 01304 806039

Publishers

MH Media Global Ltd.
18/20 Newington Road,
Ramsgate Kent CT12 6EE

Cover images courtesy of: Left: Techo-Bloc | Top Right: Waterscapes Limited | Bottom Right: Eva-Last®

Every effort is made to ensure the accuracy and reliability of material published in Landscape & Urban Design however, the publishers accept no responsibility for the claims or opinions made by advertisers, manufacturers or contributors. No part of this publication may be reproduced or transmitted in any form or by any means, mechanical, electronic (including photocopying) or stored in any information retrieval system without the prior consent of the publisher.



FIRST LOOK AT RABY CASTLE'S REMODELLED EAST GARDEN

In June 2023, Lord and Lady Barnard invited guests to view the first completed section of the 18th Century Walled Garden which features a unique tiered grass amphitheatre.

The event allowed Raby's members a sneak preview of the first phase of the exciting new design, carefully crafted by world-renowned garden designer Luciano Giubbilei, in close collaboration with Lady Barnard.

Situated just a stone's throw from the 14th century Raby Castle, home to the Vane family since 1626, work began in the eastern section of the

Walled Garden in early 2022 and has included the creation of the tiered grass amphitheatre, and the planting of new borders and beds.

Lady Barnard, who is spearheading the rejuvenation of the Walled Garden, was thrilled to share this momentous occasion with the Raby members. "This preview of the East Garden is truly the first step in our thrilling journey to completion. The gardens at Raby Castle have always had huge appeal for visitors, and it was so important to us that we maintained its character and original features.

"Part of the scheme to improve the Raby visitor experience includes providing a space in which the public can relax and enjoy the picturesque surroundings. The addition of the grass amphitheatre has created a sunken performance area for enjoyment of the arts, but also for quiet contemplation.

"We have maintained the soul of the East Garden, embracing its provenance and memories, utilising the much-loved combination of herbaceous borders and trees. The space is framed by amelanchier woodlands, which will grow over time to create an intimate



The Formal Garden will comprise a series of unique mazes alongside the historic Raby yew hedge, with a graceful rill flowing north to south, adding the tranquil sounds and sight of water complementing this calm space. The adjacent West Garden will be the productive space, combining raised beds growing seasonal vegetables, a greenhouse displaying hot house plants and a cut flower garden full of roses, peonies, dahlias and sweet peas.



experience for visitors, as they stroll through the interspersed woodland under blossoming trees towards the open amphitheatre, with the castle framing the horizon.

“Evergreens and topiary have been introduced to reflect the balance of formality and informality within the structure of the garden, with

Taxus hedging and Osmanthus cloud-pruned plants installed to create flow and mirror the form of the historical yew hedge in the neighbouring Formal Garden. We wanted to mix the soft textures of blossom from the amelanchier, with the evergreen structure, creating subtle impact and inspiration.”

For further information on The Rising, please visit:
www.raby.co.uk/about-us/development/raby-castle-development/



IRRIGATION SYSTEMS NEED TLC – STARTING NOW!

by Paul Jeffery, Managing Director, Waterscapes Limited

With changes to our climate, irrigation systems may be operational until November and within a few months attention is turned again to the Spring Start Up. No matter how long it has been turned off, an irrigation system should not be restarted until it has been fully tested so that existing or emerging problems can be rectified, and the year starts with a fully functioning system.

Whatever the complexity of the installation, it then needs to be managed accordingly under a planned maintenance regime. This will help to ensure reliable and consistent performance throughout the seasons as operational capacity is increased to 100% or higher in the peak dry weeks of summer.

The irrigation technology may range from simple sprinklers or surface dripline through to sophisticated, remotely managed fully automated systems. Start Up checks should cover all elements, helping to reduce costly call outs and repairs, water wastage and longer-term damage to landscapes.

Water should be turned on slowly to prevent sudden pressure causing damage to any part of the installation. There may be a need to flush the system and clear out unwanted particles. Sprinkler heads can get blocked not just over winter but throughout the seasons. They should all be checked to ensure also that they rotate correctly and still achieve the required coverage.

Damage caused by rodents, other animals, or garden tools as well as general wear and tear can be assessed when checking surface dripline. Out of sight irrigation delivery systems must also be thoroughly inspected for breakages or leaks to prevent water wastage and ensure low pressure does not result in parts of the landscape receiving insufficient irrigation.



Larger areas are frequently split into irrigation zones with individual watering schedules according to planting. Control valves and controllers should be checked for correct set up and cycle times as well as tested for electrical or supply issues.

After the Spring Start Up, water conservation, cost control and ensuring no under watering in the drier weeks are continuing considerations. Dependent upon the installation, mid-season or more regular planned visits need to be part of every management regime before proper winterisation. It will pay dividends to use experienced professionals to undertake this work as they can also recommend how the performance of the system could be improved through adjustments to watering schedules or investment in additional technology such as flow and rain sensors.

Waterscapes offer full design, installation & maintenance services for irrigation systems and water features - please contact them at info@waterscapes.co.uk waterscapes.co.uk | 01963 824166



waterscapes Ltd

Award winning, reliable irrigation professionals



With over 40 years combined experience, producing & installing projects across the UK

- Irrigation design & installation
- Full maintenance services
- Construction, local authority and private client sectors
- Display water features & fountains
- Excellent customer service & project management support

T: 01963 824166

E: info@waterscapes.co.uk

waterscapes.co.uk



@waterscapesltd



Image credit: RHS / Guy Harrop

RHS PARTNER GARDEN OF THE YEAR COMPETITION 2024

The Royal Horticultural Society is inviting millions of garden lovers across the country - and beyond - to vote for their favourite RHS Partner Garden for 2024.

Now in its fourth year, the contest continues with the "Feel Good" theme and all voters in the popular RHS Partner Garden of the Year competition will be entered into a prize draw to win a pair of tickets to the RHS Hampton Court Palace Garden Festival in 2025 with a luxury two-night stay close to the showground as a thank you for their show of support.

Last year, with thousands of votes cast, Hidden Valley Gardens, an intimate three-acre cottage style garden in Treemill, Cornwall, won the overall competition, with a further five gardens winning regional categories.

Previous winners have described how the award has confirmed the appreciation of their hard work shown by visitors. Ian Maberly, who runs Nant y Bedd Garden in the Brecon Beacons which was crowned RHS Partner Garden of the Year in 2022, said: "We're pretty sure that the increase in visitor numbers in

2023 must have been associated with the win.

"We know that what we are doing here is greatly appreciated by our visitors from what they write in our Visitors' Book, and the award confirms that."

There are 220 gardens in the RHS Partner Garden scheme in the UK and abroad. The scheme gives free access to the garden to the charity's 600,000 members at selected times of the year. Voting for the Partner Garden competition is open to anyone, however, not just members.

Nine new gardens have joined the scheme this year, including Riverhill Himalayan Garden in Kent, Natural Surroundings in Norfolk and La Mortella in Naples.

Votes can be cast via the RHS website rhs.org.uk/pgoty. Voting is open from 10am on Wednesday 10 April until midday on 27 September, 2024.

Many of the RHS Partner Gardens will also be displaying the link to vote in their gardens, on social

media and on garden websites, so it will be easy for visitors to cast their vote for their favourite garden and leave a comment to say what the garden means to them.

Visitors can choose their favourite gardens in each of six regions: Midlands and East Anglia; North and Northern Ireland; Overseas; Scotland; South East and Channel Islands; and South West and Wales.

As before, the gardens will be ranked according to the number of

votes they have received relative to their total visitor numbers for the previous year with the comments they've received from voters to determine the winner for each region and the overall winner.

The winners, who will be revealed in December, will receive a special plaque to display at their property as well as a professional photoshoot of their garden. Gardens that have won in the past two years will be excluded from this year's competition.



Image credit: RHS / Trevor Ray Hart



Image credit: RHS / Trevor Ray Hart

RHS Partner Garden Manager Helen Feary said: "We're delighted to be running the RHS Partner Garden of the Year competition again in 2024. Visiting a garden brings so much joy to so many people and it's wonderful to be able to give people the chance to vote for their favourite 'feel good' garden from among the 220 RHS Partner Gardens. The heart-warming comments show us how much these gardens mean to their visitors."

For more information visit
www.rhs.org.uk



THE RISE OF BAMBOO: A SUSTAINABLE ALTERNATIVE TO TROPICAL HARDWOODS

In recent years, there has been a significant shift in the construction and landscaping sectors towards more sustainable and eco-friendly materials. This trend is especially evident in the increasing popularity of bamboo decking and cladding as a viable alternative to tropical hardwoods. Here are some key reasons we believe are behind this shift:

Environmental Concerns

Bamboo is one of the fastest-growing plants on earth, with some species growing up to 3 feet in just 24 hours. Unlike hardwood trees, which can take decades to mature, bamboo reaches maturity in 3-5 years, making it a highly renewable resource that can be harvested without causing harm to the environment. Additionally, it absorbs more carbon dioxide and releases more oxygen than hardwood trees, helping to reduce greenhouse gas emissions.

Durability and Strength

Despite being a grass, bamboo is incredibly strong and durable, making it an ideal material for decking and cladding. It has a higher tensile strength than steel and is highly resistant to pests, rot, and moisture. This durability ensures that bamboo decking and cladding can withstand the elements and maintain their integrity over time, reducing the need for frequent replacements.

Aesthetic Appeal

Bamboo decking and cladding offer a unique aesthetic that is both modern and timeless. Its warm colour and fine grain add a touch of elegance to any outdoor space, while its natural texture creates an inviting atmosphere. Bamboo's versatility also allows for a range of design options, from contemporary to rustic, making it a popular choice for a variety of projects.

Cost-Effectiveness

In addition to its environmental and aesthetic benefits, bamboo is often more cost-effective than traditional hardwoods, making it an affordable option for wood products. Its rapid growth rate means that it can be harvested and replenished more quickly than hardwood trees, reducing the overall cost of production. Furthermore, the long-term savings in maintenance and replacement costs make it a more economical choice in the long run.

As the demand for sustainable building materials continues to grow, bamboo is likely to remain a popular landscaping choice in the future.

www.gripsure.co.uk

Bamboo: Beauty with a conscience.

Step into a world where
style meets responsibility.

Known for its strength, resilience, and timeless elegance, our bamboo decking and cladding collections are crafted from one of the world's most rapidly renewable resources, transforming outdoor spaces into a harmonious blend of luxury and environmental consciousness. Redefine the art of outdoor living without compromise.

- ✓ Fire rated
- ✓ Co2 neutral
- ✓ Hard & durable
- ✓ Beautiful appearance
- ✓ Easy installation
- ✓ High stability
- ✓ Endless resource
- ✓ Maintenance free

© Reily Imagery

Discover the beauty of bamboo and order your
free decking and cladding sample today.

www.gripsure.co.uk info@gripsure.co.uk 01726 844616

 **GRIPSURE**[®]
keeps you on your feet



TREKKER HITS A SIX AT STATE OF THE ART CRICKET CLUB

Budleigh Salterton Cricket Club, a renowned sporting hub now located in the picturesque Devon coastal town of Budleigh Salterton, has recently undergone a relocation from Ottermouth and a bespoke design and development. This exciting change comes as a result of suffering from seasonal flooding for years in its previous location, causing disruption to the running of the facility and damage to the property.

The Environmental Agency has invested £15m in a Lower Otter Restoration Project to return the area to a more natural state which has allowed for the relocation and complete development of this much-loved, purpose built cricket club.

The relocation and investment brought the opportunity to start from scratch and create a stunning purpose-built hub that meets all of the specific needs of the cricket club, whilst also acting as a social hub for the wider community.

This two-story development allows for sports and changing facilities on the ground floor and a large entertaining and social space on the first floor. The stunning raised balcony gives a 180° panoramic view across the two cricket pitches with views all the way out to sea - the perfect place to enjoy a summer afternoon.

For this project, the client was looking for a low maintenance, highly durable decking solution that could withstand the high foot traffic as well as offer a stunning finish that fits with the complete aesthetic - this is where Trekker comes in.

The installation of Trekker Composite Decking brought a transformative change to the Budleigh Salterton Cricket Club pavilion. The Natura Grooved boards in Vulcan added a touch of sophistication to the structure whilst ensuring resistance against the elements. It's Trekker's Natura Grooved range offers more of

a raw looking finish with the look and feel of timber, but the durability and easy maintenance of a composite. Made from recycled material and fully recyclable, the use of Trekker FSC accredited products also added to the sustainability of the project.

As spring draws in, spectators and users of the cricket club are sure to be eager to make use of their stunning new balcony whilst immersing themselves in some fantastic games of cricket.



Product: HO924 Natura Vulcan Grooved

www.trekkerglobal.com
 01483 310800
info@trekkerglobal.com



Beautiful decking for outdoor living.

Ask us about our range of luxury composite decking and cladding products in stunning colours and finishes to complement any garden project. All products are made from recycled hardwood fibres and virgin polymer.

The result is a beautiful, luxury material designed for life

TREKKER
LUXURY DECKING & CLADDING

trekkglobal.com
info@trekkglobal.com
01483 310800



THE BENEFITS AND BEAUTY OF BUILDING WITH COMPOSITES

Who has the time, or money, for pesky problems such as outdoor building maintenance like painting, refurbishing or replacing wooden decks?

More and more smart people are discovering the beauty and benefits of building with composites.

The ingenuity of composites combines the positive physical properties of different compounds - organic or inorganic - to make life easier and better.

Properties such as weather resistance, decreased flammability, structural stability or pest prevention - are all factors that can be engineered into an enhanced product offering.

Various inherent advantages in the component compounds are combined into composites to offer savvy consumers lower maintenance and degradation prevention, with the added benefit of reduced consumption of natural resources. And the rate at which composites are evolving and becoming a favourable choice is astounding!

The inherent strength and structural stability of bamboo fibre, with its

natural resistance to moisture, act as deterrents against biodegradation such as mould and rot. When combined with high-performance recyclable polymers, Eva-Last decking not only resists degradation but also provide enhanced fade and scratch resistance, meaning your deck looks as good as it did the day you bought it.

Eva-Last's bamboo composite decking, a modern marvel, offers an attractive alternative to real wood, outperforming their traditional counterparts in terms of superior performance and sustainability. That alone justifies the investment. Consider their lower long-term maintenance costs, extended lifespan due to increased weather and pest-resistance, and colourfast properties, together with an array of natural shades and patterns on offer, and you wonder why no-one had thought of them sooner.

"Necessity is the Mother of all Invention"

It's never been easier to add stylish comfort and convenience to your life than with the advanced composite decking from Eva-Last. Their extensive range of composite decking offers the very latest in material technologies.

Developed for enhanced wear characteristics and user-friendliness, Eva-Last decking also addresses the pressing environmental concerns of deforestation, pollution and carbon emissions that threaten our very survival.

These composites transform recycled plastic and eco-friendly bamboo fibres into beautiful bamboo plastic composites (BPC), providing attractive alternatives with reduced input and maintenance costs, low environmental impact, and enhanced durability.

What's more, Eva-Last's 44 000 KWh of solar-power installed at the factory further contributes towards producing eco-friendly composite decking.

Not only do these modern composite products enhance the environment and make living with them a pleasure, but they also protect the natural one, reducing the requirement for scarce natural resources such as timber.

What's not to love?

www.eva-last.co.uk

EVA-LAST®

INSPIRED BY NATURE, DESIGNED FOR LIFE.



WHEN YOU CHOOSE EVA-LAST, YOU'RE CHOOSING THE BEST SOLUTION FOR BOTH YOU AND THE ENVIRONMENT.

Eva-Last decking products are the low-maintenance, reliable alternative to timber. They are also free of toxic chemicals and preservatives normally used for the treatment of wooden decking. The beauty of wood, without the constant upkeep. An investment that saves time and money, and adds value to any outdoor project.

EVA-LAST®
INSPIRED BY NATURE, DESIGNED FOR LIFE.



LOW ENVIRONMENTAL IMPACT

Holistically sustainable manufacturing & use of raw materials



www.eva-last.co.uk

Scan for more info on our product range

HOW TO MAKE YOUR GARDEN ECO-FRIENDLY



Playing our part to become more sustainable is more important than ever. Whether that's growing our own food and cutting down on our household waste or renovating our gardens - we all need to do our bit.

Eco-paving manufacturer, Bradstone, highlights five ways in which you can become eco-friendlier and more self-sufficient in your own gardens.

1. Grow your own food

Why not devote a patch of your garden to growing your own food?

Not only is it cheaper but it also reduces your environmental impact - reducing the need for plastic packaging. It's also a great way of getting the children involved in gardening and for children who dig their heels in when it comes to eating their greens, they may be more inclined to eat veggies at dinner time if they grew it themselves. You can grow plenty of different vegetables like carrots, potatoes and peppers, or fruits such as apples and berries right in your own English garden.

2. Installing a water butt

British people are all too accustomed with rain, and no one particularly enjoys it, but you can turn the negative into a positive by installing a water butt to collect rainfall. Manually watering a garden using a hose can actually lead to a considerable amount of water wastage due to it being difficult to measure the amount being used. Not only will a water butt cut down water usage, but it is hugely beneficial for plants too.

3. Installing wildlife homes

Give nature an extra helping hand by providing some man-made shelter. From bird boxes to bug hotels and hedgehog homes to bee biomes, there are plenty ways you can make your garden that little bit more comfortable for wildlife. The mini beasts will absolutely love these homes and children can learn a lot from observing them.

4. Using household waste as compost

Home composting is favourable because it helps to divert garden waste and some uncooked fruit and vegetable off-cuts from disposal. It reduces greenhouse gas emissions and provides keen gardeners with a self-made supply of compost. This means you have to worry less about your food waste - you can simply

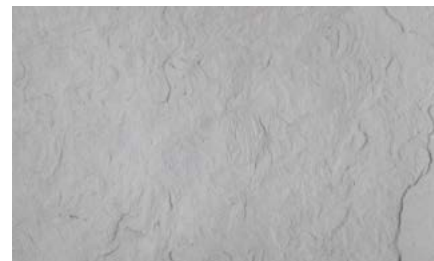
turn it into compost and generate an ongoing green cycle.

5. Switching out your paving

Bradstone's ECO range offers a collection of low carbon products for patios and driveways that offer a 20% reduction in carbon footprint. This isn't just a number; it translates into tangible environmental benefits. Take, for example, a standard 30-square-meter patio paved with the ECO products—it yields a carbon saving equivalent to the positive impact generated by three mature trees over the course of a year. Amongst the eco-paving product range is the Old Town Silver Grey ECO EVOLE, which offers a substantial 35% reduction. The best part is, it offers the same style and quality as its traditional concrete range, but with lower carbon

emissions. So, you can expect the same beautiful paving in a variety of different finishes and colours which meets the design needs of all purchasers.

Eco-friendly gardens have become a huge trend over the past few years, adorned with bee spas and bug hotels, and continue to be a focal point in 2024. Bradstone applauds the commitment to sustainability, with gardeners taking on the role of stewards for local biodiversity. The integration of these elements not only nurtures the environment but also encourages a deeper appreciation for the interconnectedness of all living things. With spring just around the corner, there is no better time to start planning your new eco garden.



An even more sustainable choice.

Old Town ECO Evolve has more than a 35% carbon reduction compared to traditional Old Town paving. The product is lighter and easier to handle, all the while maintaining the same standards of quality and strength. With a different laying pattern to Old Town ECO it is now faster to lay as well. Look out for our new, on-trend Silver Grey shade for a more contemporary look. The product is available in a 7.2m² patio kit containing four sizes, 900x600mm, 600x600mm, 600x300mm and 300x300mm



www.bradstone.com



FOR THOSE DEMANDING CLIENTS

Urban Outdoors has supplied the outdoor living industry since 2010. It is a unique UK-wide service for architects, landscapers, designers and developers.

They are manufacturers of bespoke outdoor fireplaces and they are the UK distributors for the luxury German Cubic brand outdoor kitchens and the range of IKON bioclimatic pergolas.

Known just as well for the quality of their products as for their design ability and supply chain management, they say they are receptive, creative and not afraid to push the boundaries of the possible with their bespoke services.

They claim to have proven their ability to innovate, to deliver on time and to provide value for money at B2B prices - and that they fully understand your mission is to complete your project on time.

CUBIC OUTDOOR KITCHENS

Cubic kitchens are perfect for those who demand a superior outdoor experience, appreciate good design & quality construction and have a passion for outdoor cooking. Cubic is fully waterproof and compatible



with the top outdoor appliance brands - Flammkraft, Wolf, Fulgor Milano, Barazza, Green Egg, Fogher, Gozney, Monolith, Indu+, Napoleon, Delivita & Alfaorni.

And there's no reason to be subject to a one-colour policy. Choose from ten standard cabinet colours - or any RAL colour - and an exquisite range of innovative, hygienic ceramic finishes for their unique worktops. Cubic will build your client a truly individual kitchen.

IKON BIOCLIMATIC PERGOLA

IKON Pergola is made for those who demand good value, whilst requiring a superior outdoor experience.

Using IKON Pergola products - and with you or a garden designer - they can design a canopy to protect the perfect outdoor entertainment space.

Specialising in bespoke design & innovative shading/weatherproofing solutions that also provide shelter in the worst of climate events, they will create a personal design to suit your client's lifestyle - designed for our demanding climate: shading, waterproof, weather-proven, wind-resistant and long-lasting.

Why bioclimatic? Using sensors, a bioclimatic pergola will protect your client's investment against rain and high winds or even heavy snow falls.

URBAN BESPOKE FIREPITS

Urban Outdoors say they offer the widest range of outdoor fireplaces in Europe - including contemporary design firepits and inspirational, design-led outdoor wall fires, firebowls and firetables. This modern collection consists of gas or bioethanol fireplaces each with smart fire technology.

They love to collaborate with clients to redefine outdoor fireplace design.



URBAN OUTDOOR LIVING

PRODUCTS FOR PROFESSIONALS



LIVING THE BEST LIFE OUTDOORS



OUTDOOR FIREPLACES



BIOCLIMATIC PERGOLAS

LUXURY OUTDOOR LIVING

CUBIC OUTDOOR KITCHENS | IKON PERGOLA | URBAN FIREPITS

We are as well known for the quality of our products as we are for our design ability and supply chain management. We are creative, receptive and unafraid to push the boundaries of the possible with our bespoke services.

For over 14 years we have proven our ability to innovate, to deliver on time and to provide value for money. We fully understand that your own mission is to complete your project on time.

We offer only premium brands such as Cubic Outdoor Living and IKON Pergola. We provide a unique UK-wide service for architects, landscapers, designers and developers via local authorised expert Resellers. Profit from becoming an Urban Partner.



0207 183 1806
 WWW.URBAN-OUTDOORS.CO.UK
 info@urban-outdoors.co.uk

MAKE US YOUR PREFERRED PARTNER

Office only: 27 Old Gloucester Street London WC1N 3AX
 Meet us at Unit 7 Thames Ditton Marina Long Ditton KT6 5QB



CREATE A SPECTACLE WITH WATER

Bringing a large body of water to life doesn't need to be a daunting prospect with OASE. Their range of fountains and feature pumps can easily create a spectacle that can be enjoyed both day and night.

For smaller lakes and large ponds, the PondJet can generate fountains up to 3m high and only requires a water depth of 0.5m. The dynamic pump function allows you to adjust the fountain height, and there are different nozzles available to provide a variety of water patterns.



OASE's patented Environmental Function Control means the pump will turn off automatically if it runs dry or gets blocked preventing any potential damage.

If you've got an even larger space that needs filling, look no further than the MIDI and MAXI floating fountains. These can create stunning water displays with heights up to 16.5m. With a power cable of 50m and capacity to work in water depths down to 1.25m they're easy to install in larger ponds or lakes. Water pressure is optimised to ensure that whichever nozzle pattern you choose it always looks incredible. The four nozzles available all have a 3" standard thread and are easy to switch depending on the aesthetic required.

All three of these floating fountains are available with optional lighting



units. These attach easily to the base and offer white or RGB lamps to bring the fountain to life when it gets dark.

With everything designed, engineered, and produced in Germany you can be assured that these are products that won't let you down and will continue to bring wonder to water.

Speak to OASE today to find out how you can add wonder with water - enquiries@oase.com, 01256 896886

Make a statement with water

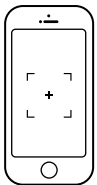
OASE FLOATING FOUNTAINS

If you have open water, why not make a statement with it? OASE offers a range of floating fountains that can bring a landscape to life.

Not only do these fountains create a point of interest, but they add vital oxygen to a lake. OASE has the

PondJet that fountains up to 3m high and is perfect for ponds. And for lakes the MIDI and MAXI generate fountains up to 16.5m high.

All fountains are available with lighting sets giving your project lift both day and night.



SCAN ME

Discover more at www.oase.com





CMO GROUP PLC ‘GROWS’ WITH THE LAUNCH OF LANDSCAPING SUPERSTORE

CMO Group PLC, the UK’s largest online only retailer of building materials and products, has expanded its offering with the launch of Landscaping Superstore. The new superstore provides trade and DIY customers with quick and convenient access to over 6000 different products for all aspects of garden design and maintenance.

The new Landscaping Superstore becomes CMO’s ninth online store which offers specialist product solutions for the most popular building projects.

Its launch follows on from the successful introduction of gardening and landscaping ranges to CMO’s existing Drainage Superstore and is in direct response to a growing customer demand for more products and project-tailored advice. The new Landscaping Superstore combines a comprehensive collection of gardening tools and furniture, as well as outdoor flooring and building materials, alongside expert customer support and a selection of online guides.

Designed to meet the needs of both DIY and professional trade customers, all of the landscaping and maintenance products on Landscaping Superstore are also available via CMO’s dedicated trade account service Building Superstore.

With regular special offers and discounts, plus reliable nationwide delivery, Building Superstore offers access to CMO’s full product portfolio which includes Roofing Superstore, Insulation Superstore, Door Superstore, Drainage Superstore, Tile Superstore,



Plumbing Superstore and Clickbasin.co.uk which was acquired by CMO in 2022. DIY customers can also source a full range of inspirational guides and product recommendations through CMO's recently launched consumer focused website, Good Build Superstore.

Commenting on the new addition to CMO Group PLC's online portfolio, Ben Hodson, brand director at CMO

Group PLC said: "We pride ourselves on being agile and responsive so we can better meet the evolving needs of our customer base and adding Landscaping Superstore to our offering makes it even easier to find everything you need for exterior jobs. From homeowners wishing to maximise their outdoor living space, to busy builders who need access to a wide range of products quickly and cost-effectively, our dropship

online model allows us to source the very best products from leading manufacturers and to supply these to our customers at the best possible price."



Visit
www.landscapingsuperstore.co.uk
 for more information.

TREE RELOCATION: PRESERVING NATURE'S BEAUTY FOR FUTURE GENERATIONS



Since 1963, Civic Trees have been at the forefront of tree relocation throughout the UK, from importing the very first Vermeer tree spade into Europe, to designing and constructing the Newman Frame which is now used worldwide.

Civic Trees are always looking to pioneer new techniques that aid the relocation of trees.

Tree relocation is a concept that involves uprooting trees from one location and transplanting them to another. With current events surrounding environmental issues, relocating trees is even more important now than ever before. By relocating trees instead of cutting them down, we can preserve nature's beauty while also promoting sustainability.

We are proud of our reputation for efficient, cost effective and reliable tree relocation throughout the UK. You can be confident that through our exemplary commitment to staff



training and development, our work meets the highest technical and safety standards.

We believe that a tree is only as good as the way it is handled, planted and maintained. Ground preparation and aftercare are crucial to the successful establishment of the tree.

Before we start the tree move process we arrange a site visit with our client and assess the tree's health, size, and root system. We also create a site specific risk assessment to ensure the whole operation is carried out safely.

Our team of experts use specialised equipment to excavate the tree with minimal damage to its root structure. The tree is then carefully transported to its new location,

where it is replanted and nurtured to ensure its successful adaptation.

Our experienced team will know and understand the benefits and methods of loading and unloading a tree using the correct lifting techniques in order not to stress the tree or root ball. This is imperative for the longevity of the tree's life.

In conclusion, tree relocation is an environmentally friendly method that allows us to preserve nature's beauty while supporting urban growth. By carefully uprooting and relocating trees, we can maintain the valuable benefits they provide to our communities.

Civic Trees prides itself in paying great attention to the health and well being of our clients most prized asset "THE TREE".



Supply. Plant. Relocate.



Visit: www.civictrees.co.uk
Email: info@civictrees.co.uk
Tel: 0208 950 4491



DECKING COMPANY ELEVATED TO NEW HEIGHTS WITH 'FLOATING' GARDENS



Macdeck Landscaping - a specialist decking company - is gearing up for significant growth after receiving a patent for its unique deck system, which could be used in a range of new sectors.

The company is in talks with builders' merchants and other potential distributors to sell the panel systems across the UK. Macdeck worked with the Advanced Forming Research Centre (AFRC), part of the National Manufacturing Institute Scotland (NMIS) Group, and the Advanced Composites Group (ACG) of the University of Strathclyde on its development, with the help of the Innovation Voucher Scottish Funding Council (SFC) funding by Interface. NMIS is operated by the University of Strathclyde and is part of the High-Value Manufacturing Catapult (HVMC).

Macdeck's lightweight panels are fixed on top of a timber frame and are designed to cover difficult ground, such as slopes or areas prone to flooding. Customers can choose to have porcelain tiles, gravel or natural turf installed on top of the panels, creating 'floating' gardens in spaces that may otherwise have been unusable.

As climate change brings heavier rain and increased risk of floods, Macdeck's product could be used to futureproof gardens and other landscapes. Less soil or other base material is needed to build ground or foundations, and less heavy machinery and concrete is required, making the process much more carbon friendly.

The modern alternative to softwood decking is Composite but some boards can weigh as much as 45kg per square metre, limiting what can be placed on top. However, Macdeck's panels made from a composite material weigh just 10kg allowing the system to carry significantly heavier top layer materials. The material, GRP, was initially designed for use in marine environments, making it strong, durable, and a safer material to walk on.

Tony McCaffrey, Director, Macdeck Landscaping, said: "The patent for our new landscaping solution is a big step forward for Macdeck that could see us breaking into new markets.

"NMIS support and expertise has been invaluable in helping us accelerate the development and refine the product. The positive results of the research gave me the confidence to take the panels to market and apply for a patent.

"We're receiving significant interest from other landscaping companies wanting to use our system. With the patent now in place we can start delivering panels to the other merchants and approach sectors such as civil construction.

"Our next step is to expand and grow the business, and we have already hired two new apprentices and we're looking to add CAD designs to support our manufacturing process further."

The AFRC and the ACG teams supported with the product development by carrying out the research on the properties of the panels and a representative unit of the whole system, using both experimental testing and computer modelling.

Katya McKenna, SME engagement lead, National Manufacturing Institute Scotland, said: "We are thrilled to have been part of this project and to witness the success that Macdeck Landscaping has achieved.

"It's great to see a small business turning its idea into reality. Macdeck's unique project aligns perfectly with our mission to make our expertise in materials science and engineering really useful to our industry clients, and we are proud to have played a role in helping it bring the product to market."



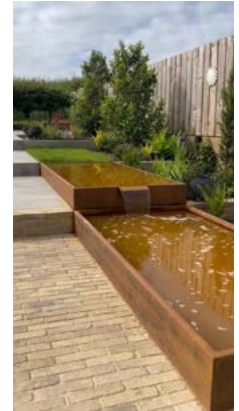
EXCEPTIONAL PRODUCTS | EXCEPTIONAL SERVICE | BESPOKE FABRICATION

Lux Unique design and manufacture bespoke high quality steel garden products in the UK.

The team behind Lux Unique are family and fabricate all their own products in Cheshire. They have a wealth of state-of-the-art machinery and expertise at their disposal and are very experienced in all aspects of steel fabrication and design. Over the last few years, the company has grown to support many garden designers and clients in creating bespoke pieces for their outside spaces which are beautifully designed and will stand the test of time.

The popularity of Cor-ten steel known for its exceptional strength, longevity and zero maintenance has seen this material become the product of choice for so many landscapers and garden designers. Lux Unique offer a minimum thickness of 3mm on all Cor-ten products because to offer a thinner material would simply compromise on the quality and strength of the product, something many of their competitors do.

The company also offers steels products in powder coated and galvanised finishes.



The in-house design team, technical engineers and fabricators mean that Lux Unique have total control over the design and manufacturing process from inception to completion and can work with clients to create truly bespoke, high quality crafted pieces.

The team has created many bespoke pieces for clients including planters, raised beds, water features, ponds, steps, and garden edging, working with designers on all the technical aspects of

their ideas to come up with solutions to suit the space and budget.

Its commitment to high standards has placed Lux Unique at the forefront of bespoke fabrication for the garden industry, bringing superior quality UK made products to the market and offering a personal one-to-one service for all its clients.

T: 03333 66 11 30

Email: hello@luxunique.co.uk

W: www.luxunique.co.uk

LUX UNIQUE

Bespoke Steel Garden Products

www.luxunique.co.uk

hello@luxunique.co.uk

(t) 033 33 66 11 30

Planters | Ponds | Edging | Raised Beds

ELEVATE OUTDOOR SPACES WITH SKYLINE CEDAR SLATS

Transform your outdoor space into a sanctuary of elegance with Skyline Premium Western Red Cedar Slats. Our planed, naturally durable timber brings contemporary aesthetics and timeless durability to your fencing, screening, and outdoor projects.



Why Choose Skyline Cedar Slats?

- **Premium Canadian Timber:** Slow grown and stable.
- **Durable:** Naturally long-lasting without the need for additional treatments.
- **Versatile:** Perfect for modern fencing, screening, and exterior structures.
- **Easy Installation:** Easy to Trim and compatible with standard softwood posts, ideal for DIY enthusiasts.

Available in convenient packs of 16 pieces our Skyline Cedar Slats are the choice for discerning homeowners and professionals alike.

Size & Specification

Grade: A Western Red Cedar | **Slat Size:** 18mm x 44mm
Lengths: 1.83m and 2.13m | **Bundled:** 16 lengths per bundle
Profile: 2mm radius on 4 corners

Visit <https://skylineslats.co.uk/> to find your nearest distributor - discover the difference and transform your outdoor space into a place of beauty and tranquility with Skyline Cedar Slats.

THEORIES

LANDSCAPES



Transforming outdoor spaces into holistic, sensory-rich environments.

Through innovative playground design, natural landscaping and premium equipment, we craft engaging, nature-inspired play experiences.



Over 40 Years
 Creating Inclusive,
 Sensory Play Environments
 for All Ages



National Farm Attraction Network



0207 2547282

jonheywood@theorieslandscapes.co.uk
theorieslandscapes.com

CHILTERN GARDEN BUILDINGS



Re-thatch Specialists

- Re-thatching & cedar roofing for all Breeze House manufacturers
- Handcrafted thatched gazebos
- Building relocation & refurbishment
- Range of building accessories



NATIONWIDE COVERAGE

T: 01491 832420

E: info@chilterngardenbuildings.co.uk

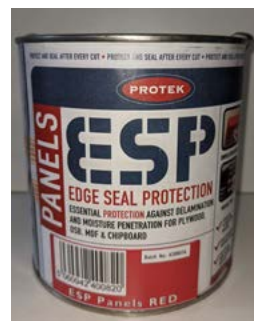
www.chilterngardenbuildings.co.uk

ESP

At last a range of products designed to prevent the ingress of moisture into timber products, ESP are here to provide a solution;

ESP Panels™ (Edge Sealant Panels): An eco-friendly paint designed and proven to prevent water ingress to the edges of plywood and all other sheet materials to protect and stop de-lamination. 1Litre seals the edges of 21 sheets of 18mm Plywood.

ESP Timber™ (End Seal Preservative): Topically applied preservative proven to prevent the ingress of moisture to the ends of cut timbers, this is proven to prevent timber from rotting on cut edges. This can be brushed, low pressure sprayed on or used as a dip, preventing water damage, protects against rot, fungi and blue stain.



Come and see us!
 21 & 22 NOVEMBER
 CBS ARENA, COVENTRY
 FREE TICKETS

NATIONAL PAINTING AND DECORATING SHOW

PROTEK
 Stand 18A

ESP
 STRUCTURAL TIMBER AWARDS 2023
 2023 FINALIST
 PRODUCT INNOVATION AWARD

TRANSFORM THE OUTDOORS IN AN INSTANT WITH READYHEDGE

Fully mature, ready to plant hedges, perfectly knitted together to give your garden an instant transformation. There are so many types to choose from including individual plants, low and high panels and even screens.

Ordering from Readyhedge is as easy as...

1. Choose your hedge variety
2. Select the height you desire
3. Measure the required distance in metres



You need 1 bag or trough for every metre measured, it really is that simple!

Create the perfect frame for any garden with our choice of over 35 varieties of hedges. You can find a hedge to accommodate any UK climate and soil type. If you're seeking immediate and impressive impact, instant hedging units are the ultimate option.

Our aim is to fulfil orders in 48 hours, we offer secure and punctual delivery to any location within the country.

For more information contact Readyhedge on 01386 750585 or visit www.readyhedge.co.uk

Follow us on Social Media:

Facebook @ReadyhedgeLtd
Twitter @Readyhedge
Instagram @readyhedge



**THE ORIGINAL
HAND-CRAFTED
HEDGE
FROM THE HOME OF
INSTANT HEDGING**



READYHEDGE

Readyhedge hedging plants, like the mixed native hedging shown here, are container-grown in the UK and fully acclimatised to UK conditions. With over 20 years' experience, Readyhedge delivers hedging to rely on, wherever you are.

01386 750 585

info@readyhedge.com

readyhedge.com

PAVING SOLUTIONS THAT DON'T COST THE EARTH



UltraScape pride themselves on their sustainability practices and all of their high performance paving installation materials are produced at their world-class manufacturing facilities in Tamworth, Staffordshire.

In recent years, UltraScape have invested over £420,000 to install 3,771sqm of solar panels at their Tamworth based premises. The power generated by the high specification solar panels will be converted into electricity for use at their site and is also predicted to save at least 36,000kw per month.

UltraScape are helping their customers reduce their own carbon footprint with the introduction of environmentally friendly bedding mortars and jointing solutions. UltraScape eco-bed and flowpoint eco both deliver the performance expected of BS 7533 compliant paving installation materials, but contain 20% recycled material - vastly reducing the use of virgin aggregates.

What's more, UltraScape premjoint brush-in sand, prem-flex paving grout and flowpoint fine flowable

grout are all available in tubs made from 100% recycled material, which can also be recycled - a huge step forward for UltraScape and the landscaping industry as a whole.

UltraScape eco-bed, flowpoint eco and the other paving installation materials available from UltraScape are delivered to customers on their 37 strong, privately owned fleet which now includes seven CNG lorries. The introduction of Compressed Natural Gas (CNG) vehicles has resulted in a reduction of CO₂ emissions by 100 tonnes per truck, per year. UltraScape are fully committed to using fuel alternatives and have a further ten CNG lorries on order, and due to be delivered during 2024.

Are pallets taking up space in your yard? UltraScape can take them back! Their experienced Drivers can collect your unwanted pallets and return them to UltraScape to be recycled or reused. Since 2021, UltraScape Drivers collected approximately 28,466 pallets. That's 366 tonnes of wood which has saved around 3,558 trees.

Other initiatives successfully implemented at UltraScape include intelligent lighting, a grey water system and climate control. They have also proudly been zero waste to landfill since 2014 - this means that 100% of manufacturing waste is recycled and not sent to landfill.



Find out more about UltraScape's environmental commitments for the future by visiting Instarmac.co.uk



ULTRASCAPE'S

bedding, priming, pointing and jointing solutions
won't cost the **earth.**



- Permeable options
- Contain recycled material
- Reduce your consumption of virgin aggregate
- Showerproof packaging – protecting your assets

Green Manufacturing



ZERO
waste
to landfill



3,700sqm
of solar panels
installed



CNG
lorries added
to fleet



Sustainable
manufacturing
processes



100%
recycled plastic
packaging

TOP TIPS FOR BUILDING A GARDEN ROOM OR LOG CABIN ON YOUR PROPERTY



Adding a Garden Office, Home Gym or outdoor living space can be an exciting, but significant decision. With over 70 years' experience in timber house production, Gardenhouse24 make this process as painless as possible. Gardenhouse24 can help you every step of the way - from expert Consultants who can help you choose the right product for your site, through to experienced installers.

Here are our top tips for successfully adding a Timber product to your home:

1. Choose Wisely

There are lots of timber product retailers out there, so it's important to choose carefully and ensure that the product quality and service offering are of the highest standards. At Gardenhouse24, we're passionate about delivering the finest wooden products in the UK, using the highest quality Nordic timber. We strive for perfection in everything we do & we only work with high-quality, FSC-certified suppliers.

2. Planning Permission

Always find out if the structure you are about to build requires planning permission, because failing to do so may mean the taking down of your building in the future. Luckily, most garden rooms don't require planning permission, but we always advise that you check with your local authority.

3. Levelling Ground and Foundation

Next it's time to look for the perfect spot for your cabin. Choose a suitable location for the foundation, ideally a spot that allows natural light in, is perhaps slightly elevated to provide good drainage, and is relatively level. Even if you're on a tight budget, it is good to invest in a solid foundation. The foundation is the base that keeps a building stable for years to come and carries the weight of the entire structure.

4. Electric, Phone, and Wi-Fi

You'll be spending time enjoying your new garden room - particularly if it's in use as an office, so it's important

to have steady electricity, reliable internet, and a phone connection.

5. Constructing Your Garden Office

Gardenhouse24 cabins can mostly be self-installed, but we always recommend our specialist installation service, available with any product in our store. Why not trust the experts to build your new gardenroom, log cabin, sauna or hot tub?

Now, for a limited time, customers can receive 3% discount* on their order with all upfront payments. Discounts also available for landscaping companies - contact us for more information.

Contact us today:

www.gardenhouse24.co.uk

Email: info@gardenhouse24.co.uk

Tel: 020 3728 8814

Or visit our Display Village:

Downtown Garden Centre

Gonerby Moor, Grantham, NG32 2AB

*T&Cs apply. Subject to change.



Gardenhouse24.co.uk

TIMBER GARDEN PRODUCTS

MAKE YOUR DREAM GARDEN A REALITY with Gardenhouse24

Garden rooms, saunas, hot tubs and more



Choose Gardenhouse24 for unparalleled variety, product quality and expertise.

Our extensive range of garden houses, saunas, sheds, garages, and home offices caters to both private customers and business clients alike. Whether you're looking for a cozy backyard retreat or a functional workspace, our diverse collection has you covered.

Unlock Unbeatable Savings Today!

3% discount* on all upfront payments and special offers for landscaping companies

www.gardenhouse24.co.uk

Email: info@gardenhouse24.co.uk • **Tel:** 020 3728 8814

FOUR OAKS CASH & CARRY



range of plants from Italy and Spain, including masterpiece bonsai trees and sculpture plants for that finishing touch on a garden project. We have a wide range of sundries also available, including garden furniture, compost, pots and planters of all sizes, gardening tools and many more.

Offering all year-round shrub and specimen nursery stock for commercial and amenity landscaping along with garden centre sales, with one of the widest ranges in the Northwest. Come and visit the largest horticultural "one stop shop" in the UK, located just 5 miles from junction 18 of the M6 motorway, or visit our website below for further information.

Tel: +44 (0) 477 571 797
marlon@fouroaks-nurseries.co.uk
www.fouroaks-nurseries.com



Ensure that your customers garden stays bustling and brimming with blooms during the spring and summer months with our selection of flowering plants. From firm British favourites to more exotic species, our summer flowering plants category casts a wide net, providing the best varieties with the greatest growing characteristics.

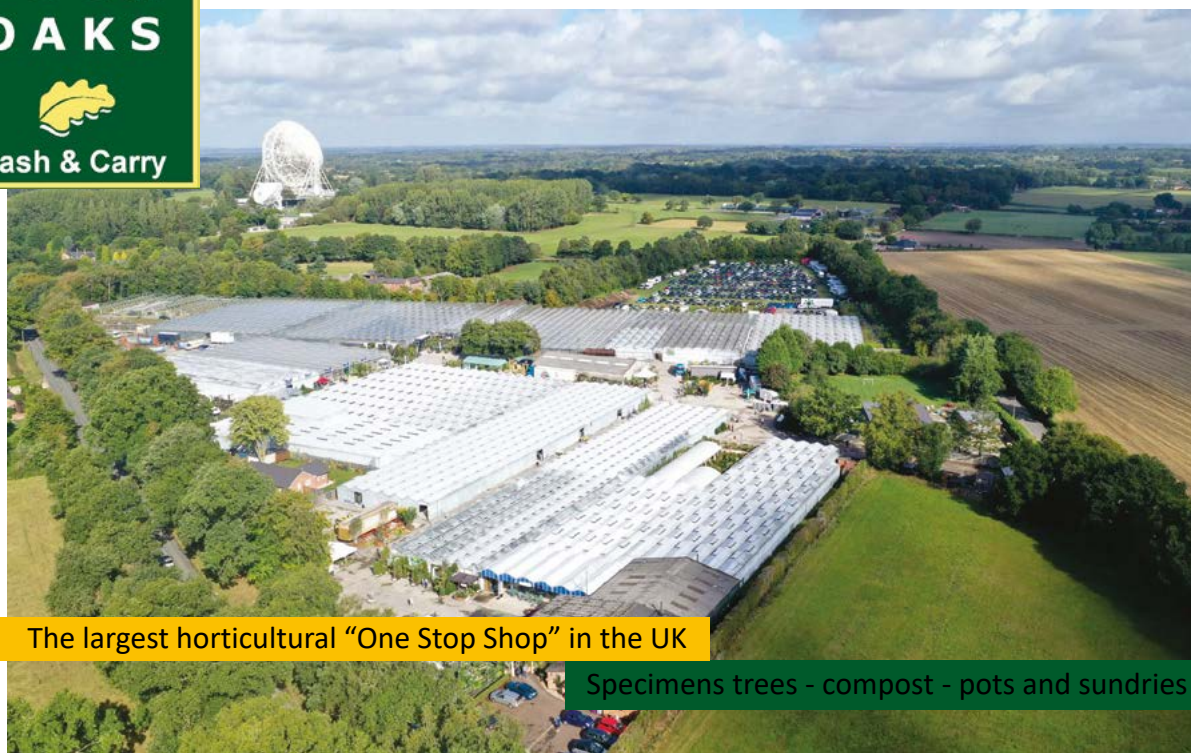
Four Oaks Cash & Carry Trade Plant Nursery has been a family-owned business for over 50 years, serving the

country with high-quality plants and garden supplies from all over the world. Our passion for gardening has been passed down through generations, and we are proud to continue providing exceptional service to our customers. Four Oaks continue to provide fresh and interesting seasonal, value added range of pots and baskets made onsite on throughout the year.

Now offering over 1500 lines of trees and shrubs, which will be on display from starter plants to specimen sizes. We have a special



Longshoot Road, Lower Withington, Macclesfield, Cheshire SK11 9DX



The largest horticultural "One Stop Shop" in the UK

Specimens trees - compost - pots and sundries

www.fouroaks-nurseries.com / marlon@fouroaks-nurseries.co.uk / Tel: +44 (0) 1477 571 797

MANOR HOUSE PLANTERS



Manor House is an up-and-coming plant container supplier for the landscape industry in the UK, with a merged 25 years of experience in premium, sheet metal fabrication. Our designers know our products from start to finish, having worked with various materials from drawing to manufacturing.

A once-shared business partnership with an existing leading planter company has culminated in the original team coming together to forge their own journey. With a new, refreshed idea for what the architectural outdoors needs from its décor, this team gives Manor House and its planters the cutting edge that landscaping needs.

Their expertise lies in creating planters that are not only functional but also enhance the aesthetics of a space. They can design planters in any shape or size, from simple squared planters to complex architectural designs. Additionally, they offer the option of incorporating seating, lighting, and other custom detailing to suit specific needs

Don't settle for ordinary planters - Transform your outdoor or indoor space into a lush oasis with Manor House custom-manufactured powder-coated steel planters.

Website: www.manorhouseplanters.co.uk/about/
 Email: info@manorhouseplanters.co.uk



Working with **Nature**

WORKING WITH NATURE, IN A SUSTAINABLE AND ENVIRONMENTAL WAY.

PROVIDING AND THE SUPPLY OF QUALITY SHRUBS, TREES, HERBACEOUS AND PERENNIALS PLANTS TO THE WHOLE OF THE UK.



TAMAR NURSERIES LIMITED

WEST DROVE SOUTH, WALPOLE HIGHWAY, WISBECH, CAMBRIDGESHIRE PE14 7RA

TEL: 01945 464383

EMAIL: SALES@TAMARNURSERIES.CO.UK

TAMARNURSERIES.COM

Looking for a sustainable mulch for your next garden project?

Apsley Farms' soil improving mulch is packed with essential NPK nutrients. Acts as effective insulation to protect soil from frost and heat, suppresses weeds and repels slugs and snails whilst improving soil structure and health. Free from peat and waste. Creates added visual appeal to borders and beds. A 100% sustainable by-product of green energy at Apsley Farms.



Delivered in 730L bags or loose loads



01264 554433
 Nationwide delivery
www.apsleyfarms.com



HARTLEY BOTANIC PREVIEWS PLANS FOR ITS 2024 RHS CHELSEA FLOWER SHOW TRADESTAND

Hartley Botanic, England's most historic and respected Glasshouse and Greenhouse manufacturer, will be again bringing its award-winning tradestand to the RHS Chelsea Flower Show this May. This year, the manufacturer has chosen Landscape Architect Rachel Sampson (BA(Hons) Dip. CMLI) as the designer to bring its highly desirable Greenhouses to life, with Stewart Landscape Construction returning for build and planting.

This year's tradestand promises to combine elegant and romantic gardening nostalgia, with a glimpse into the most significant trends amongst Hartley Botanic's customers today.

Tom Barry, CEO of Hartley Botanic said; "The RHS Chelsea Flower Show is always the highlight of our year and that of our customers.' It provides a fantastic opportunity to show our Greenhouses in all

their glory, with customers able to see their structural integrity, aesthetic beauty and versatility for themselves. This year we will be drawing inspiration from our gardening past, whilst combining this with Hartley Botanic's most exciting trends and developments."

All Hartley Botanic's Glasshouses and Greenhouses are handmade, bespoke, and made to order.



‘Why Hartley?’ - What makes a Hartley Botanic the finest Glasshouse money can buy

Unrivalled. Unparalleled. Unique. There are Glasshouses and there are Hartley Botanic Glasshouses. Combining inspired design with enduring quality, nothing quite enhances your garden and home like a Hartley Botanic; each one beautifully handmade to last a lifetime.

Why Hartley?

At Hartley Botanic we have had a continuous conversation with our customers over many years. We have collected their comments so as to let you know what our customers say about us, and just why they have chosen a Hartley Botanic Glasshouse.



1. Beauty and Elegance

The incomparable range of simply beautiful and elegant structures means Hartley Botanic can create designs that are distinctive and unique. The Victorian, Heritage and Modern Glasshouse ranges, are so comprehensive you don't have to go anywhere else to find your beautifully crafted, high-quality Glasshouses from the widest of choices.

2. Structurally Superior

Every Hartley Botanic Glasshouse is handmade in the North of England to your exact requirements. It is made of the finest materials with unparalleled durability, safety, and beauty. All of the aluminium sections have a structural purpose. Short cuts, such as ‘sticking’ aluminium to glass for aesthetic reasons, are

never taken. Hartley Botanic are so confident of the structural integrity of their Greenhouses; a 30-year Lifetime Guarantee is offered.

3. A reputation Beyond Compare

Hartley Botanic's brand heritage and reputation have been built on trust for over 80 years. They have earned an unrivalled reputation for crafting the finest Glasshouses and Greenhouses money can buy through the very highest standards of hard-won experience, craftsmanship and service.

4. Unrivalled Knowledge and Expertise

There is a wealth of knowledge and expertise built into every Hartley Botanic Glasshouse. Generations of customers have put their trust in the hands of expert, time served, highly skilled craftsmen. Glasshouses of distinction are created from decades of knowledge and care.

5. Exceptional Delivery of Service

Once your order has been handmade to your personal requirements, and Hartley Botanic's exacting standards, your delivery and installation will be exceptional. The proud team at Hartley Botanic are there to ensure the process runs smoothly, providing you with the information you need and keeping you up to date throughout.



Customers interested in purchasing a Hartley Botanic Greenhouse should visit www.hartley-botanic.co.uk or call 01457 819 155 for more information.



Garden Room In The Timber Buildings Showroom



British Larch Pavilion In The Timber Buildings Showroom

RADNOR OAK & TIMBER BUILDINGS

WE ARE UK MARKET LEADERS FOR BEAUTIFUL OAK AND TIMBER FRAMED GARDEN BUILDINGS

Trading since 1990, we specialise in manufacturing buildings of excellence.

We create lifestyle solutions and work hard to accommodate customers' needs.

Value for money and sustainability are important to us - we will never be beaten on price for a 'like for like' specification, and the timber we use is from FSC and PEFC certificated British and European forests.

Our Oak Garden Buildings include a traditionally jointed oak frame with substantial framing timbers and knee braces, heavy duty ancillary framing components and our own concealed weatherproofing system. Residential grade doors and windows are standard for summerhouses and garden rooms. We can supply Cedar shingle, slate or tile roofing packs.

Our Timber Garden Buildings have significantly raised the bar above

that of conventional softwood buildings. They can be left to weather naturally or can be painted. We include heavy-duty, multiple layer walls and roof which can be insulated for use during all seasons. Cedar shingle roof and double-glazed doors and windows add to the exceptional quality. Cladding can be the customers choice of T&G or feather edge.

Our Luxury Sheds take the humble garden shed to another level, requiring little or no maintenance. Triple skinned and ply lined walls and roof, a robust elevated solid floor, waterproof membranes to all panels, double glazed doors and windows, high quality ironmongery and a beautiful Cedar shingle roof all ooze charm and quality.

British Larch Garden Pavilions are about as sustainable as is possible. No chemicals, low road miles, UK Timber and no maintenance required - we're not sure if that can be beat!

Gazebo's, Pavilions, Outdoor Kitchens & Dining Rooms, Summerhouses, Garden Rooms, Luxury Sheds, Potting Sheds, Garden

Offices, Tool Stores, Machinery Stores, Pergolas, Home Gyms, Studios the list is endless.

If none of our pre-designed buildings are suitable, we can manufacture bespoke designs.

Our buildings are supplied as pre-jointed kits and are accompanied by working drawings and assembly plans.

We have manufactured many thousands of high-quality buildings and have also constructed several Chelsea Flower Gardens. We therefore understand the needs of the landscaping industry and would welcome the opportunity to work with landscape professionals on future projects.

We have an indoor showroom which you are very welcome to visit.

SUSTAINABLE BUILDINGS - MADE IN BRITAIN

For further information please visit our website www.radnoroak.co.uk or feel free to call us on 01544 260727

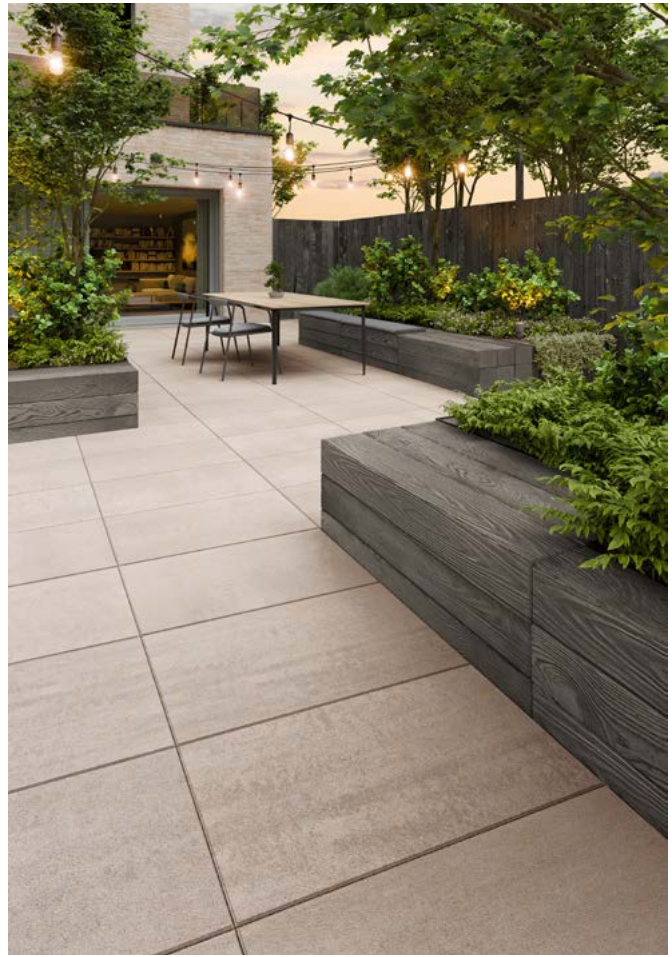


TRADITIONAL OAK & TIMBER BUILDINGS

OAK GARAGES & OUTBUILDINGS, OAK ANNEXES & EXTENSIONS, LUXURY GARDEN SHEDS, GARDEN ROOMS, SUMMERHOUSES, HOME OFFICES, GAZEBOS, GARDEN PAVILIONS & TIMBER CARPORT KITS.

01544 260 727

www.radnoroak.co.uk



TECHO-BLOC UNVEILS THIS YEAR'S LEADING TRENDS THROUGH NEW PRODUCT AND COLOR LAUNCHES

Techo-Bloc Inc., a leading North American manufacturer of modern hardscape products, is proud to announce the launch of its new products and colors that reflect this year's landscape design trends.

In sync with the evolving landscape design scene, Techo-Bloc introduces this year's theme of 'Quiet Luxury'. Stepping away from ostentation, the focus is on timeless, investment pieces that lay the foundation for outdoor spaces, mirroring the sophistication seen in contemporary fashion and design.

Trend #1: Warm tones

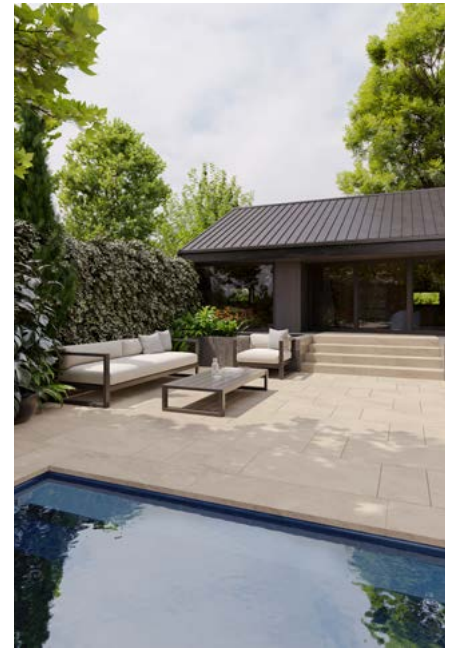
Embracing the design and fashion fascination with creamy tones, Techo-Bloc introduces the Caffè Crema color. This versatile hue warms up contemporary landscapes from the cold greys we've seen for years. Caffè Crema is now available in popular selections such as Industria HD2 Smooth slab, Para HD2 Smooth slab, Blu 60 mm collection, and Raffinato walls, caps, steps, and edges.

Trend #2: Luxury materials

Introducing the Natural Stone Collection - a testament to quiet luxury. Featuring a Sandstone slab, wall cap & pool coping, and an

outdoor step collection, this offering presents large-scale, chiseled natural stone in soft beige and grey hues, providing a modern appeal to the beauty of natural materials.

In the pursuit of contemporary aesthetics, Techo-Bloc also unveils its new Silver Granite color. This meticulously crafted color mirrors the opulence of granite. Available in Para slab, Sleek paver, Industria 600x600 slab and paver, and our Industria 900 paver, Silver Granite epitomizes luxury with its association to premium materials and sophisticated design.



Trend #3: Rich & Tactile Textures

In response to the increasing desire for opulent textures reminiscent of cashmere, velvet, and silk in outdoor spaces, Techo-Bloc is expanding its HD2 Smooth collection. The brand introduces a larger-sized (14x32) Raffinato wall cap/pool coping, complemented by the addition of the sophisticated Beige Cream color to the Blu HD2 Smooth collection, enhancing options for creating seamless pools and patios.

“At Techo-Bloc, we pride ourselves on being pioneers in the landscape industry, constantly setting trends rather than following them. The introduction of our new Natural Stone Collection and new Caffè Crema and Silver Granite colors is a testament to our dedication to staying ahead of the curve. These thoughtfully crafted additions not only capture the essence of quiet luxury, but they also empower designers and homeowners to create outdoor spaces that blend the latest trends with timeless elegance. We believe in offering more than just products; we provide the tools for transformative outdoor experiences. We strive to define the landscape of tomorrow,” said Jessica Ciccarello, Marketing Director at Techo-Bloc.

Techo-Bloc’s commitment to excellence and innovation is evident in these new additions, providing designers and homeowners with the tools to craft outdoor spaces that



reflect the latest trends and timeless elegance.

Explore Techo-Bloc’s NEW 2024 Landscape Catalog for a comprehensive showcase of new products, colors, top landscaping

trends, mesmerizing mosaic designs, and an extensive collection of modern products.

www.techo-bloc.com

NAVIGATING CLIMATE CHALLENGES IN THE TURF INDUSTRY

Growing natural turf can be an unpredictable venture, placing turf growers in a dynamic landscape governed by weather patterns.



Within the turf industry, challenges emerge from the unpredictability of weather events and evolving climate dynamics.

Understanding the volatility of turf cultivation, Inturf acknowledges the array of challenges posed by climate change. From droughts to floods, gusty winds to stagnant conditions, each weather extremity presents unique obstacles. Droughts render grasses brittle and scorched, necessitating extensive irrigation efforts to sustain vitality, while floods compact soil and suffocate grasses, leading to rot and decay.

Addressing flood damage requires substantial investment in drainage and specialised cultivation techniques. Irrigation demands meticulous planning

and substantial financial resources. Turf growers confront the reality that climate unpredictability directly influences product quality, requiring investment to adapt to changing conditions.

Growing turf requires an extended cultivation period up to 18 months before harvest. This timeline introduces uncertainty into stock planning, as conditions fluctuate over time, potentially resulting in stock shortages or surpluses.

Adapting to climatic shifts requires investment in technologies and practices to mitigate weather-related risks. Enhanced irrigation systems, drainage solutions, and resilient turfgrass varieties represent essential investments in climate resilience.

Despite these challenges, the benefits of turfgrass are manifold. Turf sustains biodiversity, stabilises soil, mitigates erosion, and facilitates water absorption, contributing to environmental sustainability. Strategically timing turf installations and incorporating innovative solutions like TerraCottem soil conditioner enhances turf resilience and long-term viability in the face of uncertainty.

While climate variability poses challenges, the turf industry remains committed to delivering quality products. By acknowledging challenges and embracing proactive approach, turf growers champion sustainability and environmental stewardship, ensuring the vitality of landscapes and ecosystems in an era of climate change.

inturf.com



Plastic Netting Free Turf
TerraCottem Distributor
SafeSupplier Verified

With over 40 years of expertise, we provide premium turf solutions including Masters Turf, Classic Turf, RTF Turf, TerraCottem and more. Get in touch for your turf needs.

Top Turf Every Time.

<https://inturf.com/>
 01759 321 000



WADE PR – DRIVE SALES IN THE UK & US

Editorial coverage and journalist recommendation is highly influential in driving final customer purchasing decisions – especially when you operate in a crowded market. When there are five brands offering a similar product or service, it is the one a journalist has mentioned that will leapfrog over its competitors. We are a boutique PR agency that delivers ambitious editorial returns for our clients, have worked in the horticulture sector for over 7 years and are in daily contact with the homes and gardens press. We get clients into both the UK and US press and our client list includes Hartley Botanic, Kate Gould Garden Design, Adrian Gray stonebalancing sculptures, Mall Galleries, Better Bankside and the Royal Society of Portrait Painters. Our work drives sales, boosts SEO rankings and increases social following. Now is the time to be speaking to magazines for the important spring/ summer season.

www.wadepr.com



ADDITIONAL 20% OFF BARE ROOT HEDGING

GENUS & SPECIES	SIZE	1	10	25	50
Hawthorn	40/60	£0.87	£7.92	£17.80	£34.00
	60/90	£1.11	£10.32	£23.80	£43.60
	90/120	£1.83	£17.52	£41.80	£79.60
Beech	40/60	£1.11	£10.32	£24.80	£47.60
	60/90	£1.43	£13.52	£31.80	£59.60
	90/120	£2.07	£19.92	£47.80	£91.60
Privet	40/60	£1.19	£11.12	£25.50	£47.60
	60/90	£1.27	£11.92	£27.80	£51.60
	90/120	£2.23	£21.52	£51.80	£99.60
Cherry Laurel	40/60	£2.87	£26.32	£63.80	£123.60
	60/90	£3.75	£35.92	£87.80	£171.60
	90/120	£5.59	£51.92	£119.80	£219.60
Blackthorn	40/60	£0.87	£7.92	£18.80	£35.60
	60/90	£1.03	£9.52	£21.80	£39.60
	90/120	£1.99	£19.12	£45.80	£87.60

GENUS & SPECIES	SIZE	50	CODE
Save ££s BEST SELLER! Mixed Native Hedging Bare root	40/60	£47.60	500376
	60/90	£63.60	500377
	90/120	£99.60	500378

0844 502 0050 USE CODE **LUD100**

Calls cost 5p per min plus your network's access charge.

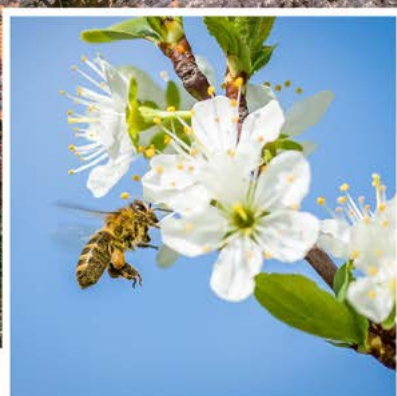
www.YouGarden.com/LUD100

Postage from £8.99 per order. Despatched within 5-7 working days.

AD CODE: LUD100



Check TreeEbb.com for Trees for bees



ebben.com | treeebb.com
Ebben nurseries



EBBEN
trees since 1862



RESIN BOUND SPECIALISTS

For 20 years national companies have been at the forefront of Dorset's home improvements industry. This has meant the Dorset way of life has been missed. Therefore, Dorset Showhomes was formed to counter the poor reputation that has developed in the area.

Above all else, we have made a commitment to quality and genuine customer care which is very much the heart of our customer promise. As a result, we have established a reputation for the superiority of our products and services.

Since then we have grown as a company and our commitments remain the same; providing homeowners & commercial/

industrial sectors with quality and value so that every customer has a great experience and will return to us time and time again.

We class ourselves as Experts when it comes to laying resin, because that's the main thing we do. We have over 10,000 installations spanning from South west up to the midlands. We offer a 10-year guarantee on all work we install. We hold Public Liability Insurance to ten million pounds and we take absolute pride in everything we do.

In 2022 we won the South England Prestige Awards for Home Improvement Service of the year which we are absolutely overwhelmed to have won, we took first place again for 2023.



What makes this particularly incredible is the fact we are a single product company yet have taken the award over companies offering multiple home improvement options such as windows, doors, conservatories and the like. Over 1,000 companies were nominated and we are blown away to have landed the award.

Enhance Your Home's Curb Appeal with Resin Bound Driveways
As homeowners, we know that the exterior of our homes sets the tone for what lies beyond the front door, we're excited to introduce you to one of the most stylish and practical solutions for enhancing your home's curb appeal: resin bound driveways.



www.dorsetshowhomes.com



www.dorsetshowhomes.com

Dear Homeowner,

To celebrate winning the South England Prestige Awards for 2023/24 and 2023 Home Improvement Company Of The Year, and the E2 Media "Finest Home Improvement Company of 2023" we are looking for four properties in the area to showcase our stunning new resin bound range.

With 10,000+ installations within the last 8 years we are experts when it comes to resin bound surfacing, we come highly recommended with outstanding reviews.

We include a 10 year warranty for all work we carry out, using only professional high quality materials.

Is there a catch?

Not at all, to qualify for the additional discount all we ask is permission to include before/after photos for our marketing and to leave a small marketing board on display for 6 weeks.
(Details are kept strictly confidential)

To qualify for this offer please contact **0800 852 7928**
Mon-Thur 9am - 5pm Friday 9am - 3pm
or simply **text 'RESIN' to 88802.**



Dorset Showhomes & Innex LTD
www.dorsetshowhomes.com

info@dorsetshowhomes.com

Finance available
Buy now, pay monthly.



Apply now





STG450 Polishing System

Achieve an industrial aesthetic in your home or garden effortlessly with the STG450 Versatile concrete polisher. Its user-friendly design has no complex switches, allowing inexperienced operatives to achieve a seamless polished concrete finish using a wet or dry application. The STG450 is easily transportable making it perfect for small projects, renovations, and routine maintenance. This cost-effective tool delivers exceptional results with its robust, heavy-duty construction and a variety of interchangeable accessories. The consumables include double-sided pads which provide an eco-friendly solution for cleaning, maintaining, and polishing hard concrete floors. For a dust free solution, the STG450 can be connected to an Industrial Vacuum. Create that industrial look using our simple step by step guide to polishing concrete using the STG450 Polishing System.


 The Preparation Group Ltd
 Preparation House, Deacon Road, Lincoln LN2 4JB
 +44 (0)1522 561 460
 hello@ppcgroup.co.uk




















Gibbs are located ideally situated to all major transport networks providing an efficient service to customers in Central and Southern regions.

Contact our experienced estimating team on 01793 524692 or email them at tenderestimating@gibbssurfacing.com.

Or call our technical department and ask them about our specialist asphalt materials inc. SUDS design and Value Engineering.

Cotswold Gold - Exposed Aggregate Finish

“Cotswold gold is becoming highly popular, utilising a polymer bonded Asphalt surface course with an exposed aggregate to create a natural looking durable finish”

Approved Resin Installer.



bonditgroup.com

Head Office: Unit G16,
River Bank Way,
Lowfields Business Park, Elland,
West Yorkshire HX5 9DN
Tel: +44(0)1422 315300

salesuk@bonditgroup.com

MANUFACTURERS OF
SILICONES • SEALANTS
PU FOAMS • ADHESIVES
BUILDING CHEMICALS
TILE ADHESIVES & GROUTS
SURFACE TREATMENTS
PLUMBING SOLUTIONS
BITUMENS

Sole distributor of Geo-Fix®
in the UK and Ireland



DOWNLOAD
OUR APP

BREAK THE MOULD

AND LET PATIO BLASTER DO THE HARD WORK FOR YOU.
VISIT BONDITGROUP.COM

CONCENTRATED PATIO BLASTER
The EASY way to clean most outdoor hard surfaces

DILUTE APPLY LEAVE TO DRY

BEFORE **AFTER**

Long lasting and biodegradable
Biocide controls green mould with no bleach or acids

Long lasting and biodegradable
Biocide controls green mould with no bleach or acids
No scrubbing or pressure washing

HILLS QUARRY PRODUCTS' CONTINUED EXPANSION



As a key part of The Hills Group, Hills Quarry Products has continued to build on its 120-year history with further expansion of its ready-mixed concrete business across the south of England. The last twelve months has seen Hills open new concrete plants in Swindon in Wiltshire and Wilmington in Devon. Hills Quarry Products has also futureproofed aggregate supplies with planning approval for its largest gravel quarry to date at Down Ampney in Gloucestershire.

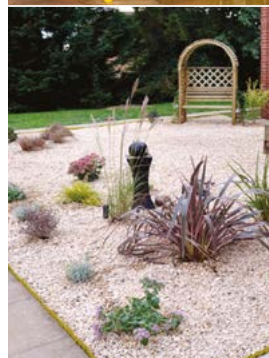
With eight concrete plants, seven quarries and a large fleet of tippers and mixers, including mini-mix, Hills is perfectly placed to fulfil orders of concrete, specialist concretes, floor screeds, stone, gravel, sand and unique, decorative aggregates.

Visit us: hills-quarry.co.uk
 Contact us: info@hills-group.co.uk

Quarry Products

Suppliers of aggregates and concrete for every need:

- ready-mixed concrete, including mini-mix delivery
- sand cement floor screed
- Cemfloor liquid screed
- decorative aggregate
- sand, gravel and stone



Telephone:
01793 714999



hills-quarry.co.uk



BESPOKE MASONRY SERVICES

In the world of landscaping and urban design, every detail counts. That is why precision cutting, and edge profiling play a crucial role in adding the perfect final additions to stone features.



At Stoneworld, we understand the significance of precision and craftsmanship in enhancing outdoor spaces.

Our edge profiling services offer a variety of options, from classic bullnose to contemporary pencil rolled edges. Whether it is stone coping, steps, or low wall copings, we provide bespoke solutions tailored to your aesthetic and functional needs.

Beyond enhancing visual appeal, our edge profiles offer practical benefits, such as improved safety and durability.

Our expertise extends into porcelain fabrication, utilizing innovative technology for precise results. With state-of-the-art machinery and skilled masons, we ensure precise cuts without the risk of breakage or wastage. Our Water jet cutter, equipped with oscillating tips, effortlessly handles porcelain, guaranteeing impeccable results.

So, whether you are a landscaper, urban designer, or homeowner looking to elevate your outdoor space, trust Stoneworld for unparalleled precision cutting and edge profiling solutions that exceed expectations and bring your dream design to life.

www.stoneworld.co.uk

STONeworld



BESPOKE MASONRY SERVICES

STEPS | COPINGS | PIER CAPS | SCULPTURE
 PAVING | WALLING | ROCKERY | WATER FEATURES

01844 279274 | sales@stoneworld.co.uk | www.stoneworld.co.uk | Views Farm, Great Milton, OX44 7NW



2024 GARDEN, PATIO AND COLOUR TRENDS

Johanna Elvidge, Head of Domestic Design at Marshalls has shared the garden, patio and colour trends that are likely to make an appearance in 2024:

STYLE TRENDS:

1 - Nurturing Gardens "Garden trends will begin moving away from minimalism and heading towards creating more nurturing

and wildlife-friendly environments. We will likely see people bringing more flowerbeds, shrub-filled areas and vegetable planters into the space, livening up the garden and allowing for greater biodiversity. These changes are not only great for the environment but will also have a positive impact on our wellbeing, encouraging more time in the garden and in amongst nature."

2 - Joyful Gardens "2024 will likely see people wanting to transform their gardens into playful, positive spaces that encourage socialisation and time enjoyed outside. These gardens will likely centre around seating areas, outdoor kitchens and fire-pits - all spaces which will encourage to spill home life into the outdoors. Those who have more space to work with may section off their garden to make the most of it."

Having regions for open-air cooking and eating, areas designated for children to play in, and an area for brightly coloured flowers to liven the space up through nature itself."

3 - Regenerative Gardens "Having a garden space that focuses on rewilding and prioritising nature has become the forefront for many over recent years. We will see people embracing trends such as No Mow May where they will allow their lawns time to re-energise and grow for the sake of wildlife and natural habitats. This trend sees imperfections being embraced, allowing for plants to take their own course where possible. 'Edible landscapes' will have their place, with people creating vegetable patches and planting fruit trees to create bright and tasty havens - both fun and practical, saving you a trip to the shop!"

4 - Luxurious Gardens "Quiet luxury is not only a trend for the home's interior. This can also be achieved in the garden, encouraging a serene space outdoors. This trend is achieved through clean lines of architectural landscaping which can be created through paving, pergolas and planting beds. These clean lines can then be softened through plants and shrubs to showcase the natural beauty of the garden throughout the design. Both light and dark tones can achieve this aesthetic, finding a tone that complements your home can be a great way to elevate the overall look, tying the entire space together."

PATIO TRENDS:

1 - Indian Sandstone "Indian sandstone is a great choice for a garden revamp. Ethically sourced options are still affordable, and the

natural appearance provides a rustic feel to the space. The varying tones of the stone mean that this paving choice will suit almost any setting and aesthetic."

2 - Porcelain Paving "Porcelain paving is likely to be a common choice for many homeowners in 2024. This type of paving is known for its low maintenance, beauty and durability. This is an ideal choice for many applications, even for those who have moss-prone gardens due to dampness and shade. The wide range of colours and shades makes it a diverse choice for any outdoor space."

3 - Block Paving "Block paving is a popular choice for driveways and garden paths. The range of colours allows for borders and patterns to be created through different layout choices. This paving choice can also complement other materials, maintaining consistency throughout a space whilst still elevating the look"

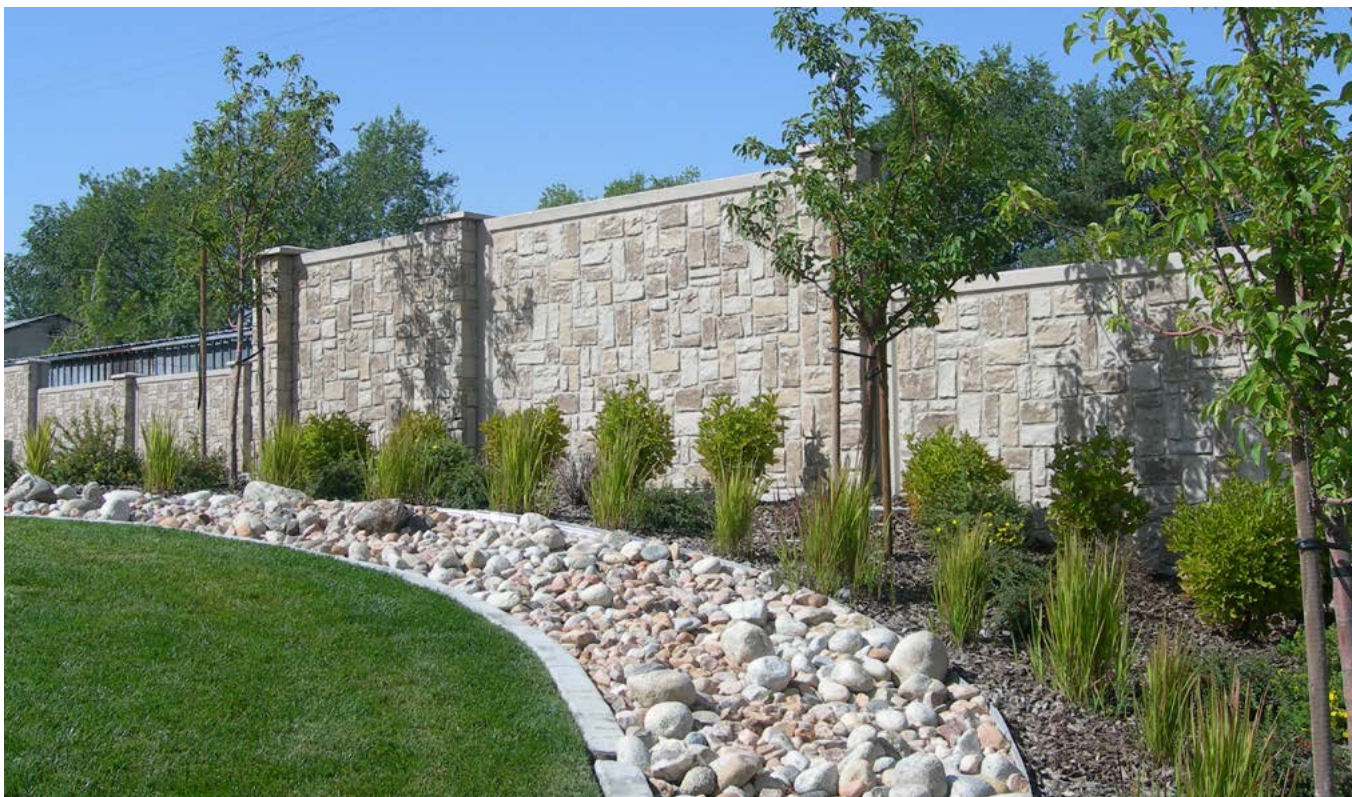
COLOUR TRENDS:

1 - Grey "Grey is a timeless trend, ideal for both modern and older-style homes. The shade complements most types of brickwork, avoiding a harsh contrast between the home and garden. Grey paving can also be a great choice for creating a smooth transition between the outside and inside - a great choice for those with large garden-facing windows and patio doors."

2 - Warm tones "Warm tones have seen a surge in popularity over recent years, with many homeowners enjoying the cosy look these shades provide throughout the garden. The shades can create the atmosphere of a Mediterranean oasis, transporting people to the feel of being on holiday, benefiting mental health and wellbeing."



You can read more about 2024 garden trends at www.marshalls.co.uk



ELITE LAUNCHES NEW FENCING SOLUTION

Introducing Elite Verti-Crete - the good-looking solution to fast and effective fencing

Answering the demand from customers and understanding the need for a cost effective, quick to install and low maintenance fencing solution, Elite Precast Concrete has introduced Elite Verti-Crete fencing and walling.

Saving on both time and money, Verti-Crete offers looks, strength and quality, as the walling and fencing can be used for a variety of applications that customers are looking to solve. These include privacy, boundary, security and of course where clients need to install a retaining wall, to allow for extra land-take and secure the development.

Paul Cartwright, Business Development Director for Elite Precast Concrete, says “with the look of masonry-like concrete, the attractive finish complements your

development, with a finish on both sides, giving homeowners a secure, beautiful fencing solution.”

He continues “Quick and easy to install, our Verti-Crete ‘hollow core’ posts are placed over individual footings with rebar anchors. The wall panels are then inserted, and only when each section is squared and levelled are the posts filled with concrete. This secures the connection between the post and footing and allows for a more levelled, stable fence system.”

“With Elite Verti-Crete you get fast installation, quality and a wall with the look of real stone at an affordable price - it’s a real winning combination.”

As an engineered fencing solution, the seamless solid-panel design provides structural strength, stability and security, which will last for decades and as our weather conditions have become increasing more unstable over the last few

years, Verti-Crete can endure the harshest conditions and broadest range of climates.



Made in the UK, Elite Verti-Crete is made in a variety of face finishes that suit both private and commercial housing developments, speak to the Elite Precast team to find out which suits you best on 01952 588885 or visit www.eliteprecast.co.uk



Verti-Crete Fencing & Walling System



Secure and Private



Effective Sound Barrier



Fast to Install



Design Flexibility



Cost Effective



Freedom of Choice



Creating safer spaces with
fencing & walling solutions



For more information please call 01952 588 885
email sales@eliteprecast.co.uk or visit www.eliteprecast.co.uk



PROTECTING & MAINTAINING EXTERNAL PORCELAIN PAVERS

With the increasing popularity of porcelain pavers, it's no wonder that the discussion surrounding maintenance has increased. And there's one issue, in particular, that keeps cropping up - should an external porcelain tile be protected and, if so, should a barrier treatment or a sealer be used? LTP Director, Mark Atkins explains.

Routine sealing of natural stone laid indoors is now common practice. Even the advice to seal external stone pavers is gaining traction, bring with it benefits in terms of performance and aesthetics. Porcelain pavers, however, are seen as a different animal. Because matt porcelain doesn't need to be sealed, it's generally laid and assumed that it will look after itself.

In some respects, this is correct. Only porcelain tiles with a polished finish need to be sealed. This is because the polishing process exposes capillaries - effectively, lots of microscopic pin holes - which remain porous. If the surface of the tile isn't sealed, grout and spillages

will penetrate quite easily and stain the tile. It will also be vulnerable to organic stains once installed. Many matt porcelain tiles, on the other hand, don't need to be sealed. However, if the tile has a textured surface - which is generally the case in external applications - it will benefit from application of a quality barrier treatment before grouting.

What is the difference between a sealer and a barrier?

The difference between a sealer and barrier is down to the active ingredients.



For example, ECOPROTEC Pre Grout Protection is a barrier treatment designed for use on textured, matt porcelain tiles. It protects the surface of the tile from grout and jointing compound during installation, making it easier for the residue to release and be cleaned out of the textured finish. Its formulation is very different to that of our sealers, which have smaller 'actives' and, in the case of MPG Sealer, contain nano waxes. The carrier within Pre Grout Protection is mildly acidic. This allows for deeper penetration into the fissures of textured porcelain tiles, where it then dries and leaves the active ingredients behind. As they dry, they cross link within the low points of the glaze. This provides protection against penetration from cement and resin-based grouts, making the removal of any residues much easier. The treatment is completely invisible once cured, so it doesn't alter the appearance of the porcelain. ECOPROTEC Pre Grout Protection is primarily used as a pre-grout solution, but it can also be applied to help assist with ongoing cleaning and aftercare, especially on external 20mm porcelain paving.

Polished porcelain sealers have a completely different formula. As well as having anti stain-based ingredients, they also include a blend of nano waxes that, following application and drying, are polished into the surface either mechanically or by hand. Polishing forces the nano wax into the open pores within the polished surface, giving it an enhanced, smoother finish. For these types of surfaces, we recommend MPG Sealer H2O from our LTP range.



The 'actives' in ECOPROTEC Pre Grout Protection are too large and will not penetrate a polished surface as efficiently, so they will not work well on this type of surface. Equally, a stone sealer, like our own ECOPROTEC Ultimate Sealer, cannot be used on a textured porcelain surface as it will just dry onto the surface without penetrating. This can often result in a micro film that remains following application and turns white/opaque when exposed to moisture.

Ongoing maintenance

Just like indoors, outdoor tiles will benefit from a periodic clean. Keeping the surface relatively

clean will prevent a build-up of dirt in the textured surface. This, in turn, will make ongoing cleaning easier and will maintain the tile's slip resistance. As a general rule of thumb, it's worth cleaning porcelain paving every couple of months or so - ideally, three times during late spring/summer and twice during the winter. Surfaces that are regularly cleaned will be far easier to keep clean. Regular cleaning of inside-to-outside surfaces, like those that run through bifold doors, will also help maintain a seamless aesthetic.

Jet washing may seem like the best method for a fast clean but it will only wash dirt off the surface of the slabs. High pressure water will also damage grout joints. A specialist treatment, like ECOPROTEC General Cleaner, will react with the dirt and organic matter, and will help break it down.



THE ECOPROTEC® RANGE OF CLEANING, SEALING & AFTERCARE PRODUCTS FOR EXTERIOR & INTERIOR STONE & PORCELAIN SURFACES

For more advice and information about other ECOPROTEC cleaning and sealing solutions, please visit www.ecoprotec.co.uk or contact the ECOPROTEC technical team on 01823 666213, email technical@ecoprotec.co.uk and browse ECOPROTEC TV on YouTube.



MICROSUDS SOLUTIONS FOR BIODIVERSITY NET GAIN

In the dynamic realm of urban development, Sustainable Urban Drainage Systems (SuDS) have emerged as a critical component of responsible planning. Among SuDS approaches, “MicroSuDS” stands out for its focus on finely tailored stormwater management solutions. In this article, we’ll delve into the significance of MicroSuDS and how GreenBlue Urban’s innovative products lead the way in creating resilient, sustainable, and cost-effective urban environments.

The Essence of MicroSuDS:

MicroSuDS, or Micro Scale Sustainable Urban Drainage Systems, takes a nuanced approach to stormwater management by integrating smaller, localised solutions. Unlike traditional SuDS, MicroSuDS solutions are both effective and discreet, enhancing water management without compromising space or aesthetics.

GreenBlue Urban’s Contribution:

GreenBlue Urban champions sustainable urban development with cutting-edge products that align seamlessly with MicroSuDS principles. Incorporating these solutions into new developments offers a triple-win scenario - saving time, cutting costs, and reducing maintenance efforts.

ArborFlow Tree Pit Systems: These systems provide a habitat for urban trees while managing stormwater effectively. By enabling rainwater infiltration into the soil, ArborFlow reduces surface runoff and prevents flooding, enhancing biodiversity and green infrastructure.

RootSpace Soil Cell Systems:

Addressing limited urban space, RootSpace creates underground voids that promote healthy root growth and serve as a stormwater management tool. Increased soil volume enhances water retention and reduces runoff.

HydroPlanter Rain Gardens: The HydroPlanter range of rain garden products meet pollution removal standards, reducing peak flows into drainage networks and enhancing biodiversity in urban areas.

Above Ground Planter SuDSPod:

SuDSPod offers on-plot attenuation, effectively managing stormwater from roofs and other sources. Its patented design delivers industry-leading performance, serving as an effective MicroSuDS solution.

Biodiversity Net Gain Legislation:

With the introduction of Biodiversity Net Gain legislation, there’s a greater emphasis

on enhancing biodiversity in developments. GreenBlue Urban’s MicroSuDS solutions align perfectly with this legislation, creating urban environments that efficiently manage stormwater and contribute positively to biodiversity.

Collaboration for Long-Term Success:

GreenBlue Urban collaborates with developers, local authorities, and environmental experts to implement MicroSuDS solutions that withstand the test of time. This collective effort ensures urban environments meet regulatory requirements while thriving in resilience, sustainability, and biodiversity.

As urban landscapes evolve, integrating MicroSuDS solutions becomes essential. GreenBlue Urban’s innovative products offer a comprehensive toolkit for developers seeking to enhance stormwater management, save costs, and promote biodiversity. Embracing MicroSuDS principles and Biodiversity Net Gain legislation paves the way for sustainable, resilient urban environments for future generations.

Creating healthier urban spaces in harmony with nature



Kenmont Gardens

Green

Air

Smart Space

Blue

GreenBlue Urban is the worlds leading tree pit specialist. With more than **30 years of experience** in creating healthier urban spaces in harmony with nature.

As part of our ongoing commitment to the circular economy, our products are manufactured in the UK from **100% recycled** material.



RootSpace

Suspended pavement support system



HydroPlanter

Modular 'Plug & Play' Rain Garden



SuDSPod

On Plot Attenuation

T: +44 (0)1580 830 800
E: enquiries@greenblue.com
W: greenblue.com



GreenBlue 
URBAN
Creating healthier urban spaces in harmony with nature

USE TREATED TIMBER IN YOUR NEXT PROJECT – THE SUSTAINABLE CHOICE

The environmental benefits of using wood in construction are compelling. Managed properly and from certified sources, trees provide a renewable material that absorbs and stores (sequesters) carbon. At the end of its life timber can be reused in a cascading process of uses, recycling or recovery of energy.

Enhancing durability and performance

Using more wood is great - however in terms of longevity or performance, some species may need additional help. By using industrially applied preservative treatments or wood modification, the service life of less durable softwoods can be improved - reducing pressure on the more naturally durable, scarcer and higher value species. And flame retardants for timber, which reduce the surface spread of flame, heat and smoke release in a fire situation, provide vital extra time for a safe escape where required.

The additional energy input of pre-treated wood production is comparatively low. The treatment industry is highly regulated and today's products and processes are

better targeted towards the factors we wish to control with less impact on the wider environment.

Ensuring fitness for purpose

Not-for-profit and independent, the Wood Protection Association (WPA) acts as a technical and advisory body - providing free guidance to specifiers, contractors, engineers and architects on the best ways to ensure wood is fit for its intended purpose.



Public realm courtyard using treated timber decking and seating. Photo courtesy of Deckbuilders Ltd.



Learn more about timber treatments and the work of the WPA and its members here: www.thewpa.org.uk



Wood Protection Association

Buying treated timber?

Get it from a supplier you can trust

Look for third-party accreditation of treatment - such as **WPA Benchmark**

Find a WPA Approved Treater

www.thewpa.org.uk

01977 558274 contact@thewpa.org.uk

Benchmark
APPROVED TREATER



Benchmark
APPROVED PRODUCT



Olympic Stadium, Stamco Hoplings

Ask us for a
quote today



Sustainable soils, growing media and turf

NEW
Bio-retention
soil mixes now
available!

British Standard Topsoil

Light in texture with good water holding capacity. Ideal for environmentally conscious landscaping and construction projects.

British Standard Subsoil

A high quality, clean and consistent soil with full traceability. Ideal for general infill, raising levels and creating landscape contours.

Roof Garden Substrate

Intensive and Extensive options ensuring healthy plant establishment for rooftop or containerised planting projects.

Amenity Tree Soil

Load bearing, fertile planting medium. Enables tree root infrastructure to develop under hard urban landscapes.

Bespoke Mixes

Rootzones, low fertility soils, subsoil, sports soils and structural soils. New to the range are two Bio Retention soils, suitable for rain garden applications.

Turfs


A comprehensive range including Wildflower Turf, which provides an instant wildflower meadow.


**Green-tree
Topsoil**

T: 01423 332 100

E: sales@green-tree.co.uk

www.green-tree.co.uk

 Green-tree is a trading style of Green-tech Ltd

Proud to be a
Supplier Member of:

gró



GREEN-TECH HELPS BRADFORD COUNCIL CREATE A NETWORK OF RAIN GARDENS TO REDUCE FLOODING

Bradford Council secured funding to carry out highway improvements and sustainable landscaping works to an area of the city known locally as the 'Top of Town'.

The funding was secured from the National Lottery Heritage Fund, through the Bradford City Centre Townscape Heritage Scheme, and European Regional Development

Fund, through the European Structural and Investment Funds Growth Programme 2014-2020.

The project, designed by Bradford Council's own Landscape Architects and Highways Engineers, set out to create a safe, healthy, attractive, and community-friendly environment for residents, workers, and visitors, which supports existing and new businesses

at the Top of Town. It focused on North Parade, Rawson Square, and Northgate with a view to these public realm works being rolled out to the wider City Village area in the future.

A community engagement programme was conducted and resulted in overwhelming support for the greening of public spaces and the creation of new public spaces.



The designs that were developed reflect the public consultation by introducing street trees and rain gardens and creating better public spaces on Northgate and Rawson Square.

Eric Wright Civil Engineering was awarded this high-specification public realm scheme and following the specifications set by the Council's Landscape Architects turned to Green-tech for the supply of materials for the soft Landscaping element of the project.

The project aims to deliver local improvements that help tackle climate change, reduce the risk of surface water flooding, and help preserve and protect the environment of the conservation area.

This is addressed in the soft landscaping scheme that included the installation of a new tree planting scheme and raised rain gardens as part of a Sustainable drainage system (SuDS) throughout the scheme, which consisted of planting 2,000 plants and 34 trees.

The Project Landscape Architect, Andrew Mindham, has been recognised as a Rising Star in the 2023 susdrain SuDS Champions Awards.

SuDS are designed to manage stormwater locally to mimic natural drainage and encourage its infiltration, attenuation, and passive treatment. A network of 'rain gardens' has been installed in Bradford as part of a drainage system that is designed to help mitigate local flooding risks. Rain gardens are areas of planting

designed to temporarily hold, filter, and soak away any rainwater that runs off buildings and paved areas in a more sustainable manner rather than straight into sewers and helps to prevent the overloading of sewers.

Green-tech supplied 440 tonnes of Bioretention Soil and 240 tonnes of Green-tree subsoil to create the rain gardens. Green-tree Bioretention Soil provides an efficient permeability rate to avoid waterlogging on the surface area but holds sufficient nutrient levels and organic matter to support the vegetation used. It has been developed around the CIRIA SuDS manual guidelines for filter media in a SuDS application and uses the highest quality sands and green composts.

The planting of semi-mature trees will contribute to the physical landscape, whilst creating new habitats and increasing biodiversity by providing wildlife corridors and connections between green spaces. Providing options for wildlife to travel is essential for urban biodiversity.

Working in a busy city centre with high volumes of vehicular and pedestrian traffic caused significant challenges for all involved. There was limited access to areas of the site and restricted space for material storage. Needing to avoid double handling and risk of contamination, all soils were delivered directly to the working areas with GRAB lorries and spread within the planters. A just-in-time delivery approach was adopted which considered the works access and delivery times to reduce the impact on the local area.

Harry Logg, Project Manager from Eric Wright Civil comments, "This project was within a heritage area, traditional high-quality paving was installed throughout the site and the soft landscaping had to compliment that. Green-tech was chosen as they supply specialist soils to a high specification, meeting our biosoil drainage requirements whilst also being competitively priced. They are collaborative in their approach to working. Ben from Green-tech was always available by phone and email to respond quickly to the deliveries we requested and kept us updated on their scheduling. This was a critical factor in the success of the site given its location. The soils delivered were always of the same consistent quality, had good workability, and the new planting within soon flourished. We are delighted with the end results".





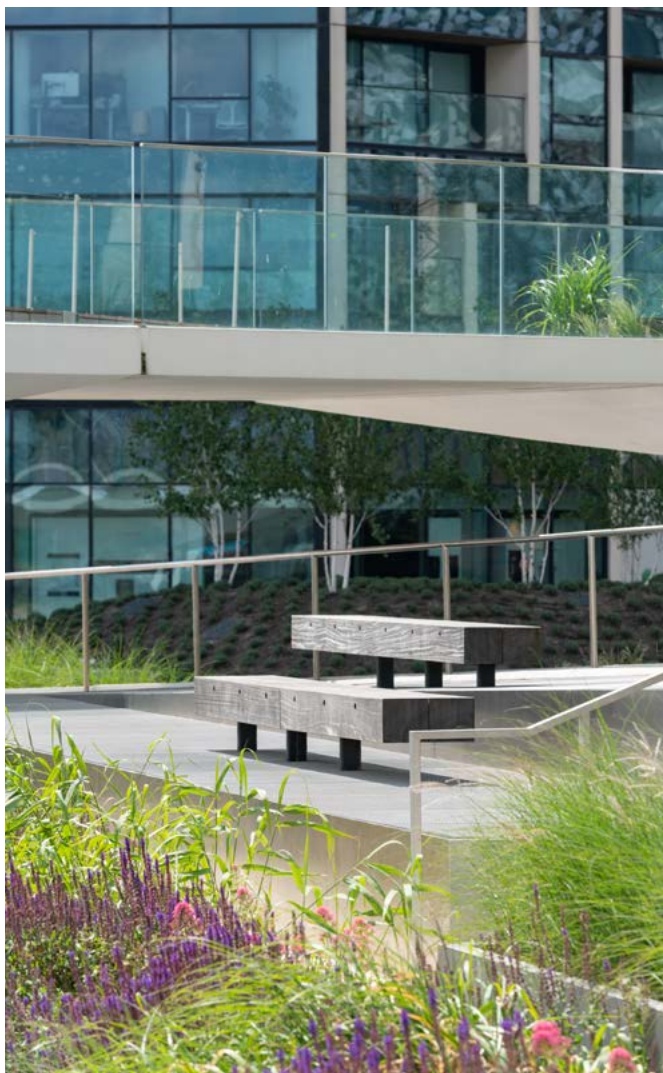
TRANSFORMING THE PENINSULA

In the heart of London, the Greenwich Peninsula regeneration project is an ambitious initiative aiming to revitalize a sprawling 79-hectare derelict post-industrial site into a vibrant urban community accommodating 35,000 residents. With an estimated value of £8.4 billion, this project marked the largest urban regeneration effort in Europe.

Woodscape, a leading provider of bespoke street furniture solutions, were initially contracted to supply Jet Planters and Litter Bins across the site, however, as the project evolved, their involvement expanded. Recognising their expertise in crafting bespoke street furniture, the project stakeholders entrusted Woodscape to provide

tailored solutions, including bespoke seating in a variety of sizes, shapes and designs, harmonising with the site's aesthetic and functional requirements.

Woodscape's role extended beyond mere product provision. They actively engaged in developing designs, assisting with material



selection, and maximising the efficient use of the chosen materials. Their proven track record in managing large-scale, complex projects distinguished them as an ideal supplier, capable of delivering exceptional results while adhering to bespoke specifications.



One differentiator which sets Woodscape apart is their ability to bring complex designs to life through the use of advanced 5-axis CNC machines. This cutting-edge technology empowered them to fabricate intricate timber components efficiently, expediting the production process without compromising on quality. This capability was instrumental in realizing complex design elements within the project's timeline and budget constraints.

The Greenwich Peninsula regeneration project boasts several remarkable features which showcase Woodscape's contributions. The Tide, London's first ever elevated linear park, spans over 1km (with plans for expansion to 5km), exemplifies the project's scale and innovation. Additionally, the inclusion of OPO by BeBox, an immersive meditation space inspired by the natural surroundings, underscores the

project's commitment to fostering community well-being amidst urban development.

Woodscape's participation in the Greenwich Peninsula regeneration project demonstrates their commitment to excellence in urban streetscape design. Through collaborative engagement, technological innovation, and meticulous craftsmanship, Woodscape played a pivotal role in transforming a neglected industrial site into a thriving urban enclave, setting a new standard for sustainable, community-centric development in Europe.

**Contact Woodscape about
your bespoke street furniture
requirements**

Tel: 01254 685 185

Email: sales@woodscape.co.uk

Web: www.woodscape.co.uk

Architect and Client:

Gross Max for Knight Dragon

HEYN ENVIRONMENTAL



Providing businesses across the UK and Ireland with the best in street furniture for the past 18 years

- ▶ Enhance cyclist-friendly environments with our new sleek cycle shelters
- ▶ Ensure safety with our smart traffic solutions, including Galvanised bollards and ramps
- ▶ Provide comfortable and sustainable seating for all outdoor environments
- ▶ Encourage a cleaner environment with a wide range of litter bins including post mounted and free standing

For bulk order or single purchases call John Irwin on +44 (0)2890 350020 or visit heyne.co.uk/environmental



UK MANUFACTURERS OF STREET FURNITURE



- POSTS - HINGED & TELESCOPIC
- BOLLARDS - STEEL & STAINLESS
- HOOPED BARRIERS
- CYCLE STANDS & RACKS
- CYCLE SHELTERS
- HEIGHT RESTRICTORS
- SWING GATES
- ARM BARRIERS
- SMOKING SHELTERS
- SEATING



01788 550556
info@autopa.co.uk
www.autopa.co.uk

AUTOPA Limited, Cottage Leap, Rugby, Warwickshire, CV21 3XP

AUTOPA



Glasdon
Quality By Design

To view the full range of high quality, durable and sustainable products, visit: www.glasdon.com



**CIS POROUS
RESIN BOUND
AND SLOT DRAIN
TREE GRILLES**



Trees are an important part of our natural life support system; they have a vital role to play in the sustainability of our towns and cities and we need to take better care of them, both now and in the future, yet we see them starved of natural food and water and damaged at their roots by earthworks, particularly in developed areas of towns and car parks.

As a result of the built environment soil compaction can inhibit or prevent natural root growth. CIS Slot Drain and Resin bound grilles are a great way of enhancing the sustainability of your project for future generations. Clients can use either resin or porous paving in any of these tree surrounds.

For further information please contact our Sales Office on: 01483 203388 or take a look at our website: www.cis-streetfurniture.co.uk/products/tree-protection/porous-resin-tree-grilles/



Creating inspiring street scenes

Bespoke Seats - Safety Railings - Giant Bollards - Security Products



CIS Street Furniture have the 'measure' of your next project

Why not call our sales team to assist?

T: 01483 203388

www.cis-streetfurniture.co.uk

[E: sales@cis-streetfurniture.co.uk](mailto:sales@cis-streetfurniture.co.uk)

OUTDOOR GARDEN LIGHTING



“With Spring now finally here, our attention is drawn to our outside spaces as we hope to make them look and feel more inviting. Winter can leave the garden looking somewhat unloved but with just a little TLC, you can soon have it looking like a place to kick back as hazy summer days roll into warm balmy nights. With longer days beckoning us to bask in our gardens, soon weekends will be adorned with festivities from dawn to dusk! Garden lighting can elevate the look and ambiance of your outdoor space, and when it comes to illuminating your haven, Sparkle Lighting reigns supreme. Their ethereal outdoor lighting collection ensures that your abode is draped

in a romantic aura, beckoning you to revel in the warm embrace of nature's wonder.

We have curated a list of our top 5 ways to use lighting in different areas of your outside space. From pergolas to dining areas, flower beds to fences, and pathways to driveways, these lighting ideas will add a touch of sparkle and create a magical atmosphere in your garden.

1. Light a pergola

With a little thought you can make this a stunning focal point by dressing with festoon lights, pergola fairy lights, solar lanterns and even outdoor hanging pendant lights.





2. Illuminate your outdoor dining area.

Gone are the days of having just a Citronella candle burning on the table while you're dining alfresco. The options for outdoor table lighting are endless and offer a fantastic way to enhance your patio lighting. Consider opting for a USB Rechargeable Table Lamp, offering both ambient lighting and flexibility. Once charged they provide 9 hours of delicate light and make the most delightful, modern & stylish garden table lights. If you prefer the romantic glow that a candle

offers, then LED candles are an ideal choice for your outdoor dining setting. LED candles, flicker like a real candle and give a sumptuous glow as if they've just been lit. They are also waterproof and come with a useful timer so you don't even need to remember to turn them off once you have finished your evening outside.

3. Delicately light a flower bed.

As the sun goes down, flower beds can fall into complete darkness and you lose the lovely colour that the garden offers during the day. Dotted solar powered fairy lights throughout your flower beds can bring the garden back to life at night and create a dramatic backdrop to enjoy your evening outside.

4. Add a glow to your fence or wall.

Garden fences are the perfect place to hang outdoor lights to illuminate your garden. Festoon lights are a great option for outdoor fence lighting and can be strung along for a look reminiscent of holidays abroad. Have a climbing plant nearby? Intertwine Garden Ivy Lights, to make a beautiful feature.

5. Light up a garden path.

Not only will this help elegantly guide you through the space but can also offer a lovely welcoming glow if you arrive home after dark. A simple string of festoon lights will beautifully guide you to your front door and make perfect pathway lights. Or for something more dramatic, line both sides of your drive with solar powered stake lights that can be easily put into the ground, and will add a magical touch to your outside space.

Carefully chosen garden lighting allows you to transform your outdoor space. Let your garden shine and become a haven of tranquillity, ready for evening hosting outside!



Explore our wide range of outdoor lighting here: www.sparkle.lighting/collections/outdoor-garden-lights



NiteLux®

YOUR GARDEN IN A NEW LIGHT

www.NiteLux.co.uk

info@NiteLux.co.uk

020 3916 5320

12V

COMPLETE SETUP IN 3 STEPS
PLUG IN & DONE



STEP 1

- CHOOSE YOUR LIGHTS AND MOUNTING BASES



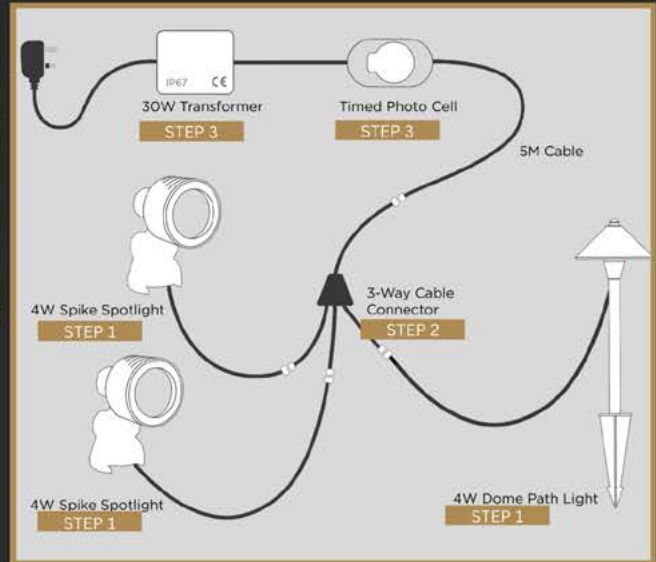
STEP 2

- CHOOSE YOUR LINK CABLES AND CABLE CONNECTORS



STEP 3

- CHOOSE YOUR TRANSFORMERS
A TIMER AND CABLE PEGS



The Professional grade linkable lighting system.

NiteLux should be your top choice for garden lighting due to its blend of innovative technology, eco-friendly design, and unmatched performance.

PLUG IN & DONE



Best exterior lighting products

★★★★★ May 16, 2023

Best exterior lighting products around, the quality is second to none. The customer service from Paul is outstanding, really goes above and beyond when needing help or his expertise.

S L HALL Electrical Services



NiteLux®

YOUR GARDEN IN A NEW LIGHT



Illuminate Your Garden and the Planet: Nitelux Garden Lighting

In the quest for sustainability, every choice counts. Nitelux's innovative design, offers a comprehensive solution that not only brightens your outdoor spaces but also contributes to a greener, more sustainable future. Our partnership with Ecologi, a key player in global climate action, commits to planting trees worldwide and supporting essential environmental projects, contributing to a more sustainable planet. With a focus on accessibility, durability, and environmental responsibility, Nitelux stands out as a leader in the industry.



Nitelux plants trees on your behalf for every £20 spent

Trees planted to date: 18,912
Co2e offset: 38.05 tonnes
Projects funded: 28

Empowering Your Green Journey:

By choosing Nitelux, your company instantly joins the ranks of eco-conscious organisations and becomes part of the green movement, with the ability to track and showcase the positive impact of your contributions through the Ecology platform.

Ecologi



Paul Naylor - MD NiteLux:

Paul Naylor's journey from electrician to garden lighting innovator is a testament to his passion and expertise. Beginning his career as an electrician, Paul honed his skills before delving into garden lighting under the mentorship of industry veteran Dave Milsom of GLI Design.

Inspired by his mentor's guidance, Paul founded Greenlite, dedicated to designing and installing lighting solutions. With a vision for excellence, he later established NiteLux, a superior brand known for its innovative designs and eco-conscious approach. NiteLux stands out as a leading choice in garden lighting, reflecting Paul's dedication to quality and sustainability.

Why is NiteLux so different?

Paul's approach has always been to understand the problems customers could come across from 1st hand knowledge of installing landscape lights for over 20 years.

This is reflected in the huge knowledge base that has been acquired and which is regularly passed onto customers by advice tips and tricks which are freely given.



He often carries out free walks and talks on prospective installations giving advice on what to light and why. The feedback from landscapers, designers, and electricians has been very rewarding.

Paul gives all the help that wasn't available or wasn't freely given when he 1st started out in garden lighting.

WEEE Compliance:

Sustainable Disposal, Responsible Consumption
In adherence to WEEE regulations, Nitelux ensures the safe disposal of LED products,



UNIQUE, INNOVATIVE LIGHTING SOLUTIONS



The Solar Bollard from Zeta is a truly unique and innovative lighting solution combining sustainability with design.

A key feature of the Zeta solar bollard is to deliver a modern solar powered solution for exterior wayfinding illumination. Harnessing its energy from the sun, the bollards offer an environmentally friendly lighting option that doesn't rely on traditional electricity sources.

Zeta's standalone, self-contained solar powered bollards utilise solar energy using LED lights and can be specified for use along pathways and cycle paths, car parks, residential estates or in other public areas to provide illumination and enhance safety. The solar bollard can help reduce carbon emissions and decrease energy costs and is an attractive option to deploy to counter rising energy prices and budget constraints.

In addition to being environmentally conscientious, Zeta has prioritized the design element of the solar bollard. The extruded aluminium body offers a sleek and modern aesthetic that will seamlessly integrate into many types of outdoor spaces. The robust casing material provides durability and longevity, ensuring the bollards will withstand harsh weather conditions. Zeta's commitment to sustainability is further demonstrated with the uniquely designed solar bollard being available in sustainably sourced hardwood as a material choice for a long-lasting lighting solution, highlighting their dedication to responsible sourcing and eco-friendly practices.

Whether for commercial or residential applications, these easy to install bollards require minimal maintenance as they have no moving parts.



The solar bollards reliance on durable LED lights means less requirement for repair and upkeep - an appealing feature when looking to demonstrate commitment to environmental stewardship.

Solar bollards can also be easily relocated if needed, providing flexibility in their deployment. Installation costs are lower too with reduced disruption to the surrounding area during installation.

 zeta

For more information,
call the Zeta specialist lighting team
on 01869 322500

Unparalleled Solar Bollard

Zeta's uniquely designed sleek solar bollard integrates into any outdoor space from walkways and paths to residential estates for sustainable wayfinding illumination.



Features

- Integrated PV – four integrated panels ensure light capture from all angles
- Two motion-detecting PIR sensors and LED lights
- Zero trenching and running costs
- Specialist internal controller
- Year round performance with dark skies option
- Commercial, residential or heritage application
- Available in extruded aluminium in a choice of RAL colours
- Sustainable hardwood finish option
- Easy to install – surface or root mounting options



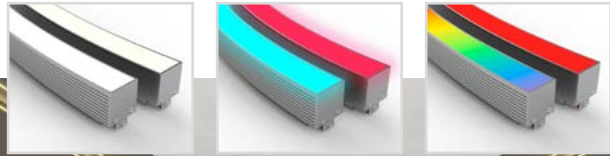


UK's leading supplier of decorative outdoor lighting.
Download the new 2024 Exterior Collection.

www.elsteadlighting.com

Mersus 2

Curved linear LED lighting
for exterior or interior projects



Contact us at sales@kempslighting.com

www.kempslighting.com

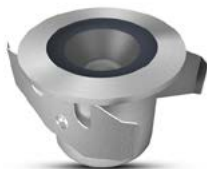
Designed & made in the UK



IP68 series of highly manufactured solid state marine grade stainless steel LED ground lights incorporating highly efficient CREE technology



SS316 COLLECTION



- Marine grade 316 stainless steel
- High-powered CREE technology
- IP68 Protection
- Efficient LED optics
- Supreme quality
- Architectural designs
- Toughened safety glass
- 3 year warranty

www.gaplighting.co.uk | info@gaplighting.co.uk | +44 (0) 1322 620 100

THORN LIGHTING



Harley Haddow enlisted Thorn Lighting's design team for a complementary lighting scheme for Ayr Riverside's rejuvenation. The project required a sensitive balance between luminaires to achieve the correct lux levels and uniformity while maintaining a unique and contemporary appearance.

Scott Thomson of Harley Haddow stated, "Thorn's Contrast luminaires provided the ideal solution for this project. They not only met the stringent requirements of the Ayrshire Roads Alliance (ARA) but also satisfied our landscape architect's need for an aesthetically pleasing scheme and open space. The bespoke columns and lighting design played a significant role in achieving the project's objectives."

Among the primary benefits of the new lighting scheme is improved colour rendering, which accentuates the new paving and street layout, lending a stylish and inviting feel to the area.



PALMER NURSERIES PARTNERS WITH INTURF TO EXPAND ITS HORTICULTURAL HUB

Palmer Nurseries, a horticultural hub in Leeds which is home to a plant nursery, garden centre and landscape operation, is proud to announce its collaboration with Inturf, a national turf production specialist, to introduce premium turf options to customers across West Yorkshire. This partnership highlights a significant step forward in providing environmentally friendly turf solutions designed to meet the diverse needs of commercial landscapers, DIYers, homeowners, and sports facility managers.

Inturf's Classic turf, now available through Palmer Nurseries, is a testament to innovation and sustainability in landscaping. Crafted without plastic or netting, this turf is not only aesthetically pleasing but also environmentally friendly. Its composition, carefully designed to absorb more carbon dioxide, significantly reduces its impact on the surrounding environment.

"Adding turf to our list of supplies in our horticultural hub is an exciting step forward for us in becoming a one-stop shop for landscaping needs. Our partnership with Inturf allows us to offer customers a premium turf option that combines durability, aesthetics, and environmental responsibility," says Ben Palmer, Director of Palmer Nurseries. "As one of only a few suppliers who do not grow plastic netting, Inturf were the perfect partner for us."

In addition to its environmental benefits, Inturf's Classic turf boasts exceptional strength, making it resistant to both drought and wear. Its unique blend of shoot density



and fescues ensures a vibrant green colour throughout the year, perfectly complementing every season.

"We are excited to add Palmer Nurseries as our West Yorkshire stockist to bring our environmentally friendly Classic turf to a wider audience," says Alex Edwards, Joint Managing Director of Inturf. "By offering this premium turf option, we aim to provide customers with a sustainable landscaping solution that exceeds their expectations in terms of quality and durability."

The partnership between Palmer Nurseries and Inturf ensures that customers can rely on locally sourced,

premium turf options backed by expert knowledge and support. Whether it's for residential lawns, commercial properties, or public spaces, customers can trust Palmer Nurseries to deliver the finest turf solutions for their projects.

Palmer Nurseries invites customers to explore its expanded turf offerings from Inturf, now available at their site on Calverley Lane in Leeds.

For more information about Palmer Nurseries and its turf offerings from Inturf, please visit www.palmernurseries.co.uk/turf

CHOOSING YOUR PERFECT LAWN SEED IS AS EASY AS 1,2,3



A helpful guide from the experts at Johnsons Lawn Seed

As the UK's premier lawn brand, Johnsons Lawn Seed takes pride in being both the oldest and the most trusted name in the business. We understand that not everyone possesses the same depth of knowledge as we do, making the task of selecting the ideal lawn seed a daunting one at times. With a commitment to simplifying this process, our team has crafted a user-friendly guide to ensure that lawn owners always make the most informed choices.

Why does the right seed matter?

While all lawns may appear green, each one is unique in its own right. Factors such as usage patterns, drainage capabilities, and underlying soil composition vary from lawn to lawn, making the notion of a universal solution impractical. Different grass varieties are meticulously bred to address these diverse needs, rejecting the concept of a one-size-fits-all approach to lawn care.

With a legacy spanning over a century in plant breeding and seed production, our parent company,

DLF Seeds, stands as a beacon of trust in the industry. Leveraging this extensive experience, Johnsons Lawn Seed meticulously selects, cultivates, and rigorously tests all grass species before blending them into tailored mixtures designed for domestic use, capable of withstanding whatever we might throw at our lawns.

How to choose your perfect lawn seed

STEP 1 - Identify your lawn's primary concerns

The initial step in achieving a lush lawn involves understanding

its unique circumstances and identifying any factors that may impact its health and appearance. Whether it's the presence of pets, frequent use by children, shaded areas caused by surrounding trees, or unsightly bald patches in need of repair, recognising these challenges is essential. Equally important is considering your lawn care preferences, whether you're dedicated to meticulous maintenance or prefer a low-maintenance approach.

STEP 2 - Select the ideal mix

Once you've assessed your lawn's needs, it's time to find the perfect match among our diverse range of seed blends. Each Johnsons Lawn Seed mix is conveniently labelled to facilitate quick and easy selection, catering to various lawn requirements:

- Tuffgrass - Ideal for lawns subjected to heavy wear and tear.
- Quick Fix - Designed for patchy lawns in need of repair.
- Shady Lawn - Tailored for lawns predominantly shaded throughout the day.



- Luxury Lawn - Perfect for creating an ornamental, finely manicured lawn.
- General Purpose - A versatile option capable of addressing common lawn care challenges.

STEP 3 - Refine your choice

With our comprehensive portfolio, you can further refine your selection to meet specific needs. For example:

TuffGrass is a boon for dog owners, boasting resistance to the harmful effects of pet urine, proven through

extensive testing, whilst Quick Lawn offers rapid establishment and minimal maintenance, allowing for more time spent enjoying your lawn.

Anytime, a groundbreaking mixture, establishes itself even in cooler temperatures (as low as 3°C), ensuring year-round success, and for those previously mossy lawns, After Moss not only fills in patches left by moss but also prevents its return, thanks to its innovative formulation.

SUMMARY

Choosing the perfect lawn seed is as simple as 1, 2, 3:

- 1) Assess your lawn's needs and challenges.
- 2) Select the appropriate seed blend from our range of offerings, aided by convenient packaging features such as QR codes and helpful tips.
- 3) Customise your choice further to address specific requirements, leveraging our scientifically developed solutions.

So, what are you waiting for? It's time to transform your lawn into a verdant masterpiece!



Find out more
 To learn more about the science behind the lawn seed, and to access everything you need to know about lawns - from sowing a new one, to fixing patches and reseeding, please visit the dedicated Johnsons Lawn Seed website - www.johnsonslawnseed.com



SAY HELLO TO THE TORO VISTA - TORO'S FIRST EVER RANGE OF PASSENGER VEHICLES

Toro is entering a new market with its first ever range of passenger vehicles. Titled the Vista, this is the moment customers have been waiting for as now their customers get to experience first-hand the quality and smooth ride of Toro, too.

Jon Cole, divisional business manager - Reesink Turfcare, says: "With the unveiling of the Vista, there's now a dedicated transport option from Toro. It's designed for comfort and work, and made to move everyone and everything, with the quality customers would expect from Toro in a passenger vehicle."

Toro has a stellar track record of utility vehicles that are both reliable and efficient people transporters as well as work horses, and with the Vista that legacy continues but with an emphasis on comfort.

A sturdy frame design stems from decades of success with Workman utility vehicles and is specifically designed to carry passengers and cargo with ease. It's paired with spacious seating for four, six or eight passengers, ample storage, cargo-enabled fold-down rear seats, independent suspension, and an ergonomic design to ensure a comfortable ride and plenty of legroom.

There are several accessories available to further enhance the comfort of the Vista, including an optional canopy for weather protection, a folding windscreen, and even a lightweight cargo bed for luggage.

Coming with two HyperCell batteries and Toro's proprietary lithium-ion battery technology, no

special charging station is needed, the battery-powered model comes equipped with an on-board 900W smart charger - a convenient charging solution that gives the Vista the capability to plug into any standard electrical socket.

Brought to the UK by distributor Reesink, it's time to say hasta la vista to old transport buggies and hello to new innovation from Toro.



Learn more about Toro's new Vista line, by calling distributor Reesink 01480 226800, emailing info@reesinkturfcare.co.uk or visit reesinkturfcare.co.uk



BRING THE NIGHT TO LIFE WITH COLOUR

Bring your fountain to life at night with Otterbine's Lighting Systems.

Introducing MIDI-RGBW Lights for Otterbine's Fountain Glo™. These 9-watt light sets offer a cost-effective way to add rich colour to your fountains. Pairs perfectly with Otterbine's 1-5hp aerating fountains to give lavish, vibrant light to accentuate any pattern with a variety of coloured displays and sequences. Takes your venue from day to night in style.

reesink-hydroscares.co.uk



Effective water solutions for all landscapes
Irrigation . Pumps . Water Aeration and More



Reesink UK LTD is authorised and regulated by the Financial Conduct Authority. Images shown for illustration only.



TRANSFORMING LANDSCAPING WITH BIOCHAR: THE ECO-FRIENDLY TREE SOIL ENHANCER



In today's drive towards sustainability and ecological stewardship, biochar is emerging as a key component, particularly when utilised as a tree soil improver. It's becoming essential for enhancing both new plantings and the revitalisation of older and veteran trees.

The Magic of Enriched Biochar Explained

Biochar is a form of charcoal, produced through the process of pyrolysis - the thermal decomposition of organic material in the absence of oxygen. Its application in landscaping is transformative, enhancing soil properties, increasing water retention, and providing a refuge for beneficial microorganisms. In the quest for greener landscapes, the superiority of enriched biochar over its plain counterpart marks a significant advancement. Enriched biochar, such as that offered by Carbon Gold, goes beyond the basic

benefits of traditional biochar by incorporating a blend of natural biology and fungi. This not only addresses the inherent issue of nutrient leaching associated with plain biochar, but also fosters a more conducive environment for plant and tree growth.

The addition of beneficial microbes and mycorrhizal fungi into the biochar matrix creates a symbiotic relationship with the plant roots, enhancing nutrient uptake, improving soil structure, and increasing water retention. These enriched properties ensure that trees and woody plants are not just surviving but thriving, by getting off to the best possible start with a robust foundation for long-term health and growth.

Pioneering Urban Greenery with Carbon Gold

For new plantings, the integration of biochar-based soil improvers can significantly accelerate growth by improving root development and nutrient uptake. This is especially crucial in urban environments where soil quality often lacks the richness found in undisturbed natural landscapes.

By incorporating Carbon Gold's enriched biochar into the soil, landscape architects and urban planners can ensure a more resilient and vibrant green infrastructure.

Revitalising Veteran Trees with Biochar Tree Soil Improver

Moreover, the rehabilitation of older and veteran trees presents a unique set of challenges, often involving compromised soil health. Here, biochar's role becomes even more

critical. Its ability to rejuvenate and restore soil fertility can breathe new life into ageing trees, enhancing their ability to withstand the stresses of urban environments and disease. Carbon Gold's Biochar Tree Soil Improver, with its added natural biology and fungi, offers a lifeline, promoting healthier, more resilient arboreal plants.

Sustainability: The Core of Biochar's Appeal

Sustainability is at the heart of biochar's appeal. Carbon Gold's products have been organically certified by the Soil Association since 2007 and are produced in an eco-friendly manner within the UK, emphasising local sourcing and minimising carbon footprint. This aligns with the broader goals of landscape and urban design to create sustainable, green spaces that contribute to the well-being of communities and the planet.

The use of enriched biochar in landscaping represents a significant step forward in sustainable urban development. Carbon Gold's innovative products exemplify the potential of combining traditional knowledge with modern science to address environmental challenges.

As we continue to reimagine our urban landscapes, Carbon Gold's suite of enriched biochar products stand out as key components in fostering healthy, resilient, and beautiful green spaces for future generations.

For further information email sales@carbongold.com or telephone 0117 2440032

CARBON GOLD[®]



It goes without saying . . .
 – selecting the right systems and products for garden and hard landscaping installation, protection and maintenance needs reliable information - and certainty that the systems and products are backed by sound science, wide knowledge, experience and by careful selection of the most appropriate materials - whether complete systems or individual products.



Since 1987, C.C.C. Limited has provided the highest performance chemically based materials for protection, care and maintenance of all types of metal, stone, concrete and timber structures, surfaces and 'objets' - in all climates and locations

- liquid membranes, adhesive, bedding and repair mortars and grouts, penetrative impregnating sealants, coatings - and more . . .
- for uses from stone and block paving installation - to timber cladding - to the cleaning and protection of delicate sculpture

with the principal aim of maintaining the 'natural' appearance of the material with maximum protection and durability.



All our products are made from scratch in our UK works, from the highest performance, safe and durable raw materials, sourced worldwide fully tested in the harshest conditions

We develop new or modified products for individual special needs

We believe that to make the right choices, there is no substitute for personal discussion so everyone can be sure you have the right product and full information for each project – whatever and wherever it is , whatever the climate - or the weather.

Please call or contact us to discuss your project needs on: -



by phone: +441229588449
 by email: info@conservationchemicals.com
 the web: <https://conservationchemicals.com>



E-BIKE CHARGING STATIONS FROM KES POWER AND LIGHT LTD

KES Power and Light Ltd is the sole UK distributor of PCE industrial plugs, sockets, and electrical distribution equipment. Notably, we are also a key player in the field of sustainable transportation, offering PCE E-Bike and EV chargers. With a full-cycle approach, our electrical panels, distro and switchgear are designed, manufactured, and perfected in the UK. The company's proficiency in CAD design and in-house metalworking ensures top-notch quality.

Additionally, our laser engraving capabilities add a personalised touch. KES Power and Light Ltd stands as a beacon of British innovation, delivering cutting-edge industrial electrical distribution and eco-friendly solutions for electrical and transportation needs. Contact our friendly sales team to find out more.

Tel. 02380704703 | Email. sales@kes.co.uk
 Web. www.kes.co.uk




LANDSCAPING ASSET FINANCE CASE STUDY FEATURE

By Propel Finance

Propel equips leading Landscaping business to drive growth

Propel recently financed a cherry picker for a leading Landscaping business; supporting the customer to achieve their development ambitions. Following this purchase, Propel helped the customer secure twelve more deals towards a range of business critical assets.

Feedback from the customer:

"We were initially referred to Propel as we required asset finance towards a cherry picker. We were impressed by the whole process, while the speed rate of securing the finance was very quick and efficient. The Propel team were outstanding; and the whole experience of dealing with them was excellent. We had so much confidence in Propel. It was a no brainer for us to return to them for further finance. They've since managed to help us purchase several other key assets such as woodchippers, cars, trucks and vans."

Maintain your advantage

To discuss how you could benefit from an asset finance solution designed around your business, call Propel's specialist team on 01633 982922 or email contact@propelfinance.co.uk.



Cutting Edge Machinery and Vehicle Finance

for Groundskeeping & Landscaping Businesses

- Access the latest machinery and vehicles immediately
- No large upfront payment, preserving capital
- Boost your cash flow by spreading the costs over time
- Flexible finance solutions tailored to your seasonal cash flow requirements
- Fixed payments protect your business against inflation
- Fast decisions, so no delays to important new contracts

Propel is the fastest-growing asset finance company in the UK; and has a track record of over 25 years in supporting Groundskeeping businesses in achieving their growth ambitions.

Talk to Propel's asset finance experts today for fast and flexible equipment and vehicle finance solutions designed to power your growth.

Finance is subject to status. Terms and Conditions Apply. Propel acts as a lender or a credit broker for business customers only.

contact@propelfinance.co.uk
 01633 982 922
www.propelfinance.co.uk

S J GEOMATICS - THE LAND SURVEYORS YOU CAN TRUST



Welcome to S J Geomatics, where we're not just land surveyors: we're your reliable partners in making your project a success. Here's what makes us stand out, plain and simple.

1. Listen Up: Your Way, Your Survey
Ever felt like your needs got lost in translation? Not with us. We get that every project is unique, so we listen, really listen, to what you need. Our surveys aren't just documents; they're your project's story, with all the details you asked for.

2. Quick and High Quality: Because Time Matters
In the hustle and bustle of construction, time is money. That's why we're all about speed without sacrificing quality. You'll get a quote on the same day you ask for it, and our final drawings? They'll be in your hands before you know it. No unnecessary delays here.

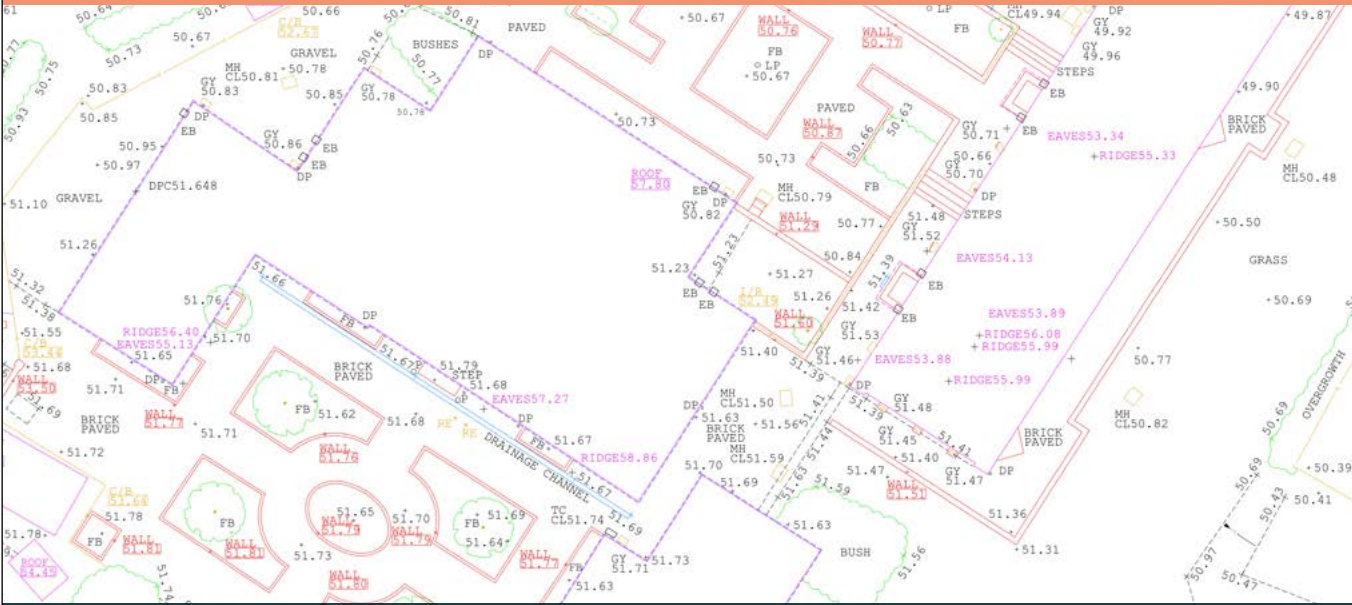
3. Affordable Excellence: Quality that Fits Your Budget
Top-notch surveys shouldn't cost a fortune. We bring you precision without the hefty price tag. Our competitive prices mean you get the quality you need without breaking the bank. Your project deserves the best, and we make sure it stays affordable.

Reliable and Trustworthy: We're in Your Corner
We're not just about surveys; we're about trust. We get how crucial our role is in your project. With us, you're not worrying about one more thing; you're focusing on getting the job done. Our mix of **attention to detail, speed,** and **fair pricing** makes us the reliable choice.

Choose S J Geomatics - where your project is our priority.
Contact us today on 01986 872716 or mail@sjgeomatics.co.uk

SJ GEOMATICS SURVEYORS

THE LAND SURVEYORS YOU CAN TRUST



WWW.SJGEOMATICS.CO.UK

INTRODUCING STEINFIX® EDGE PROFILES: REVOLUTIONISING EFFICIENCY IN PAVING AND STONE INSTALLATION



<p>Affixing with nails.</p> 	<p>Instantly available for use.</p> 	<p>Lawn borders with a gray hue.</p> 
---	---	--

Discover the innovative solution that not only saves you time but also improve cost-effectiveness in paving and stone laying - Steinfix® Edge Profiles. Bid farewell to the laborious task of concreting edges, as our cutting-edge profiles offer a permanent fixing solution, unaffected by concrete mix or weather conditions.

Key Features:

- Swift edge profile installation without the need for concreting.
- Designed for secure fixation using nails.
- Mouldable edge profile without concreting.
- Exceptionally robust, ideal for handling heavier loads.
- Ensures a clean and discreet gap between buildings and tiles.
- Perfect for sealing gaps in ceramic or natural stone tiles.



Steinfix® Edge Profiles guarantee not only efficiency and durability but also a seamless and professional finish for your paving and stone projects. Experience the future of hassle-free installations with Steinfix®.

www.pghorticulture.co.uk

steinfix[®]

Pavement finish without concrete



immediately ready for use



quickly laid



neat assembly



no concreting



extremely resistant



for areas subject to traffic



www.pghorticulture.co.uk



info@pghorticulture.co.uk



01327 828373



SMALL SPACE: BIG IMPACT

FOREST GARDEN'S TOP TIPS FOR BRINGING BIG STYLE TO SMALL SPACES

Spring is just around the corner and homeowners are looking to transform the most compact of outdoor spaces, according to new research from Forest Garden - the UK's leading manufacturer and distributor of wooden garden products.

Using data from Pinterest, Forest Garden found searches soaring over the last month for 'small garden' terms, with 'small back garden' up 100%, 'small city garden' up 90% and 'small garden design' up 100%.

Jenny Davis, Head of Marketing for Forest Garden, said: "Homeowners are making use of every inch of their outdoor space.

"From vertical gardens packed with colourful blooms to cosy seating spaces nestled in the tiniest nooks, homeowners are looking for clever solutions to maximise functionality and aesthetics in limited space."

Here, Jenny shares Forest Garden's guide to maximising every inch of your garden, to create a space that adds value to the rest of the home.

Designing a small garden

Less is more in a small garden but that doesn't mean everything needs to be small. A lot of small elements can create a very cluttered feel, so you may be better off choosing bigger more dominant features and

planting to balance the space - but at the same time, don't overwhelm the space. Think simplicity.

The sky's the limit

Vertical space is hugely important in a small garden where often you have more space upwards than you do outwards. Think about growing plants on walls, training them upwards or hanging them from a structure such as trellis, our living screen planter (great for rental properties as it doesn't need to be fixed to a wall) or our vertical slatted wall planter.

Vertical structures that can serve multiple purposes are ideal, think

privacy screening that can also provide support for climbing plants.

Multi-functional fixtures

Clever multi-purpose usage of areas is going to be the ideal situation. A space that works for two different purposes. Think about storage under bench seating rather than free-standing garden furniture. Raised beds or linear planters that can also act as dividers.

Forest Garden’s fold-down garden bar provides a brilliant entertaining space and when not in use can be folded away almost flush with the wall.

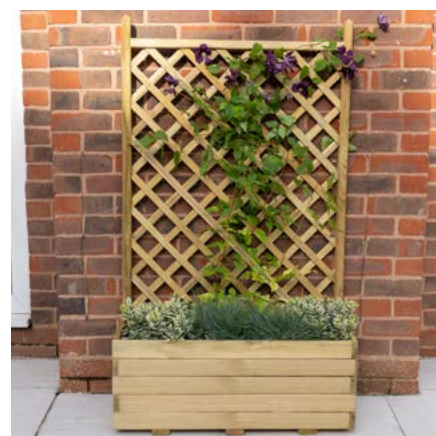
Finishing touches

A tree is always an asset to an outdoor space, even in a small garden. It leads the eye, attracts wildlife and can look really pretty adorned with solar lights. Garden designers always champion trees in small gardens.

Mirrors and reflective surfaces are also useful in giving the illusion that the space is bigger than it really is.

Jenny added: “When it comes to small garden spaces and courtyard gardens, every choice and every inch counts. Applying key design principles can turn even the

most compact courtyard into a lush, inviting hideaway with focal points leading the eye and space maximised through the use of vertical gardening.”



NATURE-BASED SOLUTIONS THAT ENHANCE BIODIVERSITY

Pictorial Meadows are committed to increasing biodiversity in gardens and urban communities. They believe embracing the beauty of flower meadows is not just about creating an aesthetically-pleasing environment, but also about fostering a lasting and harmonious coexistence with nature.



The Pictorial Meadows Difference

With over 20 years of dedicated research and development, in partnership with the University of Sheffield, Pictorial Meadows are committed to creating nature-based solutions that are proven and reliable. Recognising that societal acceptance is crucial for the long-term success of such planting styles, their goal is to make biodiversity-rich flower meadows accessible and appealing to all.

Quick and Colourful

Annual flower meadows are an excellent starting point when wanting to increase biodiversity into projects. Not only are they affordable and easy to implement, but they yield quick wins and vibrant results. The burst of colour is often a talking point for people, as well as a magnet for insects and pollinators that enrich the local ecosystem. These annual seed-sown meadows can be a very rewarding introduction into the world of colour and biodiversity, paving the way for more extensive and longer-term planting practices.

Simplified Long-term Solutions

If you want to remove the complexity of growing from seed, Pictorial Meadows' pre-grown turf simplifies this process as all the professional horticultural growing has been done in advance, providing an instant and long-term planting solution. But it doesn't have to be a distinct choice between perennial seed and turf - a combination of both can be



employed by carefully thinking about sightlines and planting densities. Strategically placing turf at front-of-view in a planting area will allow perennial seeds to establish behind. This will give quicker and higher flower densities in the foreground, and slower and lower densities at the rear.

Perennial Turf: A Biodiversity Powerhouse

For those seeking the highest levels of biodiversity with minimal effort and instant results, Pictorial Meadows' perennial turf range is the go-to solution. Offering various mixes tailored to different location requirements, this product contains over thirty different species that boast long-season flowering and exceptional winter interest. The ease of implementation, coupled with the visual spectacle and ecological benefits, makes their perennial turf an ideal choice for all types of projects. Even over winter, biodiversity is being supported; leaving the dead flower heads standing over winter benefits not just

biodiversity in the garden, but also local wildlife by providing a habitat for invertebrates and a resource of oil-rich seeds for winter-feeding birds.

Reliable and Trusted

In addition to having won awards for sustainability and biodiversity, customers are delighted with results. After installing Pictorial Meadows' 'Classic' mix at Clumber Park, the National Trust's Head Gardener, Dene Wood, talked about how the increase in pollinator numbers was not only evident to visitors, but also celebrated. He humorously remarked, "If only those extra visitors (bees and insects) were counted in our visitor numbers!"

Pictorial Meadows is part of The Green Estate Community Interest Company and offers a range of designer meadow seed mixes and turf alongside a professional meadow creation, management and consultation service.

pictorialmeadows.co.uk

Pictorial Meadows ★ Planting for the future with Pictorial Meadows turf

Beautiful and robust plants that provide considerable climate resilience

Patchwork Quilt



Botanical Skyline



Woodland Fringe



Robust & Reliable

Tried and tested in diverse climatic conditions

Resilient & Adaptive

Breadth of species allows for dynamic adaptation to climate challenges

Stunning Visual Impact

100% flowers, upwards of 150 plants per square metre



the
**green
estate**

COMMUNITY
INTEREST
COMPANY

pictorialmeadows.co.uk
0114 267 7635

Chikara[®]

Weed Control

The number one season long broad spectrum weed control product for professionals

- ✓ Up to 5 months control
- ✓ Less Sprays = Less Labour
- ✓ Pre and early post emergence control
- ✓ Low application rate = Cost effective

Chikara is a water dispersible granule formulation containing 25% w/w flazasulfuron for use as a non-selective herbicide on natural surfaces not intended to bear vegetation, permeable surfaces overlying soil, hard surfaces (railway ballast only and amenity vegetation).

Discover more: www.certisbelchim.co.uk

CHIKARA[®]

USE PLANT PROTECTION PRODUCTS SAFELY. ALWAYS READ THE LABEL AND PRODUCT INFORMATION BEFORE USE. For further information with regard to the handling, storage and disposal of these products please refer to the product label. Chikara[®] is a registered trademark of Harrowden Turf & Seeds Ltd, Ipswich and contains flazasulfuron. MAAPP No. 20186. Contact Certis Belchim on 0945 373 0305, e-mail info.uk@certisbelchim.com or visit www.certisbelchim.co.uk. © Certis Belchim 2024

teign trees & landscapes

south west limited

www.teigntrees.co.uk

- All Aspects of Tree & Hedge Work
- Tree Safety Reports & Surveying
- Vegetation Management
- Ecology & Consultancy
- Decking, Fencing & Gates
- Site Clearance & Stump Grinding
- Timber Buildings & Garden Rooms
- Ground Maintenance
- Turfing & Planting

COVERING SOUTH/SOUTH WEST OF THE UK

Call us on: 01174 524400
or 01626 773499

Email: hello@teigntrees.co.uk

TURF BUT NOT JUST TURF

Harrowden

TURF | WILDFLOWER | GREENROOF | TOPSOIL | SEED

Scan here to find out more

01832 777100
sales@harrowdenturf.co.uk

The Original SwellGel

Water Storing Granules

The original and best water storing granule

Perfect for EVERY planting occasion

- Reduce watering by up to 75%
- Improve soil structure
- Reduce stress from transplant shock
- Help turf establish
- Help plants succeed

For bulk order quantities please contact hello@swellgel.co.uk

Discover more at www.swellgel.co.uk



F.H.BRUNDLÉ
SERVING THE TRADE SINCE 1889



It's a lifestyle choice...



Pro-Railing® stainless steel & glass balustrade specialists

The widest range of innovative and stylish handrail and balustrade from a single supplier.

Whatever the project, we have a cost effective solution.

01708 39 80 22

sales@brundle.com

www.fhbrundle.co.uk



50 SHADES OF GREEN

50 SHADES of GREEN® Seed Range

ABOUT THE COMPANY As you will see the company has a wide range of certified seed mixture formulations all of which tried and tested over several years and guaranteed to deliver optimum reliable results in a range of different environments. With over 30 years' experience in the UK seed industry our "specialist seedsmen" give you the confidence that will always meet or exceed your expectations.

BESPOKE MIXTURES AT IDEALSEED Unlike mainstream seed suppliers our focus is ensuring all our seed mixtures are "fit for purpose" and contain varieties/cultivars suited to specific geographical locations, as such each mixture is processed individually selecting varieties from our vast Grass & wildflower seed portfolio which are best suited to your seeding environmental location. We are more than happy to discuss your requirements.

CONTACT US

Call to discuss your requirements/needs or a competitively priced quotation.

Billy Nimmo 07920 456426 / email billy@idealseed.co.uk

Alternatively explore our website:

www.idealseed.co.uk

Note: instant credit and discount for bulk seed



i-DEALSEED

"The Grass & Native Wildflower seed specialists"

NEW! THOMAS SANDERSON INTRODUCES SMART ELECTRIC PERGOLA AWNINGS LAUNCHING MARCH 2024



Thomas Sanderson, a leading UK window dressing and garage door specialist, has unveiled a new range of smart electric pergola awnings.

Offering a more permanent and expansive shading solution than traditional awnings, pergola awnings create an outdoor room, perfect for entertaining, relaxing, or simply enjoying the fresh air.

“With the UK awning market experiencing significant growth and searches for ‘outdoor living furniture’ increasing by 67% in 2023 vs 2022*, people are now spending more time outdoors than before the pandemic. Thomas Sanderson is responding to the ever-growing trend of creating luxurious outdoor living spaces,” says Abi Clewley,

product manager at Thomas Sanderson.

“Our premium pergola awnings cater to this demand perfectly. Blurring the lines between indoors and out, they offer extensive coverage, are ideal for larger areas and come with a host of smart features for ultimate convenience, like app, remote or voice control for shade levels, lighting, and even heating.

Crafted with premium materials and available in a wide range of on-trend fabric colours and frame finishes, these awnings are not only highly durable but also stylishly complement your home’s architecture. They provide exceptional sun protection, ensuring a comfortable outdoor experience

even on the brightest days. And thanks to their versatile design, they’re engineered to withstand various weather conditions, making them perfect for enjoying your outdoor space year-round. Plus, with our professional installation and ongoing support, you can enjoy peace of mind knowing your pergola awning is built to last.”

Available in 45 retractable fabrics, with optional LED lighting and heating, these awnings offer the perfect blend of functionality, style, and comfort.

Prices from £2,199.

For more information visit:

www.thomas-sanderson.co.uk/awnings

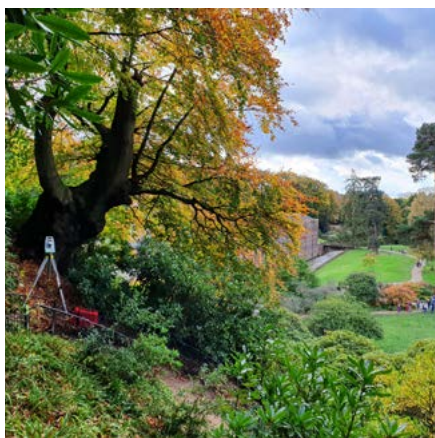
FAST AND AFFORDABLE SURVEYING SOLUTIONS FROM A PROFESSIONAL AND FRIENDLY TEAM

NTB Survey is a land surveying practice offering flexible and bespoke services to meet client needs, including:

- Topographical surveys
- Measured building surveys
- Settlement monitoring
- Cut-fill analysis
- Utility surveys

NTB Survey is committed to delivering the best surveying services to provide a perfect foundation for successful development of projects, guiding our clients through the whole process.

We have developed a product specifically aimed at the landscaping industry, paying particularly close attention to building apertures. This allows the designer to visualise the outdoor space from the perspective of the residents within the properties they're helping to develop, allowing eye-catching features within the landscape to be visible from within the properties themselves, giving clients a fully immersive connection between the indoors and outdoors.



Our land surveyors have a wealth of knowledge and experience, having delivered accurate survey results on thousands of projects. Having this experience within the team translates to an understanding of the importance of feature heights, such as walls and hedges, that impact visibility lines, crucial to design.

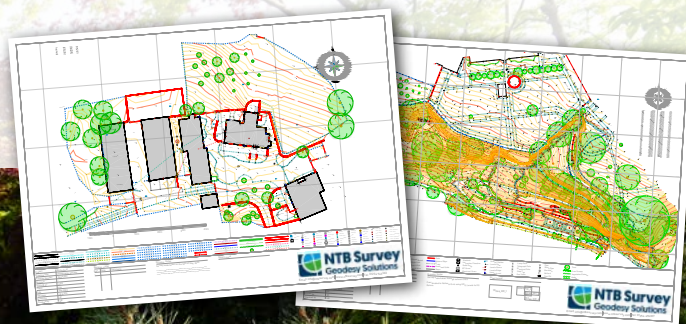
We work closely with our clients to identify their objectives and the most cost-effective solutions for their project.

Recognising that clients often need a quick turnaround to achieve project goals, we work quickly and efficiently, whilst always maintaining high standards you can trust.

When you book a service with us, our expert surveyors pay attention to detail and use their expertise, alongside the latest technologies, to produce accurate survey results, on time, every time.

To book a survey, or to find out more, please get in touch by phone, email, or via our website:

**01254 94 33 63 | info@ntbsurvey.com
www.ntbsurvey.com**

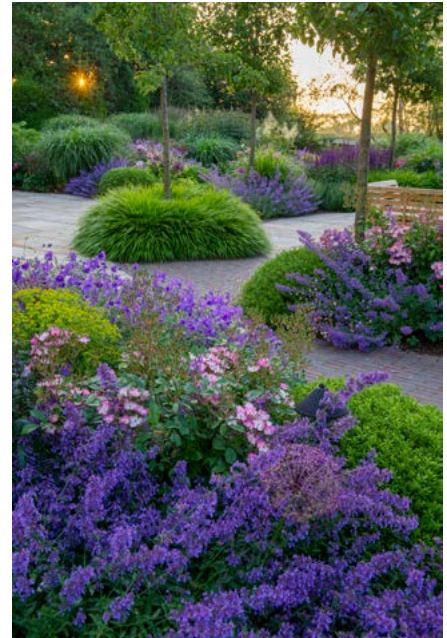


Land Surveying Solutions in the UK

Receive 10% OFF our services when filling in our enquiry form on our website using code L&UD10
www.ntbsurvey.com | info@ntbsurvey.com | 01254 943 363



ENTRIES ARE NOW OPEN FOR THE 48TH NATIONAL LANDSCAPE AWARDS



The British Association of Landscape Industries (BALI) is delighted to confirm that entries into this year's National Landscape Awards are now open. This year there are 30 categories open for entry, with all winners automatically being eligible to win one of our Special Awards, which includes Best First Time Entrant, Best Design and Build and Best Newcomer to BALI.

Entry into the National Landscape Awards is exclusive to Accredited members and Training Provider members of the Association.

The Awards are a fantastic opportunity to showcase your exceptional capability and expertise to the landscaping industry. Winning a National Award is recognised as a stamp of excellence, setting you apart and providing you with a unique selling point for your products or services.

The Awards are a great way to recognise and celebrate the hard work and commitment your employees make to delivering exceptional schemes and first-class

customer service. The associated publicity generated will increase the visibility of your business, providing you with new opportunities, potential partners and end clients.

To assist members with the online entry process Chair of the Judging Panel, John Melmoe and Events Project Manager, Emily Feeney, will be holding an online workshop on the 15 March centred around key areas of the entry process to help members get ahead on their submissions. After this date the workshop will be available on-demand through the Awards website baliawards.co.uk.



Entry deadlines and costs:

Accredited Contractor & Group/ Accredited Designer Categories

Early Bird Discount Deadline: 24 April - £225.00 per entry (Additional Entries: £200.00 per entry)

Final Deadline: 3 June - £260.00 (Additional Entries: £235.00 per entry)

First Time Entrants: £155.00 per entry

Supplier Exceptional Service/ Employer Excellence Categories

Early Bird Discount Deadline: 3 June - £225.00 per entry (Additional Entries: £200.00 per entry)

Final Deadline: 5 July - £260.00 (Additional Entries: £235.00 per entry)

First Time Entrants: £155.00 per entry

International

Early Bird Discount Deadline: 3 June - Fee £325.00 per entry (Additional Entries: £300.00 per entry)

Final Deadline: 5 July - Fee £360.00 per entry (Additional Entries: £335.00 per entry)

First Time Entrants: £255.00 per entry



BALI
National
Landscape
Awards



Headline Sponsor

OPEN FOR ENTRIES

Accredited Contractor & Group/Accredited Designer Categories

Early Bird Discount Deadline: 24 April 2024

Final Deadline: 3 June 2024

Supplier Exceptional Service/Employer Excellence Categories

Early Bird Discount Deadline: 3 June 2024

Final Deadline: 5 July 2024

International

Early Bird Discount Deadline: 3 June 2024

Final Deadline: 5 July 2024

The National Landscape Awards Ceremony will be held on Friday 6 December 2024, JW Marriott Grosvenor House, Park Lane, London

 @BALI_Landscape

 balilandscapeuk

Visit baliawards.co.uk for entry criteria and to start your entry

For general enquiries, contact **Emily Feeney**
Telephone: **07936 944258**
Email: emily.feeney@bali.org.uk

For sponsorship opportunities, contact **Joanna Pieprzak**
Telephone: **07842 436597**
Email: joanna.pieprzak@bali.org.uk

HEADLINE SPONSOR



SPONSORED BY

adtrak.

TOPSOIL
Respectfully sourced,
certified peat-free.
The experts that care.

Composite Prime

Crowders
Growing since 1798

easiglass™

PLANTS
UK LIMITED

Green-tree
Topsoil

Ground
Control

Millier

JOHNSONS
Landscape

Makita

M+M
Soils | Aggregates | Waste

REESINK
Turfcare

Rochfords
Specialists in the landscape industry

VAN DEN BERK
UK LIMITED



Load & Go



Plant & Go

ADVANCED KFS SPECIAL VEHICLES UNVEILS CUTTING-EDGE VEHICLE CONVERSIONS FOR GROUNDS MAINTENANCE LEADERS

In a significant announcement that is set to redefine efficiency and safety in grounds maintenance, Advanced KFS Special Vehicles (AKFS) has solidified its position as the pioneer in innovative vehicle conversions. For years, AKFS has been at the forefront of engineering bespoke vehicle solutions for industry giants, including Glendale and idverde, enhancing operational capabilities with their groundbreaking Plant & Go® and Load & Go® vehicle conversions.

Glendale has been particularly impressed by the Plant & Go® model's low floor design and generous payload capacity of 1430kg, which perfectly aligns with their operational needs. Similarly, idverde adoption of the Load & Go® beavertail conversions, renowned for their adaptability to any chassis, underscores the versatility and customisability AKFS brings to the table.

Specialising in lightweight yet durable engineering, AKFS's Load & Go® beavertail conversion stands out with a total conversion weight of just 320kg, including assisted tailgate; ensuring that businesses benefit from the best possible payload options. The commitment to tailor-made solutions extends to offering bespoke conversions that meet the specific needs of each customer, backed by extensive experience and advisory on design modifications.

The Plant & Go® model is designed with operator safety in mind, featuring a low working height and an efficient tailgate to facilitate the smooth transition of large mowers and equipment from transport to operation. With a width of 1810mm between wheel arches, it comfortably accommodates most large ride-on mowers, supplemented by additional storage for tools and equipment. Customisation options,

including towbars, winches, lighting, and more, allow for a vehicle that meets both personal and regulatory needs.

Likewise, the Load & Go® conversion's compatibility with any cab make offers unparalleled flexibility, ensuring that clients can select a model that best fits their preferences and requirements. With options for bed lengths ranging from 3600mm to 4500mm and advantageous fleet terms, AKFS promises not only the ideal vehicle conversion but also competitive pricing.

For more information, contact our Grounds Maintenance Product Specialists on 01246 250022. This is a unique opportunity to discover how AKFS's tailored vehicle conversions can streamline your business operations, setting a new standard in the industry for efficiency and safety.

AKFS Ltd

Grounds Maintenance Vehicles

AKFS[®]



Scan me



Quote LAUD66 to our Product Specialists
and receive a free "Cab Comfort Pack" on all orders
processed before C.o.B 30/04/2024



01246 250022

www.advanced-kfs.co.uk



STRATEGIC PARTNER
AL-KO
QUALITY FOR LIFE

Built Without Compromise



THE GP360 ECO FUSION PULSE WELFARE UNIT FROM GENQUIP-GROUNDHOG

The GP360 Eco Fusion Pulse is one of a range of sustainable site welfare units from one of the UK's leading temporary accommodation manufacturers, Genquip-Groundhog. The unit is built to provide an advanced environmental solution, whilst ensuring that the operator is fully compliant with all CDM - Construction (Design and Management) regulations and HSE- Health and Safety Executive legislation. Safe working regulations state that site workers should have access to sanitary conveniences, washing facilities, access to drinking water, accommodation for drying and changing clothes, and an area for rest and eating.

The GP360 Eco Fusion Pulse mobile units are suitable for accommodating six persons, which provides pleasant and safe working environments, ideally suited for contractors working on outside projects.

The GP360 Eco Pulse welfare unit is supplied with a current electrical installation test certificate. It also features a highly secure double lock door, tough security window shutters and an anti-theft secure nose cone.

The GP360 Eco Fusion is operated by an on board 12V battery system that powers the energy-saving LED lights, heating, hot water and USB inverter sockets. The battery charger automatically charges the on board batteries and ensures the smooth operation of the hot water system, kettle and microwave. The battery charger is fitted with an auto-stop timer to save overrunning and unnecessary wastage. Users of a GP360 Eco Fusion Pulse will benefit from reduced fuel usage, less generator servicing, longer generator life, fewer breakdowns and low noise pollution.

The GP360 Eco Fusion Pulse features a roof-mounted solar panel that provides the power for heating, lighting, hot water and electrical sockets. Genquip-Groundhog engineers have calculated that this system can ease carbon discharges and bring about cost savings of up to 80% - by simply reducing the reliance on a diesel generator, which restricts harmful emissions. The on-board low flush toilet system, which is considerably more comfortable than a chemical toilet, reduces water use and waste on-site.

Most site projects have set rigorous targets to reduce the impact on the wider environment. These goals include; carbon, waste and water. Therefore using a GP360 Eco Fusion can help a contractor to meet these objectives.



Genquip-Groundhog
Telephone: 01639 823484
Email: sales@genquip.co.uk
groundhog.co.uk

Accommodation for urban landscaping professionals.

Proven, robust, reliable welfare.



groundhog hybrid Fusion Pulse welfare units and solar toilets give owners and end users improved chances of winning contracts through greater sustainability by way of reduced fuel usage leading to lower CO₂ emissions.

Scan the QR code to view full product range



FUSION PULSE
GPO500



FUSION PULSE
GP360



solar toilet



x8+2
6 kVA
x1



x6
6 kVA
x1



x2
x2

Robust, incredibly efficient and easy to use, these units are ideal for on site applications where **secure, easily transported and deployed welfare and office space** incorporating **full toilet facilities** or **standalone toilets** are required fast.

Incorporating all the latest environmental and safety technologies, the units provide a pleasant & safe working environment, making them a high secure choice of anti-vandal welfare accommodation – ideal for the ever demanding urban landscaping industry.

Helping you achieve realistic carbon reduction goals

TEL: 01639 823484 | EMAIL: sales@genquip.co.uk
www.groundhog.co.uk



Mobile Units have obtained type approval with VCA



NATURAL TECHNOLOGY FOR TURF AND SOIL

Our unwavering commitment to introducing cutting-edge products has led us to proudly announce the exclusive availability of three new Organic-Mineral Fertilisers manufactured by DCM in Belgium, available in the UK exclusively from Thorntrees Amenity Ltd.

DCM Organic-Mineral Fertilisers are meticulously built from more than 30 different high quality organic sources. Most of these raw materials are of plant or animal origin that are derived from residual flows from the human food industry. These ingredients are carefully

integrated with high-quality mineral components to create DCM Organic-Mineral Fertilisers.

Each raw material has its own nutrient release characteristic. These release characteristics can be modified additionally by a variety of proprietary pre-treatments. By properly combining the right ingredients and carefully pre-treating certain elements, a prill can be designed to release its nutrients in a controlled and gradual manner.

DCM has the perfectly balanced formula for the summer.

The organic nutrients release evenly for continuous growth with a constant ball speed. The appropriate potassium content ensures a strong turf, resistant against treading. The added magnesium and iron result in a superb green grass colour.

Due to the unique production process, the MINIGRAN® granule contains the same nutrients in each granule. Several trials have shown that MINIGRAN® can be distributed up to 60% more efficiently than a regular pellet or crumble! This perfect distribution ensures even growth and colour, leaving no spot pattern. The small granules fall deeper into the turf, increasing efficiency since they are not picked up while mowing.

Improve your results and efficiency with our DCM Organic-Mineral Fertilisers. Exclusively distributed by Thorntrees Amenity Limited, we promise not just a fast supply line, but a driving force of productivity.



www.thorntreesamenity.co.uk

DCM MINIGRAN® FERTILISER

Natural Technology For Turf And Soil

MINIGRAN VITAL-GREEN 14-4-7



•Up to 100 days controlled release

Application Rate: 35 grams per square metre
Each 25 KG bag will treat 714 square metres
IMPORTANT: 14 bags will treat 1 hectare

Total Nitrogen	14%	
3.0% Ammoniacal Nitrogen		
6.0% Urea Nitrogen		
5.0% Water Insoluble Nitrogen*		
Available Phosphate (P ₂ O ₅)	4.0%	(1.7%P)
Soluble Potash (K ₂ O).....	7.0%	(5.8%K)
Magnesium (MgO).....	3.0%	(1.8%Mg)
Iron (Fe)	0.15%	
0.15% Chelated Iron (Fe)		

MINIGRAN SPORT-MIX 8-3-12



•Up to 100 days controlled release

Application Rate: 35 grams per square metre
Each 25 KG bag will treat 714 square metres
IMPORTANT: 14 bags will treat 1 hectare

Total Nitrogen	8.0%	
1.0% Ammoniacal Nitrogen		
3.0% Urea Nitrogen		
4.0% Water Insoluble Nitrogen*		
Available Phosphate (P ₂ O ₅).....	3.0%	(1.3% P)
Soluble Potash (K ₂ O).....	12.0%	(9.9% K)
Magnesium (MgO).....	3.0%	(1.8% Mg)

MINIGRAN GREEN BALANCE 9-0-9



•Up to 100 days controlled release

Application Rate: 35 grams per square metre
Each 25 KG bag will treat 714 square metres
IMPORTANT: 14 bags will treat 1 hectare

Total Nitrogen	9.0%	
3.0% Ammoniacal Nitrogen		
3.0% Urea Nitrogen		
3.0% Water Insoluble Nitrogen*		
Soluble Potash (K ₂ O)	9.0%	(7.5%K)
Magnesium (MgO).....	2.0%	(1.2%Mg)
Iron (Fe)	2.0%	
2.0% Water Soluble Iron (Fe)		

MIXTURE OF VEGETABLE, ANIMAL AND/OR MINERAL INGREDIENTS



EACH INGREDIENT HAS ITS
SPECIFIC NPK CONTENT

EACH INGREDIENT IS A
FEEDING SOURCE FOR SOIL LIFE



BRING THE OUTDOORS TO LIFE WITH ROBINIA FOREST PLAY RANGE



Playspaces are employing the extremely strong and durable Robinia European Hardwood in their new Forest Play Range, designed and manufactured in Kent. As a well-known rot resistant hard wood, Robinia is perfect for outdoor playground equipment and tough enough to withstand anything the British weather throws at it. It is great to work with as it does not require impregnation and can be anchored directly in the ground. This highly sustainable wood's unique irregular look with its natural curves blends into the surroundings beautifully, creating original and fun spaces for children to play.

Playspaces design, manufacture, supply and install bespoke outdoor playground equipment, providing individual play equipment pieces or complete turnkey playground installs. Their extensive range of timber playground equipment has products suitable for every age and setting, including safety and all-weather surfacing. Their bespoke designs and robust high-quality installations are suitable for schools, nurseries, parks and commercial outdoor play areas. The New Robinia Forest Range is especially suited to commercial applications for parish councils and play park owners concerned about the higher carbon footprint of metal play equipment. Timber play equipment by its very nature represents a huge source of carbon capture - especially an untreated natural European Hardwood like Robinia!

Playspaces play schemes comply with the most stringent safety standards and all Playspaces manufactured products come with full installation instructions, with each component part simple to identify. From trim trails and towers to climbing frames, swings, slides and more, Playspaces will work with you from initial site visits and design discussions, through manufacturing to installation as well as taking care of your subsequent safety and maintenance inspections and repairs.



enquiries@playspaces.co.uk | Tel 01622 844 238
www.playspaces.co.uk



Ask us
about our
Robinia
range!

Bespoke Design, Physical Play Equipment,
Outdoor Learning, UK Manufactured



Find us on:   

T: 01622 844 238
E: info@playspaces.co.uk

playspaces.co.uk

fmwDISTINCT
golf course equipment



GOLF COURSE EQUIPMENT





ECO RUBBER CHIPPINGS



Colour Variations



Safe, long lasting, trouble free, colourful ground cover.
Ideal for play areas, landscaping & animal settings.

01977 529 570 | info@ecochippings.co.uk

ecochippings.co.uk

Playgrounds Just Got
Way More Exciting!

TOUGH TRAIL®

EN1176
Playground Safety Compliant

NEW

www.eibe.co.uk

contactus@eibe.co.uk

FREE Catalogue
& Consultation

01483 813834

STIHL

NEW

**PROFESSIONAL
PERFORMANCE.
LONG WORKING TIMES.
BATTERY POWERED.**



KMA 120 BATTERY-POWERED KOMBIENGINE.
STIHL.CO.UK

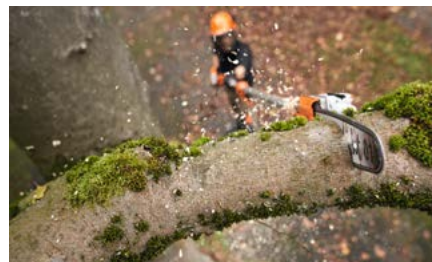
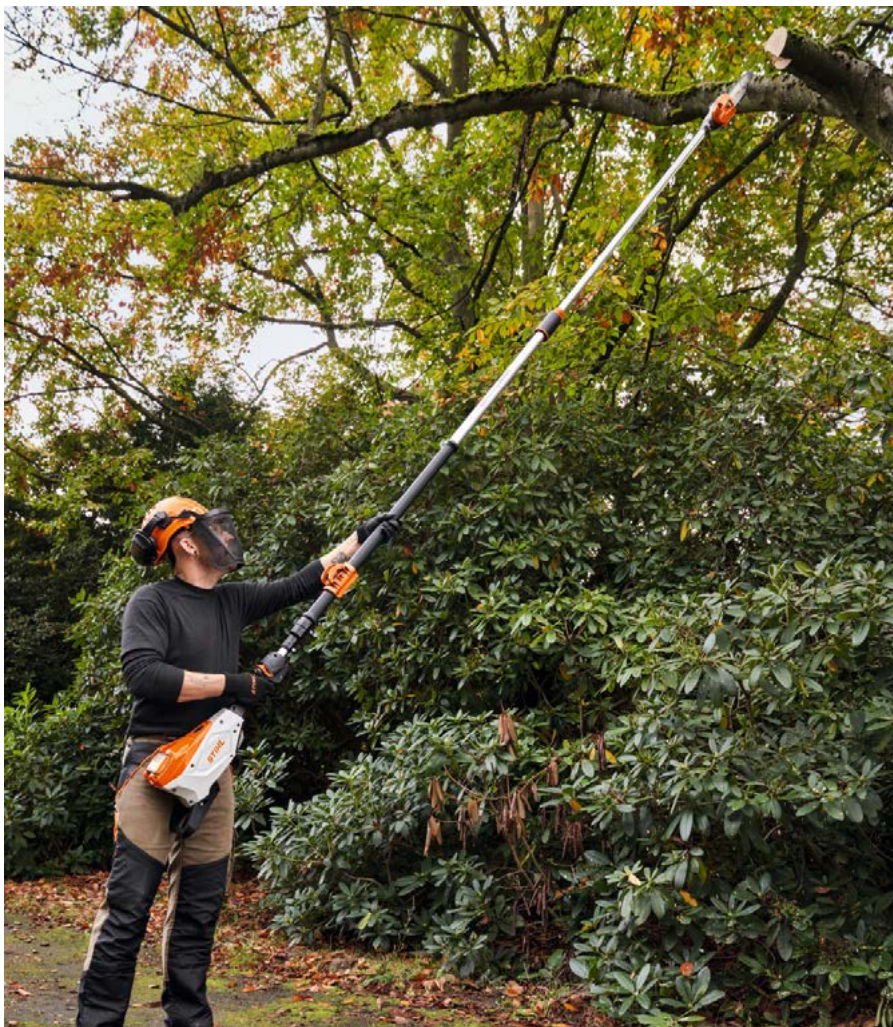


STIHL's extensive range of professional grade battery-powered tools continues to grow with the new KMA 120 KombiEngine. Choose from 11 different attachments, ranging from hedge trimmers to brushcutters to leaf blowers. And with long lasting smart batteries that deliver fast charging times and consistent performance, STIHL has the right tool for any commercial user.

APIII
SYSTEM

BATTERY POWER. BY STIHL.

STIHL LAUNCHES ITS MOST POWERFUL BATTERY POLE PRUNERS TO DATE



STIHL has launched two new professional battery pole pruners, offering greater cordless performance than ever before. The two tools, forming part of the AP System, give professional landscapers and arborists lightweight operability and maximum power for unrivalled efficiency.

Both the HTA 150 and HTA 160 offer a high power output of 1.4 kW, the same as the petrol HT 135 pole pruner and 0.3kW higher than

the HTA 135. Driven by a powerful and low maintenance EC motor, both the HTA 150 and HTA 160 offer elite performance with both models capable of cutting through large branches for efficiency in professional arboriculture and forestry applications.

While the HTA 160 boasts a rigid telescopic shaft with a maximum length of 405 cm, the same reach as professional petrol models, the HTA 150 offers a shorter, fixed length

shaft best suited to thinning work in young stands.

Battery pole pruners offer numerous advantages compared to petrol models, such as a low noise and emission free work environment, low running costs and easier maintenance.

Thanks to the lightweight magnesium gearbox, both models are easy to manoeuvre into the desired position for precise cutting. The design of the sprocket cover is also optimised to promote efficient ejection of the wood shavings for faster working too.

Like many tools in the AP System, the HTA 150 and HTA 160 feature a metal mesh air filter, helping to cool the battery and motor during operation and further enhancing the lifetime of the product.

Compatible with the Smart Connector 2 A, both models allow users to gather insights from the tool, such as working time and working speed history. Not only this, but this intuitive feature also alerts the user when maintenance tasks are due on each individual tool to maximise productivity.

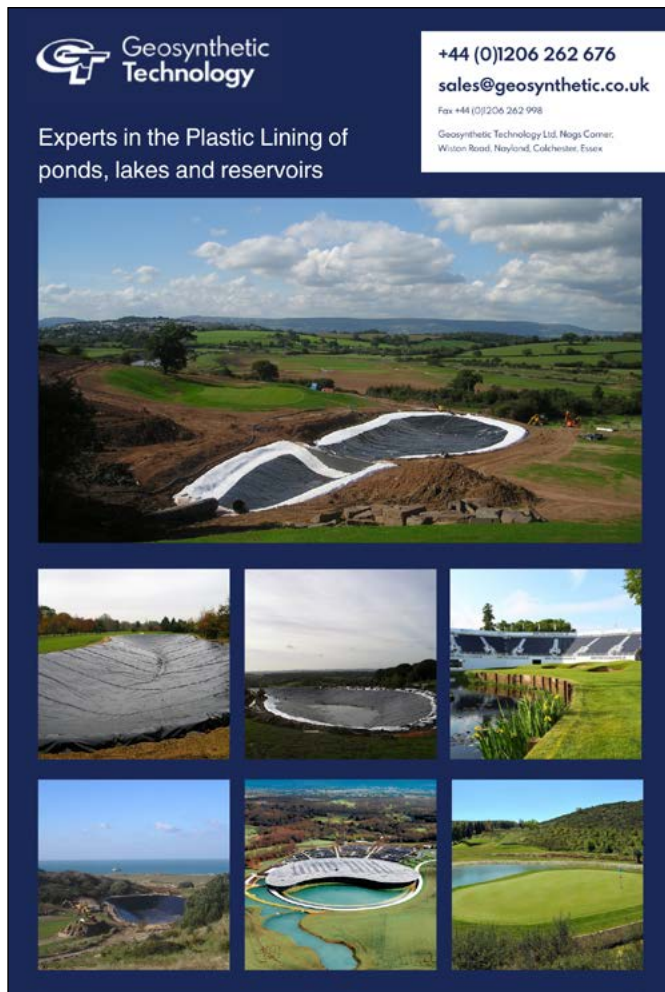
For more information on the HTA range and STIHL's professional battery tools, please visit www.stihl.co.uk.



FPM
AGROMECHANIKA

COMPACT TRACTOR ATTACHMENTS
farmtechsupplies.co.uk
01420 520510

the home of FPM **FARM TECH SUPPLIES**
COMPACT TRACTOR ATTACHMENTS



Geosynthetic Technology

+44 (0)1206 262 676
sales@geosynthetic.co.uk
Fax +44 (0)1206 262 998
Geosynthetic Technology Ltd, Nags Corner,
Wilton Road, Nayland, Colchester, Essex

Experts in the Plastic Lining of ponds, lakes and reservoirs



screwSHOP.co.uk
DIY • Trade • Business

"Let us surprise you - Lowest Online Prices"

- Ironmongery & Builders Metalwork
- Silicones/ Sealants
- PPE
- Lowest Prices
- Next Day Delivery throughout the UK

Home of **TURBOQWIK** and **RHINO**
THE PRECISION MULTIPURPOSE WOODSCREW SCREWS

0121 559 8866 • sales@screwshop.co.uk



WELCOME TO THE POST-PETROL ERA

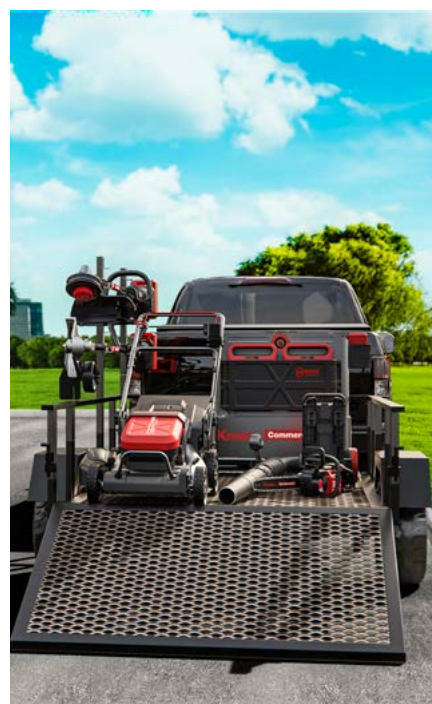
Kress is leading the charge with breakthrough innovation in battery-powered technology, built to deliver the performance and power of petrol. Committed to ensuring the groundskeeping and landscape maintenance industry a zero-emission future, Kress's unique battery technology makes the transition from petrol to battery-powered outdoor power equipment sustainable, with benefits both for the environment and the users.

Kress has a legacy of excellence and innovation that spans over five decades. This long history of innovation has earned Kress a strong reputation for reliability, quality, and sets industry-leading standards. This legacy speaks to Kress's track record of delivering cutting-edge cordless solutions, without compromising on power.

The Kress range of commercial outdoor power equipment, combined with the remarkable Kress 8-minute CyberSystem batteries, delivers unparalleled power in record time. It's a revolutionary achievement that establishes a groundbreaking standard for commercial equipment, and it is the gateway to transitioning to zero-emission landscaping.

Kress has an innovative range of robotic mowers. The Kress RTKn robot mowers efficiently operate in parallel lines and autonomously move from an area to another as if they were driven by humans, with no need for boundary wires, or on-site aerials. It's like having an extra seasoned greenkeeper on your team.

Kress is also gearing up to launch their much-anticipated expansion to the commercial range, set to arrive Spring 2024.



www.kress.com



Battery tools with no compromise on power or performance

Fast-charging and long-lasting, choose the Kress 60V Commercial Range of outdoor power equipment for new levels of power for all types of landscaping professionals. An impressive line of commercial gardening equipment, with a performance battery platform that stands strong in harsh conditions and delivers unparalleled reliability - all without the high costs and hassles of petrol.



Speak to your local garden machinery dealer today to learn more

[kress.com](https://www.kress.com)



ACCESS EQUIPMENT AND VEHICLE CONVERSIONS

CPL offer one of the largest ranges of access equipment and vehicle conversions for the landscaping and design sector.

Such a vast sector deserves a variety of solutions to ensure safety and efficiency. Therefore, CPL dedicate design and manufacturing resources to ensure there is an option for all interventions.

The 4x4 Isuzu D-Max and Toyota Hilux Platforms make sure the operator can gain access no matter the terrain and the 360° boom rotation system ensures access to everything. With accessory options fitted inhouse from PPE lockers, cages to protect beacons and company livery/ chapter markings.

The ATAT (All terrain arb truck) has been specifically developed for green waste movements. The sleek design gives a strong first impression to new clients. With the help of various industry experts, it is also a strong and efficient workhorse. Available as a tipping bed with

1300KG payload, a static drop side and a tipping drop side, this model is extremely versatile to suit your specific needs.

CPL take pride in providing the correct machine for you and your business. This is why we are dealers for a range of solutions with very powerful specifications. Within the range are tracked platforms, Spider lifts and trailer mounted solutions. Although spider lifts have been a firm favourite within the sector for some time, these units are somewhat different. They are a combination of both a self-propelled wheeled platform and stabilised tracked platforms. This technology allows the platform to be moved without stowing. This makes multiple tree/shrubbery maintenance more efficient which in turn saves time and money.

High performance lifts such as the mini scissor options can move across rough terrain and can overcome slopes up to 20° longitudinally and 15° laterally.



CPL are the official UK dealer for Palfinger Platforms. These are one of the highest quality manufacturers in the world. The 3.5t chassis options range from 20m to an impressive 28m. For the larger forestry projects there are some superb telescopic booms reaching all the way up to 90m but generally the 28m to 48m selection are the most favoured due to their versatility.

www.cpl-ltd.com



VEHICLE CONVERSION SPECIALISTS



**A FULL RANGE OF ACCESS
EQUIPMENT AND VEHICLE
CONVERSIONS DESIGNED
WITH YOU IN MIND**

**SCAN THE QR CODE TO
DISCOVER THE FULL RANGE**



www.cpl-ltd.com | Info@cpl-ltd.com | 01536 529876

THE MICHELIN X[®] TWEEL[™]

– AIRLESS, PUNCTURE PROOF & MAINTENANCE FREE TYRES – AVAILABLE FROM TYRE-LINE LTD



With its multi-directional tread design, high performance rubber compound and an efficient contact patch, Michelin X[®] Tweel[™] Turf tyres are designed to give 2-3 times the wear life of the equivalent pneumatic tyre at equal tread depth and due to its No Maintenance & No Downtime philosophy, can save users up to 54%* on their equivalent pneumatic tyre maintenance & replacement costs over its life. Front, castor wheels are also catered for with both smooth and rib pattern fitments, complete with an integrated metal centre hub fitted with OEM quality, sealed bearings and fitting adaptors for multiple machinery models and types.

Revolutionary... Innovative... Radical... Game Changing...The Michelin X[®] Tweel[™] series of Airless Radial Tyres has been called them all, and it's easy to see why.

Michelin X[®] Tweel[™] are a single unit, replacing the existing tyre and wheel assembly with a No Maintenance, No Compromise & No Downtime tyre and wheel assembly which require no complex mounting equipment and once fitted require no inflation pressure maintenance.

With several test and evaluation sets of Michelin X[®] Tweel[™] Turf currently in the field, supplied by UK agents Tyre-Line Ltd, feedback has been very encouraging and exciting, with operators reporting: Extremely Good Grip, Reduced Turf Damage, Excellent Bank Grip, Increased Operator Comfort, Reduced WBV (whole body vibration), Reduced Kerb Shock Levels and a general Increased Level of Confidence in their machinery.

With No Downtime & No Maintenance the Michelin X[®] Tweel[™] Turf is the ultimate option for both professional and commercial mowers as well as heavy use residential mowers. Available in an extensive range of vehicle fitments for most of today's biggest brands including Ariens, Bobcat, Cub Cadet, Ferris, John Deere, Kioti, Kubota, Mean Green, SCAG, Toro, Ventrac and many more.

The Michelin X[®] Tweel[™] Turf is just one part of the Michelin Tweel[™] lineup, with versions also available for ATV/UTV, Skid Steer and Golf Buggies.



The complete range of Michelin X[®] Tweel[™] products are available to order now from UK agent Tyre-Line Ltd. Contact their Aftermarket team on 01458 250350, aftermarket@tyreline.com or visit their website at www.tyreline.com for further information.

* unverified comparison data used based on average tyre life, details available upon request

MICHELIN

X[®] TWEEL[™] TURF

FOR ZERO-TURN RADIUS MOWERS



SAVE
UP TO
54%

ON EQUIVALENT
PNEUMATIC TYRE
REPLACEMENT AND
MAINTENANCE
COSTS*



- **NO MAINTENANCE**
- **NO DOWNTIME (NO FLATS)**
- **NO COMPROMISE**

AIRLESS RADIAL TYRE

- No flat tyres or unseated beads!
- Consistent hub height
- Excellent lateral stability & grip
- Outstanding operator comfort
- Available to fit an extensive range of vehicle makes and models

* unverified comparison data used based on average tyre life, details available upon request



TYRE-LINE

AFTERMARKET



Available from: Tyre-Line Ltd
01458 250350
aftermarket@tyreline.com
www.tyreline.com

GROUNDSMAN® *Leading by design*

Turf / Sod Cutters

- Exceptional Traction & Cutting Ability
- Low Operator Hand Arm Vibrations
- 12 - 24 inch Sod Cutting Widths



Turf Aerators

- Solid or Hollow Coring Tines
- Proven Reliability & Performance
- Consistent Depth to 5" Depth



Soil / Core Collector

- Hugs Contours for Clean Collection
- For Groundsman Aerators, Turf Tractors and other aerators



Tractor Aerators

- Hollow & Solid Tine to 6" Deep
- Core & Collect in One Pass
- Proven Rugged & Low Maintenance



**Versatile
Reliable
Performance...**

Tel : +44(0) 28 2766 7049
enquiries@groundsmanindustries.com
www.groundsmanindustries.com



AMBROGIO UK



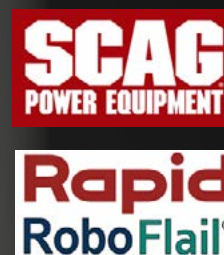
Like you, we understand the importance of green spaces and the value of being able to offer these to your clients. However, we know that a lawn can create a workload that your clients may not be prepared or willing to undertake. Offering an automatic mowing solution at the design stage gives your clients freedom to choose a natural lawn and enjoy it, without the hard parts. The mulching action of our robots helps to keep that lawn lush and healthy, maintaining the professional quality of your work.

We're actively looking for new partners to work with us and supply our robots - if you're interested, please get in touch.

Email: info@ambrogio.co.uk
 Phone: 01522 283028
www.ambrogio.co.uk



*Debris
Clearance
Equipment*



*Pedestrian
and
Stand-on
mowers*



*Electric and
Petrol
ride-on
plus
Remote
Control
mowers*

01789 488450
info@st-mach.com
www.st-mach.com



www.st-mach.com



Nothing but **HEAVY DUTY.**[™]

M18 FUEL

MILWAUKEE® EXPANDS THEIR M18 FUEL “QUIK-LOK™” ATTACHMENT SYSTEM

MILWAUKEE® continues their commitment to drive productivity and versatility for the landscaping and trade professional, with the expansion of the M18 FUEL™ QUIK-LOK™ Attachment System.



“The M18 FUEL™ QUIK-LOK™ Attachment System provides ultimate versatility to complete a wide range of applications.”

ACHIEVING INSTANTANEOUS THROTTLE RESPONSE WHILE MAINTAINING A LIGHTWEIGHT AND ERGONOMIC DESIGN, OPERATORS ARE PROVIDED WITH IMPROVED PRODUCTIVITY AND VERSATILITY ON THE JOB.

Now consisting of over ten attachments and offering year-round application versatility, the M18 FUEL™ Outdoor Power Head with QUIK-LOK™ is compatible with a new cultivator, reciprocator, hedge trimmer, and blower.



KUBOTA LAUNCH THEIR LATEST GENERATION OF ZERO-TURN MOWERS

Kubota fully supports the declaration of the world becoming a fully sustainable carbon neutral environment by 2050. In conjunction with world demand on zero emissions, Kubota has to deliver and meet the customer's needs for a productive, efficient and durable machine. The Ze electric zero-turn models not only meet

productivity requirements, but also with a higher level of operator comfort through reduced noise levels and less vibration during operation.

Together these mowers are specifically aimed at environmentally conscious customers such as municipalities, professional

contractors and residential owners that want to maintain large lawn areas with reduced maintenance, simplified operation and higher levels of operator comfort.

The engineering development of the Ze range began back in 2017 where the key requirements always remained the same and that is a

machine that can operate for a full working day providing excellent driver comfort and outstanding cutting quality. Testing has been carried out throughout Europe to ensure that the performance is consistent whether it is in wet tall grass or dry rigid grass.

Silent power

The “heart” of the Ze is a 48V / 10kW battery which is located at the rear of the machine, pretty much where an engine would sit. This battery has the capacity for over 15 000m² of mowing operation. The Ze has a unique feature in that the battery pack can be quickly and easily removed and another fully charged battery fitted. A second battery and fitting trolley is available which will allow the operator to work continuously during the busy grass cutting season.

Recharging of the battery can be done from the charge connector on the Ze or independently away from the machine.

A charger which is compatible with both European and UK domestic plugs is provided and a full battery recharge takes approximately 5 hours.

Electric drive

There are a total of three electric drive motors on the Ze. Two drive motors (one for each wheel) and one drive motor for the mower deck. The battery discharge can be optimised as the drive power to the cutting deck can be adapted to suit the working conditions. There is a choice of three working modes - ECO, Standard and Boost. The key difference is the blade speed and the mode can be set according to the work required.

High quality cutting performance whatever the conditions

Kubota know how and technology is incorporated into all areas of these machines. A prime example is the K-sense. Forward speed to deck cutting speed is continuously monitored to provide optimum performance. Should the deck encounter a heavy load, the forward speed would compensate and slow down to ensure the best possible cutting quality. When the load reduces the travel speed automatically increases.

The Ze Series is available with 42” or 48” side discharge mower decks. Both deck options can be fitted with a mulching kit.

Simplicity and comfort incorporated

The deck lifting and lowering is a low effort foot pedal control. Quick-dial deck height setting adjustment ensures cutting height can be set quickly and easily. When the motion drive levers return to neutral the auto parking brake is engaged for safe dismount.

A deluxe high back seat with position adjustment, armrests and additional lumbar support ensures ultimate comfort.

Right from the start of development, the engineers knew that meeting the environmental targets set could not be at the expense of productivity, performance and comfort. The end result is the Ze Series which incorporates the best of both.

These new products will be presented for the first time at Saltex in UK, Agritechnica in Germany and Paysalia in France. They will be available on the market from April 2024.





JACOBSEN® UNVEILS FULLY ELECTRIC MOWING SOLUTION WITH PACE TECHNOLOGIES CONNECTIVITY

In 2024, Jacobsen will become one of the first manufacturers to offer a fully electric golf course mowing service solution. With the Eclipse 2 ELiTE™ walking greens mower, ELiTE lithium outfront and AR1 ELiTE articulated rotary mower joining the already successful Eclipse 360 ELiTE and SLF1 ELiTE models.

Jacobsen has scaled up the power requirements for fairway and rough machines using tried and tested Samsung® Lithium SDI technology. By partnering this technology with Jacobsen mowers, turf professionals can cut all day on greens, tees, fairways, or roughs, while always maintaining Jacobsen's famous quality of cut.

Extending the benefits of lithium to the entire course enables golf organizations to reduce their carbon emissions further, but there are also significant user benefits. With noise and vibration greatly decreased, a day of cutting fairways or rough will have less stress on the operator, bringing increased comfort and productivity.

To enhance the efficiency and productivity of these machines, Jacobsen has added PACE Technology™, an equipment management and geofencing system that is a screenless web-based solution. PACE can be accessed from any device and features real-time tracking and task management to maximize the effectiveness of your

operation. Users can track and measure the power output per hole of the machines to maximize their performance and develop a bespoke picture of how they work on the course.

Testing these innovations and their capabilities has been a big consideration. Jacobsen, Cushman®, and PACE have collaborated with 26 courses across three continents in 2023, including Sage Valley Golf Club, South Carolina, Loch Lomond Golf Club, Scotland, and Peninsula Kingswood in Australia.

LANDSCAPE & URBAN DESIGN



Providing the UK's major landscaping and urban design specifiers with a comprehensive look at the latest in landscape design and management, design innovations, garden design, the built and natural environment, public space, green space, open space and environmental sustainability.

FREE DIGITAL MAGAZINE SUBSCRIPTION

Subscription enquiries:

Call - 01304 806039
info@mhmagazine.co.uk

Advertising enquiries:

Lee Martin - 01227 936974
lee@landud.co.uk

Editorial submissions or enquiries:

Antony Holter - 01304 806039
antony@mhmagazine.co.uk



SUBSCRIBE TODAY!

#designthenation

elephant park, london



01254 685 185

sales@woodscape.co.uk

woodscape.co.uk

woodscapegroup

woodscapectd

woodscape_street_furniture

 Woodscape.
Bespoke Street Furniture