

# LANDSCAPE & URBAN DESIGN

47

Jan/Feb 2021

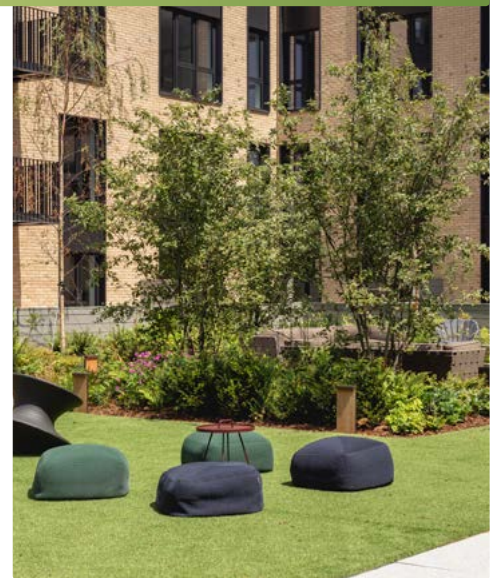
Price £3<sup>95</sup>

landud.co.uk



## Garden Offices: The ultimate work from home solution for 2021

The much-longed-for 30-second commute has finally become a realisation for many of us



## GeoCeramica porcelain paving

A major new mixed-use development in London



## Virtual boundary technology









Productivity and flexibility for professionals

# INSPIRA

modular planting system



A canvas for natural bursts of colour, bringing a range of environmental & social benefits to the built environment.

-  Increases Biodiversity
-  Acoustic Cushioning
-  Improves Rainwater Management
-  Offers Pedestrian Protection
-  Reduces Pollution
-  Improves Mental Health
-  Promotes Social Distancing
-  Climate Cooling

# CONTENTS ISSUE 47

## THIS ISSUES MAIN FEATURES



**Artificial Grass | 8 - 11**



**Lighting | 29 - 37**



**Groundskeeping | 38 - 47**



**Sport & Play | 77 - 79**

### RHS

04 - The power of plants and gardens are to be celebrated with the return of world-leading RHS Flower Shows in 2021.

28 - A bumper crop of winter berries has appeared in gardens says the Royal Horticultural Society - but they may not last long.

### Artificial Grass

08 - Namgrass' blooming great 2021 garden design predictions.

### Garden Design

12 - Garden offices - The ultimate work from home solution for 2021.

18 - The great outdoors... 5 top tips for al-fresco living next year.

24 - Eco-friendly gardens are vital in helping to protect the planet against negative effects on the environment.

### Lighting

29 - A positive force, well-documented amidst the difficult months of 2020, was a shared focus on outdoor spaces and our appreciation of them.

32 - Breathing new life into your garden, doesn't always require a landscape gardener. There are plenty of simple updates you can do without breaking the bank...

34 - With winter fast approaching, leading lighting manufacturer EGLO is encouraging homeowners to think about illuminating their outdoor space.

### Groundskeeping

42 - Glamorgan CCC are the latest in a growing list of cricket clubs to discover the benefits of the UltraGroomer™ cassette from the renowned TMSYSTEM™ collection.

46 - How Nottingham Forest FC's grounds team keep the playing surfaces in top-notch condition.

### Green & Blue Infrastructure

48 - London-based landscape and architecture studio Untitled Practice (UP) has completed the redevelopment of Valley Gardens, a new linked park system in the heart of Brighton.

### Concrete & Stonework

60 - Brett Landscaping has supplied its GeoCeramica porcelain paving for the roof terraces and public spaces of a major new mixed-use development in London, overlooking the Grand Union Canal.

### Landscaping Services

68 - Cardinal Newman College, a successful Catholic Sixth Form College in the heart of Preston, has unveiled a new outdoor space for their students.

### Decking

72 - 4 ways to get the most from your decking area in winter.

### Sport & Play

77 - Set for 27 - 29 July 2021, industry buzz is building around trade show newcomer the Sports and Grounds Expo (SAGE).

### Publishing Director

Martin Holmes  
martin@mhmagazine.co.uk

### Sales Director

Lee Martin  
lee@landud.co.uk

### Digital Manager

Jamie Bullock  
jamie@mhmagazine.co.uk

### Editor-in-Chief

Antony Holter  
editor@mmhmagazine.co.uk

### Editor

Lorna Davidson  
lorna@landud.co.uk

### Business Manager

Josh Holmes  
josh@mhmagazine.co.uk

### Studio Designer

Sarah Johnson  
sarah.johnson@mhmagazine.co.uk

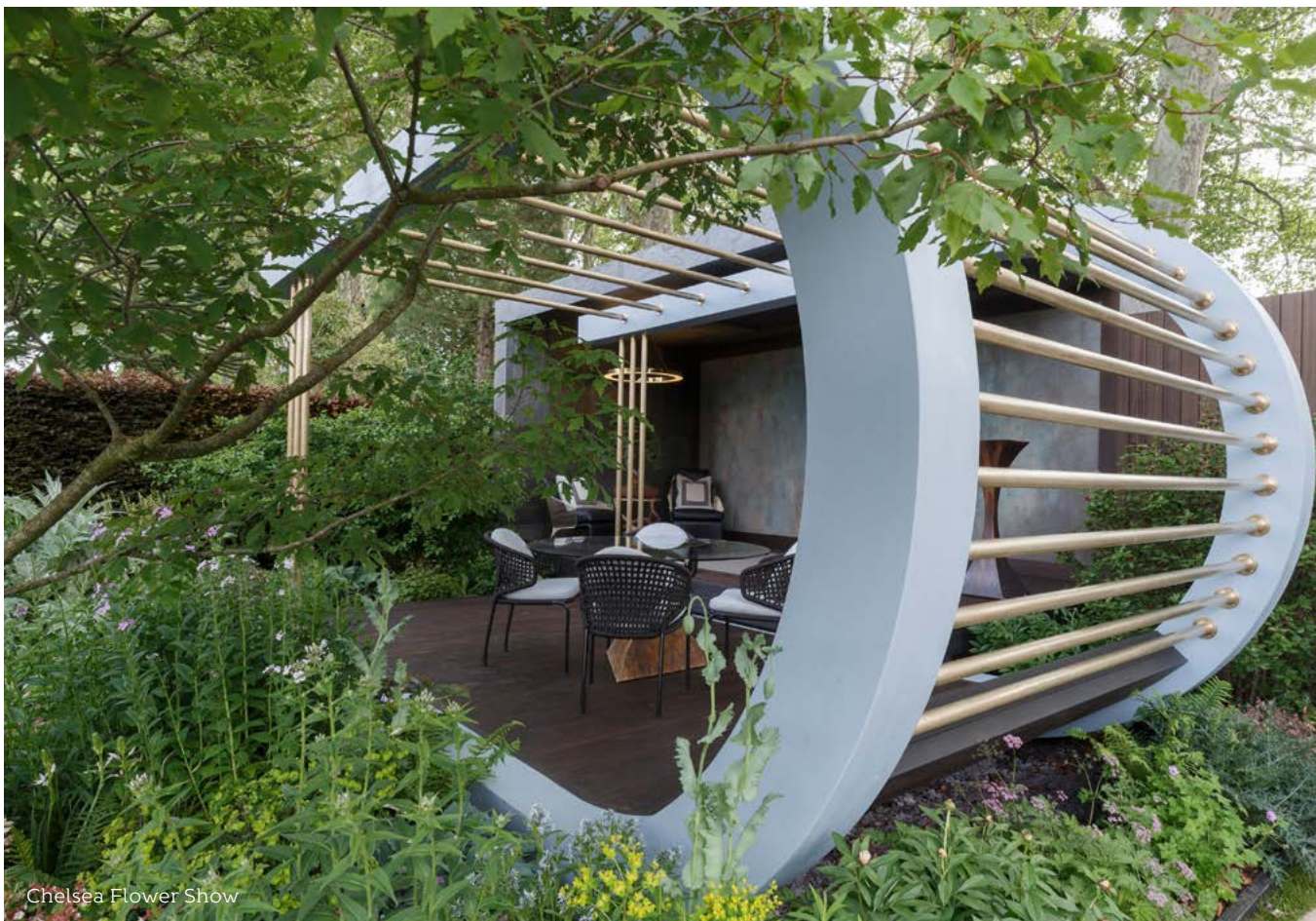
Marketing Enquiries - 01227 936974  
Editorial Enquiries - 01304 806039  
Other Enquiries - 01304 806039

### Publishers

MH Media Global Ltd.  
Discovery Park, Sandwich, CT13 9FD

Cover images courtesy of: Left: Green Retreats | Top Right: Greystar for greenfordquay.com | Bottom Right: Husqvarna

Every effort is made to ensure the accuracy and reliability of material published in Landscape & Urban Design however, the publishers accept no responsibility for the claims or opinions made by advertisers, manufacturers or contributors. No part of this publication may be reproduced or transmitted in any form or by any means, mechanical, electronic (including photocopying) or stored in any information retrieval system without the prior consent of the publisher.



# POWER OF PLANTS AND GARDENS TO BE CELEBRATED WITH RETURN OF WORLD-LEADING RHS FLOWER SHOWS IN 2021

The Royal Horticultural Society (RHS) announces themes and initial highlights across its 2021 flower shows\* including the world famous RHS Chelsea Flower Show, 18-23 May, sponsored by M&G, as tickets go on sale to the public.

With millions finding solace in gardening this year, the positive impact of plants on our health and wellbeing is a prominent theme at all shows and the focus of a new RHS Chelsea category; 'Sanctuary Gardens'.

The majority of gardens and designers set for RHS Chelsea 2020 will be returning and many will champion the restorative power of plants. This includes Sarah Eberle for the Bible Society, Amanda Waring for SSAFA the Armed Forces charity supported by CCLA and Robert Myers for The Burdett Trust for Nursing whose garden shines a light on the critical role nurses play in modern-day healthcare whilst celebrating the remarkable legacy of Florence Nightingale and the importance of gardens for wellbeing and recovery.

In addition, new for 2021, Naomi Ferrett-Cohen has designed 'Finding Our Way - An NHS Tribute Garden', as a space to reflect on the incredible efforts of the thousands of people working in and around the NHS who, together with universities, are striving collectively to fight the ongoing COVID-19 pandemic.

A number of other new designers for 2021 have taken inspiration from beautiful landscapes around the world, creating gardens as spaces to re-engage with nature for mental and spiritual wellbeing whilst

shining a light on the beauty and diversity of nature and the need to protect it for future generations.

Former RHS Young Designer of the Year finalist, Lilly Gomm will create a Sanctuary Garden inspired by the unique flora that typifies various regions in Switzerland. Meanwhile, Carly Kershaw and Ekaterina Zasukhina will be making their Chelsea debut with a Show Garden inspired by the beauty of Russia's Ural Mountain region, a space to calm the mind whilst reinforcing the need to protect the region's forests and rivers, which are coming under threat from industrial processes.



Chelsea Flower Show



Malvern Spring Festival

Returning designers also taking inspiration from foreign landscapes include Jonathan Snow (Himalayas) and Taina Suonio (Finland) while Artisan favourite Kazuyuki Ishihara returns with a 'Zen Garden' in his signature style, taking inspiration from the scenery of both Satoyama in Japan and the rest of the world.

At the heart of the show, the Great Pavilion will be full of uplifting displays created by nurseries who live by the ethos 'growing is good for you'. The benefits of indoor plants will be highlighted in the new Houseplant Studios, showing how anyone can enjoy growing plants indoors all year round, regardless of space.



Tatton Park

RHS Hampton, Tatton, and Malvern will continue the theme of health and wellbeing next year. At RHS Hampton Court, supported by Viking, the feel good therapy of gardening and growing together will be celebrated in the new Community

Area, with allotment style gardens created by local community gardening groups, keen gardeners and budding garden designers full of inspiration to encourage more people to get together and create beautiful, shared green spaces in

their local communities. At RHS Tatton Park, the 'RHS Flower Power Garden' Designed by Anca Panait will explore the positive power of flowers, plants, and the many ways they can help heal and elevate our senses.



Tatton Park

Helena Pettit, RHS Director of Gardens and Shows said: "Helping and inspiring millions of people to garden and grow for their health and wellbeing is at the heart of what we do, and as so many people have turned to gardening and experienced the positive power of plants during this unsettling year it feels more significant than ever to see this theme highlighted across our shows next year."

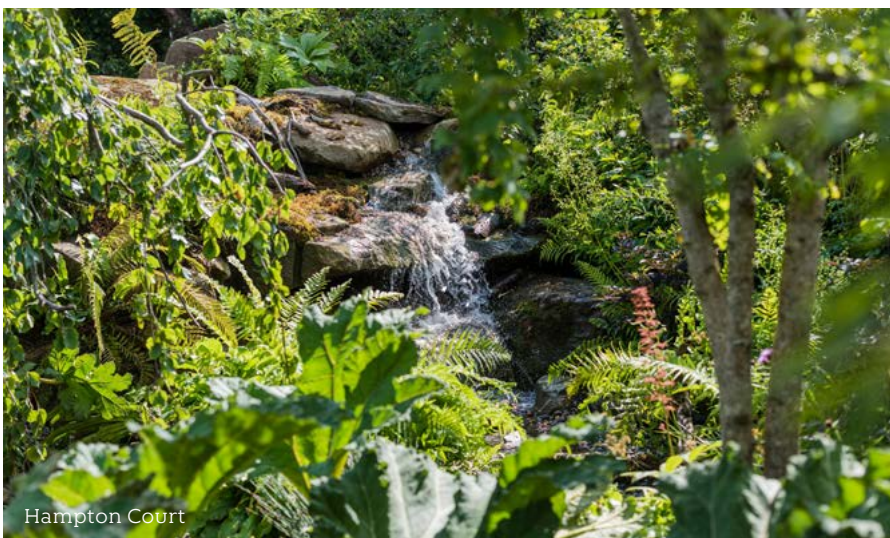
We are excited to be planning our 2021 Shows and cannot wait to bring everyone together again safely next summer and celebrate all that is wonderful about gardening and growing. Our shows promise to be blooming with a whole host of inspiration and advice for everyone, from those who have just recently discovered a passion for plants to seasoned gardeners whose love for gardens has been reaffirmed

and who are keen to once again experience the unforgettable sights and smells on display at our RHS shows."

The RHS will also be introducing a number of necessary health, hygiene and safety measures to ensure RHS Shows can operate safely and are COVID secure.



Hampton Court



Hampton Court

**Tickets to RHS Shows are available to purchase now, visit [rhs.org.uk/shows](https://rhs.org.uk/shows) or call 0344 338 7501 to book now.**

**RHS Members can benefit from early Bird ticket offer to RHS Malvern Spring Festival, RHS Hampton Court Palace Garden Festival, including the Preview Evening, and RHS Flower Show Tatton Park.**

**Available from 26 Oct - 20 Dec 2020.**

[www.rhs.org.uk](https://www.rhs.org.uk)



# NAMGRASS' BLOOMING GREAT 2021 GARDEN DESIGN PREDICTIONS

Namgrass are a leading supplier of evolutionary artificial grass and their friendly team operate from premises on the edge of the New Forest supported by an infrastructure of professional installers across the UK. Namgrass' products are of the highest industry standards and are designed and manufactured by experts in their head office in Belgium. A dedicated commitment to investment in research and the latest technology combined with clever innovation has made them the natural choice for artificial grass for the last 30 years.

Namgrass saw a huge increase in demand for artificial grass over the last year as the quintessentially English garden took on many necessary and additional functions, lockdown, furlough, and home-schooling to name but a few. In true stiff upper lip tradition, the great British public who famously consider home to be their castle have striped garden centres and DIY Stores to spruce up outside spaces whatever their shape or size in a bid to keep busy and make the most of their homes. We are now moving into another new season and gardens and outside space looks set

to continue to play a vital role, many homes are continuing to look for low maintenance options but do not want to cut corners on kerb appeal, design and functionality.

Namgrass are keen to continue to offer their customers cutting edge design, innovation, and originality in the garden for 2021 and are here are a few of the trends they have unearthed:

With space being high on everyone's agenda right now the inside outside garden trend is a huge hit in big cities across the UK.



Creating a seamless connection straight from your main living area straight through to your outside area will give a feeling of additional space and offers bigger and more versatile reception areas. Simply continue one statement colour or style of flooring throughout and use a mixture of indoor and outdoor plants giving a harmonious bright and spacious vibe.

More and more properties across the UK are being built with balconies or roof top gardens and one very high rising trend is to turn these spaces into comfortable additions to your home. Balconies are often covered so you will benefit from a seating area whatever the weather.

Choose to lay artificial lawn, as many residents are doing, and you will feel a real sense of outdoors underfoot. Add this to the current love amongst budding gardeners for vertical planting and fruit box stacking and you will enjoy a modern new garden experience for the fast-approaching spring evenings.

Often now referred to as Vegepod Gardening or raised bed gardening to the rest of us this trend is simple and straightforward and appeals to anyone wanting to grow their own fruits and veggies with a more modern twist and visually impactful. Predicted as a real up and coming trend for 2021 and whilst more people may well be working from home nobody wants more pruning and mowing the



use of unique wooden raised beds, boxes or pods provide fantastic features and when filled with good quality soil they make growing quality produce easy and on a more manageable scale. Raised beds work brilliantly with low maintenance artificial lawns as the more time you have on your hands people you can choose to grow varieties of unusual flowers as well.

The block colour or White Garden trend is just as it says on the tin, white chairs, white seating, and soft furnishing with white lightings makes this a total showstopper.



The key to this innovator in garden design is to choose a dark green artificial lawn and dark foliage with the addition of different types of texture from stone to vinyl, create unusual shapes and plant a variety of different sized plants all in stunning pure white of course.

One thing is for sure with an artificial lawn you can spend time in the garden doing what you enjoy most

and say goodbye to daily weeding, watering, and mowing. Namgrass lawns are designed and produced to make them hard-wearing, easy to clean and able to withstand heavy garden use from playful kid and pets plus an artificial lawn will look healthy and flawless whatever the weather. Your garden can be in regular use all year round and you can experience the feeling of a truly unreal lawn beneath your feet.

Namgrass offer exceptional lawns of the best quality and appearance. The extensive range of grasses are available in an elegant range of styles and colours to create your perfect artificial lawn at a price you will love and come with a 10-year warranty.

---

**Contact Namgrass today at**  
**[www.namgrass.co.uk](http://www.namgrass.co.uk) or 01425 627832**  
**or email on [info@namgrass.co.uk](mailto:info@namgrass.co.uk)**



MADE FOR LIVING

# LIKE REAL GRASS, ONLY BETTER.

## A TROUBLE-FREE 10-YEAR WARRANTY

There's a whopping 10-year warranty with your Namgrass and its the strongest warranty on the market. Still, you probably won't need it as it's so well made.

**01425 627832**

## EUROPEAN MANUFACTURED

We follow a strict research and development and manufacturing and distribution process to ensure the grass you receive is in top condition and made to last.

**info@namgrass.co.uk**

## ULTRA REALISTIC ARTIFICIAL GRASS

We've constantly driven improvements using clever innovation and cool new technology and we've always ensured that Namgrass offers the most natural look and feel.

**namgrass.co.uk**

#MADEFORLIVING

Product: Eclipse

### Garden Room Inspiration 6m x 4m

The Inspiration is clean and contemporary, ideal for those looking for the maximum internal floor area vs. exterior footprint with its shallow front aspect. The Inspiration garden room comes as standard with one deck board.

Photo credit: Green Retreats



# GARDEN OFFICES

## THE ULTIMATE WORK FROM HOME SOLUTION FOR 2021

### The Pros and Cons of Working from Home

Working from home was not so long ago considered a perk of the job, however, the much-longed-for 30-second commute, for many of us, has finally become a realisation. Prior to the global pandemic, we would have spent 492 days of our lives commuting to and from work and inevitably, Covid-19

has brought about a catalyst of change. Businesses are now seeing the benefits of reducing costs by giving up office spaces, and with commuting now significantly reduced, one of the biggest winners out of this situation is the environment.

With this in mind, there's no doubt that the "new normal" of home working is, quite clearly, here to stay.

The general consensus is that working from home is wholly positive and can provide a better work-life balance. Whilst this is true, there is evidence to suggest that this can be quite the opposite, with staff working later than usual as they battle to "switch-off" when their working day is over.

So, what's the solution?

**Garden Offices**

Green Retreats have long been advocates for working from home, creating stunning garden offices for customers who needed extra space to work in, at home, away from the house. They provide the ultimate work from home space that gives clients the best of both worlds, an office to work in without the distractions of home life and when it's time to finish, you can walk away and lock up and resist the urge to open the laptop.

Garden offices from Green Retreats provide space to work in all year round, and are available in hundreds of style and size configurations to suit almost any garden space and budget. Sizes start at just 4m<sup>2</sup> and go up in half-metre increments all the way to 30m<sup>2</sup> with width and depth choices to suit the client's use.

**The Undeniable Data**

There is no doubt that garden rooms, offices and studios, that were once in an emerging market, have now become the solution to working from home for those who need dedicated space from which to do so. No matter how 2021 pans out, it seems as though garden offices are set to be an ever-popular addition to people's homes for years to come.

**What are the Rules?**

Garden rooms generally do not require planning permission because they fall within permitted development rights. Garden rooms are classed as 'outbuildings' and as such can be built without permission as long as customers comply with permitted development guidelines.



**Garden Room TGO1 7m x 3.5m**

The TGO1 combines modern styling with a traditional garden lodge feel to create what is now a current-day classic. The sloping roof of the TGO1 extends from all sides creating a grand hooded feature, styled in either black or graphite. The three-board decking is coloured matched with your choice of either graphite or black complete the aesthetic. Unique to the TGO range is the wrap-around door and window sets to enhance the corner aspect of your garden office.

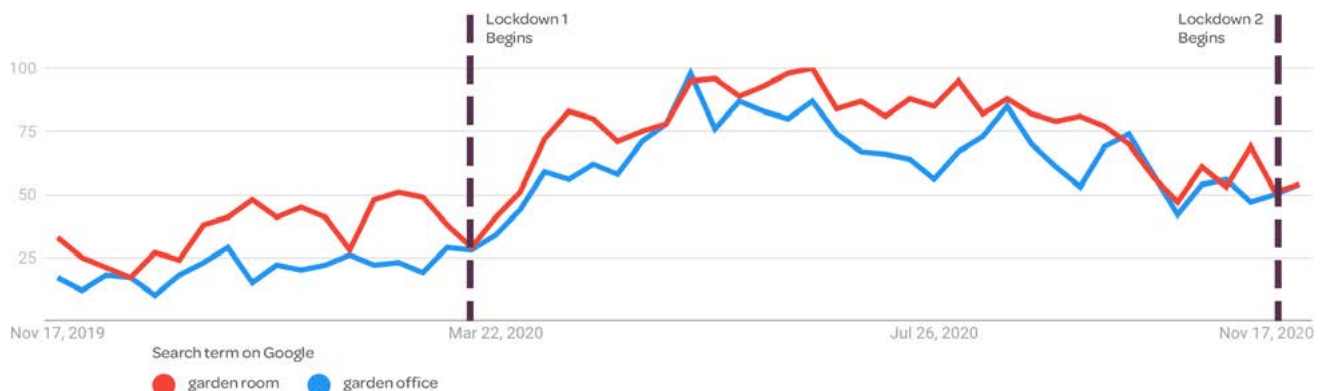
Photo credit: Green Retreats



**Garden Room Pinnacle 4.5m x 3m**

The Pinnacle features an architecturally stunning forward leaning aspect to its front. A visually striking garden room that will certainly make a statement.

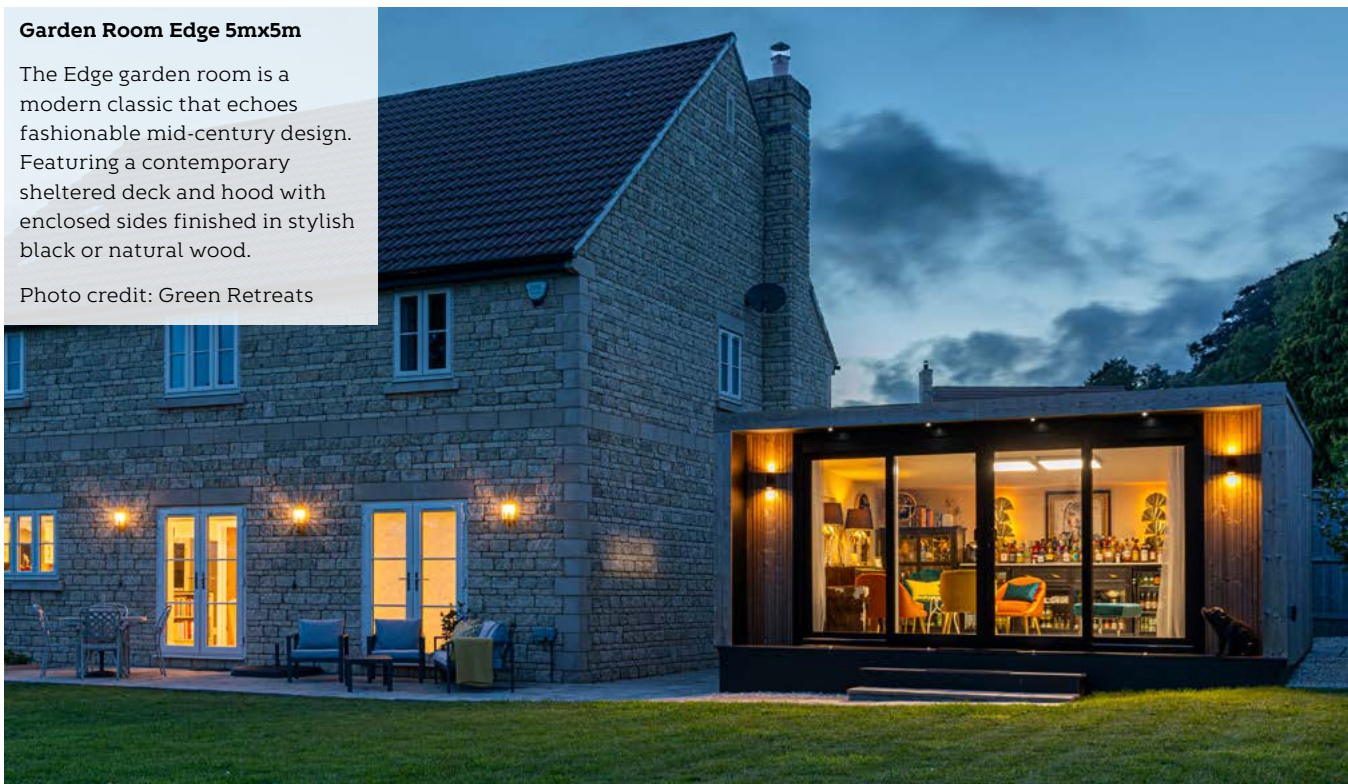
Photo credit: Green Retreats



### Garden Room Edge 5mx5m

The Edge garden room is a modern classic that echoes fashionable mid-century design. Featuring a contemporary sheltered deck and hood with enclosed sides finished in stylish black or natural wood.

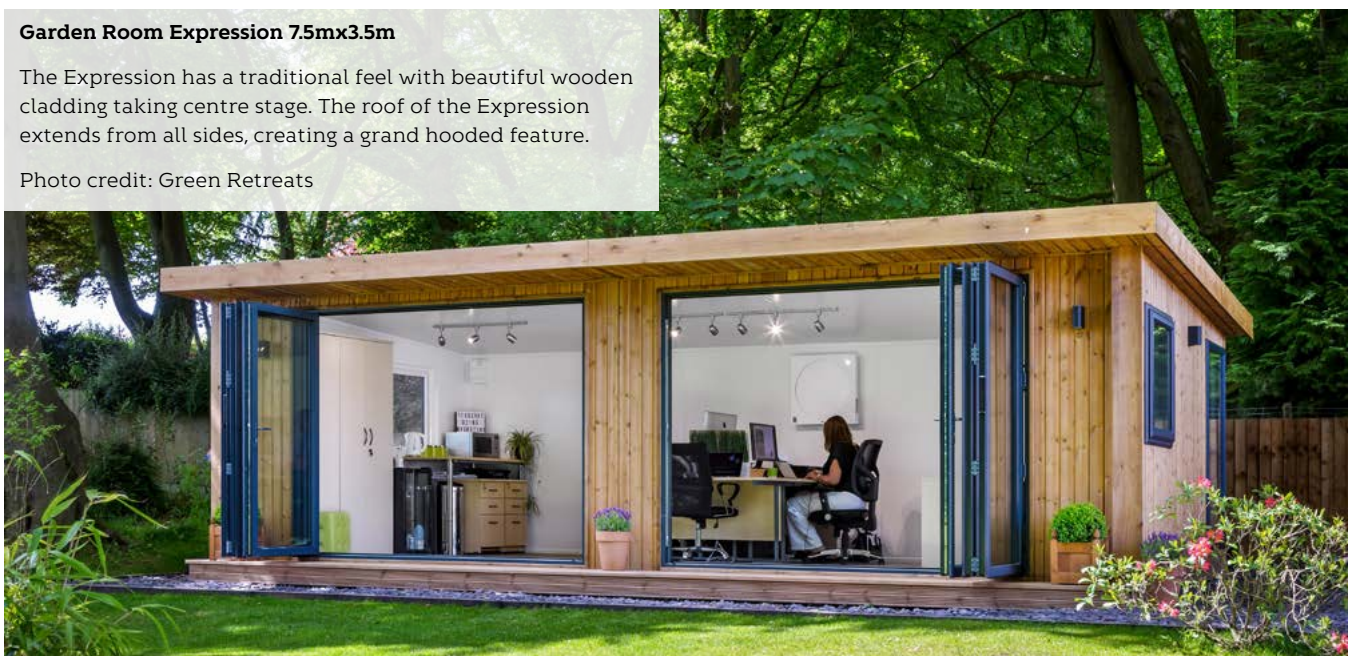
Photo credit: Green Retreats



### Garden Room Expression 7.5mx3.5m

The Expression has a traditional feel with beautiful wooden cladding taking centre stage. The roof of the Expression extends from all sides, creating a grand hooded feature.

Photo credit: Green Retreats



### Choosing a Garden Office Company

Whilst there are plenty of options out there for customers to look at, Green Retreats have become the go-to provider for the turn-key solution to garden offices. With modern showrooms in Buckinghamshire and Twickenham, unparalleled customer service, a 5\* Trustpilot rating and an enviable environmental policy, Green Retreats are the clear choice when choosing a garden office provider in 2021.

### Key Facts and Prices

Prices start at £14,745, which includes all of the essentials; a choice of doors, a window, internal wiring, flooring choices, plus much more. Prices also include the concrete pile base, full installation and VAT.

- Designed and built in the UK
- 10-year guarantee
- Eco-friendly
- Insulated, weatherproofed and heated for year-round-use
- Planning permission rarely required



01296 653066  
[www.greenretreats.co.uk](http://www.greenretreats.co.uk)

## SPECIALISTS IN GROWING INSTANT HEDGING

Readyhedge is a nursery situated in the south of Worcestershire. We specialise in growing instant hedging in metre long lengths and various height from 30cm tall to 200cm tall. As well as individual plants and low and high panels and screens. We grow over 40km of hedges in containers every year in over 35 varieties

Readyhedge is an innovative way of supplying hedges which over comes the problem of how many plants do I need, by supplying pre-spaced metre long units of hedging that can be easily handled by one or two people. This means that to order Readyhedge you just need to select a variety, select a height that you need and measure the distance in metres. It is as easy as that. We can deliver anywhere in the country and normally turn orders around within 48 hours.

Readyhedge comes in two different styles, Readyhedge troughs and Readyhedge bags which cover a range of heights and widths. Specialising purely in hedging means that all our hedges are grown with the love and attention that each variety needs.

[www.readyhedge.com](http://www.readyhedge.com)



# READYHEDGE Choice.

Our instant hedging is available to order in a huge range of varieties and sizes, ready-spaced in troughs or Readybags.

01386 75058

[lindsay@readyhedge.com](mailto:lindsay@readyhedge.com)

[matthew@readyhedge.com](mailto:matthew@readyhedge.com)

[www.readyhedge.com](http://www.readyhedge.com)



## THE HOCKLEY PROJECT

**Hot tubs and swim spas have been the ultimate garden accessory during the 2020 lockdown period and can provide a tonic for everyone.**

**But now that winter is here, what happens to them?**

In August 2020, Caribbean Blinds installed one of their award-winning Outdoor Living Pods™ (the Deluxe model) to protect a six-metre swim spa and hot tub so that it can be used all year round.

As a family with a focus on health and wellbeing, the client wanted to fully enclose their hot tub/swim spa structure so that even on the coldest and wettest days they could be in their hot tub.

The Deluxe model was selected as one single structure can cover up to seven metres in a single module. As the maximum width of the side screens on this model is 6 metres, the area for the back and front

screens of the structure has been split so that a central upright allows for two x 3.5 metre screens to span the 7 metres.

This Deluxe model Outdoor Living Pod™ has screens on all sides so they can close the space in, shutting the roof and dropping the sides down for full protection against incumbent weather but also against hot, glaring sunshine, by positioning the blinds accordingly. Everything on the structure is individually controlled so the user has complete flexibility.

“The Outdoor Living Pod has transformed this area completely. We are now able to use both the hot tub and the swim spa all year round....It has provided us with so many options to accommodate the typical British weather.” Wylsie - Hockley, Essex

The Caribbean Blinds Outdoor Living Pod™ provides the ultimate luxury, all-weather, outdoor living

space that gives the customer complete, year-round control of the elements. Key features include:

- Innovative rotating louvered roof permits the user to play with light and shade
- Open-air alfresco feel when left fully open
- Water, wind and snow-tight roof when closed
- Optional windproof screens, ambient LED perimeter lighting and instant infra-red heaters for a cosy environment
- Constructed from super strong, corrosion resistant, powder coated aluminium for durability and longevity

**To find out more about the award-winning Outdoor Living Pod™, visit [www.cbsolarshading.co.uk/outdoor-living-pod](http://www.cbsolarshading.co.uk/outdoor-living-pod) or alternatively speak to the Caribbean Blinds trade team on 0344 800 1947 about incorporating the Outdoor Living Pod into your garden designs.**





CARIBBEAN  
BLINDS UK LTD

# Sun. Shade. Shelter.



**REAL  
HOMES**  
★★★★★  
**AWARDS 2020  
WINNER**  
**BEST GARDEN BUY**

OUTDOOR LIVING POD™ - LOUVERED ROOF |

## ALL WEATHER | TERRACE COVERINGS

- Waterproof fabric or aluminium louvered roofs
- Effortless motorised remote control operation
- Wind resistant upto Beaufort 12 (hurricane force)\*
- Optional LED lighting & infra-red heating
- 5 year guarantee for peace of mind

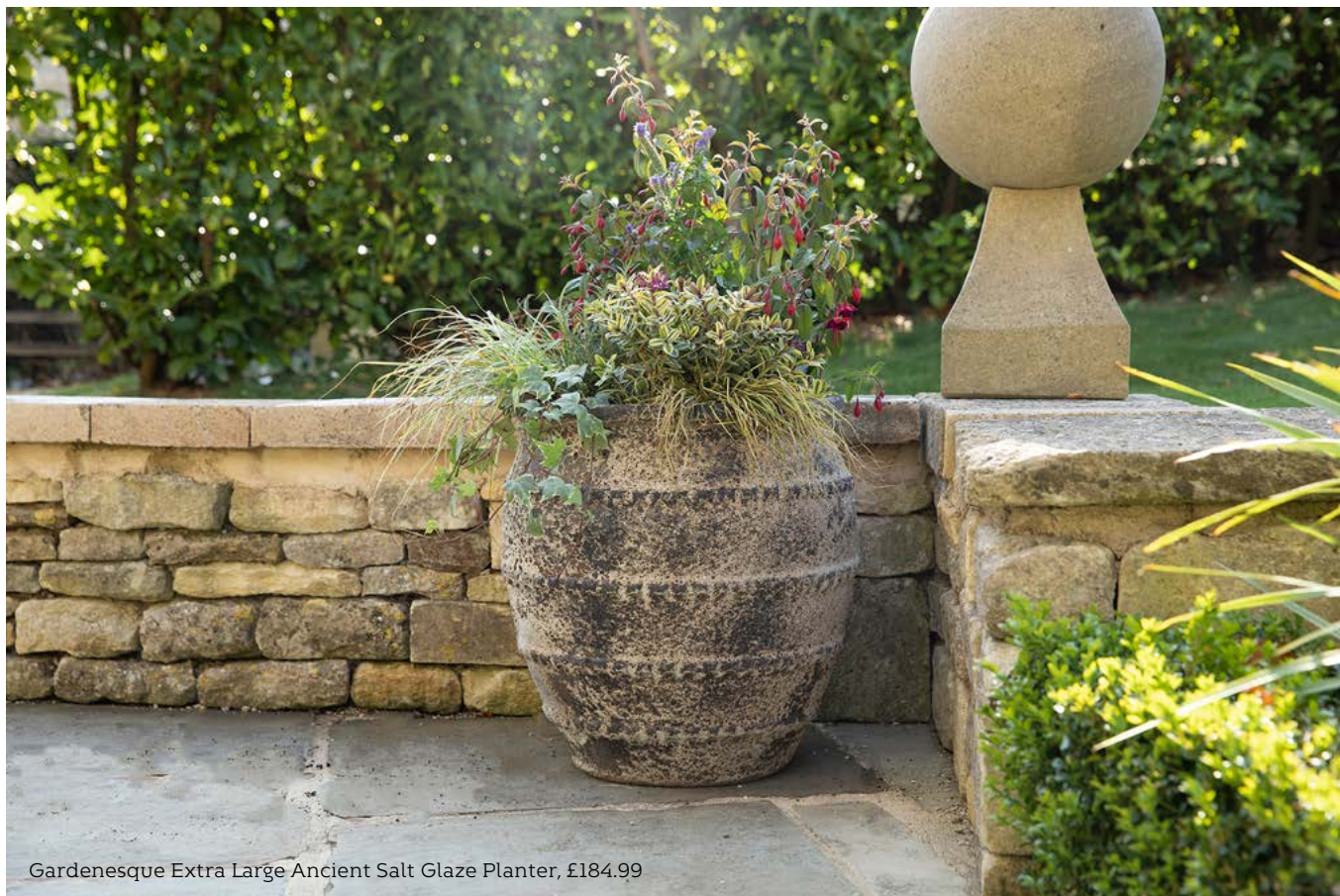
Enhance your garden designs with our **innovative retractable awnings and aluminium pergolas** that provide flexible shade and shelter, allowing your clients to enjoy the alfresco experience all year round come sun, wind, rain or even snow\*. Proudly UK manufactured since 1987.



t 0344 800 1947  
e [info@cbsolarshading.co.uk](mailto:info@cbsolarshading.co.uk)  
w [cbsolarshading.co.uk/trade](http://cbsolarshading.co.uk/trade)

\*Wind resistance and snow load based on our louvered roof Outdoor Living Pods™





Gardenesque Extra Large Ancient Salt Glaze Planter, £184.99

# THE GREAT OUTDOORS...

## 5 TOP TIPS FOR AL-FRESCO LIVING NEXT YEAR WITH GARDENESQUE

During lockdown in 2020, it became more important than ever to have a pleasant outdoor space to spend our time in. Being outdoors, enjoying nature and sharing your outdoor space with your family brought healing benefits to physical and mental wellbeing with many seeing their garden as a getaway from it all.

The outdoor entertaining and living trend looks set to continue into 2021 with many choosing to 'staycation' and create the luxury holiday at home. Many of us have a newfound appreciation for spending time with our families, friends or pets in our gardens and on our terraces and balconies.

Having space to entertain friends and family is deemed the second most appealing garden feature for consumers in the UK, gardens are

no longer just places to work in and look at, they now form part of everyday living. The Horticultural Trades Association revealed in the summer that sales of garden furniture was up 101%, compared to June 2019, which saw people embrace their outdoor spaces, whether it be a balcony and or lawns providing spots for chilling out and household socialising.

### Relaxation outdoors

Rattan and wooden furniture has soared in popularity as it follows 2020's natural interiors trend, blurring the lines between home décor and outdoor style. Natural textures like rattan and FSC wood in neutral tones, have recreated a bright and beachy feel to mimic a luxury holiday haven for those that haven't been able to travel over the summer.

Gone are white plastic garden chairs, in are neutral frame colours with cushions and blankets in neutral shades as consumers look at getting back to the basics and embracing the universal values that bond us together. According to Pantone, the on trend colours of spring / summer 2021 will reflect naturalness and ease. Colours such as muted lilac, green, orange, red, graphite, cream and mushroom will compliment natural furniture and create a tranquil and ambient atmosphere within their gardens.

Our range of super-stylish Paxton rattan furniture (RRP £449.99 - £799) turns the garden into an outdoor room and extension of the home, turning relaxation to al-fresco dining in seconds.

As the weather heats up, why not go ultimate relaxation outdoors with our Paxton Rattan Single or Double Hanging Egg Chair? (RRP £449.99 - £649)=- If you don't have room for a hammock, the egg chairs are ideal and will give you that relaxing motion without taking up tons of space. With easy to reach drinks holders and luxurious cushions, our egg chairs can really make a world of difference to your comfort and pleasure whilst relaxing in the sun.

Our eucalyptus wood Repton range, (RRP £59.99 - £849.99) is a traditional, but stylish addition to an outdoor room. Environmentally friendly, and prized for its strength, durability, and weathering characteristics in all climates, the Repton range gives the ultimate comfort when entertaining, no matter your party size, available to seat a cosy twosome or sets to suit a family gathering.

The Repton rocking chair (RRP £189.99) has also proved to be popular as there are fewer things more relaxing than reading or snoozing while gently swaying in the breeze and enjoying the sun's rays! For those that have a balcony or little outside space, small bistro sets such as our Repton premium bistro set (RRP £159.99) are on the rise.

### Social hotspots

This year, fire pits have proven to be the must-have garden accessory and that is set to continue massively into next year as it allows people to enjoy their garden for longer. Summer days outdoors can be extended for longer periods of time and often well into the evening as a fire pit adds warmth and light, creating a cosy ambience as the sun goes down. Our Hoole firepits (RRP £69.99 - £259.99) -adds both rustic charm and character, making it perfect for both modern and traditional properties and their outside space.

New for 2021, is an extension of the Hoole range with two brand new caged designs for BBQ areas on patios and in back yards with entertaining in mind.

Paxton Swinging Egg Chair With Cream Cushion , £449.99



Repton Wooden Rocking Chair, £189.99



Gardenesque Hoole cast iron fire pit with removable grill metal poker, £79.99



The classic Lelant Fire Bowl, with its sleek diamond design which is enhanced further once backlit by fire, it will be a welcome addition when entertaining in your garden long into the evening.

If you plan to entertain large groups of people, then the new Seaton firepit, launching in summer 2021 will quickly become the focal point in your backyard, with its classical design aimed increasing the comfort whilst socialising at home. A welcome addition to the Gardenesque range which will sit proudly with our popular Wakehurst fireplace (RRP £339.99), a design aimed to recreate the fireside outdoors. Whether your idea of the perfect night is roasting marshmallows or snuggling fireside with a loved one, our fireplaces will bring your entire patio space together.

### Al-fresco cooking

As a result of the Covid-19 lockdown, BBQ and al-fresco dining and entertaining has become even more of the UK's No.1 summer home leisure activity, with three out of four households now owning some type of BBQ. With more people staying at home and new ways of working, Kantar reported a significant growth in BBQ's this summer, with 100 million occasions occurring between April and August, up 44% year-on-year.

The garden is perfect for those that lack space or wish to escape from their kitchens or dining rooms, BBQs, pizza ovens and outdoor kitchens are becoming popular as consumers embrace the summer months by entertaining, eating and enjoying the garden, which also gives them inspiration and confidence to enjoy and improve their outside space.

Our range of contemporary, portable kettle charcoal barbecues (RRP £35.99 - £63.99) are perfect for small garden spaces, social tabletop grilling, camping trips or lazy days on the beach.

With BBQ's popularity showing no signs of slowing, Gardenesque will be adding a luxury egg BBQ to their



Seaton Firepit Available Summer 2021



Gardenesque Portable Table Top Kettle Bbq Charcoal Grill Green, £35.99

outdoor kitchen range early next year - the latest barbecue trend, promising deliciously smoky-tasting food that just can't be beaten for flavour.

**Wildlife**

Another result of the 'stay at home' culture at the peak of the Covid-19 crisis, it seems many households turned their attentions to observing and caring for wildlife, in particular garden birds. The Royal Society for the Protection of Birds (RSPB) found that the number of people using their online bird identification tool shot up by 95% compared to the same period last year. Our beautiful Wood Effect Bird Bath (RRP £129) will build on this popularity, appealing to wildlife lovers who want to watch wild birds in their gardens, whilst helping them bathe and feed and fits perfectly in with the popular cottage garden trend.

**Love your pots**

As gardens are being used more frequently as an outdoor room, they have to look the part also. Container gardening is on the rise amongst the younger generation, especially millennials and families who want



Wood Effect Bird Bath With Detachable Top, £129

a low maintenance instant look without any hassle, that can be moved or changed depending on the situation. This simple and effective style of gardening can add drama to any outdoor area and add personality to any space. You can grow vertical, it provides the benefits of gardening without the hours of hard labour, requires no heavy tools or equipment and gives the option to move plants around, so you can find the optimal spot for plant growth. We've seen demand increase in distressed, glazed and natural pots, taking the garden back in time with our Ancient Pot

Gardenesque Extra Large Ancient Salt Glaze Planter, £184.99



Collection (RRP £35.69 - £80.99), available in four sizes for different garden settings and the Ancient Pot Bowl Collection RRP £24.79 - £55.99) that brings character and elegance to your garden.

So, as you can see there is plenty of up and coming trends focusing on outdoor living, entertaining and really getting back to nature. The new 2021 season promises a lot more to enjoy, if outdoor trends of 2020 are anything to go by.

[www.gardenesque.com](http://www.gardenesque.com)



# COOK ALFRESCO IN A GARDEN KITCHEN

One of the few upsides to the current pandemic is that people are valuing their outside space much more, which has led to a greater desire to cook at home more often, and whenever possible, in the garden. One of the more established trends was the inclusion of Outdoor Kitchens in design projects, and this has been further heightened by the unfortunate recent events.

There are few things that complement warmer weather than the fragrant smoky aroma of a barbecue. Do not, however, believe that alfresco cooking is limited to the summer months only; a delicious meal is just as welcome on a cold winter evening as a grilled burger on a sunny day in July. Having an outdoor kitchen gives your clients the opportunity to indulge in preparing and cooking delicious food in a fun and unique setting all year round.

For the landscaper, this also offers an enhanced profit opportunity. With help from an organisation such as Kitchen in the Garden, clients can select the outdoor cooking equipment that meets their needs, and one that suits their budget. It is important to seek the advice from a specialist firm with a broad portfolio of brands, so that a client can match their cooking style and usual party size with suitable quality equipment.



Without previous experience, the challenge for the landscaper is in the construction of an outdoor kitchen project. Building an outdoor kitchen is not easy, but if you are a competent hard landscaper it is not difficult either. Start by identifying the location and establishing the approximate kitchen size. Find out what the client exactly wants; is it just the essentials or the all singing, all dancing version. Think in terms of zones, Cooking - choose from Grill, Side Burner, Pizza Oven, Kamado, Water and Chilling- Sink, Fridge, Ice Bucket and Store - Cupboards, Drawers, Waste Bins and lastly Entertaining - is seating or a bar area wanted. If you do not feel confident in the design of the outdoor kitchen, or would like some expert advice, get

a specialist to design it. This is usually free if you buy the equipment from that supplier.

Key in the construction process is laying the relevant utility services; electricity, gas, water and drainage. This should of course always be done before you lay the patio. In terms of the actual build, the simplest method is a single skin blockwork frame, with a cut out for the components. The kitchen can be finished in a variety of ways to suit your client's taste, with the easiest being porcelain tile, but alternatives include a solid or sand & cement render, or wood cladding, topped with a granite, porcelain or Dekton worktop.

The construction of a kitchen in the garden will add another string to your bow and create a great cooking and entertaining area for your client, which not only adds value to the project but also increases your bottom line.

**If you like to learn more about  
Outdoor Kitchens**

**Research at [kitcheninthegarden.co.uk](http://kitcheninthegarden.co.uk)  
Talk on 01932 556266  
Or email  
[sales@kitcheninthegarden.co.uk](mailto:sales@kitcheninthegarden.co.uk)**



Kitchen in the Garden, based at Cedar Nursery in Cobham, Surrey, supply a full range of outdoor cooking equipment, from the world's leading outdoor cooking brands.

We provide expert advice and technical support for the design and build of premium outdoor kitchens. From contemporary grills, high-end pizza ovens, sinks and fridges, to a vast range of specialist cooking equipment. We cater for all outdoor cooking requirements, along with a variety of storage options tailored to your client's needs.

Why not suggest to your client to add an outdoor kitchen to make the most of their outdoor space and add value to their property?

Authorised Dealers For:



**Kitchen in the Garden**, Cedar Nursery, Horsley Road, Cobham, KT11 3JX

tel: 01932 556266 email: [sales@kitcheninthegarden.co.uk](mailto:sales@kitcheninthegarden.co.uk)

[kitcheninthegarden.co.uk](http://kitcheninthegarden.co.uk)



# CREATING AN ECO-FRIENDLY GARDEN

We all understand the importance of having an eco-friendly house, but having an eco-friendly garden is just as vital in helping to protect the planet against negative effects on the environment.

Whether it's by growing your own food or using recycled plastic garden products, being as eco-friendly and sustainable as possible when creating and maintaining

your garden won't just help the environment, but will also help save you time and money.

To point you in the right direction of where to start with creating an eco-friendly garden, the team at Kedel have put together this helpful guide to help inspire you and show you just how easy it is with the right materials.

## GROW YOUR OWN FRUITS AND VEGETABLES

Growing your own fruits and vegetables not only provides you with delicious, homegrown food, but helps decrease your reliance on food transportation and delivery systems. These systems create emissions that negatively impact the environment, causing the global temperature to rise and therefore putting the planet in danger.



There are many different fruits and vegetables you can grow in your garden, including the likes of carrots and potatoes as well as chillies and apples.

Raised bed gardening is a common method for growing foods, and can be done incredibly sustainably by using recycled plastic raised beds instead of wooden raised beds. Not only does using recycled plastic prevent unnecessary pollution, but will provide you with beds that are durable and long-lasting.

### REPLACE WOODEN DECKING WITH RECYCLED PLASTIC DECKING

While a simple internet search can provide you with heaps of beautiful garden decking ideas, it's important that garden decking is as sustainable as it is good-looking.

Recycled plastic decking is the perfect answer to this problem, as it helps reduce pollution as well as makes having and maintaining decking easier. Only 7% of the plastic produced each year is currently recycled, so choosing recycled plastic for your landscaping is a great way to help the environment.

Our eco-friendly plastic decking from Kedel is completely resistant to water, frost, insects, fungi and algae, making it incredibly durable and easy to look after. With plastic decking, you never have to worry about replacing it frequently or splashing out for expensive upkeep jobs, as it's made to be long-lasting and maintenance-free.

### HOME COMPOSTING

Home composting not only provides an environmentally friendly way to deal with both kitchen and garden waste but creates a compost full of eco-friendly materials that can be used as a soil improver in the garden.

When choosing a composter for your garden, opt for a recycled plastic composter instead of a wooden one, as a plastic one fully combats rot, and will last much longer than any made from wood.



### LANDSCAPE WITH RECYCLED PLASTIC PALISADES

Garden landscape design helps gardens look more aesthetically pleasing, as well as helps to create specific areas for plants and trees so that they can grow efficiently.

When landscaping your garden, it's important to think about the materials being used for both the sake of the environment and maintenance levels.

Eco-friendly landscaping materials, such as eco-plastic palisades for garden edging, are a good alternative to timber materials as they last a lifetime without maintenance. As well as this, recycled plastic fencing is an eco-friendly alternative to timber fencing, as eco-plastic fencing will last for decades without the need for painting, staining or oiling. Opting for recycled plastic also helps to reduce the amount of waste plastic in landfill sites, which can be harmful to the environment.



**FILL IT WITH ECO-FRIENDLY FURNISHINGS**

Having furniture outdoors helps make any garden homely and comforting, as well as offers the ability to turn the garden into a social area.

From seating to planters, gardens can be filled with eco-friendly furnishings to help keep them sustainable while protecting the environment at the same time.

Our designs release 250% less CO2 into the atmosphere during manufacturing than virgin plastic designs.

A good example of eco-friendly furnishings is recycled plastic chairs that are a durable alternative to timber chairs. While wooden and metal furniture has to be taken in during the winter months, recycled plastic furniture can stay out all year long without worrying about damage.

**For more tips on how to create and maintain an eco-friendly garden, as well as how to use materials made from recycled plastic efficiently and aesthetically, keep an eye on our blog. Browse our wider range of eco-friendly landscaping and gardening products today, or take a look at our selection of eco-friendly building and construction materials.**

[www.kedel.co.uk](http://www.kedel.co.uk)

# TORC:POTS



@torc\_pots



www.torc-pots.com

# BOUNTY OF BERRIES

## BEDAZZLES IN GARDENS, BUT NOT FOR LONG, SAYS RHS



A bumper crop of winter berries has appeared in gardens thanks to favourable weather conditions earlier in the year, says the Royal Horticultural Society - but they may not last long. Heading into winter, the charity predicts that the abundant display is likely to attract hordes of hungry wildlife who could strip the shrubs in days should harsher weather conditions set in.

In the four RHS Gardens, top-performing trees and shrubs include *Malus* (crabapple), *Sorbus* (rowan or mountain ash) and *Callicarpa* (beauty berry), alongside festive favourite *Ilex* (holly). "It has been a really good year for berries and the Winter Walk at Wisley has an excellent show of *Ilex*, *Callicarpa bodinieri* 'Imperial Pearl' and the very cool and rare *Lonicera ligustrina* var. *pileata* 'Blue Pearl', a shrubby honeysuckle," says Peter Jones, Garden Manager at RHS Garden Wisley. "However the berries in the garden can literally disappear overnight, so I'd suggest people get out to enjoy the display while they can!"

Hungry birds are already taking advantage of the bounty in areas of the country which have seen colder weather in recent days. "There's lots of hedgerow fruit this year so in one sense you might anticipate wildlife has more than enough to eat," explains RHS Senior Horticultural Advisor, Helen Bostock. "But as we go through winter and these wild food sources become depleted, gardens

will become a focus for hungry birds and other animals, especially in any cold snaps when the ground is too frozen for hunting for invertebrates."

This may be good news for amateur ornithologists, however, who could have an opportunity to spot some more unusual birds visiting their gardens. "Winter thrushes start arriving from northern Europe and Scandinavia at this time of year," says Helen. "These are the redwings and fieldfares which can be seen in large, chattering flocks. Less common but a real treat if you get to see them are waxwings, again a bird which comes across the North Sea to our shores for winter foraging.

"The redwings are busy taking from the hawthorn berries down my lane at the moment. I'm keeping a close eye on our big holly which is dripping in red berries in case they turn their attention on that after the hawthorn. If so, I'll be rushing out there with the long-handled loppers to grab a few sprigs for my Christmas wreath before they're all gone!"

This winter's spectacular displays of fruit may be explained by two successive summers of good growing conditions, according to RHS experts. "With the right combination of temperature and moisture at the time of fruit set, it's been an excellent year for trees like hawthorn and the berrying shrubs such as *euonymus*," says Jonathan Webster, Curator of RHS Garden Rosemoor in North Devon. "Here at Rosemoor, the birds are particularly fond of the berries on our National Collection of holly, especially *Ilex aquifolium* 'Pyramidalis', but they're really spoiled for choice this year with a great crop on the crabapples too, particularly *Malus transitoria*, *M. hupehensis* and *M. baccata* var. *mandshurica*."

RHS Chief Horticulturist Guy Barter adds: "As holly flowers best on one-year-old wood, we might be seeing the effects of the good growing weather in 2019 when much new timber was produced. The same is probably true of other berryed shrubs. There were some stinging late frosts in the south-east this year but they don't seem to have harmed berrying shrubs in the same way that some orchards have been afflicted, possibly because shrubs are grown in gardens where there is more shelter, flower later or flower after leaves are expanded sheltering the flowers."

"The weather this year seems to have perfect for this group of plants," agrees Robert Brett, Curator of RHS Garden Hyde Hall in Essex. "They flowered well in spring, had no trouble from late frosts and the recent wetter weather will have helped to swell their size too. We've got huge quantities of fruit on our crabapples, *euonymus* and *callicarpa* in the Winter Garden, Queen Mother's Garden and Hilltop Garden, giving a really colourful display as we transition from autumn into winter."

Paul Cook, Curator at the most northerly RHS Garden, Harlow Carr in Harrogate, says: "Our hollies are always full of colourful berries at this time of the year, but what has surprised us this autumn is our *Sorbus* - they don't usually do quite so well in the wetter soil conditions we usually have at RHS Garden Harlow Carr. However, the prolonged periods of dry weather that we've seen this year seem to have given them a boost and they are absolutely laden with fruit right now, along with our *euonymus* and crabapples. We have noticed that the local wildlife have been moving in on the berries though, thanks to the colder weather we've seen over the last week - so the spectacle might not last long!"



**BOLLARD LIGHTING THE SUSTAINABLE WAY**

**THE LARGEST RANGE OF PATH LIGHTS IN THE U.K**



Radiata Sleeper



Panama (Solar)



Eccentrica (Solar)



Ledifice w/Photocell



Parabola - Flat



Airlite (12v Option)

240v, SOLAR & 12v OPTIONS IN DURABLE MATERIALS - DESIGNED FOR LONG-TERM PROFESSIONAL USE  
ALL LIGHTS ARE HIGHLY EFFICIENT, LED COMPATIBLE & NATURALLY WEATHERPROOF

THE MUST-SEE  
NEW RANGE  
FOR 2021

Professional Solar Lights by Lumena



01327 871161

[www.lumenalights.com](http://www.lumenalights.com)

Daventry showroom 9am-4.30pm Mon-Fri - NN11 4NR

TECHNICAL ADVICE

SPEC. SHEETS

TRADE SUPPLY

HIGH STOCK LEVELS

NEXT WORKING DAY DELIVERY





# LANDSCAPERS PROVIDE LIGHT

A positive force, well-documented amidst the difficult months of 2020, was a shared focus on outdoor spaces and our appreciation of them. Whether it was walks in parks or woodland, or spending time in our own garden at home, there was a widespread gratitude for ‘fresh air’ that returned to many, that found there was suddenly more time to enjoy these spaces. Although the seasons change, the appreciation remains, and the concept of being thankful for a homely space has also been revitalised.

In this time, trade professionals across the UK have adapted amazingly in the most part, to a totally different way of working, both in accepting projects, and physically making them happen. Many Landscapers, Garden Designers and outdoor Electricians have found that their workload has continued. A

positive economic knock-on effect is that many suppliers have also found that business has increased.

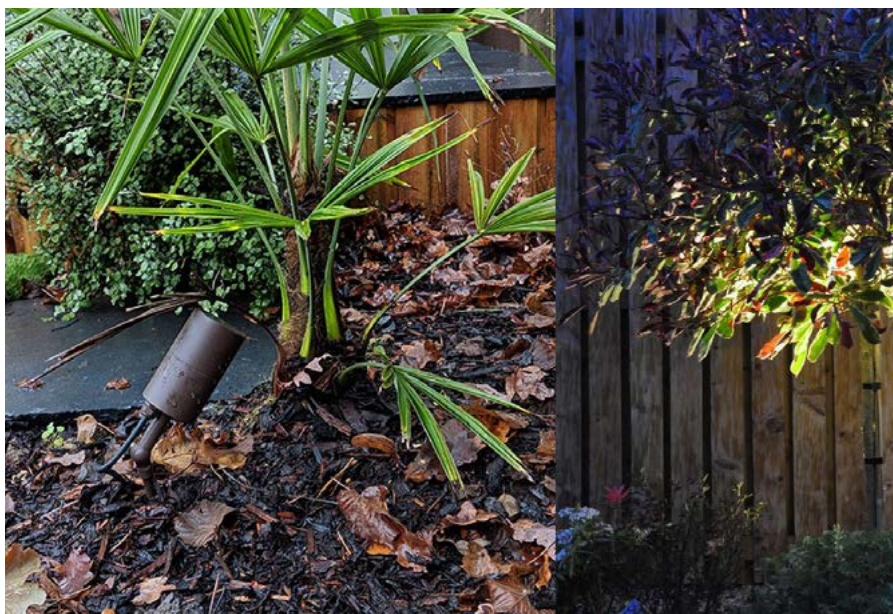
The great thing about landscaping, designing, or improving an outdoor space, is that quality advice from the trade now covers all areas - It’s always impressive when plants and path lights can be considered in the same project. Good workmanship, ideas and a passion for various different aspects of a garden is a must when considering a full landscape project. Good lighting is now seen as an important part of an overall garden layout and can totally transform a space, instantly making it more homely, safe and enjoyable.

In a recent questionnaire, sent out by lighting suppliers Lumena Lights, landscapers gave insight on their thoughts on using lights in their projects:

“One of my favourite things to do with the lighting, is to place the lights at the base of the posts of a pergola. The light then wraps up and over you catching the timber creating a full, warm, encompassing feeling” - Cornerstone Landscapers - Northamptonshire

“I aim to create subtle low-level lighting for night ambience and access / step illumination” - The Outside Design Company - Middlesex  
With ‘Up-lighting trees and shrubs’ as a popular effect and ‘Good Design, material and price point’ being the most important factors when selecting outdoor lights. (Martha Krempel Garden Design - Surrey)

In some cases, Landscapers and designers may opt for a discreet light source. There are many designs, finishes and materials that blend in fantastically with the garden



landscape such as Black, Garden Green and Rustic Brown spike lights.

These camouflaged colours will blend in seamlessly with the surrounding area such as foliage and soil, matching the rest of the colours of the garden and not drawing unneeded attention to the light source. Incorporating outdoor light fittings that blend with the colours of a natural environment can create the perfect ambiance,

without the fittings looking out of place.

Alternatively, if you are looking for lights that will provide ornamental value within your landscape, Brass or Copper are versatile materials with fantastic decorative qualities. After a while, Natural Copper lights will oxidise to change colour to really look as if they have always been part of the garden.

Incorporating outdoor light fittings that blend with the colours of a natural environment can create the perfect ambiance, without the fittings looking out of place.

**High quality, reliable lighting, and advice on the best products to use is available at [www.lumenalights.com](http://www.lumenalights.com)**



# LOCKED DOWN GARDENING? HERE'S HOW TO GET GOING ON A BUDGET

**Matthew Currington, Technical Director, The Lighting Superstore**

Is your garden looking a little lacklustre and needing a bit of TLC? As we're spending more time in our homes and gardens than ever before, there's no time like the present to tackle your outdoor space.

Breathing new life into your garden, doesn't always require a landscape gardener. There are plenty of simple updates you can do without breaking the bank.

Whether you have a small garden, patio area or a balcony garden, Matthew Currington at The Lighting Superstore has put together a

budget gardening guide to create your own tranquil haven.

## **Pop of colour**

This might seem obvious, but a fresh lick of paint makes everything look brighter. Fences tend to be a dismal brown colour, weathered by natural conditions. Why not spruce yours up with a new, exciting coat?





Instead of your usual shades of brown, consider a fresh, playful colour instead. If you want to make your garden feel more spacious, an off-white will expand your space infinitely.

### Upcycling

Upcycling is the ideal way to inject some homemade décor into your garden. Not only is it wasteless, it can often cost you absolutely nothing. Turn your old, unloved items into features around the garden - old crates and pots can be used to organise your tools and leftover jars can be filed with tea lights for a Pinterest worthy addition.

To get really creative, try making your own bird feeder! All you need is a mug, a strong piece of string and somewhere to hang it. Attach the string to the mugs handle and fill it with bird-friendly food like seeds or peanut butter. This idea perfectly teams eco-friendly with stylish details.

### Green fingers

It comes as no surprise that adding flowers to your green space can really spruce it up. If you have the room bedding plants add instant colour into your garden. With garden centres reopening this could be the best time to get your green thumbs out.

If space is quite limited, living walls are a great alternative to embrace vertical planting and create maximum drama in your outdoor space.

### Pathways

Brick paths are a really easy statement feature to create in your garden. Simply dig up some shallow

ground so only a bit of your slab or brick sticks out or if you have gravel you can just nestle them in - this makes a cute stepping-stone pathway to add something a little extra to your outdoors.

Best of all, you can use old bricks or slabs that you may have. If not, check on selling sites to see if anyone is looking to get rid of some locally.

### Bring a touch of inside out

Why double up the expenses of buying separate outdoor accessories. Dress your space with attractive textural accessories that can be easily popped inside should the great British weather take a turn for the worse.

Adding blankets or rugs to your patio or seating area is an easy way to burst some colour and personality into the space.

You could also place old mirrors on the fence to add some style while also making the space look much bigger through clever reflections.

### Light it up

Outdoor lighting is one of the easiest and most affordable ways to transform a garden. Not only are they practical - allowing you to enjoy your space well into the evening - adding a touch of illumination to a seating area can bring a touch of ambiance for the warm summer nights.

Think twinkly lanterns hanging from a tree or solar stakes nestled among your flowerbeds, there is a light for every garden.





# THE SMART WAY TO LIGHT UP YOUR HOME THIS WINTER

With winter fast approaching, leading lighting manufacturer EGLO is encouraging homeowners to think about illuminating their outdoor space.

As well as offering a warm welcome to your home, outdoor lighting provides safety, and the comfort of increased visibility, giving you peace of mind as you navigate the exterior of your home as the nights draw in and your outdoor visibility becomes compromised.

Gone are the days of clunky, space invading lighting systems, there are now a range of sleek, modern options meaning that you don't have to compromise on design when choosing your outdoor lighting.



### Smart Lighting

Smart lighting for the outside of your home is an ingenious option meaning that you'll never have to worry about getting out of bed to check if you've turned off the outdoor lights again.

Outdoor lights can be controlled by the touch of a button with EGLO Connect. This tech-savvy option can provide a great deal of comfort in your daily life, taking the stress away from having to manually turn on lights, with a range of extra benefits to boot.

EGLO Connect enables you to control and program the light in

your home individually or in groups. You can connect to your smart lights via the remote control or use the free-of-charge Smart Control App that can be downloaded on your smartphone, tablet or smartwatch.

An added bonus of having outdoor smart lighting is that it will save you money. Because outdoor smart lighting is only used when you need it most, it will cut down your energy usage and in turn, your bill.

### Motion Detectors

Instead of worrying about turning your lights on and off, let the detectors do it for you. Activated by movement, motion detectors are

the simple solution to automatically light your entrance area when you are coming home with your hands full.

Motion detection will safely light up areas with bad visibility when this is necessary so you will always be able to see what is happening, avoiding tripping hazards and lowering your risk of accidents around the home.

---

**For more information on EGLO UK and their available products, visit [www.eglo.com/uk](http://www.eglo.com/uk)**

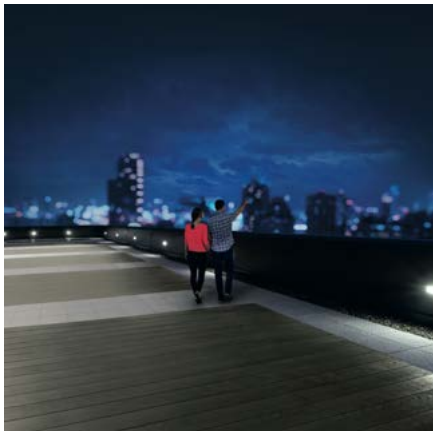
# STYLISH DESIGN MEETS ENERGY EFFICIENCY

Bringing light to outdoor spaces is a complex job. A complete outdoor lighting solution must meet the needs of the space, the people in it, and the environment. Graeme Shaw Technical Application Manager at Thorn Lighting (part of the Zumtobel Group), explains how it is now possible to incorporate stylish design with exceptional energy efficiency and good colour rendering.

Street lighting is something that today we all take for granted but, just because we take it for granted does not mean that it will always be there - as recently evidenced within a number of local authorities, who took the decision to switch off street lighting in certain areas to reduce costs. Understandably this caused a backlash with local residents and road users concerned with the issue of safety on their streets at night. There are many arguments for and against; local authorities have cutback, but at what cost? Are they aware that with new technology in place they could still achieve notable savings without turning the lights off at all?

## Functional lighting

Functional lighting is usually provided by luminaires designed specifically to satisfy precise tasks and functions, with key requirements including high performance, ease of installation



and maintenance and, perhaps more importantly, safety and security. Using LED with a white light provides the perception of a safer environment for both drivers and pedestrians. In fact tests show that motorists are able to detect roadside movement faster, and from a greater distance, with white light, thus allowing more time to react to danger or to stop if someone steps out into their path.

## Urban lighting

Character and definition are vital when lighting an outdoor space - good illumination can open up outdoor spaces after dark, transforming and defining them, whilst supporting people's wellbeing and making urban areas more liveable. Generally, urban lighting is provided by decorative luminaires which are integrated into the design of the environment, and whose appearance enhances the look of the space both by day and by night. Key features of good urban lighting are low glare, good uniformity, aesthetic quality and good colour rendering. Superior colour rendering and correct levels of brightness make it easier to distinguish shapes and people's features during the

hours of darkness. As a result of this increased visibility, it makes the streets feel a safer place to be.

## Architectural lighting

Good architectural lighting provides orientation points and highlights the landmarks of a city, whilst also encouraging social interactions. It can give a familiar landmark a whole new identity - or even a whole new colour. Architectural luminaires help to highlight materials, details and shapes and can range from tiny accent lights to powerful projectors and wall-washers. Key features of architectural lighting include high mechanical and optical flexibility, controllability, aesthetic quality and a wide choice of mounting options.

## Good design should go hand in hand with an energy efficient product.

Having addressed the aesthetics, another very important reason for switching to LED technology is the cost savings involved. Over the past few years as budgets have been cut there has been a great deal of pressure to reduce the energy consumption of street lighting and its associated carbon emissions.

Until recently, many local authorities have had to make a choice between the high cost quality illumination of LED lighting or a low cost alternative with poor colour rendering and high energy consumption that make the streets a far from inviting place. Therefore it's no wonder that many local authorities resorted to the wholesale 'switch off' solution.

As the relative energy efficiency of LED luminaires has improved it has become possible to achieve a better quality of light at lower running costs throughout the lifetime of the product. As a result the attitude towards LED street lighting has dramatically shifted and new products have entered the market which are extremely versatile; meeting the end user need for a cost effective solution and providing the necessary level of light to achieve a safe and secure environment after dark with significantly reduced energy consumption.

**Controlling the light**

Today's smart controls make saving energy and minimising light pollution simple and offer much more besides. Users can fine-tune light levels for different times and activities, reduce maintenance cycles and extend the life of luminaires by dimming or turning them off when they are not needed, create dynamic lighting displays that turn structures into living works of art and access their lighting remotely from anywhere. Control options range from simple local setups right up to sophisticated smart lighting systems.



**Individual control**

Simple controls with time switches, photocells and motion detection, offer reliable savings with little effort. Thorn's bi-power switch (BPS) solutions give the option of dimming to 50% for eight hours at night or any project required combination. Bi-power does not require external control wiring and its settings can be easily customised or deactivated. Optional photocells can save as much as 50% by reacting to available daylight, while motion sensors offer the possibility of even bigger savings.

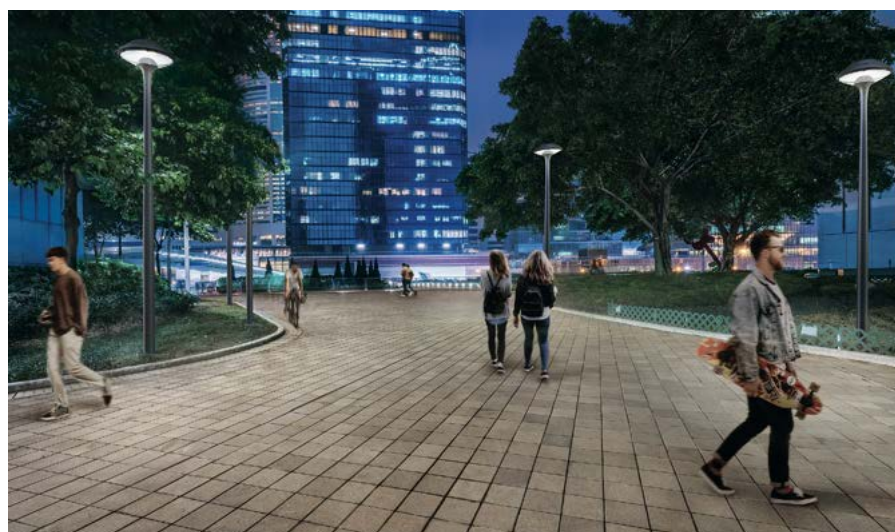
**Group control**

Lighting control for a group of luminaires typically can use a local control cabinet or controls via wireless radio frequency (RF) communication, power-line communication, DMX or DALI. This allows the dimming of a group of lighting points according to predefined profiles or the detection of people and vehicles. Potentially without the need for extensive

commissioning, this approach offers energy savings while still providing all the required light on demand. DMX allows precise and sophisticated control especially for colour-changing light installations.

**Wireless control**

For larger installations, RF wireless control allows luminaires to be controlled and monitored remotely, giving lighting managers the power to check for faults, respond immediately to changing lighting needs, and make sure light is only used when it is needed. The ability to conduct preventive maintenance means more reliable service, as well as big savings of time and money. The added benefit of controls is the possibility of connecting lighting to other smart applications, potentially enabling features like integration with traffic and weather monitoring, or responding to emergencies. The opportunities are growing by the day as other smart services come on line, so the future applications are becoming ever more exciting.



With the introduction of new technology we are able to develop new products which provide a sensible and cost effective solution to the need for energy reduction and which vastly improves the aesthetics of our towns and cities. So whether you are looking at street lighting for a major city, a small housing development or a university campus, the same solutions can be applied.

[www.thornlighting.co.uk/en-gb/solutions/urban-life-lighting](http://www.thornlighting.co.uk/en-gb/solutions/urban-life-lighting)



# TORO'S TOP PICKS

It's a tricky task picking out the top machines from the extensive Toro grounds care machinery range. Every machine has a different characteristic which leads those who use it, to love it.

Whether it's famed for its versatility, durability, productivity or efficiency, there will be something that will enhance your working life, bringing benefits and making that tough or tricky job that bit easier. So what we've done here is curate the firm favourites, new technology and innovation and the problem-solvers.

## NEW TECHNOLOGY

### Toro Groundsmaster 3200 and 3300

Bringing a unique balance of productivity, durability and value to the UK's grounds care customers,

the new machines are the next generation of out-front rotary mowers and have all the benefits out-front rotaries are known for, but with significant performance enhancements.

When it launched in 2019, little did anyone know just how widely appreciated this series would become in 2020. As cutting regimes in many places were reduced, the Toro Groundsmaster 3200 and 3300 came to the fore. Their versatility to cope with the upshot of reduced mowing cycles and the resulting longer coarser grass and give year-round productivity had never been more needed or valued.

These machines brought more choice for customers. Rotary and flail cutting deck options provide flexibility and value and a two-tier rotary deck met with customers'

feature and price requirements. The 24.7hp and a 37.4hp Yanmar diesel engines make simple work of tough jobs and the legendary cutting deck is easy to adjust for simple maintenance. The bullnose bumper, rugged spindles and 7-gauge high strength steel decks are built for any terrain and the CrossTrax all-wheel drive system provides automatic traction control, shifting power to the wheels in slippery conditions.

## OUTSTANDING INNOVATION

### Toro LT-F3000 triple flail

Toro's LT-F3000 has always been a popular choice for grounds customers wanting maximum productivity and unrivalled versatility, and never more so than in 2020 when grounds teams were working at reduced rates across the nation.

The fact that customers can make real savings by mowing less often makes it the perfect choice for those working to tight budgets and timeframes. So, let's look at why this is the case. What is it exactly that makes this revolutionary and innovative machine so popular?

To start with it offers a completely new cutting concept to triple mowing. It mimics the size, cutting width and manoeuvrability of a traditional triple cylinder mower.

Easily tackling the most challenging environments - from the widest open spaces to the narrowest verges - with greater ground contour control, it's simple-to-operate and makes light work of parklands, roadside verges, housing estate green spaces and other grassed areas. Plus, the flail cutting heads are able to cut long and short grass, wet or dry, and leave a much better

after-cut appearance than a rotary mower.

What's more, an innovative cylinder attachment gives the front-facing flail a dual purpose, and a machine that was originally intended as a flail mower can now cut as a cylinder mower to also deliver a premium finish on playing fields and sports grounds.

**SOLVING THE PROBLEM OF MOWING AND COLLECTING  
Toro ProLine H800 direct collect**

Put productivity at an all-time high and make clippings clear-up easier with Toro's ProLine H800 direct collect rotary mower. Its 23.8hp engine powers up to 12,000m<sup>2</sup> of mowing per hour, while the 41 litre fuel tank is large enough to power a full day's work. The generous 810 litre collector is one of the biggest in its class and accompanied by a

sensor which alerts the operator when it's full to avoid unnecessary stopping to check and empty. And there's no overflow either as the hopper sensor triggers an automatic deck stop before the hopper is over-filled. There are three settings - the first for dry conditions, the second for long wet grass and the third for dealing with bulky material such as leaves.

**FIRM FAVOURITE  
Toro LT3340 heavy-duty triple mower**

The Toro LT3340 is designed for jobs where high-productivity grass-cutting is needed. It gives a great finish thanks to its numerous blade configurations and commercial-specification cutting units in both 200mm (8 inch) and 250mm (10 inch) diameters.





The 200mm unit is available with four, six, eight or 10 blades and a floating head option for terrain where excellent contour following is essential and is particularly suited to finer applications such as sports pitches, playing fields and school grounds.

The larger 250mm version, which is available with four, six or eight blades, comes into its own mowing longer or dense grass, and can easily cut down grass 125mm (5 inch) or longer to less than 25mm (1 inch) in one pass.

Large diameter high-specification tyres, a robust rear-axle and superb levels of ground clearance mean the machine takes kerbs in its stride.

### VERSATILE CUTTING

#### Toro Groundsmaster 360 Quad-Steer

This zero-turn mower gives superb performance and manoeuvrability. Powered by a 36hp/26.8kW Kubota four-cylinder engine, it features Quad-Steer all-wheel-drive steering for maximum productivity in uneven undulating terrains.

Commercial rotary mowers can work incredibly hard for a living.



Expected to cope not just with a variety of mowing tasks, they have to be able to travel extended distances between jobs, scale what can be really steep kerbs and deliver a good finish, with well contained clippings, sometimes in far from ideal conditions.

Fistly the Groundsmaster 360 is a jolly good mower first and with the benefit of its unique Quad-Steer system second. After all, agility is worth nothing if it comes with any compromise in the mower itself. Put the two together and what you have is a machine that is an absolute doddle to drive. It literally turns on a sixpence and is so easy

to place it takes a degree of skill to unintentionally hit something. It's fast, tight and can cut around anything all without leaving a mark on the turf.

In a nutshell, it can tackle the sort of demanding agile mowing that has long been reserved for pedestrian and, more recently, zero-turn ride-on mowers.

### SMALL BUT MIGHTY

#### Toro Groundsmaster 7210

This small area zero-turn rotary mower doesn't believe in a day off. Its powerful 3-cylinder, liquid-cooled 25hp Kubota diesel engine gets the job done time after time. Durable heavy-duty 7-gauge welded steel cutting deck construction and the industry's toughest spindle assembly assures a long life while tackling the toughest of grounds care jobs with ease. Optional accessories mean this has the capabilities for more than mowing, it has the added versatility for removing snow, grooming infields and blowing leaves too.

Further information on Toro's range of grounds machinery can be found at [reesinkturfcare.co.uk](http://reesinkturfcare.co.uk).



**TORO**<sup>®</sup>

# TOUGH DURABLE VERSATILE AND MORE



**Tackle more with Toro machinery.**  
**World-class solutions for every job.**

Toro brings you unparalleled productivity, durability and all-season versatility with its range of grounds machinery. With the Groundsmaster 3300 out-front rotary, the LT-F3000 triple flail, the LT3340 heavy-duty triple and the Groundsmaster 360 Quad-Steer, we've got you covered.

[reesinkturfcare.co.uk](http://reesinkturfcare.co.uk)

Get **MORE** from your turfcare partner this year:  
More products . More advice . More training . More finance



Reesink UK LTD is authorised and regulated by the Financial Conduct Authority. Images shown for illustration only.





# ULTRAGROOMER™ GETS TO GRIPS WITH UNWANTED ACCUMULATIONS AT GLAMORGAN CCC

Glamorgan CCC are the latest in a growing list of cricket clubs to discover the benefits of the UltraGroomer™ cassette from the renowned TMSYSTEM™ collection. Purchased in conjunction with a 30" INFINICUT® FL mower in June 2020, the unit has helped Head Groundsman Robin Saxton to remove thatch and annual meadow grass accumulations to improve both presentation and overall plant health.

"The combination of the very wet winter quickly followed by warm conditions in the spring had caused a build-up of annual meadow grass on the square" explains Robin, who together with a team of five maintains the Sophia Gardens Ground and an off-site practice area. "We were familiar with the UltraGroomer™ from prior experience and felt it was going to be key to us clearing the accumulations

and improving sward cleanliness moving forward. Since we've been using the cassette it's exceeded what we hoped to achieve!"

Featuring over 80 tungsten carbide tipped blades, the UltraGroomer™ improves the plants immediate environment by removing Poa ingress, lateral growth and organic matter to enhance the movement of oxygen and nutrients and make it more difficult for disease pathogens to take hold. "During the main season, we were passing over the square every 3-4 weeks and each time were amazed at the amount of debris and organic matter we took out - we achieved a square which was clean, carried good pace and encouraged strong, healthy plant growth."

"The UltraGroomer™ will also be used in pre-renovation work, to thin out the surface and create an ideal

seed bed to optimise the results with our seeding and topdressing operations."

When not equipped with the UltraGroomer™ cassette, the INFINICUT® FL complete with SMARTCut™ reel has become the go-to mower for Robin when it comes to cutting the square. "We're very impressed with both the cut quality and presentation we achieve. This combination of equipment puts us in a fantastic position to continue to improve our facility, ready to host a more regular level of play (fingers crossed!) next season."

---

**Cub Cadet Golf & Sports Turf Products, 3 Redwood Court, Campbell Way, Dinington, S25 3NQ UK**  
Tel: +44 (0) 114 2122 200  
Web: [www.infinicut.com](http://www.infinicut.com)



Franklin Electric

# PUMP PERFECTION

Franklin Electric clean & dirty water pumps



CLEAN &  
DIRTY WATER  
PUMPS

## THE QUICK, EASY AND ECONOMICAL OPTION

Introducing the ES, VS and EV series pumps from Franklin, made for pumping clean water through irrigation systems at golf clubs and sports grounds. And the EGT and EGF series, for dirty water extraction from reservoirs, streams, lakes and pits. Ask for Franklin pumps and get instant improvements to energy efficiencies, variable speed solutions and a boost to your water pressure. Easily the best choice for pump replacements.

[reesinkturfcare.co.uk](http://reesinkturfcare.co.uk)

Get **MORE** from your turfcare partner this year:

More products . More advice . More training . More finance



Reesink UK LTD is authorised and regulated by the Financial Conduct Authority. Images shown for illustration only.





**Tough,  
everyday  
performance  
to rely on.**



**#OnYourSide**

# THE KUBOTA ST SERIES: - DESIGNED WITH THE USER IN MIND

Easy to operate and exceptionally reliable, Kubota's ST range of diesel tractors is designed with groundcare operators in mind. The machine is lightweight and compact yet powerful, helping it to deliver in terms of speed, maneuverability and efficiency.

It can be used for a wider range of jobs. For mowing, its mid-PTO-drive mid-mounted mowers and shaft drive feature ensure maximum durability with low maintenance.

It can also be utilised for front-loader or implement work, with grass catchers, trailers, decompaction equipment and pallet forks all easily attached.

The high torque, low noise Kubota diesel engine ensures powerful performance and offers a high and stable output over a wide rpm range. Operators can handle every high-duty task with power to spare.

Standard features include power steering and cruise control, as well as the exclusive Kubota bi-speed turning. This feature reduces drag, ensuring smoother, faster, and tighter turns, minimising turf damage. Precision mowing has never been easier!

The spacious cab features a 4-pillar design, with a large, curved windscreen and glass at the sides and rear.

This provides an unobstructed view of the operator's surroundings. The machine also incorporates a cruise control setting which helps to reduce operator fatigue by ensuring a constant speed for mowing and other tasks, without the user constantly having to adjust the accelerator pedal. Similarly, its engine outputs low levels of noise and vibration also helps to minimise operator fatigue, improving safety.

[www.kubota.co.uk](http://www.kubota.co.uk)



## G SERIES: Powerful and robust ride-on mowing solutions

If you're going to spend all day riding a mower, make sure it's the right one. Visit our website or talk to your dealer now to find out how our G series has everything you need to make mowing more efficient and productive: powerful but economic Kubota engines, superb twin-cut mower deck, highly efficient cut and collection. And for all day comfort, power steering, cruise control plus a high back suspension seat as standard.

Contact your local dealer or visit our website for more details.

[f](#) [t](#) [v](#) [in](#) [www.kubota.co.uk](http://www.kubota.co.uk)

OPTIONAL  
**5 YR**   
EXTENDED WARRANTY  
BASED ON THE HOURS YOU WORK\*  
\*Conditions apply. See your Kubota dealer for details.

**Kubota**  
130th Anniversary



# QUICK TURN-AROUND – GREAT RESULTS!

Due to Covid-19 sports calendar upheavals, the window to renovate has been incredibly tight for EFL Championship League football clubs this year, but great teamwork and bespoke maintenance programmes by Nottingham Forest FC’s grounds team keep the playing surfaces in top-notch condition

Unlike other clubs in the Championship, the playing surfaces at Nottingham Forest’s City Ground and the training ground are not identical, so stadium Head Groundsman Ewan Hunter works closely with training ground Head Groundsman Matt Tietjen to ensure

youth academy up to first- team players experience the best playing surfaces possible.

According to Ewan, the fibre-sand surfaces at both sites are in great condition, and that’s due to Rigby Taylor products.

“The players like the pitches at both venues as they give a slick playing surface,” he says. “At the City Ground the surface doesn’t bobble and the ball moves around well. My deputy, Jack Farmer, and I take a meter reading with a Clegg hammer if areas of the pitch are harder than others and occasionally struggle

with water in the winter months. However, when the weather is on our side, we produce one of the best surfaces in the Championship.” And a sizable collection of pitch, grounds team and groundsman of the year awards from the Grounds Management Association and the STRI is testament to the team’s high standards.

Ewan says he’s proud that the club’s team of four full-time and two apprentice grounds personnel do such a good job with what they currently have to work with. The equipment at the stadium includes G860 Dennis cylinder mowers, a

Toro Procore, a vertidrainer and sprayers. At the training ground, Matt uses ride on and tractor-mounted equipment to cover the five and a half pitches - including sprayers, Toro Reelmaster 3100 mowers, a Toro Procore and a Rigby Taylor iGO line marker - marking pitches with the dilutable line marking paint, Dazzle.

Regarding pitch materials, Ewan says that Rigby Taylor's Technical Sales Representative Mike Bear is an invaluable addition to the grounds team. "Matt and I speak to Mike quite a bit, he's always at the end of the phone when we need him. His product and industry knowledge is exceptional and we trust him 100%."

The club uses Rigby Taylor products that include the seed and its establishment, disease prevention, nutritional supplements and, according to Mike, his regular conversations with Ewan and Matt cover a proactive programme of treatment.

"We discuss what we're looking to supplement - the leaf, the roots or match recovery," Mike says. "We keep an eye of the fixture list, the time of year and look at what the plant needs, not just now but in a few weeks' time."

The annual nutrient and disease prevention programme at the City Ground includes Rigby Taylor's Microlite premium range of NPK-balanced fertilisers, which is complemented by the Nutri-Link range of bio-stimulant liquid sprays. In addition, Ewan uses the Autumn Green Bio fertiliser in autumn and winter and applies fungicides with fertiliser application throughout the year to keep diseases at bay.



Matt follows a similar programme to ensure playing surface consistency at both venues. "The training pitches get plenty of use from the academy under nine's up to the first team players - 600-700 hours on the three academy pitches and about 350 hours on the first team pitches - so we need to keep up standards. We rely on Rigby Taylor's Fine Turf Bio and Premier HG or PolyPro range of fertilisers, as well as Nutri-Link Revive and Nutri-Link Base liquid sprays, plus the Autumn Green Bio and fungicides," Matt says.

Ewan purchases products for both venues, in close consultation with Matt, and says that since joining the club in 2005, he tried a lot of grass seed brands before Rigby Taylor's R14 100% Perennial Ryegrass blend and continued with this for five years before upgrading to the R140 Tetraploid and Diploid Perennial Ryegrass blend because of its robust, hard-wearing benefits.

According to Mike, doubling the number of chromosomes has given R140 tetraploid perennial ryegrasses cell-wall 'double glazing'. "The increase in cellular chloroplast boosts chlorophyll production and aids energy absorption. It works well in colder temperatures, has enhanced disease tolerance and creates a deeper, denser root mass," he says.

Faster establishment in a shorter renovation window was a key issue for the club this season, due to Covid-19 effects on the sporting calendar. Ewan says he was literally waiting for the last kick of last season's home game so he could start work within a short six-week renovation window before the 2020/21 season kicked off.

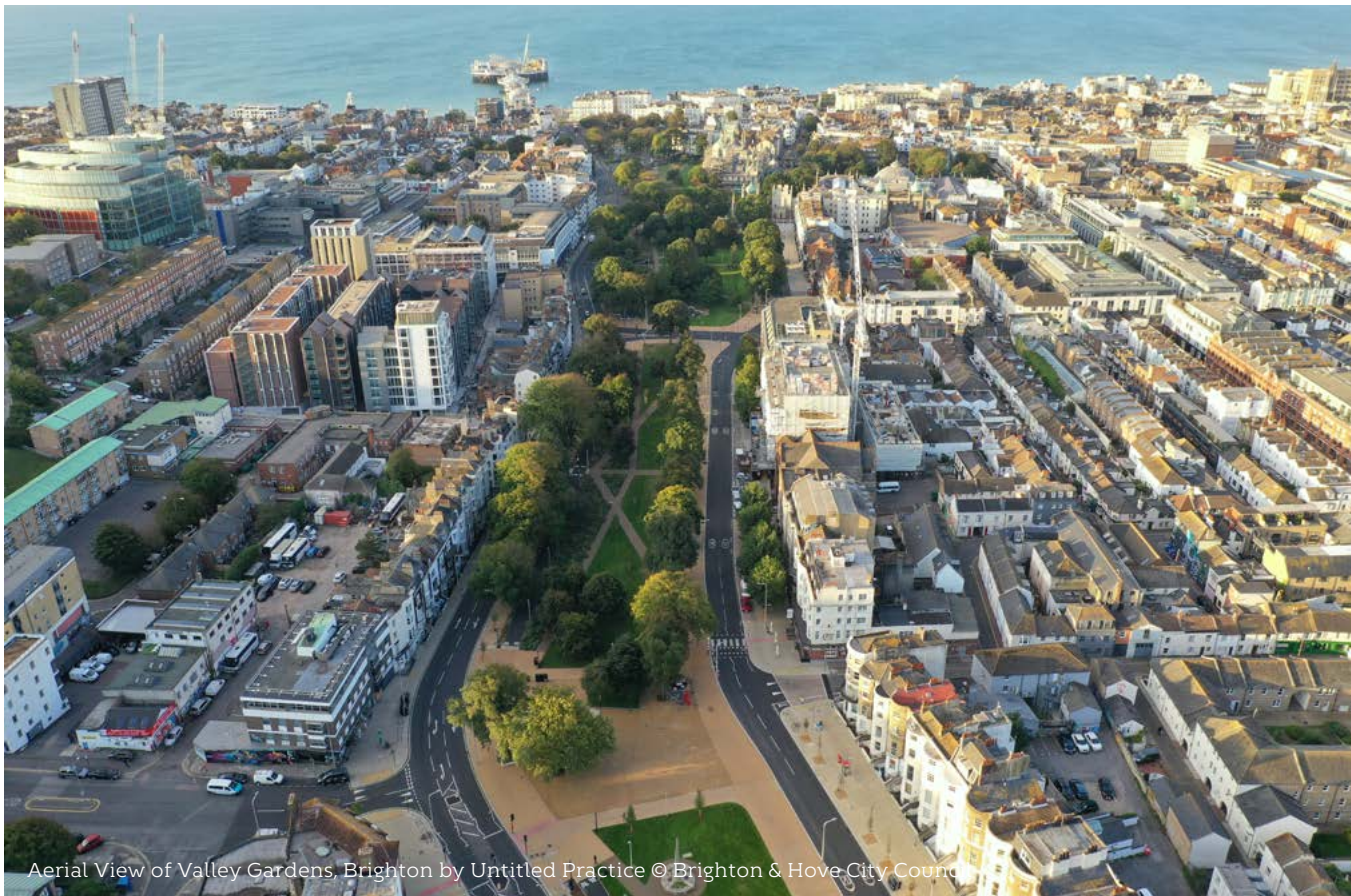
Matt too had the same time constraints when renovating his three academy pitches in time for pre-season training.

"One of the major benefits we've both found when using R140 is that it helps to establish germination quickly and offers early protection against fungi," Ewan says. "In the early days, when the seed bed is very young, we don't want to be going on there with a tractor or a sprayer so it gives us that extra couple of weeks' protection before we apply a fungicide."

Matt was also impressed by the fact that the seed can withstand low temperatures and its tolerance to drought.

With such a short window, Ewan, Matt and the club's renovation contractor, Premier Pitches, decided to go a lot lighter with the Koro, before seeding the City Ground and academy pitches - leaving them green, instead of taking them back to sand, which allowed a percentage of poa to remain in the ground; This was controlled by brushing and verticutting after a game and boxing off the clippings to prevent them from spreading.

Ewan continues: "R140 has already worked really well for us during renovation this year. Although we normally leave an eight- to nine-week window to create a quality playing surface, the grass has established well in just six to seven weeks, and we're confident that our on-going maintenance programme will support its durability so we can continue to meet the players' expectations throughout the season."



Aerial View of Valley Gardens, Brighton by Untitled Practice © Brighton & Hove City Council

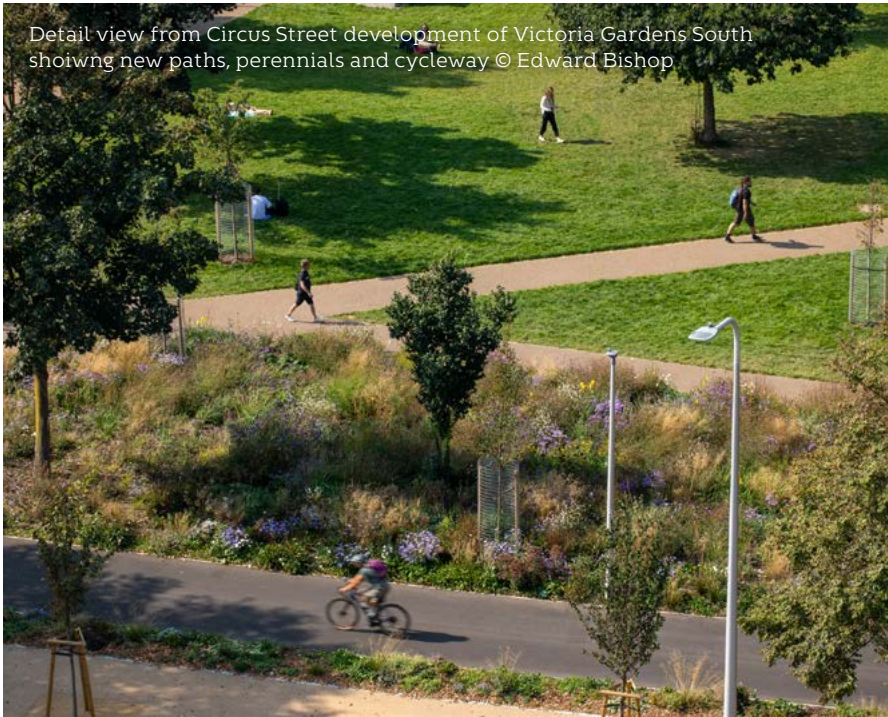
# **UNTITLED PRACTICE COMPLETES NEW 1.5KM LINKED PARK SYSTEM IN THE HEART OF BRIGHTON**

London-based landscape and architecture studio Untitled Practice (UP) has completed the redevelopment of Valley Gardens, a new linked park system in the heart of Brighton. Extending from St Peter's Church through to the Royal Pavilion, Valley Gardens joins up an extensive 1.5km sequence of public park spaces from The Level to Brighton Palace Pier, creating significant new integrated hard and soft public realm for the benefit of residents and visitors. The project encompasses a new setting and square for St Peter's Church, new lawns, perennial gardens, wildflower meadows, and extensive tree planting, as well as the National Elm Collection.



View across perennial gardens to King & Queen pub, Victoria Gardens South © Edward Bishop





Detail view from Circus Street development of Victoria Gardens South showing new paths, perennials and cycleway © Edward Bishop

Over the years the literal sense of Valley and Gardens had been lost so UP's proposals reinstate both by reconsidering the site's landscape urban history, from seasonally inundated commons, to promenading gardens. Ideas to emphasise movement 'flows' along the length of the valley floor were explored to inform the design of the open spaces as a 'linked park system', inspired by Frederik Law Olmsted's 'Emerald Necklace' in Boston. Conceived as a series of landscape strata that progress from grey to green, highways to parks, hard to soft, roads to paths, lawns, gardens and trees, the scheme provides almost 2.62ha of vibrant public realm for Brighton.



View to Victoria Gardens South with Mazda Fountain in foreground, showing new lawns and trees beside mature Elms © Edward Bishop

The introduction of wider footpaths throughout were coordinated with pedestrian crossings to improve accessibility to the parks for pedestrians and cyclists, opening up green spaces as never before. The footpaths frame the parks as well as two new urban squares created at St Peter's and Richmond Place; the former providing a new setting to the foreground of the Grade II\* listed building. The network of new paths bisects the long blocks connecting east and west neighbourhoods, and a new dedicated cycle lane runs continuously through the parks. General traffic is relocated to Royal Parade alongside the existing avenue of mature elms while public transport and local access is directed along the west adjacent to the busy North Laines, with its many shops and cafés. A road cross-over at Richmond Place was completely removed and another at Marlborough Place significantly reduced.

The new urban landscape was completed in close coordination with ambitious highway modifications along a busy arterial city centre route to the seafront.

Following a nine-year long journey, UP's ambitious regeneration has completed as the UK exits its second Covid-19 lockdown, providing a timely new outdoor public amenity for the city. The potential for the site was first highlighted in Jan Gehl's 'Public Space Public Life' study carried out for Brighton & Hove City Council in 2007, and the council's Public Realm Analysis of 2011, which documented the existing site's many issues ranging from a complex highway layout with inconsistent pedestrian crossing points to poor air quality.

In 2014 Brighton became one of the world's first UNESCO Urban Biosphere Reserves, the first completely new Biosphere in the UK for nearly 40 years. Valley Gardens lies strategically central within the urban 'transition area' of the Brighton & Lewes Downs Biosphere - known as 'The Living Coast' - and sits within the Valley Gardens Conservation Area, which includes John Nash's famous Grade I listed Royal Pavilion. The Pavilion Gardens and Grade II listed North Gate define the southern extent of the project site, and Charles Barry's Grade II\* listed St Peter's Church defines the north end of the site.



View at VGN showing new path across park, and carriageway reduction to 2 lanes w new footway and mature Elms re-set into extended park lawns © Edward Bishop

View from Circus Street development showing VGS as a green lung through central Brighton, with South Downs in background © Edward Bishop



This continuity is maintained across Richmond Square, and St Peter's Square, where a larger aggregate stone responds to the different scales of these spaces. The gravel stone provides a generous and informal quality to the spaces, referencing Brighton's pebbled beach, and is both flexible and permeable over the extensive root protection areas (RPAs) of important mature trees across the whole site - this was a major consideration in relation to the National Elm Collection.

Murray Smith and Fenella Griffin, Founders of Untitled Practice, commented: "Valley Gardens shows how green infrastructure can make our cities more resilient to climate change, providing public realm spaces that are more accessible and usable, especially in a post-Covid world with renewed appreciation of outdoors. The project is about connecting things up to create new relationships between people, place and nature, for better health and wellbeing, and it's been wonderful to see Brighton's residents and visitors taking full advantage of this fantastic new resource at the heart of the Biosphere."

The linked parks are characterised by the structure of existing and new trees, 140 of which have been carefully chosen for their spatial typology, seasonal interest, ability to cope with the coastal location and disease resistance. Arguably the most impactful feature of the scheme is a 650m long 'river of flowers' perennial garden that 'flows' along the east side of Valley Gardens. The garden screens the inner park area from vehicular traffic and cyclists along Grand Parade, whilst providing seasonal interest and supporting significantly improved biodiversity with a rich matrix of low maintenance perennial and bulb planting.

The surrounding urban landscape, which frames the green areas, is finished in a homogenous resin-bound gravel, which extends throughout the network of paths across the open spaces, unifying the new public realm.



View showing new cycleway between perennial gardens © Edward Bishop



View from Circus Street development across Victoria Gardens South, with i360 in the background © Edward Bishop



Tracy Beverley, Senior Project Manager, Transport Projects and Engineering Team, at Brighton & Hove City Council, commented: 'It's been great to work with Untitled Practice during this fantastic project to transform Valley Gardens. Their landscape expertise has helped us to build a space which can be enjoyed by our residents and visitors for years to come. Even during lockdown, work was able to continue to open up new gardens, wider footpaths and cycle routes. We're now looking ahead to the final part of the corridor which will connect the space to the seafront.'

Funding for the project was provided by the Department for Transport, through the Coast to Capital Local Enterprise Partnership. Jonathan Sharrock, Chief Executive at Coast to Capital, commented: "Our vision at Coast to Capital is to build our economy back stronger, smarter and greener, Valley Gardens 1 & 2 is a fantastic example of how our towns and cities can be enhanced with sustainability in mind. I look forward to seeing developments with the next steps of the project."

<http://untitledpractice.com/>



# HYDROPLANTER™

## THE ULTIMATE RAINGARDEN SOLUTION

GreenBlue Urban's new modular bioretention raingarden system, the HydroPlanter™ is the latest product can be retrofitted into highways schemes and on new developments of any size.

The "Plug and Play" sustainable urban drainage solution can attenuate and cleanse stormwater and provide amenity and biodiversity to new and existing spaces particularly suitable for highway build outs, central reservations and verges. A single modular unit which is also suitable for new housing developments tackling SuDS solutions when space is at a premium. The HydroPanter is an easy to design solution with drag and drop CAD drawings available via the GreenBlue Urban website.

The modules are manufactured in the UK from 100% recycled, recyclable material that can be filled with a soil specification and planted with wildflowers and biodiverse grasses. The concept is flexible, scalable and each unit stacks together to be a convenient



solution that any subcontractor can work with and install. Installation is fast, simple and offers significant cost savings to alternative methods. The complete package is available to include soil, drainage, stone and planting schemes. The HydroPlanter fully meets all requirements of the 4 pillars of SuDS outlined in the CIRIA manual. For detailed specification of the new HydroPlanter including internal build ups, suggested

planting schemes and UK Hydraulic Performance design tables visit the GreenBlue website at <https://www.greenblue.com/gb/products/hydroplanter/>

**GreenBlue also offer dedicated SuDS CPD's with lunch included, should you wish to discover more do express further interest by emailing [Hello@greenblue.com](mailto:Hello@greenblue.com) or by calling 01580 830800.**

# THE WORLD'S LEADING TREE PIT STORM WATER MANAGEMENT SYSTEM

#LetsGetPlanting

**GreenBlue Urban** is the world's leading tree pit specialist.  
Creating greener, healthier cities for all those that live,  
work and play in the urban environment.



Tree Irrigation



Underground  
Guying



Root  
Management



Tree  
Protection



Stormwater  
Management





Soil Cells

Visit [greenblue.com](https://greenblue.com) today to discover more  
on our **green** and **blue** infrastructure solutions.



w: [greenblue.com](https://greenblue.com)  
t: 0800 018 7797  
e: [hello@greenblue.com](mailto:hello@greenblue.com)

**GreenBlue**  
URBAN <sup>®</sup>  
Establishing the future urban landscape

**ABGRoofdrain**


ABG's UK manufactured **Roofdrain** geocomposite range provides factory controlled flow capacity for green roof constructions and structural landscaping applications.

**Roofdrain** allows storage of water within the nodes of the HDPE core, whilst facilitating the drainage of any excess water away from the roof. This helps prevent the root growing media from drying out during warm periods and from becoming waterlogged during wet periods.


The geotextile layer filters a wide range of materials whilst allowing water to percolate into the core of the geocomposite.



**Green roof drainage & attenuation layer**



01484 852096  
 sales@abgltd.com  
 www.abg-geosynthetics.com



**LEEDS SKELTON LAKE SERVICES LIVING ROOF**

A brand new £64M service station development has opened at J45 on the M1 in Leeds, located adjacent to Skelton Lake country park, 2 miles south east of the city centre.



The main 5,277m<sup>2</sup> food court building features an undulating wildflower living roof to help minimise the visual impact of the development, configured in a unique 'ribbon' pattern in eleven separate sections. The green roof absorbs rainwater into the roof build up to minimise surface water run-off; and the vegetation, growing media and filtration fabrics used within the green roof construction also filter dust and pollution from the air and rainfall, reducing the amount of chemicals and pollutants that reach the surrounding water courses.

At the base of the living roof structure ABG Roofdrain reservoir and drainage geocomposite is installed. The main core structure of the HDPE reservoir board features a matrix of storage cups to attenuate storm water and provide irrigation of the wildflower and sedum planting during dry periods.

The green roof system was designed by ABG Geosynthetics and installed by Geogreen Solutions.

[www.abg-geosynthetics.com](http://www.abg-geosynthetics.com)



**PlantBox**  
 A Biotechure Company

- Instant vertical greening
- Numerous plant options
- Simple irrigation system
- Easy-to-grow & adaptable
- Proven supplier
- Trade terms available

**Are you looking for a reliable living wall partner?**

PlantBox is designed with professional landscapers, garden designers & self-builders in mind – simply attach and plant on site for instant **vertical greening** solutions!

Ideal for planting Herbs & Edibles, Ferns & Grasses, Bedding Plants and more.

**It's a Growing Revolution!™**

For your recognised, reliable living wall partner contact PlantBox NOW.  
 020 8543 4530 [contact@plantbox.shop](mailto:contact@plantbox.shop)  
[www.plantbox.shop](http://www.plantbox.shop)





# Working together to create landscapes to be proud of

We are more than a supplier. Choose Green-tech and you get a trusted business partner.

- Over 25 years servicing the landscaping and forestry industries
- Renowned for our professional advice and technical know-how
- Vast warehousing and stock holding capabilities
- All your landscaping materials available from one company and on one delivery
- Next day delivery
- Competitive pricing
- Excellent customer care

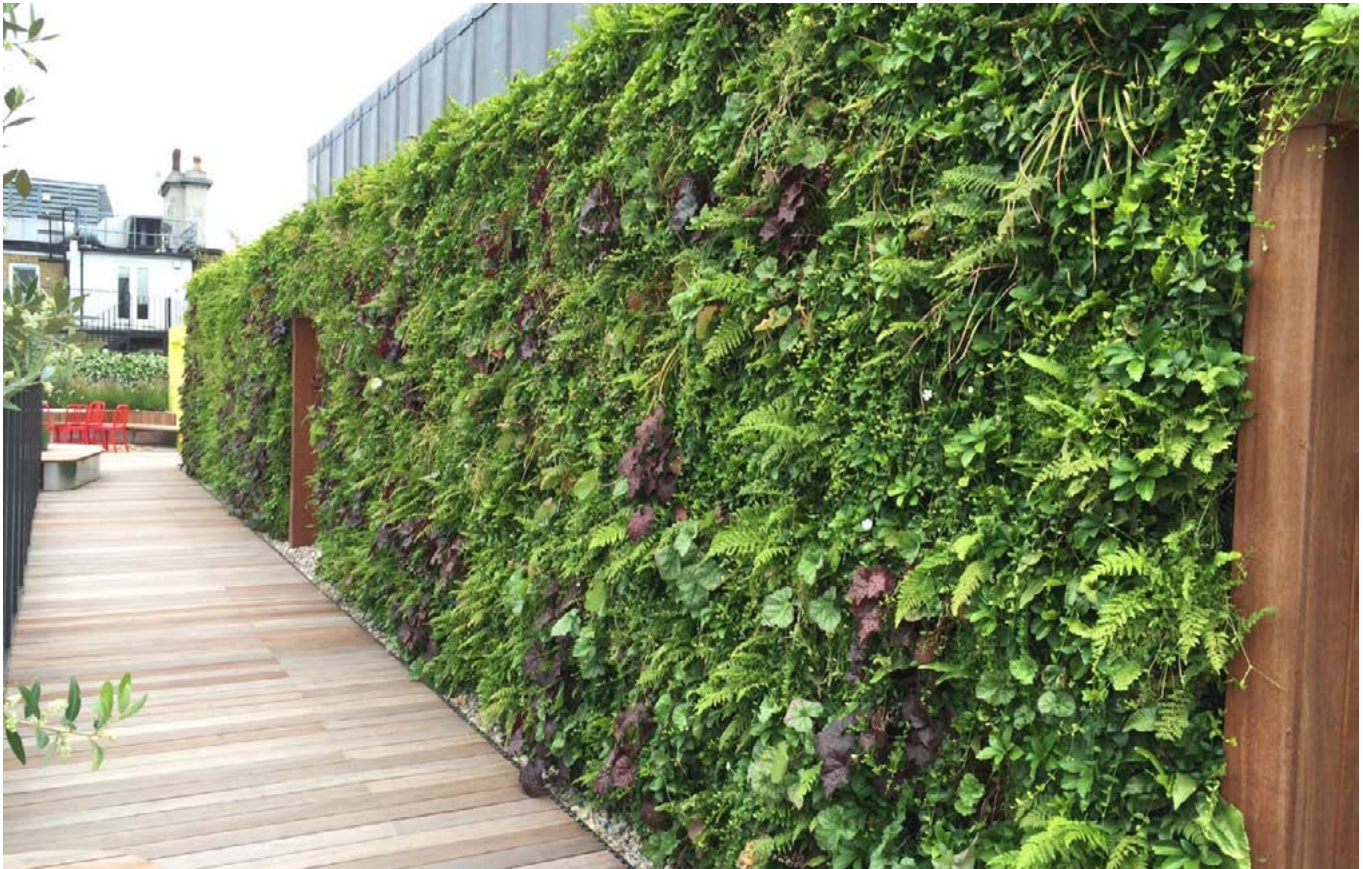


Call now to pre-order our new 2021 catalogue

T: 01423 332100  
E: [sales@green-tech.co.uk](mailto:sales@green-tech.co.uk)  
[www.green-tech.co.uk](http://www.green-tech.co.uk)

[@greentechltd](https://www.instagram.com/greentechltd) [@greentechuk](https://www.facebook.com/greentechuk) [green-tech-ltd](https://www.linkedin.com/company/green-tech-ltd)





# PLANTBOX – CLEVERLY SIMPLE VERTICAL GREENING

PlantBox is the new and cleverly simple living wall system that will transform the way you and your clients think about vertical greening. From balconies and railings to hoardings and commercial installations, PlantBox will instantly enrich the space.

## Versatile way to add greenery

Our PlantBox modular planters can be easily assembled by clicking and stacking them together, providing a quick and simple solution to greening the grey and reconnecting people with nature.

Freestanding or wall mounted, PlantBox can be easily attached or restrained to hoardings, walls, fences and railings. The perfect way to cover bare walls or breathe life into neutral spaces - and all this at a price point that opens up a whole new market for green walls. Finally, a living wall system that doesn't cost the earth.

## Really, really simple irrigation

Each PlantBox trough features a self-contained, reservoir-wicking irrigation system, meaning moisture from the in-built reservoir is wicked up directly into the plants' rootzone. This built-in feature means that both over and underwatering is a thing of the past. All thanks to a concealed overflow allowing for any excess water to drain through and cascade vertically down - giving you and your customer that all-in-one-living-wall-and-water-feature display!

As each trough has a built-in float indicator telling you when to top up, it provides a practically carefree, and extremely low maintenance, living wall system.

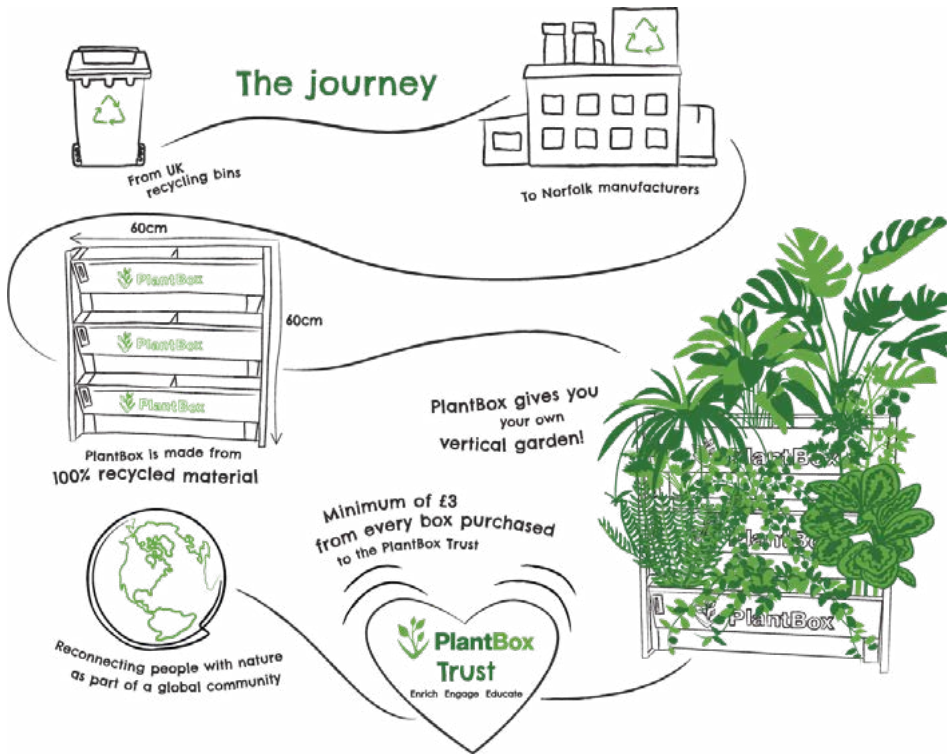
We want to make our living walls even easier to maintain, so we now also supply a simple irrigation kit that will allow for quick and carefree watering at the twist of a tap. A real game-changer.





## Built to last from 100% recycled materials

We believe in a greener planet and to be part of the solution we manufacture our troughs in the UK using 100% UK recycled materials. Plus, they're built to last, giving you and your clients reassurance that your living walls will be thriving for years to come.



## It's time to grow up

Grow everything from herbs and edibles to grasses and perennials using PlantBox. Angled troughs provide an ideal environment for up to four 1LTR (13cm) pot size plants to give you and your customer that instant impact and coverage.

Whether you are fixing back to a third floor balcony or a north-facing hoarding, we can advise you on the perfect plant mix to transform a space.

## Become a Trade customer today

There are so many benefits to becoming a Growing Revolution Trade customer, including:

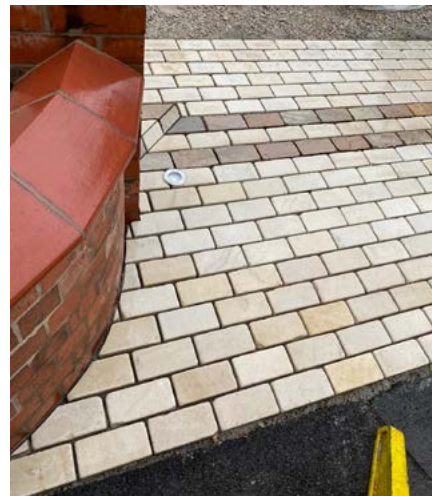
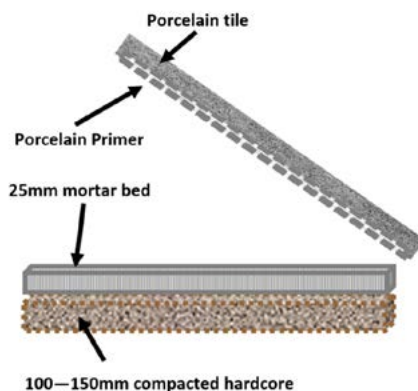
- Unbelievable value for money
- Priority shipping from UK stock
- Quantity based bulk discounts
- Trade Credit terms available
- Access to numerous customer enquiries/leads
- Full support, advice and back up
- PlantBox Training Sessions at our West Sussex nursery
- Part of the PlantBox Trust - a charity set up by us to invest in cleaner air, water and other green initiatives



We designed and patented PlantBox to be the best living wall system available. See for yourself by ordering your free sample today from our new dedicated Trade page [www.growingrevolution.com/trade](http://www.growingrevolution.com/trade).

Want to find out more?  
Contact Matt Lindsay, General Manager, on 01243 957109 or email [plantbox@growingrevolution.com](mailto:plantbox@growingrevolution.com) to join our Growing Revolution!





# TILERS TOOLS RISES TO THE CHALLENGE TO CREATE A COMPLETE LANDSCAPE INSTALLATION SYSTEM

As winner of the Service Provider of the Year last year from The Association of Professional Landscapers, the team at Tilers Tools continued to have lots of contact with their friends in the landscape profession and were still holding training days until CV-19 put them on stop temporarily. Invariably during the discussions, the topic of the best way to install porcelain was always the subject for lively debate and it was clear there was no stand-out system.

Well, there was a challenge that the team at Tilers Tools just couldn't ignore. Come up with a stand-out installation system.

They set out to discover what landscape professionals were looking for, then visited a number of manufacturers of adhesives and grouts. Tilers Tools quickly settled on two manufacturers, one to formulate the hybrid cement mortar mix and the primer which works with it and the other manufacturer to produce high quality grout that can be used in heavily trafficked areas.

The formulations went through extensive testing and tweaking in the laboratories to settle upon the very best system - in the laboratory. But the real tests could only be done on site.

The first test of the mortar mix and primer on site took place on an outdoor area being created by Chris at Sandstone Supplies. Chris has many years' experience as a landscaper so his input was invaluable. The test went extremely well, but there were still a couple of improvements to be made. Then the products were ready for real-life testing and a couple of very capable landscapers, Paul at Signature Landscapes and Craig at Taylor'd Landscaping, and their clients, volunteered to be guinea-pigs.

Following very positive feedback, the test was rolled out. Over the months since testing began, the products have been given a resounding thumbs-up from everyone using it. A guaranteed system, simple to use, which holds up well and forms a solid monolithic bond between flags, mortar and sub-base and delivers these benefits in an economic way was clearly going to be a winner.

The grout, Part C, is first class too. The grout is hybrid resin cement based but with a formulation that ensures it is UV solid, has flexibility to resist cracking, can be used on joints up to 20mm wide, is water-resistant and can be used in areas subject to heavy traffic. It's simple to apply and easy to clean off. The FUGA-PAVE Flex CH grout comes in the five most popular colours, light grey, medium grey, anthracite, Jasmin and limestone.

The FUGA-PAVE ABC system is so versatile. While it was designed with porcelain flags in mind, ABC is also suitable when installing natural stone and cementitious products, including blocks and pavers. Part A, the hybrid cement can be used with building sand as a strong mortar when building walls.

Why would you specify anything else?

Look out for FUGA-PAVE ABC at your local landscape supplier.



# FUGA-PAVE ABC

## Complete Paving System

### Formulated for landscape professionals

- ◆ Economical - versus traditional sand + cement
- ◆ Guaranteed - subject to terms
- ◆ Versatile - for porcelain, stone and cement flags
- ◆ Solid - can be used on heavily trafficked areas
- ◆ Easy to work - trowels nicely, holds flags well

So many benefits and saves money too. Why wouldn't you insist on FUGA-PAVE ABC?

Contact us today for your nearest stockist;

01565 344860 sales@tilerstools.co.uk www.tilerstools.co.uk

## As easy as ABC

Part A  
Hybrid Cement



Part B  
Hybrid Primer



Part C  
Hybrid Grout



Guaranteed System,  
subject to terms





# GEOCERAMICA PAVING TOPS OFF GREENFORD QUAY DEVELOPMENT

Brett Landscaping has supplied its GeoCeramica porcelain paving for the roof terraces and public spaces of a major new mixed-use development in London, overlooking the Grand Union Canal.

More than 1400 m<sup>2</sup> of GeoCeramica has been installed across the communal areas of the £151 million Greenford Quay development, with 150 m<sup>2</sup> used to provide a highly aesthetic finish to the communal roof terrace on the tallest tower in the scheme.

Greenford Quay is one of the UK's largest 'Build to Rent' schemes with

1,965 new homes being built across seven main buildings within wide public realm spaces. The aim of the development is to create a vibrant mixed-use neighbourhood at the side of the historic Grand Union canal.

Project architect HTA Design required a high-quality paving system that would complement the curated gardens across the podium courtyards and upper terraces of the development, and a system that could meet the strict specification requirements for use on tall buildings.

The architect worked with the technical team at Brett Landscaping and chose to use the GeoCeramica range of porcelain paving. The range provides the look and finish of natural stone, while containing modern paving technology suited to the demands of the project.

Brett Landscaping were able to demonstrate that not only would the Fiordi GeoCeramica system provide a finish that met the aesthetic requirements of the upper terraces of the project, but that it could meet the loading requirements and ensure its suitability for the building's design.



Ajay Vohra, Specification Sales Manager - London and South East, Brett Landscaping said:

“The Greenford Quay project allowed the opportunity for Brett’s GeoCeramica to meet the needs of HTA’s brief and vision for the development for its roof and podium terraces. The elegant range of aesthetics available of this high-quality product, is the future choice and the latest progression in paving and roofing materials.

“At Brett Landscaping we offer high specification paving systems that add value to large public spaces and boost those complex intricate detailed areas. The Brett team provides the expertise, and offer the complete service from conceptual or technical design, right through to sale, supply and installation.”

Ian Hainsworth Senior Landscape Architect at HTA Design:

“Working with Brett allowed us to choose a paving system that met the high aesthetic requirements of this landmark luxury development, without compromising on the structural durability, reliability and quality of the installed system.”

“As former industrial estates are reclaimed and converted to modern living developments, there is a need for architects to design public realms that can offer residents a real sense of wide-open space. Greenford Quay is a landmark example of how new community neighbourhoods can be created through careful use of design and high-quality building materials.”

GeoCeramica is a hybrid porcelain and concrete paving flag tile with a pre-bonded cementitious water permeable drainage layer.

For the roof-top areas GeoCeramica has been installed on a pedestal system. This is made possible due to the inherent dead weight of each hybrid flag tile and its individual strength characteristics. The product could meet the technical brief without compromising on the aesthetics offered.

The specification of GeoCeramica provided HTA Design with assurance that the paving would prove durable in all weathers and conditions, at the top of the 14 storey Tillerman’s Court (Block 5) on the scheme.



A further 1200m2 of the GeoCeramica Impasto and Fiordi paving was supplied to provide footpaths and private terraces on the podium landscapes. These provide a high-end finish to the communal amenity gardens at first floor level.



**Pictures courtesy of Greystar  
www.greenfordquay.com**

## THE ADAPTABILITY OF RESIN BOUND SURFACING



There has been a significant increase in demand for resin bound surfacing over the past couple of years. It is a product which was initially popular within commercial projects, particularly public spaces. This is because commercial paving projects often experience high levels of foot traffic so require a surface that is high quality, long lasting and hard wearing. The smooth surface also makes it easily accessible for wheelchair users. However, over the past couple of years resin bound surfacing has quickly found its way into the residential sector too. Most commonly used for the driveway area, it is also ideal for use on pathways, roof terraces, accessibility ramps and swimming pool surrounds to name a few.

Long Rake Spar provides high quality, dried and screened aggregate granules and sands into resin bound surfacing. Our Grantex range of decorative aggregates, offers our customers a wide choice of colours and sizes, to complete any resin bound project, big or small. Our products were recently used for two very different resin bound applications. Firstly a commercial project, in which our customer Addagrip provided a new multi-purpose path for pocket park improvements near Wandsworth. This featured their Resin bound Terrabound. Part of the plan to upgrade Bramford Gardens (a pocket park near Wandsworth), included reconstruction of the existing separate cycle path and foot path. The idea was to provide a new shared pedestrian cycle path. Additional improvements also included repainting of existing railings, planting trees, laying turf, renewing signs and installing new benches.

Addagrip approved contractor O'Hara Bros Ltd dug up the existing cycle route and pedestrian path to create a wider shared route. They then installed 200m<sup>2</sup> of BBA approved Terrabound Resin Bound surfacing in an attractive 10mm Trent blend. The aggregates used within this stunning blend were from our Grantex range of specialist dried and screened decorative aggregates. The challenge was working in a busy public place, maintaining the safety of the public and keeping work areas to a minimum. The area being resurfaced had to be as accessible to the public as possible during the installation. Park gate access and parking required the use of smaller machinery and storage points outside of the working area. The new surface is porous, seamless and has revitalised the park with a decorative yet low maintenance paving.

The second resin bound paving project that featured our Grantex range, was residential. Our customer SureSet were situated in a small town close to Longleat Forest in Wiltshire, where they were faced with a tired, south facing residential patio that was in desperate need of a revamp. The owners of the worn-out patio area wanted to transform the back garden of their detached property with resin bound aggregate. The installation was done by the homeowner themselves and they chose to use SureSet's 6mm Cappuccino material, which was chosen from the Natural Aggregate DIYPack Range. Well over a year after its completion, the owners are still extremely happy with not only how the resin bound surface looks, but also how it performs in the rain!

[www.longrakespar.co.uk](http://www.longrakespar.co.uk)



**RS**  
EST 1867  
**LONG RAKE SPAR**  
Specialist Decorative Aggregates



THE UK'S LARGEST RANGE OF  
**DECORATIVE AGGREGATES**  
FOR RESIN SURFACING

**Grantex**  
Surfacing Aggregates

**Sight GRIP**

01629 636 210

[www.longrakespar.co.uk](http://www.longrakespar.co.uk)

[sales@longrakespar.co.uk](mailto:sales@longrakespar.co.uk)

**Benefits**

- Attractive, natural grass surface
- High load bearing strength
- Resists rutting and compaction
- Clean and free draining
- Provides ideal source control for Sustainable Urban Drainage Systems (SUDS)

**Suitability**

- Events and amenity areas
- Emergency vehicle access roads (inc. HGV)
- Overspill car parks
- Sports surfaces
- Source control for SUDS

# TechTurf Systems



The Naylor TechTurf reinforced grass system consists of a specially prepared sand: compost rootzone into which is blended thousands of small interlocking mesh elements. Selected turf and fertiliser are supplied to establish grass cover.

As the grass roots develop they penetrate through the mesh to form a deep anchored root system and a very stable rootzone. The result is a free draining natural grass surface with no visible structures, compaction resistance and high load bearing capabilities. TechTurf is supported by over a decade of high level civil engineering and agronomic research.





# Street Design

## Grenadier timber planters help with social distancing in Leicester

Leicester City Council needed to put social distancing measures in place during the coronavirus crisis.

Timber planters were seen as a useful device to create safe areas for cyclists and pedestrians whilst at the same time restricting vehicular access.

Street Design was approached to manufacture and supply their Grenadier timber planters.

The FSC Certified treated softwood planters were manufactured and delivered quickly to allow these changes to be implemented as soon as possible, increasing the spaces for cyclists and pedestrians.

The planters have been used to close off streets, narrow traffic carriageways and create outdoor eating areas.

The closed streets have allowed cafes and bars to extend onto the road, providing safe areas for customers to eat and drink.

Planters have been located to reduce the number of carriageways, allowing more space for cyclists and pedestrians.

A large pop-up picnic area has been created in one of the city centre squares, providing seating and tables for people to consume their takeaway food and drink, bought from a range of local businesses.

In addition to helping with social distancing, the planters have increased the number of trees and planting in the city centre.

Contact Street Design for more information on **01509 815335**








# Street Design

UK BASED DESIGNERS &  
MANUFACTURERS OF  
STREET FURNITURE &  
LANDSCAPE PRODUCTS

 001509 815335

 [0sdl@street-design.com](mailto:0sdl@street-design.com)

 [www.street-design.com](http://www.street-design.com)

## PLANTERS & SEATING

- Established in 1986
- UK based manufacturer
- Full range of Planters & Seating manufactured to specific sizes
- Choice of materials and finishes
- Low maintenance products
- ISO Registered
- FSC Registered

**ROOF GARDENS**

**RETAIL**

**RESIDENTIAL**

**EDUCATION**

**HEALTH CARE**

**HOTEL & LEISURE**

**COMMERCIAL**

**PUBLIC REALM**





Photo credit: idverde



Photo credit: idverde

## DON'T HALT YOUR WINTER MAINTENANCE REGIME

2020 has been an exceptional year for us all. Subjected to a new threat we previously knew nothing about, the United Kingdom has been tasked with adapting to a new way of life.

The challenges associated with this new way of living have been no different at work. Whilst those who were able to fulfil desk-based tasks from home did so, landscape contractors such as those in BALI's National Contractors Forum continued to work as normal during the summer, ensuring the soft estate was maintained according to client specification and public demand.

Whilst the public commonly associate 'landscaping' with conspicuous activities such as grass cutting or litter picking within parks and open spaces, most landscape

works go unnoticed. Away from the public eye, management of the soft-estate associated with infrastructure - sewage treatment sites, electricity pylons, road verges and defence sites - continued throughout the summer regardless of the pandemic, to ensure their function and safety.

Unfortunately, during the summer many commercial clients were faced with difficult decisions regarding budget allocation. Soft-estate maintenance budgets were cut, resulting in reduced or even cancelled maintenance operations.

As in the summer, reduction of budgets for landscape maintenance services during winter would be a false economy and likely to result in landscapes less resilient, accessible, or safe.



British Association of Landscape Industries



Whilst the colder weather and shorter days will reduce the pressure on services such as grass cutting, during winter landscape contractors commonly undertake tree works, vegetation clearance, gritting and snow clearance to ensure dog walkers and joggers can exercise in the local park, key workers can travel on roads and those working from home are guaranteed water, electricity and broadband.

The outlook for 2021 is looking bright, and with a little luck life as we knew it will begin to return to normal. Until then, continued investment in the landscape is essential to ensure it remains safe and functional during winter, and when normality returns next year it is ready for the busy, exciting life we once knew.

To find out more about the BALI-NCF visit [bali.org.uk/about/bali-ncf](http://bali.org.uk/about/bali-ncf)



[bali.org.uk](http://bali.org.uk)

# Join BALI and get money back



British Association of Landscape Industries

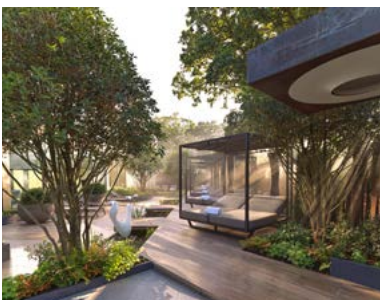
Join the British Association of Landscape Industries, from just £504 per annum\*, and save over £1,000 in member benefits.



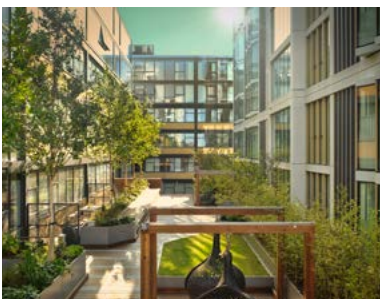
idverde - Thamesmead



John O'Conner (Grounds Maintenance)



Landform Consultants - Cottonmill Spa



LDC - Long Street

## Take advantage of our exclusive benefits designed to support and promote your business

- ✓ BALI National Landscape Awards - Enter your project, sponsor an Award and/or attend the largest landscaping awards ceremony in Europe
- ✓ BALI Health & Safety and Human Resources - Save over £1,000 with 24/7 support, guidance, templates and legal services
- ✓ BALI Insurance - Up to 10% savings on insurance premiums with specialist broker
- ✓ New company website or social media pages developed and managed for you with our BALI Digital service, with savings starting at £800
- ✓ Company profile on the BALI website and use of the Registered logo, a recognised symbol of trust, quality and respect
- ✓ Access to exclusive events and networking opportunities throughout the UK

## Interested in joining as a Registered member?

Call Alex Newberry on  
+44(0)24 7669 8650 or  
[alex.newberry@bali.org.uk](mailto:alex.newberry@bali.org.uk)



# [bali.org.uk](http://bali.org.uk)

\*Membership application fees apply, annual fees based on company turnover

# NEW OUTDOOR SOCIAL SPACE FOR PRESTON SIXTH FORM COLLEGE



Cardinal Newman College, a successful Catholic Sixth Form College in the heart of Preston, has unveiled a new outdoor space for their students.

In response to Covid-19, the College wanted to create a new outdoor covered social space for their students with benches and planting which could be used in all weather.

With the additional pressure on circulation space due to the pandemic, the external spaces needed to be more efficiently designed to accommodate small and medium groups of students throughout the year.

Land Studio, a specialist landscape architecture, design and masterplanning practice in Chester, worked on the project with Flinders Chase, a civil engineering company based in Liverpool, to design the complex terrace improvement scheme.

With underground services plus the roots of protected lime trees to avoid, a specialist screw pile foundation solution to avoid pouring metres of concrete - and 4,000 students to navigate - the design includes reconstituted decking under a permanent canopy structure with steel seats. The scheme was brought together within four months from design concept to completion.

Land Studio founder and director Simon Richards said: "The coronavirus pandemic has shown how vital it is that students have safe spaces outside during their busy academic day.

"We are working with a growing number of schools, sixth form colleges and universities across the country to help them to create rich, vibrant and immersive spaces outside. These are spaces which work whatever the weather because Covid-19 is not going away anytime soon."

Principal of Cardinal Newman, Nick Burnham, said: "The outdoor seating has proved very popular so far with students using it straight away, especially the large covered area, as it provides great shelter whilst the weather has been so unpredictable.

"It offers students a great alternative to the indoor social areas, particularly under the current circumstances, as it allows students to spend time on campus between their lessons in a safe and socially distanced way.

"We look forward to the warmer months, when I am sure we will get even more use out of the seating. The seating fits well into the surroundings, compliments our grounds and gives us even more opportunity to enjoy the beautiful campus."

[www.landstudio-uk.com](http://www.landstudio-uk.com)

## SPRINGBRIDGE DIRECT LTD - ONE OF THE UK'S LARGEST TURF AND TOPSOIL SUPPLIERS

Running a Fleet 20 Vehicles we are able to supply soft landscaping materials in bulk bags, pallets or loose tipper loads in any quantity from one ton to one thousand tons.

Based in a prime location on the outskirts of West London, we can deliver with our own fleet of vehicles through the South East, as well as delivering nationwide using our network of pallet couriers.

All Springbridge's products are tested to the highest standards to ensure quality throughout our range. Whether you're looking for BS3882:2015 standard topsoil, TGA approved Turf or 6.1 rated multi trip bulk bags we will have, or be able to source products to any specification.

Alternatively you may just want some bog standard turf and topsoil for a small back garden. We can do this as well.

With over 30 years' experience in the industry, a fast efficient delivery service, high quality products and good value pricing we urge you to give us a try on your next order and let us show you what we can do.

[www.springbridge.co.uk](http://www.springbridge.co.uk)



**New for 2020**

Introducing...  
**Magic Meadows™**  
by Pictorial Meadows

- An expertly balanced mix of annuals, biennials, and perennials
- Dramatic changes in colours and variety from year to year
- Choose from 3 stunning new meadow designs

Superior quality designer meadows from seed and PMTurf based on 20 years of research and development

# Pictorial Meadows

Request your catalogue or arrange your CPD now:

01142 677 635  
[PictorialMeadows.co.uk](http://PictorialMeadows.co.uk)

Meadow seed and PMTurf™ supply  
Training and CPD seminars  
Design and consultation  
Meadow installation



# REBIRTH OF THE HOME ZONE

Apart from measures directly related to Covid 19 itself, it is now clear that the pandemic has triggered a fundamental rethink about other aspects of how we live and work. Many longer-term, wider issues considered important for some time, but left on the back-burner, are now re-surfacing, with the pandemic acting as a catalyst accelerating action. These issues have major implications for the built environment - including paving, as the trade association Interpave explains.

There is a new drive for walking and cycling to reduce obesity, and also address pollution resulting from car travel. The issue of traffic 'rat runs' through residential areas, generated by sat nav, is also in the news. Home working and the growth of on-line shopping have also created debate about creating stronger neighbourhoods and the reinvention of the suburbs, as well as our city



centres. Now is the time to revisit the home zone concept for new or existing housing.

## QUALITY OF LIFE

Home Zones are residential streets or other external spaces within residential neighbourhoods where people and vehicles share the

whole road space safely and on equal terms - although the motorist should feel like a 'guest' in the area. They are designed so that quality of life takes precedence over ease of traffic movement and they aim to promote neighbourliness and a sense of security. Other original aims of home zones, particularly relevant today, include encouragement of cycling and walking for health - so reducing congestion and pollution - inclusion of older residents within the community and improving 'Liveability'.

Detailed guidelines have been available for some time on all aspects of Home from various organisations - including Interpave's 2005 Home Zone Paving guide (available via [www.paving.org.uk](http://www.paving.org.uk)). Home Zones need to be designed as vibrant public spaces to accommodate play, exercise and relaxation by residents including children, the elderly and disabled people.

They should be individually designed to give a sense of identity and community.

**MODULAR CONCRETE PAVING**

The guidelines recognise that paving materials need to give each Home Zone visual appeal and definition of a specific character. Most of the paving in Home Zones will be shared surfaces without traditional stepped kerbs to identify the carriageway. So, a variety of colours, patterns and textures is needed to clearly differentiate public from ‘private’ spaces and shared areas from non-vehicular, as well as identifying particular features.

Modular concrete block and flag paving is ideally suited, meeting the criteria set out in the guidelines including proven long-term performance, durability and minimal maintenance while offering endless variety in shape, scale, colour and texture. In terms of design, a wide choice of colours is available from Interpave members - ranging from vibrant to muted tones, as well as varied mixes of colours that can emulate other materials such as stone or clay. Surface treatments can also be applied to paving blocks, flags, kerbs and other products to give

different textures, some exposing aggregates and others giving a weathered appearance.

In addition, different shapes and sizes, ranging from large flags to the smaller paving blocks, give the diversity called for in guidelines to suit the particular scales of different spaces. Despite the huge choice, precast concrete paved surfaces give consistent frictional characteristics and joint widths ensuring safety and ease of use by the whole community. All these attributes combine to enable designers to select paving styles ranging from traditional to contemporary, giving each Home Zone its own special character.

**LOW INTERVENTION CHANGES**

The concept of a uniform surface shared by people and vehicles is fundamental to Home Zones and modular concrete paving is ideally suited to both. In addition, weather-independent ‘dry’ construction methods optimise available working times to fit in with the requirements of residents. There are no curing delays before the paving can be used or noxious fumes as encountered with asphalt and, as only small plant and equipment is needed, noise



and disturbance is minimised. Importantly in these uncertain times, modular concrete paving can be lifted and re-used for layout changes and new requirements or access to services.

With existing streets, the Home Zone surface will generally be created by raising the carriageway level up to meet the footway, eliminating stepped kerbs. This can be achieved economically with limited intervention using an overlay construction of modular concrete paving units. But there is a convincing case to consider concrete block permeable paving, a multifunctional SuDS technique providing an inherent drainage system that requires no additional land take for water storage. It also offers a range of additional benefits, including pollution removal - with a gradual supply of clean, treated water as an asset - and even potential for urban cooling.

**PERMEABLE PAVING INNOVATIONS**

The innovative concept of concrete block permeable paving overlays is used for existing streets to provide a well-drained surface level with the footway. But it opens up wider possibilities for all hard-surfaces, including those around existing housing. It also sets the bar for adaptable, multifunctional modular paving in new developments as well. With good design, this approach can meet the latest drive to encourage walking, cycling and social distancing - with minimal interventions and maximum flexibility - whilst reducing flooding, pollution and overheating.



# 4 WAYS TO GET THE MOST FROM YOUR DECKING AREA IN WINTER



The peak season for buying decking is in the spring, when everyone is getting ready for the long summer evenings spent outdoors. When winter rolls around many decks are left neglected, but this needn't be the case.

With some creative thinking, a garden deck can be every bit as useful and enjoyable in the autumn and winter as it is at warmer times of the year, and in fact, now is also the perfect time to act to protect your decking area during the colder months.

We've compiled some top tips for making sure your deck brings you joy all year round.

## 1. Heat it up

Adding a fire pit, a chiminea or some patio heaters and some cosy faux fur throws to your outside area can turn it into an appealing place to sit, even when the temperature outside takes a drop.

Fire pits and chimineas are a quick and easy update for those who seek something more rustic and charming to huddle round but remember to keep it safe. Whilst composite materials are a great option due to their specific blending of timber and recycled plastic which develops a good resistance against heat and fire, remember that a wood-burning fire pit can reach temperatures of up to 1,200 degrees Celsius, so you'll want to be sure to avoid any cosmetic damage from scorching or from hot fire pit contents spilling onto the deck. The easiest way to do this is to pop your fire pit or chiminea onto some old paving slabs or other completely non-combustible surface so you can avoid any damage to your deck.







## 2. Add some shelter

As well as providing shade from the sun when it's warm, canopy awnings and shade sails can help to keep you dry when you're out on your deck in the rainy and snowy months. If you have a heat source on your deck already, then your awning will help to trap the heat and keep you even warmer when you're outside on chillier evenings.

## 3. Alfresco dining even in the winter

Alfresco dining is likely to be one of the primary functions of your outdoor living space so why not make the most of this function all year round? When you're creating your ideal outdoor area, be sure to consider how you'd like to use

it in terms of dining and cooking and include the right equipment to make it as easy as possible. A gas or charcoal barbecue is a common choice that won't break the budget, but if you fancy something a bit more substantial for your finest dining moments, you could opt for a clay oven or pizza oven. As with fire pits, you'll need to guard your deck against the heat source, but an outdoor oven can turn your deck into the perfect party venue from January to December.

## 4. Let there be light

Lighting is key for creating the right mood in any space. Candles are a quick and easy way to illuminate and soften a space to help create a sense of intimacy, and if you opt

for LED versions then you needn't worry about remembering to blow them out before heading inside. Solar string lights are another great option that can add a whimsical touch or festival vibe to your exterior area, especially if you have a small deck as they don't take up much room and their effortless simplicity can help draw the eye to your plants, cushions and other accessories.

With these tips you'll be able to make the most of your decking space all year-round, whether it's 30 degrees or minus 30.

[www.duracomposites.com](http://www.duracomposites.com)



# KEEP MAINTENANCE (AND STRESS) TO A MINIMUM WITH NEOTIMBER'S LATEST RANGE OF ALL-WEATHER DECKING SOLUTIONS

NeoTimber® widens their product range with a host of new weather-resistant decking and subframe offerings.

In their aim to provide both homeowners and installers with the complete outdoor flooring solution, NeoTimber® launch their new capped composite decking range, alongside a host of subframe solutions designed to be their most eco-friendly and hardwearing to date. With weather-resistance and durability at the heart of their design, the new products are typically NeoTimber® and are in-keeping with the brand's mantra of offering innovative solutions that are designed with both performance and aesthetics in mind.

## The NeoTimber® Advanced Range

Broadening their offering of long-life decking solutions, NeoTimber® launch their latest composite decking range, the Advanced board.

A hollow composite product smarter than most, the board is capped in a protective polymer shell and is built to tackle the stresses and strains of everyday garden life. Unlike most hollow boards on the market, the capped board is designed to offer superior stain and fade resistance and in-turn, provide added peace of mind, year-after-year. Designed with the brand's trademark hollow tubes, the board offers a lightweight, yet hardy construction, and comes with an impressive 25-year residential warranty.

The range is priced at £25 inc. VAT per 3.6m length and is available in a choice of 3 on-trend shades: Teak; a light oak; Chocolate; a timeless classic; and Grey; modern and minimalistic.

## NeoTimber's Eco-Friendly Subframe Solutions

NeoTimber's range of eco-friendly plastic lumber is comprised of 100% recycled plastic and offers a robust,

long-life alternative to timber. Designed to work hand-in-hand with the decking boards, NeoTimber's plastic subframe solutions are versatile and can be used in a number of different installation settings.

Low maintenance and rot-free, the subframe solutions offer long-term strength and structural support. The range includes two different types of plastic joist, a 100mmx100mm plastic post and a series of fully adjustable pedestals. The selection of products are designed to be installed individually, or together, in order to create long-life subframes on roof terraces, uneven soft ground or directly onto concrete bases.

Pricing information and product specifications can be found on the NeoTimber® website

## Become an Approved NeoTimber® Installer

An installer programme  
built with landscapers  
in mind.

The benefits you'll receive:



COST  
SAVINGS



EXPERT  
ADVISE



TRAINING



REFERRALS

Contact our expert sales team to apply:

☎ 01509 323 170

➡ [www.neotimber.com](http://www.neotimber.com)

✉ [enquiries@neotimber.com](mailto:enquiries@neotimber.com)





**TREX DECKING**

Trex Company, the world's No. 1 decking brand, offers a solution to build with green materials whilst not compromising on aesthetics. In fact, no trees have ever been cut down to make Trex. The entire high-performance decking portfolio is manufactured from more than 95% recycled content. With high-definition wood grain patterns and rich, saturated colours inspired by the outdoors, Trex composite decking looks natural and boasts a vibrancy that remains unchanged for years. Colour options range from deep earth tones to warm umbers, spicy reds and pristine greys.

Featuring a protective shell for superior defense against severe weather and heavy foot traffic, Trex deck boards will retain their good looks even after years of wet British winters. Just an occasional sweep and soap-and-water cleaning is all that is needed to maintain a Trex deck for decades.

Trex decking is available locally through Arbordeck stores at [www.arbordeck.co.uk](http://www.arbordeck.co.uk). Visit [uk.trex.com](http://uk.trex.com) for more information on low-maintenance, high-performance Trex products.



CREATE A DRY SPACE BELOW YOUR DECK



WATERPROOF YOUR TIMBER DECK



[trexrainscape.com](http://trexrainscape.com) | [trexprotect.com](http://trexprotect.com)

\*See the product website for the terms of the warranty.  
© 2020 Trex Company, Inc. All rights reserved. Trex® RainEscape® and Trex® Protect® products are manufactured and sold by Deck Enterprises, LLC under a Trademark License Agreement with Trex Company, Inc. RainEscape® is a federally registered trademark of Deck Enterprises, LLC.

**THE PERFECT SOLUTION FOR YOUR NEXT DECKING OR PAVING PROJECT**



Karoapp fixed and adjustable pedestals for use on decking and paving are the latest brand to reach the UK market and are available from Euro Accessories Ltd.

Fixed pedestals are available in 4 different heights ranging from 13mm to 30mm. Adjustable pedestals are available in 6 different adjustable heights ranging from 18mm to 225mm.

By incorporating the extension piece a further 7 adjustable heights are available, offering a complete range from 18mm up to a staggering 1083mm.

Karoapp pedestals are fully tested and offer a minimum load resistance of 900kg each. Using recycled plastics, they help prevent moisture to the deck / patio helping to increase its life.

Euro Accessories professional pedestal team can also offer assistance with any development or project you have.



- Fast and easy to use in all weathers.
- Adjustable for all sites and slopes.
- Allows easy access to utilities concealed below the deck.
- Continuous drainage through joint spacers means no accumulation of water on decks or paving.
- It provides a point-to-point intervention in insulation problems.
- It has a high load resistance (Min 900kg/pc)
- Provides the final level without any screed concrete on installation.



For more information on Karoapp  
Tel. 01189 81 95 22

[www.karoapp-pedestals.co.uk](http://www.karoapp-pedestals.co.uk) | [sales@euroacc.co.uk](mailto:sales@euroacc.co.uk)

For more information on Karoapp  
Tel. 01189 81 95 22

[www.karoapp-pedestals.co.uk](http://www.karoapp-pedestals.co.uk) | [sales@euroacc.co.uk](mailto:sales@euroacc.co.uk)

Brand new for 2021



# SAGE 2021

SPORTS & GROUNDS EXPO

JULY 27-29 • THREE COUNTIES SHOWGROUND, MALVERN



## OUTDOOR SPORTS & GROUNDS TRADE SHOW

Visitor registration now open for 2021  
Go to [www.sportsandgrounds.co.uk](http://www.sportsandgrounds.co.uk)



[team@sportsandgrounds.co.uk](mailto:team@sportsandgrounds.co.uk)

[www.sportsandgrounds.co.uk](http://www.sportsandgrounds.co.uk)



# THE SPORTS & GROUNDS EXPO:

## ALL NEW OUTDOOR TRADE SHOW LOOKS TO BE MASSIVE FOR 2021

Set for 27 - 29 July 2021, industry buzz is building around trade show newcomer the Sports and Grounds Expo (SAGE). Set in the stunning surrounds of the Three Counties Showground at the foot of the Malvern Hills, the show has a clear focus on hands-on demonstrations and experiences, offering visitors the chance to see and test out the latest products and ideas within the industry whilst maintaining a safe environment.

The target of SAGE is to bring together grounds personnel from a broad range of sectors and provide

an engaging and well-resourced environment. Many companies are looking to improve efficiency and cost effectiveness and this is a key area, which SAGE is focusing on; exploring and showcasing the products that allow this to actually happen across the industry.

“Our motivation is to give visitors a hands-on experience as much as possible, without compromising on safety, whilst it has always been the case, the pandemic has created extra pressure for many companies that are looking to streamline operations and ensure

cost efficiency.” Says Event Manager Vicky Panniers

“With our industry adapting at pace, SAGE provides the perfect environment for everyone to be able to experience the latest innovations on the market,” She continues.

Already signed to exhibit are a diverse range of companies across the industry, with many market leaders such as Campey Turf Care Systems, KIOTI UK, TRIMAX and Fleet Line Markers to name a few already preparing for SAGE next summer!

SPORTS SURFACES  
& EQUIPMENTARBOCULTURE  
& HORTICULTUREAGGREGATES,  
SEED & SOILTURF & LAWN  
MAINTAINANCEPLAY  
EQUIPMENT

The renowned outdoor venue provides reassurances to both visitor and exhibitor alike. Visitors will be impressed by the abundance of space and the diversity of products on show, whilst exhibitors will be astounded at the value for money on offer!

There are exciting plans in progress - watch this space! Keep

up to date with all the SAGE news on Twitter & Facebook.

The Sports & Grounds Expo will be the highlight of the industry calendar next summer, offering a safe and proactive environment for those operating across all sectors of the sports and grounds maintenance industry. SAGE is a free event open to all, who .

Visitor registration is now open - Go to [www.sportsandgrounds.co.uk](http://www.sportsandgrounds.co.uk) to register and to be kept up to date with what's to come in July 2021!

**For more information, contact the team today by email: [team@sportsandgrounds.co.uk](mailto:team@sportsandgrounds.co.uk), by phone: +44 (0)1684 580101 or visit the website: [www.sportsandgrounds.co.uk](http://www.sportsandgrounds.co.uk).**



# NEW HUSQVARNA AUTOMOWER® WITH VIRTUAL BOUNDARY TECHNOLOGY OFFERS PRODUCTIVITY AND FLEXIBILITY FOR PROFESSIONALS

Husqvarna - global leader in robotic lawnmowing - is now, after months of thorough testing internally and with customers, launching the new high capacity Husqvarna Automower® 550 EPOS robotic mower. Its satellite-based virtual boundary solution offers new levels of flexibility, convenience and performance for areas up to 5,000 m<sup>2</sup>.

The pilot of the Husqvarna Automower® 550 EPOS robotic mower with virtual boundary technology included 100 robotic mowers in four countries. It was, for example, tested at Royal Djurgården in Stockholm, the Ullevi Stadium in Göteborg, Munich Airport, La Seine Musicale in Paris and at a baseball stadium in New York.

Gunnar Björkman, Park Manager at Royal Djurgården, a park with more than 15 million visitors each year, tested the Husqvarna Automower® 550 EPOS robotic mower during the spring and summer. He said: "The main benefits we saw from testing the Husqvarna 550 EPOS robotic mower was the easy installation and the flexible area management which allowed us to create temporary stay out zones when lawns were being used for events or closed off for other reasons. With robotics using virtual boundaries we can use robotics for 75% of our mowing, compared to 25% previously."

At the "Planten un Blomen" park in Hamburg, a Husqvarna Automower® 550 EPOS

robotic mower was installed in collaboration with Elbgarden OHG on a demanding public area of 1,200 m<sup>2</sup>. The test area is located in direct connection to a footpath and an artificial lake, where events such as the music-accompanied water light games take place. Matthias Olinski, head of the "Planten un Blomen" park in Hamburg, was impressed by the performance and flexibility of Husqvarna Automower® 550 EPOS.

He said: "It offers many advantages over conventional mowing technology, especially in terms of flexibility. We no longer have to plan whether we have enough staff for mowing. This offers more time for other work like grooming or bed care."



Via the app, we can manage when the robotic lawnmower should run or pause. During organised events, for example, we can easily adapt the mowing work to the respective situation - very practical and user-friendly."

Husqvarna's virtual boundary EPOS technology is a high-precision satellite navigation system that delivers an accuracy of 2-3 centimetres, giving the user a new level of flexibility and offers a robust and flexible installation on areas with an open sky. The virtual boundaries also enable aerating and scarifying without breaking physical wires and the user can change boundaries and transport paths from their phone. With the Precise

Area Management feature, several work areas can be defined with different timers and settings, including cutting height. It also makes it possible to create temporary stay out zones.

Kevin Ashmore, UK Manager of Husqvarna Professional commented: "We are extremely proud to bring the new Husqvarna Automower® 550 EPOS robotic mower to the market. Utilising Husqvarna's EPOS technology, it offers a sustainable and cost-efficient solution that simplifies maintaining large green spaces. Being battery powered it emits no fumes and the light weight of the



mower and low electric energy consumption reduce its carbon footprint."

Operating with low noise levels, it is suitable for environments that require some degree of noise control - for example at golf courses, football stadiums or in urban areas such as city parks. For a convenient user interaction, as well as easy maintenance and handling, it is possible to monitor and control Husqvarna Automower® 550 EPOS through the Automower® Connect and Husqvarna Fleet Services™ apps.

Husqvarna Automower® 550 EPOS will be available from May 2021 and costs £5,199 inc. VAT for the unit and £1,099 inc. VAT for the reference station. The reference station can serve multiple machines.



For more information, visit the Husqvarna website: [www.husqvarna.com/uk/lawn-garden/professional/professional-robotic-mowers/epos/](http://www.husqvarna.com/uk/lawn-garden/professional/professional-robotic-mowers/epos/)

## THE NEW FLEXIWORK NEON JACKETS AND FLEECES

NEW Neon Jackets and Fleeces from Snickers Workwear for the flexible working environment - delivering visibly superior comfort and freedom of movement.

While Fabric, Functionality and Fit are hallmarks of Snickers Workwear, it's the innovation and fabric technology in the design of the new FlexiWork Neon Fleece Hoodie, Jacket and Gilet that really set these new garments apart.



They're great for working outdoors in the colder months. Delivering superior flexibility and comfort, these lightweight 4-way stretch garments come in a body-mapping design and are made from an Elastane/Polyester fabric with a water-and wind-repellent finish for comfort and durability when you need it most.

As well as being street-smart and visibly striking with Neon panels and reflective details for enhanced visibility they're designed for the fast-paced professional who's always on the go and delivering top class work on site.

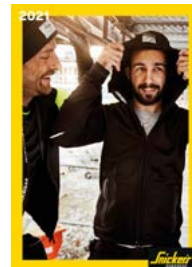
For professionals who rely on their gear in demanding environments, they're a must for those who want to be visibly ahead of the rest on site this winter.

For more information on Snickers Workwear call the Hultafors Group UK Helpline on 01484 854788, email [sales@hultaforsgroup.co.uk](mailto:sales@hultaforsgroup.co.uk), or check out the website and download a digital catalogue at [www.snickersworkwear.co.uk](http://www.snickersworkwear.co.uk)

## NEW JACKETS, WORK TROUSERS & TOPWEAR IN THE 2021 SNICKERS WORKWEAR CATALOGUE

With verifiably sustainable fabric technology innovations.

With a focus on comfort, performance and sustainability in its new products, the 2021 digital catalogue has all you need to know about Snickers Workwear, including new products that now use REPREVE, the world's number one brand of recycled performance fibre. There's also new AllroundWork Topwear with the cooling 37.5@ moisture transportation fabric, as well as upgraded FLEXIWork Stretch Trousers with extra functionality and durability. By popular demand, there's also a stretchy hi-vis Work Jacket with great comfort and flexibility for high-performance work and high visibility in low-light conditions. Added to which, there's the most innovative street-smart stretch fabrics in the ALLROUNDWork clothing range for mobile comfort and a Layered Clothing System that ensures you can choose clothes to suit the weather on site - rain or shine, wind or snow - plus an extensive range of EN-certified ProtecWork and PPE products. Complimented by Snickers Workwear's Profiling and Embroidery services and the most extensive range of garment sizes, this clothing system delivers the ultimate solution to make every man and woman's workday easier and safer.



Getting more information on the Snickers Workwear range is easy. You can call the Helpline on 01484 854788; check out [www.snickersworkwear.com/page/product\\_guide\\_media](http://www.snickersworkwear.com/page/product_guide_media) and download a digital catalogue or email [sales@hultaforsgroup.co.uk](mailto:sales@hultaforsgroup.co.uk)



## PLUGGER LAWN AERATORS

The Billy Goat range of Plugger Aerators enables grounds professionals, landscapers and contractors to be able to tackle large areas of lawn quickly and easily.

Plugger aerators offer the perfect solution to promoting spring growth. They can improve drainage and encourage new growth by making holes throughout the turf that breaks up compacted soil and allows air, water and nutrients to circulate through the roots. This results in healthier, stronger roots, grass and turf.



**HONDA**

**To find your local Billy Goat dealer visit [www.billygoat.co.uk](http://www.billygoat.co.uk) today**

For information on all Billy Goat products call: 0115 986 6646 visit: [www.billygoat.co.uk](http://www.billygoat.co.uk) or email: [info@hcuk.co.uk](mailto:info@hcuk.co.uk)

# Quartix

Vehicle tracking that works for you

Find out just how much you can save with Quartix



No auto-renewal | Free mobile app | 1st class customer service

Visit [quartix.com](https://quartix.com) or call **01686 807 607** to schedule a free demo



ID:A00438



## #designthenation

wapping quay, liverpool

This residential area in Liverpool required new seating to make the most of their stunning views, along with fully bespoke planters.

Our always popular Tooting Seats were the perfect solution, providing a reassuringly robust seat with classic stylings.

Our team then worked to produce a custom planter design that would make the most of the narrow footprint required, and tie in with the aesthetic of the Tooting Seats.

The result is as cost-effective as it is pleasing to the eye, and will be enjoyed by the residents of the area for years to come.



01254 685 185

sales@woodscape.co.uk

woodscape.co.uk

woodscapegroup

woodscapectd

woodscape\_street\_furniture



Woodscape.

Hardwood Street Furniture