



One Baltic Square Construction Update

February 2022

February 2022

This month at One Baltic Square, the show flat in Block D is near completion, and the hoists in Blocks B and C are being installed. Drainage installation across the site continues.

Another task nearing completion is the lift in Block D, as well as clear development being made to the first fix mechanical, electrical and containment for electrical works in Blocks A and D. Finishes in the storerooms are being completed at a rapid rate.

Summary of Works Progressed

- Near completion of the show flat in Block D
- Development of first fix mechanical and electrical and containment for electrical works in Blocks A and D
- Internal partitioning and boarding in Blocks A and D seeing fast progress
- Clear progression of the lift in Block D
- Advancements to party wall masonry works
- Finishes in the storerooms are progressing
- Progression of framing for combination units within the bathrooms
- Near completion of substation masonry
- Commencement of ceiling boarding to Block D
- Plastering on Block D begun and is ongoing
- Foundations on Block E have commenced and made excellent progress
- Drainage installation works continue
- Hoists installed on Blocks B and C
- Commencement of steel frame erection on Block E

Works Anticipated

- Completion of concrete pour on Block C
- Completion of the show flat
- Nearing completion of internal stud work partitions and boarding on Blocks A and D
- Clear progression of bathroom unit framing and sanitaryware in Block D
- Development of first fix mechanical and electrical works
- Progression of plastering on Block D
- Ceiling framing progress in Block D
- Advancement of lift installation in Block D
- Progression of ground floor masonry works
- Development fire stopping
- Commencement of intumescent painting on Block C
- Progress to the structural frame system in Block B



Erection of steel frame on Block E



As above, commencement of steel frame erection on Block E



Installation of arched windows to Block D



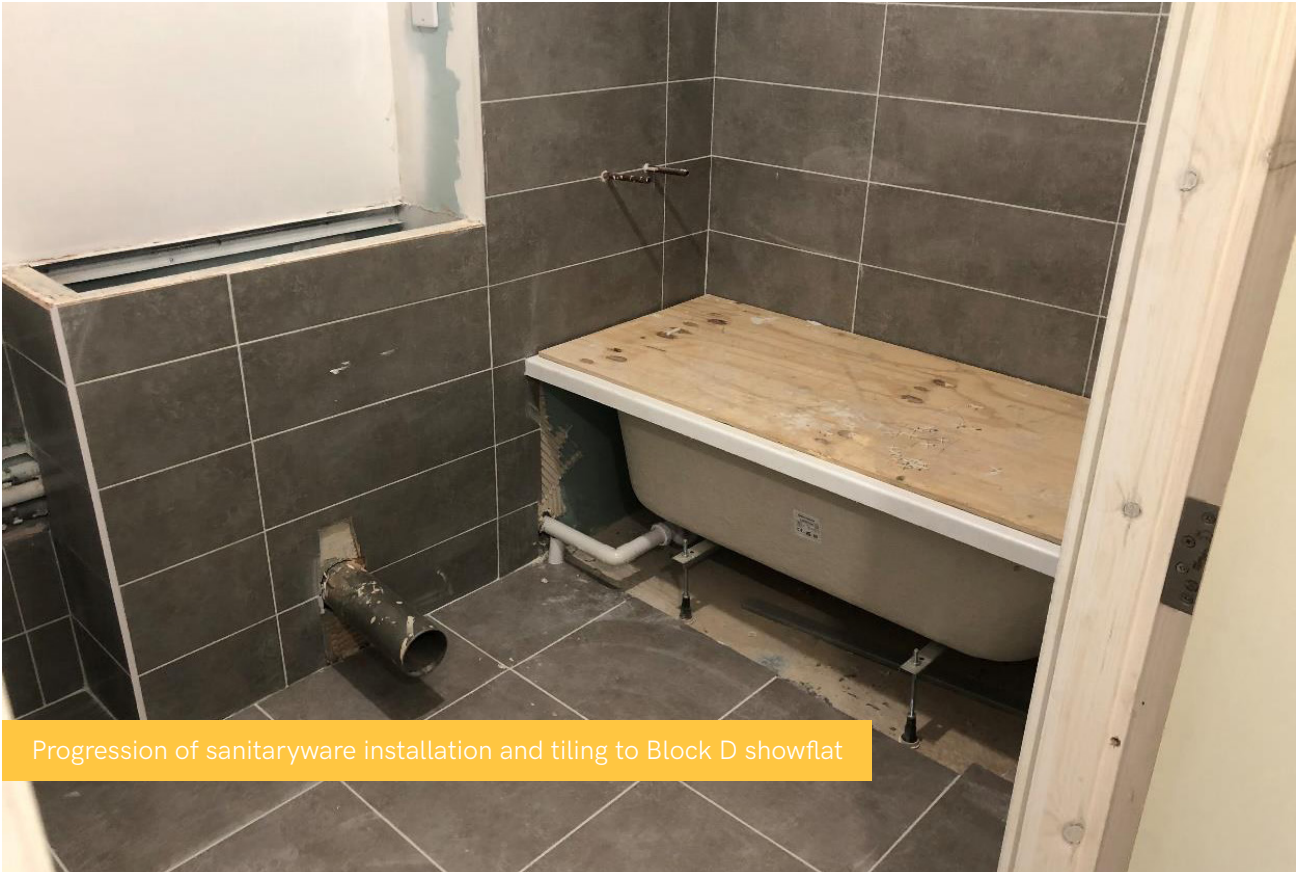
Progression of Structural Frame System to Block B



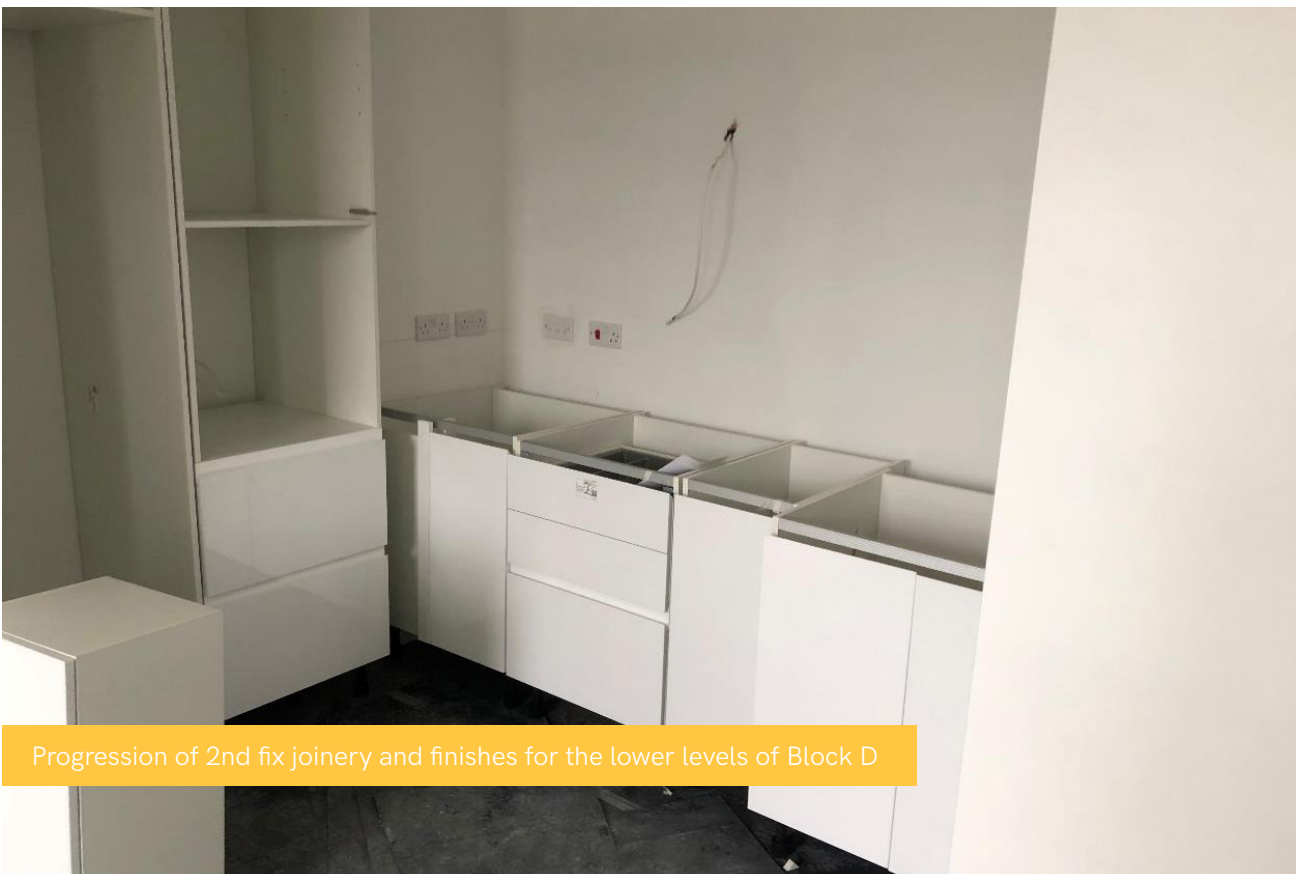
Ground floor masonry progressing on Block A and D gable ends



Commencement of kitchen installation for the showflat on Block D



Progression of sanitaryware installation and tiling to Block D showflat



Progression of 2nd fix joinery and finishes for the lower levels of Block D



Progression of sanitaryware and framing for combinations units within Block D bathrooms



Installation of Automatic Opening Vent (AOV) rooflight to Block D



Progression of plastering across the lower floors on Block D



Ceiling frameworks progressing within Block A



Progression of internal boarding within Block A



As above, progression of internal boarding within Block A





External view of superstructures