

REFURBISHMENT & RESTORE

Issue 22 2020 £3.95

CHILSTONE

New build luxury with
Victorian charm

MASTIC ASPHALT COUNCIL

There's more to mastic
asphalt than meets the eye

COVER PROJECT

BUREAU FRAAI CONVERTS

FORMER MONASTERY

INTO A CHARACTERISTIC TOWNHOUSE

Safe. Simple. Durable.

Non combustible aluminium decking.

Designed as a complete decking system for balconies, roof terraces and walkways.



**Designed for
everyday living.**

Adek is a lightweight, A2FL S1 fire rated aluminium decking system which has been designed with the practicalities of everyday living in mind. The clean lines, sleek appearance and concealed fixings reflect trends in modern building design.

An Epwin Group design.

Adek[®]

a-dek.co.uk

Refurbishment & Restore

Our Team

Editor-in-Chief

Antony Holter
T: 01304 806039
E: editor@mhmagazine.co.uk

Editorial Manager

Claire Morgan
T: 01304 806039
E: claire@refurbandrestore.co.uk

Editorial Manager

Chris Nicholls
T: 0203 9079161
E: chris@refurbandrestore.co.uk

Sales Manager

Lee Ashdown
T: 01227 392575
E: lee.ashdown@refurbandrestore.co.uk

Business Manager

Josh Holmes
T: 01304 806039
E: josh@mhmagazine.co.uk

Publishing Director

Martin Holmes
T: 01304 806039
E: martin@mhmagazine.co.uk

Accounts

Sue Wallace
T: 01304 806039
E: sue@mhmagazine.co.uk



MH Media Global Ltd
Innovation House, Discovery Park,
Ramsgate Road, Sandwich,
Kent, CT13 9FD

Cover Image Courtesy of

Madasiro fotografie
Architects: Daniel Aw, Rikjan Scholten

Every effort is made to ensure the accuracy and reliability of material published in Refurbishment & Restore however, the publishers accept no responsibility for the claims or opinions made by advertisers, manufacturers or contributors. No part of this publication may be reproduced or transmitted in any form or by any means, mechanical, electronic (including photocopying) or stored in any information retrieval system without the prior consent of the publisher.

Contents

www.refurbandrestore.co.uk

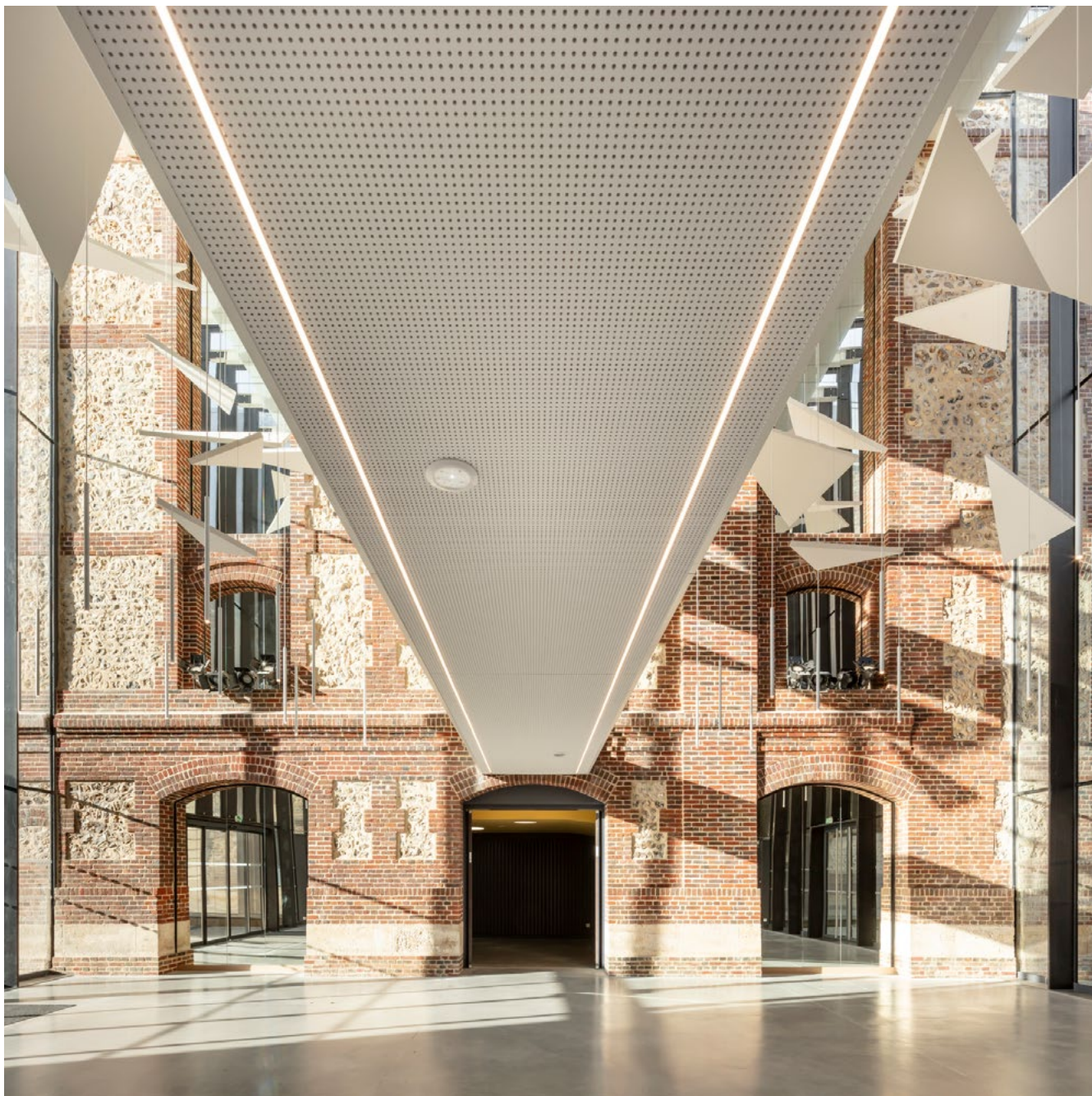
Issue 22 2020

Case Studies

- | | | | |
|--------------|---|--------------|--|
| 4-6 | Legendre Theater
Enhancing the town's emblematic Beaux-Arts style edifice with a more contemporary look and feel. | 50 | Lapitec
Lapitec for the loft winner of the "Silver Interiors Award 2020" |
| 10-11 | MW Architects
A light filled family home within a secluded sunken garden in Maida Vale. | 52-53 | Pick Everard
£60m redevelopment of one of UK's largest independent schools completes |
| 16-17 | Harris Brushes
Painting a feature?
Get the right tools from harris. | 60-61 | Guelo Nunes Arquitetura
Maestro residence. |
| 20-21 | Bureau Fraai
Bureau Fraai designs a private car showroom and tops up a townhouse in Amsterdam. | 64-65 | Mastic Asphalt Council
There's more to mastic asphalt than meets the eye |
| 28-29 | MR Architecture
Cold Spring Harbor House | 70-71 | DUT 18
Converted Dutch barn opens as getaway for creative professionals looking to reconnect with nature |
| 36-37 | IQ Glass
London terraced property required more living space and an internal refurbishment to open up the home. | 76-77 | Chilstone
New Build Luxury With Victorian Charm |
| 44-45 | SHH
SHH creates a new generation 'House of Books'. | 82 | Houzz
A Smart Extension Transforms a Tired Victorian House |
| 48 | Bureau Fraai
Bureau Fraai converts former monastery into a characteristic townhouse. | | |

Featured Categories

Commercial	4-6
Editor's Choice	7-9
Coatings, Sealants & Paint	12-19
Doors, Windows & Fittings	22-27
Floors & Flooring	30-34
Glass & Glazing	35-37
Heating & Ventilation	38-43
Interiors	46-51
Landscaping & External Works	55-57
Lighting & Electrical	62-63
Roofing, Cladding & Facades	64-69
Safety, Security & Fire Protection	72-74
Tools Plant & Equipment	78-79



LEGENDRE THEATER

Enhancing the town's emblematic Beaux-Arts style edifice with a more contemporary look and feel. The highly respectful project aimed to restore this theater dating from 1903 to its former glory, in its original architectural style and including the design of a new décor for the lobby.

Inaugurated in 1903, the Théâtre d'Evreux, and commonly referred to as the Théâtre Legendre, was built in the Beaux-Arts style and signed by the architect Léon Legendre. Despite its relatively restricted floor area, it possesses the full range of features traditionally found in a theater. Listed since 2002 with France's "Monuments Historiques" supplemental inventory, it had to be closed to the public in 2006 due to the deteriorating conditions observed in the

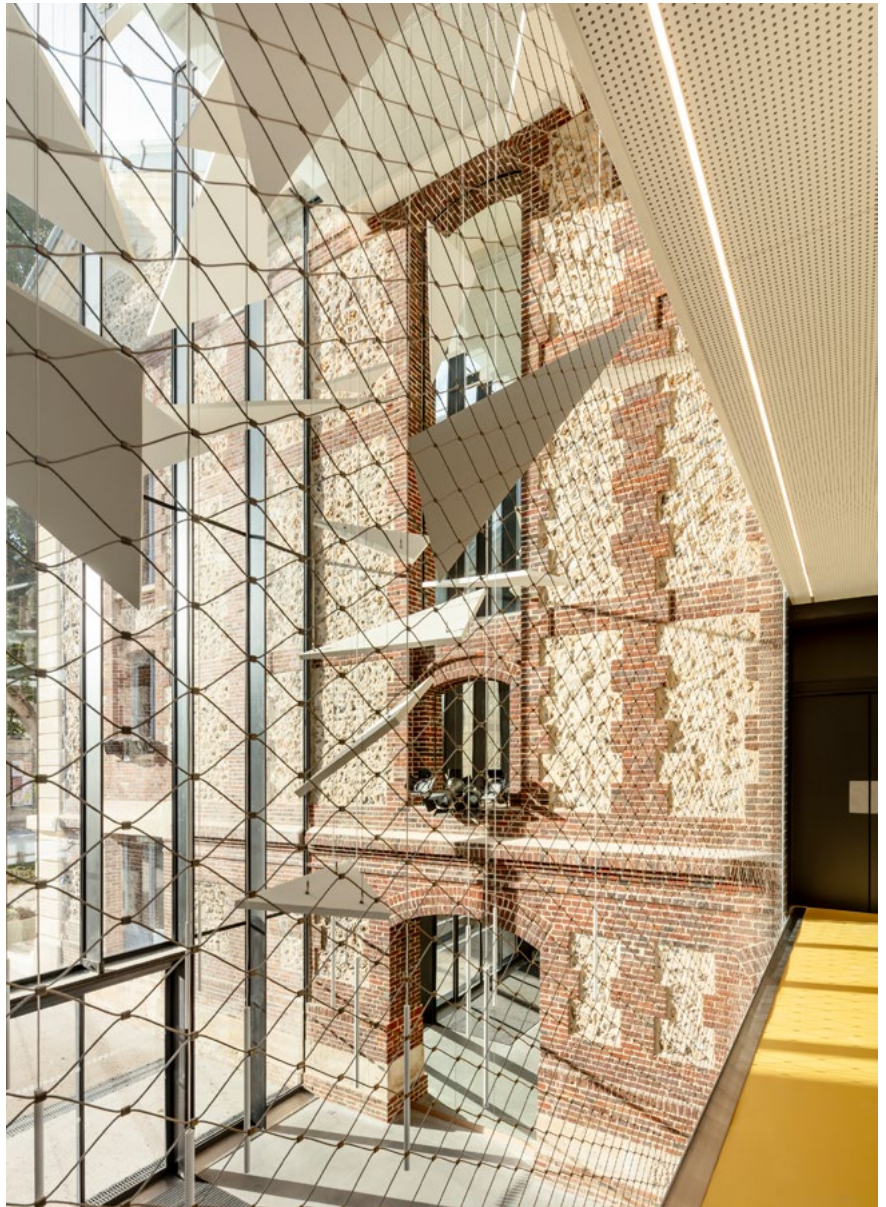
breeze block masonry and interior décors and to other security nonconformities. A series of projects were undertaken at the time and then prematurely halted, mainly because of cost overruns related to the challenging characteristics of the underlying ground.

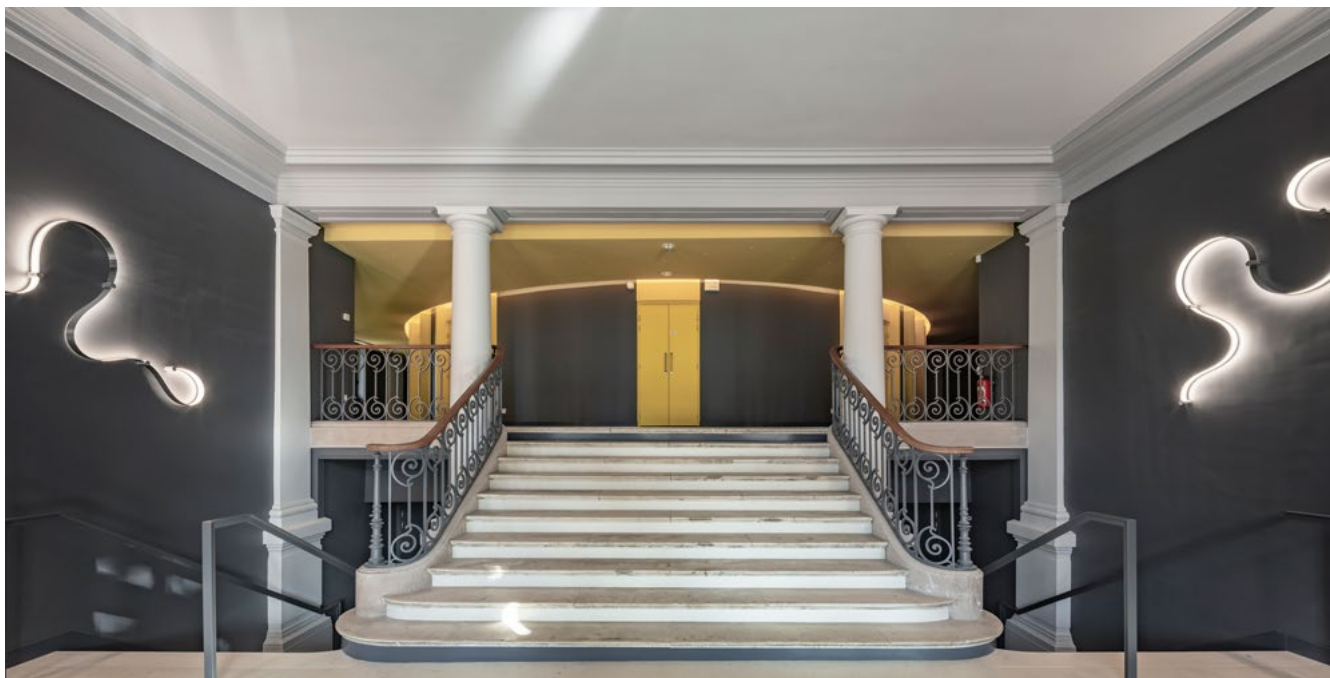
Prior to its restoration, the theater's southern façade was in a state of ruin and bore traces of past damage. Its restoration was done in such a way as to erase the successive modifications from view and to restore its original proportions by recreating the brick and silex facings and initial apertures. The program included full upgrading to current standards for theaters and the adaptations required for operating contemporary stage sets.



The extension to the south of the existing building houses the new functions of the theater, which include dressing rooms and green rooms, the offices of the director and the stage manager as well as a rehearsal room. It is separated from the theater by the insertion of a setback creating the space for a vast glazed lobby, that forms an interior street and ensures perfect readability of the existing brick and breeze block façade.

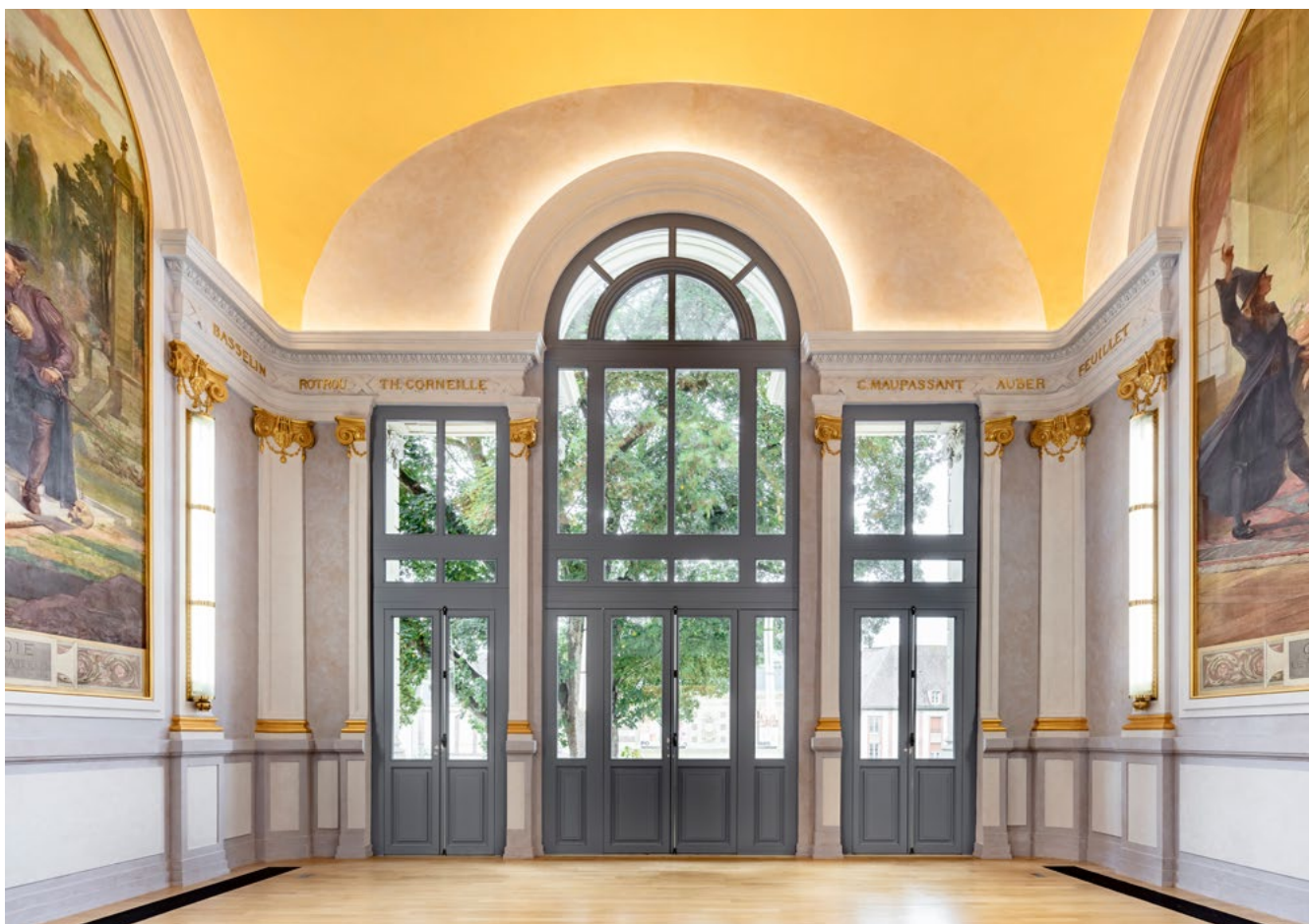
The interior wall of the extension that faces the existing theater and which extends the length of the lobby was treated as an immense perfectly smooth mirror reflecting the outlines and shades of the brick and breeze block masonry, creating an appealing vision from the square in front of the town hall and setting up an illusionistic interplay of images, characteristic of theater, where the distinction of reality from fiction is blurred. The strips of cladding located to the right of the windows and the ventilation grilles of the technical systems are perforated to ensure continuity of the material and penetration of light and air.





The décors of the hall itself were restored to their original state. The structural survey of the highly deteriorated décors of the historic building offered no certainty as to the existing elements. Thus, the decision to design a new décor, one which fully participates in the renewal of this theatrical venue and the new life of a monument that had for so long been closed to the public.

www.opus5.fr
 Photographer Luc Boegly



MAPEI CEMENTS A TOUGH BOND WITH MAPEPROOF FBT

Mapeproof FBT by Mapei is a pre-applied synthetic waterproofing membrane with a non-woven fabric backing applied in full adhesion to protect structures below ground level. It is able to withstand up to 7 bars of pressure, and provides Radon and Methane protection.

Mapeproof FBT is applied underneath foundation slabs and against diaphragm, pile walls, sheet piling and other permanent retaining structures.

The waterproofing system is suitable for a range of applications including basements, garages, car parks, swimming pools, basins, storage tanks, underpasses and underground areas in general.

The fully-bonded waterproof sheet membrane system incorporates two Mapei adhesive tapes: Mapeproof FBT Tape, used to bond joints between the upper-facing side of adjacent membranes in the system, and Mapeproof SA Tape, for bonding joints between the lower-facing sides of adjacent membranes.

With extreme flexibility, Mapeproof FBT is easy to install. The waterproofing membrane is cold-applied (between +5°C and +35°C), thus no heat or naked flames are required on site. Positioned before placing the steel reinforcement and pouring of the concrete, joints can be bonded on horizontal or vertical surfaces and shaped to follow the geometry of the substrate, ensuring a longstanding tough bond; due to its bond, Mapeproof FBT prevents water from migrating laterally between the

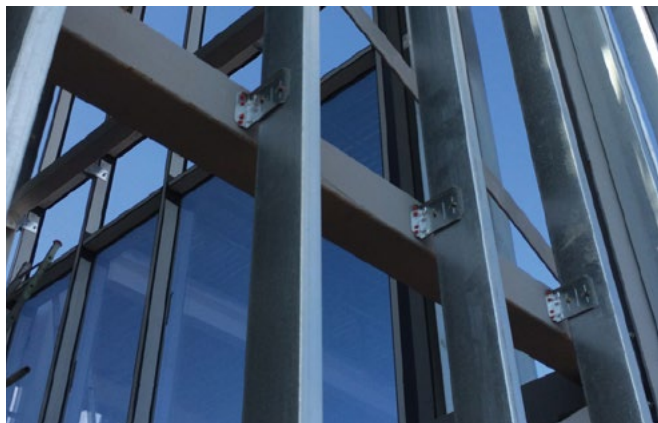


foundation structure and the membrane, once concrete has been poured. It does not require a protective layer.

The certified Mapeproof FBT waterproofing system also consists of two double-sided adhesive tapes. Mapeproof Fix Tape is used to hold the waterproofing membrane in place

during installation. Meanwhile, Mapeproof BA Tape, a waterproof synthetic tape, is used for treating fillet joints between horizontal and vertical surfaces, as well as those between adjacent vertical surfaces.

For more information on Mapeproof FBT and the full system, visit www.mapei.com



THE LIGHT GAUGE STEEL SOLUTION

Simpson Strong-Tie is all set to provide the steel frame construction industry with performance tested connectors and fixings, with the release of their 2021 Connectors for Light Gauge Steel catalogue.

Alongside the ever popular TJC Jack Truss and Rafter Connector, HTT5 Tension Ties and Quik Drive collated fastening system sit brand new product innovations:

- The LGSSC Splicing Clip connects over-sail LGS studs to the primary structure
- The RCKW Parapet Wall Bracket resists an over-turning moment at the base of exterior knee-walls and parapets

- X1214 screws are capable of drilling through 5mm steel and suitable for 450 grade hardened steel.

- X1224 screws are capable of drilling through 12.5mm steel and suitable for fixing to hot rolled steel sections.

"Our LGS range will ensure projects are completed on time and to your specification." Explains Sales Manager Keith Lister. "Our dedicated technical support team are available daily to help you select your solution."

Download the catalogue at www.strongtie.co.uk



T: +44 (0)1825 764737
F: +44 (0)1825 768330
E: info@appeng.co.uk
www.appeng.co.uk



FIRE SPRINKLER VALVE SET 1" to 2"





CONVERTING MULTI-OCCUPANCY HOUSE INTO TWO SEPARATE DWELLINGS

Located in the exclusive and beautiful South West London district of Kew, PAD Architects converted a multi-occupancy house into two separate dwellings.

The ground and first floor were combined and transformed into a large, contemporary property with three excellent bedrooms, spacious living areas and wonderful outdoor spaces. With PAD's help, the client finished this property to an exceptionally high standard and has happily made it her home.

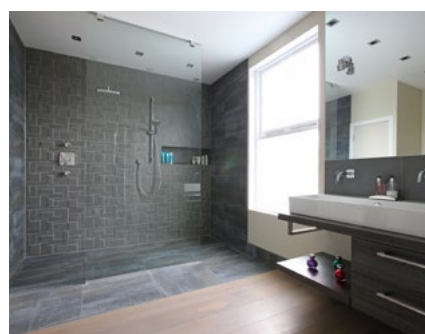
The third floor was converted into a self contained one bedroom flat with separate entrance which the client is able to rent out successfully.

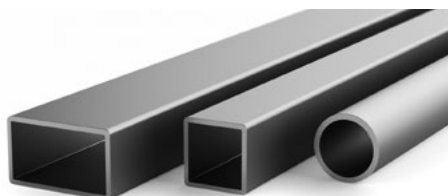
The kitchen is minimal and contemporary in that way is unlikely to ever age. The finish on Mortlake Road is high end, and this level



of quality of finish is timeless. The second something begins to look tatty and faded it reveals its age and lack of currency, the kitchen in Mortlake Road has clever storage solutions, clean lines, neutral block colours and hidden appliances, meaning it retains that 'just finished' look. The kitchen is open plan, light and spacious.

www.padarchitects.co.uk
Photographer Jamie Manester





HARDWARE WAREHOUSE

Hardware Warehouse is one of the UK's largest online stockists of metal and plastic profiles, sheet metals, hooks and flooring accessories. As well as having a large stock holding, we also offer next day delivery as standard, meaning you get your order as quickly as possible.

With no minimum or maximum order value and graduated pricing, it means the more you buy, the more you save. Both commercial and domestic customers are equally catered for.

Our products are widely used in numerous applications and industries, including glazers,

engineers, designers and plumbers to name a few.

The majority of our profiles are available in 1m and 2m lengths. If you have a commercial address you can benefit from reduced 2m delivery rates by simply registering as a business customer with us. Plus spend £100 or over on 1m lengths (ex VAT) and £150 on 2m lengths (ex VAT) and get your delivery absolutely FREE!

We can also provide bespoke quotes if you require a large quantity so do get in touch so we can give you the best possible price.

We put the customer at the heart of everything we do, offering first class customer service to every customer, whether their order is big or small. As a result we have numerous 5 star reviews and many of our customers buy from us time and time again.

Why not check out our full range at www.hardware-warehouse.co.uk, spend £20 or more and use code REFURB10 to receive 10% off your order!

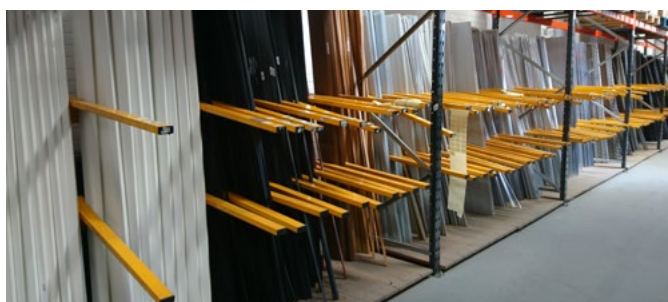
T: +44 (0)330 333 5030
E: info@hardware-warehouse.co.uk
W: www.hardware-warehouse.co.uk

HARDWARE WAREHOUSE

SUPERIOR QUALITY PRODUCTS AT AFFORDABLE PRICES

- One of the UK's largest stockists of metal and plastic profiles
- Metal and plastic profiles in 1m and 2m lengths
- First class customer service
- As well as holding a large stock of metal and plastic profiles we also sell a large range of sheet metals and hooks
- Happy to quote on and order large quantities
- Discounted delivery on 2m lengths being delivered to a commercial address
- No minimum or maximum order quantity
- Multi-buy discounts available

+44 (0)330 333 5030
info@hardware-warehouse.co.uk
www.hardware-warehouse.co.uk



Use code
REFURB10 to
receive 10% off
your order*



*Terms & conditions may apply



MW ARCHITECTS HAVE CREATED A LIGHT FILLED FAMILY HOME **WITHIN A SECLUDED SUNKEN GARDEN IN MAIDA VALE**

The property was previously dark and poorly arranged, a common issue with many Lower Ground Floor properties in the area. The clients wanted to rearrange their flat to allow the family to grow and enjoy the location whilst also creating stronger connections with the garden.

MW Architects realised there was an opportunity to extend the flat into the garden to the benefit of both the internal and external spaces. The flat has been reversed so that the living areas now address the garden directly whilst a series of light wells mean the bedrooms are not compromised by poor natural light. The previously overgrown garden has been given definition by the articulated form of the extension allowing the loss of area to be offset by better use of the available space.

By considering the key requirements of the communal areas of the family home three distinct spaces were defined. The 'living area' becomes a place for reading bed time stories and watching movies. The ceiling is lowered to create the intimate feeling of an inglenook and to avoid blocking light to the rear bedroom. The living room is a place to withdraw to from the garden dining

area which occupies the heart of the home and can extend outside onto the patio. The kitchen overlooks the whole property with views towards the front gate to see visitors arriving and also views of the back garden to

watch the kids playing. The stepped ceilings give a sense of defined spaces for living, dining, and cooking within a looser open plan layout that can adapt over time to suit different occasions.





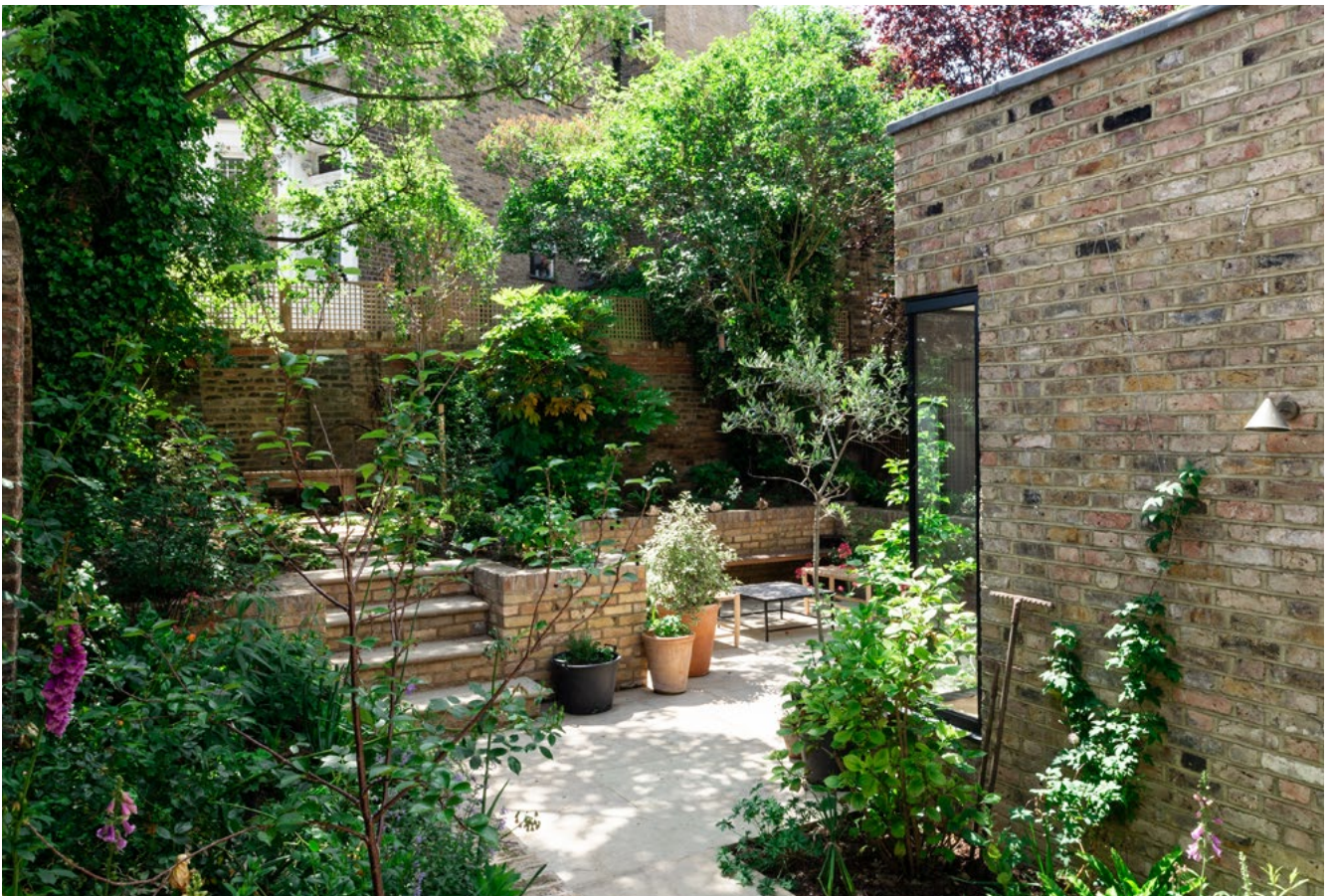
By adding these three individual spaces within an unusual articulated form the previously dark and awkward lower ground floor flat has been transformed into a bright family home with strong physical and visual connections to the garden.

The external treatment of the extension follows the pattern of the existing building with a mix of rendered walls and brickwork. The brickwork provides a varied texture as a backdrop to the planting whilst the rendered walls help to bounce light into the light wells. MW Architects worked with the client, who is a landscape architect, to create a further series of external spaces that relate to the interiors. Large windows meet the floor with planting beds running into the reveals creating the illusion that the planting can enter the interiors, blurring the boundary between inside and out. An external 'living room' relates directly to the interior living room with a large pivot door providing uninterrupted access for the activity within to overflow into the garden. The window cills are set at seat height and the deep reveals provide a setting to relax on the boundary between inside and out. One window wraps itself around a corner to further open up the interior and blur the edge of the extensions external appearance.

The result is a relaxed and modest space that feels secluded due to its sunken position and yet remains bright and airy - an unusual and successful combination.



www.mwarchitects.co.uk
 email: architect@mwarchitects.co.uk
 phone: (+44)20 7407 6767





AEROTHERM

AeroTherm is a revolutionary, 1.0 mm thick, insulation plaster that reflects the heat from any radiated thermal source back on itself, at the speed of light!

AeroTherm saves as much as 35% of heating energy, being of particular interest for treating solid wall or hard to insulate buildings, without changes to the buildings' external appearance, or loss of internal room space.

Manufactured from 3M, glass microspheres and Aerogel, AeroTherm exceeds energy savings of older insulation methods, producing a more comfortable living space and more uniform floor to ceiling heat

distribution, achieved at lower heating thermostat settings.

Applied using conventional plastering techniques, AeroTherm can be painted or papered over, for a final finish.

AeroTherm creates warm walls, eliminating conditions where condensation and subsequent mould growth occurs.

Independently tested and certified, AeroTherm has a minimum life expectancy in excess of 25 years.

www.aerotherm.co.com
info@aerotherm.co.com
 01202 854767.



EARTHBORN - DOING THINGS DIFFERENTLY

Earthborn is delighted to introduce The Earth Collection, a palette of five harmonious new paint shades inspired by the natural world, themed around the earth, land, sand, sea and clouds. The Classic Earthborn colour card will remain unchanged for now; instead a simple bookmark is available displaying real painted swatches of the five new colours.

The new colours, and the full range of 72 shades on the Classic shade card, are available to buy online now, or from Earthborn's network of stockists.

CROCKY ROAD

Inspired by the earth, its faintest green undertone lends Crocky Road an easy, earthy quality.

UP UP AWAY

Inspired by the clouds, Up Up Away

is a cool, calm and collected off-white shade.

GRASSY

Inspired by the land, this elegant grey-green is reminiscent of misty, mountainous landscapes.

SKIPPER

Inspired by the sea, this warm denim shade has a casual charm.

SANDY CASTLE

Inspired by the sand, and the feeling of sunlight on sand dunes to create our own take on cream.

With Earthborn you get no acrylics or oils, but you get high quality and high performance and a full list of ingredients to help you make a more informed choice.

www.earthbornpaints.co.uk

DON'T CRACK UP

Bond It, one of the UK's fastest growing manufacturers of sealants, adhesives and building chemicals, has launched a new sealant to compliment its already growing silicone and sealant range.

No Crack Caulk, introduced under the Companys Superheros Brand, is a water resistant, high quality decorators caulk that prevents craze cracking when painted. This white, solvent-free, water-based sealant is highly flexible, with a joint movement capability up to 12.5% and can be overpainted within 1 hour.

With excellent gap-filling properties this hard wearing Caulk contains a fungicide to retard mould growth and is suitable for use on both interior and exterior jobs.

Adheres to most surfaces without the use of a primer and is non-corrosive to metals. It is more resistant to movement than most standard caulks and is longer lasting. Perfect for sealing around window frames, architraves, cornices, PVC profile trim & cladding, plasterboard joints and for sealing cracks and gaps in plaster, brickwork, concrete, skirting boards and walls.

For more information on Bond It contact our Sales Team on 01422 315300 or visit www.bond-it.co.uk.



THE FINISH YOU DESERVE

- Airless, airless air assisted & HVLP paint sprayers (plus more!)
- Wide range of spray guns
- Repairs and services
- Multitude of spray accessories, including PPE, tips, guards, filters, extension poles, seals, air caps, needles, rings & many more...
- Supply and installation of spray booths
- Team of professionals providing valuable and extensive advice only a phone call away
- Hire services and leasing options available
- The Apollo A.S.I master distributors of the UK!



01509 237415
info@totalcoatingsystems.com

www.totalcoatingsystems.com

SUSTAINABLE SEALANTS — LOCK AND RE-LOAD

For most of us involved in the building industry, reducing our environmental impact is an increasingly important priority. One small step that can make a big difference is taking a fresh look at your use of sealants.

Every year, it's estimated that a staggering one hundred million used sealant cartridges are sent to landfill in the UK. That equates to around 6,000 tonnes of non-degradable waste - with at least some of it being produced by the glazing industry. One company which has found an innovative way of addressing this problem is British-based, Bond It.

As David Moore, Managing Director at the manufacturer of sealants, adhesives, grouts and other building chemicals, explains: "For all businesses - including those in the sealant applicator sector - the case for adopting more sustainable products and working practices has never been stronger. Aside from protecting the environment for future generations, going greener can deliver major benefits in other areas such as potentially reduced costs and increased marketing opportunities.

"It's for this reason that Bond It remains committed to enhancing our range with environmentally friendly products that still offer all the performance of their more traditional, less green counterparts. A

prime example of this can be found in our Reload range."

BETTER BY DESIGN

Bond It's Reload range of silicones employs a unique reusable design that helps to minimise waste to landfill offering a solution around sustainable packaging. The system is designed for use with special sausage refills. Currently being offered, three of Bond It's most popular silicones and sealants, WP100, Frame-Mate and Multi-Mate, with a view to rolling out the concept to other products in the range at a later date.

How the Reload refillable system works is simple. The silicone is supplied in the form of EU3 aluminium foil sausages that can be replaced as needed. The end of this refill is removed with scissors before the nozzle is attached as normal. The sealant can then be dispensed using an ordinary skeleton gun and once the refill is used up, the aluminium slug can be simply and cleanly removed and disposed of before another refill is reloaded.

GOING GREEN

As well as being incredibly easy to use, the Reload system also offers significant environmental benefits. In particular, both the cartridge and the nozzle are completely recyclable while Reload's refillable nature also

means that any excess silicone in the nozzle doesn't go to waste.

But the green benefits don't stop there. The reusable nature of Reload also results in a considerable reduction in the amount of waste generated and subsequently requiring disposal.

"Aside from helping to reduce the enormous number of sealant cartridges currently being sent to landfill, the Reload system also delivers a significant reduction in packaging use and subsequent waste," explains David. "In fact, compared to traditional spent sealant cartridges, a used Reload refill is up to 60% lighter and 80% smaller in volume.

"This offers major benefits against a backdrop where site waste disposal costs are now determined by waste type and weight. It's also particularly pertinent when we take into consideration the legal requirement for Site Waste Management Plans (SWMP) on all building projects over £300,000 which seek to increase waste reduction, recovery and recycling." Coupled with landfill shortages around the corner and increasing site costs imposed by the Government, this will lead to increased transportation costs as waste will need to travel further.

For more information on Reload contact our Sales Team on 01422 315300 or visit www.bond-it.co.uk.

LOAD, SEAL, REPEAT

It's as simple as that.

Load a high quality silicone sausage into the re-useable cartridge and apply using a standard sealant gun.

Low environmental impact, cuts down on waste, time and costs.

Visit www.bond-it.co.uk for details



Unit G16, River Bank Way, Lowfields Business Park, Elland, West Yorkshire HX5 9DN
Tel: +44(0)1422 315300, Fax: +44(0)1422 315310, Email: sales@bond-it.co.uk



SEAL IT - THE NEXT GENERATION

HYBRID ROOFING MEMBRANE

Everyone has their favourites, and in the roofing game the same can be said for choosing the right product! Football or Rugby Union? Wine or spirits? Horse racing or Formula One? We all have preferences and in the roofing industry we face the same choices and ultimate decisions. Although there are many roofing and weatherproofing compounds on the market, most roofing contractors have a favourite product that they will use time after time. Part of the reason for this is that all compounds appear to do more or less the same job. Indeed, it is a fact that in some installations the choice of compound is not critical, particularly given the tolerance there is in the products on the market. But the tolerance level can be stretched too far and often we don't assess correctly the whole criteria required by a particular installation!

To ensure the right product is used for the right installation, a number of factors have to be considered. How damp is the installation and will it be prone to water retention? How long for the product to cure in order to become resistant to water and moisture? With roofing applications weather is always an unknown quantity and can often lead to roofing installations failing because of too much H₂O. It is not always possible to cover a roof to give protection from the elements and we cannot control the weather to give us consecutive days of sunshine!

What materials are involved in the installation – will the surface requiring priming to allow the compound to adhere? In particular, galvanized metals offer little keying properties for most acrylic based products and will inherently require a primer in order to fix the compound. This can extend application time considerably whilst you wait for the primer to dry before applying the compound. Also, how flexible is the material, if prone to movement then a product needs to be used that will give with oscillation and won't break down or crack. Does the product need to be high-build and will it give a uniform 1 coat application? Dependant on the viscosity of the liquid will it actually flow and reduce the protective layer or will it retain it's properties allowing the product to be moulded into areas where required most.

Ventilation will also have a bearing on the product specification. In areas of poor ventilation high VOC products can cause irritation and in extreme cases nausea and dizziness to the applicator as well as subsequent residents. Particularly important with sensitive installations where lingering solvent smells will not meet health and safety requirements.

There are many things to consider when choosing the right product but with Bond It's Seal It One Coat Roof Membrane



weatherproofing situations are made easy and comes with added benefits!

Seal It Liquid Membrane is an easy to apply one coat roof seal offering a modern alternative to traditional GRP, PU, silicone and bitumen roof coatings. Seal It Liquid Membrane is a highly reflective, solvent-free, non-flammable liquid membrane formulated for professional roofing applications and requires no special training to apply. Designed to be used on its own it can, however, in more demanding situations be used in conjunction with a primer, accelerator, reinforcement mat and edging and trimming sealer. Altogether the system delivers a high performance, watertight, permanently flexible and extremely durable barrier coating for all existing roof substrates which is guaranteed for 25 years.

Offering primerless adhesion on a wide variety of building and roofing surfaces, such as metal, treated and untreated wood, brick, stone, polyester, glass, lead, bitumen coating*, tile, plastics, polycarbonate, concrete, without heating or bonding. Ideal for repairing flat roofs, pitch roofs (less than 10o), leaking flashing, guttering and roof lights and cracked roofing panels, chimney stacks, corrugated or plate roofing materials, zinc, steel, fibre-cement and façade panels creating an impermeable seal to repel water damage and provide resistance to degradation from natural weathering like rain, snow and sunlight. Also suitable for zinc guttering, down pipes, ventilation ducts, etc.

Based on advanced hybrid technology and developed by the chemists at Bond It in the UK, this product remains permanently flexible once cured and will not harden or soften even under extremes of weather, temperature, UV radiation and external chemical attack. Excellent resistance to ageing, ultra-violet attack and discolouration. Under test conditions, Seal It Liquid Membrane was shown to have superb cool roof thermal properties, outperforming black bitumen by 36% at just 0.8mm thickness. It was also 11.3% more efficient than solar reflective paint, all helping to reduce energy costs.



SYSTEM COMPONENTS:

SEAL IT LIQUID MEMBRANE : A 'one coat roof seal', professional grade hybrid roof coating available in either white or grey. Solvent-free and non-flammable, making it safer to use, one part, moisture cure, easy to apply coating. Provides outstanding water resistance, weather proofing characteristics and self-levelling properties and is crack bridging, non-shrinking and non-cracking. Compatible for use with most common roofing materials.

SEAL IT PRIMER: A one-part solvent-free primer for preparation of bitumen surfaces and roofing.

SEAL IT REINFORCING MAT: A high grade 100% polyester fabric which is non-woven and spunbonded to offer reinforcement to blisters, splits, seams, details, joints and penetrations, etc. offering twice the strength once incorporated. Ideal for areas subject to high movement. Tear and puncture resistant.

SEAL IT CRACKS & EDGING SEALER: A hybrid polymer sealer suitable for filling cracks, edges, details and small gaps prior to application of Seal It Liquid Membrane. Alternatively, it can also be used after Seal It Liquid Membrane application to secure edgings and seals to create a self-terminating flashing or provide extra protection around roof elements such as chimneys, air vents, etc.

SEAL IT ACCELERATOR: For colder climates, where the air temperature can affect the cure process, Seal It Accelerator can be mixed with Seal It Liquid Membrane to speed up drying rates. When used in conjunction with the Accelerator, Seal It Liquid Membrane will withstand temperatures down to -20°C.

For all your waterproofing problems, one product can offer you the quick and easy solution. Make life less complicated and try Seal It today – you'll see there is NO better alternative!

For more information on Seal It contact our Sales Team on 01422 315300 or visit www.bonditgroup.com.

PRESERVING HIGH STANDARDS

Bond It is building on its track record of offering innovative, value adding products with the launch of its new Coloured Wood Preservers.

The business, which ranks as one of the UK's leading manufacturers of sealants, adhesives and building chemicals, has identified the need to offer more wood treatment products under its new Wood Guard banner.

With recent EU legislation banning ingredients such as propiconazole, products containing this active ingredient are currently being phased out throughout the industry. In response to this, Bond It has introduced a Coloured Wood Preserver that offers a waterbased alternative containing no VOCs and no propiconazole, making it safer to use.

It contains a fungicide specifically formulated for use against wood rotting, decay and staining fungi, algae, lichen and other growths on wood surfaces. It is an ideal product for the protection of outdoor timber structures such as sheds, fences, trellis, pergolas, gazebos etc and can be applied to all rough, sawn or smooth timbers.

Available in a range of durable UV fade resistant colours that provide deep penetration into timber and leave a colour finish with the natural timber grain texture still visible.

It has virtually no odour and can be applied either by brush or low pressure spray to provide lasting protection. The formulation is water-based producing a non-flammable, quick drying product and is ready to apply direct from the container. It also facilitates easy clean up of brushes and tools.

Dr Kayleigh Cox-Novak, technical manager at Bond It, says: "As a business, Bond It are quick to react to legislative changes affecting the construction industry and strive to offer safer solutions to the users of our products. The launch of Coloured Wood Preserver reflects this focus on continued innovation and improvement."

Available in 5L tins, the Coloured Wood Preserver is being offered in Light Brown, Dark Brown and Green.

For more information on Seal It contact our Sales Team on 01422 315300 or visit www.bond-it.co.uk.



seal it

ONE COAT ROOF SEAL

100% WATERPROOF BARRIER

the flexible cool roof

Solvent-free and non-flammable, Seal It Liquid Membrane is designed for professional roofing applications as the ultimate alternative to bitumen based and GRP roofing membranes: ideal for all existing roof substrates. With outstanding water resistance and weather proofing it is self-levelling, gap-bridging, non-shrinking and non-cracking.

You can even apply it when it's wet!

Full available system comprises: Primer, Reinforcing Mat, Sealer and Accelerator. Available in either white or grey and in stock now.

Unit G16, River Bank Way, Lowfields Business Park, Elland, West Yorkshire HX5 9DN
 Tel: +44(0)1422 315300, Fax: +44(0)1422 315310
 Email: sales@bond-it.co.uk Website: www.bond-it.co.uk

PAINTING A FEATURE?

GET THE RIGHT TOOLS FROM HARRIS

Feature walls (also known as accent walls) are on trend and can be an exciting design element in any room as well as a fun and creative project to undertake. The easiest and least expensive way to create one is with paint – there is no limit to the effects, and it is the easiest material to change. With the new range of painting tools from top brand Harris now available, this is the perfect time to give a feature wall a go.

By their very nature however, feature walls can be dramatic, so it is a good idea to get some advice on how best to go about it, before starting the job. Top decorating brand, Harris has a host of handy tips on how to achieve a stunning effect that you will be happy to live with in the long term – visit www.harrisbrushes.com.

There are three key considerations when planning to paint feature walls:

1. Which wall(s) to paint – or not
2. What kind of tools and techniques to use to get great results
3. What kind of design to choose (not to mention what colours!)

1. WHICH WALLS TO PAINT

A feature wall draws the eye to a focal point. So, use it to emphasise features that already exist rather than fight with them. If you have a fireplace or an archway, choosing a different wall risks the room feeling chaotic. Similarly, if the room already has lots of furniture or surface patterns, then a feature wall as well may be too much.

Small rooms will look smaller with a feature wall, so one colour all over – even if its bold - will work better. To make a ceiling look higher, or a room less narrow paint the bottom two thirds of a wall darker and the top third lighter with a clean, straight divide. Corridors and hallways can carry more intense colour effects as they are not areas where time is spent; and the drama can make great first impressions.

You might also use a feature wall to create zones in an open plan area – separating living from dining; or making an office area in a room used mostly for something else.

2. WHAT KIND OF TOOLS AND TECHNIQUES TO USE

Just like any decorating task, painting a feature wall is much more successful using the right tools for each stage of the project. It will also be easier and quicker with high quality tools that are comfortable to use and are guaranteed no bristle loss. With Harris NO-LOSSTM technology you can be confident. For a feature wall, you need the Harris Ultimate Walls & Ceilings Flat Brush for precision, the Harris Ultimate

Walls & Ceilings Flat Brush for faster painting and a Harris Ultimate Walls & Ceilings Roller. For the straight edges of a pattern, you need Harris Ultimate Fine Line Masking Tape. If you use a sub-standard tape, you will either have paint bleed underneath, or you will pull the paint off the wall and have a sticky residue left behind.

As with any decorating it's best to prepare properly, covering floors and furniture that cannot be moved with a Harris Seriously Good Double Protection Dust Sheet, masking light switches and cleaning the painting area with a Harris Seriously Good

Microfibre Cleaning Cloth. You also need a nice even base coat for your feature wall so if you have not already decorated, then this is the next step.

To create your design, use your Harris Ultimate Fine Line Masking Tape and start to make shapes with the tape on the wall. Then use a Harris Ultimate Walls & Ceilings Flat Brush, or an Ultimate Walls & Ceilings 4-inch Mini Roller if you have space. These products will give you a great finish and let you work much faster. Choose the one that fits the size of your shapes best.



If you are working on large areas or have chosen just one colour for your pattern, double the amount of UV tape around the edges and use the Harris Ultimate Walls & Ceilings Powercoat Roller to cover the most wall and get finished even more quickly. Depending on the colours chosen, you could need more than one layer.

3. WHAT KIND OF DESIGN TO CHOOSE

Feature walls do not have to be bold or bright. A subtle pattern can create interest without being too overwhelming. Complementary colours usually work well, but a good rule of thumb is 60-30-10. Use light colours for 60% of the space, so it will look brighter, darker colours for 30% and 10% for accents or details. More than three colours is usually too much.

Highlights - Interesting architectural details can be picked out with contrasting or complementary shades. You could even be a bit playful with something very traditional

like a cornice by painting in a very modern shade or adding a stripe.

The Unexpected - Remember that feature walls do not just have to be about the plaster. Picking out functional features like dados, picture rails, doors or door panels, skirting boards, steps – or maybe just the risers – in bright zingy colours can create a great look. It might sound fiddly but cutting in brushes from Harris will make the job a whole lot easier.

Stripes, blocks and geometrics - Lines, borders, formal stripes, checks or dramatic colour blocking inspired by the artist Mondrian can all be achieved with the help of good quality Harris Masking Tape and Harris not only has the kit but can also take you through the process step by step. Bigger blocks of contrasting colours can be used for zoning and for changing the mood and a broad horizontal stripe around the room can be eye-catching. You can even break away from straight lines, by

overlapping tape at different angles.

Illusions - This idea is all about tricking the eye into seeing features that are only painted effects. Stair runners are a good example. Fake dado rails or borders can be used to frame floors, fireplaces, arches, windows and other features, drawing attention to them. You could even outline a window frame with a stripe of paint to create a 'picture-like' effect; or create the illusion of 3D on a wall just by painting the sides of it in a slightly darker shade. Again, Harris masking tape is the key decorating aid required.

Decorating tools from Harris are available through many DIY stores – see the stockist list on www.harrisbrushes.com. For more information about Harris decorating tools, preparation and cleaning products, plus invaluable hints and tips on all key decorating projects, visit www.harrisbrushes.com. All with the help from Harris... let's decorate.

www.harrisbrushes.com





SILANCOLOR TONACHINO PLUS BY MAPEI

Mapei's Silancolor Tonachino Plus is a fibre-reinforced silicon resin-based coating, ideal for internal and external surfaces that can be affected by the growth of algae, mould and fungi. It comes in a paste form with good filling capacity, making it perfect for a contemporary finish.

The double synergic action carried out by the components contained in Silancolor Tonachino Plus eliminates the causes which create conditions favourable to the growth of micro-organisms, and instead offer excellent protection for the façade due to it containing a special agent that controls growth.

Silancolor Tonachino Plus is particularly ideal for protecting deteriorating or north-facing facades due to its excellent repellence to water and its resistance to UV rays, cracking, and ageing. Its special formulation mean substrates have good permeability to water vapour and are highly water-repellent. Unlike conventional synthetic coating products, it forms a porous layer rather than a film which is impermeable to water vapour, while the special silicon resins contained in the product form an excellent barrier against

the penetration of water, so that the render always remains dry.

Available in various grain sizes, including new 1.5mm, it combines the advantages of mineral coating materials for high breathability, as well as those of synthetic coatings for a uniform colour, and excellent adhesion to old paintwork (depending on its condition). It is also available in colours obtained using the ColorMap® automatic colouring system by Mapei for your ideal match.

www.mapei.com



EARTHBORN'S HISTORIC PAINT COLOURS

Earthborn is well known for its high performing, eco friendly paints that are healthier to live with and better for the planet. But it doesn't stop there.

With a host of unique qualities, Earthborn is the perfect choice for listed buildings and period homes. From historic medieval churches to sprawling Georgian mansions, compact Victorian terraces to mid-century bungalows, Earthborn's paints are regularly specified by homeowners and professionals alike for a variety of heritage projects. Claypaint is available in a palette of 72 signature shades, including several based on historic paint colours.

Of course, every period building has its own unique characteristics and considerations, not least when it comes to decorating. So Earthborn has combined its own paint knowledge and colour know-how with the expertise of Lincoln Conservation, to produce a guide on how to choose paint for older properties and create historic paint colour palettes that remain suitable for modern living.

Lincoln Conservation specialises in the conservation and restoration of interior and exterior features in listed and historic buildings, historic artefacts and historic paint analysis. Certain paint pigments have fascinating stories to tell; from the highly prized yet poisonous Arsenic Green to the fly repellent properties of Slaughthouse Blue.

The experts at Lincoln Conservation helped Earthborn to delve a little deeper into some of the most historically important shades and together, they have created colour palettes suitable for a range of architectural styles and eras.

No.38 The Park is a boutique Georgian townhouse hotel featuring a palette of warm Earthborn greens.



The "Earthborn Guide to Historic Paint Colours", identifying design themes and colour recommendations for Georgian, Victorian and 20th century property styles is available on request from marketing@earthbornpaints.co.uk

seal it ONE COAT ROOF SEAL 100% WATERPROOF BARRIER

the flexible cool roof

Solvent-free and non-flammable, Seal It Liquid Membrane is designed for professional roofing applications as the ultimate alternative to bitumen based and GRP roofing membranes: ideal for all existing roof substrates. With outstanding water resistance and weather proofing it is self levelling, gap bridging, non-shrinking and non-cracking.

You can even apply it when it's wet!

Available in either white or grey and in stock now.



bond it

Unit G16, River Bank Way, Lowfields Business Park, Elland, West Yorkshire HX5 9DN
Tel: +44(0)1422 315300, Fax: +44(0)1422 315310
Email: sales@bond-it.co.uk Website: www.bond-it.co.uk

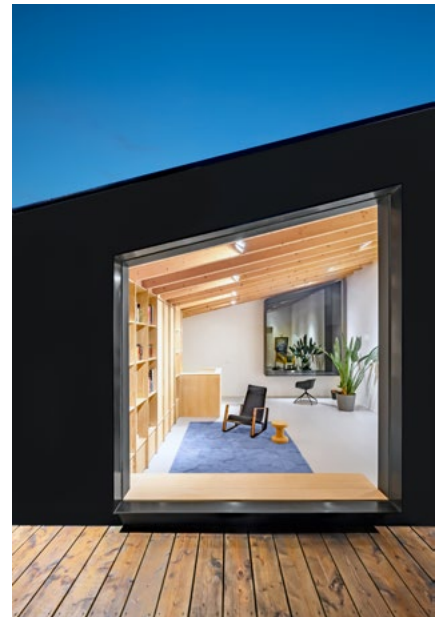


BUREAU FRAAI DESIGNS A PRIVATE CAR SHOWROOM AND TOPS UP A TOWNHOUSE IN AMSTERDAM



As proud owners of two Jaguar models the clients asked Amsterdam based architecture office Bureau Fraai to design a garage to safely store them, preferably showcasing their favourite model so that they could enjoy this beauty to the fullest. The architects came up with the concept of a private showroom in their backyard visible from the main house. The showroom is designed as a distinct black volume in which the two Jaguars are stacked using an automatic car lift. The large steel plate framed window frames the client's favourite model as if it were a painting; a 'painting' to be enjoyed from within their own living room. The characteristic design of the showroom is enhanced by integrating a custom designed grill with Jaguar logo referring to classical models from the car brand's history.

Besides the showroom Bureau Fraai also designed a matching black roof extension connecting to the two different roof heights of the neighbours.



Here two big steel plate framed windows frame the interior of this top floor living and working area creating an Edward Hopper like appearance from the outside. Both window frames also serve a second purpose. The front one extends into the interior as a desk while framing the view to the neighbourhood. The rear one facing the roof terrace and garden evolves into a bench where one can relax and enjoy the sky. In contrast with the black shell the interior has a warm and light character. Both the ceiling and the connected built-in wall cabinet are built up from wood with clear matching partitioning and refined detailing.

Project info:

Status: Completed 2020

Client: Private

Location: Amsterdam, The Netherlands

Contractor: Michel Pronk Bouw

Interior builder: Pronklust

Photographer: Studio de Nooyer



NEW SMART TECH ROOF WINDOW UPGRADE FROM VELUX® IS DESIGNED TO HELP INSTALLERS REAP THE BENEFITS

Leading roof window manufacturer VELUX® has introduced a new promotion which is set to make it easier for installers to promote the benefits of VELUX INTEGRA® to their customers.

Starting in August and running until the end of the year, homeowners purchasing VELUX INTEGRA® electric and solar powered roof windows* can receive a free VELUX ACTIVE with NETATMO kit worth £220. This complimentary upgrade will make it easier for installers to showcase the impact INTEGRA windows will have on their clients' projects.

VELUX INTEGRA® is an innovative system of roof windows, blinds and shutters that can be controlled with one touch of a pre-paired wall switch, with rain sensors automatically closing roof windows at the first sign of a downpour.

VELUX ACTIVE with NETATMO takes the INTEGRA® range to the next level, offering total indoor climate control. Smart sensors continuously monitor temperature, humidity and CO2 levels in customers' homes and adjust their roof windows to create a healthier indoor climate.

Windows can even be controlled when customers are on the go, thanks to the VELUX ACTIVE app, which is compatible with voice-controlled virtual assistants such as Apple's Siri and Google Assistant.



The ACTIVE kit can be delivered to the property where the windows were installed and comes ready to fit and with full instructions included. This means that once it arrives, home owners can install the kit themselves, saving installers time ahead of their next client project.

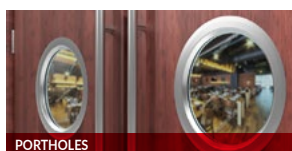
Grant Sneddon, Product Manager at VELUX, said: "As homeowners everywhere adjust to their new normal, improving our indoor spaces has never been more important, especially in busy areas of the home such as the kitchen or dining room which are ideal places for a VELUX INTEGRA and ACTIVE combination.

"We hope that this offer will give installers a chance to upsell some of our products and drive revenue for themselves in the process."

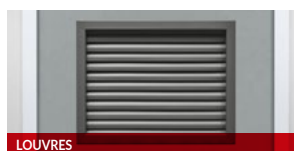
Installers can help customers take advantage of this offer until the end of December 2020, simply by creating a VELUX Rewards account and uploading their invoice. Approved purchases of VELUX INTEGRA roof windows will automatically generate an email with instructions to claim a free ACTIVE kit.

Up to £30 in VELUX Rewards per roof window will also be available, which can be spent with top-brand partners including M&S, Argos, TK Maxx, H&M and many more.

**- One free VELUX ACTIVE kit will be offered per invoice where a purchase of VELUX INTEGRA® electric and solar roof windows has been made. Terms and conditions apply, see velux.co.uk/activeupgrade for more details.*



PORTHOLES



LOUVRES



POWER TRANSFER UNITS

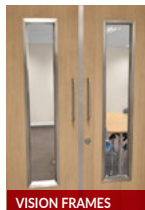


LOCKS AND CYLINDERS



FLUSH BOLTS

**SPECIALIST
ARCHITECTURAL
HARDWARE SUPPLIES
TO THE DOOR
OPENINGS INDUSTRY**



VISION FRAMES



FINGER PROTECTION



DOOR STAYS



PANIC HARDWARE



ACOUSTIC SEALS

ZERO SEAL SYSTEMS LTD
UNITS 43-45 LADFORD COVERT SEIGHFORD STAFFORD ST18 9QG
TEL - 01785 282910 E-MAIL - SALES@ZEROPLUS.CO.UK
WWW.ZEROPLUS.CO.UK

ZEROplus

AUTHENTIC CRITTALL — THE REAL STEEL DEAL

It's almost 200 years ago when Crittall pioneered the original, iconic steel window frames. Modified over the years to meet today's stringent regulations, hand-crafted Crittall windows, doors and screens undoubtedly add value to a home with bespoke, timeless, design for every application.

World famous for minimalist, slim profiles and sightlines, the company's products are equally as popular today with people looking to make a statement about their property through renovation, new or self-build projects.

Innovative development using steel has led to creative multiple-use options from room dividers to shower screens adding glamour and elegance. Cleverly dividing space and letting in light, acoustic properties make interior screens particularly suitable for partitioning kitchens, living areas, home offices and more, with glazing options to reduce noise and allow privacy.

The company prides itself on its manufacturing expertise, using handcrafted, centuries-old techniques with skills and craftsmanship that can rarely be matched. Crittall windows, doors and screens are virtually maintenance-free, finished in any colour with galvanised, factory applied powder-coating to last a lifetime. A discreet plaque stamps

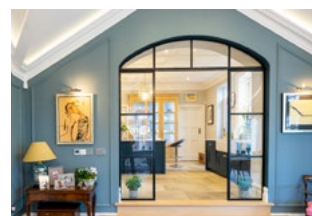


Photo: John Knight Glass and David Godfrey Photography

Crittall authenticity and approval allowing identification of genuine Crittall products.

INSTALL ONLY THE ORIGINAL, GENUINE MAKE

Russell Ager, managing director at Crittall Windows, says:

"There is only one genuine Crittall brand of windows and doors, stamped as the authentic product our customers deserve.

"We place considerable emphasis on communicating our key message of Crittall authenticity based on quality, craftsmanship and British heritage.

"When a customer buys a window sold by reference to the Crittall name, they need assurance that it's the genuine item made by Crittall Windows."

www.crittall-windows.co.uk

The ALL **NEW**
GlassIIEdge™

Flush glazing range ..

**AVAILABLE AS
BI-FOLDING
SLIDING / STACKING
CENTER FOLD
BAR-TOP, WINDOWS
& MUCH MORE**

.. in all materials



REVOLUTIONARY NEW **DOOR & WINDOW** SYSTEM



presents ...

GlassIIEdge™

**FOR FURTHER INFORMATION,
SHOWROOMS OR TO BOOK
YOUR VIRTUAL TOUR**

WWW.FSDC.GLOBAL
T. 0345 64 64 646 / Text 66777



**BOOK YOUR
VIRTUAL
TOUR**

TRADITIONAL TIMBER WINDOW AND DOOR SPECIALISTS

The Sash Window Workshop specialise in the replacement and repair of timber windows and doors in period properties. Since they were founded in 1994, the company have worked with various homeowners, architects, contractors, designers and developers.

The Sash Window Workshop manufacture all their new windows and doors at their workshops in Berkshire. Their new joinery is manufactured to improve energy efficiency, while replicating as closely as possible the proportions and designs of historic windows and doors. The materials used allow the company to produce products to the highest specifications, combining minimum maintenance with maximum lifespan.

The company were approached by a homeowner in South West London who was looking to replace several timber windows and doors. Upon receiving the quotation, the

customer arranged a tour of the workshops to see the craftsmanship that goes into the new joinery.

As all the windows and doors that The Sash Window Workshop manufacture are bespoke, they were able to ensure that the replacement windows and doors matched the original designs, meaning that they complied with conservation area regulations and retained the aesthetic look and feel of the property.

Upon completion of the work, the customer commented that the "quality of the work is fabulous and worth every penny". They have since placed another order to replace more windows at their property.

To obtain a quotation for your project, contact The Sash Window Workshop on: 01344 868 668 or info@sashwindow.com. You can also visit their website: www.sashwindow.com.



High Quality, Traditional Timber Windows and Doors

Providing Tailor Made Solutions For Your Project. Period Property Experts.

Supply Only, Supply and Install, Draught Proofing and Overhaul.



01344 868 668

www.sashwindow.com



THE SASH
WINDOW
WORKSHOP

EXPERIENCE THE VICAIMA HEARTBEAT WITH NEW VIDEO FOR TOMORROW'S WORLD

If music be the food of love, then this new video demonstrates just how deep the love for doors exists and how it plays in perfect harmony with nature. Crafted with sophisticated design and accompanied with a melody that strikes a chord for the future. As one of the largest European players in the design and production of quality interior timber door solutions, technical doorsets, wardrobes, panels and even furniture; this communication reinforces the Vicaima brand values. With its recognizable signature "Unexpected Harmony", the video embodies aesthetics and emotional inspiration.

This modern video reiterates the fundamental pillars of the Vicaima brand, taking the audience through varying scenarios and unusual situations, with beauty, safety, comfort and an unpredictable and bold design, capable of projecting with a universal language. A video with music and imagery that reveals the constant heartbeat of Vicaima.

This audio visual content has enormous significance for Vicaima, as it represents a path, where the future approaches the present and is seen in infinite possibilities, representing continuity and hope, the latter symbolized by childhood, nature and sustainability.

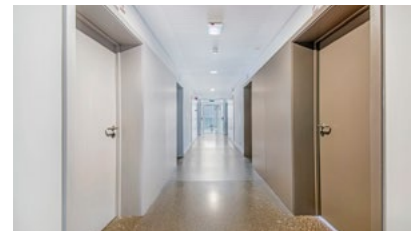
"It is a great pride to present a work with this visual quality and an author's music that



definitely shows the rhythm and beat of what Vicaima is, a company with a futuristic and avant-garde vision, whose creation of trends is in its genesis. This moment seemed ideal for the launch of this video, which is inspired by such important themes and which register our reality, such as sustainability and concern for well-being and safety anywhere. Our motto "Unexpected Harmony" is also the basis of this creation, because harmony, combined with the surprise element, are the fundamentals that have projected and elevated us over more than 60 years of evolution", says Antonio Moutinho, Director at Vicaima Group.

Staying true to its role of inspiring customers and partners around the world, Vicaima once again highlights its leading position in the field of innovation and creating trends.

Visit the Vicaima website www.vicaima.com.




STANZA
ARCHITECTURAL HARDWARE

Our STANZA range is designed to be both elegant and modern with the affordability to suit both consumer and contractor.

UTILITY BY DESIGN

A range of designer zinc levers available on rose and backplate, chrome plated to achieve long performance and great aesthetic appeal.

T : +44 (0) 1228 672 900
E : sales@zoo-hardware.co.uk
W : www.zoohardware.co.uk

For further information on this range visit our website or call one of our friendly sales team.

STANZA is part of Zoo Hardware Ltd. 



PLUMSTEAD LIBRARY'S NEXT CHAPTER WITH A STORY OF STEEL

Plumstead Library, originally constructed in 1903 and located in the Royal Borough of Greenwich, has recently undergone a dramatic renovation project. Having previously been under-used, the building is now a fully fit for purpose 21st century public library. This impressive transformation involved the creation of a community centre, a sport and gym centre and, of course, the restoration of the libraries for adults and children.

A significant part of the project was the full refurbishment of all 33 windows which included an impressive 124 individual window frames.

For this important and large job, Steel Window Association member ASWS were entrusted with the completion.

The library is a Grade II-listed building and so the work required careful consideration, planning and unparalleled expertise. Modernisation has been carried out in a way that bridges the gap between old and new, preserving traditional charm and increasing functionality at the same time.

For further information on the Steel Window Association, please visit www.steel-window-association.co.uk or call 020 3475 8049

TOUCH

IRONMONGERY LTD

www.atouchofbrass.co.uk

210 Fulham Road, Chelsea London SW10 9PJ

THE PERFECT TOUCH

**Touch Ironmongery is one of London's leading Architectural Ironmongers
Established in October 1982**

Originally called "A Touch of Brass", the firm changed their name in 2003 in reaction to slowly advancing market changes in architectural ironmongery which is no longer supplied solely in brass, and to also reflect the broader range of product and finishes that they sell.

In fact today, Touch can supply a wide range of finishes including Brass, Satin Brass, Polished Chrome, Polished Nickel, Satin Nickel, Copper, Bronze – solid and plated, BMA, Antique Brass, Black, Pewter, Ceramic, Leather, Stainless Steel, Satin Stainless Steel, Gun Metal, and the list keeps growing. Whatever finish you require, Touch can help you get the right look.

Touch occupy their recently refurbished showroom at 210 Fulham Road, Chelsea, where they display a vast range of their 5,000 products. With a customer base including Interior Designers, Builders and Individuals who are interested in the quality end of the Ironmongery market, Touch mainly supply to residential premises but hotel and office properties also contribute to their vast clientele.

The company also have a healthy export market to all corners of the world, namely the Middle East, Europe and the Americas. Touch's owner and founder, Bill Benham, has 38 years' experience in the ironmongery trade, as do his colleagues Jim Haselup and Alan Blanchard. Saleem Qureshi is the newest member of our team and has 10 years' experience, meaning their knowledge is unrivalled in this industry.

The range of products supplied by Touch date from circa 1640 French (Louise XIV) and cover all subsequent periods (Georgian, Edwardian & Victorian), art deco and contemporary pieces also make up the product ranges. In addition, Touch showcases the very best of British manufacturing; the best ranges are still produced in the Midlands by craftsmen in factories dating back 200 years or more.

Touch Ironmongery have recently become suppliers for **Designer Doorware (Australia)** who have beautiful products with a cutting edge design Metal, Wood and concrete. We also have the exclusive rights to sell the **Olaria (Barcelona)** range in the UK.

Olaria make all our bespoke products, they have incredible levels of workmanship. Touch also sell European manufactured goods which is considered to be of a very good quality and in recent years they have introduced some of the far eastern made products, albeit in a limited range but cost effective. With trends continuously evolving new innovative products are constantly under development. Touch understand that keeping up with the fashion-shifts is imperative in order to provide every customer with the best solution for their requirements.

Ironmongery can be a difficult and complicated aspect of a building project, as a result Touch aim to take this awkward aspect and make it user friendly and clear to understand by offering an on-site service where they carry out a detailed door by door, window by window, room by room Ironmongery schedule, highlighting all requirements and identifying any items that can be refurbished. Refurbishment is a large part of the business; Touch will undertake complete ironmongery refurbishment projects, and can restore old paint covered door furniture to their former glory, looking as new, at a fraction of the cost to replace.

**For more information about Touch Ironmongery or to arrange a
showroom visit please call 0207 351 2255 or alternatively
visit www.atouchofbrass.co.uk**



BRITISH & EUROPEAN MANUFACTURERS SUPPLYING THE FINEST QUALITY IRONMONGERY

Touch combine traditional skills with modern manufacturing techniques to produce the most beautiful, quality fittings, built to stand the test of time.

As well as specialist bespoke items, Touch supply over 1000 products, available in 23 different finishes to furnish high end residential and commercial properties, royal palaces, government houses, historic castles and stately homes.

Olaria, available from Touch Ironmongery

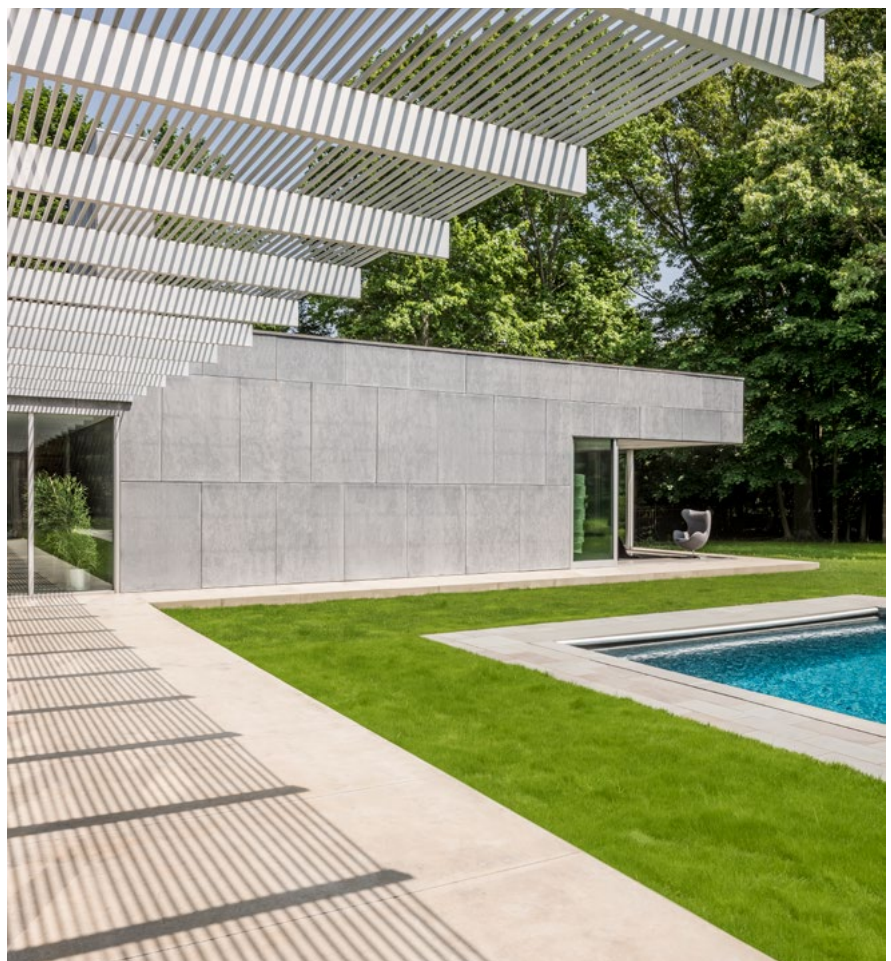
www.atouchofbrass.co.uk & www.olariabarcelona.com





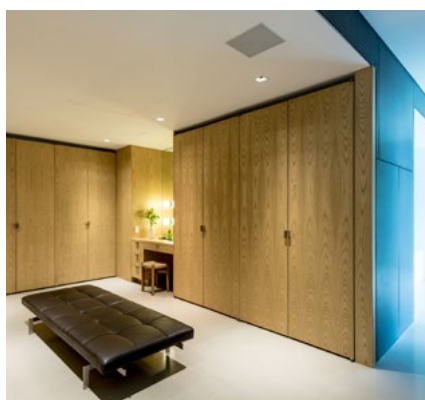
COLD SPRING HARBOR HOUSE

This 6,000-square-foot house was designed for a partner in a construction company with whom we had collaborated many years earlier as the builder of several floors we had designed for Takashimaya New York. His family of six had been living in a small Cape Cod-style house on a two-and-a-half acre property in Cold Spring Harbor on Long Island. We worked closely with the entire family to design a home that would suit all of their needs.



The house's two full floors and basement are expansive and allow for multiple rooms and areas. The ground floor encompasses a large music room/library, formal living room, family room, kitchen and breakfast room, mudroom, and sizable master bedroom suite with a private outdoor garden. The second floor incorporates four large bedrooms, two bathrooms, an exercise room, playroom, and large roof deck with an outdoor fireplace.

We seized the opportunity to use state-of-the-art materials in the construction of the house. It's clad in a commercial material, Cembonit, which hangs off the structure, providing a rain screen while allowing the exterior composition to breathe. The back of the house is mainly glass, with a louvered screen to protect the interior from too much sunlight. There is also a massive shading system integrated into the ceilings of every room: recessed roller shades operate on a smart home system.



Inside, the home is furnished in a comfortable palette of bright colors mixed with neutrals. Outside, at the far end of the pool area a freestanding screen conceals an outdoor shower and barbecue, complete with a portal, so that whomever is at the grill can engage with the family poolside.

MR Architecture + Decor

WWW.MRARCH.COM
Image Credits Francois Dischinger.



CAVENDISH DEVERE OF LONDON

Cavendish deVere supply and fit carpets and flooring into homes and businesses in London. We pride ourselves on achieving the very highest standards with the very best floor fitters, supplying a unique and bespoke range of quality carpet, wood, linoleum and Luxury Vinyl Tiles.

Why we stand out

- Winner 2019 Build magazine
- Winner 2019 Prestige Awards
- Winner 2018 Build Magazine
- Best Luxury Flooring company London
- Real Estate and Property awards 2020
- Best boutique Carpets and flooring supply

For more information get in touch;
Phone no: **020 8798 3011**
Direct office number:
0330 088 4849
Email Address:
info@cavendishdevere.com
Web: **www.cavendishdevere.com**

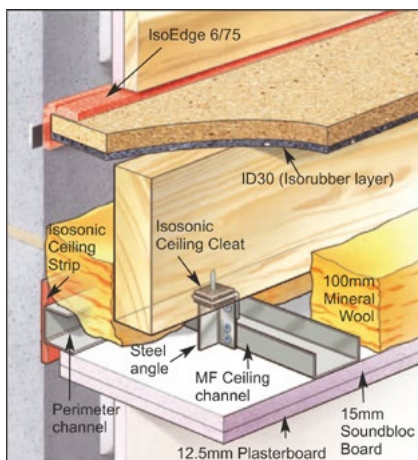


THE DIRECT TO JOIST ACOUSTIC FLOORING SYSTEM FOR REFURBISHMENT PROJECTS FROM THERMAL ECONOMICS

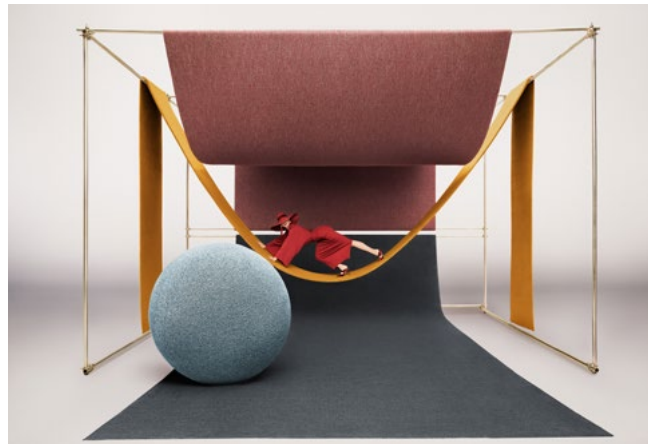
ID30 is a 30mm thick acoustic structural deck for installation directly over joists as part of a flooring system to achieve Part E building regulation compliance in refurbishment projects.

The benefits of the Isosonic Dekfloor 30 system include:

- Site tested for Approved Document Part E compliance.
- The utilization of an Isorubber acoustic layer, a dense & durable material with a proven track record with over three million square meters installed across the UK.
- No long-term loss of acoustic performance.
- Virtually no short term (elastic) or long term (creep) compression under load.
- No appreciable settlement under high loads, including non-loadbearing partitions.
- Quick and simple to install with no specialist tools or cutting blades needed.



For more information please contact or Technical Department on 01582 544255 or visit our website www.thermal-economics.co.uk



OBJECT CARPET X IPPOLITO FLEITZ GROUP NEW COLLECTION BRINGS CARPETS TO CENTRE STAGE

With a kaleidoscope of fascinating colours and structures, OBJECT CARPET is presenting a new carpet collection with eight new materials in 111 colours, making for an incomparable variety of combinations.

The new "desire for textile" is the guiding principle of the carpet brand's cooperation with the Ippolito Fleitz Group. For the new OBJECT CARPET collection, the Stuttgart-based design group has produced carpets that inspire people to be active, creative, and communicate with one another, while still allowing them to relax and feel comfortable.

Captivating textures provide each of the carpets with a unique appearance. Names like SKILL x CHILL or MOVE x GROOVE characterise the feeling, mood and atmosphere of the respective look. The colour variations make the carpets particularly versatile, whether in a hotel room, a lounge, an educational institution or a prestigious office.

For more information:
www.object-carpet.com

**OBJECT
CARPET**

DORRELL

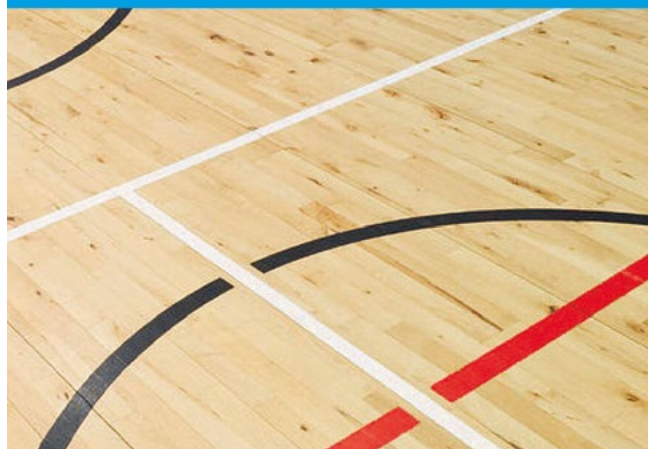
SPORTS FLOOR CARE

**SANDING | SEALING | COURT MARKINGS
NATIONWIDE SPECIALISTS**

Tel: 01684 567504

Email: info@dorrellflooring.co.uk

www.dorrellflooring.co.uk



Hardwood Flooring

*bespoke finished
to complement
your designs*



☎ 01462 486586

✉ info@roversflooring.co.uk

🌐 www.roversflooring.co.uk

33 Jubilee Trade Centre,
Jubilee Road, Letchworth,
Hertfordshire SG6 1SP

 **ROVER'S**
F L O O R I N G
PRODUCERS, IMPORTERS & DISTRIBUTORS



Rubio® Invisible Protector

Rubio® Invisible Protector is a plant-based wood protection that preserves the natural look and feel of your wood. The original surface gets a durable protection with an invisible finish. You can use Rubio® Invisible Protector on almost all wood types and it also preserves the natural look and feel of darker wood types.

And last but certainly not least, Rubio® Invisible Protector is based on a revolutionary plant-based resin.

At Rubio Monocoat, thinking green comes naturally. That's why Rubio® Invisible Protector is the perfect example of our sustainable entrepreneurship and vision to lower our environmental footprint. By using a revolutionary technology based on plant renewable materials, Rubio® Invisible Protector contributes to Rubio's EcoConscious story'!

- 100% invisible
- Natural look and feel
- Excellent UV protection
- Non-yellowing
- Plant-based resin
- Can be applied on all wood types

- Durable protection
- Water-based
- Scratch-resistant
- 1 component
- Mark resistant
- Easy to apply on brushed and sanded wood

**New
Product!**



Plant-based **PROTECTION THAT**
PRESERVES THE *natural look* **OF WOOD**

Rubio[®] **MONOCOAT**
YOUR PARTNER IN WOOD PROTECTION

7A Vanguard Way, Battlefield Enterprise Park, Shrewsbury, SY1 3TG, +44 (0) 1827 59 041
WWW.RUBIOMONOCOAT.CO.UK

TERRAZZO TREND FOR MASTIC ASPHALT FLOORING AND PAVING

Mastic asphalt is ideal for construction projects where a seamless, waterproof, durable surface is required. Commonly associated with roofing, tanking, flooring, paving and screeding projects due to its ability to offer total waterproof protection, the Mastic Asphalt Council (MAC) has recently seen a trend emerging of the use of mastic asphalt flooring incorporating terrazzo.

The long and rich history of terrazzo, with

archaeologists discovering terrazzo as far back as 8000 years ago, is testament to its status as a construction material that stands the test of time. Modern interpretations of terrazzo have been created by combining decorative stone chippings with mastic asphalt, which is then polished to create infinite possibilities in any design situation.

Some perceive mastic asphalt terrazzo as having a distinctly 'retro' look and no

two installations are ever the same, as the aggregate is exposed as part of the finishing process. Other finishes can also be created - such as matt or smooth - as opposed to the highly polished effect normally associated with terrazzo. Different visual effects can be created depending on the size and type of aggregate added at the mixing point to create a bespoke finish.

Mastic asphalt terrazzo offers the durability and distinctive features of terrazzo and consists of a traditional mastic asphalt base with a modern finish. Slip and skid resistance can also be incorporated into the wearing course of the mastic asphalt. In addition, mastic asphalt terrazzo is suited for both internal and external applications.

Web: www.masticasphaltcouncil.co.uk
Email: info@masticasphaltcouncil.co.uk
Tel: 01273 242778



Heywood Bespoke Hardwood Flooring

Your innovative flooring manufacturer for the most diverse range in dimensions, treatments and colour finishings.

- 'Multiplank', engineered on WBP plywood, but also solid hardwood flooring
- Wide and long boards, up to 400mm wide and 8000mm long
- Herringbone & Chevron
- Aged and hand-carved flooring
- Genuine reclaimed flooring & cladding
- Wide range of woodspecies

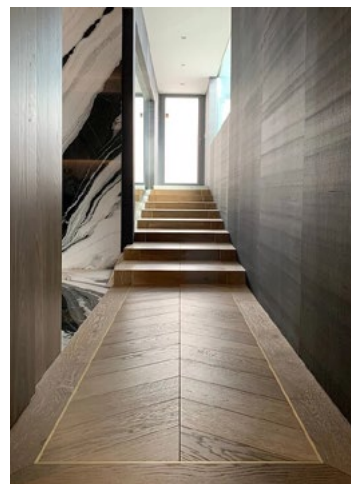
Numerous treatment and prefinishing combinations available, including brushing, bandsawing, distressing (tumbling), smoking, staining, and many natural, 'invisible' and colour finishing options.

Next to an extensive collection of treated and prefinished flooring, there are many opportunities for creating your bespoke flooring project.

Whether looking for a modern, contemporary, classic or aged style, together we can create the floor that matches your project.

At Heywood we consider flexibility, reliability and a high service level of paramount importance.

Please feel free to contact us for further information.



heywood
VLOEREN



T: +31(0)412 - 657 428 | E: info@heywoodvloeren.com | www.heywoodvloeren.com



STYLE & SUBSTANCE



We install PVCu, timber and aluminium windows, doors and Fire Doors and work in the Refurbishment, New Build and Commercial sectors.

Working with some of the most prestigious brands in the UK has influenced Newview, the South East's leading environmentally accredited glazing installer to become one of the ONLY companies with both ISO14001 for Environmental Management, ISO9001 for Quality Management as well as UKAS accredited Fire Door Installers & Inspectors. We are proud to promote the '3 R's' - Recycle, Re-use and Reduce how much waste we produce. 98% of our waste is now recycled and we work with councils, builders and airports to



reduce energy consumption and carbon emissions. Members of the Consumer Protection Association and Green Deal ready, you can trust Newview for all your glazing needs

newviewhomes.co.uk
01903 244 449



REST EASY - WHEN YOU RETROFIT FINEO GLAZING

FINEO, the latest generation of vacuum-insulated glazing opens new possibilities for both new build projects and refurbishment of existing timber sash and casement windows.

Starting at 6.7mm thickness, FINEO has a U-value of just 0.7 W/m²K, equivalent to a triple glazed unit (36mm thickness).

Retrofitting FINEO vacuum insulated glazing means your home will stay warmer, for longer.

- FINEO is suitable for retrofitting into existing frames.

- FINEO is 8 times more efficient than single glazing.

- FINEO also reduces external noise levels.

With a market-leading guarantee of 15 years, period or heritage homes can now enjoy all the warmth and comfort of triple glazing – without sacrificing the original authentic appearance.



Search www.energlaze.co.uk today



ASWS - THE GO-TO EXPERT FOR STEEL WINDOW REPLACEMENT AND REFURBISHMENT

Associated Steel Window Services (www.asws.co.uk) is a family-managed business now into its third generation and 60th year as a specialist steel window refurbishment and replacement company. It has evolved continuously since 1960 and is now a leading figure in the steel window industry.

ASWS has been a member of the Steel Window Association - www.steel-window-association.co.uk - since the late 1980's working to optimize expertise in the industry.

Established in 1960, the company started with a small client base working mainly for large insurance companies such as Sun Alliance

and Legal & General. The original company concentrated on the servicing of steel windows, general glazing and repairs to fire escapes.

Since the mid-1980's, after the former proprietor retired from the business and the current management team took over, the company has grown considerably and moved into a more specialized field; that of replacement, refurbishment and redecoration of steel windows encompassing a complete site package.

For further information on Associated Steel Window Services, please visit www.asws.co.uk or call 020 8665 5335.



SWA MEMBER TRANSFORMS THE JAM FACTORY, OXFORD WITH FULL WINDOW REFURBISHMENT

The Jam Factory in Oxford, once home to Frank Cooper's marmalade business, now comprises over 1,000 square metres of modern office space and a separate café and art gallery. Located in the heart of the city close to Oxford train station, this Grade II-listed building has undergone impressive renovation and refurbishment work to refresh its grand appearance and create the new office space.

Member of the Steel Window Association, Cotswold Casements, has extensive experience in the repair, replacement and

refurbishment of windows and was tasked with the responsibility of the fenestration. The Cotswolds-based metal window expert refurbished the windows offsite; the detailed work undertaken included a polyester finish applied to the window sections. This was an impressive project taking around a year to complete and the reinstallation of over 100 refurbished windows has created a striking result.

For further information on the Steel Window Association, please visit www.steel-window-association.co.uk or call 020 3475 8049.



HOLLYCROFT AVENUE

This London terraced property required more living space and an internal refurbishment to open up the home. A loft conversion and basement renovation were complete with multiple glazed elements and a complete overhaul of the rear elevation.

The homeowners required a broken plan internal scheme, allowing for natural light to flow through the spaces whilst having the option to separate living areas. An industrial style was favoured for the interior design, therefore IQ installed steel framed systems throughout the ground floor. Glazing bars were integrated into the internal steel designs, adding a touch of traditional charm to the contemporary home.

Some steel systems were required to be fire rated, ensuring the safety of the homeowners by creating a barrier between the kitchen and main living spaces. These fire rated systems followed a frameless design, enhancing the modern interior design.



The traditional steel ensured the internal glazing was elegant as well as functional, granting the ability to separate the kitchen from the dining room and wine cellar. Dark wood and light furniture choices were complimented by the sharp edged, dark steel frames.

At the rear of the property, minimally framed sliding doors grant access to the outdoor dining area. The double height installation allows an abundance of natural light into the home whilst seamlessly merging indoor and outdoor areas when slid open.

sliding doors with such slim sightlines allows the family expansive views from both floors, as well as highly ventilated spaces when desired.

On the upper level, a frameless glass balustrade was integrated within the sliding system, creating a modern Juliet style balcony and offering a safety element when the doors are open. The balustrade was placed on the internal face of the sliding doors and is almost invisible from the external view as a result.

To the left of the sliding door installation, an oversized pivot opening is accompanied by fixed structural glazing. Using a pivot door gives the appearance of a casement door, only revealing its bespoke nature when opened. The dramatic opening is another point which grants garden access, creating a seamless transition when travelling between inside and outside.

Fixed structural glazing was used to encourage natural light to flood both floors of the home, creating uninterrupted views from every room. The frameless glass panes have been packpainted in keeping with the minimal aesthetic, creating a contemporary façade design.

As well as expanding useable space across multiple floors, this project provided the homeowners with an abundance of natural light, bouncing through the home across multiple floors. By forging a strong bond between indoor and outdoor spaces the family are able to enjoy the outdoor living spaces, again increasing their useable space in the warmer months.

The property now benefits from significantly more space and light whilst remaining completely in keeping with the street from the front. Clever placement of glass and use of adaptable systems meant the large home retains its original charm, with added functionality to suit the family's growing needs.

www.igglassuk.com
Images – Luca Piffaretti





The **Ashbourne Electric Integra** is a decorative arched cast-iron insert shown inside the **Corinthian** marble mantelpiece.

CAST TEC'S NEW EASY-FIT ELECTRIC CAST-IRON FIRES

The CastTec Electric Integra is a range of cast-iron fireplaces with a realistic electric flame effect called an Electraflame and includes a 2kW fan heater.

Ideal for new builds and any suitable flat wall, the Electric Integra can be housed inside a standard 75mm (3") rebated mantelpiece, reducing the need to knock into a chimney breast.

CastTec also manufacture a Combination style fireplace which needs only a hearth to fit. As its name suggests, the

Combination includes a small top shelf to form a complete fireplace without the need for a mantelpiece.

Electric Integra can be traditional in a decorative style or more minimalist with several different finish options.

The CastTec Integra range also includes a substantial L.P.G. or natural gas collection which includes a balanced flue option for external walls. A wood-burning and multi-fuel option is also available to suit traditional chimneys or twin-walled chimney flue systems.



Regal Electric Combination

The CastTec Integra Collection brochure can be viewed on www.casttec.co.uk.

CastTec

I n t e g r a C o l l e c t i o n

CAST-IRON FIRES FOR THE 2020'S

- * Electric 'flat wall' installations
- * High efficiency gas options
- * Efficient Multi-fuel Stoves



Integra Electric



Integra Gas



Integra Solid Fuel

CONSORT CLAUDGEN

EXPERTS IN ELECTRIC HEATING SOLUTIONS
FOR DOMESTIC, COMMERCIAL AND INDUSTRIAL ENVIRONMENTS



Consort Claudgen is one of the industry's leading manufacturers of electric heating products. We are UK-owned, and specialise in manufacturing high quality products at our Pembrokeshire factory.

Our product range includes panel, convector, fan and radiant heaters. Other related products include heating controllers, air curtains, towel rails and low surface temperature (LST) heaters. Our BIM objects include panel, fan and recessed ceiling heaters, and air curtains.

Download our **2020 Heat brochure** and discover our latest products as well as the established range.



CONTACT US

Consort Claudgen
Thornton Industrial Est, Milford Haven, Pembrokeshire, SA73 2RT
t: 01646 692172 www.consortepl.com sales@consortepl.com

FOLLOW US



@ConsortClaudgen

EASY INSTALLATION • HIGH-QUALITY • WELL-DESIGNED • COST EFFECTIVE

Residential Ventilation



Midi-BY-AT



EVO250



ELX1003

MVHRs - wall, loft or in-line
summer bypass, frost-protection
LCD commissioning.

MIDI, MAXI, MAXI PLUS

optional integral
acoustic attenuation
independently tested sound levels
quietest, smallest and lightest.

Axial and centrifugal
3 and 4 speed dMEVs.

Single Room Heat Recovery
Positive Input Ventilation

eco ventilation systems -
remove moisture, odours
and pollutants -
new build and refurbishment

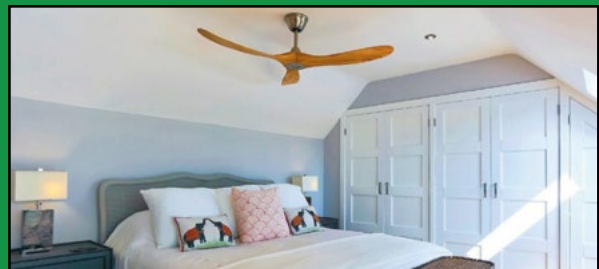
low energy: economical
tenant and environmentally friendly

SAP PCDB Listed

Full range of ancillaries

Vectaire Ltd. 01494 522333. sales@vectaire.co.uk. www.vectaire.co.uk

Beautiful Designer Ceiling Fans



Powerful - Stylish - Reliable - Silent



MrKen Cosmo HVLS Eco 3m Ceiling Fan for:

- Garages • Large shops • Warehouses
- Industrial • Barns • Sports halls

THE HENLEY FAN COMPANY LTD



01256 636 509
www.henleyfan.com

All your heating needs **100% FREE***



Free thermal energy is stored within the PCM cell and then released when the temperature drops



Use with solar vacuum tubes or photovoltaic powered ground and air source pump systems

Fit PCM cells and benefit from:



Reduced energy consumption



No maintenance
Fit and forget



Suitable for
other heat saving
applications



Available in
different sizes



www.pcmproducts.net
info@pcmproducts.net

Want to make your
air conditioning
more efficient?

**SEE OUR COOLING
PCM CELL RANGE**



the electric heating company

No.1 Choice Electric Radiator Collection



DSR Solaris Aluminium Convactor Heater with ceramic blocks. Four outputs available, 500, 1000, 1500 & 2000watts.

2 Year Controller & 5 Year Main Body Warranty

- Free APP
- Control your heating anywhere and anytime
- Adjust each room temperature separately
- Geolocation Feature
- Monitor electricity consumption.



DSR Edge Traditional Column Convactor Heater with a large ceramic core. Four outputs available, 500, 1000, 1500 & 2000watts.

2 Year Controller & 10 Year Main Body Warranty



Contact us for a quote or more information



01698 820533

www.electric-heatingcompany.co.uk

The comfortable solution for warmth where you want it, when you want it... guaranteed

- ◆ efficient
- ◆ controllable
- ◆ professionally installed
- ◆ nationwide suppliers
- ◆ ideal for conversions & retrofits



electrical underfloor heating by
SPEEDHEAT
comfort from the ground up

Speedheat UK
Iona House, Stratford Road,
Wicken, Milton Keynes, MK19 6DF
tel: 01908 562211 email: info@speedheat.co.uk

www.speedheat.co.uk



CONSORT LAUNCHES NEW ELECTRIC HEATING BROCHURE PLUS UPDATES TO BIM LIBRARY

Consort Claudgen have launched their latest Heat brochure which includes a host of new heaters and heating controls in their product range. The new products are detailed along with the established panel and fan heaters, convectors, LST heaters, air curtains, downflows and towel rails. Consort have also added new BIM objects of low surface temperature heaters to their BIM library which consists of panel and fan heaters, recessed ceiling heaters and air curtains. All BIM objects can be downloaded from Consort Claudgen's website or the NBS National BIM Library.

Technical details such as dimensions, ratings, insulation standard classes and electrical specifications are also available on the NBS National BIM Library.

www.consortepl.com
www.consortepl.com/bim-modelling





- Quality factory reject Celotex insulation boards
- Thickness from 12mm to 250mm
- Standard size 1.2m x 2.4m
- Other sizes are also available
- Discount available for large orders
- Nationwide delivery subject to agreeing on delivery cost



Collection from

Unit W, Stafford Park, Liston
Sudbury, Suffolk, CO10 7HX

Culford Sawmill, Brandon Road
Culford, Suffolk, IP28 6UE

Call Us On : 01787 370 295 | 07963 695 226 | sales@economicinsulation.com

Or visit www.economicinsulation.com



SHH CREATES A NEW GENERATION 'HOUSE OF BOOKS'

SHH has created a complete transformation of the 'House of Books' in Hampstead. The property's name derives from its previous owner who had an enormous library of books, as well as his own personal erudition and authorship. In the words of journalist Anthony Howard the house was, 'dedicated to books – reaching high to the ceiling in bookshelves, piled untidily on tables, even scattered randomly about on the floor.'

On purchasing the property, the new owners commissioned SHH to gut and remodel the house entirely, but in a way that was very much in keeping with the spirit of the previous owner. The new scheme is formed therefore around a stunning library structure that runs through all five floors of the property - as the new owners also happened to be complete bibliophiles, with over 100 linear metres of books of their own.

SHH Associate Director, Stuart McLauchlan, who led the project, said that both the bookcase and the new stair which wraps around it were absolutely central to the new design for the house, forming a top-to-bottom spine, off which all other spaces were then arranged. The property was completely gutted and then re-created behind its traditional frontage to achieve

this radical new interior structure, together with a new cedar and zinc side and rear extension to increase floor space. Whilst the house was not listed, it is situated in a conservation area and the retention of the existing façade was a requirement of planning permission terms.

'We ripped the whole house out behind the façade' explained Stuart McLauchlan, 'and built a new steel and timber-frame to sit within the old brick skin and connect it to the existing structure. The space configuration and resulting floors, walls and stair are all new, with the new stair more linear than its predecessor and set to one side in order to create more floor space. The house was extended not only to the rear but also to the side in order to house the ambitious new stair and bookcase concept.'

The five-storey house starts with a garden level and goes up to a raised ground floor entrance level, which doesn't extend fully to the far edge of the rear extension, so that a double-height space is created beyond at the back of the house. A master suite is located on the first floor, with further bedrooms and bathrooms for the client's family on the second and third floors.





The new aluminium, double-sided bookcase is inset into the house's new timber- and steel-frame and is held in place by the house's exposed structure, although in itself it is not a structural element – bar the high-tension cables that go through the bookcases, which form part of the safety railing for the staircase balustrades.

The striking bright orange stair, which wraps round the bookcase on all five levels, is made of individual steel trays dipped in orange liquid rubber and bolted over individual cantilevered steel hoops. A curved steel hoop was bolted into each upside-down U-shaped tray in raw, blackened steel, with the top surface then dipped in vibrant, orange liquid rubber. The trays are open-ended so that the end of the hoop is visible from the far side.

The stair floats 50mm away from the bookcase with open risers. On the very first level (garden level up to ground floor), the stair has the same colour and finish but doesn't have an open structure, but rather a solid plywood structure instead, so that services (AV hub, switch gears, lighting controls) and a coat store can be housed beneath it and out of sight.

The stair runs up alongside the bookcase on each floor, so that every book is accessible to the new owners and their family. The bookcase is made up of machined anodised aluminium sheets, which were precision-engineered and machine-screwed together so that there are no welds, with counter-sunk stainless steel screws so that every junction is perfect.

'The bookcase, staircase and balustrades were manufactured to meet our designs by Square Circle Design' Stuart McLauchlan commented 'who did a brilliant job in answering such a complex and exacting specification.'



The bookcase also features glazed, walk-on slots set into the timber floor directly in front of the bookcase at every level, allowing full top-to-bottom views, whichever level you are on. The bookcase finishes 1.1m above floor level on the top storey with a skylight directly above, which opens according to an automated temperature sensor and closes when it rains.

The brief for the interior, beyond the bookcase and stair structure, was to create a sense of surprise from the moment the front door opens, giving visitors immediate views on entry right through the house and through the rear extension to the garden beyond, rather than into the classic entrance hall and stair of a house of this period. 'To achieve this, we had to create a very technically-complex arrangement of the systems for the smoke and fire curtain systems' explained Stuart McLauchlan.

A quiet and relaxing ante-lobby and working space is located on the entrance floor, together with a separate office space for one of the owners, who works from home. This area has doors that can be folded away, so that the entrance level area can be completely open plan when in use, bar the toilet area. Sofas at the far end of this space give users views right through the two-storey space beyond and the glass sliding doors of the rear of the extension, with the ceiling of the extension created one metre higher than the entrance floor level in order to create this sightline.

The two-storey extension to the side and rear is made up of two main components: dark zinc and solid cedar, with the cedar wrapping around the corner edge.

A series of angled louvres maintains views out but prevents immediate neighbours from seeing in. The extension features a sliding, glazed curtain wall system with slim (22mm

wide) framing elements in black aluminium. A glass gasket runs over the top to allow the new to complement the old, with the glass integrated into the structure, but acting as a separation.

'The planning permission stage of the project was quite challenging' Stuart McLauchlan commented. 'Whilst Camden Borough Council liked the project, neighbours were initially concerned about light pollution from the extensive use of glass in the new scheme. Our solution was to coat the glass with tinted film, which allowed the light in but minimised its outward effects.'

The garden level formed by the new extension is the heart of the new home, with the interior made-up of a large, open-plan kitchen (from Bulthaup); a high-bar dining area; a more formal dining area and a seating nook, surrounded by a timber frame. The floor is in polished concrete, which was hand-polished for a really high-quality finish, whilst the dining table was bespoke-designed by SHH's Stuart McLauchlan. At the back of the space is a TV snug area and toilet.

The first floor features the clients' master suite and dressing rooms, with full-height walnut walls in the dressing room. The whole suite features fold-back double doors so that it can be completely open during the day and sealed off only at night. The bathroom is all in white with a single black mosaic wall.

Family bedrooms and a shared shower room are on the first floor, with a family bedroom plus shower and toilet, and guest bedroom with a shower and toilet area set into a loft space with a steep, pitched roof on the second floor.

www.shh.co.uk



A TIMELESS BRITISH BRAND



An Anglepoise always has been much more than just a lamp. Their iconic range of lighting solutions are both beautifully designed and robust, making them equally ideal for domestic and commercial projects.

Wall lights allow focused pools of light - ideal for illuminating bedside reading, kitchen prep, living areas and corridors. Desk lamps can be cleverly deployed with the use of a clamp or wall bracket for more articulation; especially useful for spaces where you want to retract the light once used. Pendants create a focal point in a room - perhaps providing light above a kitchen, dining or meeting room table.



For the larger project - or a specific need - Anglepoise also offer a bespoke design service. Details available on request.

www.anglepoise.com



BESPOKE DESIGN & MANUFACTURE

Sir William Bentley Billiards are experts in Antique billiards and designers and makers of truly bespoke, hand-crafted Snooker, Pool, dual-purpose dining tables, accessories and lighting.

After more than 40 years of restoration, design and creation, they have earned an international reputation for the attention to detail and quality of their work. Collaborating closely with each private client or Interior designer, their craftsmen create truly unique pieces, individually tailored to the space they're made for.

Some tables - such as the Walnut Continental Rollover, pictured - have precision-engineered mechanisms to transform an elegant dining table into a stylish Pool / Snooker table. Some offer Table-tennis too. Others are simply stunning Billiards, Snooker or Pool tables. All are hand crafted in the UK and installed worldwide.

t. 01264 731 210
e. sales@billiards.co.uk
Instagram: [billiards.uk](https://www.instagram.com/billiards.uk)
pinterest: [@billiardsuk](https://www.pinterest.co.uk/billiardsuk)
www.billiards.co.uk



ANTIBACTERIAL SURFACES FROM STARON

Renowned for offering a vast array of solid surfaces for use within the home, healthcare and hospitality sectors, Staron's unique surface structure delivers a material with outstanding performance capabilities.

Providing an exquisitely smooth surface, separate sections of the material are combined through indistinguishable joins, offering total flexibility when it comes to design. Creating the perfect seamless fit, the invisible joints ensure that no rims or crevices remain and that no grout is needed. The completely

seamless material therefore prevents the growth of bacteria, providing an extremely hygienic and easy to clean surface.

Non porous and exceptionally durable, surfaces from Staron suppress mold and germs and are impervious to moisture. Staron can be used in any environment; providing homeowners, businesses and medical industrials with peace of mind that they're choosing the very best surface for their needs.

www.staron.com

JUST ARTIFICIAL
PLANTS - TREES - FLOWERS

ARTIFICIAL PLANTS & TREES FOR BUSINESSES

At Just Artificial, we work with interior designers, decorators, set dressers, architects and more to set your premises apart from the rest. Our artificial plants, flowers, and trees are highly realistic to look and touch, as well as being durable and attractive.

www.justartificial.co.uk | 01524 858888 |
sales@justartificial.co.uk

OSMO CONCRETE OIL

Introducing Osmo Concrete Oil, a clear, satin impregnation oil that is designed to protect and enhance the appearance of concrete, artificial and natural stone, screed and unglazed tiles. Providing a warm and rich colour, the finish is intended for use on wall panelling and flooring in kitchen and bathrooms, and on tabletops, windowsills and kitchen worktops.

Made from natural oils and waxes, Concrete Oil is a microporous and breathable finish that penetrates the surface, rather than forming a film on top of it. This prevents the finish from cracking, peeling, flaking or blistering. Once treated, the surface becomes water and dirt repellent as well as stain resistant.

Osmo Concrete Oil is ready to use straight from the tin – it does not need to be thinned – it just requires stirring. Before application, the surface must be absorbent, clean, dry and frost-free. By using an Osmo Flat Brush, Floor Brush, Oil Finish Applicator Fleece (Hand Pad Holder) or Microfibre Roller, apply the finish very thinly and spread it well across the surface. Any excess product should be removed with a pad or a lint-free cloth, or on larger areas, use a rubber scraper and polish with a buffing machine (white pad). Ventilate the room well and leave the finish to dry for 8 – 10 hours, at which point, a thin second coat can be applied.

Osmo Concrete Oil is for use on:

- All types of interior concrete (exposed concrete)
- Absorbent artificial stone
- Screed
- Microporous, natural stone with a polished, sanded or break surface
- Unglazed tiles

www.osmouk.com



CONCRETE OIL

For concrete, stone & tiles

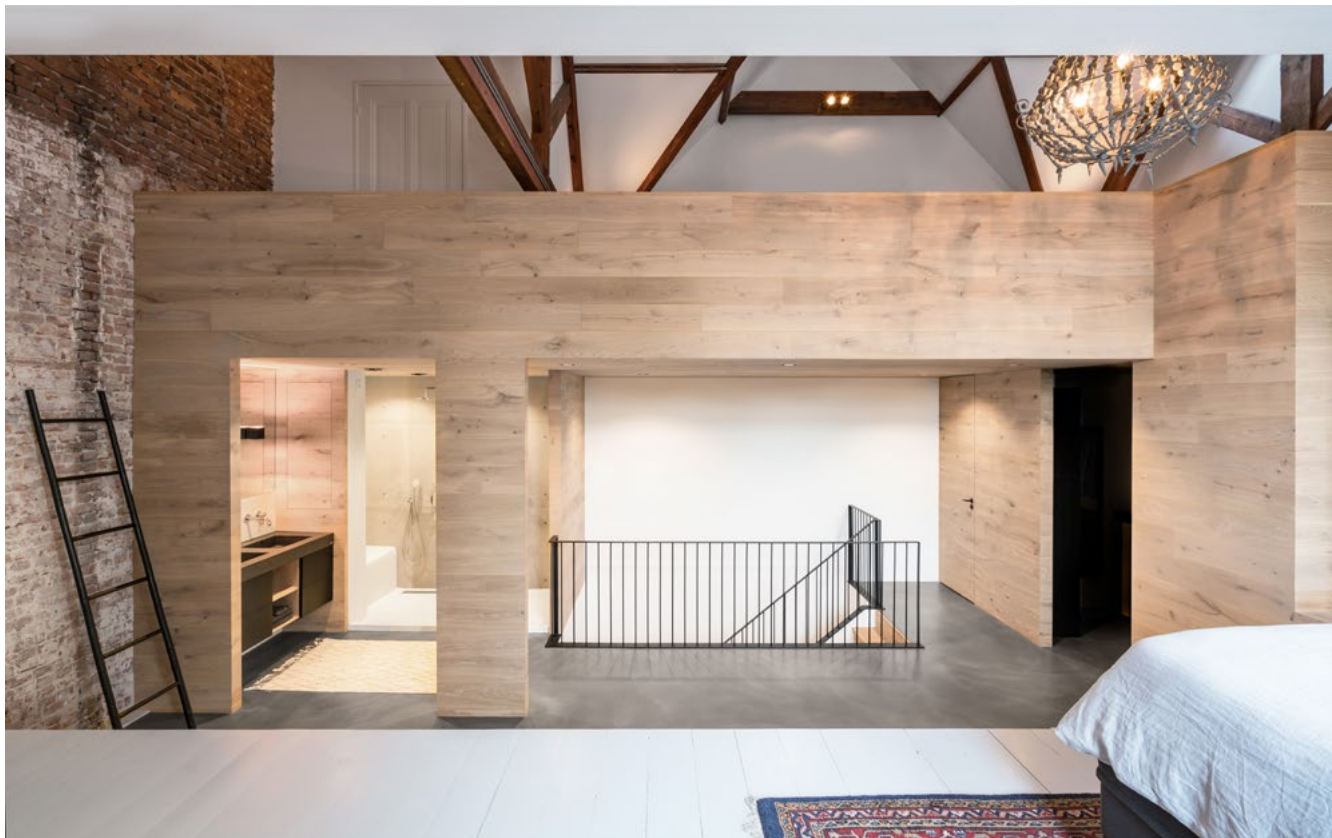


610 Satin

- Natural Ingredients
- Highly Water Repellent
- Protects Against Dirt & Wear
- Enhances the Natural Surface

www.osmouk.com





BUREAU FRAAI CONVERTS FORMER MONASTERY INTO A CHARACTERISTIC TOWNHOUSE

In the former Sint Lucia monastery in Bennebroek, The Netherlands, Bureau Fraai has made an interior design transforming a part of a characteristic monastery into a high-quality townhouse while maintaining the characteristic qualities of the monastery. By introducing a new oak staircase with slender steel railings, the living room on the ground floor is connected to the basement on the one hand and the sleeping floor for the children and the multifunctional attic floor on the other. By introducing a robust oak element in this attic, the large space with authentic trusses is divided into a sleeping area with Jacuzzi, a bathroom, a walk-in closet and a mezzanine with workplaces. The bed and Jacuzzi are embedded in an elevated stage.

Project info:

Status: Completed 2018

Design: Bureau Fraai

Architects: Daniel Aw, Rikjan Scholten

Client: Private

Location: Sint Lucia Monastery,

Bennebroek, The Netherlands

Floor area: 340 m²

Contractor casco: De Nijs

Interior builder: BA interieurbouw

Photographer: Madasiro fotografie

www.bureaufraai.com

info@bureaufraai.com





dwell

live like this

dwell.co.uk | stores nationwide

Trade programme available, just ask in-store or call 0345 675 9090



LAPITEC FOR THE LOFT WINNER OF THE “SILVER INTERIORS AWARD 2020”

The magnificent apartment, in the historical center of Athens, has undergone a radical renovation by the Greek studio AK Praxis

It was completed just a few months ago and has already received the recognition of the Interior Awards 2020 in the category “Renovation of apartments over 100 square meters”: Iridou Attikou Apartment, designed by the Greek studio AK Praxis, occupies the second floor of a complex of the 50s, in Athens, and overlooks the National Garden and the Presidential Palace, not far from the Acropolis with its monumental ruins.

The penthouse is spread over a single level of 290 square meters, has three bedrooms with private bathrooms and a large home office space, and is characterized by a completely new Mediterranean style. The traditional white color dominates all the rooms, walls and ceiling at any point, including the tone-on-tone plaster moldings highlighted by linear lighting, and the thin skirting, in contact with the wenge flooring. The decorative profiles and the chevron layout of the parquet, which contrasts with the vertical surfaces, are used to remove any minimalist hint, reinterpreting the classic aesthetic.





The house thus appears as a container with almost museum features: punctuated by large openings that connect one room to another and by large panoramic windows with white profiles, it looks like an art gallery in which the furnishings and accessories can be read in the same way as a permanent collection. Contemporary paintings with black frames, sculptures, antiques and geometric pendant lamps help to design a calibrated sequence, where spaces are mostly left empty with the only objective of emphasizing the furnishings.

Completely total white except for the paintings and the floor, the kitchen develops in a narrow and long room and has a large central island in the center, equipped with a cooking area, sink and integrated snack top. The top was made of Lapitec in Michelangelo Satin finish, and the use of a single slab over 3 meters long allowed to create a continuous surface without any junction marks. The 12 mm thick rib also has the same finish as the top, thanks to the 'full-body' composition of Lapitec. Finally, the sink, the top and the relative splashback of the wall system are always made of Lapitec Michelangelo Satin for a pure result and a monolithic look.

The subtle veins that decorate the surface renew the architectural firm's desire to re-read materials and elements typical of classicism, but in a new dimension: no longer using traditional stone, but sintered stone, which while retaining the warmth and charm of natural materials, guarantees higher performance, also in a sustainable way. The composition of Lapitec is in fact completely free of inks, resins and other toxic additives: an essential detail for AK Praxis, member of the Sustainable Building Council of Greece and BREEAM LICENSED ASSESSOR company (GreenBookLive.com), which like the company has always made sustainability the cornerstone of its working philosophy.





£60M REDEVELOPMENT OF ONE OF UK'S LARGEST INDEPENDENT SCHOOLS COMPLETES

THE multi-million-pound redevelopment of one of the largest independent schools in the UK has completed, delivering state-of-the-art facilities for students in Macclesfield.

The King's School employs 250 people and provides education for more than 1,200 students from pre-school through to sixth form. This £60m redevelopment scheme unites two previous sites across the town into one central area, with the new campus sitting adjacent to the school's existing sports pitches at Derby Fields.

21,000m² of new academic building has been built, creating 350 rooms, along with a separate sports centre and 75-acres of sporting and outdoor facilities.

The new sports centre houses a 25m, six-lane swimming pool, a six-court sports hall, an indoor cricket centre, a dance and martial arts studio, a fitness suite and a café. Outside, students will have use of five new rugby football pitches, a rounders field and two floodlit AstroTurf hockey pitches, and netball courts.

National independent property, construction and infrastructure consultancy Pick Everard



has provided full design and engineering services for the project. Duncan Green, managing partner, said: "We are absolutely delighted to have completed this large-scale scheme for The King's School, creating a high-quality central site for its students to thrive in – especially important as pupils return to the classroom after months of online learning."

Natalie Clemson, director and project lead, said: "We worked very closely with VINCI Construction UK, the main contractor for the scheme, from the pre-contract stage. This meant we were able to fully integrate

the team into the design process early on, creating a synergy and ensuring that detailed knowledge of the scheme and design intent was retained from start to finish – something extremely important to the headmaster and governors.

"Completing a significant project like this during the COVID-19 pandemic has been a challenge, but it was here that our close relationship with VINCI Construction UK benefitted everyone. Like many construction projects across the UK, we felt the impact and we had to change our working methodology completely.



We introduced virtual site visits during the fit-out stages to suit social distancing and safety measures and held our site project meetings remotely. Despite the challenges, this had minimal impact on the scheme itself, which is a testament to the working relationships developed throughout the project and the professionalism of all involved."

It was important to the school that the new facilities provided a reduction in its carbon footprint, while also improving budgets through energy efficiency, so that money saved on fuel bills can be reinvested back into the curriculum for the benefit of the students.

The new, sustainable facility has been rated as BREEAM 'very good', and incorporates eco-features including sustainable drainage systems (SuDS), bat and swift boxes, beehives and outdoor classrooms to further connect pupils to their natural surroundings.

Simon Hyde, who was Headmaster during the design and construction phase, said: "This has been without a doubt the most ambitious project for the school in its 518-

year history, and we could not be happier with the finished product.

"A connection to nature has been very important to us at the school, and we are incredibly lucky to be set in our rural, woodland location. The new campus will allow us to expand what we offer, for example the new floodlit netball courts will allow us to host netball tournaments, something we simply could not do before. We also have Cheshire's only indoor cricket centre."

Dedicated art, music, science and computing rooms for both the infant and junior divisions have been built, as well as a dedicated hall, lecture theatre and library. In the senior division, teaching and learning areas have been organised by faculty, with the science department also benefitting from 15 high-tech laboratories, prep rooms and office space.

Martin Horton, project manager at VINCI Construction UK, the main contractor, added: "The new school site sits perfectly in the landscape, and along with its spacious and naturally-lit spaces is a very impressive facility. We were very pleased to work in close conjunction with Pick Everard to deliver

the new school, while ensuring the safety of all those on site."

Preliminary works started in August 2018, with the aim of the school being ready for the start of the 2020/21 academic year. The school has now welcomed back its pupils in line with the latest government guidance regarding COVID-19. The large indoor and outdoor areas including extremely spacious corridors, are helping the school to operate in a Covid-safe way.

The project has been funded by the school selling its previous two sites in Fence Avenue and Cumberland Street to housing developers, areas which will provide sustainable and affordable homes, along with retirement and assisted living options.

Pick Everard employs more than 500 staff across its 13 offices, providing a range of project, cost and design consultancy services.

For more information, please visit www.pickeverard.co.uk



Award Winning Commercial Landscapers since 1973

The Water Garden Viewing Platform & Stepping stones

Could you be the next Award Winning
Commercial Landscaper?

Recruiting now for careers in our
Landscape Design, Grounds Maintenance,
Arboriculture & Ecology Divisions.

How to Apply:

T: 0800 334 5606

E: talent@ground-control.co.uk

W: www.ground-control.co.uk/careers



Grounds Maintenance | Arboriculture | Vegetation Management | Gritting & Snow Clearance | Landscape Construction | Landscape Design | Ecology | Fencing | Pest Control | Roofing | Specialist External Cleaning | Pothole Repairs | ChargePoint Installations

BALI

2019

GRAND
AWARD WINNER

National
Landscape
Awards





MORE HOMEOWNERS THAN EVER ARE ASKING FOR RESIN BOUND DRIVEWAYS - HERE'S WHY...

Resin Bound is a stunning alternative to block paving, macadam and concrete and, thanks to its beautiful, hard-wearing, natural finish, it ticks many of the boxes everyone wants regarding appearance, longevity and low maintenance.

As well as its attractive uniform and even appearance, the permeability of Resin Bound is a major plus point. Fully SUDS compliant, Resin Bound does not require planning permission. It is also weed and slip resistant and easy to maintain.

Derbyshire Specialist Aggregates is the manufacturer of DALTEX, the

No.1 brand for Resin Bound. The DALTEX Bespoke range includes 46 stunning Resin Bound colour blends and there's a colour for every style of property – be it residential or commercial.

The DALTEX UVR System has been certified by the BBA (British Board of Agrément) – the highest industry standard. Free online training is also available from resinboundtraining.com

For further information, contact:
Tel: 01629 636500
Email: sales@derbyaggs.com
Web: resinbondedaggregates.com

TREX DECKING



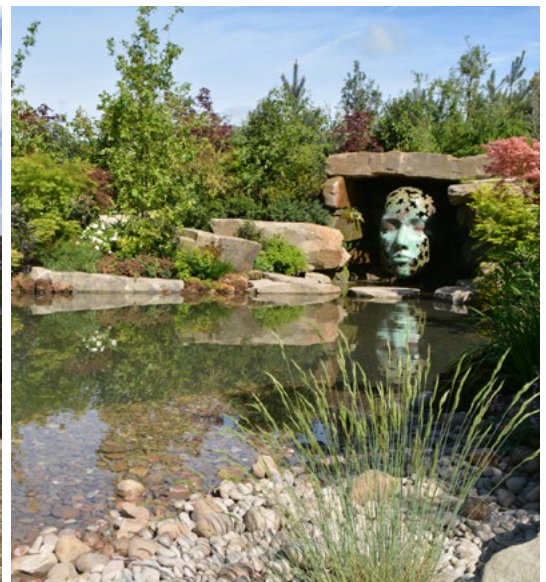
Trex Company, the world's No 1 decking brand, offers a simple and easy way to build with green materials whilst not compromising on look and feel. With high-definition wood grain patterns and rich, saturated colours inspired by the outdoors, Trex composite decking looks natural and boasts a vibrancy that remains unchanged for years. Colour options range from deep earth tones to warm umbers, spicy reds and pristine greys.

Featuring a protective shell for superior defense against severe weather and heavy foot traffic, Trex

deck boards will retain their good looks even after years of wet British winters and are guaranteed to look as good as new by the time summer comes around – year after year. Just an occasional sweep, and a clean with soap and water is all that is needed to ensure the beauty of a Trex deck for decades.

Trex decking is available locally through Arbordeck stores
www.arbordeck.co.uk/

Visit uk.trex.com for more information on Trex products.



LIMESTONE - SANDSTONE
BUILDING STONE - FLOORING - WALLING
MASONRY - LANDSCAPING - RESTORATION



01386 584384
www.stonequarries.co.uk





SAFE, STYLISH, SUSTAINABLE

THE ADEK EVOLUTION

The Grenfell disaster shone a light on the immediate need for fire resistant, fit-for-purpose outdoor flooring in all high-rise buildings. The result has been the introduction of new building regulations, which mean it is now a legal requirement for any material used in the construction or refurbishment of high-rise buildings of 18m or above to be A2FL s1 fire rated

In response, Ecodek, part of the Epwin Group Plc, has developed Adek, an engineered lightweight aluminium flooring system specifically created to meet the new directives. With A2FL-s1 fire certification, the Adek system is ideal for both residential and commercial projects.

Adek is available in standard lengths and can also be manufactured to project specific bespoke lengths, dramatically reducing the cost of materials by decreasing the amount of waste generated and increasing the speed of installation. Adek is available in two board widths; a wide 295mm for large expanses, such as roof terraces, that can be ripped lengthways for a perfect fit, and a narrower 147mm board which is ideal for smaller areas and refurbishment projects. With a point load of 4kN, both Adek profiles are safe, simple and durable.

PUTTING SAFETY FIRST

The Epwin Group Plc and Ecodek understand the challenges faced by

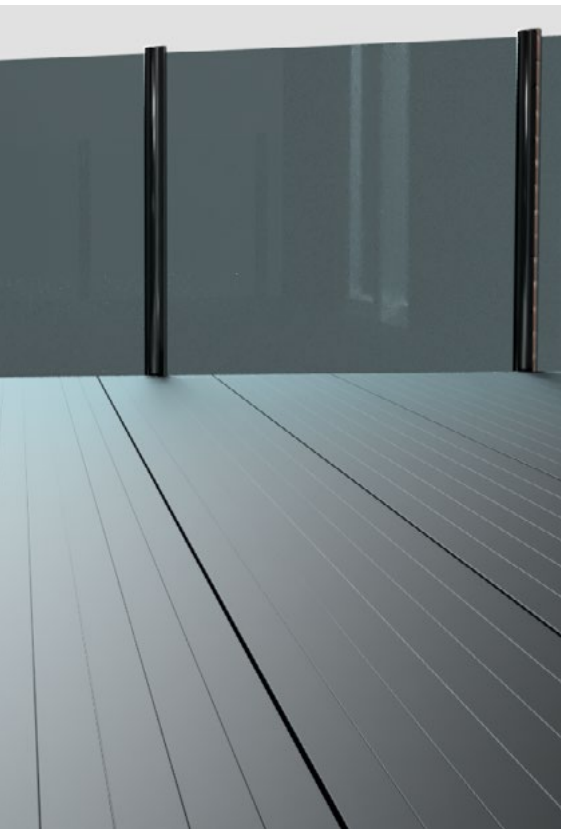


contractors working on new build and refurbishment projects at height. This has led to the development of a complete fire rated system that is extremely easy to install. With a concealed face fixing system and extra wide board, installing Adek could not be simpler or more efficient.

In addition, its unique wide channel can accommodate a lifting eye bolt so balconies

can be constructed off-site and craned into position. A full range of different height aluminium pedestals and bearers also provide flexibility to project requirements.

"The events of 2017 highlighted the importance of utilising only the most appropriate materials in the development or refurbishment of buildings, particularly multi-storeyed dwellings.



It led to the Government implementing a legal requirement for all building owners to replace non-Class A materials as soon as possible," explains Felicity Hodgkinson, Marketing Manager at Ecodek. "We have developed the Adek system in response to this, to assist the industry in attaining these new regulations, whilst still maintaining the highest level of quality and style sought by residents."

EASY ON THE EYE – AND THE FEET

In addition to ensuring industry-leading fire-resistant credentials, Ecodek has also bought user experience and aesthetics to the fore. Adek's innovative design has resulted in a smooth surface, which together with its anti-slip coating makes it safe and comfortable underfoot, even for bare feet, and the perfect choice for residential structures of any height.

Its sleek, contemporary appearance and minimalist, yet timeless design means Adek blends seamlessly into any building making it ideal for retrofitting and refurbishment projects.

TAKING ON THE RECYCLING RESPONSIBILITY

Made from 100 percent recycled aluminium and being fully recyclable, Adek's environmental credentials also make it an attractive proposition, as Felicity explains:

"Adek is the first decking system available in the UK that is made from 100 percent recycled aluminium. This ties in with the Epwin Group's philosophy of developing products that have a low or negative carbon footprint.

"Recycling aluminium is an extremely environmentally sound process. The production of recycled or secondary



aluminium uses approximately five percent of the energy that it takes to produce the same weight of primary metal – and, more importantly, the modern technology used in the production of Adek boards means there is no loss of quality or performance in our recycled material."

In addition to the importance of meeting Government regulations and the need to meet its own environmental aspirations, Ecodek also understands the significance of the supply chain to its customers.

PUTTING CERTAINTY INTO THE SUPPLY CHAIN

"In these unique times having trust in your supply chain has never been more important but we're confident that choosing Adek will give customers the peace of mind they are looking for," continues Felicity. "Adek has been designed, engineered and evaluated by a cross-functional team of technical manufacturing experts at Ecodek, who have a long-established reputation for supplying decking into commercial high-rise buildings.

"In turn, Ecodek is part of Epwin Group Plc, one of the UK's largest manufacturers of building products. As such, the development of Adek has benefited from not only years of outdoor flooring expertise from Ecodek but also years of manufacturing knowledge drawn from the wider Epwin Group Plc. - and as part of this, Adek has the financial stability and reassurance required from a supply chain."

Felicity concludes: "Adek has been a collaborative creation, bringing together the knowledge and expertise of everyone at Ecodek and the Epwin Group, and we are extremely proud of the product we have developed. It fulfils all of the necessary building requirements, whilst maintaining our environmental credentials and providing the industry with an expertly designed, technically advanced, quality product."

01978 667 840
www.ecodek.co.uk



Bespoke Platform Lift Solutions

Every lift is made to specification to ensure it is fit for purpose

Quality Service and Products

Range of stylish commercial and residential platform lift solutions



Designed, Engineered and Installed

In-house design, qualified engineers, service & maintenance

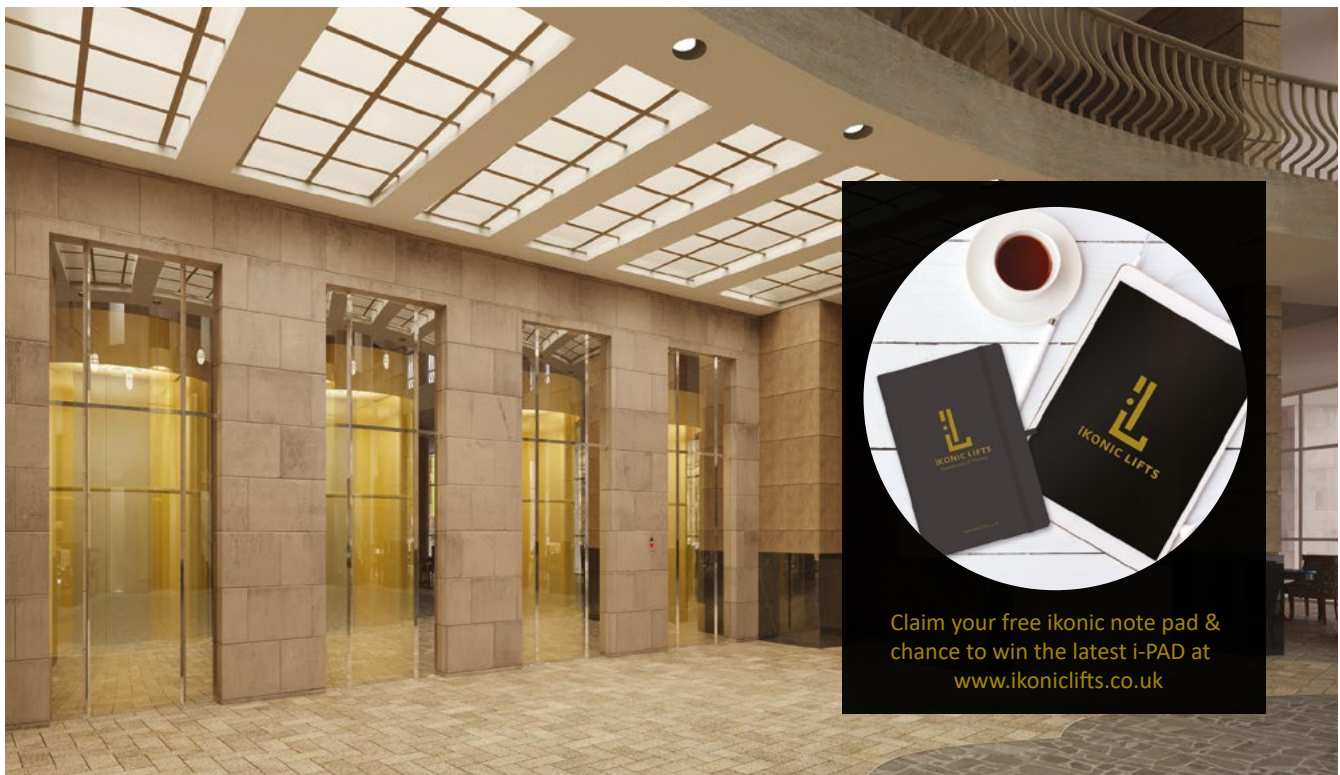
platform

LIFT COMPANY

We're exhibiting at Naidex on 17 & 18 March 2020
Come and see us at Stand N792, NEC, Birmingham.

Precision from concept to completion without compromise

01256 896000 | www.platformliftco.co.uk



Claim your free ikonic note pad & chance to win the latest i-PAD at www.ikonicliffts.co.uk

Bespoke Lift Solutions

Passenger, Goods and Platform Lifts

0203 376 6440

www.ikonicliffts.co.uk



IKONIC LIFTS

WORKING AT HEIGHT SOLUTIONS

At Ladderstore we specialise in working at height solutions and ensuring that any work carried out at height is done in a safe manner. With over 15 years experience and every member of our team being Ladder Association Accredited, you can have complete confidence in our advice and recommendations.

If you are working on projects requiring standard step and extension ladders or mobile towers, we have a full range of certified products available from a variety of well established manufacturers.

Our most unique offering is our ability to work on larger scale projects and assist with the design and manufacture of bespoke solutions. If you cannot find a standard solution to work, don't hesitate to get in touch with us. Our offering includes bridging and conveyor steps, vehicle access systems, roof and gantry ladders and much more. If you need any product to work at height safely we'll be able to help.

We are also ISO:9001 accredited and hold Investors In People Accreditations.

We also have a range of bespoke rolling library ladders too, mixing practicality and design. Perfect for kitchens, bookshelves and even mezzanine access, our rolling ladders are available in a range of materials and finishes.



For more information please get in touch with our expert team on
01204 590 232
or email bespoke@ladderstore.com.
www.ladderstore.com

LADDERSTORE

Tel: 01204 590 232
Email: info@ladderstore.com
Web: www.ladderstore.com

-Bespoke Working At Height Solutions-



BESPOKE

Made to order products to suit your requirements.



EXPERTS

Our team are all Ladder Association Accredited.



SAFETY

All our products are certified to the relevant standards.



INDUSTRIAL

A range of solutions available for industrial projects.



DESIGN

We'll design & manufacture the perfect solution.



- Bespoke Roof Access Systems - Bridging Steps & Platforms - Vehicle Access & Tanker Ladders - Bespoke Rolling Library Ladders -



MAESTRO RESIDENCE

The need for a major intervention was clear since my first visit to the house. The walls on the ground floor interrupted the communication between the internal spaces and also their connection with the exterior of the house. On the first floor, the distribution was disconnected and fragmented, with small and low quality spaces.

When studying the original division of the house, I realized that the original living room area was too narrow, the entry hall too generous and the kitchen and dining area too big.

From this point on the idea of a complete inversion of the house came to mind: the kitchen occupies today the old living room, the dining room is where the entry hall was and the living room is where the kitchen and dining area used to be. To make such transformation possible, metallic beams were set to support the walls on the first floor, aligned with the ones on the ground floor. The beams are intentionally visible to remind us, in a way, of the history of the old house.

Another strong reason for the layout inversion was to create a beautiful entry garden where the service patio was. The entry, which used to be shy and hidden on the narrow side of the house, is made today by this patio between the main block and the outbuilding.

A hollow brick wall was set beside the outbuilding's access stairs, displaying the passage of time through the change of light and shadows, whilst creating a dynamic and elegant background to the living area, especially at night.

The external facades of the house were all peeled, exposing the original brick walls, which were left unrepaired. To organize the new openings, hide the old ones and protect the windows from the rain, 11in deep metallic black boxes were created around the windows and the walls between them were also painted black, creating horizontal elements on the facade.



As a counterpoint to the rustic facade, the interior of the house receives simple and pure materials, with no interferences. The floor is its own slab polished and varnished. The white walls and ceiling take out any excessive information, guaranteeing a fluid feel of the space and enhancing the connection with the exterior, framed by the new openings. The raw granite on the kitchen top reinforces the same concept.

On the first floor the layout was all reviewed, a new bathroom was created to the hall and the master bathroom got bigger.

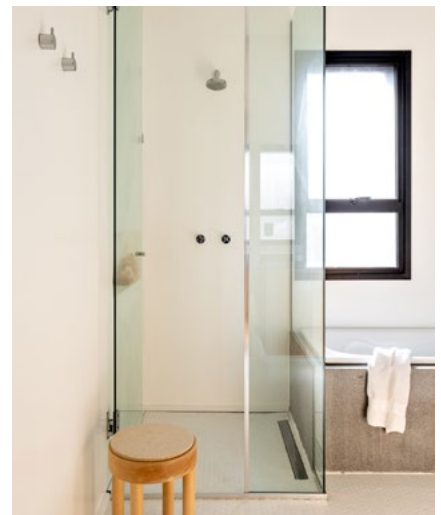
All the windows are larger and bigger now and the original wooden floor was restored.

This Project reflects, from the beginning, trust and synergy between clients and architect and the final result shows exactly that.

GENERAL INFORMATIONS

Project Name: Maestro Residence
Architecture : GUELO NUNES ARQUITETURA
Website: www.guelonunes.com.br
E-mail: guelo@guelonunes.com.br
Office Location: Rua Barão de Capanema, 343 – 4º andar / São Paulo / SP / Brazil
Year of conclusion: 2020
Total área: 180m²
Location: São Paulo
Chief Architect: Guelo Nunes
Project Team: Lucas Lauton

www.guelonunes.com.br
Photos: Fran Parente.



Our PIR detectors go to great lengths – to help you control energy

GENB-IR



GEFL-HS



Introducing the GENB-IR long-range, narrow beam PIR

Ideal for corridor and aisle applications, the new GENB-IR presence detector will increase a building's efficiency in a retrofit context by ensuring lighting is off when it is not needed. Its PIR 'curtain style' lens is designed for long-range detection of movement, and with an adjustable head, you'll get precise coverage.

Its long-range also means it can control lighting in corridors or aisles with fewer detectors saving time and money.

Key Features

- Adjustable detection pattern to suit the application
- Narrow beam sensor for aisles and corridors
- Curtain style lens for long-range controlled detection
- Adjust time delay and lux setting via an optional handset.

Controlling any light source, any building, any space.



Contact us today or visit
www.cpelectronics.co.uk

T: +44 (0)333 900 0671 or
comms@cpelectronics.co.uk

A brand of  **legrand**

SIMPLE or SMART Energy Saving Controls

DANLERS Limited are proud to introduce SMART PIR Sensors suitable to work wirelessly with ecosystems including: CASAMBI, SILVAIR and WIREPAS. These new controls compliment DANLERS highly regarded stand alone controls range which has been simply saving energy for our customers for nearly 30 years.

Whether WIRED or WIRELESS communication is required DANLERS have solutions suitable for most applications: Contact us or visit our website for more information on our lighting controls.

DANLERS
Controls for Lighting & HVAC

T: 01249 443377.
E: sales@danlers.co.uk
www.danlers.co.uk

DANLERS Limited, Vincients Road, Chippenham SN14 6NQ

BROUGHTONS

— LIGHTING & IRONMONGERY —

*Downing Street Bell Push
with Oak Pattress
Renovated Brass
DFBP0010*



Showroom Open: Monday to Saturday 10am - 4pm
The Old Cinema Cropston Road Anstey Leicestershire LE7 7BP

0116 232 3175

www.broughtons.com sales@broughtons.com

Alexander Joseph Luxury Cordless Lamps



Custom made luxury cordless lamps for elegant homes.
Commissions most welcome.

www.alexanderjoseph.co.uk
Telephone +44 (0) 1202 863600



THERE'S MORE TO MASTIC ASPHALT THAN MEETS THE EYE **BY THE MASTIC ASPHALT COUNCIL (MAC)**

Although mastic asphalt is one of the world's oldest and most traditional roofing materials, it can sometimes be wrongly perceived by specifiers and clients as a one-dimensional waterproofing product that is only available in a standard black finish. But like many long-lasting, tried and tested materials, mastic asphalt is being re-imagined, modified and re-examined as a highly relevant building material for today.

A project carried out by Oxford Asphalt, a member of the Mastic Asphalt Council (MAC) for over 20 years, certainly illustrates this. A roofing system was required for a private residence near Witney in Oxfordshire and the architect concerned was seeking a roofing material that had the general appearance of lead, but with a seamless finish. Metal theft is one of the fastest

growing crimes in the UK and both the architect and building owner wanted to avoid the prospect of lead being stolen from the roof.

A seam-free system would ensure that there was no threat of water penetration through any joints, laps or seams and it would also ensure that the roofing system could be easily spot repaired if need be, eliminating the need for costly wholesale replacement. The main contractor for the project was Midland Builders.

Terry Grandi, Director of Oxford Asphalt said: "This project was different to the norm as the client wanted the roof to look like lead and have the seamless look of lead, but not be constructed in lead. The architect didn't want to use felt or a single ply roofing

system, so we offered the option of mastic asphalt with a colour reflective coating on top to mimic the appearance of lead. As mastic asphalt has no scrap or resale value, it is not targeted by thieves so the threat of any theft would be eradicated.

"In order that the client could visualise how the system would look, we made a mock-up model to show them the versatility and seamless possibilities of mastic asphalt. They were very impressed when they saw it and on this basis, mastic asphalt was specified," he continued.

The mastic asphalt system was made up of a vapour control layer, 140mm rigid board insulation, mastic asphalt waterproofing and a coloured reflective coating finish to match the appearance of lead.

The mastic asphalt product specified was a specially formulated roofing grade material, incorporating advanced polymer technology to give the ideal combination of long term durability, increased fatigue resistance, improved temperature stability and ease of installation. It can be worked around roof lights and other projections to provide a completely seam free membrane.

During the application, it became apparent that the carpenter had not created falls in the roof, so Oxford Asphalt had to create the necessary falls to the perimeter gutter outlets within the mastic asphalt system. Three sides to the roof had shallow box gutters and, by using mastic asphalt, it was possible to create a minimal fall with no open joints, as opposed to lead which would have required a greater fall. The main roof area was completed and then protected so that the slate roofing element of the works could be carried out. Asphalt lead roll was then added after completion of the pitched roof areas.

Terry Grandi added: "This project presented an excellent opportunity to show what a diverse material mastic asphalt can be in circumstances where the client had a particular vision but was unsure of what roofing material should be used. Over the years, Oxford Asphalt has been involved in many similar projects, such as St Edmund Hall at the University of Oxford which was a former winner of the Challenge Trophy at the Mastic Asphalt Council's Annual Awards."



GOING ABOVE AND BEYOND THE EXPECTATIONS OF OUR CLIENTS

NEG Earth is probably the leading, independent, British based live entertainment lighting and rigging hire company in the British live entertainments industry including feature events such as Glastonbury and most internationally famous solo Artists and live rock bands – operating in the UK and internationally including the USA where they recently supported the Rolling Stones tour.

The company's core philosophy is to deliver a "one stop" entertainment lighting and rigging service. They offer premium levels of support and value for money through the provision of skills and advice in project management, design, fabrication, installation and maintenance – together with the supply of crew for large scale music festivals, tours, ceremonies, sporting events, theatrical production and corporate events.

The original building experienced a fire which caused extensive damage to the warehouse and offices and as a result, the building had to be demolished.

This was devastating for NEG Earth but they quickly secured temporary premises and re stocked equipment.

Because of the previous fire and the closeness of adjacent buildings and proximity to the Grenfell building tragedy, being only approximately 2 miles away as the crow flies, the Client and Insurers were absolutely adamant that the building was re-clad to the highest fire standards requiring fire performance of 60 minutes insulation and 60 minutes integrity as per the through wall specification requirements.

Following discussions with NEG Earth and the Main Contractor, SPV, were appointed in early 2019 under a sub contract of almost £1.5 million to carry out the refurbishment of the building to the correct standards.

SPV's remit was to strip the existing assembly down to the existing liner trays and reseal and re-fix correctly then re-fix the existing APL Tritherm sub-frame grid system incorporating Tritherm Helping Hand™ brackets utilising the inbuilt 24mm adjustment for correct line/level alignment for the new 7000m2 Architectural Profiles external AP45HR half round profiles laid horizontally.

Between the inner and outer skins SPV installed multi layer semi-rigid Flexislab stonewool insulation laid chequerboard joint and secured with special 80mm hexagonal washers at approximately 3 No per m2 per layer.

This was a most challenging project as the building remained in full occupation throughout. With the value of equipment within the building totaling over £50 million, the project had to be completed in sections with the highest levels of security on a 24 hour basis – added to this were the difficulties of the general 14m eaves height



with particular large studio areas where the 'stage sets' are pre-built being 20m high.

It was imperative that no disruption was caused to the business throughout the duration of the works. SPV fully delivered on this with no complaints received over the 9 months on site.

As is usual with London projects - space at the site was extremely limited and with a service road adjacent to the building, SPV had to arrange road closures and also undertake night work so there was minimal disruption to both the operation of the building and adjacent businesses.

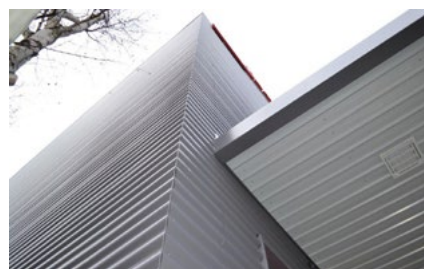
The project completed ahead of schedule and all as per agreed budgets.

We also had great feedback from the client, main contractor and manufacturer

The Client and manufacturer made a particular point to thank the team them for their considerable efforts and complementing them on the standard of work achieved and their cooperation in phasing the work to suit the Neg earth ongoing requirements of a busy and active business.

"Now the Neg Earth project is complete, I wanted to write and inform you how impressed I have been with your supervisor Shaun and your team of operatives throughout the project

As you and I Both know, it has not been the



easiest of projects, not just because of the building being occupied but also due to the politics involved of the various parties. Shaun and the team have not only delivered a quality project but Shaun has very diplomatically managed the scheme.

I would also like to pass on my thanks to Paul, who without his assistance throughout the project I would have found even more challenging.

I would be grateful if you could pass on my gratitude to the team for their diligence and professionals throughout the project and hope we will work together in the future in less challenging circumstances "

- Marbank Construction

"We thoroughly agree with the Clients comments and feel both Shaun and Paul should be complemented for their efforts on this job which is an extremely good reflection on the SPV business

Also Dean should be complimented on his supervision and his actual fixing and detail work which was done first class, particularly on the corners

Thank you to yourself and all at SPV for a very satisfied customer who now says his faith has been somewhat restored in the construction industry due to SPV's efforts'- Architectural profiles

www.spv-uk.co.uk/



SPV Group operate a nationwide service for the refurbishment and maintenance of buildings in the Industrial, Commercial, Retail, Educational and Hospitality sectors.



We offer services in:

- Flat roofing • Cladding • Rainscreen • Fascias • Glazing • Curtain Walling
- Slating • Tiling • Concrete repairs

01922 749511 | spv-uk.co.uk | info@spv-uk.co.uk

SPV Group | Westgate | Aldridge
Walsall | West Midlands | WS9 8EX

SIKA SARNAFIL EXPLOSIVE SUCCESS FOR ROYAL GUNPOWDER MILLS HERITAGE ROOF REFURBISHMENT



The Royal Gunpowder Mills heritage site had Sika Sarnafil products installed to guarantee a stunning aesthetic and durable roofing solution.

A historic and archaeological treasure, the Royal Gunpowder Mills heritage site in Waltham Abbey, Essex, has been given a new lease of life with a stunning and sympathetic roof refurbishment.

Consisting of listed buildings, ancient monuments and natural aspect features, the site is a well-loved attraction. A busy hub of activity, it attracts thousands of visitors every year, with exhibitions and a programme of hands-on activities for school groups.

With previous roof coverings across the site's buildings close to derelict, a new roofing system was needed that would both guarantee a durable solution and fit with the aesthetic of the heritage buildings. To meet those needs, Sika Sarnafil G410-15EL FSA Lead Grey was specified alongside Sarnavap 1000E air and vapour control layer.

The high-quality roofing system was chosen after the project's main contractors Courtenay Builders Limited were impressed with the results from similar Sika Sarnafil projects. They also entrusted Contour Roofing with the specification and installation after seeing its award-winning track record with Sika Sarnafil.

As a site once home to tonnes of explosives and with visitors in throughout the refurbishment, the project proved challenging, requiring extensive attention to health and safety. A strict ban on naked flames and hot works meant that the plywood boards had to be primed immediately after installation and before exposure to any wet weather. The specification therefore considered this and the original system, which would have needed a completely dry substrate, was switched to a loose laid polyethylene air and vapour control layer that was more equipped for a faster installation in the expected conditions.

Securing a 20-year Sarnafil guarantee, the newly refurbished roofs have not only met the client's need for a stunning aesthetic, but have also provided a durable weatherproof roofing system – upholding the heritage charity's mission to conserve the site for the benefit of the general public.

gbr.sarnafil.sika.com



CEDRAL

The ideal low maintenance, rot-free alternative to traditional cladding material that will give your home a timeless facade.

✓ low maintenance

✓ factory applied colour

✓ easy to install



[more at cedral.co.uk](http://more.at.cedral.co.uk)



VersaTILE Consultants

Providing you with bespoke support
for your Pitched Roofing Issues

www.versatileltd.uk

Email: claire.lawson@versatileltd.uk | **Tel:** 07886 017 060



Introducing
the new sliding
SKY Flatglass

A smoke vent, access hatch and rooflight. Three solutions in one



Our new SKY Flatglass offers a sleek and functional approach to natural smoke ventilation whilst also offering roof access and natural daylight for a room, stairwell or corridor.

The sliding cover is both stylish in design and practical in exposed areas where a hinged opening is impractical.

Meeting the requirements of building regulations document B and tested to EN 12101-2 as a natural smoke vent, why would you specify anything less?





CONVERTED DUTCH BARN OPENS AS GETAWAY FOR CREATIVE PROFESSIONALS LOOKING TO RECONNECT WITH NATURE

Opening marks the end of two-year project by Laura and David Johnston transforming the agricultural barn into a modern home

Designed by Turner Works as an acknowledgment to the site's natural beauty and agricultural history

Now open for bookings, including weekend retreats and developmental workshops for creative teams

DUT18 is a seven-bedroom converted agricultural Dutch barn set on a fourteen-acre site in the heart of the English countryside. Its completion marks the end of a two-year passion project by couple Laura and David Johnston; founder of London creative studio Accept & Proceed.

Inspired by the elegant pause of minimalist design and the messy pagan pulse of nature worship, the Cotswolds retreat boasts a large island kitchen and dining area, cinema and yoga area, double height living space and intense dark skies for an idyllic night of stargazing.

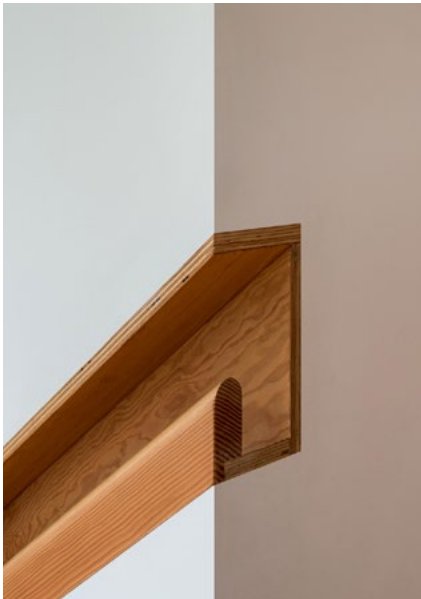
Turner Works was appointed to head architectural direction with a brief to transform the utilitarian agricultural structure into a modern spacious holiday home. Primarily envisioned as a transformative getaway for studio creatives, the barn provides a calming and flexible living space, equally suitable for hosting families, mature groups and wellbeing retreats.

The barn is now open for bookings, with future plans to offer developmental workshops that focus equipping creative professionals with the right tools to impact societal change and be successful in the everchanging context of business.

THE MAIN BARN – DUT18

The barn is wrapped with black corrugated steel, celebrating the industrial qualities of the repurposed kit structure, and adding rhythm to its unified facades and curved roof. Where original openings accommodated large agricultural vehicles, they are now carefully tuned to frame views across the rolling hills and countryside.





Inside, the accommodation is arranged over two floors. At ground floor, the layout creates a large open plan space zoned into a sequence of areas for playing, cooking, dining and living. A double height living space featuring an upper floor balcony, forming a moment of spatial generosity at the south end of the home, its verticality emphasised by a chimney and two-storey glazing.

White walls and sliding doors form a calming backdrop throughout the property, complimented by elements in Douglas Fir, concrete, stainless steel and metallic textiles.

200sqm of scaffold board decking surrounds the base of the building, connecting the interior with the surrounding fields and encouraging activity to spill outdoors.

THE FIELD OF PLAY

Outside features a natural children's play area. The Field of Play uses repurposed components sourced from the surrounding environment, forming a stage of activity, including kissing gates, stiles, trees, rocks, logs, steppingstones, animal troughs, mounds, fingerposts and a trampoline.

The outside will also be joined by wider wildflower meadow and a series of meditative walks designed by Julia Watson, author of Lo-TEK Design by Radical Indigenism alongside partner Marie Salembier, Founders of Watson Salembier landscape and urban design studio.

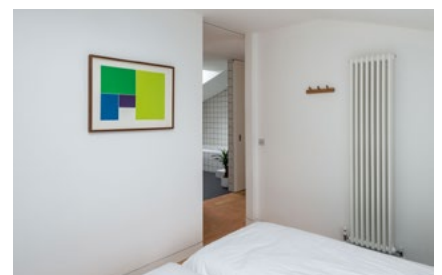
David Johnston DUT18 owner and Founder at Accept & Proceed, said; "The project started as a text from my wife Laura – a joke in fact – with a link to a field for sale. After attending The DO Lectures in West Wales, I was inspired to create a similar space where creatives and pioneers could get away from it all – refresh, rethink, rewire – in order to tackle the huge problems, we face as a society.

Laura and I live in London, conjuring up DUT18 to give us what we don't get in the city. As a family, it's an amazing place

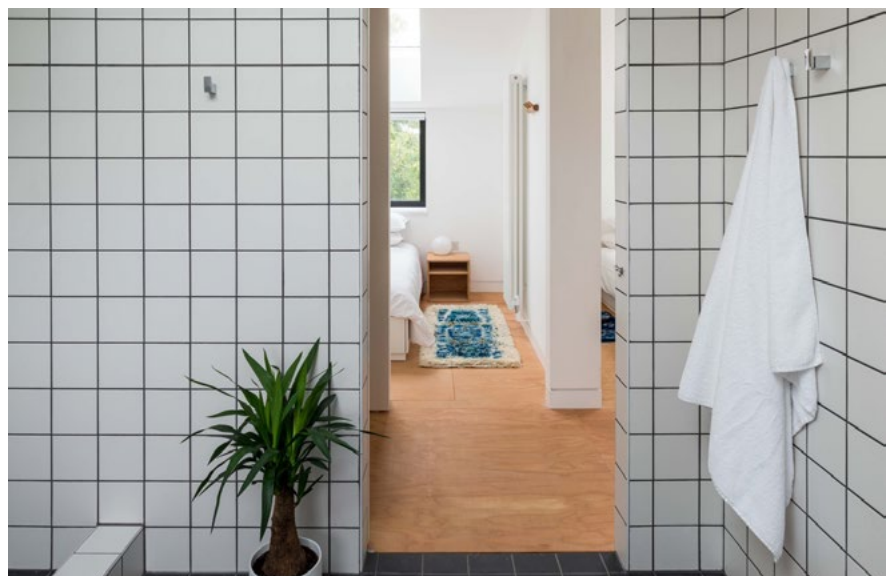
to go and spend time together, share experiences and explain to the kids our place in nature; what we need to ensure we protect. As the leader of a studio it's a great place for the team to connect and talk about our plans for the future.

My vision for a workshop to be held at the barn is to help business understanding their true purpose and how they intend to show up in the future. I feel we are in a time of great revealing, where everything is being unearthed but there is no new story to replace it. Workshops at the barn will hold a space to shape a new vision and be connected to others who are also looking for a new story and a better way. It's really a magical place to help create a better future."

Carl Turner, Founding Director at Turner Works, adds; "After being introduced to David in 2013 working on his house and now this, we have become a good friends so helping make his dream a reality was a no-brainer. The site brought its challenges with strict building restrictions dictated by local planning laws, yet the result forms a sensitively executed set of interventions on the landscape that maximise the opportunities within their tight restrictions which I'm immensely proud of."



Those looking to book a stay at DUT18 can visit www.dut18.com or www.manorcottages.co.uk/1026186. Stays start from £2,990 per week for more information email info@dut18.com.



STAY SAFE WITH **ENERGETICS TECHNOLOGY**

Building and Facilities News is happy to announce that Energetics Technology Ltd is our Security and Counter Terrorism Company of the Month.

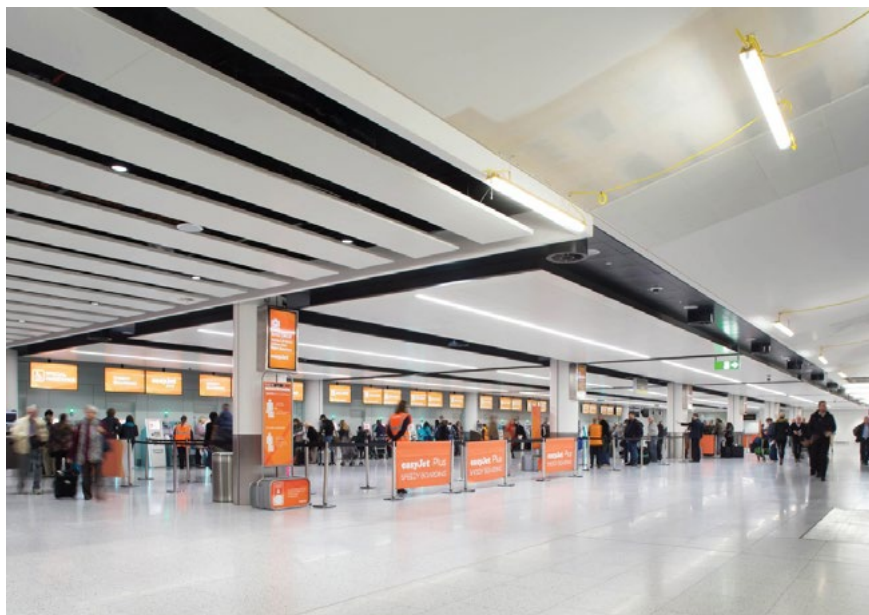
Established in 2010 by Dr Peter Jemmett, Derbyshire based Energetics Technology Ltd (ETL) is very active in creating new products for the security and counter terror industries. ETL centres on the research and development of energetic materials, and pyrotechnic products for the successful integration of its products into ordnance systems. The company offers the design and manufacturing of specialist energetic products and research and development into pyrotechnic compositions and explosives, explosives and weapon system evaluations, CIED training and the supply of EOD equipment.

Flexible UK manufacturing facilities render ETL capable of providing fast responses and able to cater for any level of specificity the customer may require. With the specialist defence product market increasing notably, ETL have grown to offer a variety of solutions.

ETL's experience and knowledge in energetic compositions also enables the company to create products that protect against such compositions. This knowledge is used in the development and manufacture of its blast protection products. ETL's Kevin Springthorpe tells us that "Every product we design and manufacture has been physically tested with the explosive charge we market the product as protecting against."

ETL has recently launched its HALO 80 Plus, an all-new blast resistant litter bin, an improvement on the HALO 80, an already popular product for dealing with public area threats. The HALO 80 Plus offers an improved protective performance against explosions and overpressures. It also has increased protection from high velocity primary fragments and is reshaping the blast protection capabilities of a small sized bin. The bin does not need to be permanently fixed to the ground, thus saving on expensive installation costs and rendering the bin easily transportable should the location of the threat change. The HALO 80 Plus provides seven star rated blast mitigation and it is functional and easily emptied. It incorporates SABREMAT™ technology which, enables all-round horizontal protection. Additionally, the Halo 80 Plus has very low maintenance costs, all equating in the bin being vastly superior to other similar products.

As well as being excellent in its function, the HALO 80 Plus can be fitted with accessories and optional extras. It can be fitted with a powder coated sleeve that can meet any standard RAL colour, or a perforated stainless steel sleeve. Buyers can also choose from recycling lids, section dividers and rain cover lids, vinyl labels for recycling information, logos or branding and cigarette stubber plates.



ETL can also offer standard isolation units and threat mitigation units for use in airport baggage areas, police stations, commercial offices, academic institutions and embassies. ETL also offers bespoke solutions to customers needing security or counter terrorism products tailored to specific needs. The bespoke options are usually based on pre-existing designs in order to adhere to an already proven level of safety, durability and reliability.

The company plans on future expansion, with a recently opened new manufacturing facility, and the continuous release of

more energetics products and blast protecting products as a result of the company's extensive research and development. For more information on ETL, its products and services, visit one of its website below or have a look at its LinkedIn page.

T 01283 732339
Kevin.springthorpe@energetics-technology.com
www.energeticsblastprotection.co.uk
www.energetics-technology.com
www.linkedin.com/company/energetics-technology-ltd/

melaphone

visual audio

When you need to talk...**Safely**

100% blocking of viruses and pathogens

0% transmission of air-flow



Melaphone Speech Unit

Fully certified to ISO 14644 -1 Class 5

In use for
over 50 years

01359 233191
info@melaphone.co.uk
melaphone.co.uk





50 YEAR OLD PRODUCT MAKES DRAMATIC COMEBACK TO HELP BEAT THE VIRUS!

The current necessity for virus protection is why the Melaphone® Speech Unit is enjoying renewed success. Its unique design eliminates the muffled sound of speech through a screen. Completely air-sealed, certified to ISO 14644-1 Class 5

Class 5, it is specified by architects and designers for hospitals, laboratories and cleanrooms. This simple but ingenious invention requires no servicing, no electricity and is very easy to keep clean.

The Melaphone® is built into our Defender Virus Screens which the company has supplied to hundreds of UK doctors' surgeries,

medical centres, and pharmacies. Screens are made to the highest quality, providing hygienic, sleek and permanent protection in any environment.

As a stand-alone unit the Melaphone® can be easily retro-fitted. It is available from stock in the original brushed aluminium, in stainless steel, in white powder-coated aluminium and now in Himacs acrylic-resin – our most popular model.

All 'MADE IN THE UK' - by us in London

www.melaphone.co.uk

STATIC SYSTEMS ENGAGES ARCHITECTS IN THE DESIGN OF A NEW THERAPEUTIC HEADWALL FOR THE PATIENT ENVIRONMENT

Following consultation with discerning architects and project teams, Static Systems Group has introduced its latest bedhead services trunking solution, Vistr Headwall®, which has been designed specifically to help create a therapeutic healthcare environment that is conducive to patient well-being and a speedy recovery.

Vistr Headwall features a decorative graphic fascia that truly enhances a patient's surroundings by incorporating light and colour.

Manufactured to an uncompromising standard using flame retardant materials, the graphic can be specified by the architect to complement the ward or building décor where the unit will be located.

Vistr Headwall has been designed to incorporate all the essential patient bedhead services and allows for easy access to these services for clinical staff, but also keeps them out of direct sight of patients and visitors, enhancing the product's aesthetics and improving the patient environment.

Vistr Headwall is available with a range of LED lighting options.

www.staticsystems.co.uk



MANUFACTURED IN THE UK

Fire Glass

UK

YOUR VISION IS OUR BUSINESS.

SUPPORTING YOUR GLAZING PROJECTS FROM CONCEPT TO COMPLETION *and beyond*

MIDLANDS

EAST

SOUTH

NORTH

SCOTLAND

INSTALLATION



THE SAFER CHOICE

GET IT RIGHT FIRST TIME:

- ☒ ACCREDITED & CERTIFIED
- ☒ CPD TRAINING
- ☒ INTERACTIVE ONLINE RESOURCES
- ☒ ALL MAJOR BRANDS OF FIRE RATED GLASS
- ☒ TESTING FACILITIES
- ☒ FIRAS INSTALLATIONS

FIRE GLASS
GUARANTEE
FIRE GLASS

FIRE-RATED

ACOUSTIC

LAMINATED

TOUGHENED

INTEGRAL BLINDS
AVAILABLE IN FIRE-RATED UNITS.
PRIVACY & PROTECTION. TRUST THE EXPERTS.



0121 667 9089
WWW.FIREGLASSUK.COM



Glass and Glazing Federation



FIRE SAFETY **THE ONUS IS** **ON YOU!**



**FIRE RATED
DOOR
PROTECTION**

Vital all round defence



**YEOMAN
SHIELD**

WALL & DOOR PROTECTION

making business a pleasure for over 50 years

For more information call

0113 279 5854

or email **sallyann@yeomanshield.com**

www.yeomanshield.com





NEW BUILD LUXURY WITH VICTORIAN CHARM



Have you ever looked at the beautiful period features of a Victorian property, but wished you could combine it with a modern energy efficient home? Well, that's now a reality in Wandsworth, London. The expertise of cast stone manufacturer, Chilstone, has helped a builder and property developer to recreate a row of new houses to match the existing Victorian street. Here's the story of how this row of houses was rebuilt decades later to replicate those bombed and destroyed during the Blitz.

BOMBED

During the Second World War the German Luftwaffe dropped 27,917 bombs on London. 738 of these were dropped in Wandsworth. The majority of those fell during 57 consecutive nights when bombs rained down on London for the worst of the Blitz. Throughout the war 1.2 million houses were destroyed in London alone. This left gaping spaces in regular residential streets, as well as changing the architectural landscape of the Southbank and large areas of London which are still visible today.

A MISMATCHED STREET

One street in Wandsworth suffered a similar fate, like so many others in London. The end of a row of Victorian terraced houses was destroyed by a German bomb. These homes were replaced with a pair of 1950s semi-detached, prefab buildings. Although they provided housing for families they were made quickly and cheaply in the post war world where resources were stretched. The original Victorian features were lost but the whole country had enough worries without fretting about architecture. The houses were functional and practical and stood at the end of the street for decades.

MATCHING THE NEIGHBOURHOOD

Many decades later the two buildings were sold and planning permission was obtained to re-build the original lost terraced houses. Chilstone were commissioned to supply the architectural stone work because of their expertise handcrafting restoration projects for renowned clients such as Kensington Palace, Kew Gardens and Hever Castle.



Chilstone re-created the detailing around the doors and windows. The neighbouring buildings featured a floral and leaf pattern in the stonework, this beautiful pattern is repeated across the headers above the windows and is a key feature on the lintels below the doorway arches on each property in the street. The neighbours kindly allowed impressions to be taken of their stonework so Chilstone's master crafts people could recreate the matching features. These details were made by hand to ensure the highest quality.

REDEVELOPMENT

The new homes looked smart, restoring the street to its former glory, replicating how the properties would have originally looked from the outside. Chilstone also supplied cast stone gate pier caps and coping to support elegant gates and railings.

Many Victorian railings across the UK were melted down in the 1940s to help the war effort, but the builder wanted to remain true to the period details for these new houses. The paths were even tiled in the traditional black and white checkerboard style synonymous with Victorian era. The inside of the homes, however, have been packed with the best of twenty-first century design. Each home is energy efficient and designed with all comforts of modern living, with en-suite bathrooms, sleek kitchens and landscaped gardens for alfresco entertaining. This creates the best of both worlds, combining a traditional exterior with a modern interior, the perfect London home. It also increased the value of the neighbouring houses by completing the street and restoring it to the way it was all those decades ago.

BESPOKE IS CHILSTONE'S SPECIALTY

Chilstone have made bespoke architectural stone, from porticos to window surrounds and more for many home owners, house developers, architects and builders over the past seven decades. Their experience extends from making character features in new builds, blending extensions into period properties and restoring damaged stonework. They supply free CAD drawings to help you with your building project

www.chilstone.com



Clean air with the system.
We conquer dust together.

Healthy, precise and time-saving work. Festool offers an uncompromising connection between mobile dust extractors and tools for every application, dust category and workplace. The result: simple and effective health protection in every situation thanks to a perfectly optimised system.

For more information visit www.festool.co.uk

Tools for the toughest demands



LONG TERM PEACE OF MIND FOR YOU YOUR STAFF AND YOUR CUSTOMERS

The new Husson H99 sanitiser station delivers safe, reliable hand sanitisation for indoor and outdoor public spaces. Gel is dispensed by pressing a foot pedal thereby providing completely safe contact less use.

The robust, weather proof design can be bolted down or fixed to the optional heavy, HPL (High Pressure Laminate) base allowing the sanitiser to be brought in at night.

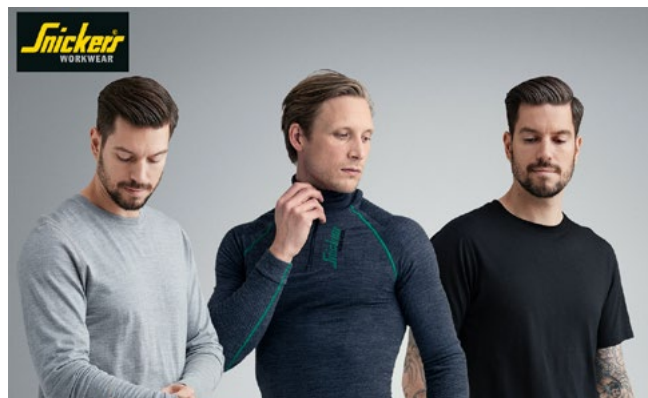
All steelwork has the usual Husson dual coat system consisting of hot-dip galvanisation followed by a polyester powder coating.

The sanitiser comes in three colour options and an optional base.

With the current Covid19 situation set to continue for several months the H99 Sanitiser offers long term peace of mind for you, your staff and/or your customers.

You can view and order the sanitiser at: <https://www.hussondirect.com/h99handsanitiser>

Or contact tcouper@husson.eu for a quote.



SNICKERS WORKWEAR SUSTAINABLE MERINO WOOL CLOTHING

Stay warm or cool in our 100% All-Natural Merino Wool mid- and base-layer clothes that deliver optimal comfort for all kinds of working environments and leisure activities when the weather gets chilly.

There are short and long sleeve T-shirts as well as leggings and topwear that combine superior wool warmth with body-mapping designs for the ultimate base- and mid-layer protection in really cold conditions.

Designed by nature for excellent ventilation and insulation, Merino wool is extremely soft, and naturally odour-preventive for an all-day fresh feel. It's also temperature-regulating, repels water, dirt particles. It's anti-

static and Snickers Workwear ensures that the wool it uses is produced in kind-to-animals, 'Mulesing-Free' environments.

All in all, Snickers Workwear clothing for autumn and winter give you the kind of warm, dry and fresh working comfort you wouldn't have thought possible. That's why Snickers Workwear is the brand of choice for working outside in cold weather.

For more information on Snickers Workwear's Sustainable workwear solutions, call the Hultafors Group UK Helpline on 01484 854788, checkout the website and download a digital catalogue at www.snickersworkwear.co.uk

BUILDING OR RENOVATING? THEN, CONSIDER INCLUDING A CENTRAL VACUUM CLEANING SYSTEM!

HIDE-A-HOSE SYSTEMS

With cleaning hoses that simply retract within the walls, delivering the ultimate vacuuming experience.

- Powerful Motors
- Faster Cleaning
- Healthier Environment
- No Dust Recirculation
- D.I.Y or Installation Options
- 10-Year Warranty
- After Sales Service

A central vacuum system consists of a small number of valve points, which are connected by PVC pipework and control cable. The vacuum machine is positioned within a garage, utility room, basement, or cupboard and all the vacuumed dust is deposited within the dirt canister and not recirculated around your home.

We design, install and service traditional central vacuums and hide-a-hose systems and offer a free design and quotation service.

Supplied and installed throughout the UK!

EMAIL YOUR DRAWINGS FOR A FREE QUOTATION

E: info@vacusystems.co.uk
T: 0844 873 1030
W: www.vacusystems.co.uk



DRESS FOR WINDY WEATHER WITH SNICKERS WORKWEAR'S GORE® WINDSTOPPER® JACKETS

Snickers Workwear jackets are well known for delivering performance and comfort at work - integral features of this new range of Windproof Jackets.

Sharp, stylish looks and market-leading GORE® WINDSTOPPER® and stretch CORDURA® fabric technology to make this jacket a must for winter on site or outdoor leisurewear.

This great-looking jacket has a fleece-lined interior for warmth and climate control fabric to keep your body warm or comfortably cool when you most need it. With a water-repellent fabric, it can be worn on its own or combined with Snickers' Mid and Base Layer garments.

Fashionable and functional, this jacket has long arm cuffs with thumb grips for warm comfort and a high collar that delivers extra wind protection. It's also got stretchable side panels in for comfort and flexibility with stretch CORDURA®-reinforced elbows for durability.

With street-smart, contemporary designs, all Snickers Workwear Jackets are packed with must-have features that focus on fit, comfort and freedom of movement as well as using innovative fabrics that deliver long lasting protection.



For more information on Snickers Workwear Jackets, call the Hultafors Group UK Helpline on 01484 854788, email sales@hultaforsgroup.co.uk, or checkout the website and download a digital catalogue at www.snickersworkwear.co.uk

Twitter: @SnickersWw_UK

SITE POWER UK LAUNCH LATEST SAFETY TRANSFORMER

Leading construction site electrics specialist Site Power UK are pleased to launch their latest 10 KVA 110volt safety Transformer the SITE10 XLC - wound in copper for low temperature operating.

Extra internal 110volt light circuits give total control through its own dedicated MCB panel. 2 x 16 amp internal outputs for "Hard Wiring" safety lights are becoming the norm in today's building sites.

MCB's are now Site Power UK branded and new hi-spec and colour coded for the voltage ie. yellow (110 volts output) blue (230 volts input).

Best prices in the U.K. market as they are factory direct supplied and always in stock.

More details are available at www.sitepoweruk.com or technical help desk 0800 9991103

NEW
10KVA
WITH EXTRA
16AMP Light Circuit




SITE
POWER


MADE IN
BRITAIN

T.C.P.

See the environment in a different light

We provide fuel cell / battery
hybrid **lighting towers**
and **power generators**

- ✓ Zero CO₂ and NO_x emissions
(at point of delivery)
- ✓ Virtually silent operation
- ✓ Portable and compact

☎ **0845 3717626**
☎ **+44 (0)7718 322 249**
🌐 **www.tcp.eu.com**

Switch from
diesel to a
clean air
solution





Premises Relocation

Bury St Edmunds, Suffolk **Complete Facility** **Relocation** **& Refurbishment**

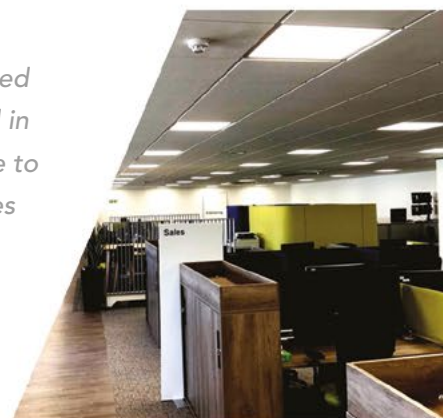
"We would fully recommend Rollins to any business looking to relocate premises or considering an extensive refurbishment."

Client Testimonial

"In 2015 we contacted Rollins via a recommendation. Over a period of design meetings we felt Rollins fully understood our brief and had the full capabilities to fulfil our requirements."

In late 2016 we awarded Rollins the full contract to refurbish the existing front building prior to carrying out an extensive fit out of our new purpose built factory, interlinking into the existing front building. Works on the existing building started in July 2017 and were handed over in January 2018 allowing us to start our move project."

Fit out works to the new factory building were delayed due to the build of main factory building and started in mid-October 2017. Rollins adjusted their programme to ensure we could start moving our production facilities during late February 2018 which has allowed us to complete our full move as planned by the end of April 2018."



Services provided:

- Electrical Installations
- Fibre and Data Network Installations
- Fire and Security System's
- Access Control
- Gas Installations
- Compressed Air Installations
- Plumbing Services
- Air Conditioning & Ventilation
- Steel Works
- Partitioning & Lay in Ceilings
- Glazing Installations
- Toilet Cubical Systems & Shower Rooms
- Flooring
- Plastering & Decoration Services
- Ground Works & Fencing



Conversion of open planned warehouse into a full operational factory within 5 months...



Refurbishment & Restoration Specialists

Services provided:

Building works

- Extension to the café.
- Building of various new walls.
- Pathways & installation of furniture.

Electrical

- Rewire of café.
- Under floor heating.
- Installation of external inground & above ground lighting across the whole site.
- Fire & Security Systems.

Mechanical

- Hot and cold water services.
- Supply and installation of: all sanitaryware, commercial kitchen equipment and 3 irrigation systems inclusive of pump house.

Carpentry

- Full fit out of the café.
- Installation of the pergola.
- Installation of decking to the café island.
- Repairs to various bridges.

**Great Yarmouth
Borough Council:**
**Venetian Waterways
Refurbishment**



Industrial & Commercial Services

Full design, manufacture & installation
with nationwide capabilities

**ELECTRICAL CONTRACTORS
MECHANICAL ENGINEERS
PLANT & GROUNDWORKS**

COMPLETE & COMPREHENSIVE FIT OUT WORKS

**ROLLINS ELECTRICAL
THE CURRENT BUILDINGS, JARVIS GATE, SUTTON ST. JAMES
SPALDING, LINCOLNSHIRE PE12 0ER**

Tel: 01945 440 779

Fax: 01945 440 614

Email: sales@rollinselectrical.com

www.rollinselectrical.com





A SMART EXTENSION TRANSFORMS A TIRED VICTORIAN HOUSE

By reconfiguring the ground floor of this Victorian terrace and extending out into the garden, Daniel Rees of Rees Architects, a professional on Houzz.co.uk—the platform that connects renovators with home improvement professionals, has carved out a bright new space in which each member of the family can comfortably live and work.

"The owners contacted us through Houzz, as they'd seen our profile and liked a previous project and our reviews, and wanted to talk about how we could help them transform their own home," Daniel says.

"Clients will often find my photos and previous work on the website," he says. "So when they approach me, they've done lots of research, and we're often a good match for each other, as they already know the sort of work I do and the areas I cover."

"With this project, I started by asking the owners questions about how they live, how they use the space, what their jobs are, and so on. We then did a survey at the property, looked at relevant planning policies, and put together a concept design based on the results," he says.

Rather than rip down the existing extension and knock out the back wall of the house to create a totally open space, Daniel took a more careful approach that worked with the existing structure and preserved some of the property's charm. "We wanted to keep some original features and bring as much light into the house as possible," he says.

By removing the rear window and building the extension around the existing back wall, Daniel created the feeling of an open-plan space while actually retaining two individual rooms. He moved the kitchen into the old dining room and positioned it underneath the internal 'window', making it feel much more spacious and connected to the rest of the house.

"When you build an extension, you always create a dark area in the middle of the house," he says, "so we try to ensure the more liveable spaces are positioned next to the garden. Having glass doors leading outside connects the dining area to the patio and makes the room feel bigger."

At the back of the kitchen, a glass door

leads into a utility space. Locating this 'service room' in the darker part of the house allowed Daniel to move the cooking and dining areas out into the light-filled extension.

"There are a few different layers of light designed into the space," he says. "We fitted pendant lights over the table and above the sink, as well as strip lighting under the kitchen cabinets."

Natural light is maximised through the inclusion of two large, triple-glazed rooflights, as well as the glazing on the back of the extension.

"One of my favourite elements of this space is the amount of natural daylight in it," Daniel says, "and I think the way the area is divided up now works really well."

Inspired by this renovation? Take a look at Houzz.co.uk today to get design ideas, find professionals near you and hire with confidence.

CEDRAL



The world of Facades

Flush-fitting, with a simple, elegant beauty,
Cedral Click brings a low-maintenance modernity
to any commercial or residential application



Easy to install



Low maintenance



Water resistant



UV resistant



Factory applied colour



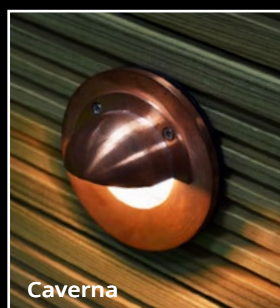
more at cedral.co.uk

etex

NEED SUSTAINABLE OUTDOOR LIGHTING?

Your Easy Guide to the Ultimate Solutions & Benefits

SOURCE 240v or 12v LIGHTS MADE FROM LONG LASTING MATERIALS



Solid Brass,
Copper, Anodised,
Stainless Steel,
Timber

BENEFITS:

- ✓ Naturally weatherproof & durable
- ✓ LED compatible for ultra efficiency
- ✓ Impressive, stylish, versatile & beautiful
- ✓ Easy DIY installation with 12v option

CHOOSE SOLAR LIGHTS DESIGNED FOR PROFESSIONAL USE



BENEFITS:

- ✓ As bright as mains powered lighting
- ✓ Easy DIY installation & no running cost
- ✓ Ultra efficient solar panels & LEDs
- ✓ Illuminate 365 days a year in the U.K



01327 871161

www.lumenalights.com

Daventry showroom 9am-4.30pm Mon-Fri - NN11 4NR

TECHNICAL ADVICE
TRADE SUPPLY
HIGH STOCK LEVELS
NEXT WORKING DAY DELIVERY

