

City Residence - the Apartments

Construction Update

July 2022

July 2022

During the last construction period at City Residence – The Apartments, several tasks are making significant progress including window installation, plastering, screed and kitchen installations.

Windows are estimated to reach completion next month, while further progress will continue to a number of construction works. These include ceiling boarding, tiling to bathrooms and laminate floor finishes.

Summary of Works Progressed

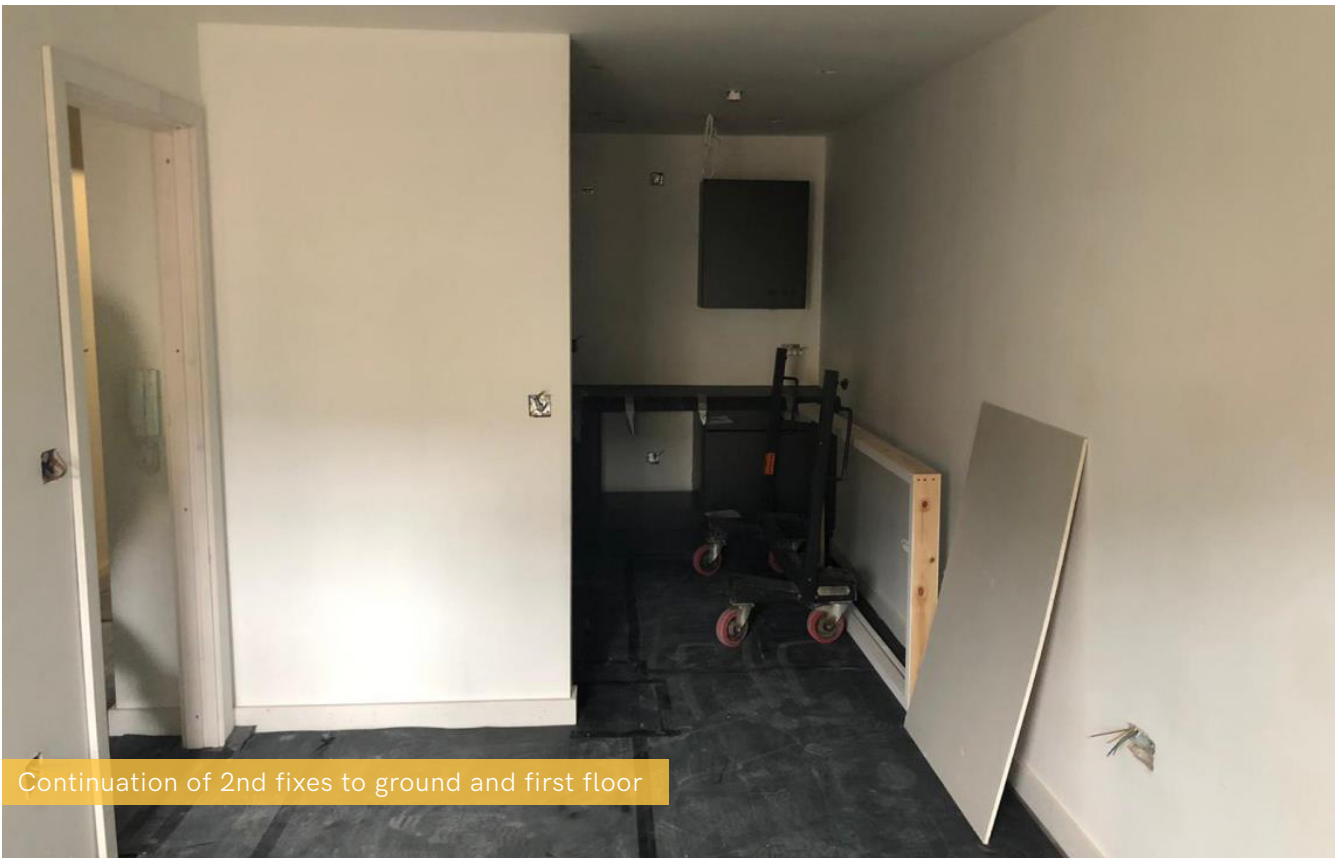
- Completion of roof and single ply membrane
- Continuation of sprinkler system installation
- Continuation of soil vent and internal drainage
- Continuation of screed
- Continuation of window installations
- Continuation of partitions and boarding
- Continuation of ceiling grids
- Continuation of plastering
- Continuation of ceiling boarding
- Continuation of framing for combination units within the bathrooms
- Continuation of kitchen installations
- Continuation of tiling to bathrooms
- Continuation of wall finishes
- Continuation of laminate floor finishes

Works Anticipated

- Near completion of window installations
- Continuation of first and second fix mechanical and electrical installations
- Continuation of internal drainage
- Continuation of partitions and boarding
- Continuation of ceiling grids
- Continuation of plastering
- Continuation of ceiling boarding
- Continuation of framing for combination units within the bathrooms
- Continuation of kitchen installation
- Continuation of tiling to bathrooms
- Continuation of wall finishes
- Continuation of laminate floor finishes



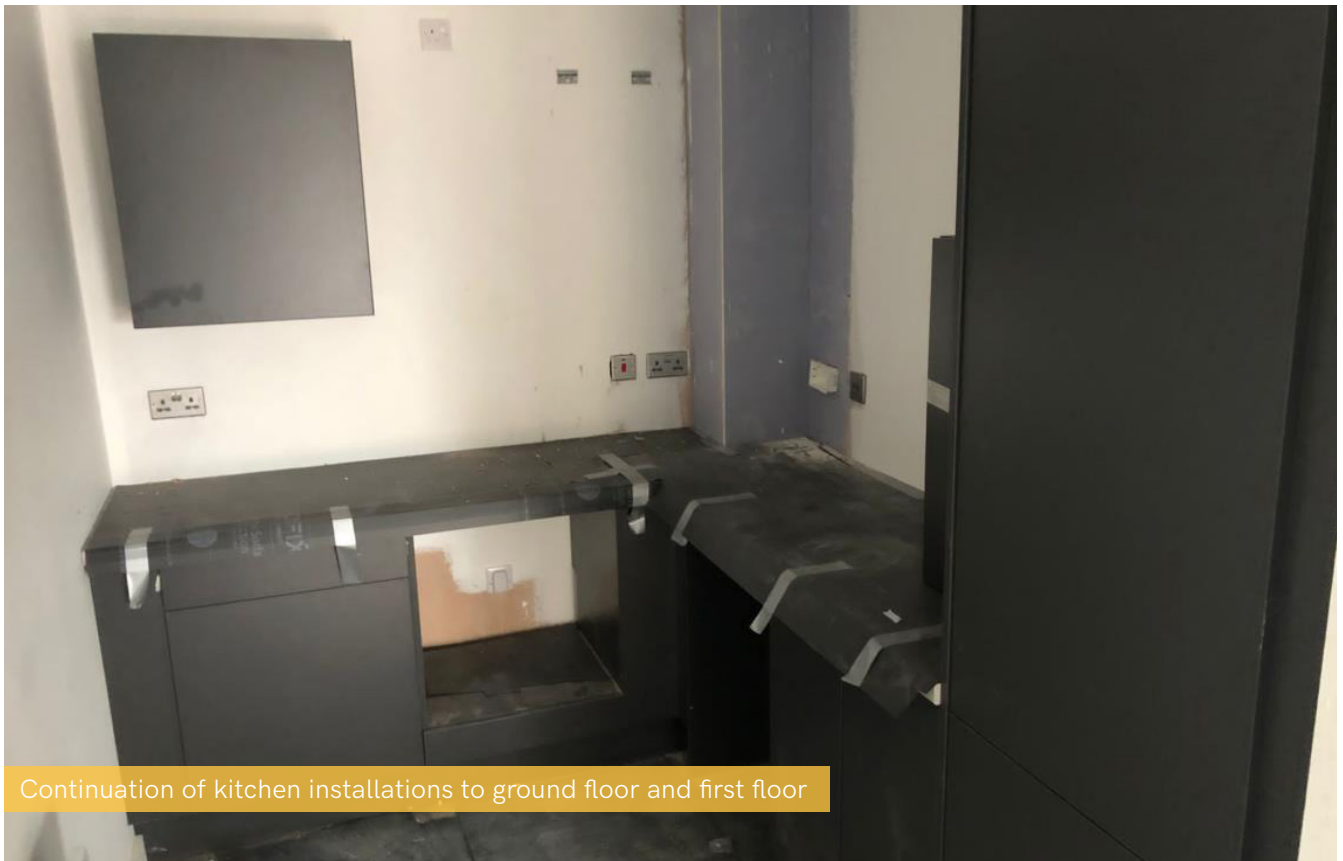
Continuation of internal wall and ceiling finishes to ground and first floor



Continuation of 2nd fixes to ground and first floor



Progression of kitchen installations to ground and first floor

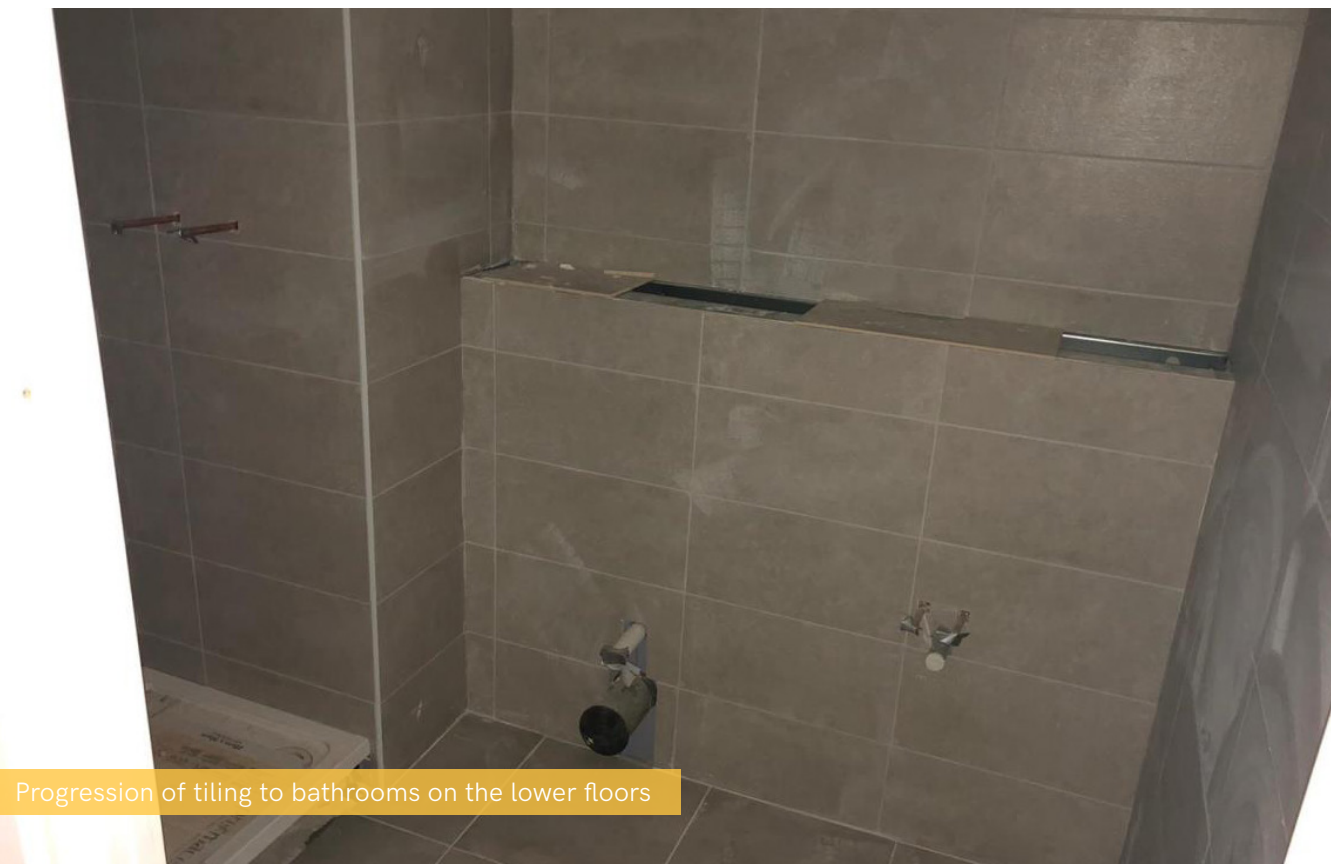


Continuation of kitchen installations to ground floor and first floor





Commencement of plastering to upper floors



Progression of tiling to bathrooms on the lower floors



External view of Blocks D and B progression



External view of Block A progression



External view of Blocks A and C progression