

City Residence- the Apartments Construction Update

May 2022

May 2022

This month at City Residence - The Apartments, the substation structure has been completed and finalisations are being made to the superstructure brickwork.

Another task now nearing completion is the scaffolding and crash decks, as well as clear development being made to the sprinkler system installation. Work has also commenced on the framing for combination units within

Summary of Works Progressed

- Substation structure is complete
- Finalisations to superstructure brickwork
- Scaffolding and crash decks nearing completion
- Clear development of sprinkler system installation
- Rapid progression of soil vent and internal drainage
- Continuation of screed
- Window installations are continuing
- Progression of partitions and boarding
- Continuation of ceiling grids
- Development of roof and single ply membrane
- Commencement of plastering
- Initiation of ceiling boarding
- Work started on framing for combination units within the bathrooms

Works Anticipated

- 100% completion of superstructure brickwork
- Finalisations of window installations
- Development of first fix mechanical and electrical installations
- Progression of internal drainage
- Continuation of partitions and boarding
- Development of grids
- Roof and single ply membrane continuing
- Continuation of plastering
- Development of ceiling boarding
- Continuation of framing for combination units within the bathrooms



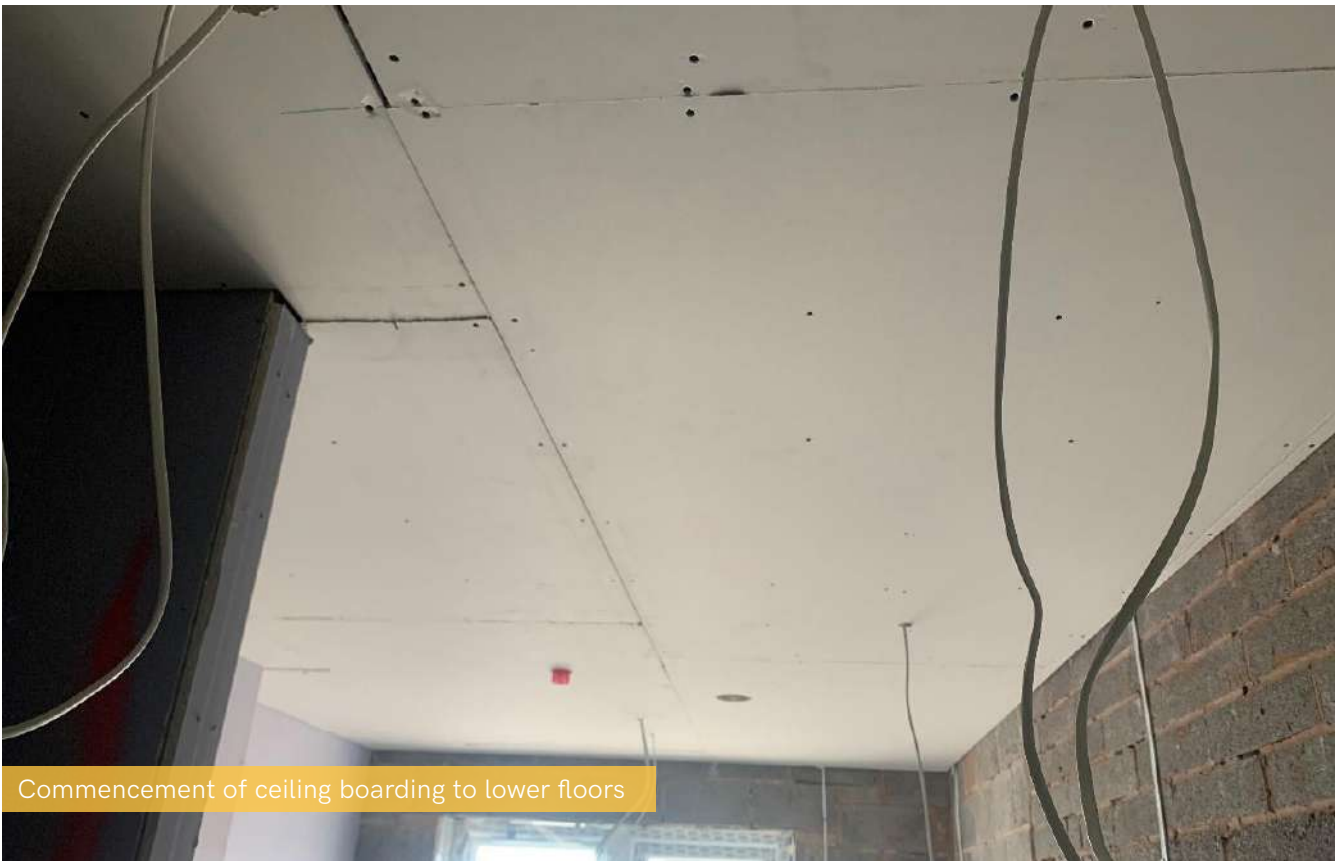
Progression of internal boarding on lower floors



Progression of internal boarding and 1st fixes on lower floors



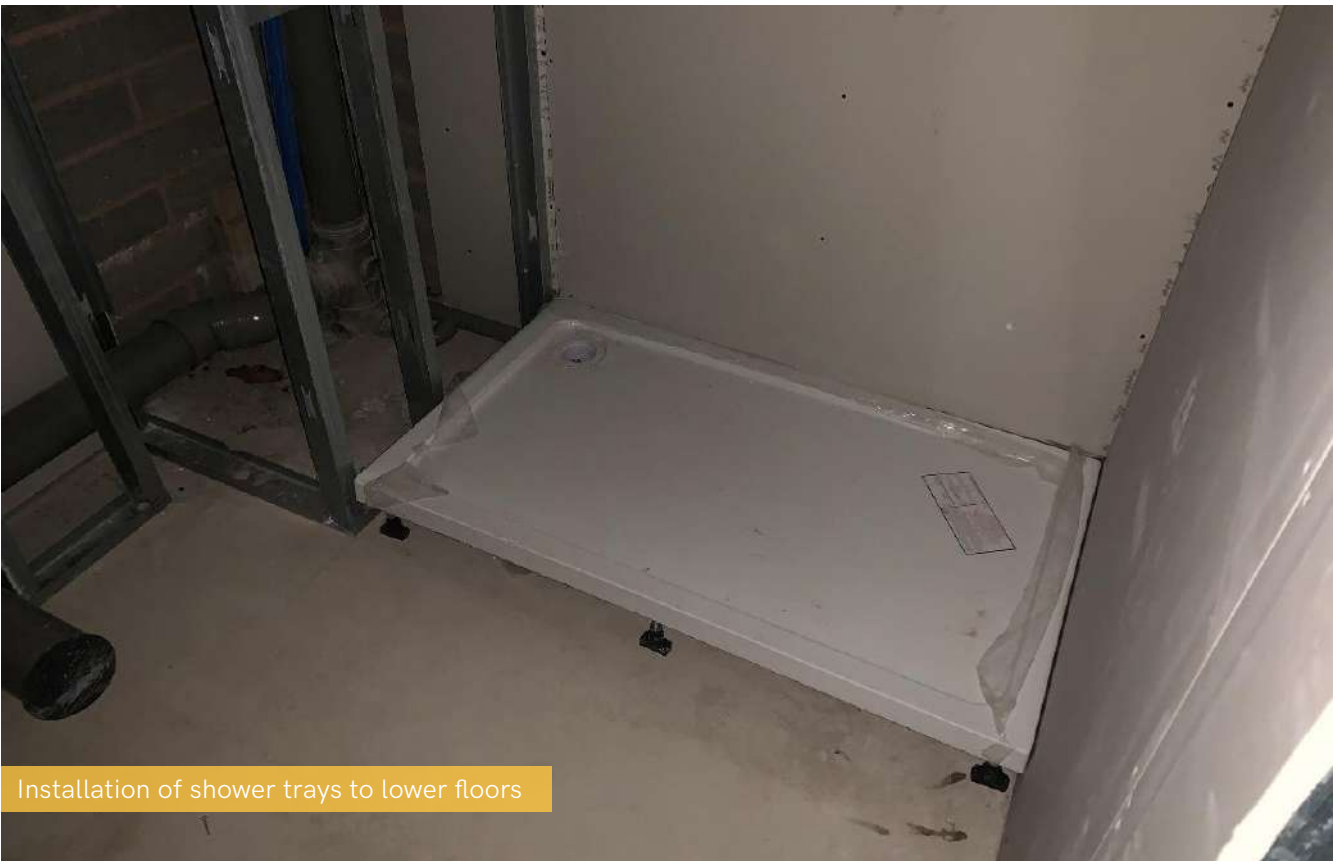
Commencement of ceiling grids on upper floors



Commencement of ceiling boarding to lower floors



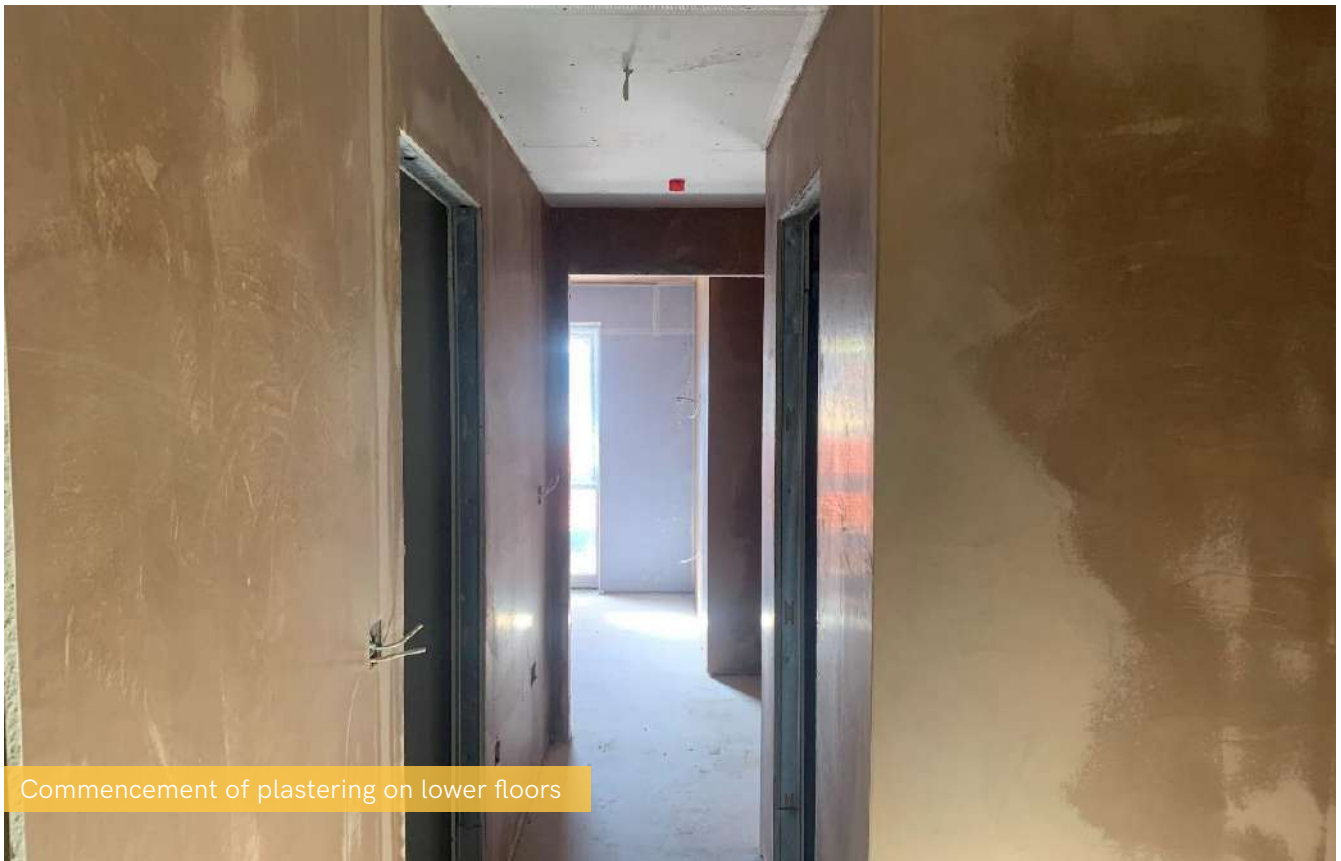
Commencement of ceiling boarding to lower floor corridors



Installation of shower trays to lower floors



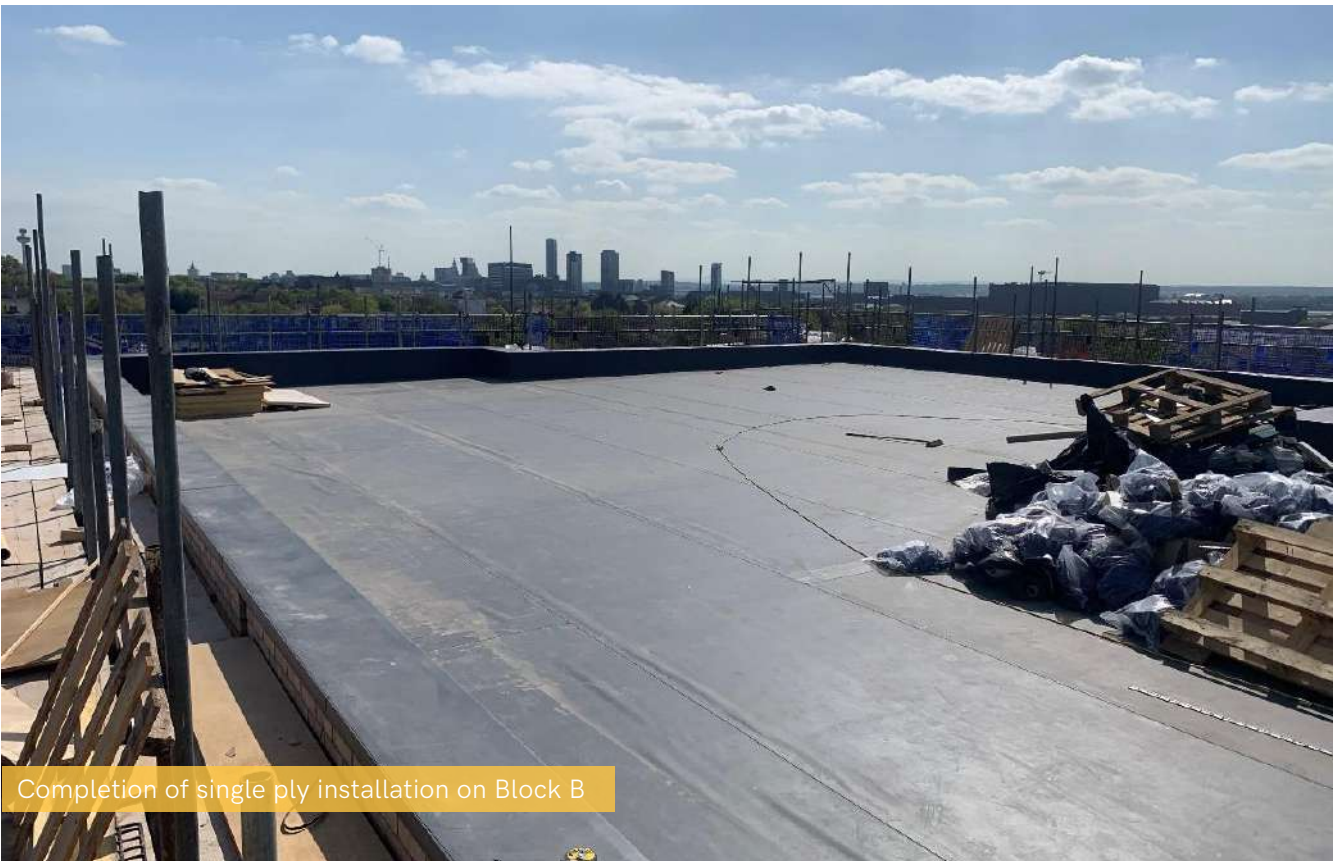
Commencement of framing for combination units within lower floors



Commencement of plastering on lower floors



Commencement of plastering on lower floors



Completion of single ply installation on Block B



Near completion of masonry and progression of roof on Block A



Installation of posi joists on Block B



External view of superstructure progression



External view of superstructure progression and installation of final slab on Block D



Aerial site view



