



RWinvest

# RELIANCE HOUSE STUDIOS

## CONSTRUCTION UPDATE

September 2019



---

# RELIANCE HOUSE STUDIOS

## CONSTRUCTION UPDATE

September 2019

Demolition and strip out are now 100% complete at Reliance House Studios in Liverpool.

The latest construction update details that the drainage has commenced and is 25% complete so far. Various drainage channel cuts have been made throughout the concrete floors and safety barriers have been put in place around these channels. Excavation for the drainage has been created via the external wall.

Internal office walls have been removed and some internal walls have been knocked through to create doorways.

Soil pipes plus other electrical services are now in place.

The lift service is installed to the upper floors and fire doors are in place to communal cupboards in this area. Fire safety running man signs and fire doors have also been installed and the dry riser is complete to the lift lobby.

The WC has been removed along with its fixtures and fittings. Other removal works include the removal of ceilings, floor finishes, existing tiling, plaster work and internal doors which are now boarded up and awaiting insulation and new plasterboard finish. The removal of tanking from the basement walls has also progressed.

Fire stopping is in place to the ceiling void above corridor doors and smoke alarms are in place. A fire safe coating has been applied to the basement ceiling.

---



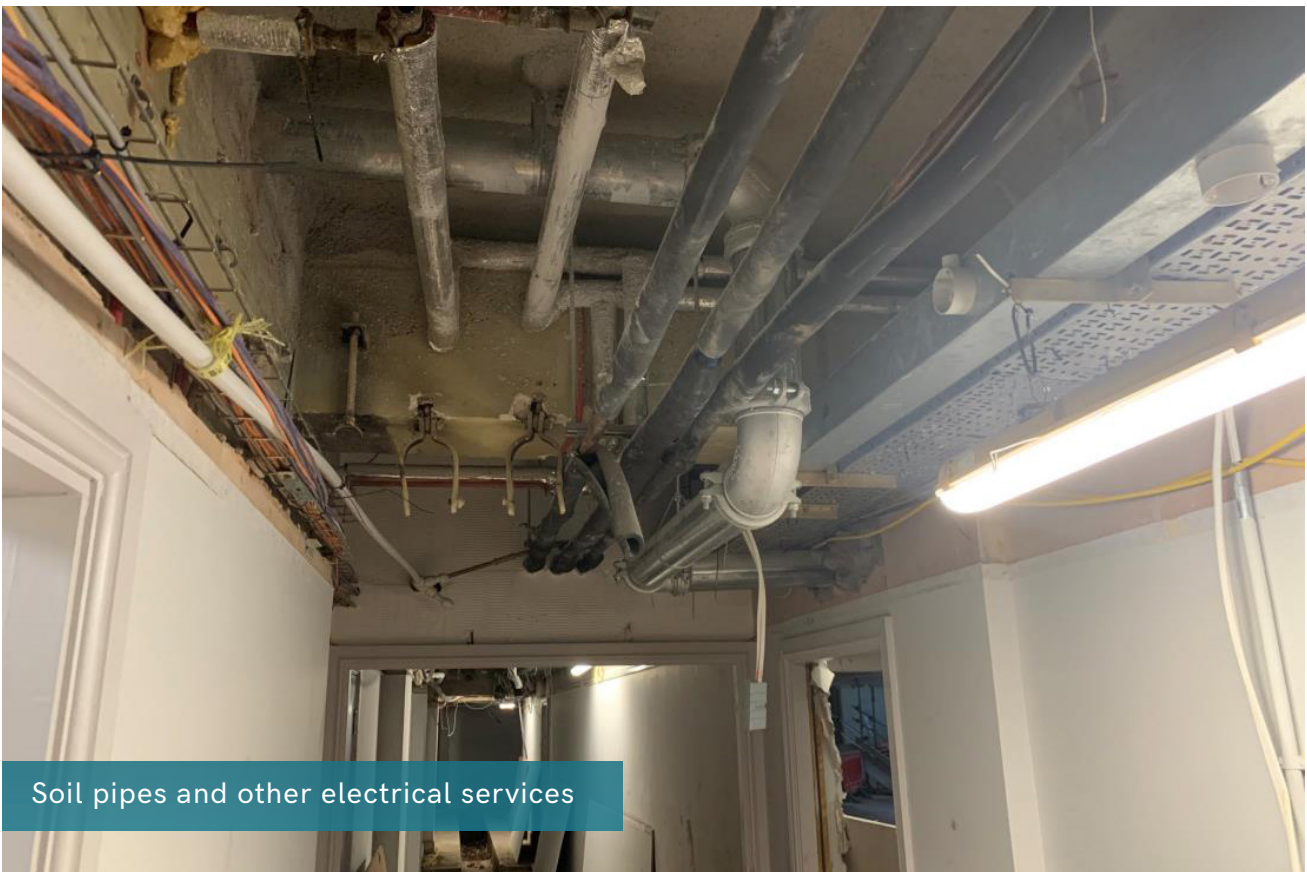


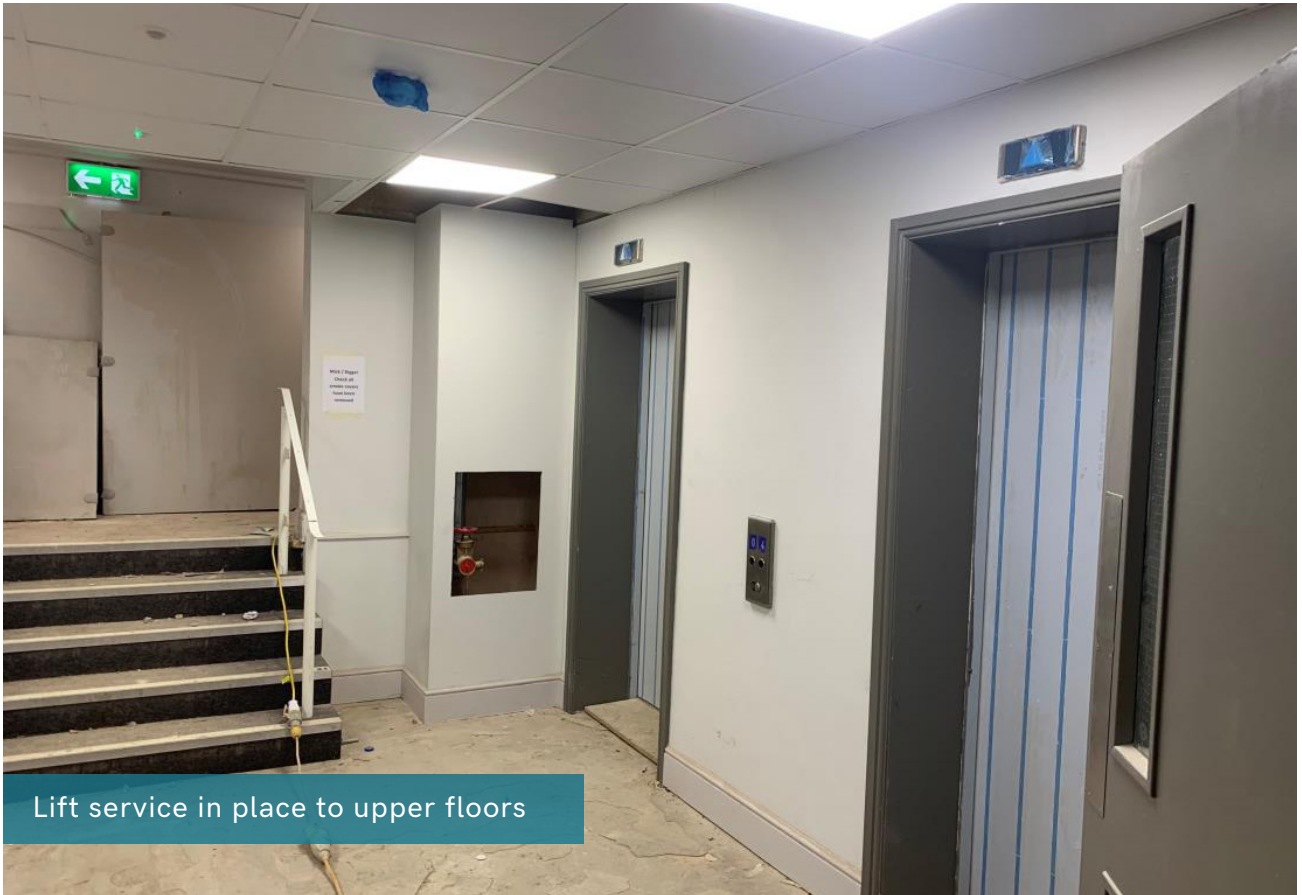
Front elevation access



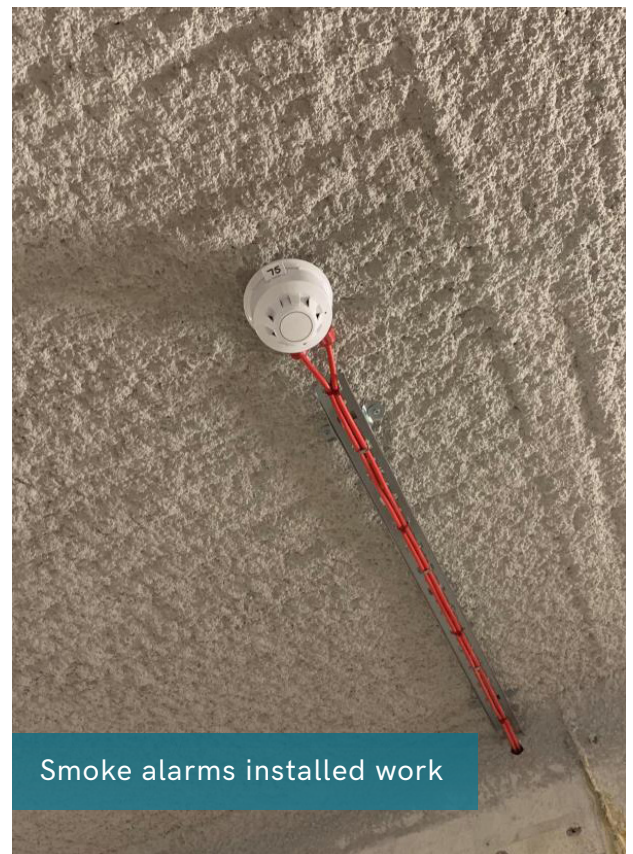
Drainage channels cut throughout concrete

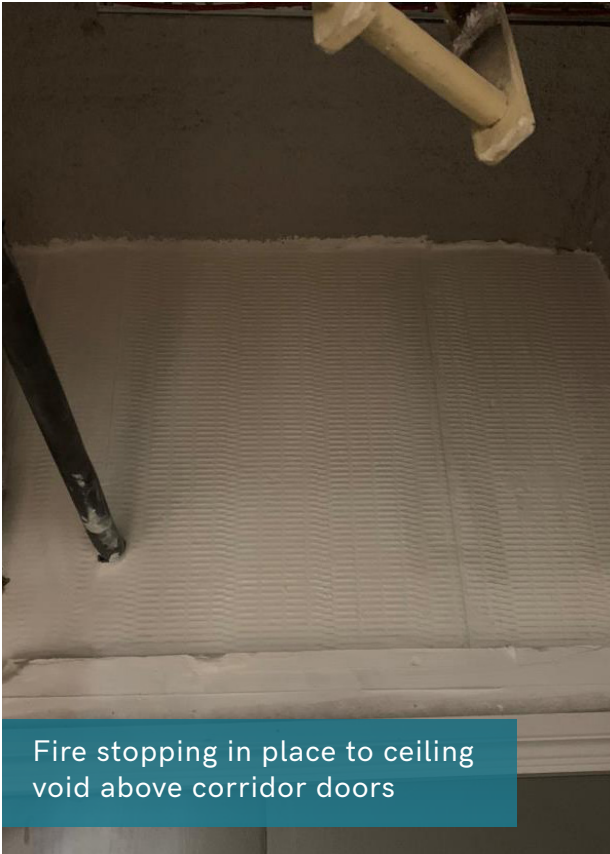




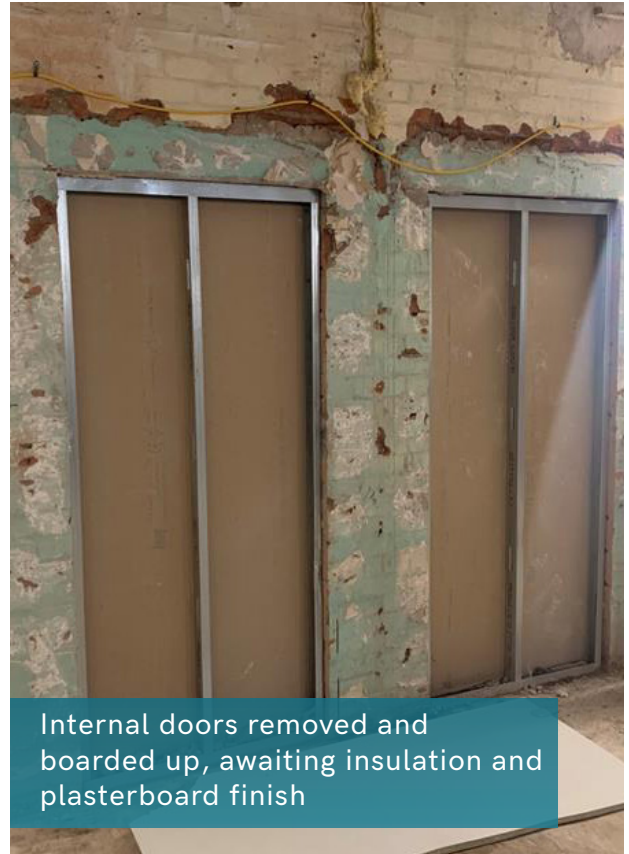








Fire stopping in place to ceiling void above corridor doors

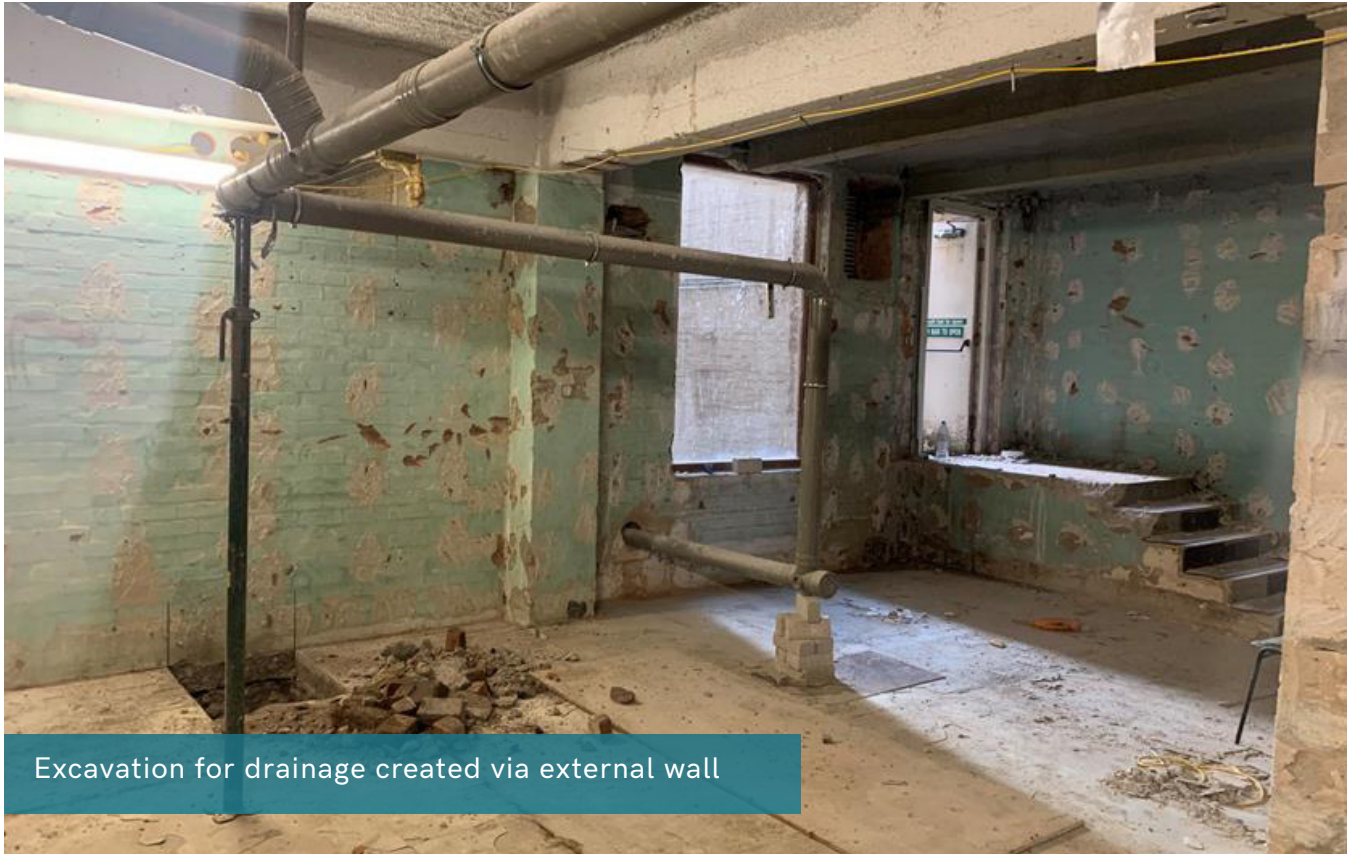


Internal doors removed and boarded up, awaiting insulation and plasterboard finish



Removal of ceiling, walls and floor finishes, fixtures and fittings





Excavation for drainage created via external wall



Removal of tanking from basement walls





**RW**invest

Liverpool +44 (0)151 808 1250

London +44 (0)207 100 4141